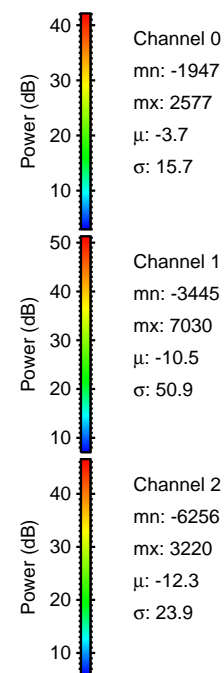
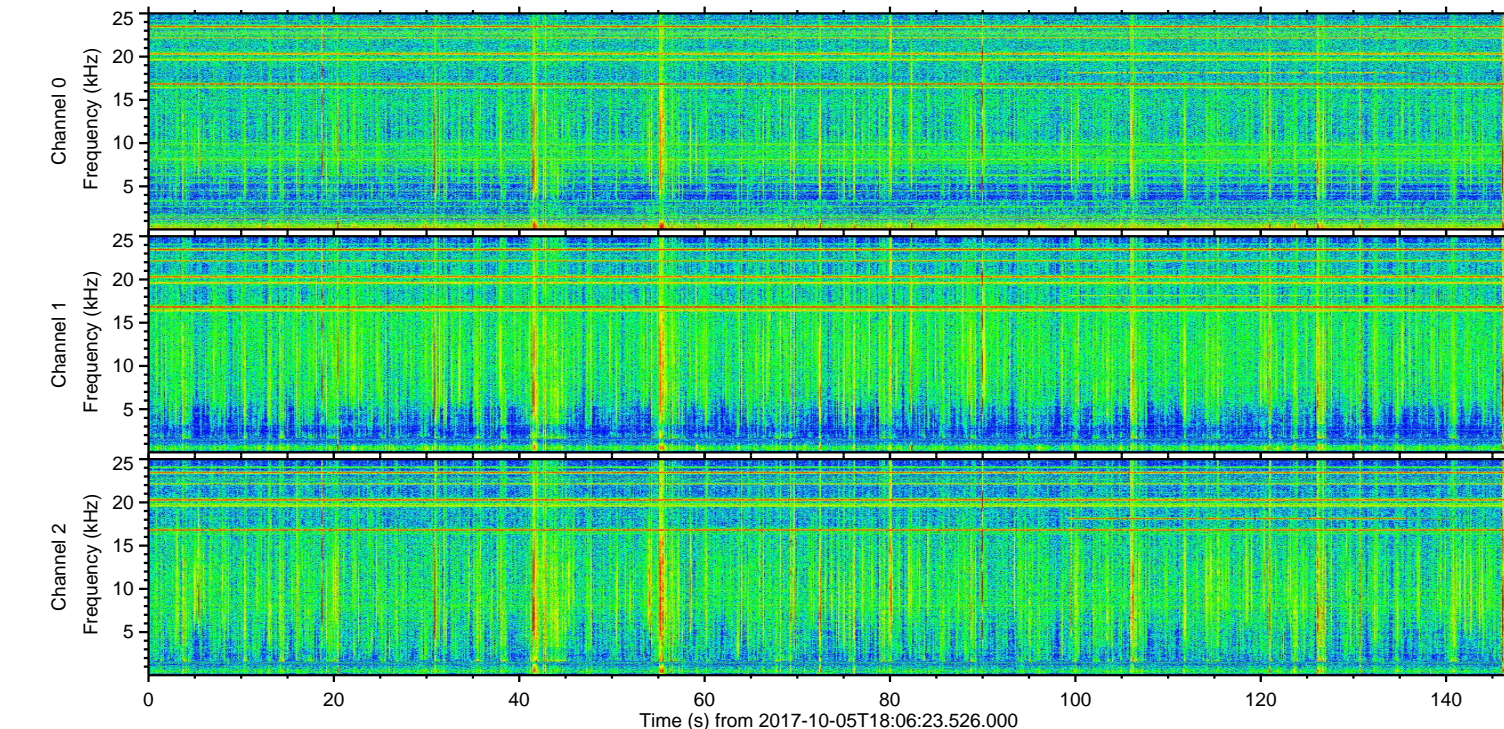
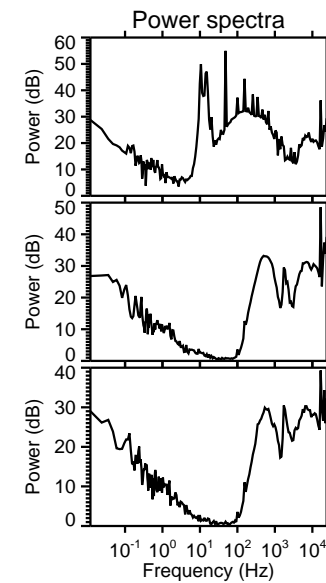
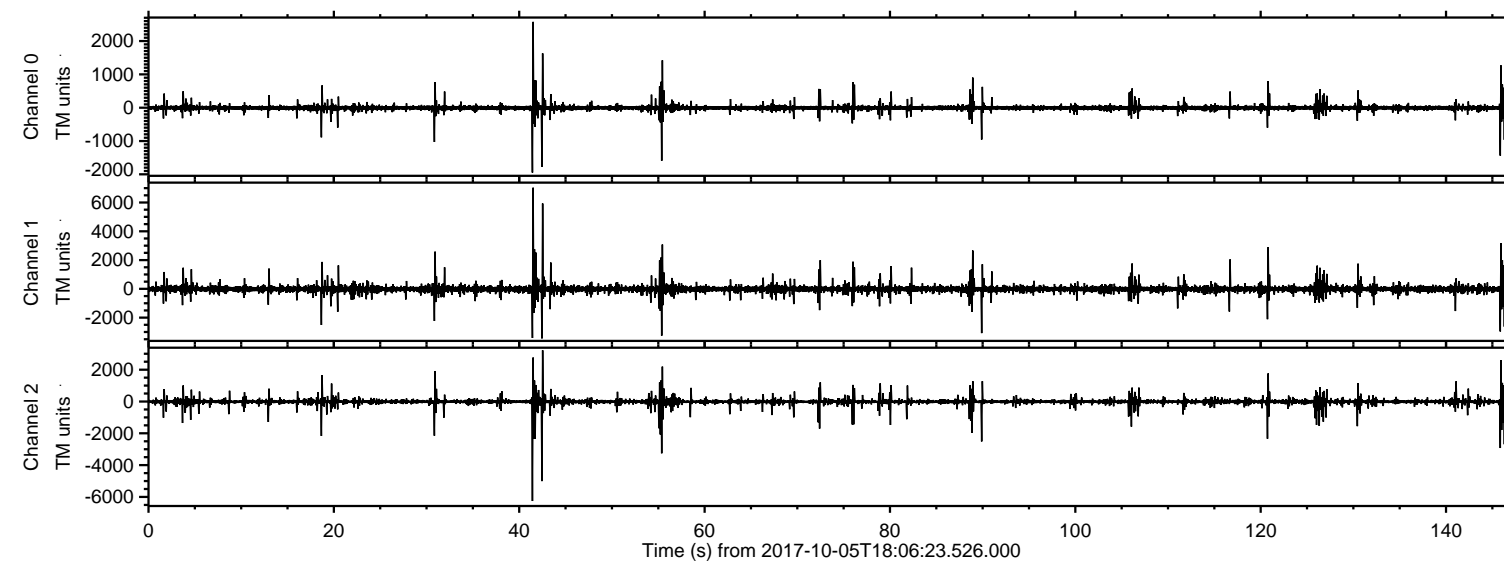
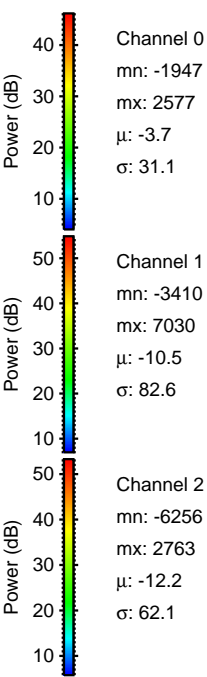
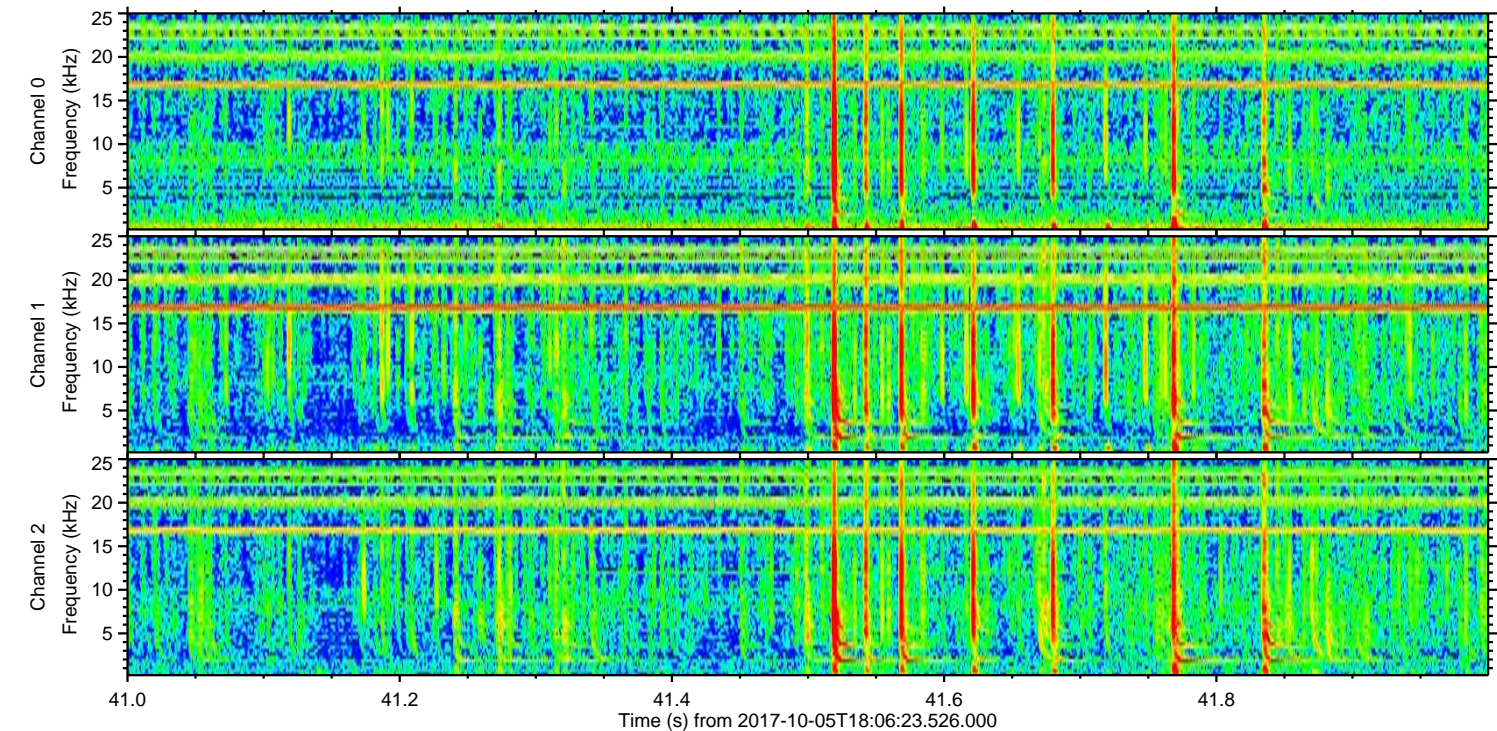
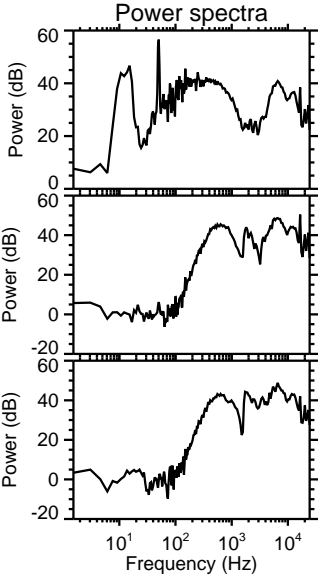
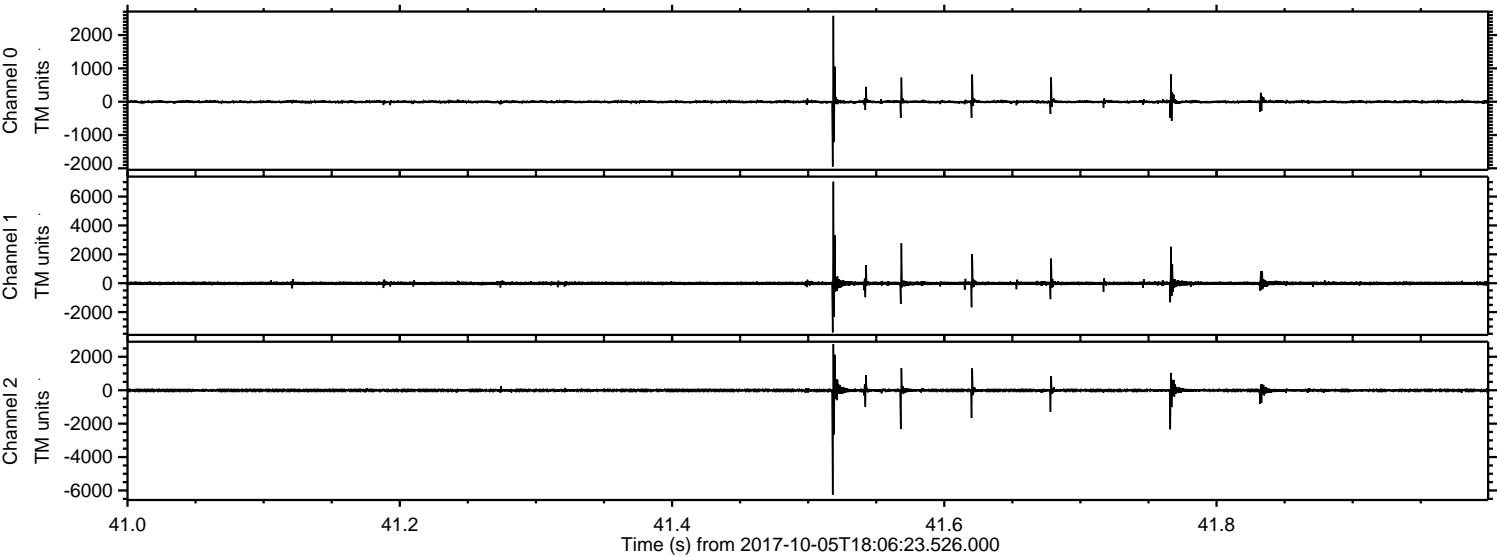


ELMAVAN 3D WAVEFORMS (Measured data sampled at 50 kHz) 51000 packets of 144 samples from 2017-10-05T18:06:23.526.000.

Processed Thu Oct 5 20:14:17 2017 by ELM ver.2012-10-06 from 001__elm20171005_180622__dat00.bin



Processed Thu Oct 5 20:14:23 2017 by ELM ver.2012-10-06 from 001__elm20171005_180622__dat00.bin

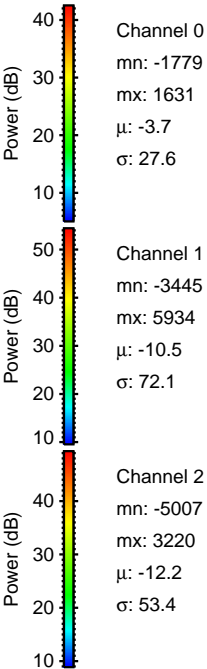
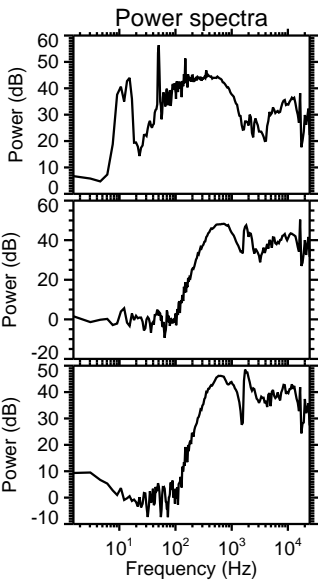
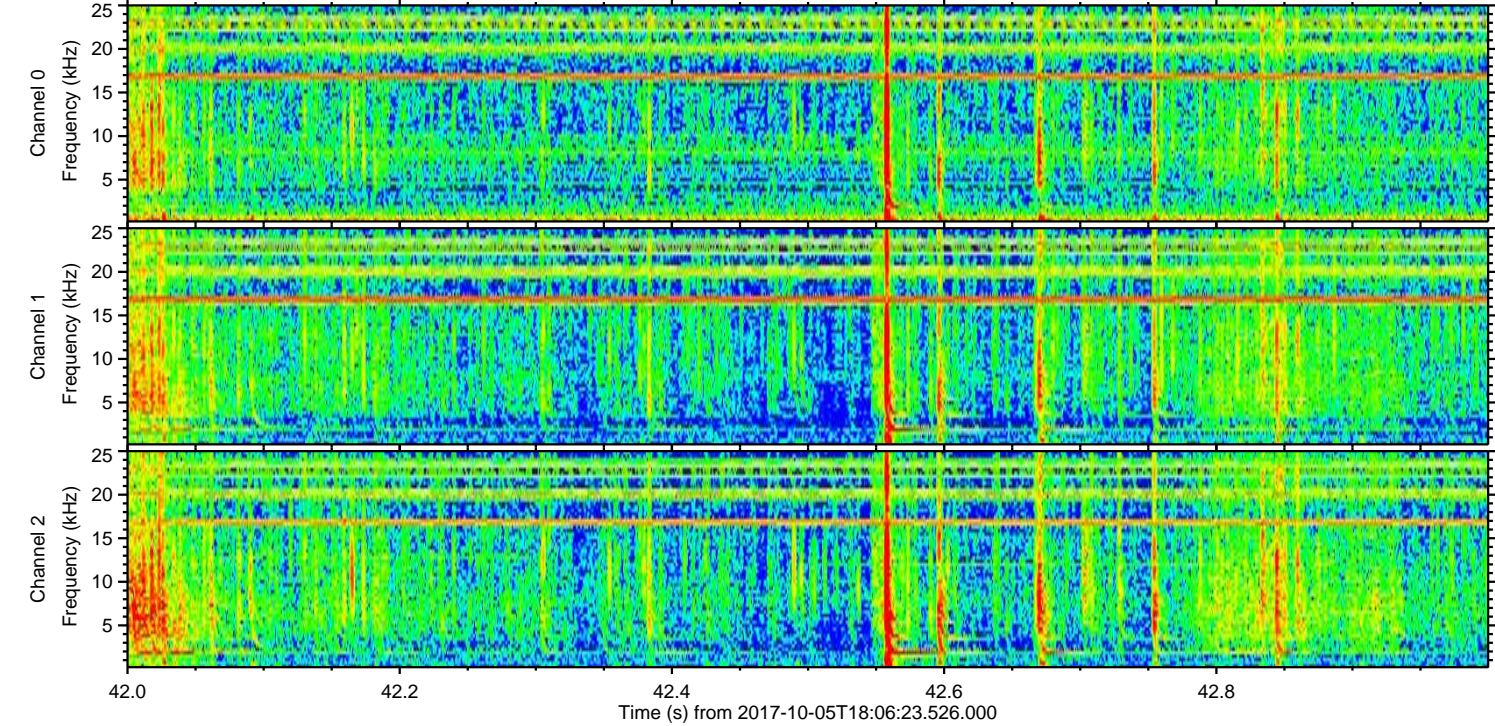
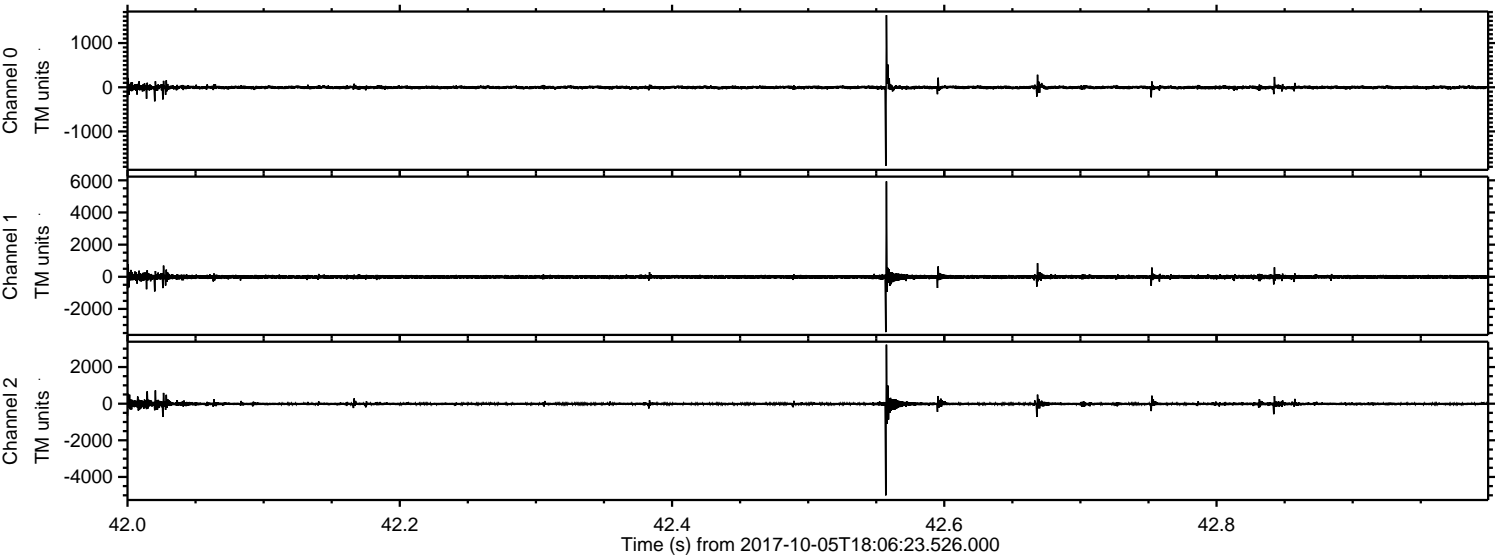


Channel 0
mn: -1947
mx: 2577
 μ : -3.7
 σ : 31.1

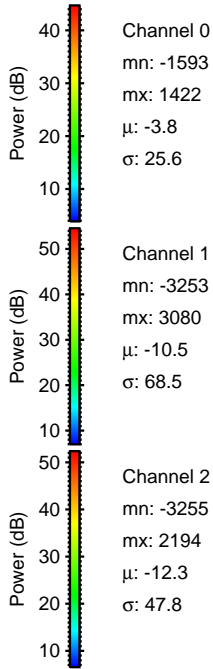
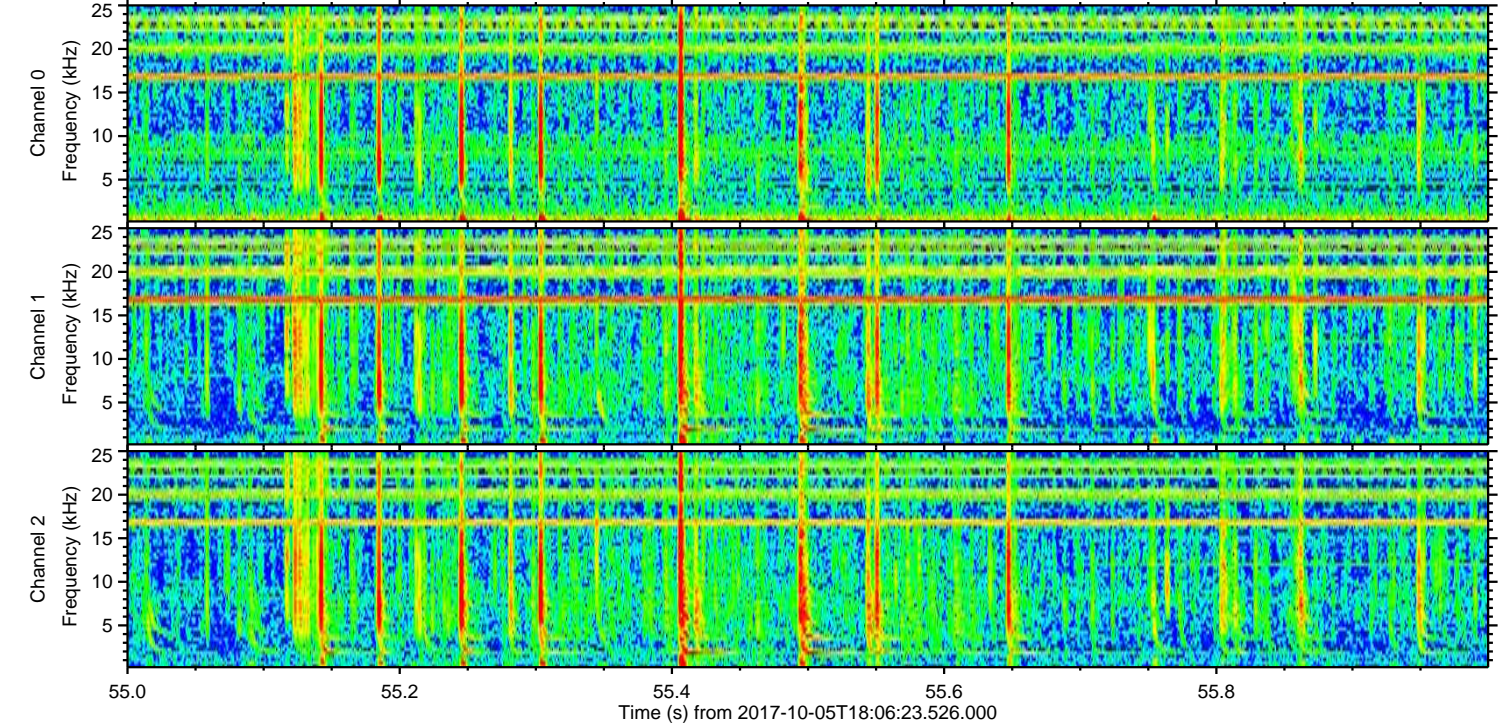
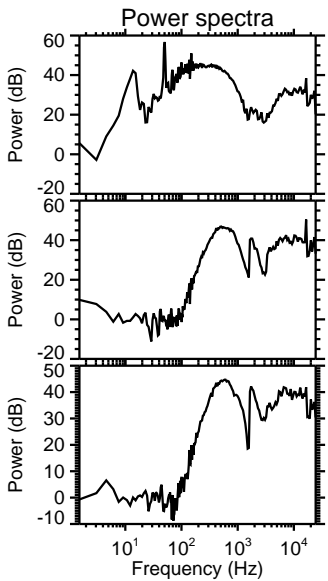
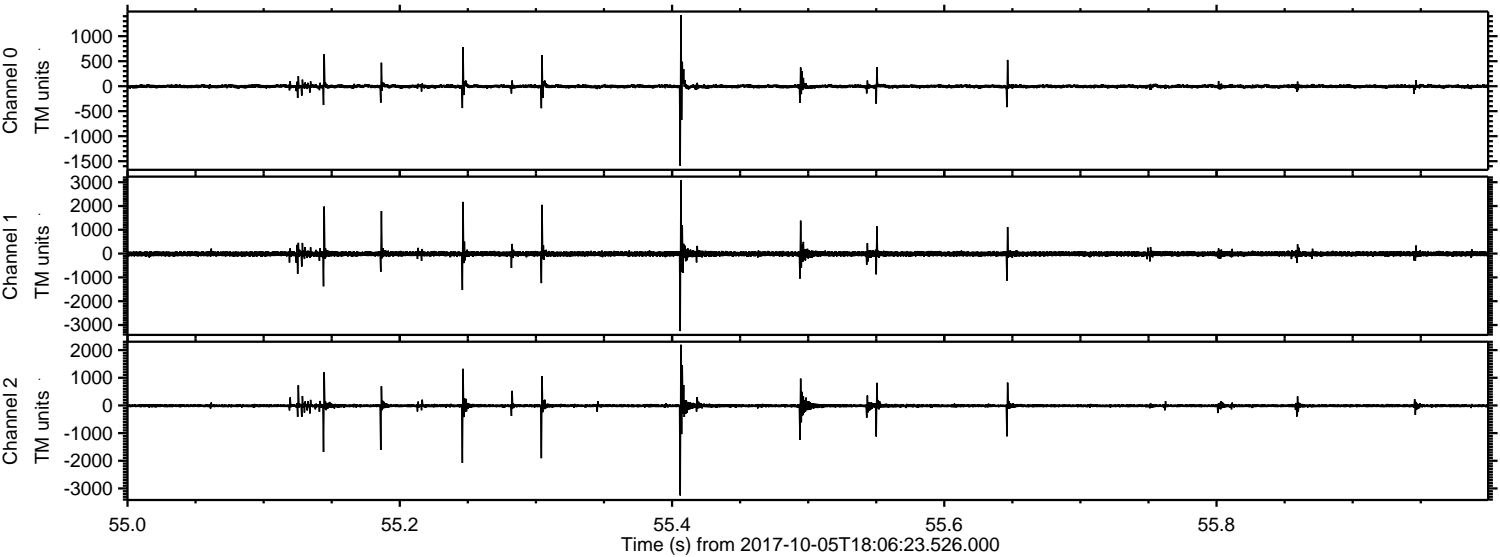
Channel 1
mn: -3410
mx: 7030
 μ : -10.5
 σ : 82.6

Channel 2
mn: -6256
mx: 2763
 μ : -12.2
 σ : 62.1

Processed Thu Oct 5 20:14:23 2017 by ELM ver.2012-10-06 from 001__elm20171005_180622__dat00.bin



Processed Thu Oct 5 20:14:24 2017 by ELM ver.2012-10-06 from 001__elm20171005_180622__dat00.bin



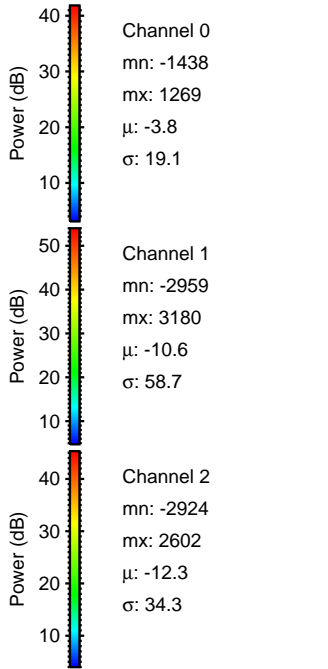
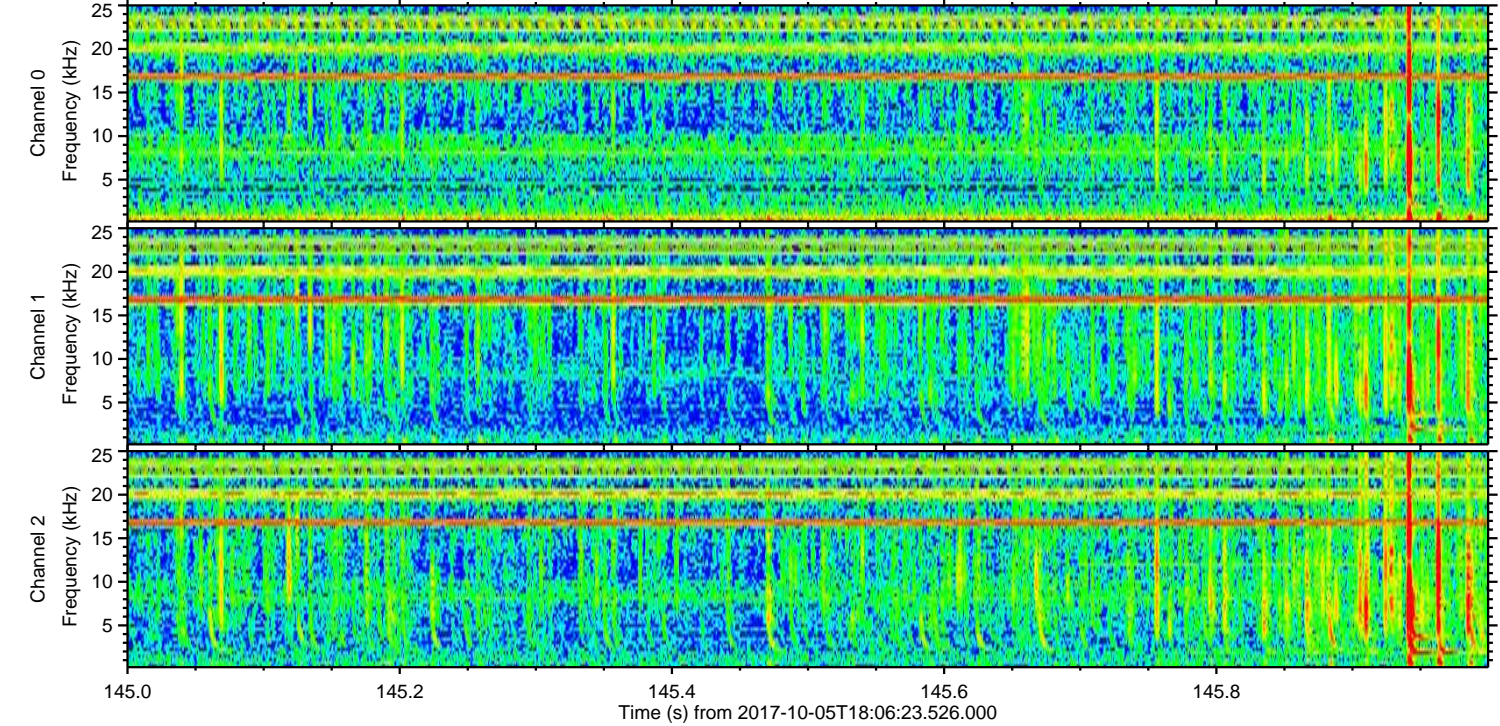
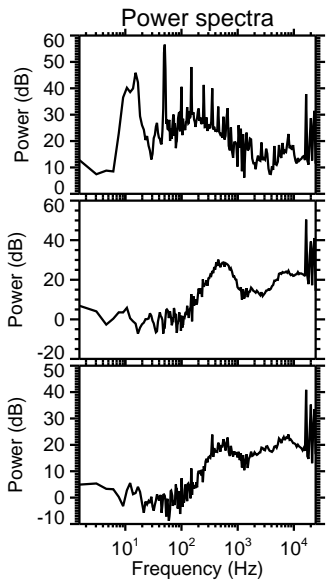
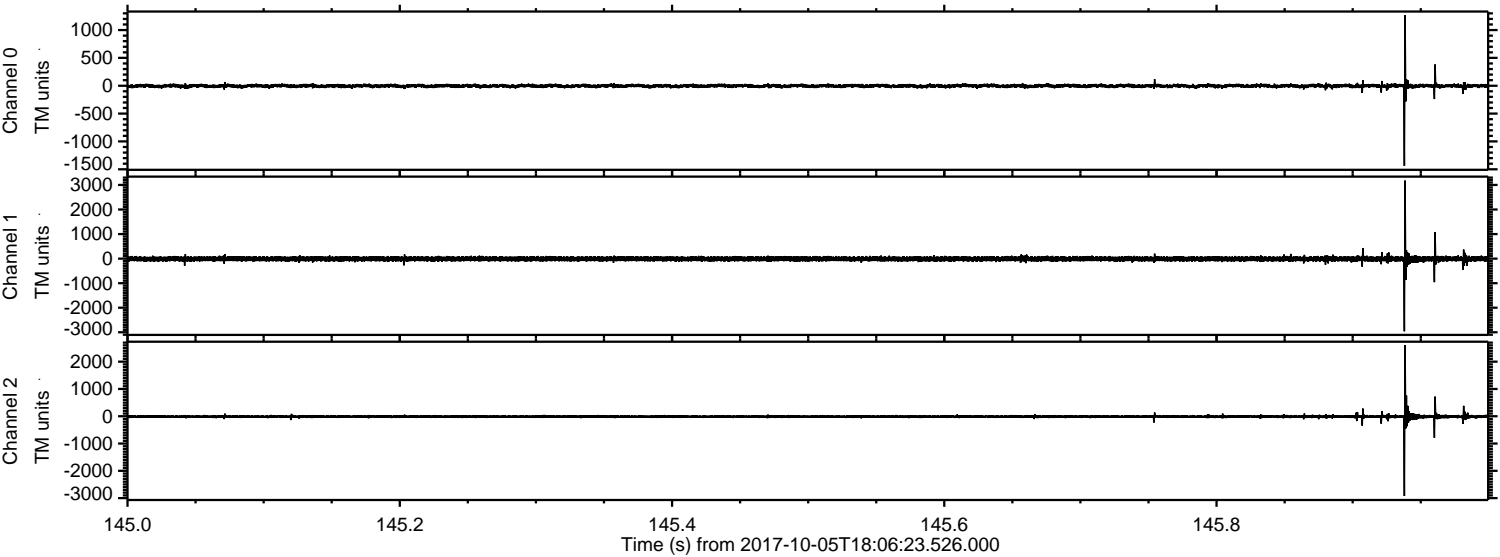
Channel 0
mn: -1593
mx: 1422
 μ : -3.8
 σ : 25.6

Channel 1
mn: -3253
mx: 3080
 μ : -10.5
 σ : 68.5

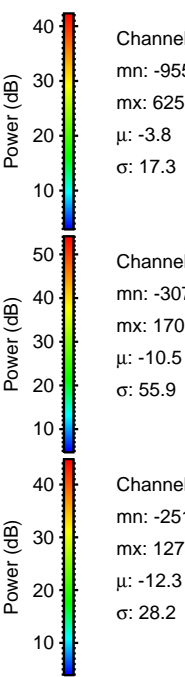
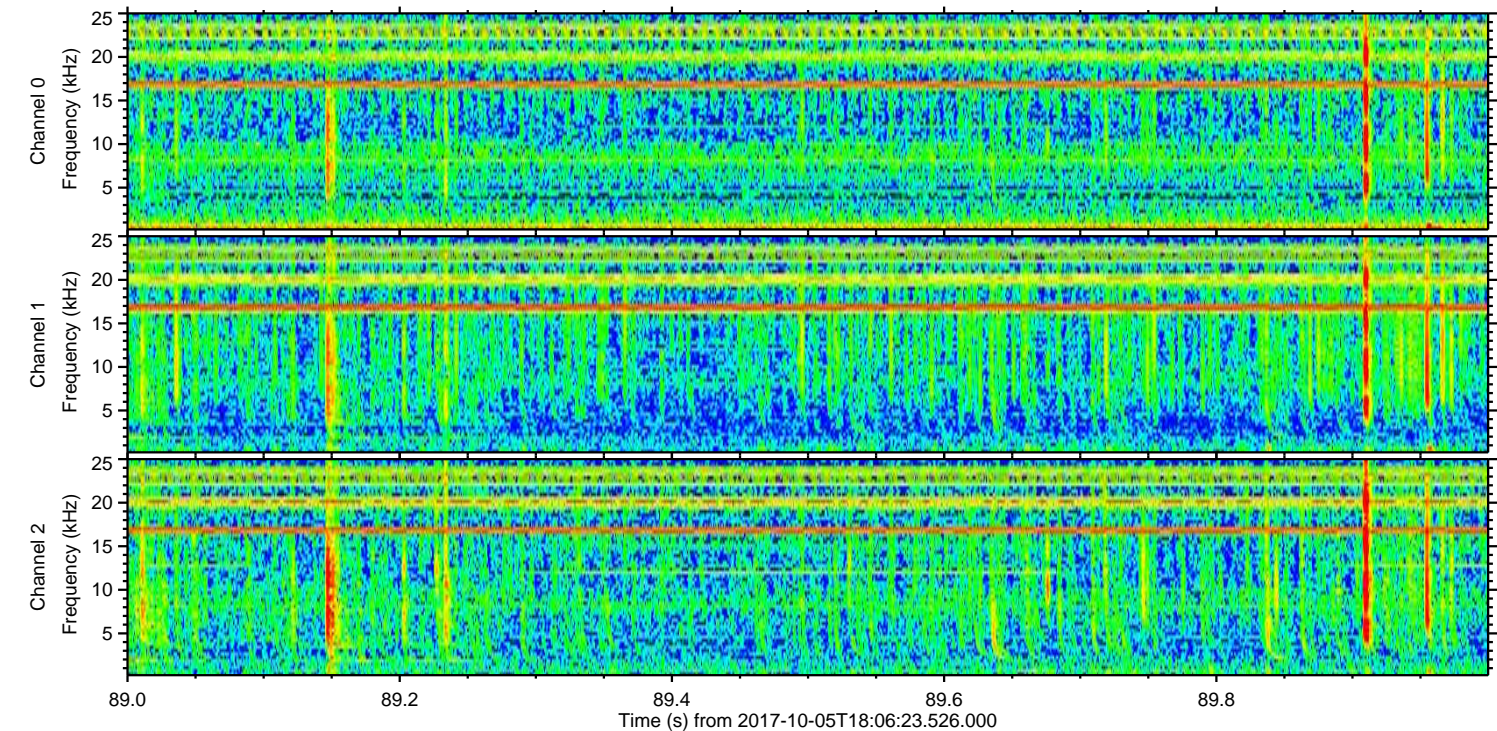
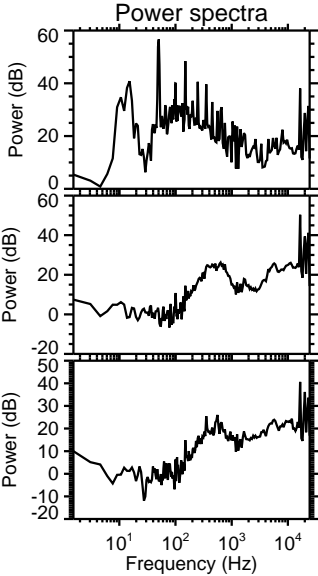
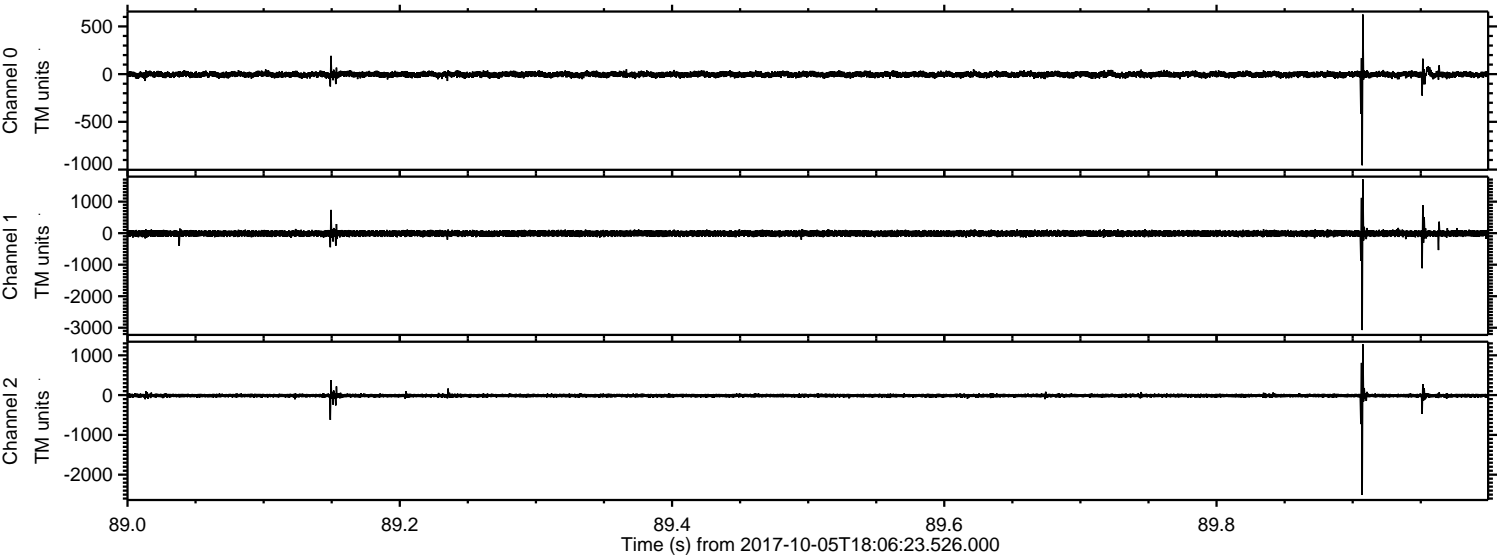
Channel 2
mn: -3255
mx: 2194
 μ : -12.3
 σ : 47.8

ELMAVAN 3D WAVEFORMS (Measured data sampled at 50 kHz) 51000 packets of 144 samples from 2017-10-05T18:06:23.526.000. Part 146/147

Processed Thu Oct 5 20:14:25 2017 by ELM ver.2012-10-06 from 001__elm20171005_180622__dat00.bin



Processed Thu Oct 5 20:14:25 2017 by ELM ver.2012-10-06 from 001__elm20171005_180622__dat00.bin



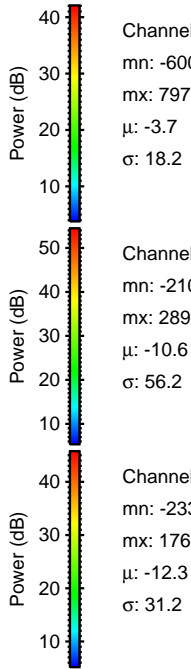
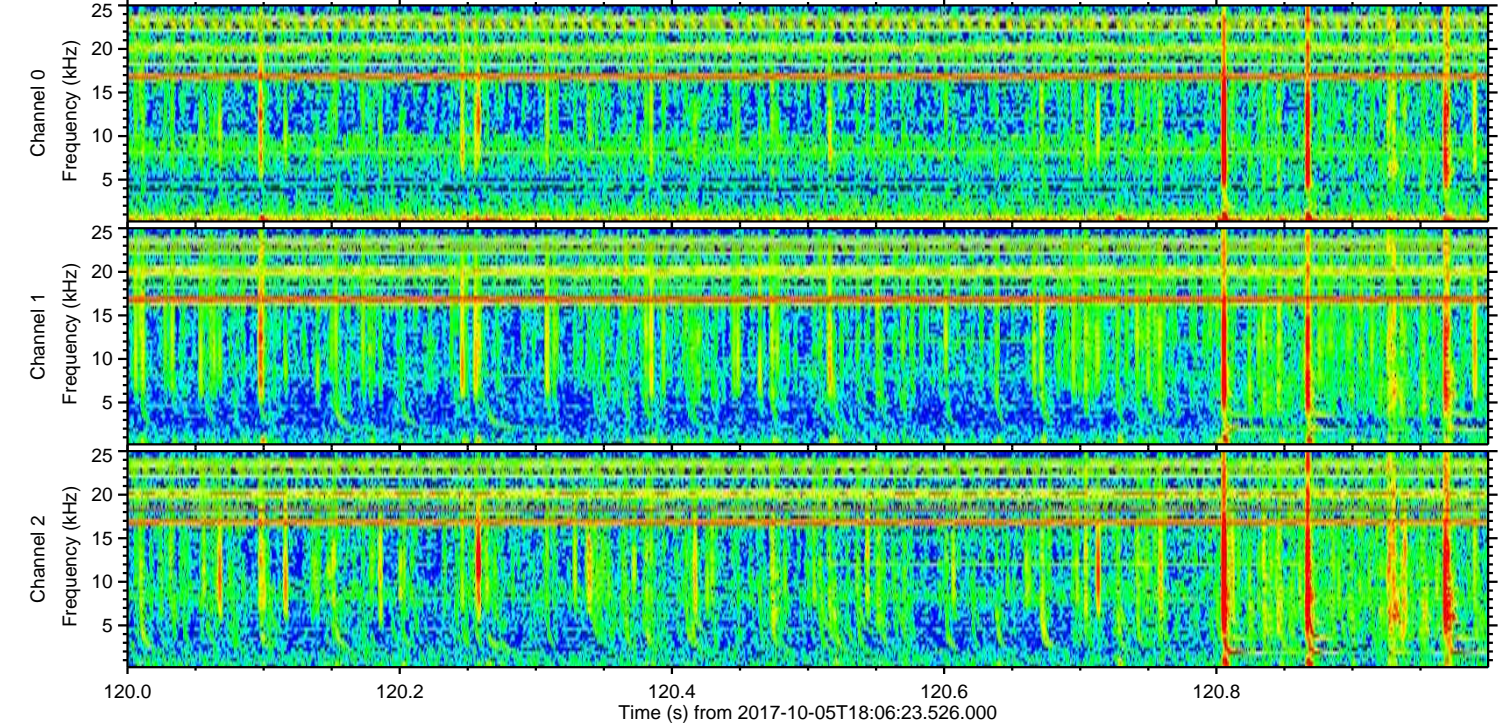
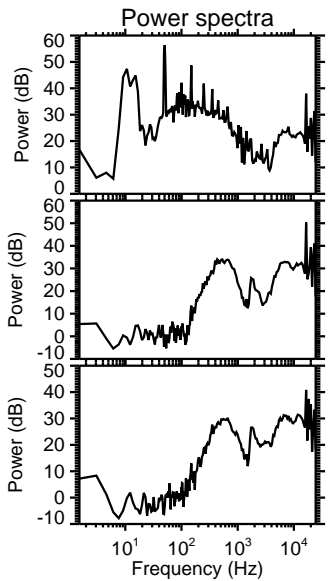
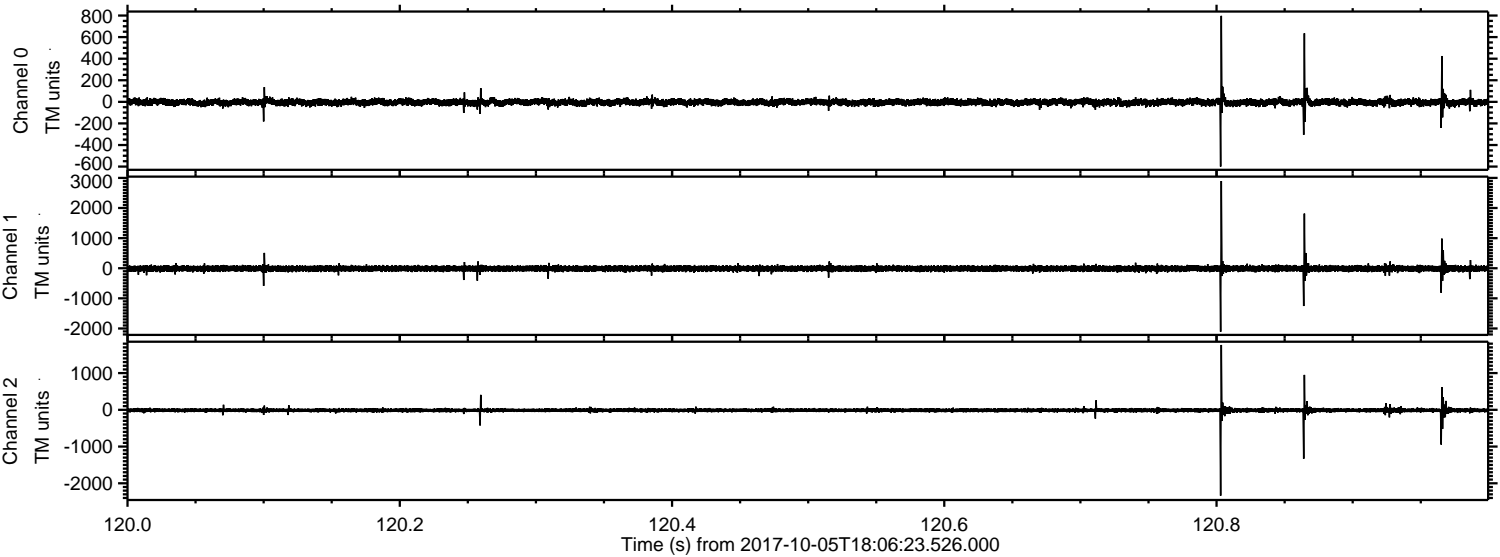
Channel 0
mn: -955
mx: 625
 μ : -3.8
 σ : 17.3

Channel 1
mn: -3075
mx: 1708
 μ : -10.5
 σ : 55.9

Channel 2
mn: -2510
mx: 1278
 μ : -12.3
 σ : 28.2

ELMAVAN 3D WAVEFORMS (Measured data sampled at 50 kHz) 51000 packets of 144 samples from 2017-10-05T18:06:23.526.000. Part 121/147

Processed Thu Oct 5 20:14:26 2017 by ELM ver.2012-10-06 from 001__elm20171005_180622__dat00.bin

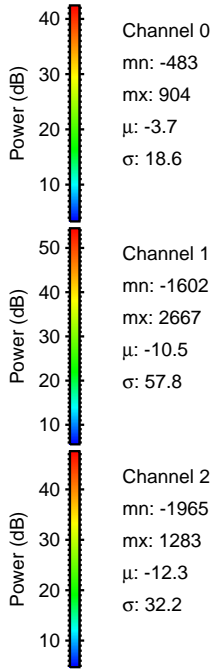
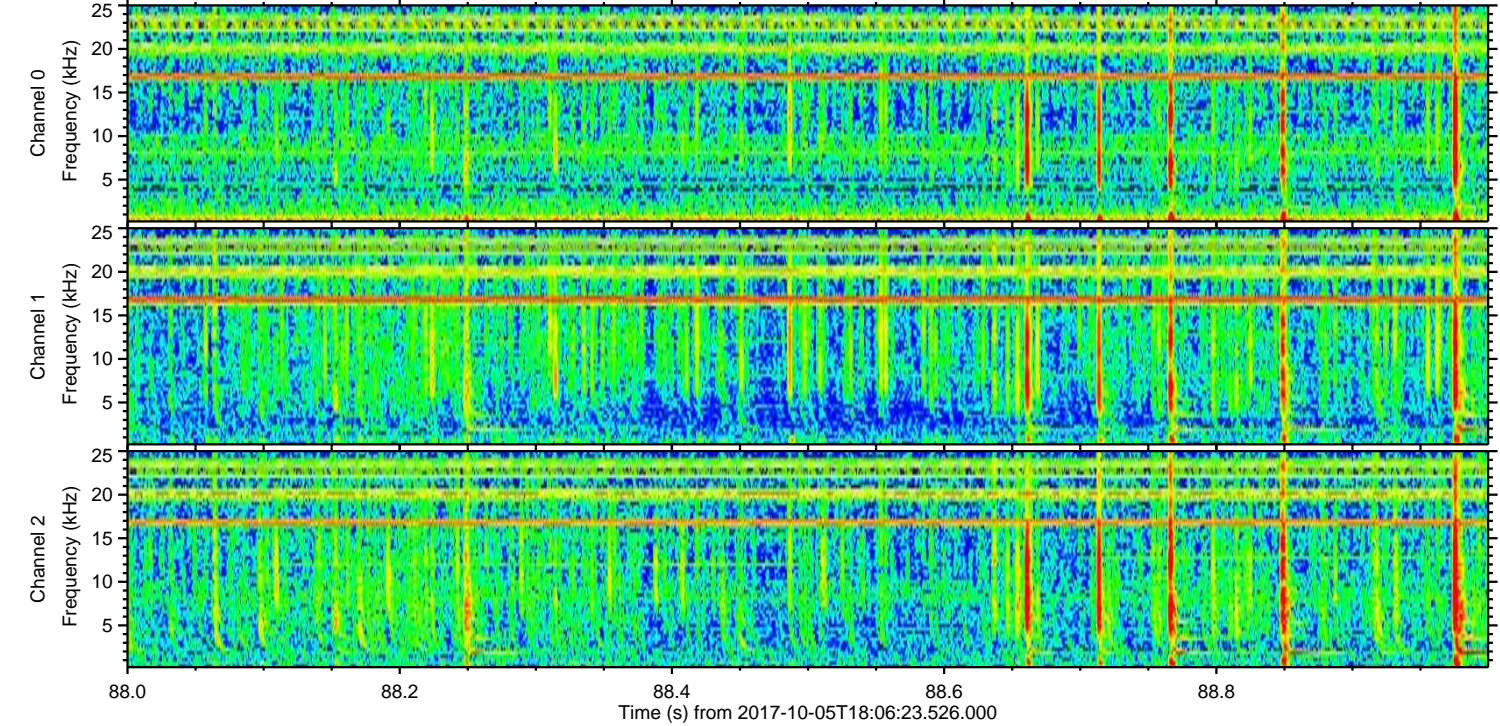
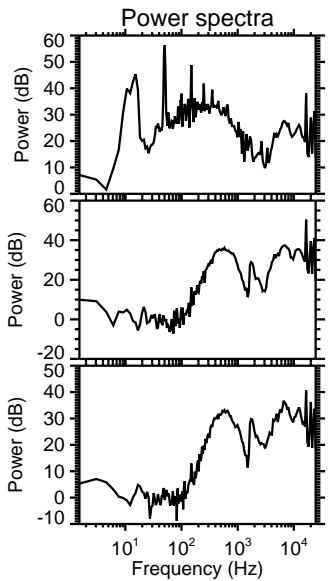
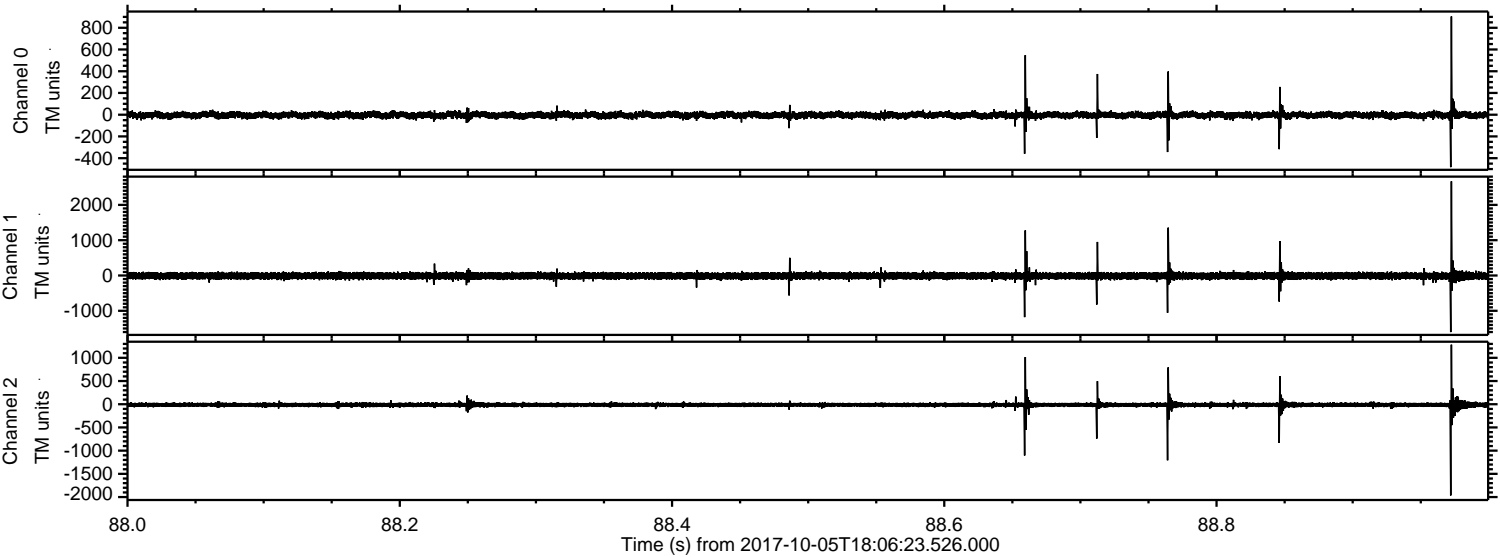


Channel 0
mn: -600
mx: 797
 μ : -3.7
 σ : 18.2

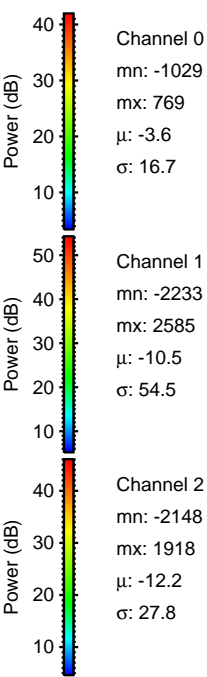
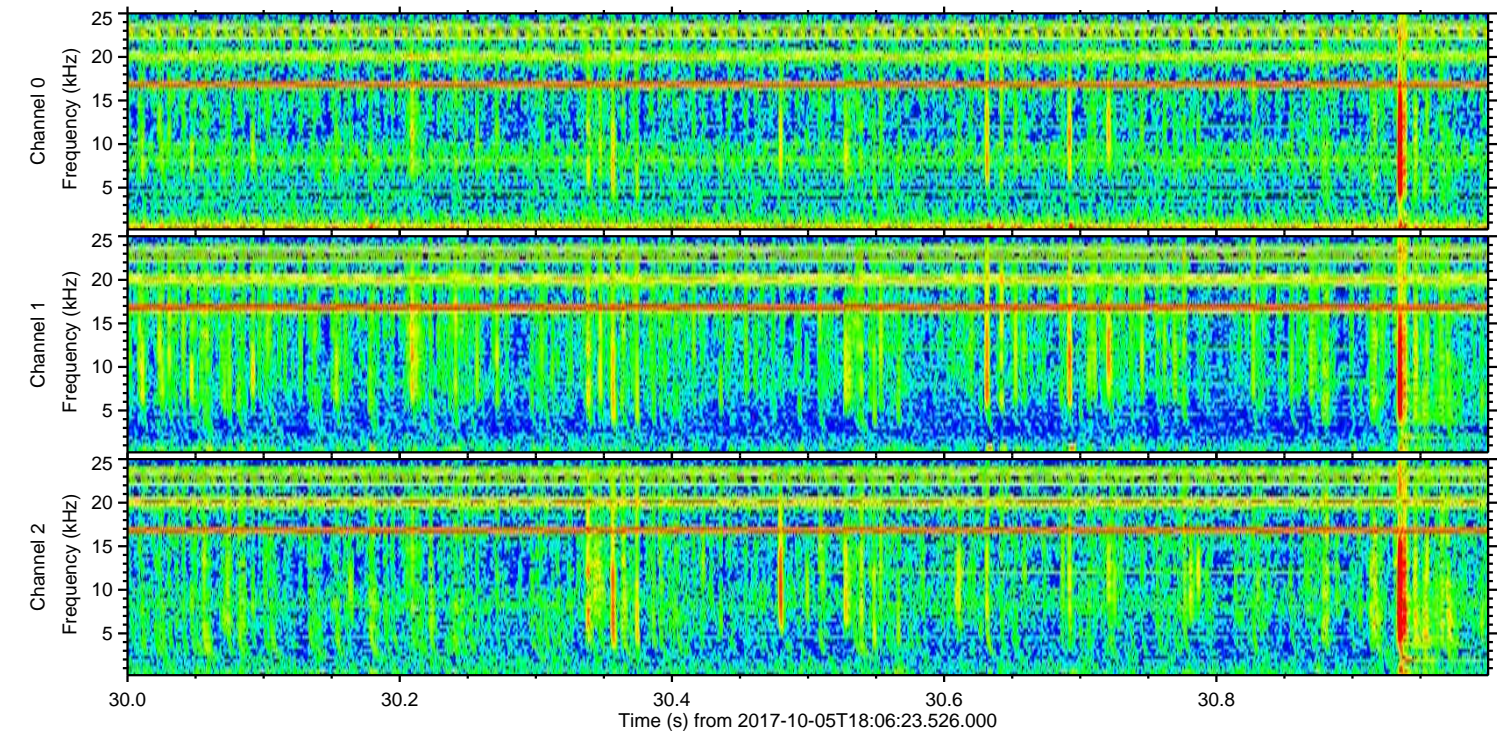
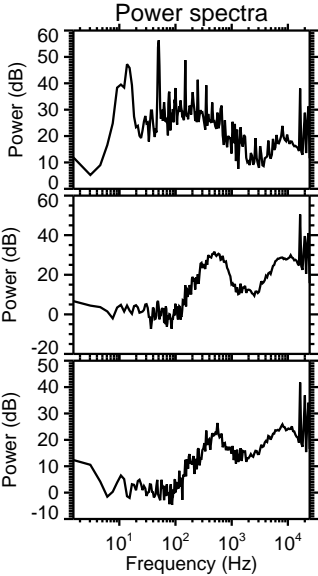
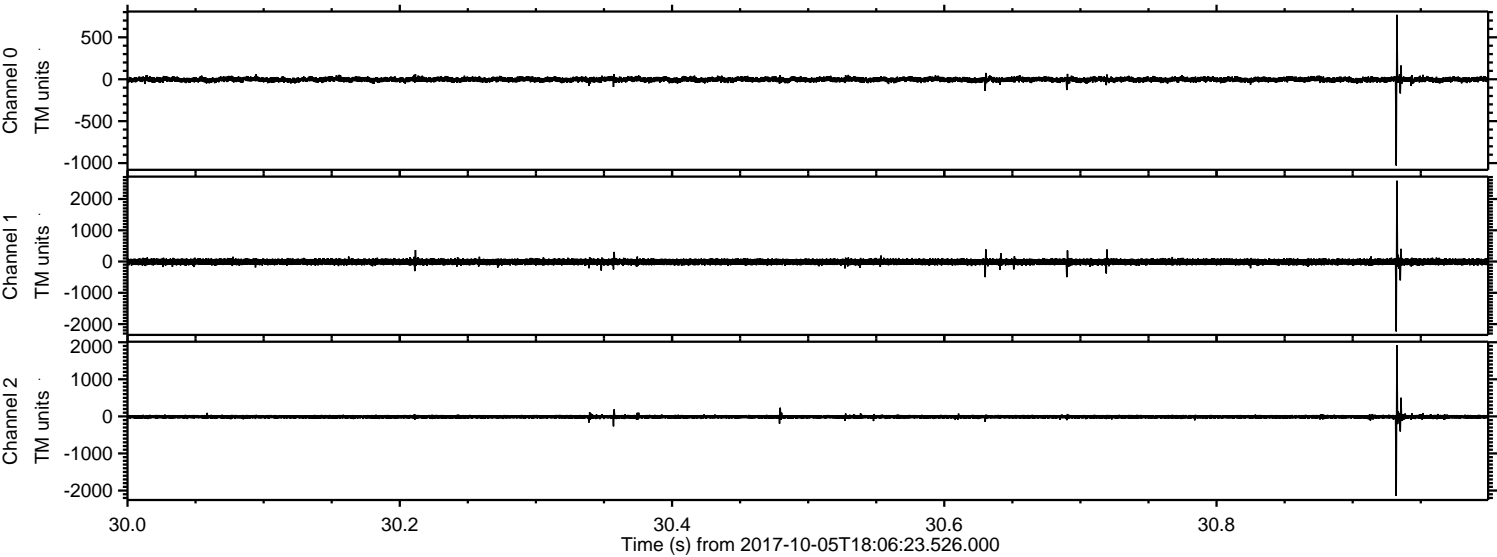
Channel 1
mn: -2109
mx: 2898
 μ : -10.6
 σ : 56.2

Channel 2
mn: -2338
mx: 1766
 μ : -12.3
 σ : 31.2

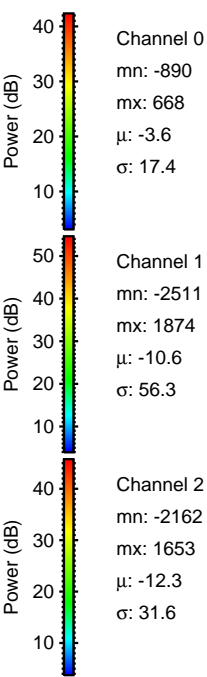
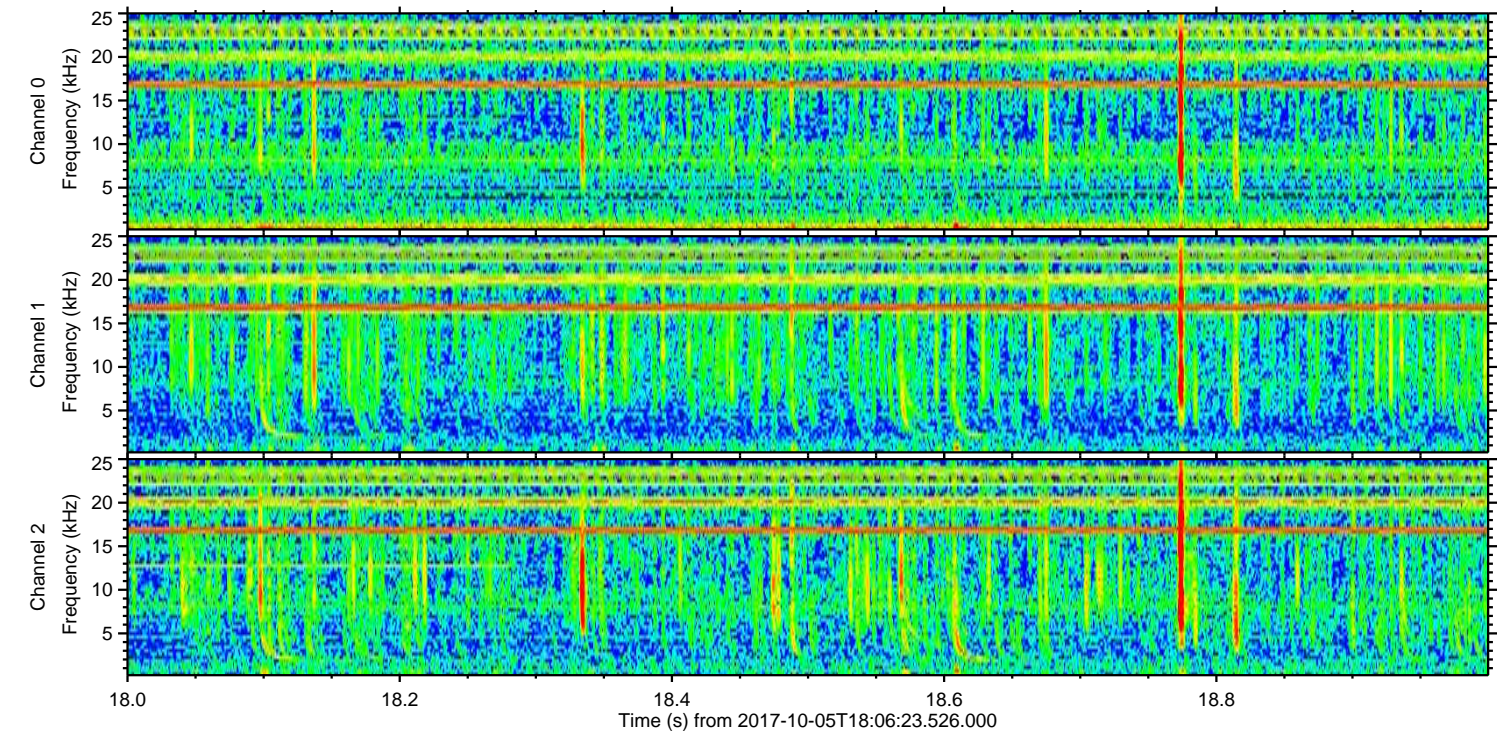
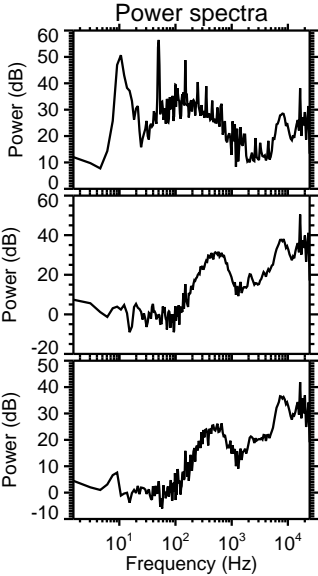
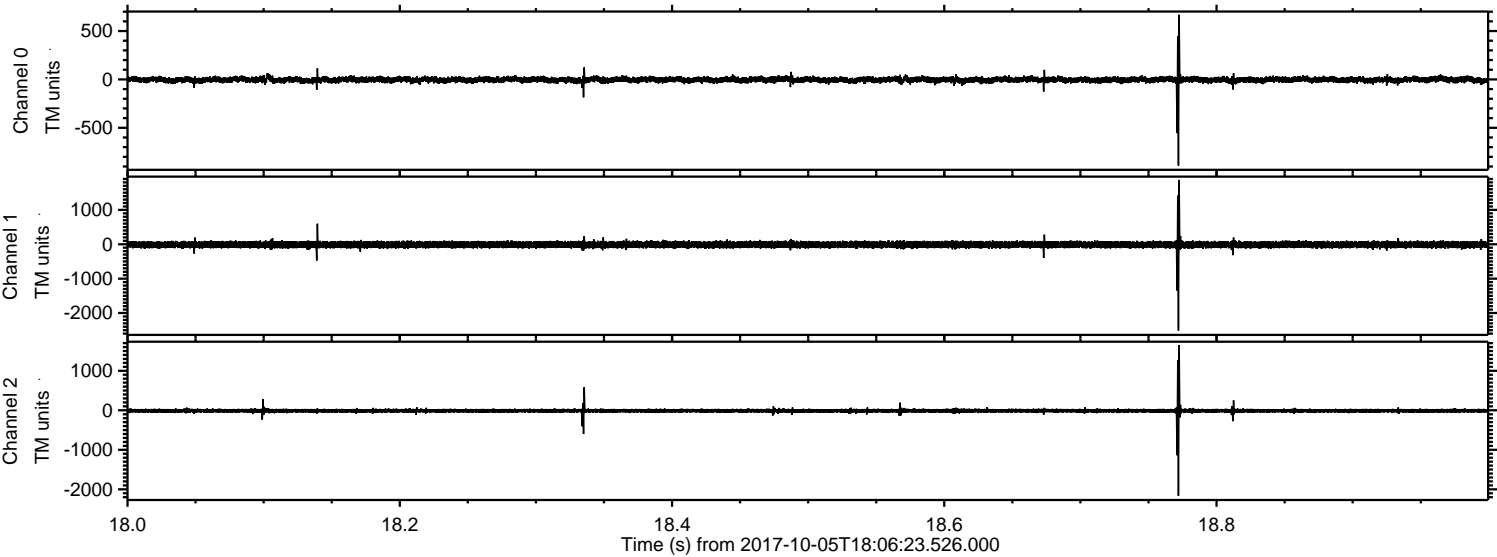
Processed Thu Oct 5 20:14:27 2017 by ELM ver.2012-10-06 from 001__elm20171005_180622__dat00.bin



Processed Thu Oct 5 20:14:27 2017 by ELM ver.2012-10-06 from 001__elm20171005_180622__dat00.bin



Processed Thu Oct 5 20:14:28 2017 by ELM ver.2012-10-06 from 001__elm20171005_180622__dat00.bin



Processed Thu Oct 5 20:14:28 2017 by ELM ver.2012-10-06 from 001__elm20171005_180622__dat00.bin

