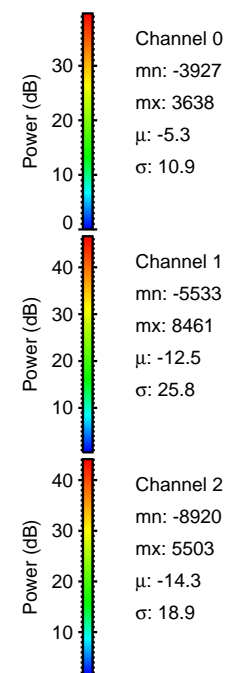
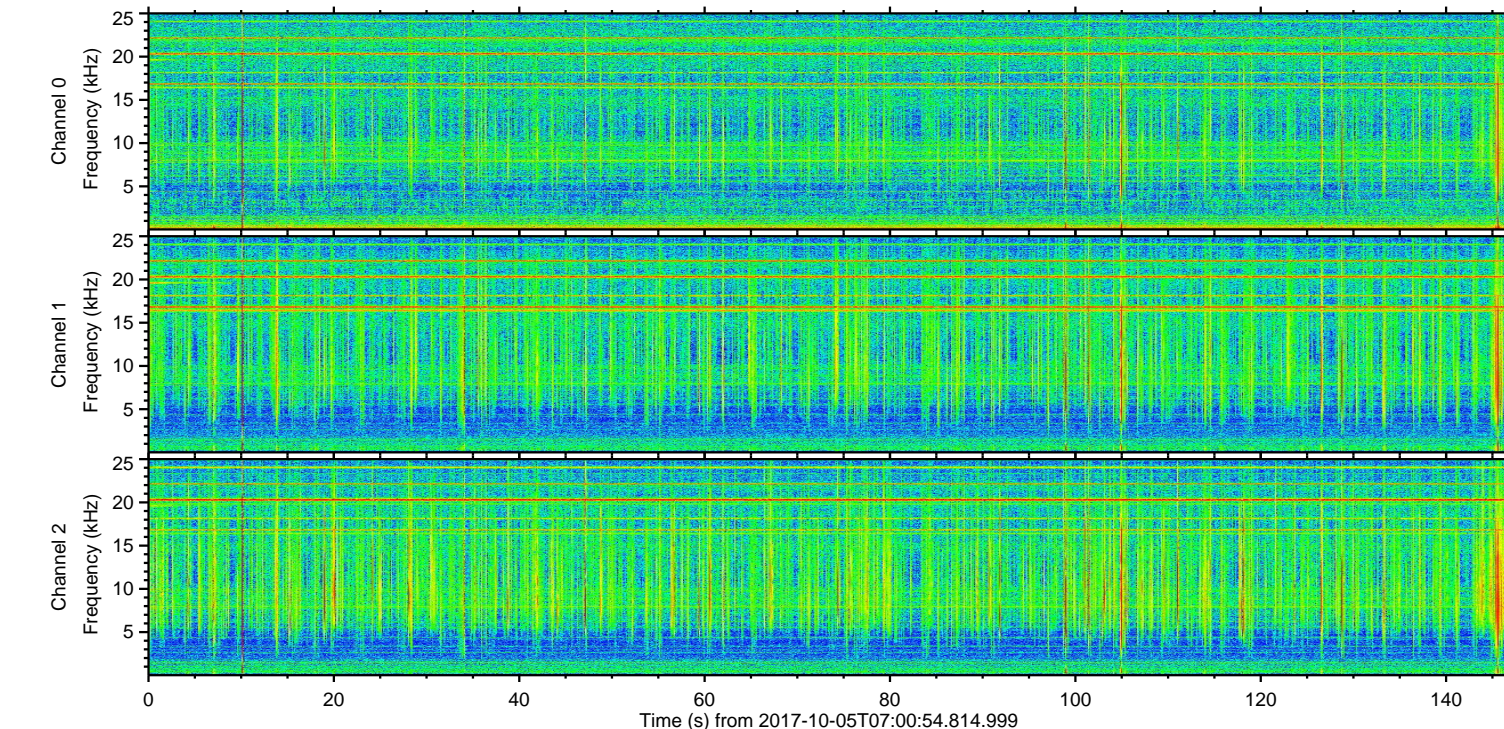
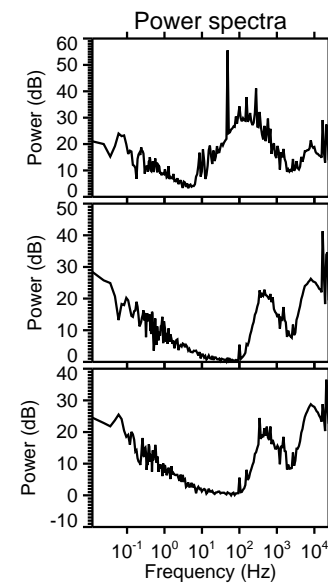
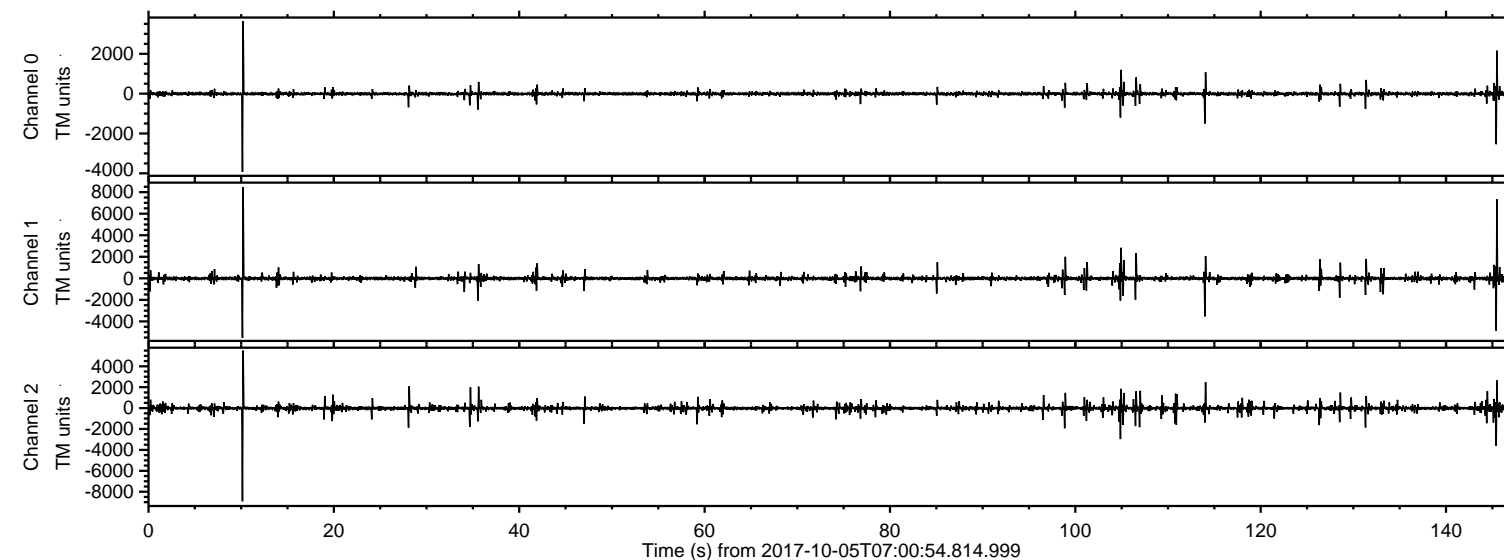
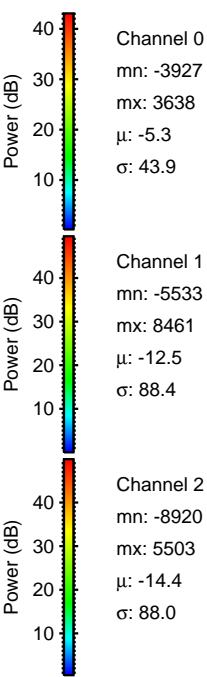
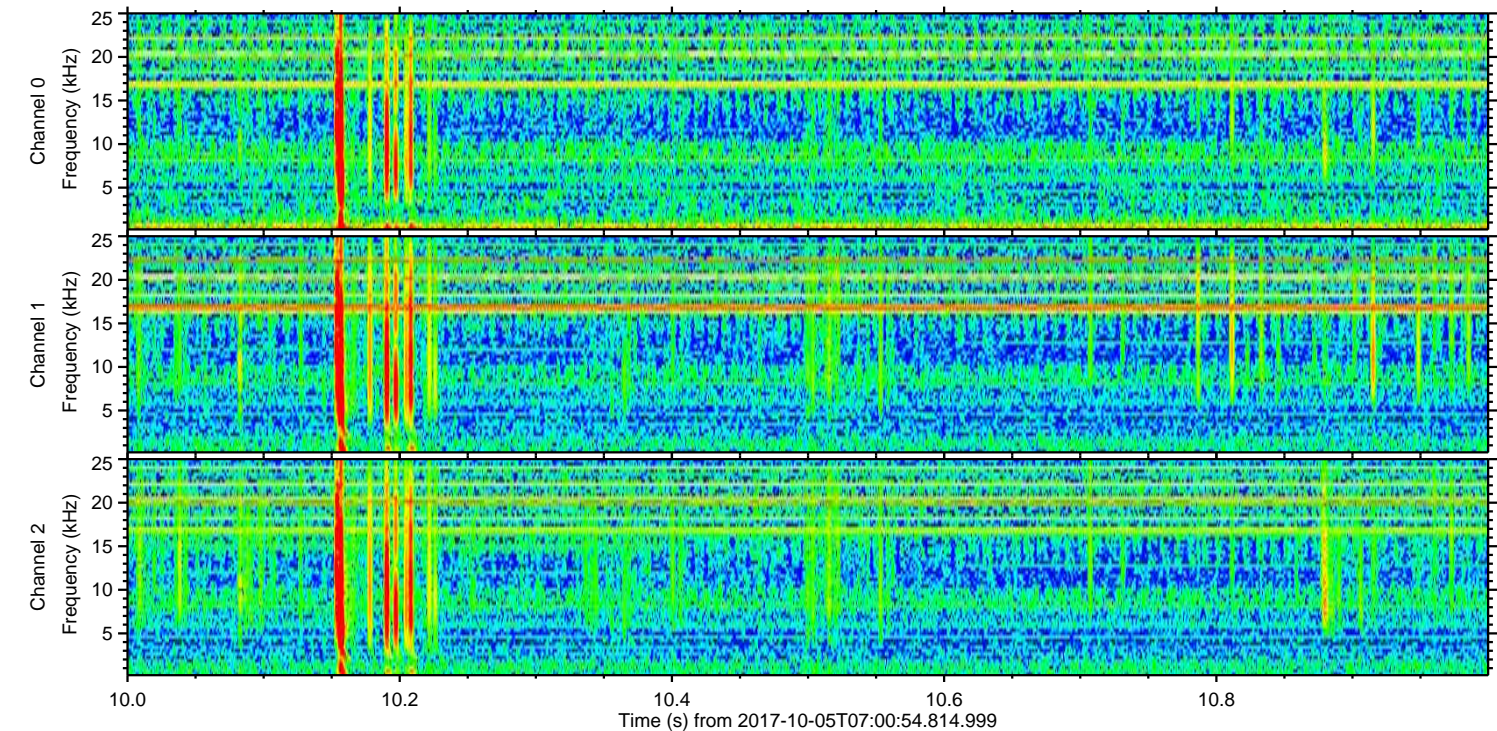
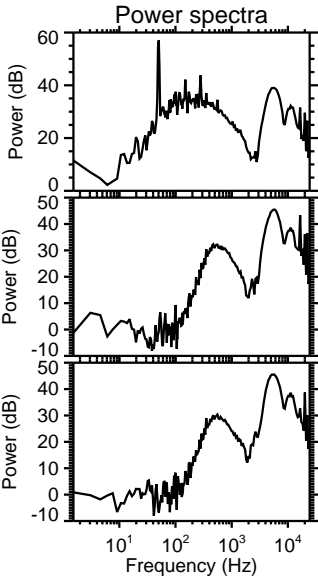
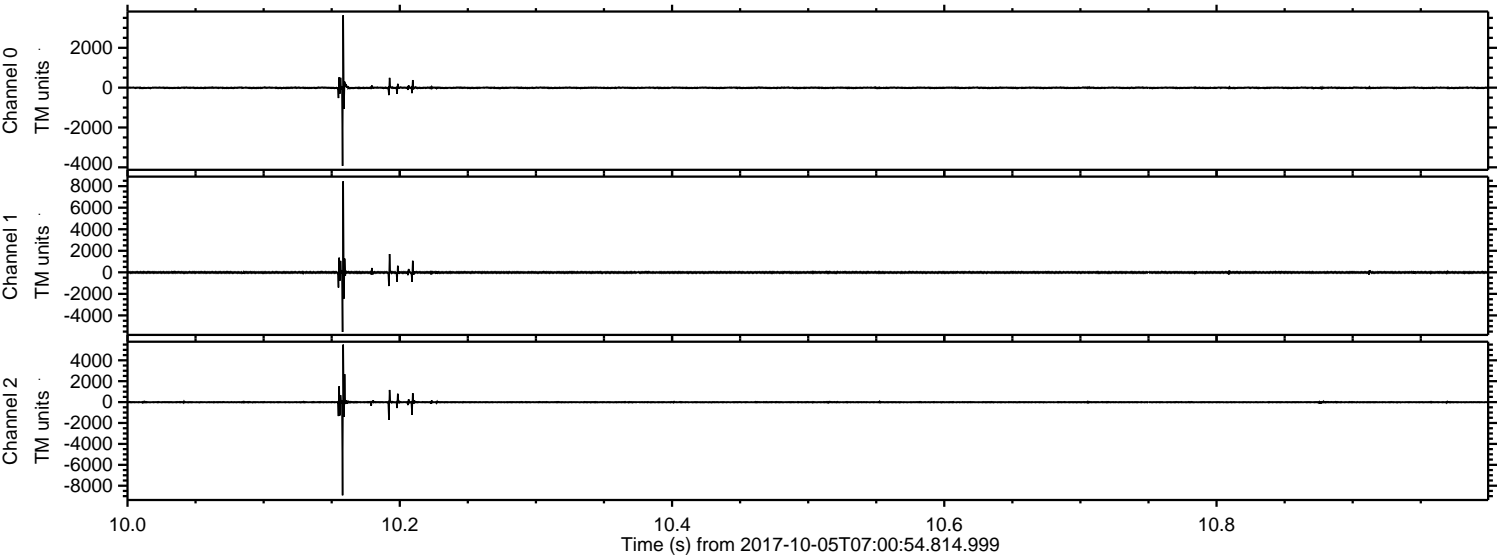


ELMAVAN 3D WAVEFORMS (Measured data sampled at 50 kHz) 51000 packets of 144 samples from 2017-10-05T07:00:54.814.999.

Processed Thu Oct 5 09:09:03 2017 by ELM ver.2012-10-06 from 001__elm20171005_070053__dat00.bin

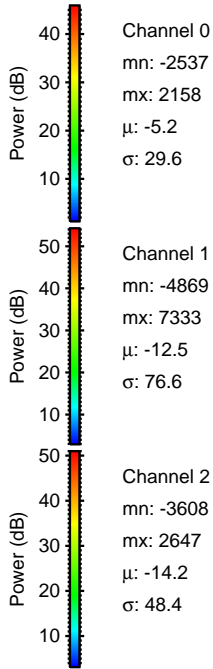
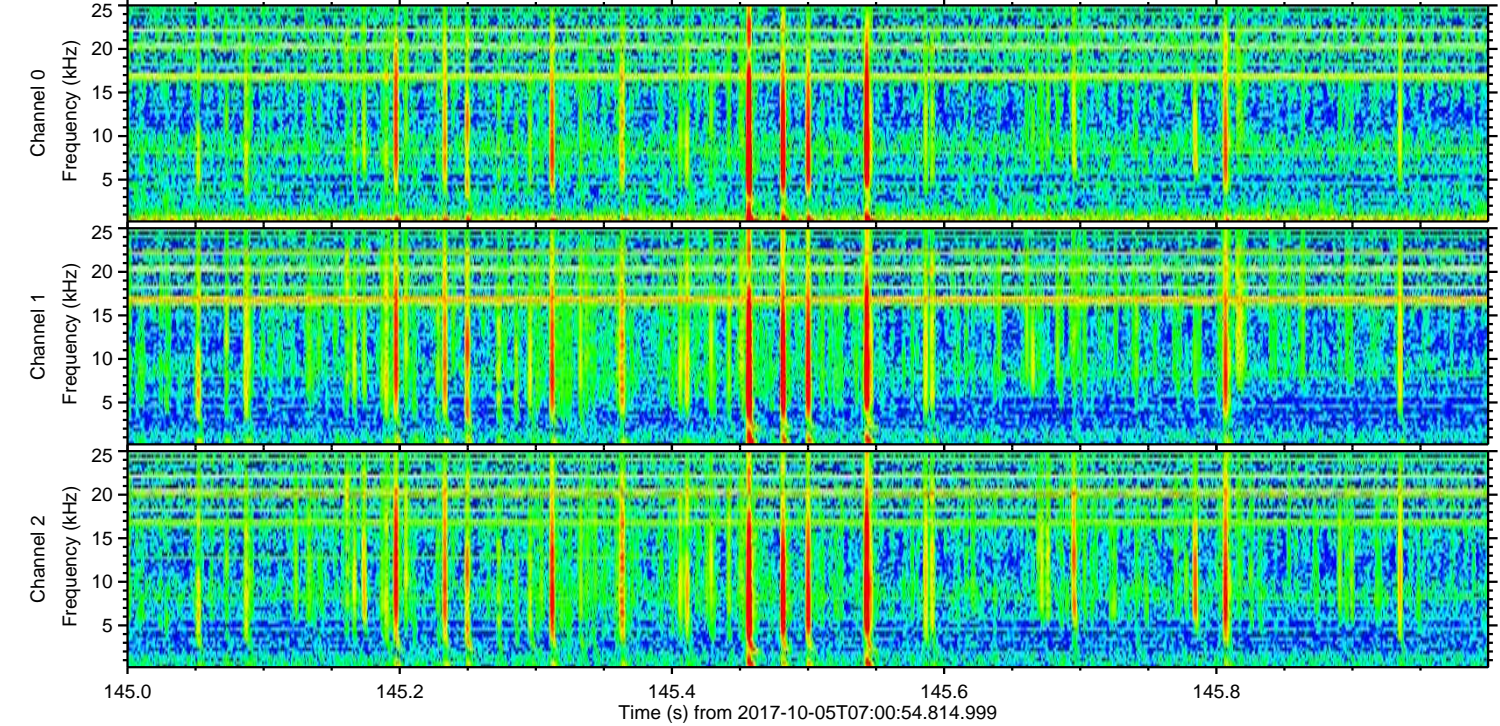
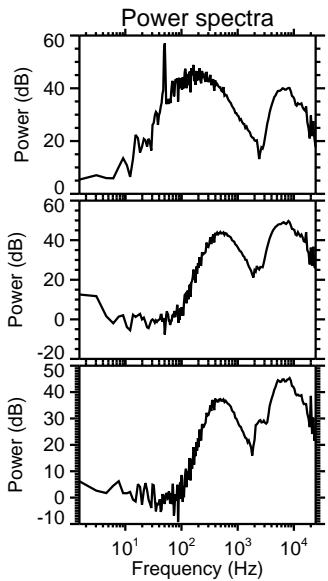
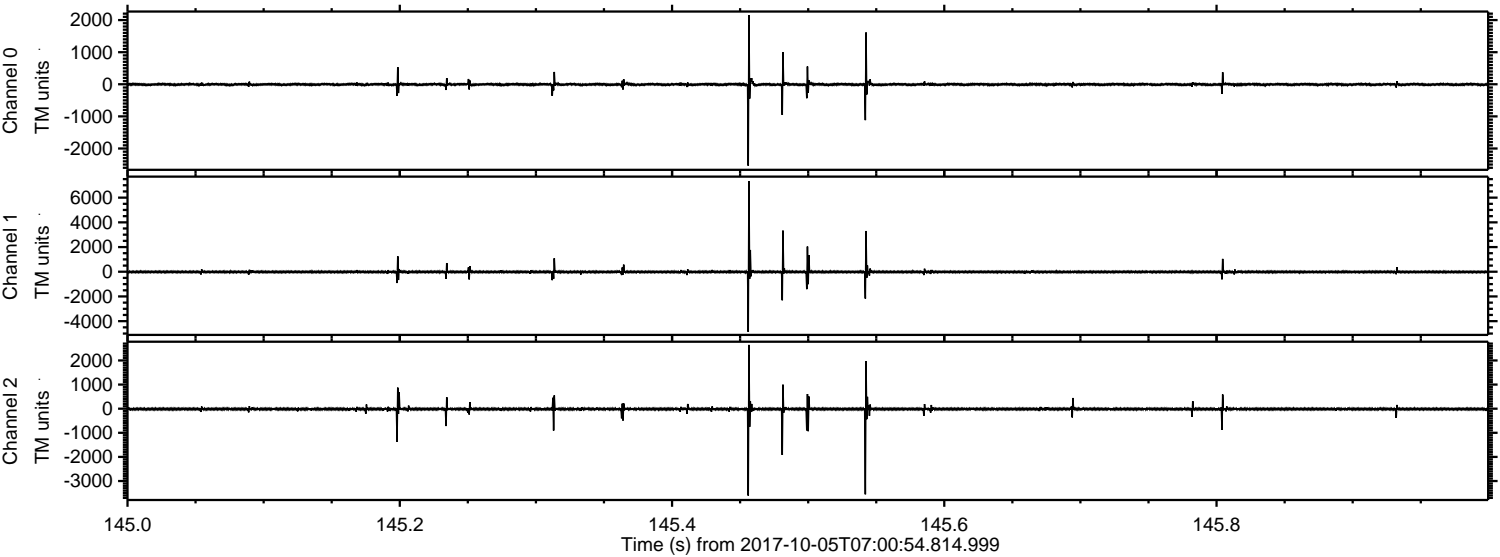


Processed Thu Oct 5 09:09:09 2017 by ELM ver.2012-10-06 from 001__elm20171005_070053__dat00.bin



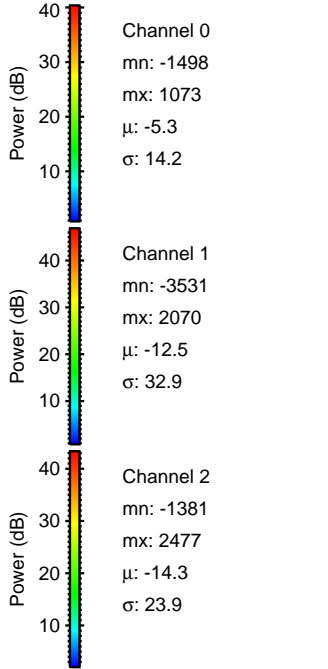
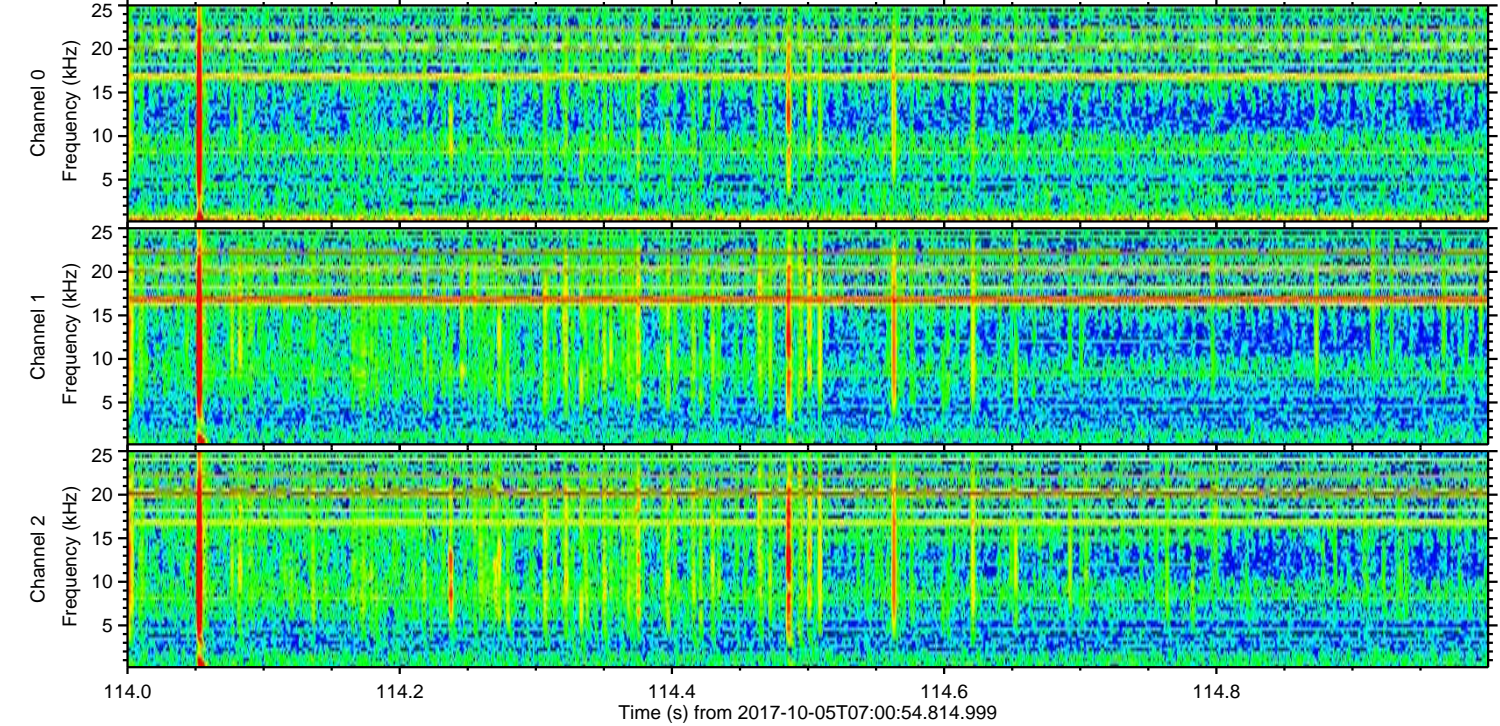
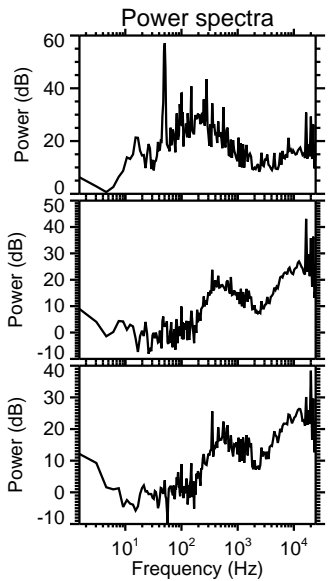
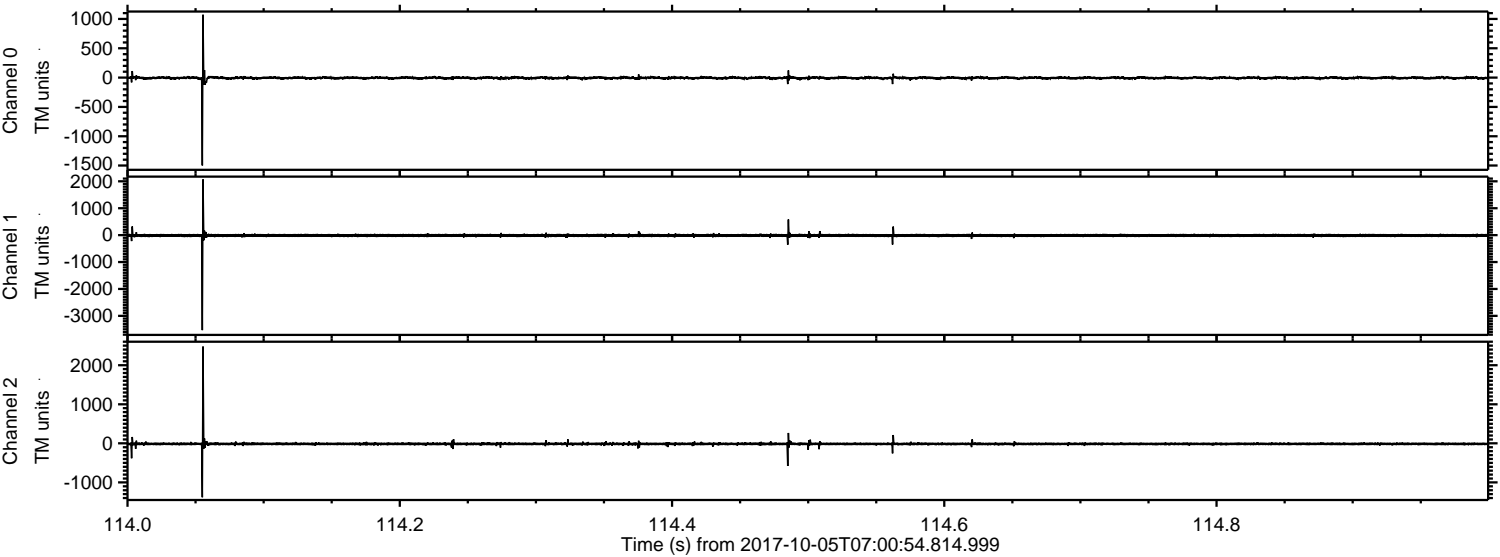
ELMAVAN 3D WAVEFORMS (Measured data sampled at 50 kHz) 51000 packets of 144 samples from 2017-10-05T07:00:54.814.999. Part 146/147

Processed Thu Oct 5 09:09:10 2017 by ELM ver.2012-10-06 from 001__elm20171005_070053__dat00.bin



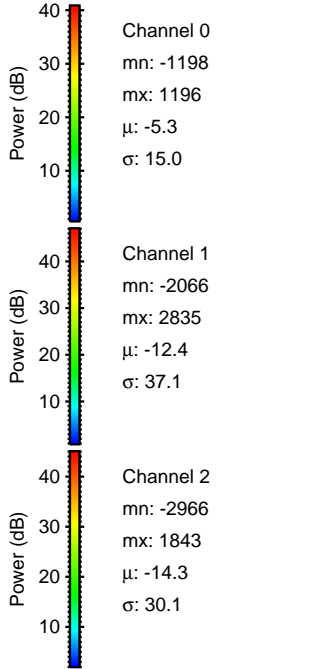
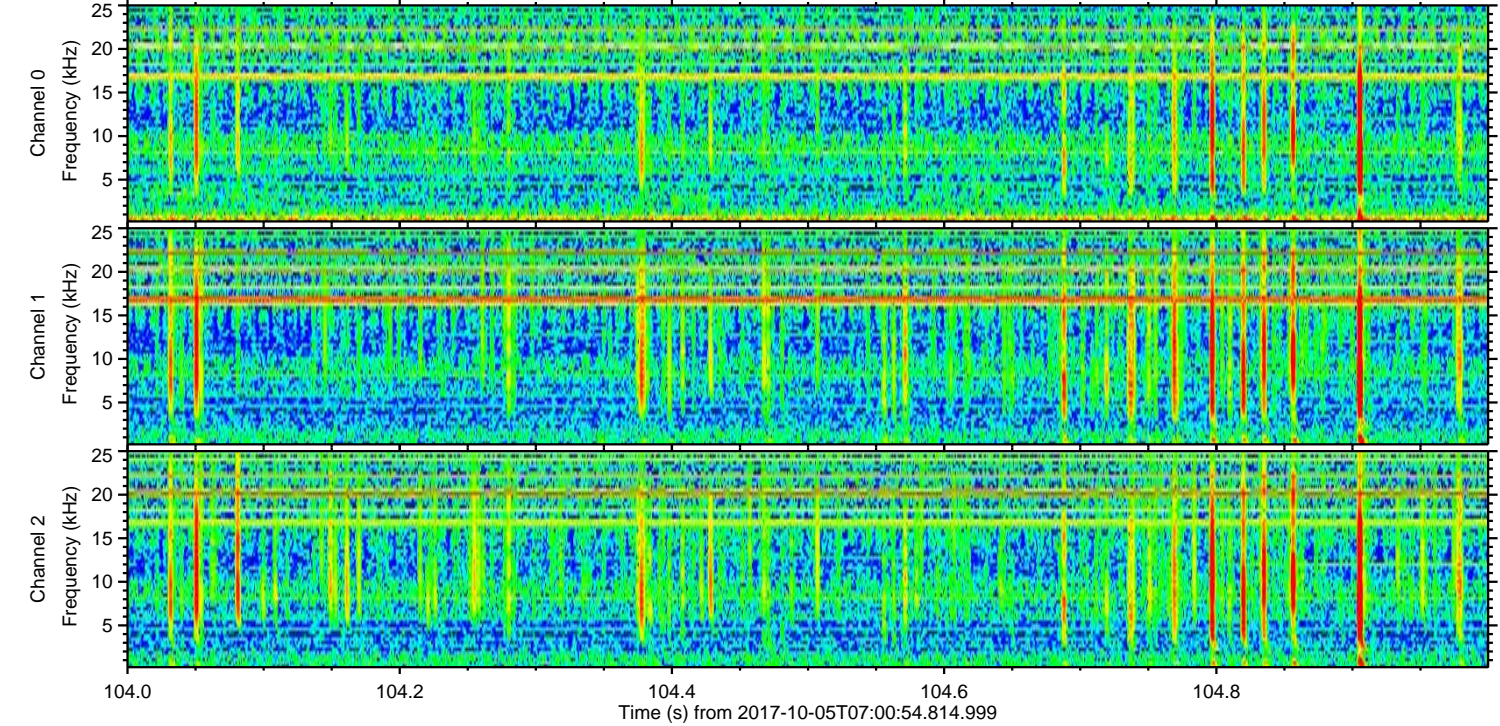
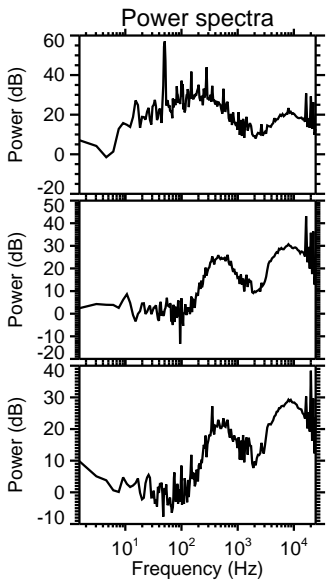
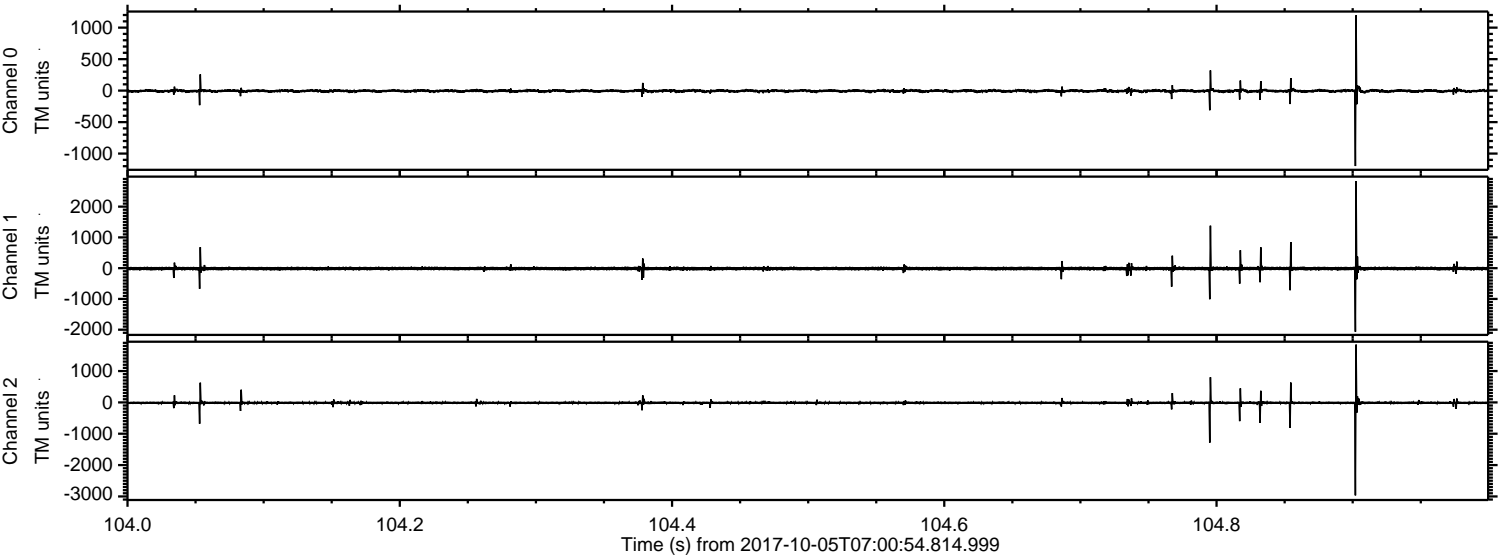
ELMAVAN 3D WAVEFORMS (Measured data sampled at 50 kHz) 51000 packets of 144 samples from 2017-10-05T07:00:54.814.999. Part 115/147

Processed Thu Oct 5 09:09:11 2017 by ELM ver.2012-10-06 from 001__elm20171005_070053__dat00.bin



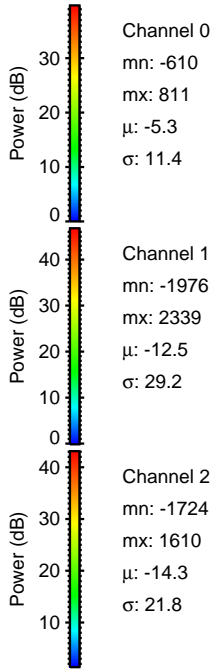
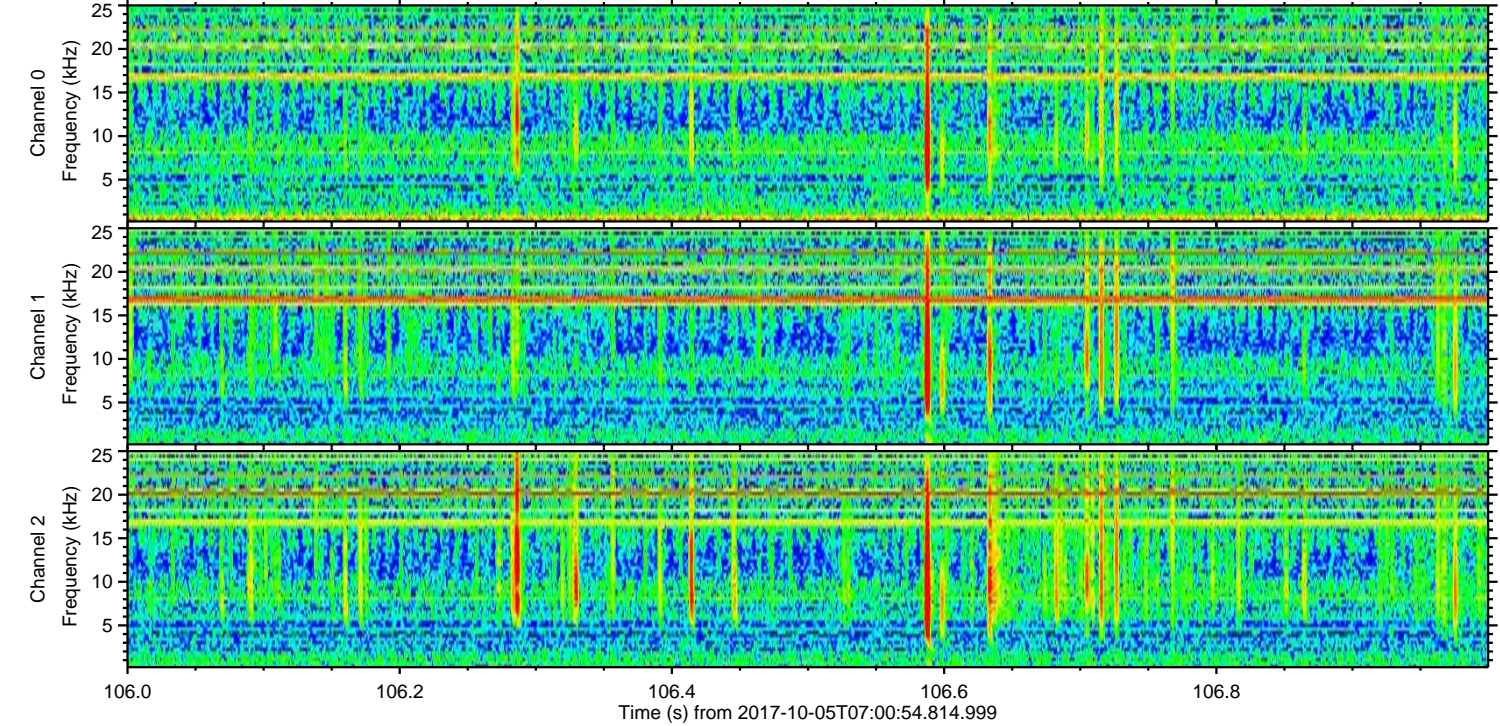
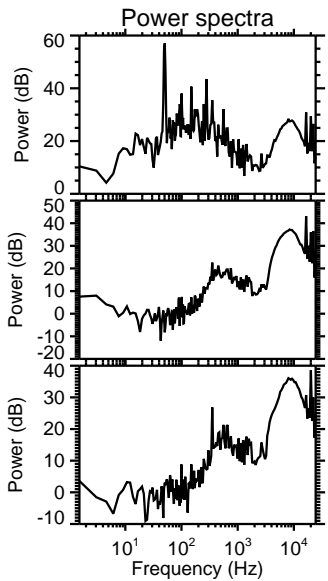
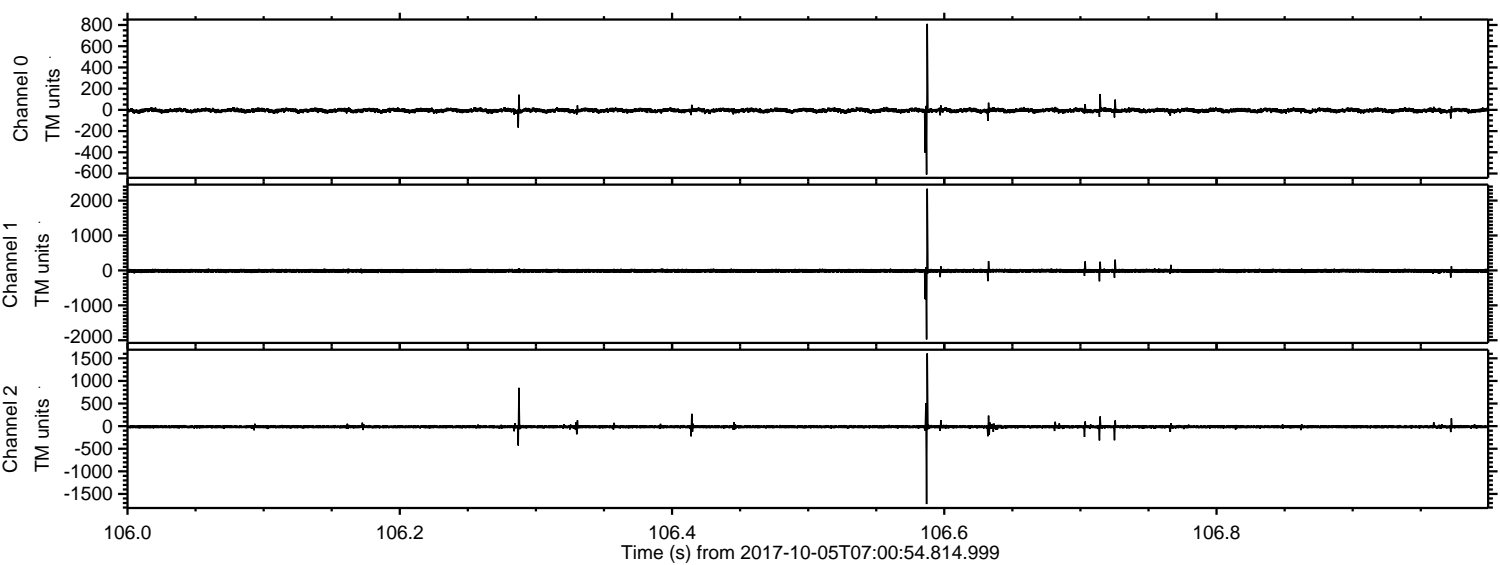
ELMAVAN 3D WAVEFORMS (Measured data sampled at 50 kHz) 51000 packets of 144 samples from 2017-10-05T07:00:54.814.999. Part 105/147

Processed Thu Oct 5 09:09:12 2017 by ELM ver.2012-10-06 from 001__elm20171005_070053__dat00.bin

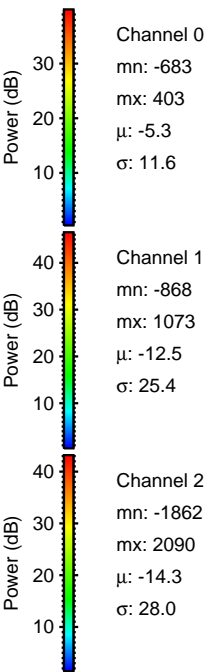
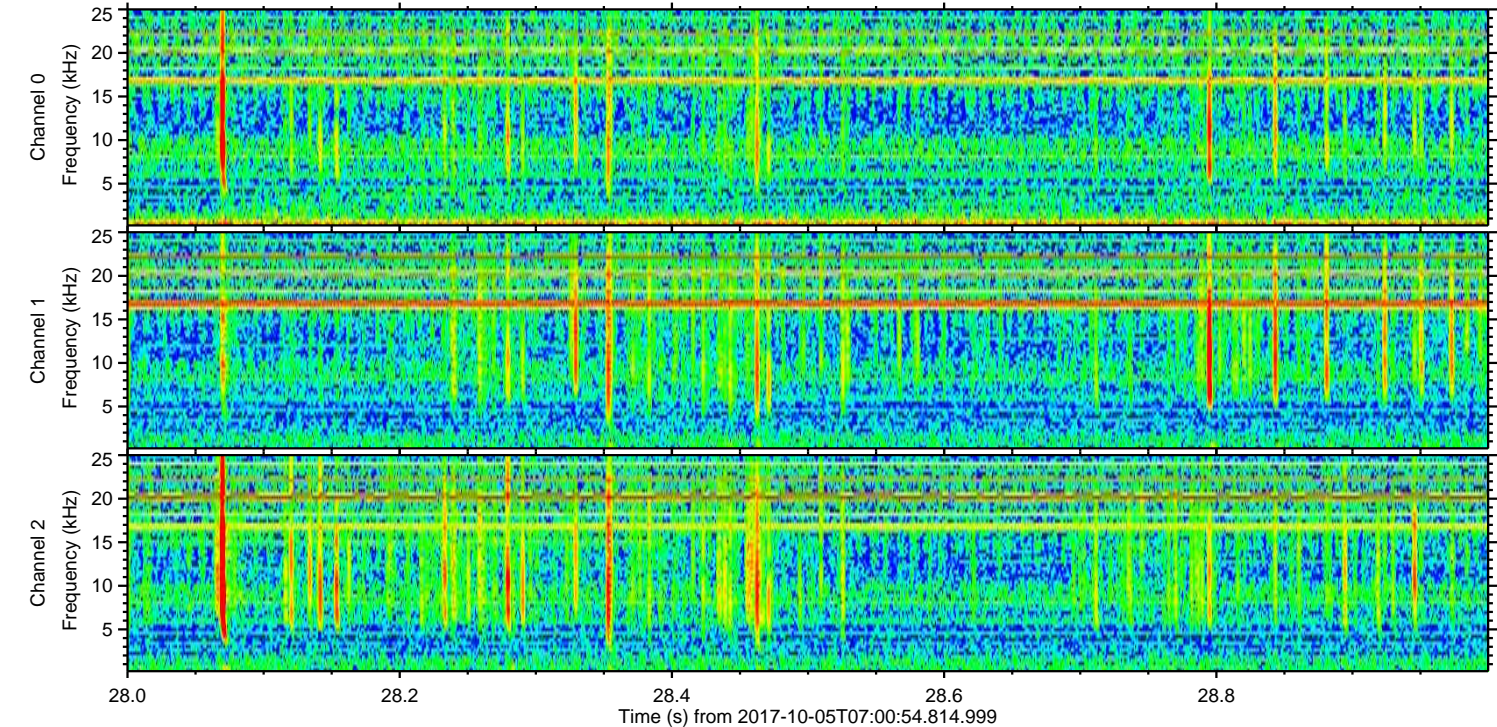
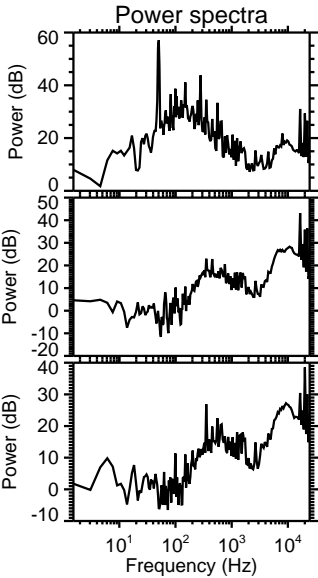
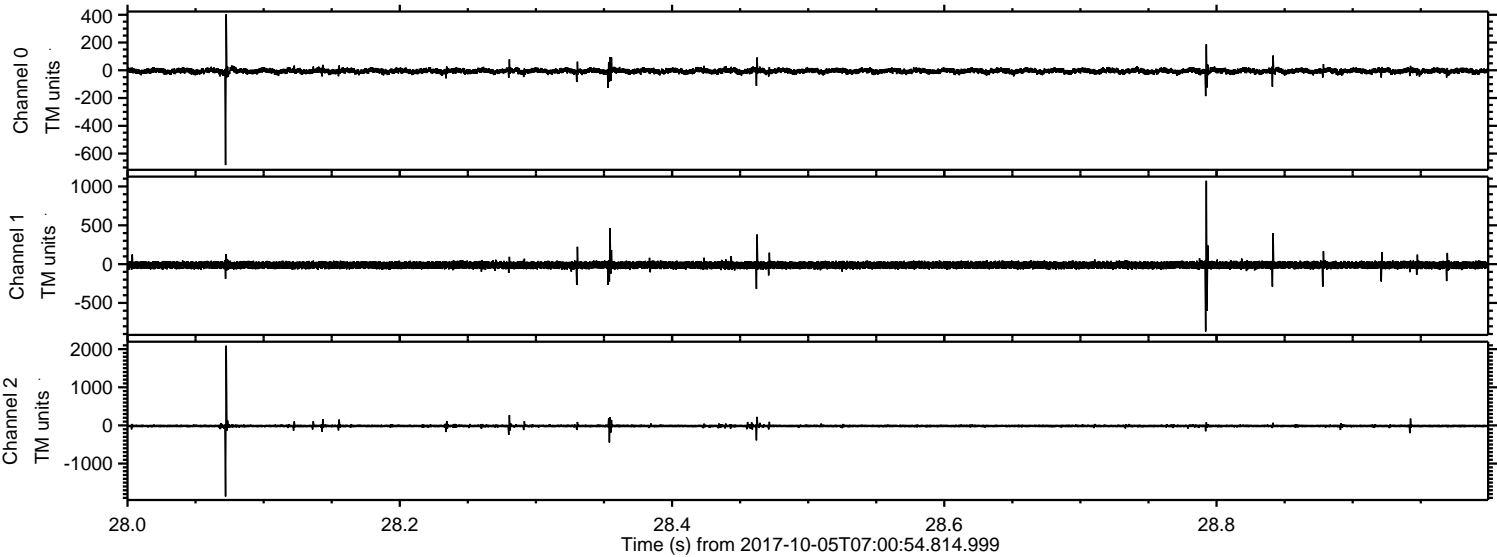


ELMAVAN 3D WAVEFORMS (Measured data sampled at 50 kHz) 51000 packets of 144 samples from 2017-10-05T07:00:54.814.999. Part 107/147

Processed Thu Oct 5 09:09:13 2017 by ELM ver.2012-10-06 from 001__elm20171005_070053__dat00.bin

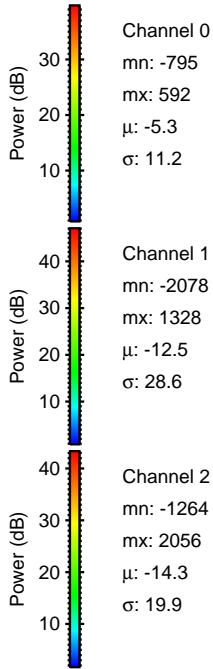
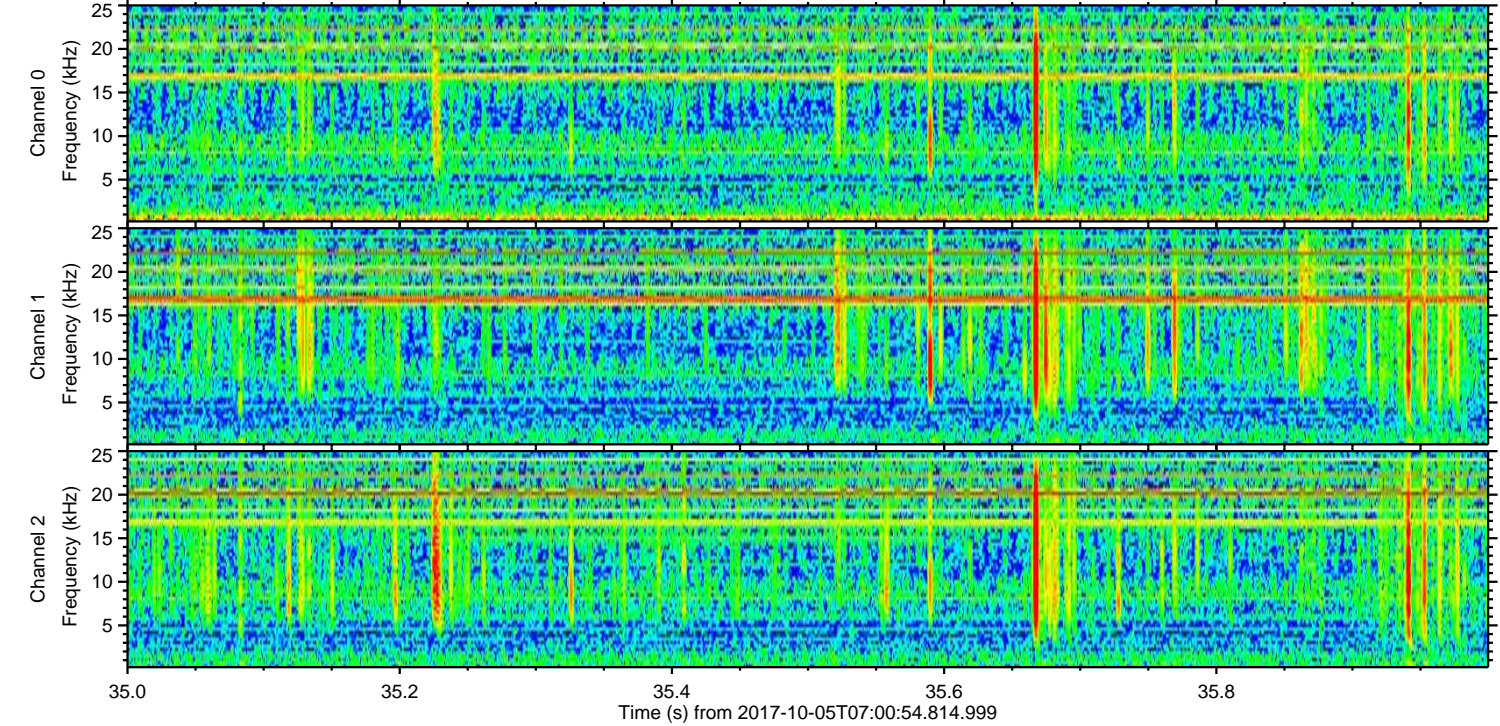
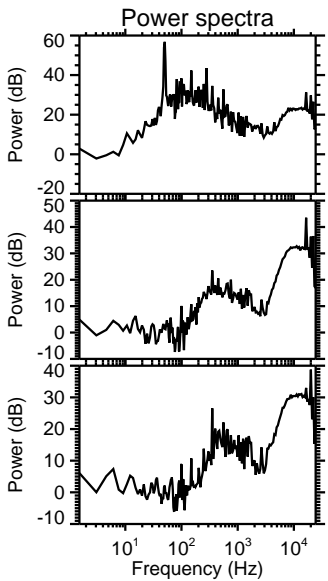
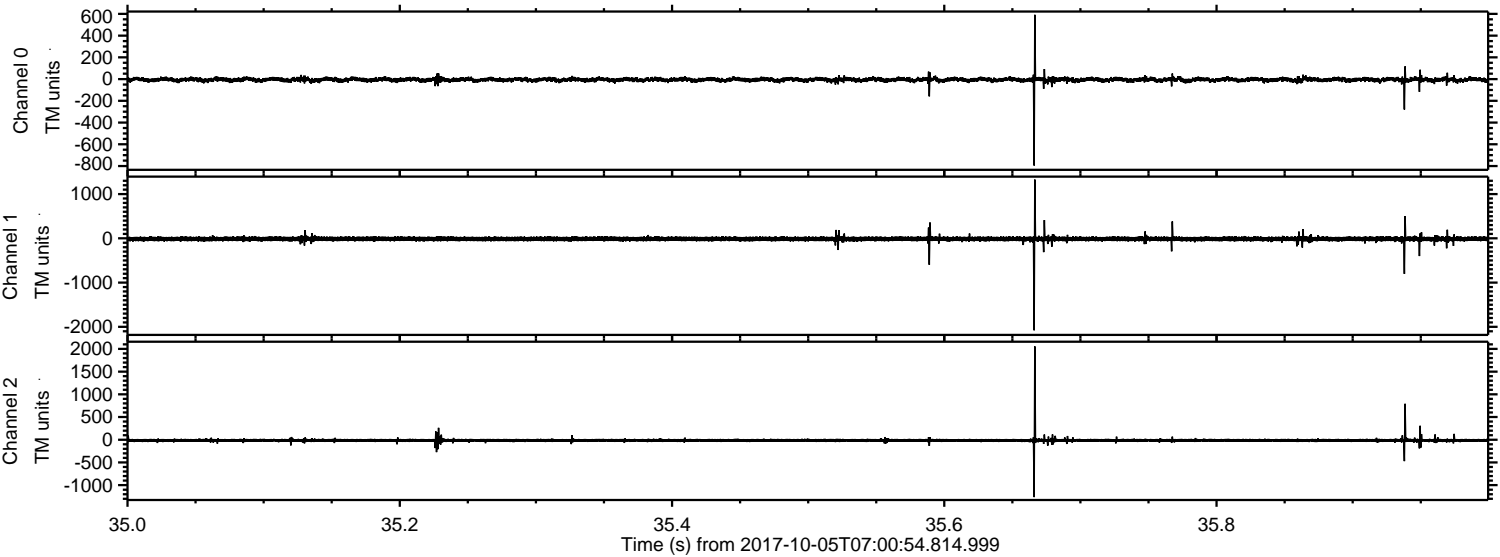


Processed Thu Oct 5 09:09:13 2017 by ELM ver.2012-10-06 from 001__elm20171005_070053__dat00.bin

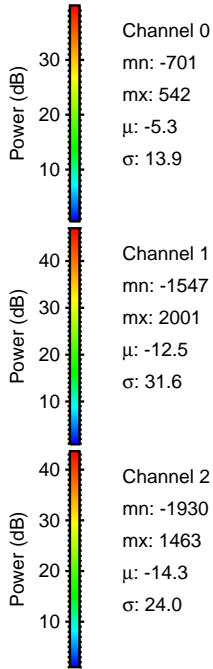
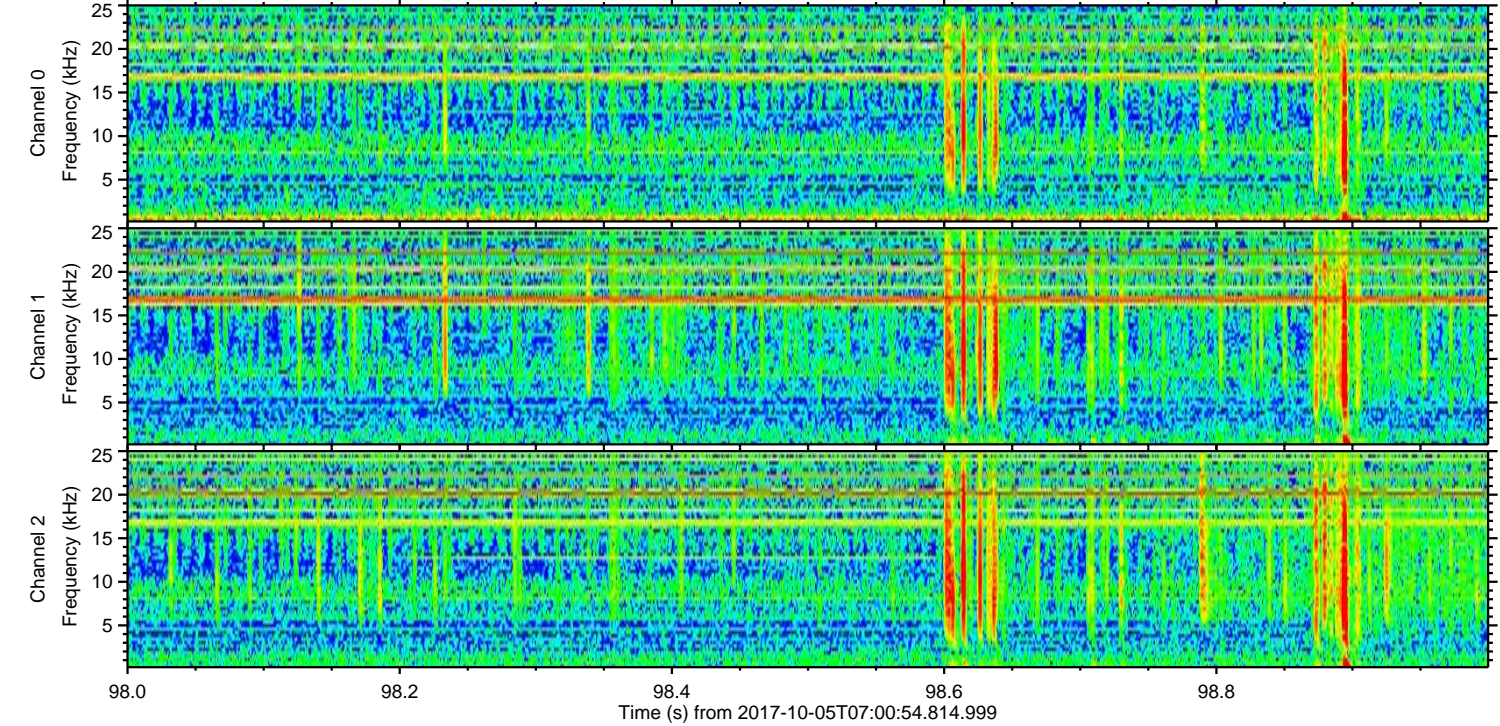
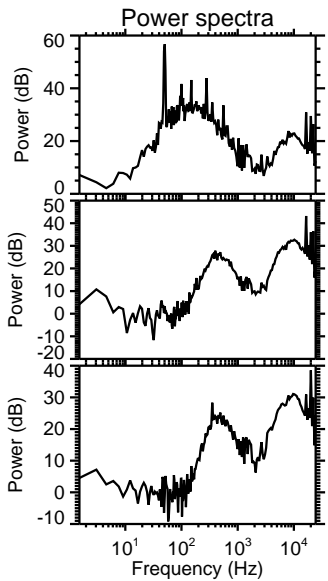
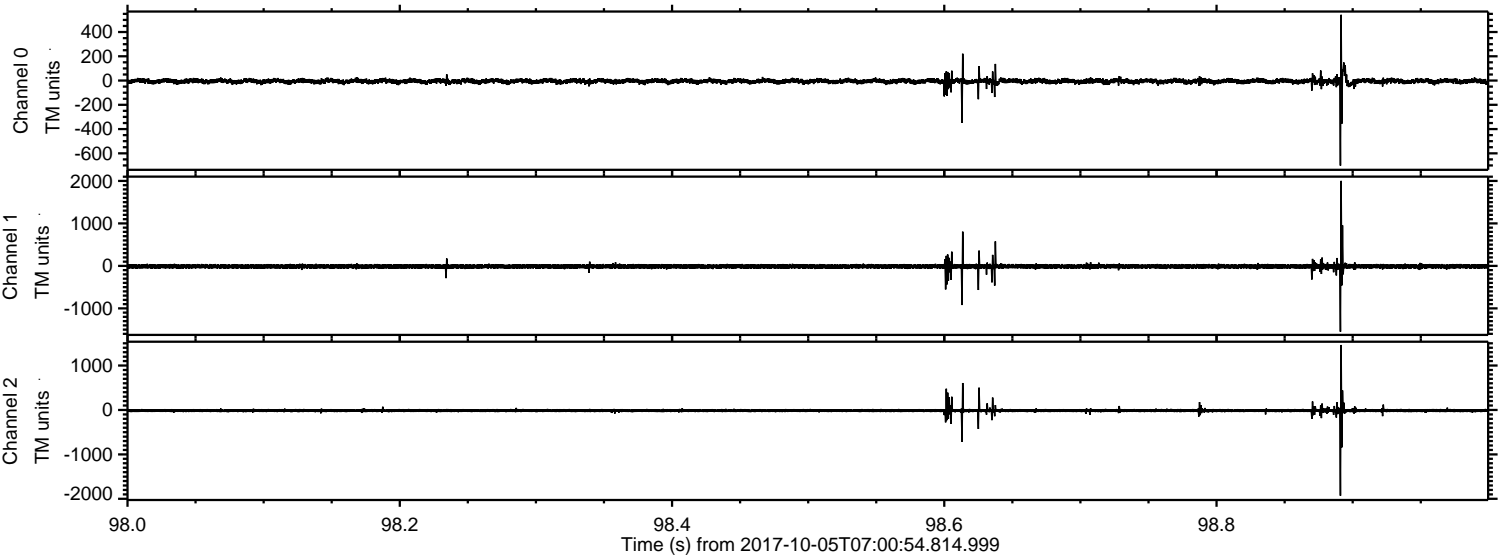


ELMAVAN 3D WAVEFORMS (Measured data sampled at 50 kHz) 51000 packets of 144 samples from 2017-10-05T07:00:54.814.999. Part 36/147

Processed Thu Oct 5 09:09:14 2017 by ELM ver.2012-10-06 from 001__elm20171005_070053__dat00.bin



Processed Thu Oct 5 09:09:15 2017 by ELM ver.2012-10-06 from 001__elm20171005_070053__dat00.bin

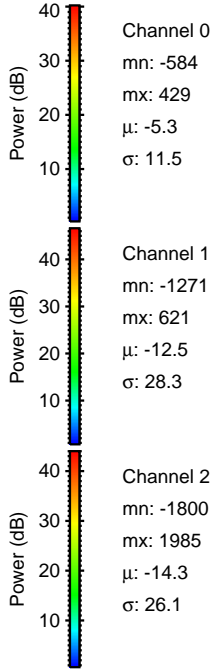
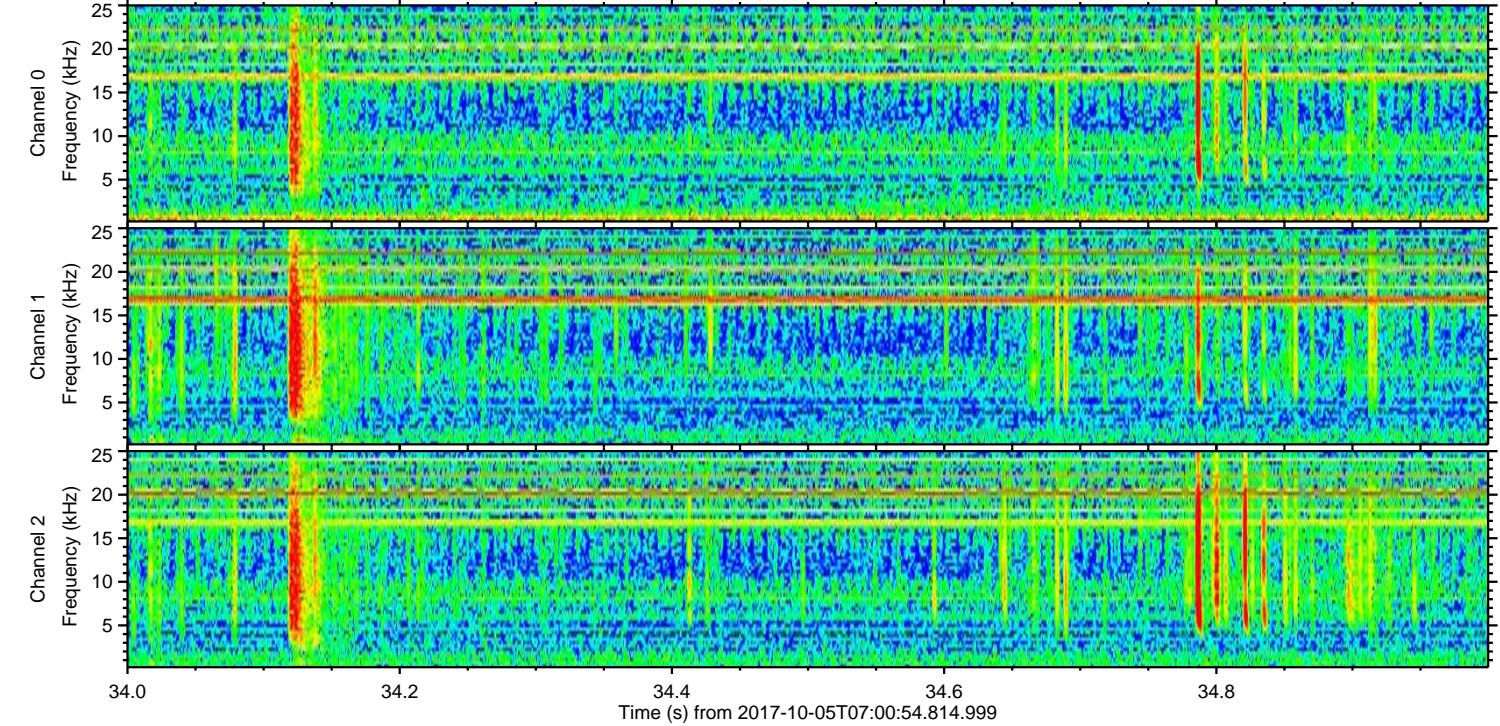
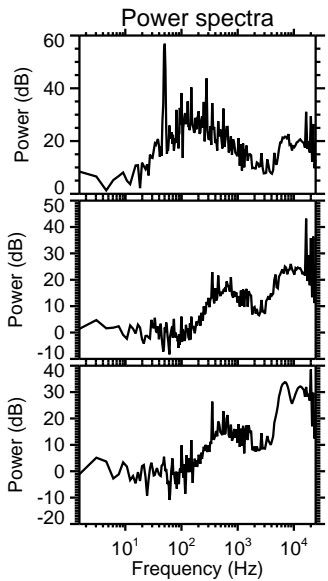
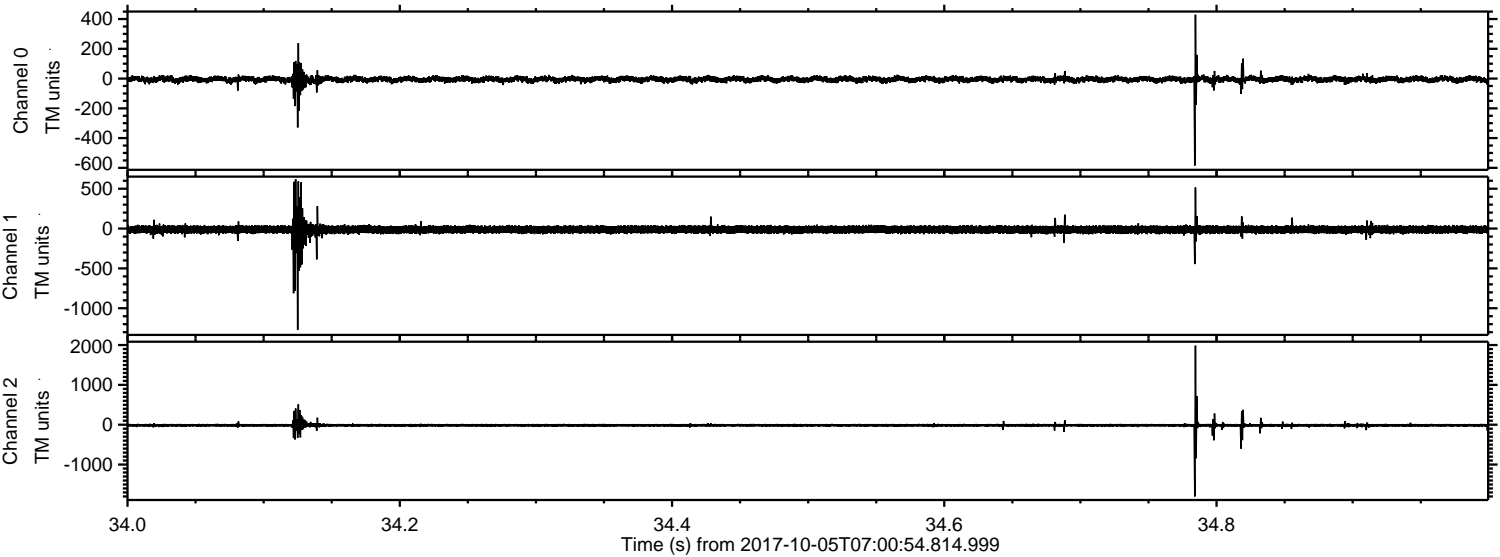


Channel 0
mn: -701
mx: 542
 μ : -5.3
 σ : 13.9

Channel 1
mn: -1547
mx: 2001
 μ : -12.5
 σ : 31.6

Channel 2
mn: -1930
mx: 1463
 μ : -14.3
 σ : 24.0

Processed Thu Oct 5 09:09:16 2017 by ELM ver.2012-10-06 from 001__elm20171005_070053__dat00.bin



Processed Thu Oct 5 09:09:16 2017 by ELM ver.2012-10-06 from 001__elm20171005_070053__dat00.bin

