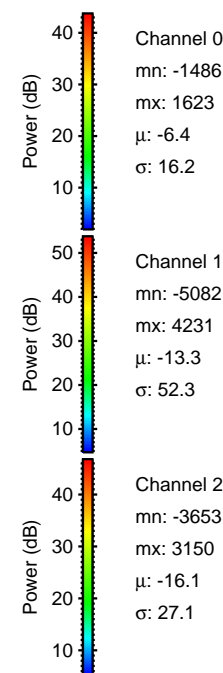
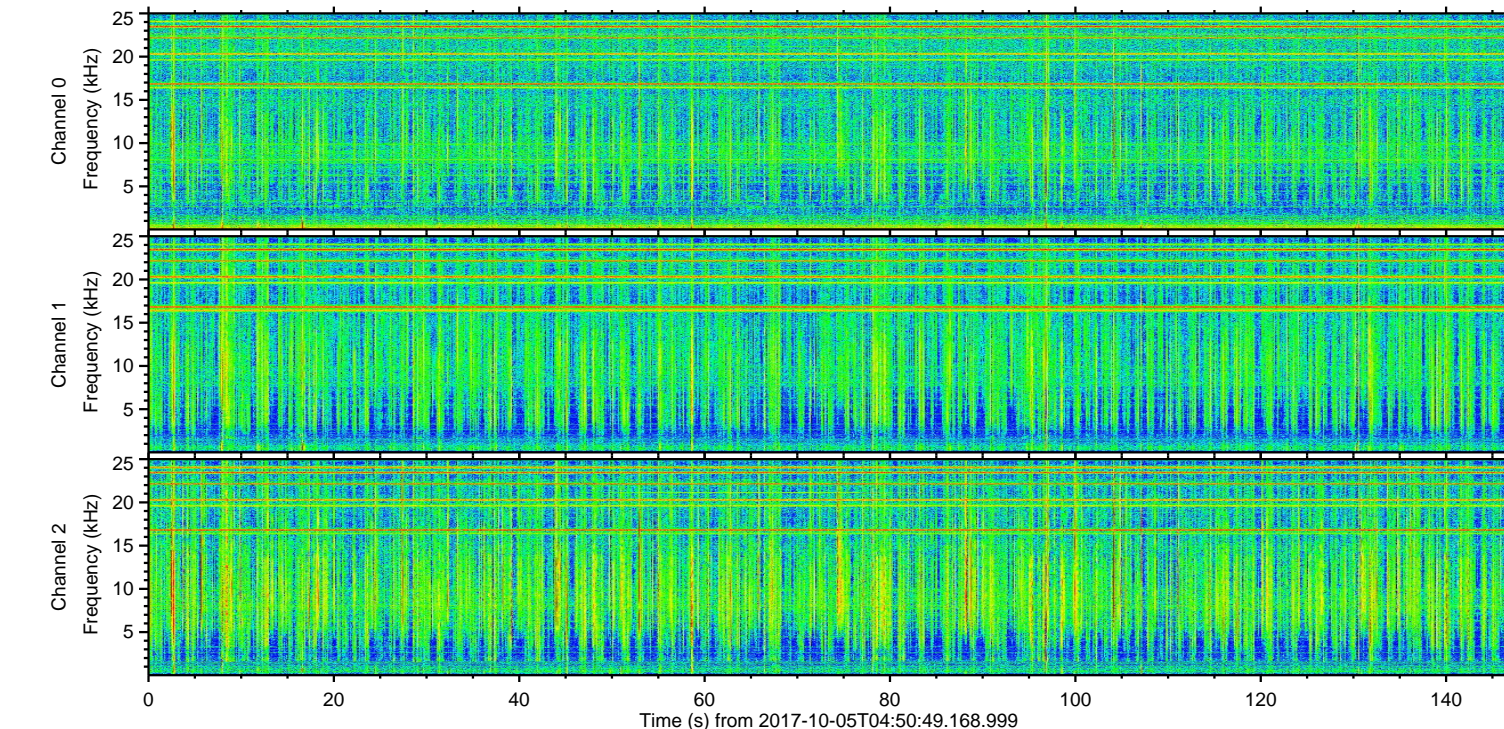
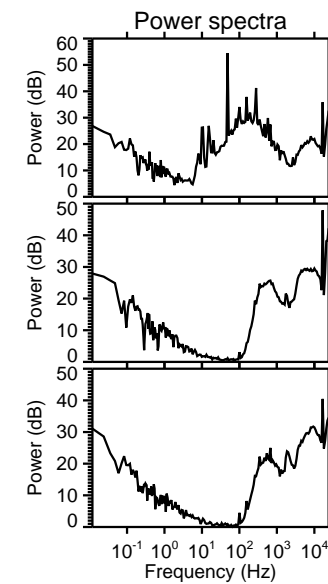
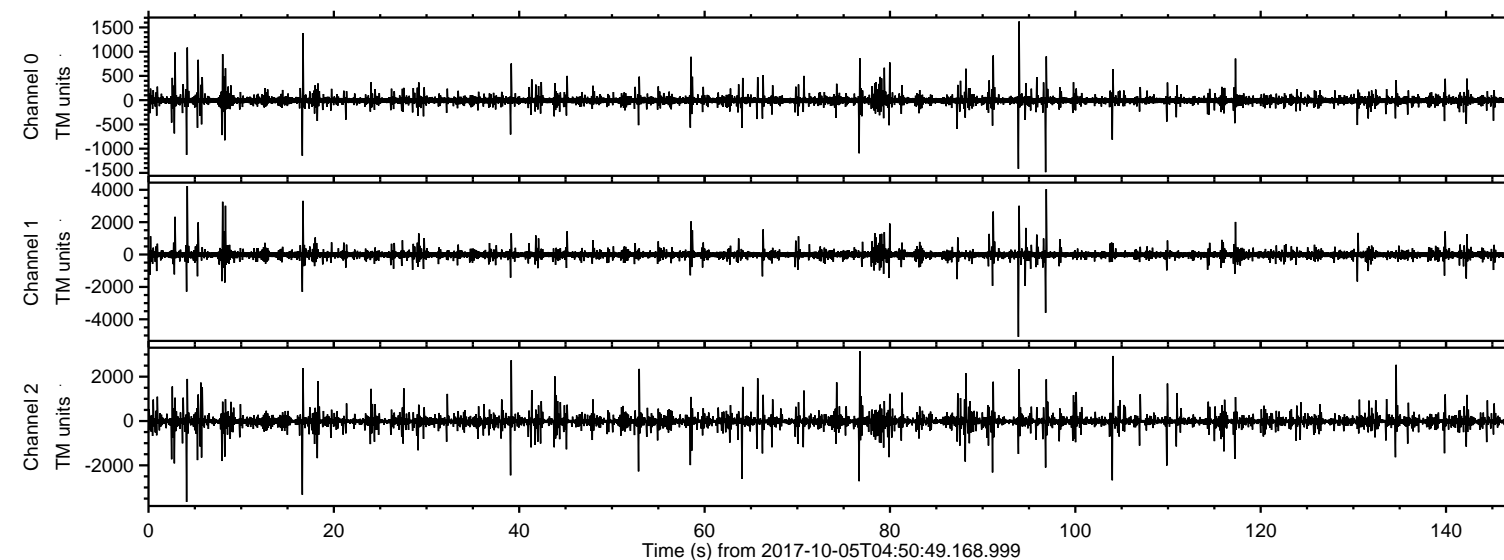


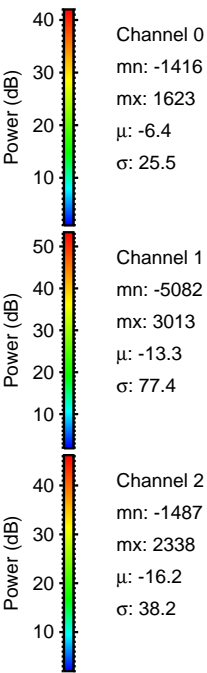
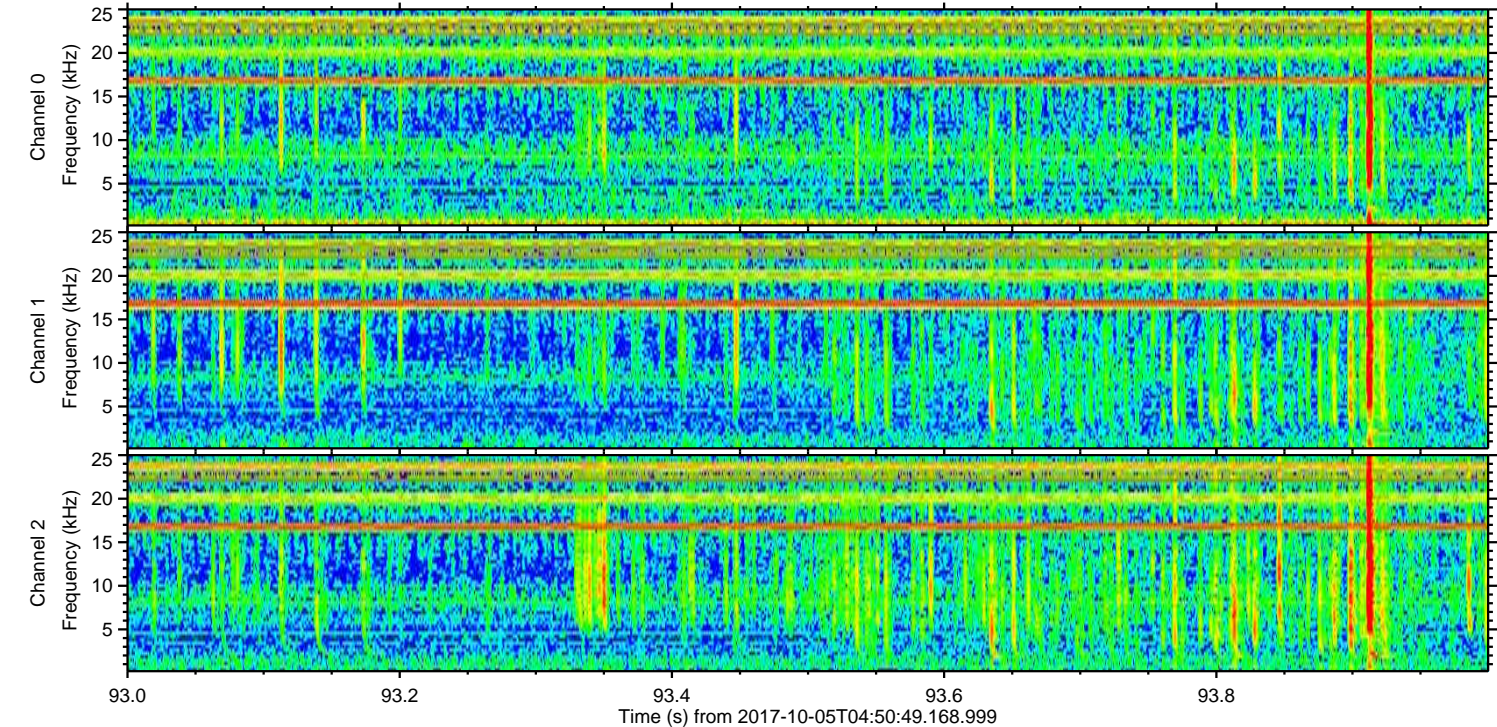
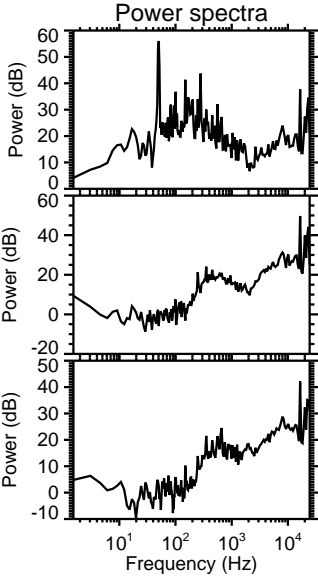
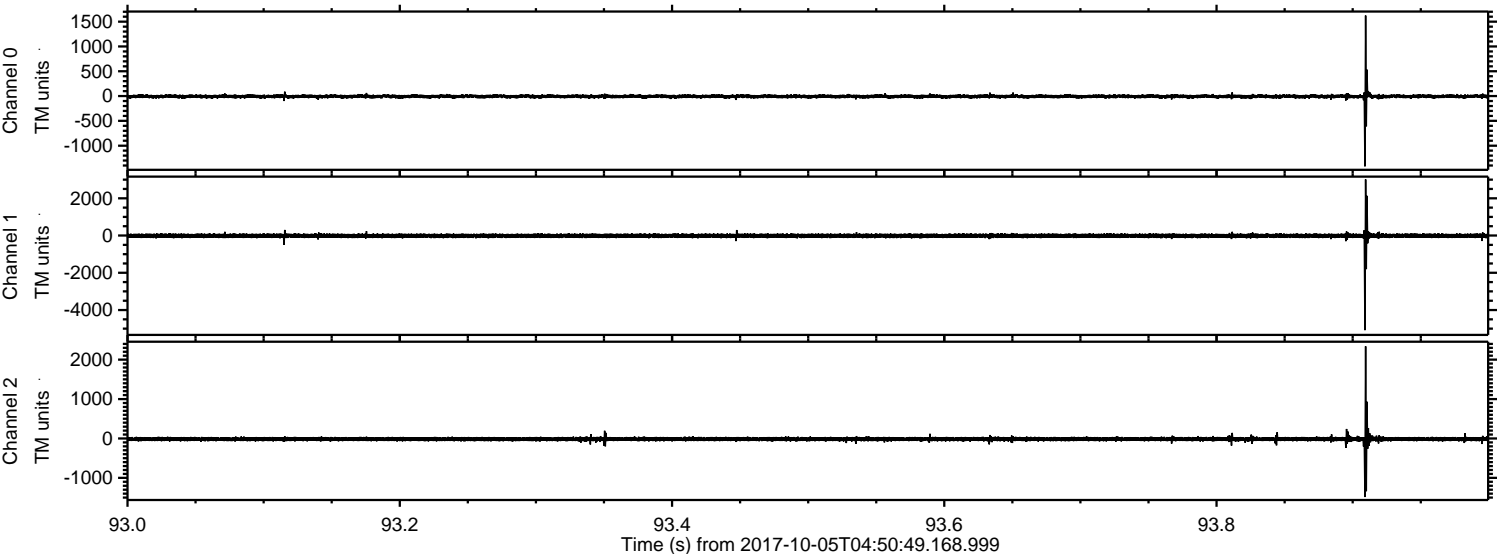
ELMAVAN 3D WAVEFORMS (Measured data sampled at 50 kHz) 51000 packets of 144 samples from 2017-10-05T04:50:49.168.999.

Processed Thu Oct 5 06:58:39 2017 by ELM ver.2012-10-06 from 001__elm20171005_045048__dat00.bin



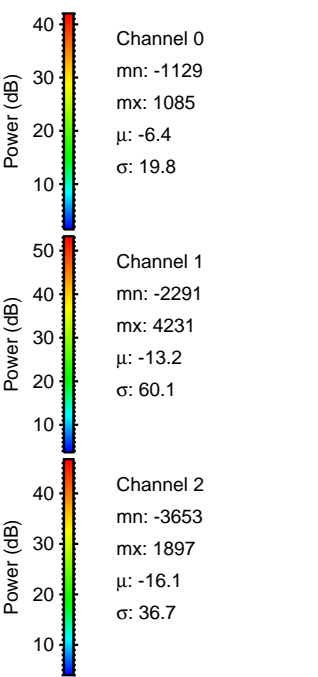
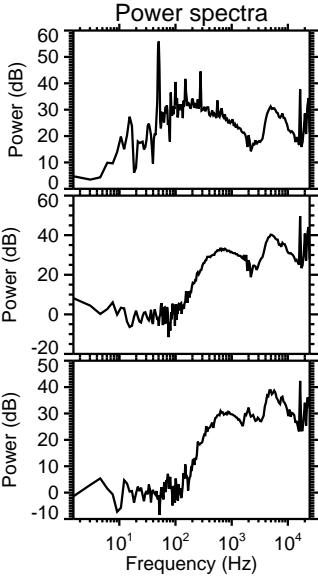
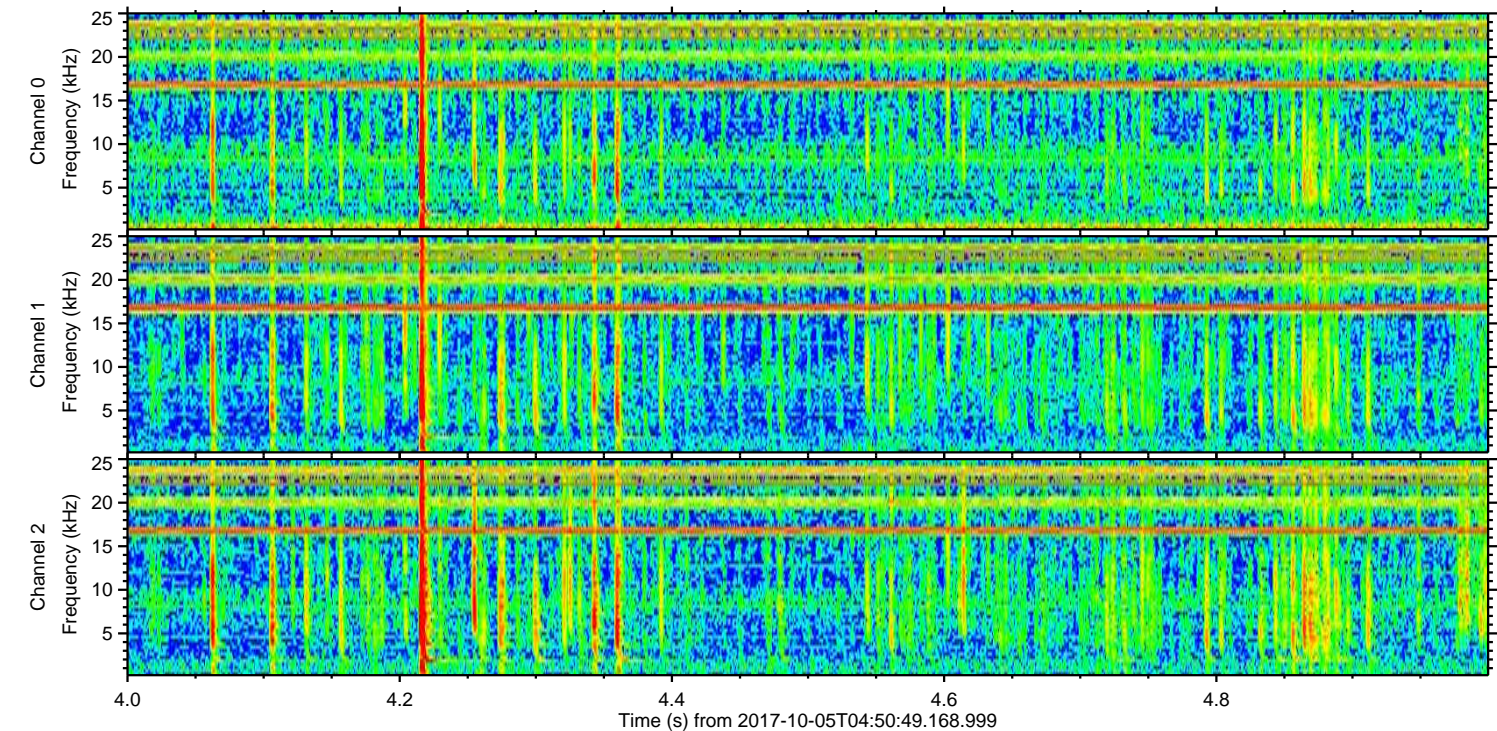
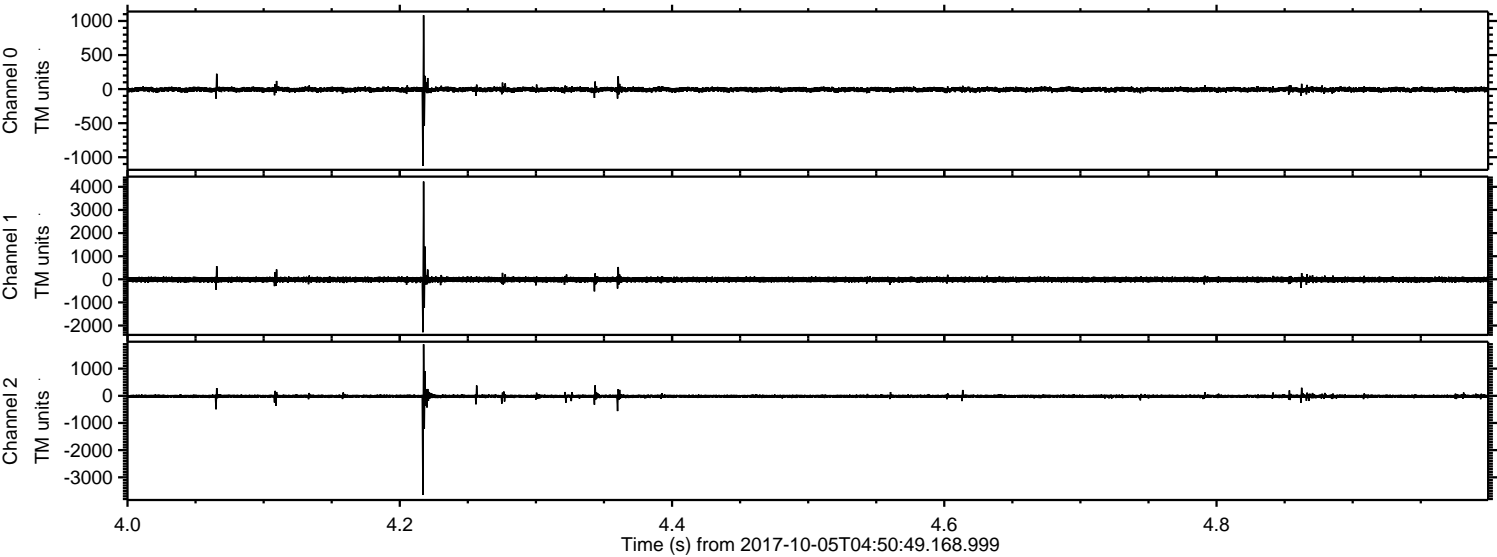
ELMAVAN 3D WAVEFORMS (Measured data sampled at 50 kHz) 51000 packets of 144 samples from 2017-10-05T04:50:49.168.999. Part 94/147

Processed Thu Oct 5 06:58:45 2017 by ELM ver.2012-10-06 from 001__elm20171005_045048__dat00.bin

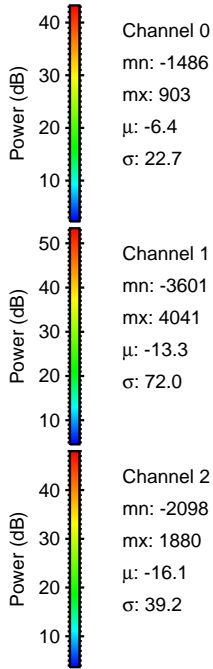
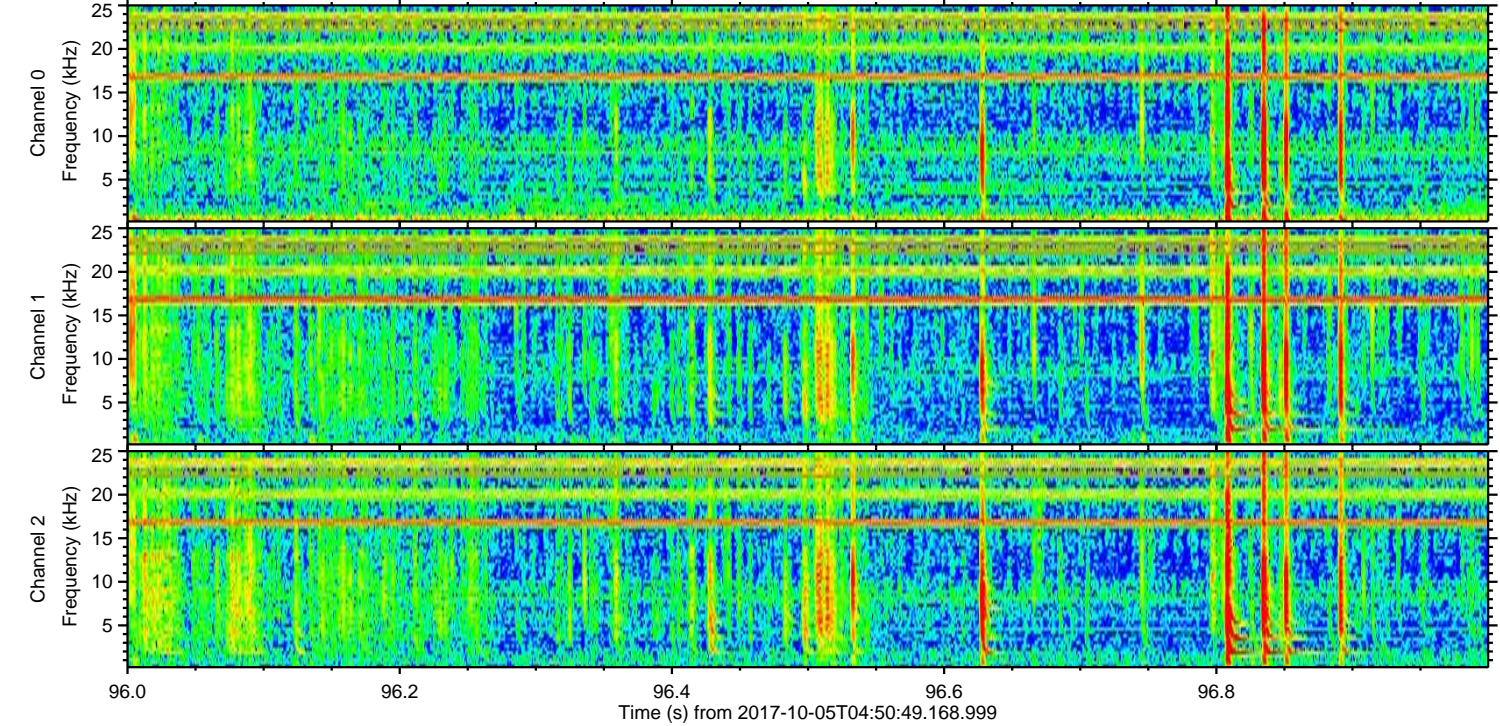
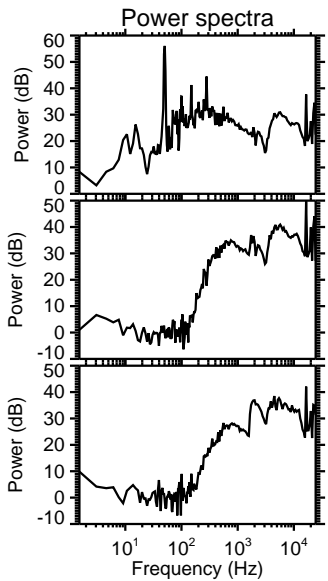
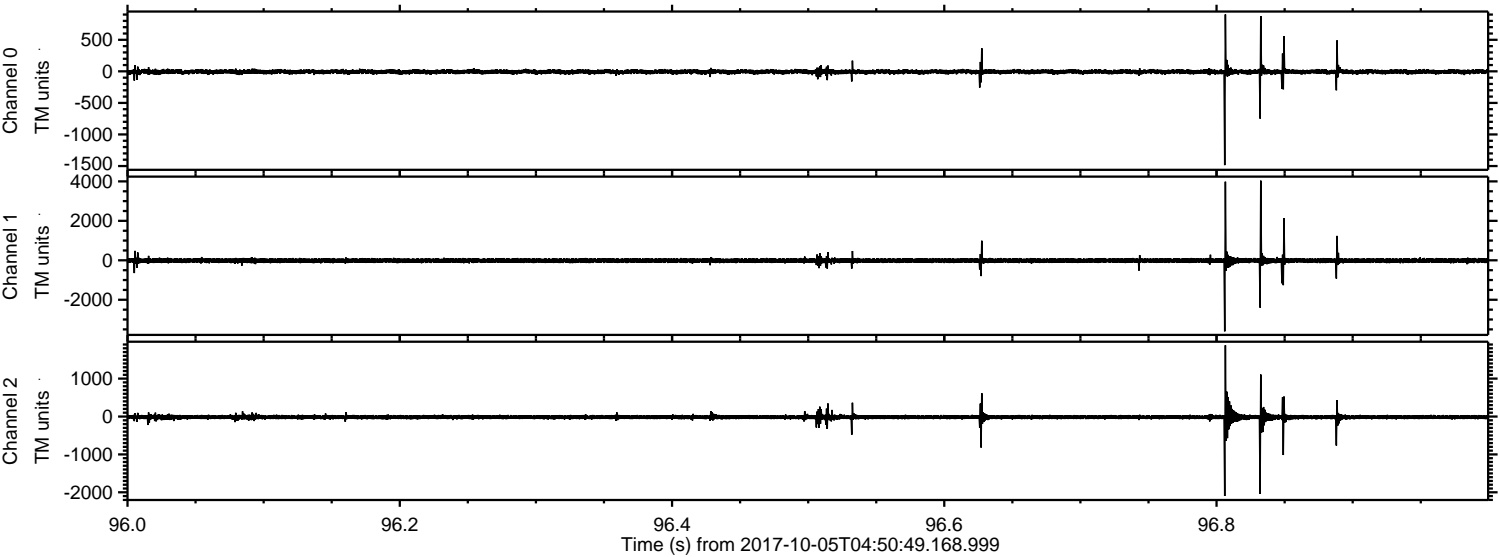


ELMAVAN 3D WAVEFORMS (Measured data sampled at 50 kHz) 51000 packets of 144 samples from 2017-10-05T04:50:49.168.999. Part 5/147

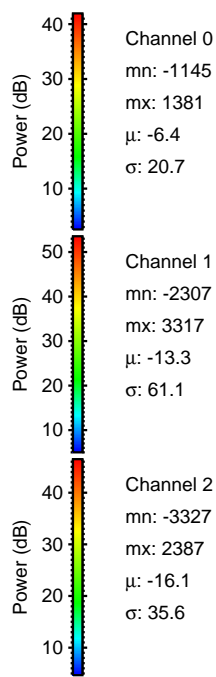
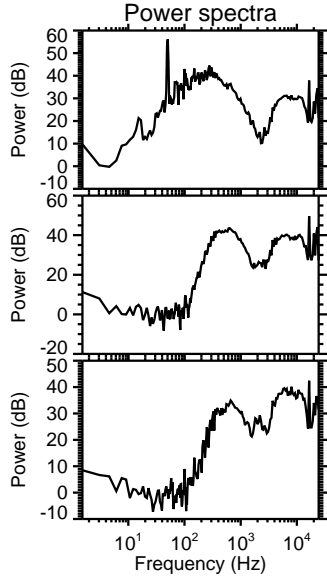
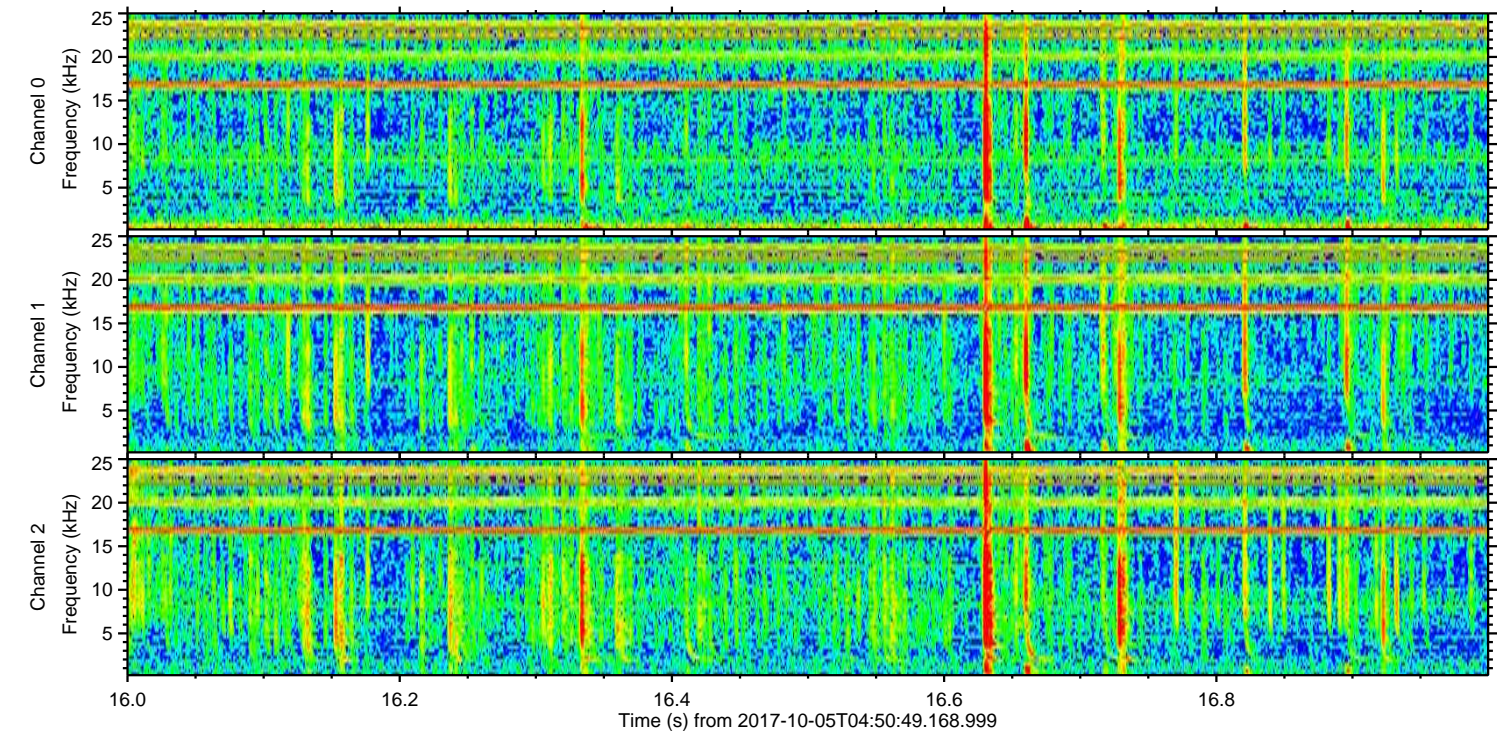
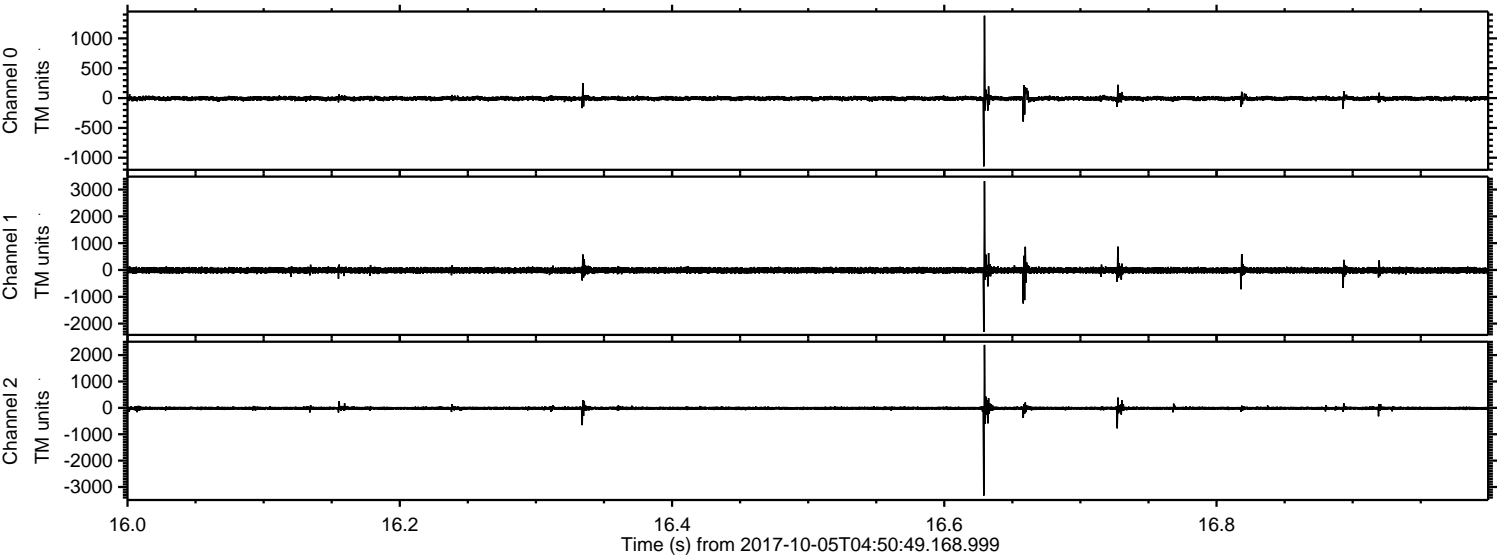
Processed Thu Oct 5 06:58:46 2017 by ELM ver.2012-10-06 from 001__elm20171005_045048__dat00.bin



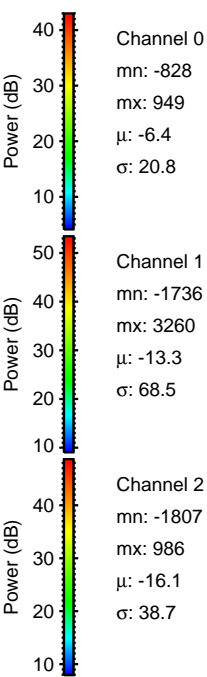
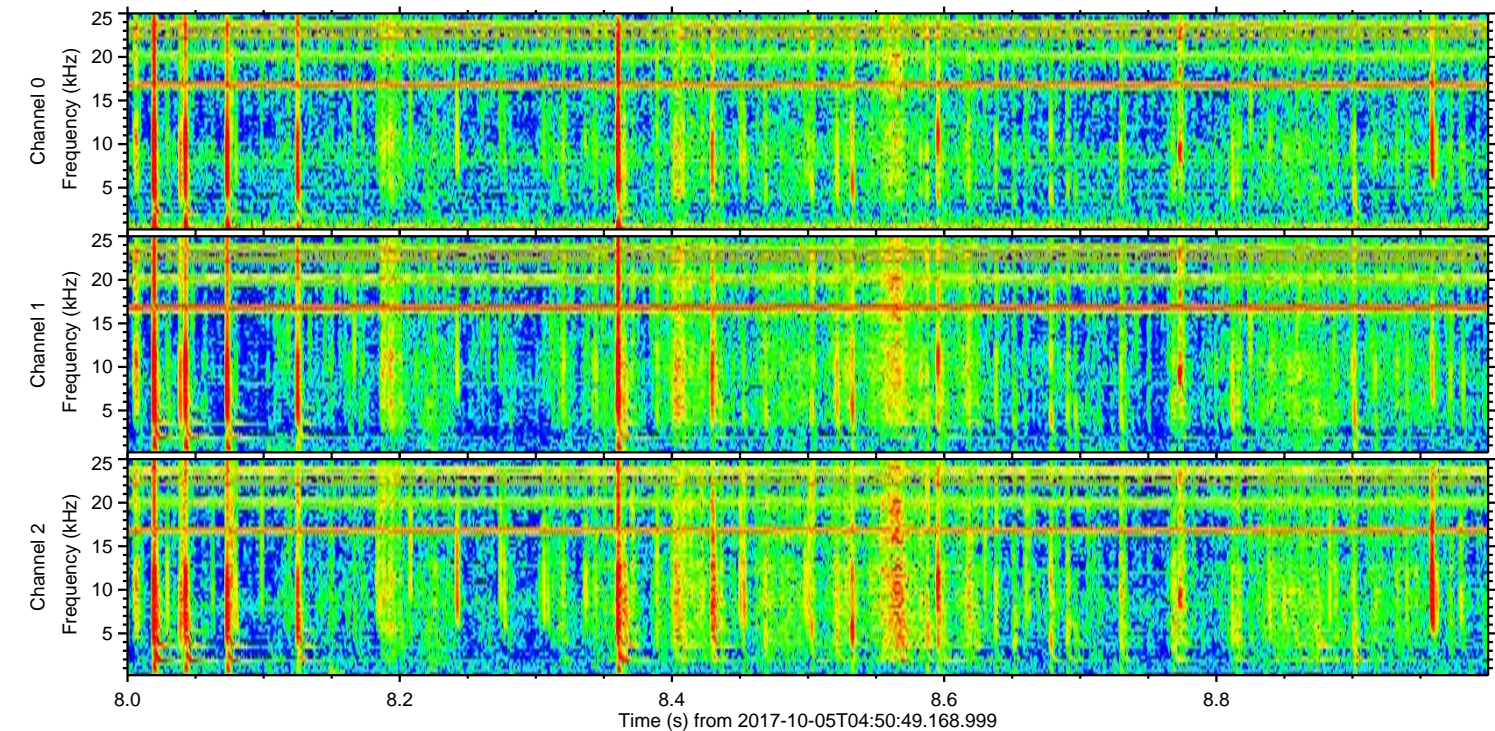
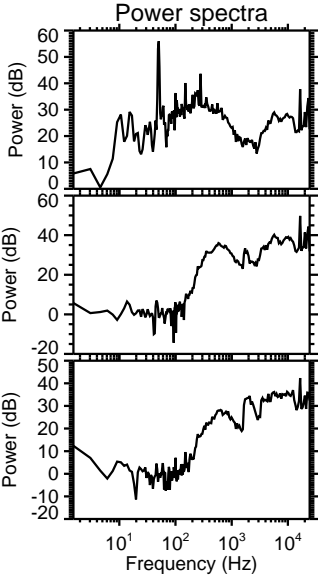
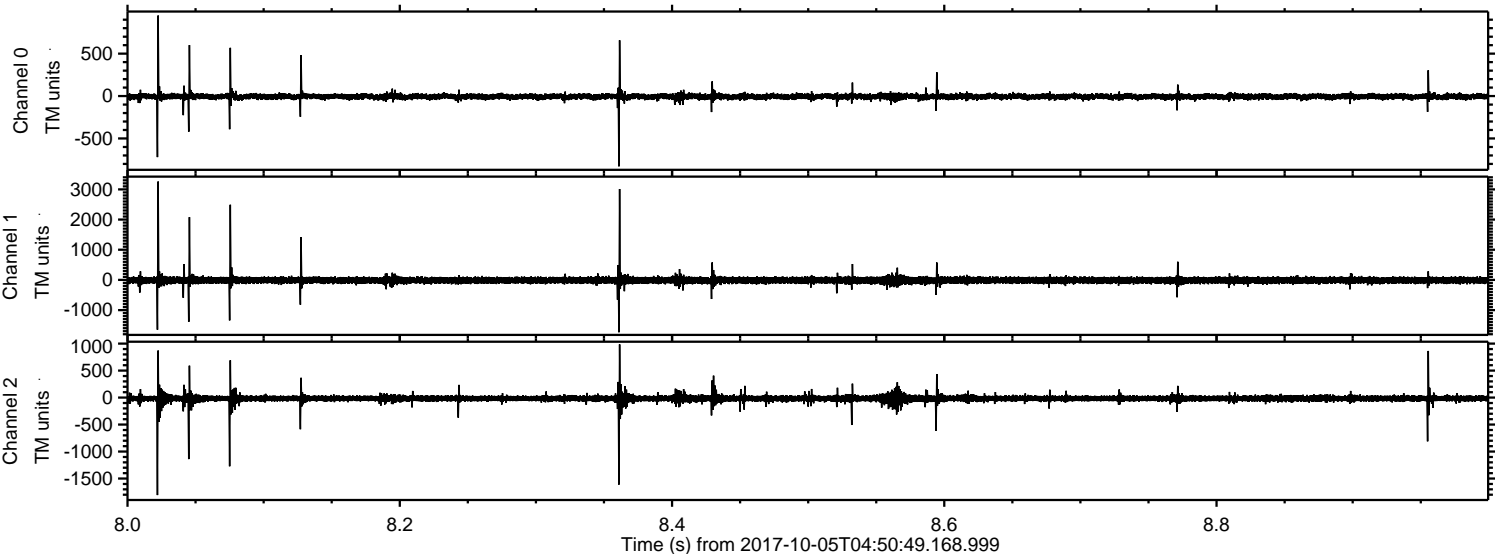
Processed Thu Oct 5 06:58:46 2017 by ELM ver.2012-10-06 from 001__elm20171005_045048__dat00.bin



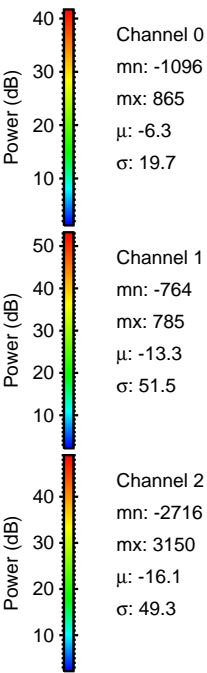
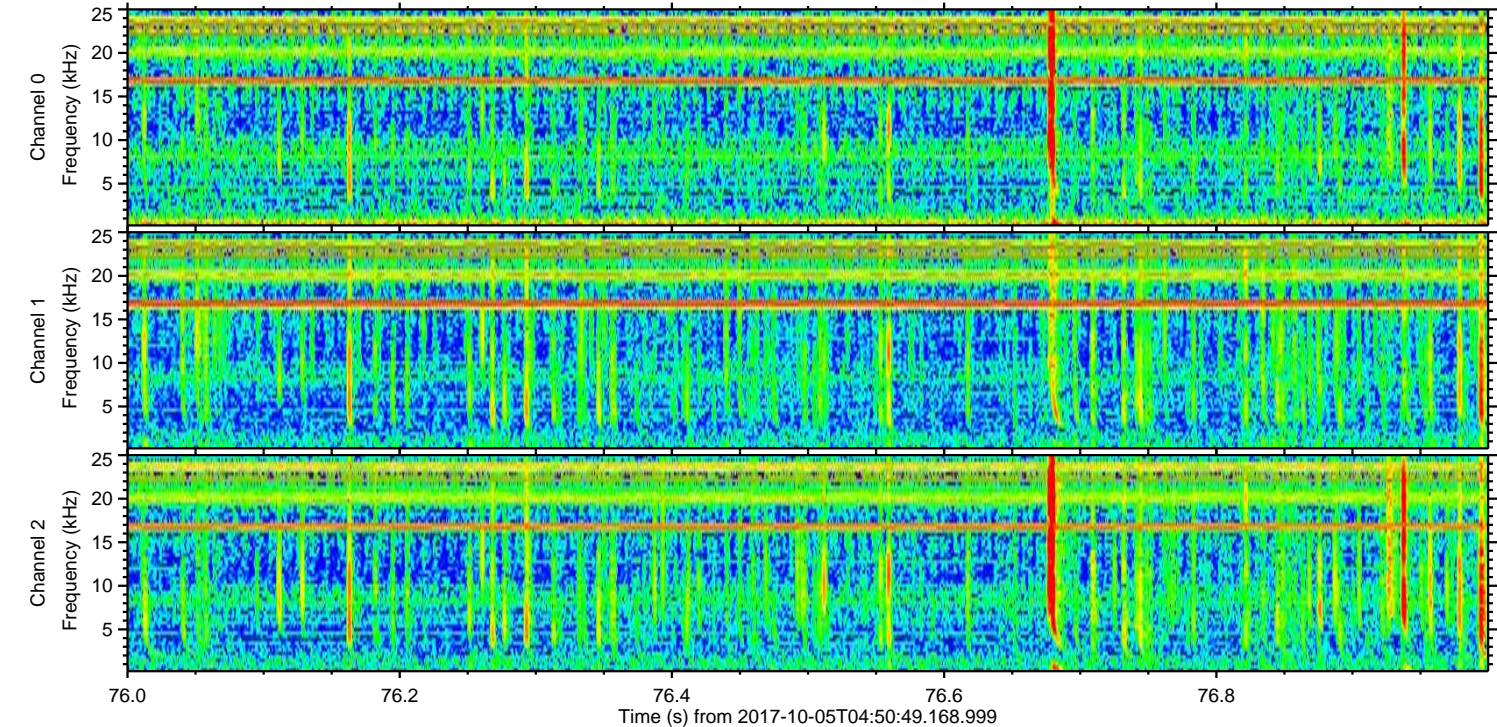
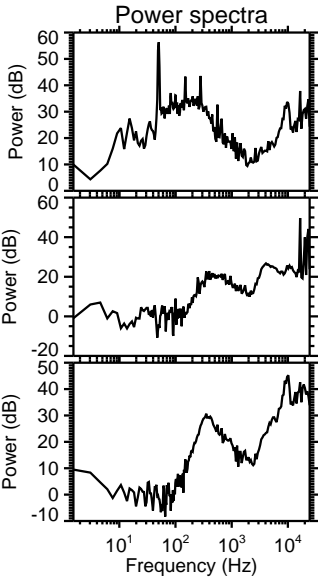
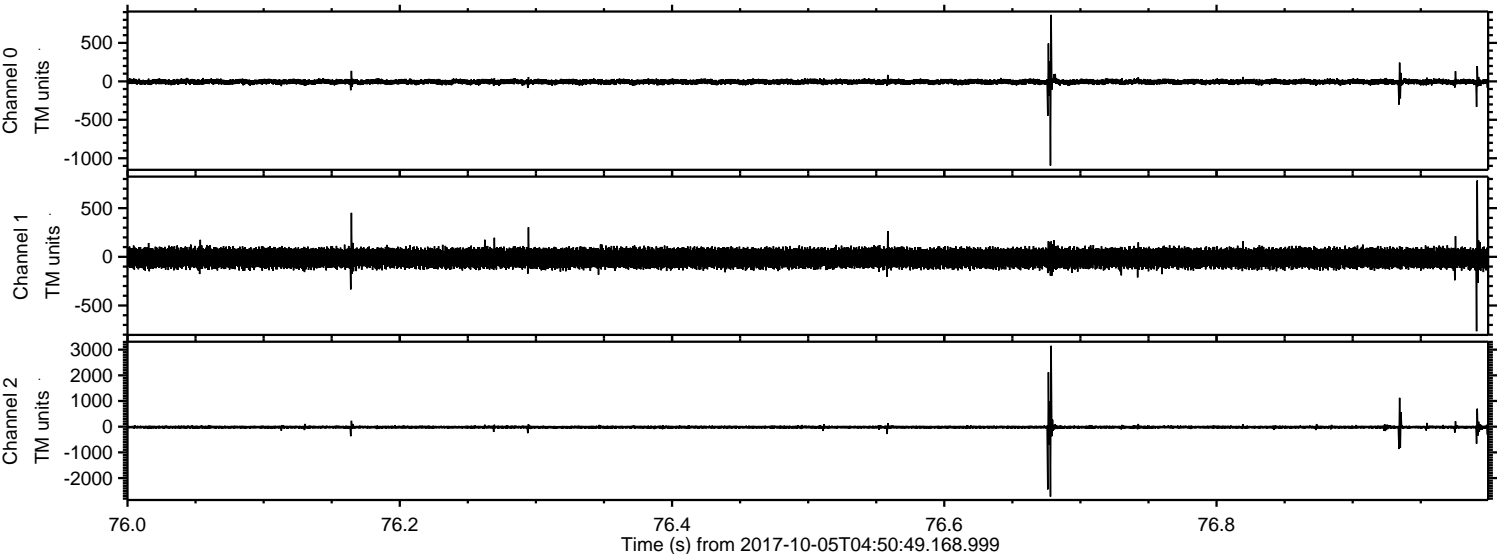
Processed Thu Oct 5 06:58:47 2017 by ELM ver.2012-10-06 from 001__elm20171005_045048__dat00.bin



Processed Thu Oct 5 06:58:48 2017 by ELM ver.2012-10-06 from 001__elm20171005_045048__dat00.bin

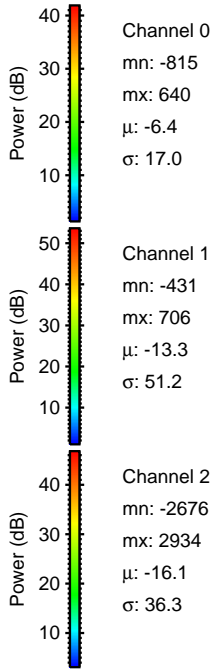
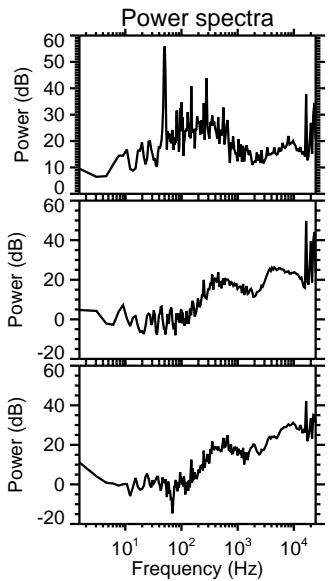
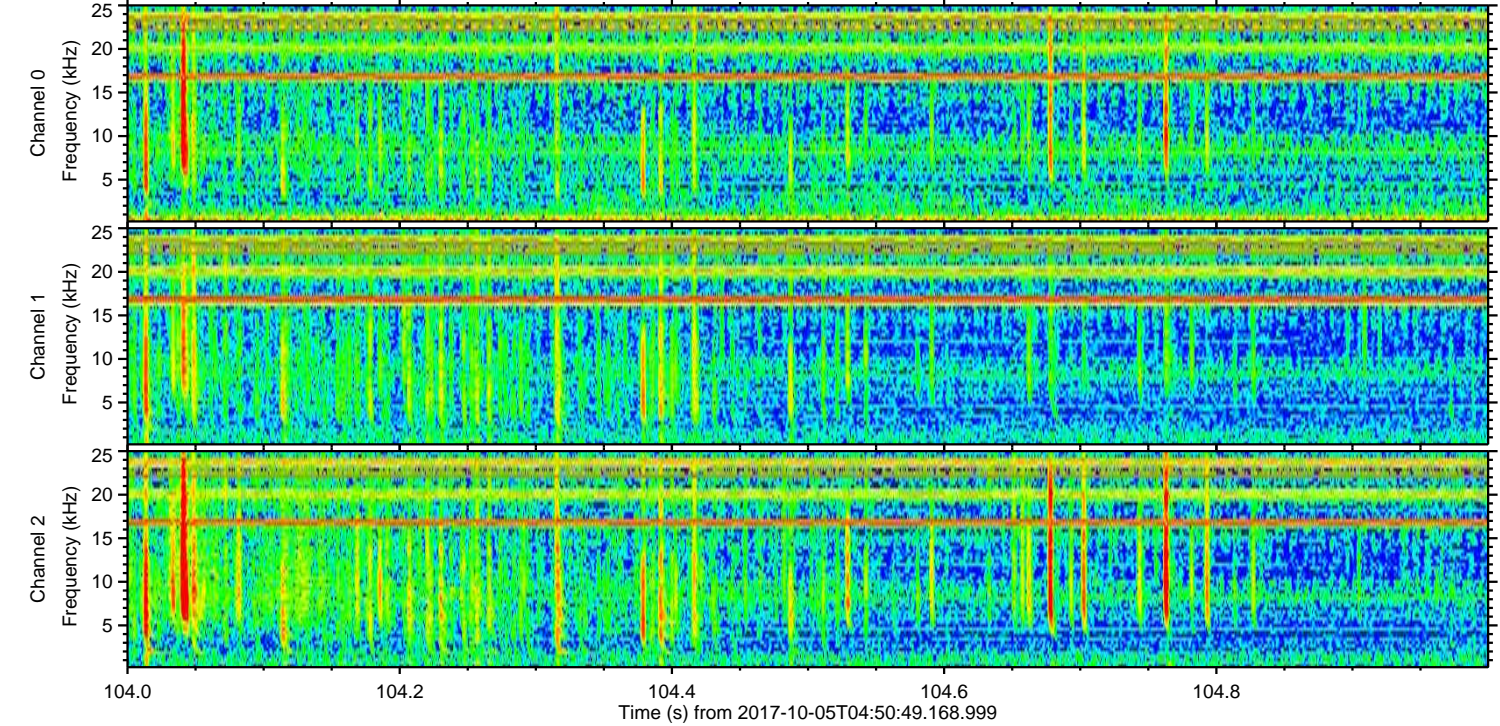
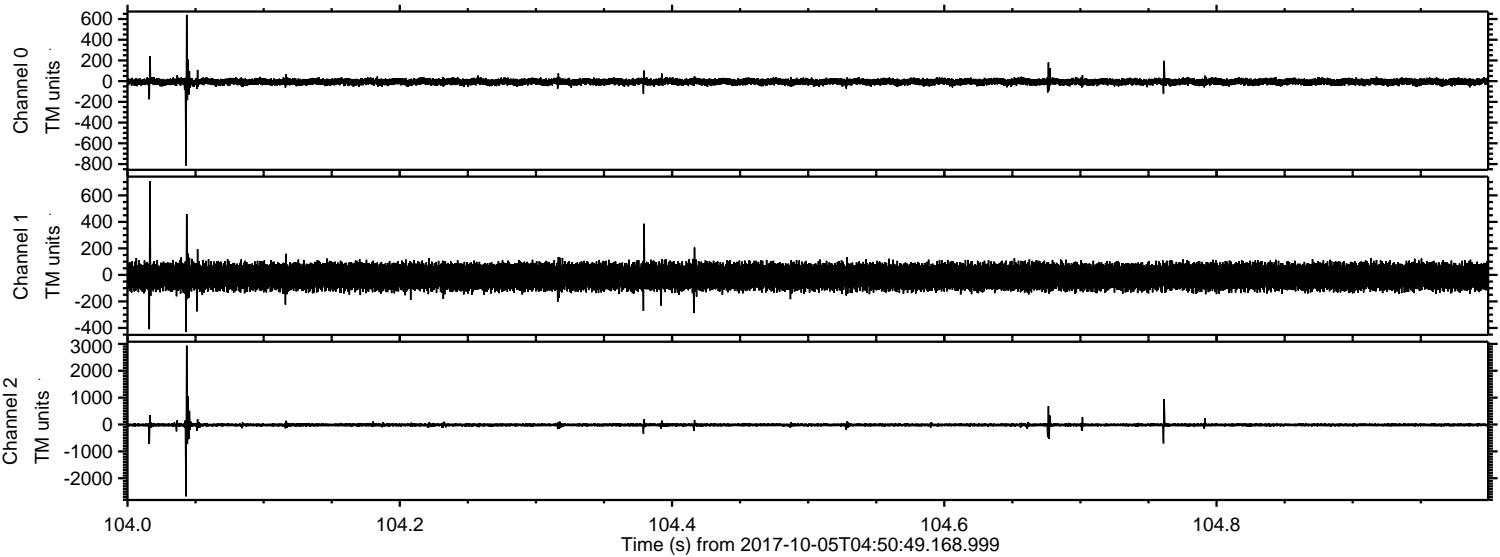


Processed Thu Oct 5 06:58:48 2017 by ELM ver.2012-10-06 from 001__elm20171005_045048__dat00.bin

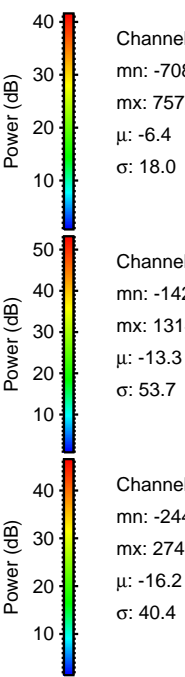
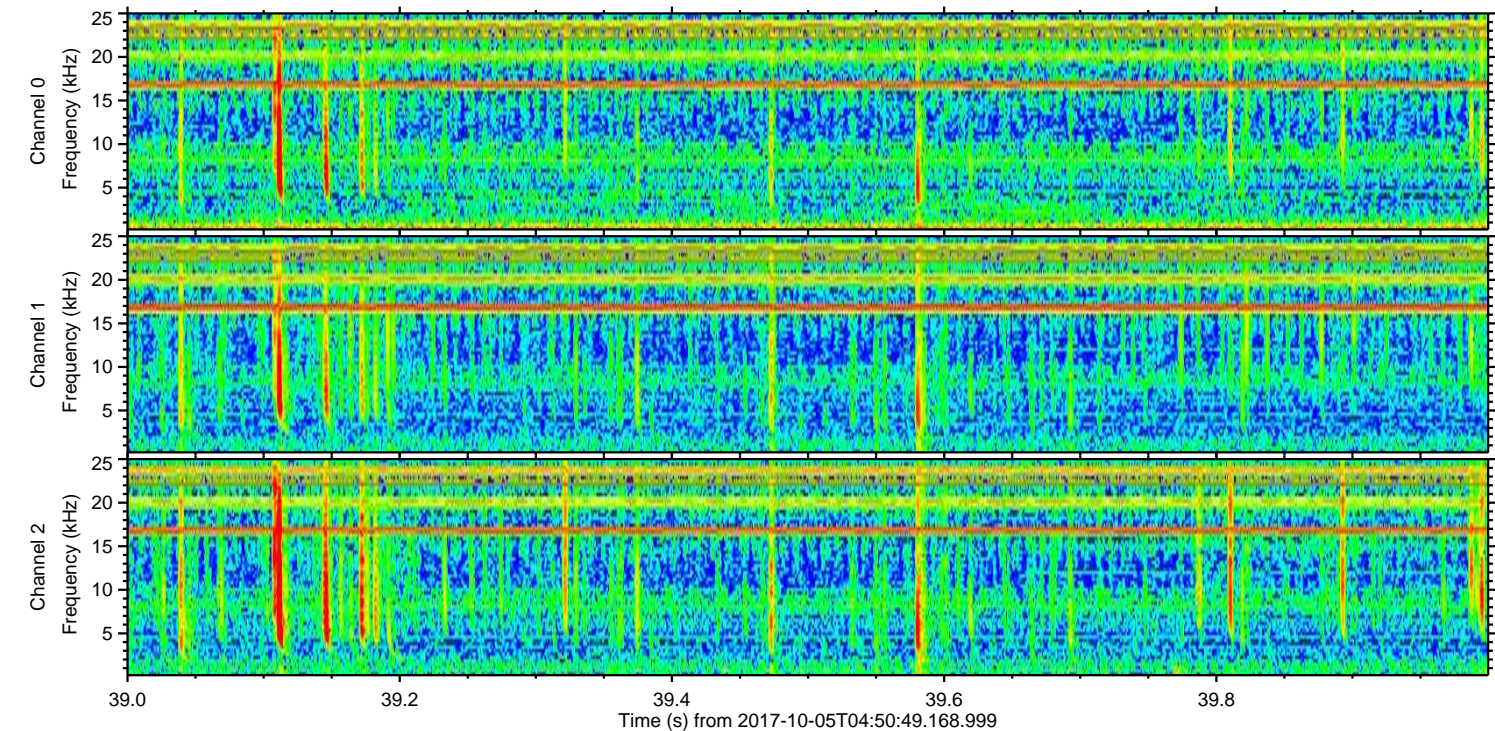
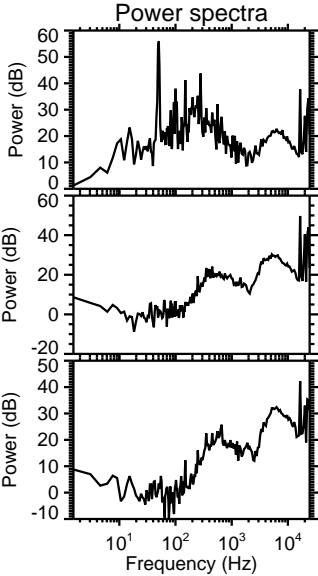
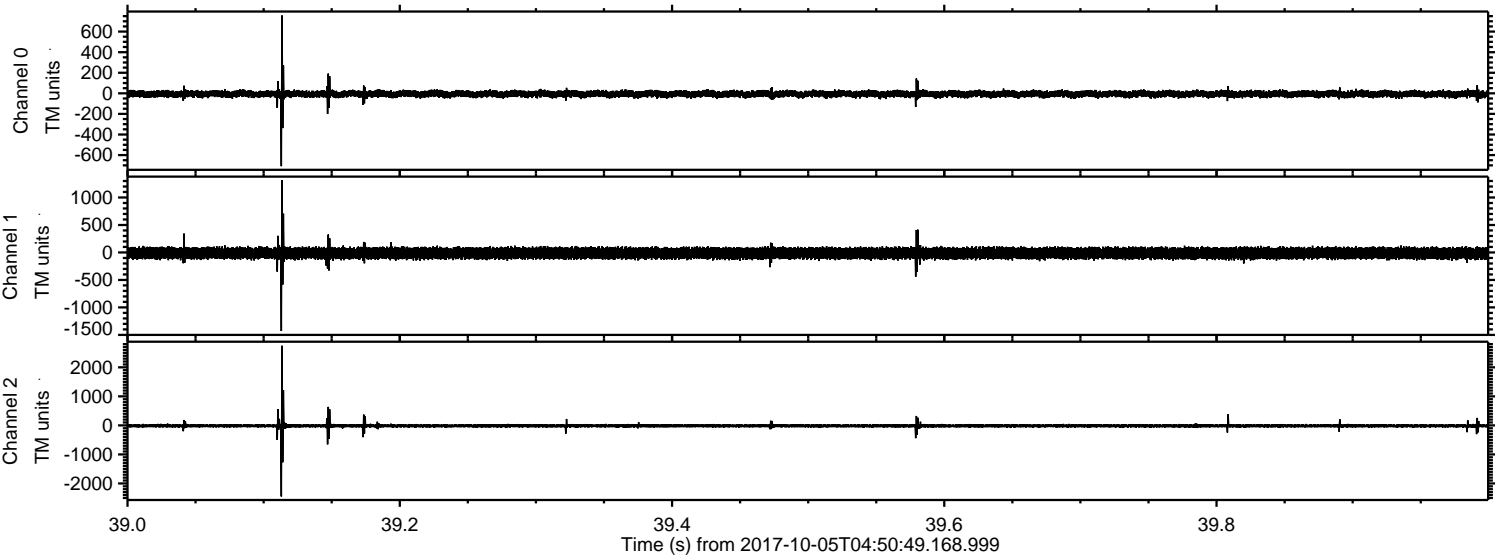


ELMAVAN 3D WAVEFORMS (Measured data sampled at 50 kHz) 51000 packets of 144 samples from 2017-10-05T04:50:49.168.999. Part 105/147

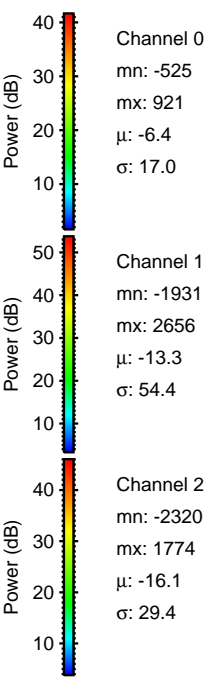
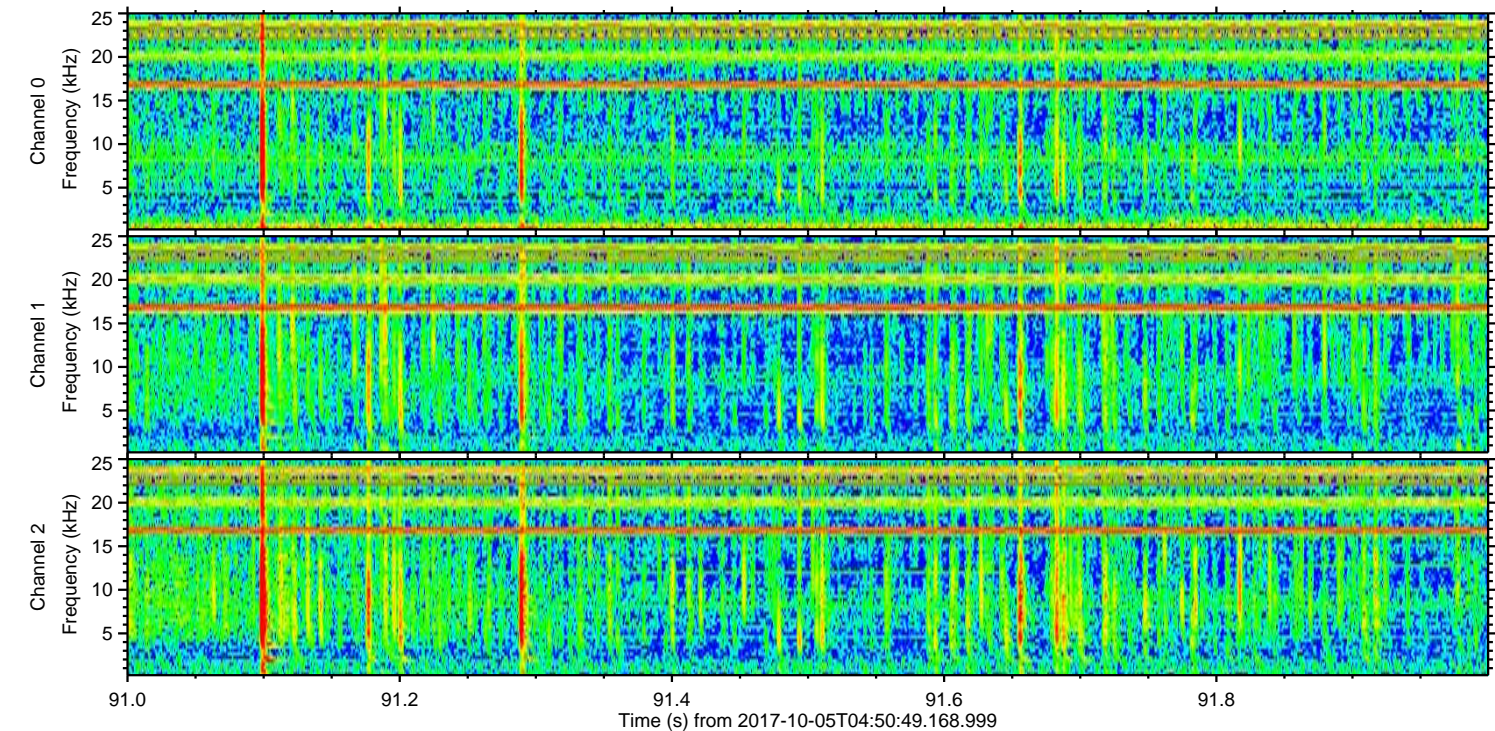
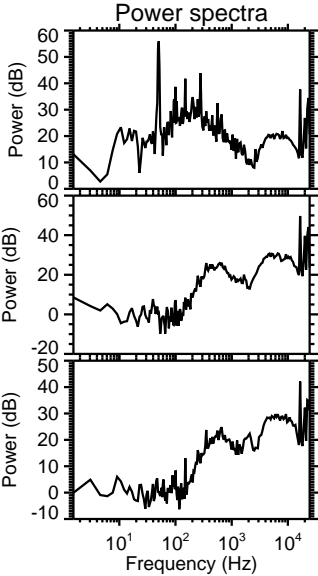
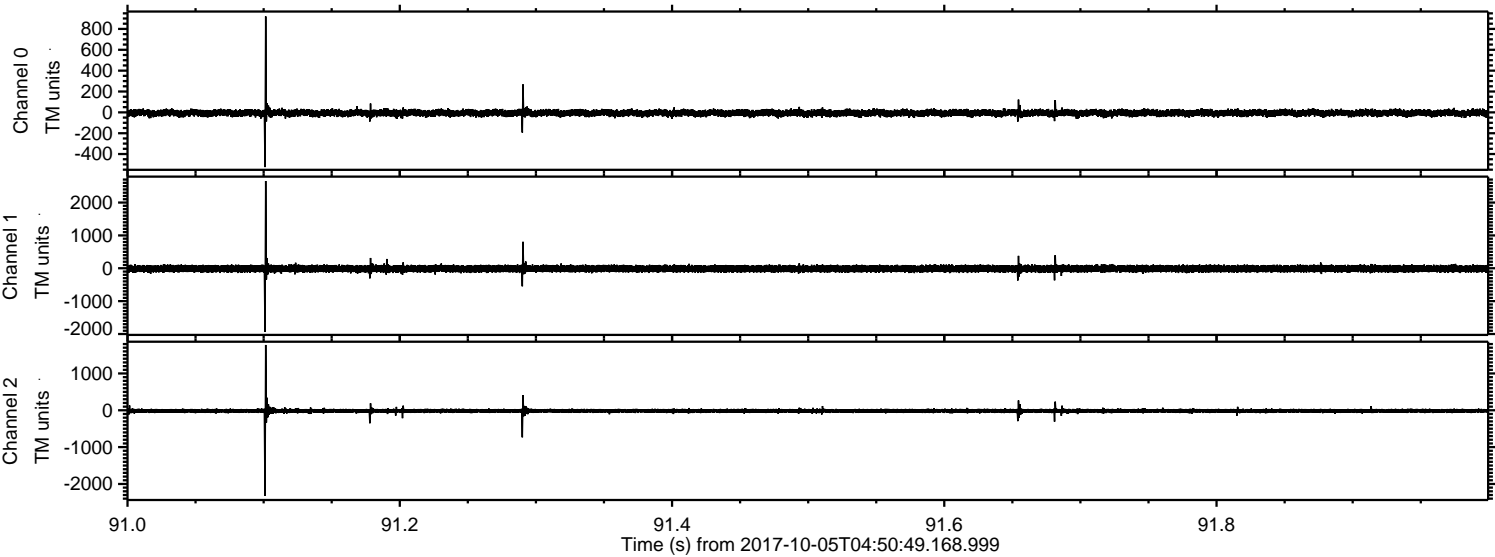
Processed Thu Oct 5 06:58:49 2017 by ELM ver.2012-10-06 from 001__elm20171005_045048__dat00.bin



Processed Thu Oct 5 06:58:50 2017 by ELM ver.2012-10-06 from 001__elm20171005_045048__dat00.bin



Processed Thu Oct 5 06:58:50 2017 by ELM ver.2012-10-06 from 001__elm20171005_045048__dat00.bin



Channel 0
mn: -525
mx: 921
 μ : -6.4
 σ : 17.0

Channel 1
mn: -1931
mx: 2656
 μ : -13.3
 σ : 54.4

Channel 2
mn: -2320
mx: 1774
 μ : -16.1
 σ : 29.4

Processed Thu Oct 5 06:58:51 2017 by ELM ver.2012-10-06 from 001__elm20171005_045048__dat00.bin

