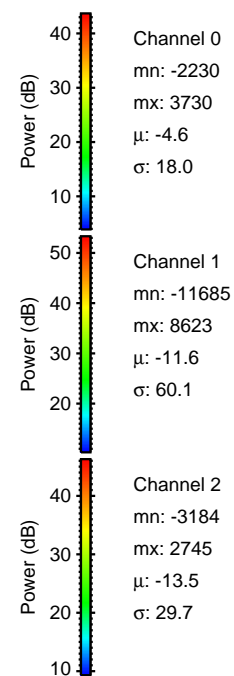
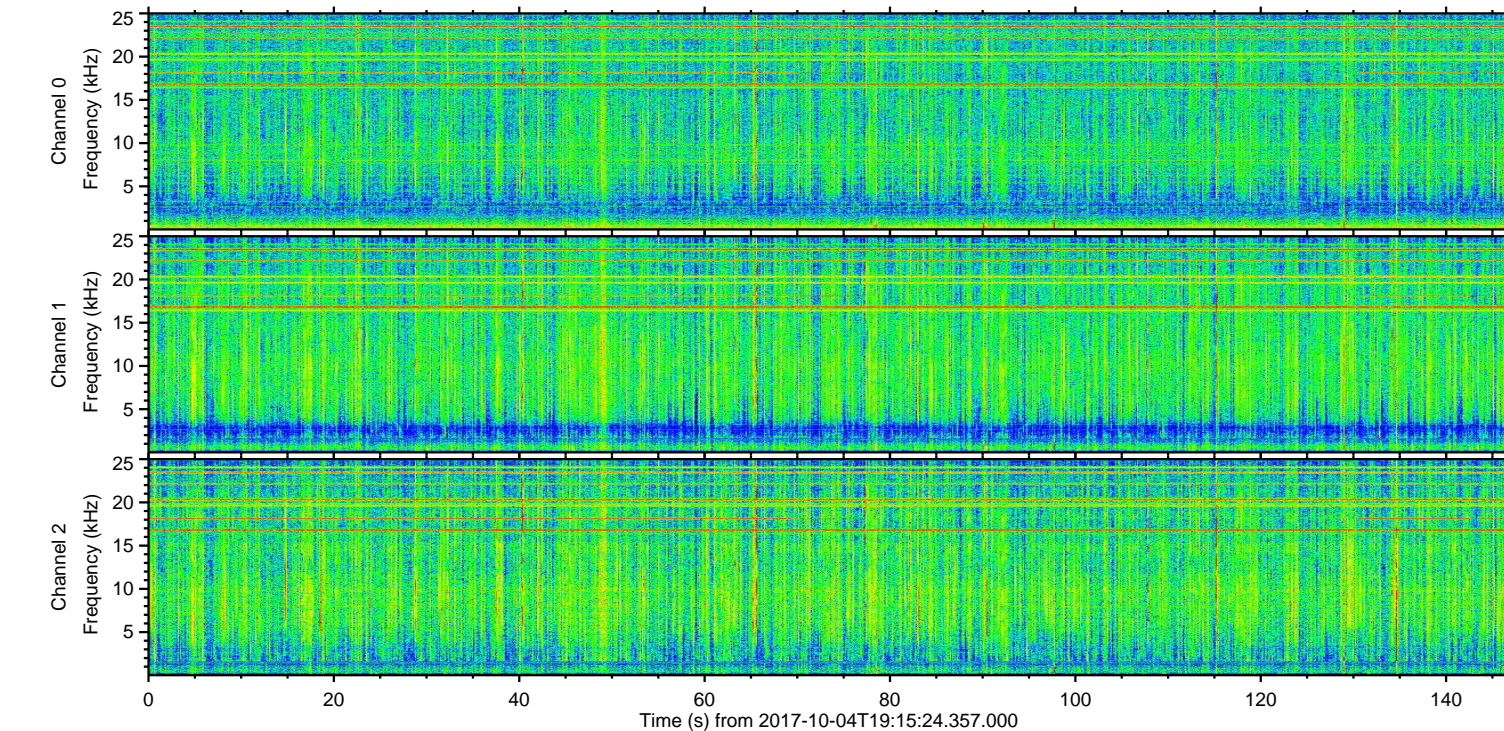
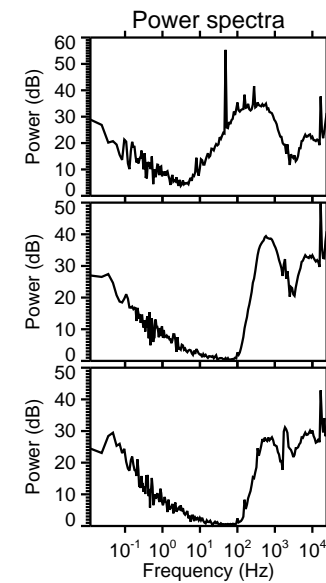
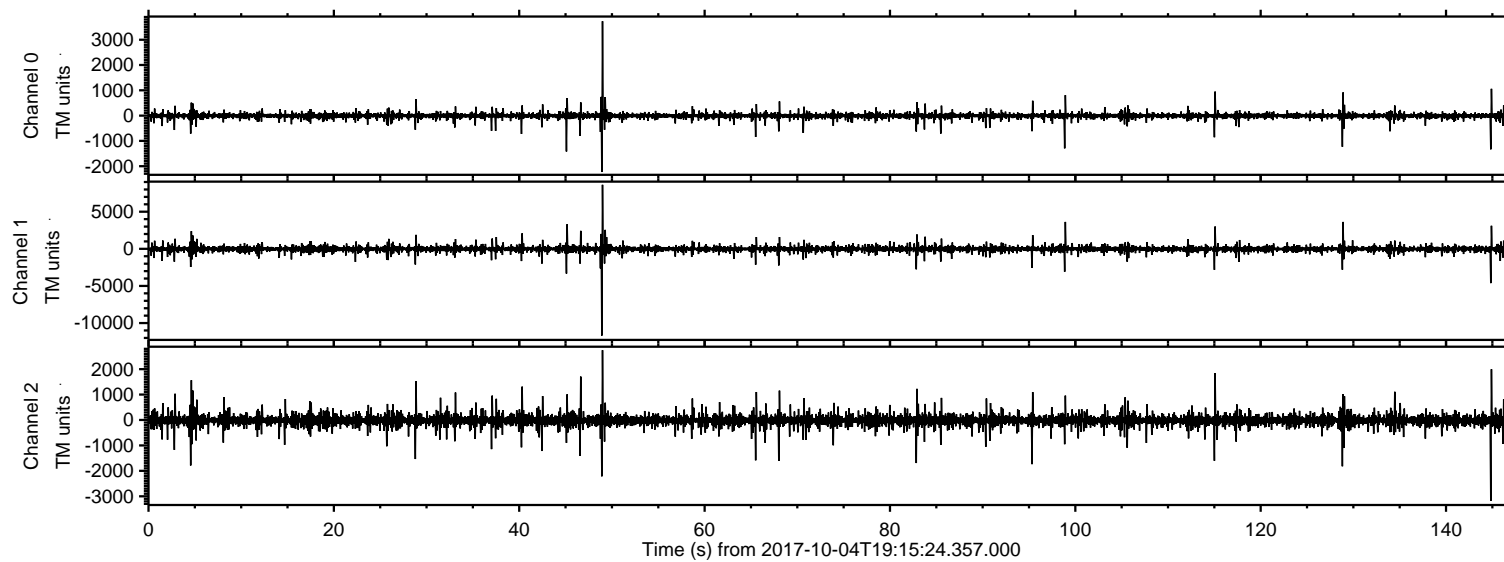


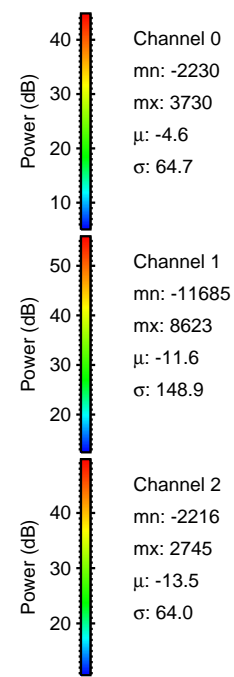
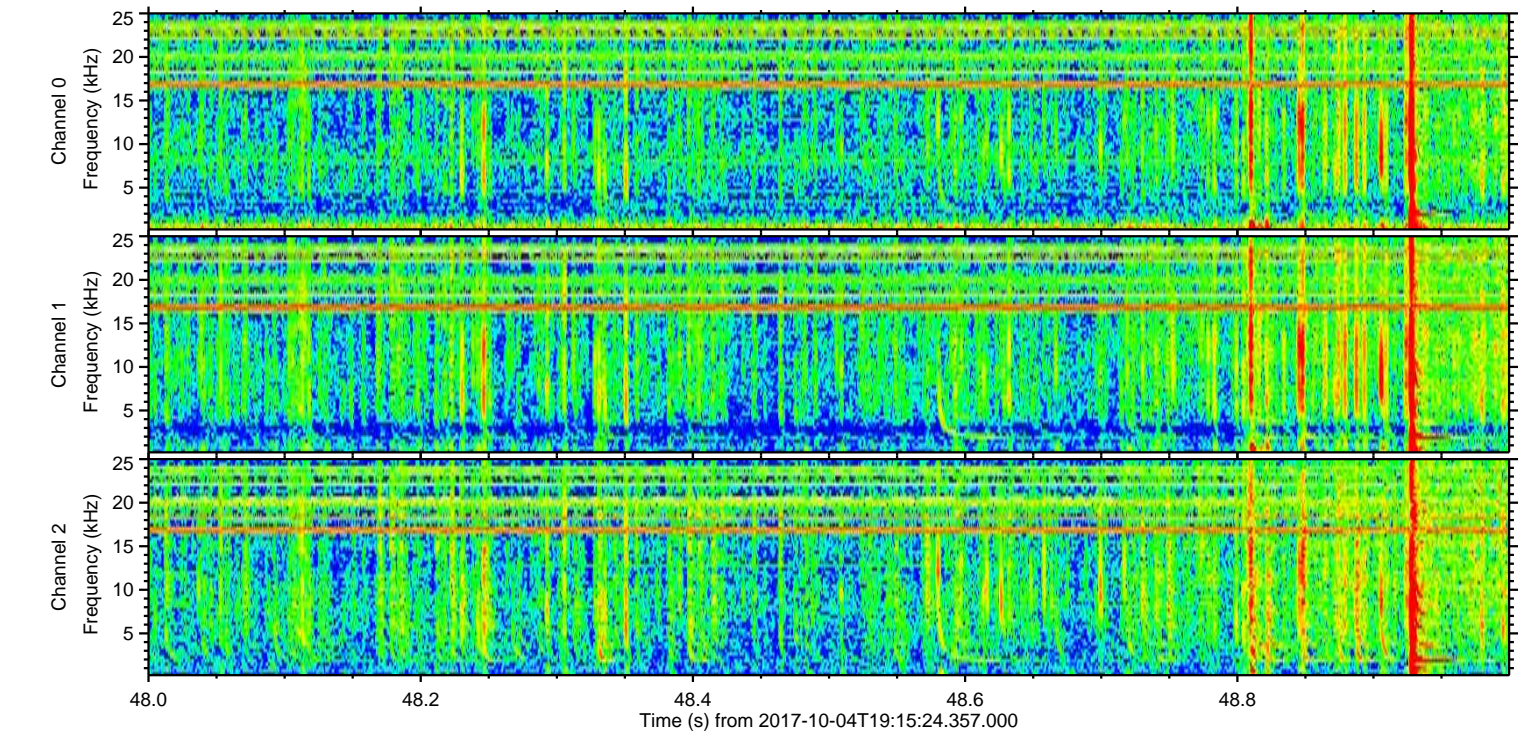
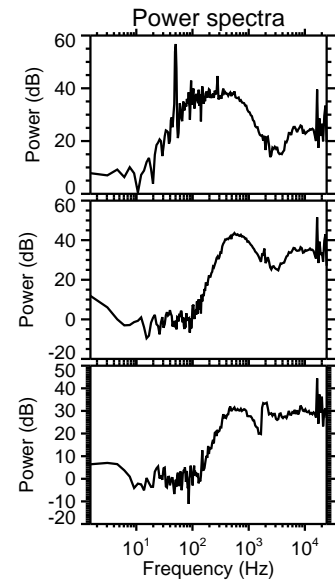
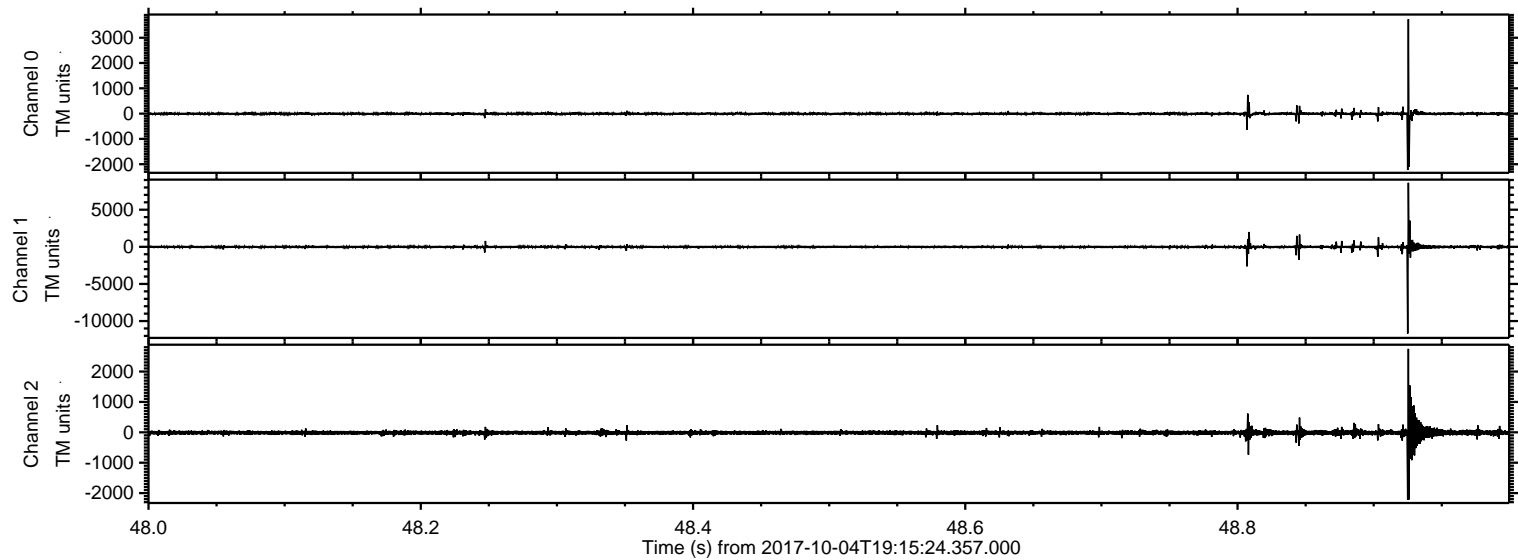
ELMAVAN 3D WAVEFORMS (Measured data sampled at 50 kHz) 51000 packets of 144 samples from 2017-10-04T19:15:24.357.000.

Processed Wed Oct 4 21:23:20 2017 by ELM ver.2012-10-06 from 001__elm20171004_191523__dat00.bin



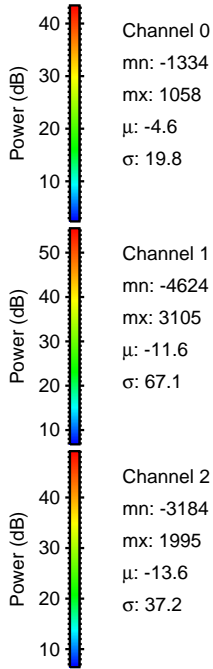
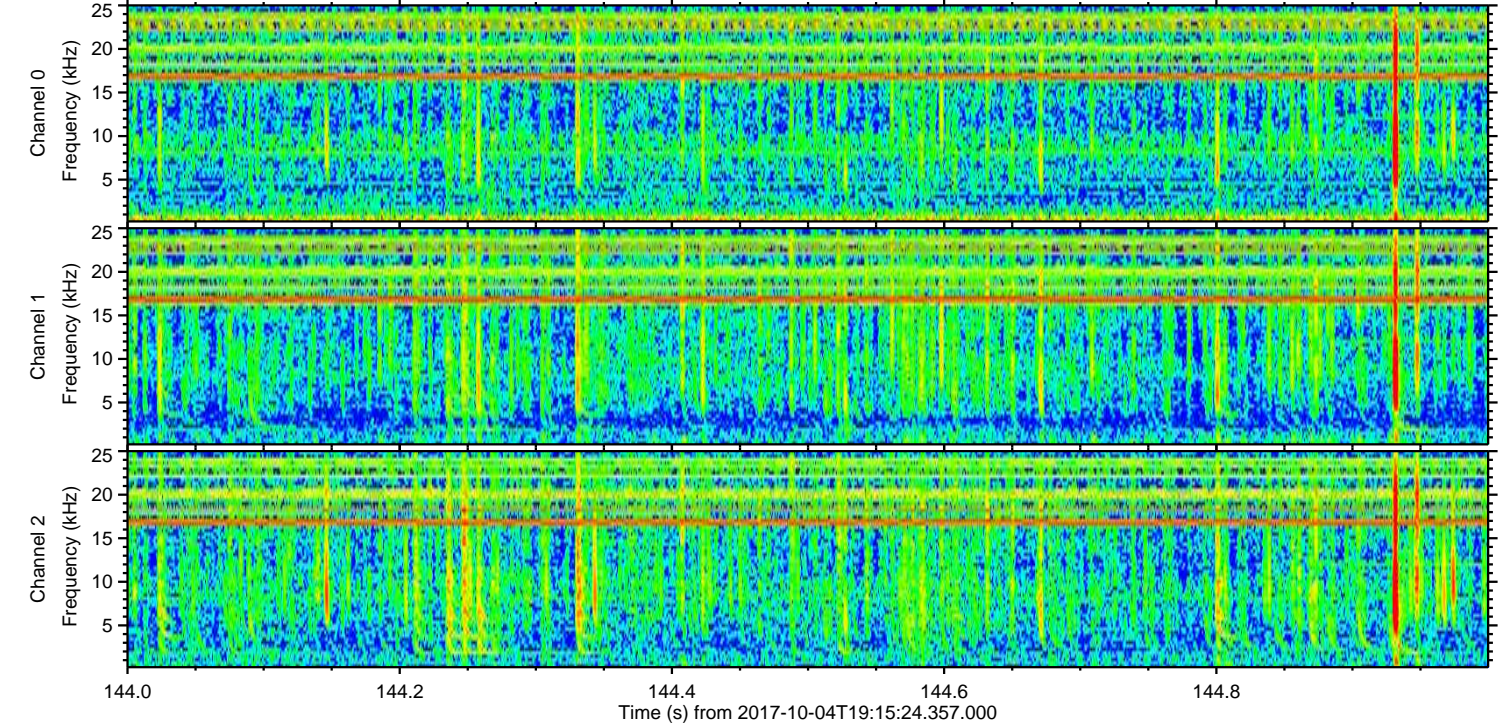
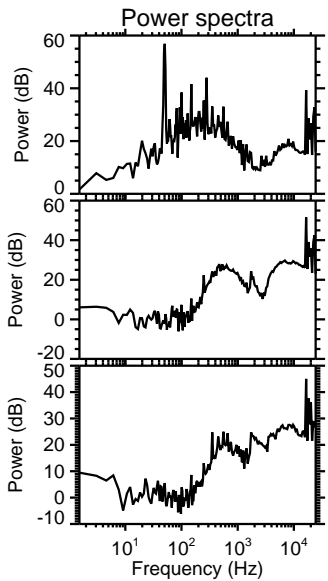
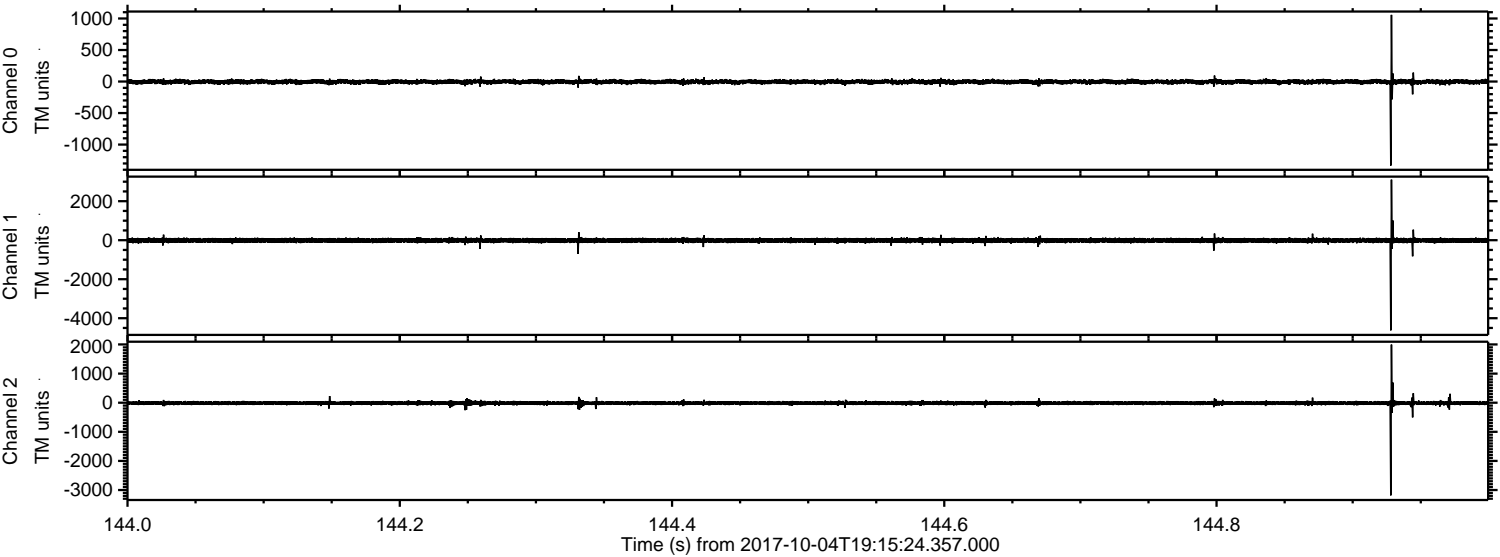
ELMAVAN 3D WAVEFORMS (Measured data sampled at 50 kHz) 51000 packets of 144 samples from 2017-10-04T19:15:24.357.000. Part 49/147

Processed Wed Oct 4 21:23:26 2017 by ELM ver.2012-10-06 from 001__elm20171004_191523__dat00.bin



ELMAVAN 3D WAVEFORMS (Measured data sampled at 50 kHz) 51000 packets of 144 samples from 2017-10-04T19:15:24.357.000. Part 145/147

Processed Wed Oct 4 21:23:27 2017 by ELM ver.2012-10-06 from 001__elm20171004_191523__dat00.bin



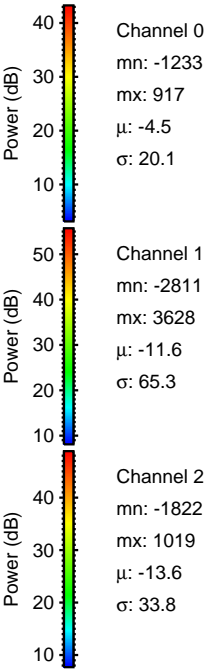
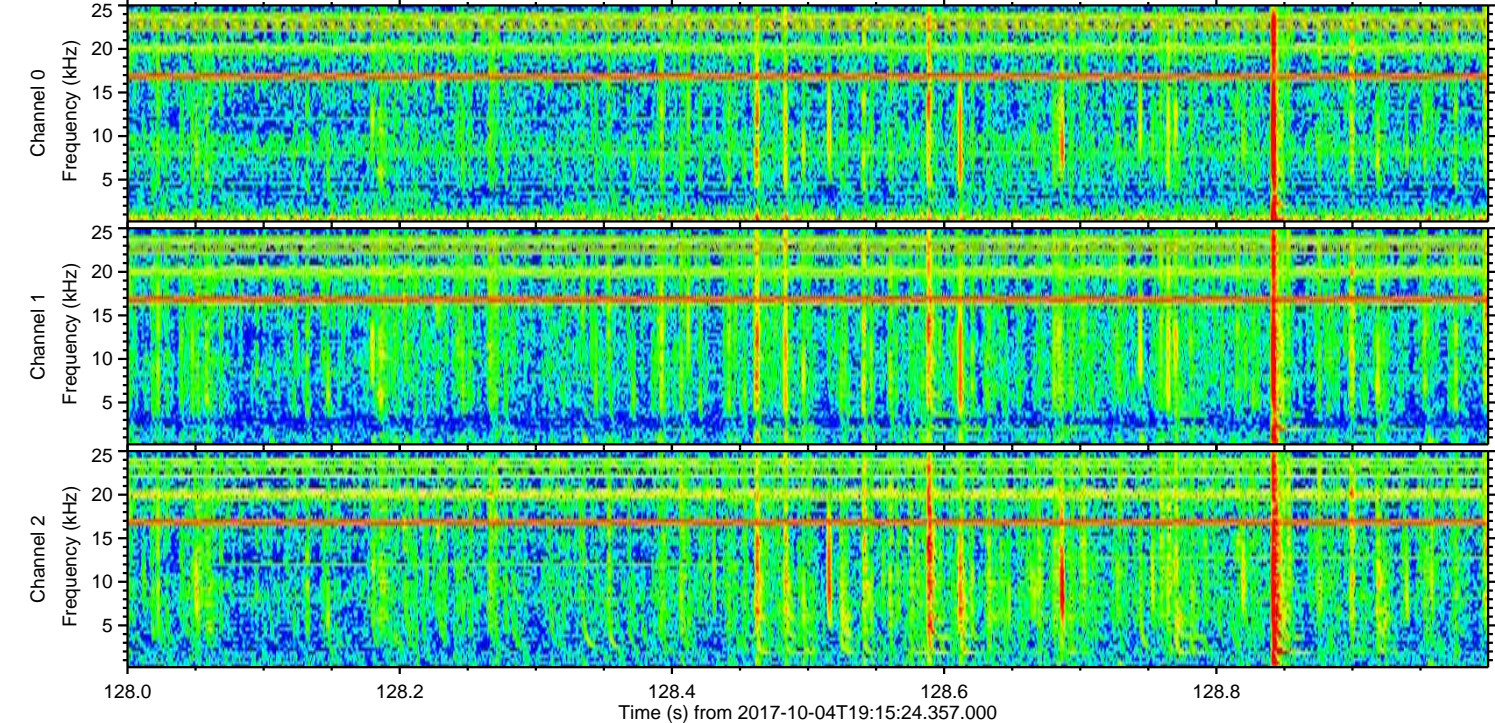
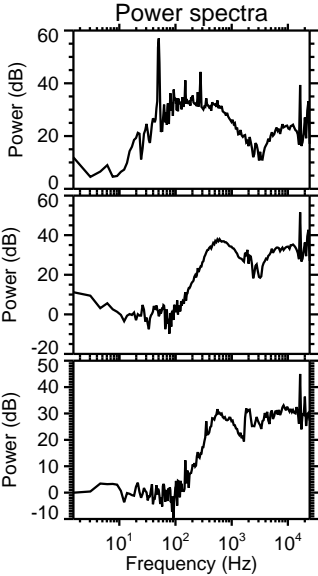
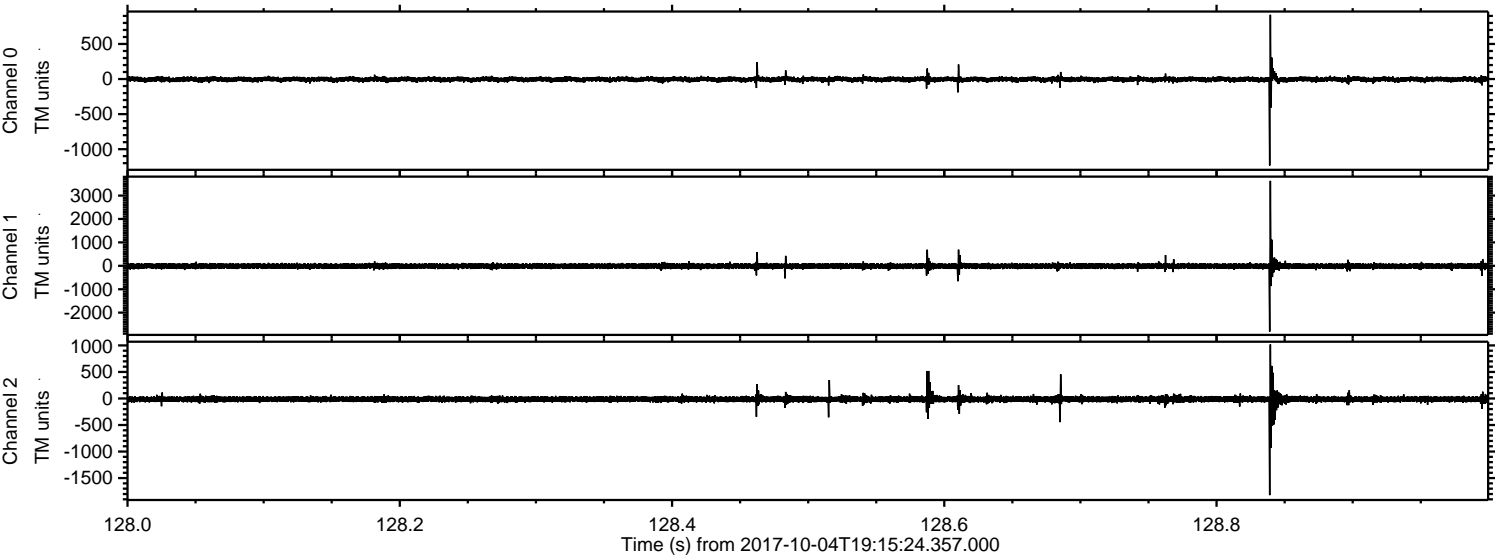
Channel 0
mn: -1334
mx: 1058
 μ : -4.6
 σ : 19.8

Channel 1
mn: -4624
mx: 3105
 μ : -11.6
 σ : 67.1

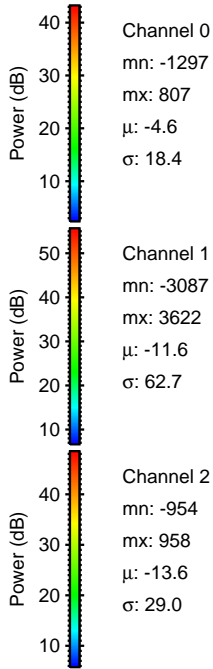
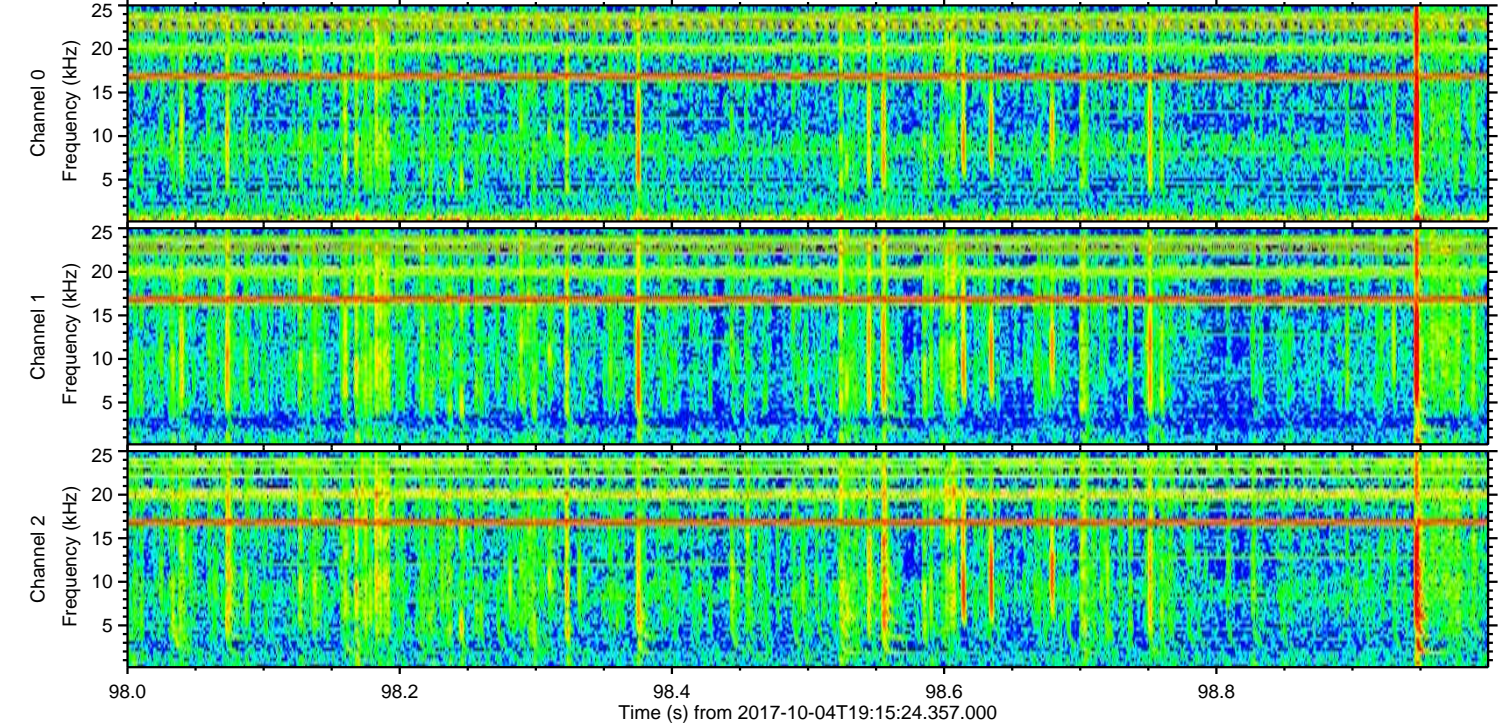
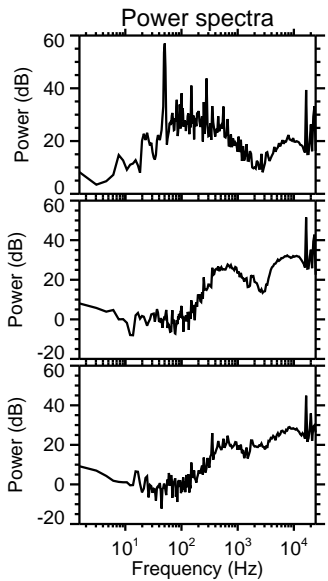
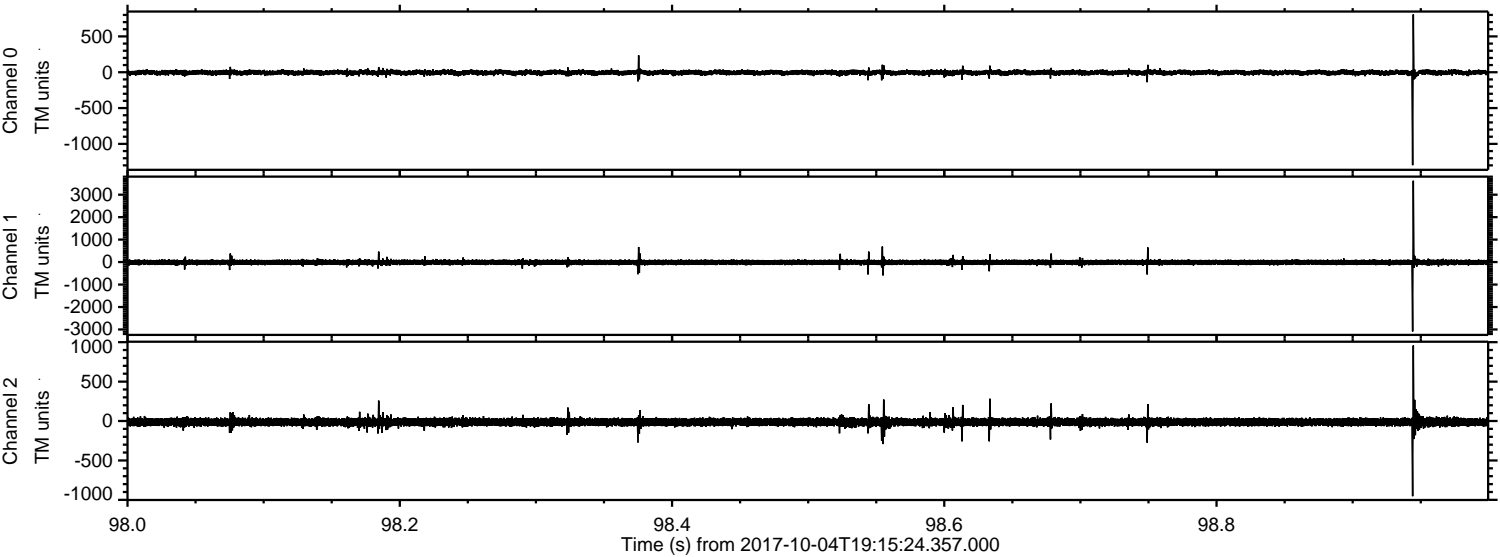
Channel 2
mn: -3184
mx: 1995
 μ : -13.6
 σ : 37.2

ELMAVAN 3D WAVEFORMS (Measured data sampled at 50 kHz) 51000 packets of 144 samples from 2017-10-04T19:15:24.357.000. Part 129/147

Processed Wed Oct 4 21:23:28 2017 by ELM ver.2012-10-06 from 001__elm20171004_191523__dat00.bin



Processed Wed Oct 4 21:23:28 2017 by ELM ver.2012-10-06 from 001__elm20171004_191523__dat00.bin

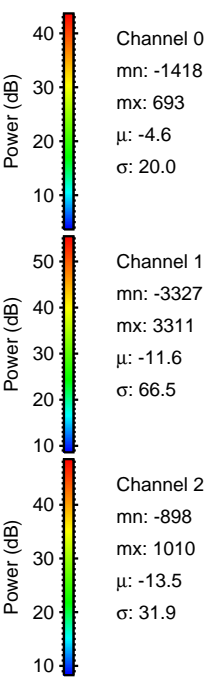
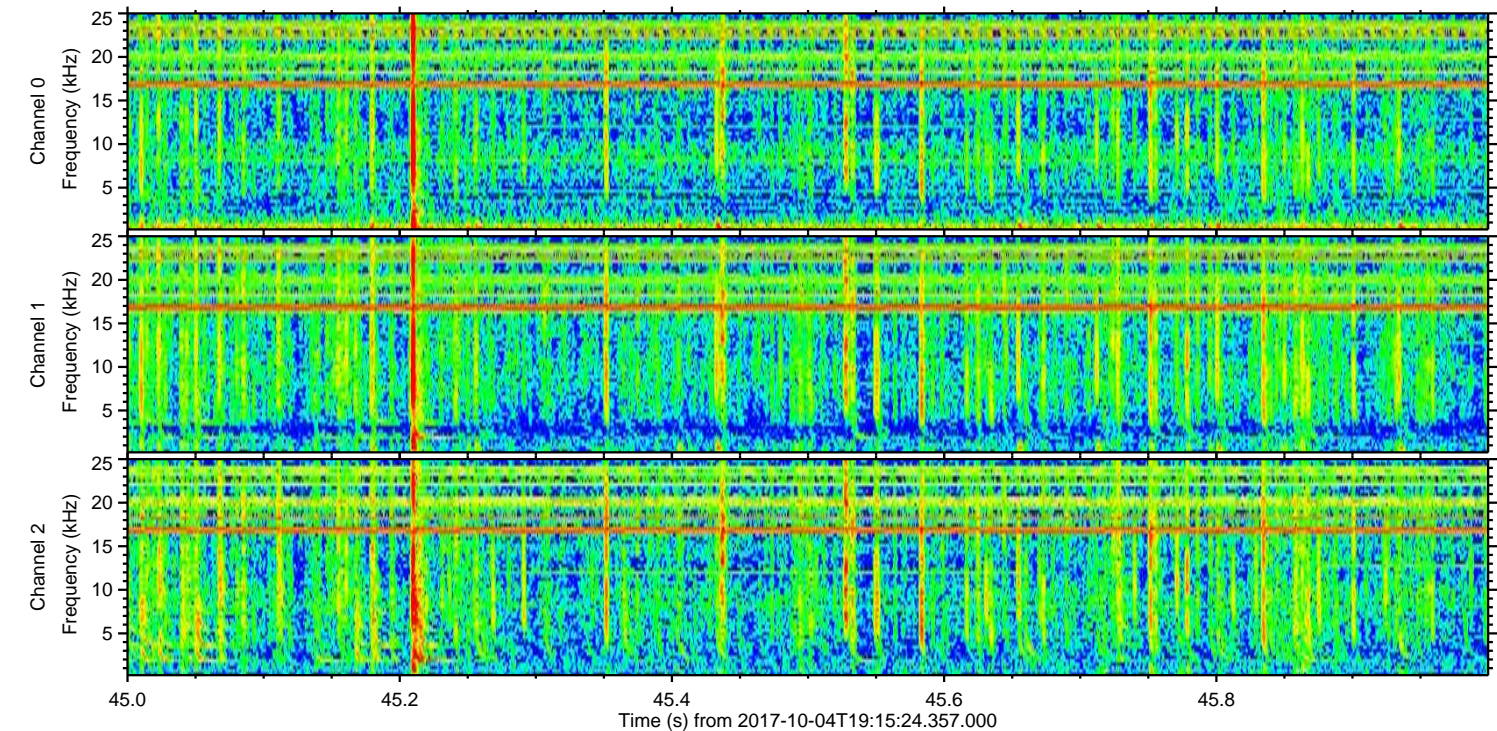
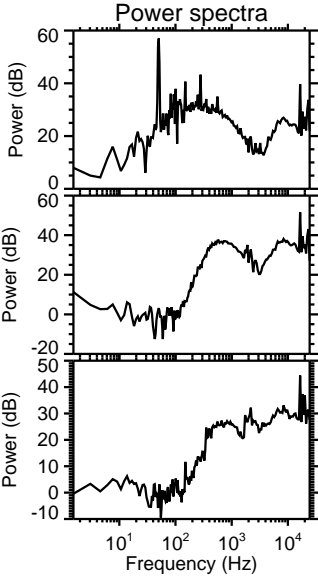
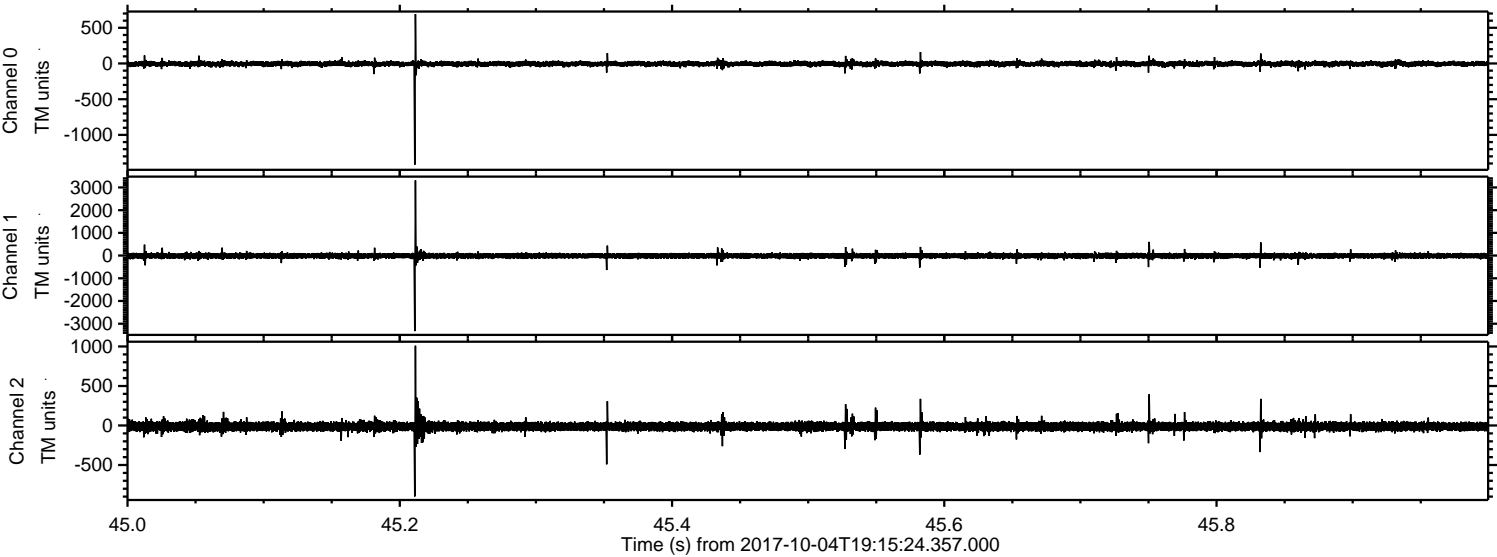


Channel 0
mn: -1297
mx: 807
 μ : -4.6
 σ : 18.4

Channel 1
mn: -3087
mx: 3622
 μ : -11.6
 σ : 62.7

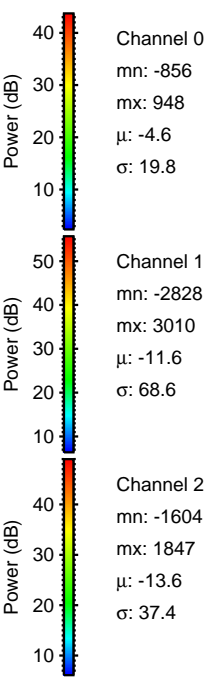
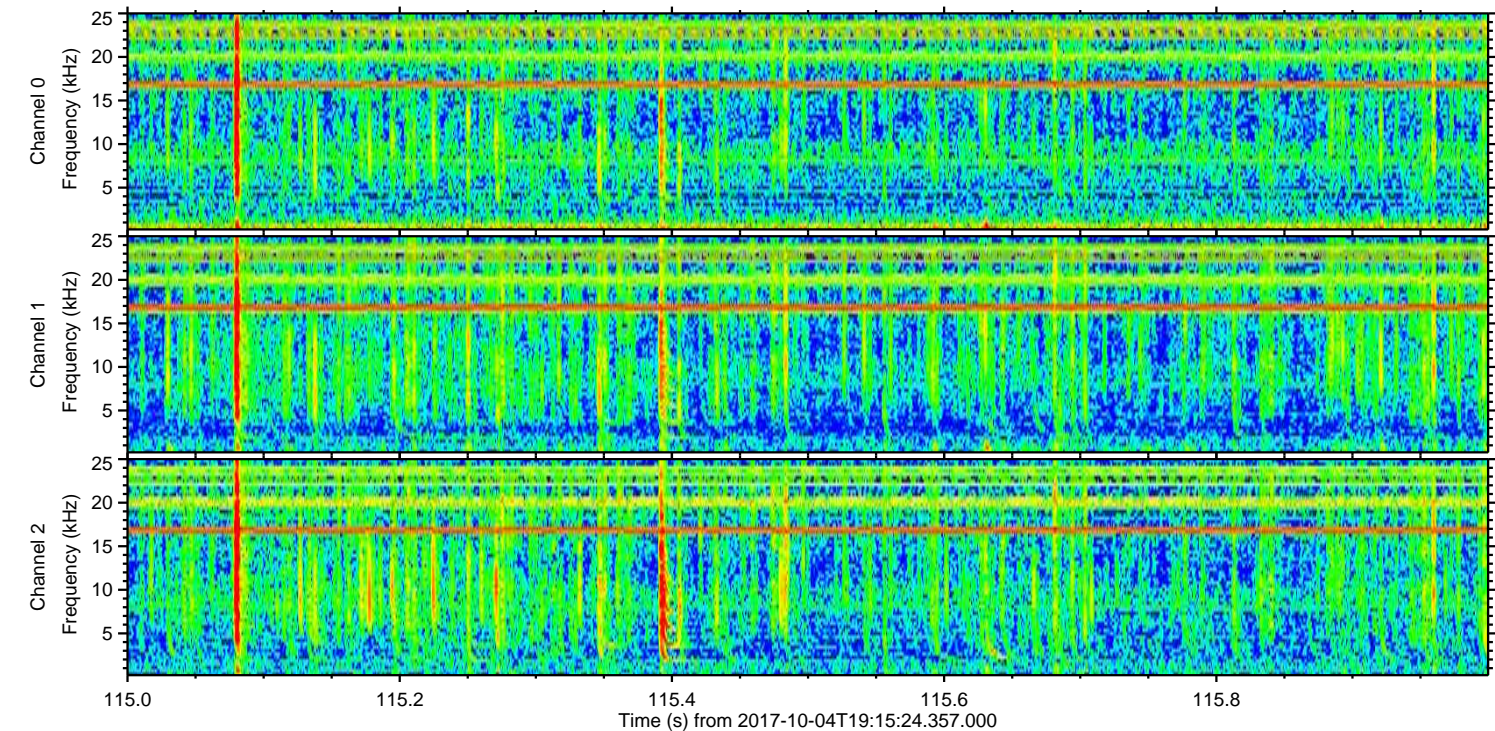
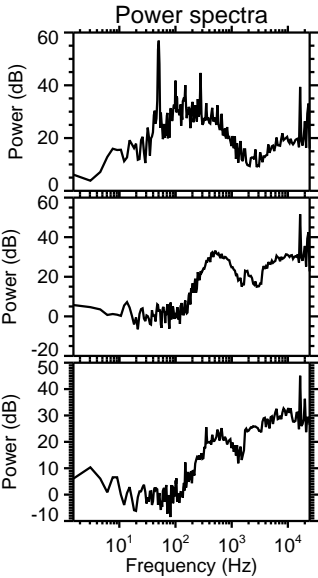
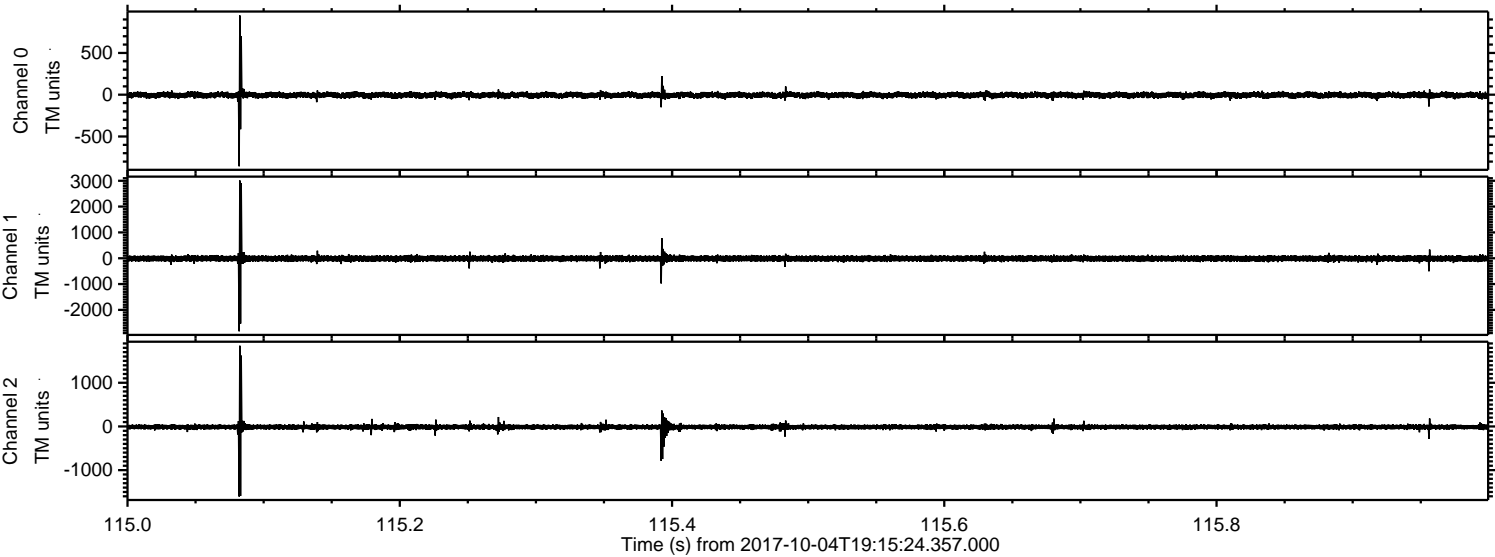
Channel 2
mn: -954
mx: 958
 μ : -13.6
 σ : 29.0

Processed Wed Oct 4 21:23:29 2017 by ELM ver.2012-10-06 from 001__elm20171004_191523__dat00.bin



ELMAVAN 3D WAVEFORMS (Measured data sampled at 50 kHz) 51000 packets of 144 samples from 2017-10-04T19:15:24.357.000. Part 116/147

Processed Wed Oct 4 21:23:30 2017 by ELM ver.2012-10-06 from 001__elm20171004_191523__dat00.bin

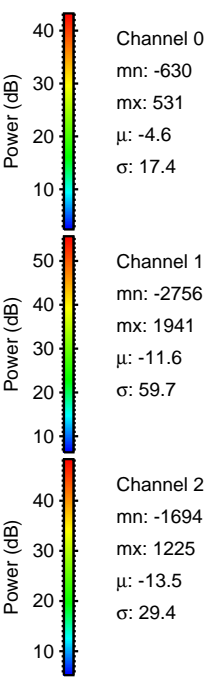
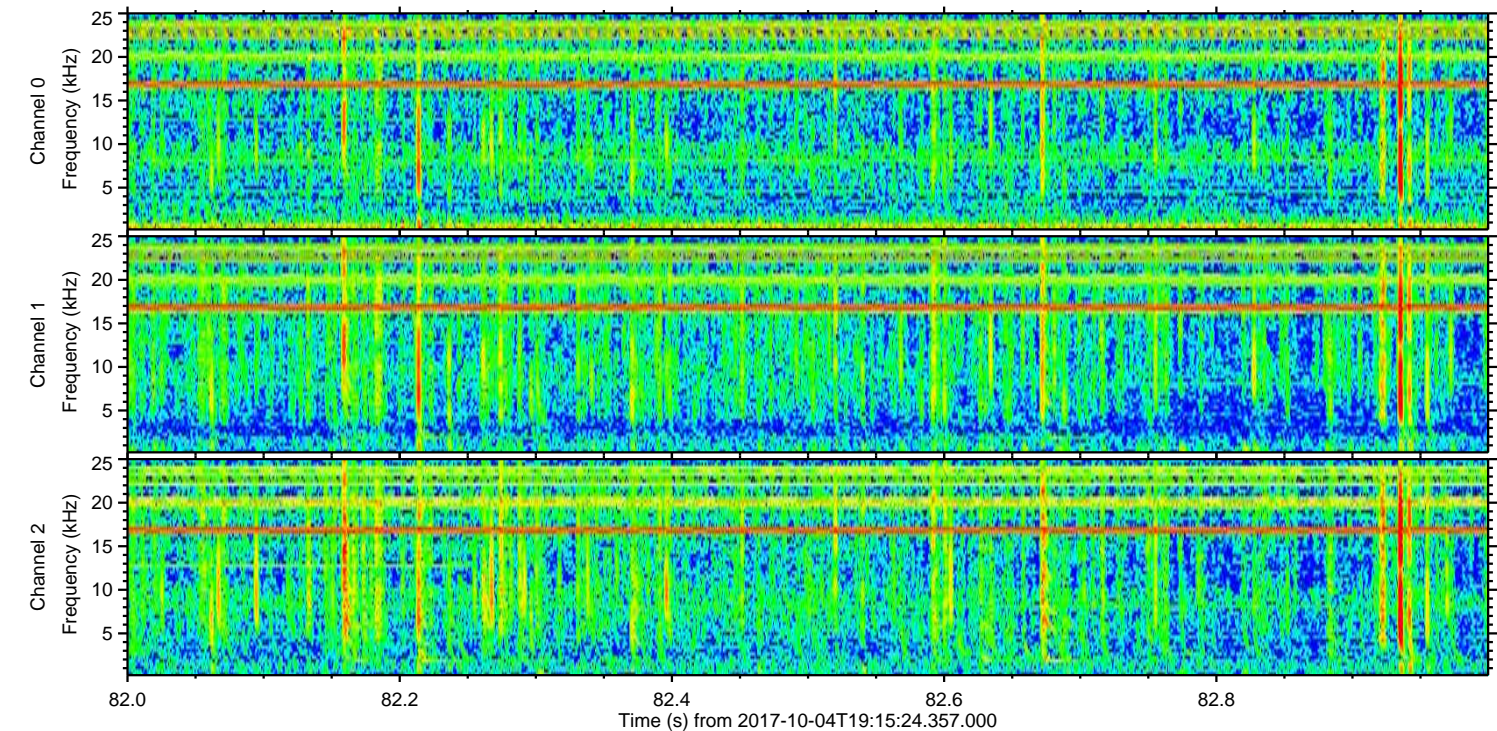
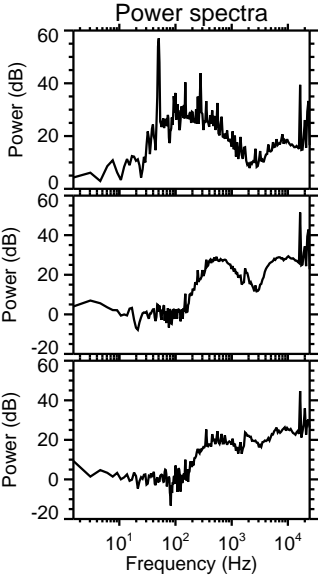
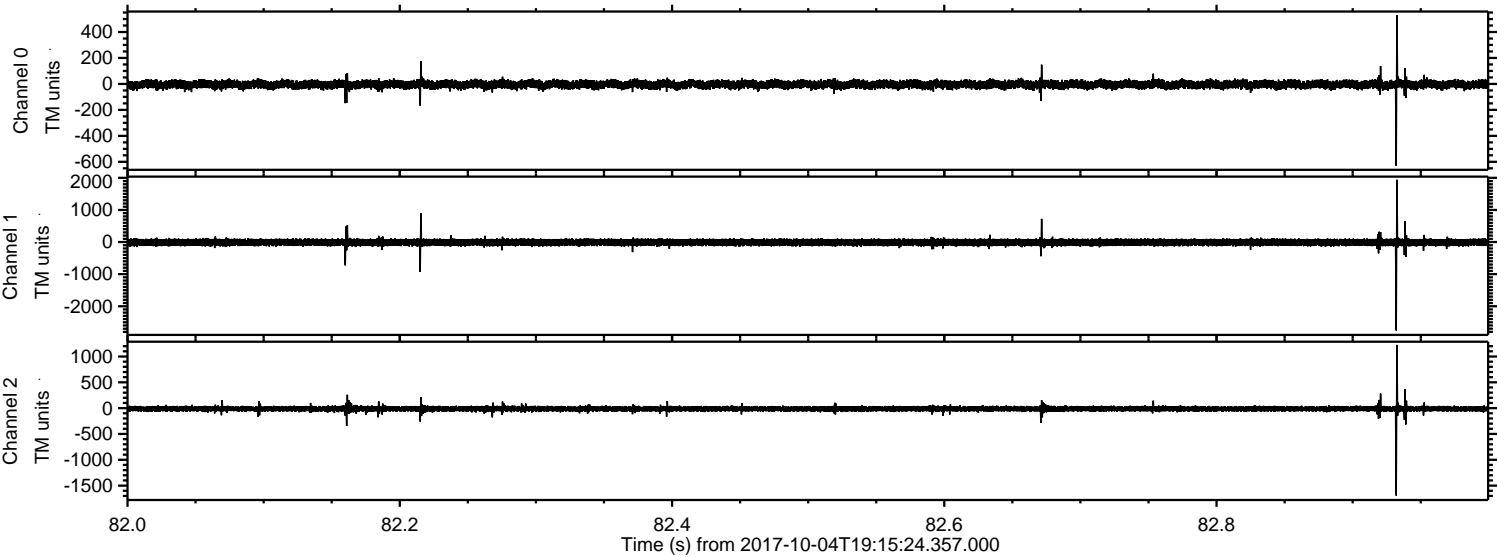


Channel 0
mn: -856
mx: 948
 μ : -4.6
 σ : 19.8

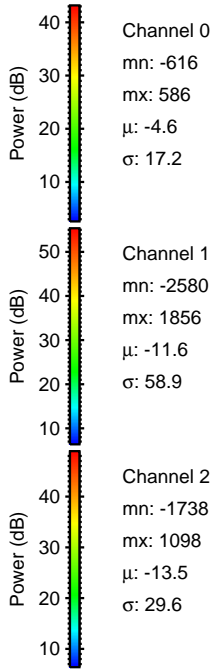
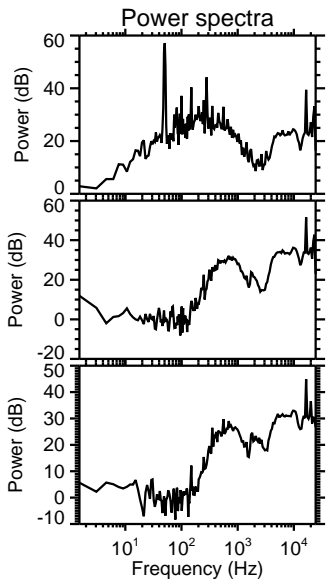
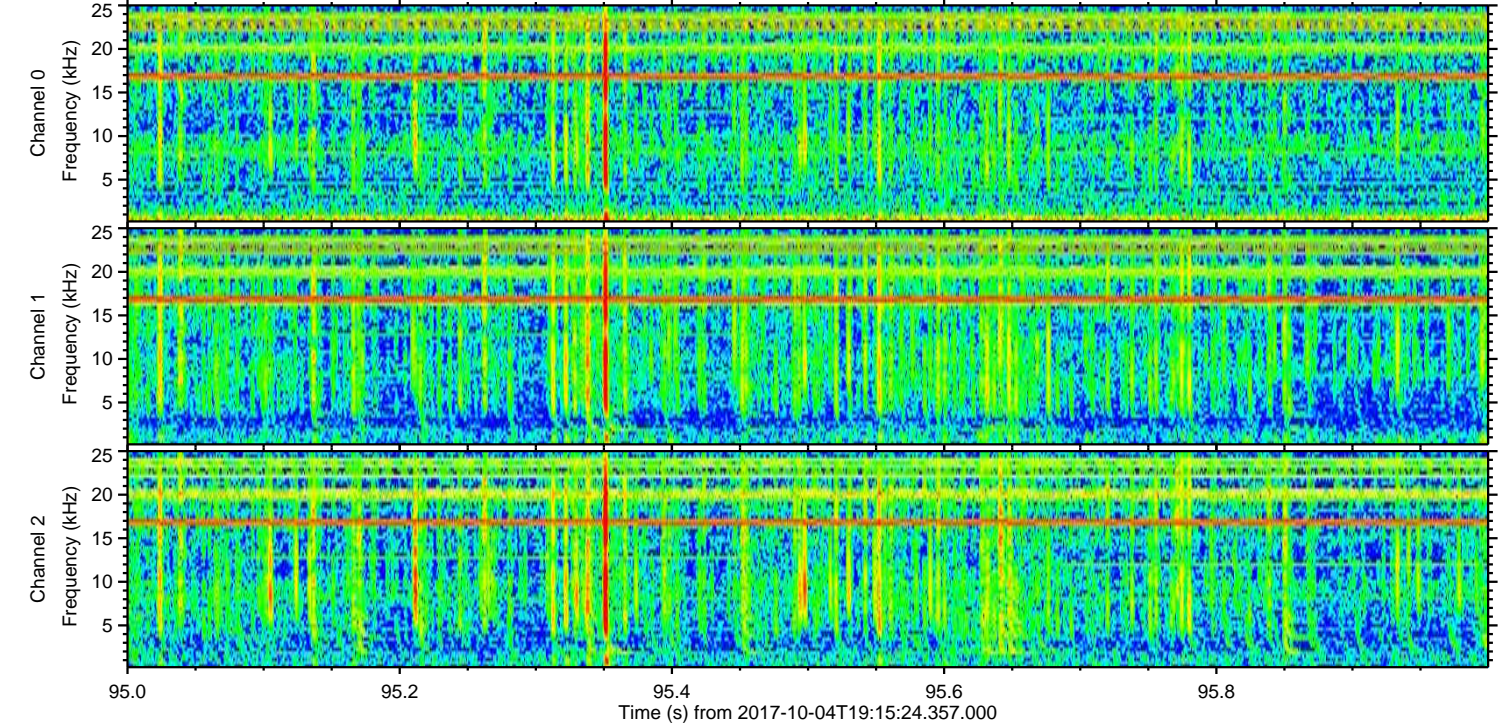
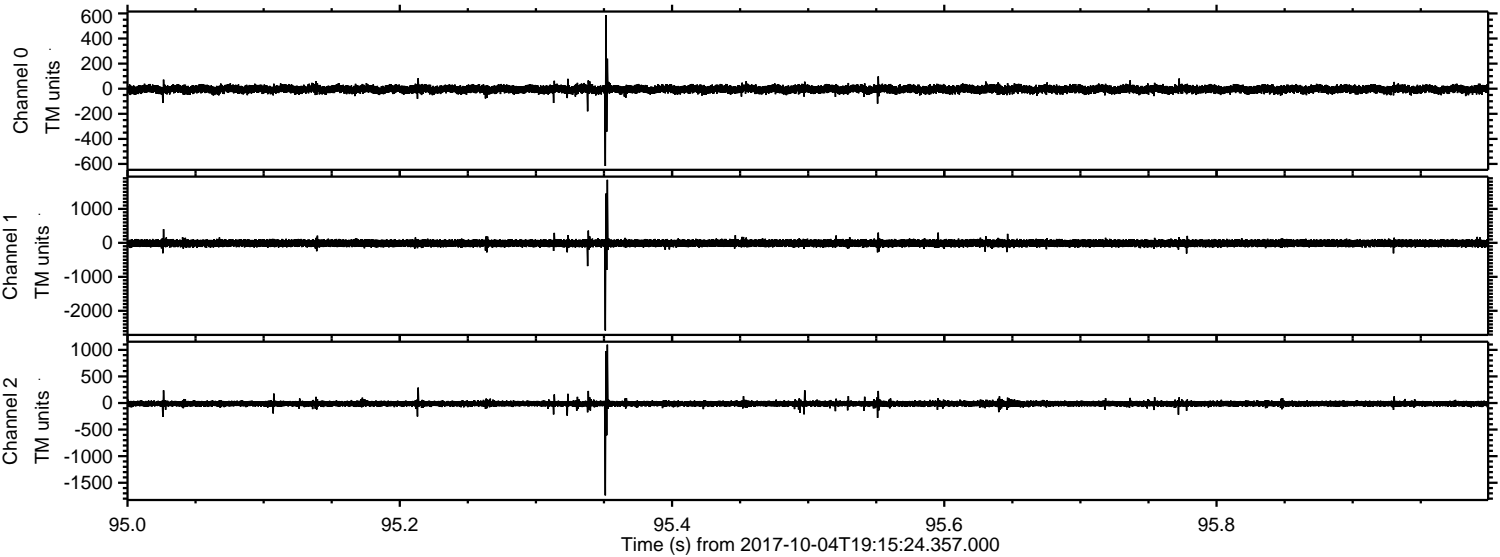
Channel 1
mn: -2828
mx: 3010
 μ : -11.6
 σ : 68.6

Channel 2
mn: -1604
mx: 1847
 μ : -13.6
 σ : 37.4

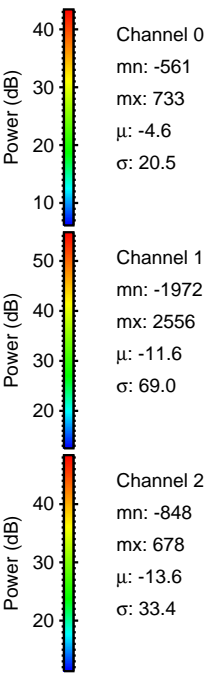
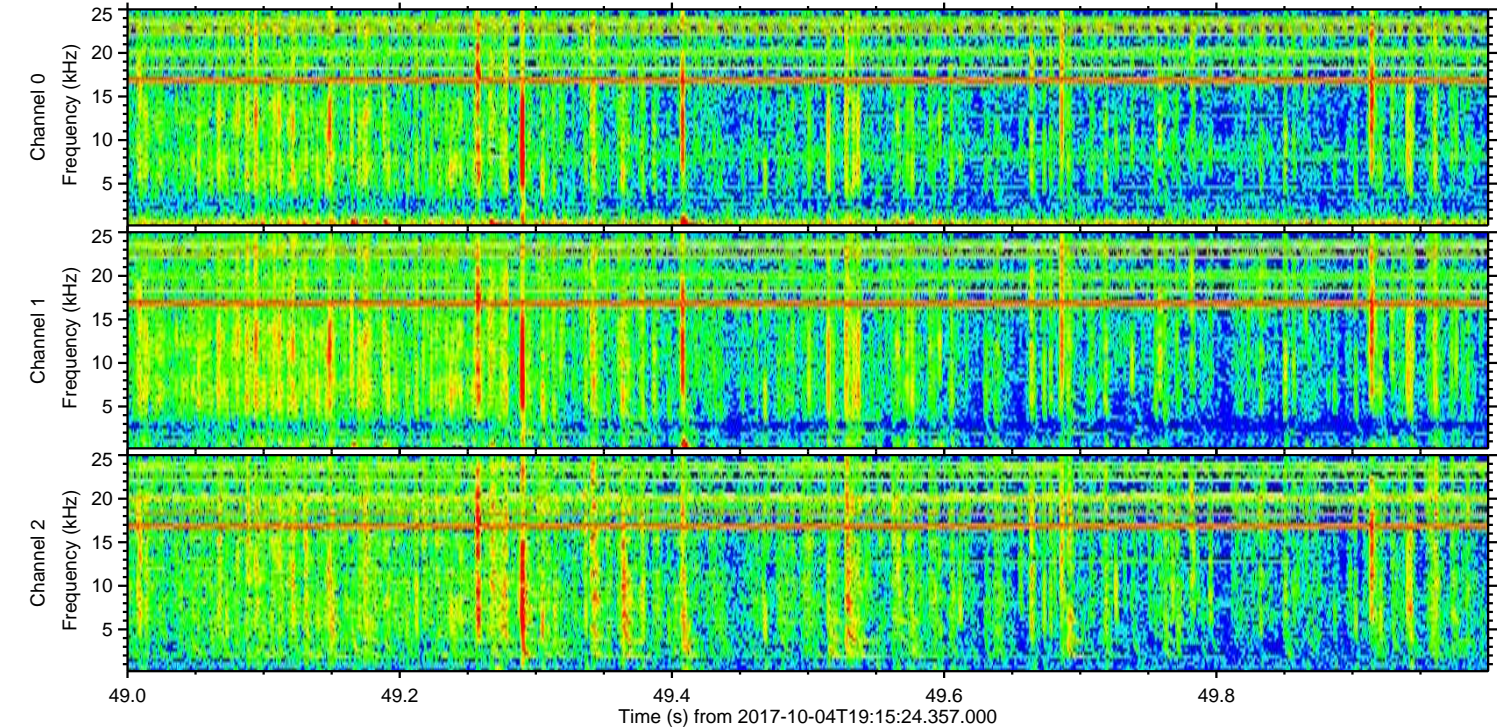
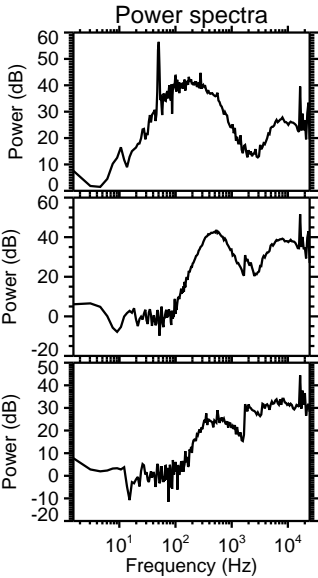
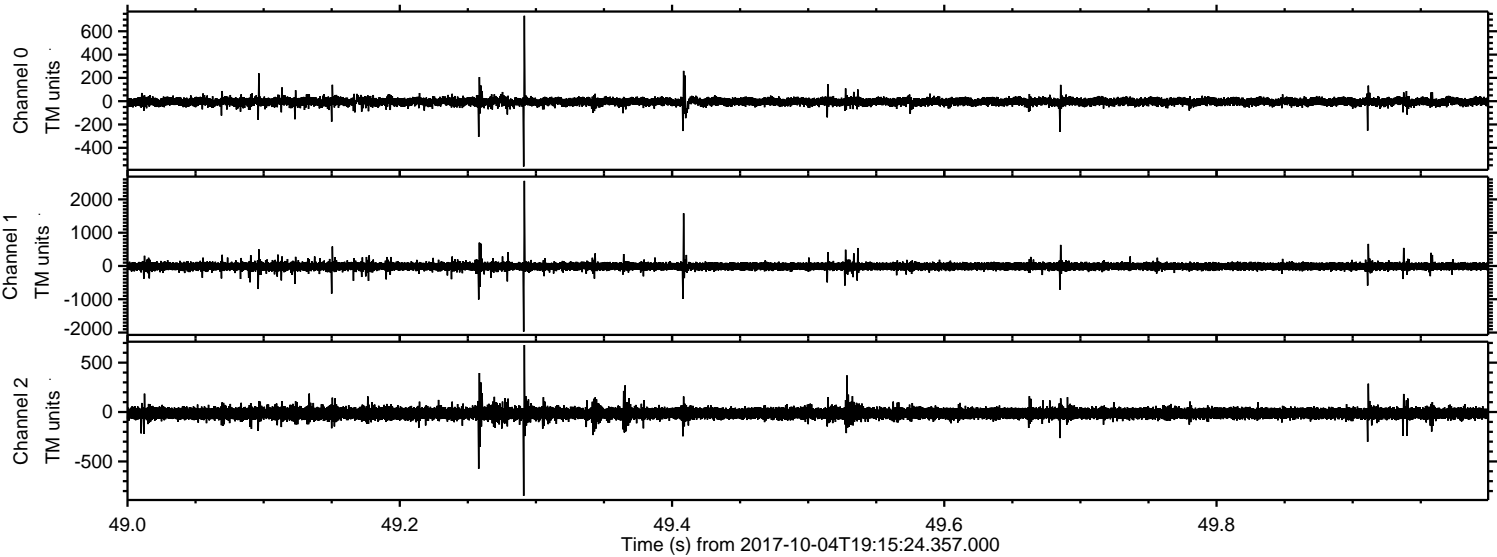
Processed Wed Oct 4 21:23:31 2017 by ELM ver.2012-10-06 from 001__elm20171004_191523__dat00.bin



Processed Wed Oct 4 21:23:31 2017 by ELM ver.2012-10-06 from 001__elm20171004_191523__dat00.bin



Processed Wed Oct 4 21:23:32 2017 by ELM ver.2012-10-06 from 001__elm20171004_191523__dat00.bin



Processed Wed Oct 4 21:23:33 2017 by ELM ver.2012-10-06 from 001__elm20171004_191523__dat00.bin

