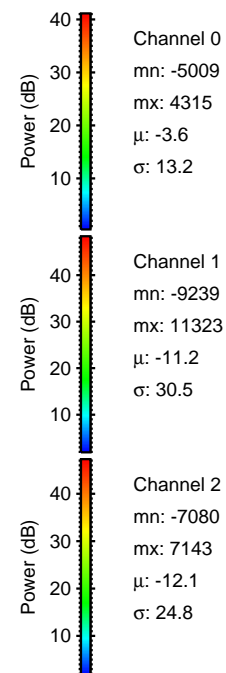
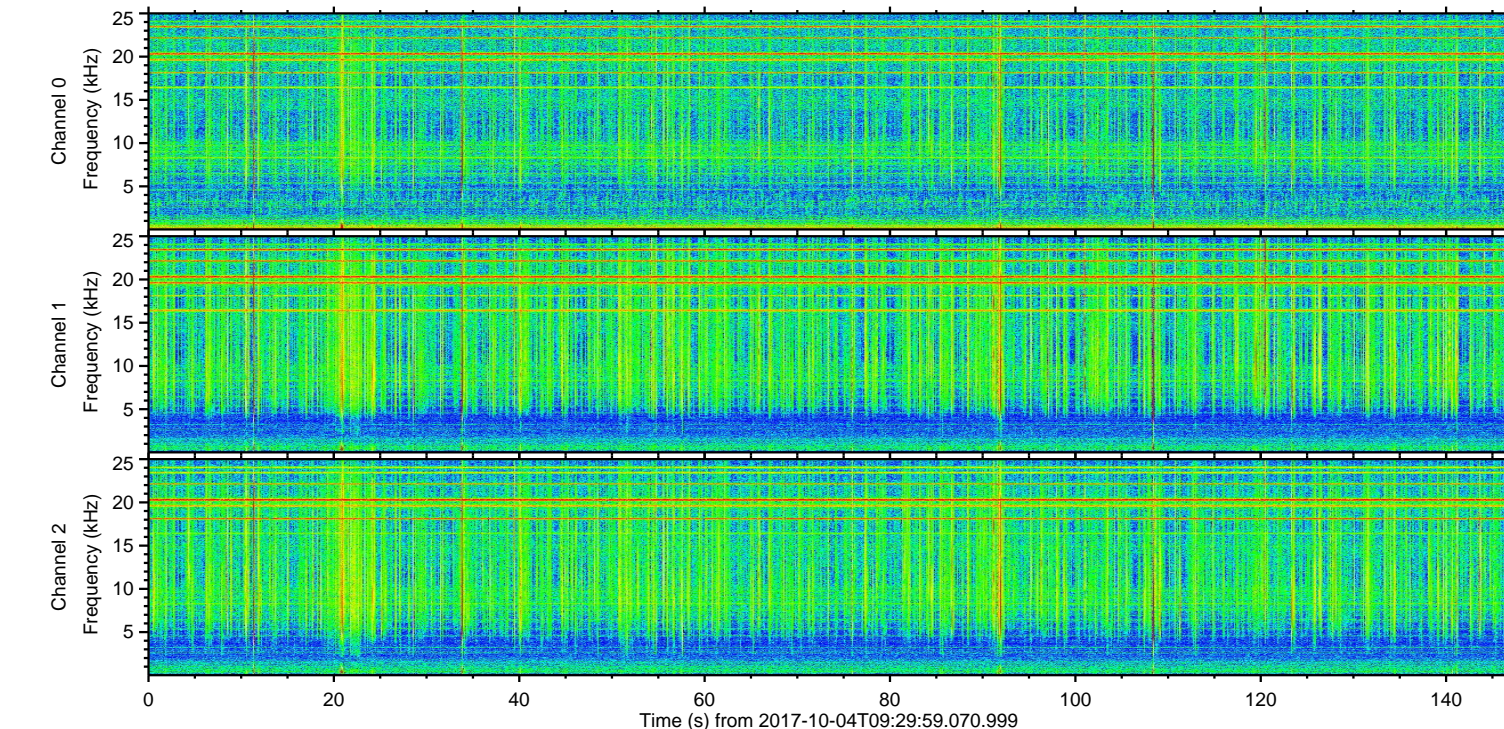
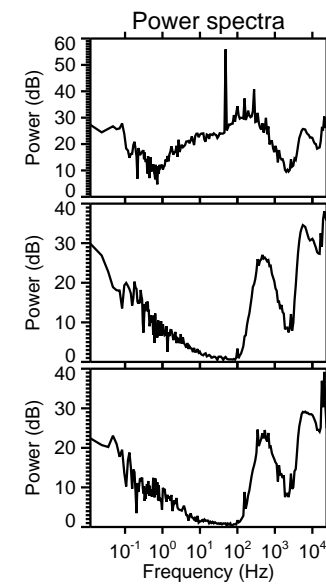
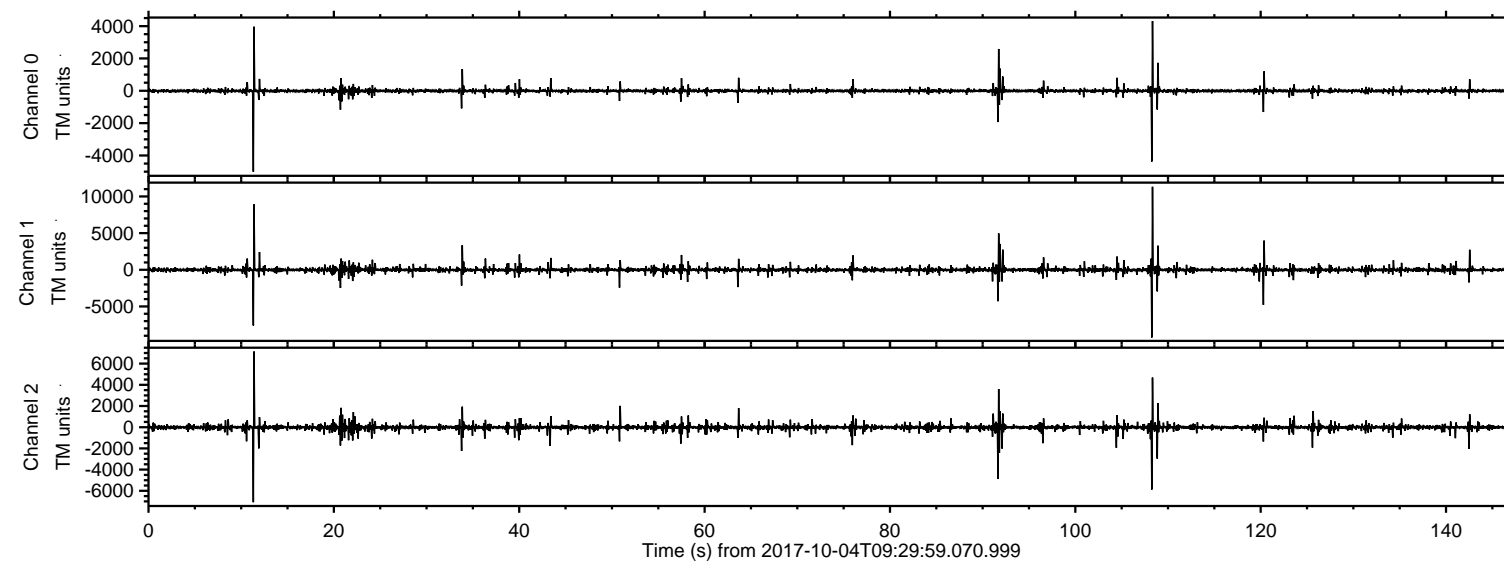


# ELMAVAN 3D WAVEFORMS (Measured data sampled at 50 kHz) 51000 packets of 144 samples from 2017-10-04T09:29:59.070.999.

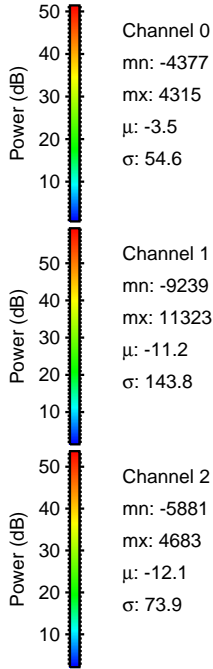
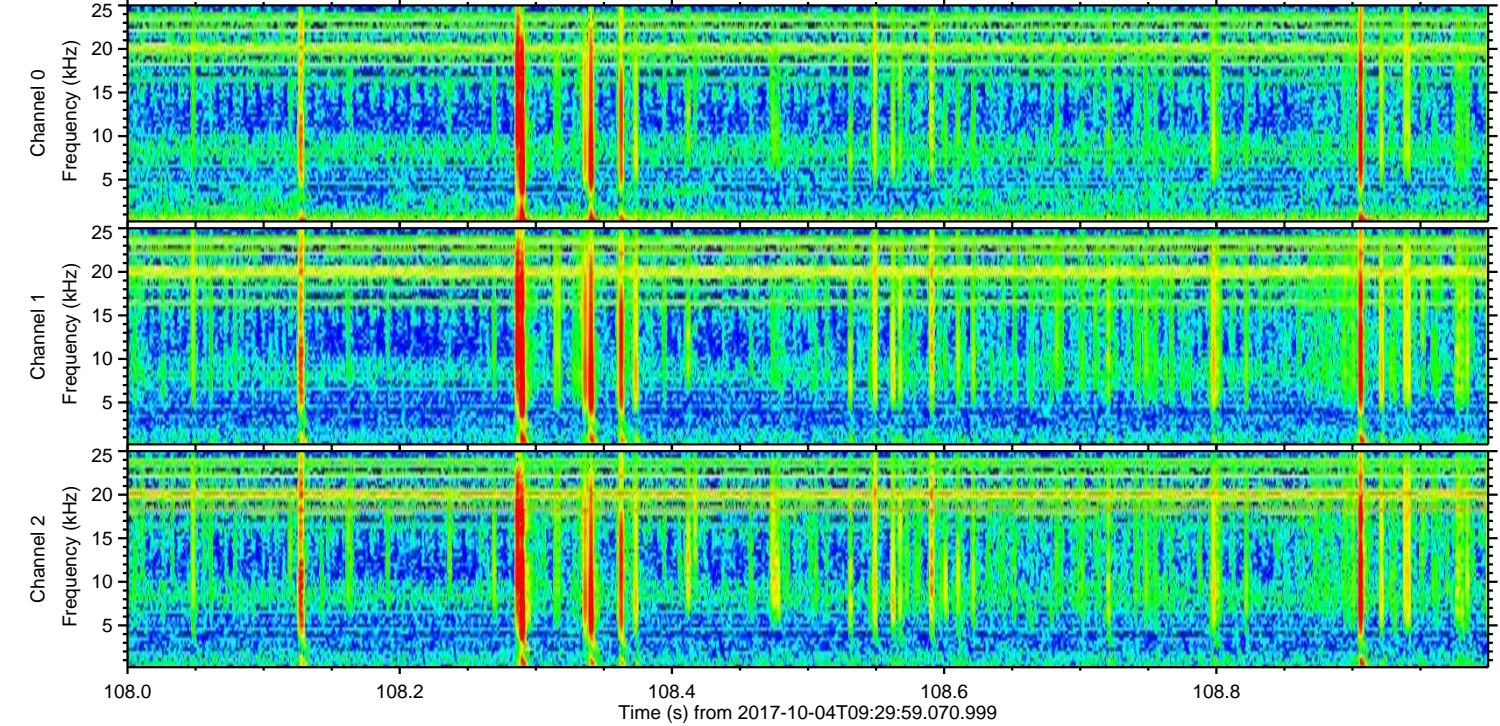
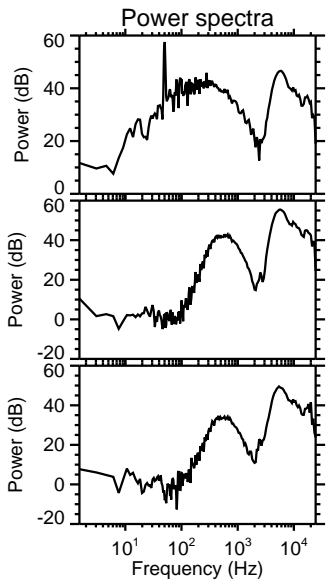
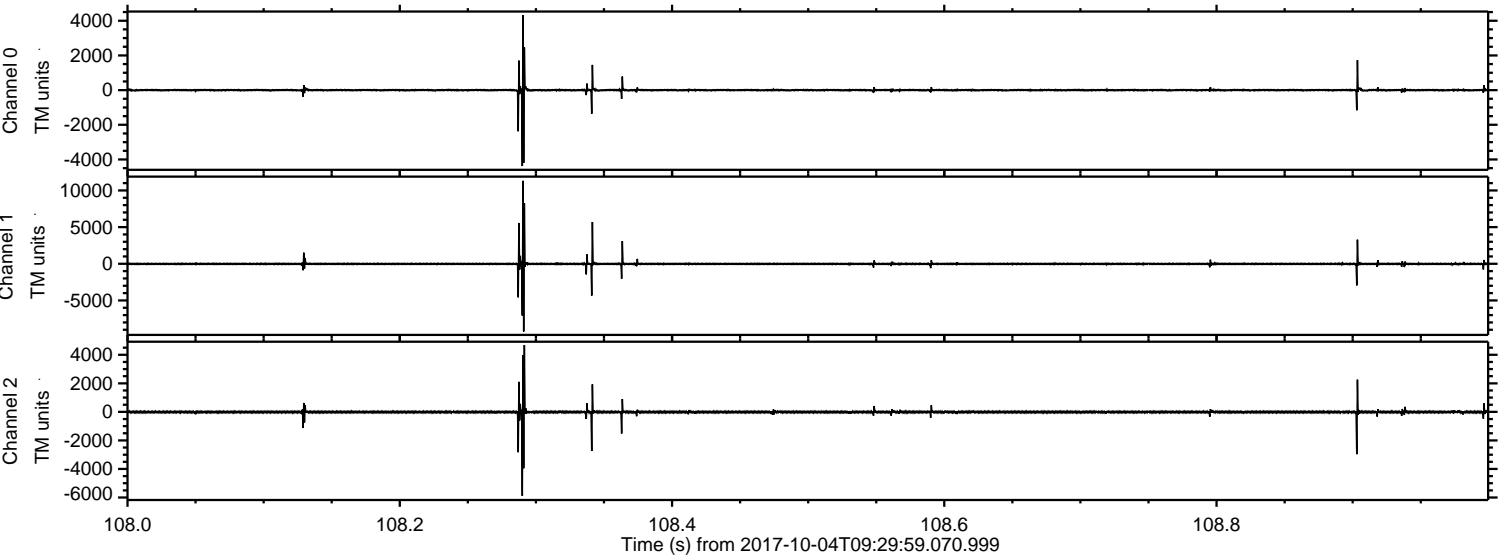
Processed Wed Oct 4 11:37:58 2017 by ELM ver.2012-10-06 from 001\_\_elm20171004\_092958\_\_dat00.bin





ELMAVAN 3D WAVEFORMS (Measured data sampled at 50 kHz) 51000 packets of 144 samples from 2017-10-04T09:29:59.070.999. Part 109/147

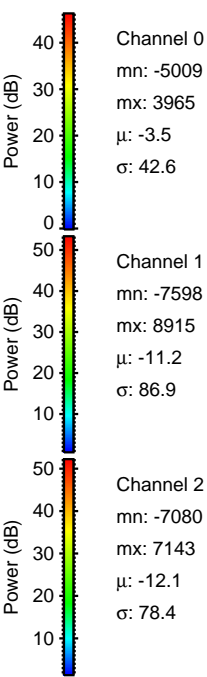
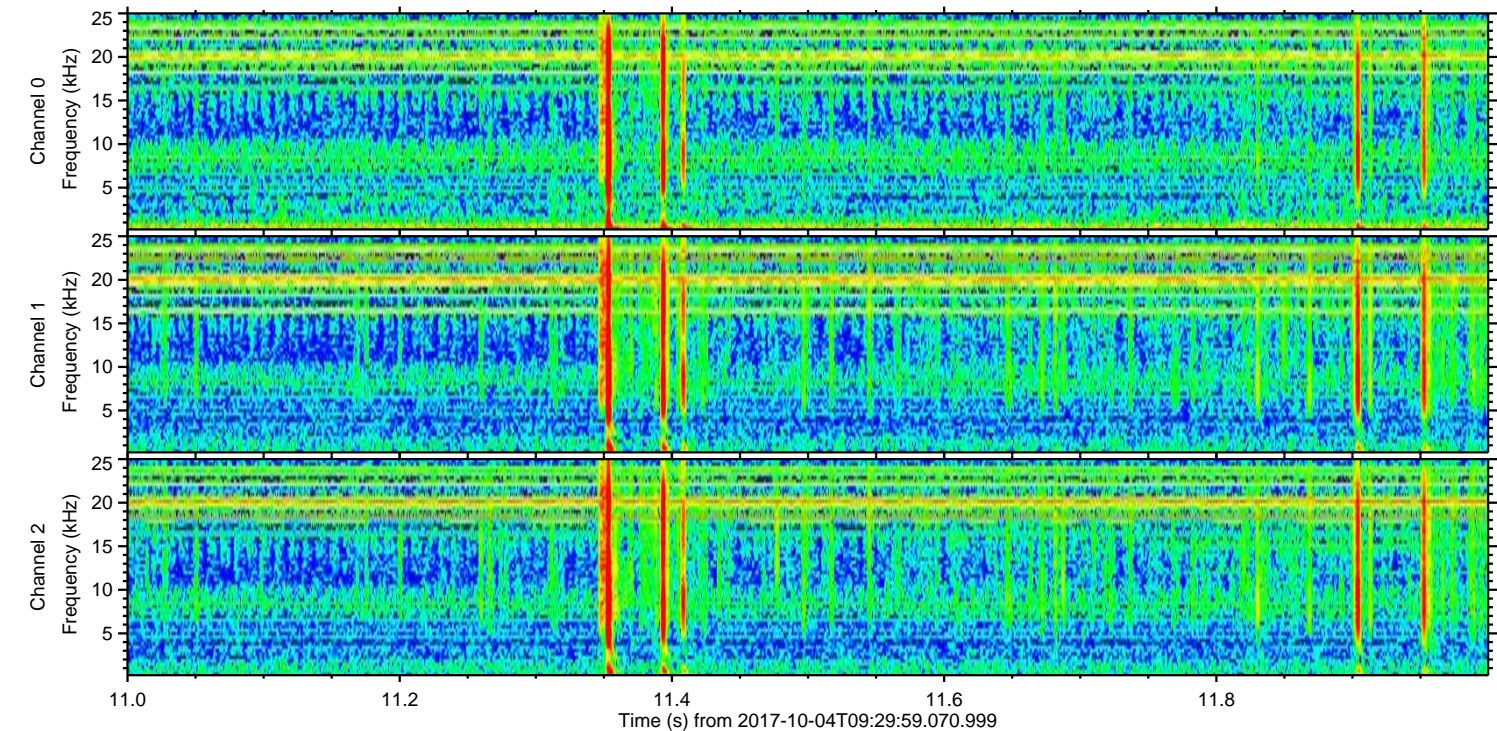
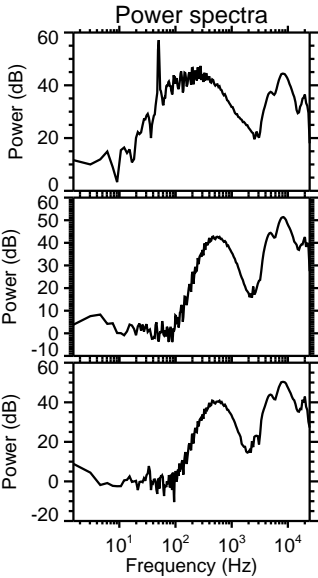
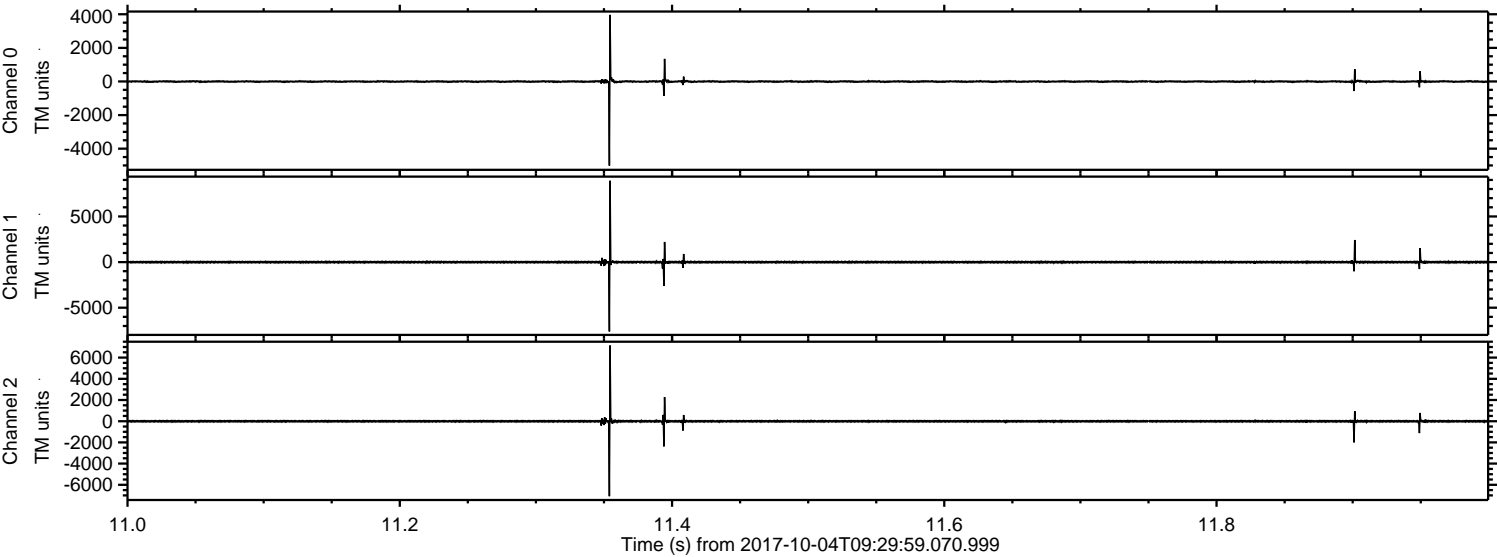
Processed Wed Oct 4 11:38:05 2017 by ELM ver.2012-10-06 from 001\_\_elm20171004\_092958\_\_dat00.bin





ELMAVAN 3D WAVEFORMS (Measured data sampled at 50 kHz) 51000 packets of 144 samples from 2017-10-04T09:29:59.070.999. Part 12/147

Processed Wed Oct 4 11:38:06 2017 by ELM ver.2012-10-06 from 001\_\_elm20171004\_092958\_\_dat00.bin



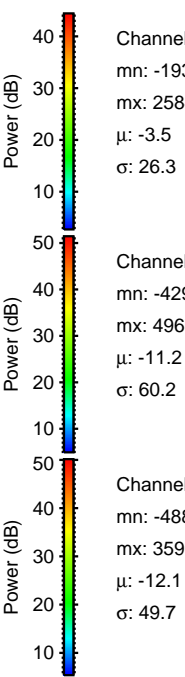
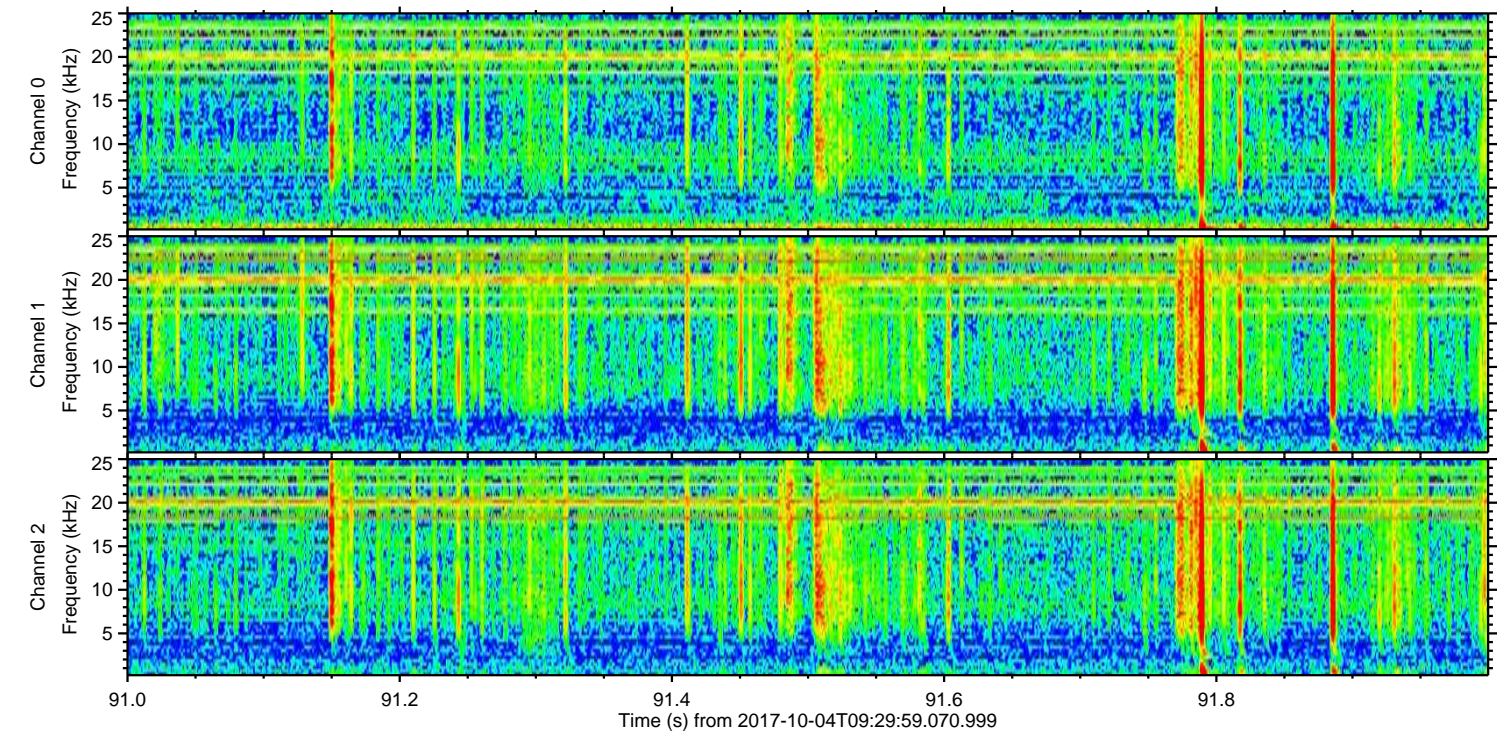
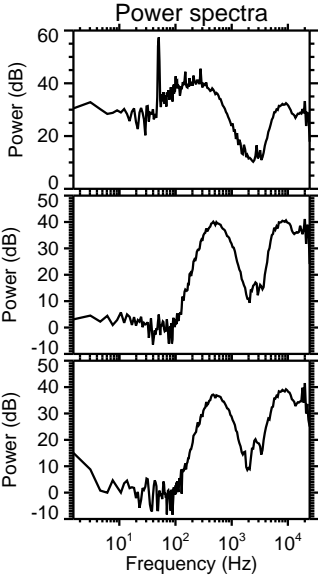
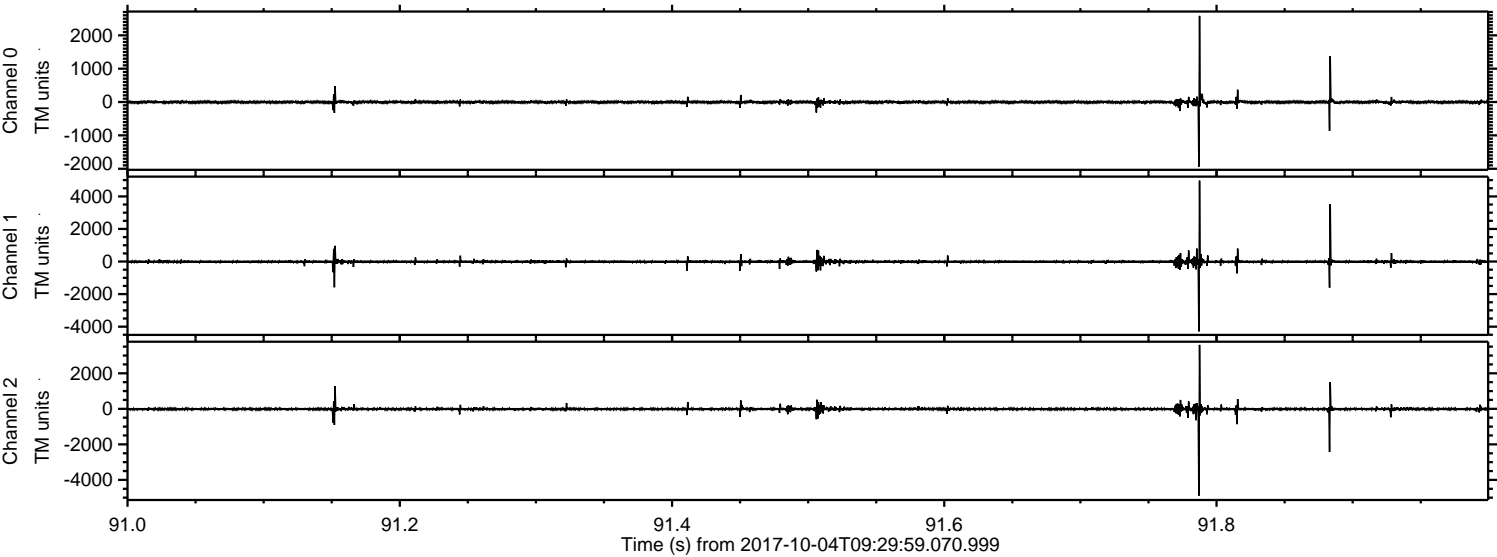
Channel 0  
mn: -5009  
mx: 3965  
 $\mu$ : -3.5  
 $\sigma$ : 42.6

Channel 1  
mn: -7598  
mx: 8915  
 $\mu$ : -11.2  
 $\sigma$ : 86.9

Channel 2  
mn: -7080  
mx: 7143  
 $\mu$ : -12.1  
 $\sigma$ : 78.4



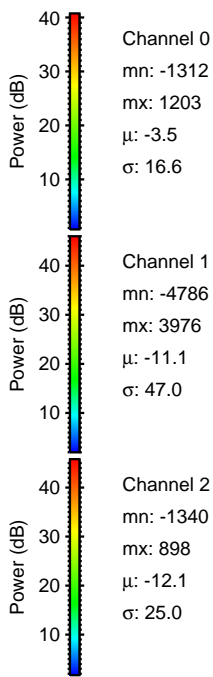
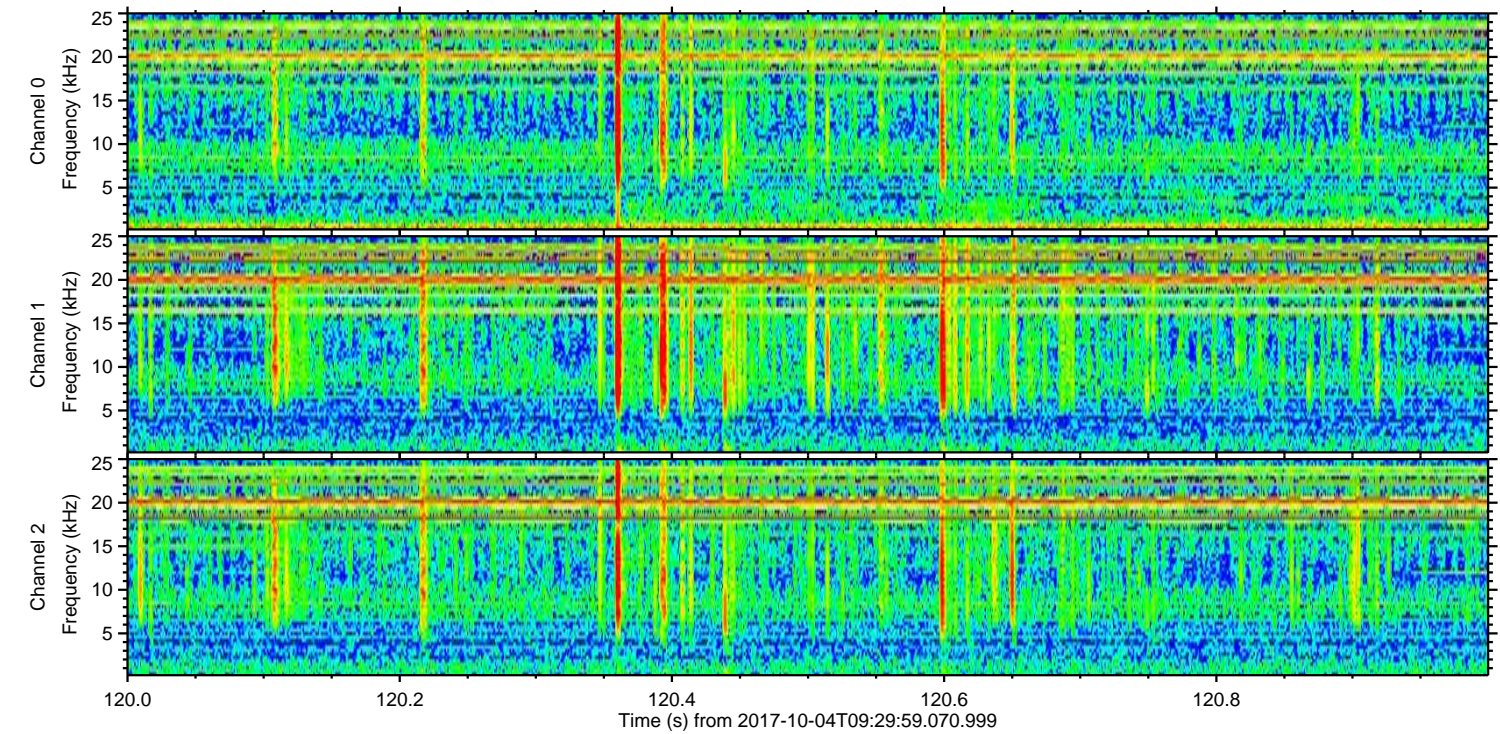
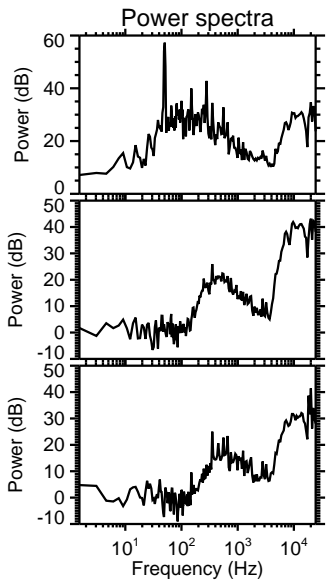
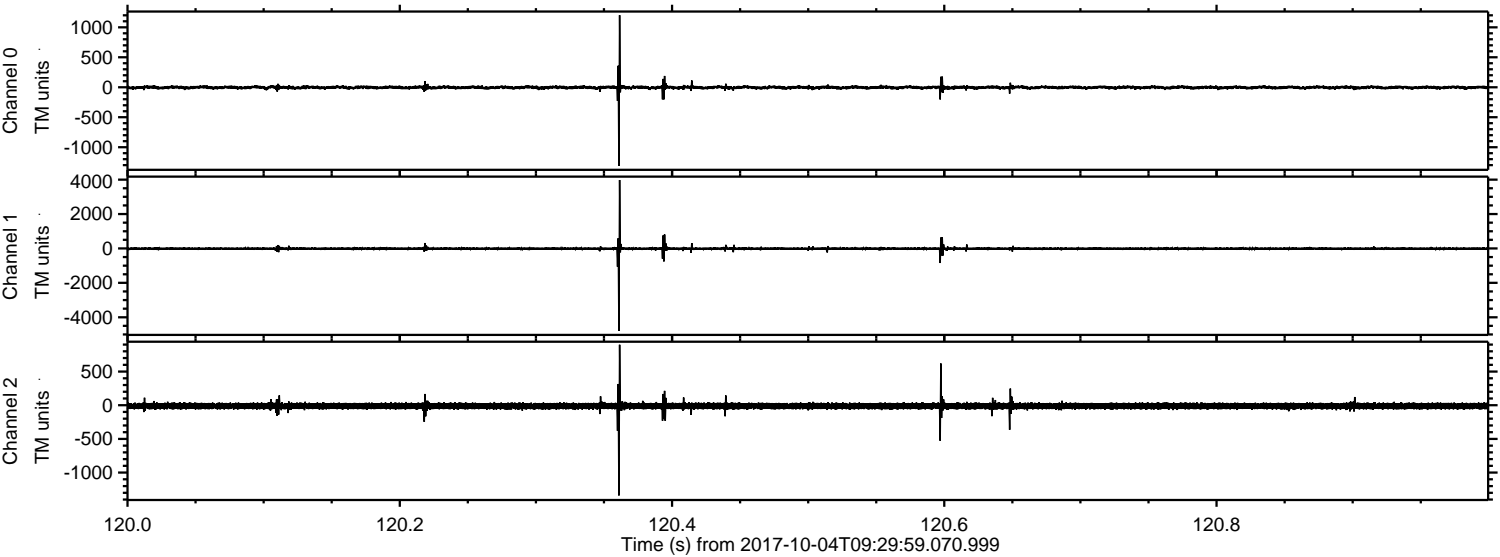
Processed Wed Oct 4 11:38:06 2017 by ELM ver.2012-10-06 from 001\_\_elm20171004\_092958\_\_dat00.bin





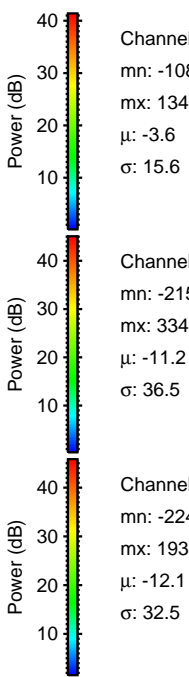
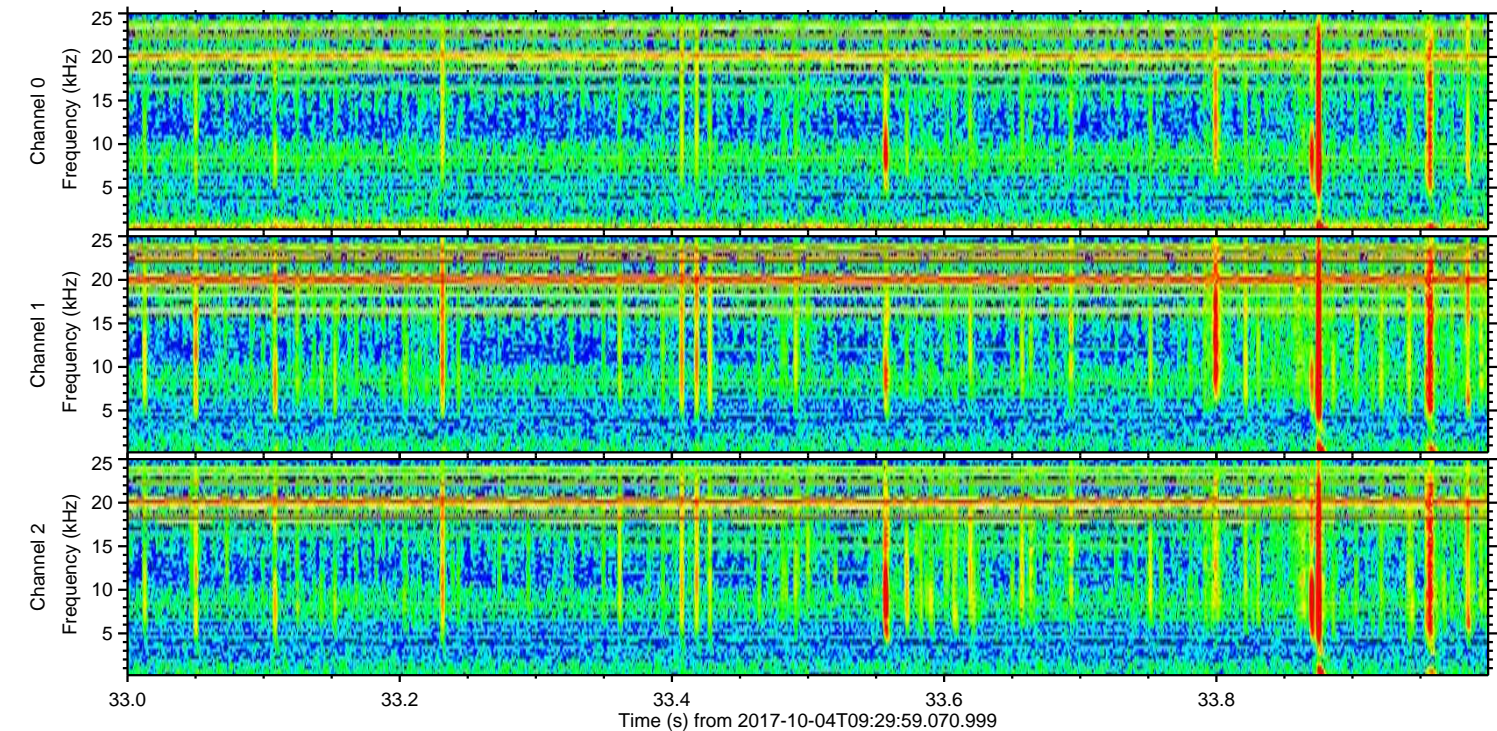
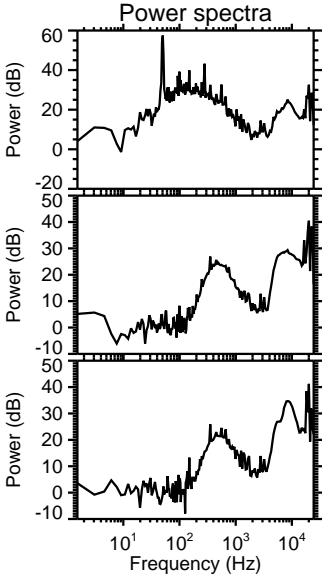
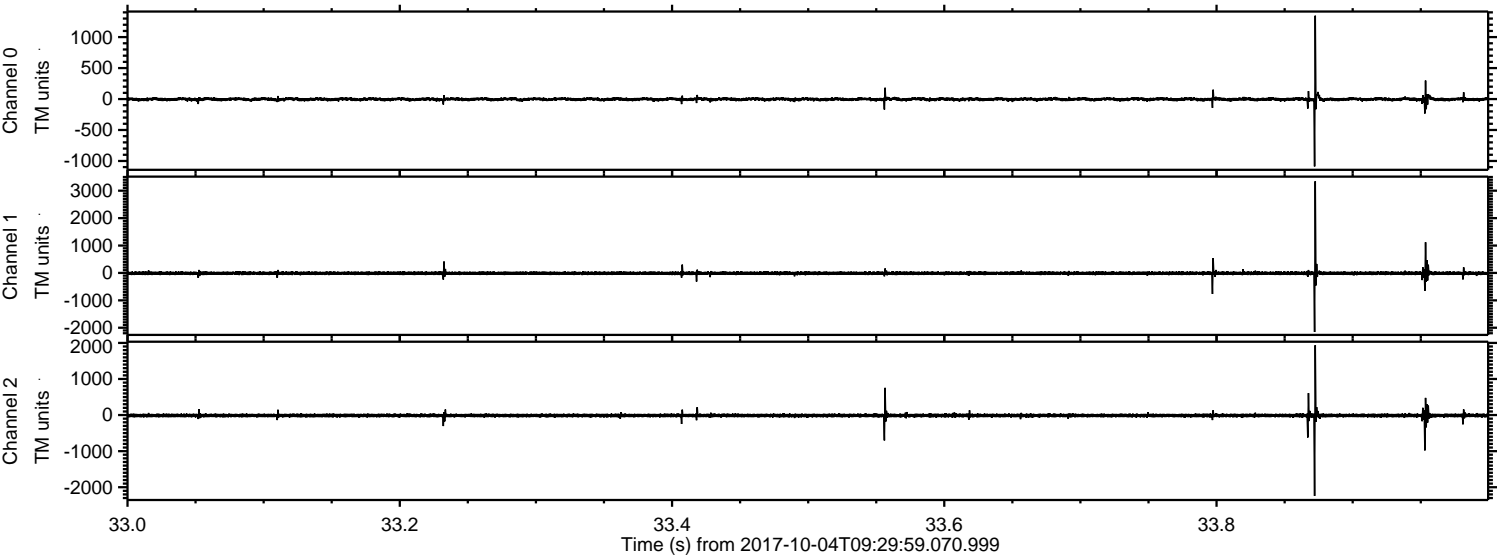
ELMAVAN 3D WAVEFORMS (Measured data sampled at 50 kHz) 51000 packets of 144 samples from 2017-10-04T09:29:59.070.999. Part 121/147

Processed Wed Oct 4 11:38:07 2017 by ELM ver.2012-10-06 from 001\_\_elm20171004\_092958\_\_dat00.bin



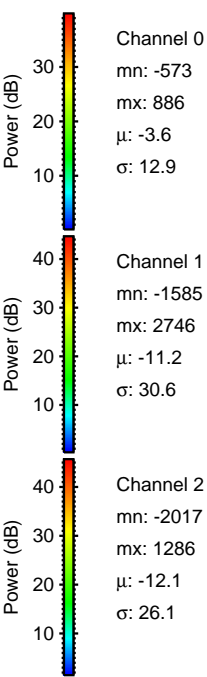
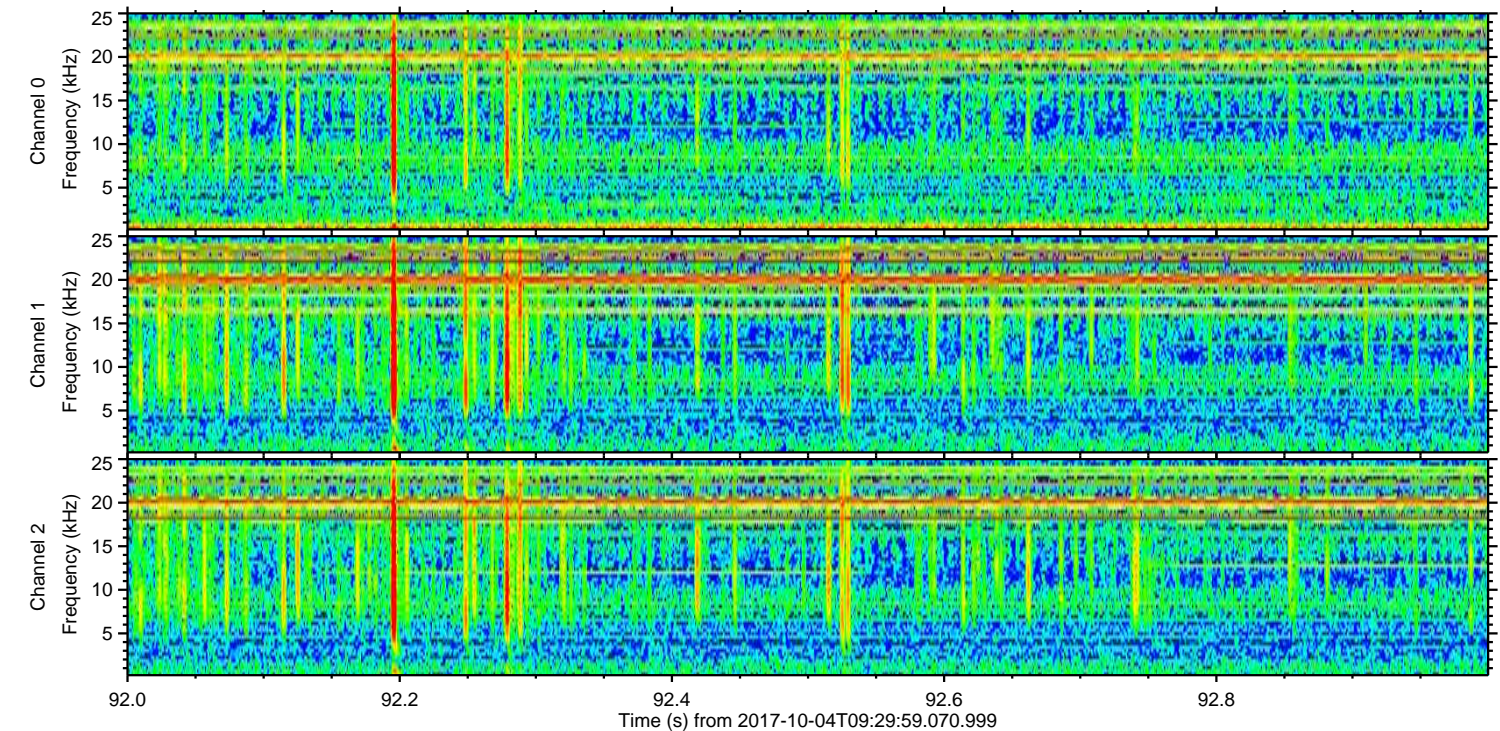
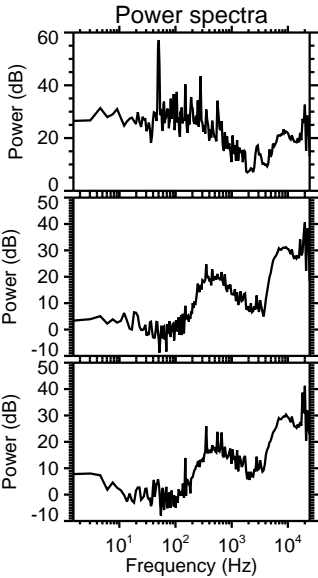
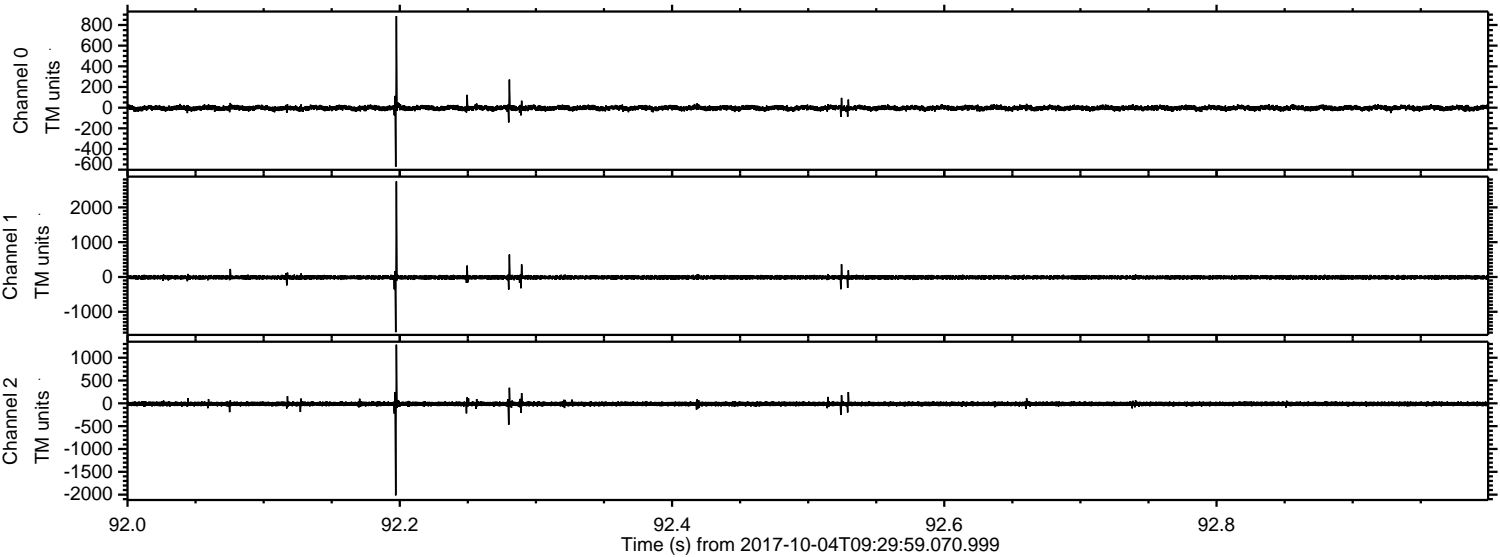


Processed Wed Oct 4 11:38:08 2017 by ELM ver.2012-10-06 from 001\_\_elm20171004\_092958\_\_dat00.bin





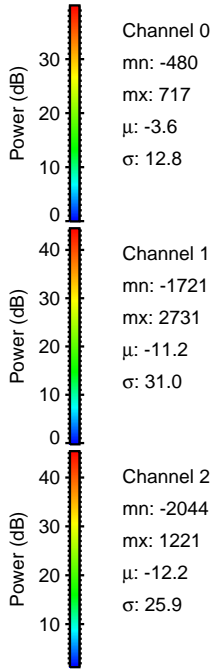
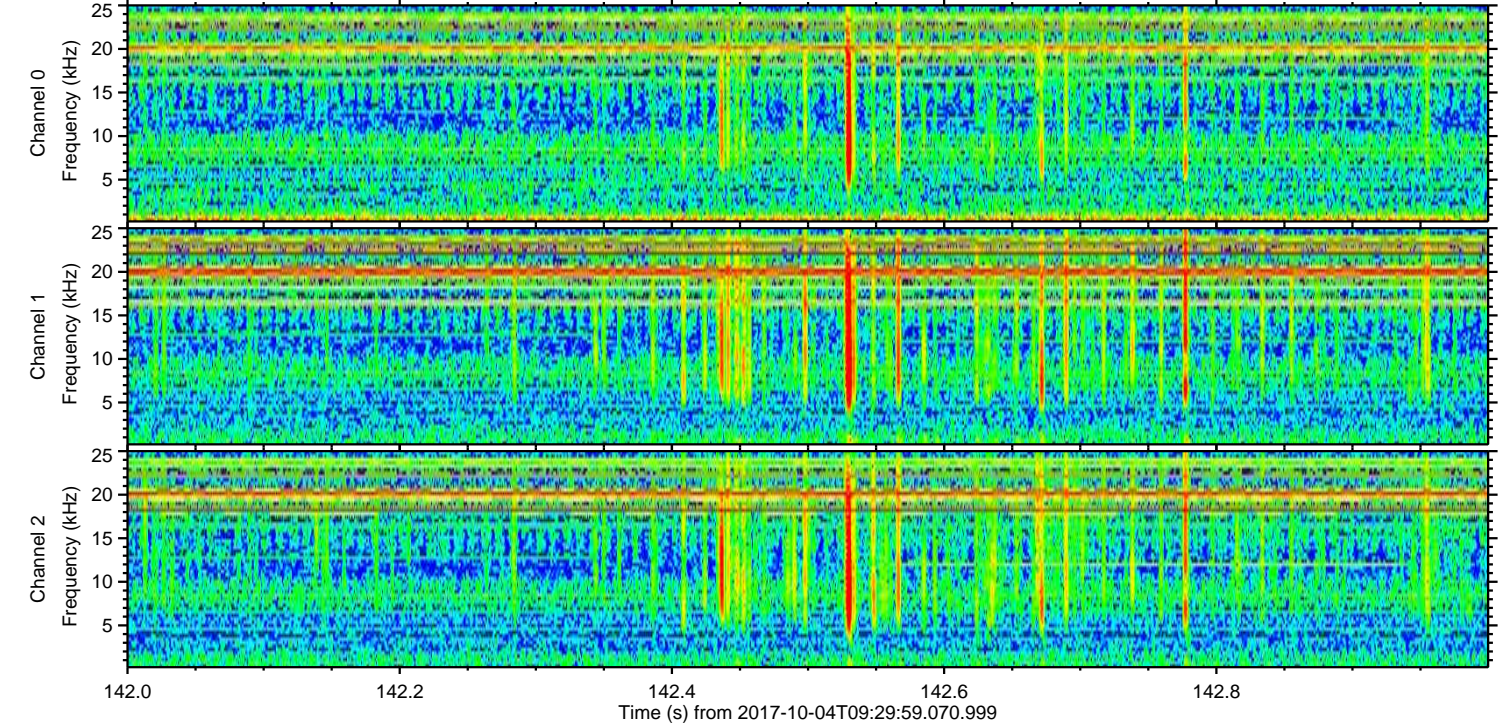
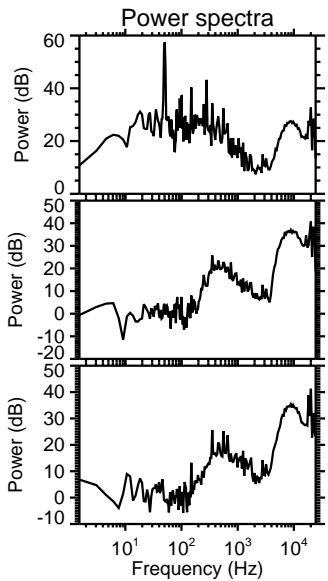
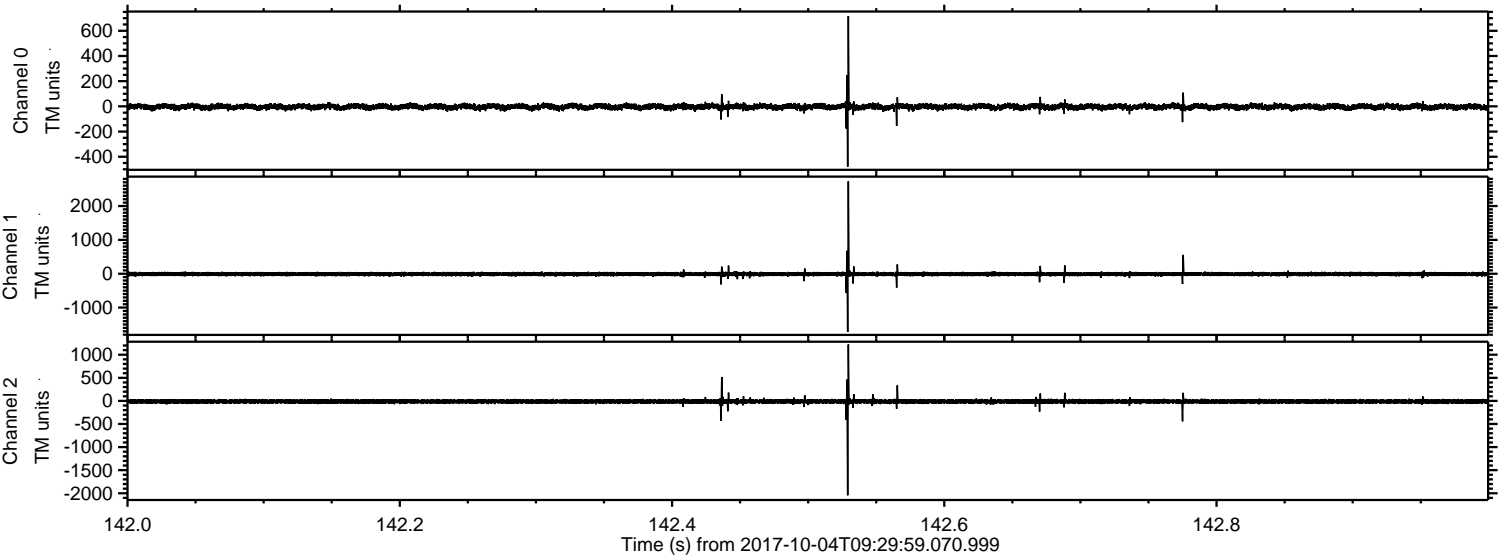
Processed Wed Oct 4 11:38:09 2017 by ELM ver.2012-10-06 from 001\_\_elm20171004\_092958\_\_dat00.bin





ELMAVAN 3D WAVEFORMS (Measured data sampled at 50 kHz) 51000 packets of 144 samples from 2017-10-04T09:29:59.070.999. Part 143/147

Processed Wed Oct 4 11:38:10 2017 by ELM ver.2012-10-06 from 001\_\_elm20171004\_092958\_\_dat00.bin



Channel 0  
mn: -480  
mx: 717  
 $\mu$ : -3.6  
 $\sigma$ : 12.8

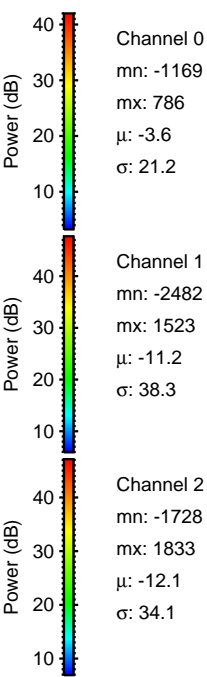
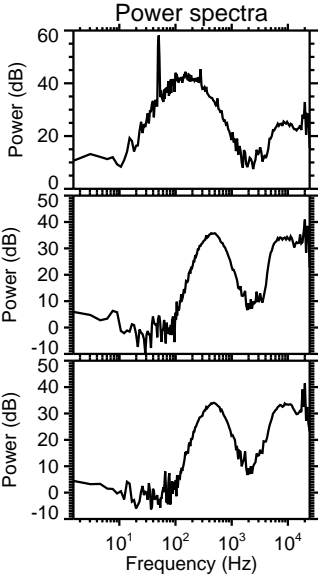
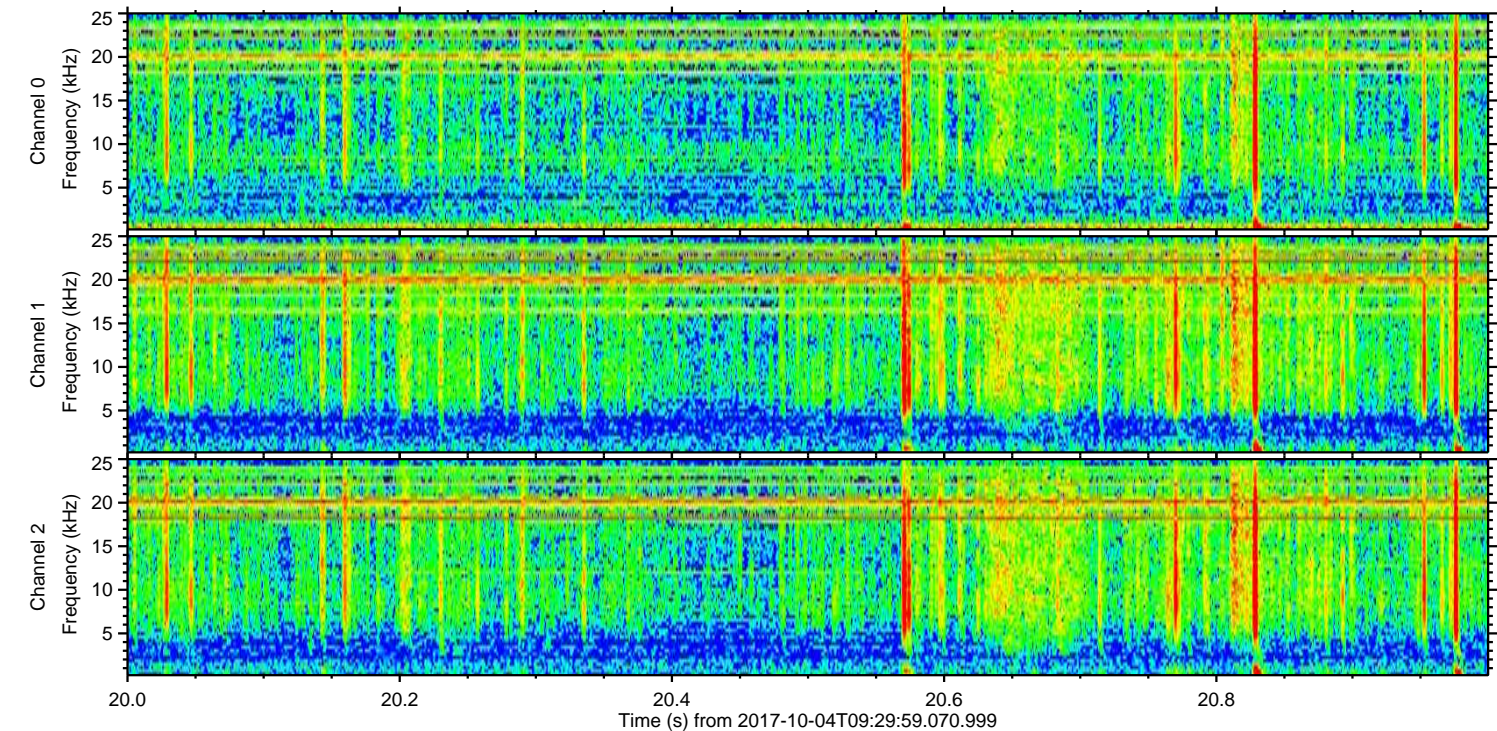
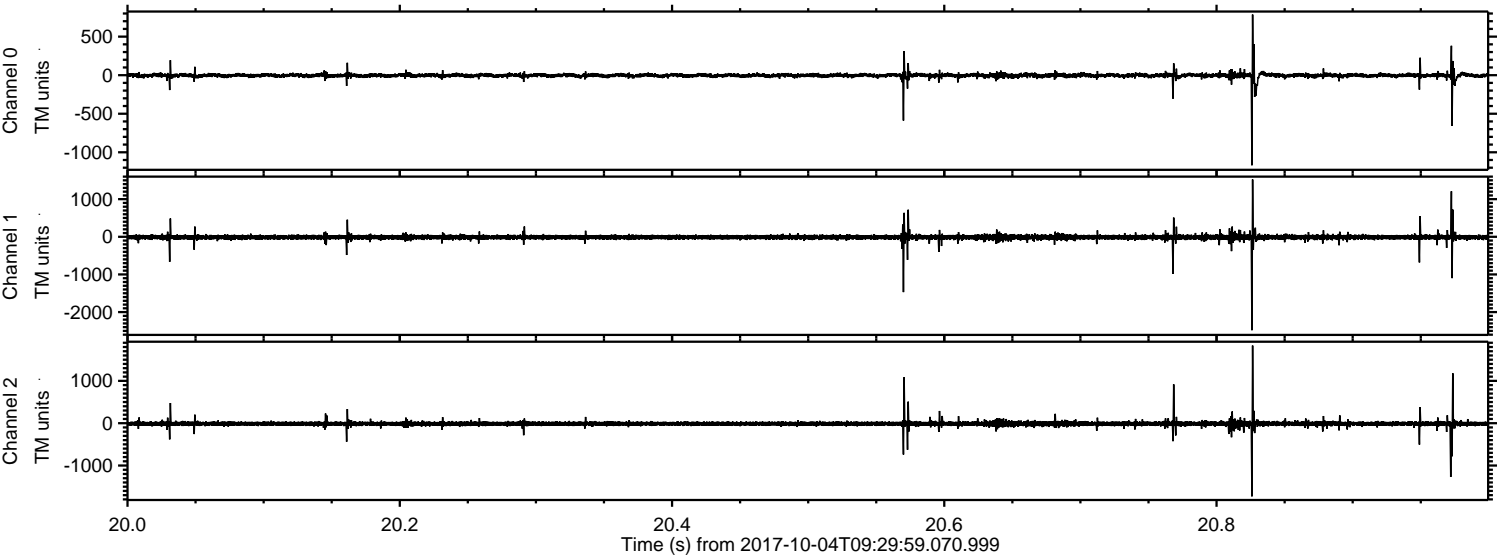
Channel 1  
mn: -1721  
mx: 2731  
 $\mu$ : -11.2  
 $\sigma$ : 31.0

Channel 2  
mn: -2044  
mx: 1221  
 $\mu$ : -12.2  
 $\sigma$ : 25.9



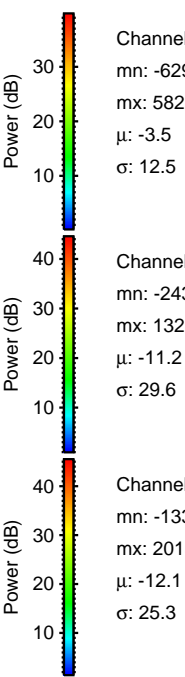
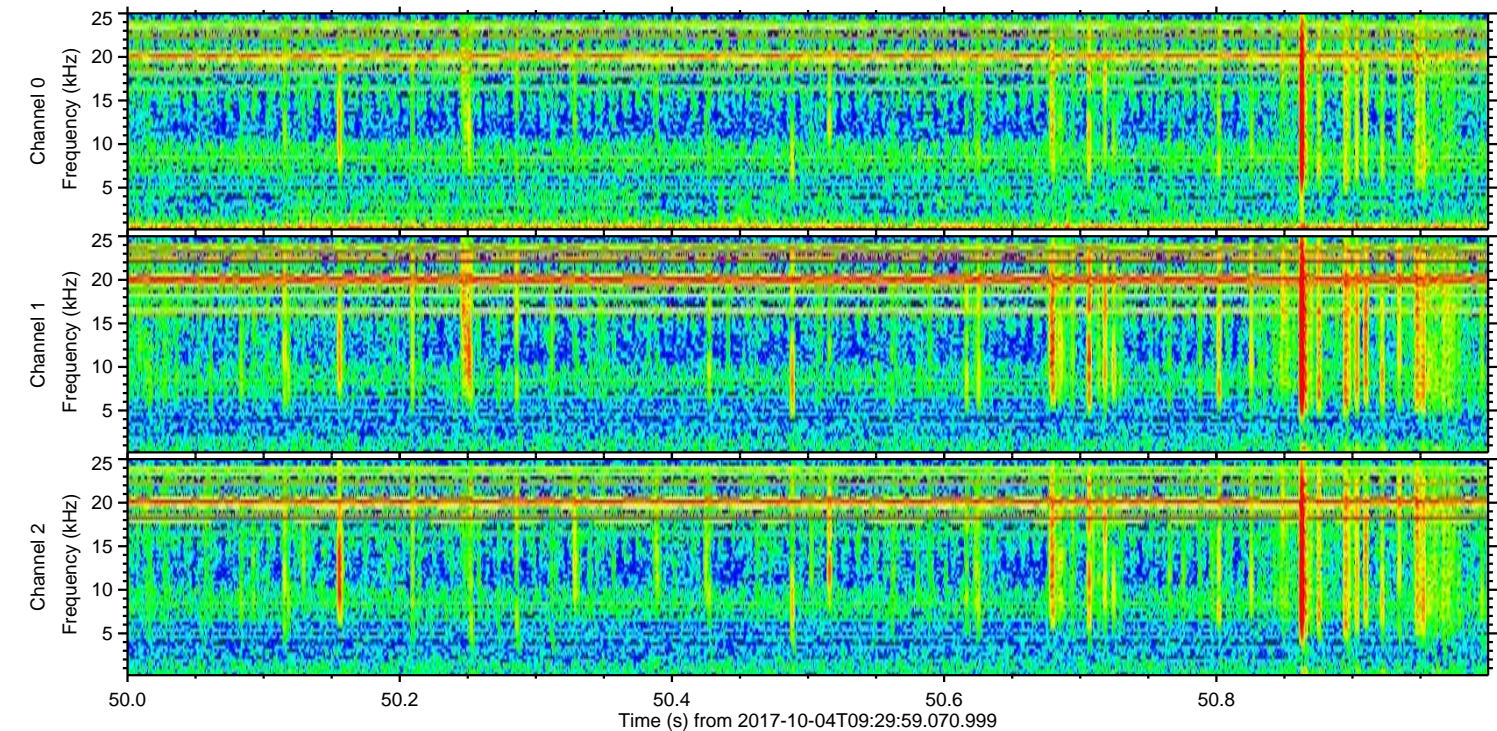
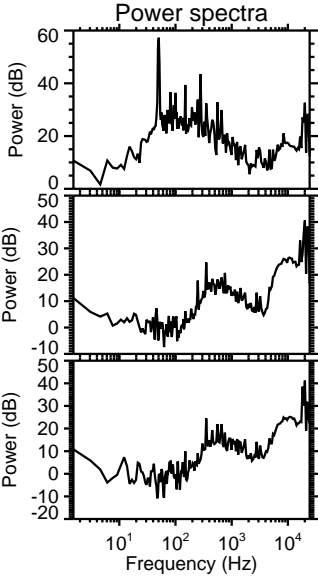
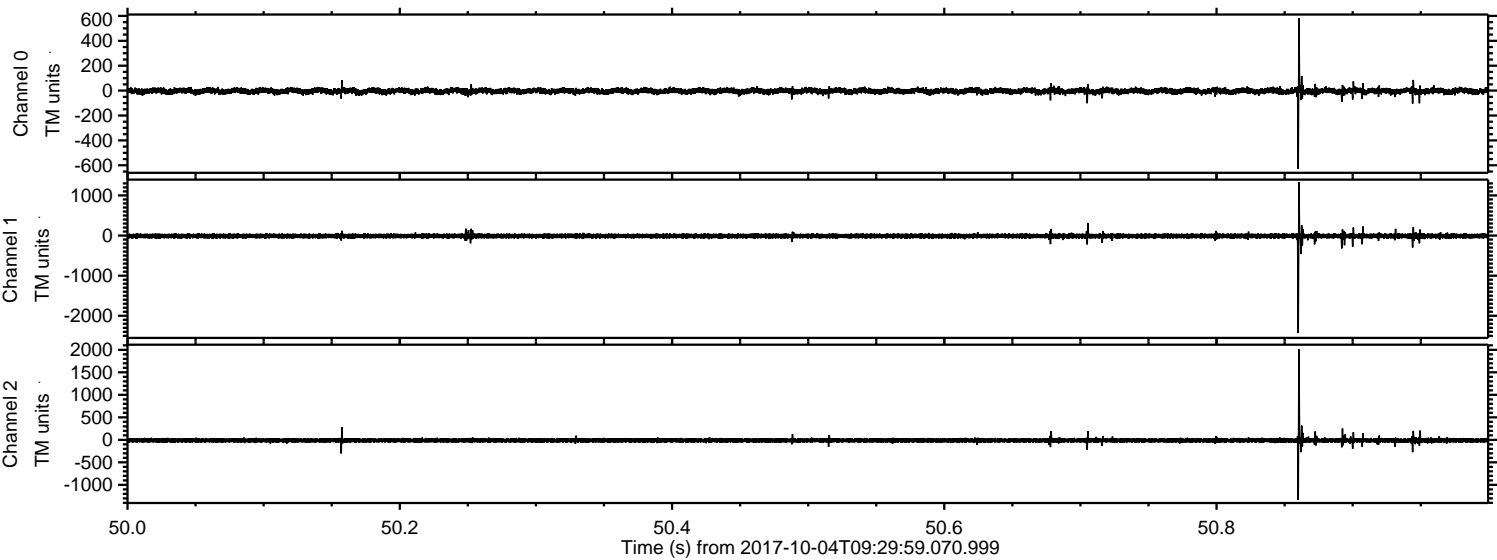
ELMAVAN 3D WAVEFORMS (Measured data sampled at 50 kHz) 51000 packets of 144 samples from 2017-10-04T09:29:59.070.999. Part 21/147

Processed Wed Oct 4 11:38:10 2017 by ELM ver.2012-10-06 from 001\_\_elm20171004\_092958\_\_dat00.bin





Processed Wed Oct 4 11:38:11 2017 by ELM ver.2012-10-06 from 001\_\_elm20171004\_092958\_\_dat00.bin



Channel 0  
mn: -629  
mx: 582  
 $\mu$ : -3.5  
 $\sigma$ : 12.5

Channel 1  
mn: -2430  
mx: 1328  
 $\mu$ : -11.2  
 $\sigma$ : 29.6

Channel 2  
mn: -1336  
mx: 2013  
 $\mu$ : -12.1  
 $\sigma$ : 25.3



ELMAVAN 3D WAVEFORMS (Measured data sampled at 50 kHz) 51000 packets of 144 samples from 2017-10-04T09:29:59.070.999. Part 117/147

