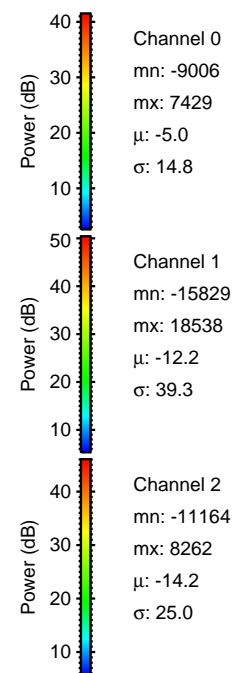
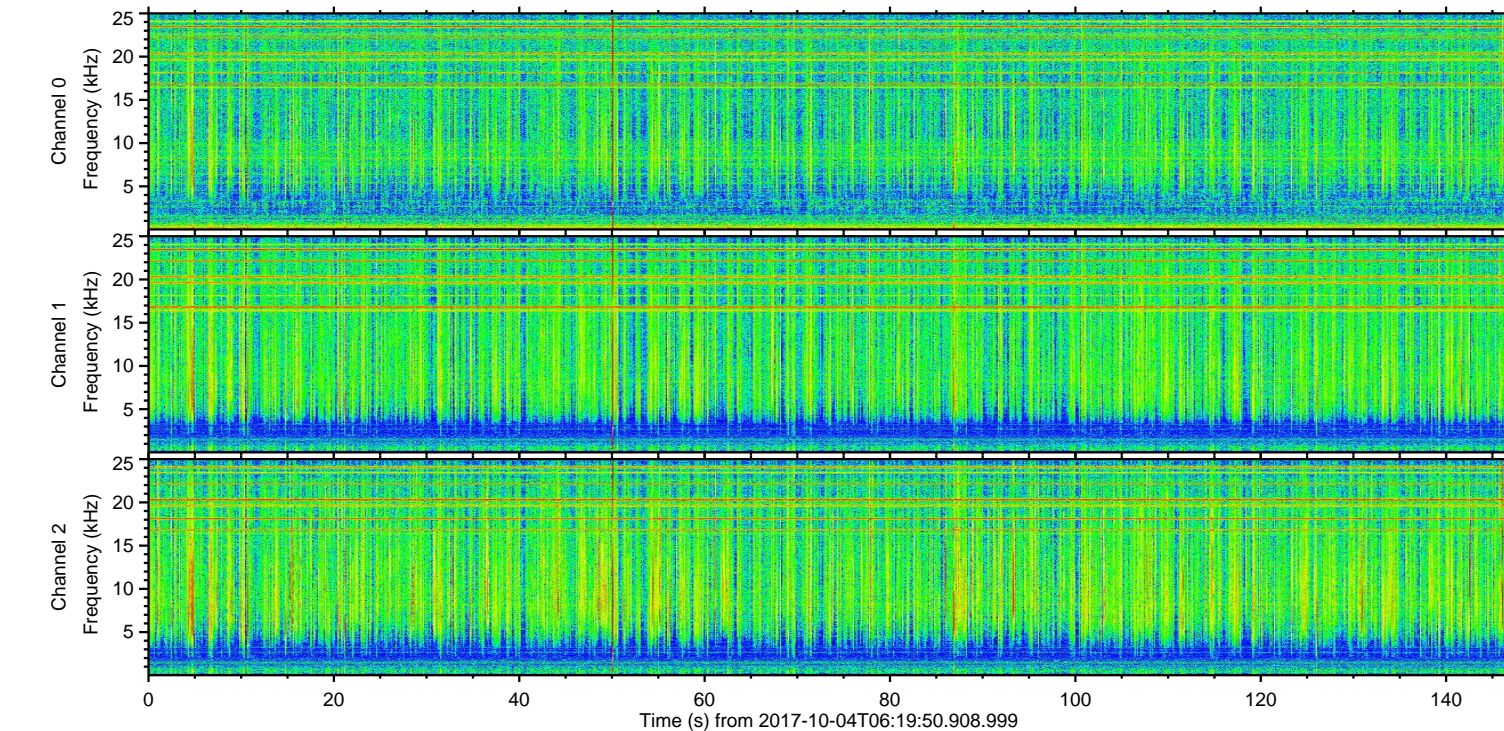
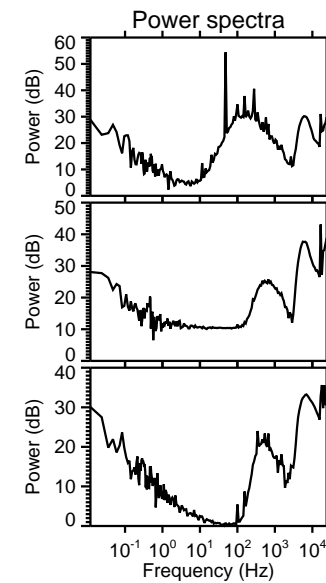
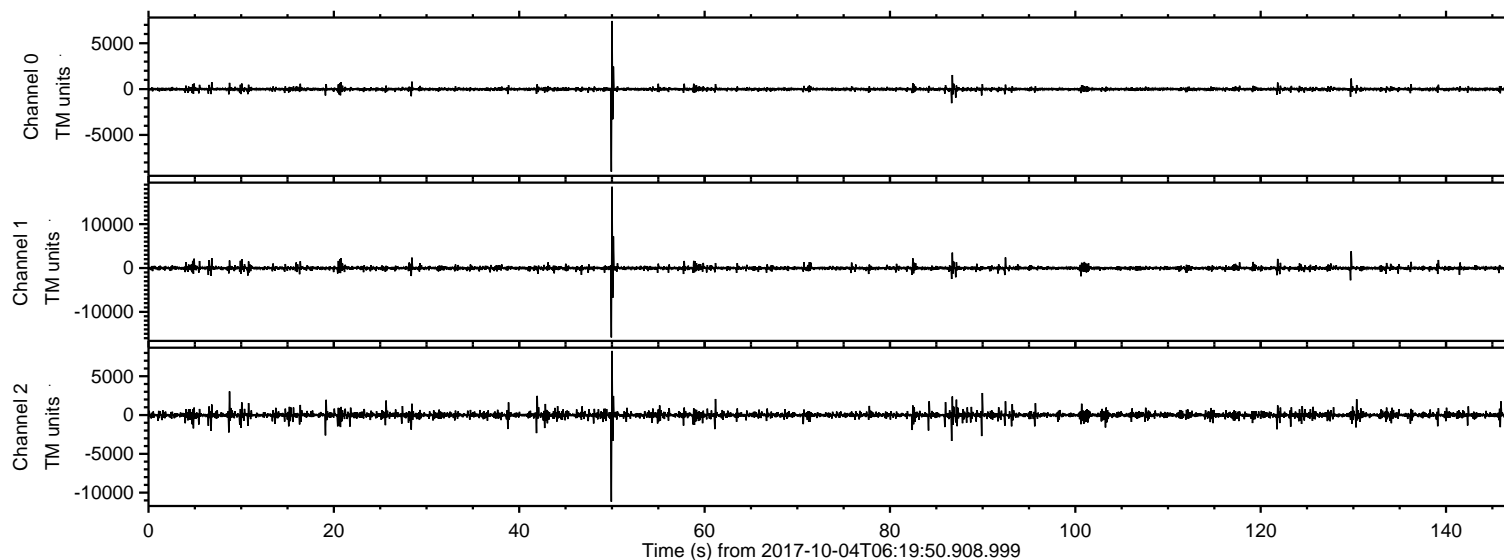


# ELMAVAN 3D WAVEFORMS (Measured data sampled at 50 kHz) 51000 packets of 144 samples from 2017-10-04T06:19:50.908.999.

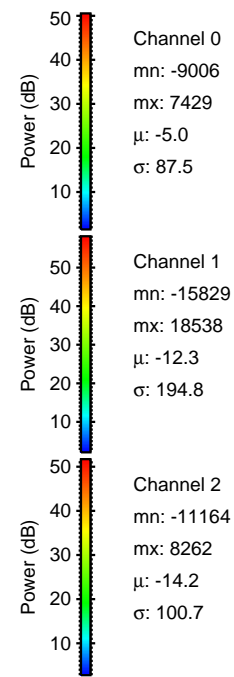
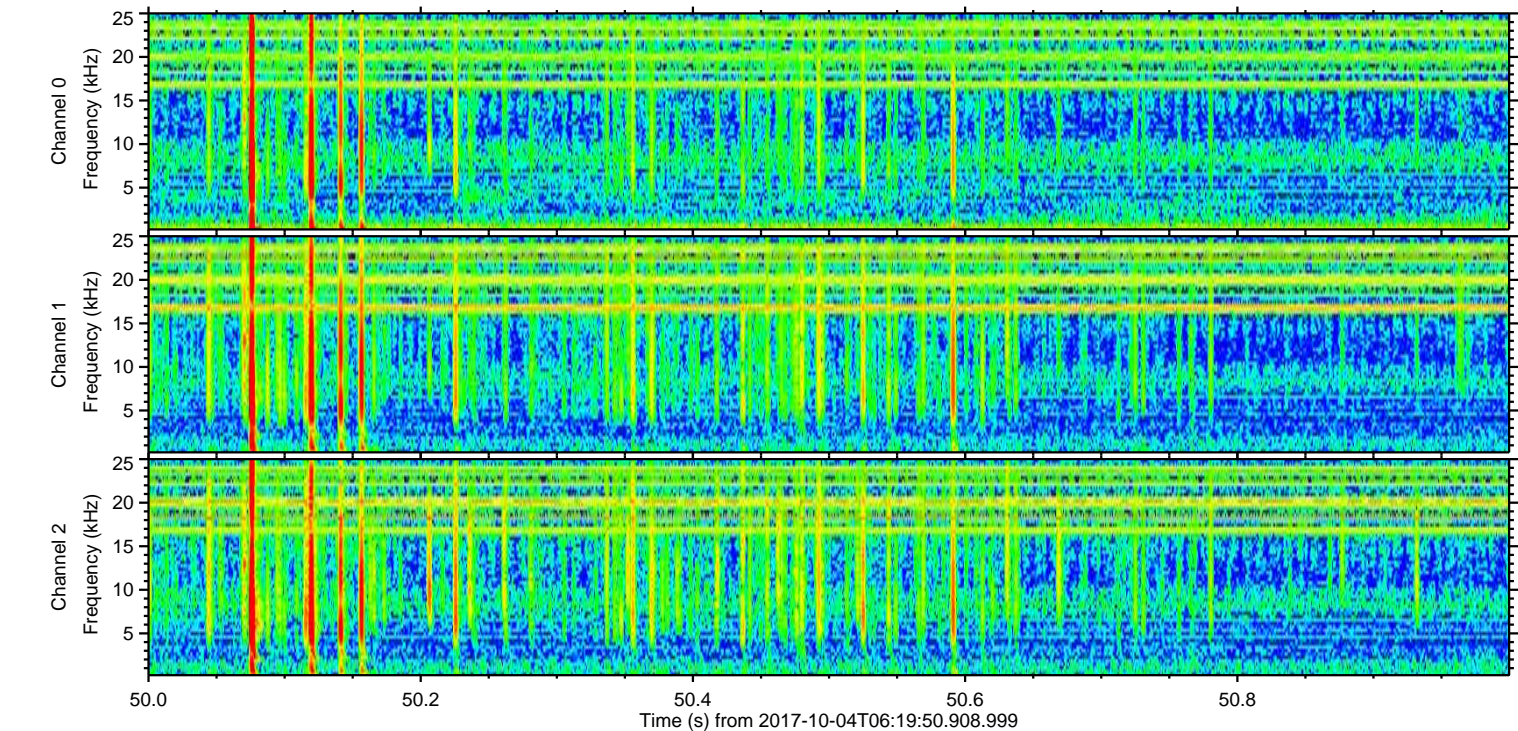
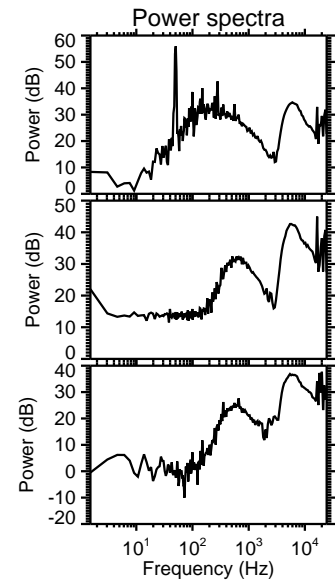
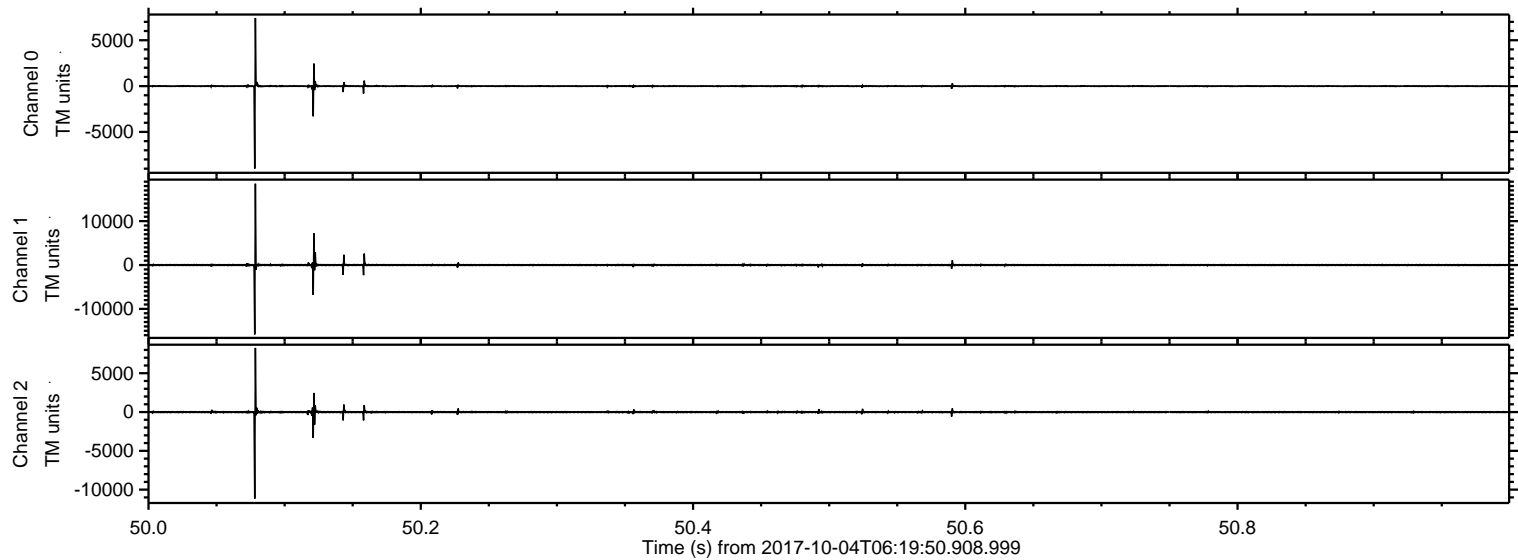
Processed Wed Oct 4 08:27:32 2017 by ELM ver.2012-10-06 from 001\_\_elm20171004\_061949\_\_dat00.bin





ELMAVAN 3D WAVEFORMS (Measured data sampled at 50 kHz) 51000 packets of 144 samples from 2017-10-04T06:19:50.908.999. Part 51/147

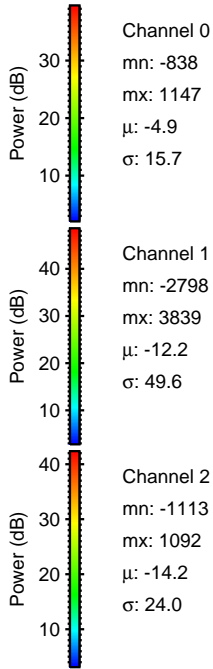
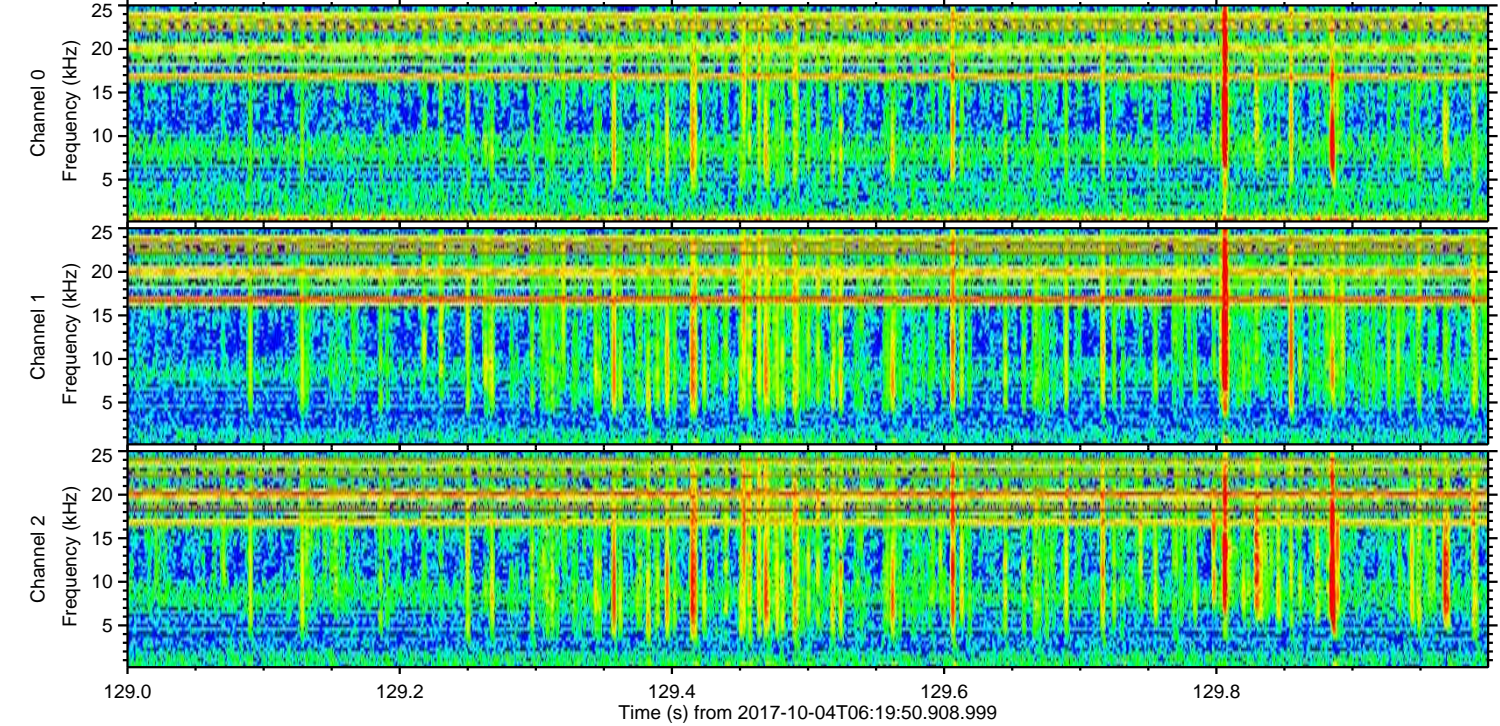
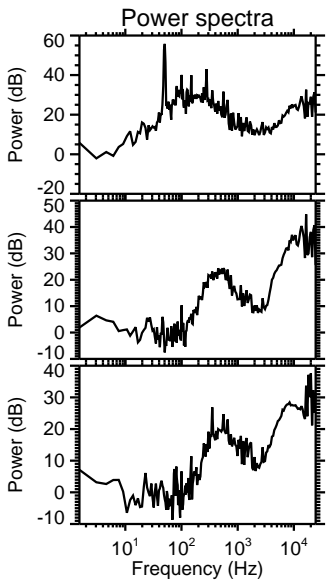
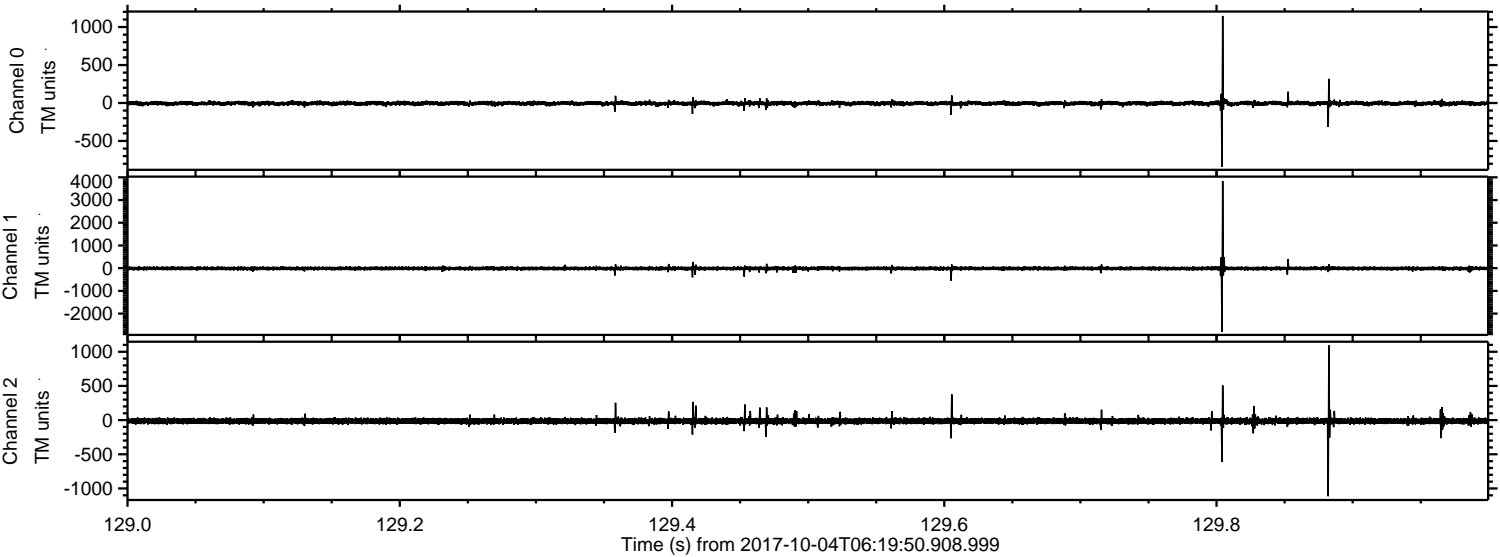
Processed Wed Oct 4 08:27:38 2017 by ELM ver.2012-10-06 from 001\_\_elm20171004\_061949\_\_dat00.bin





ELMAVAN 3D WAVEFORMS (Measured data sampled at 50 kHz) 51000 packets of 144 samples from 2017-10-04T06:19:50.908.999. Part 130/147

Processed Wed Oct 4 08:27:39 2017 by ELM ver.2012-10-06 from 001\_\_elm20171004\_061949\_\_dat00.bin



Channel 0  
mn: -838  
mx: 1147  
 $\mu$ : -4.9  
 $\sigma$ : 15.7

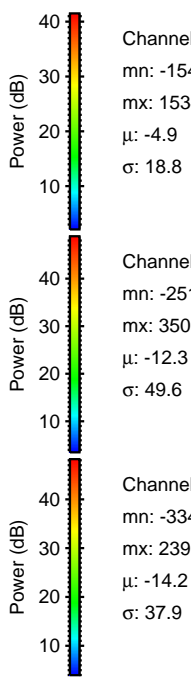
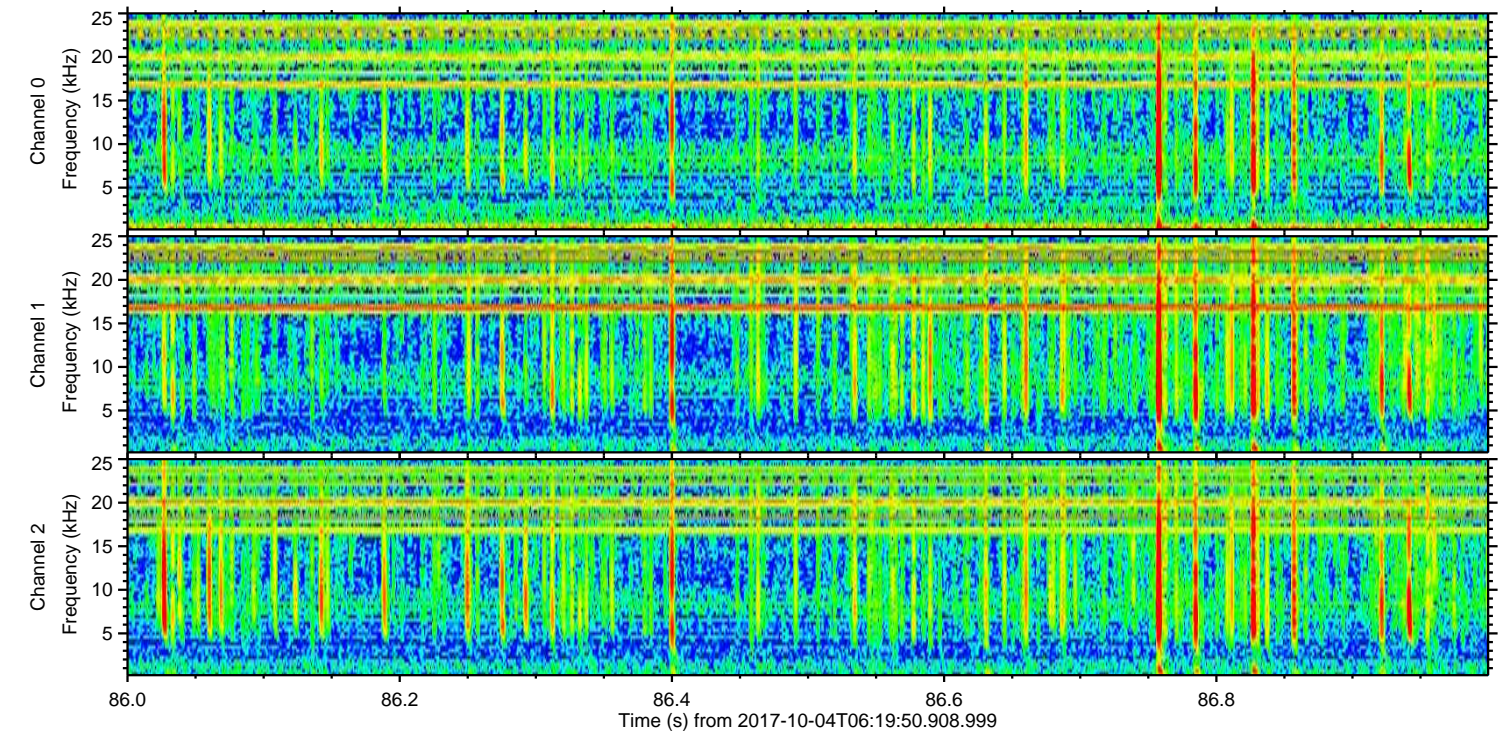
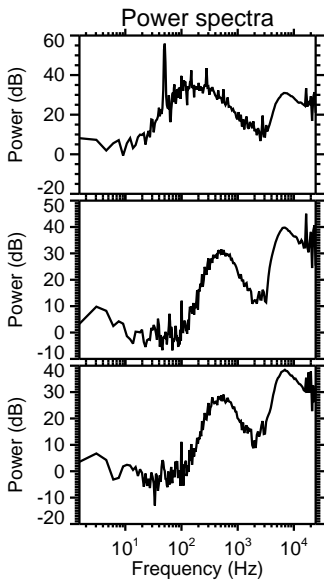
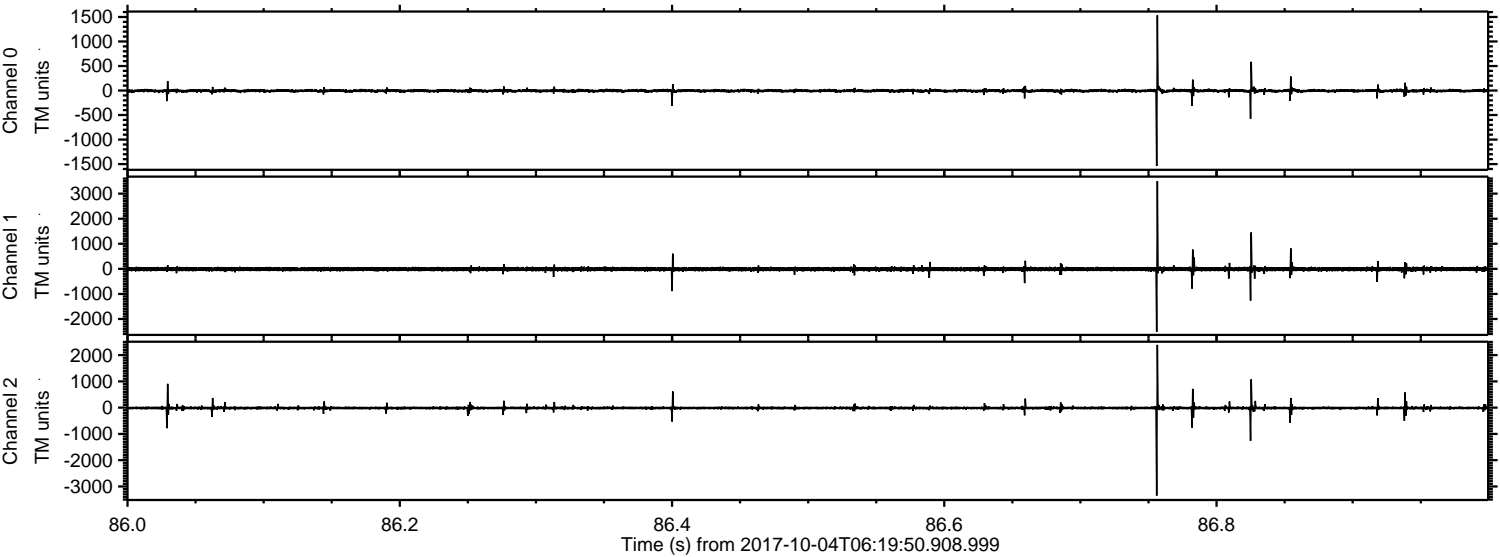
Channel 1  
mn: -2798  
mx: 3839  
 $\mu$ : -12.2  
 $\sigma$ : 49.6

Channel 2  
mn: -1113  
mx: 1092  
 $\mu$ : -14.2  
 $\sigma$ : 24.0



ELMAVAN 3D WAVEFORMS (Measured data sampled at 50 kHz) 51000 packets of 144 samples from 2017-10-04T06:19:50.908.999. Part 87/147

Processed Wed Oct 4 08:27:40 2017 by ELM ver.2012-10-06 from 001\_\_elm20171004\_061949\_\_dat00.bin



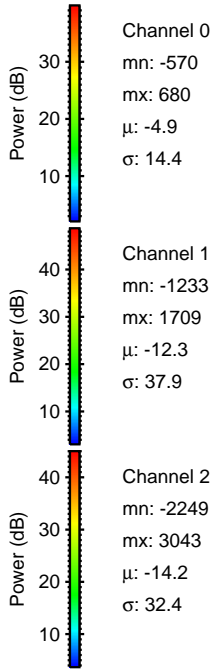
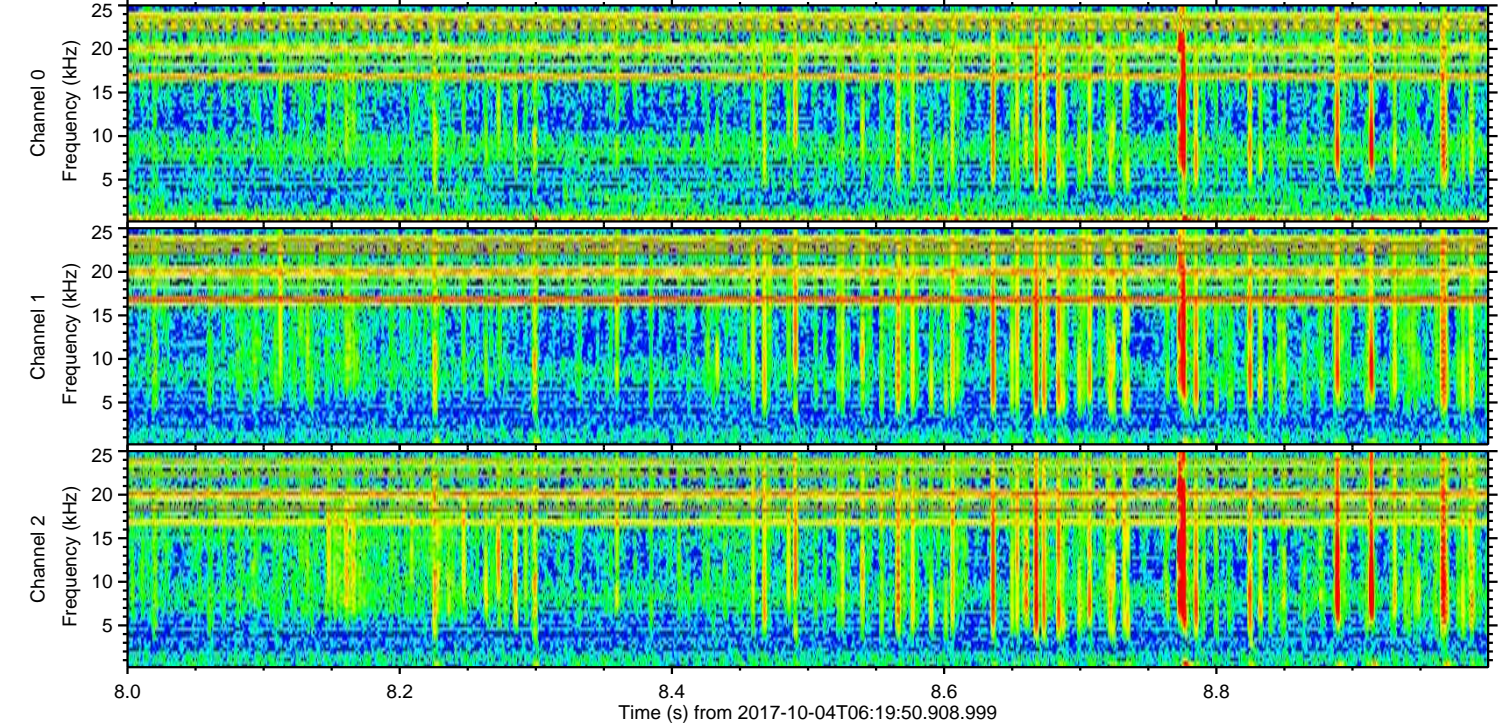
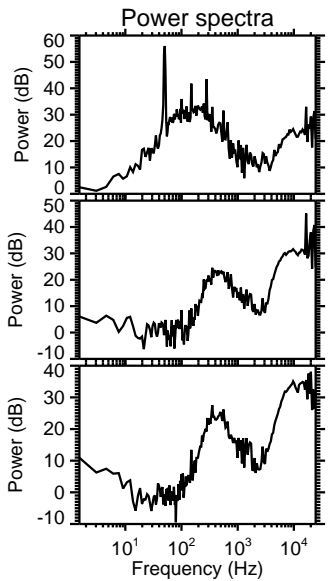
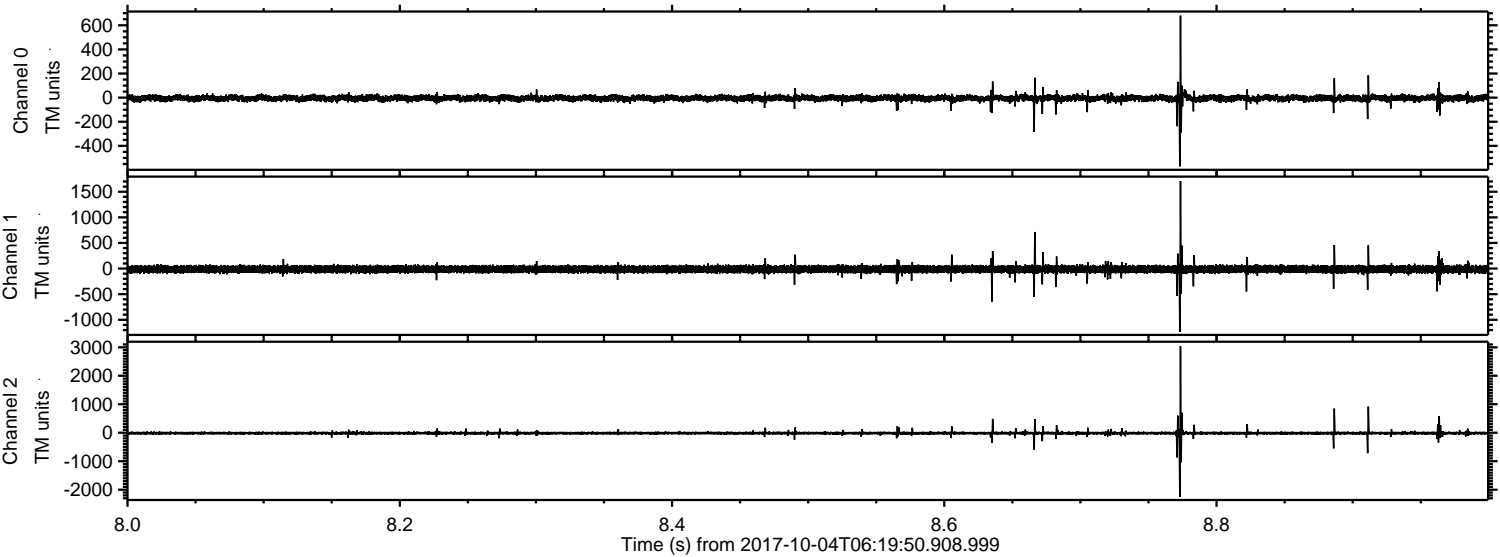
Channel 0  
mn: -1540  
mx: 1534  
 $\mu$ : -4.9  
 $\sigma$ : 18.8

Channel 1  
mn: -2510  
mx: 3503  
 $\mu$ : -12.3  
 $\sigma$ : 49.6

Channel 2  
mn: -3349  
mx: 2390  
 $\mu$ : -14.2  
 $\sigma$ : 37.9

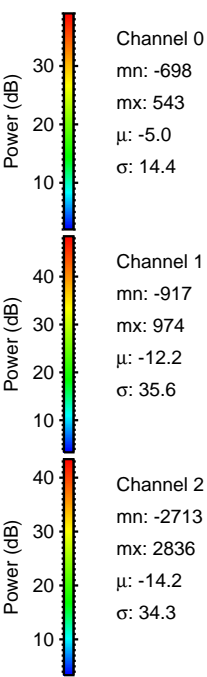
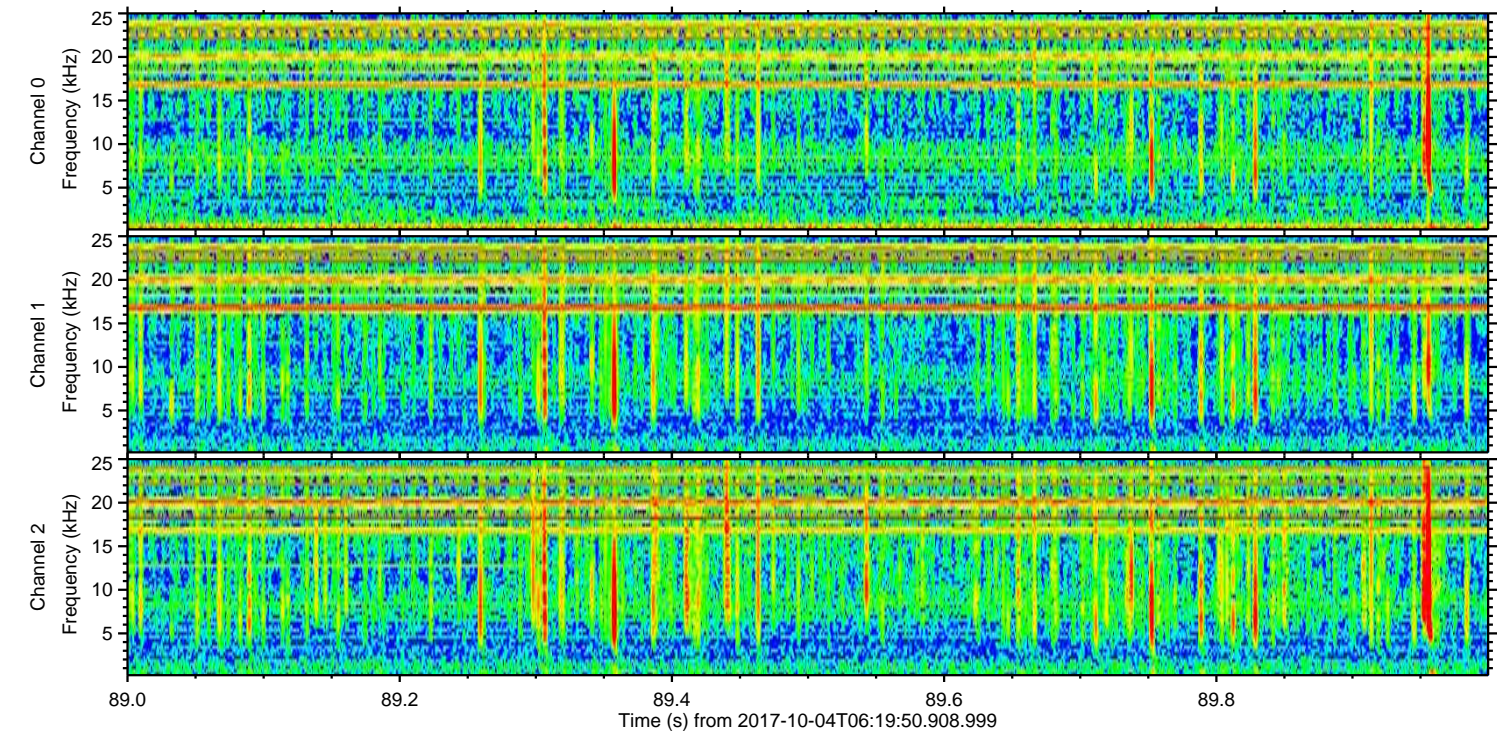
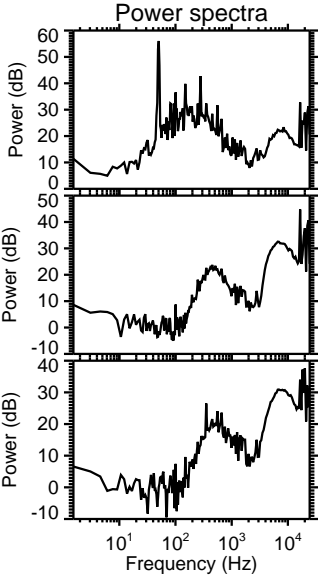
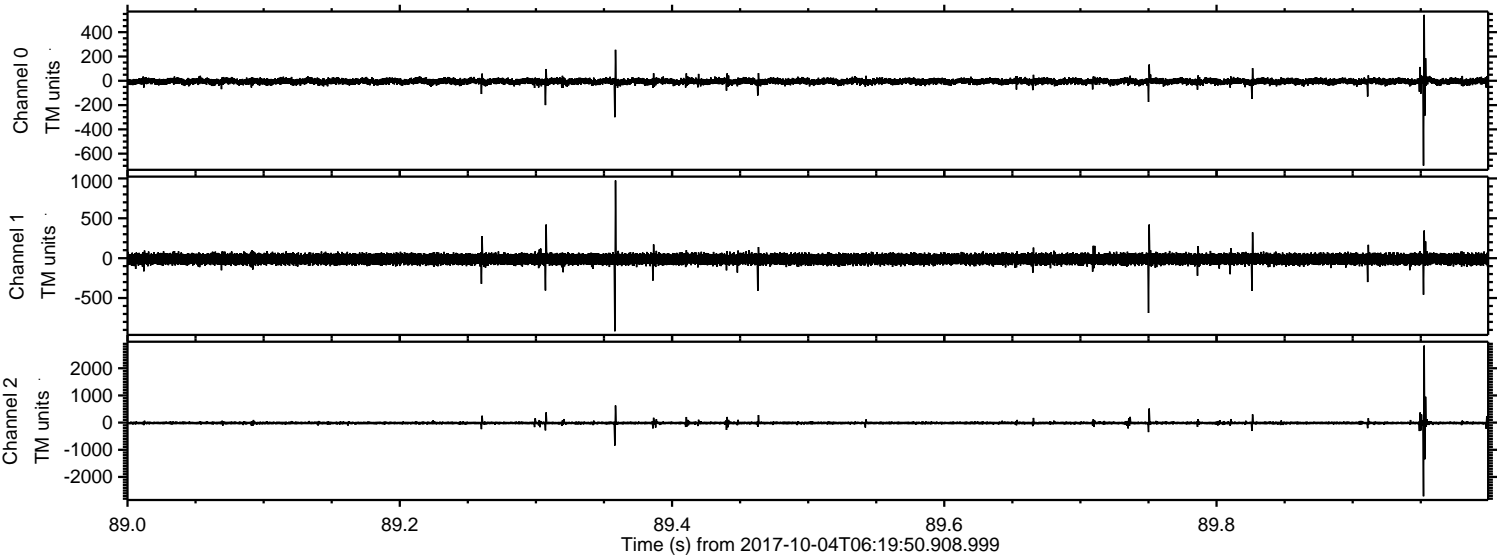


Processed Wed Oct 4 08:27:40 2017 by ELM ver.2012-10-06 from 001\_\_elm20171004\_061949\_\_dat00.bin



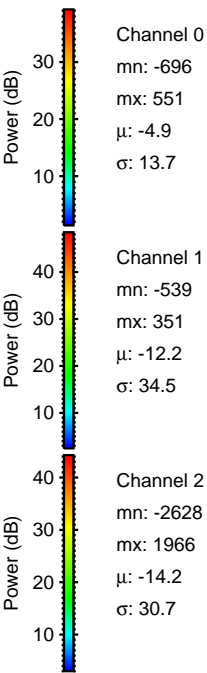
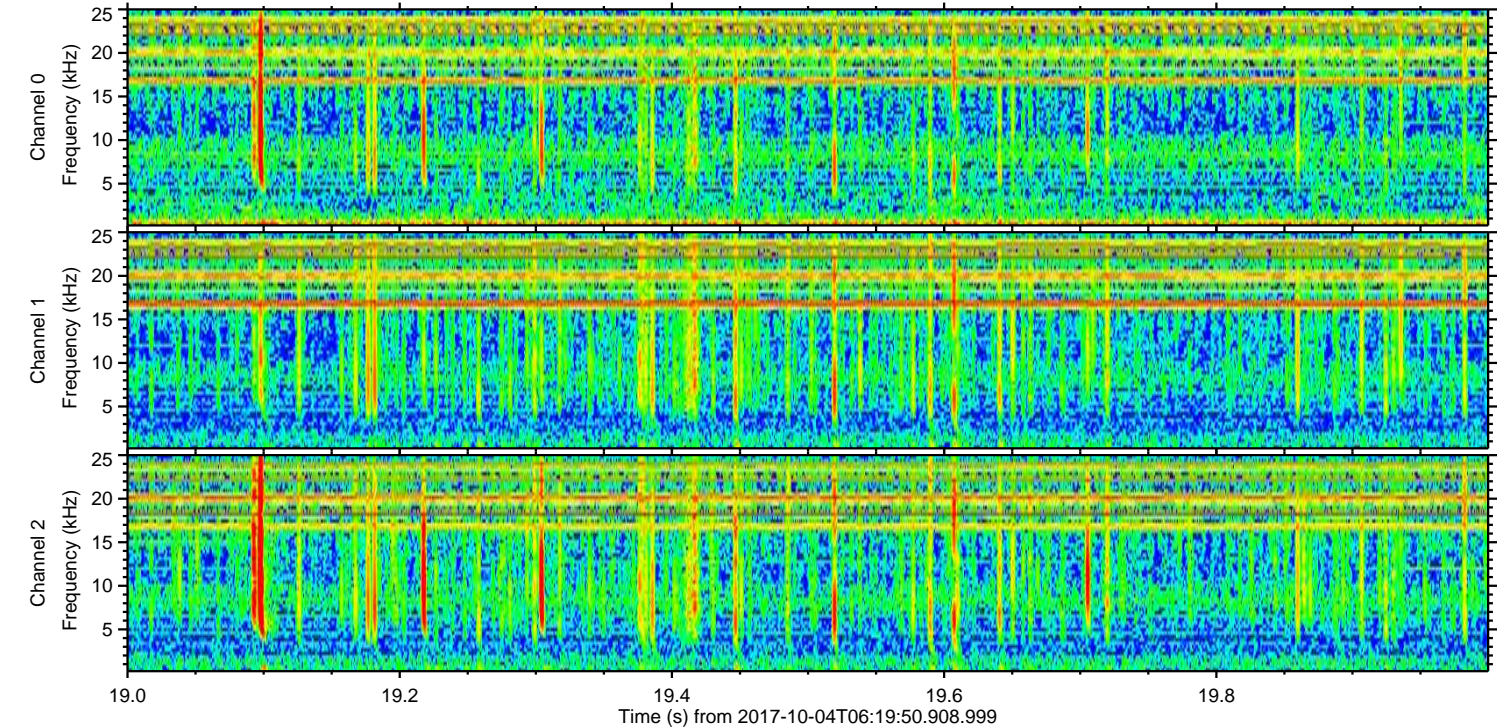
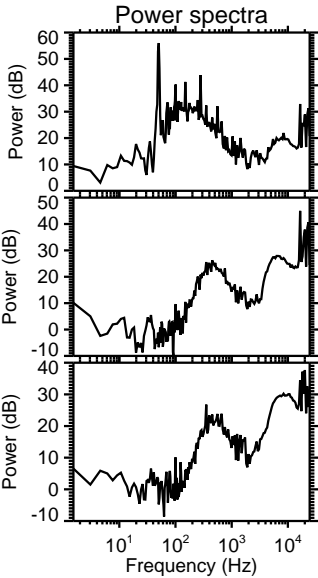
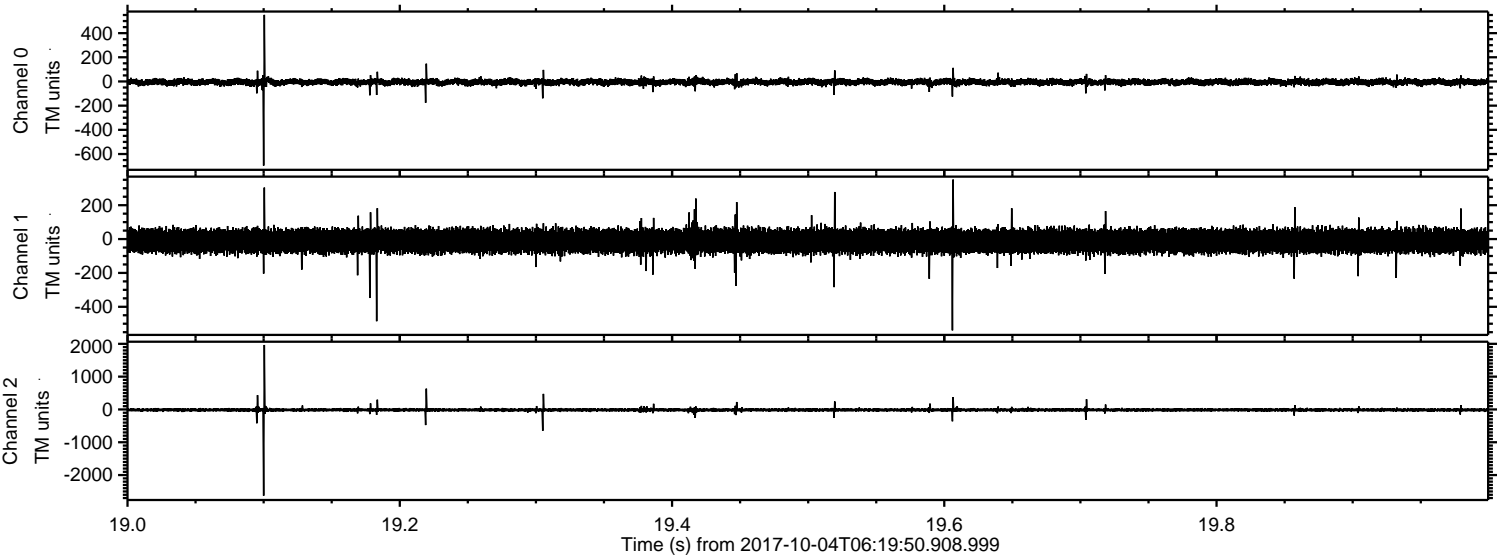


Processed Wed Oct 4 08:27:41 2017 by ELM ver.2012-10-06 from 001\_\_elm20171004\_061949\_\_dat00.bin





Processed Wed Oct 4 08:27:42 2017 by ELM ver.2012-10-06 from 001\_\_elm20171004\_061949\_\_dat00.bin



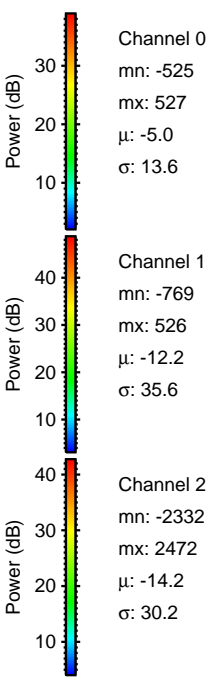
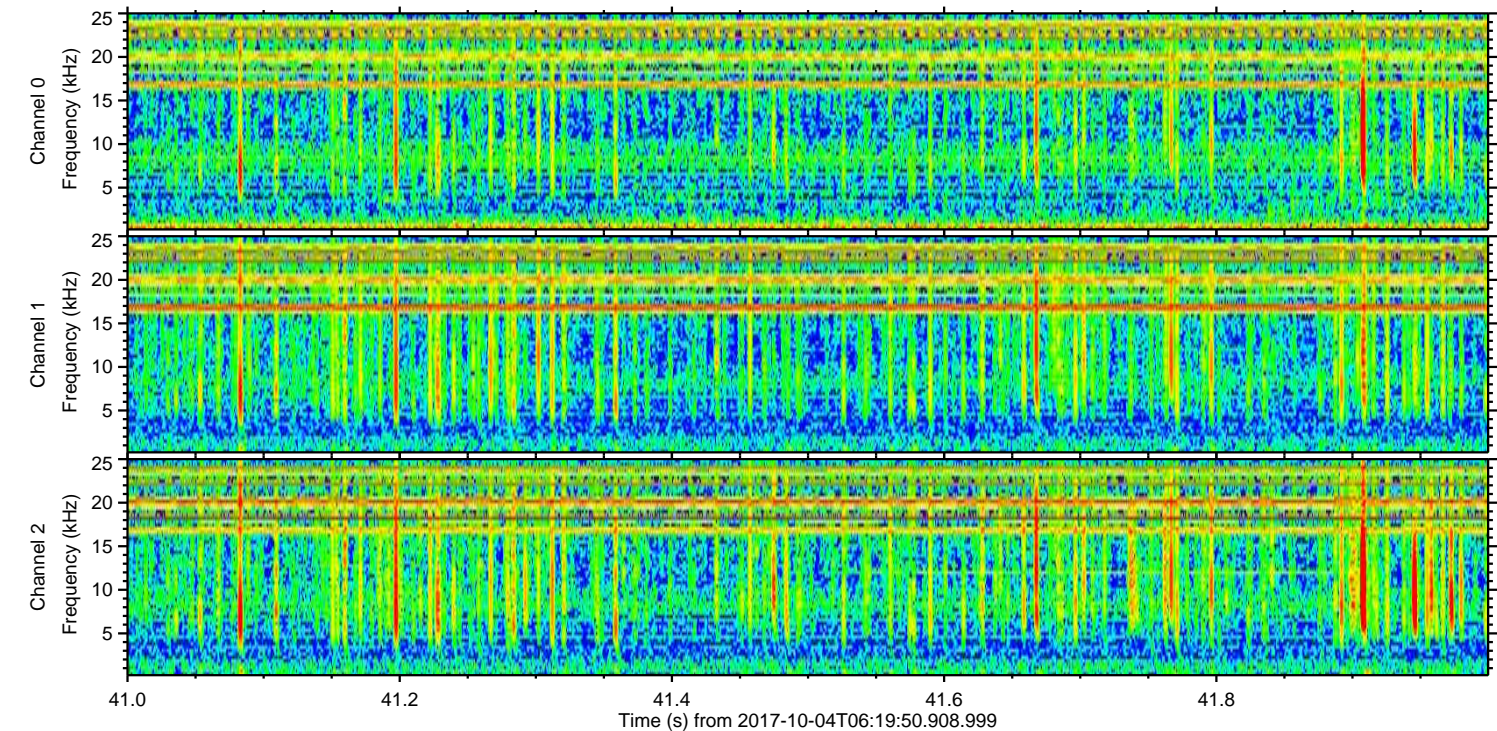
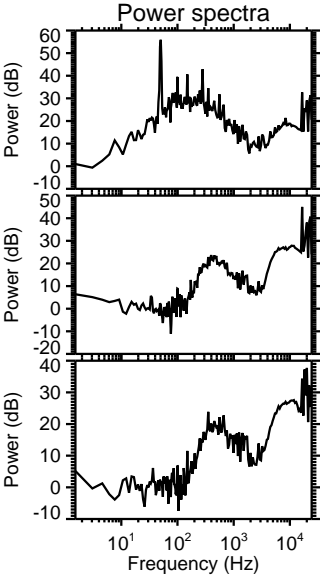
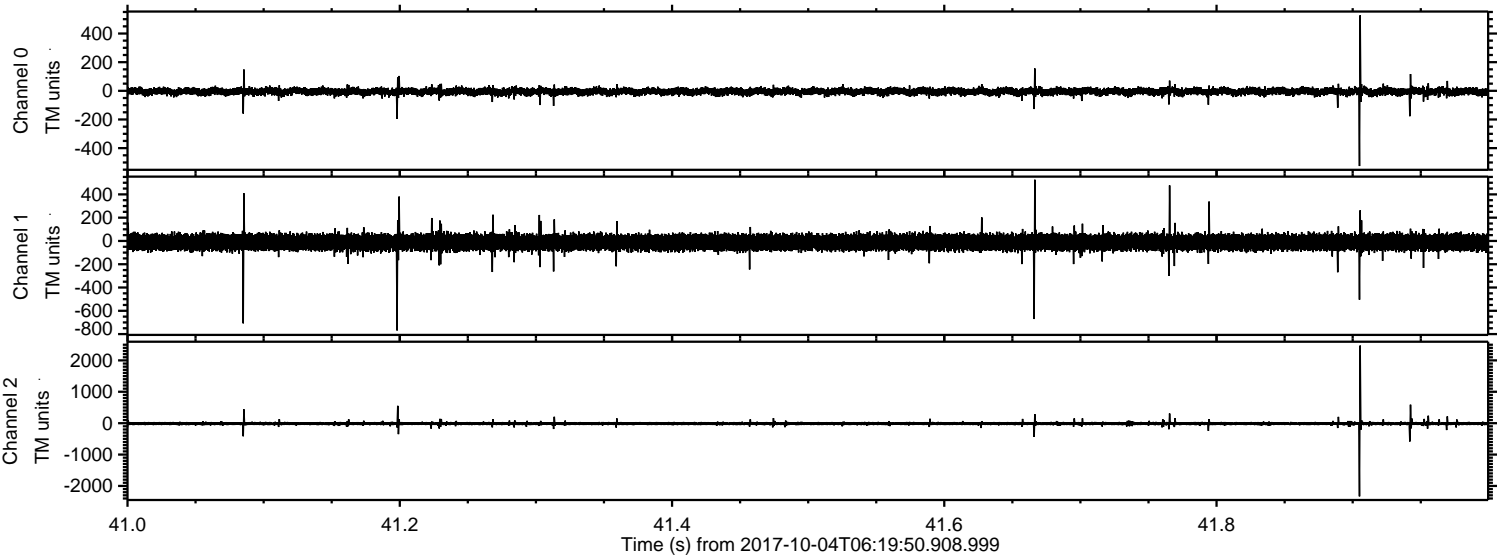
Channel 0  
mn: -696  
mx: 551  
 $\mu$ : -4.9  
 $\sigma$ : 13.7

Channel 1  
mn: -539  
mx: 351  
 $\mu$ : -12.2  
 $\sigma$ : 34.5

Channel 2  
mn: -2628  
mx: 1966  
 $\mu$ : -14.2  
 $\sigma$ : 30.7

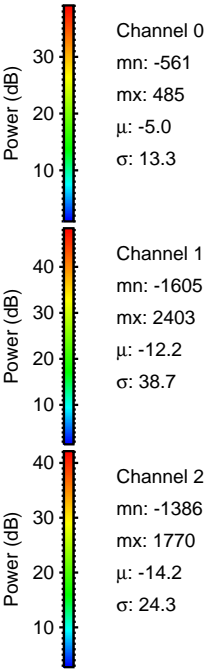
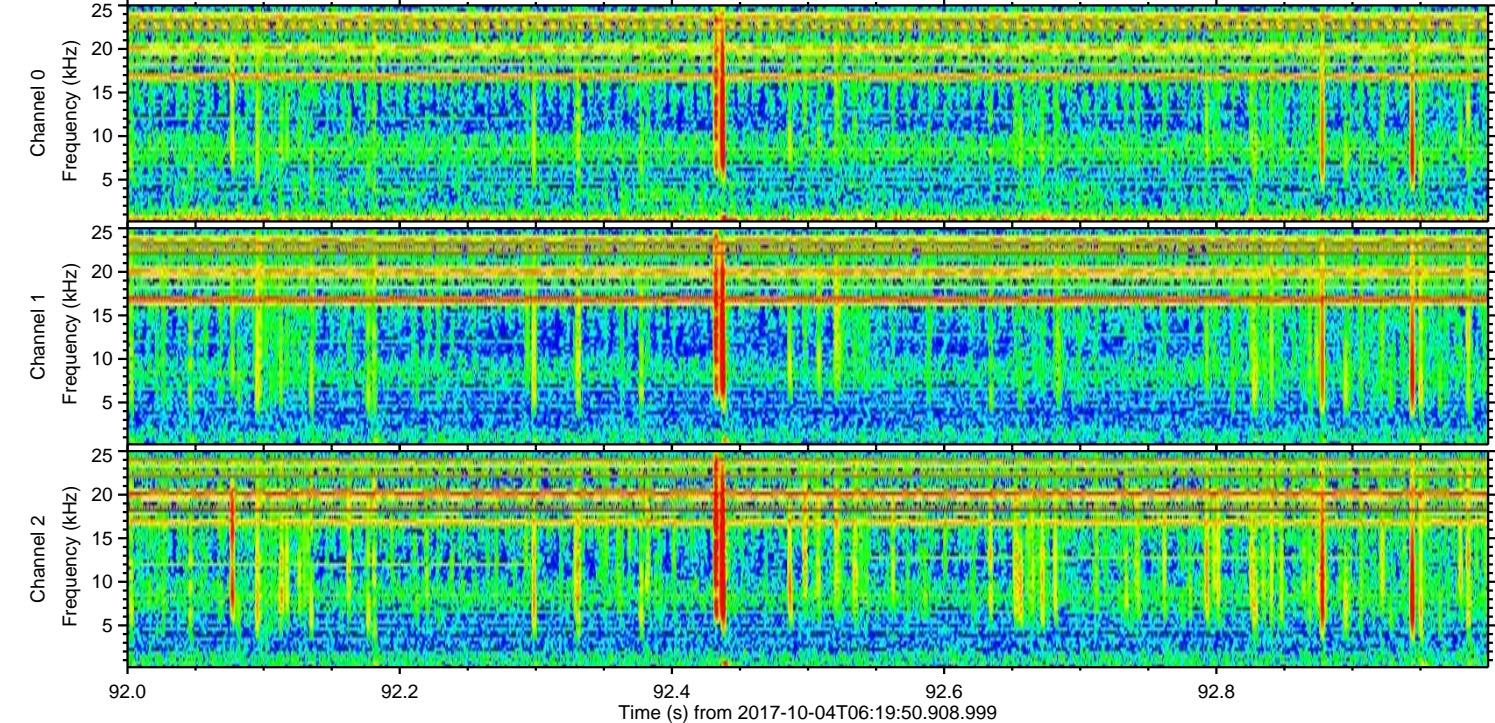
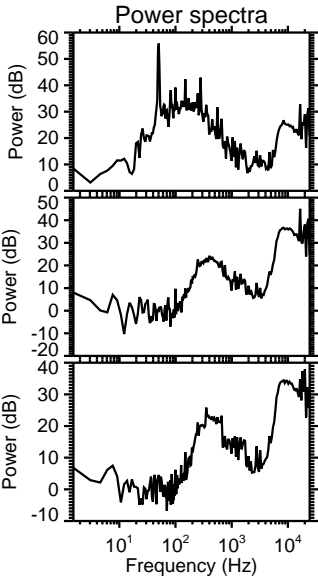
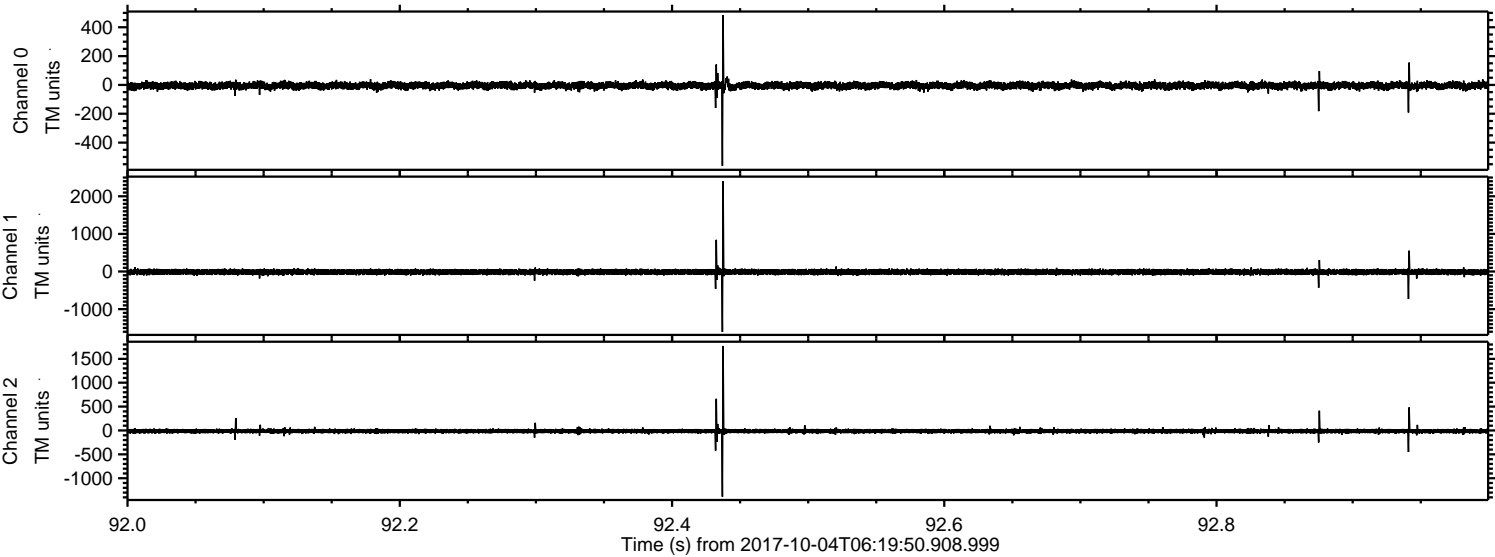


Processed Wed Oct 4 08:27:42 2017 by ELM ver.2012-10-06 from 001\_\_elm20171004\_061949\_\_dat00.bin



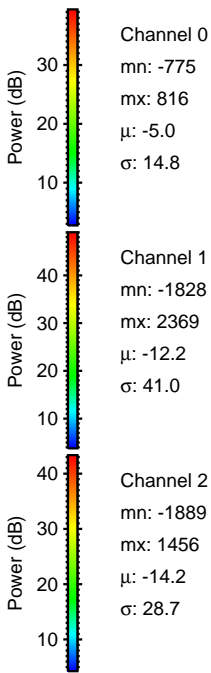
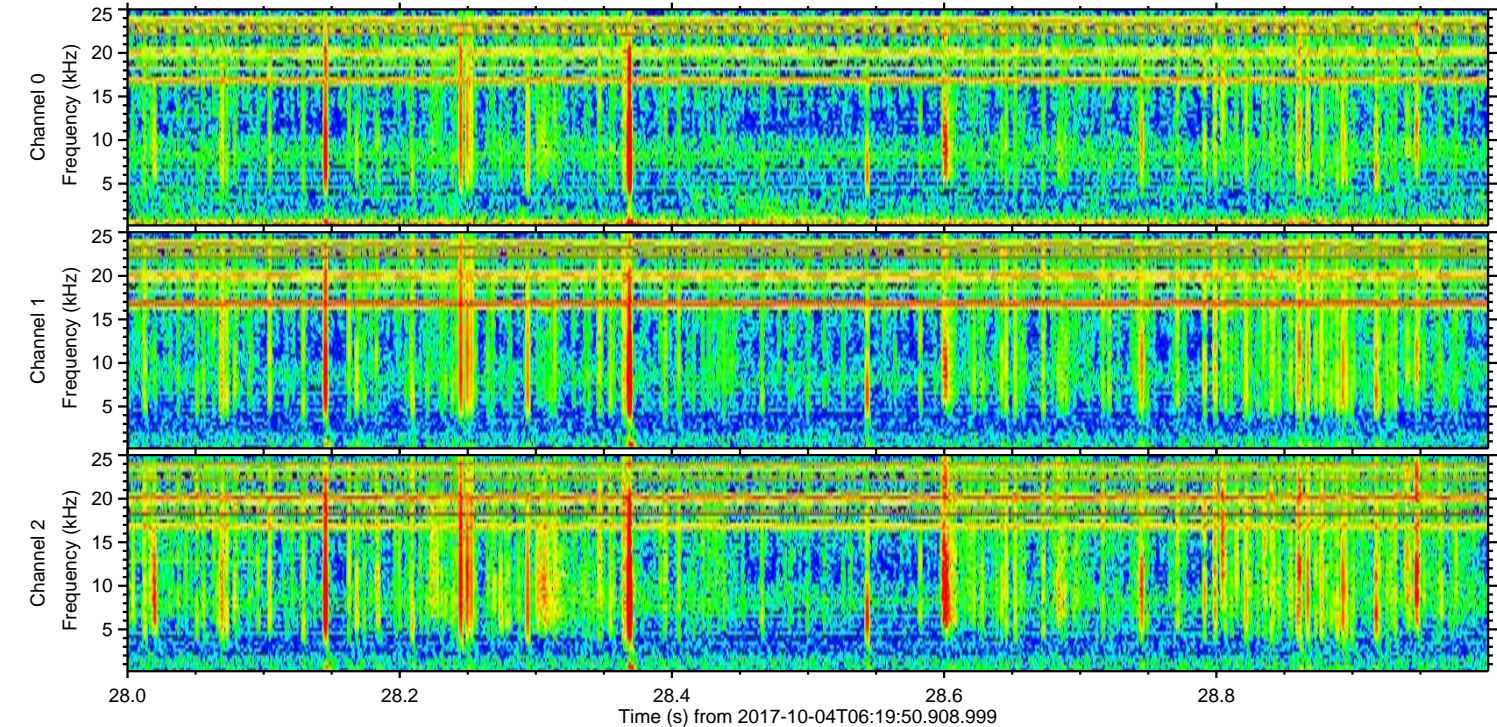
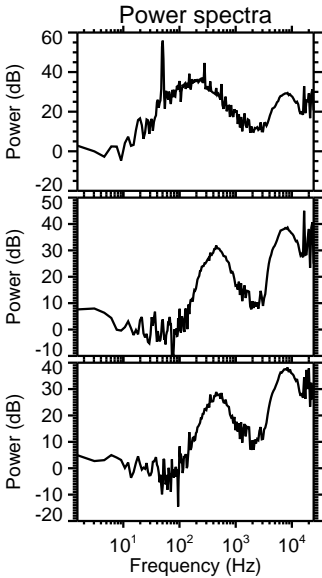
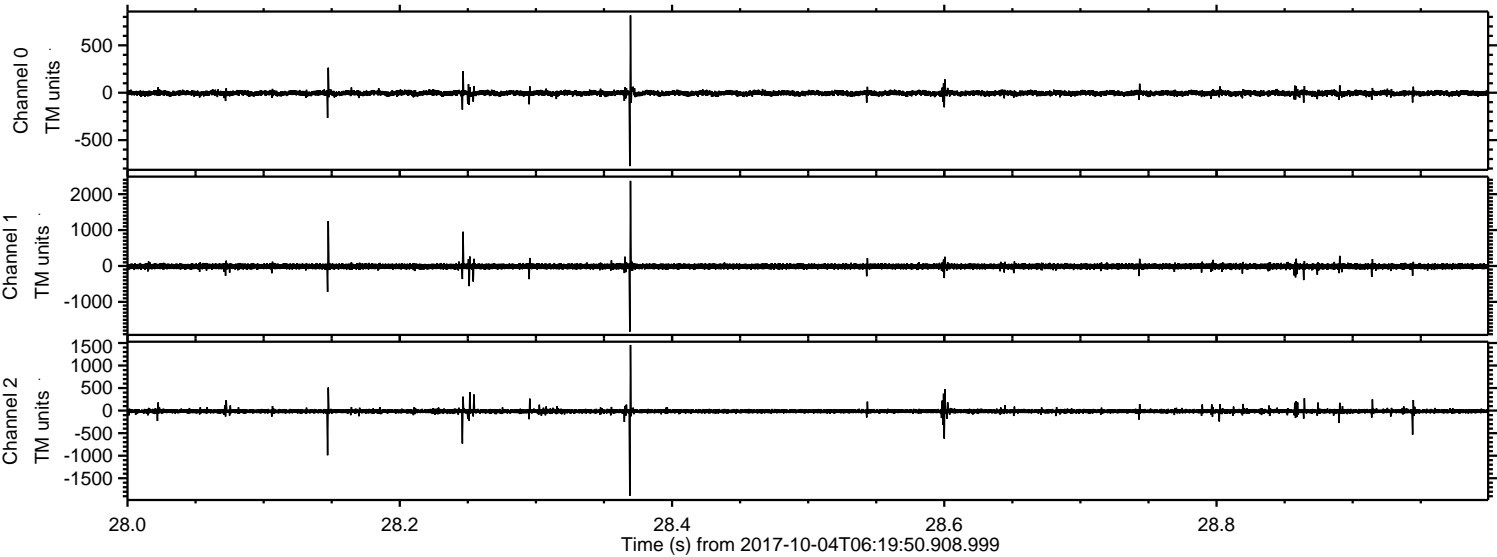


Processed Wed Oct 4 08:27:43 2017 by ELM ver.2012-10-06 from 001\_\_elm20171004\_061949\_\_dat00.bin





Processed Wed Oct 4 08:27:44 2017 by ELM ver.2012-10-06 from 001\_\_elm20171004\_061949\_\_dat00.bin





Processed Wed Oct 4 08:27:44 2017 by ELM ver.2012-10-06 from 001\_\_elm20171004\_061949\_\_dat00.bin

