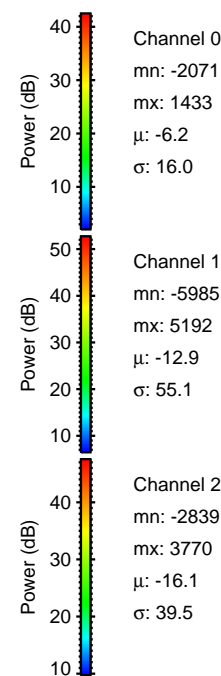
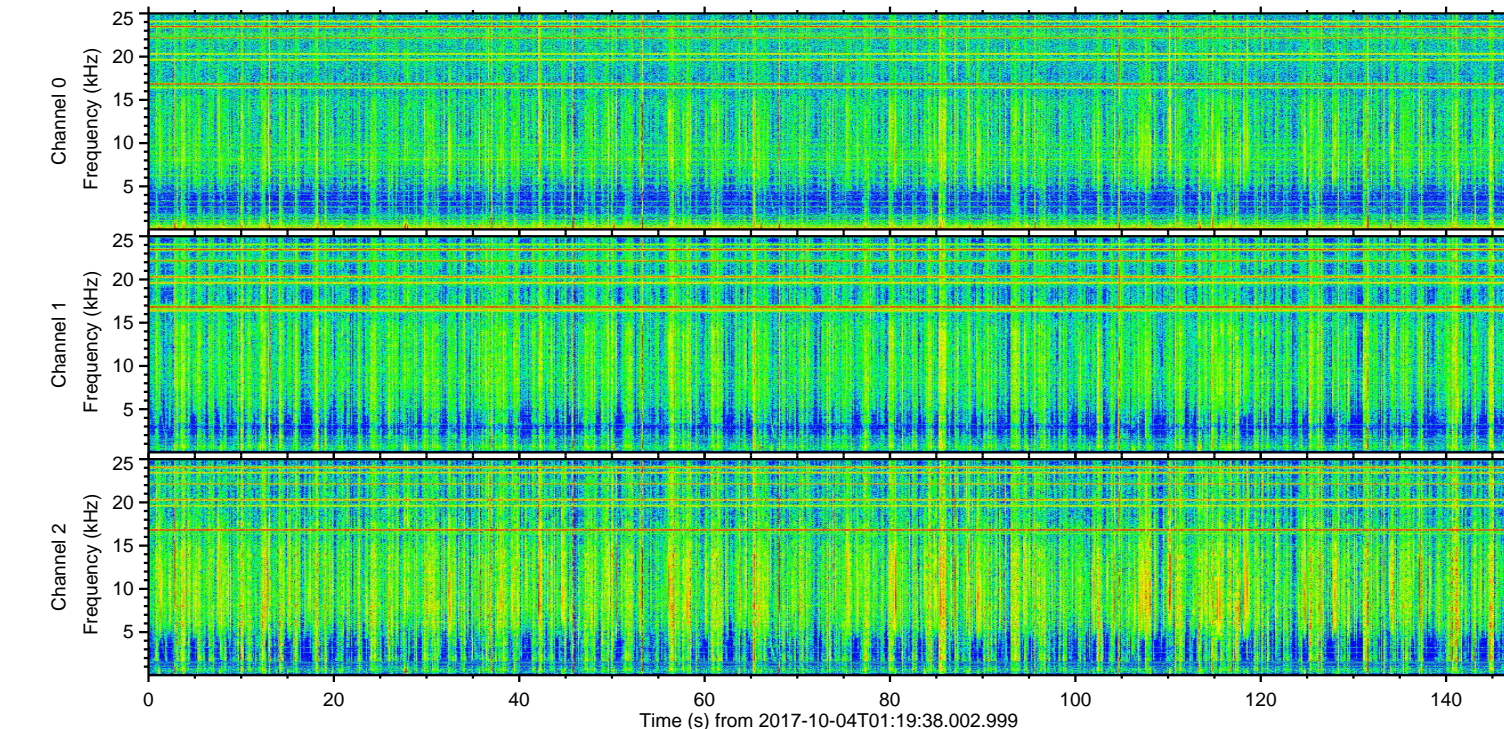
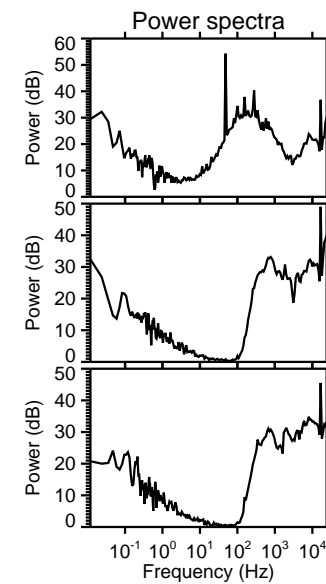
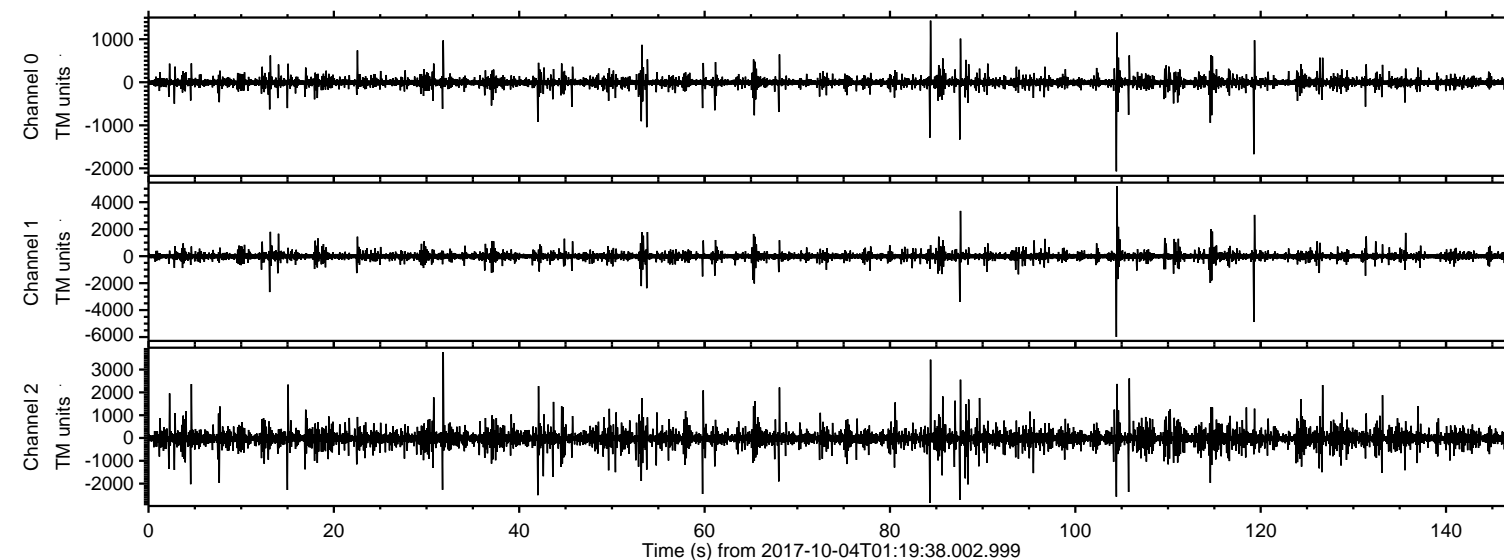


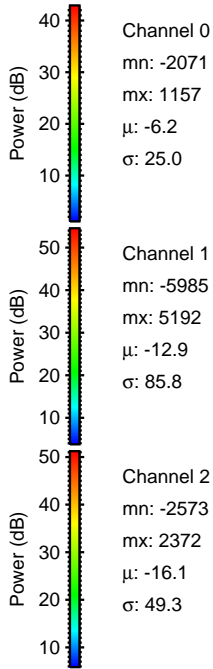
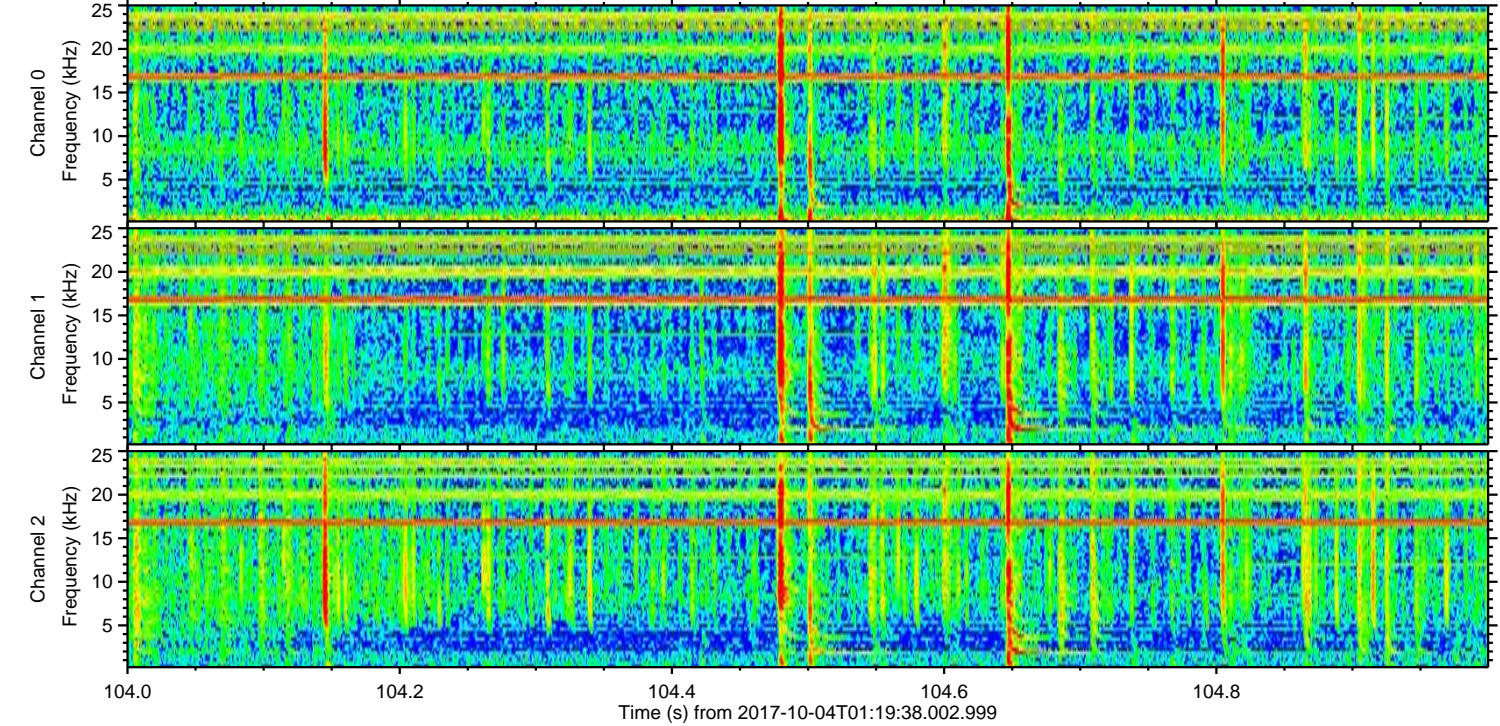
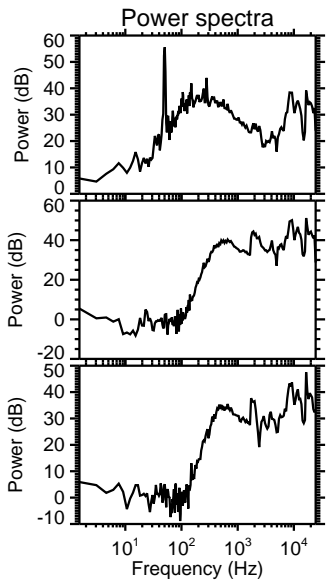
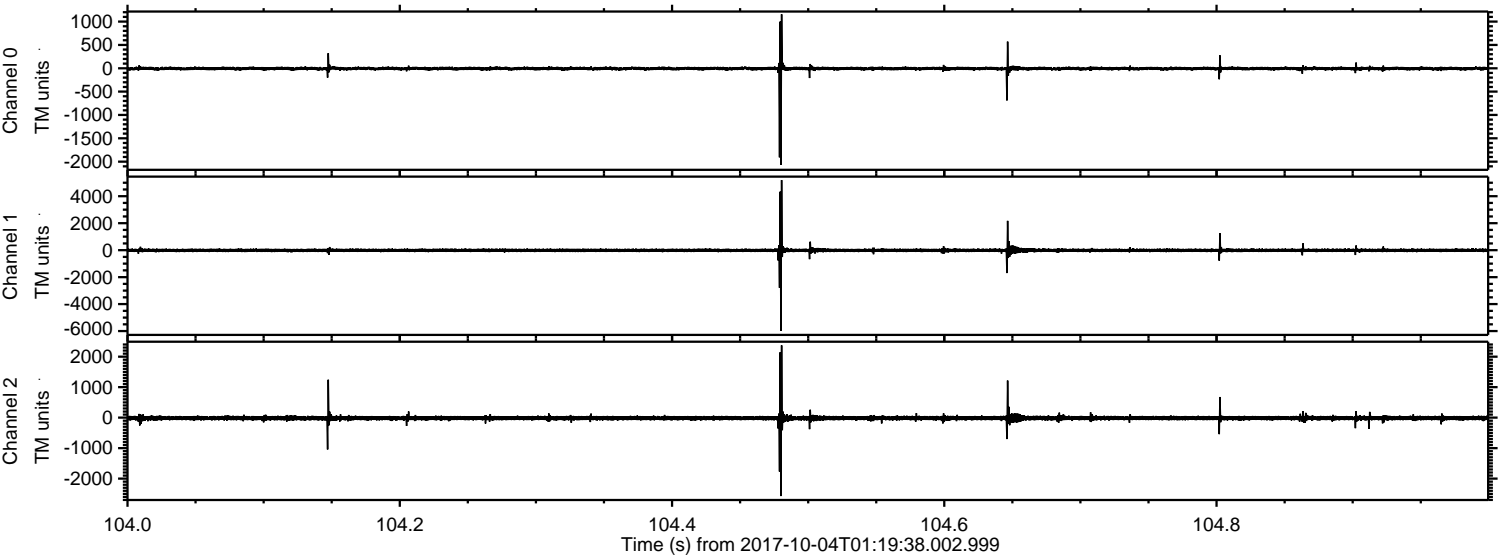
ELMAVAN 3D WAVEFORMS (Measured data sampled at 50 kHz) 51000 packets of 144 samples from 2017-10-04T01:19:38.002.999.

Processed Wed Oct 4 03:27:07 2017 by ELM ver.2012-10-06 from 001__elm20171004_011936__dat00.bin



ELMAVAN 3D WAVEFORMS (Measured data sampled at 50 kHz) 51000 packets of 144 samples from 2017-10-04T01:19:38.002.999. Part 105/147

Processed Wed Oct 4 03:27:13 2017 by ELM ver.2012-10-06 from 001__elm20171004_011936__dat00.bin



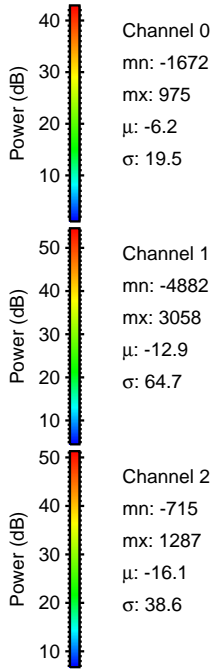
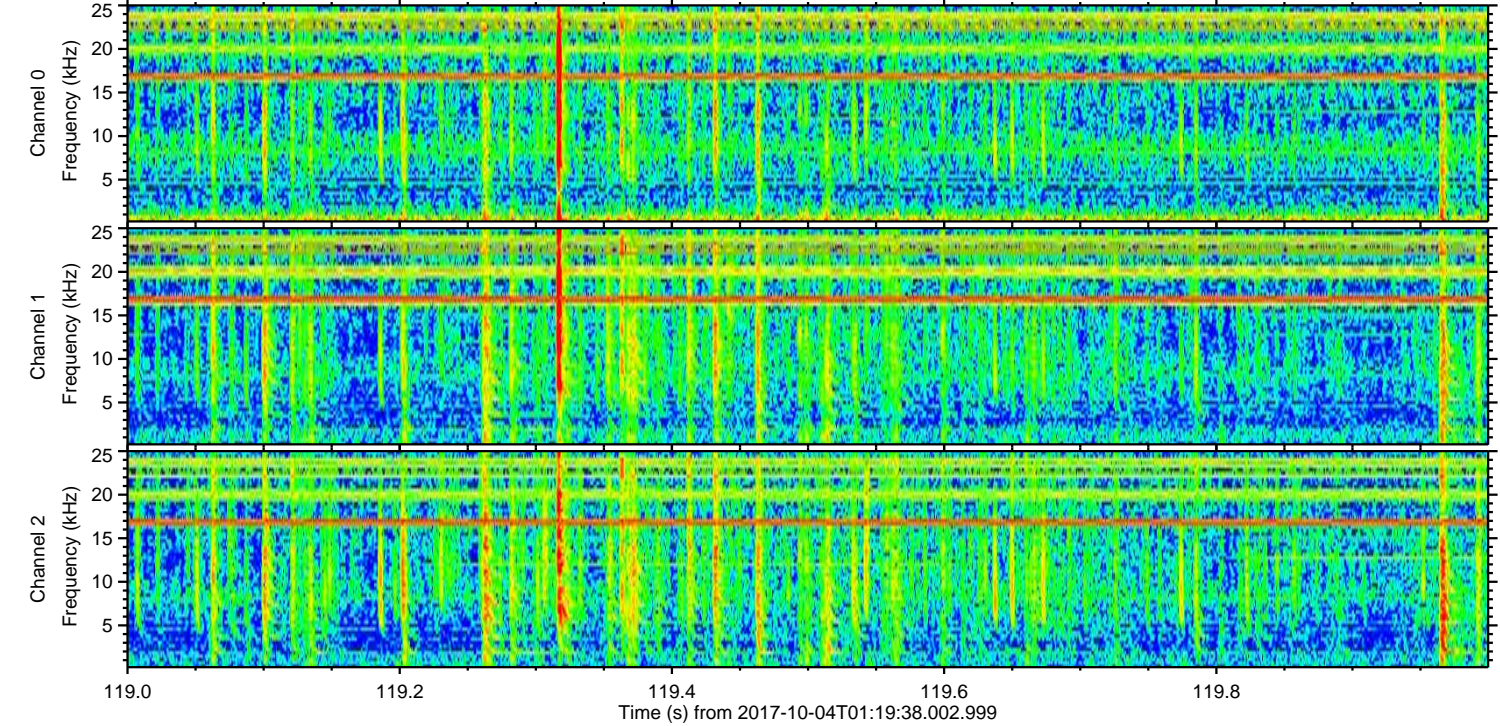
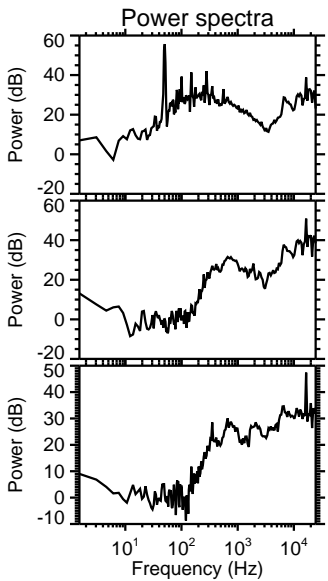
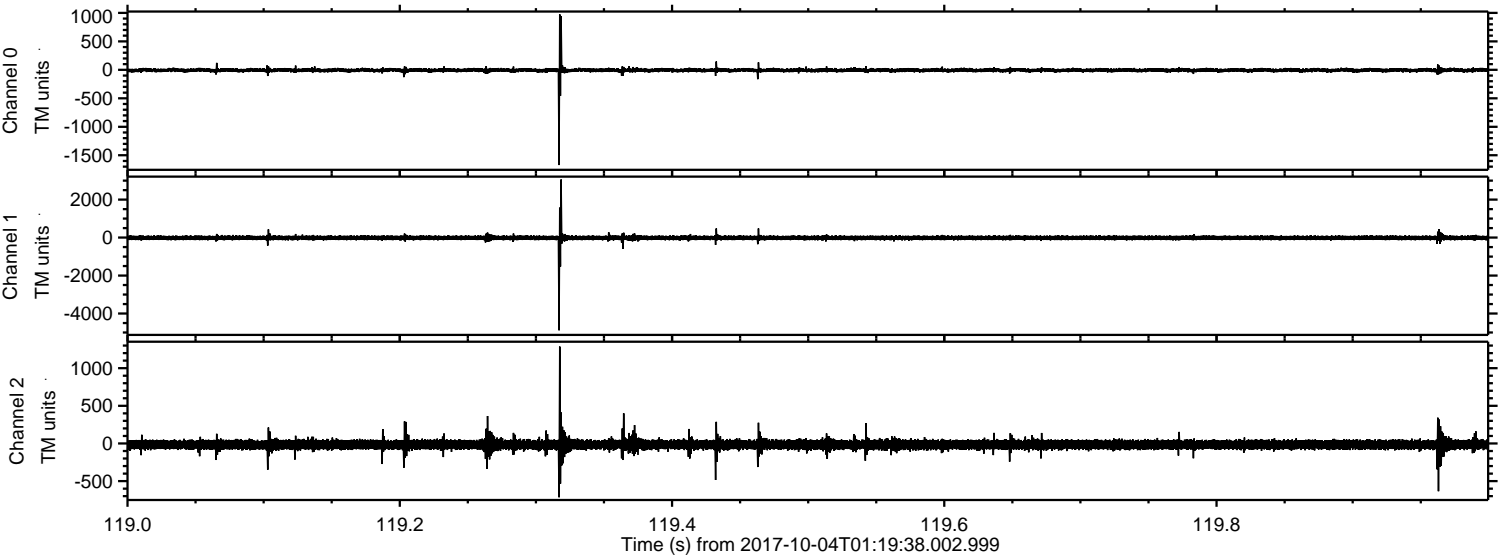
Channel 0
mn: -2071
mx: 1157
 μ : -6.2
 σ : 25.0

Channel 1
mn: -5985
mx: 5192
 μ : -12.9
 σ : 85.8

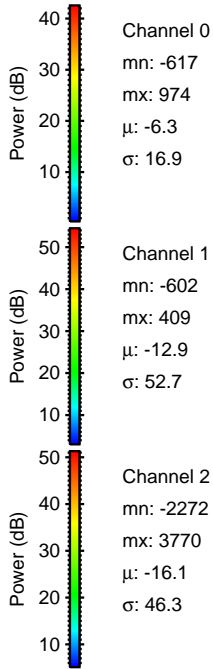
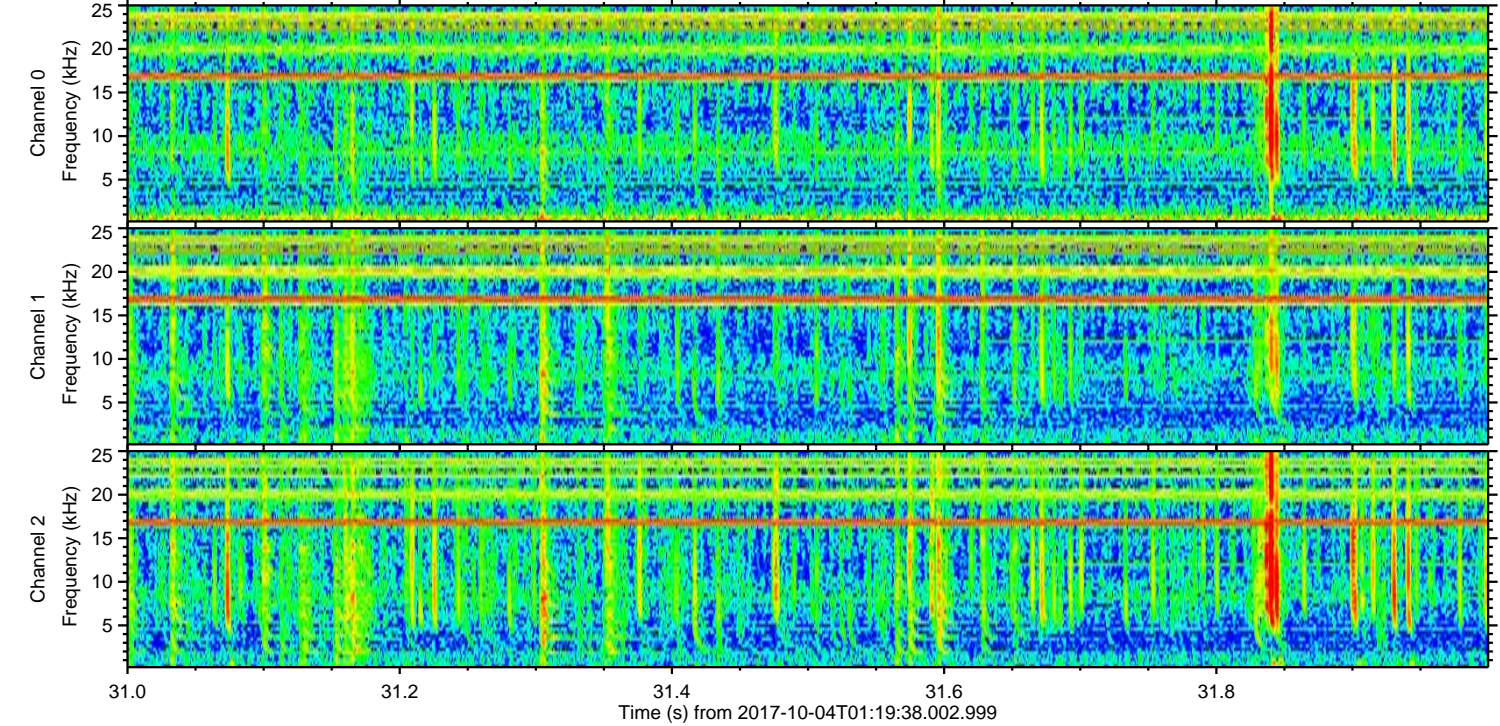
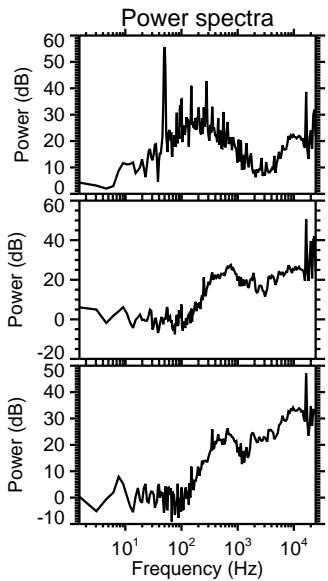
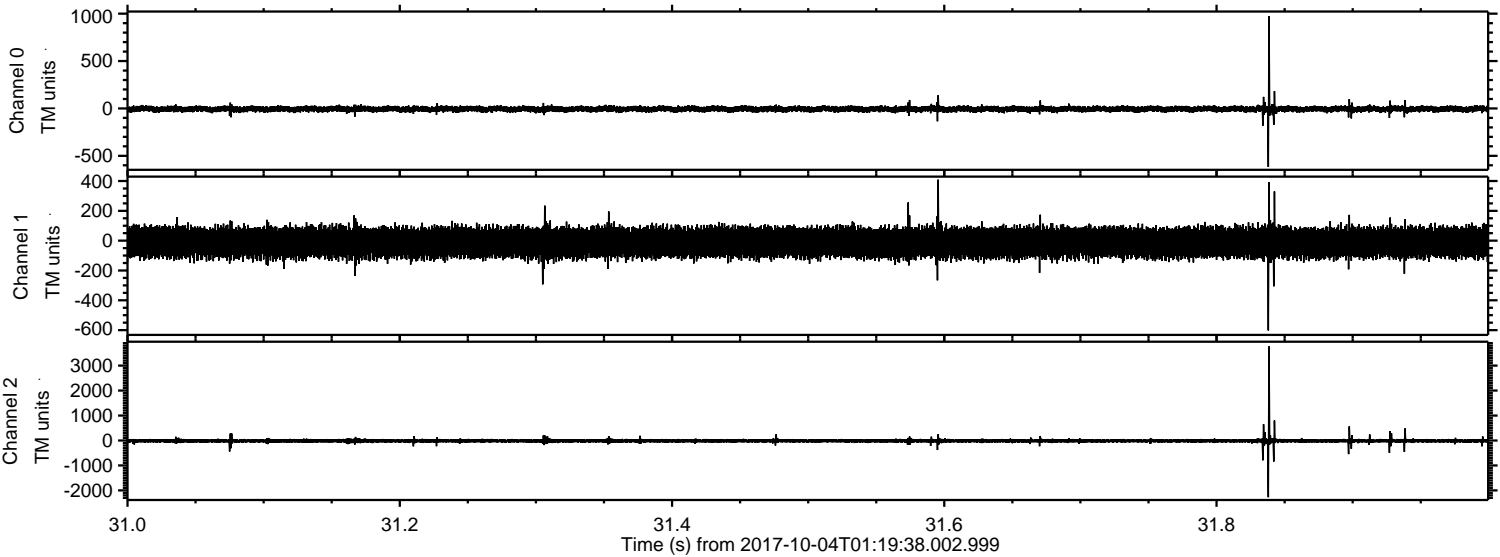
Channel 2
mn: -2573
mx: 2372
 μ : -16.1
 σ : 49.3

ELMAVAN 3D WAVEFORMS (Measured data sampled at 50 kHz) 51000 packets of 144 samples from 2017-10-04T01:19:38.002.999. Part 120/147

Processed Wed Oct 4 03:27:13 2017 by ELM ver.2012-10-06 from 001__elm20171004_011936__dat00.bin



Processed Wed Oct 4 03:27:14 2017 by ELM ver.2012-10-06 from 001__elm20171004_011936__dat00.bin



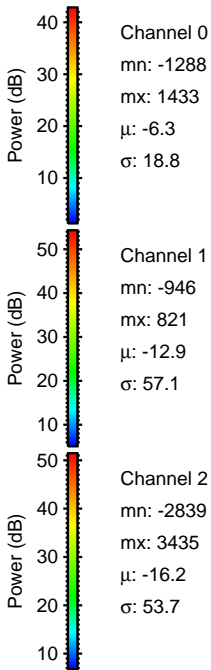
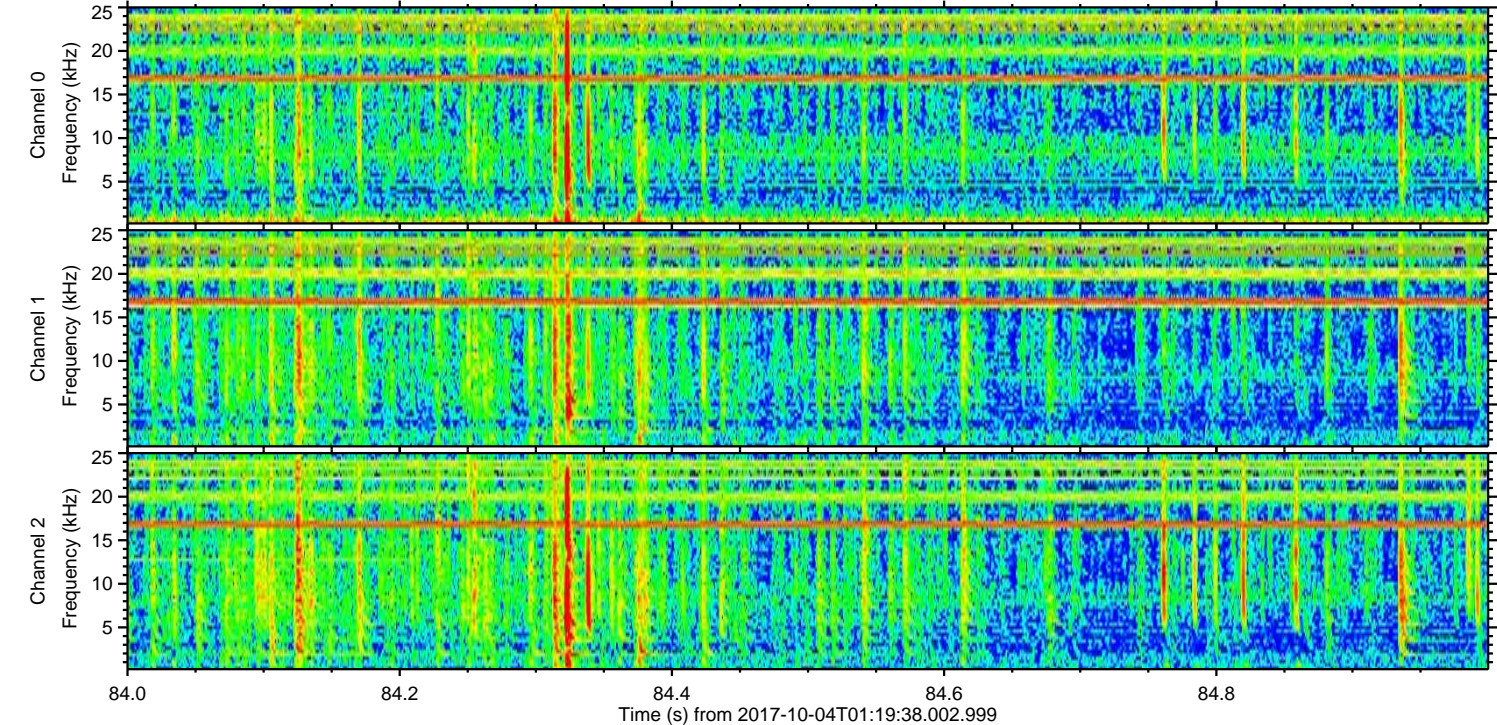
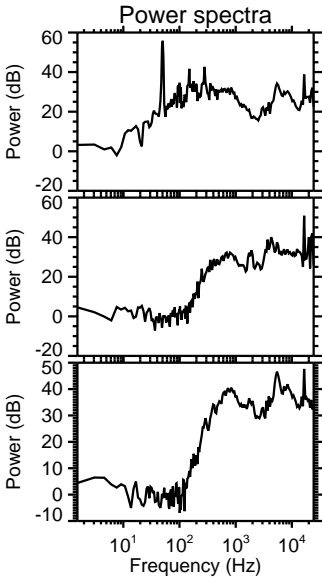
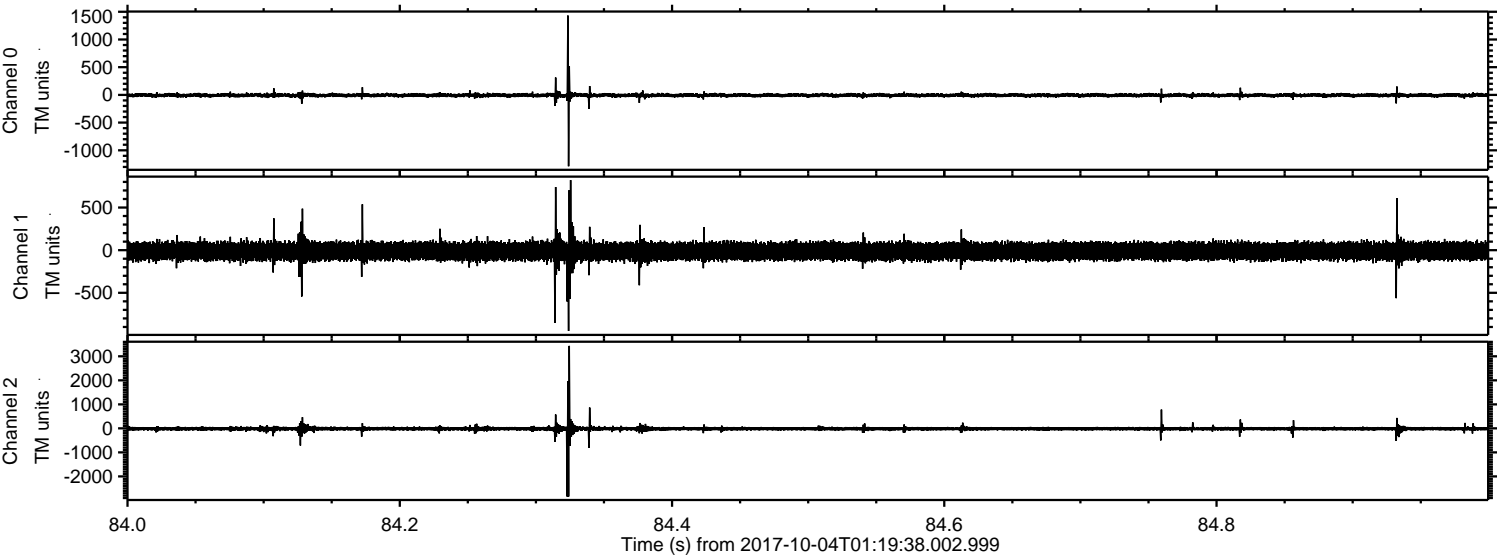
Channel 0
mn: -617
mx: 974
 μ : -6.3
 σ : 16.9

Channel 1
mn: -602
mx: 409
 μ : -12.9
 σ : 52.7

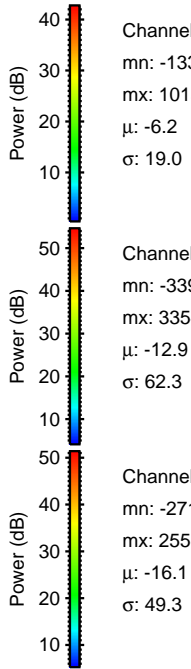
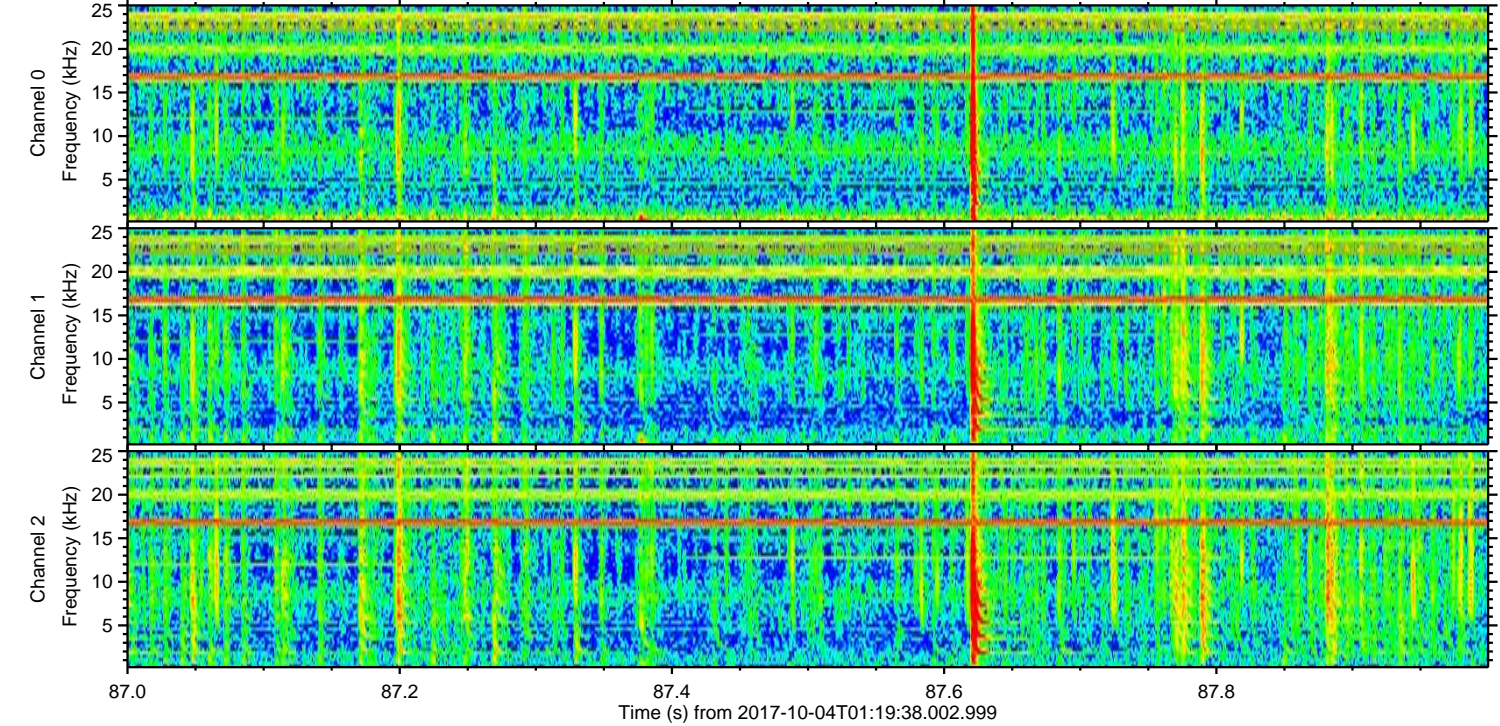
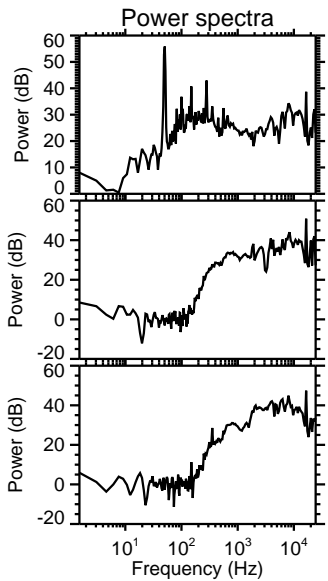
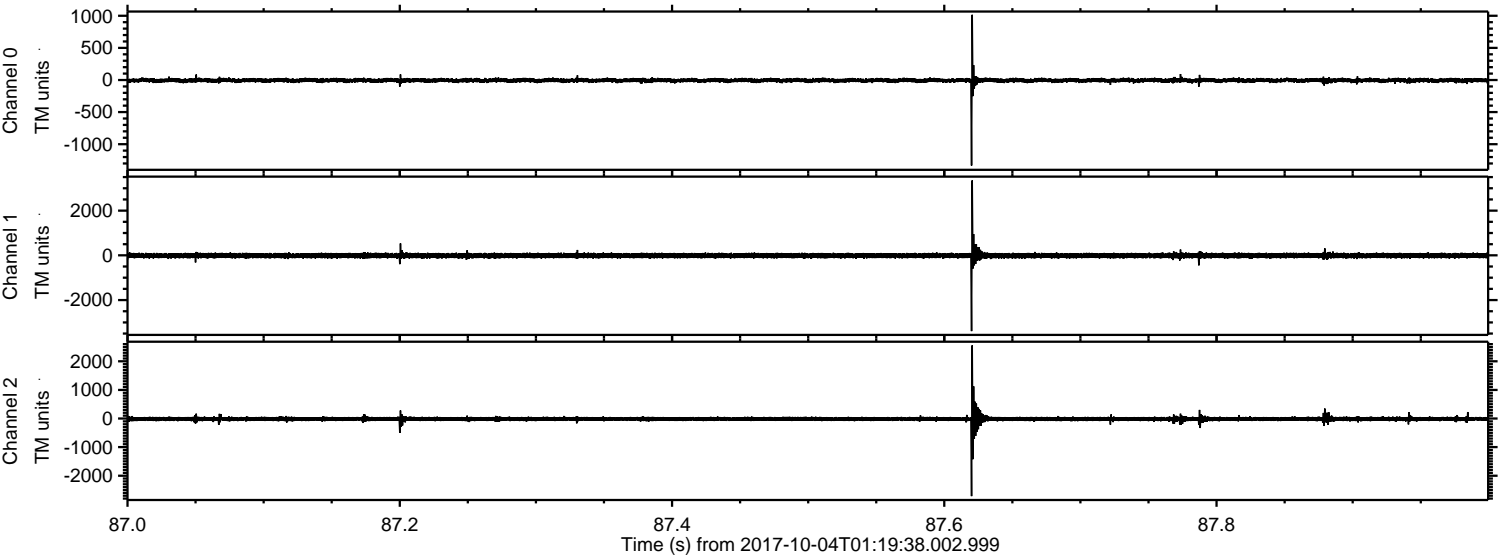
Channel 2
mn: -2272
mx: 3770
 μ : -16.1
 σ : 46.3

ELMAVAN 3D WAVEFORMS (Measured data sampled at 50 kHz) 51000 packets of 144 samples from 2017-10-04T01:19:38.002.999. Part 85/147

Processed Wed Oct 4 03:27:15 2017 by ELM ver.2012-10-06 from 001__elm20171004_011936__dat00.bin

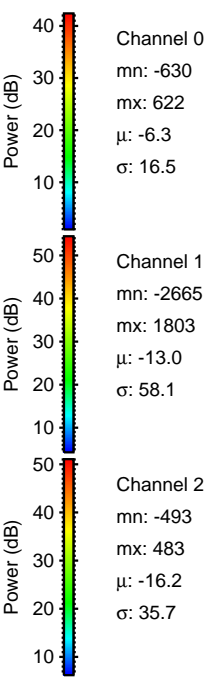
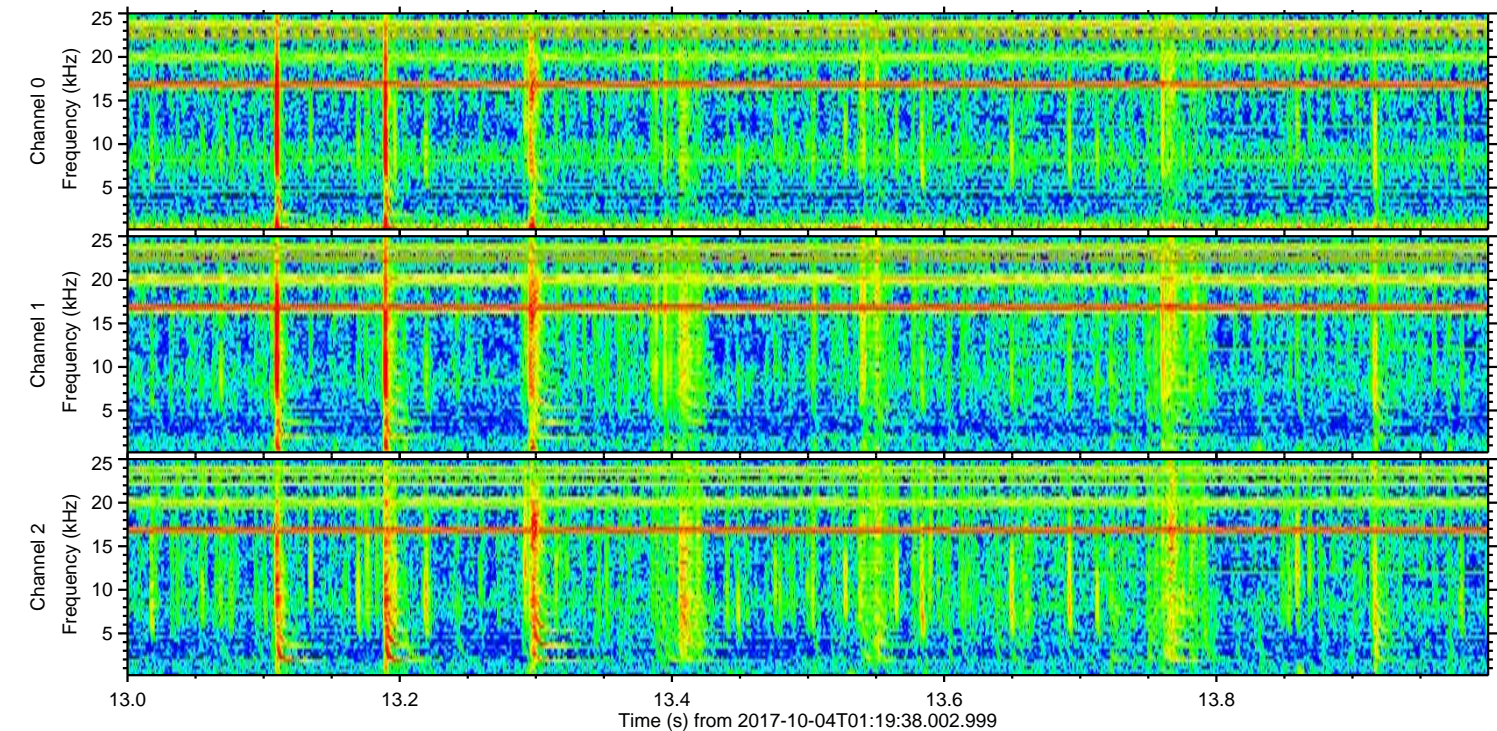
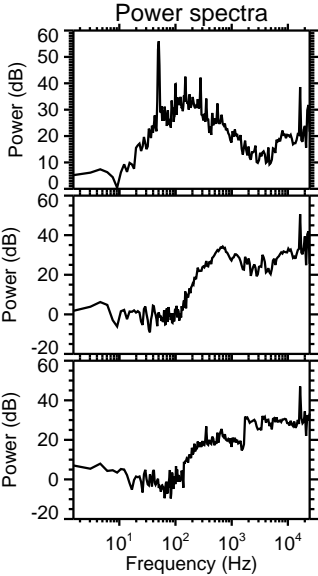
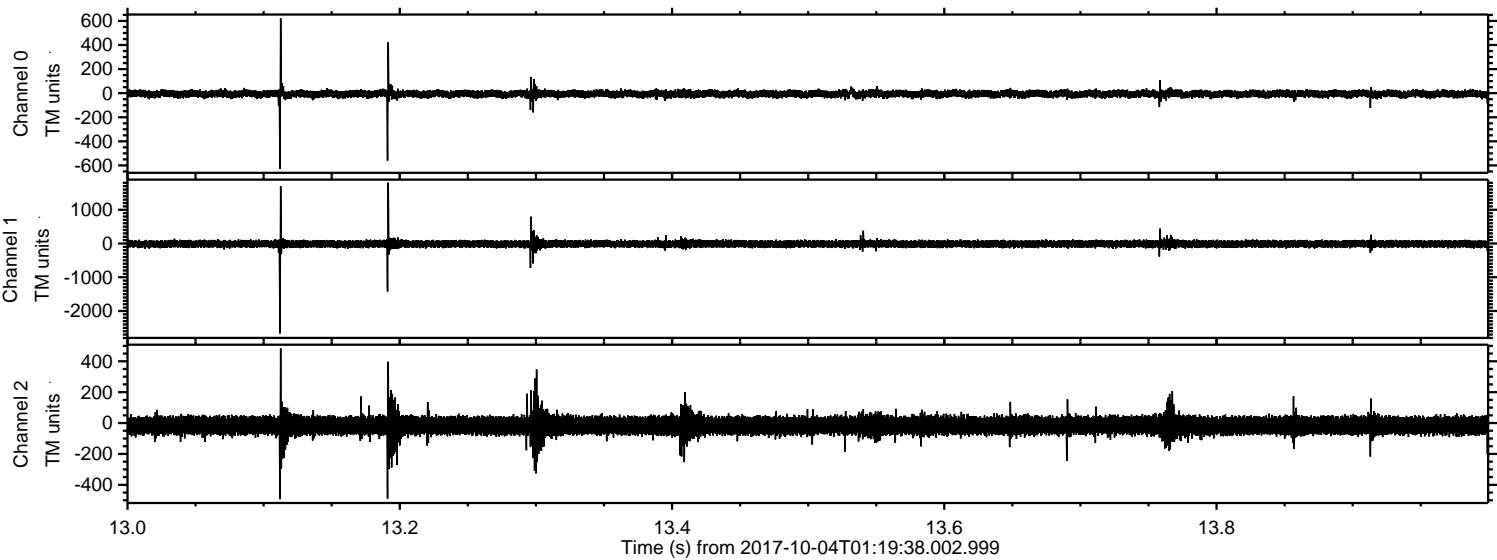


Processed Wed Oct 4 03:27:15 2017 by ELM ver.2012-10-06 from 001__elm20171004_011936__dat00.bin



ELMAVAN 3D WAVEFORMS (Measured data sampled at 50 kHz) 51000 packets of 144 samples from 2017-10-04T01:19:38.002.999. Part 14/147

Processed Wed Oct 4 03:27:16 2017 by ELM ver.2012-10-06 from 001__elm20171004_011936__dat00.bin



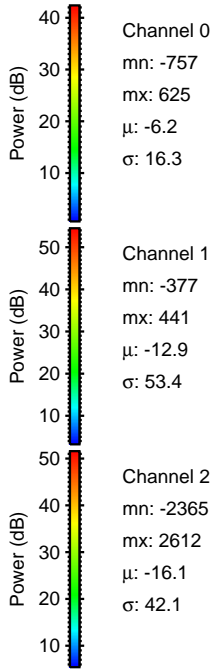
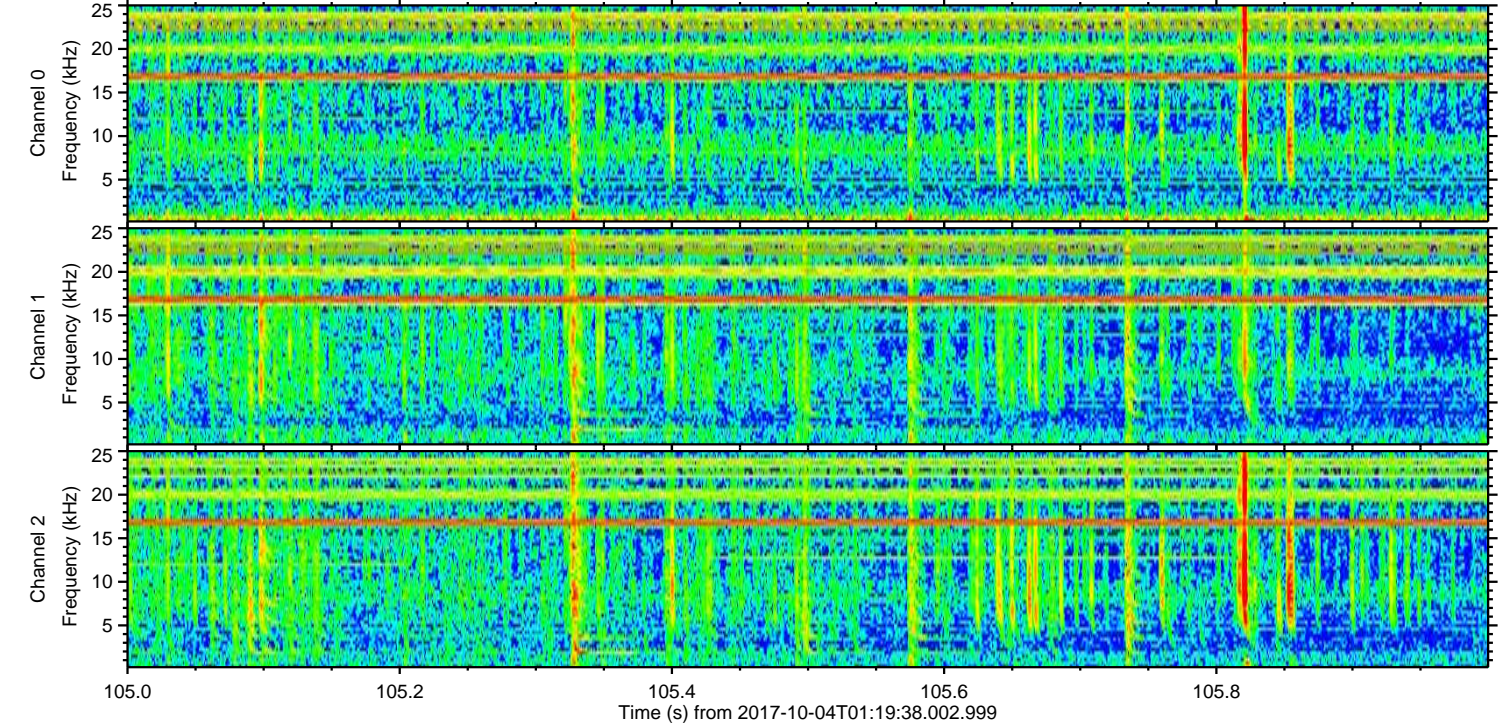
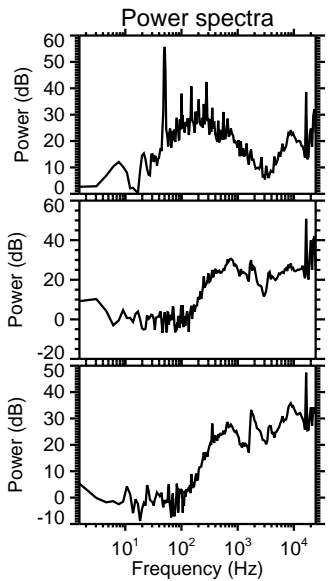
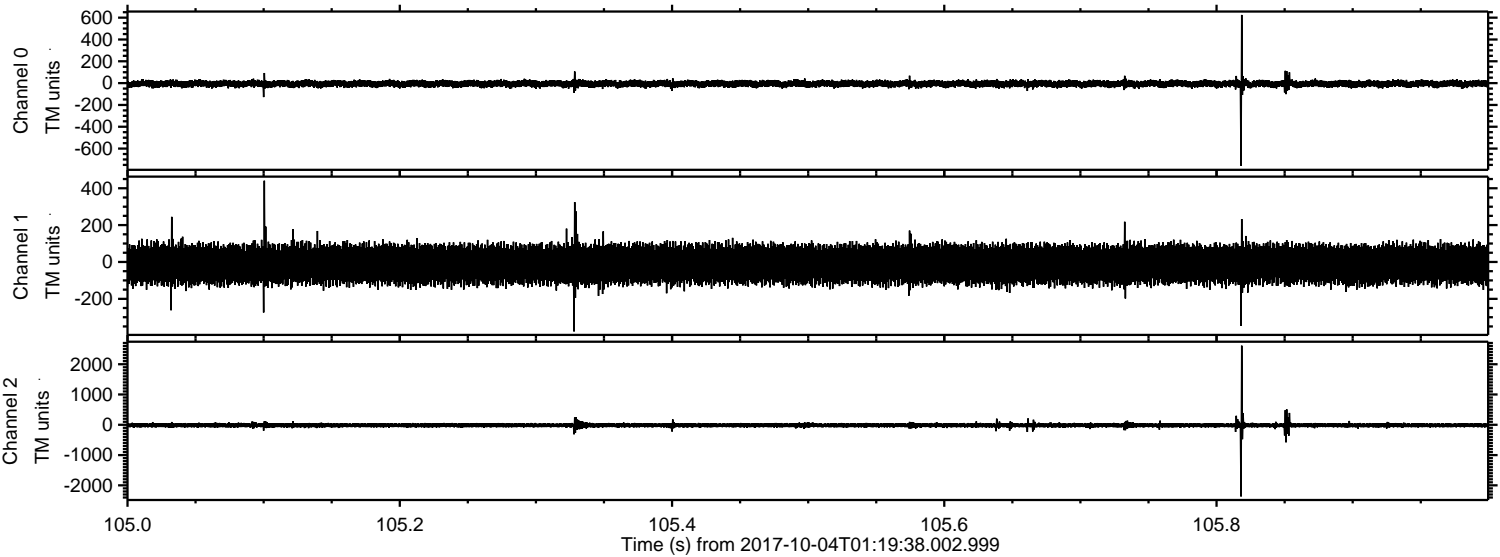
Channel 0
mn: -630
mx: 622
 μ : -6.3
 σ : 16.5

Channel 1
mn: -2665
mx: 1803
 μ : -13.0
 σ : 58.1

Channel 2
mn: -493
mx: 483
 μ : -16.2
 σ : 35.7

ELMAVAN 3D WAVEFORMS (Measured data sampled at 50 kHz) 51000 packets of 144 samples from 2017-10-04T01:19:38.002.999. Part 106/147

Processed Wed Oct 4 03:27:17 2017 by ELM ver.2012-10-06 from 001__elm20171004_011936__dat00.bin

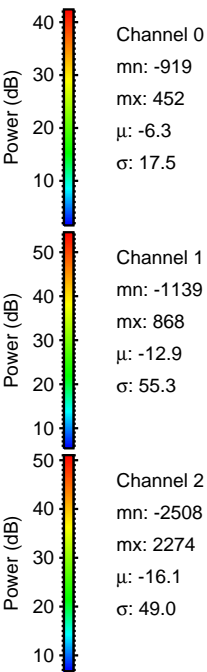
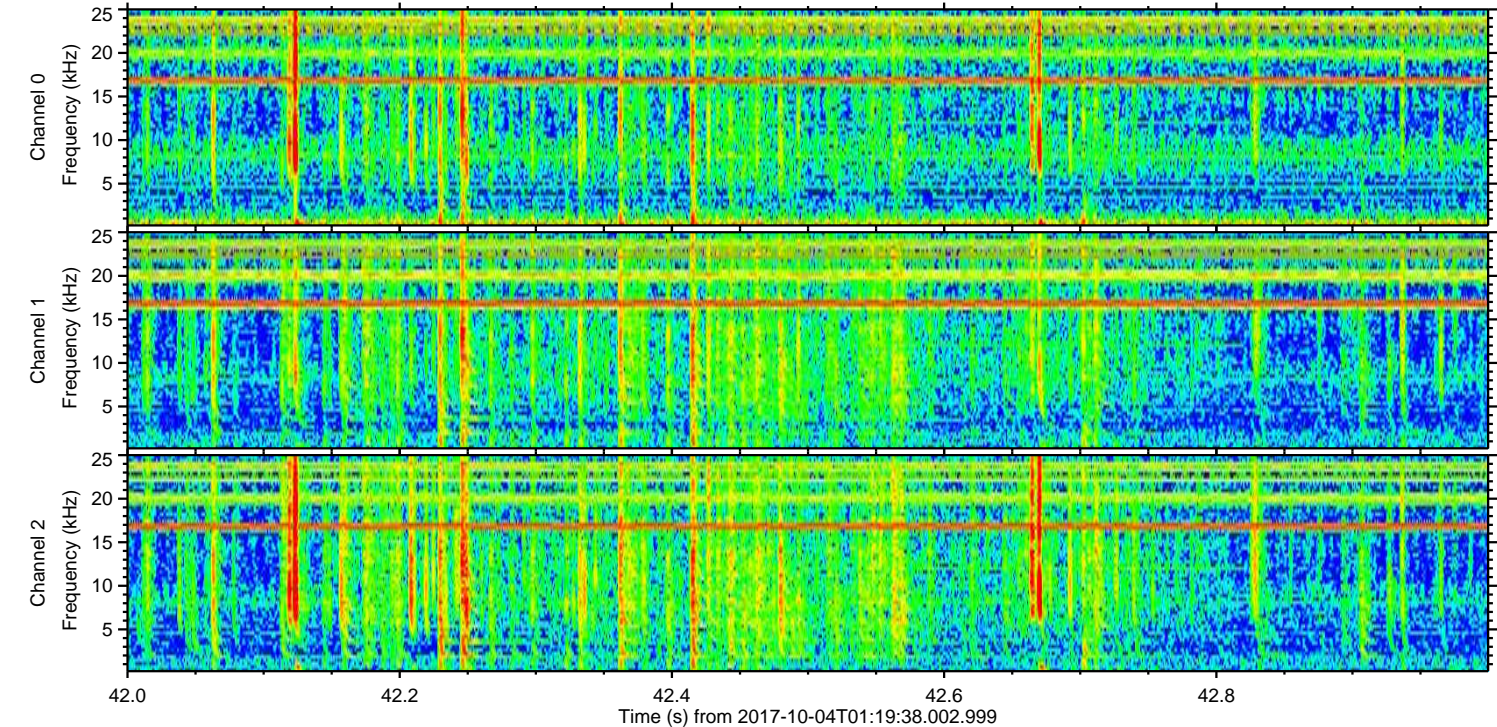
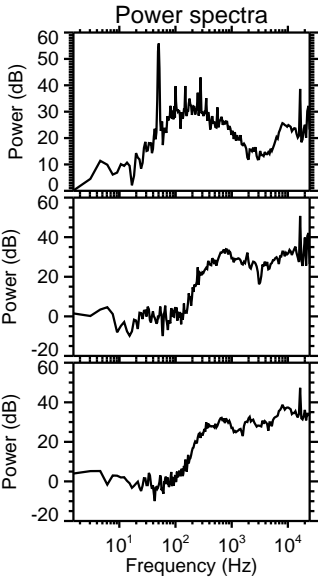
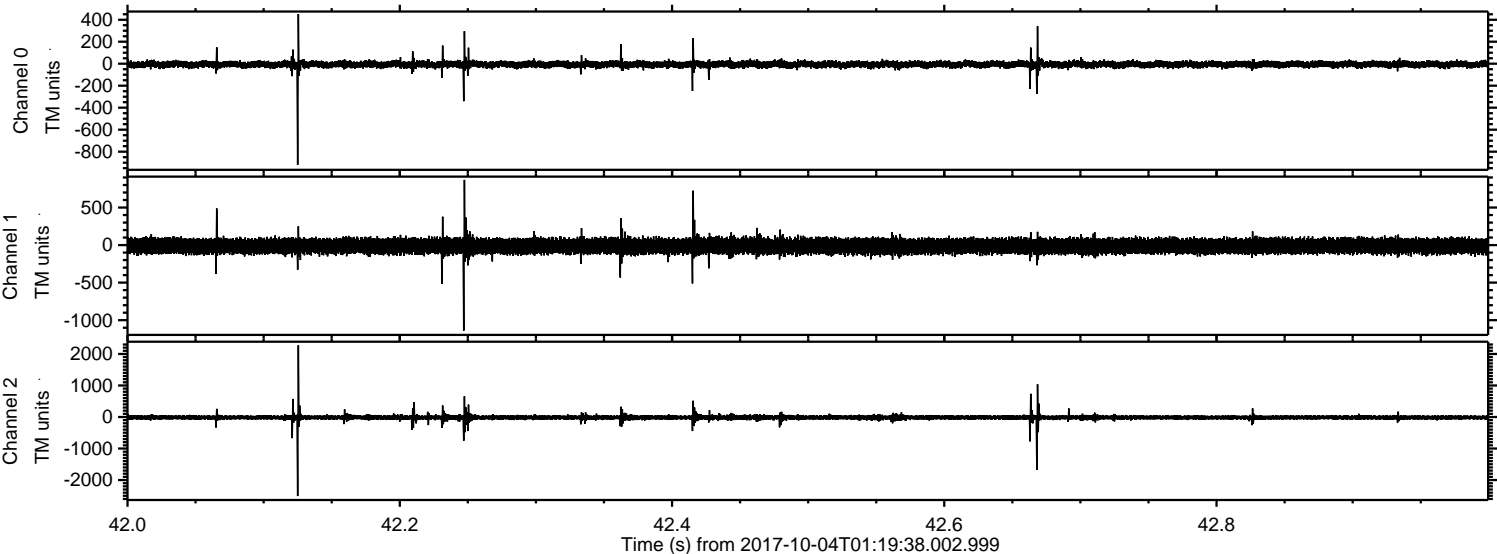


Channel 0
mn: -757
mx: 625
 μ : -6.2
 σ : 16.3

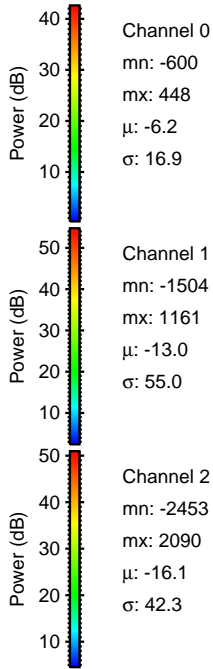
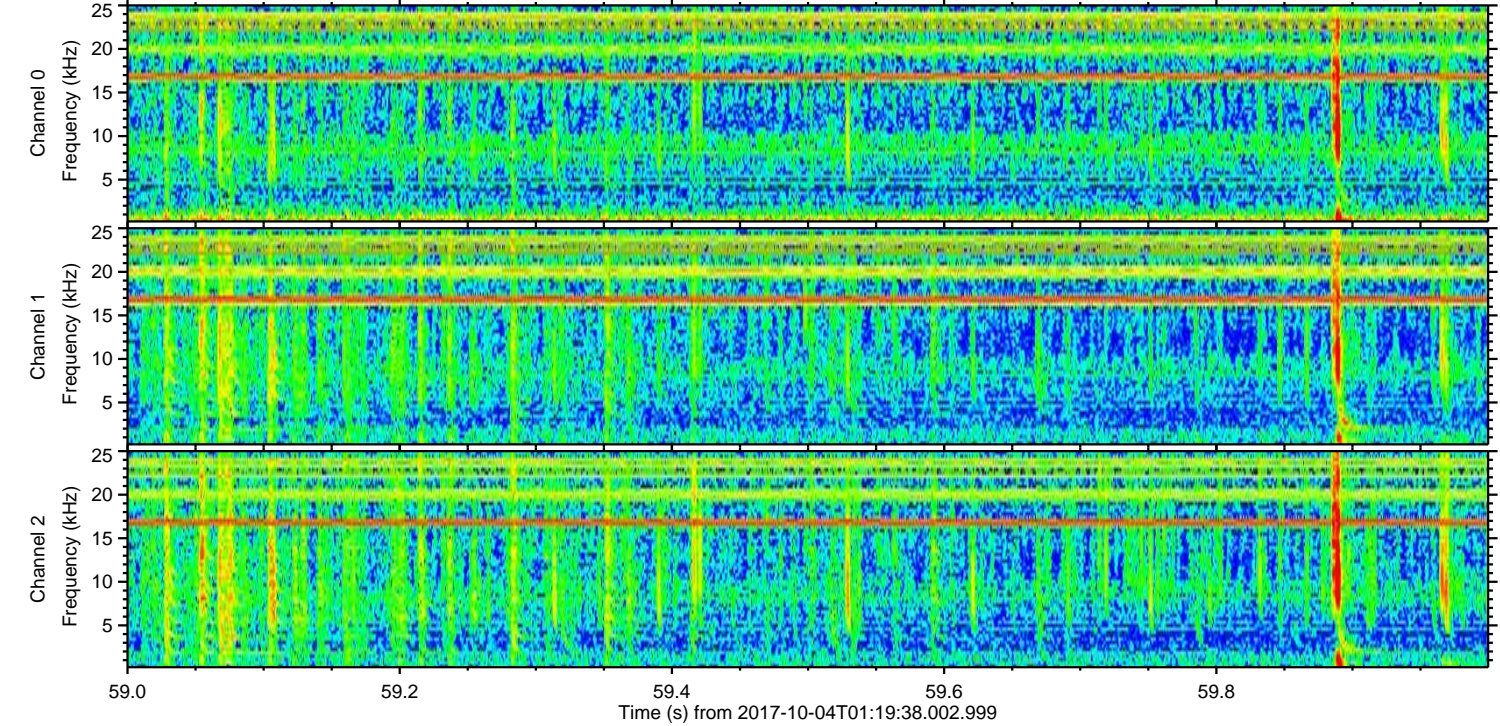
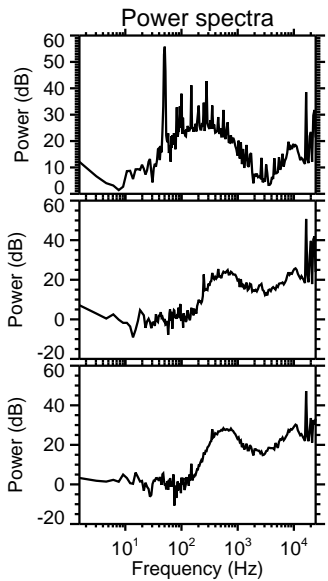
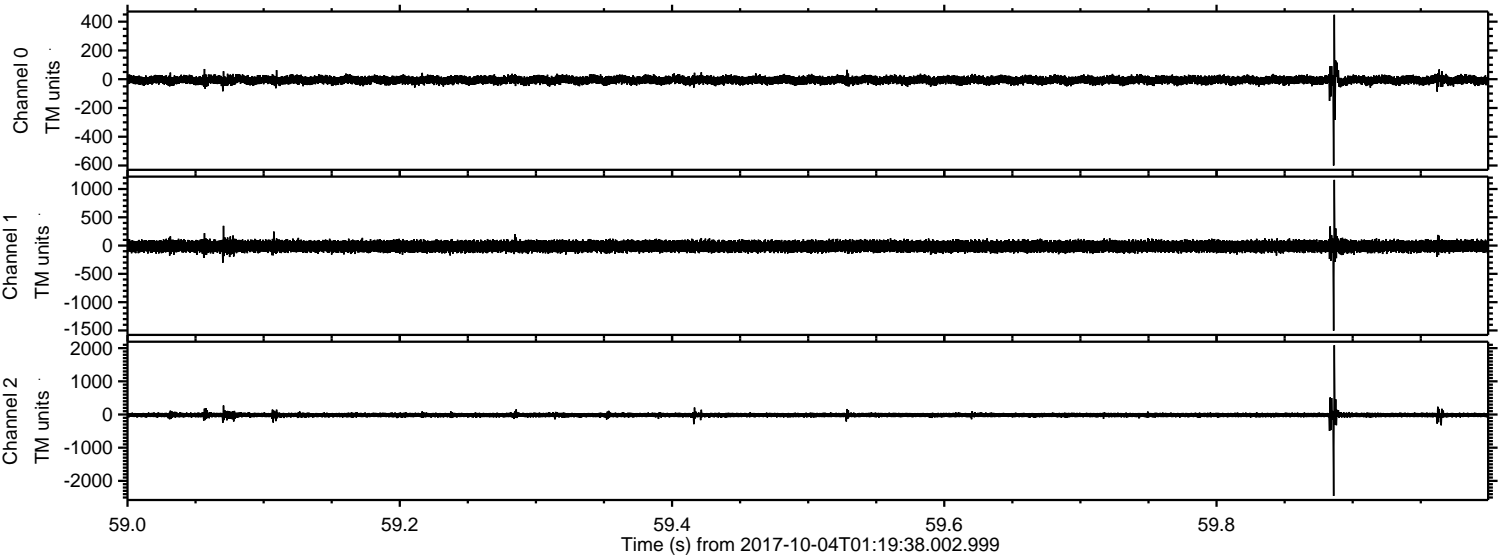
Channel 1
mn: -377
mx: 441
 μ : -12.9
 σ : 53.4

Channel 2
mn: -2365
mx: 2612
 μ : -16.1
 σ : 42.1

Processed Wed Oct 4 03:27:17 2017 by ELM ver.2012-10-06 from 001__elm20171004_011936__dat00.bin



Processed Wed Oct 4 03:27:18 2017 by ELM ver.2012-10-06 from 001__elm20171004_011936__dat00.bin



ELMAVAN 3D WAVEFORMS (Measured data sampled at 50 kHz) 51000 packets of 144 samples from 2017-10-04T01:19:38.002.999. Part 79/147

Processed Wed Oct 4 03:27:18 2017 by ELM ver.2012-10-06 from 001__elm20171004_011936__dat00.bin

