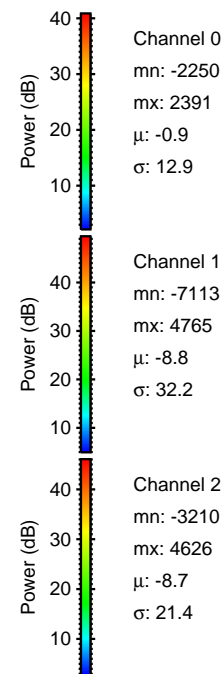
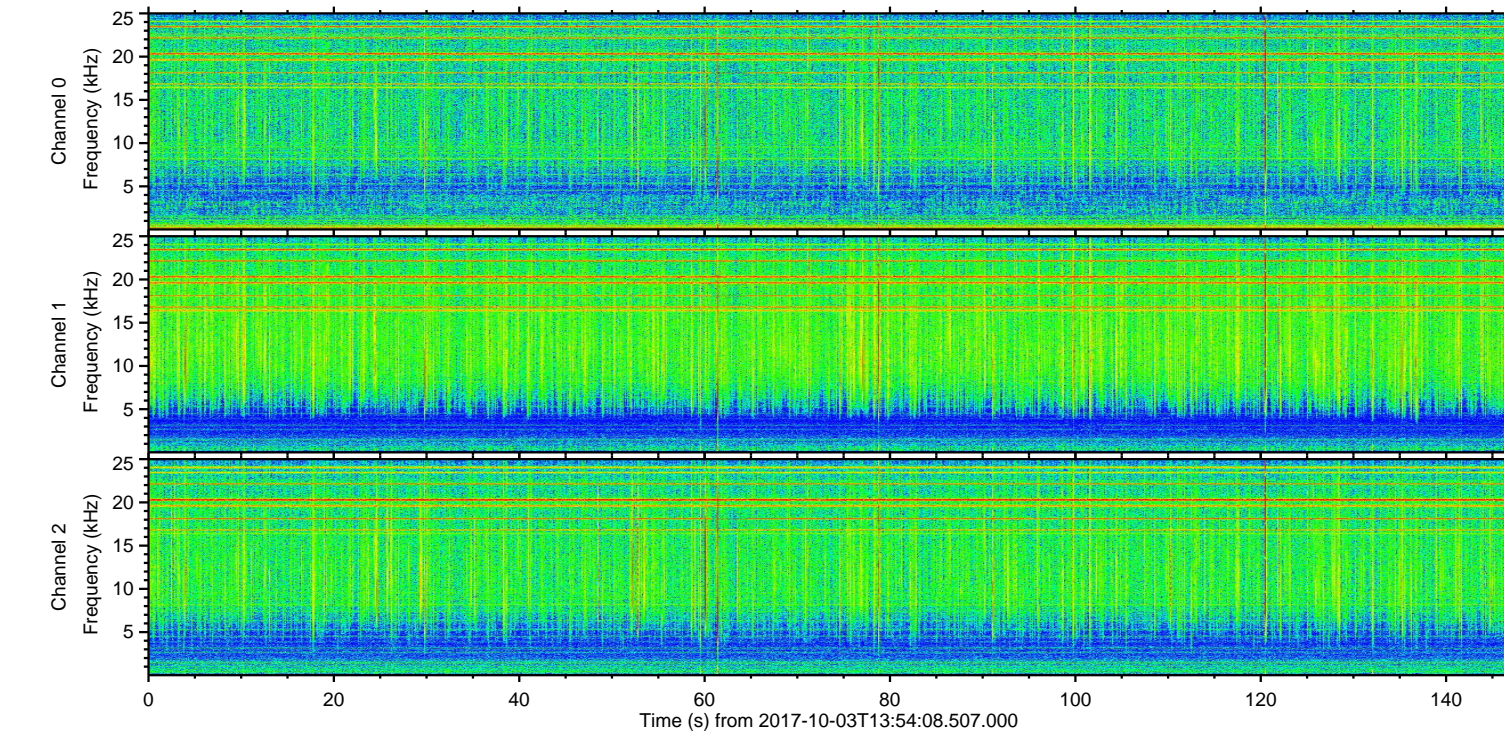
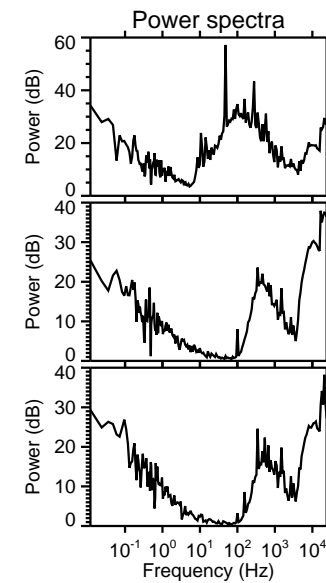
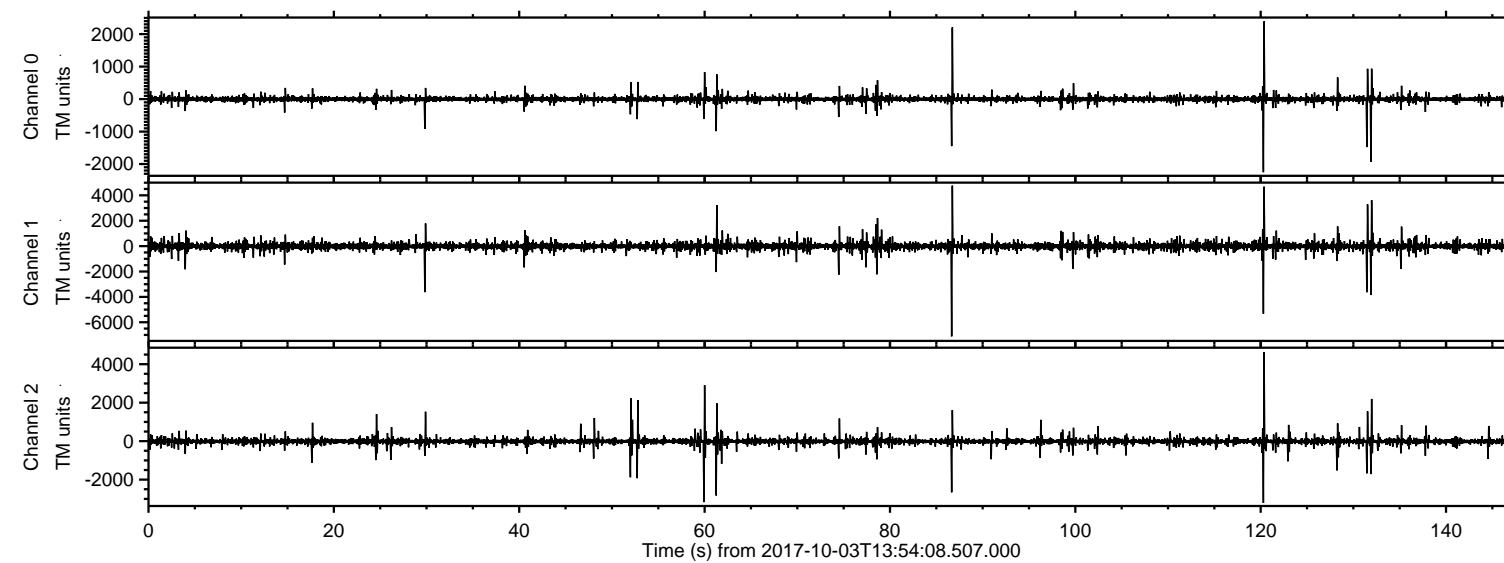


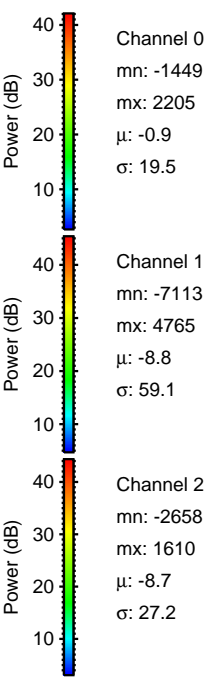
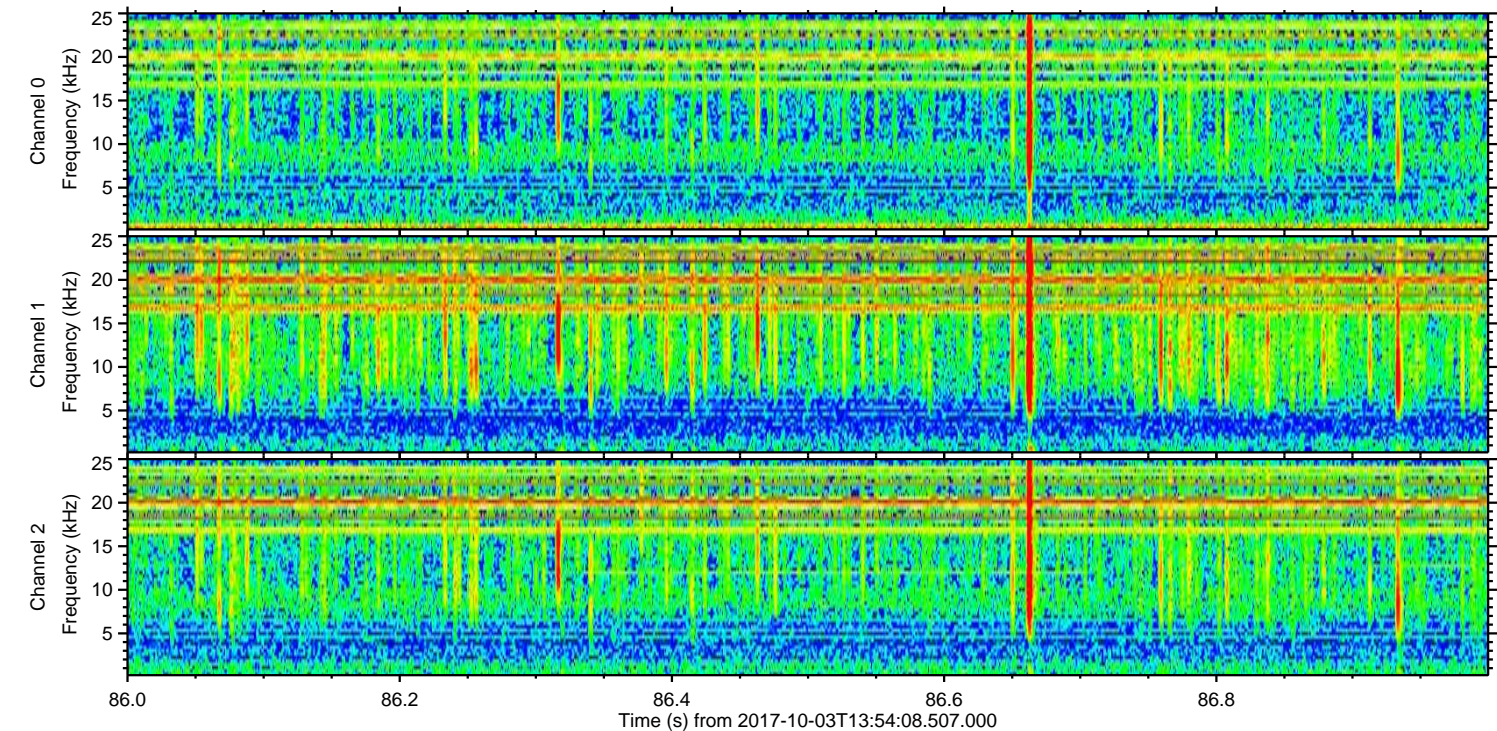
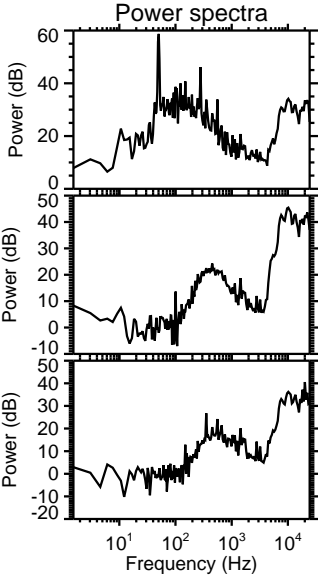
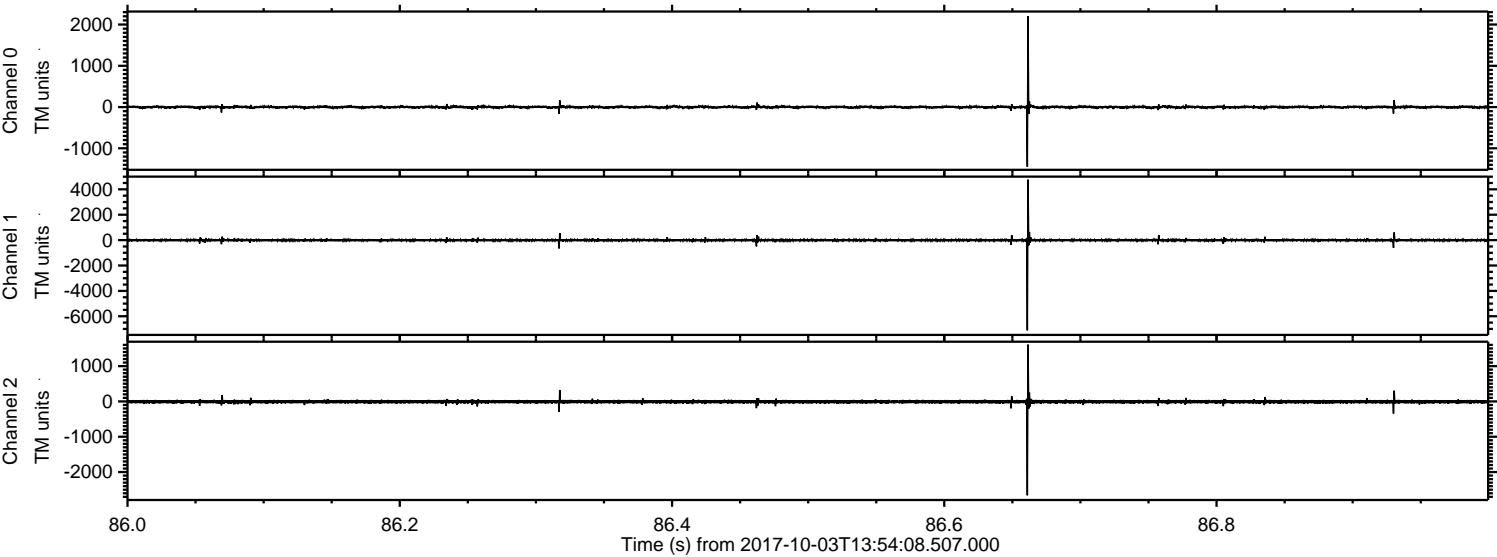
# ELMAVAN 3D WAVEFORMS (Measured data sampled at 50 kHz) 51000 packets of 144 samples from 2017-10-03T13:54:08.507.000.

Processed Tue Oct 3 16:01:41 2017 by ELM ver.2012-10-06 from 001\_\_elm20171003\_135407\_\_dat00.bin





Processed Tue Oct 3 16:01:47 2017 by ELM ver.2012-10-06 from 001\_\_elm20171003\_135407\_\_dat00.bin



Channel 0  
mn: -1449  
mx: 2205  
 $\mu$ : -0.9  
 $\sigma$ : 19.5

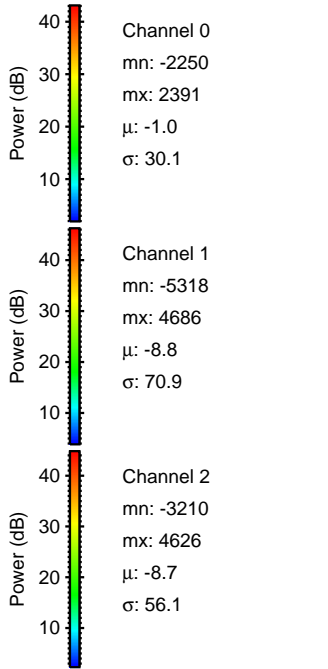
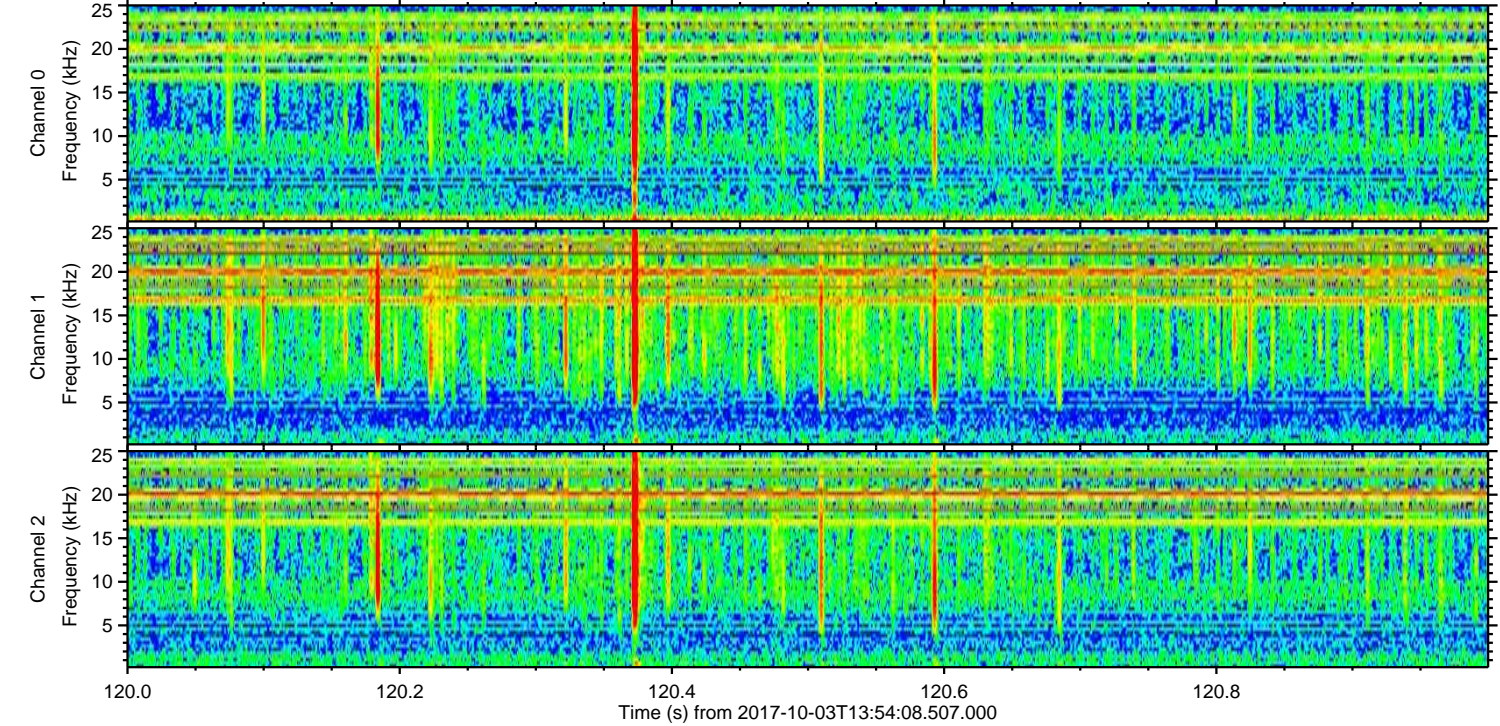
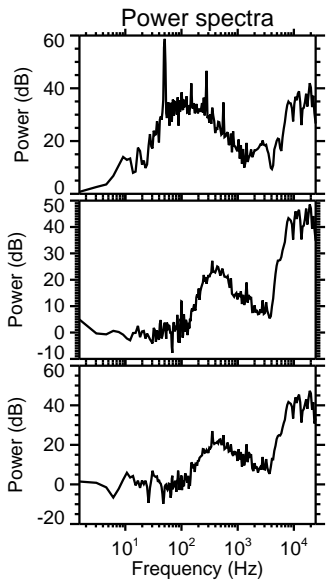
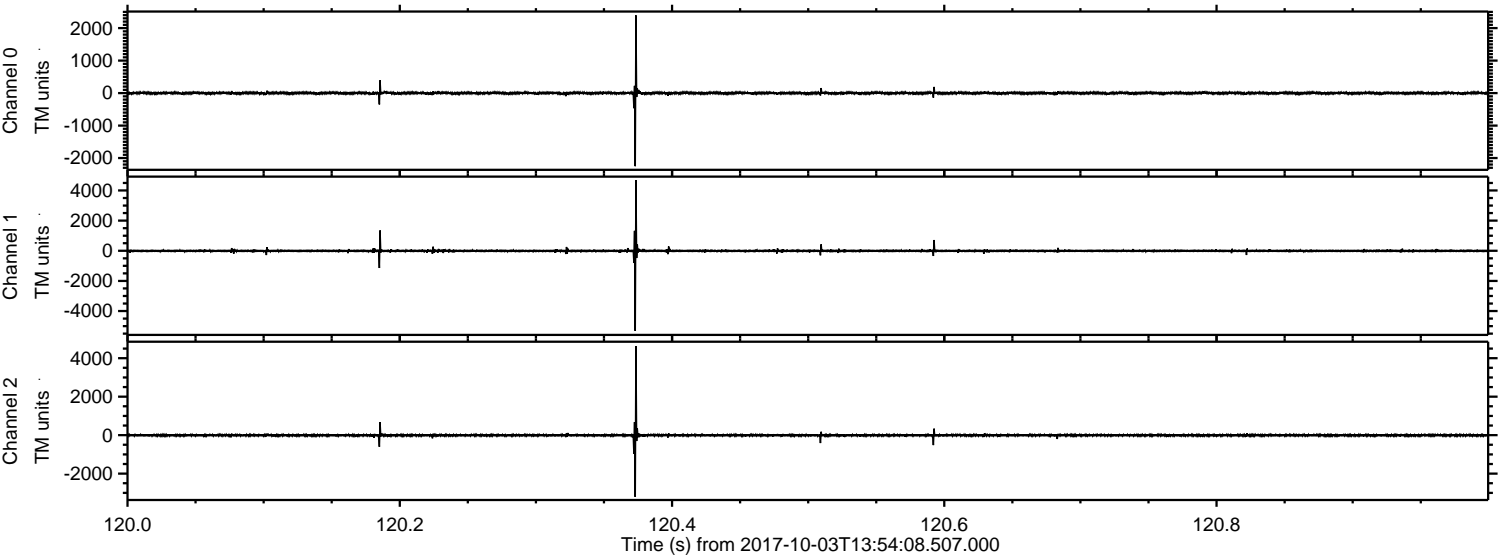
Channel 1  
mn: -7113  
mx: 4765  
 $\mu$ : -8.8  
 $\sigma$ : 59.1

Channel 2  
mn: -2658  
mx: 1610  
 $\mu$ : -8.7  
 $\sigma$ : 27.2



ELMAVAN 3D WAVEFORMS (Measured data sampled at 50 kHz) 51000 packets of 144 samples from 2017-10-03T13:54:08.507.000. Part 121/147

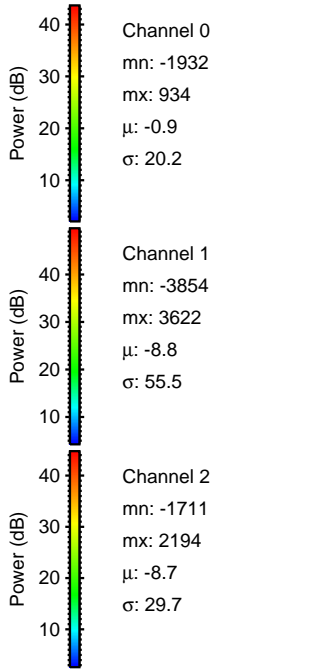
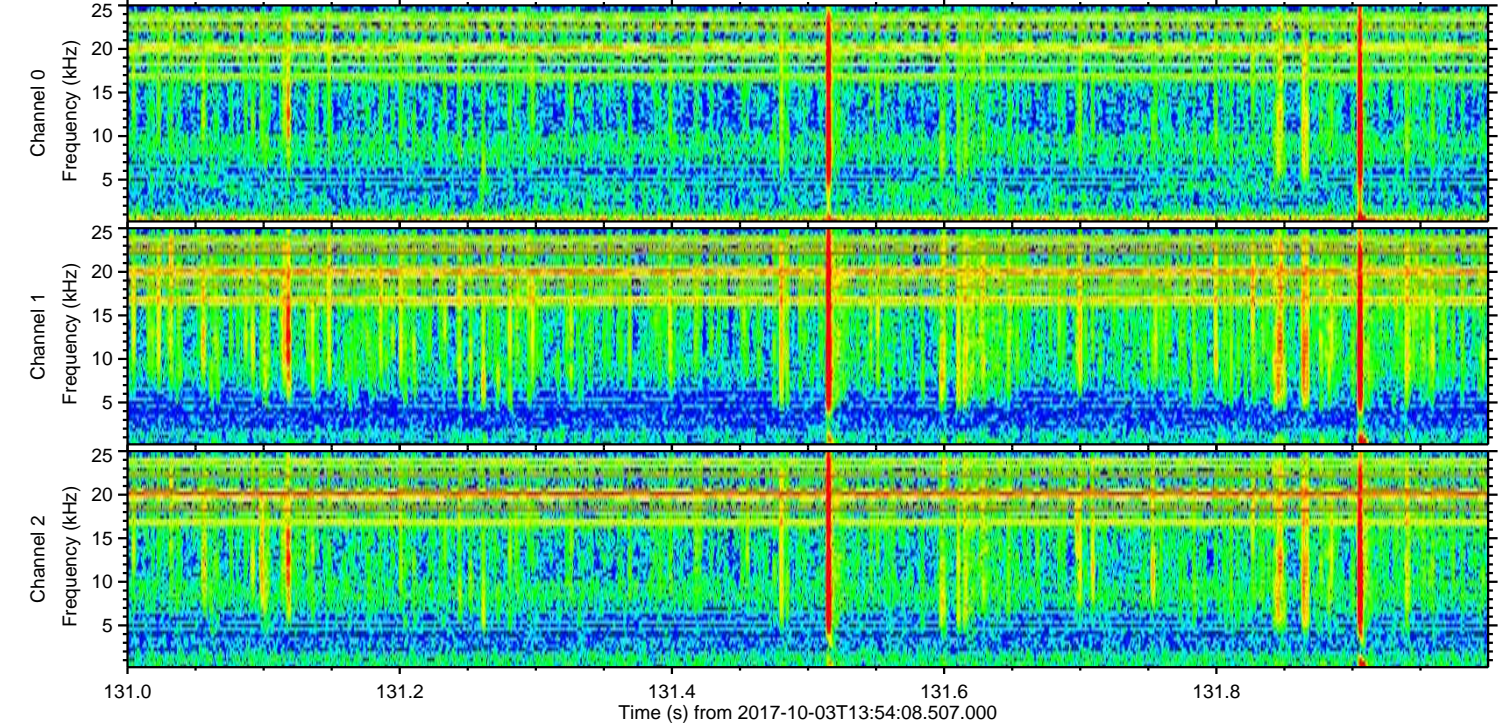
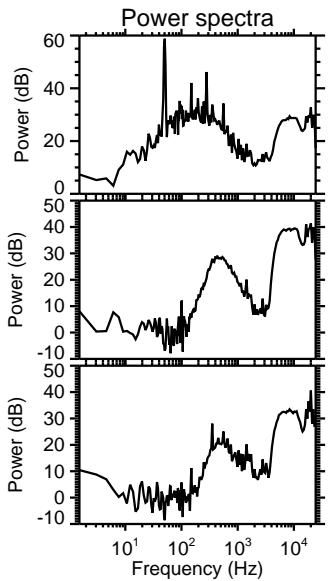
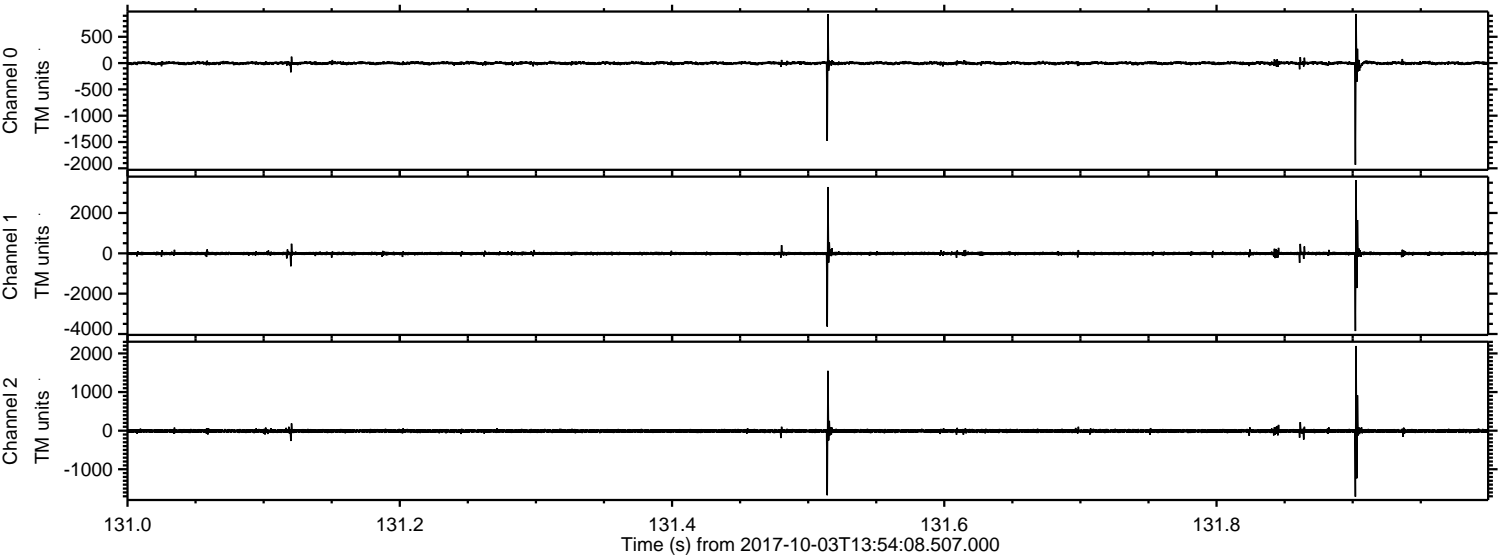
Processed Tue Oct 3 16:01:48 2017 by ELM ver.2012-10-06 from 001\_\_elm20171003\_135407\_\_dat00.bin





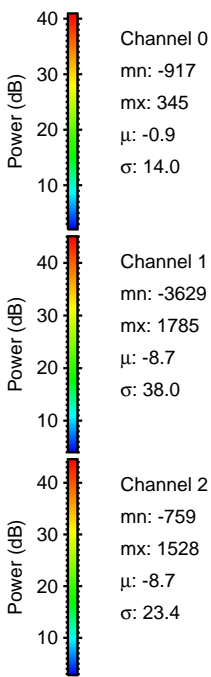
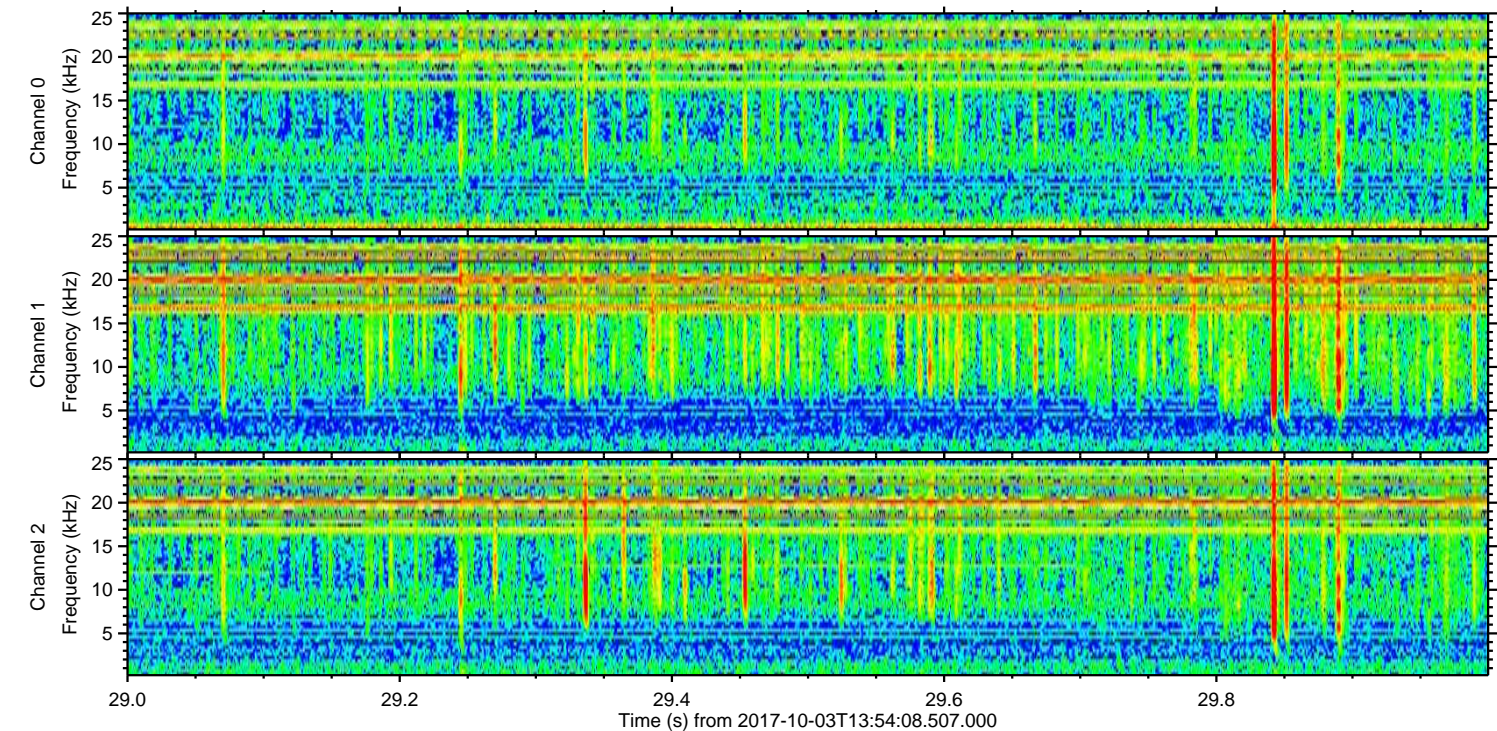
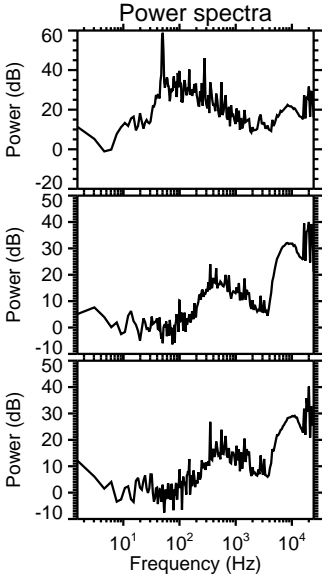
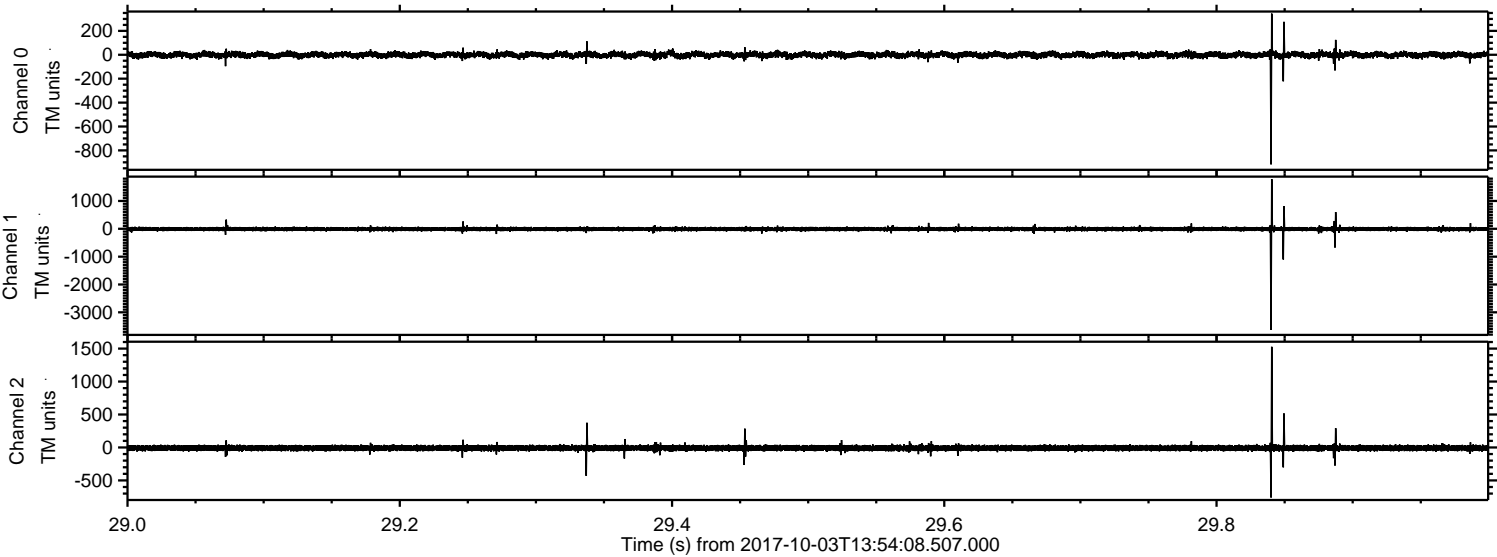
ELMAVAN 3D WAVEFORMS (Measured data sampled at 50 kHz) 51000 packets of 144 samples from 2017-10-03T13:54:08.507.000. Part 132/147

Processed Tue Oct 3 16:01:48 2017 by ELM ver.2012-10-06 from 001\_\_elm20171003\_135407\_\_dat00.bin



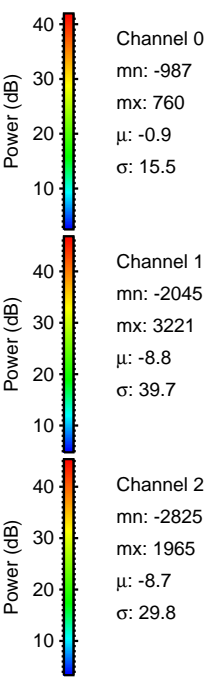
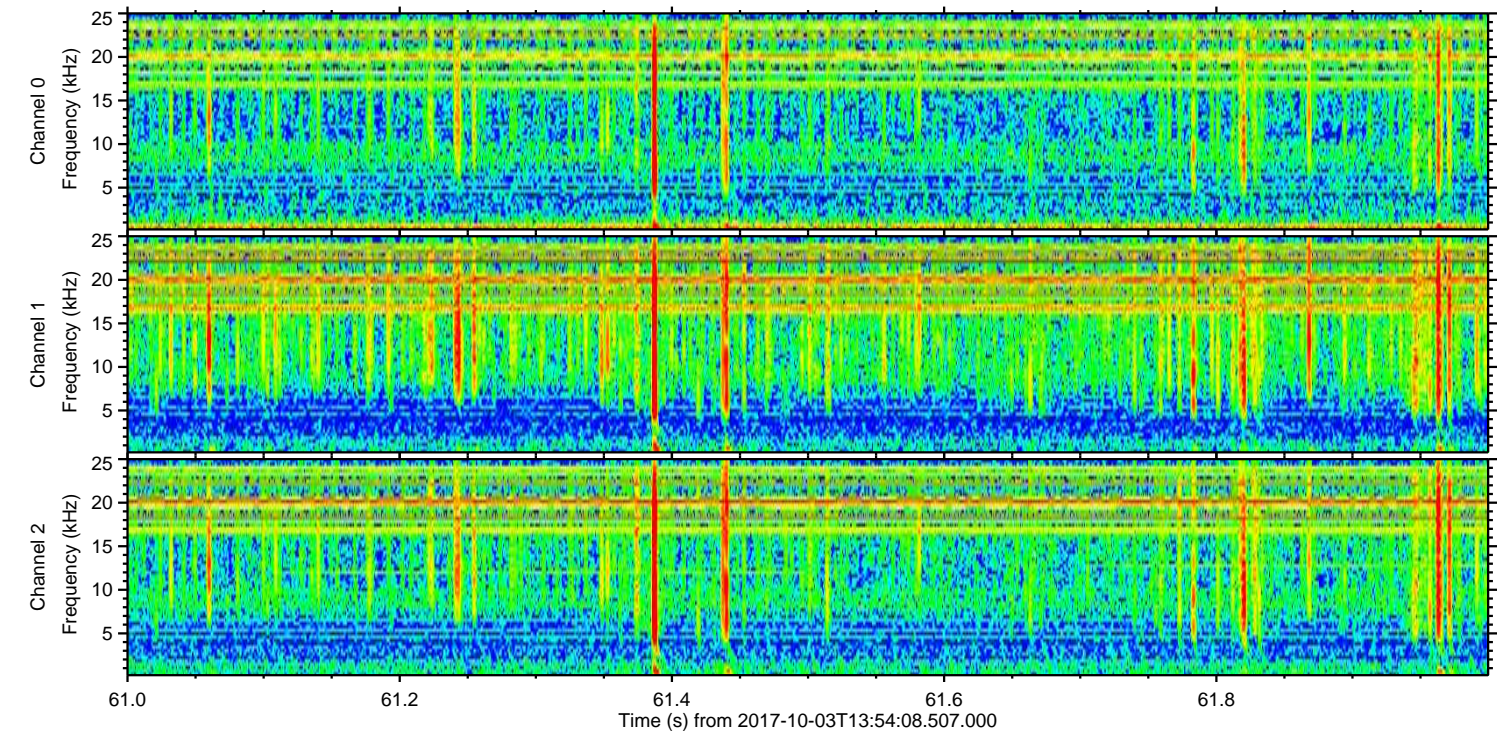
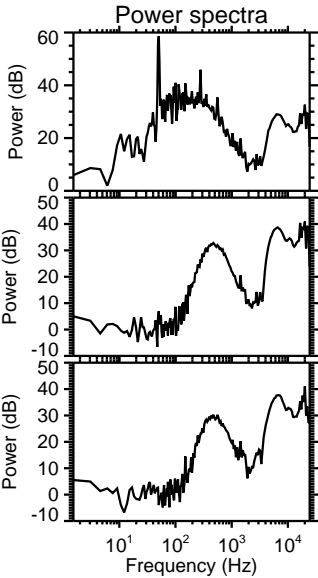
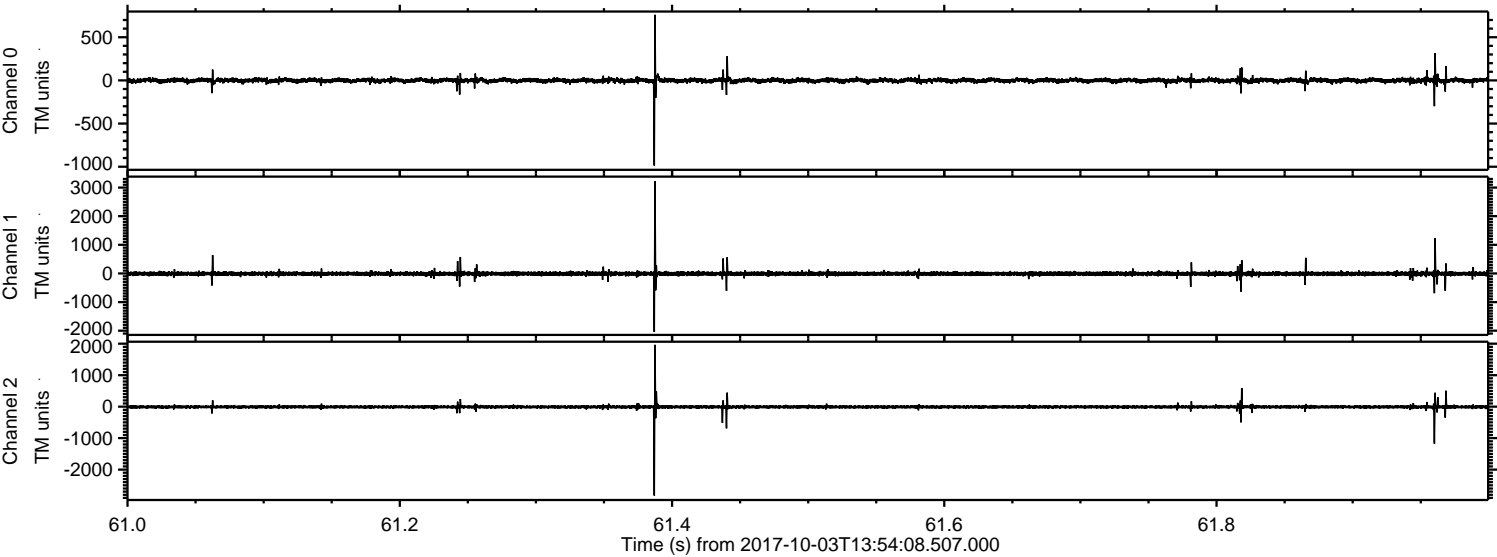


Processed Tue Oct 3 16:01:49 2017 by ELM ver.2012-10-06 from 001\_\_elm20171003\_135407\_\_dat00.bin





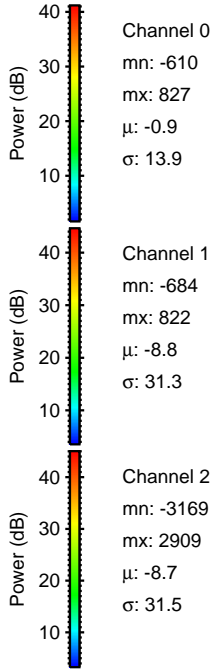
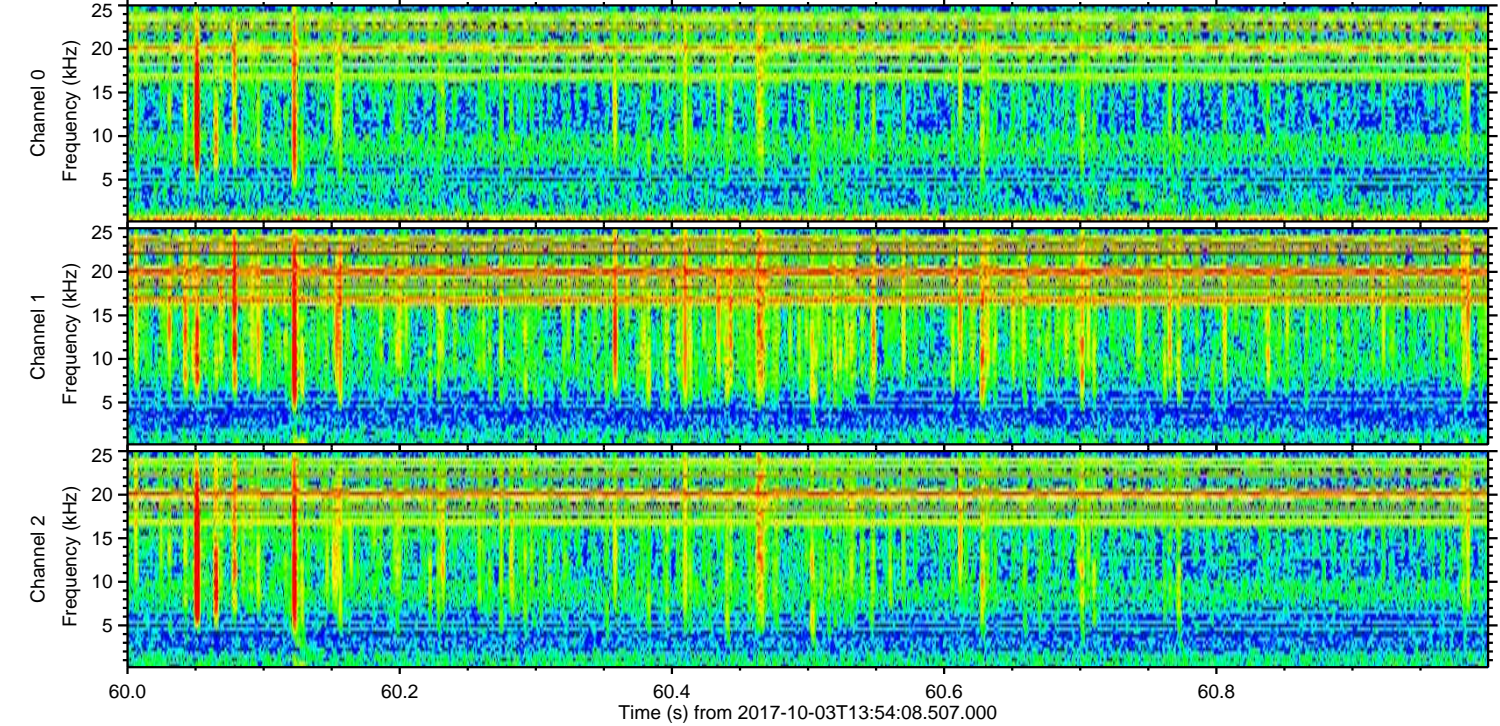
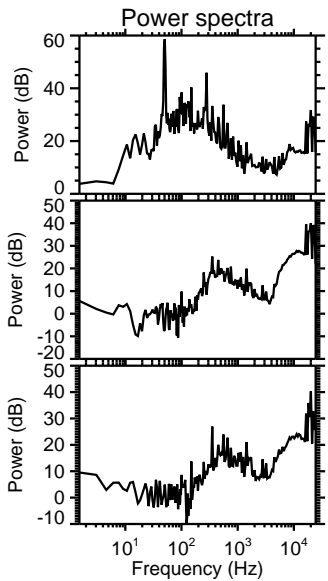
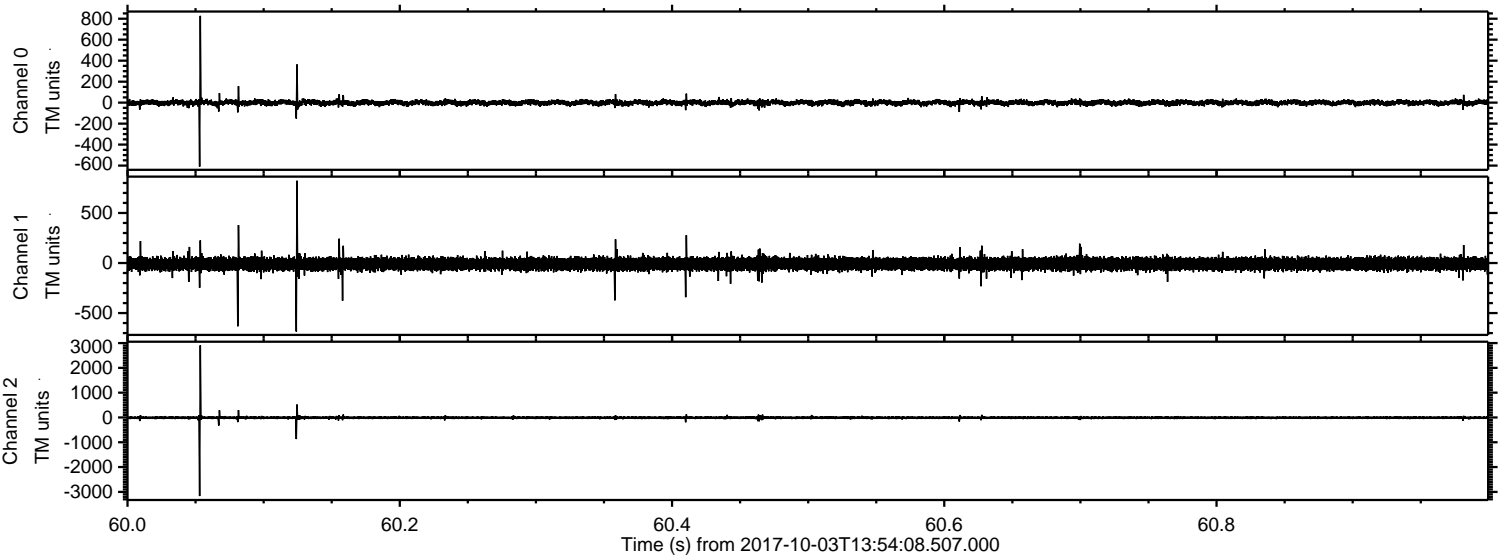
Processed Tue Oct 3 16:01:49 2017 by ELM ver.2012-10-06 from 001\_\_elm20171003\_135407\_\_dat00.bin





ELMAVAN 3D WAVEFORMS (Measured data sampled at 50 kHz) 51000 packets of 144 samples from 2017-10-03T13:54:08.507.000. Part 61/147

Processed Tue Oct 3 16:01:50 2017 by ELM ver.2012-10-06 from 001\_\_elm20171003\_135407\_\_dat00.bin



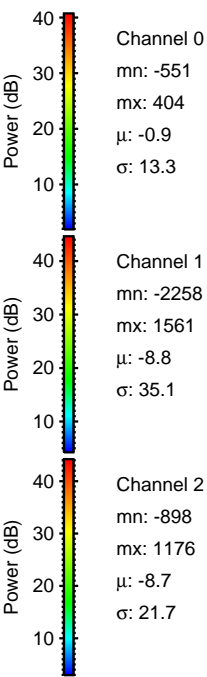
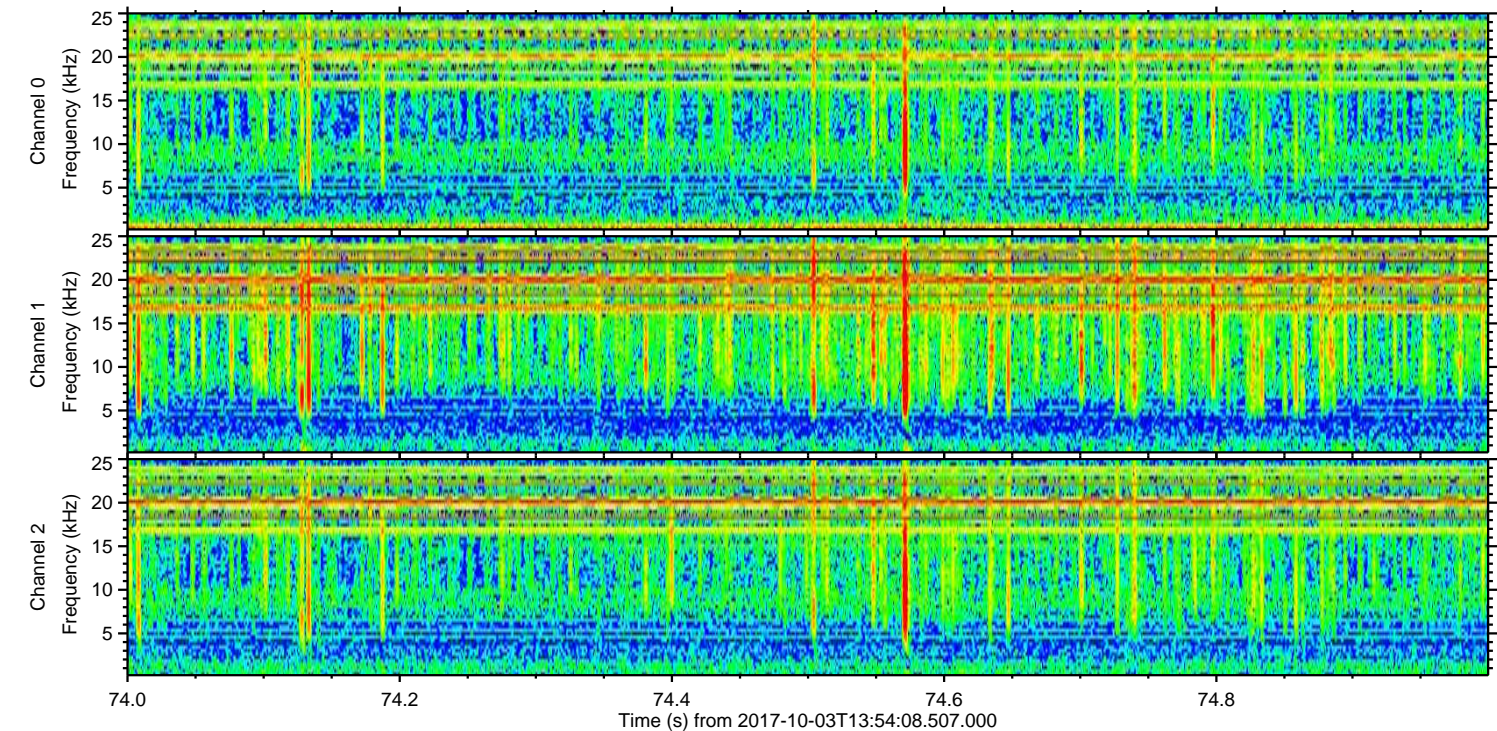
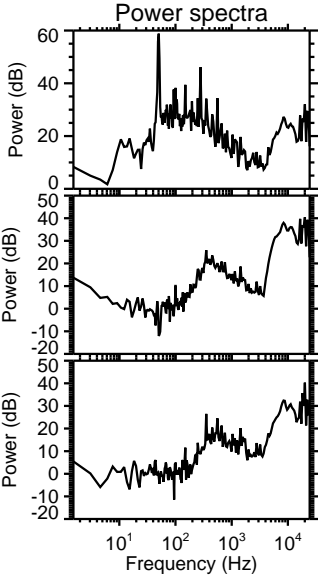
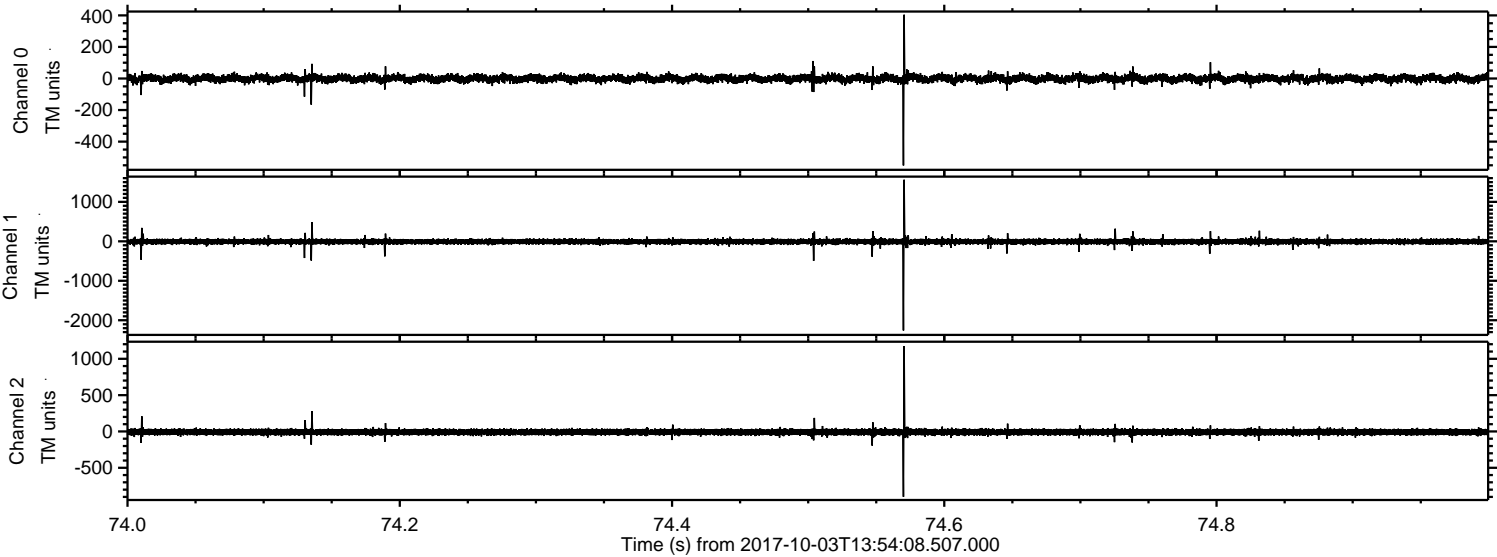
Channel 0  
mn: -610  
mx: 827  
 $\mu$ : -0.9  
 $\sigma$ : 13.9

Channel 1  
mn: -684  
mx: 822  
 $\mu$ : -8.8  
 $\sigma$ : 31.3

Channel 2  
mn: -3169  
mx: 2909  
 $\mu$ : -8.7  
 $\sigma$ : 31.5

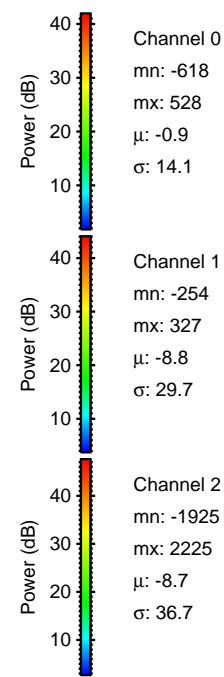
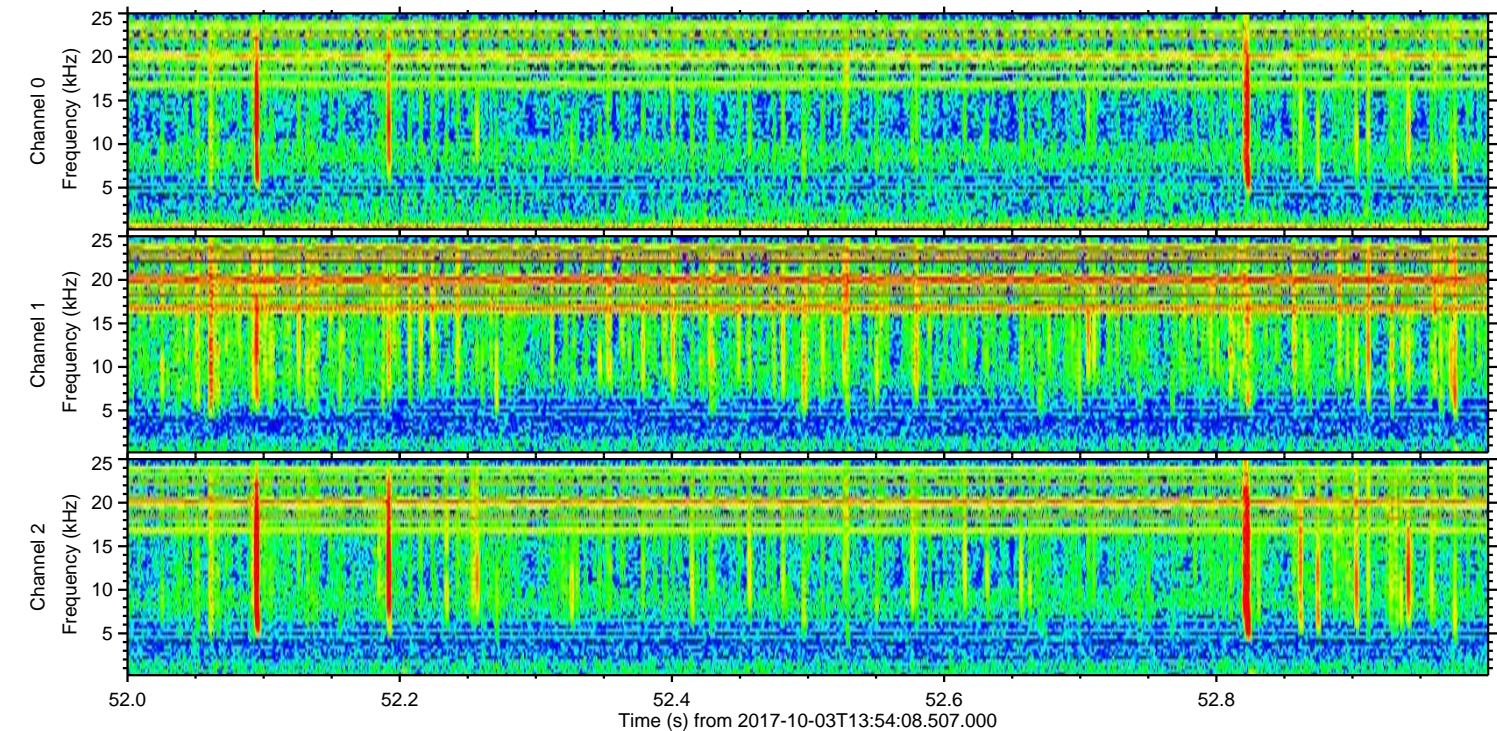
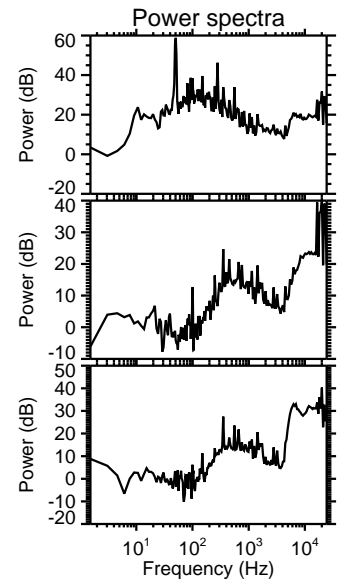
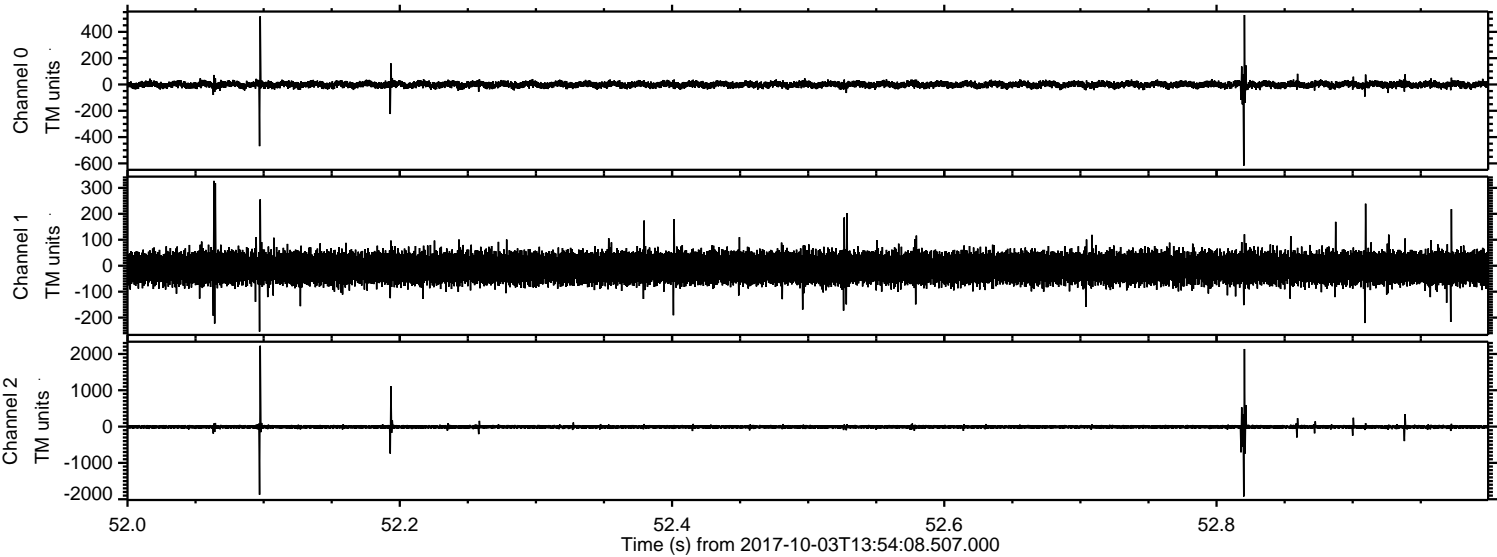


Processed Tue Oct 3 16:01:51 2017 by ELM ver.2012-10-06 from 001\_\_elm20171003\_135407\_\_dat00.bin





Processed Tue Oct 3 16:01:51 2017 by ELM ver.2012-10-06 from 001\_\_elm20171003\_135407\_\_dat00.bin





Processed Tue Oct 3 16:01:52 2017 by ELM ver.2012-10-06 from 001\_\_elm20171003\_135407\_\_dat00.bin

