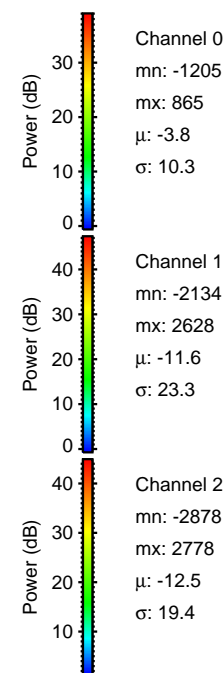
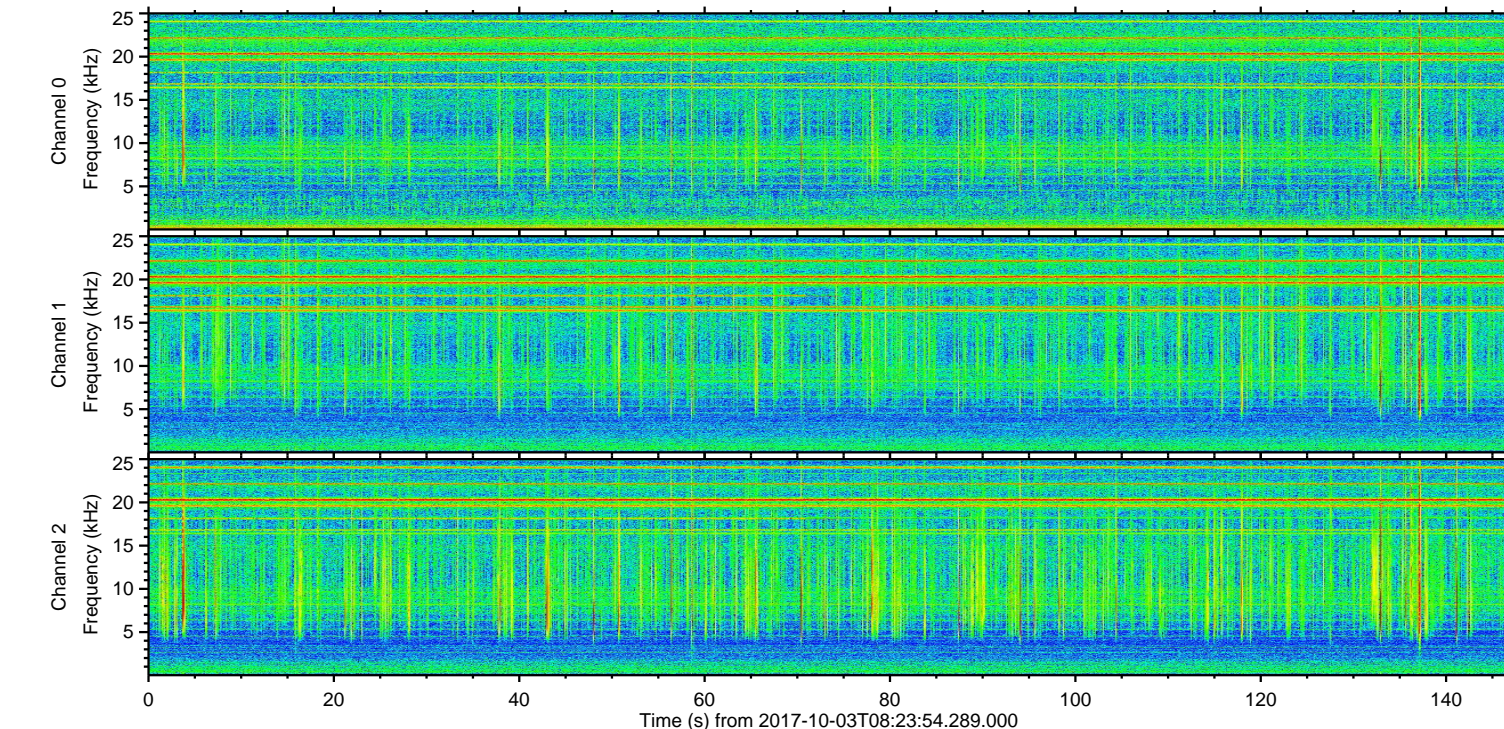
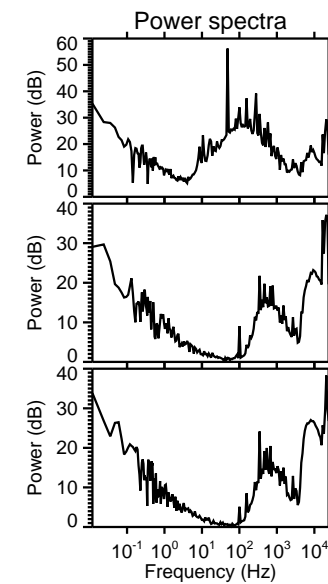
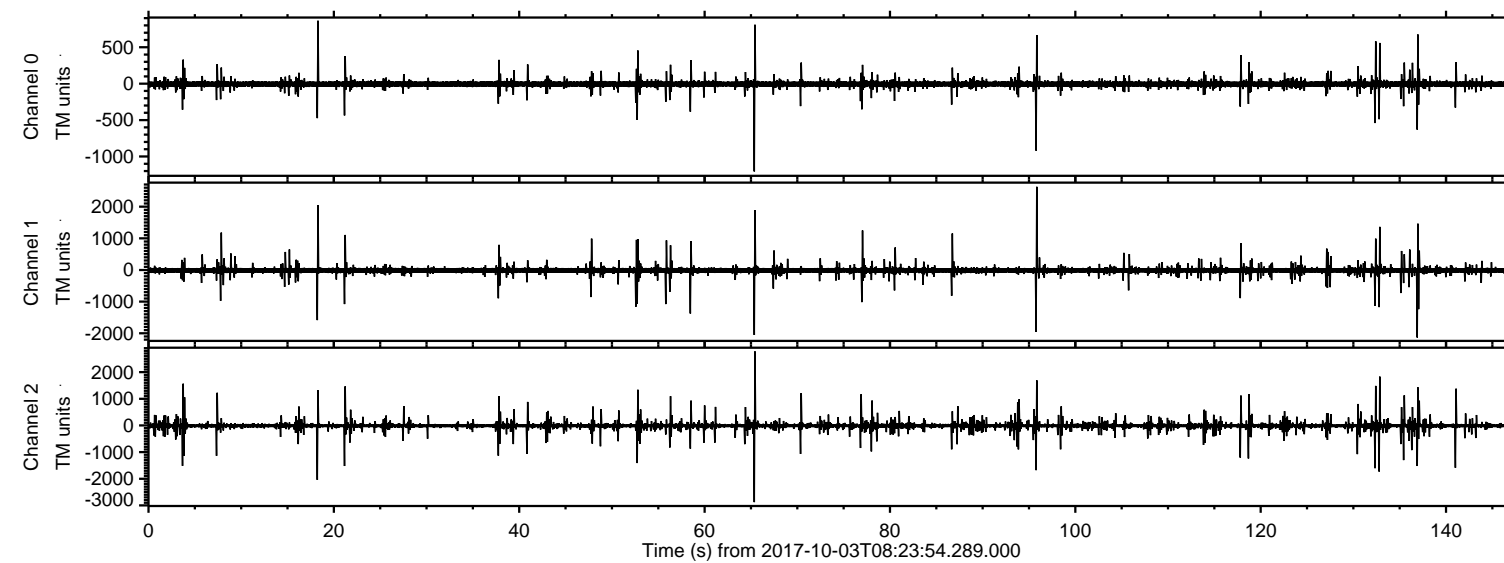
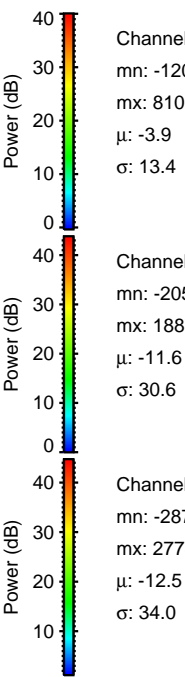
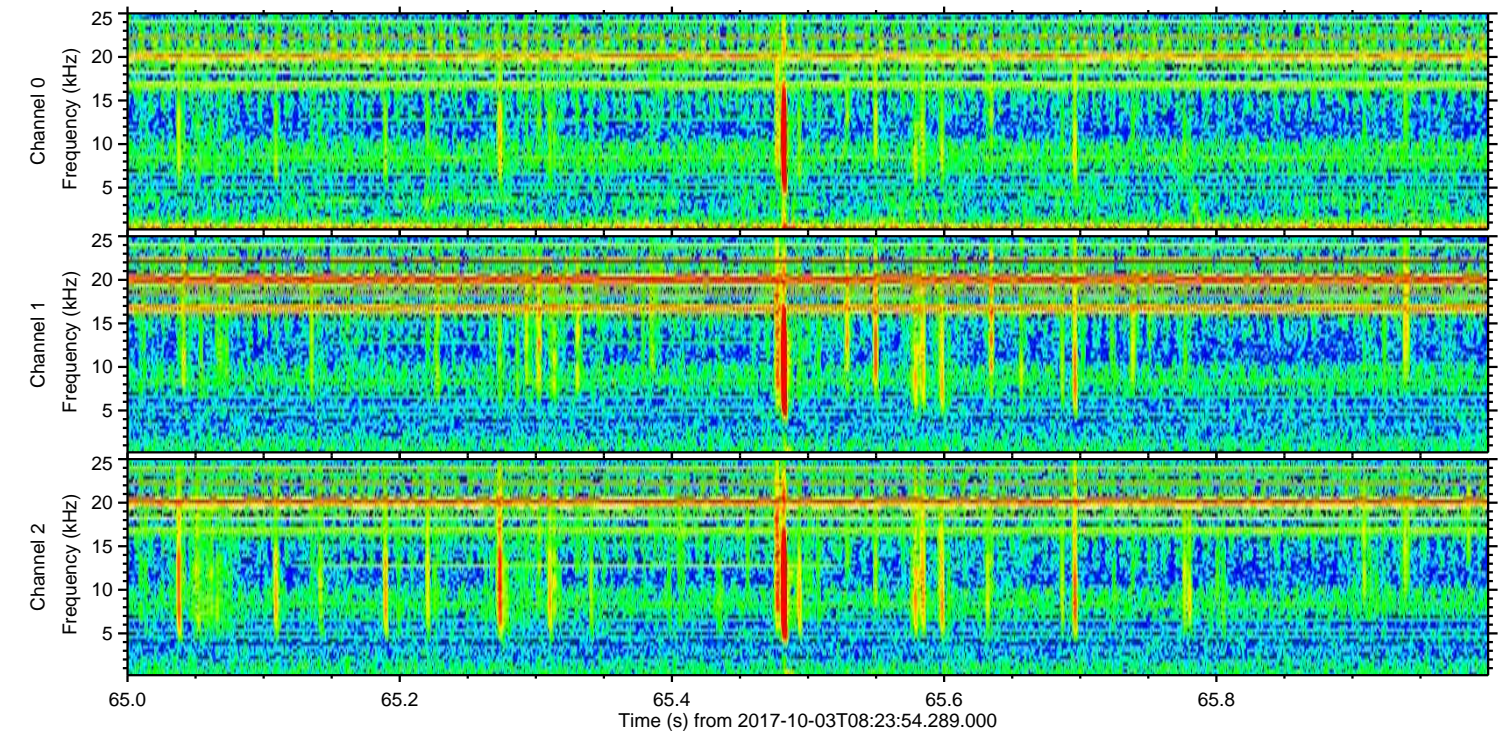
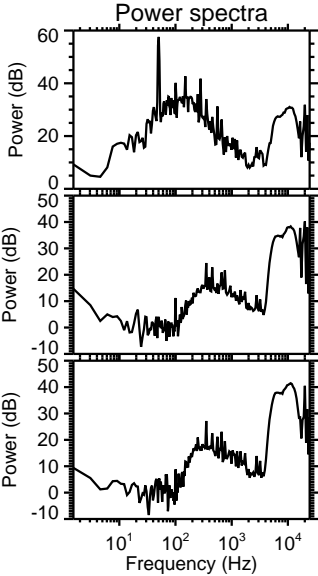
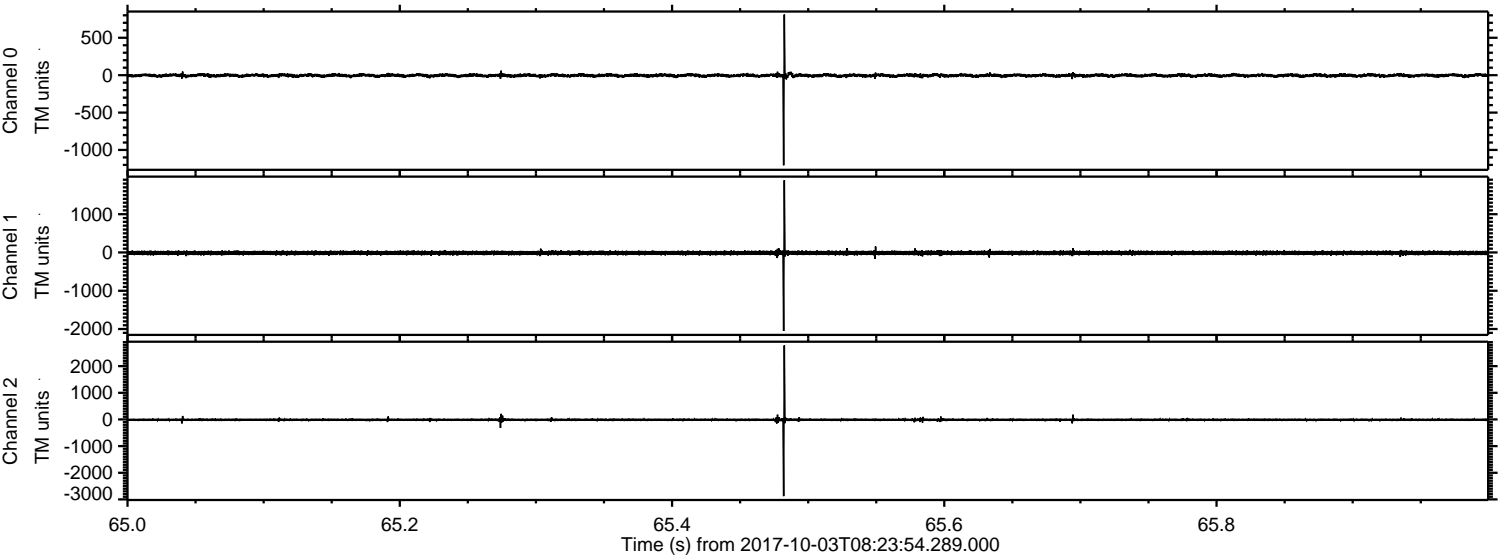


ELMAVAN 3D WAVEFORMS (Measured data sampled at 50 kHz) 51000 packets of 144 samples from 2017-10-03T08:23:54.289.000.

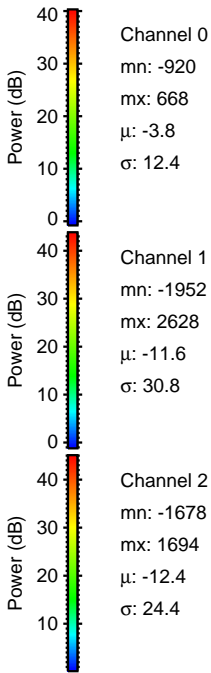
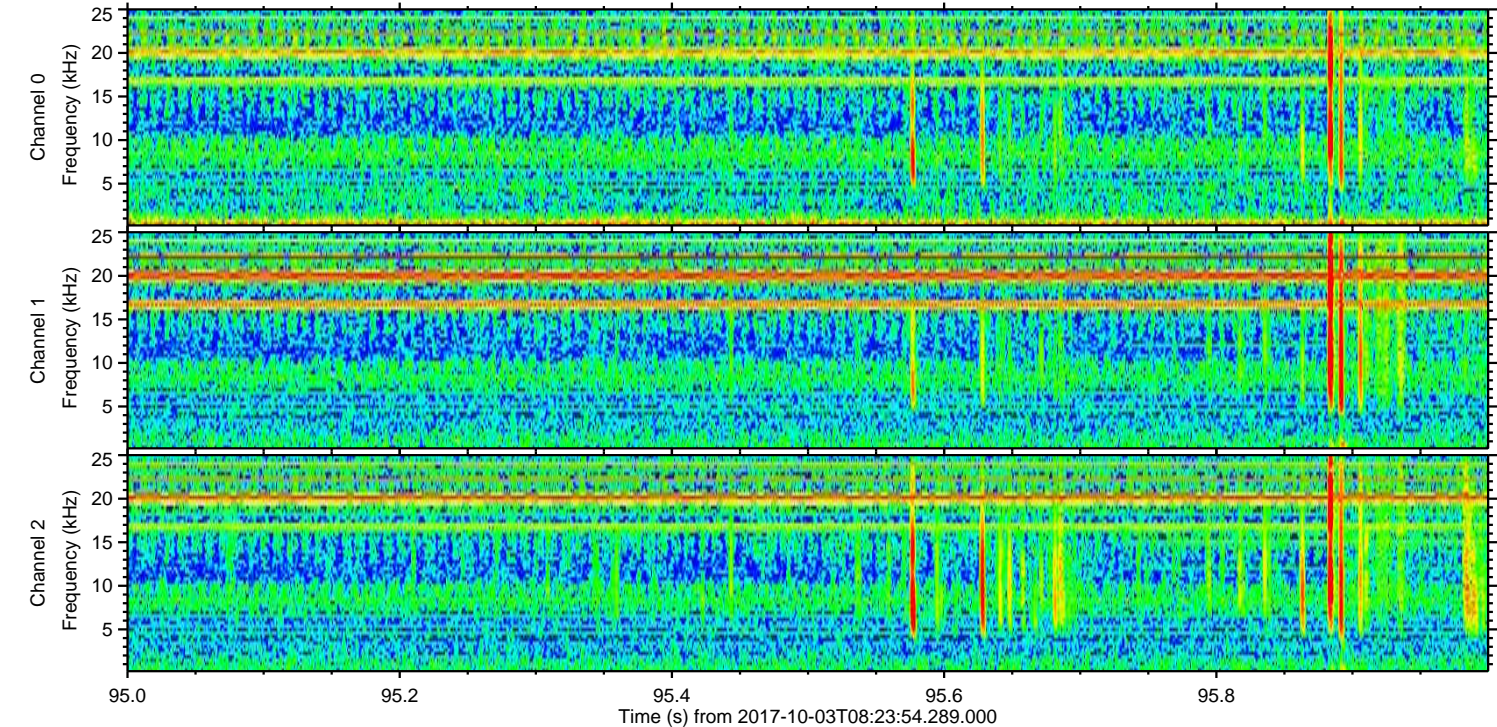
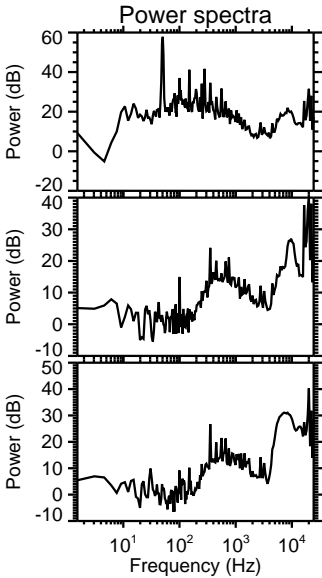
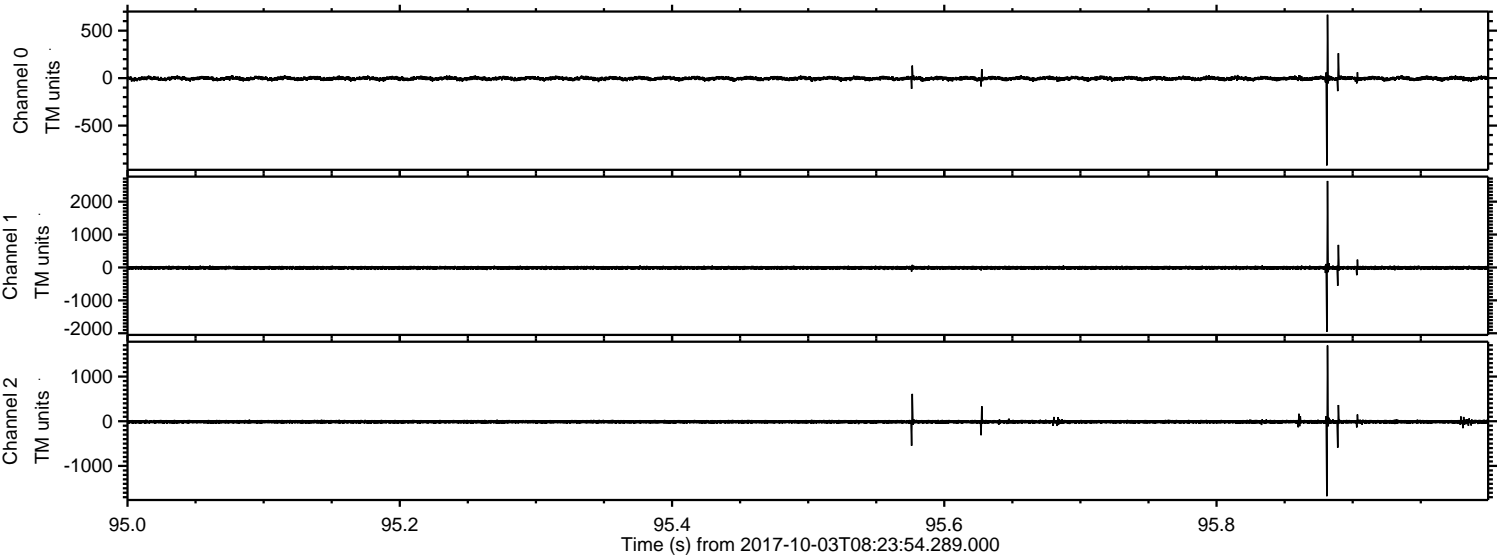
Processed Tue Oct 3 10:31:54 2017 by ELM ver.2012-10-06 from 001__elm20171003_082353__dat00.bin



Processed Tue Oct 3 10:32:00 2017 by ELM ver.2012-10-06 from 001__elm20171003_082353__dat00.bin

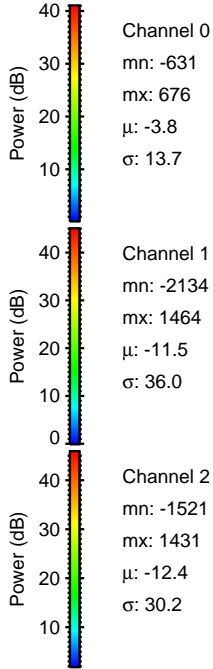
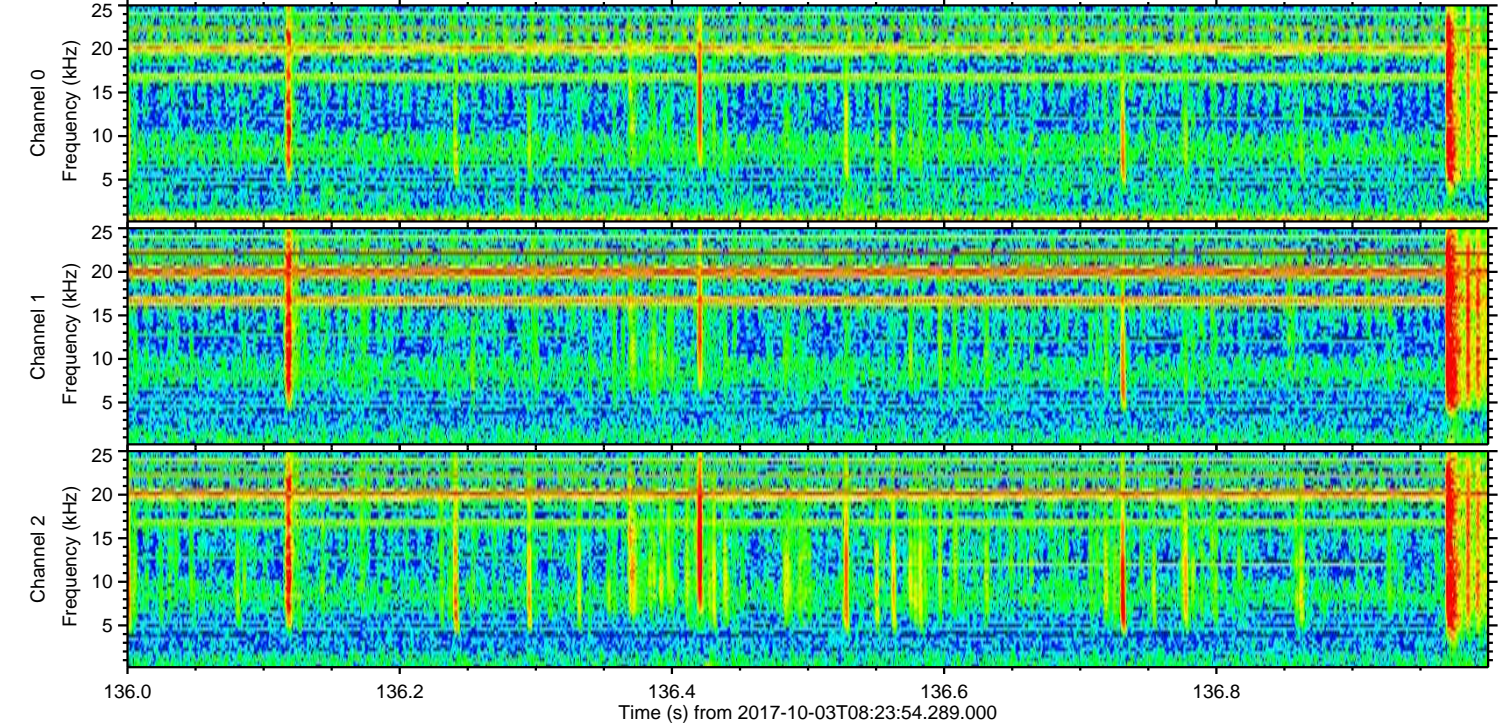
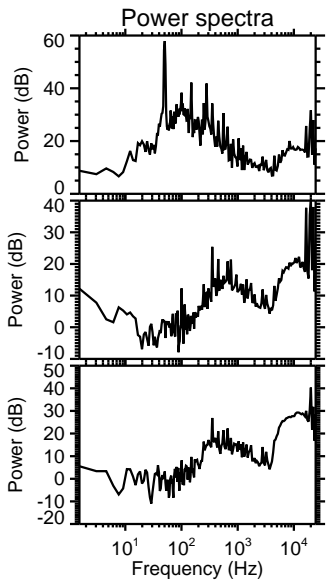
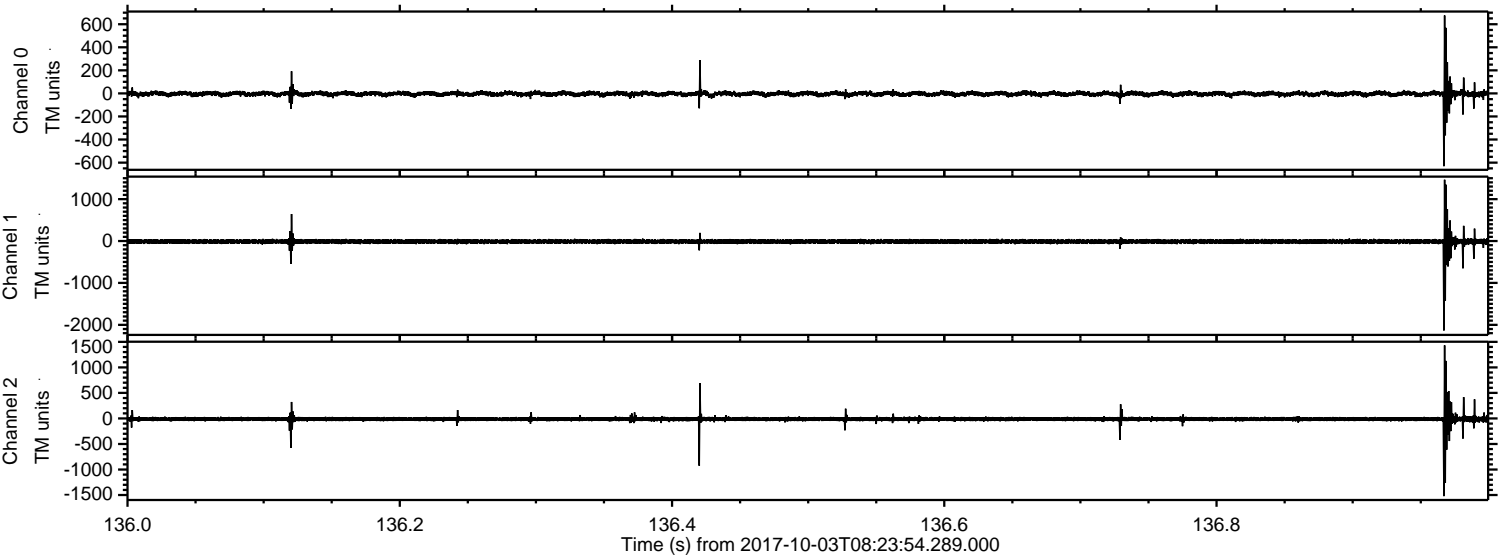


Processed Tue Oct 3 10:32:01 2017 by ELM ver.2012-10-06 from 001__elm20171003_082353__dat00.bin



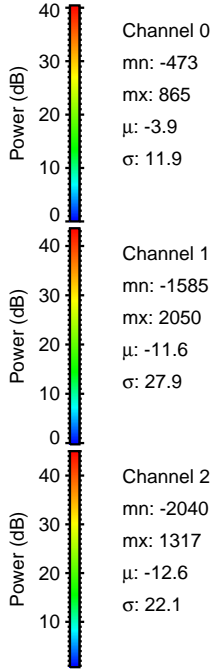
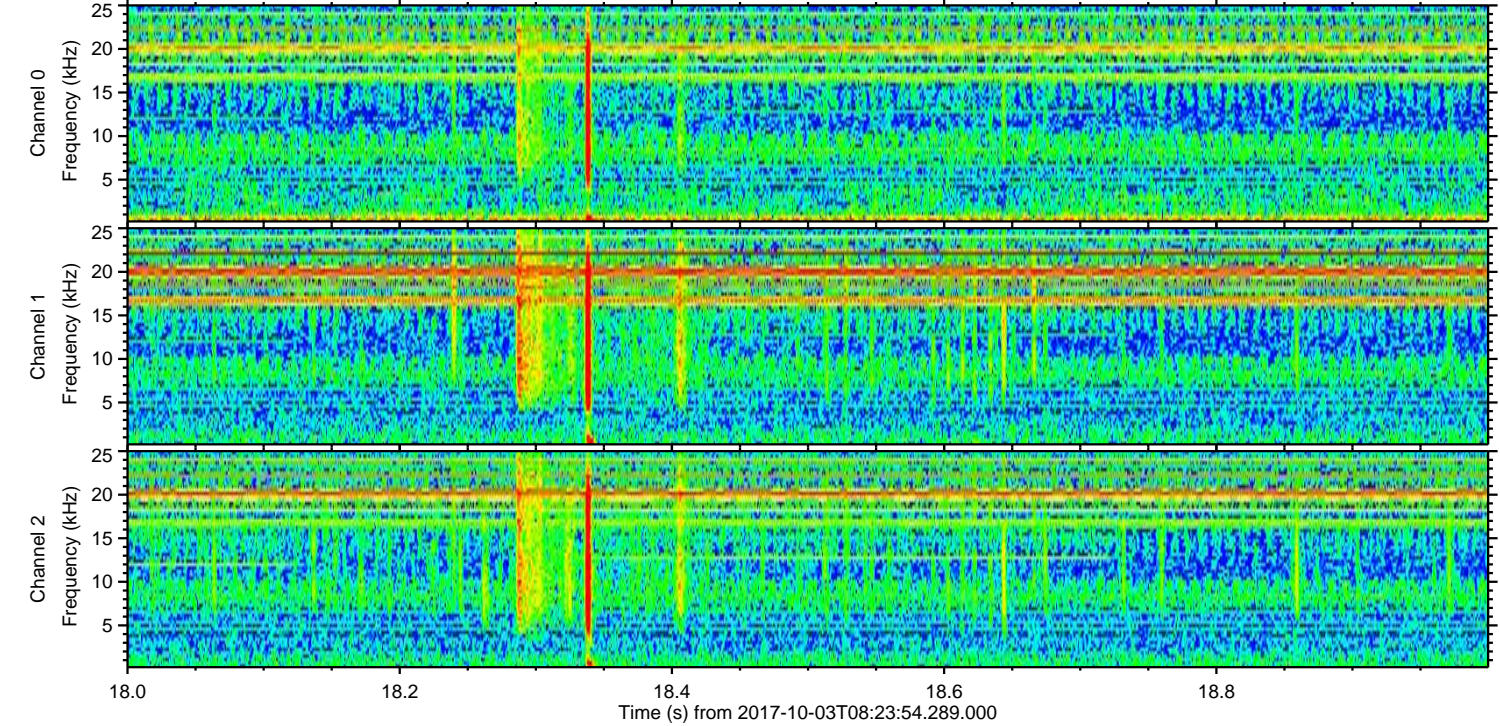
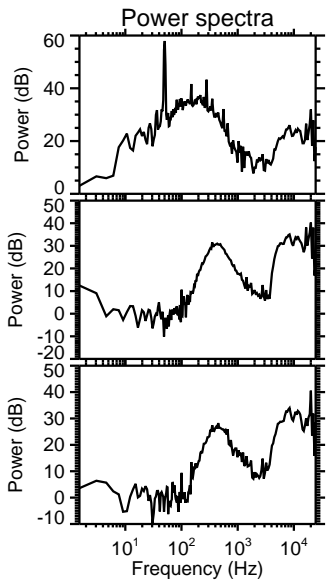
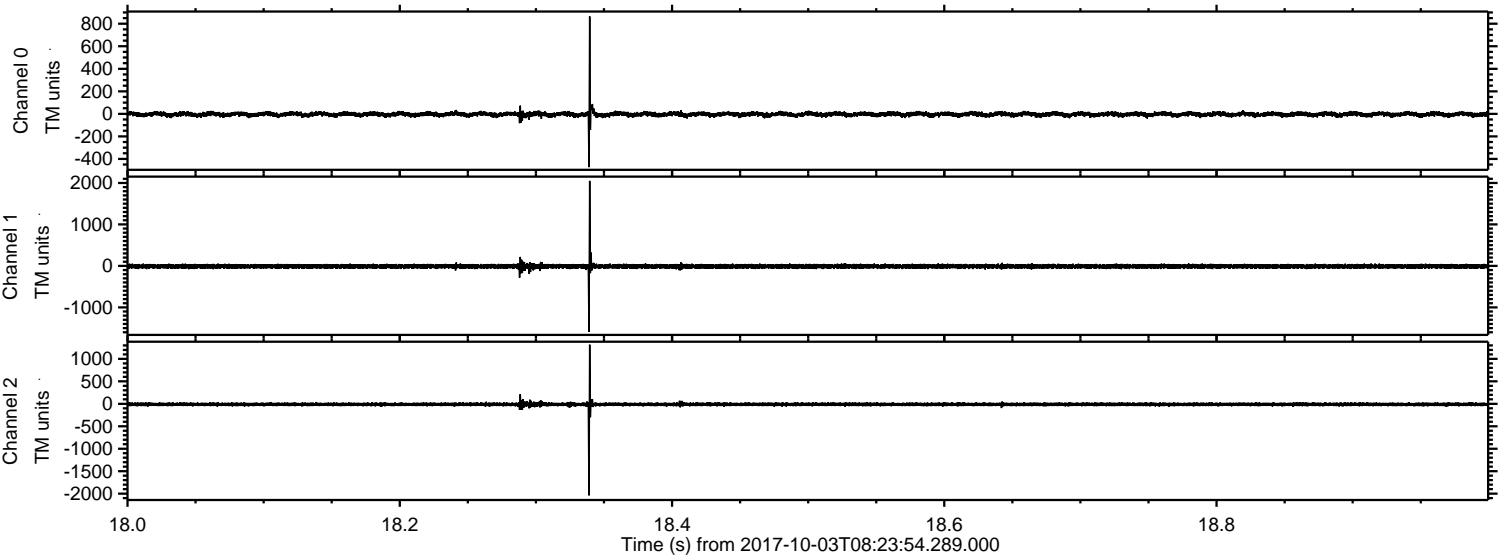
ELMAVAN 3D WAVEFORMS (Measured data sampled at 50 kHz) 51000 packets of 144 samples from 2017-10-03T08:23:54.289.000. Part 137/147

Processed Tue Oct 3 10:32:01 2017 by ELM ver.2012-10-06 from 001__elm20171003_082353__dat00.bin



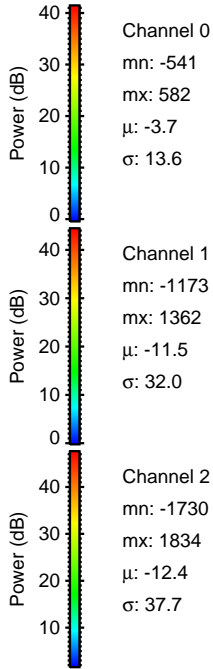
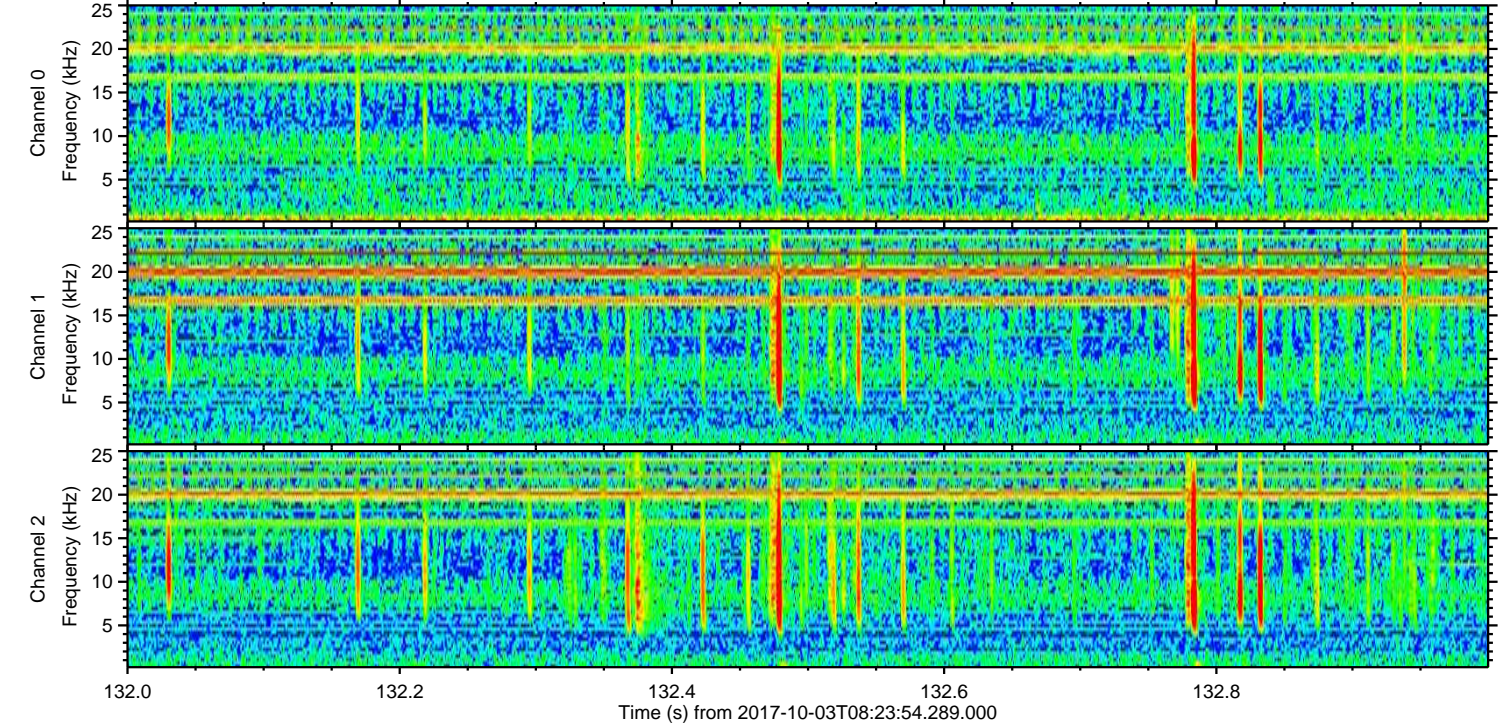
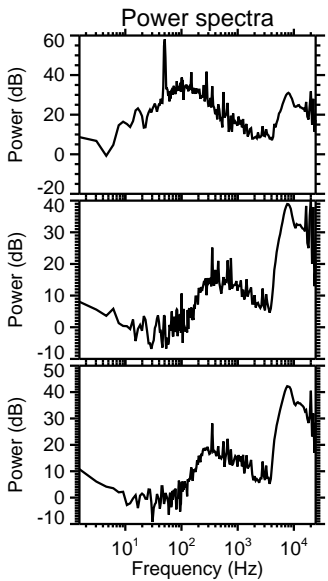
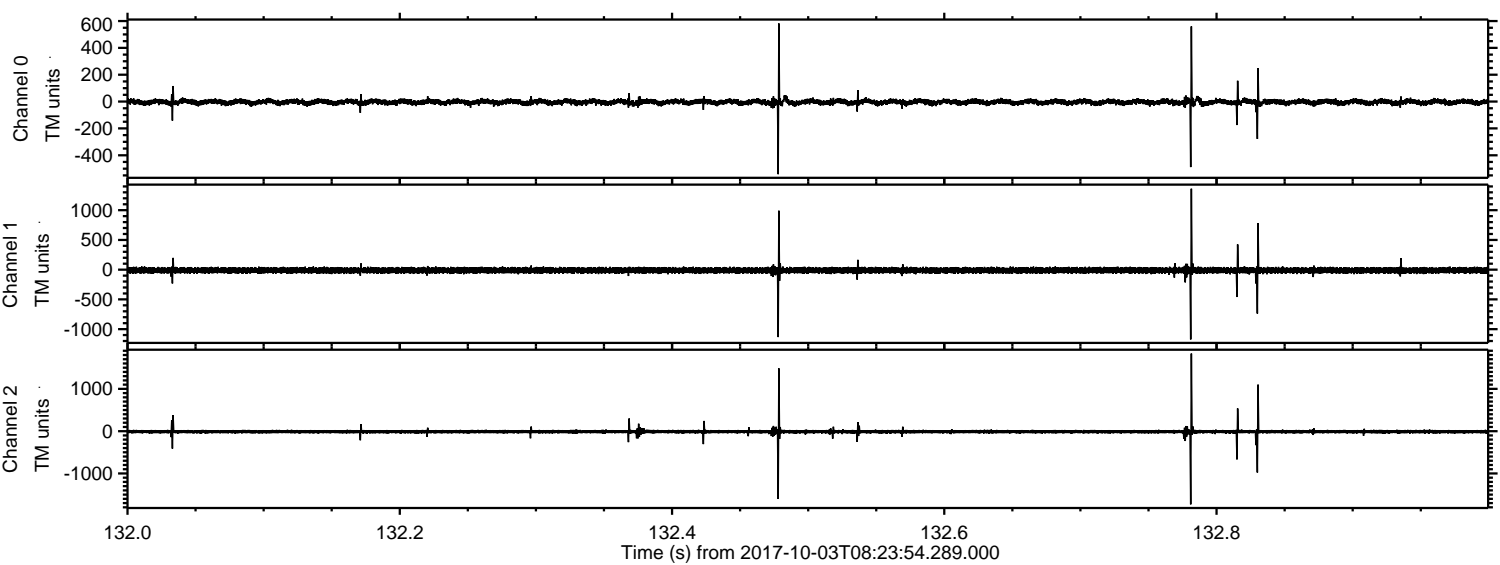
ELMAVAN 3D WAVEFORMS (Measured data sampled at 50 kHz) 51000 packets of 144 samples from 2017-10-03T08:23:54.289.000. Part 19/147

Processed Tue Oct 3 10:32:02 2017 by ELM ver.2012-10-06 from 001__elm20171003_082353__dat00.bin



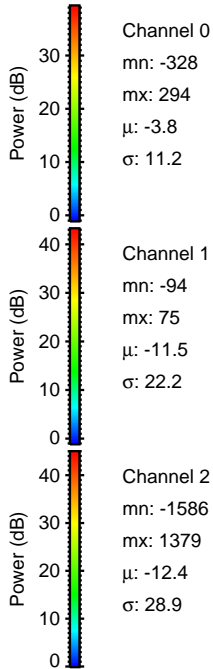
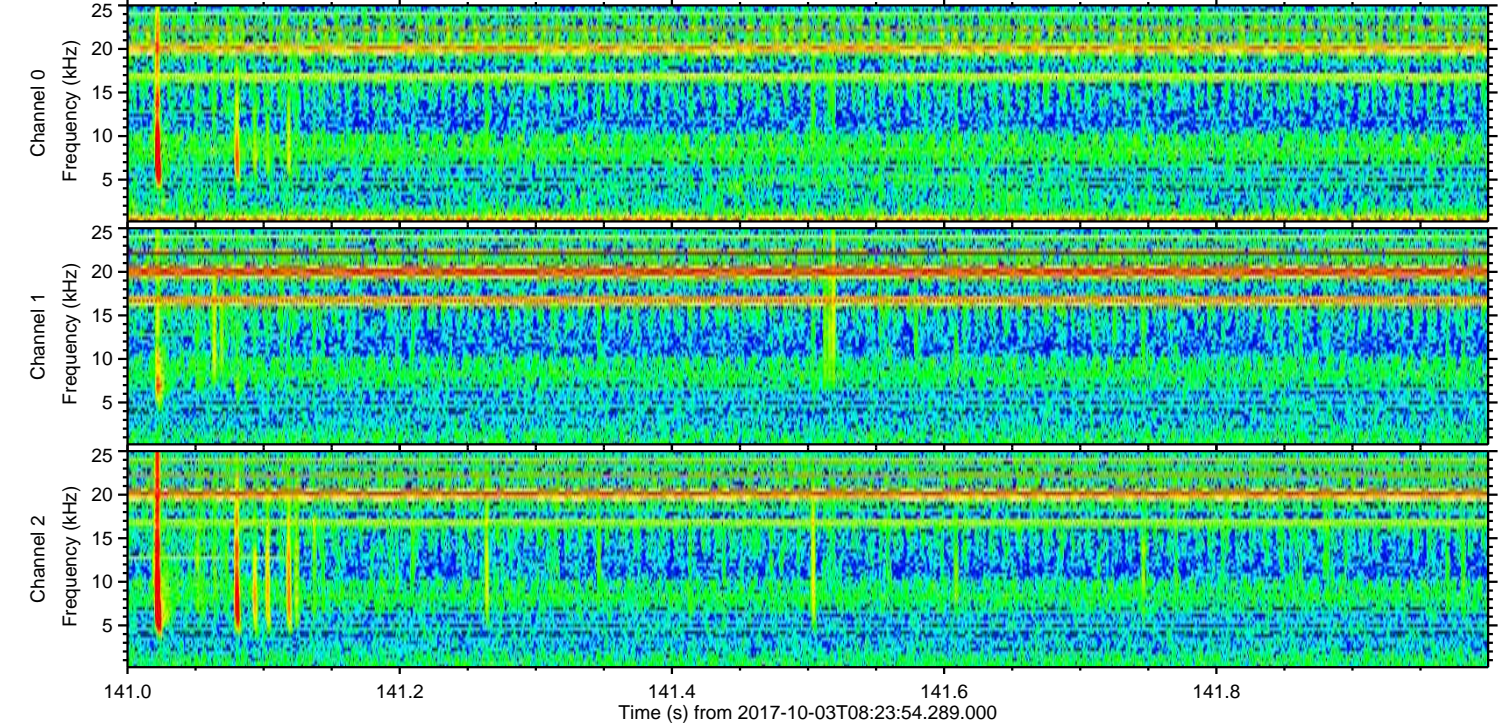
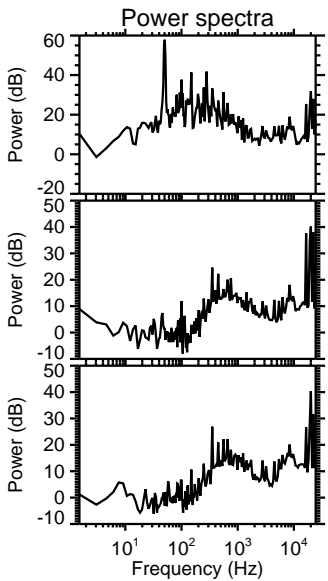
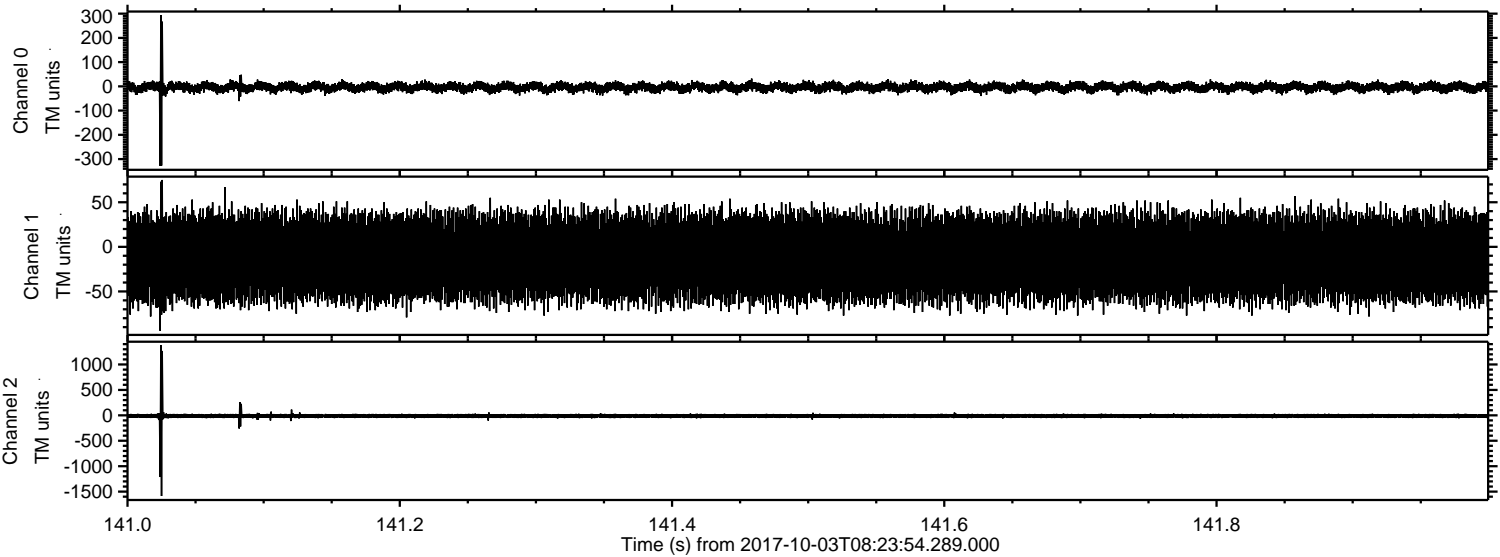
ELMAVAN 3D WAVEFORMS (Measured data sampled at 50 kHz) 51000 packets of 144 samples from 2017-10-03T08:23:54.289.000. Part 133/147

Processed Tue Oct 3 10:32:03 2017 by ELM ver.2012-10-06 from 001__elm20171003_082353__dat00.bin

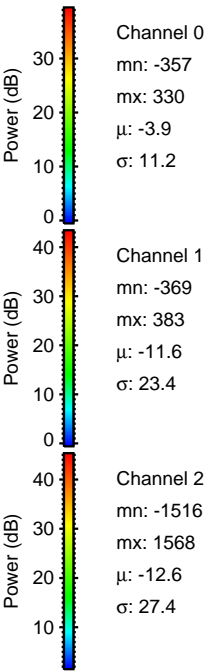
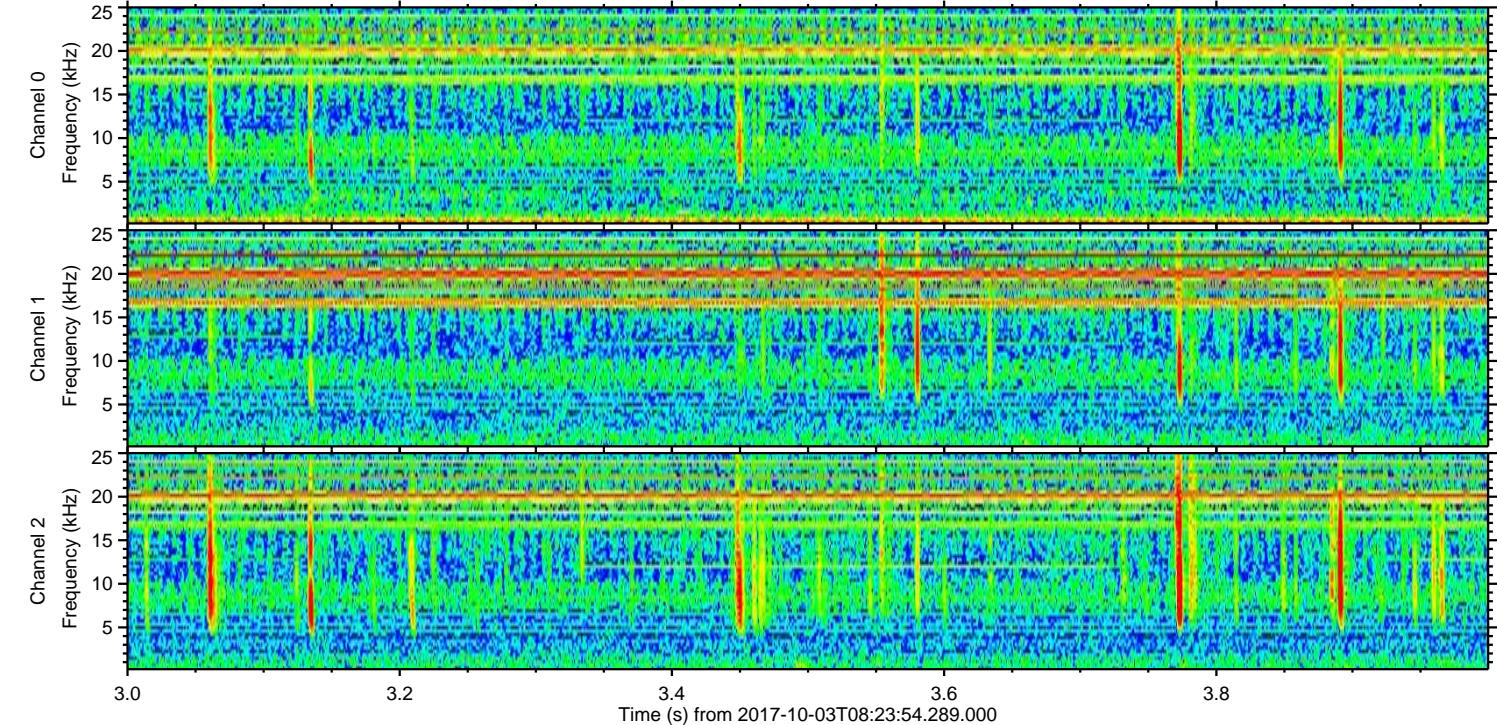
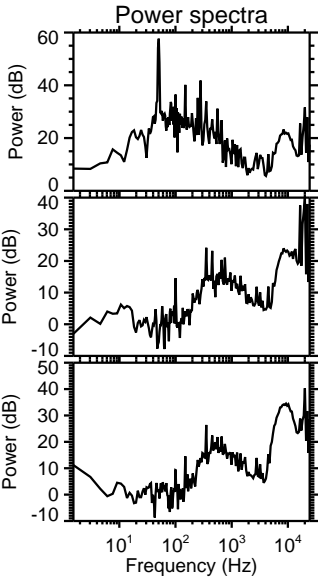
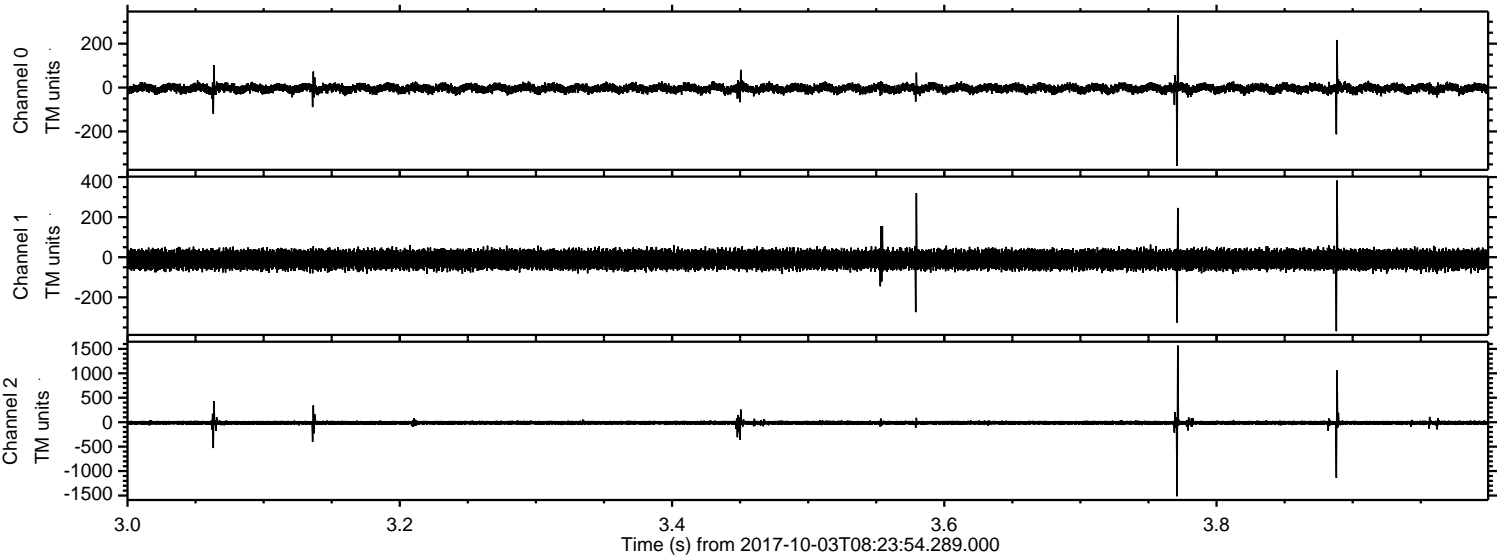


ELMAVAN 3D WAVEFORMS (Measured data sampled at 50 kHz) 51000 packets of 144 samples from 2017-10-03T08:23:54.289.000. Part 142/147

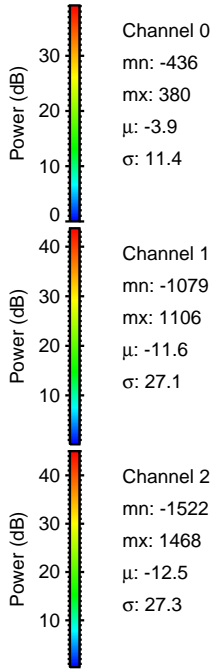
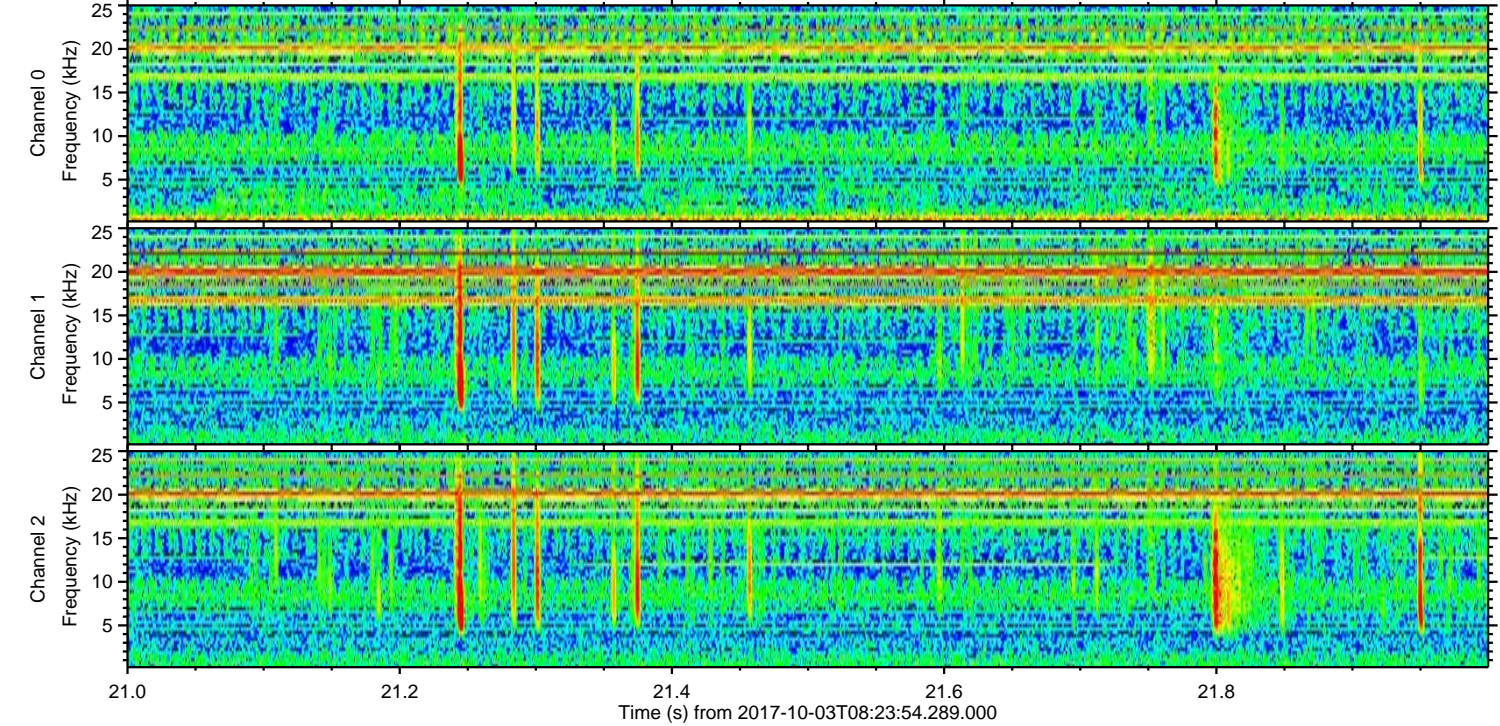
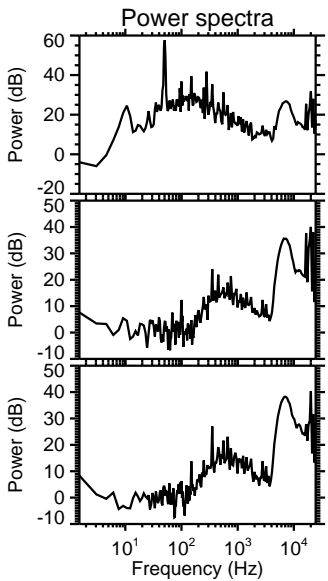
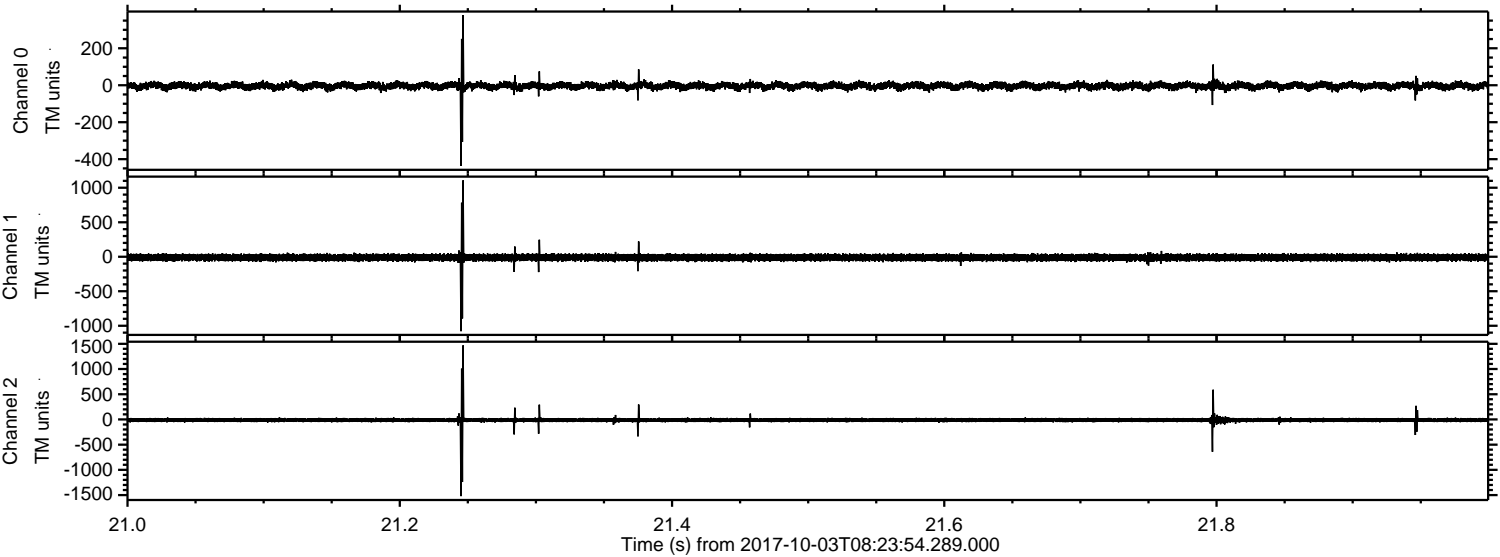
Processed Tue Oct 3 10:32:03 2017 by ELM ver.2012-10-06 from 001__elm20171003_082353__dat00.bin



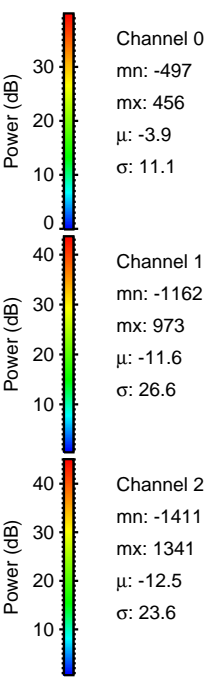
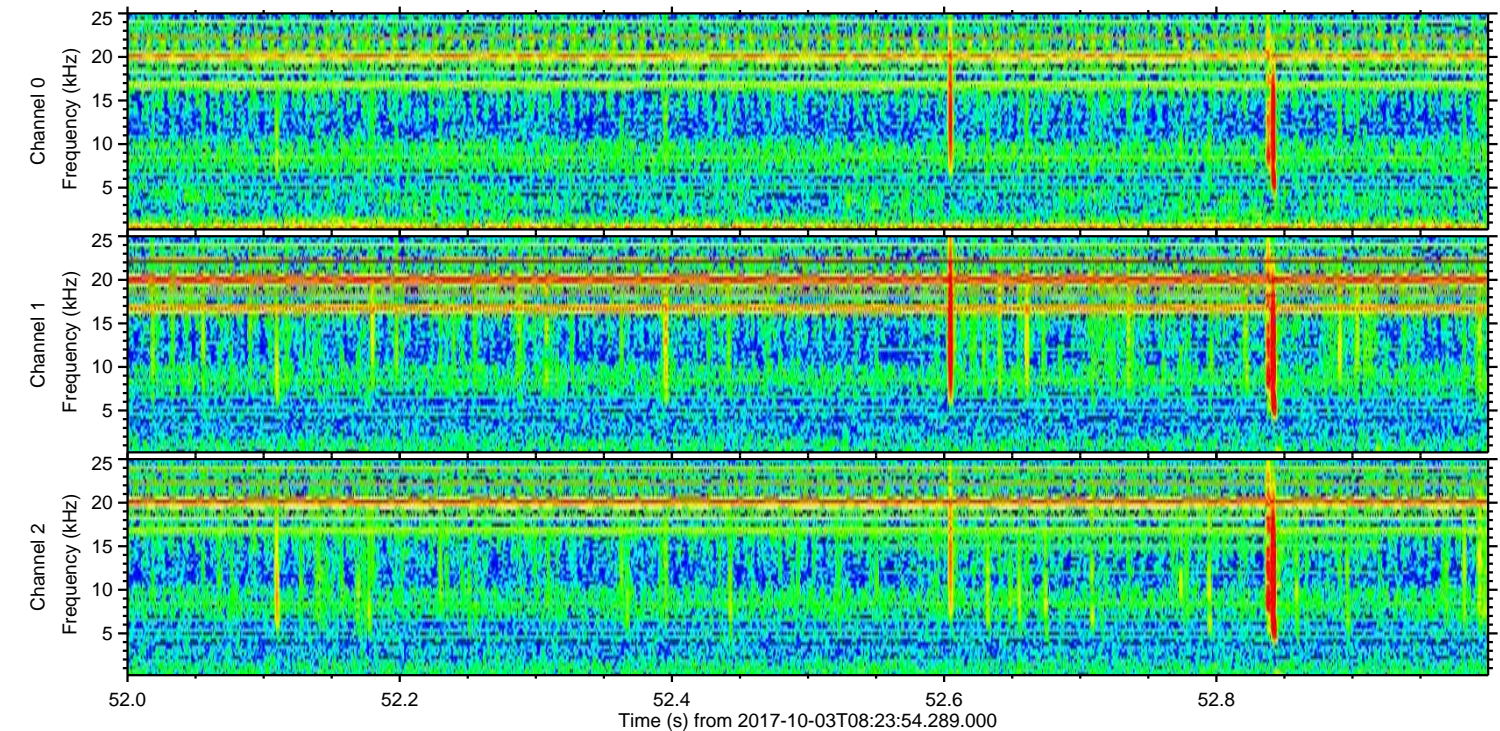
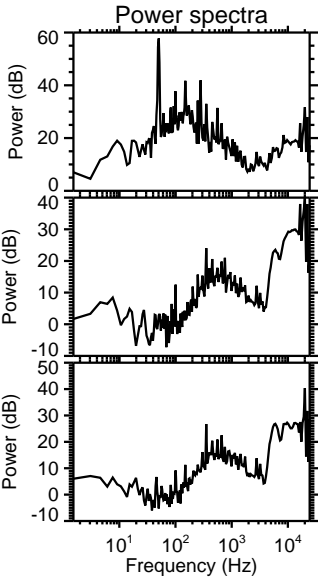
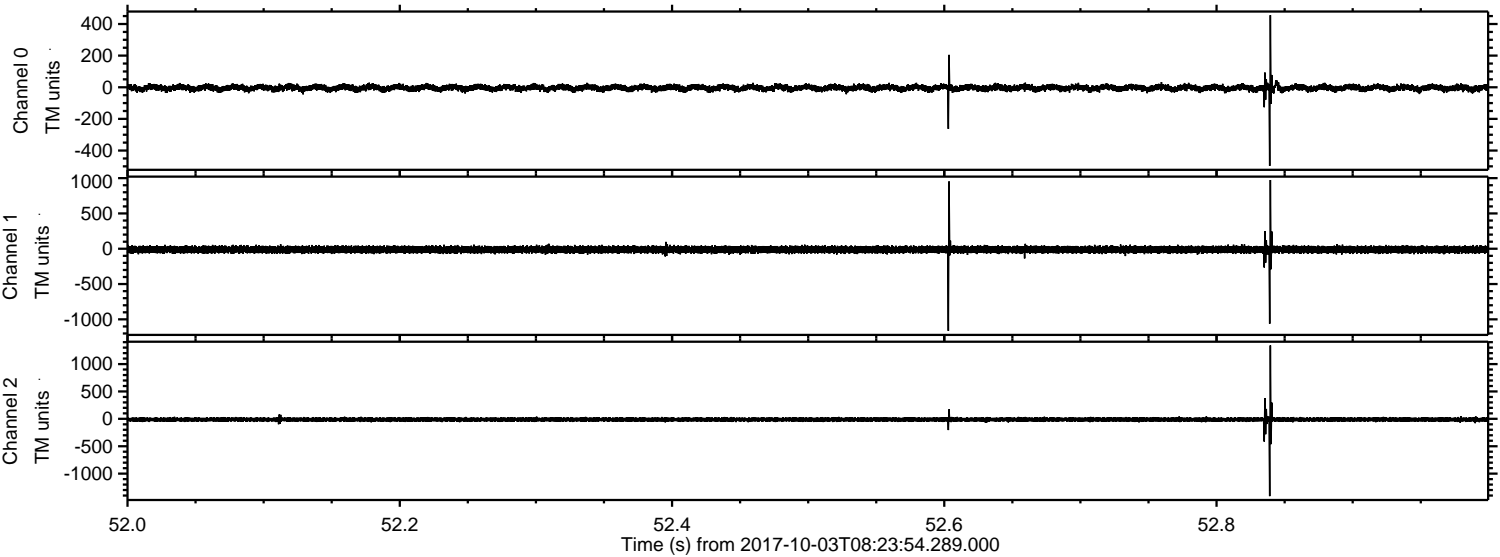
Processed Tue Oct 3 10:32:04 2017 by ELM ver.2012-10-06 from 001__elm20171003_082353__dat00.bin



Processed Tue Oct 3 10:32:05 2017 by ELM ver.2012-10-06 from 001__elm20171003_082353__dat00.bin



Processed Tue Oct 3 10:32:05 2017 by ELM ver.2012-10-06 from 001__elm20171003_082353__dat00.bin



Channel 0
mn: -497
mx: 456
 μ : -3.9
 σ : 11.1

Channel 1
mn: -1162
mx: 973
 μ : -11.6
 σ : 26.6

Channel 2
mn: -1411
mx: 1341
 μ : -12.5
 σ : 23.6

