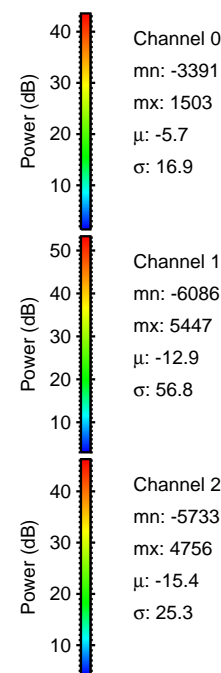
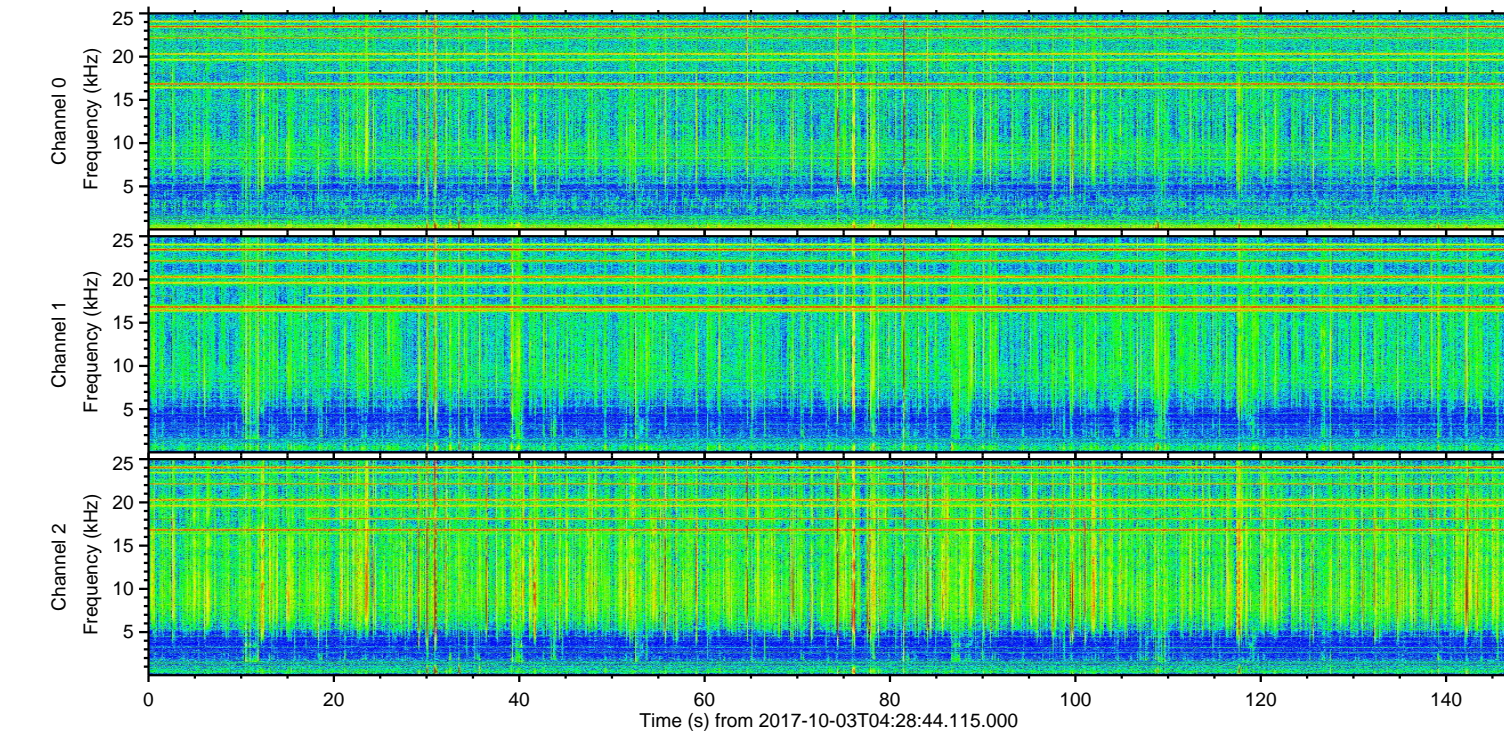
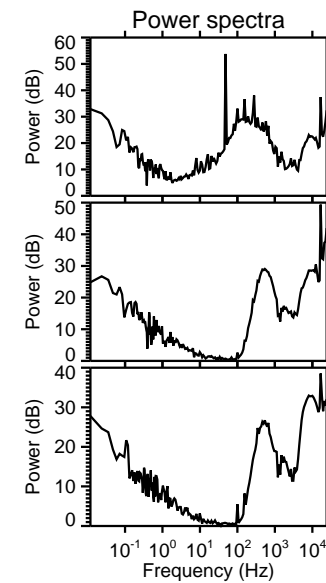
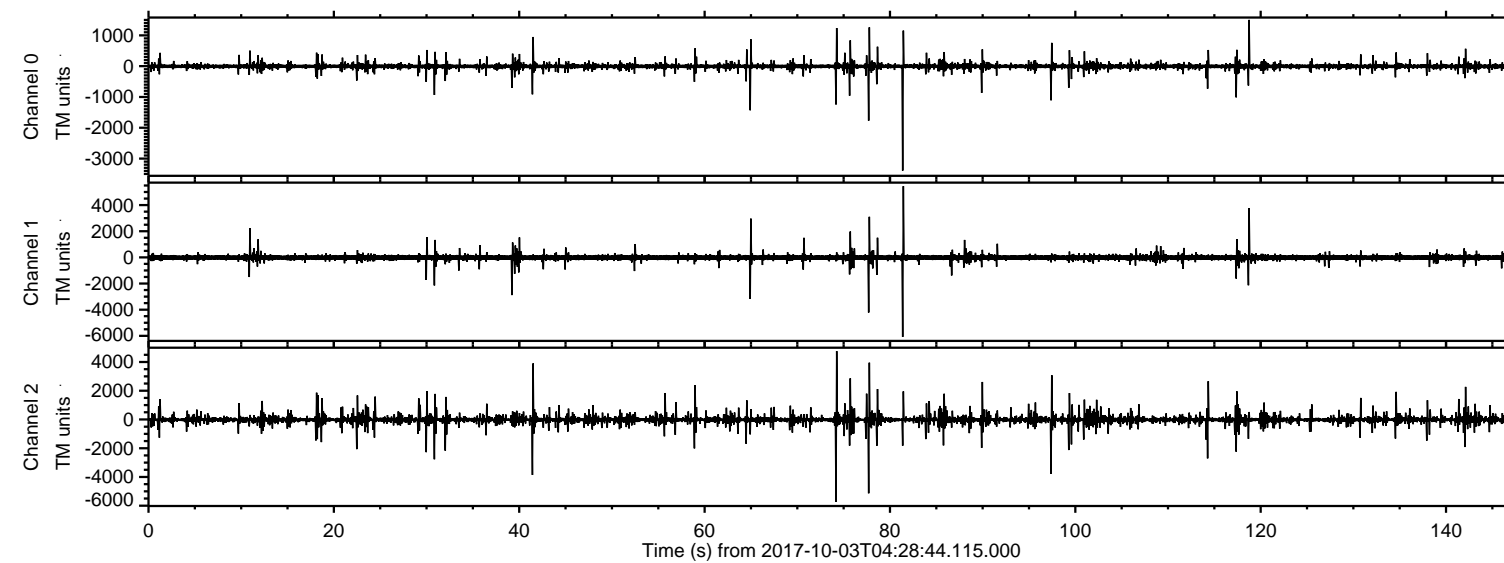


ELMAVAN 3D WAVEFORMS (Measured data sampled at 50 kHz) 51000 packets of 144 samples from 2017-10-03T04:28:44.115.000.

Processed Tue Oct 3 06:36:54 2017 by ELM ver.2012-10-06 from 001__elm20171003_042843__dat00.bin

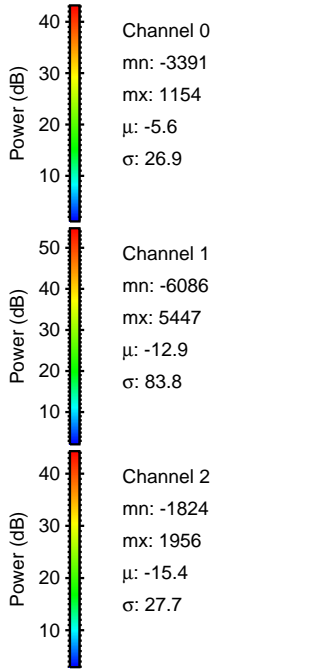
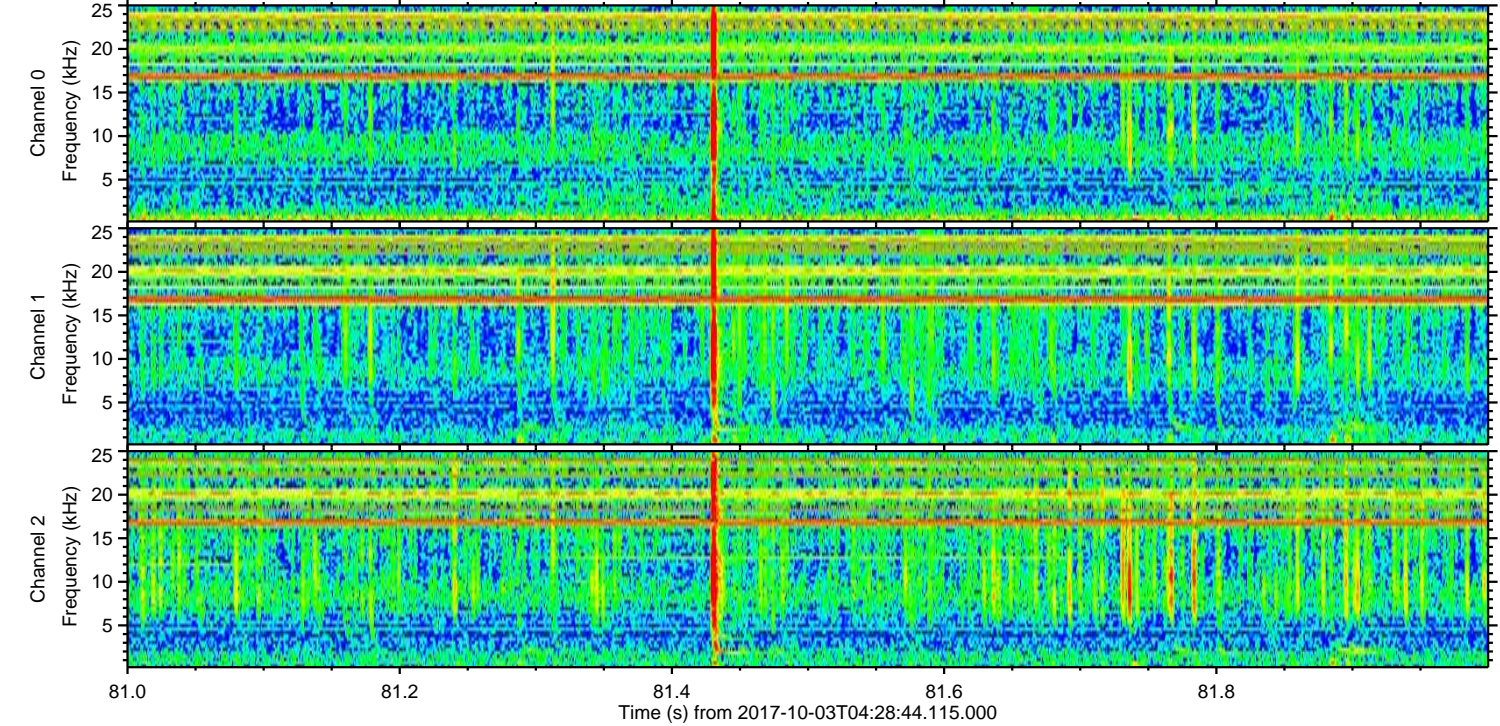
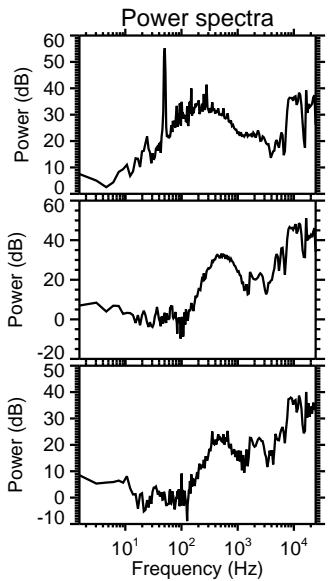
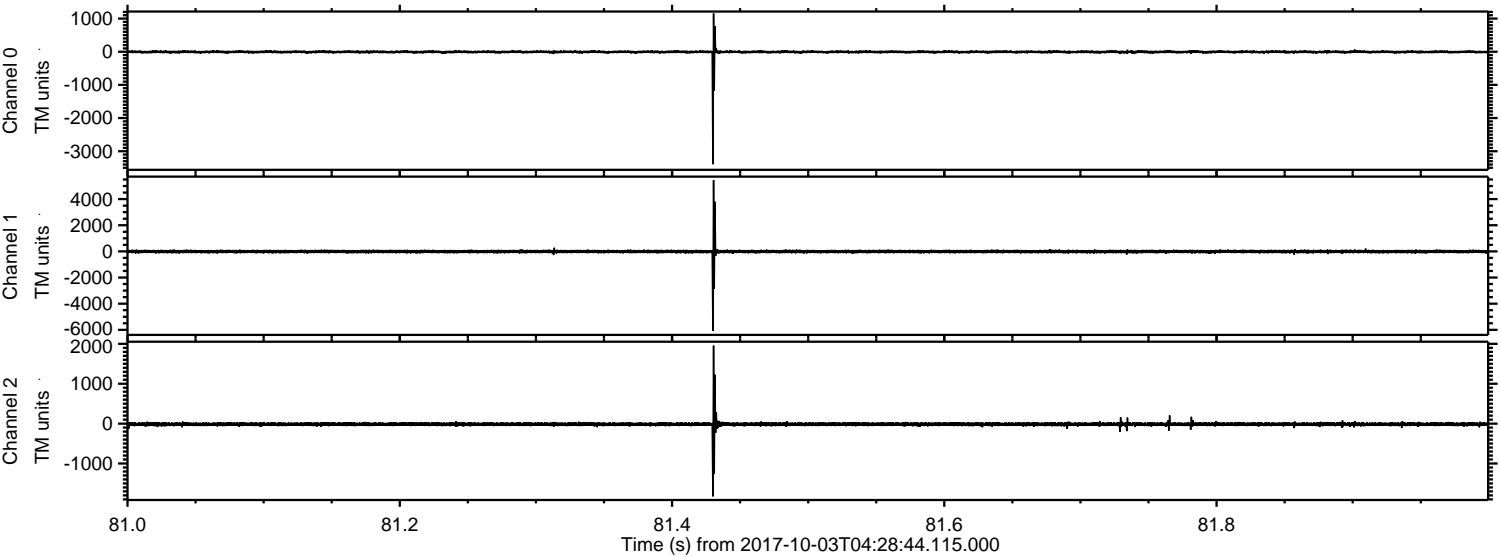


Channel 0
mn: -3391
mx: 1503
 μ : -5.7
 σ : 16.9

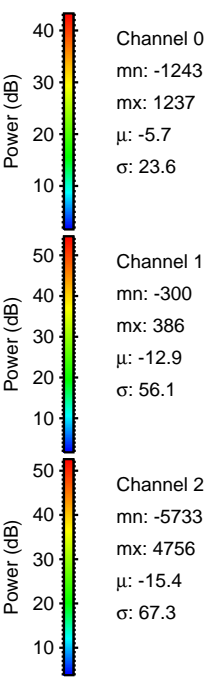
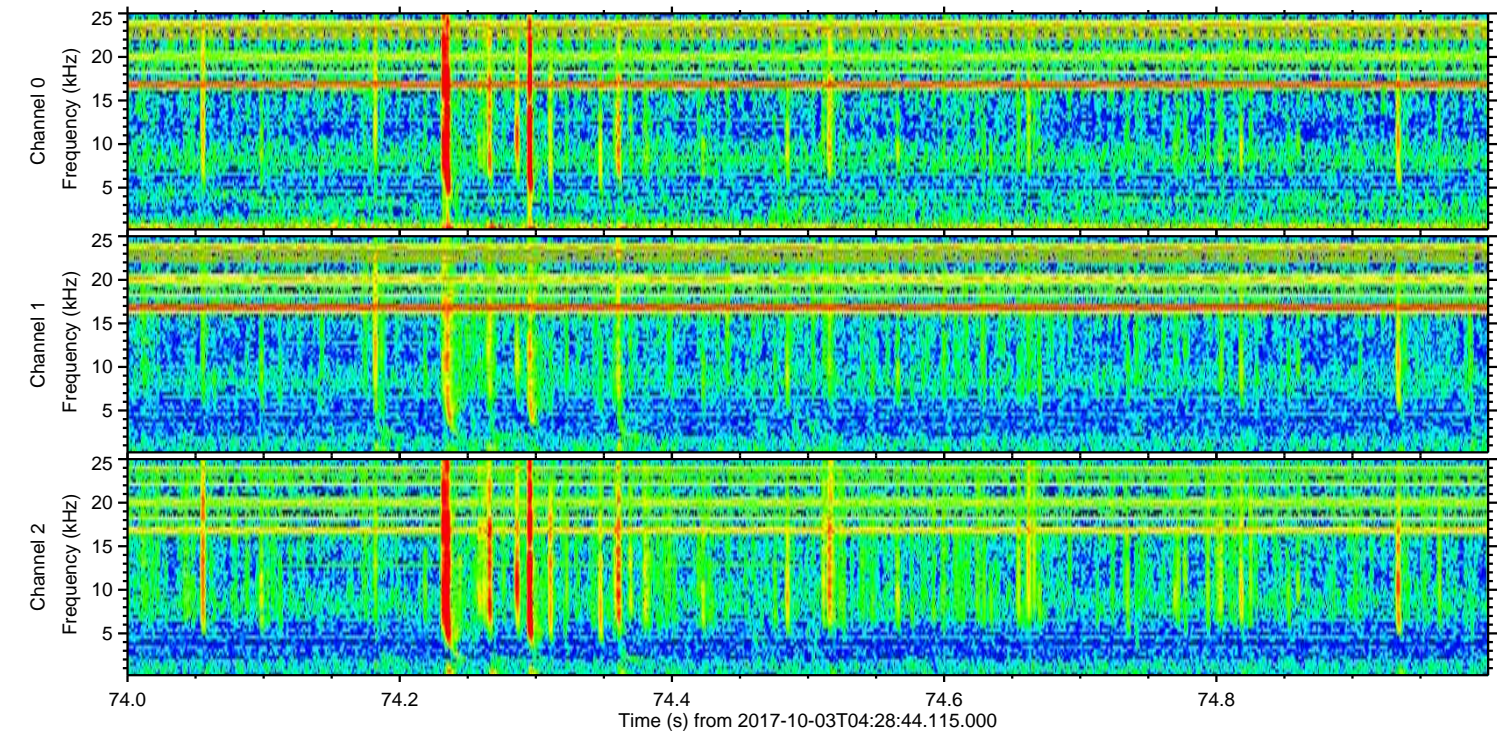
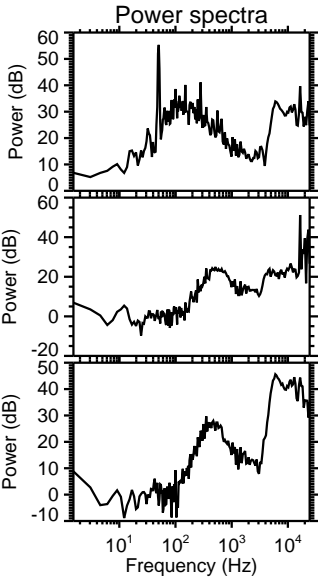
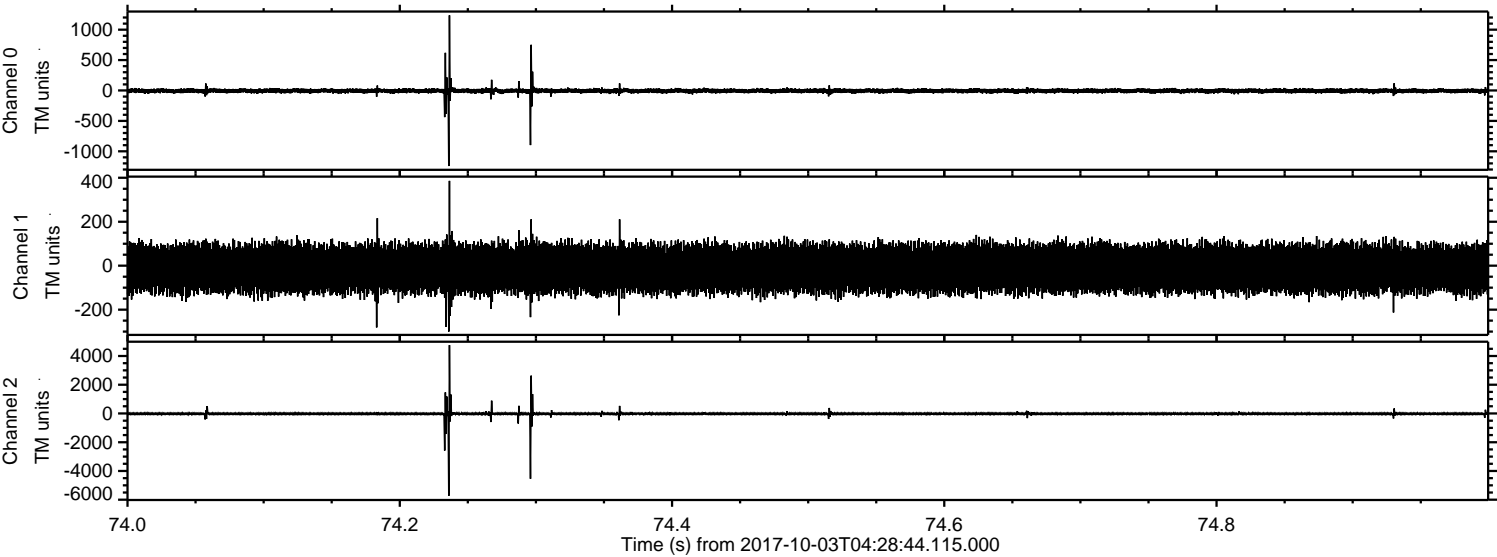
Channel 1
mn: -6086
mx: 5447
 μ : -12.9
 σ : 56.8

Channel 2
mn: -5733
mx: 4756
 μ : -15.4
 σ : 25.3

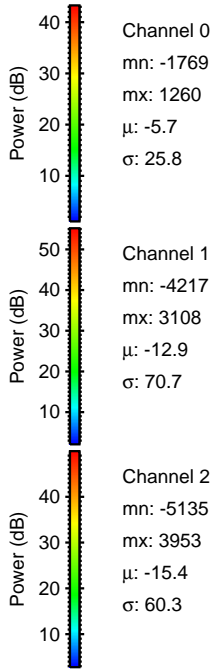
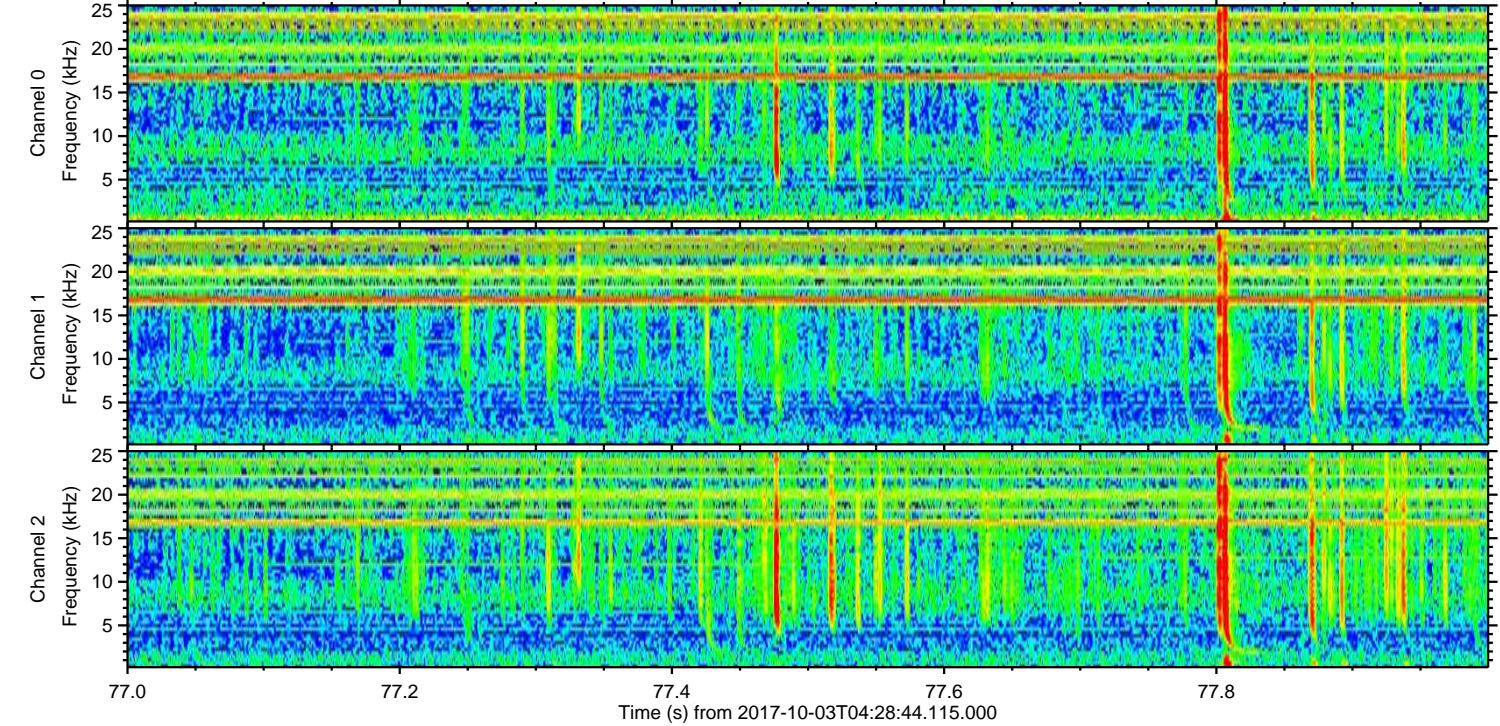
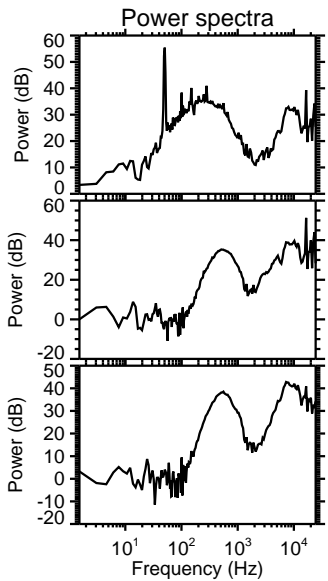
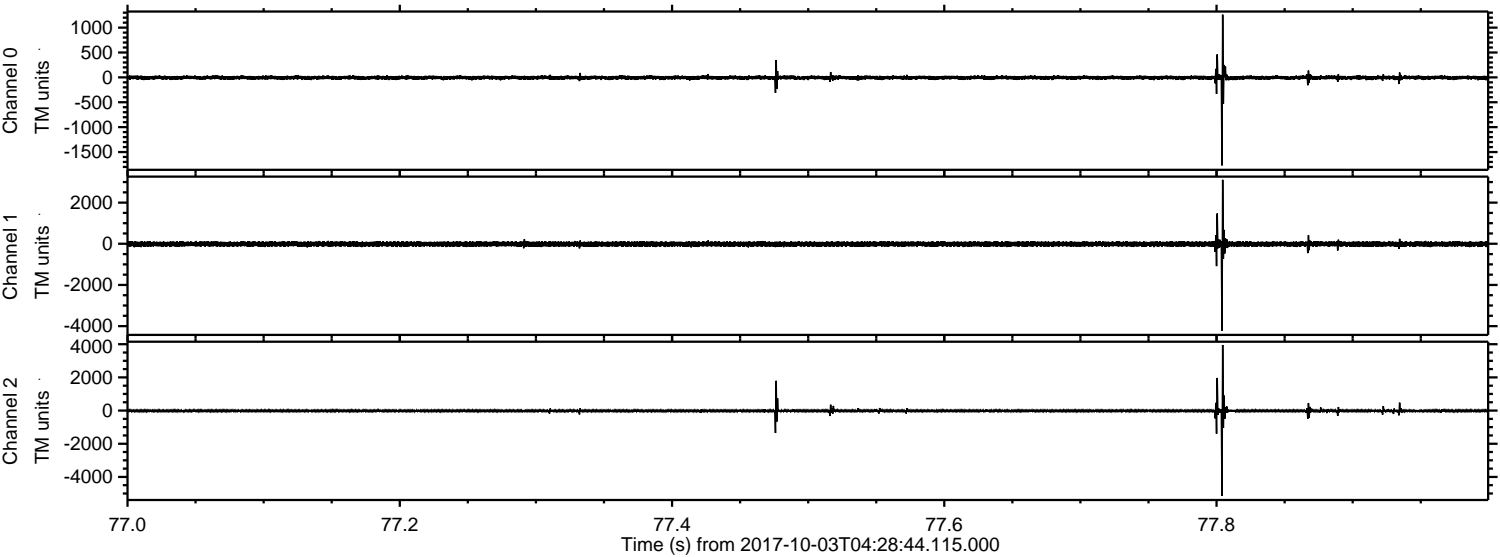
Processed Tue Oct 3 06:37:00 2017 by ELM ver.2012-10-06 from 001__elm20171003_042843__dat00.bin



Processed Tue Oct 3 06:37:01 2017 by ELM ver.2012-10-06 from 001__elm20171003_042843__dat00.bin



Processed Tue Oct 3 06:37:01 2017 by ELM ver.2012-10-06 from 001__elm20171003_042843__dat00.bin

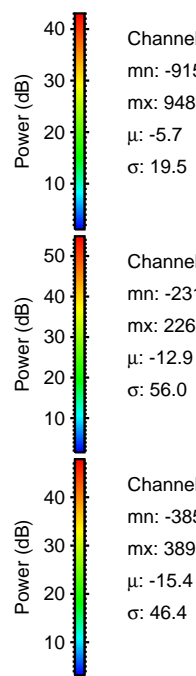
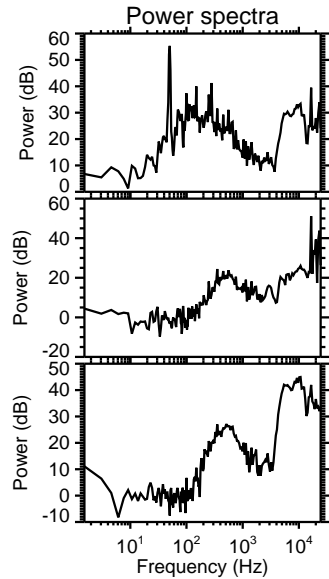
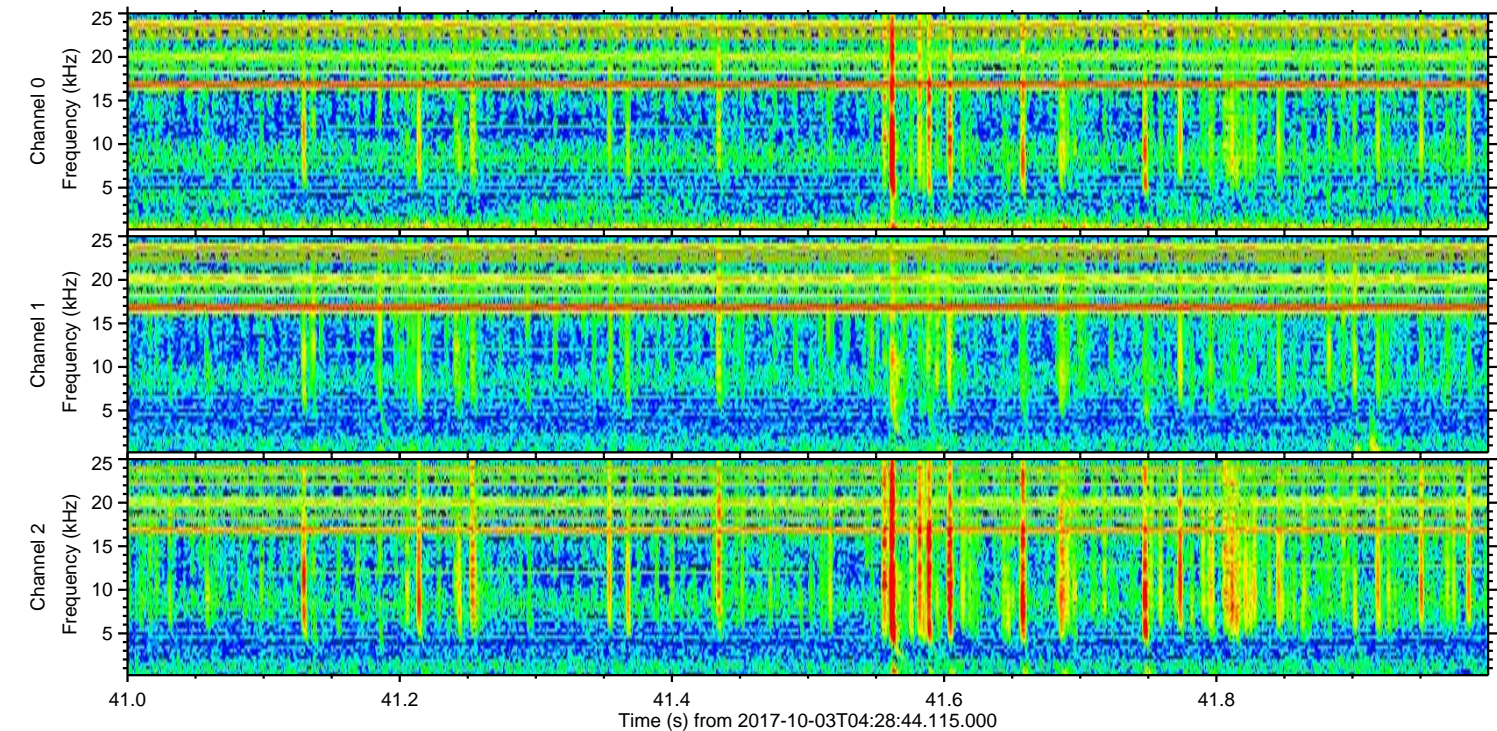
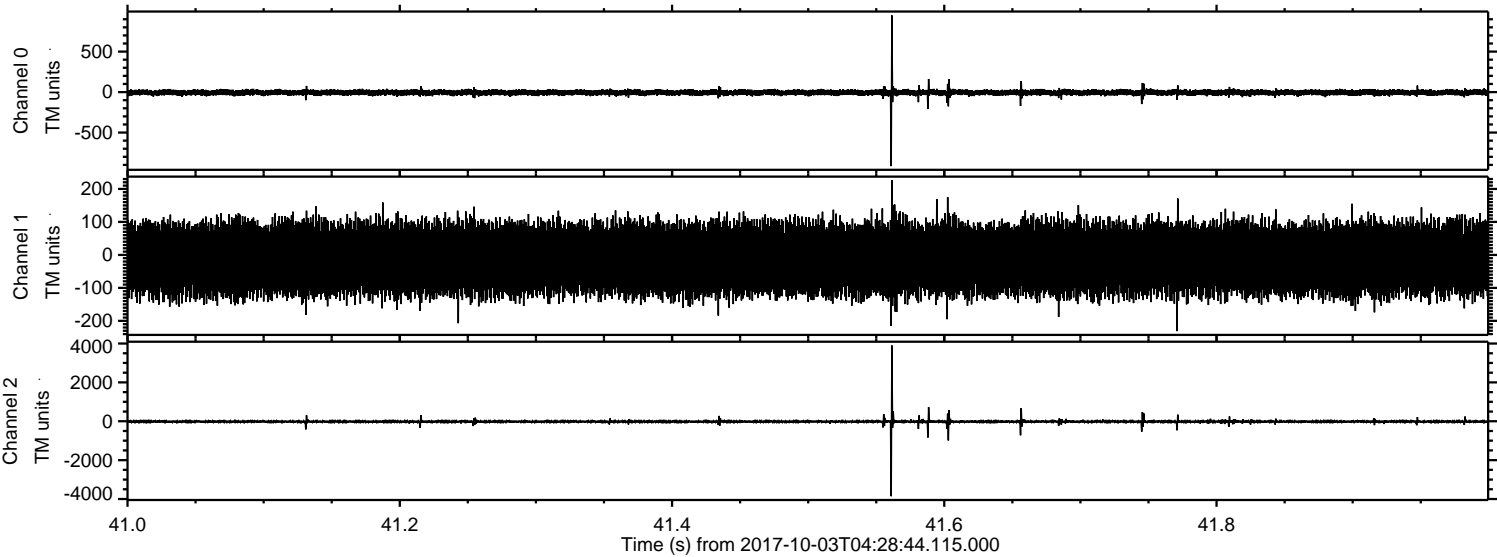


Channel 0
mn: -1769
mx: 1260
 μ : -5.7
 σ : 25.8

Channel 1
mn: -4217
mx: 3108
 μ : -12.9
 σ : 70.7

Channel 2
mn: -5135
mx: 3953
 μ : -15.4
 σ : 60.3

Processed Tue Oct 3 06:37:02 2017 by ELM ver.2012-10-06 from 001__elm20171003_042843__dat00.bin



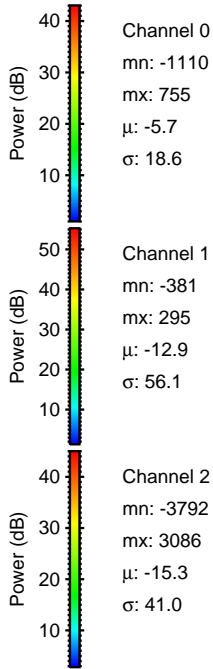
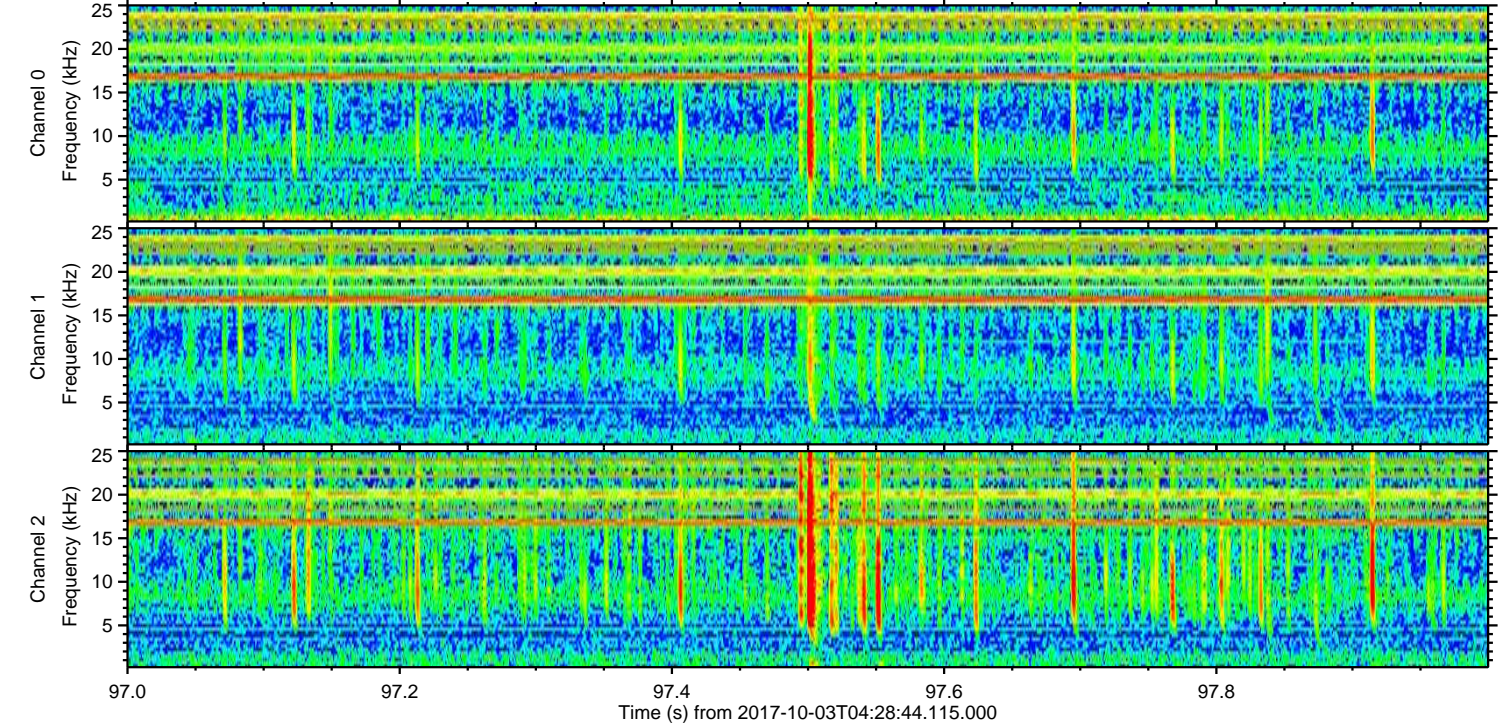
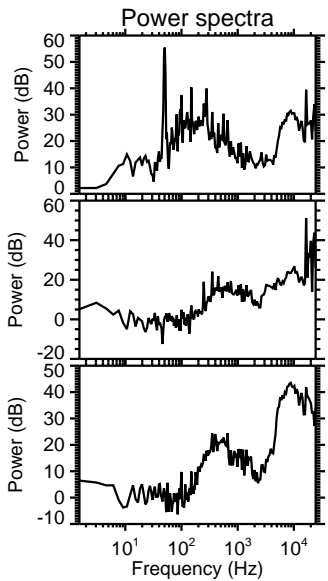
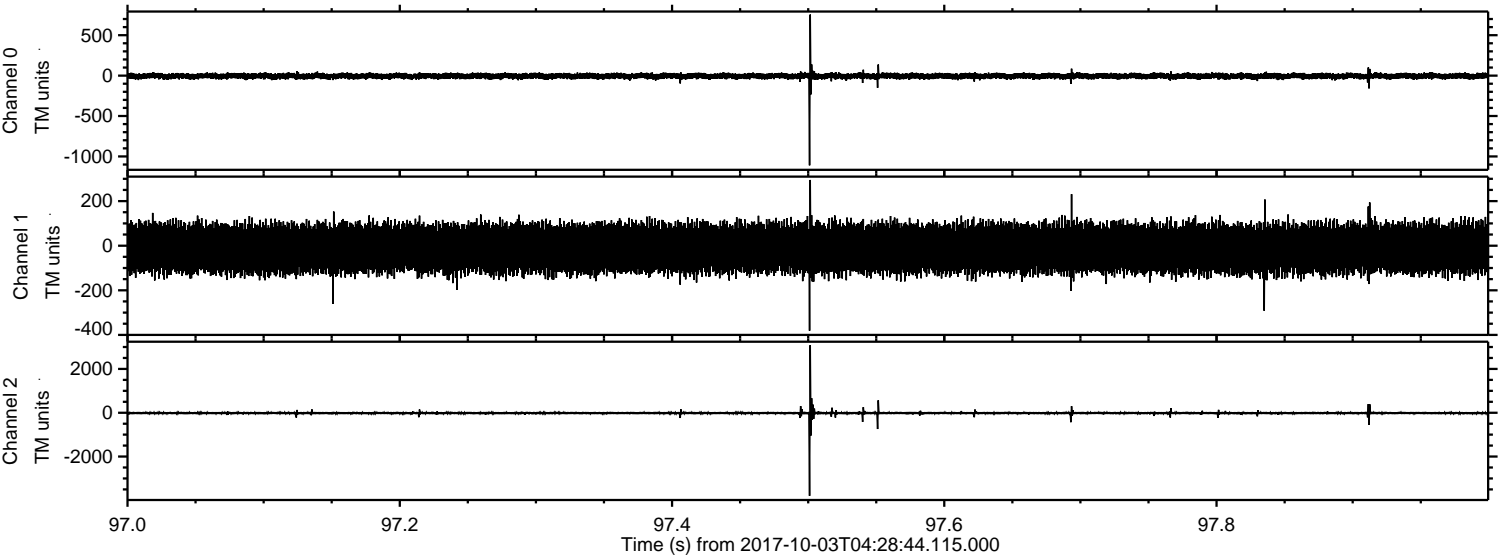
Power spectra

Channel 0
mn: -915
mx: 948
 μ : -5.7
 σ : 19.5

Channel 1
mn: -231
mx: 226
 μ : -12.9
 σ : 56.0

Channel 2
mn: -3859
mx: 3899
 μ : -15.4
 σ : 46.4

Processed Tue Oct 3 06:37:03 2017 by ELM ver.2012-10-06 from 001__elm20171003_042843__dat00.bin



Power spectra

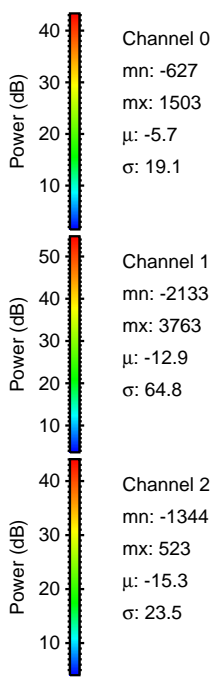
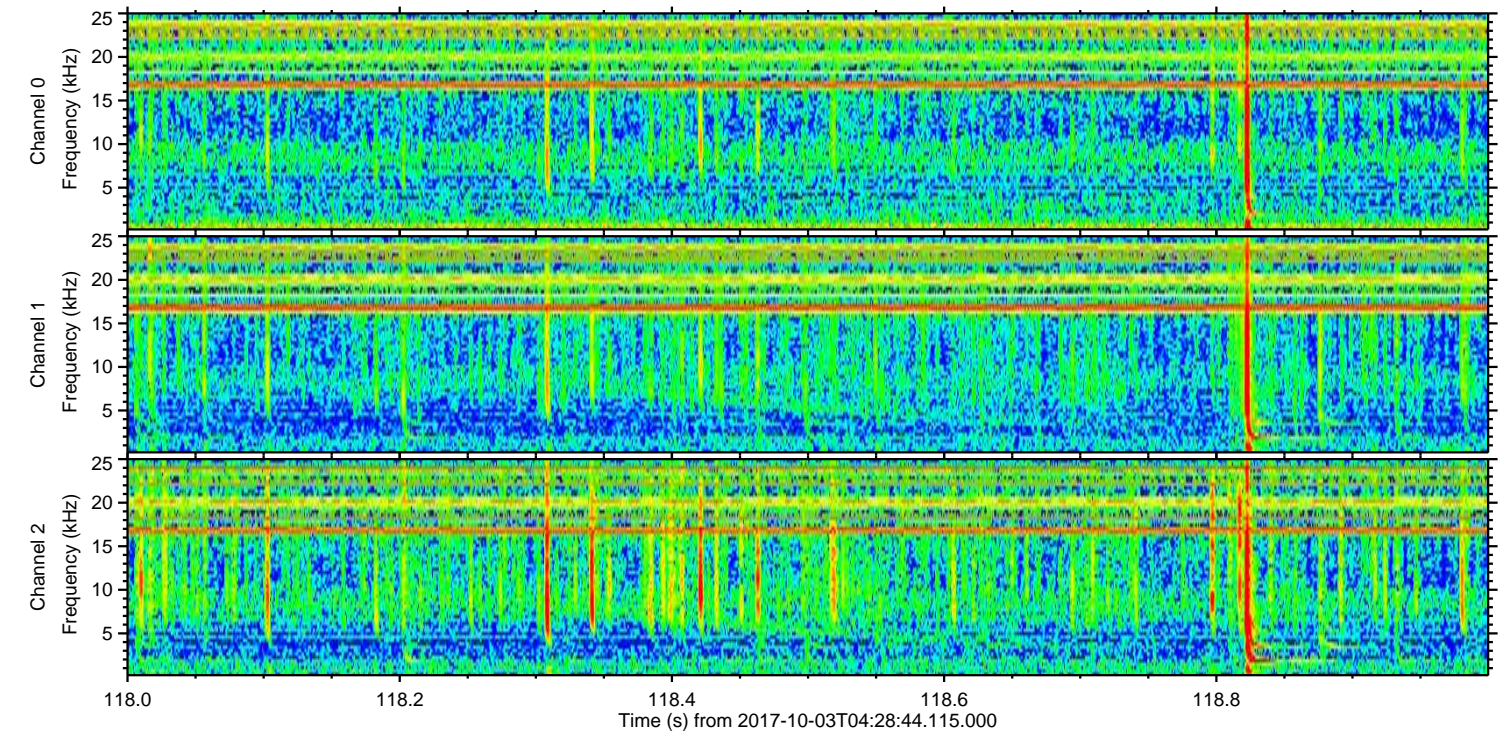
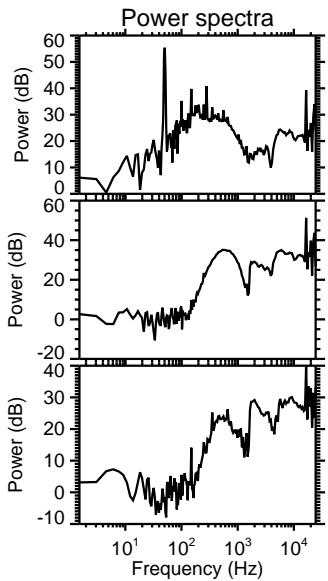
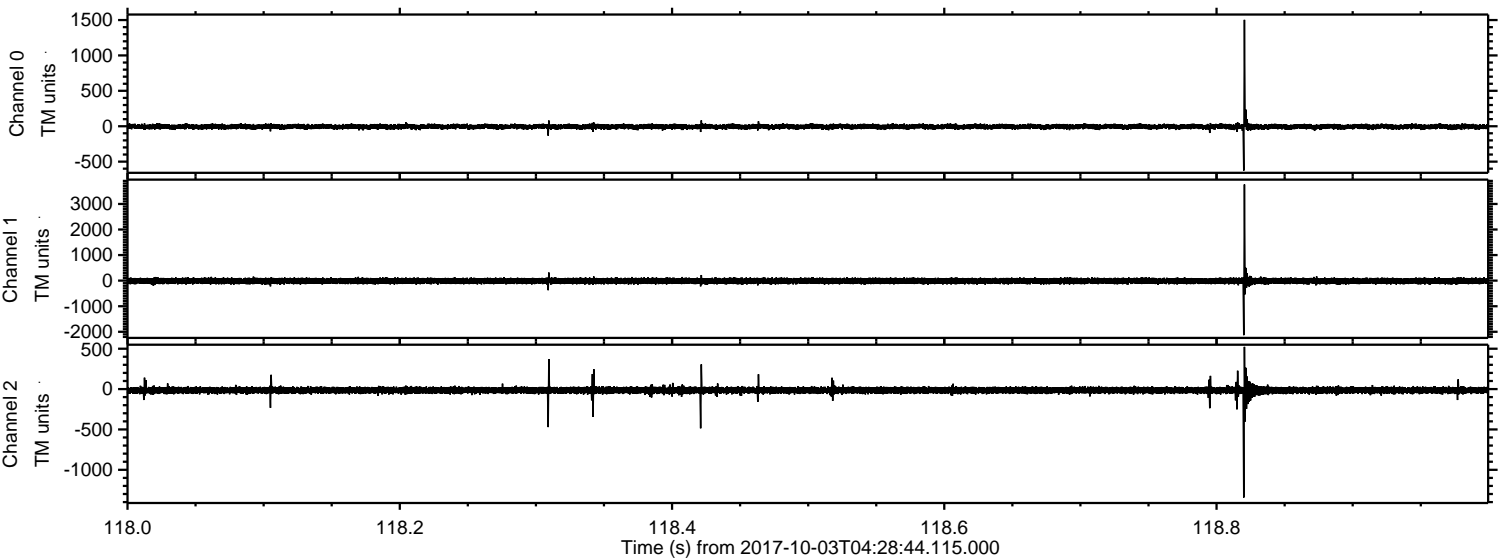
Channel 0
mn: -1110
mx: 755
 μ : -5.7
 σ : 18.6

Channel 1
mn: -381
mx: 295
 μ : -12.9
 σ : 56.1

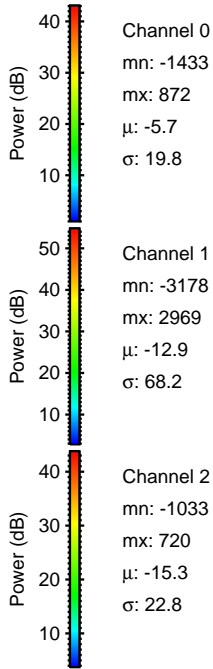
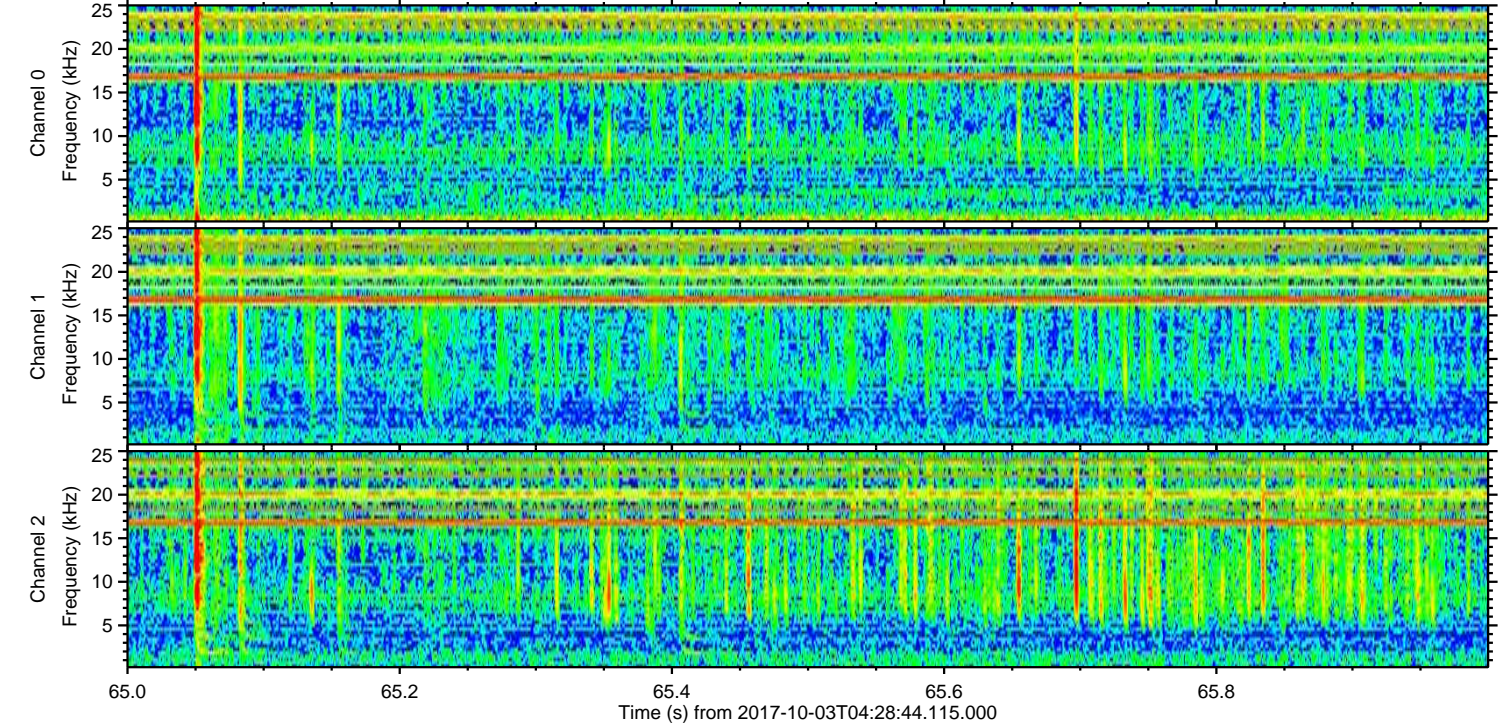
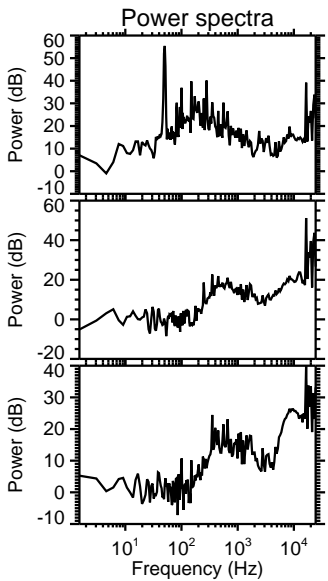
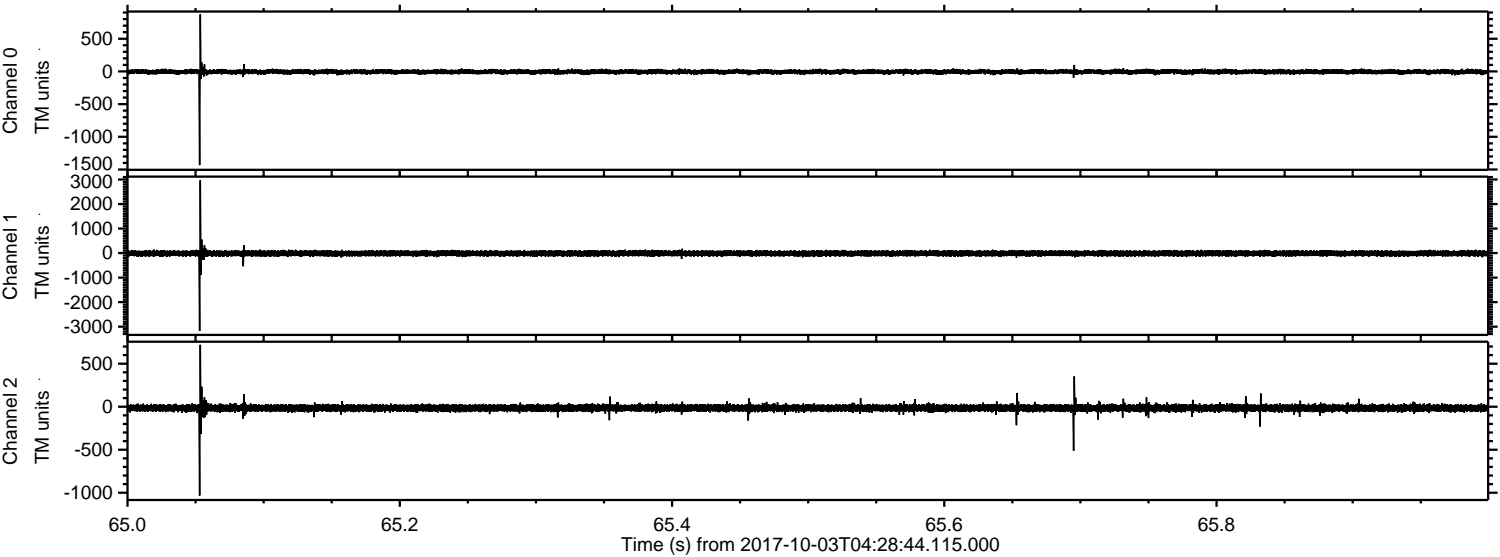
Channel 2
mn: -3792
mx: 3086
 μ : -15.3
 σ : 41.0

ELMAVAN 3D WAVEFORMS (Measured data sampled at 50 kHz) 51000 packets of 144 samples from 2017-10-03T04:28:44.115.000. Part 119/147

Processed Tue Oct 3 06:37:03 2017 by ELM ver.2012-10-06 from 001__elm20171003_042843__dat00.bin



Processed Tue Oct 3 06:37:04 2017 by ELM ver.2012-10-06 from 001__elm20171003_042843__dat00.bin



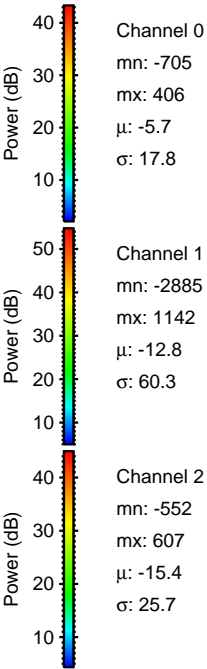
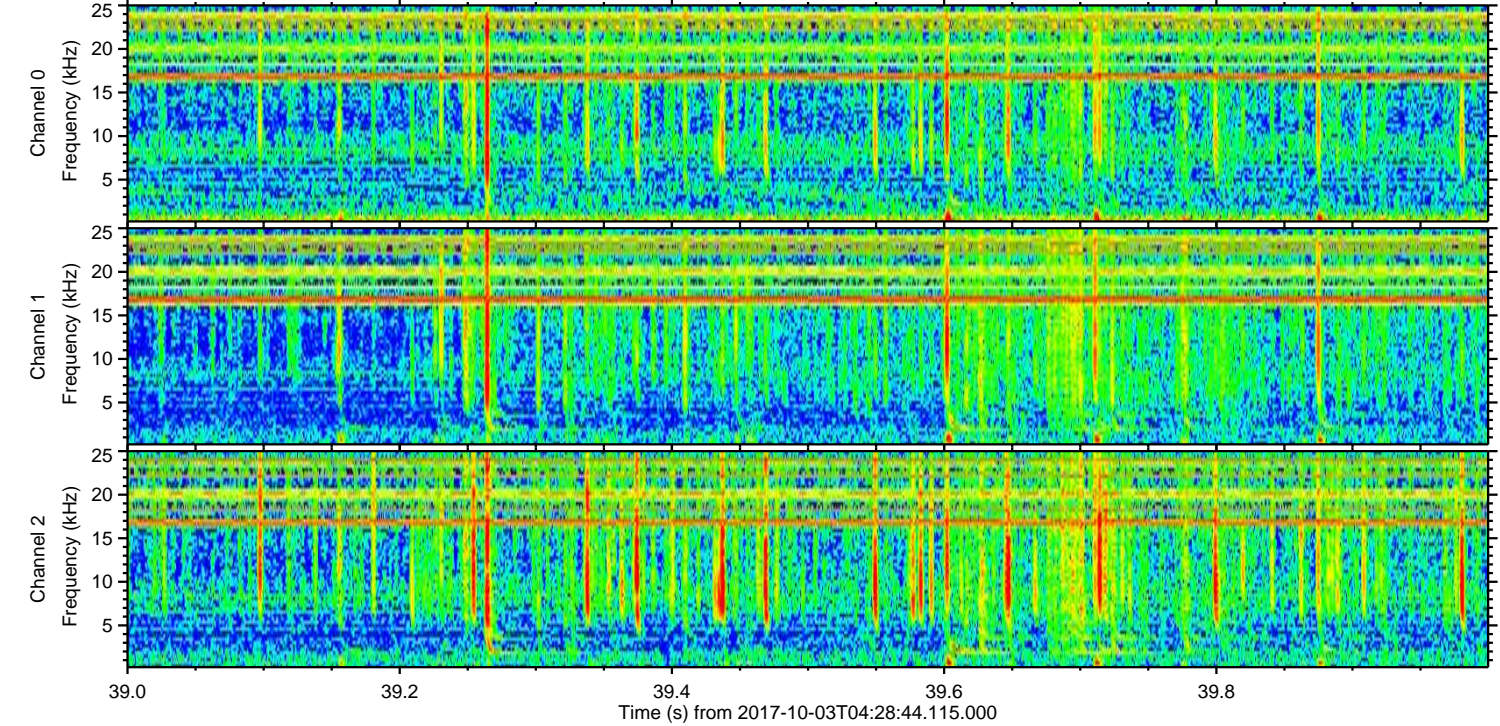
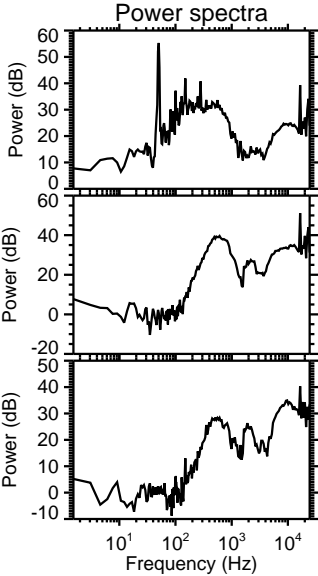
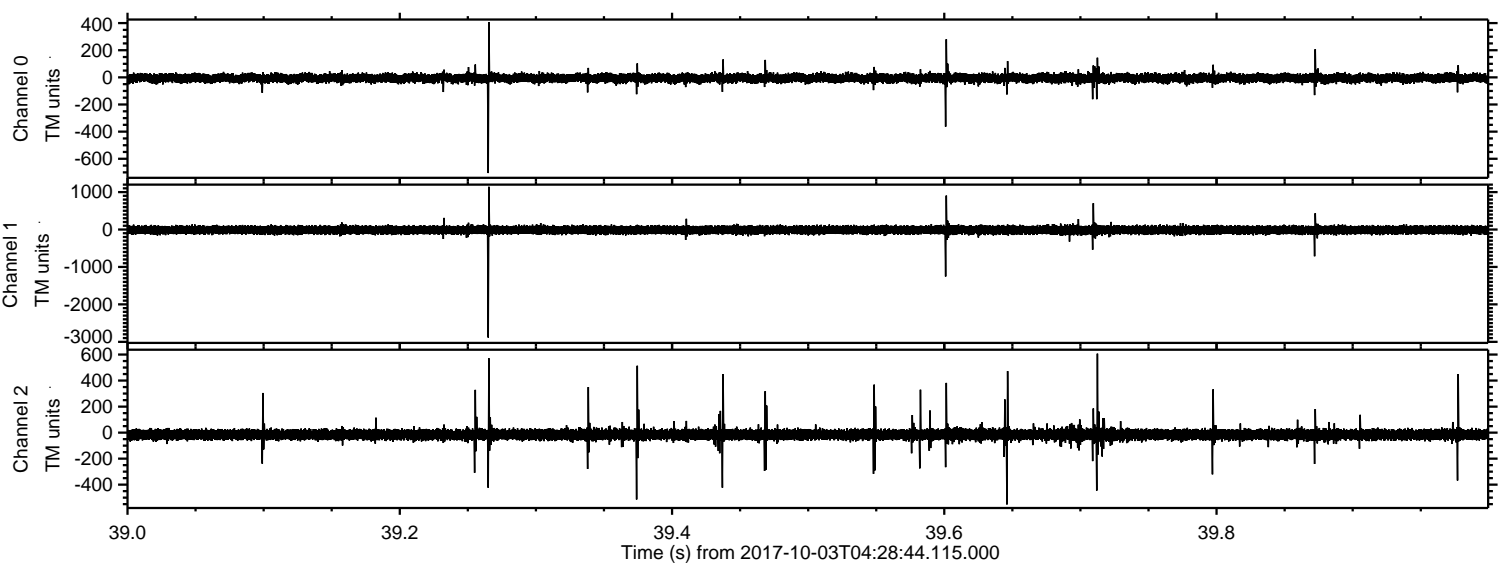
Channel 0
mn: -1433
mx: 872
 μ : -5.7
 σ : 19.8

Channel 1
mn: -3178
mx: 2969
 μ : -12.9
 σ : 68.2

Channel 2
mn: -1033
mx: 720
 μ : -15.3
 σ : 22.8

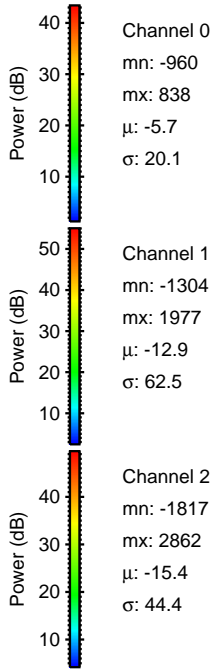
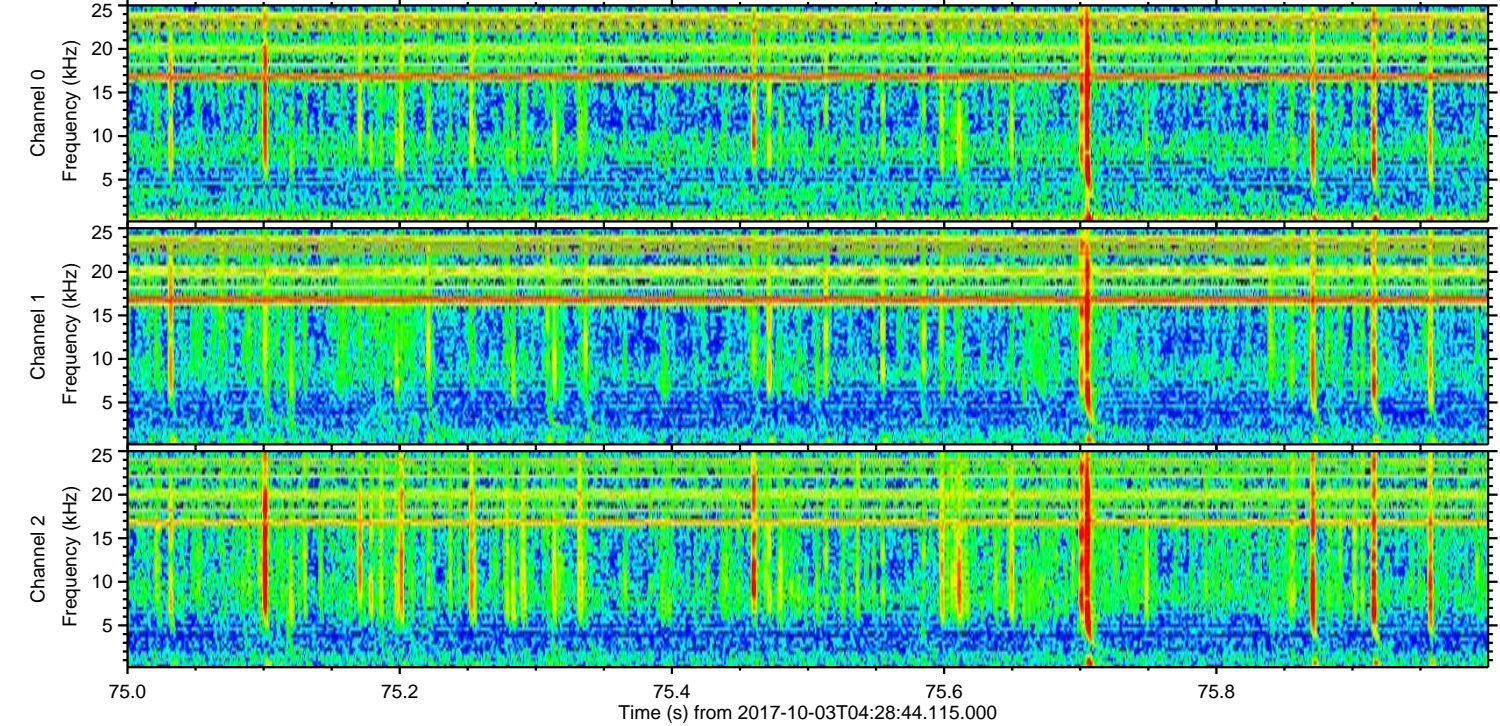
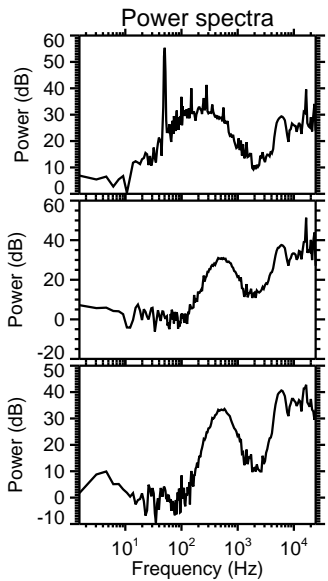
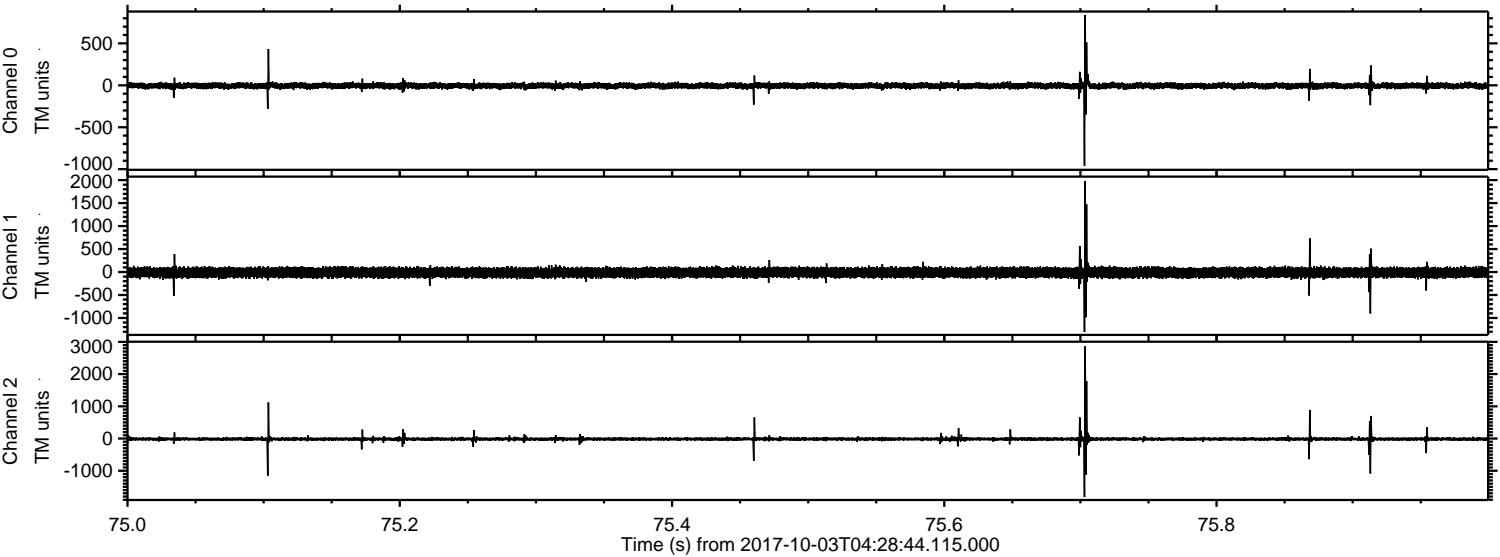
ELMAVAN 3D WAVEFORMS (Measured data sampled at 50 kHz) 51000 packets of 144 samples from 2017-10-03T04:28:44.115.000. Part 40/147

Processed Tue Oct 3 06:37:04 2017 by ELM ver.2012-10-06 from 001__elm20171003_042843__dat00.bin



ELMAVAN 3D WAVEFORMS (Measured data sampled at 50 kHz) 51000 packets of 144 samples from 2017-10-03T04:28:44.115.000. Part 76/147

Processed Tue Oct 3 06:37:05 2017 by ELM ver.2012-10-06 from 001__elm20171003_042843__dat00.bin



Processed Tue Oct 3 06:37:06 2017 by ELM ver.2012-10-06 from 001__elm20171003_042843__dat00.bin

