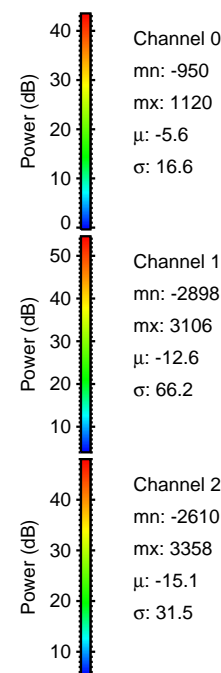
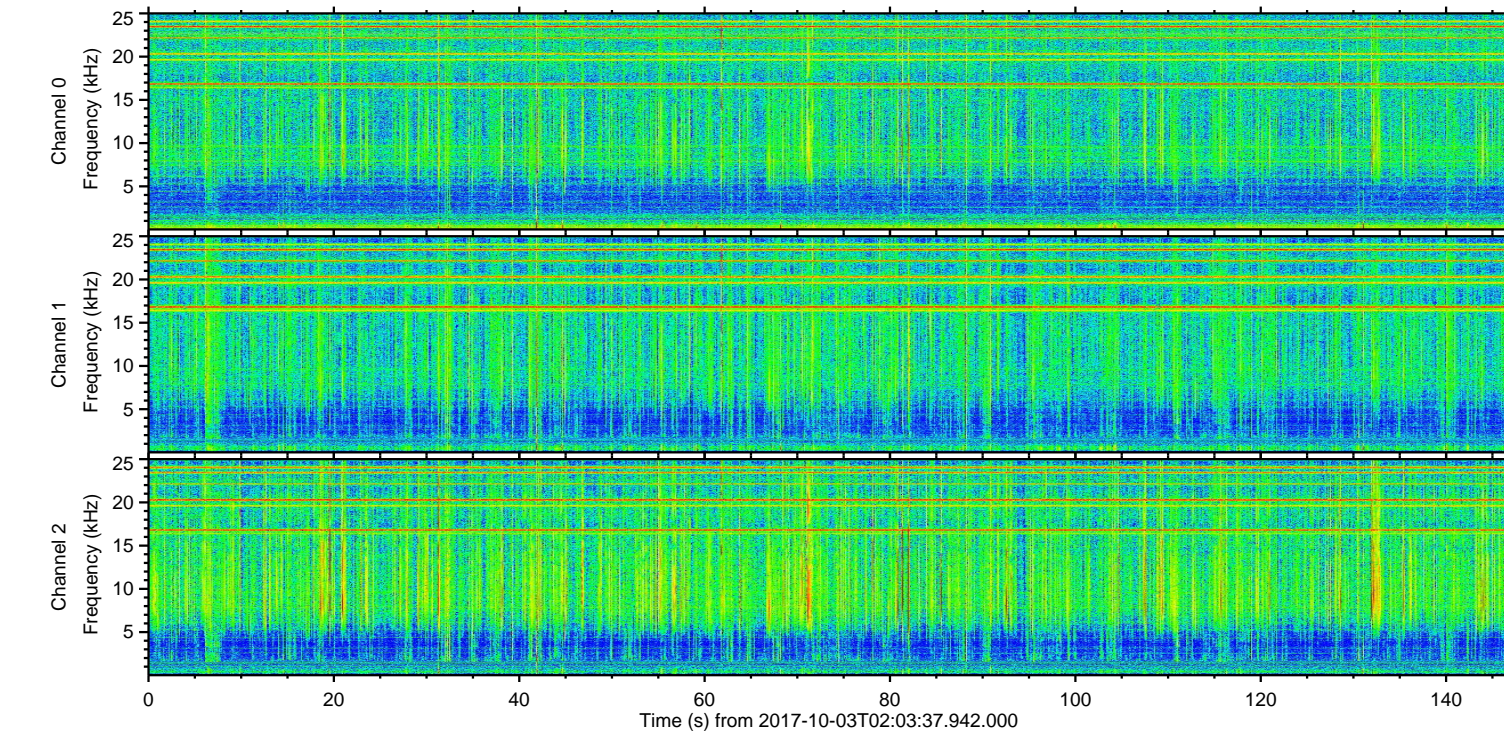
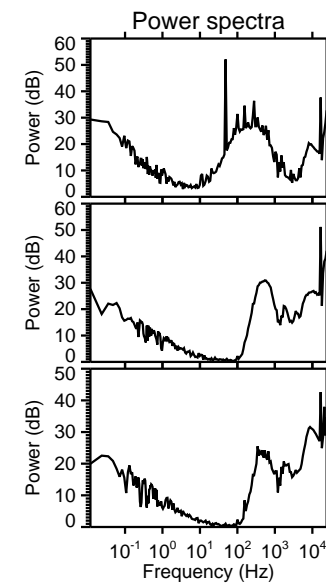
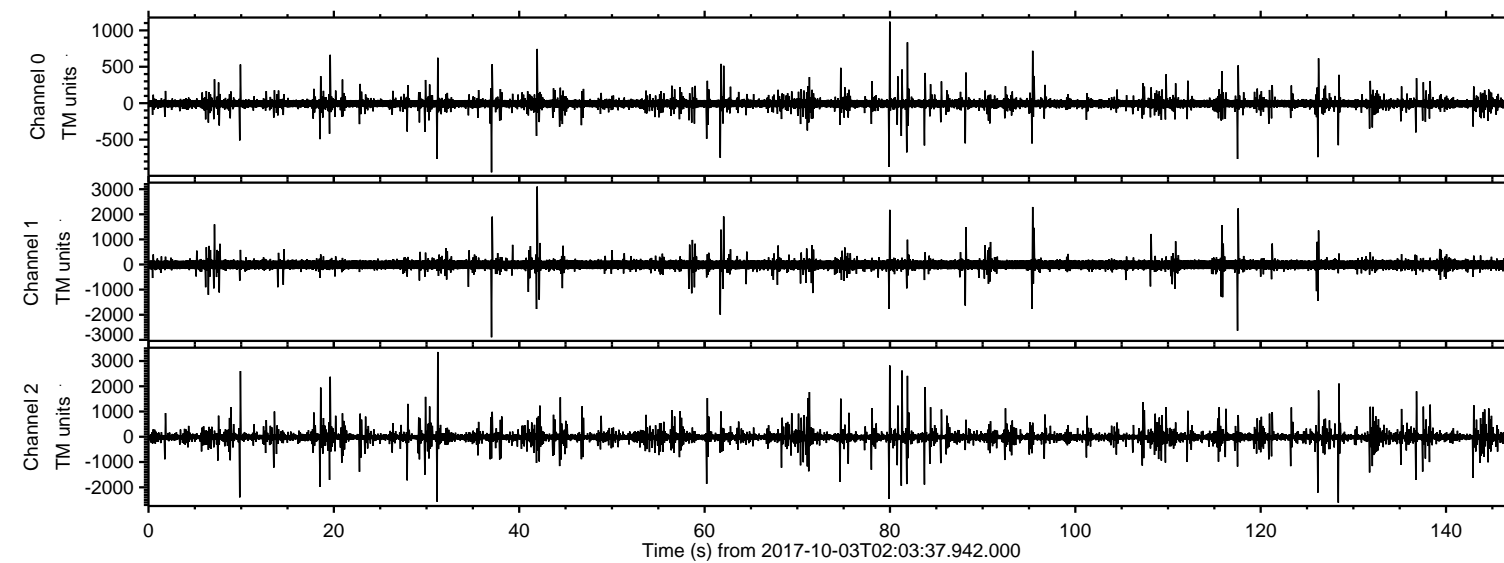


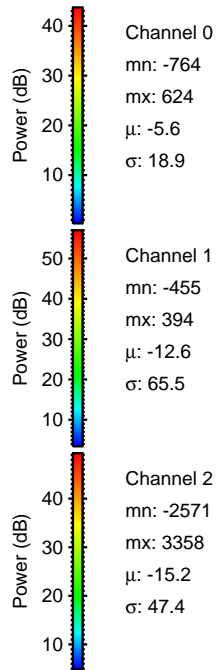
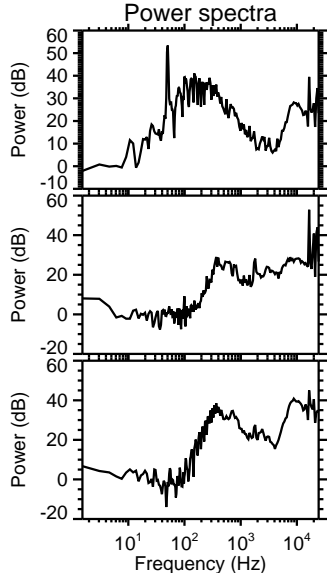
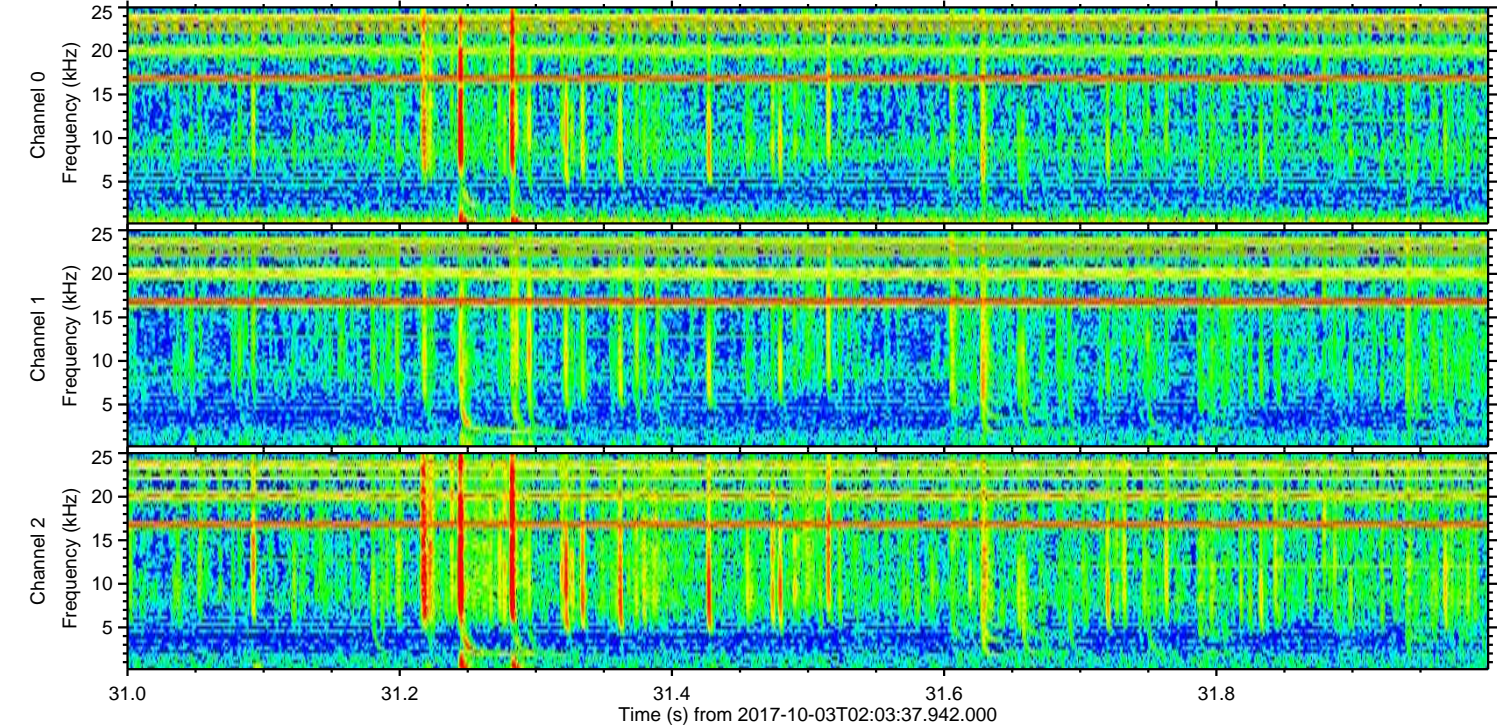
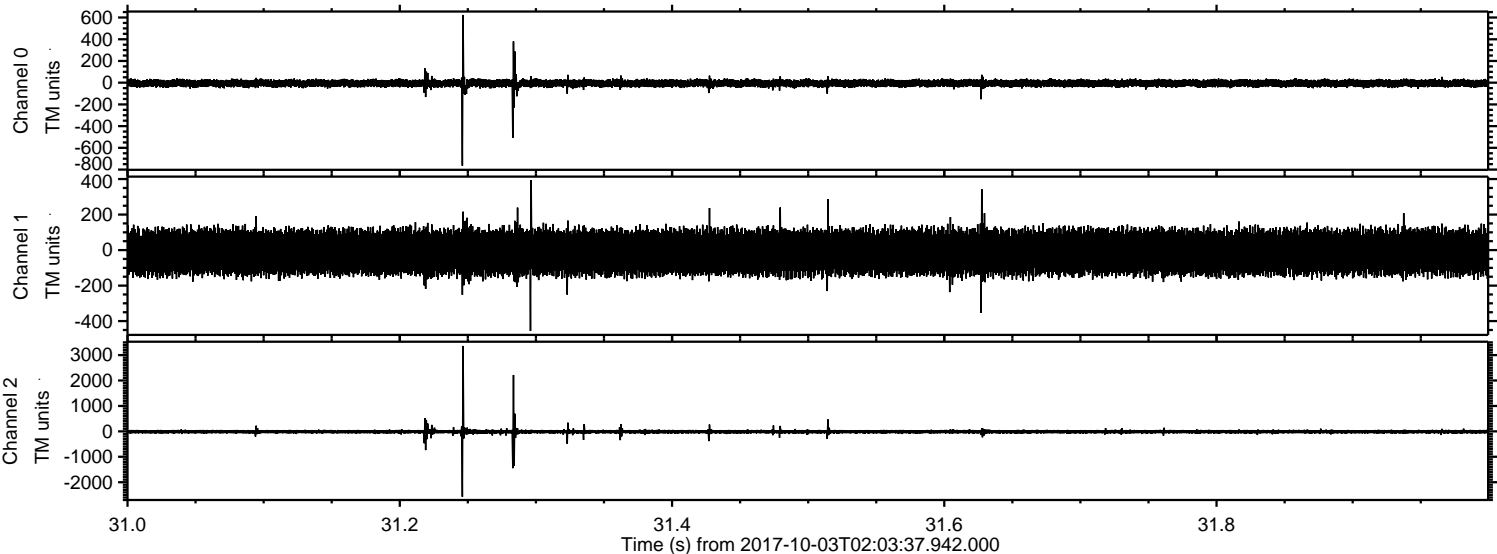
ELMAVAN 3D WAVEFORMS (Measured data sampled at 50 kHz) 51000 packets of 144 samples from 2017-10-03T02:03:37.942.000.

Processed Tue Oct 3 04:11:26 2017 by ELM ver.2012-10-06 from 001\_\_elm20171003\_020336\_\_dat00.bin



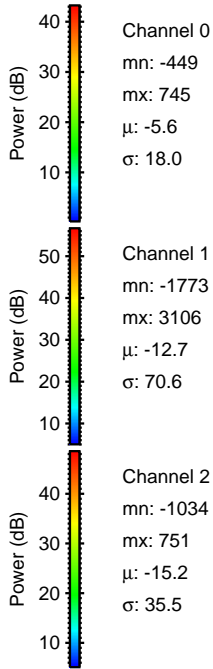
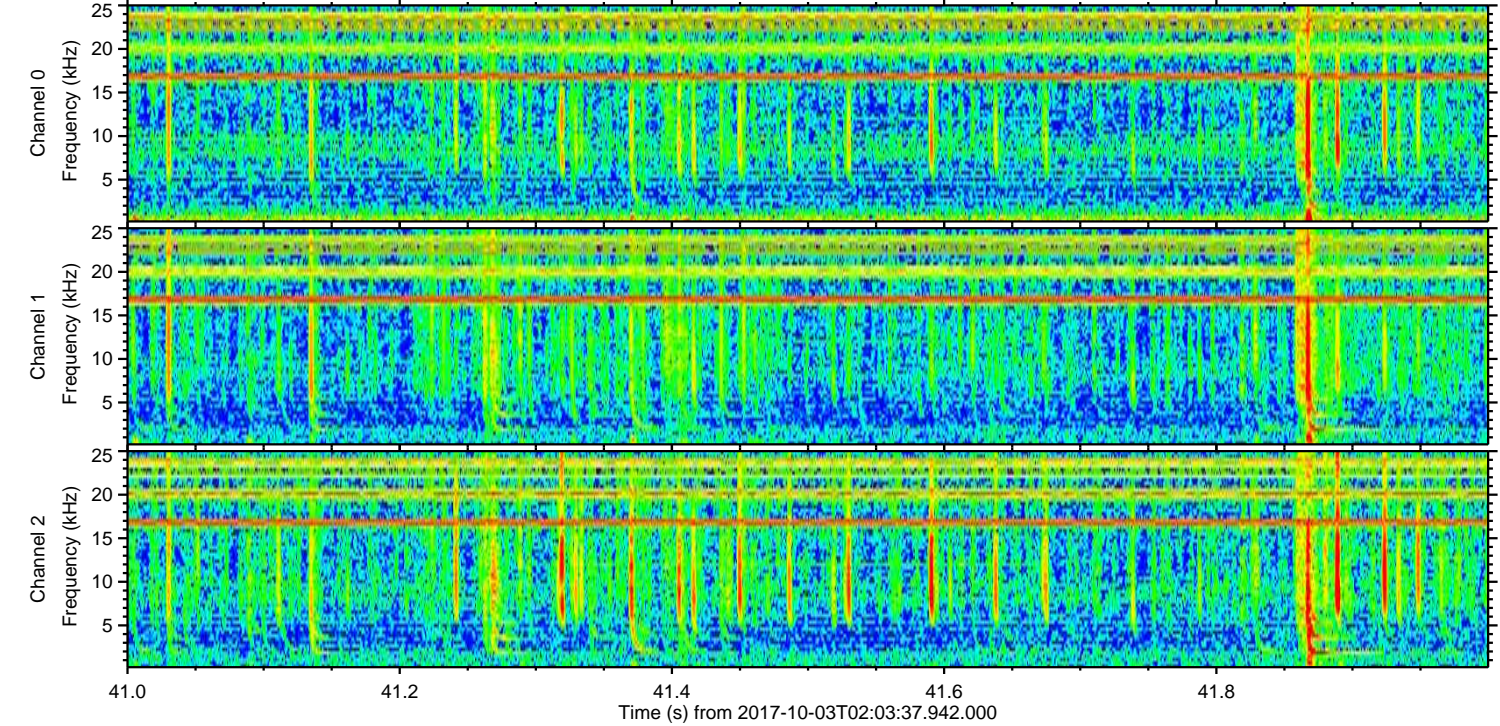
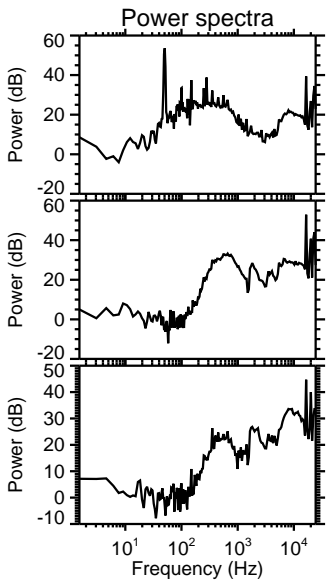
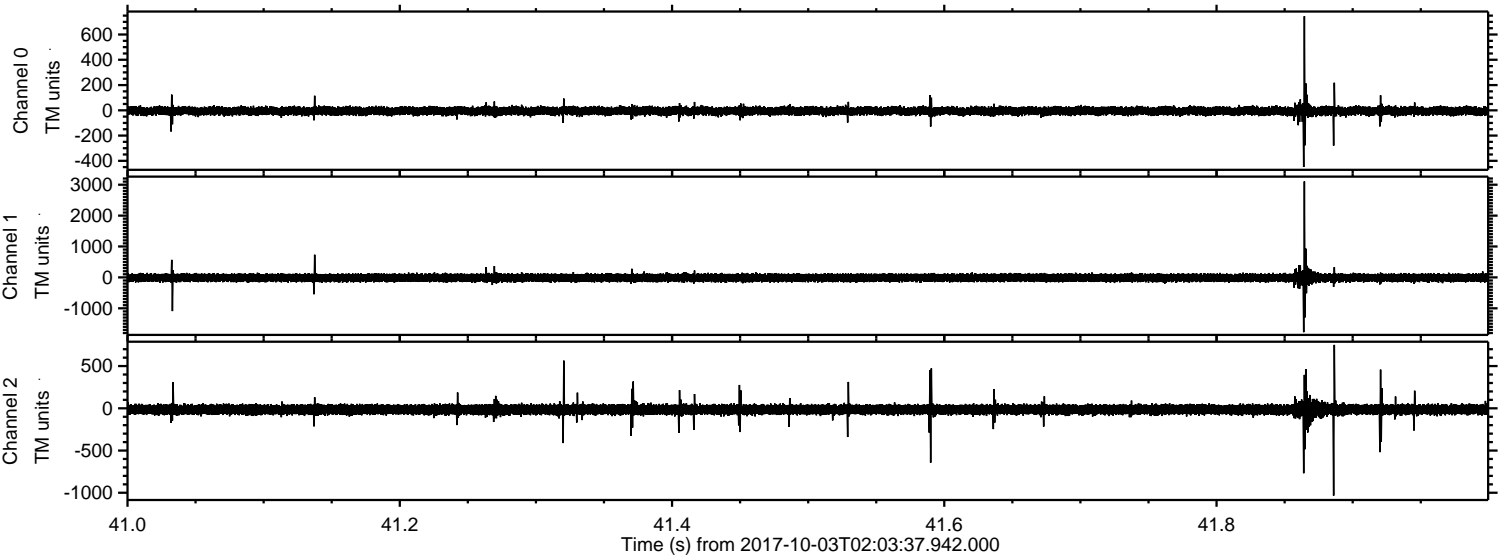


Processed Tue Oct 3 04:11:31 2017 by ELM ver.2012-10-06 from 001\_\_elm20171003\_020336\_\_dat00.bin



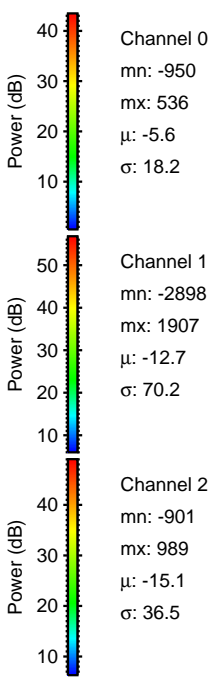
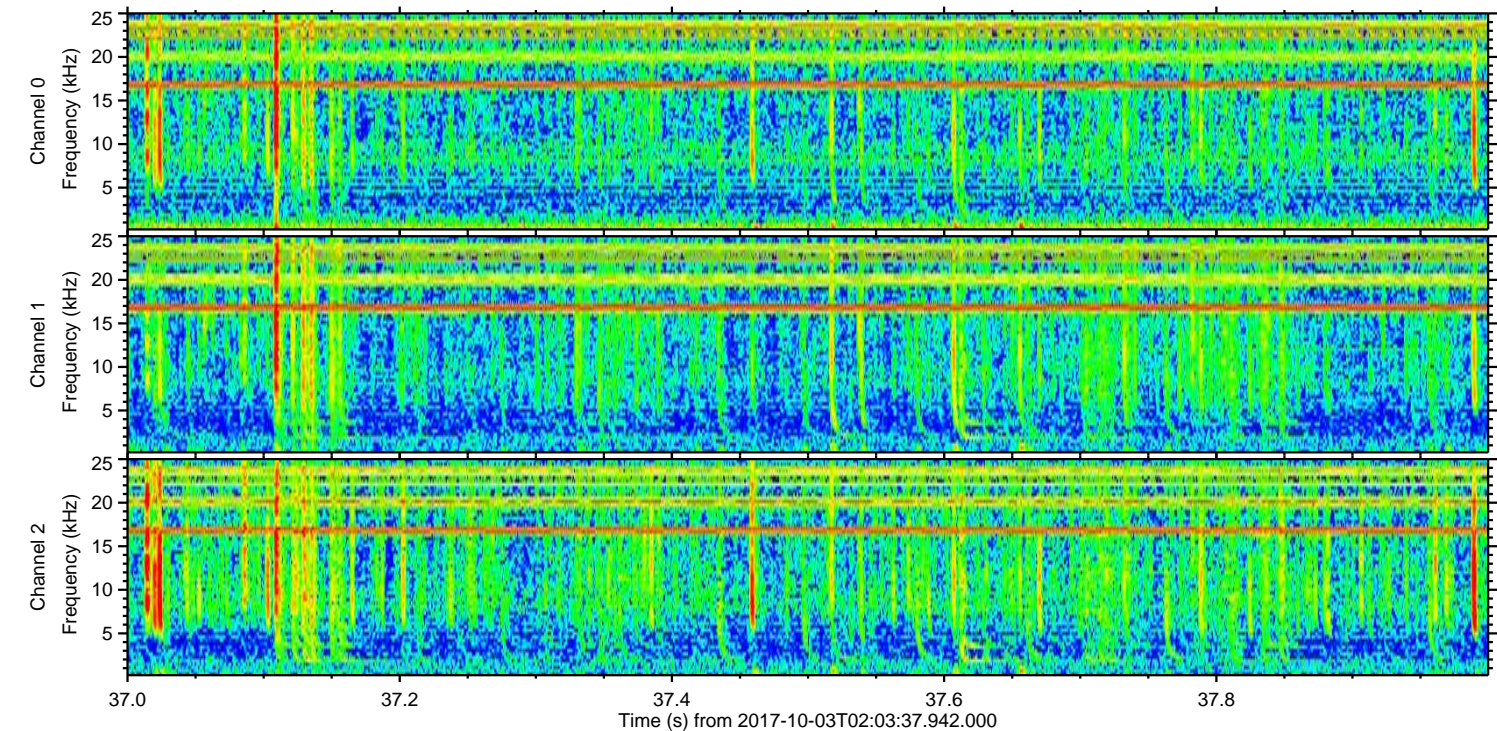
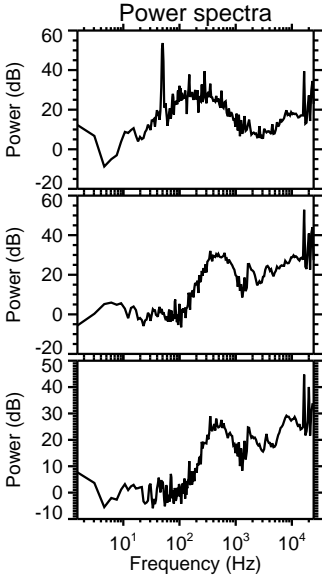
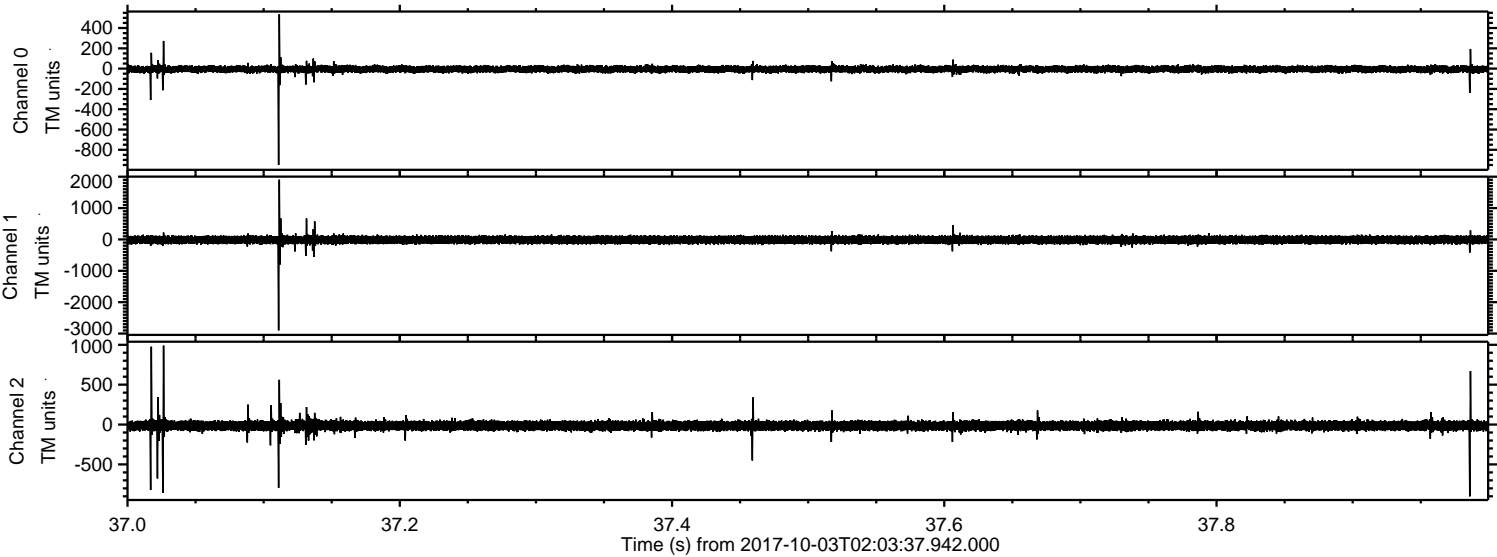


Processed Tue Oct 3 04:11:32 2017 by ELM ver.2012-10-06 from 001\_\_elm20171003\_020336\_\_dat00.bin



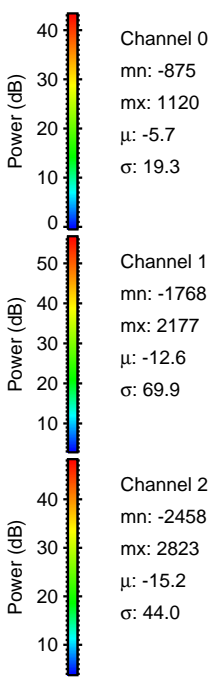
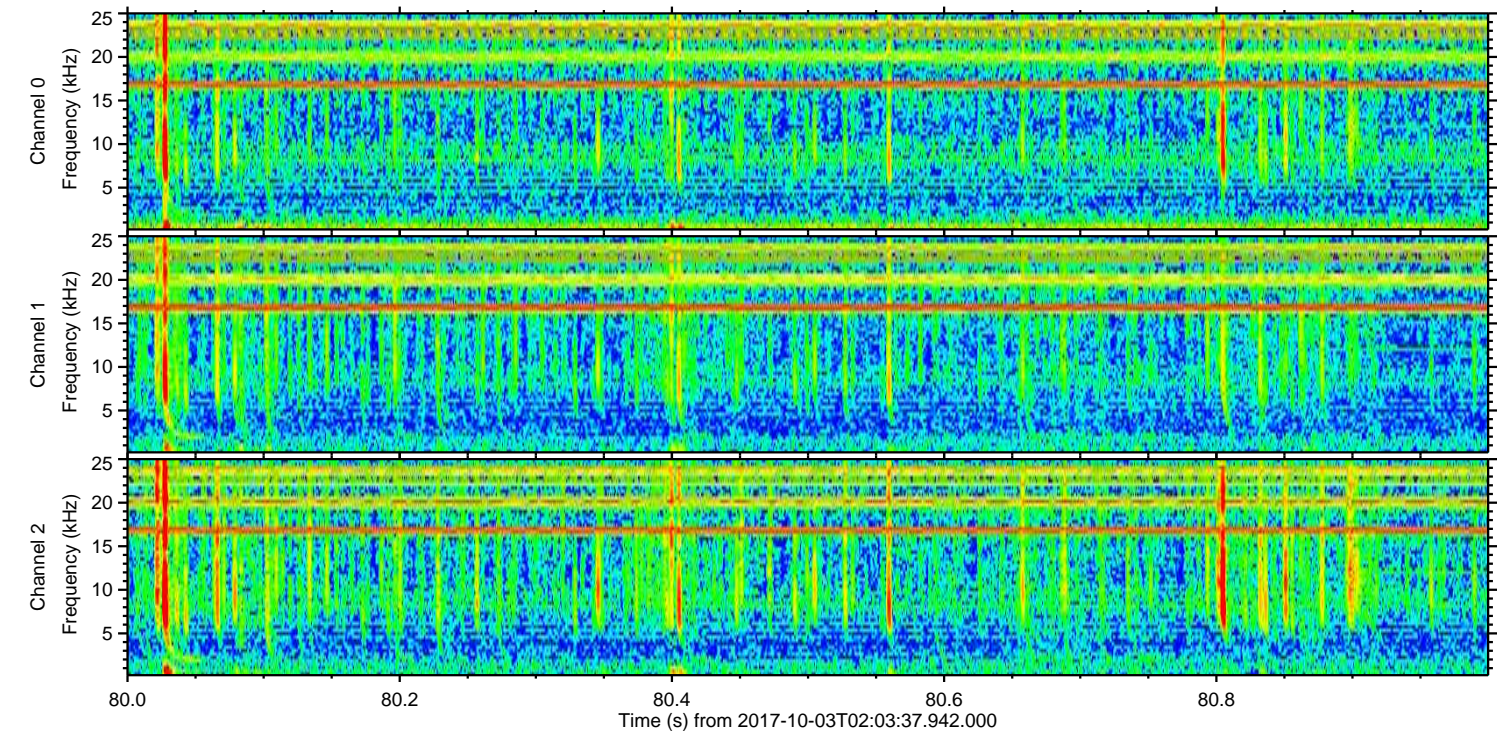
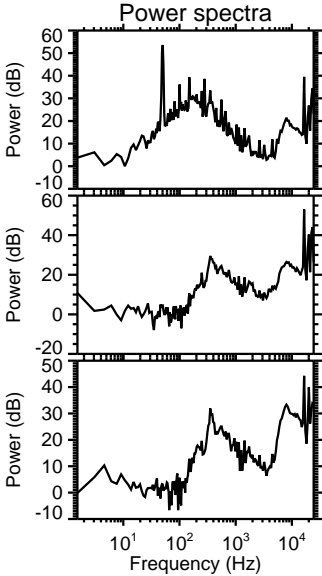
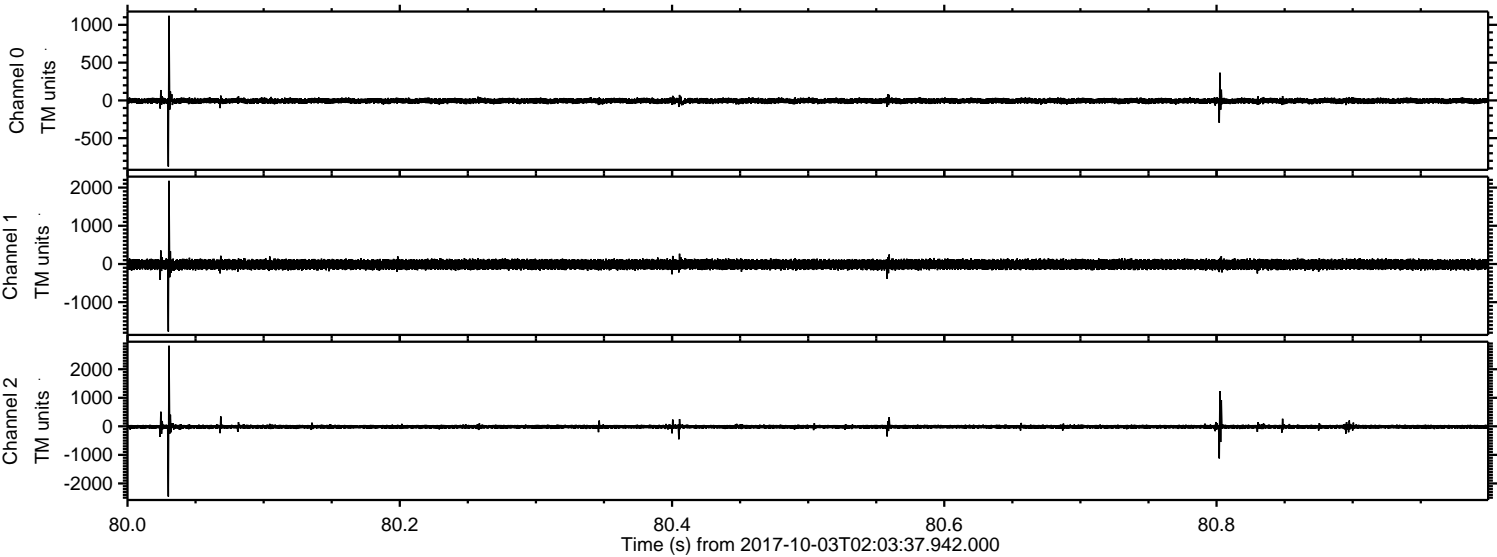


Processed Tue Oct 3 04:11:33 2017 by ELM ver.2012-10-06 from 001\_\_elm20171003\_020336\_\_dat00.bin





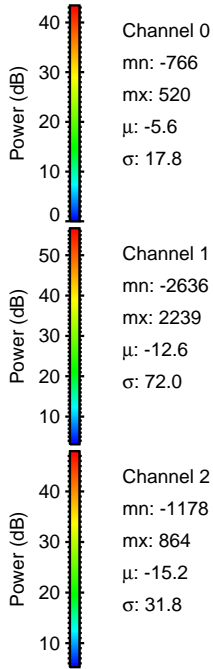
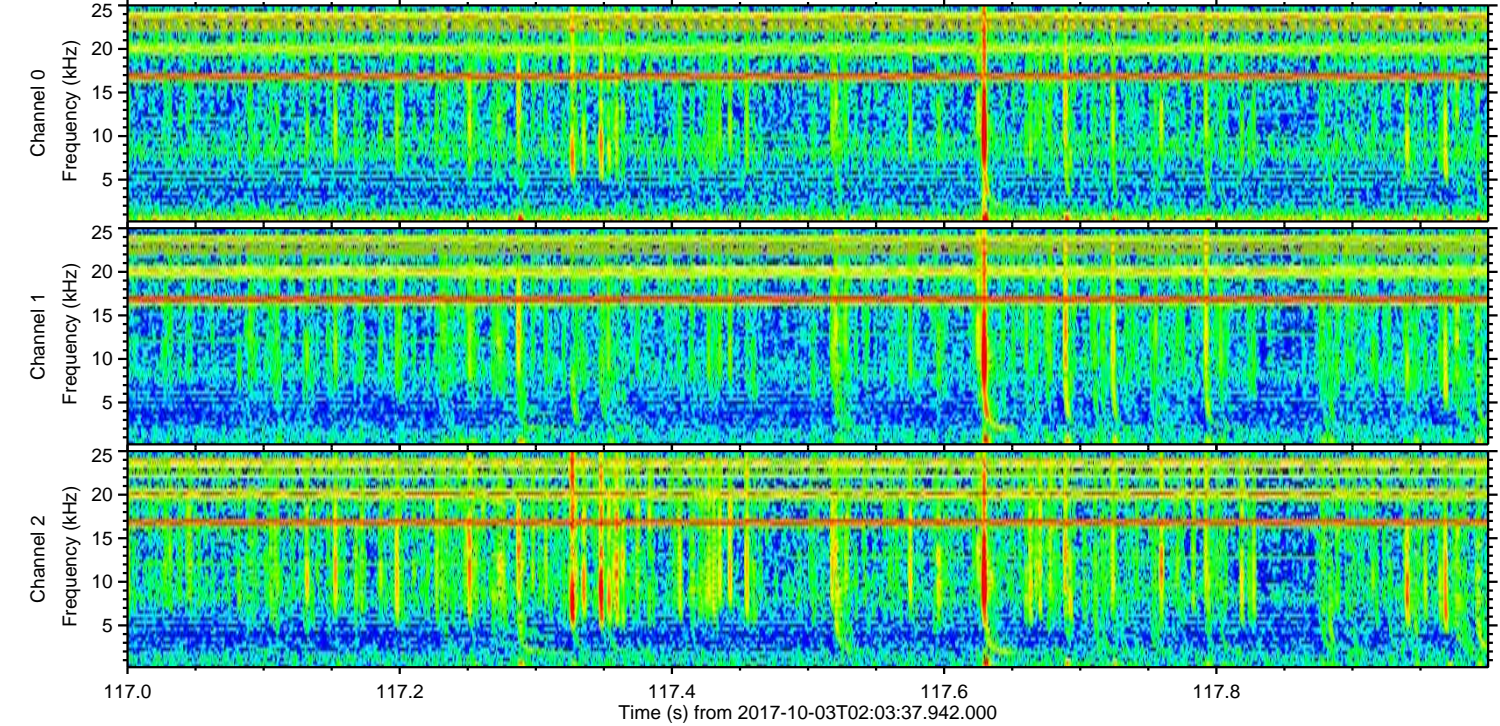
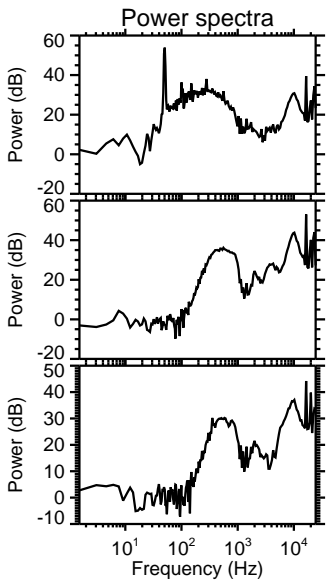
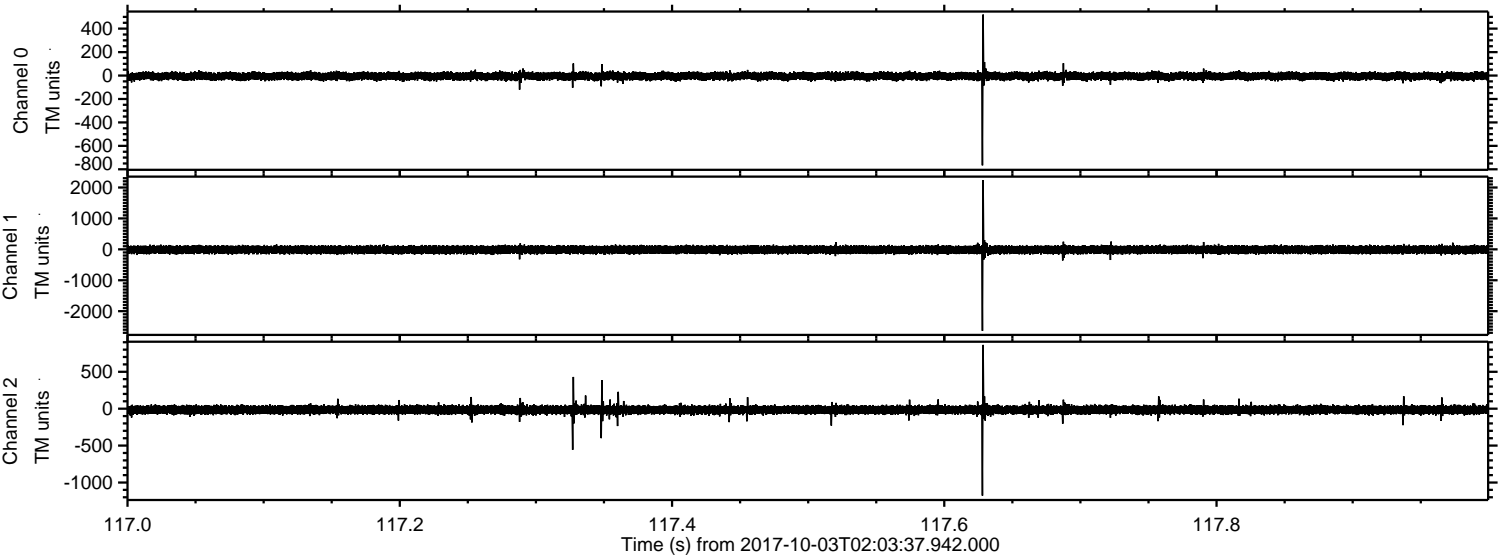
Processed Tue Oct 3 04:11:33 2017 by ELM ver.2012-10-06 from 001\_\_elm20171003\_020336\_\_dat00.bin





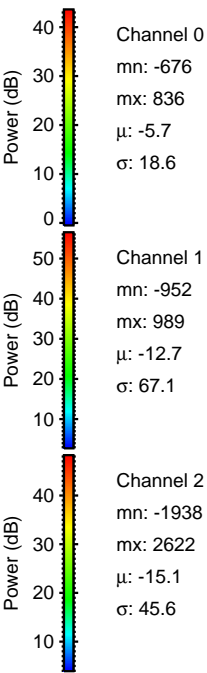
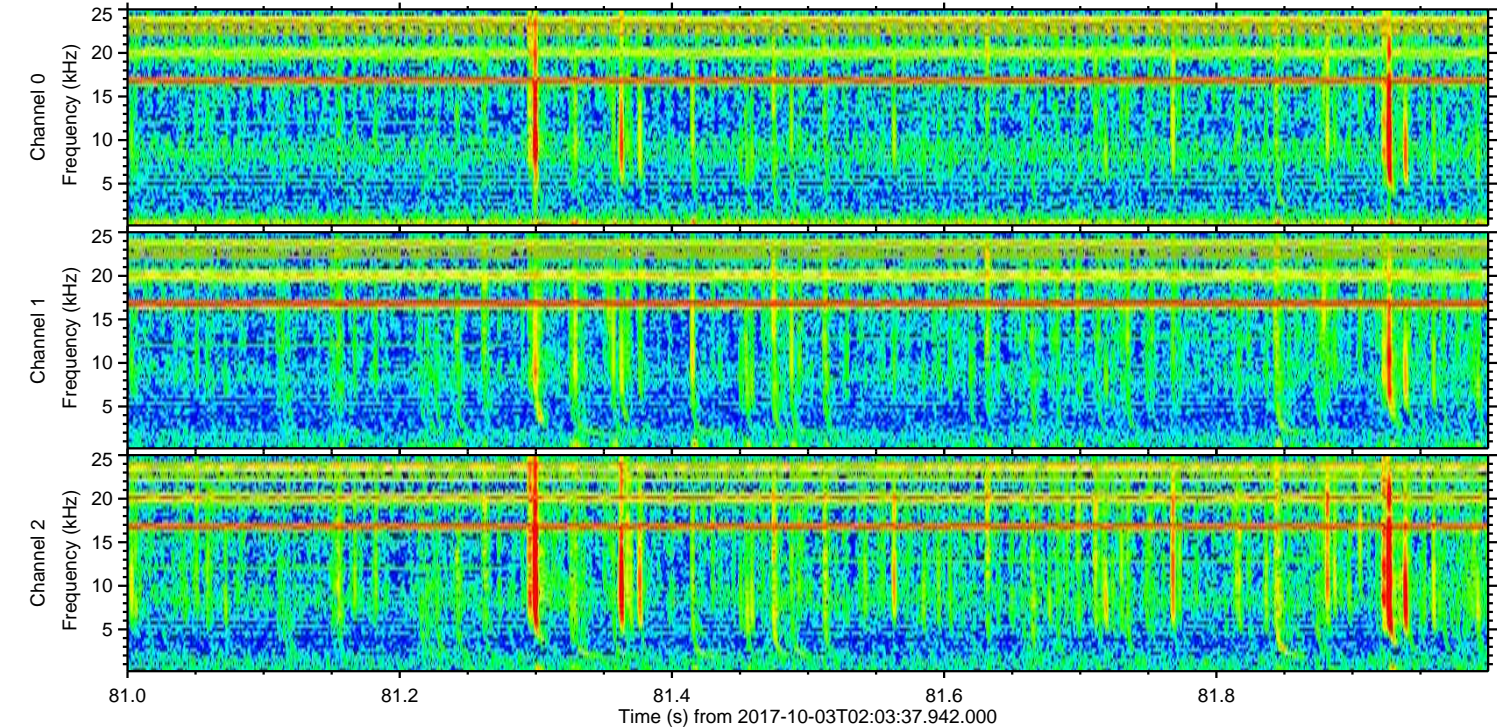
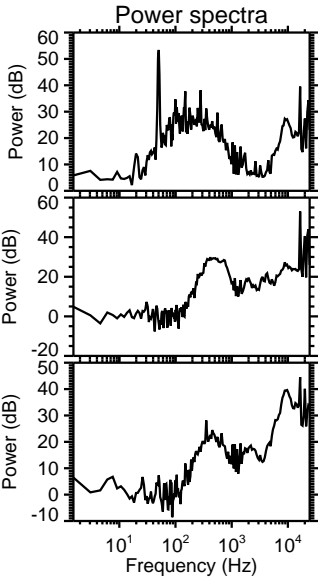
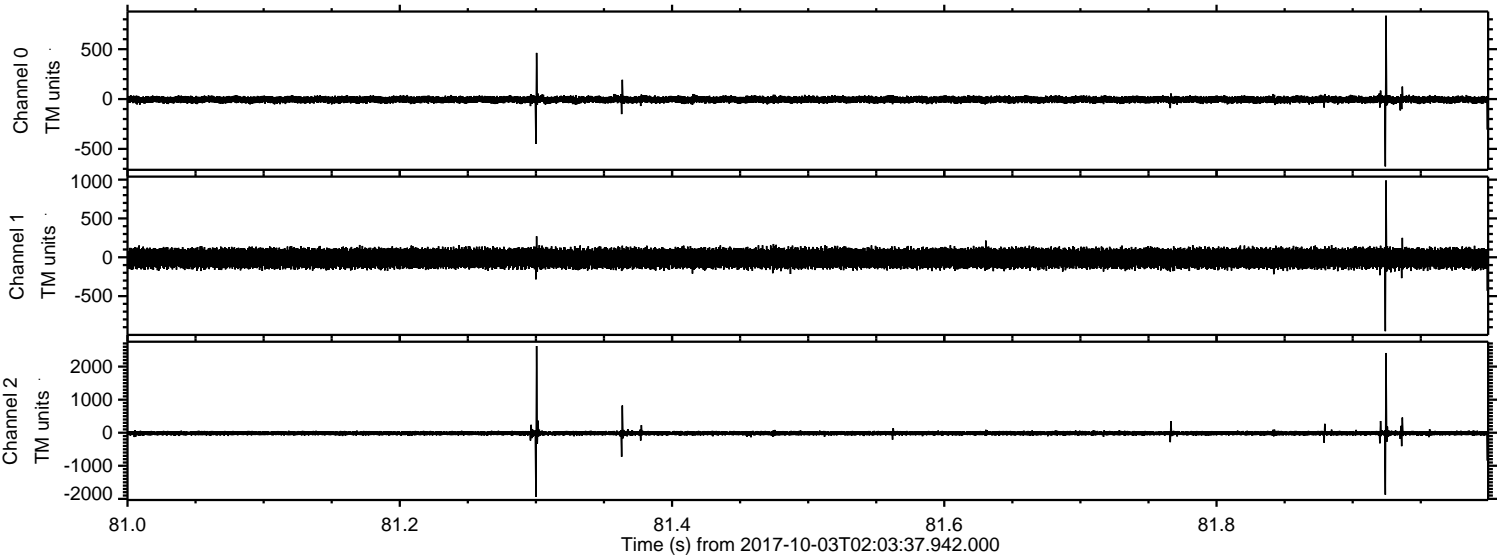
ELMAVAN 3D WAVEFORMS (Measured data sampled at 50 kHz) 51000 packets of 144 samples from 2017-10-03T02:03:37.942.000. Part 118/147

Processed Tue Oct 3 04:11:34 2017 by ELM ver.2012-10-06 from 001\_\_elm20171003\_020336\_\_dat00.bin





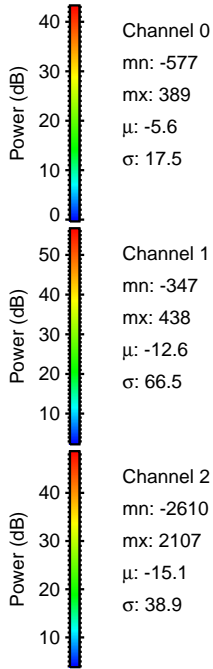
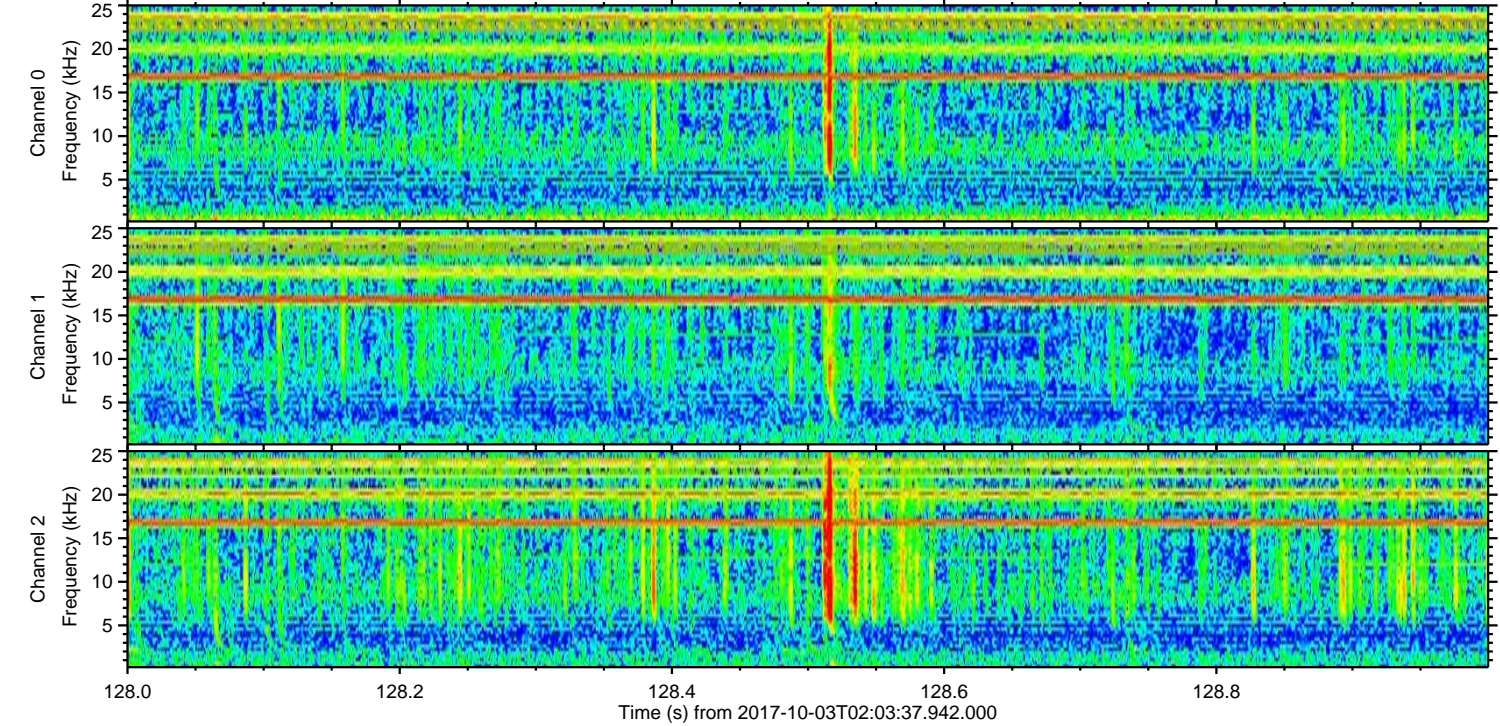
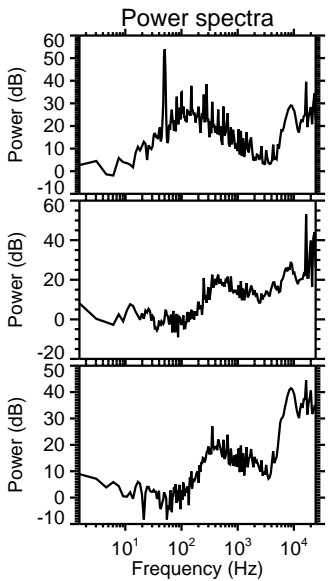
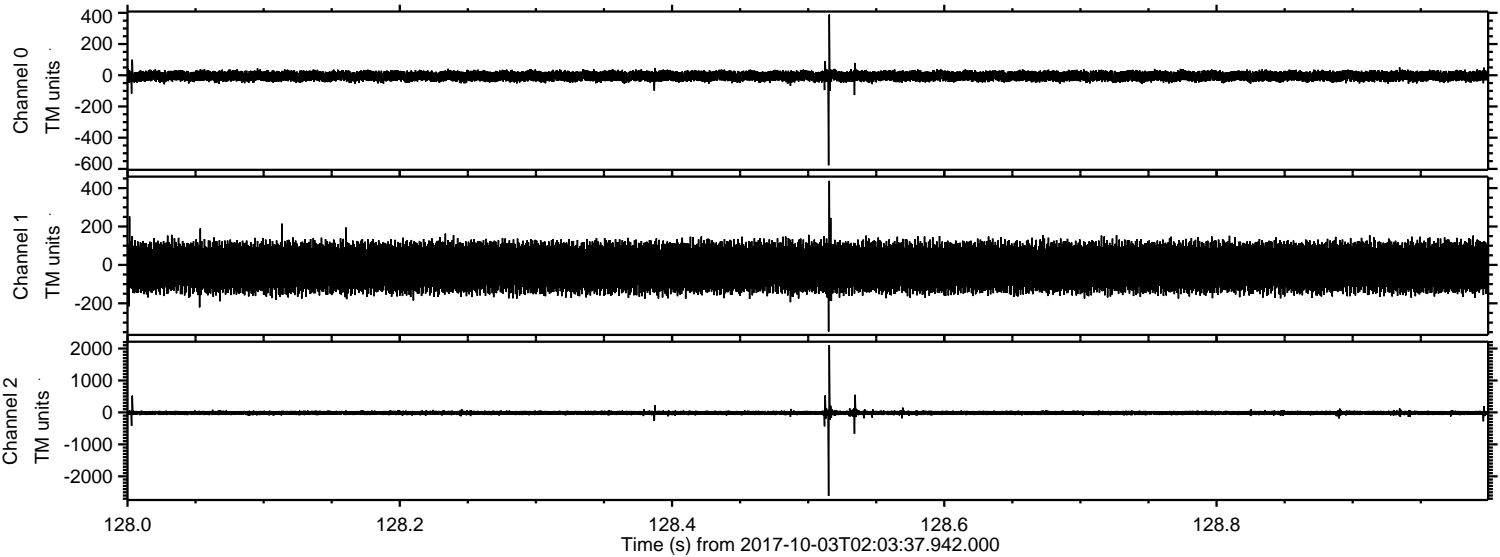
Processed Tue Oct 3 04:11:35 2017 by ELM ver.2012-10-06 from 001\_\_elm20171003\_020336\_\_dat00.bin





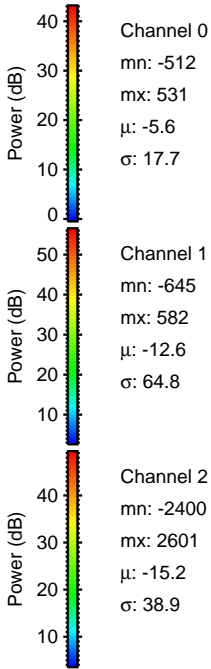
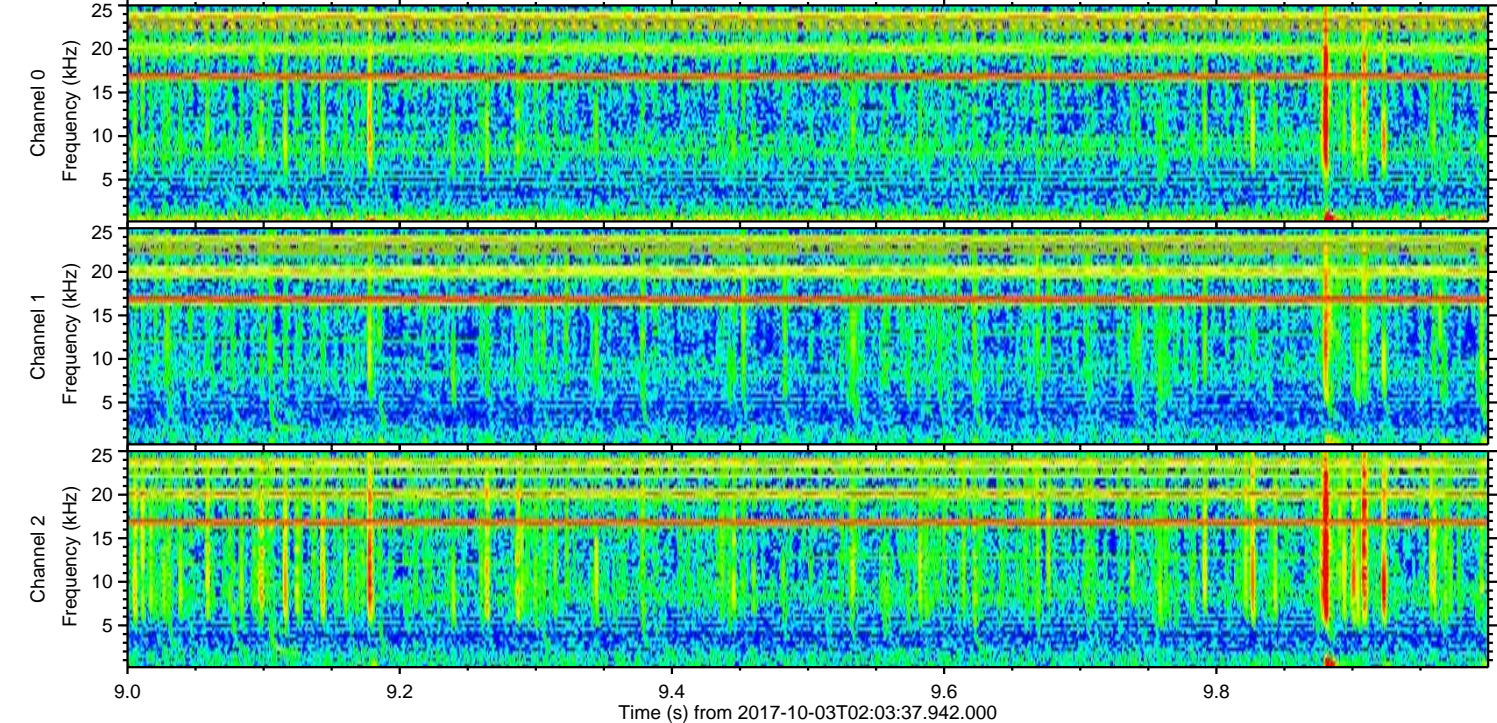
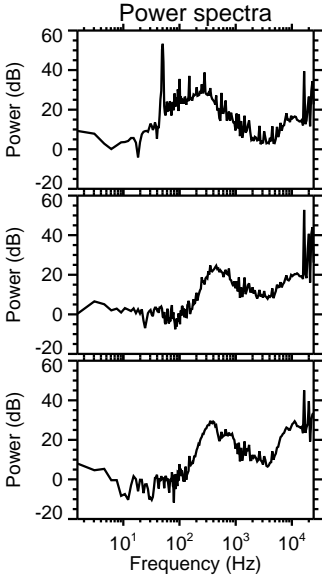
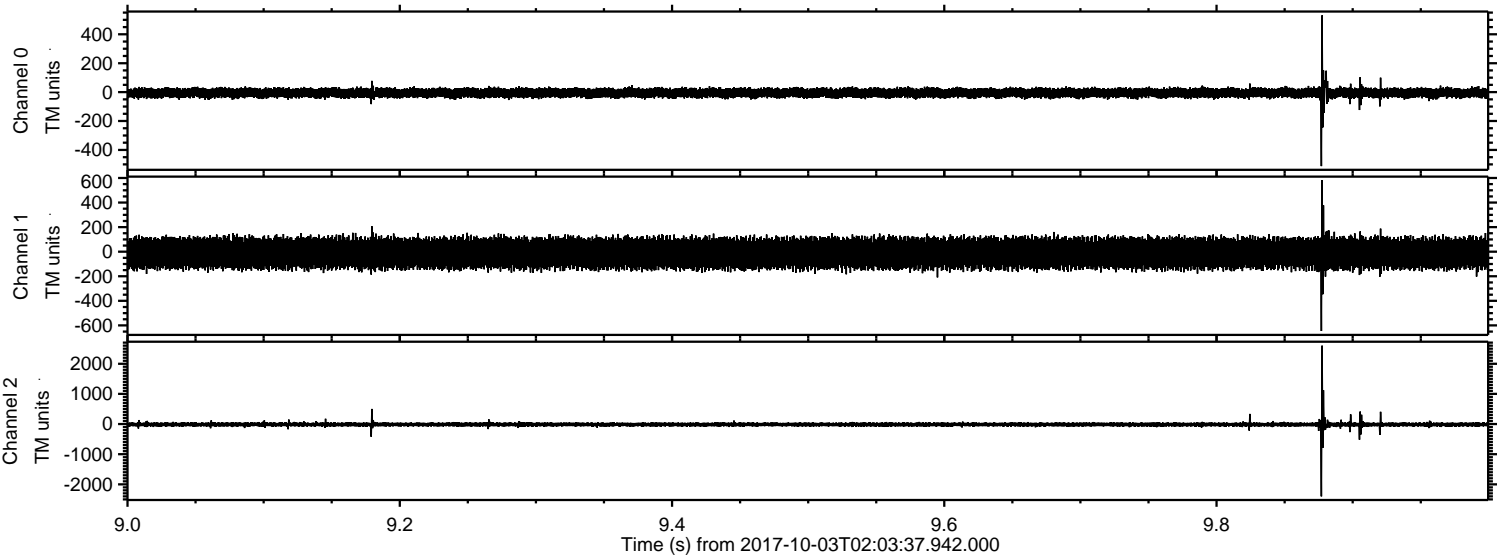
ELMAVAN 3D WAVEFORMS (Measured data sampled at 50 kHz) 51000 packets of 144 samples from 2017-10-03T02:03:37.942.000. Part 129/147

Processed Tue Oct 3 04:11:35 2017 by ELM ver.2012-10-06 from 001\_\_elm20171003\_020336\_\_dat00.bin





Processed Tue Oct 3 04:11:36 2017 by ELM ver.2012-10-06 from 001\_\_elm20171003\_020336\_\_dat00.bin





Processed Tue Oct 3 04:11:36 2017 by ELM ver.2012-10-06 from 001\_\_elm20171003\_020336\_\_dat00.bin

