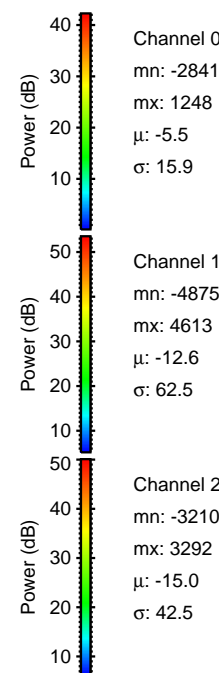
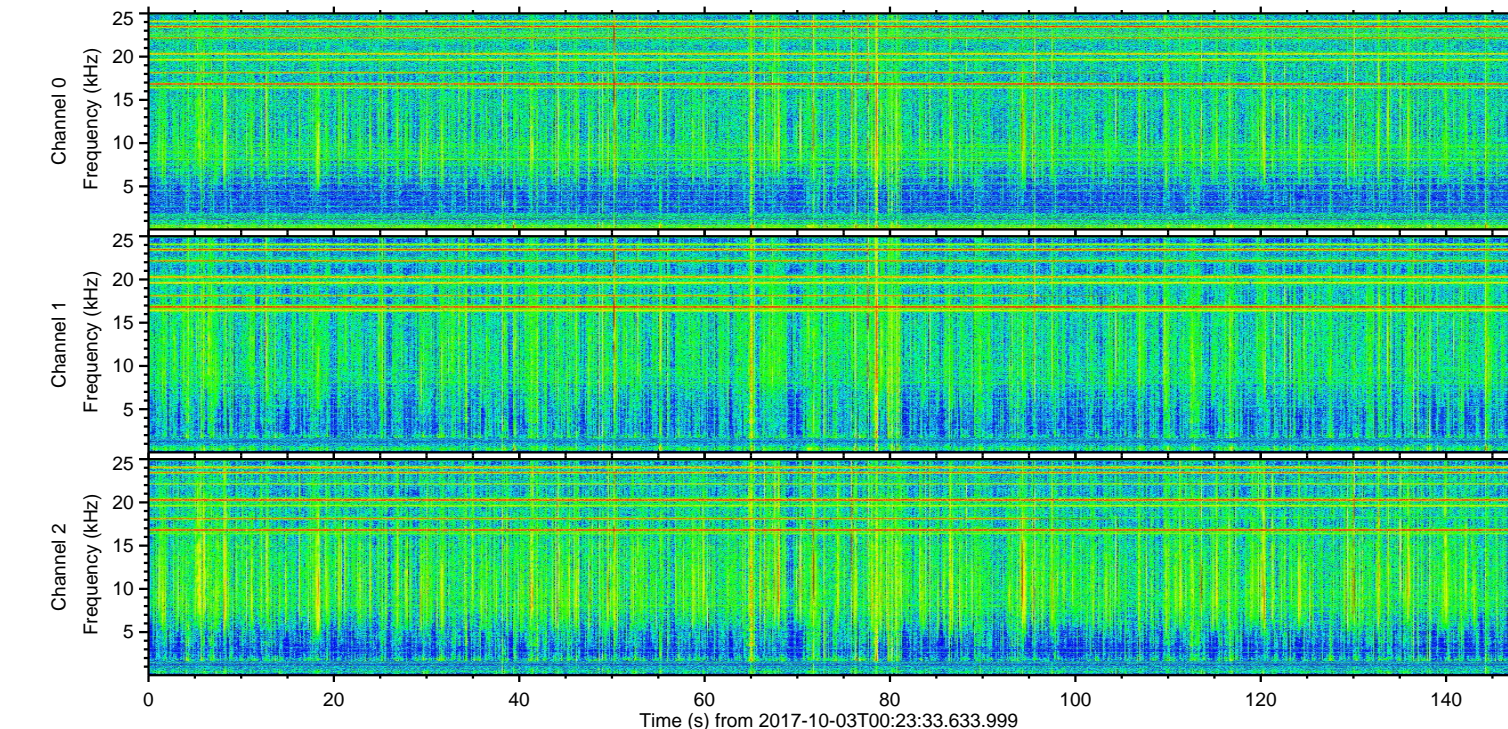
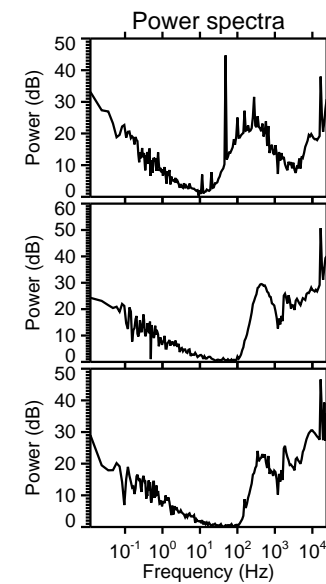
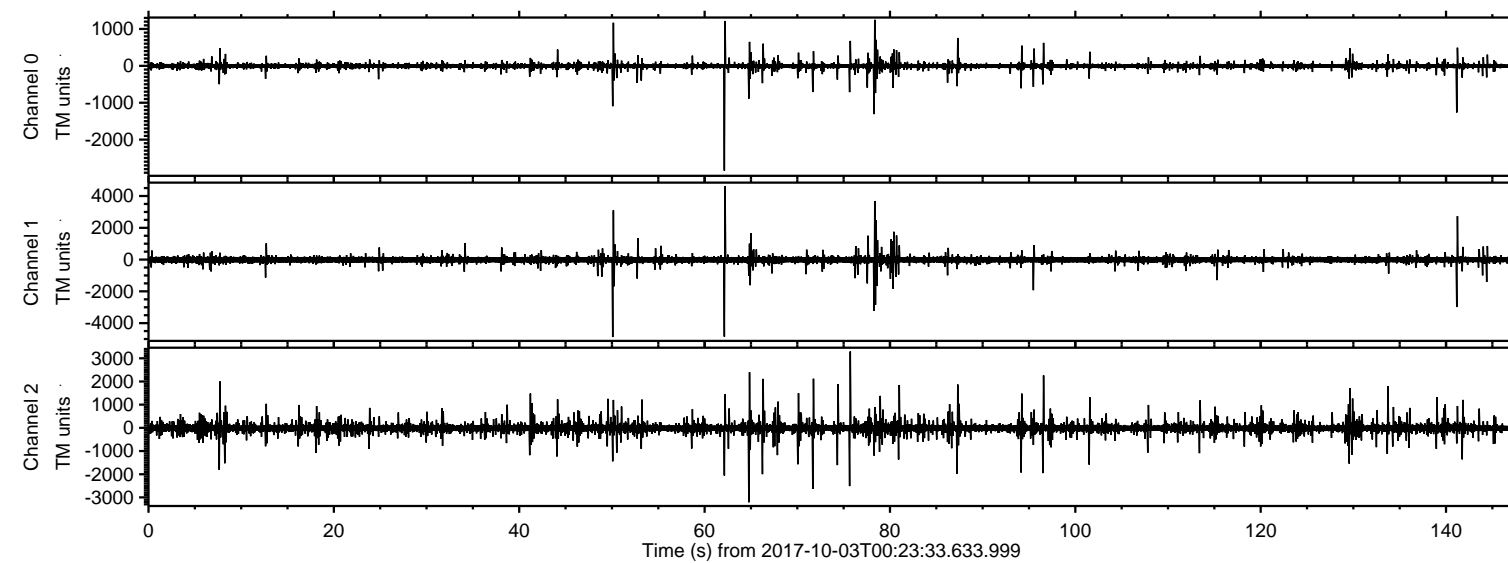


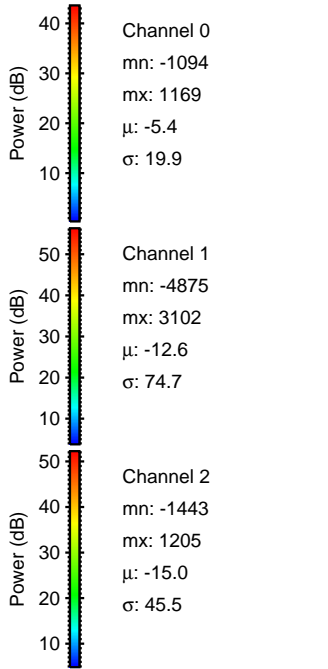
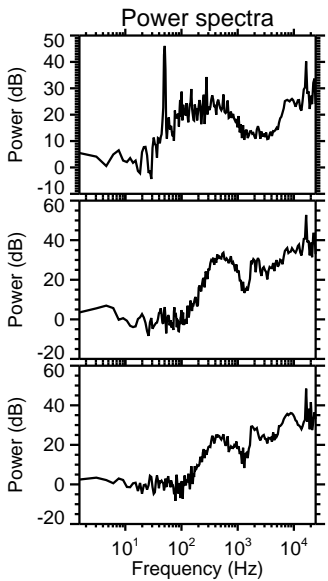
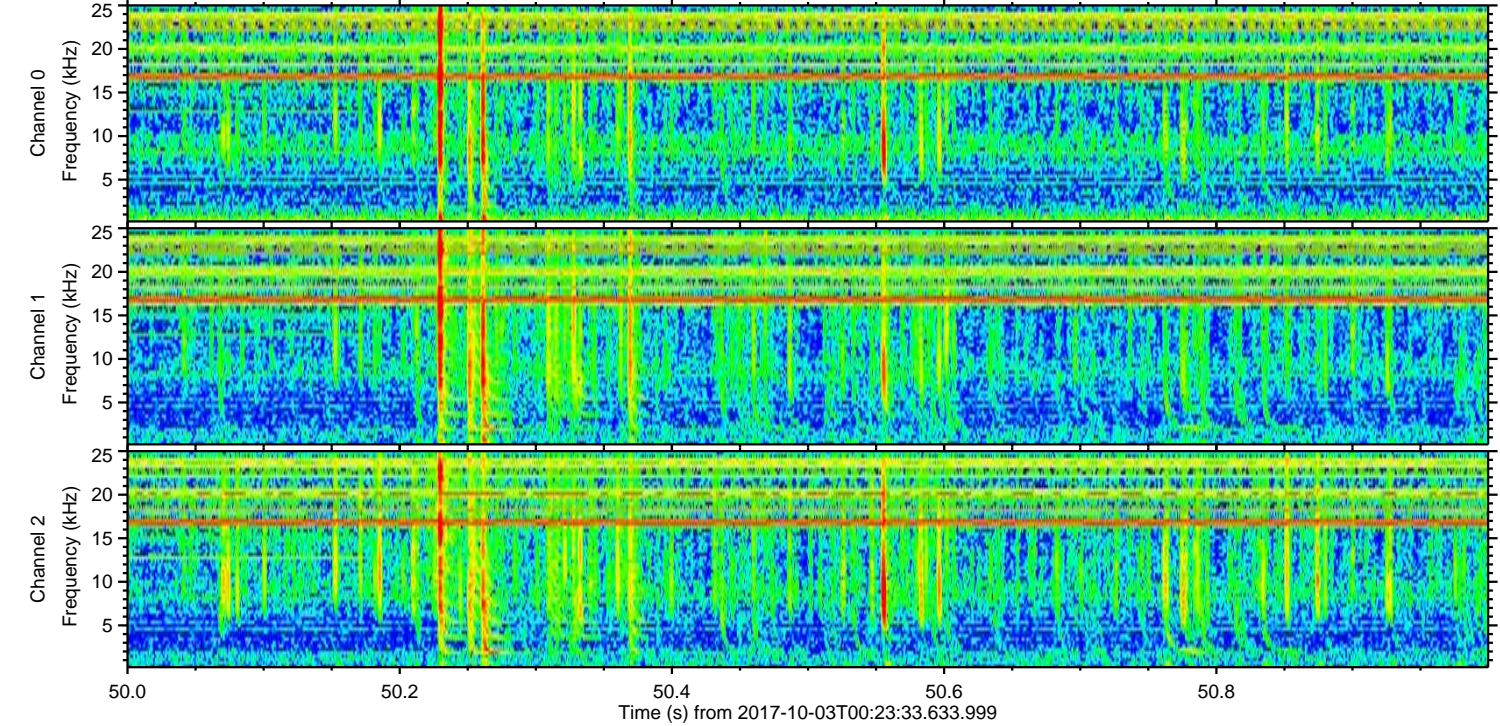
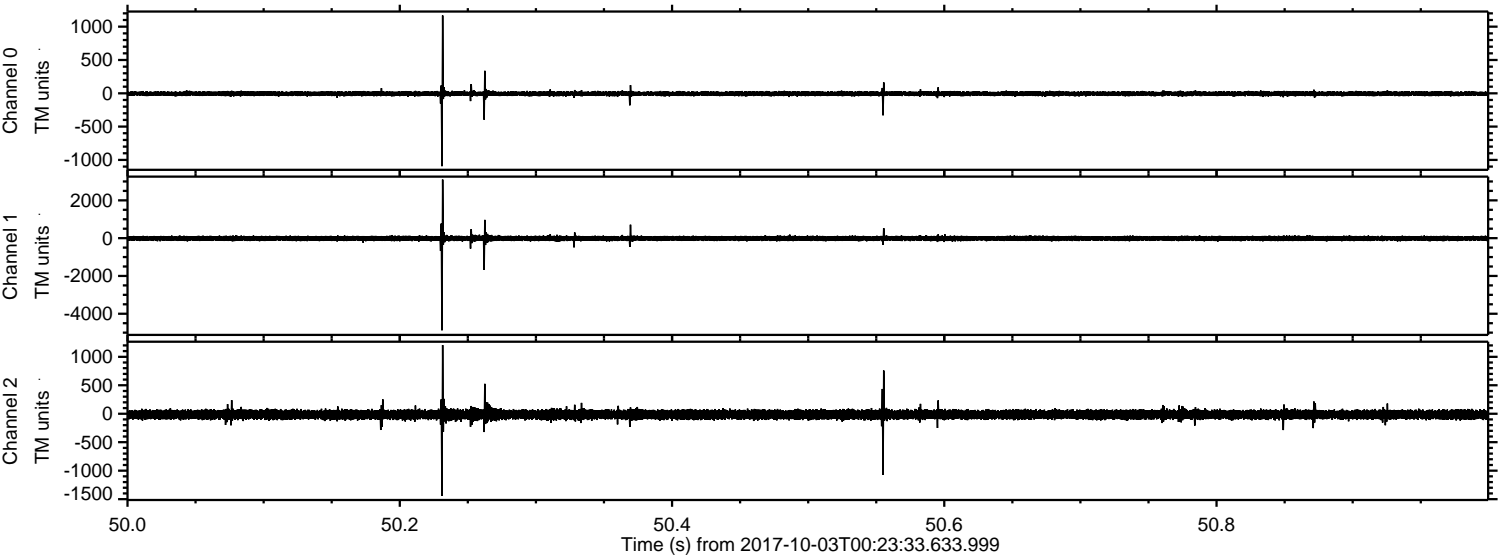
ELMAVAN 3D WAVEFORMS (Measured data sampled at 50 kHz) 51000 packets of 144 samples from 2017-10-03T00:23:33.633.999.

Processed Tue Oct 3 02:31:12 2017 by ELM ver.2012-10-06 from 001__elm20171003_002332__dat00.bin



ELMAVAN 3D WAVEFORMS (Measured data sampled at 50 kHz) 51000 packets of 144 samples from 2017-10-03T00:23:33.633.999. Part 51/147

Processed Tue Oct 3 02:31:18 2017 by ELM ver.2012-10-06 from 001__elm20171003_002332__dat00.bin



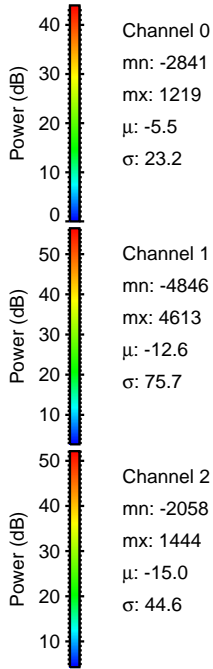
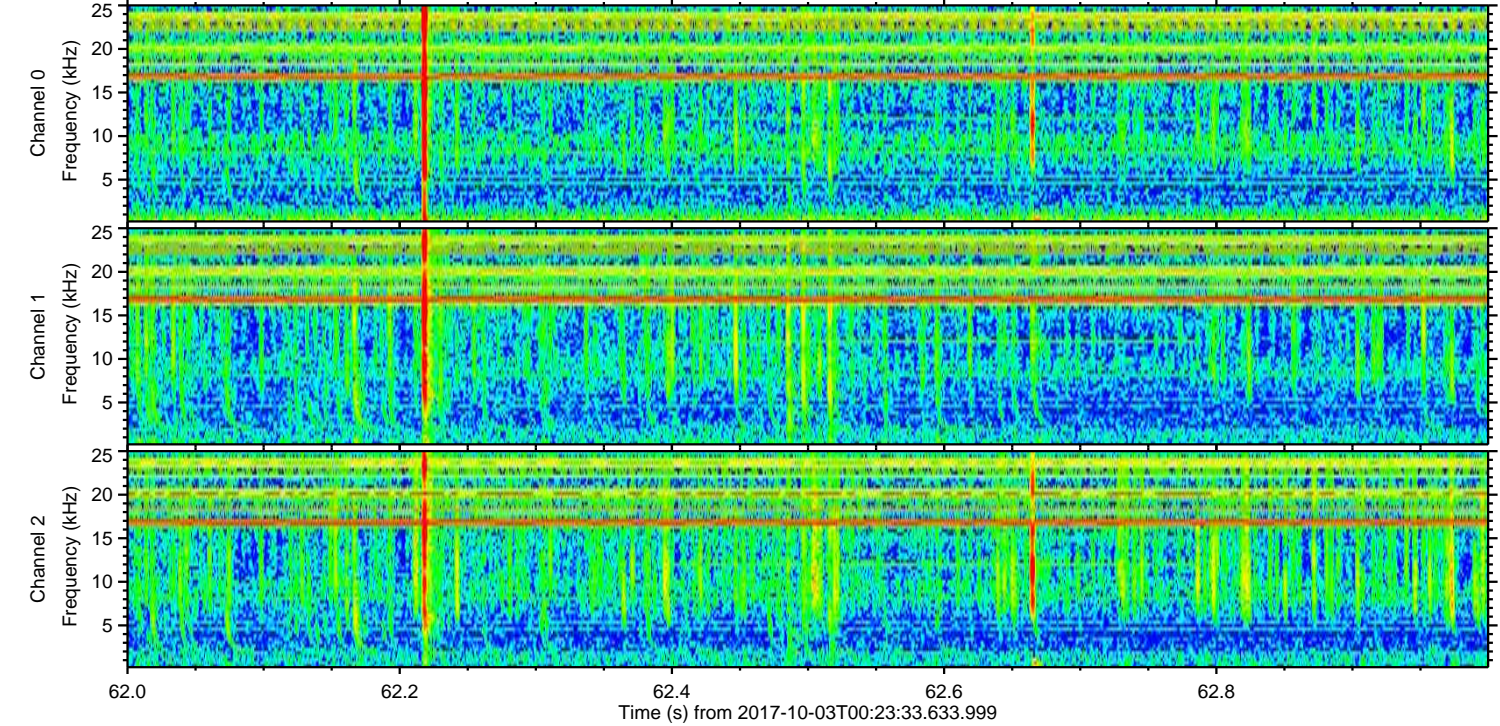
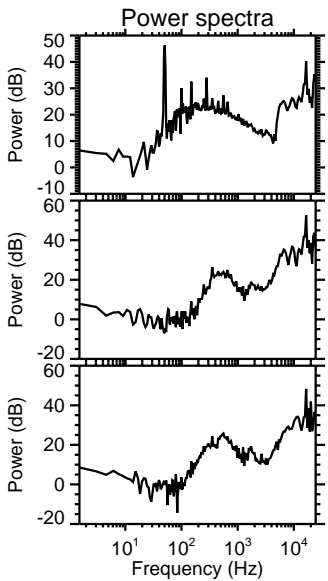
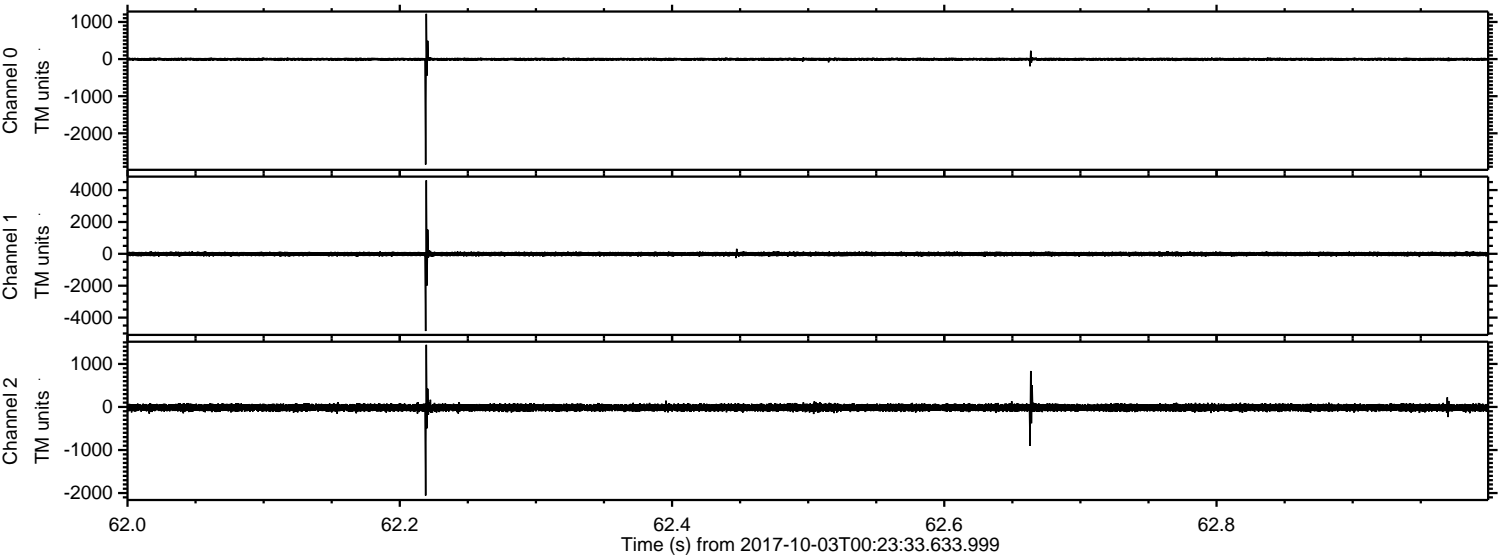
Channel 0
mn: -1094
mx: 1169
 μ : -5.4
 σ : 19.9

Channel 1
mn: -4875
mx: 3102
 μ : -12.6
 σ : 74.7

Channel 2
mn: -1443
mx: 1205
 μ : -15.0
 σ : 45.5

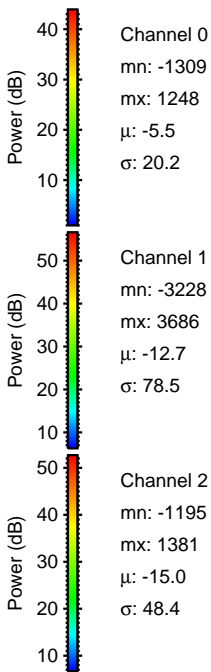
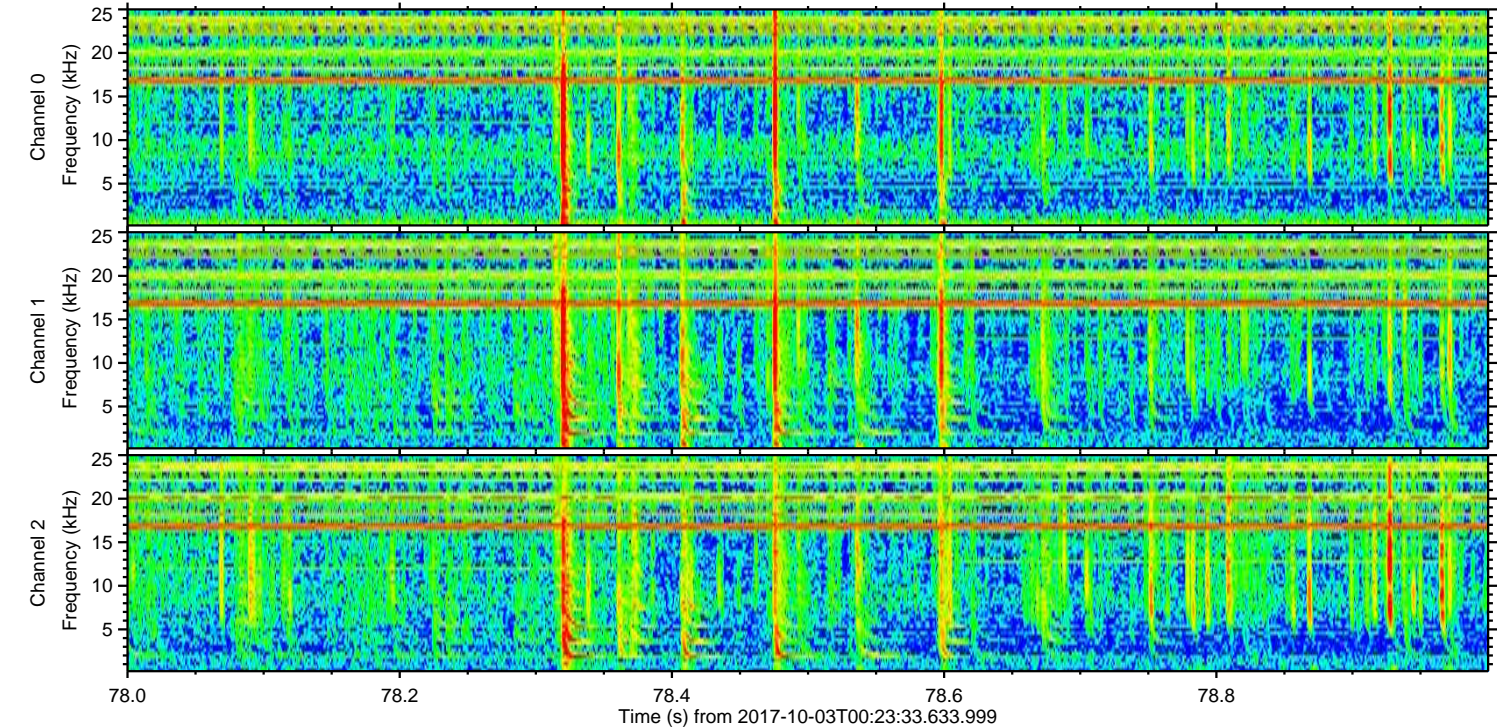
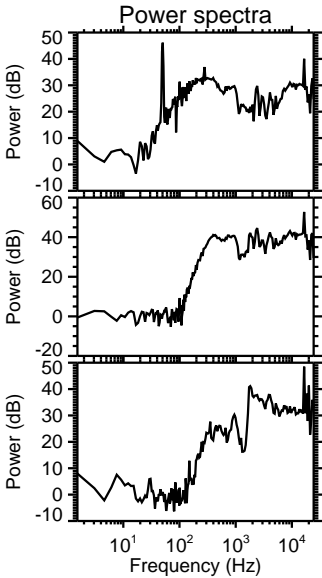
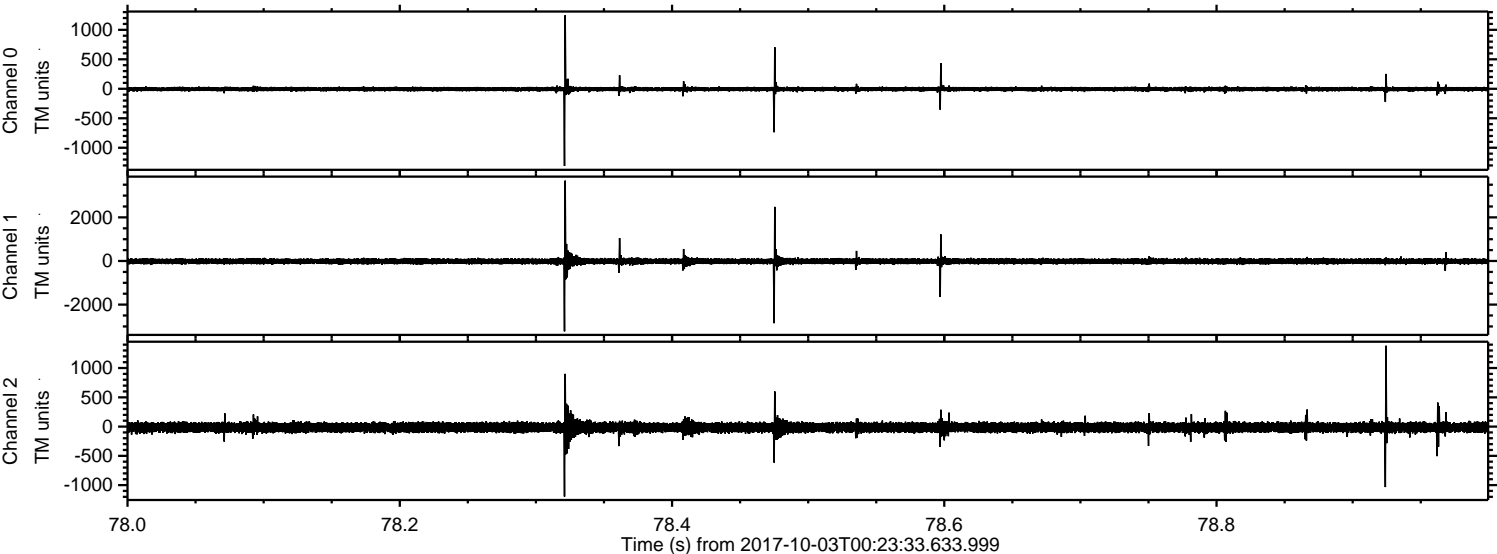
ELMAVAN 3D WAVEFORMS (Measured data sampled at 50 kHz) 51000 packets of 144 samples from 2017-10-03T00:23:33.633.999. Part 63/147

Processed Tue Oct 3 02:31:19 2017 by ELM ver.2012-10-06 from 001__elm20171003_002332__dat00.bin



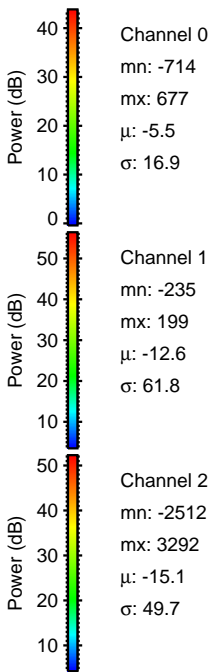
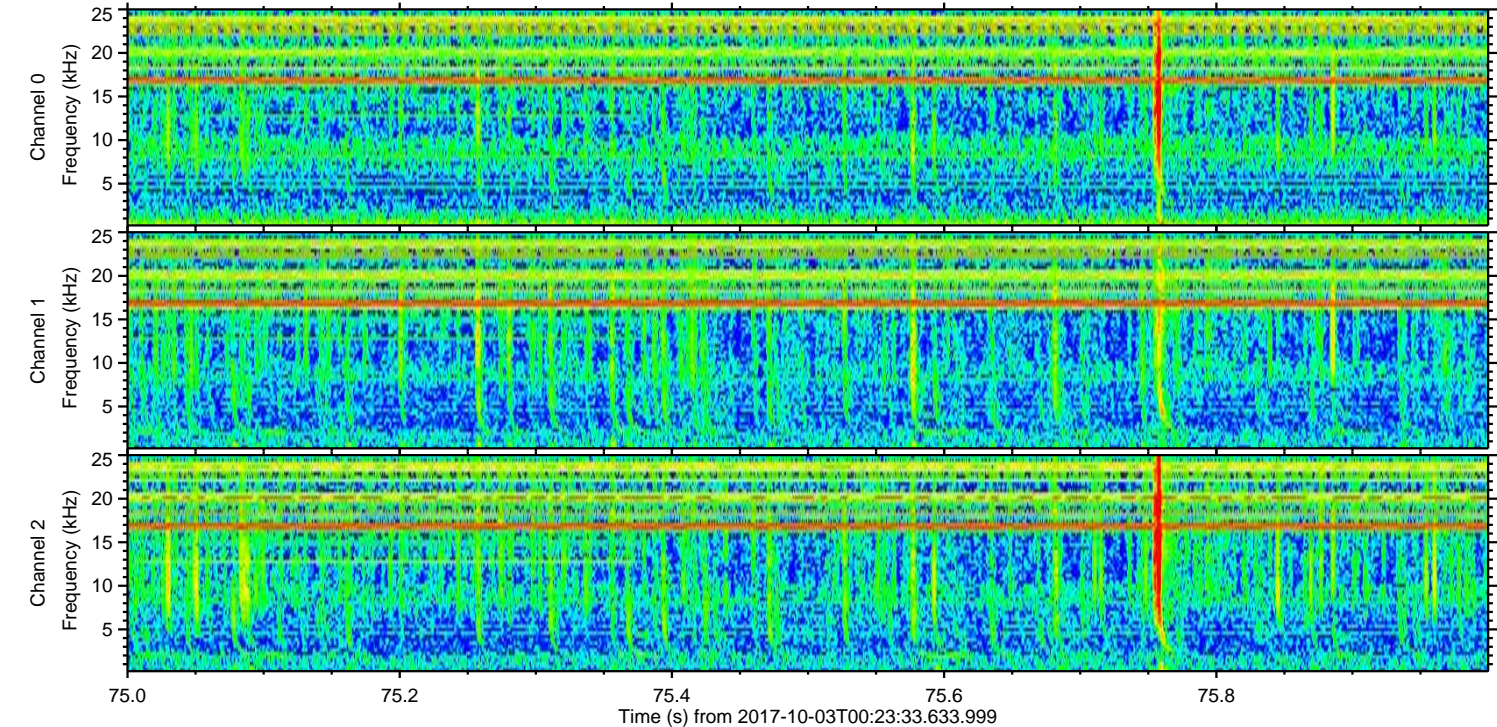
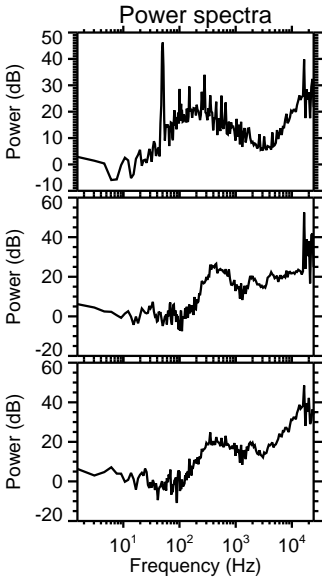
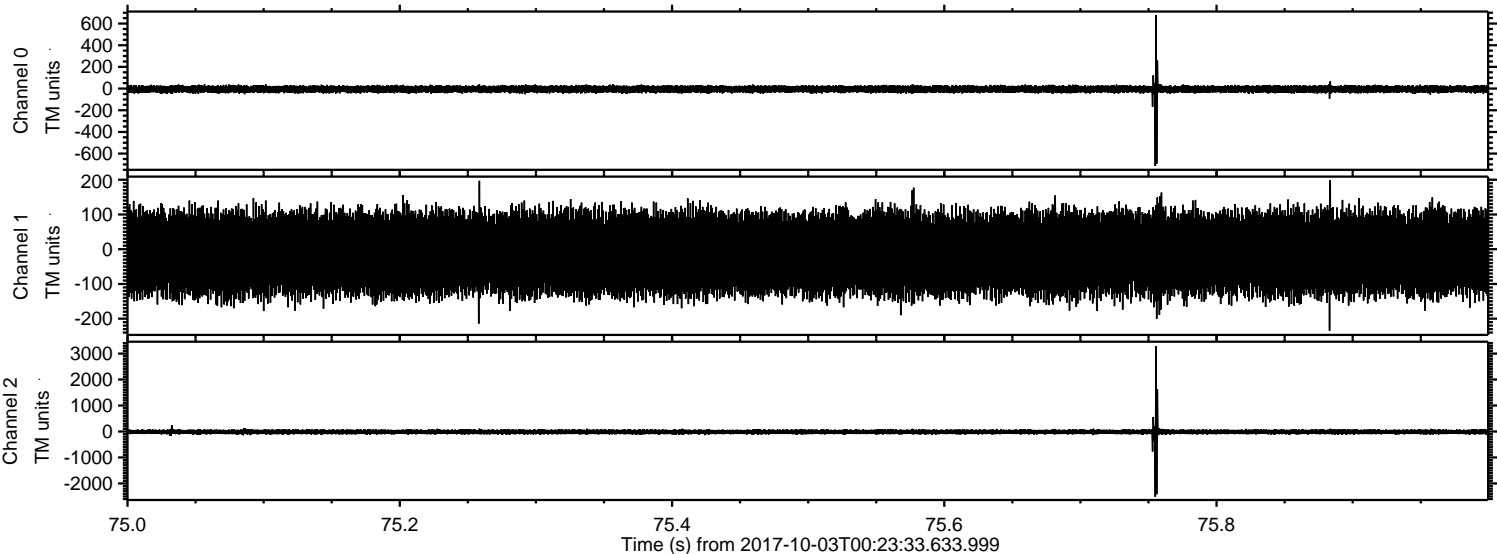
ELMAVAN 3D WAVEFORMS (Measured data sampled at 50 kHz) 51000 packets of 144 samples from 2017-10-03T00:23:33.633.999. Part 79/147

Processed Tue Oct 3 02:31:20 2017 by ELM ver.2012-10-06 from 001__elm20171003_002332__dat00.bin

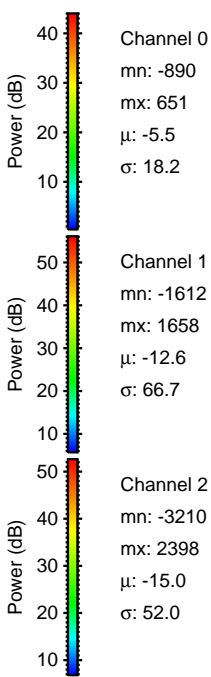
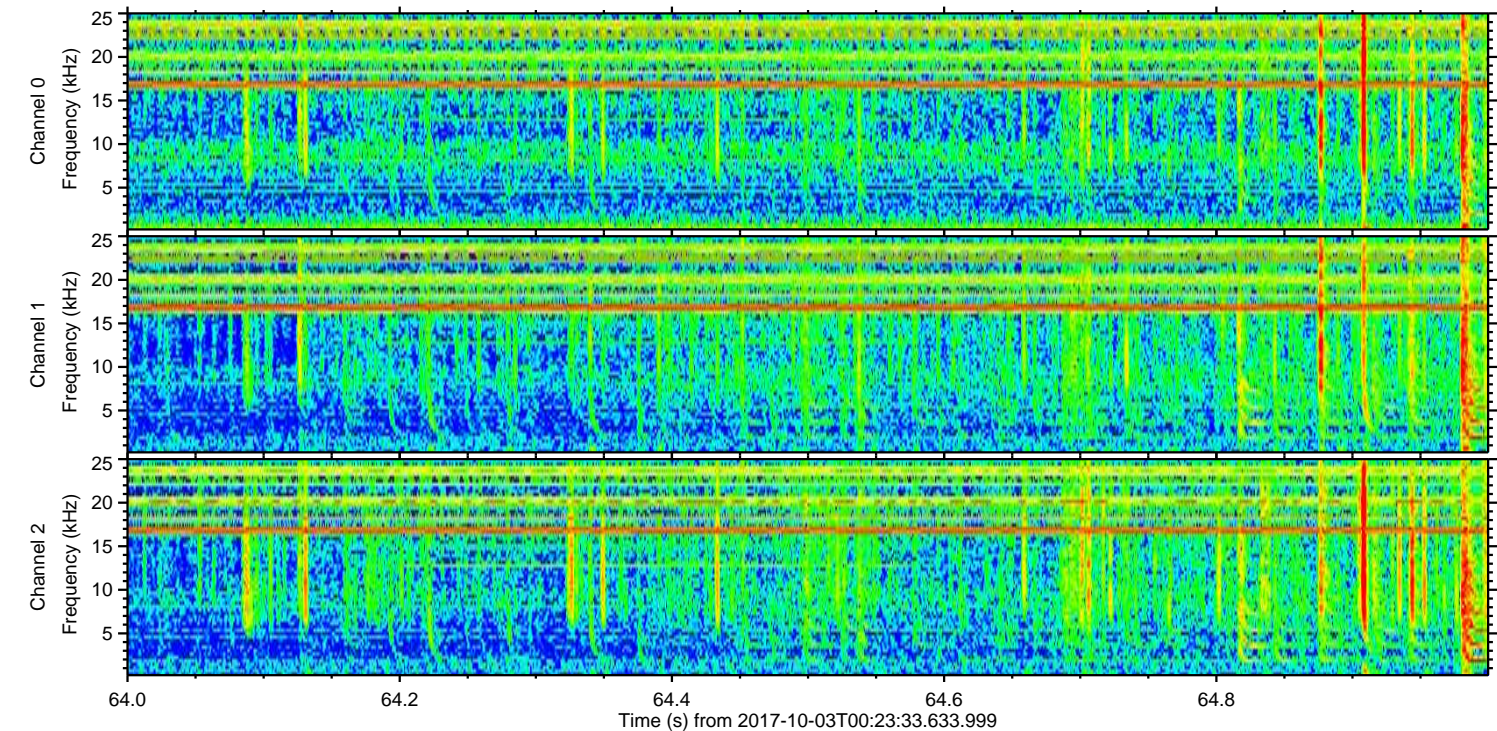
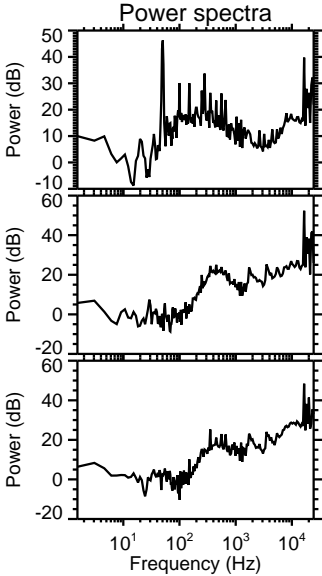
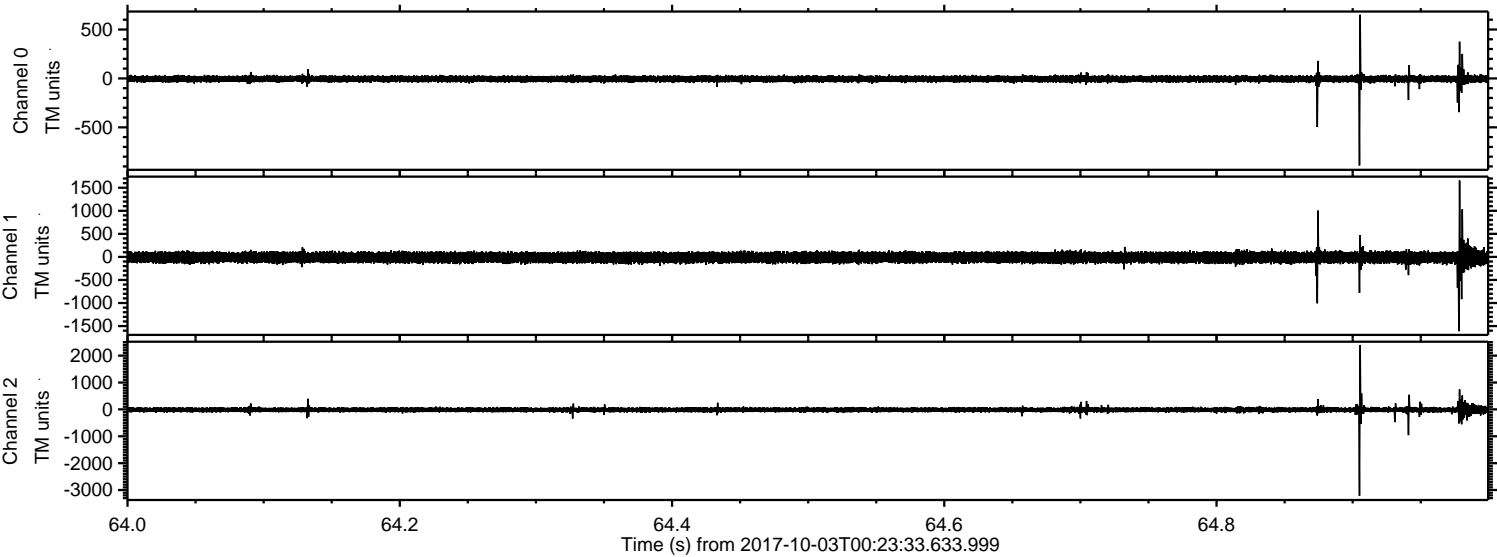


ELMAVAN 3D WAVEFORMS (Measured data sampled at 50 kHz) 51000 packets of 144 samples from 2017-10-03T00:23:33.633.999. Part 76/147

Processed Tue Oct 3 02:31:20 2017 by ELM ver.2012-10-06 from 001__elm20171003_002332__dat00.bin

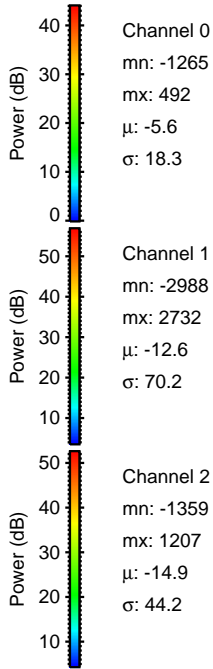
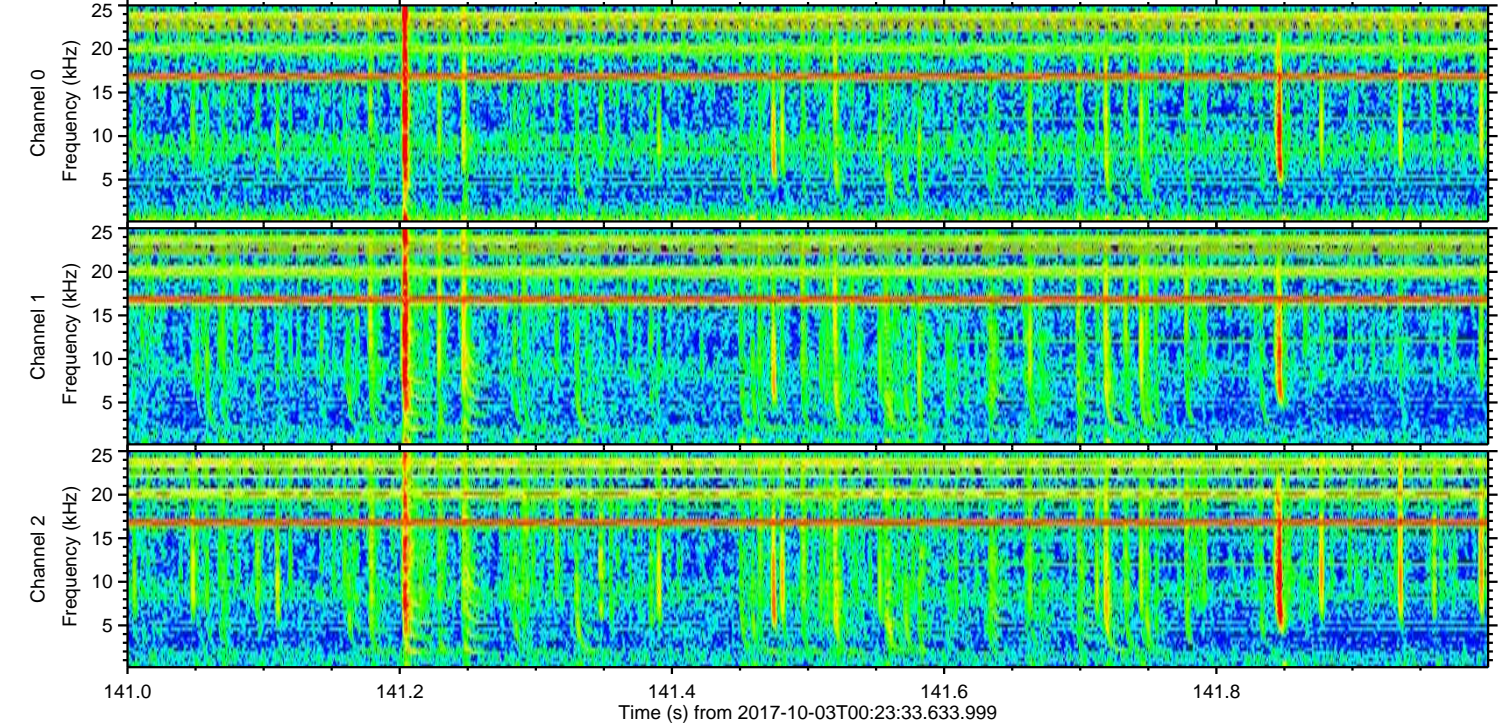
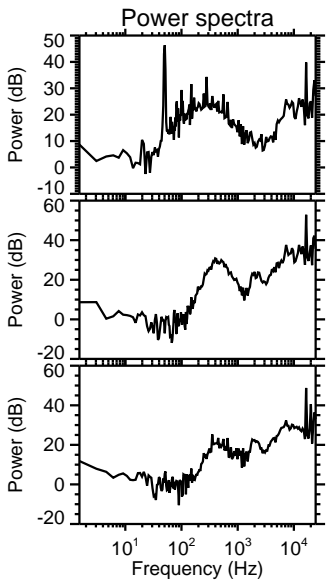
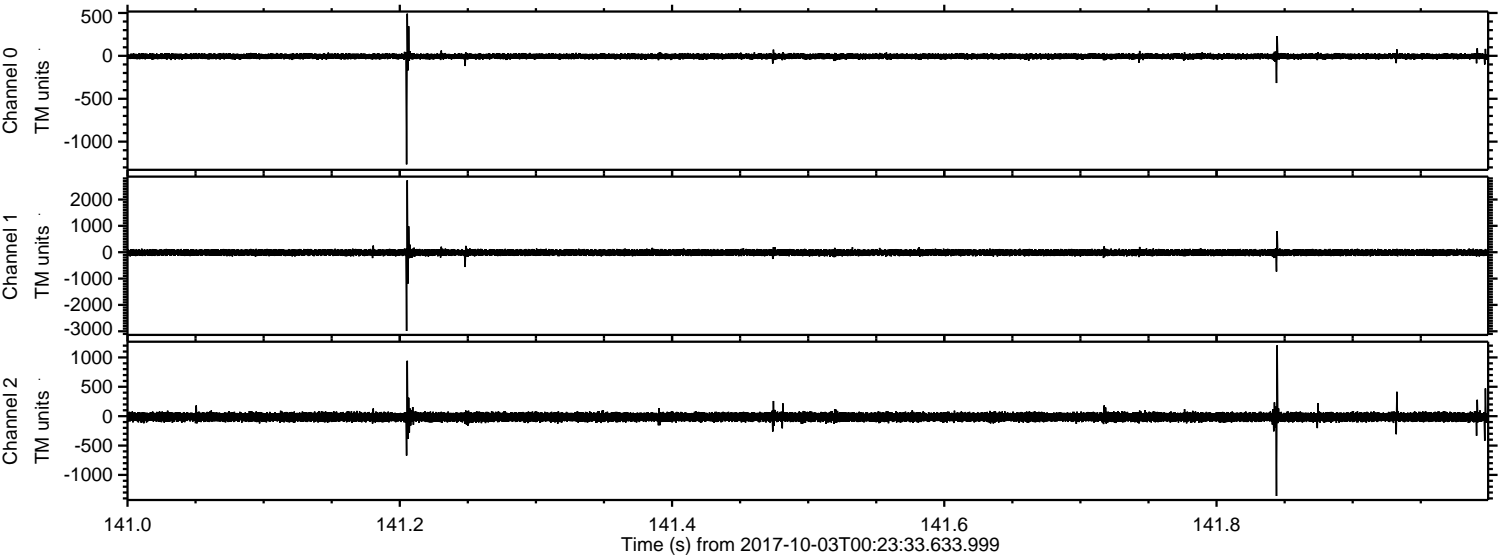


Processed Tue Oct 3 02:31:21 2017 by ELM ver.2012-10-06 from 001__elm20171003_002332__dat00.bin



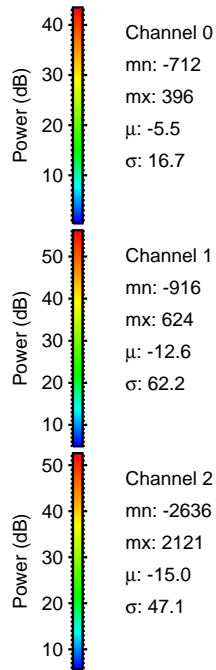
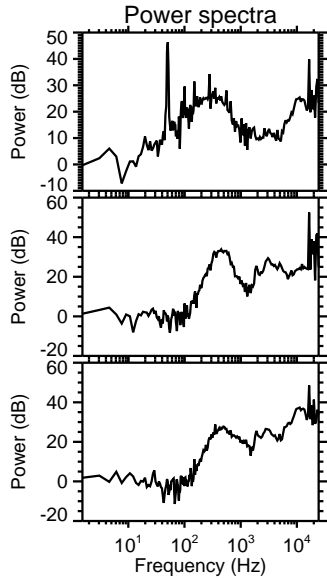
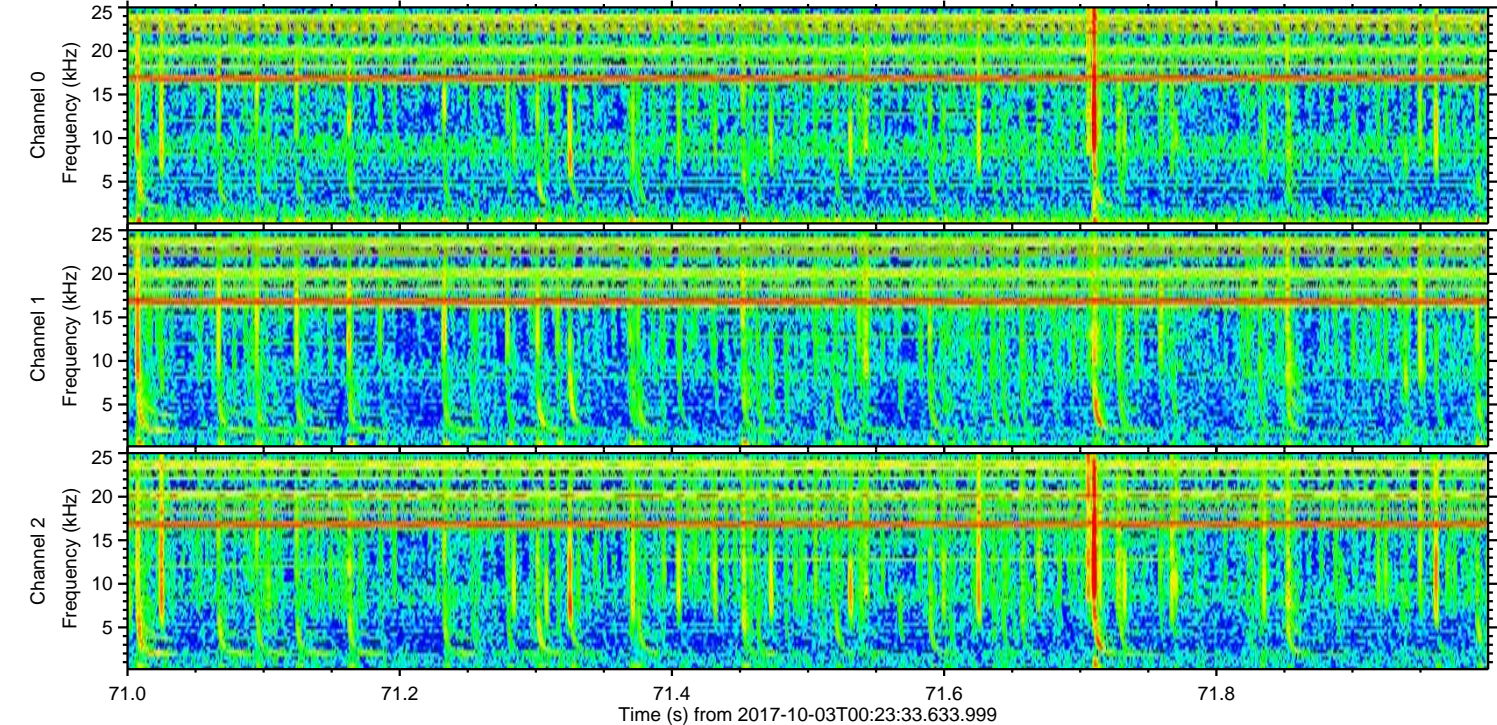
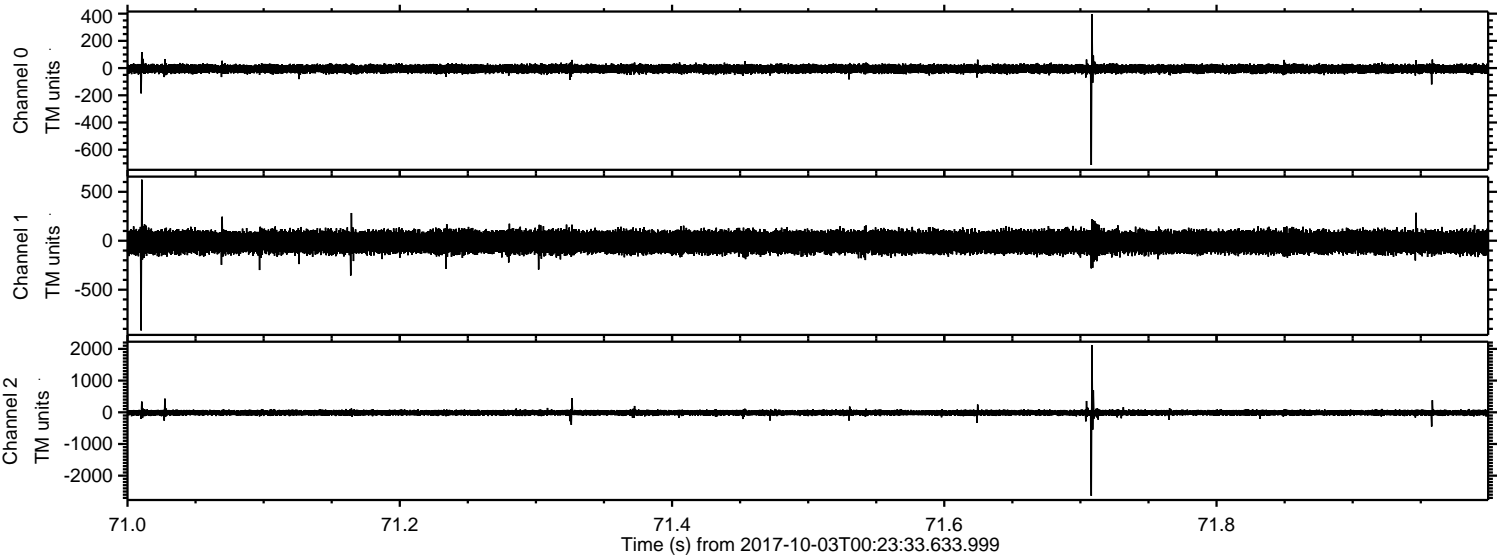
ELMAVAN 3D WAVEFORMS (Measured data sampled at 50 kHz) 51000 packets of 144 samples from 2017-10-03T00:23:33.633.999. Part 142/147

Processed Tue Oct 3 02:31:22 2017 by ELM ver.2012-10-06 from 001__elm20171003_002332__dat00.bin



ELMAVAN 3D WAVEFORMS (Measured data sampled at 50 kHz) 51000 packets of 144 samples from 2017-10-03T00:23:33.633.999. Part 72/147

Processed Tue Oct 3 02:31:22 2017 by ELM ver.2012-10-06 from 001__elm20171003_002332__dat00.bin

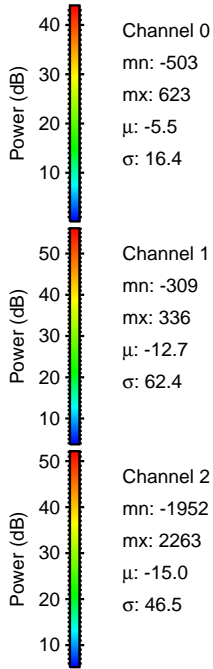
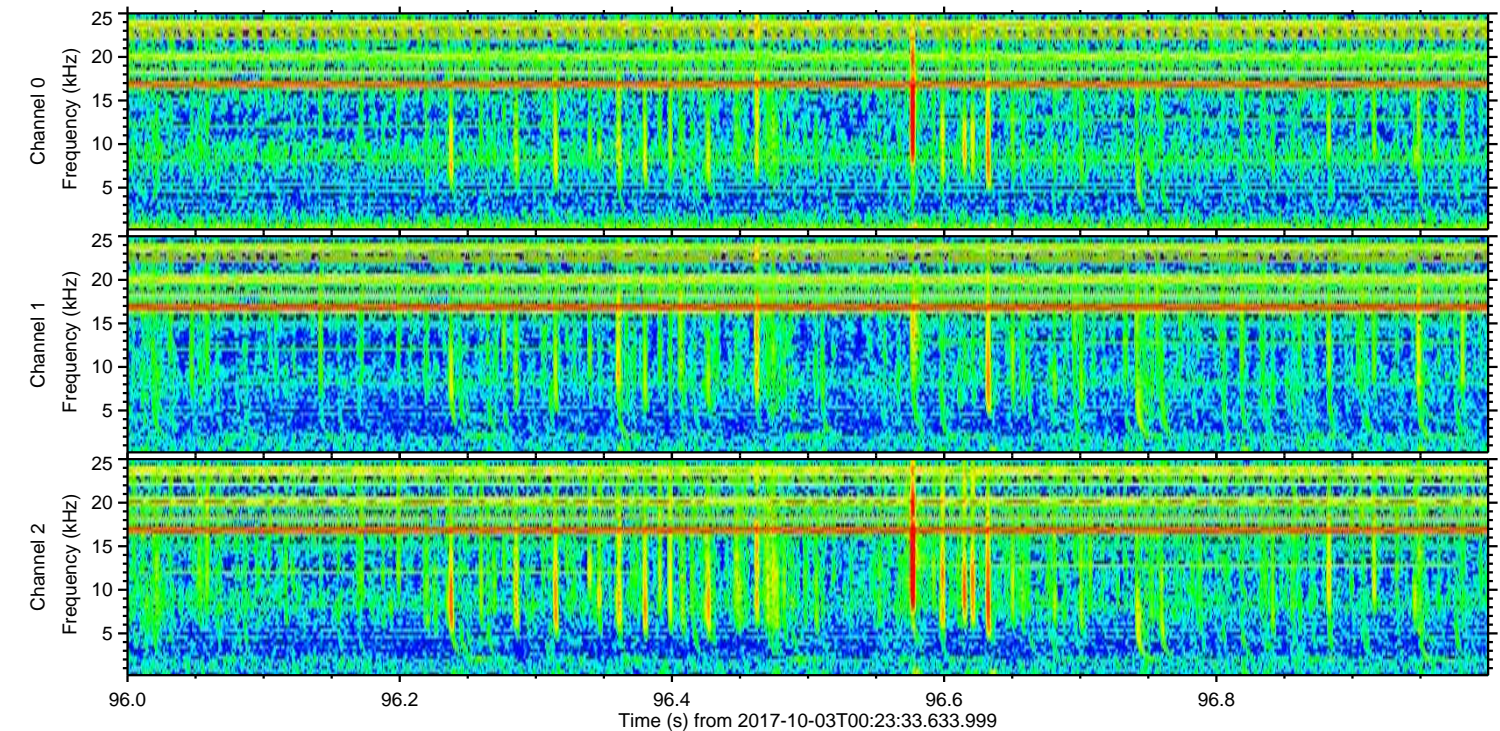
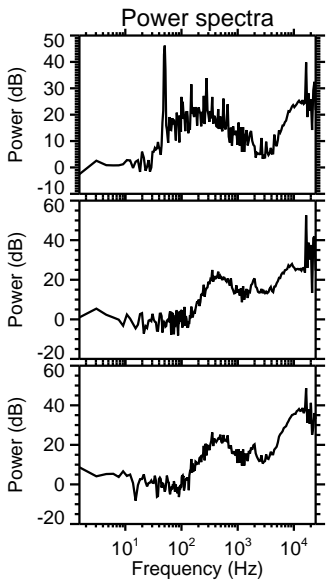
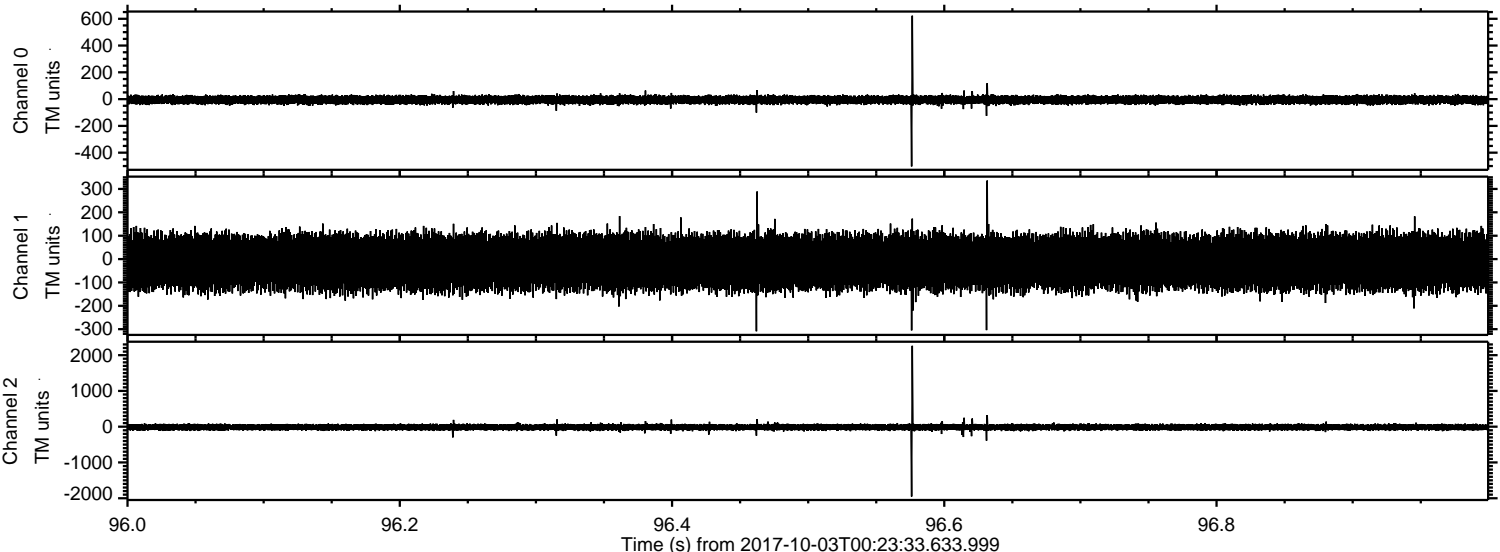


Channel 0
mn: -712
mx: 396
 μ : -5.5
 σ : 16.7

Channel 1
mn: -916
mx: 624
 μ : -12.6
 σ : 62.2

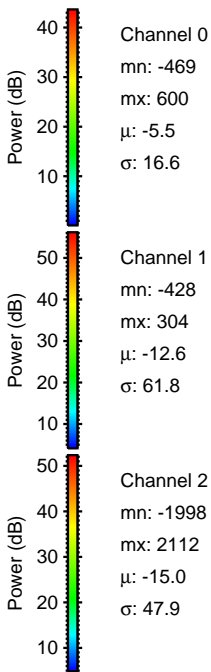
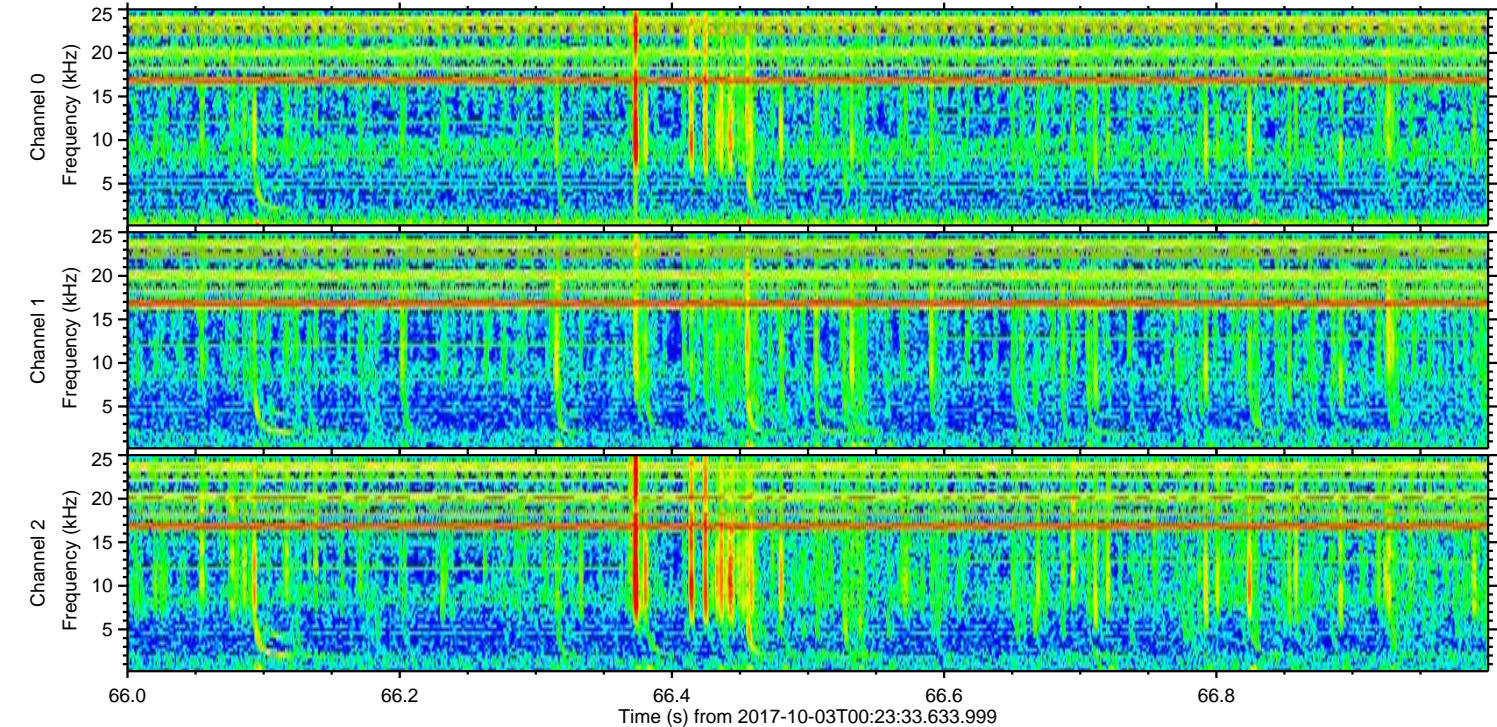
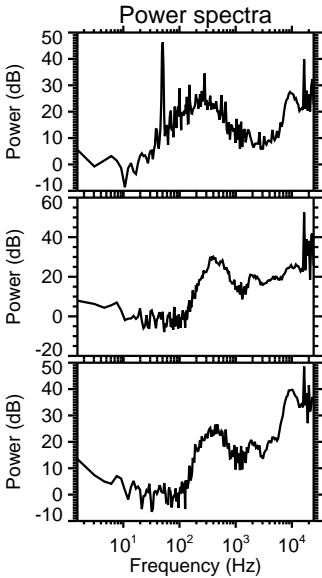
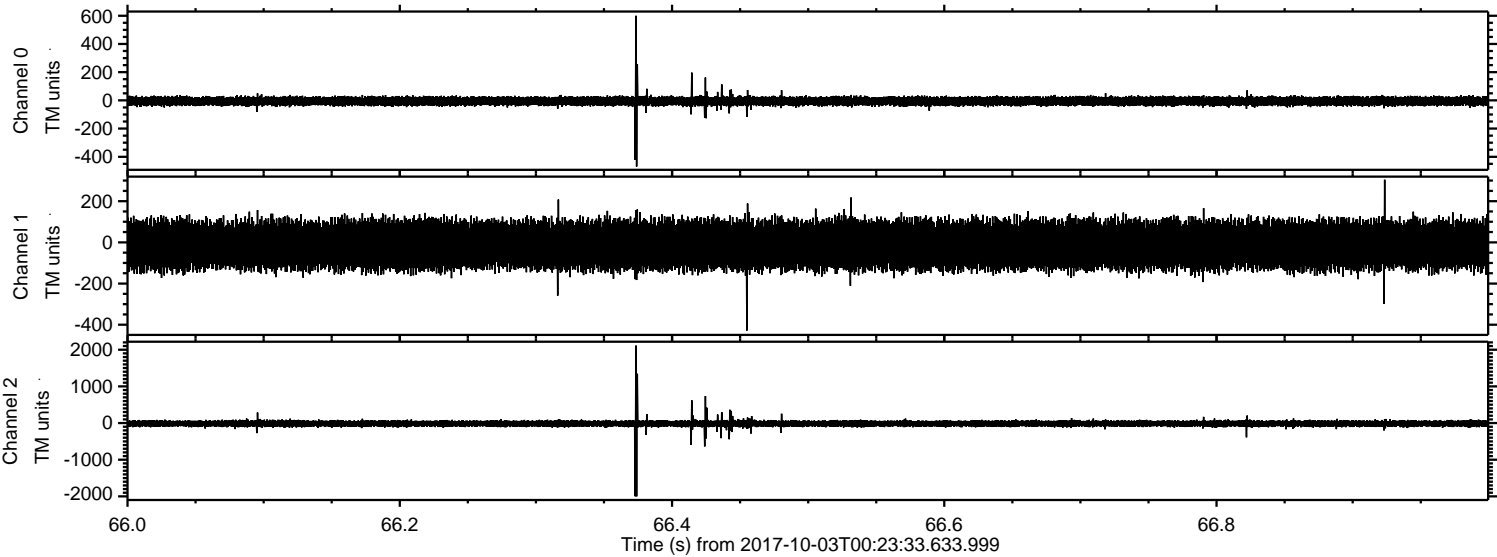
Channel 2
mn: -2636
mx: 2121
 μ : -15.0
 σ : 47.1

Processed Tue Oct 3 02:31:23 2017 by ELM ver.2012-10-06 from 001__elm20171003_002332__dat00.bin

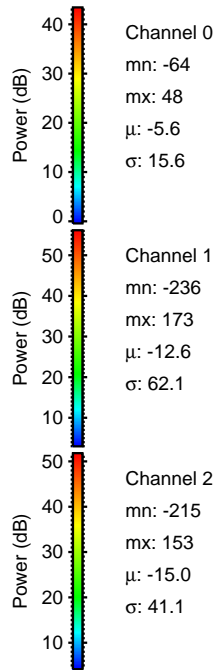
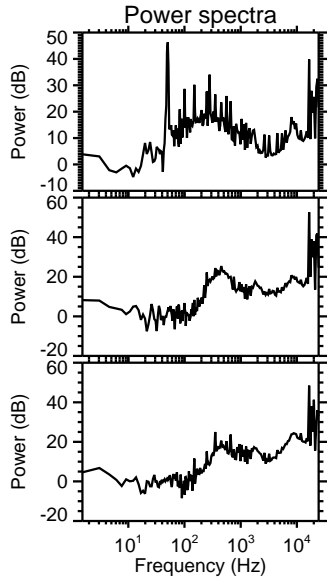
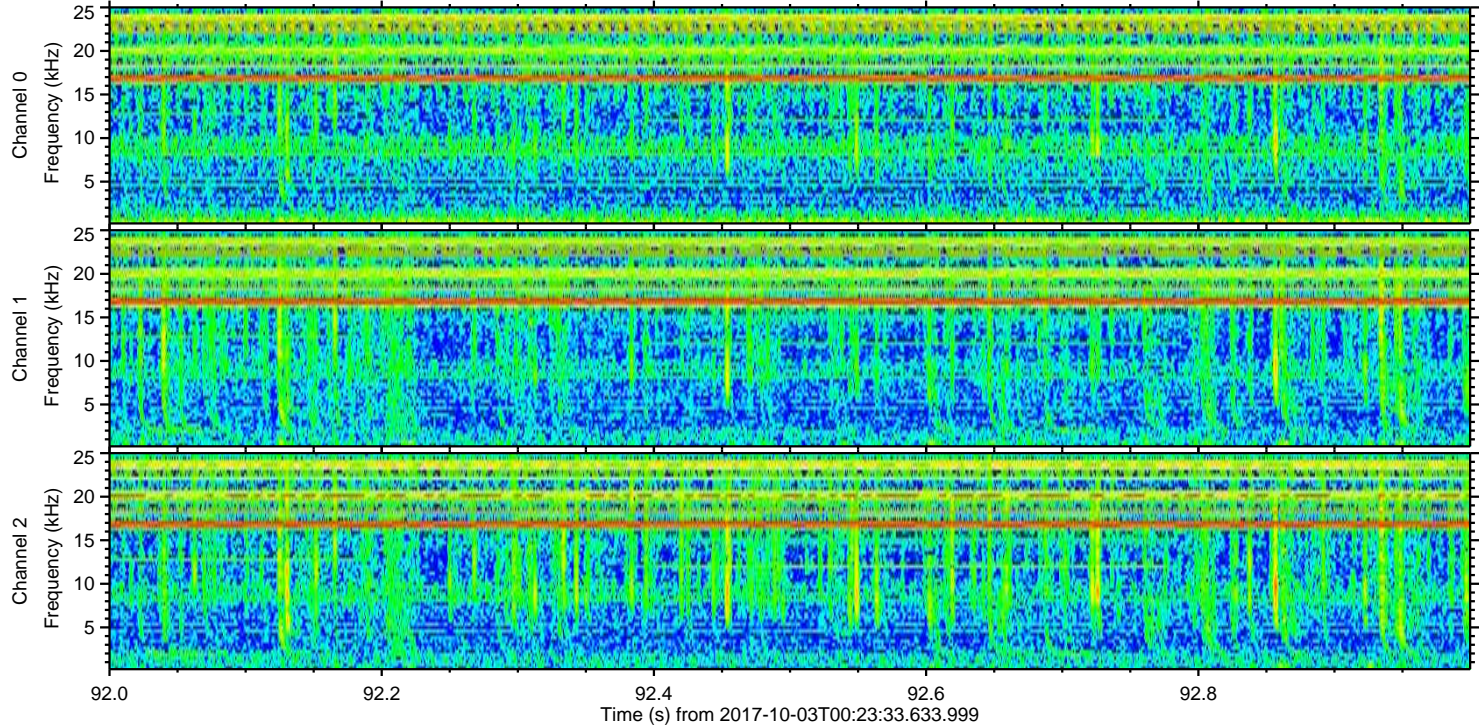
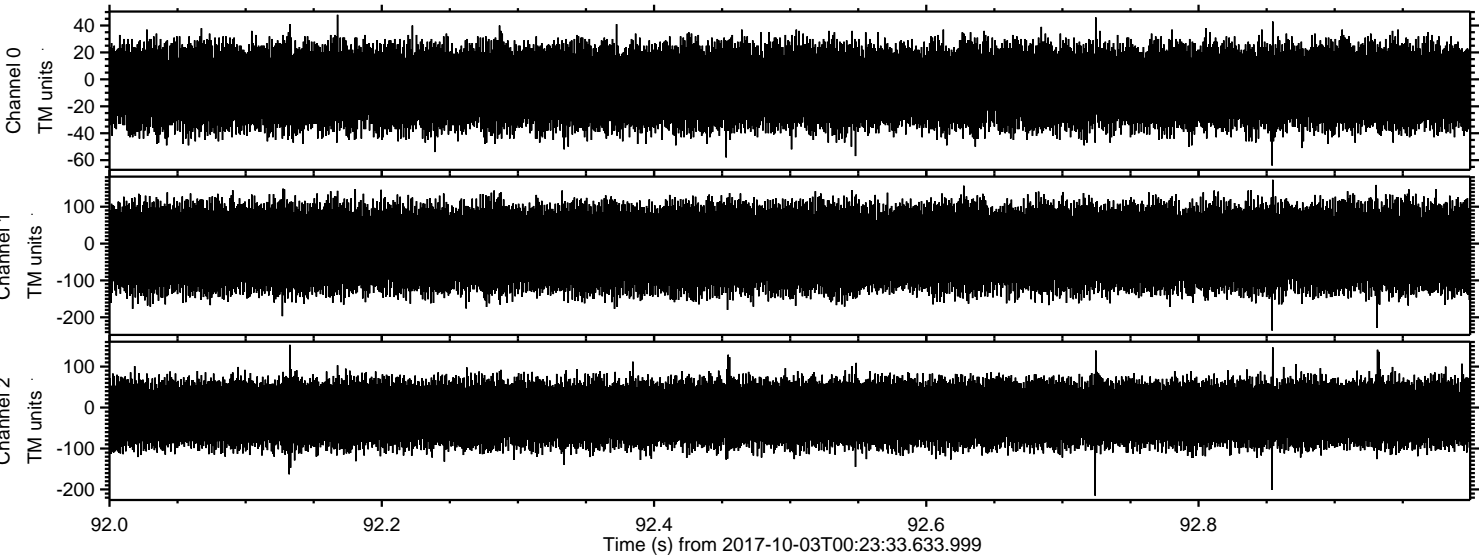


ELMAVAN 3D WAVEFORMS (Measured data sampled at 50 kHz) 51000 packets of 144 samples from 2017-10-03T00:23:33.633.999. Part 67/147

Processed Tue Oct 3 02:31:24 2017 by ELM ver.2012-10-06 from 001__elm20171003_002332__dat00.bin



Processed Tue Oct 3 02:31:24 2017 by ELM ver.2012-10-06 from 001__elm20171003_002332__dat00.bin



Power spectra

Channel 0
mn: -64
mx: 48
 μ : -5.6
 σ : 15.6

Channel 1
mn: -236
mx: 173
 μ : -12.6
 σ : 62.1

Channel 2
mn: -215
mx: 153
 μ : -15.0
 σ : 41.1