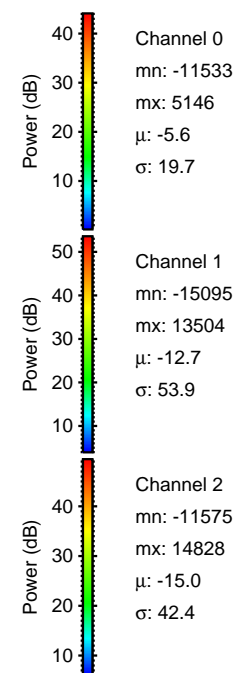
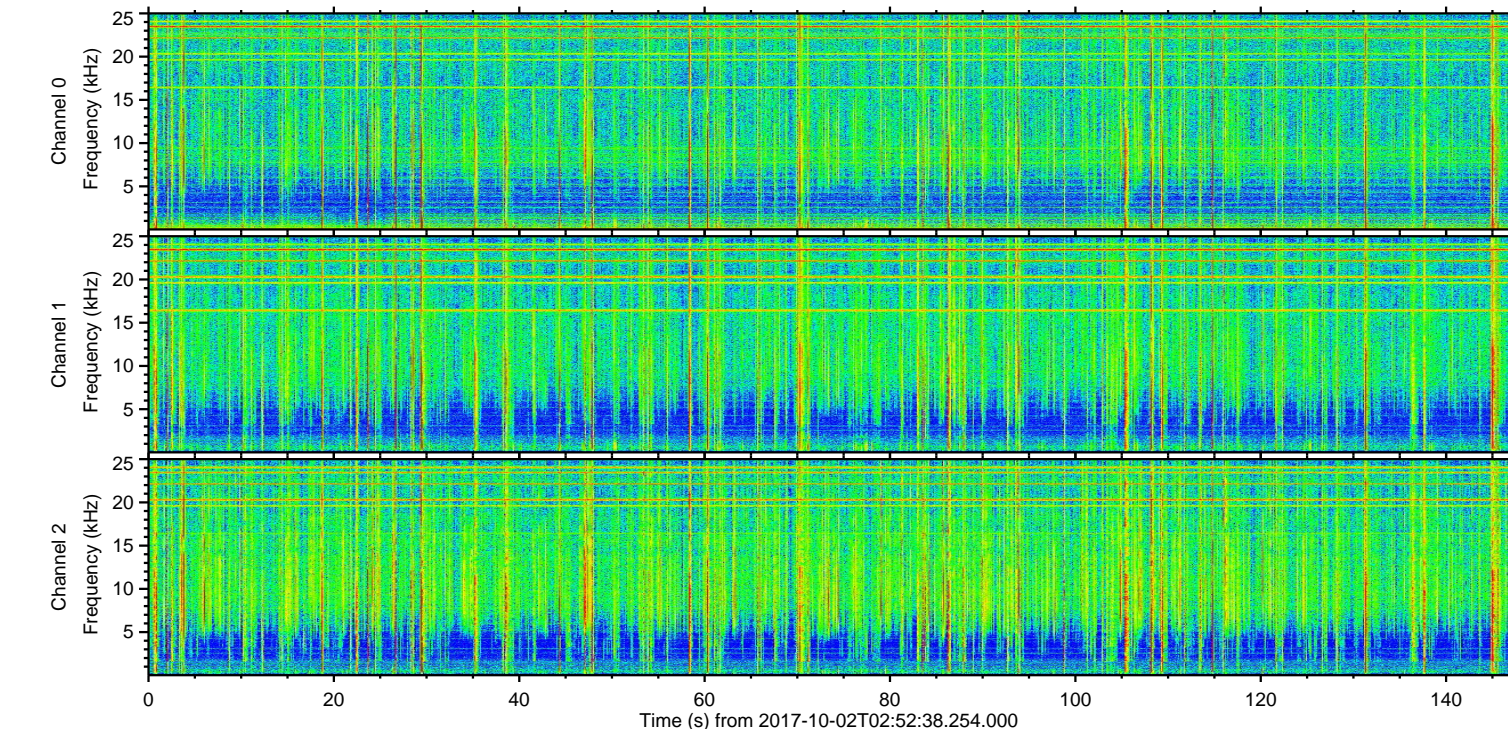
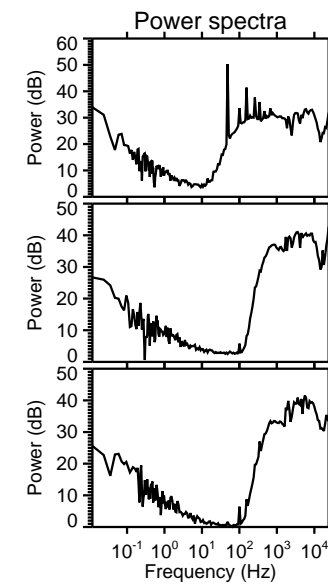
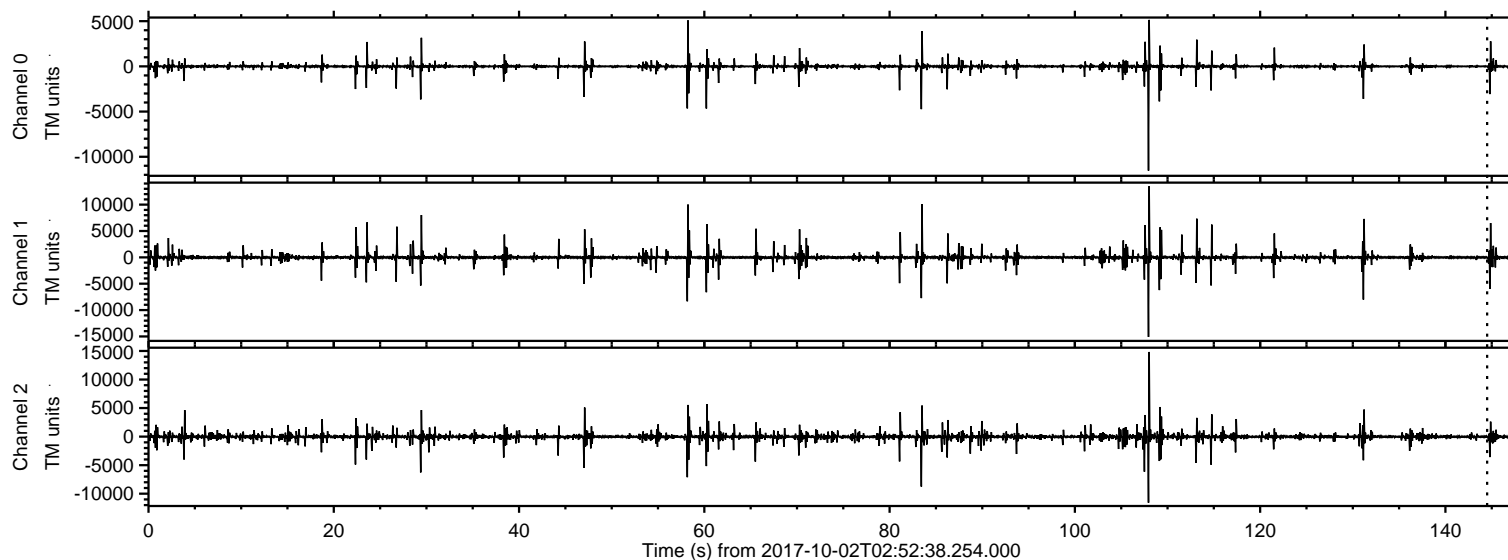


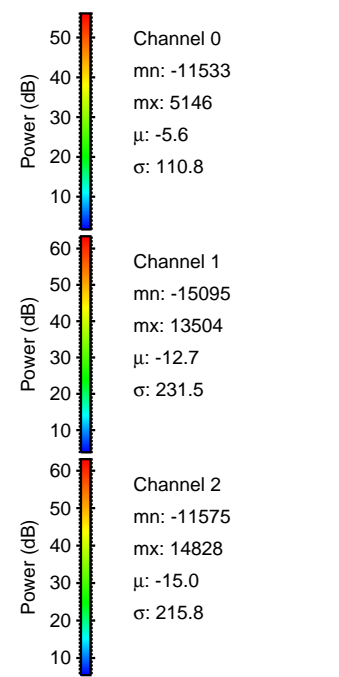
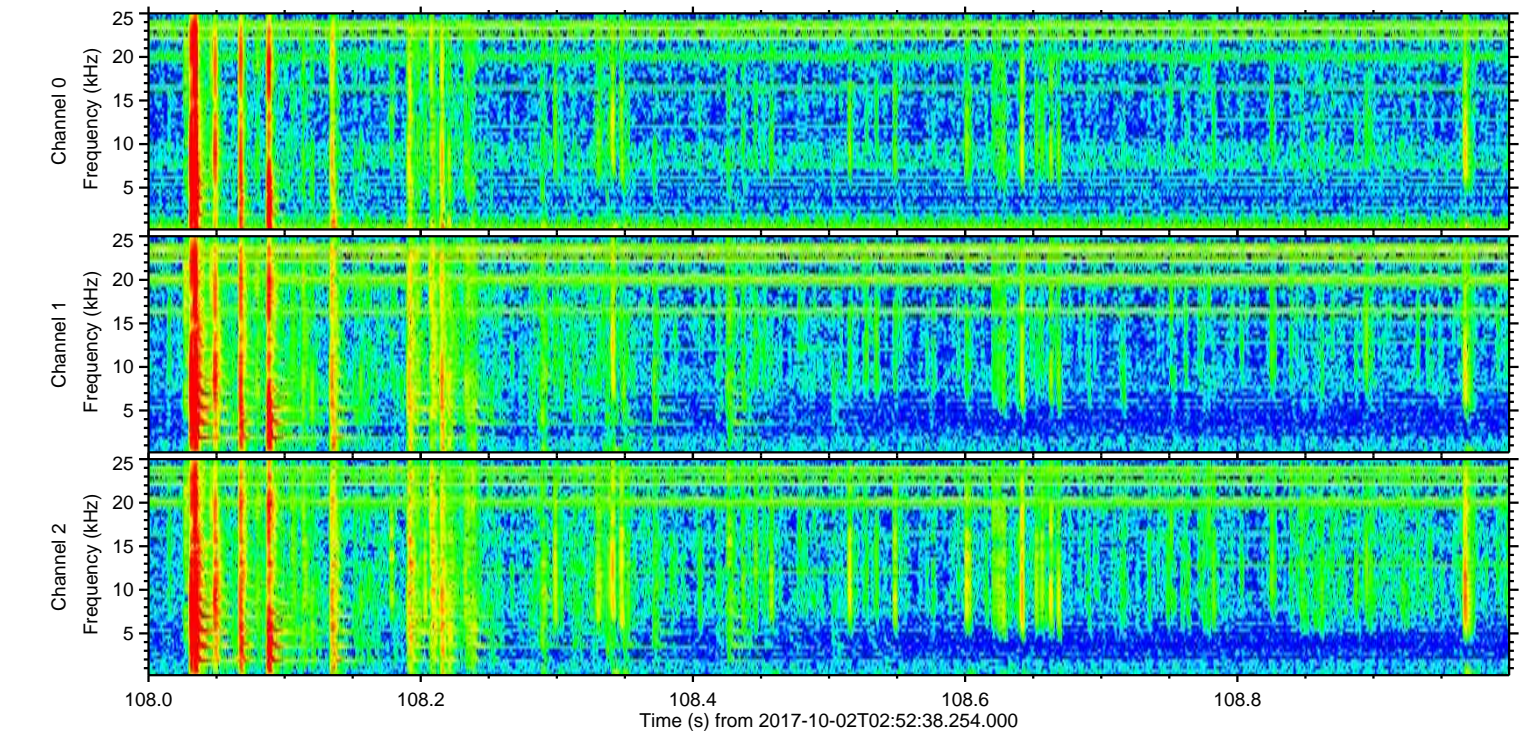
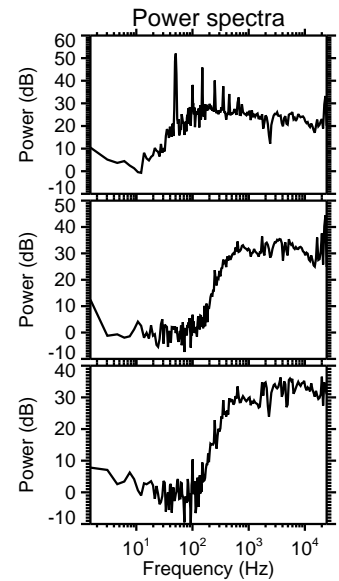
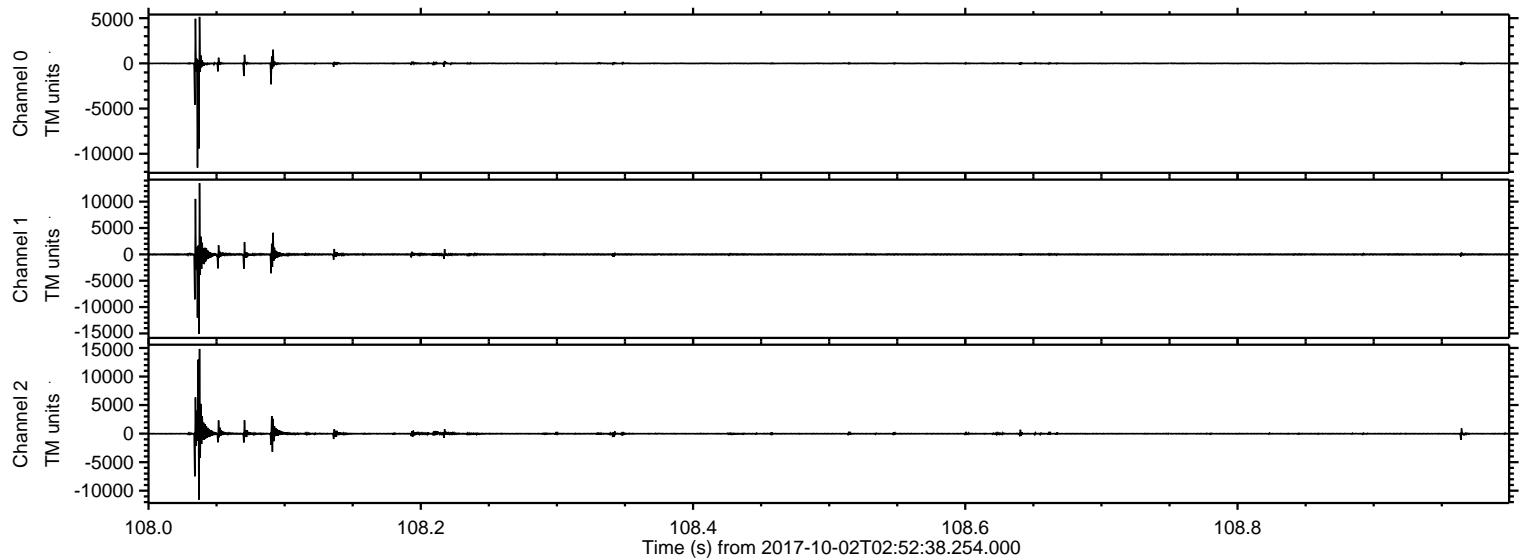
ELMAVAN 3D WAVEFORMS (Measured data sampled at 50 kHz) 50999 packets of 144 samples from 2017-10-02T02:52:38.254.000.

Processed Mon Oct 2 05:00:42 2017 by ELM ver.2012-10-06 from 001__elm20171002_025237__dat00.bin

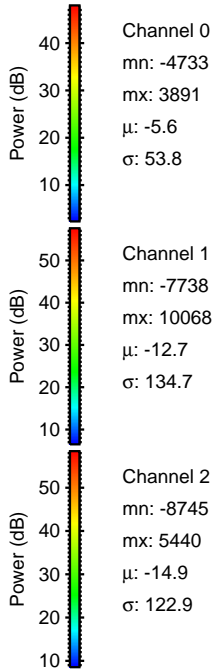
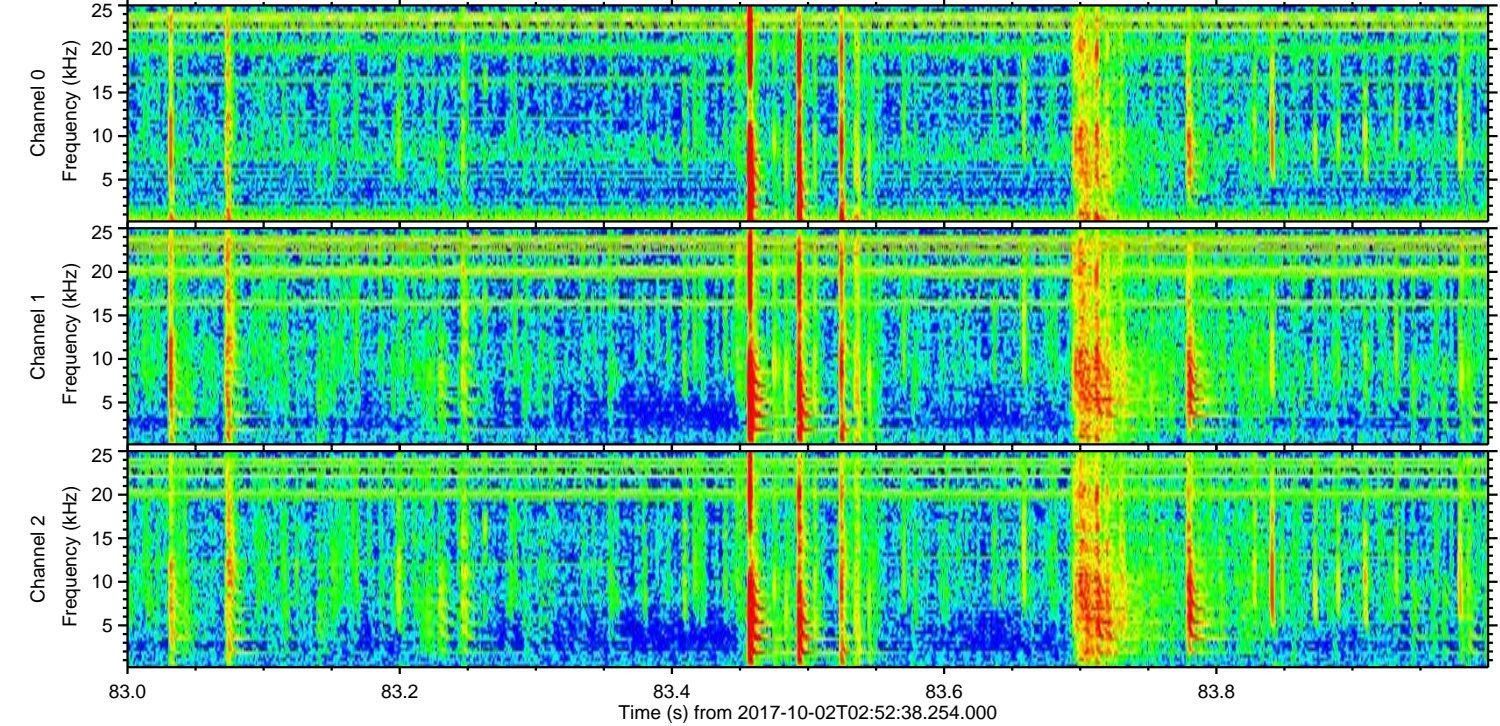
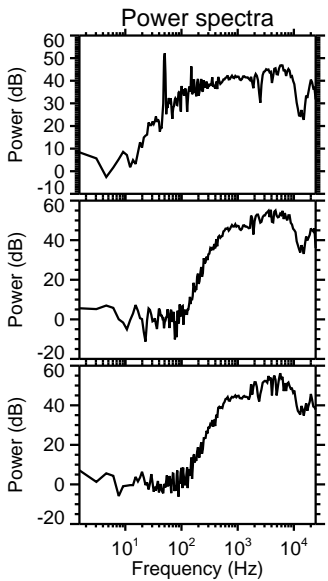
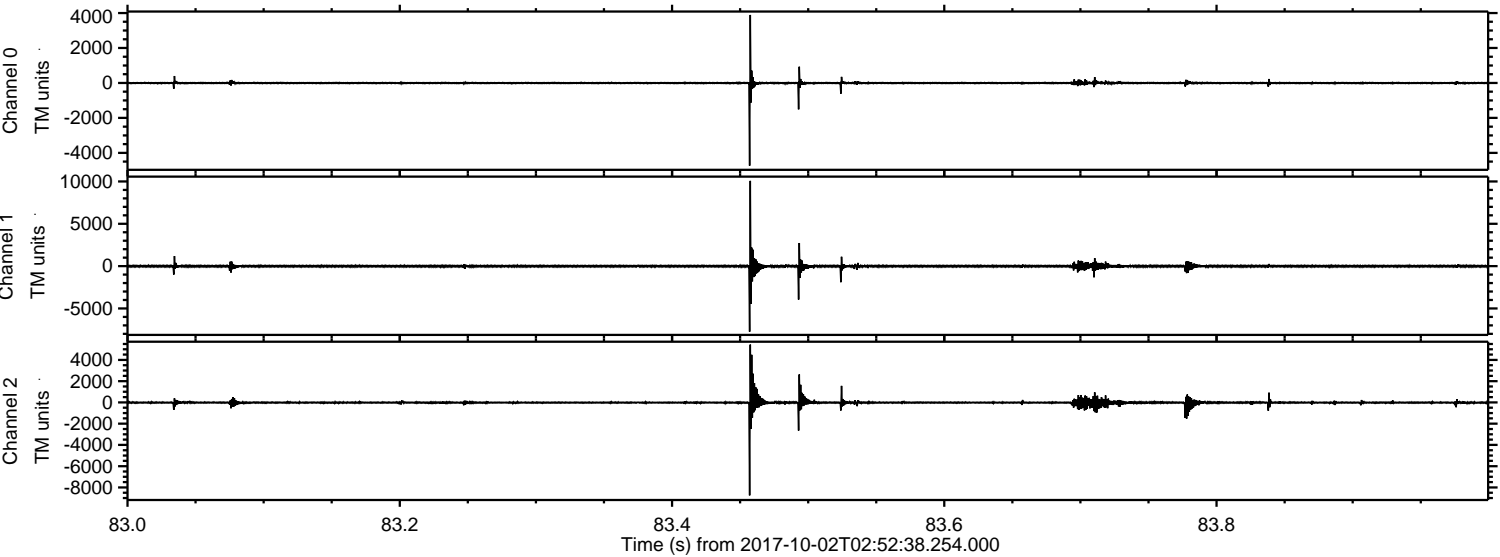


ELMAVAN 3D WAVEFORMS (Measured data sampled at 50 kHz) 50999 packets of 144 samples from 2017-10-02T02:52:38.254.000. Part 109/147

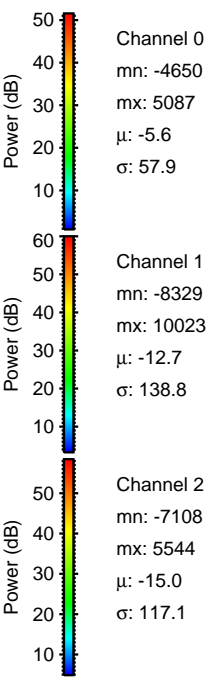
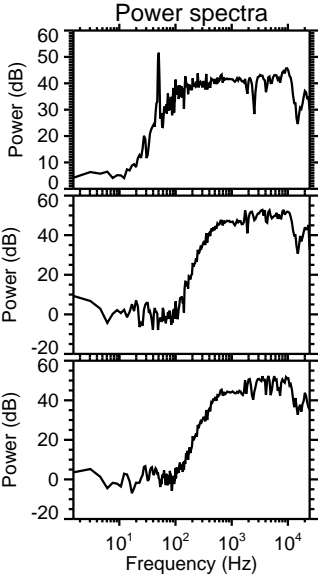
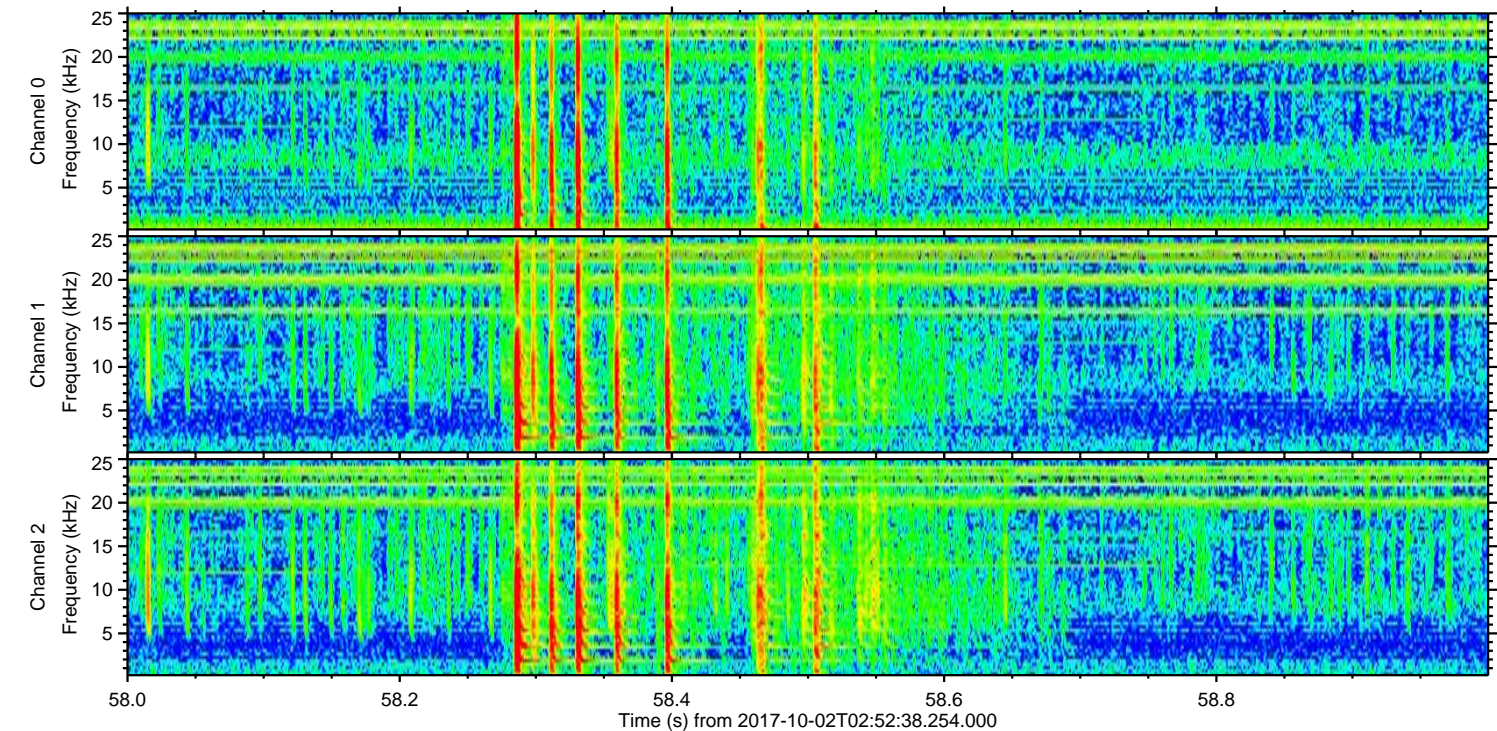
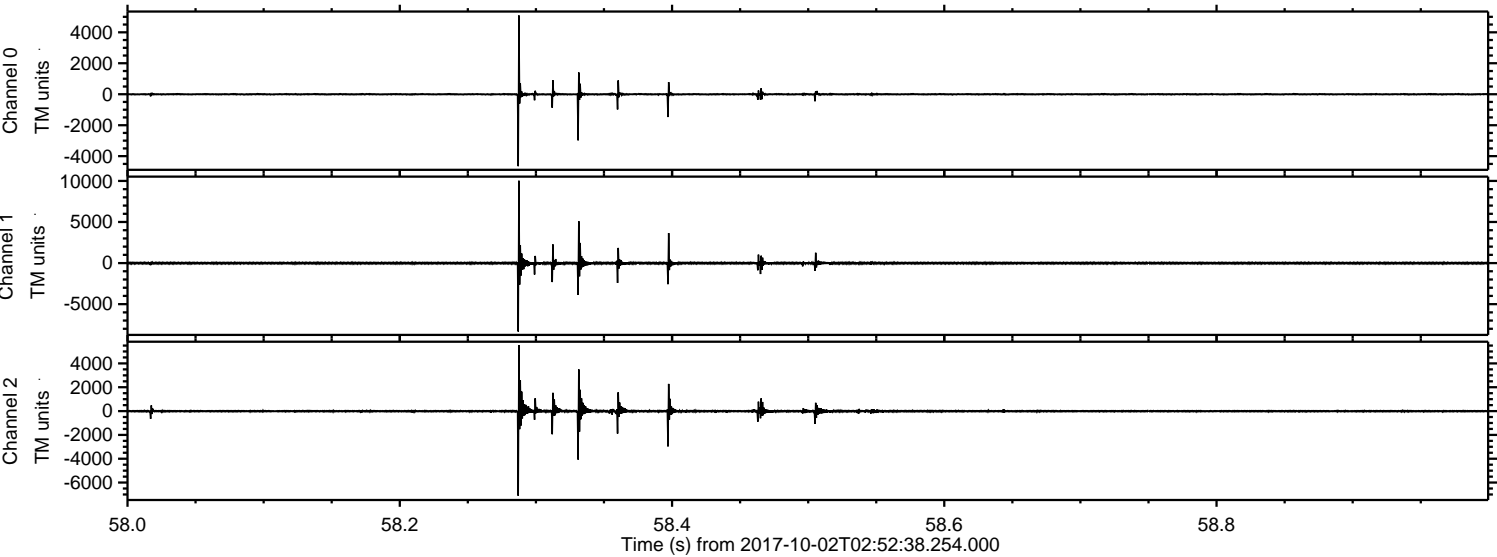
Processed Mon Oct 2 05:00:49 2017 by ELM ver.2012-10-06 from 001__elm20171002_025237__dat00.bin



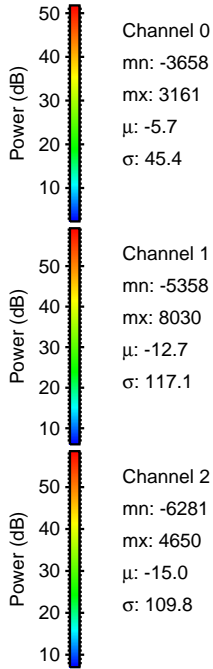
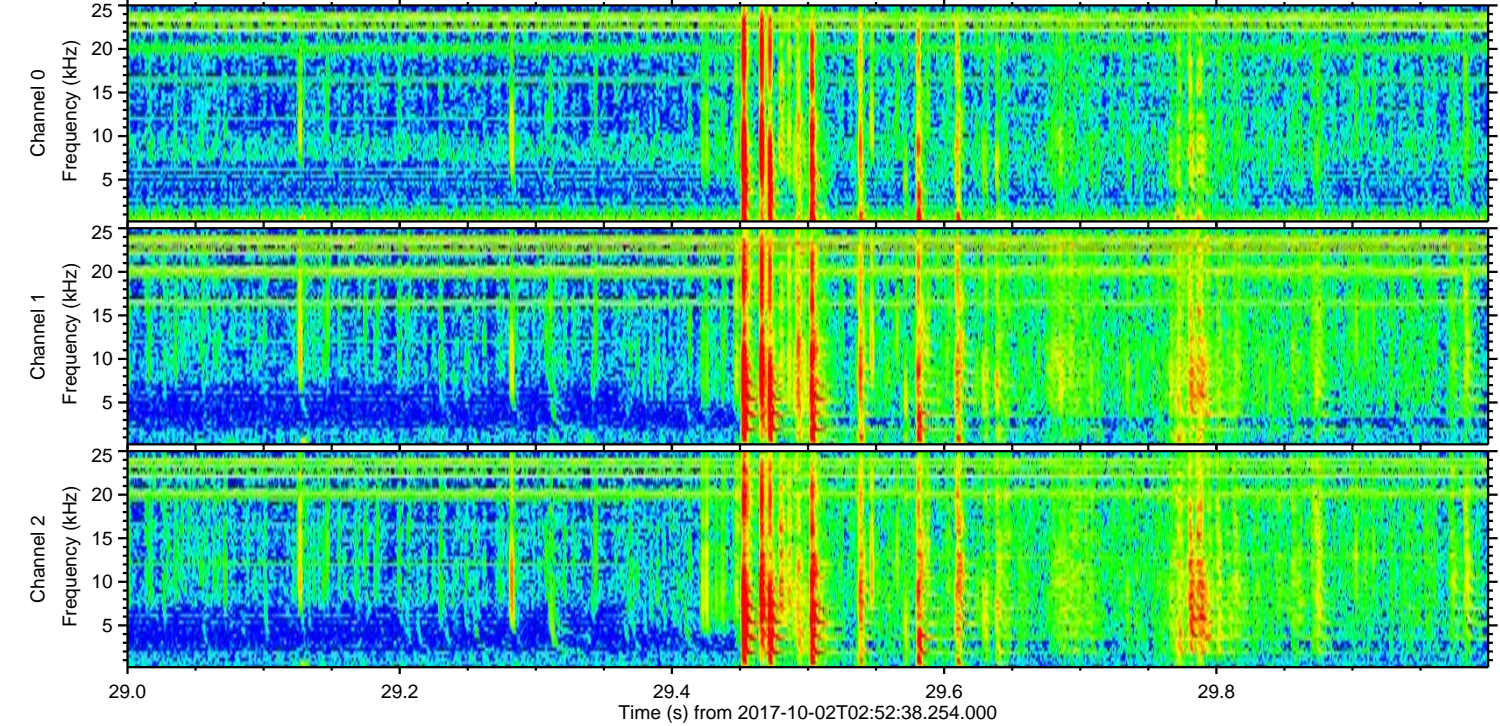
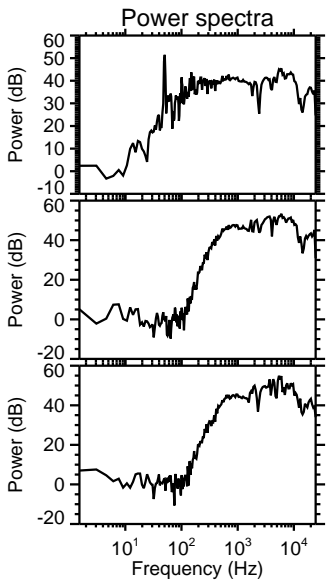
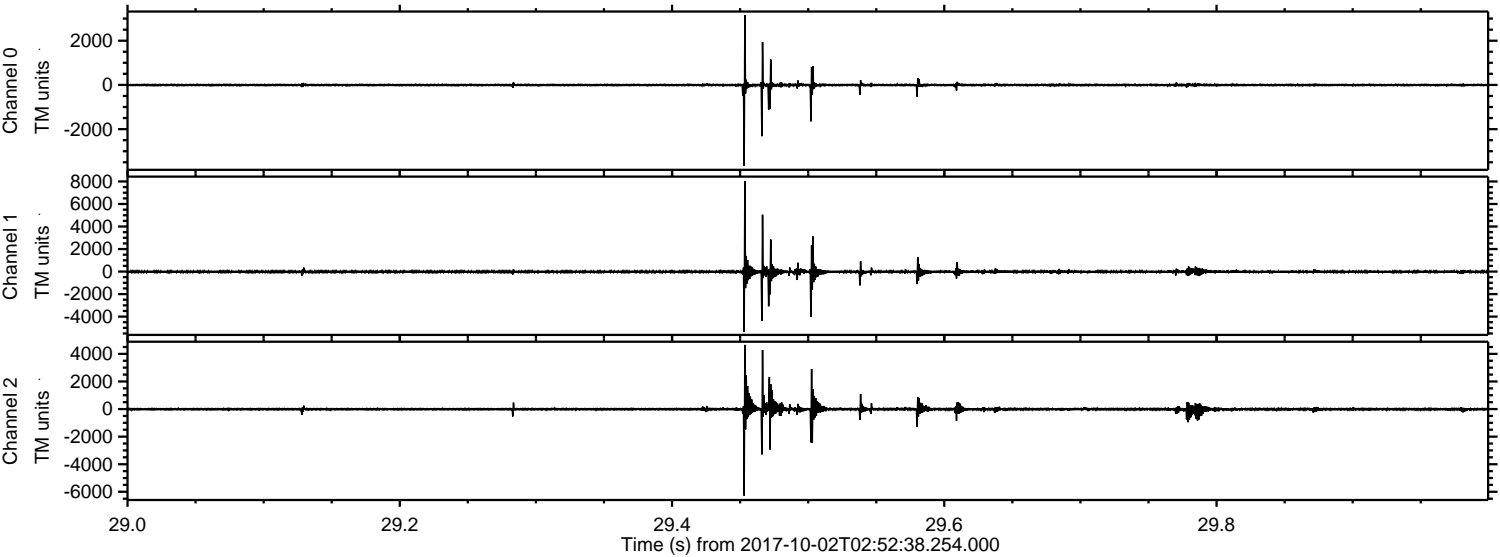
Processed Mon Oct 2 05:00:50 2017 by ELM ver.2012-10-06 from 001__elm20171002_025237__dat00.bin



Processed Mon Oct 2 05:00:50 2017 by ELM ver.2012-10-06 from 001__elm20171002_025237__dat00.bin

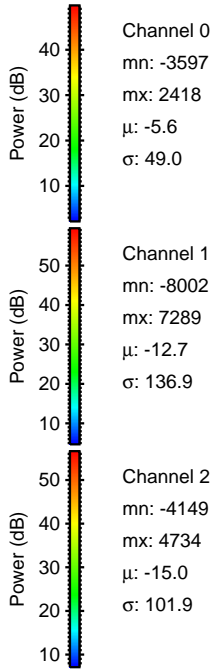
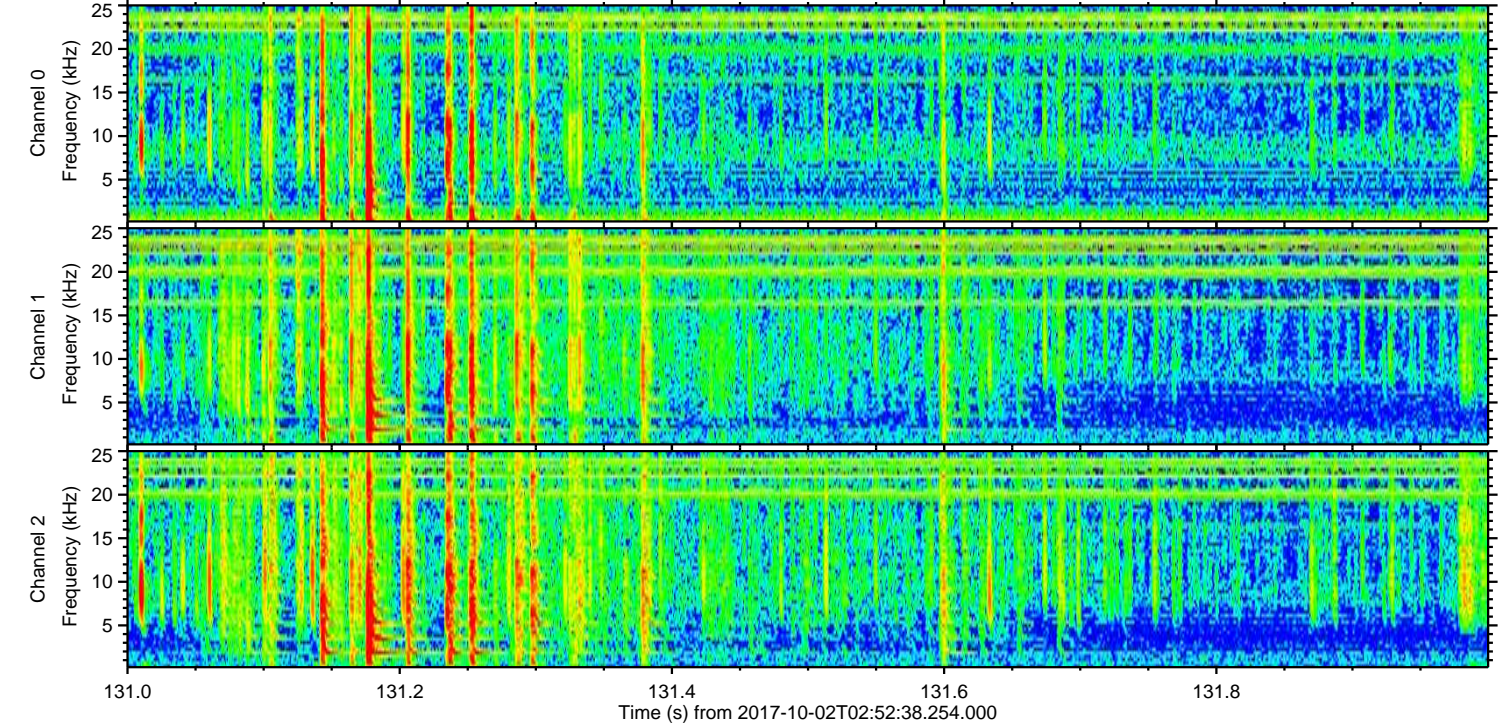
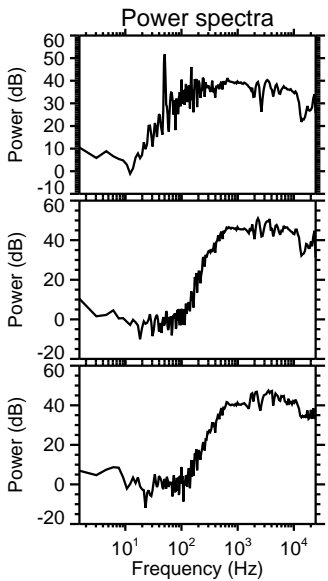
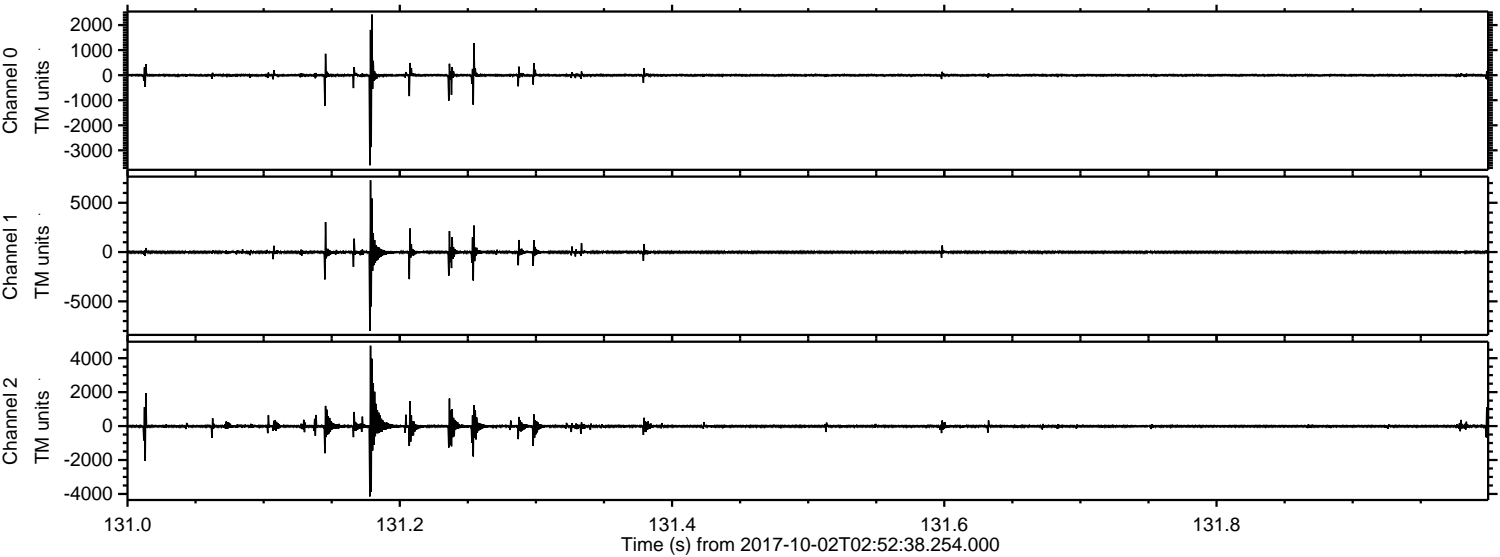


Processed Mon Oct 2 05:00:51 2017 by ELM ver.2012-10-06 from 001__elm20171002_025237__dat00.bin



ELMAVAN 3D WAVEFORMS (Measured data sampled at 50 kHz) 50999 packets of 144 samples from 2017-10-02T02:52:38.254.000. Part 132/147

Processed Mon Oct 2 05:00:52 2017 by ELM ver.2012-10-06 from 001__elm20171002_025237__dat00.bin



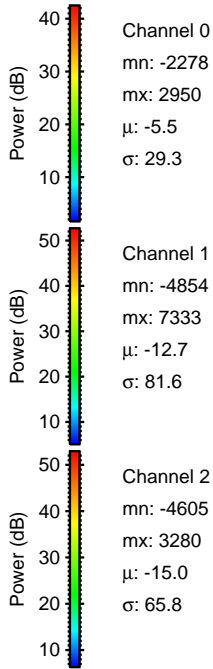
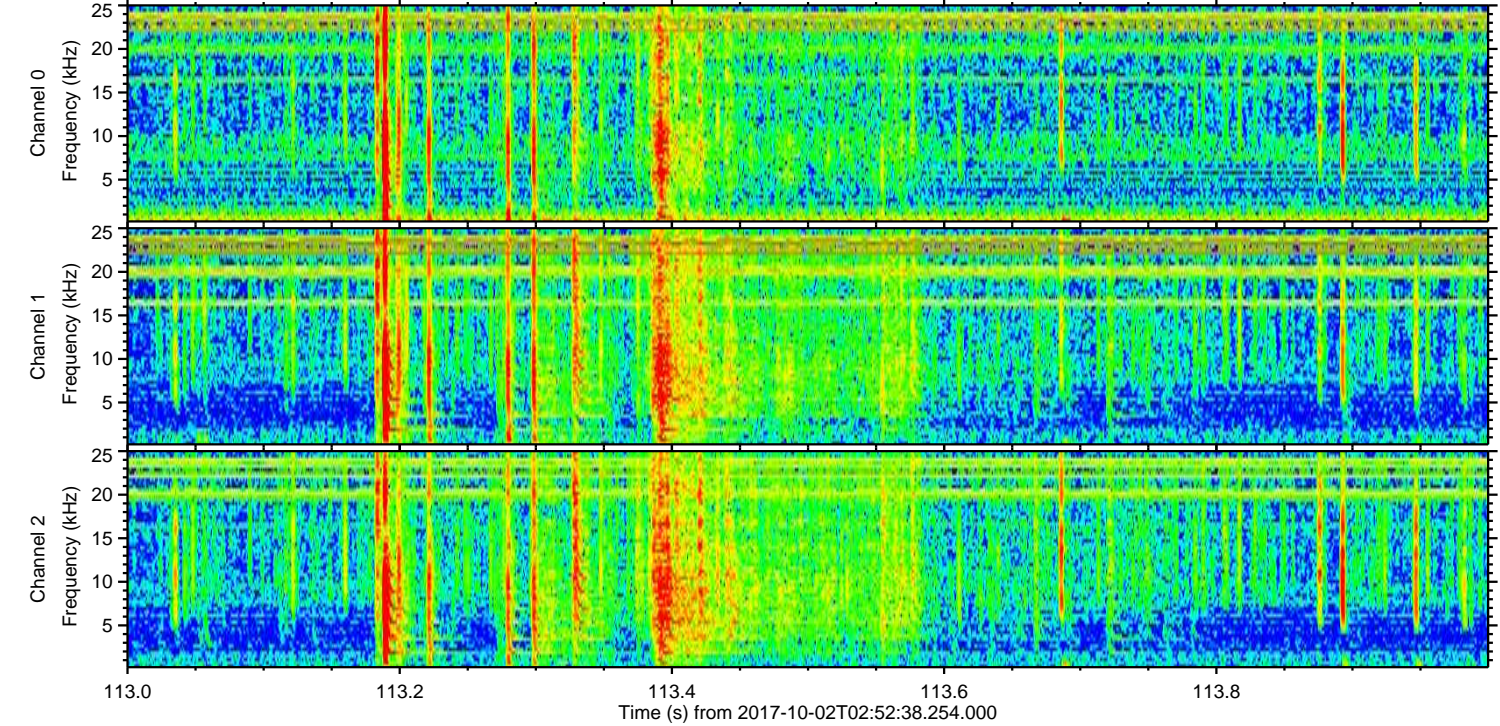
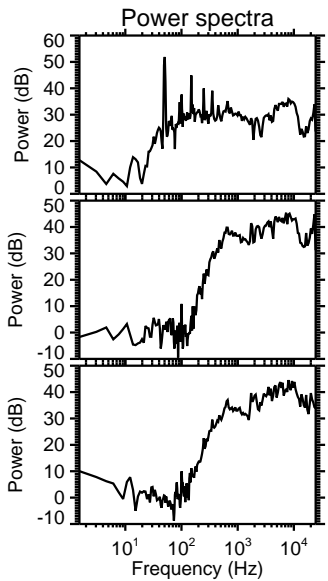
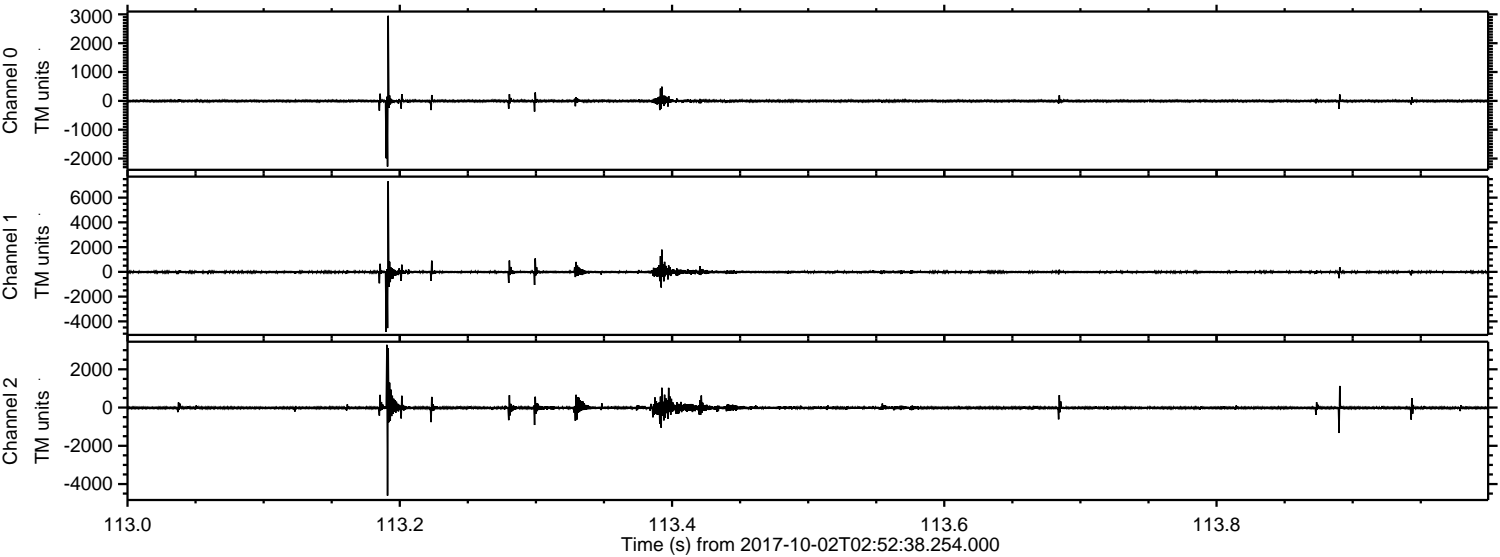
Channel 0
mn: -3597
mx: 2418
 μ : -5.6
 σ : 49.0

Channel 1
mn: -8002
mx: 7289
 μ : -12.7
 σ : 136.9

Channel 2
mn: -4149
mx: 4734
 μ : -15.0
 σ : 101.9

ELMAVAN 3D WAVEFORMS (Measured data sampled at 50 kHz) 50999 packets of 144 samples from 2017-10-02T02:52:38.254.000. Part 114/147

Processed Mon Oct 2 05:00:53 2017 by ELM ver.2012-10-06 from 001__elm20171002_025237__dat00.bin

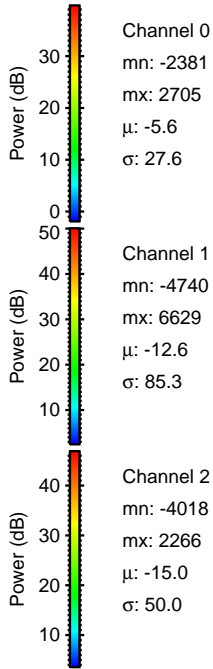
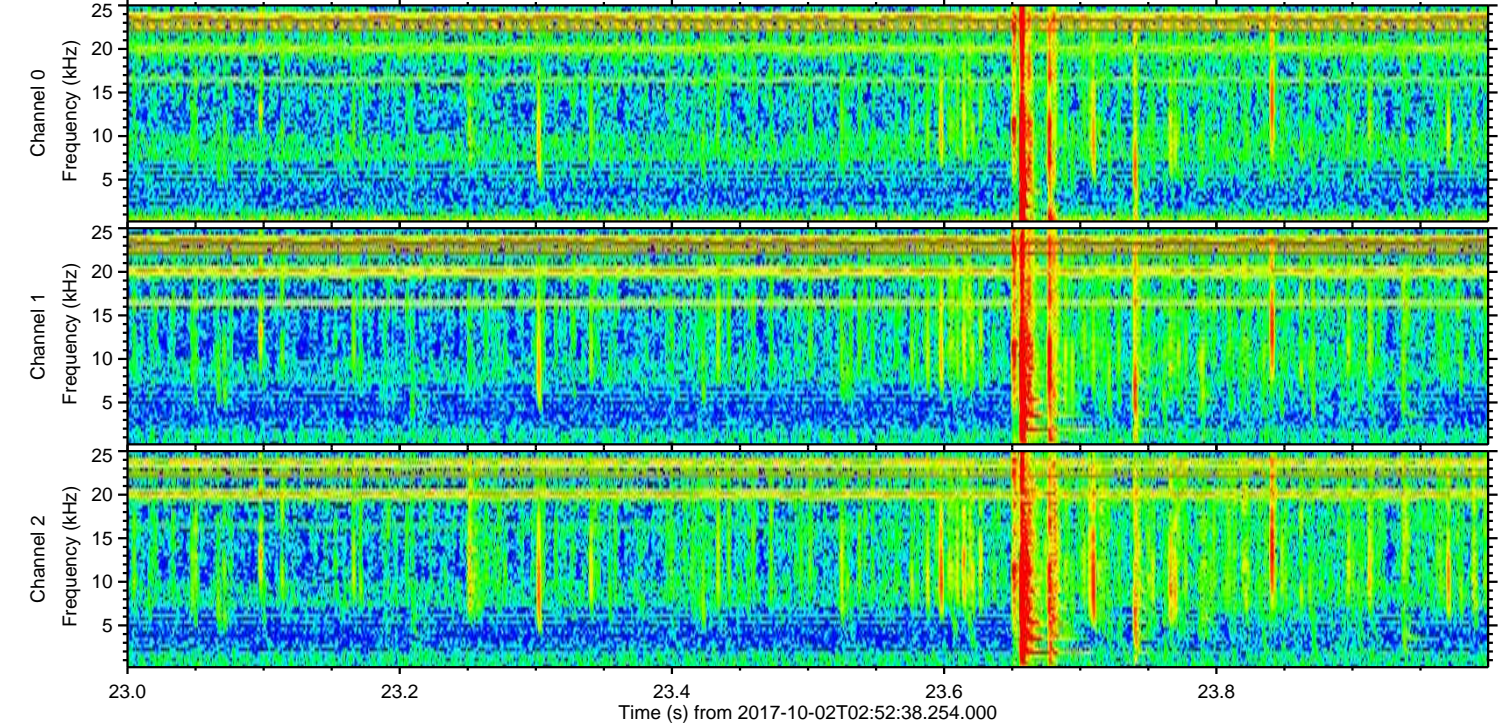
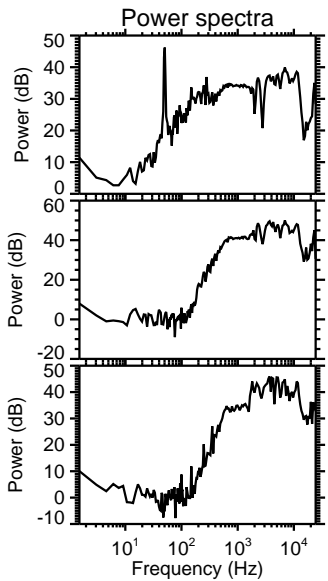
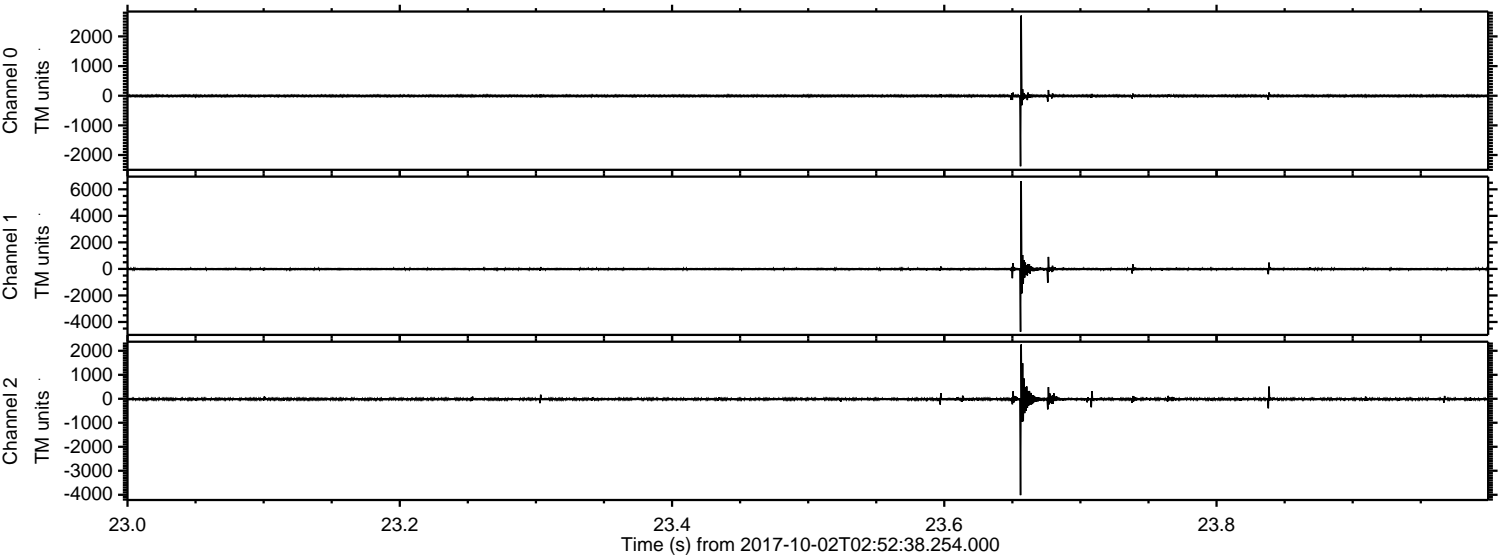


Channel 0
mn: -2278
mx: 2950
 μ : -5.5
 σ : 29.3

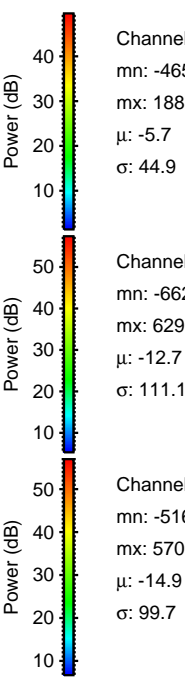
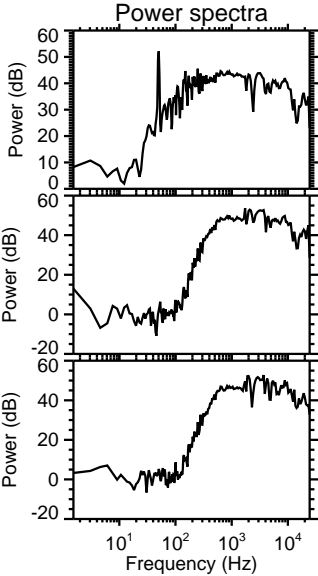
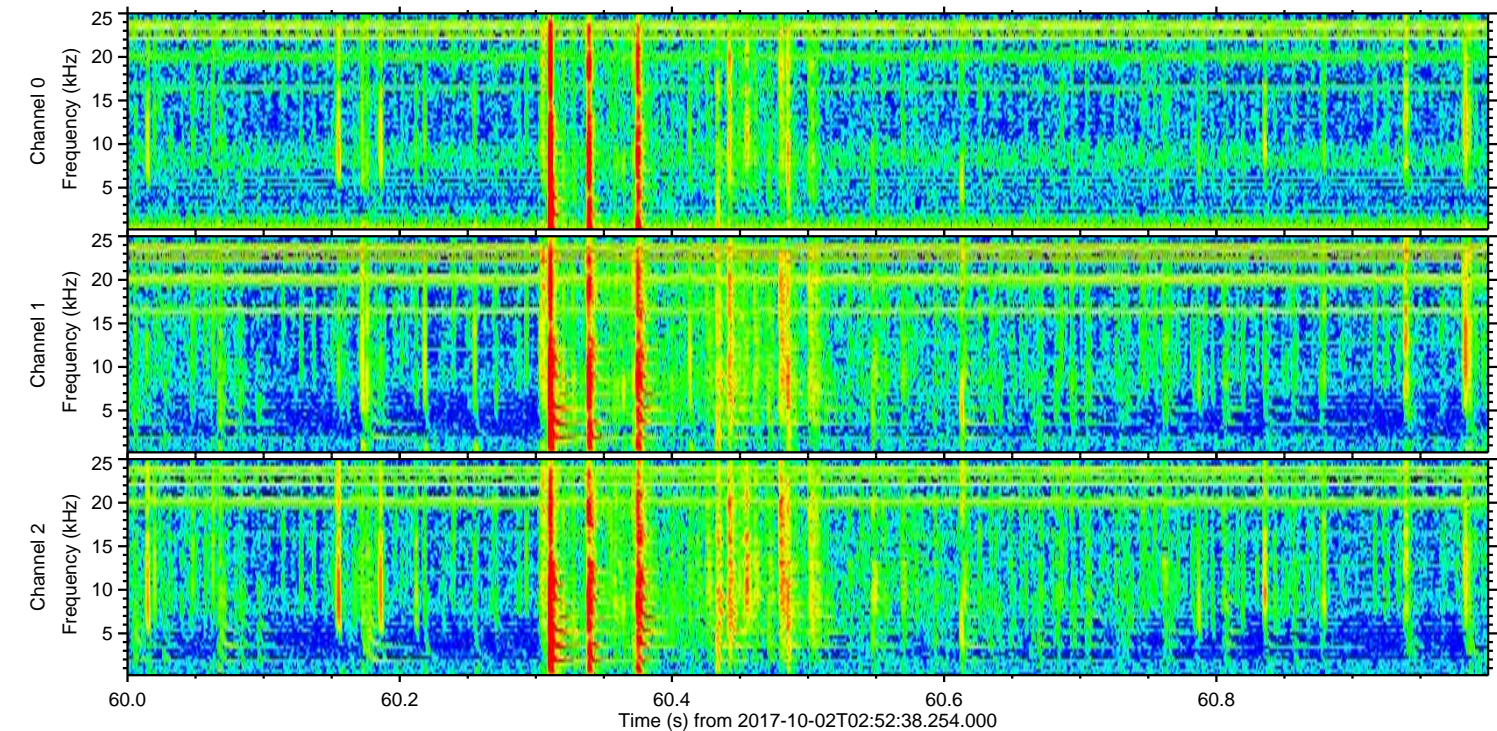
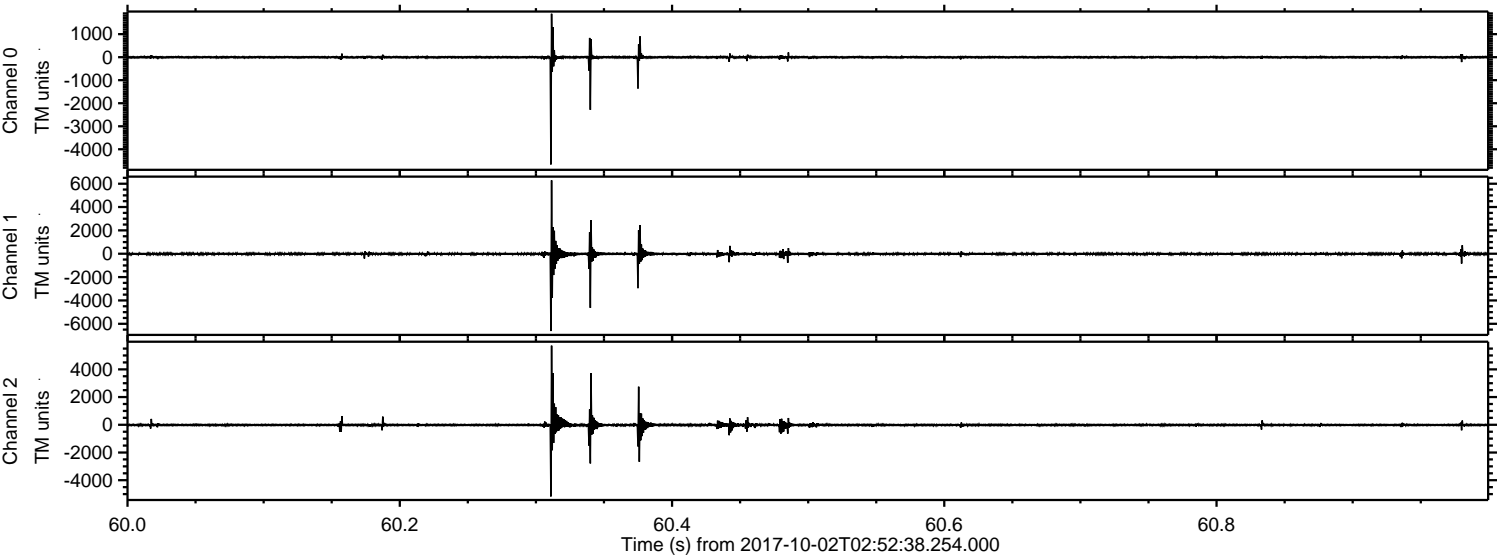
Channel 1
mn: -4854
mx: 7333
 μ : -12.7
 σ : 81.6

Channel 2
mn: -4605
mx: 3280
 μ : -15.0
 σ : 65.8

Processed Mon Oct 2 05:00:54 2017 by ELM ver.2012-10-06 from 001__elm20171002_025237__dat00.bin

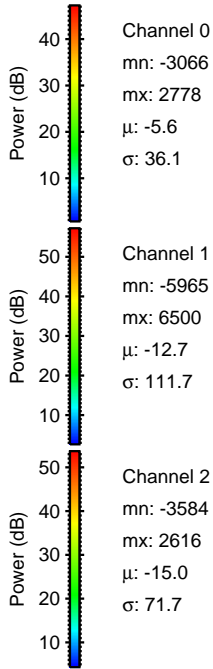
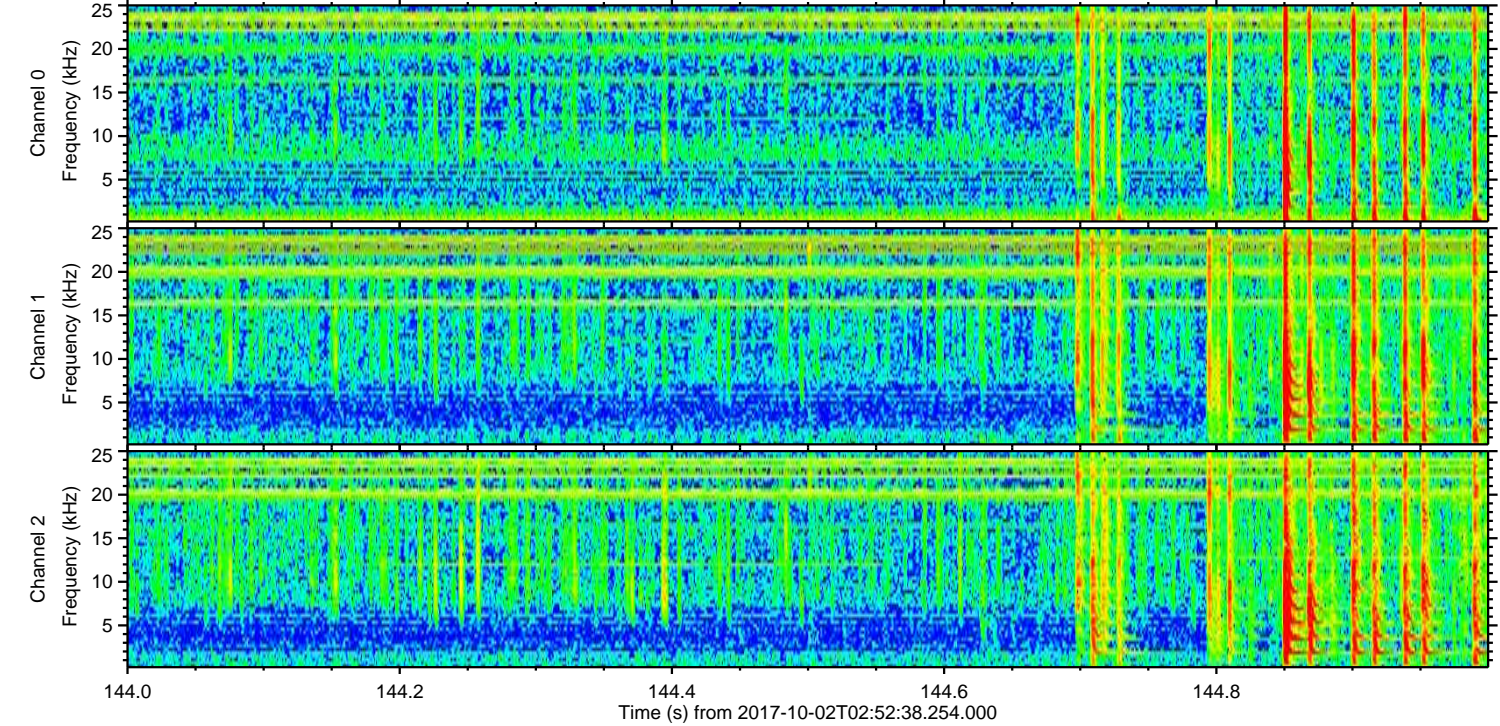
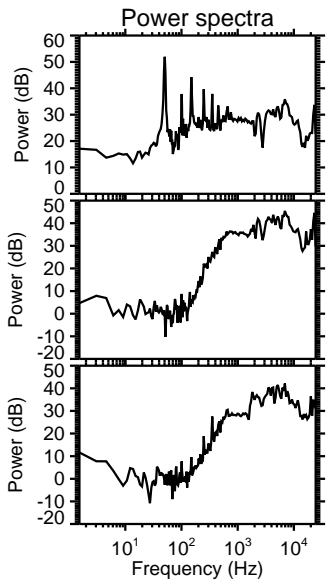
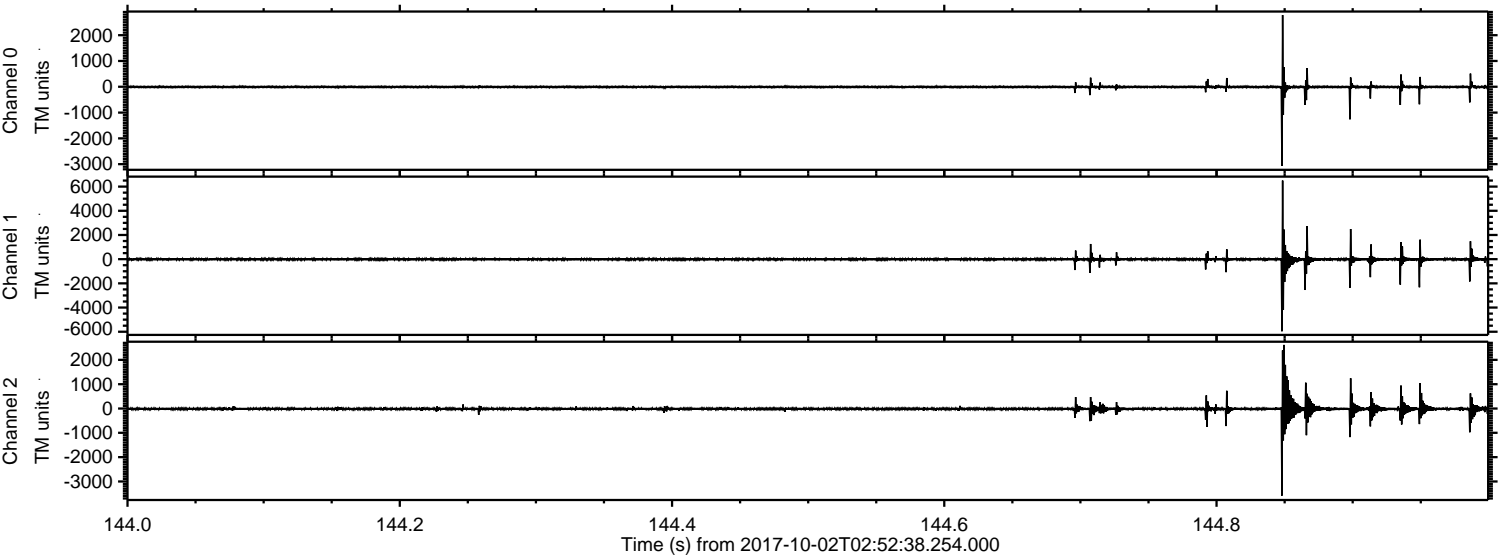


Processed Mon Oct 2 05:00:54 2017 by ELM ver.2012-10-06 from 001__elm20171002_025237__dat00.bin



ELMAVAN 3D WAVEFORMS (Measured data sampled at 50 kHz) 50999 packets of 144 samples from 2017-10-02T02:52:38.254.000. Part 145/147

Processed Mon Oct 2 05:00:55 2017 by ELM ver.2012-10-06 from 001__elm20171002_025237__dat00.bin



Channel 0
mn: -3066
mx: 2778
 μ : -5.6
 σ : 36.1

Channel 1
mn: -5965
mx: 6500
 μ : -12.7
 σ : 111.7

Channel 2
mn: -3584
mx: 2616
 μ : -15.0
 σ : 71.7

