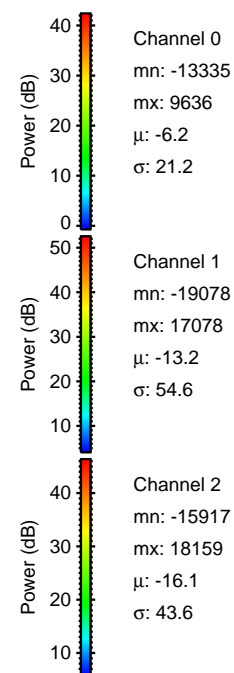
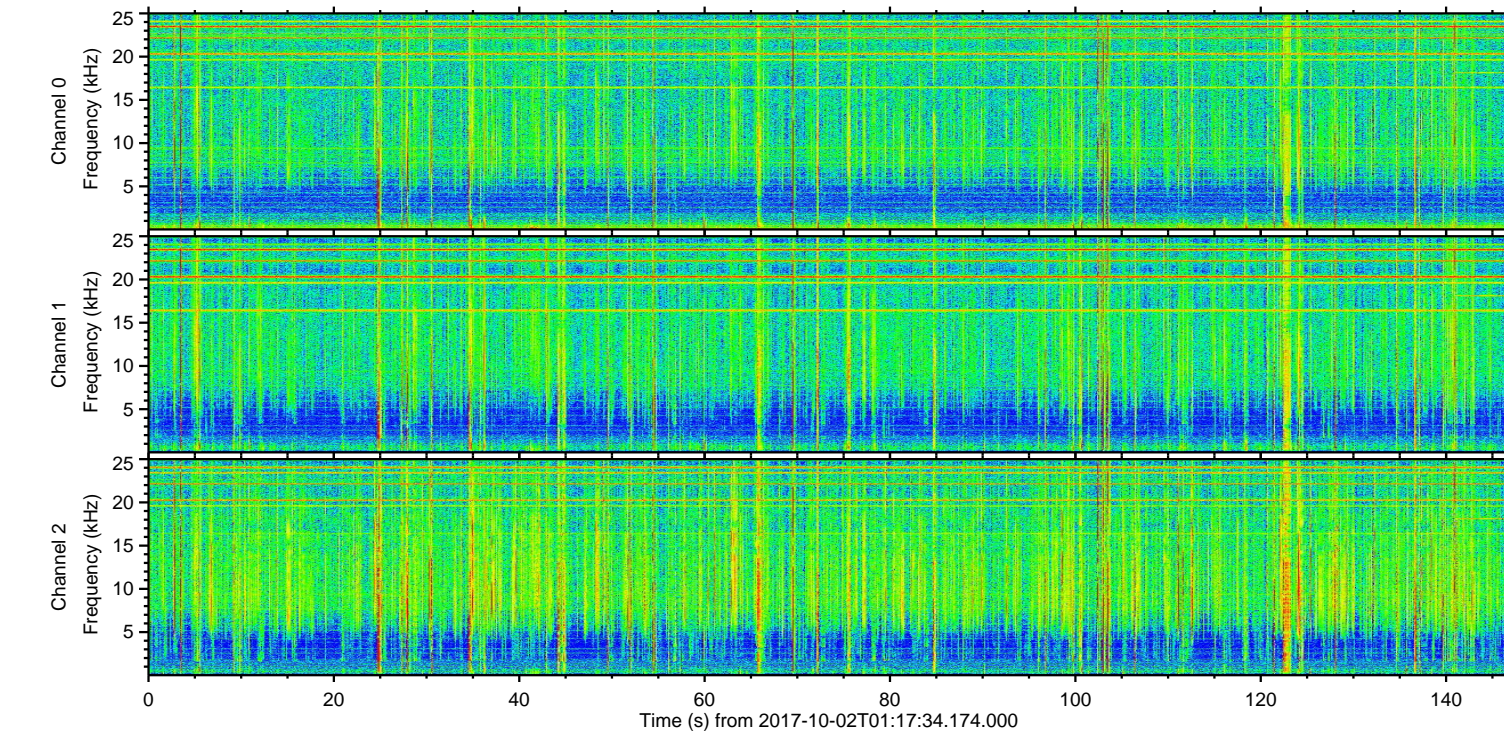
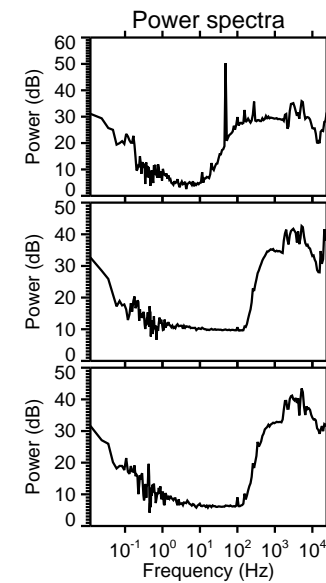
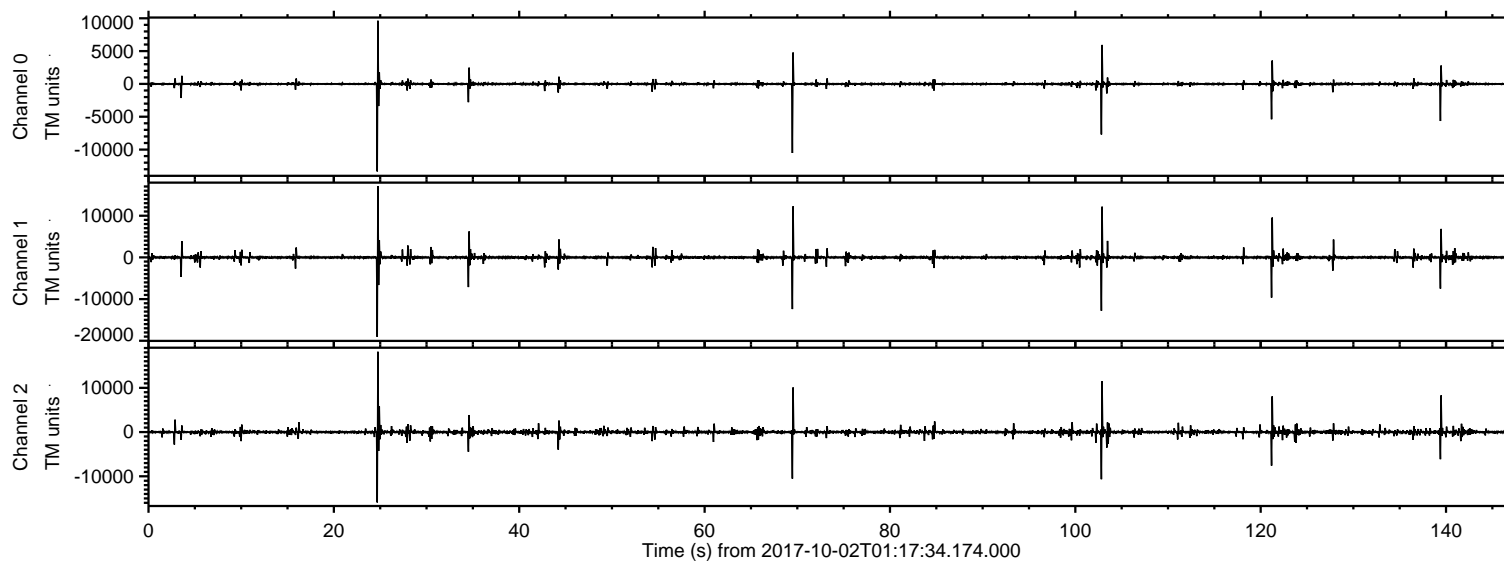


# ELMAVAN 3D WAVEFORMS (Measured data sampled at 50 kHz) 51000 packets of 144 samples from 2017-10-02T01:17:34.174.000.

Processed Mon Oct 2 03:25:06 2017 by ELM ver.2012-10-06 from 001\_\_elm20171002\_011733\_\_dat00.bin



Channel 0  
mn: -13335  
mx: 9636  
 $\mu$ : -6.2  
 $\sigma$ : 21.2

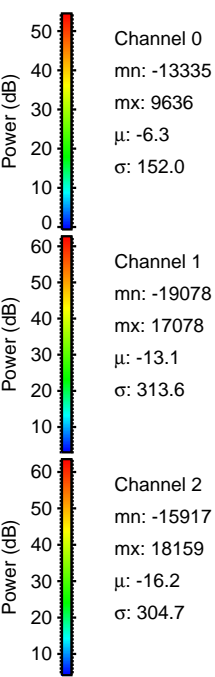
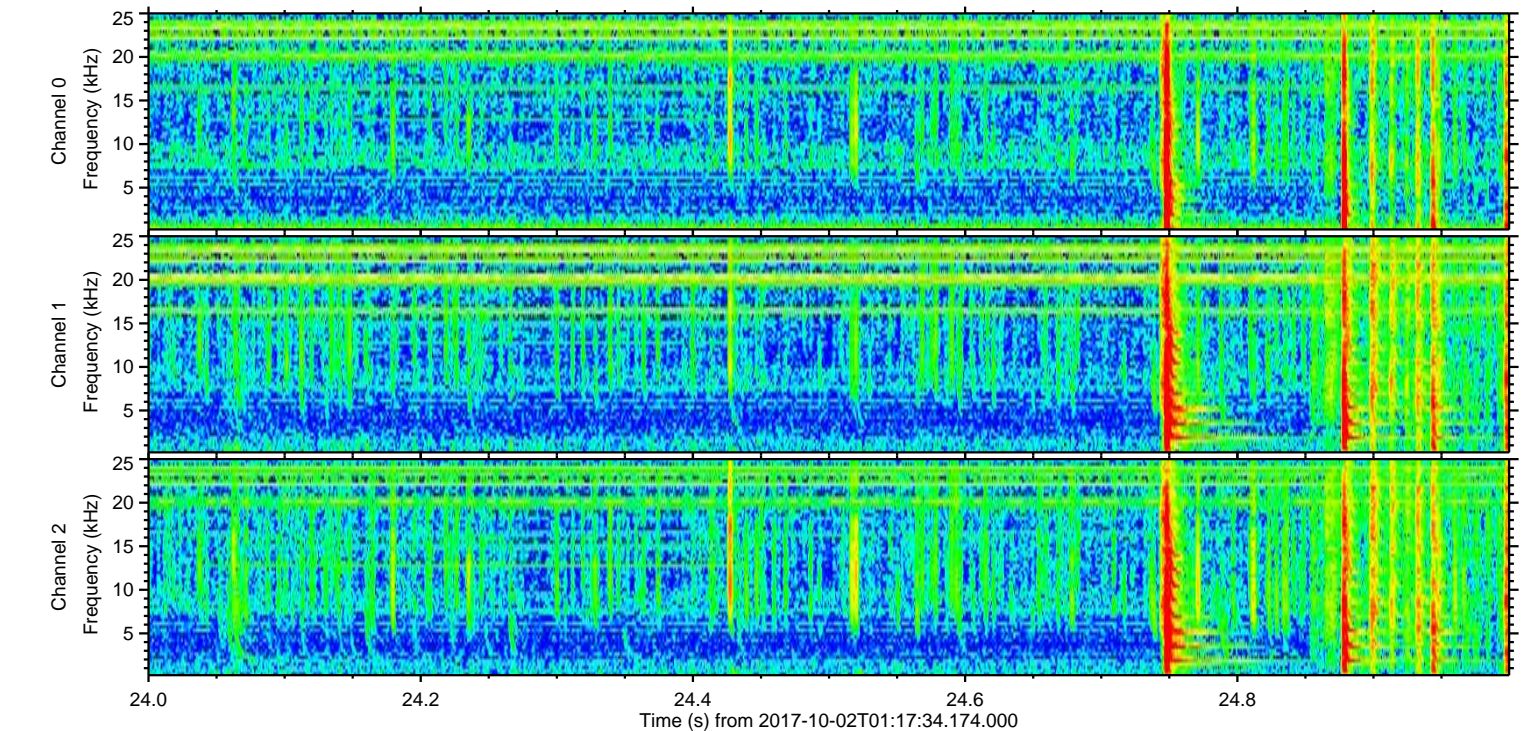
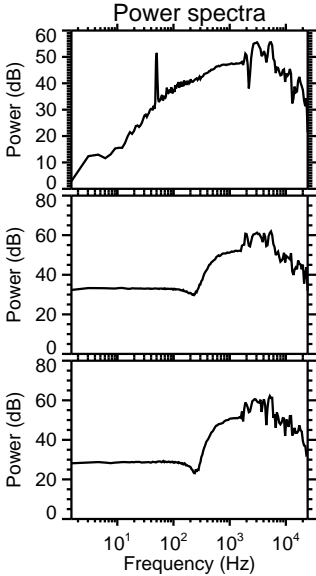
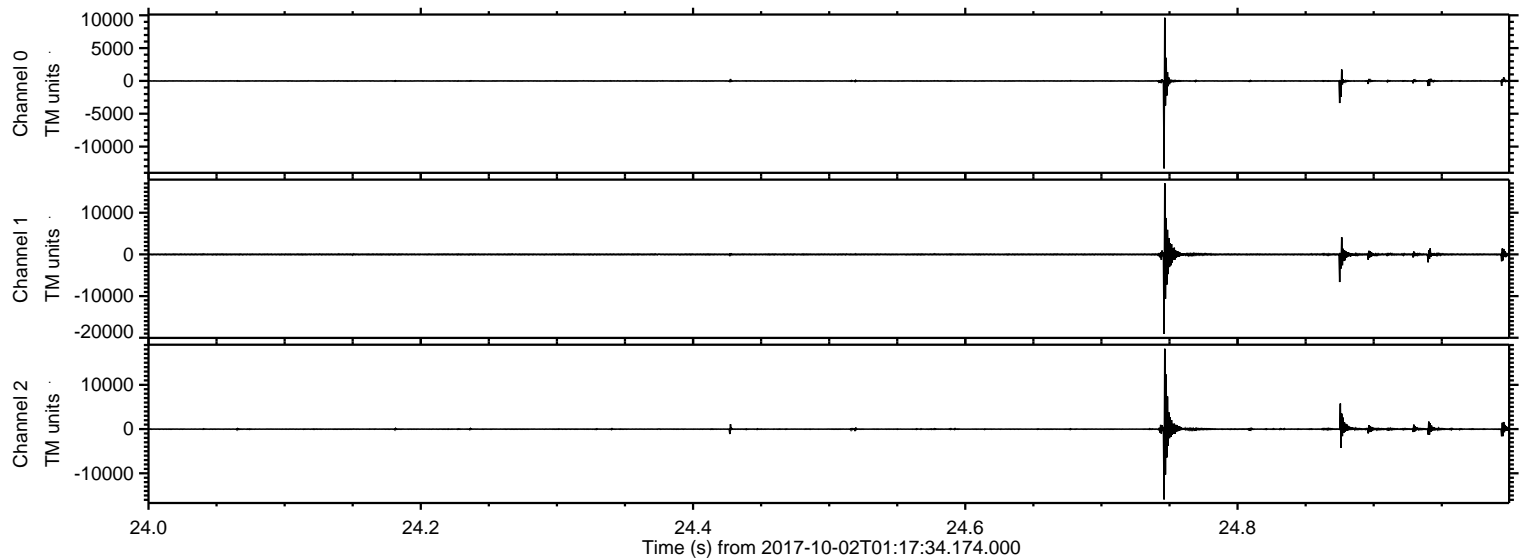
Channel 1  
mn: -19078  
mx: 17078  
 $\mu$ : -13.2  
 $\sigma$ : 54.6

Channel 2  
mn: -15917  
mx: 18159  
 $\mu$ : -16.1  
 $\sigma$ : 43.6



ELMAVAN 3D WAVEFORMS (Measured data sampled at 50 kHz) 51000 packets of 144 samples from 2017-10-02T01:17:34.174.000. Part 25/147

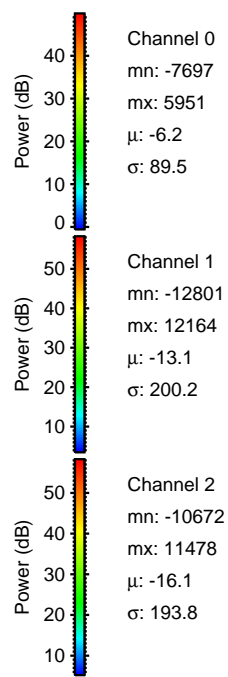
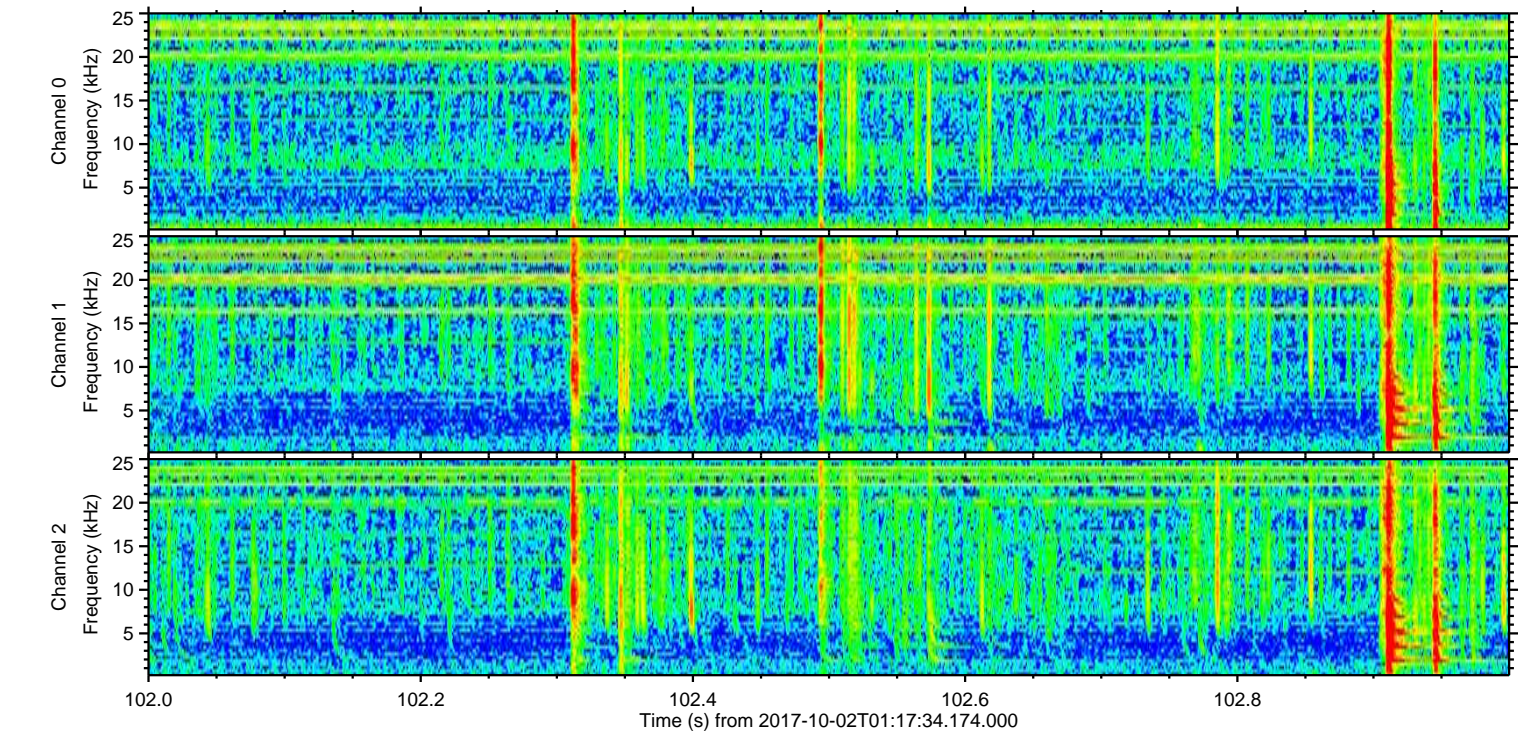
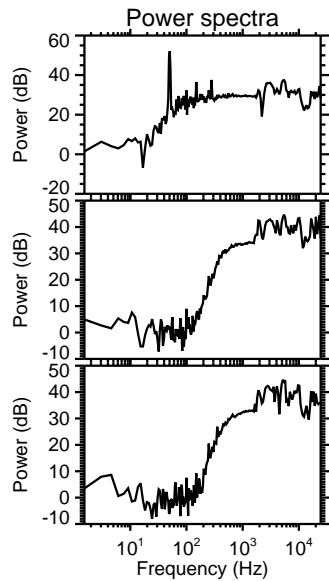
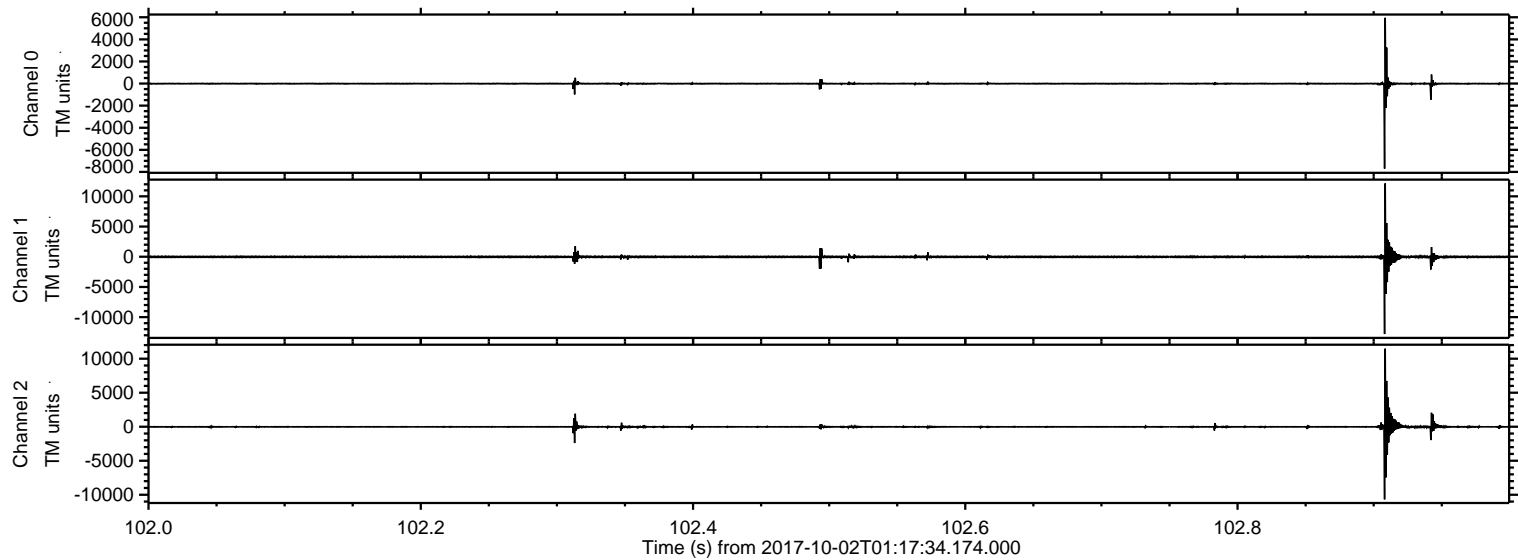
Processed Mon Oct 2 03:25:12 2017 by ELM ver.2012-10-06 from 001\_\_elm20171002\_011733\_\_dat00.bin





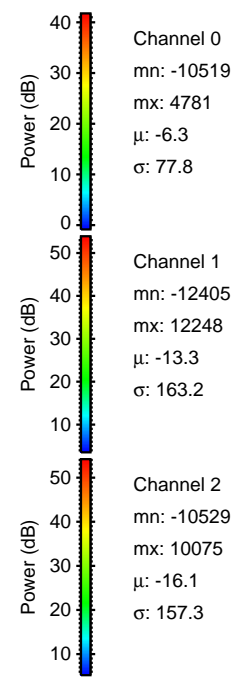
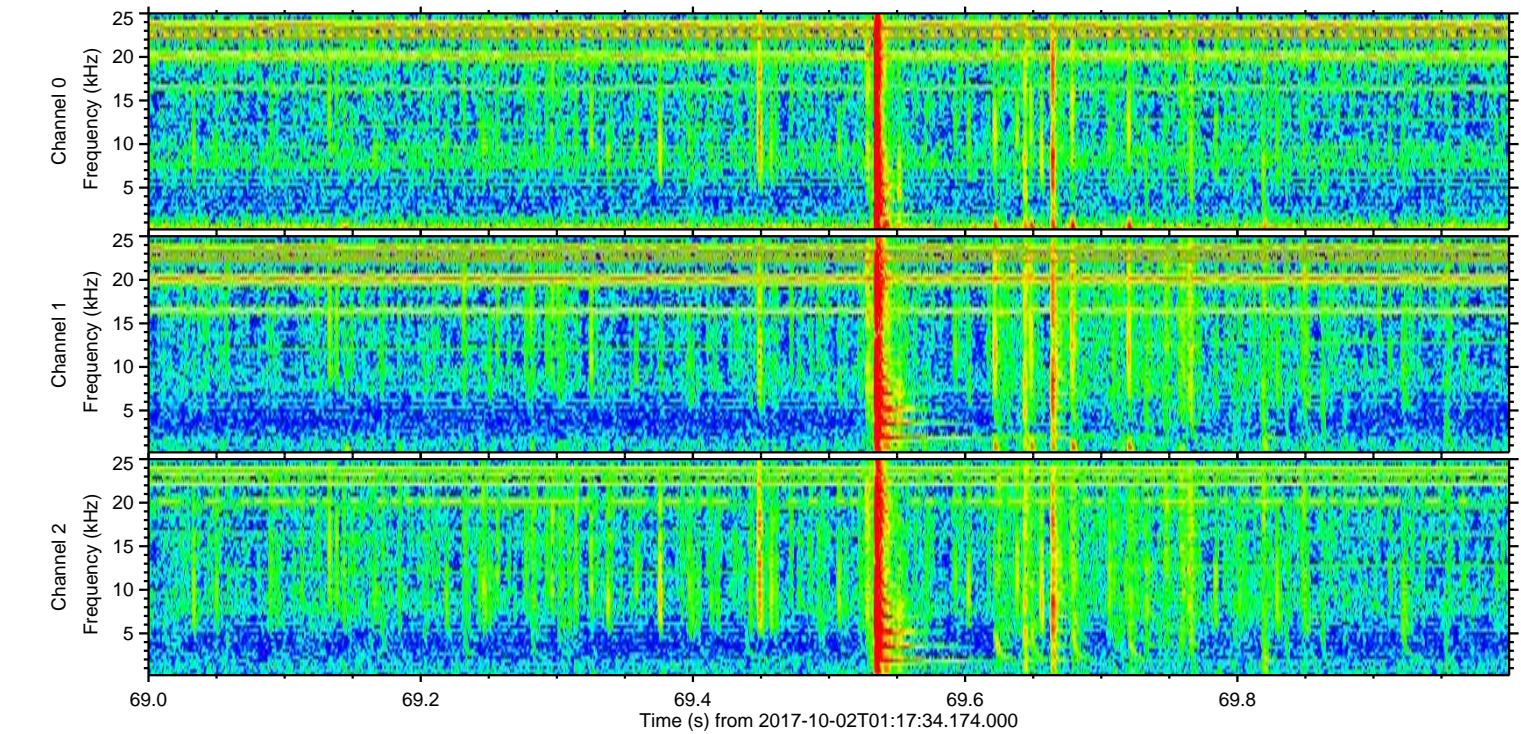
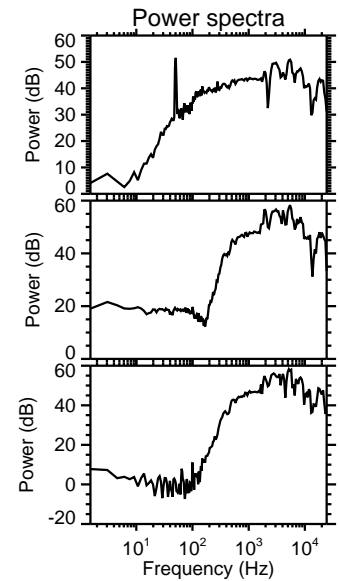
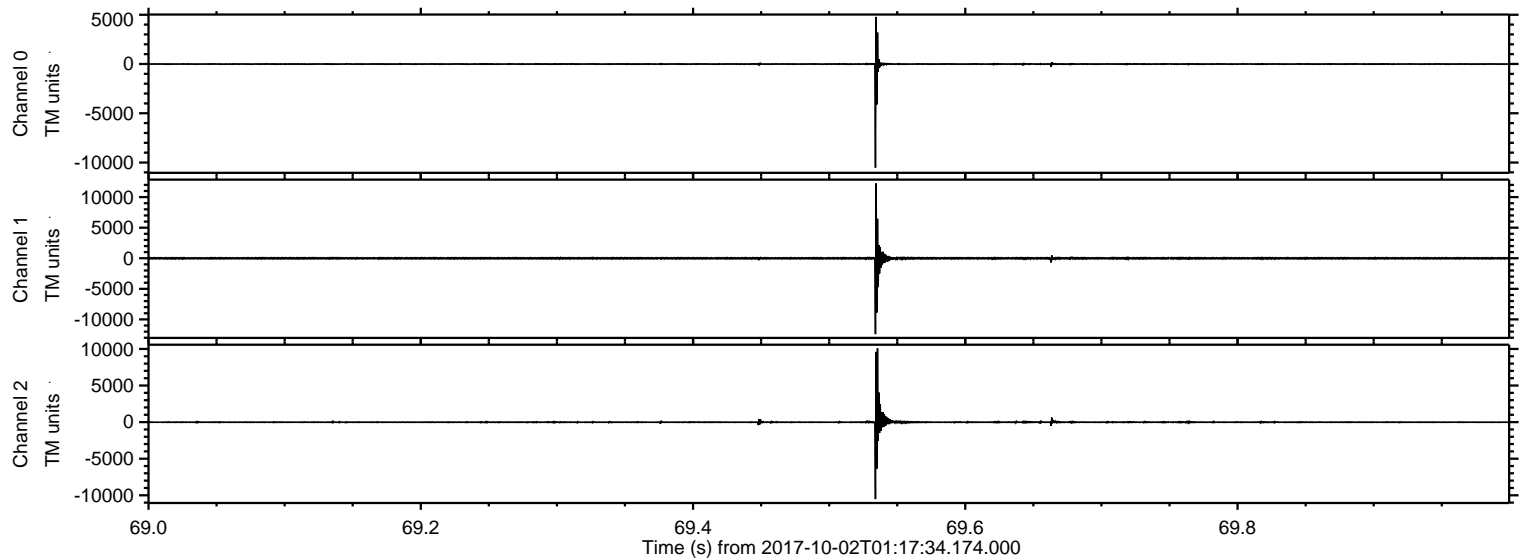
ELMAVAN 3D WAVEFORMS (Measured data sampled at 50 kHz) 51000 packets of 144 samples from 2017-10-02T01:17:34.174.000. Part 103/147

Processed Mon Oct 2 03:25:13 2017 by ELM ver.2012-10-06 from 001\_\_elm20171002\_011733\_\_dat00.bin





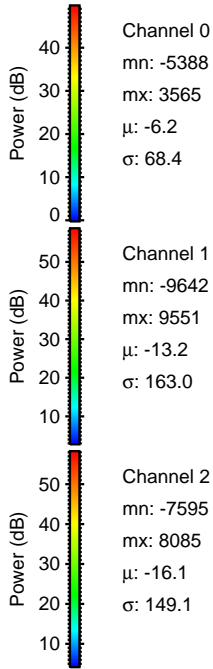
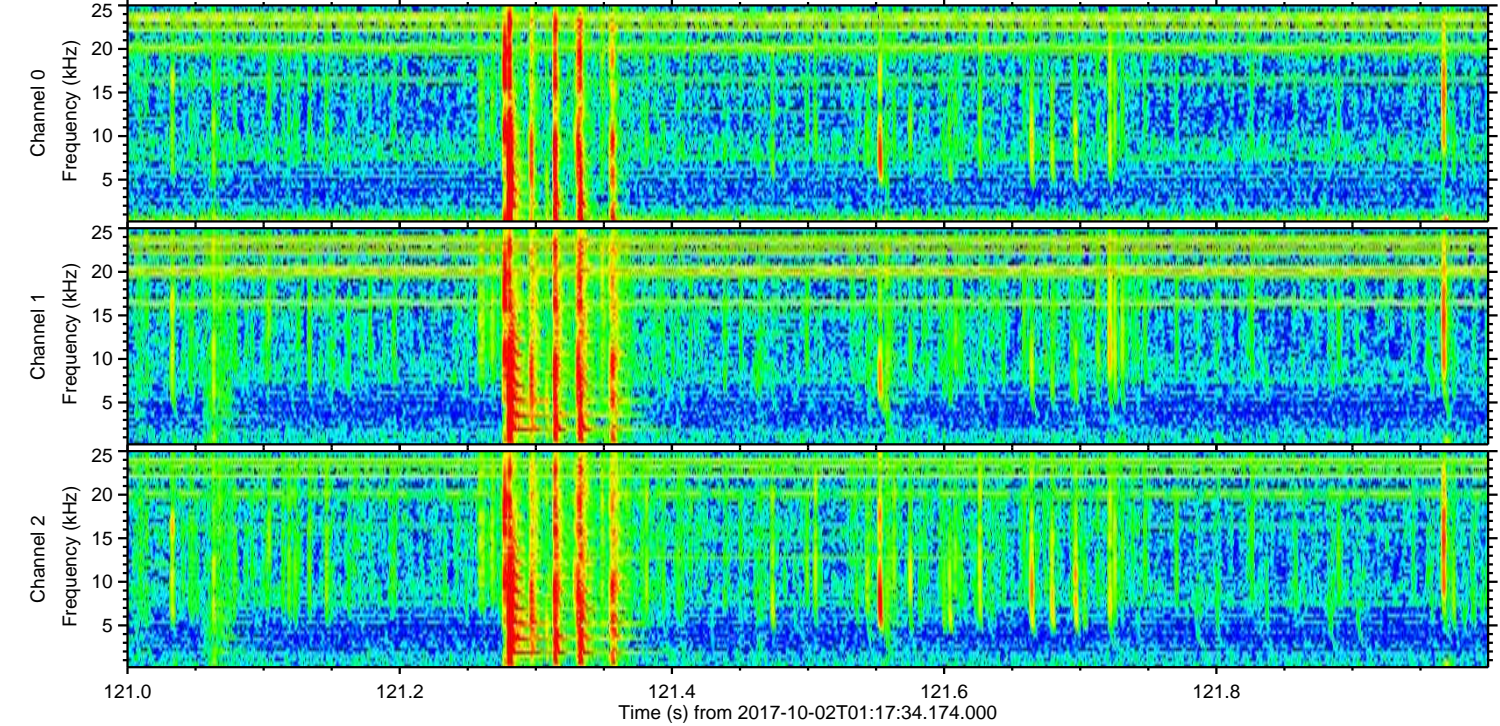
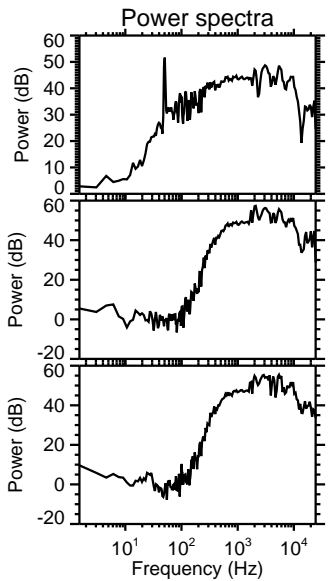
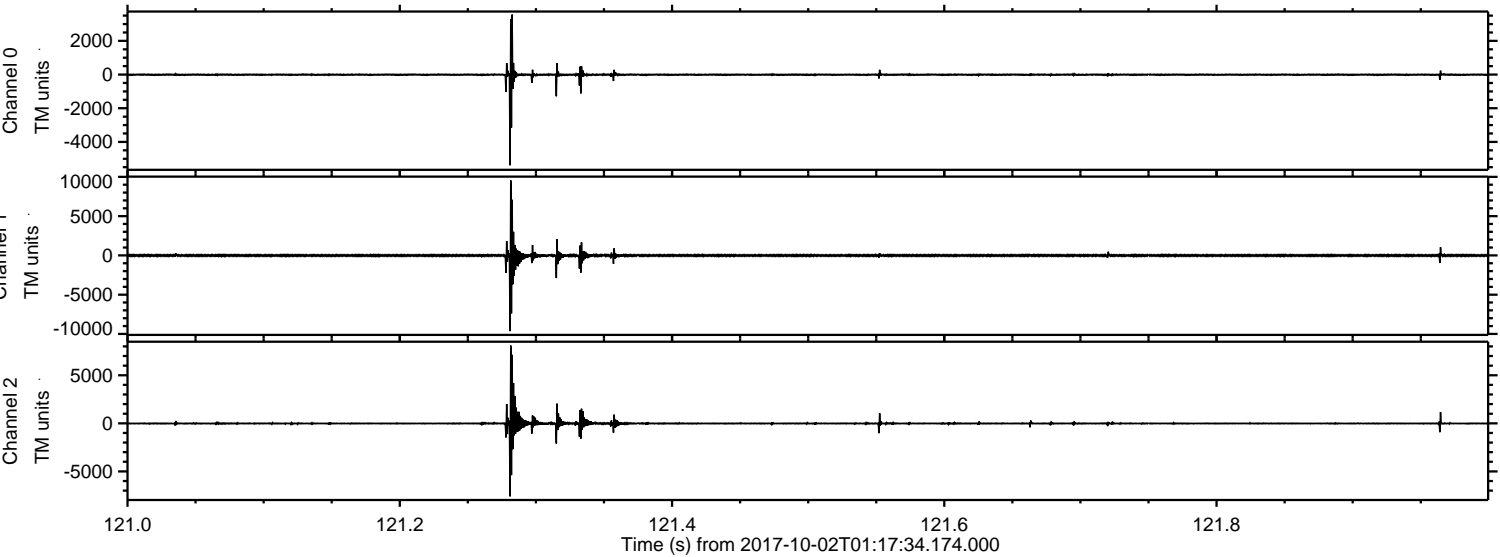
Processed Mon Oct 2 03:25:14 2017 by ELM ver.2012-10-06 from 001\_\_elm20171002\_011733\_\_dat00.bin





ELMAVAN 3D WAVEFORMS (Measured data sampled at 50 kHz) 51000 packets of 144 samples from 2017-10-02T01:17:34.174.000. Part 122/147

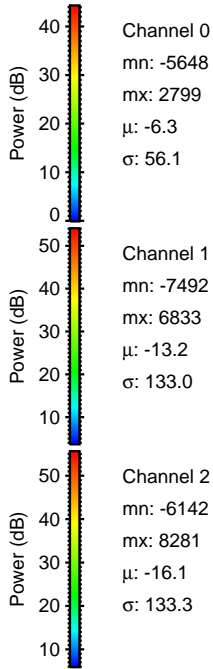
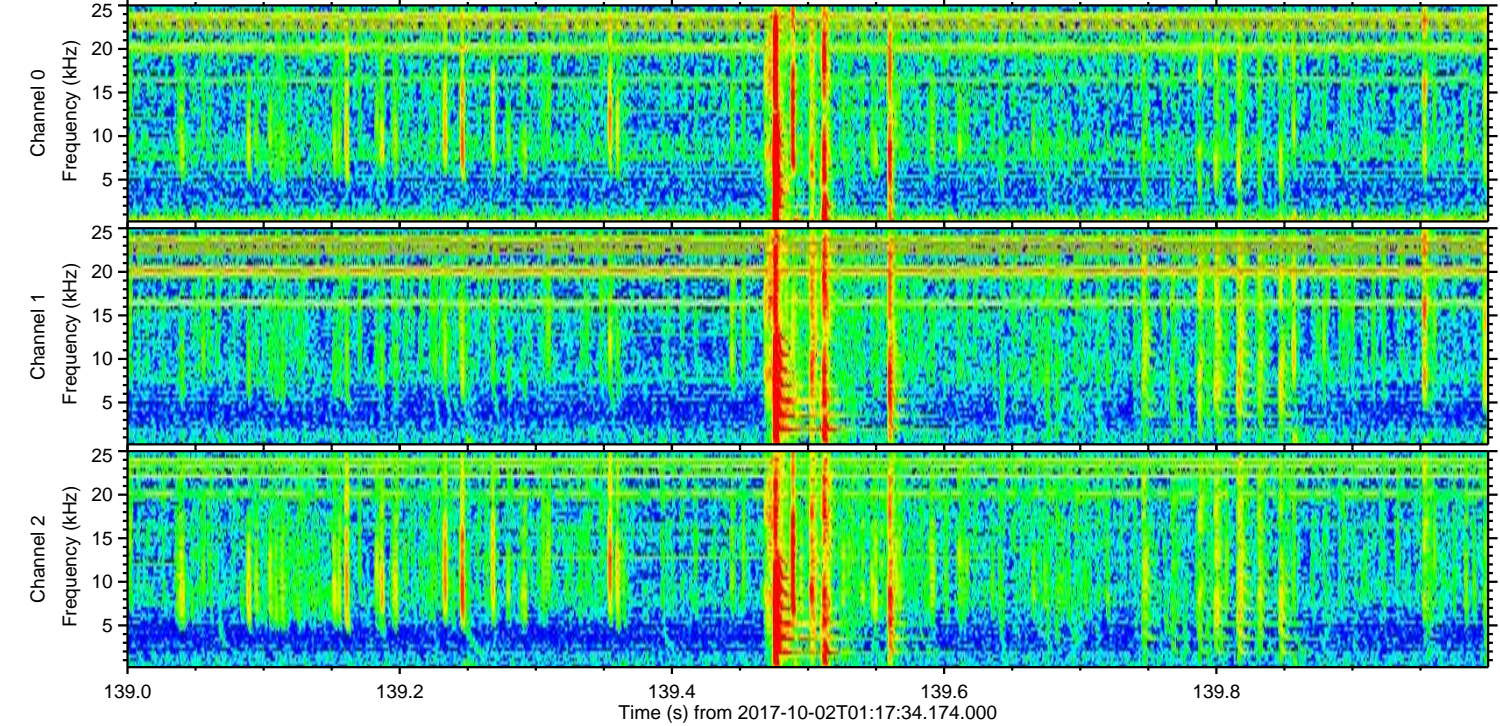
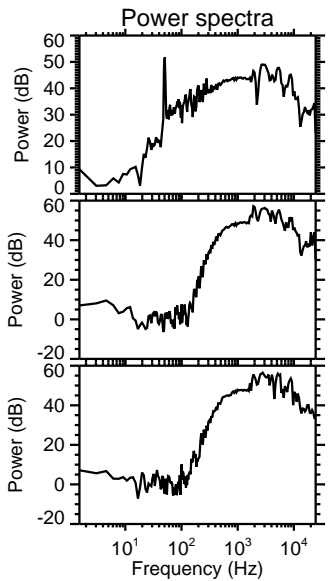
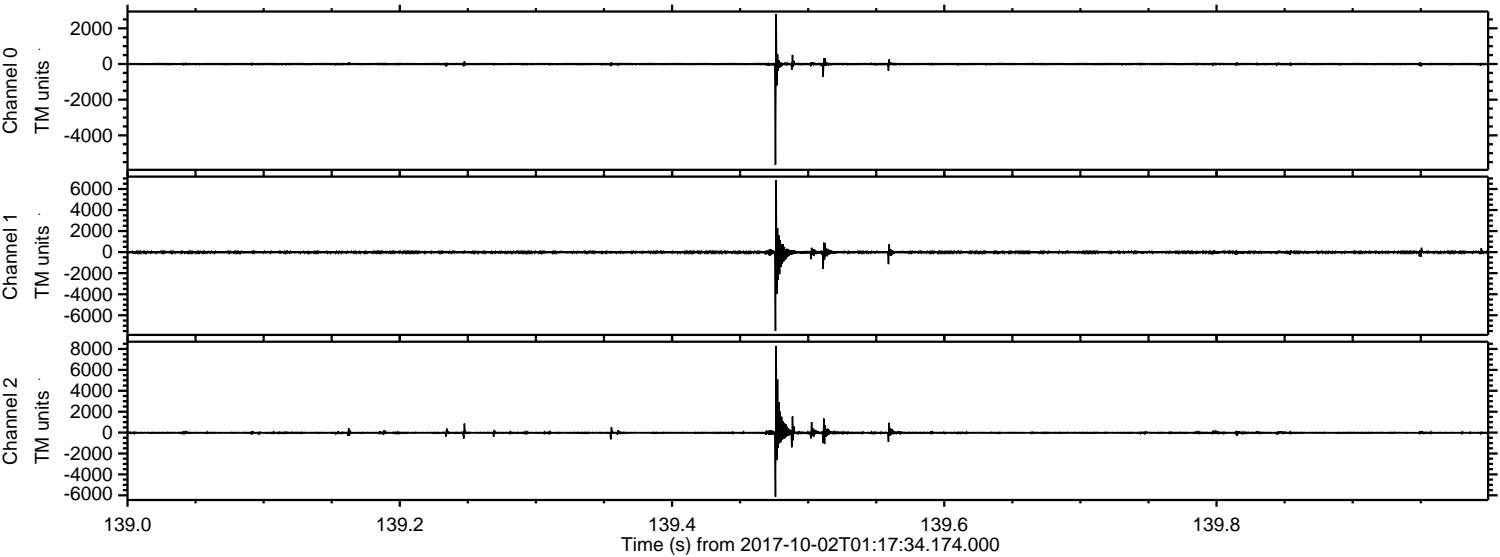
Processed Mon Oct 2 03:25:15 2017 by ELM ver.2012-10-06 from 001\_\_elm20171002\_011733\_\_dat00.bin





ELMAVAN 3D WAVEFORMS (Measured data sampled at 50 kHz) 51000 packets of 144 samples from 2017-10-02T01:17:34.174.000. Part 140/147

Processed Mon Oct 2 03:25:15 2017 by ELM ver.2012-10-06 from 001\_\_elm20171002\_011733\_\_dat00.bin



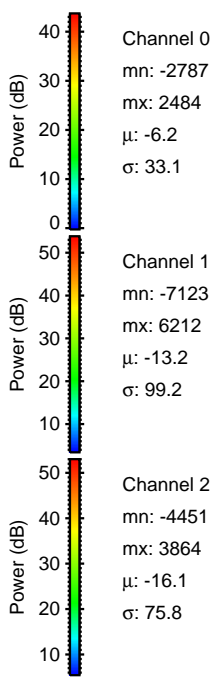
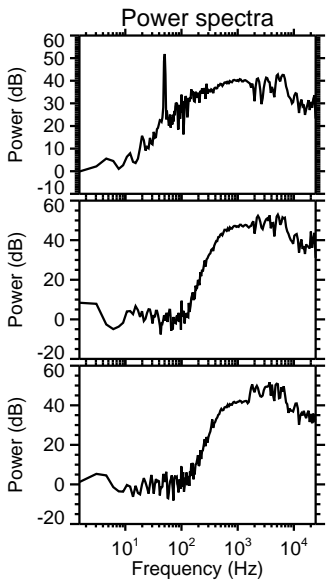
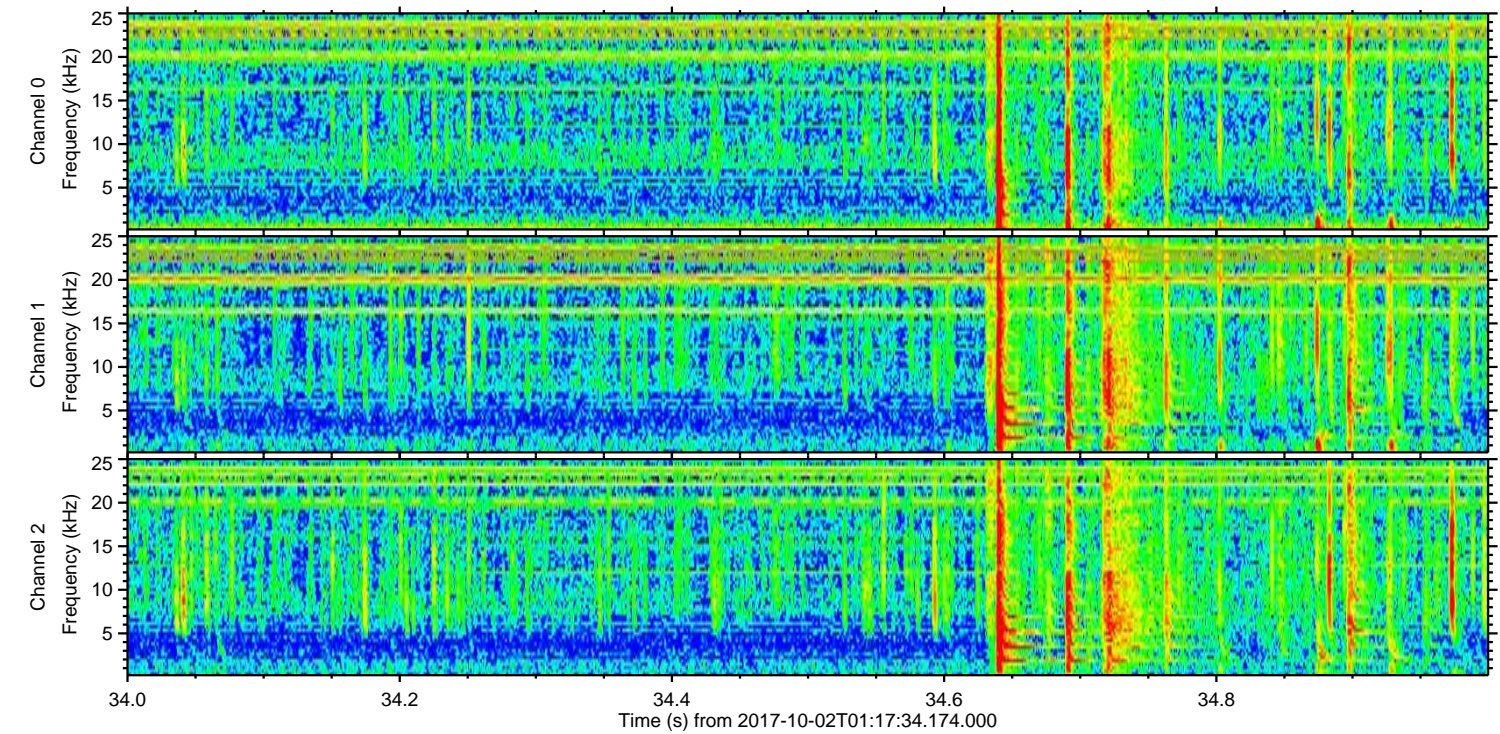
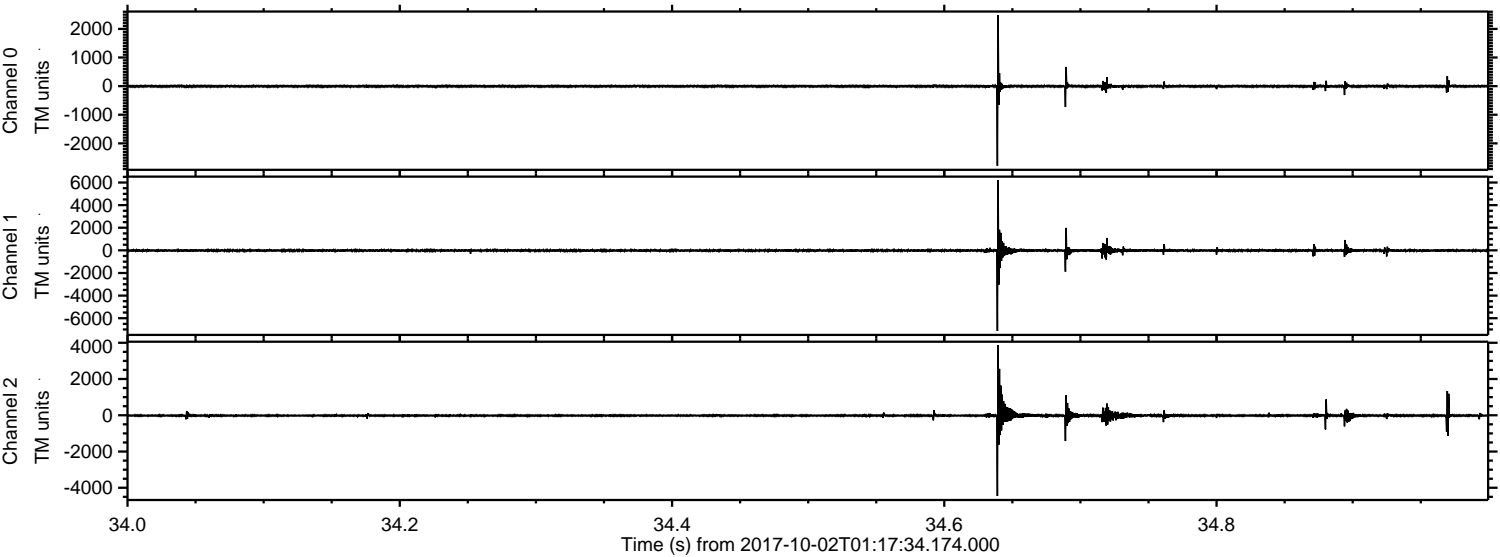
Channel 0  
mn: -5648  
mx: 2799  
 $\mu$ : -6.3  
 $\sigma$ : 56.1

Channel 1  
mn: -7492  
mx: 6833  
 $\mu$ : -13.2  
 $\sigma$ : 133.0

Channel 2  
mn: -6142  
mx: 8281  
 $\mu$ : -16.1  
 $\sigma$ : 133.3



Processed Mon Oct 2 03:25:16 2017 by ELM ver.2012-10-06 from 001\_\_elm20171002\_011733\_\_dat00.bin



Channel 0  
mn: -2787  
mx: 2484  
 $\mu$ : -6.2  
 $\sigma$ : 33.1

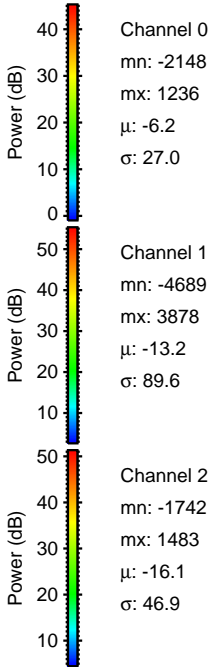
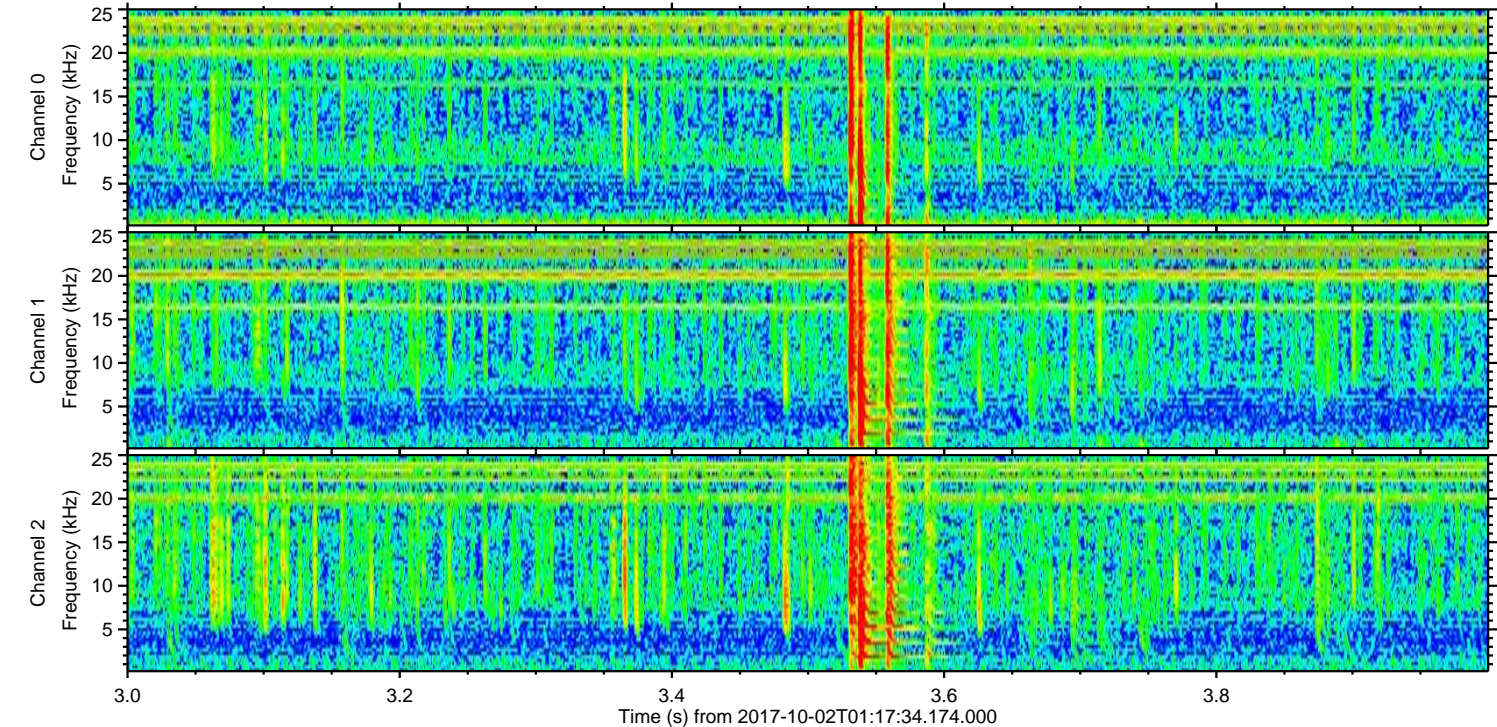
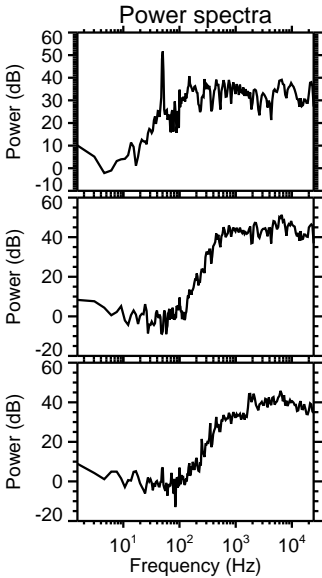
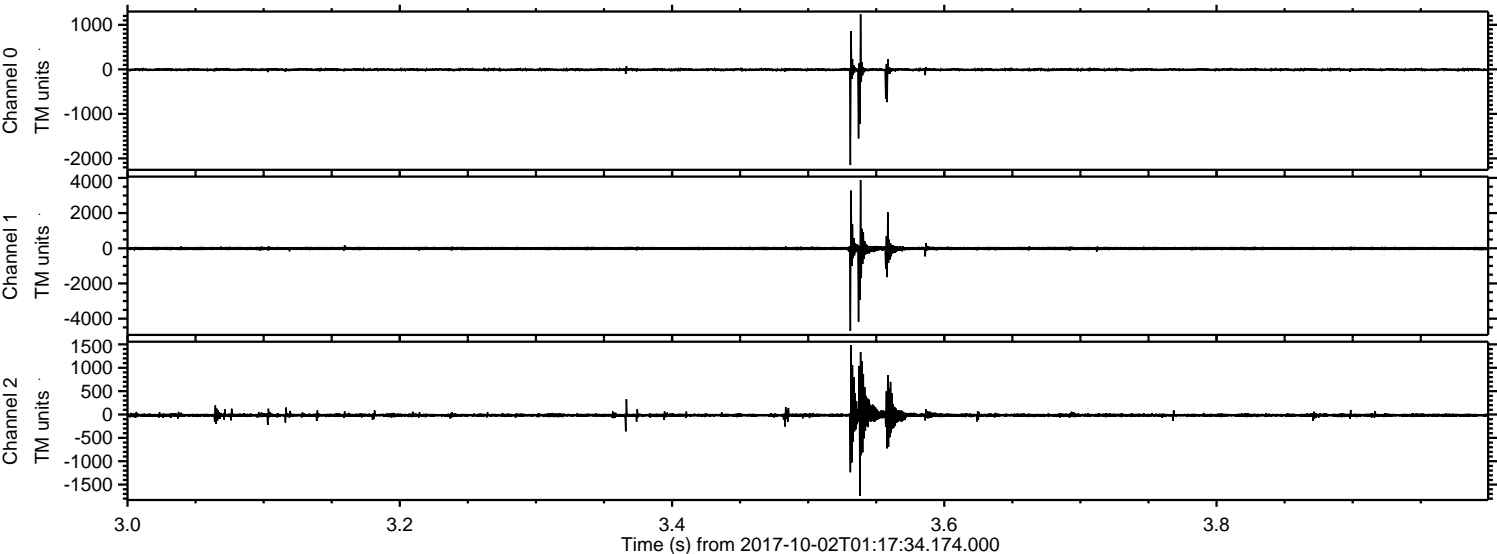
Channel 1  
mn: -7123  
mx: 6212  
 $\mu$ : -13.2  
 $\sigma$ : 99.2

Channel 2  
mn: -4451  
mx: 3864  
 $\mu$ : -16.1  
 $\sigma$ : 75.8



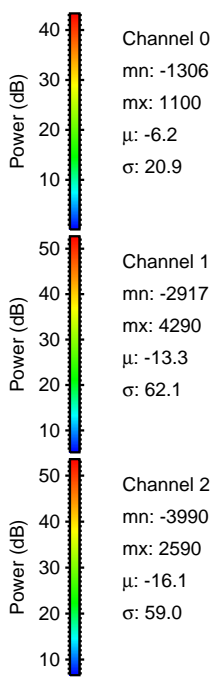
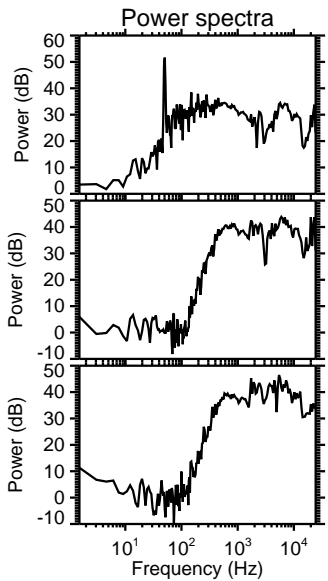
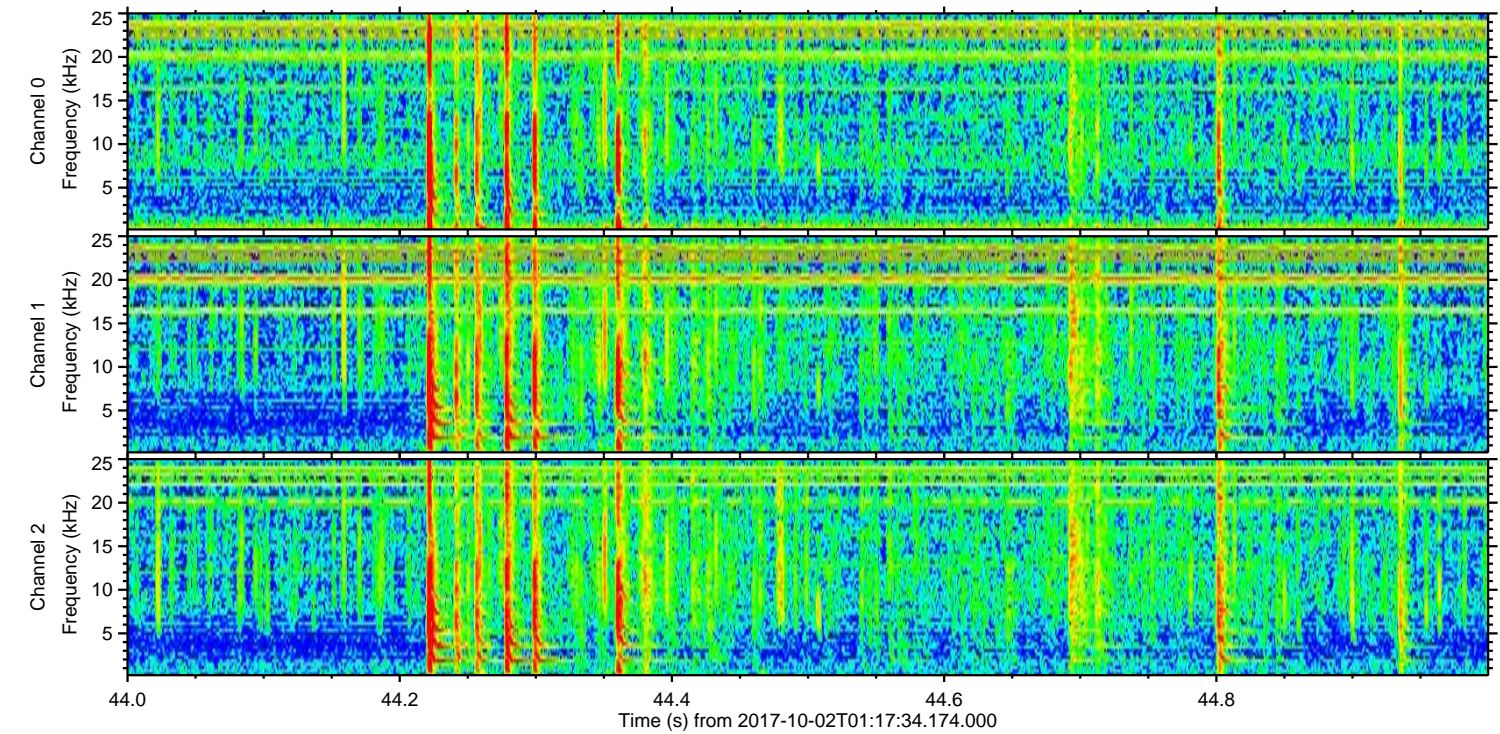
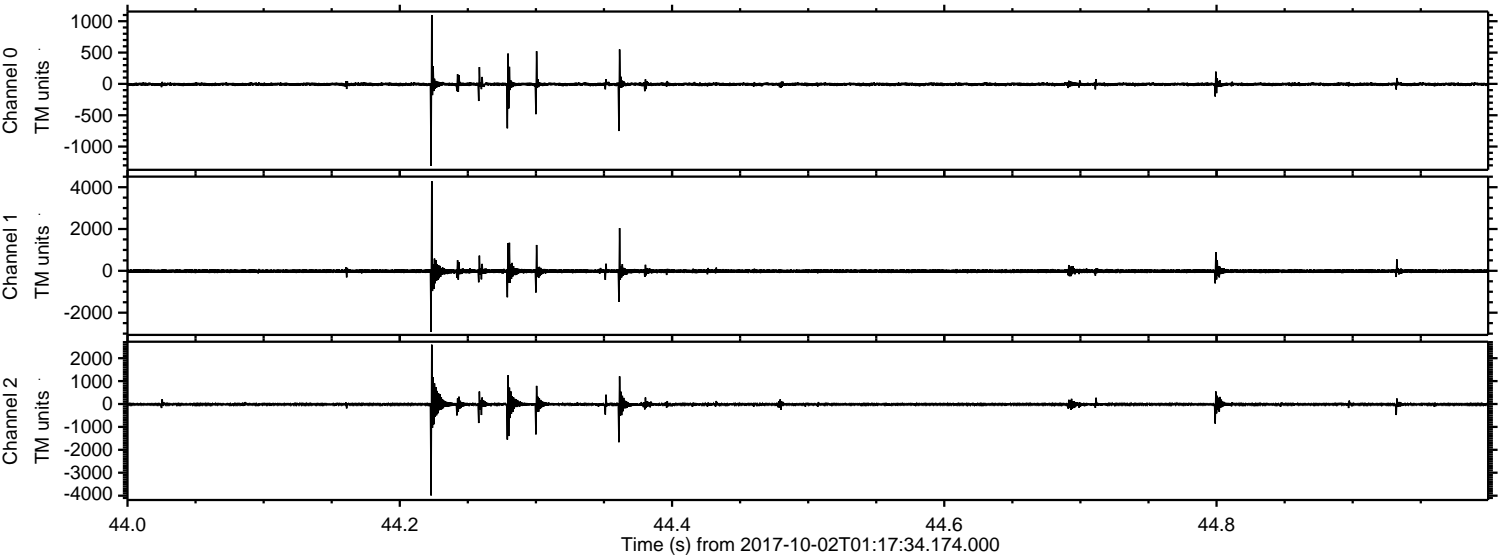
ELMAVAN 3D WAVEFORMS (Measured data sampled at 50 kHz) 51000 packets of 144 samples from 2017-10-02T01:17:34.174.000. Part 4/147

Processed Mon Oct 2 03:25:17 2017 by ELM ver.2012-10-06 from 001\_\_elm20171002\_011733\_\_dat00.bin





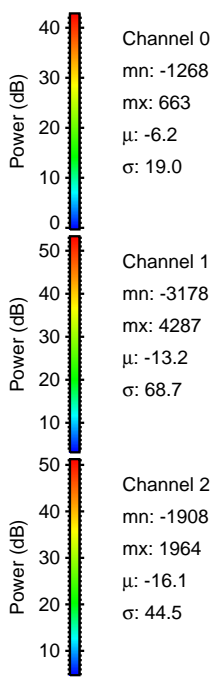
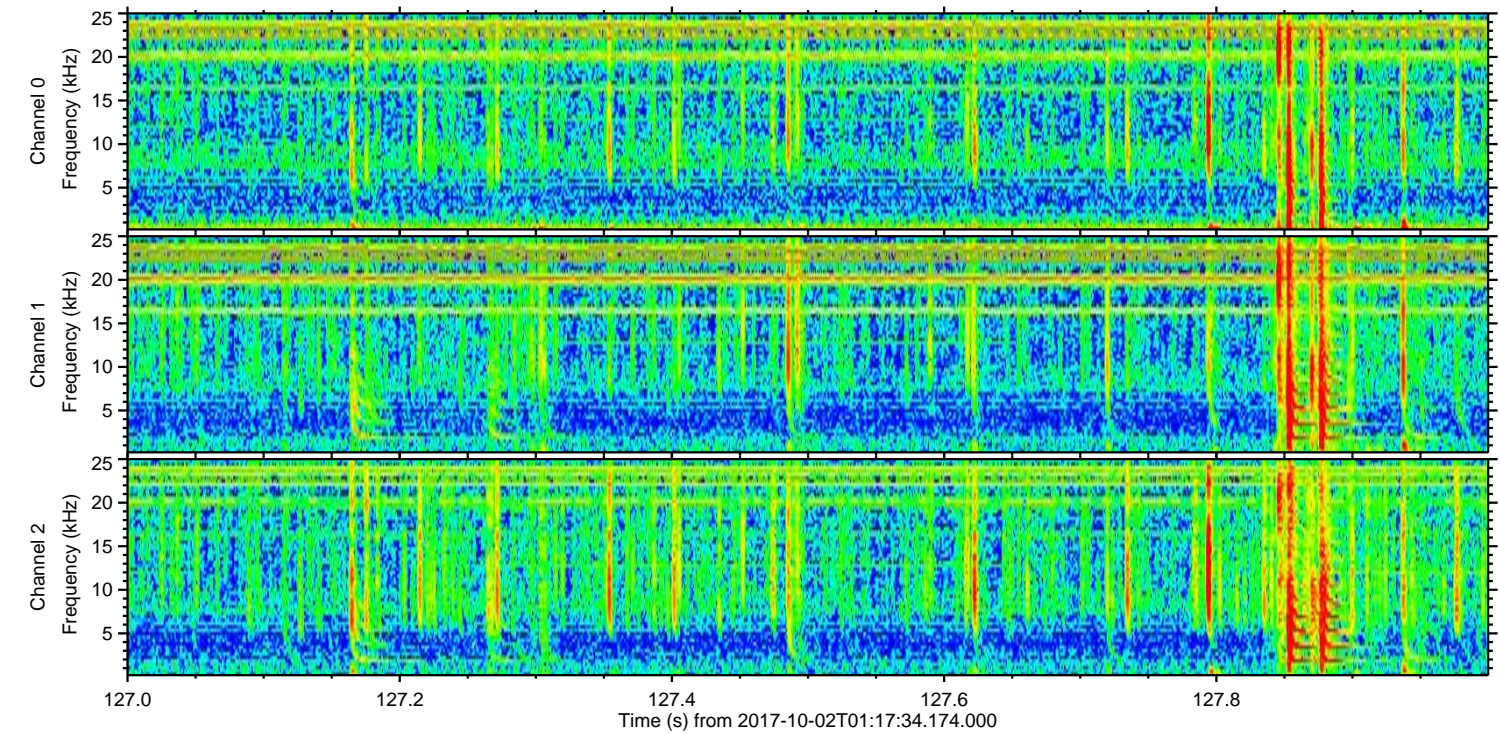
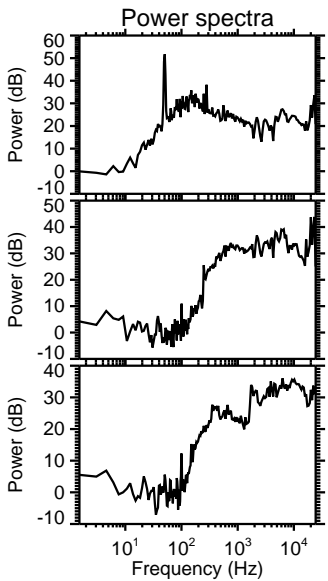
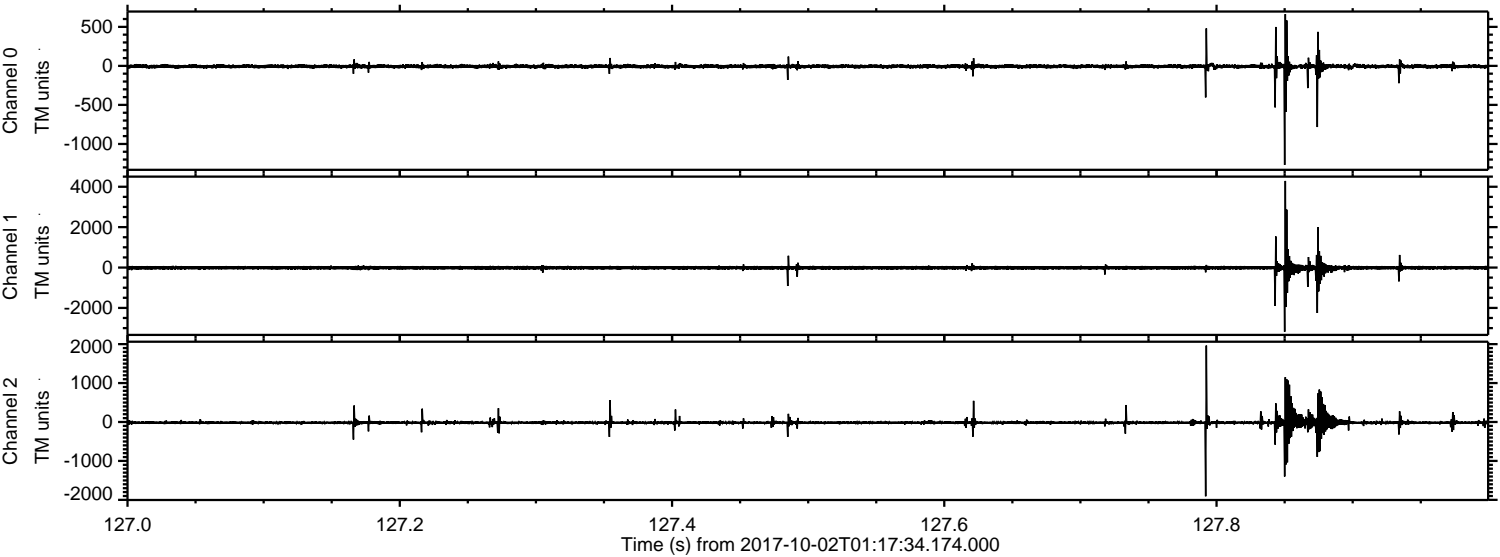
Processed Mon Oct 2 03:25:18 2017 by ELM ver.2012-10-06 from 001\_\_elm20171002\_011733\_\_dat00.bin





ELMAVAN 3D WAVEFORMS (Measured data sampled at 50 kHz) 51000 packets of 144 samples from 2017-10-02T01:17:34.174.000. Part 128/147

Processed Mon Oct 2 03:25:18 2017 by ELM ver.2012-10-06 from 001\_\_elm20171002\_011733\_\_dat00.bin



Channel 0  
mn: -1268  
mx: 663  
 $\mu$ : -6.2  
 $\sigma$ : 19.0

Channel 1  
mn: -3178  
mx: 4287  
 $\mu$ : -13.2  
 $\sigma$ : 68.7

Channel 2  
mn: -1908  
mx: 1964  
 $\mu$ : -16.1  
 $\sigma$ : 44.5



Processed Mon Oct 2 03:25:19 2017 by ELM ver.2012-10-06 from 001\_\_elm20171002\_011733\_\_dat00.bin

