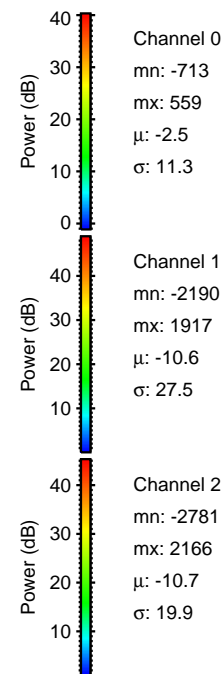
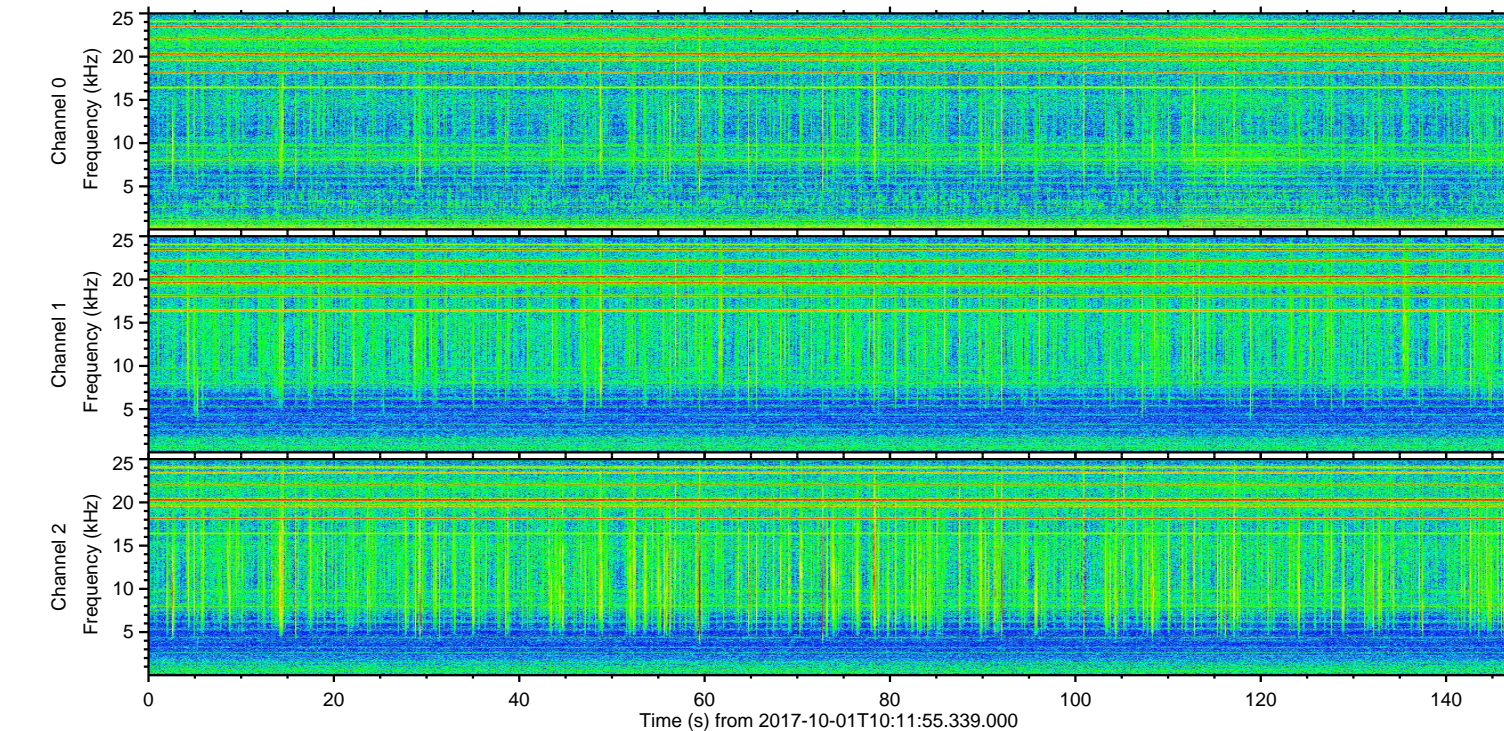
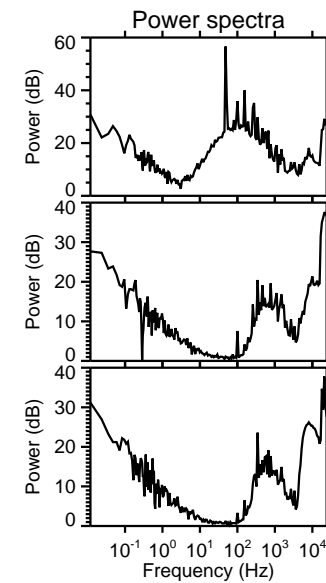
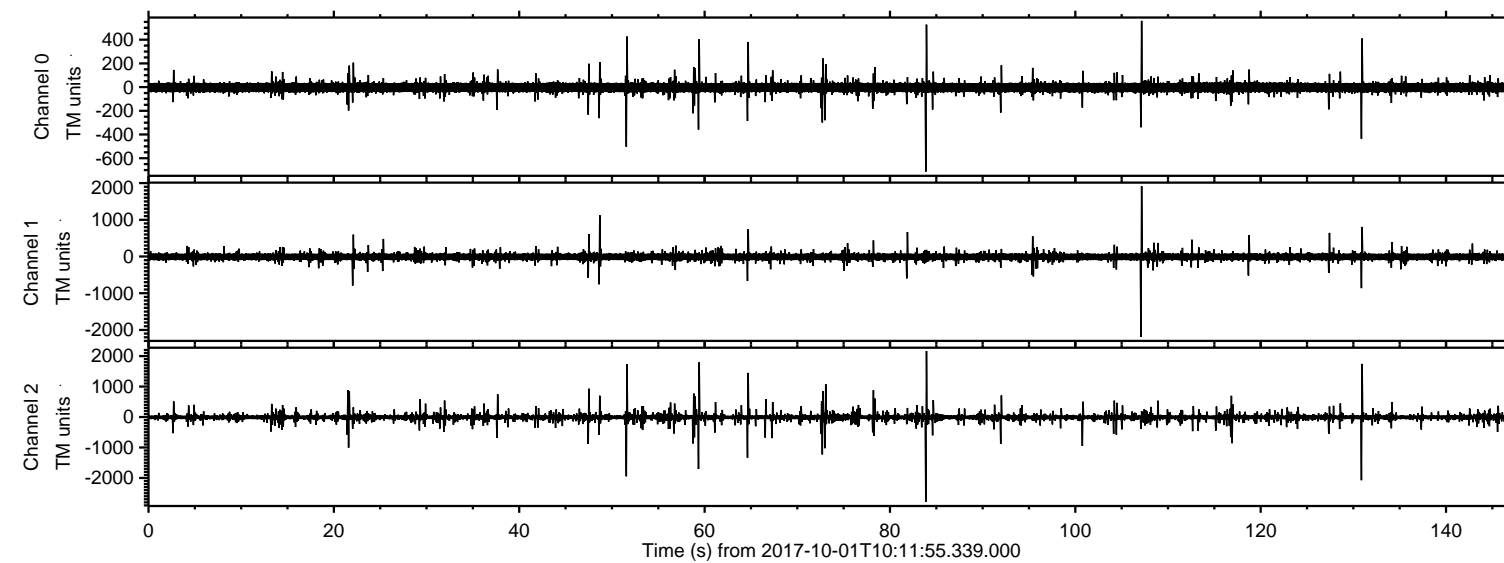
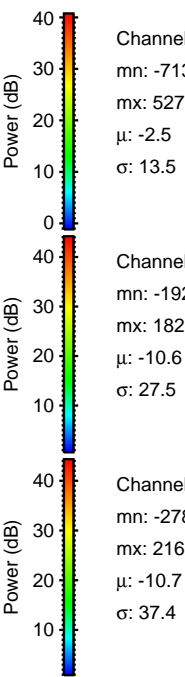
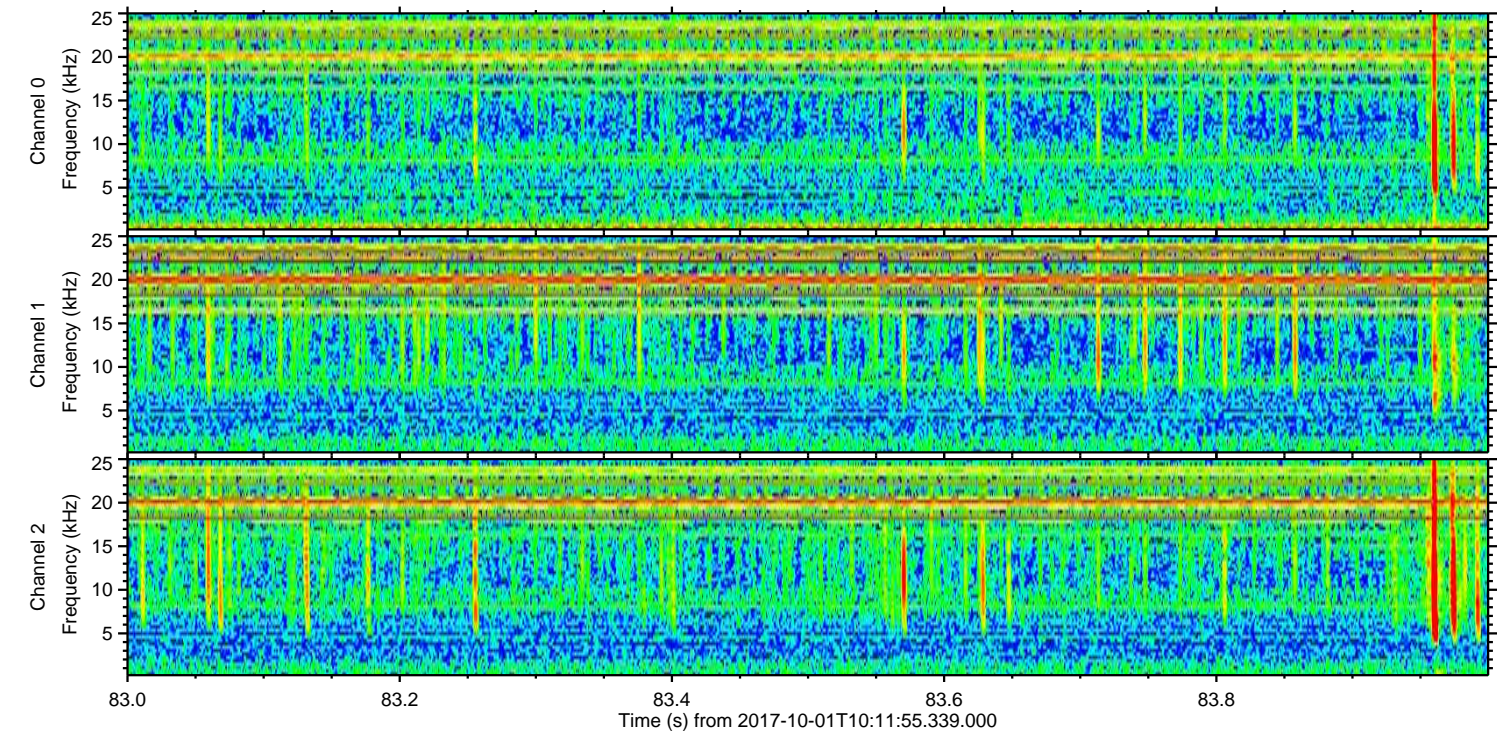
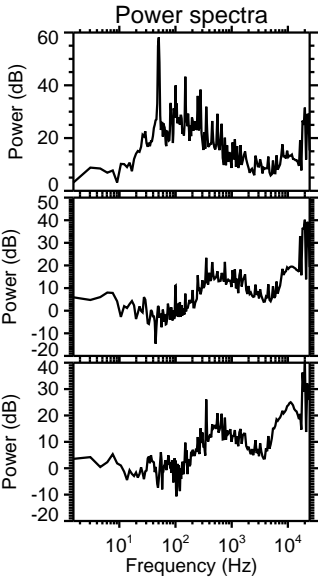
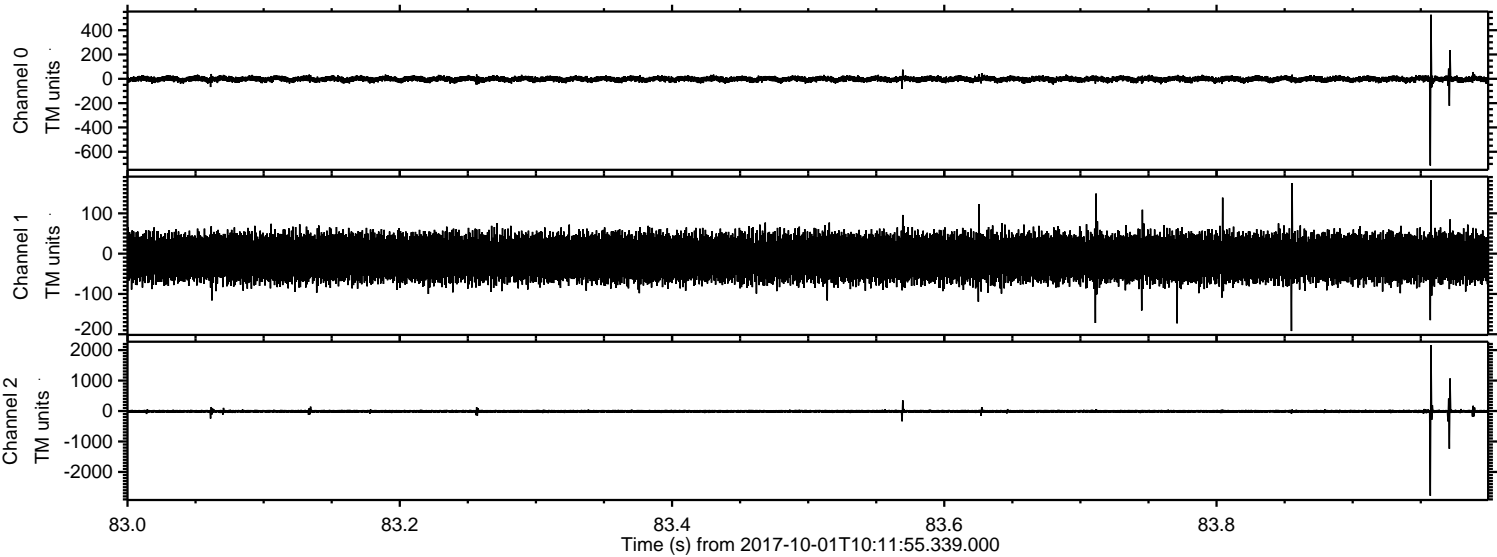


ELMAVAN 3D WAVEFORMS (Measured data sampled at 50 kHz) 51000 packets of 144 samples from 2017-10-01T10:11:55.339.000.

Processed Sun Oct 1 12:19:36 2017 by ELM ver.2012-10-06 from 001__elm20171001_101154__dat00.bin

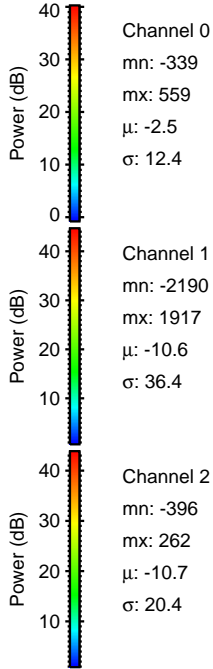
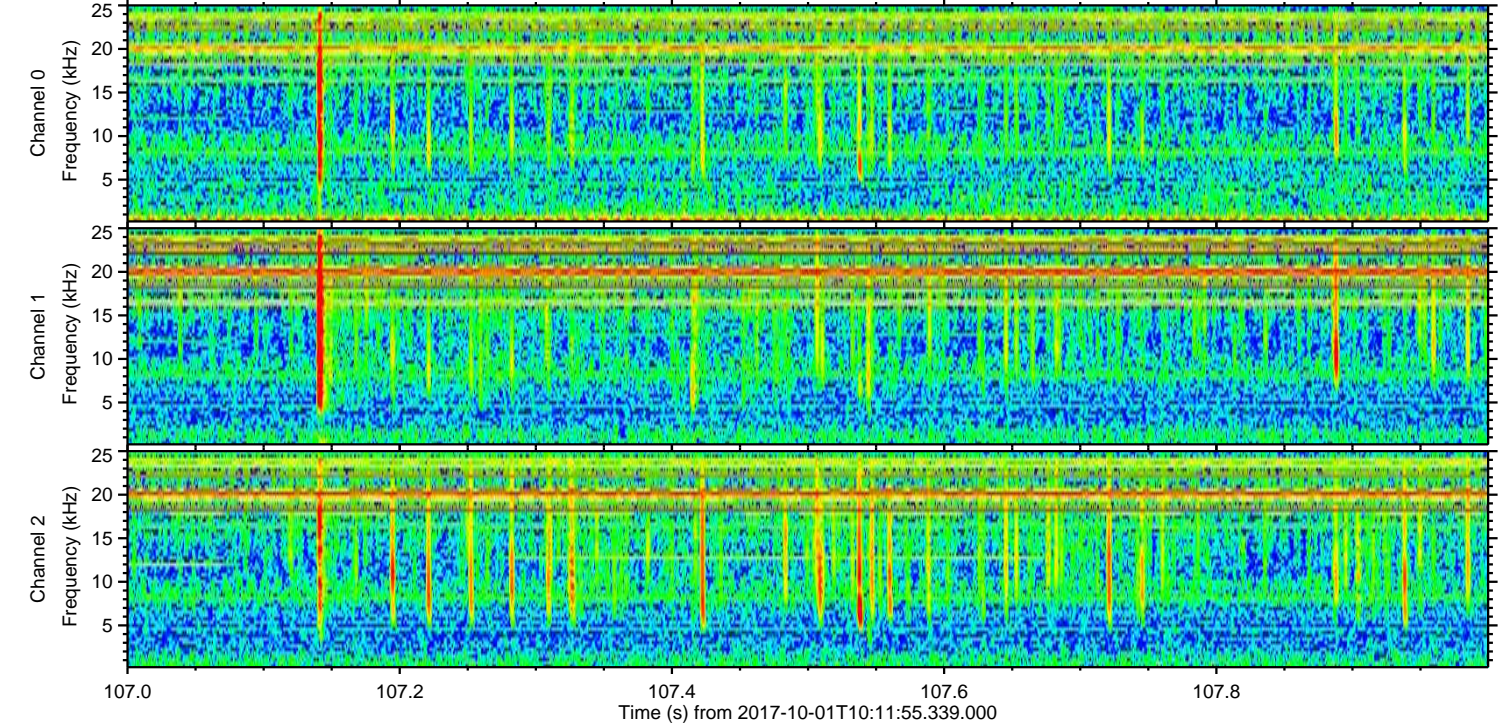
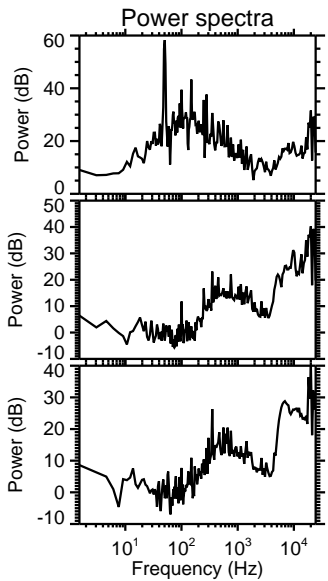
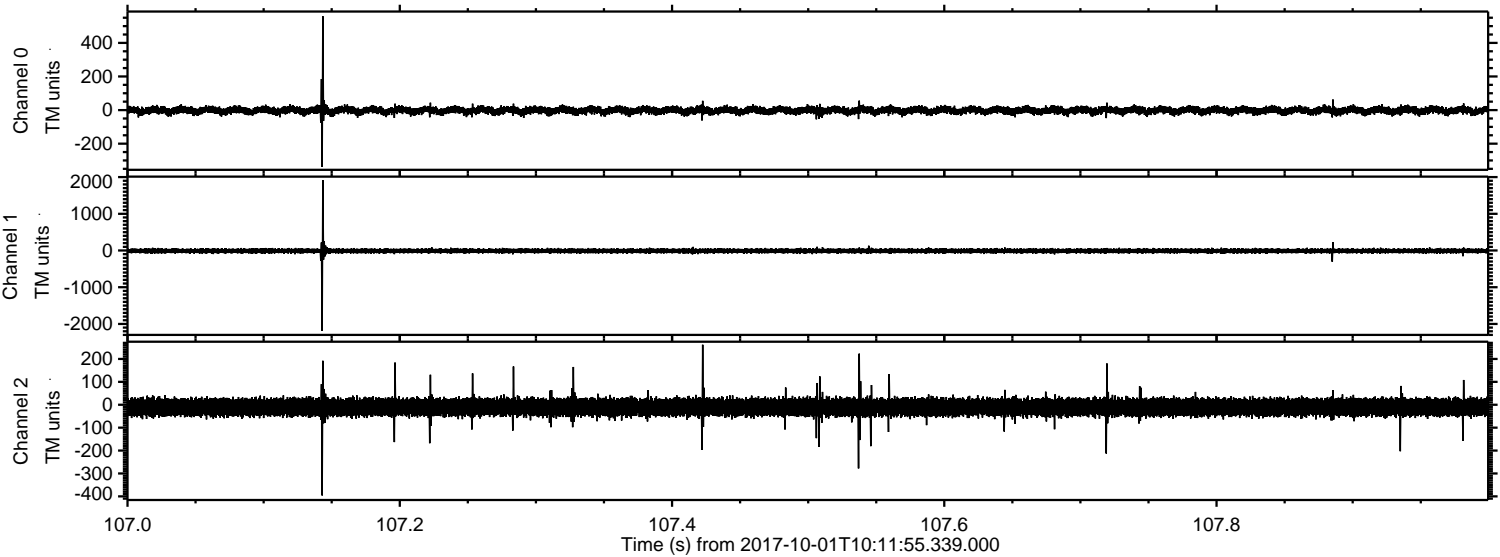


Processed Sun Oct 1 12:19:43 2017 by ELM ver.2012-10-06 from 001__elm20171001_101154__dat00.bin



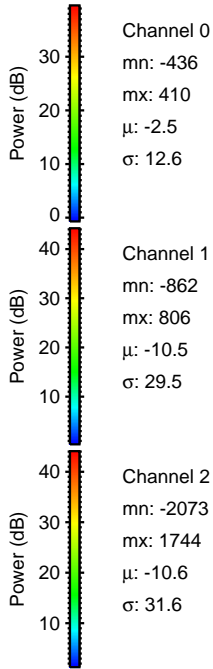
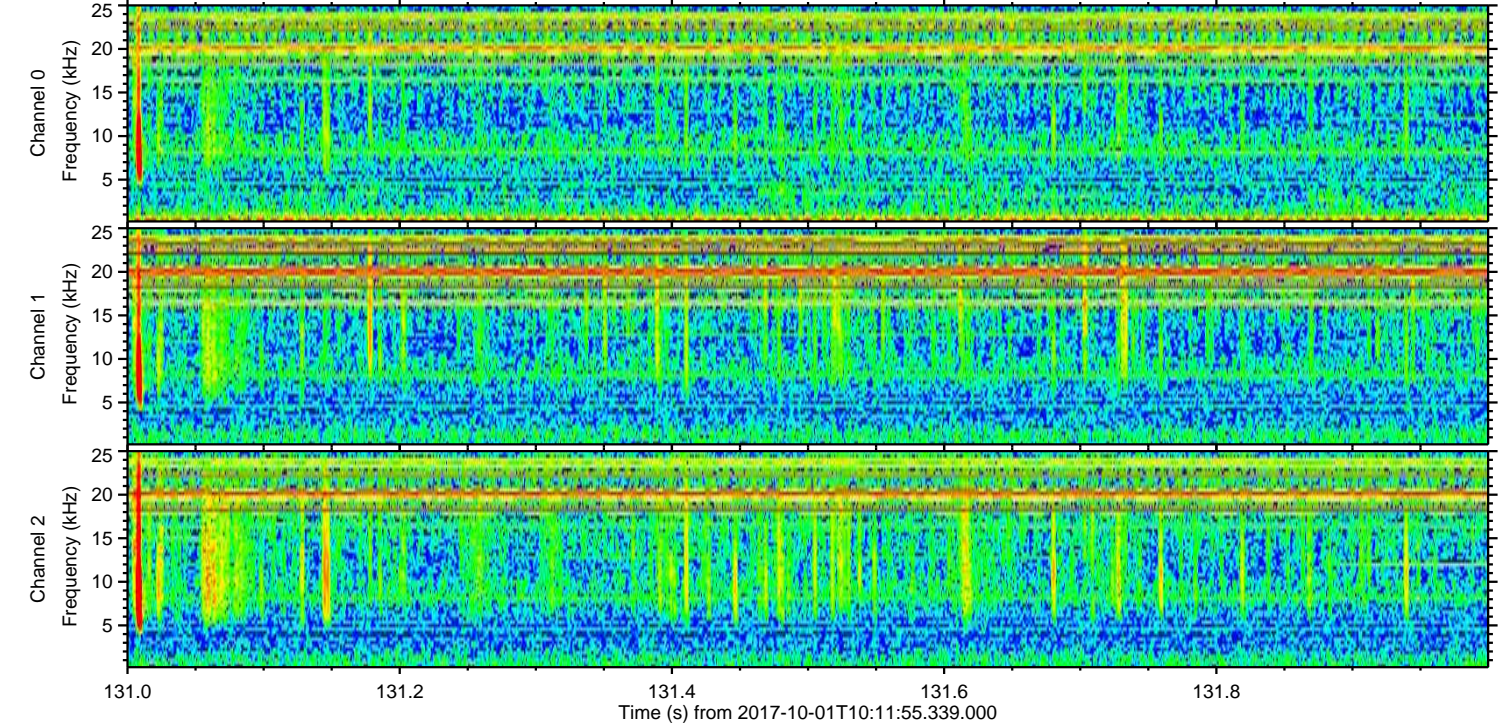
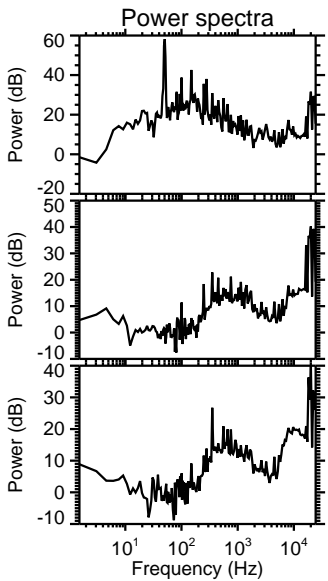
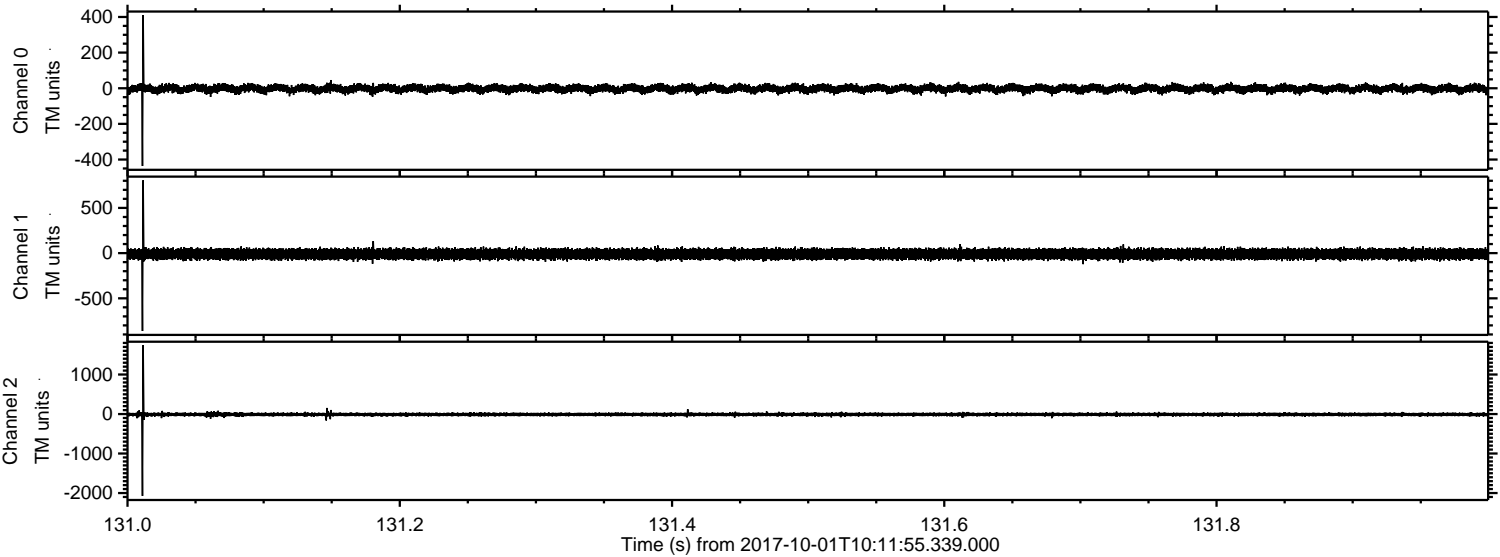
ELMAVAN 3D WAVEFORMS (Measured data sampled at 50 kHz) 51000 packets of 144 samples from 2017-10-01T10:11:55.339.000. Part 108/147

Processed Sun Oct 1 12:19:44 2017 by ELM ver.2012-10-06 from 001__elm20171001_101154__dat00.bin

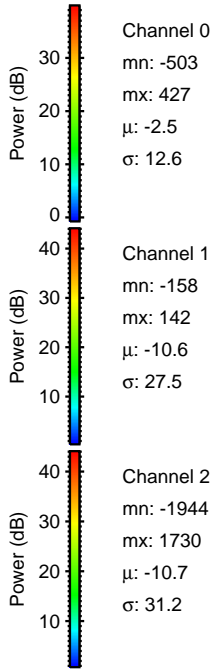
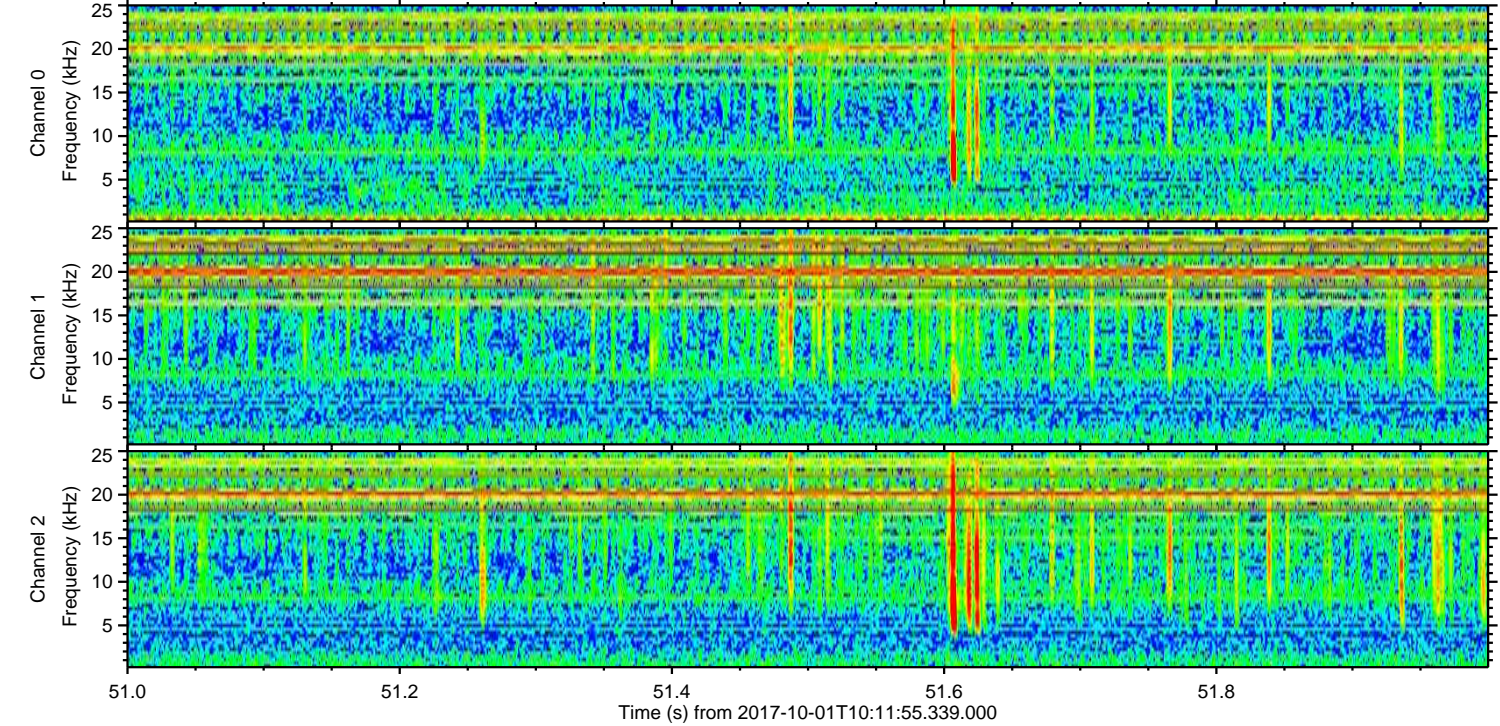
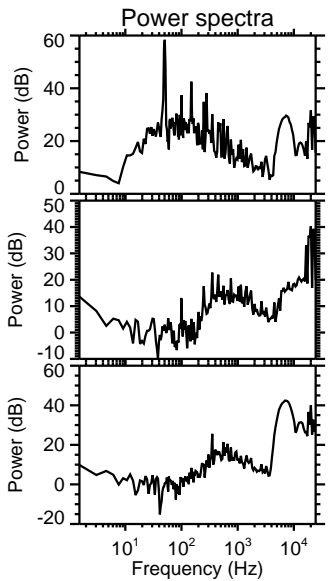
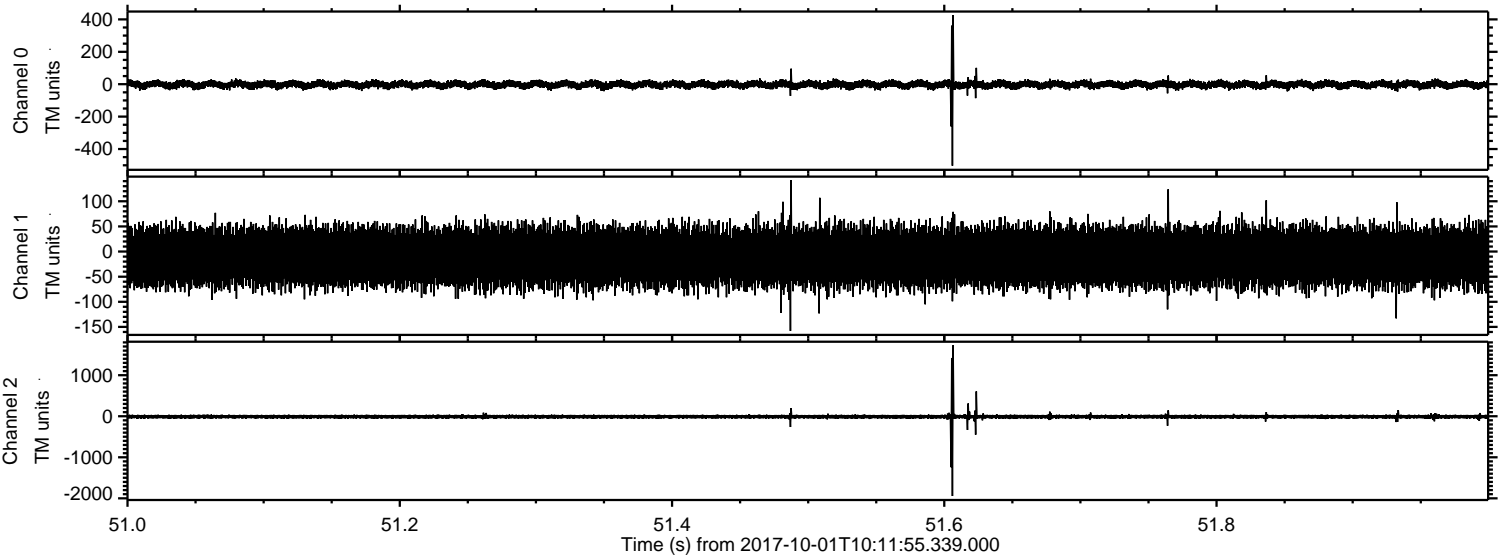


ELMAVAN 3D WAVEFORMS (Measured data sampled at 50 kHz) 51000 packets of 144 samples from 2017-10-01T10:11:55.339.000. Part 132/147

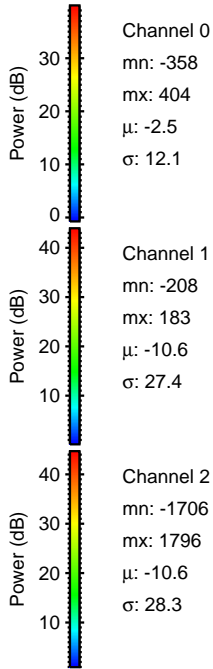
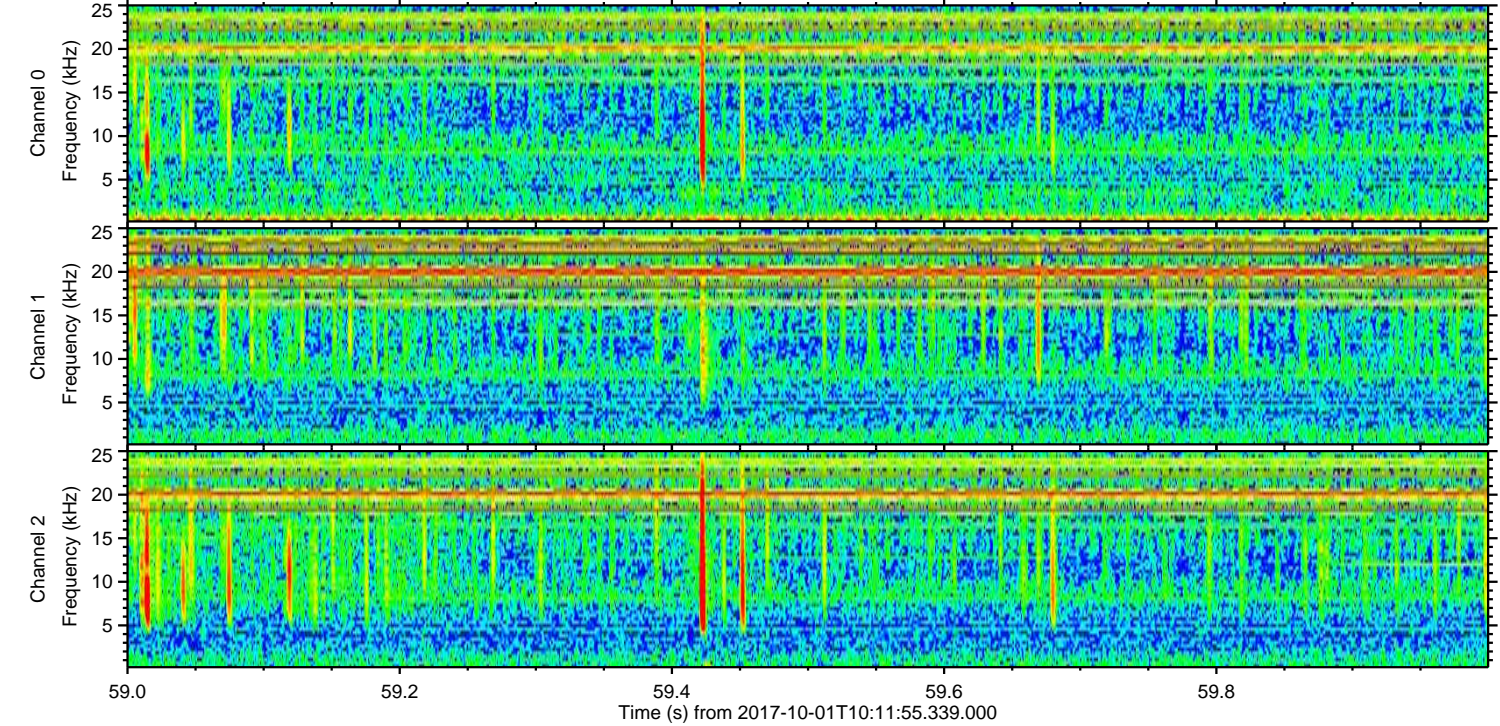
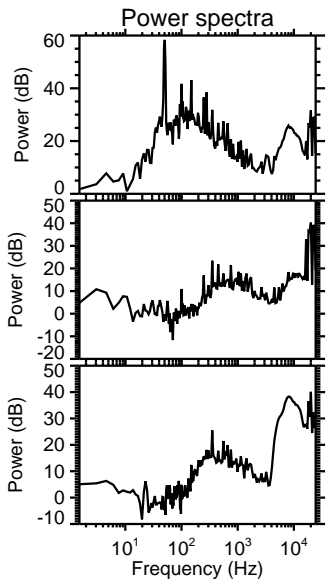
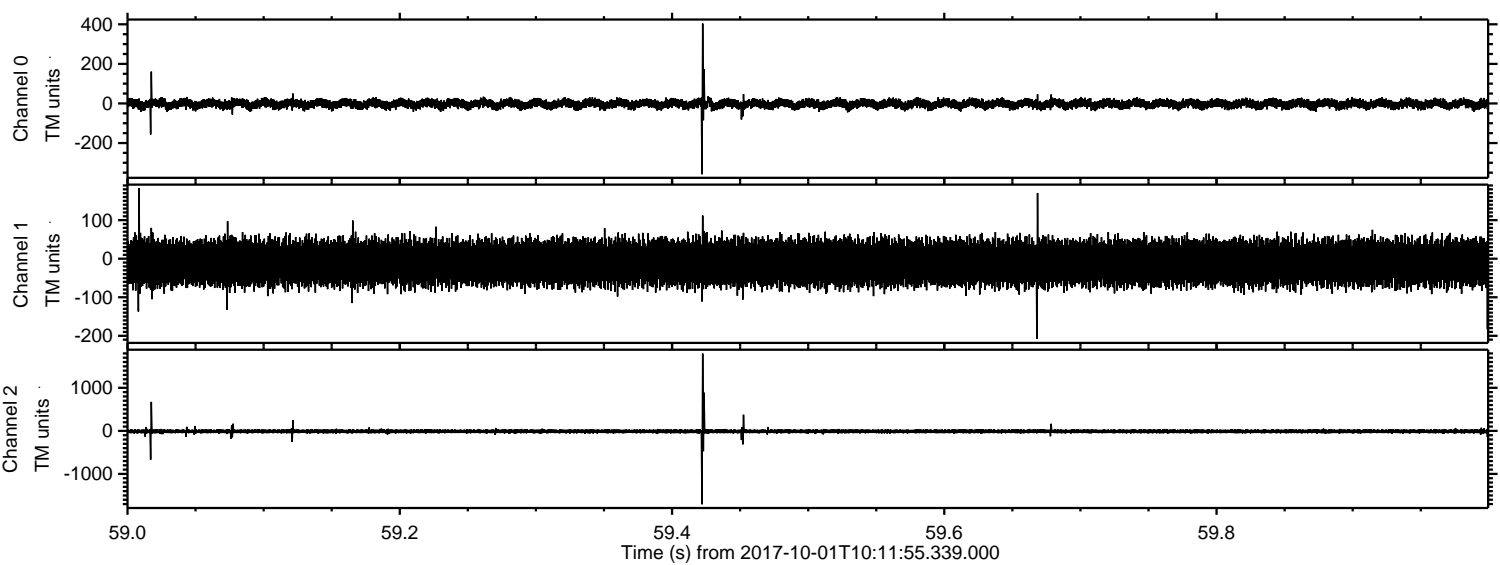
Processed Sun Oct 1 12:19:45 2017 by ELM ver.2012-10-06 from 001__elm20171001_101154__dat00.bin



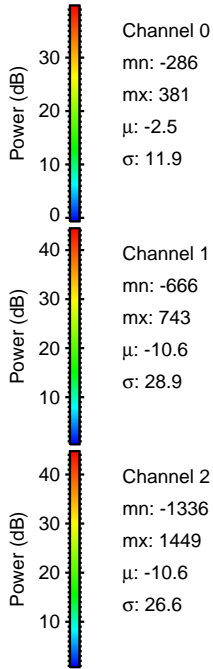
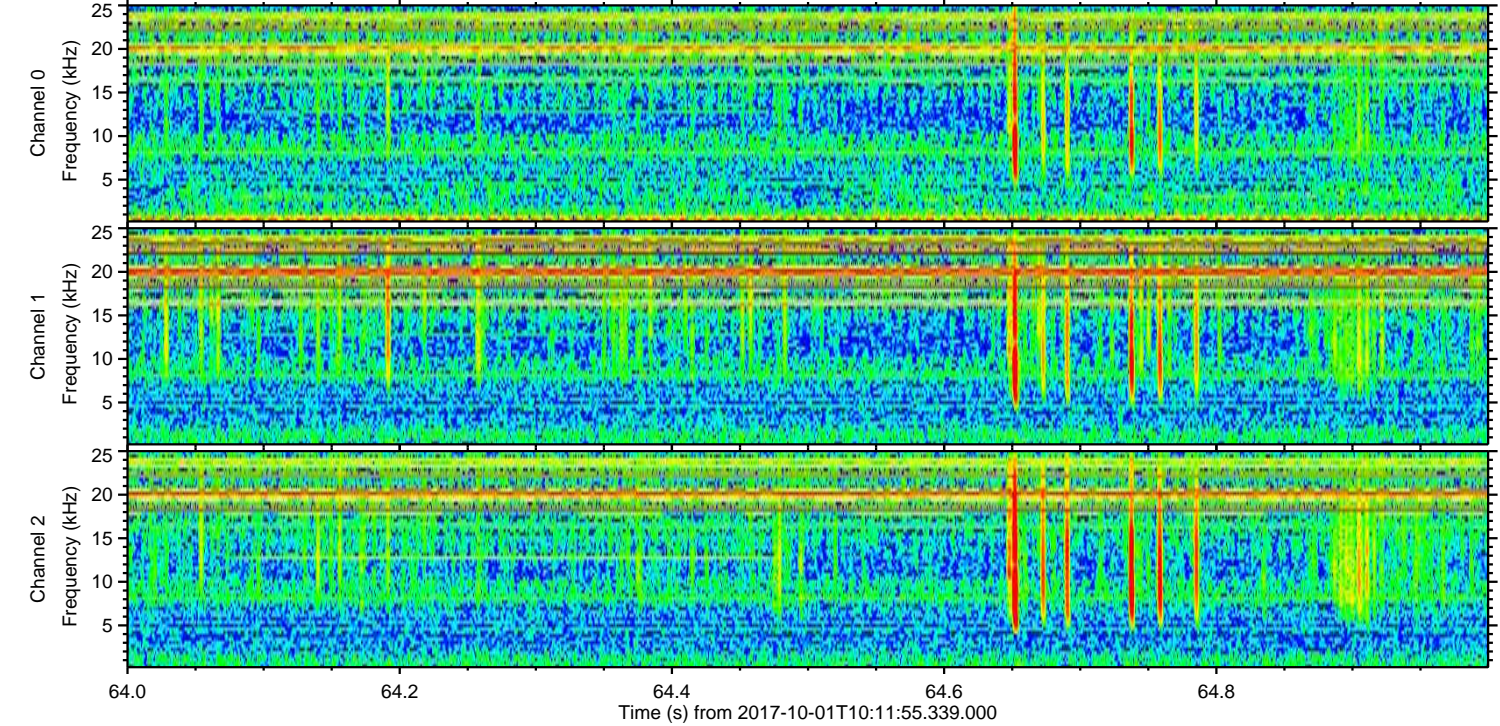
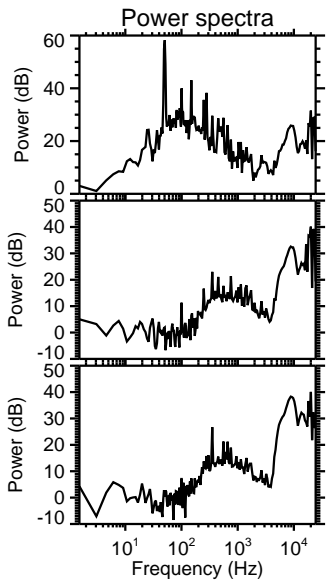
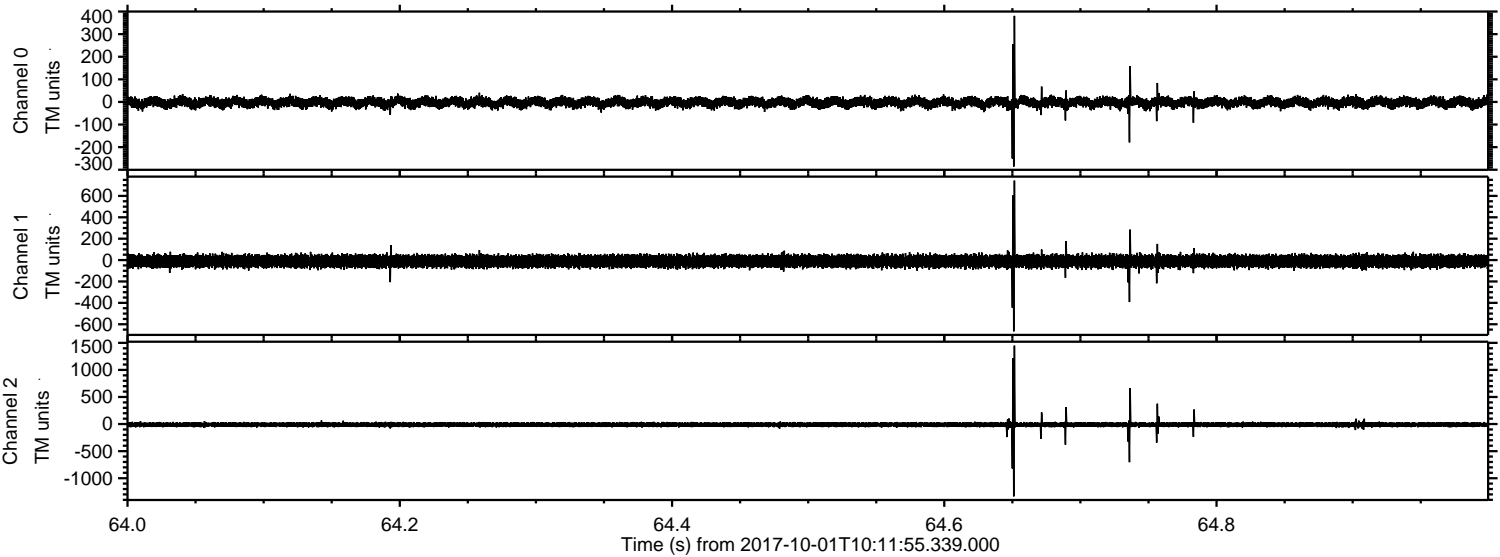
Processed Sun Oct 1 12:19:45 2017 by ELM ver.2012-10-06 from 001__elm20171001_101154__dat00.bin



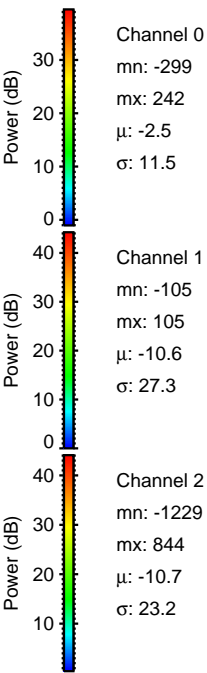
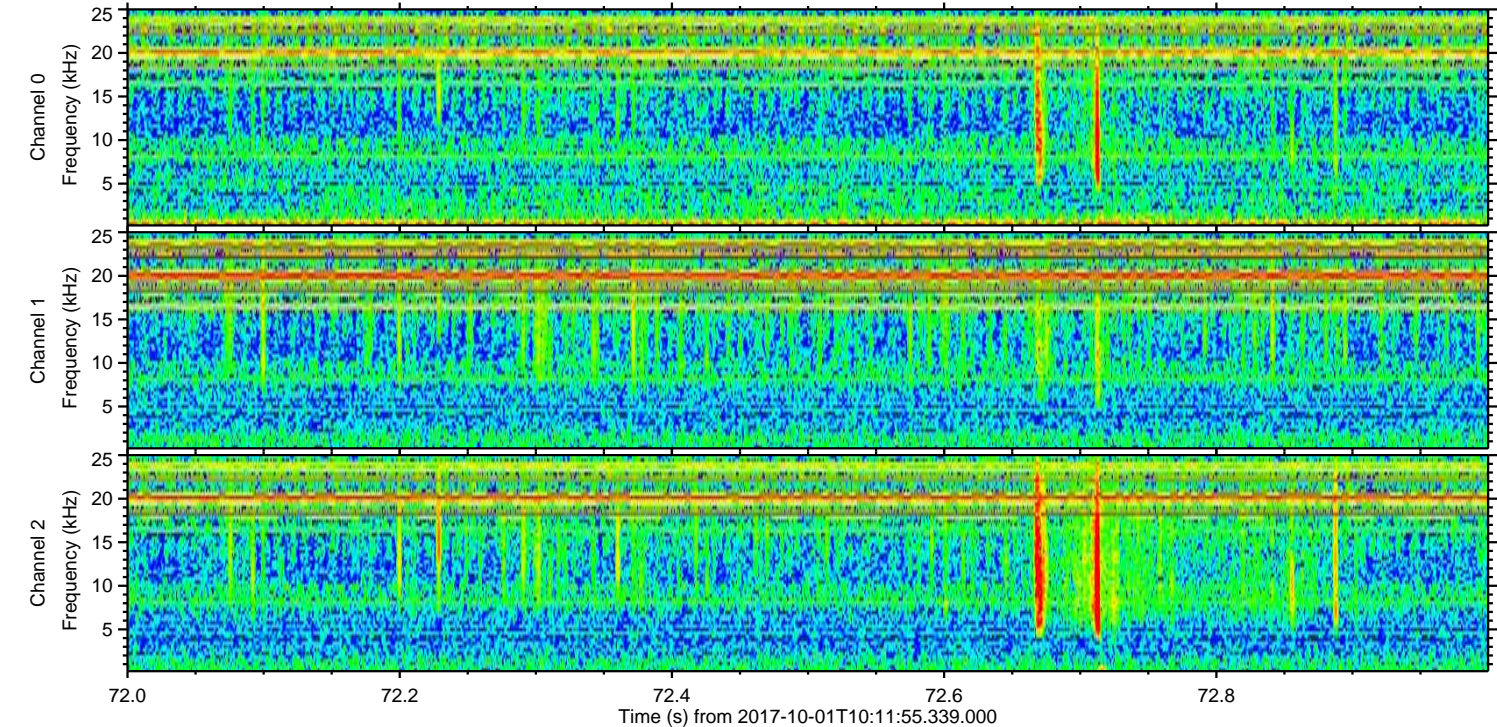
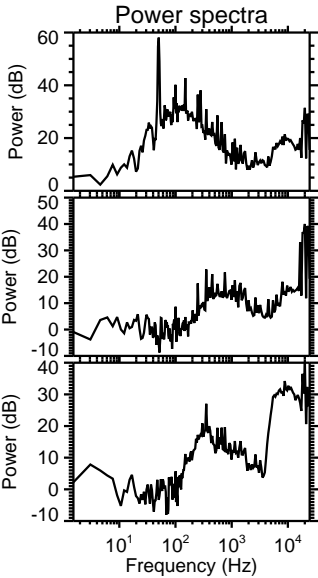
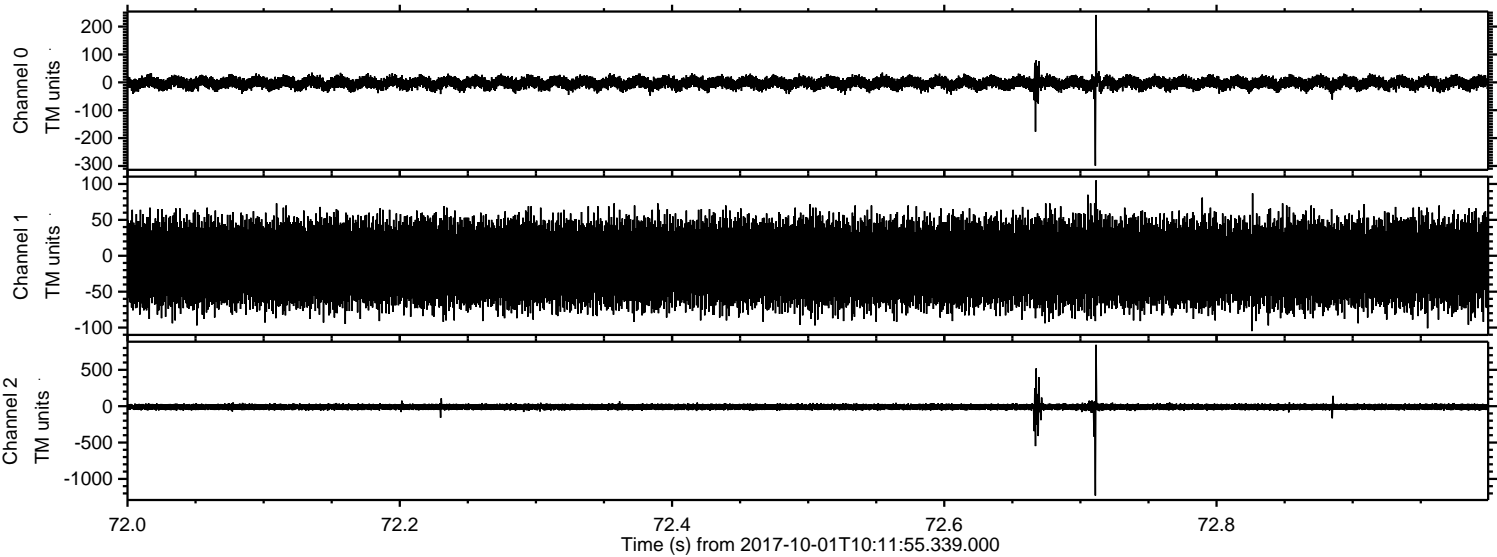
Processed Sun Oct 1 12:19:46 2017 by ELM ver.2012-10-06 from 001__elm20171001_101154__dat00.bin



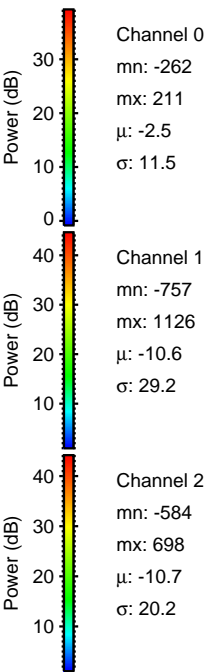
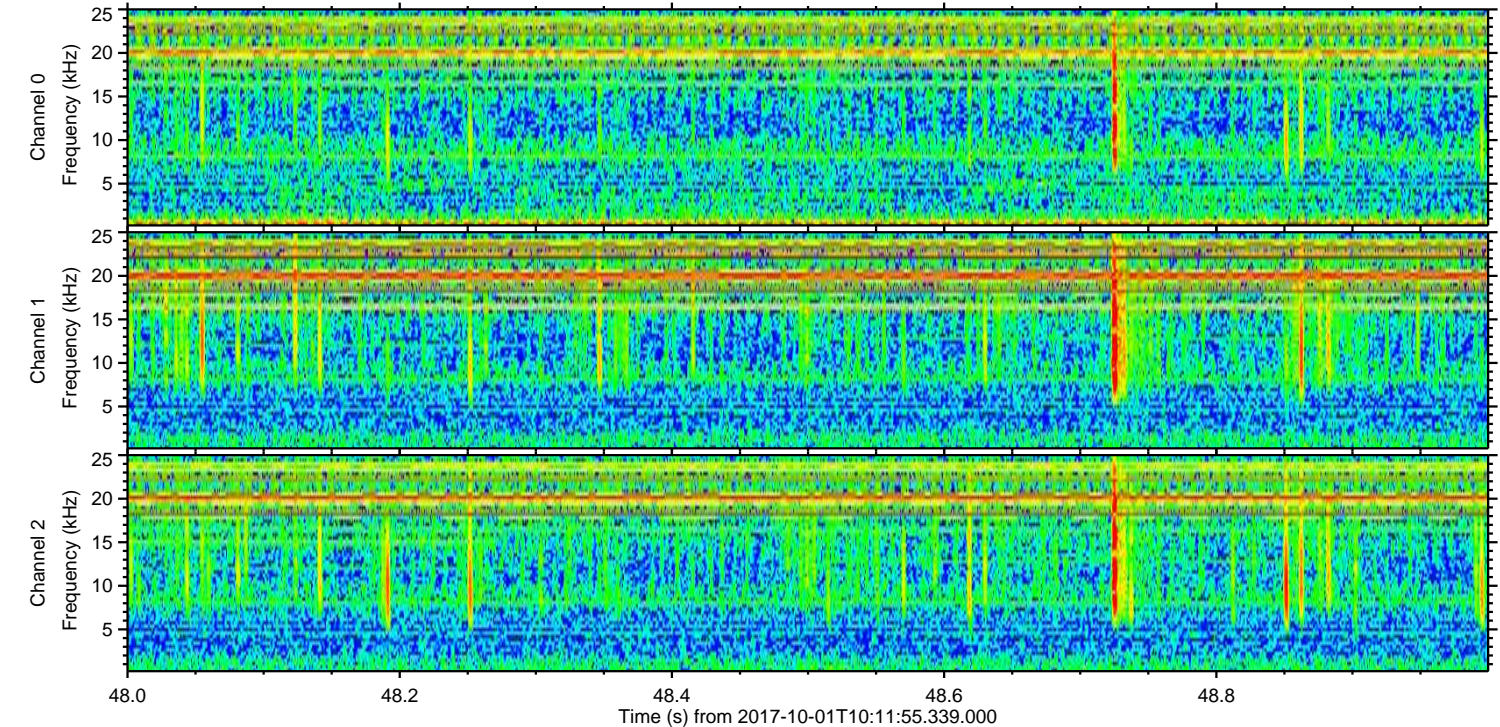
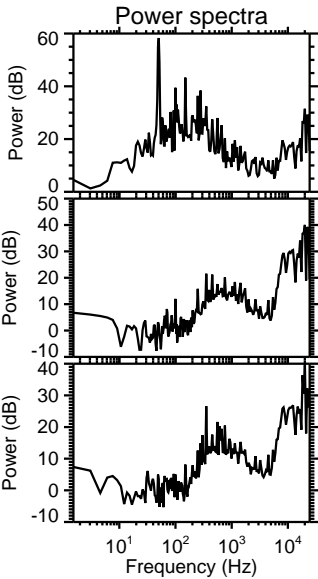
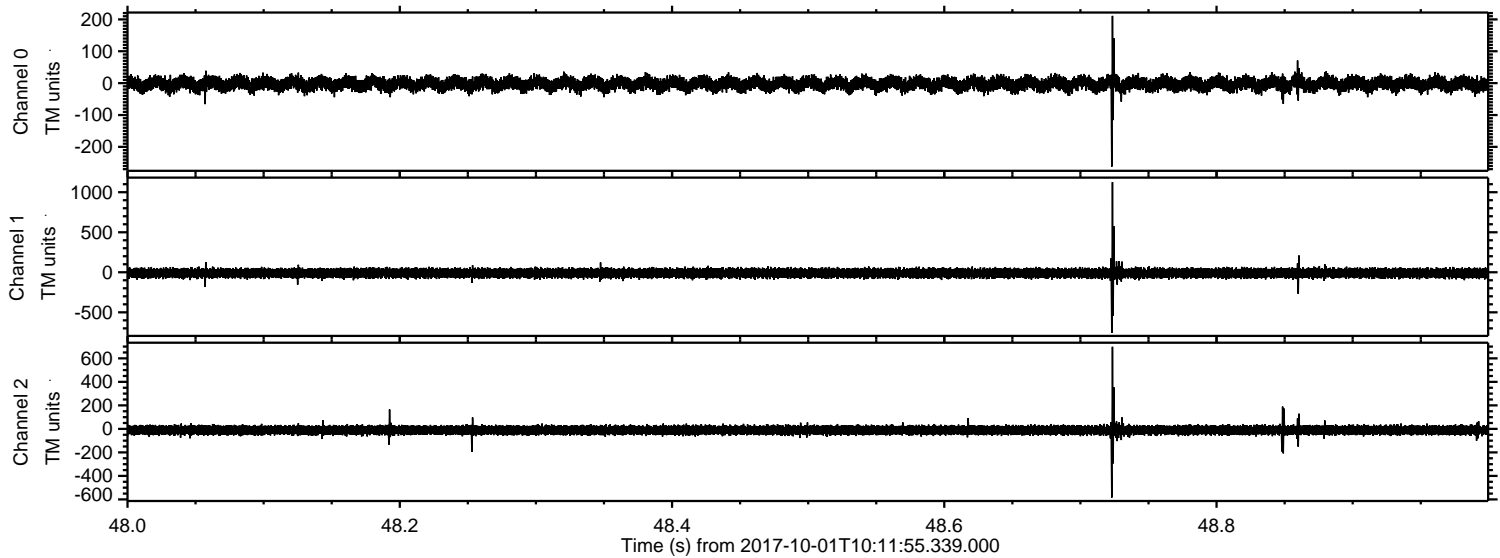
Processed Sun Oct 1 12:19:47 2017 by ELM ver.2012-10-06 from 001__elm20171001_101154__dat00.bin



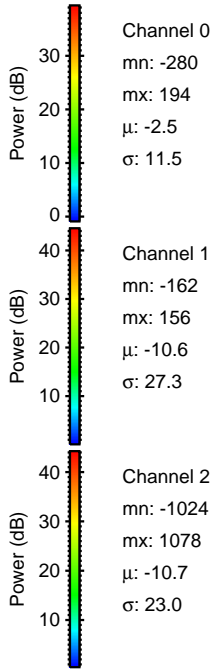
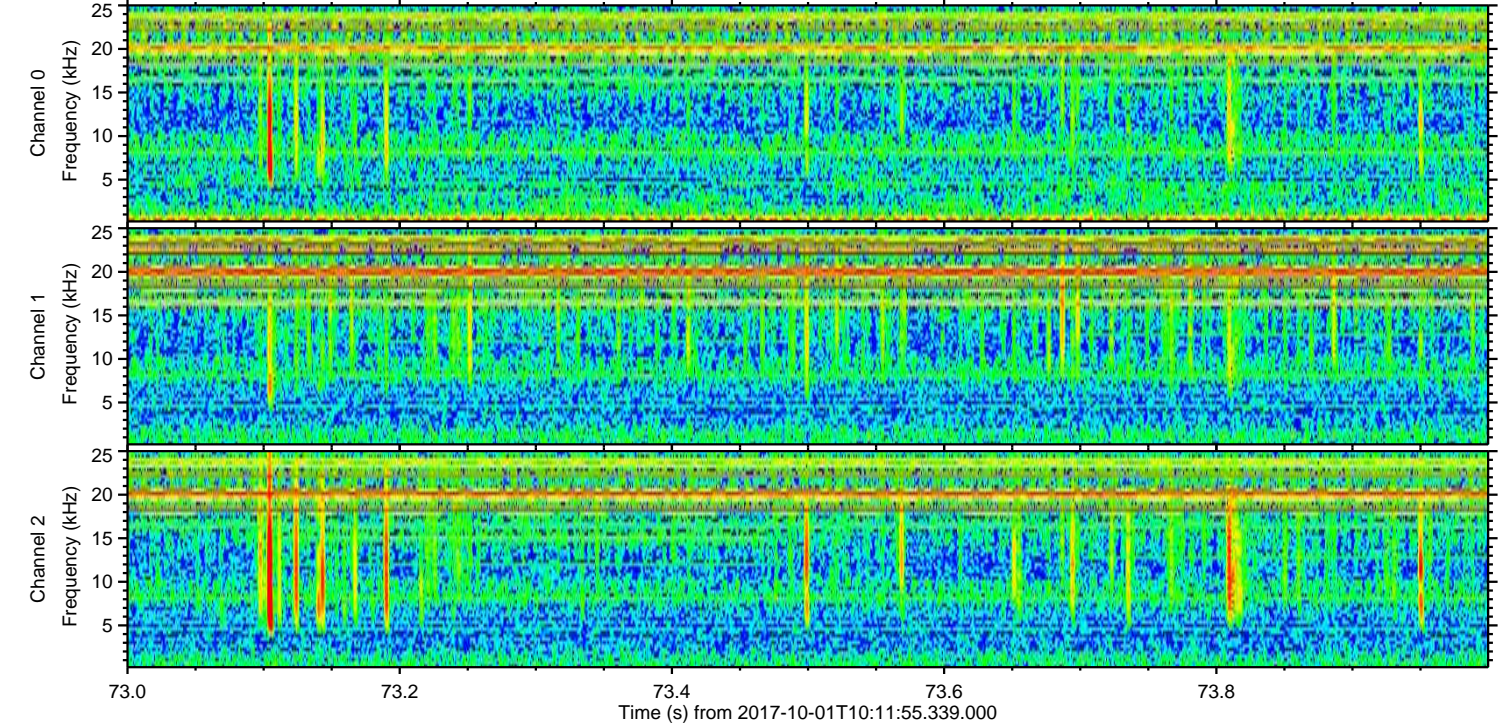
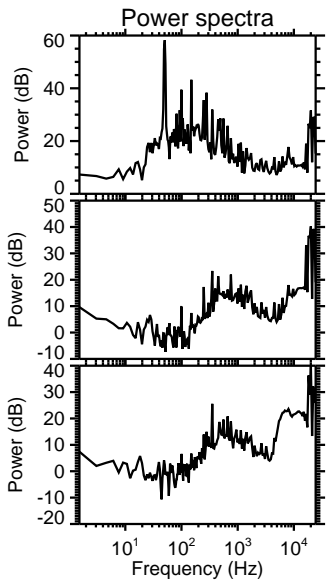
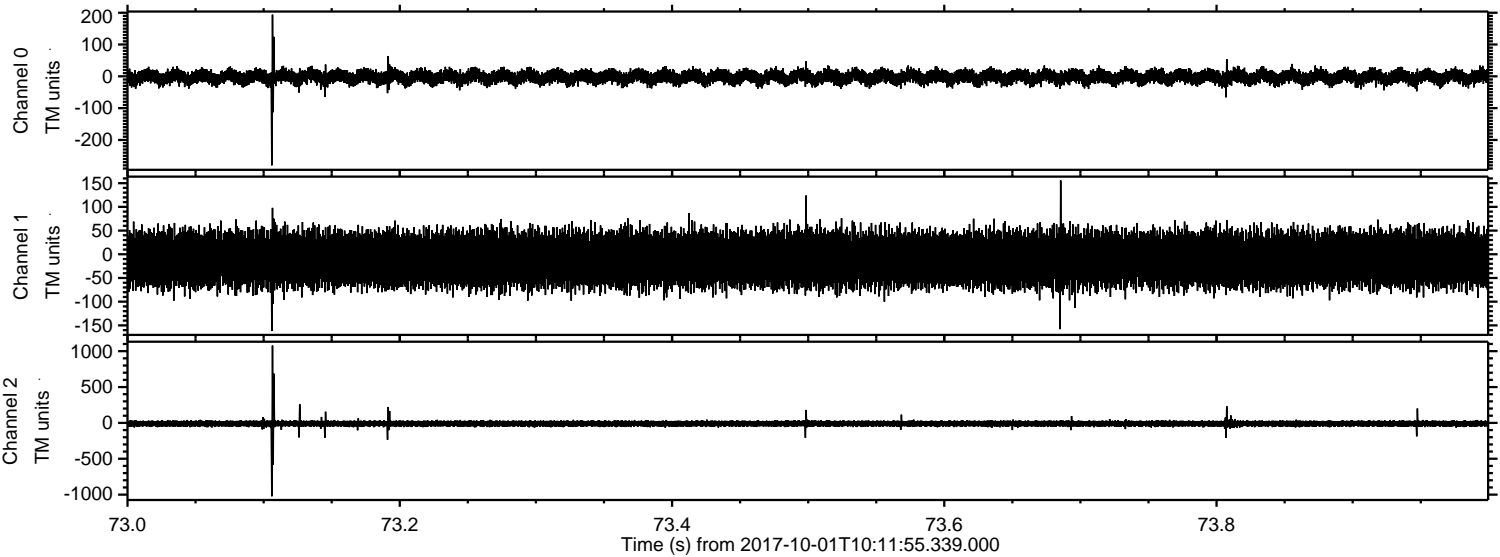
Processed Sun Oct 1 12:19:48 2017 by ELM ver.2012-10-06 from 001__elm20171001_101154__dat00.bin



Processed Sun Oct 1 12:19:48 2017 by ELM ver.2012-10-06 from 001__elm20171001_101154__dat00.bin



Processed Sun Oct 1 12:19:49 2017 by ELM ver.2012-10-06 from 001__elm20171001_101154__dat00.bin



Channel 0
mn: -280
mx: 194
 μ : -2.5
 σ : 11.5

Channel 1
mn: -162
mx: 156
 μ : -10.6
 σ : 27.3

Channel 2
mn: -1024
mx: 1078
 μ : -10.7
 σ : 23.0

