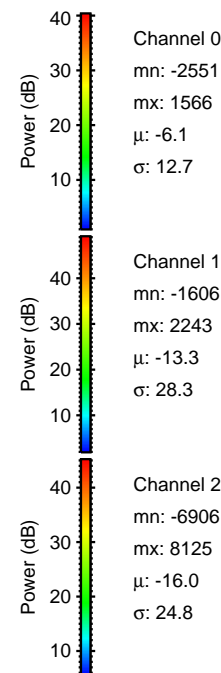
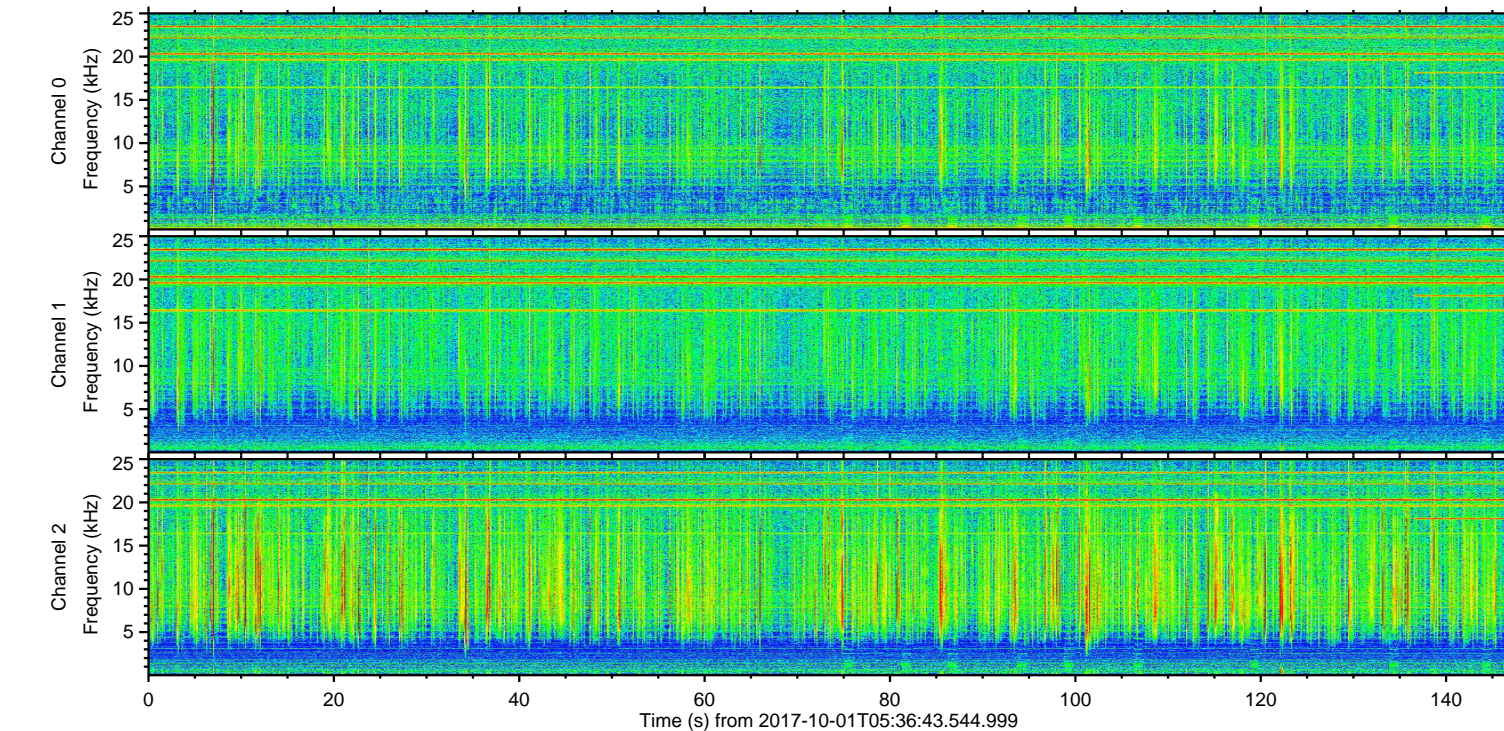
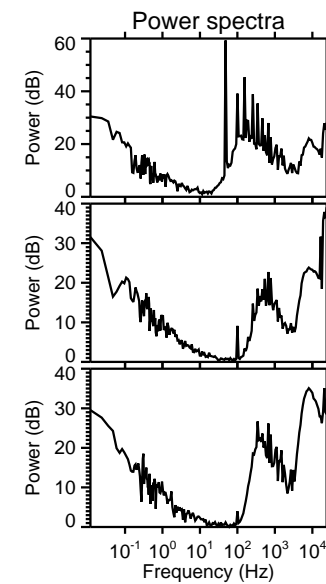
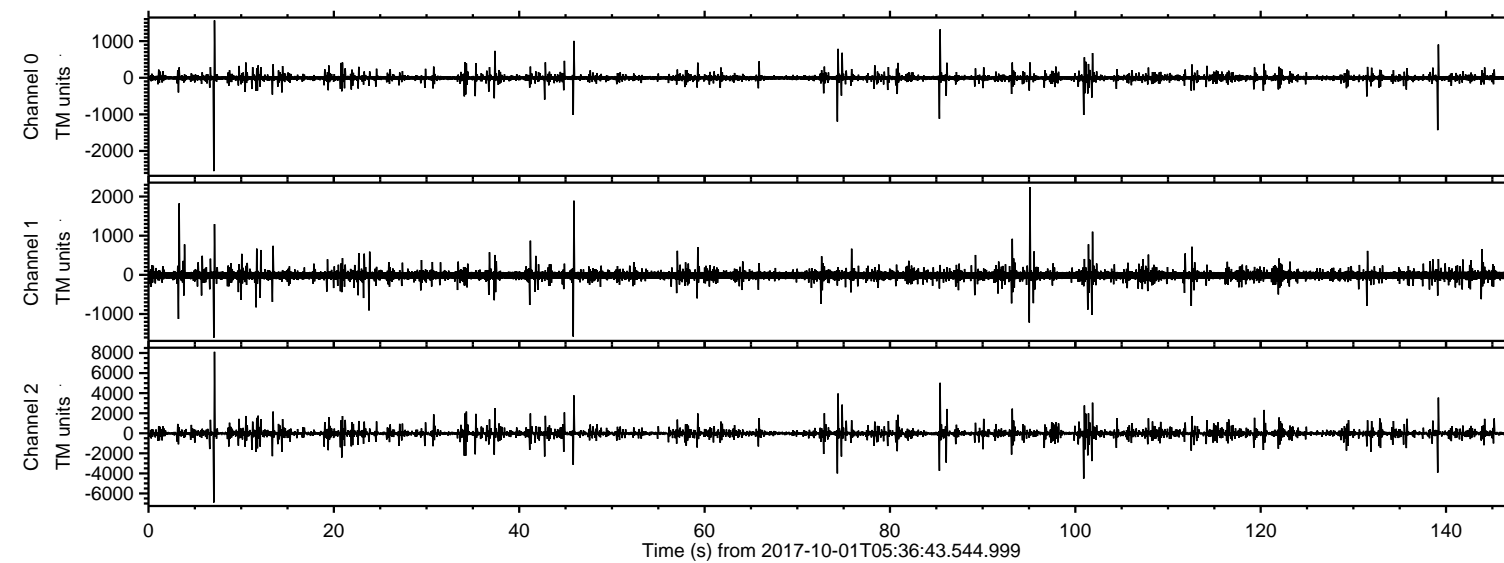
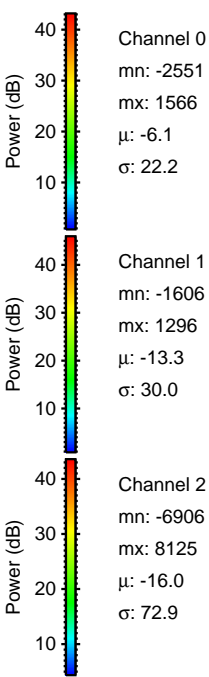
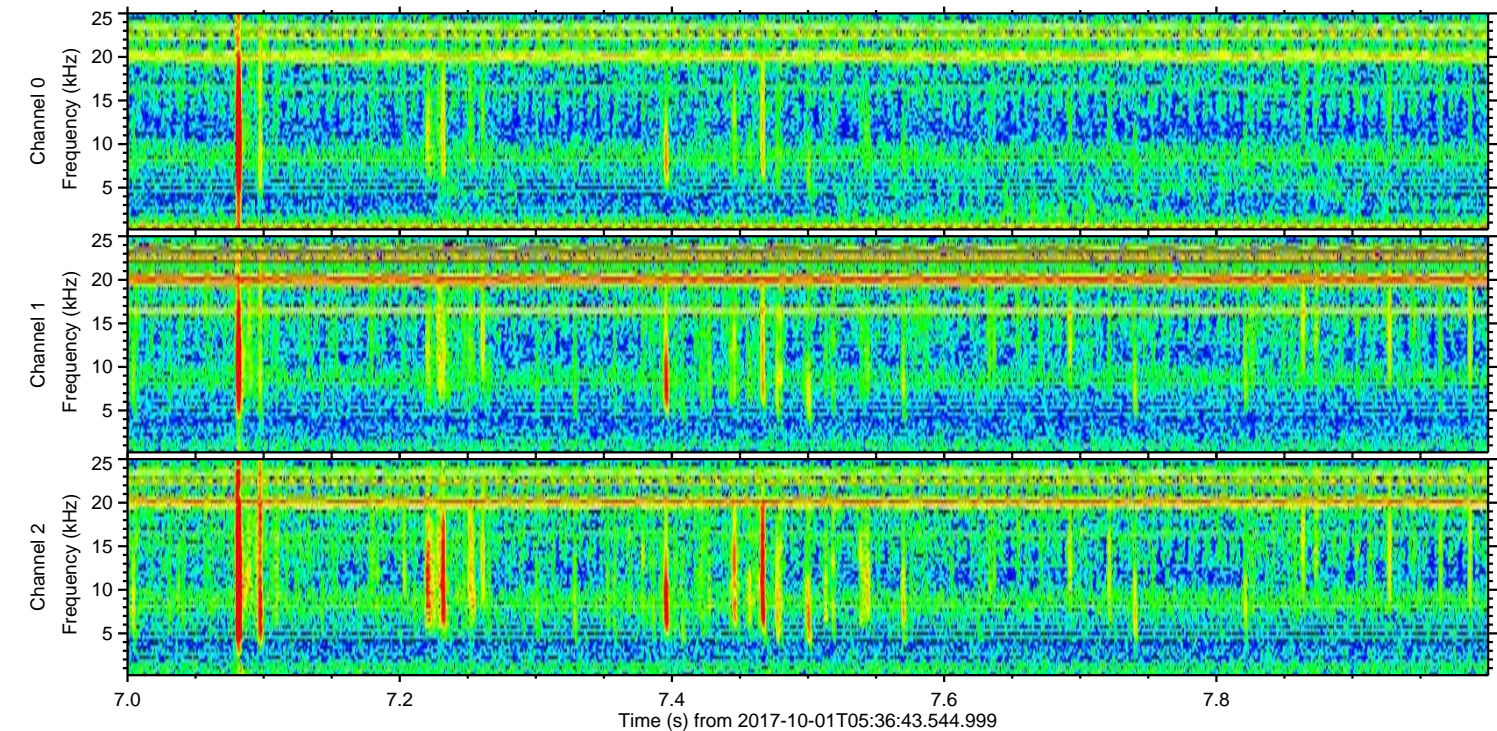
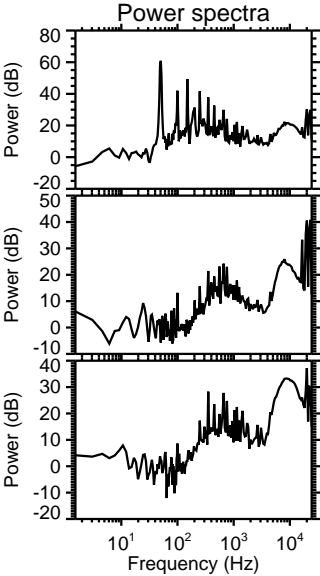
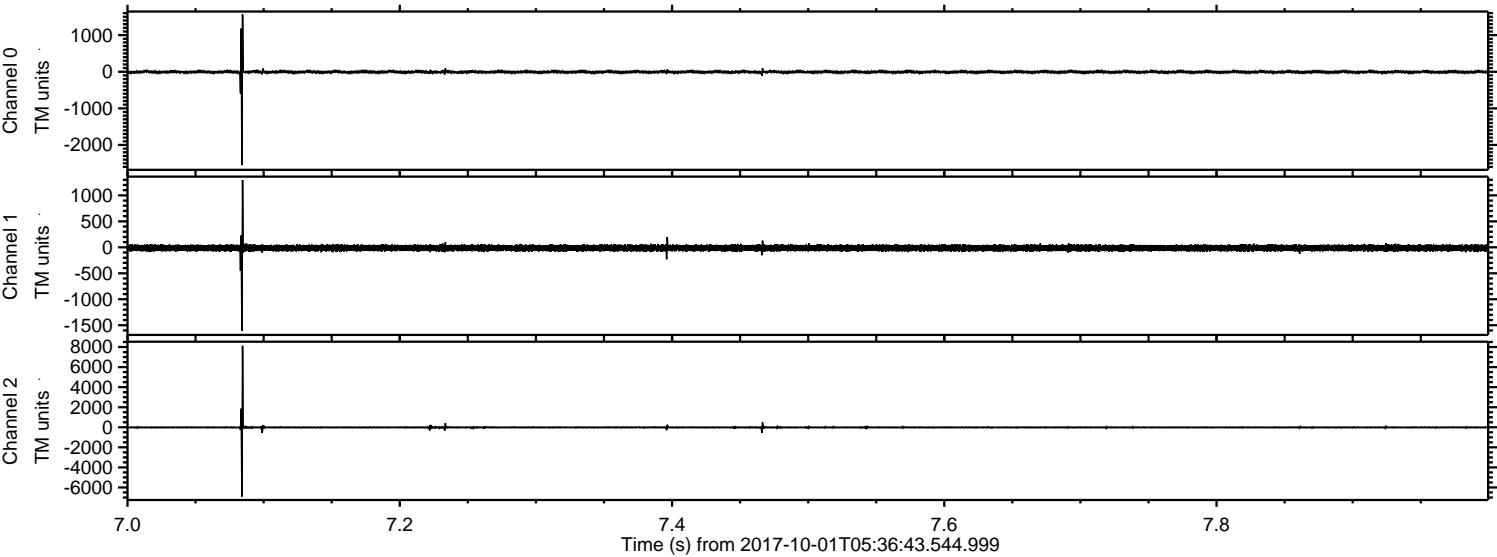


ELMAVAN 3D WAVEFORMS (Measured data sampled at 50 kHz) 51000 packets of 144 samples from 2017-10-01T05:36:43.544.999.

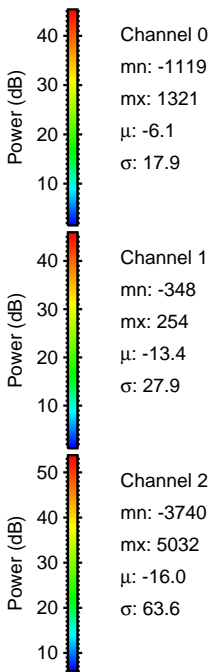
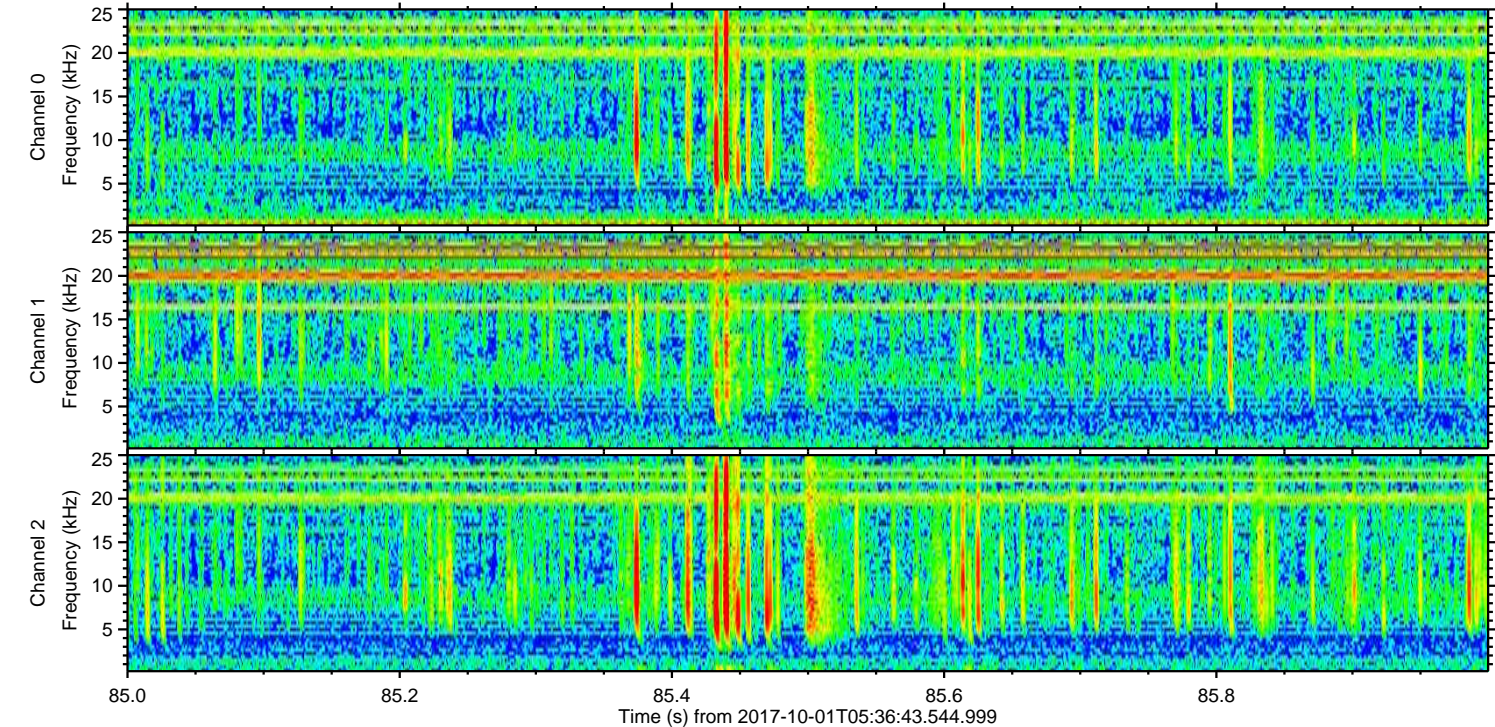
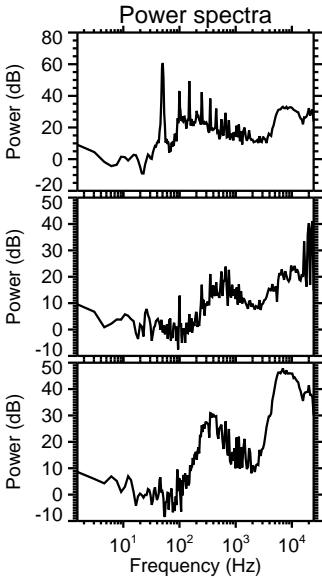
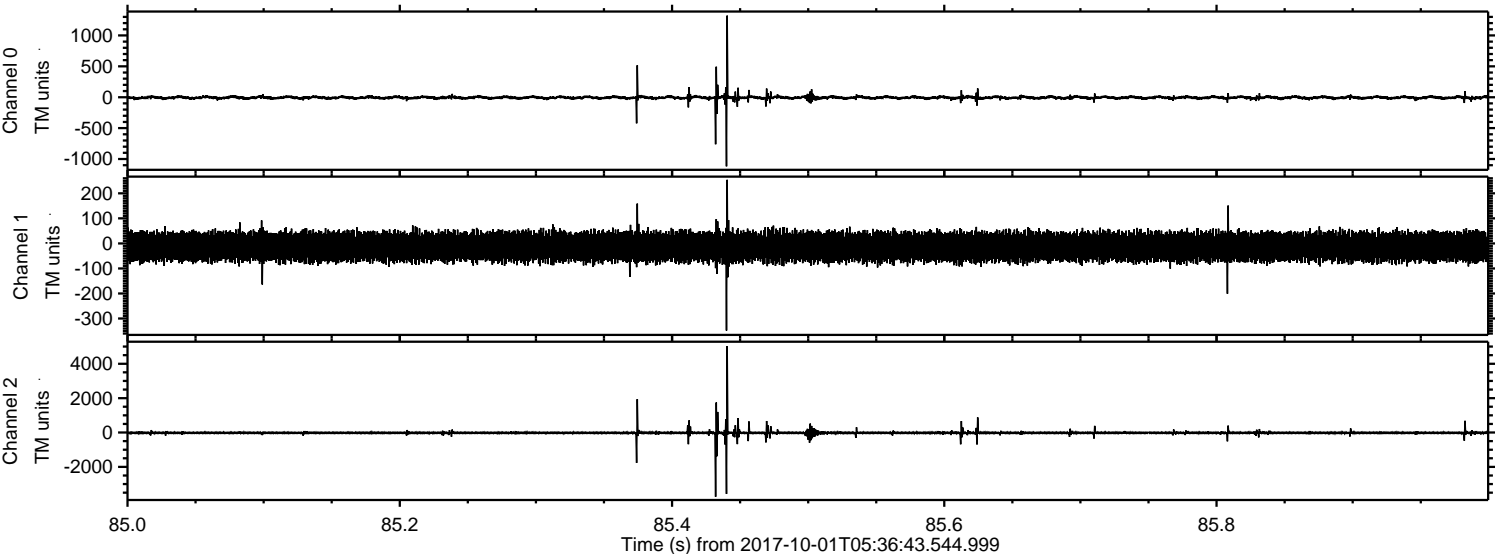
Processed Sun Oct 1 07:44:17 2017 by ELM ver.2012-10-06 from 001__elm20171001_053642__dat00.bin



Processed Sun Oct 1 07:44:24 2017 by ELM ver.2012-10-06 from 001__elm20171001_053642__dat00.bin

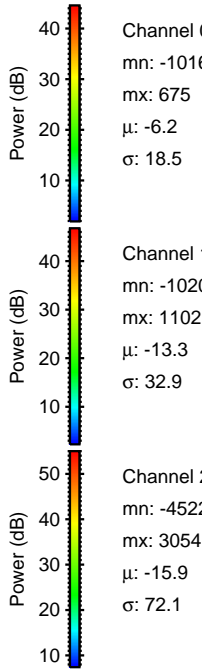
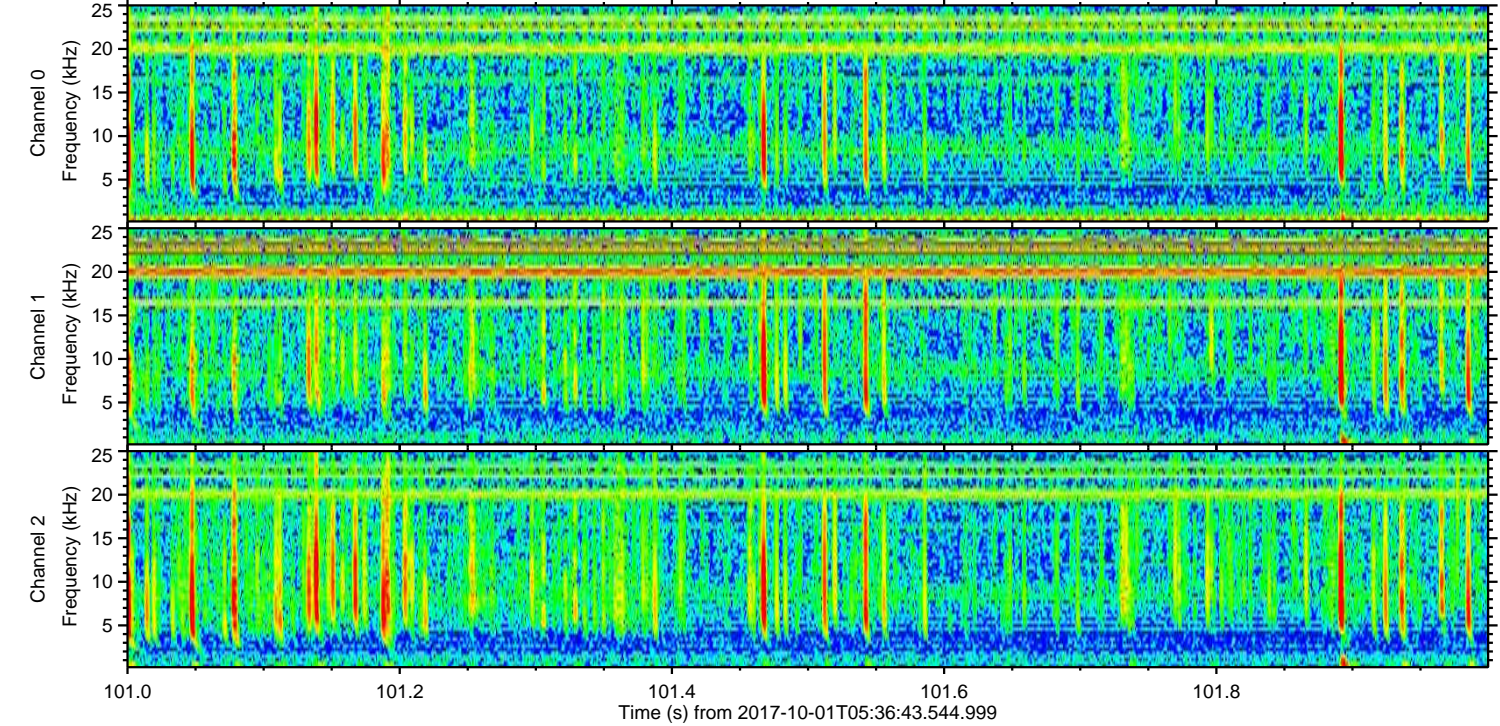
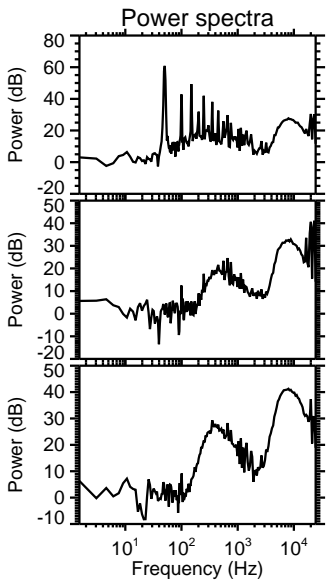
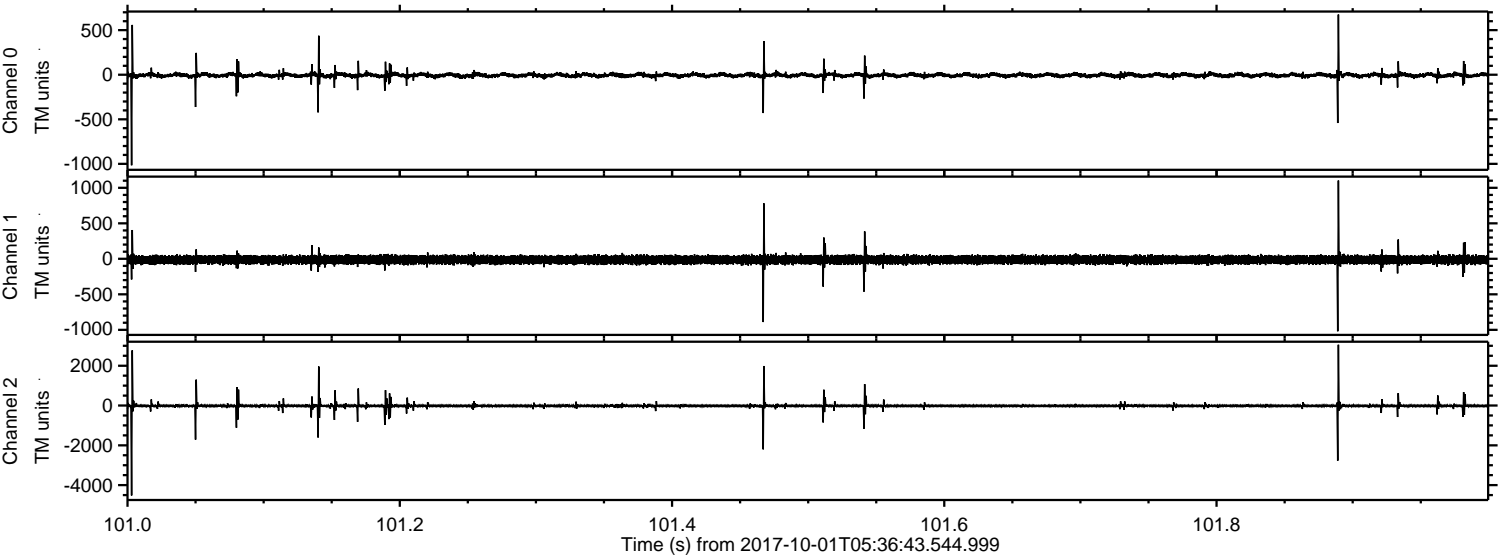


Processed Sun Oct 1 07:44:25 2017 by ELM ver.2012-10-06 from 001__elm20171001_053642__dat00.bin



ELMAVAN 3D WAVEFORMS (Measured data sampled at 50 kHz) 51000 packets of 144 samples from 2017-10-01T05:36:43.544.999. Part 102/147

Processed Sun Oct 1 07:44:25 2017 by ELM ver.2012-10-06 from 001__elm20171001_053642__dat00.bin

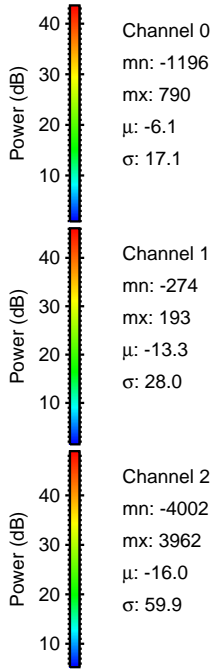
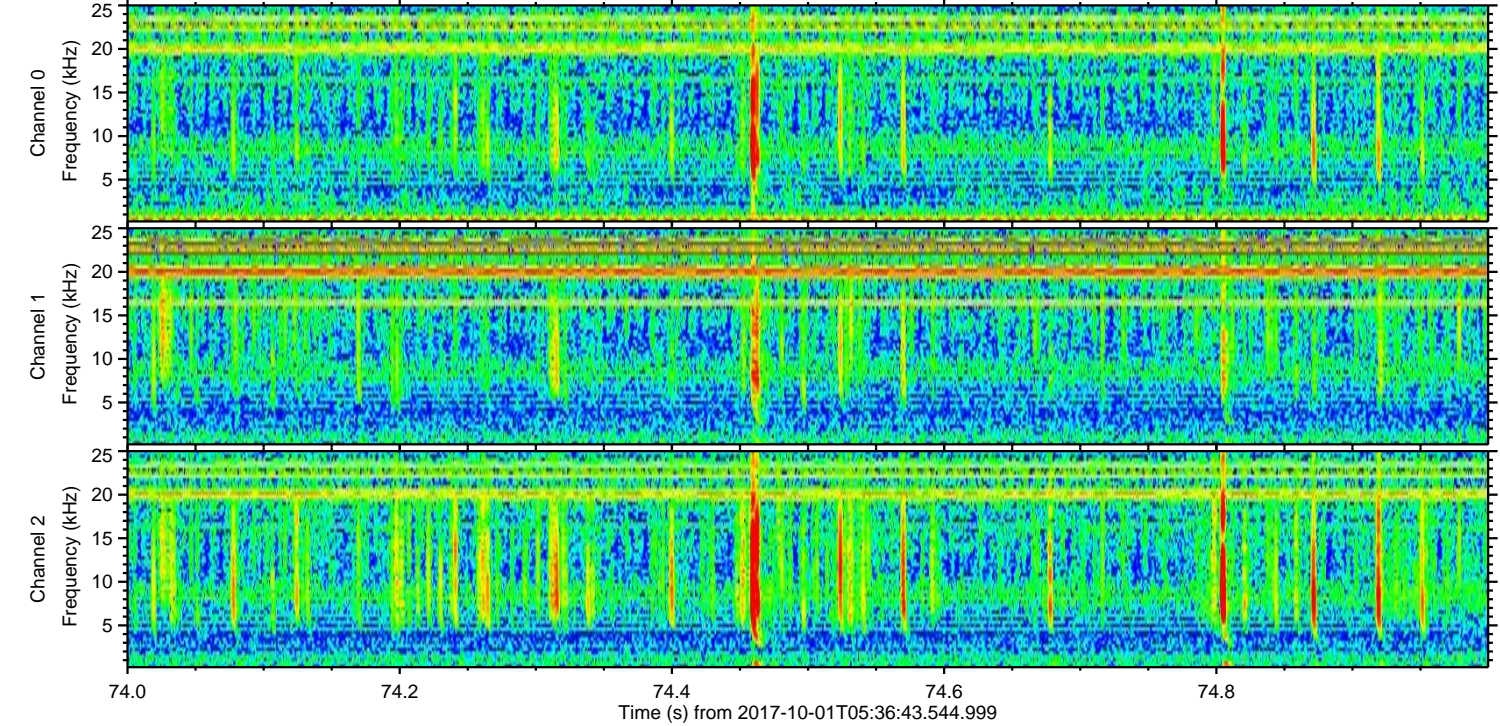
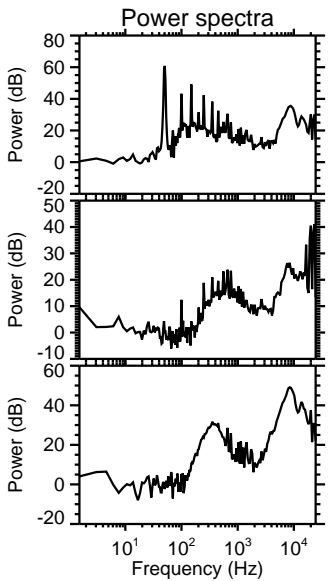
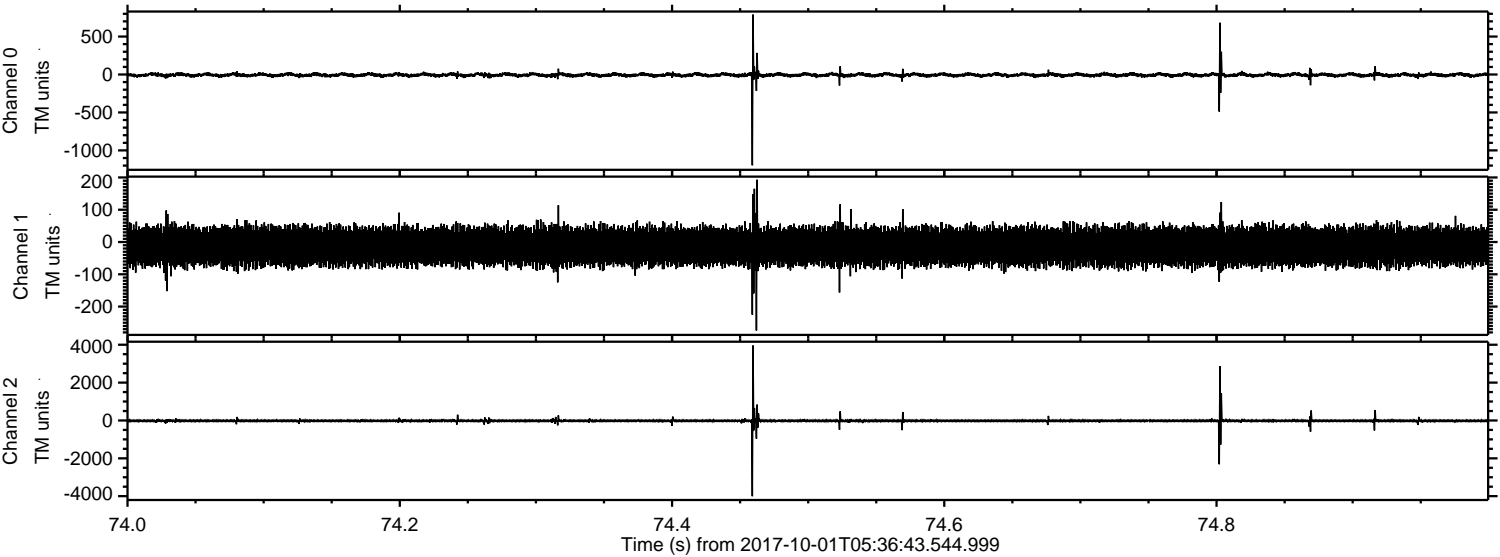


Channel 0
mn: -1016
mx: 675
 μ : -6.2
 σ : 18.5

Channel 1
mn: -1020
mx: 1102
 μ : -13.3
 σ : 32.9

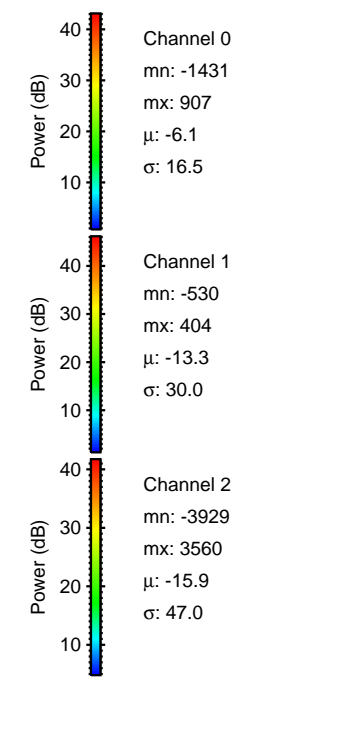
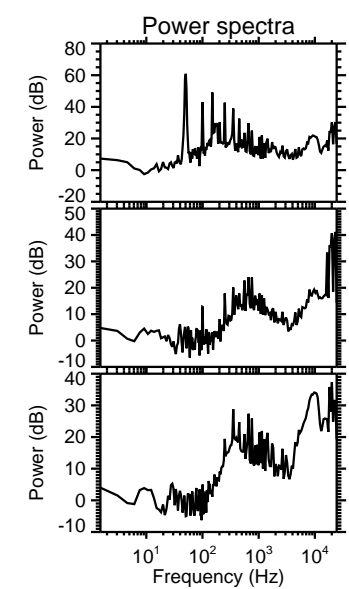
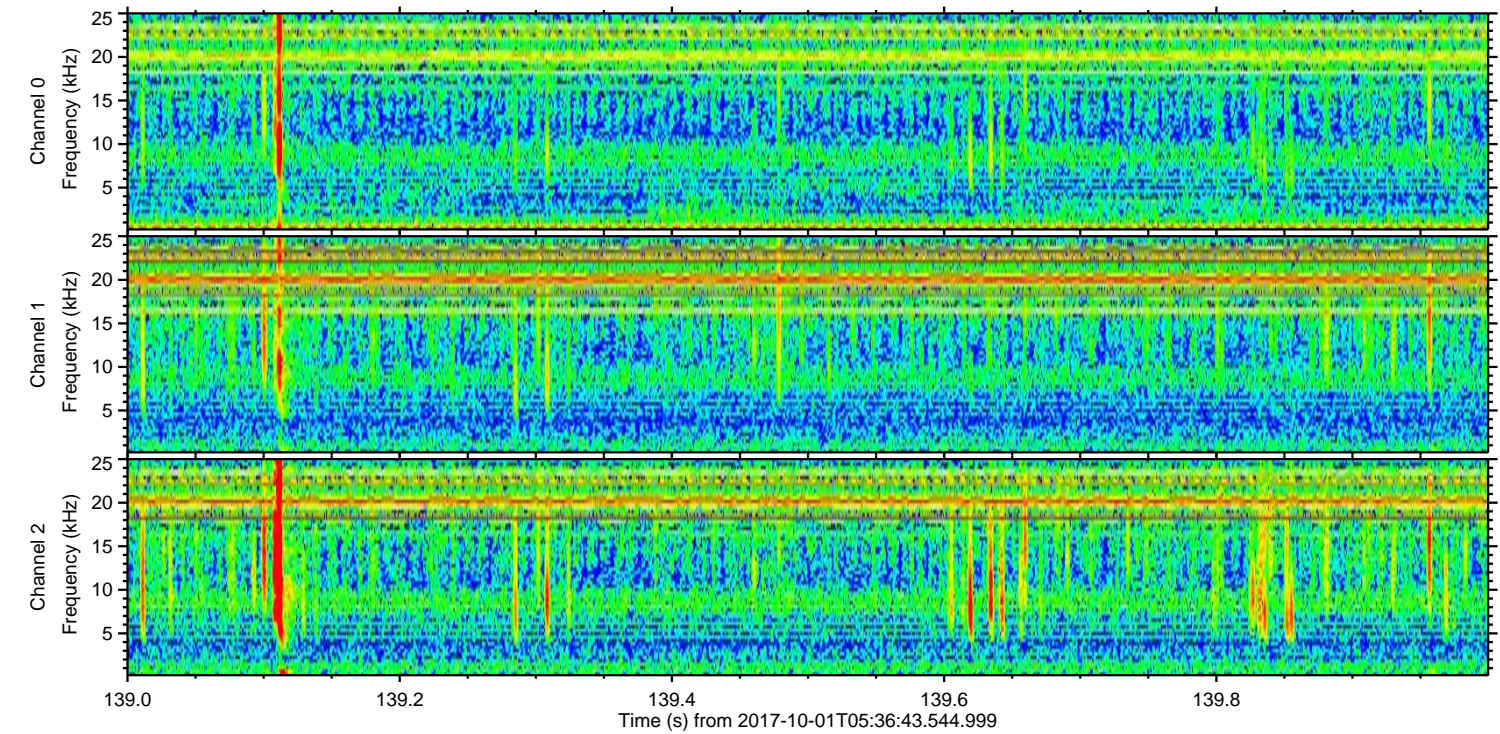
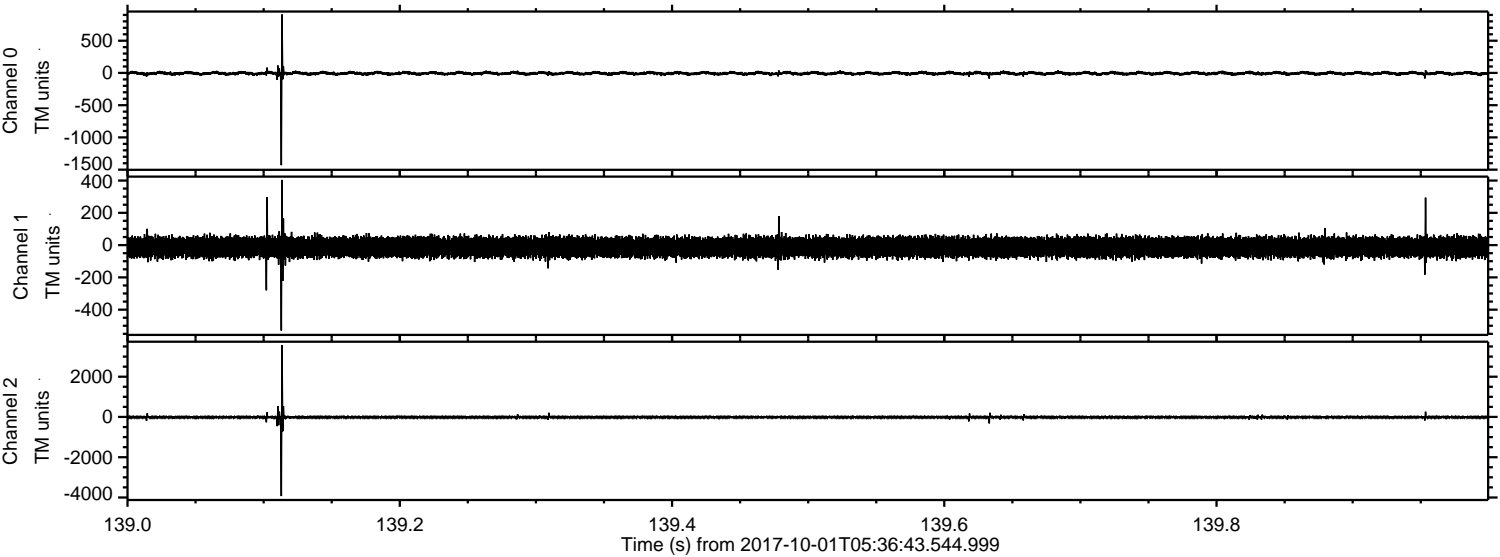
Channel 2
mn: -4522
mx: 3054
 μ : -15.9
 σ : 72.1

Processed Sun Oct 1 07:44:26 2017 by ELM ver.2012-10-06 from 001__elm20171001_053642__dat00.bin



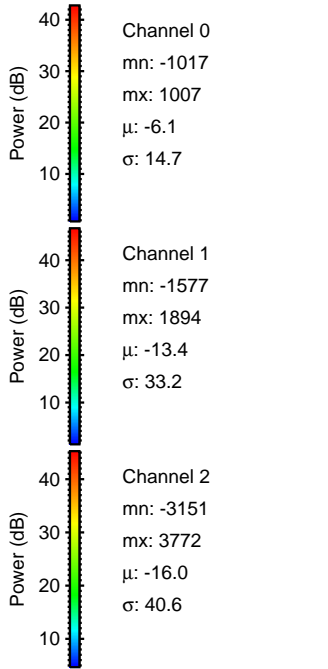
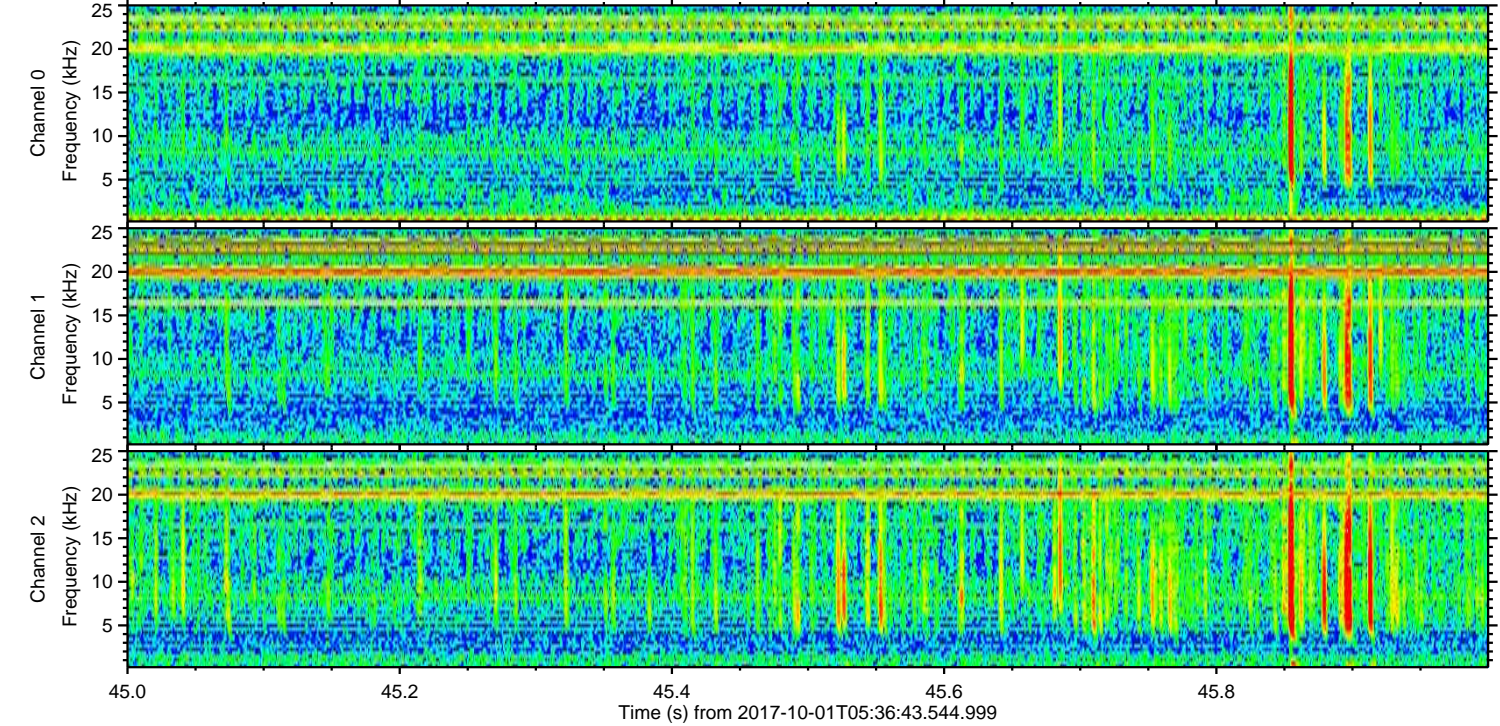
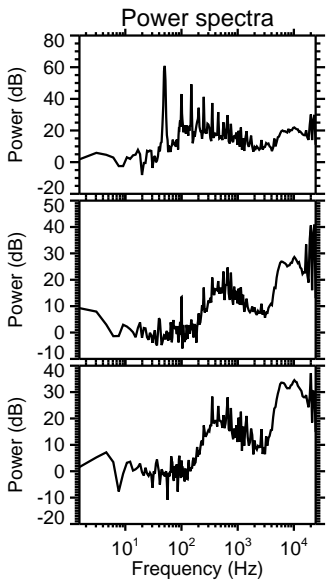
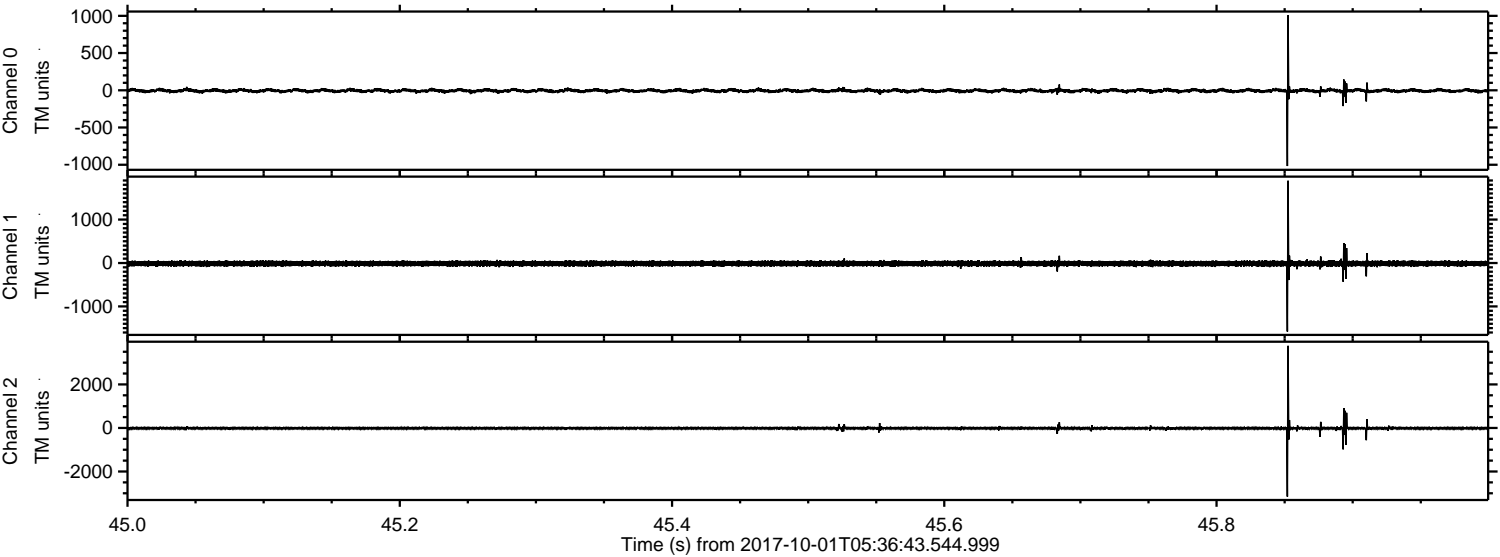
ELMAVAN 3D WAVEFORMS (Measured data sampled at 50 kHz) 51000 packets of 144 samples from 2017-10-01T05:36:43.544.999. Part 140/147

Processed Sun Oct 1 07:44:27 2017 by ELM ver.2012-10-06 from 001__elm20171001_053642__dat00.bin

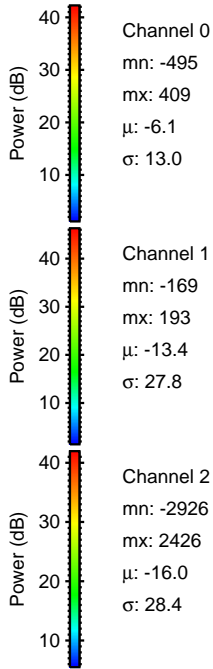
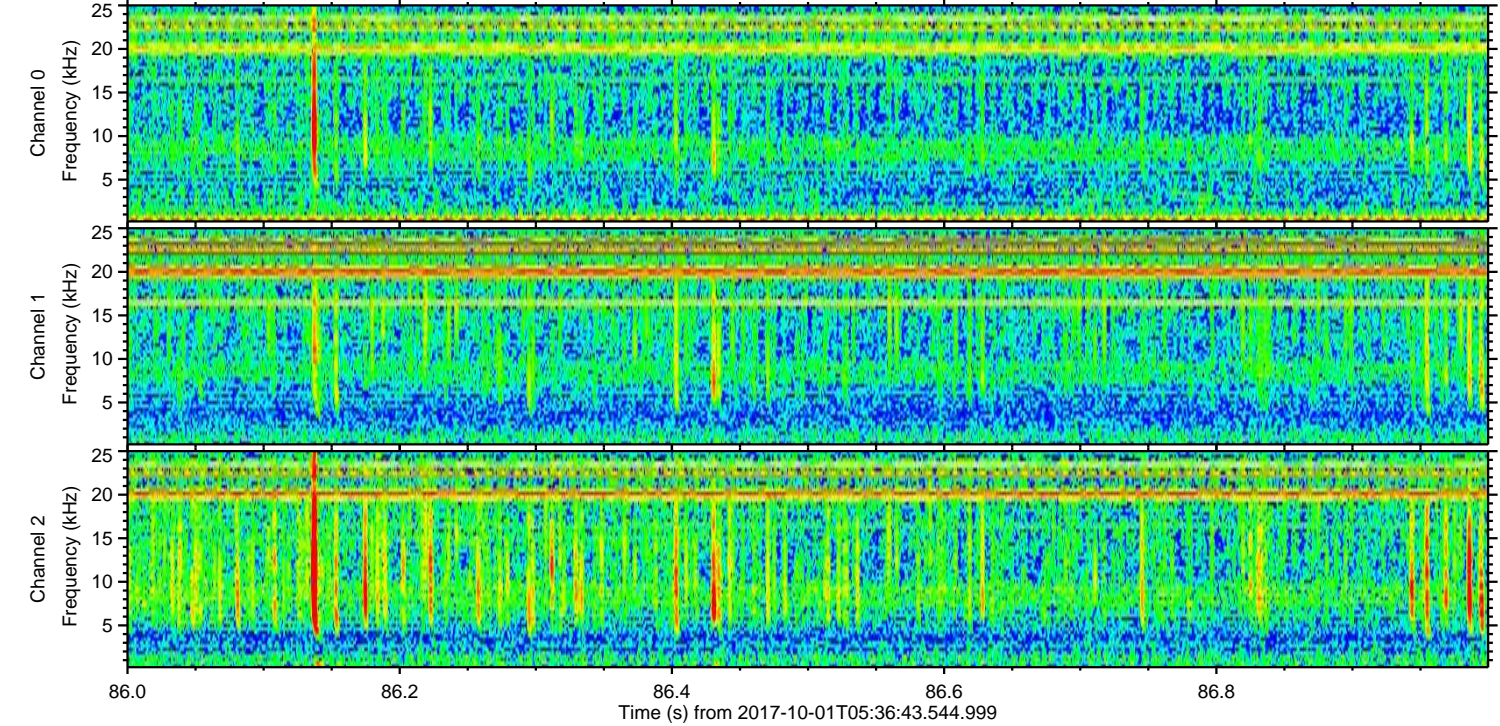
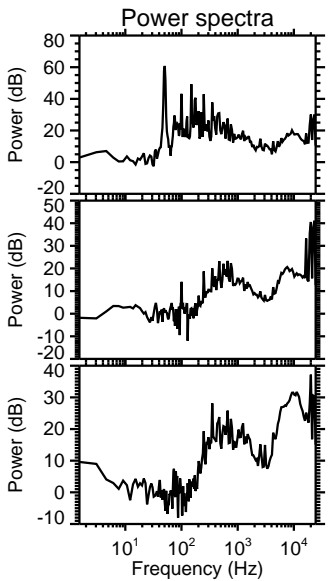
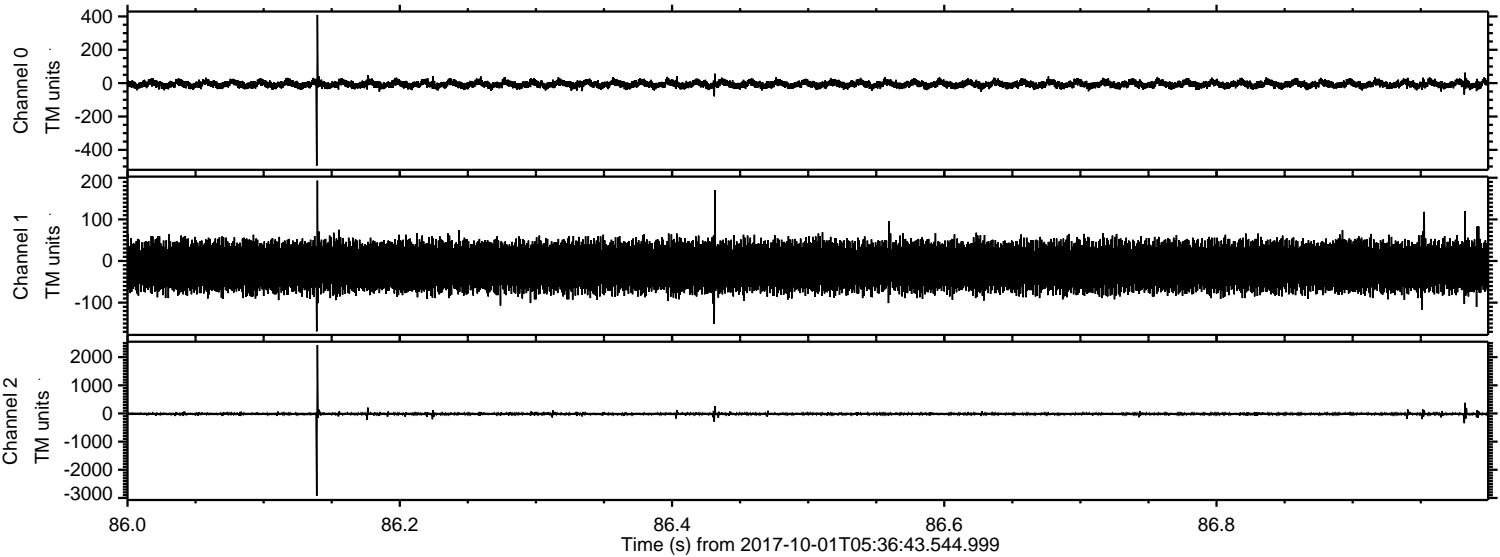


ELMAVAN 3D WAVEFORMS (Measured data sampled at 50 kHz) 51000 packets of 144 samples from 2017-10-01T05:36:43.544.999. Part 46/147

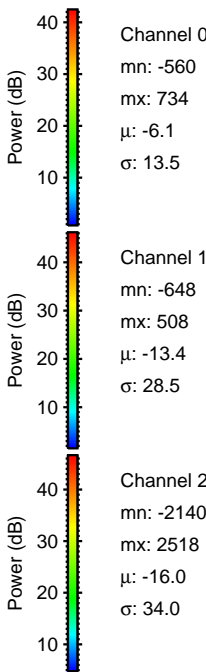
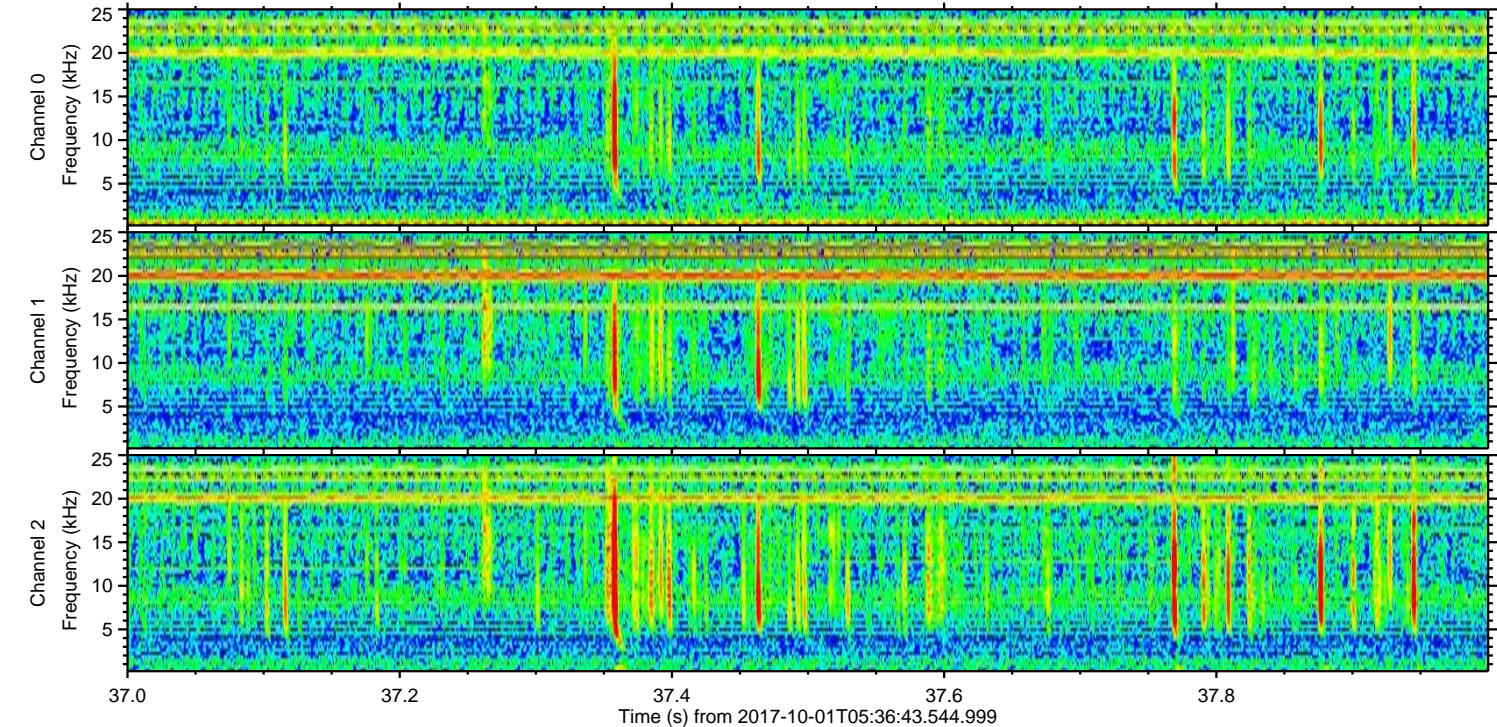
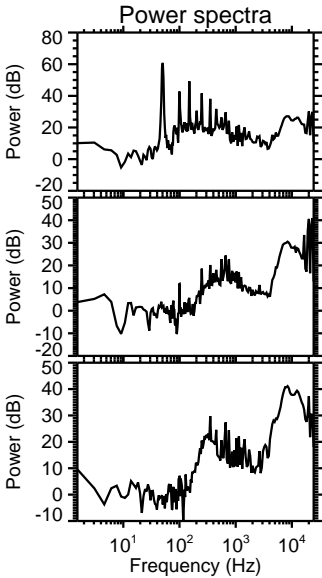
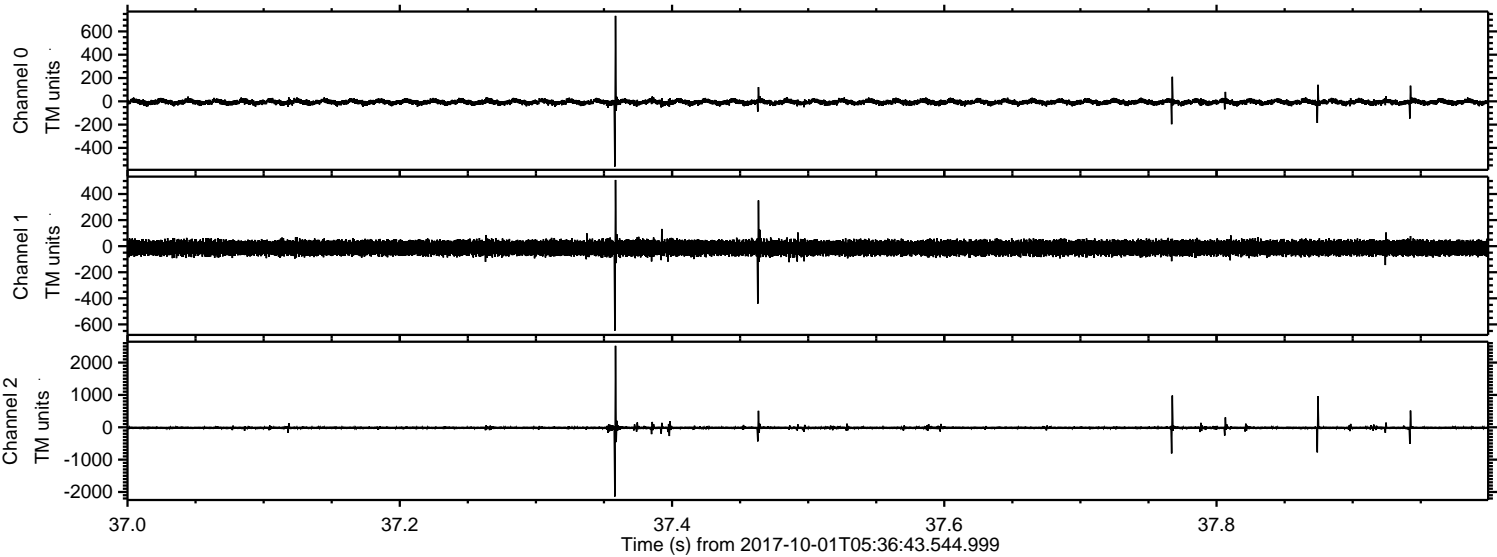
Processed Sun Oct 1 07:44:28 2017 by ELM ver.2012-10-06 from 001__elm20171001_053642__dat00.bin



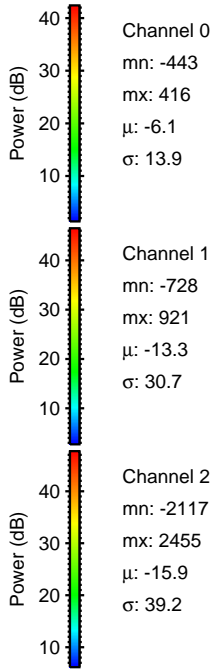
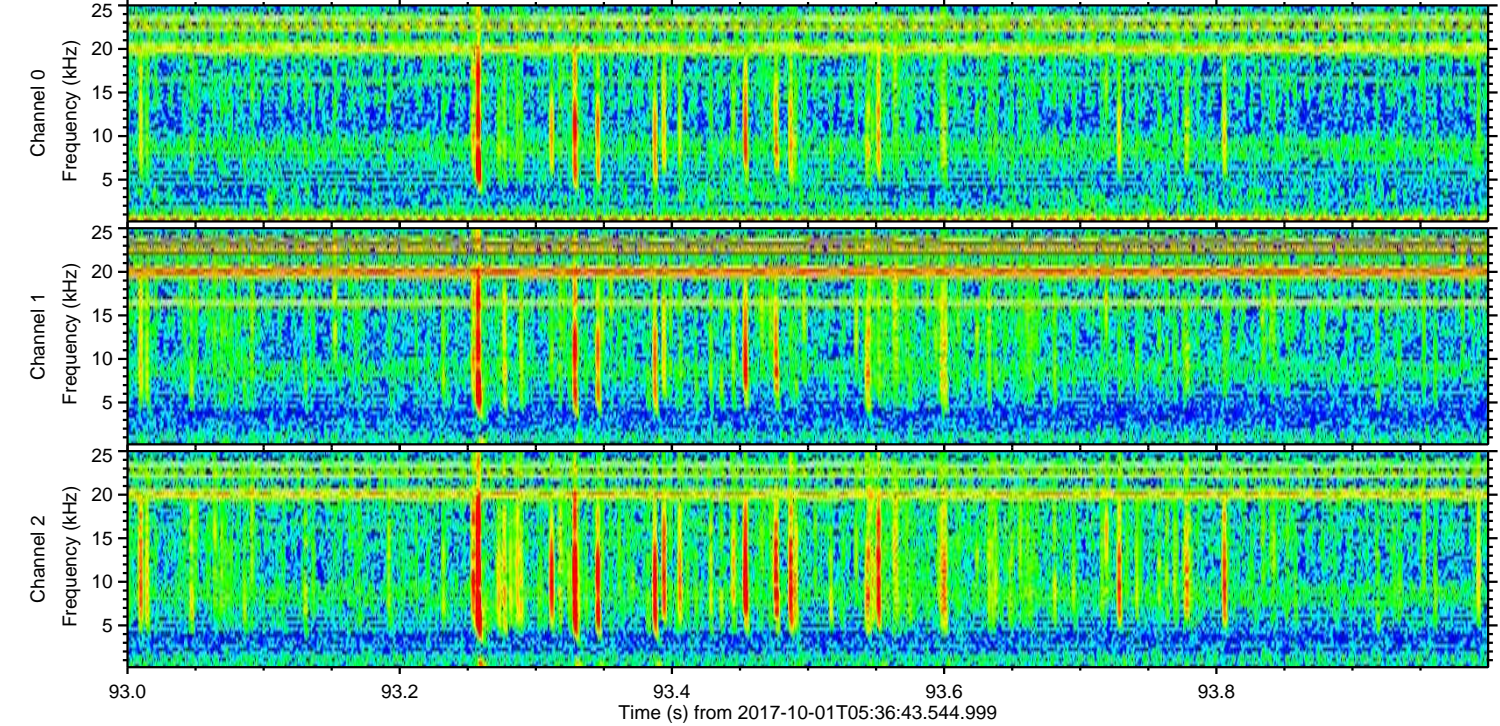
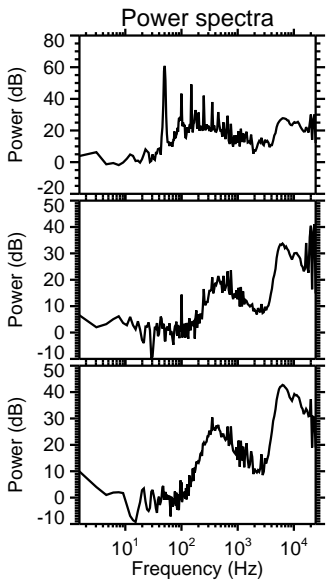
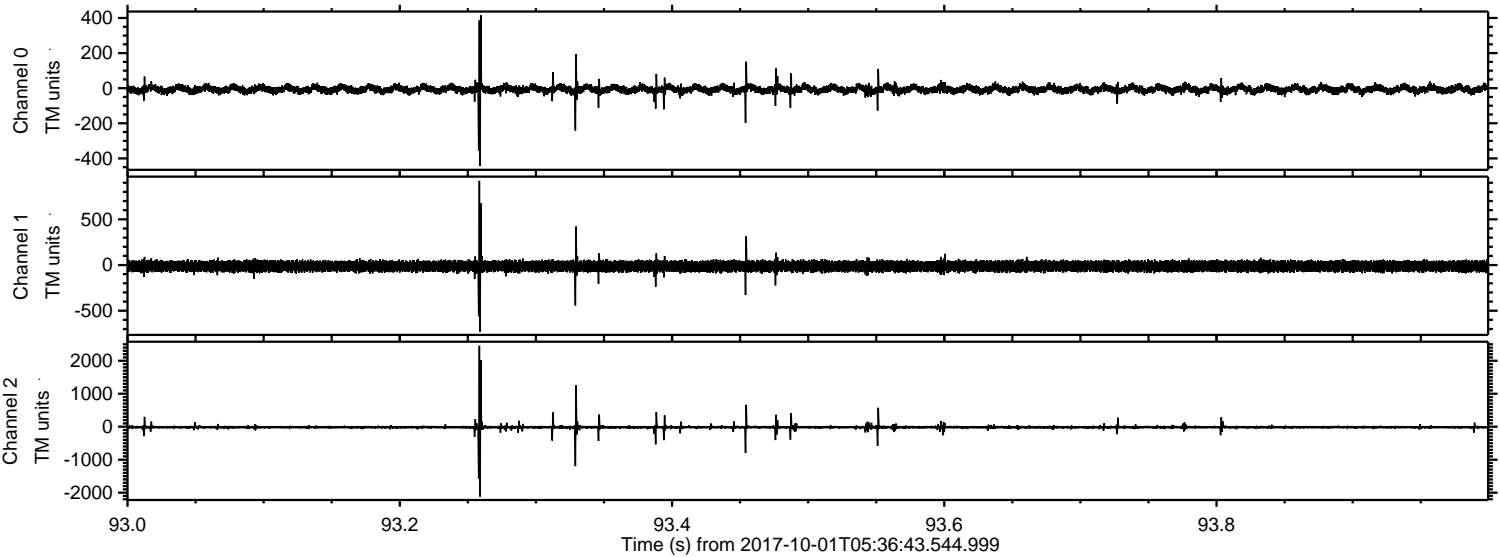
Processed Sun Oct 1 07:44:28 2017 by ELM ver.2012-10-06 from 001__elm20171001_053642__dat00.bin



Processed Sun Oct 1 07:44:29 2017 by ELM ver.2012-10-06 from 001__elm20171001_053642__dat00.bin



Processed Sun Oct 1 07:44:30 2017 by ELM ver.2012-10-06 from 001__elm20171001_053642__dat00.bin



Channel 0
mn: -443
mx: 416
 μ : -6.1
 σ : 13.9

Channel 1
mn: -728
mx: 921
 μ : -13.3
 σ : 30.7

Channel 2
mn: -2117
mx: 2455
 μ : -15.9
 σ : 39.2

Processed Sun Oct 1 07:44:31 2017 by ELM ver.2012-10-06 from 001__elm20171001_053642__dat00.bin

