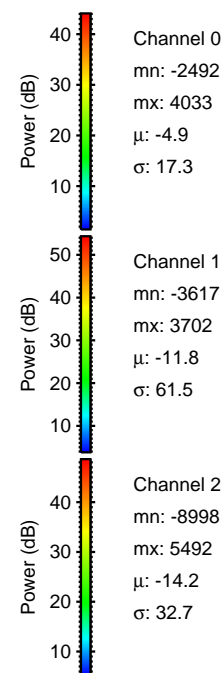
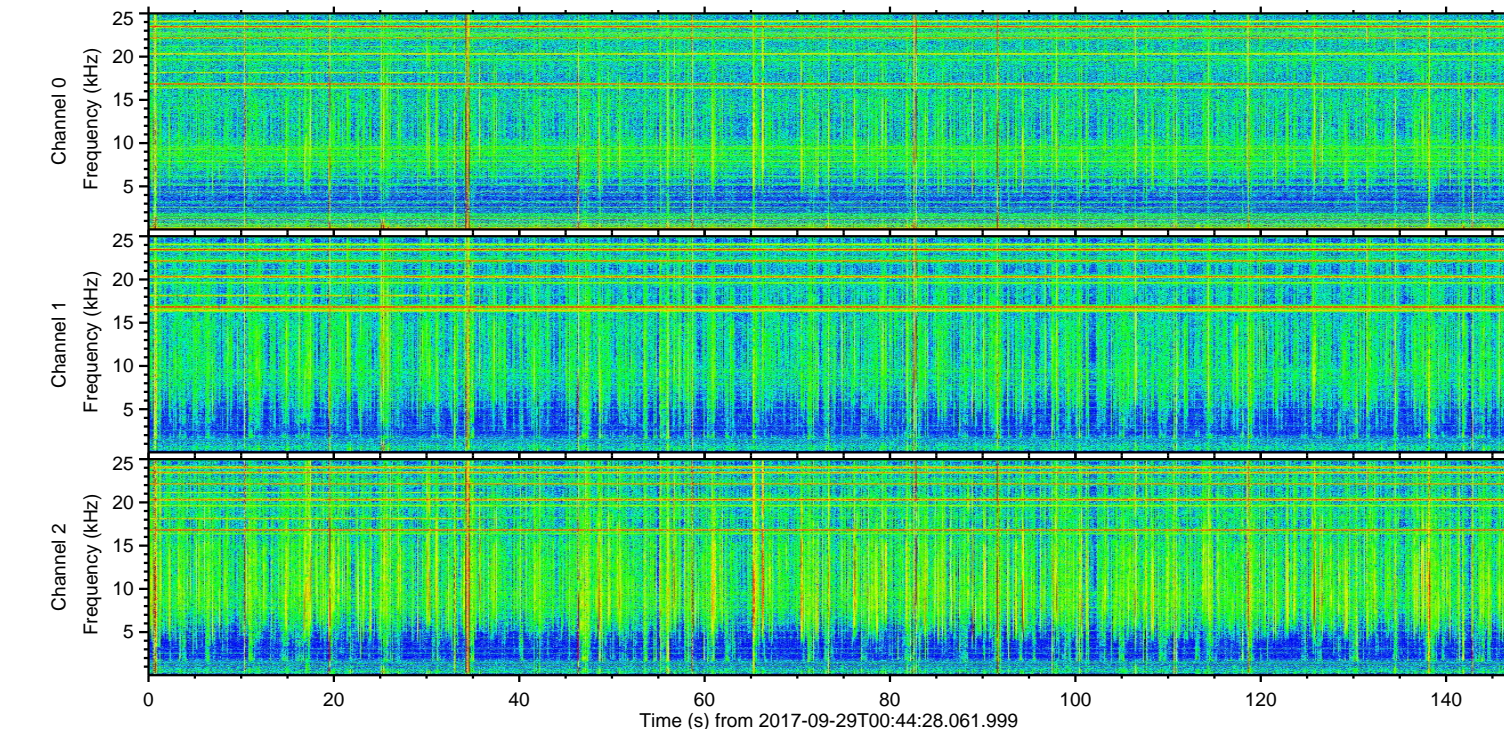
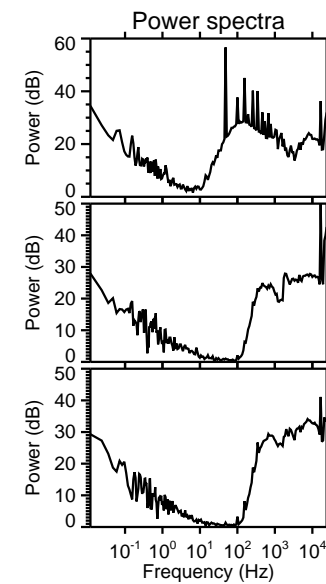
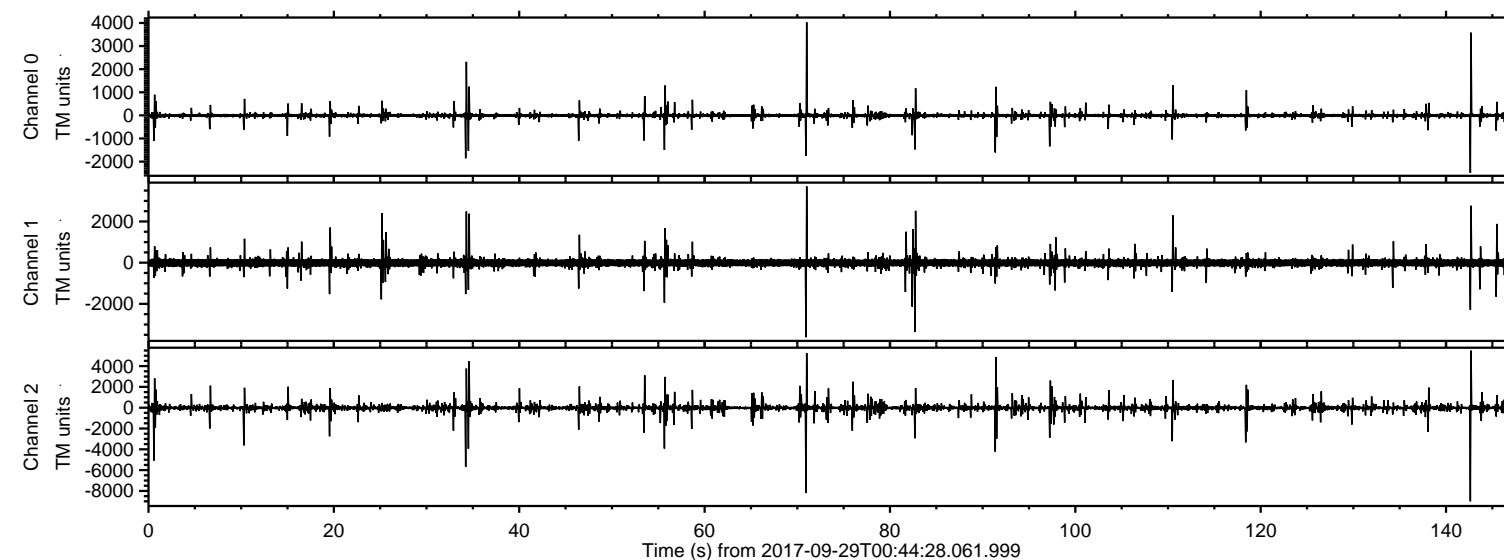


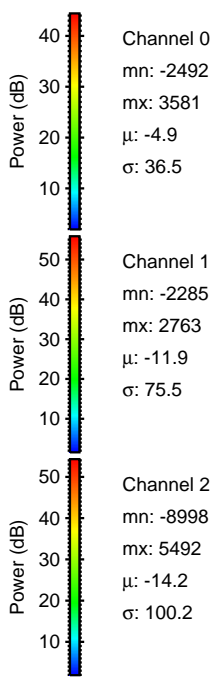
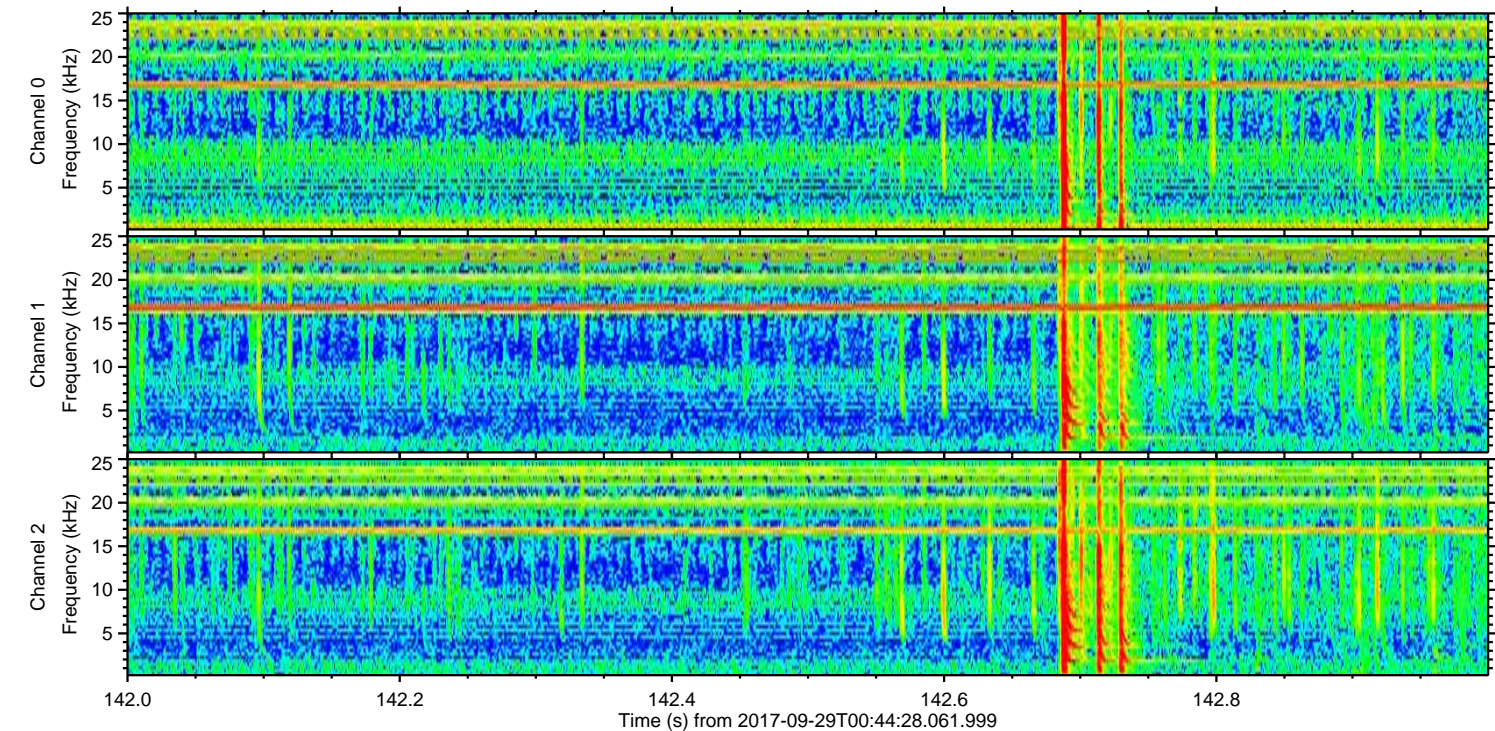
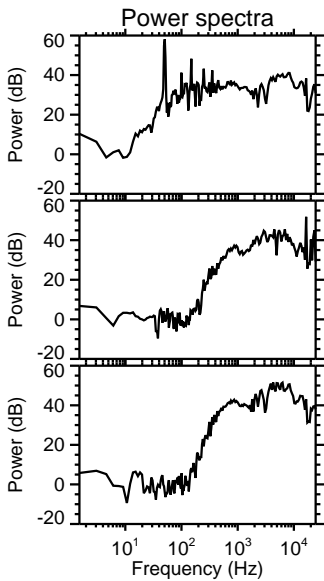
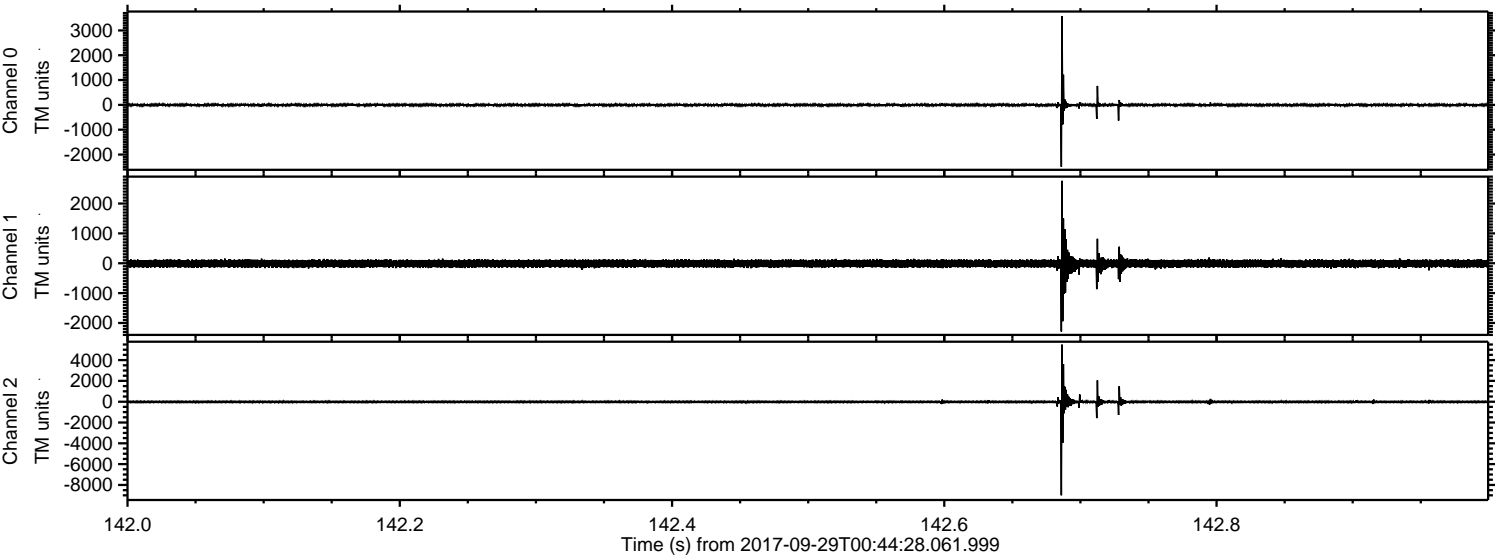
ELMAVAN 3D WAVEFORMS (Measured data sampled at 50 kHz) 51000 packets of 144 samples from 2017-09-29T00:44:28.061.999.

Processed Fri Sep 29 02:52:36 2017 by ELM ver.2012-10-06 from 001__elm20170929_004427__dat00.bin



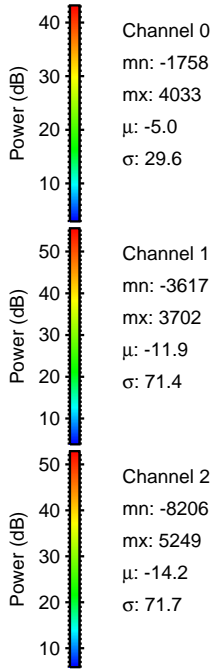
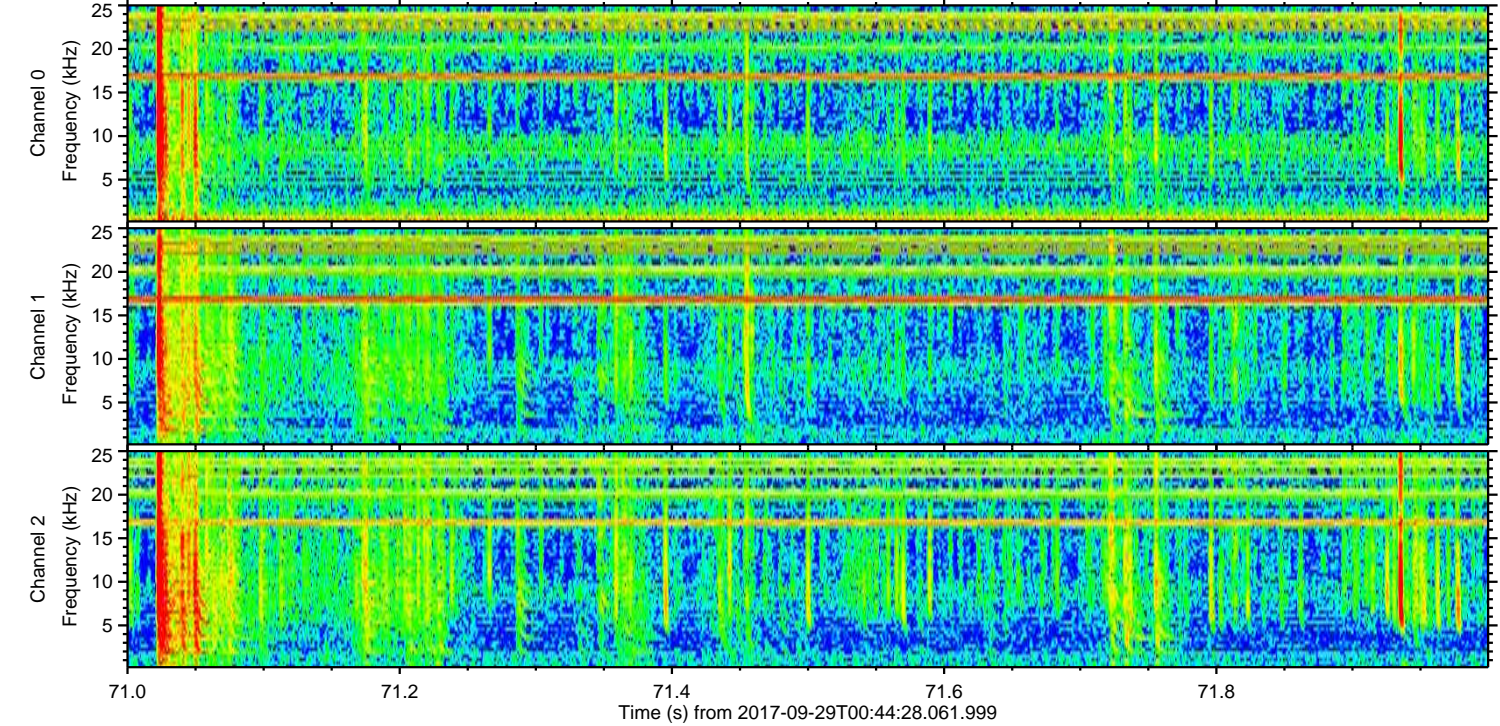
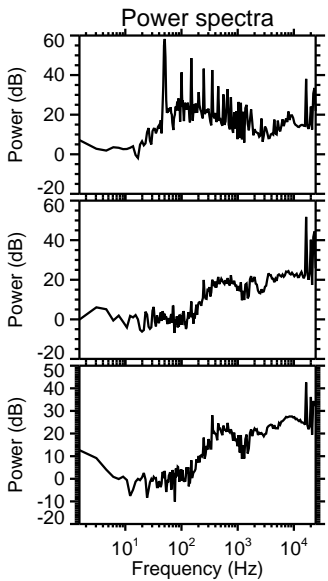
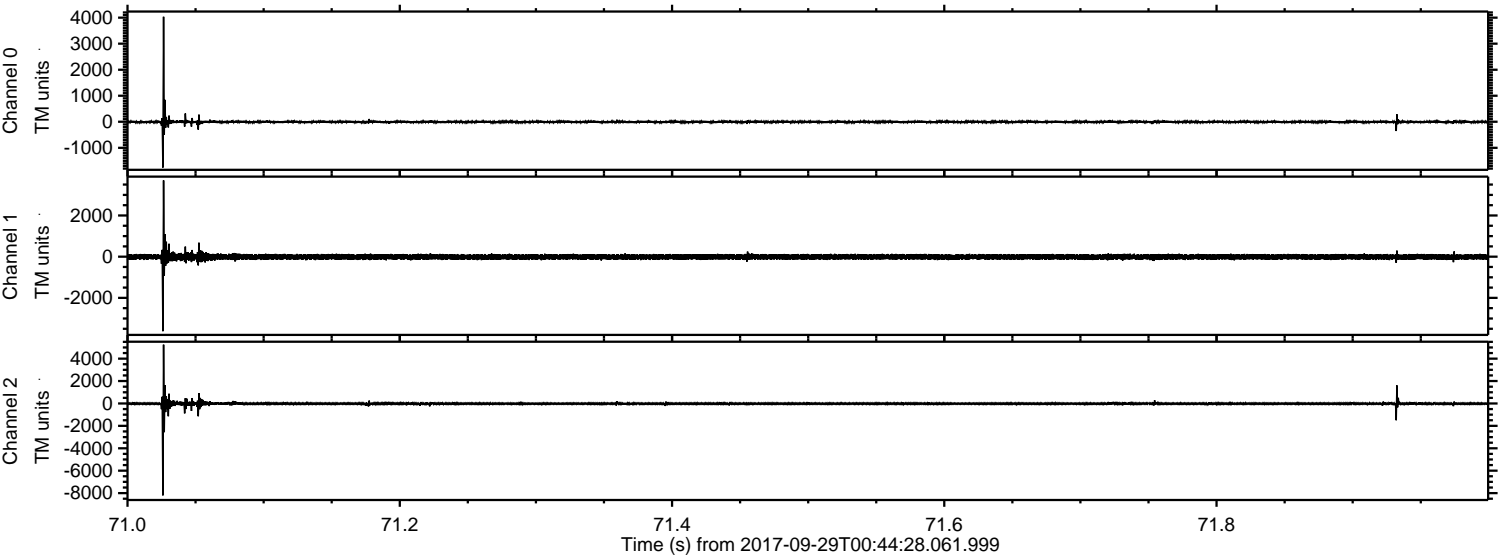
ELMAVAN 3D WAVEFORMS (Measured data sampled at 50 kHz) 51000 packets of 144 samples from 2017-09-29T00:44:28.061.999. Part 143/147

Processed Fri Sep 29 02:52:43 2017 by ELM ver.2012-10-06 from 001__elm20170929_004427__dat00.bin



ELMAVAN 3D WAVEFORMS (Measured data sampled at 50 kHz) 51000 packets of 144 samples from 2017-09-29T00:44:28.061.999. Part 72/147

Processed Fri Sep 29 02:52:44 2017 by ELM ver.2012-10-06 from 001__elm20170929_004427__dat00.bin



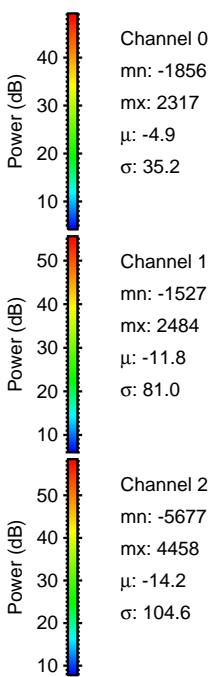
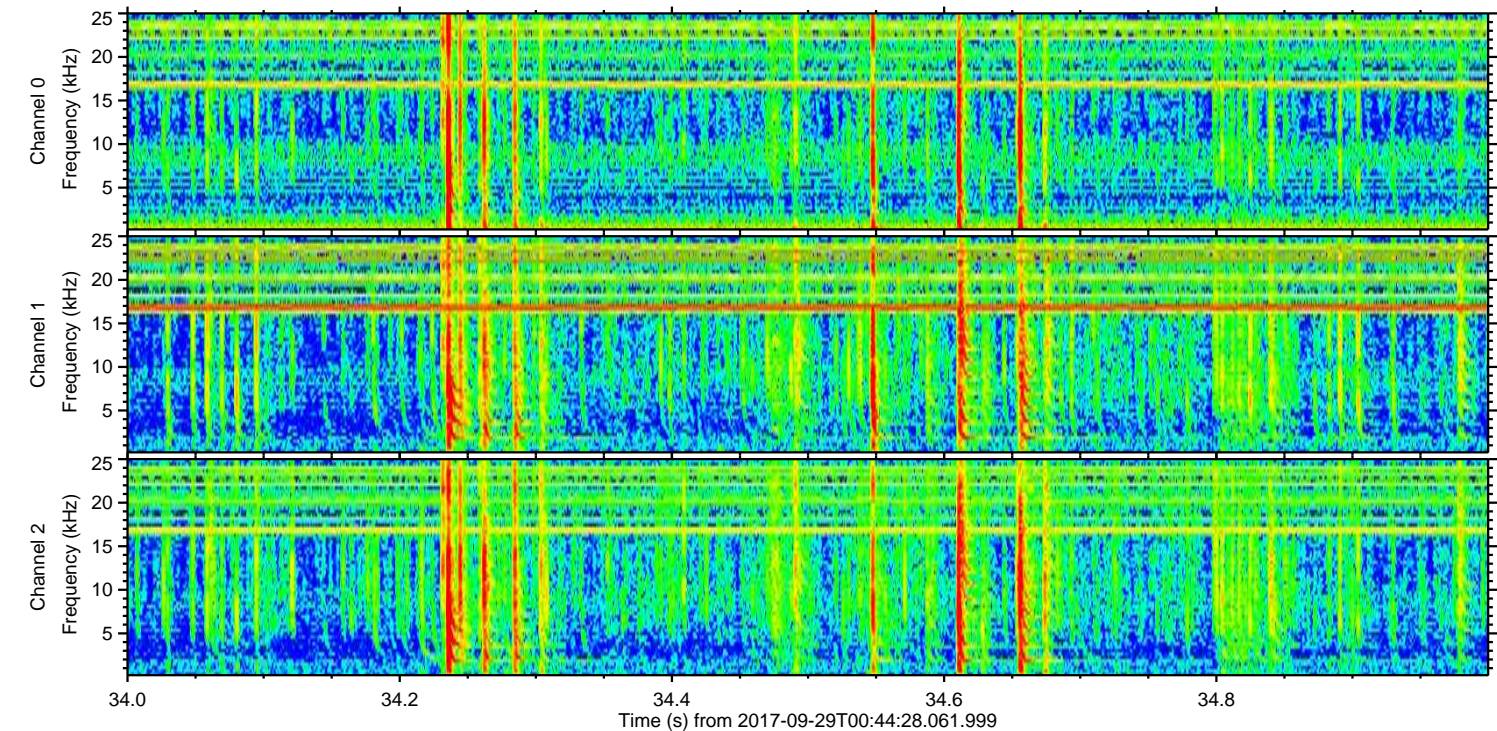
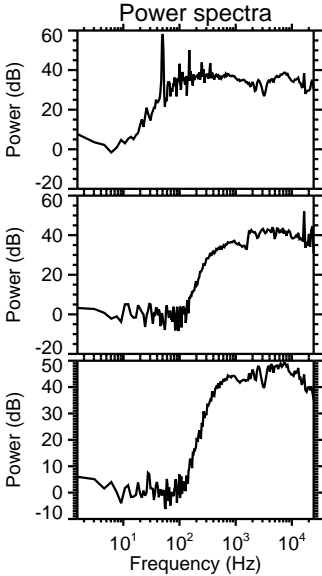
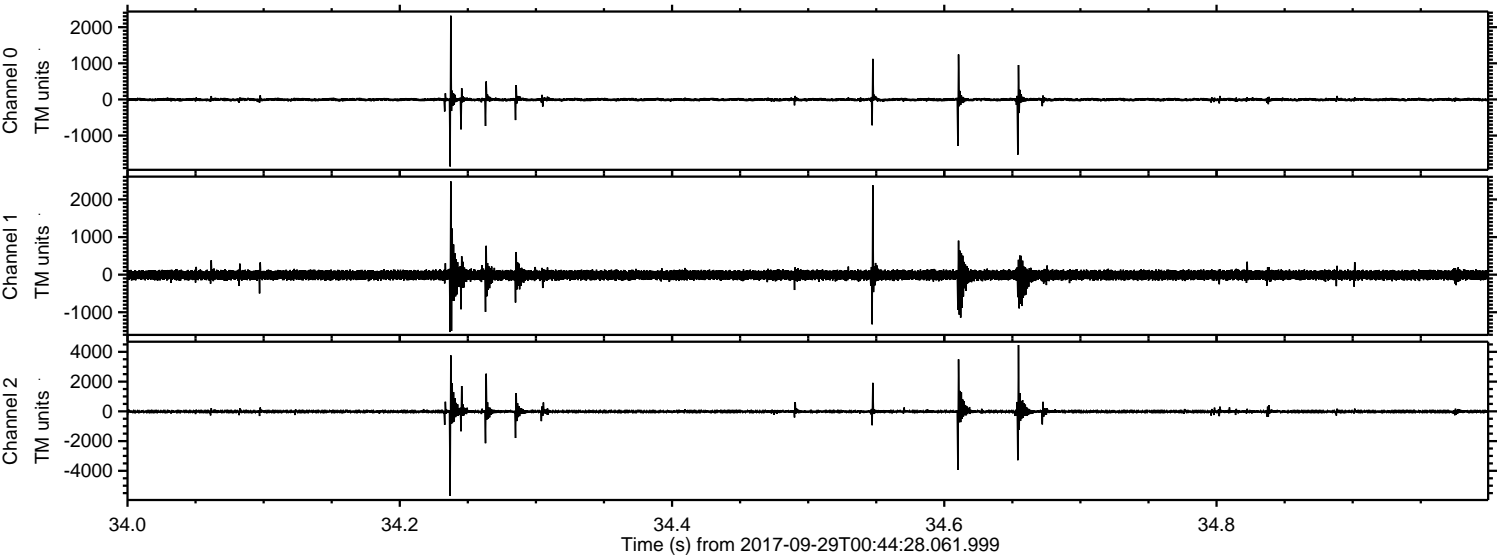
Channel 0
mn: -1758
mx: 4033
 μ : -5.0
 σ : 29.6

Channel 1
mn: -3617
mx: 3702
 μ : -11.9
 σ : 71.4

Channel 2
mn: -8206
mx: 5249
 μ : -14.2
 σ : 71.7

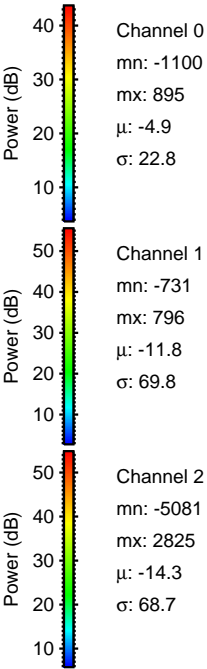
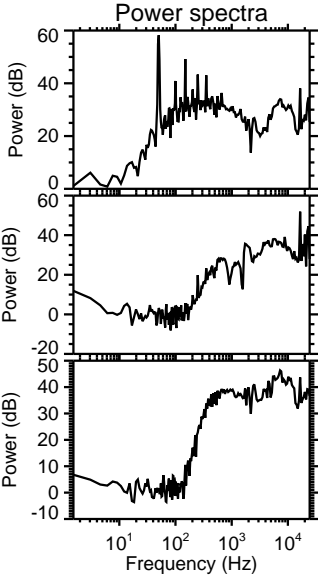
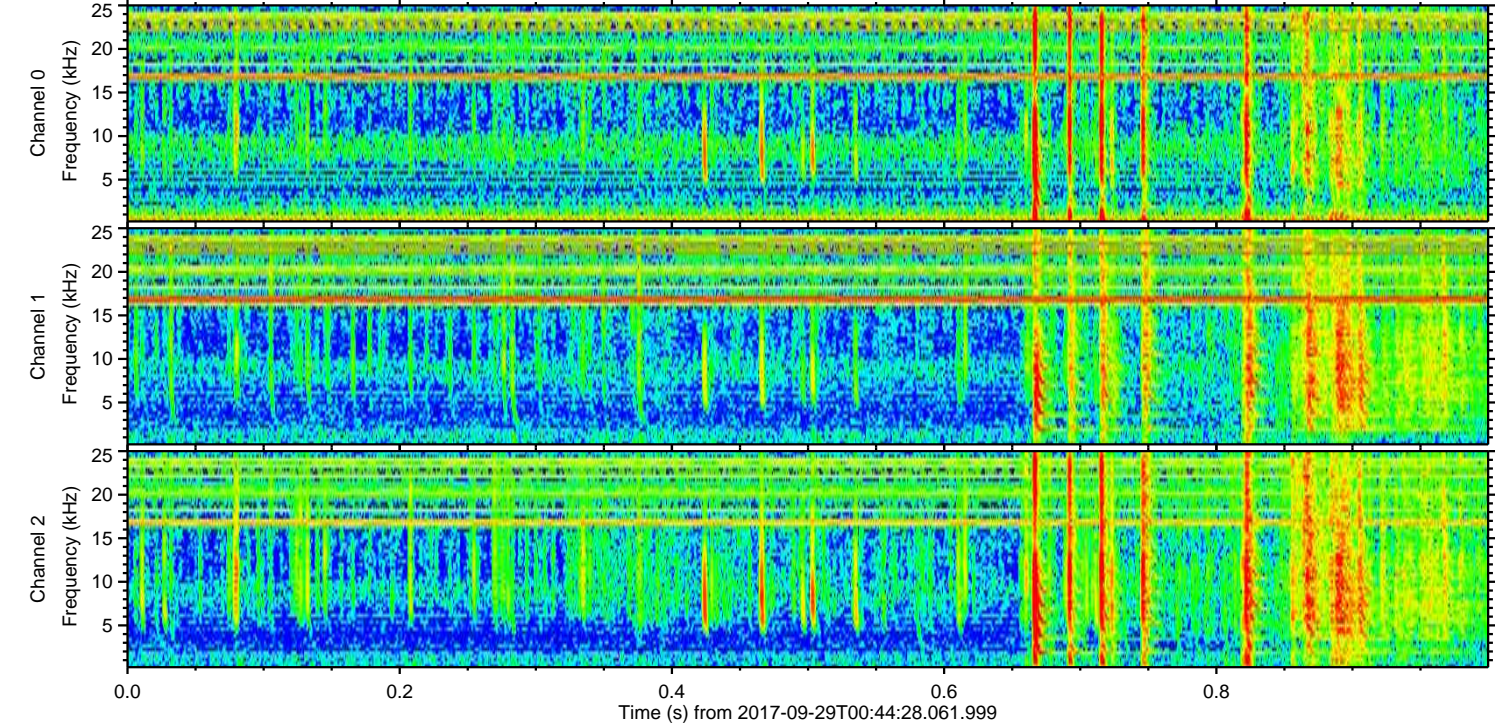
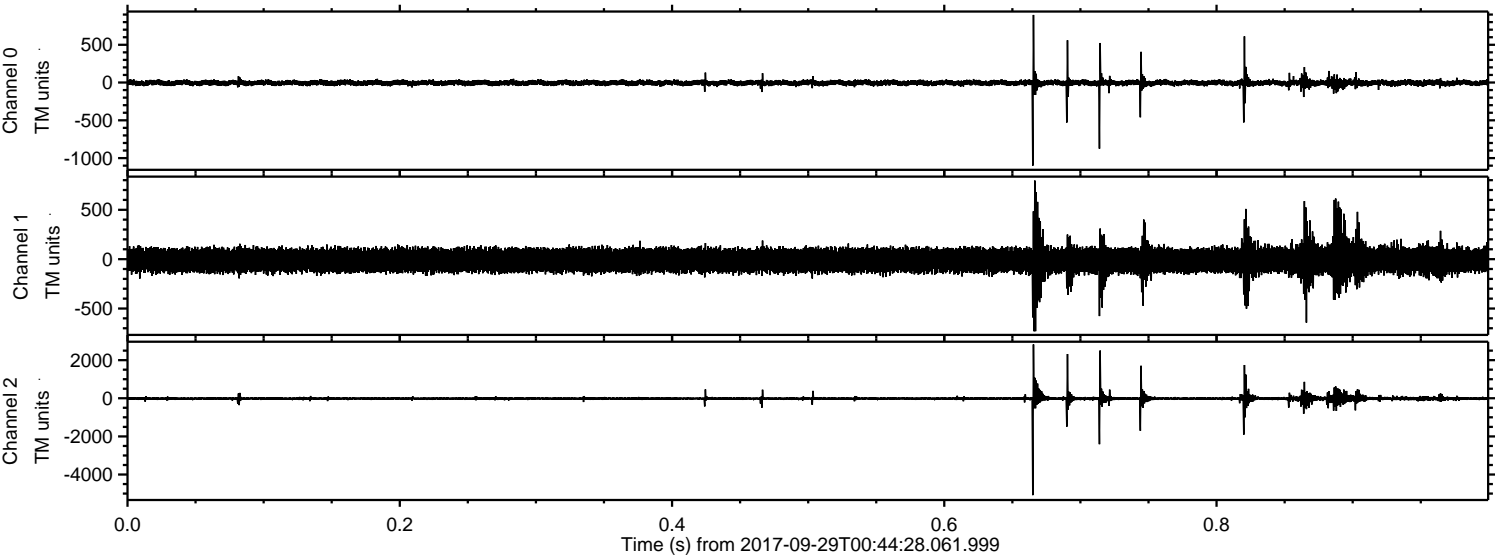
ELMAVAN 3D WAVEFORMS (Measured data sampled at 50 kHz) 51000 packets of 144 samples from 2017-09-29T00:44:28.061.999. Part 35/147

Processed Fri Sep 29 02:52:44 2017 by ELM ver.2012-10-06 from 001__elm20170929_004427__dat00.bin



ELMAVAN 3D WAVEFORMS (Measured data sampled at 50 kHz) 51000 packets of 144 samples from 2017-09-29T00:44:28.061.999. Part 1/147

Processed Fri Sep 29 02:52:45 2017 by ELM ver.2012-10-06 from 001__elm20170929_004427__dat00.bin

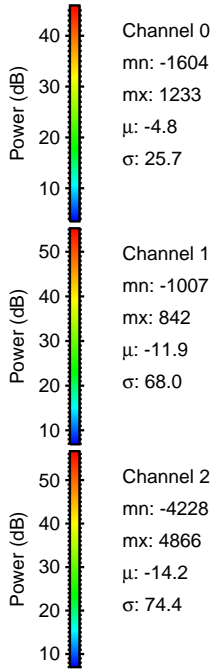
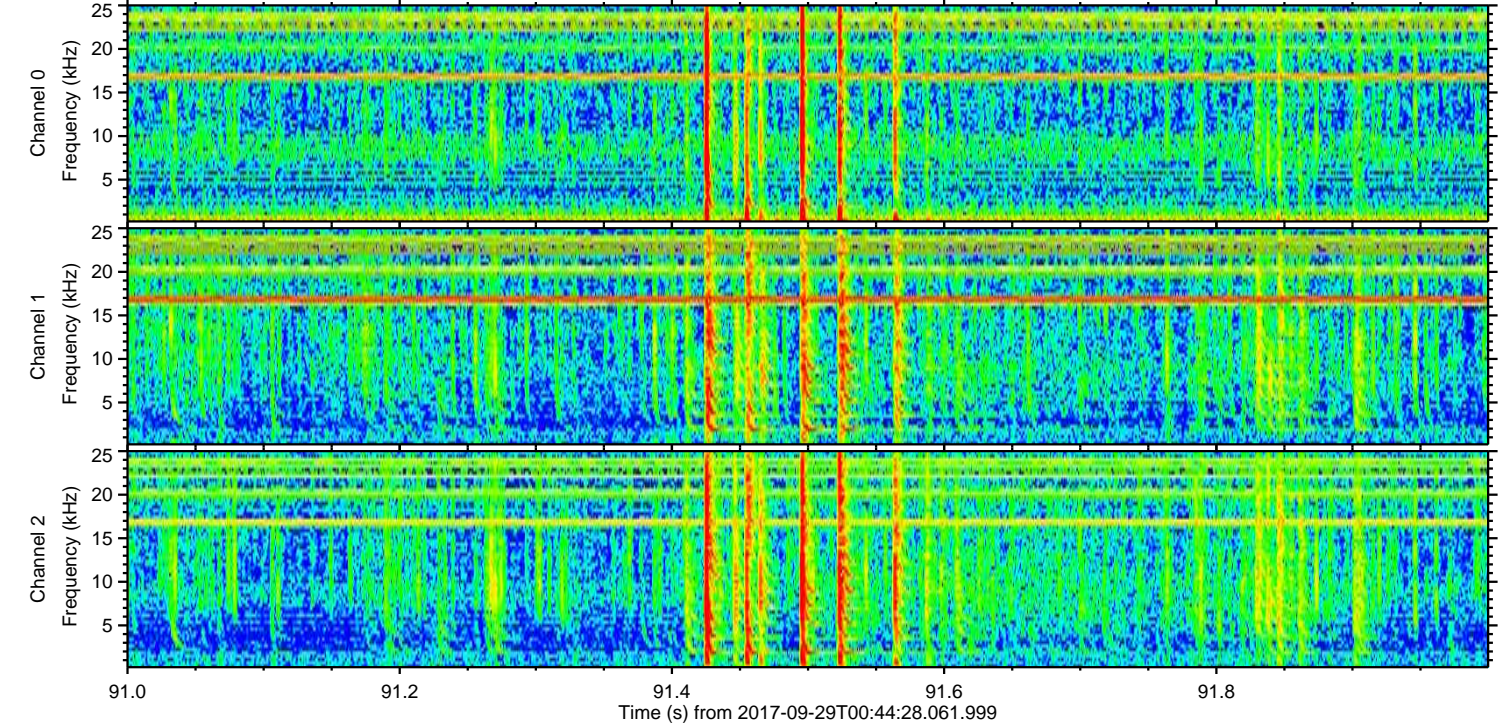
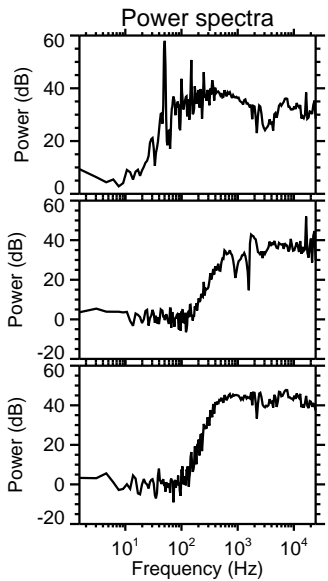
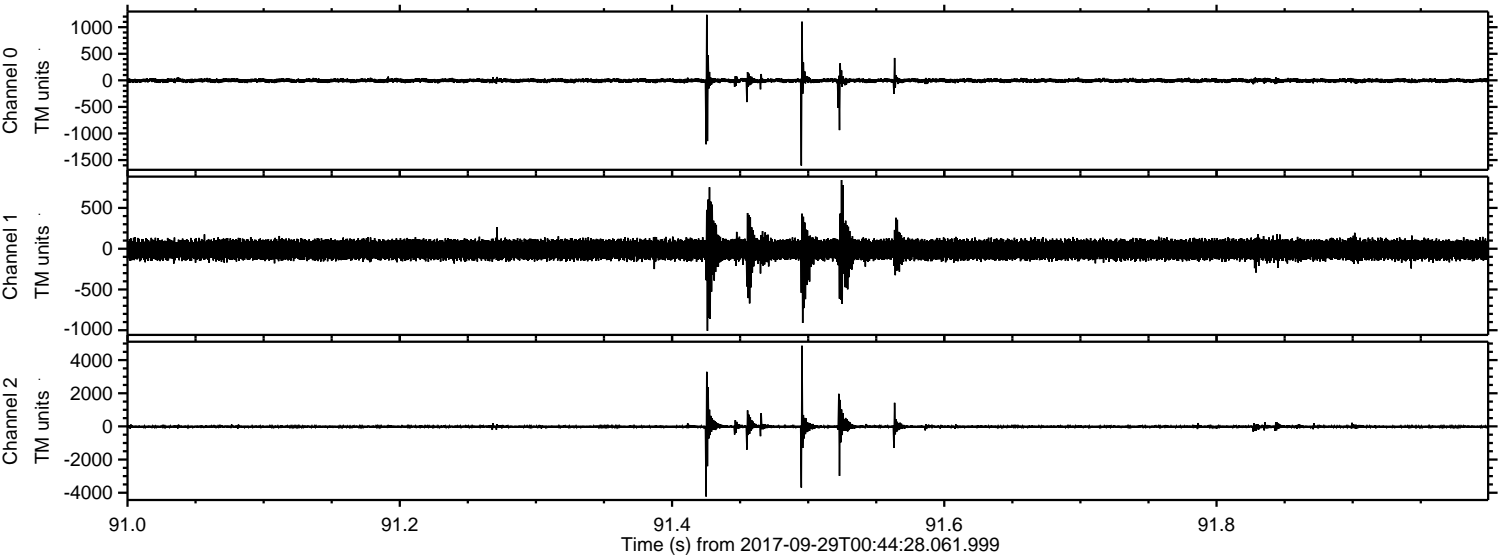


Channel 0
mn: -1100
mx: 895
 μ : -4.9
 σ : 22.8

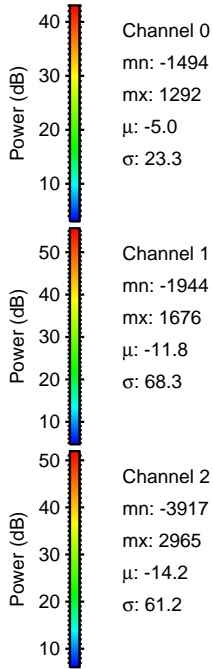
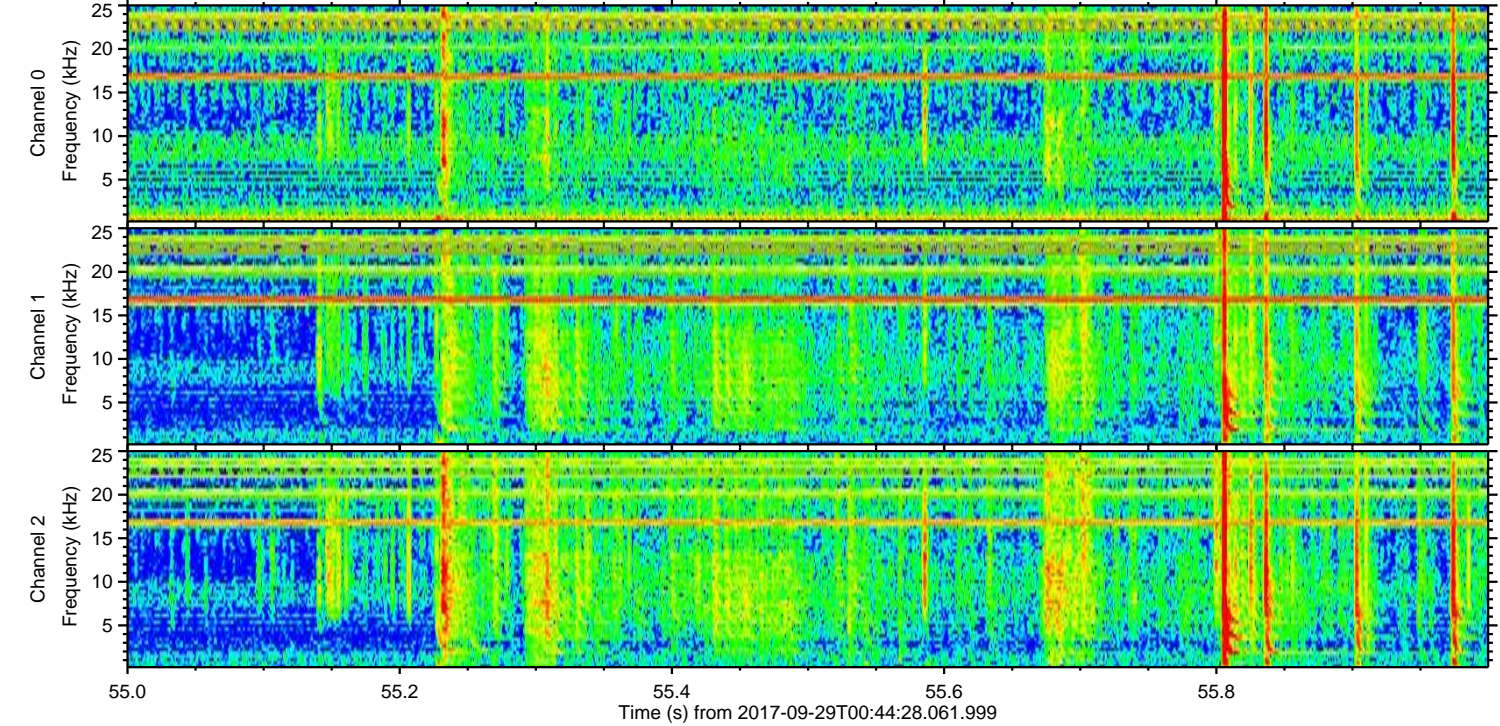
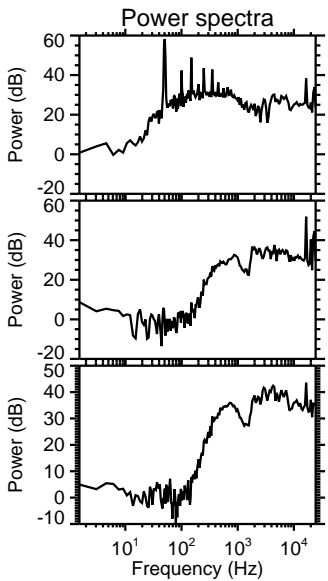
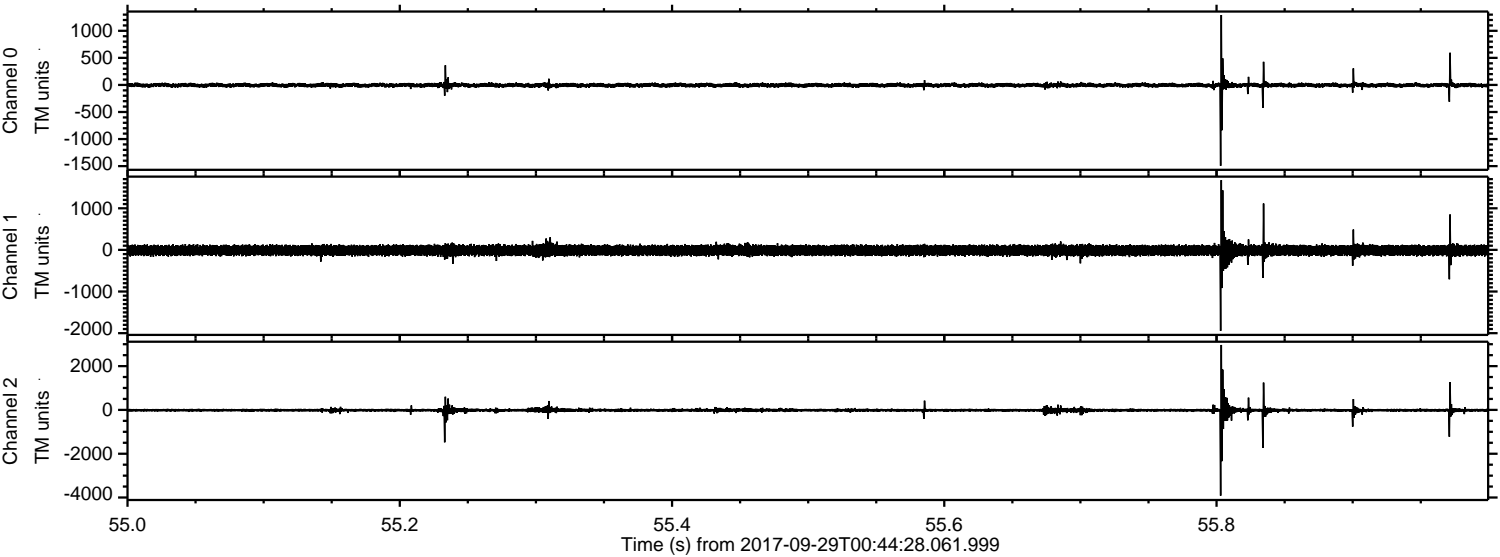
Channel 1
mn: -731
mx: 796
 μ : -11.8
 σ : 69.8

Channel 2
mn: -5081
mx: 2825
 μ : -14.3
 σ : 68.7

Processed Fri Sep 29 02:52:46 2017 by ELM ver.2012-10-06 from 001__elm20170929_004427__dat00.bin



Processed Fri Sep 29 02:52:47 2017 by ELM ver.2012-10-06 from 001__elm20170929_004427__dat00.bin

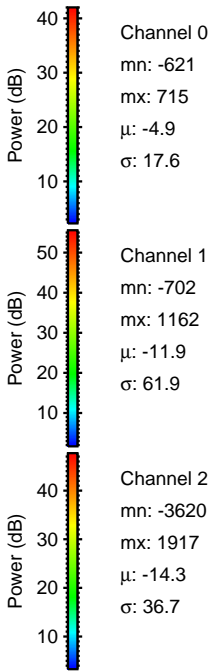
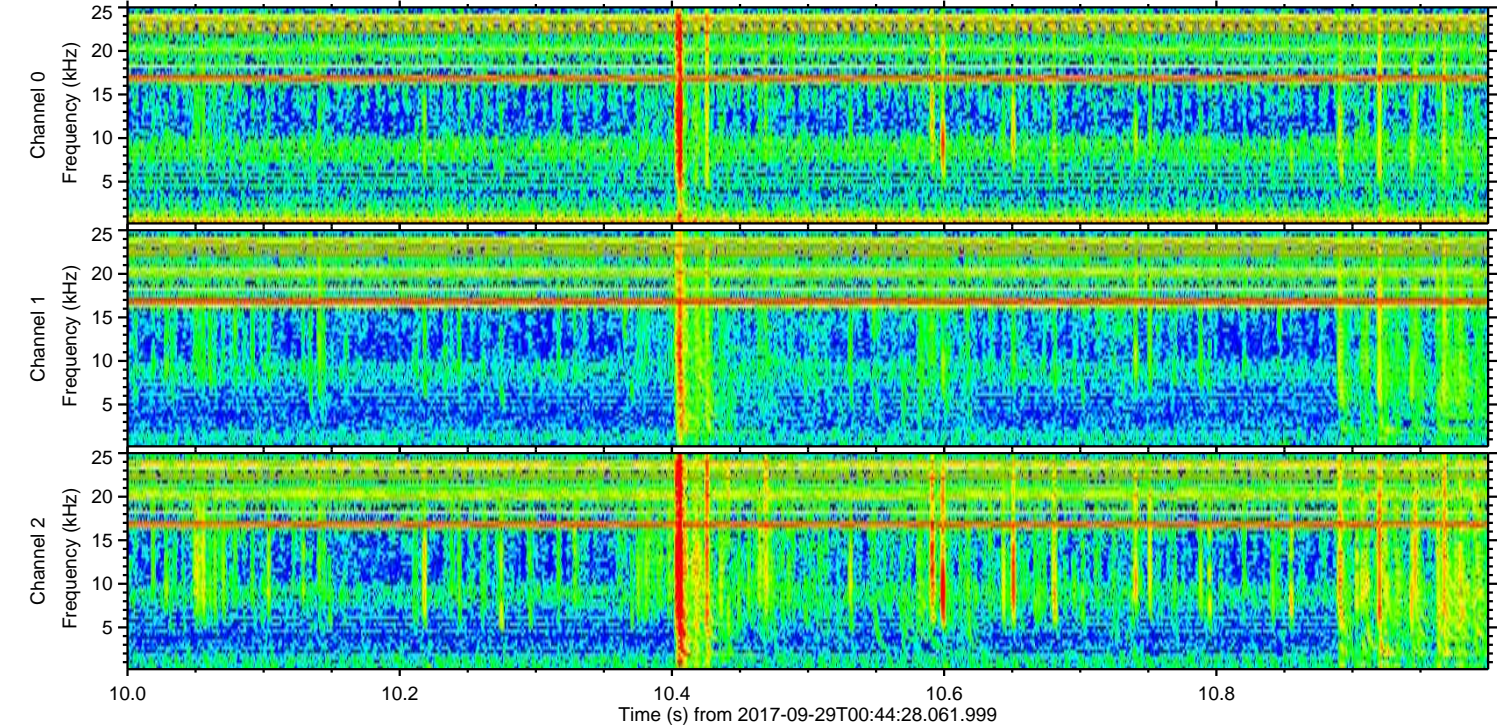
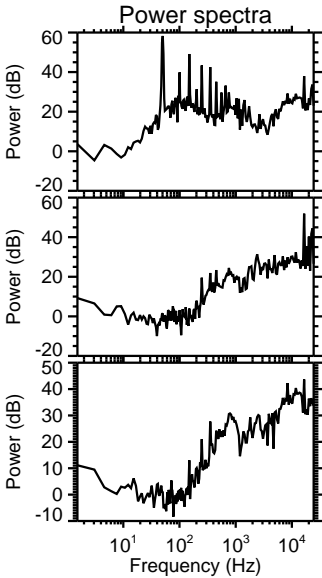
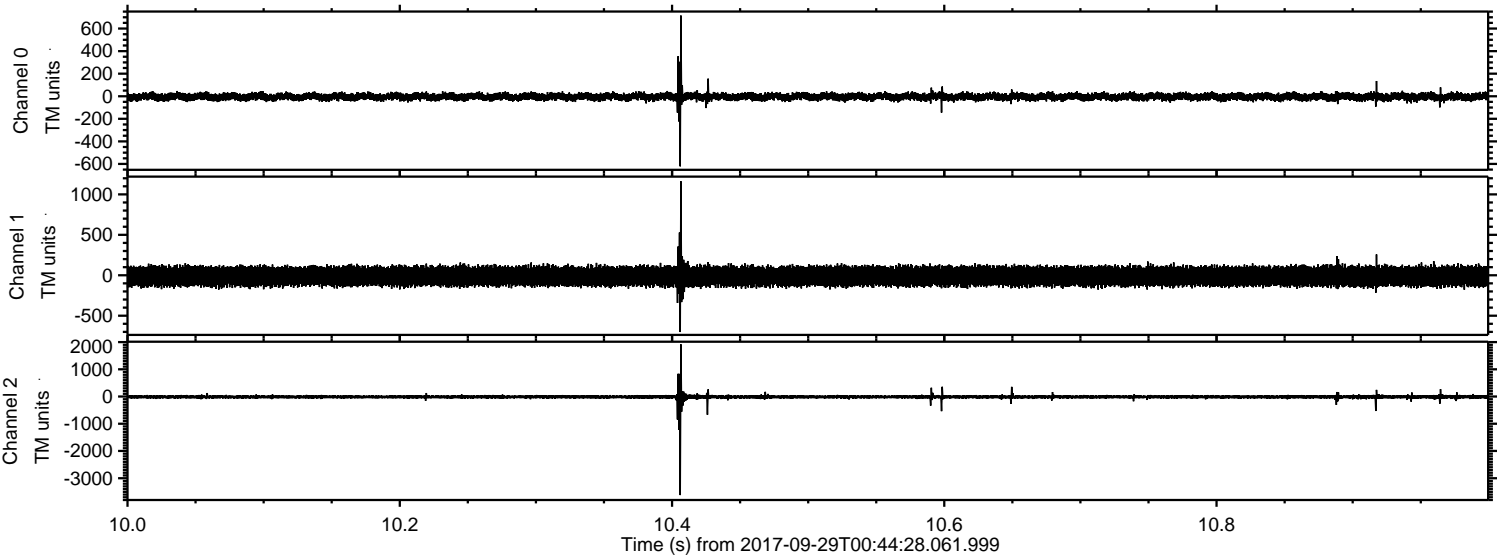


Channel 0
mn: -1494
mx: 1292
 μ : -5.0
 σ : 23.3

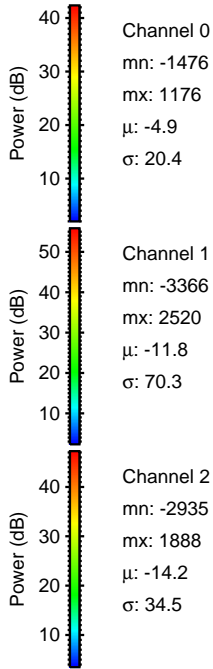
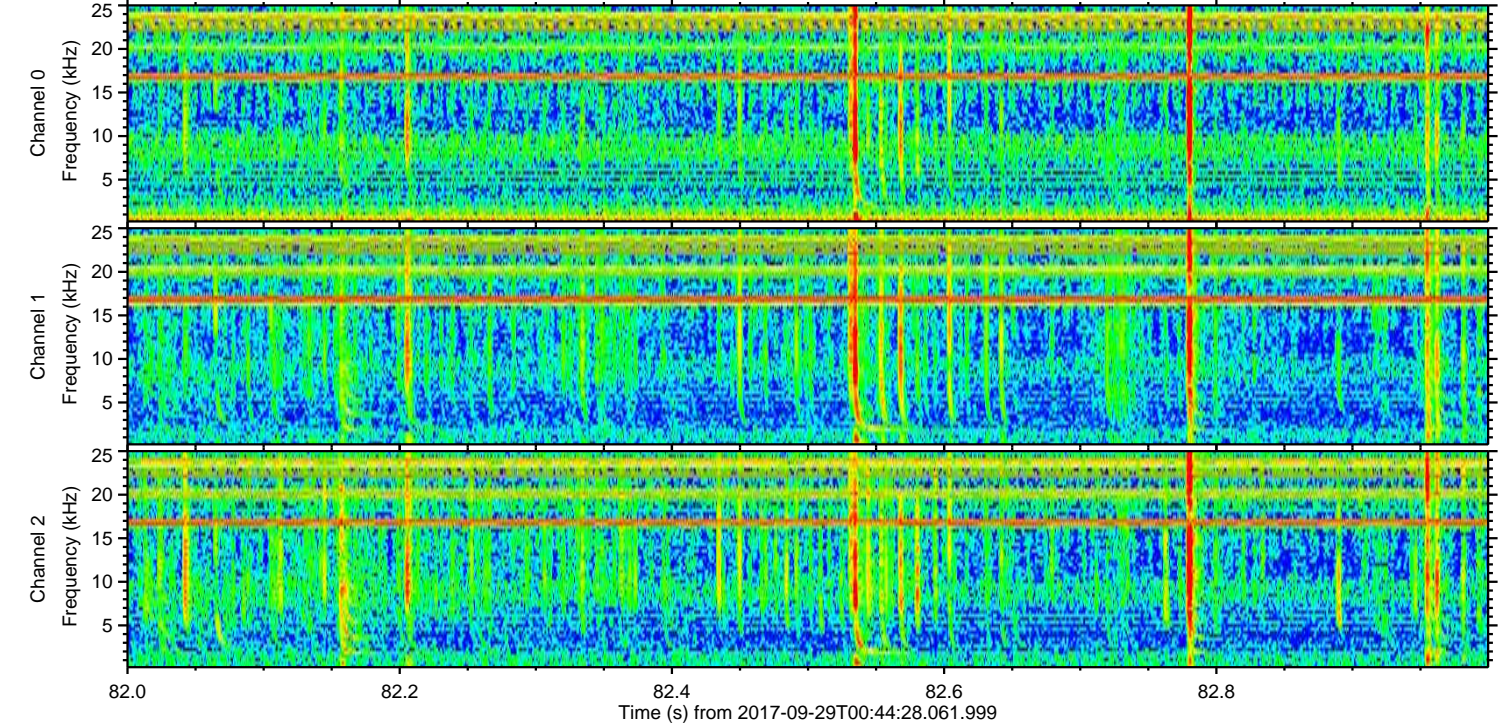
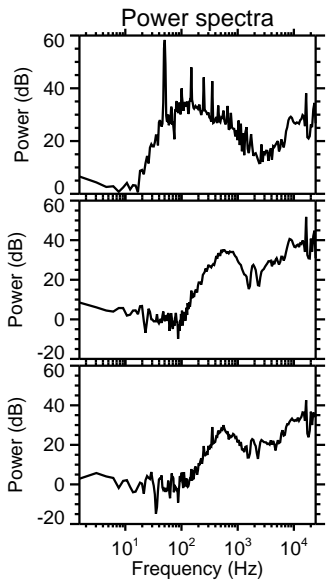
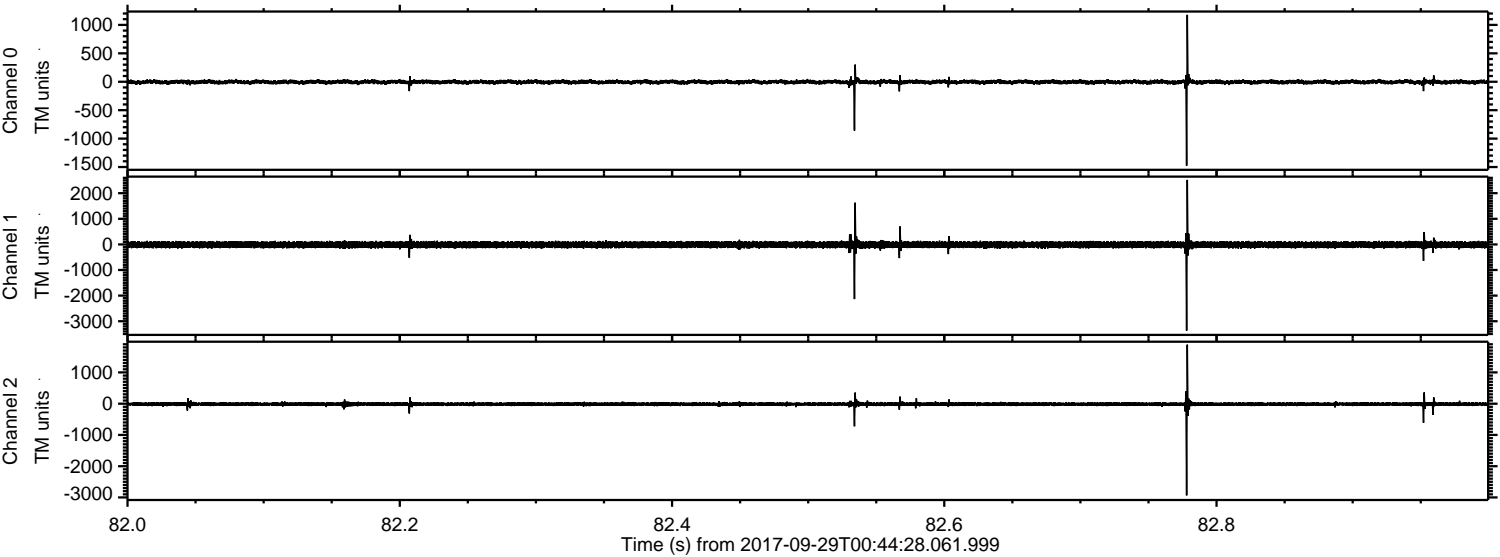
Channel 1
mn: -1944
mx: 1676
 μ : -11.8
 σ : 68.3

Channel 2
mn: -3917
mx: 2965
 μ : -14.2
 σ : 61.2

Processed Fri Sep 29 02:52:48 2017 by ELM ver.2012-10-06 from 001__elm20170929_004427__dat00.bin



Processed Fri Sep 29 02:52:48 2017 by ELM ver.2012-10-06 from 001__elm20170929_004427__dat00.bin



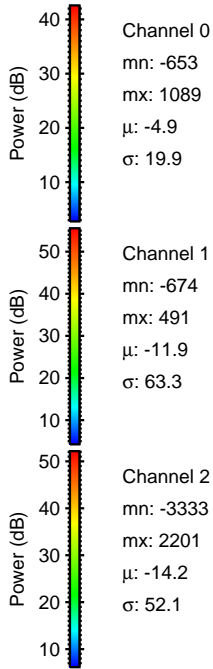
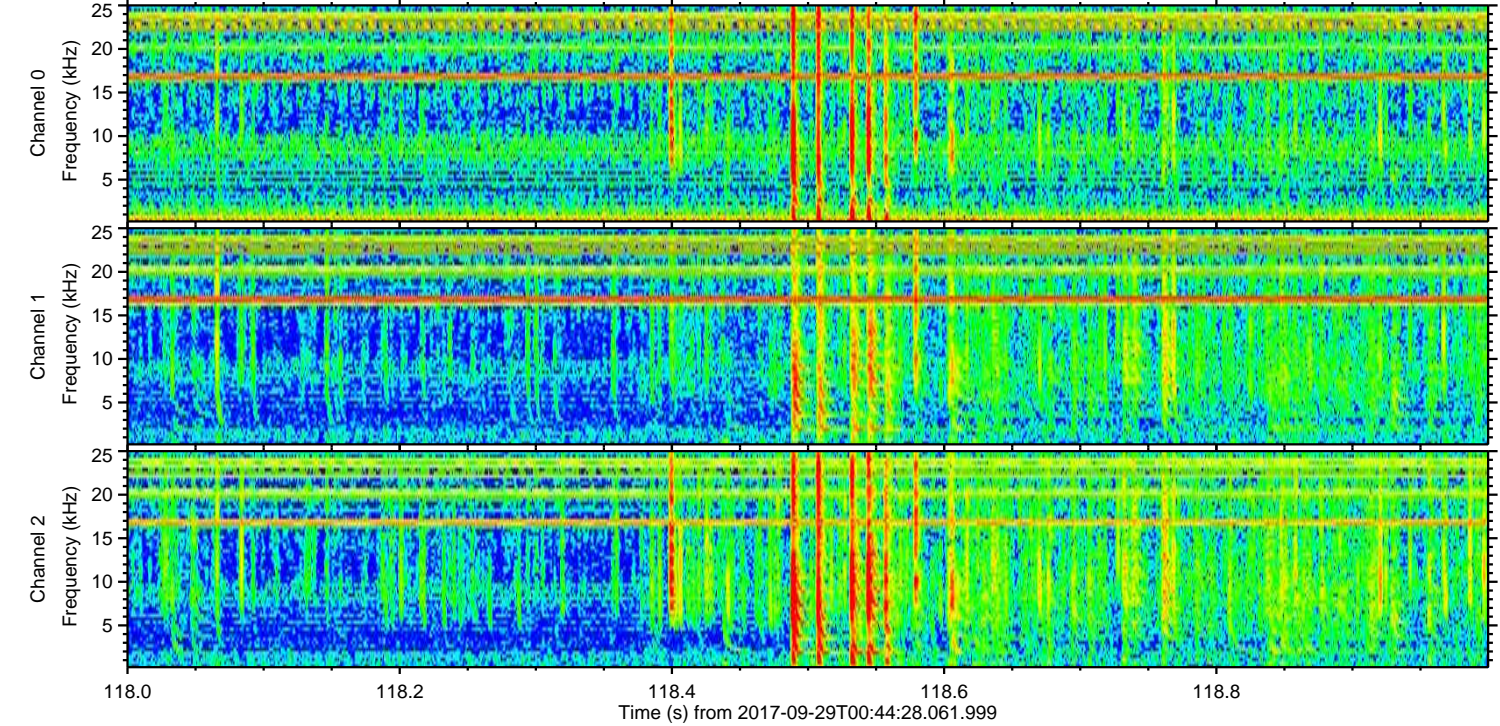
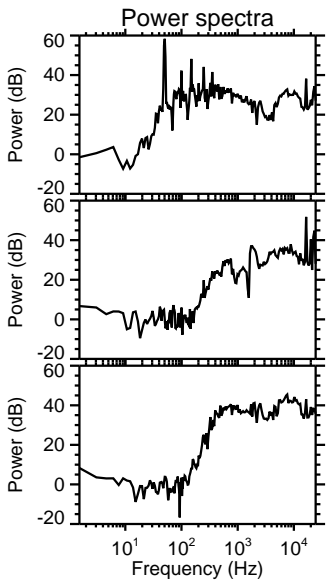
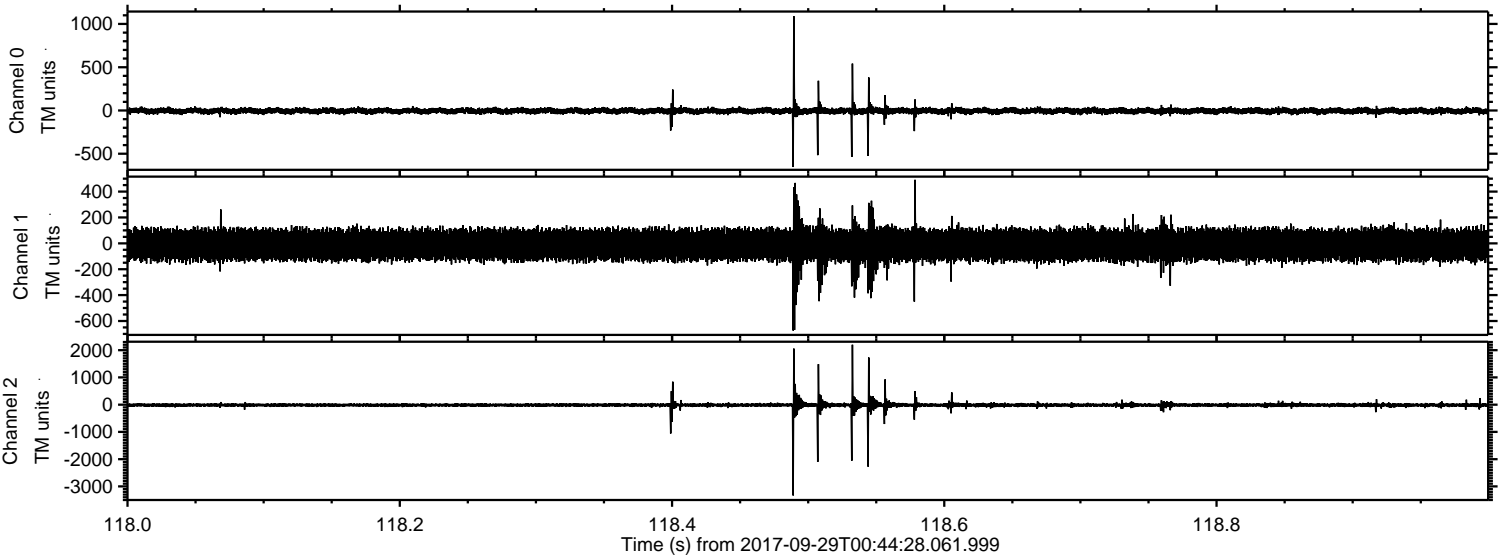
Channel 0
mn: -1476
mx: 1176
 μ : -4.9
 σ : 20.4

Channel 1
mn: -3366
mx: 2520
 μ : -11.8
 σ : 70.3

Channel 2
mn: -2935
mx: 1888
 μ : -14.2
 σ : 34.5

ELMAVAN 3D WAVEFORMS (Measured data sampled at 50 kHz) 51000 packets of 144 samples from 2017-09-29T00:44:28.061.999. Part 119/147

Processed Fri Sep 29 02:52:49 2017 by ELM ver.2012-10-06 from 001__elm20170929_004427__dat00.bin



Channel 0
mn: -653
mx: 1089
 μ : -4.9
 σ : 19.9

Channel 1
mn: -674
mx: 491
 μ : -11.9
 σ : 63.3

Channel 2
mn: -3333
mx: 2201
 μ : -14.2
 σ : 52.1

