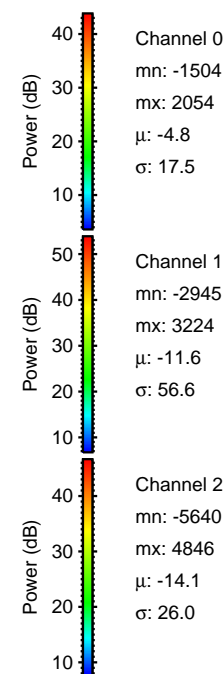
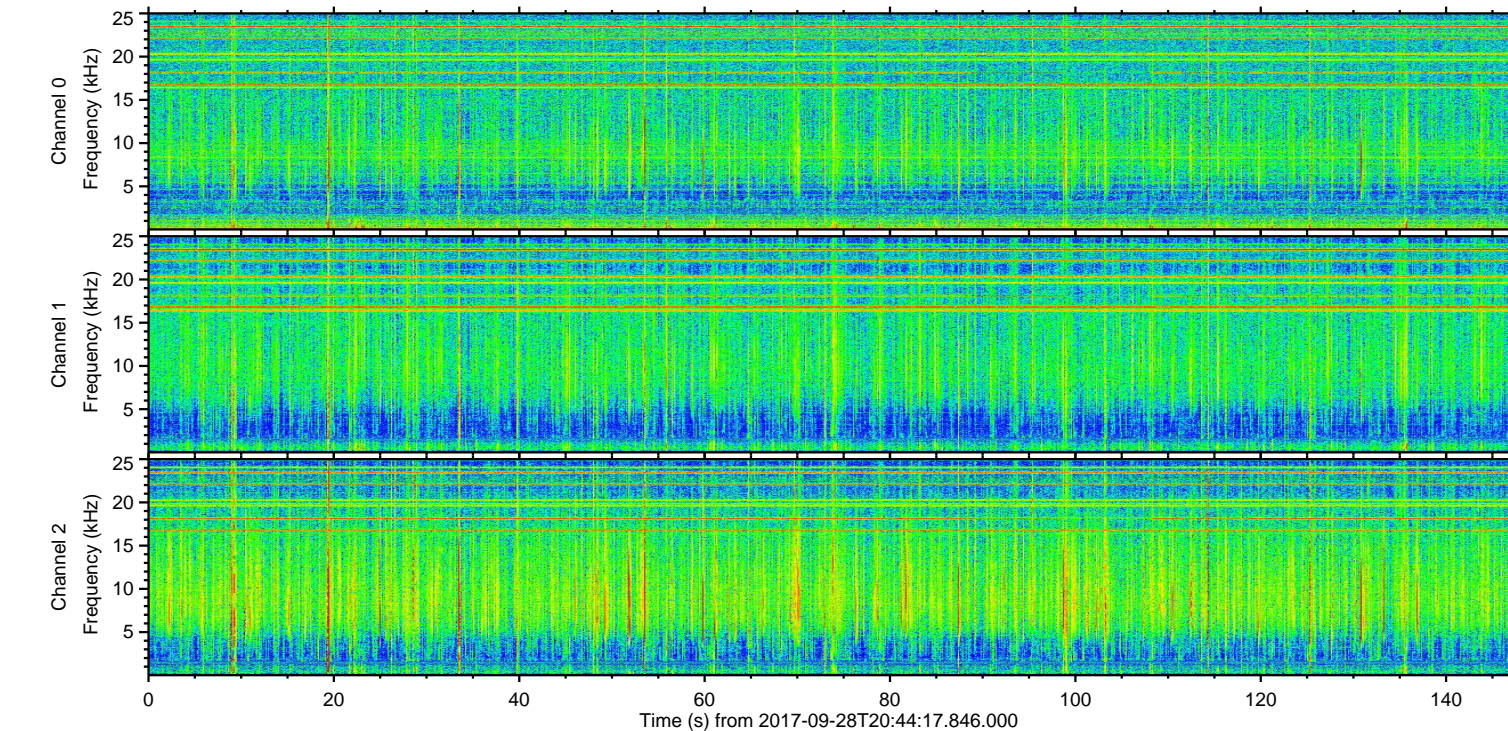
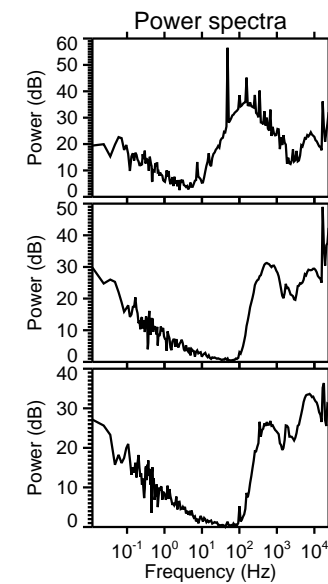
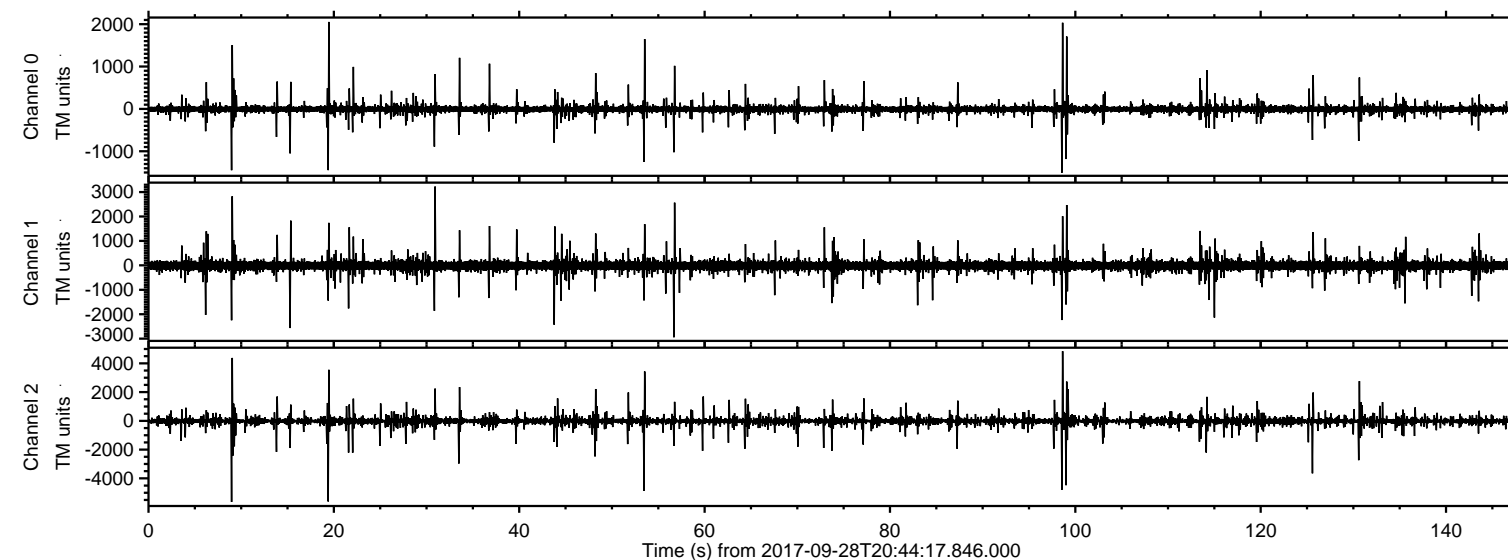


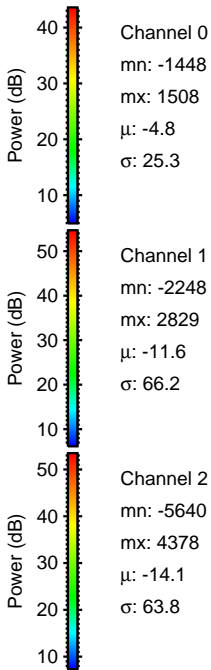
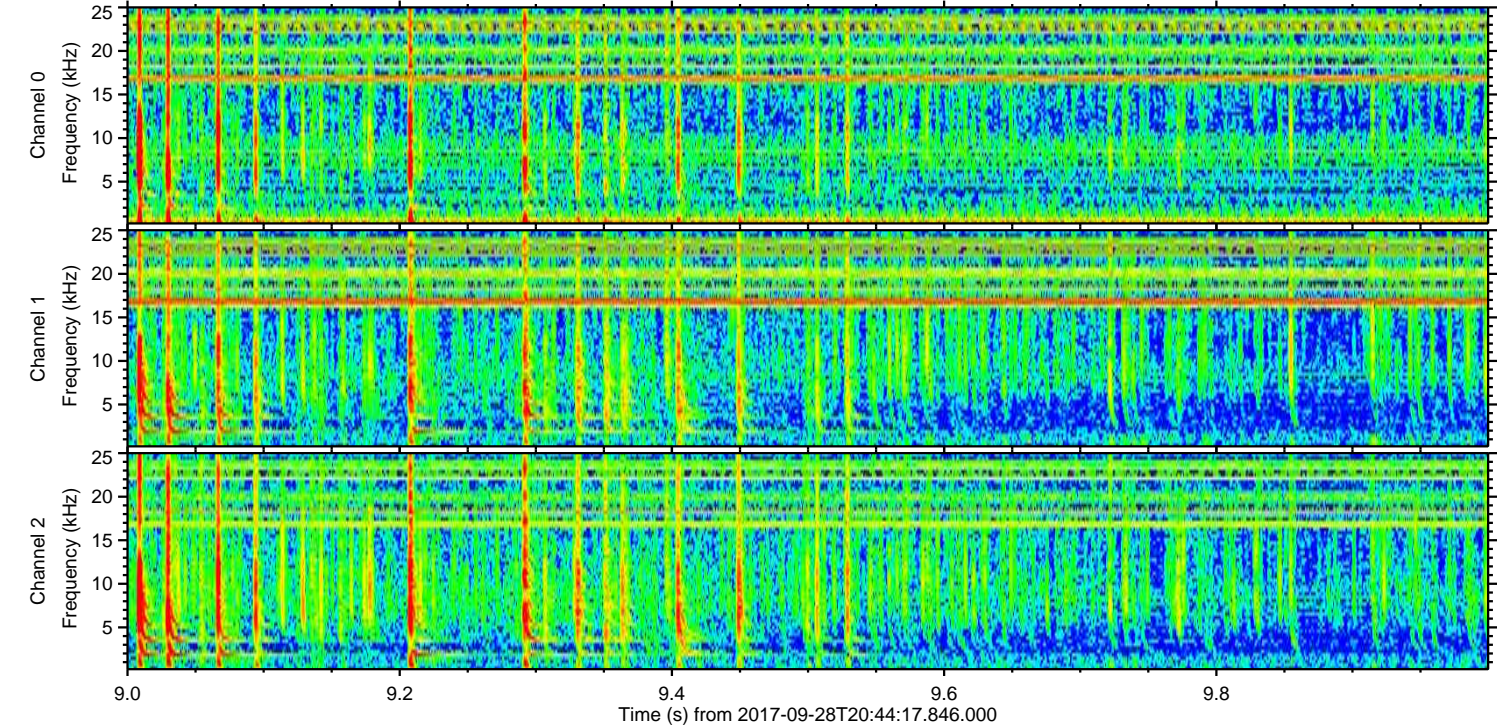
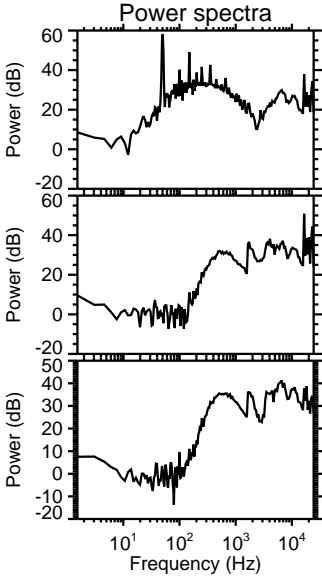
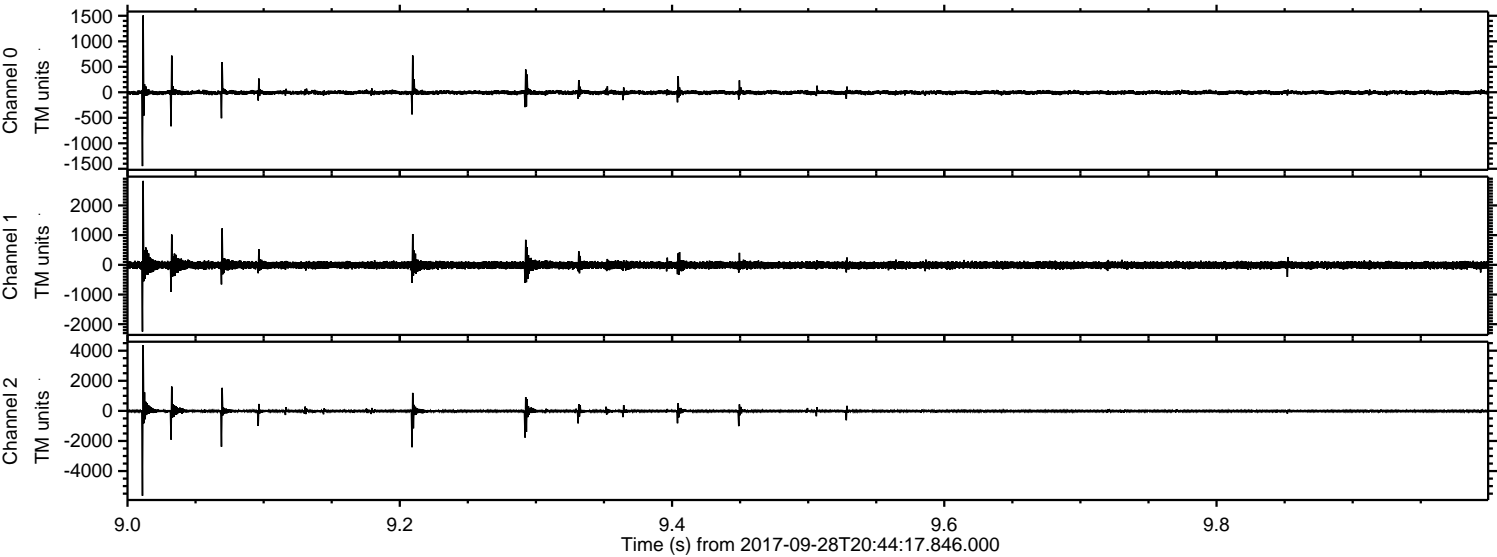
ELMAVAN 3D WAVEFORMS (Measured data sampled at 50 kHz) 51000 packets of 144 samples from 2017-09-28T20:44:17.846.000.

Processed Thu Sep 28 22:52:19 2017 by ELM ver.2012-10-06 from 001\_\_elm20170928\_204416\_\_dat00.bin





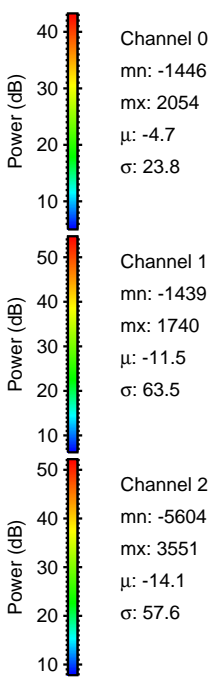
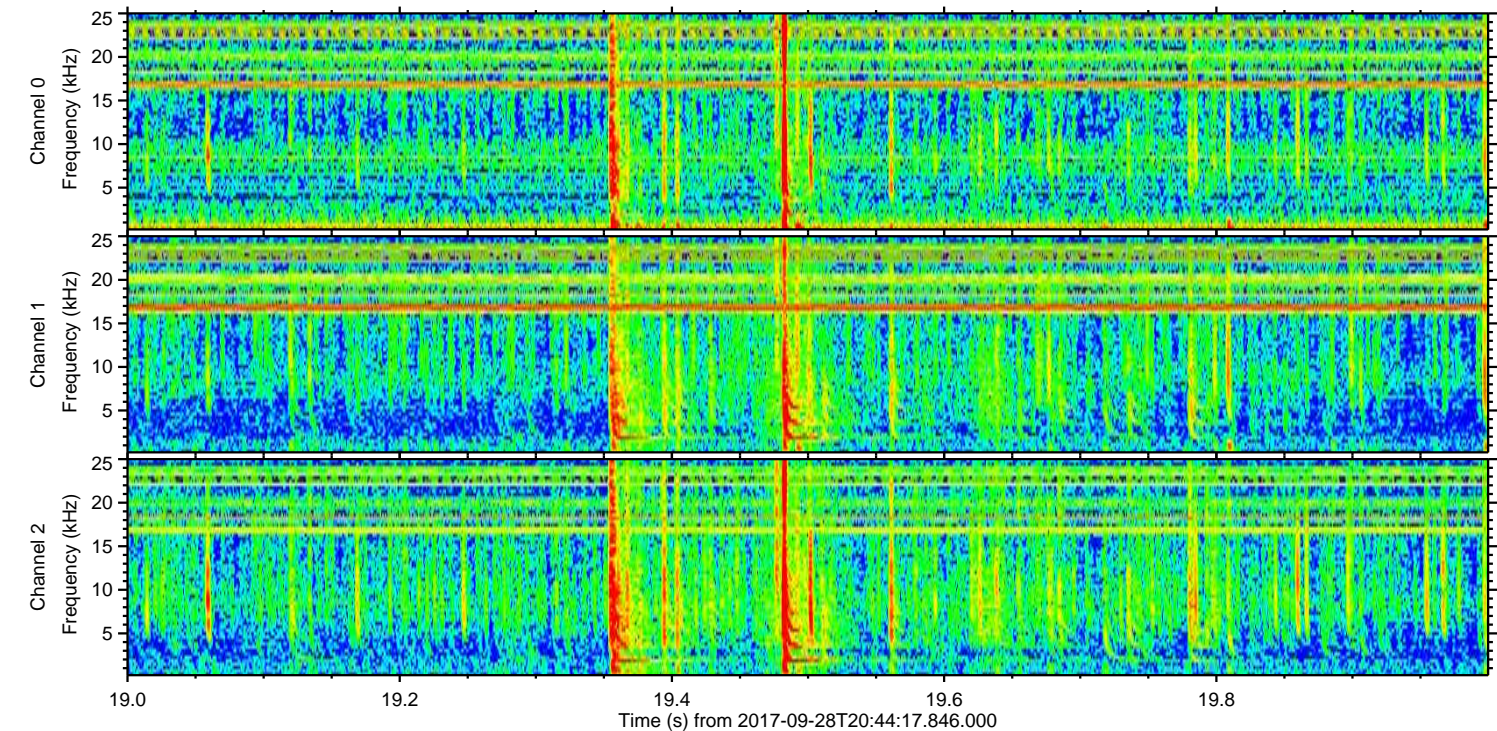
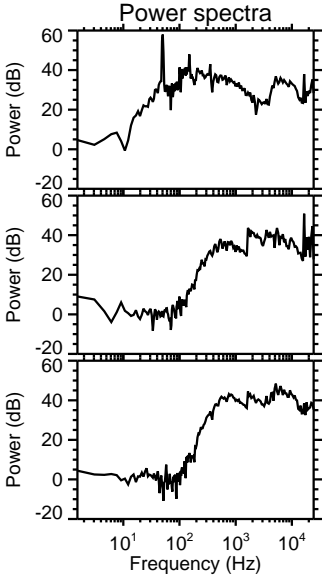
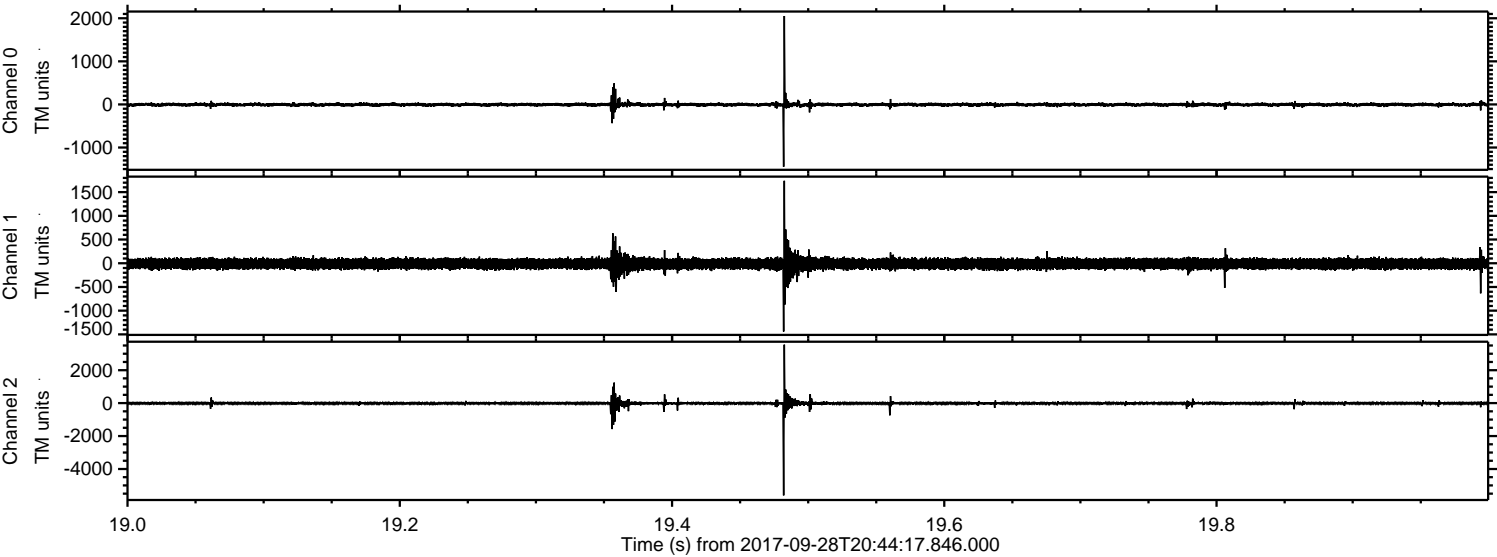
Processed Thu Sep 28 22:52:26 2017 by ELM ver.2012-10-06 from 001\_\_elm20170928\_204416\_\_dat00.bin





ELMAVAN 3D WAVEFORMS (Measured data sampled at 50 kHz) 51000 packets of 144 samples from 2017-09-28T20:44:17.846.000. Part 20/147

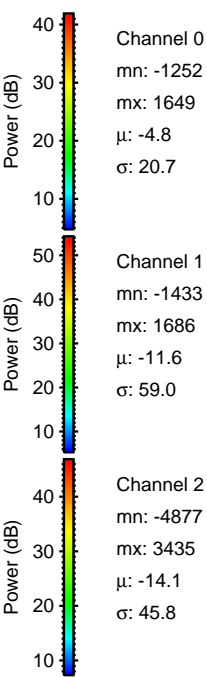
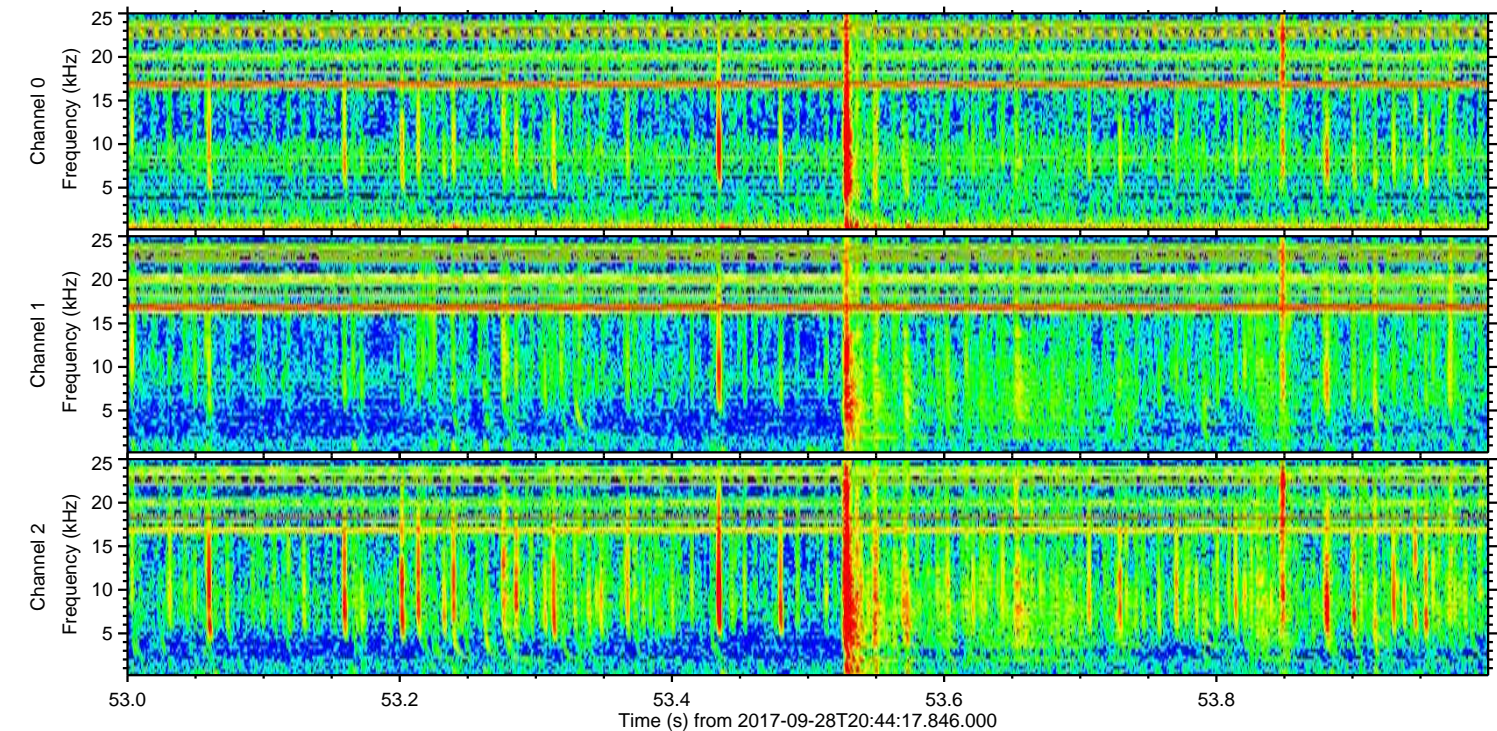
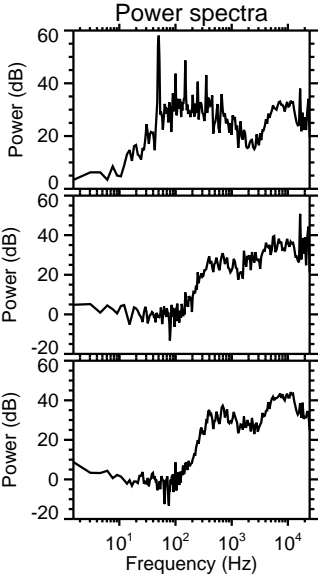
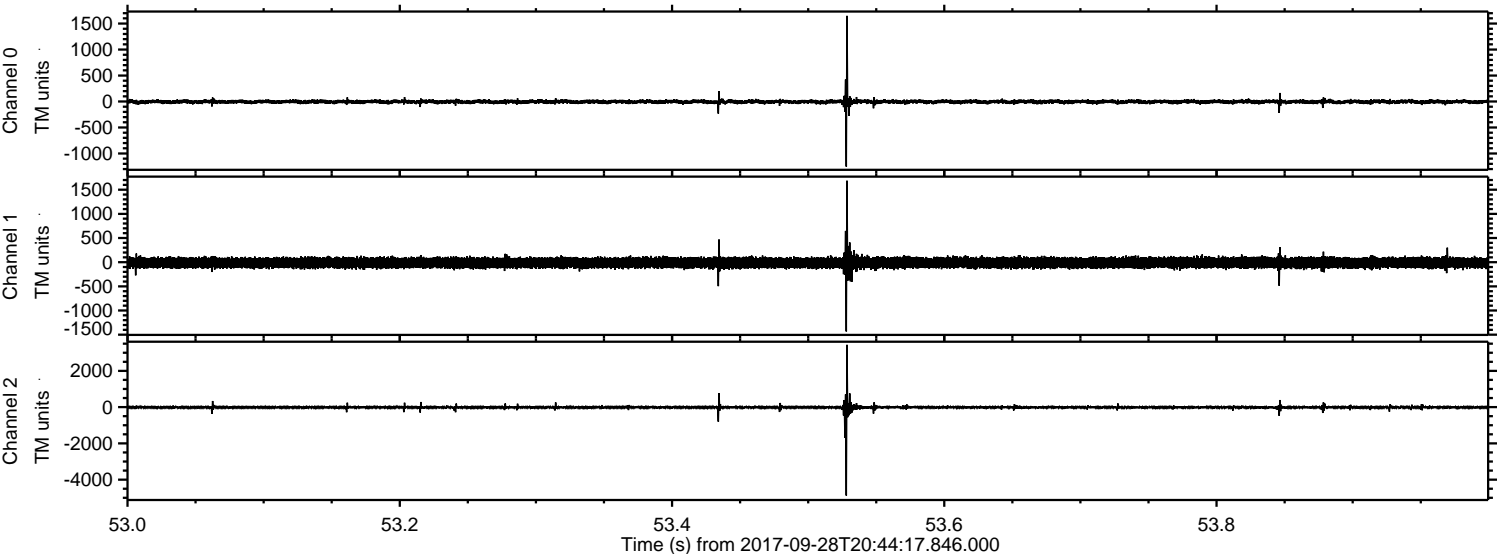
Processed Thu Sep 28 22:52:26 2017 by ELM ver.2012-10-06 from 001\_\_elm20170928\_204416\_\_dat00.bin





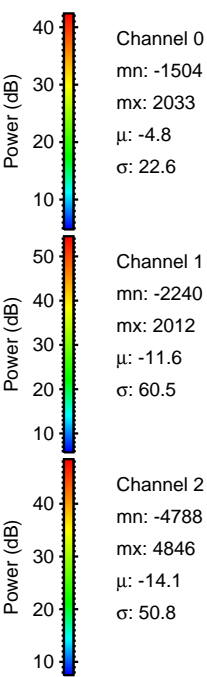
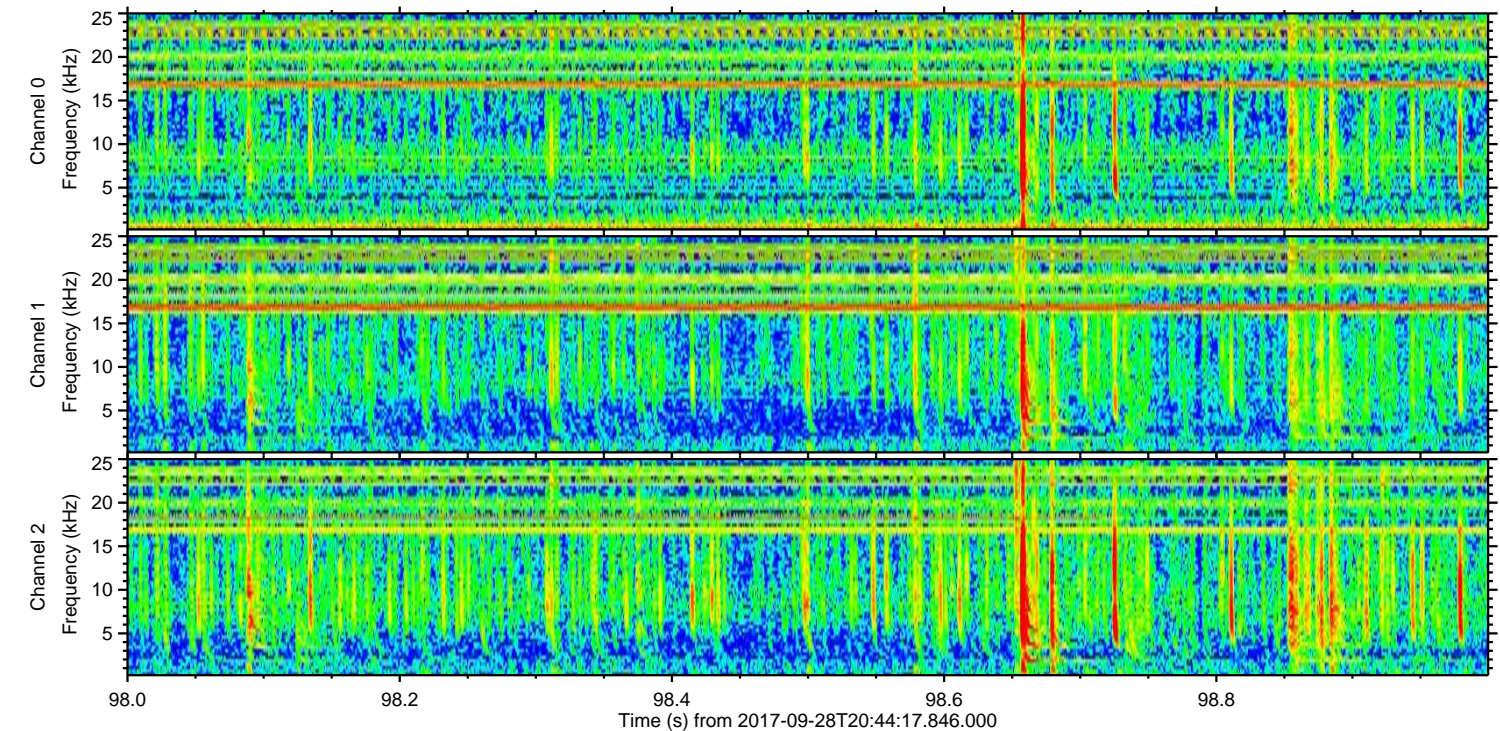
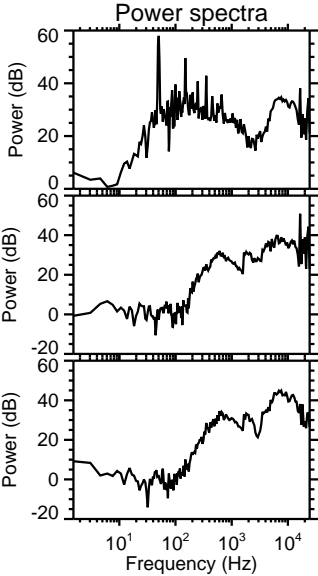
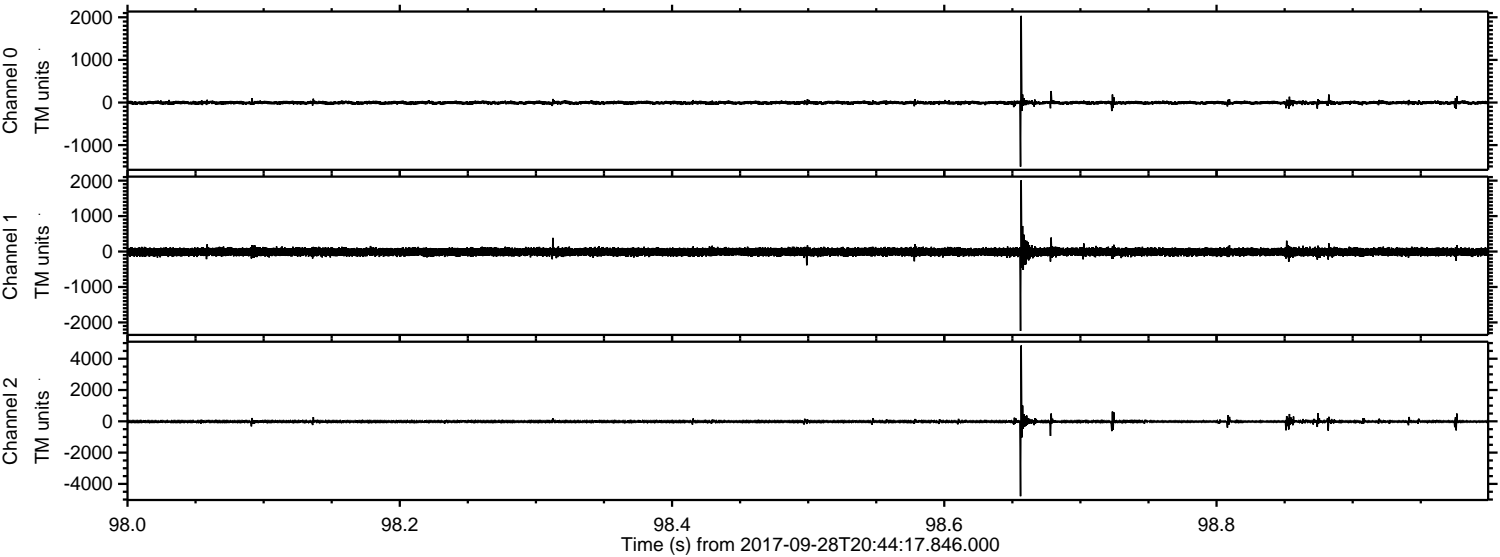
ELMAVAN 3D WAVEFORMS (Measured data sampled at 50 kHz) 51000 packets of 144 samples from 2017-09-28T20:44:17.846.000. Part 54/147

Processed Thu Sep 28 22:52:27 2017 by ELM ver.2012-10-06 from 001\_\_elm20170928\_204416\_\_dat00.bin





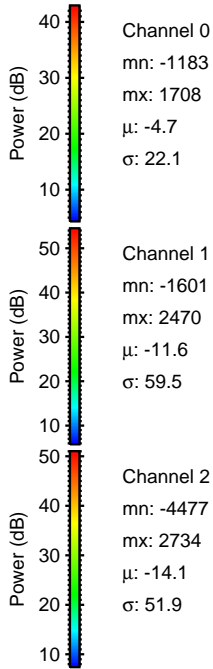
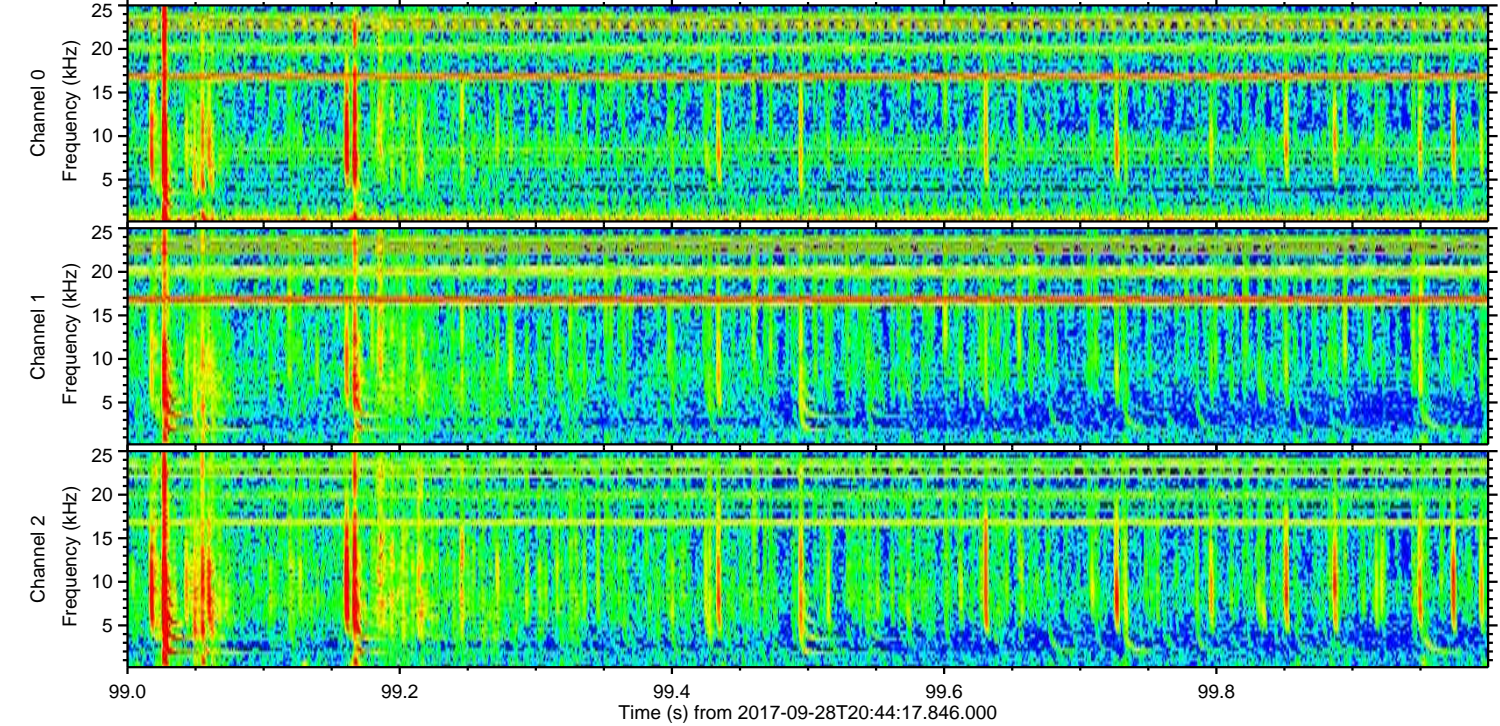
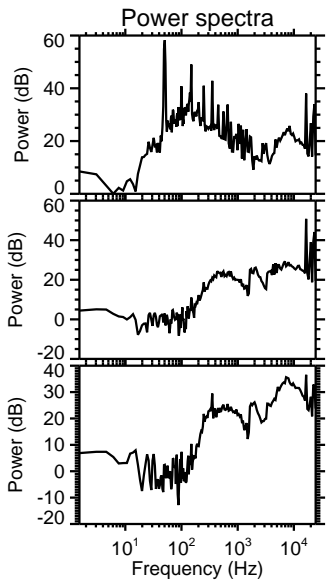
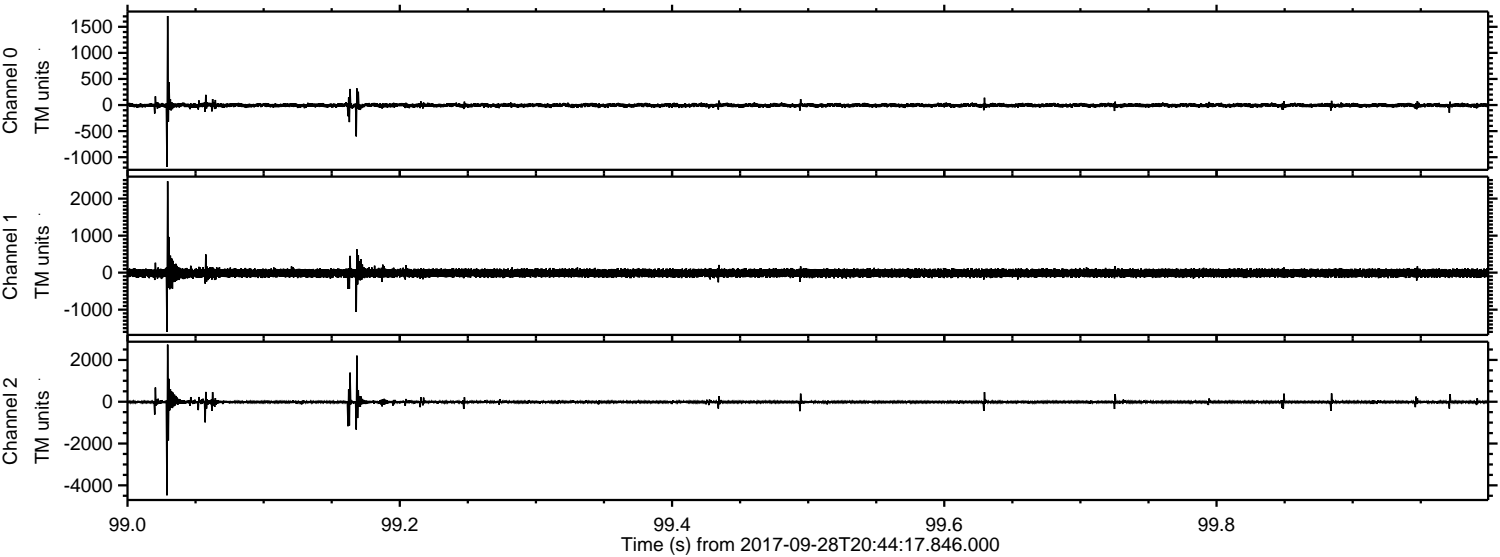
Processed Thu Sep 28 22:52:28 2017 by ELM ver.2012-10-06 from 001\_\_elm20170928\_204416\_\_dat00.bin





ELMAVAN 3D WAVEFORMS (Measured data sampled at 50 kHz) 51000 packets of 144 samples from 2017-09-28T20:44:17.846.000. Part 100/147

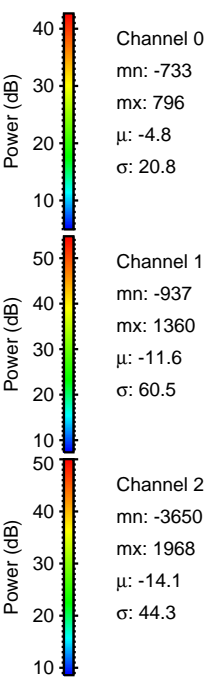
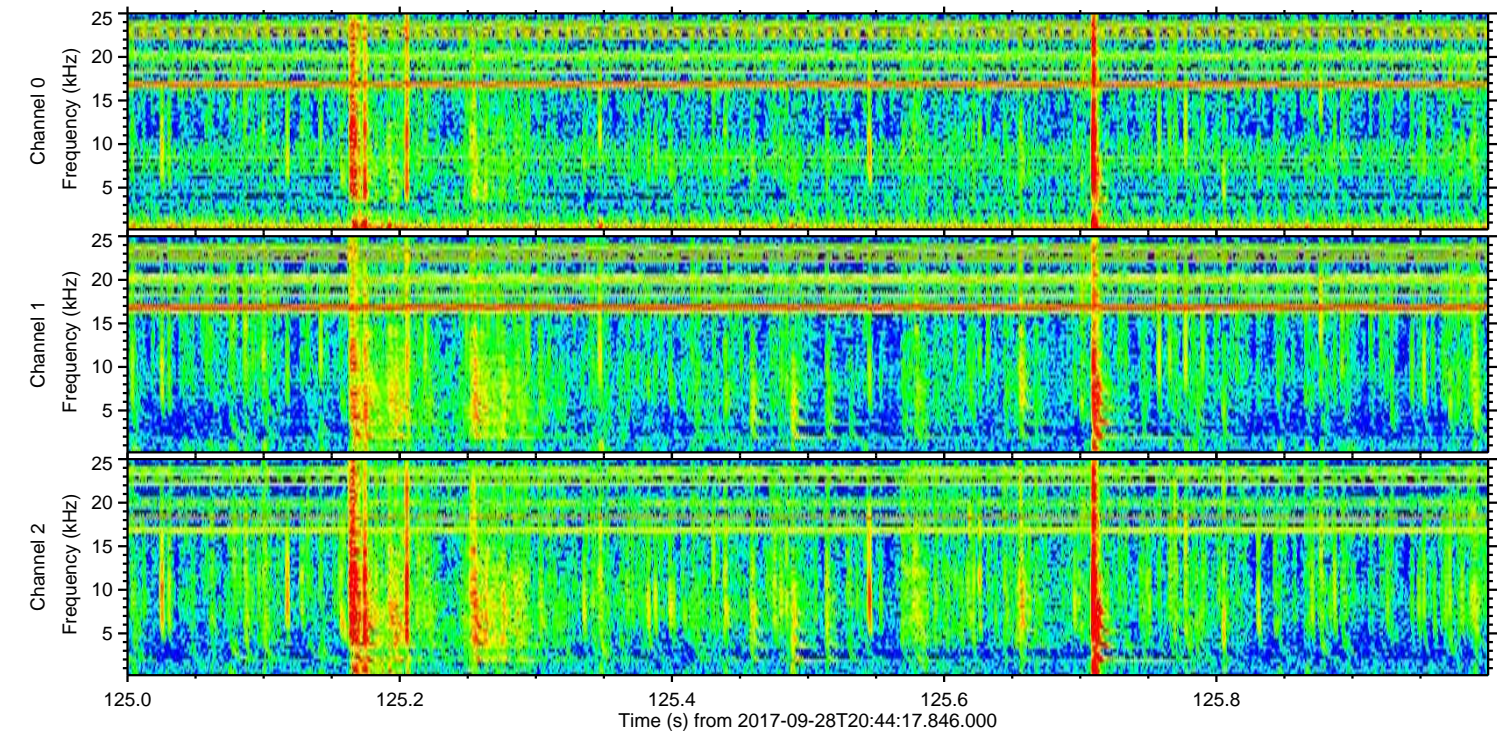
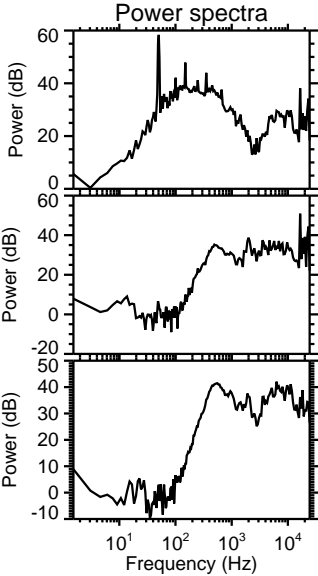
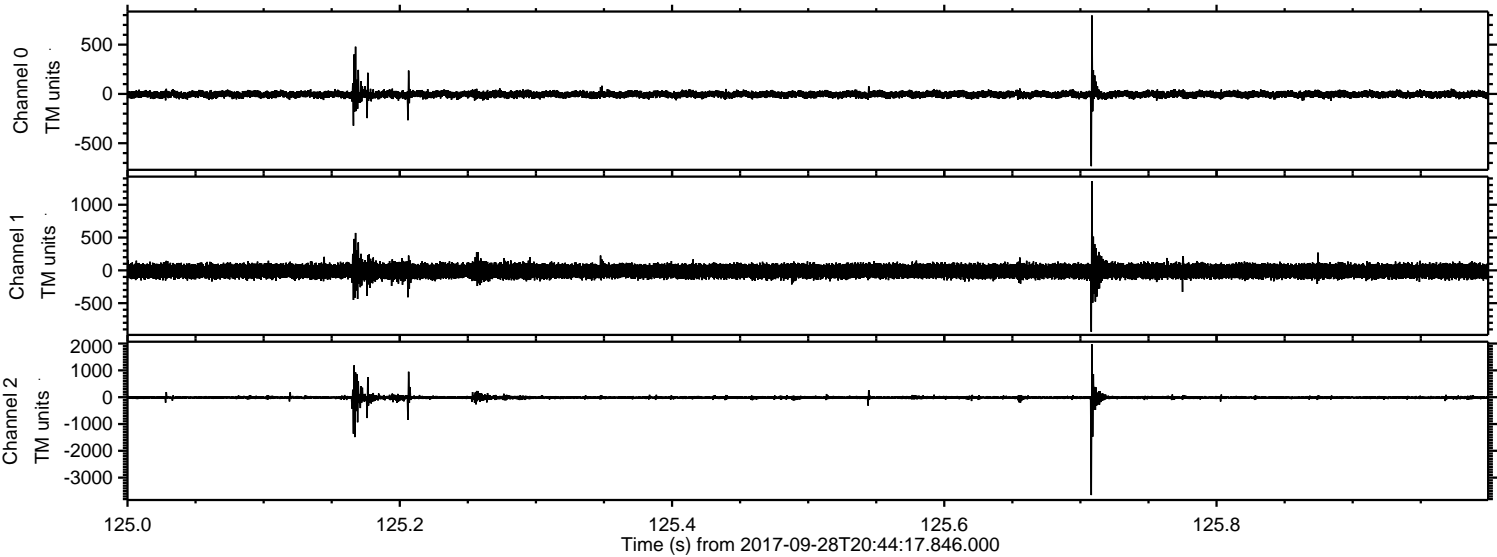
Processed Thu Sep 28 22:52:29 2017 by ELM ver.2012-10-06 from 001\_\_elm20170928\_204416\_\_dat00.bin





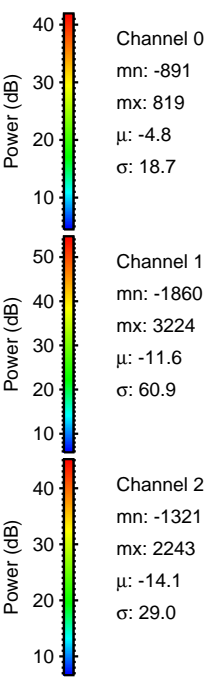
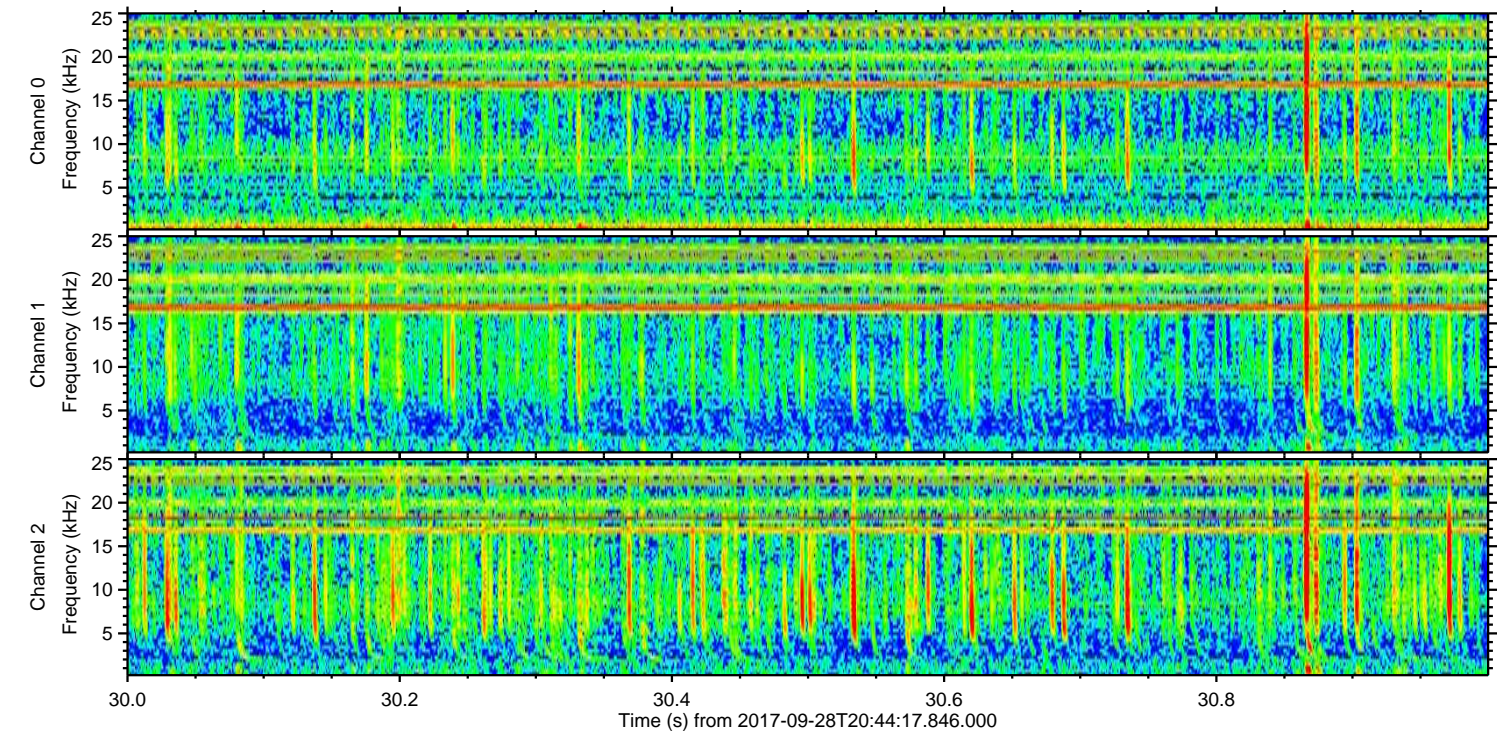
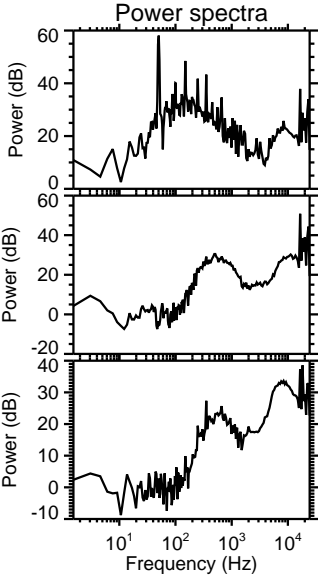
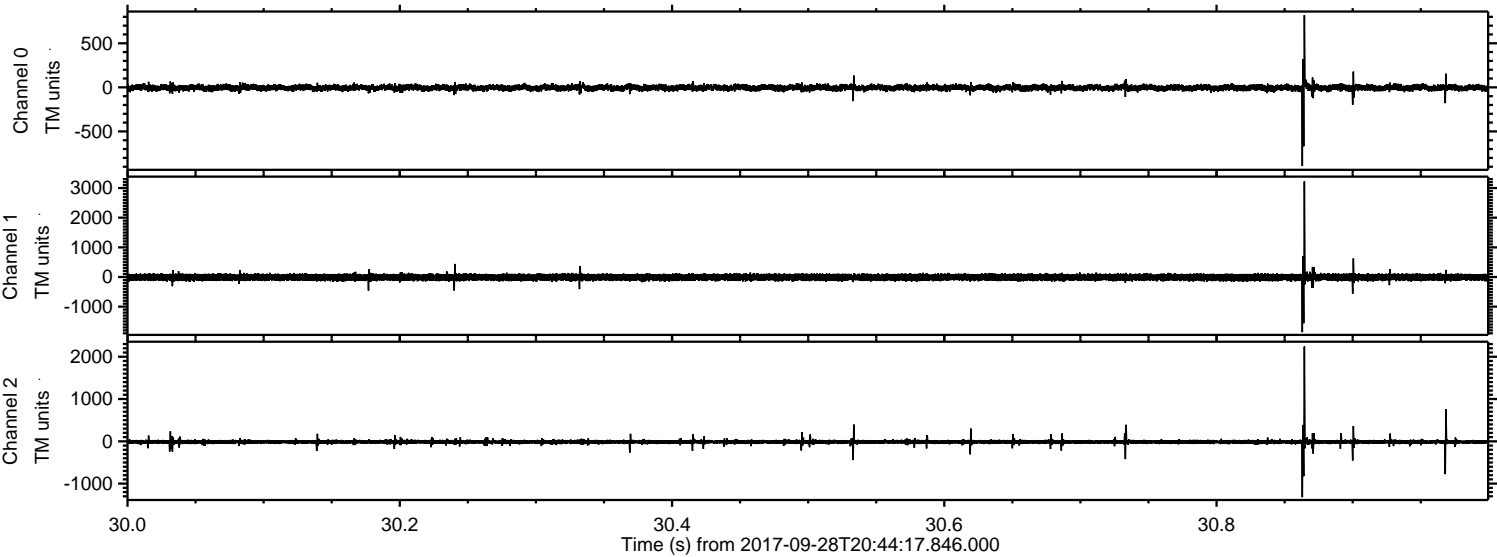
ELMAVAN 3D WAVEFORMS (Measured data sampled at 50 kHz) 51000 packets of 144 samples from 2017-09-28T20:44:17.846.000. Part 126/147

Processed Thu Sep 28 22:52:30 2017 by ELM ver.2012-10-06 from 001\_\_elm20170928\_204416\_\_dat00.bin





Processed Thu Sep 28 22:52:30 2017 by ELM ver.2012-10-06 from 001\_\_elm20170928\_204416\_\_dat00.bin



Channel 0  
mn: -891  
mx: 819  
 $\mu$ : -4.8  
 $\sigma$ : 18.7

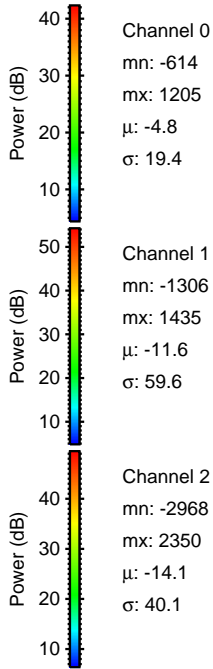
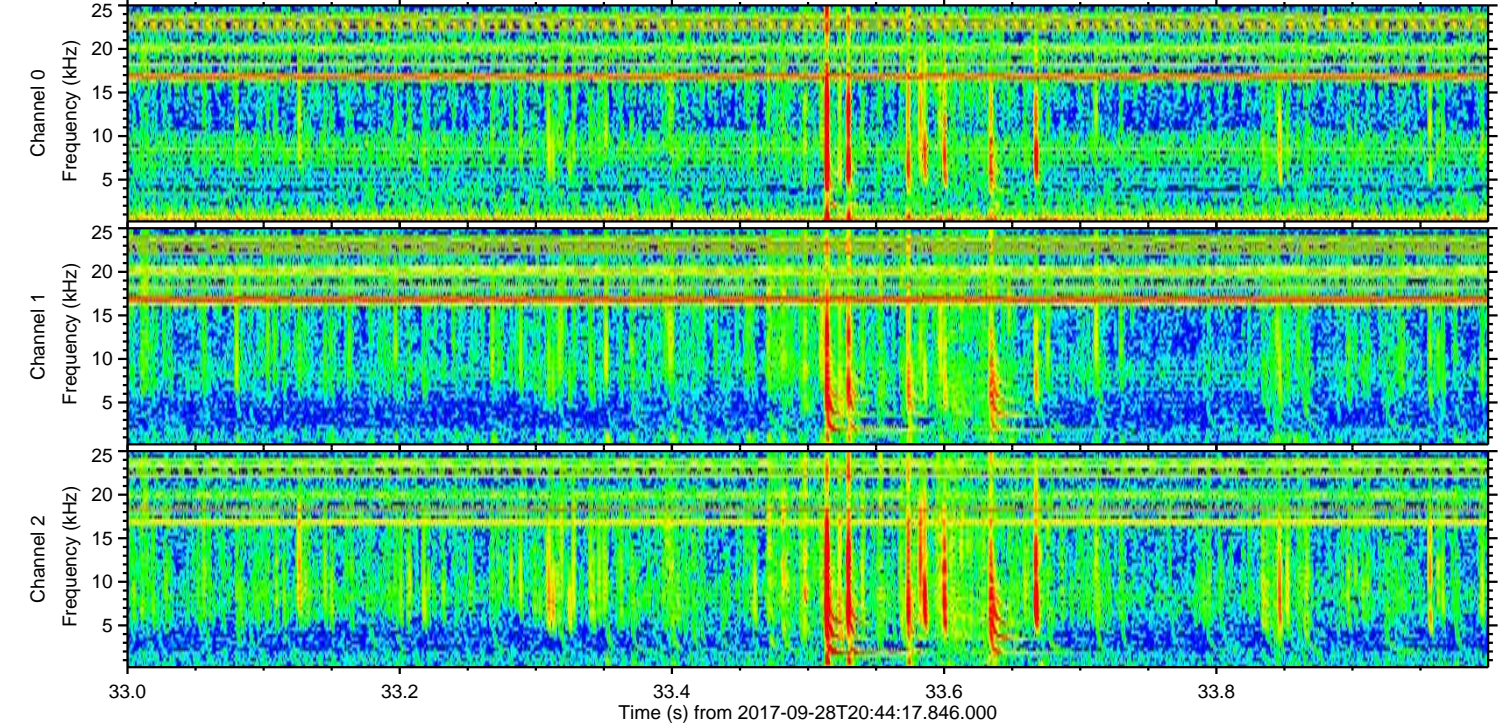
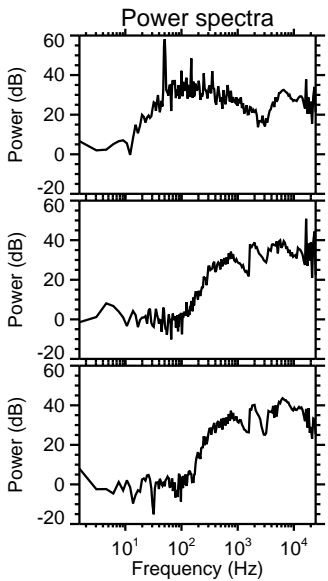
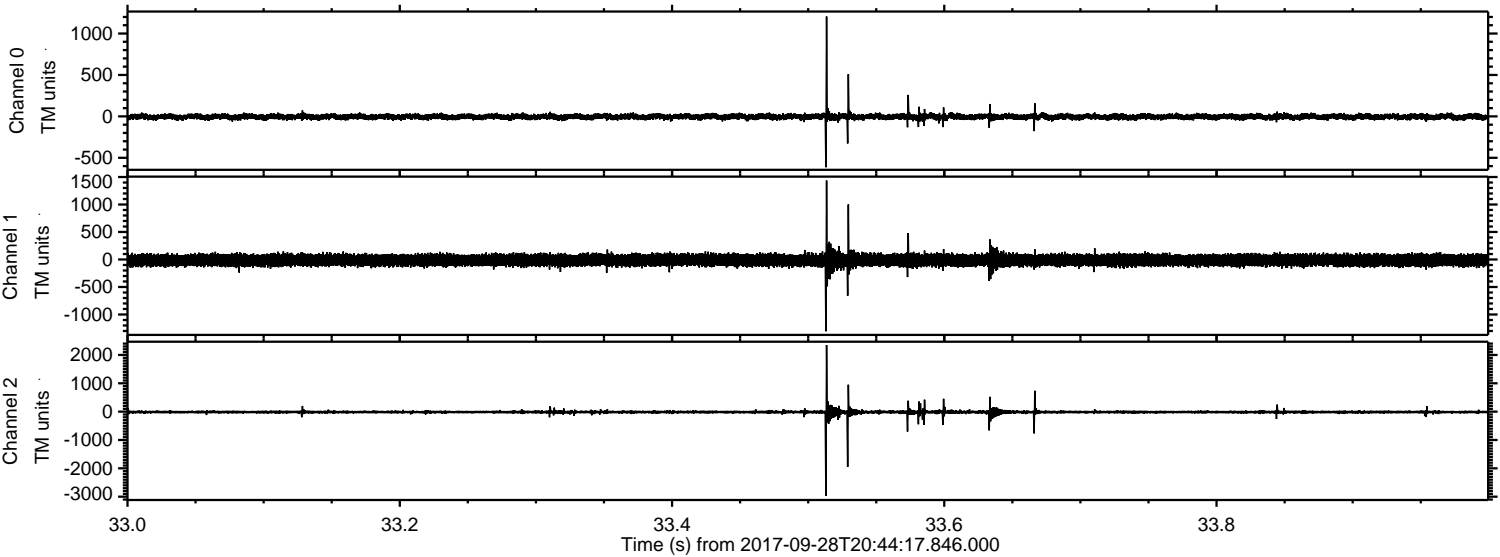
Channel 1  
mn: -1860  
mx: 3224  
 $\mu$ : -11.6  
 $\sigma$ : 60.9

Channel 2  
mn: -1321  
mx: 2243  
 $\mu$ : -14.1  
 $\sigma$ : 29.0



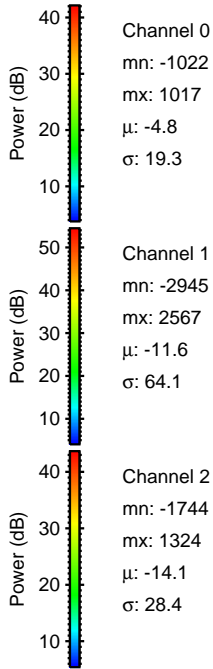
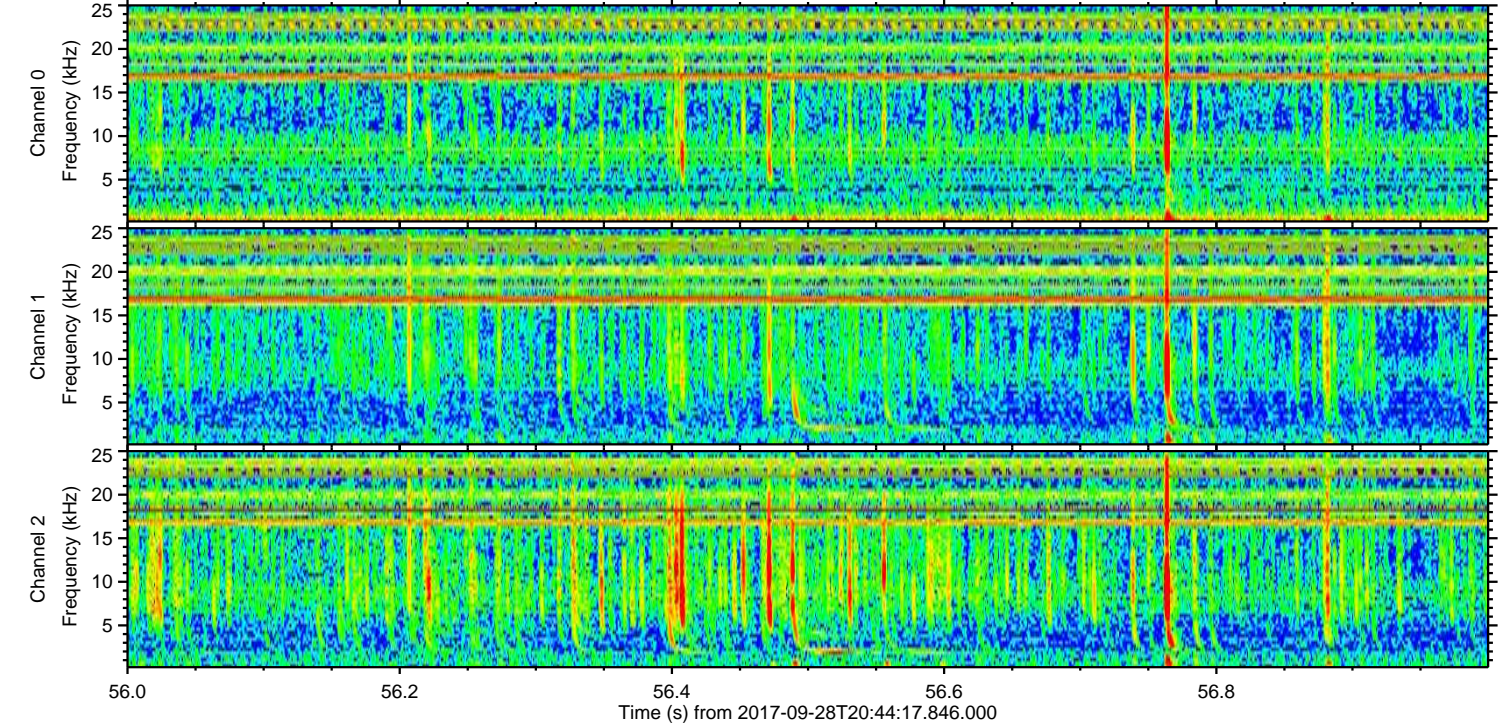
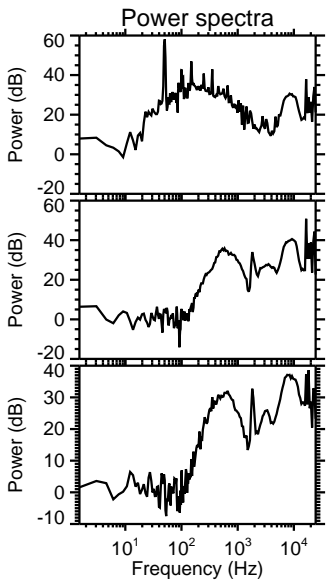
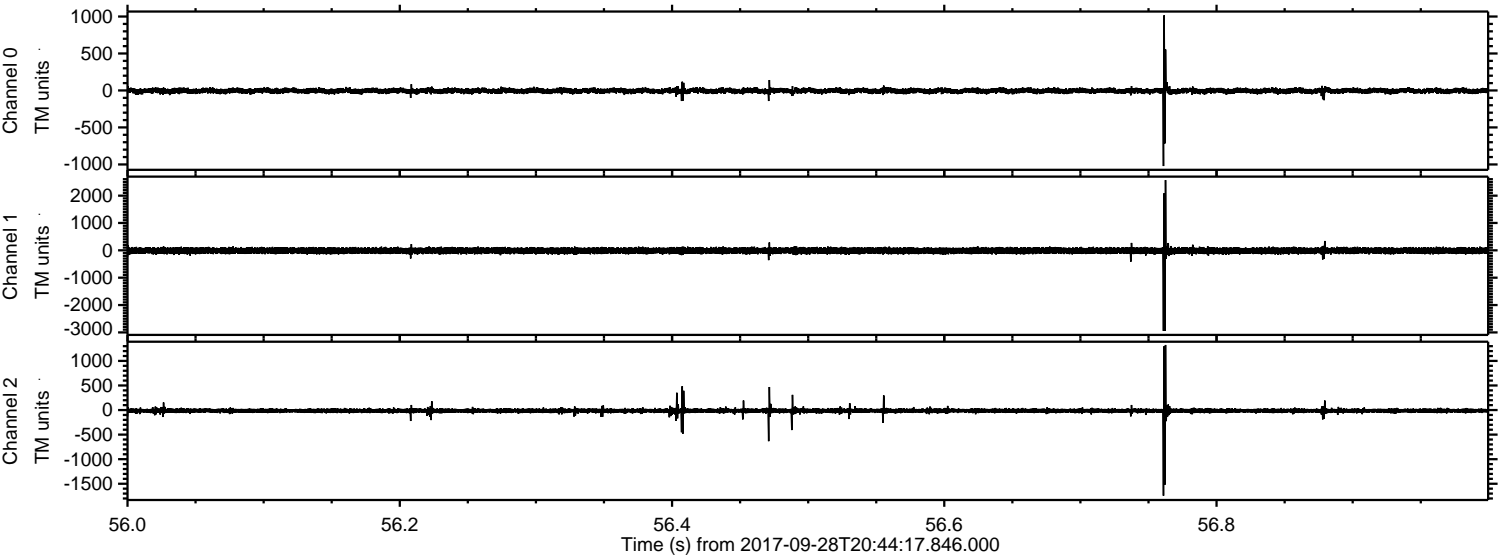
ELMAVAN 3D WAVEFORMS (Measured data sampled at 50 kHz) 51000 packets of 144 samples from 2017-09-28T20:44:17.846.000. Part 34/147

Processed Thu Sep 28 22:52:31 2017 by ELM ver.2012-10-06 from 001\_\_elm20170928\_204416\_\_dat00.bin





Processed Thu Sep 28 22:52:32 2017 by ELM ver.2012-10-06 from 001\_\_elm20170928\_204416\_\_dat00.bin



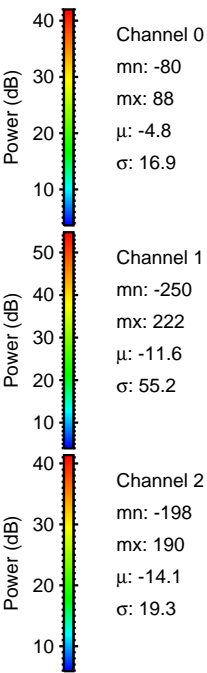
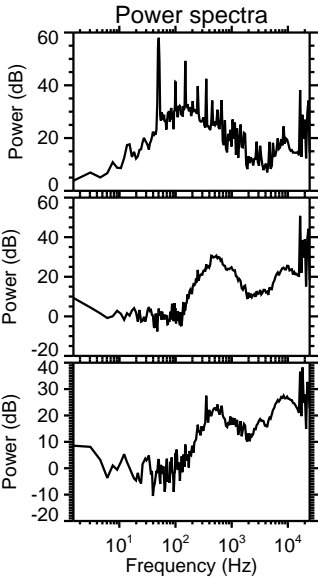
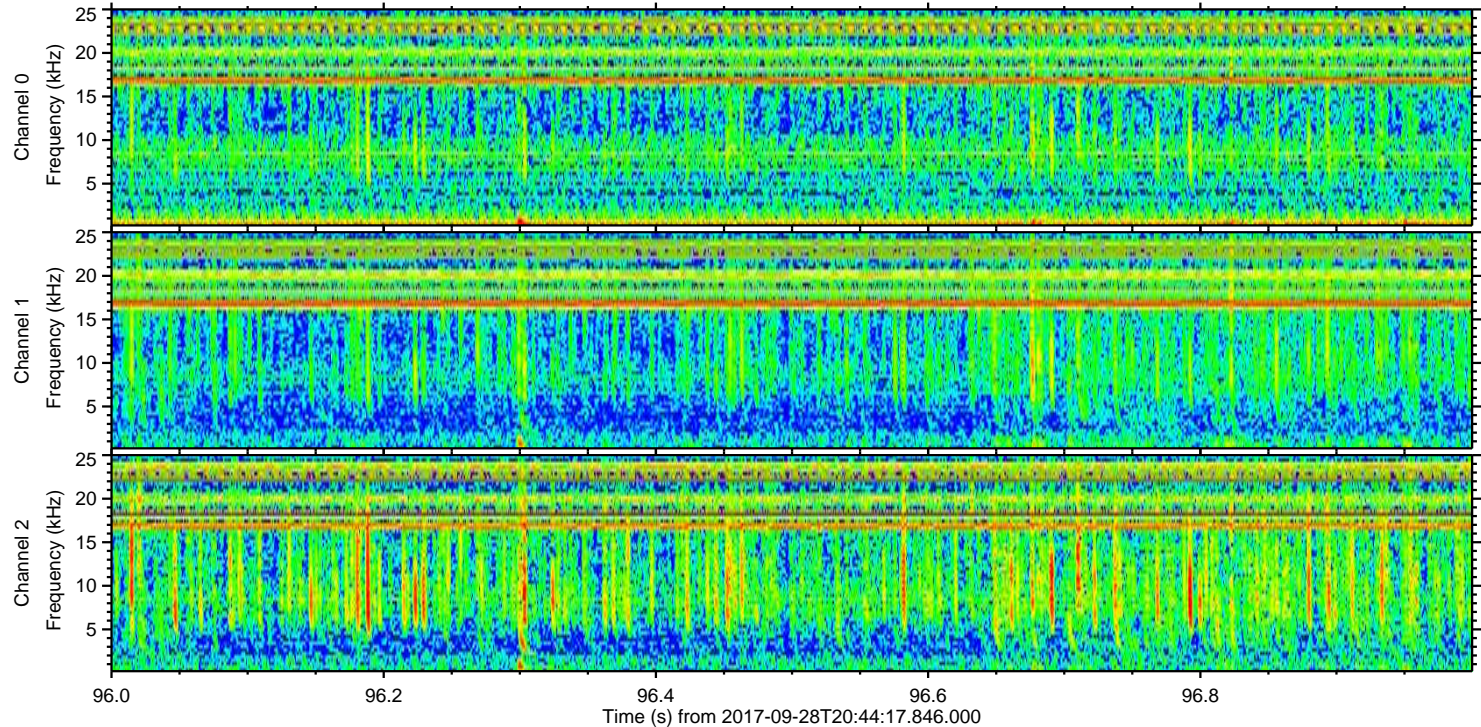
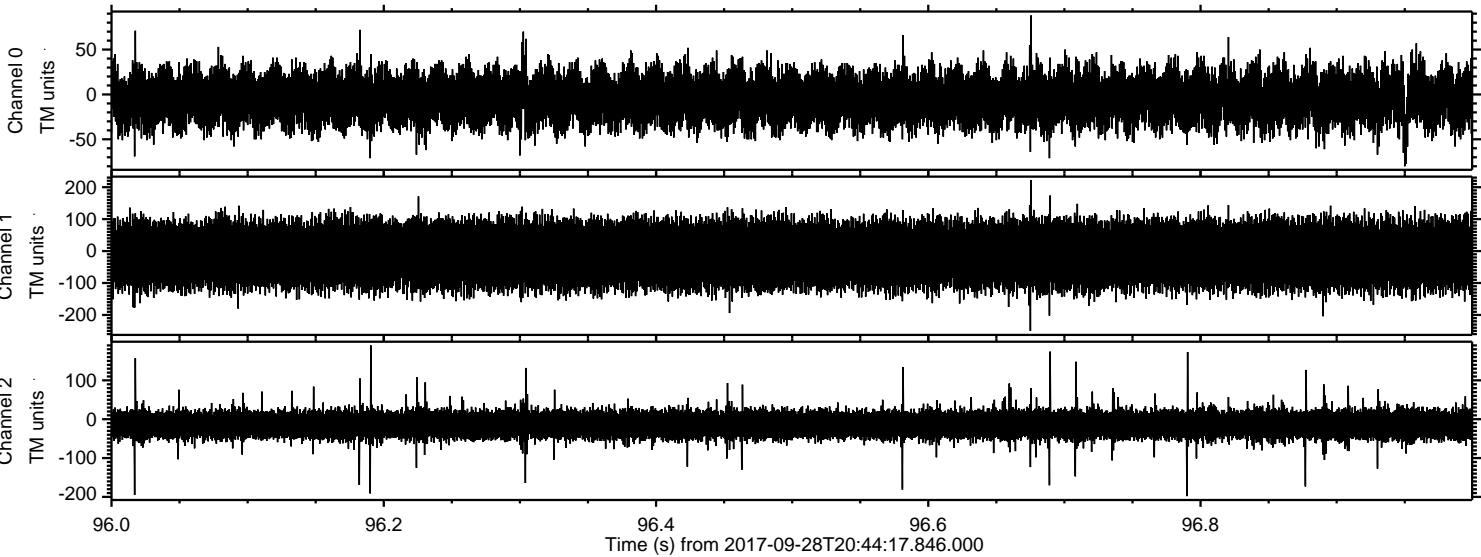
Channel 0  
mn: -1022  
mx: 1017  
 $\mu$ : -4.8  
 $\sigma$ : 19.3

Channel 1  
mn: -2945  
mx: 2567  
 $\mu$ : -11.6  
 $\sigma$ : 64.1

Channel 2  
mn: -1744  
mx: 1324  
 $\mu$ : -14.1  
 $\sigma$ : 28.4



Processed Thu Sep 28 22:52:33 2017 by ELM ver.2012-10-06 from 001\_\_elm20170928\_204416\_\_dat00.bin



Channel 0  
mn: -80  
mx: 88  
 $\mu$ : -4.8  
 $\sigma$ : 16.9

Channel 1  
mn: -250  
mx: 222  
 $\mu$ : -11.6  
 $\sigma$ : 55.2

Channel 2  
mn: -198  
mx: 190  
 $\mu$ : -14.1  
 $\sigma$ : 19.3