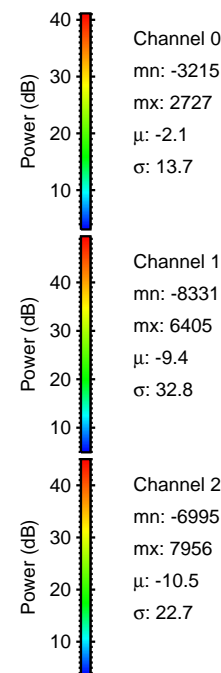
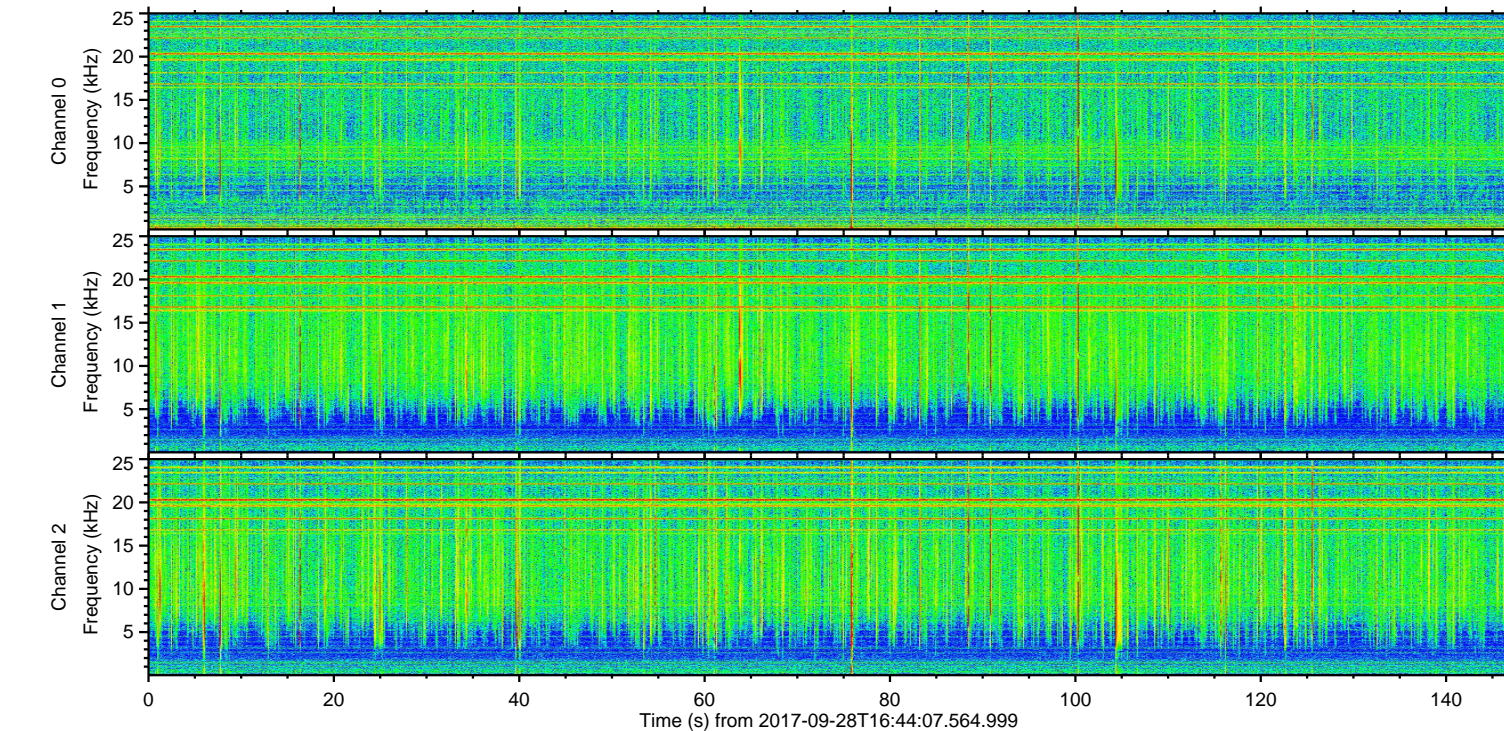
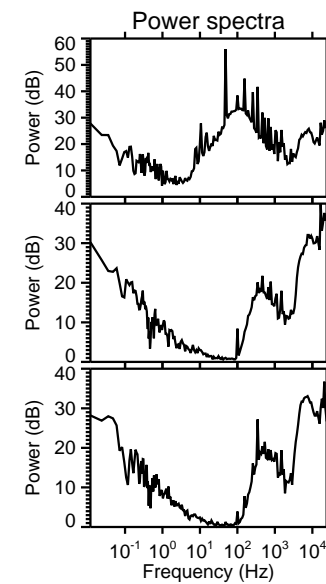
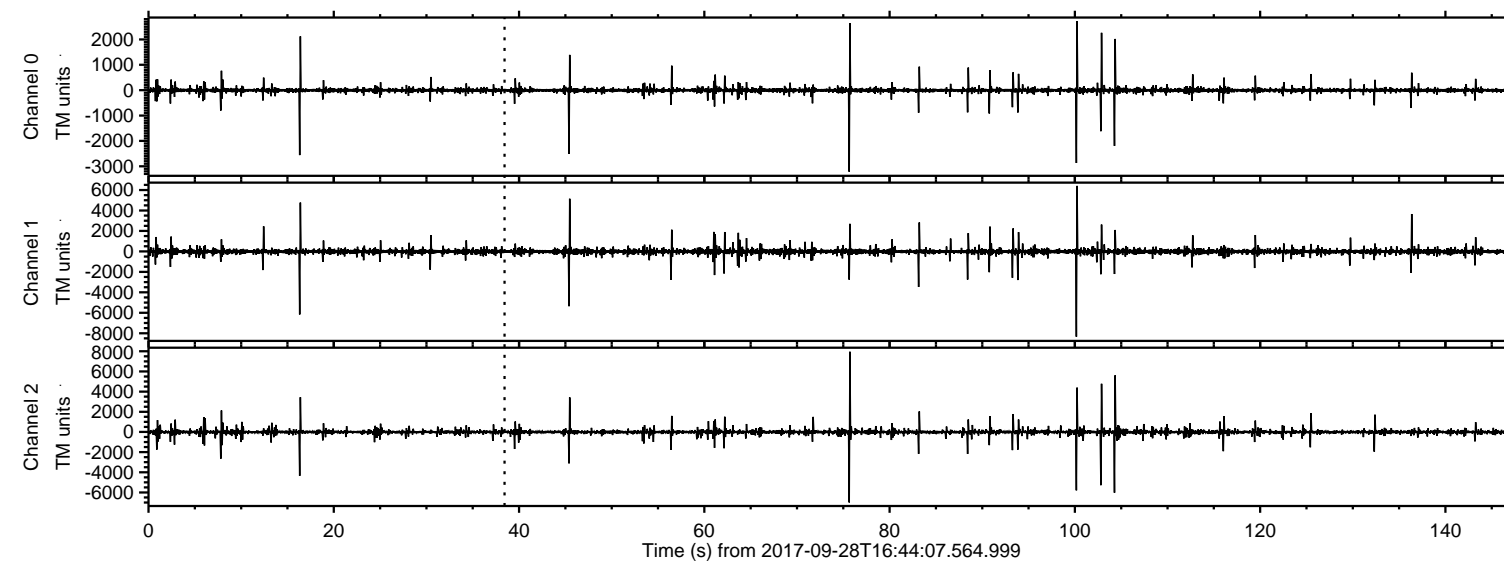


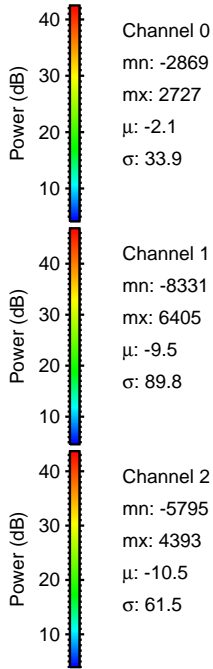
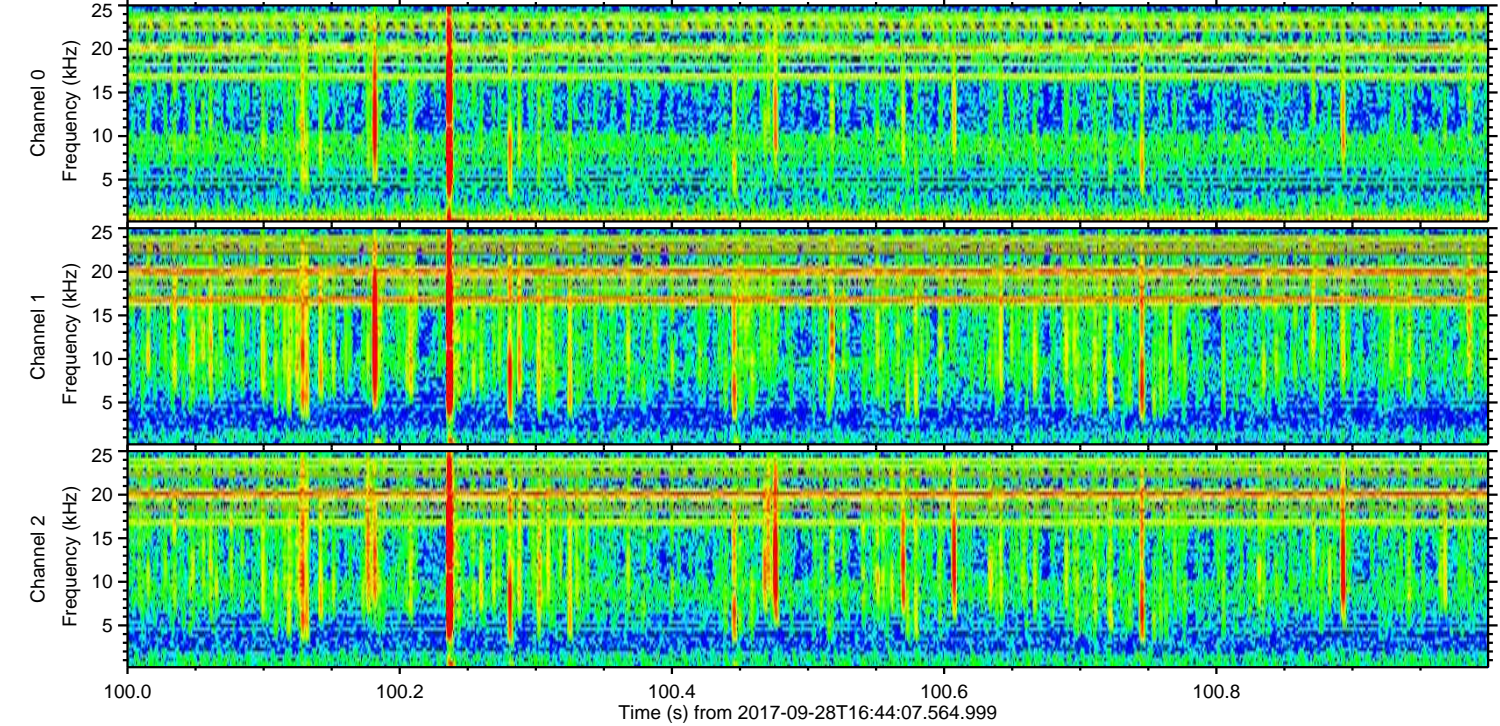
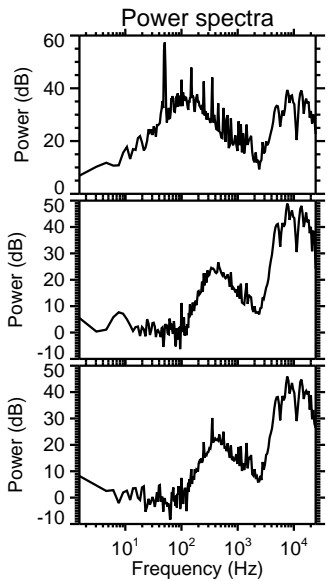
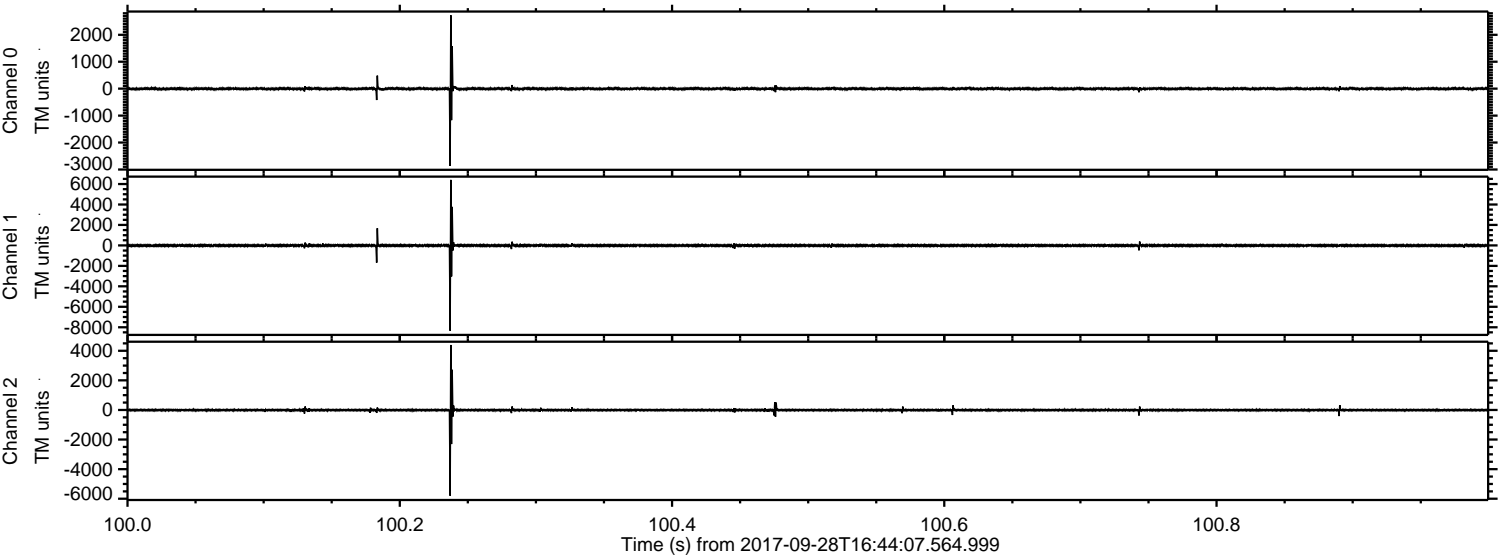
ELMAVAN 3D WAVEFORMS (Measured data sampled at 50 kHz) 50999 packets of 144 samples from 2017-09-28T16:44:07.564.999.

Processed Thu Sep 28 18:52:25 2017 by ELM ver.2012-10-06 from 001__elm20170928_164406__dat00.bin

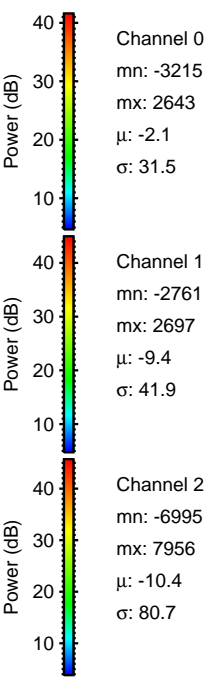
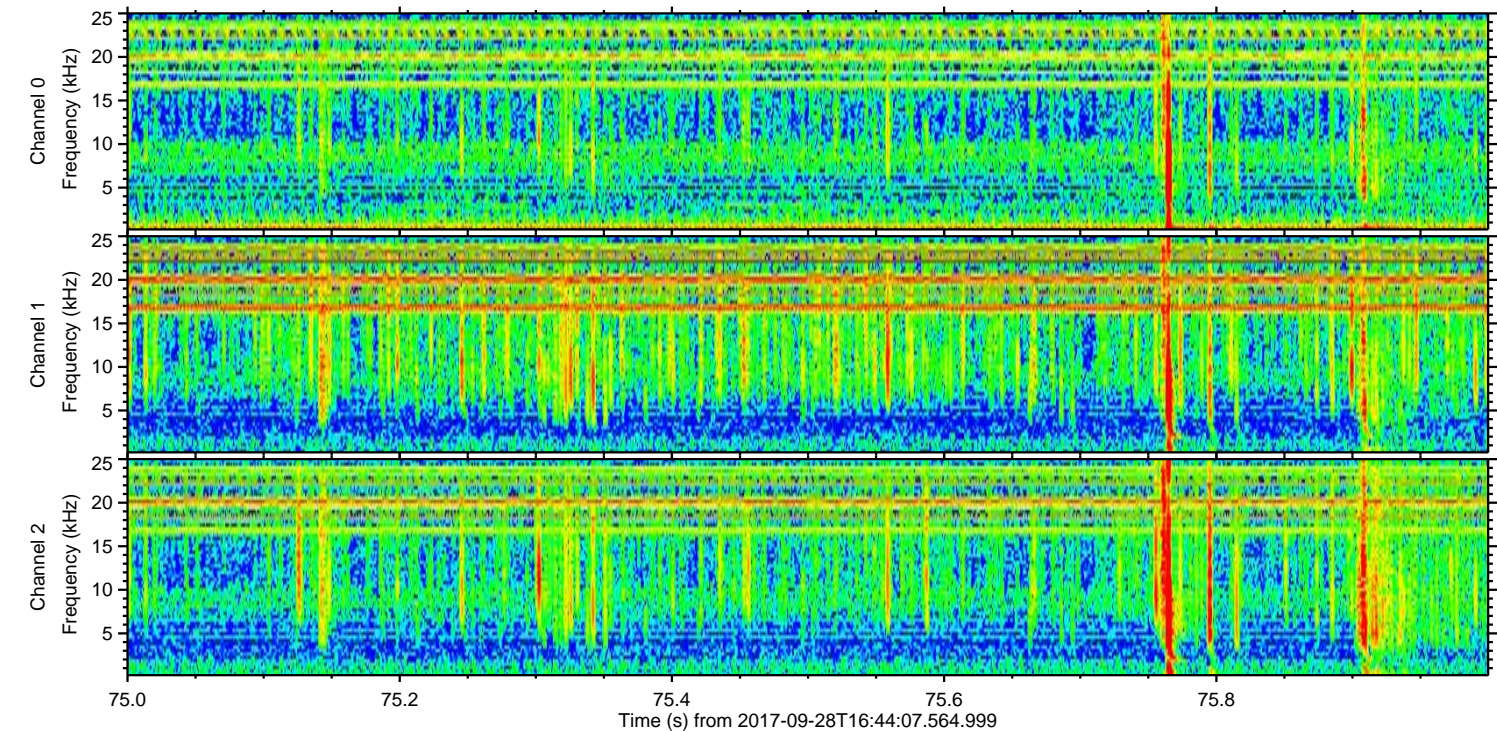
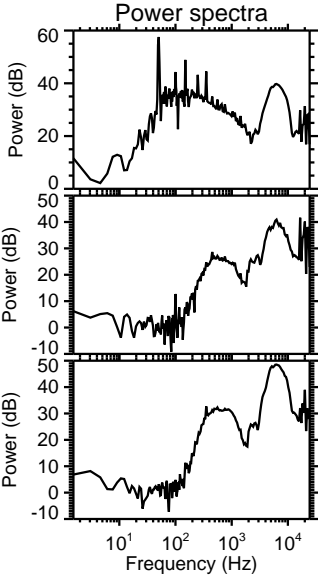
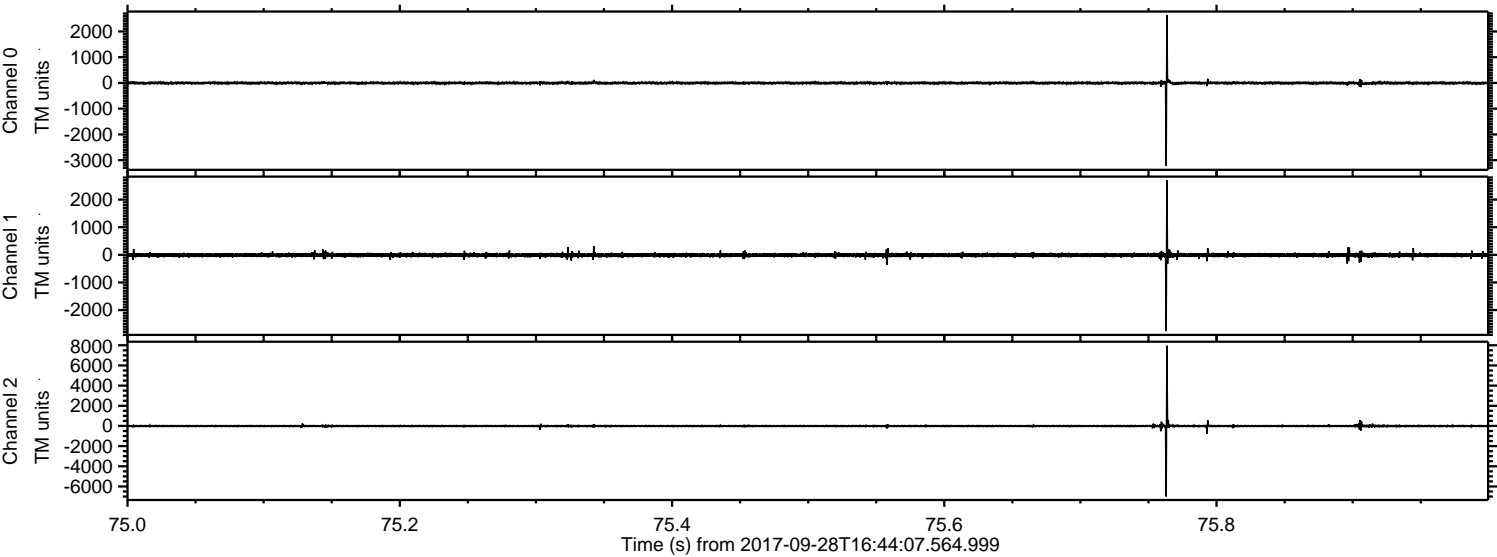


ELMAVAN 3D WAVEFORMS (Measured data sampled at 50 kHz) 50999 packets of 144 samples from 2017-09-28T16:44:07.564.999. Part 101/147

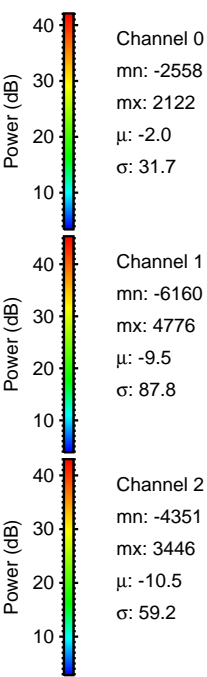
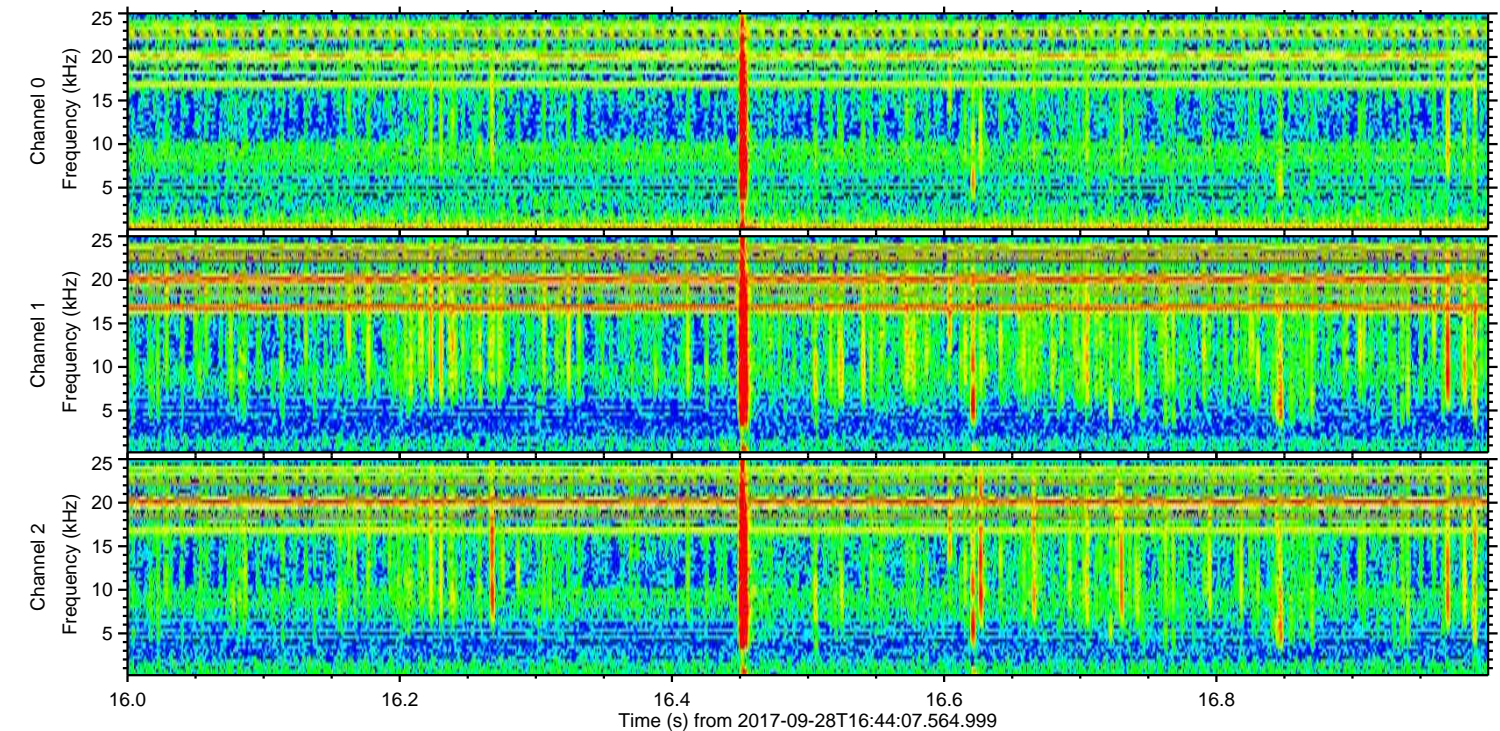
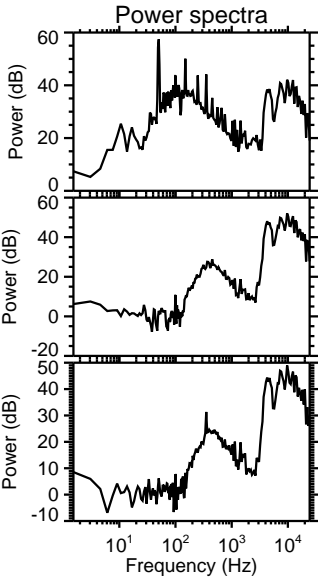
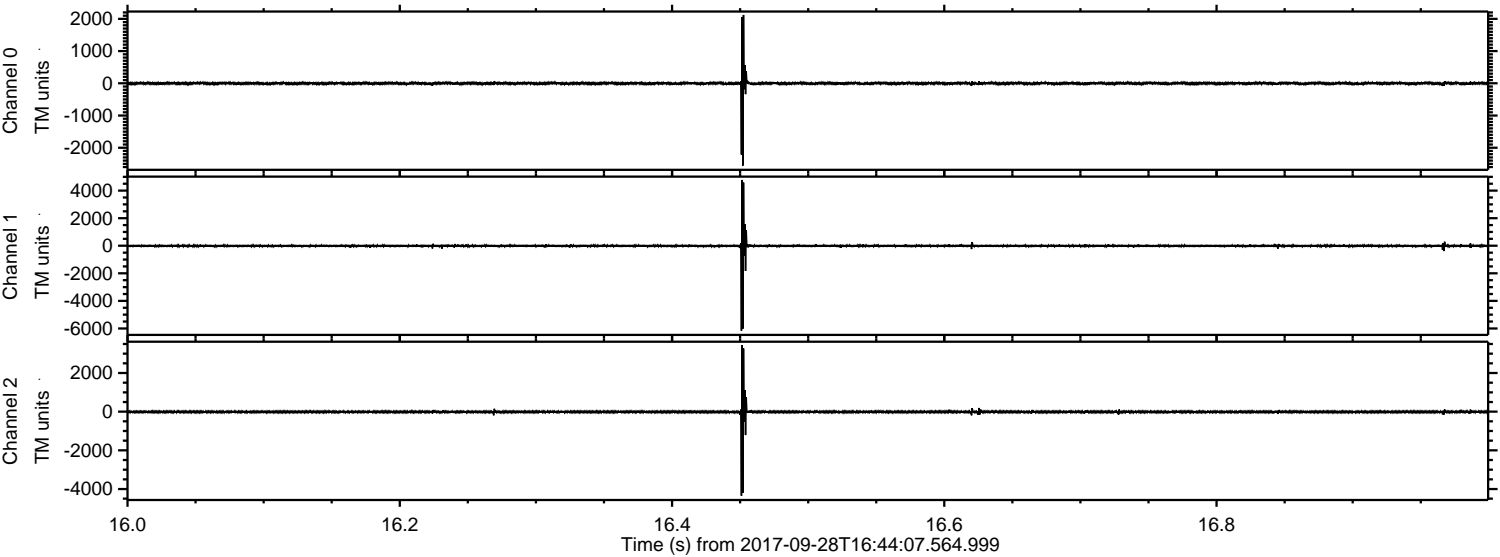
Processed Thu Sep 28 18:52:31 2017 by ELM ver.2012-10-06 from 001__elm20170928_164406__dat00.bin



Processed Thu Sep 28 18:52:32 2017 by ELM ver.2012-10-06 from 001__elm20170928_164406__dat00.bin

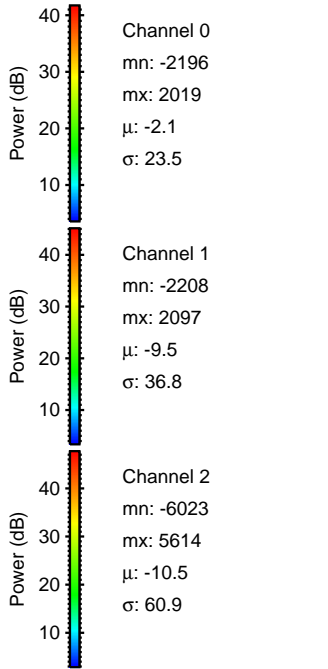
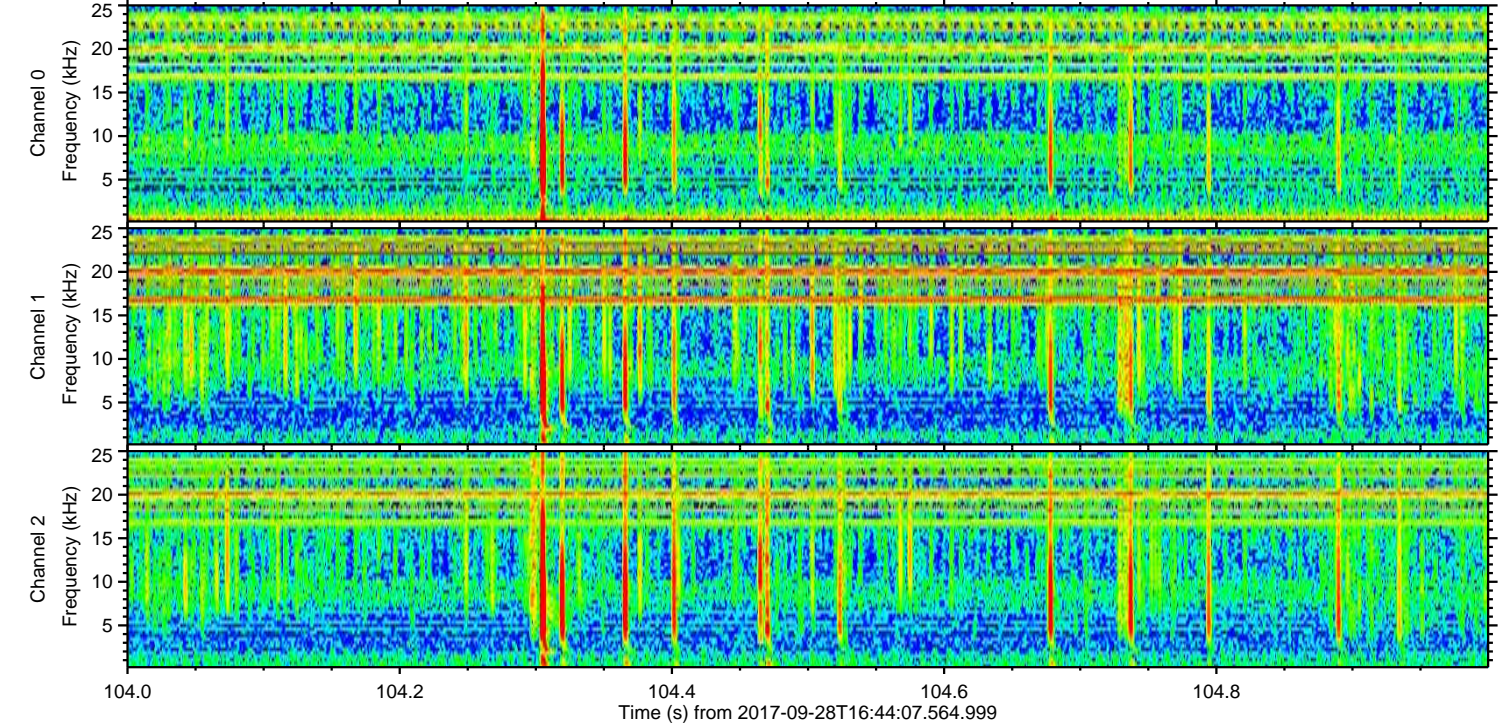
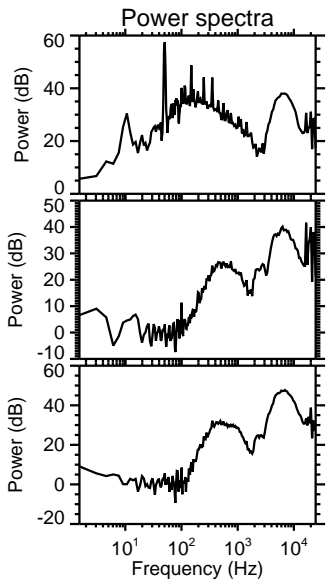
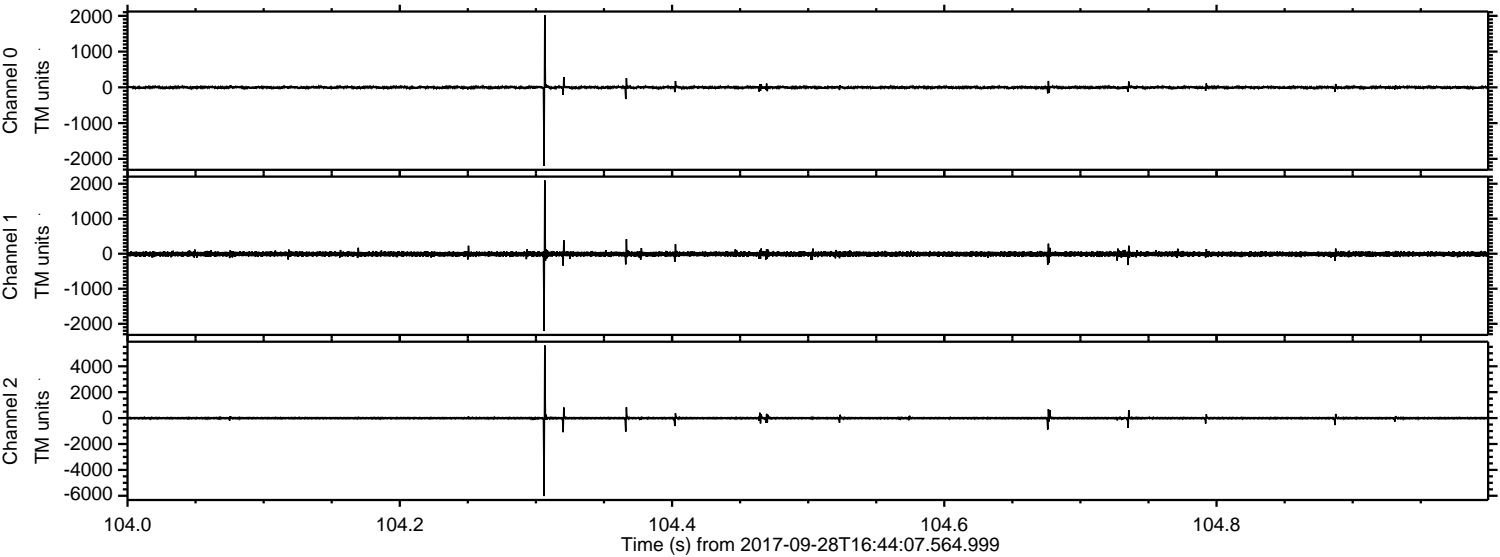


Processed Thu Sep 28 18:52:33 2017 by ELM ver.2012-10-06 from 001__elm20170928_164406__dat00.bin

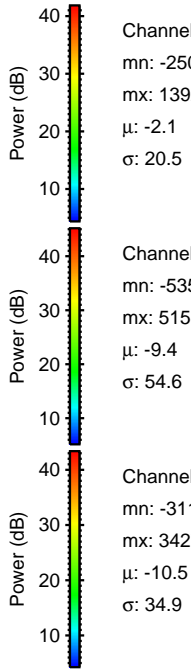
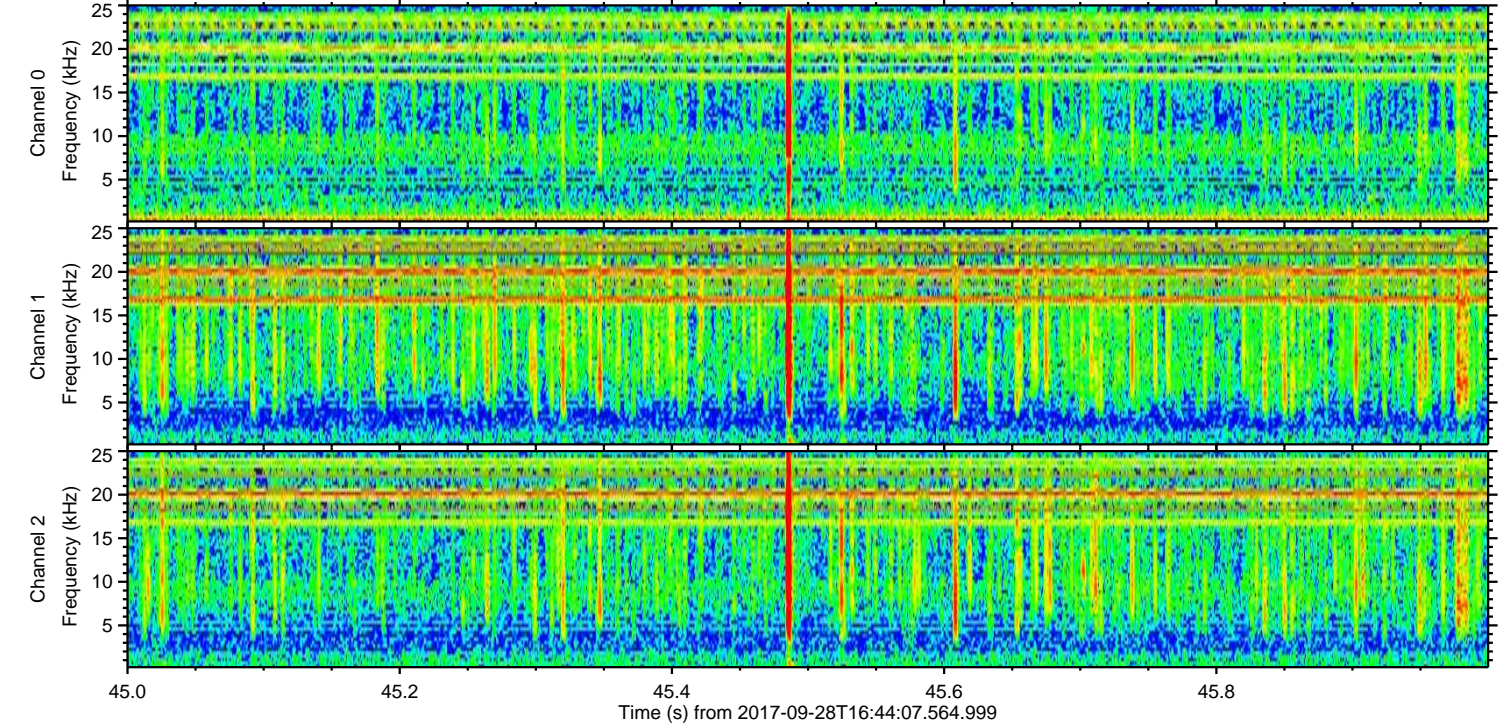
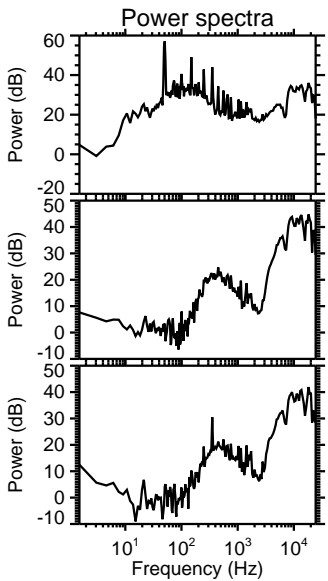
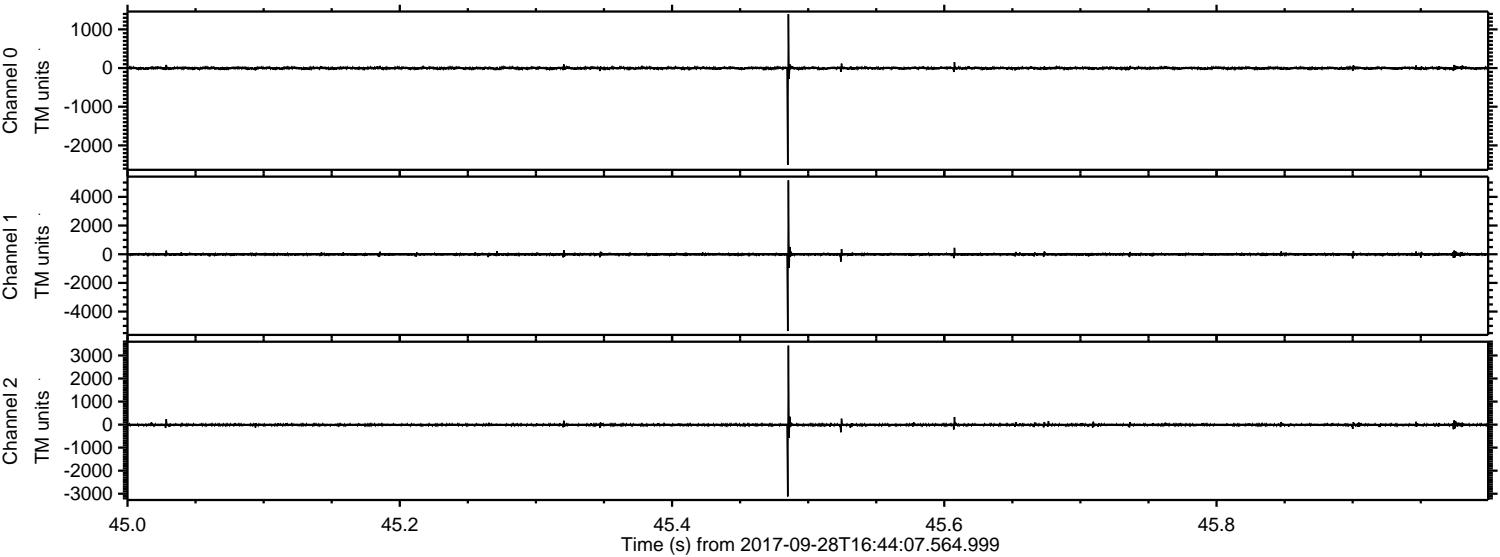


ELMAVAN 3D WAVEFORMS (Measured data sampled at 50 kHz) 50999 packets of 144 samples from 2017-09-28T16:44:07.564.999. Part 105/147

Processed Thu Sep 28 18:52:34 2017 by ELM ver.2012-10-06 from 001__elm20170928_164406__dat00.bin



Processed Thu Sep 28 18:52:35 2017 by ELM ver.2012-10-06 from 001__elm20170928_164406__dat00.bin



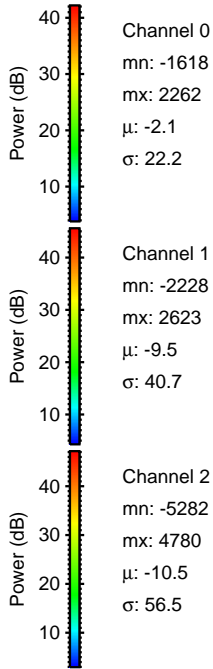
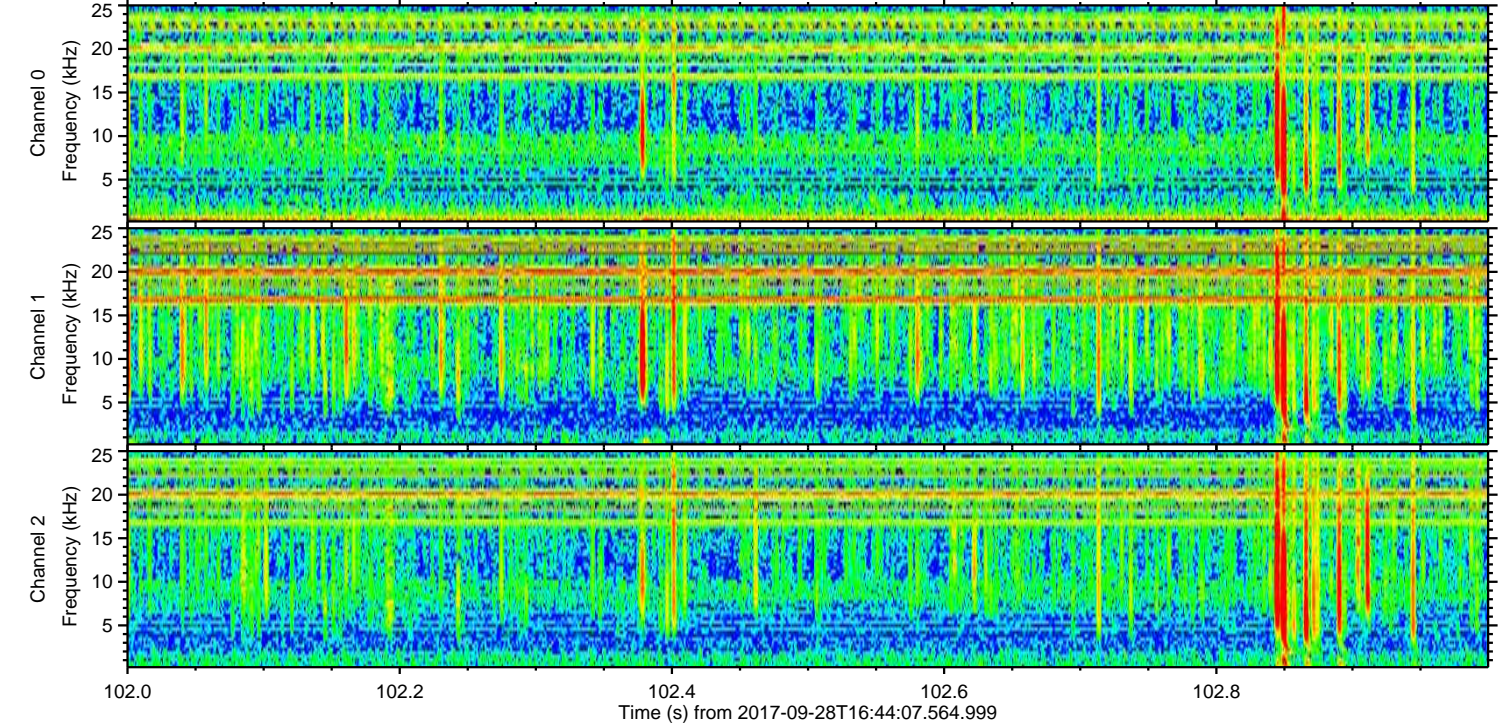
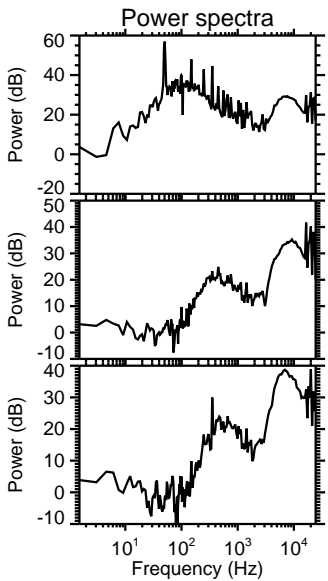
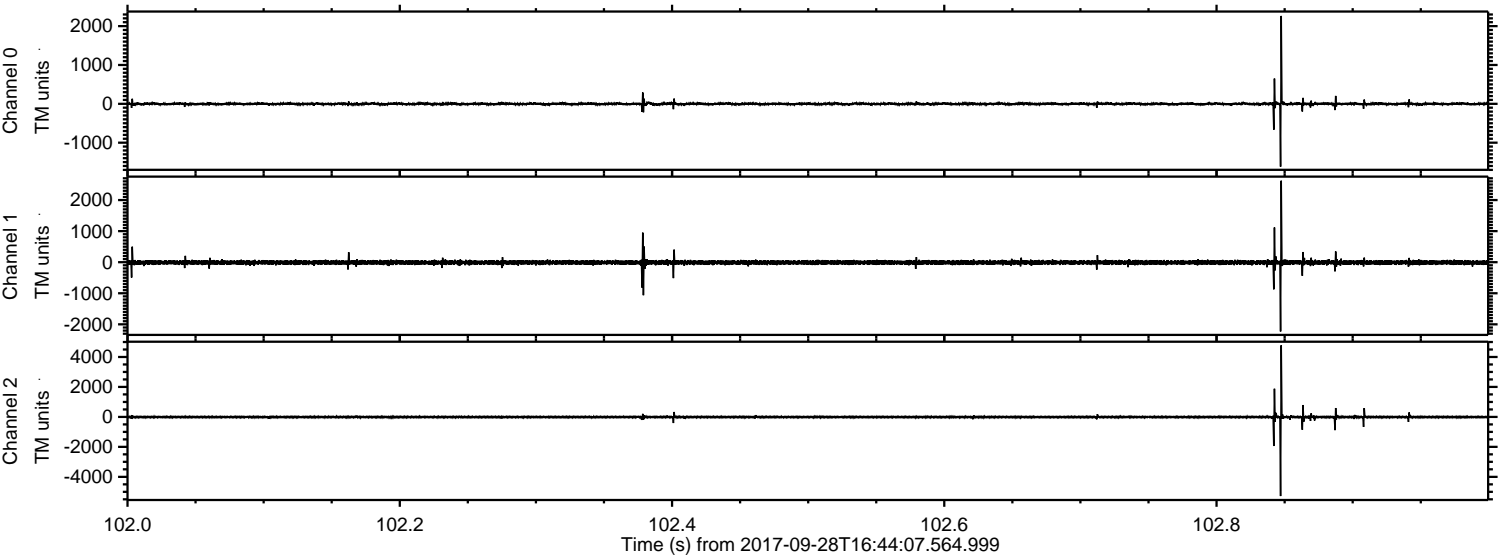
Channel 0
mn: -2506
mx: 1392
 μ : -2.1
 σ : 20.5

Channel 1
mn: -5359
mx: 5155
 μ : -9.4
 σ : 54.6

Channel 2
mn: -3117
mx: 3427
 μ : -10.5
 σ : 34.9

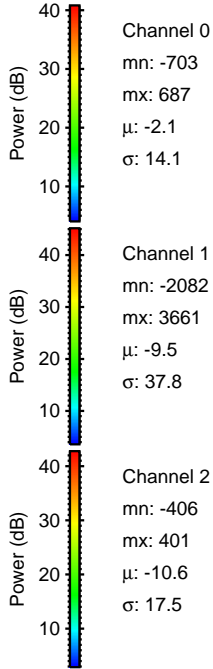
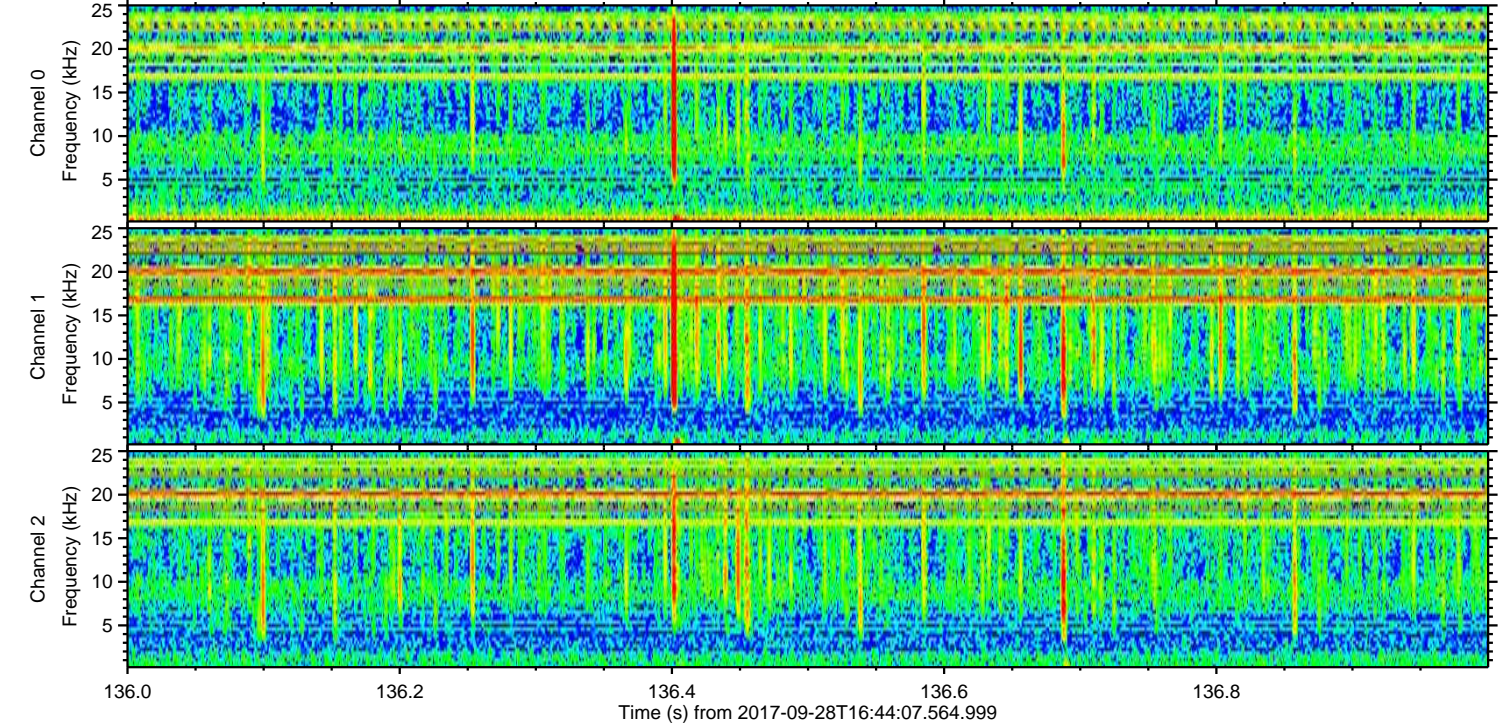
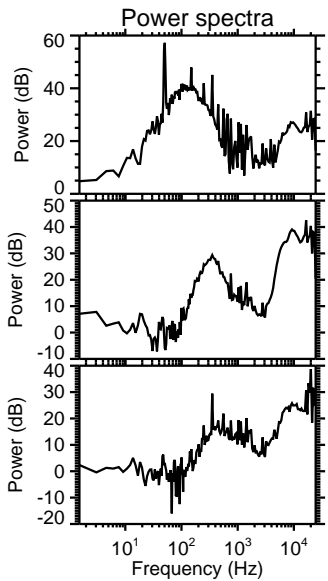
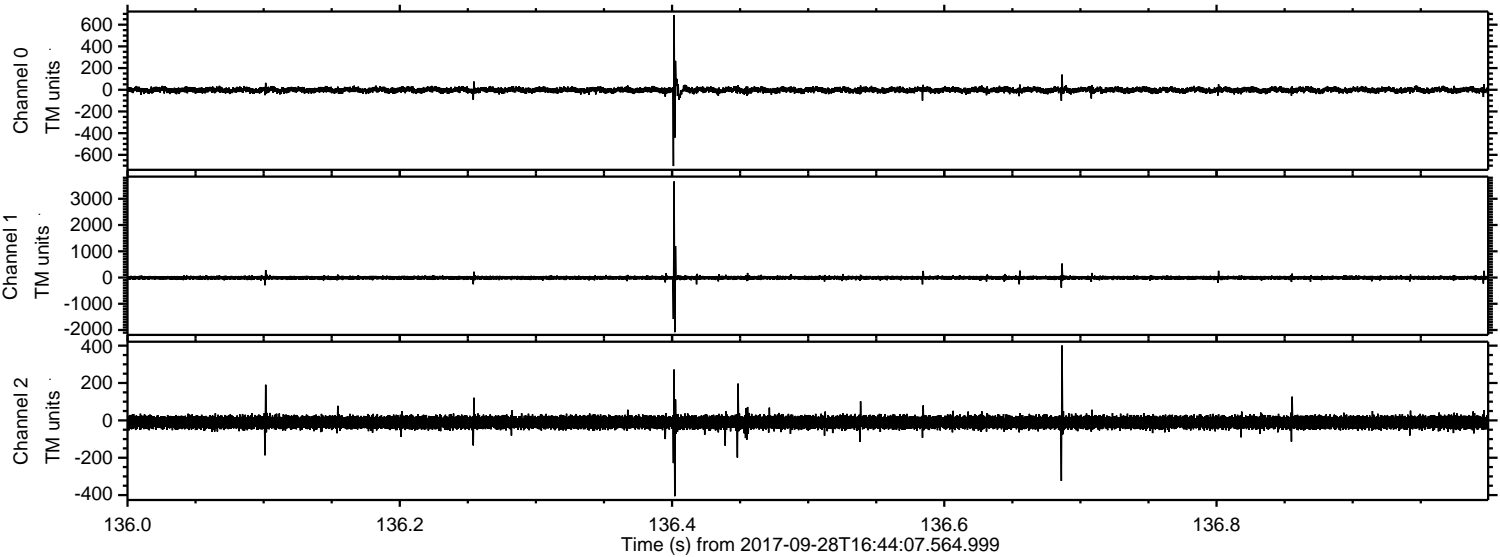
ELMAVAN 3D WAVEFORMS (Measured data sampled at 50 kHz) 50999 packets of 144 samples from 2017-09-28T16:44:07.564.999. Part 103/147

Processed Thu Sep 28 18:52:35 2017 by ELM ver.2012-10-06 from 001__elm20170928_164406__dat00.bin



ELMAVAN 3D WAVEFORMS (Measured data sampled at 50 kHz) 50999 packets of 144 samples from 2017-09-28T16:44:07.564.999. Part 137/147

Processed Thu Sep 28 18:52:36 2017 by ELM ver.2012-10-06 from 001__elm20170928_164406__dat00.bin

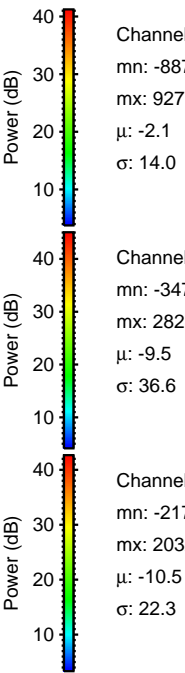
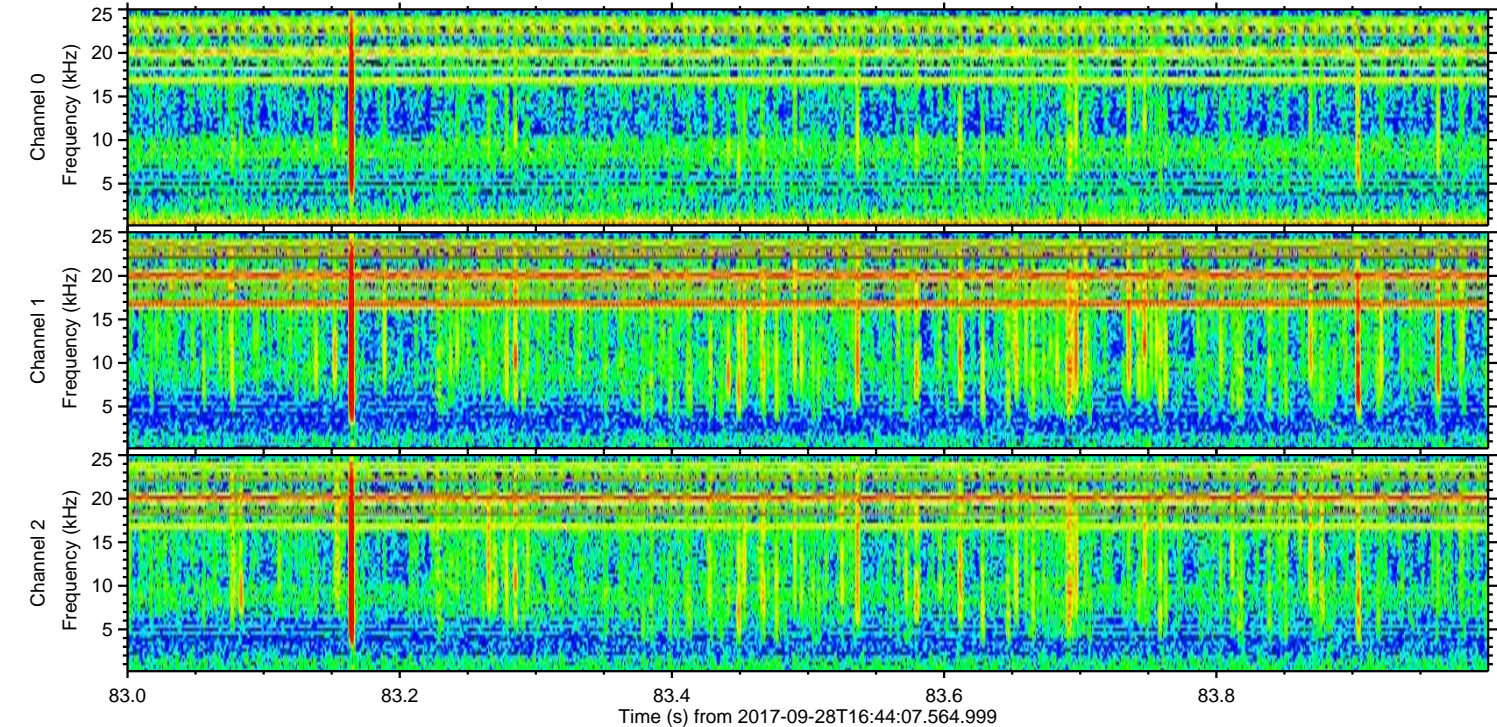
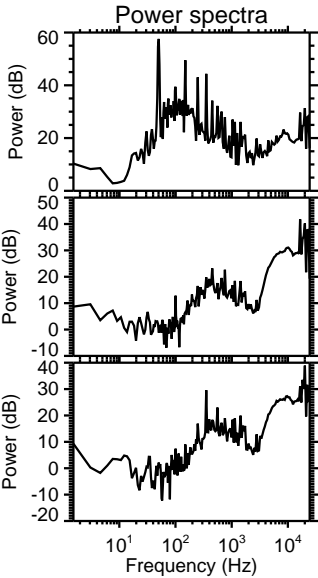
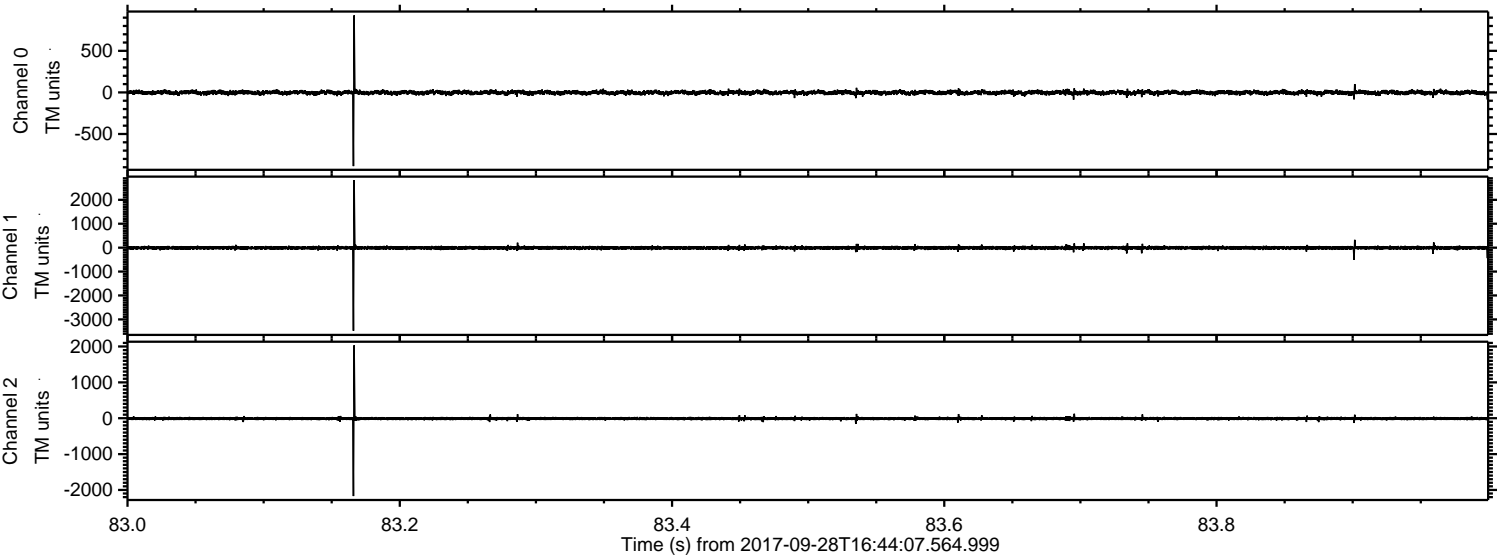


Channel 0
mn: -703
mx: 687
 μ : -2.1
 σ : 14.1

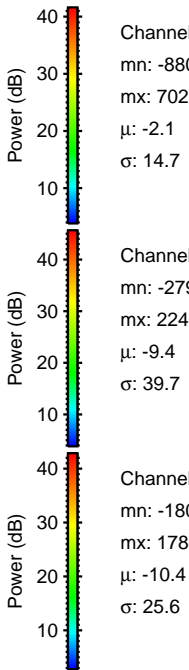
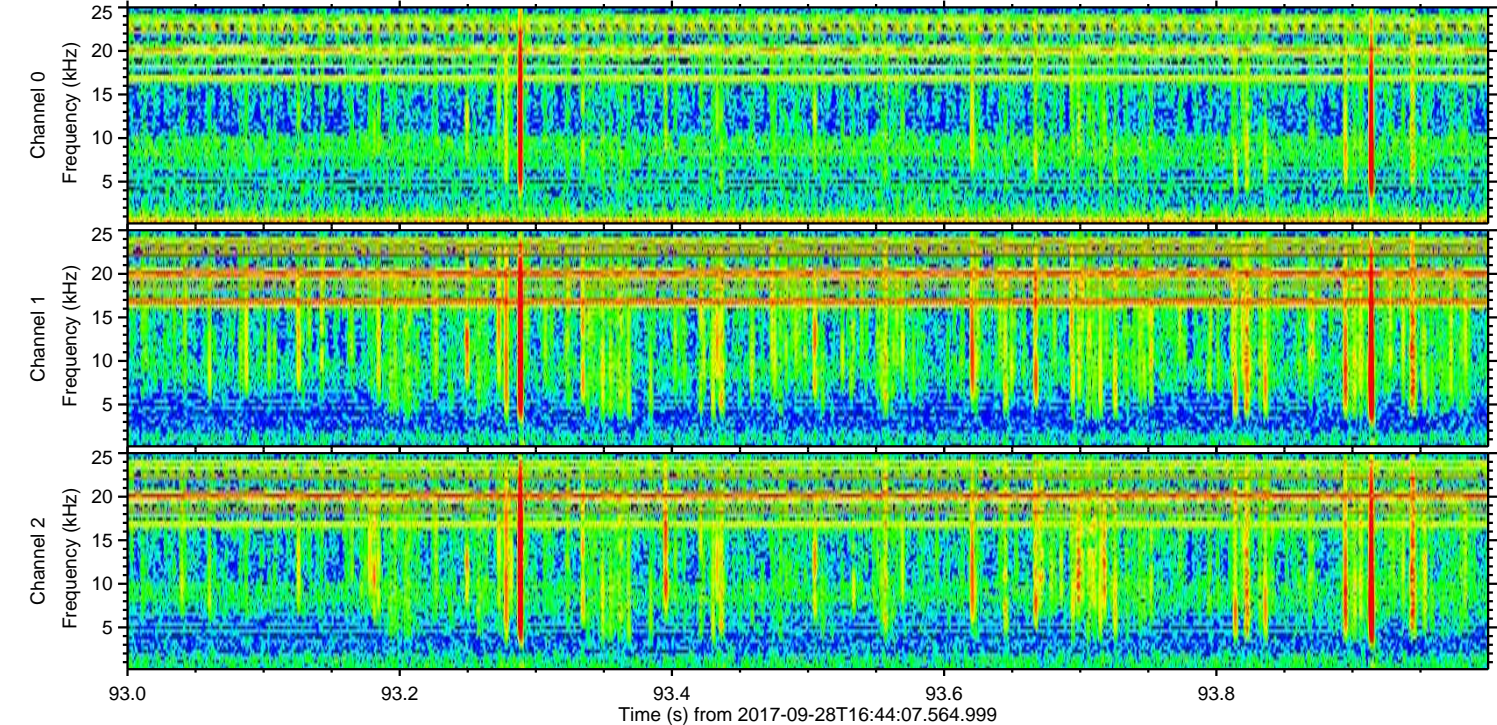
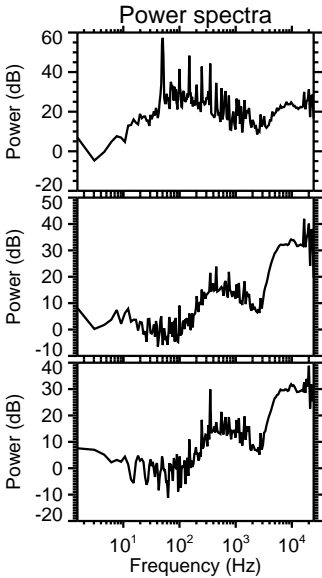
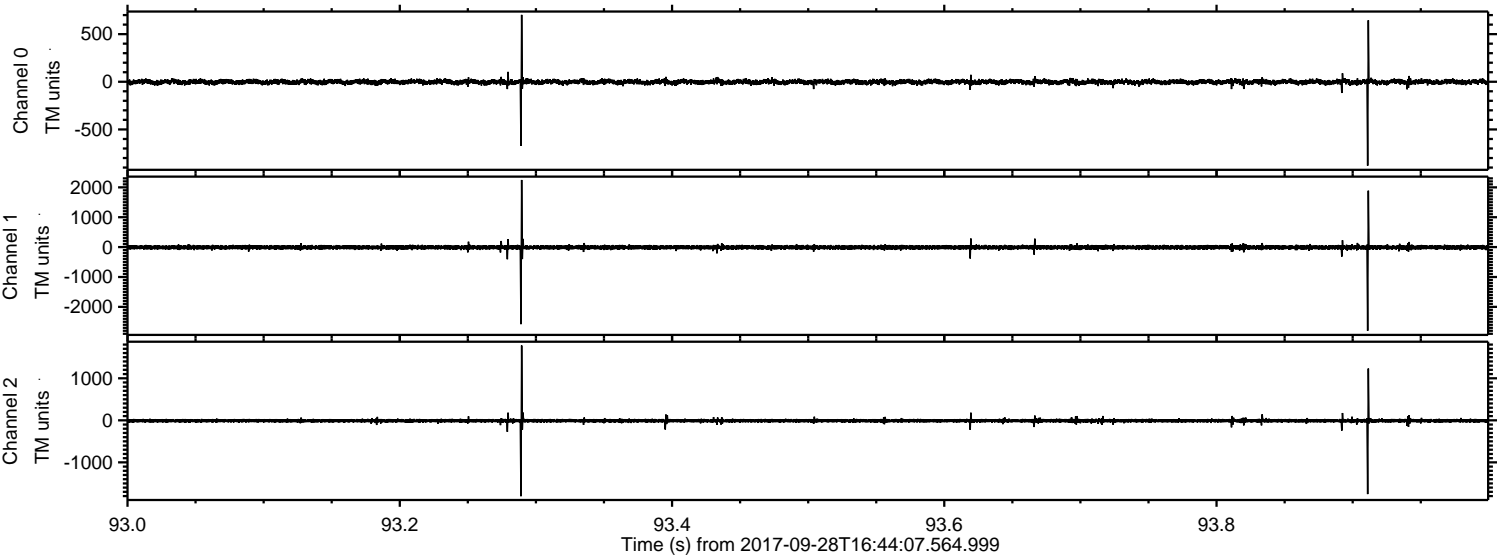
Channel 1
mn: -2082
mx: 3661
 μ : -9.5
 σ : 37.8

Channel 2
mn: -406
mx: 401
 μ : -10.6
 σ : 17.5

Processed Thu Sep 28 18:52:37 2017 by ELM ver.2012-10-06 from 001__elm20170928_164406__dat00.bin



Processed Thu Sep 28 18:52:38 2017 by ELM ver.2012-10-06 from 001__elm20170928_164406__dat00.bin



Channel 0
mn: -880
mx: 702
 μ : -2.1
 σ : 14.7

Channel 1
mn: -2799
mx: 2246
 μ : -9.4
 σ : 39.7

Channel 2
mn: -1804
mx: 1780
 μ : -10.4
 σ : 25.6

