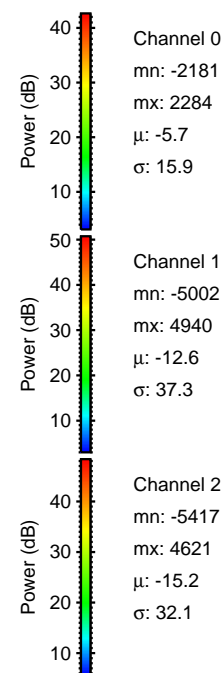
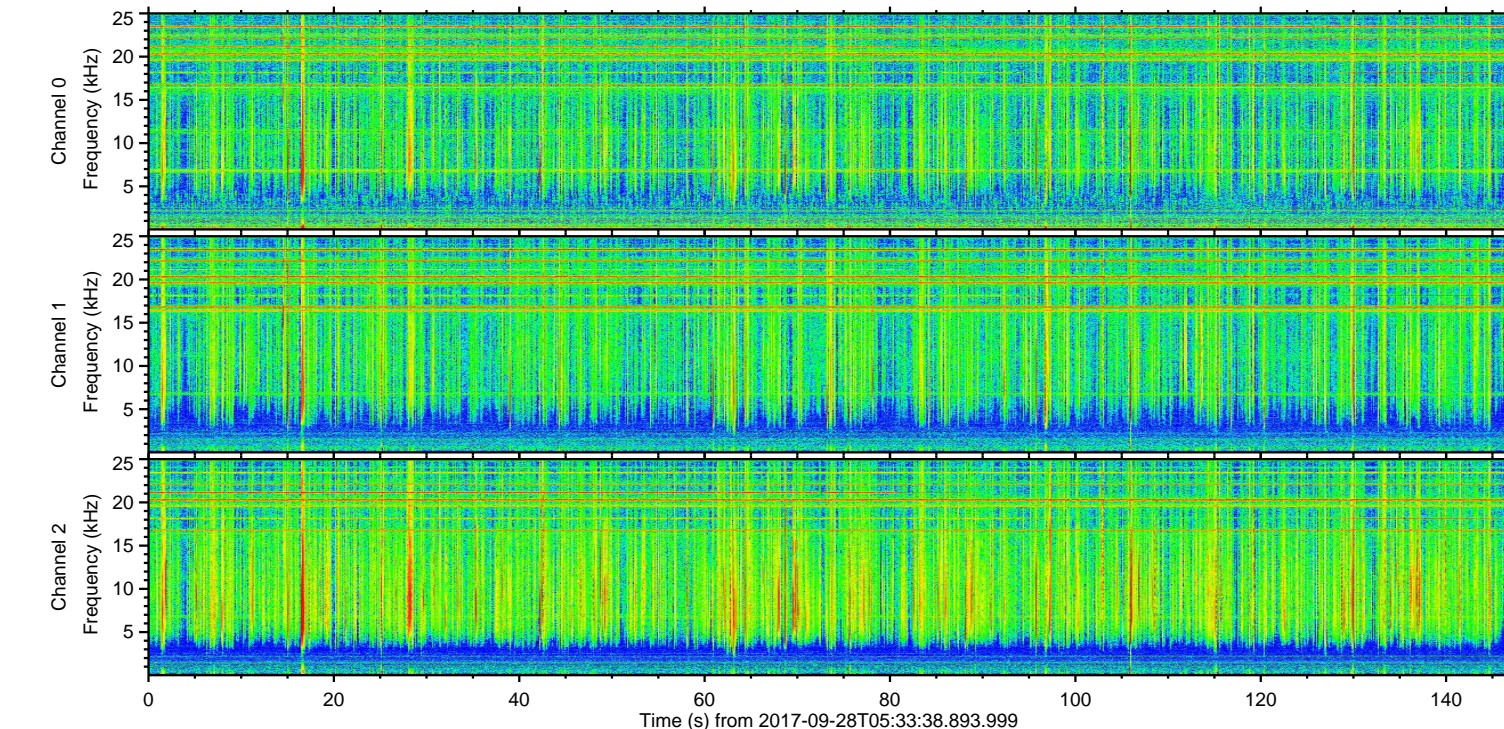
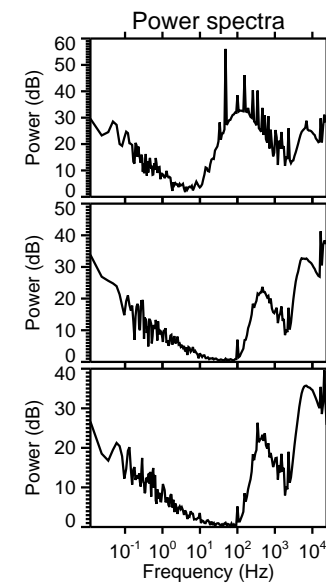
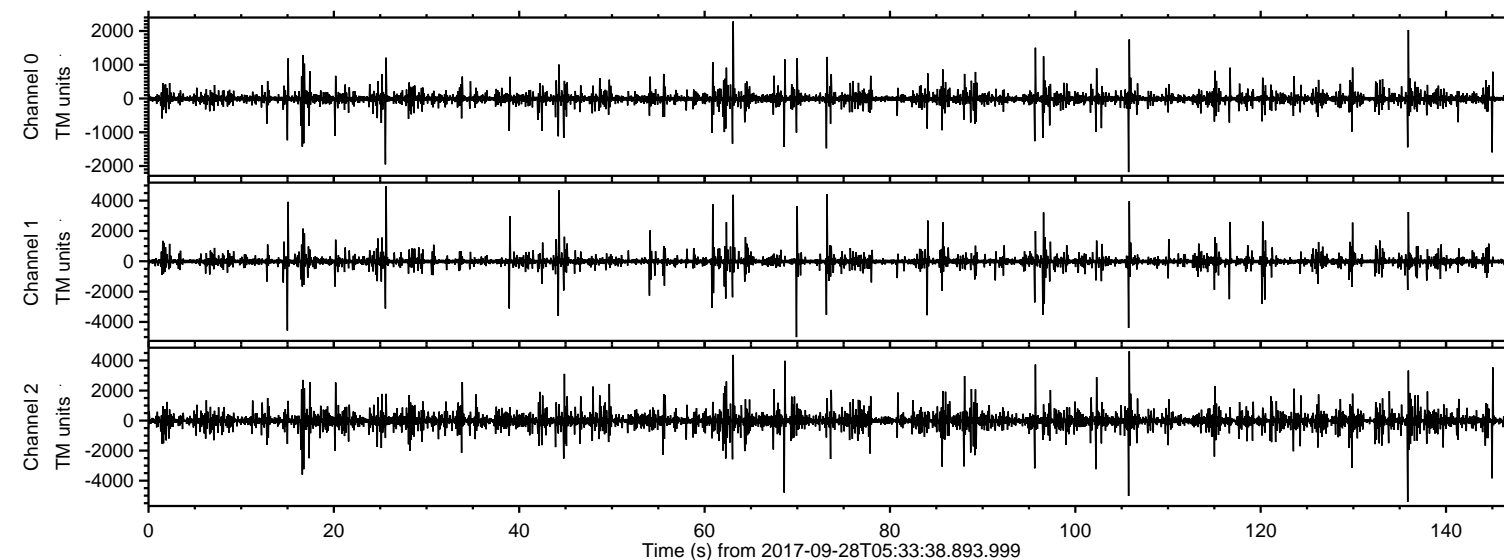


ELMAVAN 3D WAVEFORMS (Measured data sampled at 50 kHz) 51000 packets of 144 samples from 2017-09-28T05:33:38.893.999.

Processed Thu Sep 28 07:41:18 2017 by ELM ver.2012-10-06 from 001__elm20170928_053337__dat00.bin



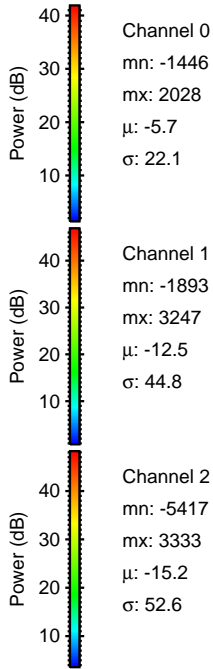
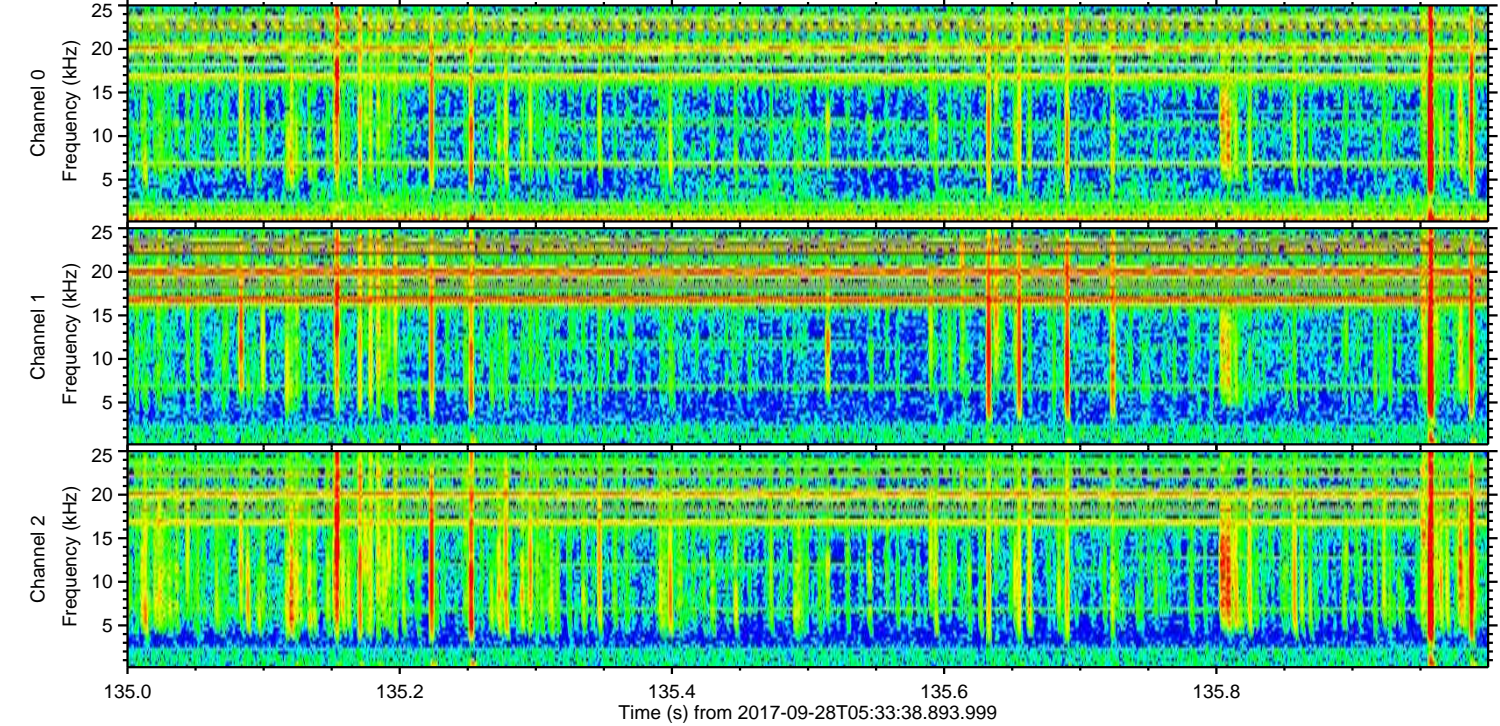
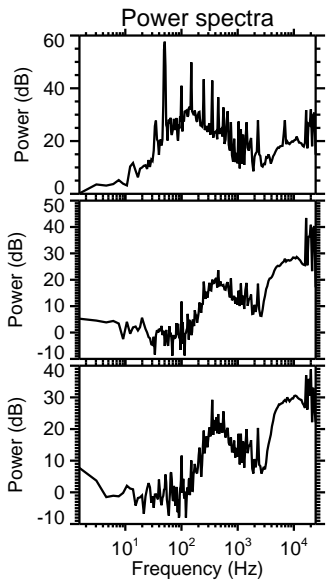
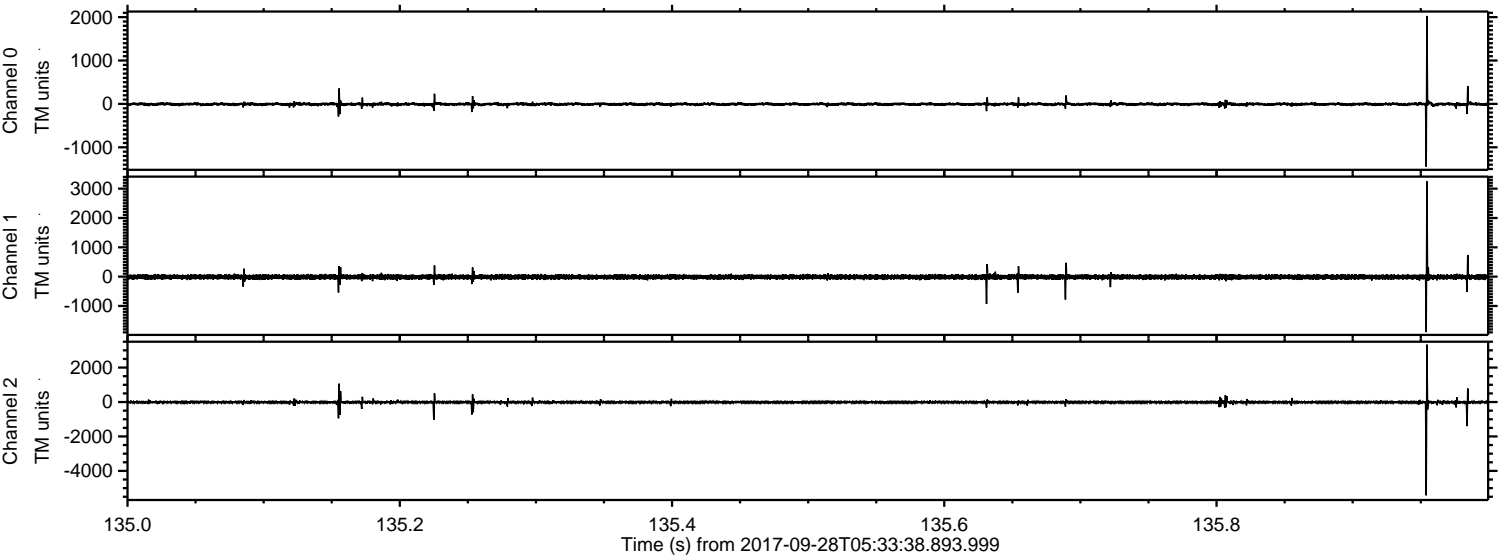
Channel 0
mn: -2181
mx: 2284
 μ : -5.7
 σ : 15.9

Channel 1
mn: -5002
mx: 4940
 μ : -12.6
 σ : 37.3

Channel 2
mn: -5417
mx: 4621
 μ : -15.2
 σ : 32.1

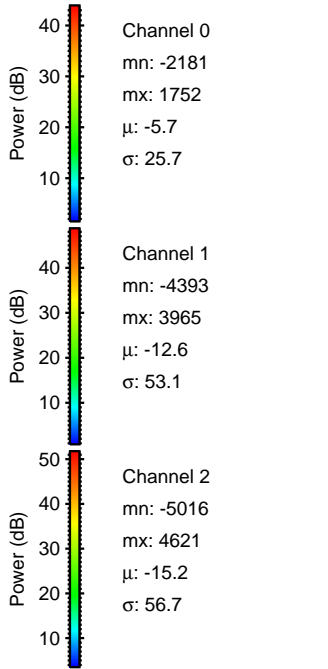
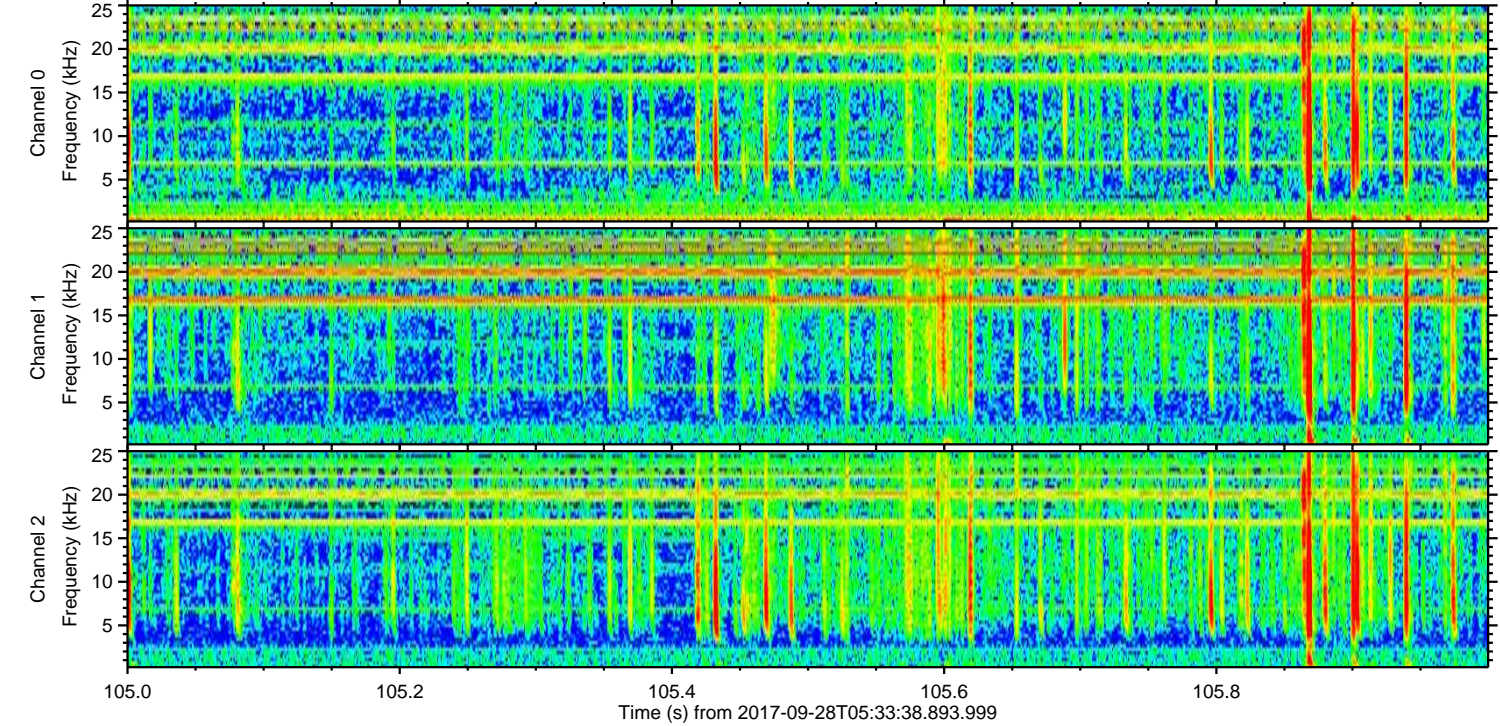
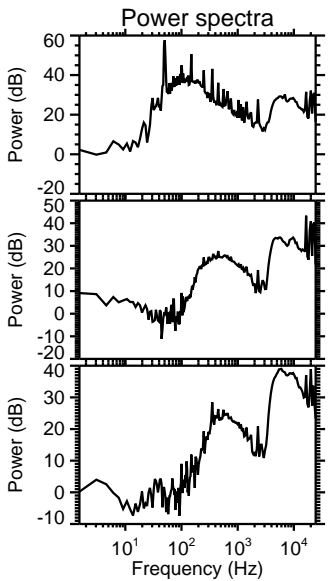
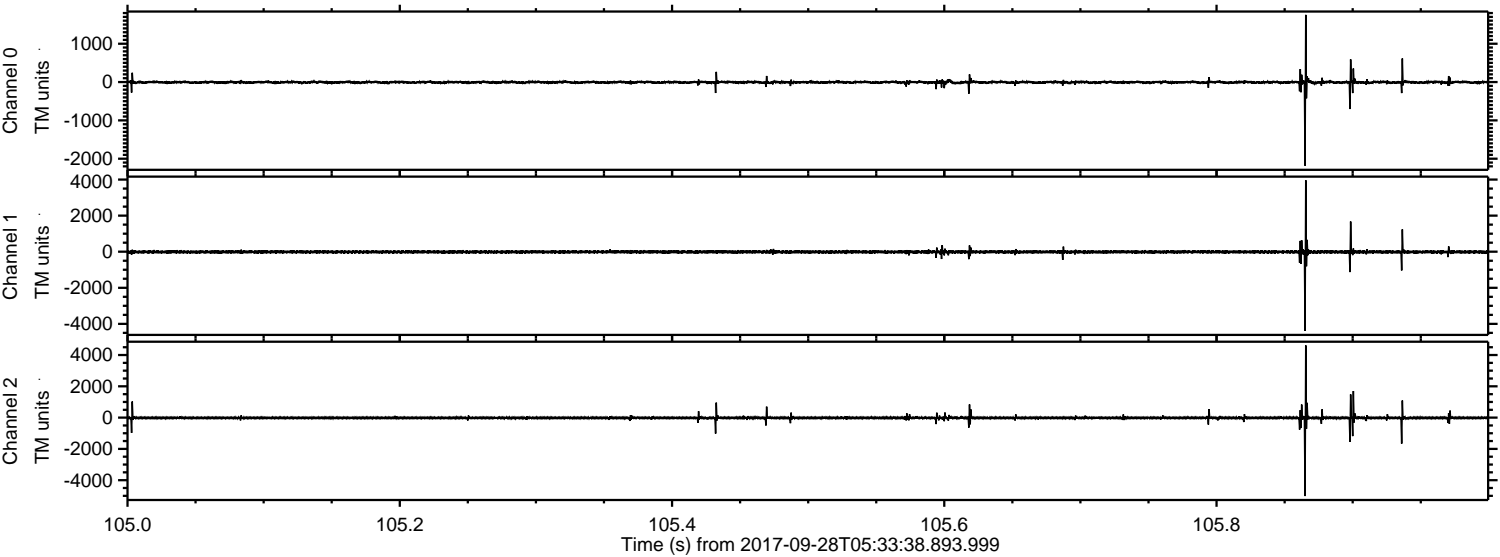
ELMAVAN 3D WAVEFORMS (Measured data sampled at 50 kHz) 51000 packets of 144 samples from 2017-09-28T05:33:38.893.999. Part 136/147

Processed Thu Sep 28 07:41:25 2017 by ELM ver.2012-10-06 from 001__elm20170928_053337__dat00.bin



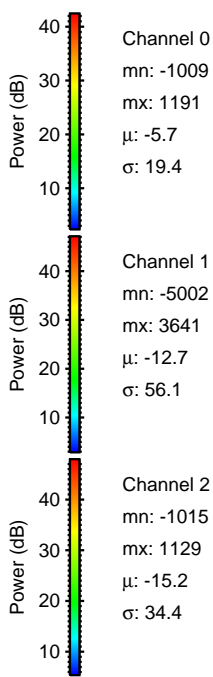
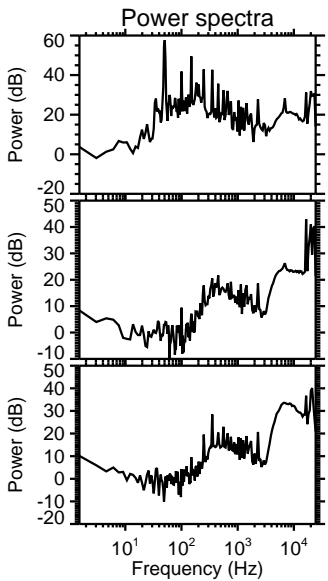
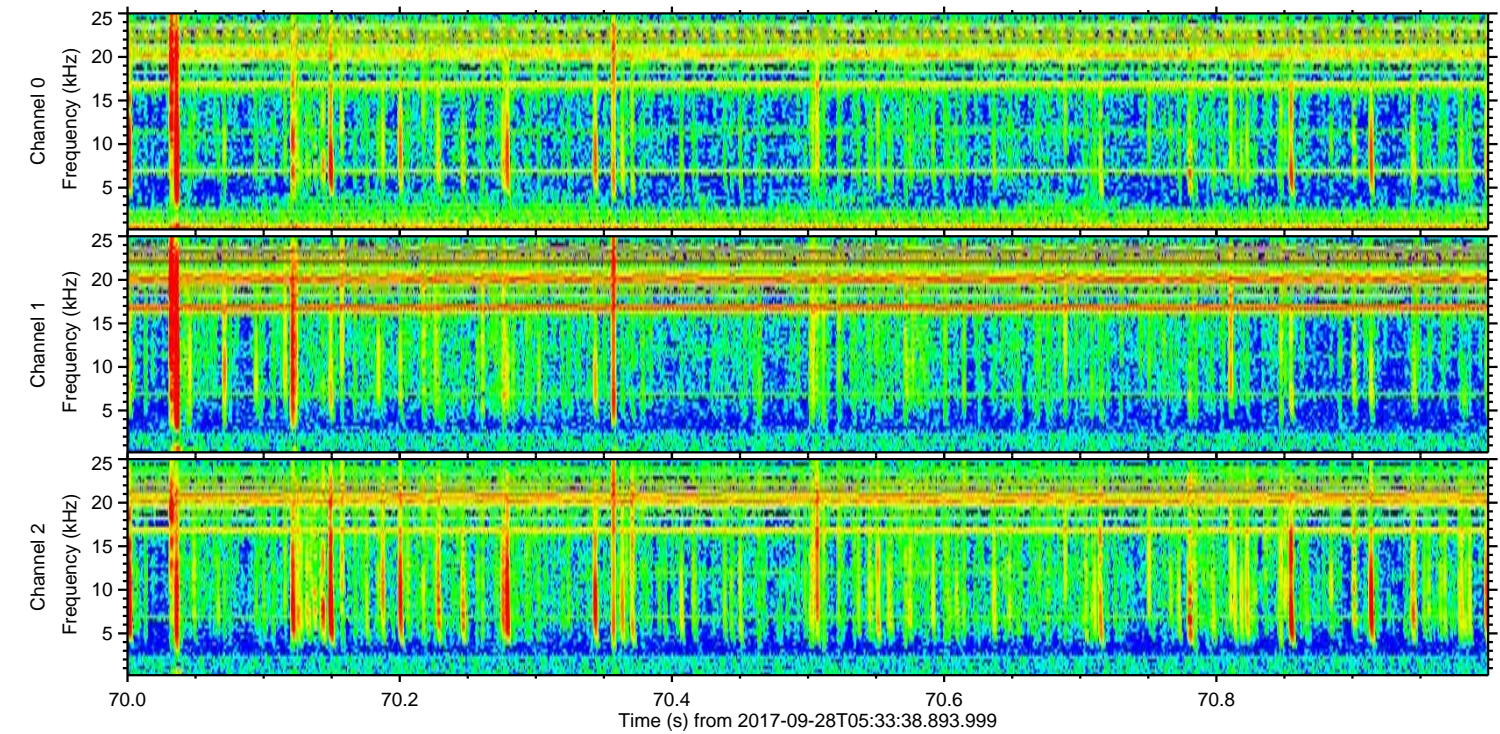
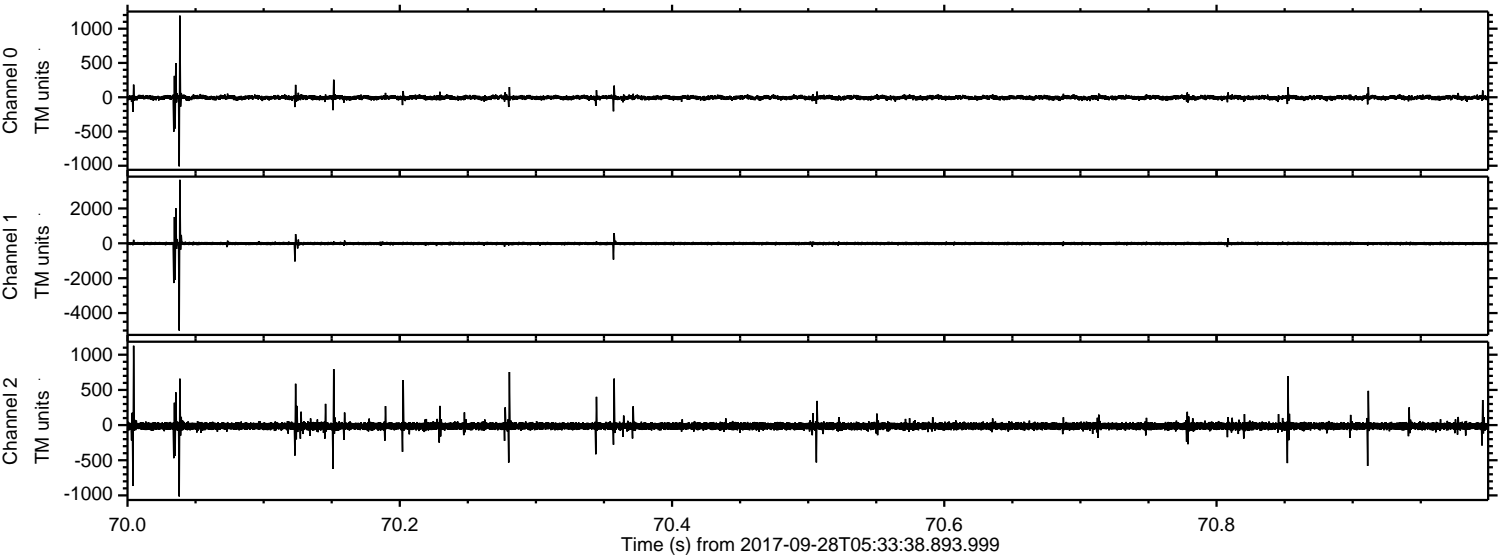
ELMAVAN 3D WAVEFORMS (Measured data sampled at 50 kHz) 51000 packets of 144 samples from 2017-09-28T05:33:38.893.999. Part 106/147

Processed Thu Sep 28 07:41:25 2017 by ELM ver.2012-10-06 from 001__elm20170928_053337__dat00.bin



ELMAVAN 3D WAVEFORMS (Measured data sampled at 50 kHz) 51000 packets of 144 samples from 2017-09-28T05:33:38.893.999. Part 71/147

Processed Thu Sep 28 07:41:26 2017 by ELM ver.2012-10-06 from 001__elm20170928_053337__dat00.bin



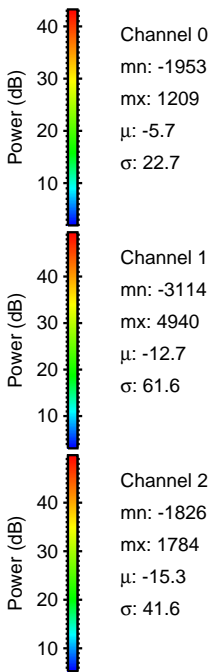
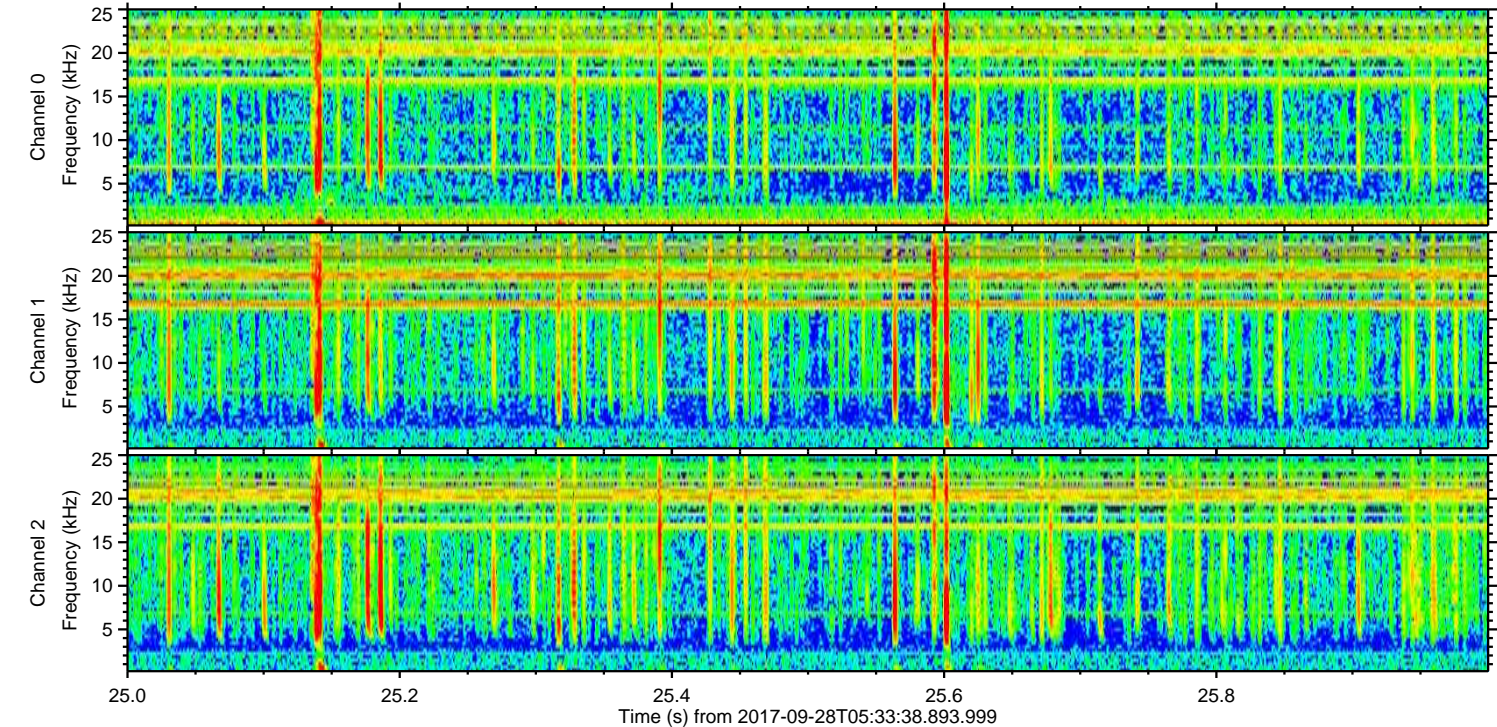
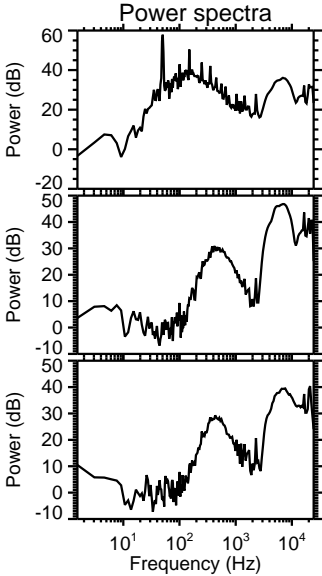
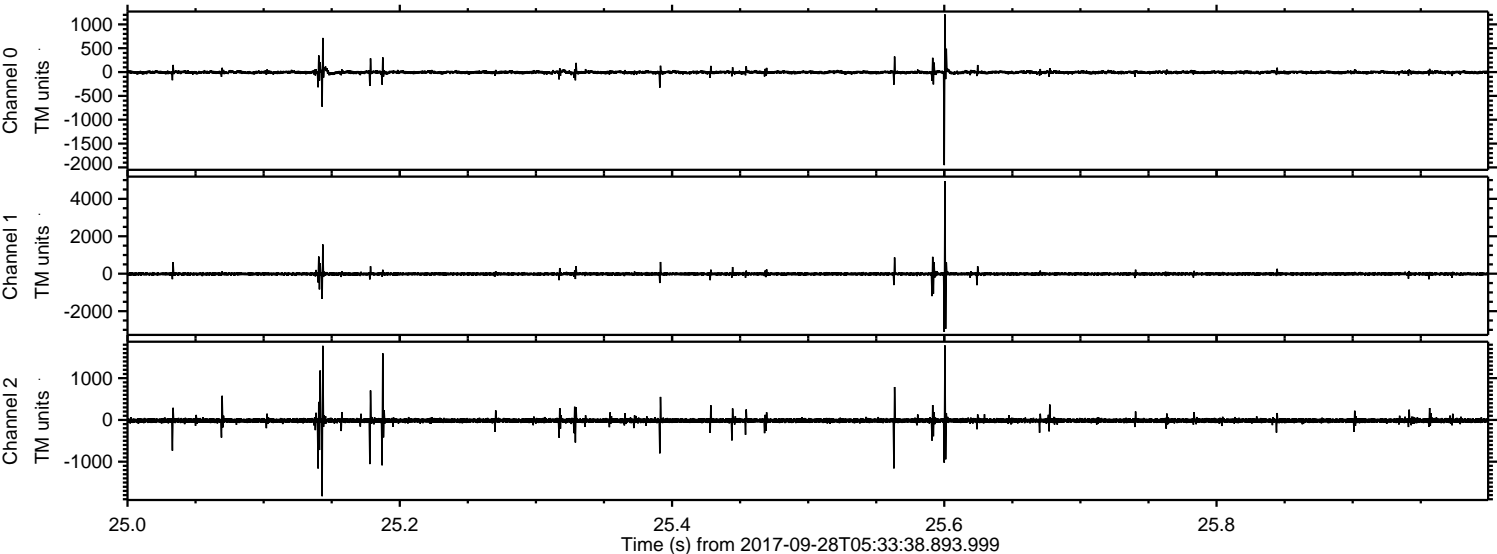
Channel 0
mn: -1009
mx: 1191
 μ : -5.7
 σ : 19.4

Channel 1
mn: -5002
mx: 3641
 μ : -12.7
 σ : 56.1

Channel 2
mn: -1015
mx: 1129
 μ : -15.2
 σ : 34.4

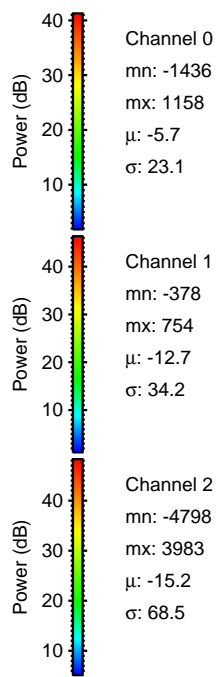
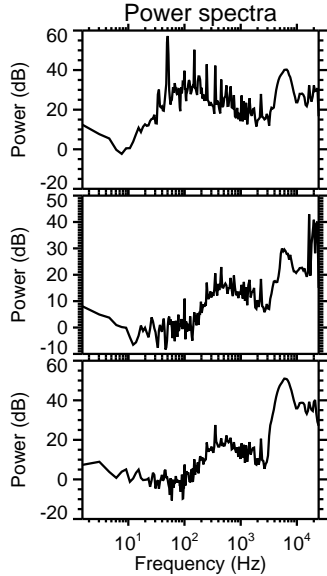
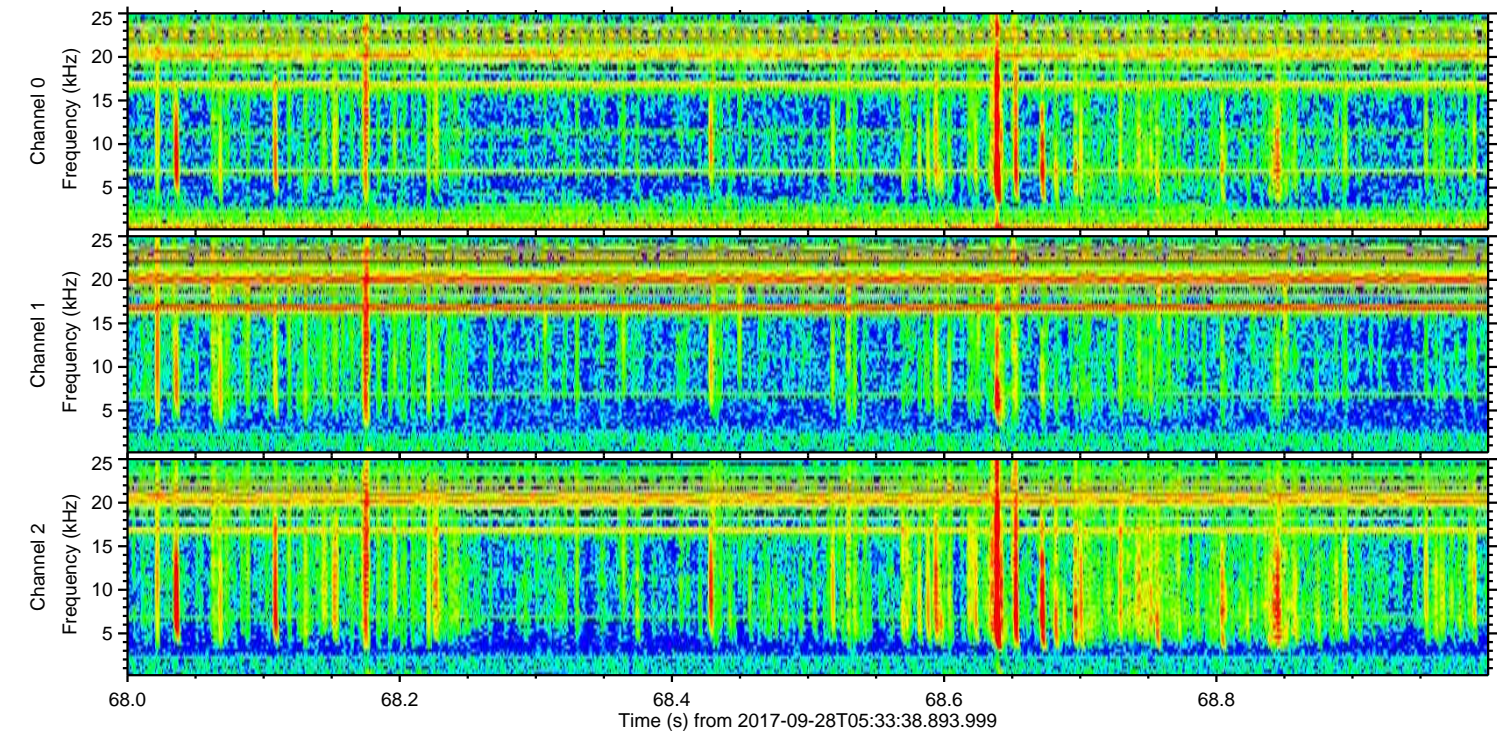
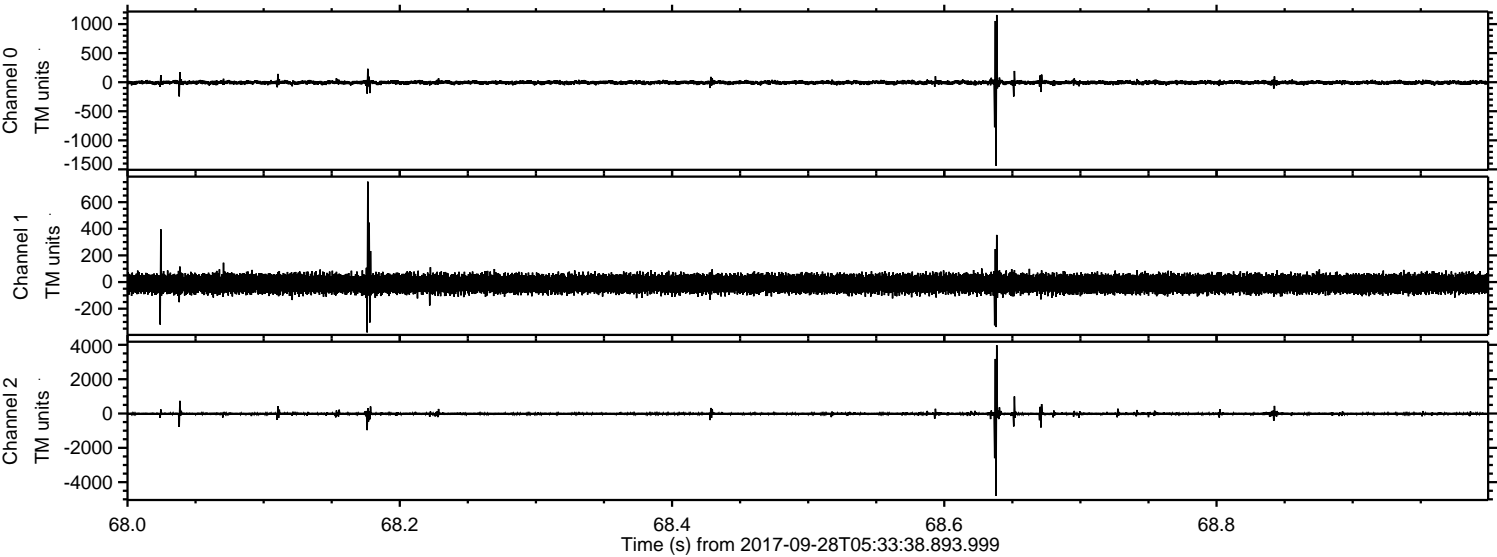
ELMAVAN 3D WAVEFORMS (Measured data sampled at 50 kHz) 51000 packets of 144 samples from 2017-09-28T05:33:38.893.999. Part 26/147

Processed Thu Sep 28 07:41:27 2017 by ELM ver.2012-10-06 from 001__elm20170928_053337__dat00.bin

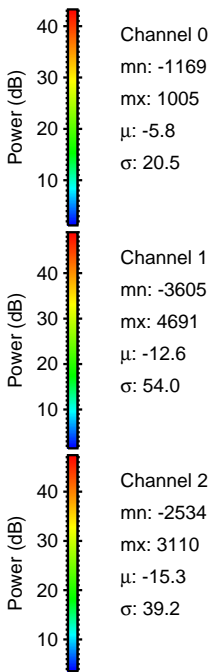
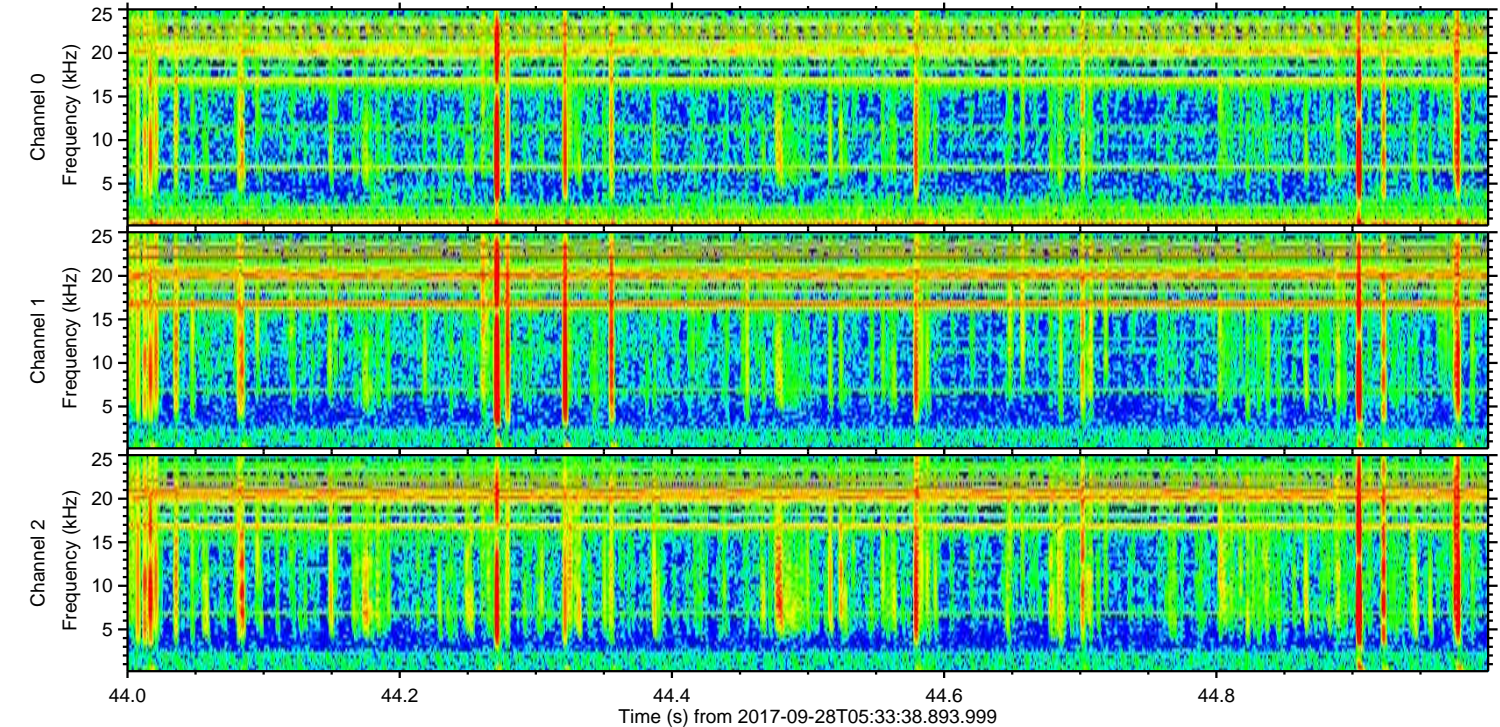
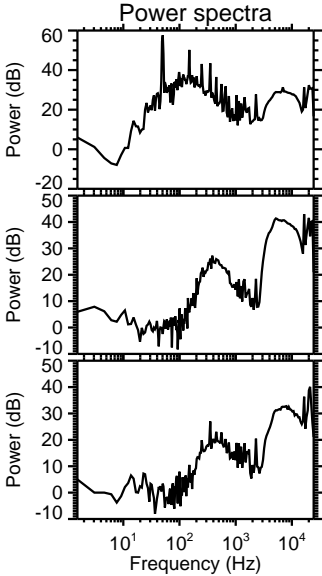
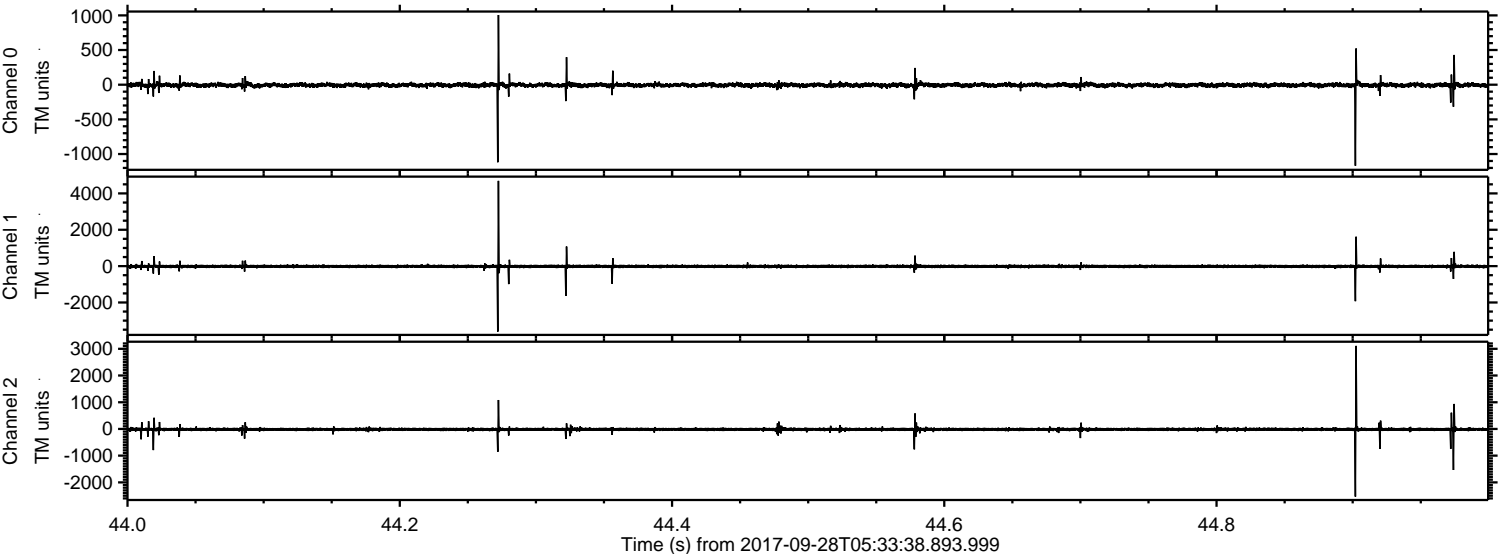


ELMAVAN 3D WAVEFORMS (Measured data sampled at 50 kHz) 51000 packets of 144 samples from 2017-09-28T05:33:38.893.999. Part 69/147

Processed Thu Sep 28 07:41:28 2017 by ELM ver.2012-10-06 from 001__elm20170928_053337__dat00.bin

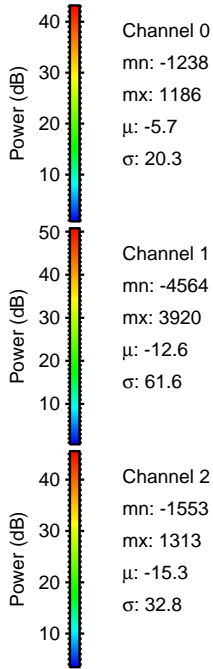
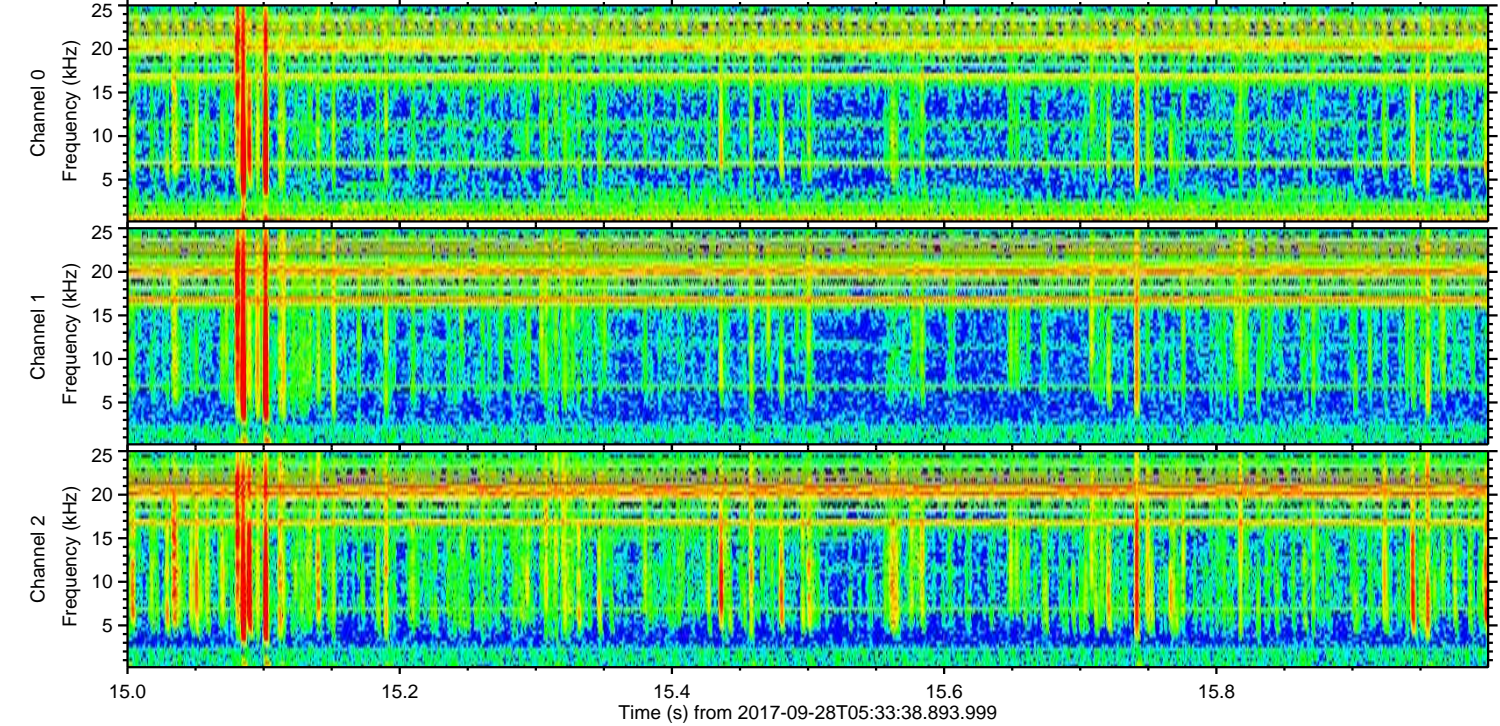
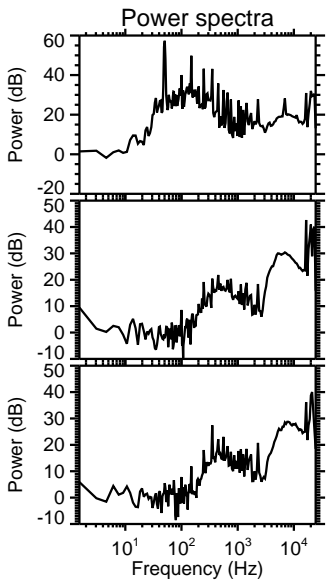
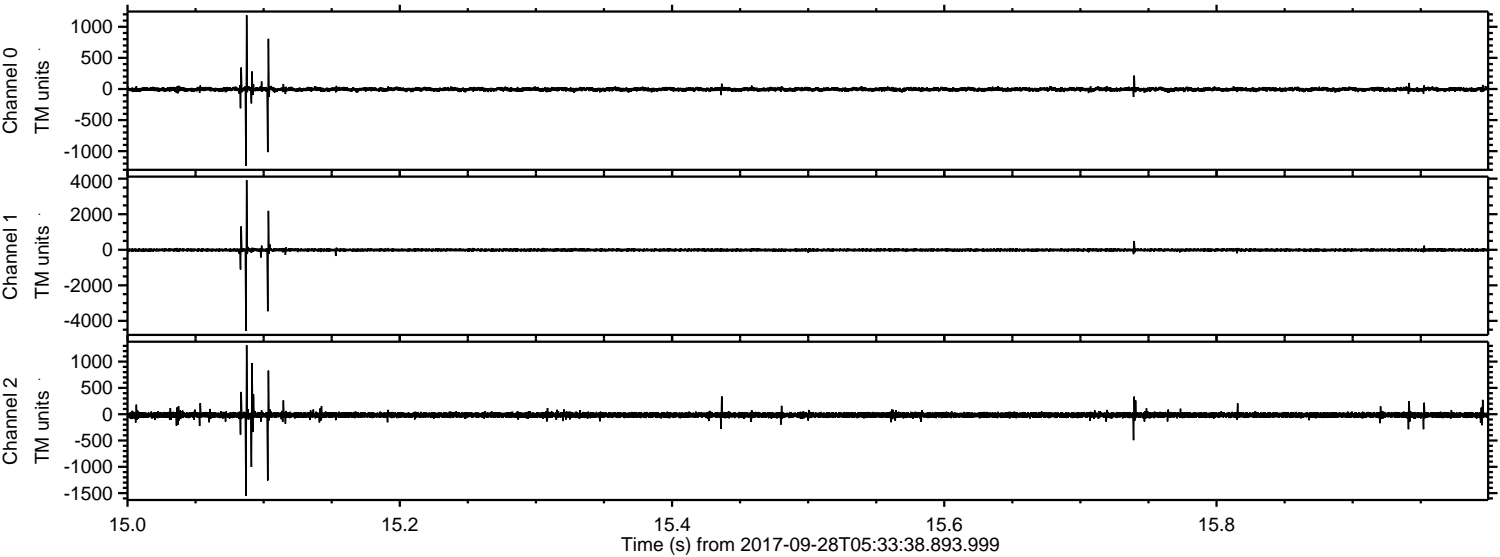


Processed Thu Sep 28 07:41:28 2017 by ELM ver.2012-10-06 from 001__elm20170928_053337__dat00.bin



ELMAVAN 3D WAVEFORMS (Measured data sampled at 50 kHz) 51000 packets of 144 samples from 2017-09-28T05:33:38.893.999. Part 16/147

Processed Thu Sep 28 07:41:29 2017 by ELM ver.2012-10-06 from 001__elm20170928_053337__dat00.bin



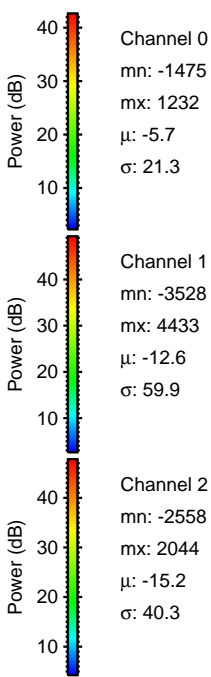
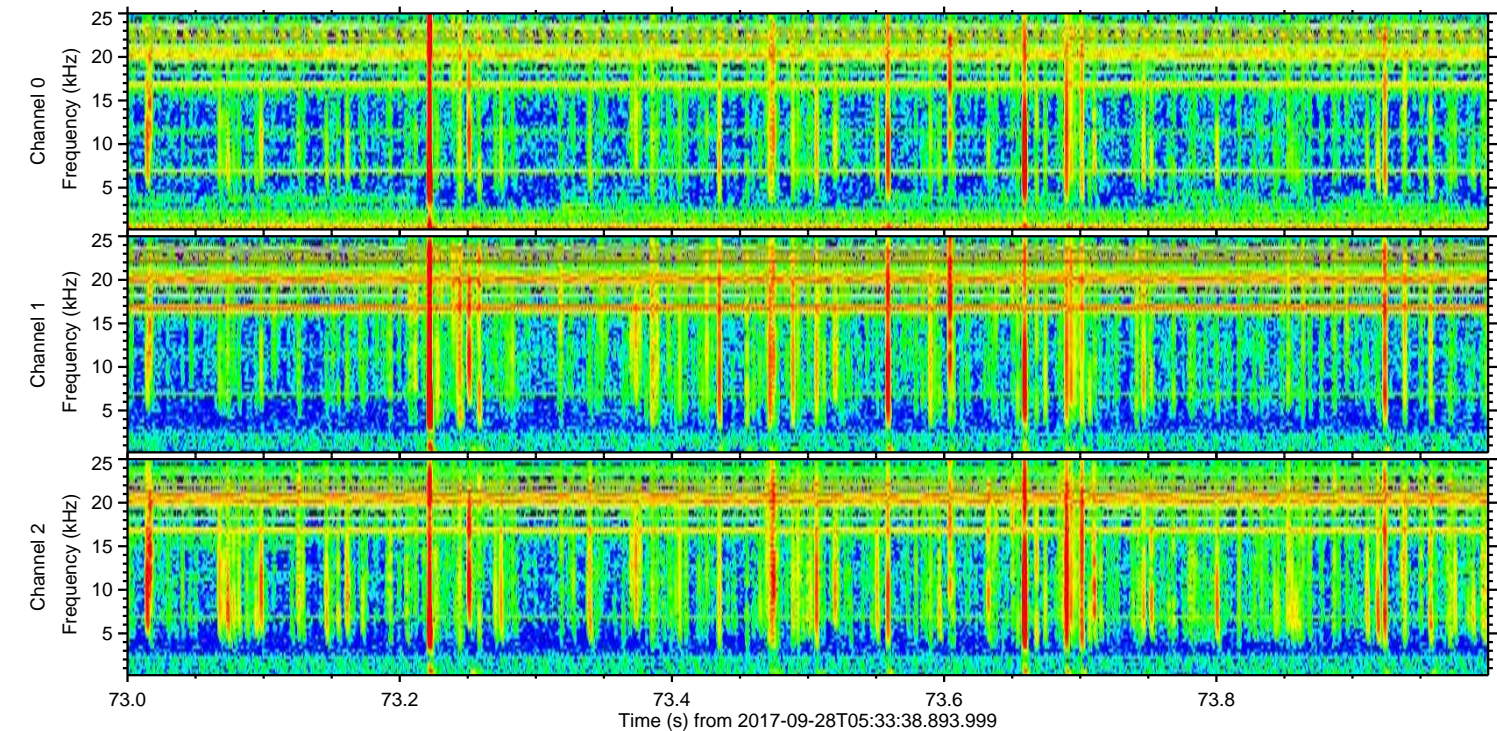
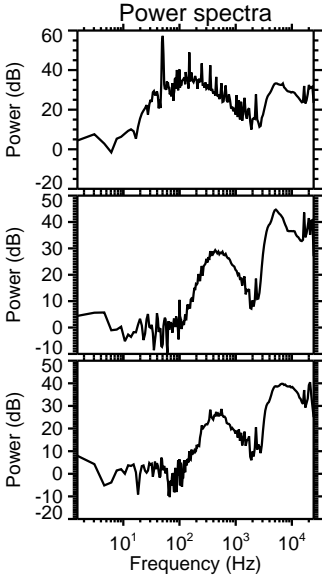
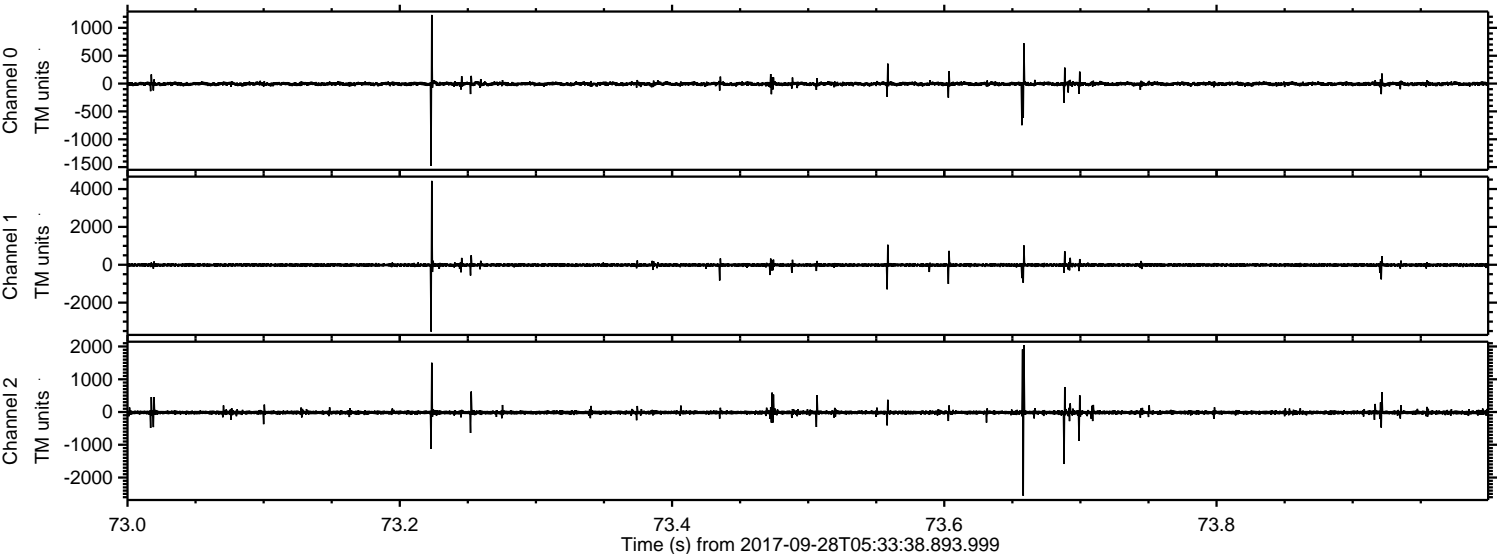
Channel 0
mn: -1238
mx: 1186
μ: -5.7
σ: 20.3

Channel 1
mn: -4564
mx: 3920
μ: -12.6
σ: 61.6

Channel 2
mn: -1553
mx: 1313
μ: -15.3
σ: 32.8

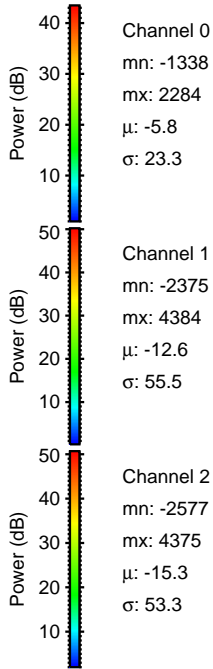
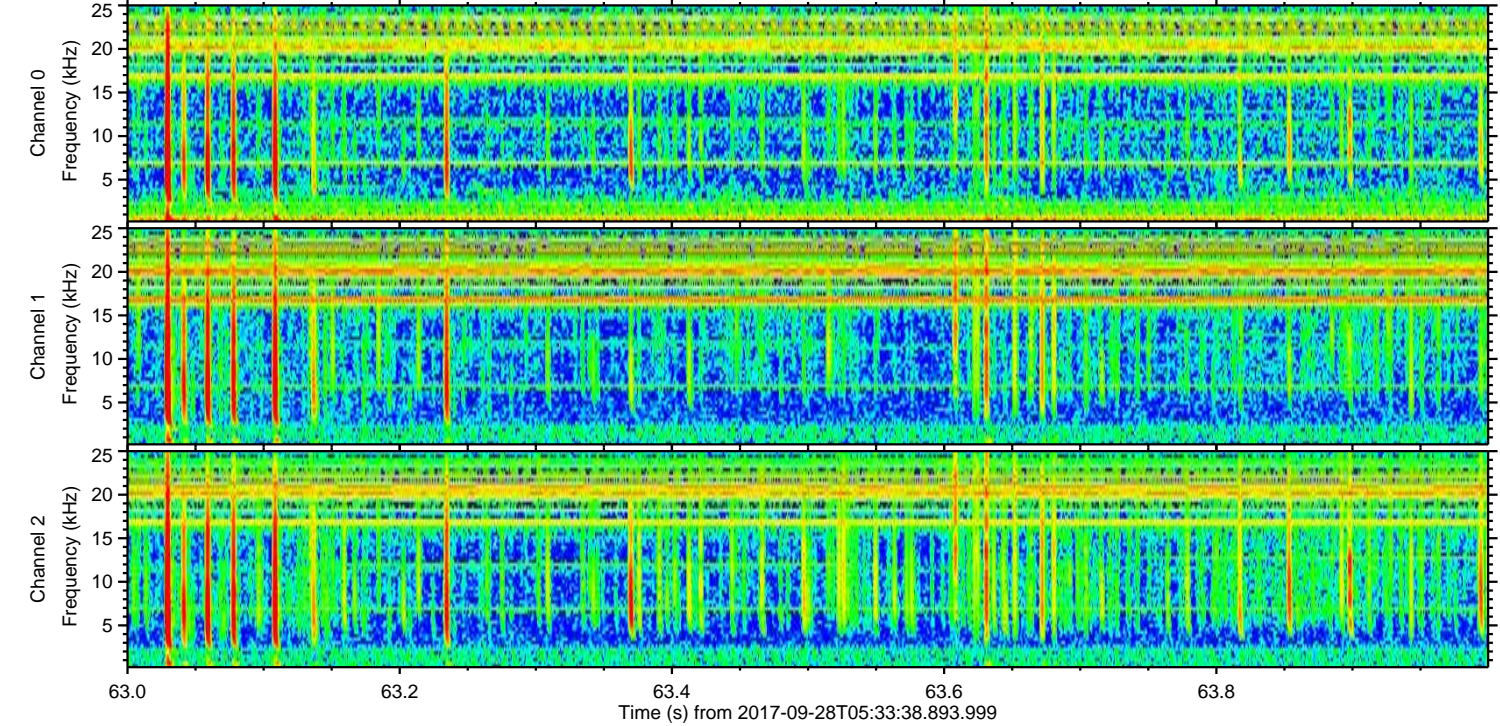
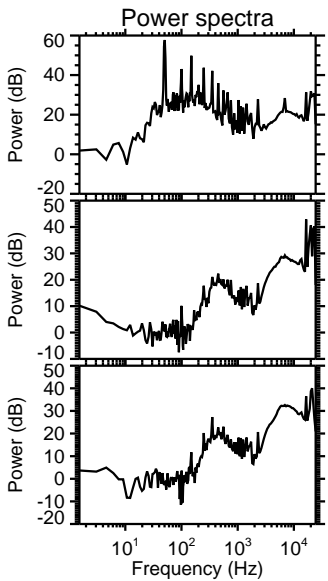
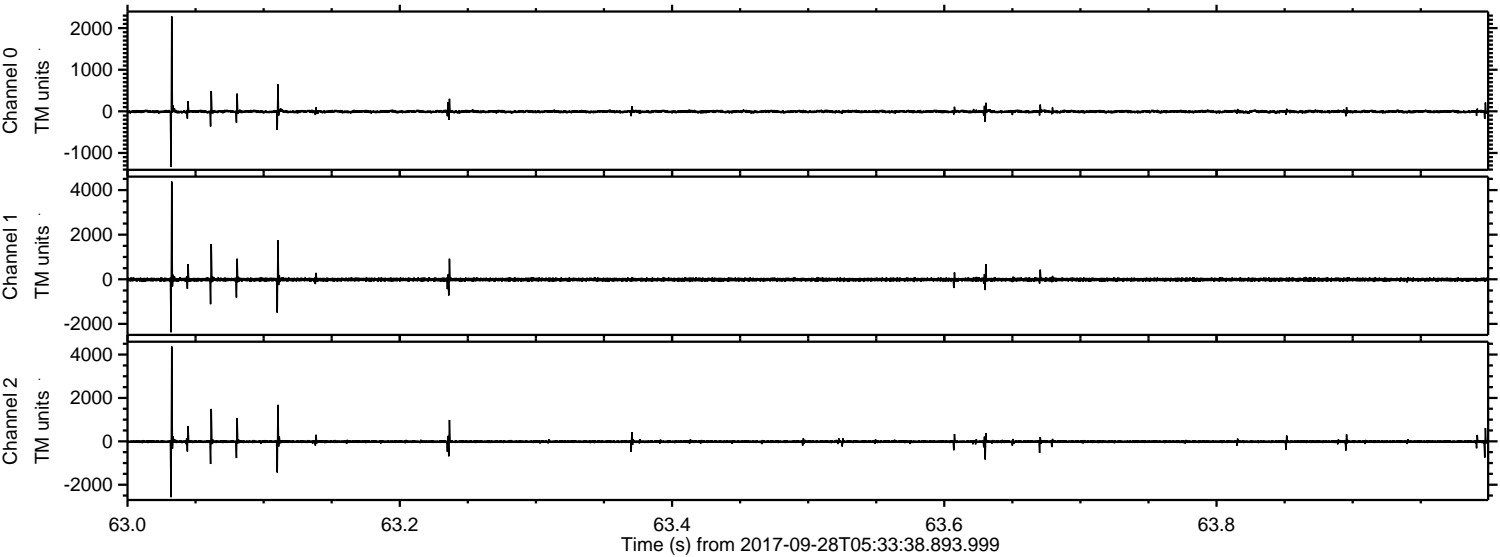
ELMAVAN 3D WAVEFORMS (Measured data sampled at 50 kHz) 51000 packets of 144 samples from 2017-09-28T05:33:38.893.999. Part 74/147

Processed Thu Sep 28 07:41:30 2017 by ELM ver.2012-10-06 from 001__elm20170928_053337__dat00.bin



ELMAVAN 3D WAVEFORMS (Measured data sampled at 50 kHz) 51000 packets of 144 samples from 2017-09-28T05:33:38.893.999. Part 64/147

Processed Thu Sep 28 07:41:31 2017 by ELM ver.2012-10-06 from 001__elm20170928_053337__dat00.bin



Channel 0
mn: -1338
mx: 2284
 μ : -5.8
 σ : 23.3

Channel 1
mn: -2375
mx: 4384
 μ : -12.6
 σ : 55.5

Channel 2
mn: -2577
mx: 4375
 μ : -15.3
 σ : 53.3

ELMAVAN 3D WAVEFORMS (Measured data sampled at 50 kHz) 51000 packets of 144 samples from 2017-09-28T05:33:38.893.999. Part 80/147

Processed Thu Sep 28 07:41:31 2017 by ELM ver.2012-10-06 from 001__elm20170928_053337__dat00.bin

