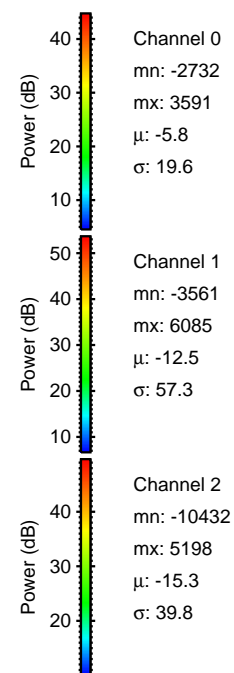
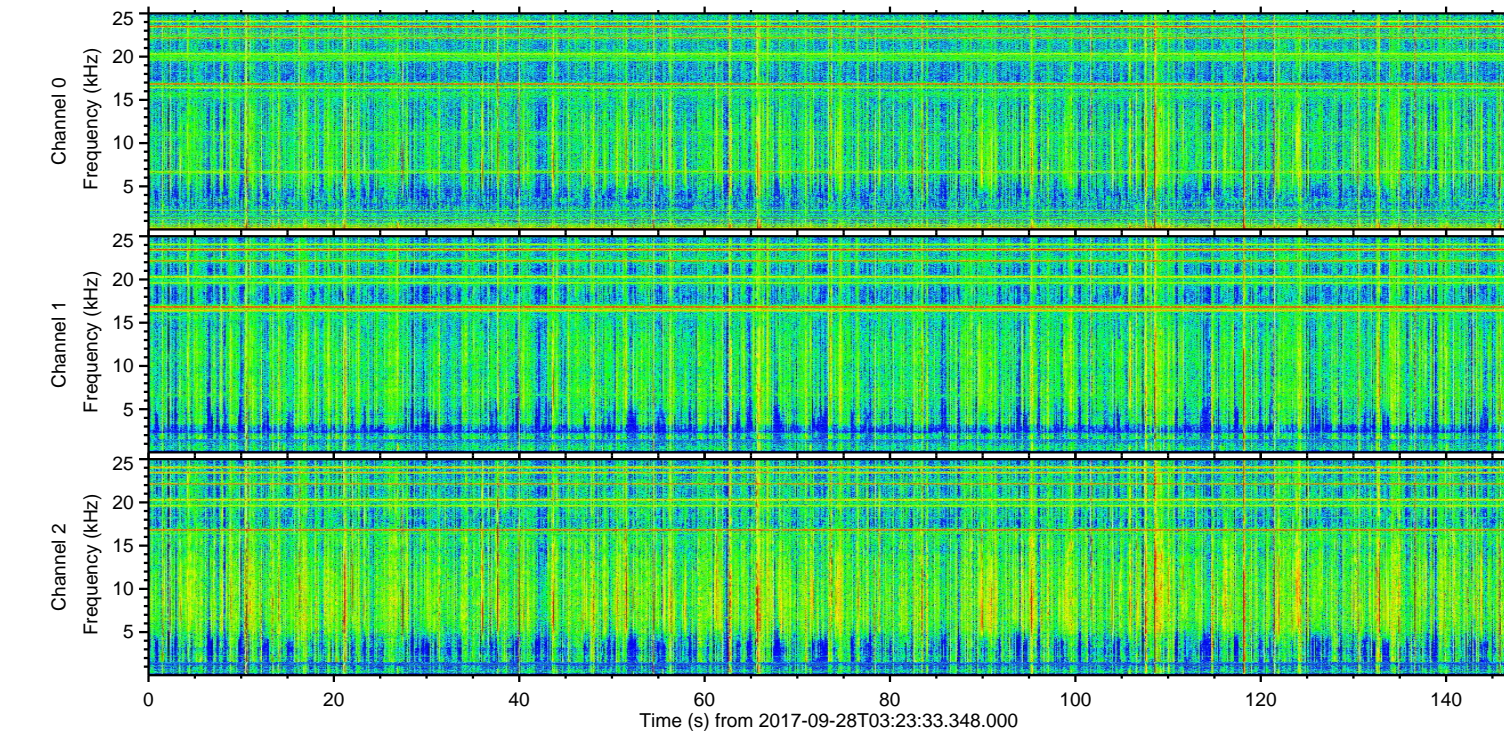
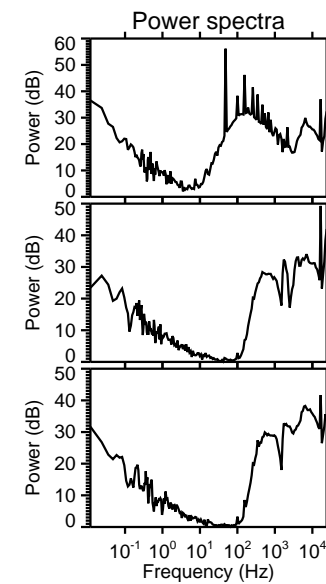
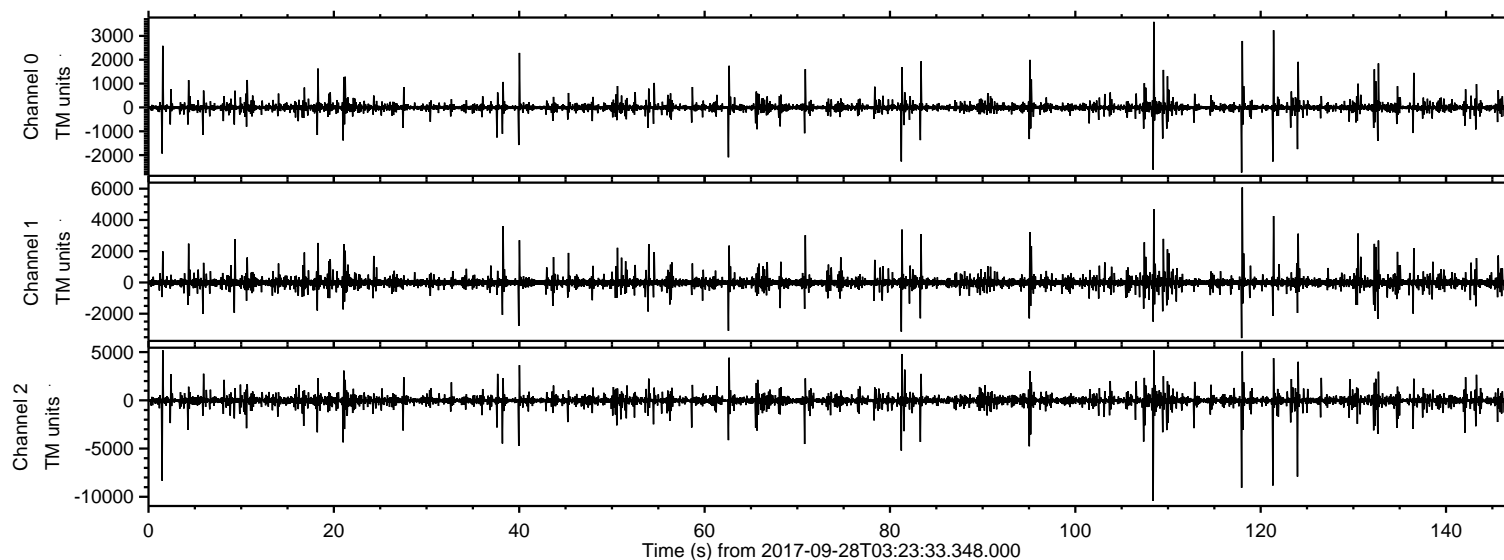


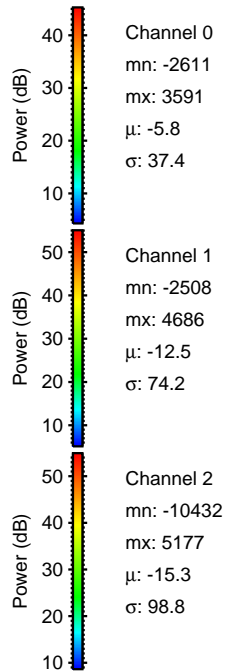
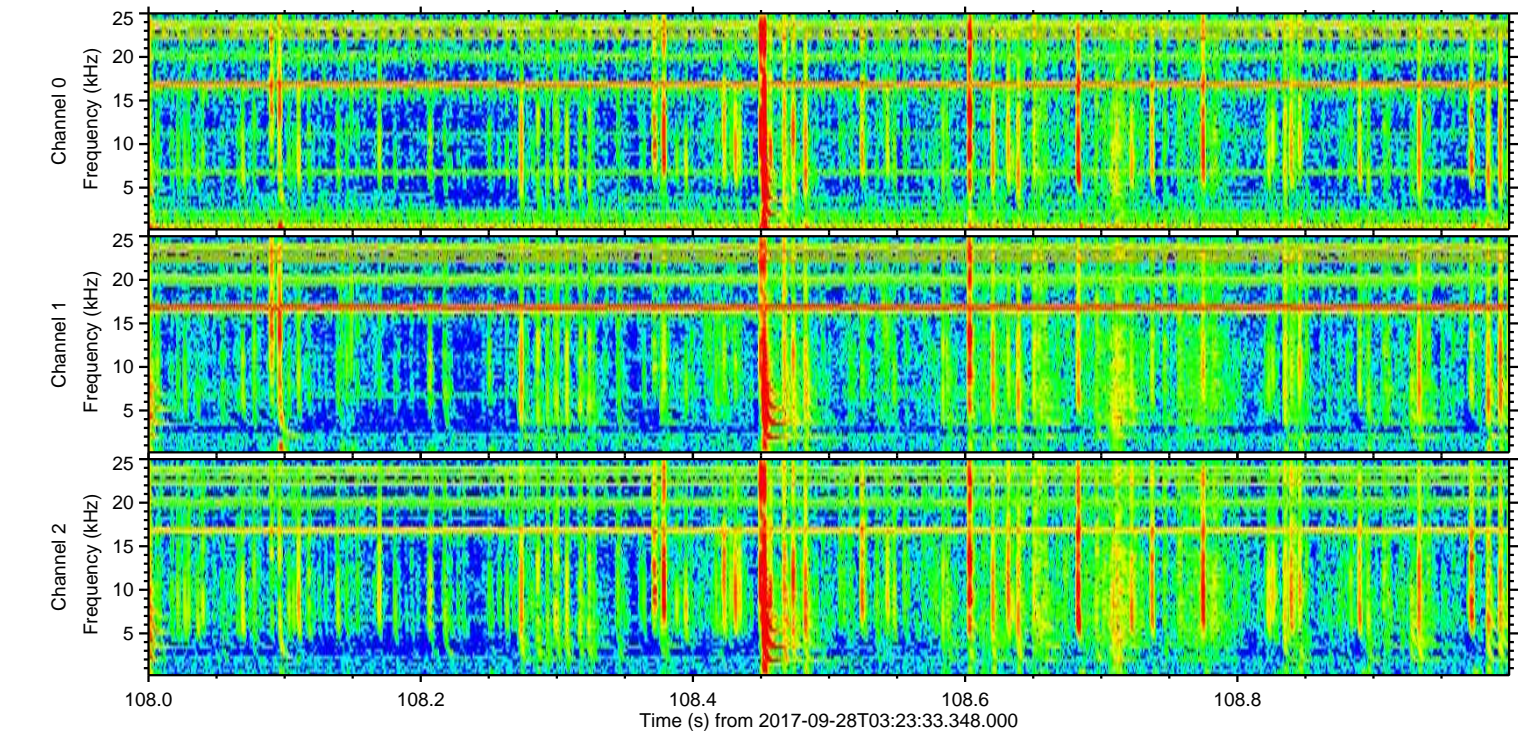
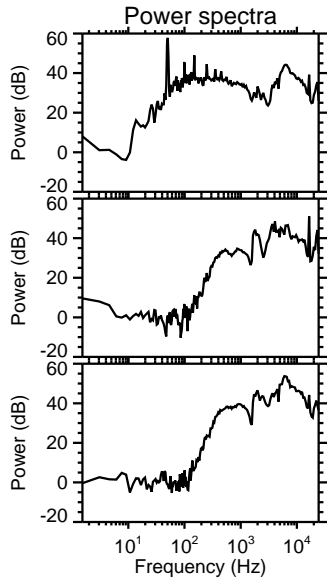
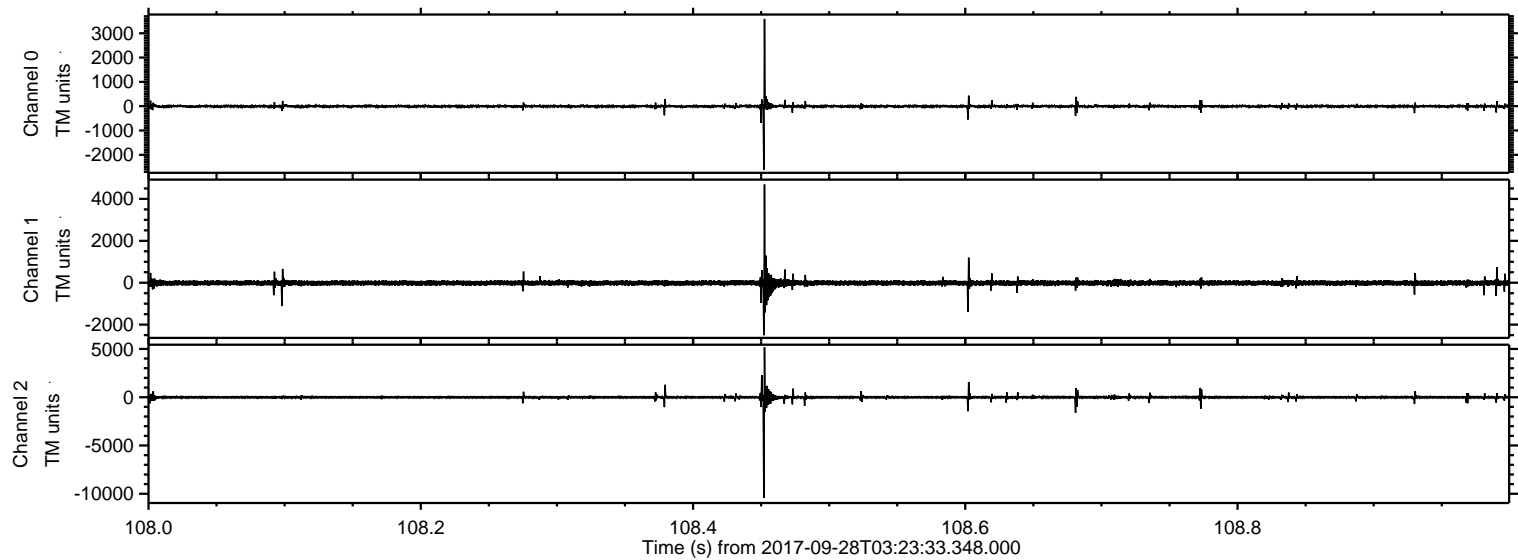
ELMAVAN 3D WAVEFORMS (Measured data sampled at 50 kHz) 51000 packets of 144 samples from 2017-09-28T03:23:33.348.000.

Processed Thu Sep 28 05:30:47 2017 by ELM ver.2012-10-06 from 001__elm20170928_032332__dat00.bin



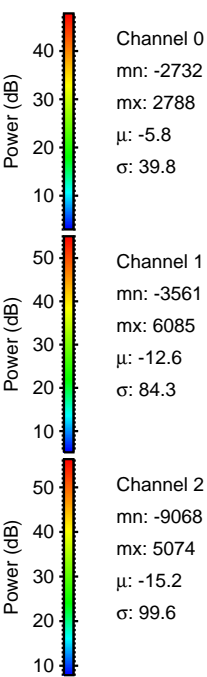
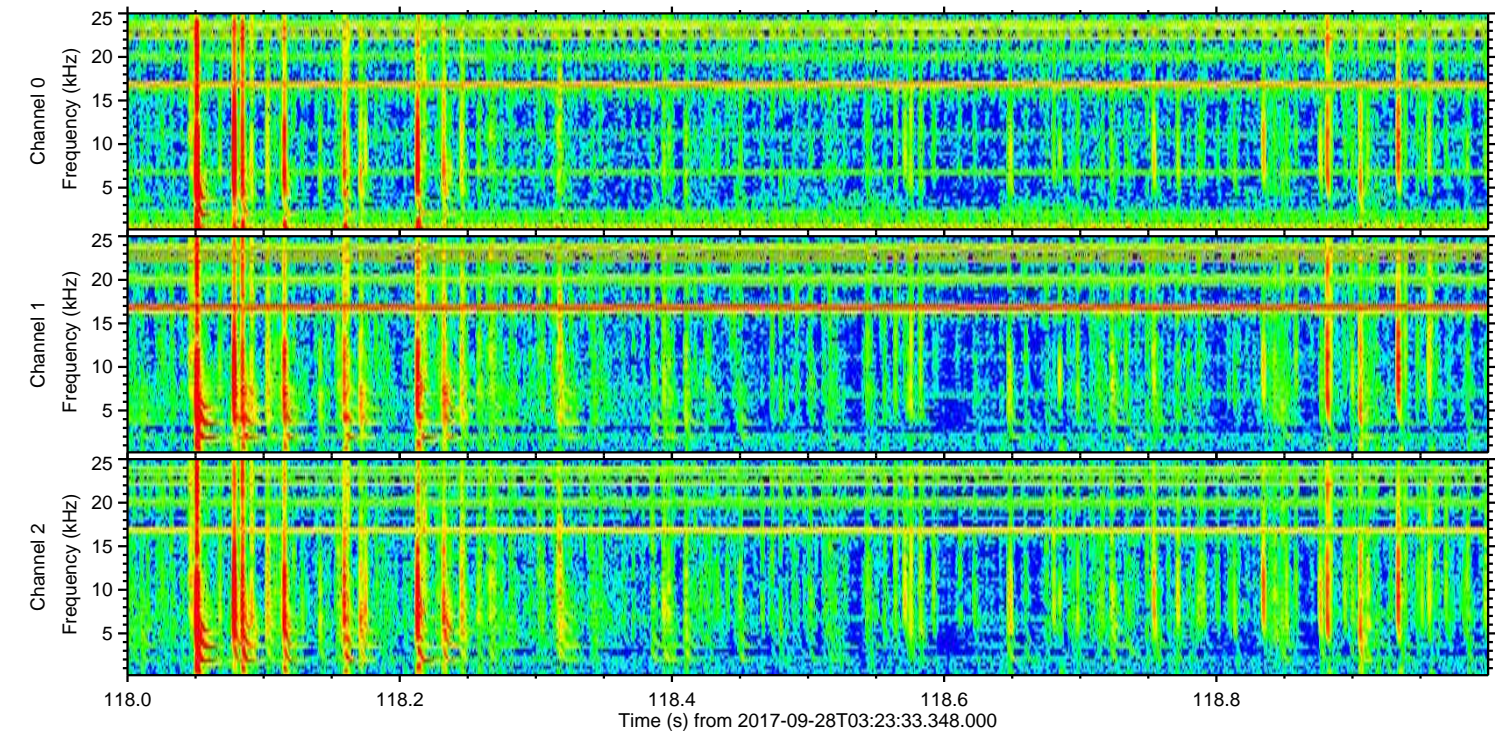
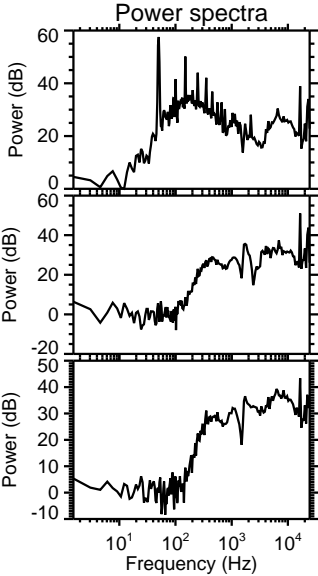
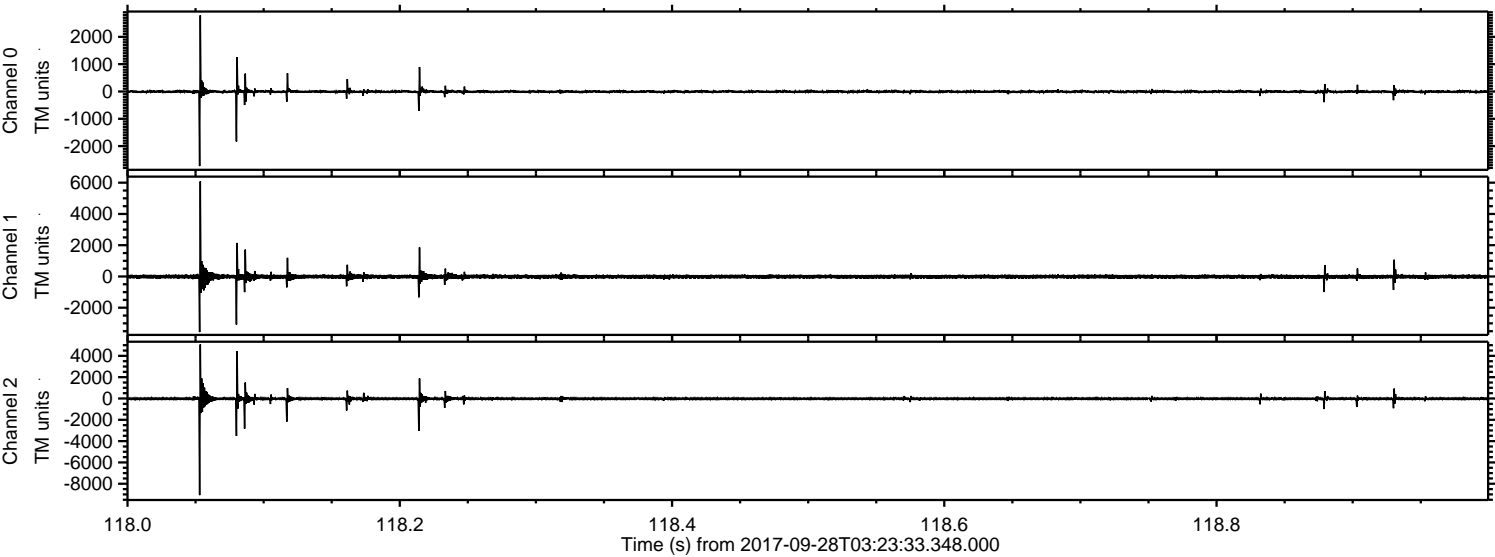
ELMAVAN 3D WAVEFORMS (Measured data sampled at 50 kHz) 51000 packets of 144 samples from 2017-09-28T03:23:33.348.000. Part 109/147

Processed Thu Sep 28 05:30:53 2017 by ELM ver.2012-10-06 from 001__elm20170928_032332__dat00.bin



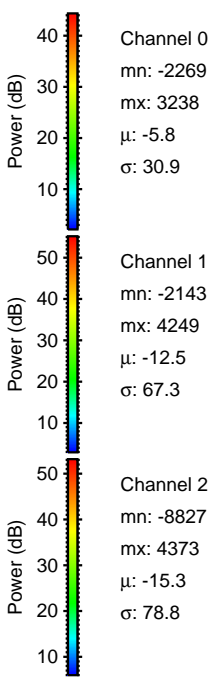
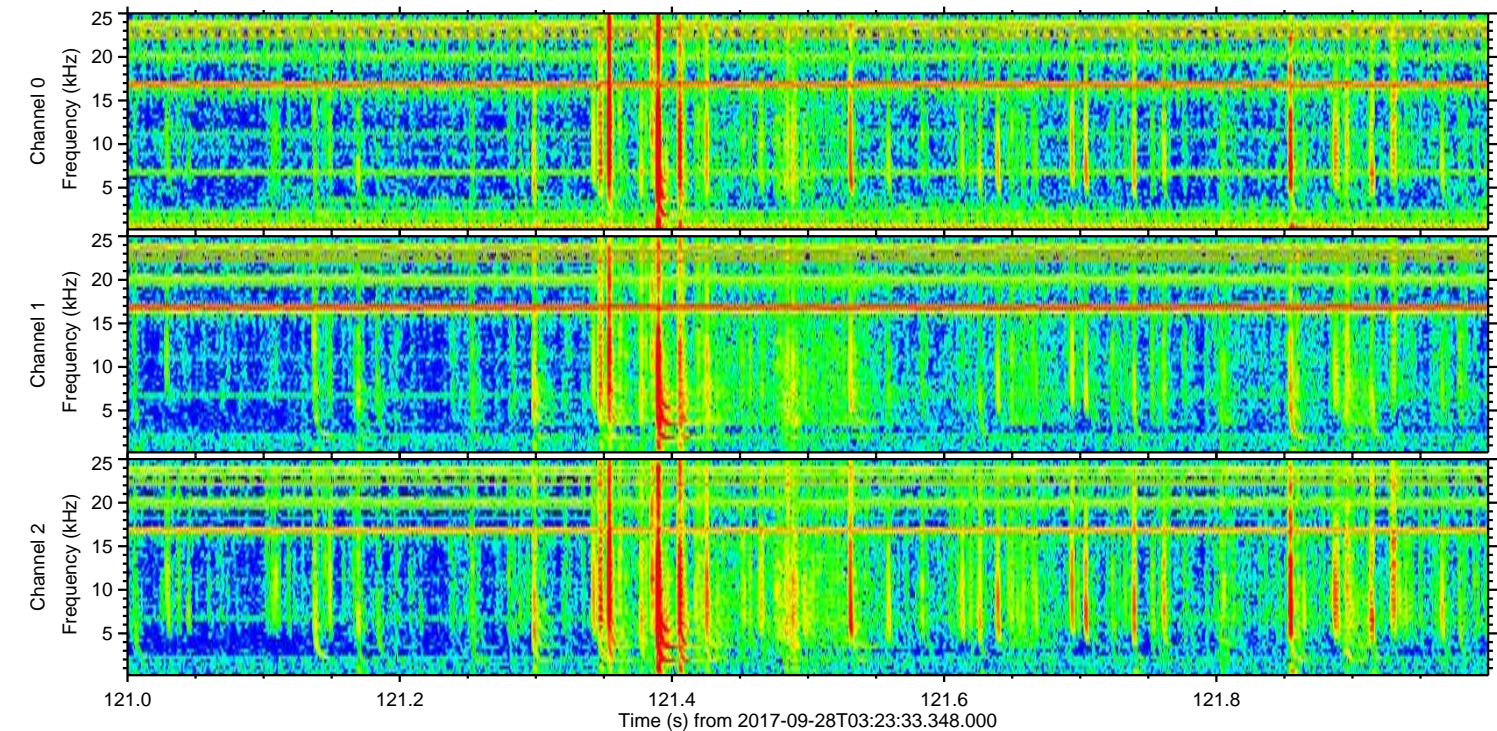
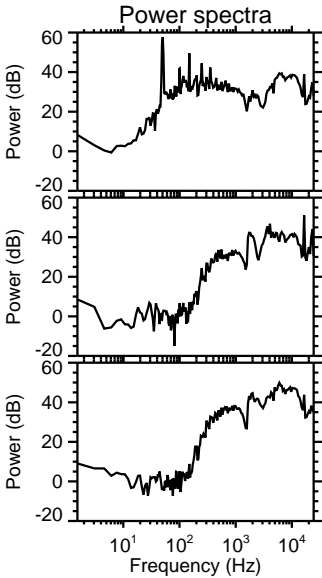
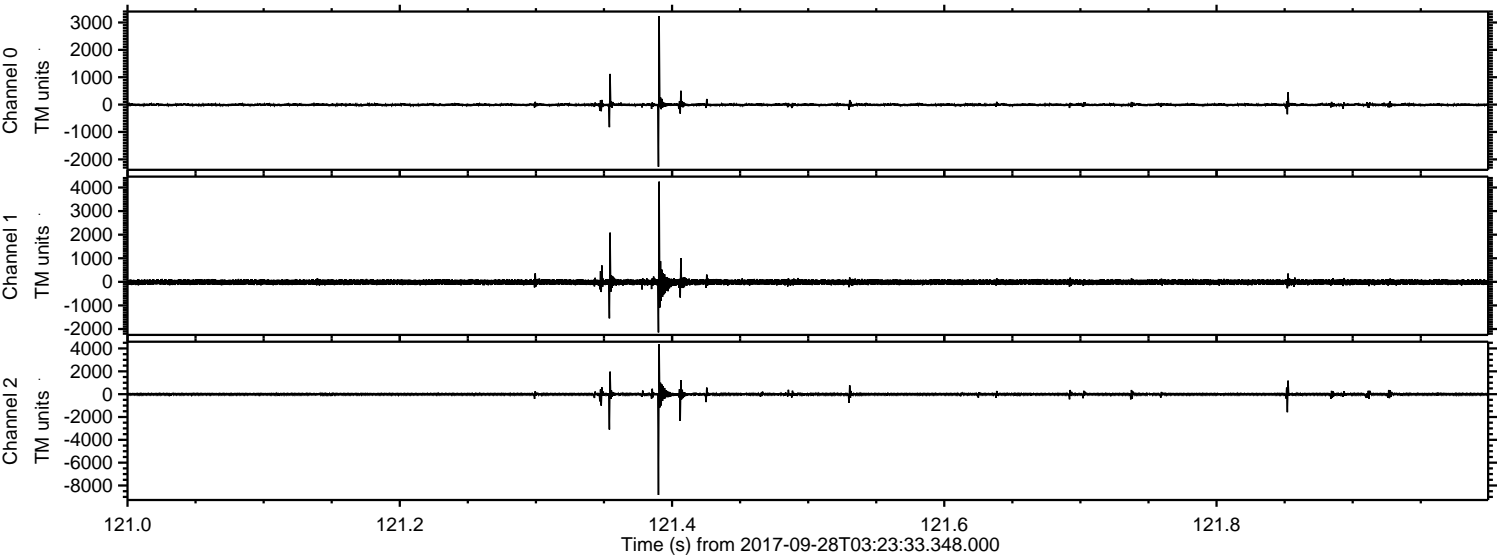
ELMAVAN 3D WAVEFORMS (Measured data sampled at 50 kHz) 51000 packets of 144 samples from 2017-09-28T03:23:33.348.000. Part 119/147

Processed Thu Sep 28 05:30:54 2017 by ELM ver.2012-10-06 from 001__elm20170928_032332__dat00.bin

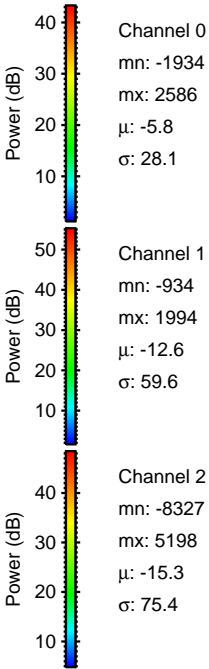
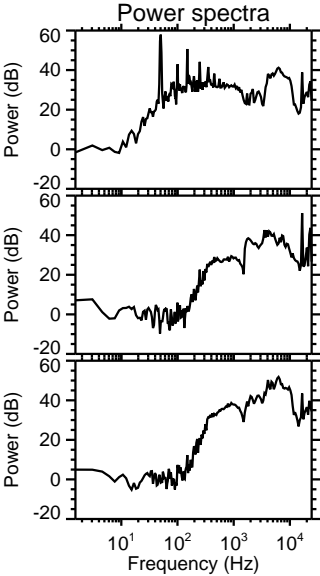
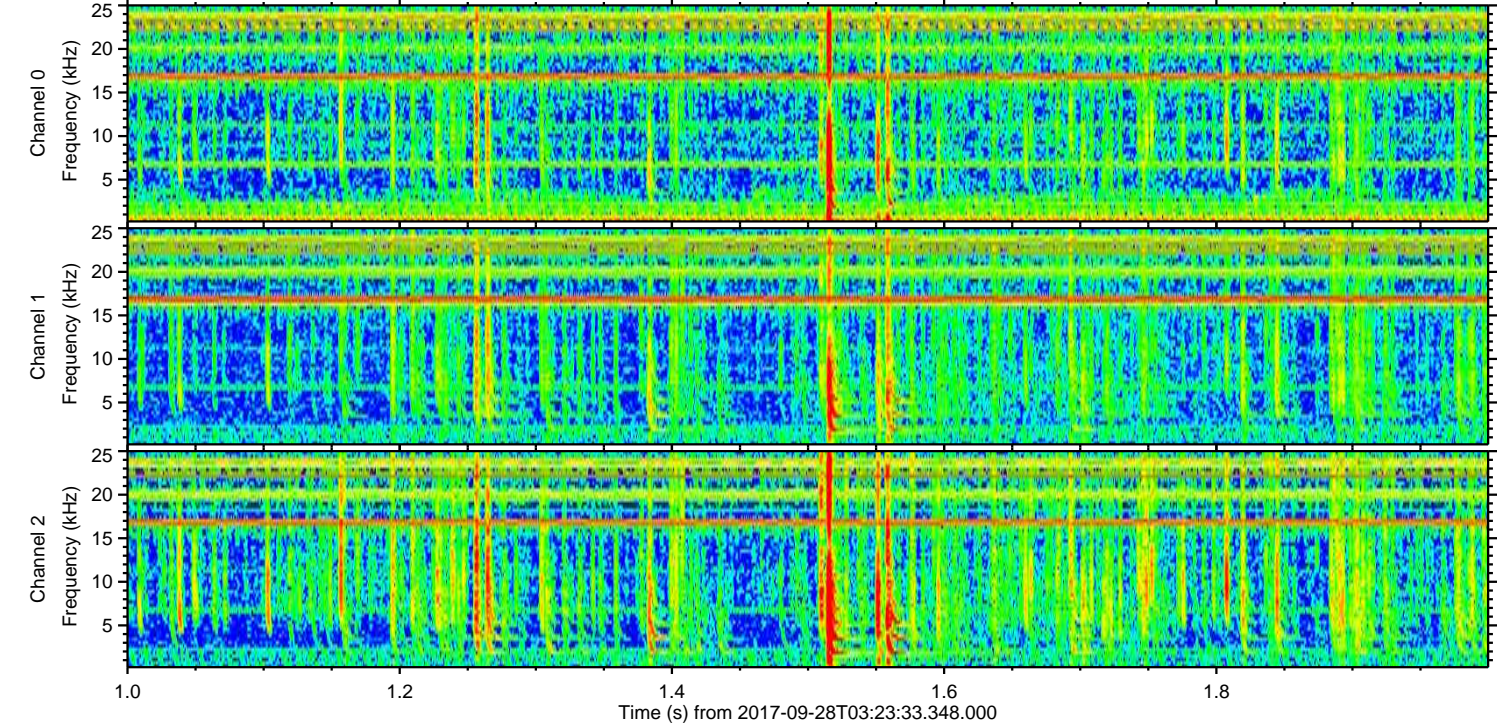
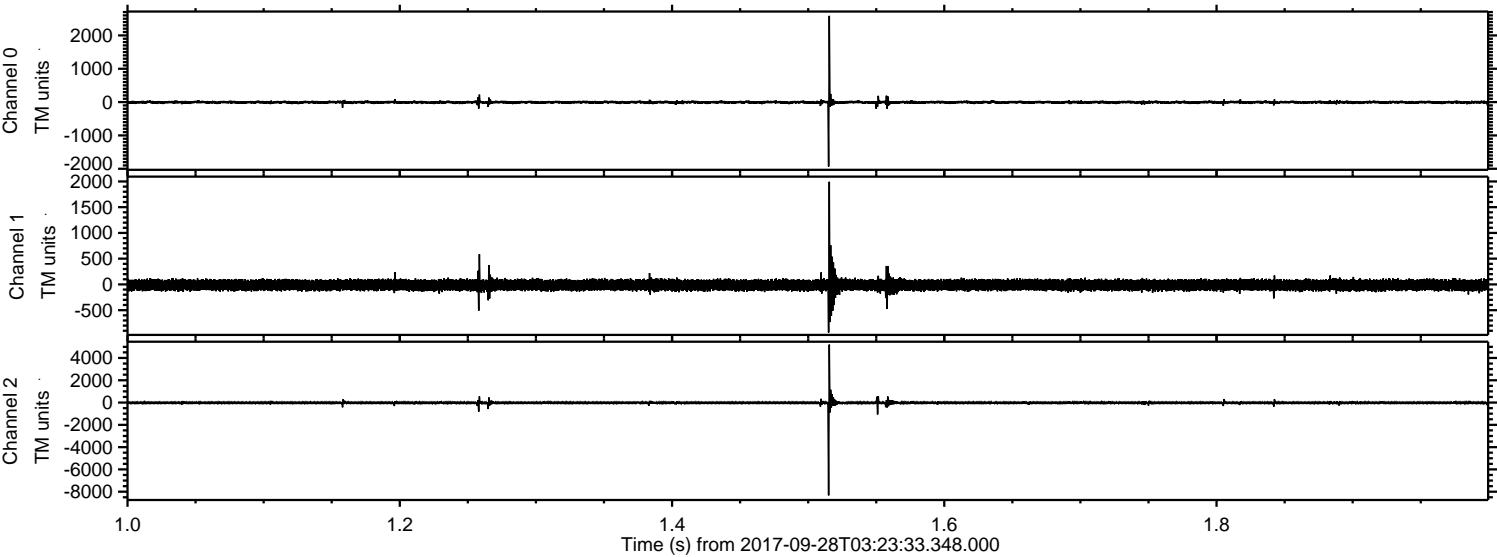


ELMAVAN 3D WAVEFORMS (Measured data sampled at 50 kHz) 51000 packets of 144 samples from 2017-09-28T03:23:33.348.000. Part 122/147

Processed Thu Sep 28 05:30:55 2017 by ELM ver.2012-10-06 from 001__elm20170928_032332__dat00.bin

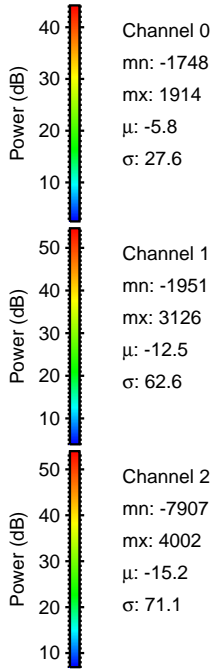
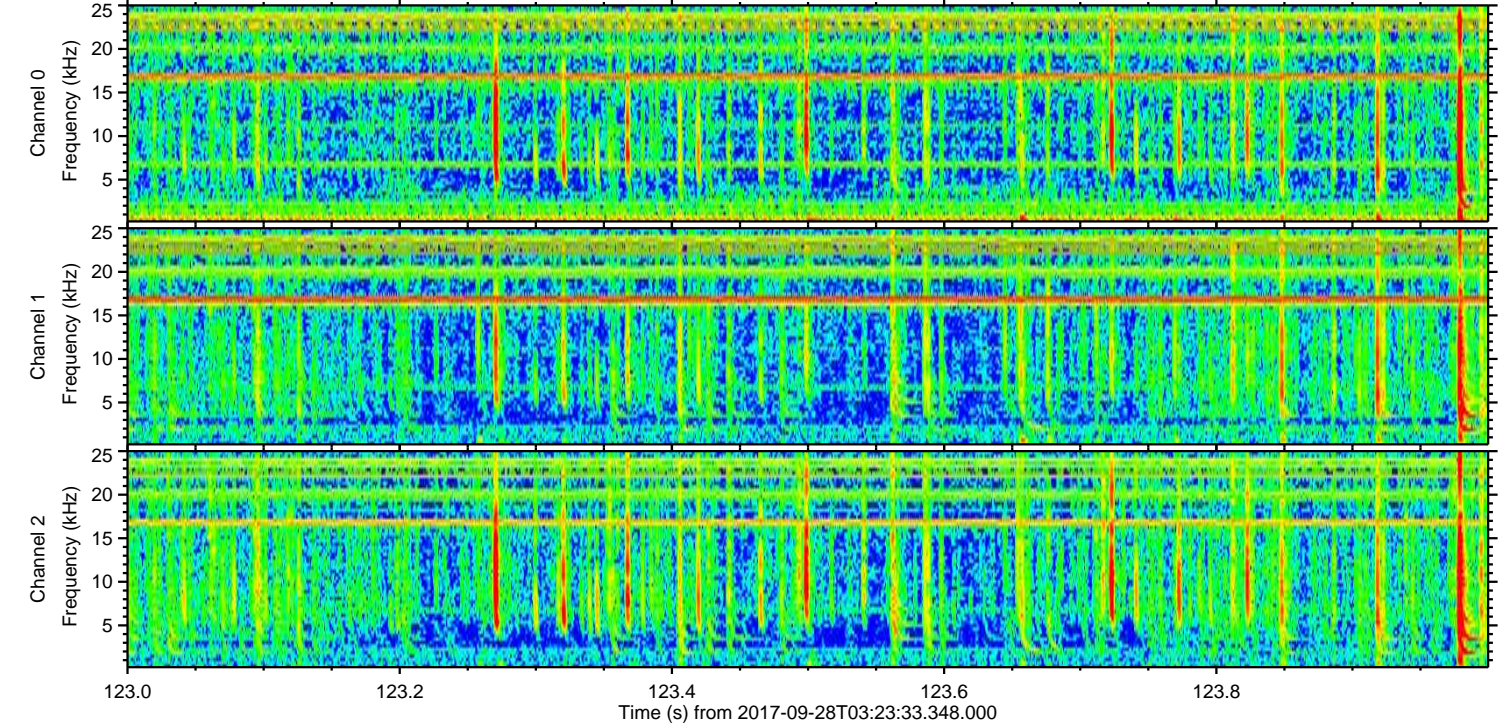
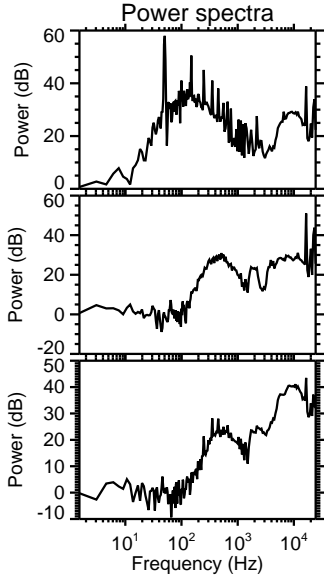
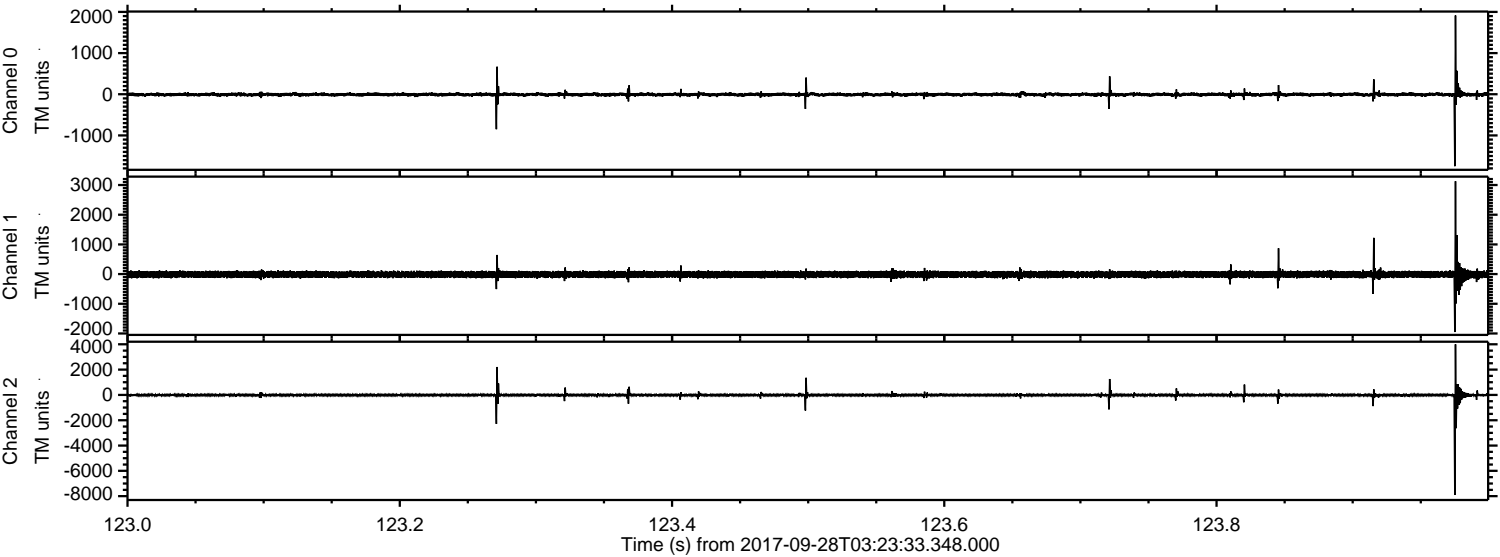


Processed Thu Sep 28 05:30:56 2017 by ELM ver.2012-10-06 from 001__elm20170928_032332__dat00.bin

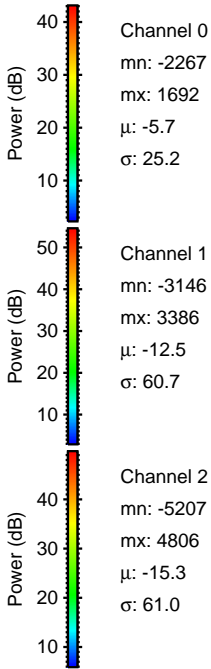
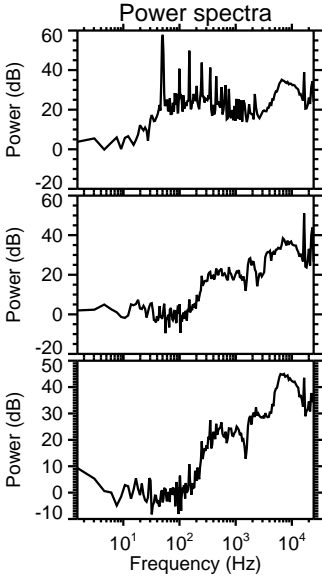
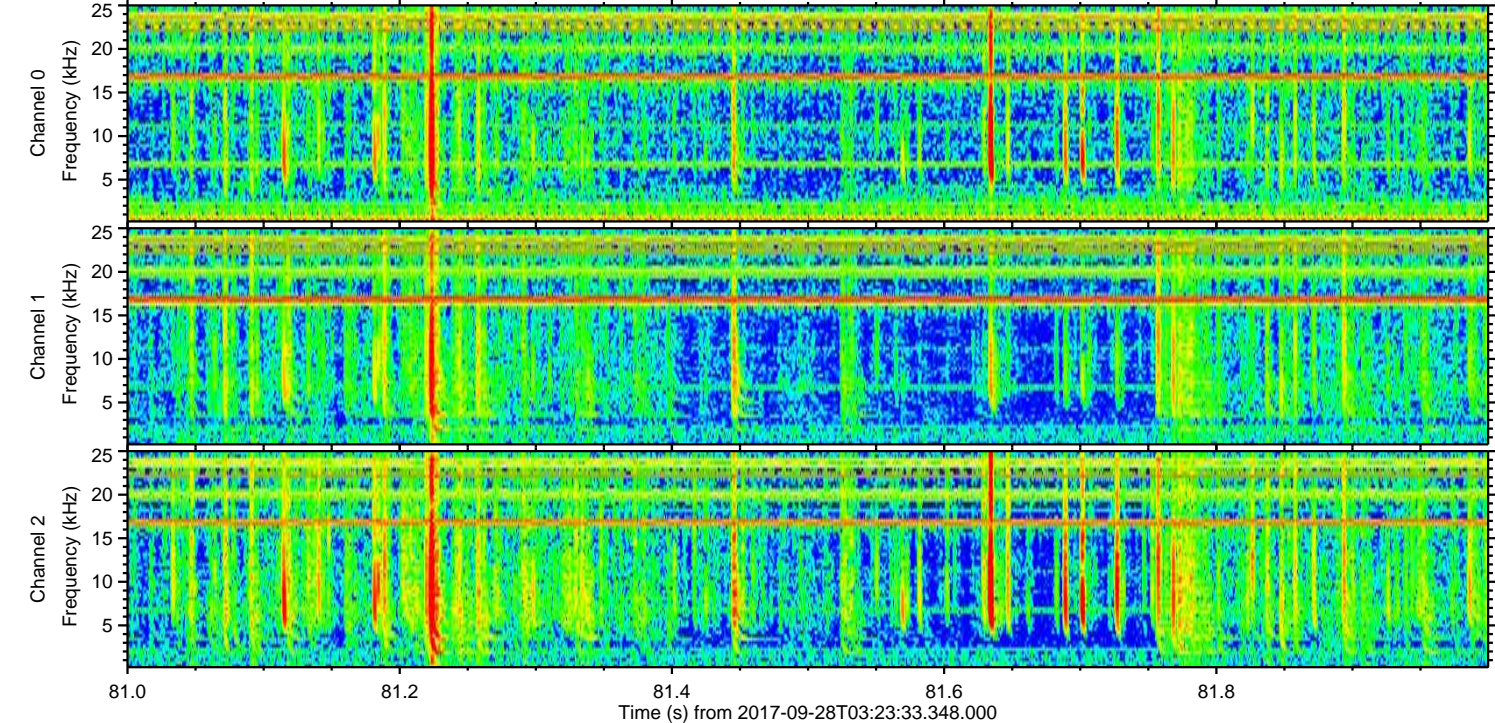
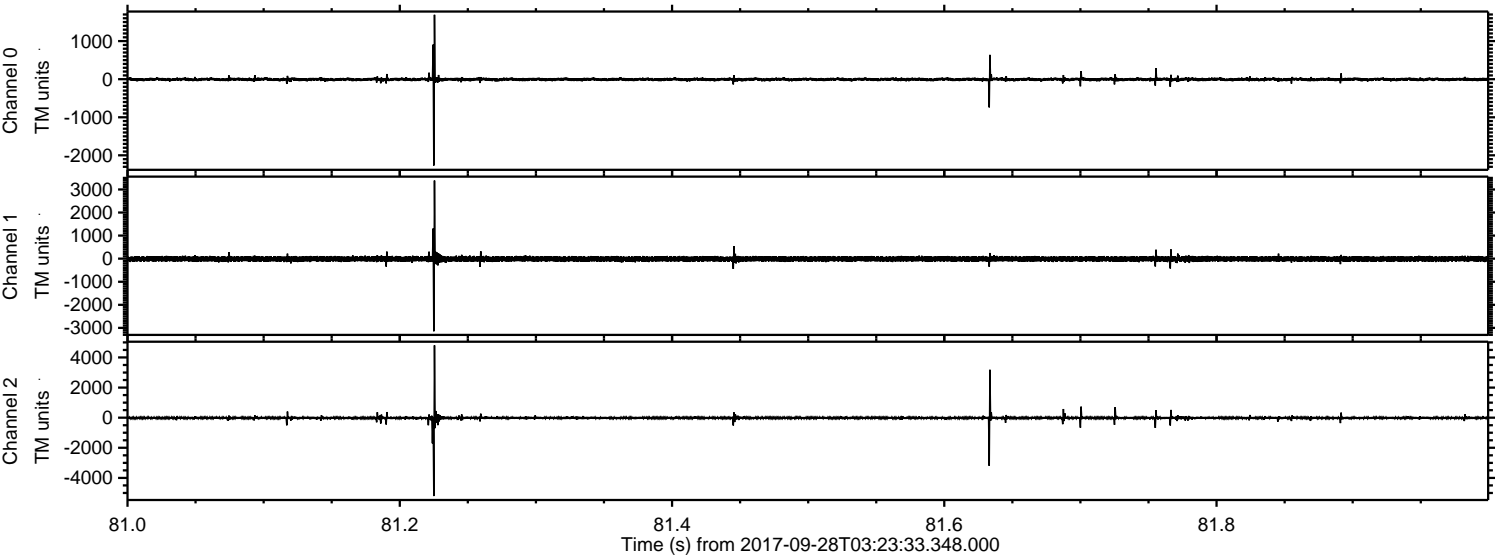


ELMAVAN 3D WAVEFORMS (Measured data sampled at 50 kHz) 51000 packets of 144 samples from 2017-09-28T03:23:33.348.000. Part 124/147

Processed Thu Sep 28 05:30:56 2017 by ELM ver.2012-10-06 from 001__elm20170928_032332__dat00.bin

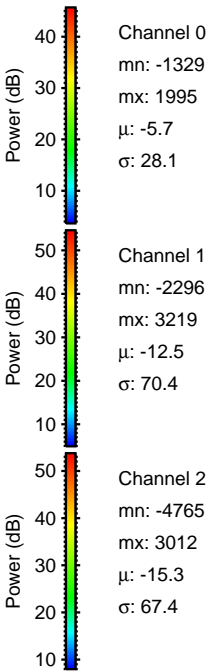
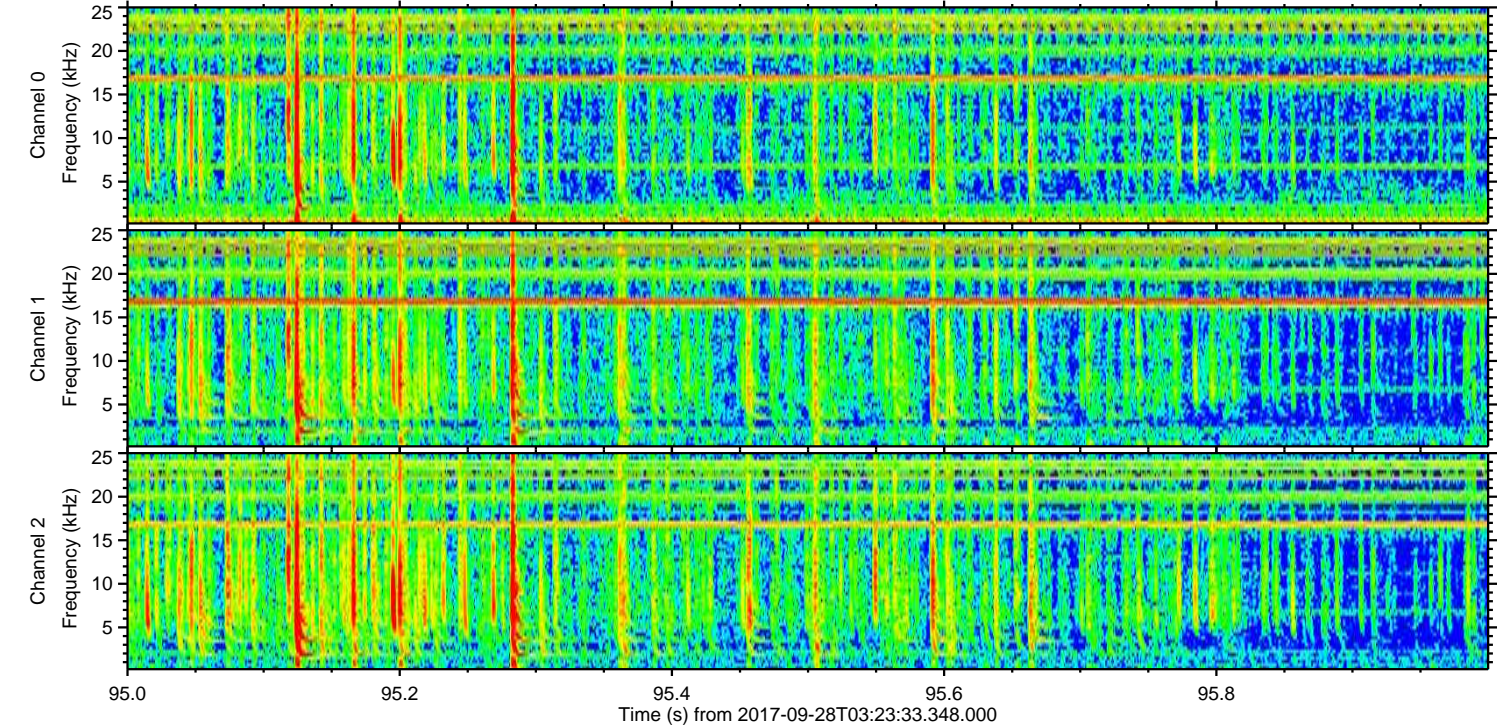
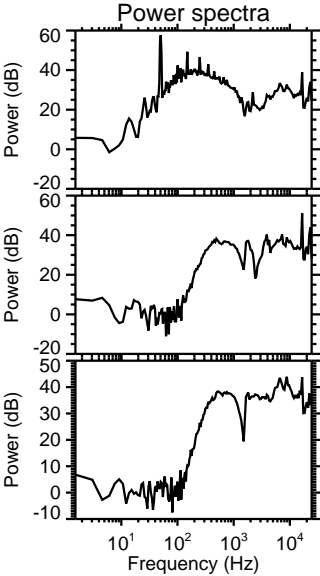
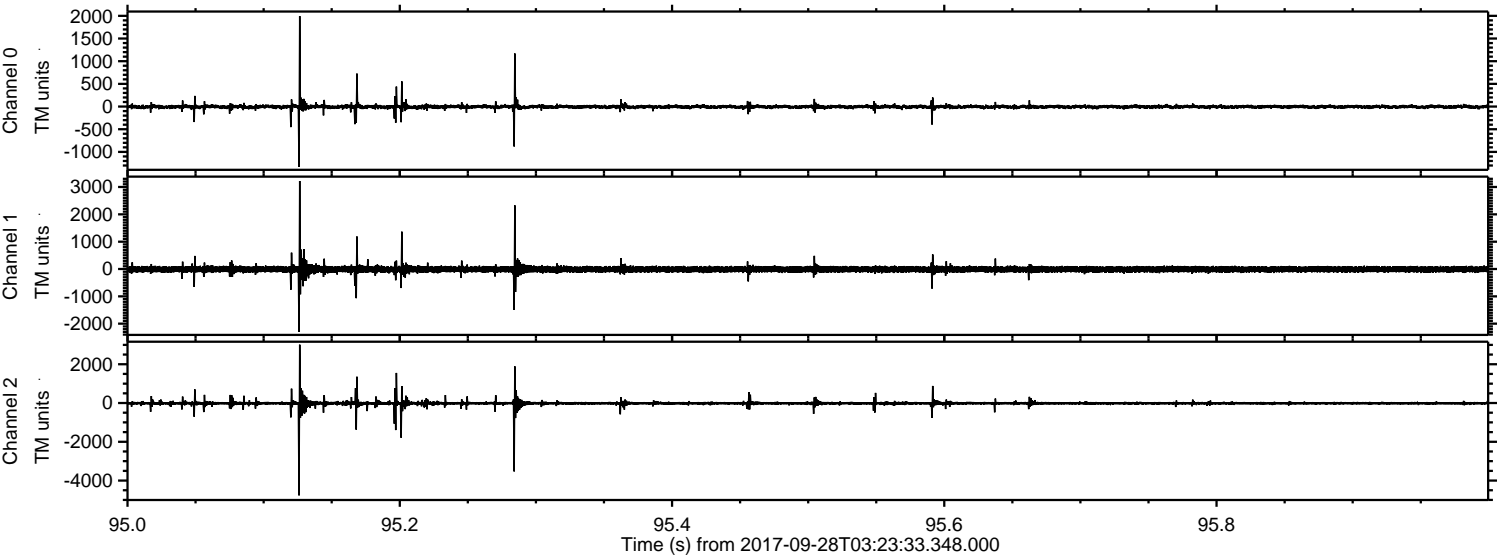


Processed Thu Sep 28 05:30:57 2017 by ELM ver.2012-10-06 from 001__elm20170928_032332__dat00.bin



ELMAVAN 3D WAVEFORMS (Measured data sampled at 50 kHz) 51000 packets of 144 samples from 2017-09-28T03:23:33.348.000. Part 96/147

Processed Thu Sep 28 05:30:58 2017 by ELM ver.2012-10-06 from 001__elm20170928_032332__dat00.bin

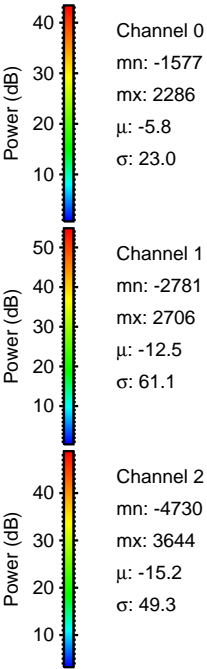
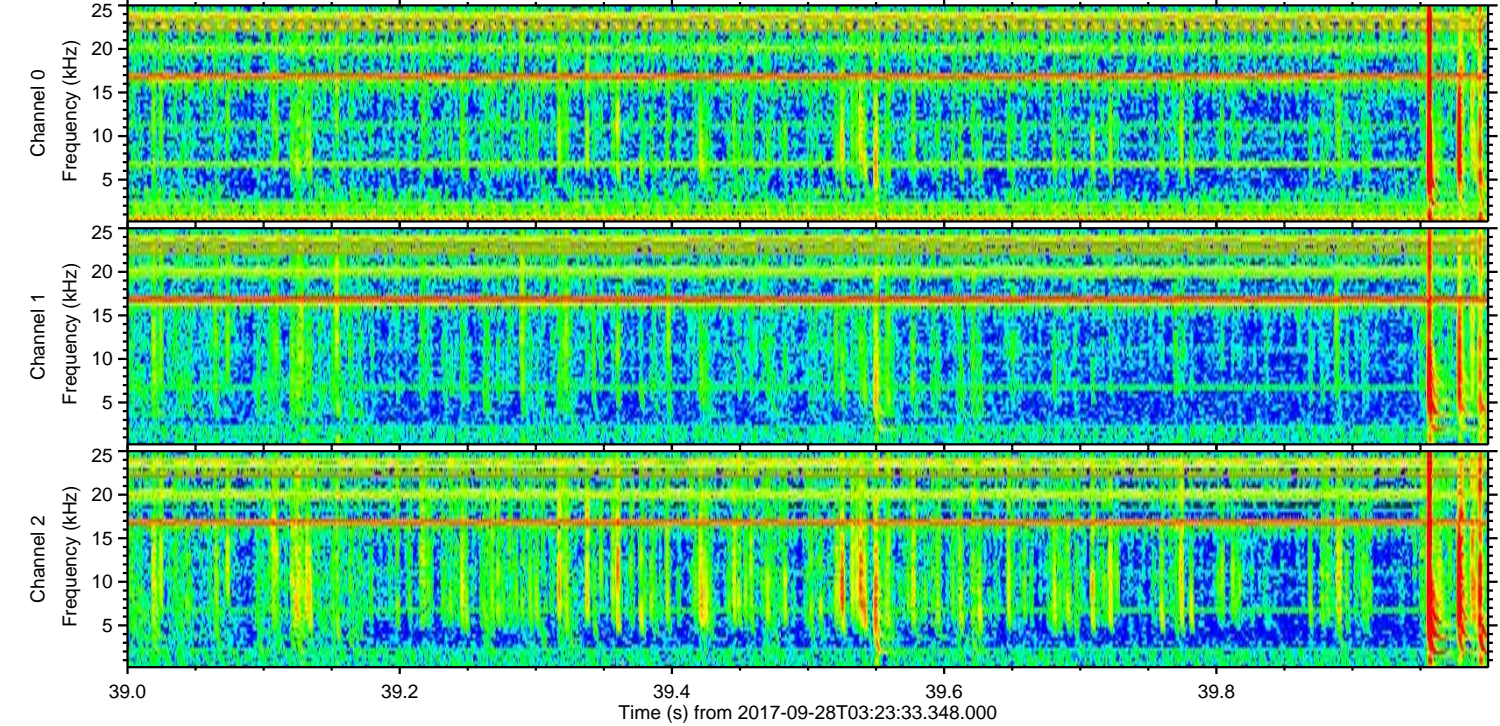
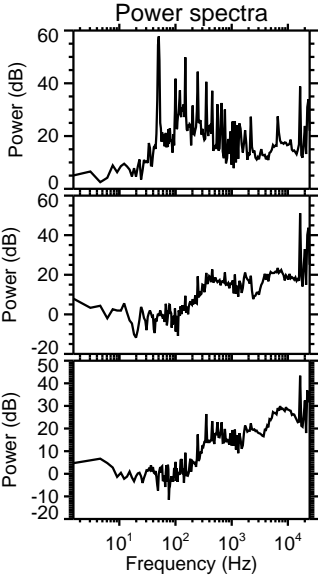
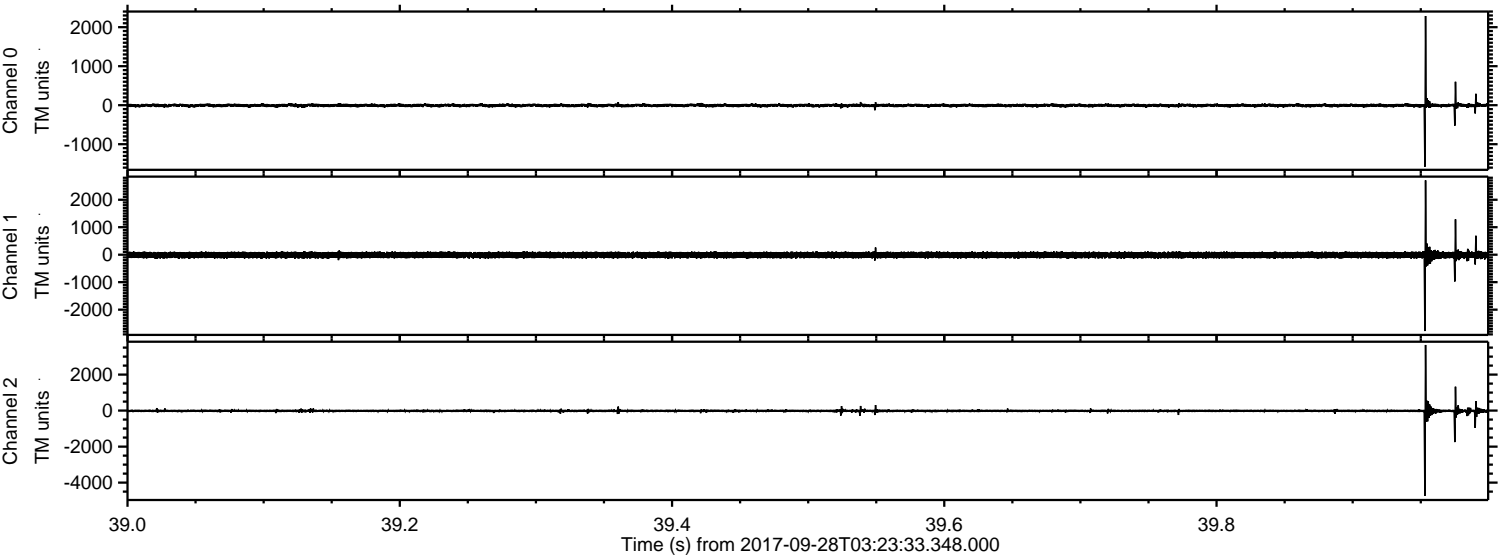


Channel 0
mn: -1329
mx: 1995
 μ : -5.7
 σ : 28.1

Channel 1
mn: -2296
mx: 3219
 μ : -12.5
 σ : 70.4

Channel 2
mn: -4765
mx: 3012
 μ : -15.3
 σ : 67.4

Processed Thu Sep 28 05:30:59 2017 by ELM ver.2012-10-06 from 001__elm20170928_032332__dat00.bin

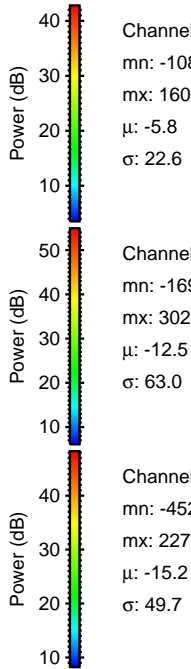
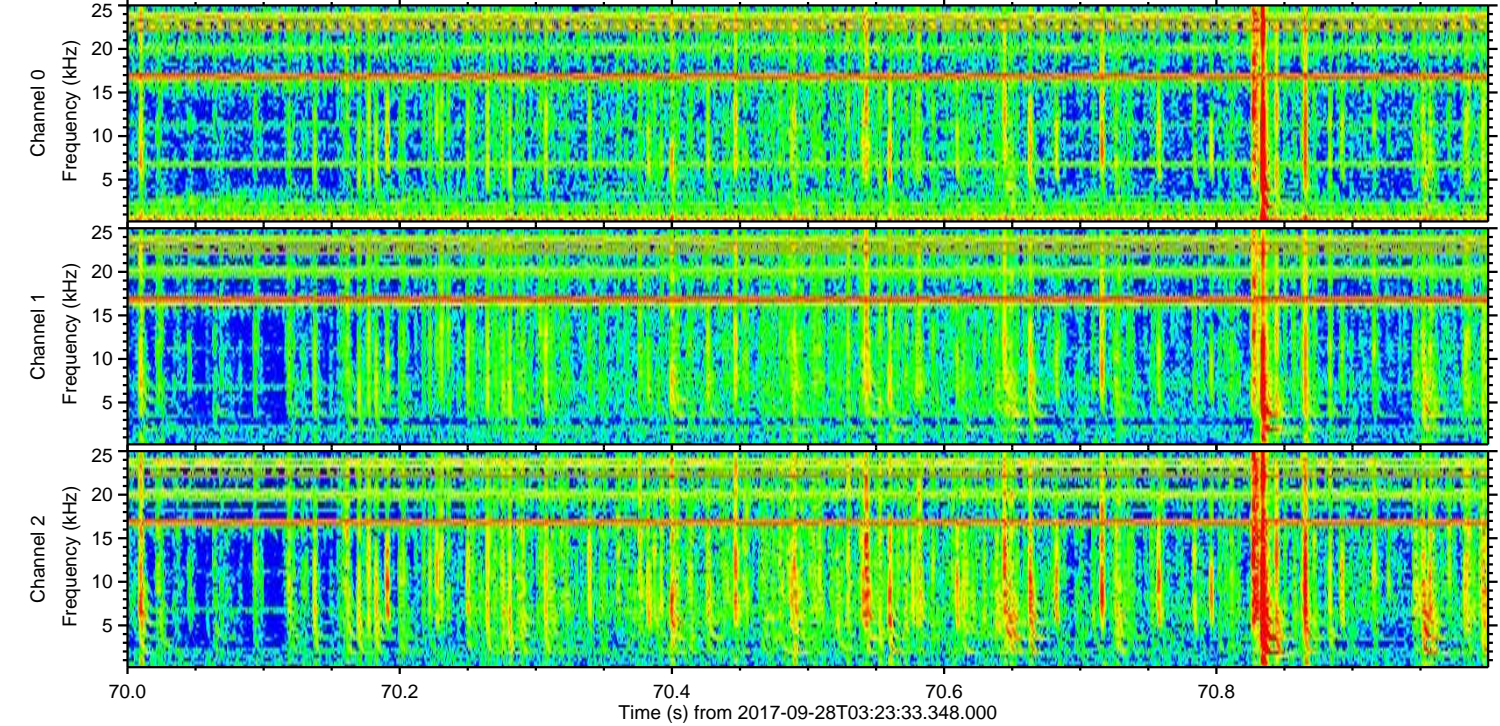
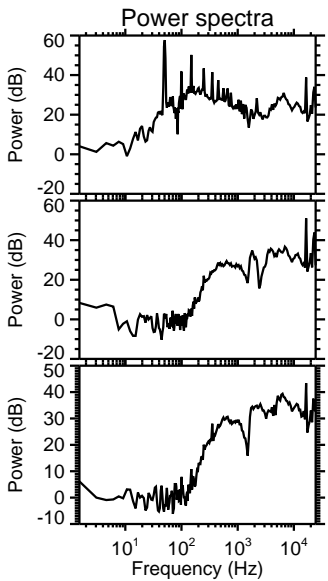
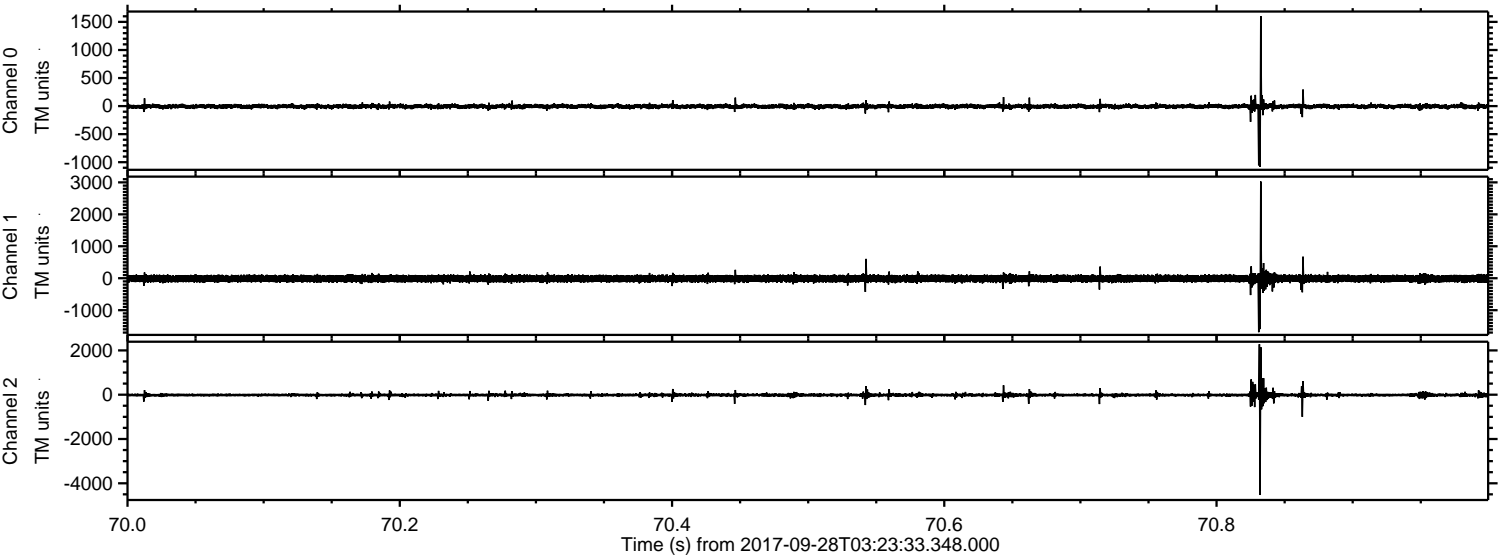


Channel 0
mn: -1577
mx: 2286
 μ : -5.8
 σ : 23.0

Channel 1
mn: -2781
mx: 2706
 μ : -12.5
 σ : 61.1

Channel 2
mn: -4730
mx: 3644
 μ : -15.2
 σ : 49.3

Processed Thu Sep 28 05:30:59 2017 by ELM ver.2012-10-06 from 001__elm20170928_032332__dat00.bin



Processed Thu Sep 28 05:31:00 2017 by ELM ver.2012-10-06 from 001__elm20170928_032332__dat00.bin

