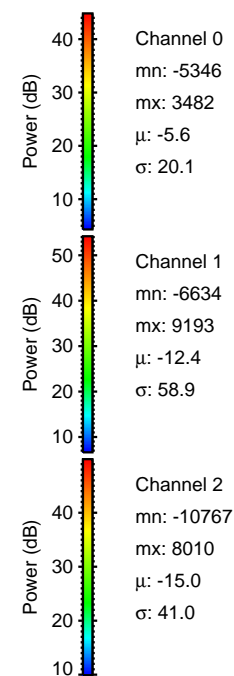
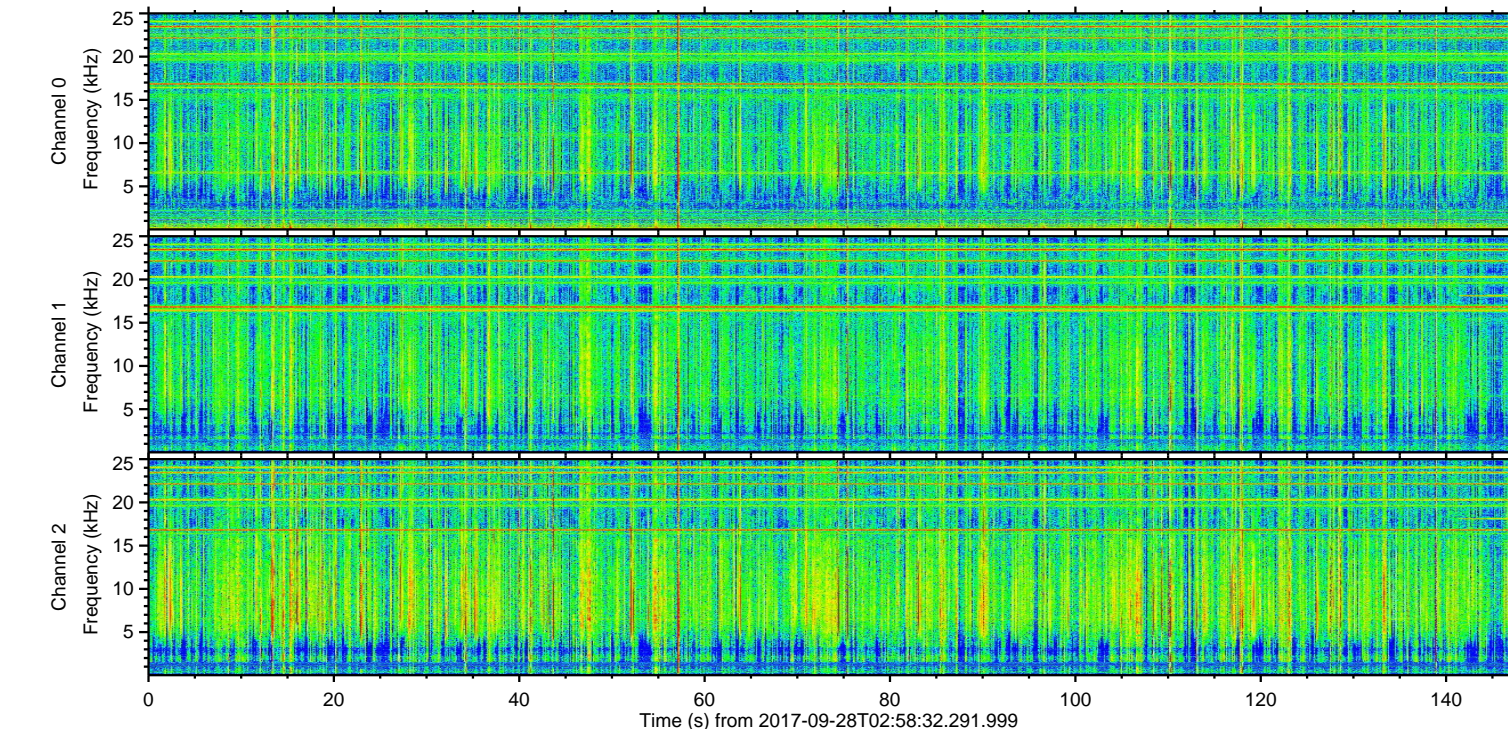
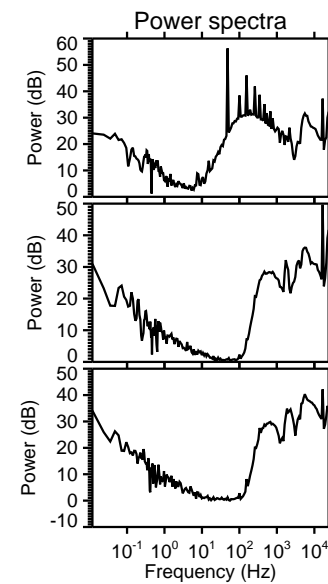
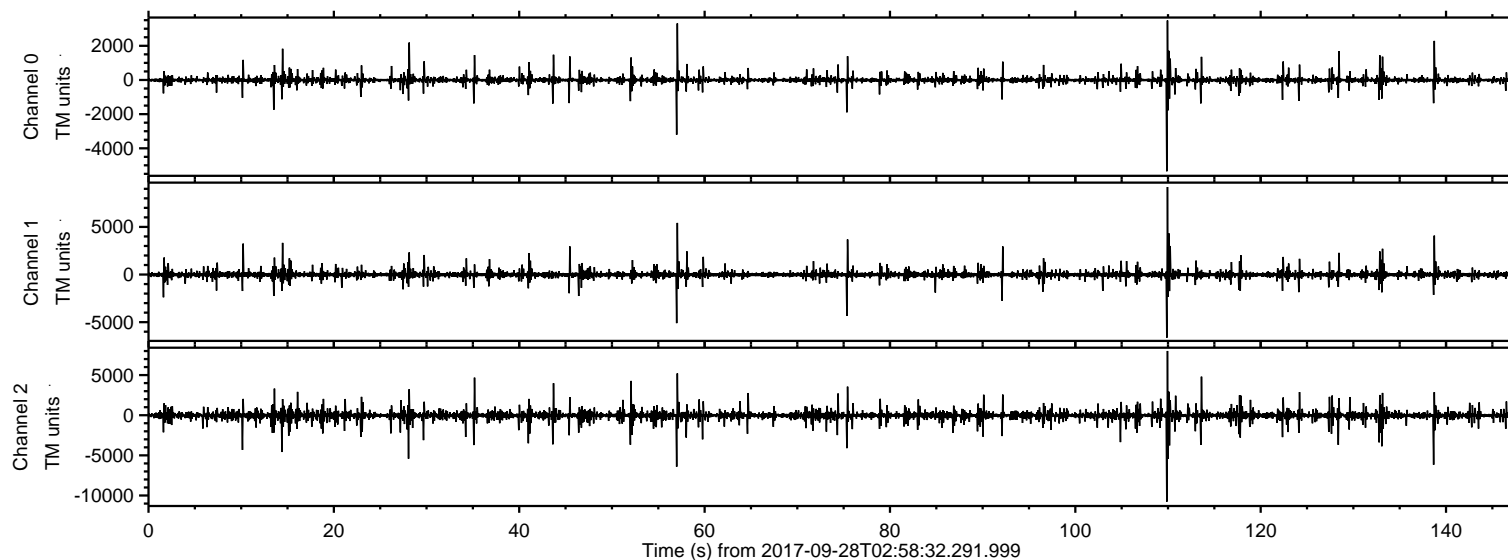


ELMAVAN 3D WAVEFORMS (Measured data sampled at 50 kHz) 51000 packets of 144 samples from 2017-09-28T02:58:32.291.999.

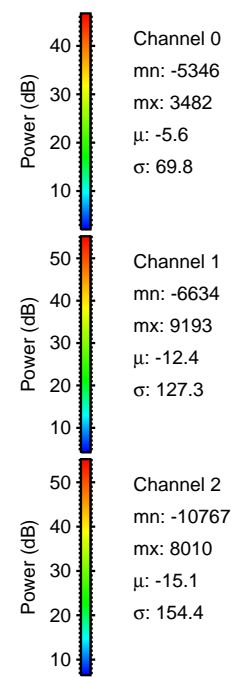
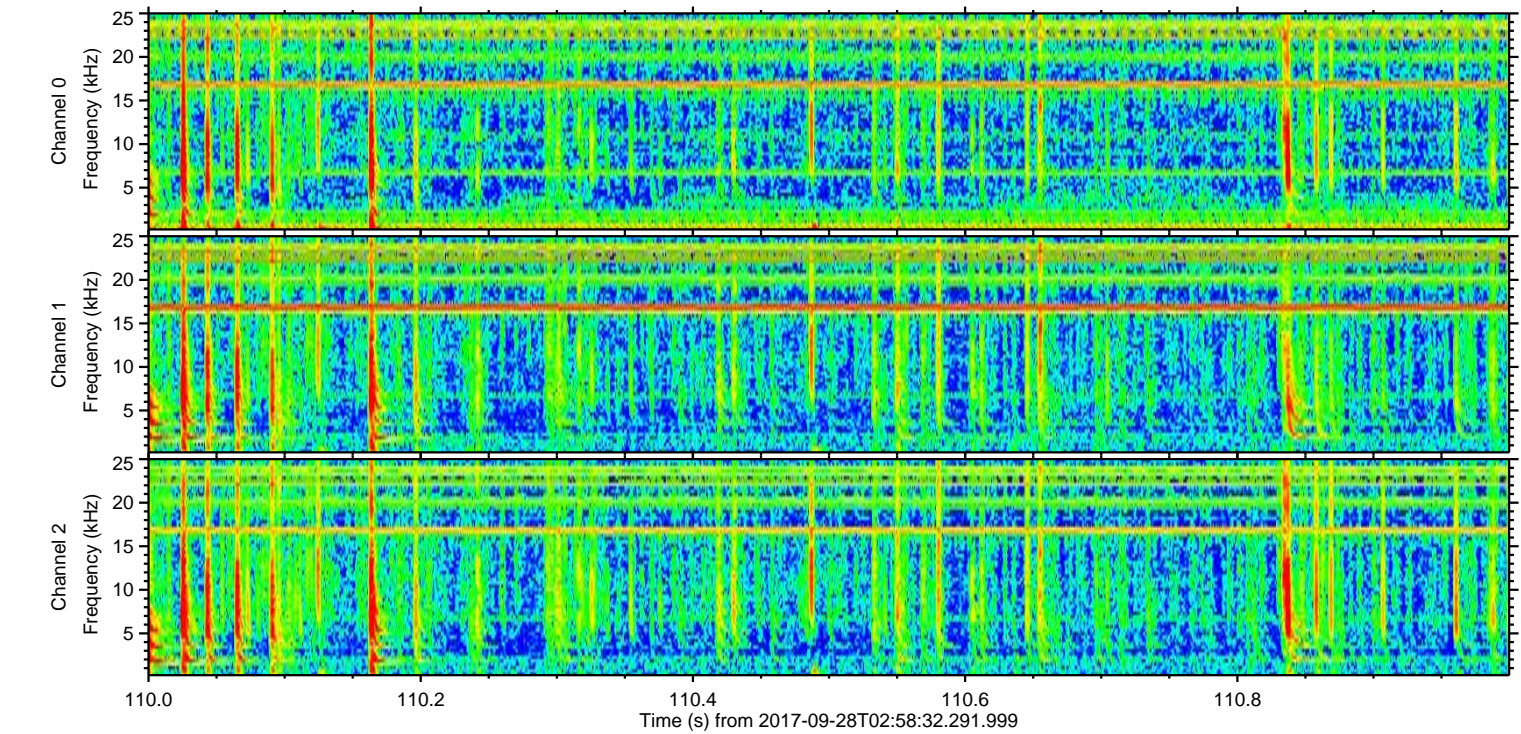
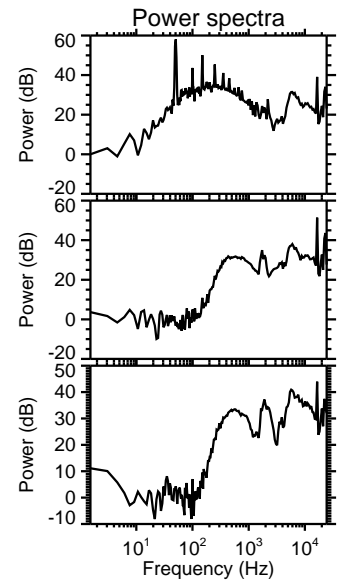
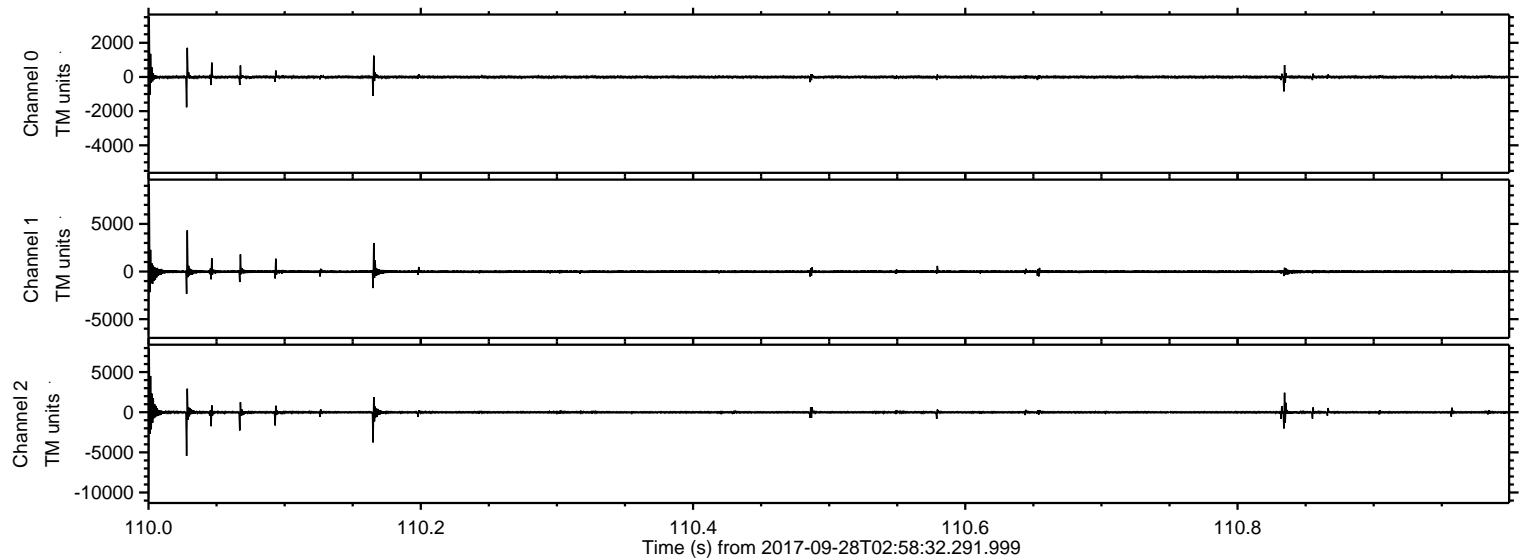
Processed Thu Sep 28 05:06:45 2017 by ELM ver.2012-10-06 from 001\_\_elm20170928\_025831\_\_dat00.bin





ELMAVAN 3D WAVEFORMS (Measured data sampled at 50 kHz) 51000 packets of 144 samples from 2017-09-28T02:58:32.291.999. Part 111/147

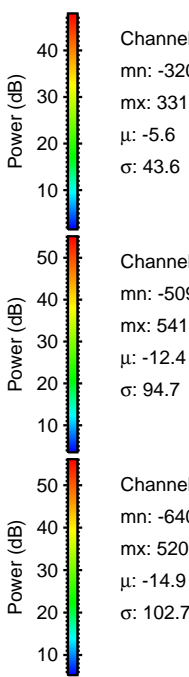
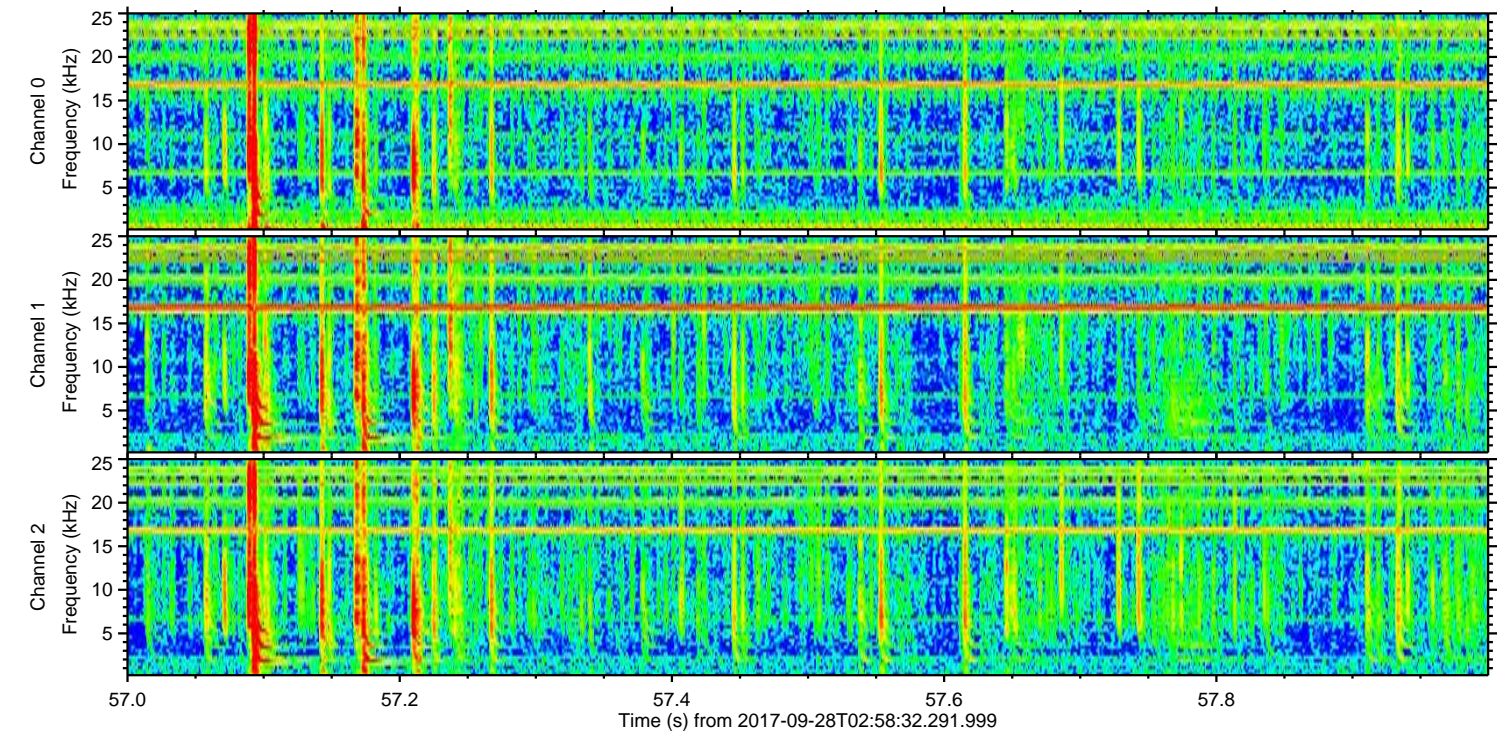
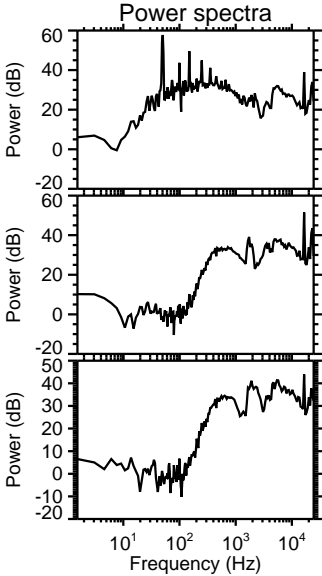
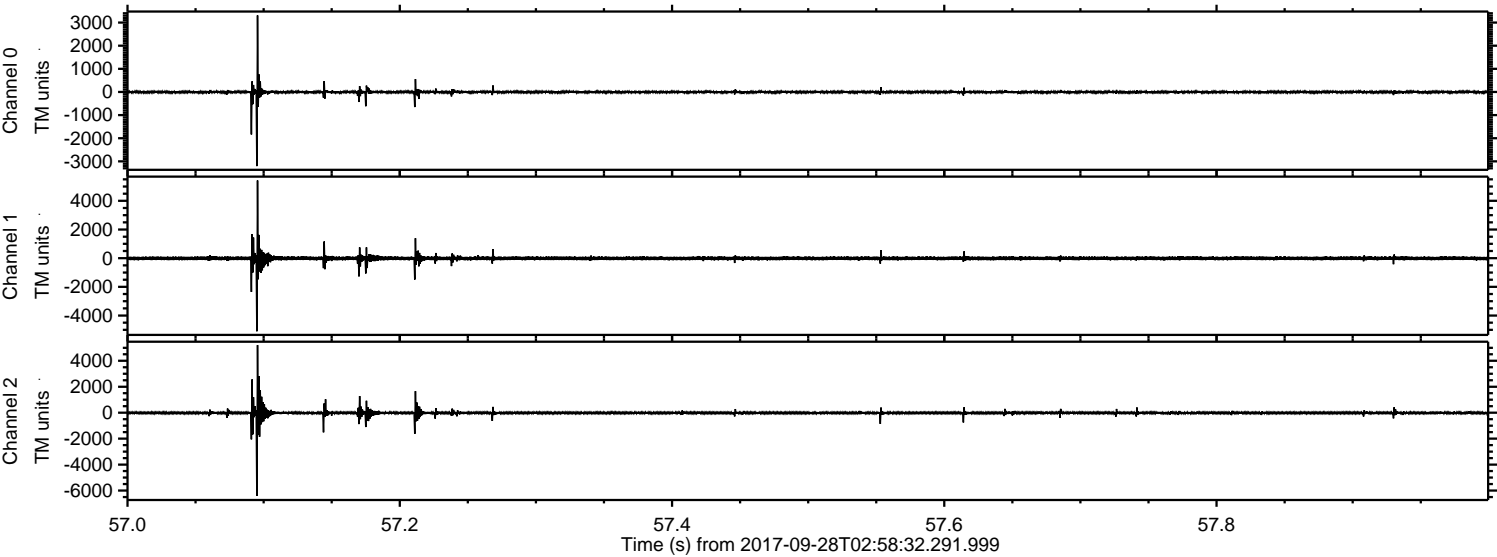
Processed Thu Sep 28 05:06:51 2017 by ELM ver.2012-10-06 from 001\_\_elm20170928\_025831\_\_dat00.bin





ELMAVAN 3D WAVEFORMS (Measured data sampled at 50 kHz) 51000 packets of 144 samples from 2017-09-28T02:58:32.291.999. Part 58/147

Processed Thu Sep 28 05:06:52 2017 by ELM ver.2012-10-06 from 001\_\_elm20170928\_025831\_\_dat00.bin



Channel 0  
mn: -3206  
mx: 3311  
 $\mu$ : -5.6  
 $\sigma$ : 43.6

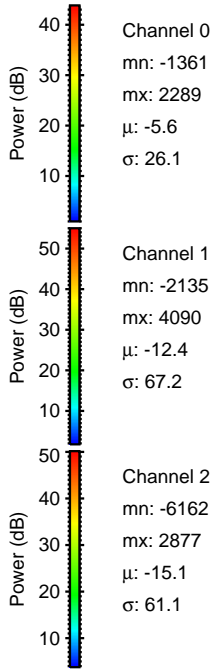
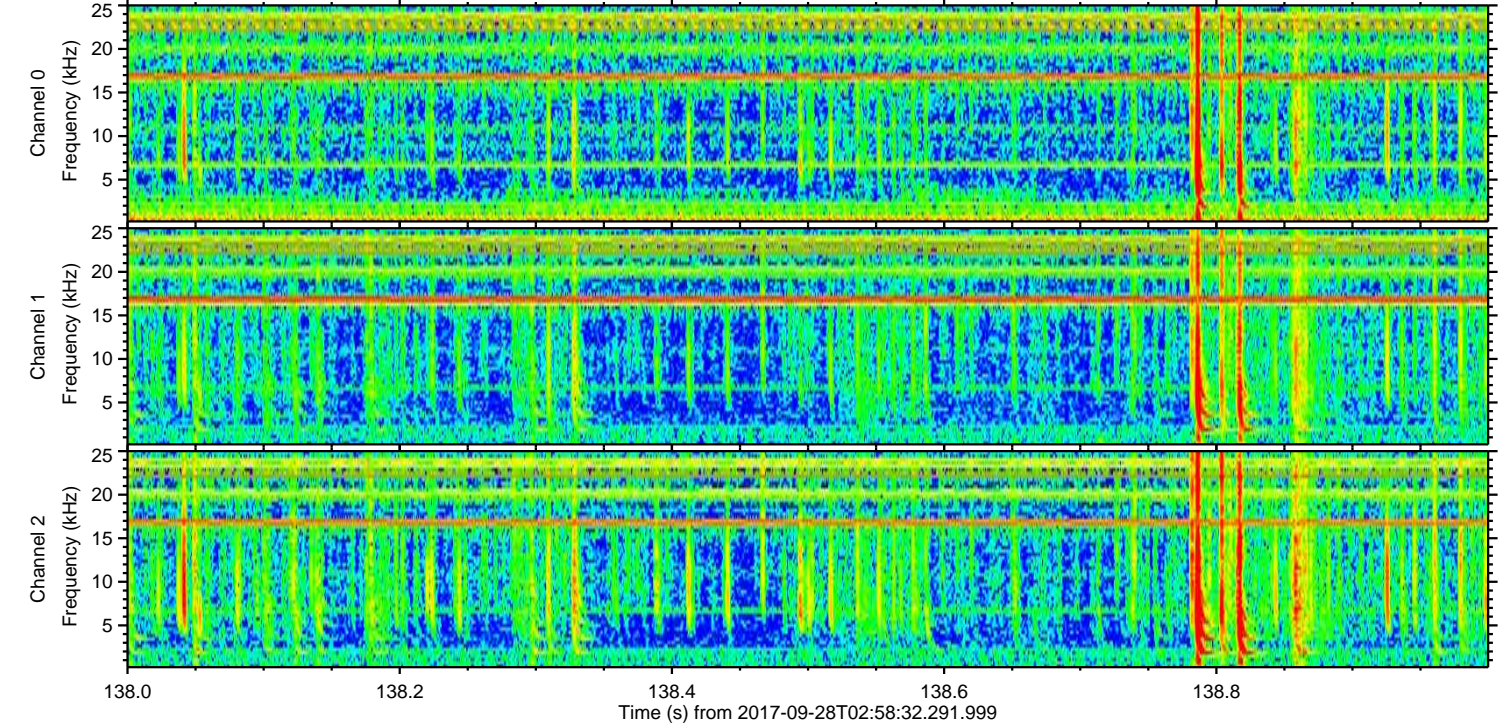
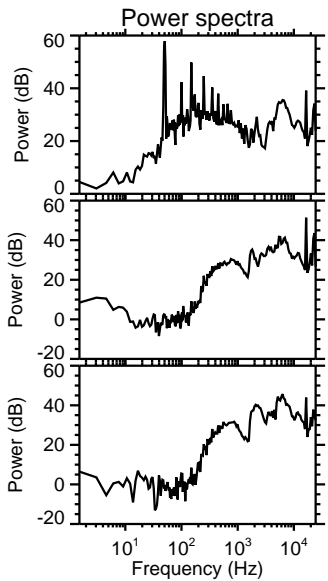
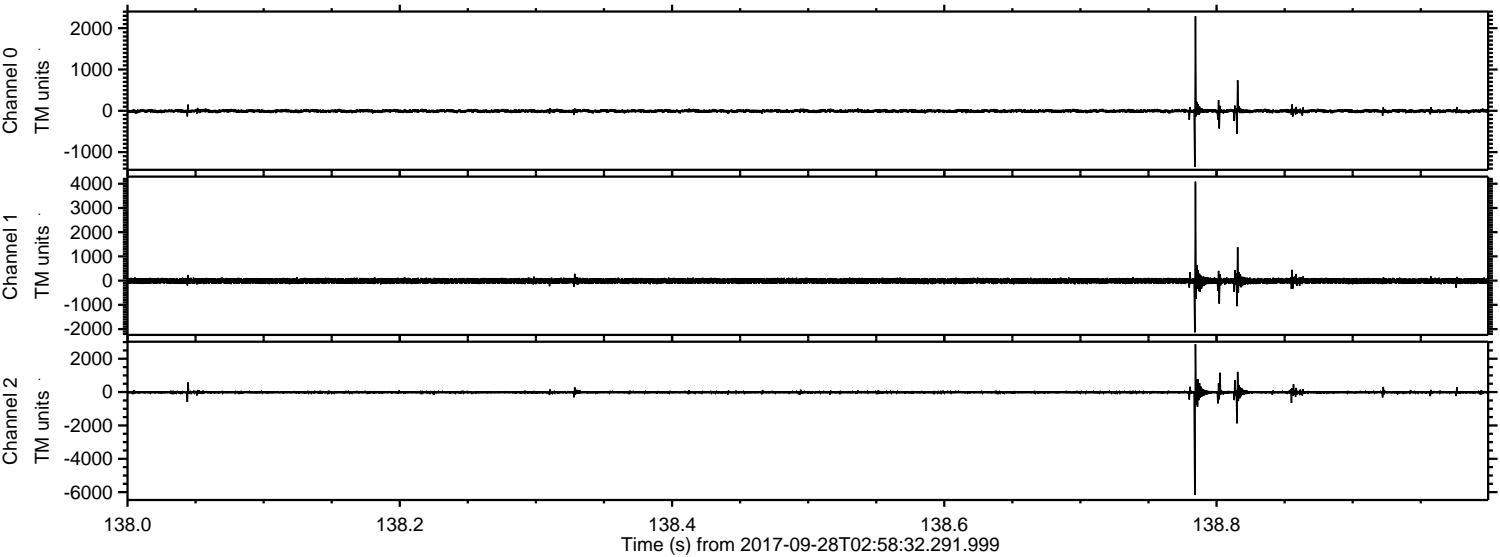
Channel 1  
mn: -5097  
mx: 5419  
 $\mu$ : -12.4  
 $\sigma$ : 94.7

Channel 2  
mn: -6408  
mx: 5209  
 $\mu$ : -14.9  
 $\sigma$ : 102.7



ELMAVAN 3D WAVEFORMS (Measured data sampled at 50 kHz) 51000 packets of 144 samples from 2017-09-28T02:58:32.291.999. Part 139/147

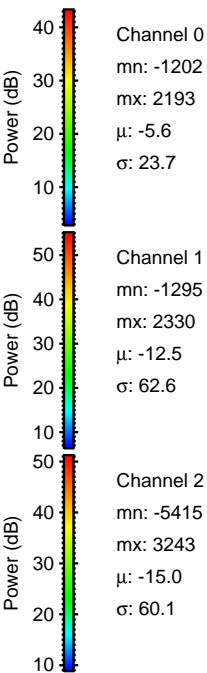
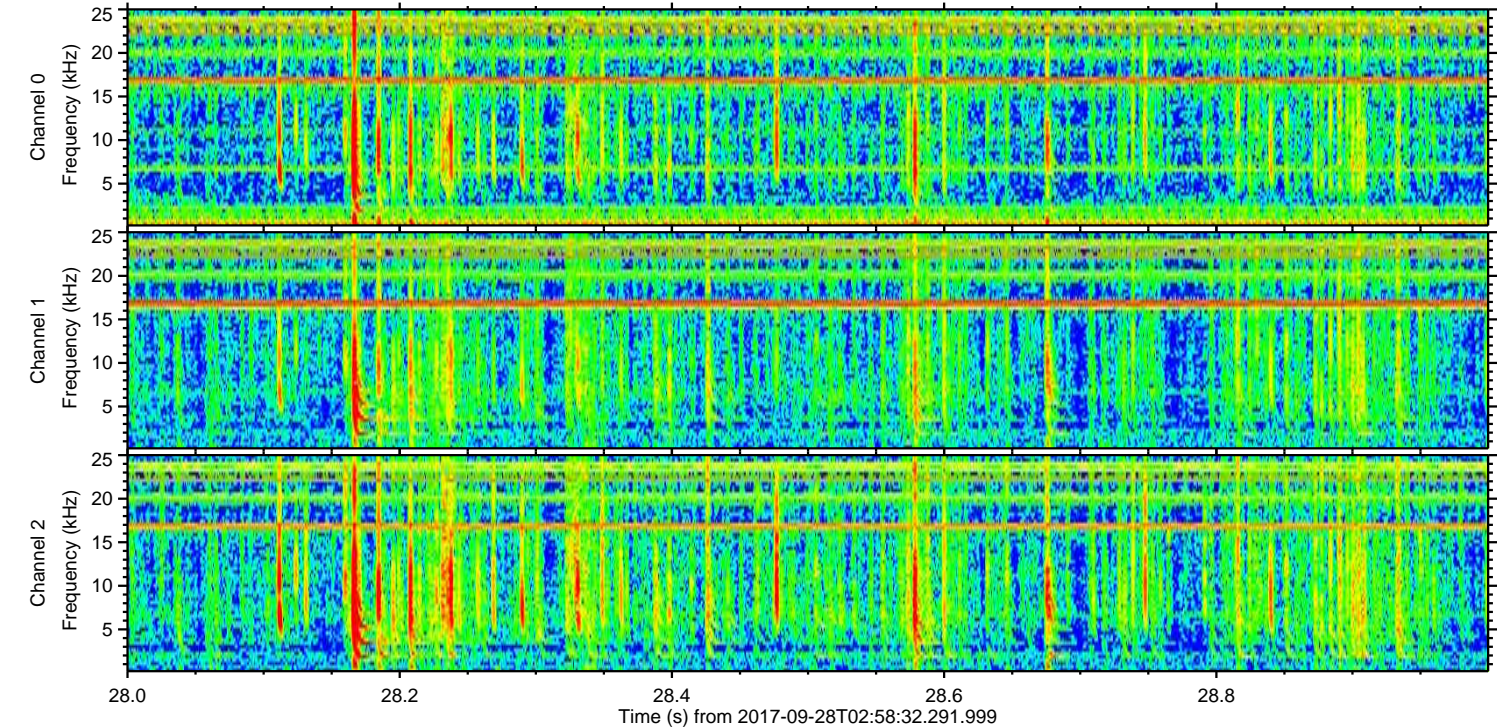
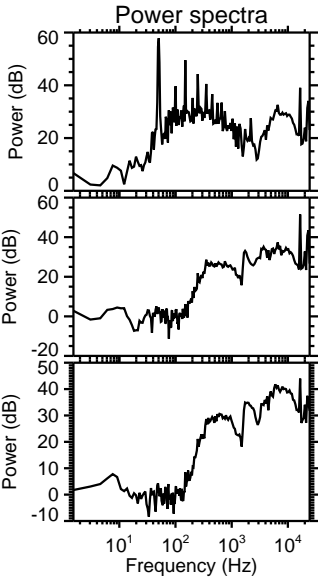
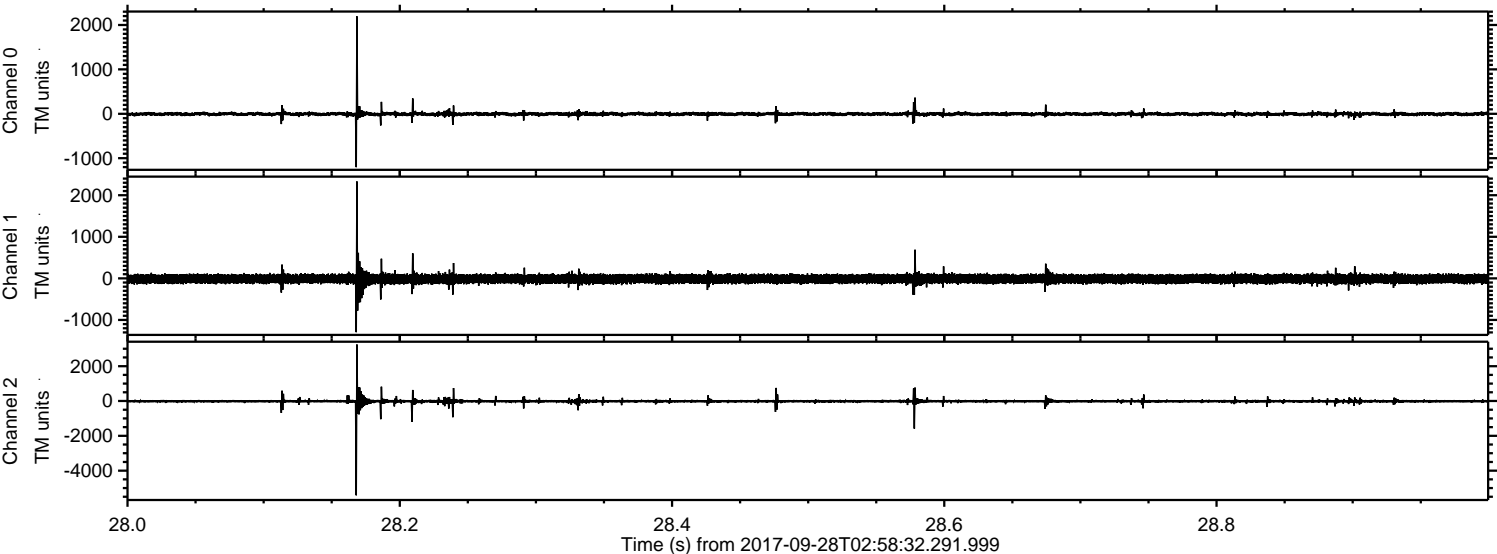
Processed Thu Sep 28 05:06:53 2017 by ELM ver.2012-10-06 from 001\_\_elm20170928\_025831\_\_dat00.bin





ELMAVAN 3D WAVEFORMS (Measured data sampled at 50 kHz) 51000 packets of 144 samples from 2017-09-28T02:58:32.291.999. Part 29/147

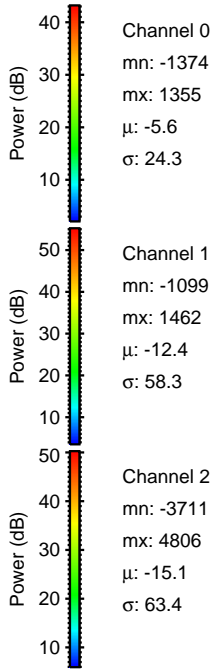
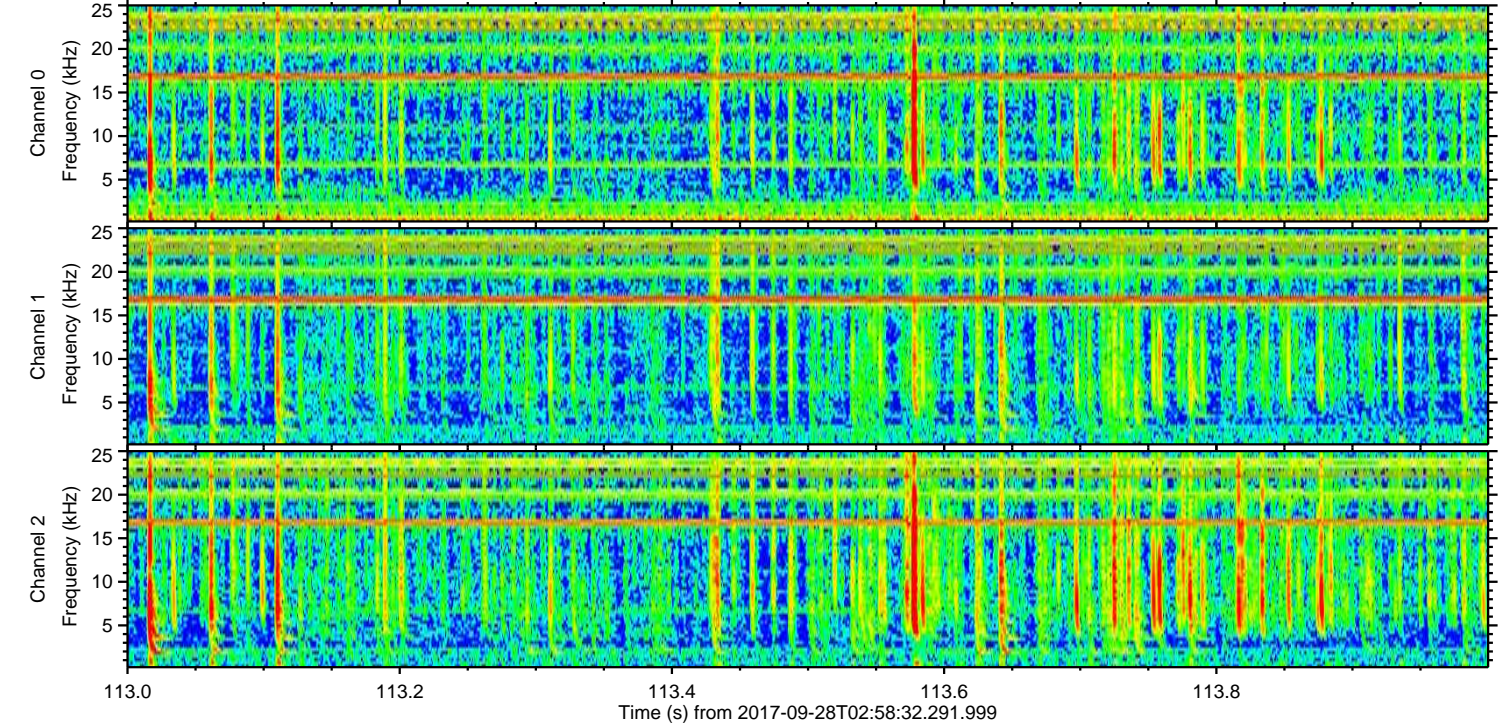
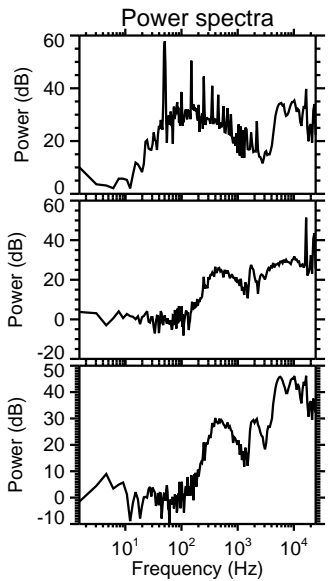
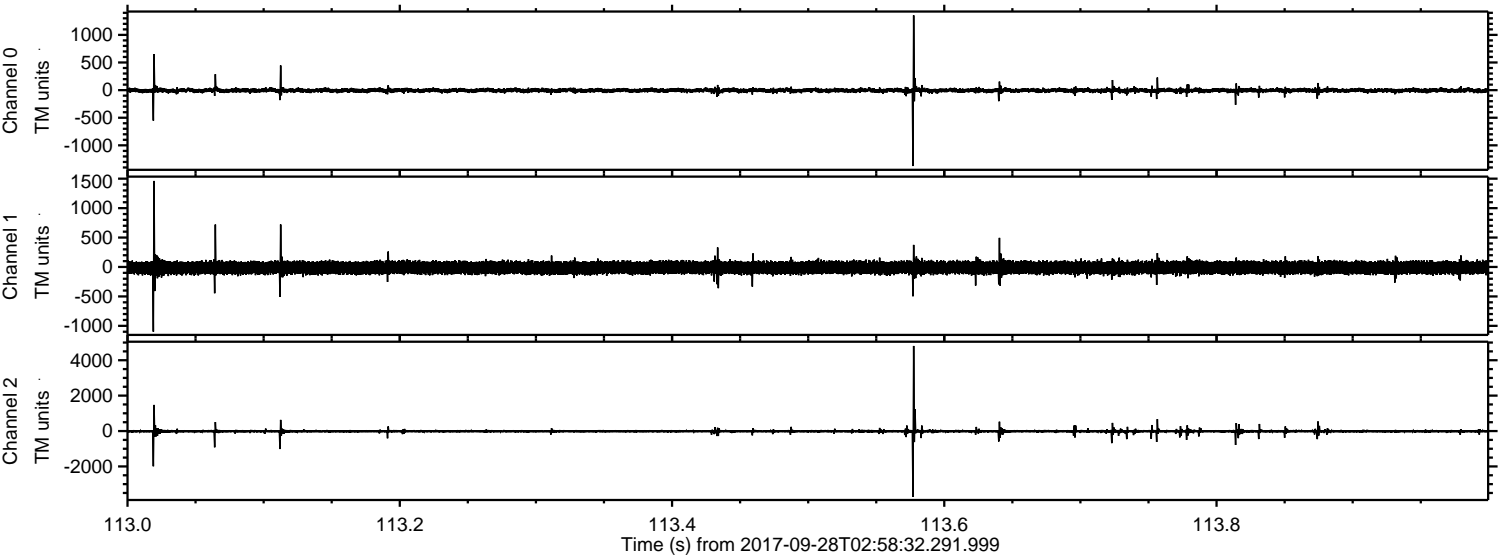
Processed Thu Sep 28 05:06:53 2017 by ELM ver.2012-10-06 from 001\_\_elm20170928\_025831\_\_dat00.bin





ELMAVAN 3D WAVEFORMS (Measured data sampled at 50 kHz) 51000 packets of 144 samples from 2017-09-28T02:58:32.291.999. Part 114/147

Processed Thu Sep 28 05:06:54 2017 by ELM ver.2012-10-06 from 001\_\_elm20170928\_025831\_\_dat00.bin



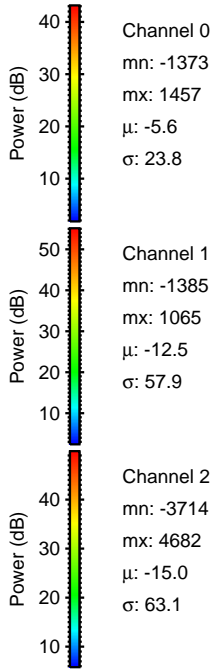
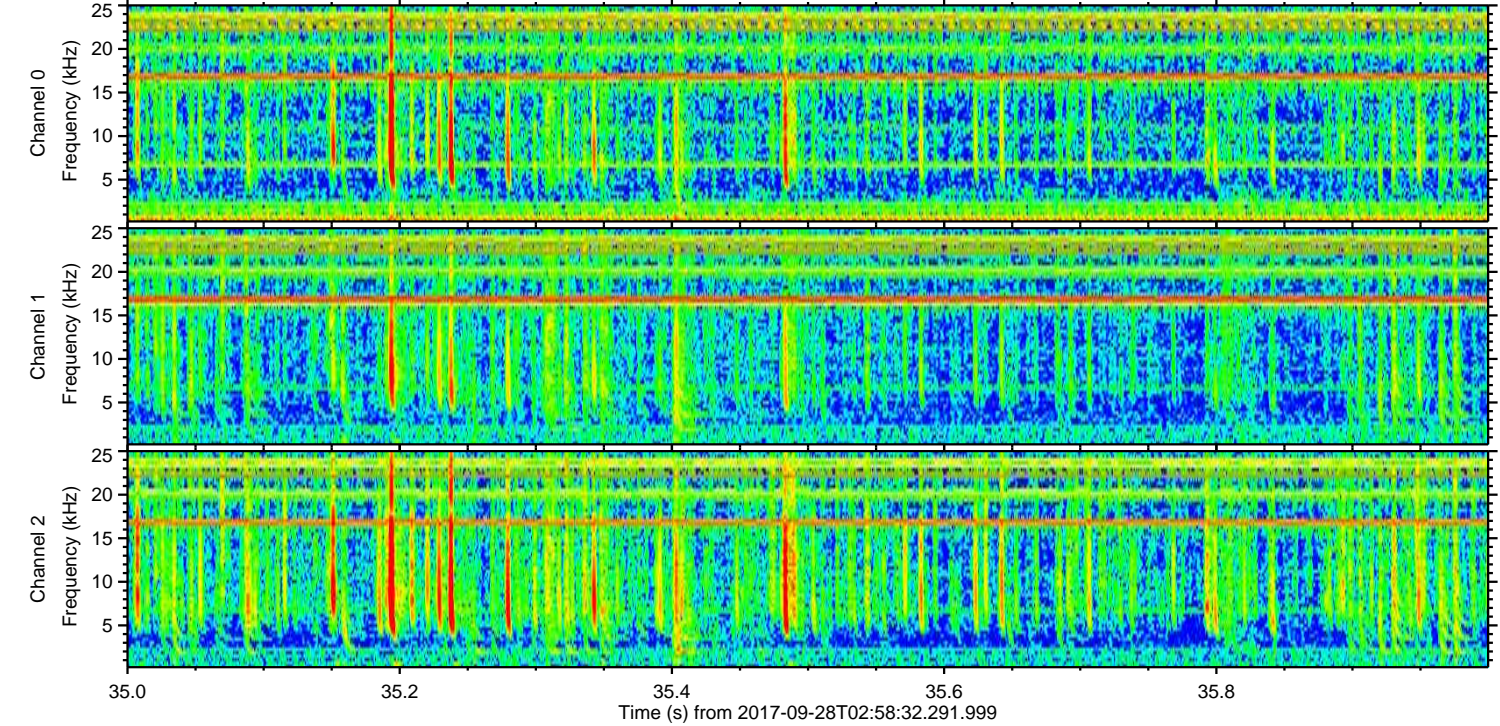
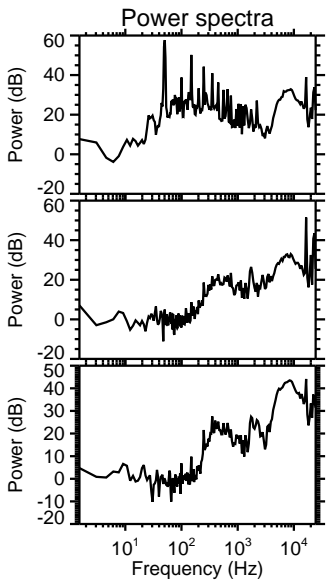
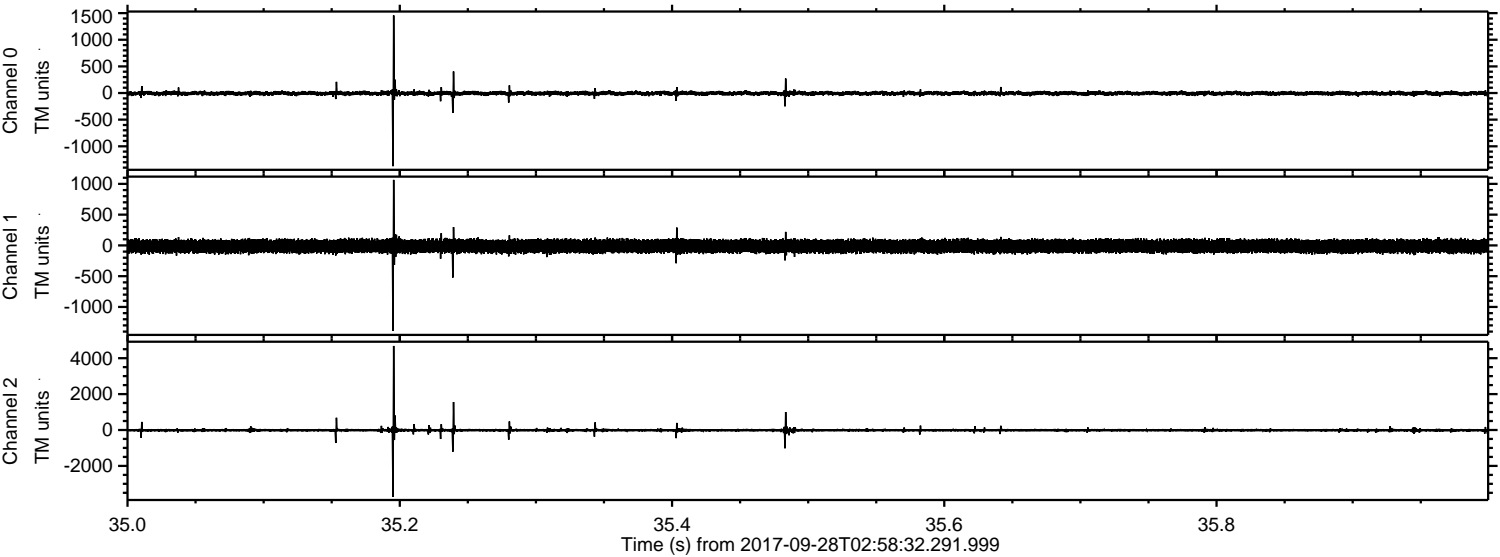
Channel 0  
mn: -1374  
mx: 1355  
 $\mu$ : -5.6  
 $\sigma$ : 24.3

Channel 1  
mn: -1099  
mx: 1462  
 $\mu$ : -12.4  
 $\sigma$ : 58.3

Channel 2  
mn: -3711  
mx: 4806  
 $\mu$ : -15.1  
 $\sigma$ : 63.4

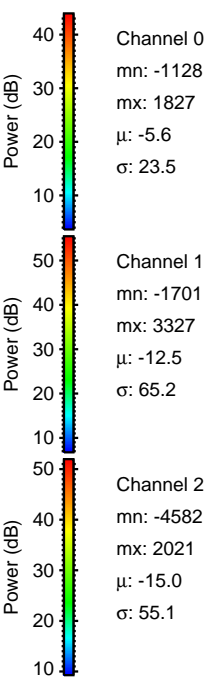
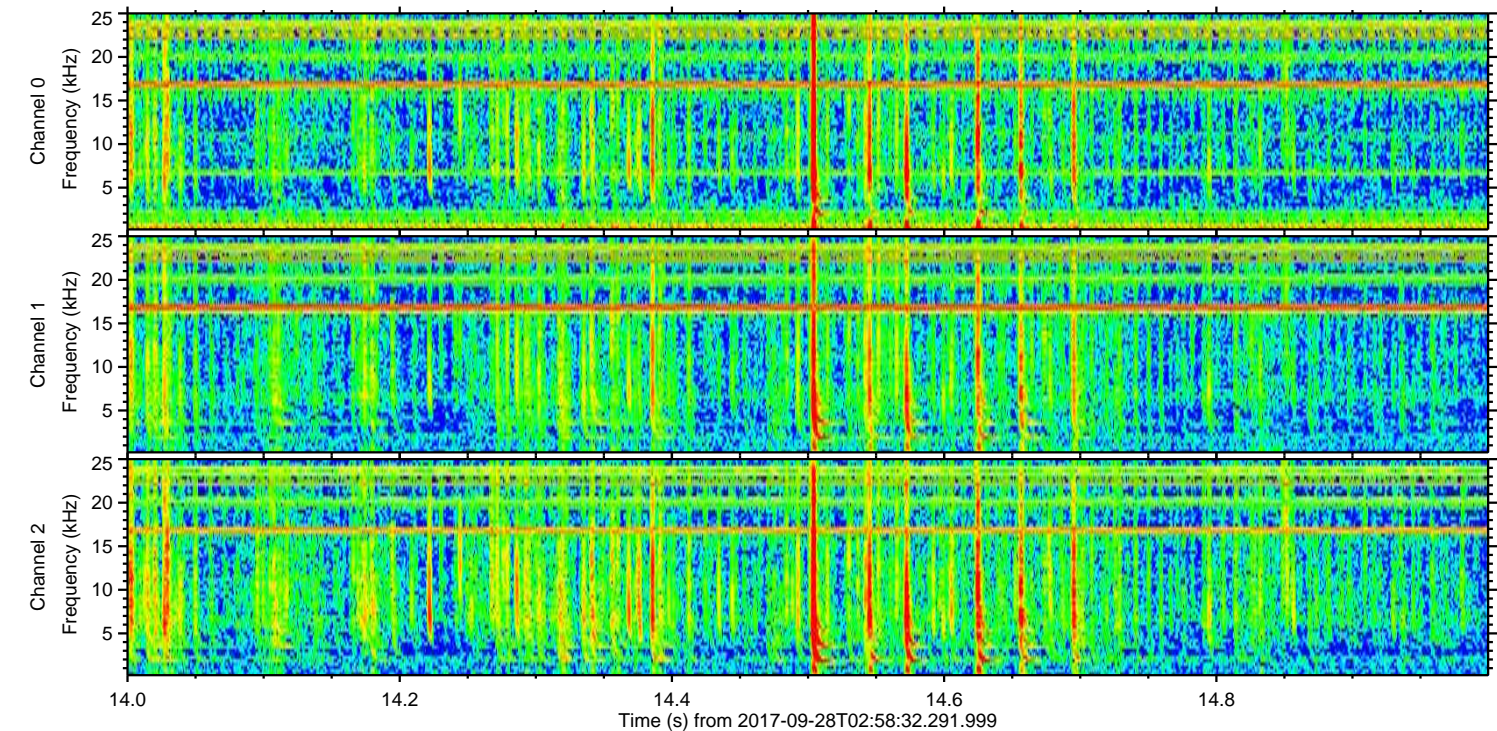
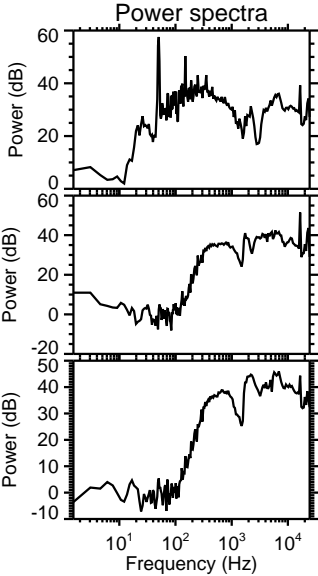
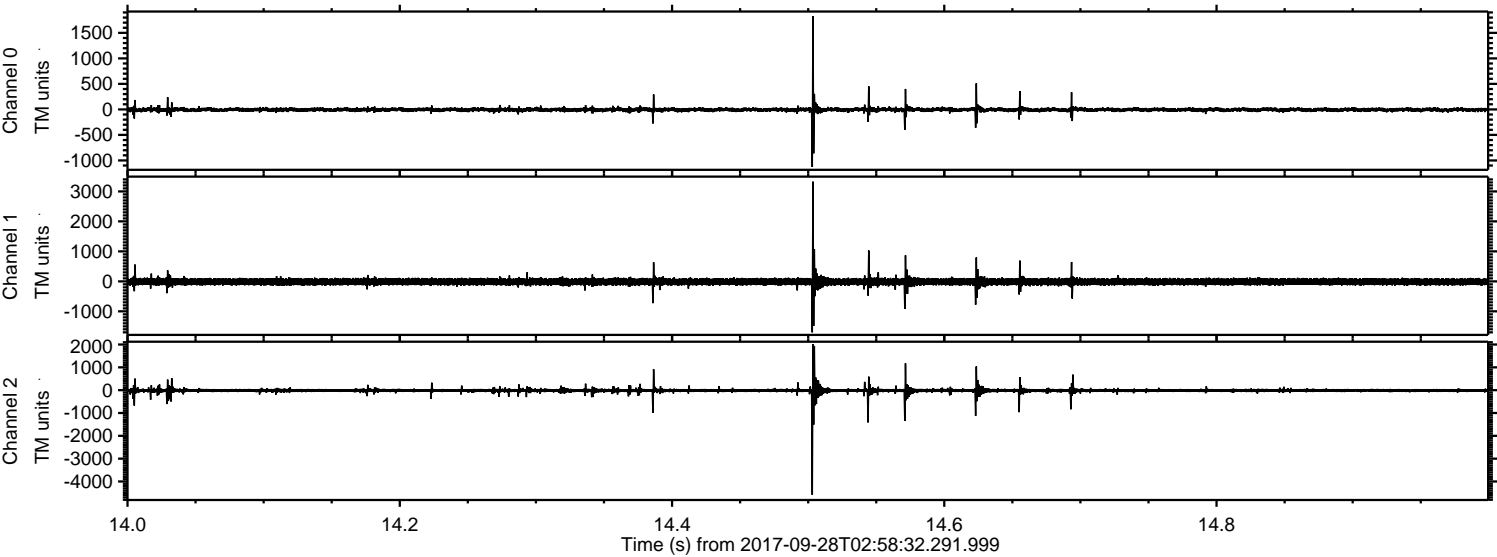


Processed Thu Sep 28 05:06:55 2017 by ELM ver.2012-10-06 from 001\_\_elm20170928\_025831\_\_dat00.bin





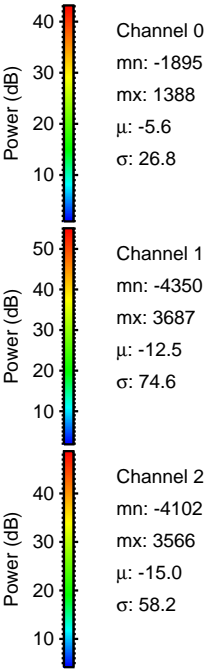
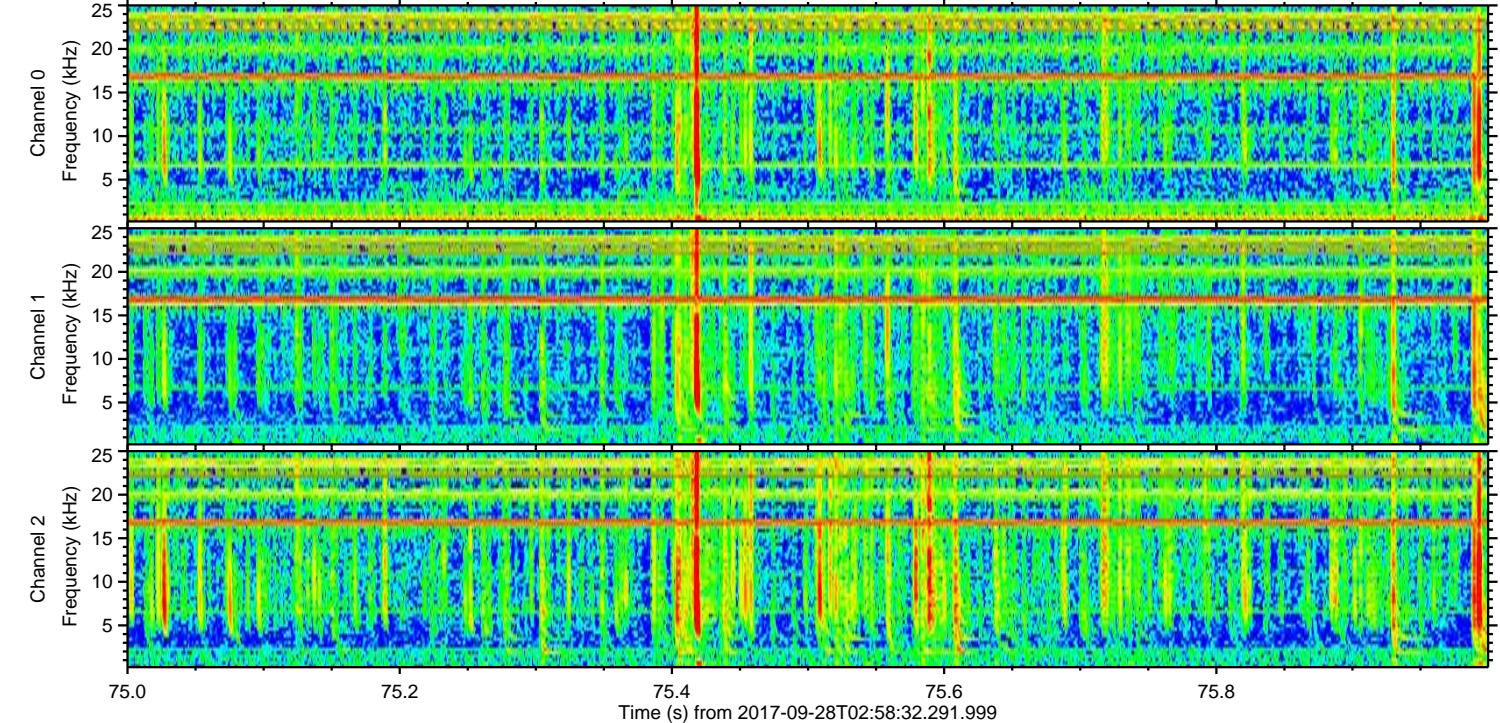
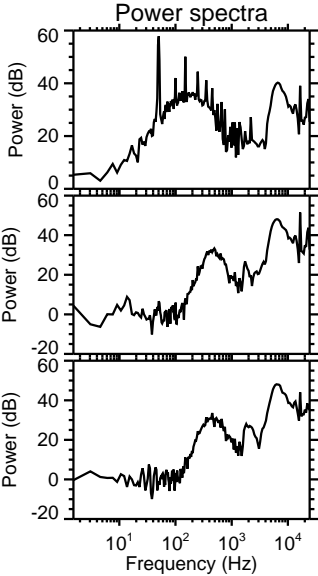
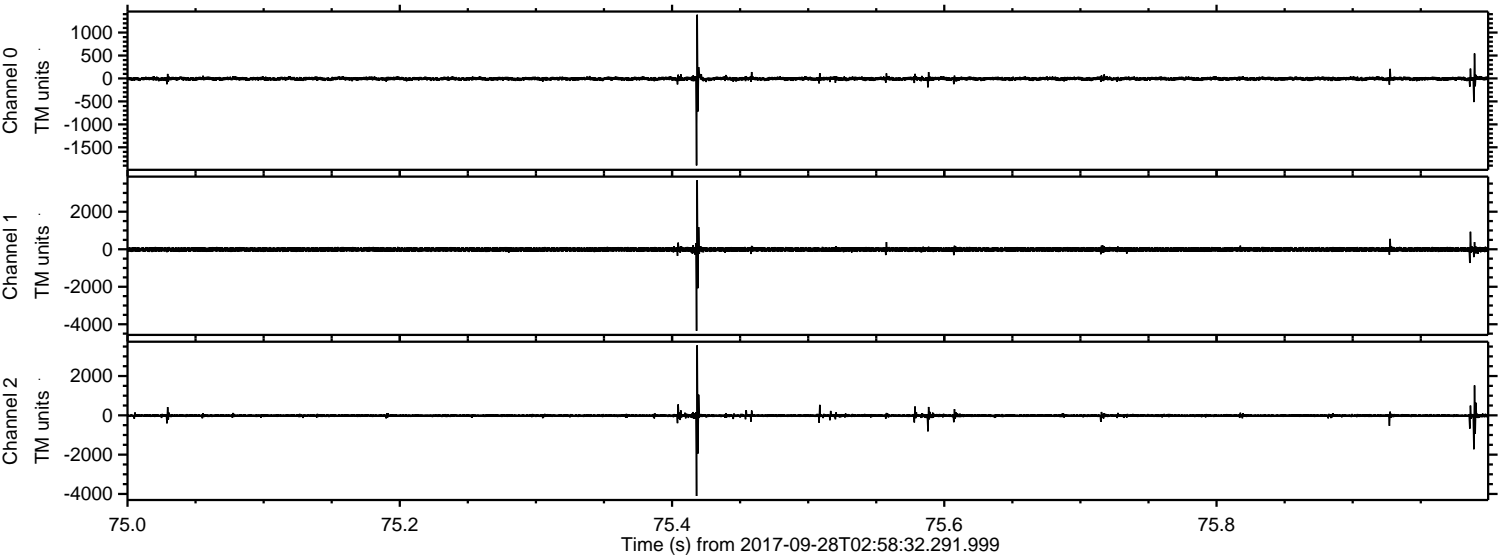
Processed Thu Sep 28 05:06:55 2017 by ELM ver.2012-10-06 from 001\_\_elm20170928\_025831\_\_dat00.bin





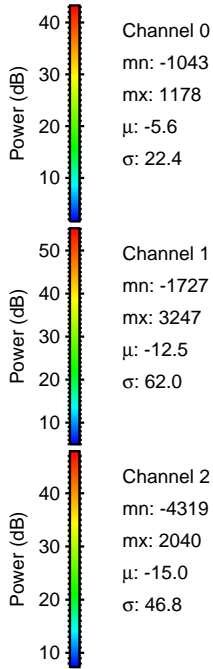
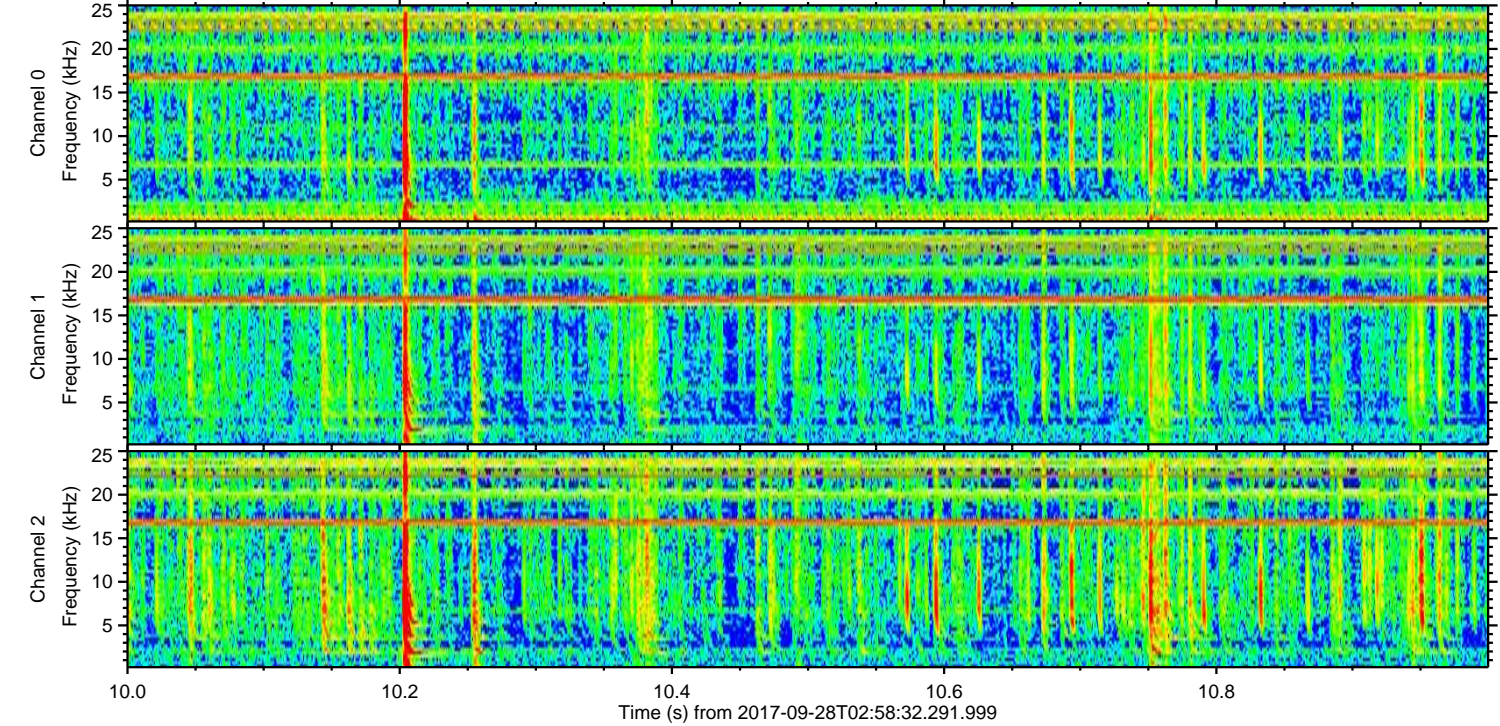
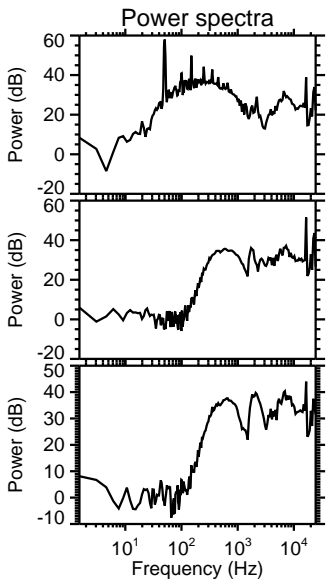
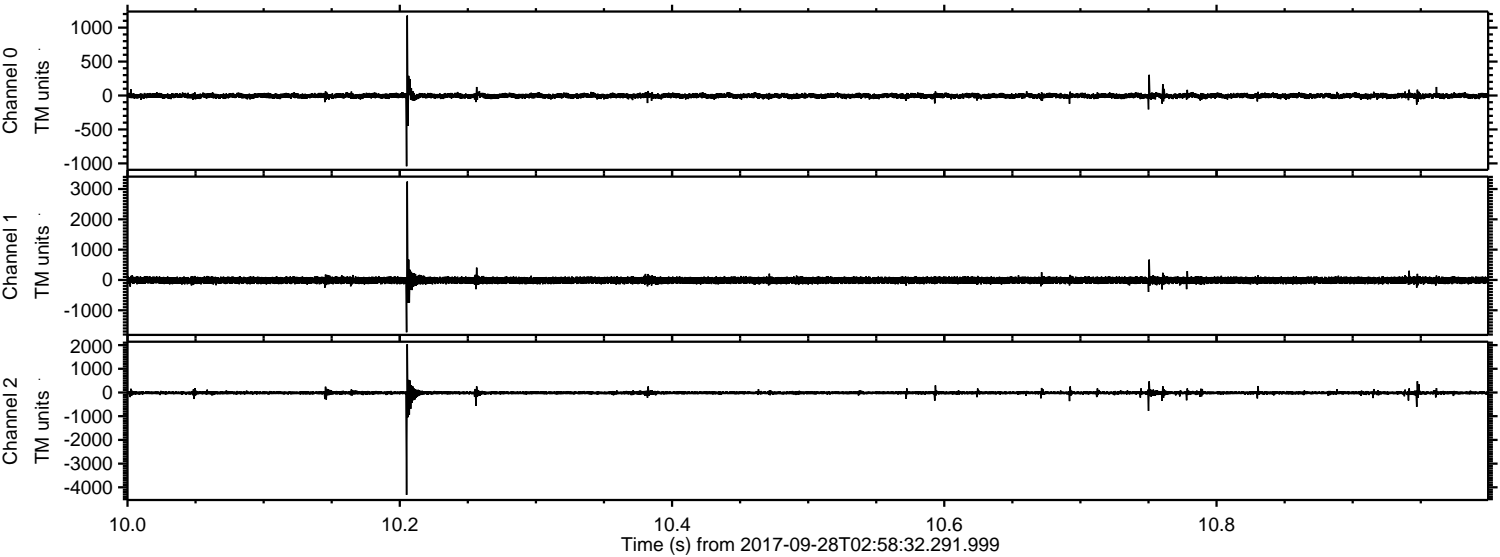
ELMAVAN 3D WAVEFORMS (Measured data sampled at 50 kHz) 51000 packets of 144 samples from 2017-09-28T02:58:32.291.999. Part 76/147

Processed Thu Sep 28 05:06:56 2017 by ELM ver.2012-10-06 from 001\_\_elm20170928\_025831\_\_dat00.bin





Processed Thu Sep 28 05:06:57 2017 by ELM ver.2012-10-06 from 001\_\_elm20170928\_025831\_\_dat00.bin





Processed Thu Sep 28 05:06:58 2017 by ELM ver.2012-10-06 from 001\_\_elm20170928\_025831\_\_dat00.bin

