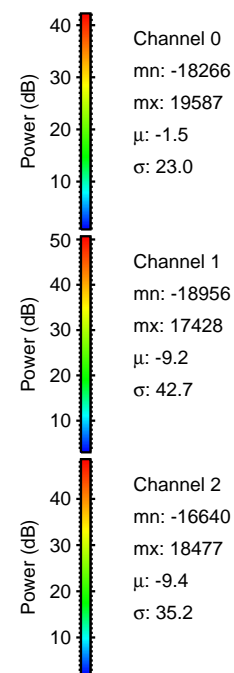
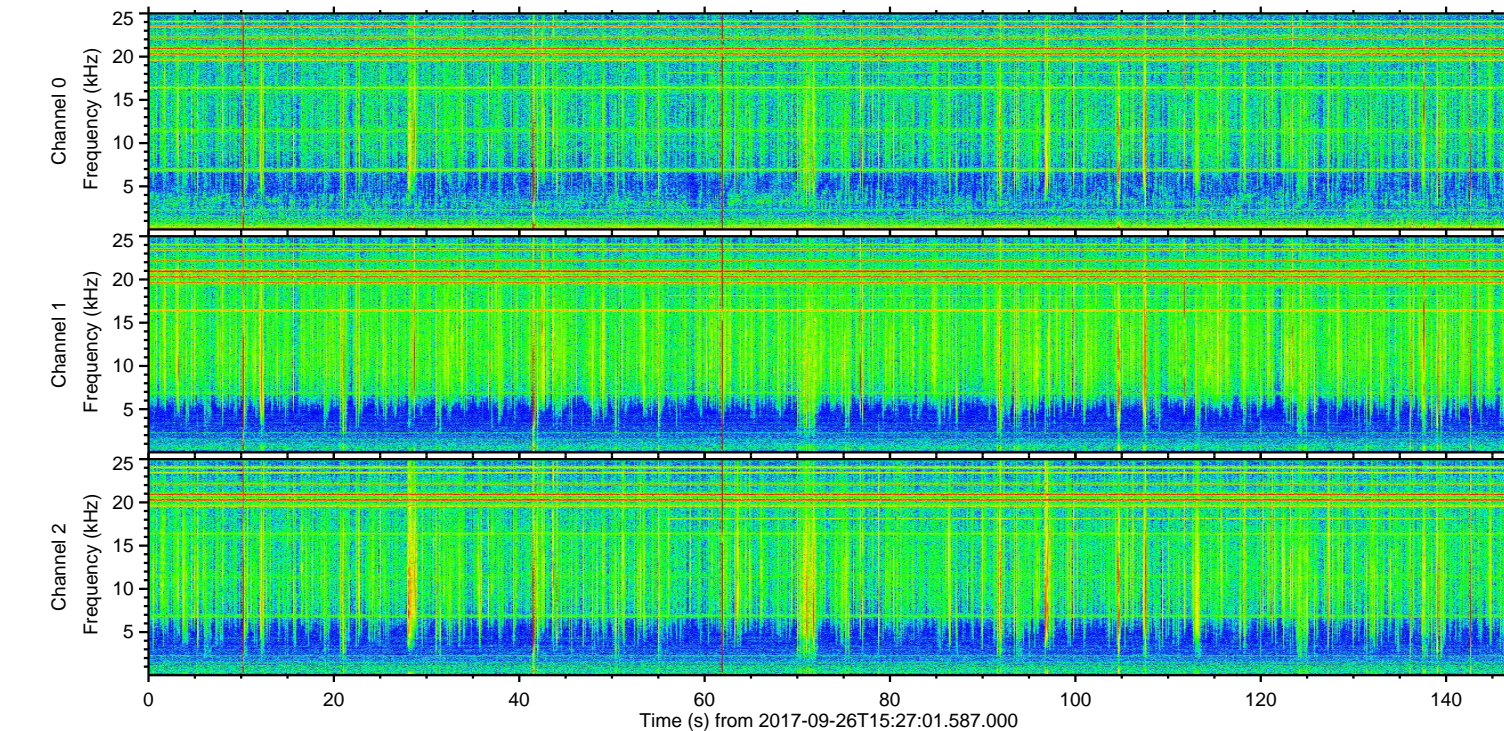
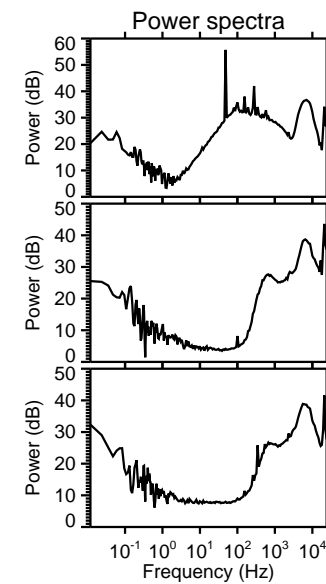
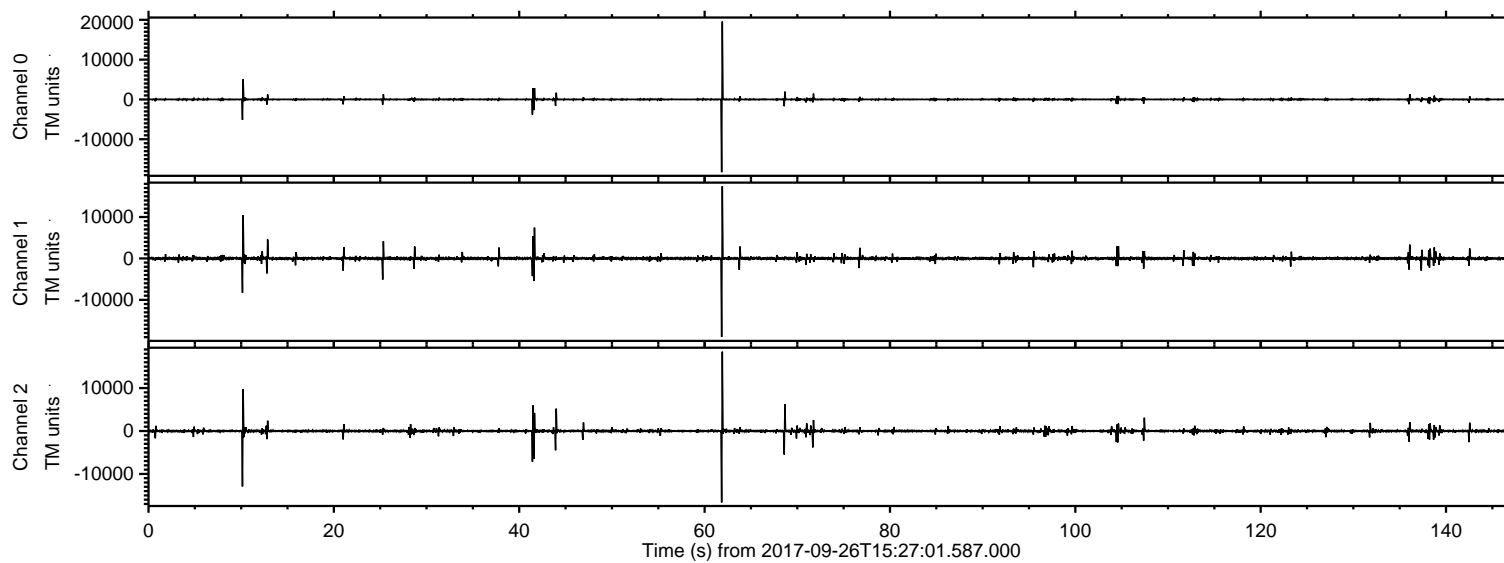
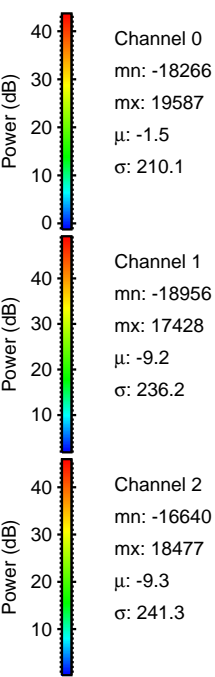
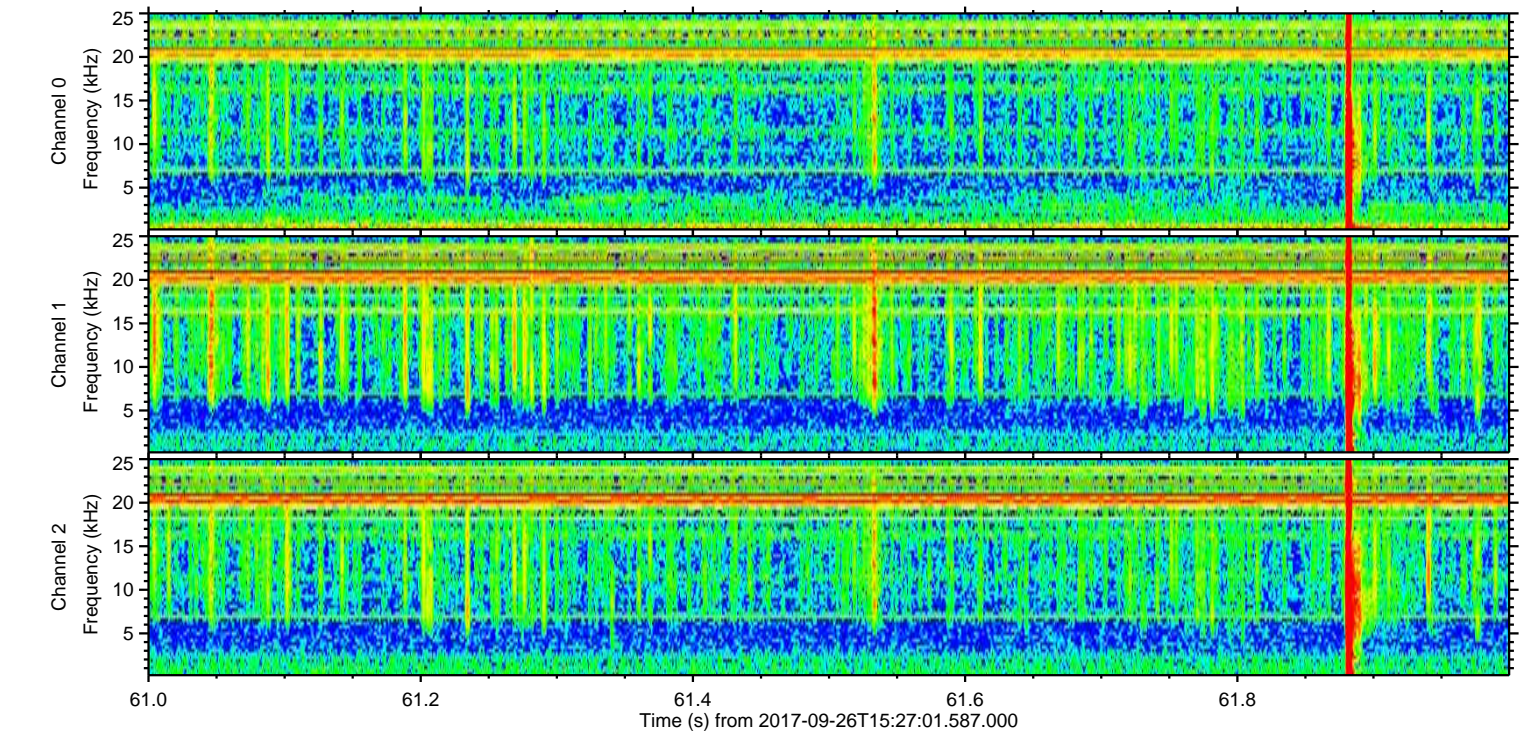
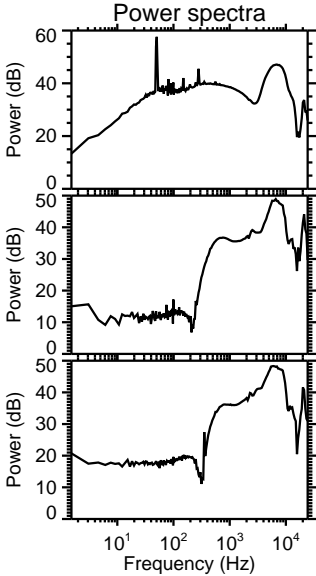
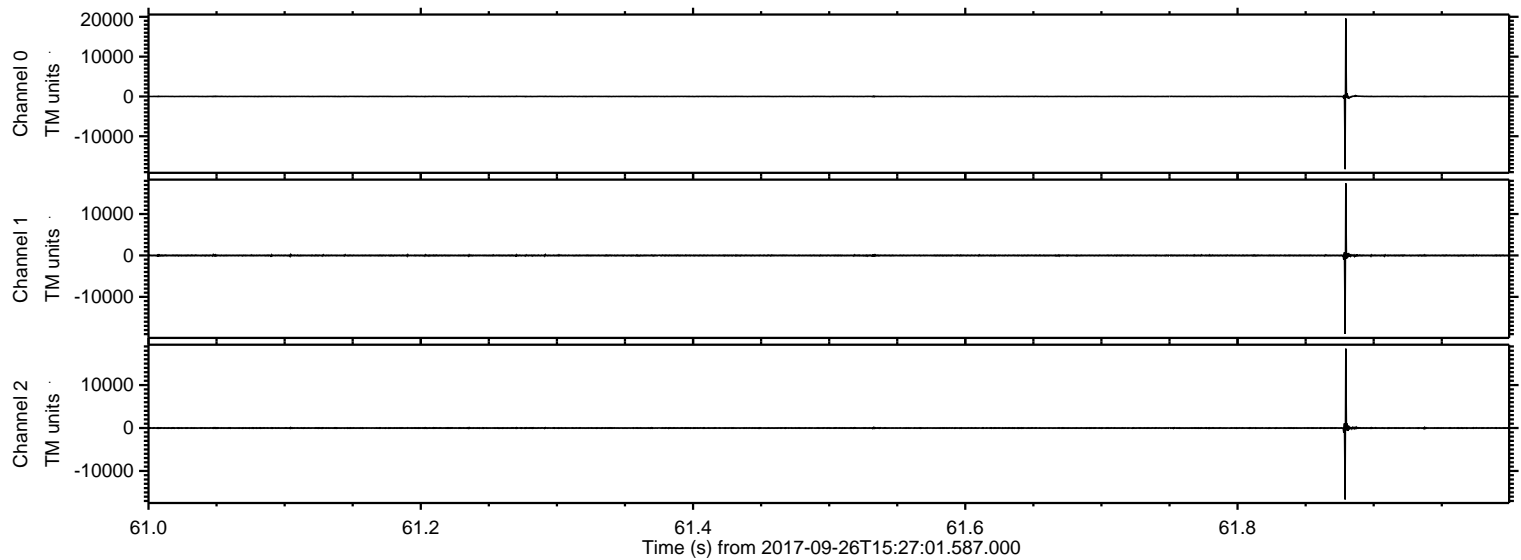


ELMAVAN 3D WAVEFORMS (Measured data sampled at 50 kHz) 51000 packets of 144 samples from 2017-09-26T15:27:01.587.000.

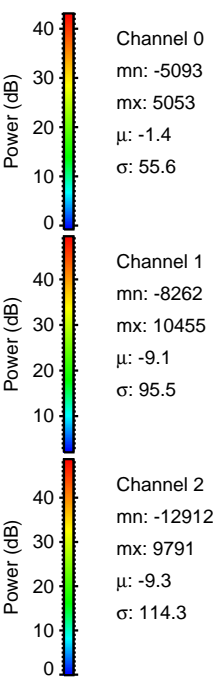
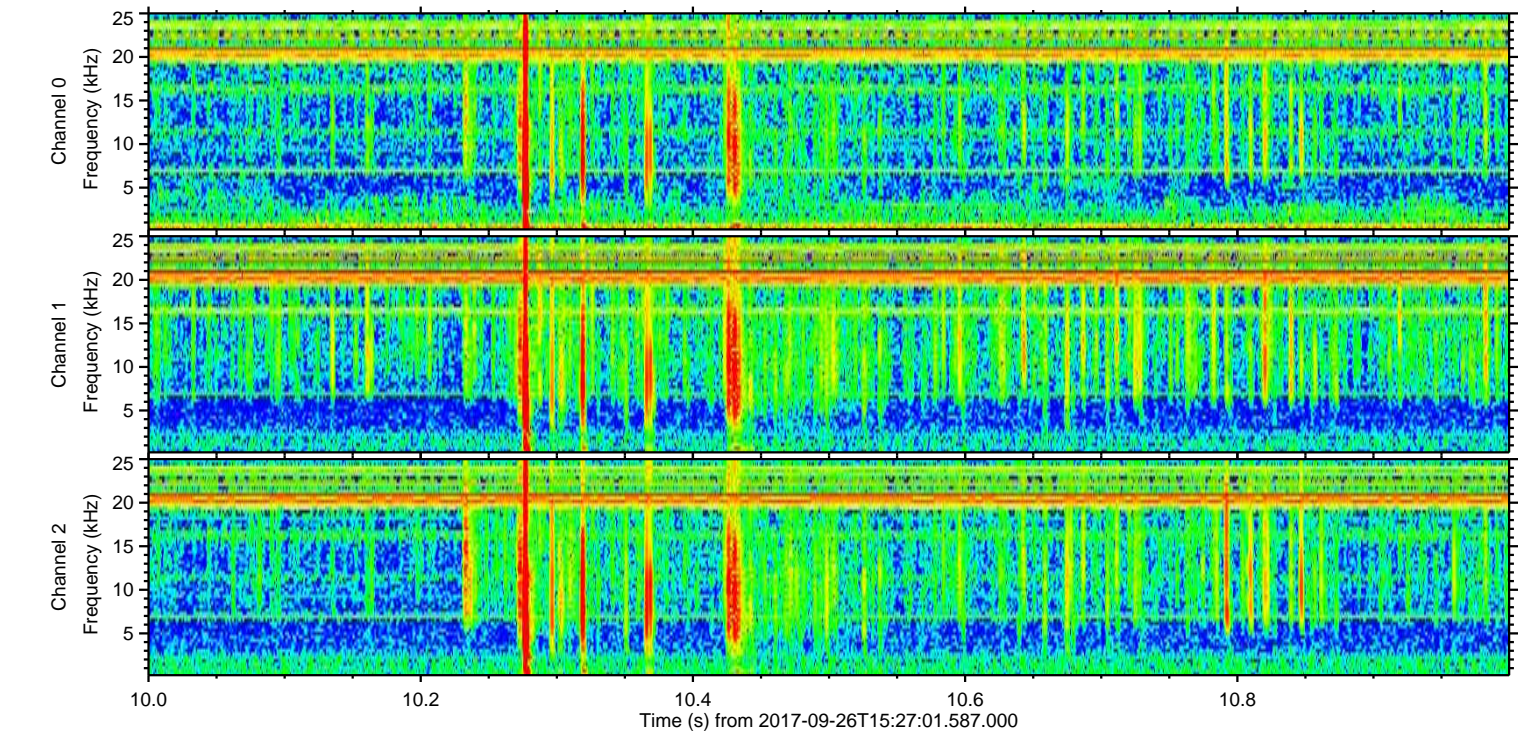
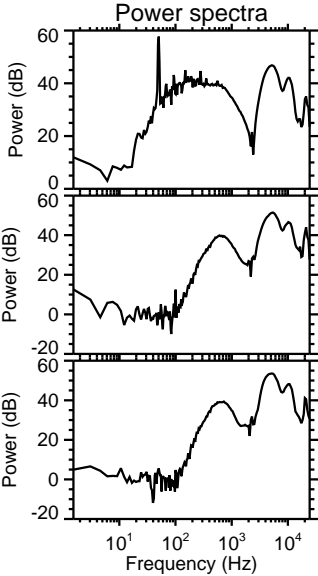
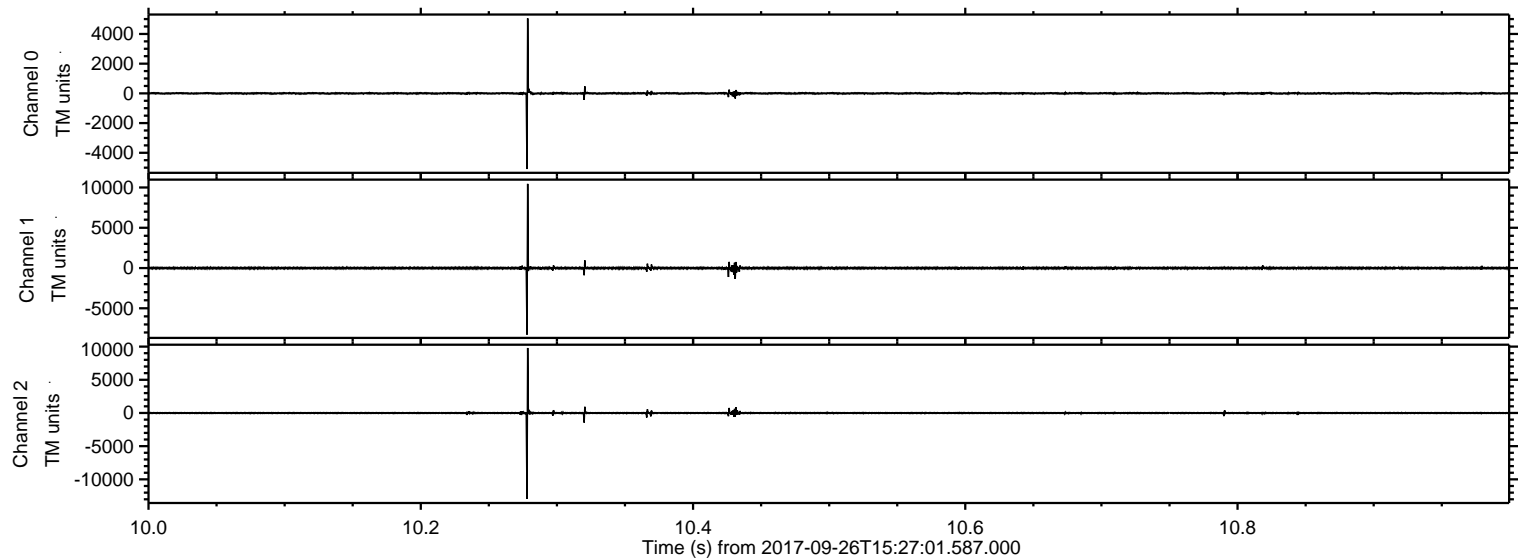
Processed Tue Sep 26 17:35:03 2017 by ELM ver.2012-10-06 from 001__elm20170926_152700__dat00.bin



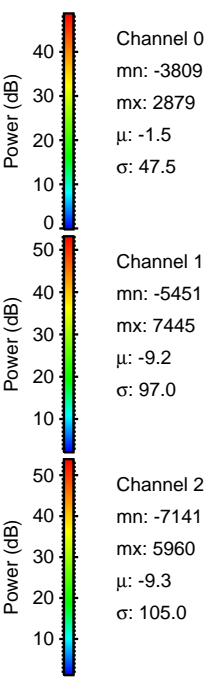
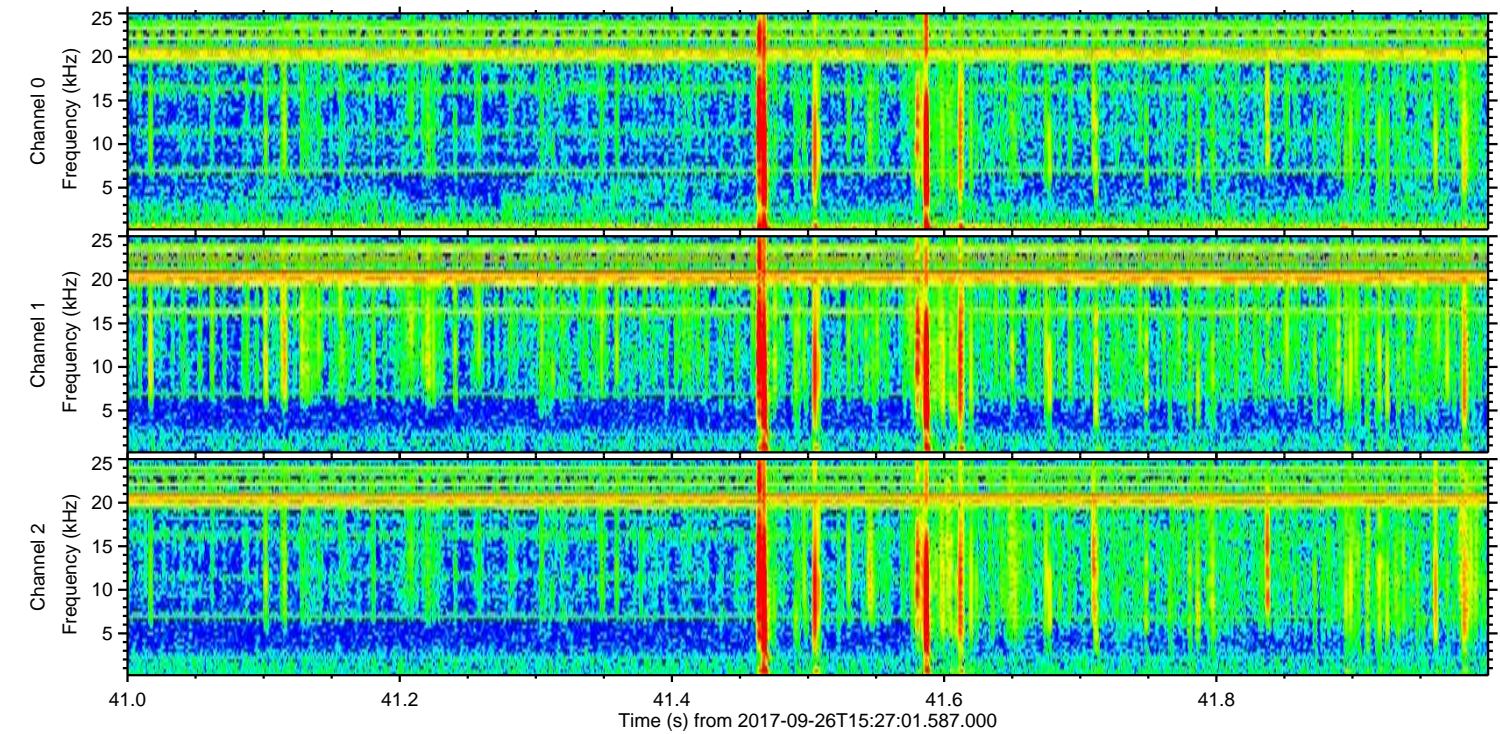
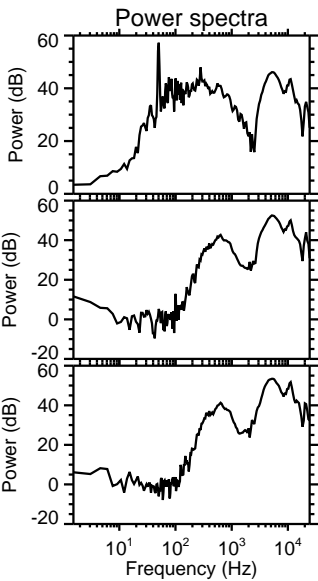
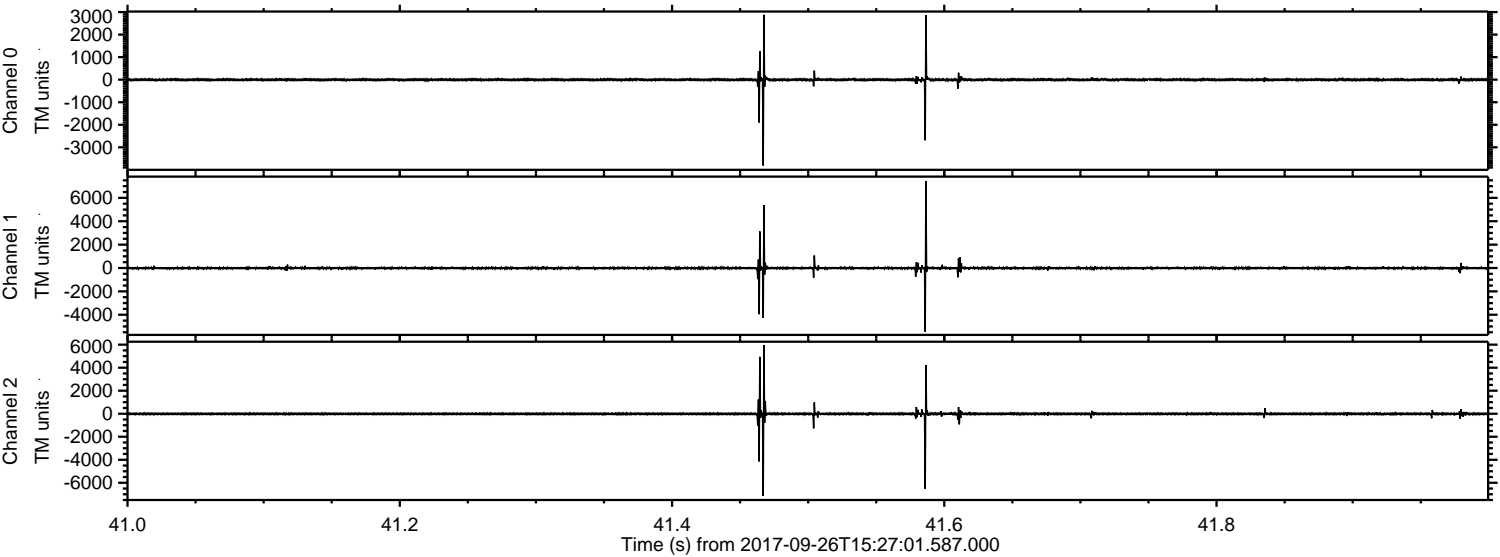
Processed Tue Sep 26 17:35:10 2017 by ELM ver.2012-10-06 from 001__elm20170926_152700__dat00.bin



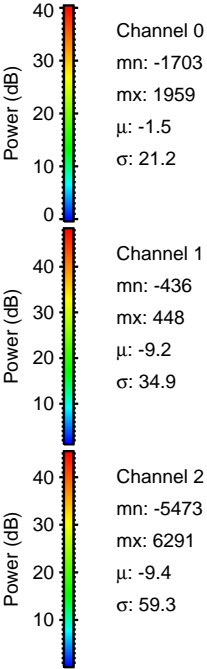
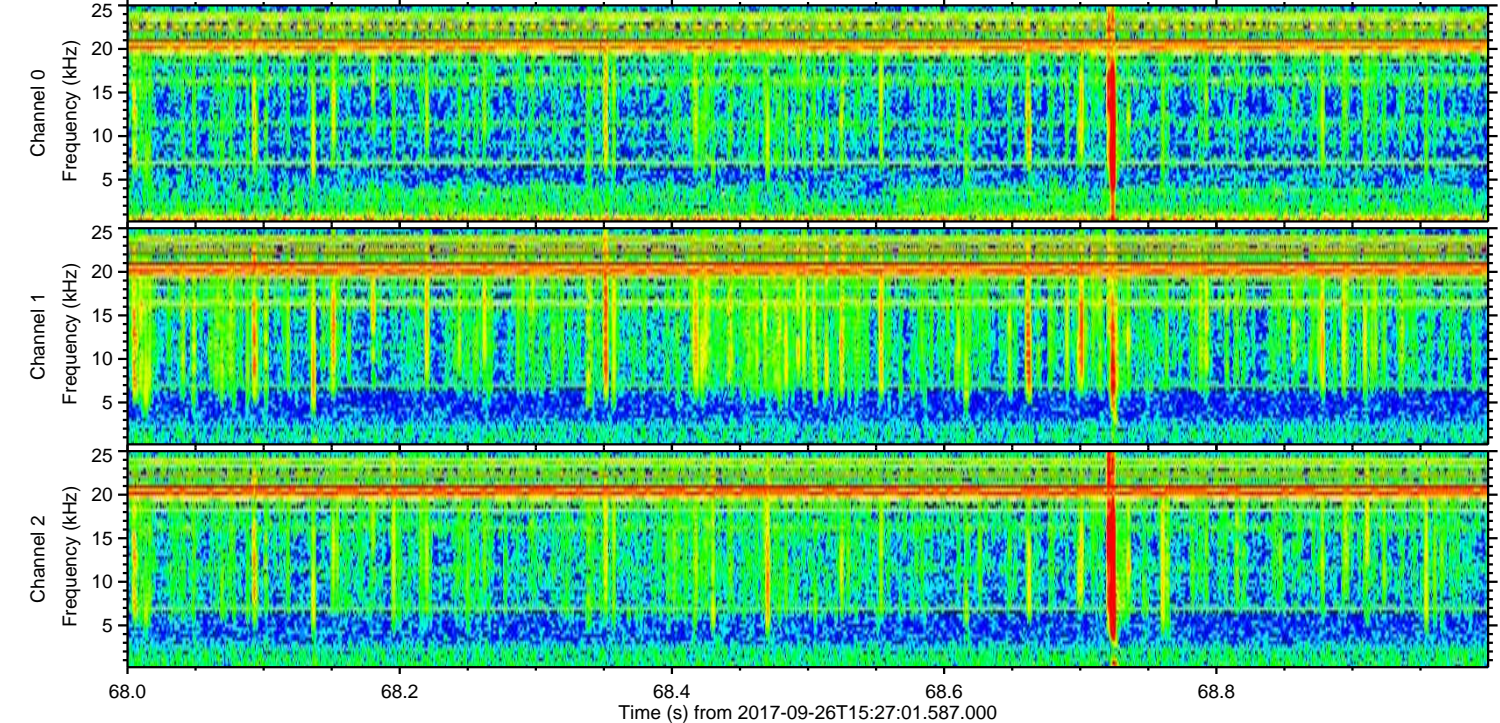
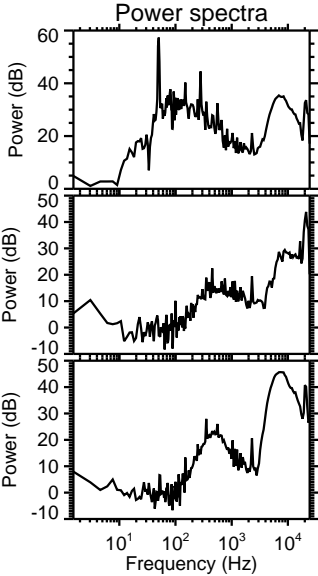
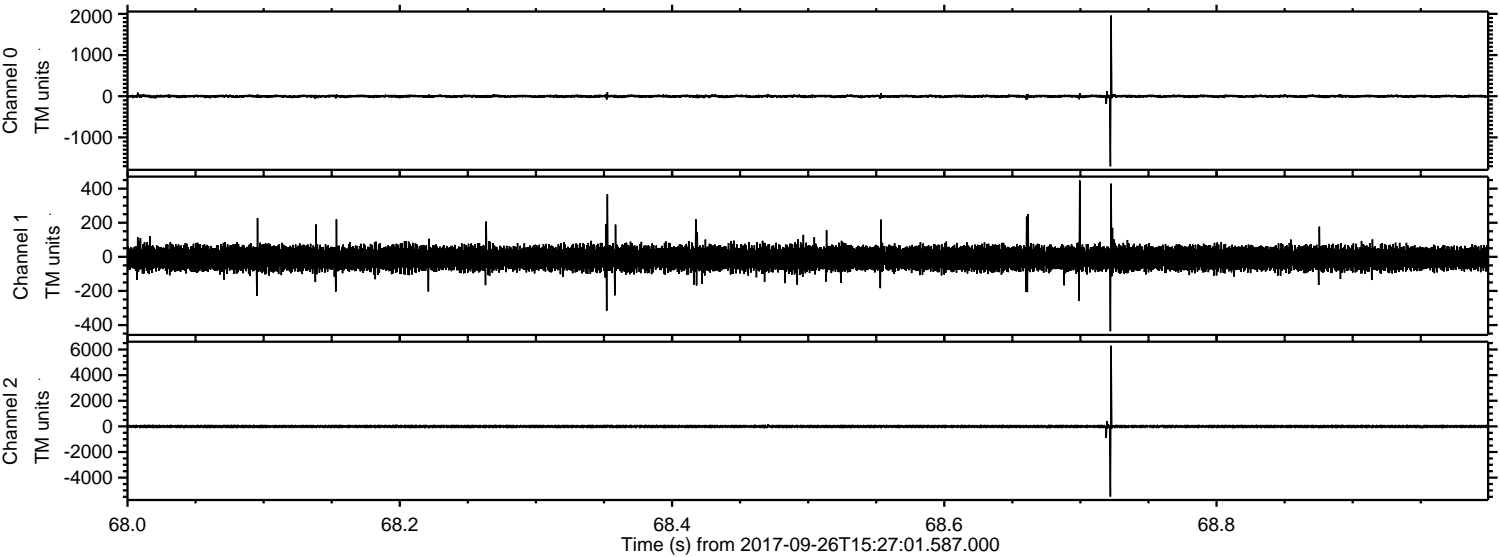
Processed Tue Sep 26 17:35:11 2017 by ELM ver.2012-10-06 from 001__elm20170926_152700__dat00.bin



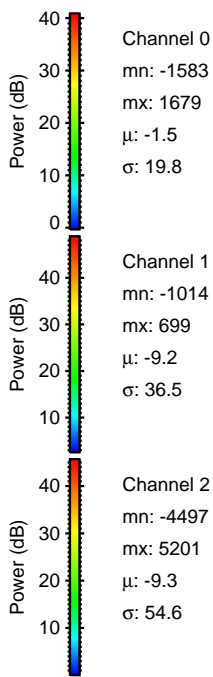
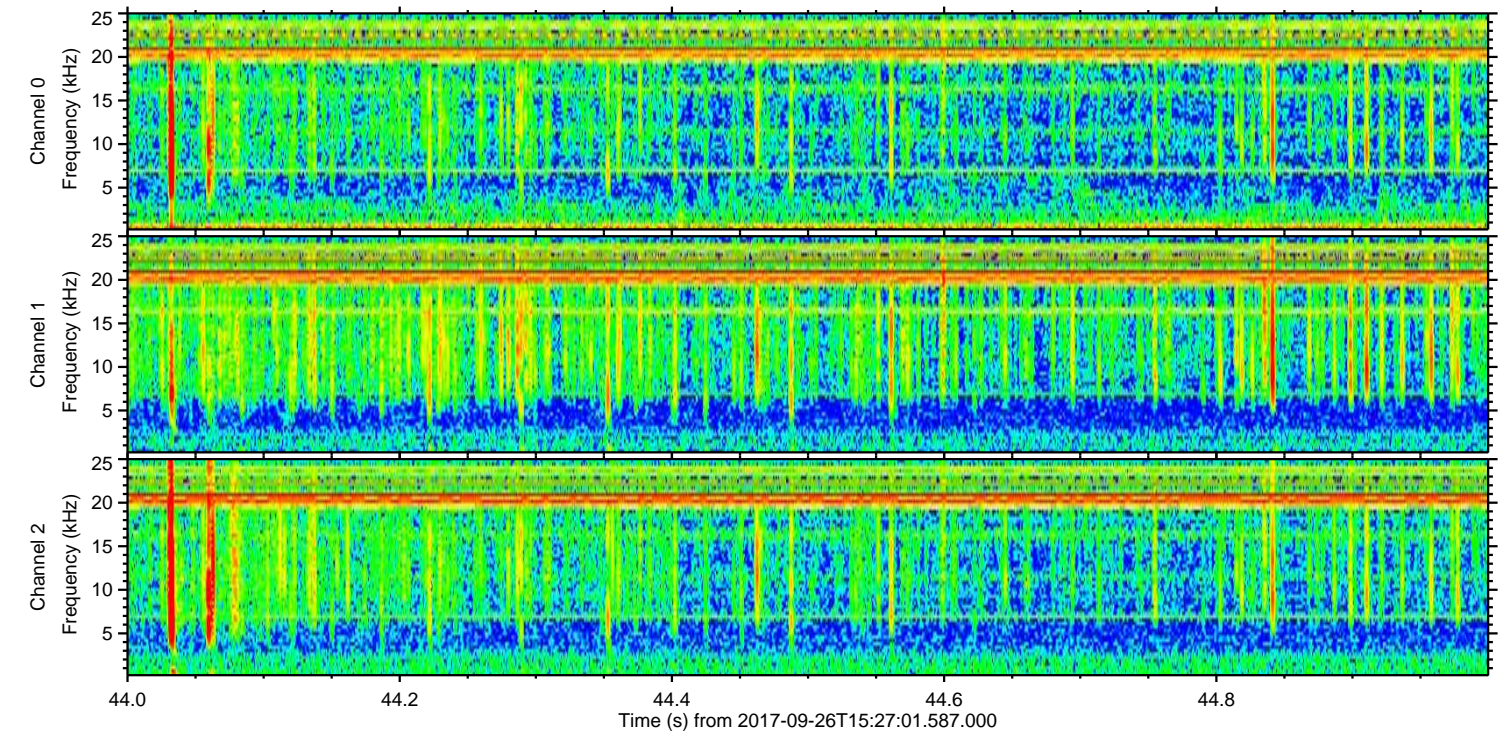
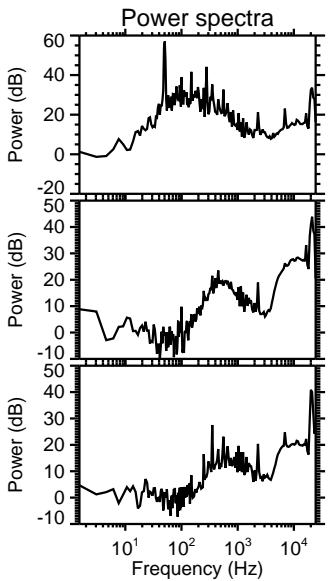
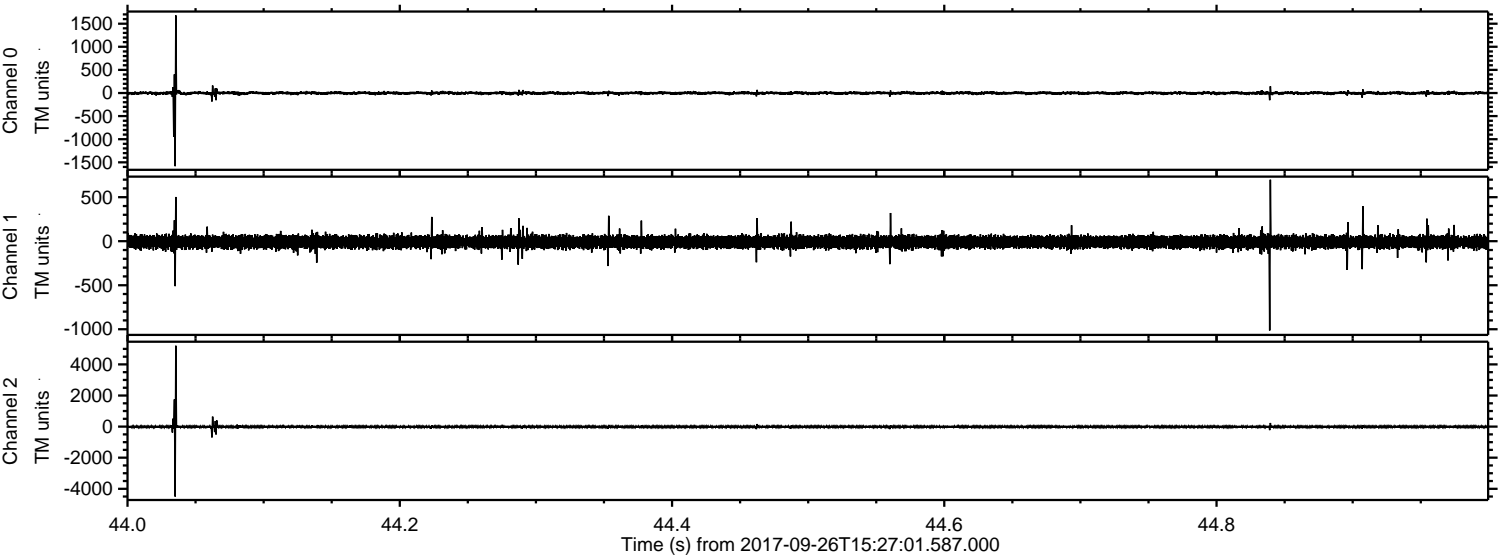
Processed Tue Sep 26 17:35:12 2017 by ELM ver.2012-10-06 from 001__elm20170926_152700__dat00.bin



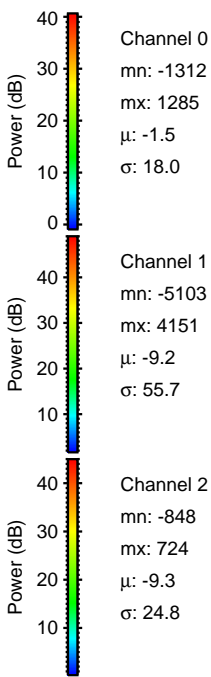
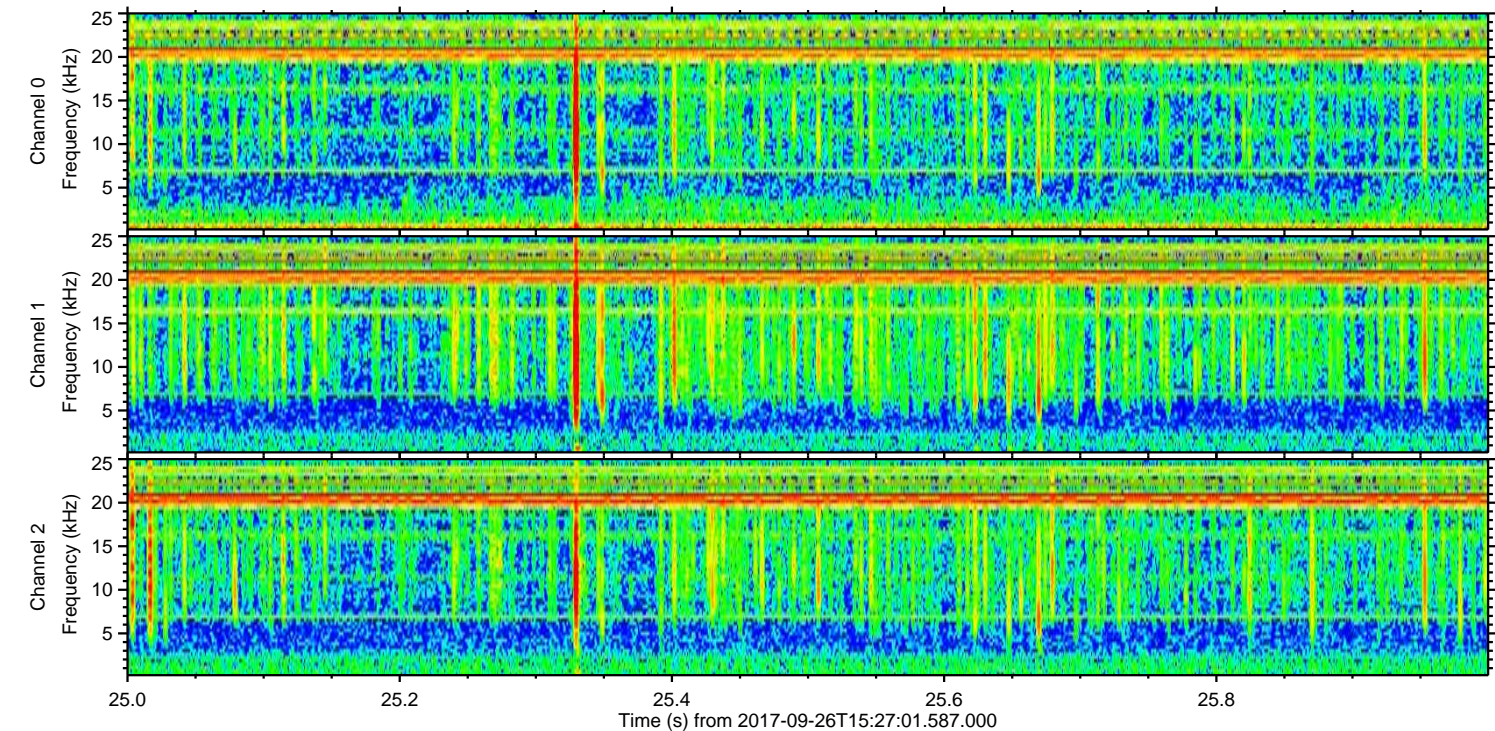
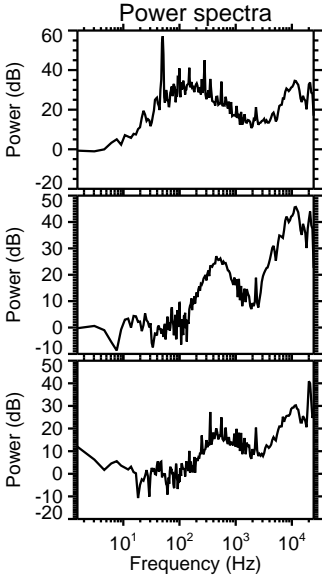
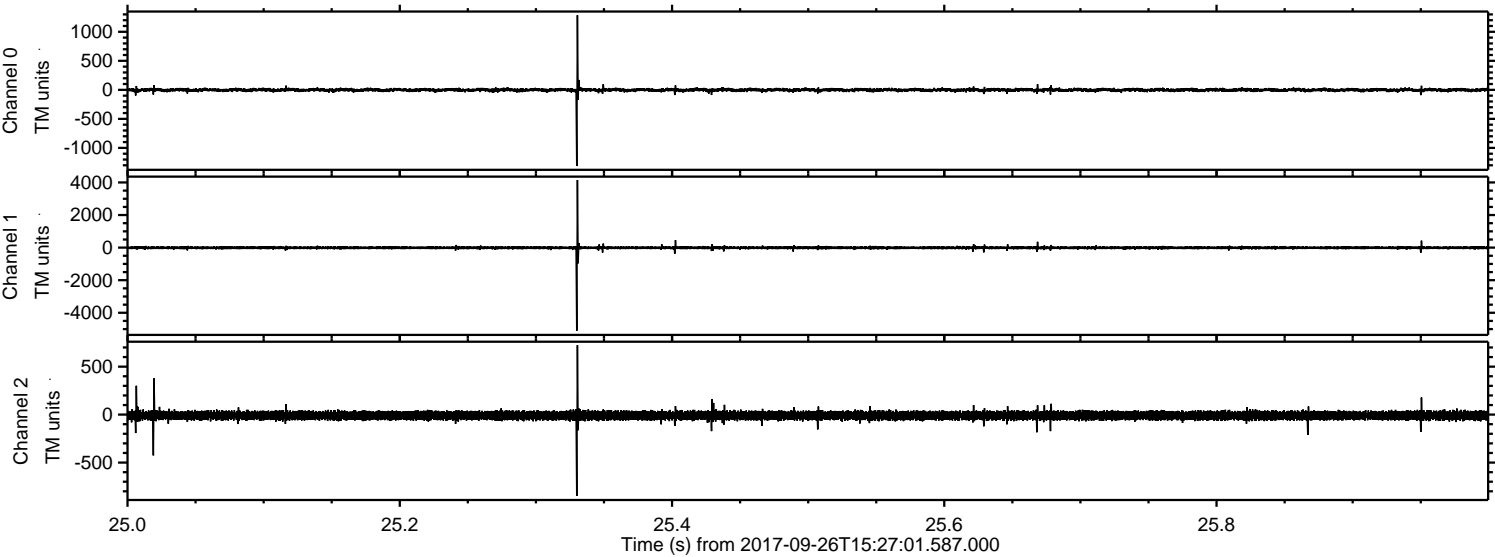
Processed Tue Sep 26 17:35:12 2017 by ELM ver.2012-10-06 from 001__elm20170926_152700__dat00.bin



Processed Tue Sep 26 17:35:13 2017 by ELM ver.2012-10-06 from 001__elm20170926_152700__dat00.bin

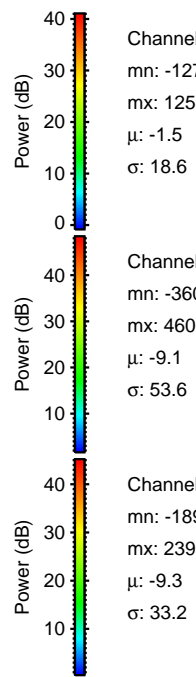
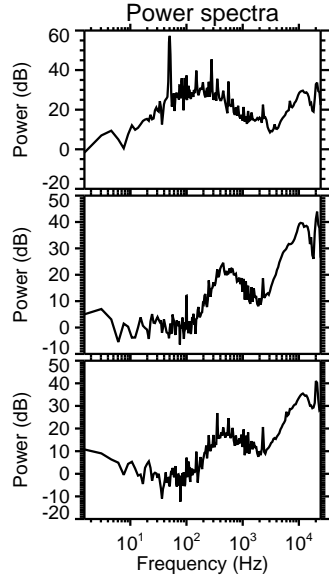
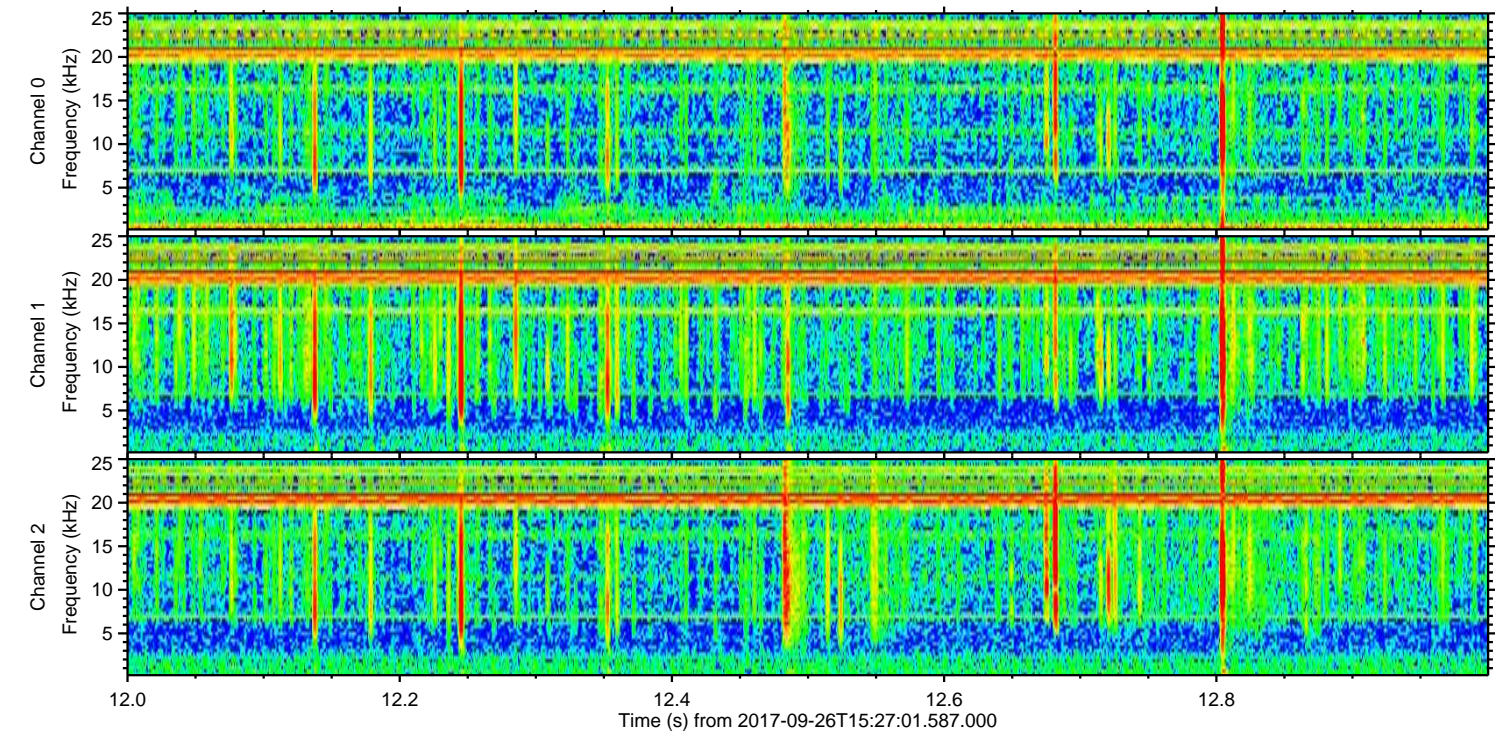
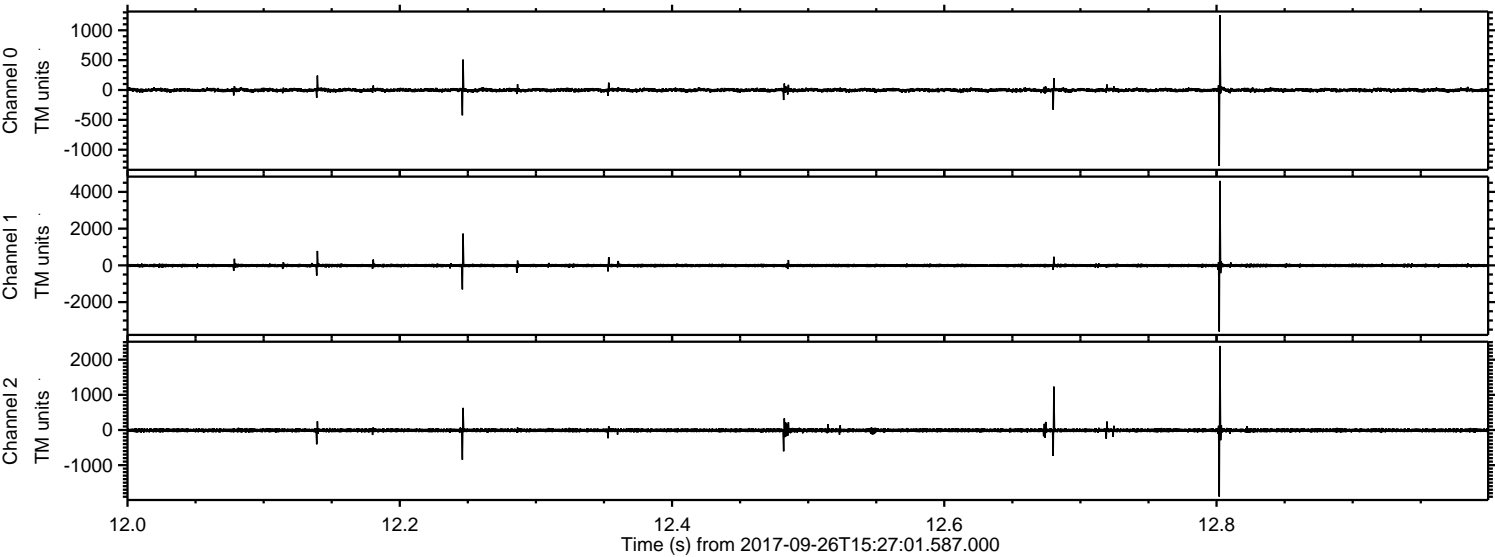


Processed Tue Sep 26 17:35:14 2017 by ELM ver.2012-10-06 from 001__elm20170926_152700__dat00.bin



ELMAVAN 3D WAVEFORMS (Measured data sampled at 50 kHz) 51000 packets of 144 samples from 2017-09-26T15:27:01.587.000. Part 13/147

Processed Tue Sep 26 17:35:15 2017 by ELM ver.2012-10-06 from 001__elm20170926_152700__dat00.bin

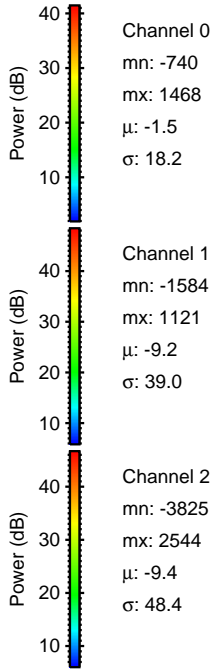
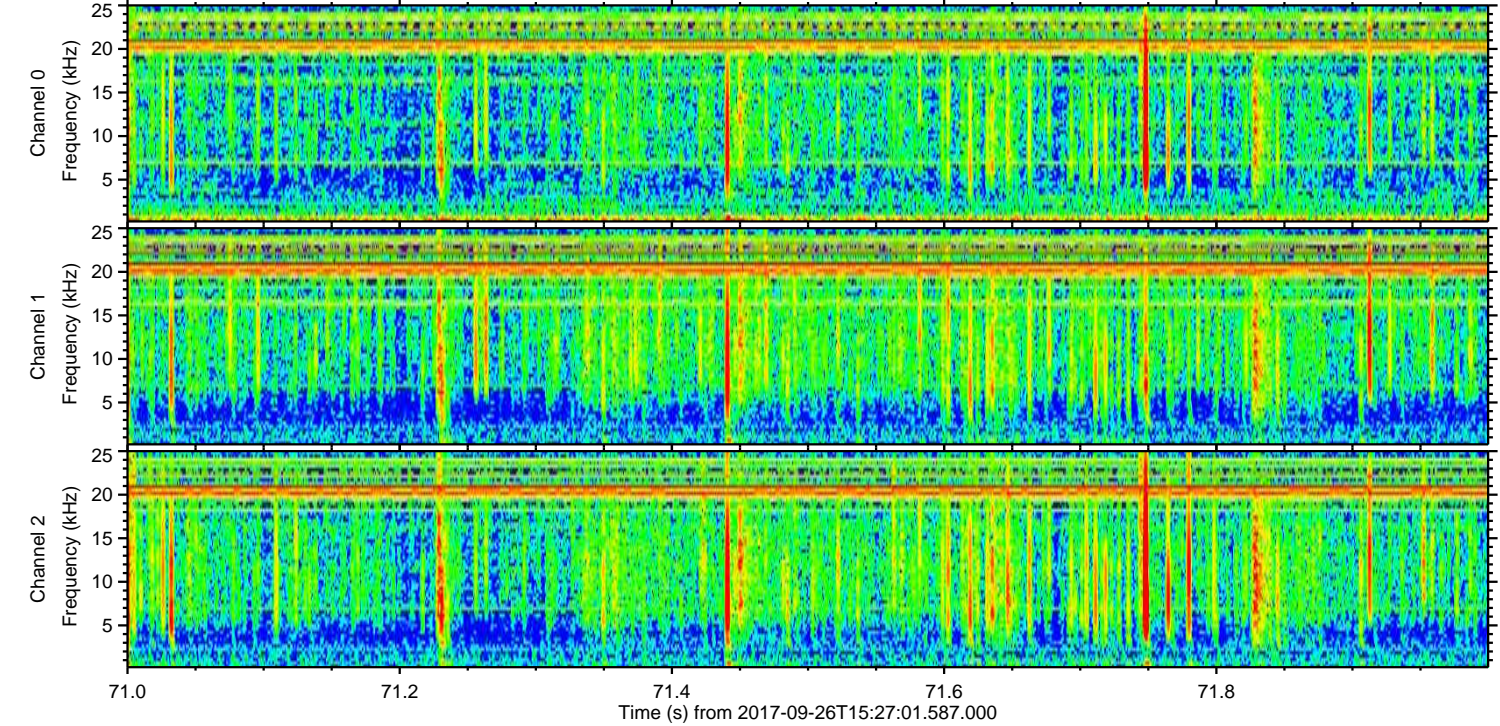
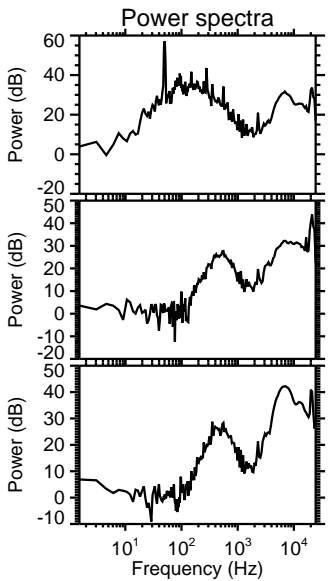
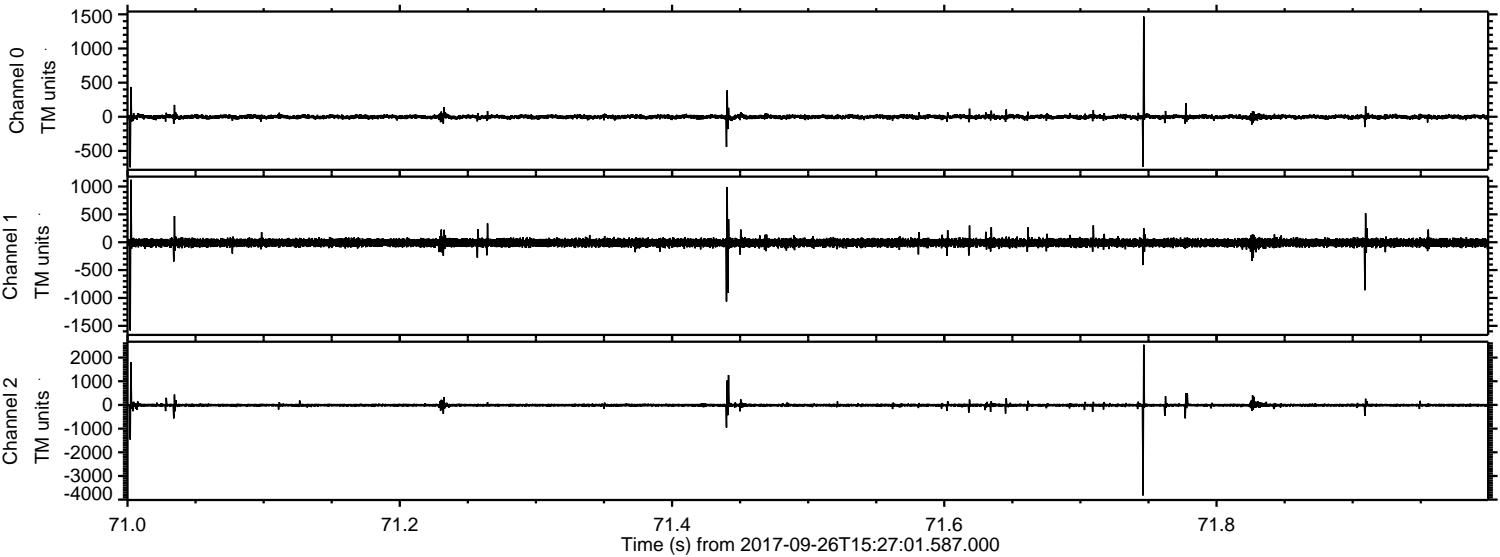


Channel 0
mn: -1273
mx: 1251
 μ : -1.5
 σ : 18.6

Channel 1
mn: -3607
mx: 4603
 μ : -9.1
 σ : 53.6

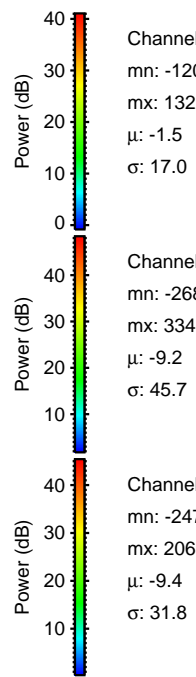
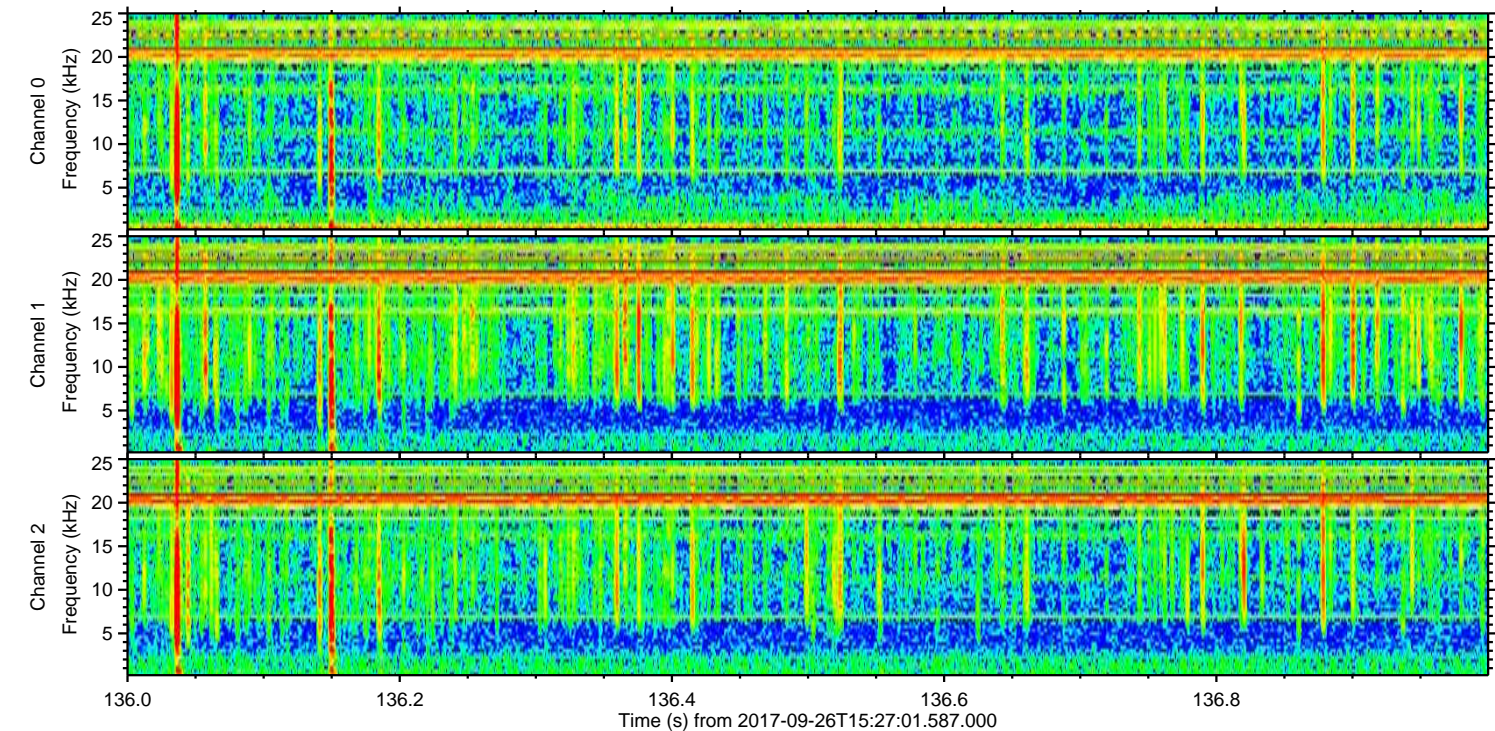
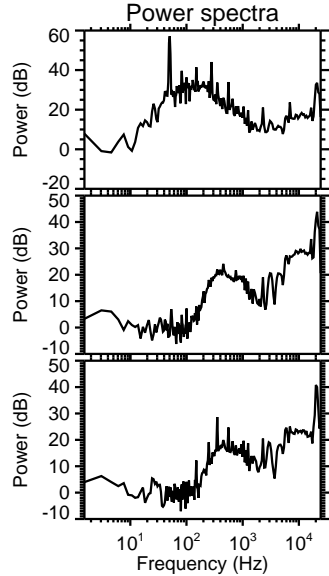
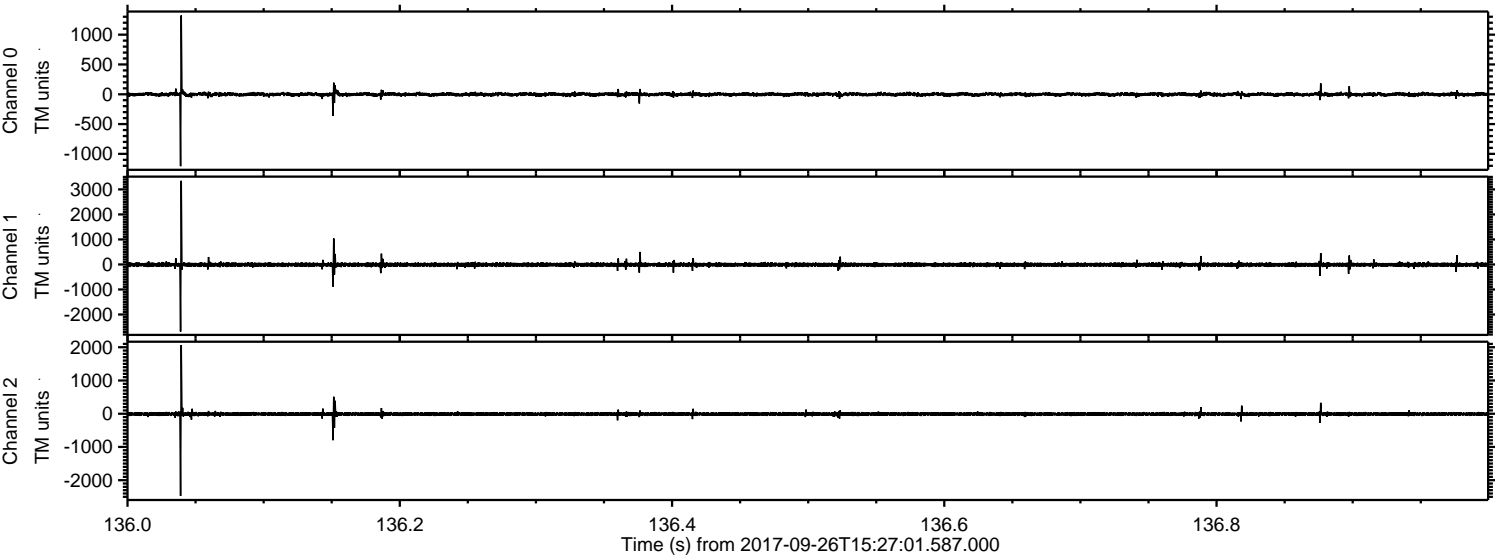
Channel 2
mn: -1898
mx: 2393
 μ : -9.3
 σ : 33.2

Processed Tue Sep 26 17:35:15 2017 by ELM ver.2012-10-06 from 001__elm20170926_152700__dat00.bin



ELMAVAN 3D WAVEFORMS (Measured data sampled at 50 kHz) 51000 packets of 144 samples from 2017-09-26T15:27:01.587.000. Part 137/147

Processed Tue Sep 26 17:35:16 2017 by ELM ver.2012-10-06 from 001__elm20170926_152700__dat00.bin



Channel 0
mn: -1207
mx: 1322
 μ : -1.5
 σ : 17.0

Channel 1
mn: -2682
mx: 3345
 μ : -9.2
 σ : 45.7

Channel 2
mn: -2472
mx: 2063
 μ : -9.4
 σ : 31.8

