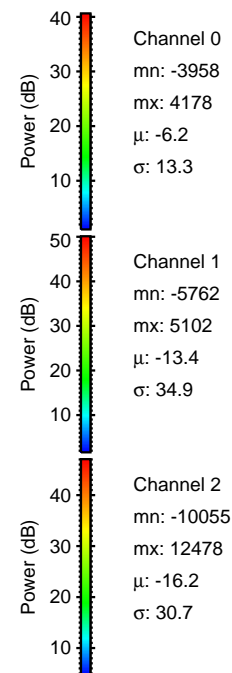
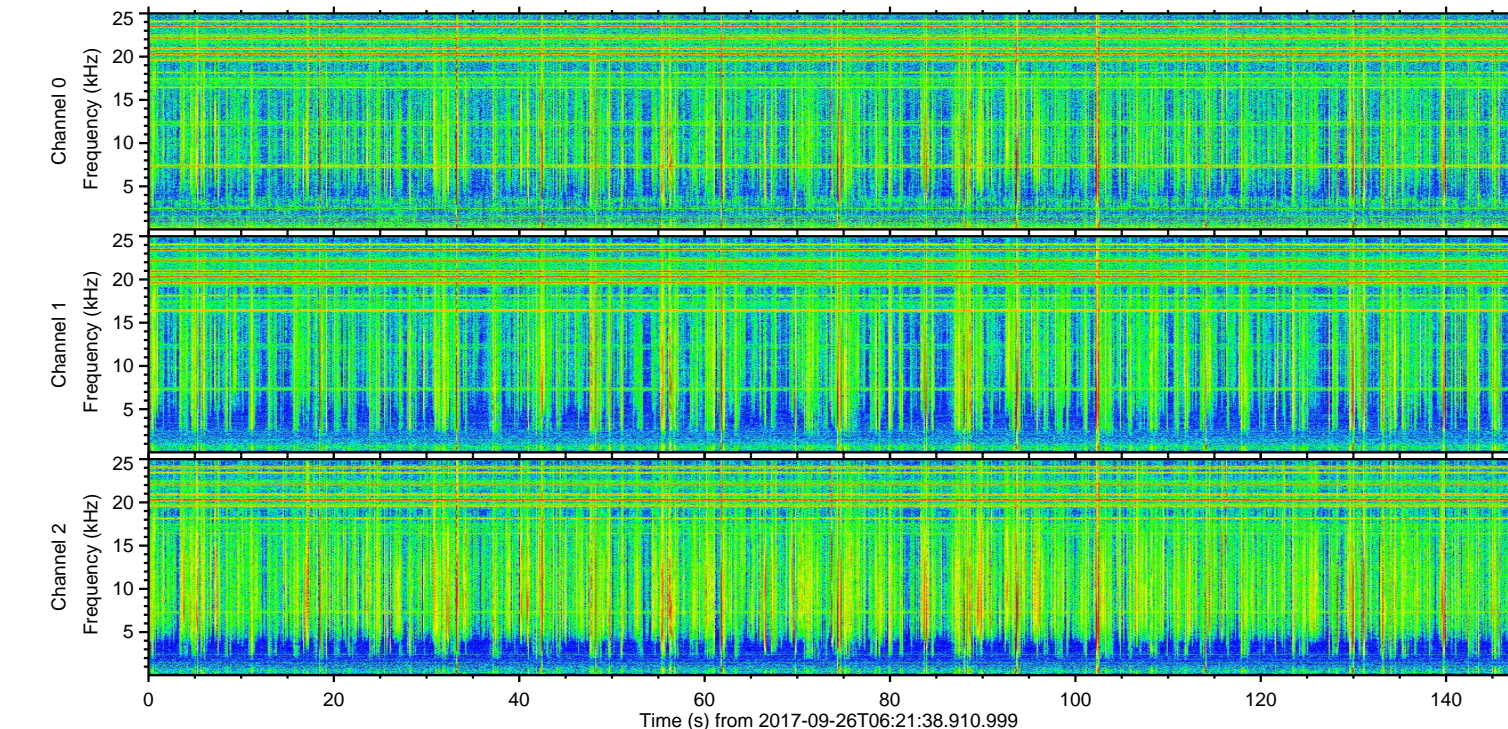
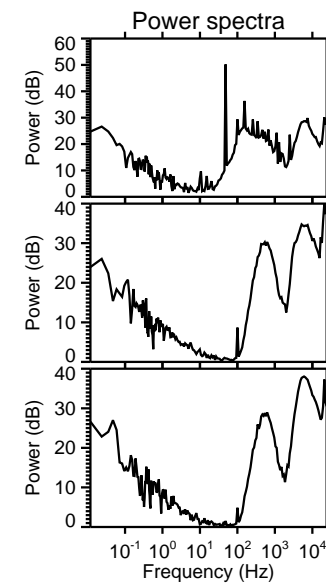
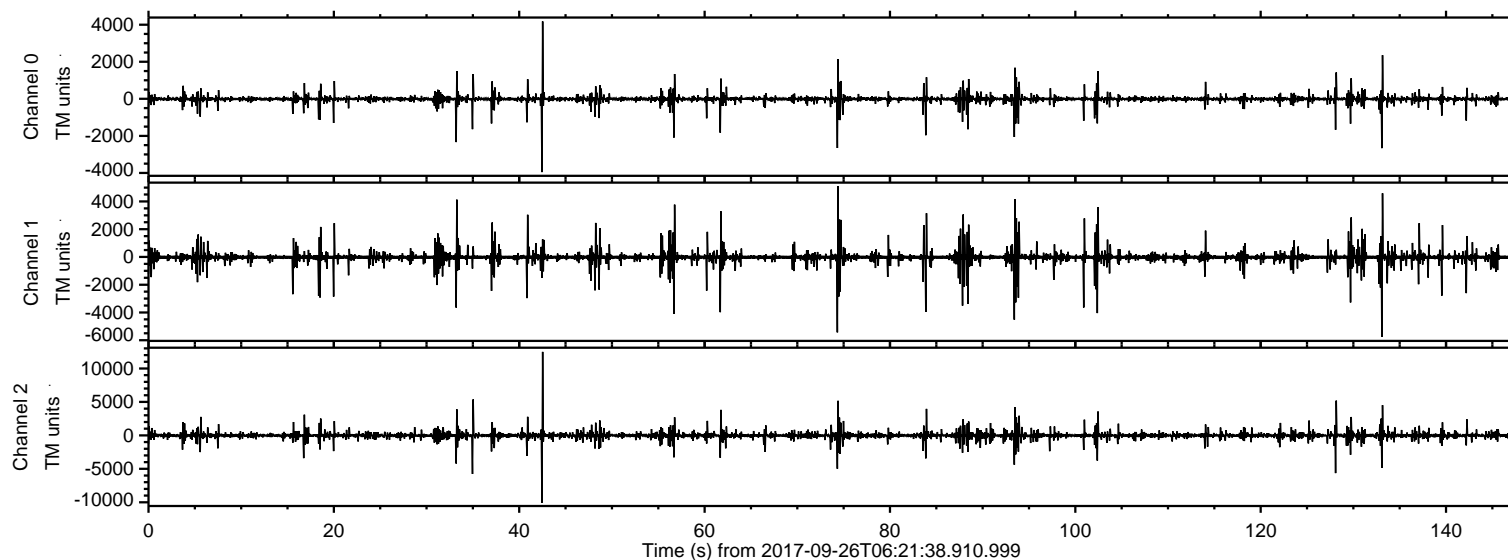


# ELMAVAN 3D WAVEFORMS (Measured data sampled at 50 kHz) 51000 packets of 144 samples from 2017-09-26T06:21:38.910.999.

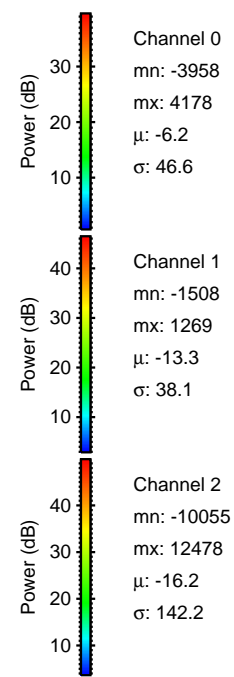
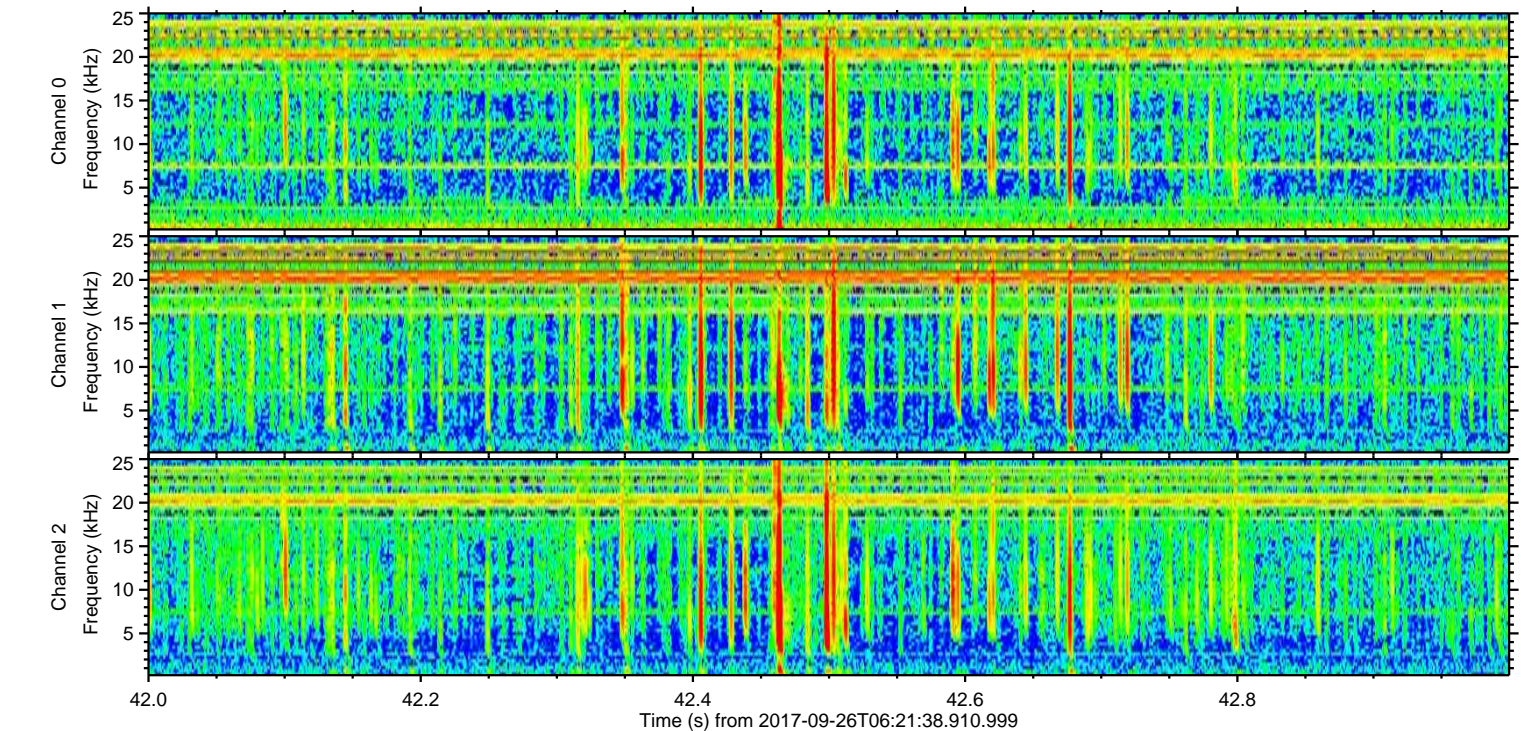
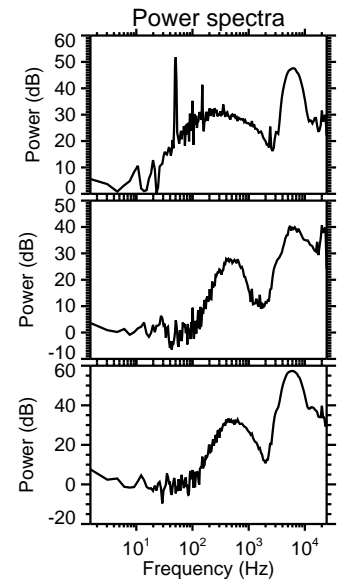
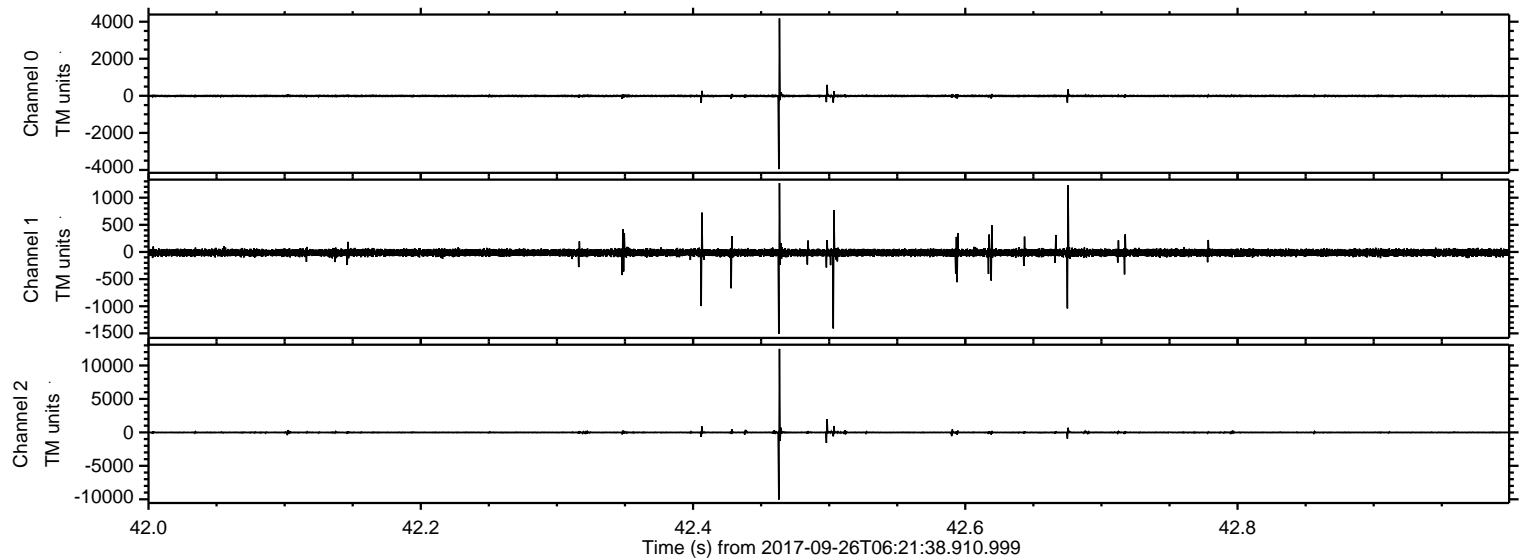
Processed Tue Sep 26 08:29:47 2017 by ELM ver.2012-10-06 from 001\_\_elm20170926\_062137\_\_dat00.bin





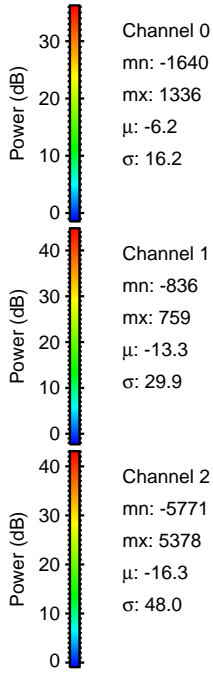
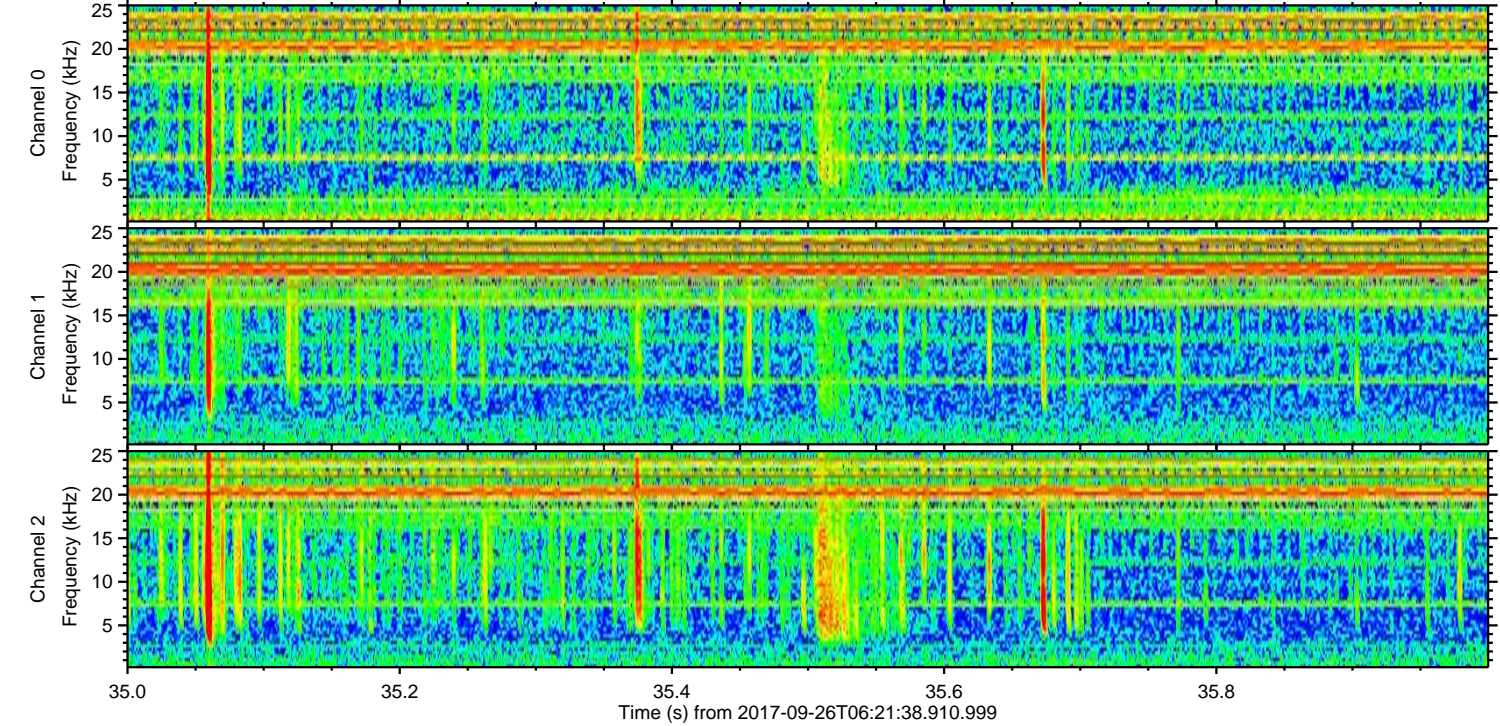
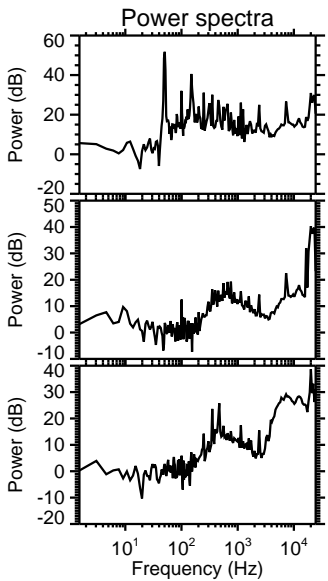
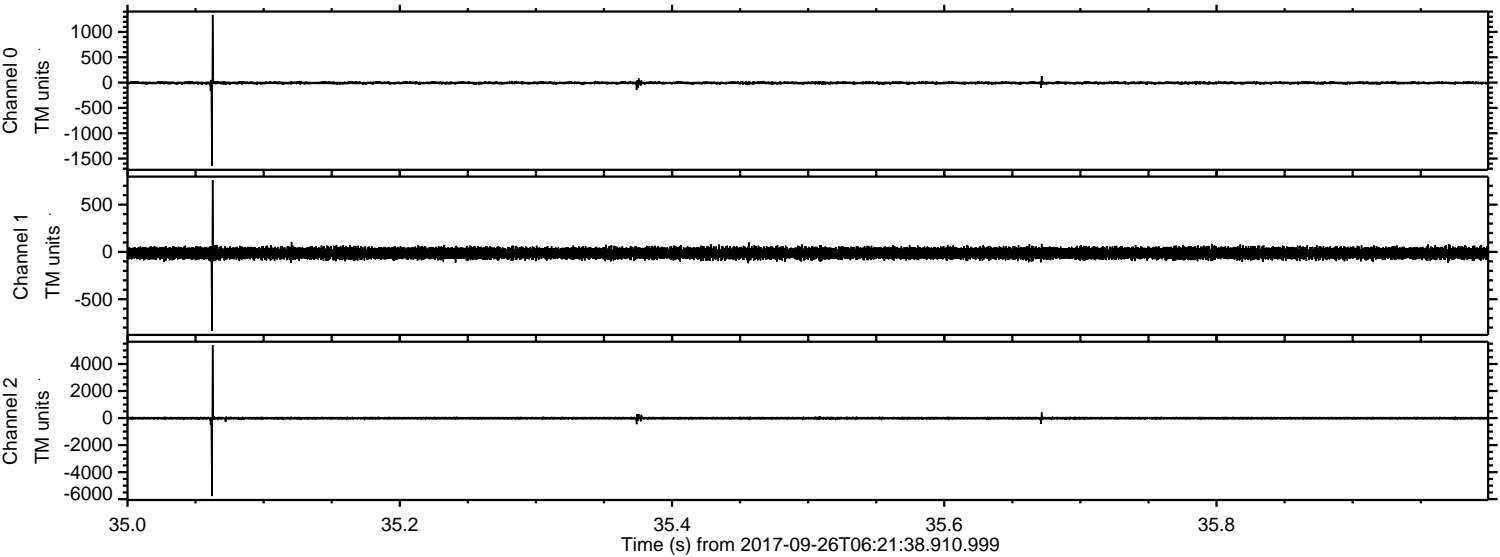
ELMAVAN 3D WAVEFORMS (Measured data sampled at 50 kHz) 51000 packets of 144 samples from 2017-09-26T06:21:38.910.999. Part 43/147

Processed Tue Sep 26 08:29:54 2017 by ELM ver.2012-10-06 from 001\_\_elm20170926\_062137\_\_dat00.bin





Processed Tue Sep 26 08:29:55 2017 by ELM ver.2012-10-06 from 001\_\_elm20170926\_062137\_\_dat00.bin



Channel 0  
mn: -1640  
mx: 1336  
 $\mu$ : -6.2  
 $\sigma$ : 16.2

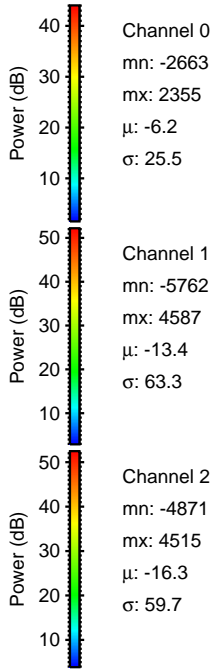
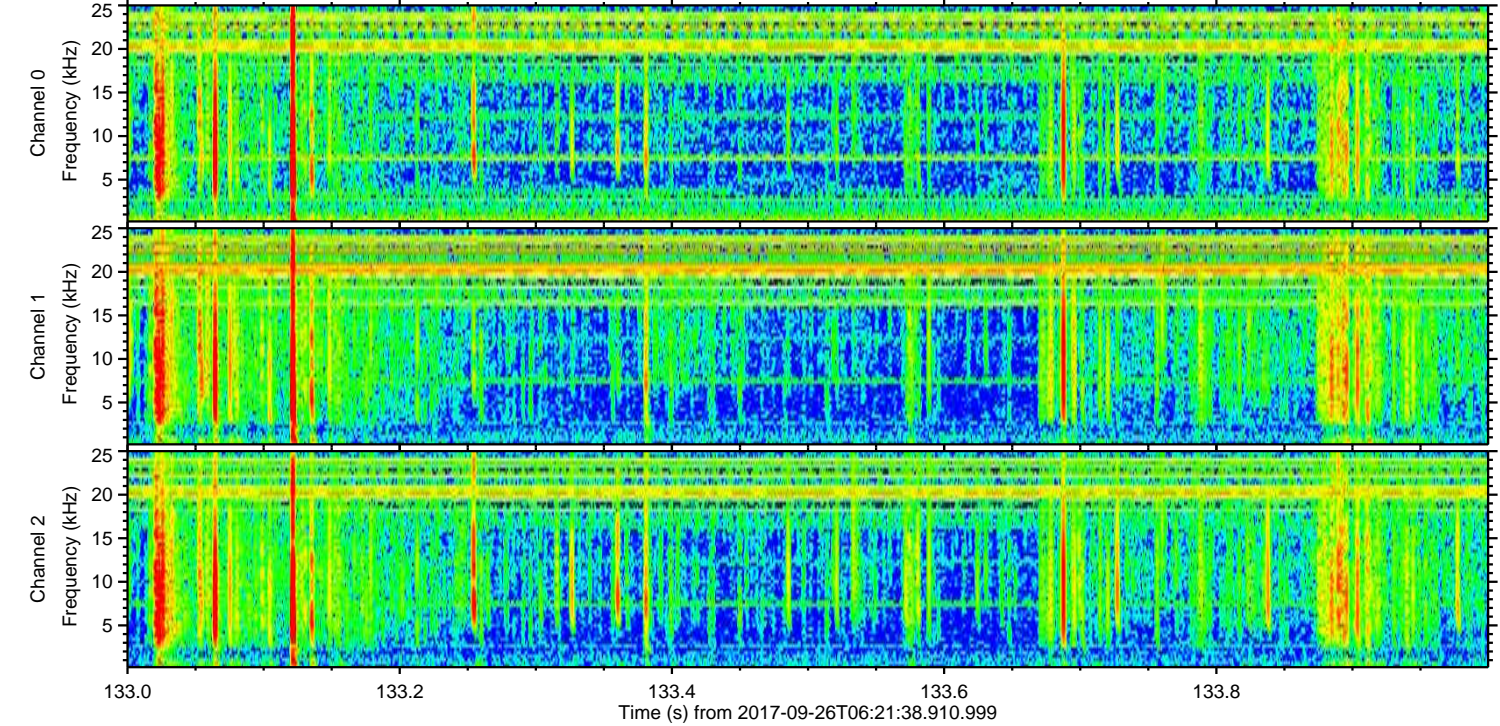
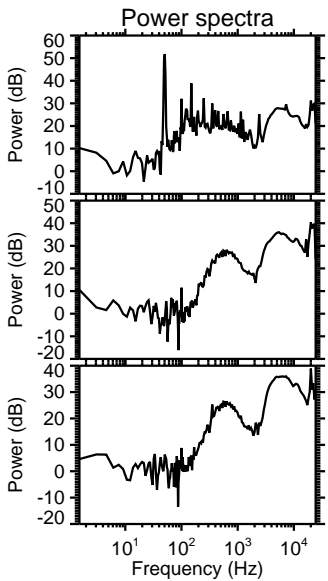
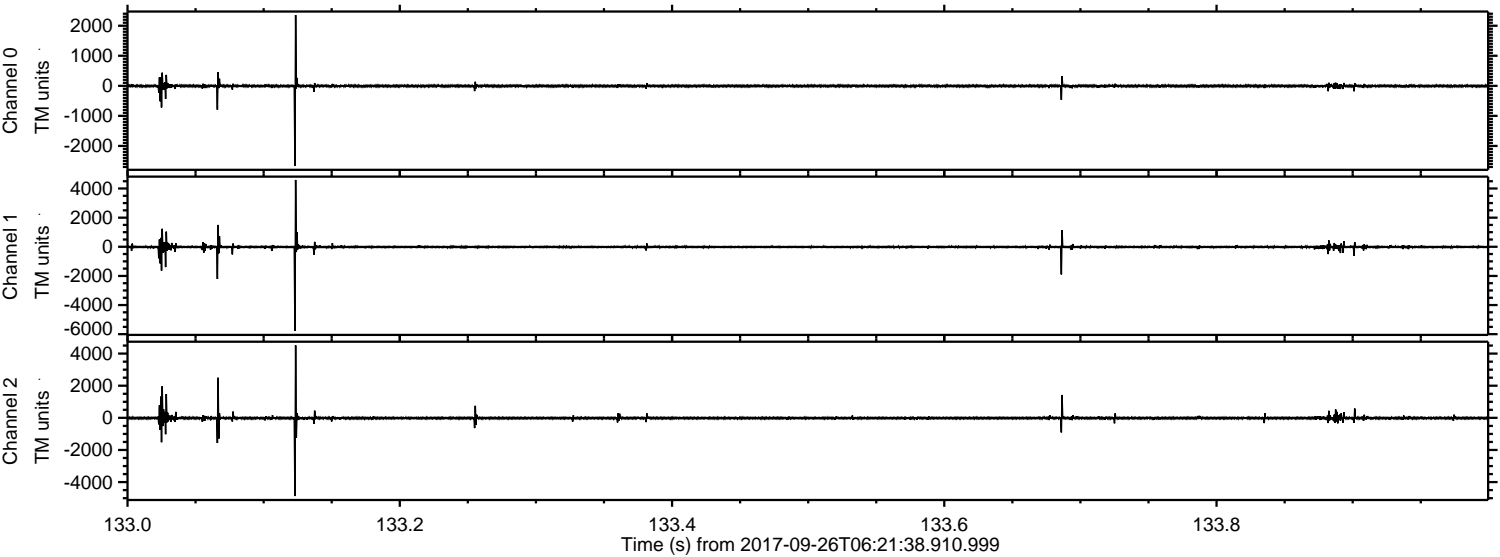
Channel 1  
mn: -836  
mx: 759  
 $\mu$ : -13.3  
 $\sigma$ : 29.9

Channel 2  
mn: -5771  
mx: 5378  
 $\mu$ : -16.3  
 $\sigma$ : 48.0



ELMAVAN 3D WAVEFORMS (Measured data sampled at 50 kHz) 51000 packets of 144 samples from 2017-09-26T06:21:38.910.999. Part 134/147

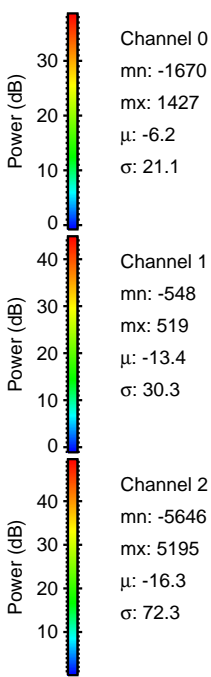
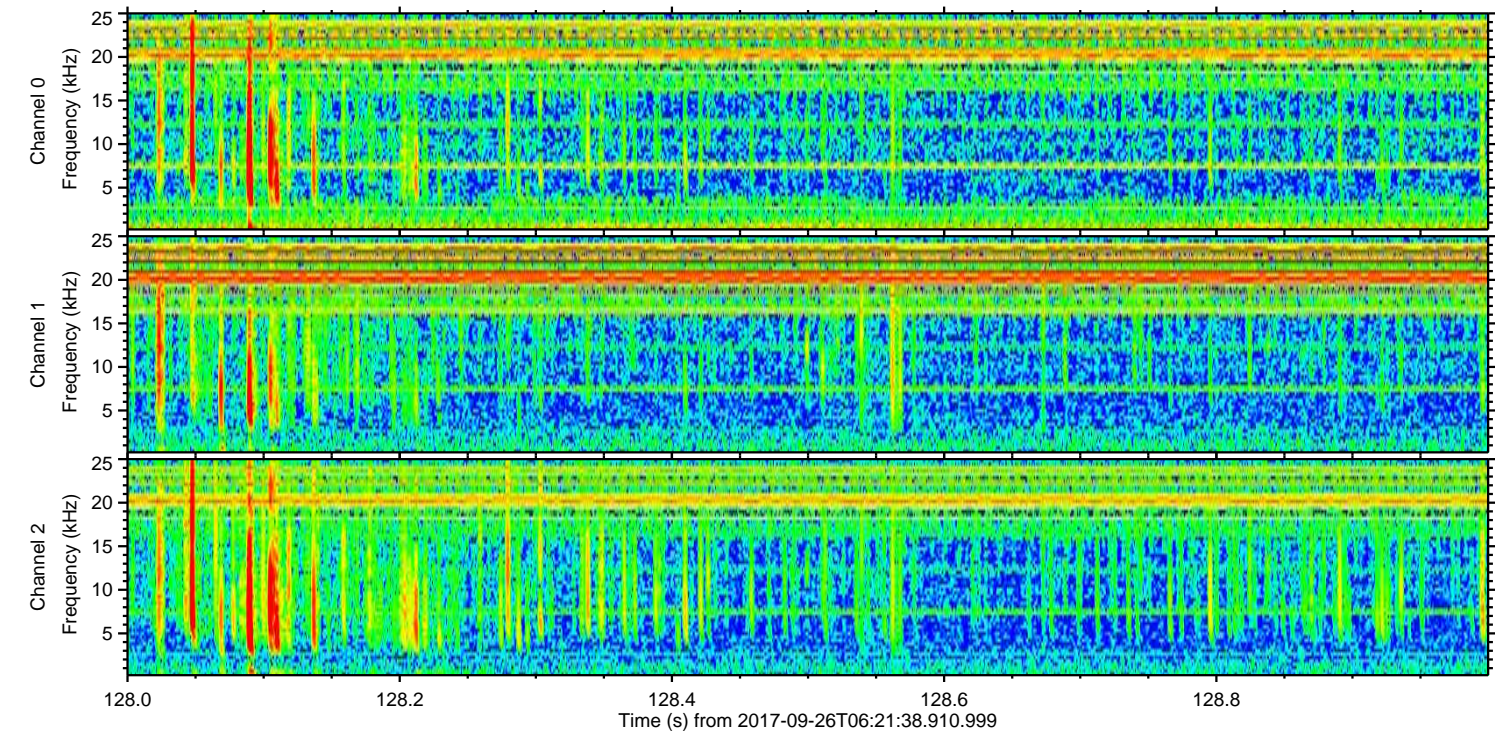
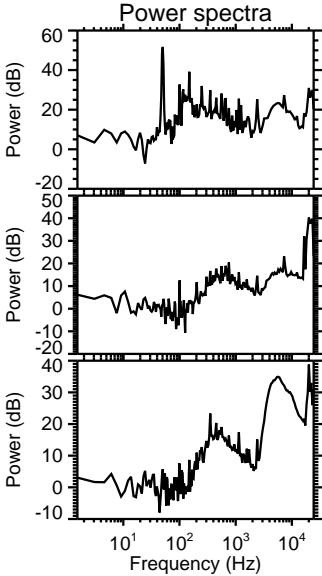
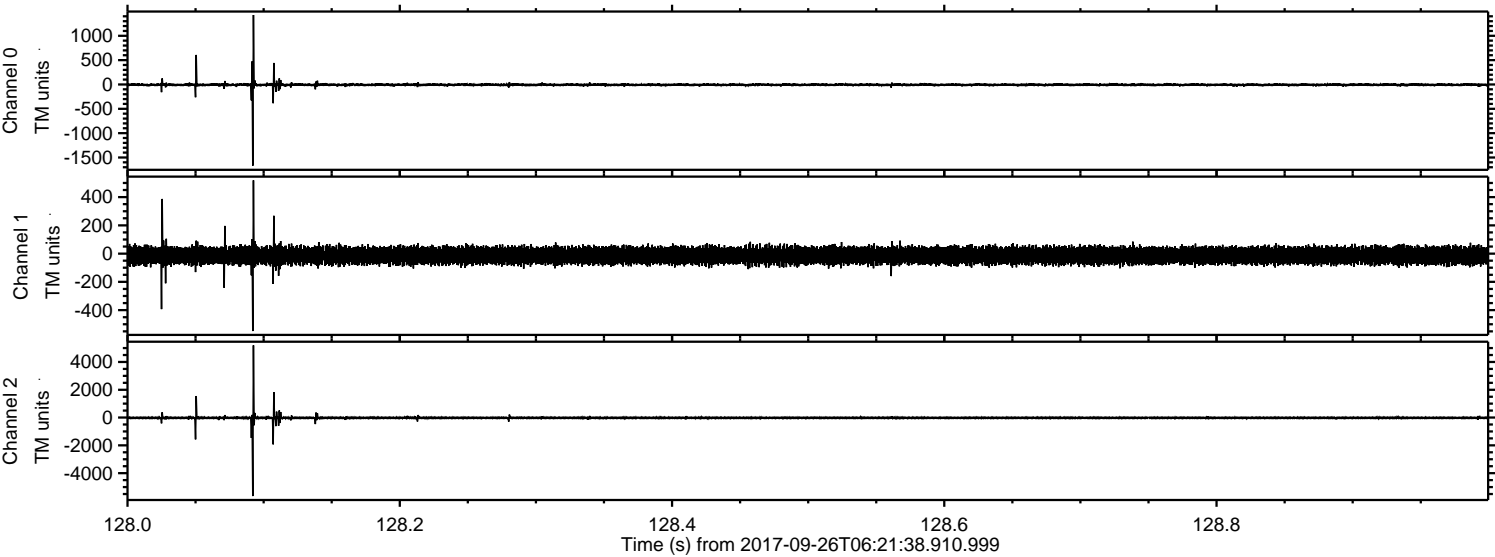
Processed Tue Sep 26 08:29:55 2017 by ELM ver.2012-10-06 from 001\_\_elm20170926\_062137\_\_dat00.bin





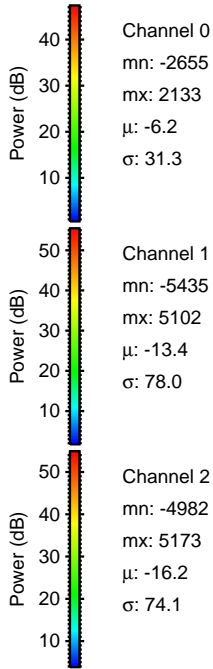
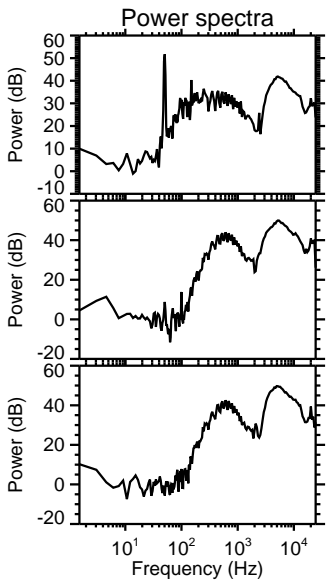
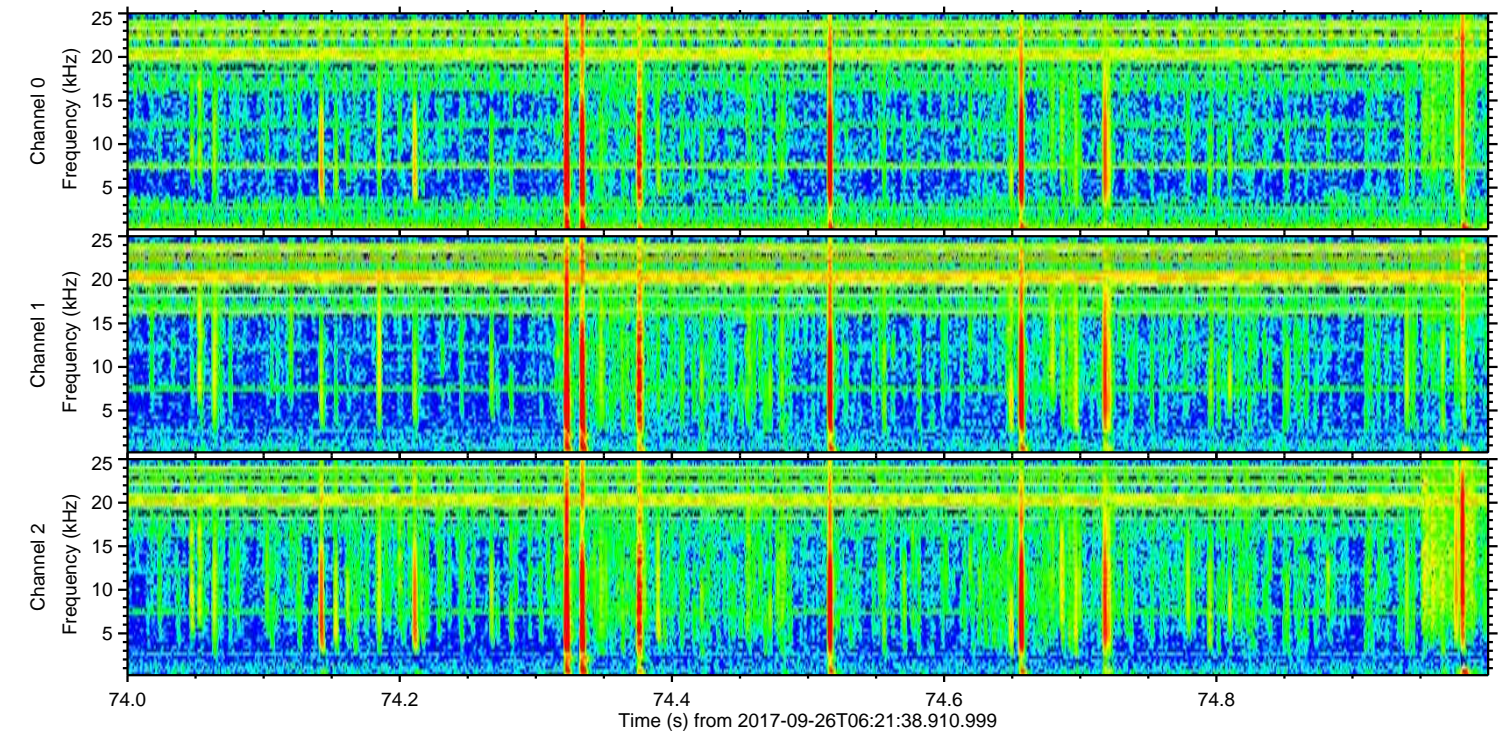
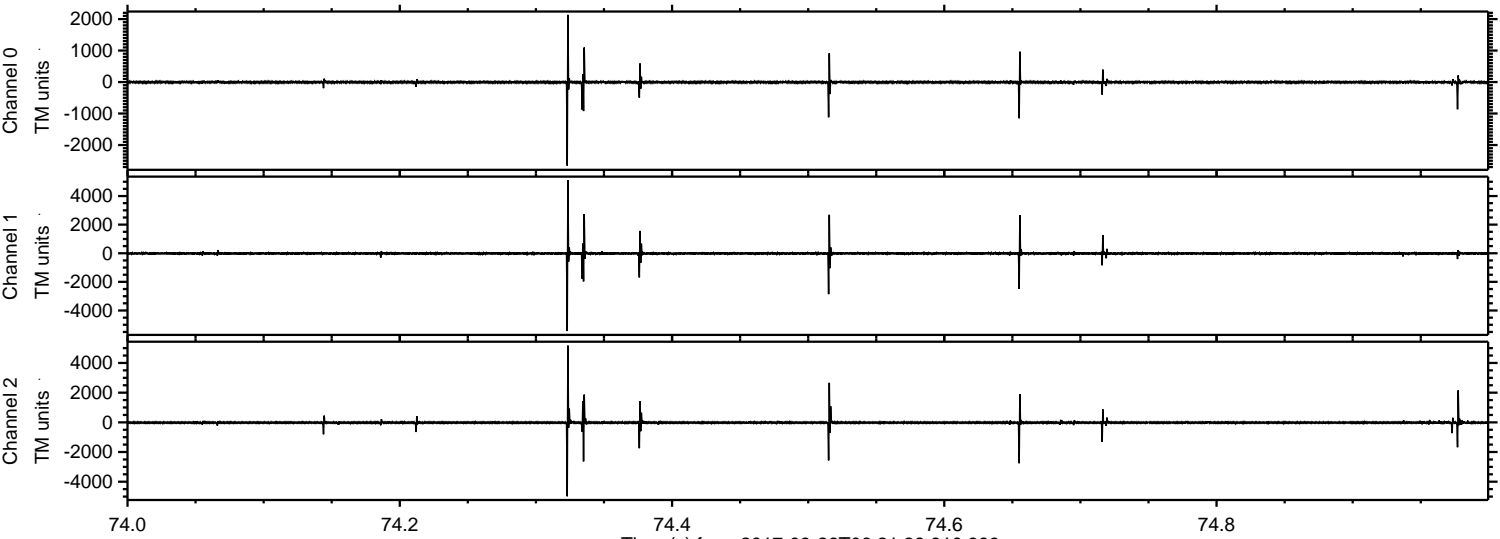
ELMAVAN 3D WAVEFORMS (Measured data sampled at 50 kHz) 51000 packets of 144 samples from 2017-09-26T06:21:38.910.999. Part 129/147

Processed Tue Sep 26 08:29:56 2017 by ELM ver.2012-10-06 from 001\_\_elm20170926\_062137\_\_dat00.bin





Processed Tue Sep 26 08:29:57 2017 by ELM ver.2012-10-06 from 001\_\_elm20170926\_062137\_\_dat00.bin



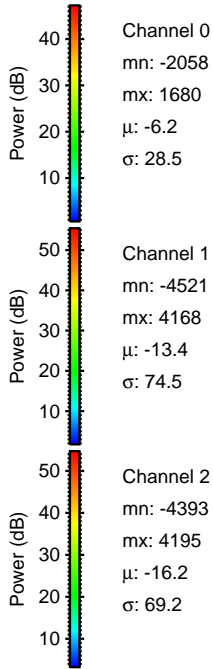
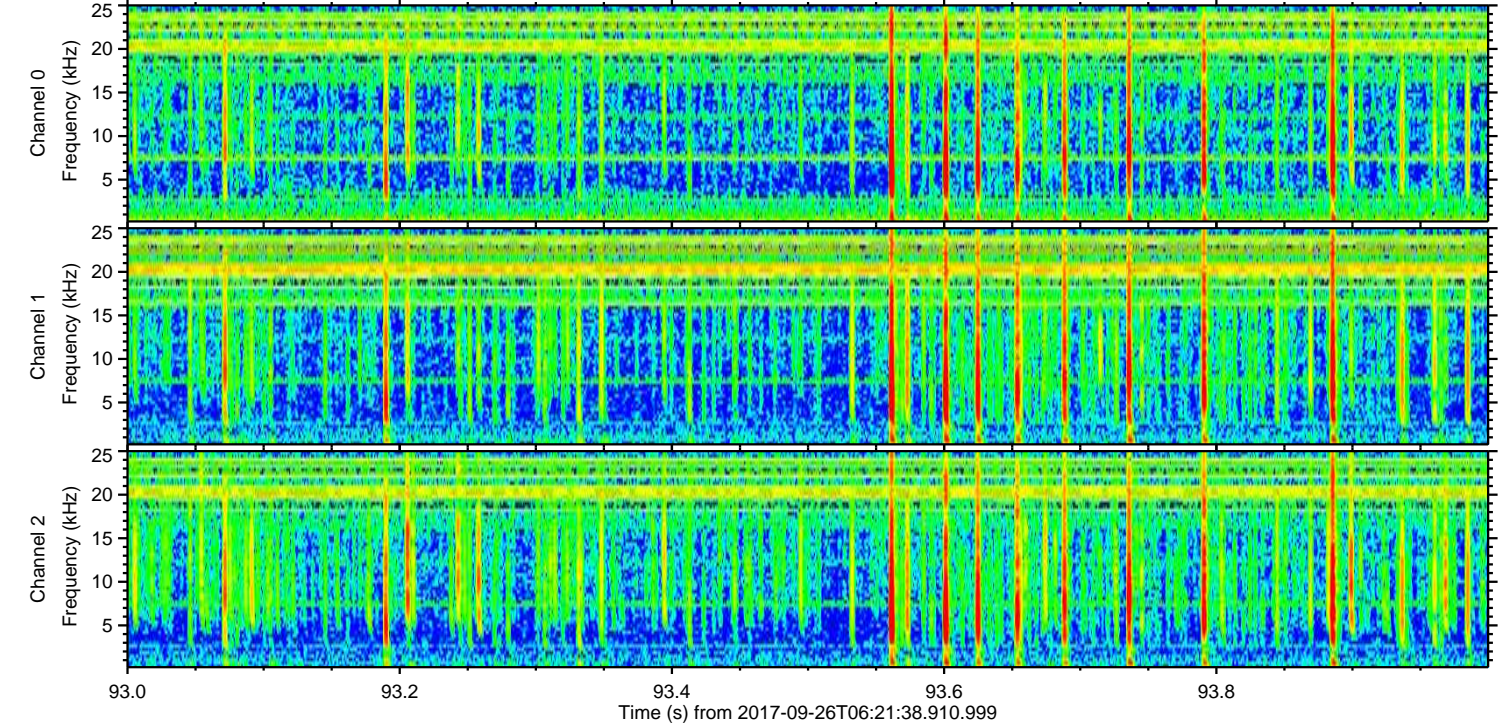
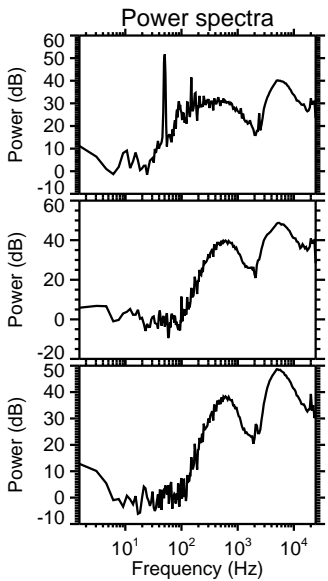
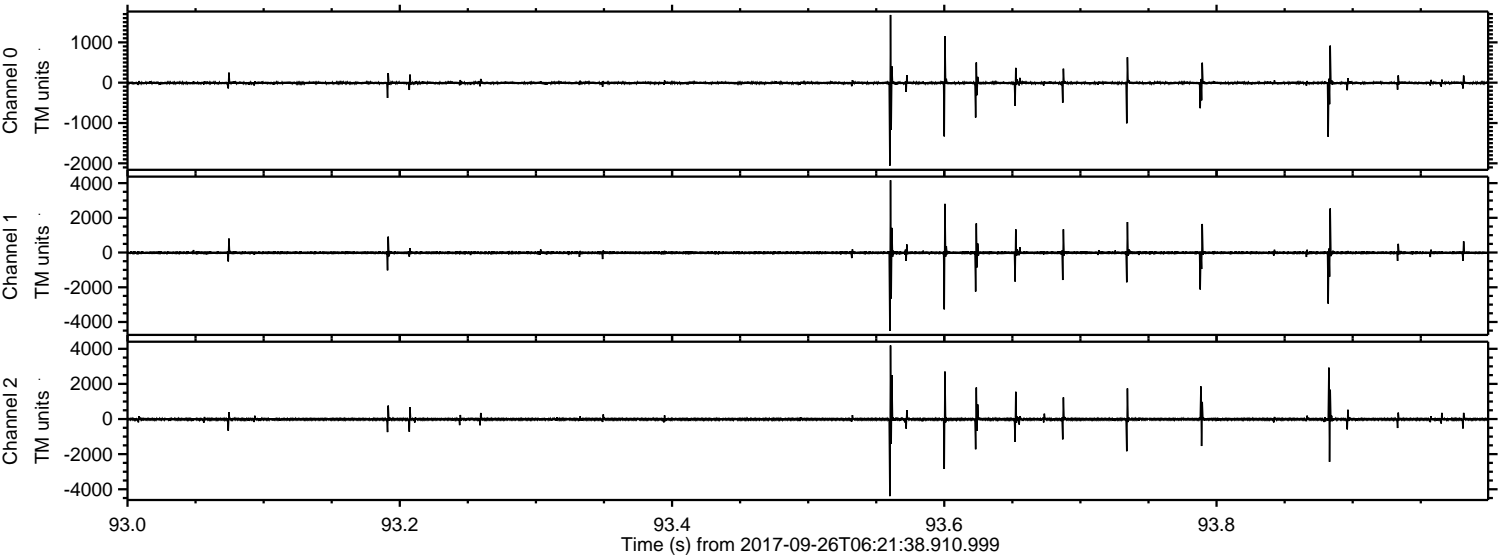
Channel 0  
mn: -2655  
mx: 2133  
 $\mu$ : -6.2  
 $\sigma$ : 31.3

Channel 1  
mn: -5435  
mx: 5102  
 $\mu$ : -13.4  
 $\sigma$ : 78.0

Channel 2  
mn: -4982  
mx: 5173  
 $\mu$ : -16.2  
 $\sigma$ : 74.1

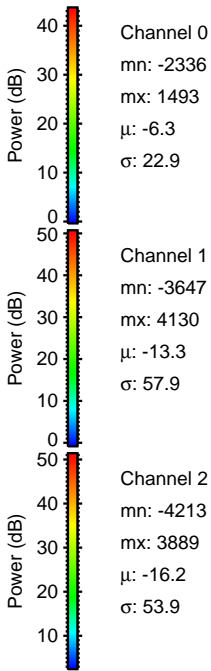
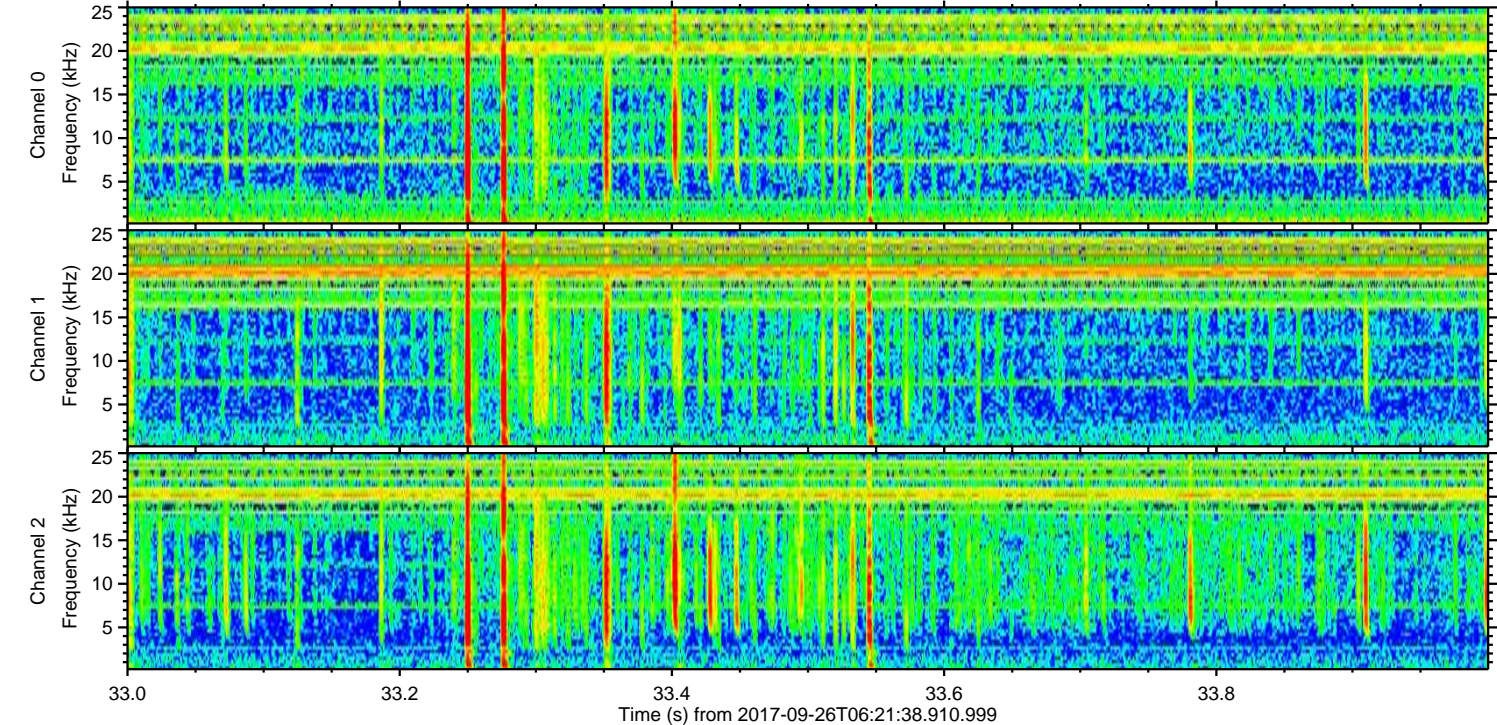
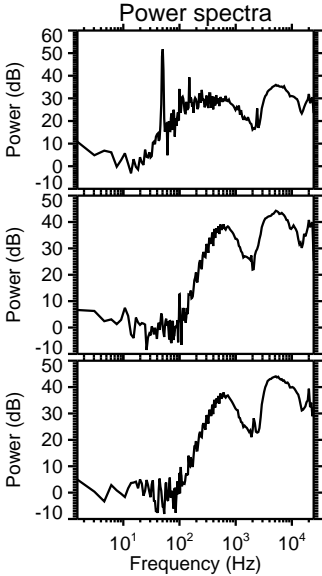
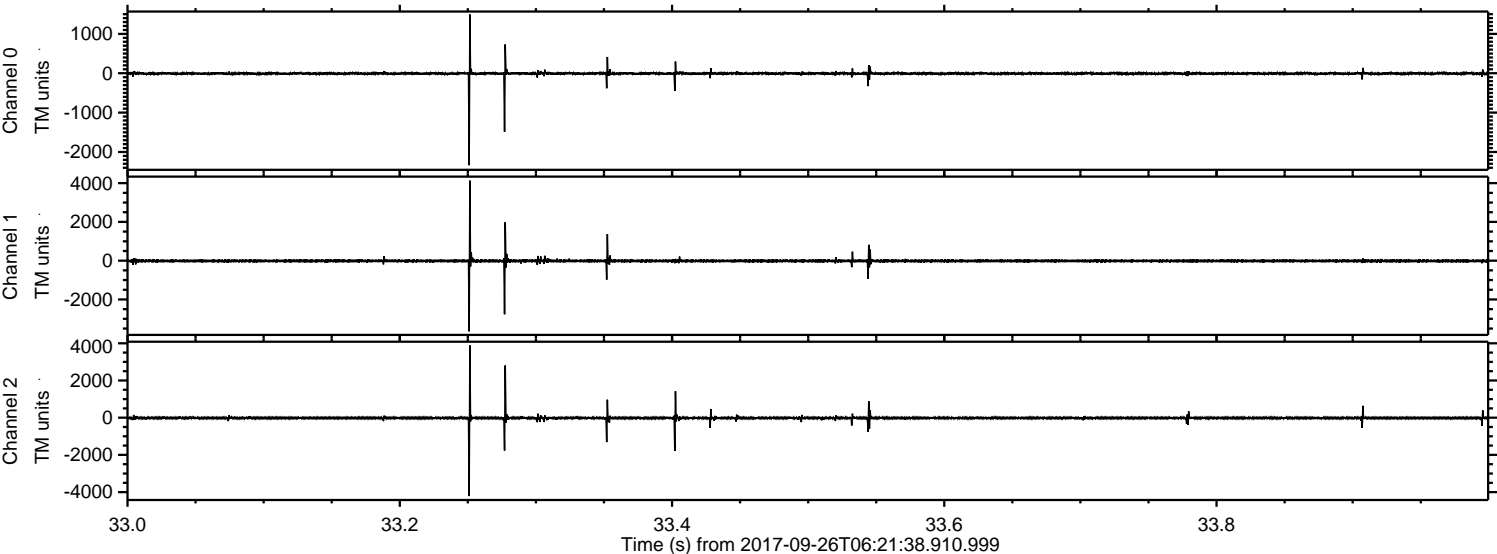


Processed Tue Sep 26 08:29:58 2017 by ELM ver.2012-10-06 from 001\_\_elm20170926\_062137\_\_dat00.bin





Processed Tue Sep 26 08:29:59 2017 by ELM ver.2012-10-06 from 001\_\_elm20170926\_062137\_\_dat00.bin



Channel 0  
mn: -2336  
mx: 1493  
 $\mu$ : -6.3  
 $\sigma$ : 22.9

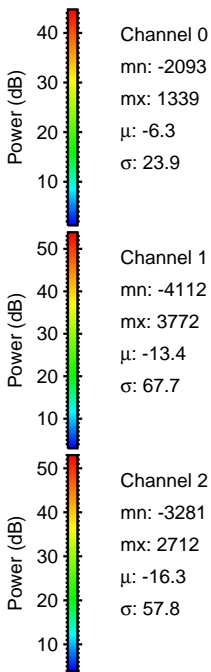
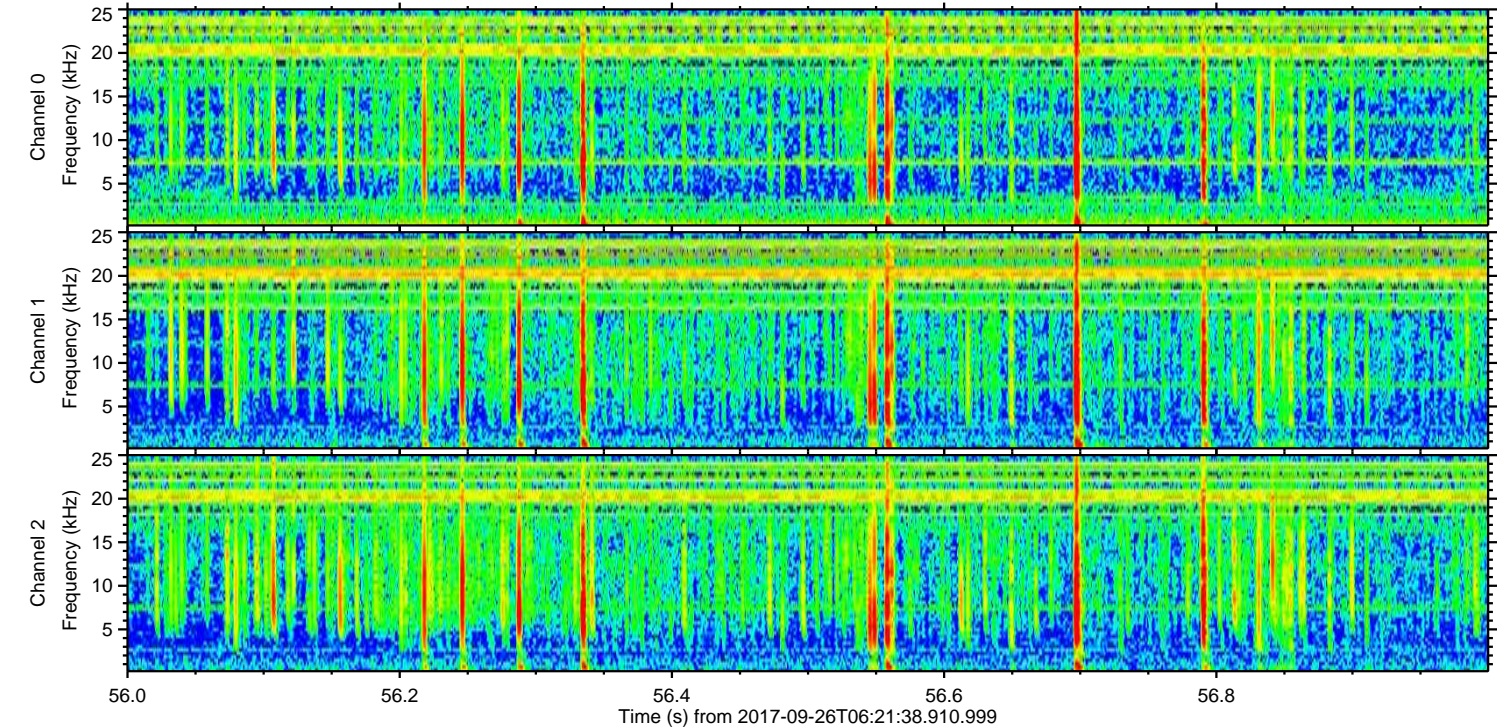
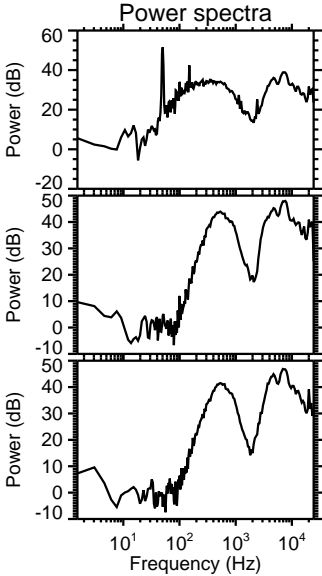
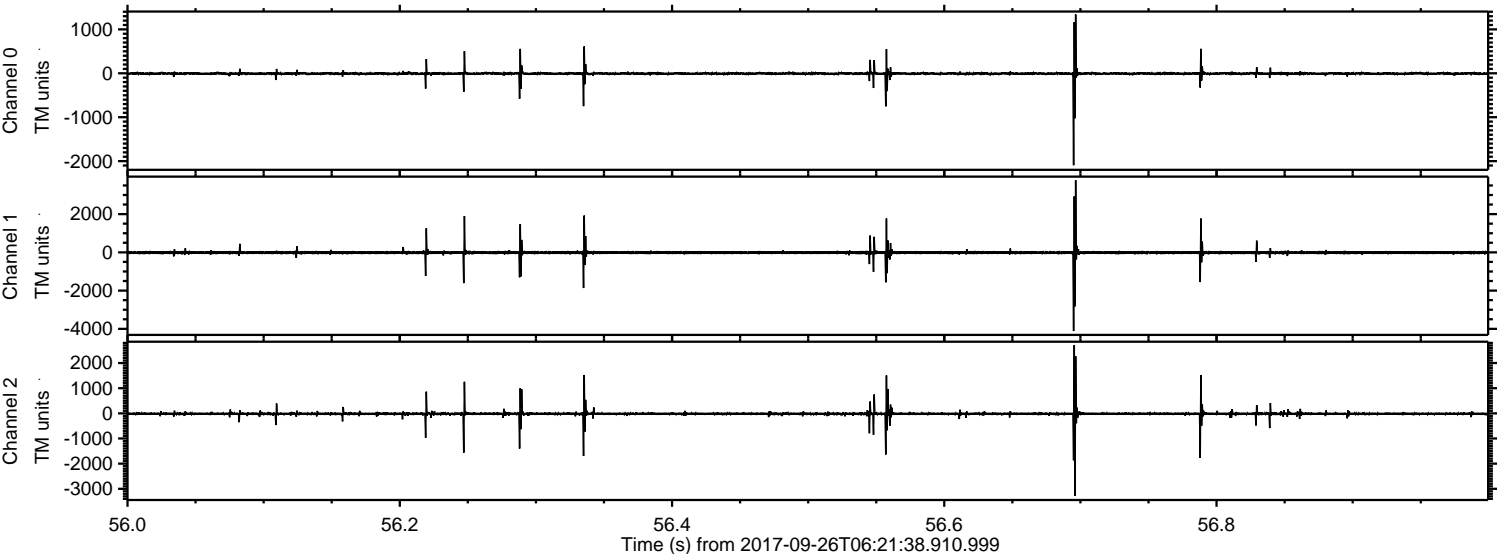
Channel 1  
mn: -3647  
mx: 4130  
 $\mu$ : -13.3  
 $\sigma$ : 57.9

Channel 2  
mn: -4213  
mx: 3889  
 $\mu$ : -16.2  
 $\sigma$ : 53.9



ELMAVAN 3D WAVEFORMS (Measured data sampled at 50 kHz) 51000 packets of 144 samples from 2017-09-26T06:21:38.910.999. Part 57/147

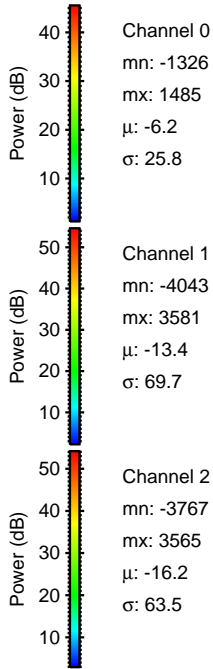
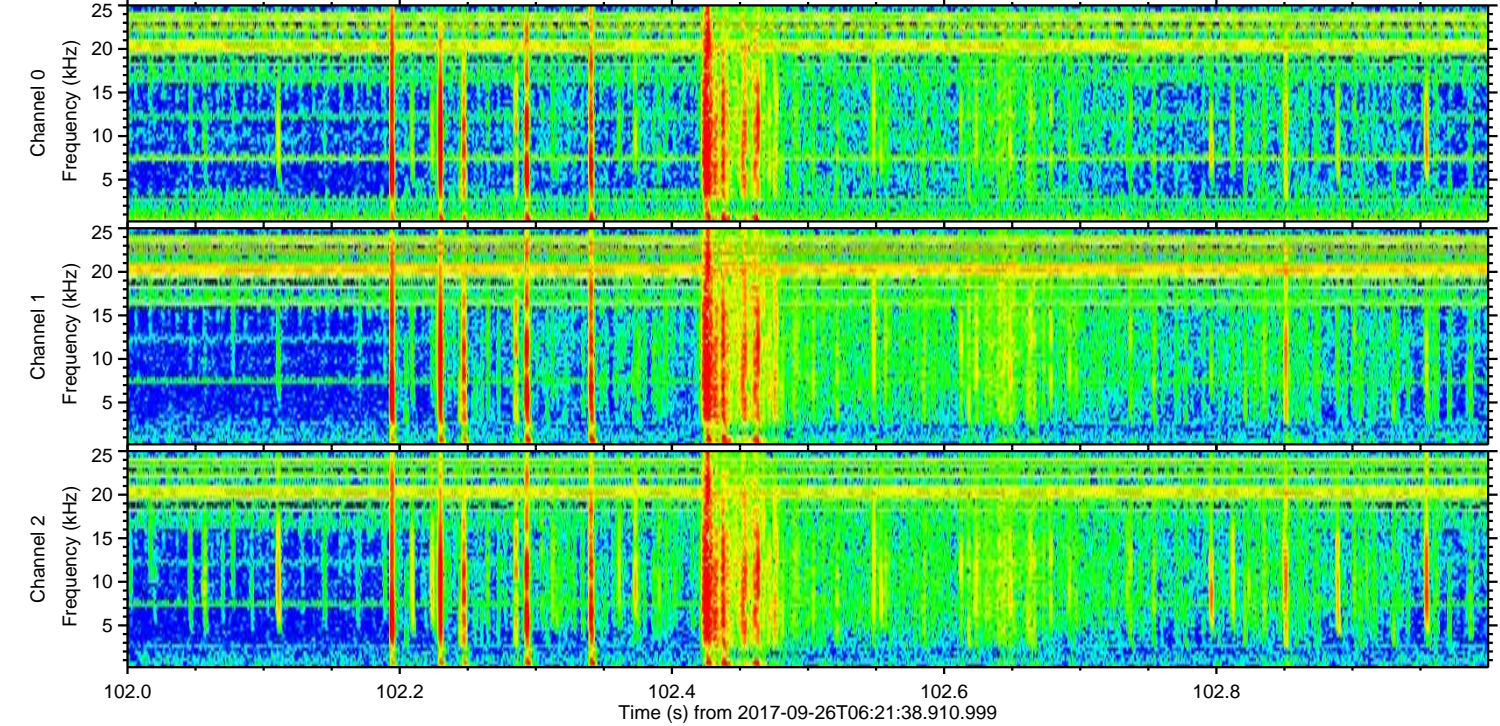
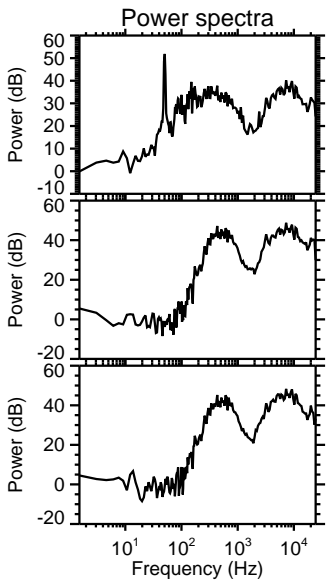
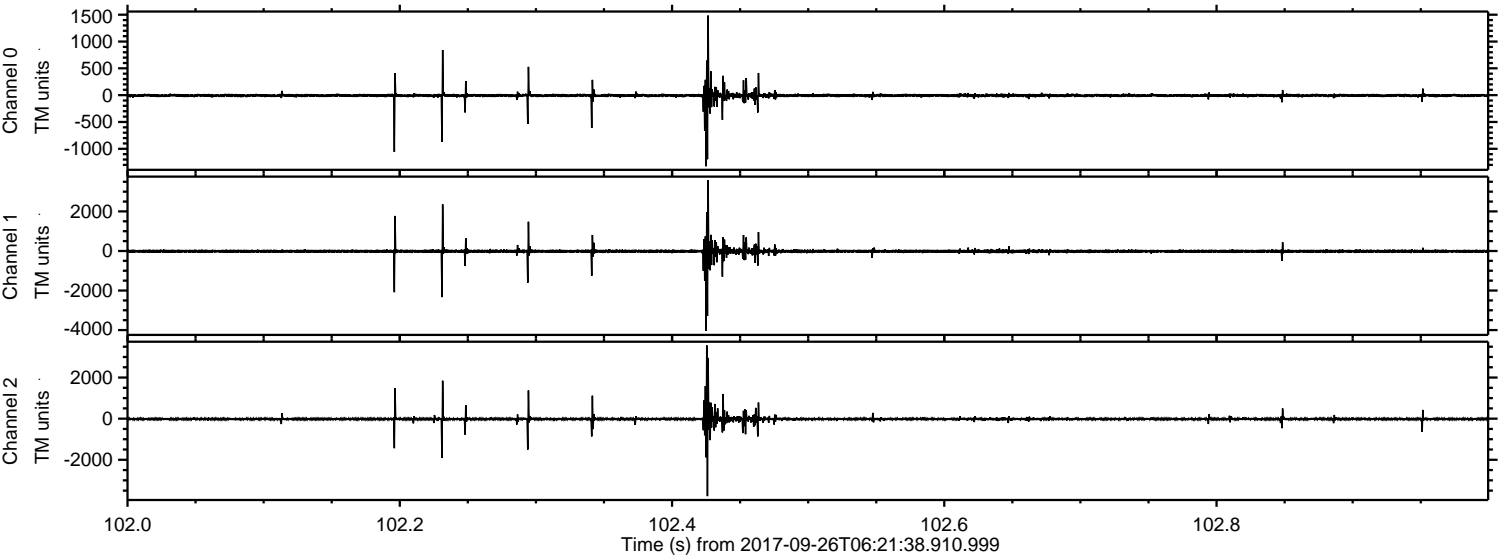
Processed Tue Sep 26 08:30:00 2017 by ELM ver.2012-10-06 from 001\_\_elm20170926\_062137\_\_dat00.bin





ELMAVAN 3D WAVEFORMS (Measured data sampled at 50 kHz) 51000 packets of 144 samples from 2017-09-26T06:21:38.910.999. Part 103/147

Processed Tue Sep 26 08:30:00 2017 by ELM ver.2012-10-06 from 001\_\_elm20170926\_062137\_\_dat00.bin





Processed Tue Sep 26 08:30:01 2017 by ELM ver.2012-10-06 from 001\_\_elm20170926\_062137\_\_dat00.bin

