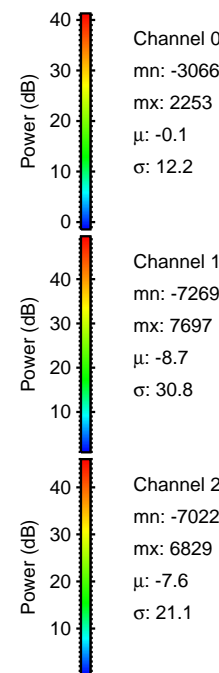
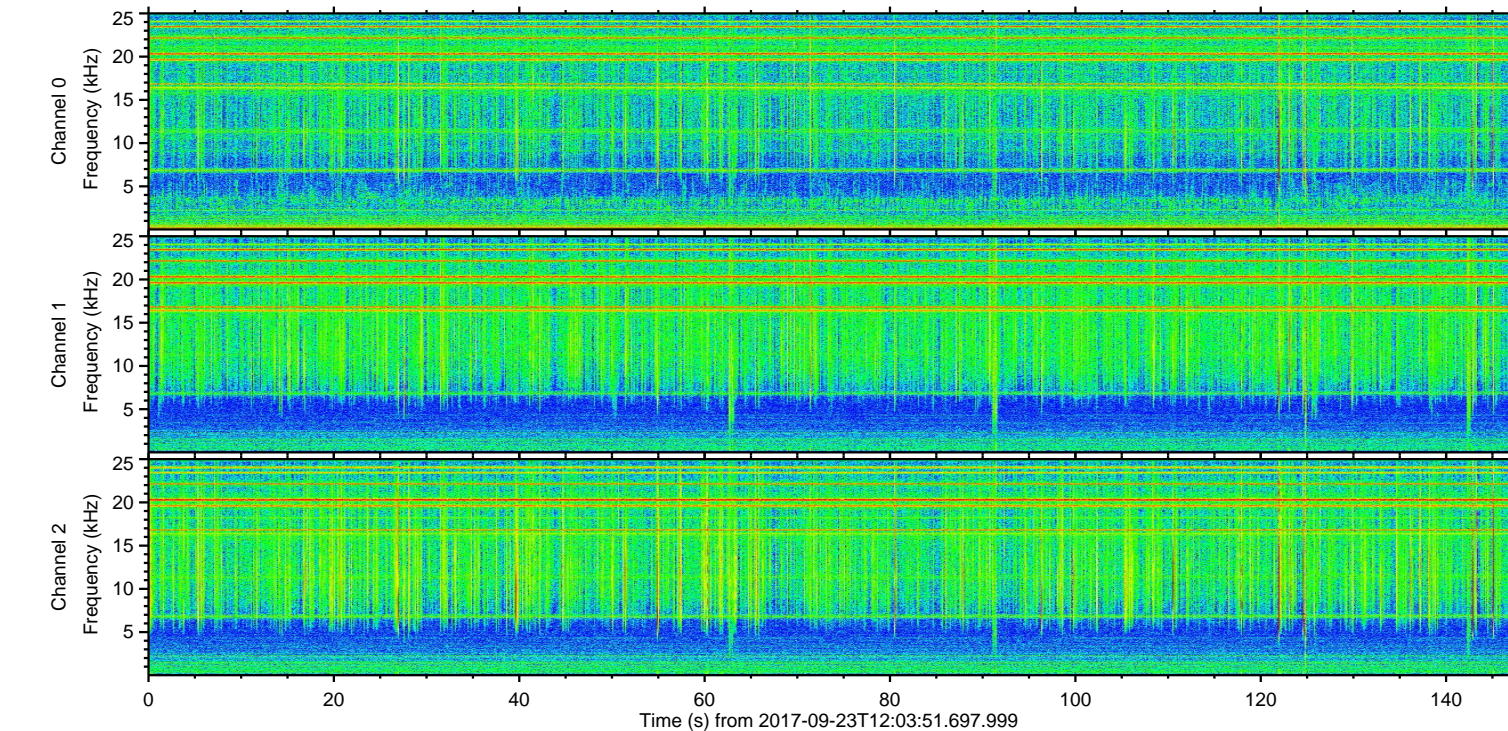
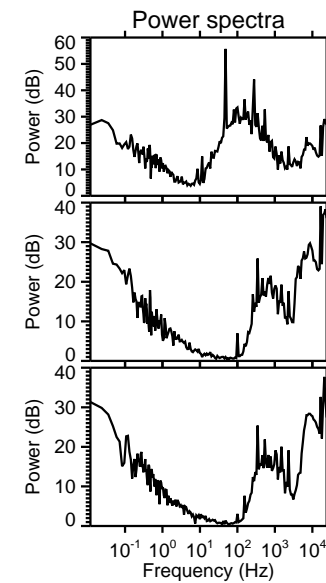
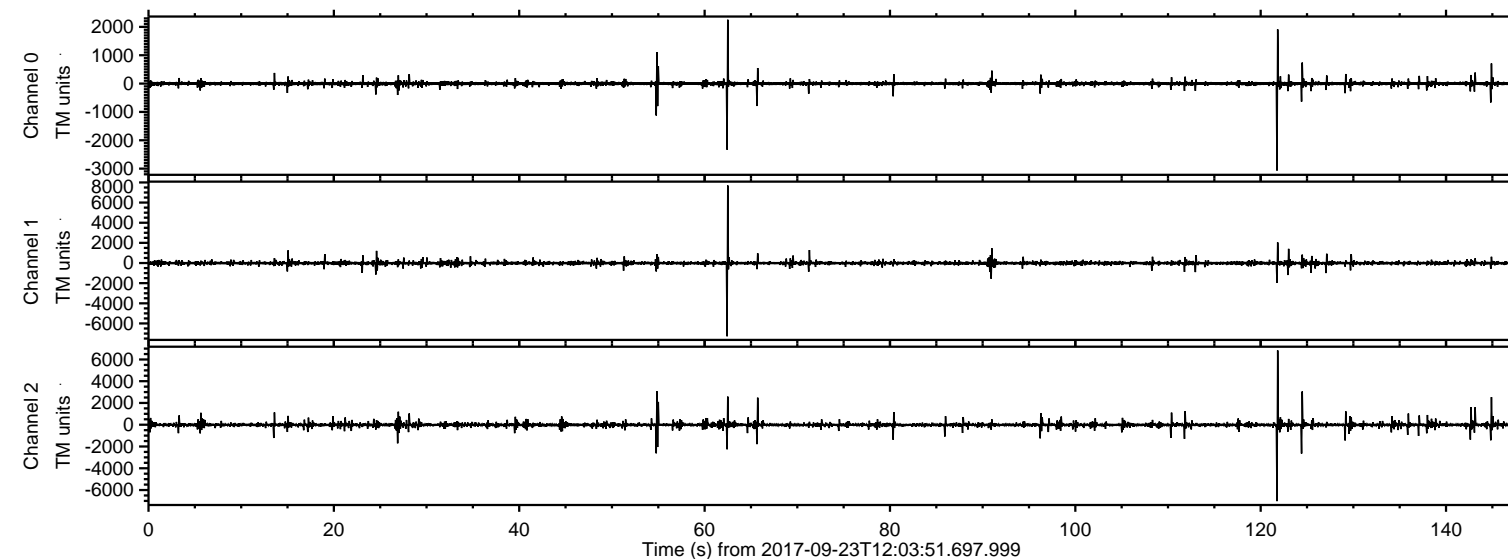


# ELMAVAN 3D WAVEFORMS (Measured data sampled at 50 kHz) 51000 packets of 144 samples from 2017-09-23T12:03:51.697.999.

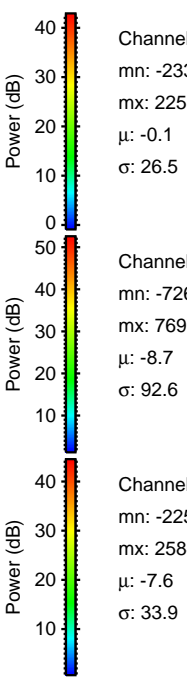
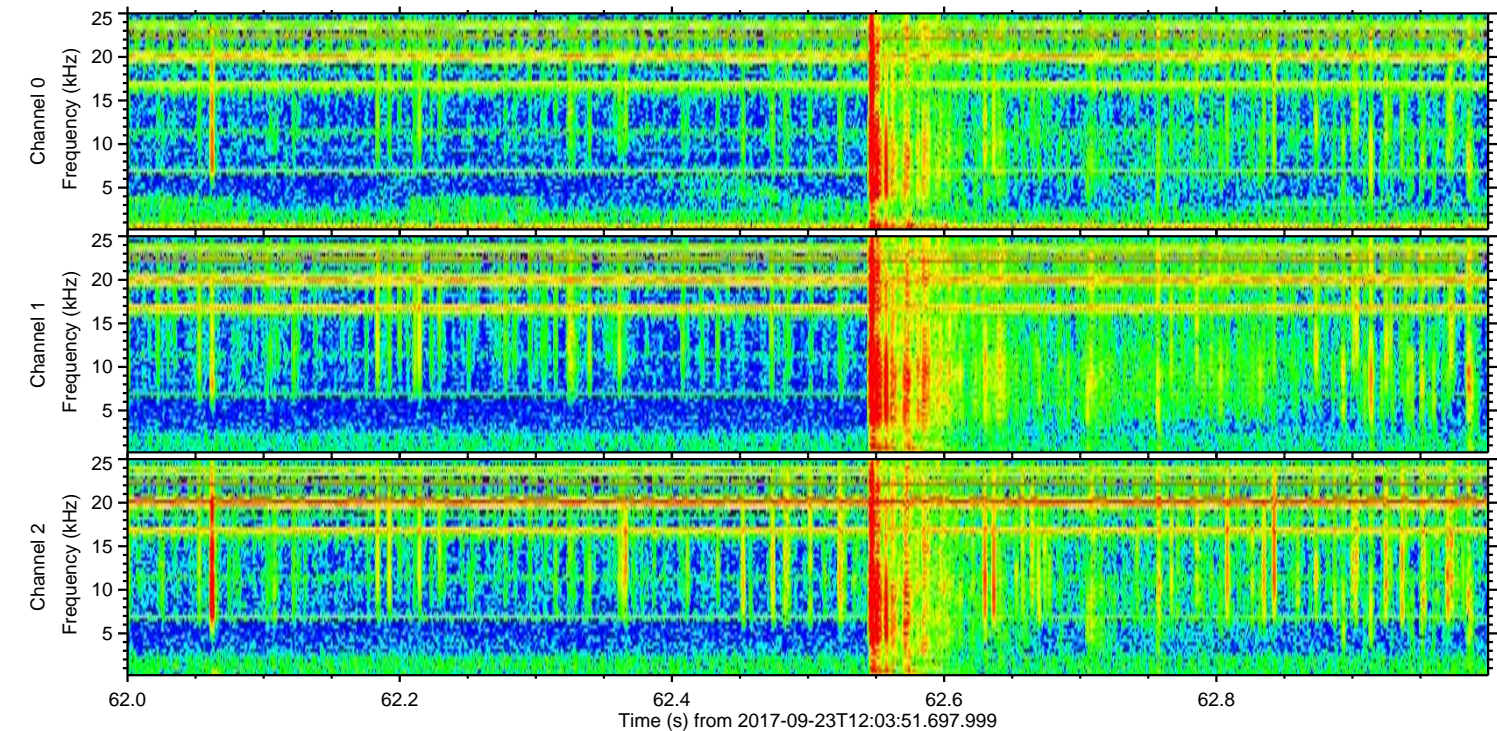
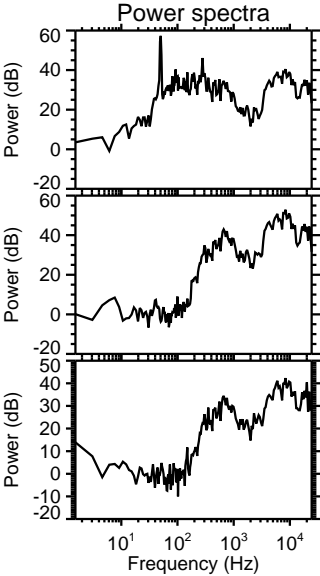
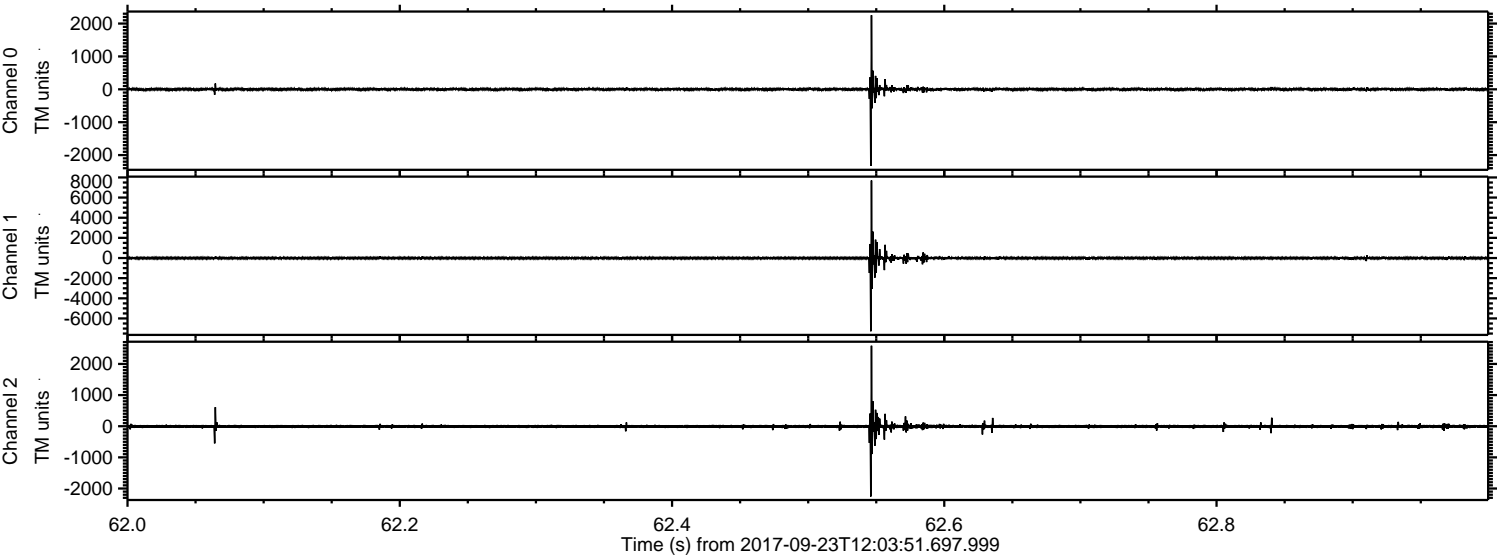
Processed Sat Sep 23 14:11:29 2017 by ELM ver.2012-10-06 from 001\_\_elm20170923\_120350\_\_dat00.bin





ELMAVAN 3D WAVEFORMS (Measured data sampled at 50 kHz) 51000 packets of 144 samples from 2017-09-23T12:03:51.697.999. Part 63/147

Processed Sat Sep 23 14:11:35 2017 by ELM ver.2012-10-06 from 001\_\_elm20170923\_120350\_\_dat00.bin



Channel 0  
mn: -2332  
mx: 2253  
 $\mu$ : -0.1  
 $\sigma$ : 26.5

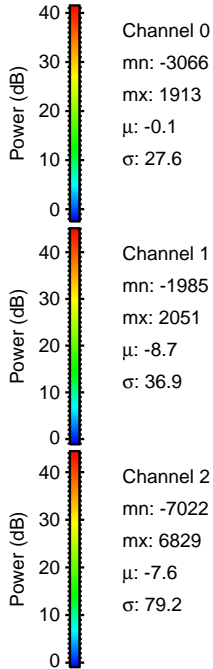
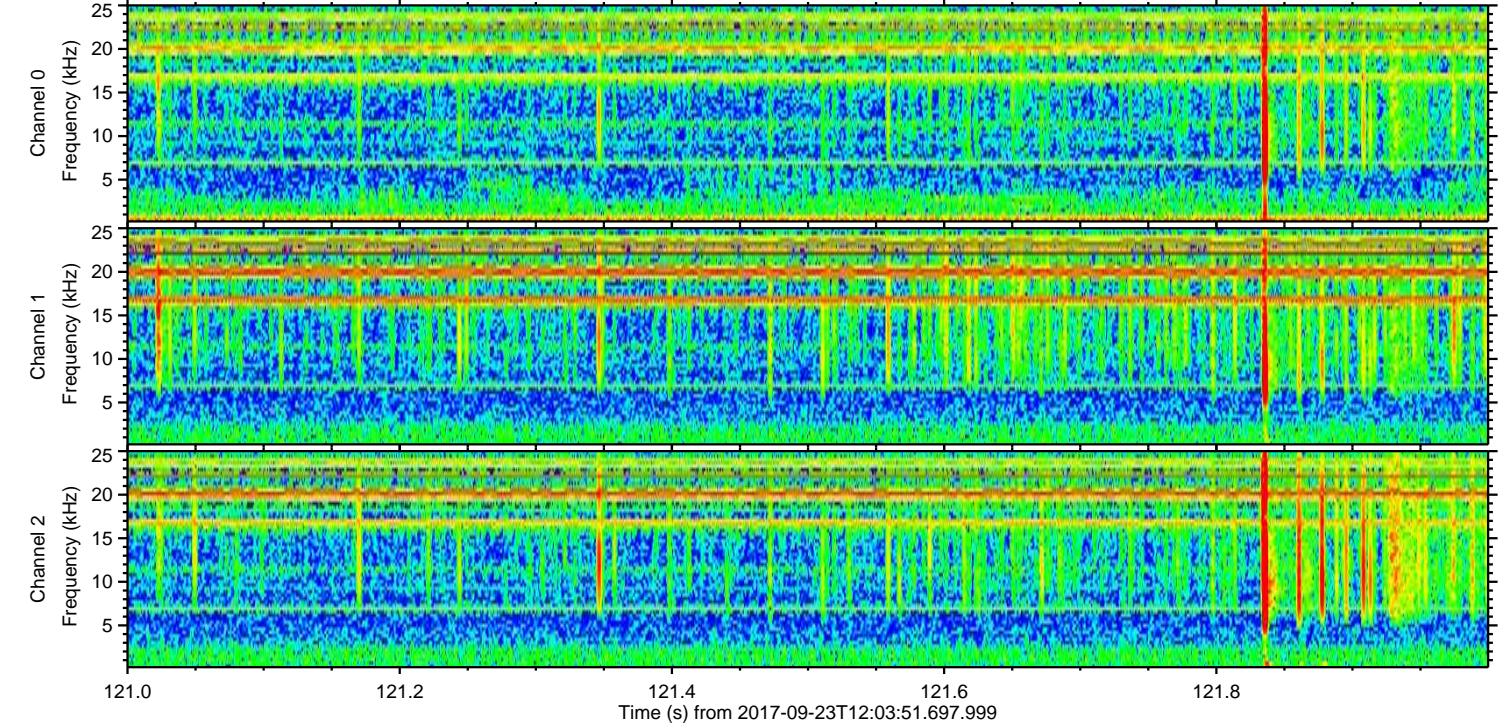
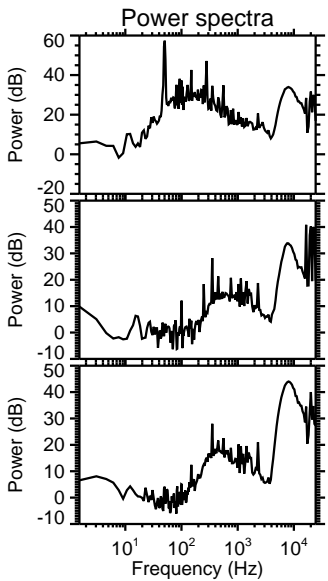
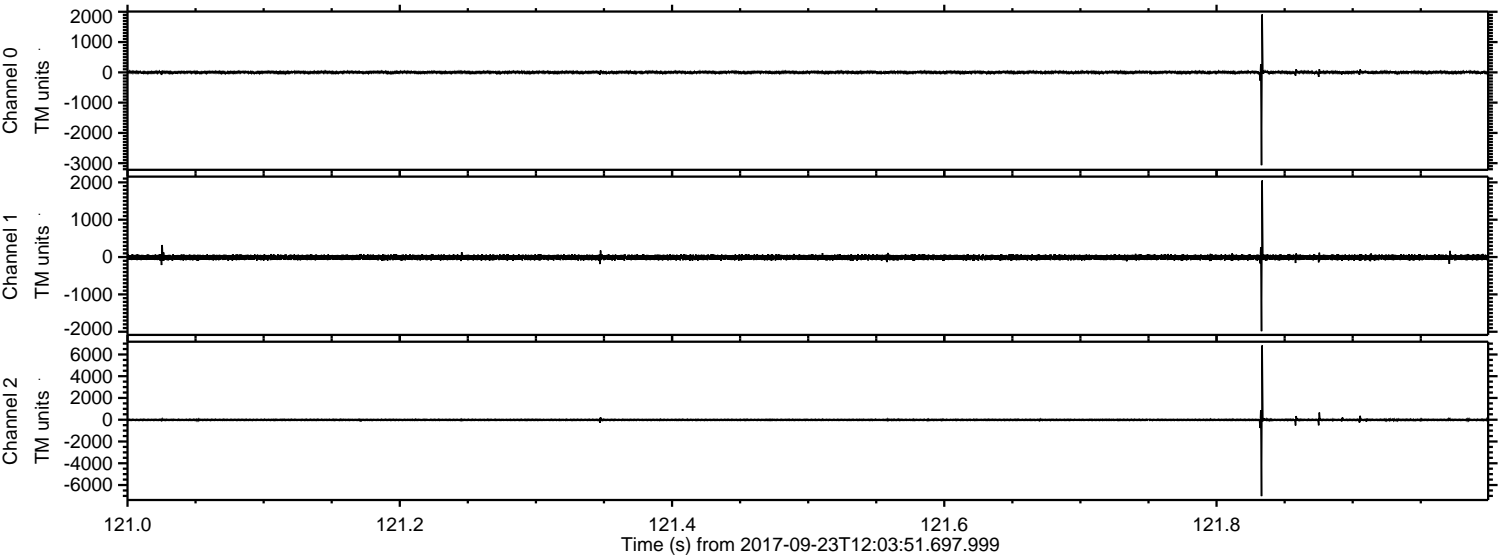
Channel 1  
mn: -7269  
mx: 7697  
 $\mu$ : -8.7  
 $\sigma$ : 92.6

Channel 2  
mn: -2257  
mx: 2584  
 $\mu$ : -7.6  
 $\sigma$ : 33.9



ELMAVAN 3D WAVEFORMS (Measured data sampled at 50 kHz) 51000 packets of 144 samples from 2017-09-23T12:03:51.697.999. Part 122/147

Processed Sat Sep 23 14:11:36 2017 by ELM ver.2012-10-06 from 001\_\_elm20170923\_120350\_\_dat00.bin



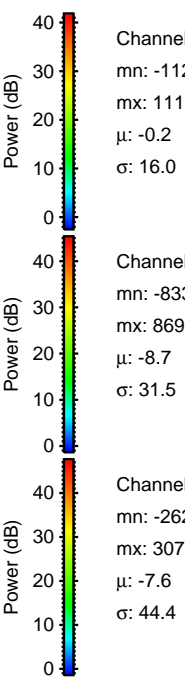
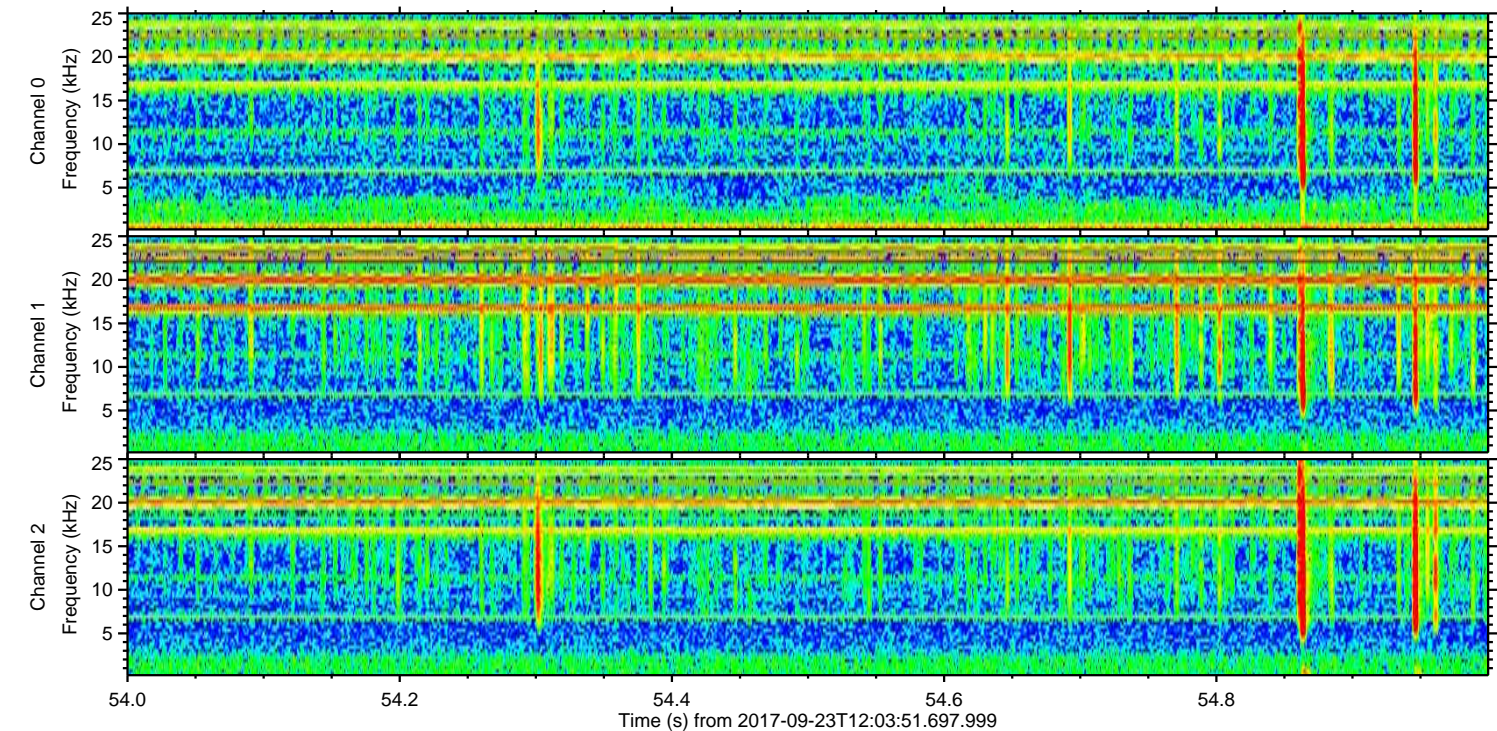
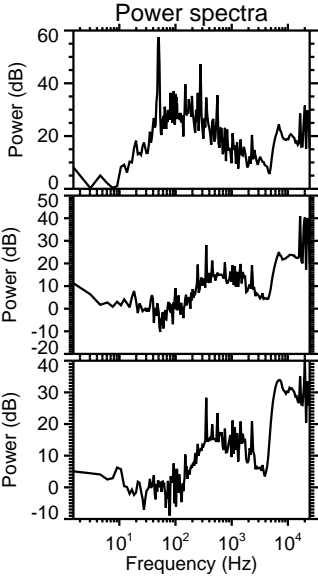
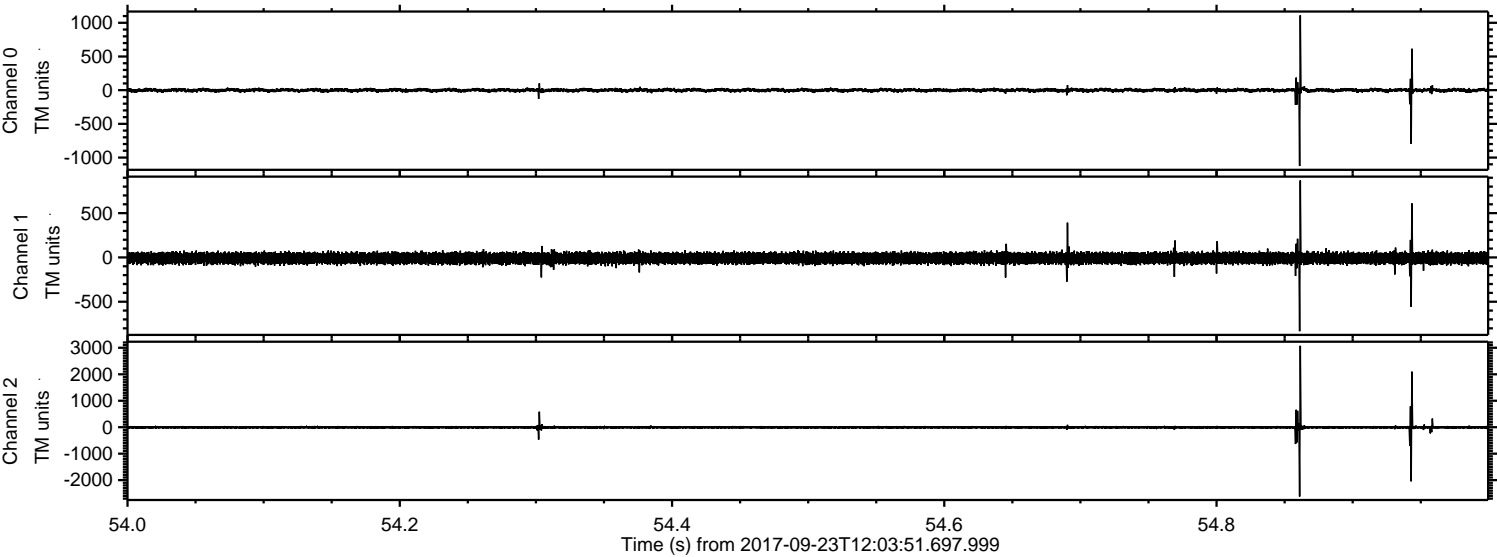
Channel 0  
mn: -3066  
mx: 1913  
 $\mu$ : -0.1  
 $\sigma$ : 27.6

Channel 1  
mn: -1985  
mx: 2051  
 $\mu$ : -8.7  
 $\sigma$ : 36.9

Channel 2  
mn: -7022  
mx: 6829  
 $\mu$ : -7.6  
 $\sigma$ : 79.2



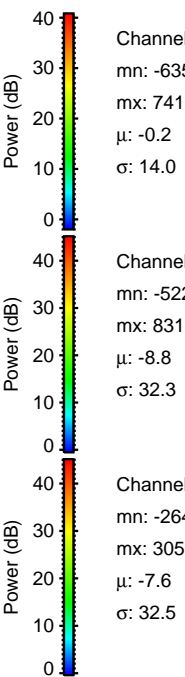
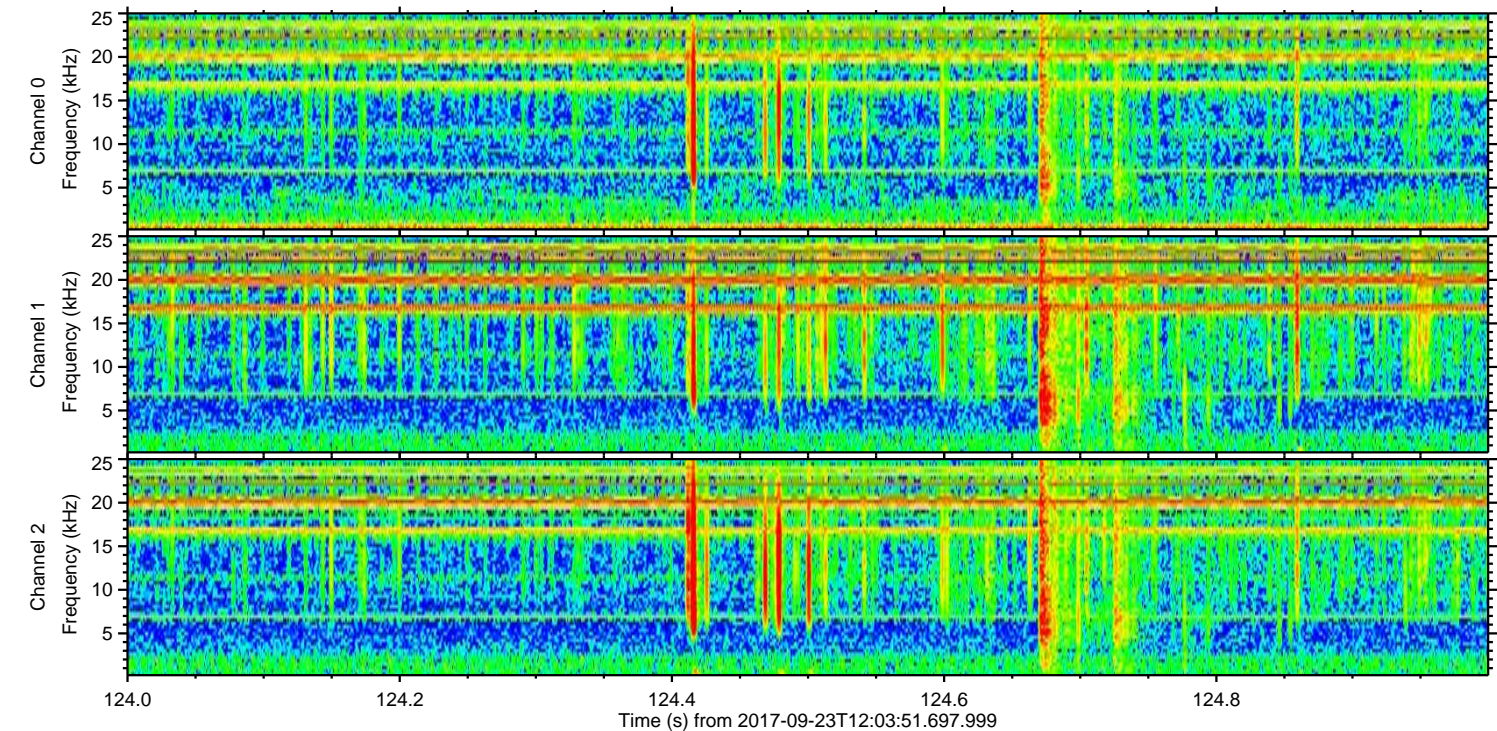
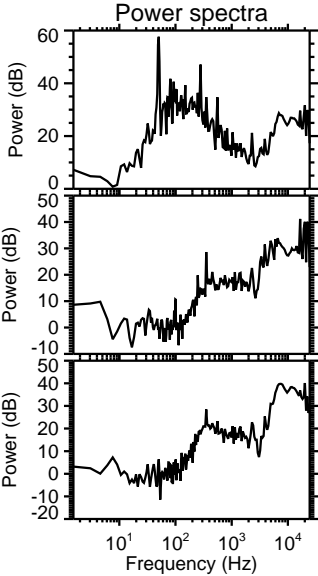
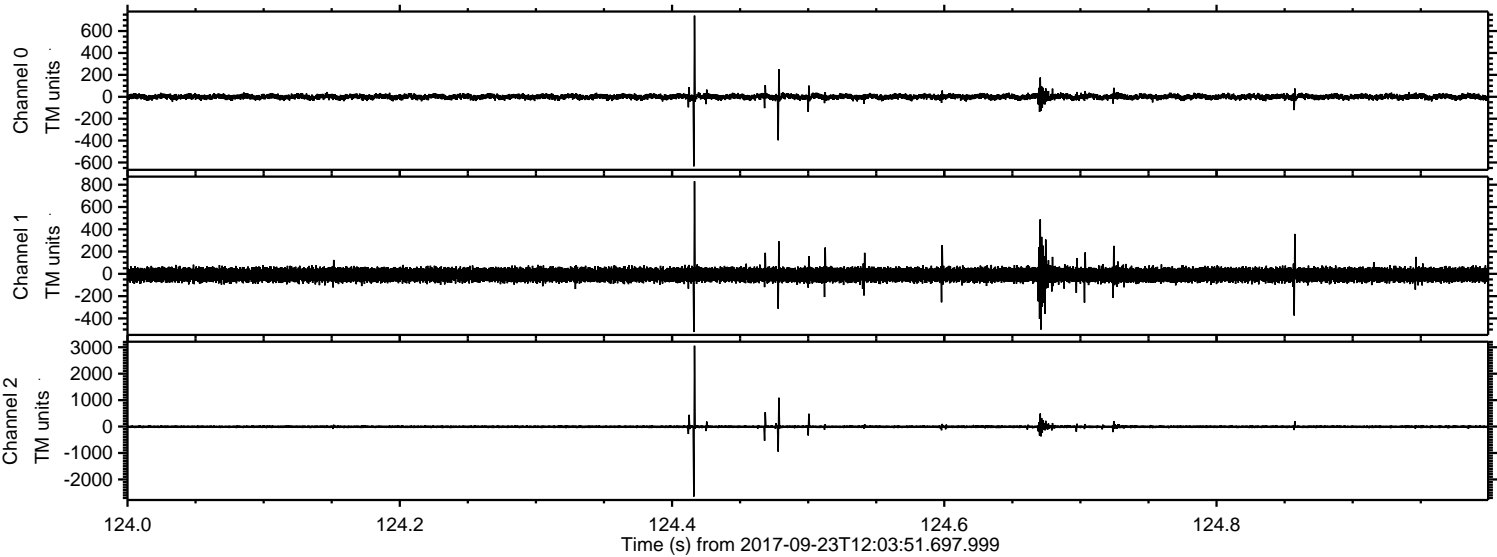
Processed Sat Sep 23 14:11:36 2017 by ELM ver.2012-10-06 from 001\_\_elm20170923\_120350\_\_dat00.bin





ELMAVAN 3D WAVEFORMS (Measured data sampled at 50 kHz) 51000 packets of 144 samples from 2017-09-23T12:03:51.697.999. Part 125/147

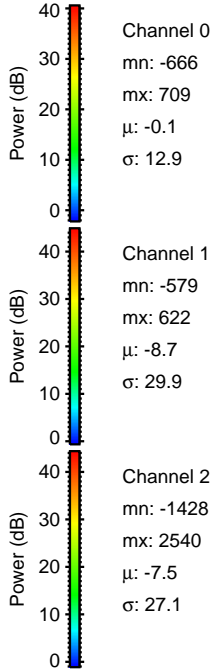
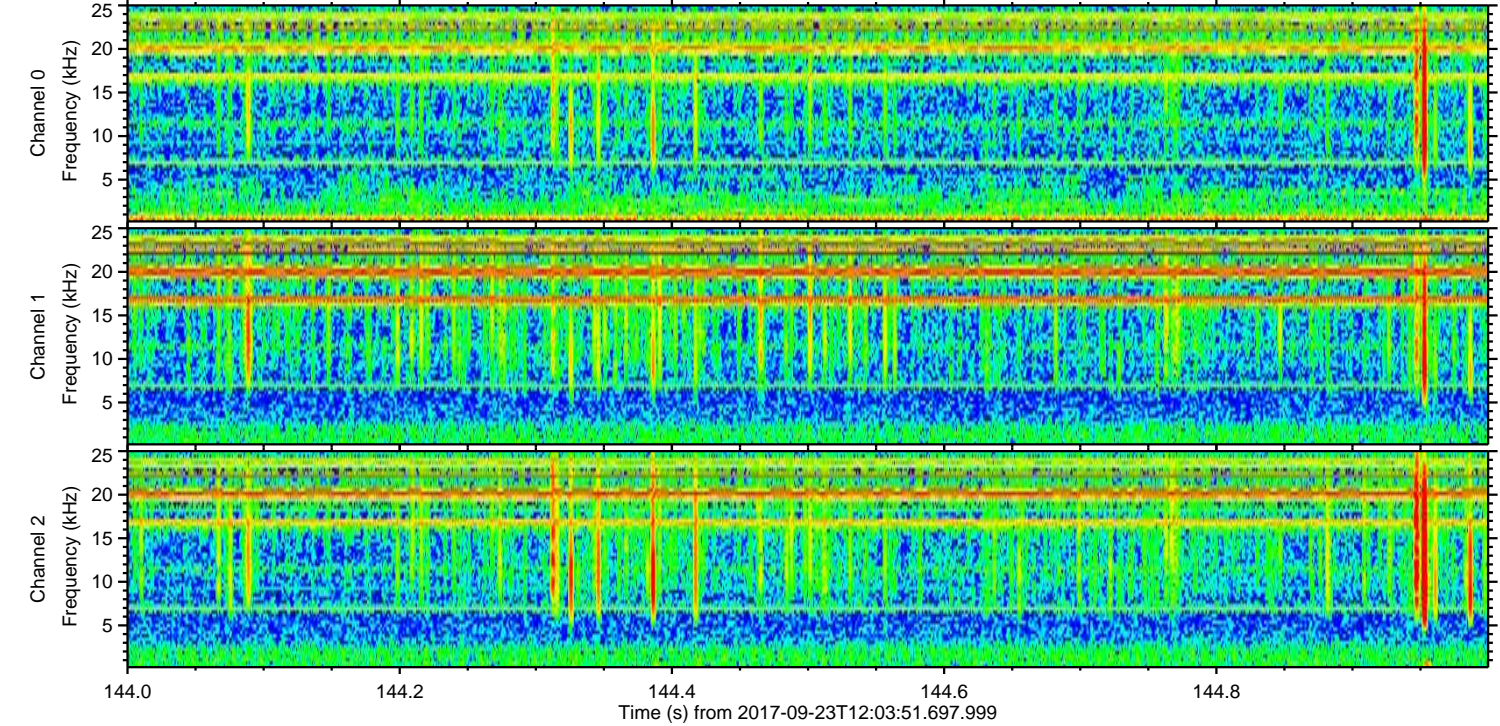
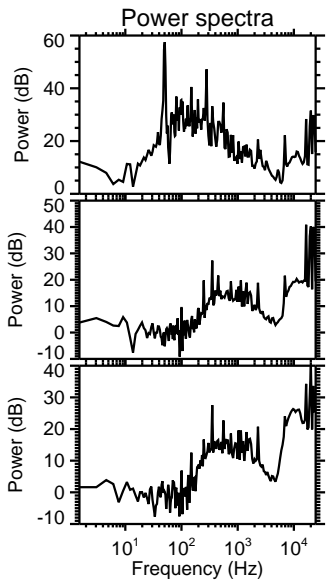
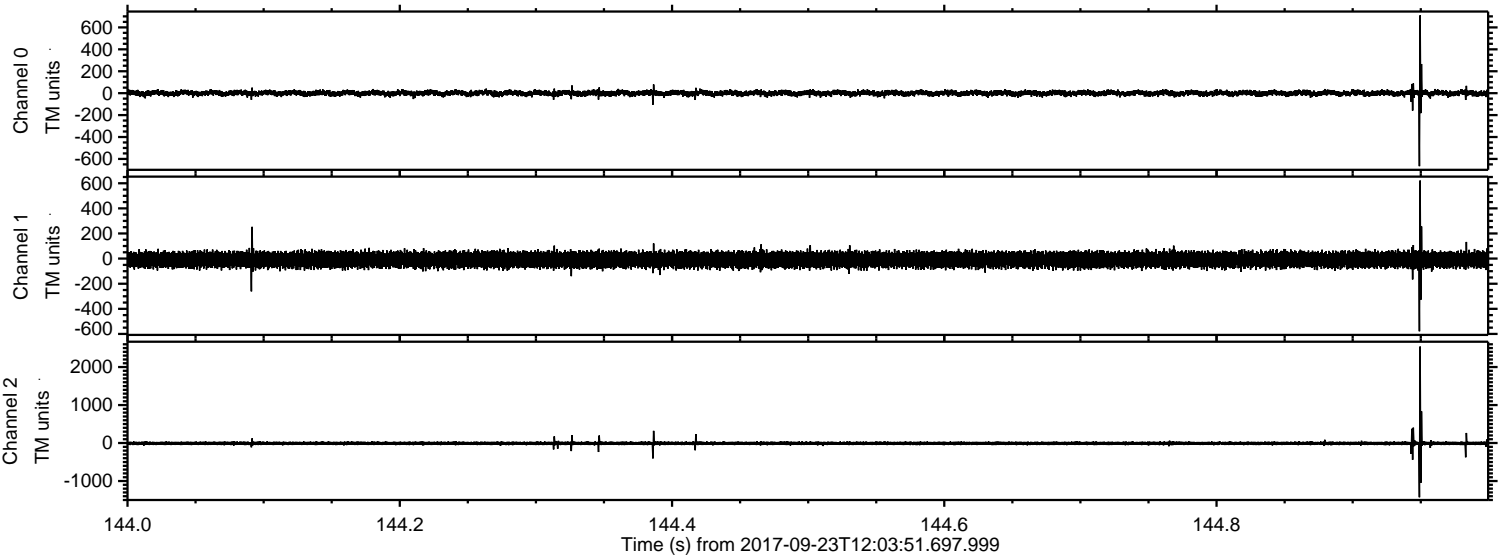
Processed Sat Sep 23 14:11:37 2017 by ELM ver.2012-10-06 from 001\_\_elm20170923\_120350\_\_dat00.bin





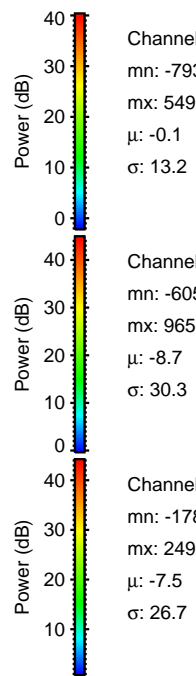
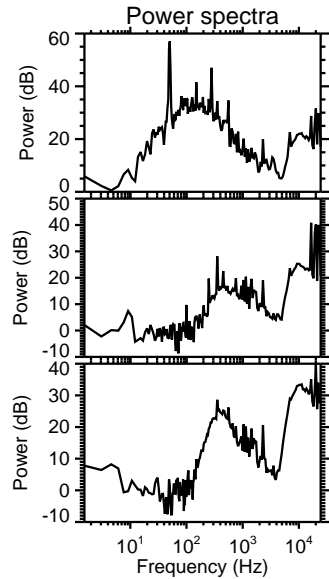
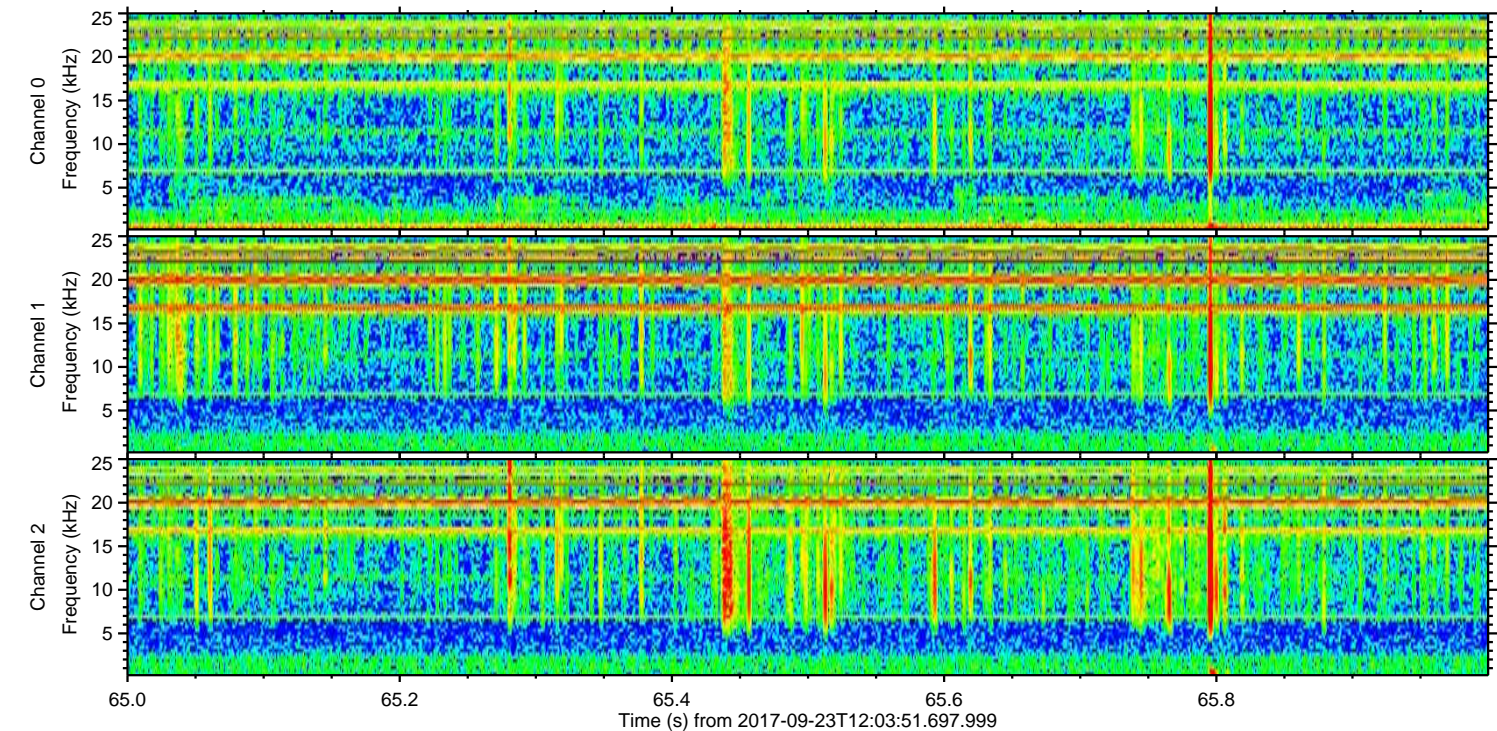
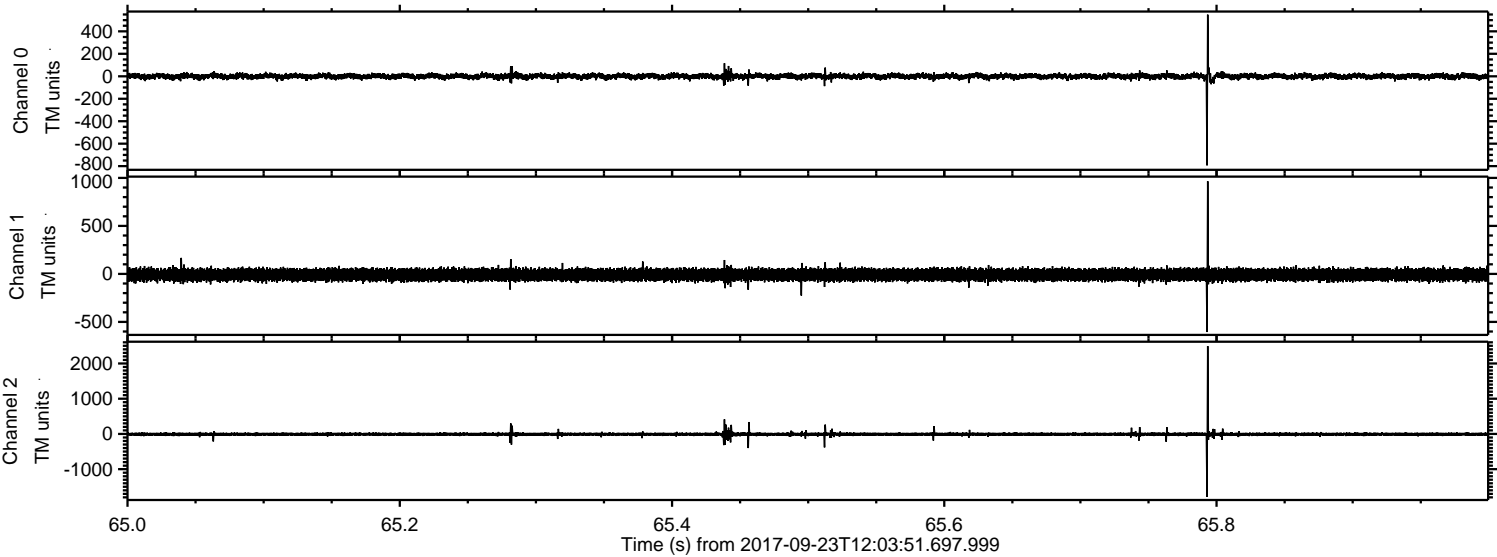
ELMAVAN 3D WAVEFORMS (Measured data sampled at 50 kHz) 51000 packets of 144 samples from 2017-09-23T12:03:51.697.999. Part 145/147

Processed Sat Sep 23 14:11:38 2017 by ELM ver.2012-10-06 from 001\_\_elm20170923\_120350\_\_dat00.bin





Processed Sat Sep 23 14:11:38 2017 by ELM ver.2012-10-06 from 001\_\_elm20170923\_120350\_\_dat00.bin



Channel 0  
mn: -793  
mx: 549  
 $\mu$ : -0.1  
 $\sigma$ : 13.2

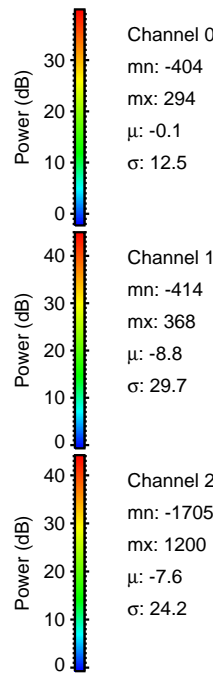
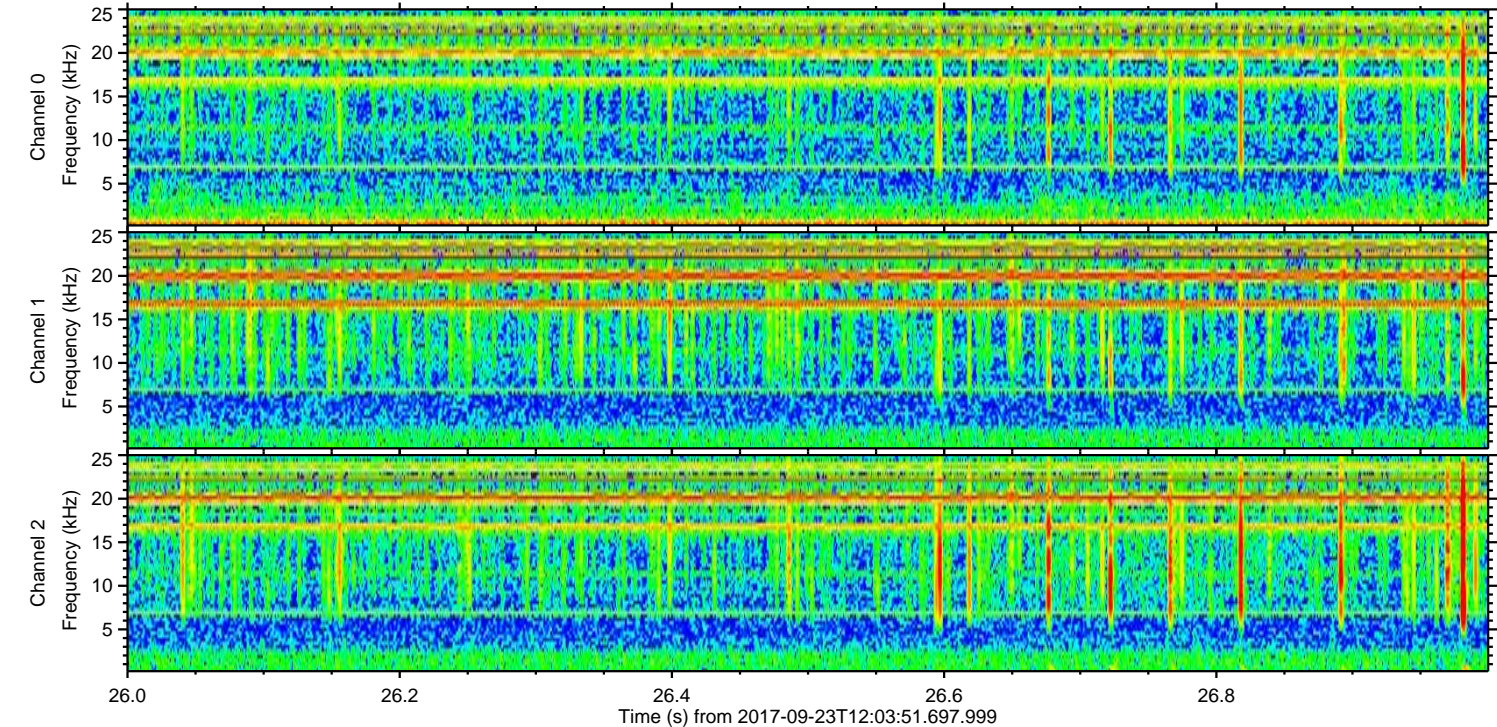
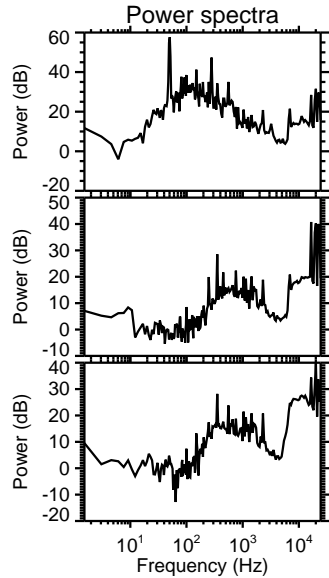
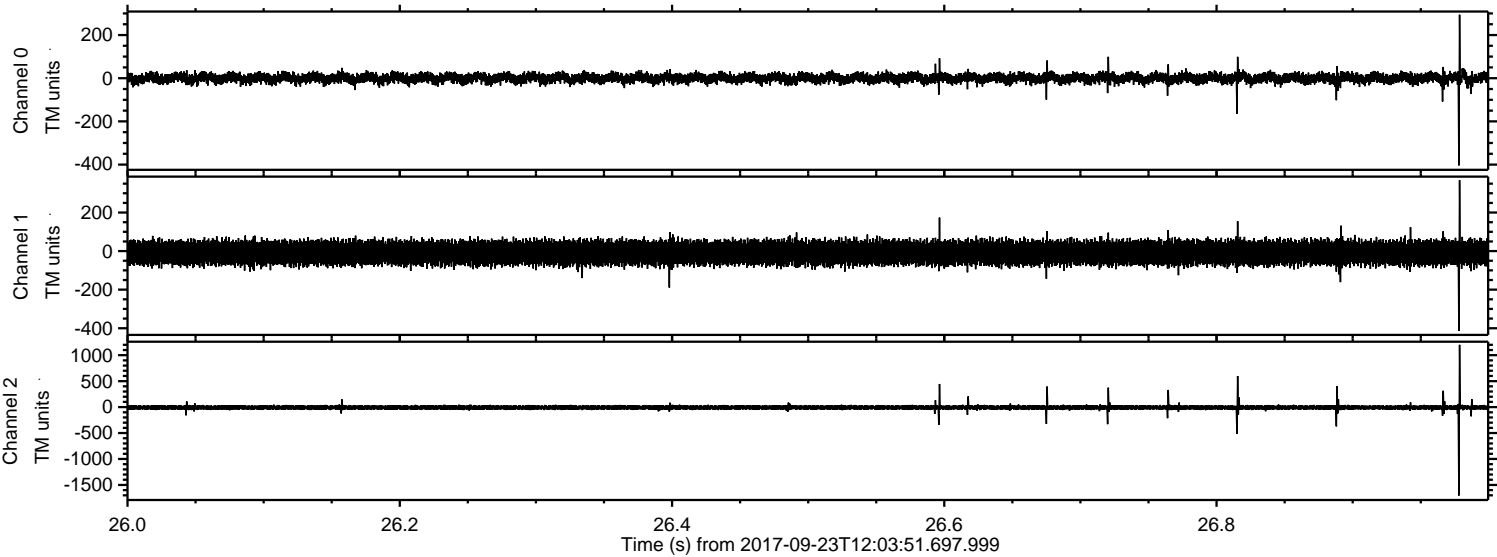
Channel 1  
mn: -605  
mx: 965  
 $\mu$ : -8.7  
 $\sigma$ : 30.3

Channel 2  
mn: -1785  
mx: 2492  
 $\mu$ : -7.5  
 $\sigma$ : 26.7



ELMAVAN 3D WAVEFORMS (Measured data sampled at 50 kHz) 51000 packets of 144 samples from 2017-09-23T12:03:51.697.999. Part 27/147

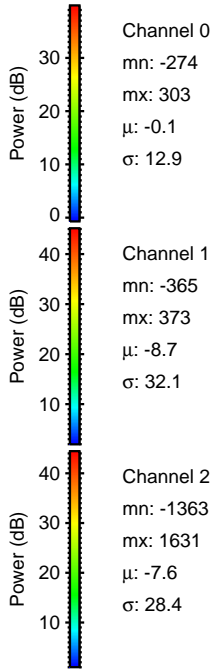
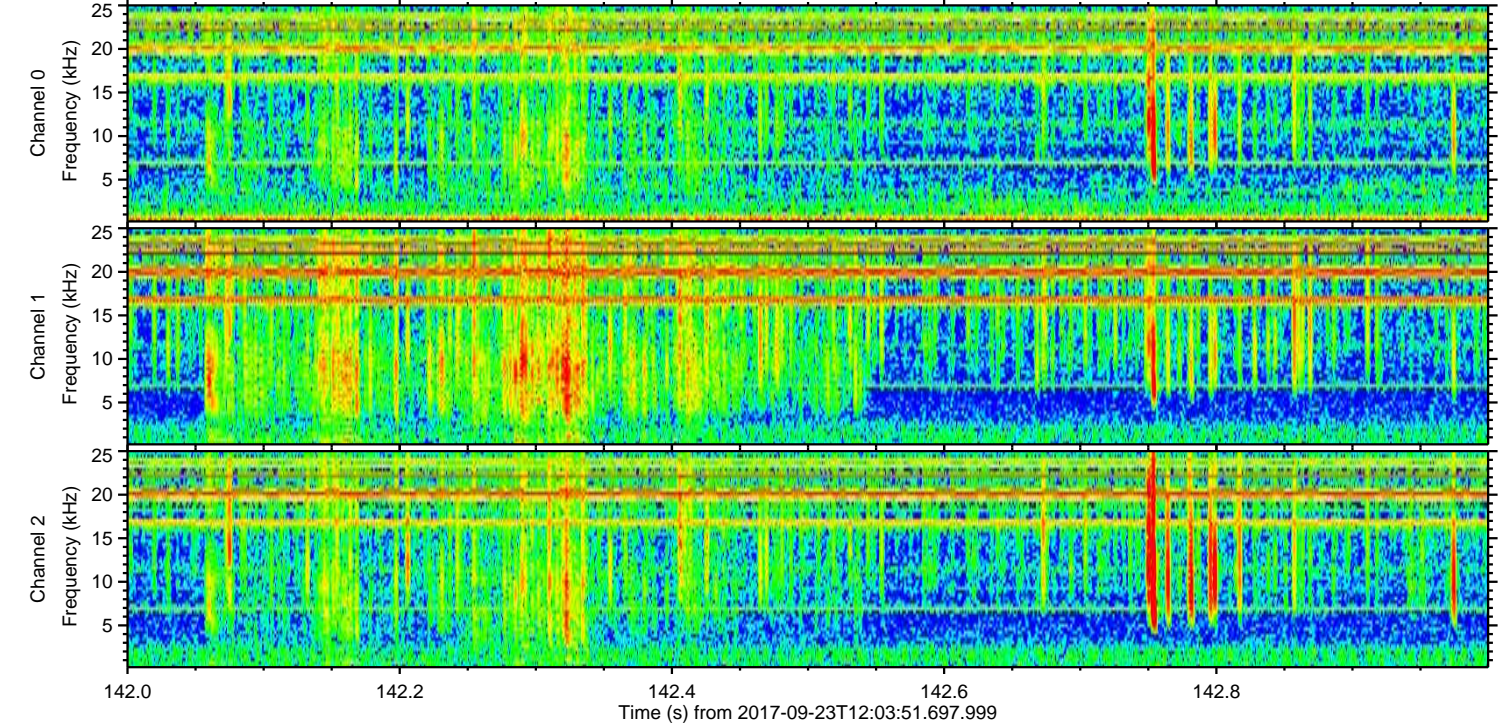
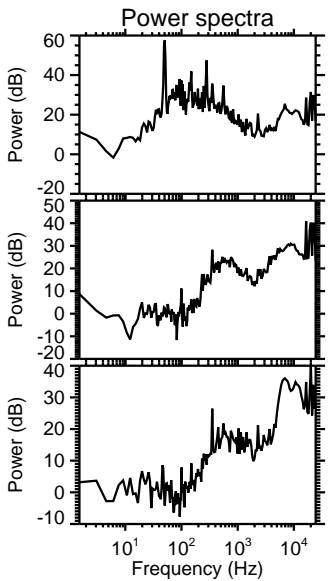
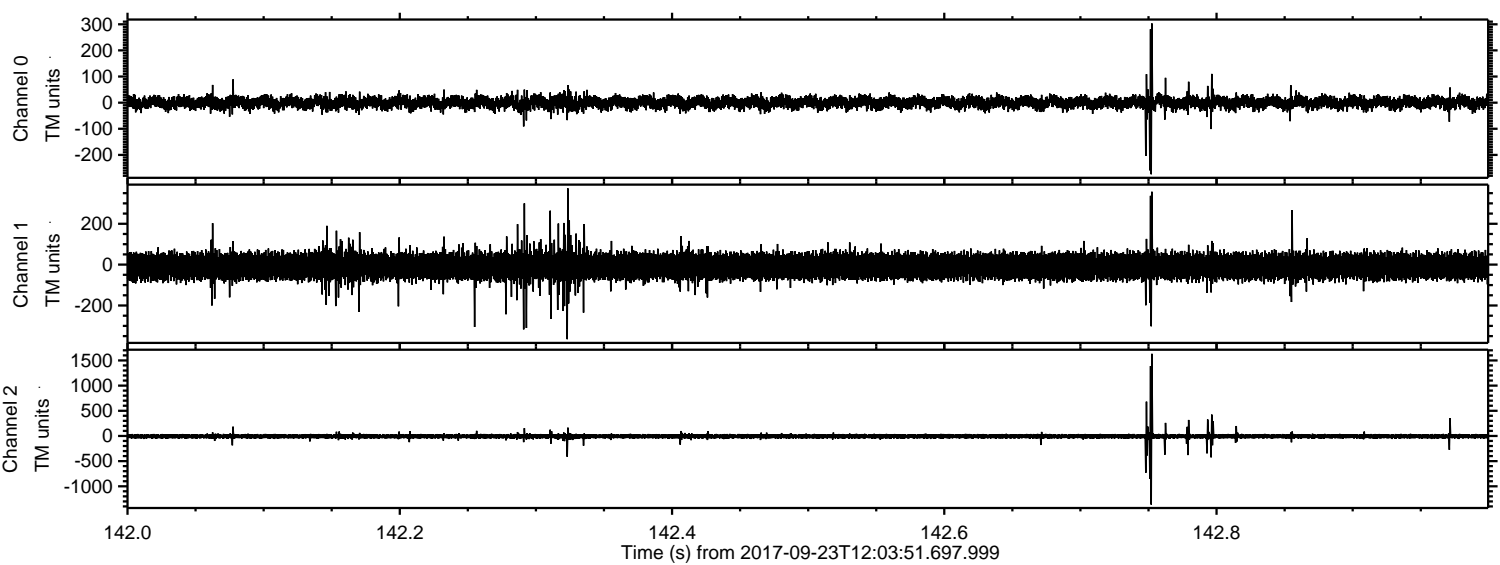
Processed Sat Sep 23 14:11:39 2017 by ELM ver.2012-10-06 from 001\_\_elm20170923\_120350\_\_dat00.bin





ELMAVAN 3D WAVEFORMS (Measured data sampled at 50 kHz) 51000 packets of 144 samples from 2017-09-23T12:03:51.697.999. Part 143/147

Processed Sat Sep 23 14:11:40 2017 by ELM ver.2012-10-06 from 001\_\_elm20170923\_120350\_\_dat00.bin





ELMAVAN 3D WAVEFORMS (Measured data sampled at 50 kHz) 51000 packets of 144 samples from 2017-09-23T12:03:51.697.999. Part 144/147

