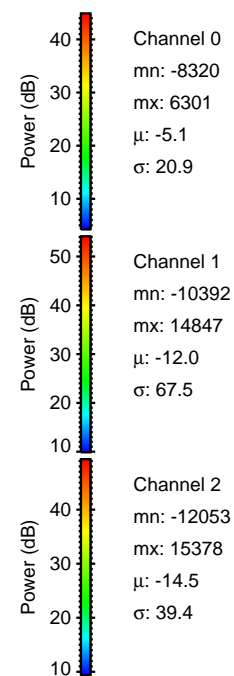
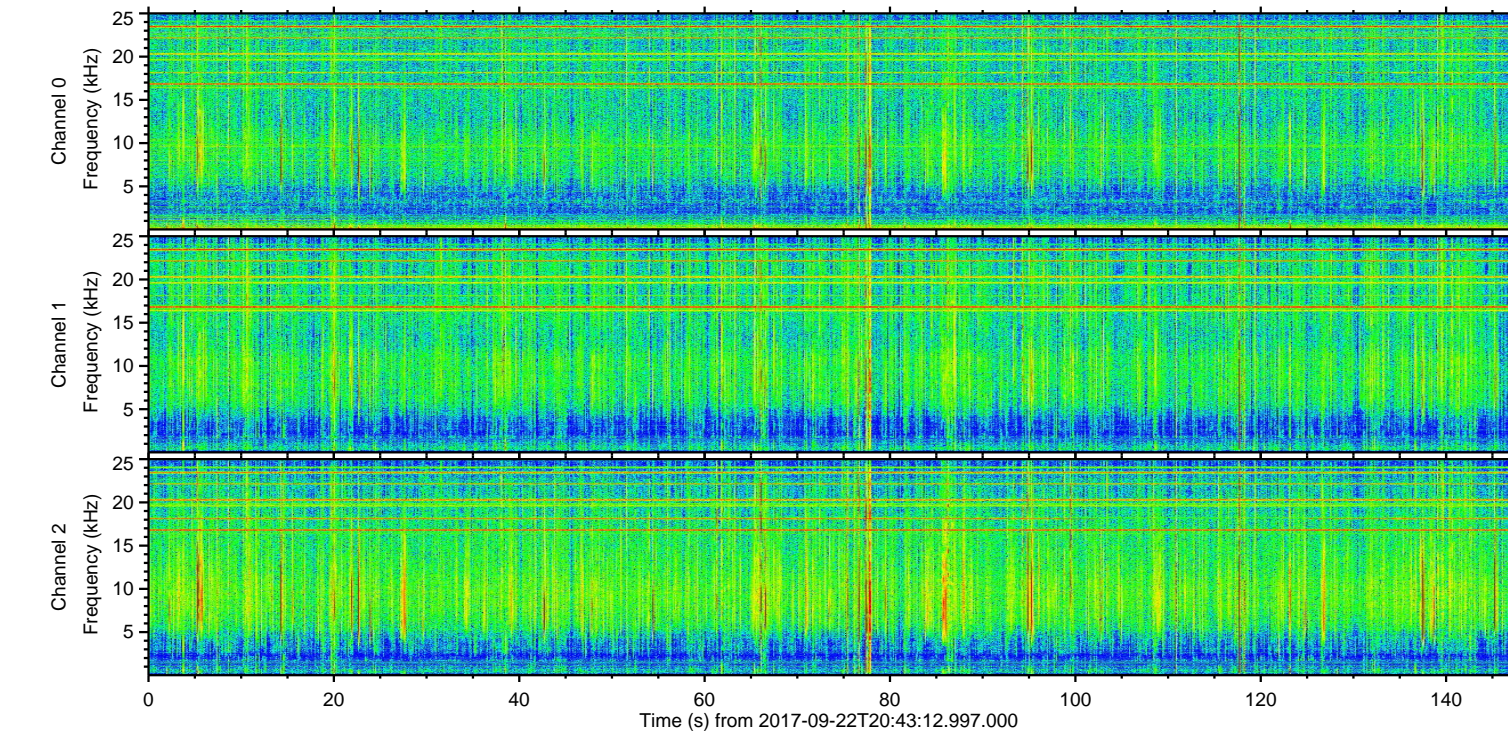
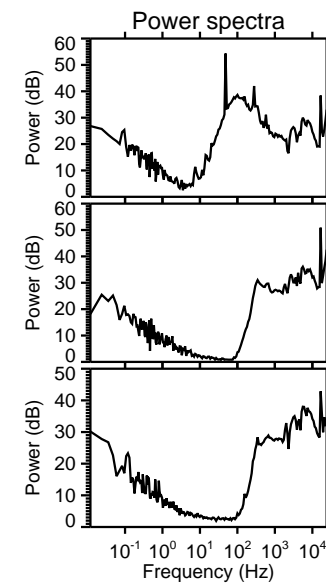
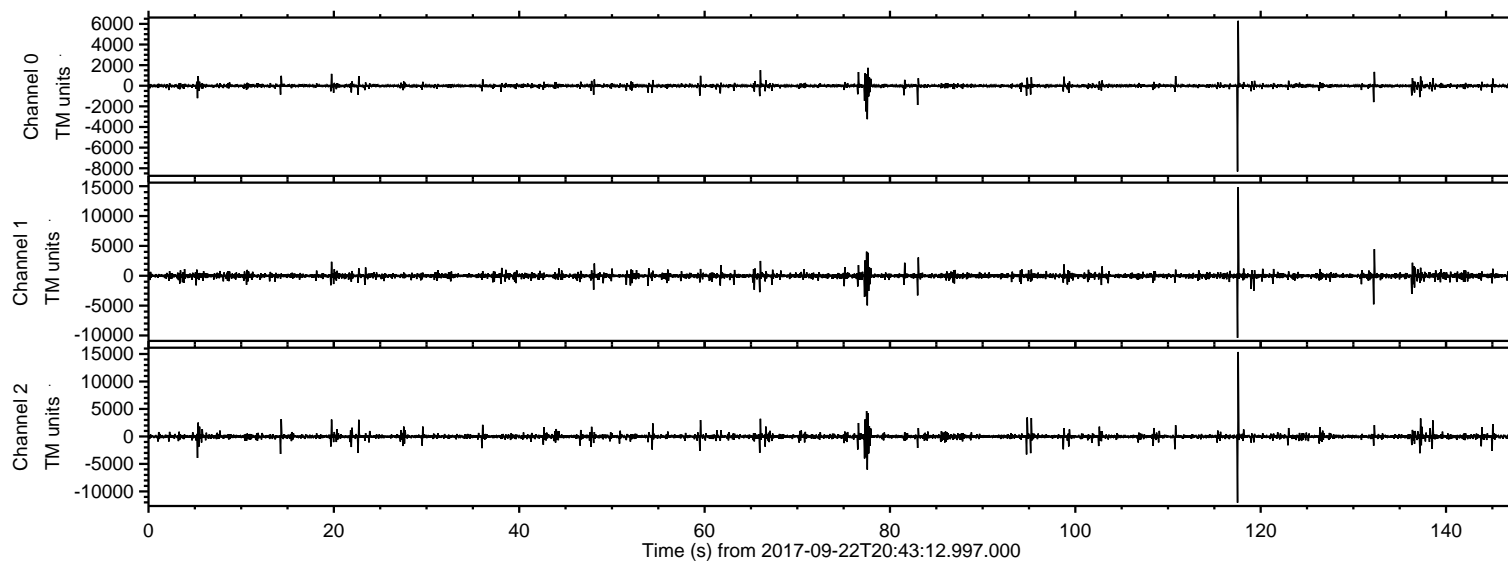


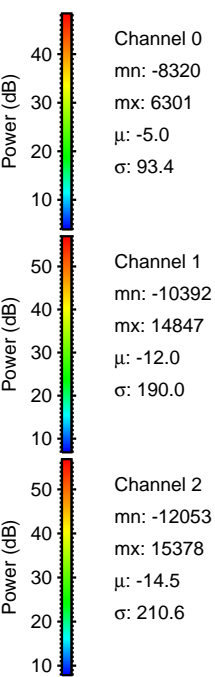
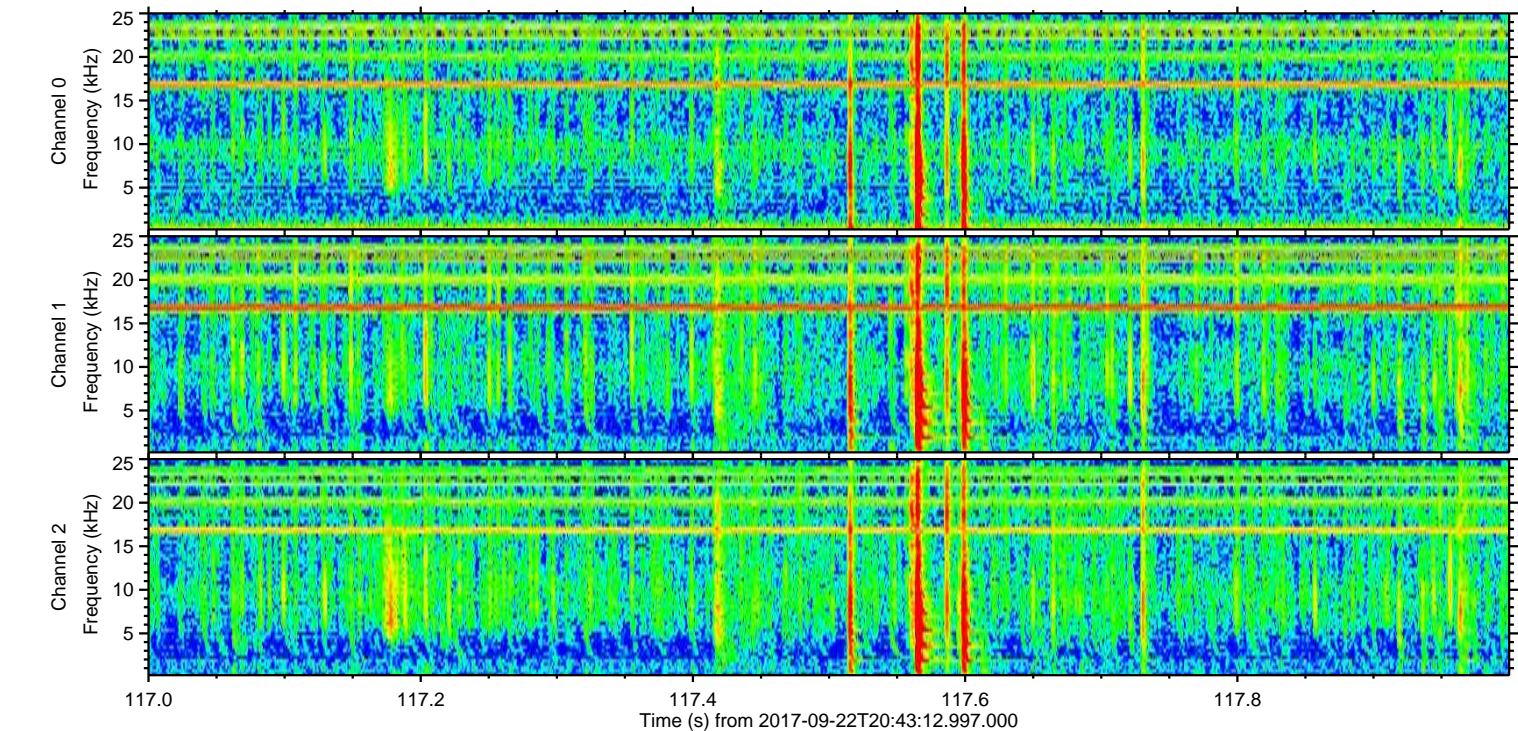
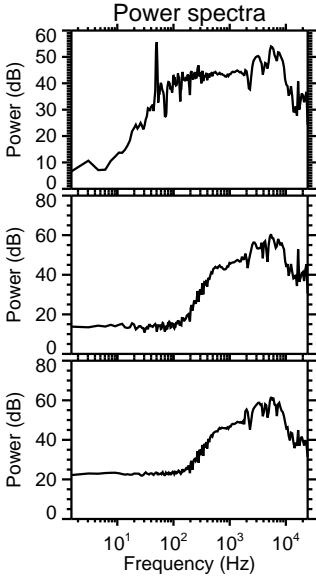
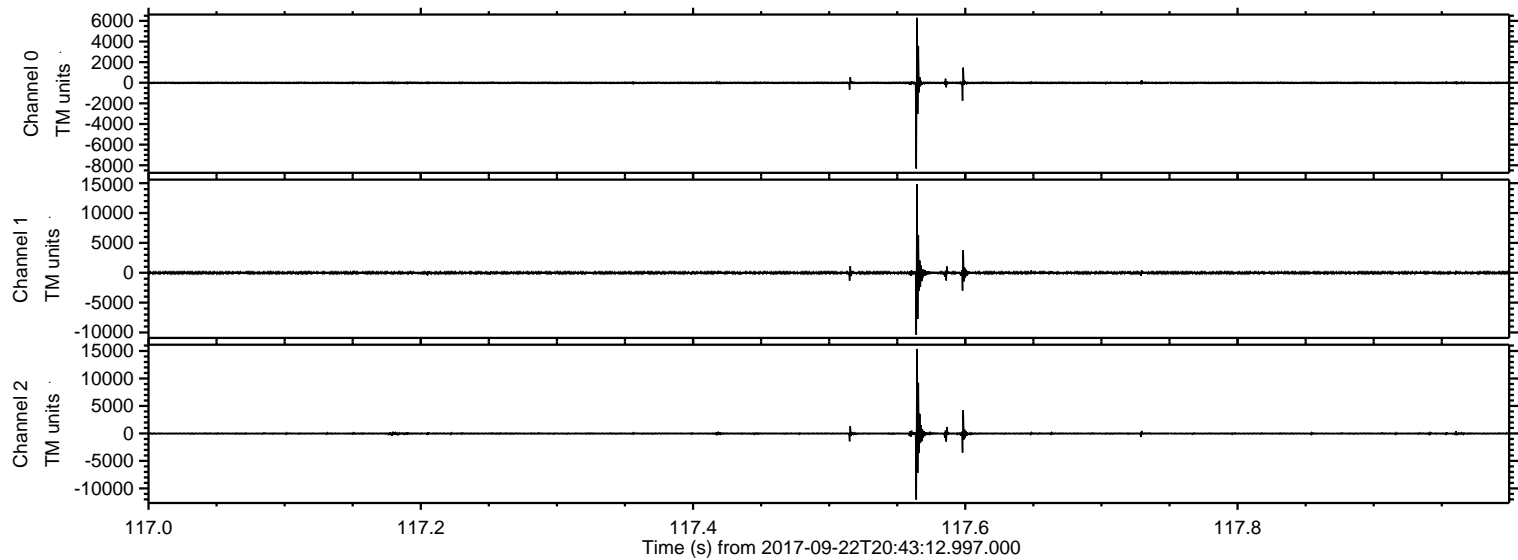
ELMAVAN 3D WAVEFORMS (Measured data sampled at 50 kHz) 51000 packets of 144 samples from 2017-09-22T20:43:12.997.000.

Processed Fri Sep 22 22:51:14 2017 by ELM ver.2012-10-06 from 001__elm20170922_204311__dat00.bin

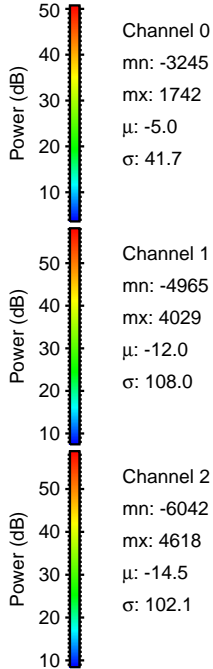
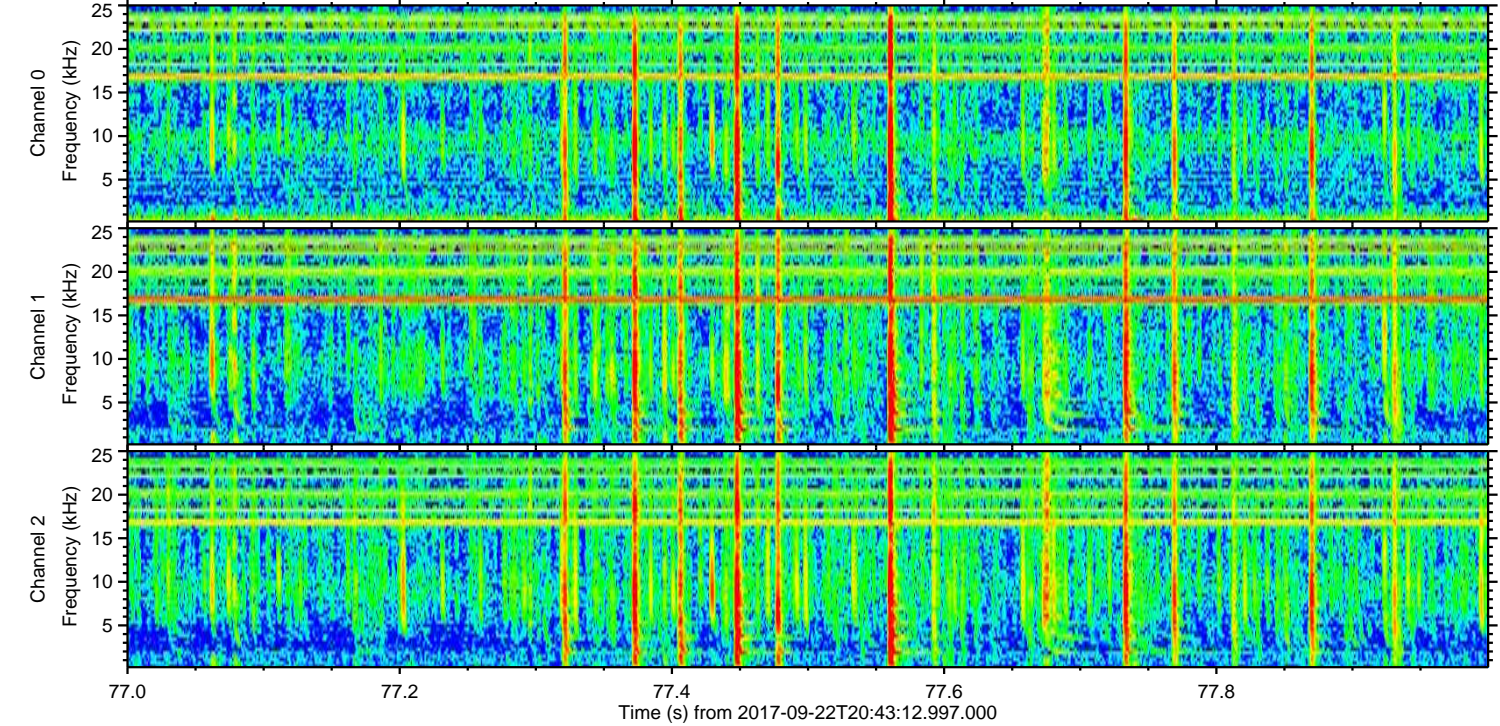
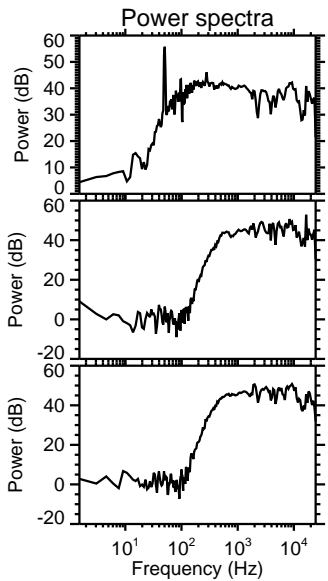
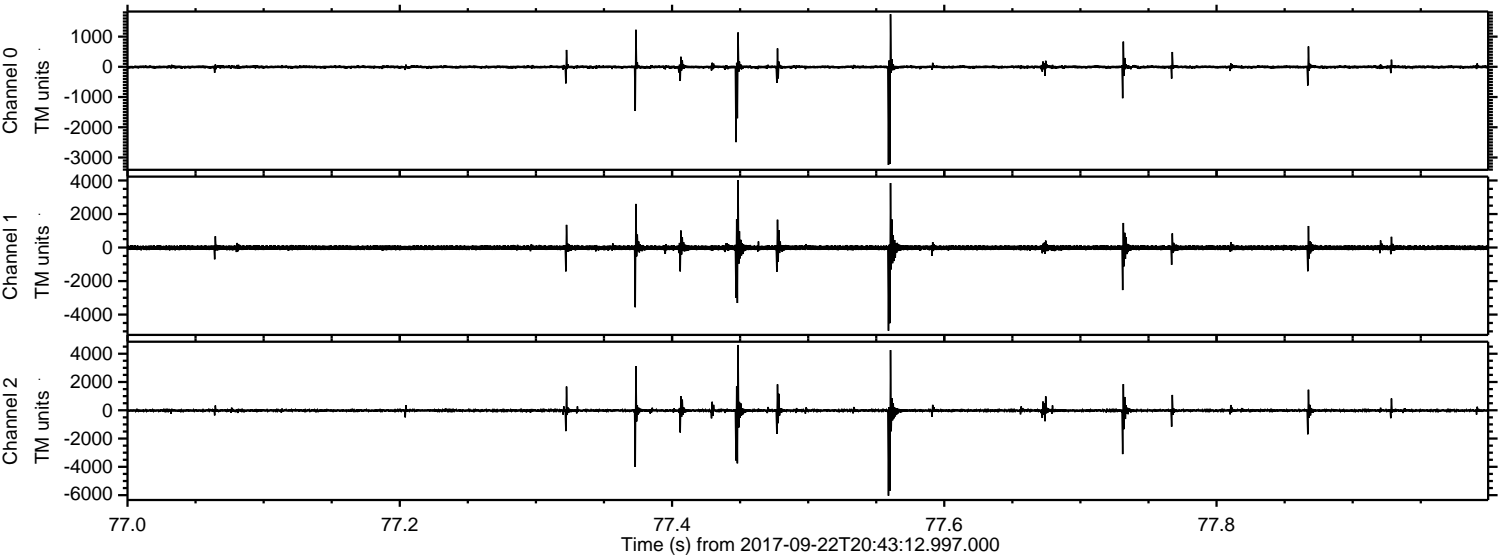


ELMAVAN 3D WAVEFORMS (Measured data sampled at 50 kHz) 51000 packets of 144 samples from 2017-09-22T20:43:12.997.000. Part 118/147

Processed Fri Sep 22 22:51:21 2017 by ELM ver.2012-10-06 from 001__elm20170922_204311__dat00.bin

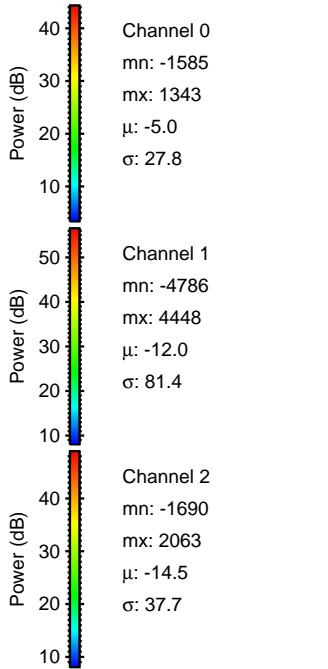
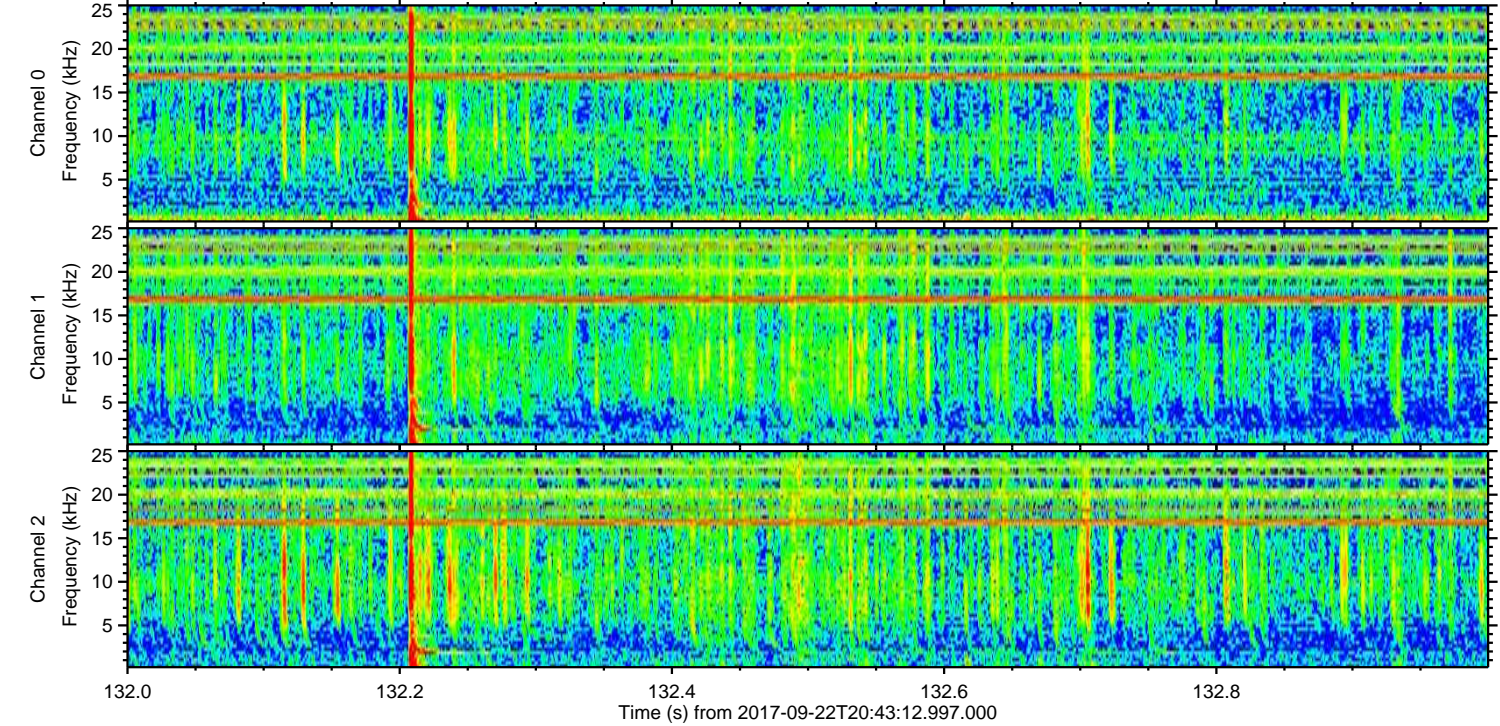
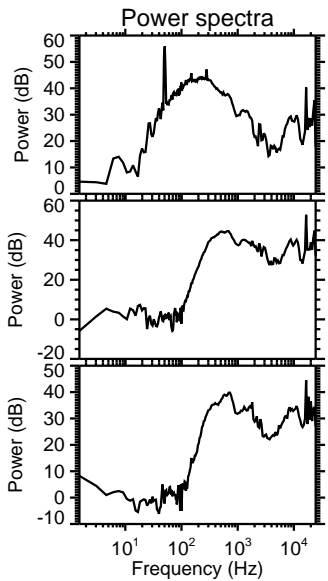
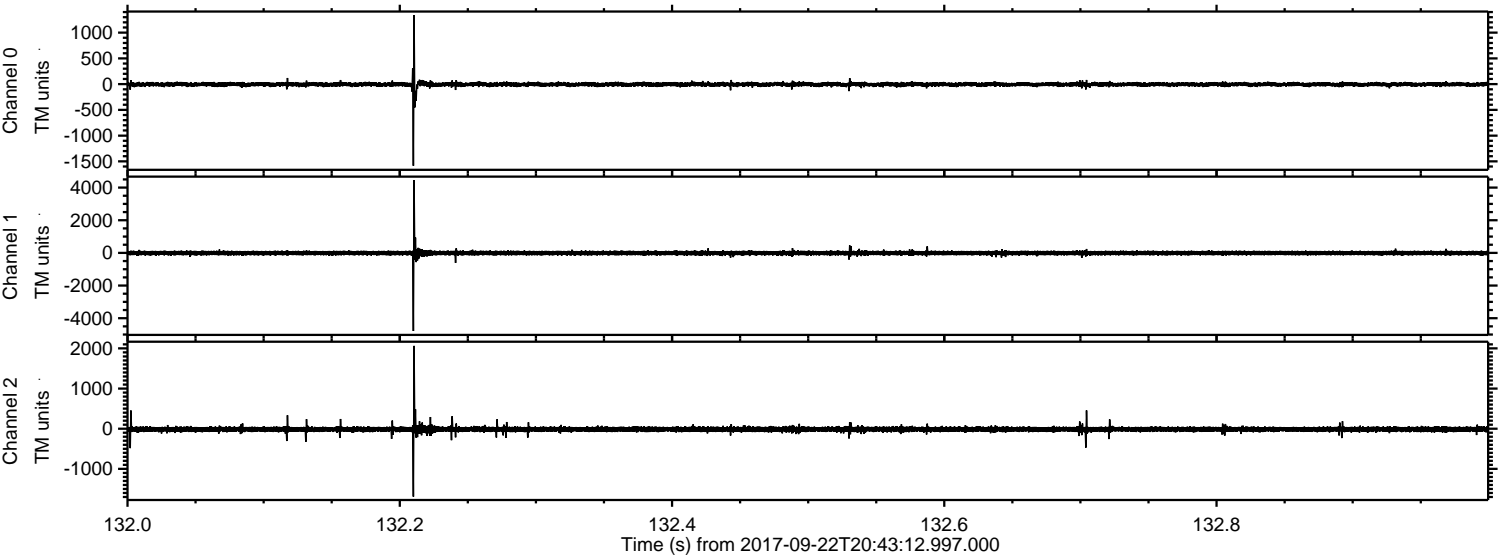


Processed Fri Sep 22 22:51:22 2017 by ELM ver.2012-10-06 from 001__elm20170922_204311__dat00.bin



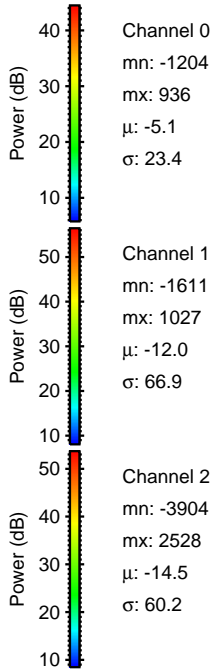
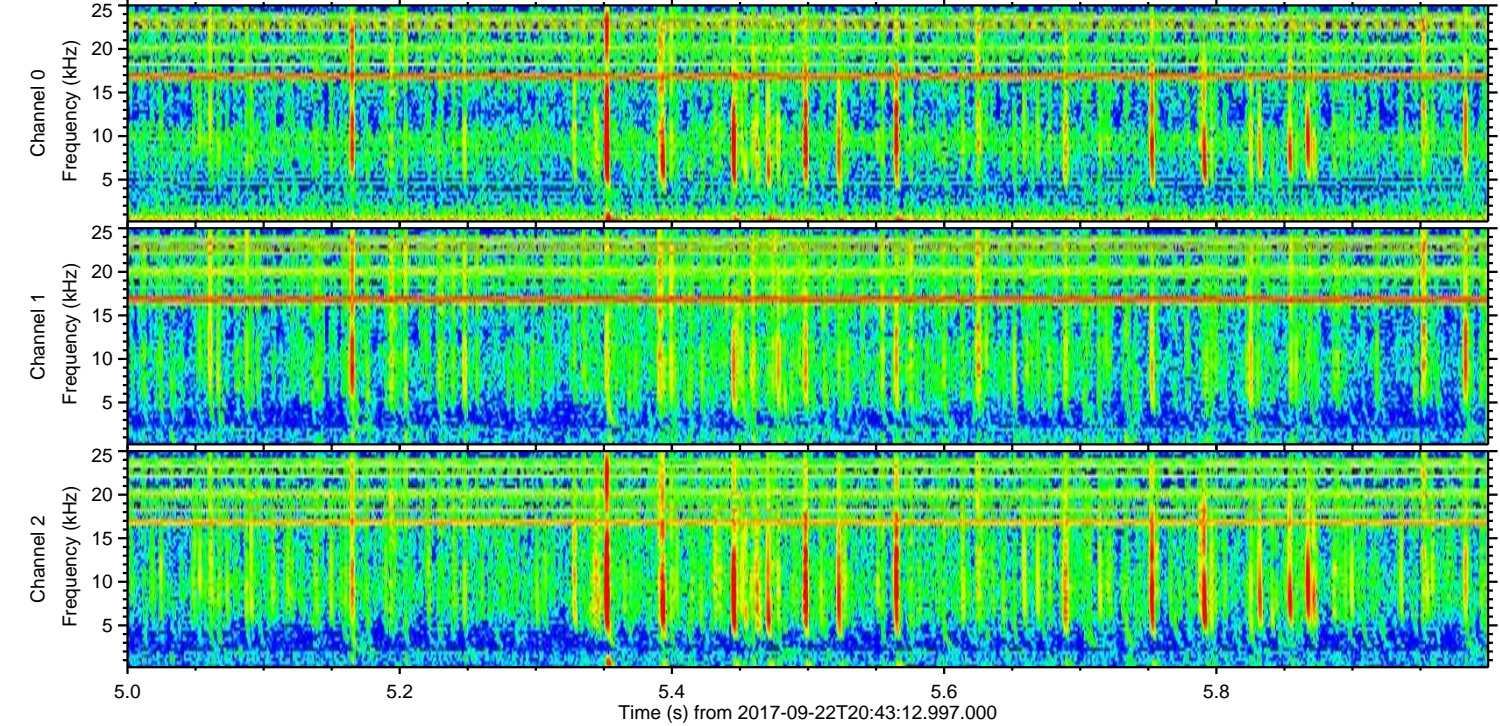
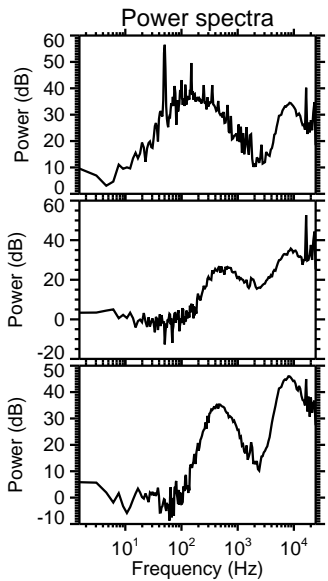
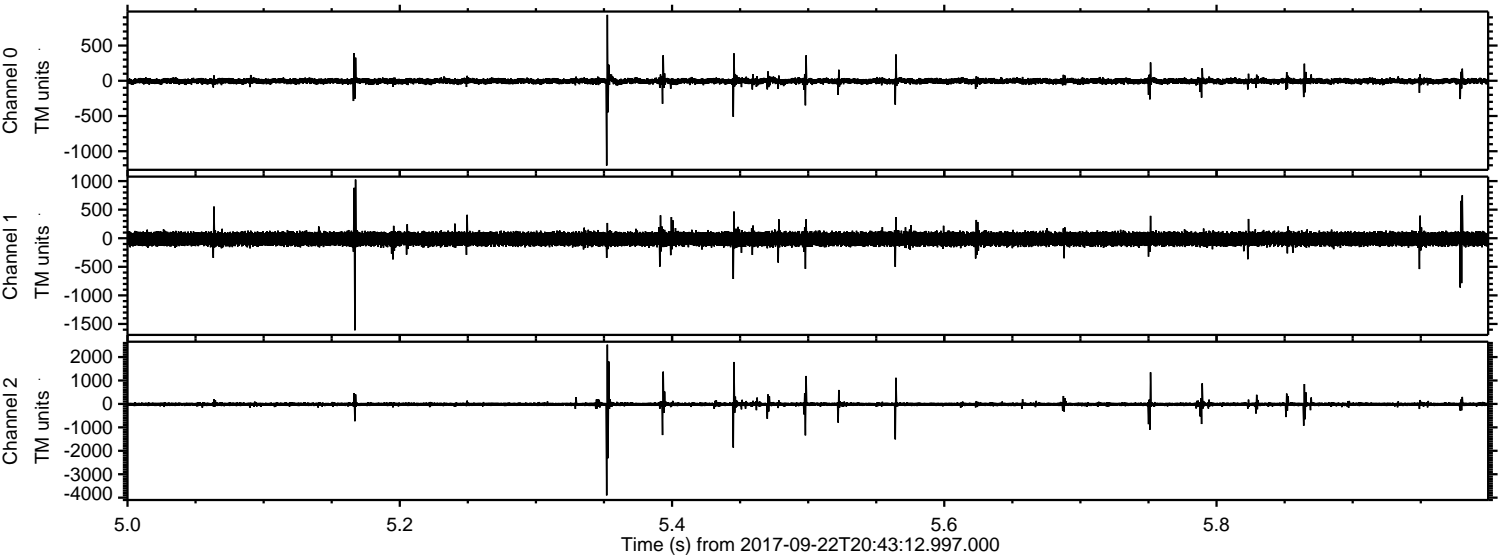
ELMAVAN 3D WAVEFORMS (Measured data sampled at 50 kHz) 51000 packets of 144 samples from 2017-09-22T20:43:12.997.000. Part 133/147

Processed Fri Sep 22 22:51:22 2017 by ELM ver.2012-10-06 from 001__elm20170922_204311__dat00.bin

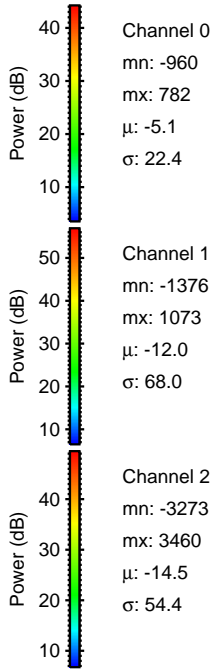
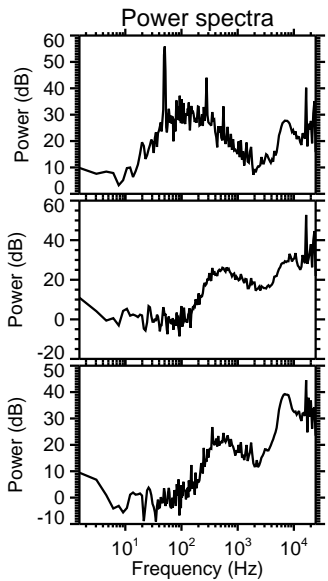
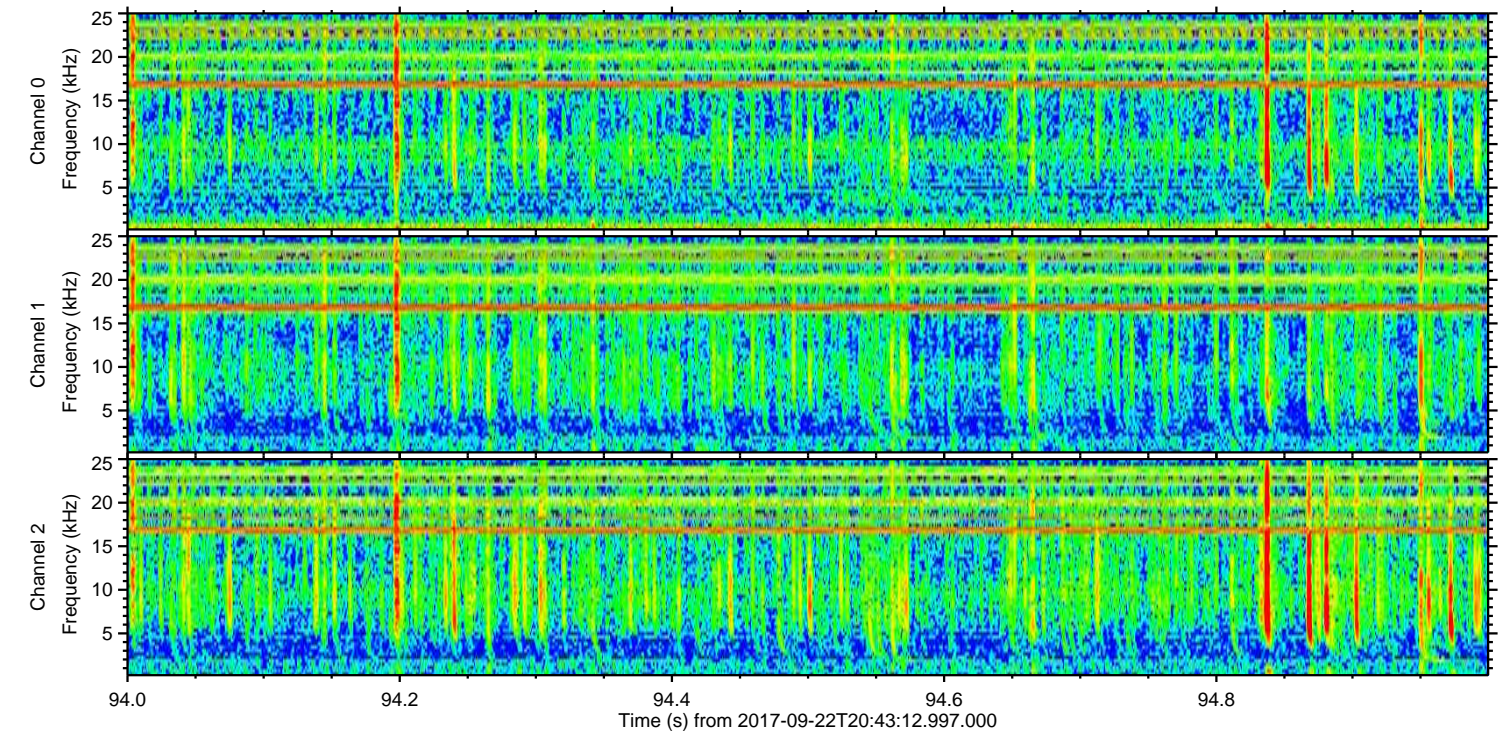
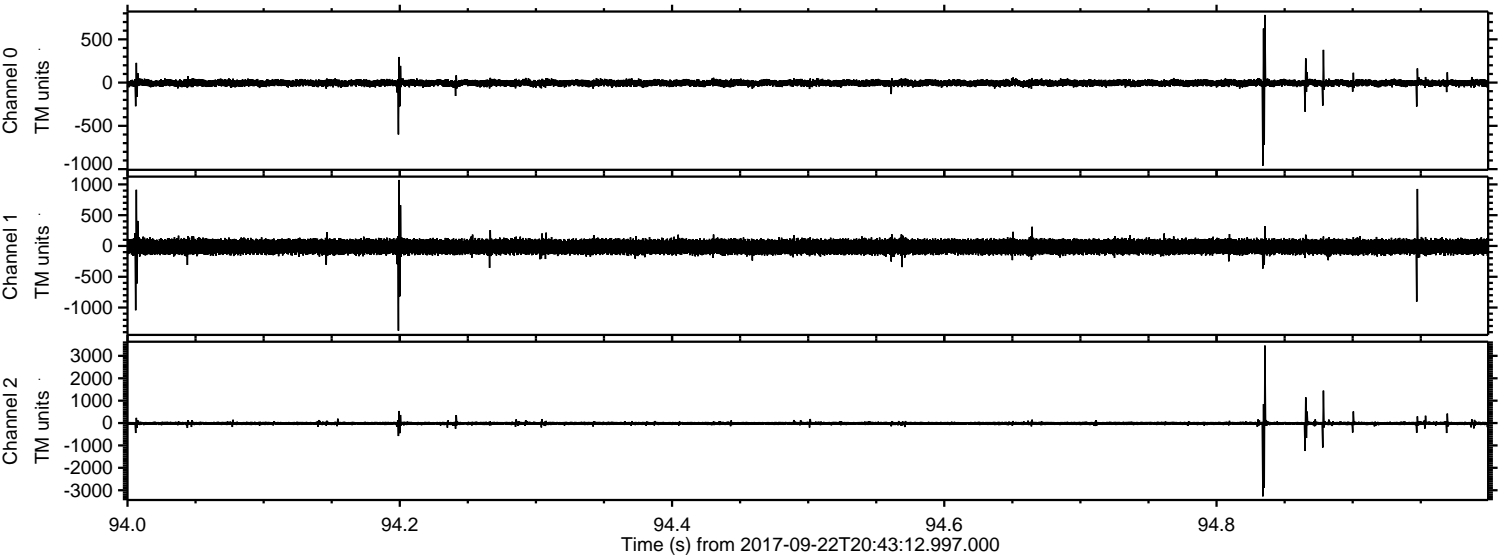


ELMAVAN 3D WAVEFORMS (Measured data sampled at 50 kHz) 51000 packets of 144 samples from 2017-09-22T20:43:12.997.000. Part 6/147

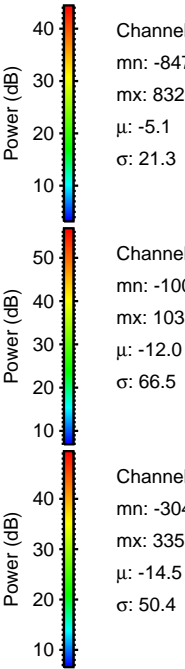
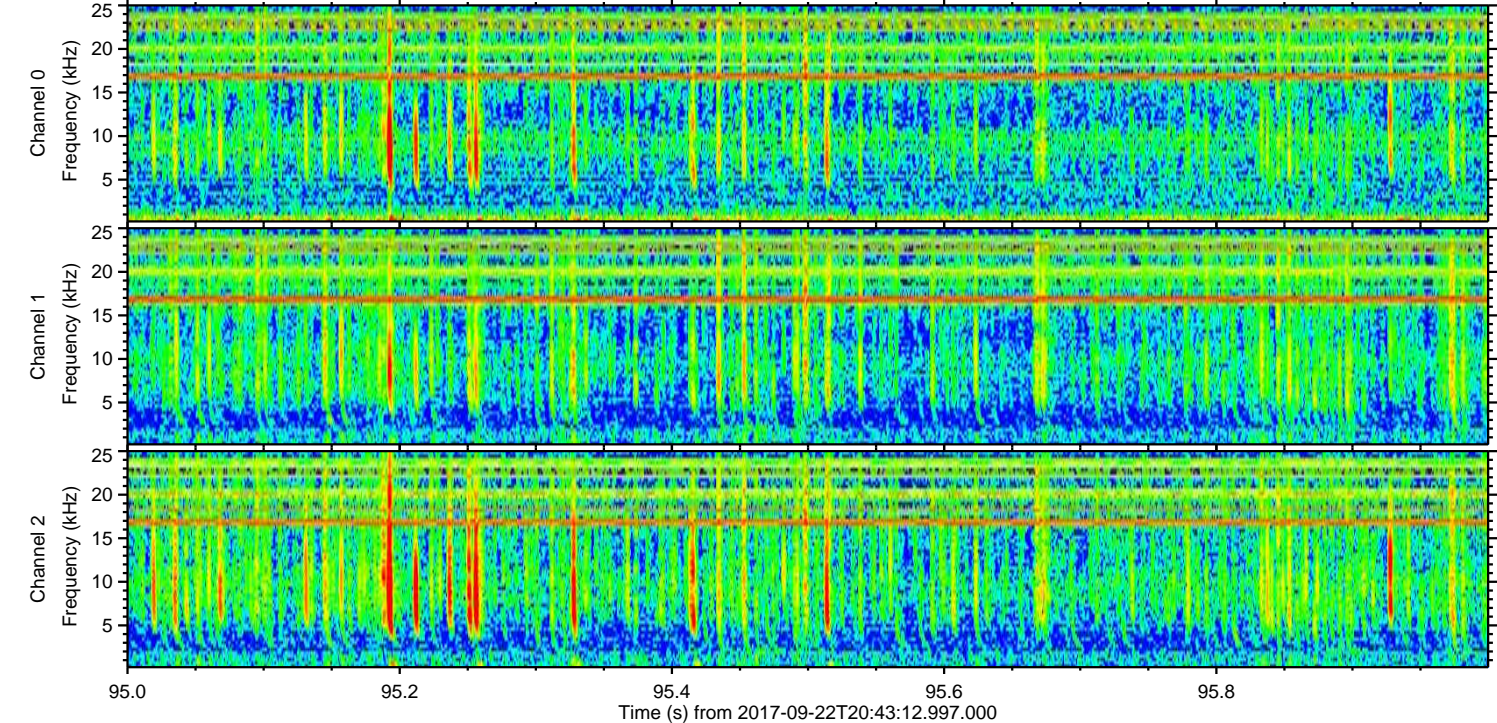
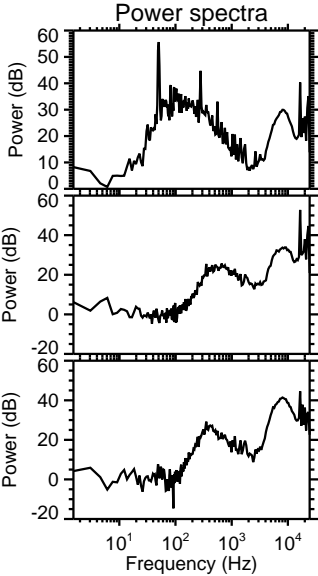
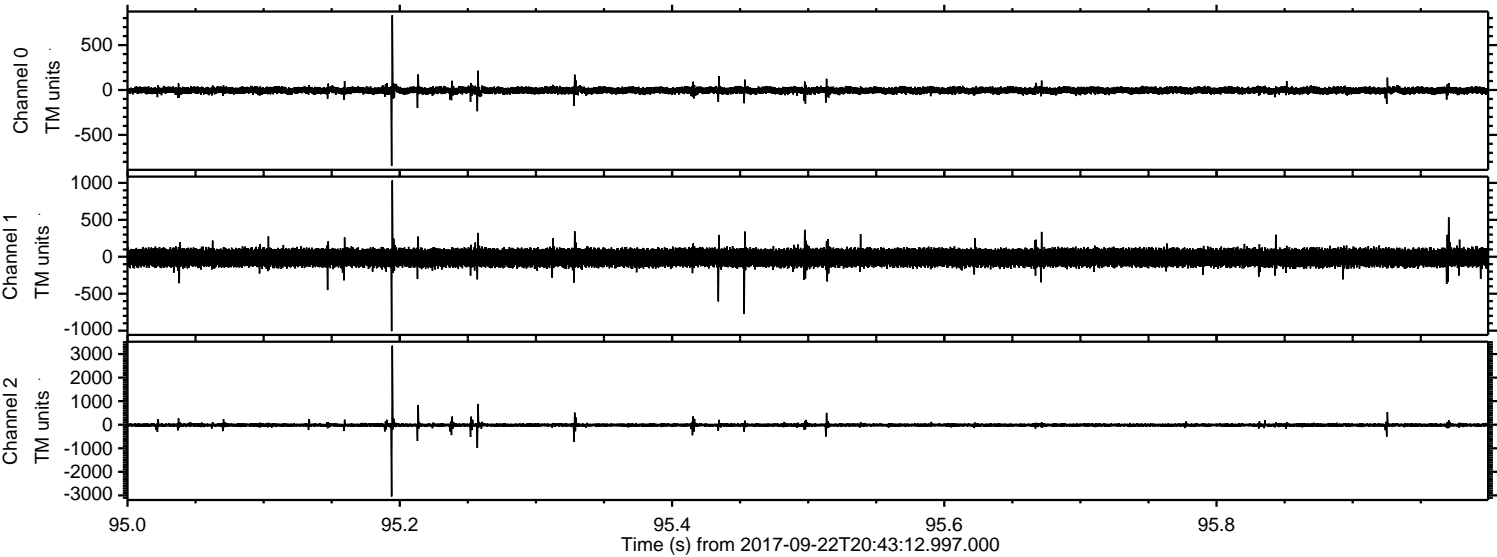
Processed Fri Sep 22 22:51:23 2017 by ELM ver.2012-10-06 from 001__elm20170922_204311__dat00.bin



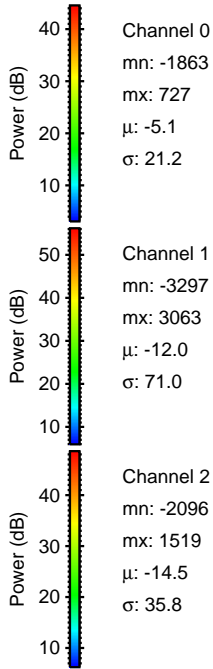
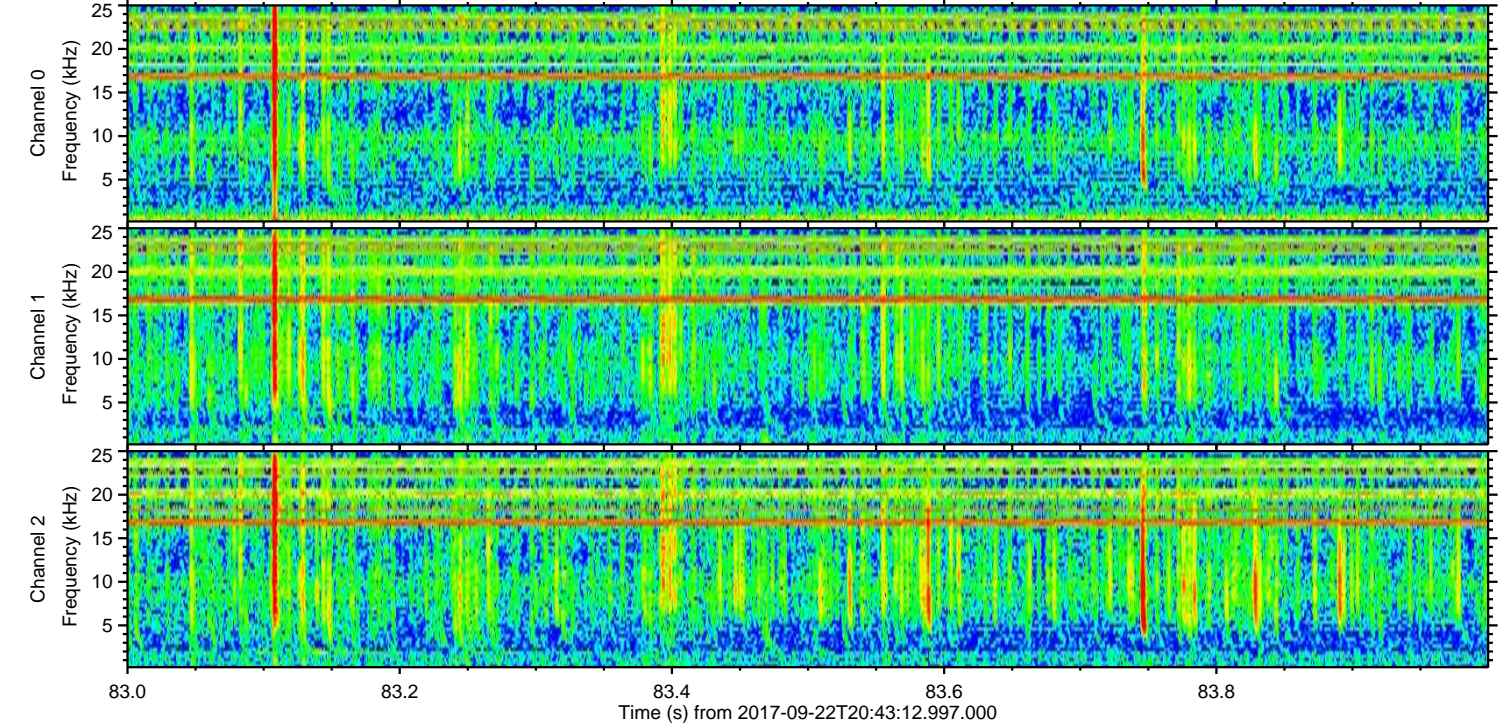
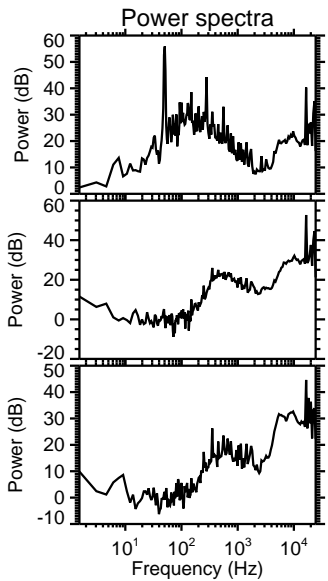
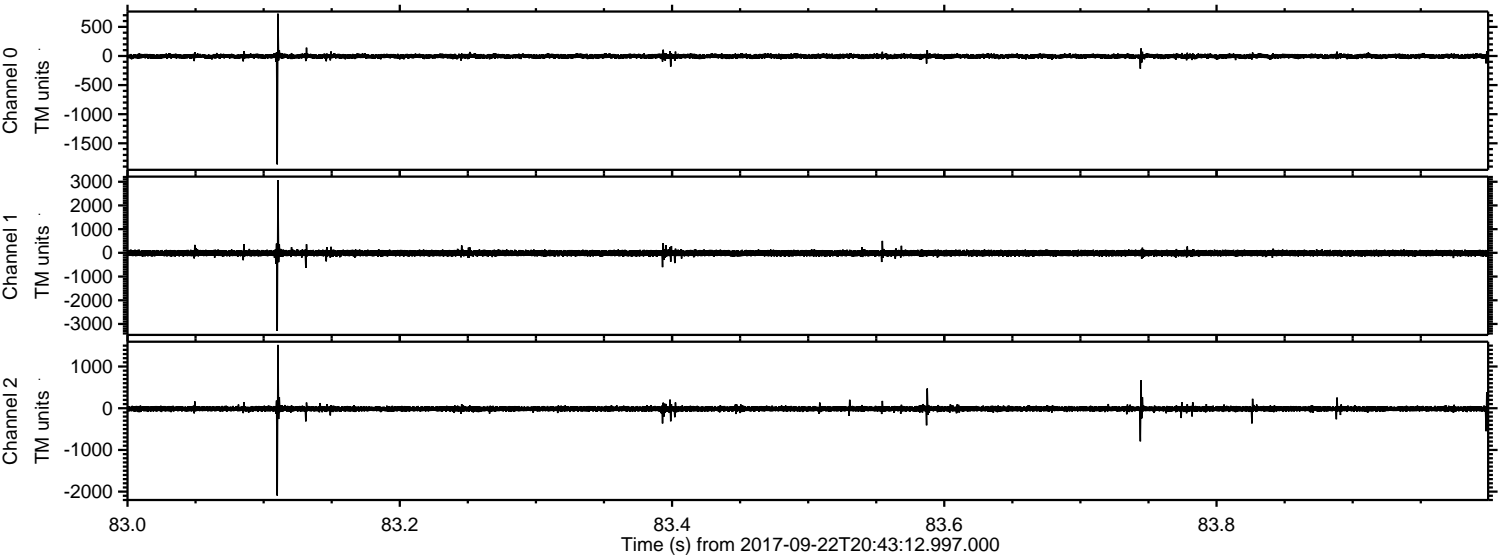
Processed Fri Sep 22 22:51:24 2017 by ELM ver.2012-10-06 from 001__elm20170922_204311__dat00.bin



Processed Fri Sep 22 22:51:25 2017 by ELM ver.2012-10-06 from 001__elm20170922_204311__dat00.bin

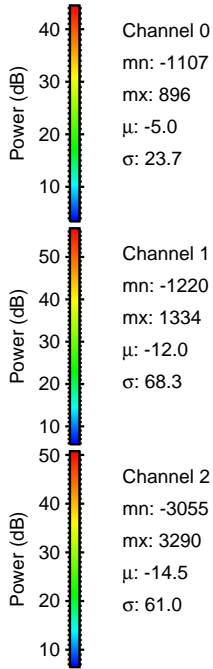
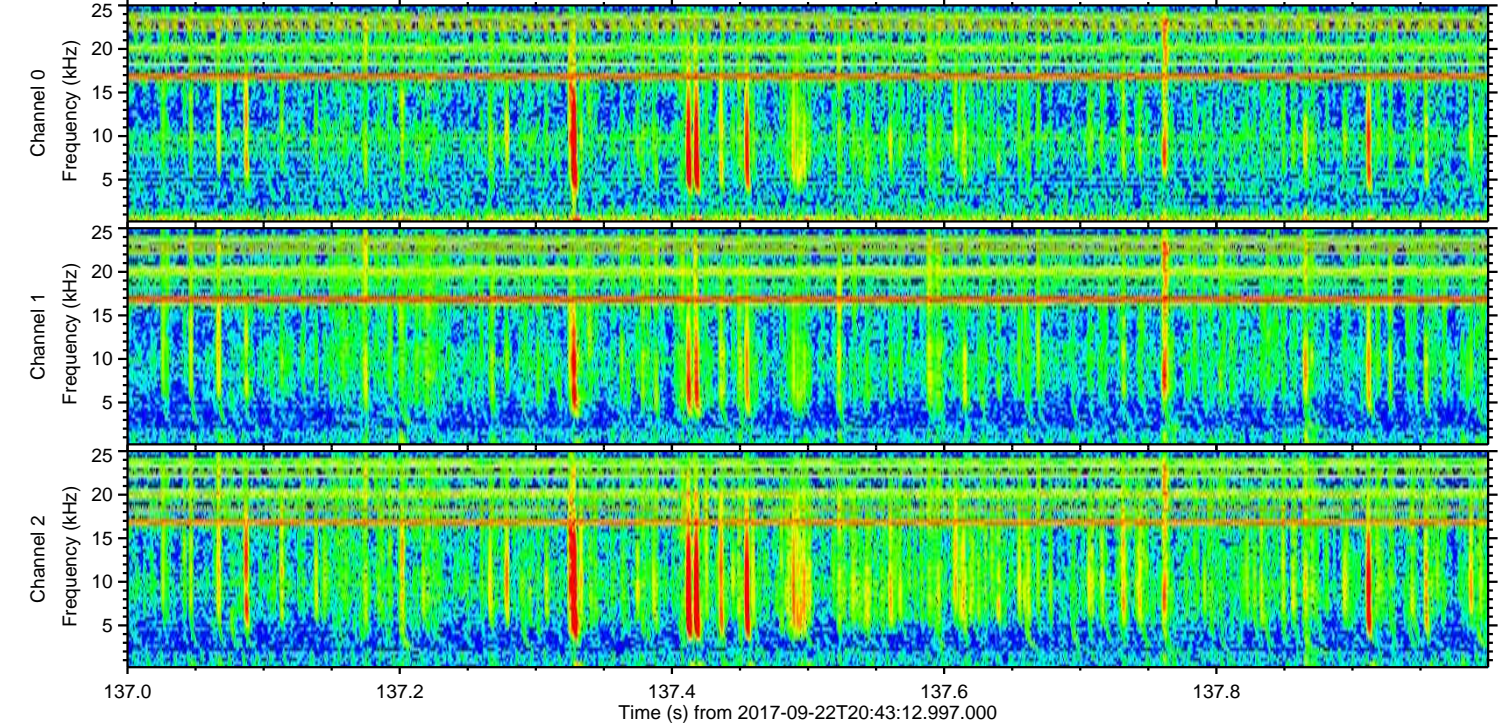
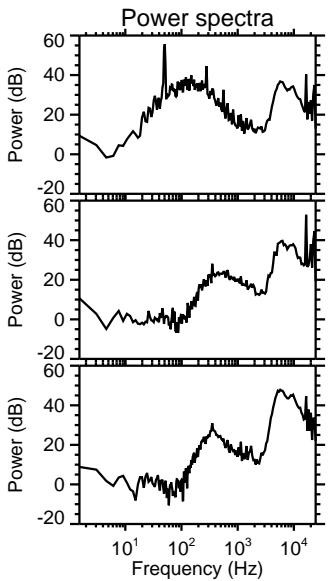
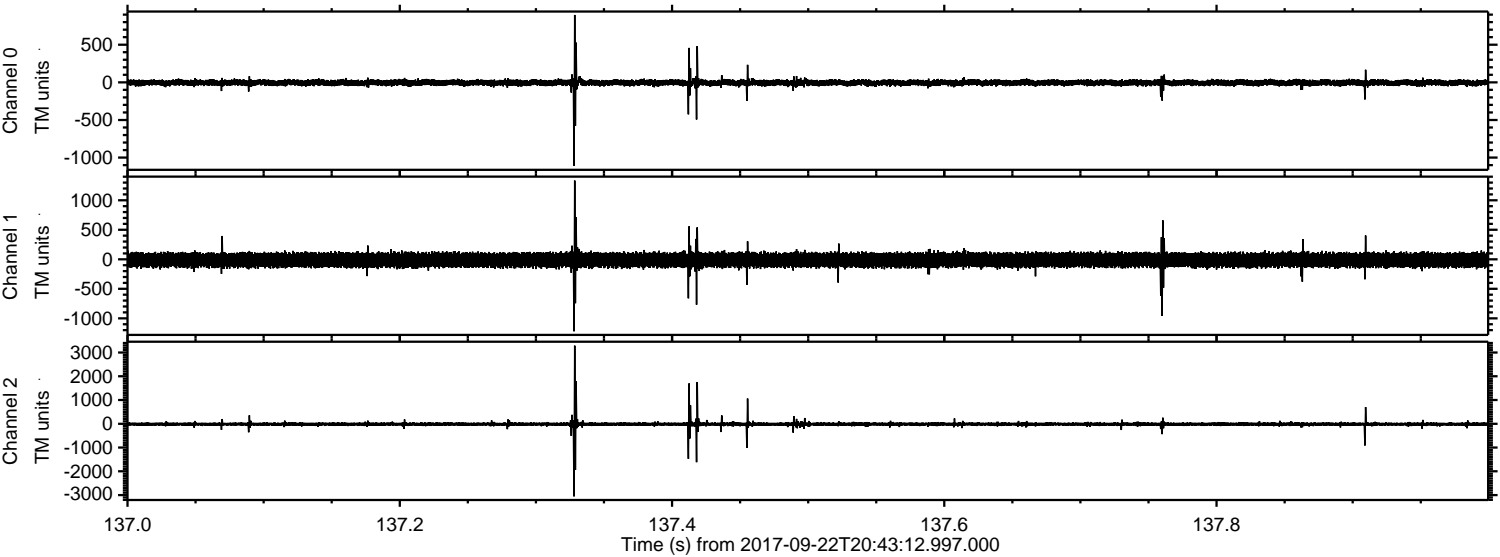


Processed Fri Sep 22 22:51:25 2017 by ELM ver.2012-10-06 from 001__elm20170922_204311__dat00.bin



ELMAVAN 3D WAVEFORMS (Measured data sampled at 50 kHz) 51000 packets of 144 samples from 2017-09-22T20:43:12.997.000. Part 138/147

Processed Fri Sep 22 22:51:26 2017 by ELM ver.2012-10-06 from 001__elm20170922_204311__dat00.bin

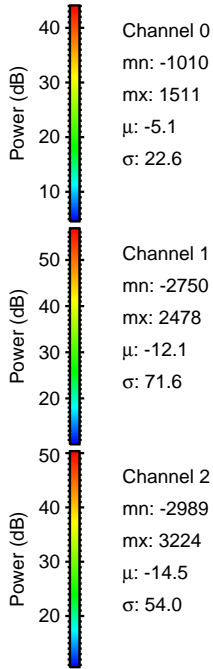
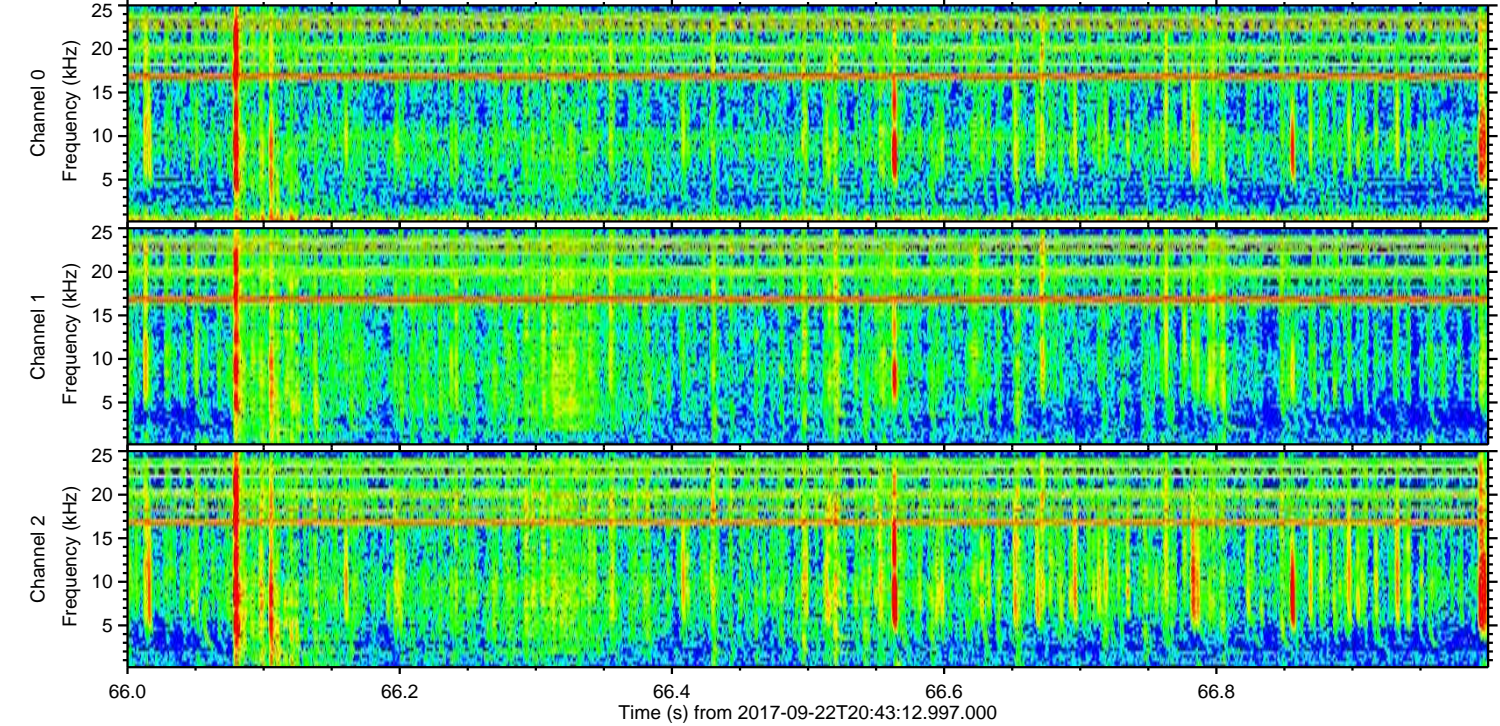
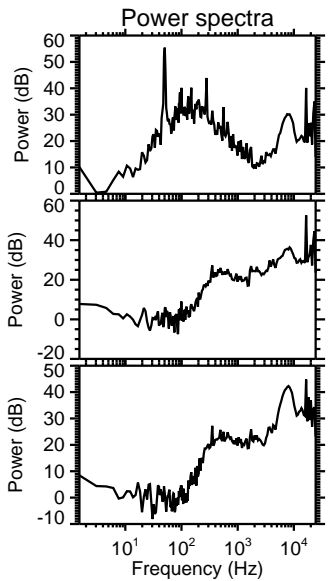
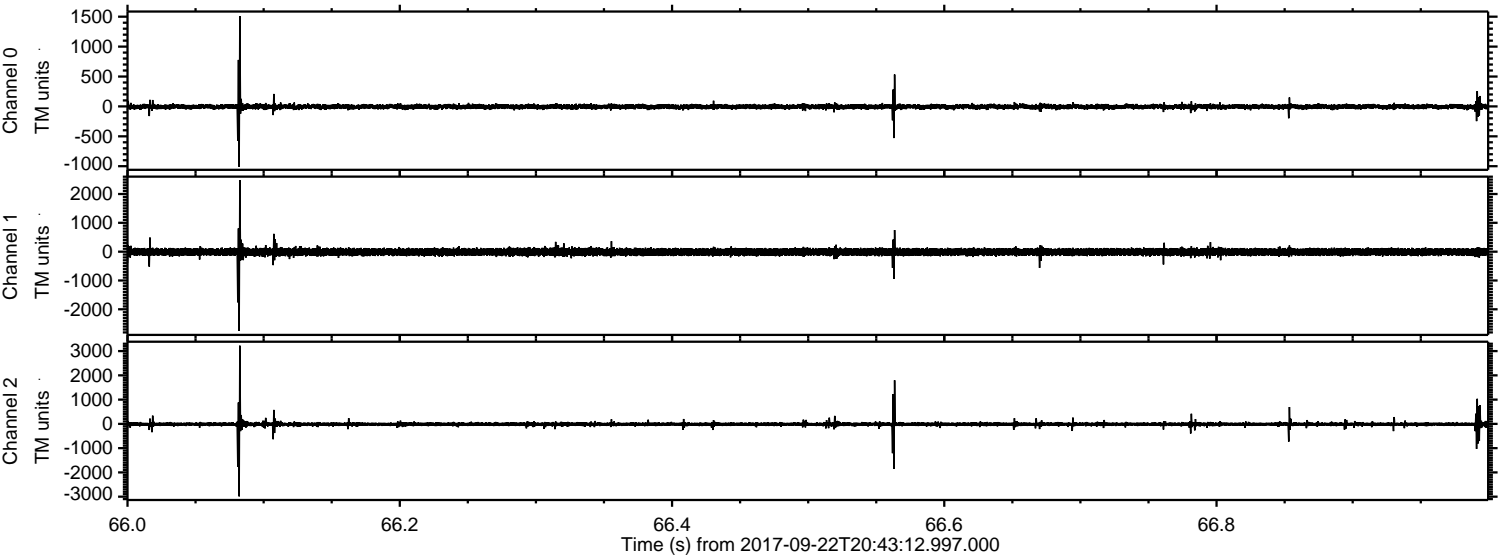


Channel 0
mn: -1107
mx: 896
 μ : -5.0
 σ : 23.7

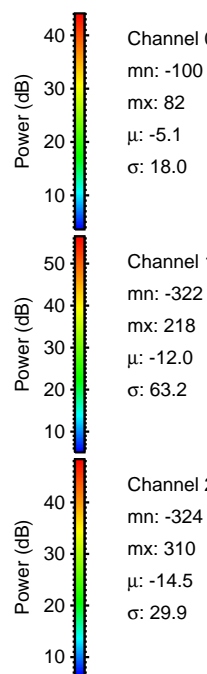
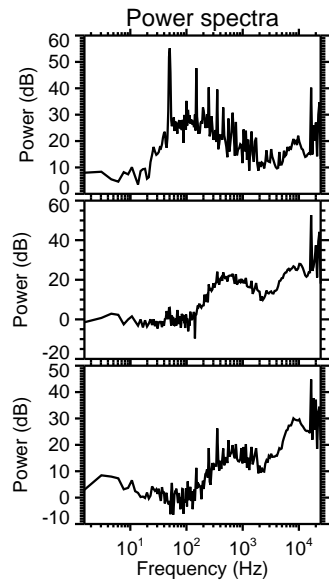
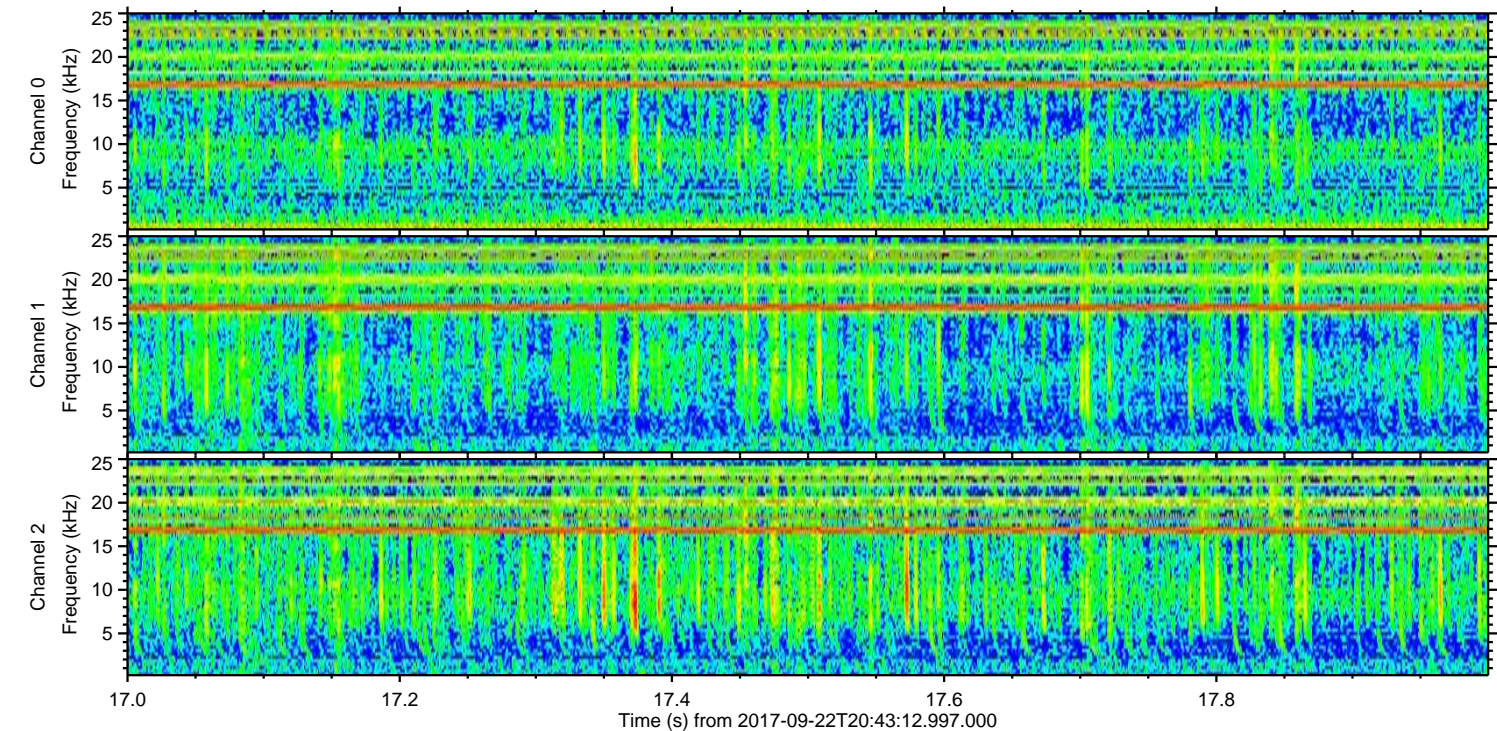
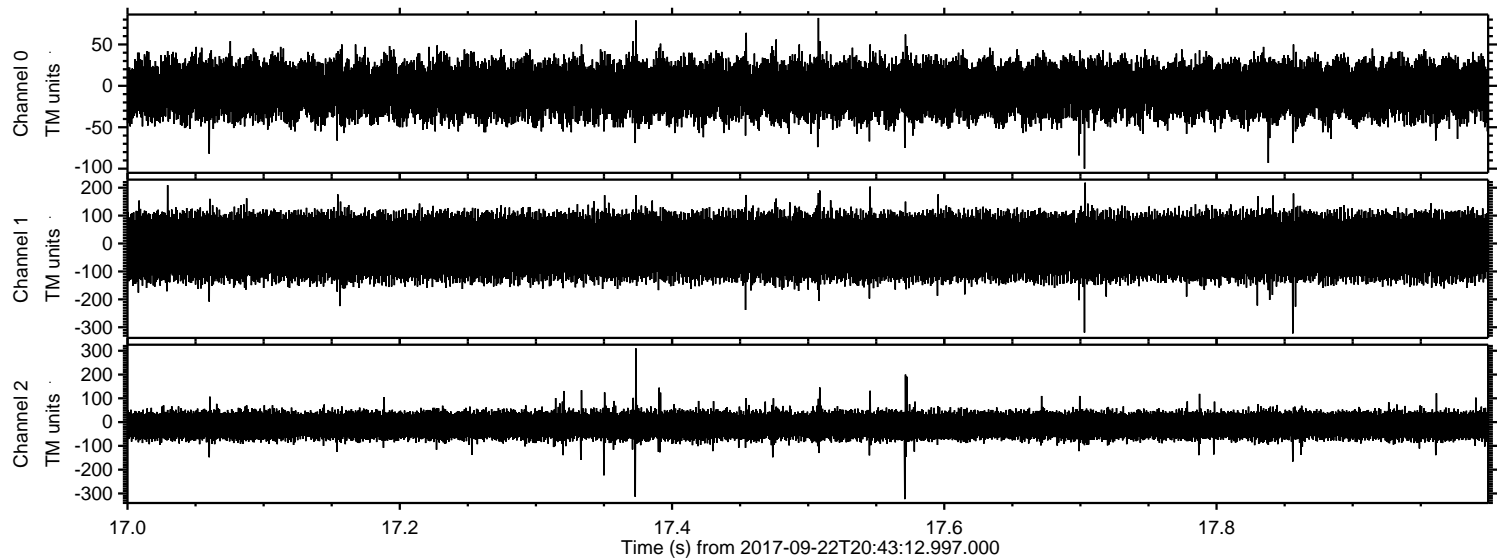
Channel 1
mn: -1220
mx: 1334
 μ : -12.0
 σ : 68.3

Channel 2
mn: -3055
mx: 3290
 μ : -14.5
 σ : 61.0

Processed Fri Sep 22 22:51:27 2017 by ELM ver.2012-10-06 from 001__elm20170922_204311__dat00.bin



Processed Fri Sep 22 22:51:27 2017 by ELM ver.2012-10-06 from 001__elm20170922_204311__dat00.bin



Channel 0
mn: -100
mx: 82
 μ : -5.1
 σ : 18.0

Channel 1
mn: -322
mx: 218
 μ : -12.0
 σ : 63.2

Channel 2
mn: -324
mx: 310
 μ : -14.5
 σ : 29.9