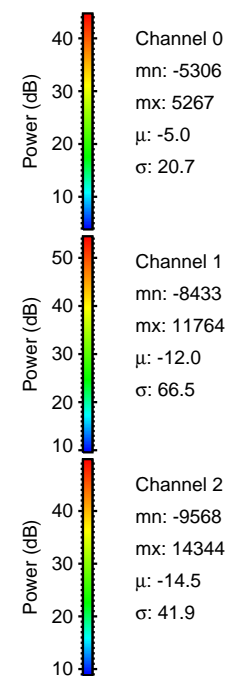
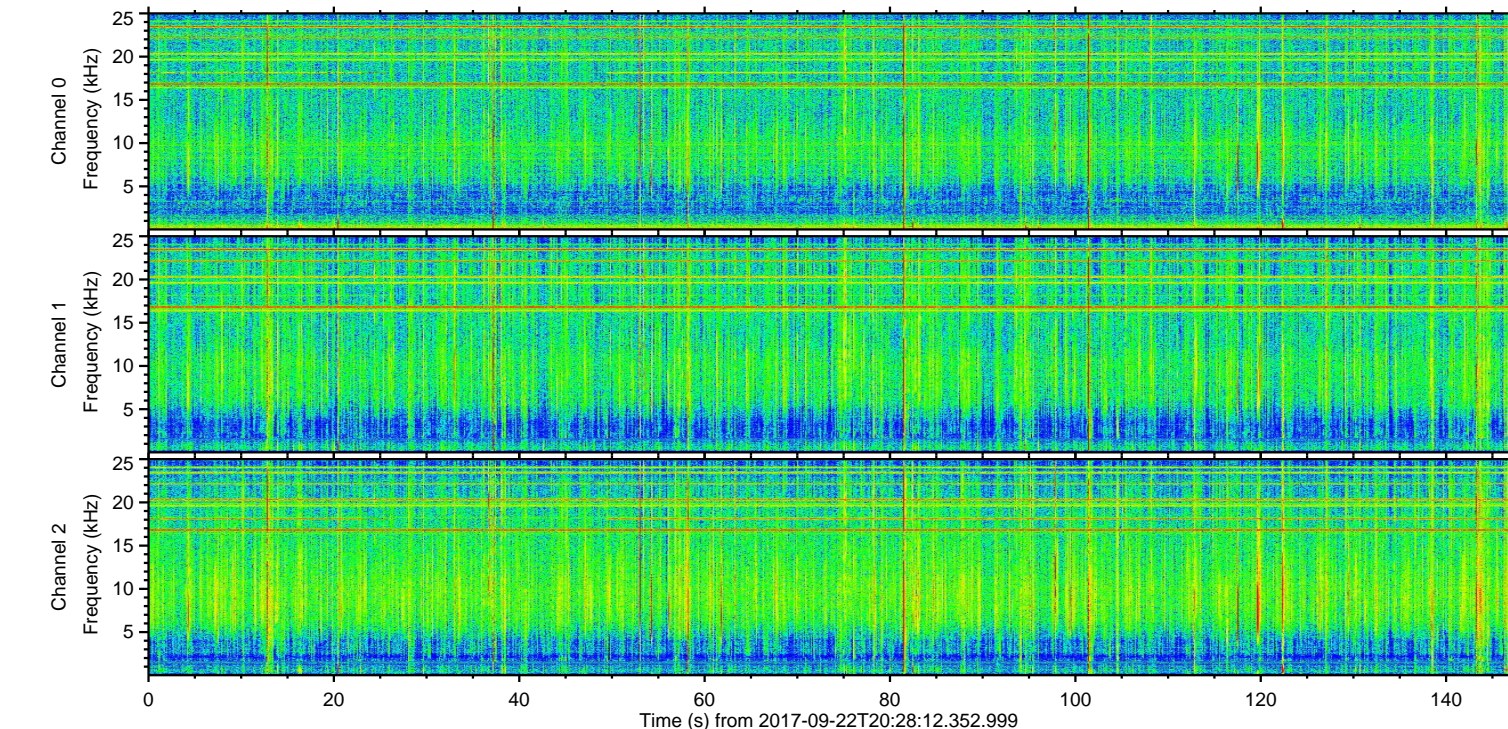
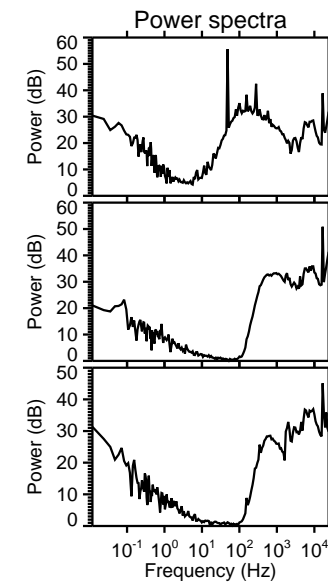
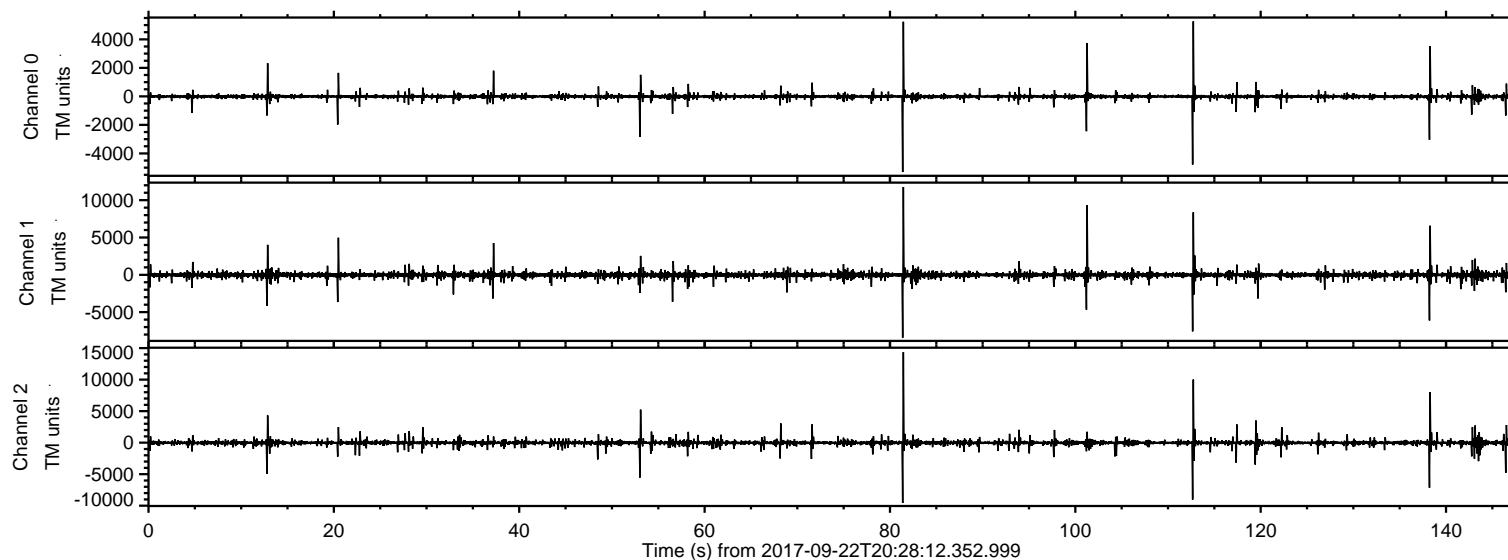
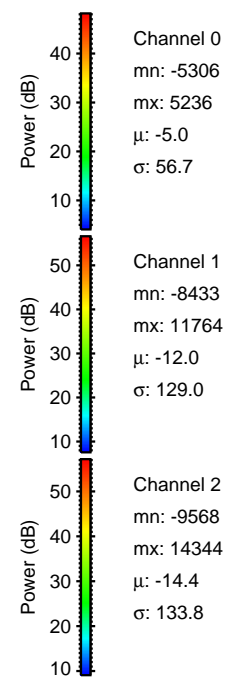
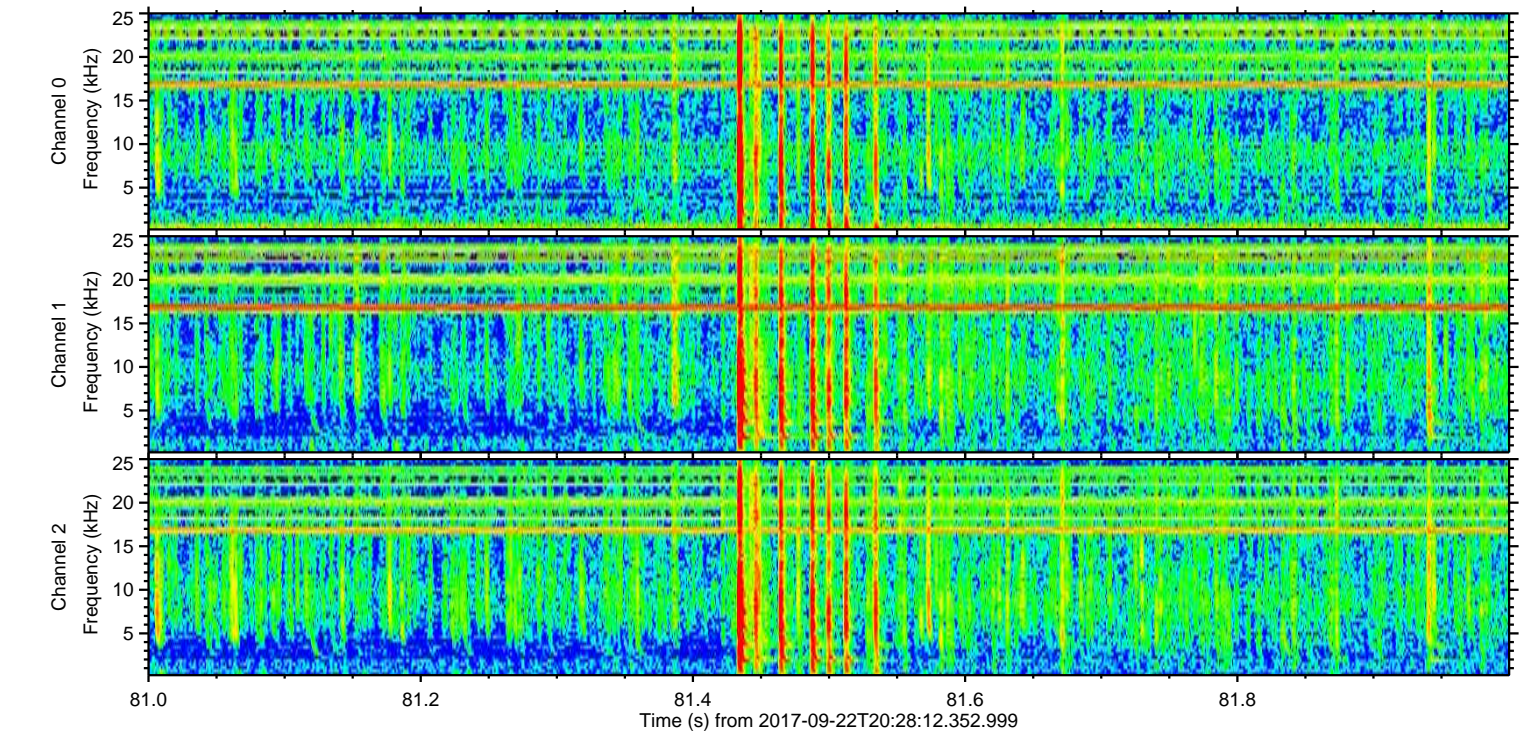
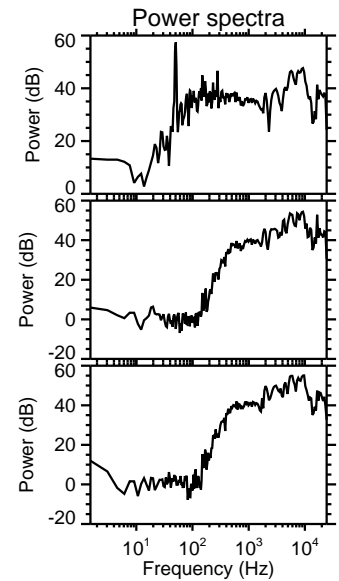
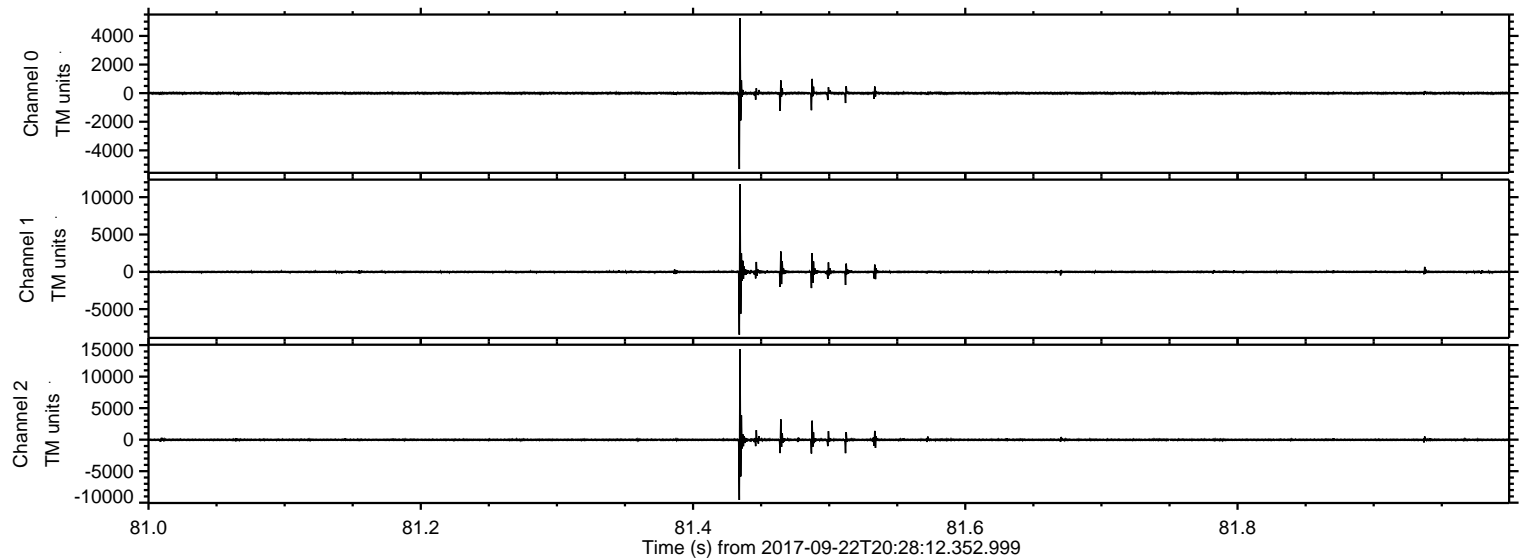


ELMAVAN 3D WAVEFORMS (Measured data sampled at 50 kHz) 51000 packets of 144 samples from 2017-09-22T20:28:12.352.999.

Processed Fri Sep 22 22:35:58 2017 by ELM ver.2012-10-06 from 001__elm20170922_202811__dat00.bin

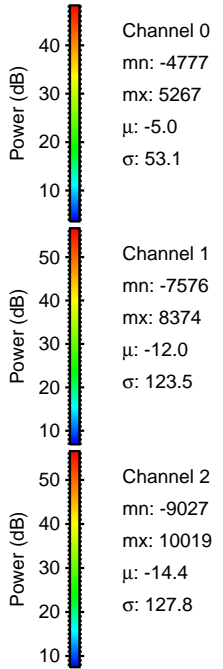
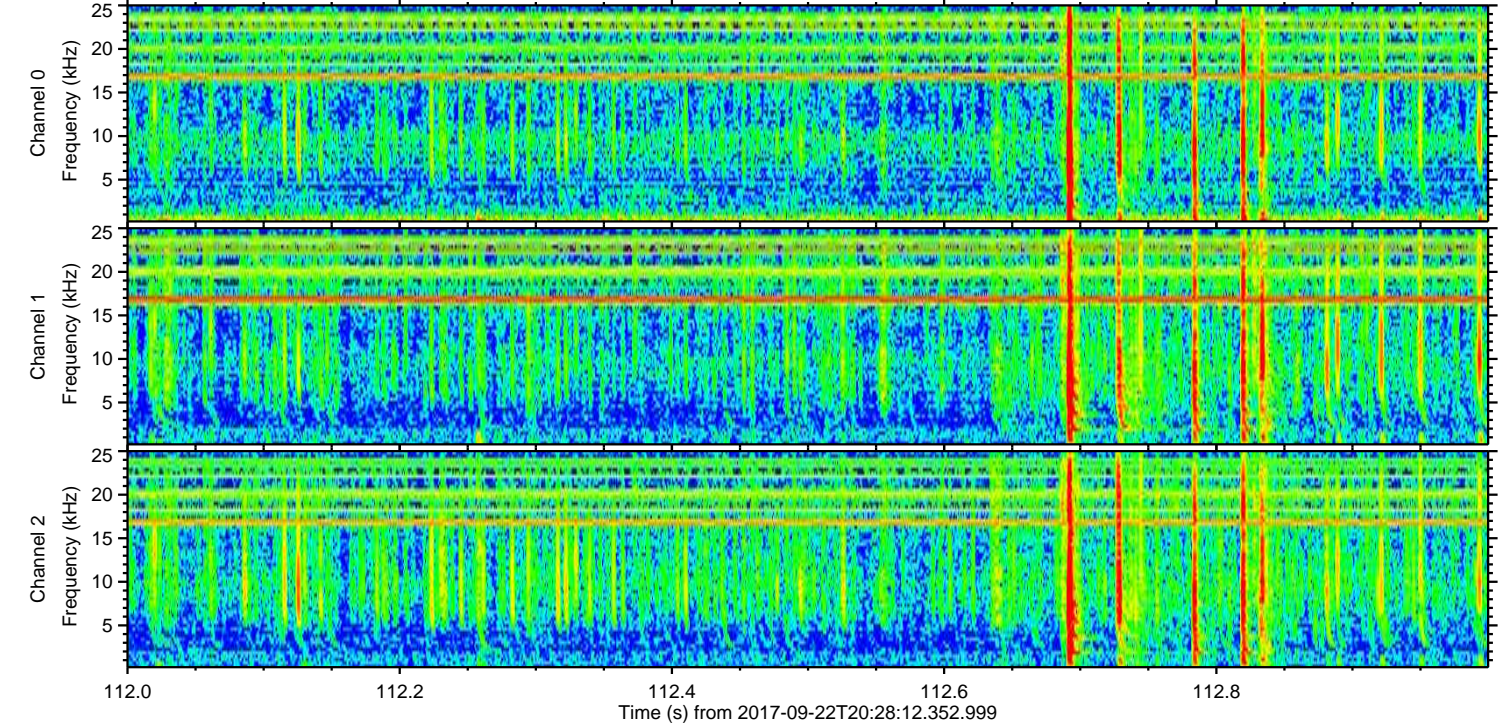
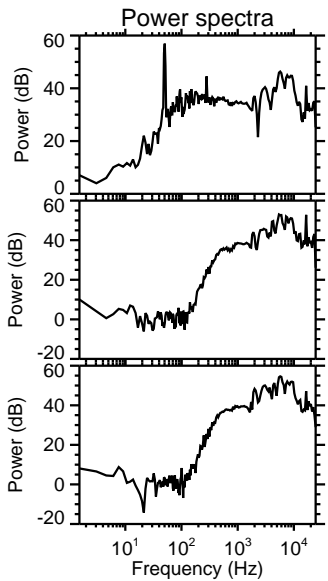
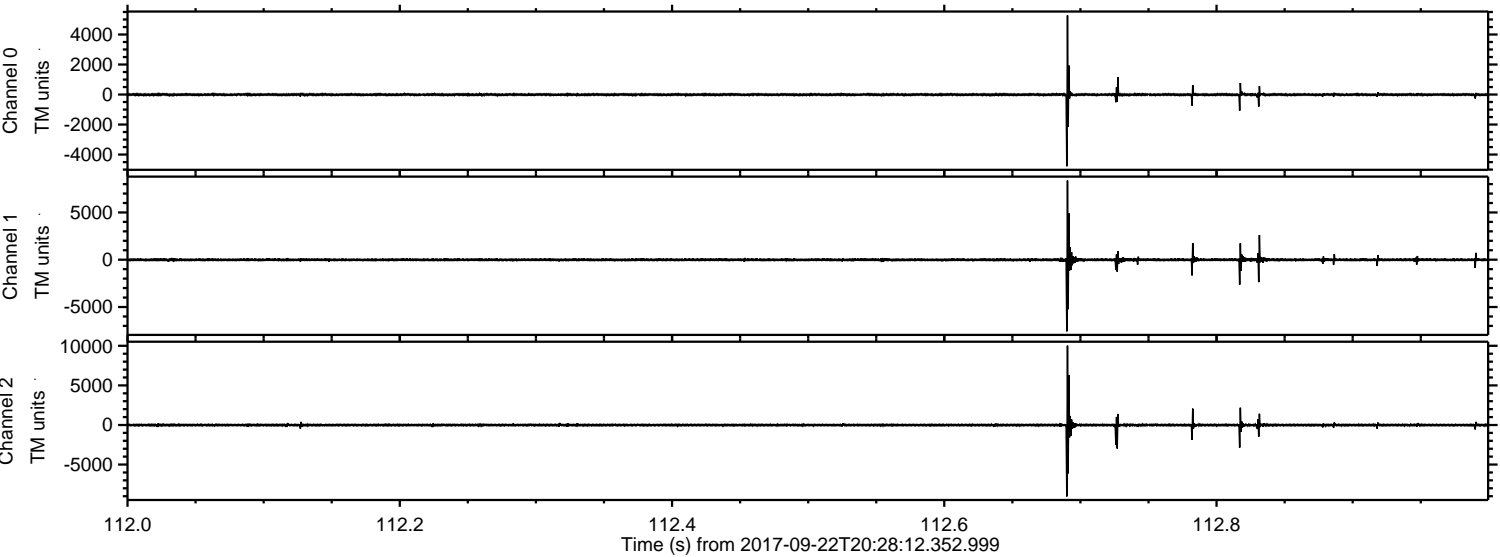


Processed Fri Sep 22 22:36:04 2017 by ELM ver.2012-10-06 from 001__elm20170922_202811__dat00.bin



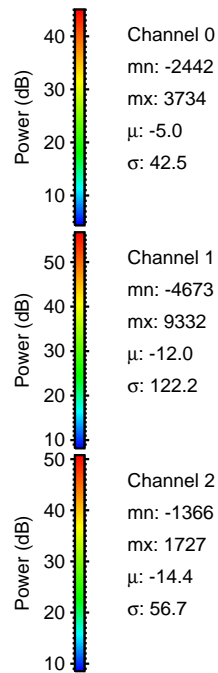
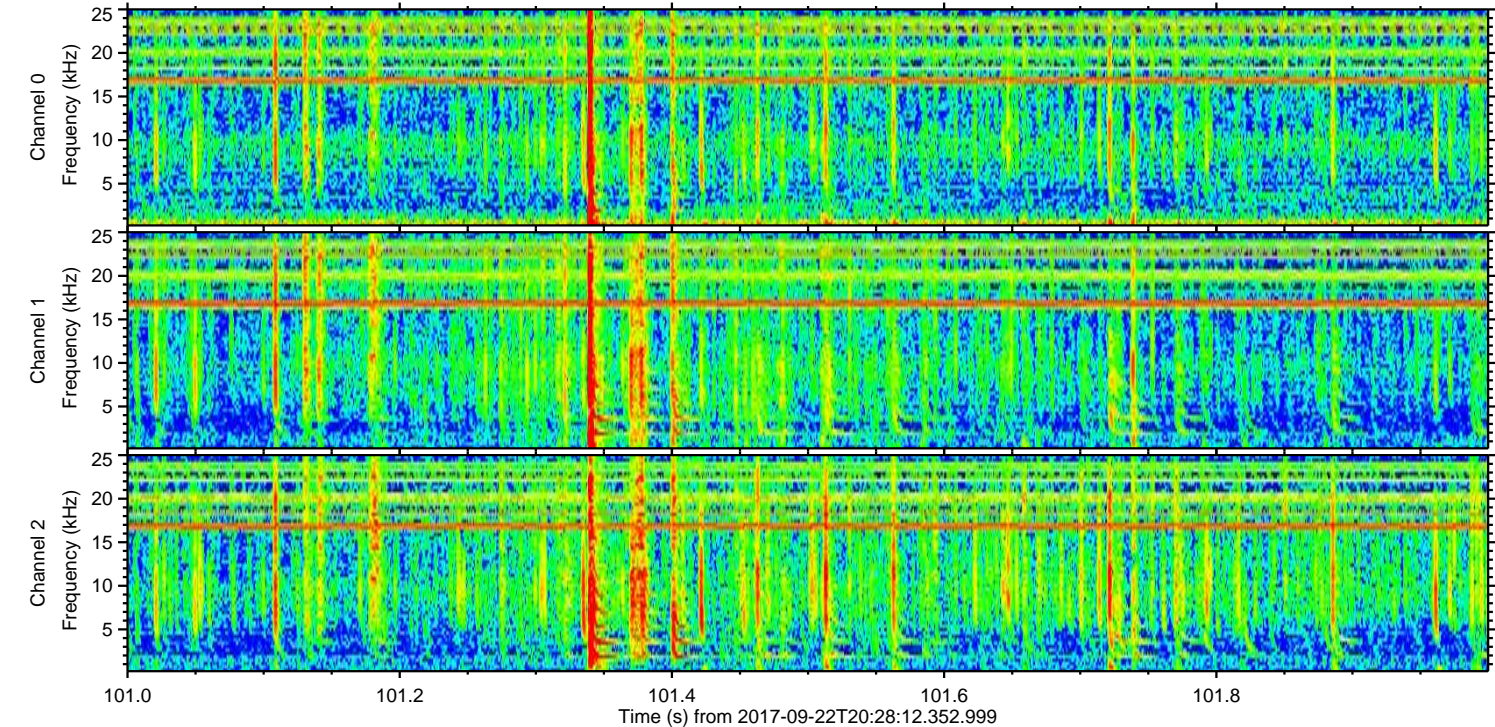
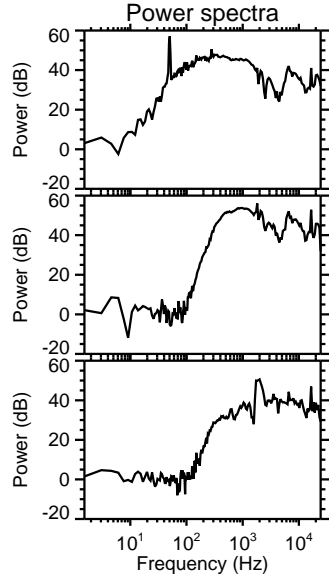
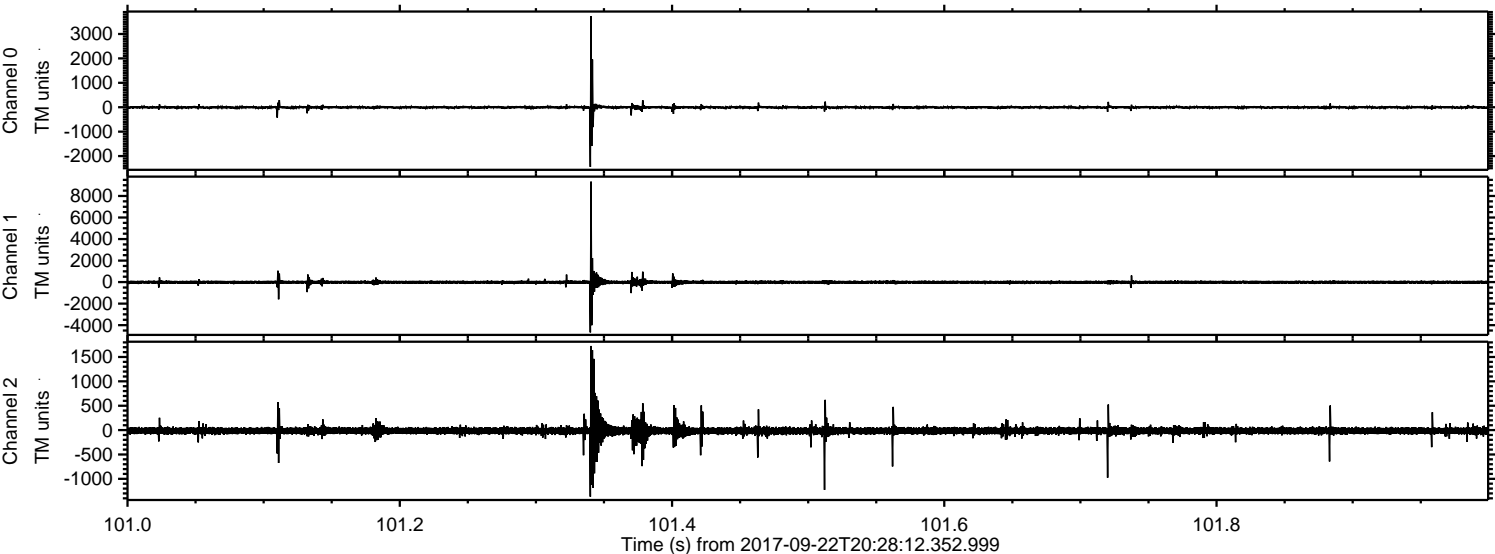
ELMAVAN 3D WAVEFORMS (Measured data sampled at 50 kHz) 51000 packets of 144 samples from 2017-09-22T20:28:12.352.999. Part 113/147

Processed Fri Sep 22 22:36:05 2017 by ELM ver.2012-10-06 from 001__elm20170922_202811__dat00.bin



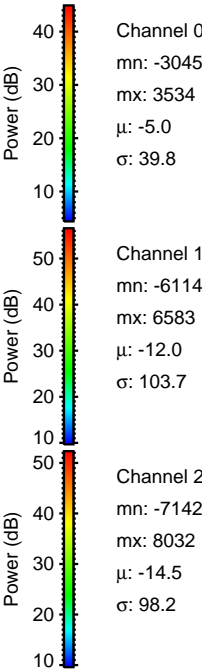
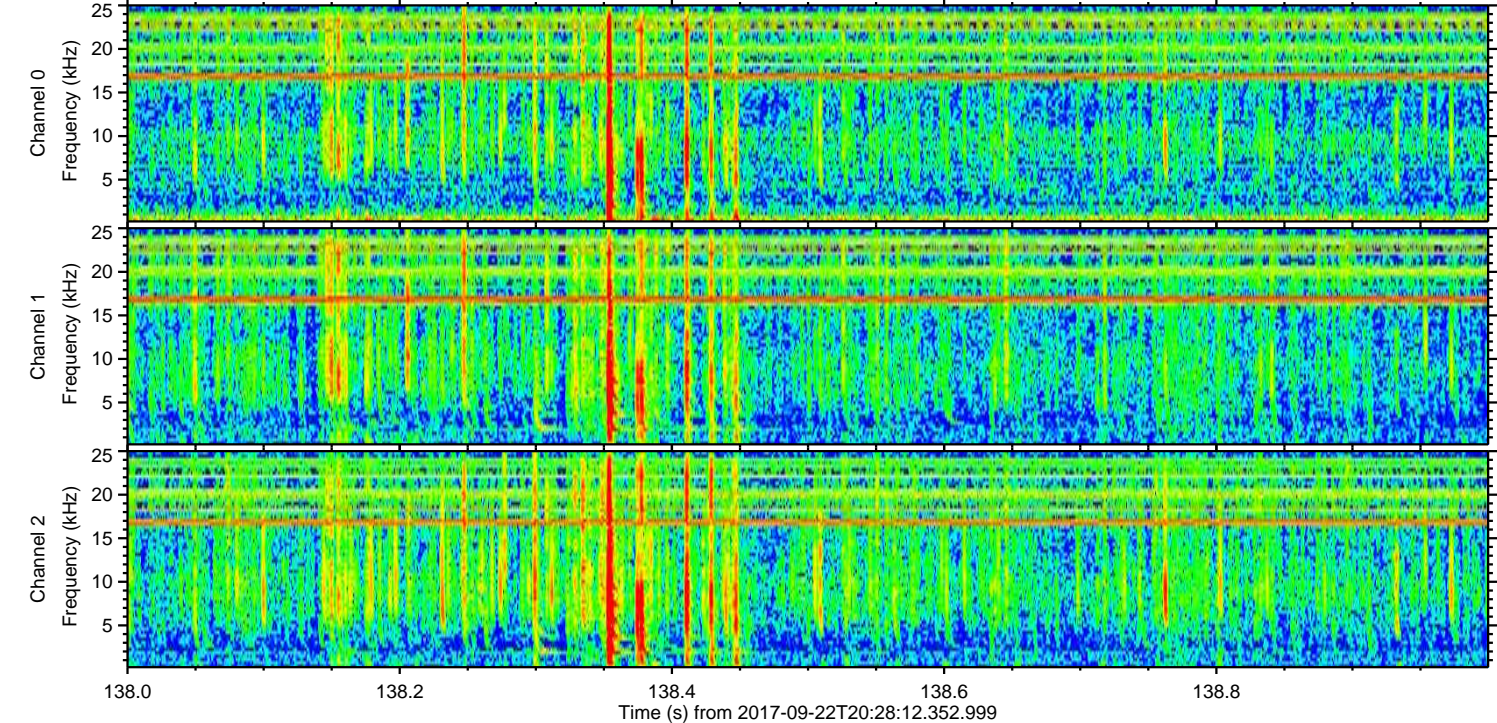
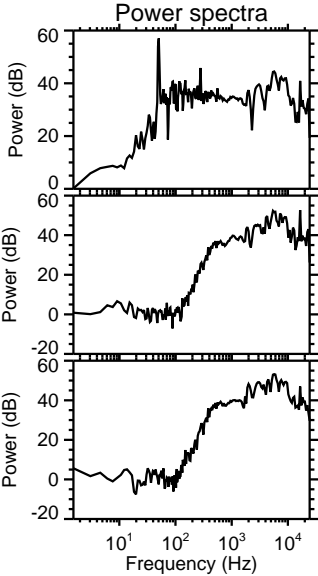
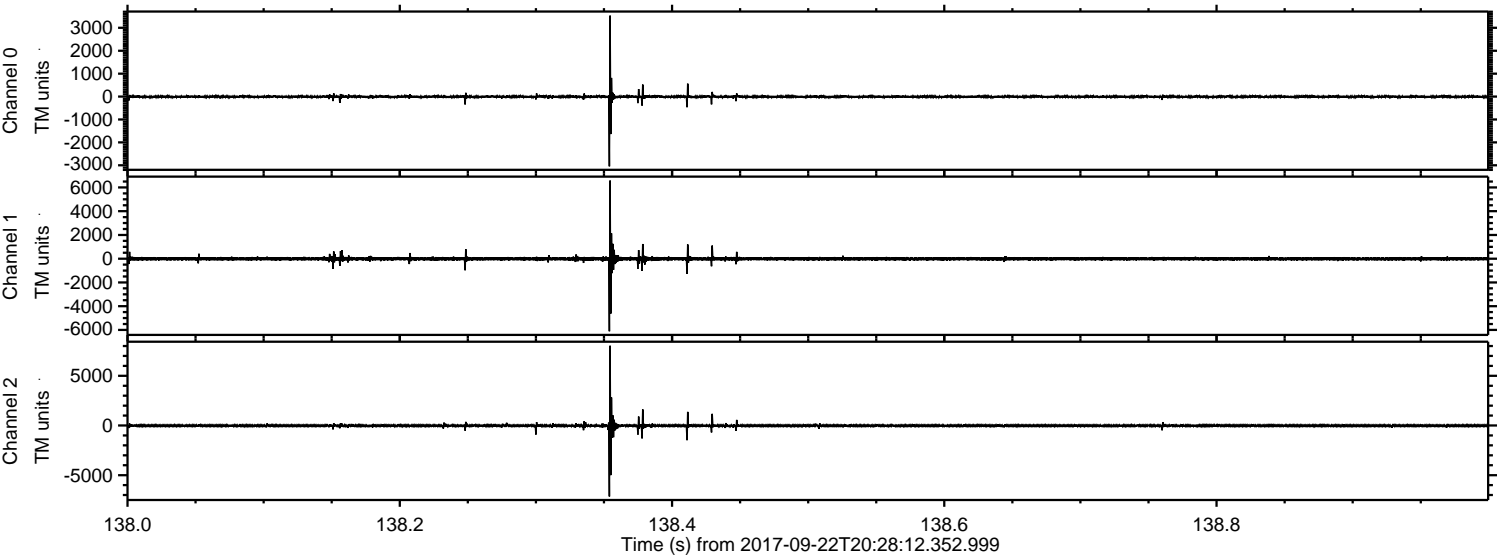
ELMAVAN 3D WAVEFORMS (Measured data sampled at 50 kHz) 51000 packets of 144 samples from 2017-09-22T20:28:12.352.999. Part 102/147

Processed Fri Sep 22 22:36:06 2017 by ELM ver.2012-10-06 from 001__elm20170922_202811__dat00.bin

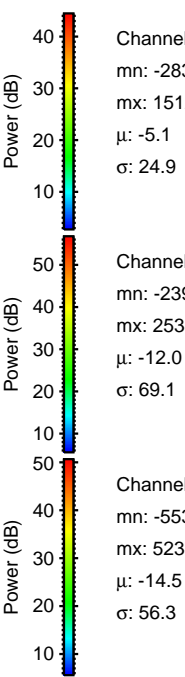
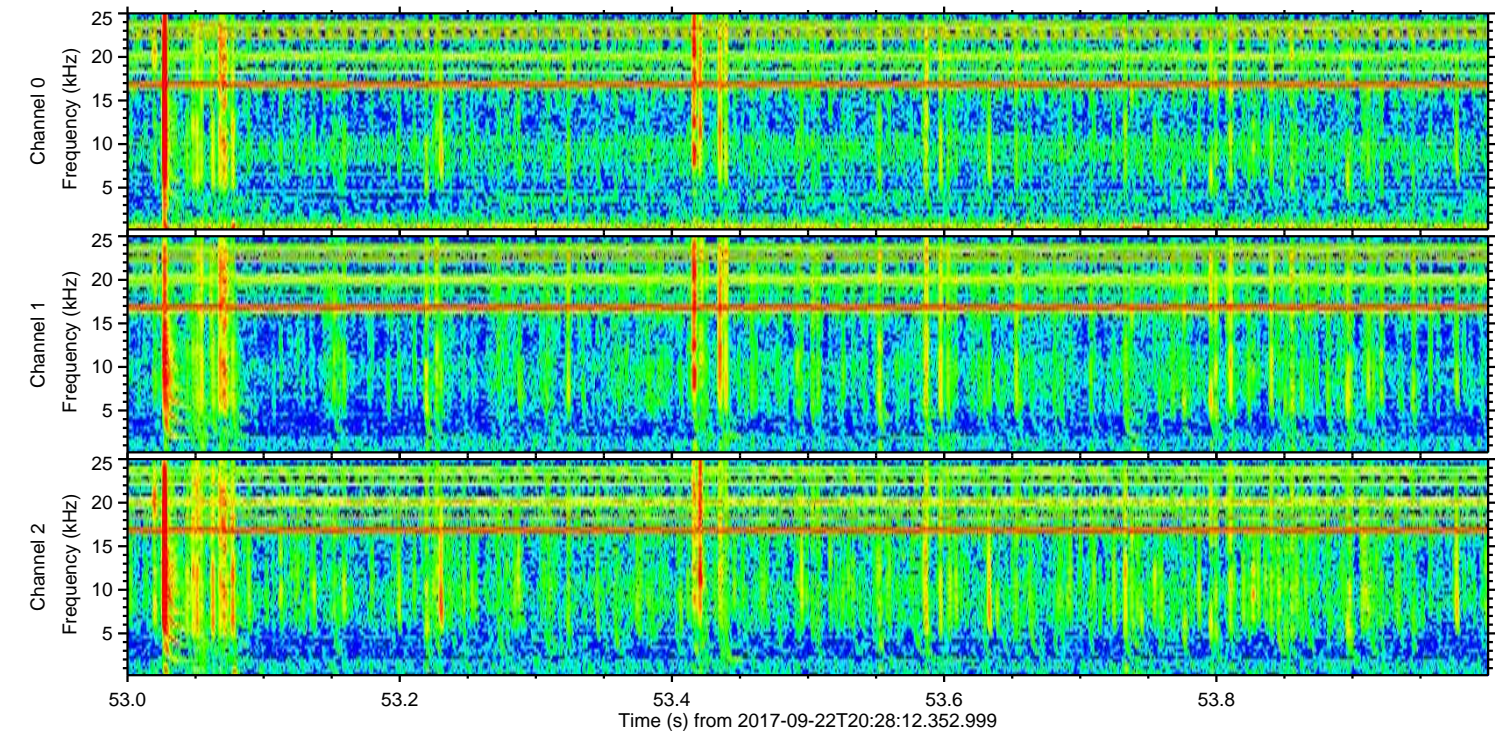
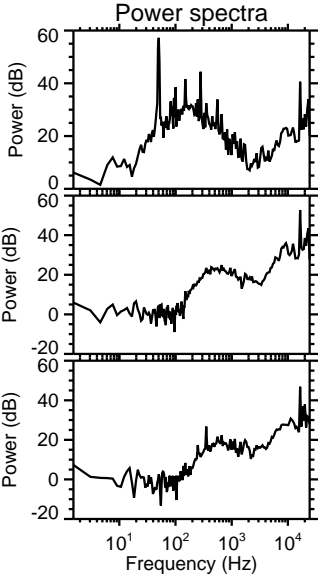
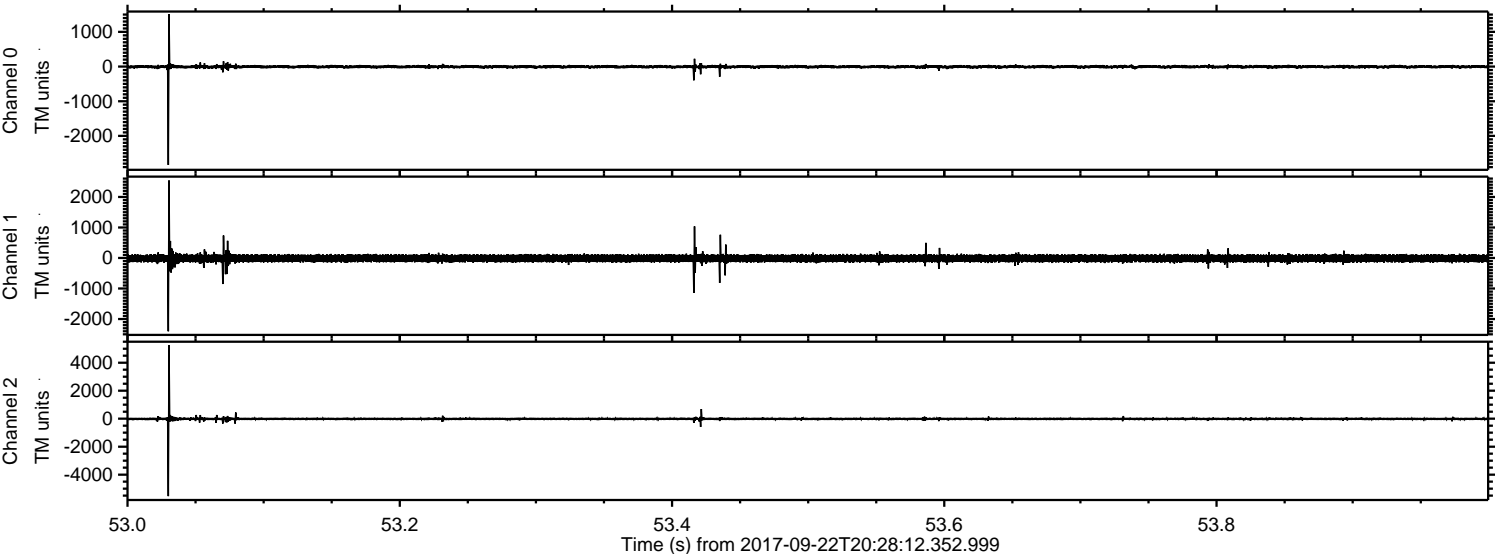


ELMAVAN 3D WAVEFORMS (Measured data sampled at 50 kHz) 51000 packets of 144 samples from 2017-09-22T20:28:12.352.999. Part 139/147

Processed Fri Sep 22 22:36:06 2017 by ELM ver.2012-10-06 from 001__elm20170922_202811__dat00.bin



Processed Fri Sep 22 22:36:07 2017 by ELM ver.2012-10-06 from 001__elm20170922_202811__dat00.bin

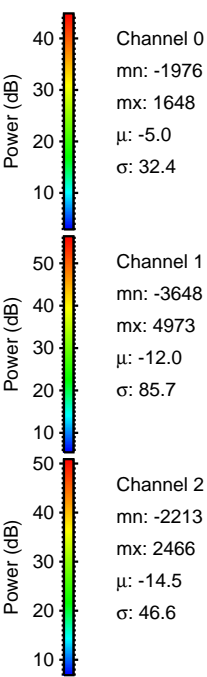
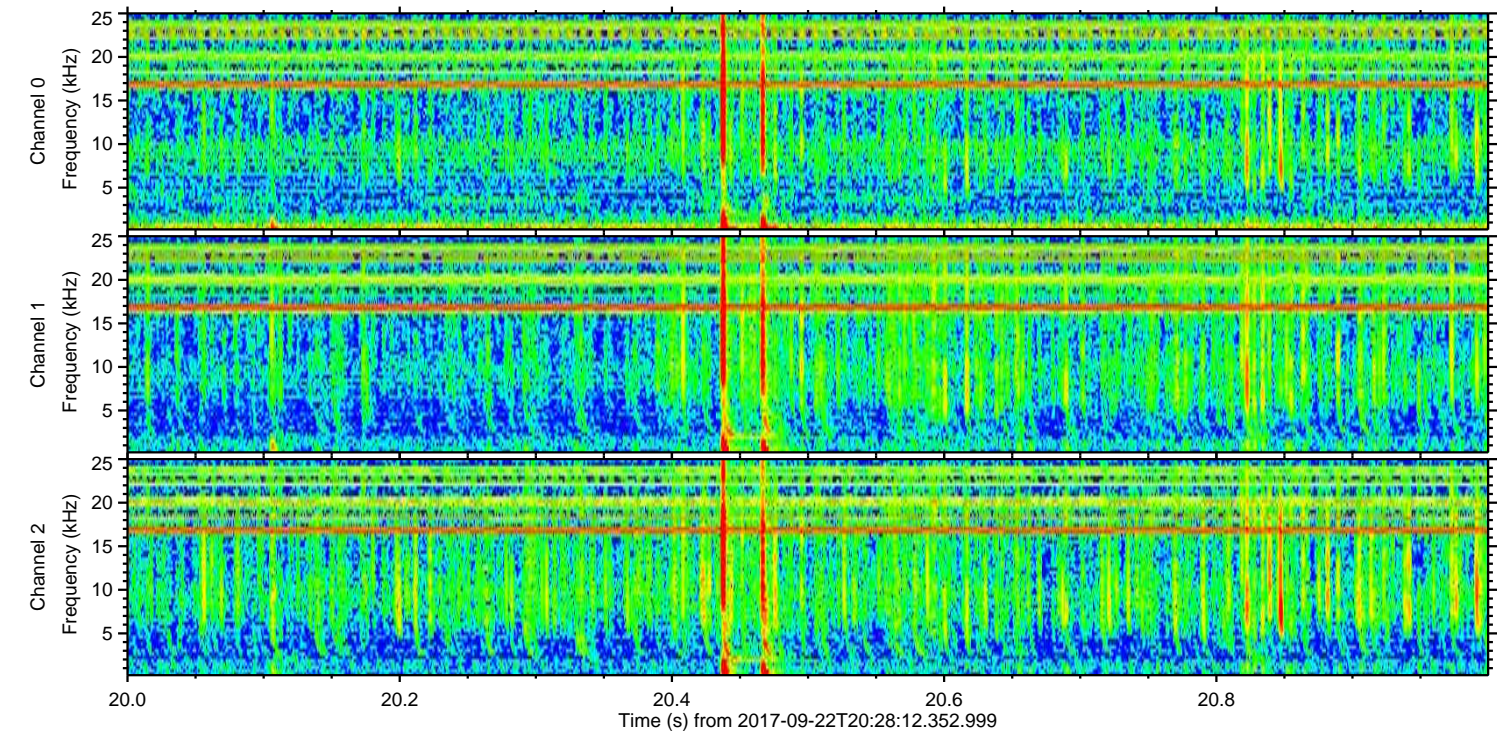
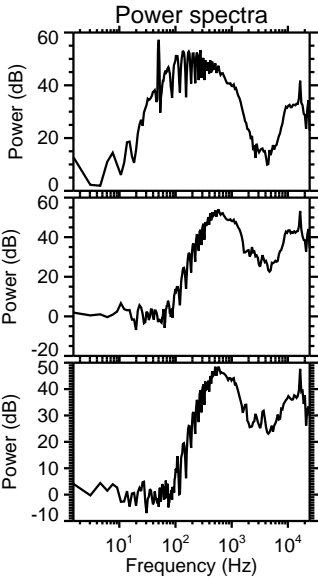
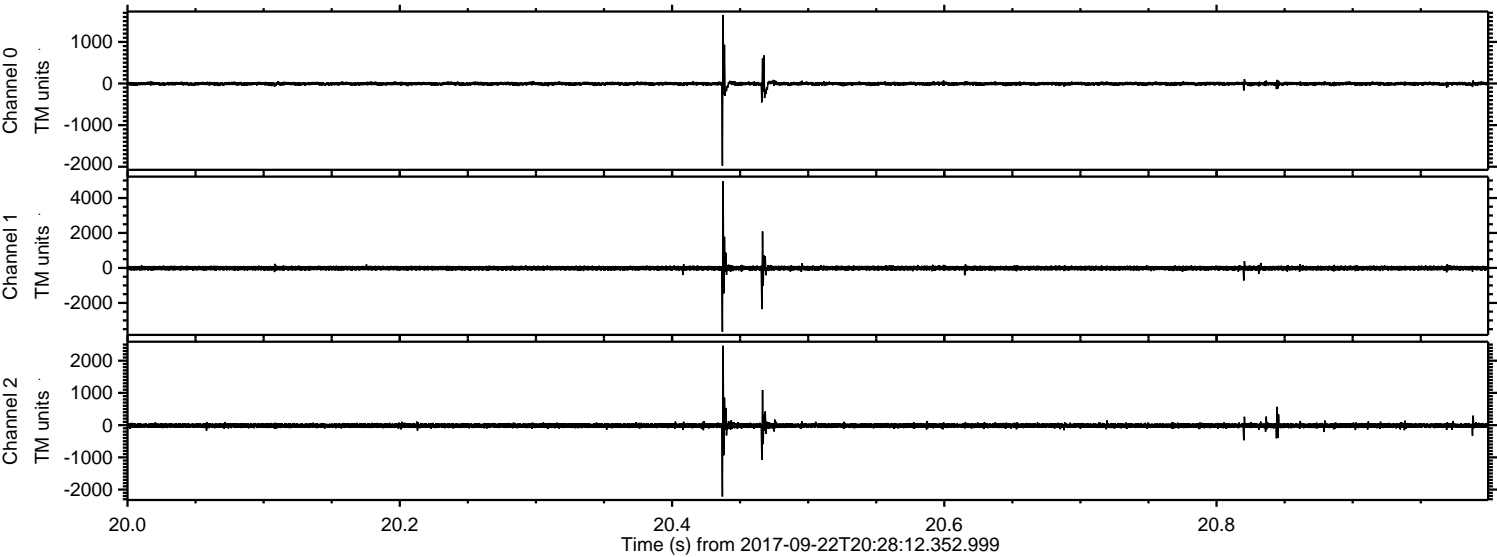


Channel 0
mn: -2837
mx: 1512
 μ : -5.1
 σ : 24.9

Channel 1
mn: -2399
mx: 2538
 μ : -12.0
 σ : 69.1

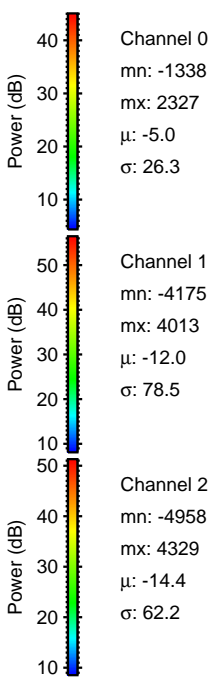
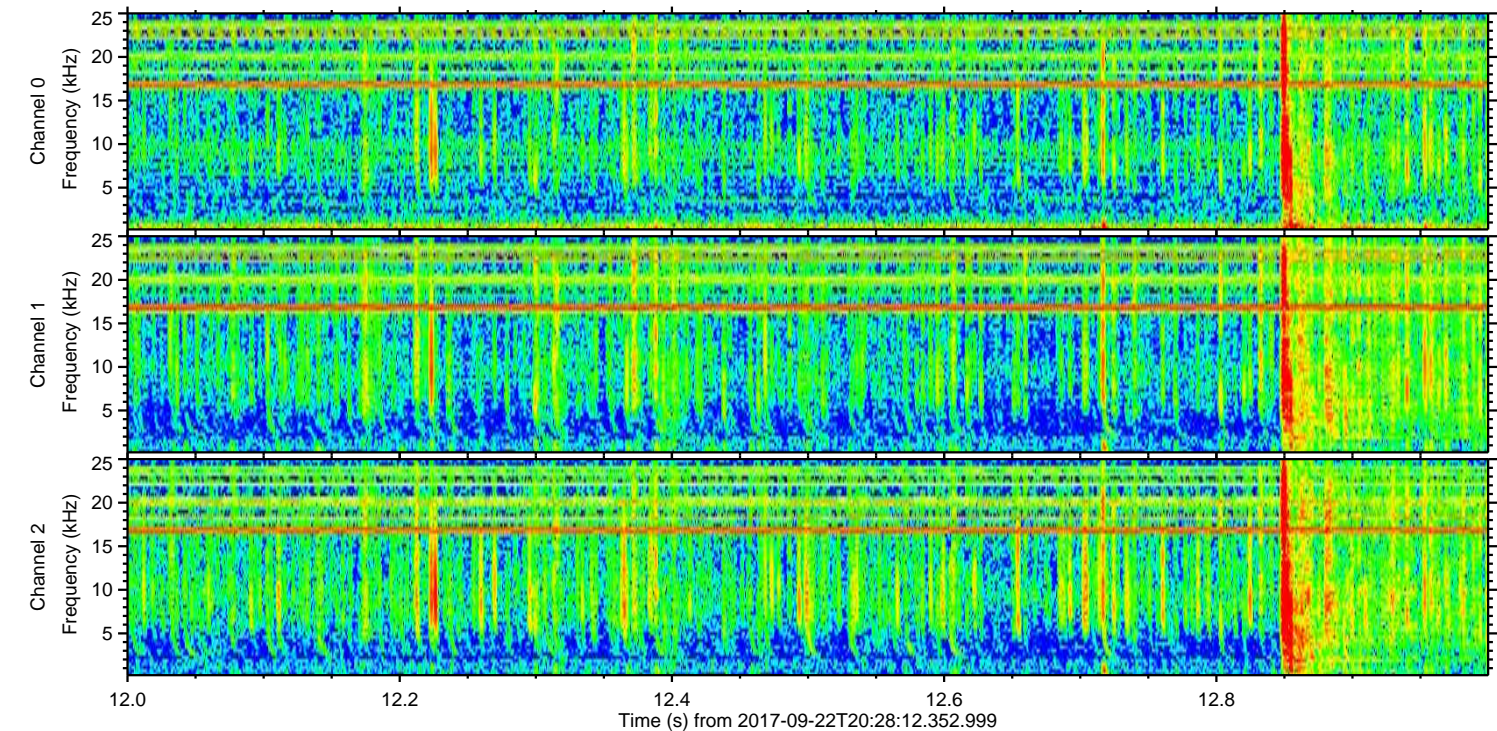
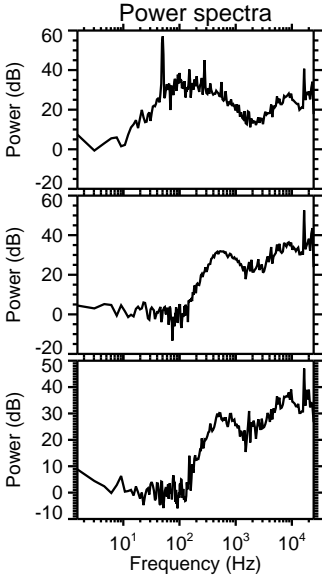
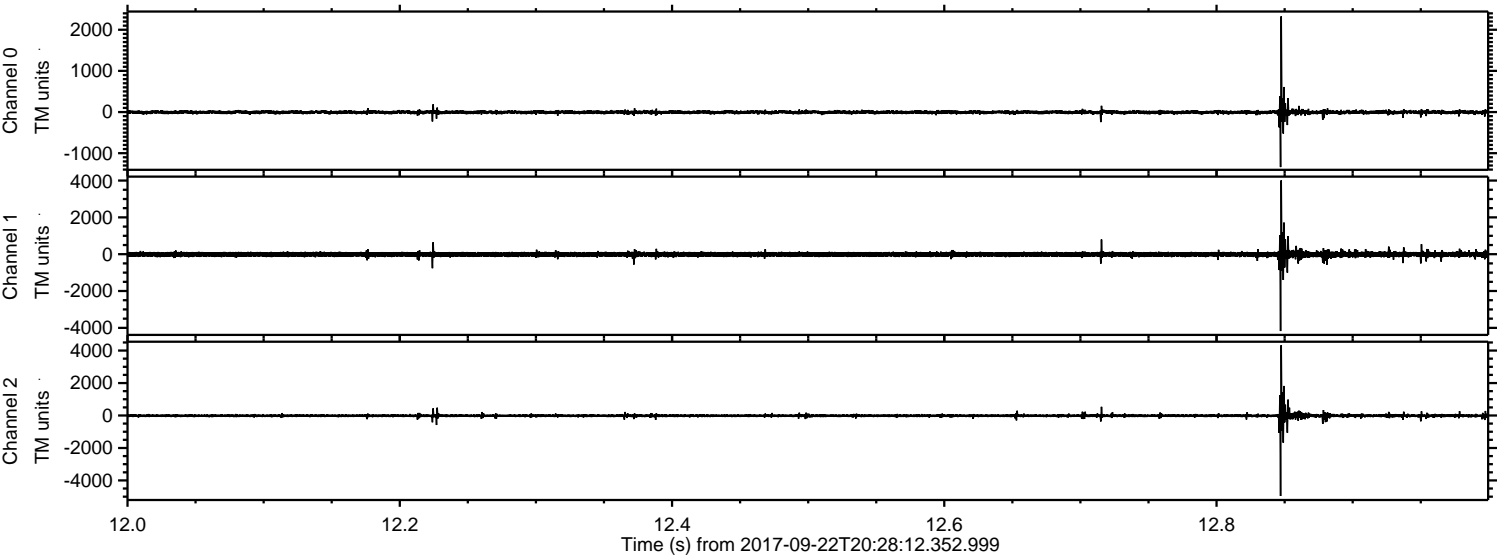
Channel 2
mn: -5534
mx: 5239
 μ : -14.5
 σ : 56.3

Processed Fri Sep 22 22:36:08 2017 by ELM ver.2012-10-06 from 001__elm20170922_202811__dat00.bin

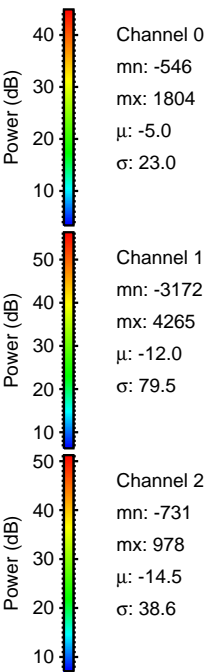
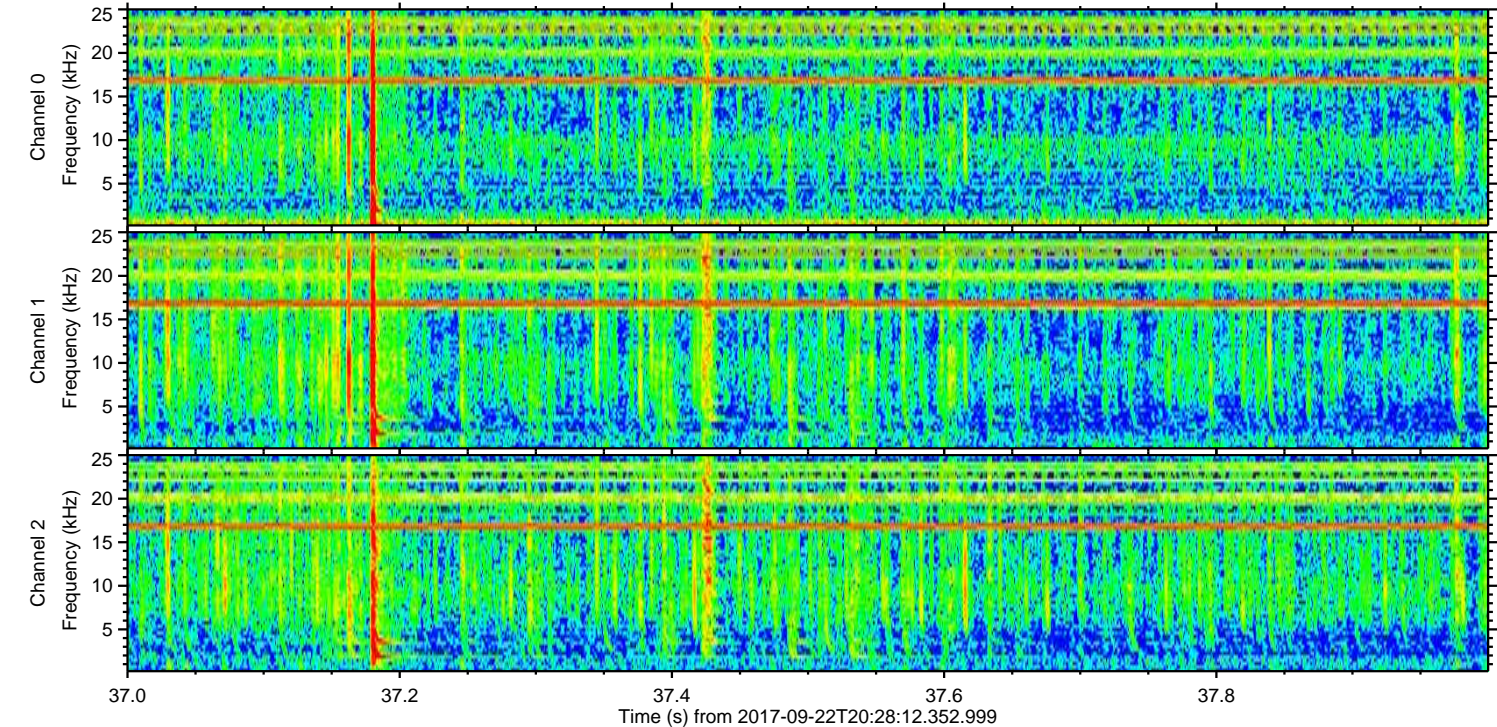
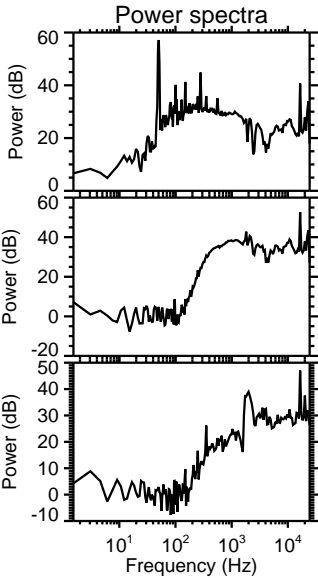
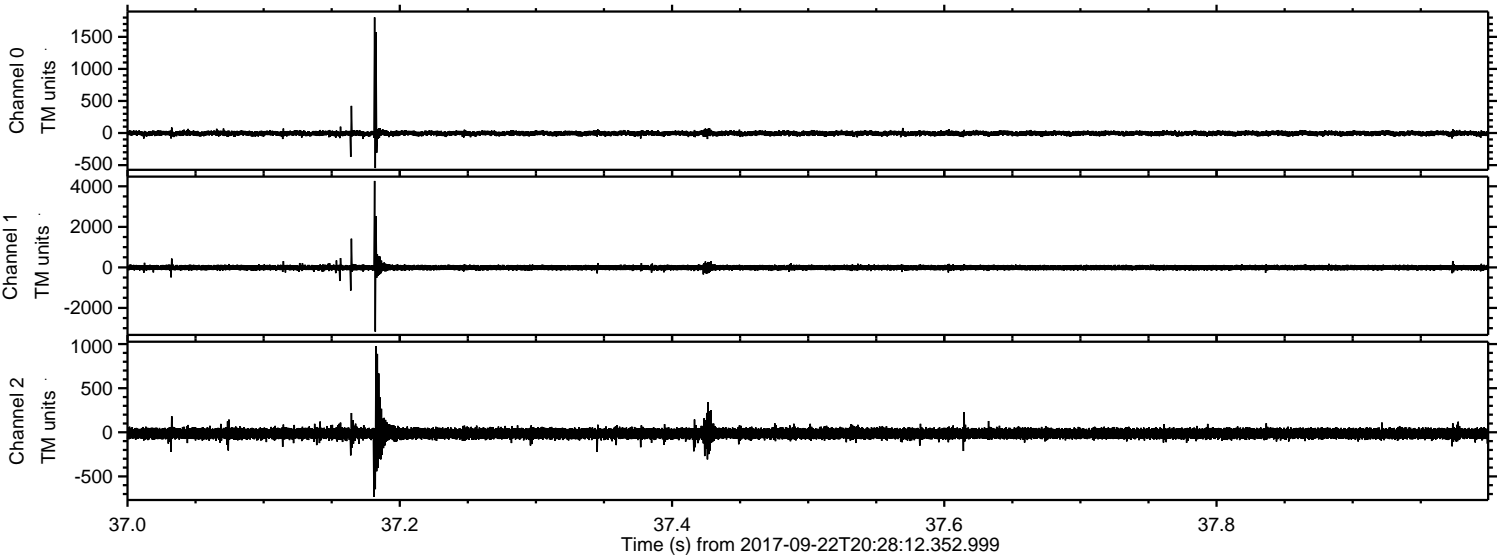


ELMAVAN 3D WAVEFORMS (Measured data sampled at 50 kHz) 51000 packets of 144 samples from 2017-09-22T20:28:12.352.999. Part 13/147

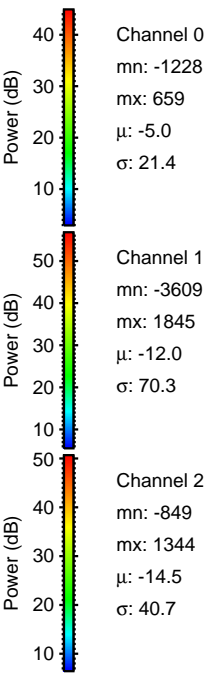
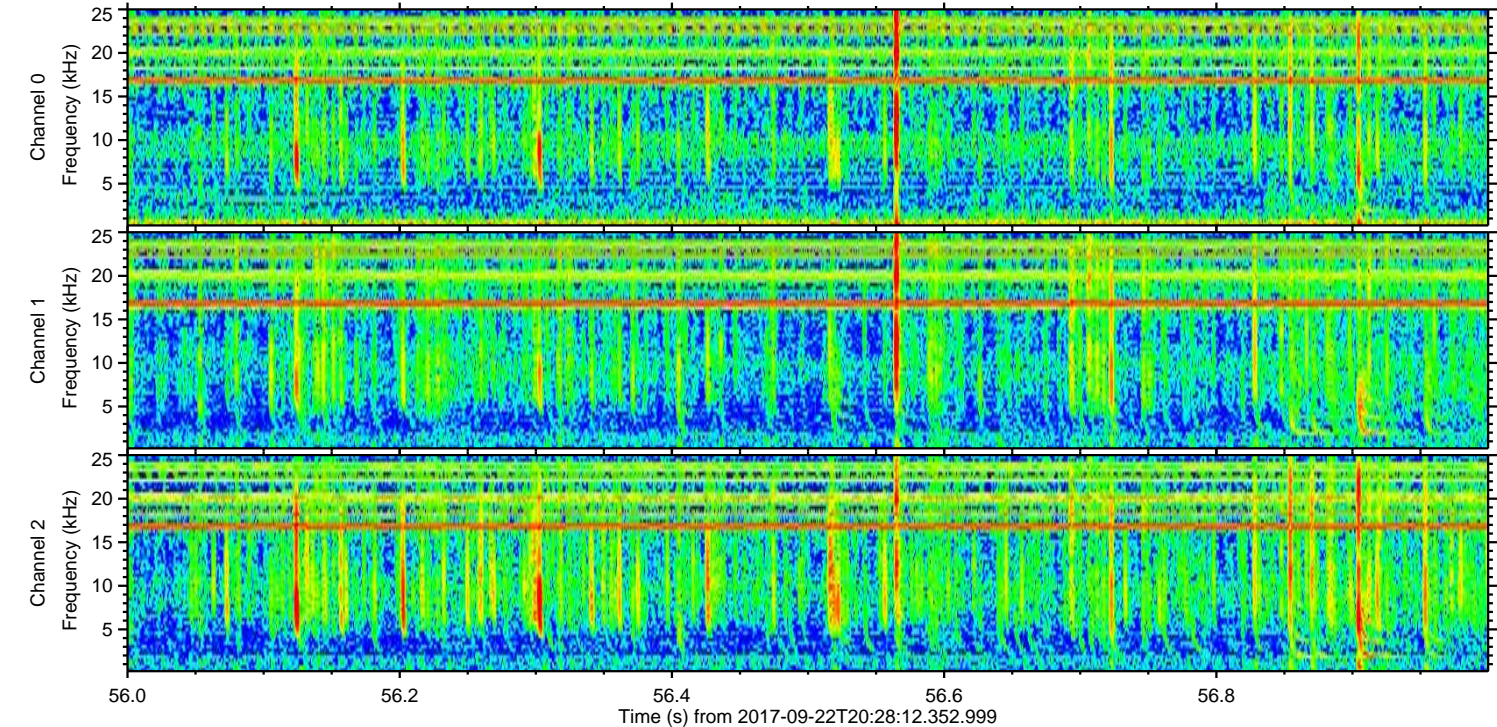
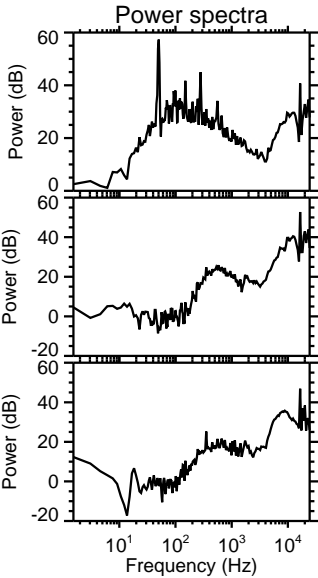
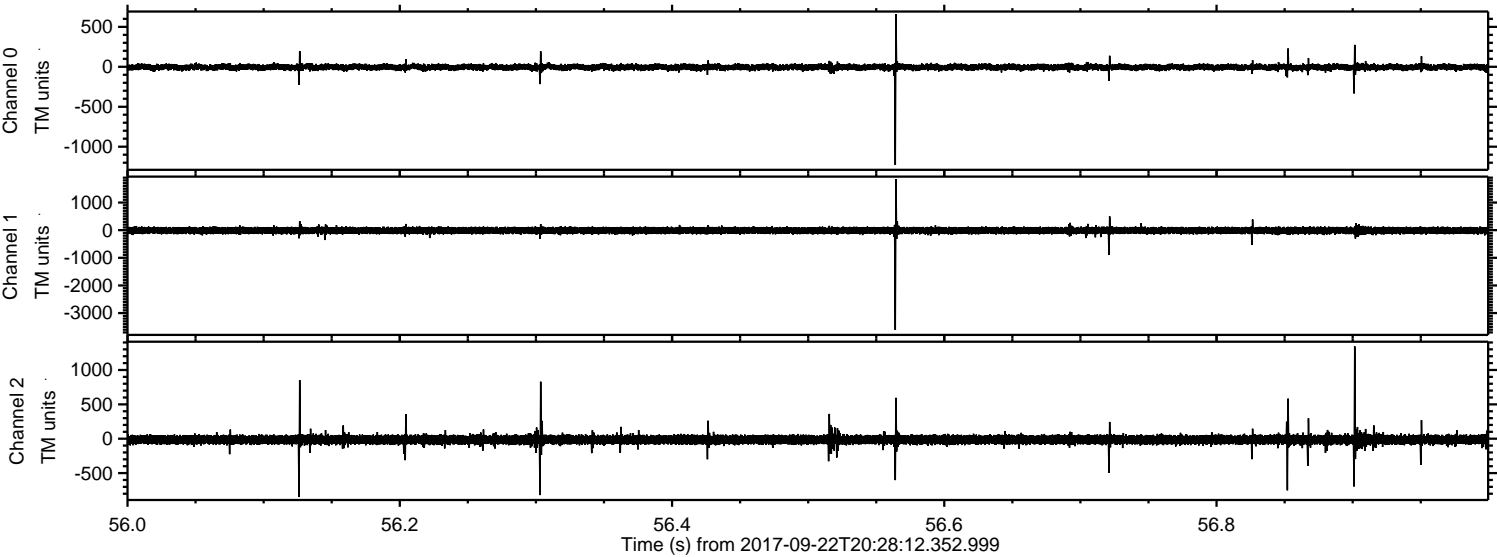
Processed Fri Sep 22 22:36:08 2017 by ELM ver.2012-10-06 from 001__elm20170922_202811__dat00.bin



Processed Fri Sep 22 22:36:09 2017 by ELM ver.2012-10-06 from 001__elm20170922_202811__dat00.bin



Processed Fri Sep 22 22:36:10 2017 by ELM ver.2012-10-06 from 001__elm20170922_202811__dat00.bin



Channel 0
mn: -1228
mx: 659
 μ : -5.0
 σ : 21.4

Channel 1
mn: -3609
mx: 1845
 μ : -12.0
 σ : 70.3

Channel 2
mn: -849
mx: 1344
 μ : -14.5
 σ : 40.7

Processed Fri Sep 22 22:36:11 2017 by ELM ver.2012-10-06 from 001__elm20170922_202811__dat00.bin

