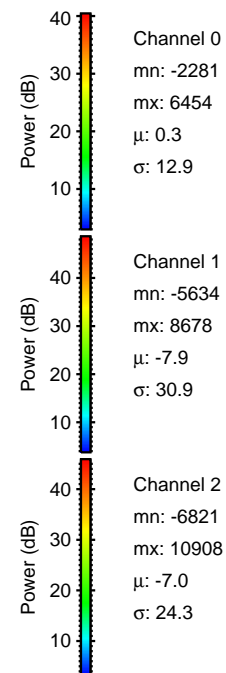
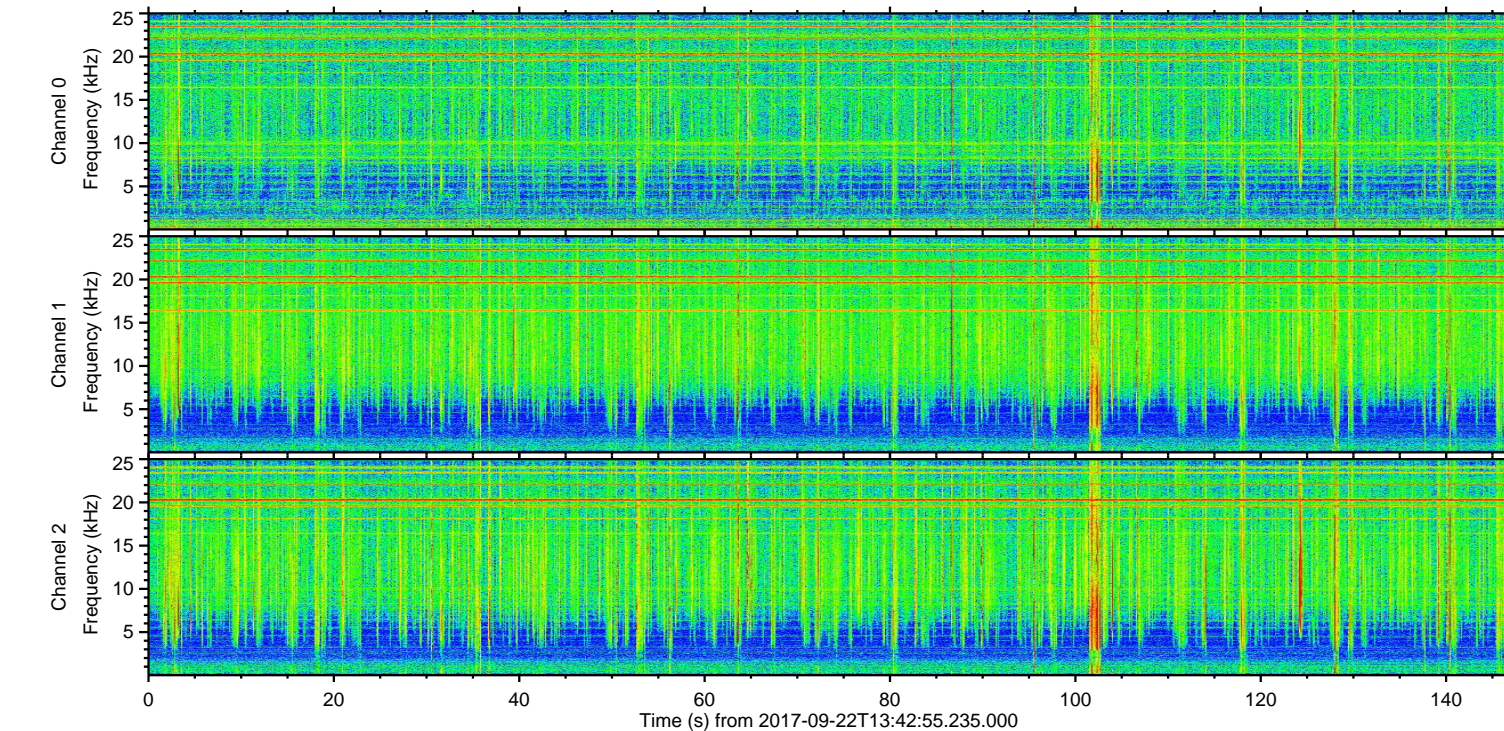
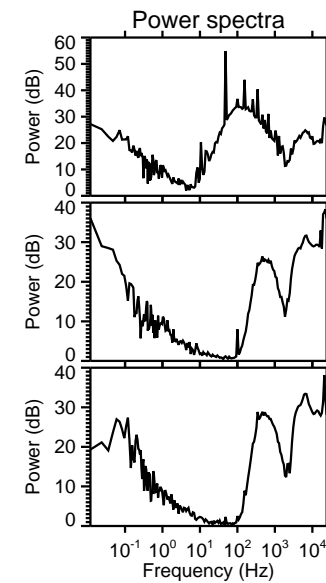
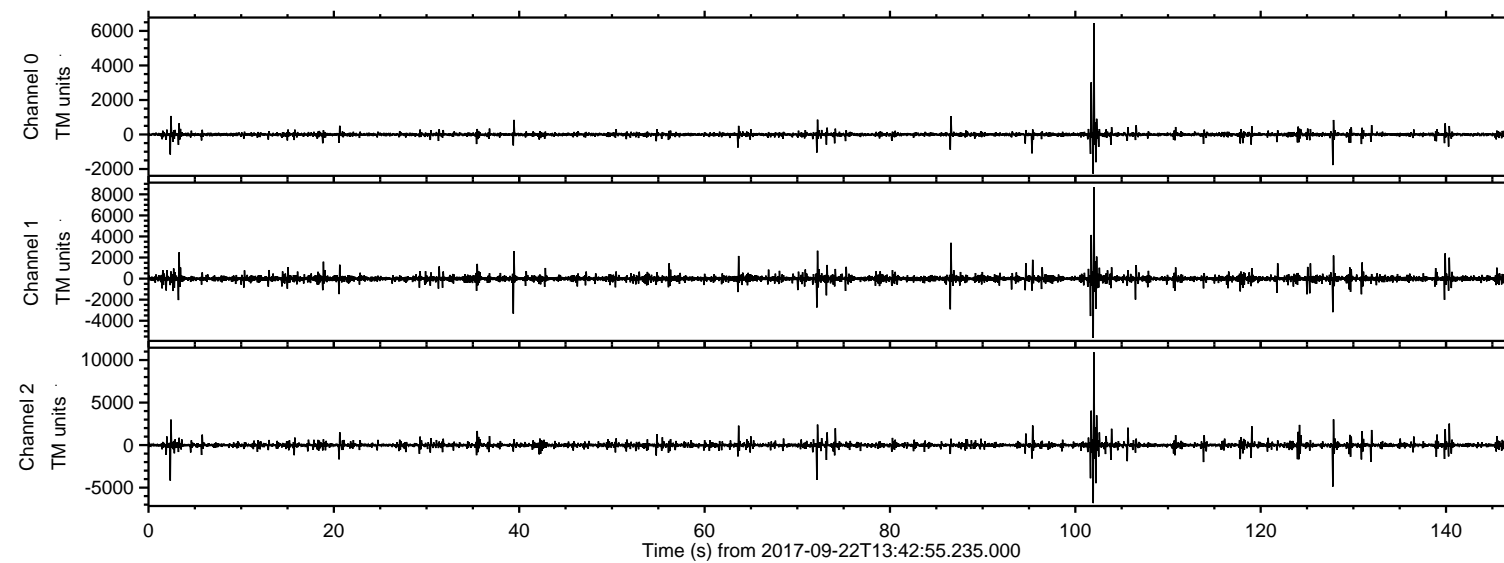


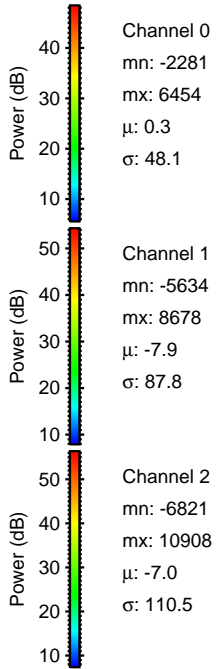
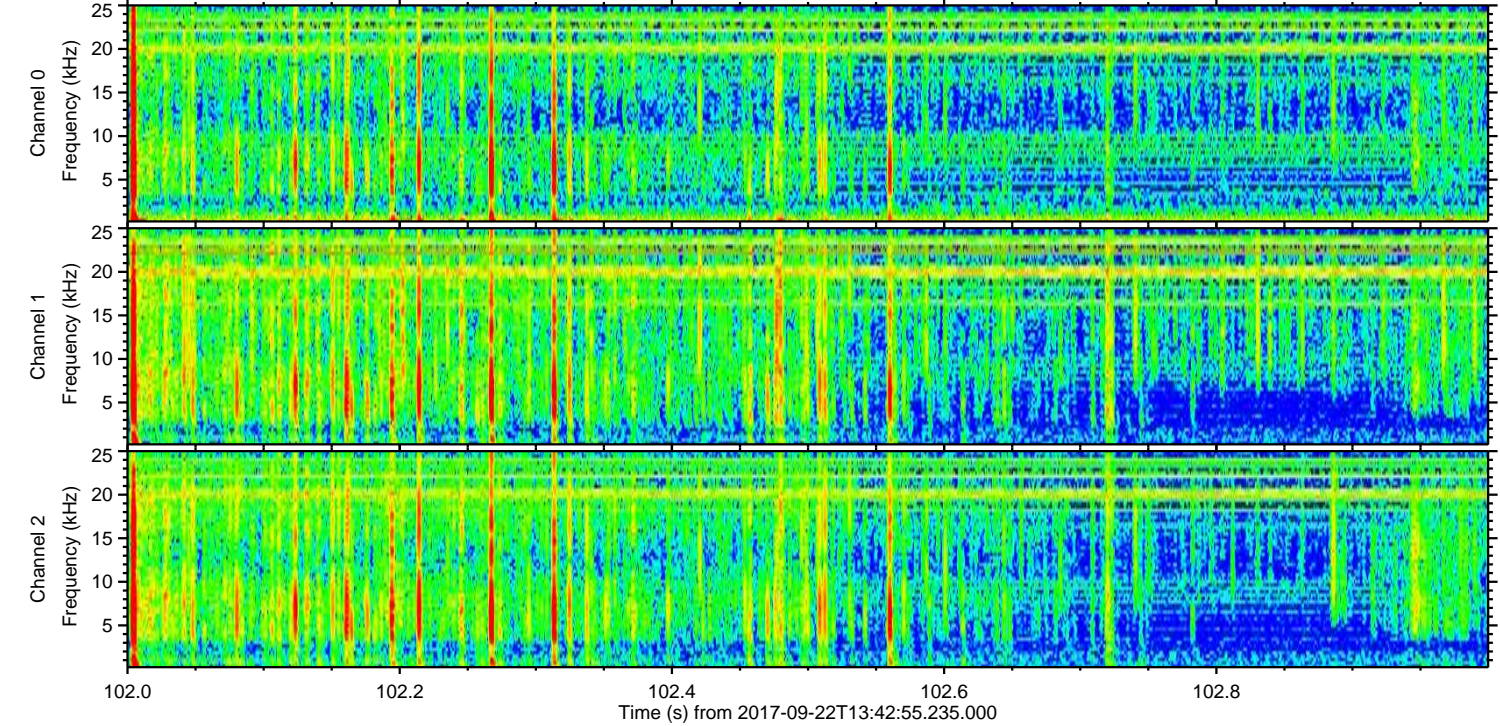
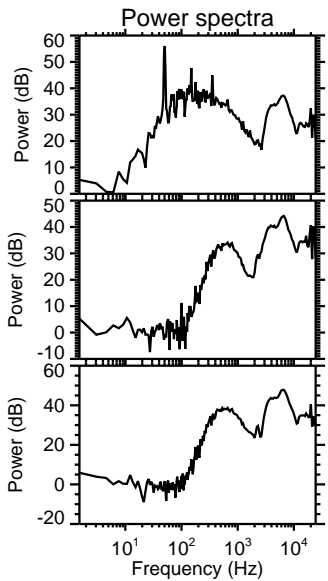
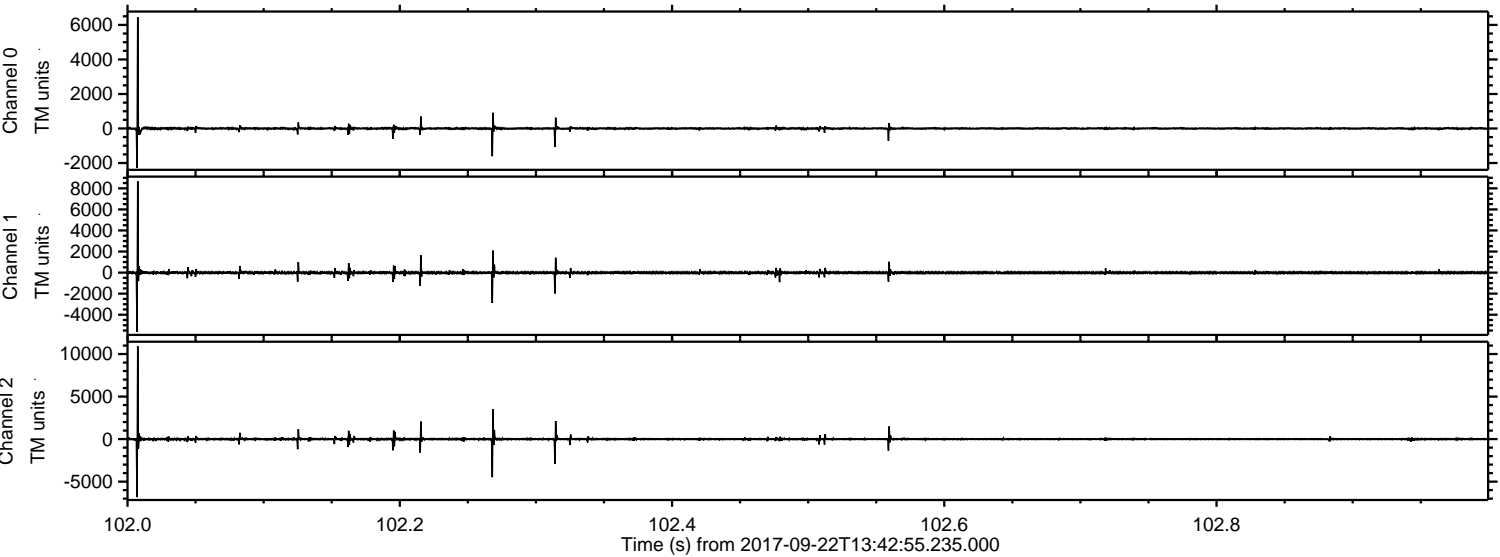
ELMAVAN 3D WAVEFORMS (Measured data sampled at 50 kHz) 51000 packets of 144 samples from 2017-09-22T13:42:55.235.000.

Processed Fri Sep 22 15:50:36 2017 by ELM ver.2012-10-06 from 001__elm20170922_134254__dat00.bin



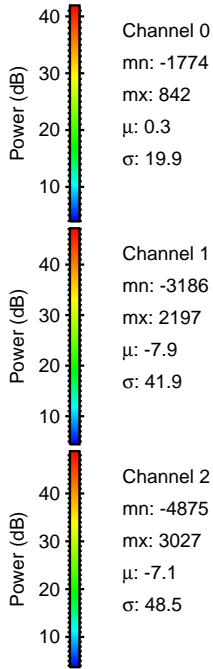
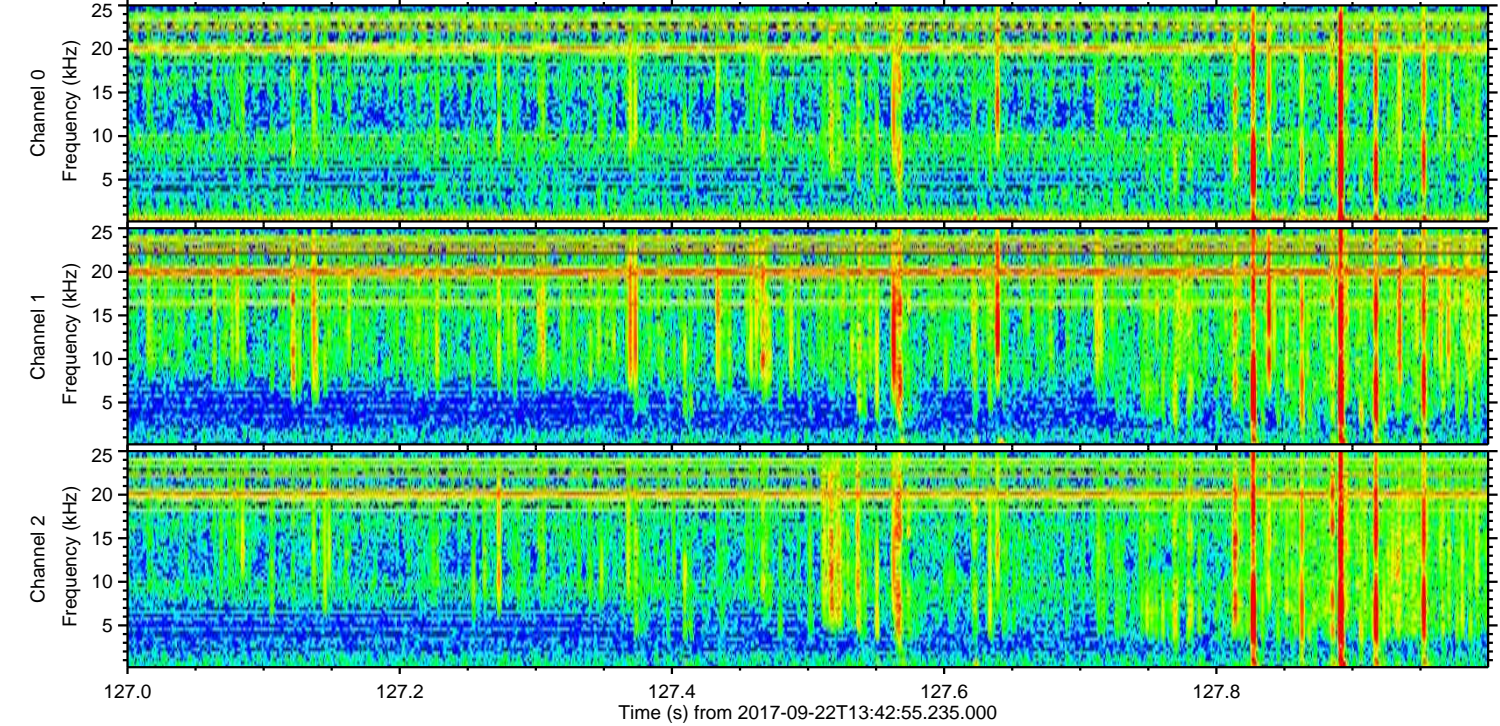
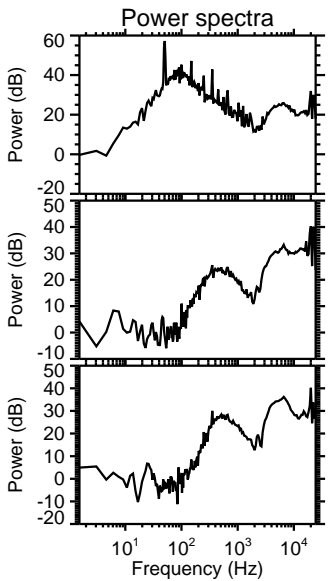
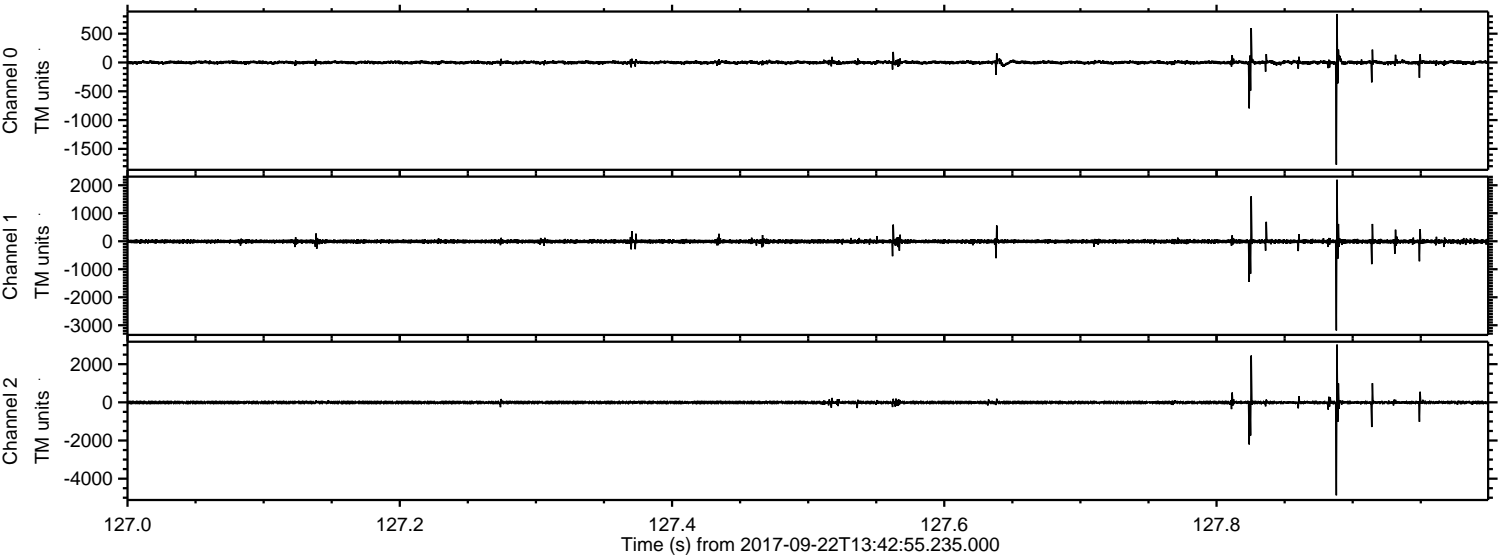
ELMAVAN 3D WAVEFORMS (Measured data sampled at 50 kHz) 51000 packets of 144 samples from 2017-09-22T13:42:55.235.000. Part 103/147

Processed Fri Sep 22 15:50:42 2017 by ELM ver.2012-10-06 from 001__elm20170922_134254__dat00.bin



ELMAVAN 3D WAVEFORMS (Measured data sampled at 50 kHz) 51000 packets of 144 samples from 2017-09-22T13:42:55.235.000. Part 128/147

Processed Fri Sep 22 15:50:43 2017 by ELM ver.2012-10-06 from 001__elm20170922_134254__dat00.bin



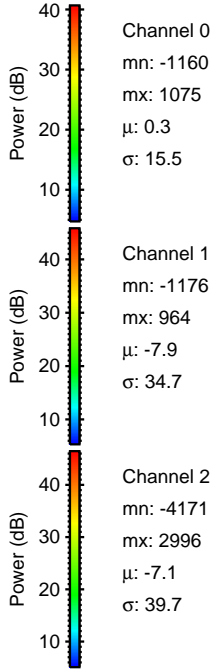
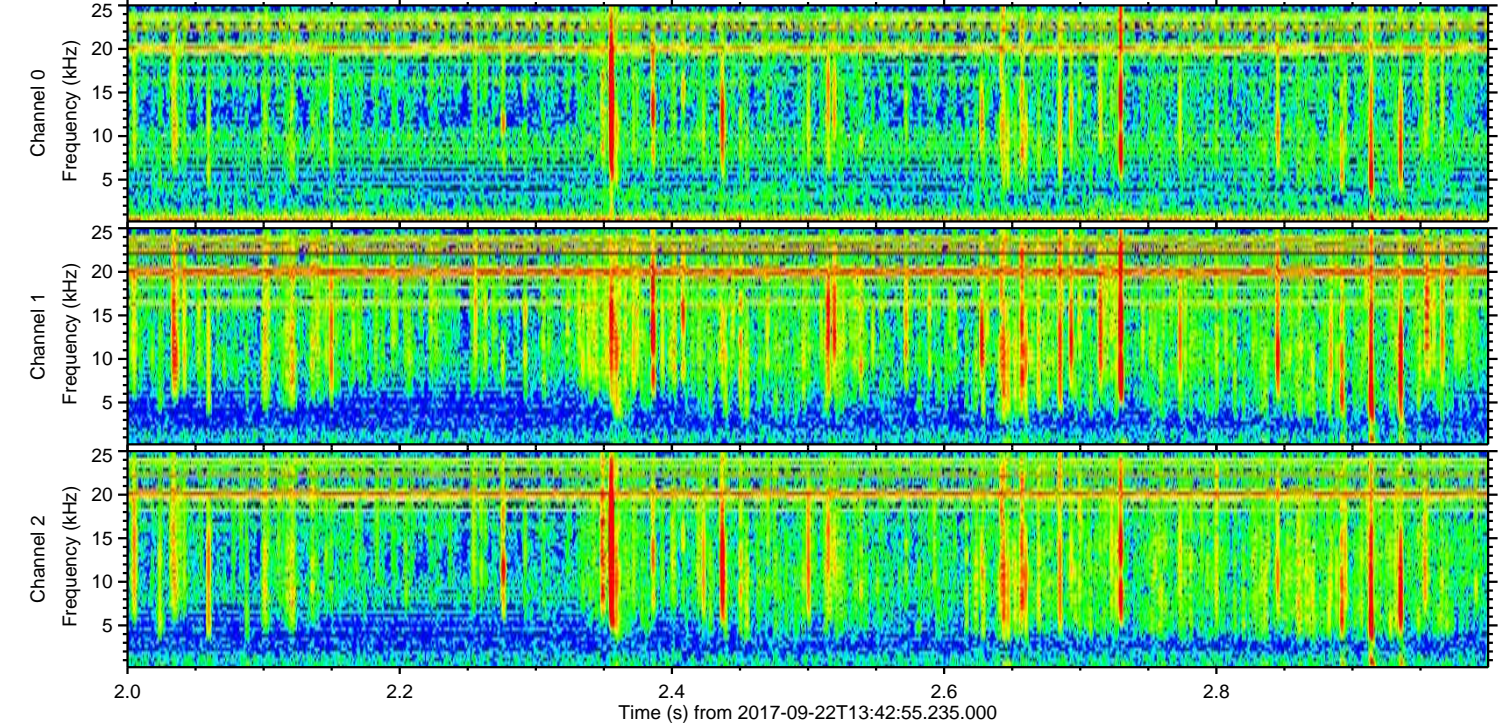
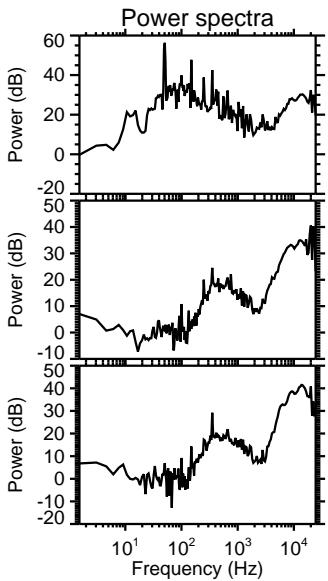
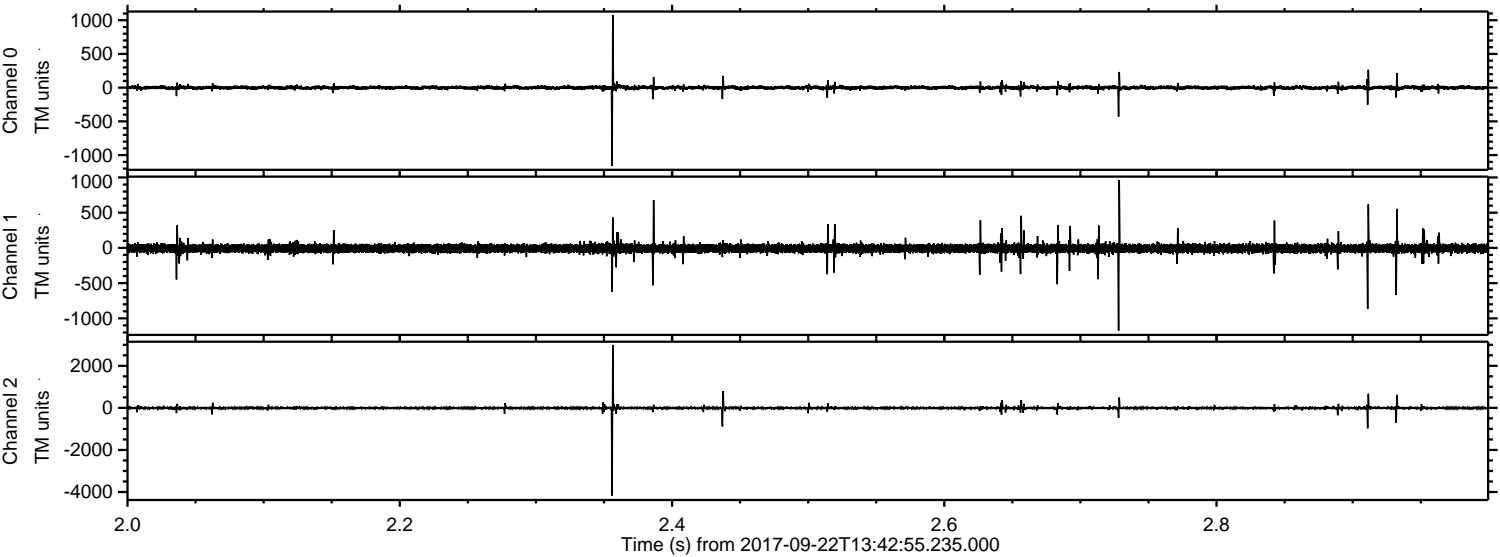
Channel 0
mn: -1774
mx: 842
 μ : 0.3
 σ : 19.9

Channel 1
mn: -3186
mx: 2197
 μ : -7.9
 σ : 41.9

Channel 2
mn: -4875
mx: 3027
 μ : -7.1
 σ : 48.5

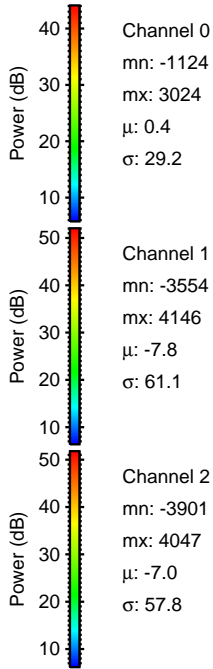
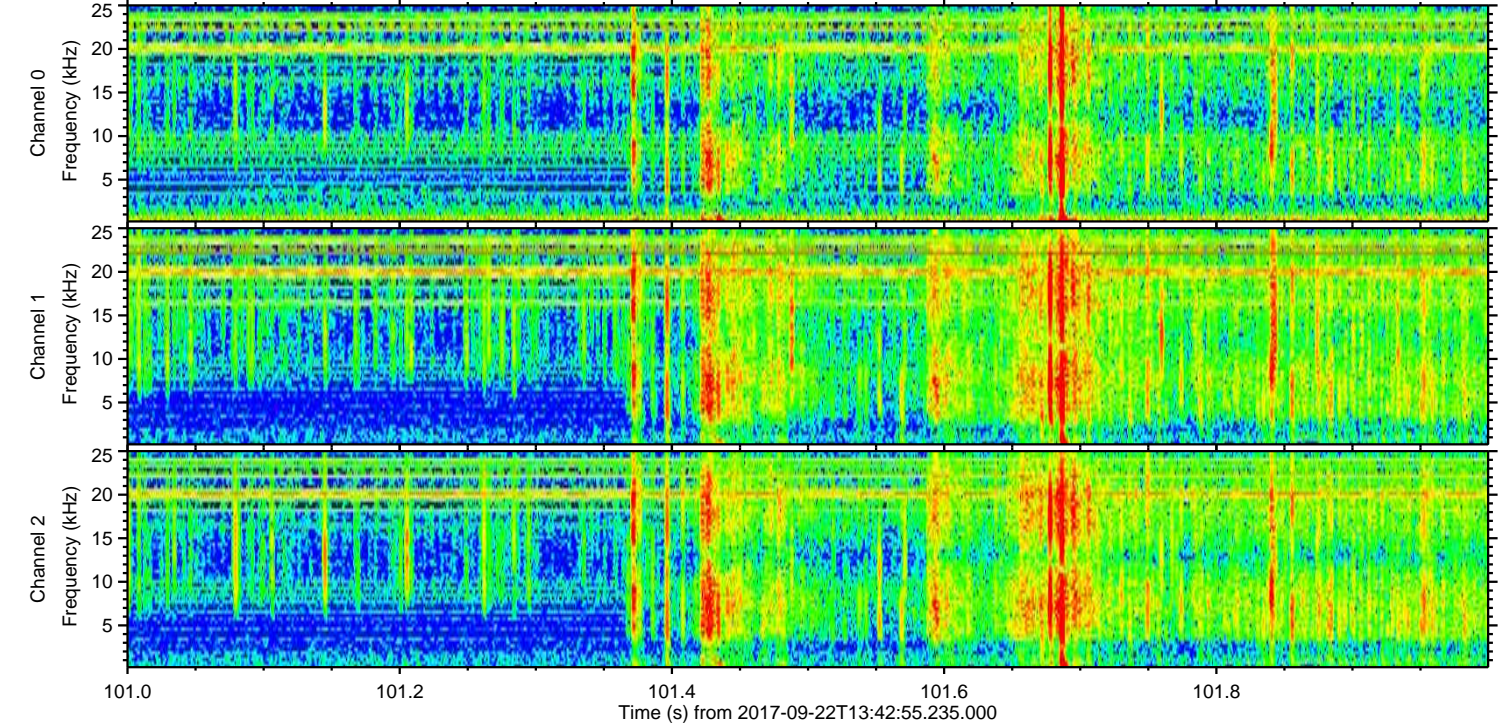
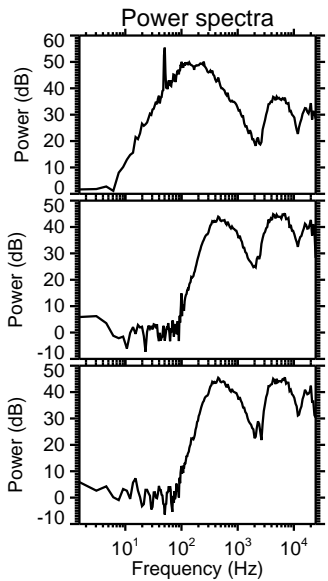
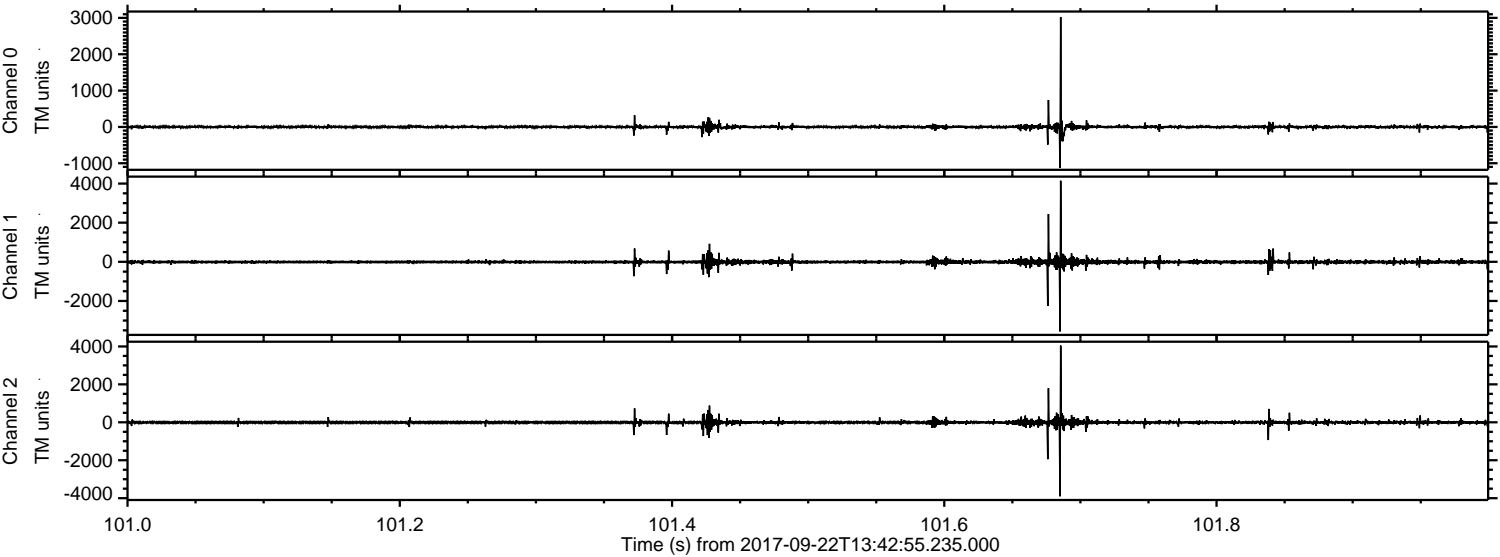
ELMAVAN 3D WAVEFORMS (Measured data sampled at 50 kHz) 51000 packets of 144 samples from 2017-09-22T13:42:55.235.000. Part 3/147

Processed Fri Sep 22 15:50:44 2017 by ELM ver.2012-10-06 from 001__elm20170922_134254__dat00.bin



ELMAVAN 3D WAVEFORMS (Measured data sampled at 50 kHz) 51000 packets of 144 samples from 2017-09-22T13:42:55.235.000. Part 102/147

Processed Fri Sep 22 15:50:44 2017 by ELM ver.2012-10-06 from 001__elm20170922_134254__dat00.bin



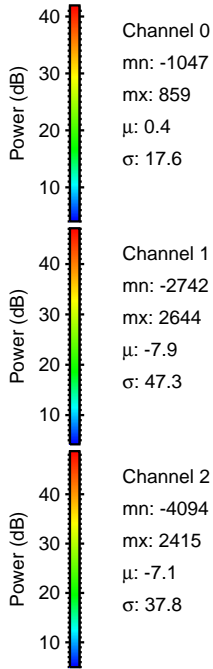
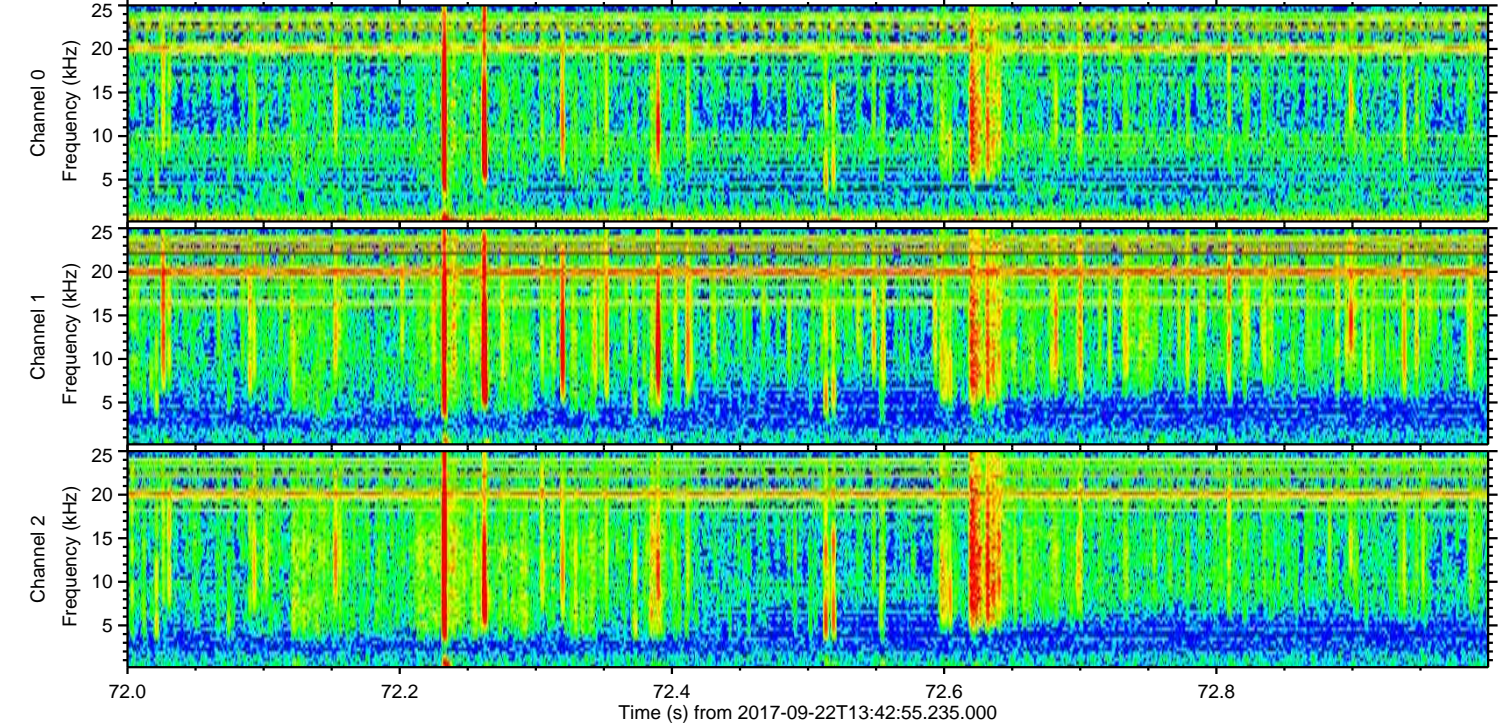
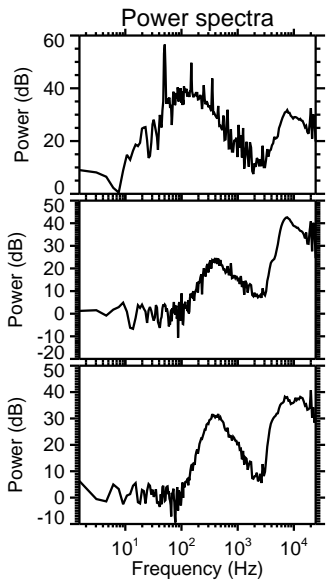
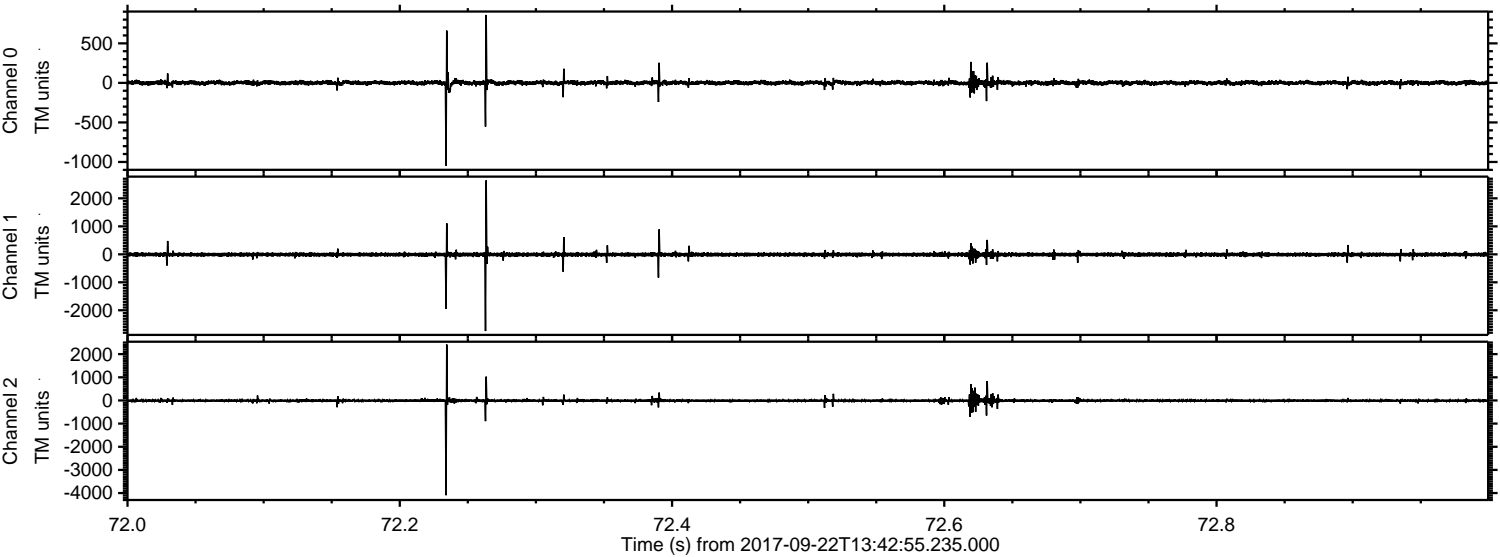
Channel 0
mn: -1124
mx: 3024
 μ : 0.4
 σ : 29.2

Channel 1
mn: -3554
mx: 4146
 μ : -7.8
 σ : 61.1

Channel 2
mn: -3901
mx: 4047
 μ : -7.0
 σ : 57.8

ELMAVAN 3D WAVEFORMS (Measured data sampled at 50 kHz) 51000 packets of 144 samples from 2017-09-22T13:42:55.235.000. Part 73/147

Processed Fri Sep 22 15:50:45 2017 by ELM ver.2012-10-06 from 001__elm20170922_134254__dat00.bin

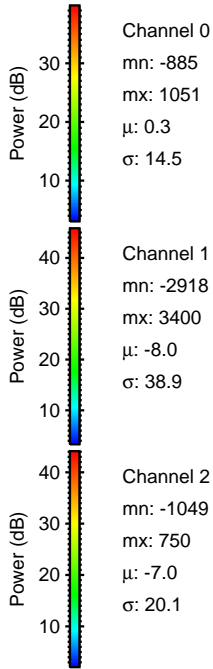
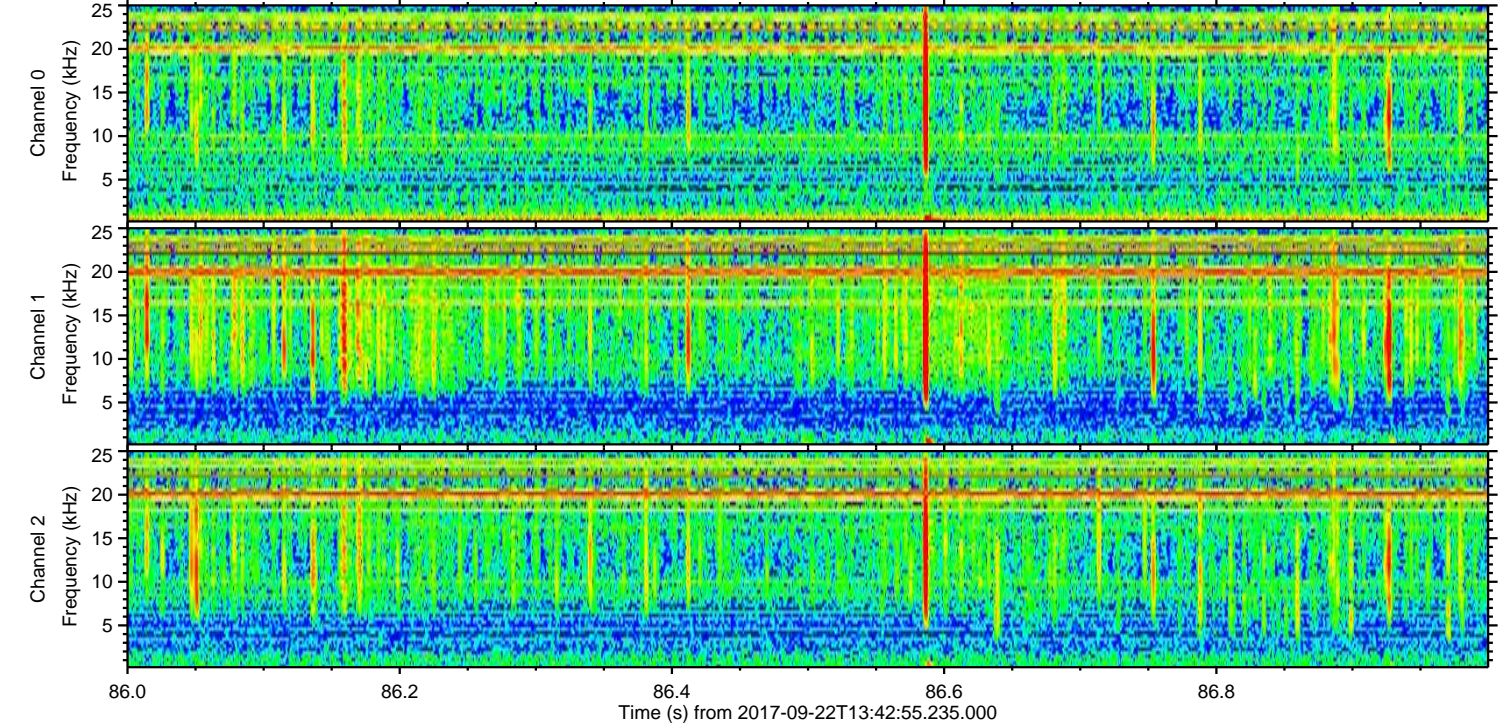
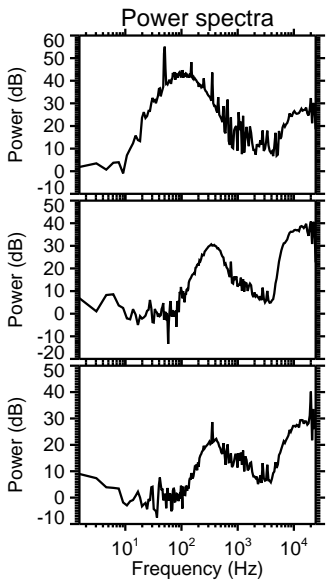
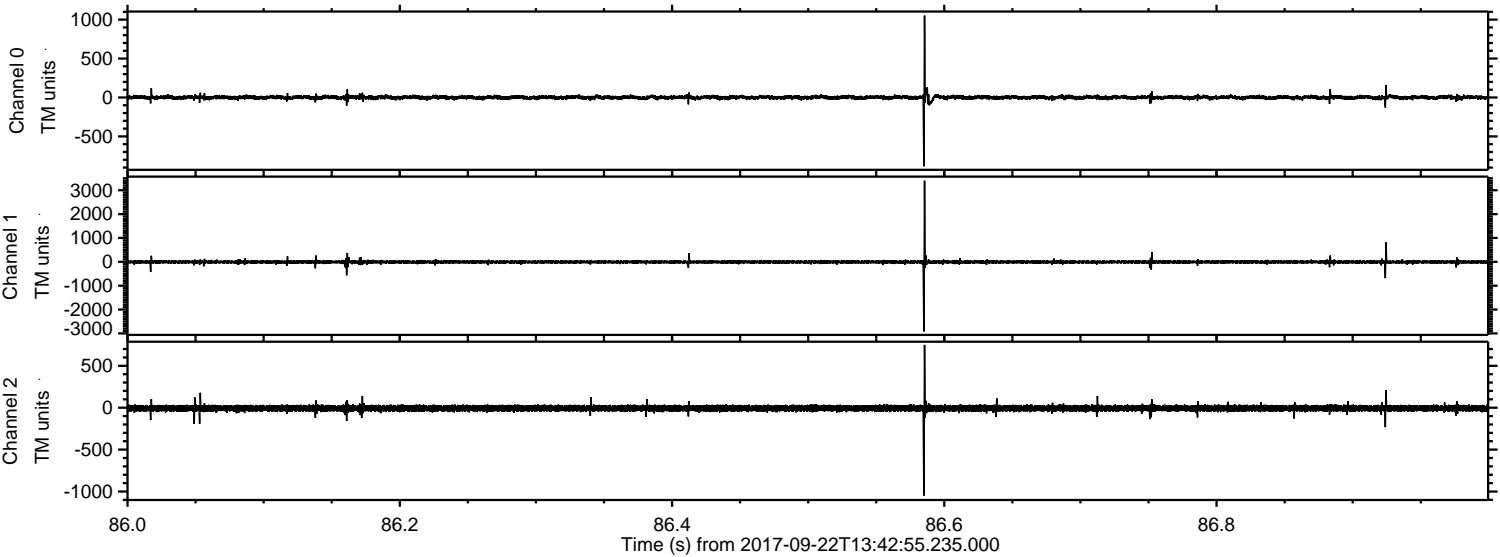


Channel 0
mn: -1047
mx: 859
 μ : 0.4
 σ : 17.6

Channel 1
mn: -2742
mx: 2644
 μ : -7.9
 σ : 47.3

Channel 2
mn: -4094
mx: 2415
 μ : -7.1
 σ : 37.8

Processed Fri Sep 22 15:50:46 2017 by ELM ver.2012-10-06 from 001__elm20170922_134254__dat00.bin

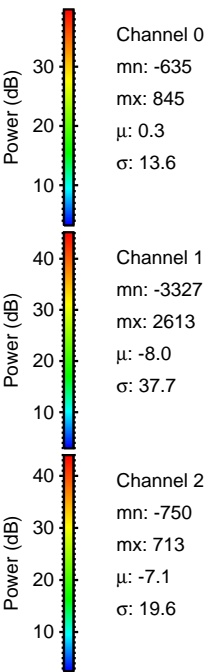
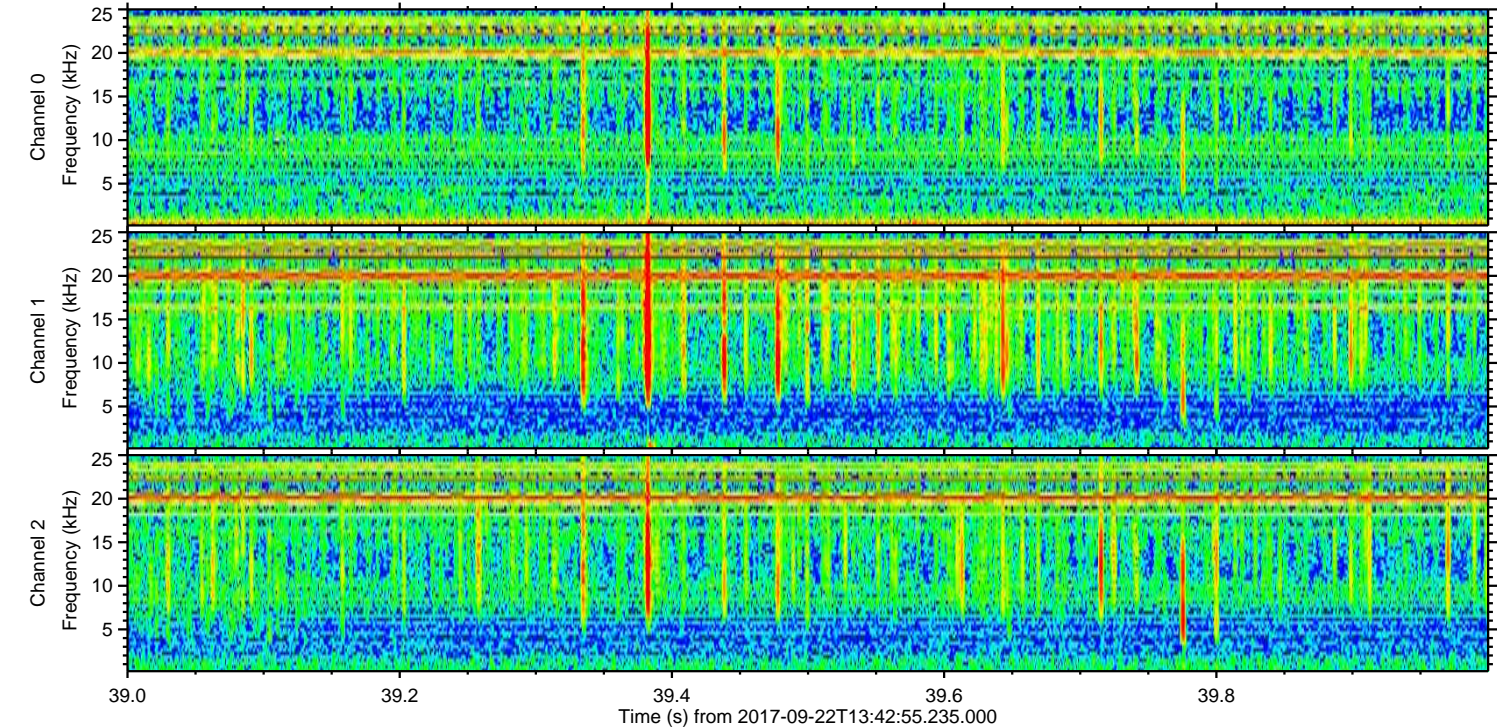
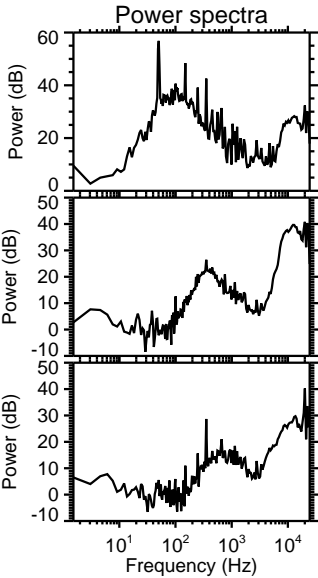
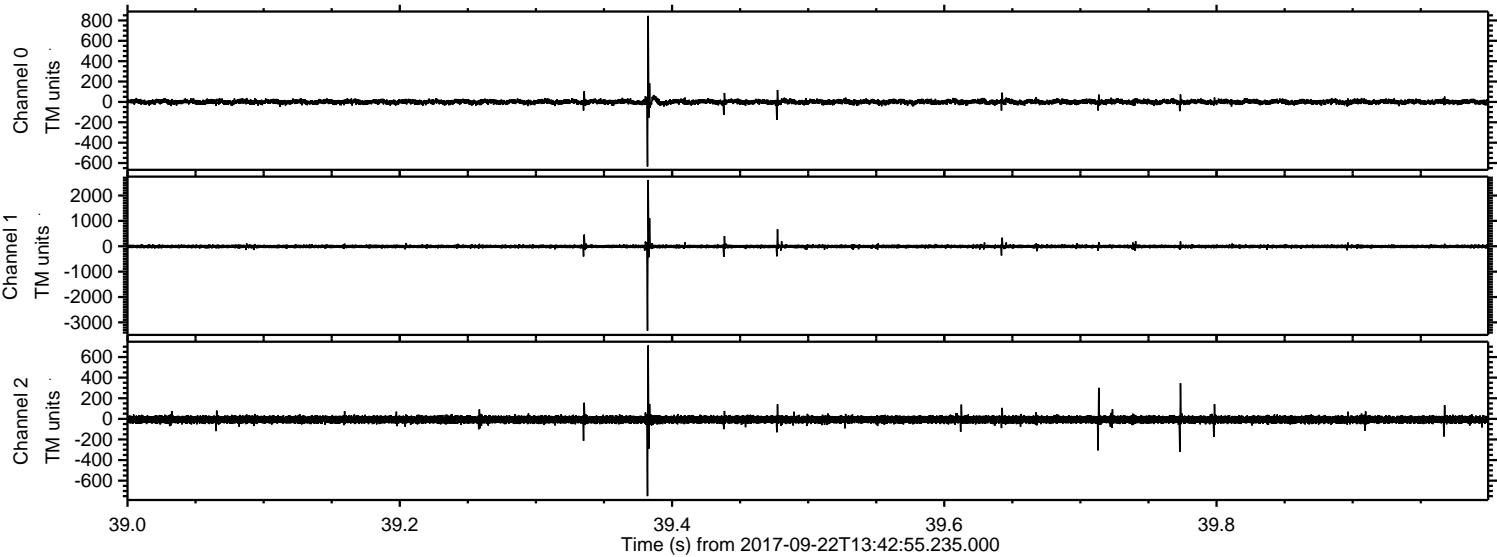


Channel 0
mn: -885
mx: 1051
 μ : 0.3
 σ : 14.5

Channel 1
mn: -2918
mx: 3400
 μ : -8.0
 σ : 38.9

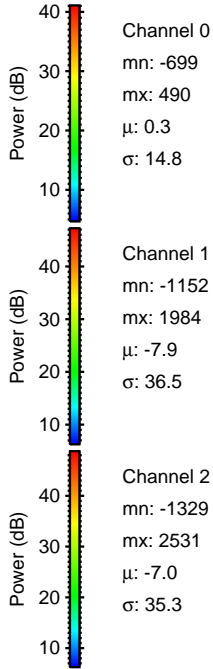
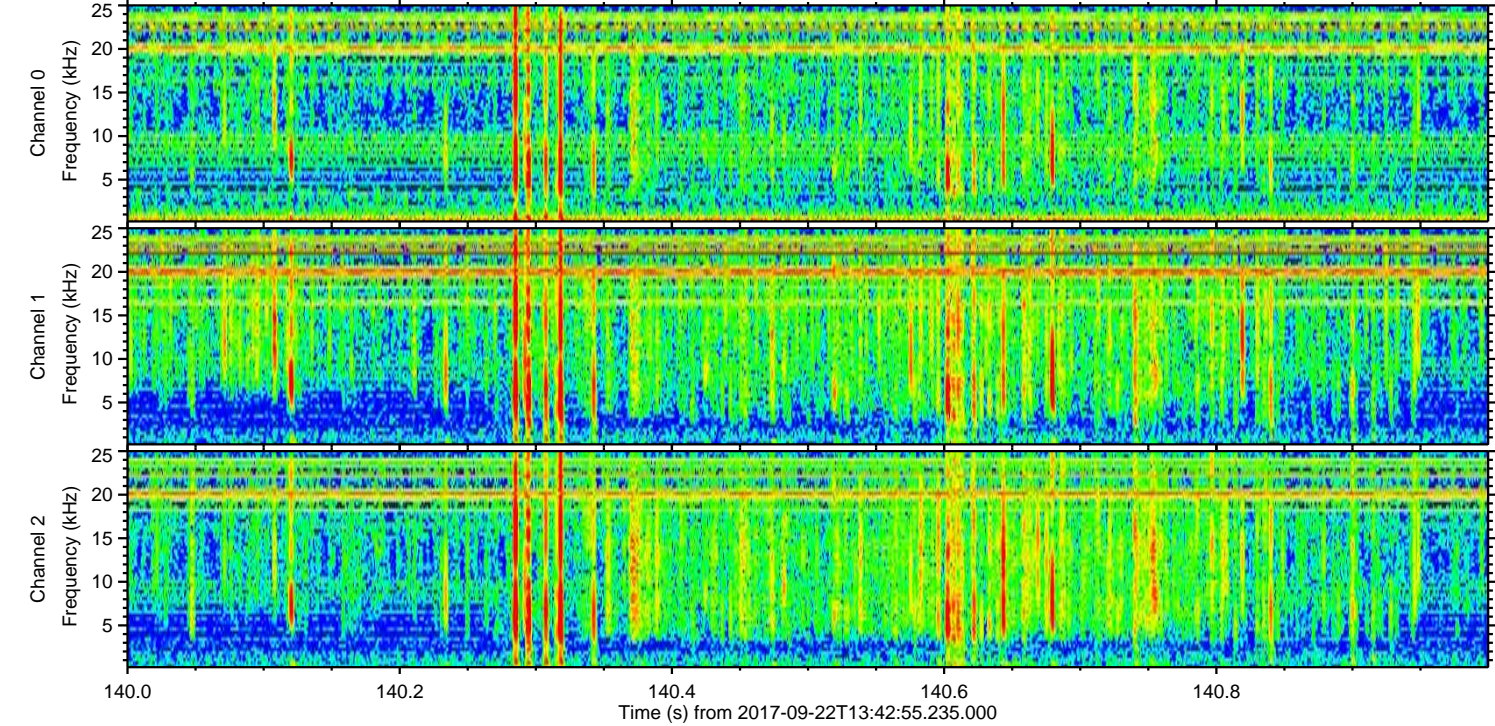
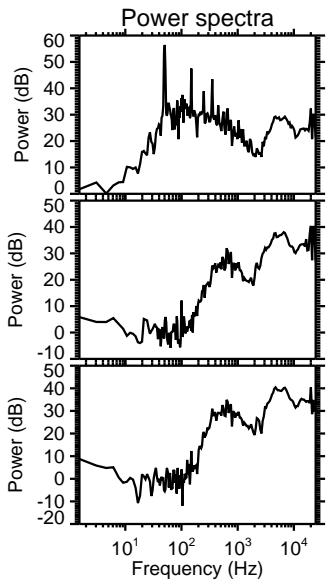
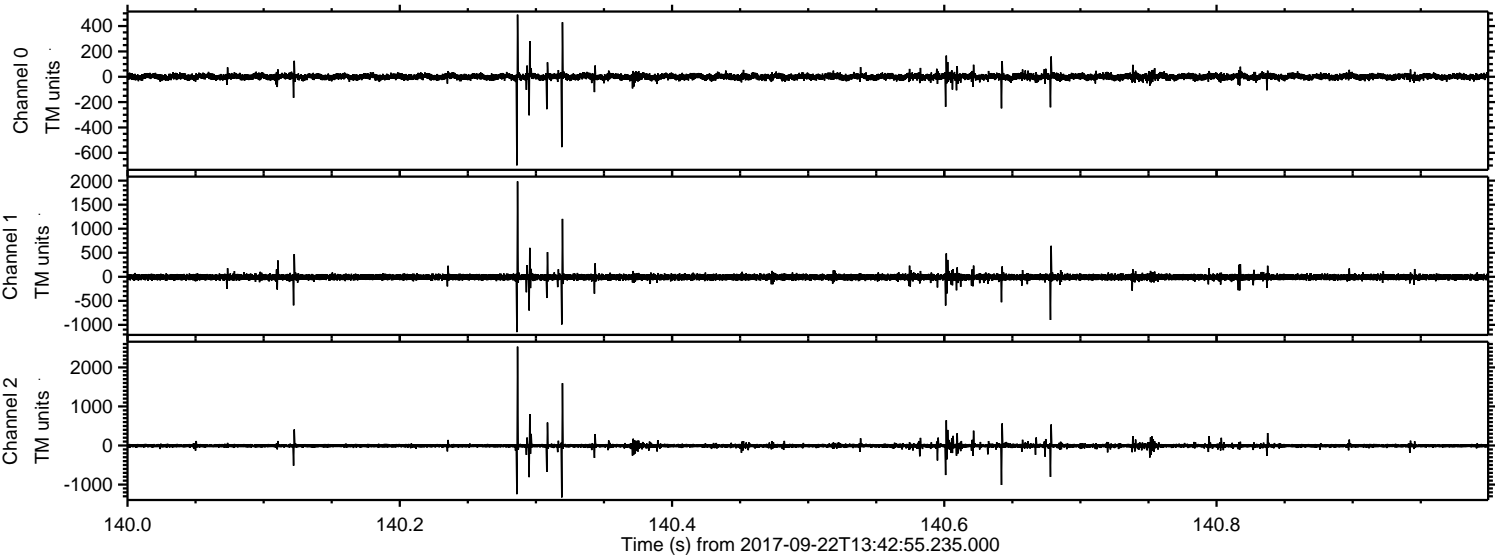
Channel 2
mn: -1049
mx: 750
 μ : -7.0
 σ : 20.1

Processed Fri Sep 22 15:50:46 2017 by ELM ver.2012-10-06 from 001__elm20170922_134254__dat00.bin



ELMAVAN 3D WAVEFORMS (Measured data sampled at 50 kHz) 51000 packets of 144 samples from 2017-09-22T13:42:55.235.000. Part 141/147

Processed Fri Sep 22 15:50:47 2017 by ELM ver.2012-10-06 from 001__elm20170922_134254__dat00.bin



ELMAVAN 3D WAVEFORMS (Measured data sampled at 50 kHz) 51000 packets of 144 samples from 2017-09-22T13:42:55.235.000. Part 4/147

Processed Fri Sep 22 15:50:48 2017 by ELM ver.2012-10-06 from 001__elm20170922_134254__dat00.bin

