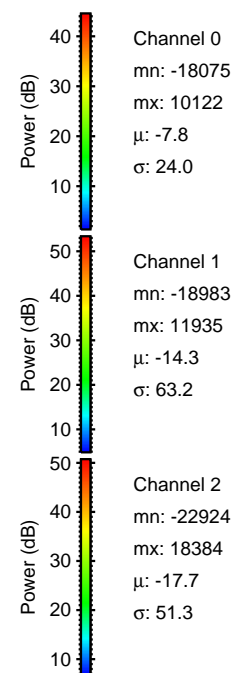
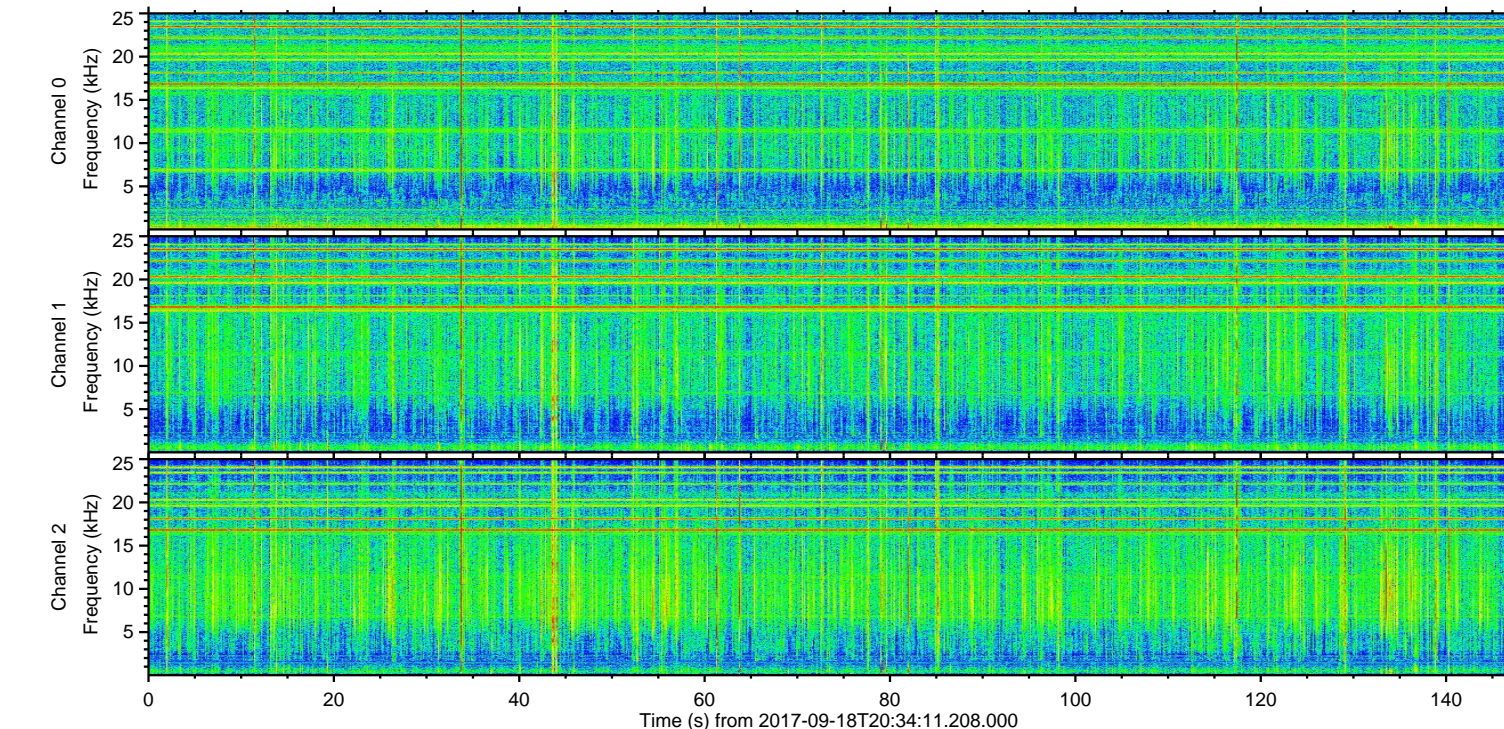
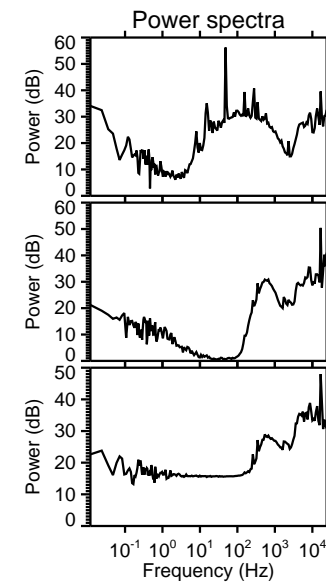
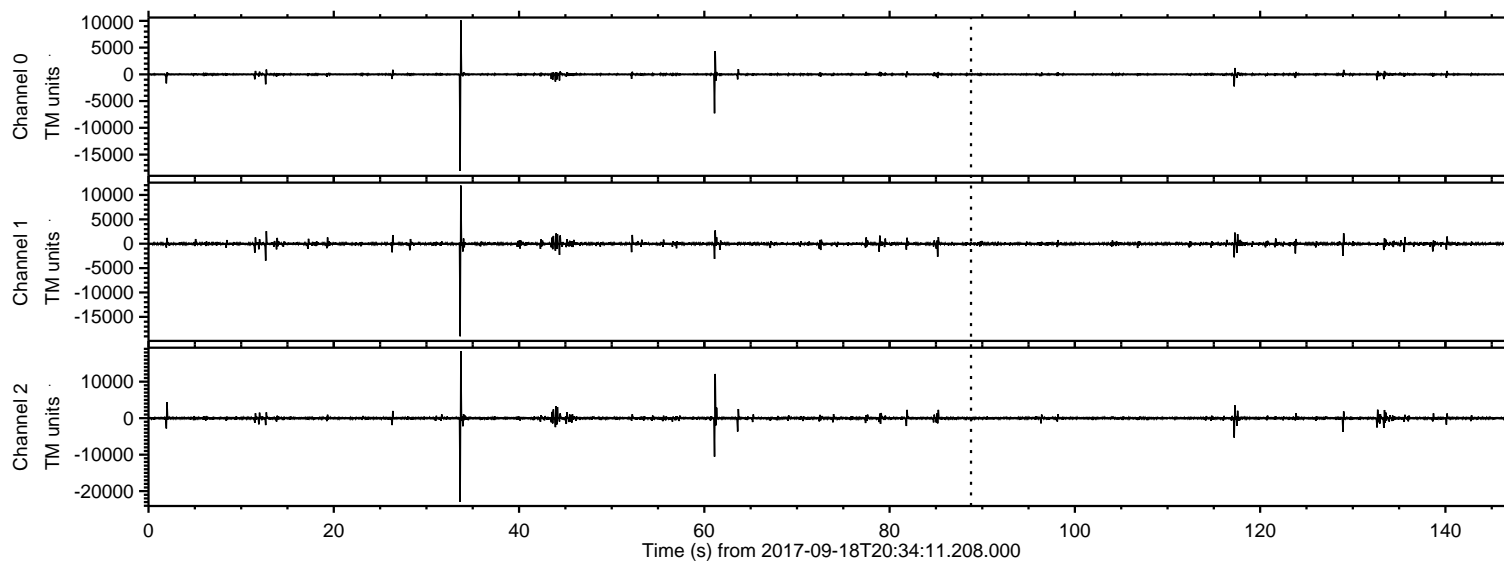


ELMAVAN 3D WAVEFORMS (Measured data sampled at 50 kHz) 50999 packets of 144 samples from 2017-09-18T20:34:11.208.000.

Processed Mon Sep 18 22:41:57 2017 by ELM ver.2012-10-06 from 001__elm20170918_203410__dat00.bin



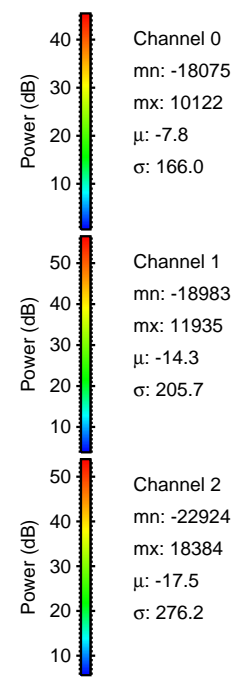
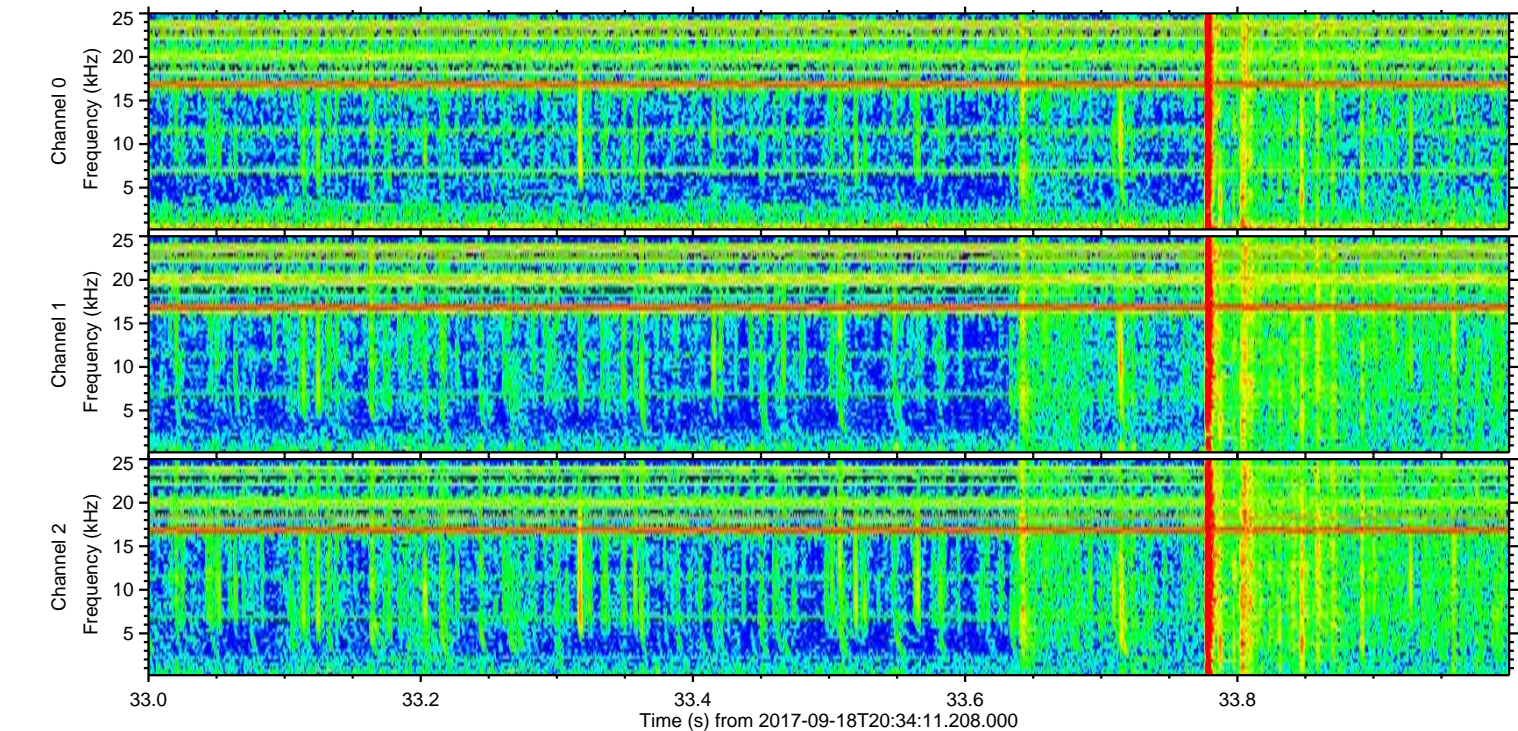
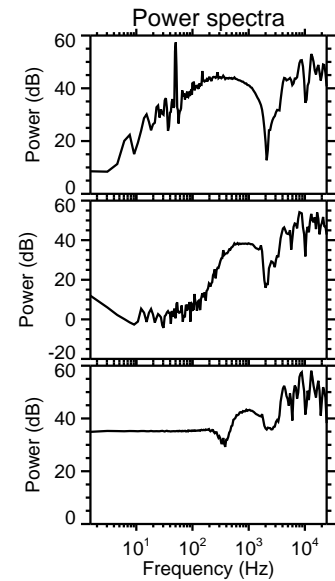
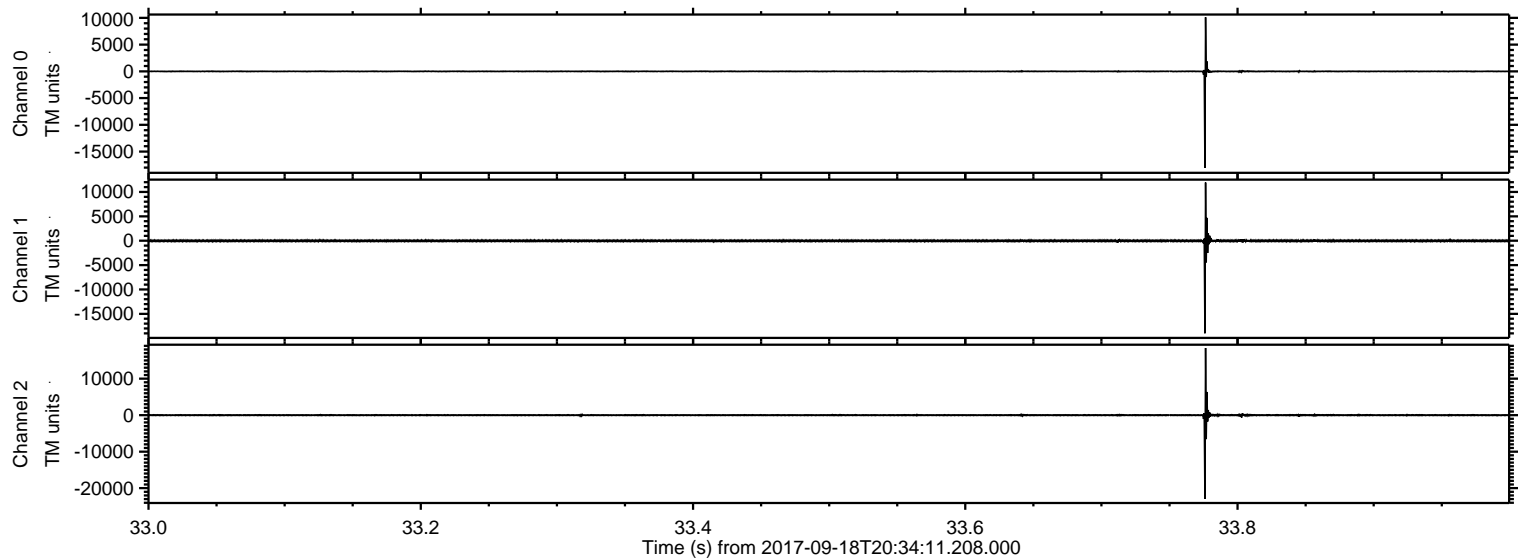
Channel 0
mn: -18075
mx: 10122
 μ : -7.8
 σ : 24.0

Channel 1
mn: -18983
mx: 11935
 μ : -14.3
 σ : 63.2

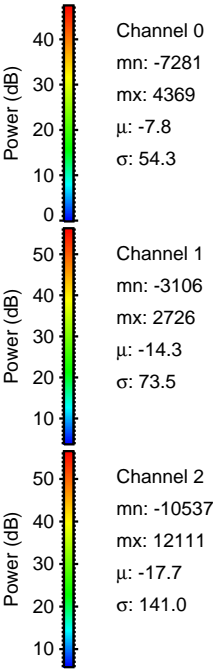
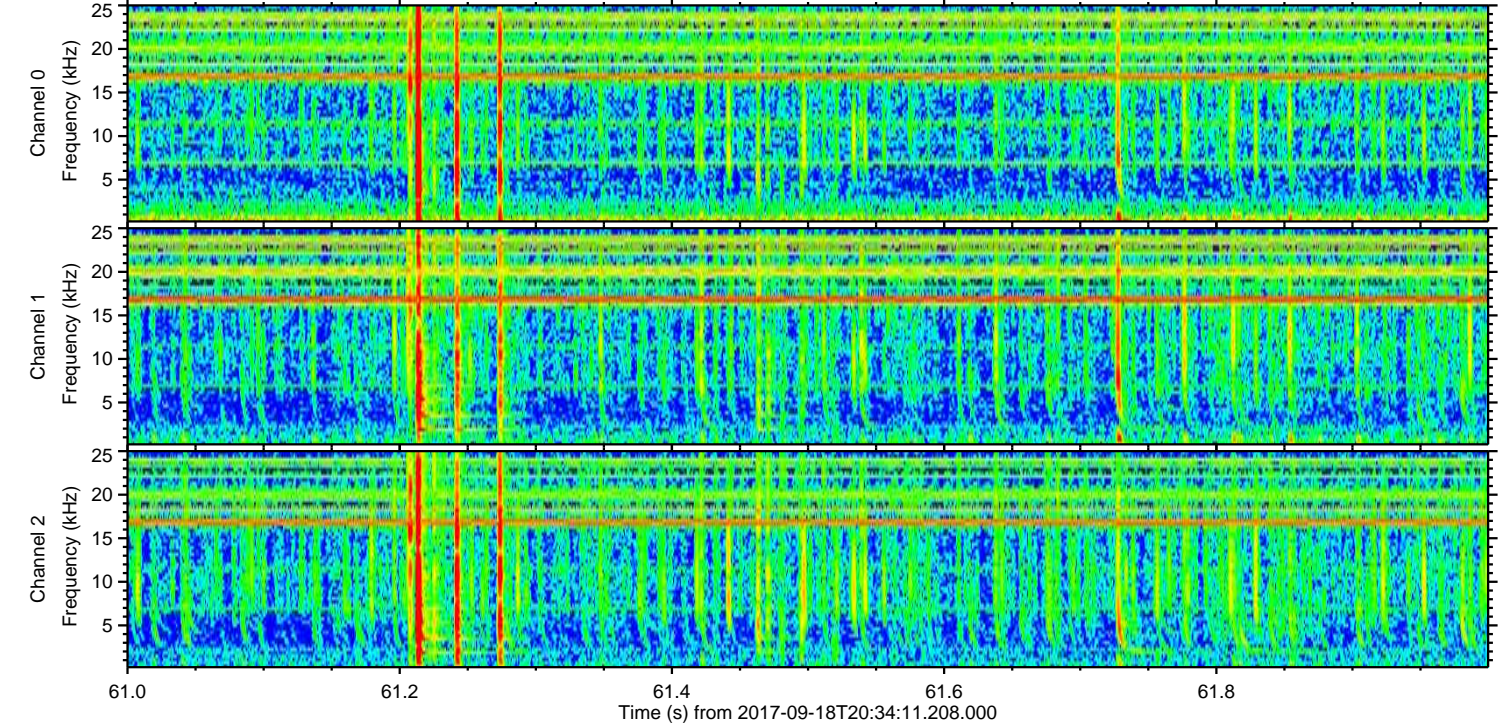
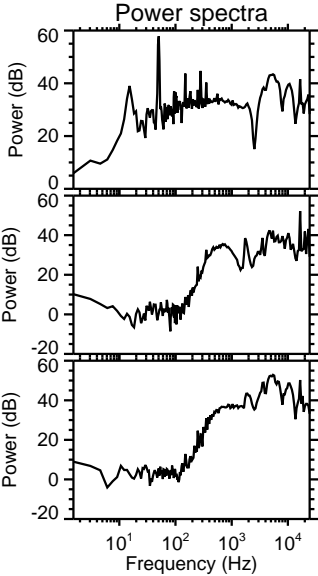
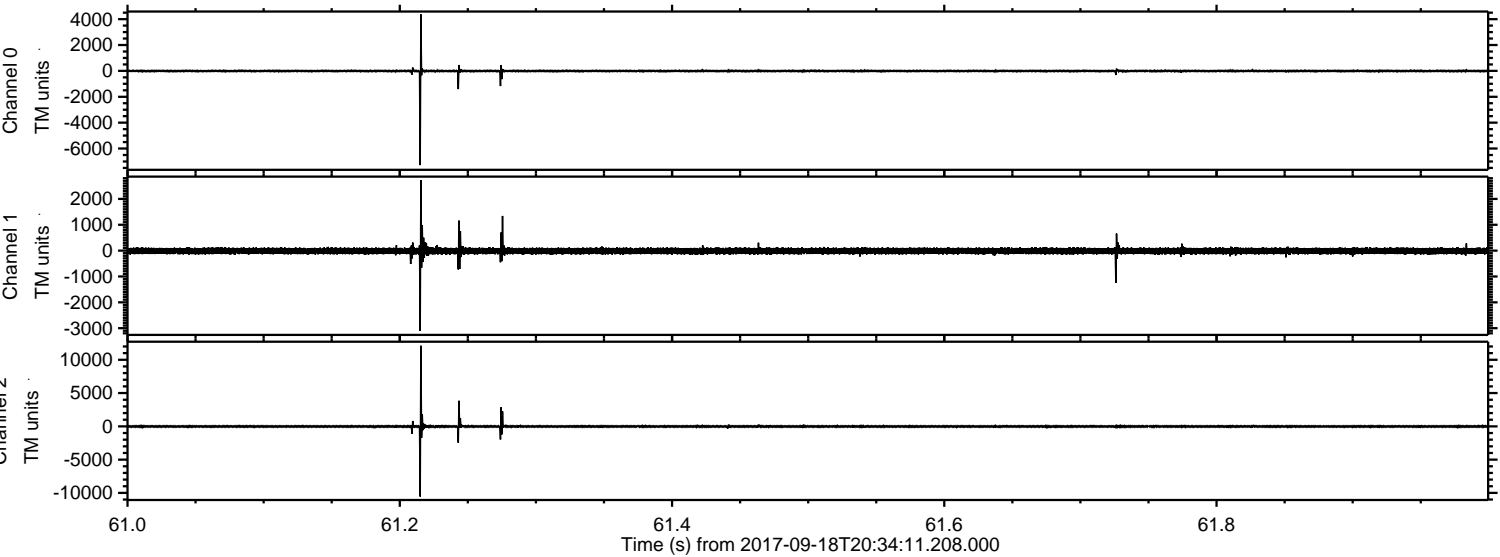
Channel 2
mn: -22924
mx: 18384
 μ : -17.7
 σ : 51.3

ELMAVAN 3D WAVEFORMS (Measured data sampled at 50 kHz) 50999 packets of 144 samples from 2017-09-18T20:34:11.208.000. Part 34/147

Processed Mon Sep 18 22:42:04 2017 by ELM ver.2012-10-06 from 001__elm20170918_203410__dat00.bin

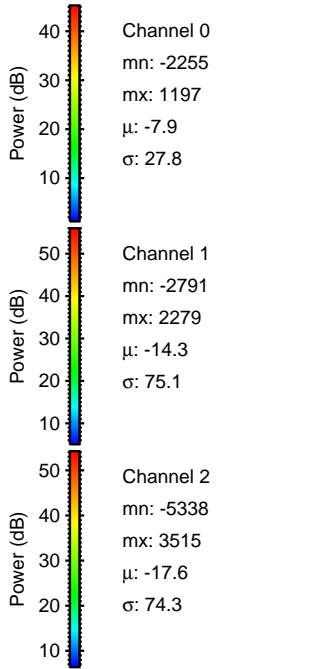
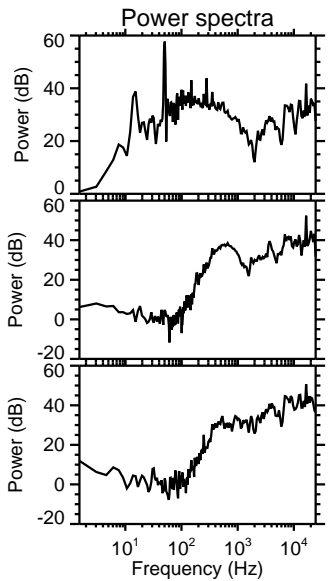
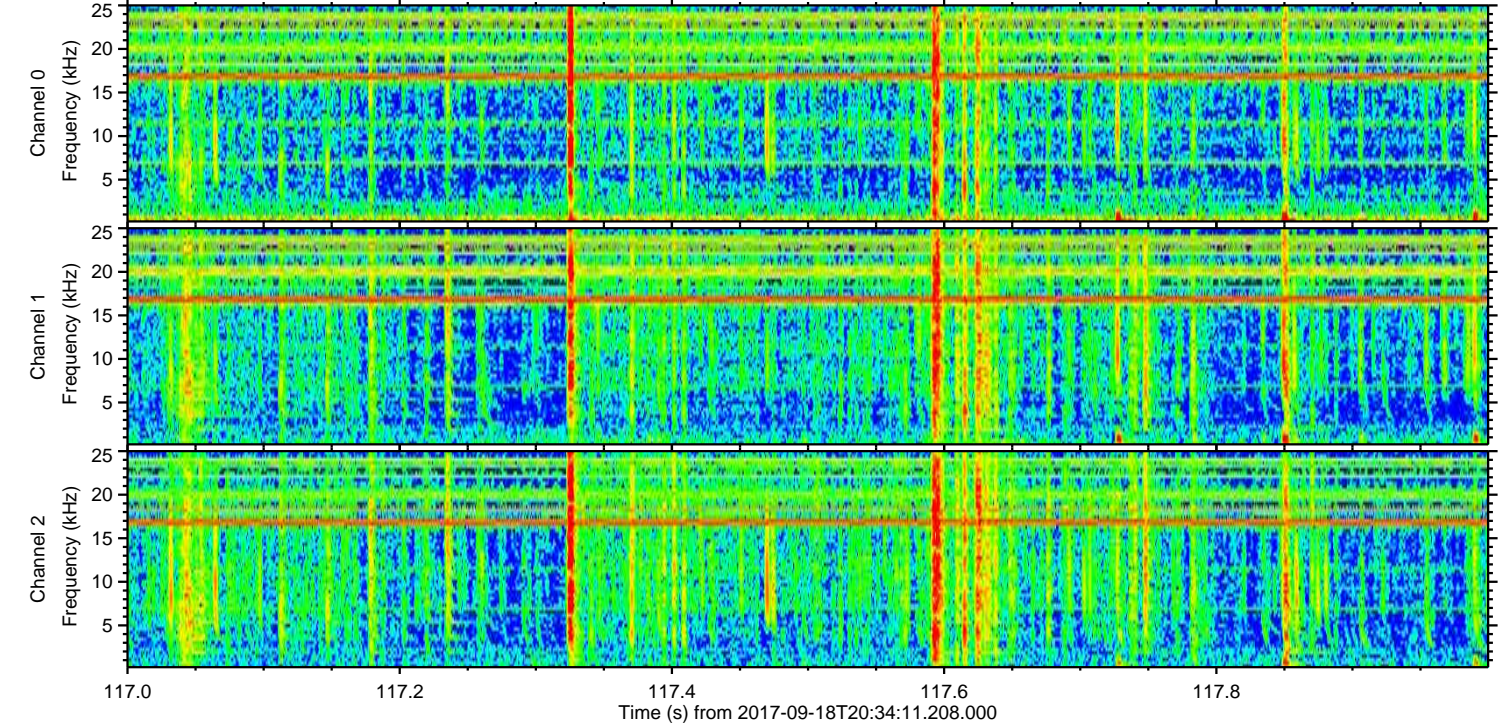
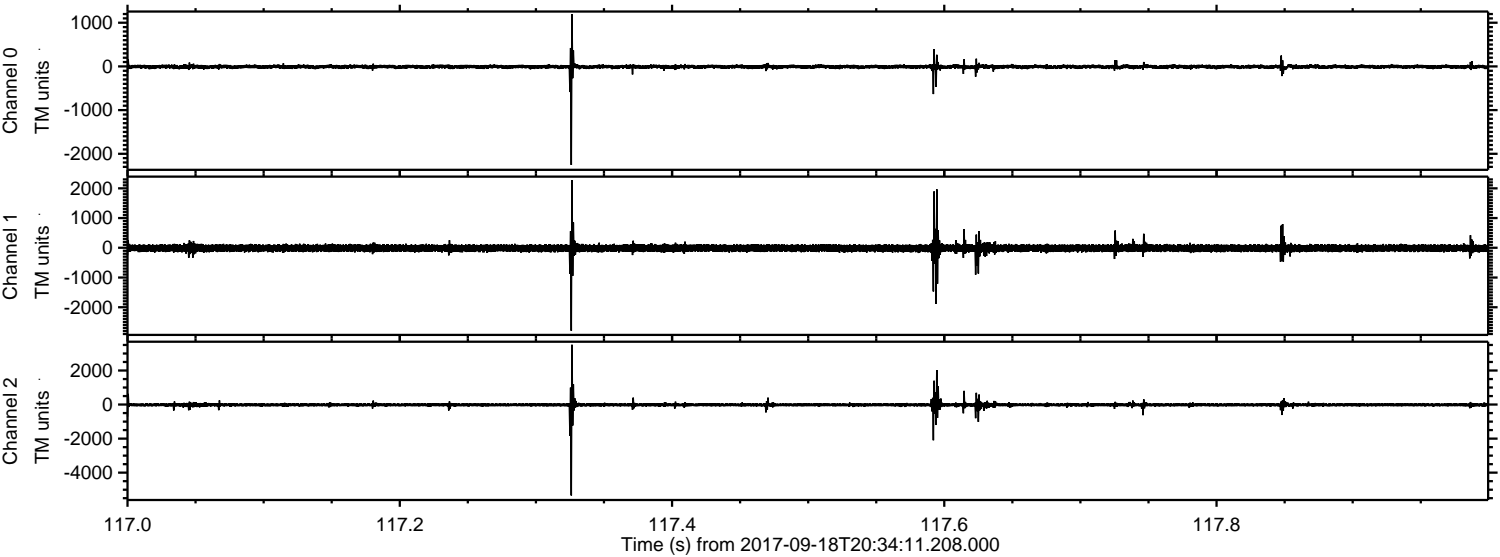


Processed Mon Sep 18 22:42:04 2017 by ELM ver.2012-10-06 from 001__elm20170918_203410__dat00.bin

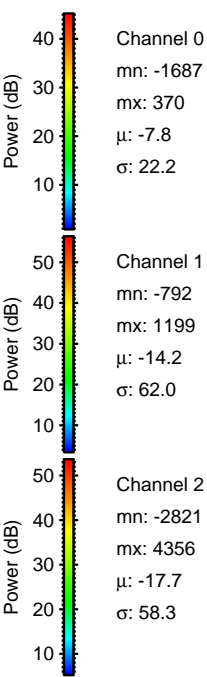
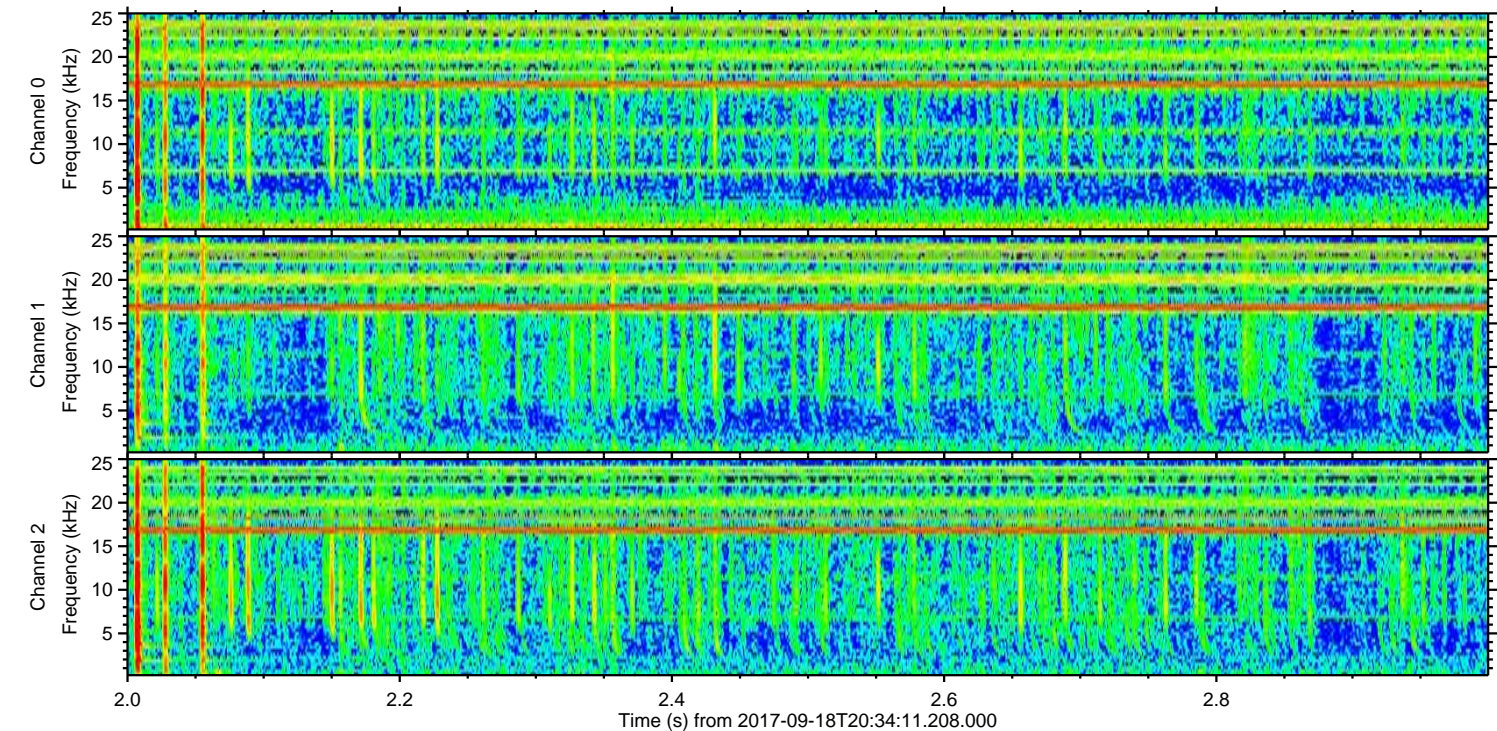
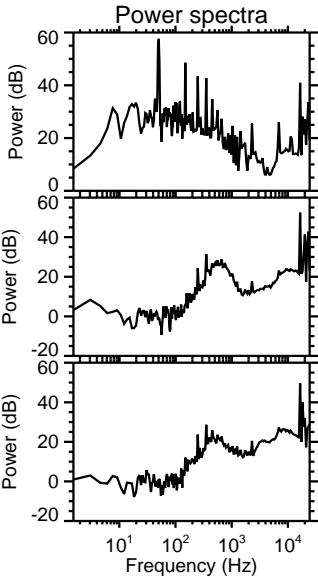
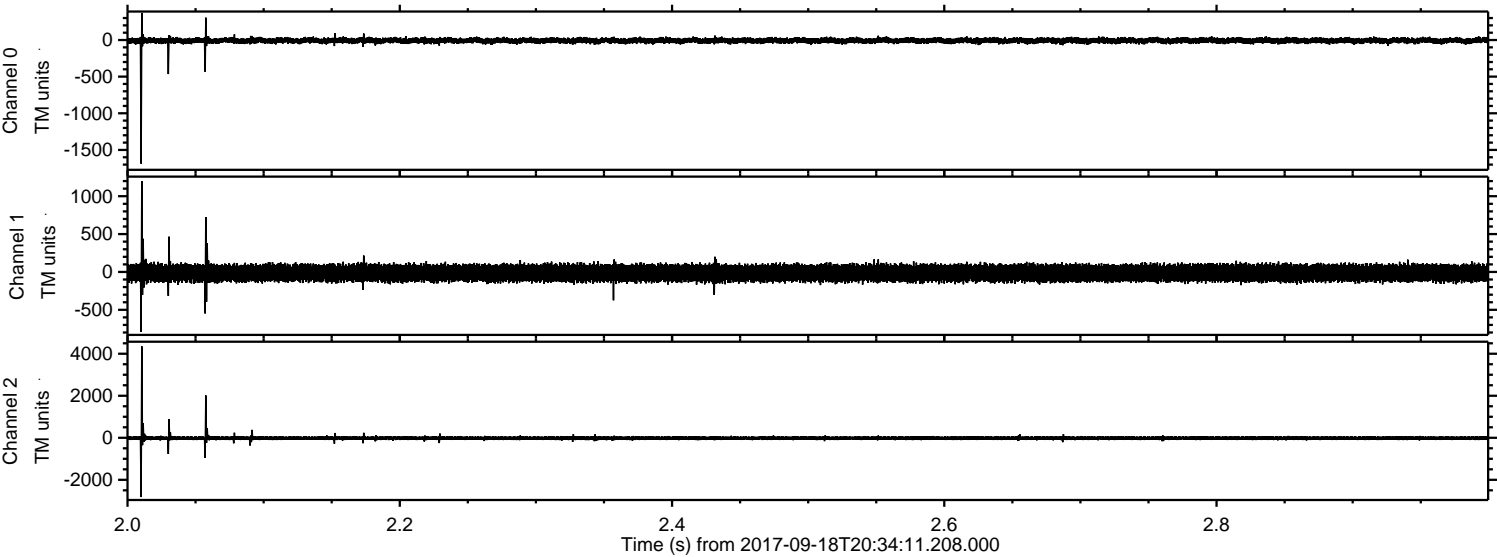


ELMAVAN 3D WAVEFORMS (Measured data sampled at 50 kHz) 50999 packets of 144 samples from 2017-09-18T20:34:11.208.000. Part 118/147

Processed Mon Sep 18 22:42:05 2017 by ELM ver.2012-10-06 from 001__elm20170918_203410__dat00.bin

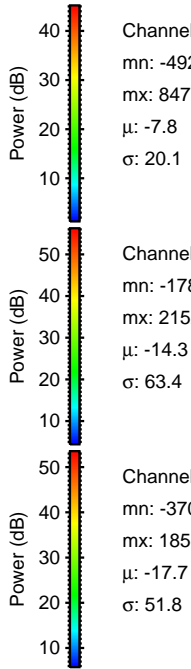
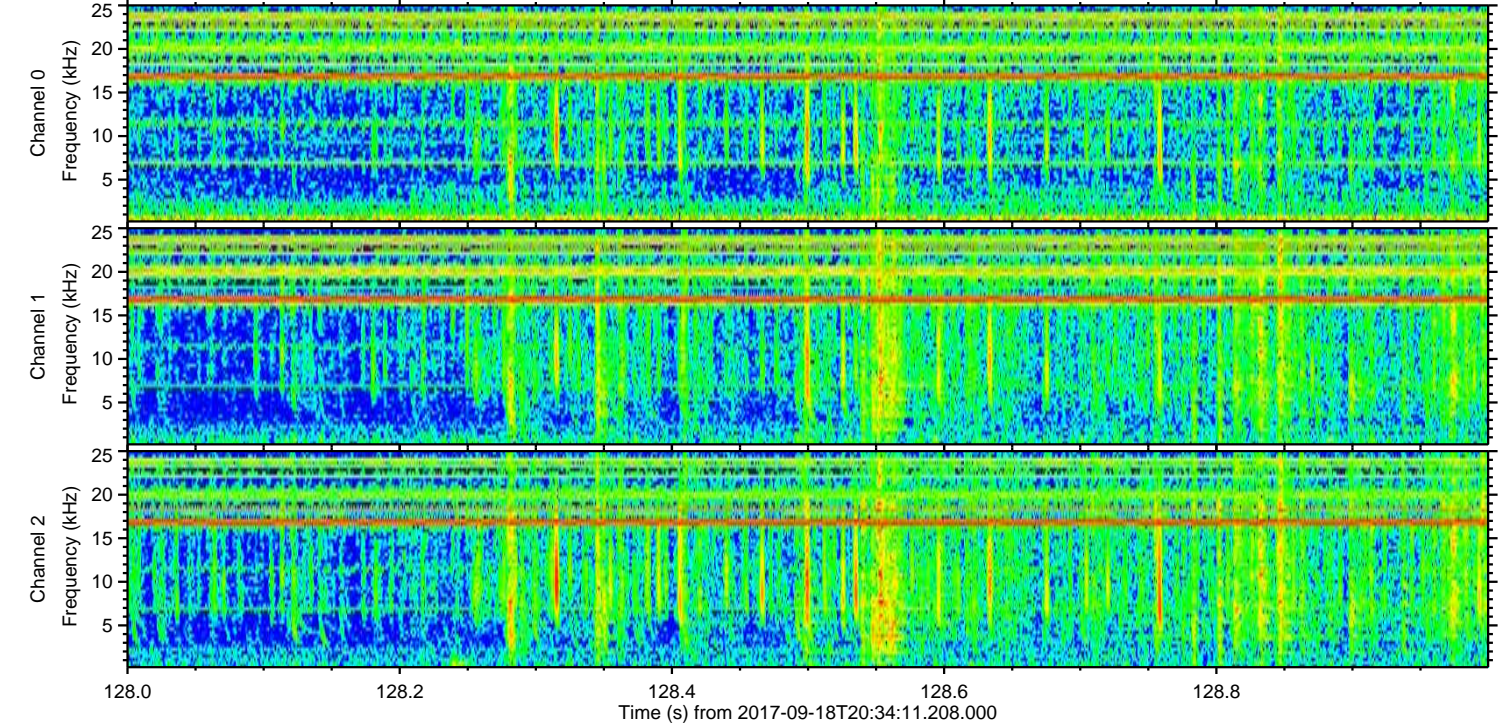
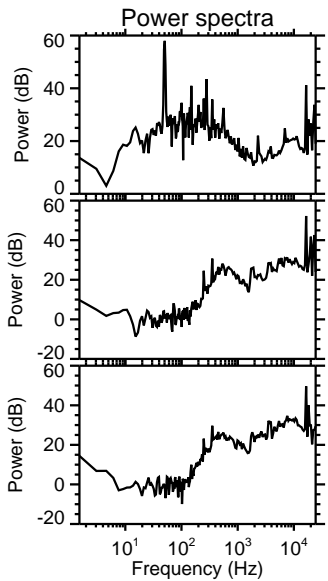
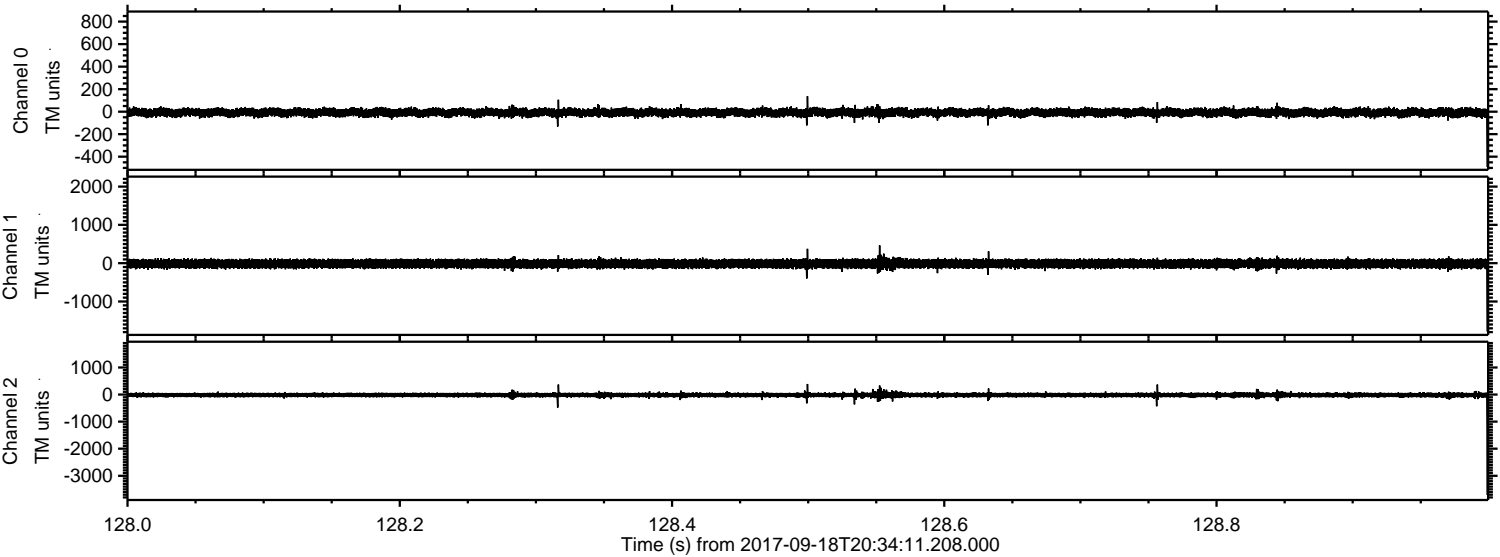


Processed Mon Sep 18 22:42:06 2017 by ELM ver.2012-10-06 from 001__elm20170918_203410__dat00.bin

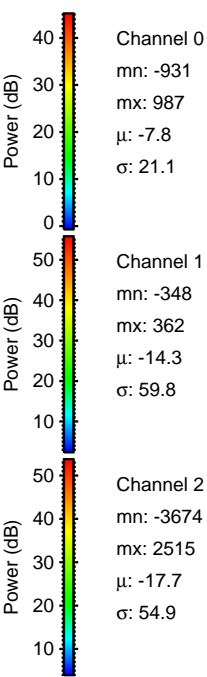
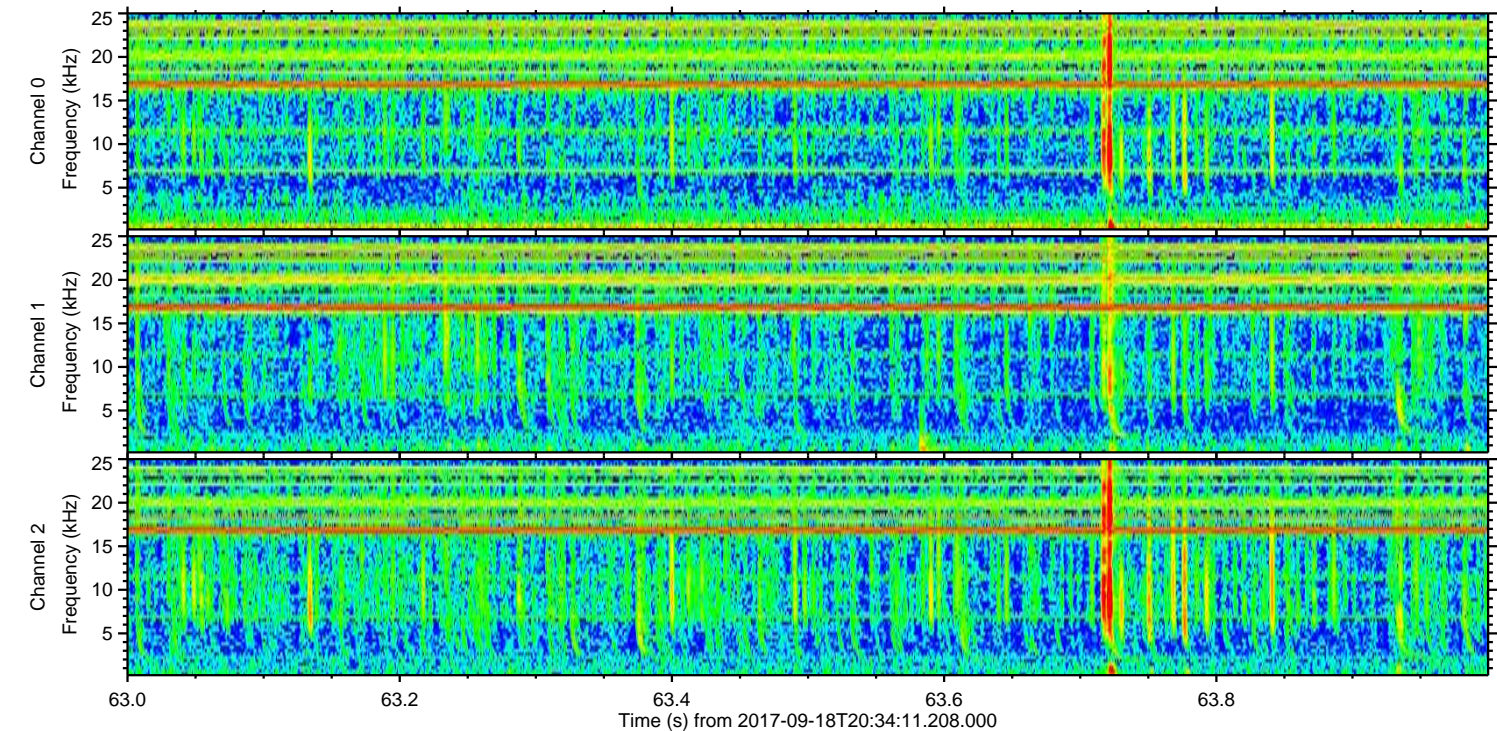
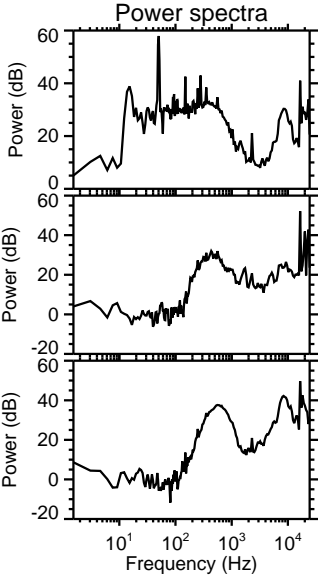
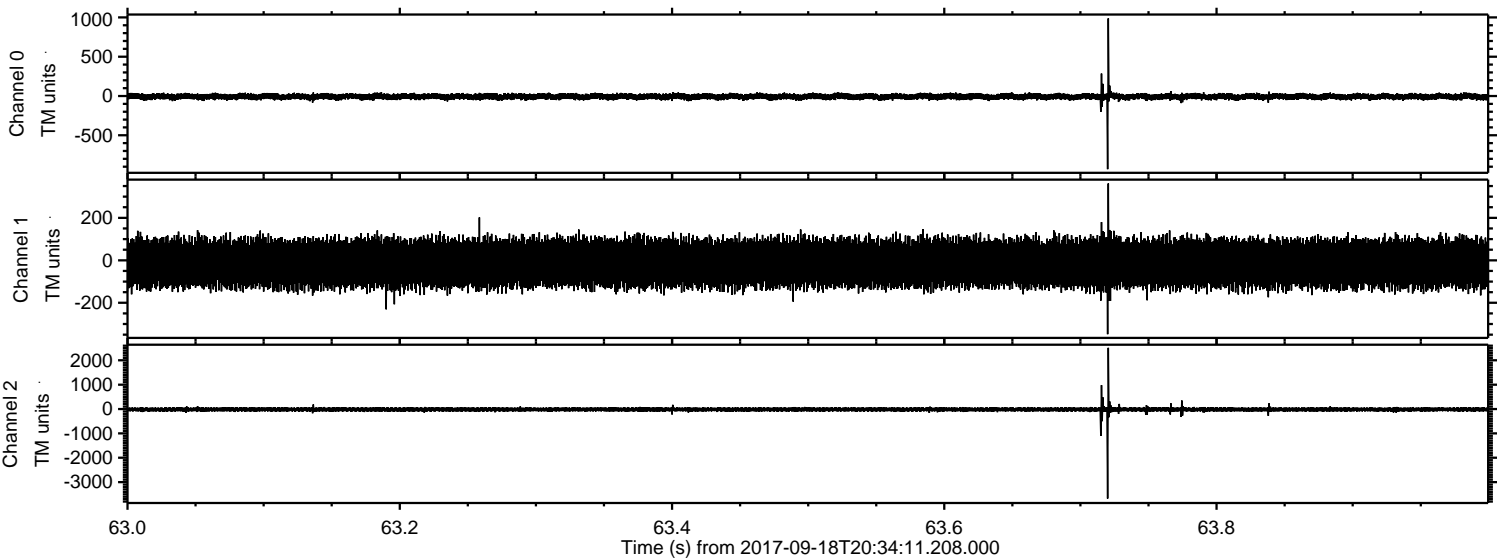


ELMAVAN 3D WAVEFORMS (Measured data sampled at 50 kHz) 50999 packets of 144 samples from 2017-09-18T20:34:11.208.000. Part 129/147

Processed Mon Sep 18 22:42:07 2017 by ELM ver.2012-10-06 from 001__elm20170918_203410__dat00.bin



Processed Mon Sep 18 22:42:07 2017 by ELM ver.2012-10-06 from 001__elm20170918_203410__dat00.bin

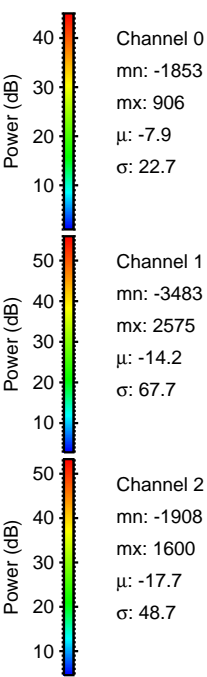
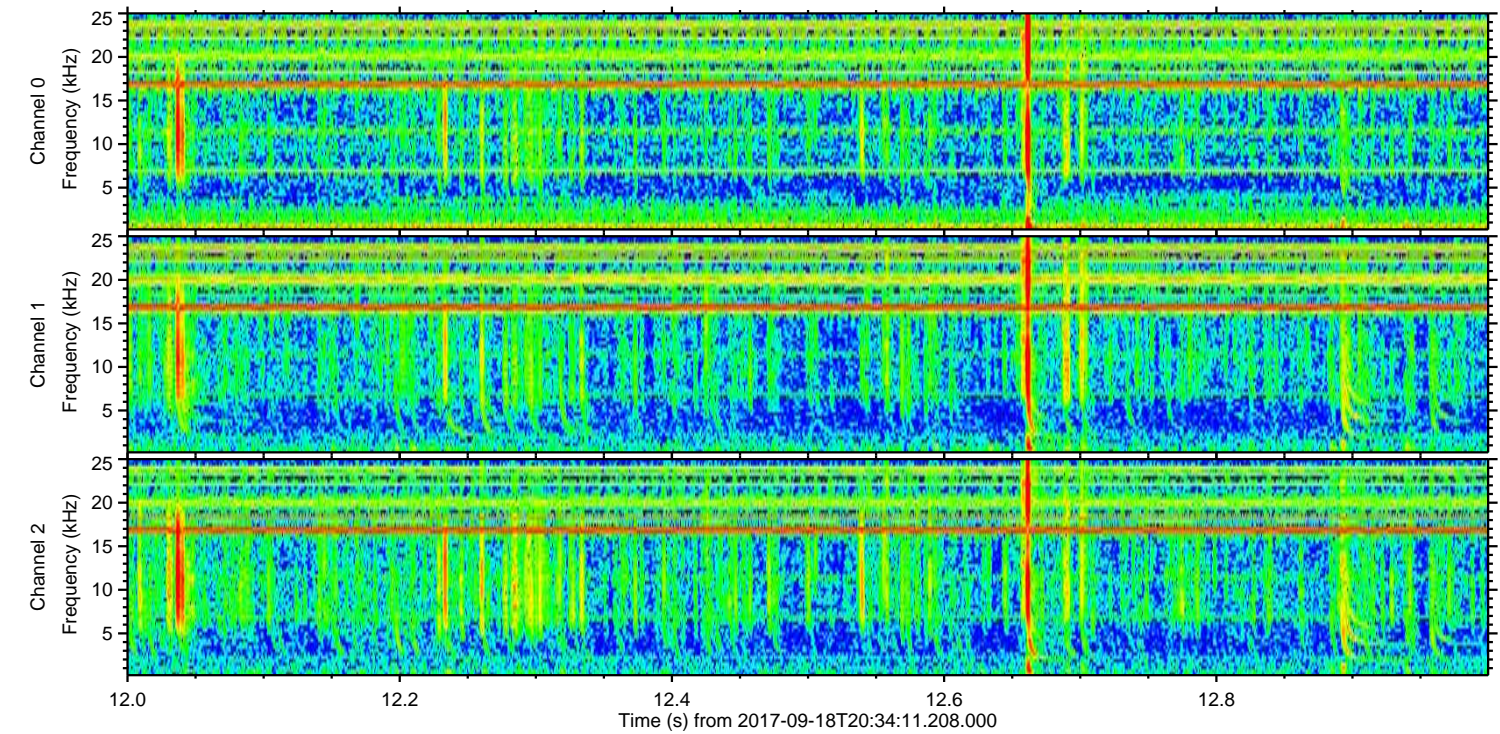
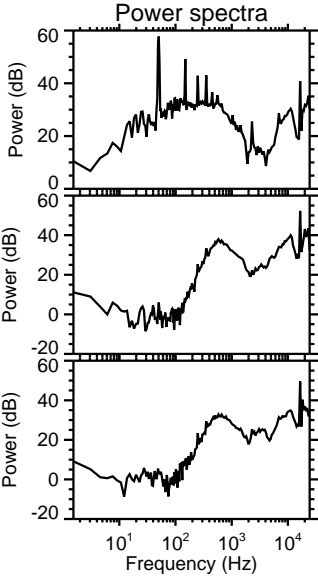
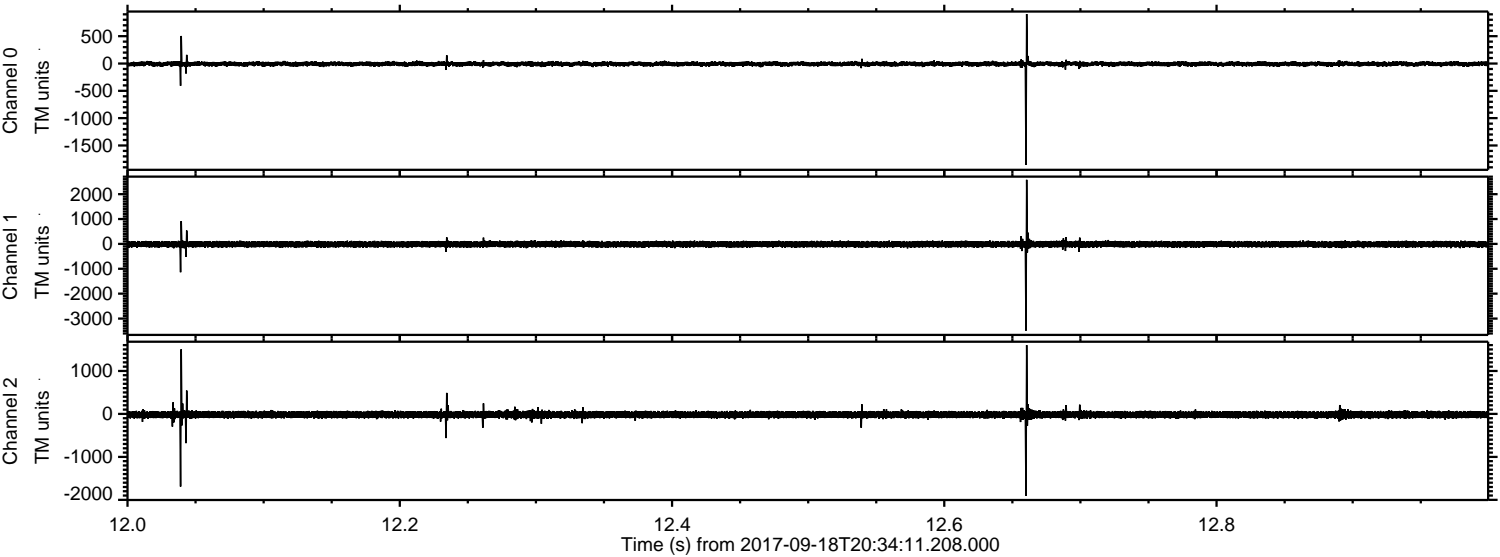


Channel 0
mn: -931
mx: 987
 μ : -7.8
 σ : 21.1

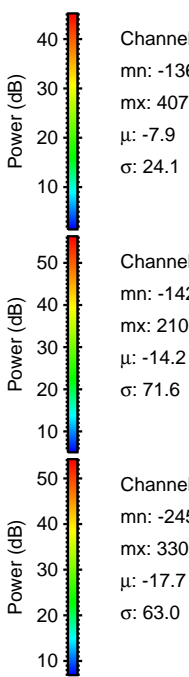
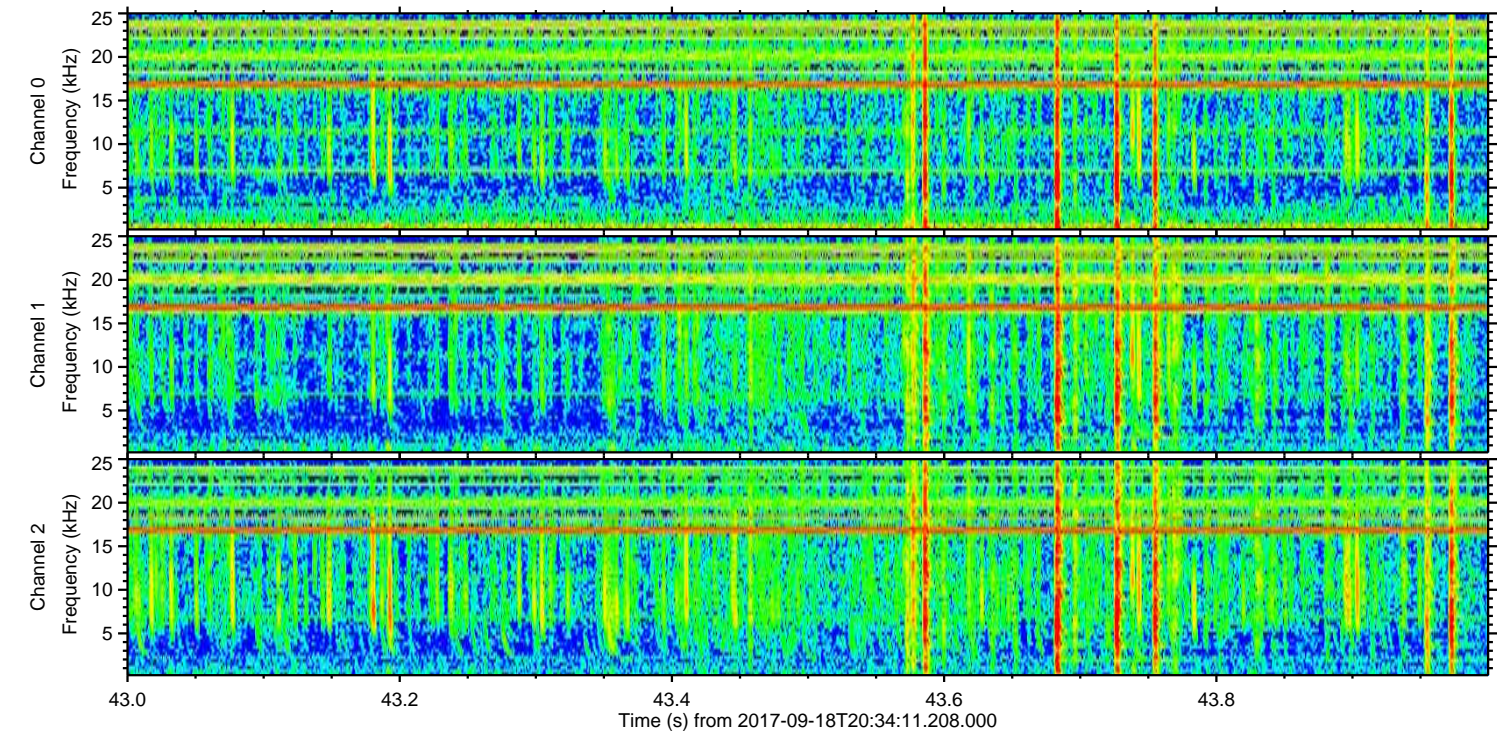
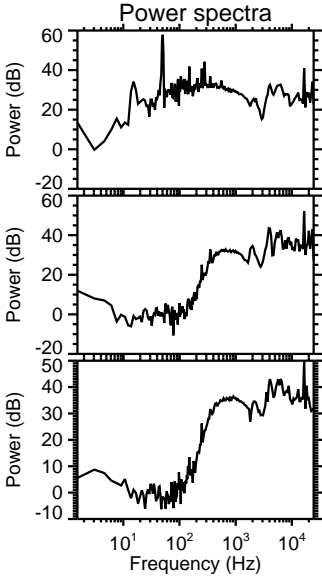
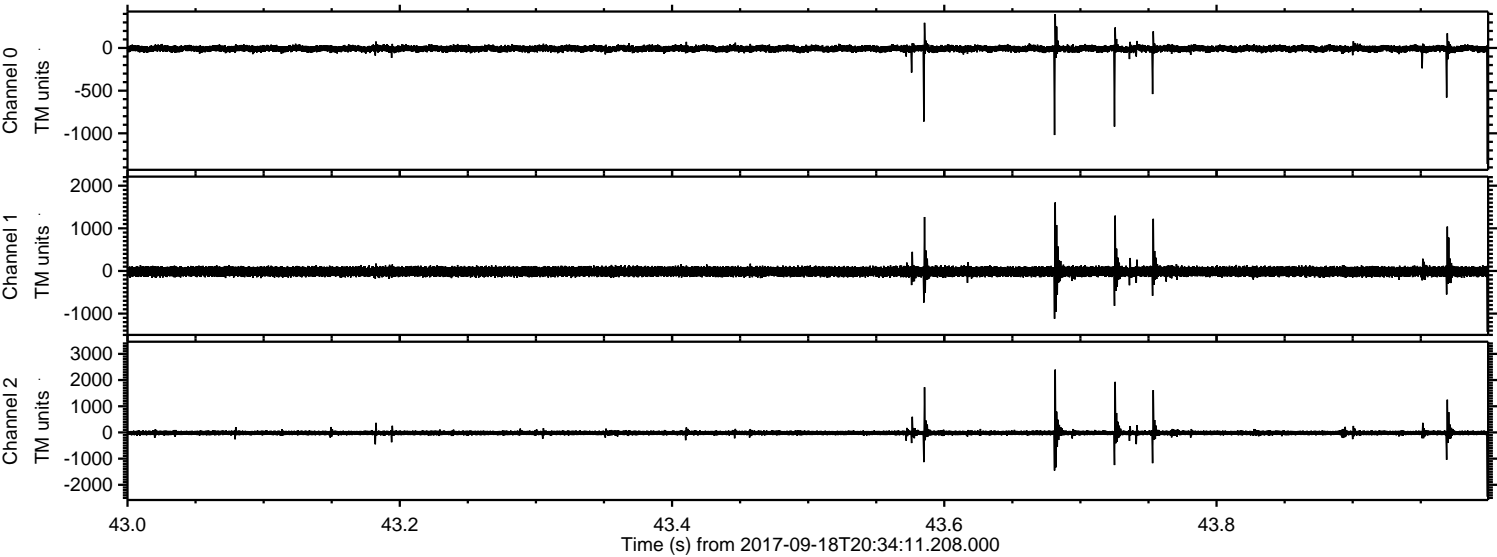
Channel 1
mn: -348
mx: 362
 μ : -14.3
 σ : 59.8

Channel 2
mn: -3674
mx: 2515
 μ : -17.7
 σ : 54.9

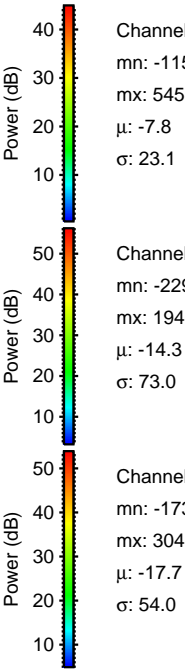
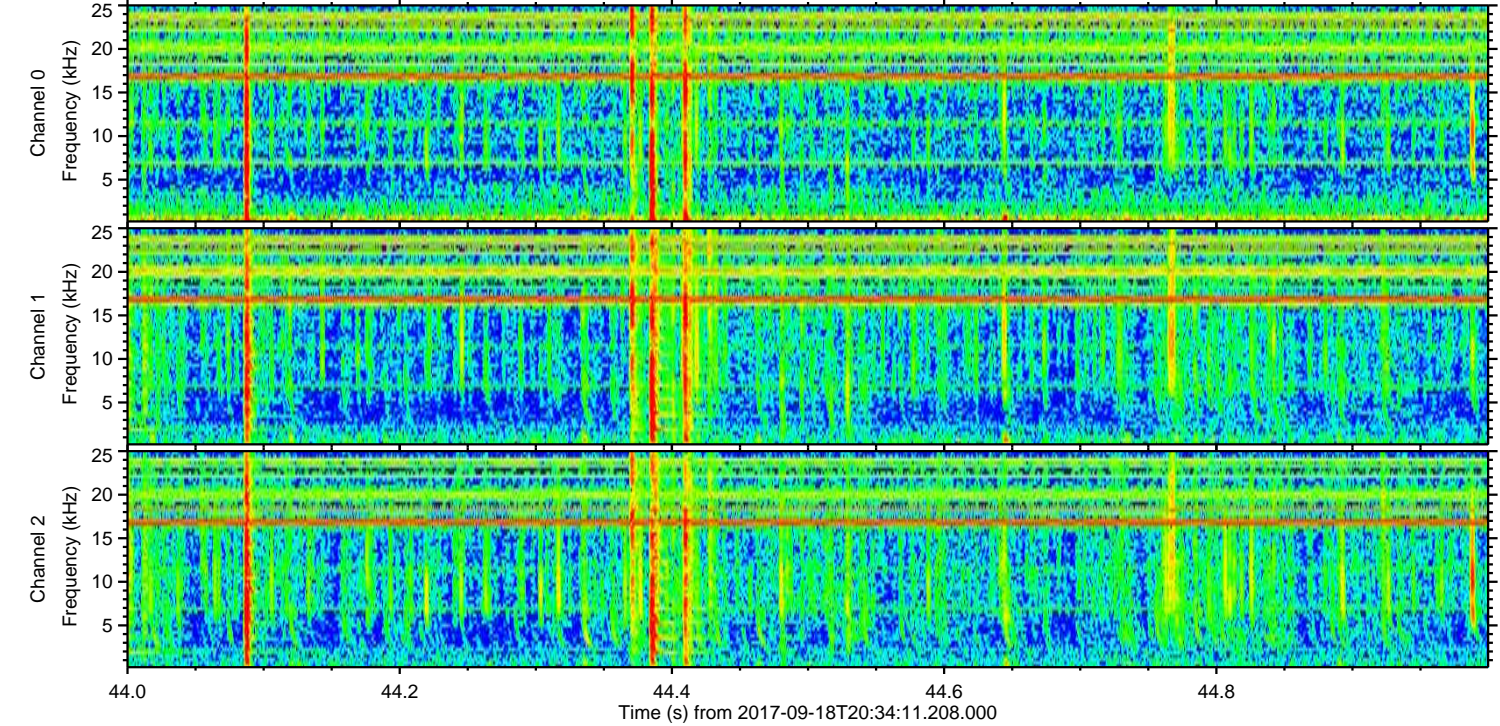
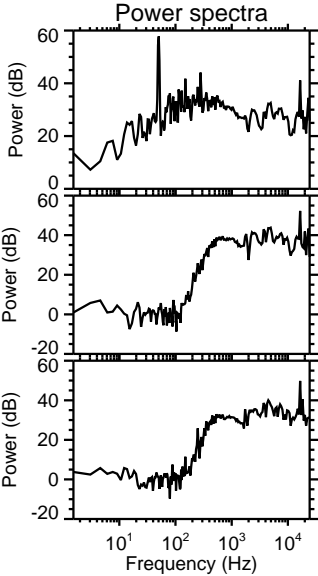
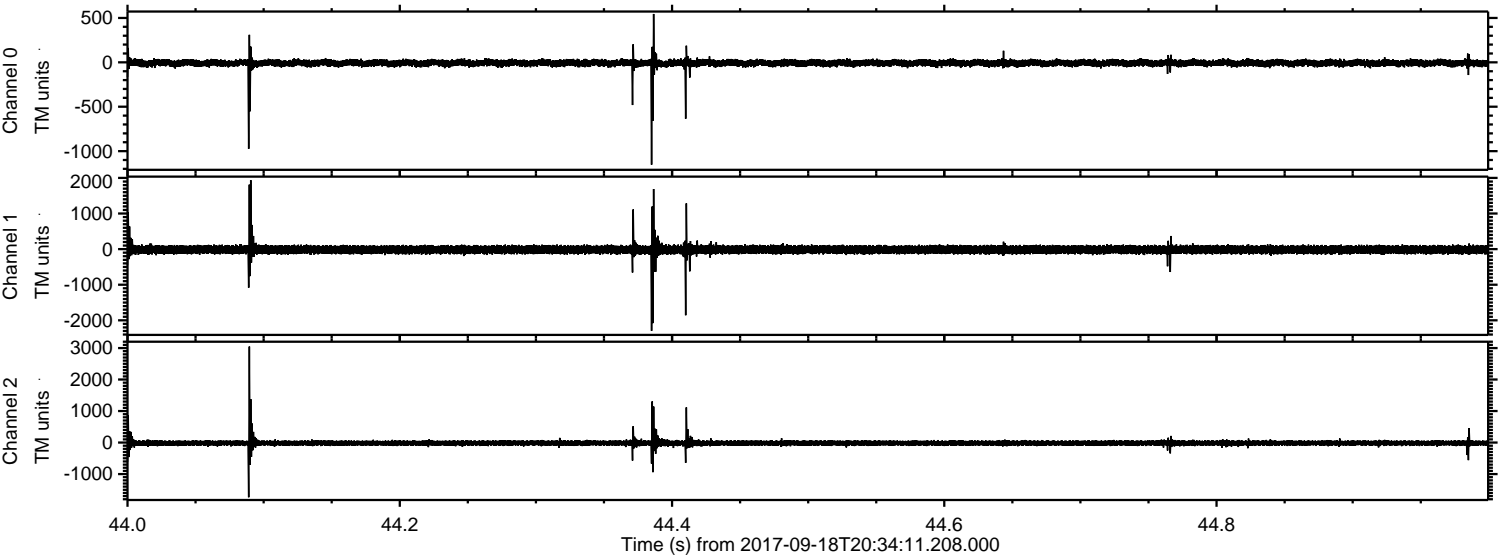
Processed Mon Sep 18 22:42:08 2017 by ELM ver.2012-10-06 from 001__elm20170918_203410__dat00.bin



Processed Mon Sep 18 22:42:09 2017 by ELM ver.2012-10-06 from 001__elm20170918_203410__dat00.bin



Processed Mon Sep 18 22:42:10 2017 by ELM ver.2012-10-06 from 001__elm20170918_203410__dat00.bin



Processed Mon Sep 18 22:42:10 2017 by ELM ver.2012-10-06 from 001__elm20170918_203410__dat00.bin

