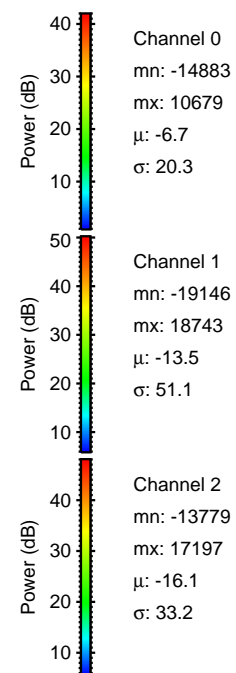
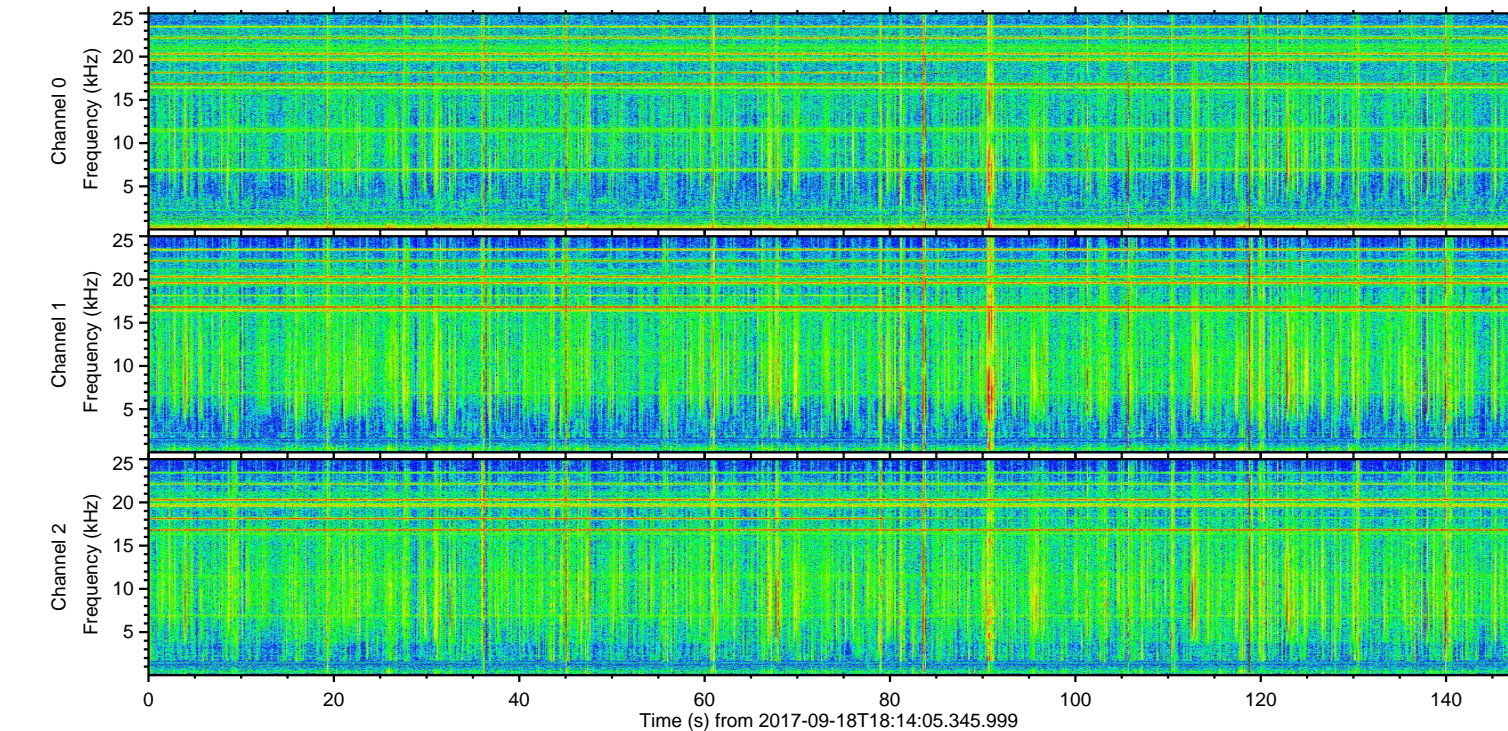
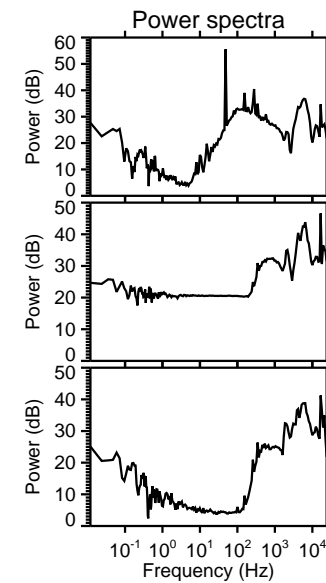
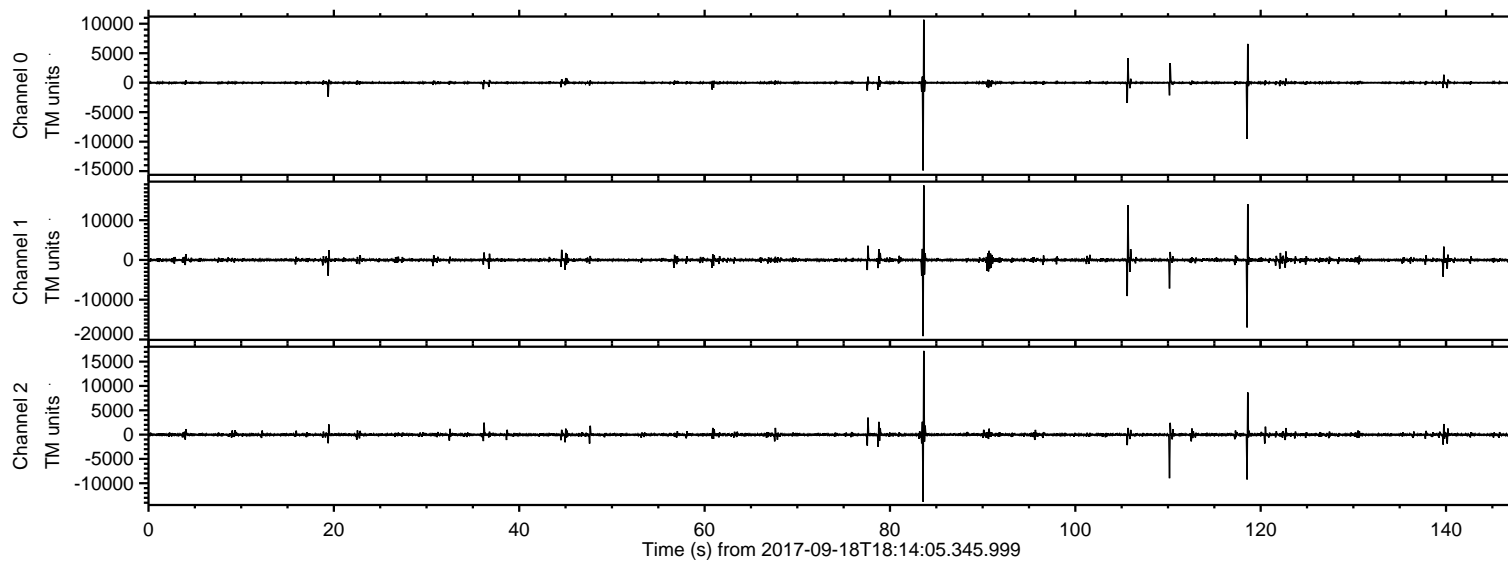


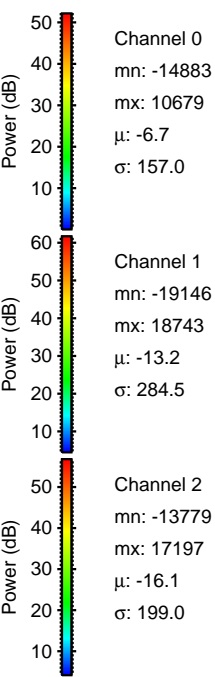
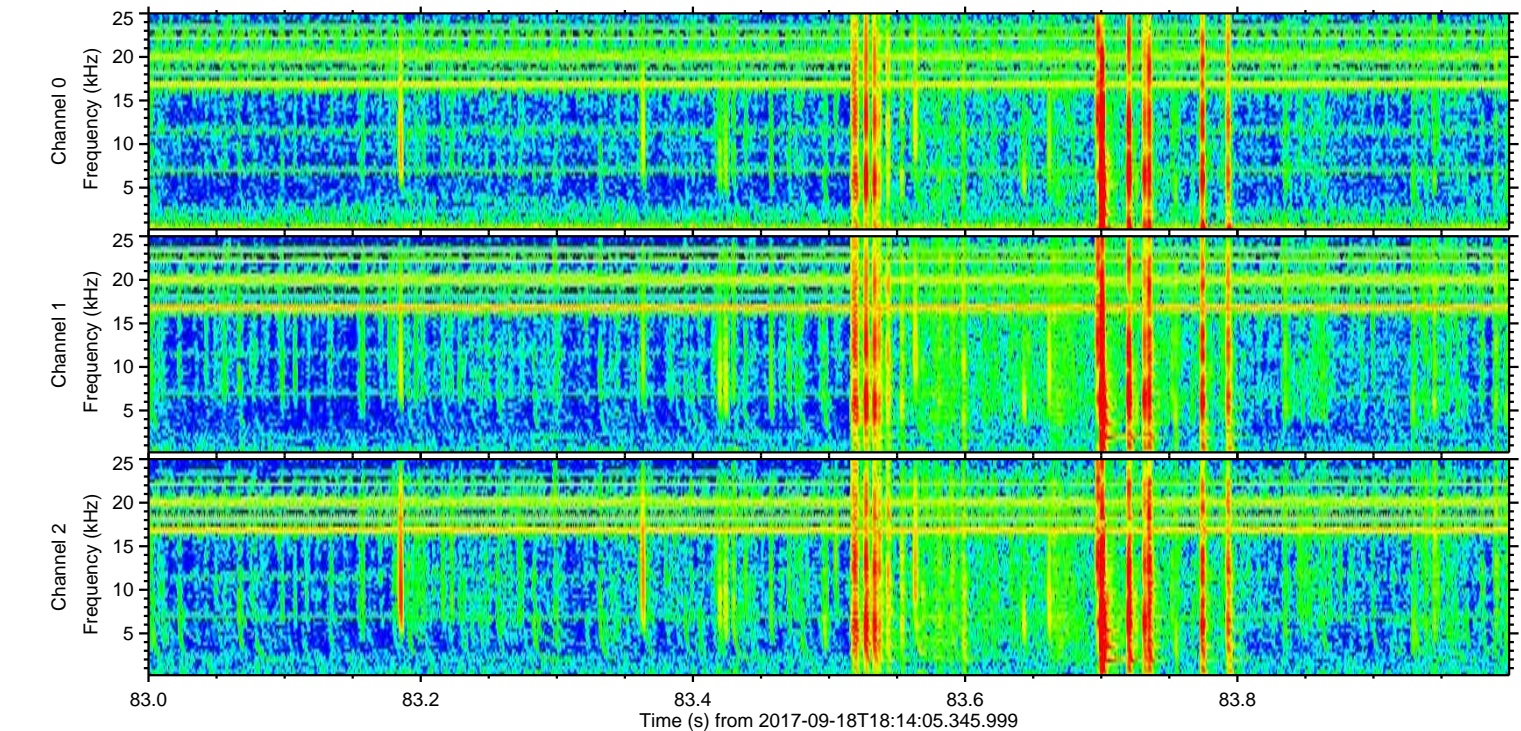
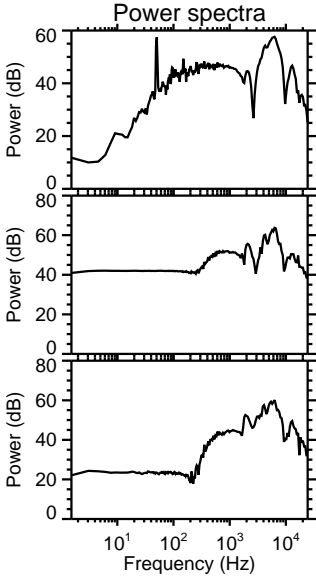
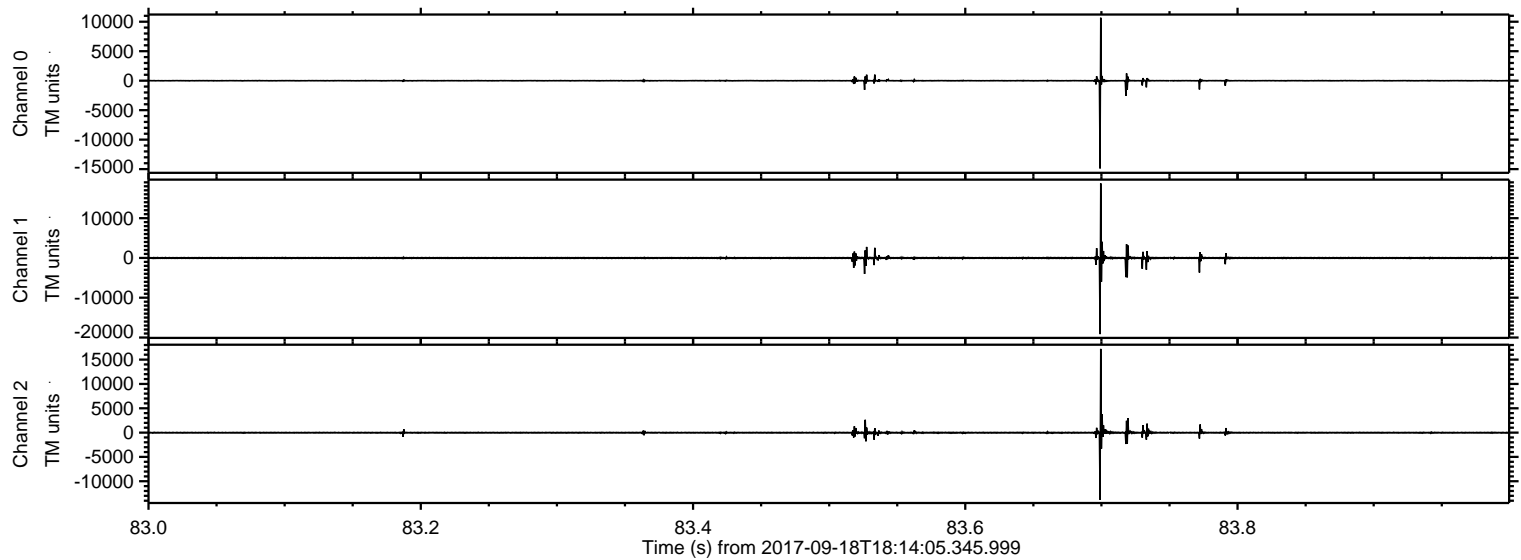
ELMAVAN 3D WAVEFORMS (Measured data sampled at 50 kHz) 51000 packets of 144 samples from 2017-09-18T18:14:05.345.999.

Processed Mon Sep 18 20:21:55 2017 by ELM ver.2012-10-06 from 001__elm20170918_181404__dat00.bin



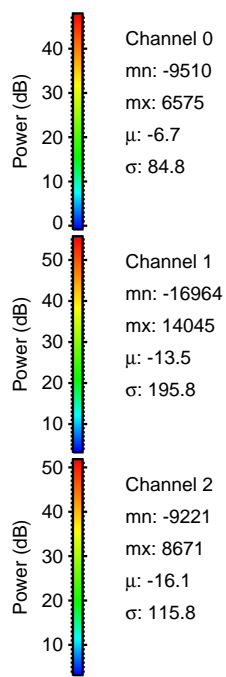
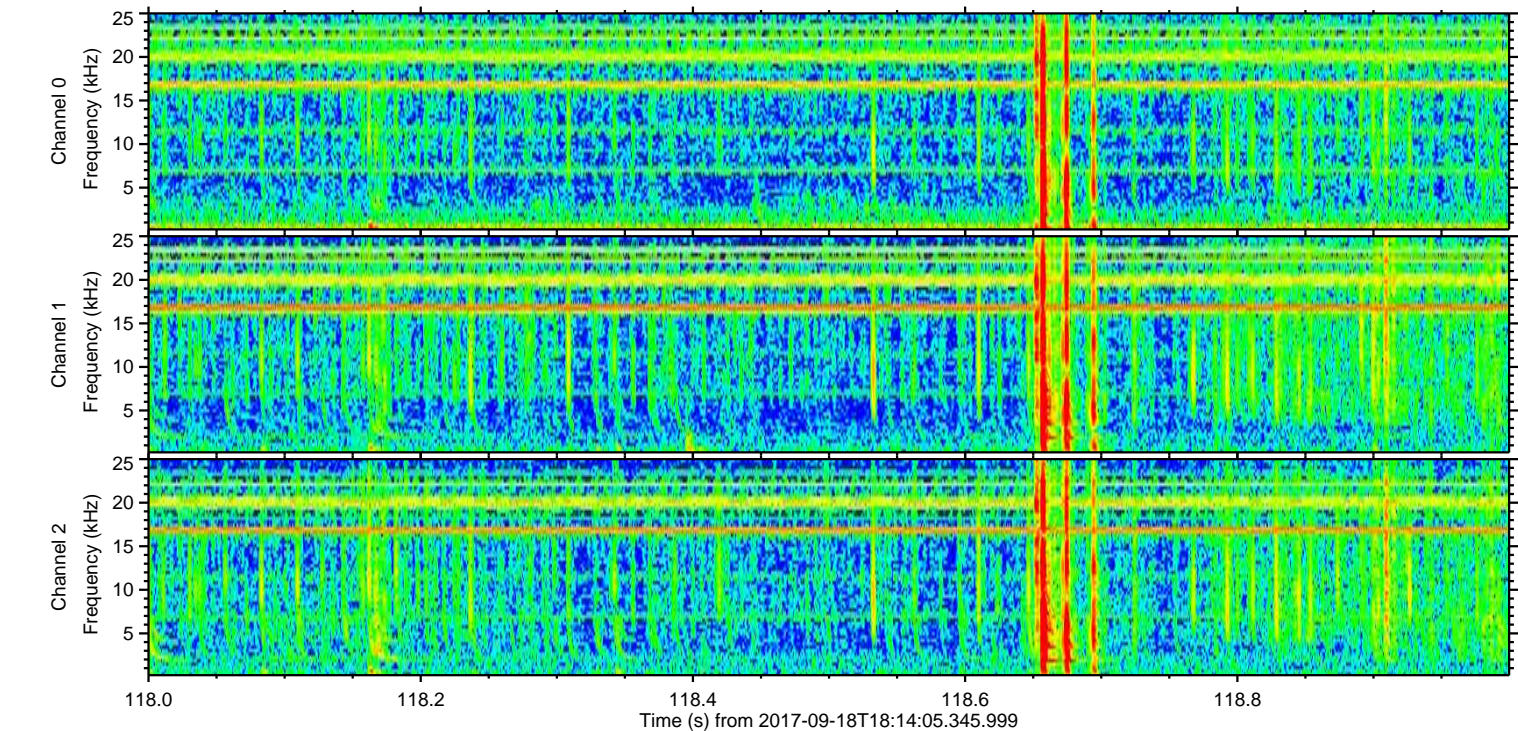
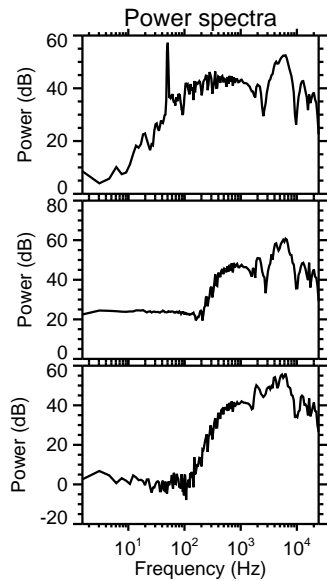
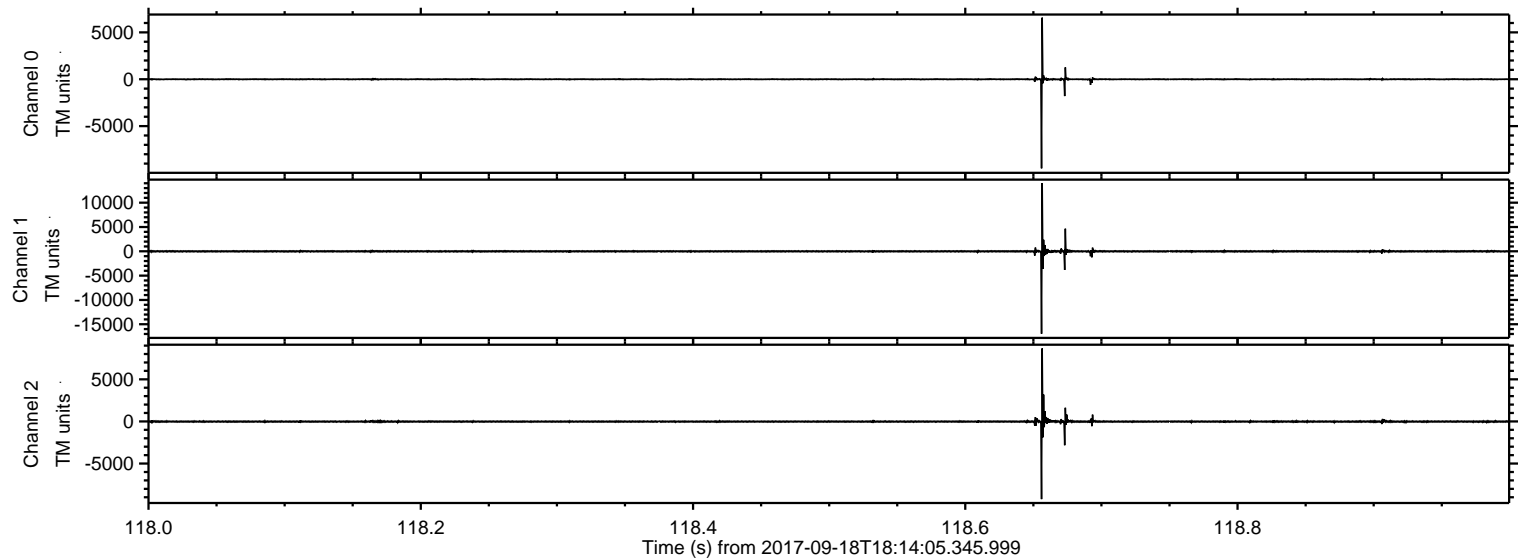
ELMAVAN 3D WAVEFORMS (Measured data sampled at 50 kHz) 51000 packets of 144 samples from 2017-09-18T18:14:05.345.999. Part 84/147

Processed Mon Sep 18 20:22:02 2017 by ELM ver.2012-10-06 from 001__elm20170918_181404__dat00.bin



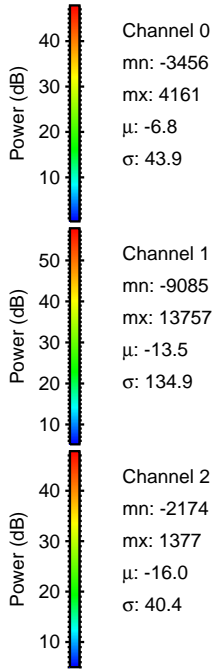
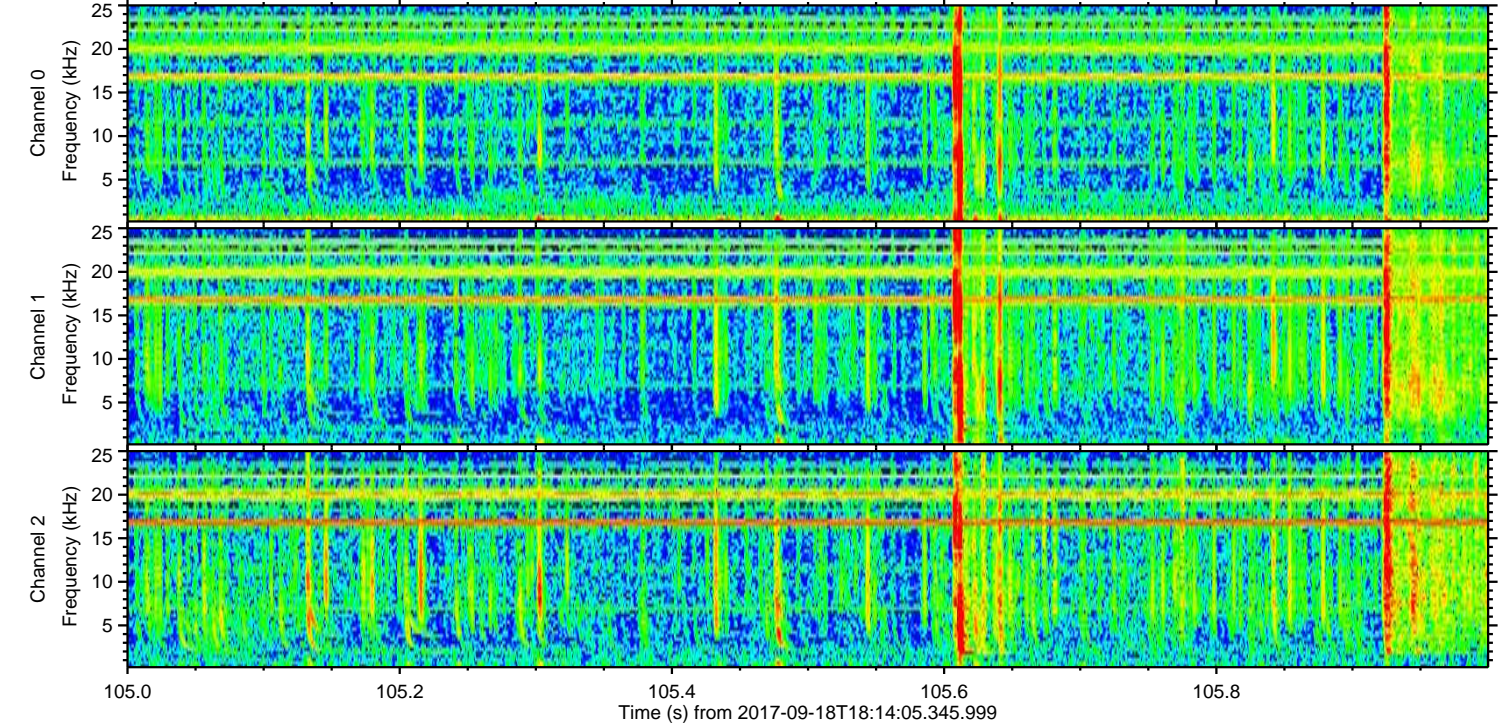
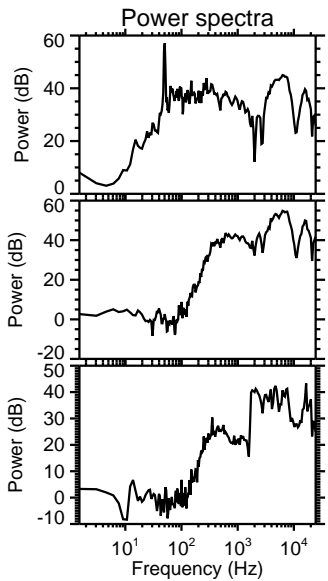
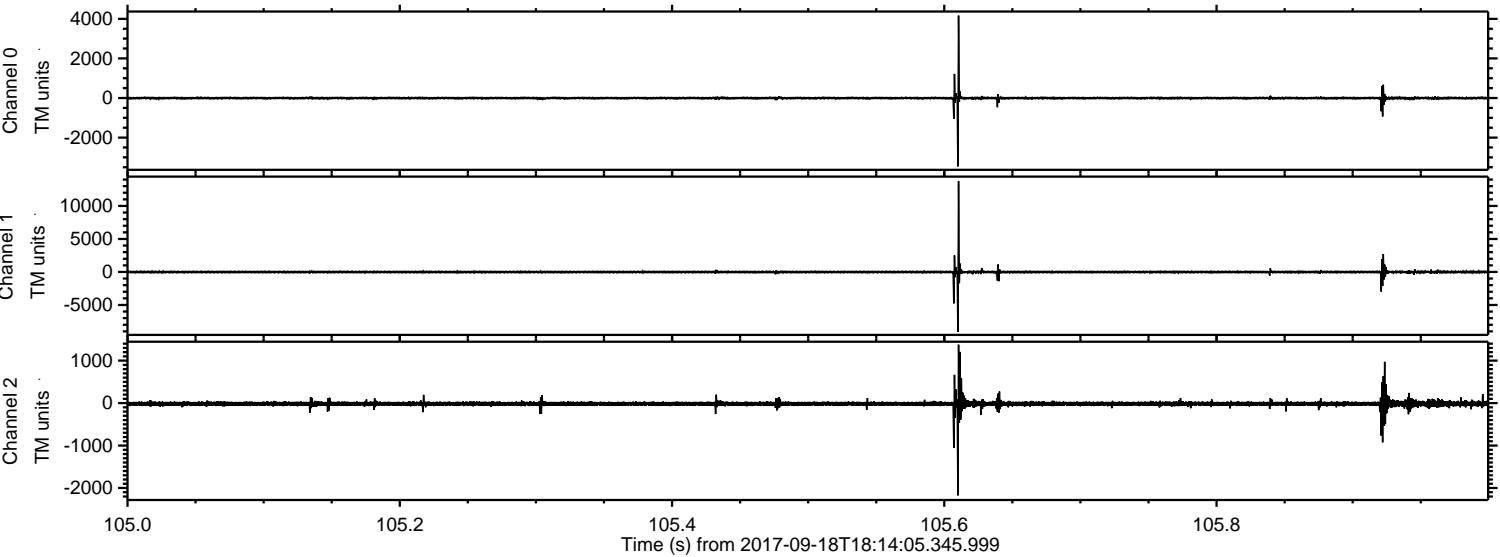
ELMAVAN 3D WAVEFORMS (Measured data sampled at 50 kHz) 51000 packets of 144 samples from 2017-09-18T18:14:05.345.999. Part 119/147

Processed Mon Sep 18 20:22:02 2017 by ELM ver.2012-10-06 from 001__elm20170918_181404__dat00.bin



ELMAVAN 3D WAVEFORMS (Measured data sampled at 50 kHz) 51000 packets of 144 samples from 2017-09-18T18:14:05.345.999. Part 106/147

Processed Mon Sep 18 20:22:03 2017 by ELM ver.2012-10-06 from 001__elm20170918_181404__dat00.bin



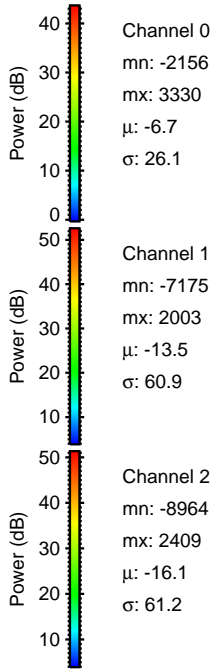
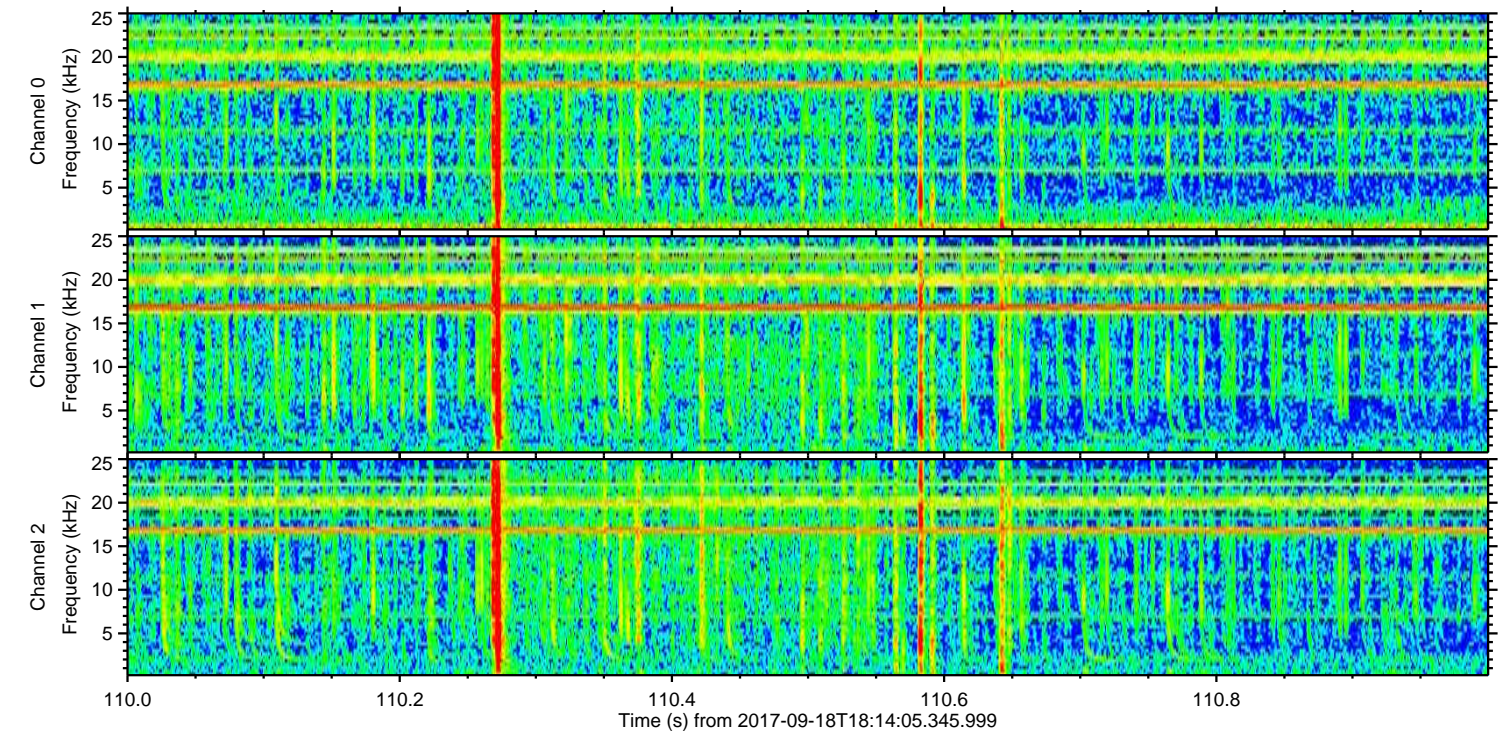
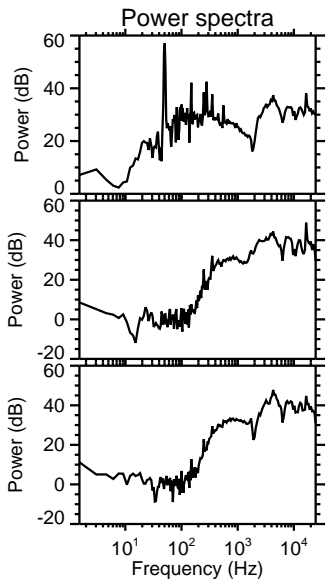
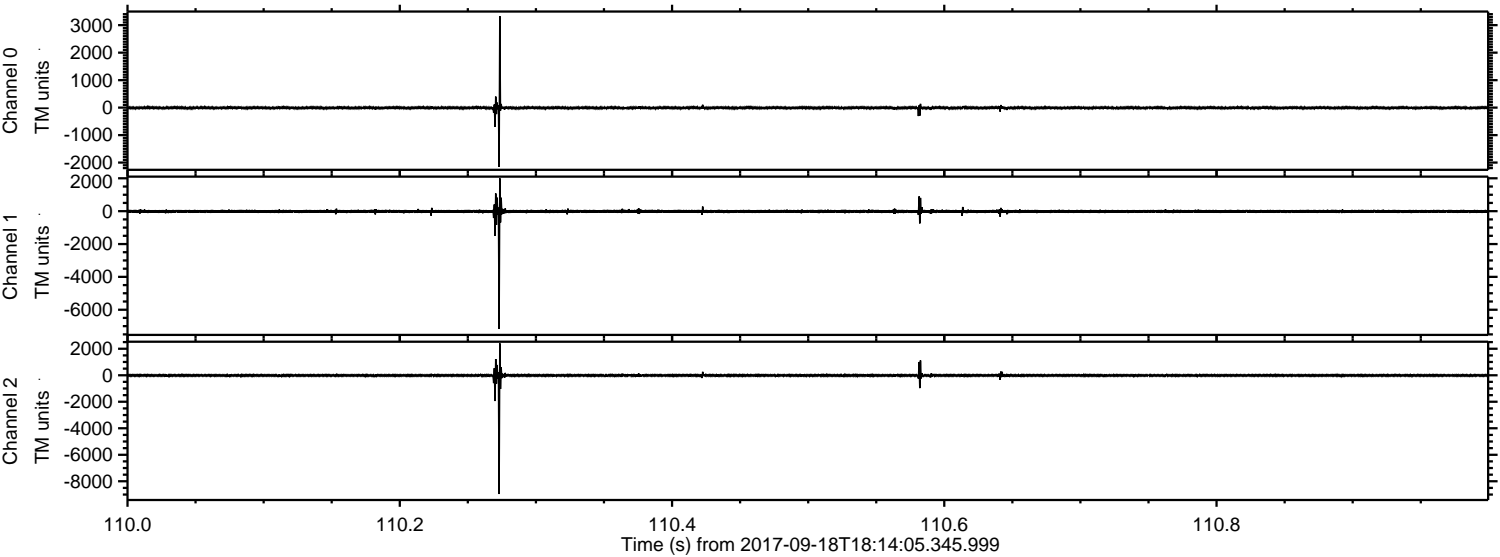
Channel 0
mn: -3456
mx: 4161
 μ : -6.8
 σ : 43.9

Channel 1
mn: -9085
mx: 13757
 μ : -13.5
 σ : 134.9

Channel 2
mn: -2174
mx: 1377
 μ : -16.0
 σ : 40.4

ELMAVAN 3D WAVEFORMS (Measured data sampled at 50 kHz) 51000 packets of 144 samples from 2017-09-18T18:14:05.345.999. Part 111/147

Processed Mon Sep 18 20:22:04 2017 by ELM ver.2012-10-06 from 001__elm20170918_181404__dat00.bin



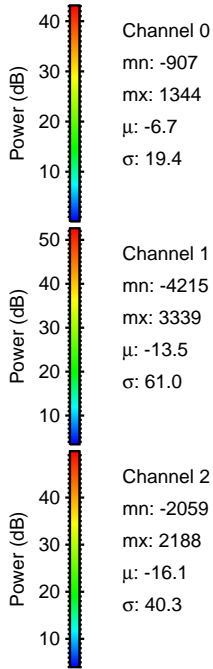
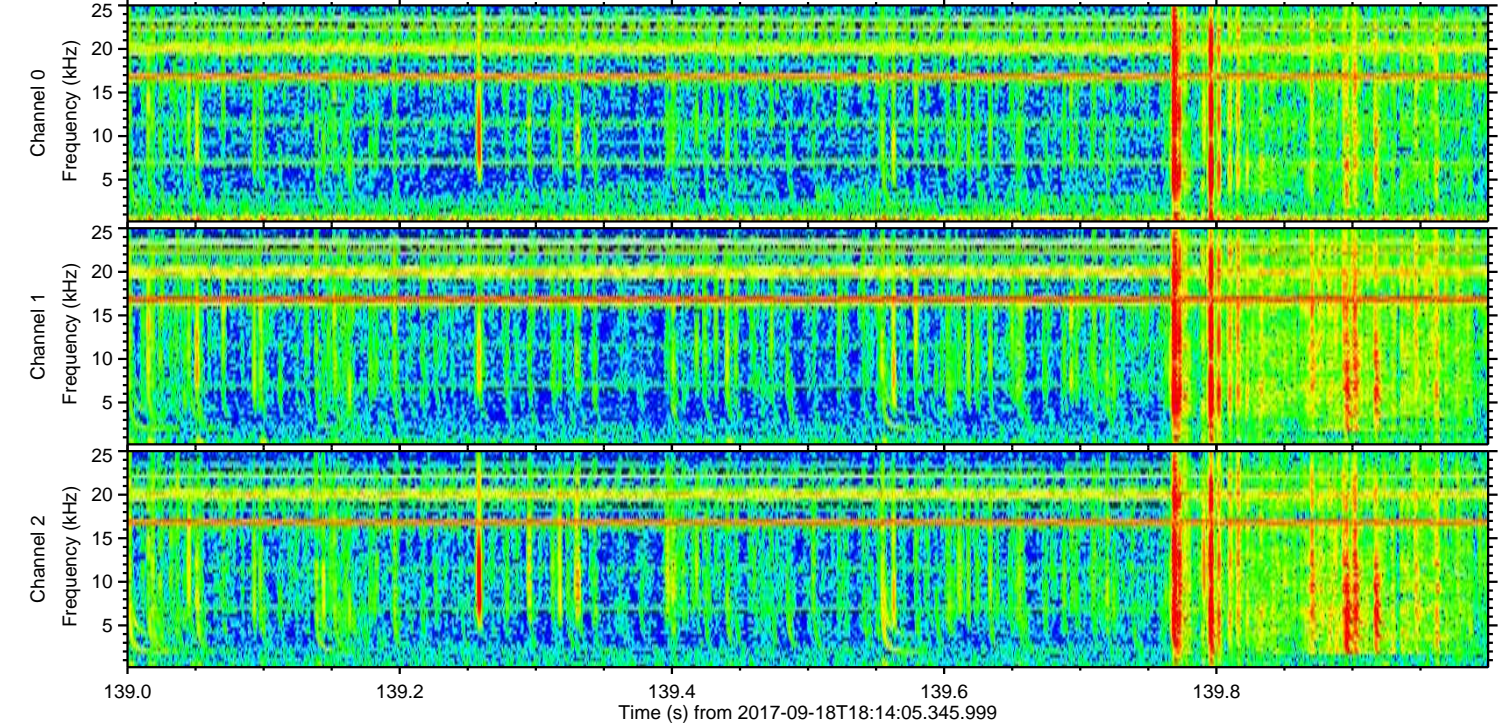
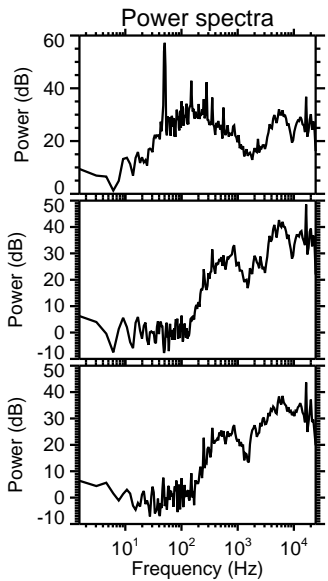
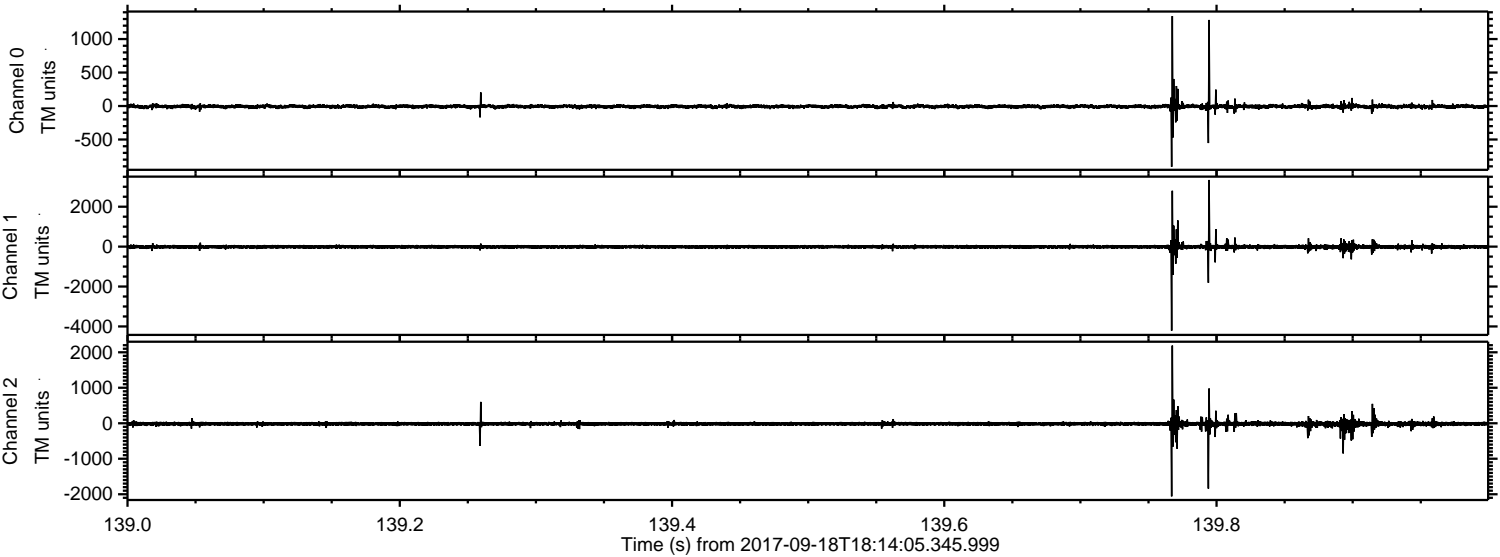
Channel 0
mn: -2156
mx: 3330
 μ : -6.7
 σ : 26.1

Channel 1
mn: -7175
mx: 2003
 μ : -13.5
 σ : 60.9

Channel 2
mn: -8964
mx: 2409
 μ : -16.1
 σ : 61.2

ELMAVAN 3D WAVEFORMS (Measured data sampled at 50 kHz) 51000 packets of 144 samples from 2017-09-18T18:14:05.345.999. Part 140/147

Processed Mon Sep 18 20:22:04 2017 by ELM ver.2012-10-06 from 001__elm20170918_181404__dat00.bin

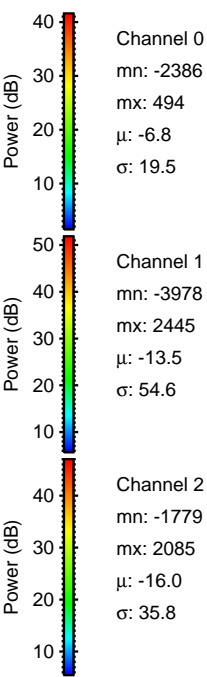
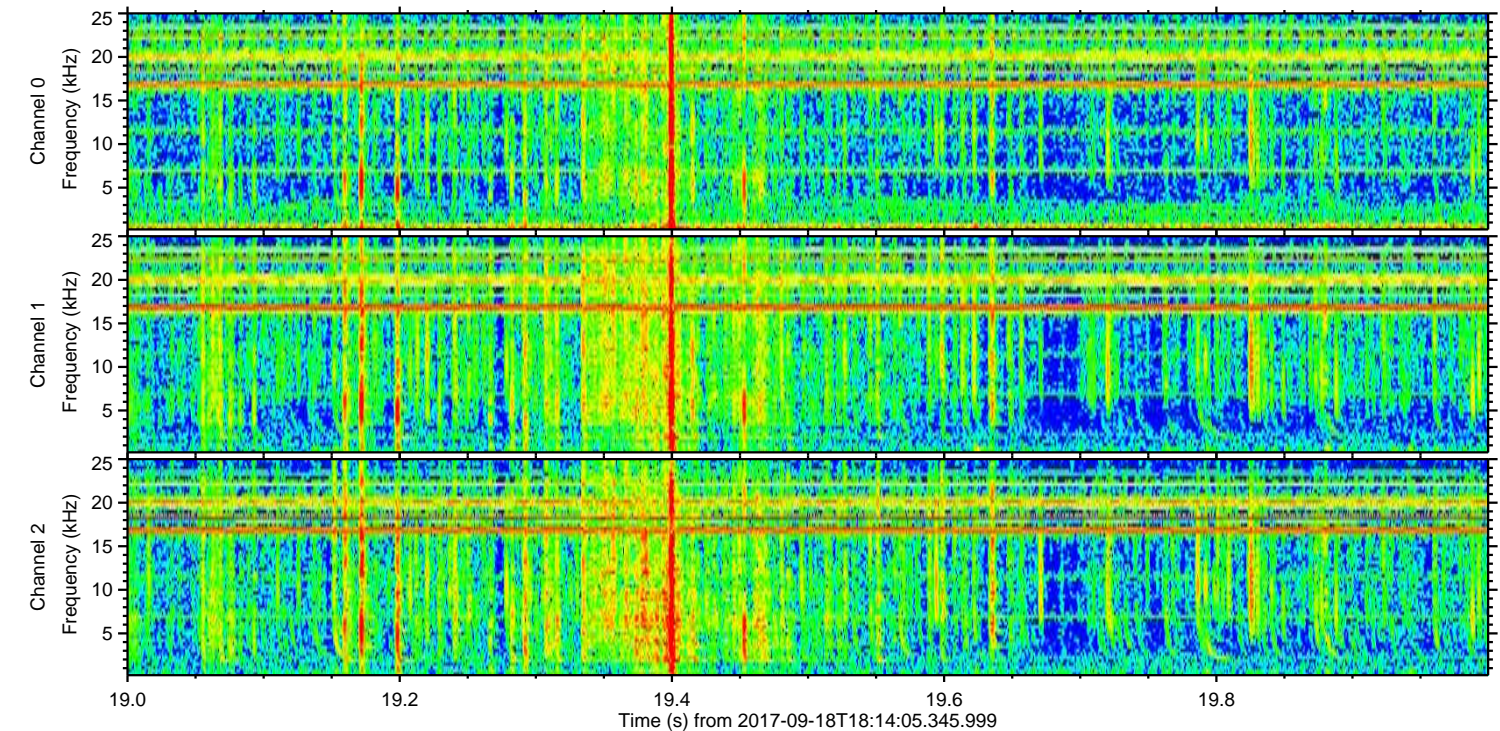
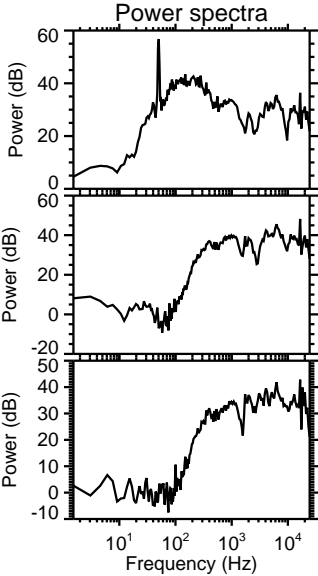
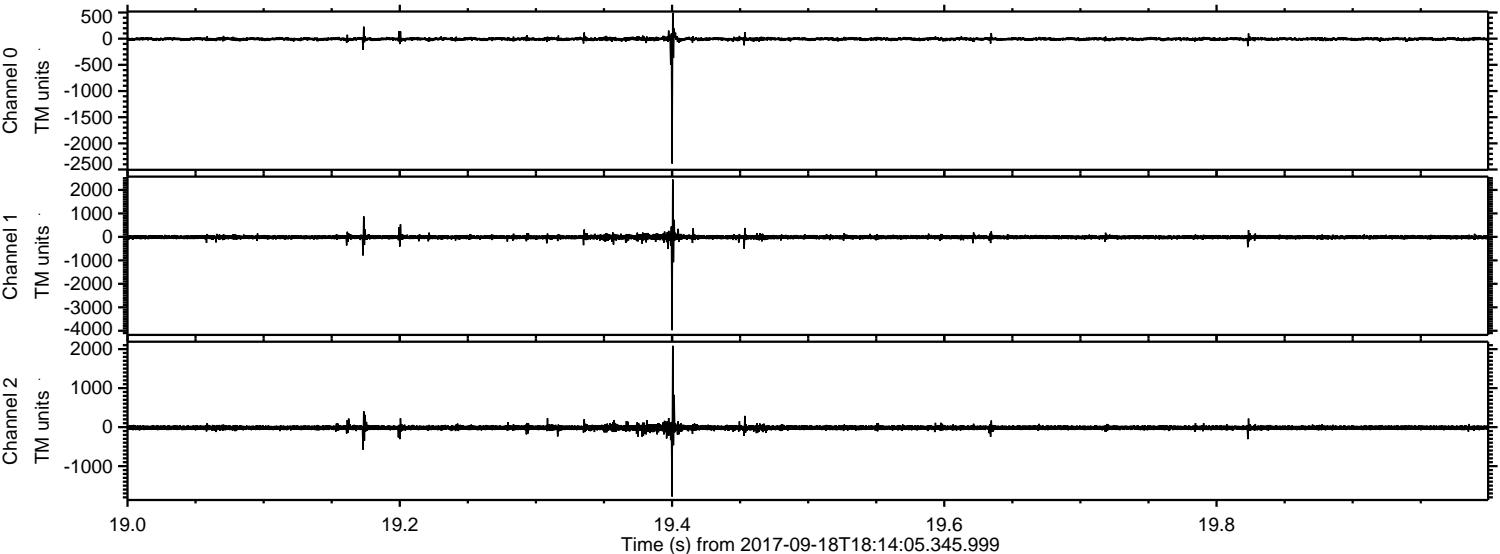


Channel 0
mn: -907
mx: 1344
 μ : -6.7
 σ : 19.4

Channel 1
mn: -4215
mx: 3339
 μ : -13.5
 σ : 61.0

Channel 2
mn: -2059
mx: 2188
 μ : -16.1
 σ : 40.3

Processed Mon Sep 18 20:22:05 2017 by ELM ver.2012-10-06 from 001__elm20170918_181404__dat00.bin

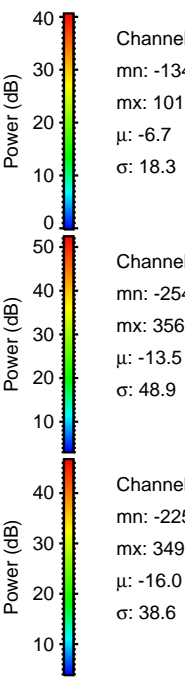
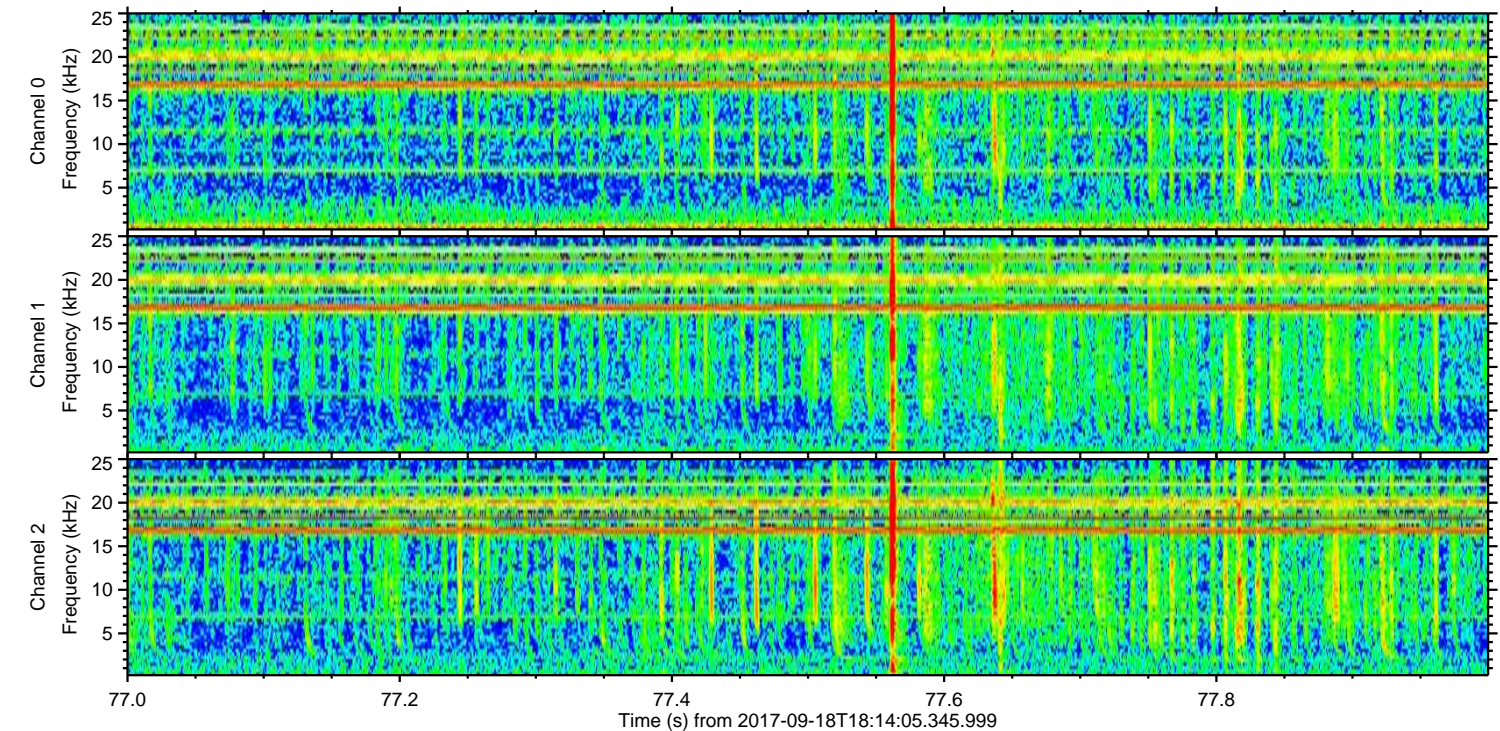
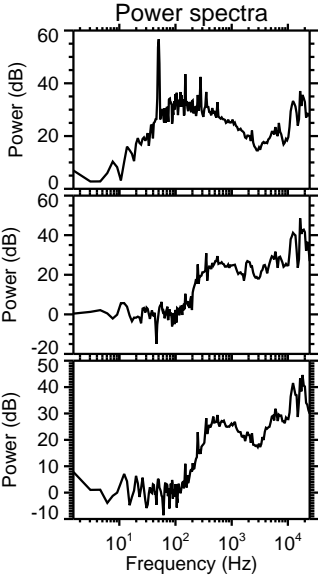
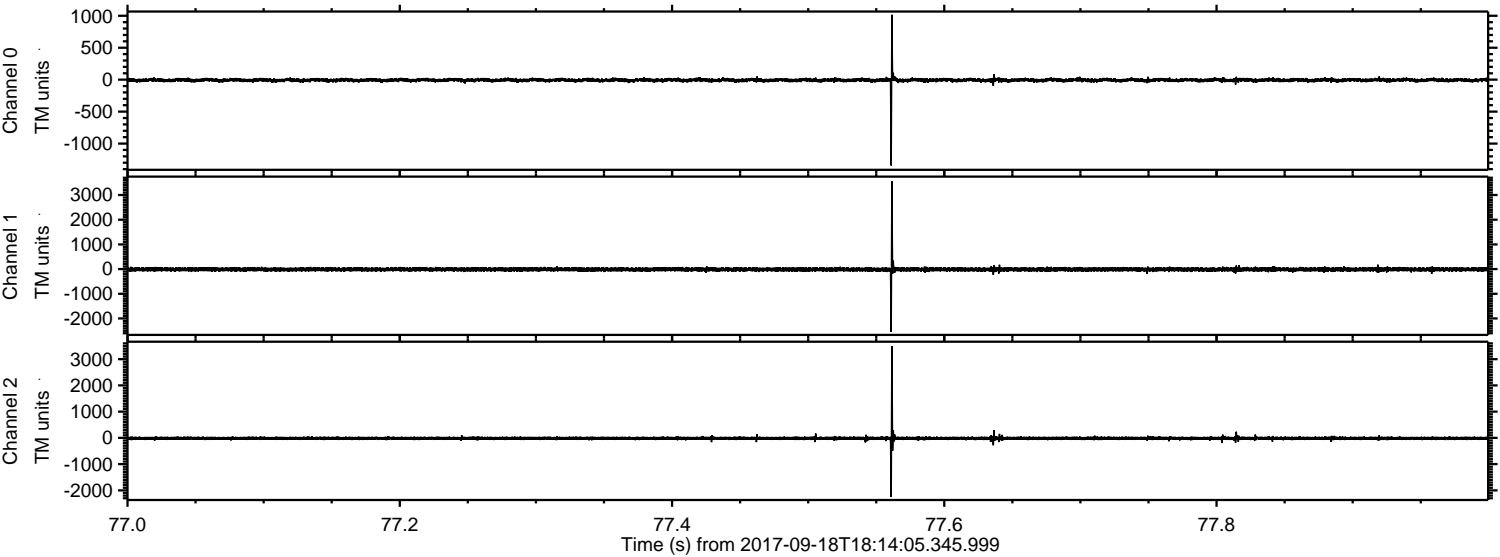


Channel 0
mn: -2386
mx: 494
 μ : -6.8
 σ : 19.5

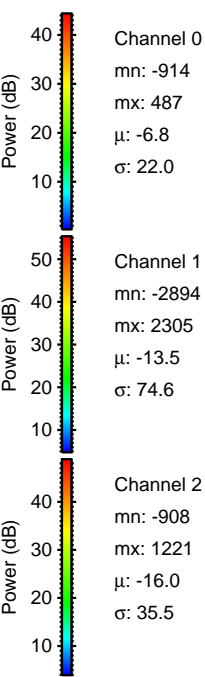
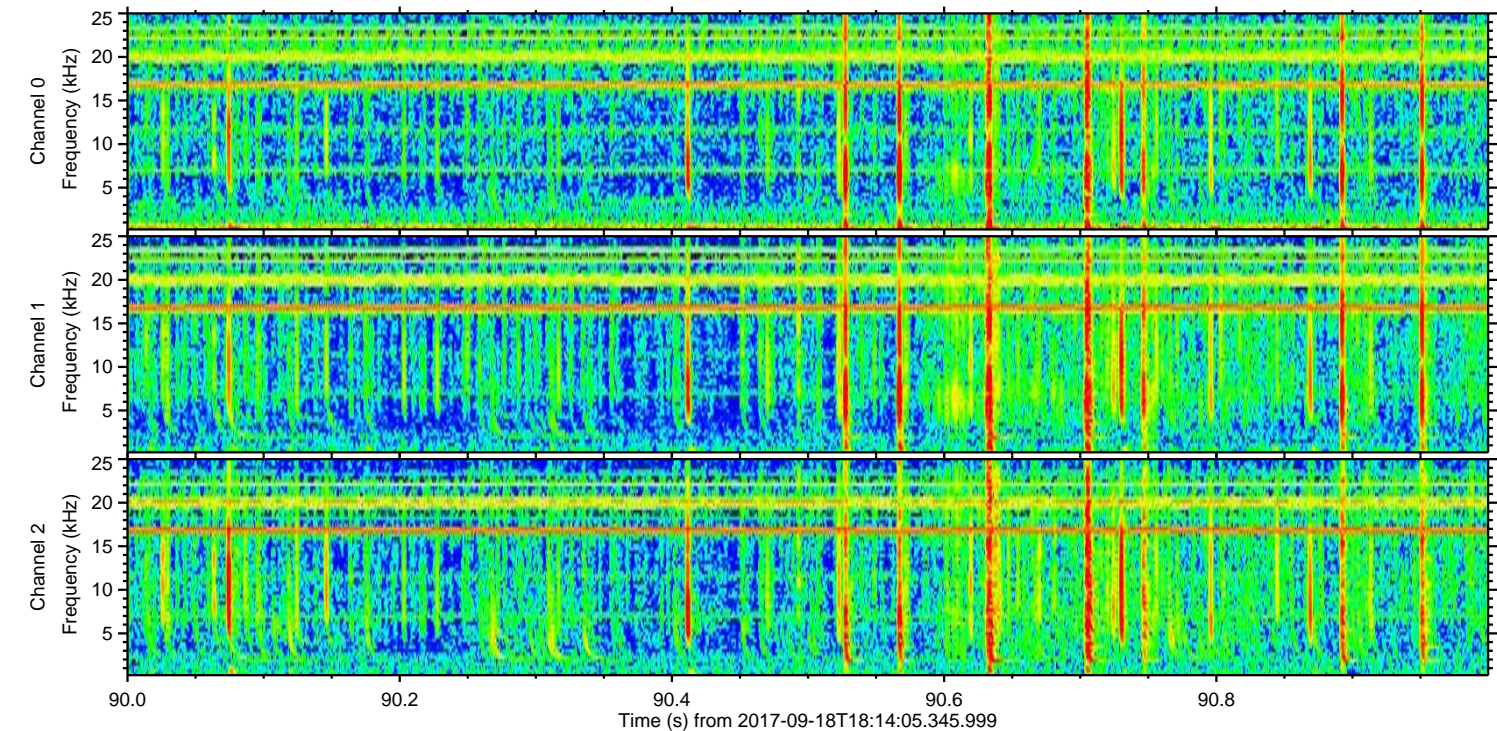
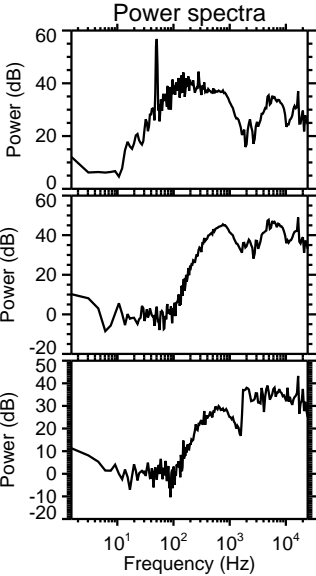
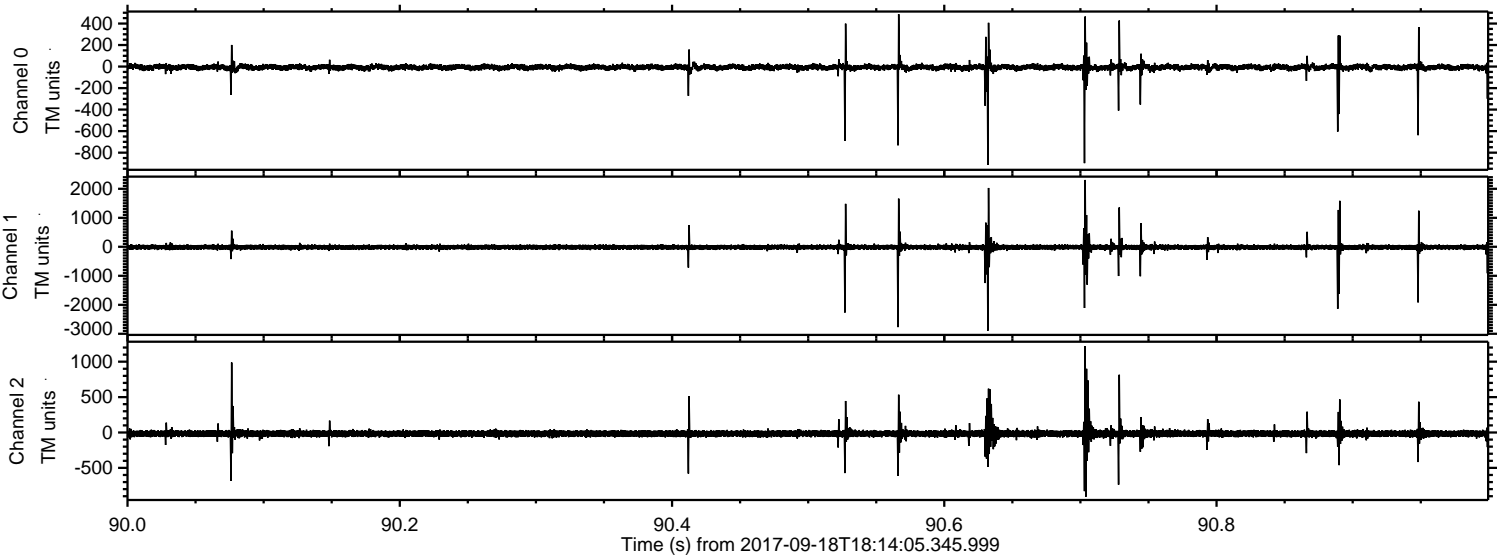
Channel 1
mn: -3978
mx: 2445
 μ : -13.5
 σ : 54.6

Channel 2
mn: -1779
mx: 2085
 μ : -16.0
 σ : 35.8

Processed Mon Sep 18 20:22:06 2017 by ELM ver.2012-10-06 from 001__elm20170918_181404__dat00.bin

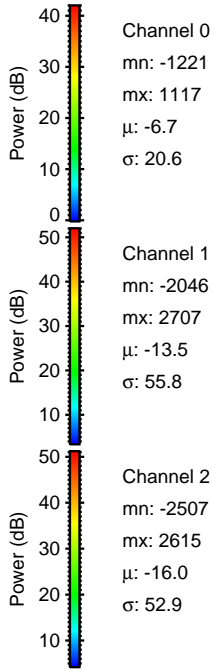
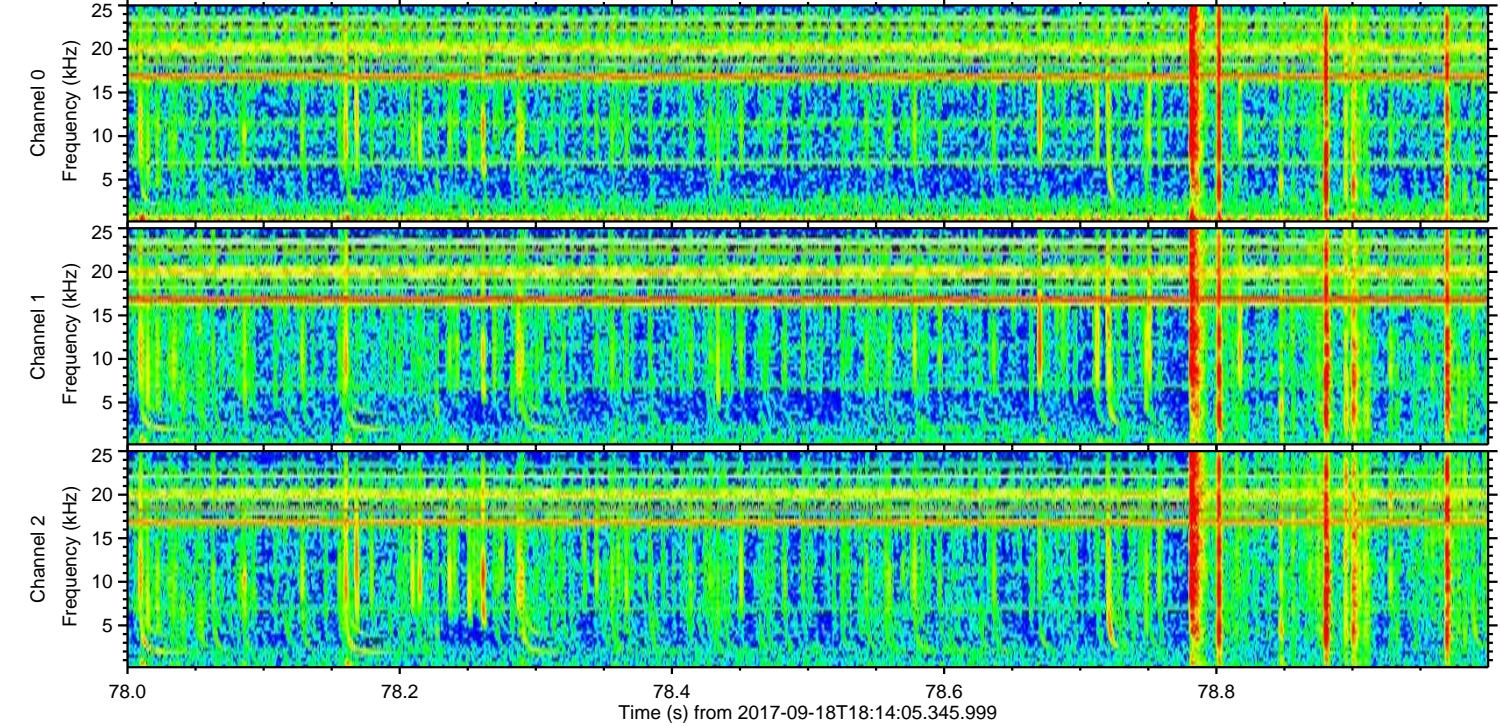
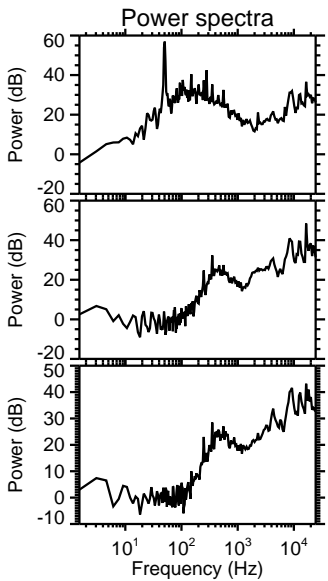
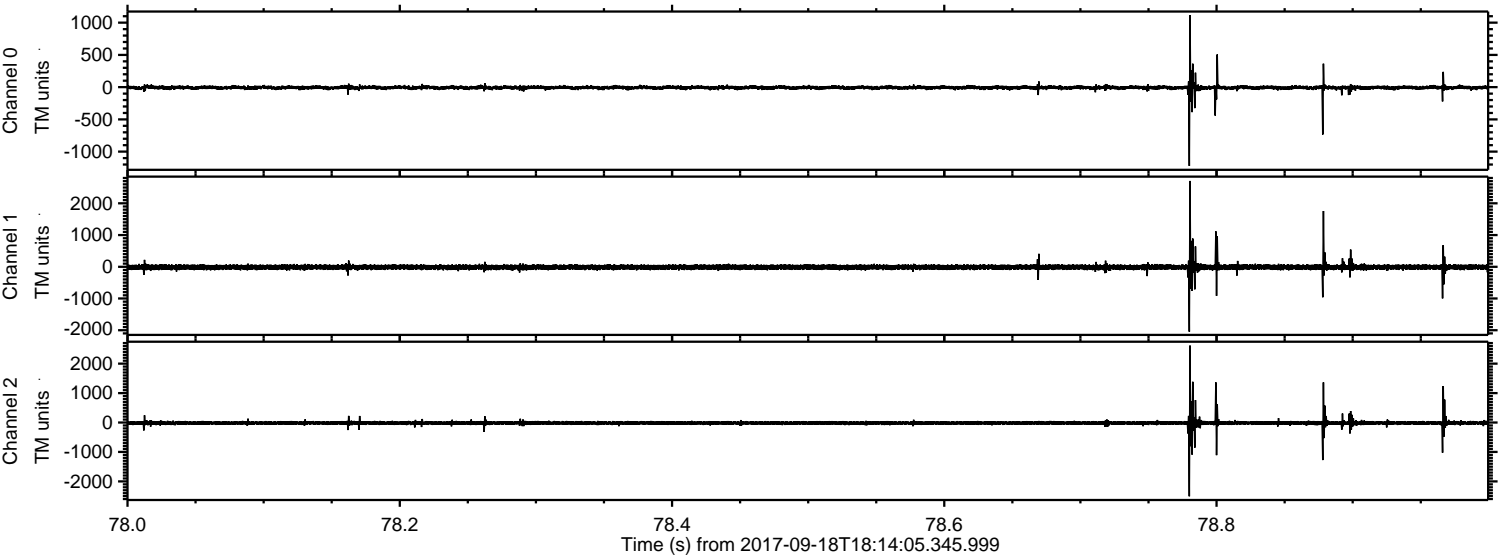


Processed Mon Sep 18 20:22:07 2017 by ELM ver.2012-10-06 from 001_elm20170918_181404__dat00.bin



ELMAVAN 3D WAVEFORMS (Measured data sampled at 50 kHz) 51000 packets of 144 samples from 2017-09-18T18:14:05.345.999. Part 79/147

Processed Mon Sep 18 20:22:07 2017 by ELM ver.2012-10-06 from 001__elm20170918_181404__dat00.bin



ELMAVAN 3D WAVEFORMS (Measured data sampled at 50 kHz) 51000 packets of 144 samples from 2017-09-18T18:14:05.345.999. Part 133/147

