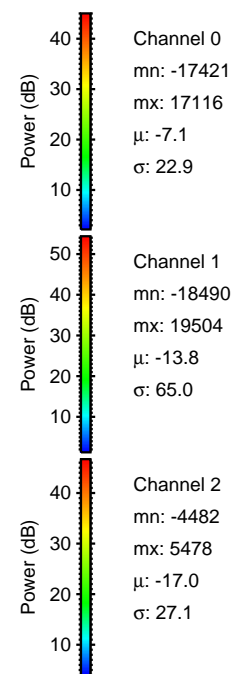
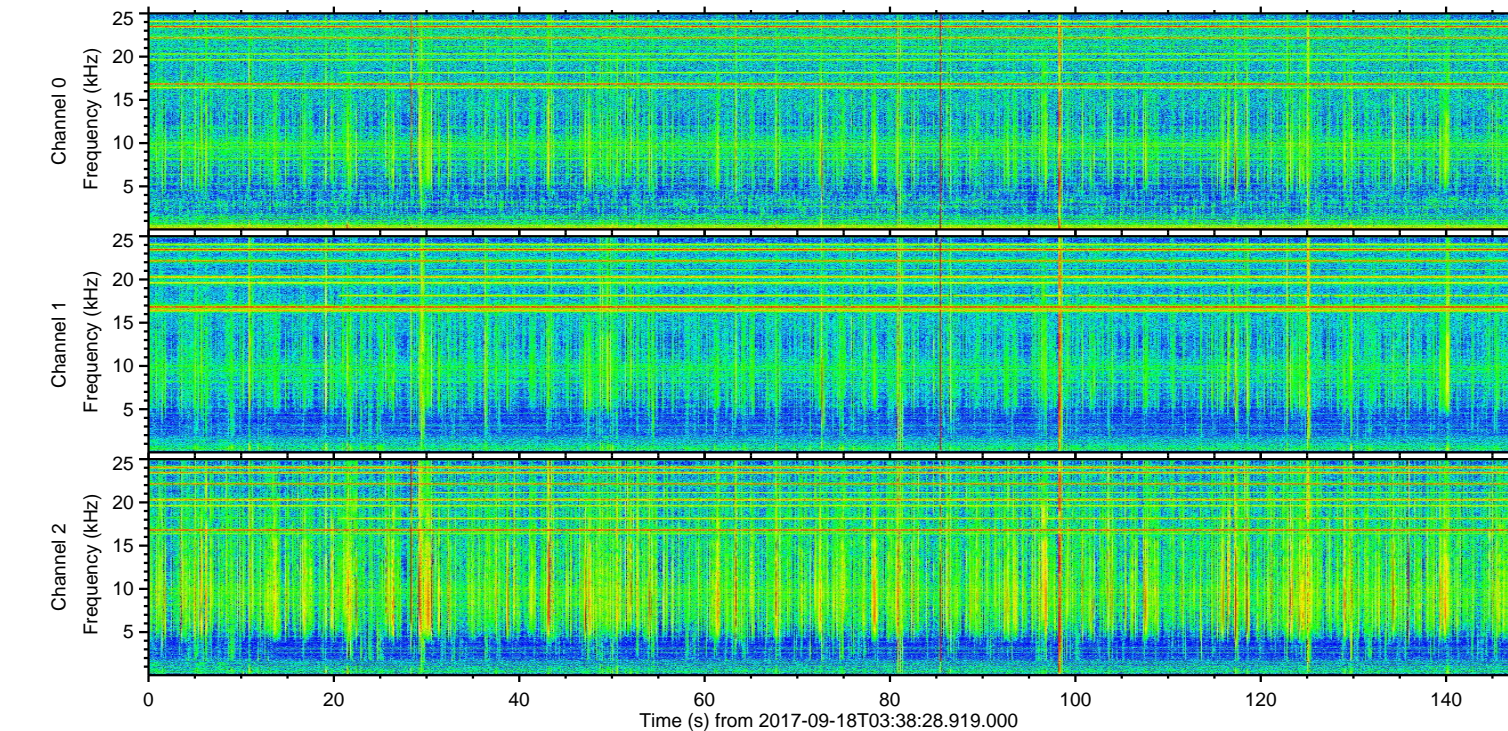
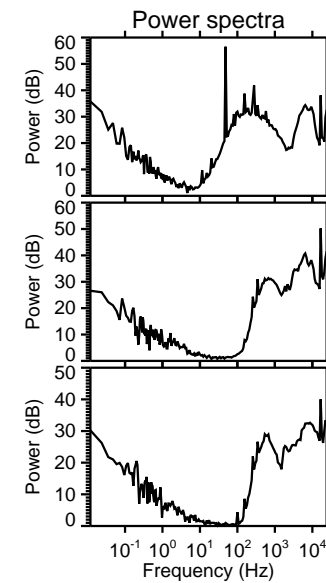
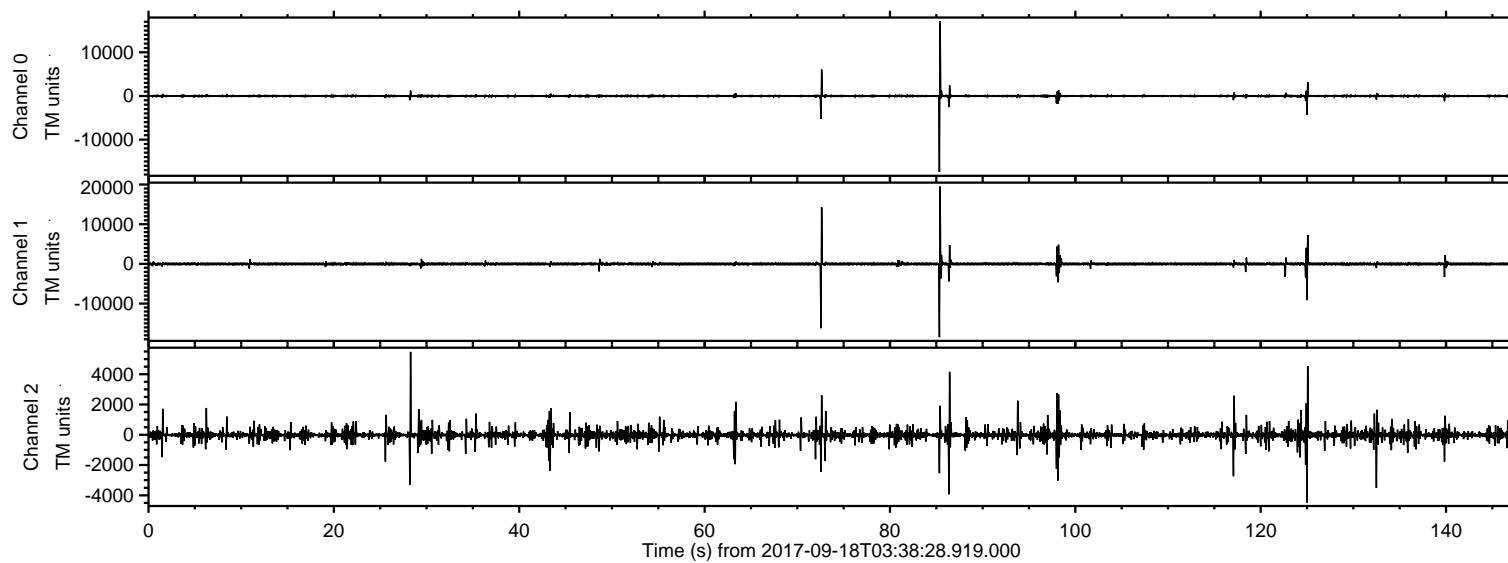


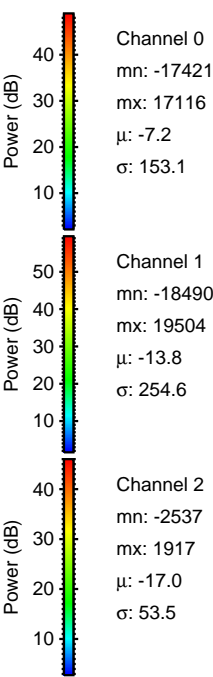
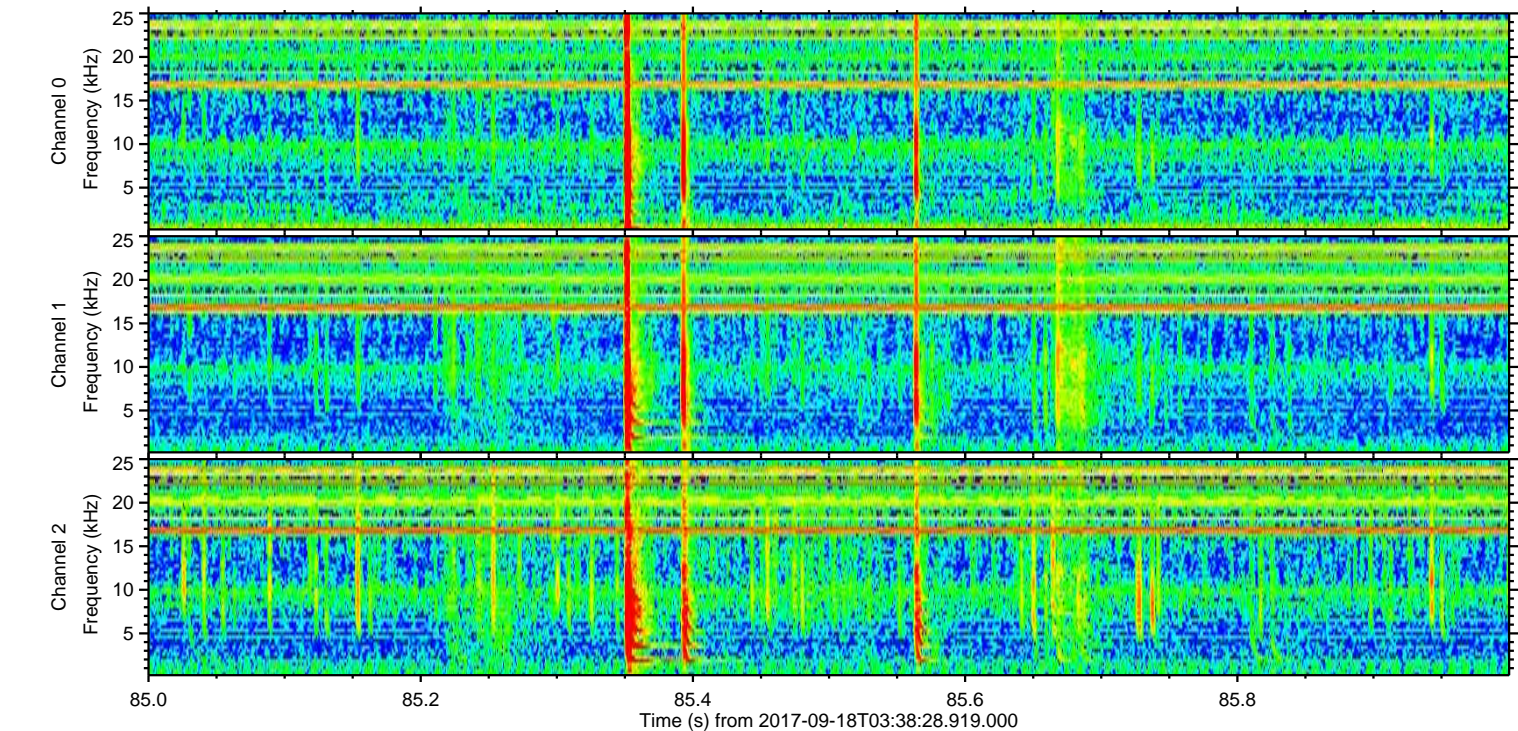
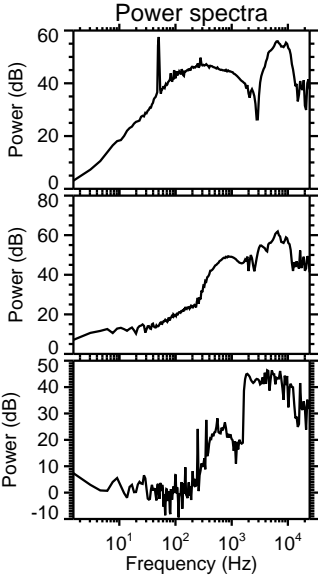
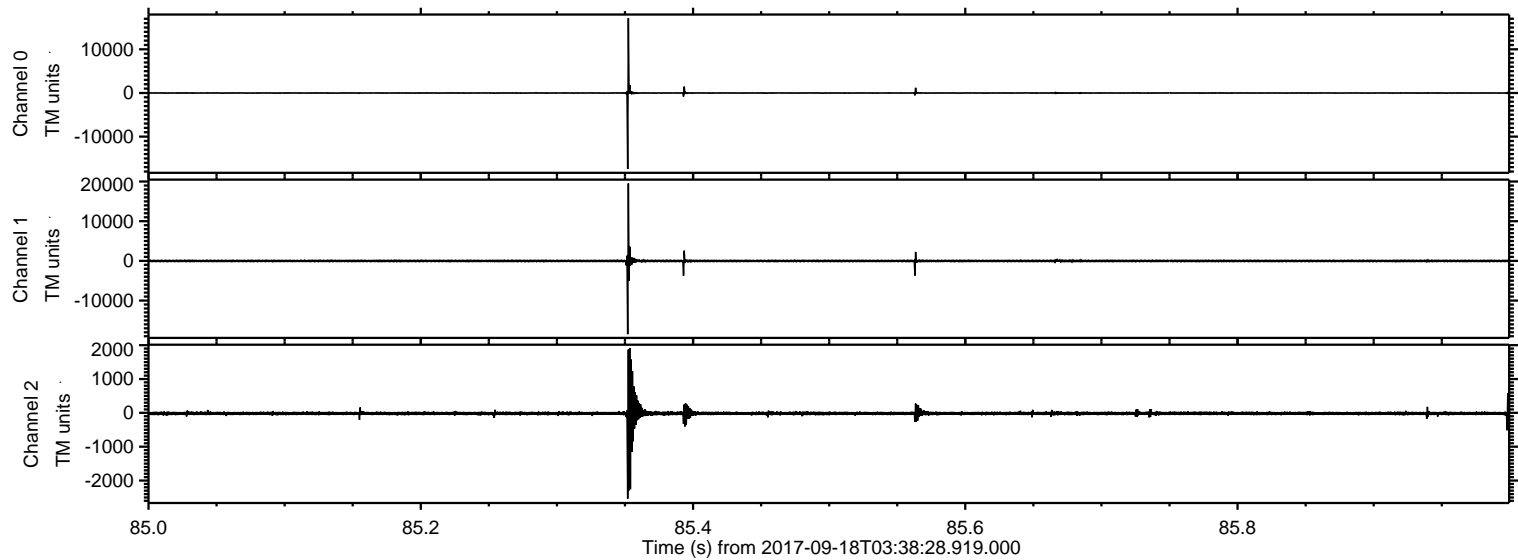
ELMAVAN 3D WAVEFORMS (Measured data sampled at 50 kHz) 51000 packets of 144 samples from 2017-09-18T03:38:28.919.000.

Processed Mon Sep 18 05:46:16 2017 by ELM ver.2012-10-06 from 001__elm20170918_033827__dat00.bin

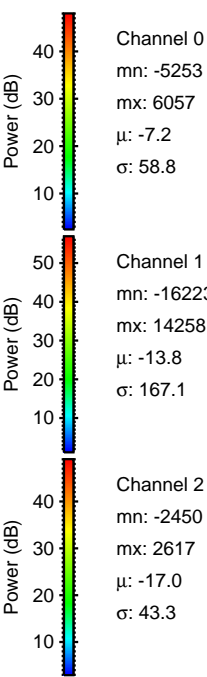
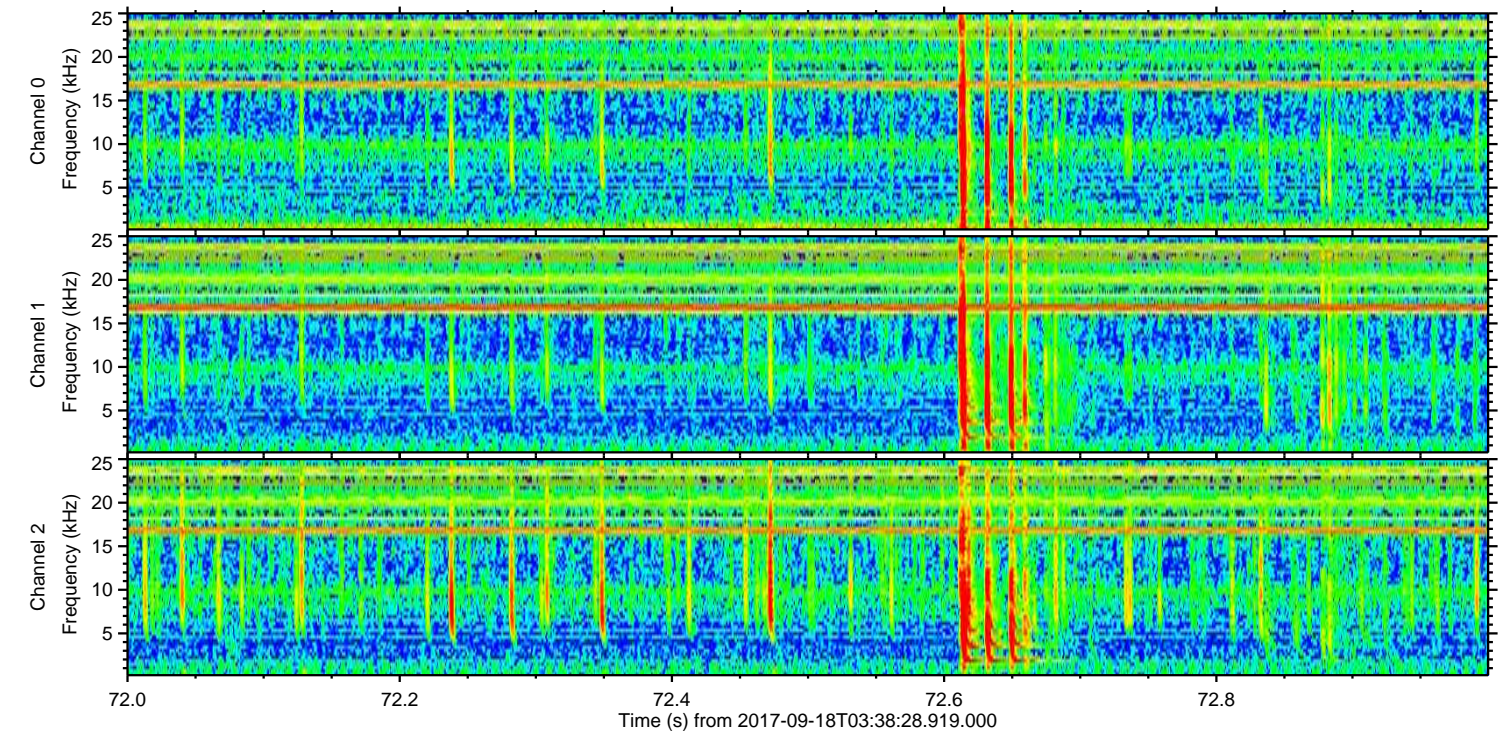
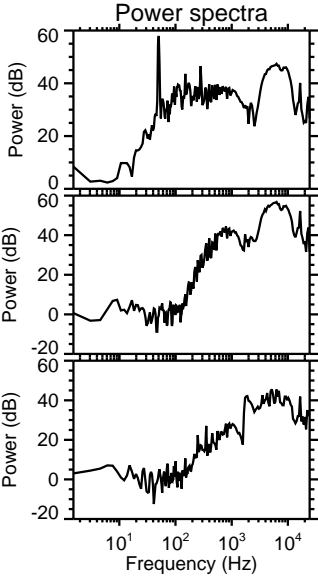
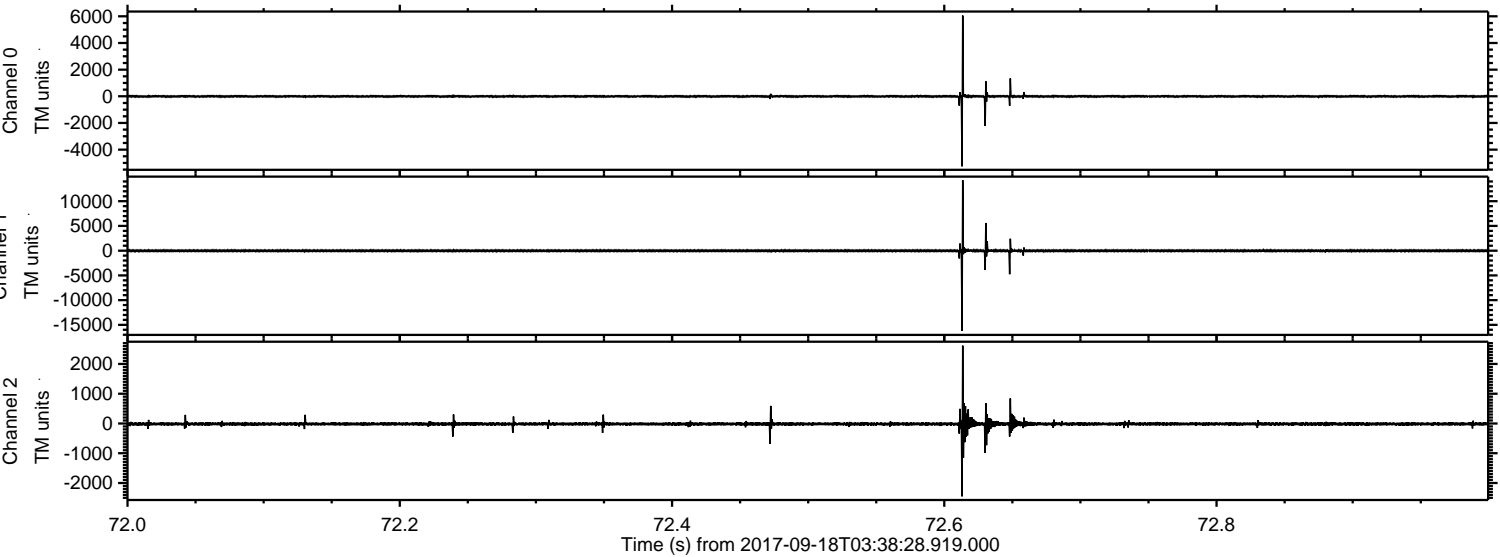


ELMAVAN 3D WAVEFORMS (Measured data sampled at 50 kHz) 51000 packets of 144 samples from 2017-09-18T03:38:28.919.000. Part 86/147

Processed Mon Sep 18 05:46:22 2017 by ELM ver.2012-10-06 from 001__elm20170918_033827__dat00.bin

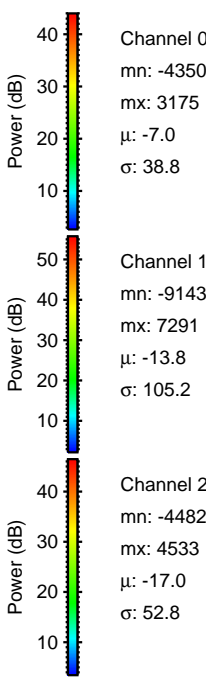
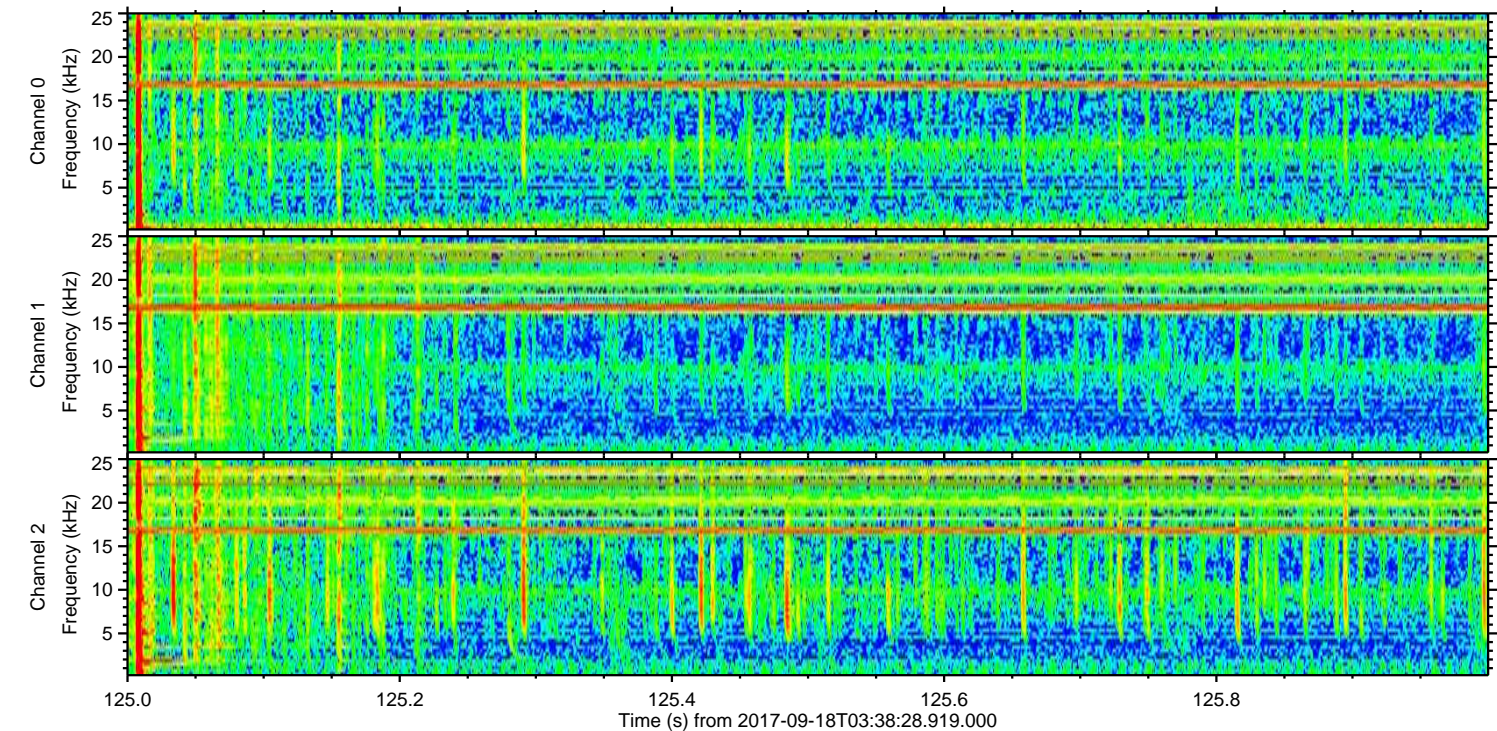
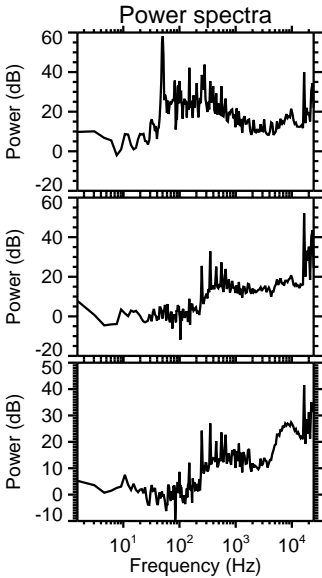
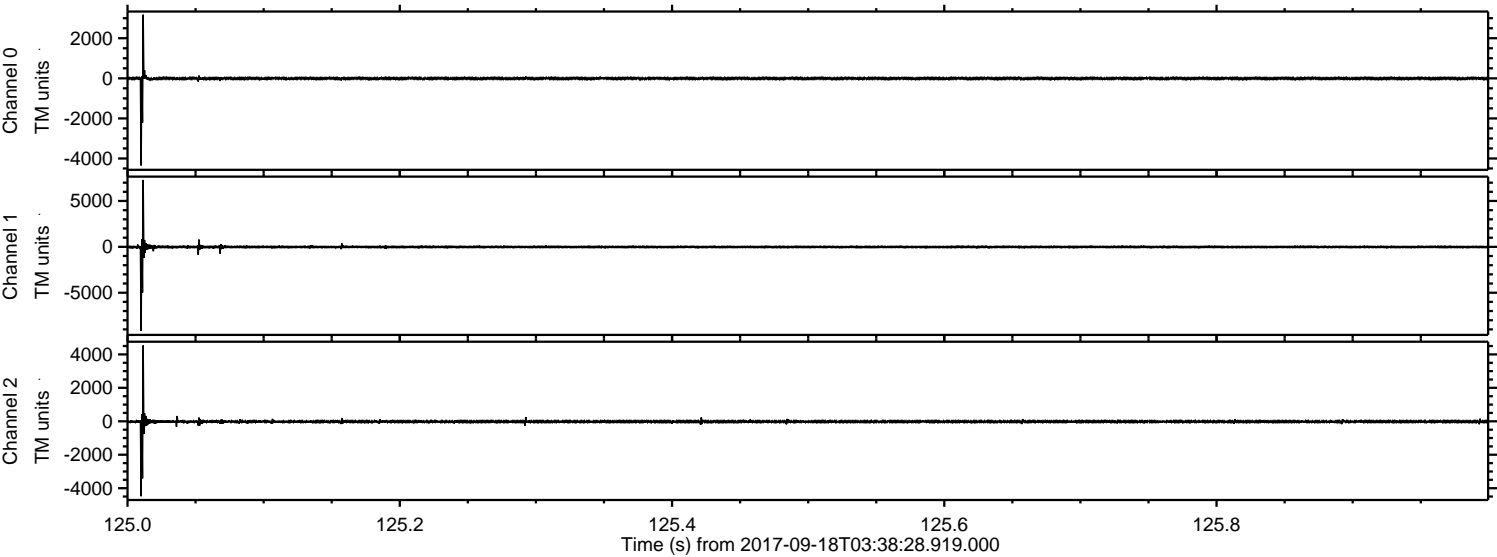


Processed Mon Sep 18 05:46:22 2017 by ELM ver.2012-10-06 from 001__elm20170918_033827__dat00.bin



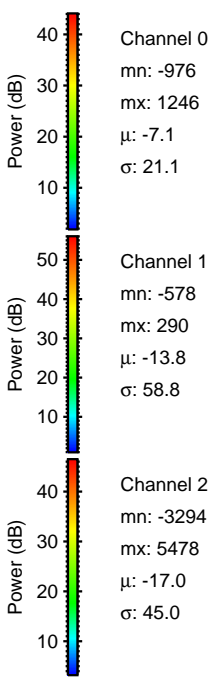
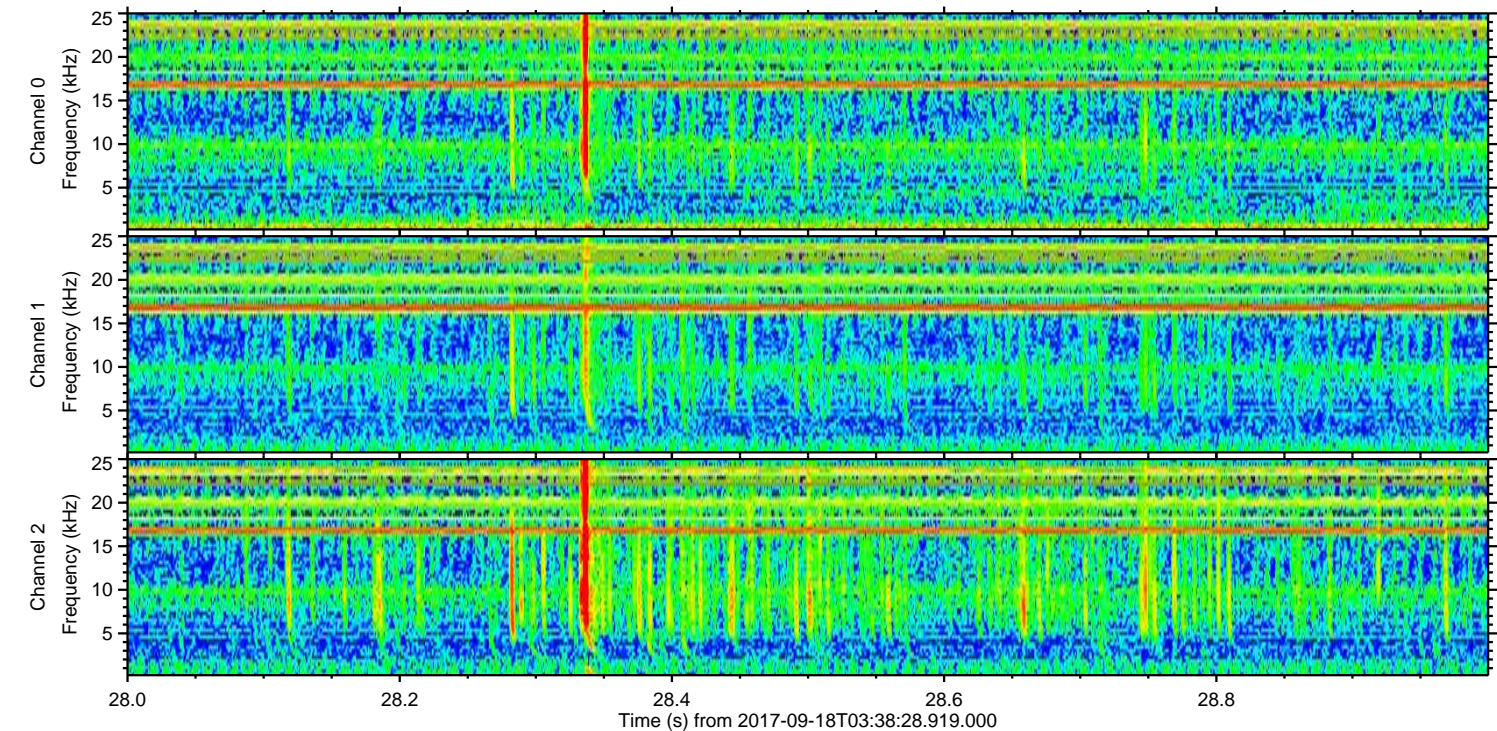
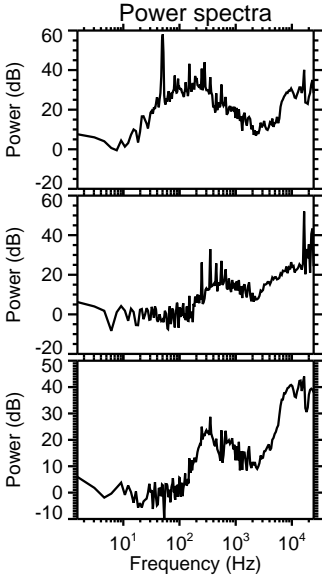
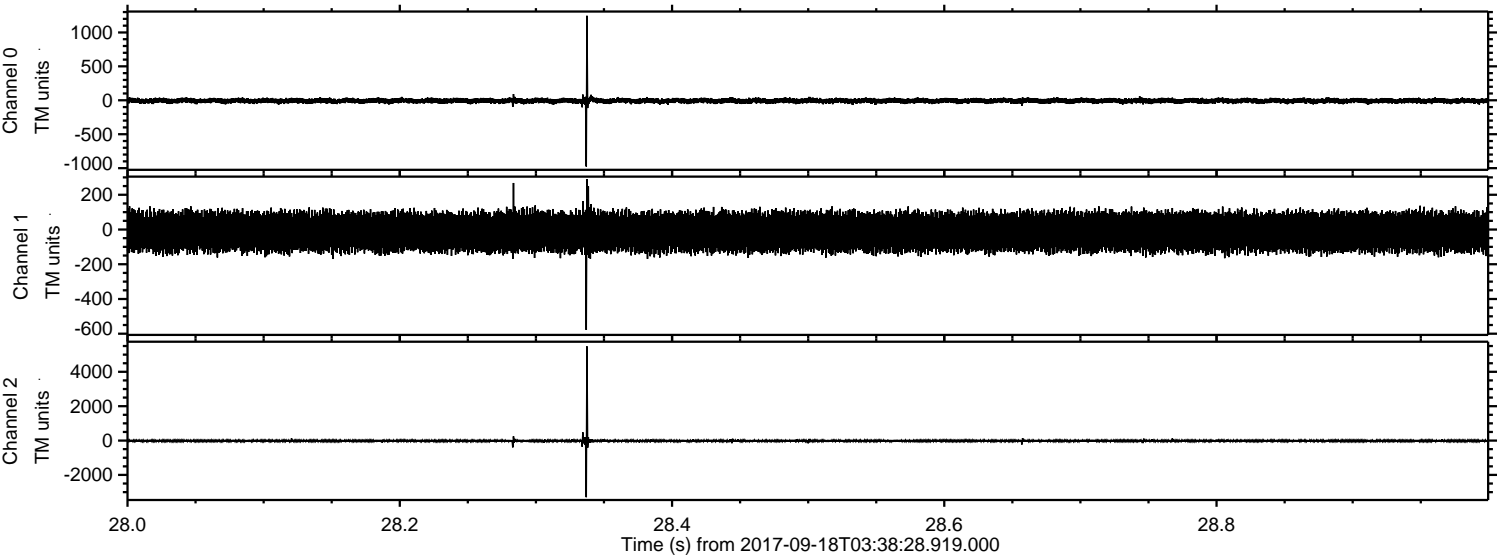
ELMAVAN 3D WAVEFORMS (Measured data sampled at 50 kHz) 51000 packets of 144 samples from 2017-09-18T03:38:28.919.000. Part 126/147

Processed Mon Sep 18 05:46:23 2017 by ELM ver.2012-10-06 from 001__elm20170918_033827__dat00.bin

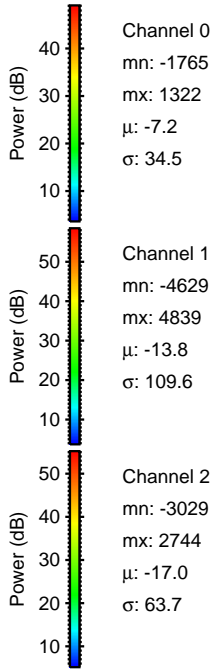
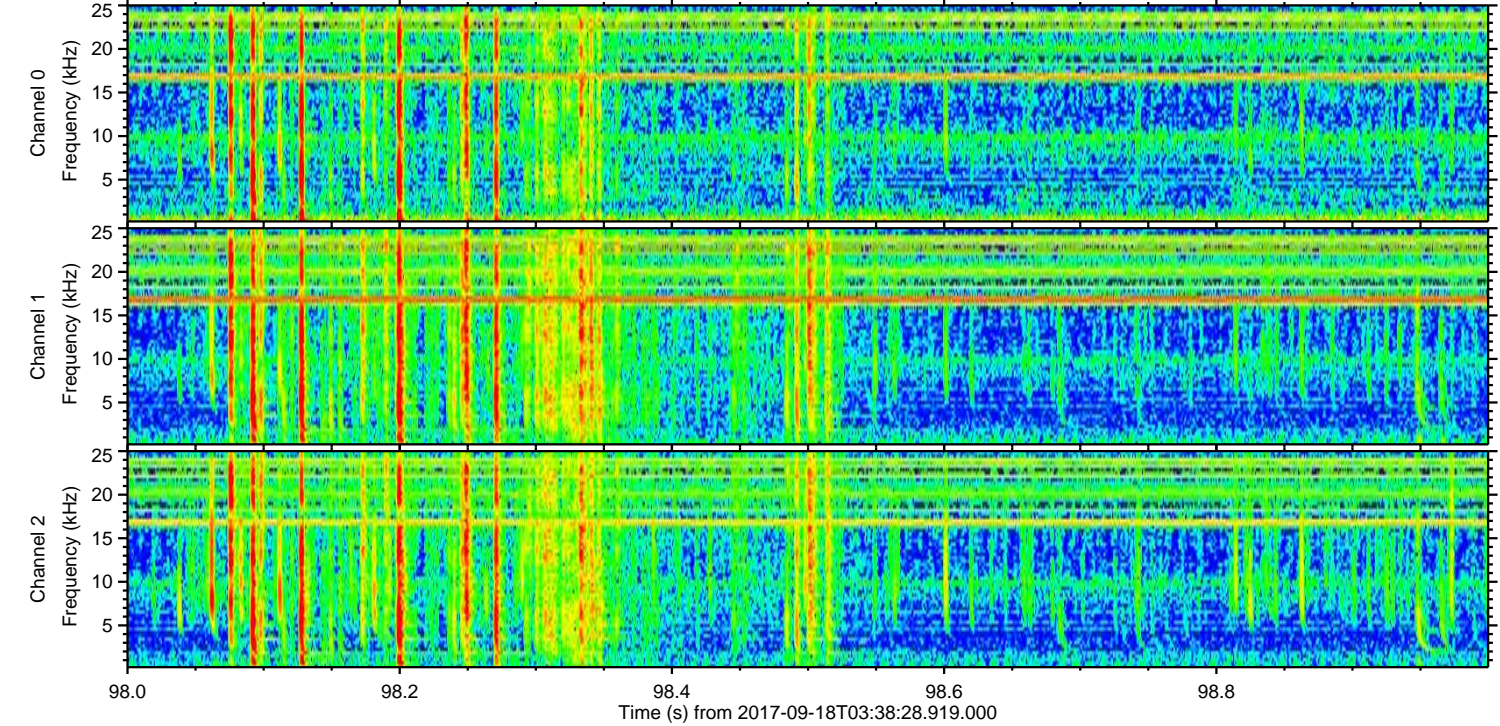
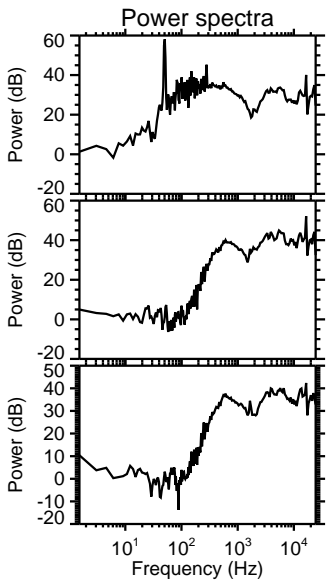
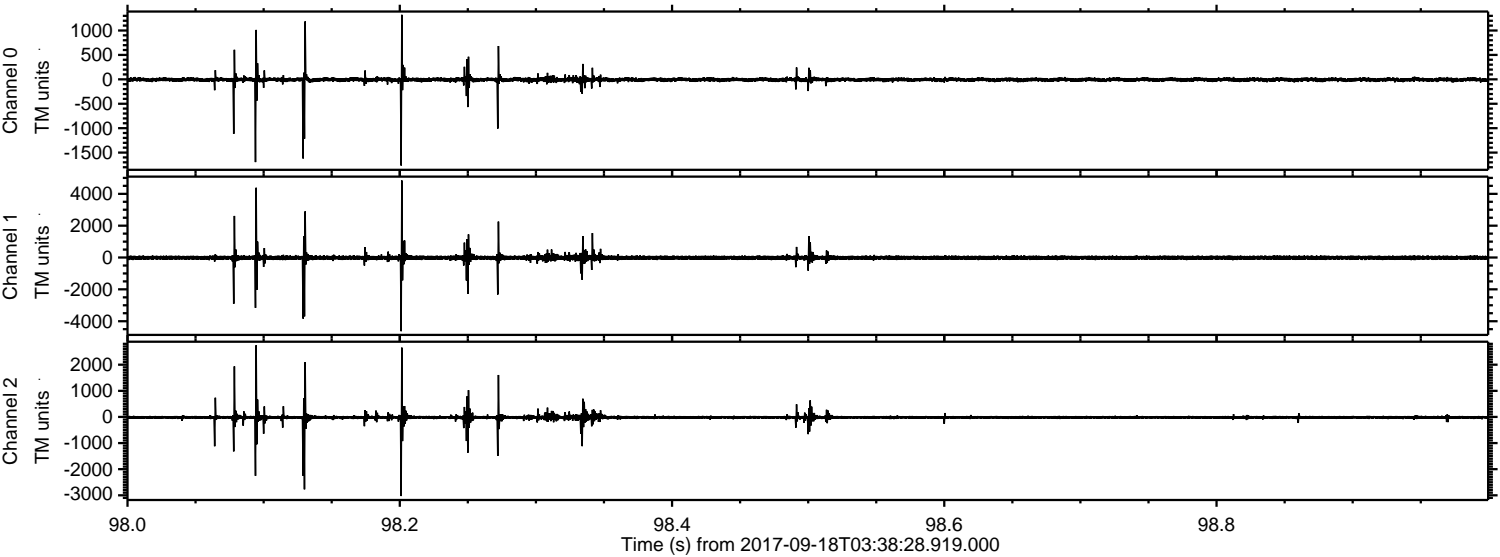


ELMAVAN 3D WAVEFORMS (Measured data sampled at 50 kHz) 51000 packets of 144 samples from 2017-09-18T03:38:28.919.000. Part 29/147

Processed Mon Sep 18 05:46:24 2017 by ELM ver.2012-10-06 from 001__elm20170918_033827__dat00.bin

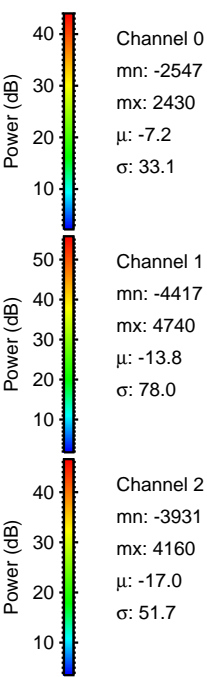
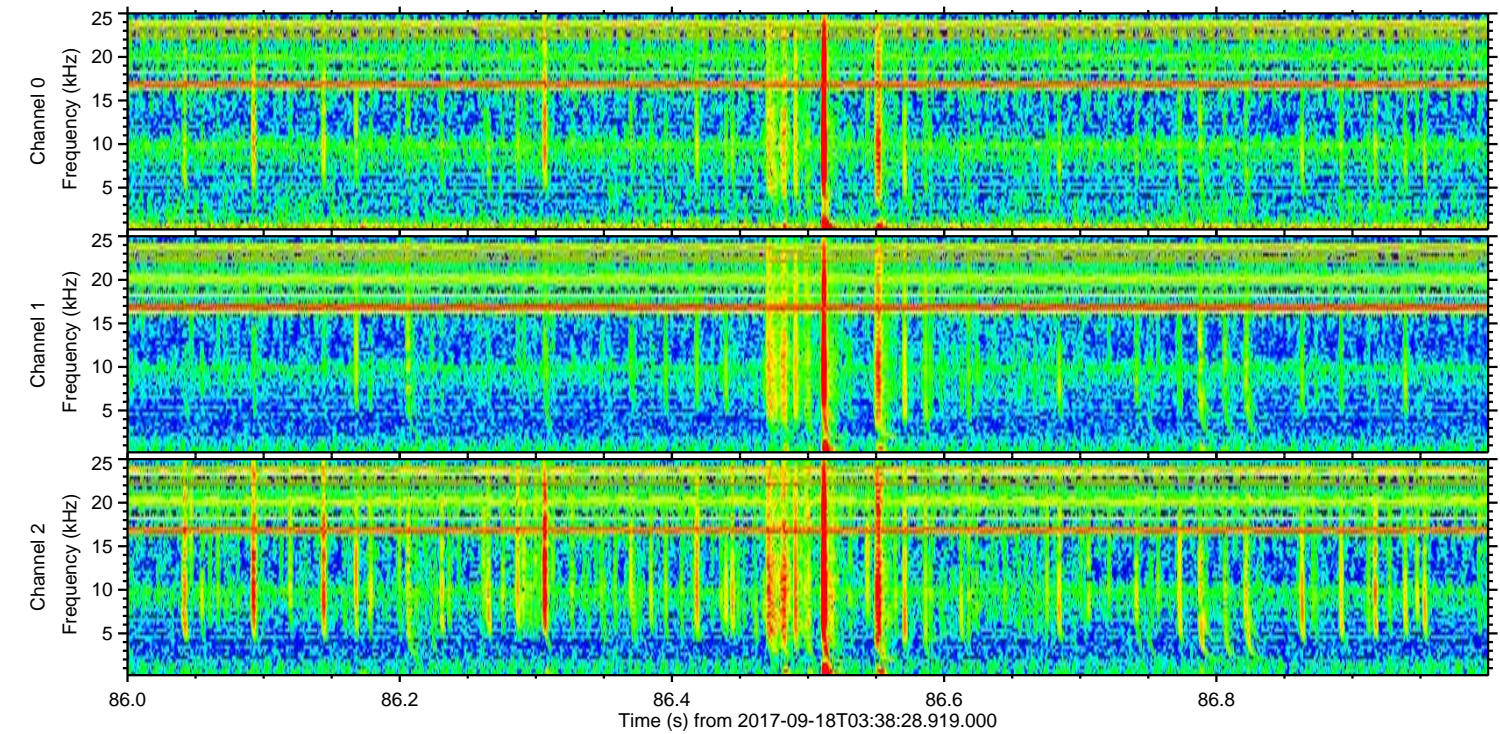
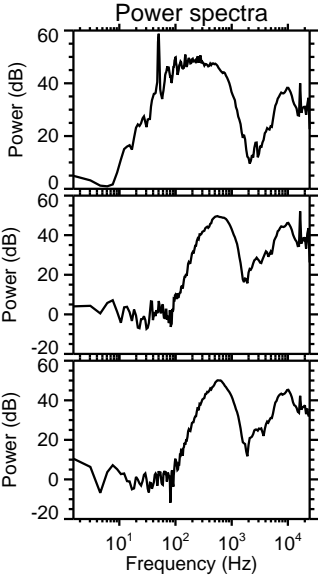
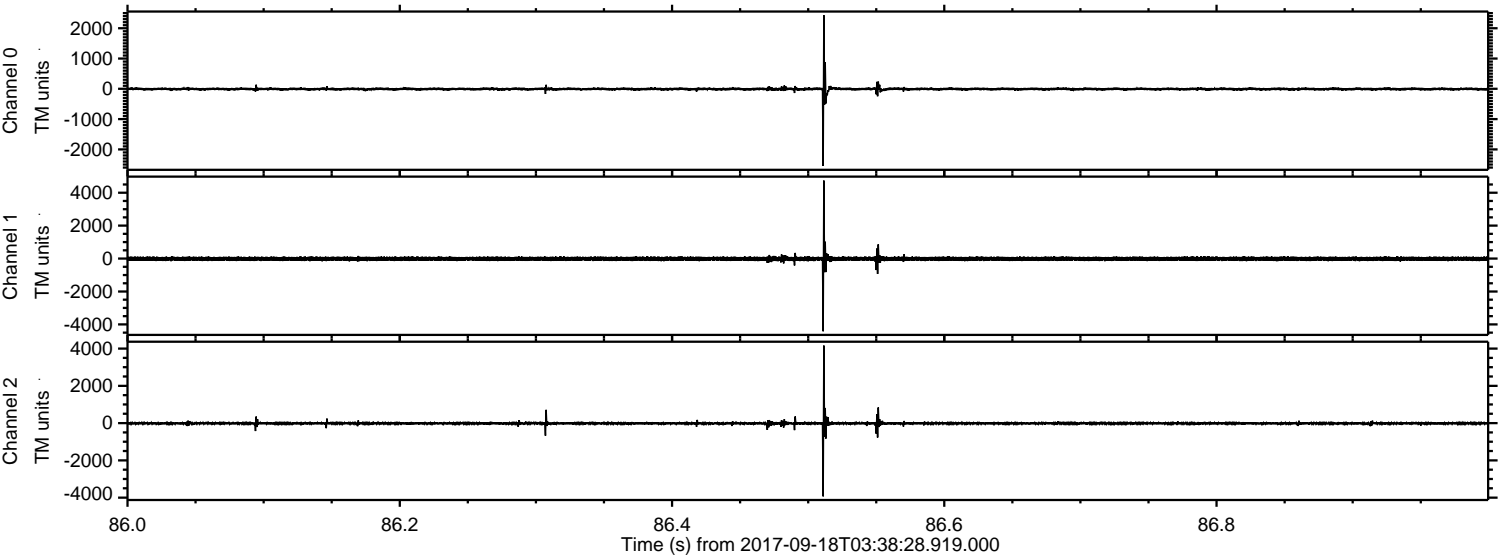


Processed Mon Sep 18 05:46:24 2017 by ELM ver.2012-10-06 from 001__elm20170918_033827__dat00.bin



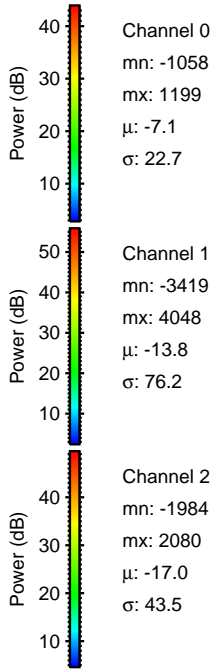
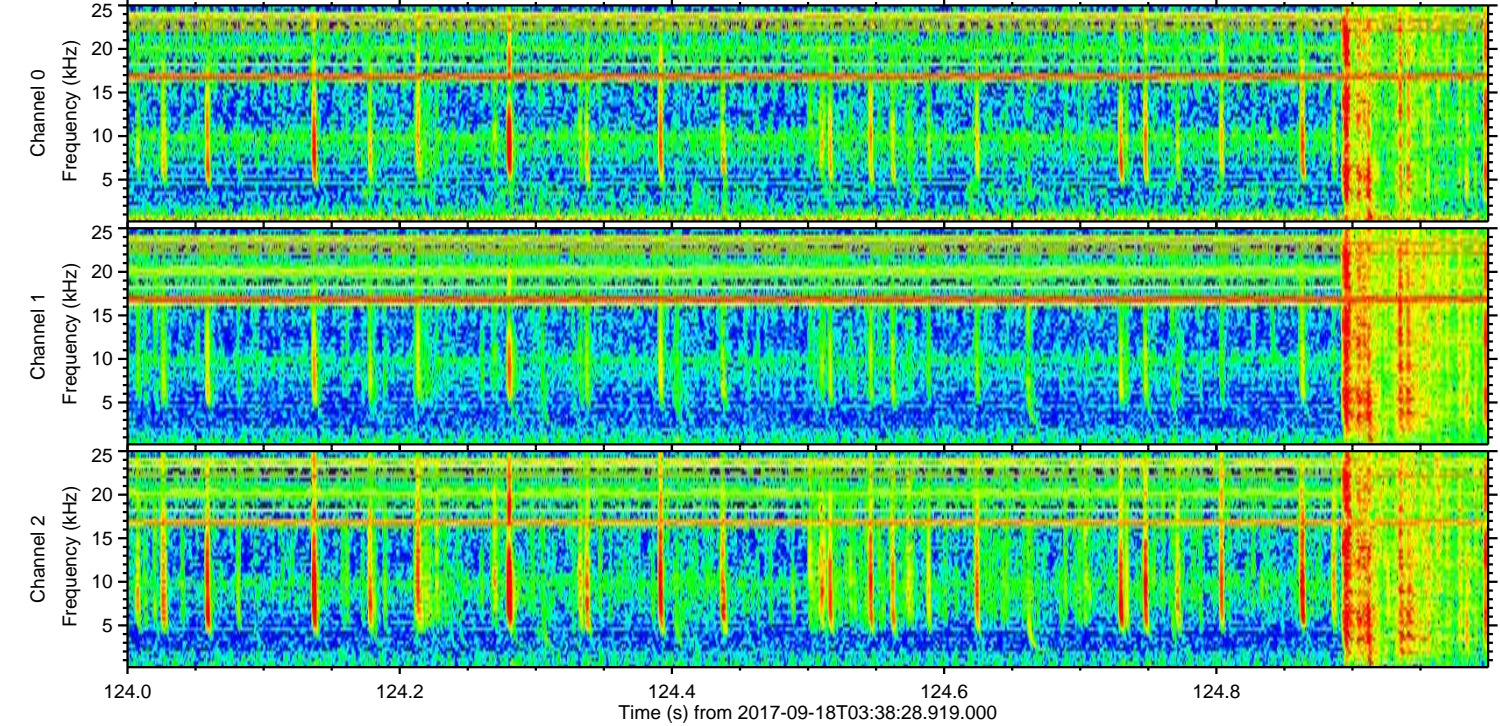
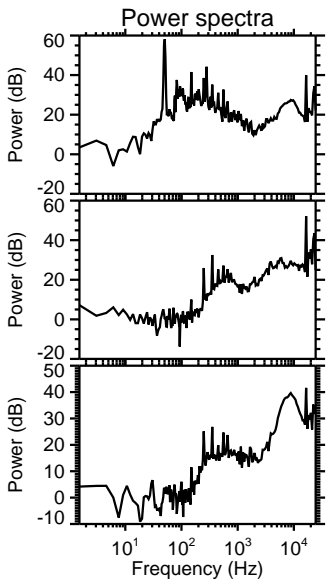
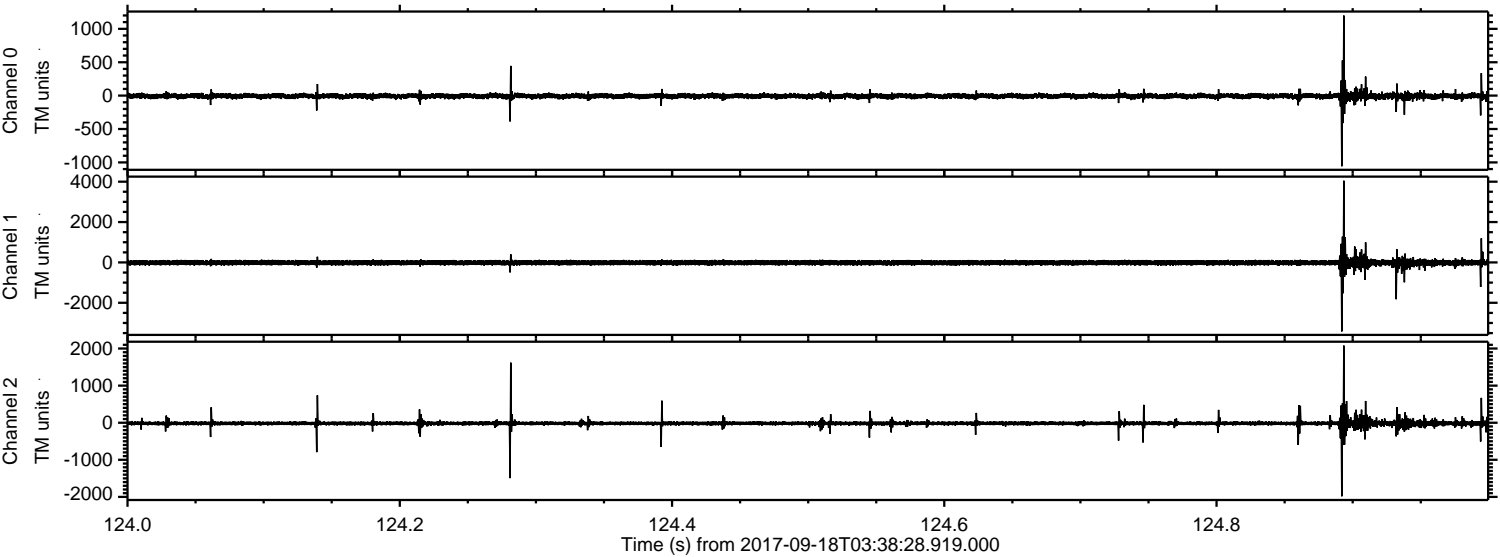
ELMAVAN 3D WAVEFORMS (Measured data sampled at 50 kHz) 51000 packets of 144 samples from 2017-09-18T03:38:28.919.000. Part 87/147

Processed Mon Sep 18 05:46:25 2017 by ELM ver.2012-10-06 from 001__elm20170918_033827__dat00.bin



ELMAVAN 3D WAVEFORMS (Measured data sampled at 50 kHz) 51000 packets of 144 samples from 2017-09-18T03:38:28.919.000. Part 125/147

Processed Mon Sep 18 05:46:26 2017 by ELM ver.2012-10-06 from 001__elm20170918_033827__dat00.bin



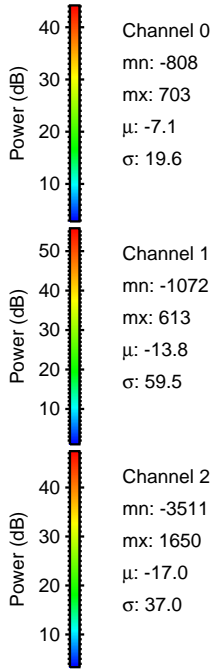
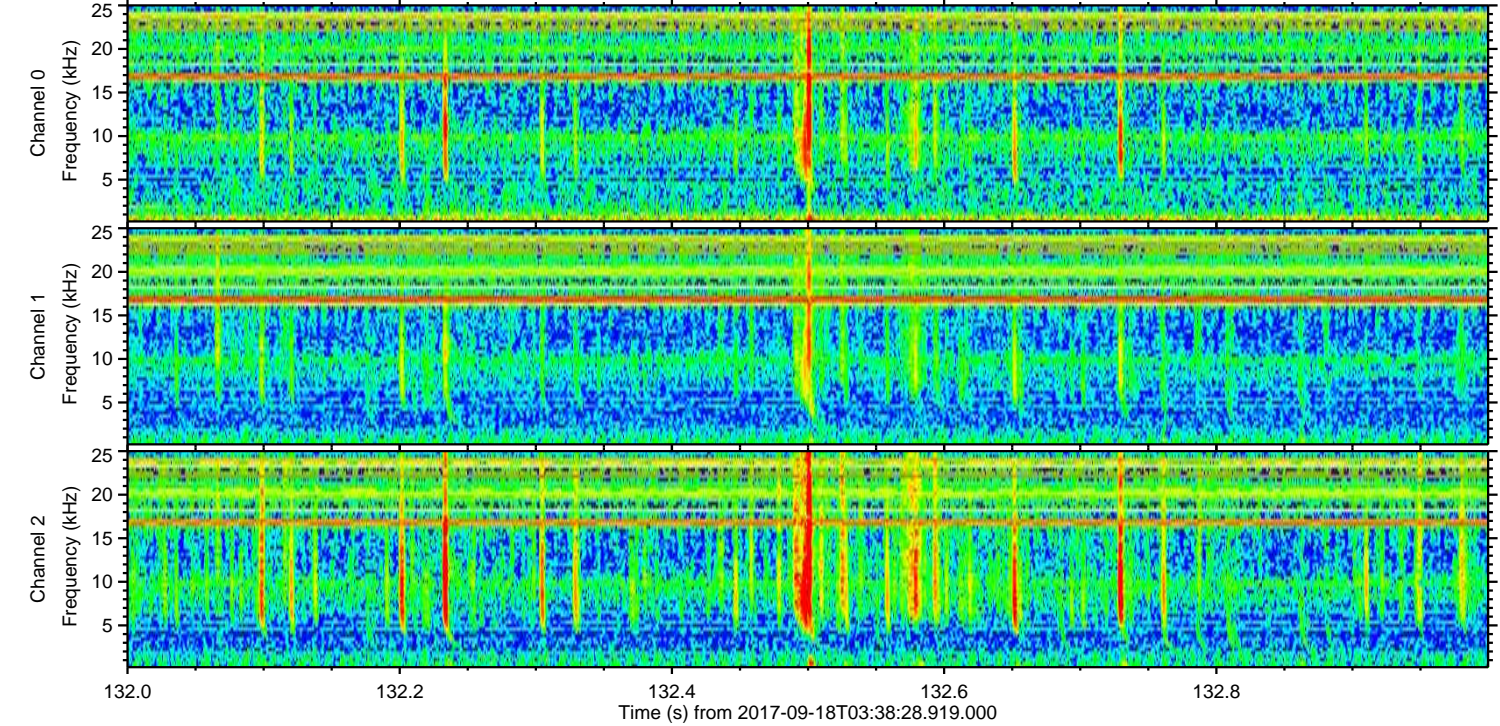
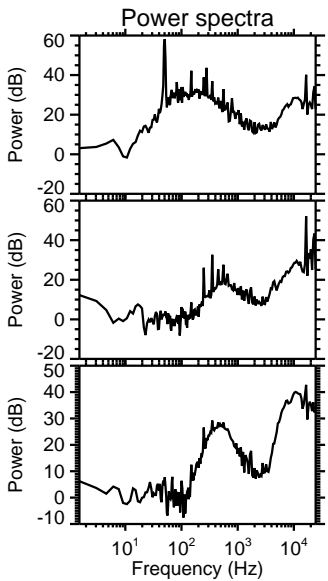
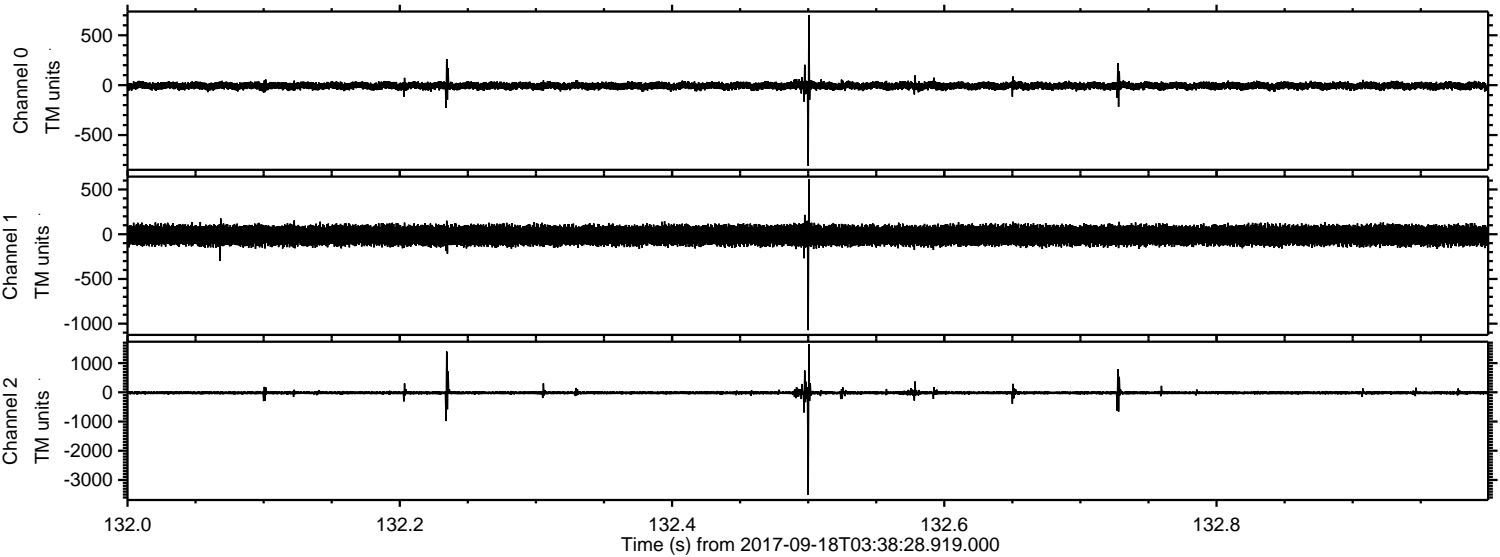
Channel 0
mn: -1058
mx: 1199
 μ : -7.1
 σ : 22.7

Channel 1
mn: -3419
mx: 4048
 μ : -13.8
 σ : 76.2

Channel 2
mn: -1984
mx: 2080
 μ : -17.0
 σ : 43.5

ELMAVAN 3D WAVEFORMS (Measured data sampled at 50 kHz) 51000 packets of 144 samples from 2017-09-18T03:38:28.919.000. Part 133/147

Processed Mon Sep 18 05:46:26 2017 by ELM ver.2012-10-06 from 001__elm20170918_033827__dat00.bin



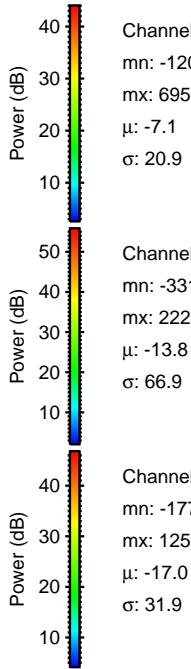
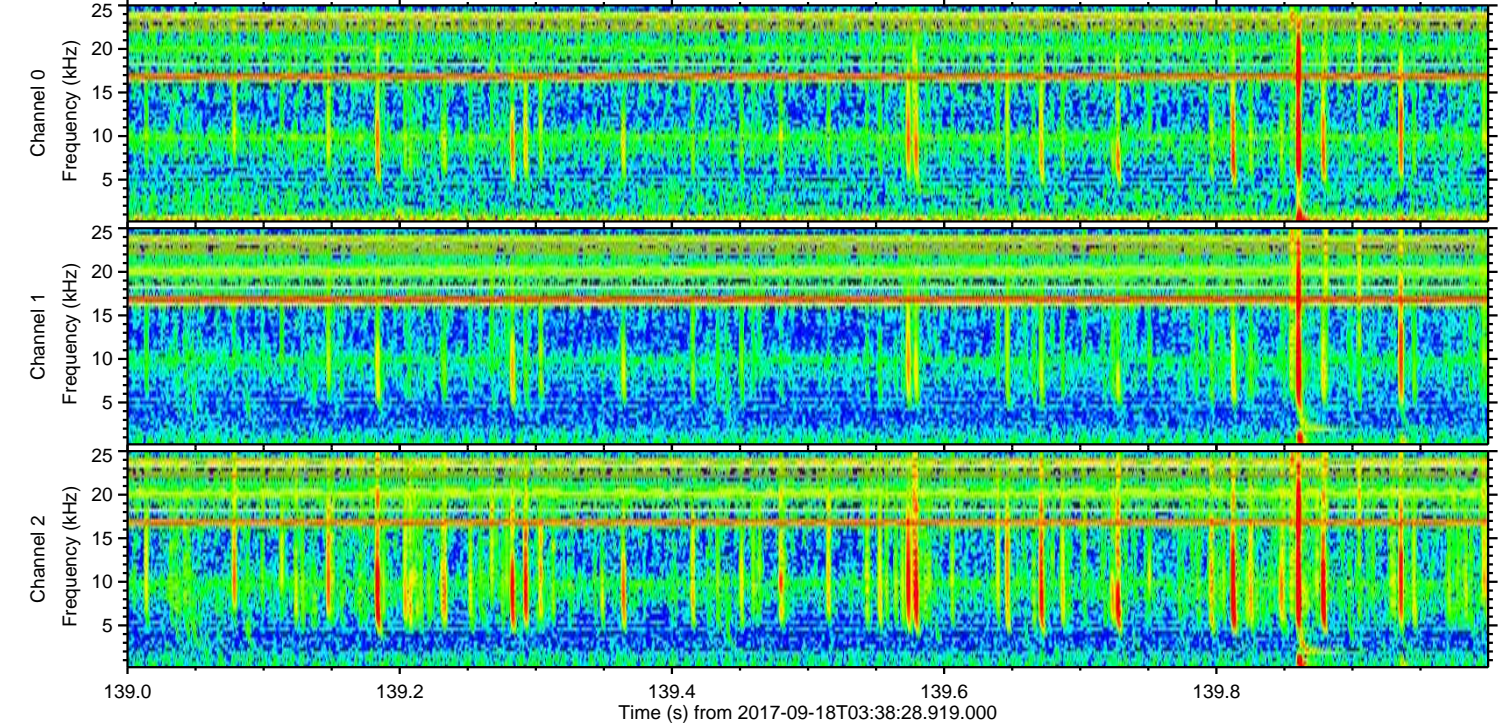
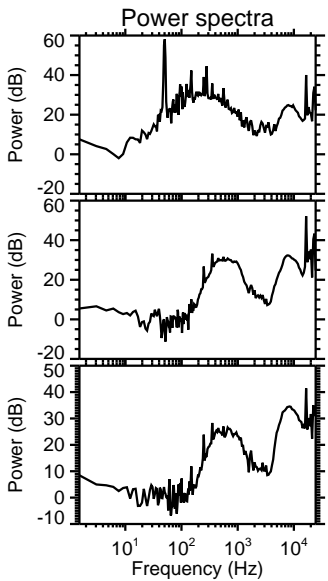
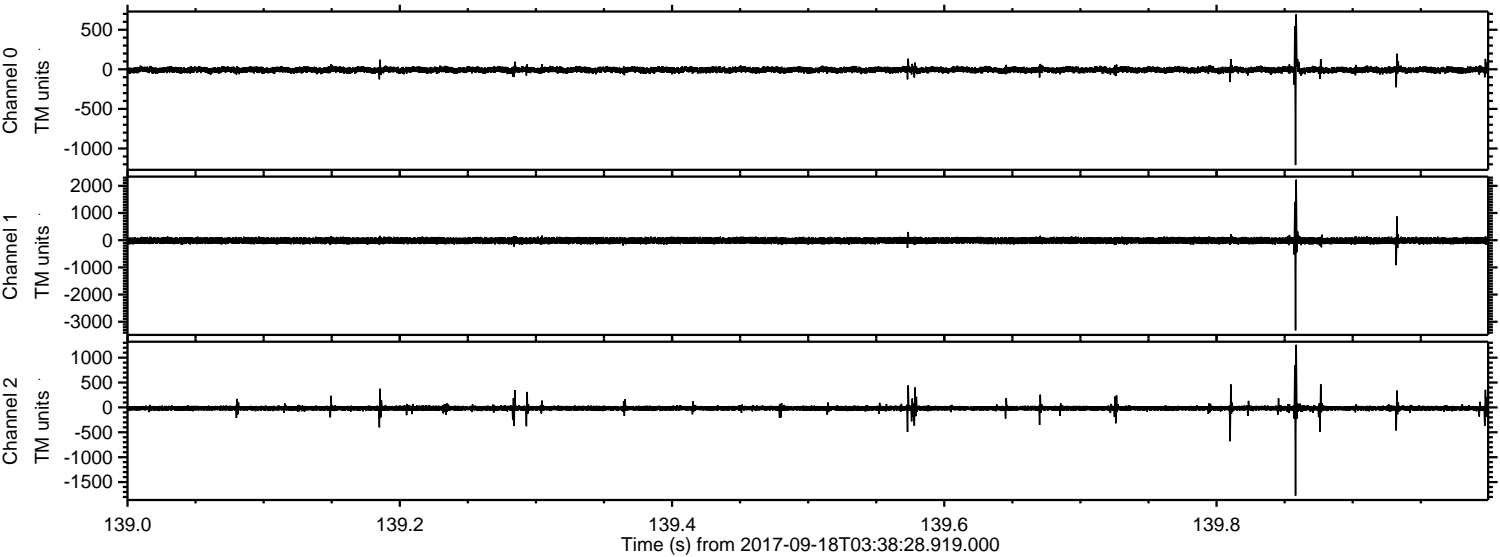
Channel 0
mn: -808
mx: 703
 μ : -7.1
 σ : 19.6

Channel 1
mn: -1072
mx: 613
 μ : -13.8
 σ : 59.5

Channel 2
mn: -3511
mx: 1650
 μ : -17.0
 σ : 37.0

ELMAVAN 3D WAVEFORMS (Measured data sampled at 50 kHz) 51000 packets of 144 samples from 2017-09-18T03:38:28.919.000. Part 140/147

Processed Mon Sep 18 05:46:27 2017 by ELM ver.2012-10-06 from 001__elm20170918_033827__dat00.bin



Channel 0
mn: -1209
mx: 695
 μ : -7.1
 σ : 20.9

Channel 1
mn: -3318
mx: 2227
 μ : -13.8
 σ : 66.9

Channel 2
mn: -1772
mx: 1258
 μ : -17.0
 σ : 31.9

Processed Mon Sep 18 05:46:27 2017 by ELM ver.2012-10-06 from 001__elm20170918_033827__dat00.bin

