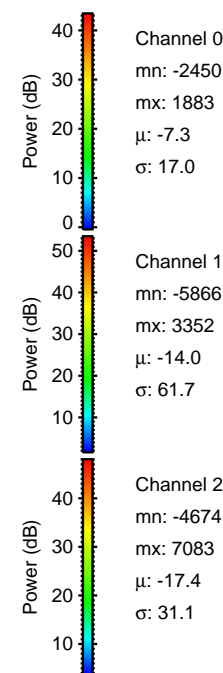
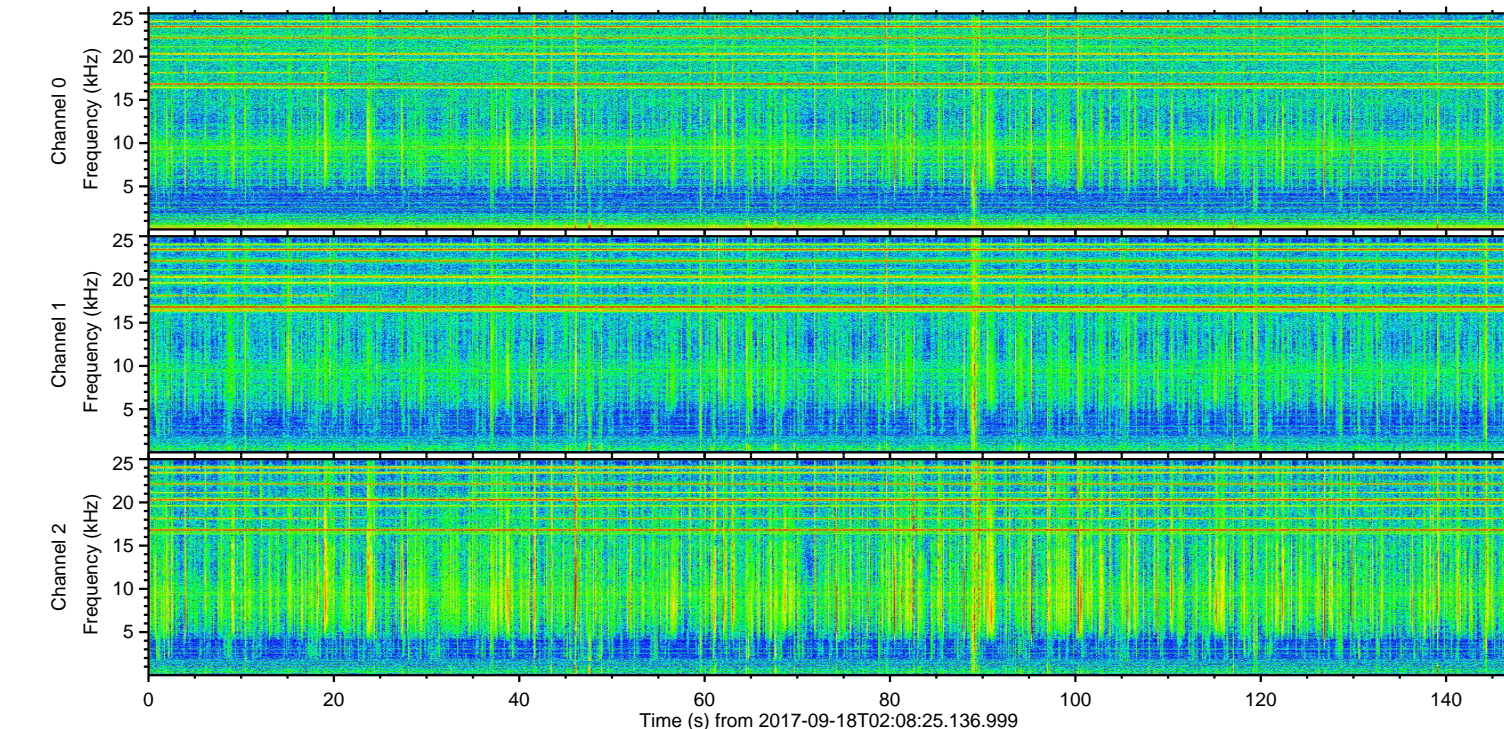
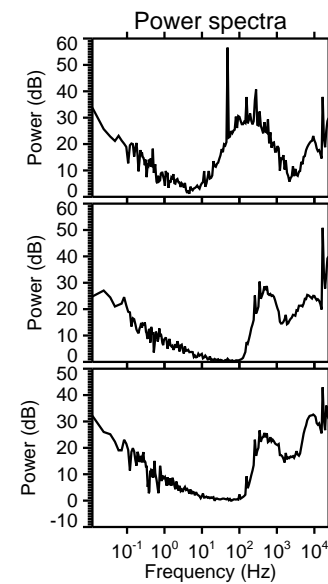
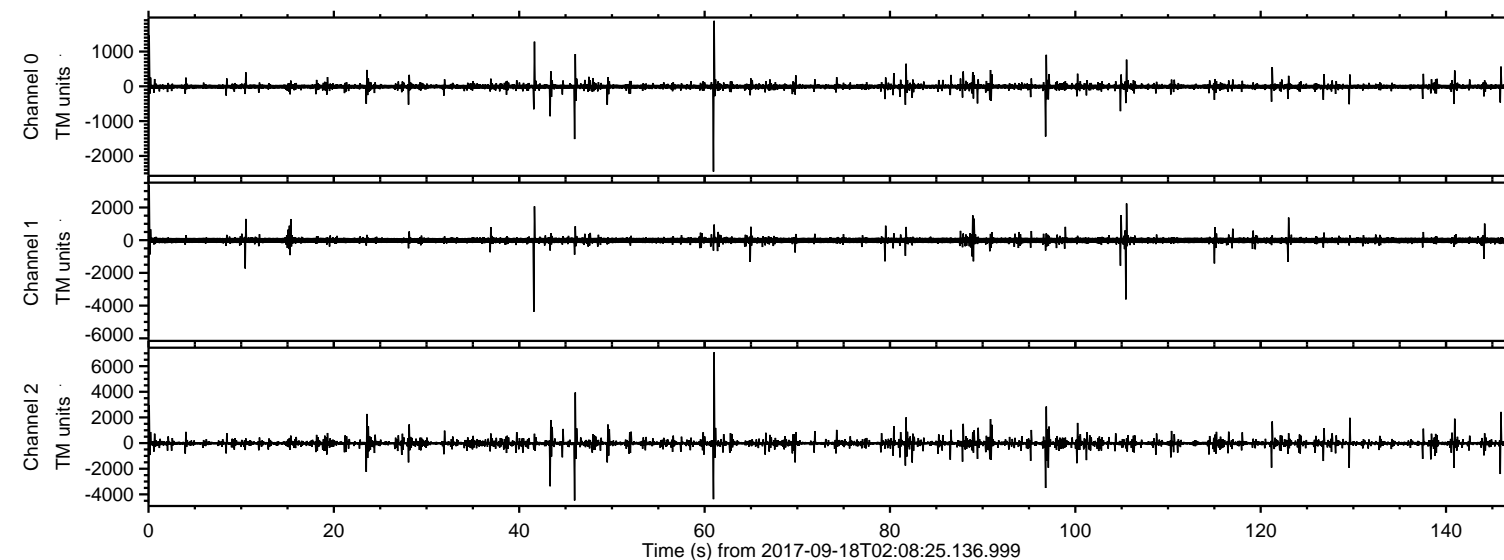
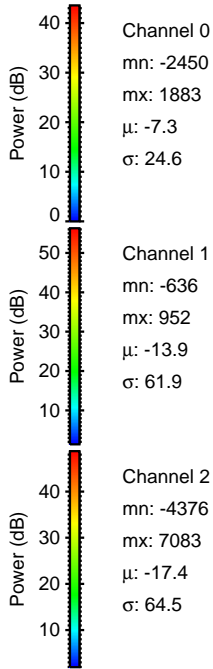
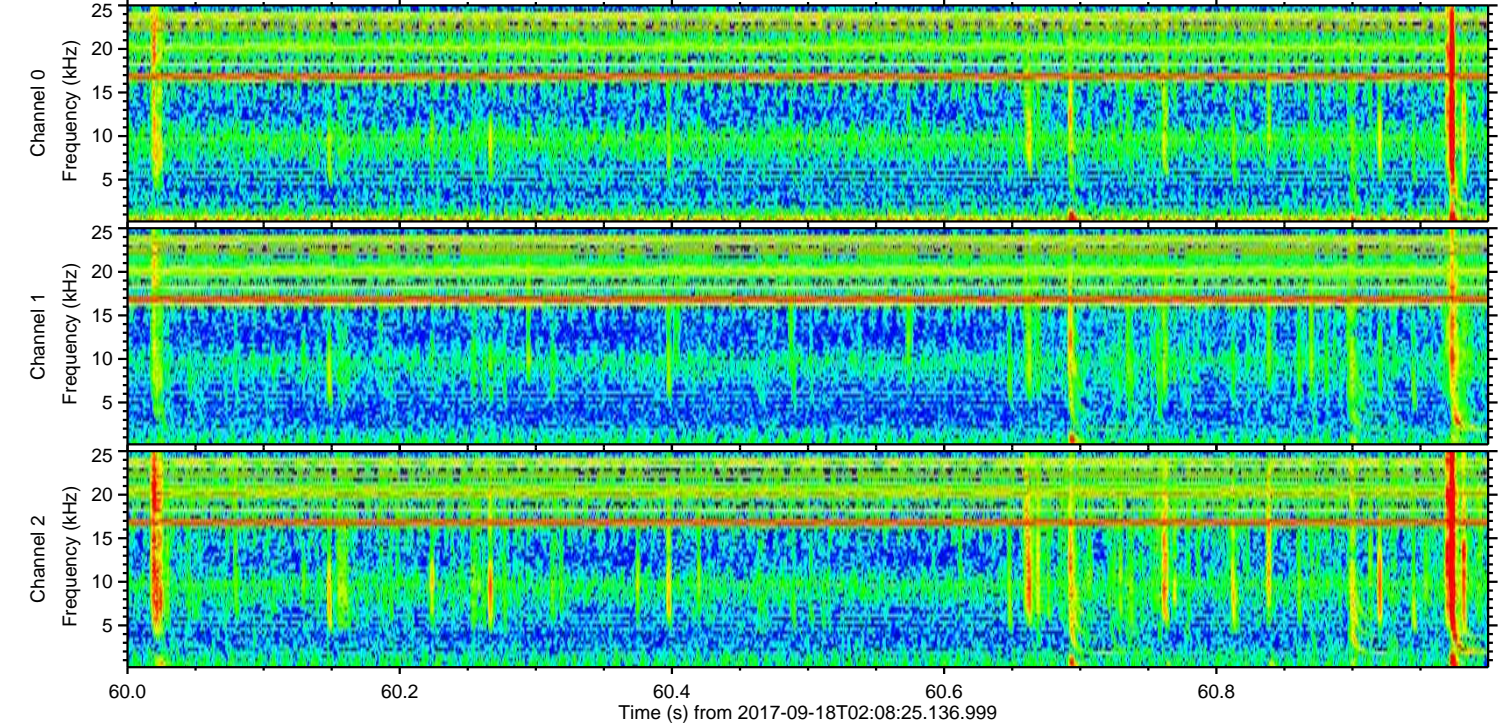
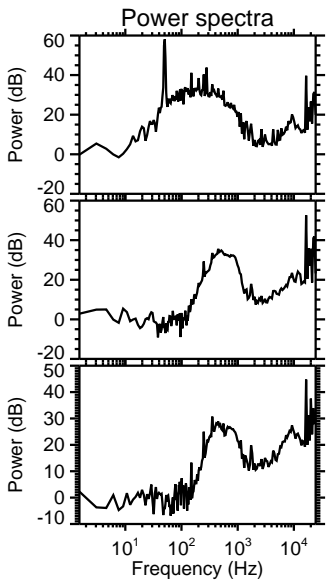
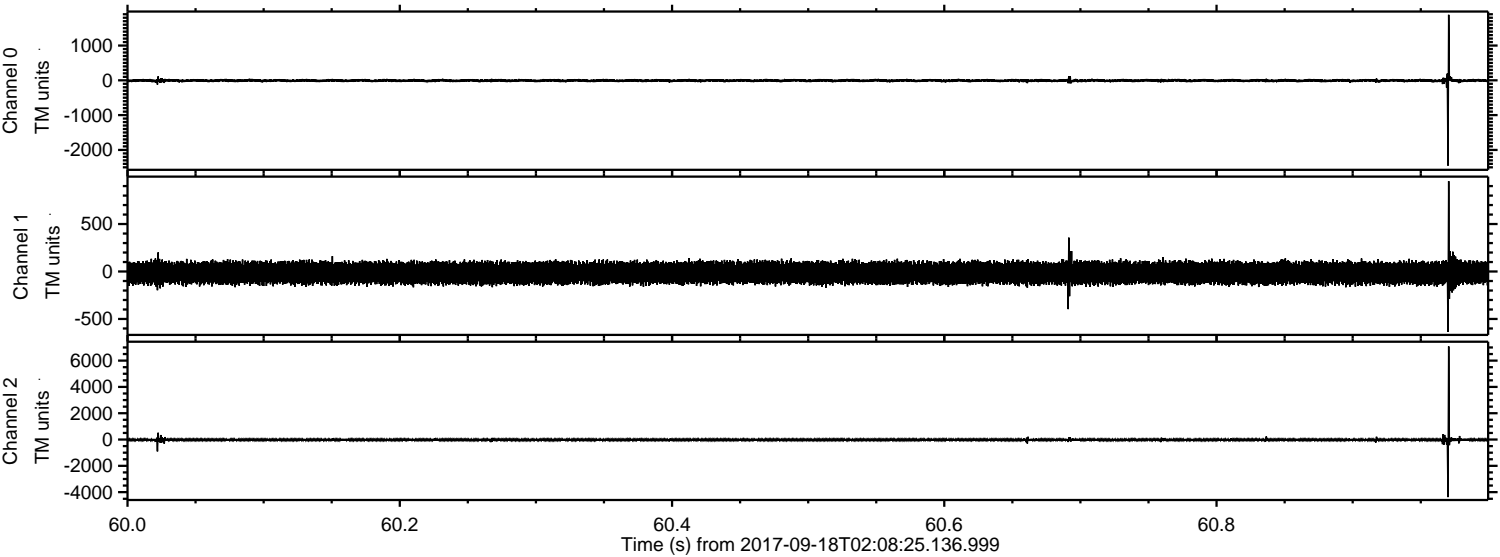


ELMAVAN 3D WAVEFORMS (Measured data sampled at 50 kHz) 51000 packets of 144 samples from 2017-09-18T02:08:25.136.999.

Processed Mon Sep 18 04:16:21 2017 by ELM ver.2012-10-06 from 001__elm20170918_020824__dat00.bin



Processed Mon Sep 18 04:16:26 2017 by ELM ver.2012-10-06 from 001__elm20170918_020824__dat00.bin



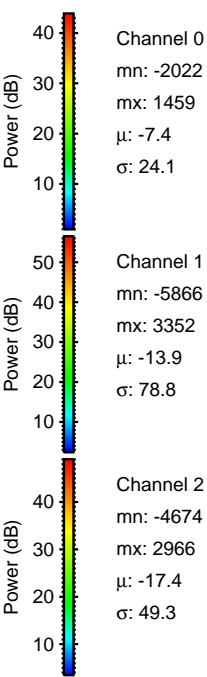
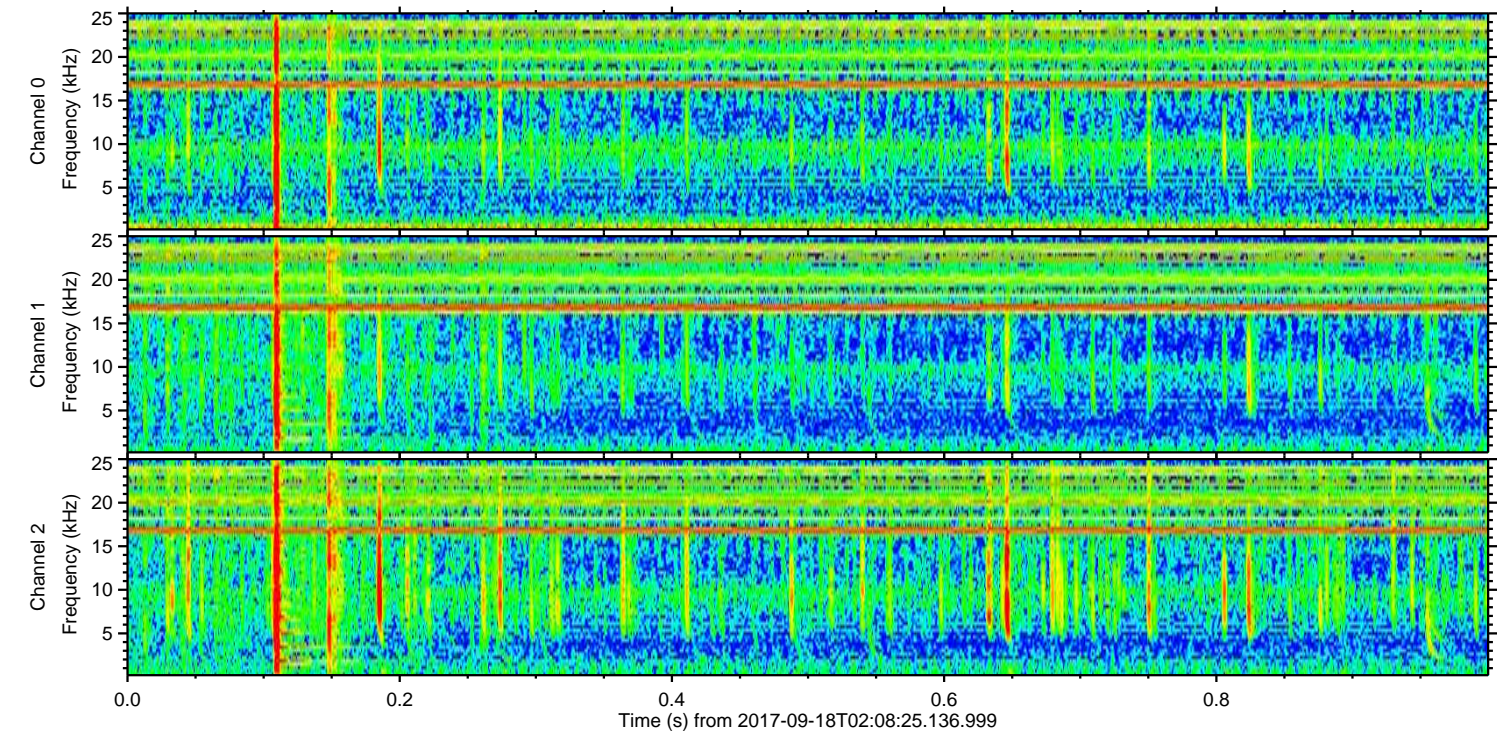
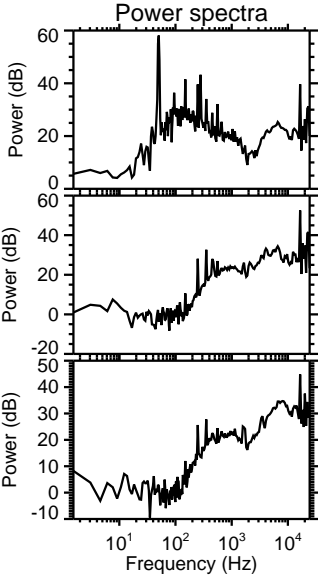
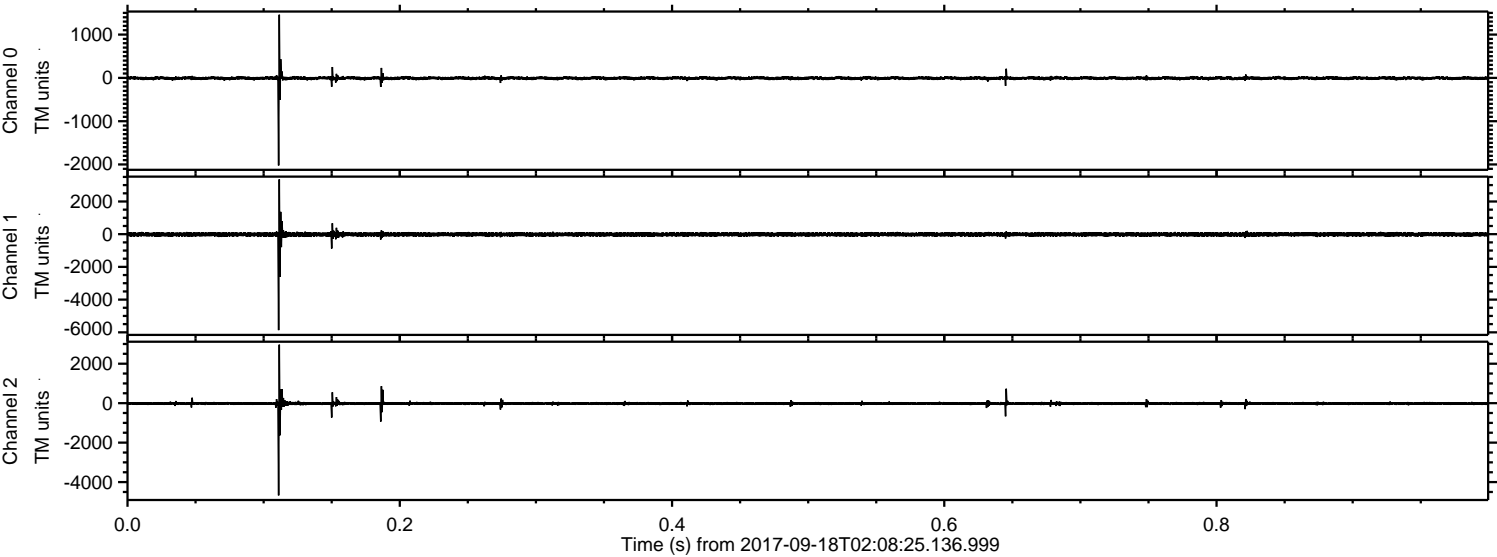
Channel 0
mn: -2450
mx: 1883
 μ : -7.3
 σ : 24.6

Channel 1
mn: -636
mx: 952
 μ : -13.9
 σ : 61.9

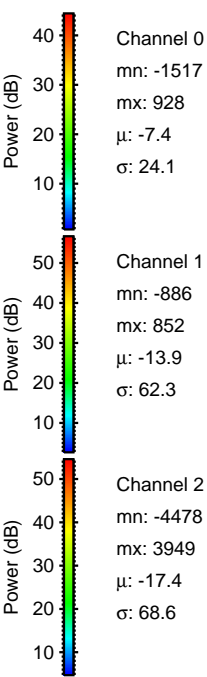
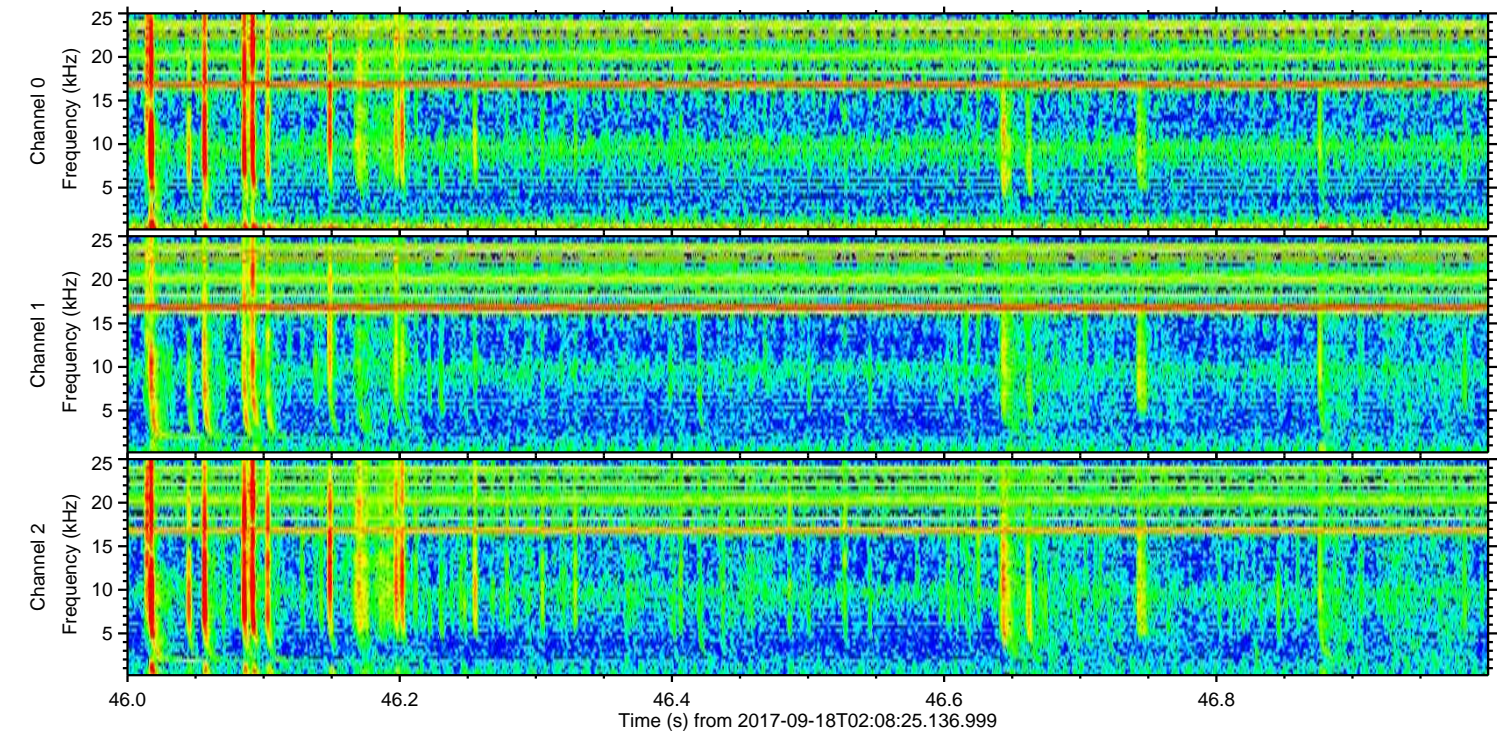
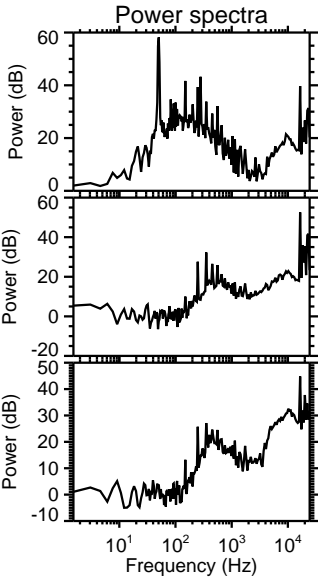
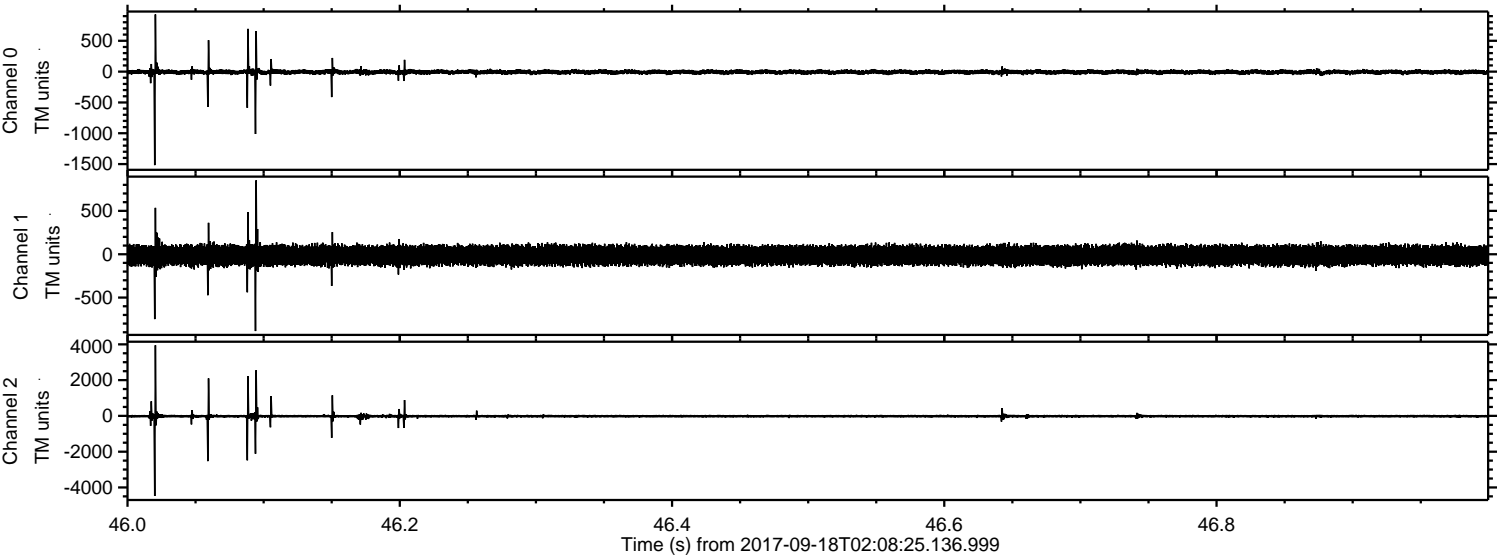
Channel 2
mn: -4376
mx: 7083
 μ : -17.4
 σ : 64.5

ELMAVAN 3D WAVEFORMS (Measured data sampled at 50 kHz) 51000 packets of 144 samples from 2017-09-18T02:08:25.136.999. Part 1/147

Processed Mon Sep 18 04:16:27 2017 by ELM ver.2012-10-06 from 001__elm20170918_020824__dat00.bin

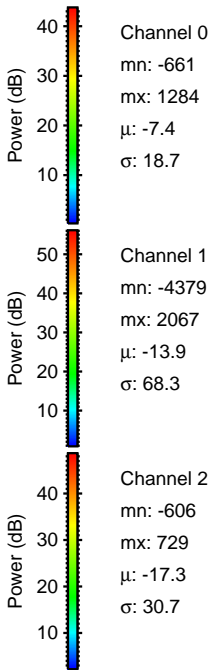
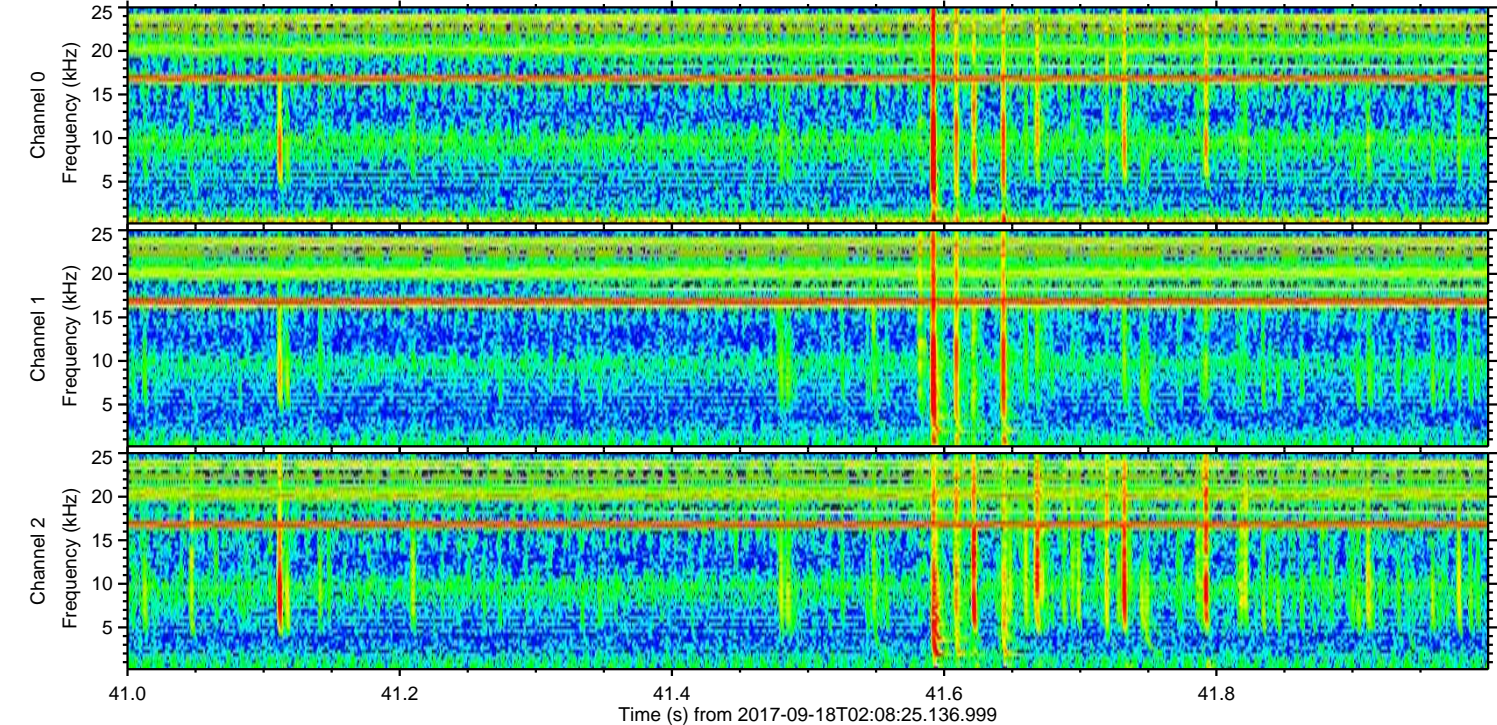
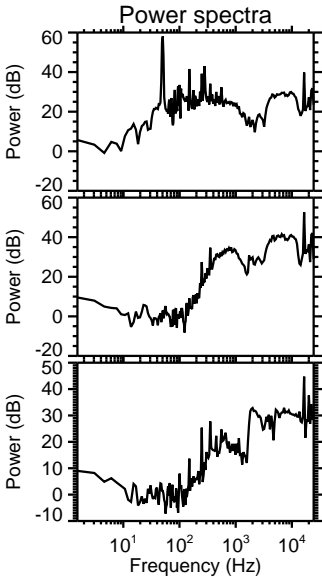
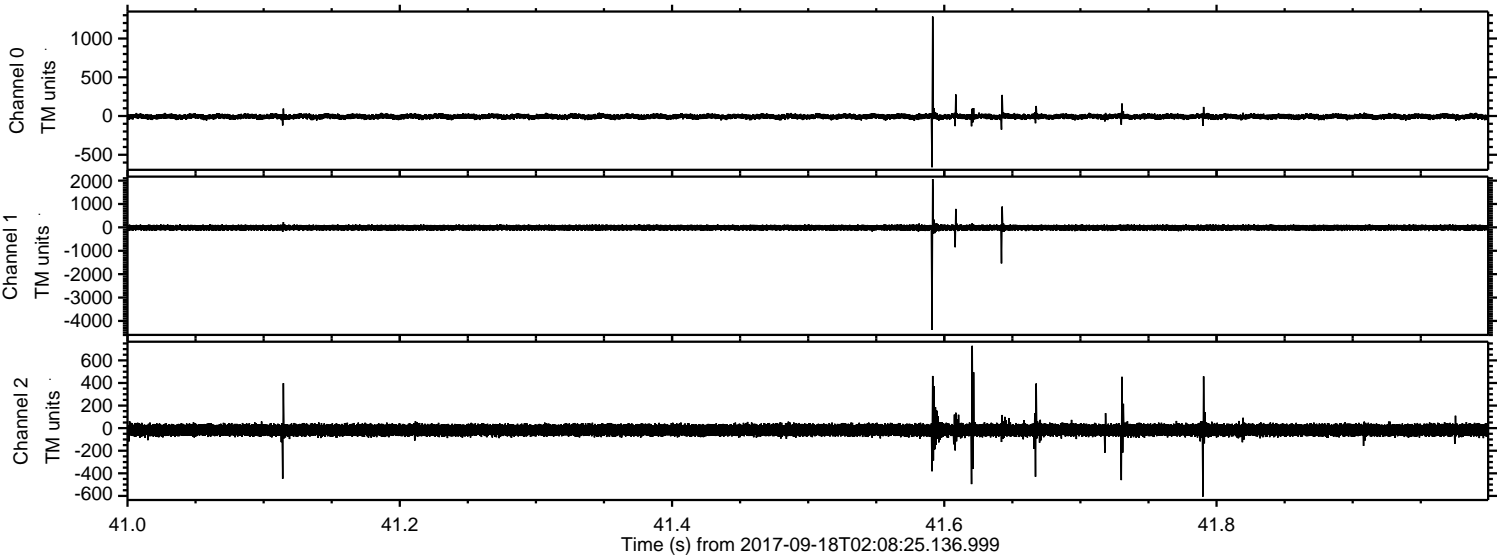


Processed Mon Sep 18 04:16:28 2017 by ELM ver.2012-10-06 from 001__elm20170918_020824__dat00.bin



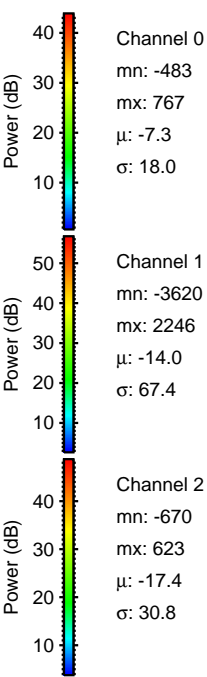
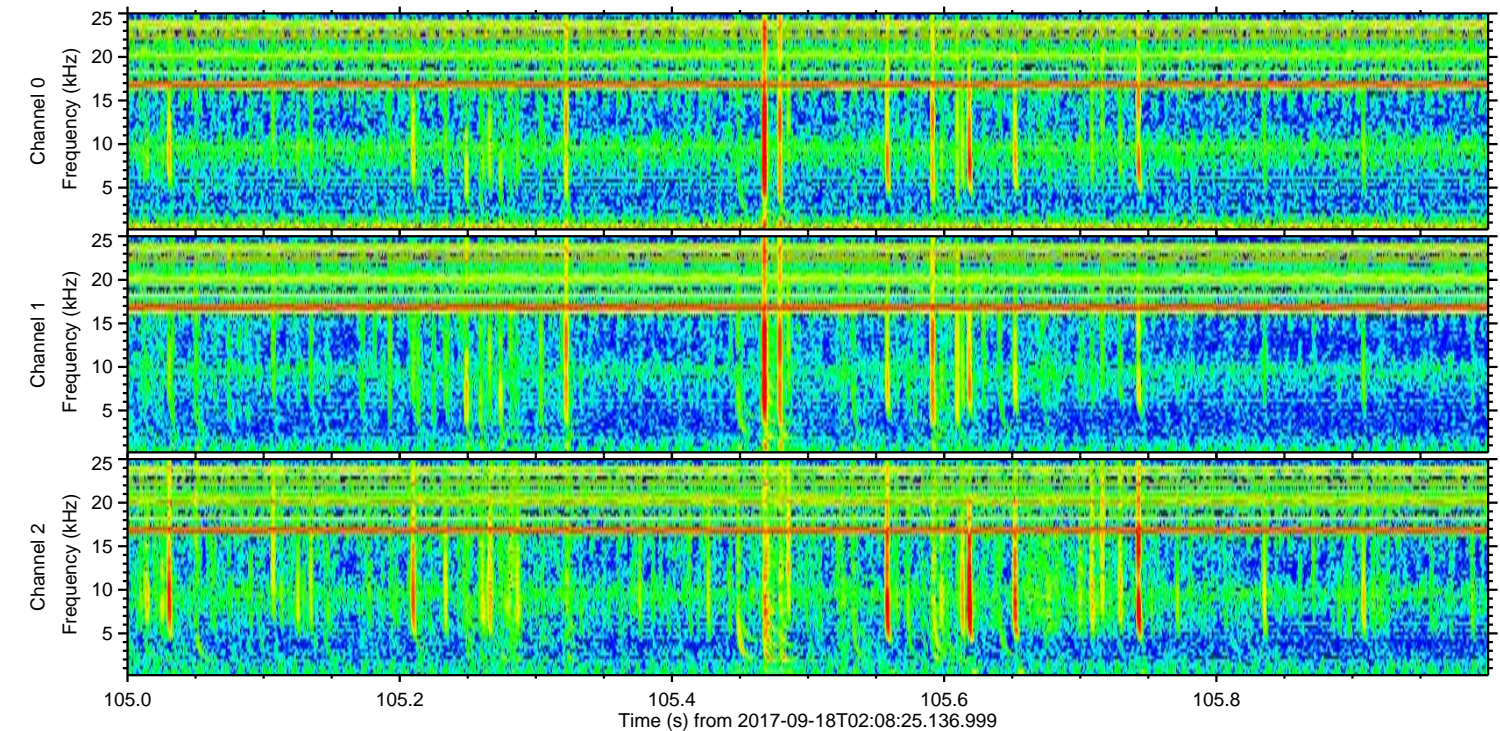
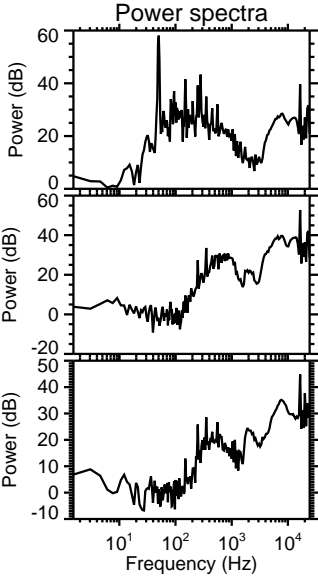
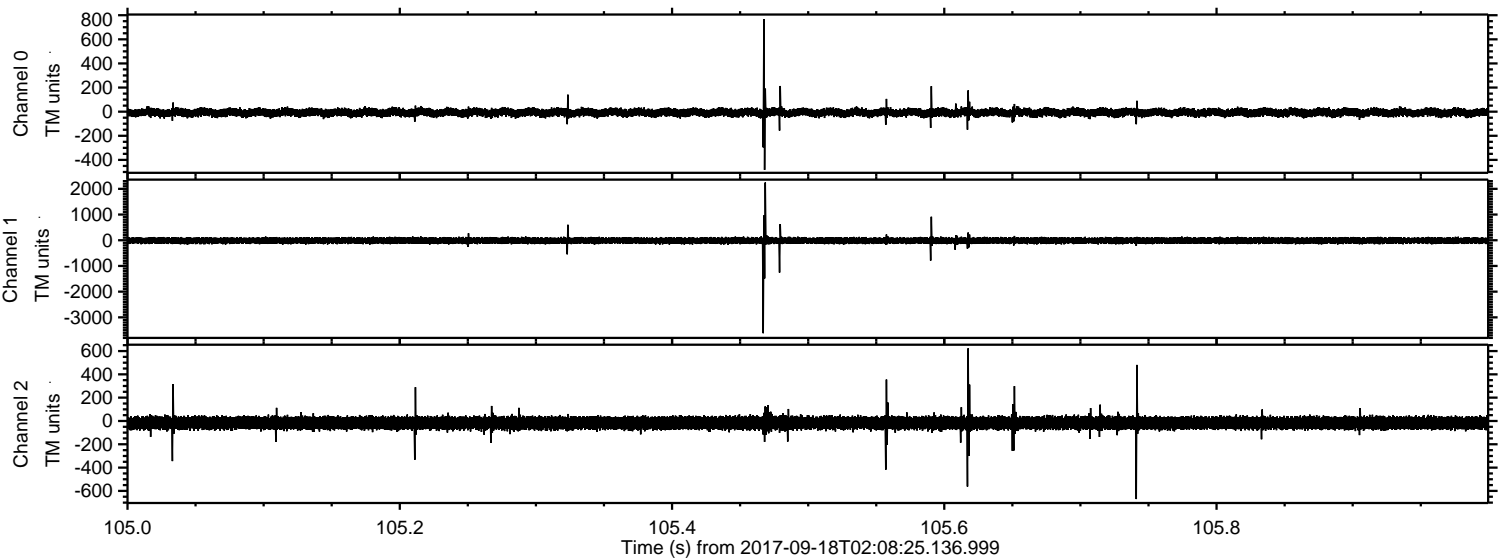
ELMAVAN 3D WAVEFORMS (Measured data sampled at 50 kHz) 51000 packets of 144 samples from 2017-09-18T02:08:25.136.999. Part 42/147

Processed Mon Sep 18 04:16:29 2017 by ELM ver.2012-10-06 from 001__elm20170918_020824__dat00.bin



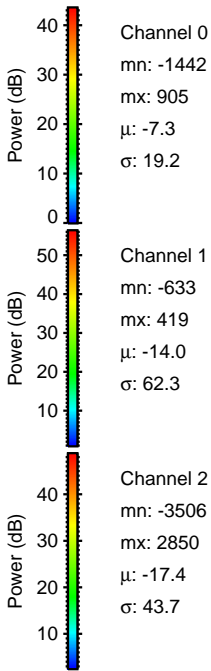
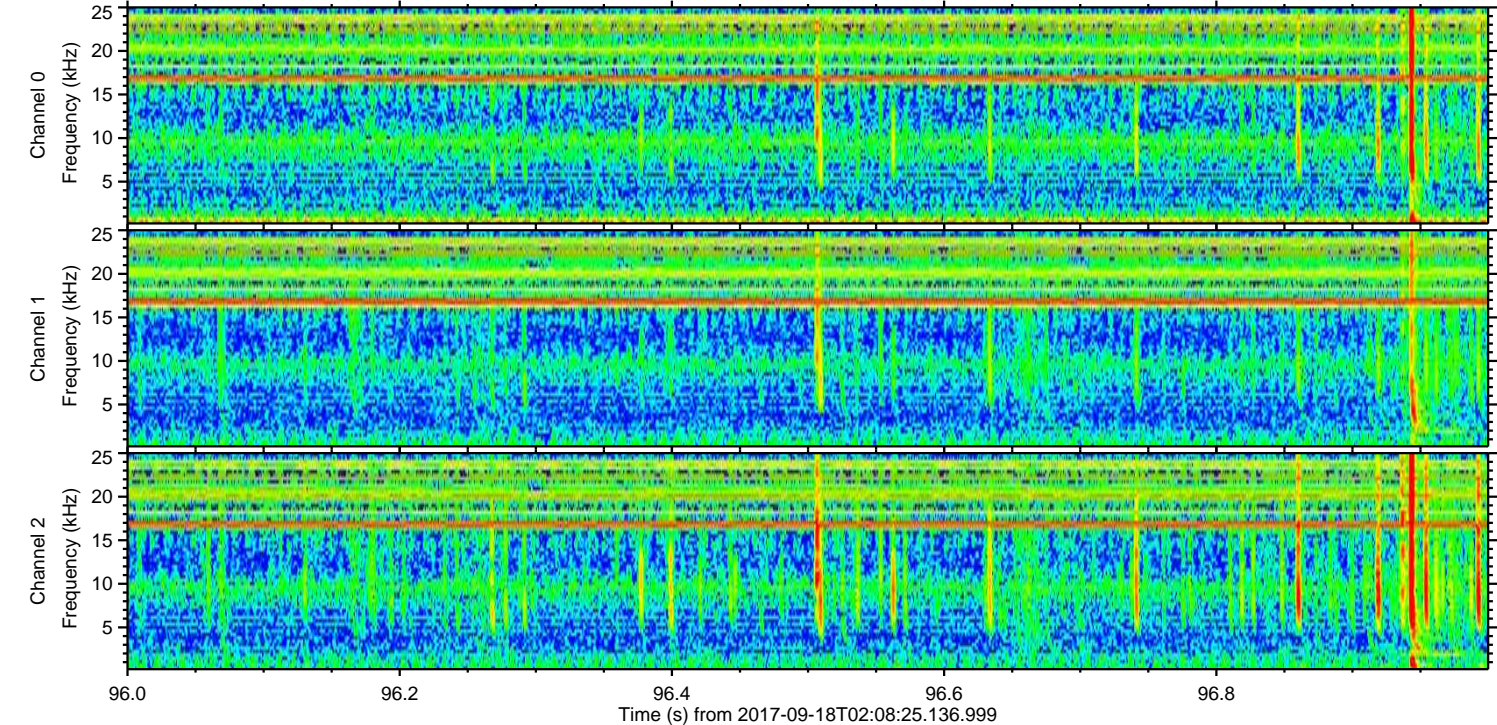
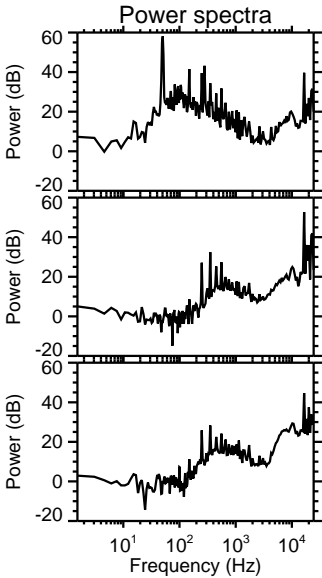
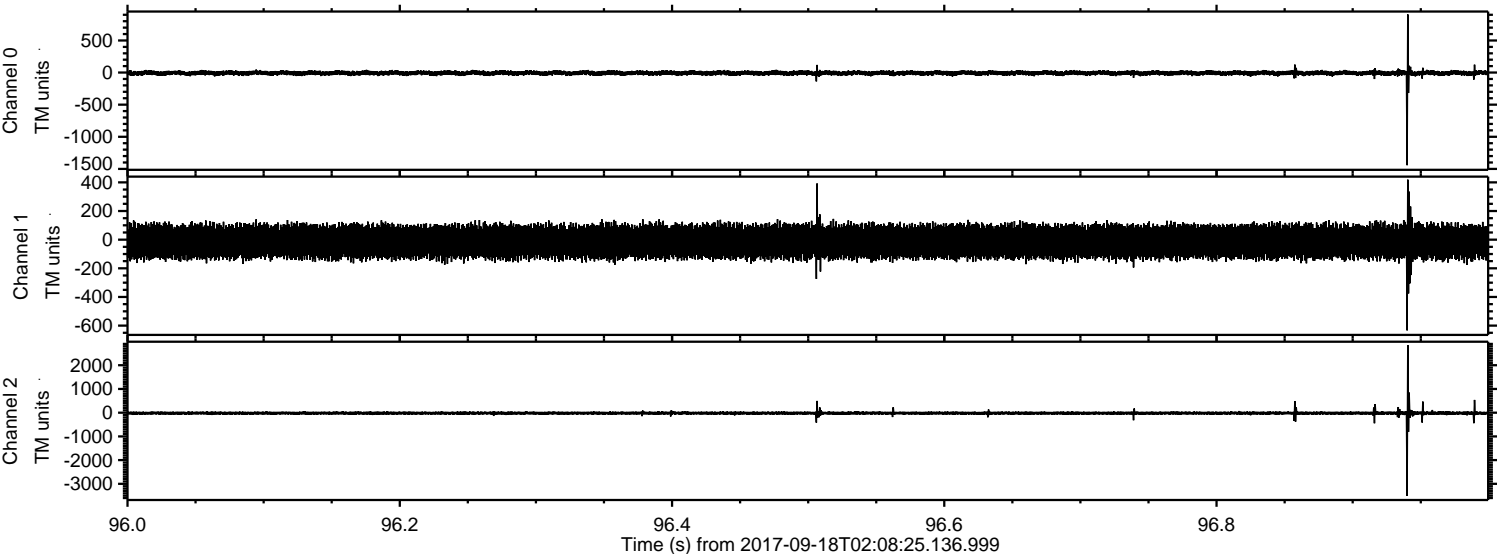
ELMAVAN 3D WAVEFORMS (Measured data sampled at 50 kHz) 51000 packets of 144 samples from 2017-09-18T02:08:25.136.999. Part 106/147

Processed Mon Sep 18 04:16:29 2017 by ELM ver.2012-10-06 from 001__elm20170918_020824__dat00.bin



ELMAVAN 3D WAVEFORMS (Measured data sampled at 50 kHz) 51000 packets of 144 samples from 2017-09-18T02:08:25.136.999. Part 97/147

Processed Mon Sep 18 04:16:30 2017 by ELM ver.2012-10-06 from 001__elm20170918_020824__dat00.bin

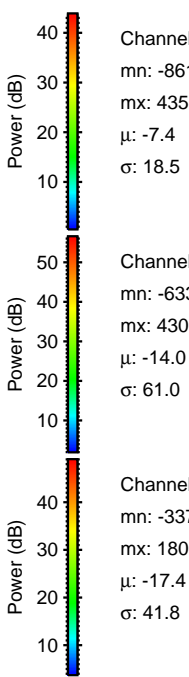
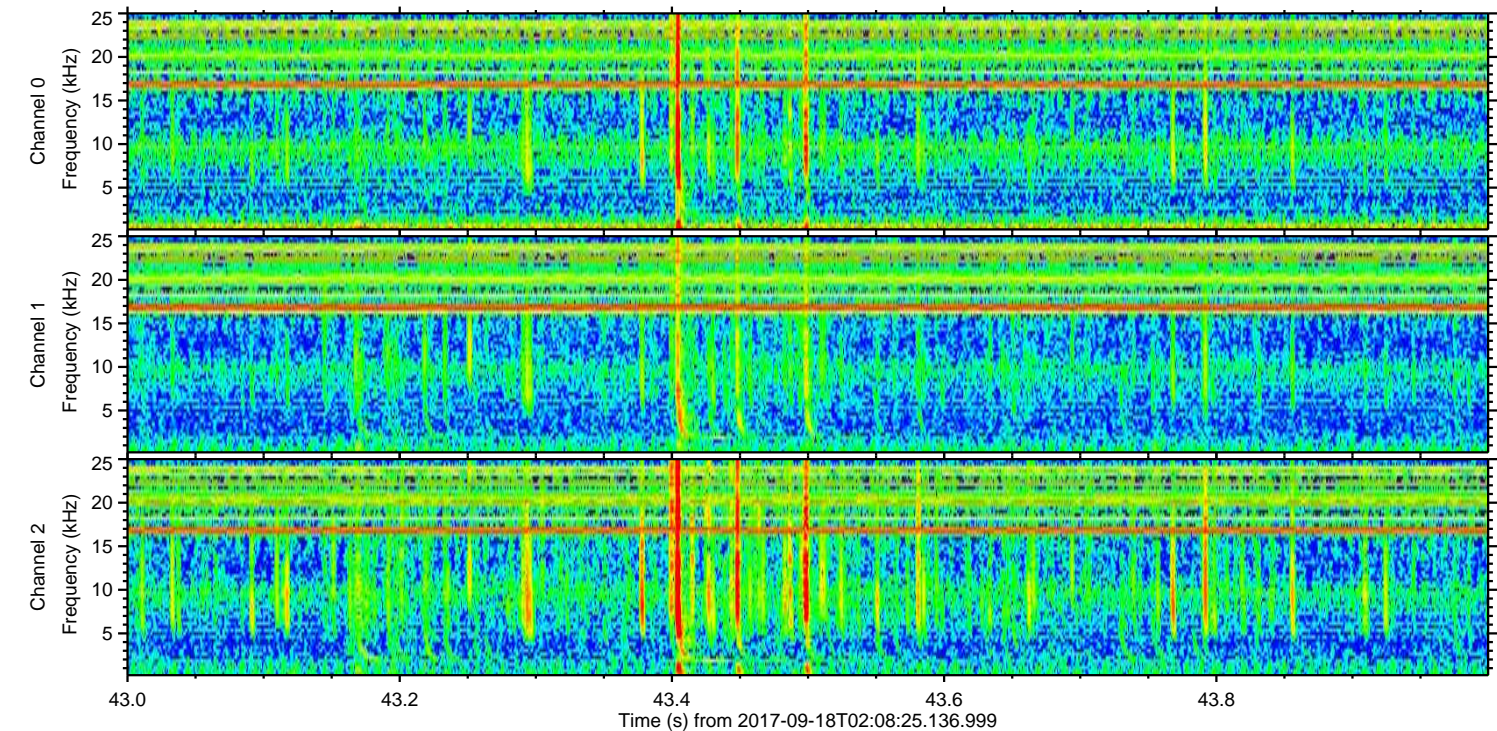
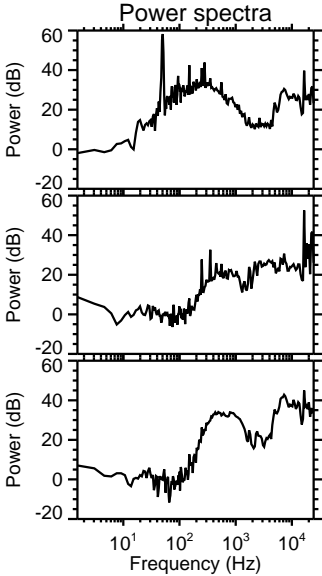
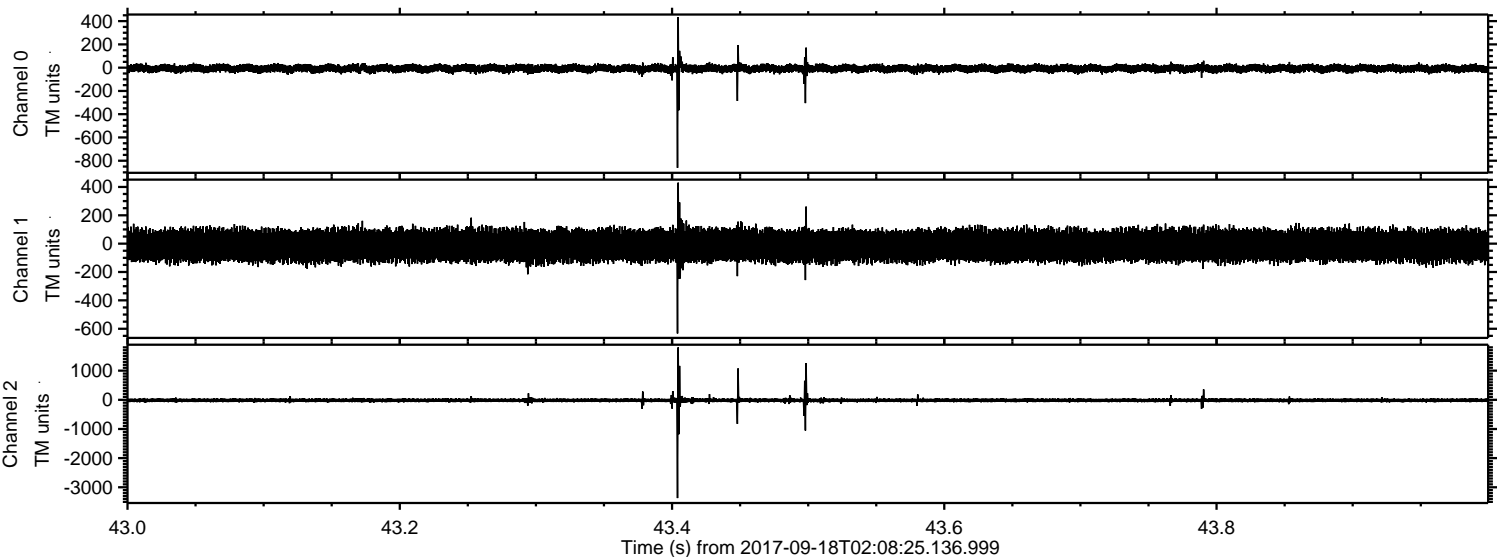


Channel 0
mn: -1442
mx: 905
 μ : -7.3
 σ : 19.2

Channel 1
mn: -633
mx: 419
 μ : -14.0
 σ : 62.3

Channel 2
mn: -3506
mx: 2850
 μ : -17.4
 σ : 43.7

Processed Mon Sep 18 04:16:31 2017 by ELM ver.2012-10-06 from 001__elm20170918_020824__dat00.bin



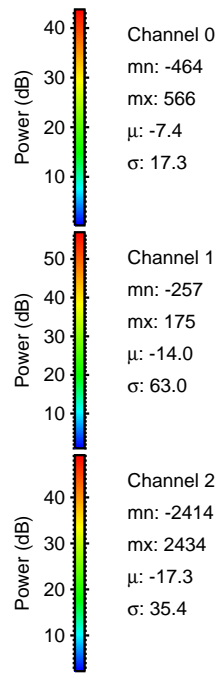
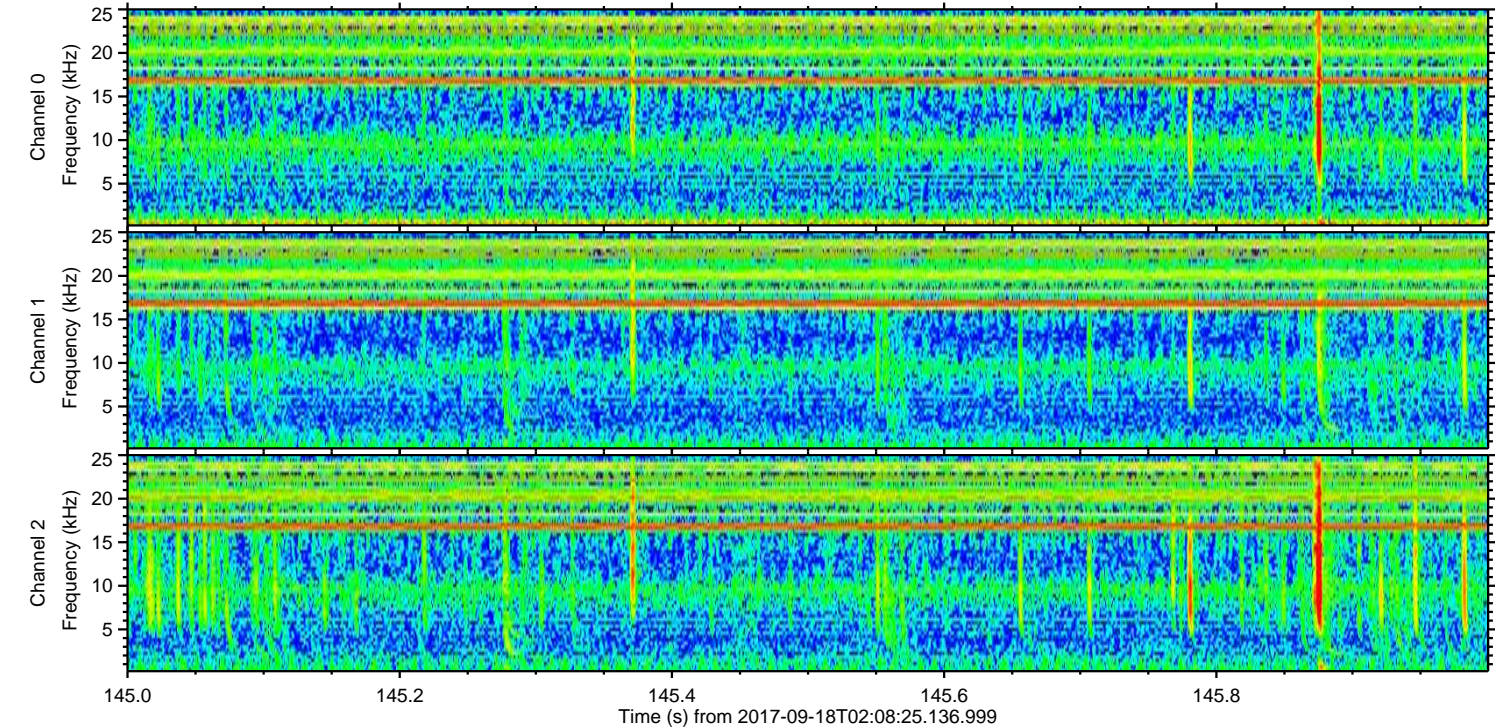
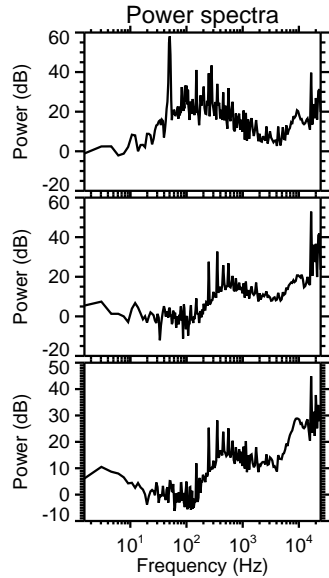
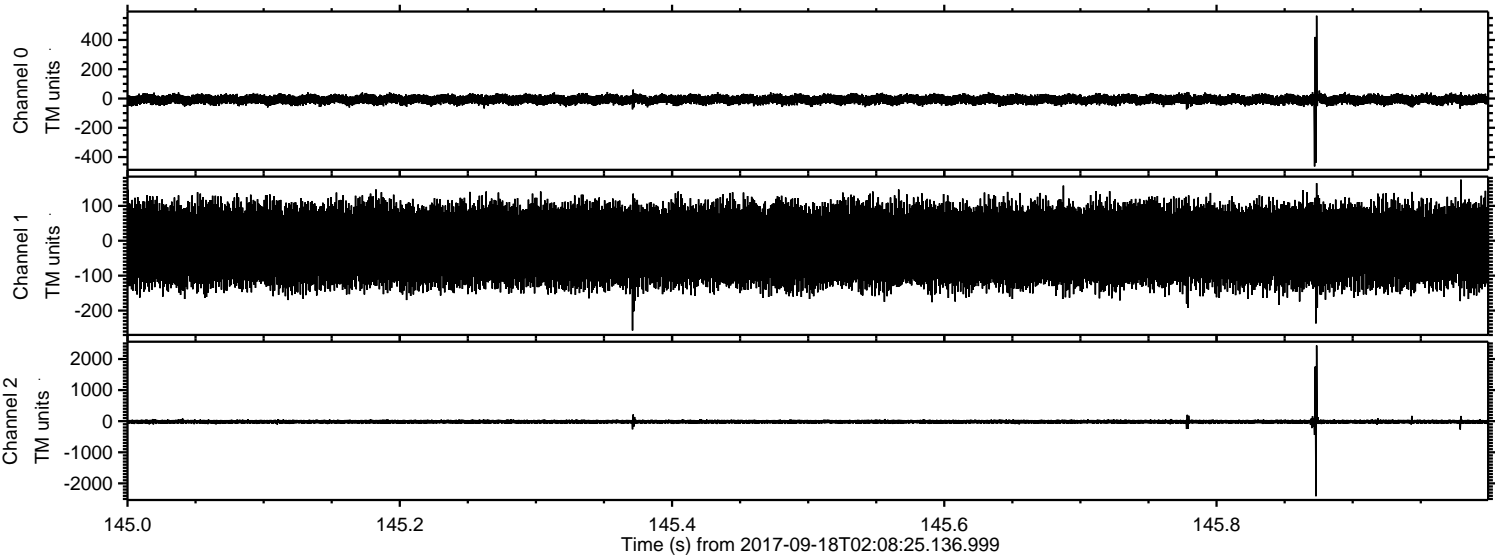
Channel 0
mn: -861
mx: 435
 μ : -7.4
 σ : 18.5

Channel 1
mn: -633
mx: 430
 μ : -14.0
 σ : 61.0

Channel 2
mn: -3371
mx: 1800
 μ : -17.4
 σ : 41.8

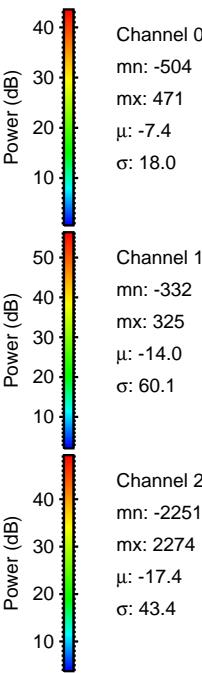
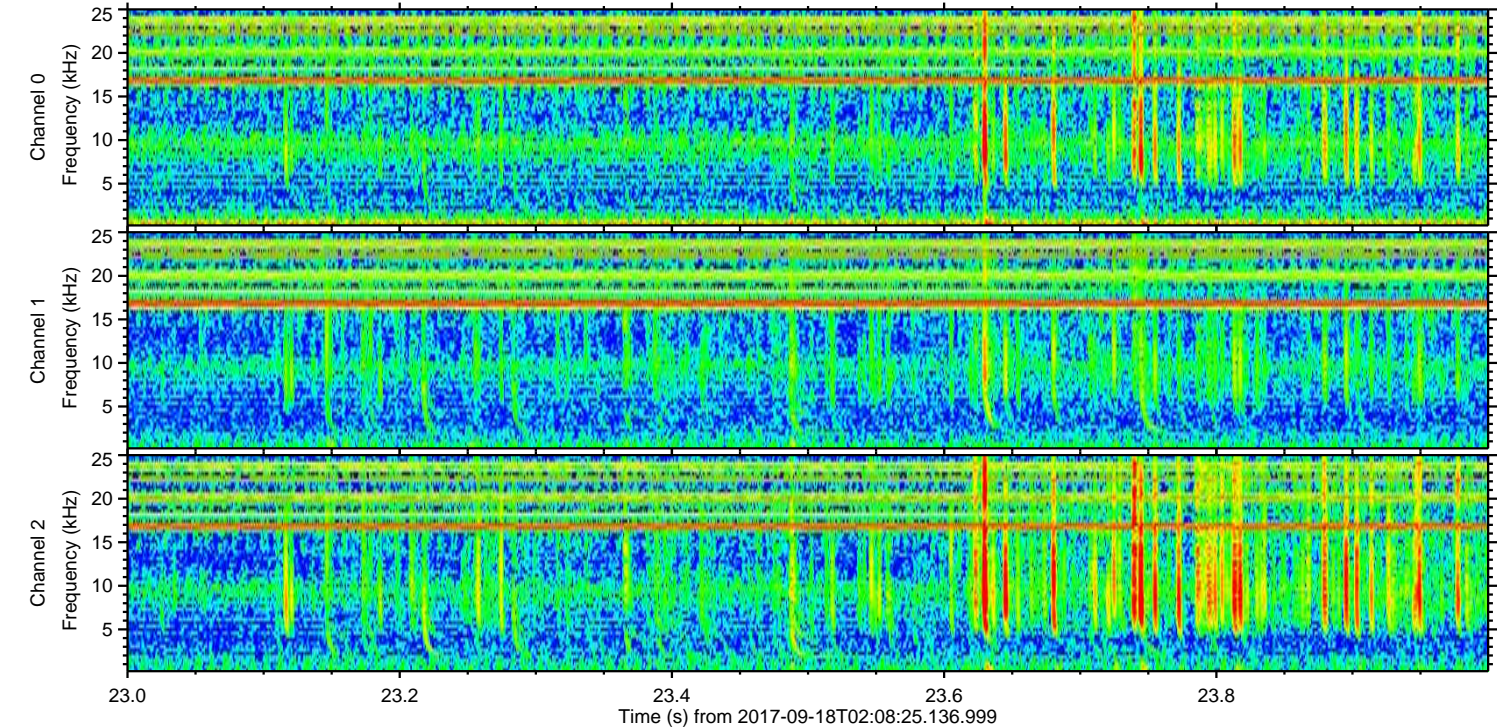
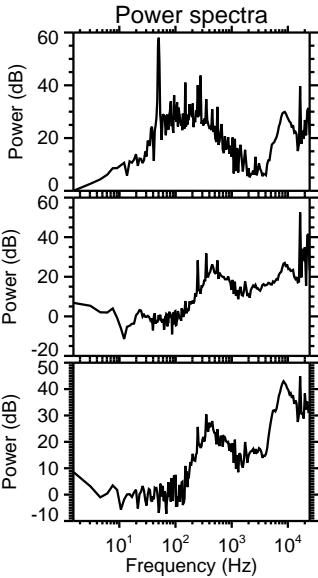
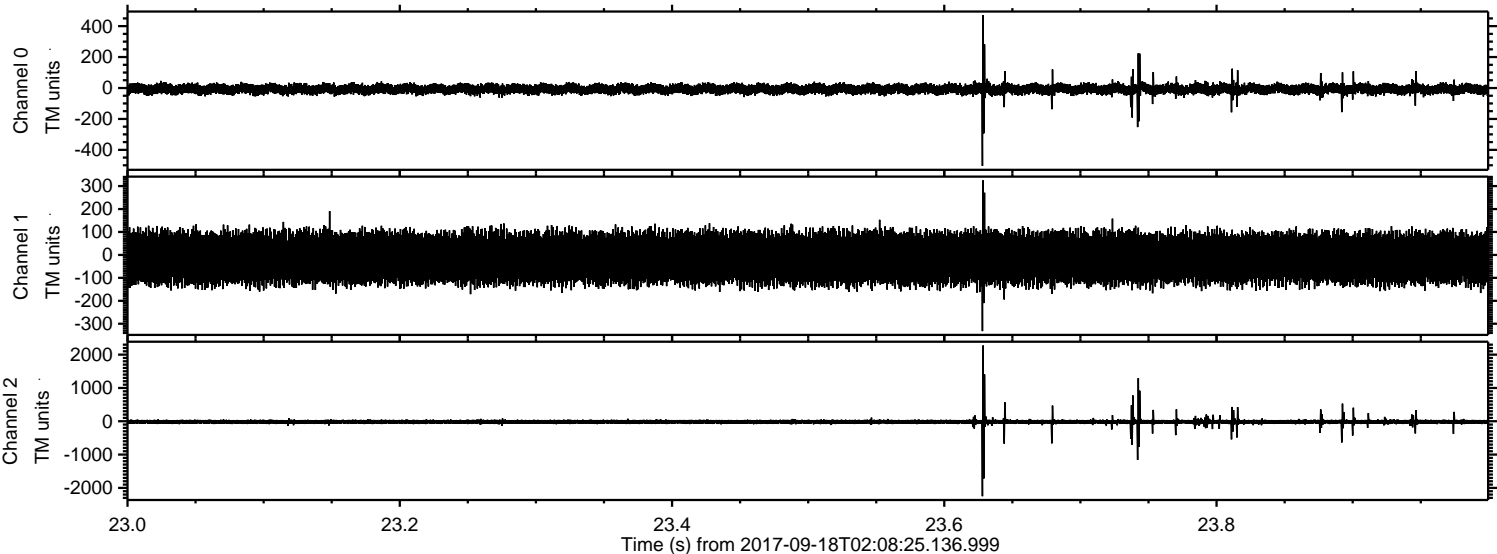
ELMAVAN 3D WAVEFORMS (Measured data sampled at 50 kHz) 51000 packets of 144 samples from 2017-09-18T02:08:25.136.999. Part 146/147

Processed Mon Sep 18 04:16:31 2017 by ELM ver.2012-10-06 from 001__elm20170918_020824__dat00.bin



ELMAVAN 3D WAVEFORMS (Measured data sampled at 50 kHz) 51000 packets of 144 samples from 2017-09-18T02:08:25.136.999. Part 24/147

Processed Mon Sep 18 04:16:32 2017 by ELM ver.2012-10-06 from 001__elm20170918_020824__dat00.bin



Processed Mon Sep 18 04:16:32 2017 by ELM ver.2012-10-06 from 001__elm20170918_020824__dat00.bin

