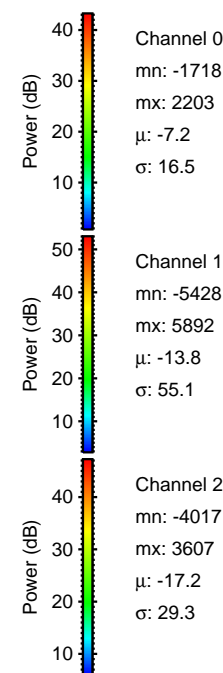
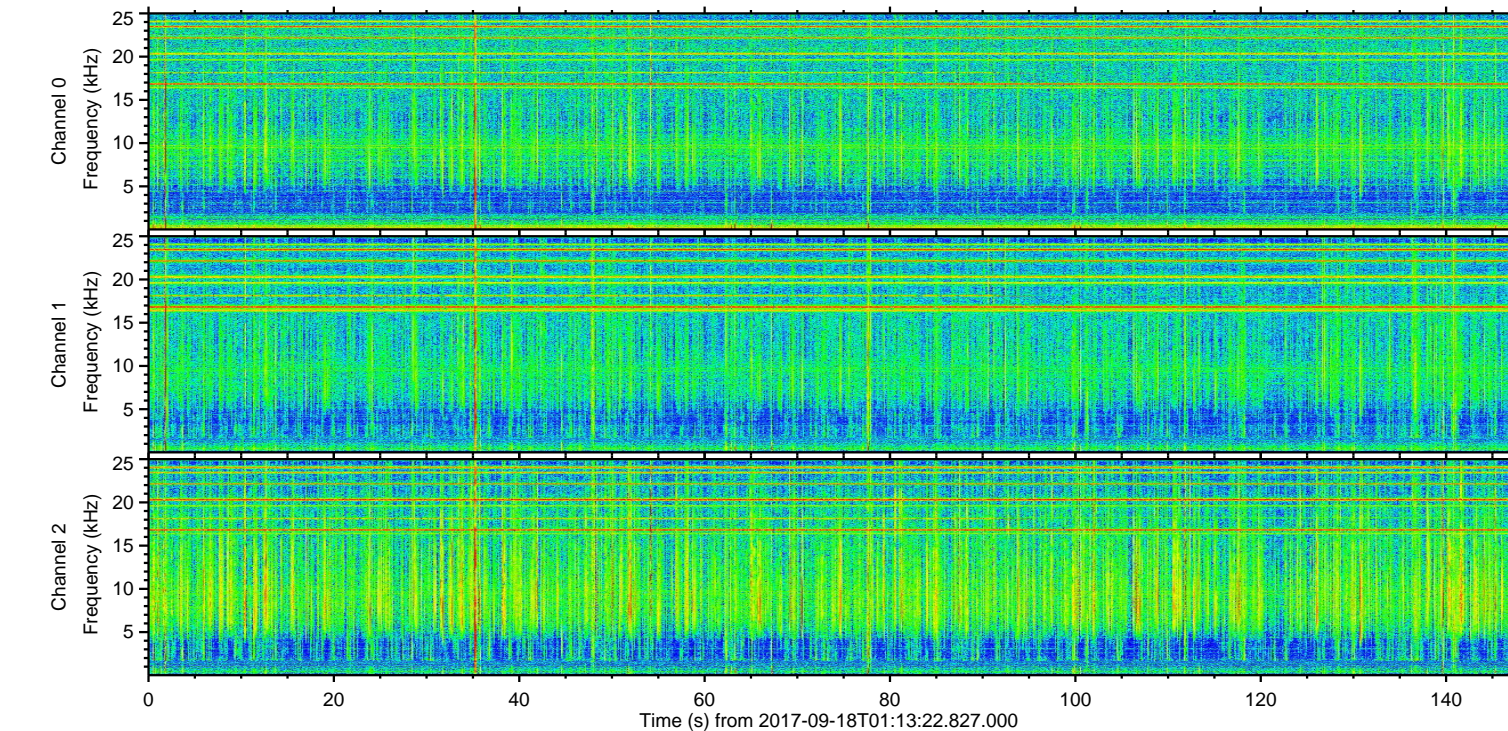
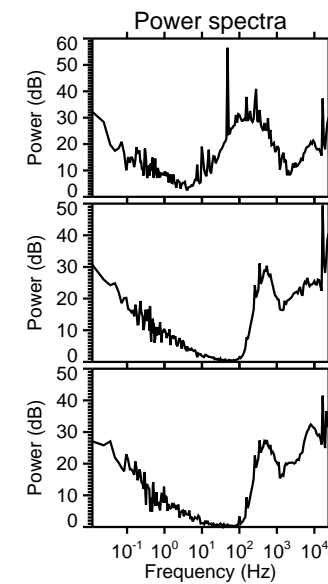
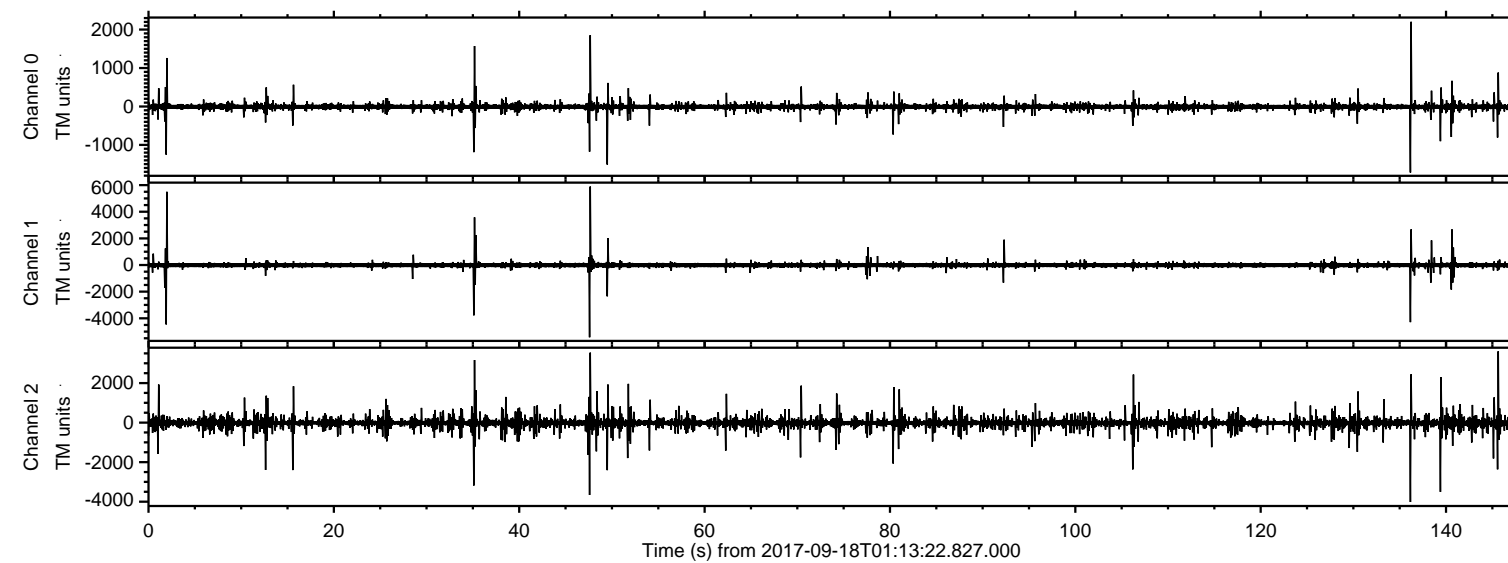


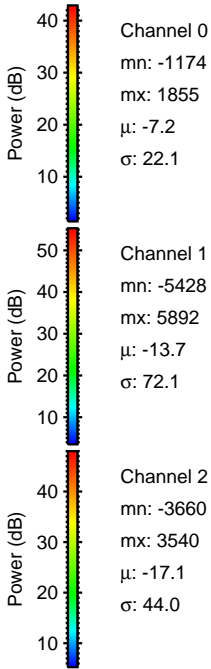
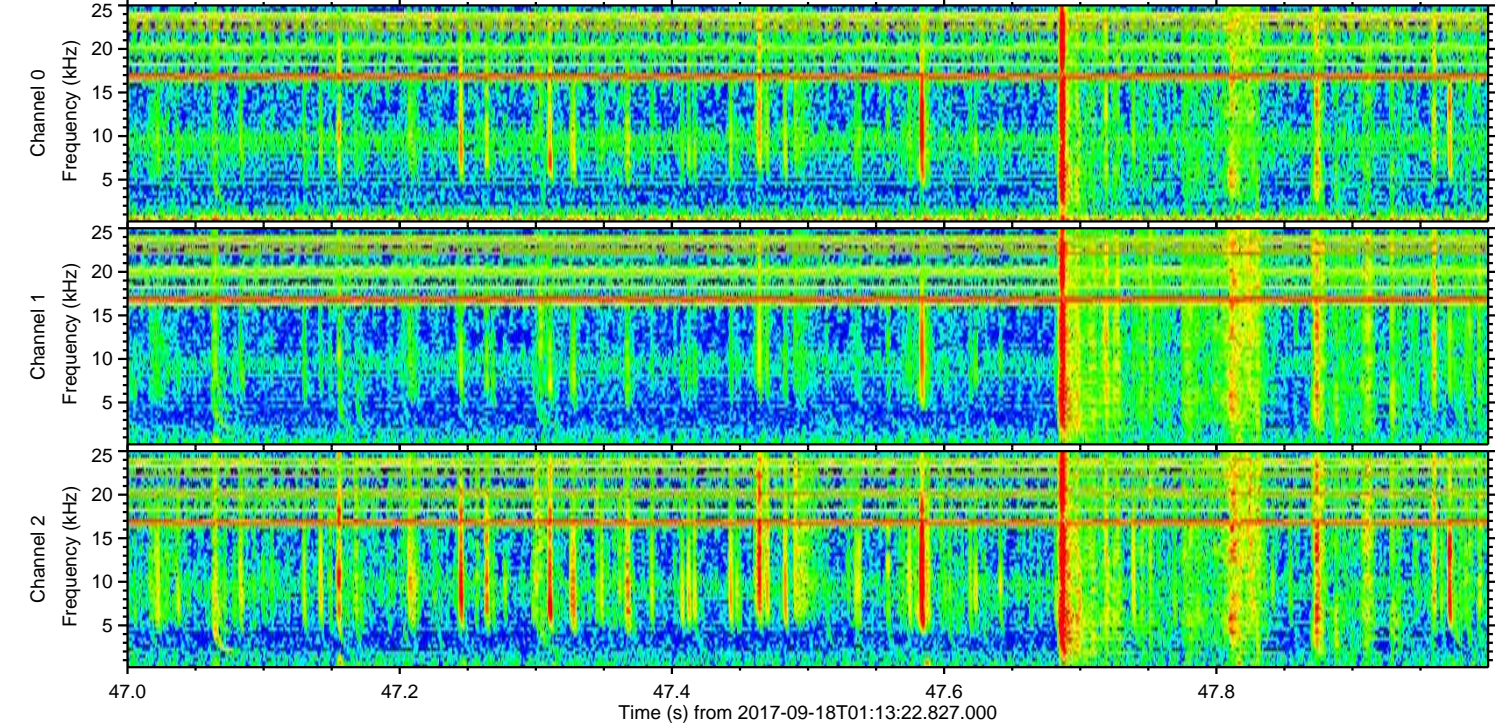
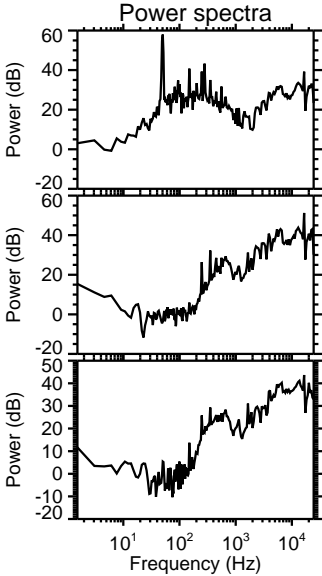
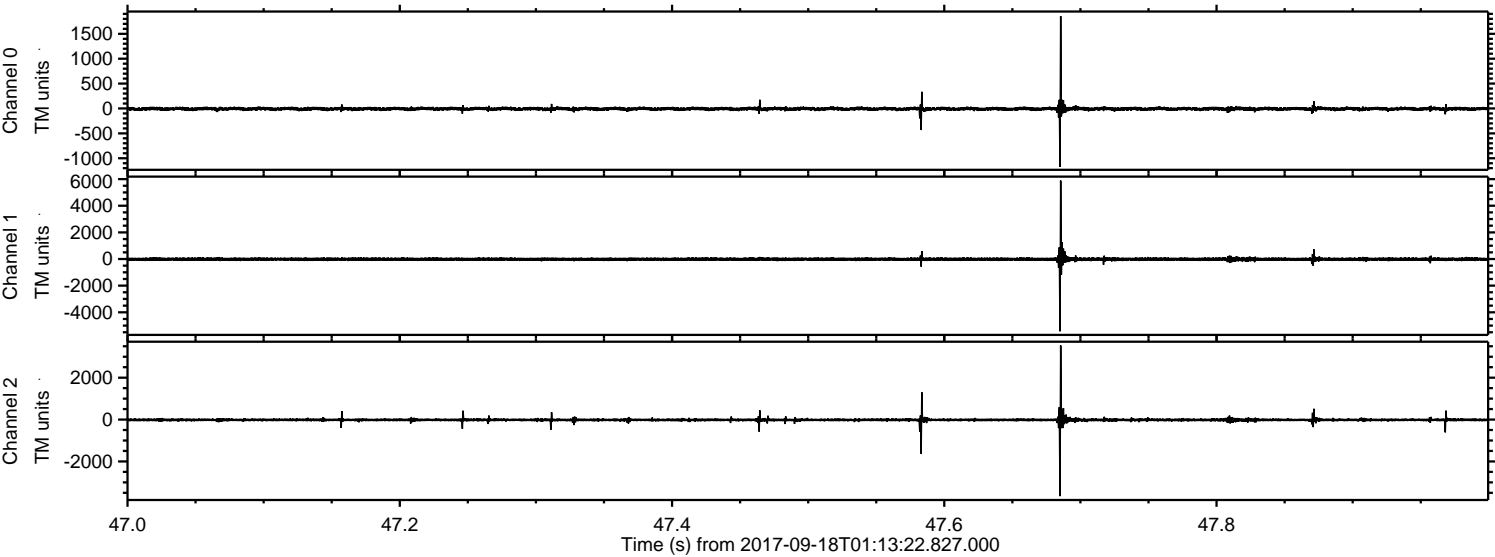
ELMAVAN 3D WAVEFORMS (Measured data sampled at 50 kHz) 51000 packets of 144 samples from 2017-09-18T01:13:22.827.000.

Processed Mon Sep 18 03:21:30 2017 by ELM ver.2012-10-06 from 001__elm20170918_011321__dat00.bin



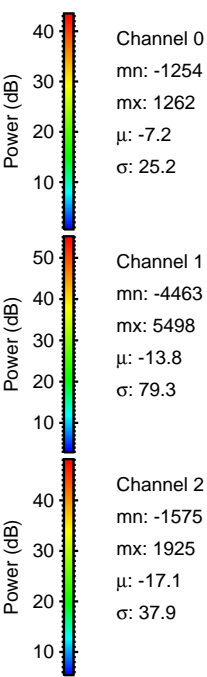
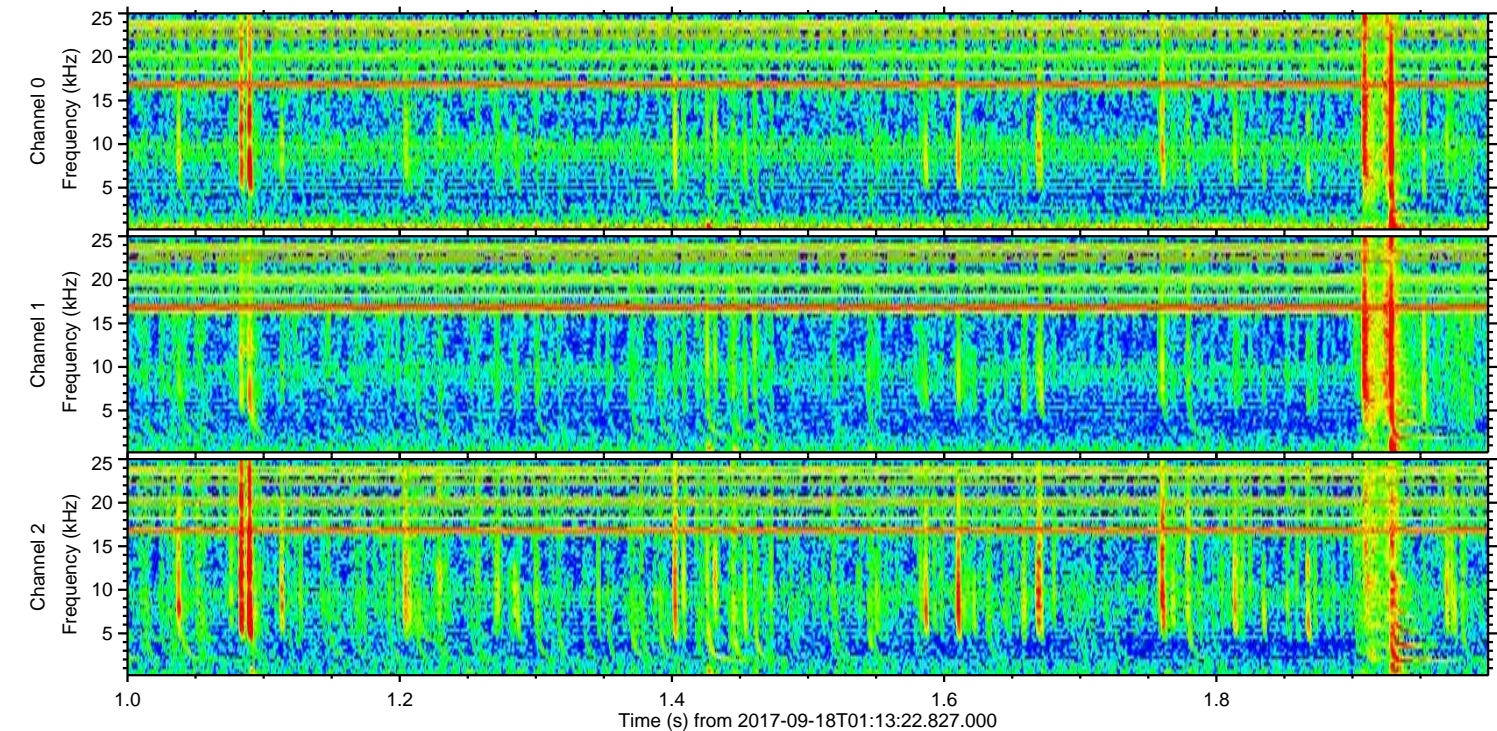
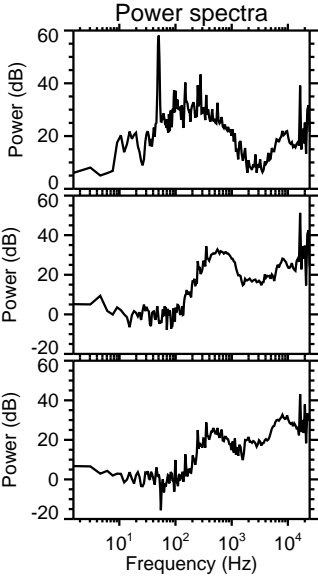
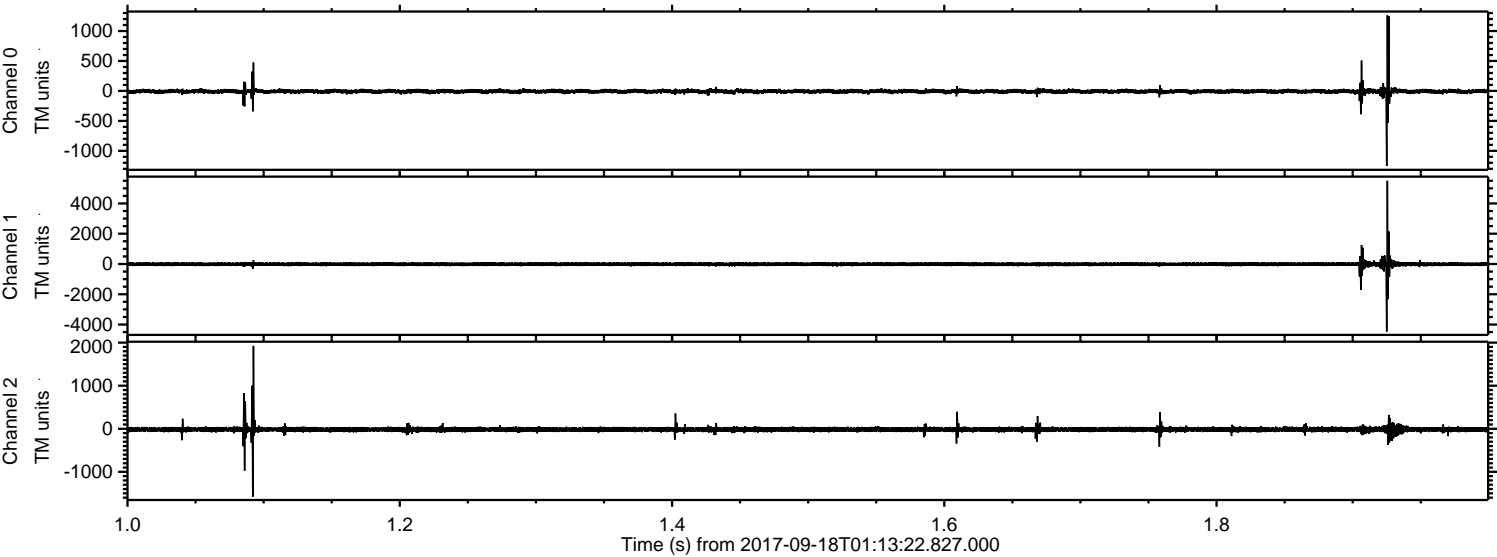
ELMAVAN 3D WAVEFORMS (Measured data sampled at 50 kHz) 51000 packets of 144 samples from 2017-09-18T01:13:22.827.000. Part 48/147

Processed Mon Sep 18 03:21:36 2017 by ELM ver.2012-10-06 from 001__elm20170918_011321__dat00.bin



ELMAVAN 3D WAVEFORMS (Measured data sampled at 50 kHz) 51000 packets of 144 samples from 2017-09-18T01:13:22.827.000. Part 2/147

Processed Mon Sep 18 03:21:37 2017 by ELM ver.2012-10-06 from 001__elm20170918_011321__dat00.bin



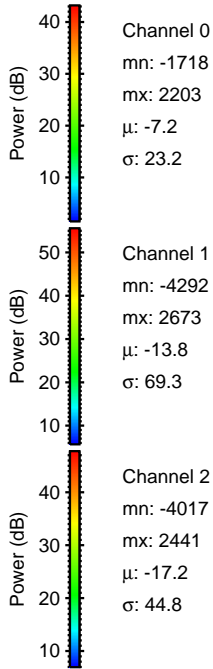
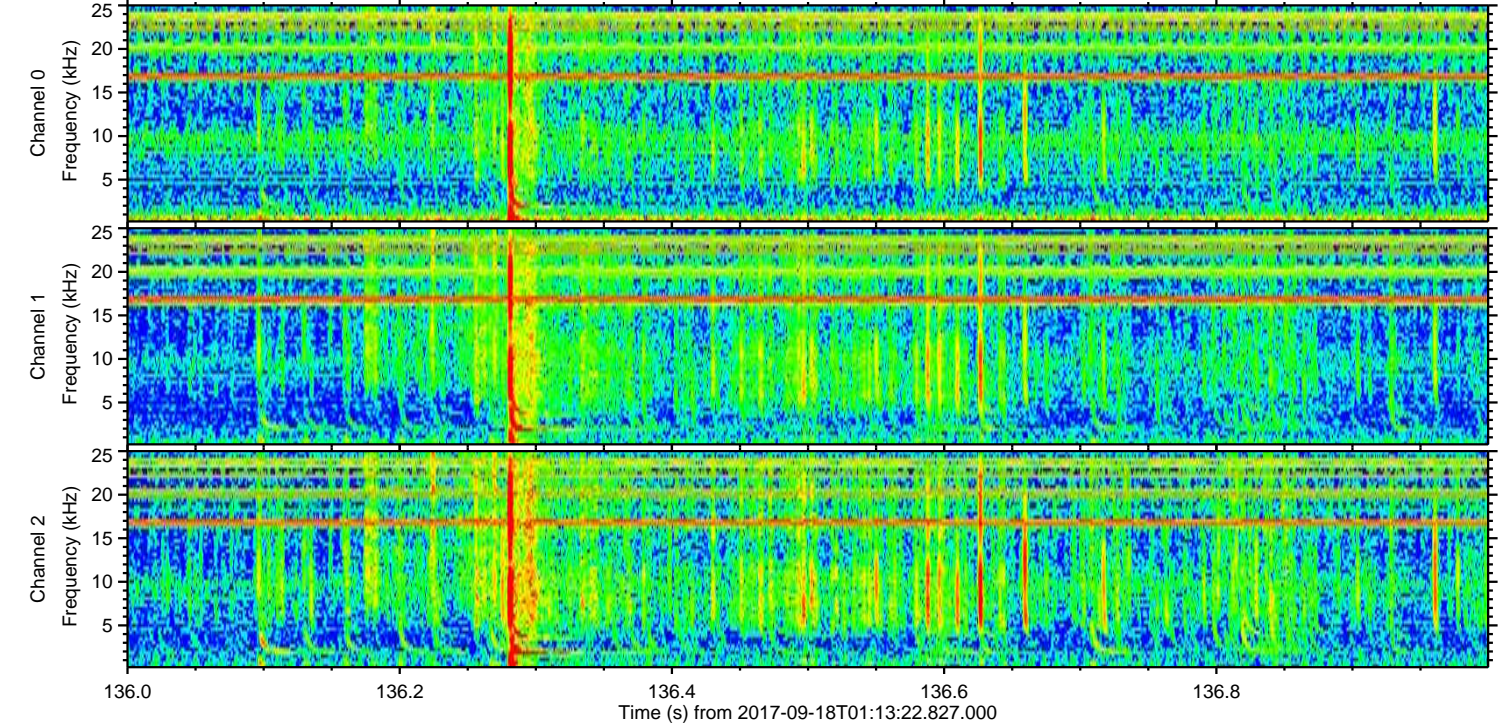
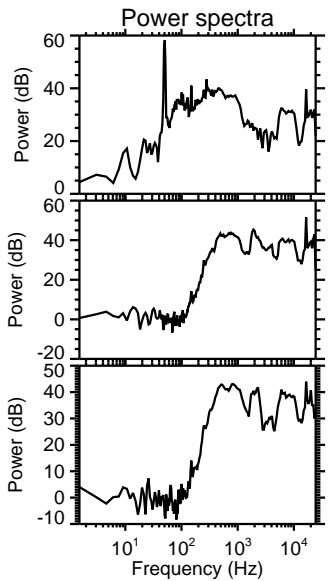
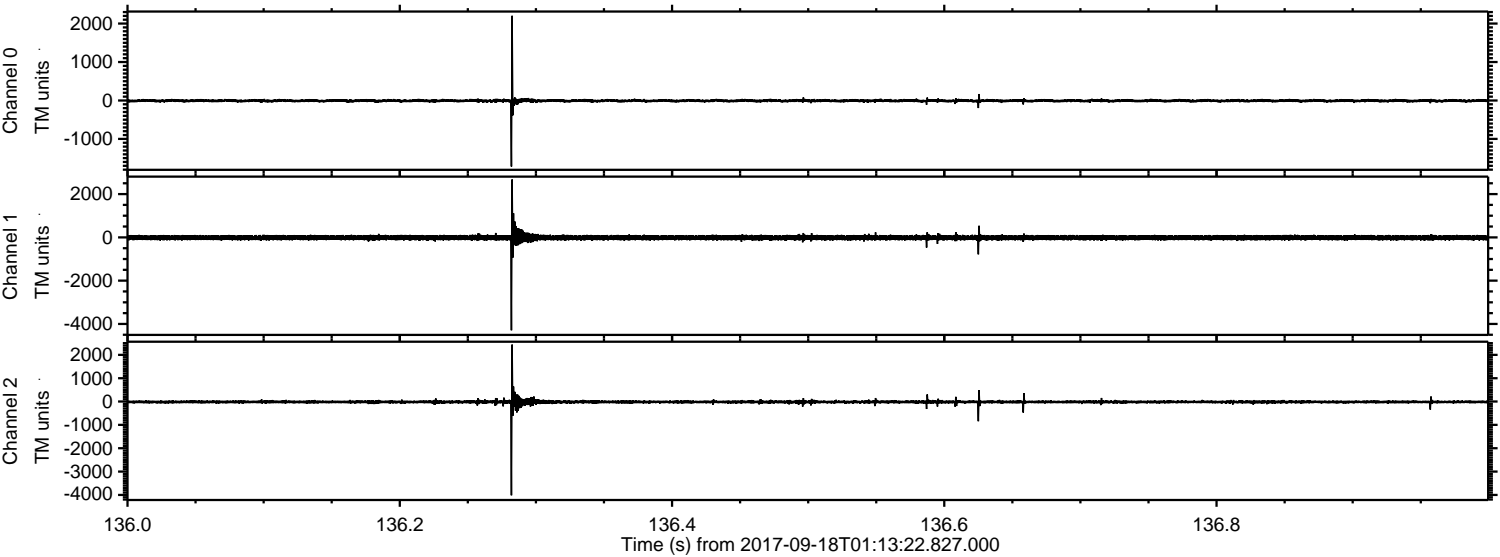
Channel 0
mn: -1254
mx: 1262
 μ : -7.2
 σ : 25.2

Channel 1
mn: -4463
mx: 5498
 μ : -13.8
 σ : 79.3

Channel 2
mn: -1575
mx: 1925
 μ : -17.1
 σ : 37.9

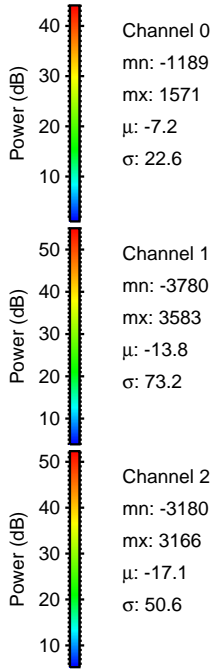
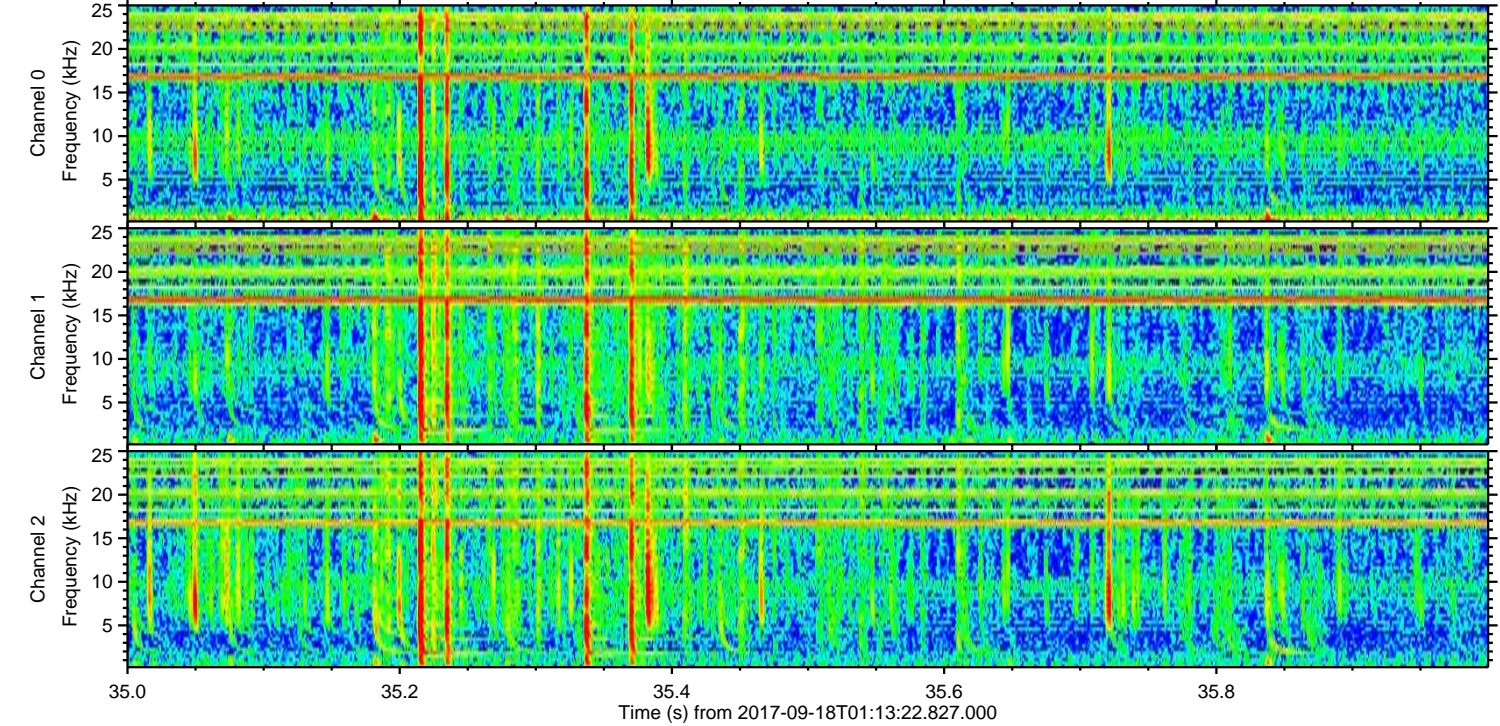
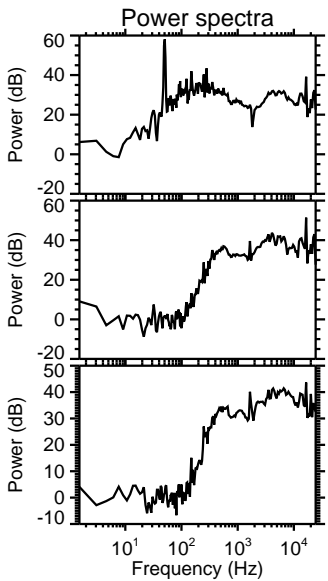
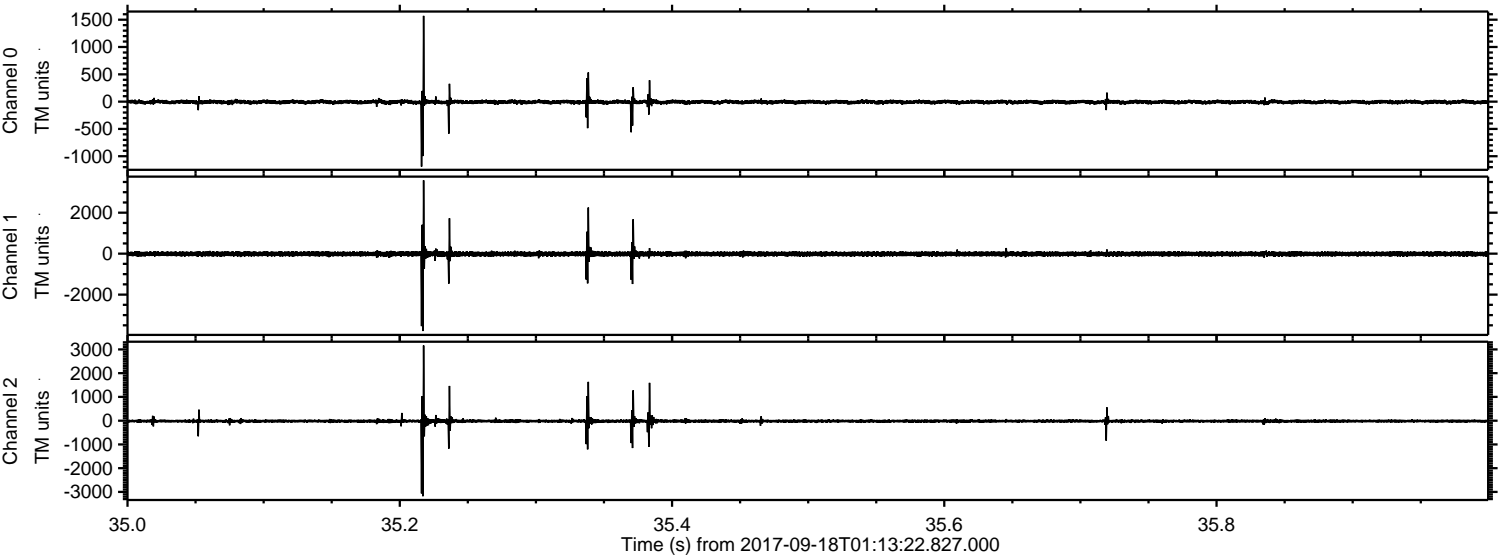
ELMAVAN 3D WAVEFORMS (Measured data sampled at 50 kHz) 51000 packets of 144 samples from 2017-09-18T01:13:22.827.000. Part 137/147

Processed Mon Sep 18 03:21:37 2017 by ELM ver.2012-10-06 from 001__elm20170918_011321__dat00.bin



ELMAVAN 3D WAVEFORMS (Measured data sampled at 50 kHz) 51000 packets of 144 samples from 2017-09-18T01:13:22.827.000. Part 36/147

Processed Mon Sep 18 03:21:38 2017 by ELM ver.2012-10-06 from 001__elm20170918_011321__dat00.bin

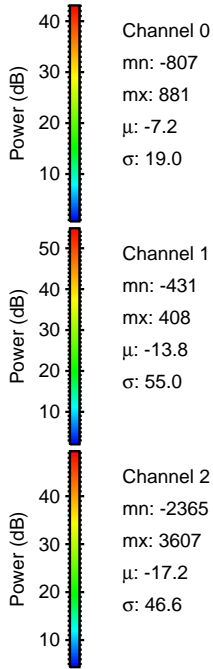
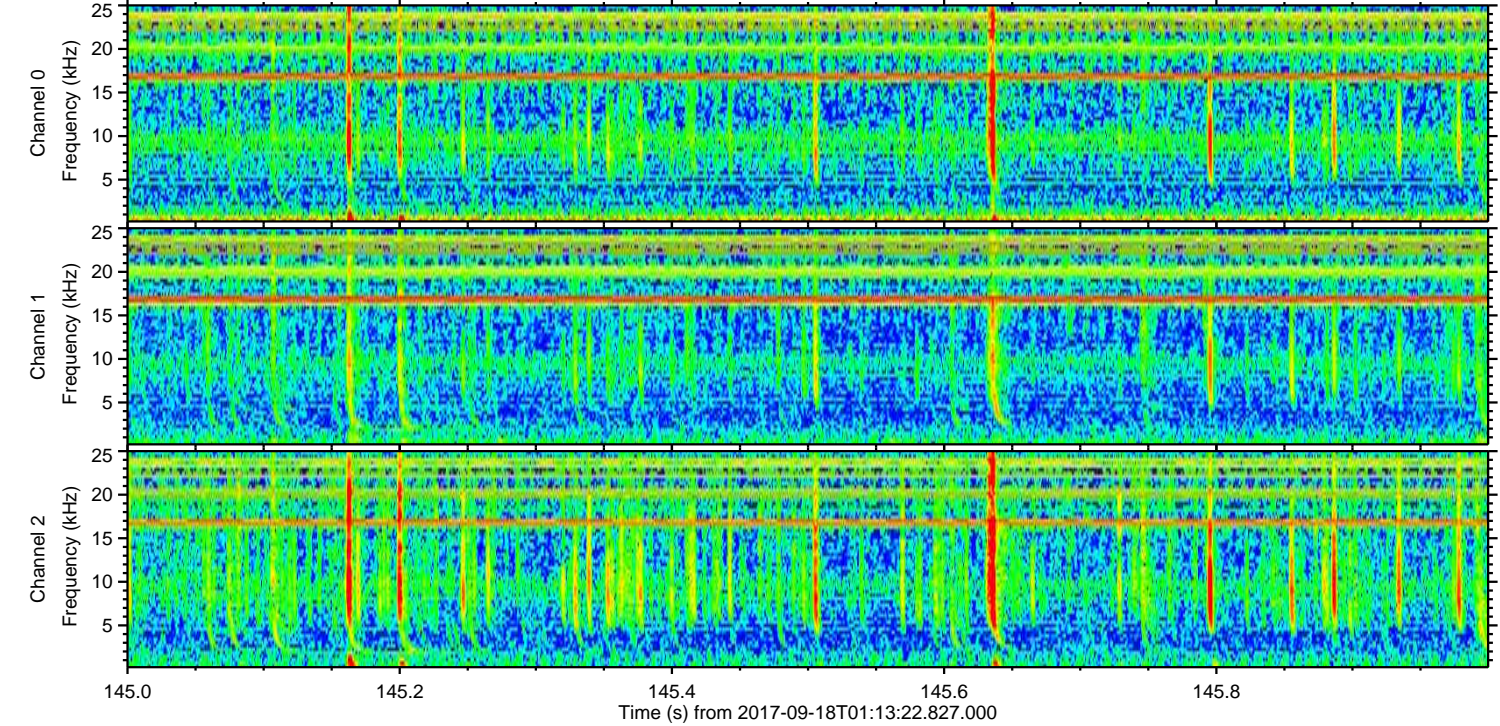
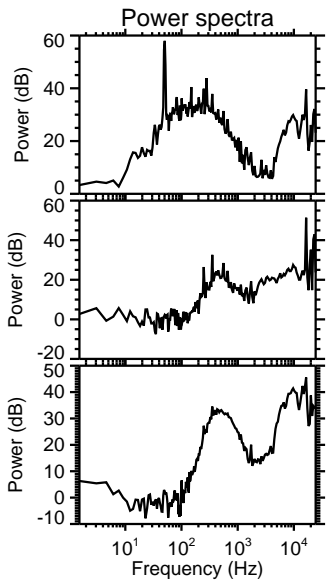
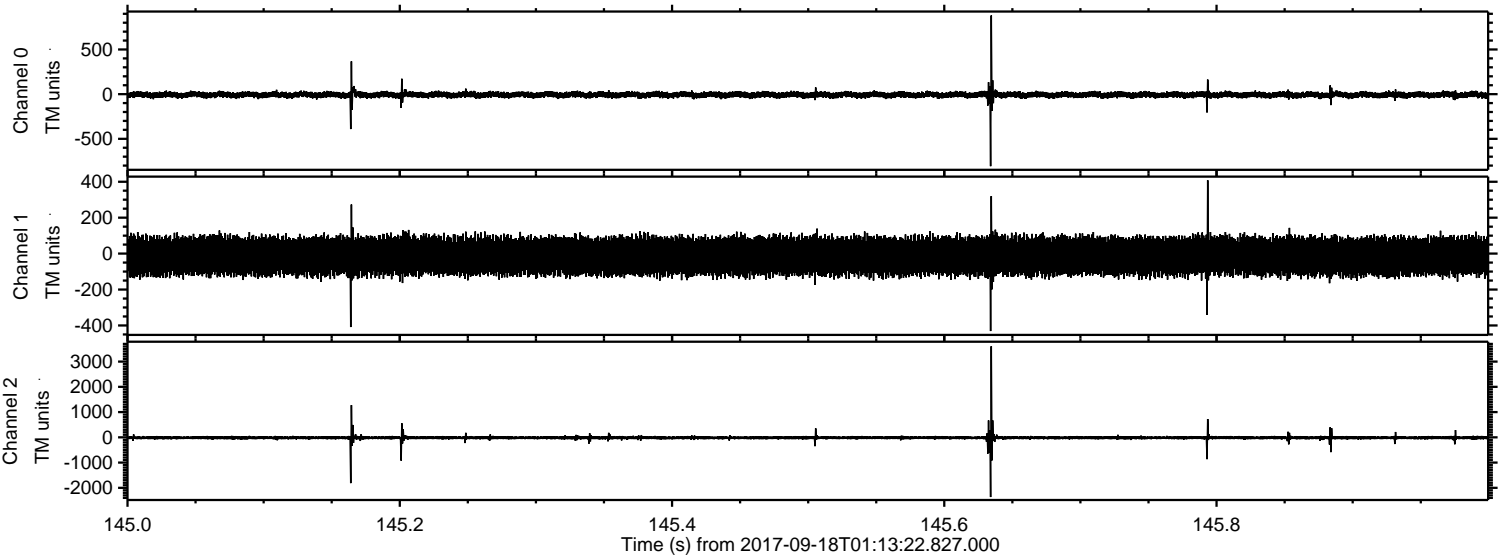


Channel 0
mn: -1189
mx: 1571
 μ : -7.2
 σ : 22.6

Channel 1
mn: -3780
mx: 3583
 μ : -13.8
 σ : 73.2

Channel 2
mn: -3180
mx: 3166
 μ : -17.1
 σ : 50.6

Processed Mon Sep 18 03:21:39 2017 by ELM ver.2012-10-06 from 001__elm20170918_011321__dat00.bin



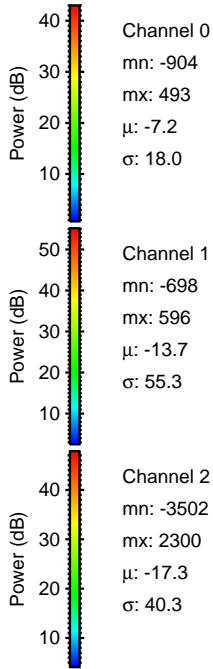
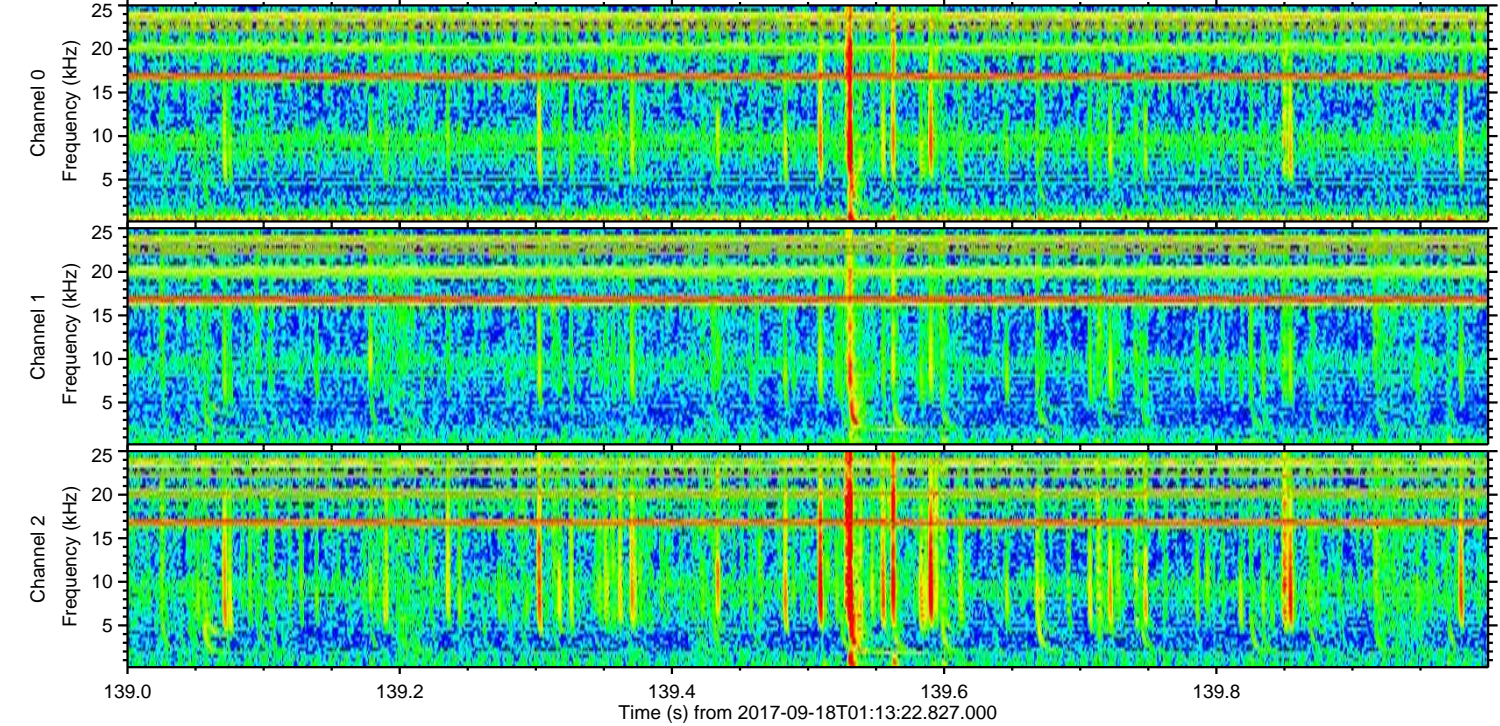
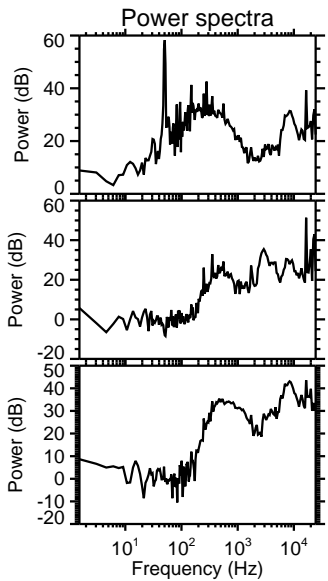
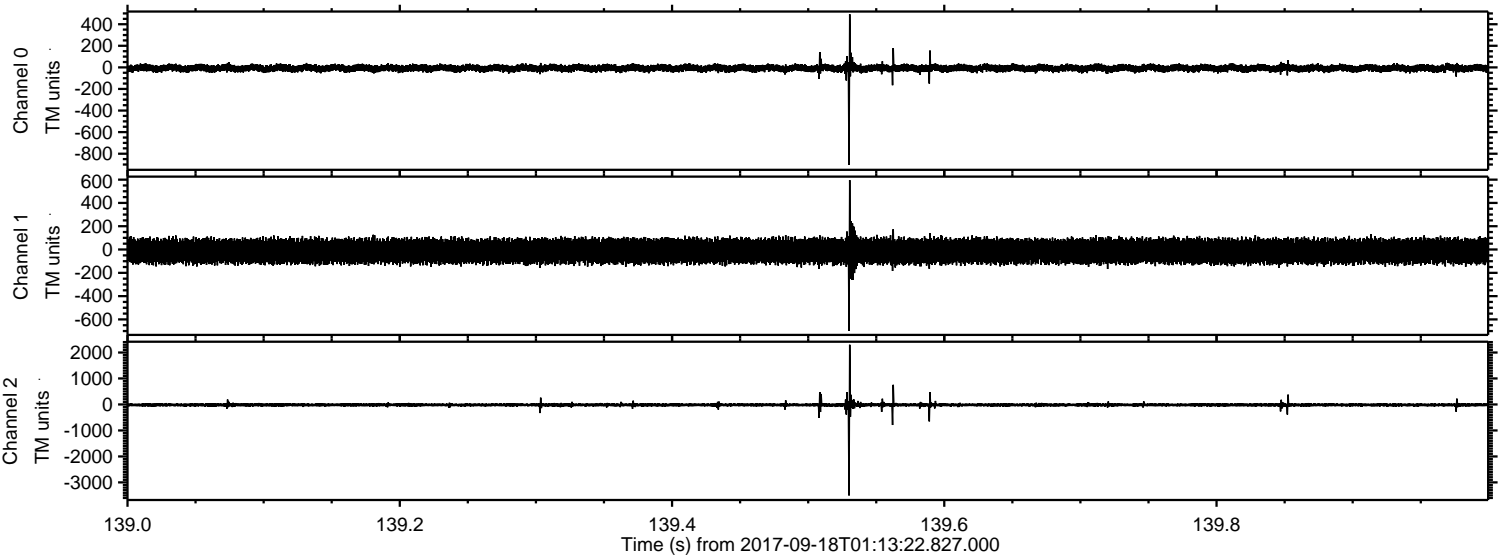
Channel 0
mn: -807
mx: 881
 μ : -7.2
 σ : 19.0

Channel 1
mn: -431
mx: 408
 μ : -13.8
 σ : 55.0

Channel 2
mn: -2365
mx: 3607
 μ : -17.2
 σ : 46.6

ELMAVAN 3D WAVEFORMS (Measured data sampled at 50 kHz) 51000 packets of 144 samples from 2017-09-18T01:13:22.827.000. Part 140/147

Processed Mon Sep 18 03:21:39 2017 by ELM ver.2012-10-06 from 001__elm20170918_011321__dat00.bin



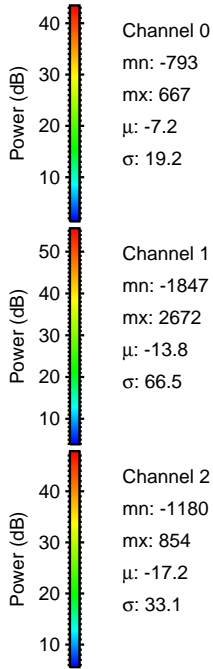
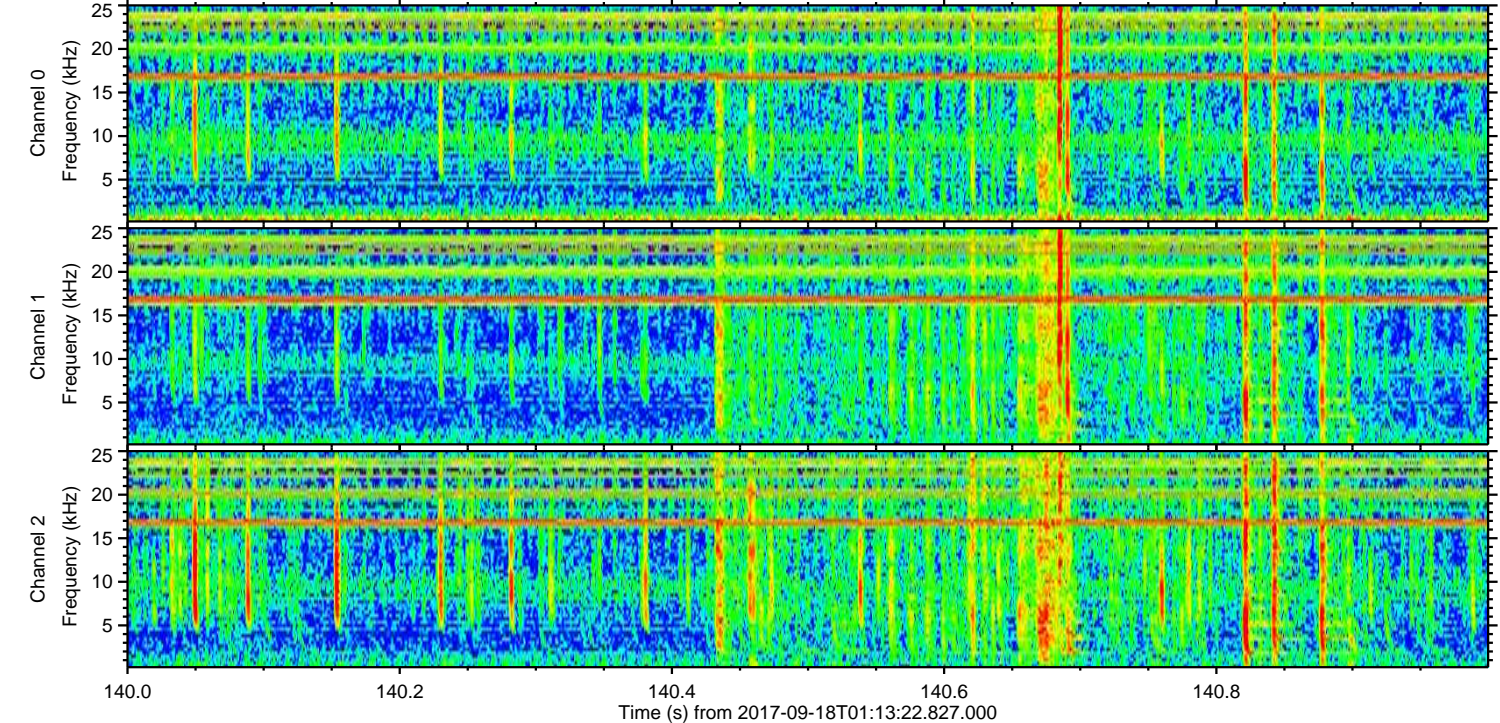
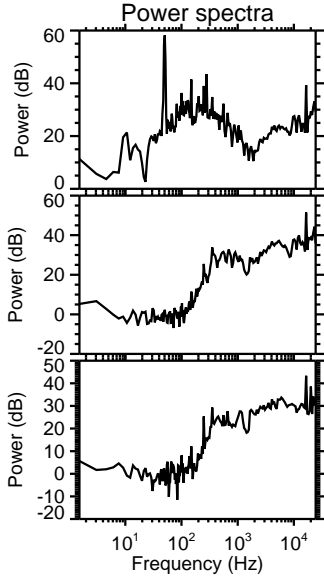
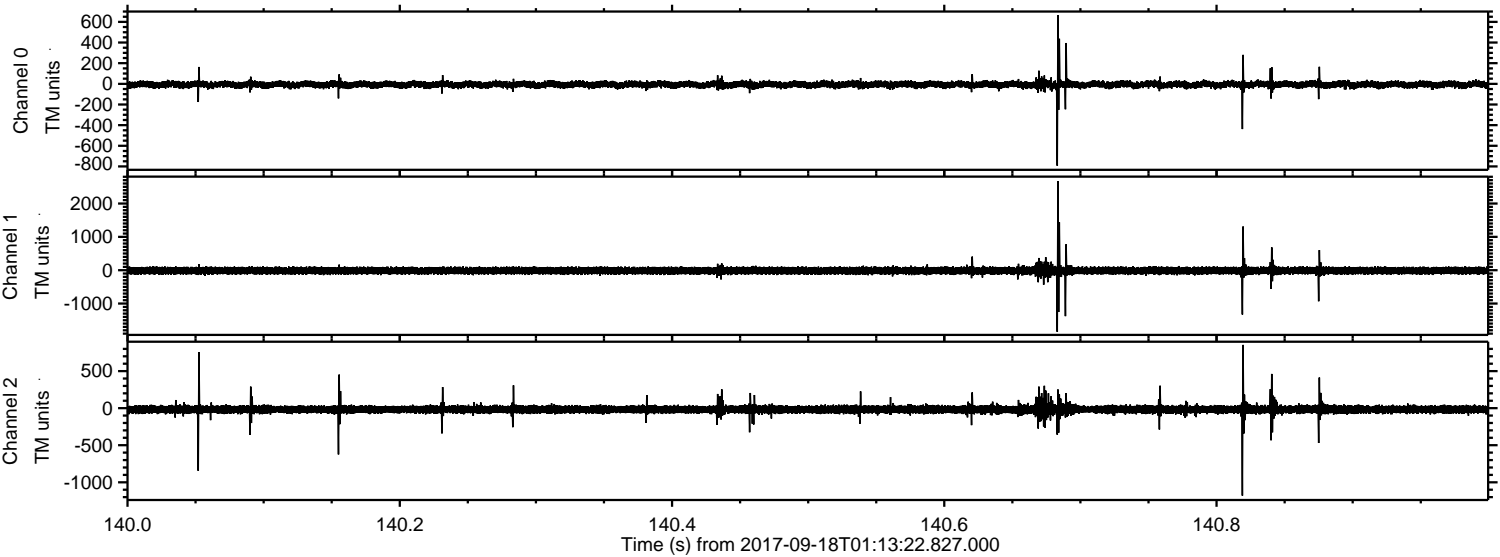
Channel 0
mn: -904
mx: 493
 μ : -7.2
 σ : 18.0

Channel 1
mn: -698
mx: 596
 μ : -13.7
 σ : 55.3

Channel 2
mn: -3502
mx: 2300
 μ : -17.3
 σ : 40.3

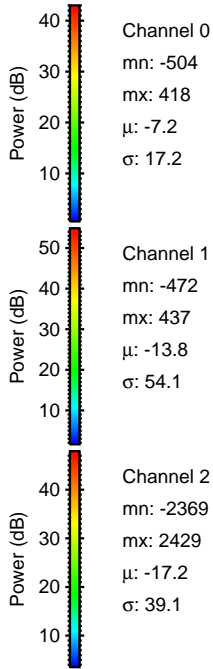
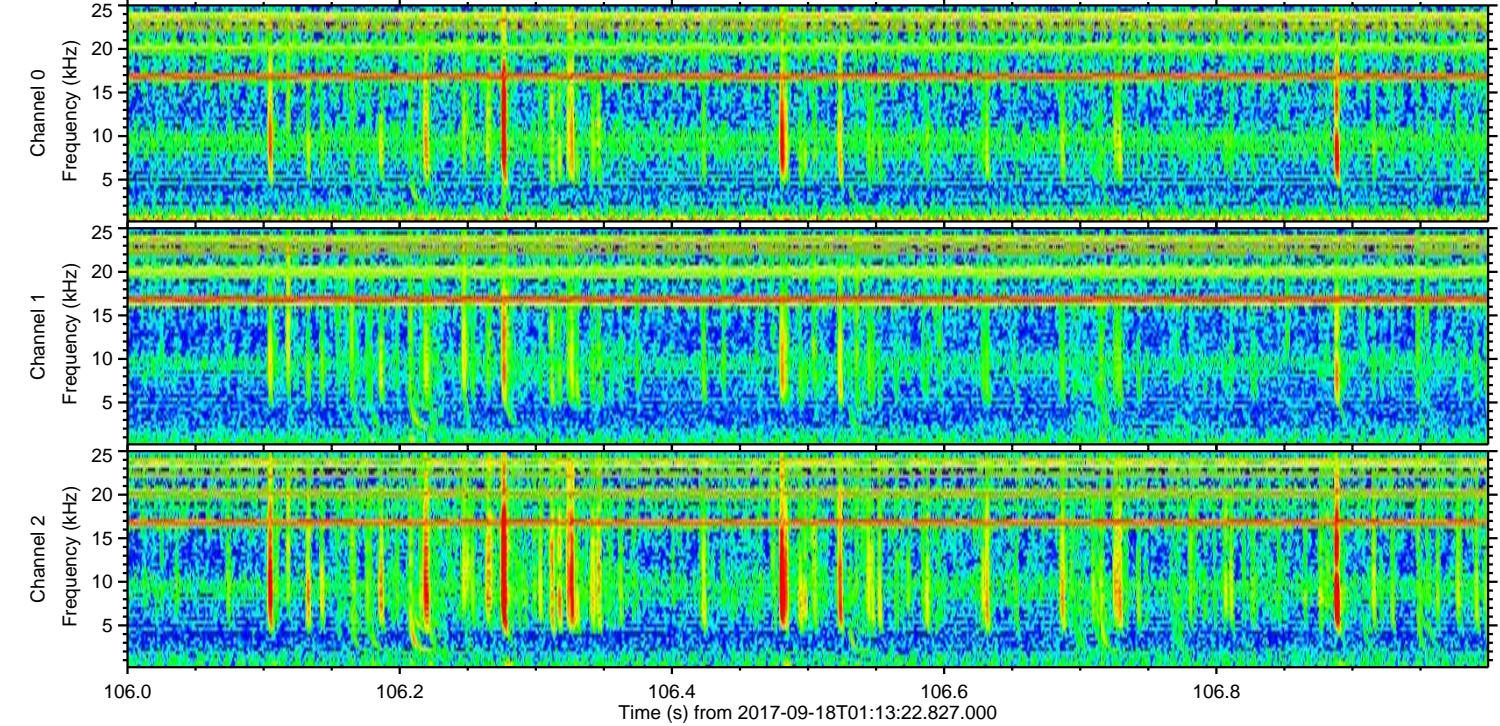
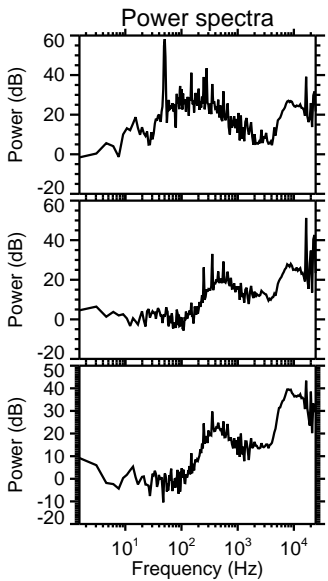
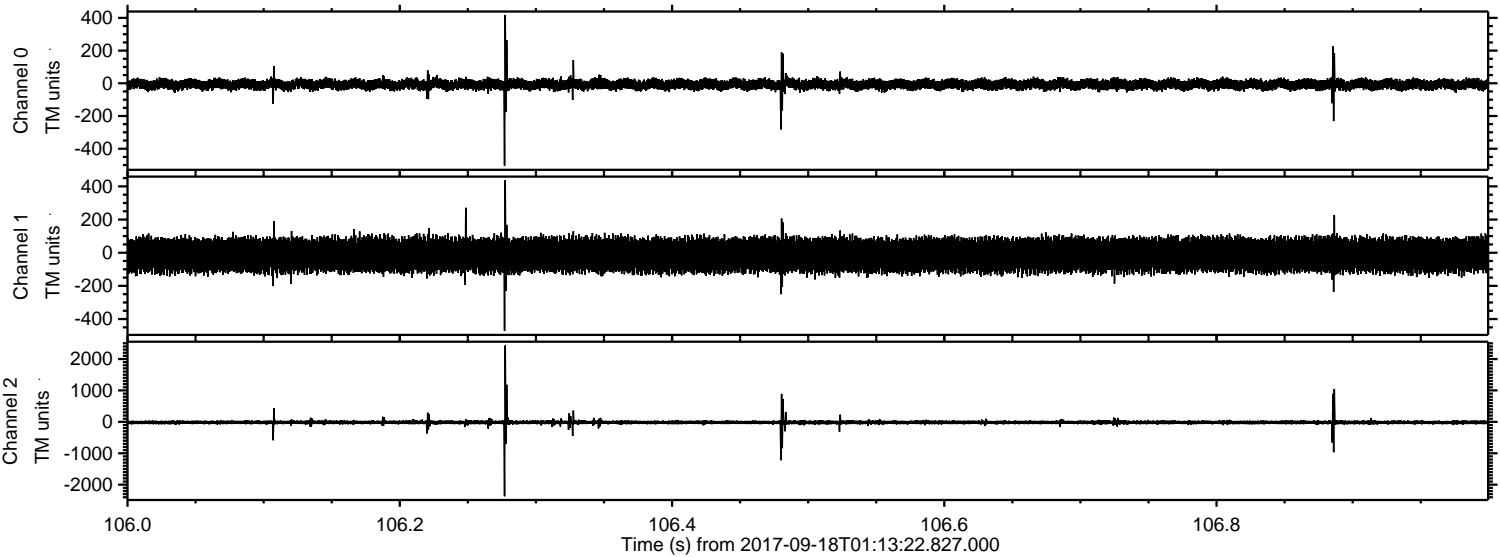
ELMAVAN 3D WAVEFORMS (Measured data sampled at 50 kHz) 51000 packets of 144 samples from 2017-09-18T01:13:22.827.000. Part 141/147

Processed Mon Sep 18 03:21:40 2017 by ELM ver.2012-10-06 from 001__elm20170918_011321__dat00.bin

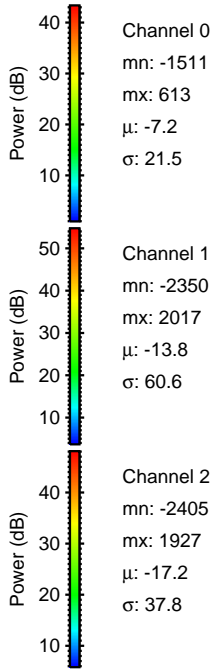
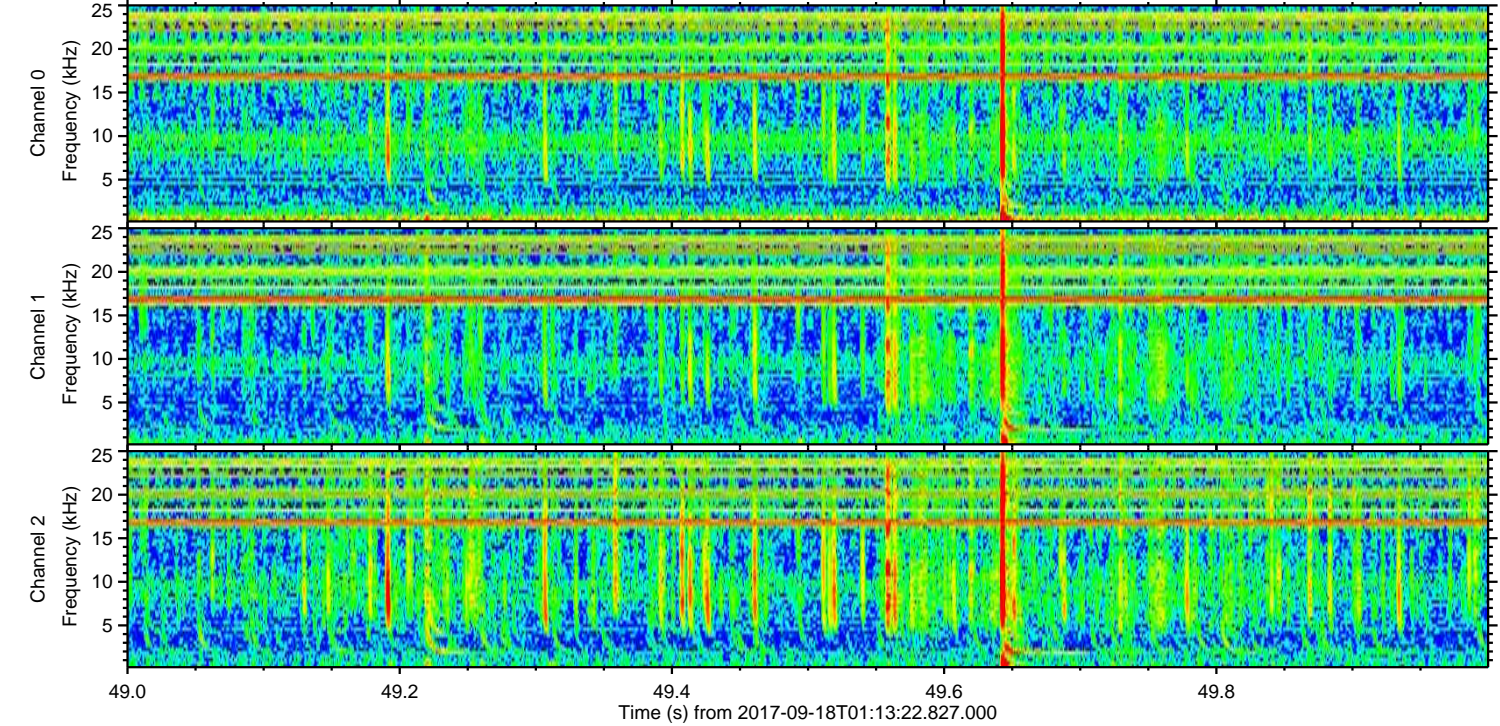
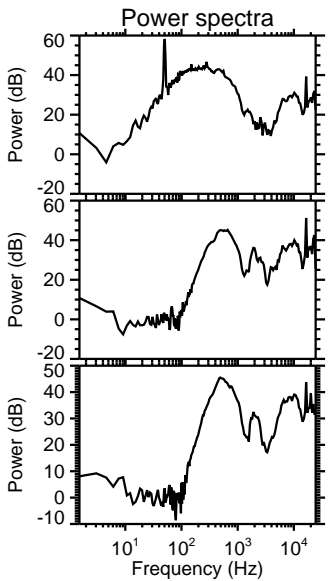
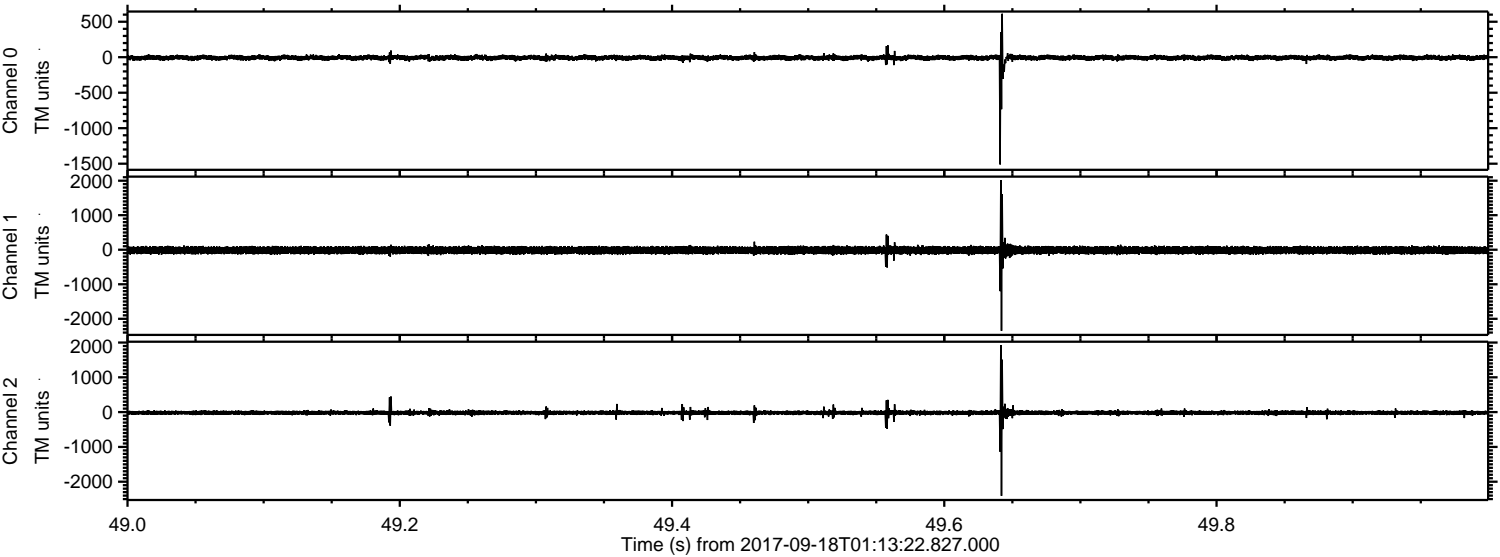


ELMAVAN 3D WAVEFORMS (Measured data sampled at 50 kHz) 51000 packets of 144 samples from 2017-09-18T01:13:22.827.000. Part 107/147

Processed Mon Sep 18 03:21:41 2017 by ELM ver.2012-10-06 from 001__elm20170918_011321__dat00.bin



Processed Mon Sep 18 03:21:41 2017 by ELM ver.2012-10-06 from 001__elm20170918_011321__dat00.bin



ELMAVAN 3D WAVEFORMS (Measured data sampled at 50 kHz) 51000 packets of 144 samples from 2017-09-18T01:13:22.827.000. Part 123/147

