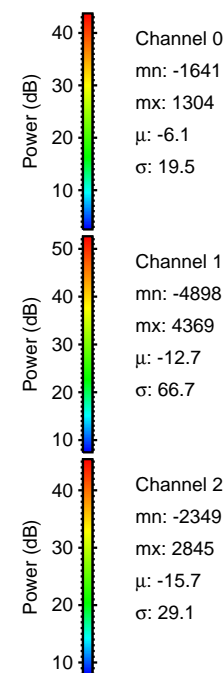
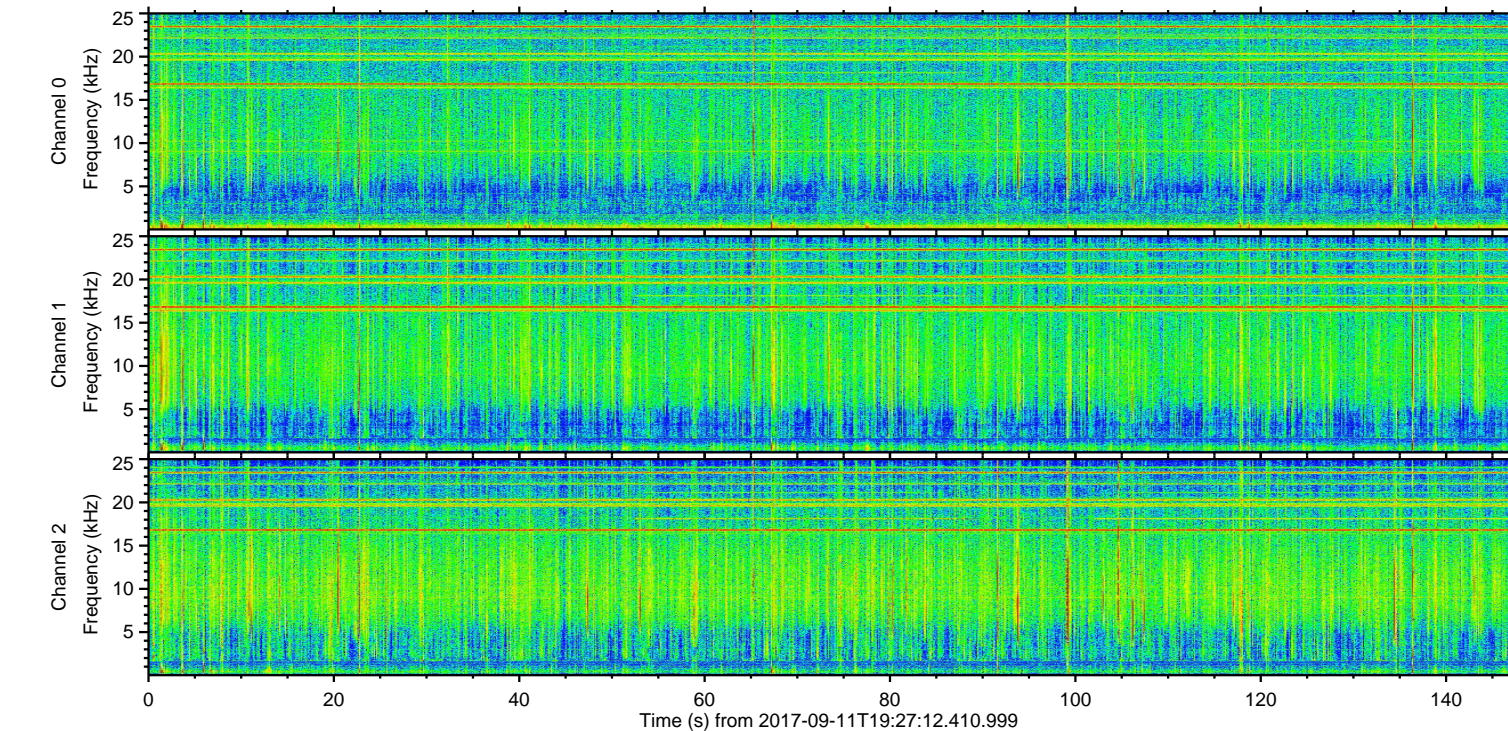
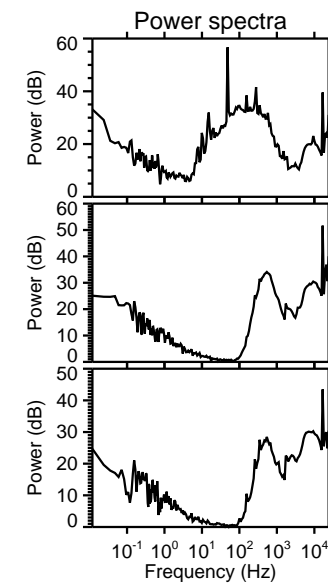
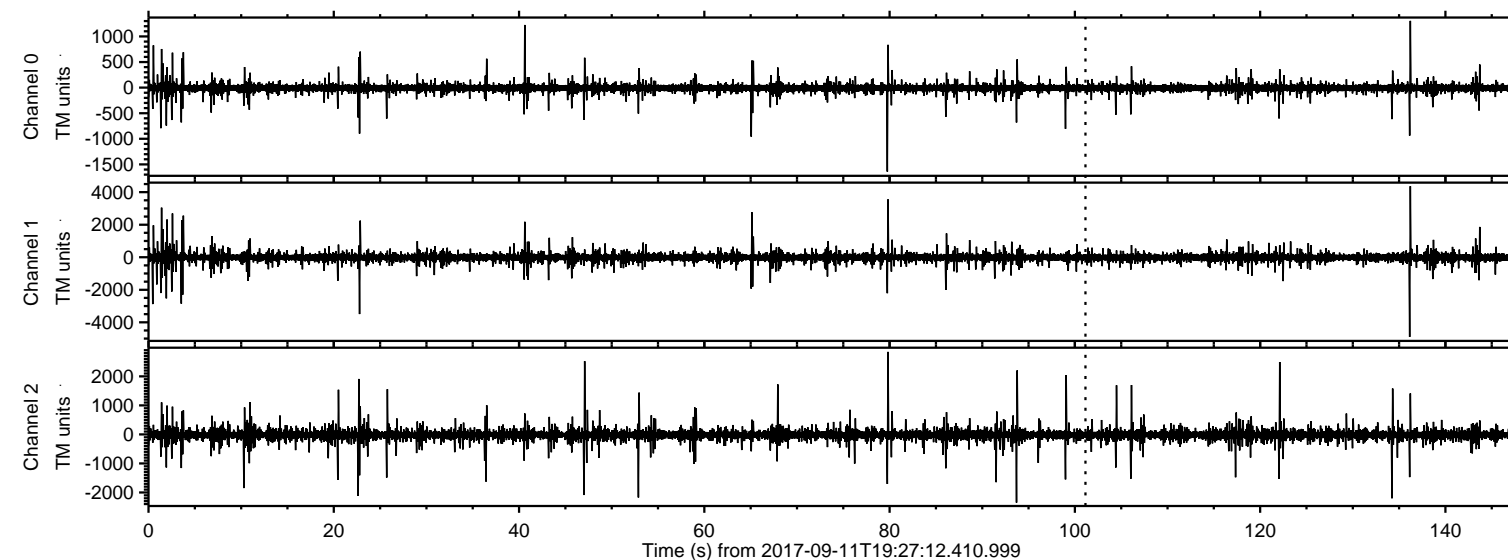


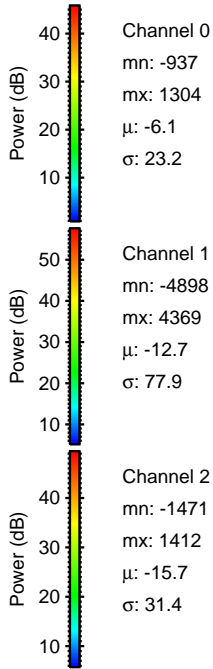
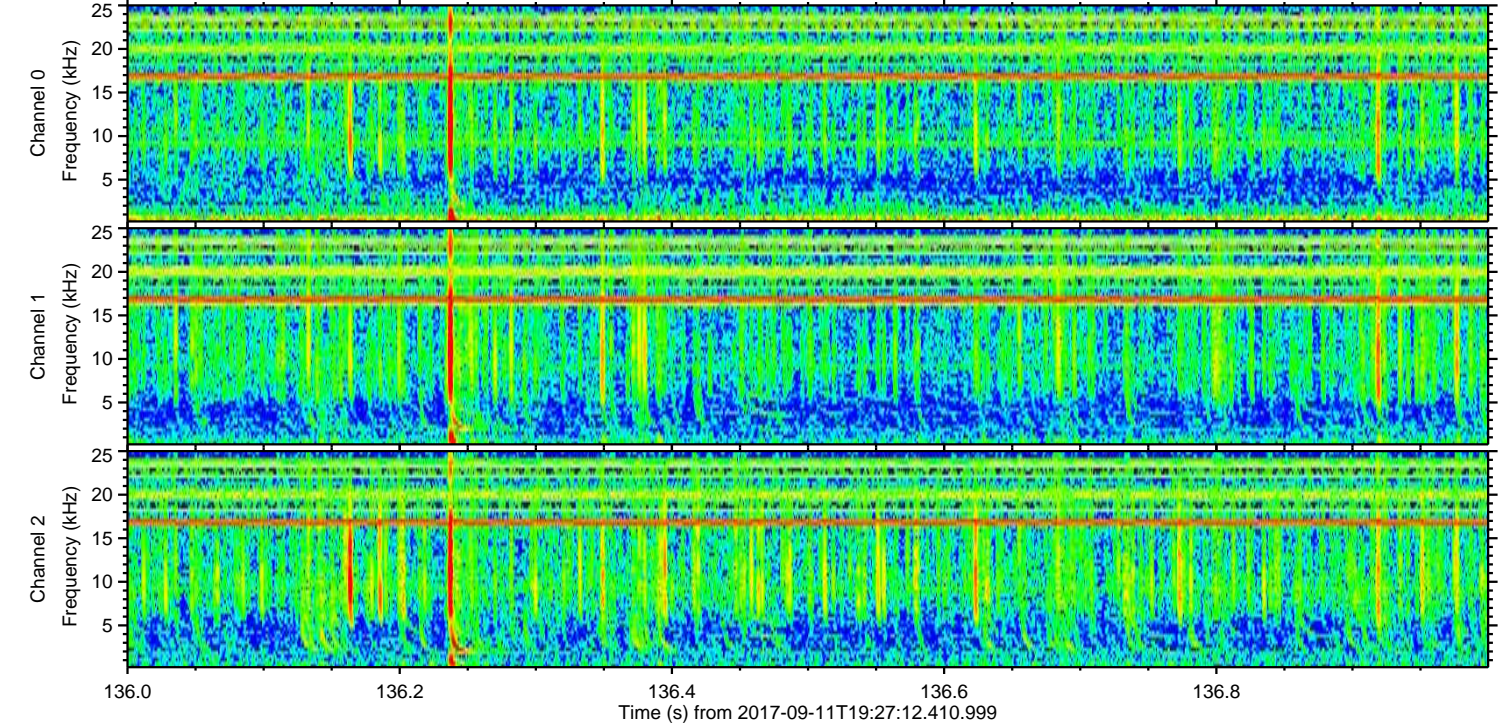
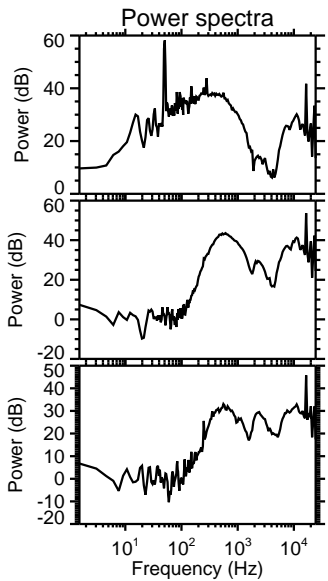
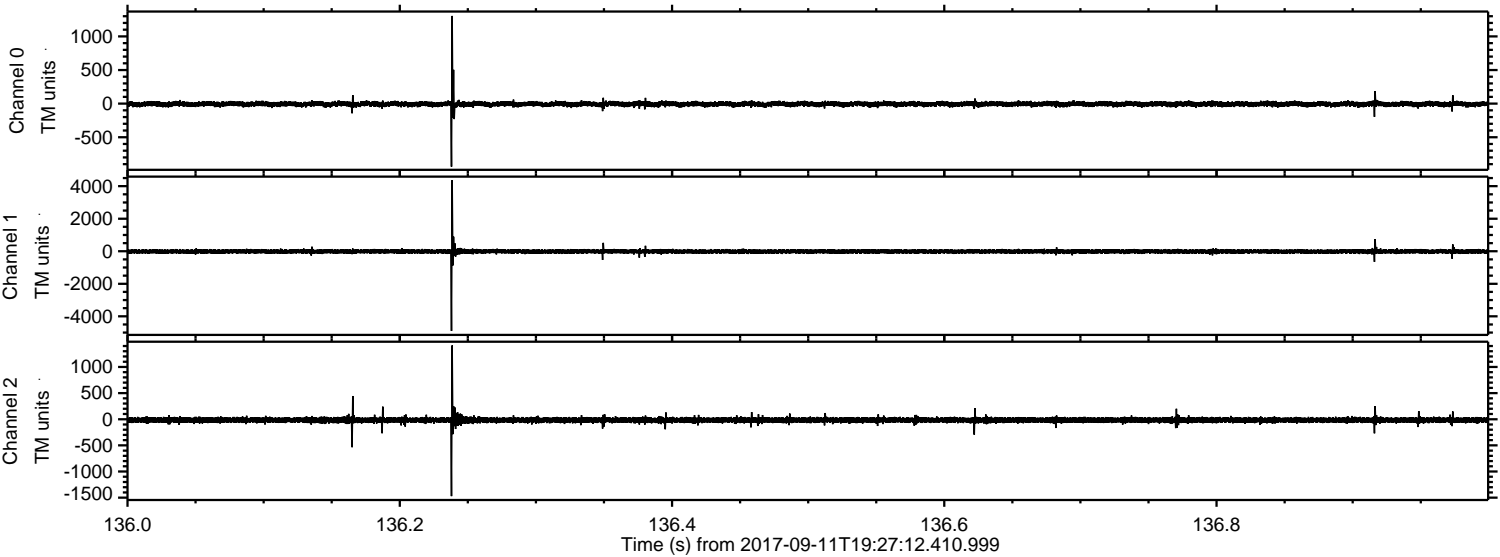
ELMAVAN 3D WAVEFORMS (Measured data sampled at 50 kHz) 50999 packets of 144 samples from 2017-09-11T19:27:12.410.999.

Processed Mon Sep 11 21:34:31 2017 by ELM ver.2012-10-06 from 001__elm20170911_192711__dat00.bin

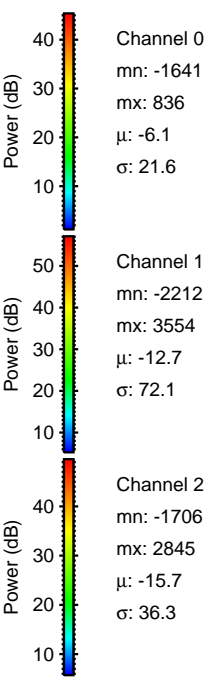
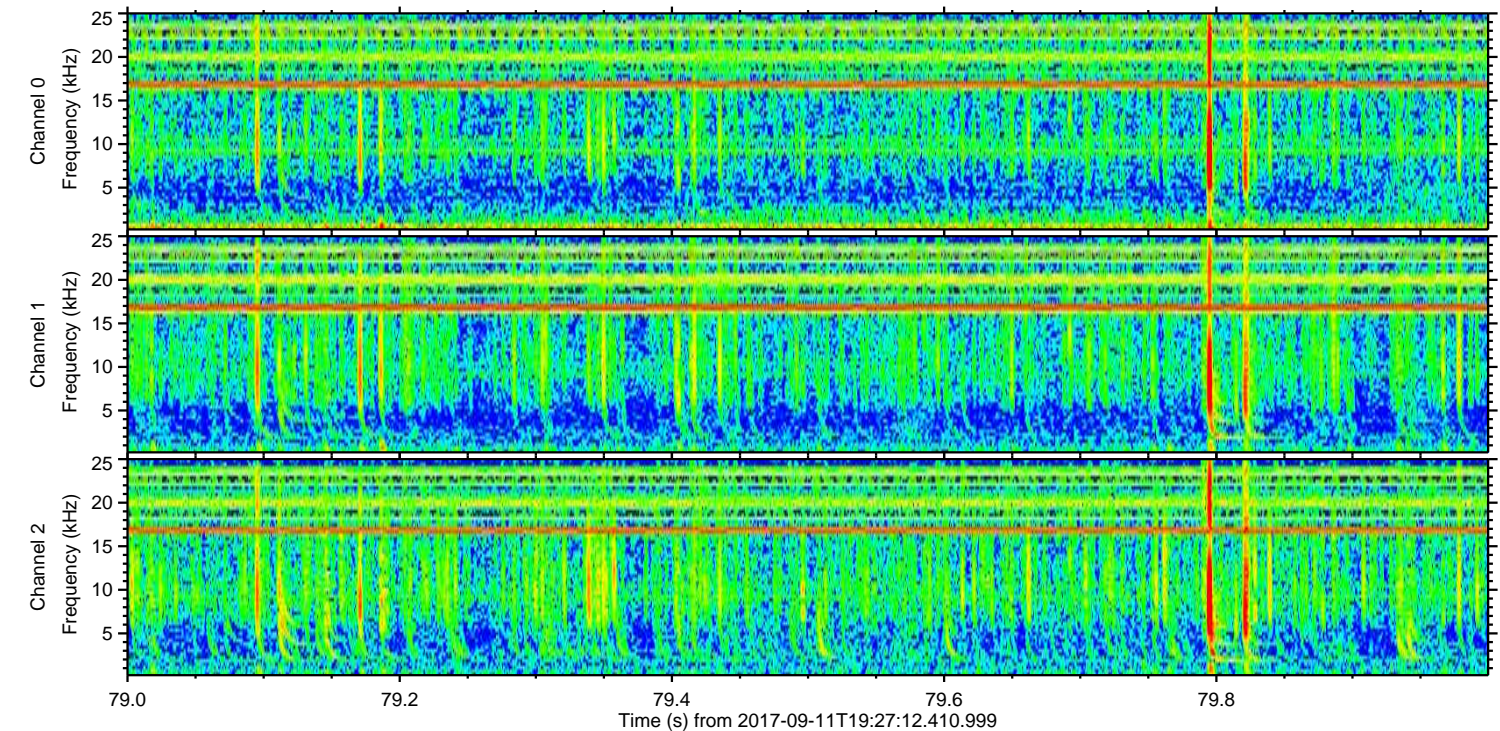
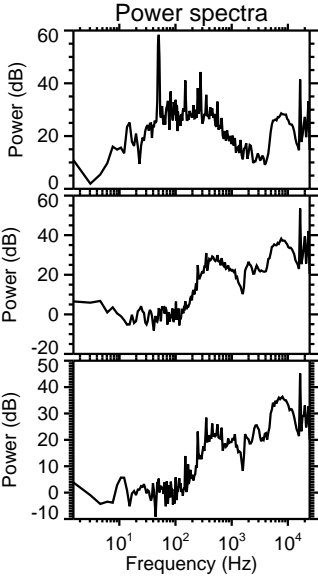
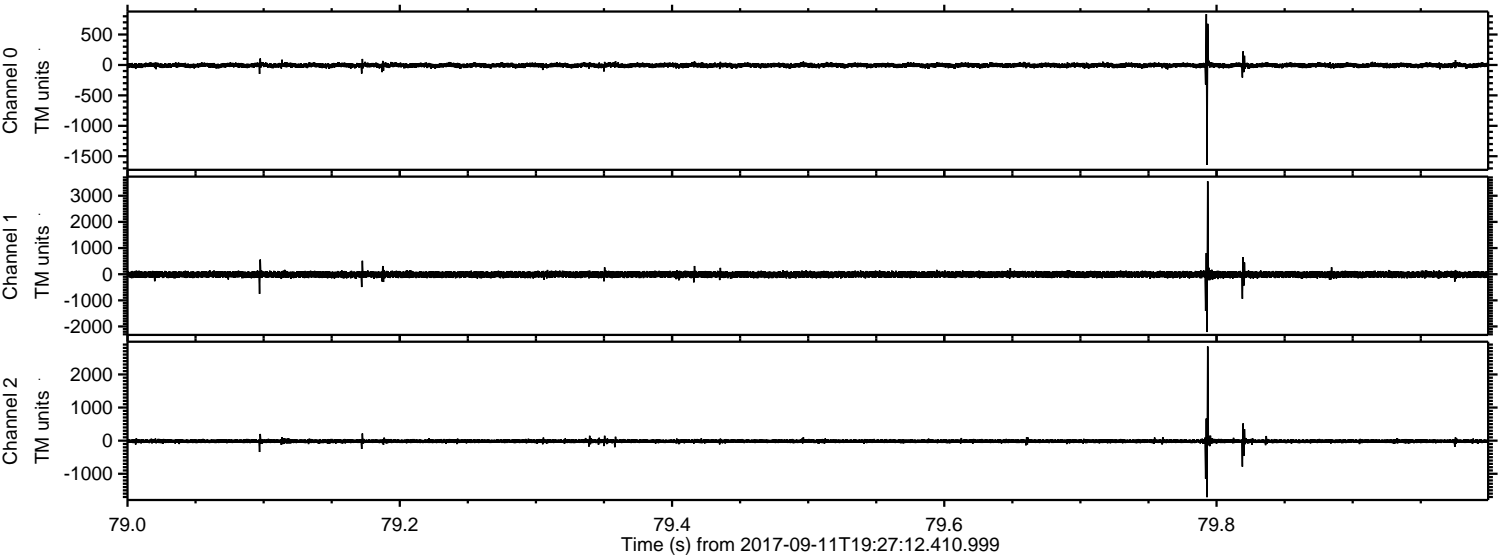


ELMAVAN 3D WAVEFORMS (Measured data sampled at 50 kHz) 50999 packets of 144 samples from 2017-09-11T19:27:12.410.999. Part 137/147

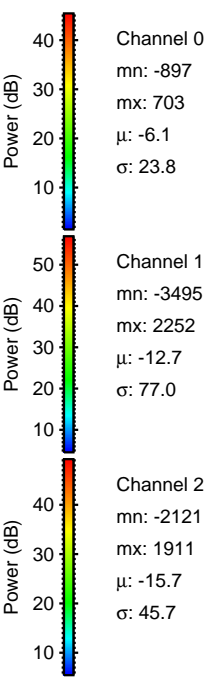
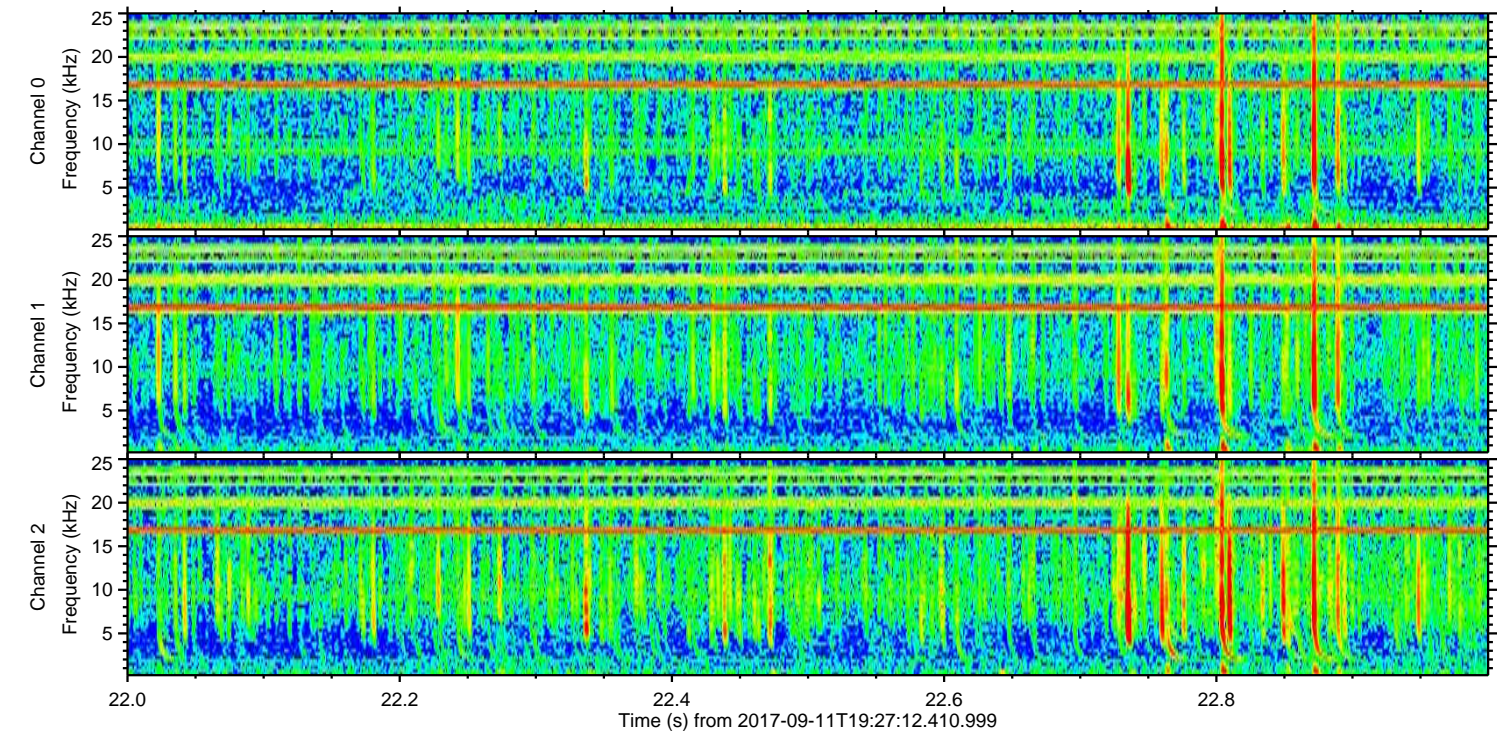
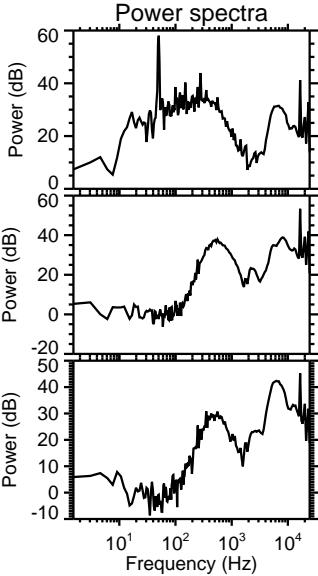
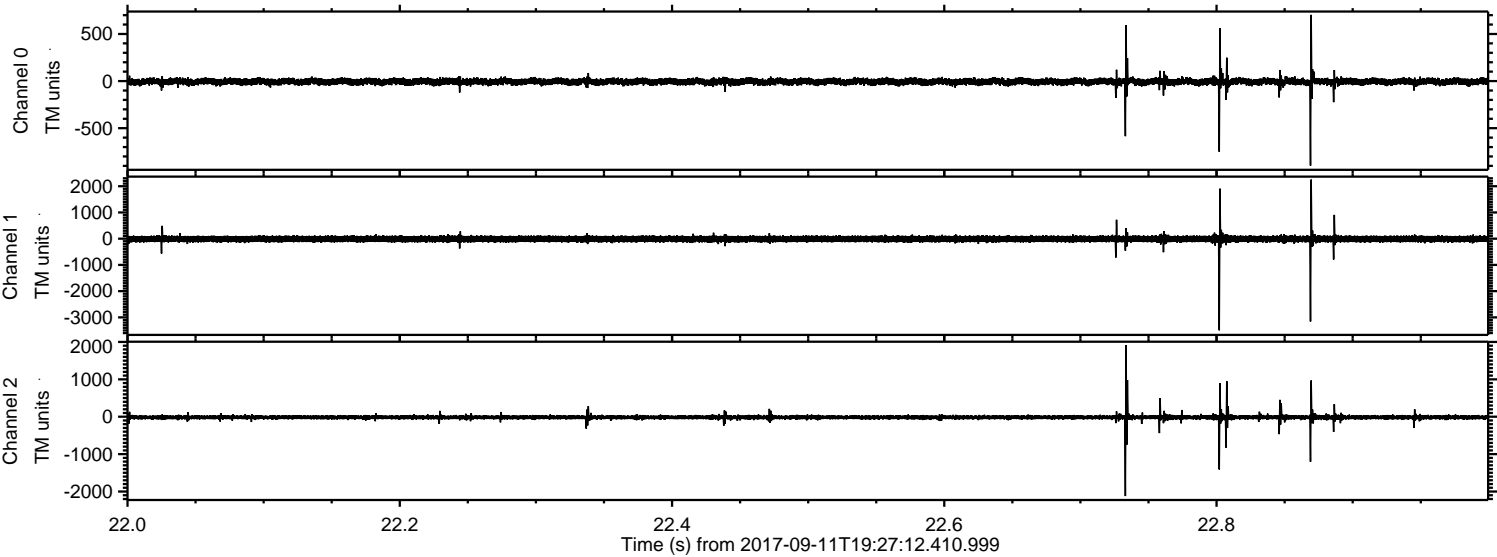
Processed Mon Sep 11 21:34:36 2017 by ELM ver.2012-10-06 from 001__elm20170911_192711__dat00.bin



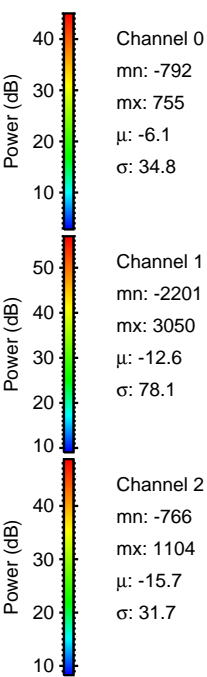
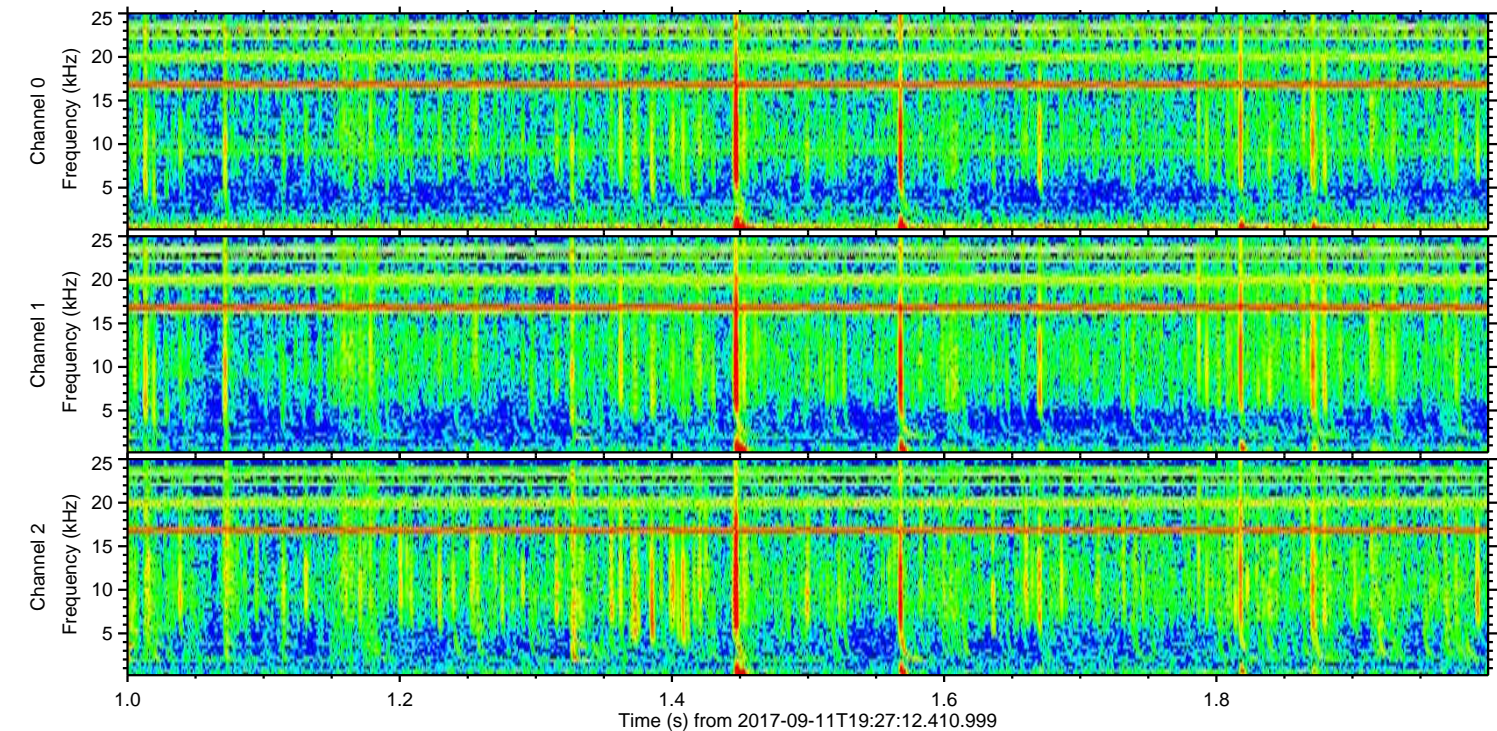
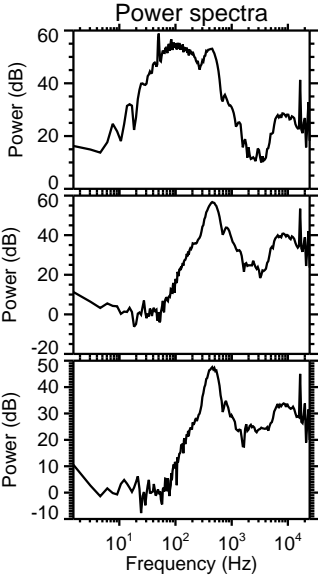
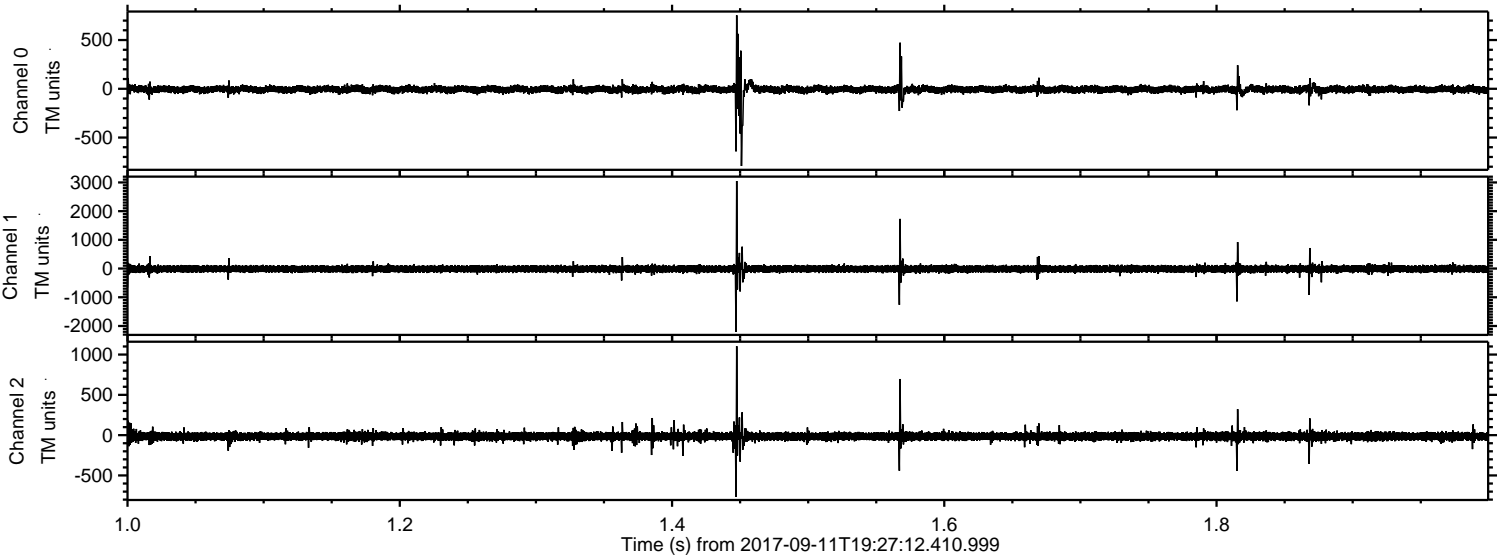
Processed Mon Sep 11 21:34:37 2017 by ELM ver.2012-10-06 from 001__elm20170911_192711__dat00.bin



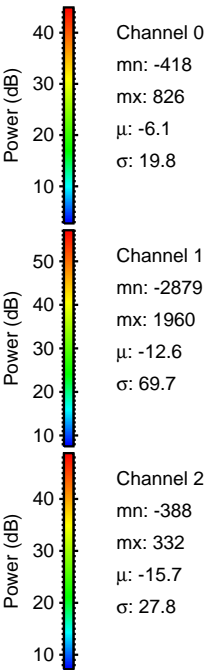
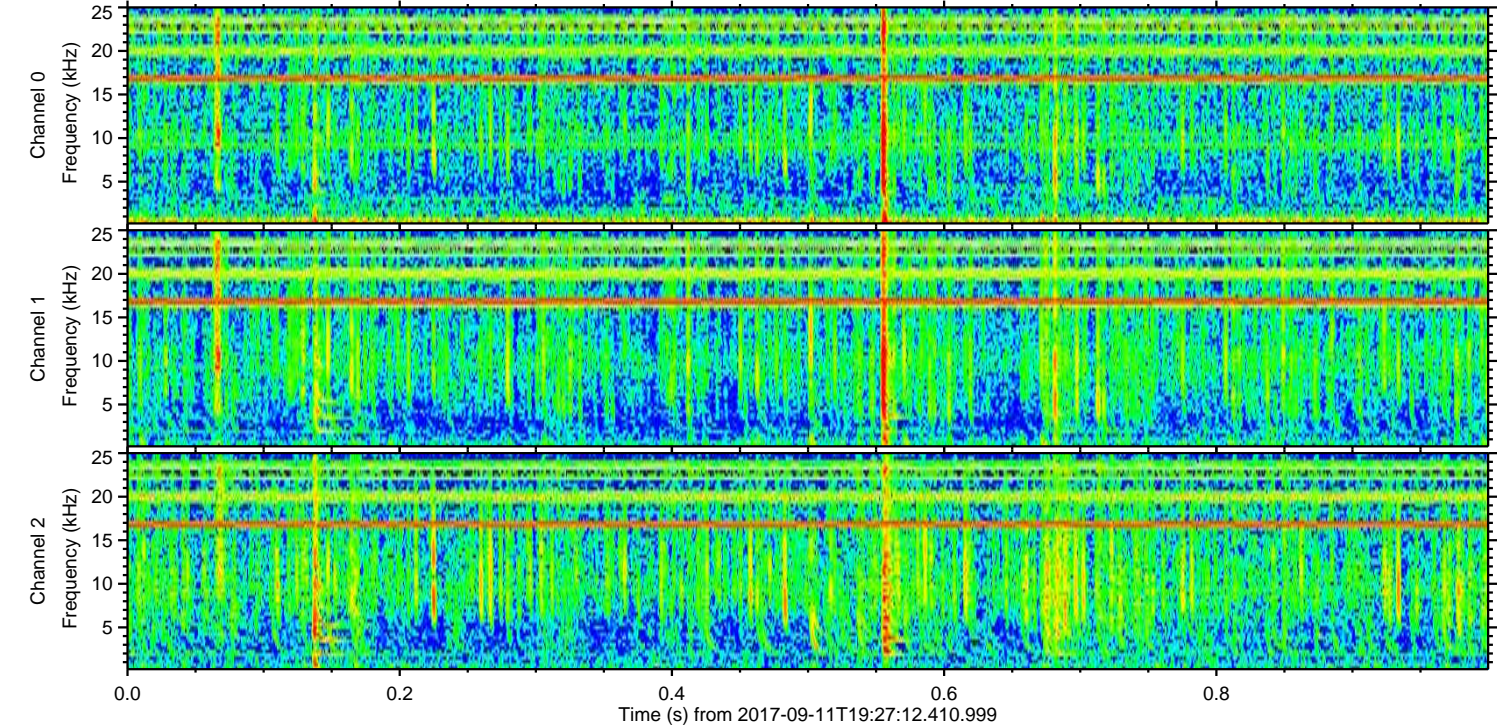
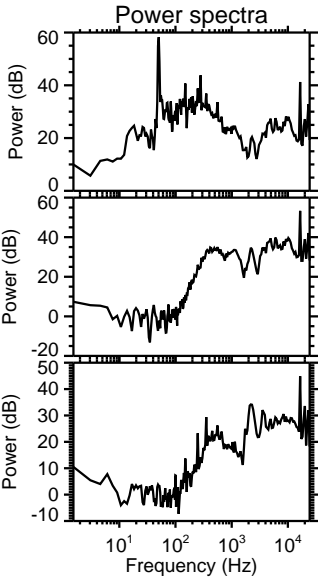
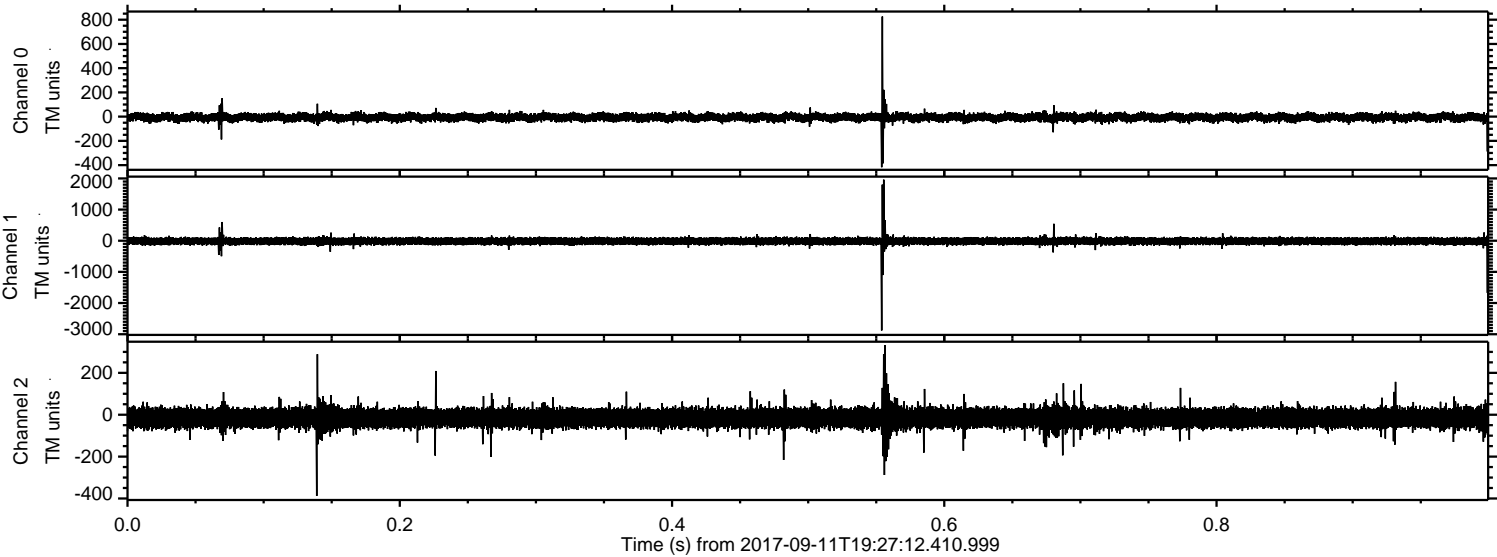
Processed Mon Sep 11 21:34:37 2017 by ELM ver.2012-10-06 from 001__elm20170911_192711__dat00.bin



Processed Mon Sep 11 21:34:38 2017 by ELM ver.2012-10-06 from 001__elm20170911_192711__dat00.bin

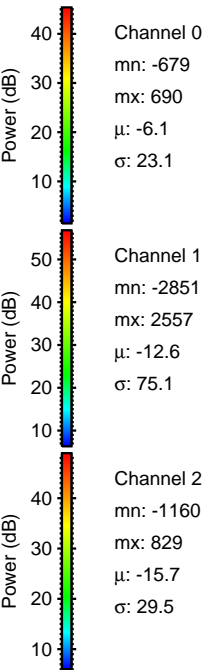
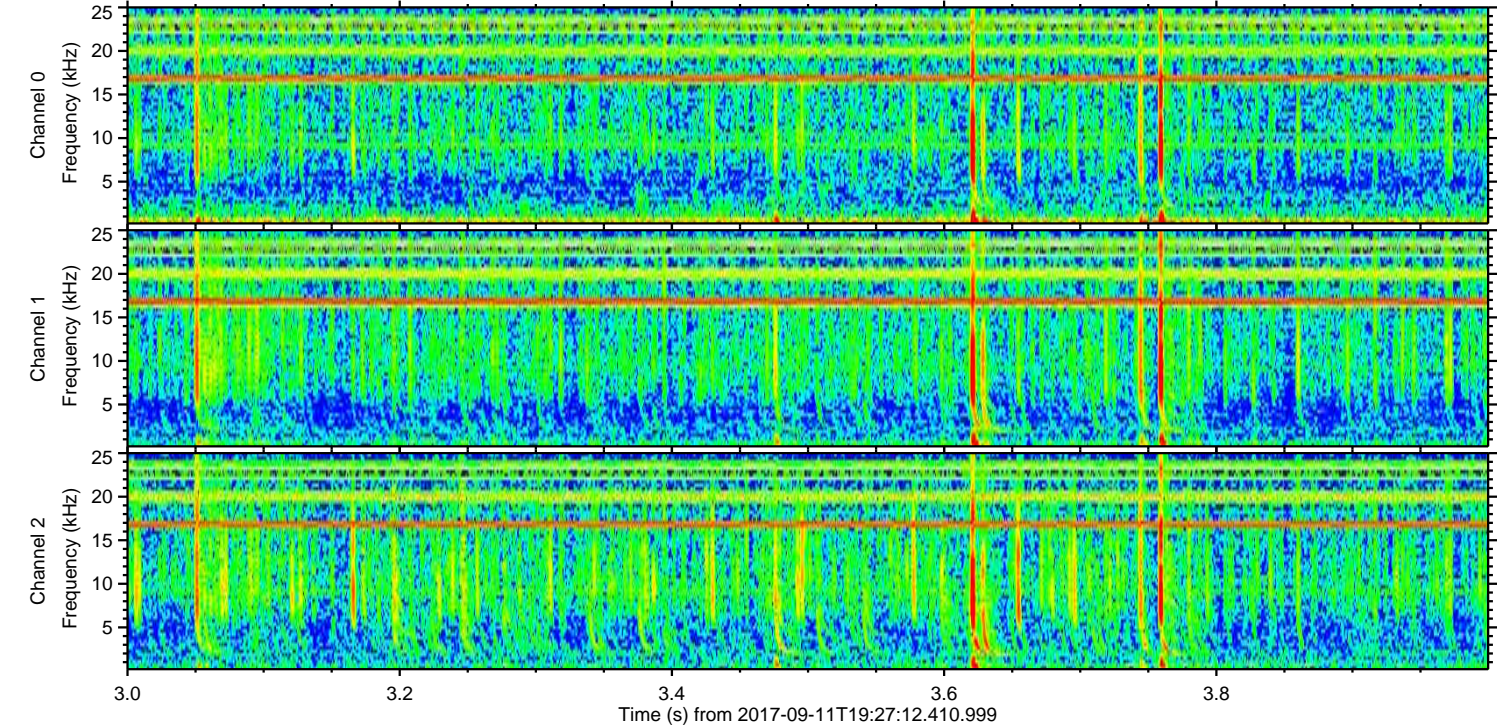
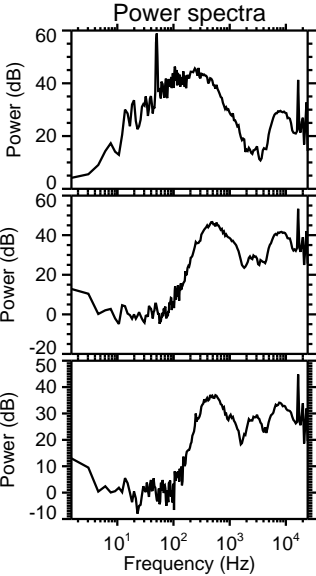
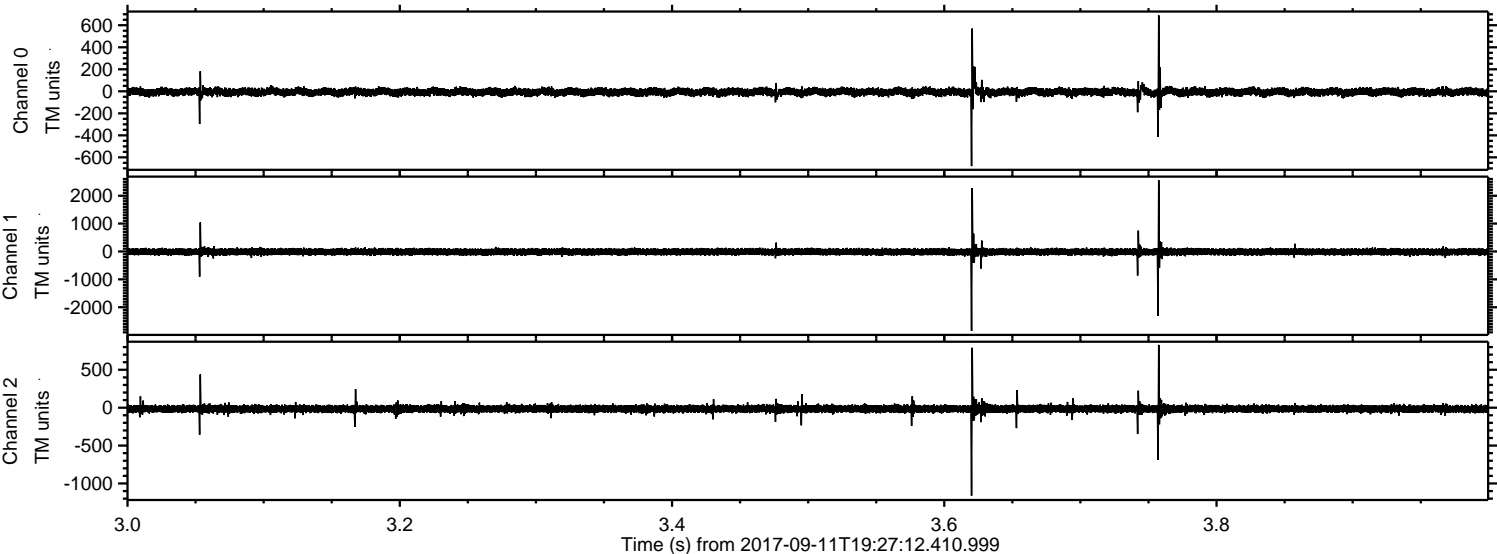


Processed Mon Sep 11 21:34:39 2017 by ELM ver.2012-10-06 from 001__elm20170911_192711__dat00.bin



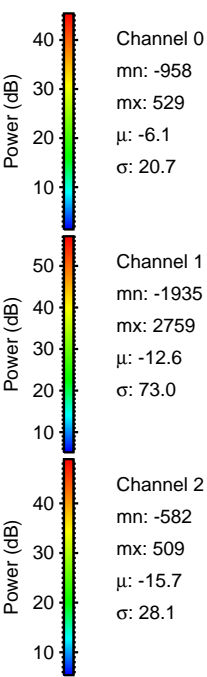
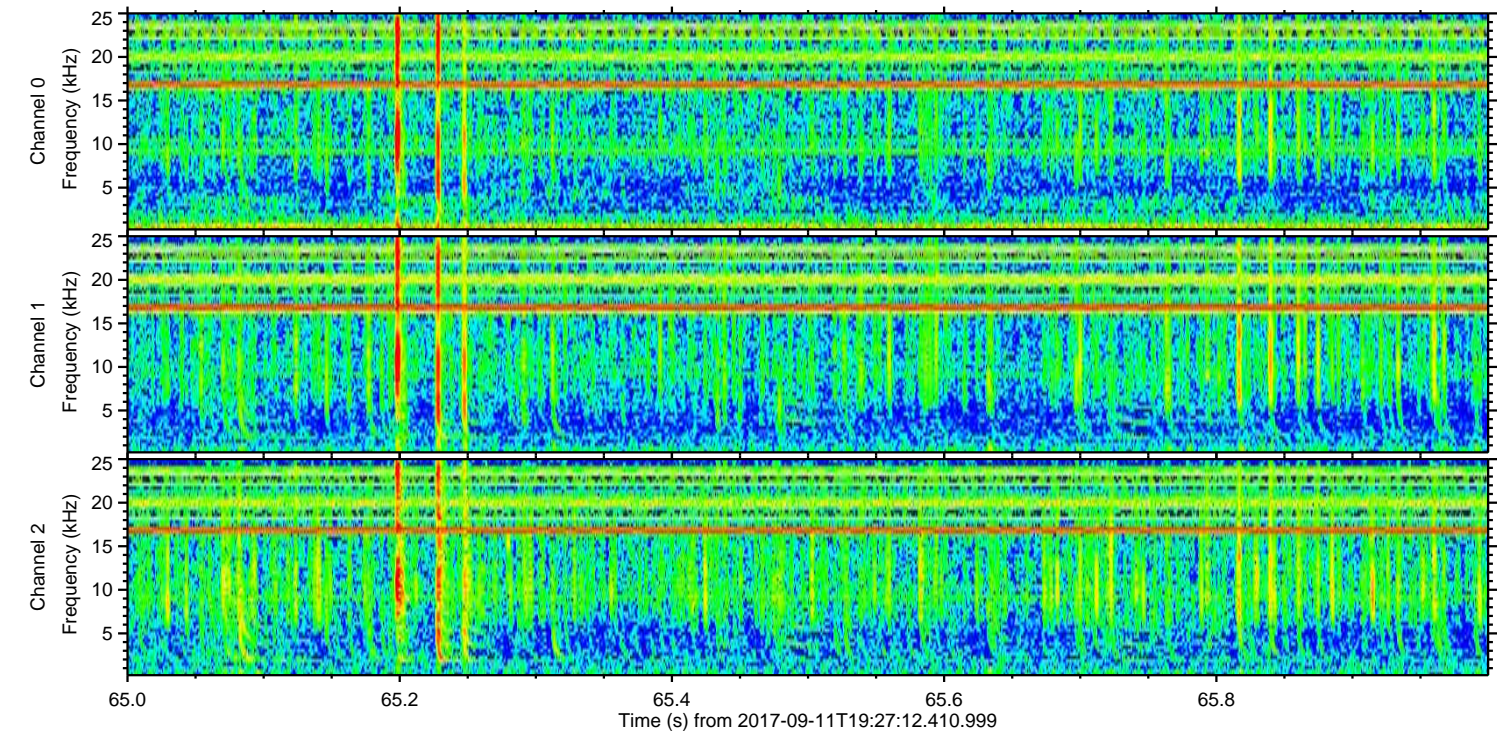
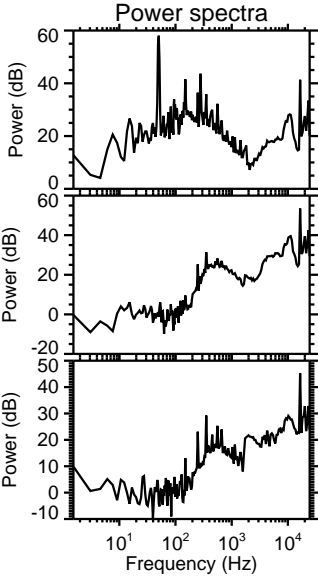
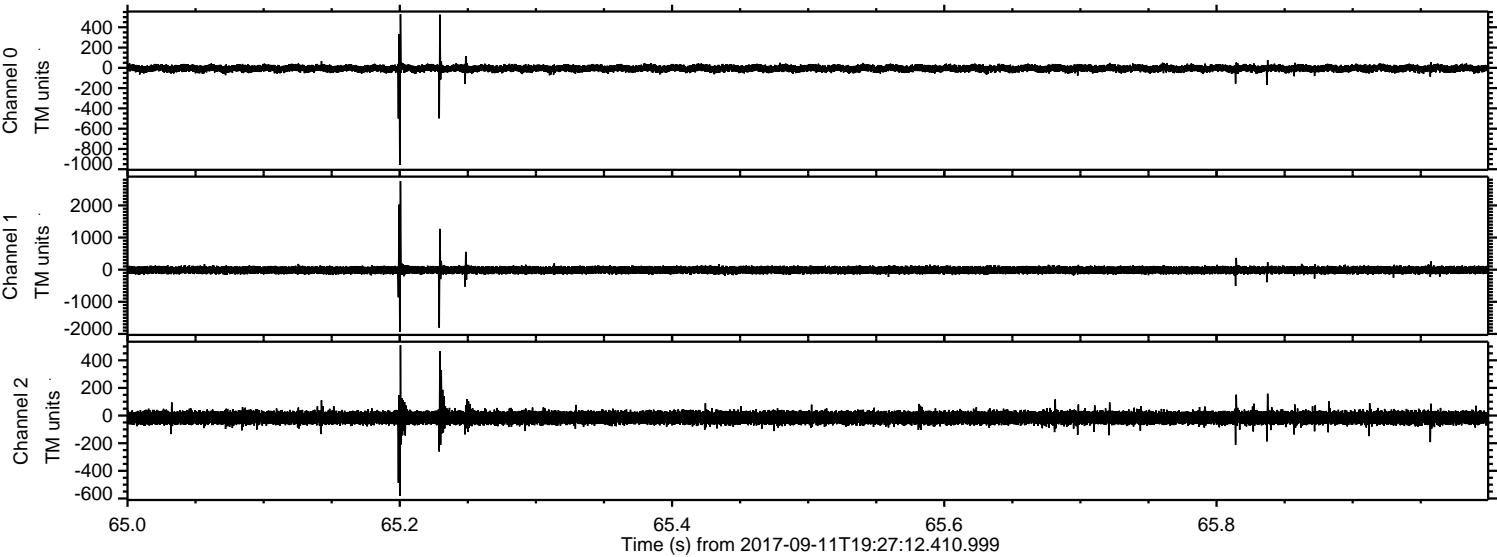
ELMAVAN 3D WAVEFORMS (Measured data sampled at 50 kHz) 50999 packets of 144 samples from 2017-09-11T19:27:12.410.999. Part 4/147

Processed Mon Sep 11 21:34:39 2017 by ELM ver.2012-10-06 from 001__elm20170911_192711__dat00.bin



ELMAVAN 3D WAVEFORMS (Measured data sampled at 50 kHz) 50999 packets of 144 samples from 2017-09-11T19:27:12.410.999. Part 66/147

Processed Mon Sep 11 21:34:40 2017 by ELM ver.2012-10-06 from 001__elm20170911_192711__dat00.bin

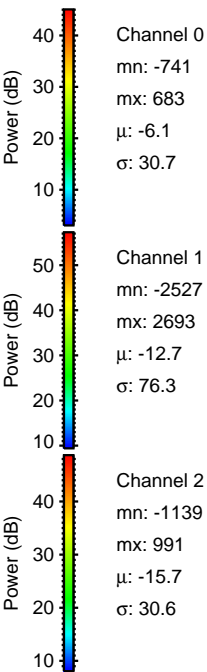
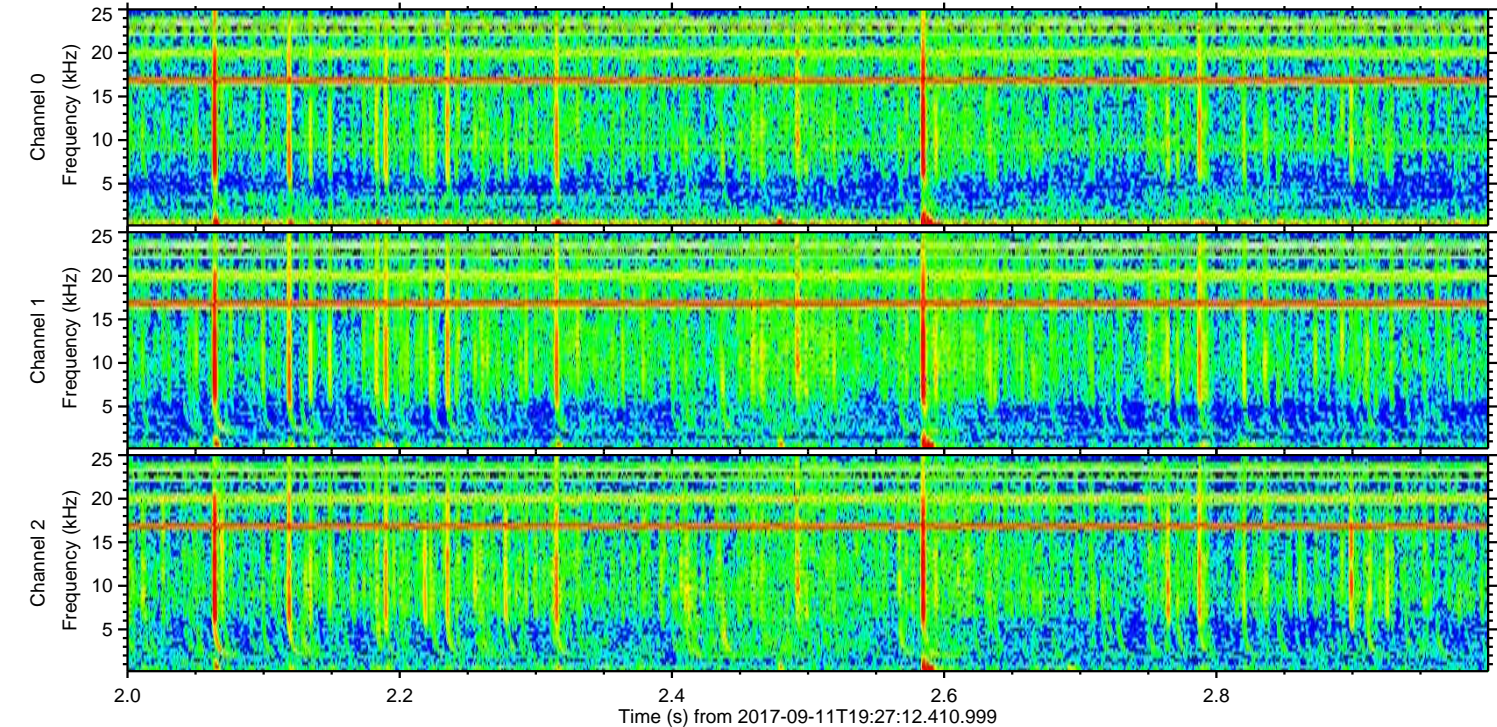
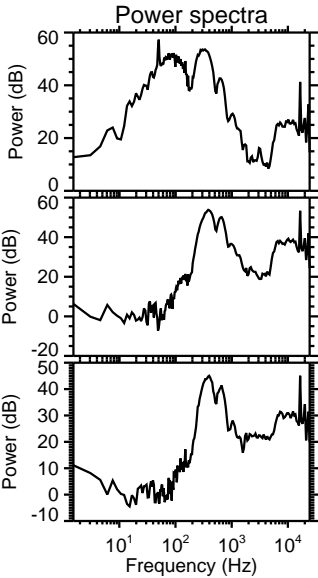
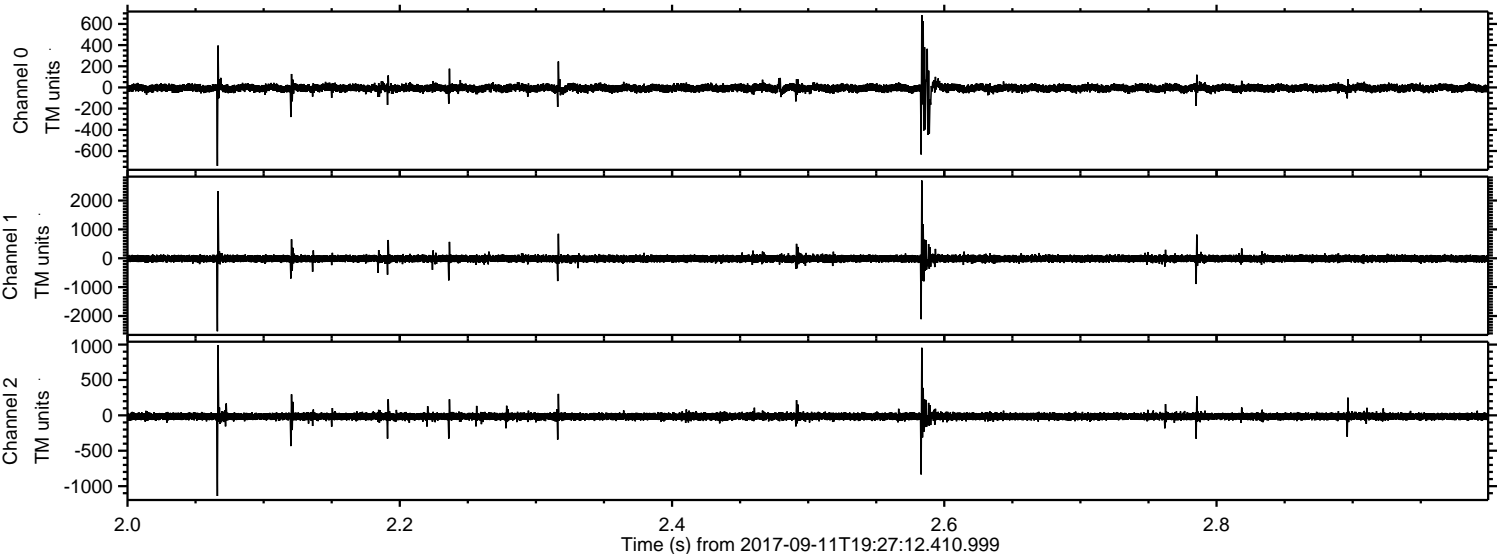


Channel 0
mn: -958
mx: 529
 μ : -6.1
 σ : 20.7

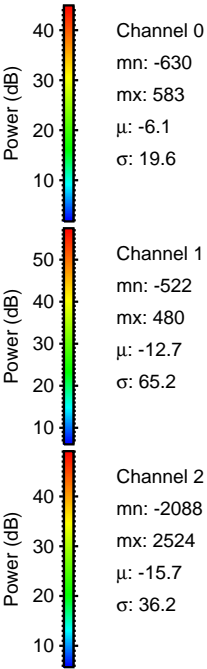
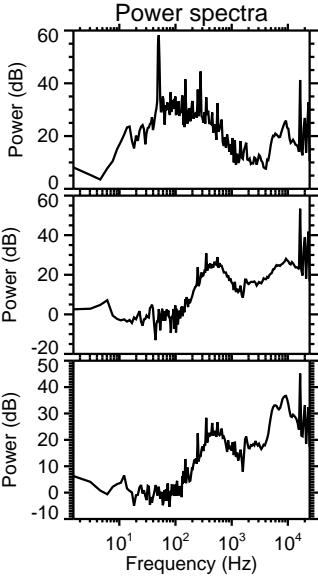
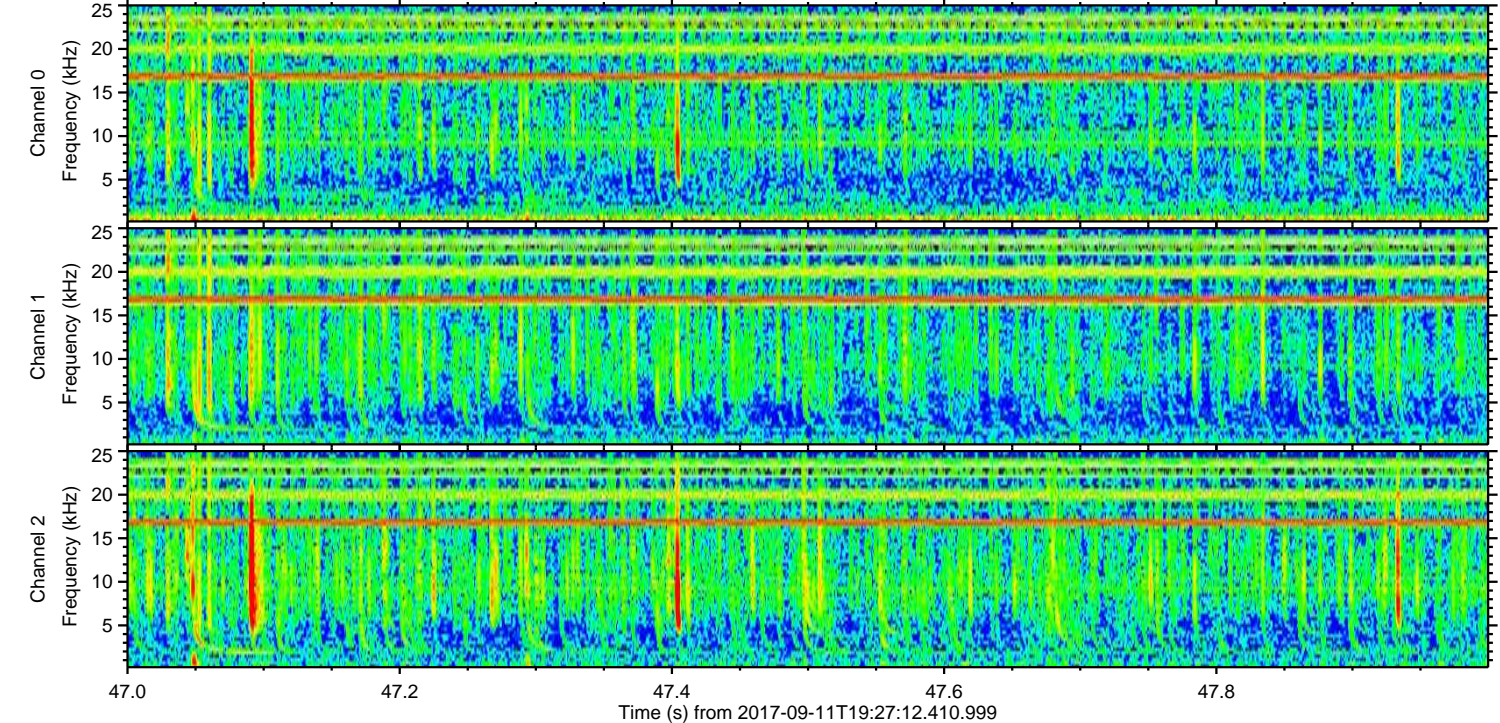
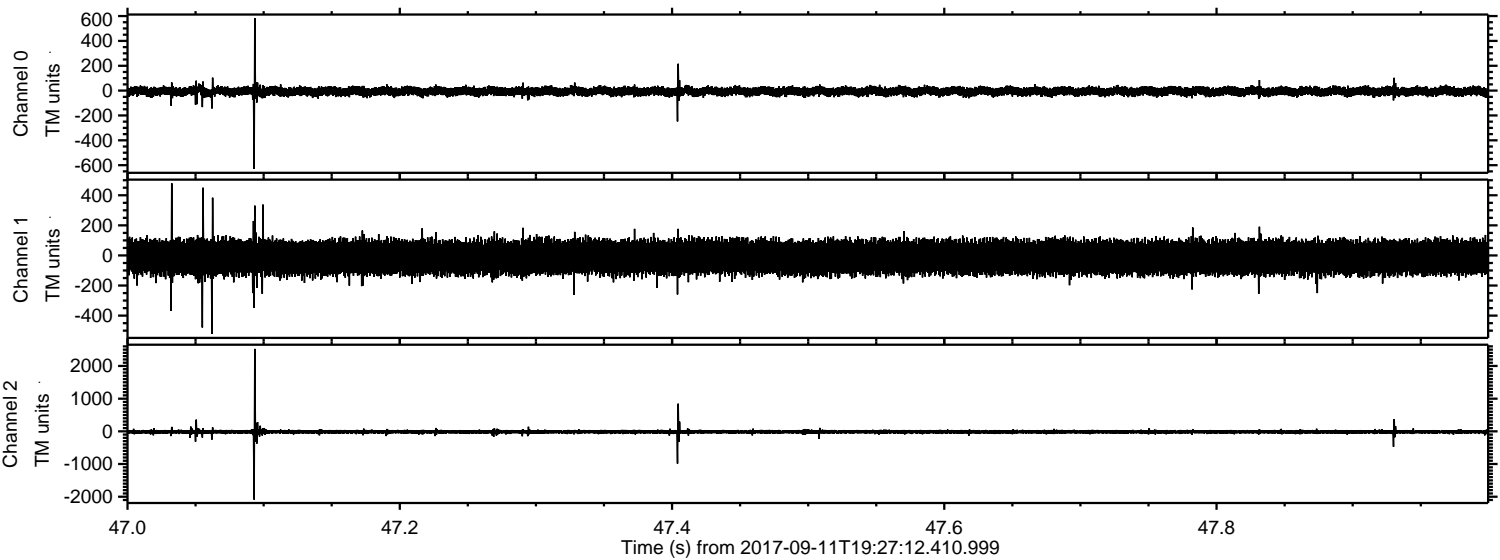
Channel 1
mn: -1935
mx: 2759
 μ : -12.6
 σ : 73.0

Channel 2
mn: -582
mx: 509
 μ : -15.7
 σ : 28.1

Processed Mon Sep 11 21:34:41 2017 by ELM ver.2012-10-06 from 001__elm20170911_192711__dat00.bin



Processed Mon Sep 11 21:34:41 2017 by ELM ver.2012-10-06 from 001__elm20170911_192711__dat00.bin



Processed Mon Sep 11 21:34:42 2017 by ELM ver.2012-10-06 from 001__elm20170911_192711__dat00.bin

