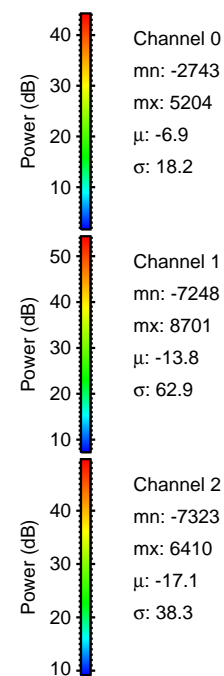
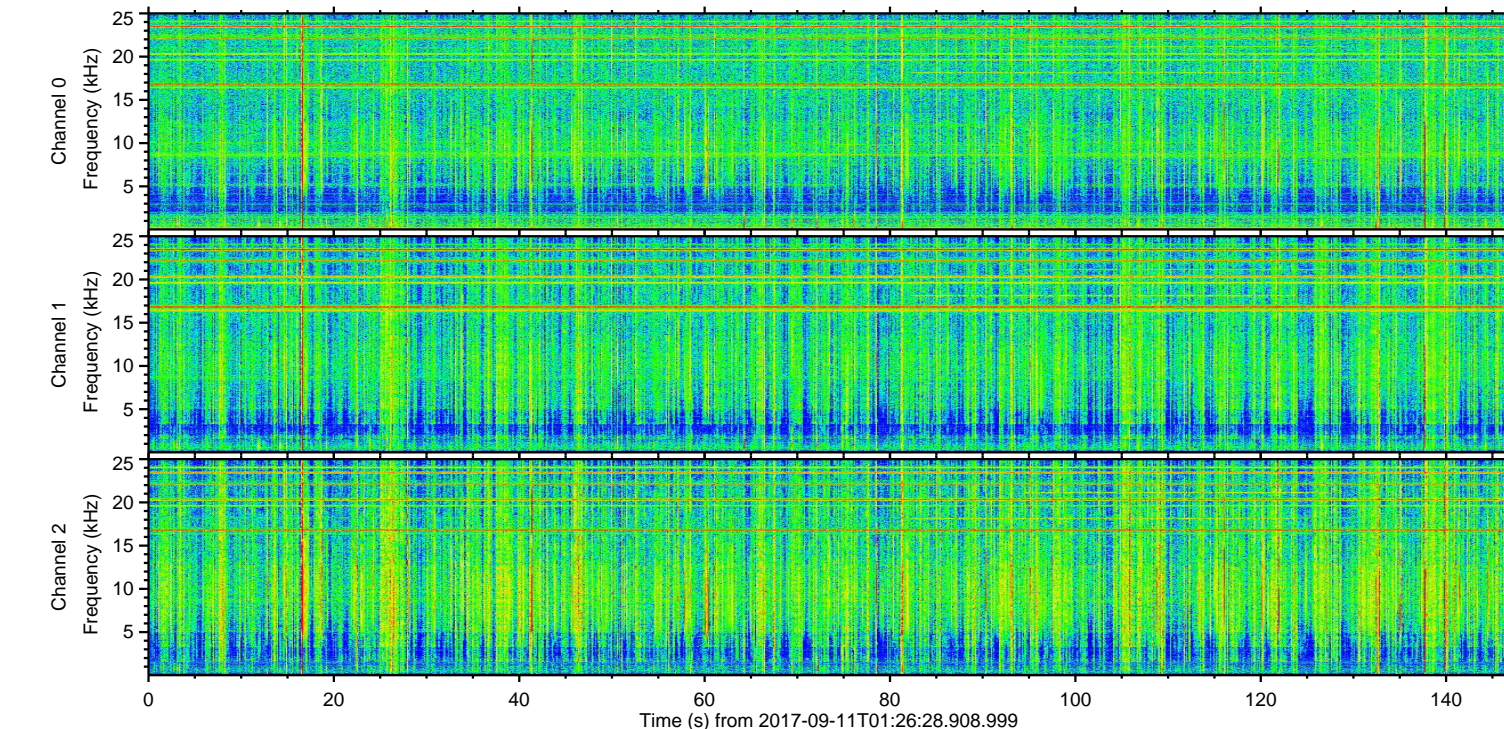
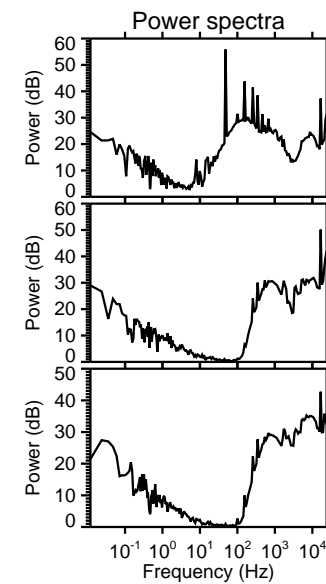
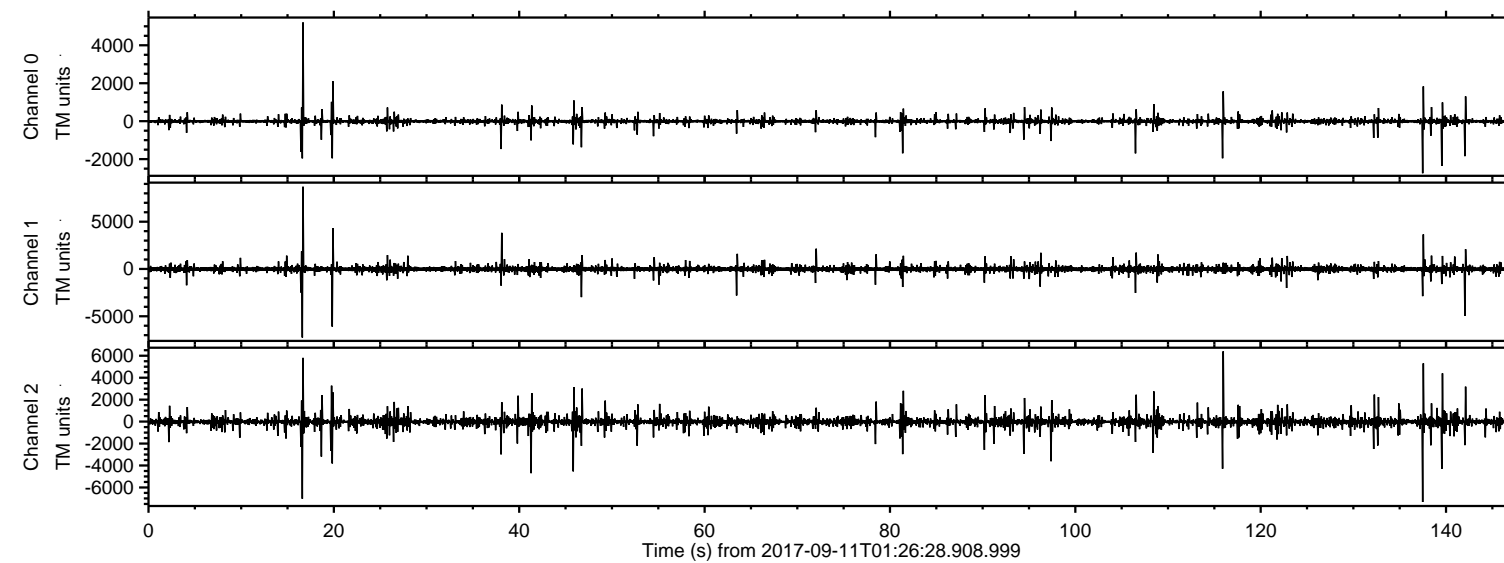


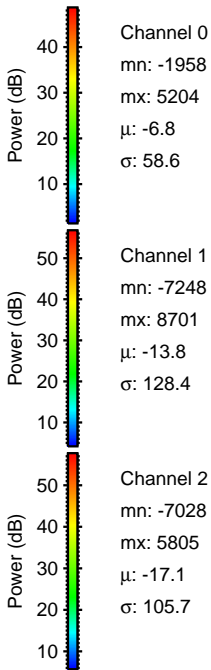
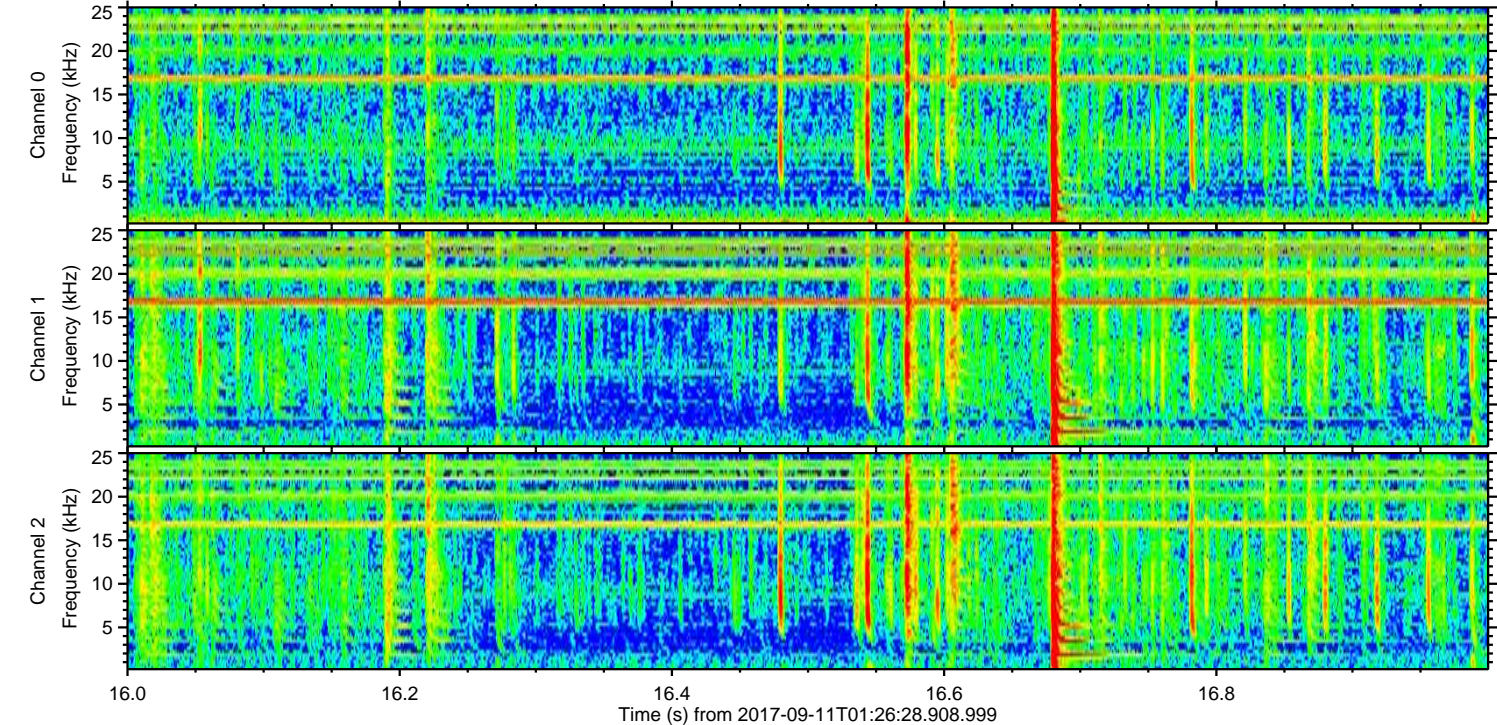
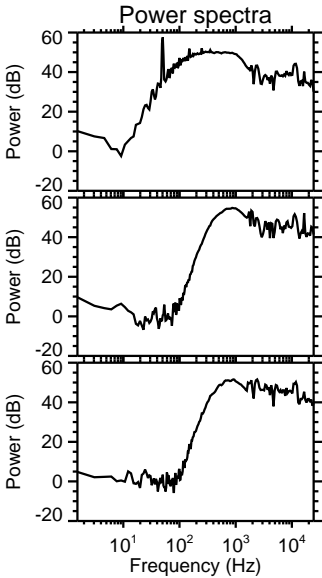
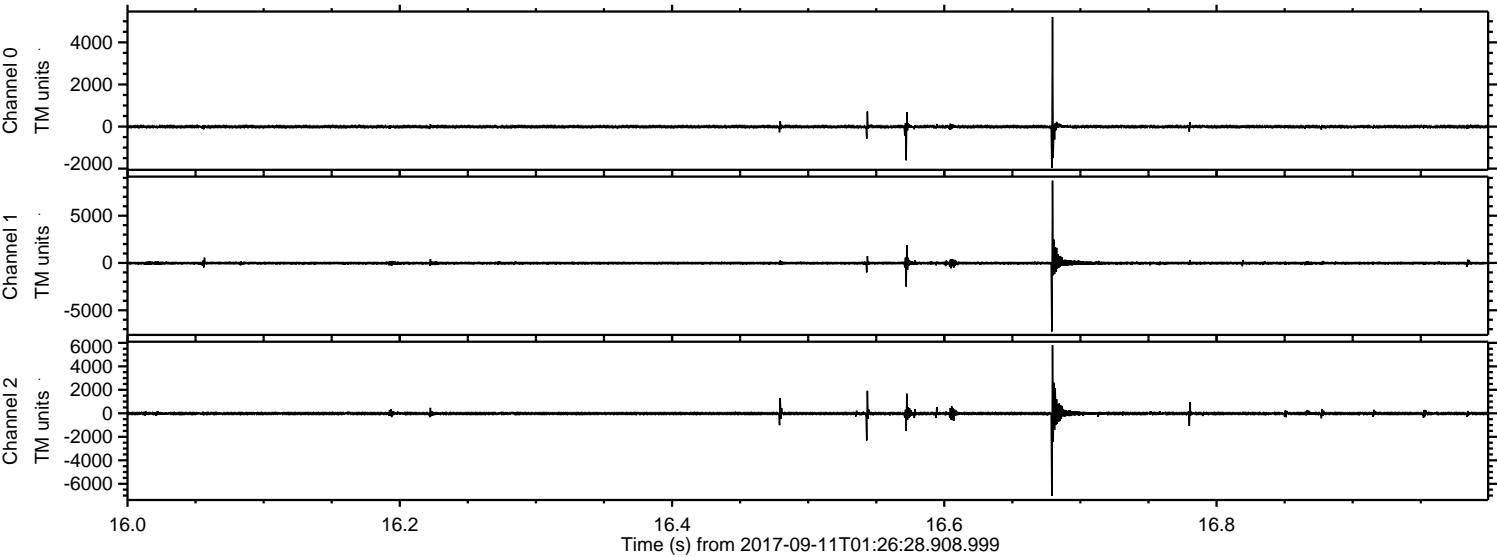
ELMAVAN 3D WAVEFORMS (Measured data sampled at 50 kHz) 51000 packets of 144 samples from 2017-09-11T01:26:28.908.999.

Processed Mon Sep 11 03:34:11 2017 by ELM ver.2012-10-06 from 001__elm20170911_012627__dat00.bin



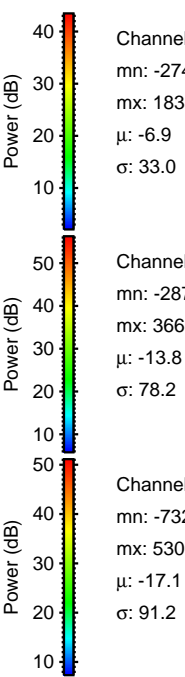
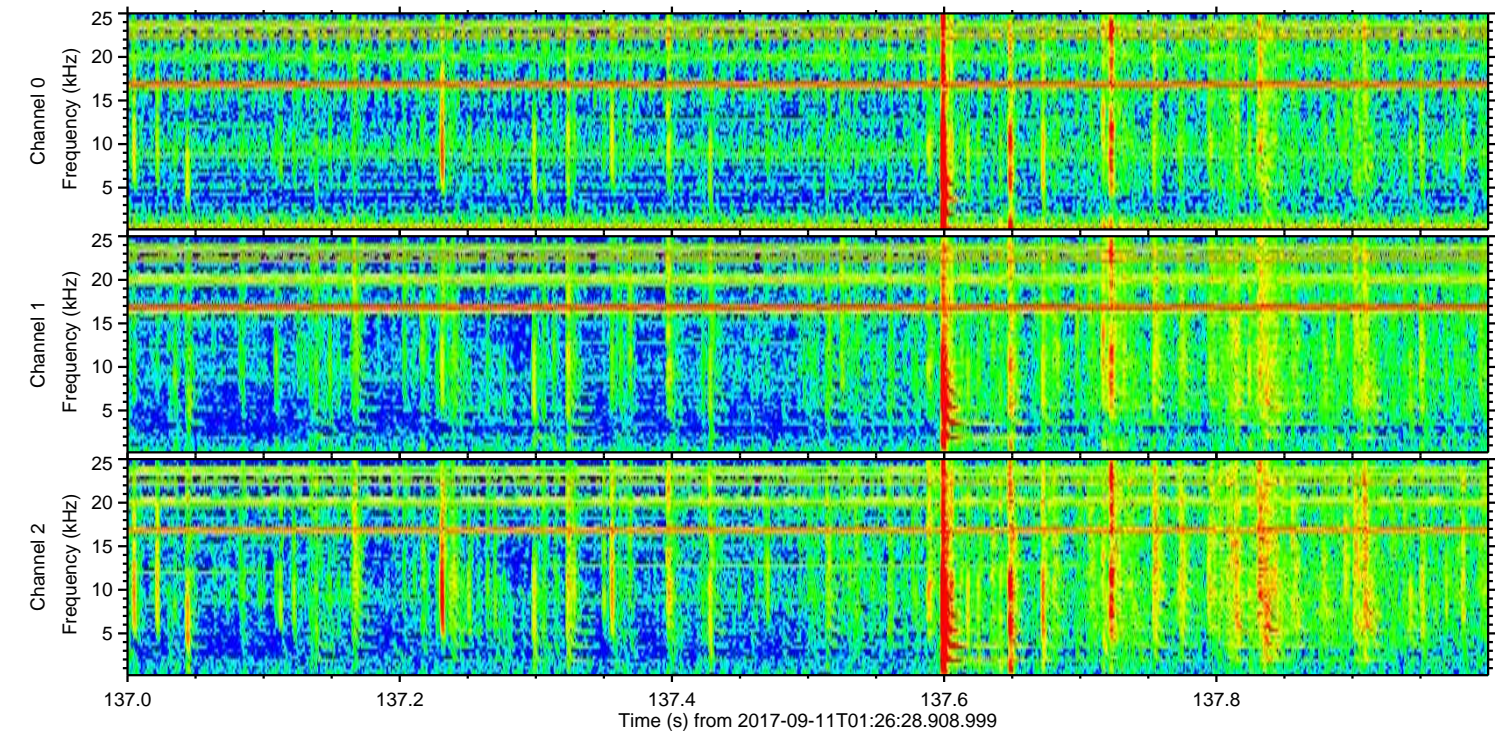
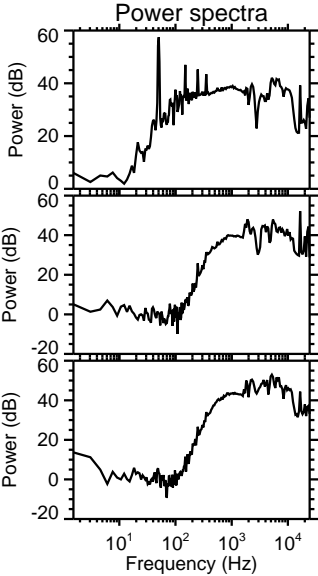
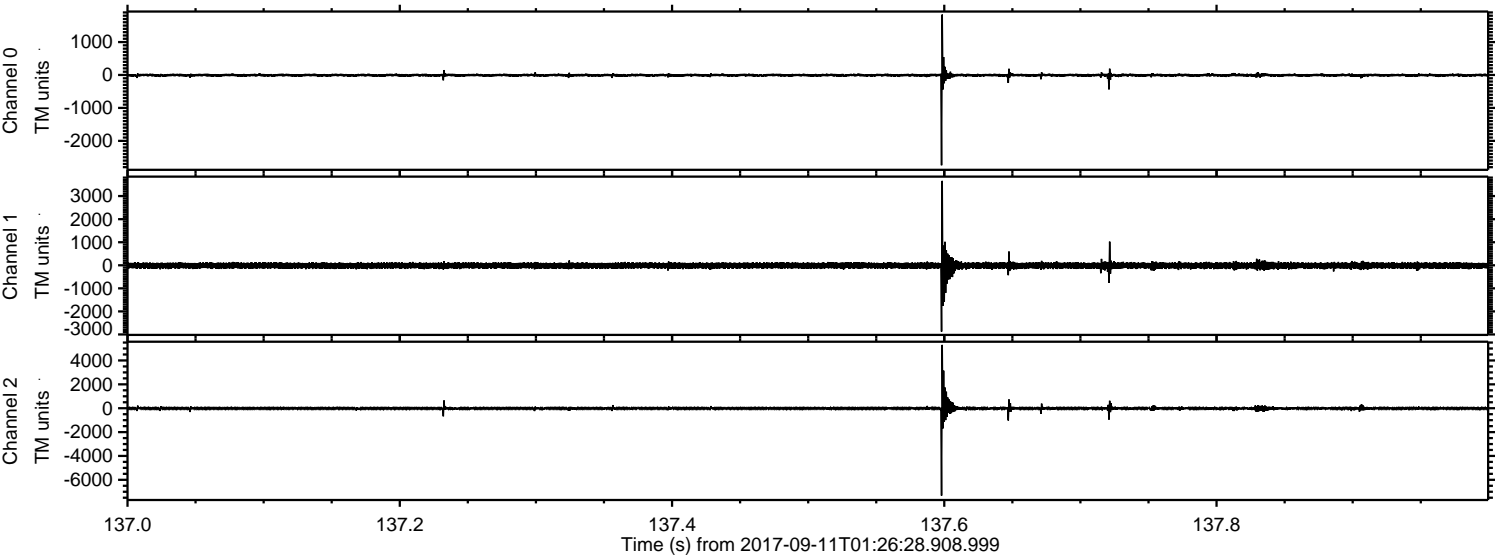
ELMAVAN 3D WAVEFORMS (Measured data sampled at 50 kHz) 51000 packets of 144 samples from 2017-09-11T01:26:28.908.999. Part 17/147

Processed Mon Sep 11 03:34:17 2017 by ELM ver.2012-10-06 from 001__elm20170911_012627__dat00.bin



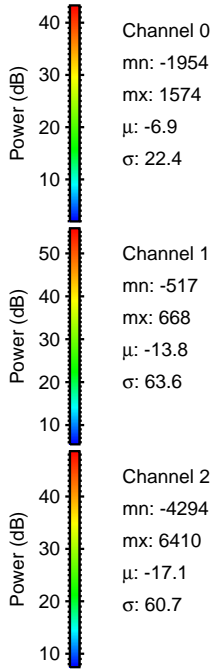
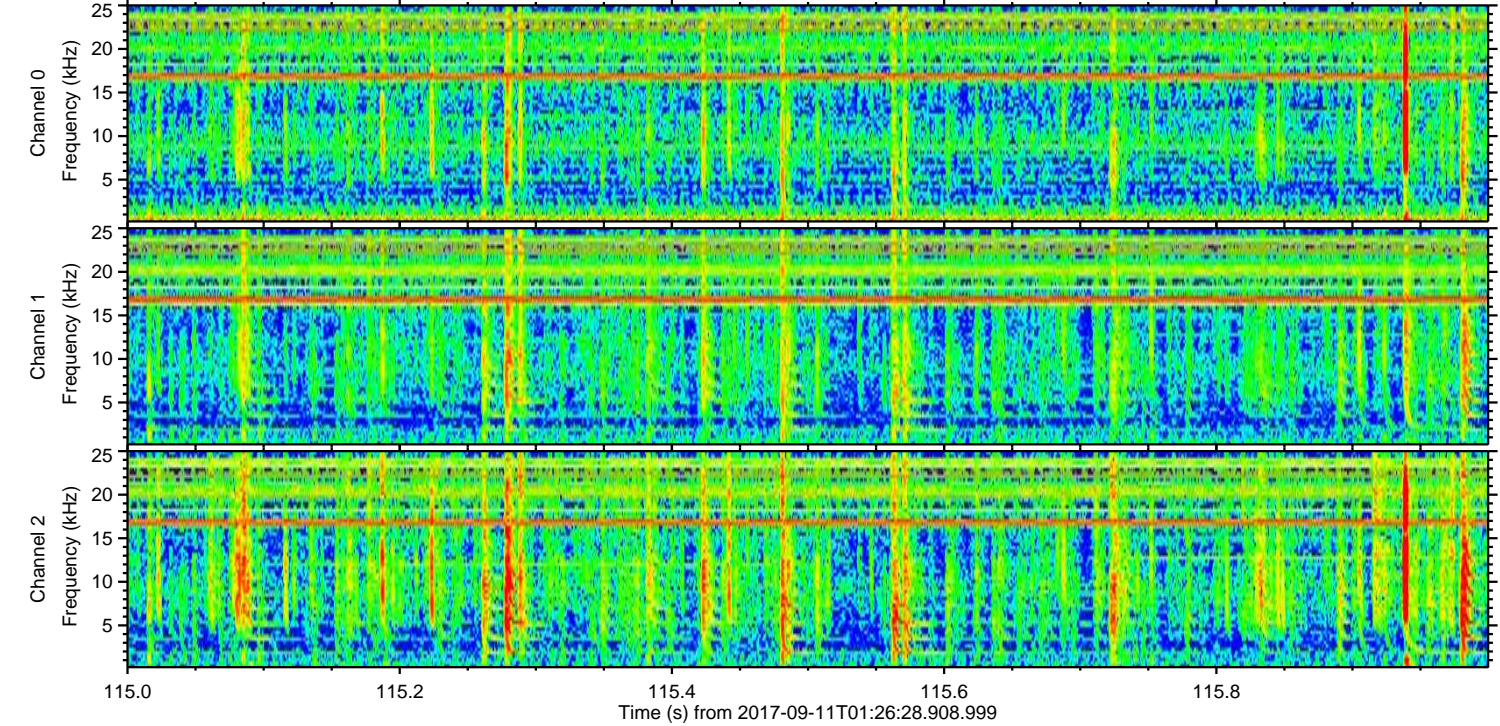
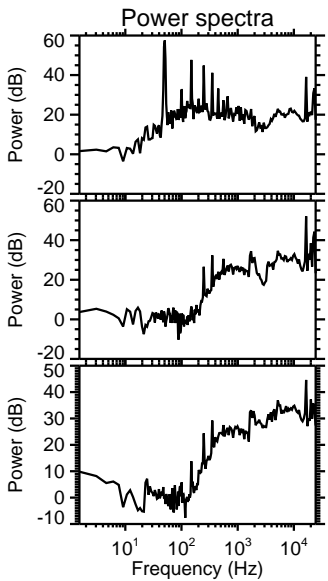
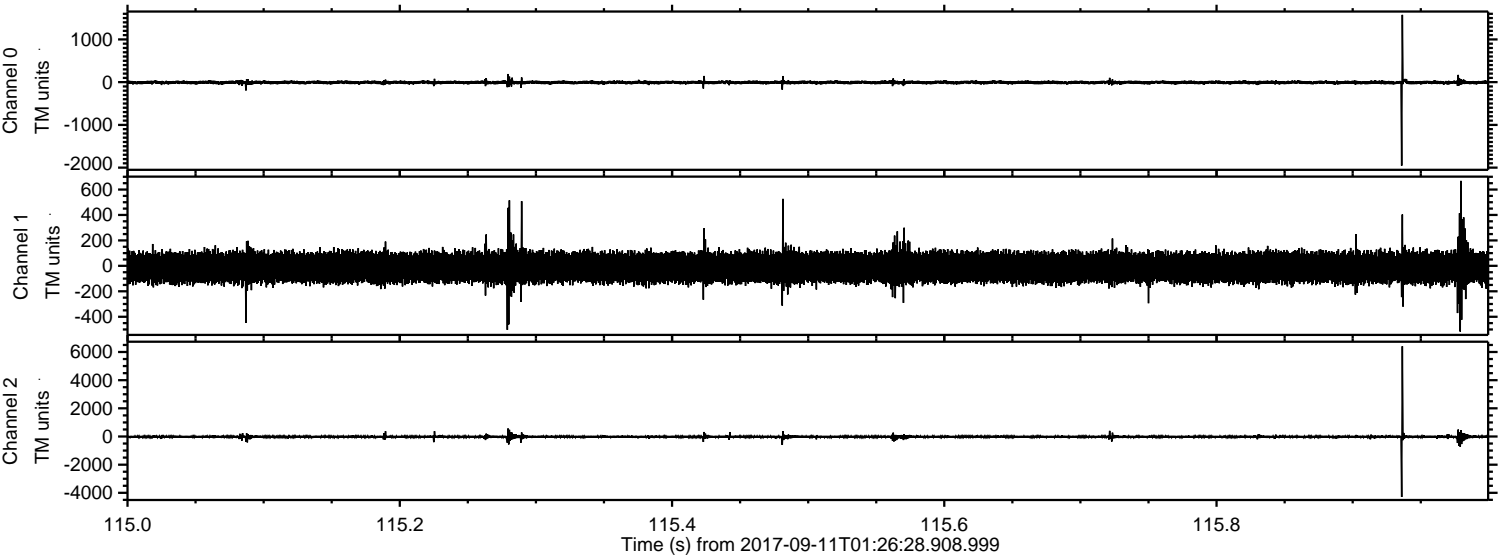
ELMAVAN 3D WAVEFORMS (Measured data sampled at 50 kHz) 51000 packets of 144 samples from 2017-09-11T01:26:28.908.999. Part 138/147

Processed Mon Sep 11 03:34:18 2017 by ELM ver.2012-10-06 from 001__elm20170911_012627__dat00.bin



ELMAVAN 3D WAVEFORMS (Measured data sampled at 50 kHz) 51000 packets of 144 samples from 2017-09-11T01:26:28.908.999. Part 116/147

Processed Mon Sep 11 03:34:18 2017 by ELM ver.2012-10-06 from 001__elm20170911_012627__dat00.bin



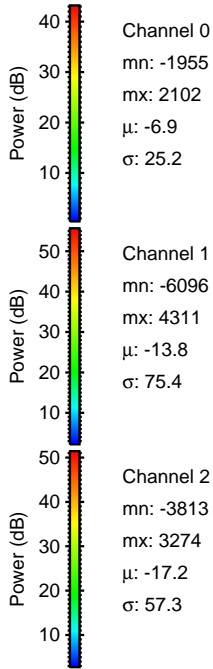
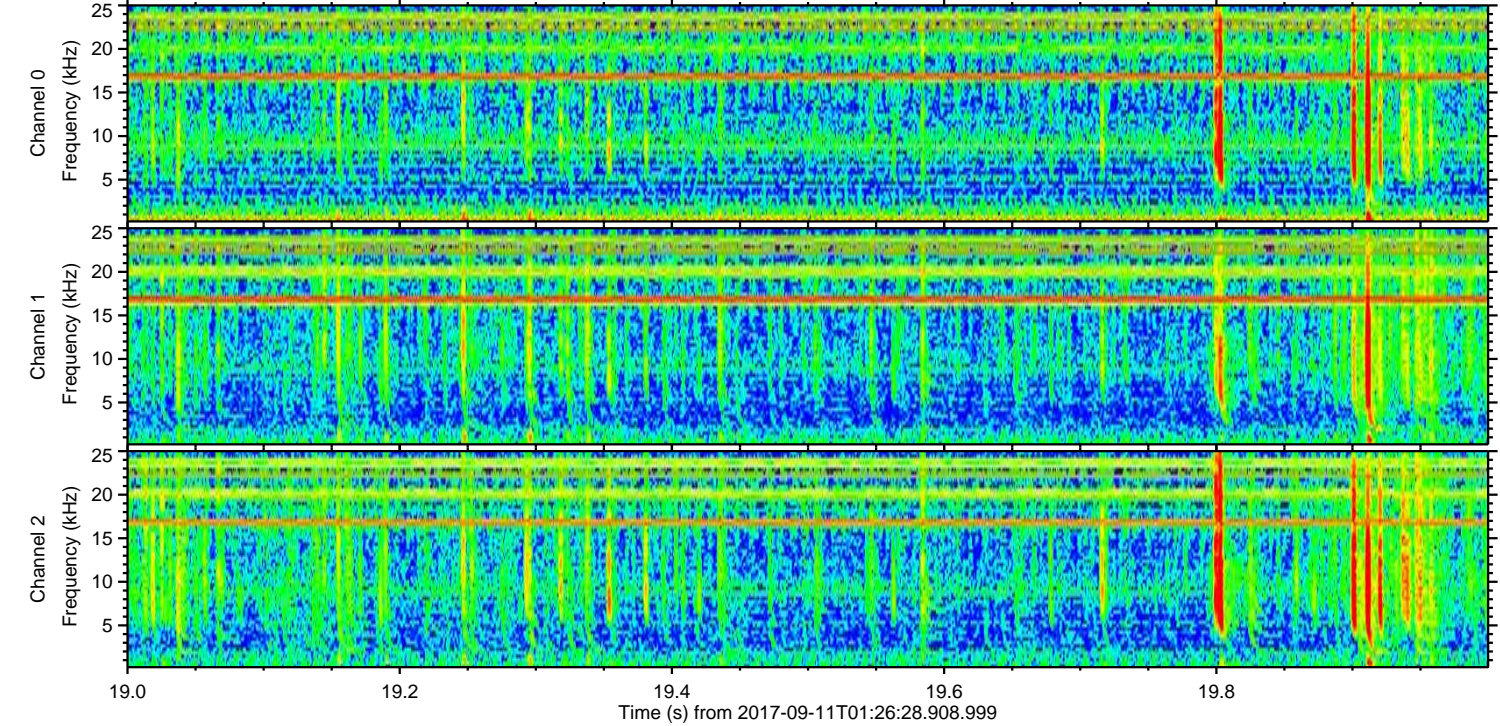
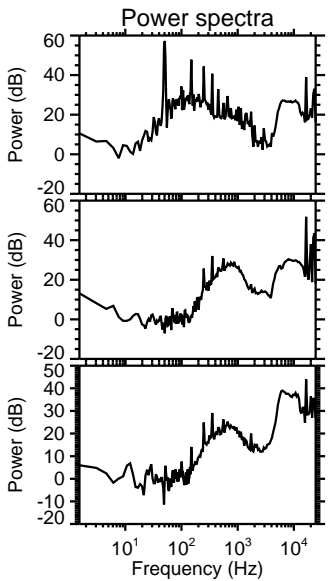
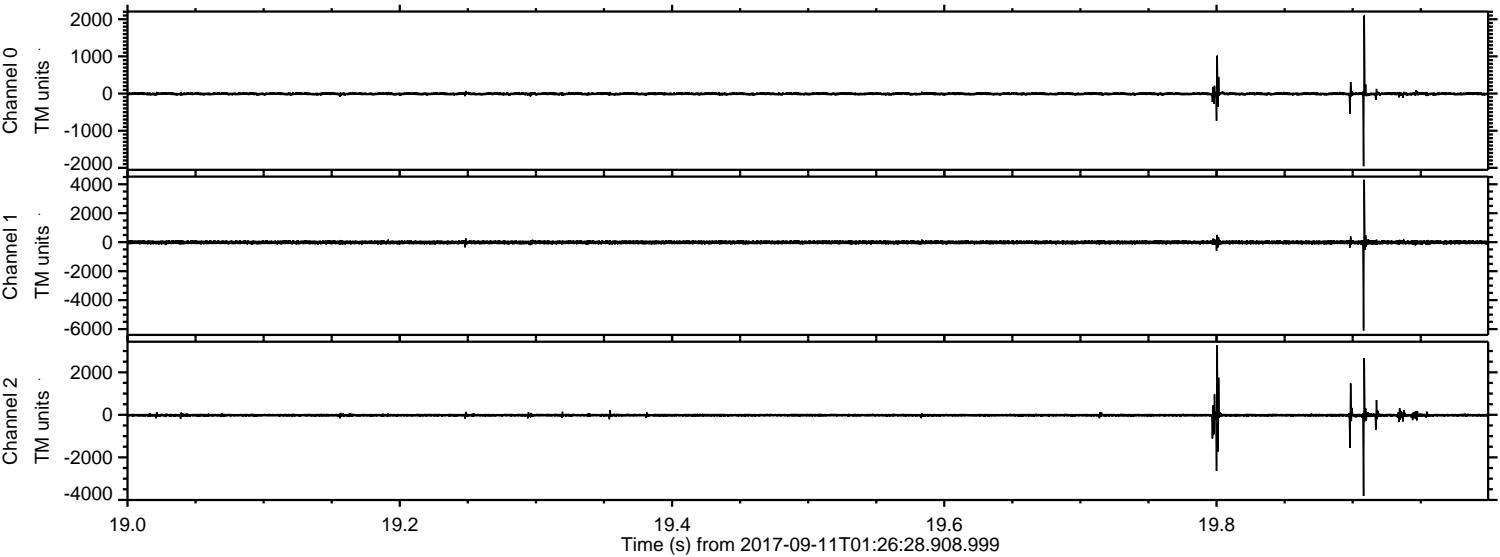
Channel 0
mn: -1954
mx: 1574
 μ : -6.9
 σ : 22.4

Channel 1
mn: -517
mx: 668
 μ : -13.8
 σ : 63.6

Channel 2
mn: -4294
mx: 6410
 μ : -17.1
 σ : 60.7

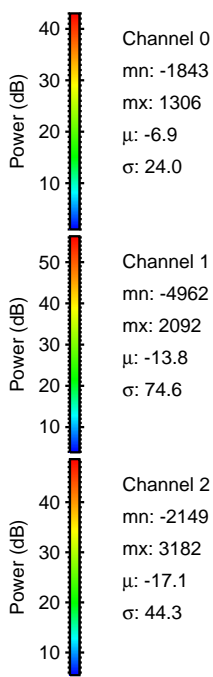
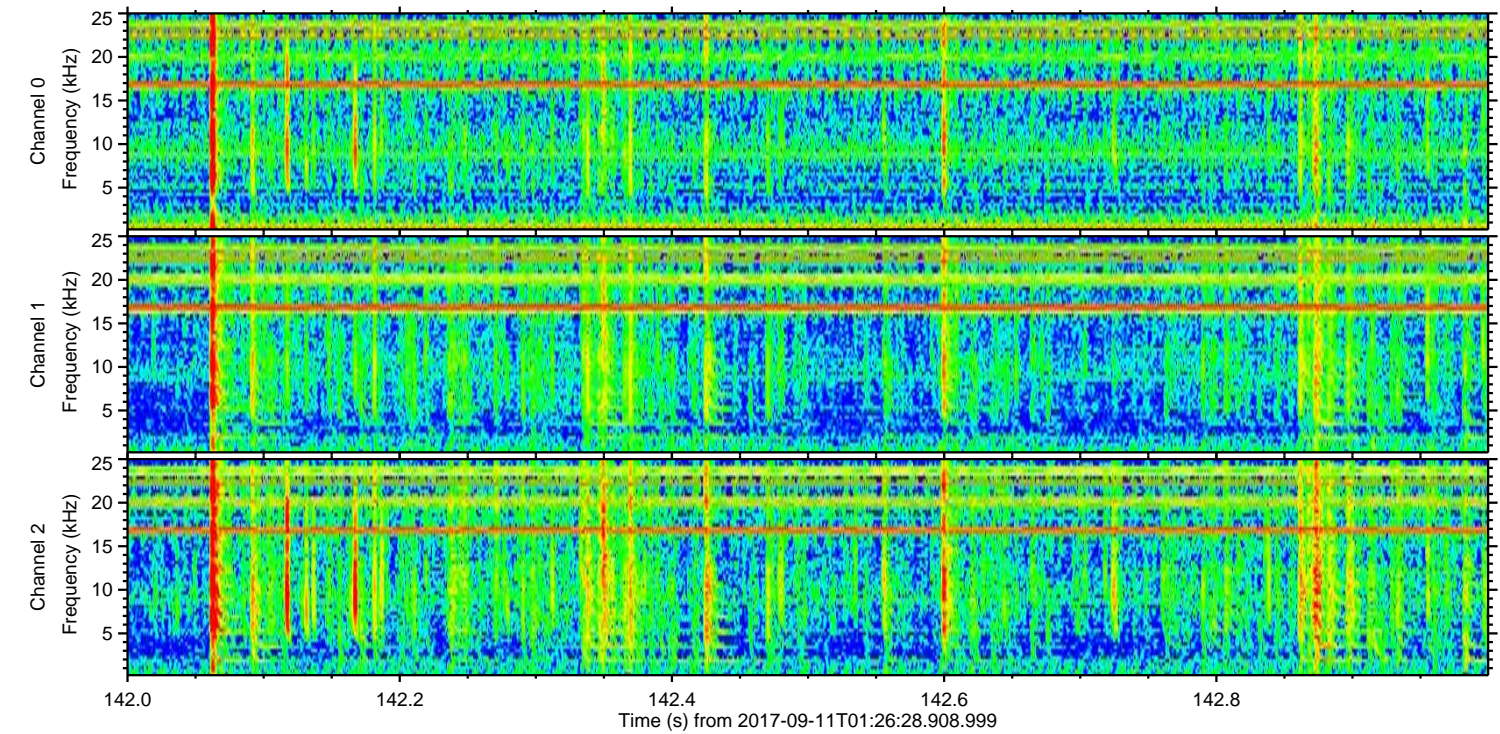
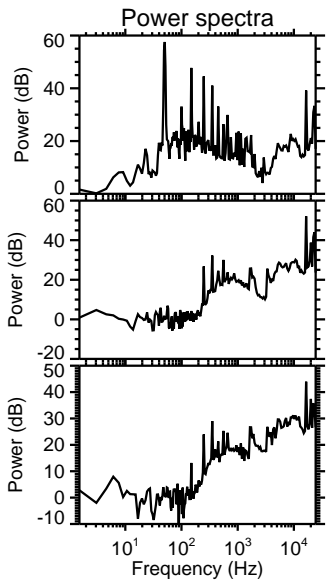
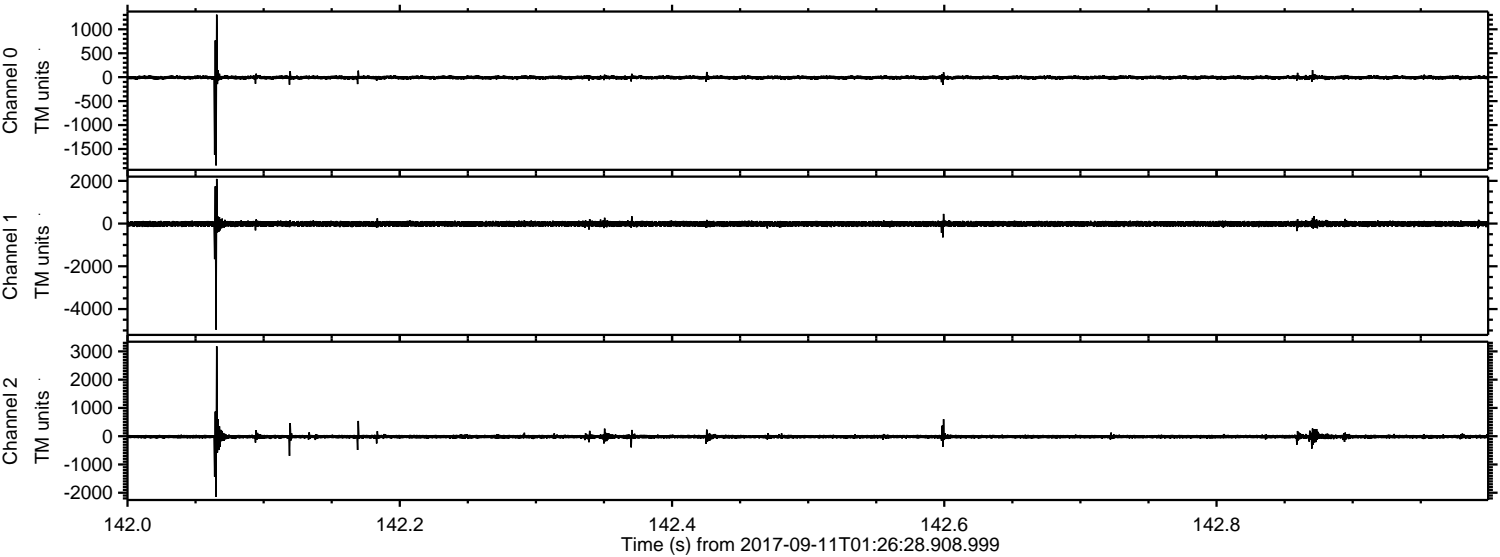
ELMAVAN 3D WAVEFORMS (Measured data sampled at 50 kHz) 51000 packets of 144 samples from 2017-09-11T01:26:28.908.999. Part 20/147

Processed Mon Sep 11 03:34:19 2017 by ELM ver.2012-10-06 from 001__elm20170911_012627__dat00.bin



ELMAVAN 3D WAVEFORMS (Measured data sampled at 50 kHz) 51000 packets of 144 samples from 2017-09-11T01:26:28.908.999. Part 143/147

Processed Mon Sep 11 03:34:20 2017 by ELM ver.2012-10-06 from 001__elm20170911_012627__dat00.bin

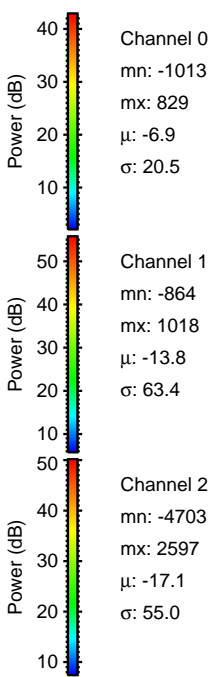
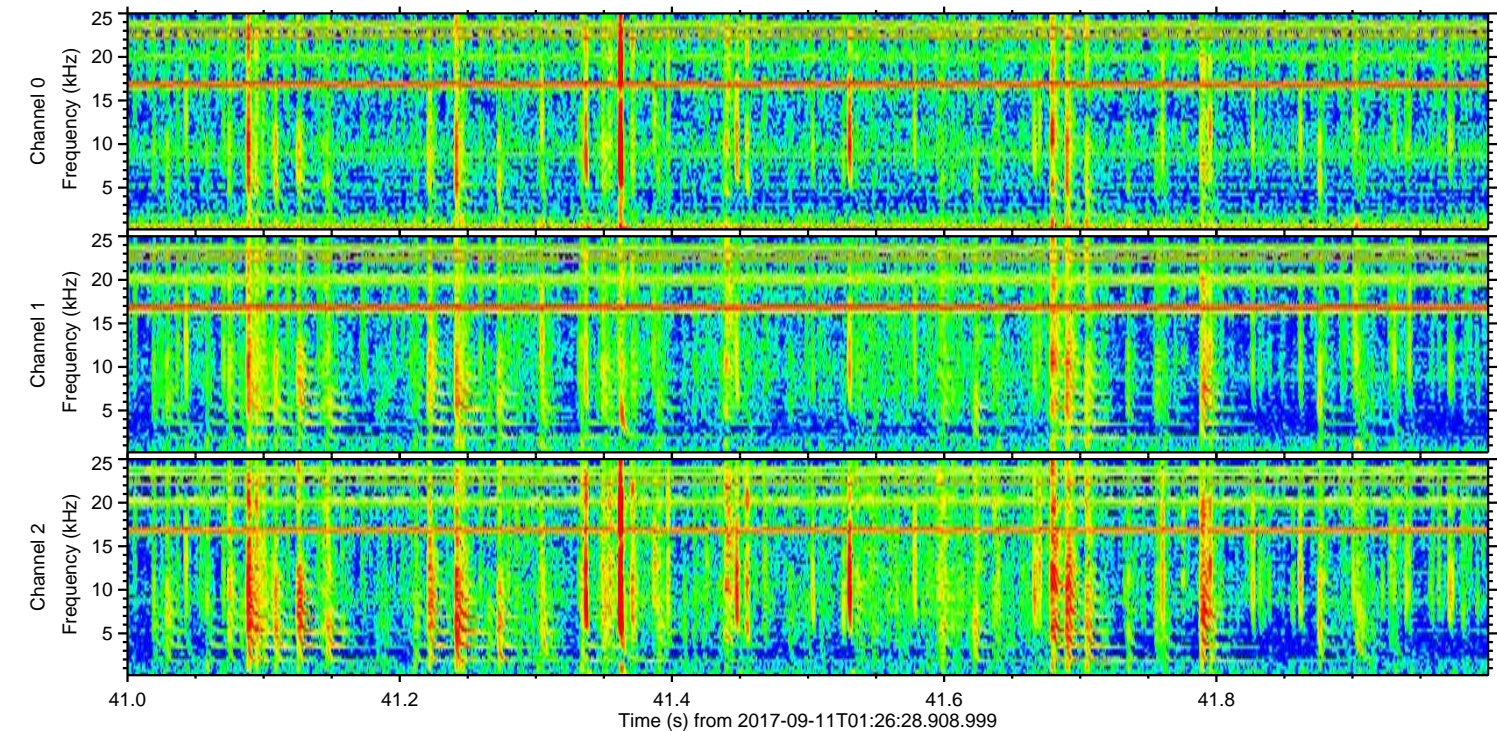
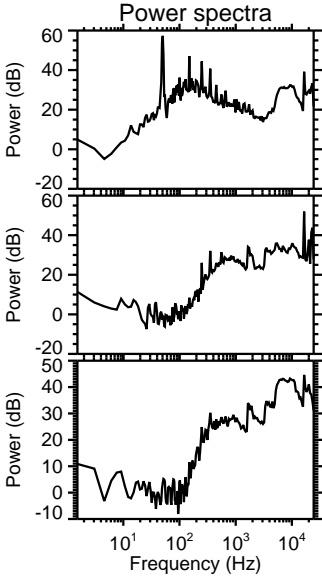
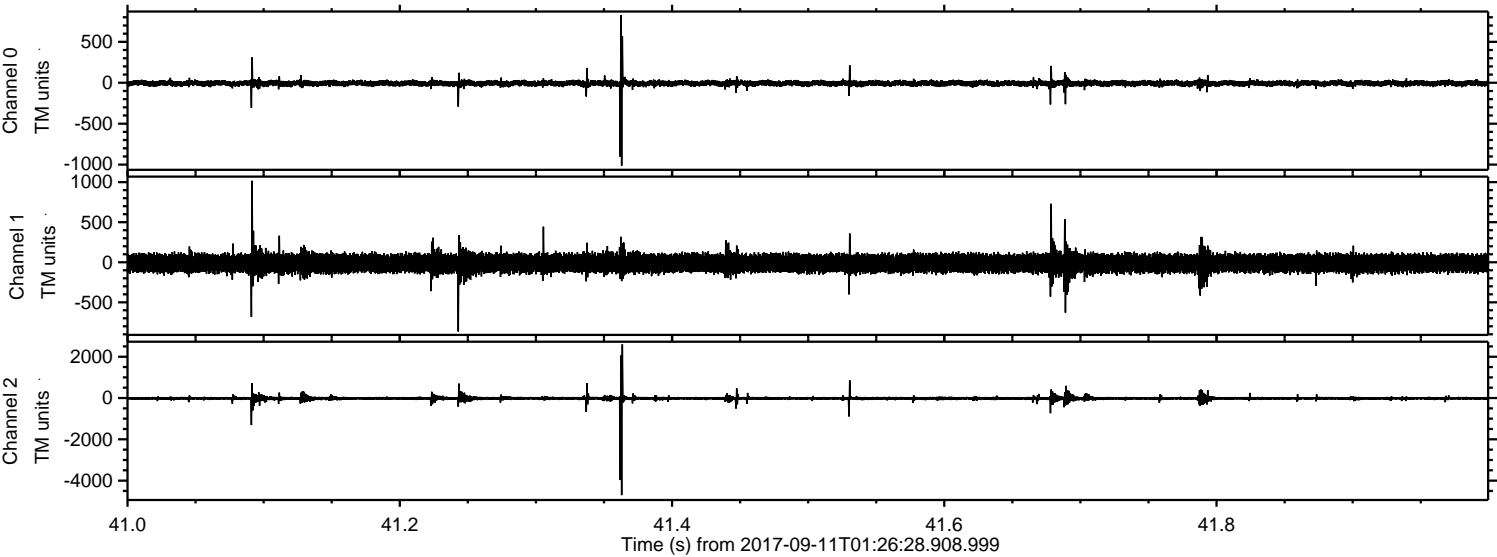


Channel 0
mn: -1843
mx: 1306
 μ : -6.9
 σ : 24.0

Channel 1
mn: -4962
mx: 2092
 μ : -13.8
 σ : 74.6

Channel 2
mn: -2149
mx: 3182
 μ : -17.1
 σ : 44.3

Processed Mon Sep 11 03:34:20 2017 by ELM ver.2012-10-06 from 001__elm20170911_012627__dat00.bin



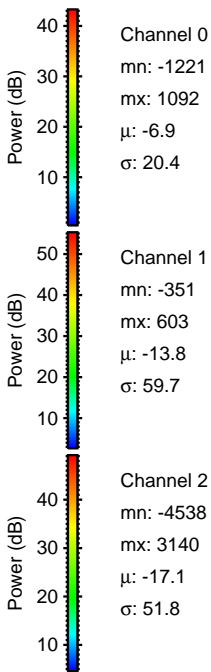
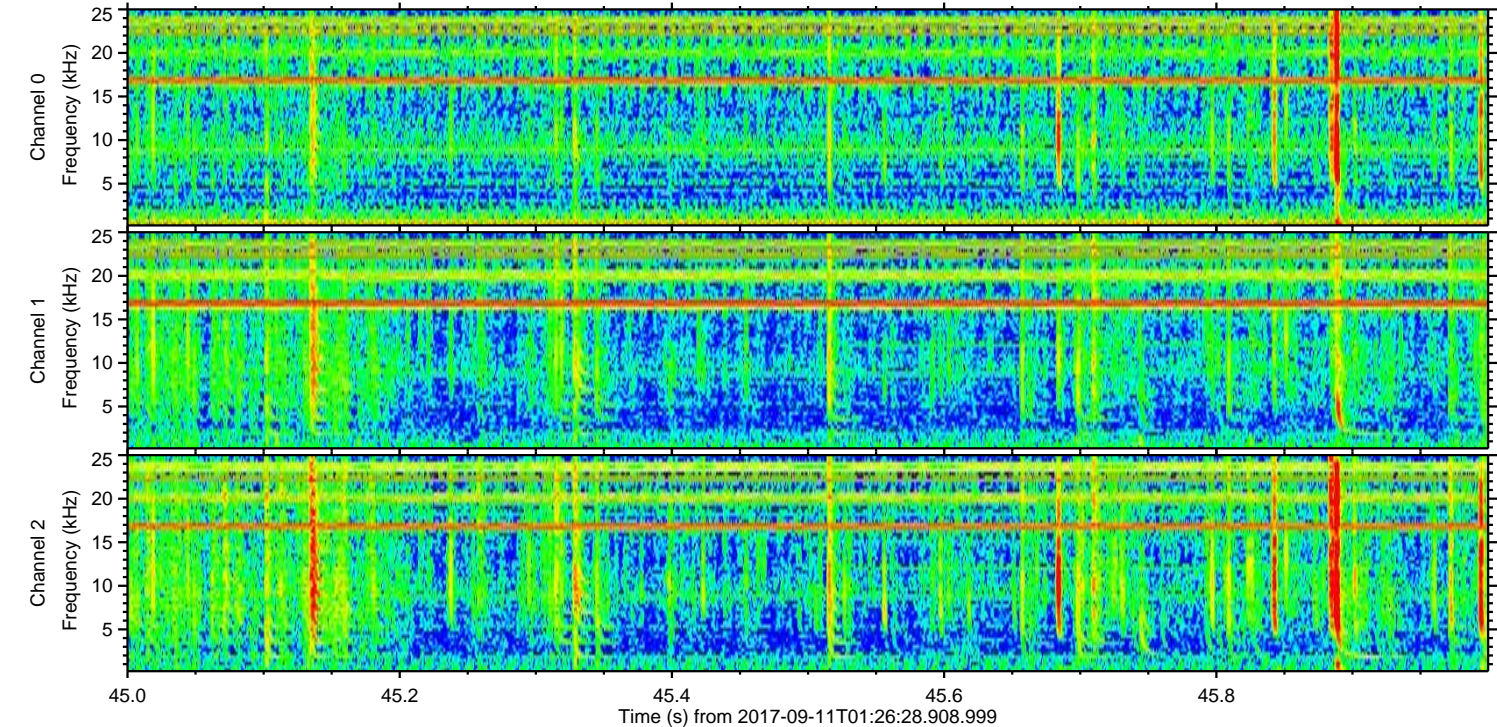
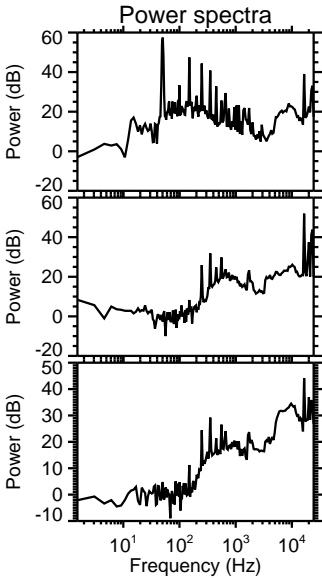
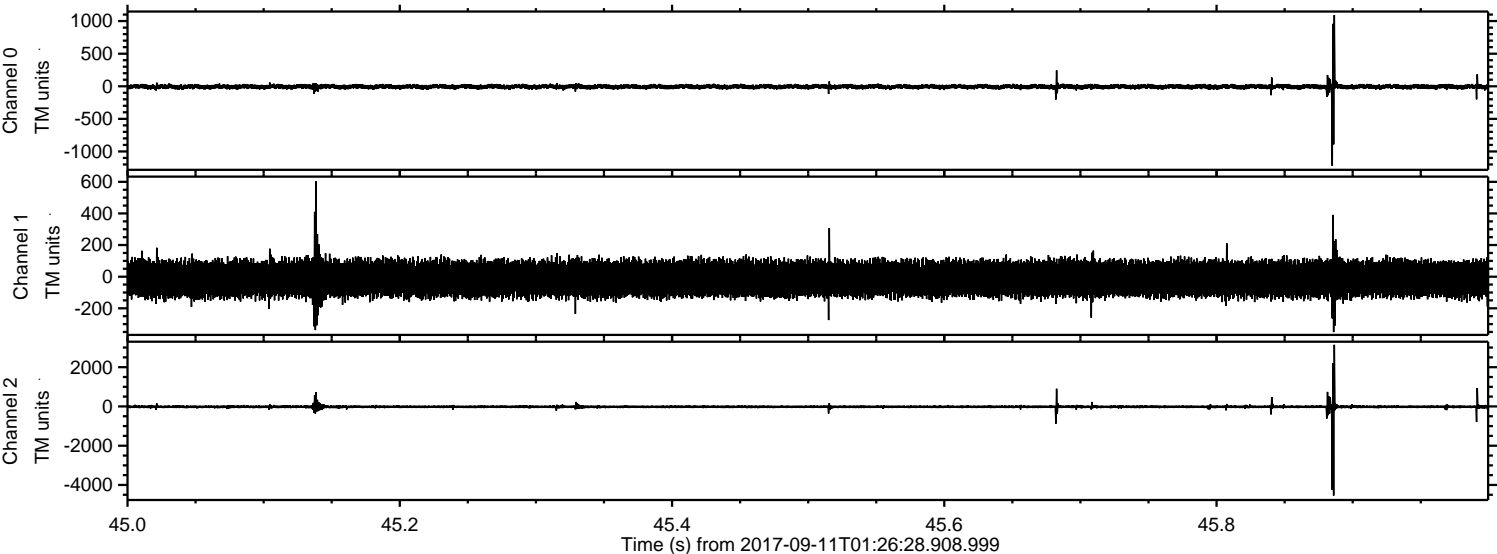
Channel 0
mn: -1013
mx: 829
 μ : -6.9
 σ : 20.5

Channel 1
mn: -864
mx: 1018
 μ : -13.8
 σ : 63.4

Channel 2
mn: -4703
mx: 2597
 μ : -17.1
 σ : 55.0

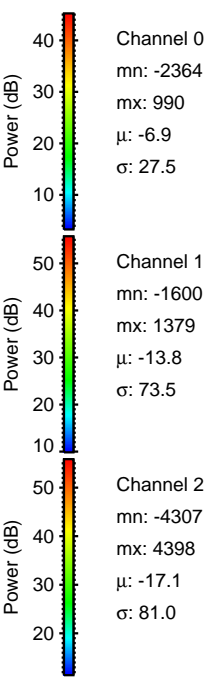
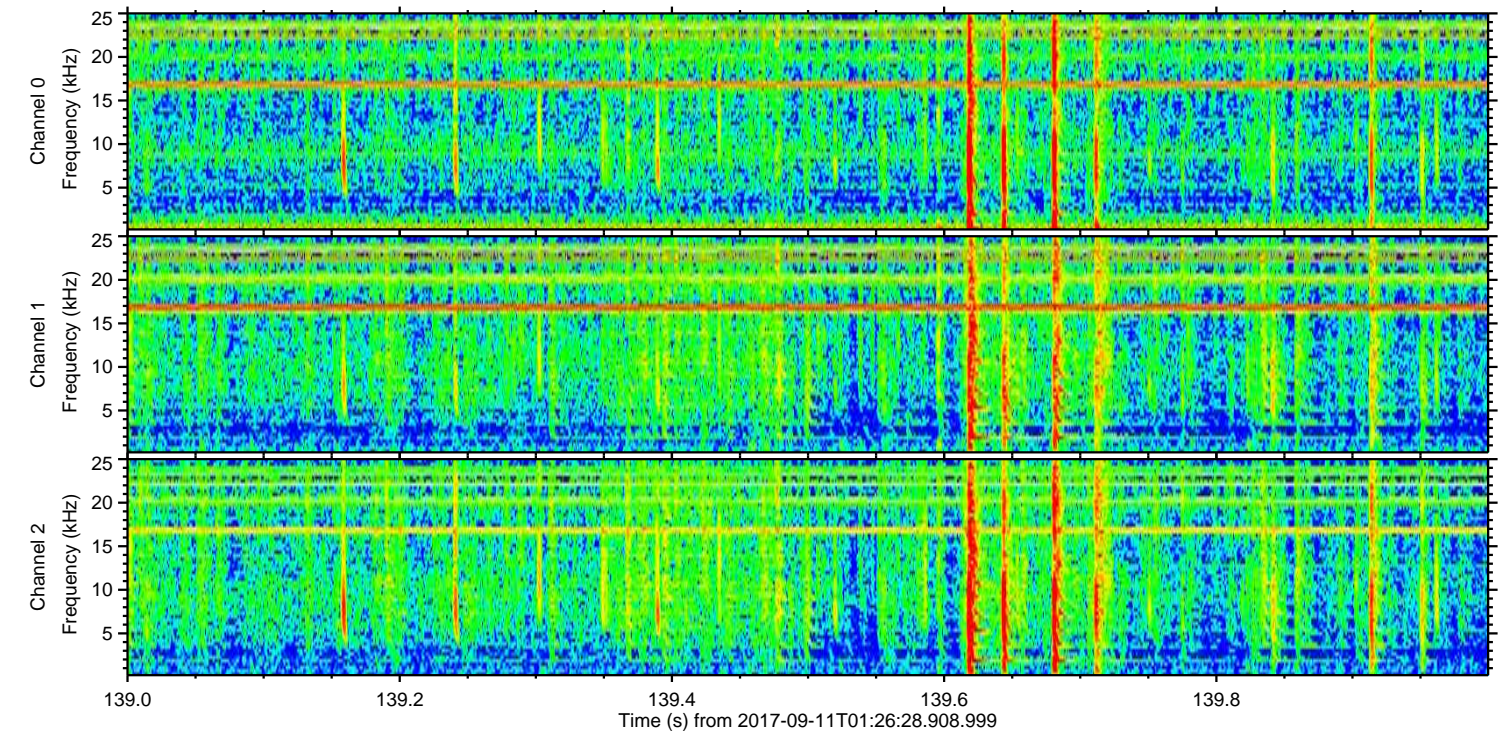
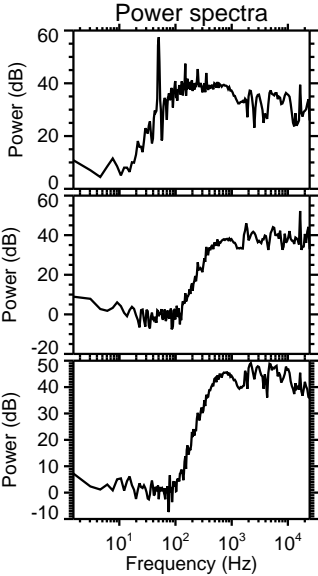
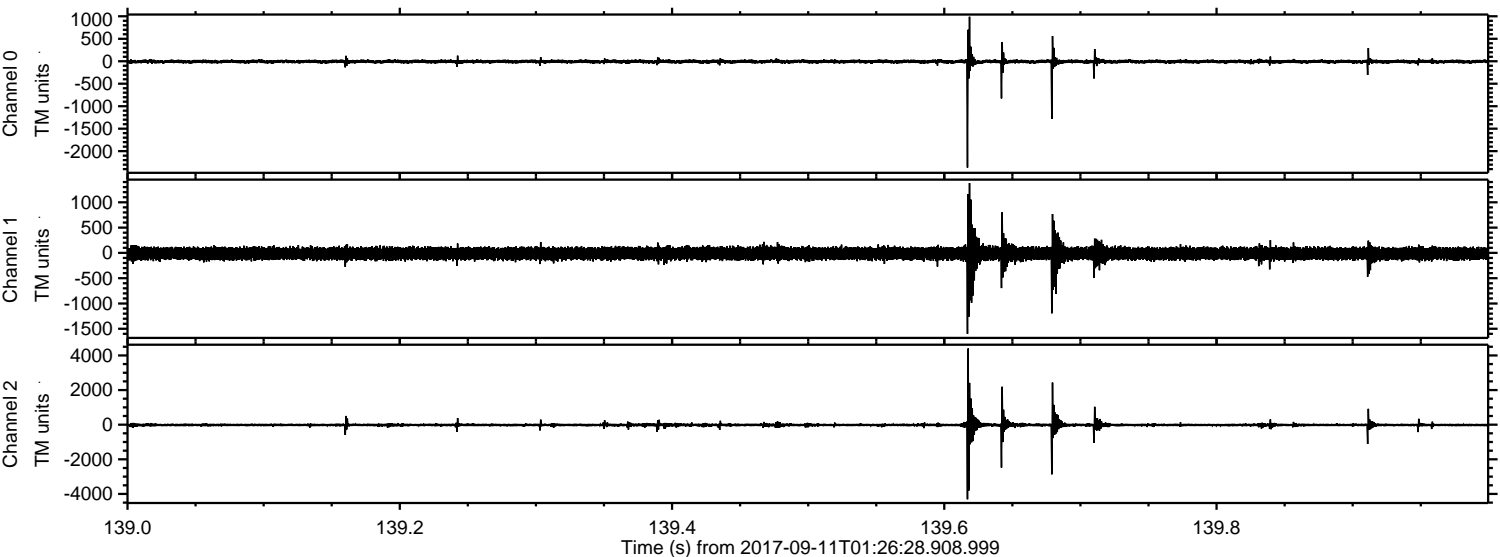
ELMAVAN 3D WAVEFORMS (Measured data sampled at 50 kHz) 51000 packets of 144 samples from 2017-09-11T01:26:28.908.999. Part 46/147

Processed Mon Sep 11 03:34:21 2017 by ELM ver.2012-10-06 from 001__elm20170911_012627__dat00.bin



ELMAVAN 3D WAVEFORMS (Measured data sampled at 50 kHz) 51000 packets of 144 samples from 2017-09-11T01:26:28.908.999. Part 140/147

Processed Mon Sep 11 03:34:22 2017 by ELM ver.2012-10-06 from 001__elm20170911_012627__dat00.bin

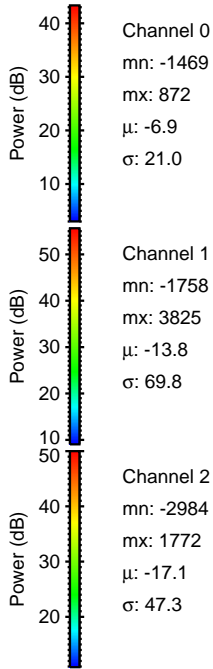
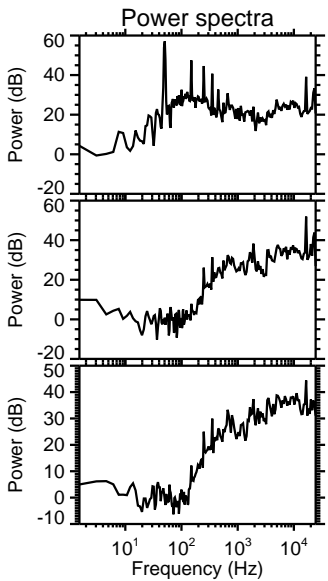
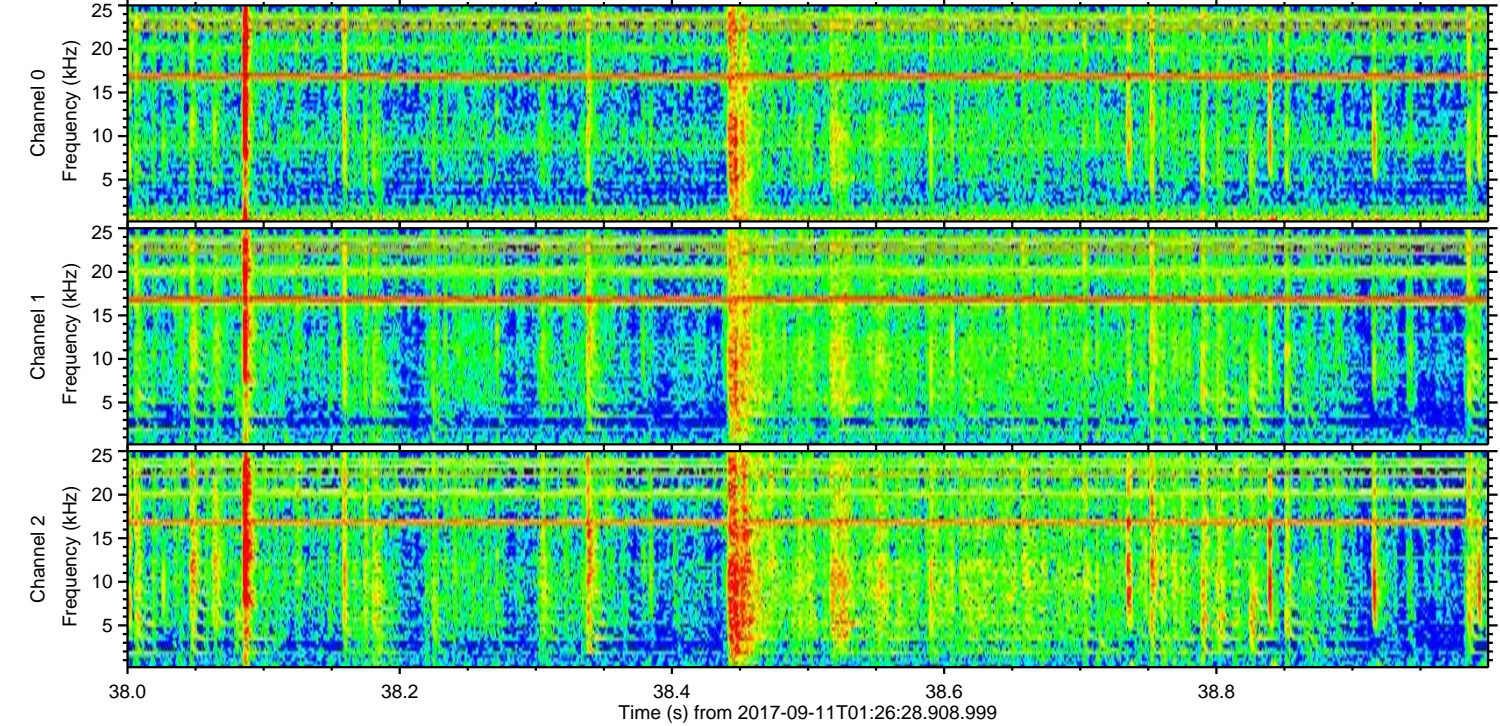
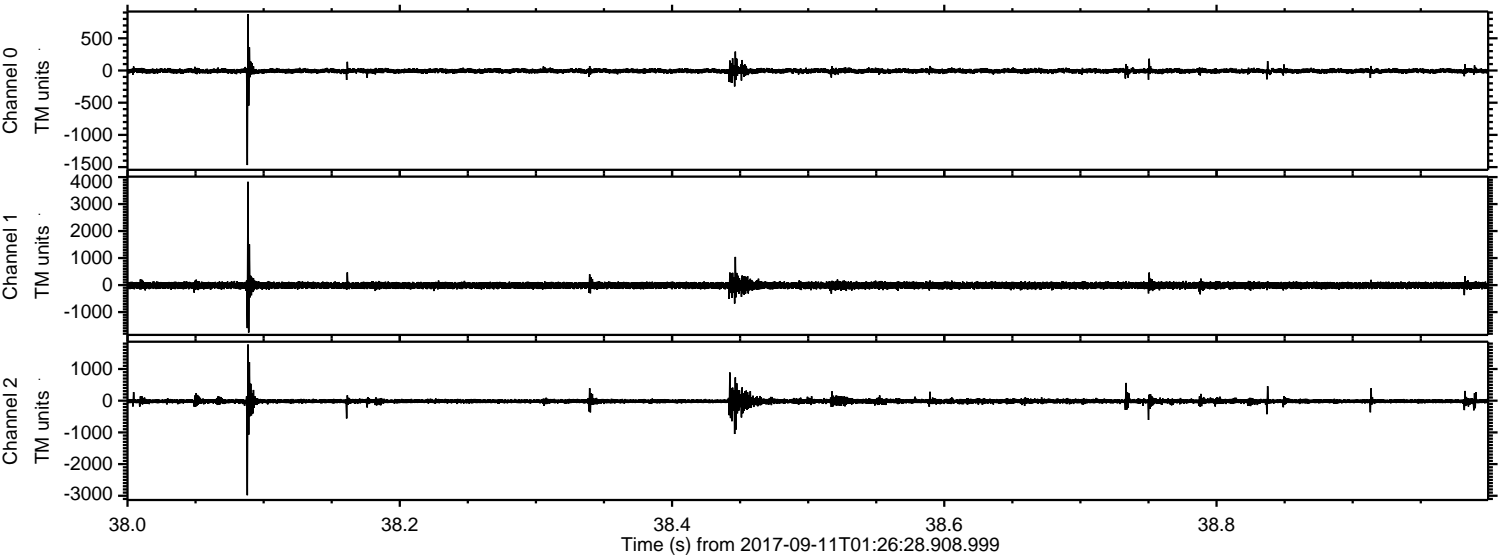


Channel 0
mn: -2364
mx: 990
 μ : -6.9
 σ : 27.5

Channel 1
mn: -1600
mx: 1379
 μ : -13.8
 σ : 73.5

Channel 2
mn: -4307
mx: 4398
 μ : -17.1
 σ : 81.0

Processed Mon Sep 11 03:34:22 2017 by ELM ver.2012-10-06 from 001__elm20170911_012627__dat00.bin



Processed Mon Sep 11 03:34:23 2017 by ELM ver.2012-10-06 from 001__elm20170911_012627__dat00.bin

