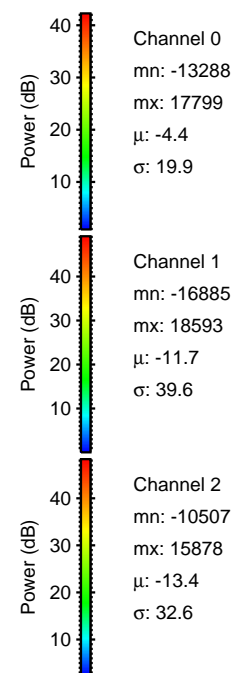
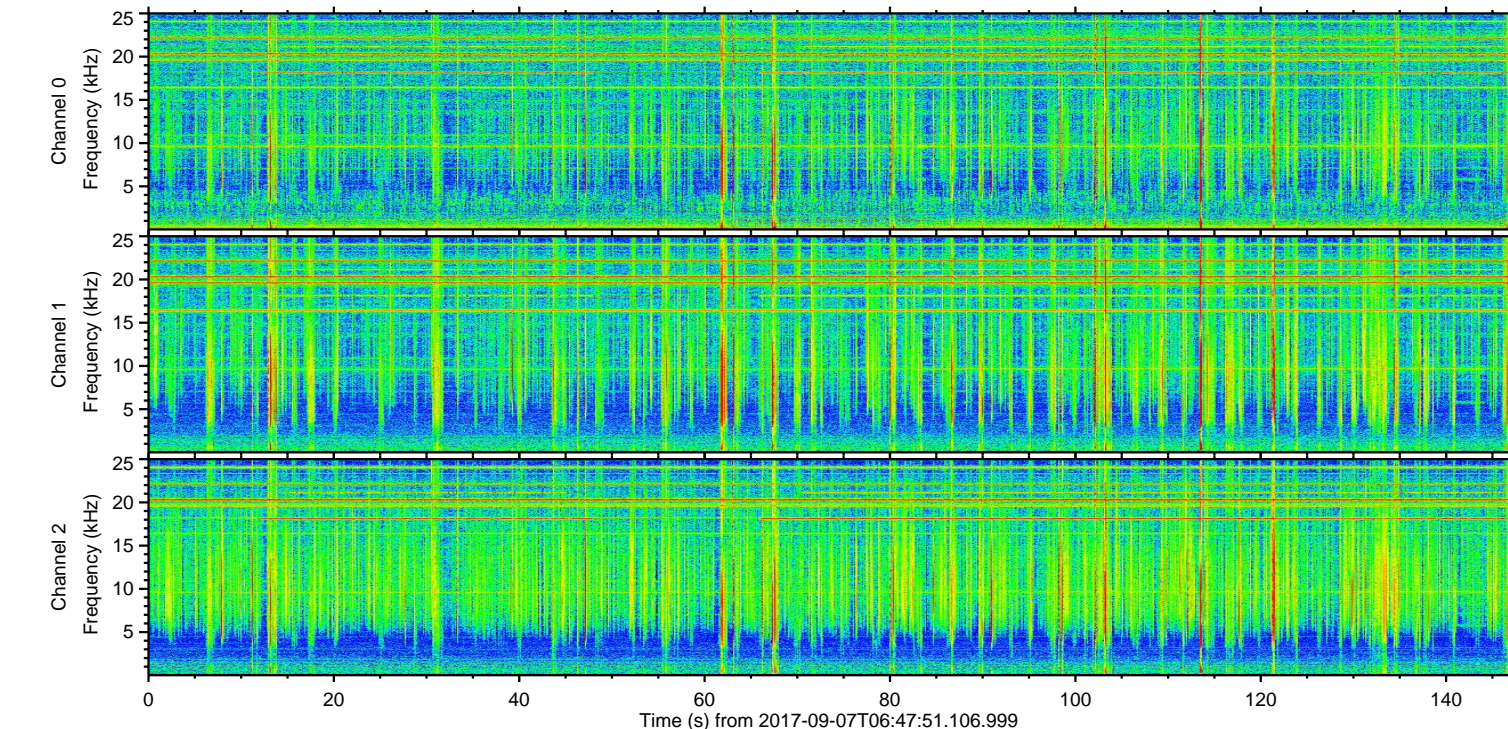
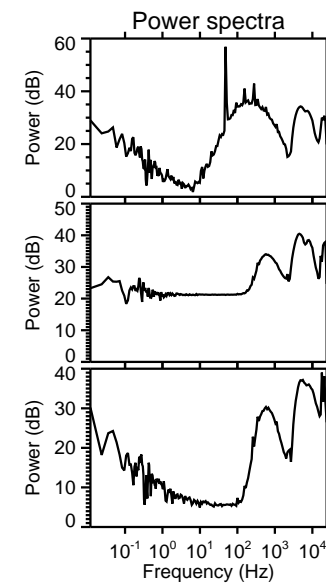
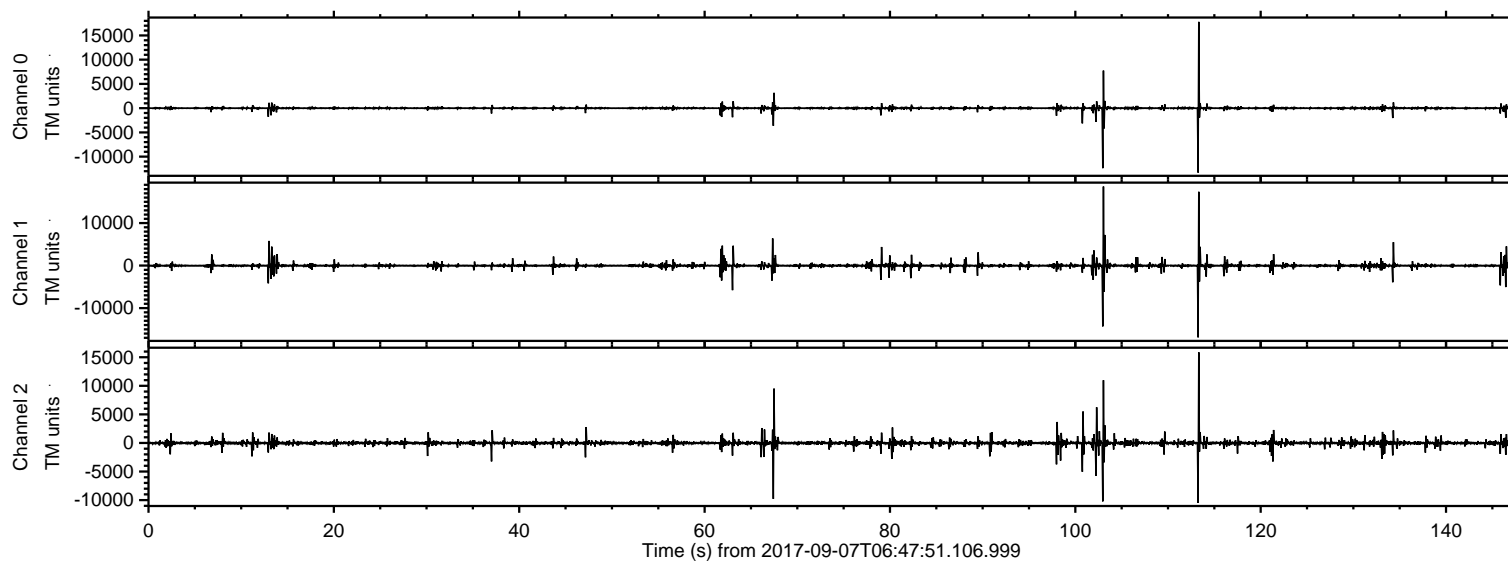


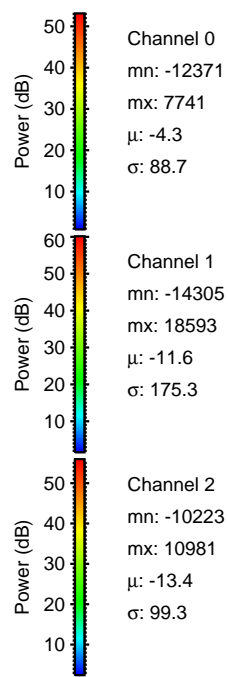
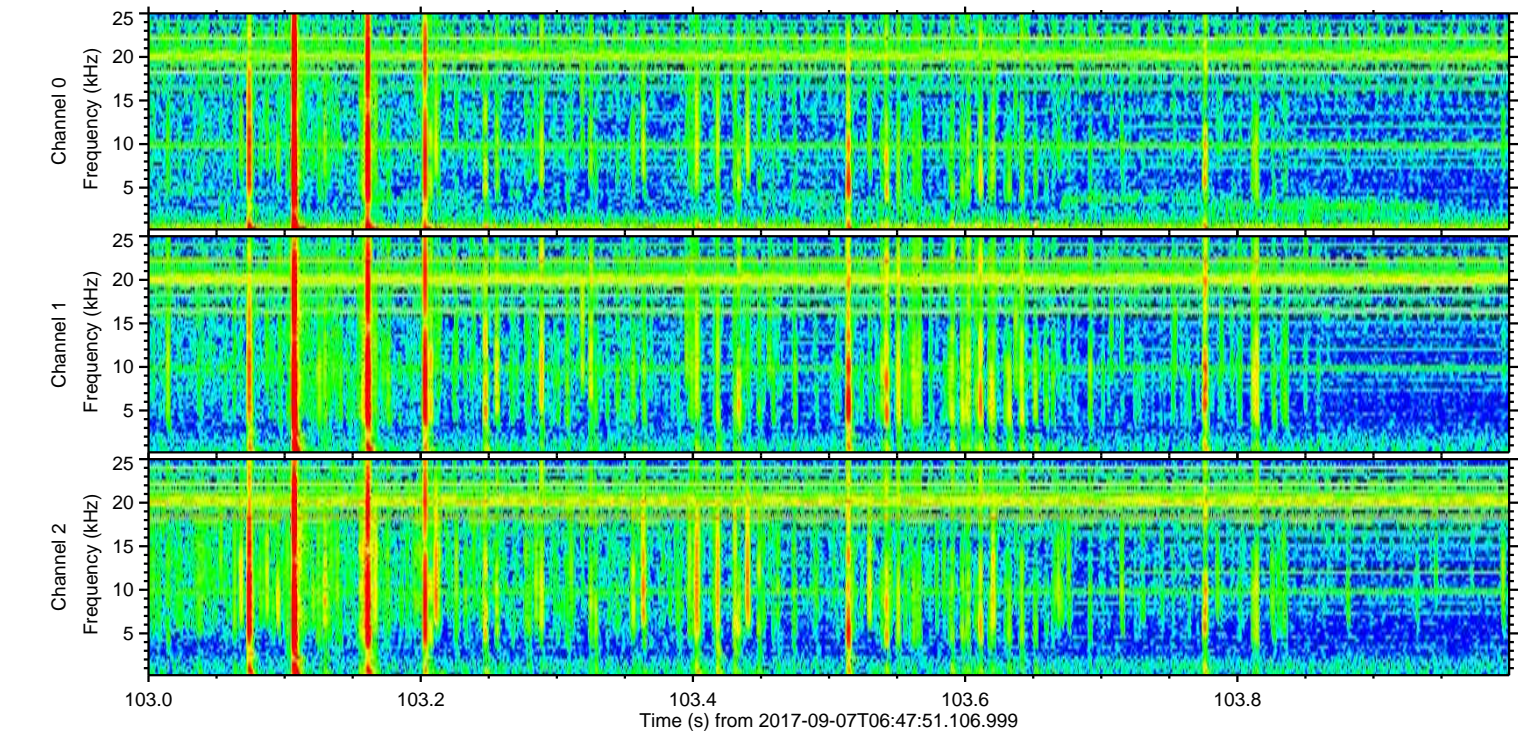
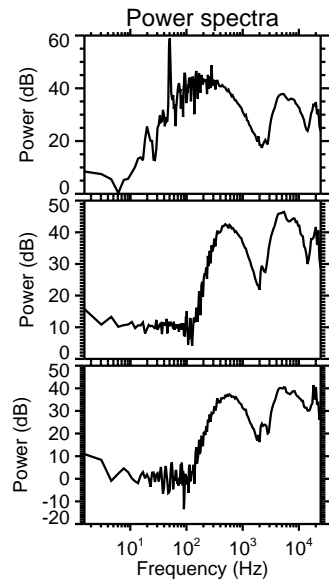
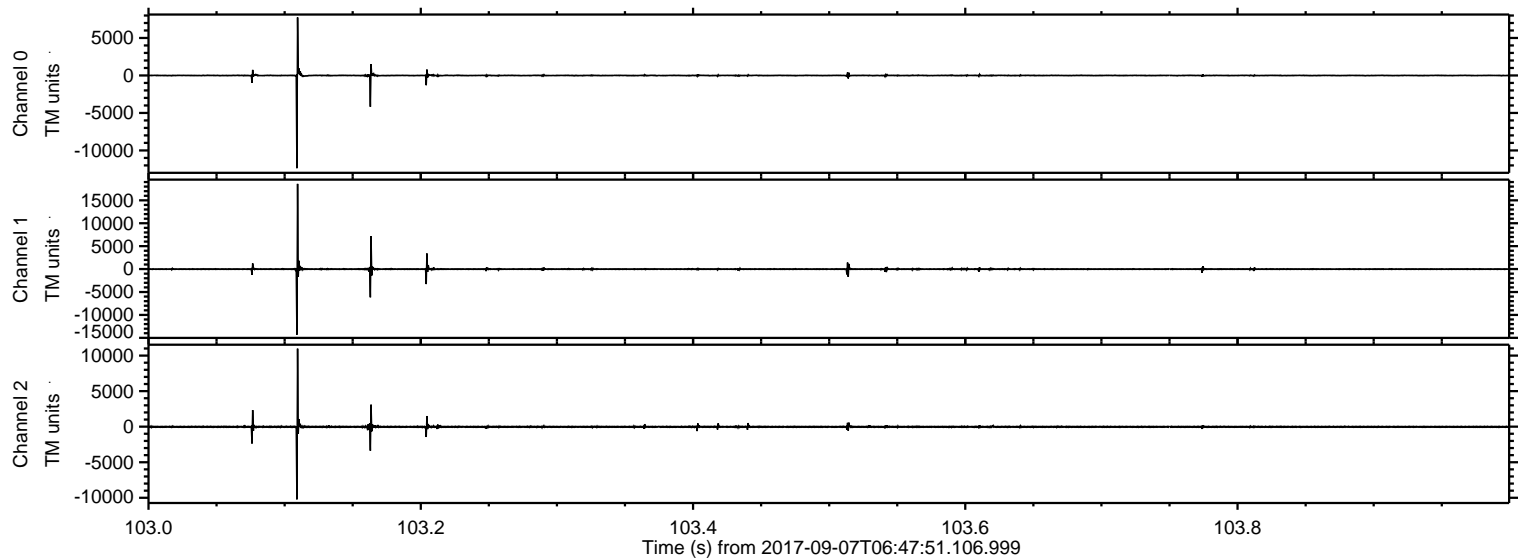
ELMAVAN 3D WAVEFORMS (Measured data sampled at 50 kHz) 51000 packets of 144 samples from 2017-09-07T06:47:51.106.999.

Processed Thu Sep 7 08:55:32 2017 by ELM ver.2012-10-06 from 001__elm20170907_064750__dat00.bin



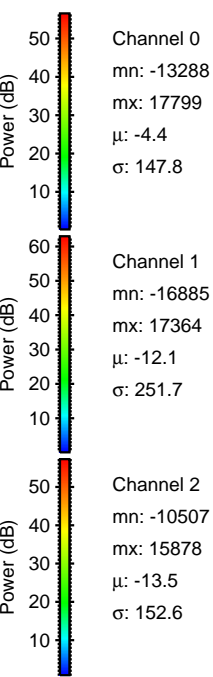
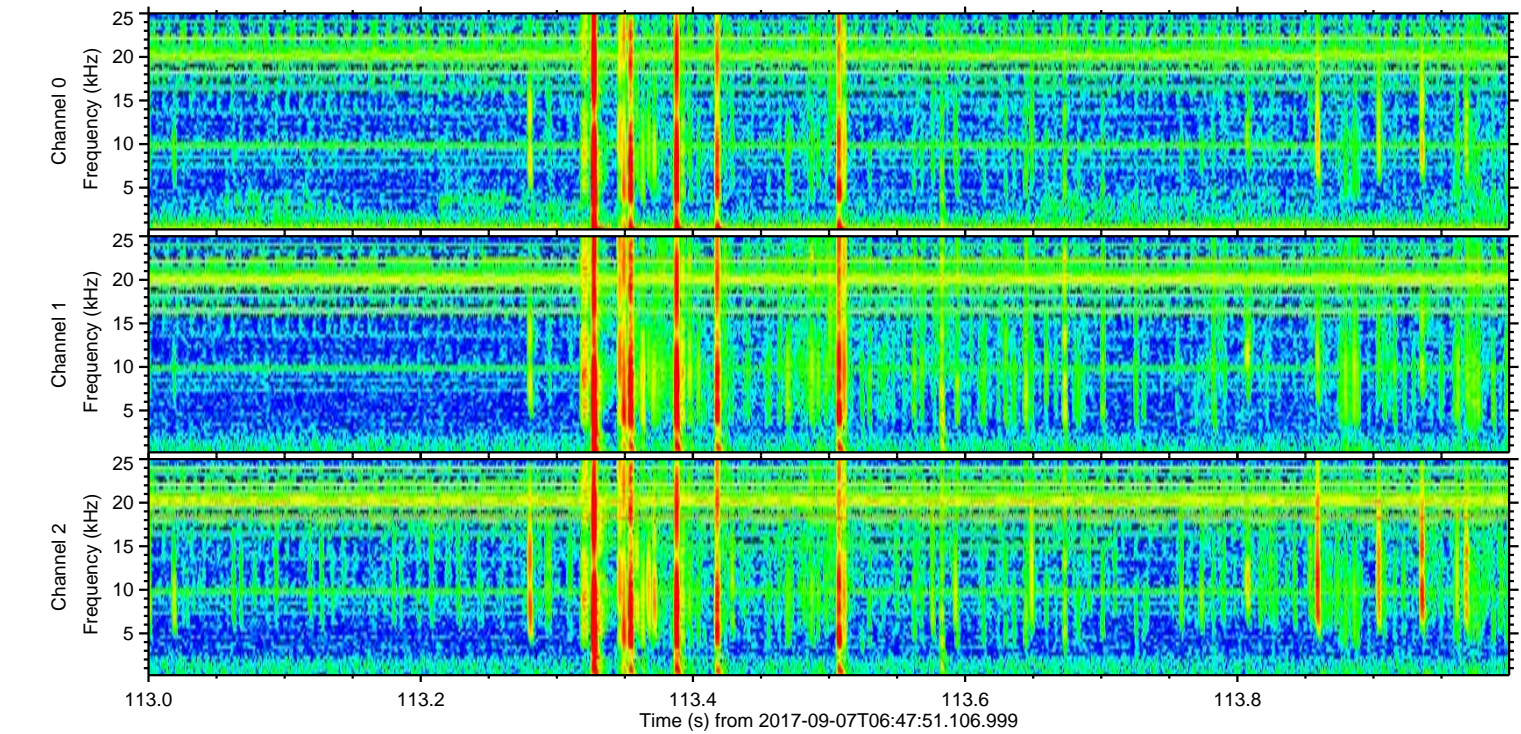
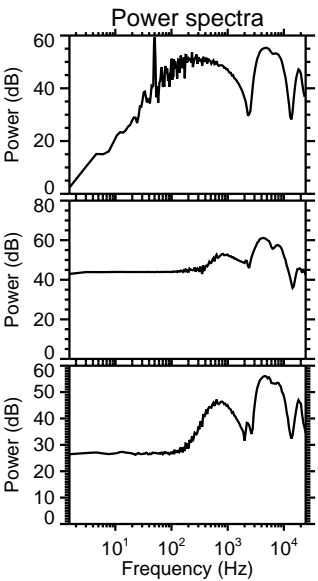
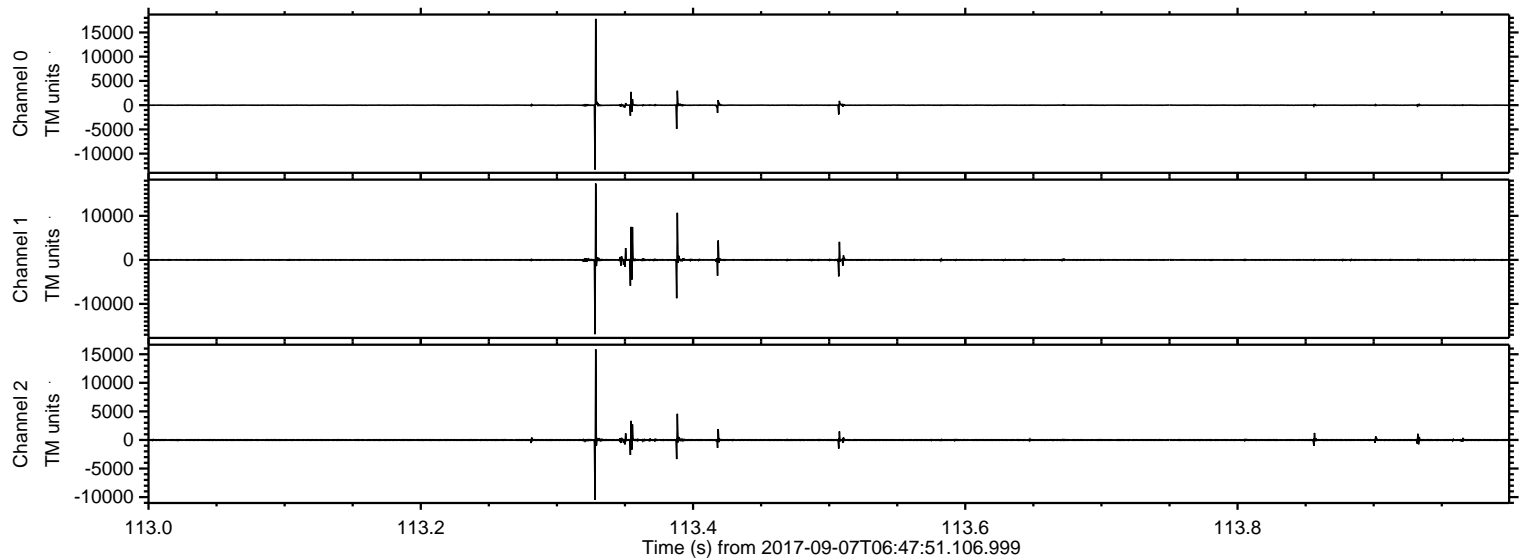
ELMAVAN 3D WAVEFORMS (Measured data sampled at 50 kHz) 51000 packets of 144 samples from 2017-09-07T06:47:51.106.999. Part 104/147

Processed Thu Sep 7 08:55:38 2017 by ELM ver.2012-10-06 from 001__elm20170907_064750__dat00.bin



ELMAVAN 3D WAVEFORMS (Measured data sampled at 50 kHz) 51000 packets of 144 samples from 2017-09-07T06:47:51.106.999. Part 114/147

Processed Thu Sep 7 08:55:39 2017 by ELM ver.2012-10-06 from 001__elm20170907_064750__dat00.bin

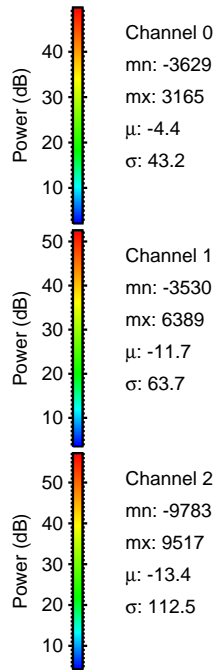
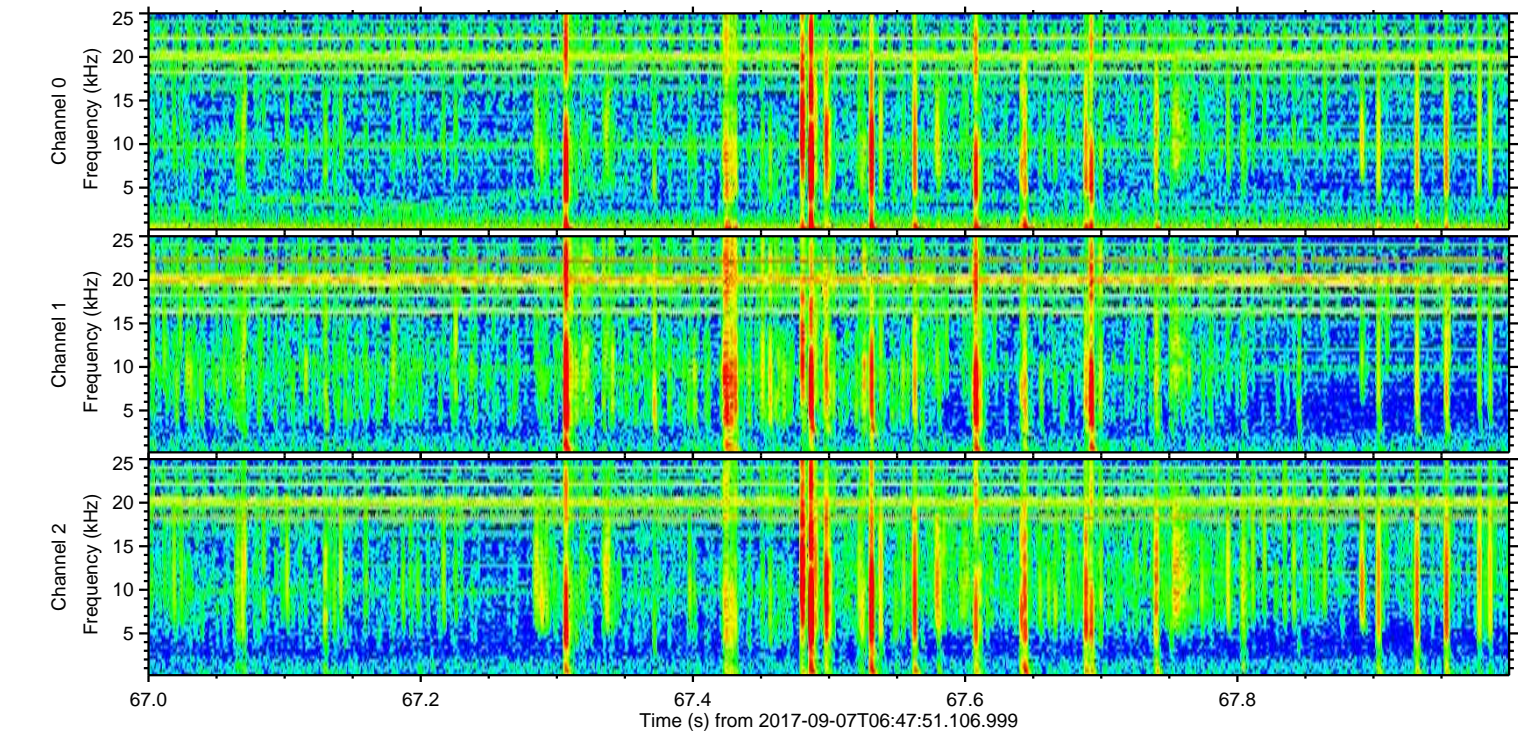
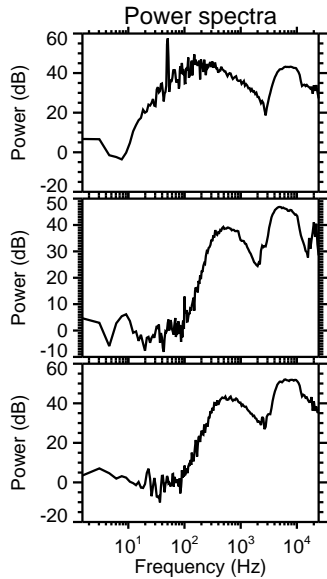
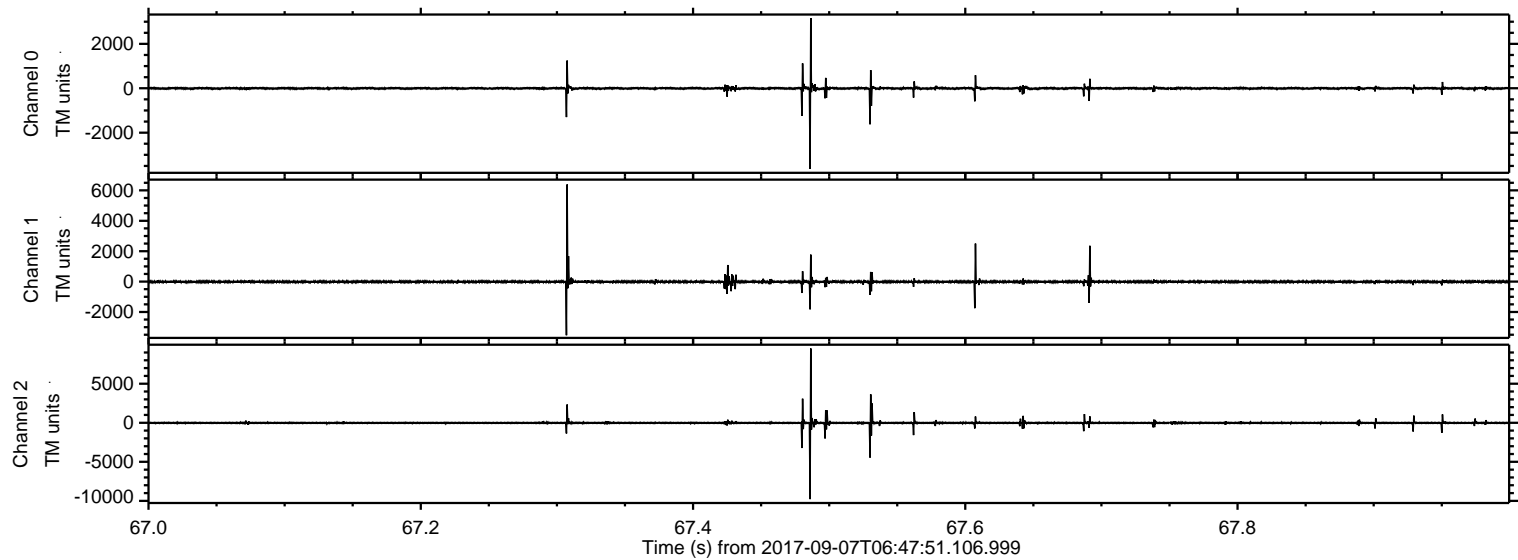


Channel 0
mn: -13288
mx: 17799
 μ : -4.4
 σ : 147.8

Channel 1
mn: -16885
mx: 17364
 μ : -12.1
 σ : 251.7

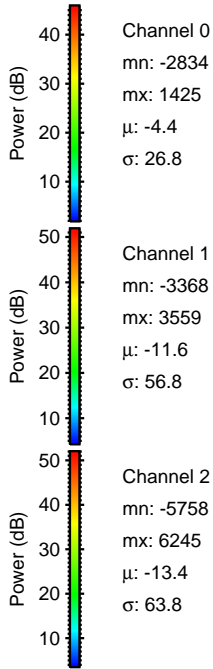
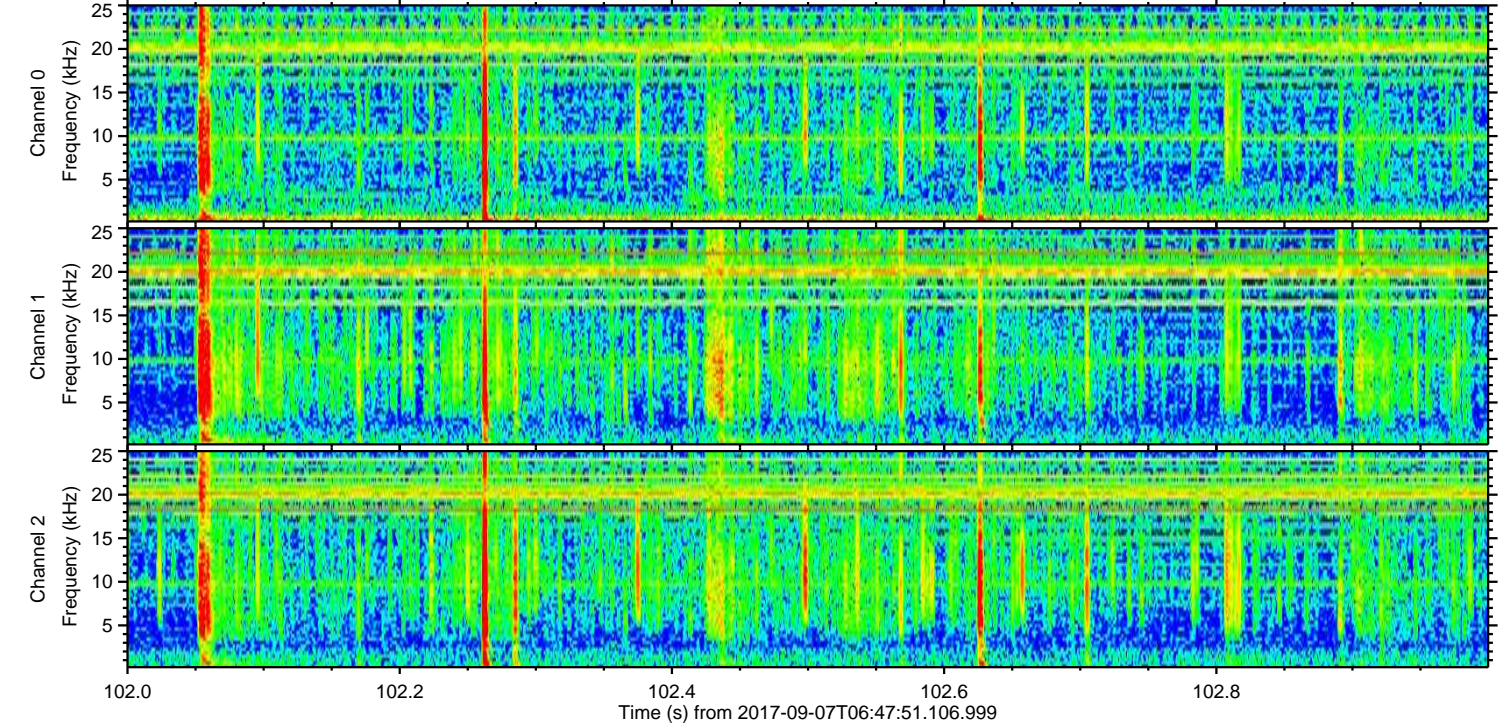
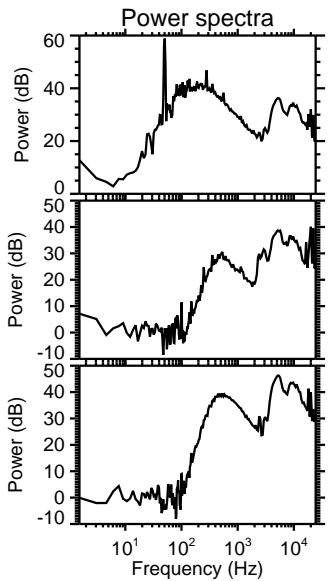
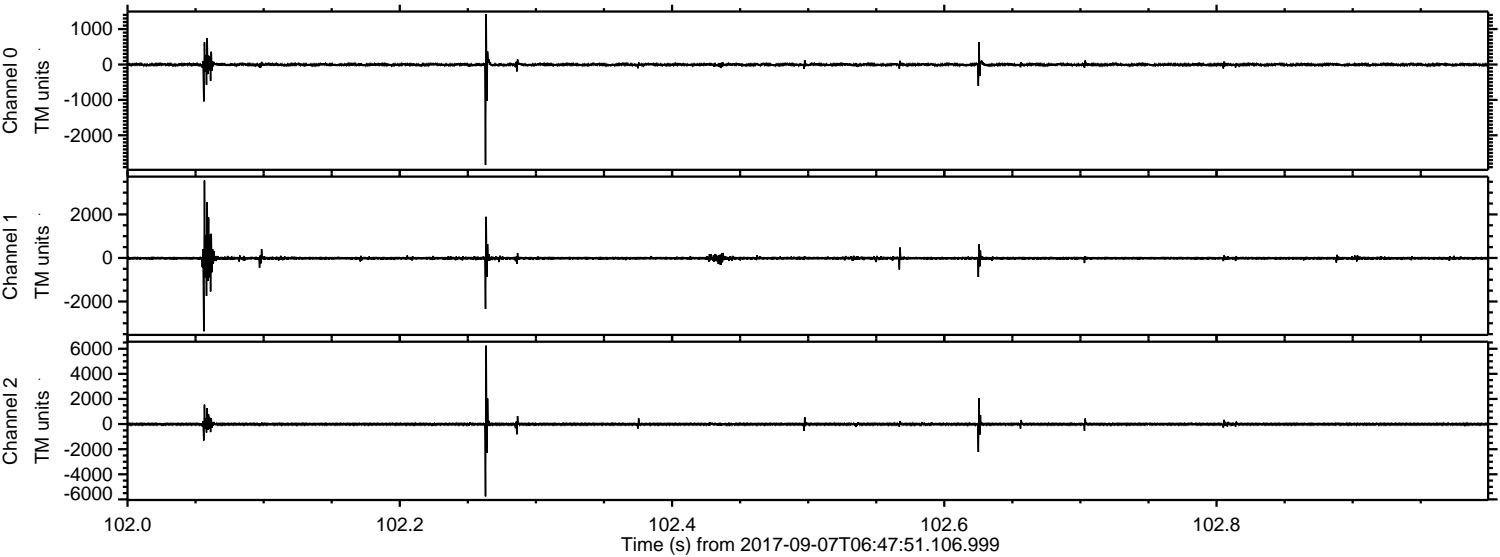
Channel 2
mn: -10507
mx: 15878
 μ : -13.5
 σ : 152.6

Processed Thu Sep 7 08:55:39 2017 by ELM ver.2012-10-06 from 001__elm20170907_064750__dat00.bin



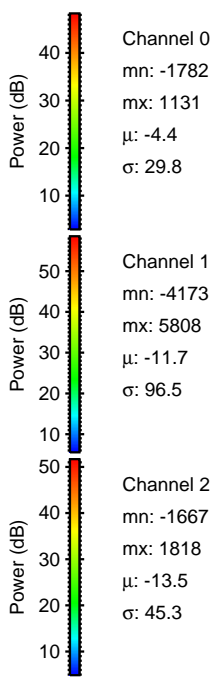
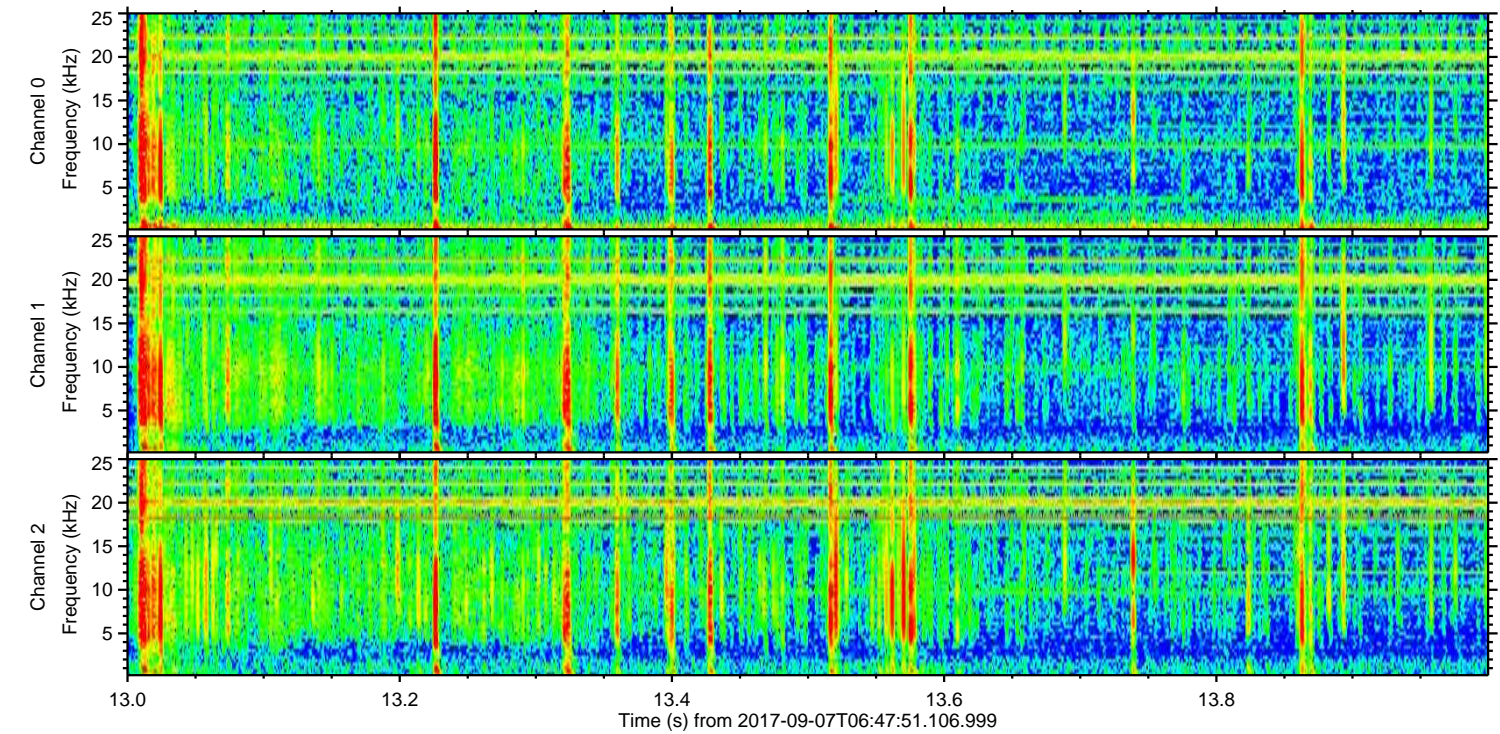
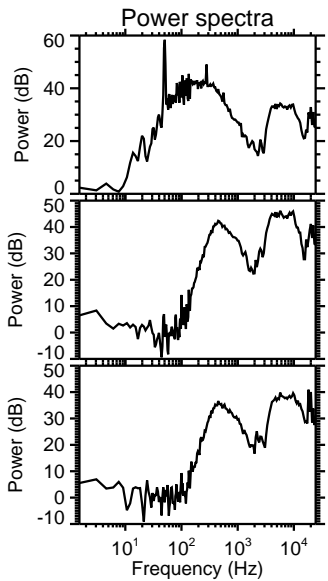
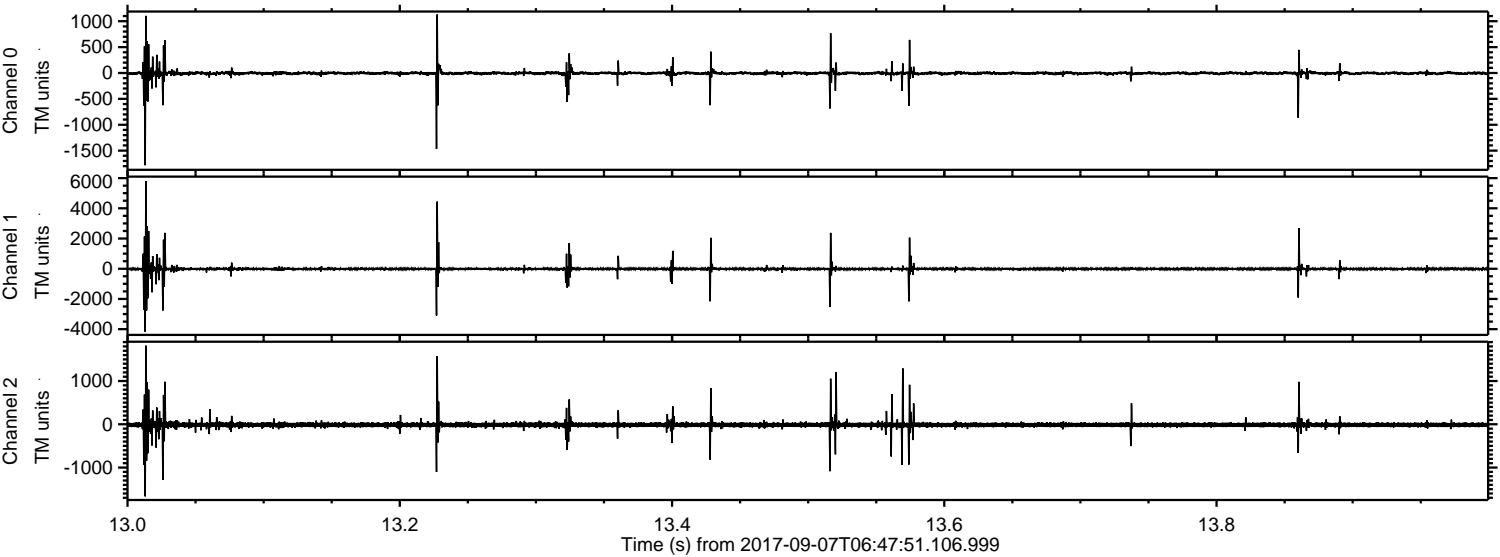
ELMAVAN 3D WAVEFORMS (Measured data sampled at 50 kHz) 51000 packets of 144 samples from 2017-09-07T06:47:51.106.999. Part 103/147

Processed Thu Sep 7 08:55:40 2017 by ELM ver.2012-10-06 from 001__elm20170907_064750__dat00.bin



ELMAVAN 3D WAVEFORMS (Measured data sampled at 50 kHz) 51000 packets of 144 samples from 2017-09-07T06:47:51.106.999. Part 14/147

Processed Thu Sep 7 08:55:40 2017 by ELM ver.2012-10-06 from 001__elm20170907_064750__dat00.bin

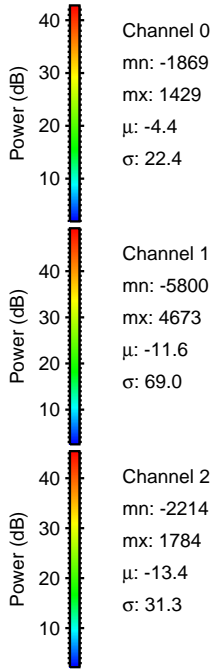
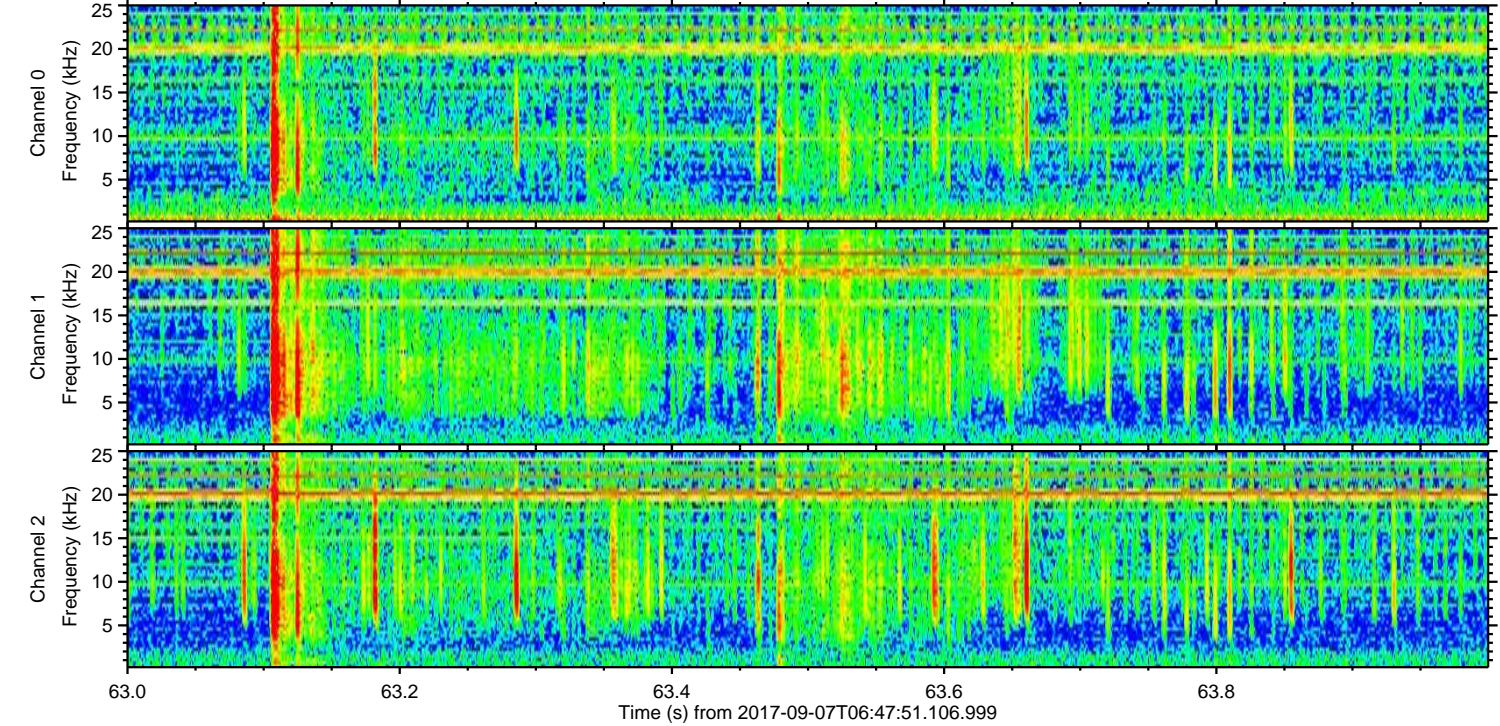
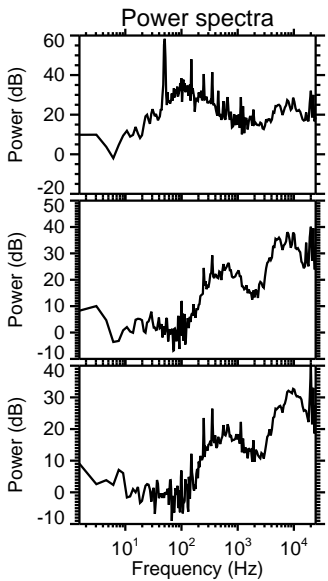
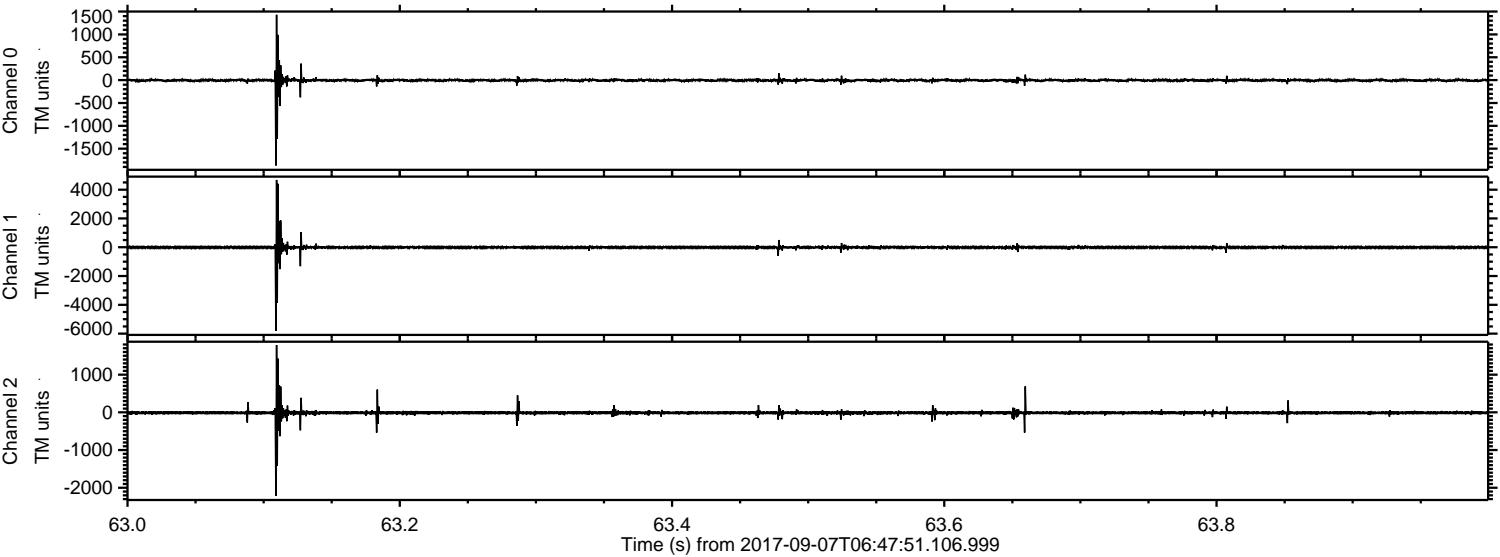


Channel 0
mn: -1782
mx: 1131
 μ : -4.4
 σ : 29.8

Channel 1
mn: -4173
mx: 5808
 μ : -11.7
 σ : 96.5

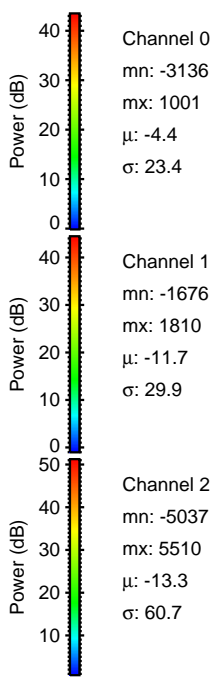
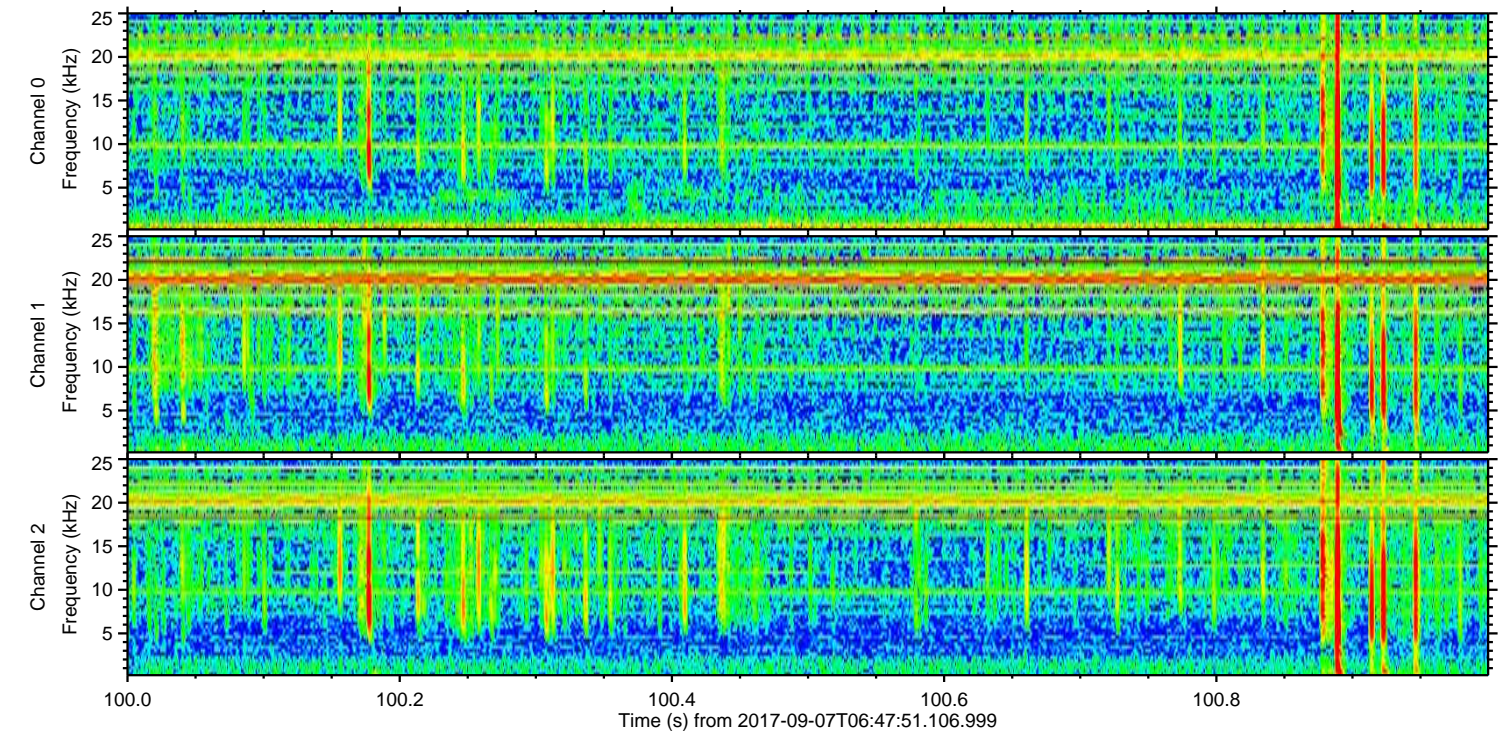
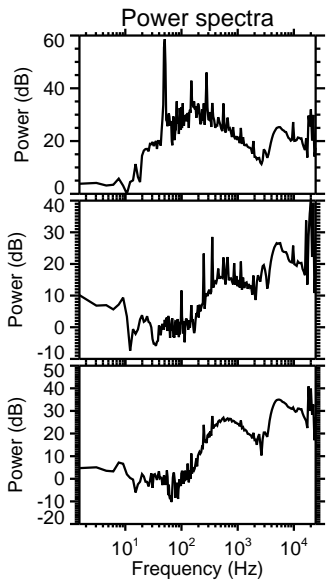
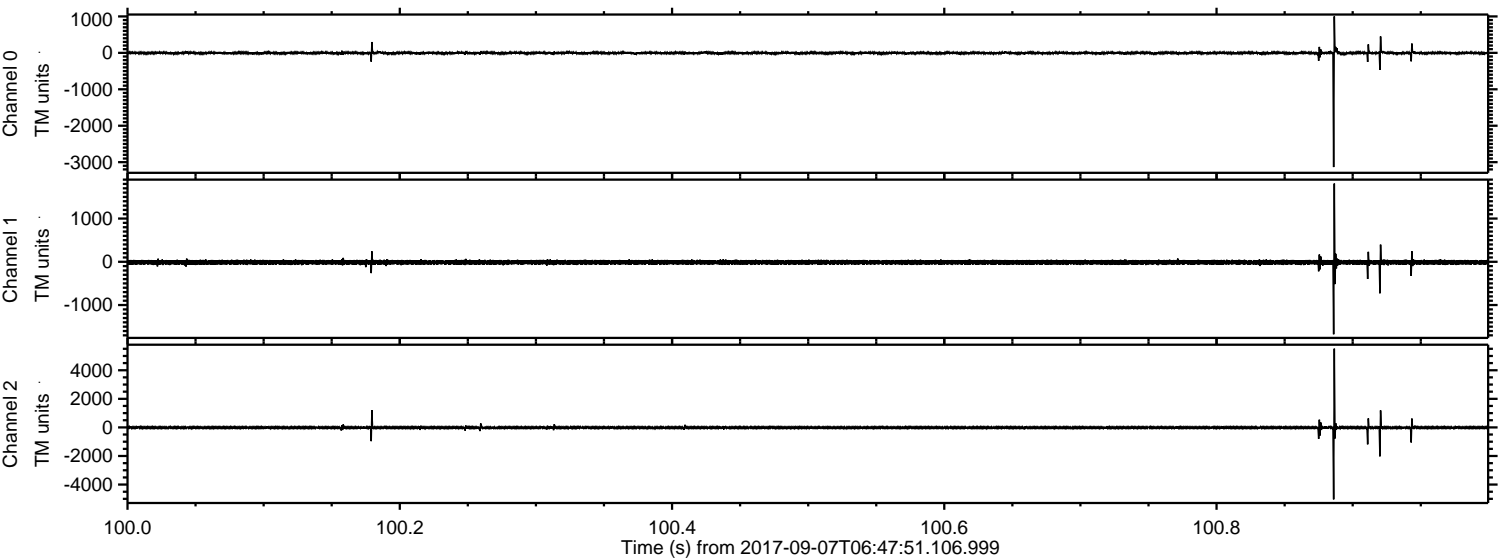
Channel 2
mn: -1667
mx: 1818
 μ : -13.5
 σ : 45.3

Processed Thu Sep 7 08:55:41 2017 by ELM ver.2012-10-06 from 001__elm20170907_064750__dat00.bin



ELMAVAN 3D WAVEFORMS (Measured data sampled at 50 kHz) 51000 packets of 144 samples from 2017-09-07T06:47:51.106.999. Part 101/147

Processed Thu Sep 7 08:55:42 2017 by ELM ver.2012-10-06 from 001__elm20170907_064750__dat00.bin



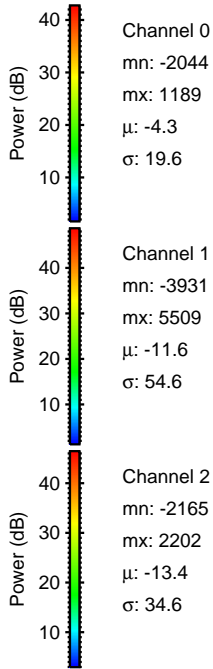
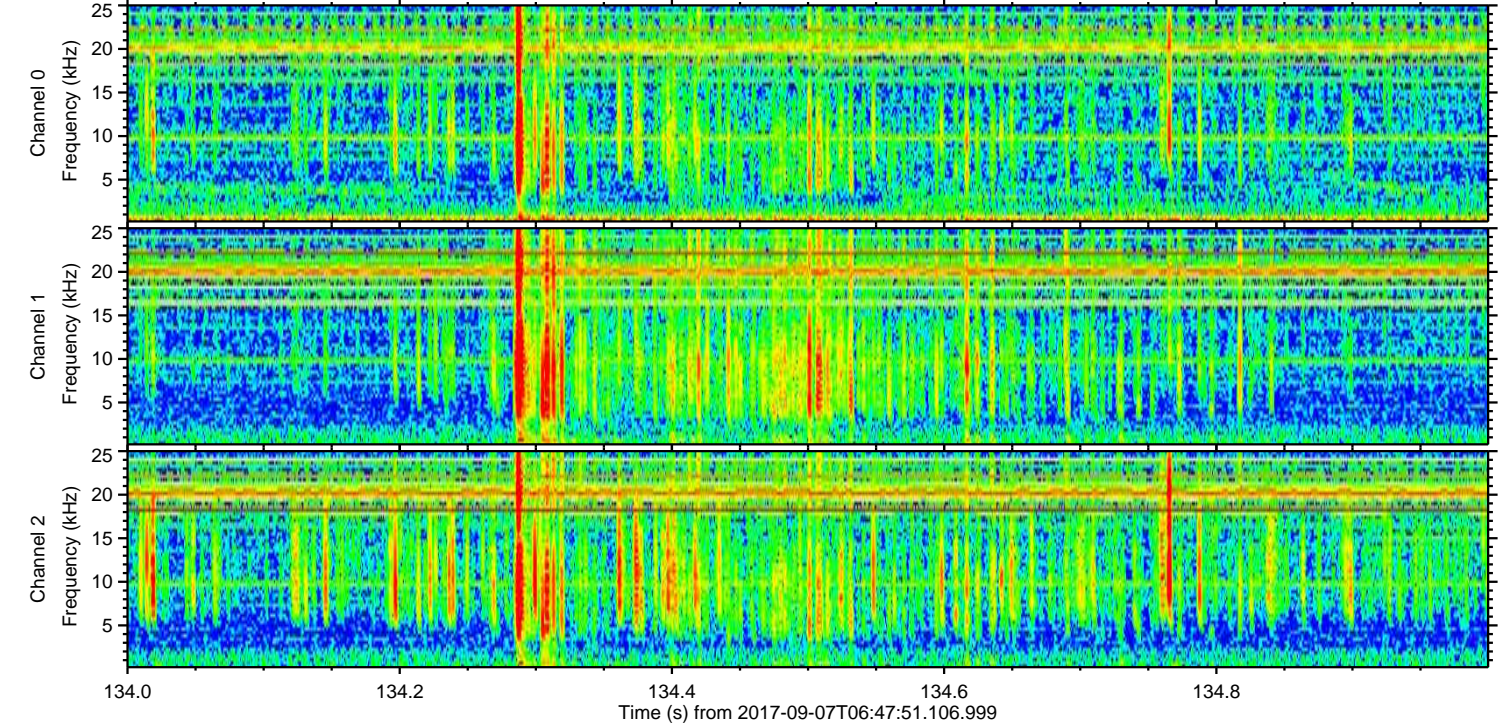
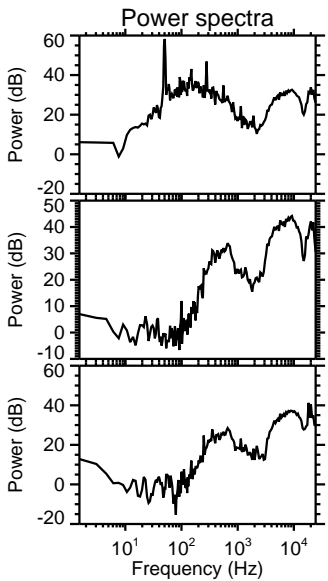
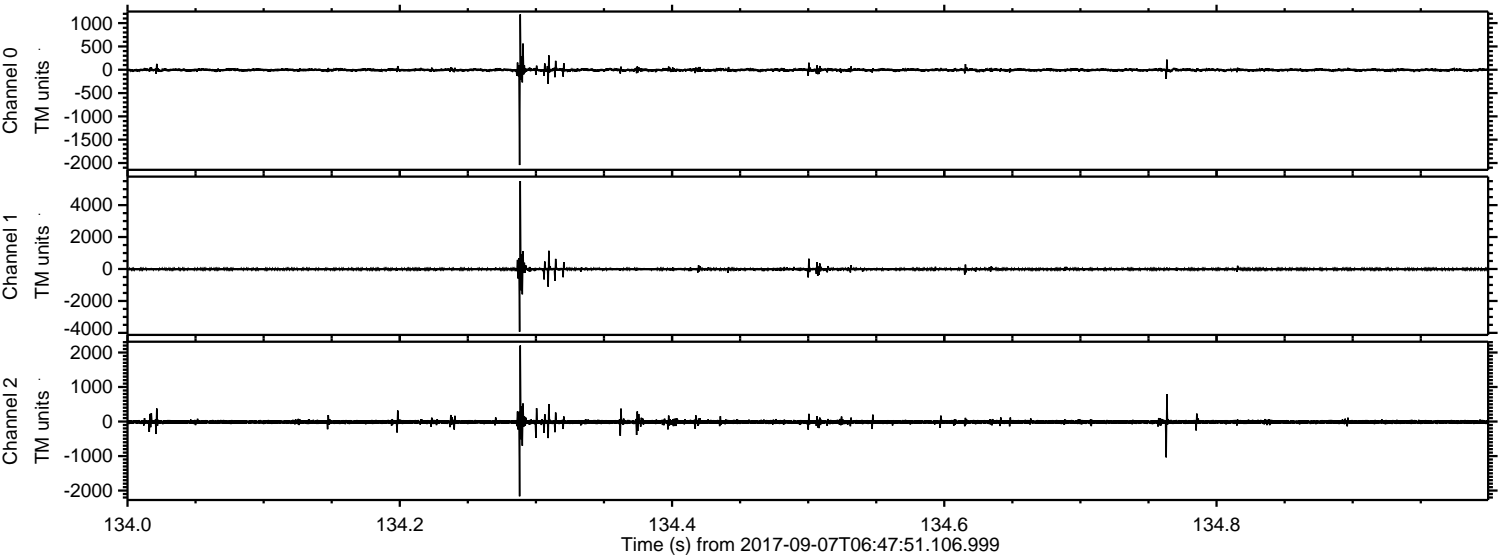
Channel 0
mn: -3136
mx: 1001
 μ : -4.4
 σ : 23.4

Channel 1
mn: -1676
mx: 1810
 μ : -11.7
 σ : 29.9

Channel 2
mn: -5037
mx: 5510
 μ : -13.3
 σ : 60.7

ELMAVAN 3D WAVEFORMS (Measured data sampled at 50 kHz) 51000 packets of 144 samples from 2017-09-07T06:47:51.106.999. Part 135/147

Processed Thu Sep 7 08:55:42 2017 by ELM ver.2012-10-06 from 001__elm20170907_064750__dat00.bin



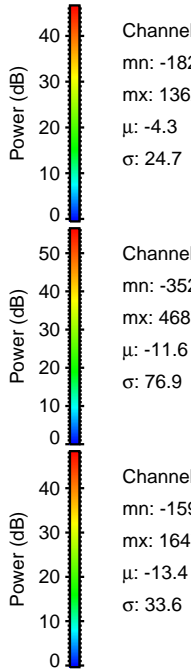
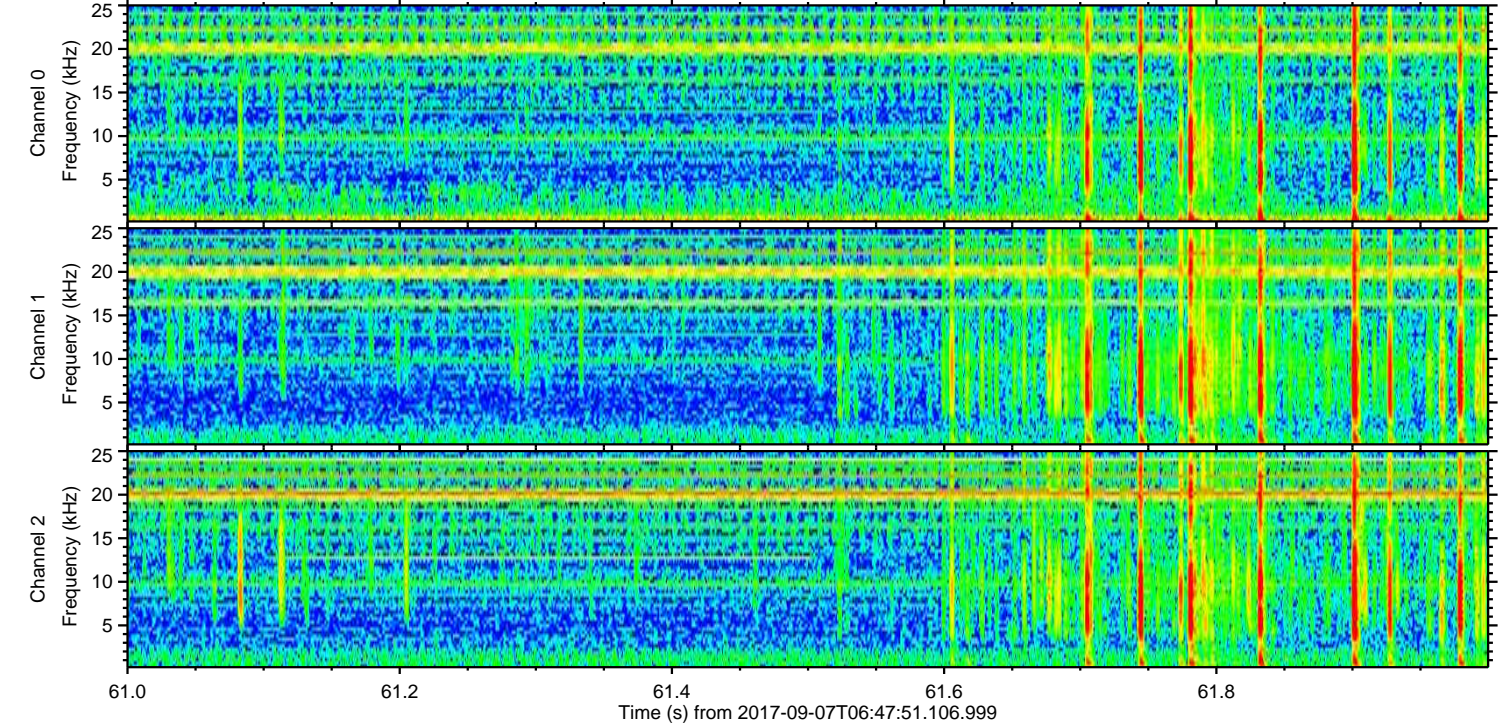
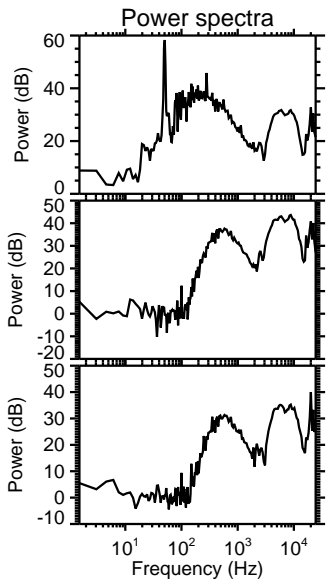
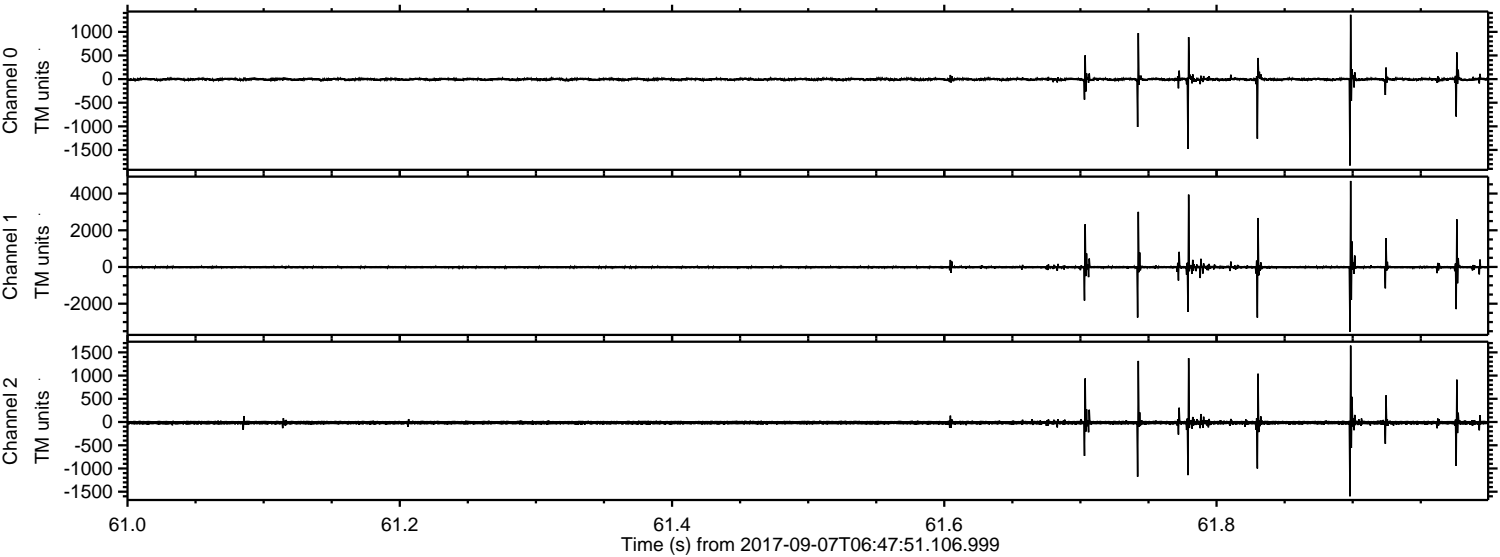
Channel 0
mn: -2044
mx: 1189
 μ : -4.3
 σ : 19.6

Channel 1
mn: -3931
mx: 5509
 μ : -11.6
 σ : 54.6

Channel 2
mn: -2165
mx: 2202
 μ : -13.4
 σ : 34.6

ELMAVAN 3D WAVEFORMS (Measured data sampled at 50 kHz) 51000 packets of 144 samples from 2017-09-07T06:47:51.106.999. Part 62/147

Processed Thu Sep 7 08:55:43 2017 by ELM ver.2012-10-06 from 001__elm20170907_064750__dat00.bin



Channel 0
mn: -1829
mx: 1362
 μ : -4.3
 σ : 24.7

Channel 1
mn: -3524
mx: 4687
 μ : -11.6
 σ : 76.9

Channel 2
mn: -1599
mx: 1647
 μ : -13.4
 σ : 33.6

Processed Thu Sep 7 08:55:44 2017 by ELM ver.2012-10-06 from 001__elm20170907_064750__dat00.bin

