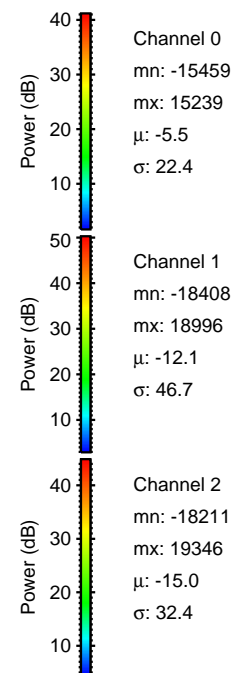
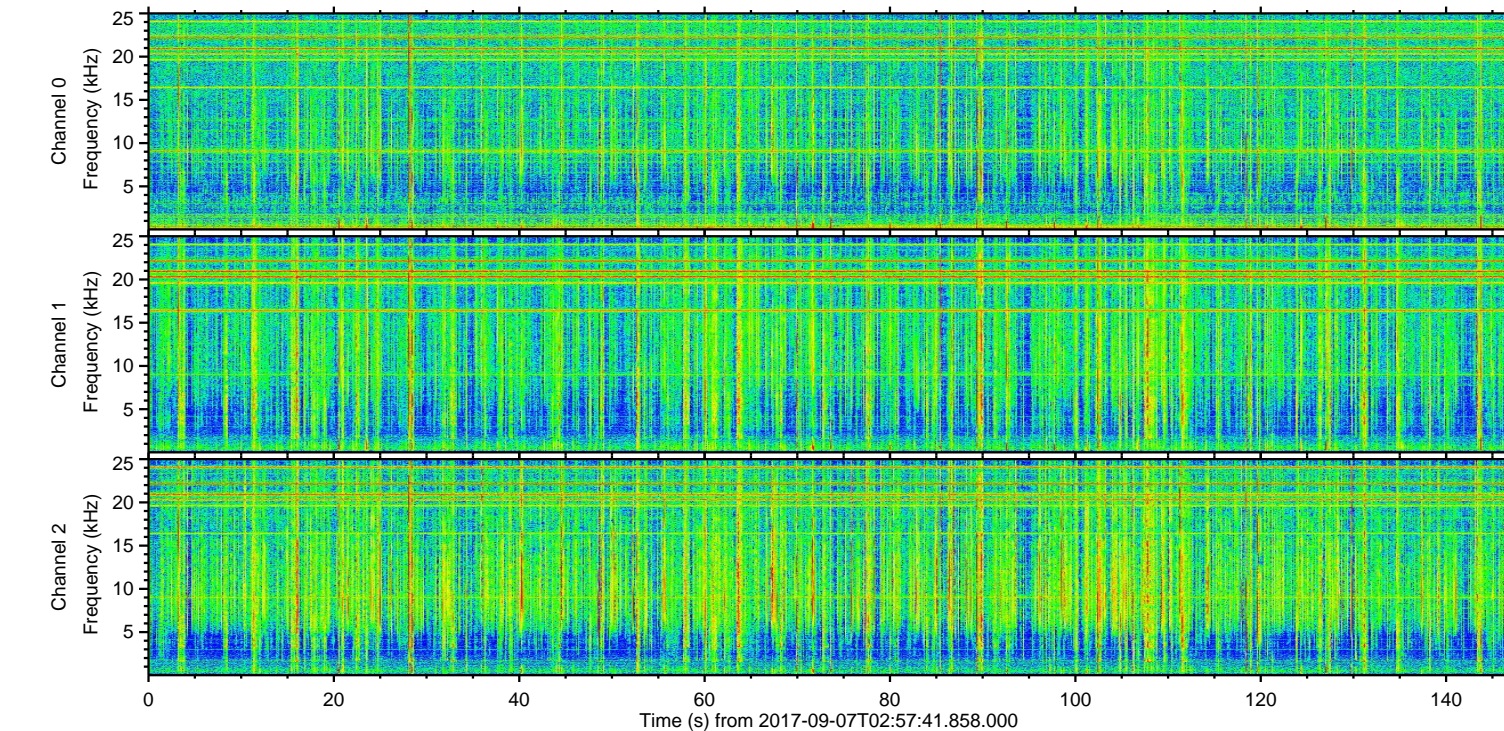
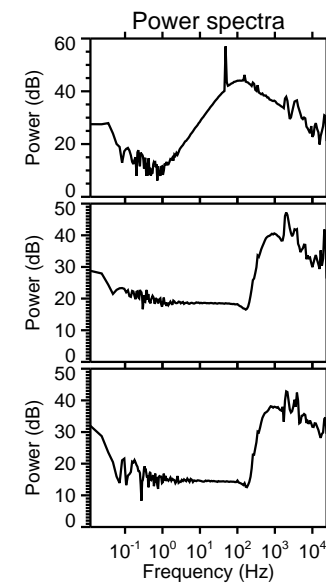
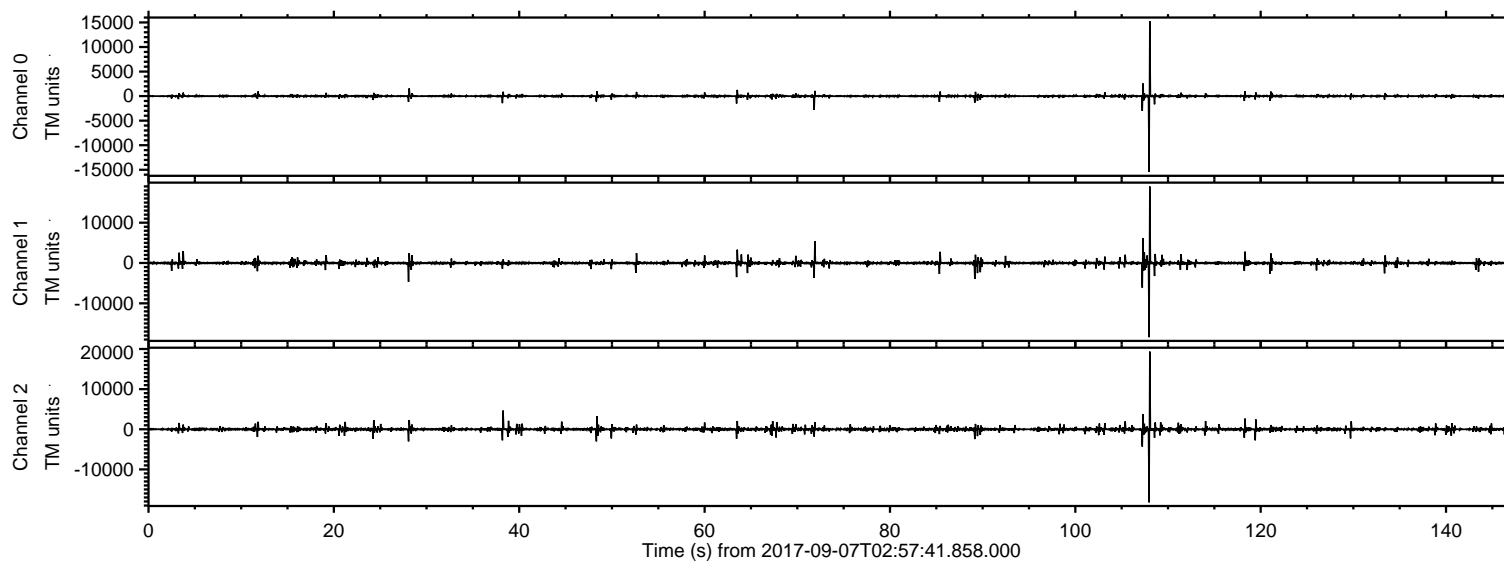


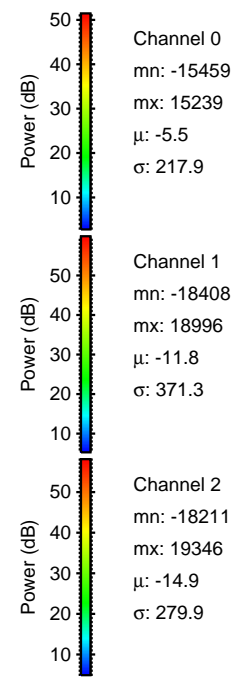
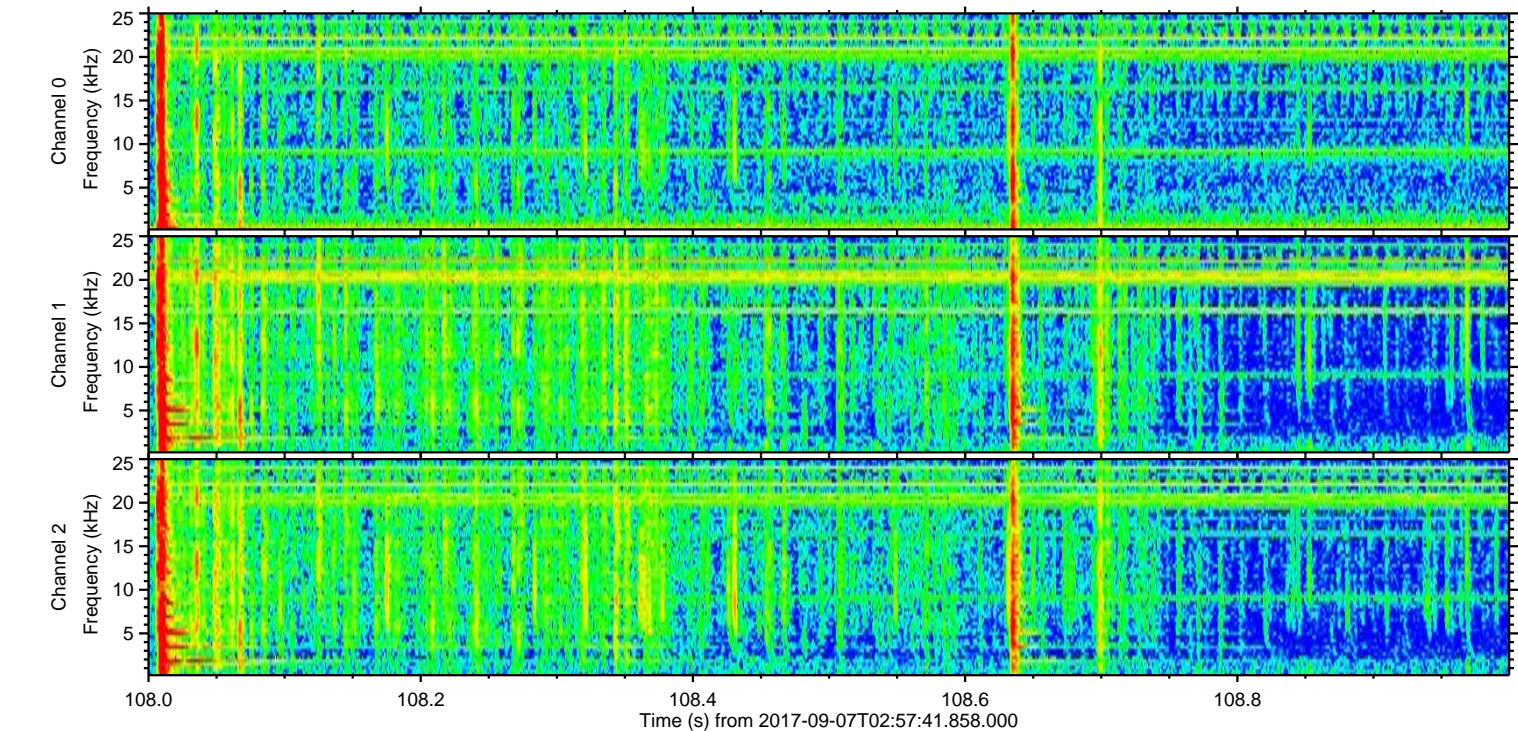
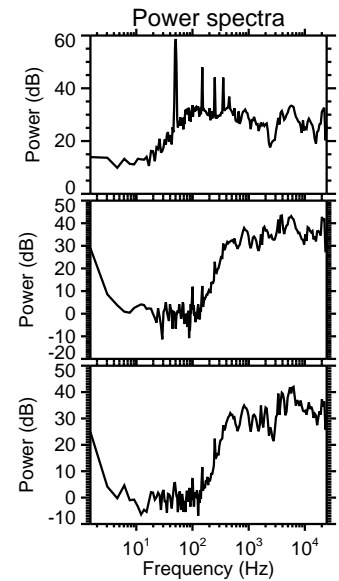
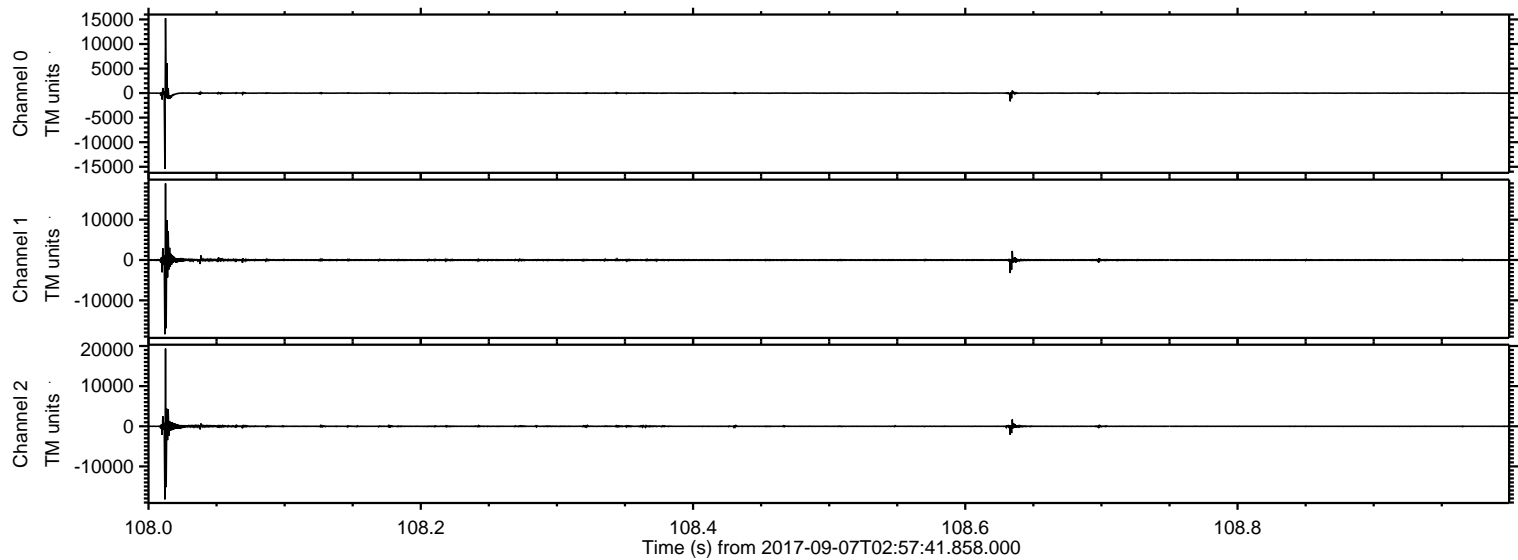
ELMAVAN 3D WAVEFORMS (Measured data sampled at 50 kHz) 51000 packets of 144 samples from 2017-09-07T02:57:41.858.000.

Processed Thu Sep 7 05:06:07 2017 by ELM ver.2012-10-06 from 001__elm20170907_025740__dat00.bin



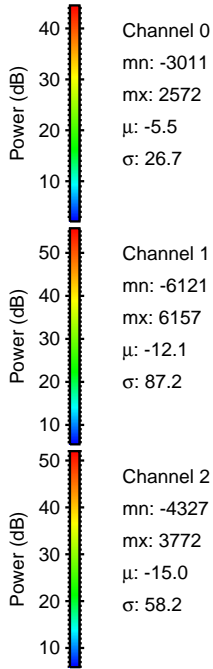
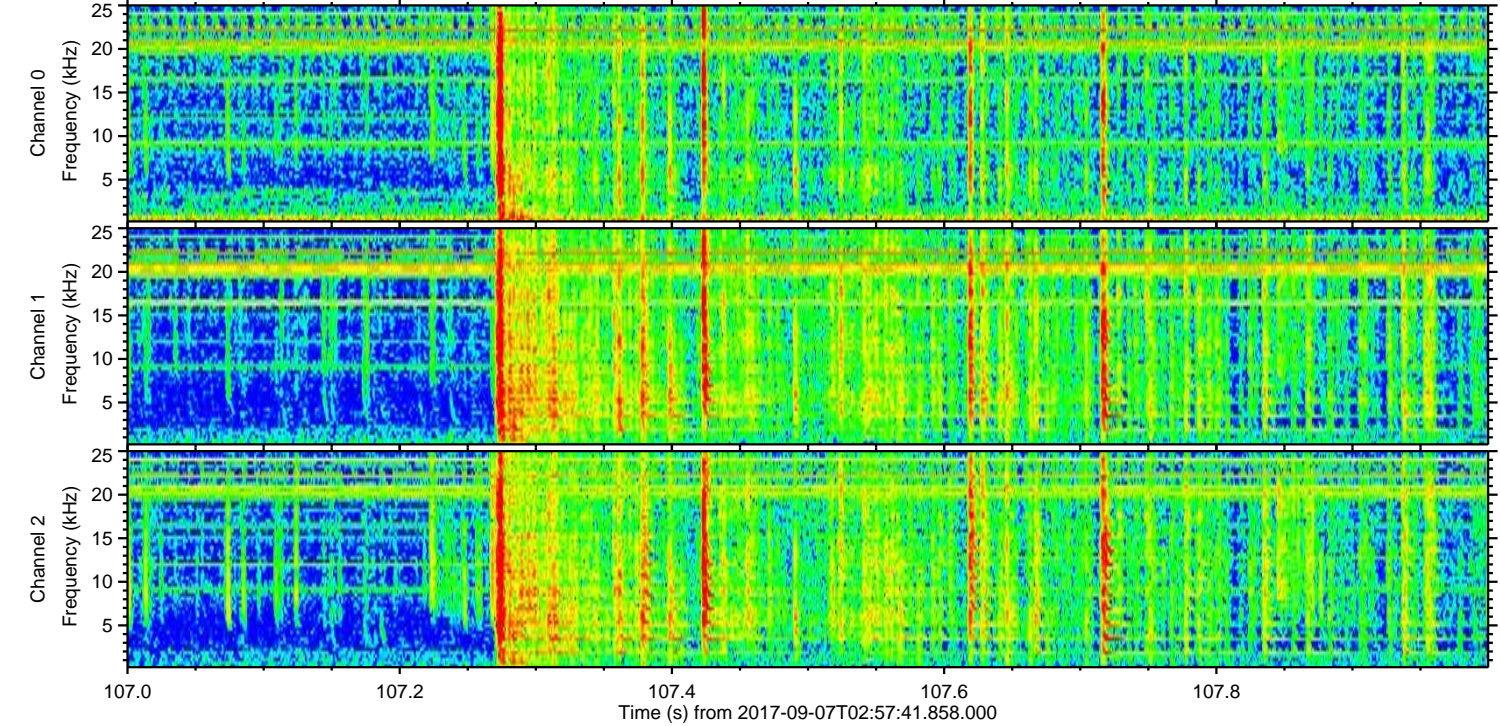
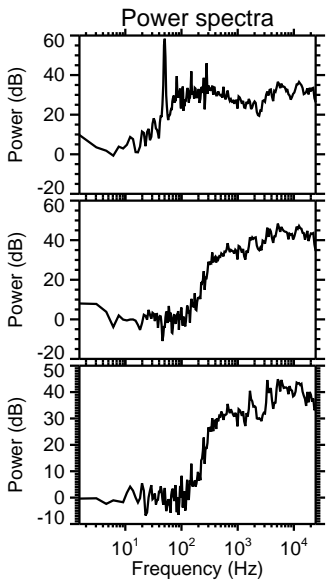
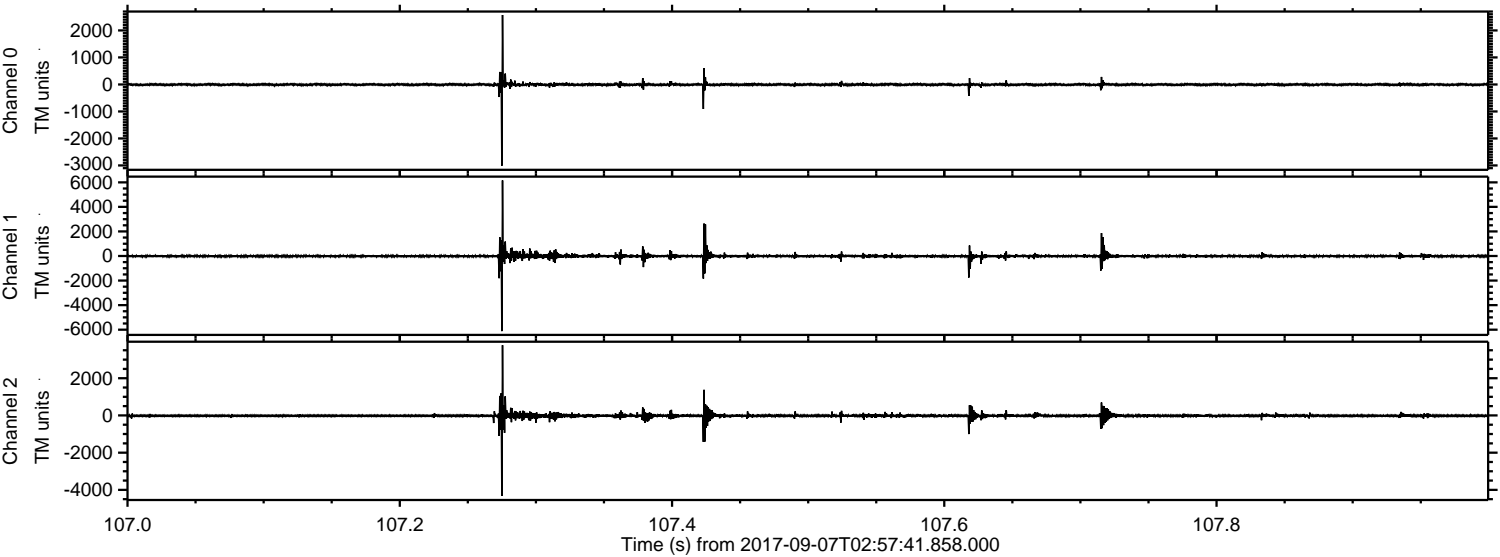
ELMAVAN 3D WAVEFORMS (Measured data sampled at 50 kHz) 51000 packets of 144 samples from 2017-09-07T02:57:41.858.000. Part 109/147

Processed Thu Sep 7 05:06:15 2017 by ELM ver.2012-10-06 from 001__elm20170907_025740__dat00.bin

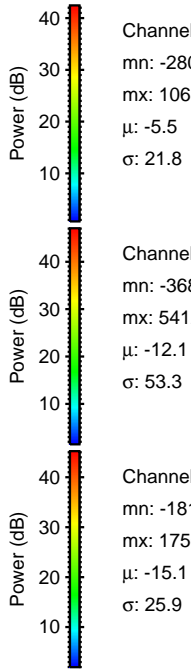
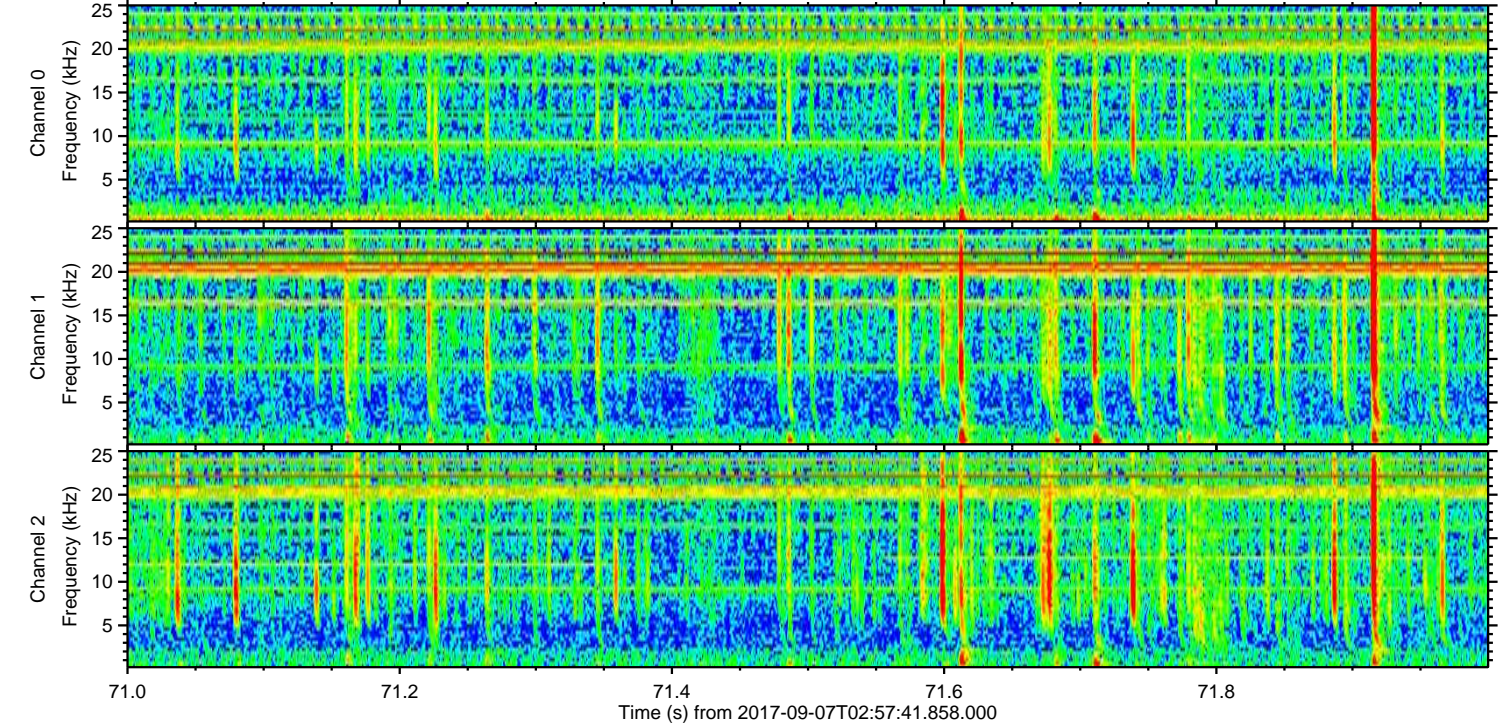
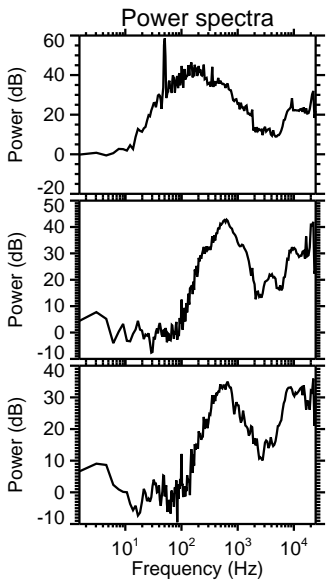
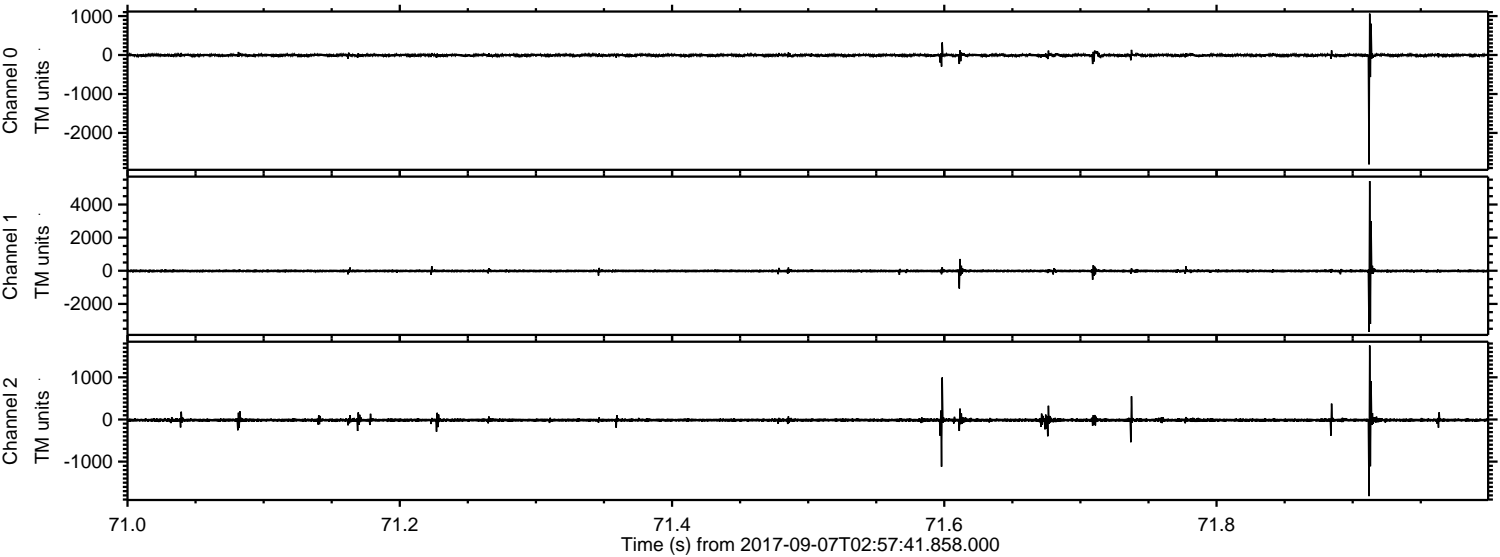


ELMAVAN 3D WAVEFORMS (Measured data sampled at 50 kHz) 51000 packets of 144 samples from 2017-09-07T02:57:41.858.000. Part 108/147

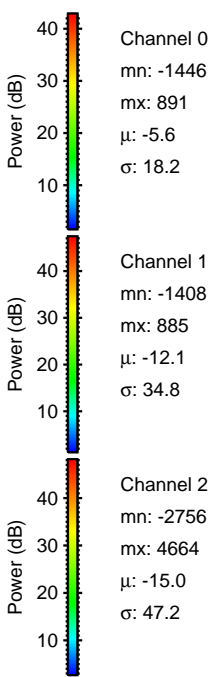
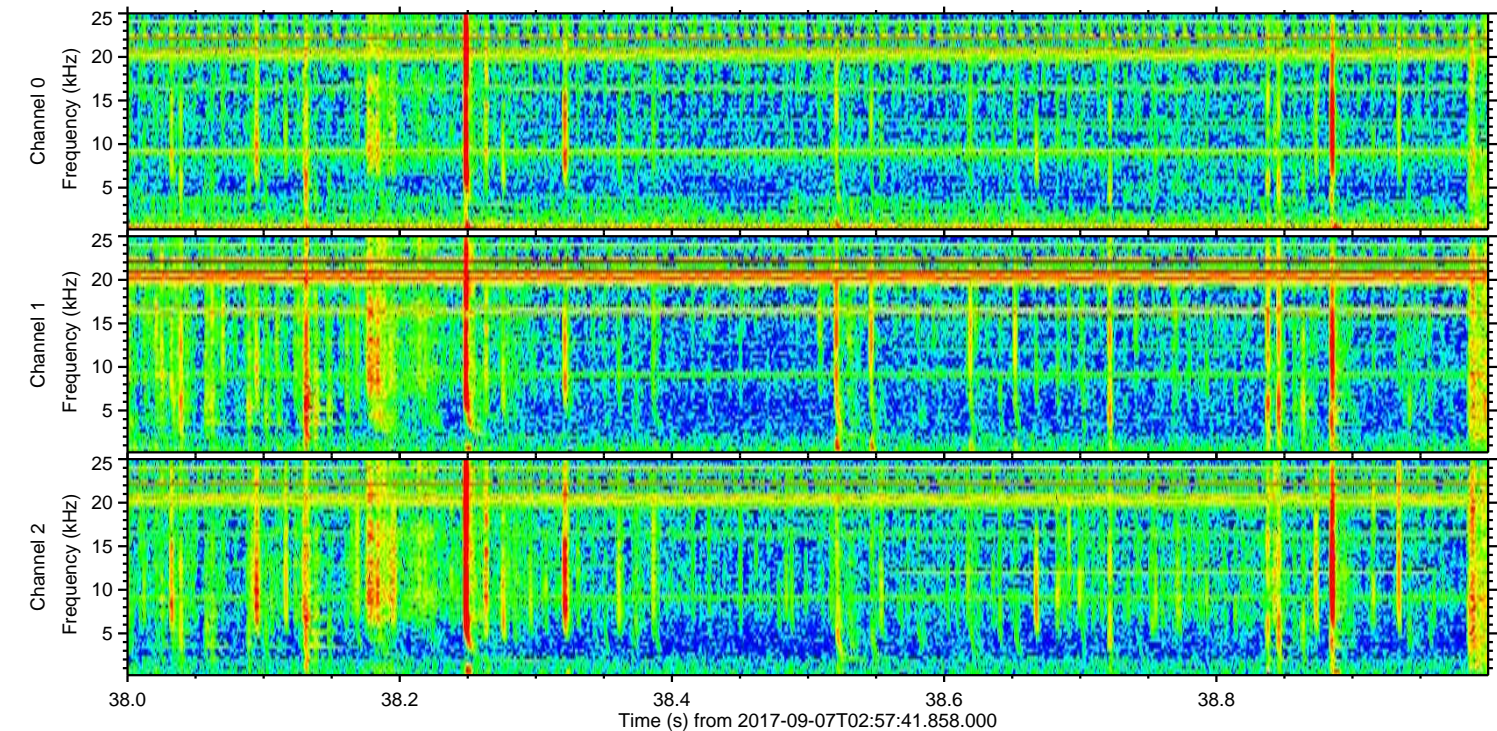
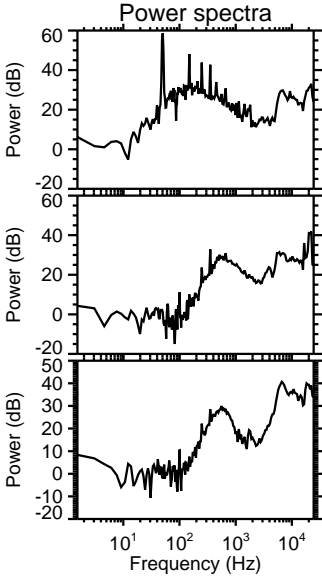
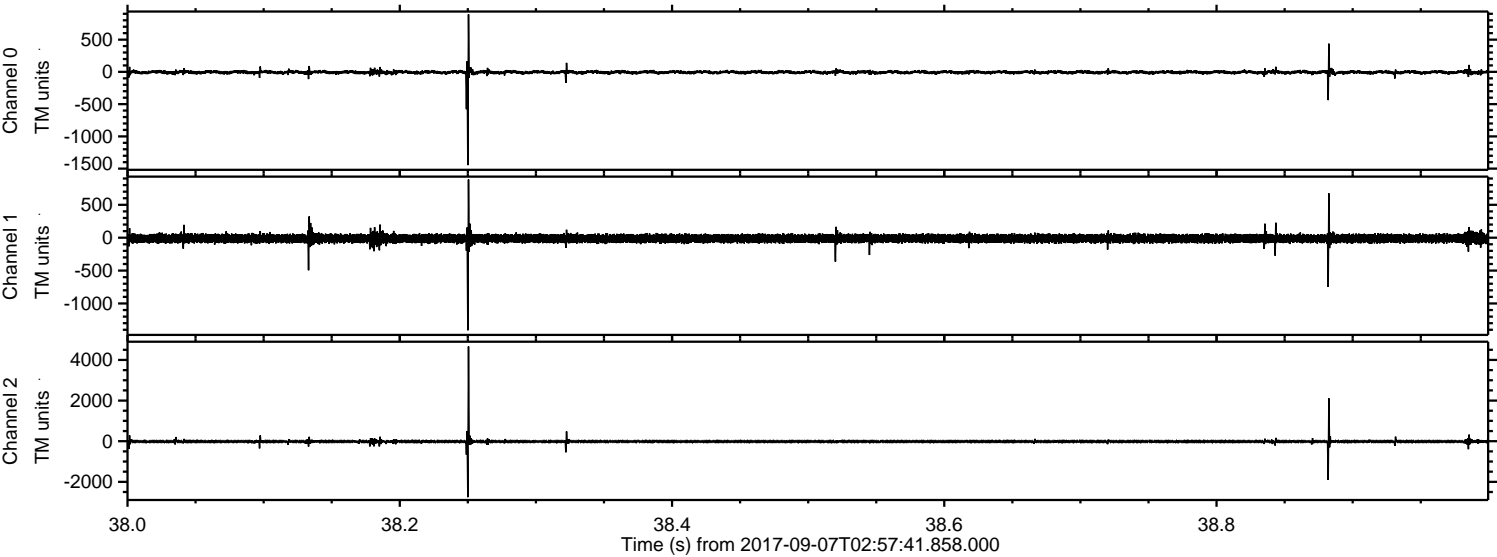
Processed Thu Sep 7 05:06:16 2017 by ELM ver.2012-10-06 from 001__elm20170907_025740__dat00.bin



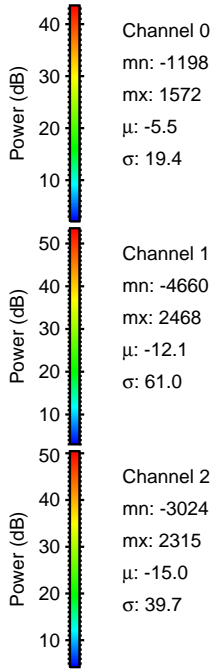
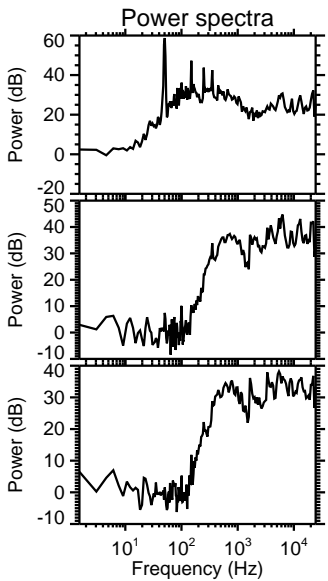
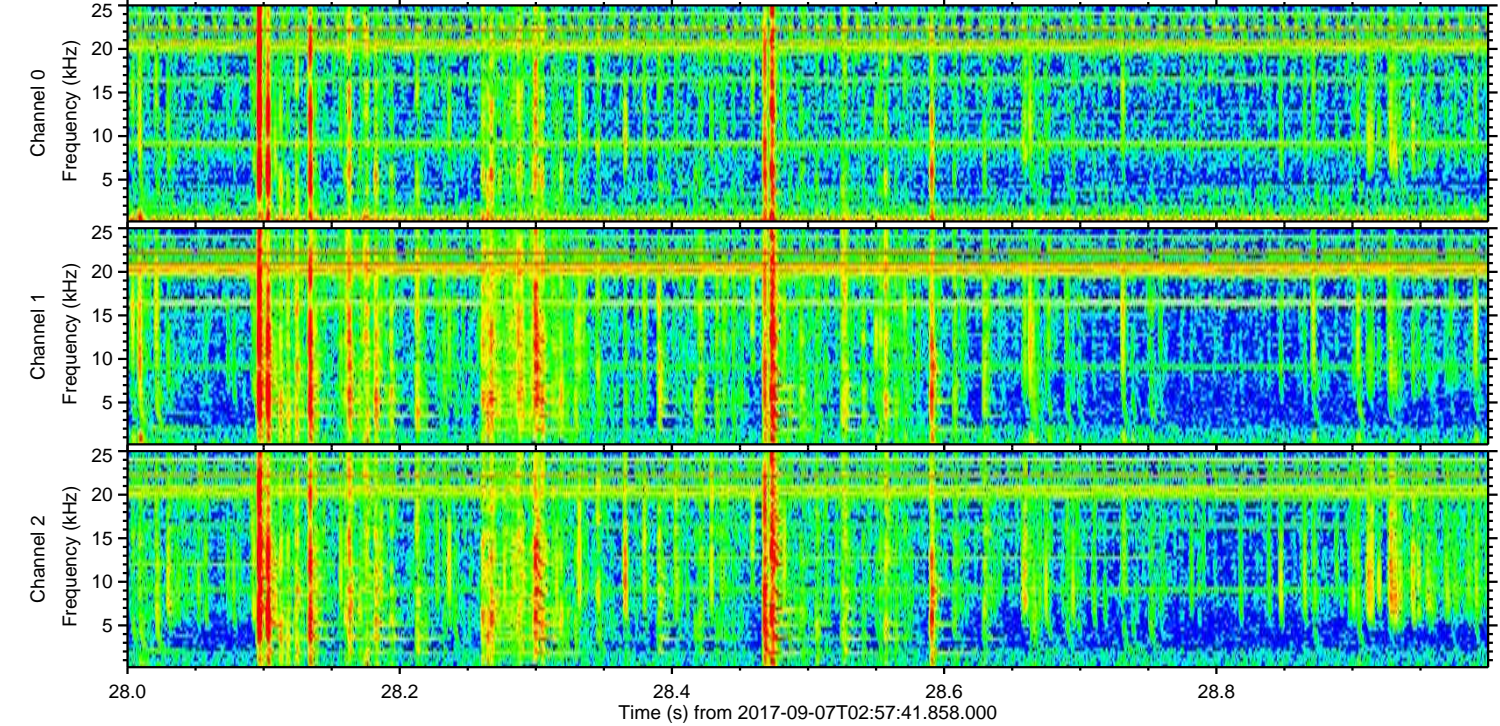
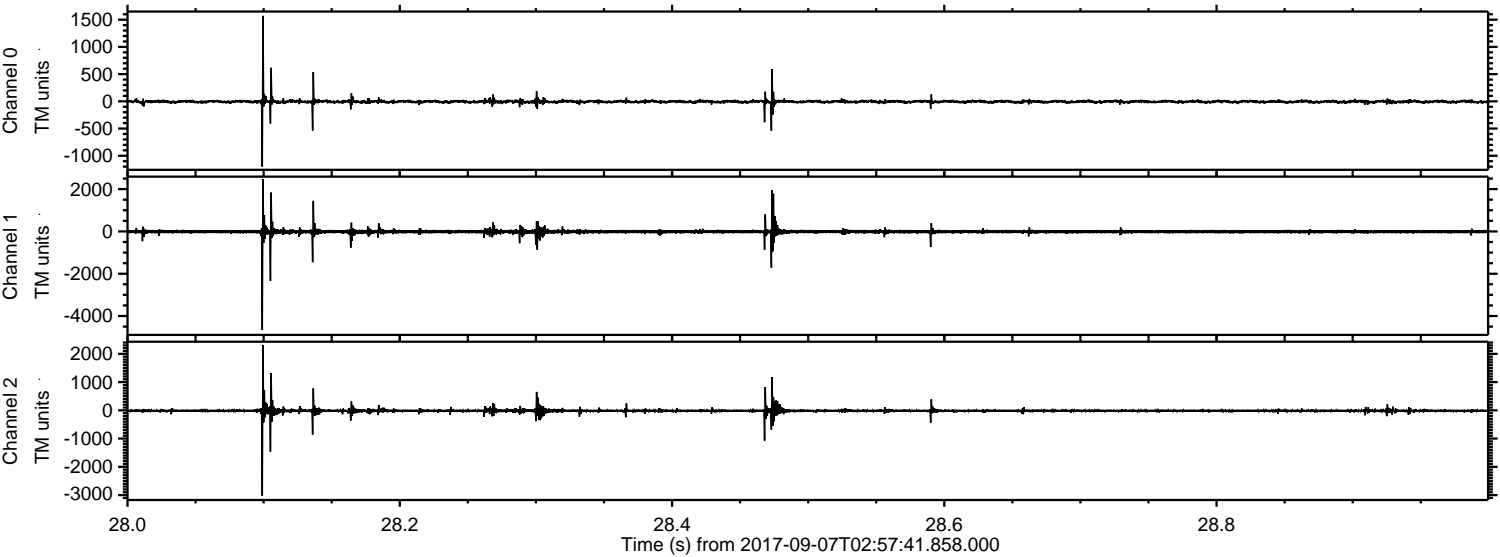
Processed Thu Sep 7 05:06:17 2017 by ELM ver.2012-10-06 from 001__elm20170907_025740__dat00.bin



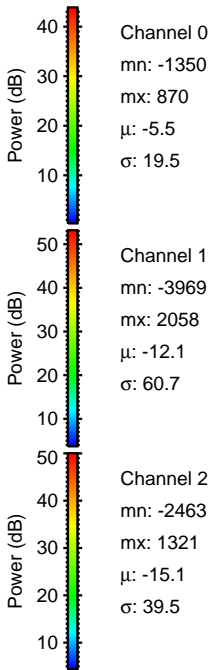
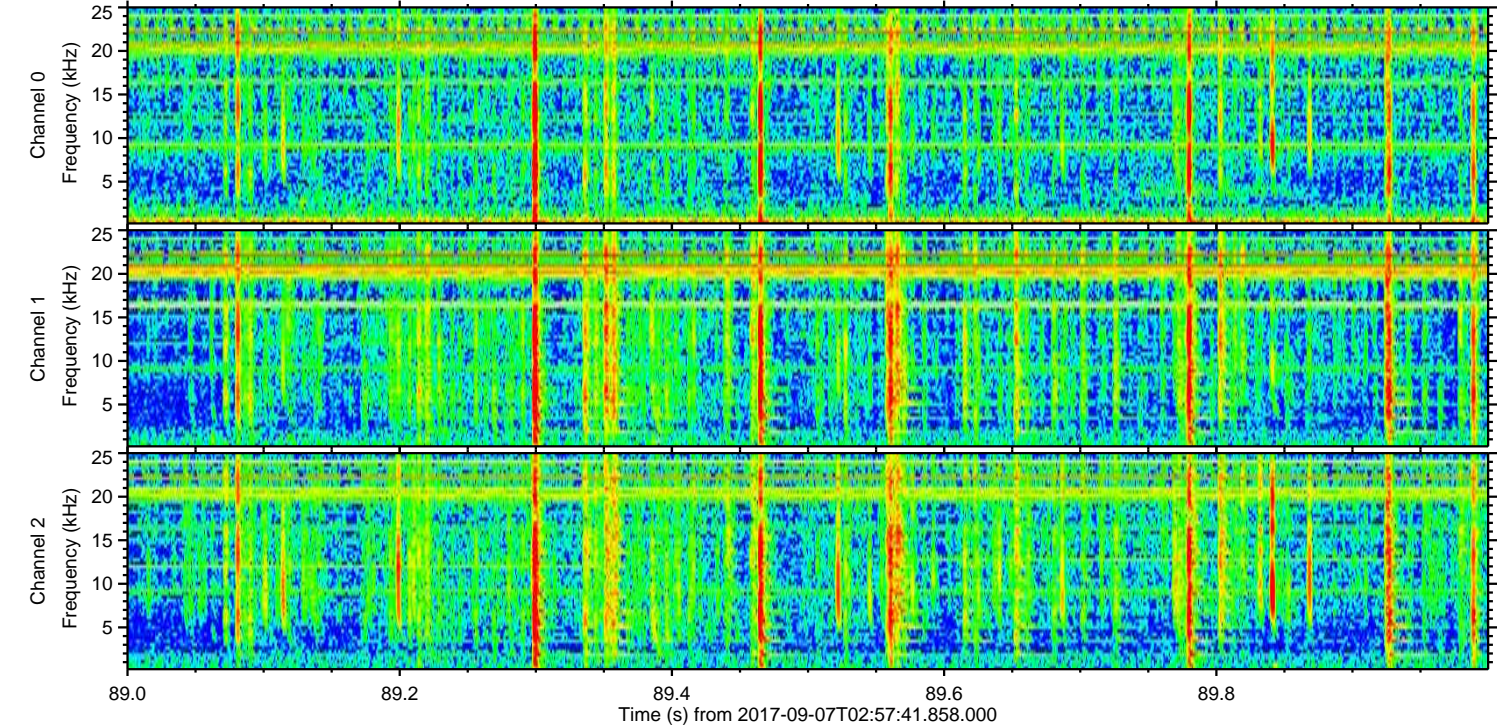
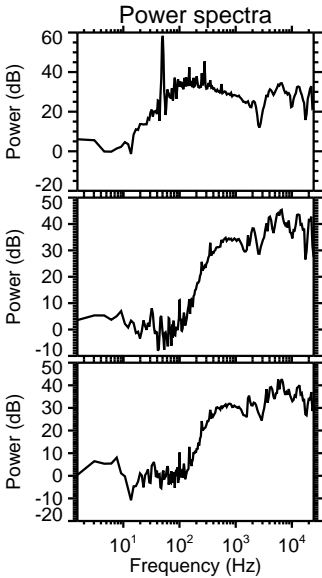
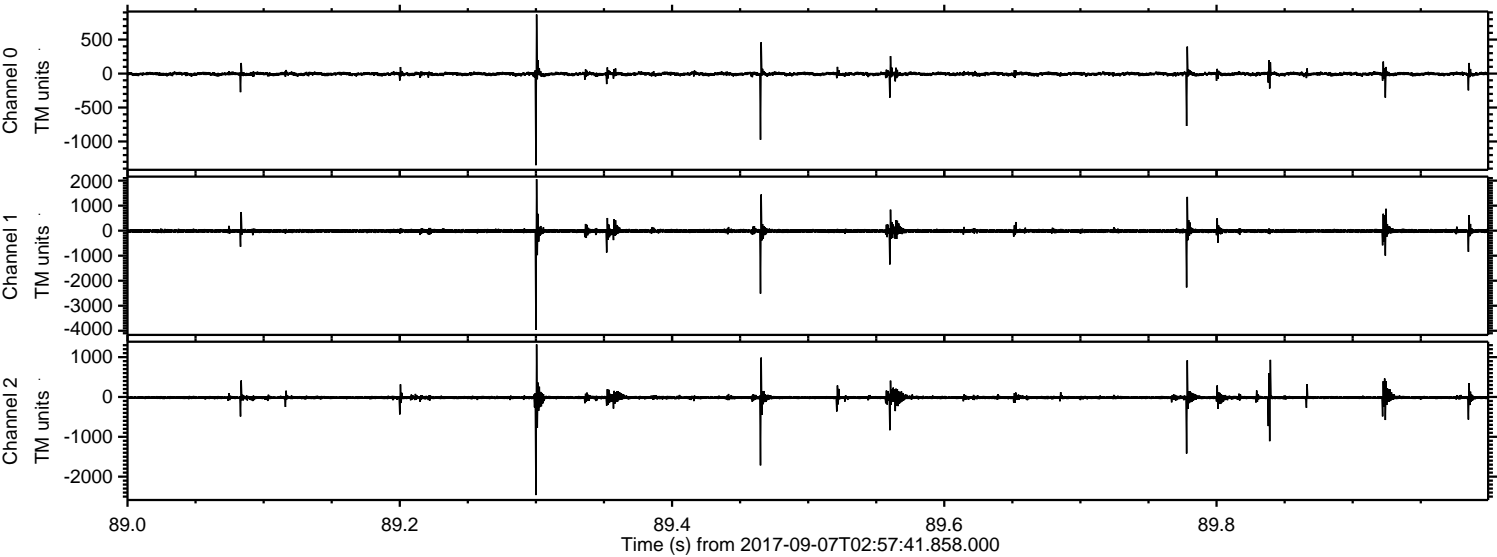
Processed Thu Sep 7 05:06:18 2017 by ELM ver.2012-10-06 from 001__elm20170907_025740__dat00.bin



Processed Thu Sep 7 05:06:19 2017 by ELM ver.2012-10-06 from 001__elm20170907_025740__dat00.bin

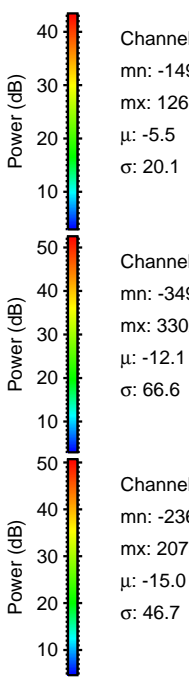
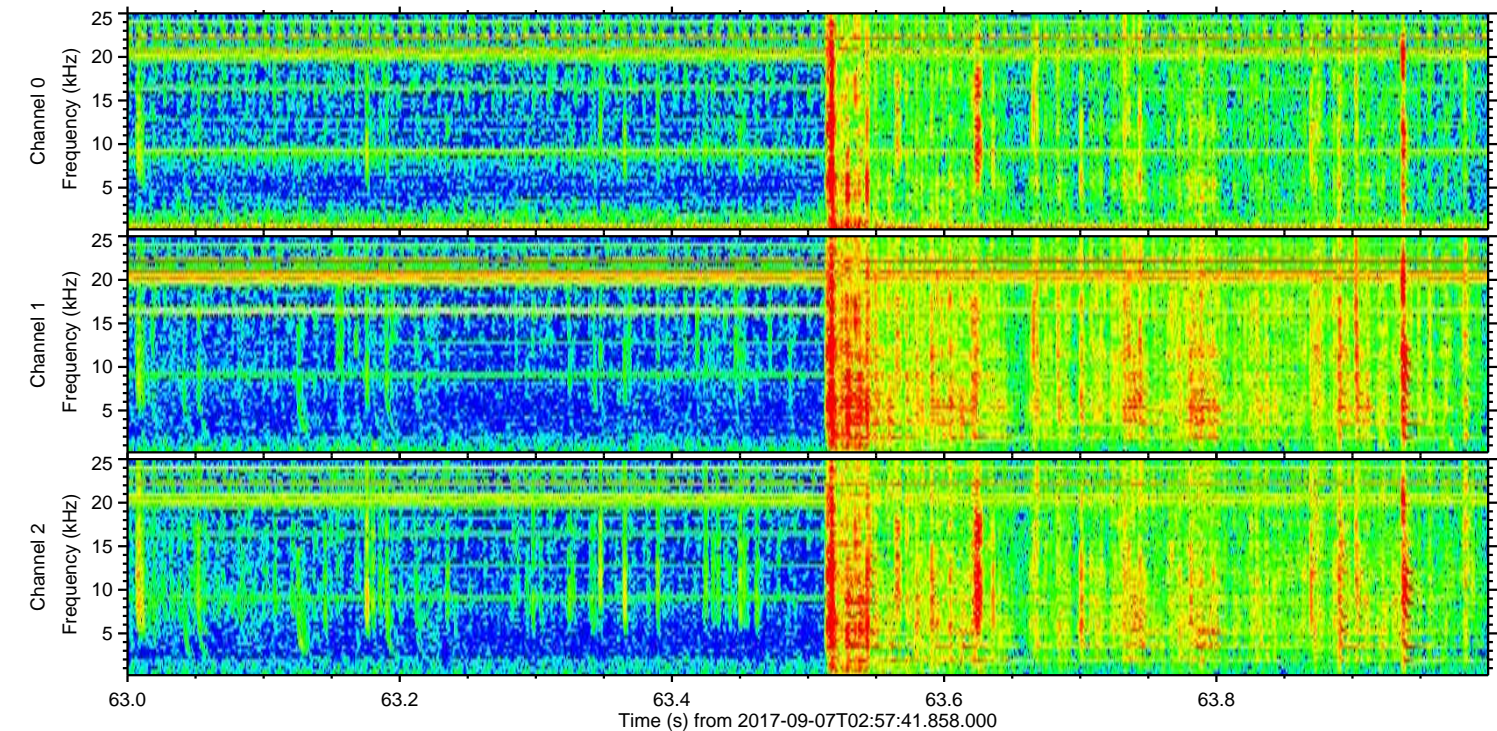
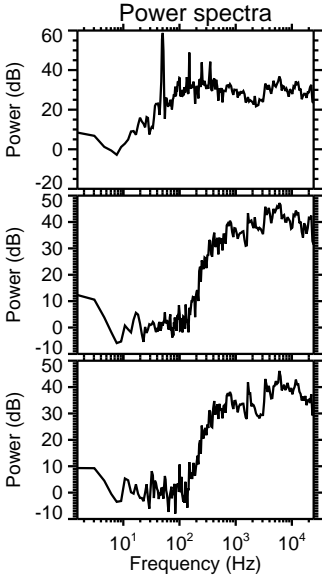
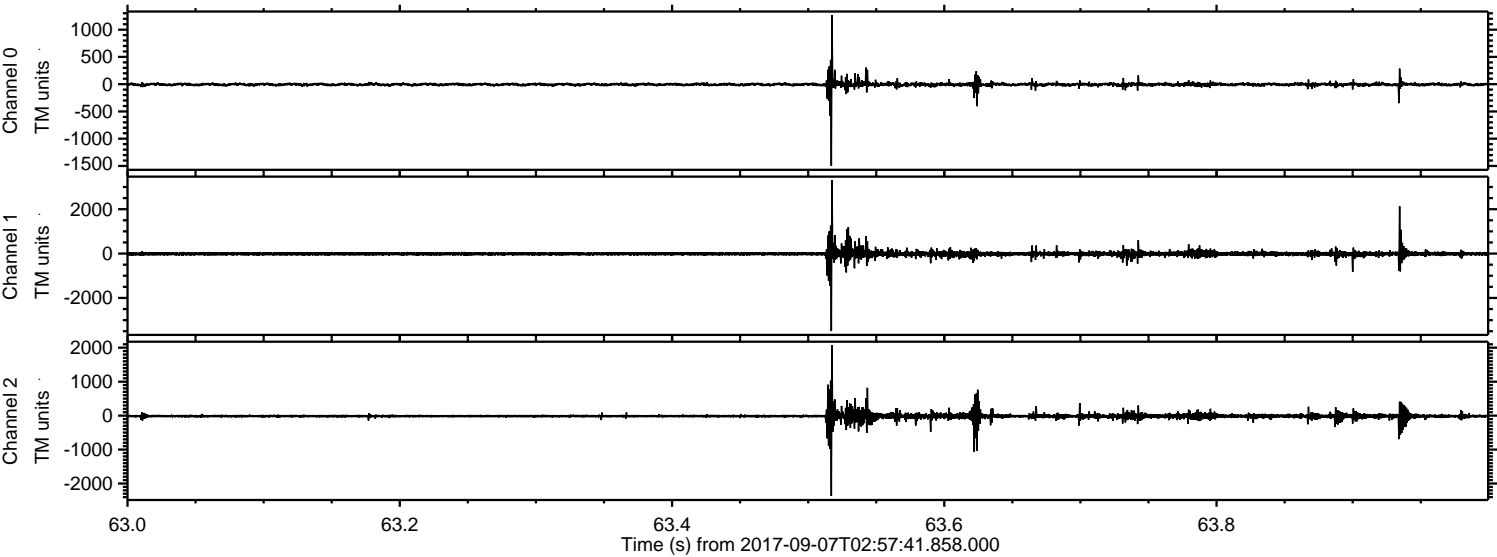


Processed Thu Sep 7 05:06:19 2017 by ELM ver.2012-10-06 from 001__elm20170907_025740__dat00.bin



ELMAVAN 3D WAVEFORMS (Measured data sampled at 50 kHz) 51000 packets of 144 samples from 2017-09-07T02:57:41.858.000. Part 64/147

Processed Thu Sep 7 05:06:20 2017 by ELM ver.2012-10-06 from 001__elm20170907_025740__dat00.bin

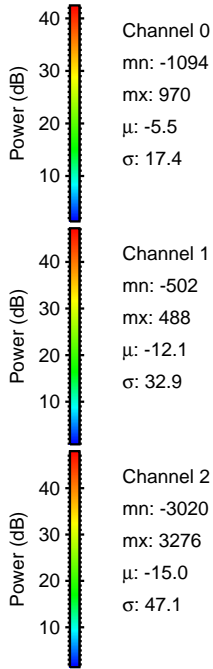
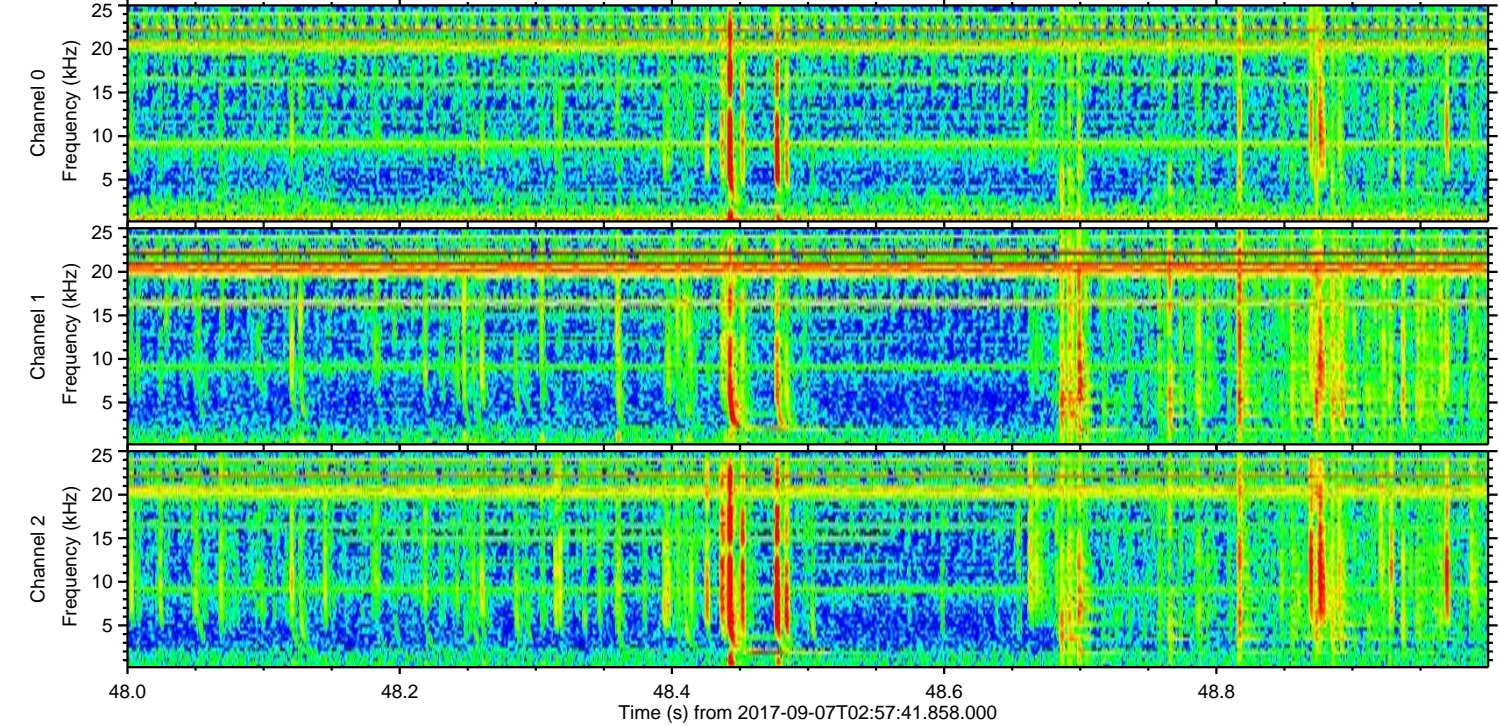
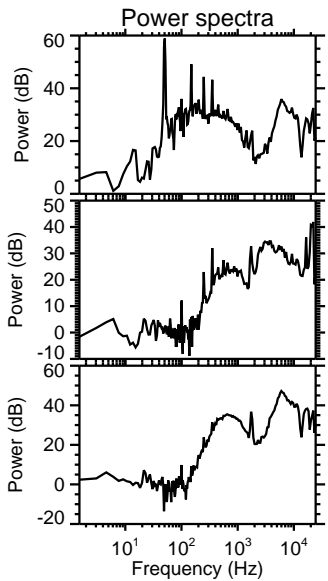
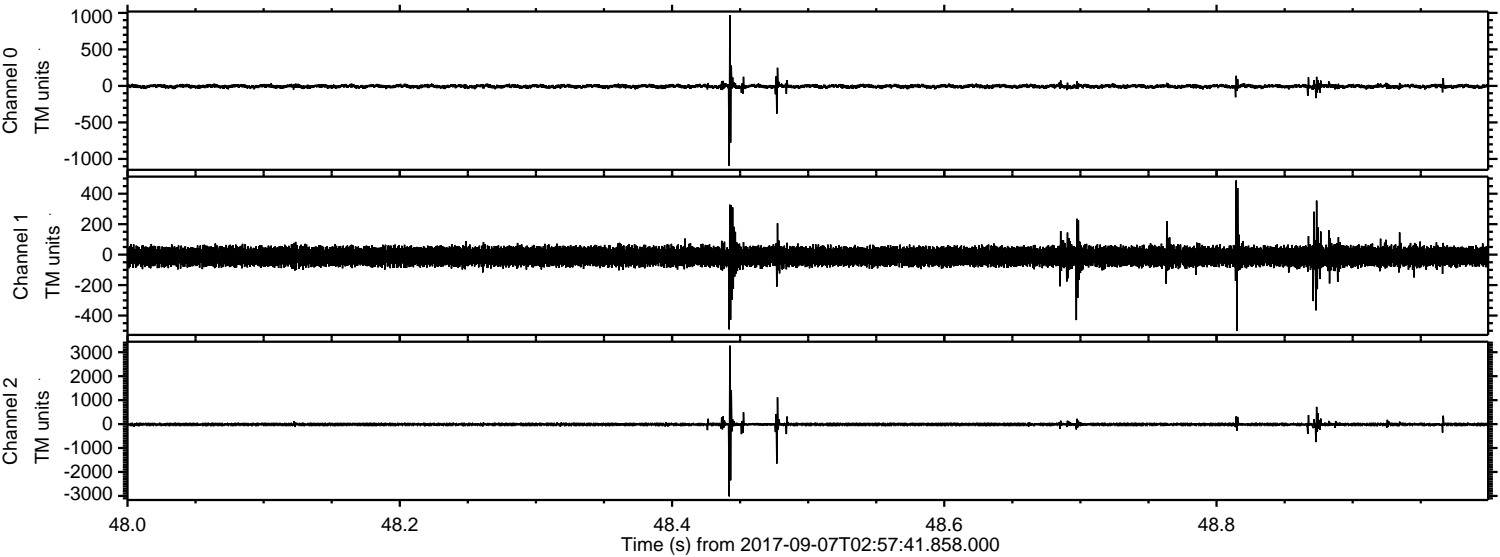


Channel 0
mn: -1496
mx: 1269
 μ : -5.5
 σ : 20.1

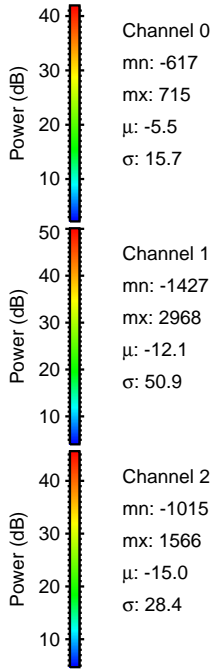
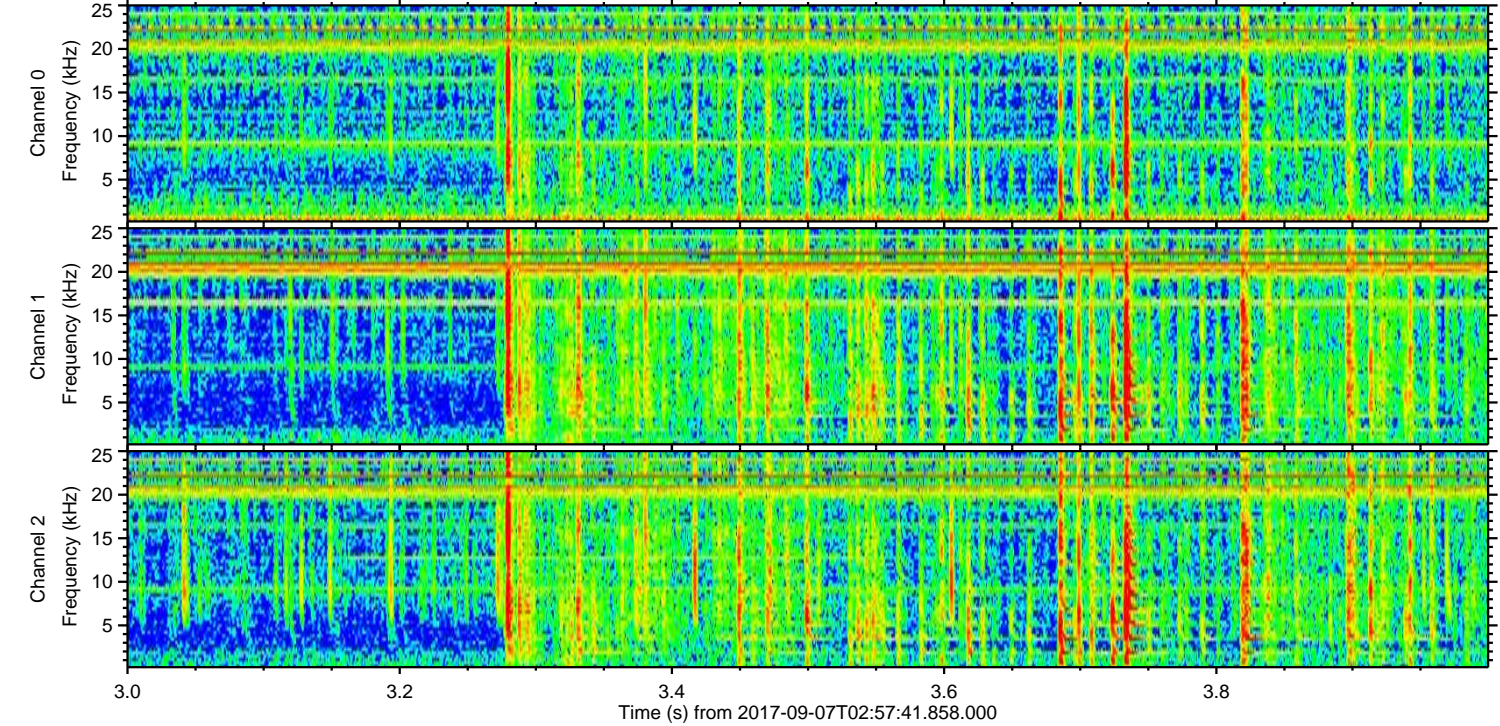
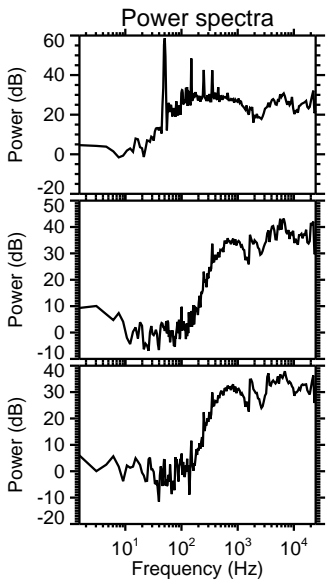
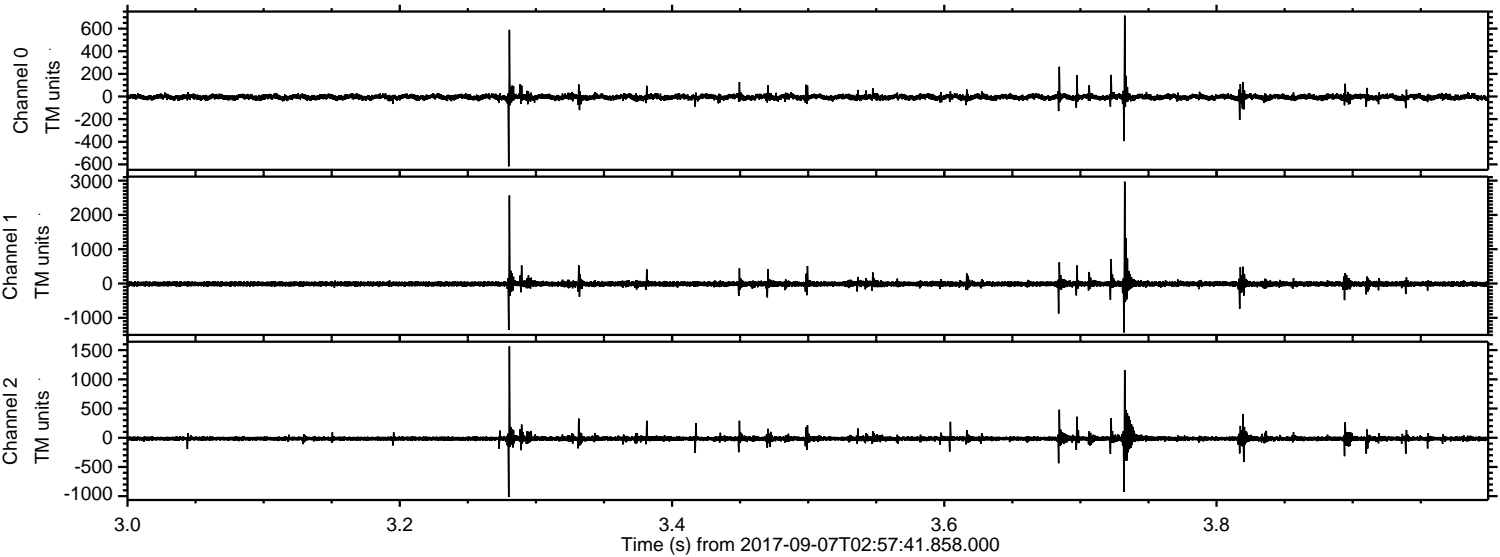
Channel 1
mn: -3491
mx: 3302
 μ : -12.1
 σ : 66.6

Channel 2
mn: -2367
mx: 2073
 μ : -15.0
 σ : 46.7

Processed Thu Sep 7 05:06:21 2017 by ELM ver.2012-10-06 from 001__elm20170907_025740__dat00.bin



Processed Thu Sep 7 05:06:22 2017 by ELM ver.2012-10-06 from 001__elm20170907_025740__dat00.bin



Channel 0
mn: -617
mx: 715
 μ : -5.5
 σ : 15.7

Channel 1
mn: -1427
mx: 2968
 μ : -12.1
 σ : 50.9

Channel 2
mn: -1015
mx: 1566
 μ : -15.0
 σ : 28.4

