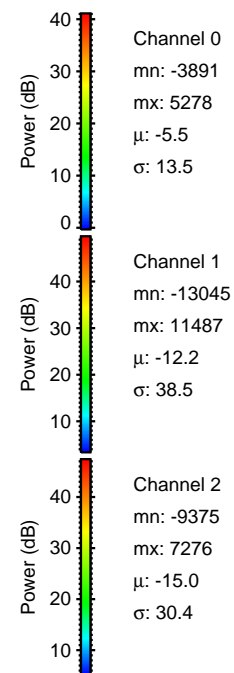
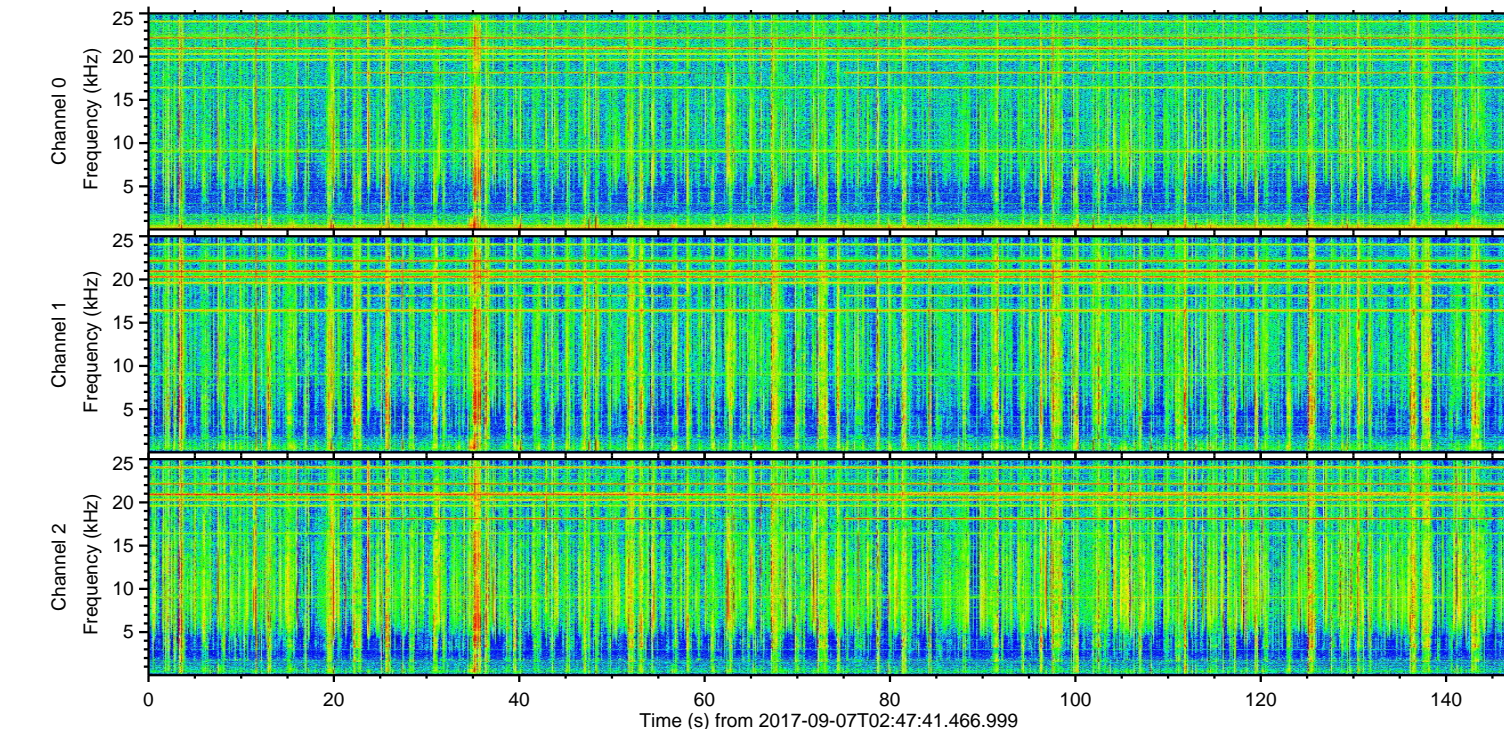
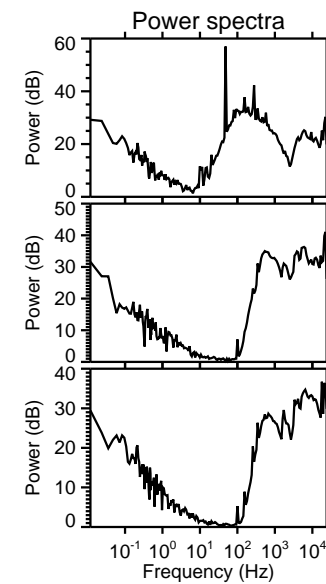
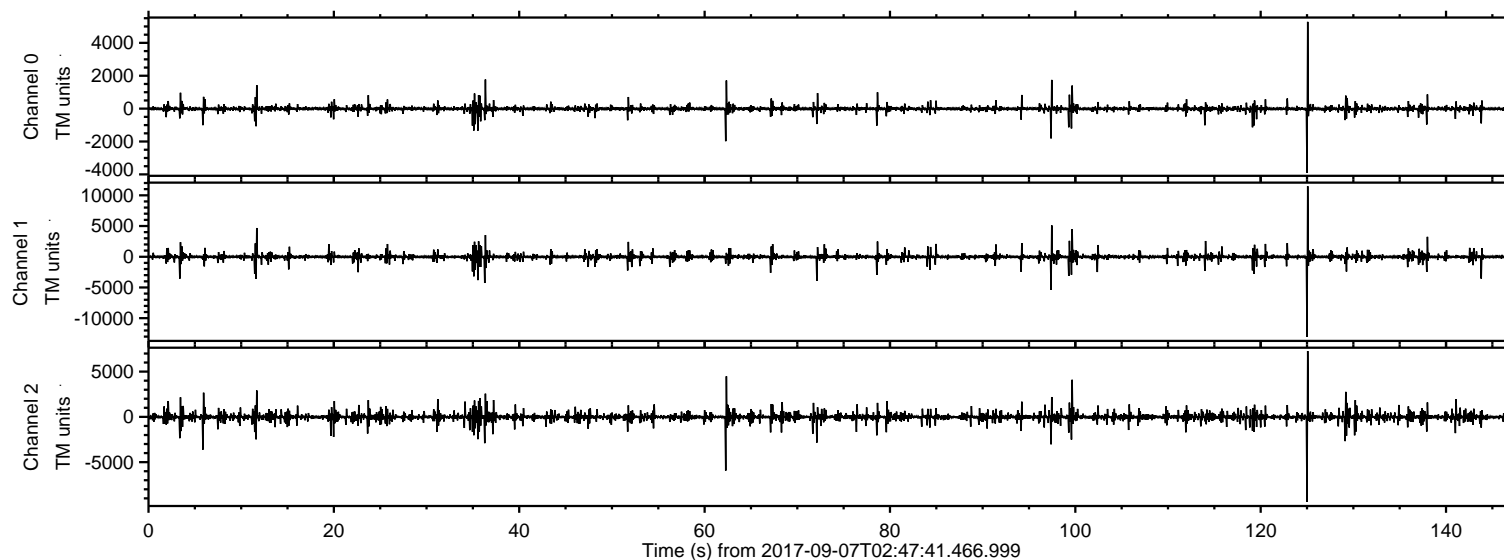


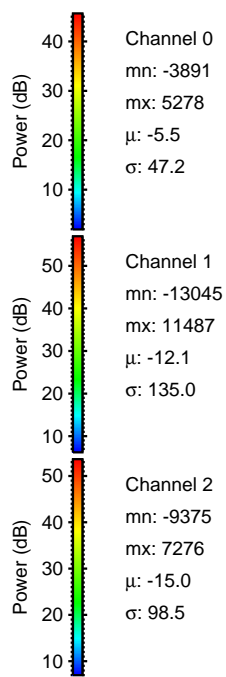
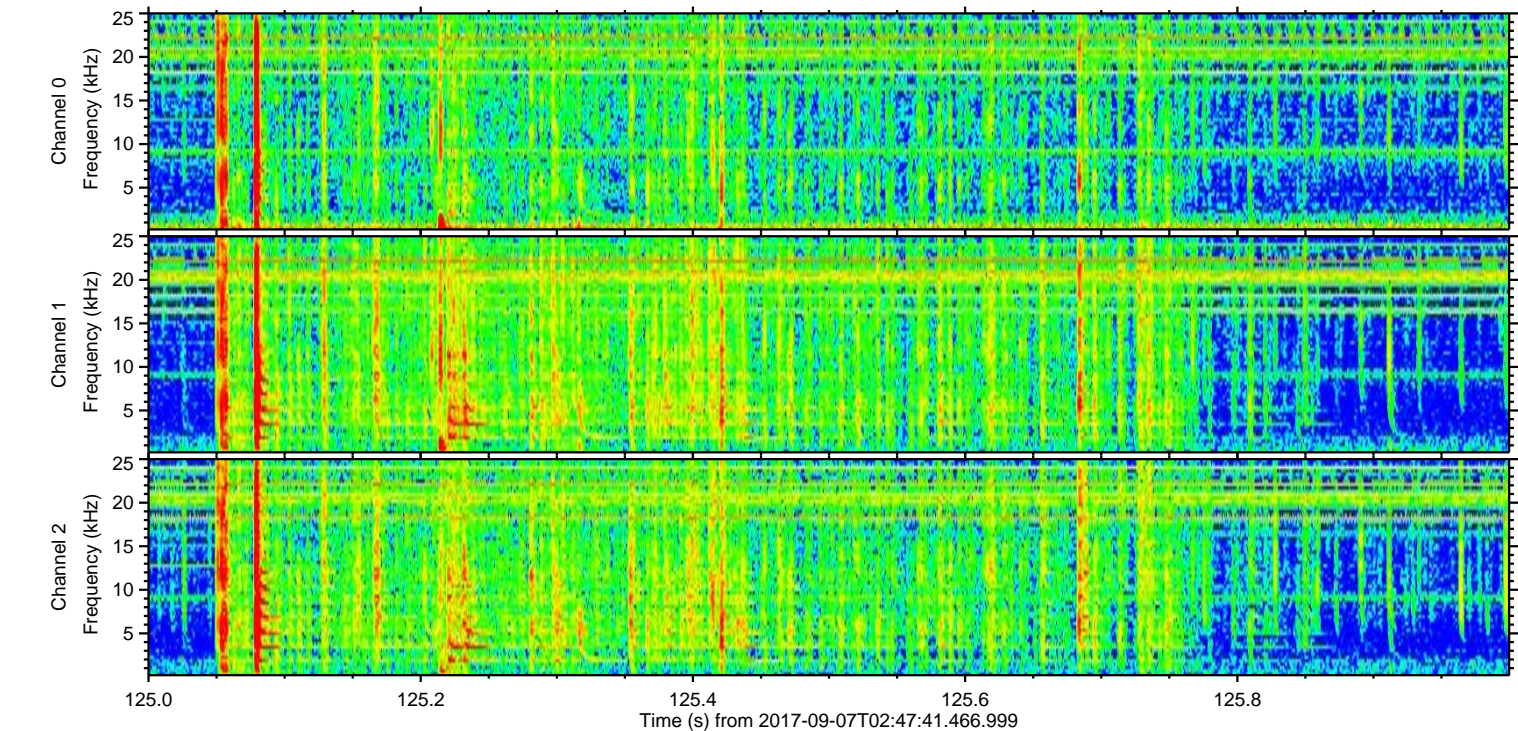
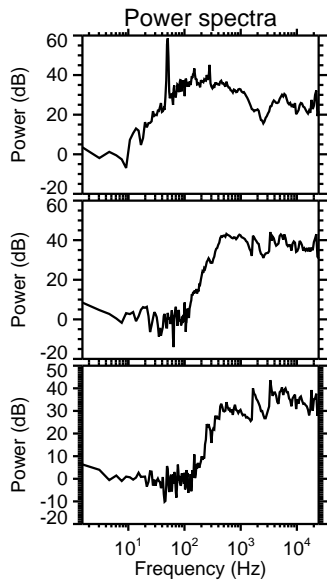
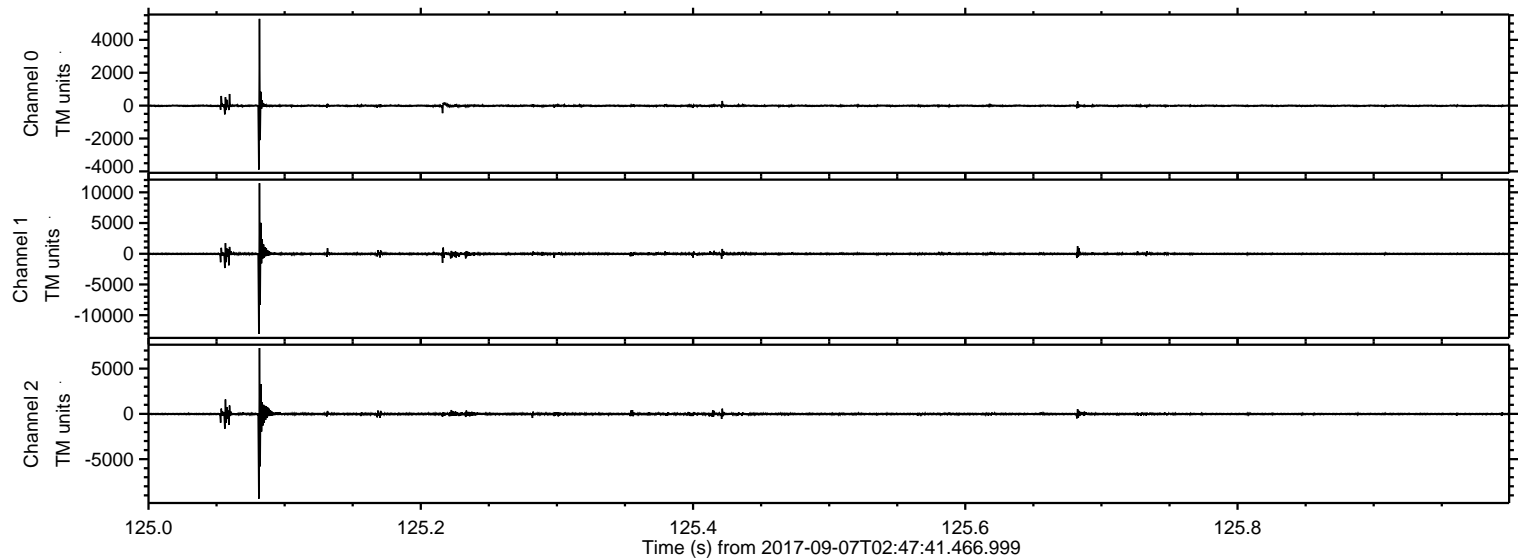
ELMAVAN 3D WAVEFORMS (Measured data sampled at 50 kHz) 51000 packets of 144 samples from 2017-09-07T02:47:41.466.999.

Processed Thu Sep 7 04:55:47 2017 by ELM ver.2012-10-06 from 001__elm20170907_024740__dat00.bin

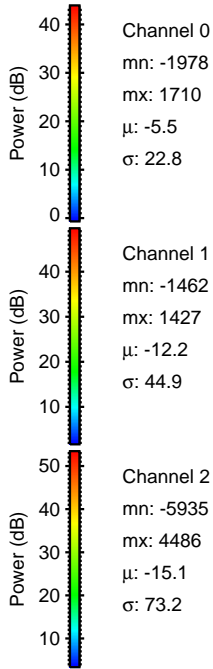
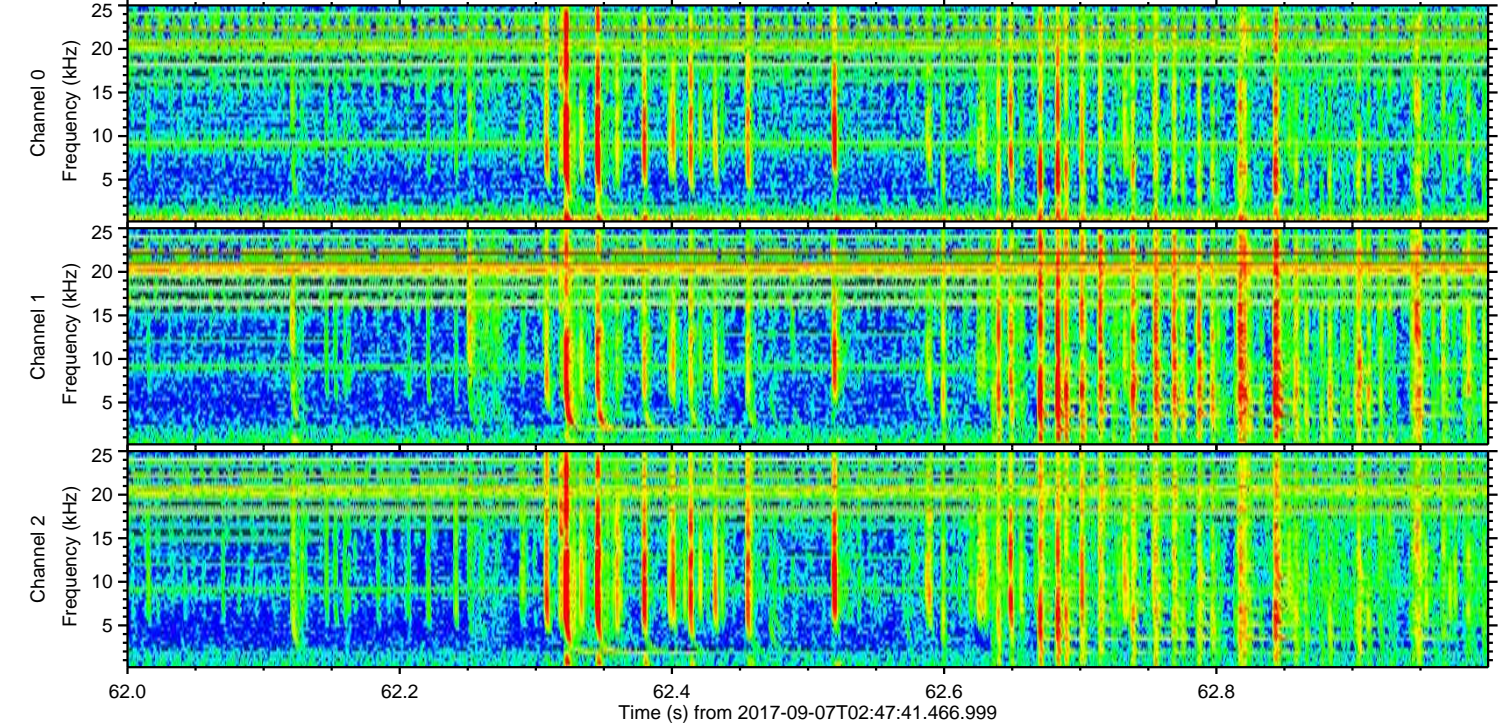
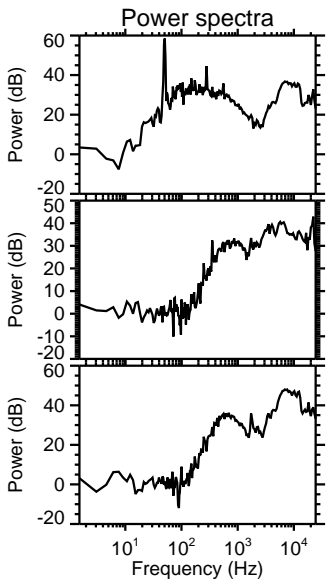
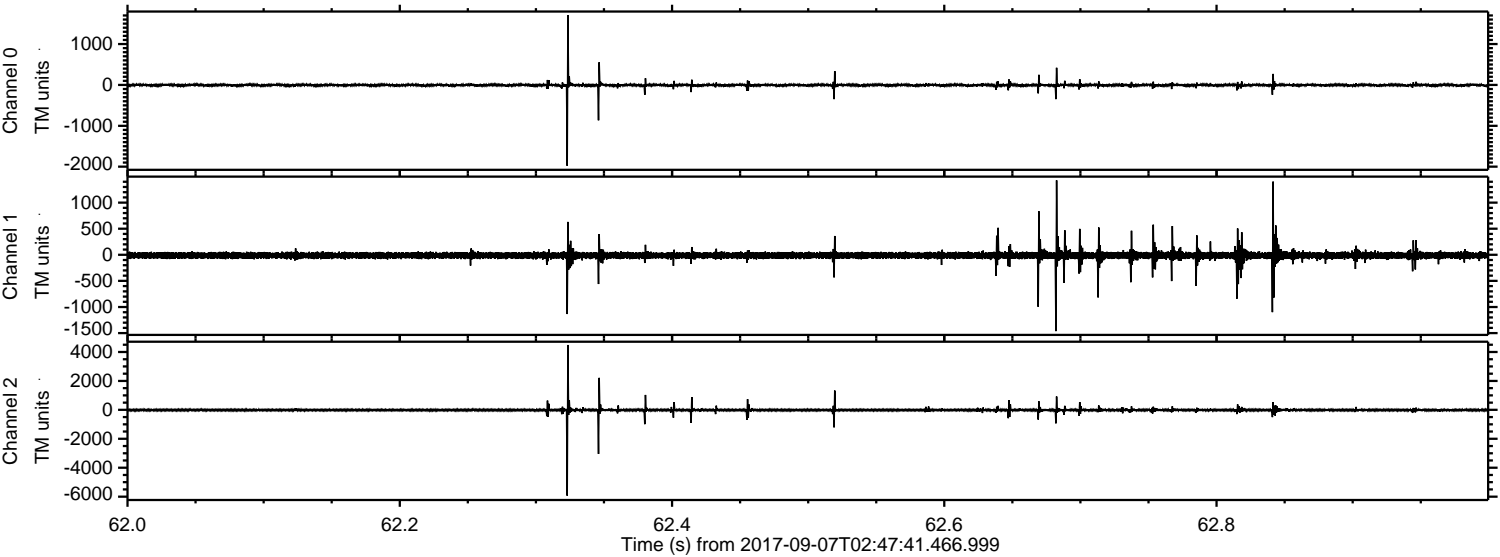


ELMAVAN 3D WAVEFORMS (Measured data sampled at 50 kHz) 51000 packets of 144 samples from 2017-09-07T02:47:41.466.999. Part 126/147

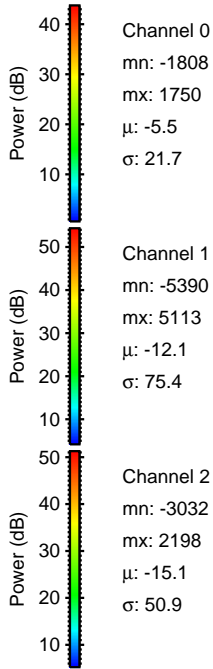
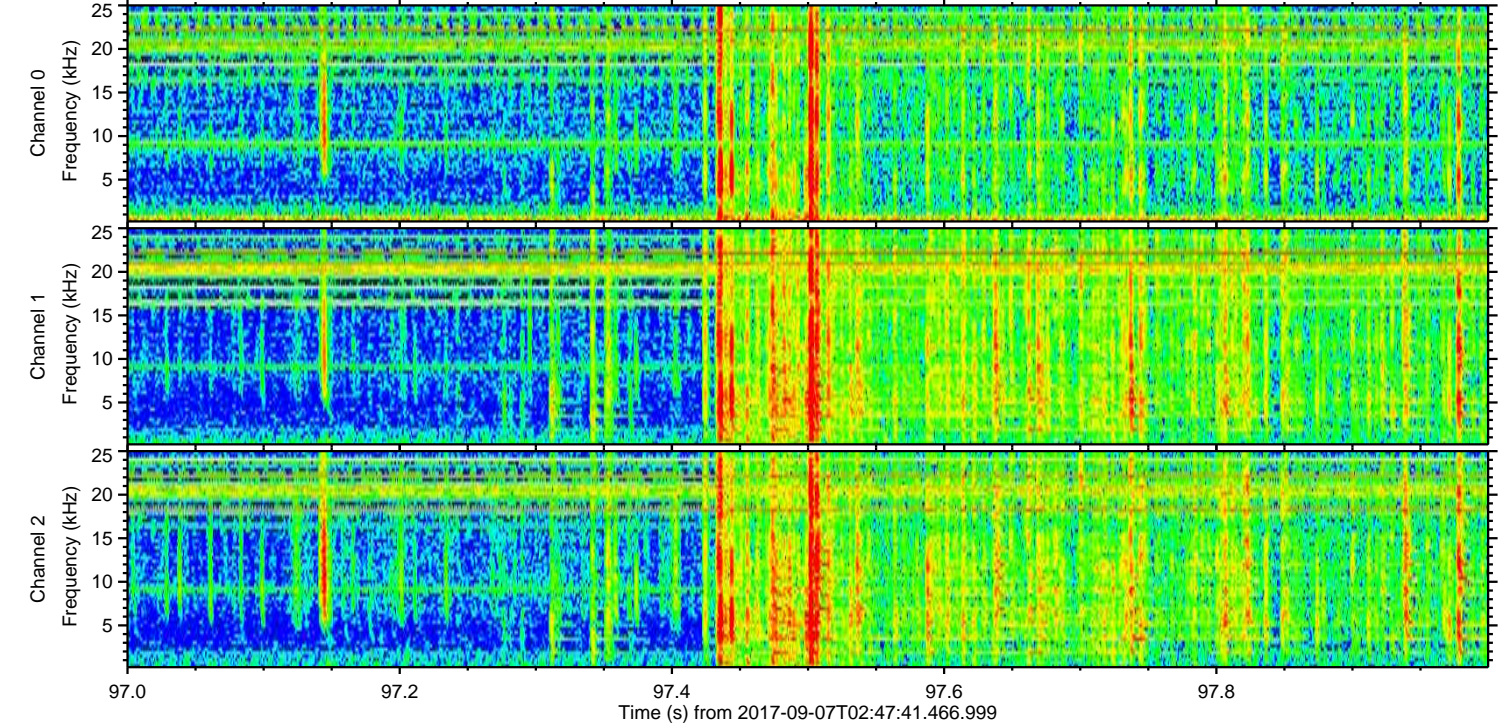
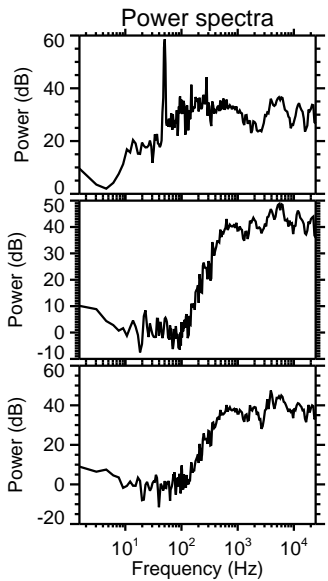
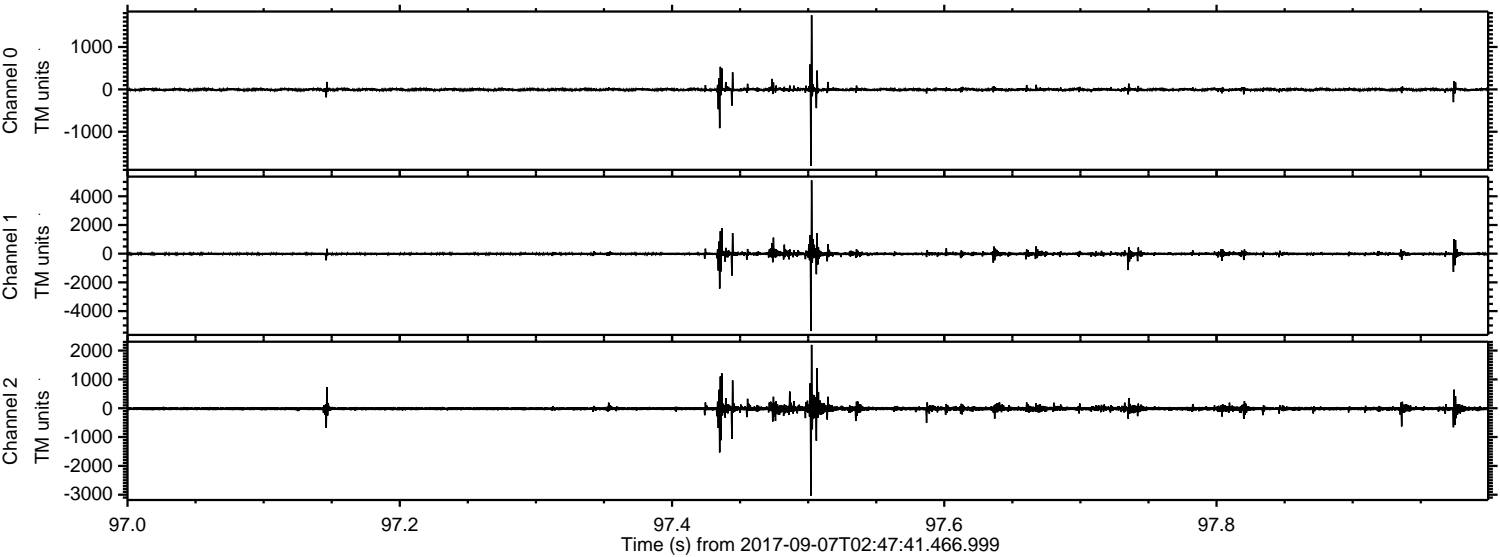
Processed Thu Sep 7 04:55:53 2017 by ELM ver.2012-10-06 from 001__elm20170907_024740__dat00.bin



Processed Thu Sep 7 04:55:54 2017 by ELM ver.2012-10-06 from 001__elm20170907_024740__dat00.bin

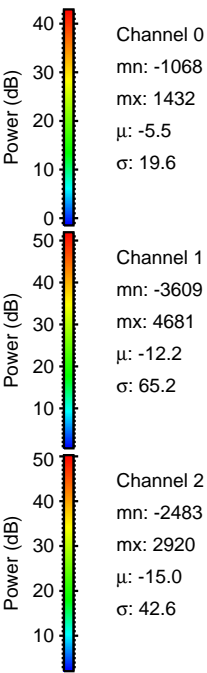
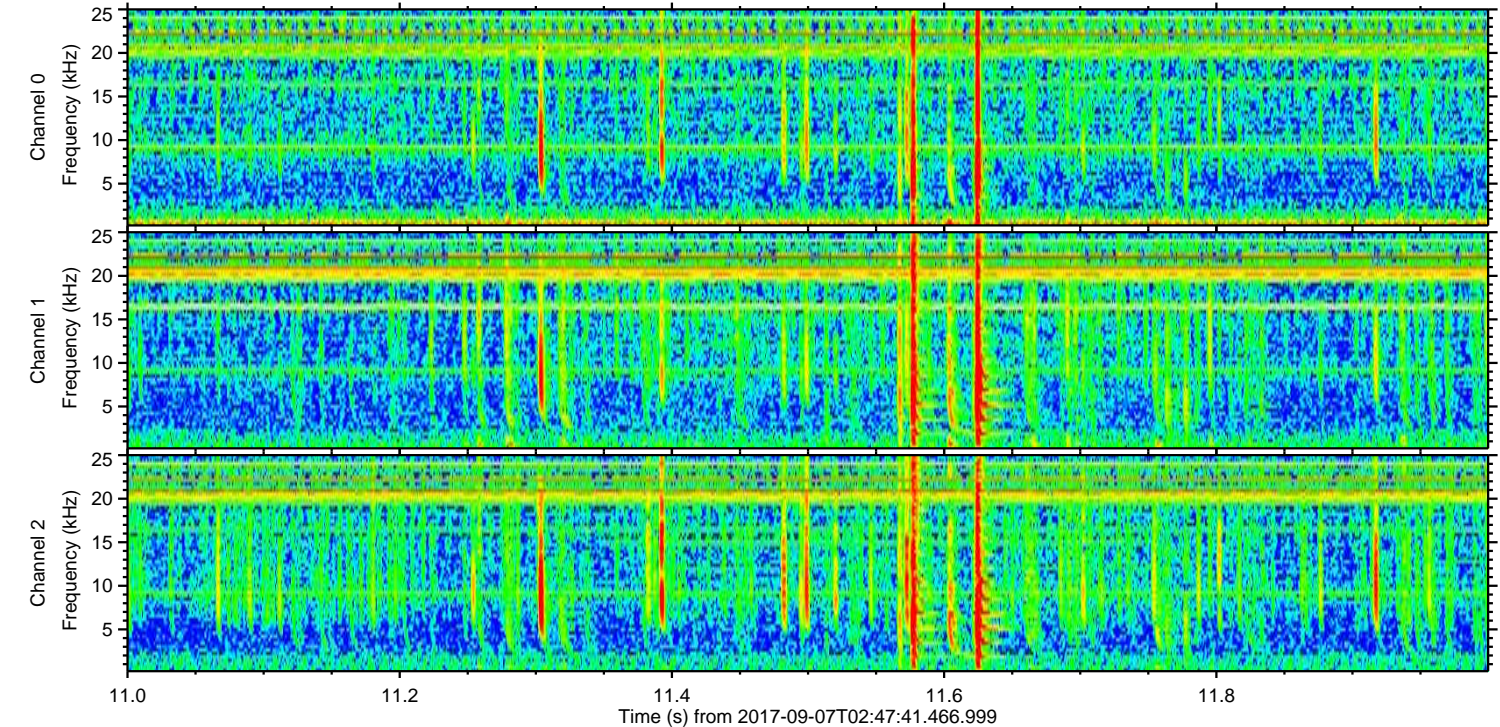
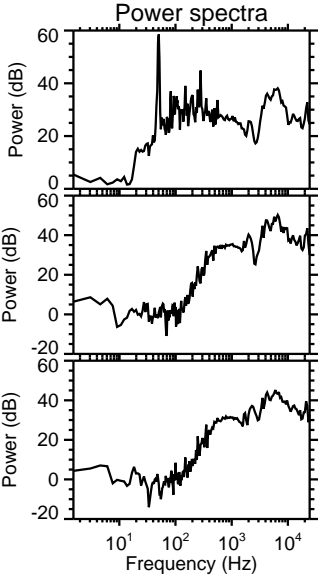
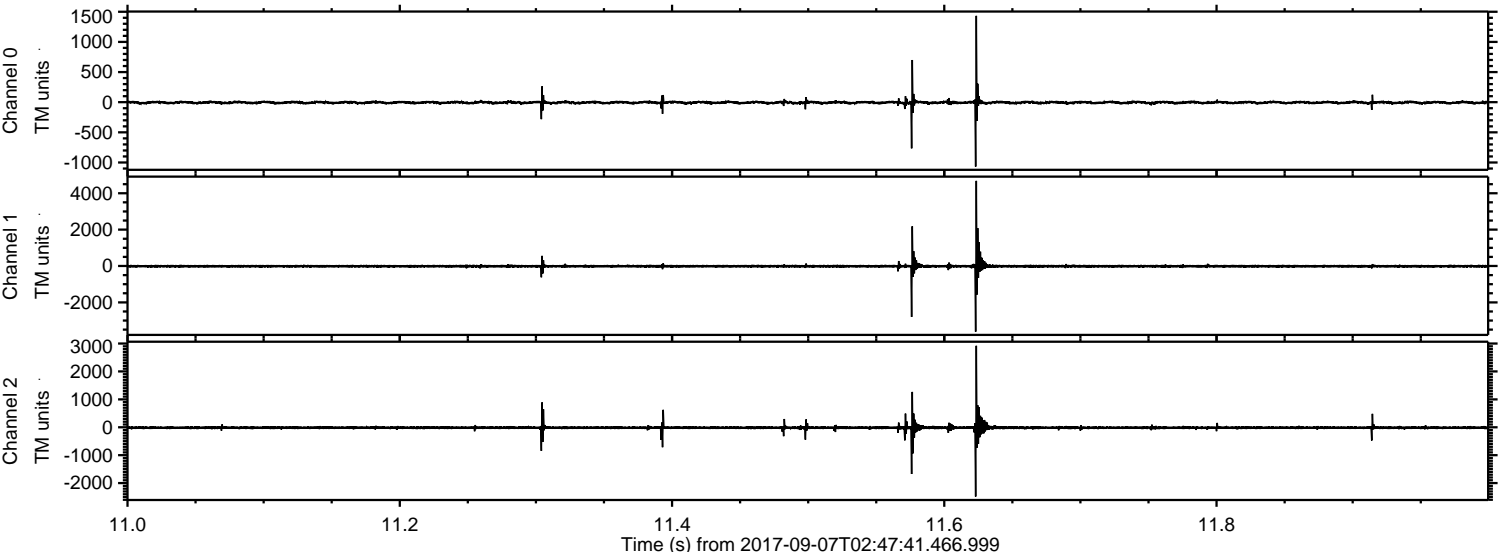


Processed Thu Sep 7 04:55:54 2017 by ELM ver.2012-10-06 from 001__elm20170907_024740__dat00.bin



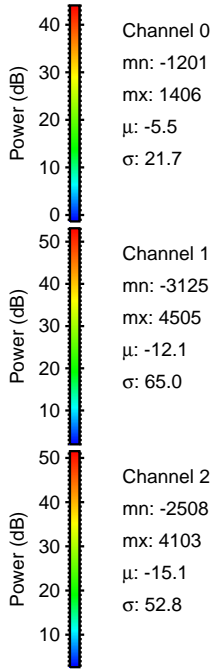
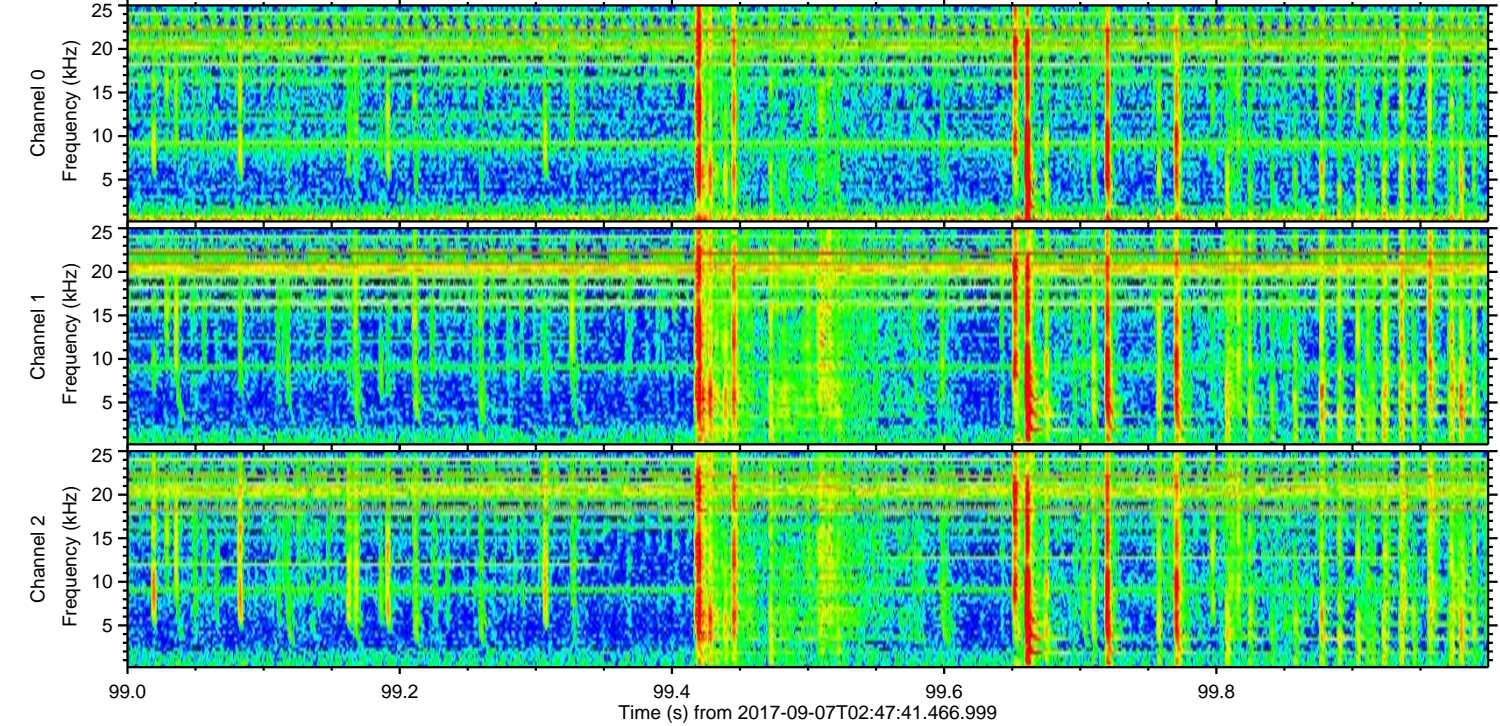
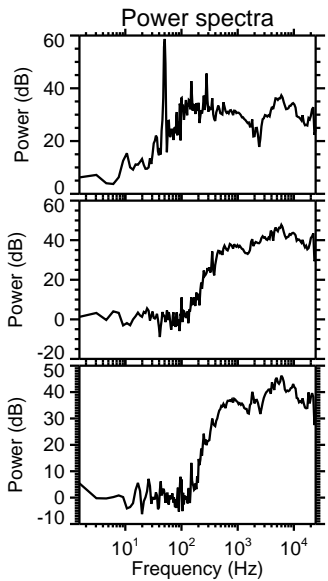
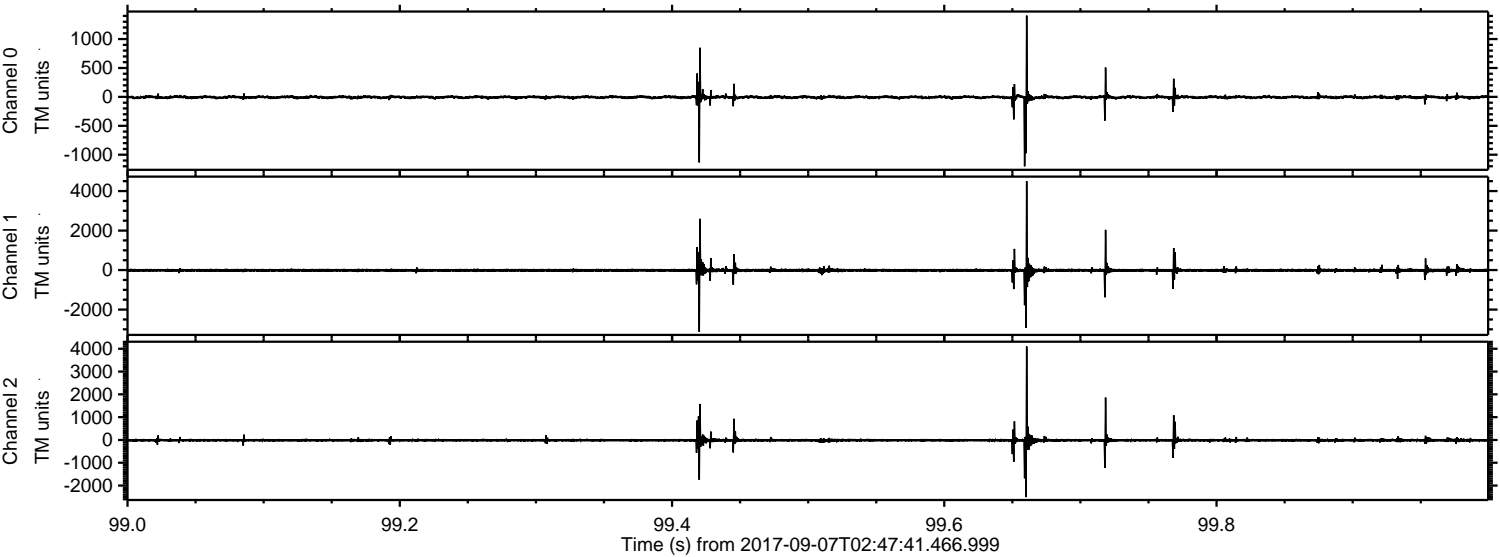
ELMAVAN 3D WAVEFORMS (Measured data sampled at 50 kHz) 51000 packets of 144 samples from 2017-09-07T02:47:41.466.999. Part 12/147

Processed Thu Sep 7 04:55:55 2017 by ELM ver.2012-10-06 from 001__elm20170907_024740__dat00.bin

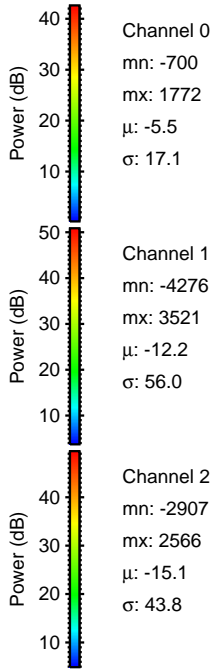
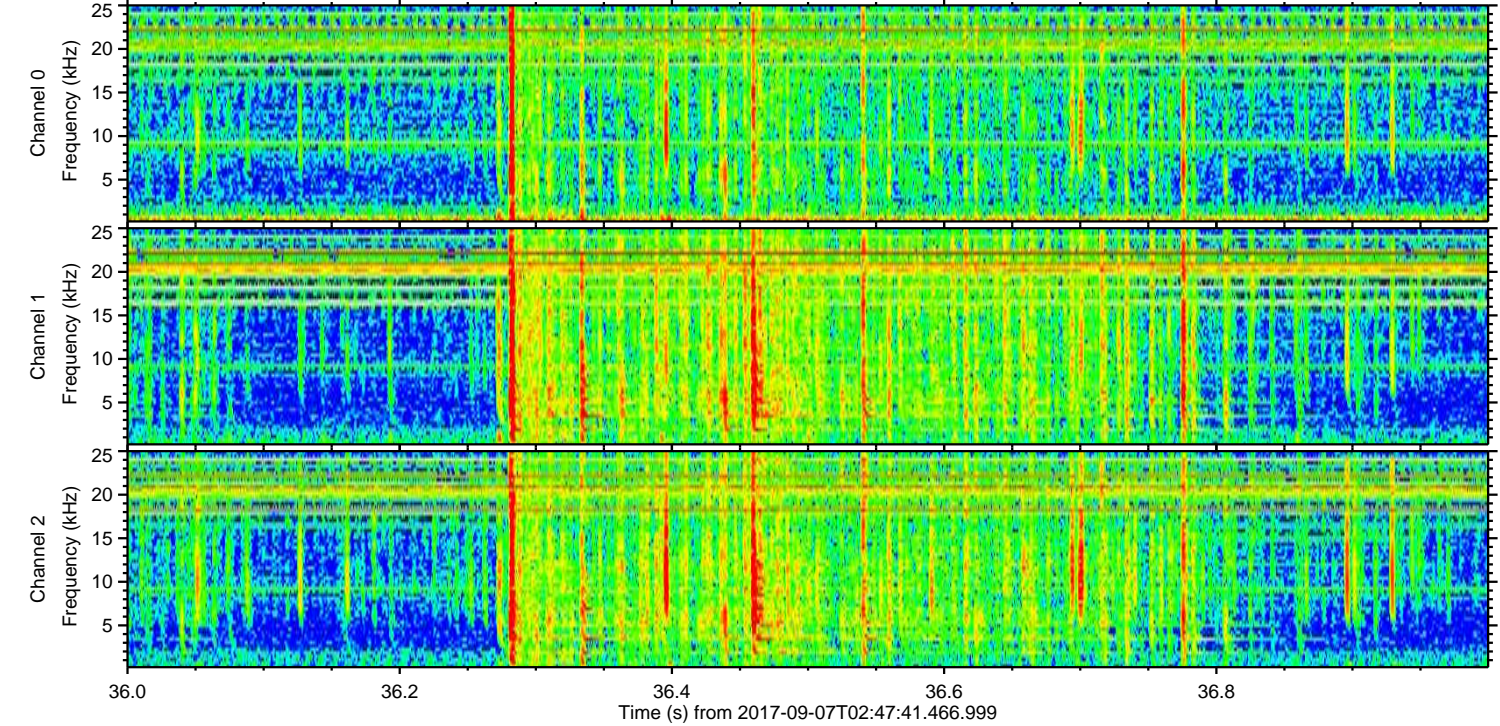
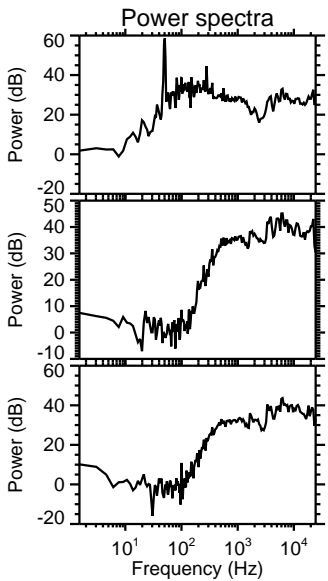
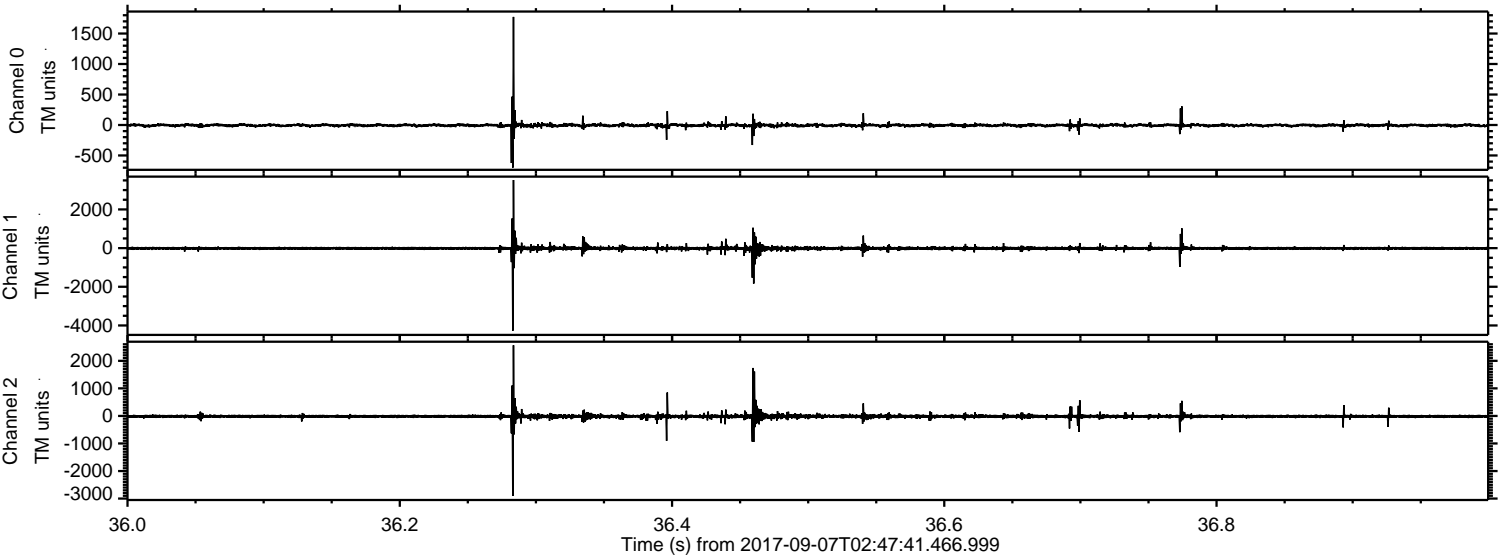


ELMAVAN 3D WAVEFORMS (Measured data sampled at 50 kHz) 51000 packets of 144 samples from 2017-09-07T02:47:41.466.999. Part 100/147

Processed Thu Sep 7 04:55:56 2017 by ELM ver.2012-10-06 from 001__elm20170907_024740__dat00.bin



Processed Thu Sep 7 04:55:56 2017 by ELM ver.2012-10-06 from 001__elm20170907_024740__dat00.bin

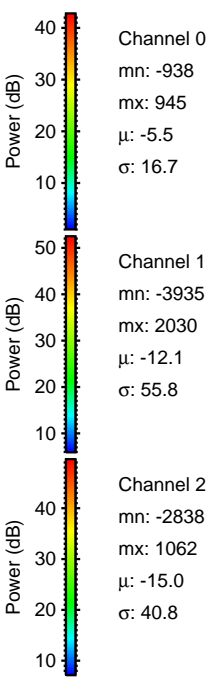
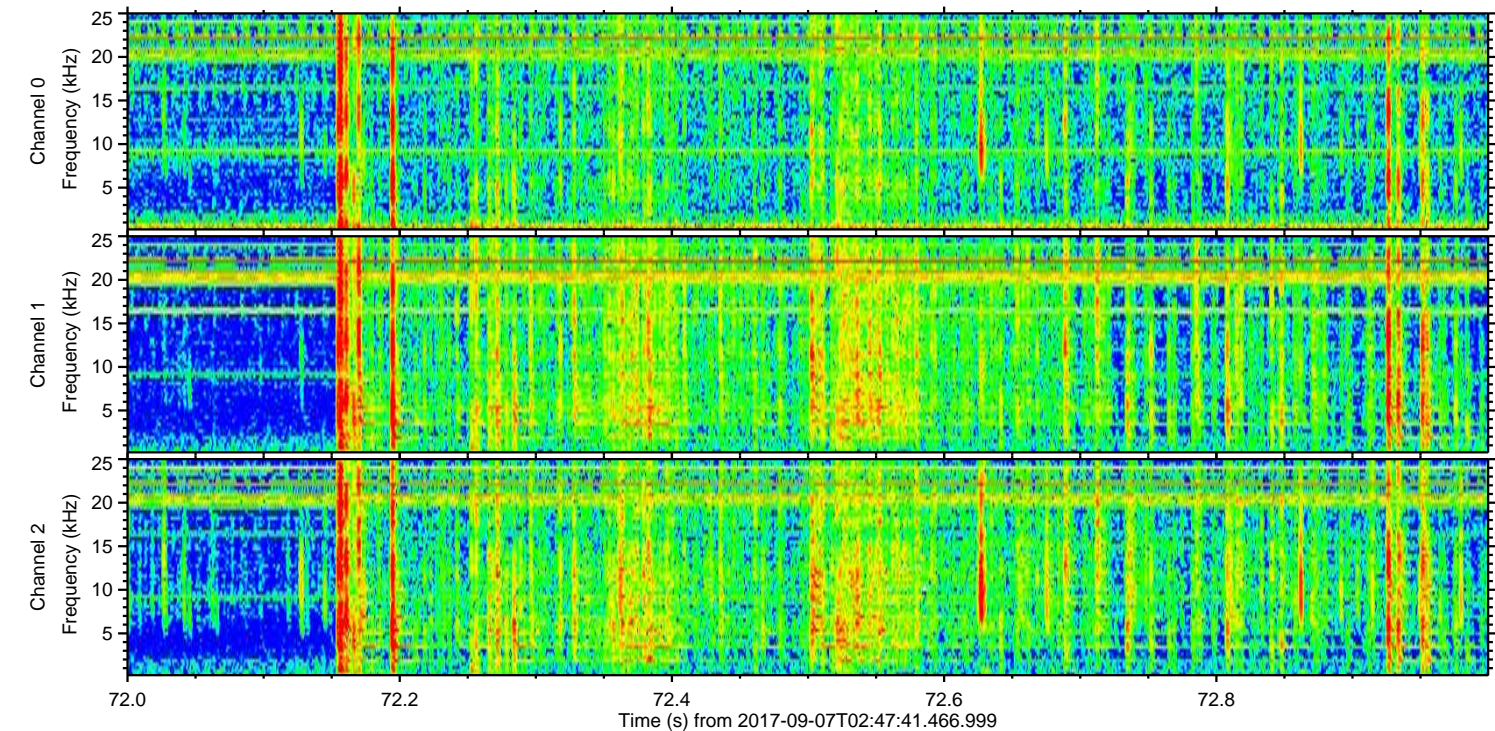
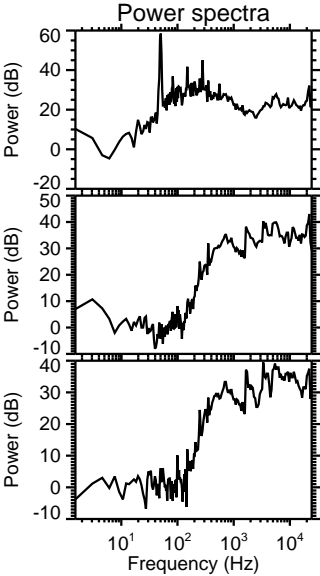
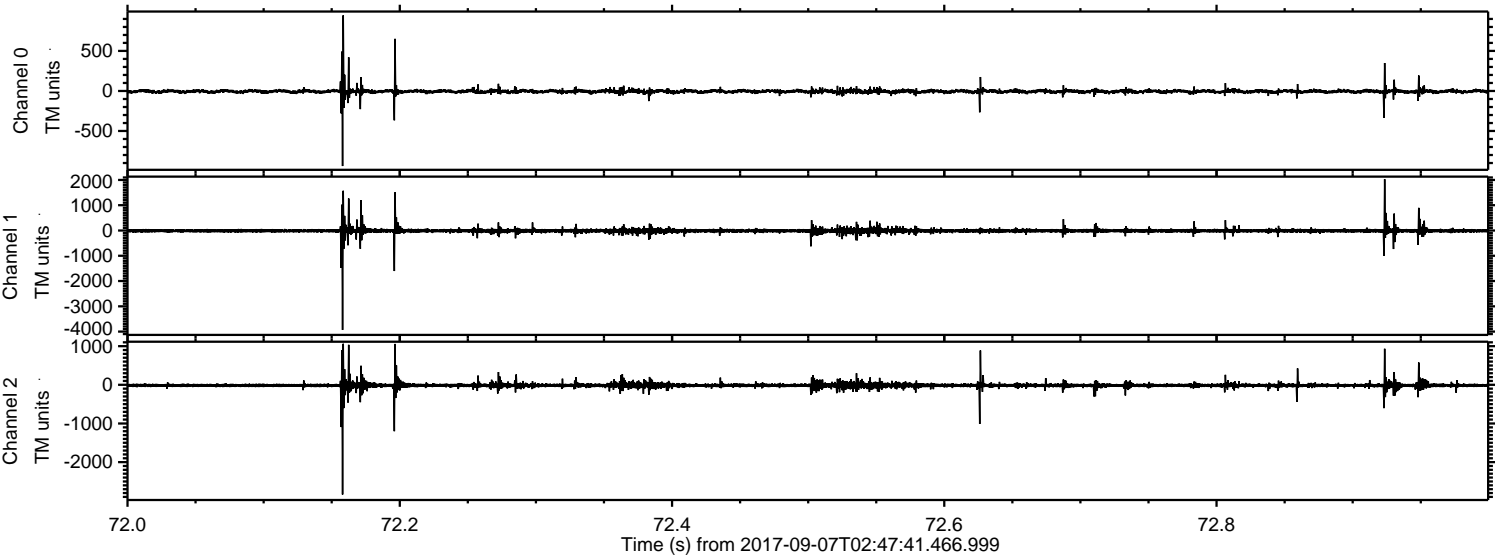


Channel 0
mn: -700
mx: 1772
 μ : -5.5
 σ : 17.1

Channel 1
mn: -4276
mx: 3521
 μ : -12.2
 σ : 56.0

Channel 2
mn: -2907
mx: 2566
 μ : -15.1
 σ : 43.8

Processed Thu Sep 7 04:55:57 2017 by ELM ver.2012-10-06 from 001__elm20170907_024740__dat00.bin

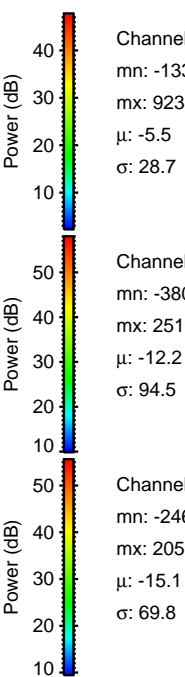
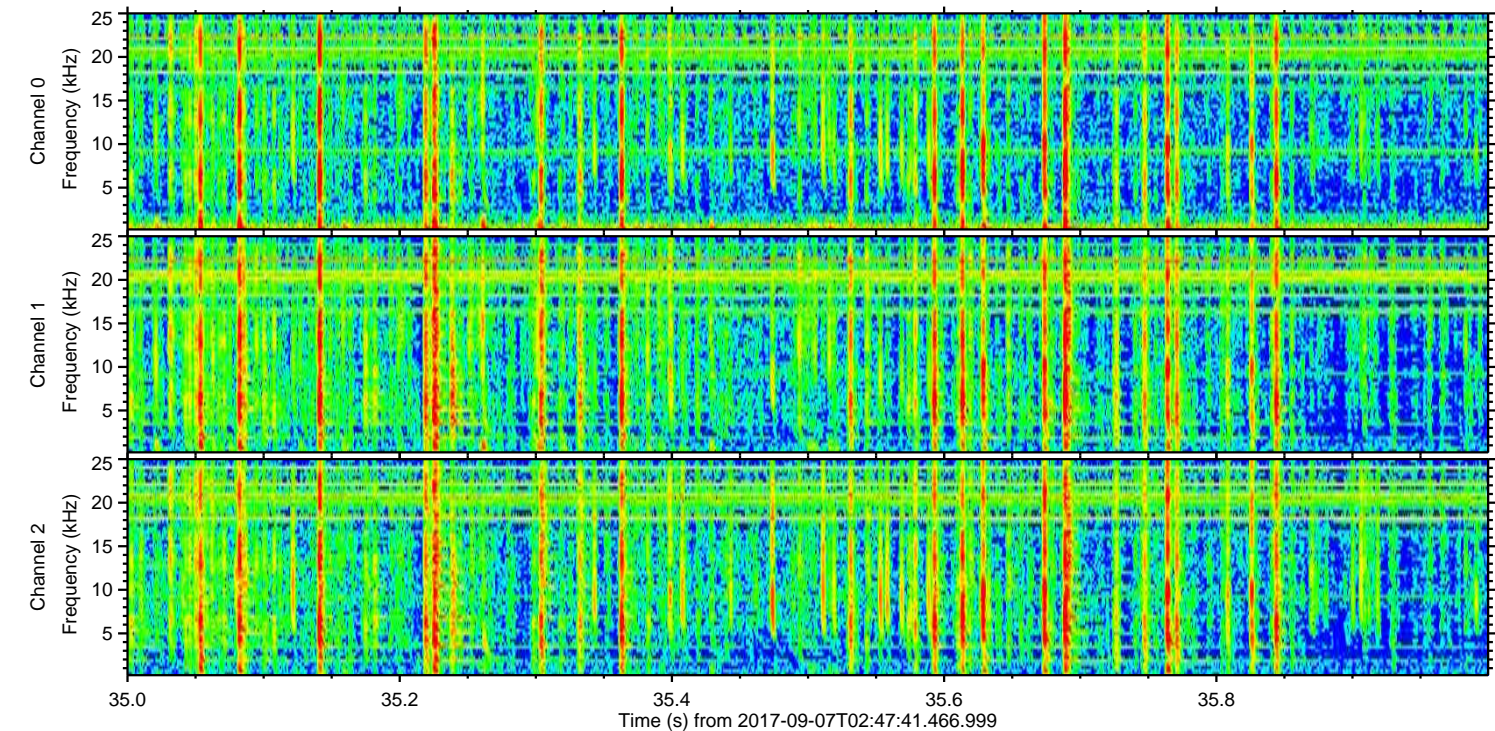
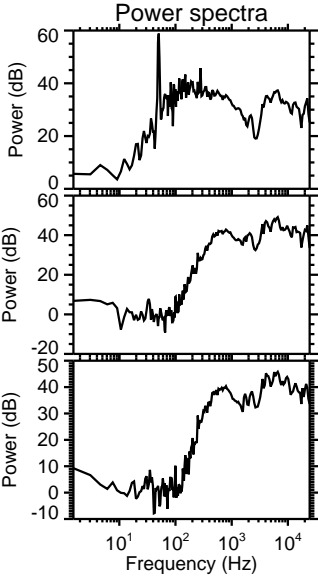
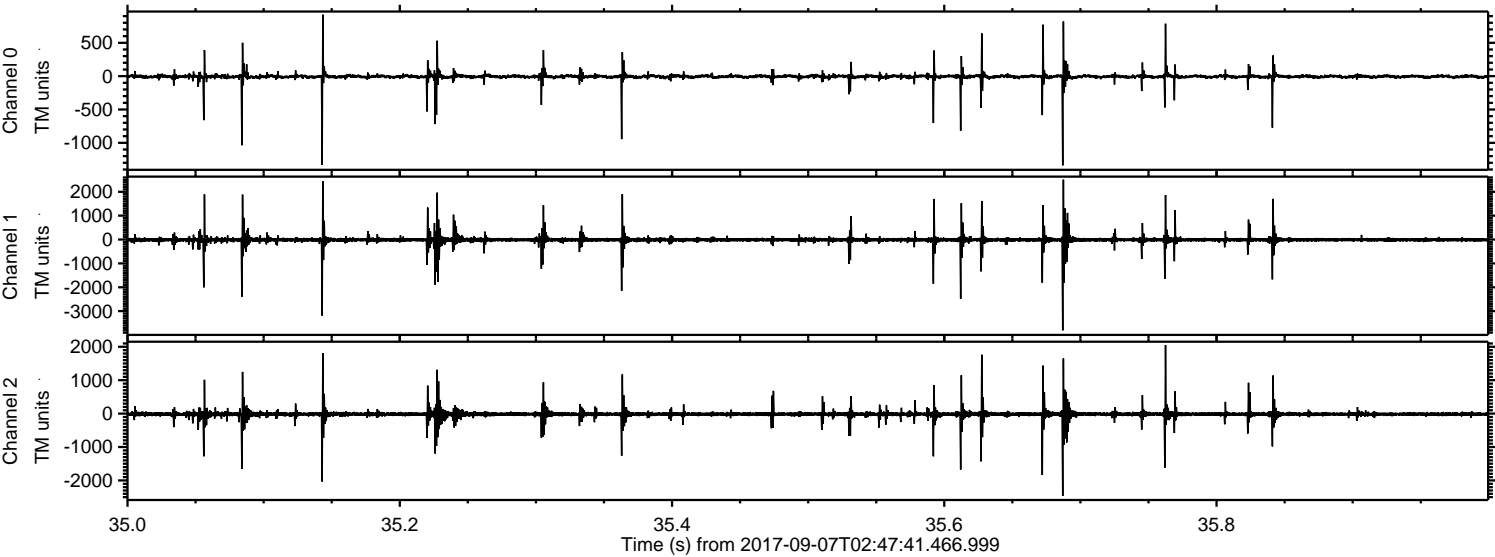


Channel 0
mn: -938
mx: 945
 μ : -5.5
 σ : 16.7

Channel 1
mn: -3935
mx: 2030
 μ : -12.1
 σ : 55.8

Channel 2
mn: -2838
mx: 1062
 μ : -15.0
 σ : 40.8

Processed Thu Sep 7 04:55:58 2017 by ELM ver.2012-10-06 from 001__elm20170907_024740__dat00.bin

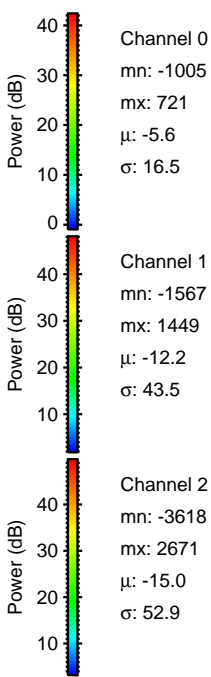
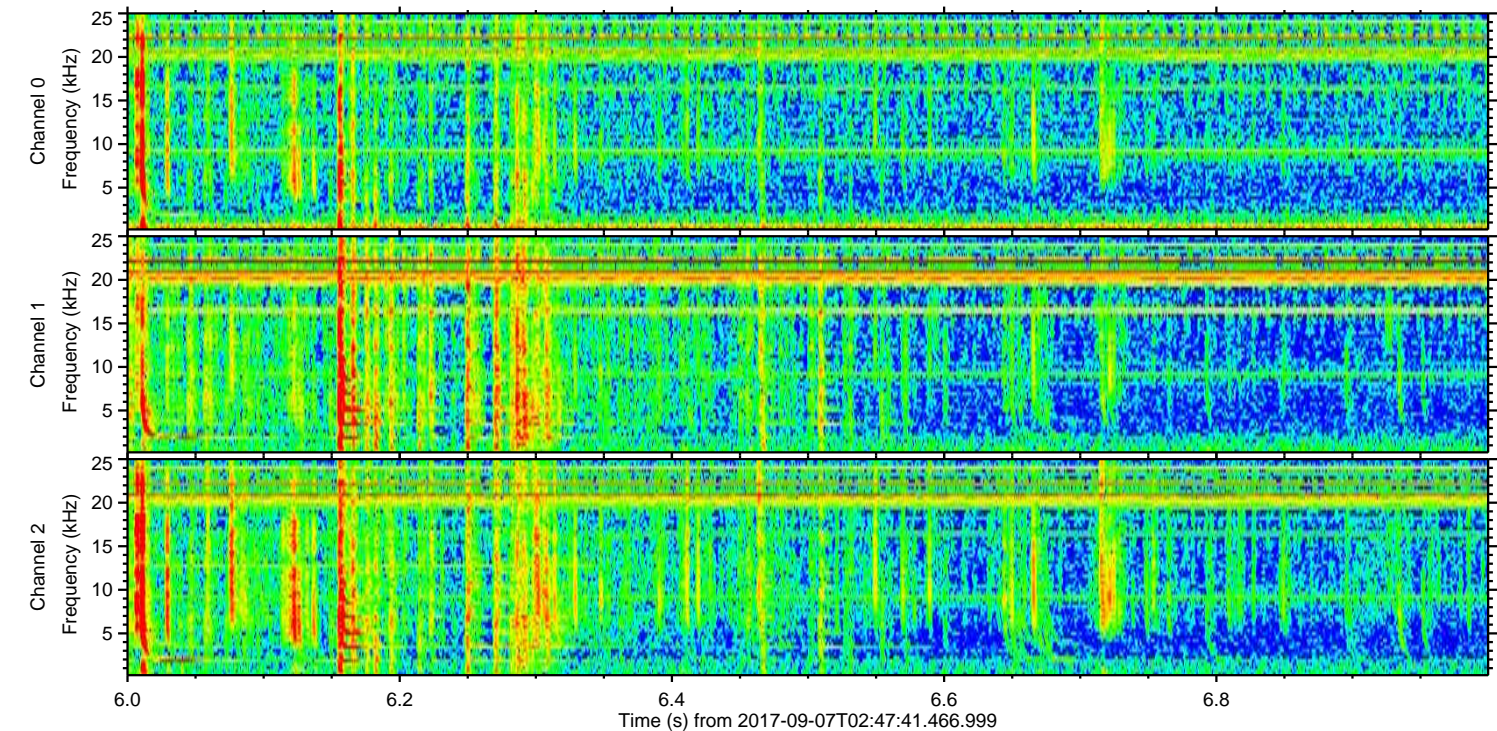
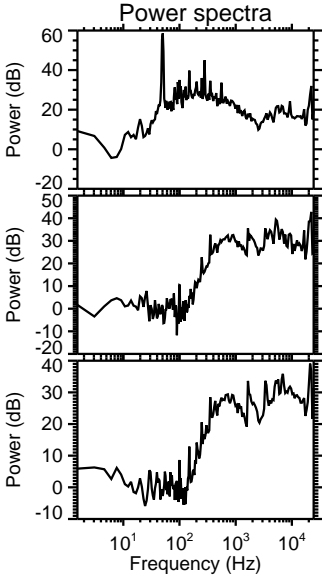
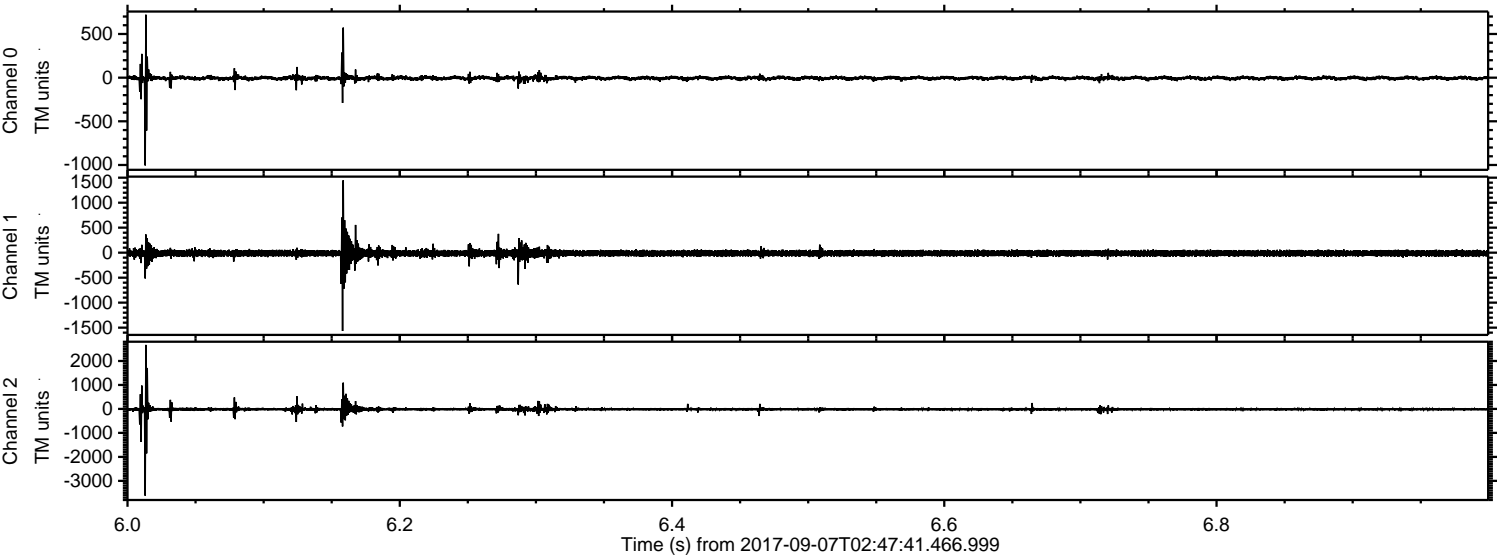


Channel 0
mn: -1338
mx: 923
 μ : -5.5
 σ : 28.7

Channel 1
mn: -3806
mx: 2510
 μ : -12.2
 σ : 94.5

Channel 2
mn: -2462
mx: 2050
 μ : -15.1
 σ : 69.8

Processed Thu Sep 7 04:55:58 2017 by ELM ver.2012-10-06 from 001__elm20170907_024740__dat00.bin



Processed Thu Sep 7 04:55:59 2017 by ELM ver.2012-10-06 from 001__elm20170907_024740__dat00.bin

