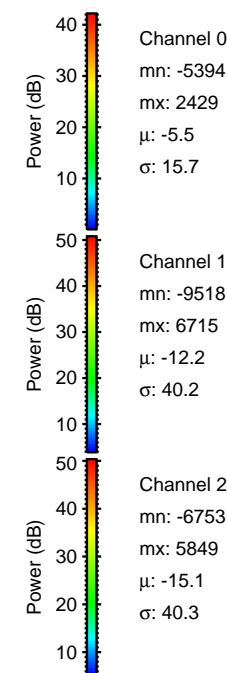
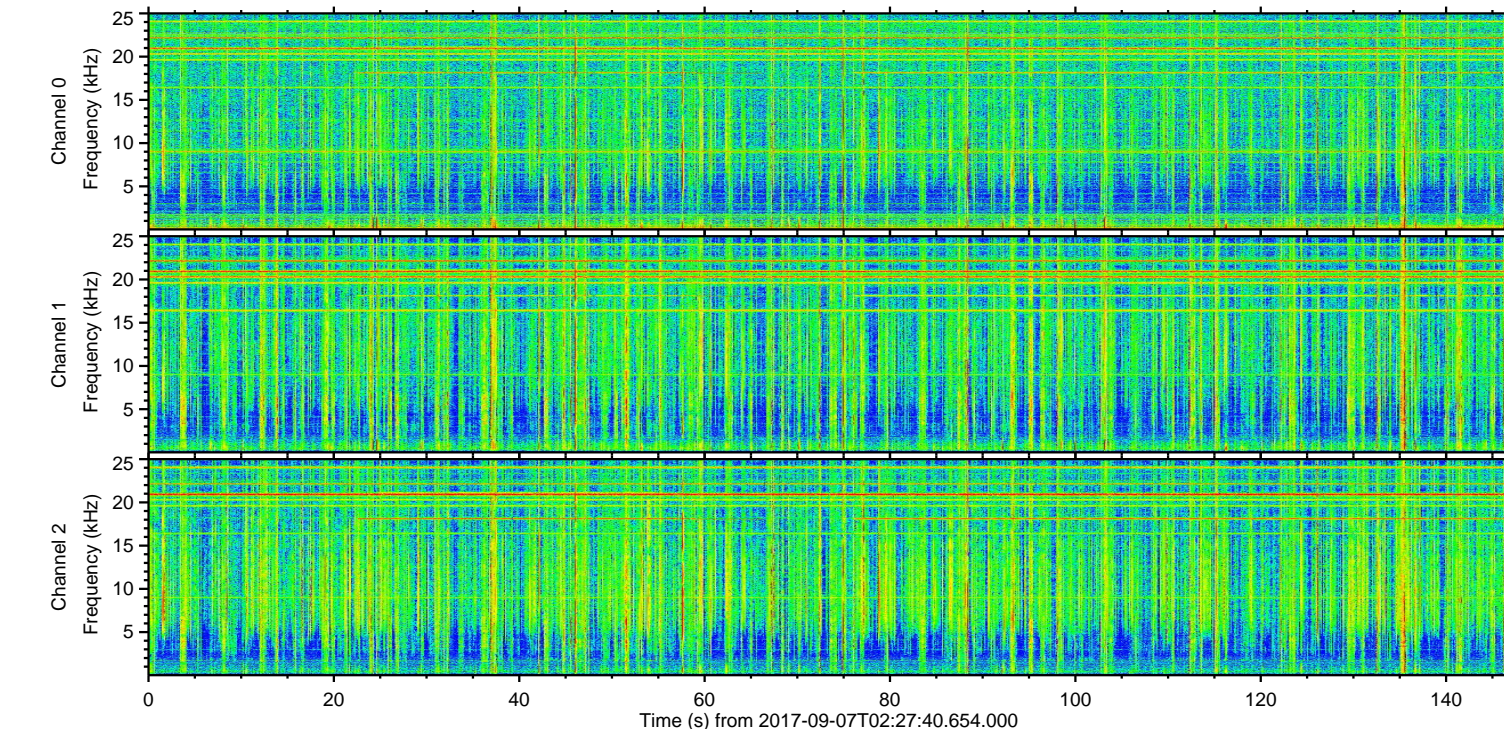
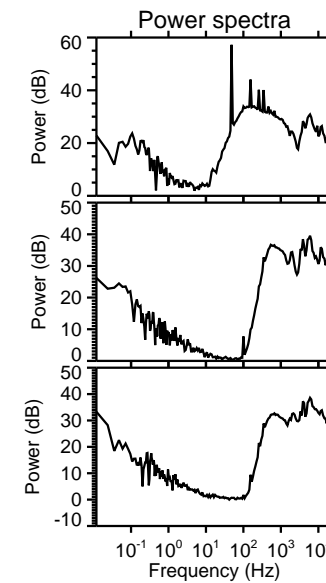
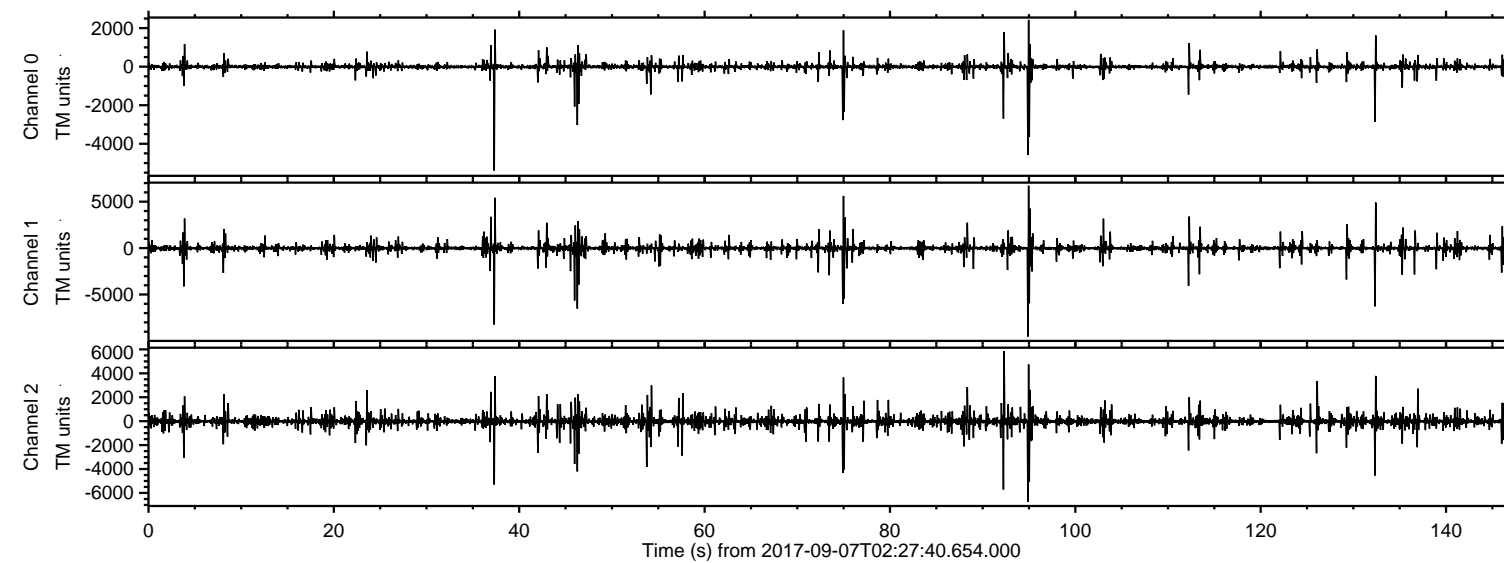


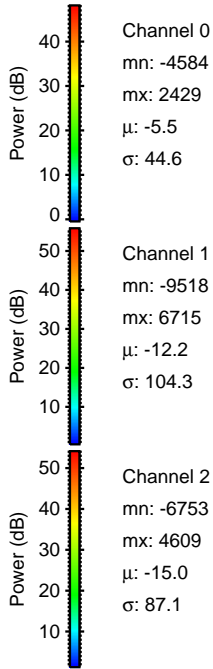
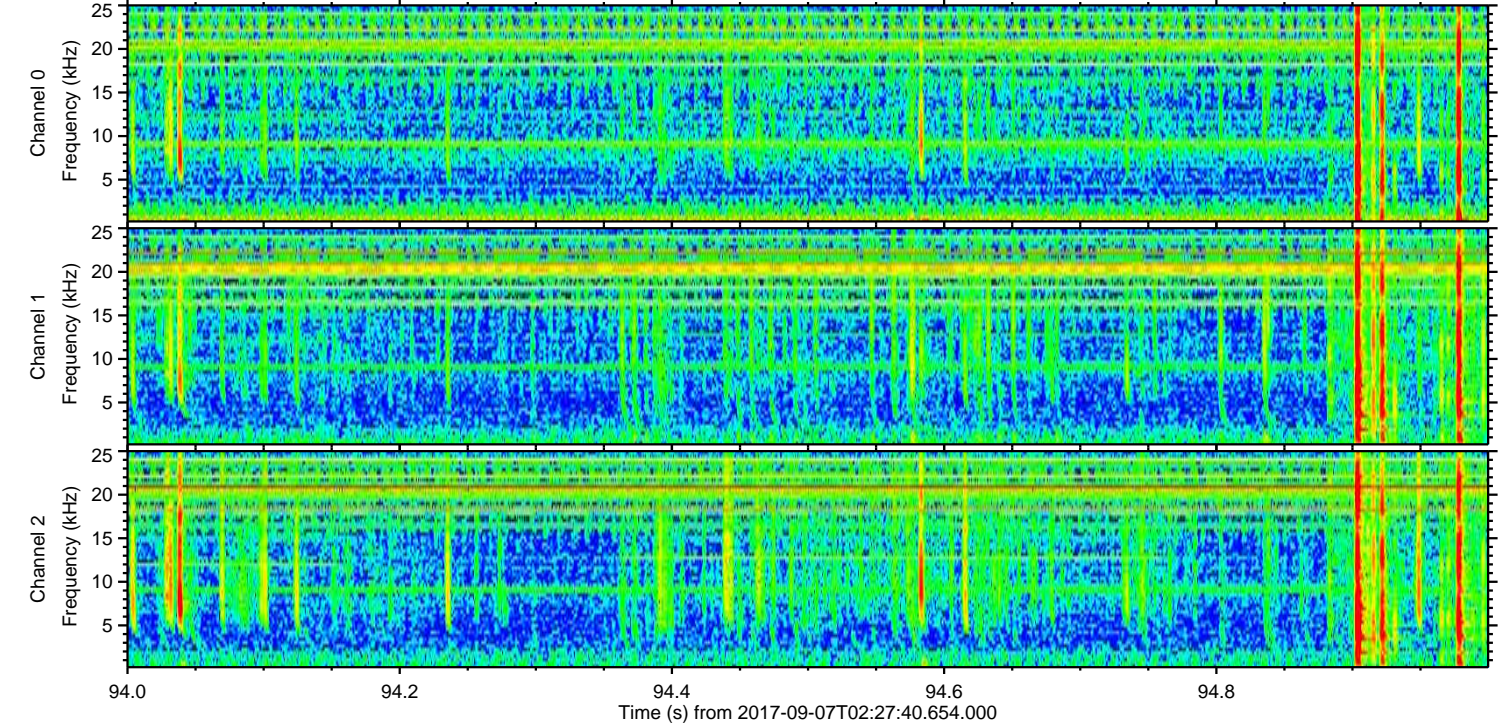
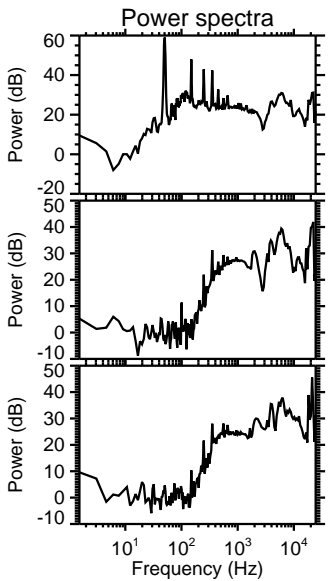
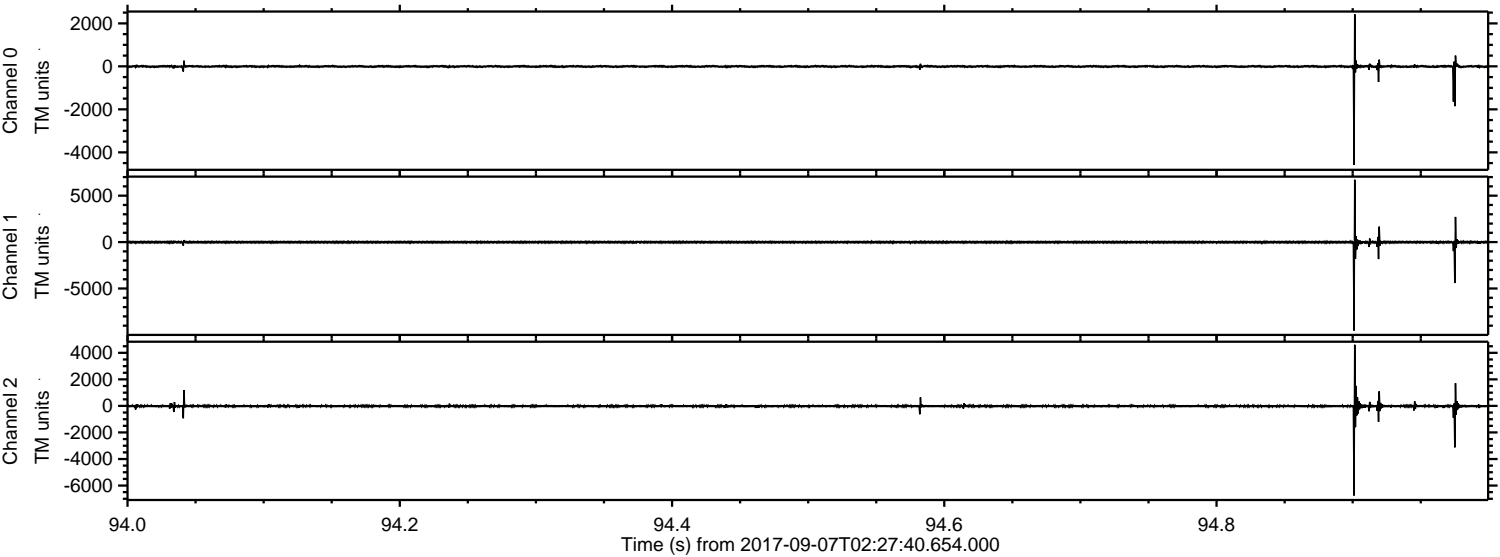
# ELMAVAN 3D WAVEFORMS (Measured data sampled at 50 kHz) 51000 packets of 144 samples from 2017-09-07T02:27:40.654.000.

Processed Thu Sep 7 04:35:33 2017 by ELM ver.2012-10-06 from 001\_\_elm20170907\_022739\_\_dat00.bin



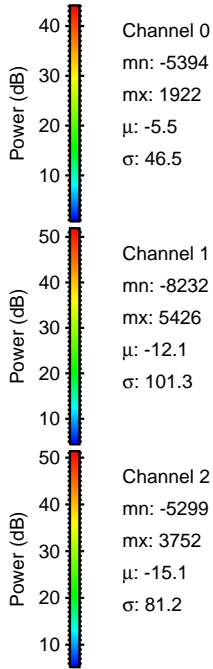
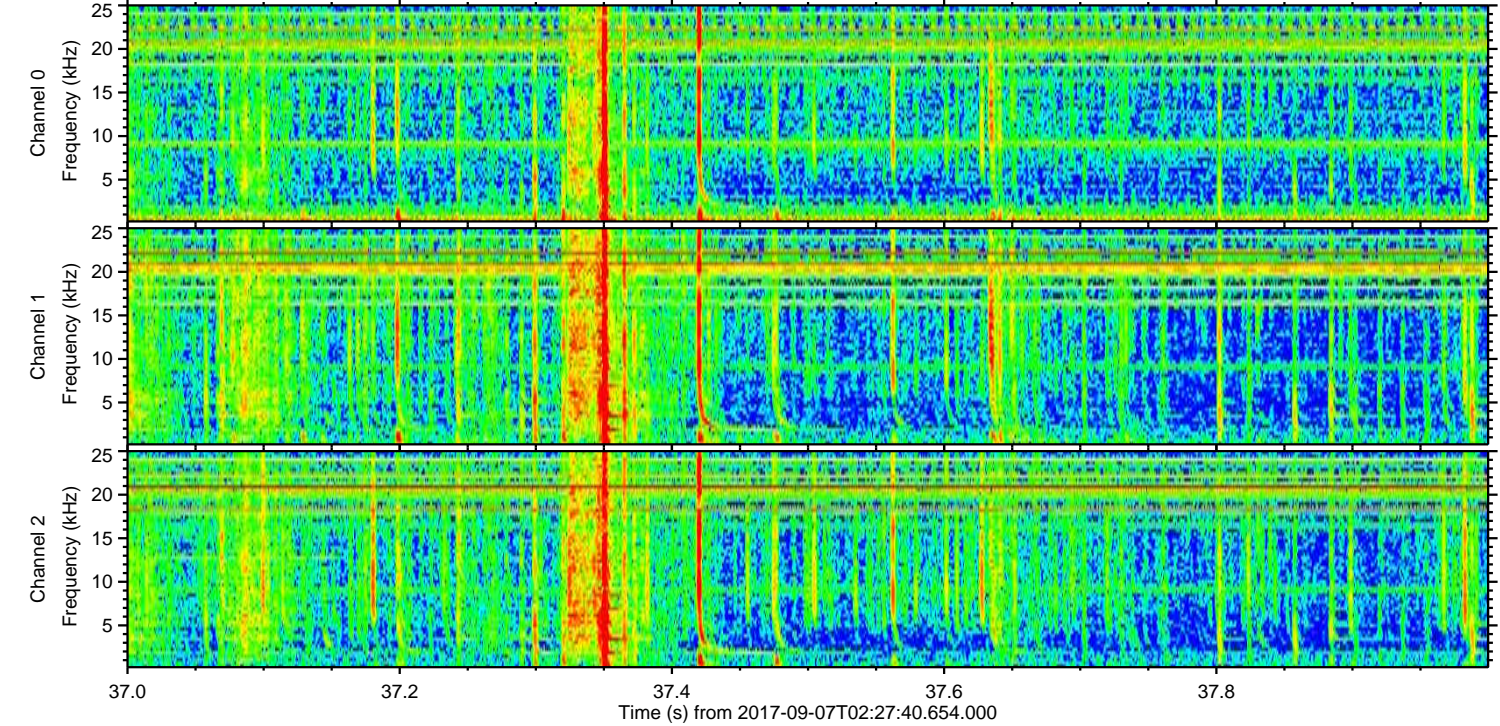
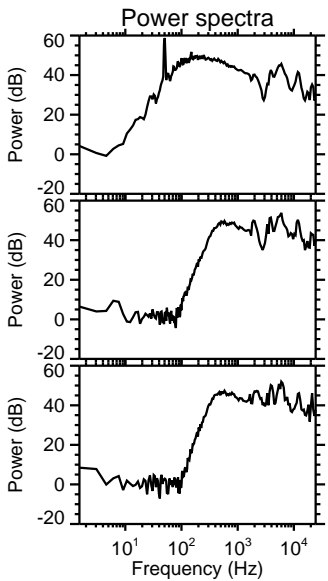
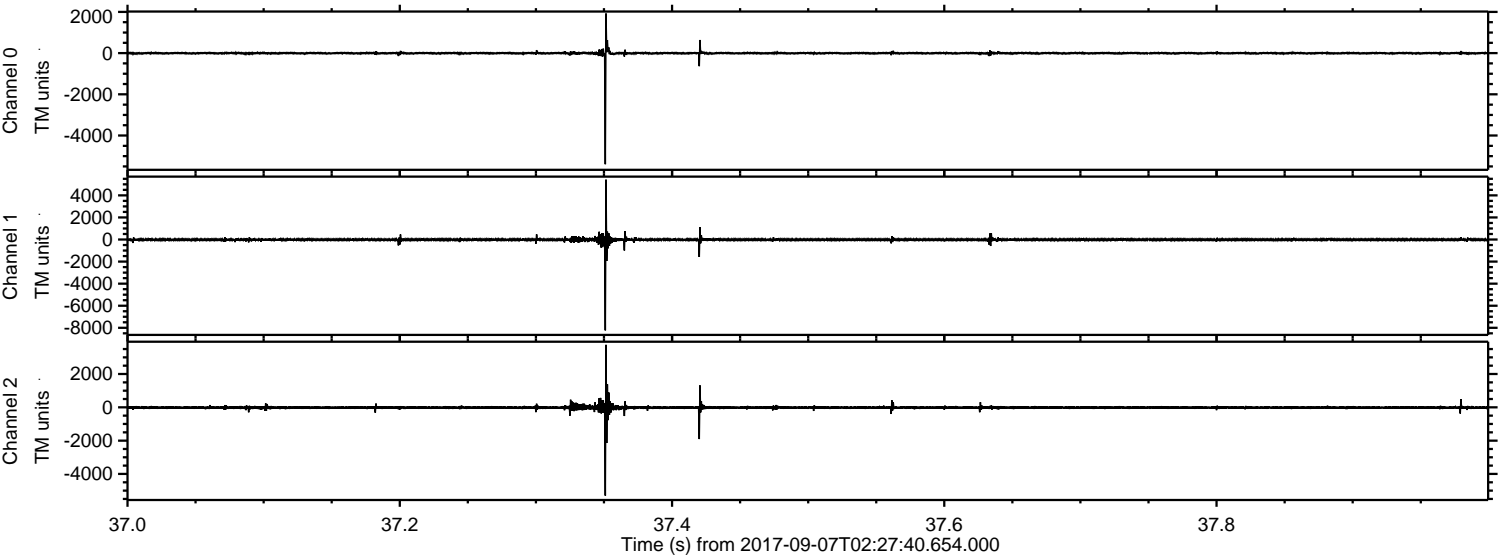


Processed Thu Sep 7 04:35:39 2017 by ELM ver.2012-10-06 from 001\_\_elm20170907\_022739\_\_dat00.bin





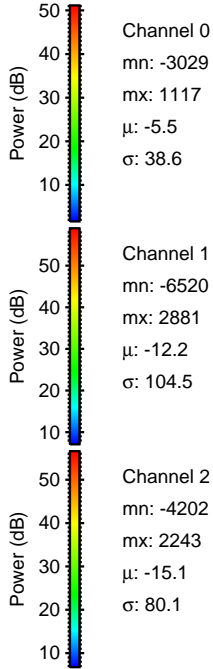
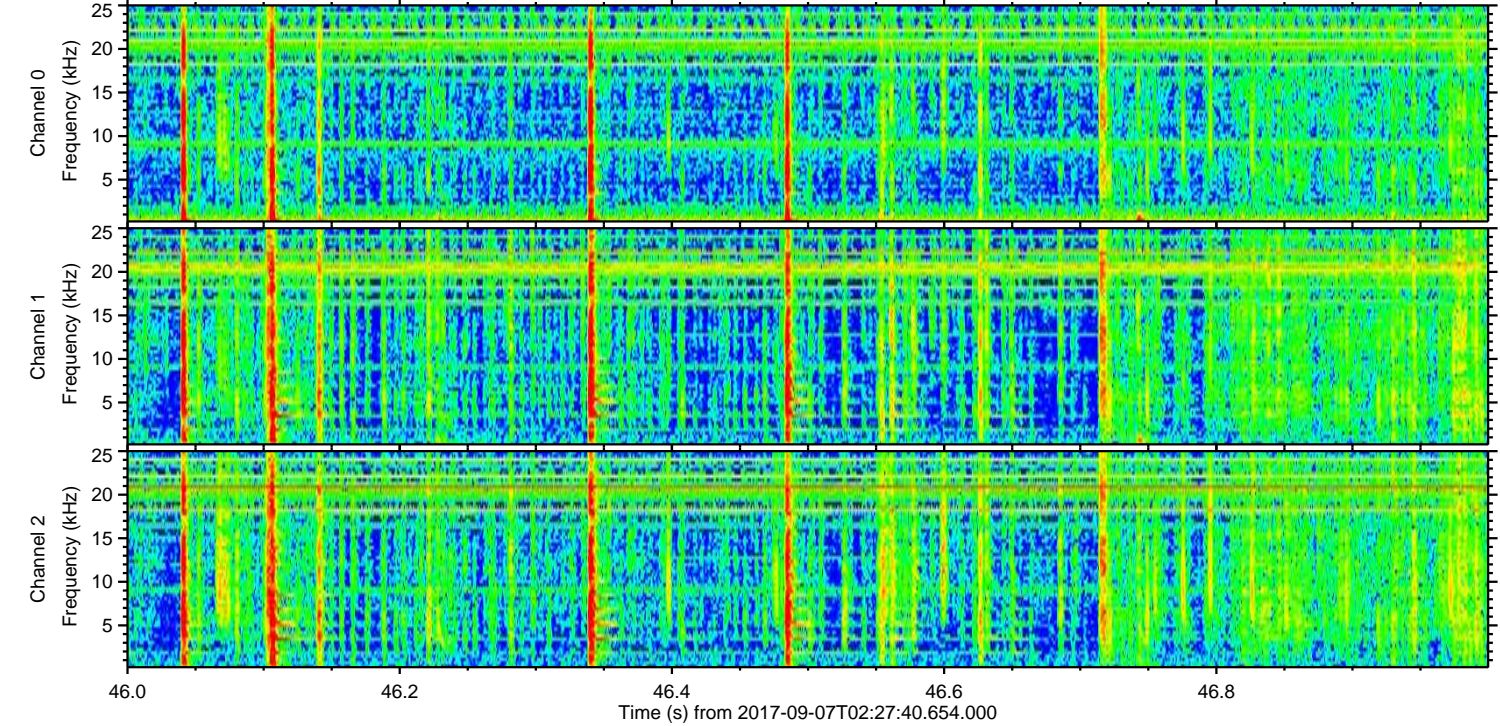
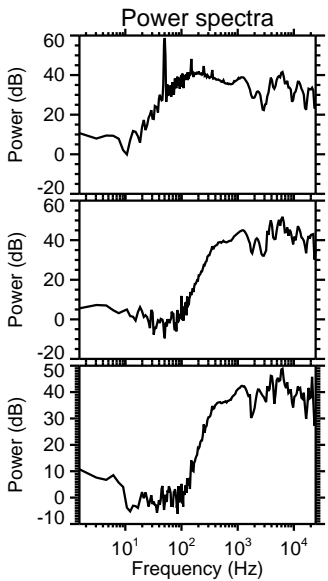
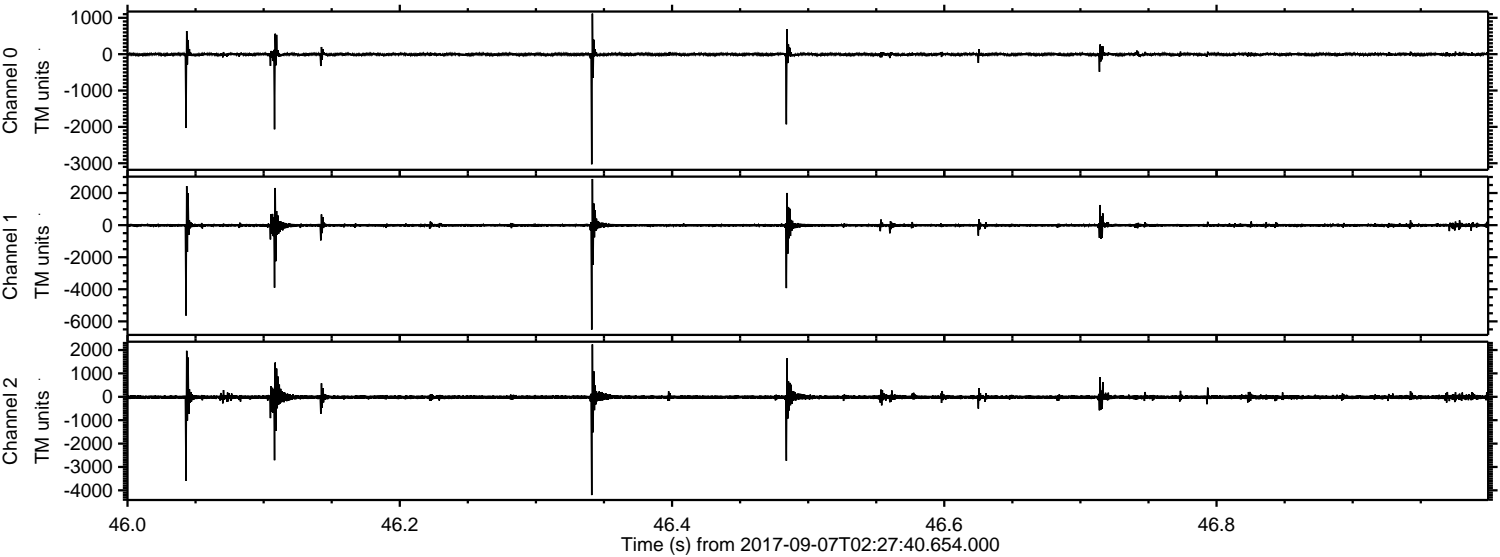
Processed Thu Sep 7 04:35:40 2017 by ELM ver.2012-10-06 from 001\_\_elm20170907\_022739\_\_dat00.bin





ELMAVAN 3D WAVEFORMS (Measured data sampled at 50 kHz) 51000 packets of 144 samples from 2017-09-07T02:27:40.654.000. Part 47/147

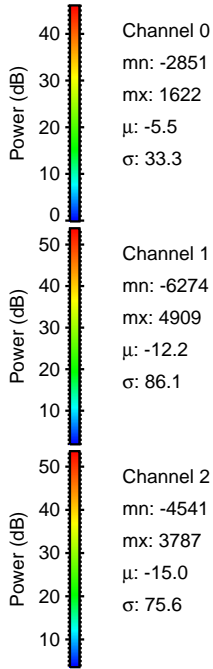
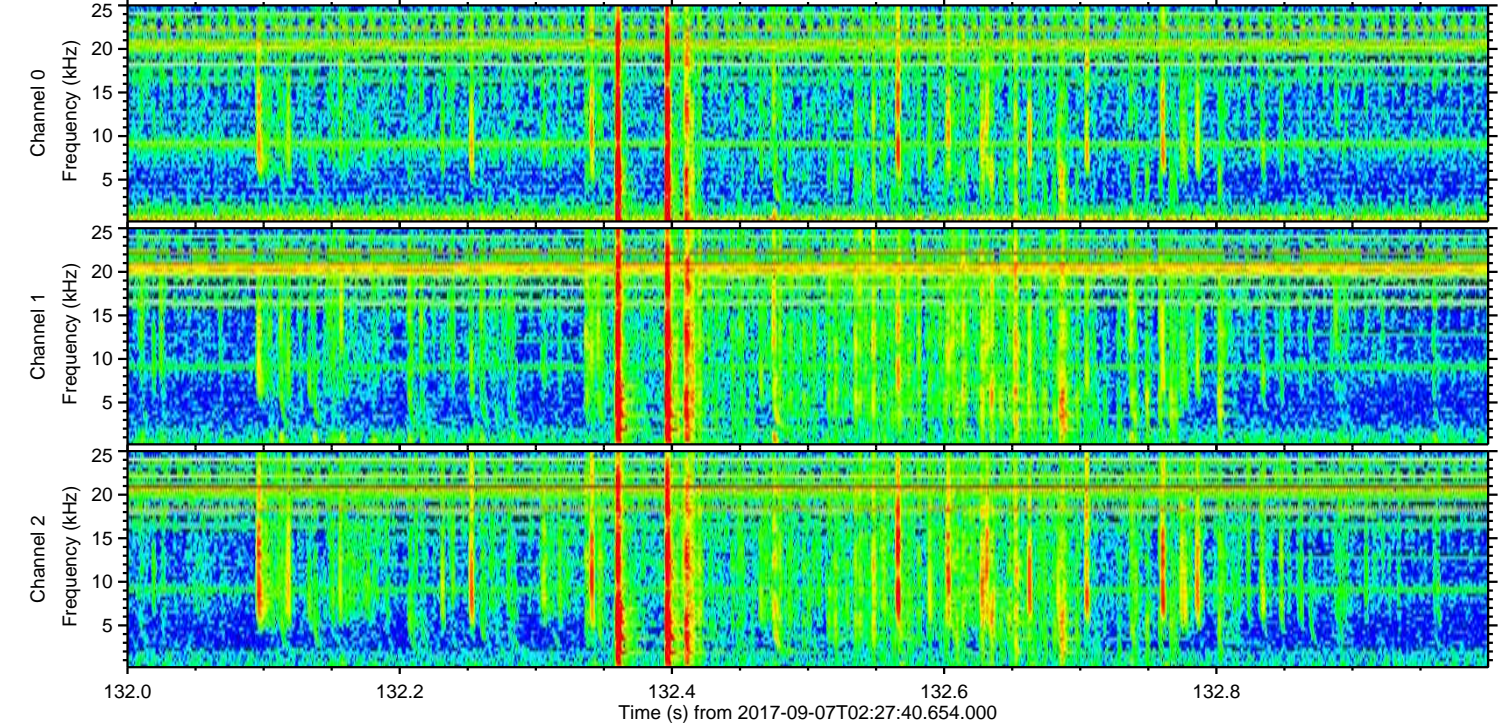
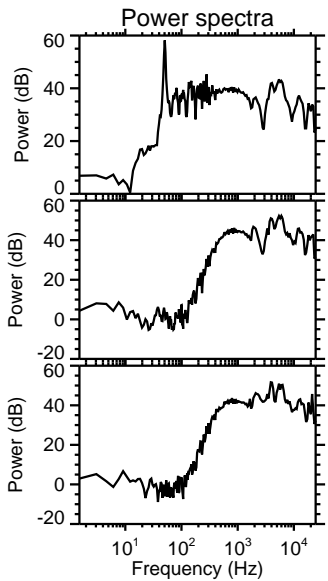
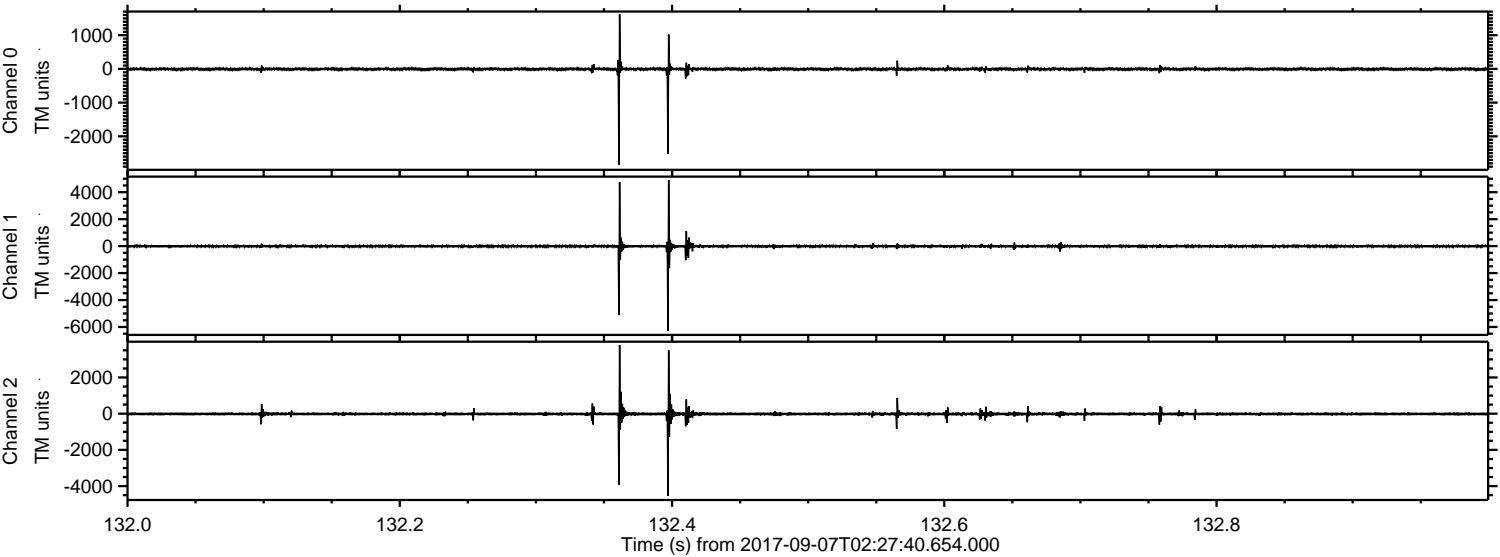
Processed Thu Sep 7 04:35:40 2017 by ELM ver.2012-10-06 from 001\_\_elm20170907\_022739\_\_dat00.bin





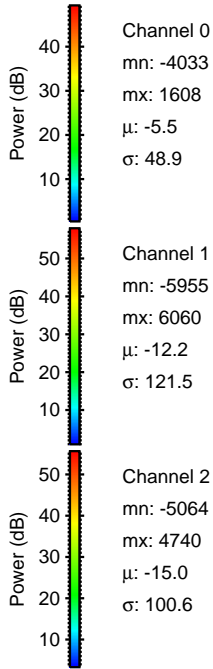
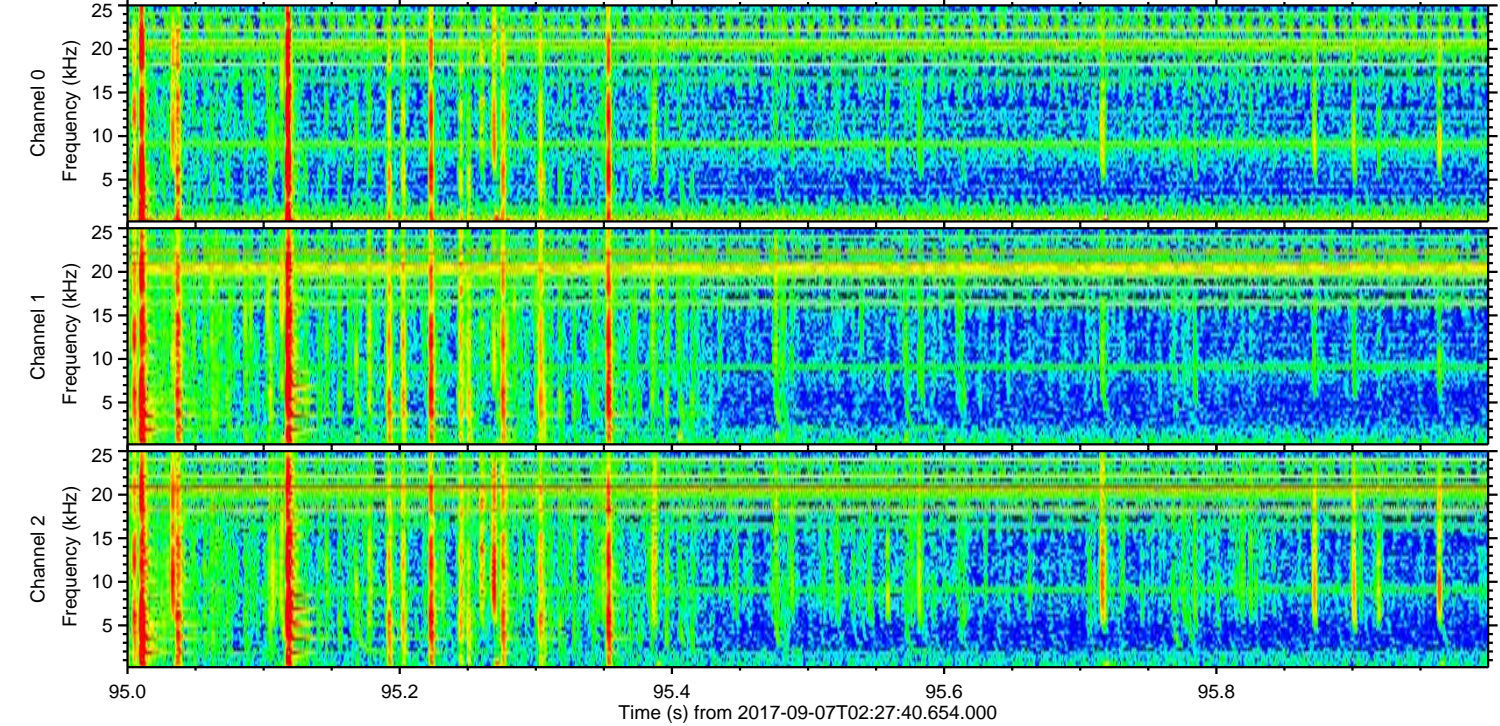
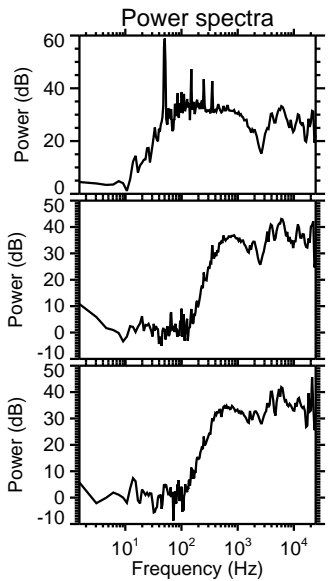
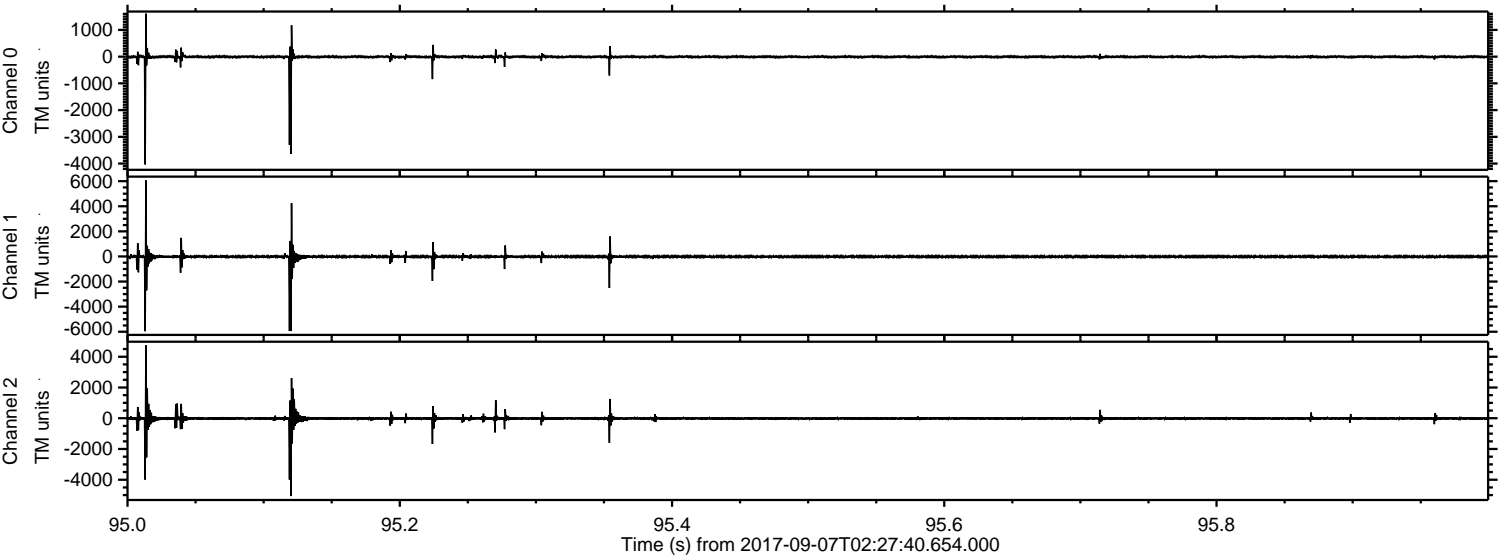
ELMAVAN 3D WAVEFORMS (Measured data sampled at 50 kHz) 51000 packets of 144 samples from 2017-09-07T02:27:40.654.000. Part 133/147

Processed Thu Sep 7 04:35:41 2017 by ELM ver.2012-10-06 from 001\_\_elm20170907\_022739\_\_dat00.bin





Processed Thu Sep 7 04:35:42 2017 by ELM ver.2012-10-06 from 001\_\_elm20170907\_022739\_\_dat00.bin



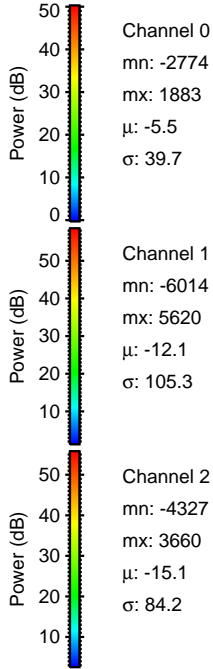
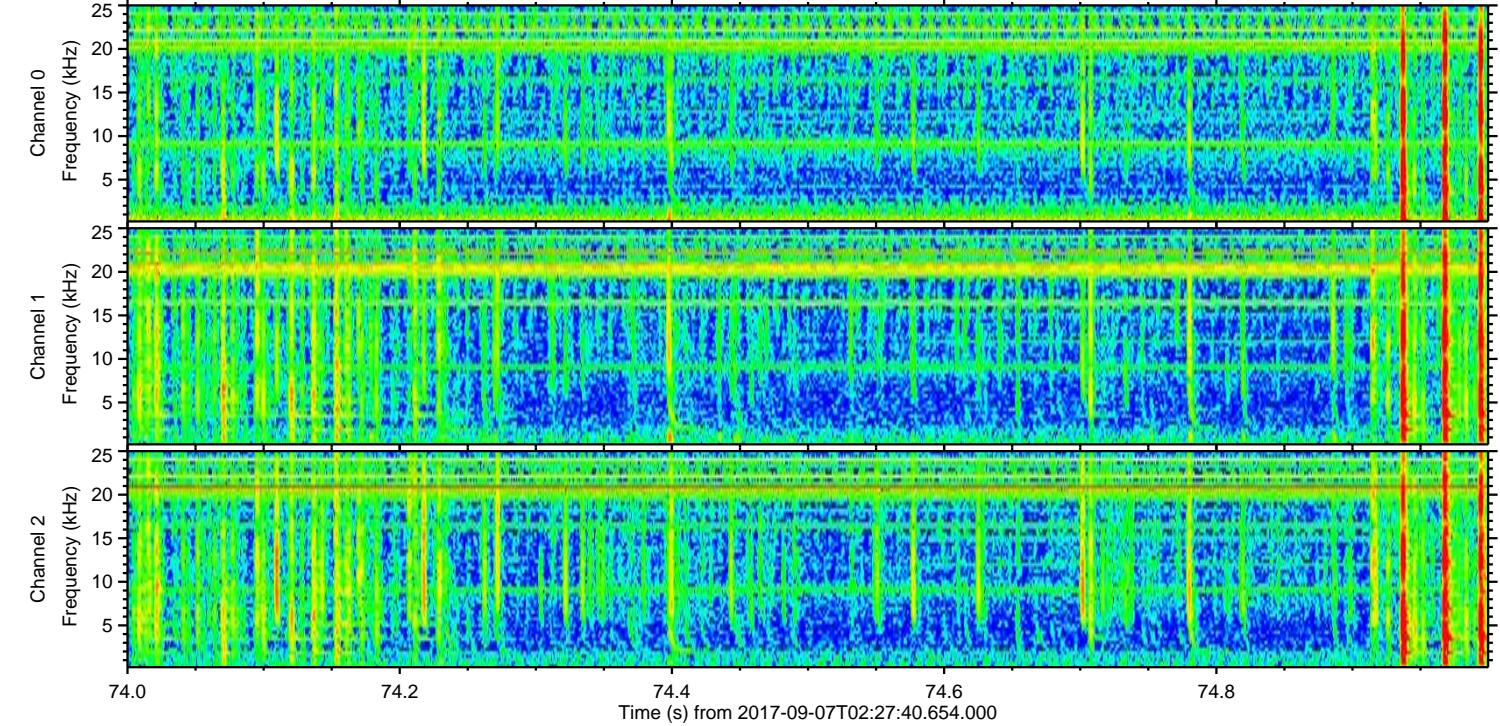
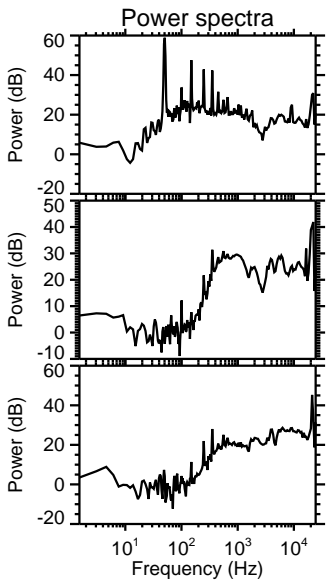
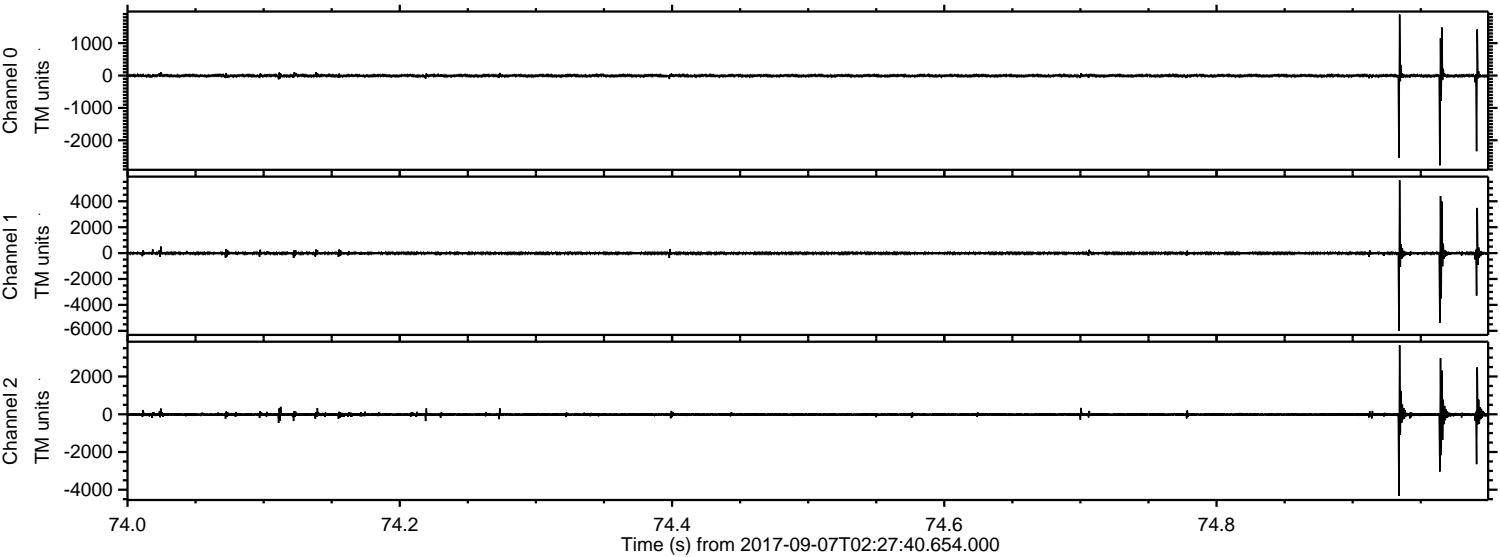
Channel 0  
mn: -4033  
mx: 1608  
 $\mu$ : -5.5  
 $\sigma$ : 48.9

Channel 1  
mn: -5955  
mx: 6060  
 $\mu$ : -12.2  
 $\sigma$ : 121.5

Channel 2  
mn: -5064  
mx: 4740  
 $\mu$ : -15.0  
 $\sigma$ : 100.6

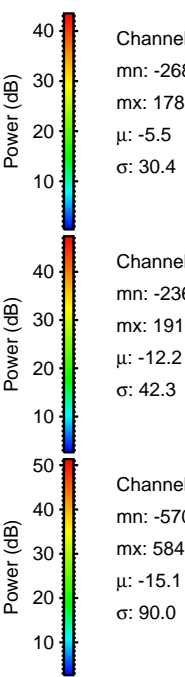
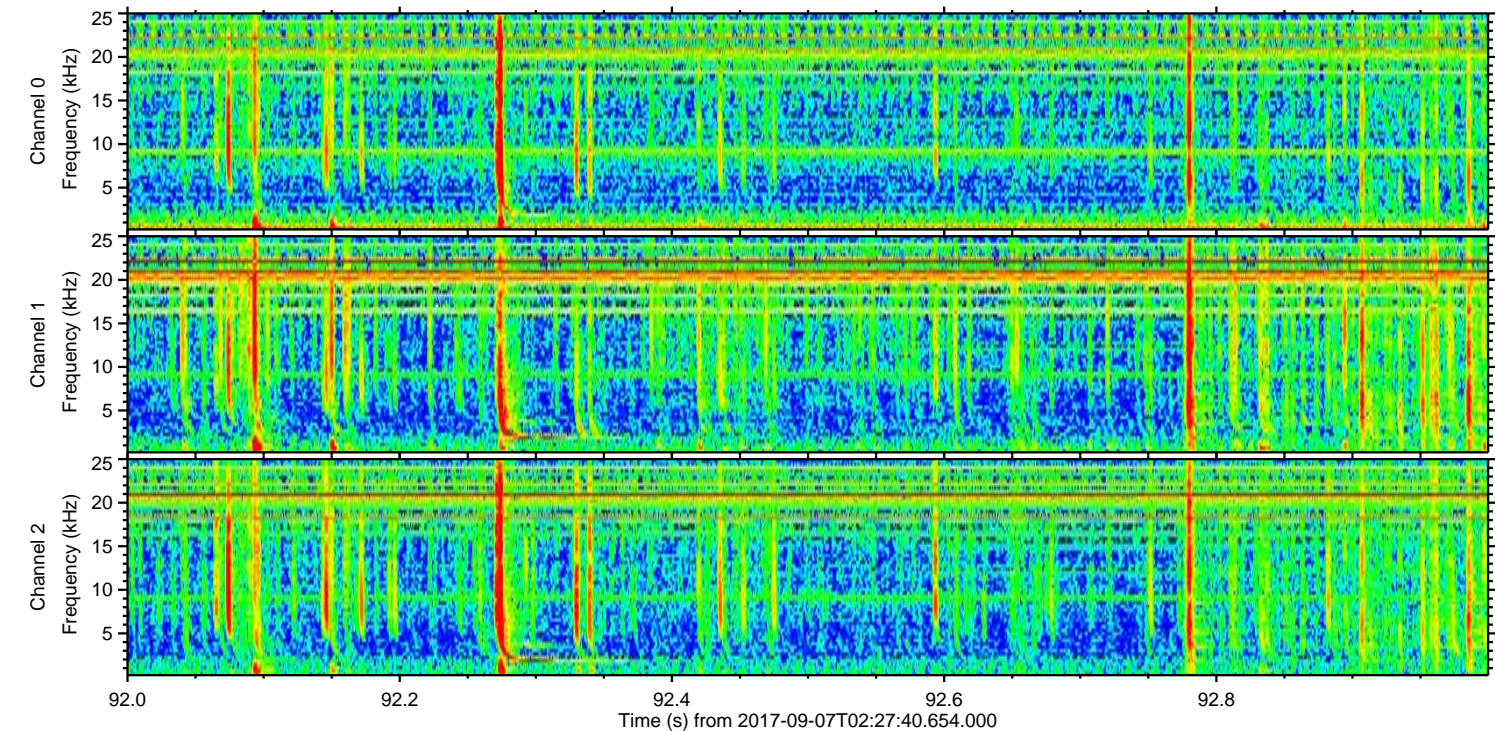
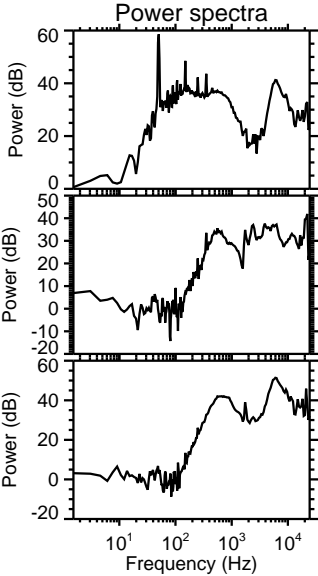
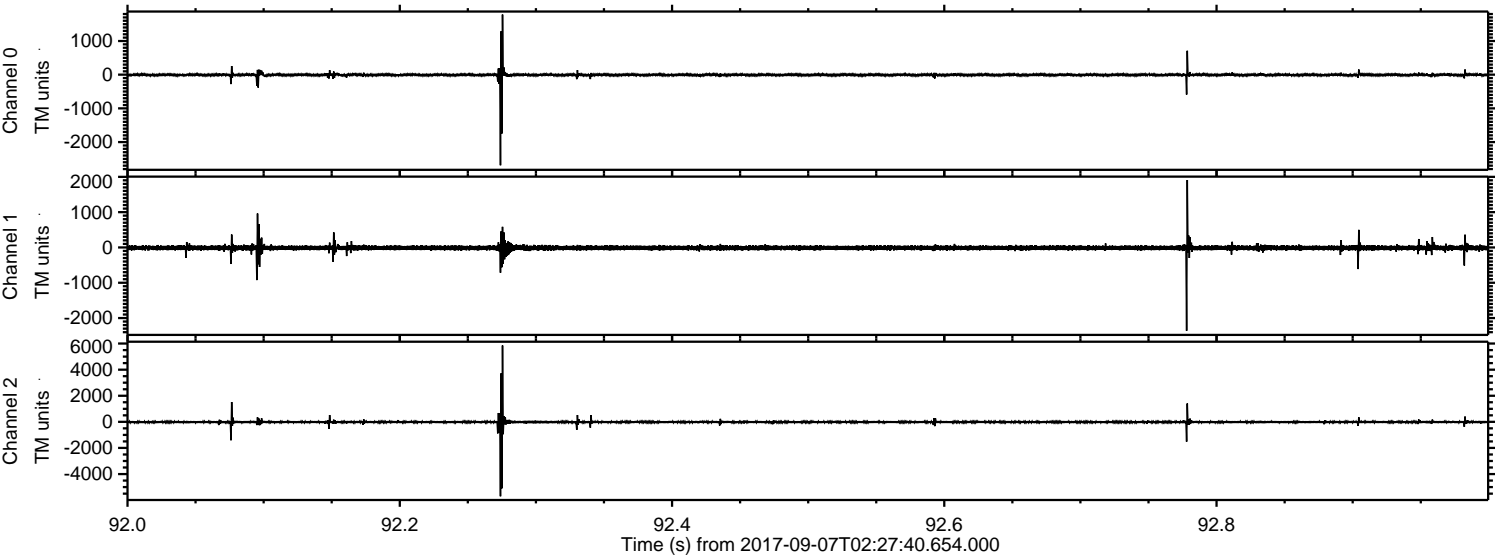


Processed Thu Sep 7 04:35:42 2017 by ELM ver.2012-10-06 from 001\_\_elm20170907\_022739\_\_dat00.bin





Processed Thu Sep 7 04:35:43 2017 by ELM ver.2012-10-06 from 001\_\_elm20170907\_022739\_\_dat00.bin



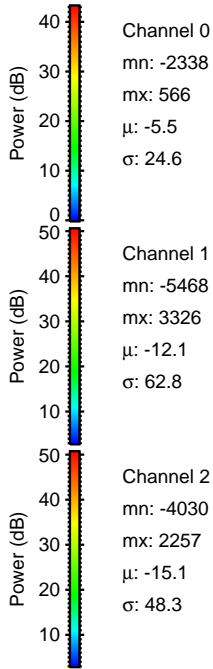
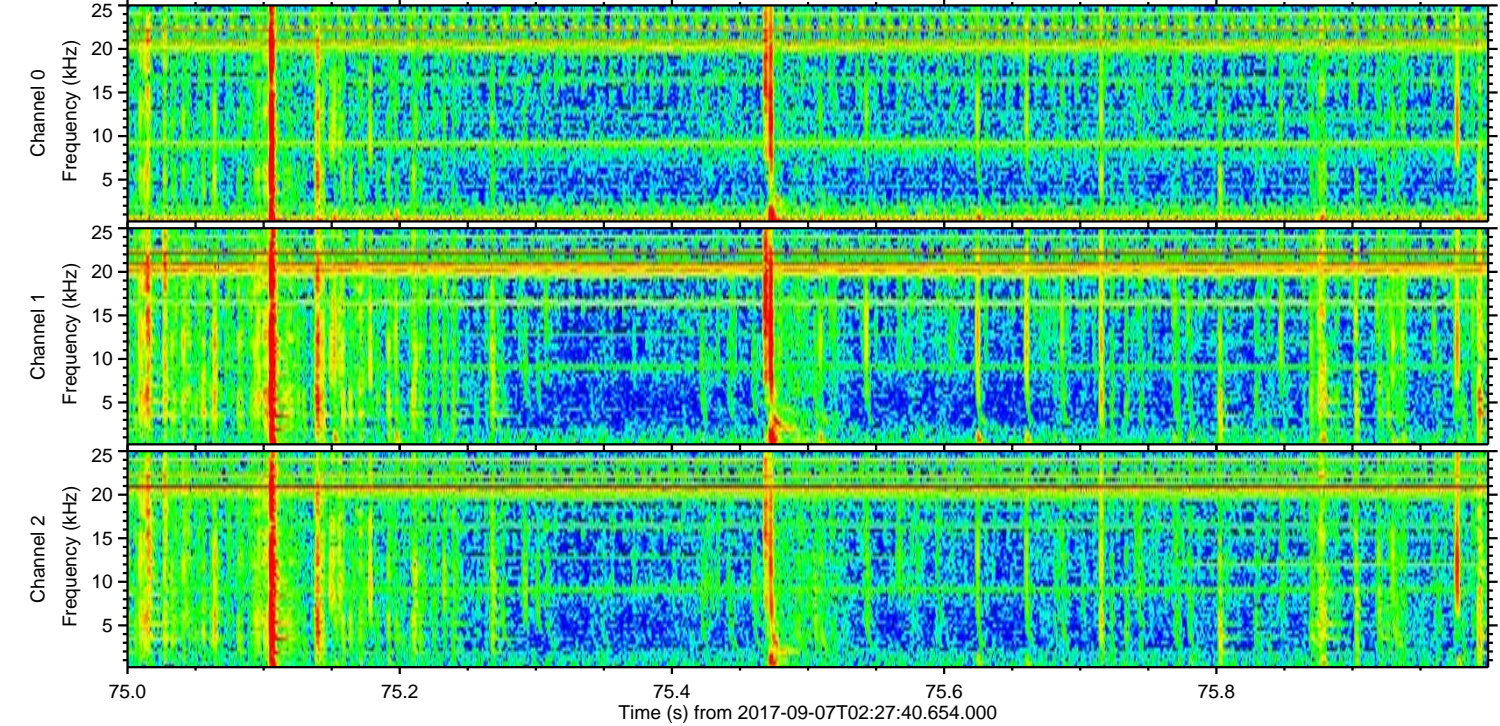
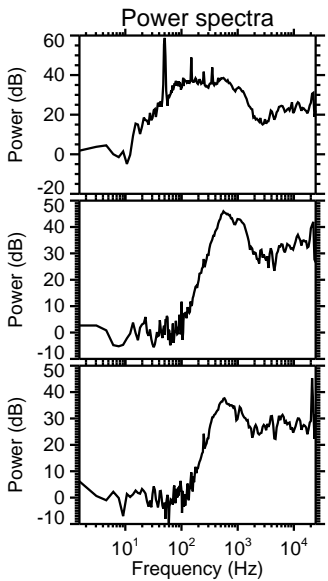
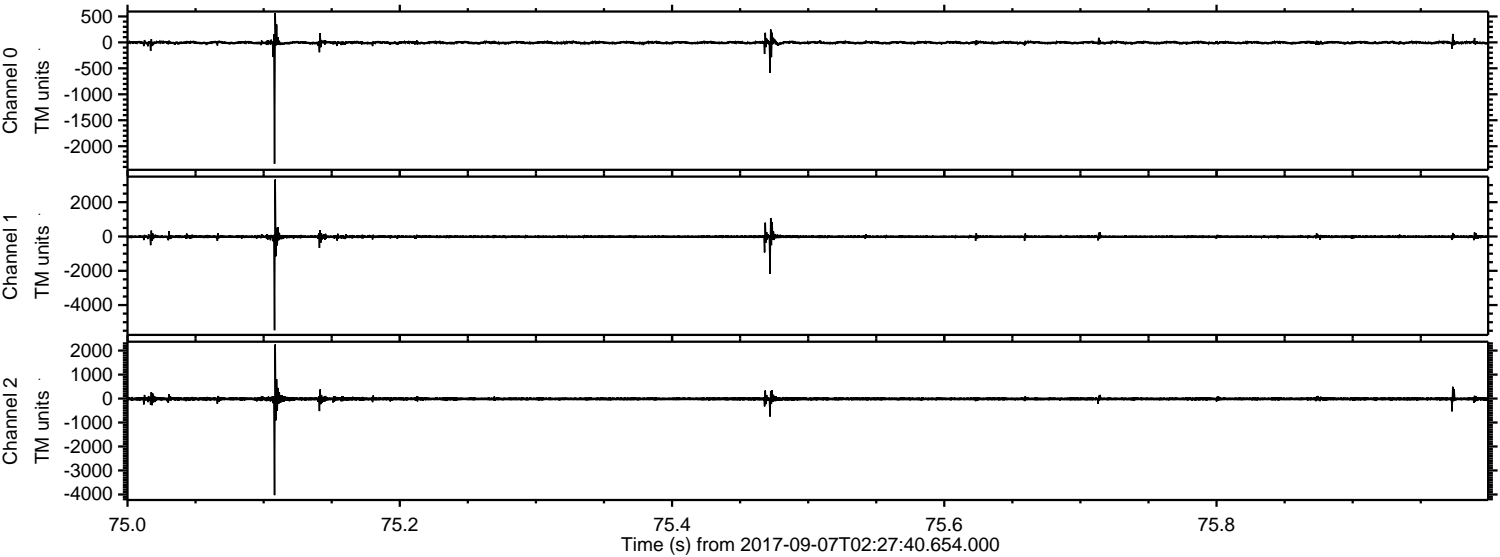
Channel 0  
mn: -2689  
mx: 1785  
 $\mu$ : -5.5  
 $\sigma$ : 30.4

Channel 1  
mn: -2360  
mx: 1910  
 $\mu$ : -12.2  
 $\sigma$ : 42.3

Channel 2  
mn: -5704  
mx: 5849  
 $\mu$ : -15.1  
 $\sigma$ : 90.0

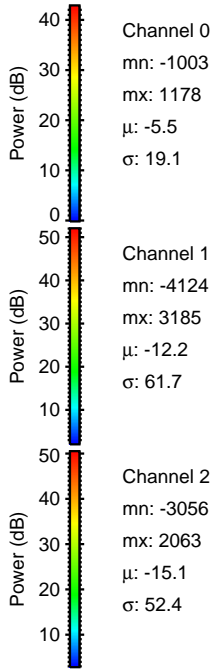
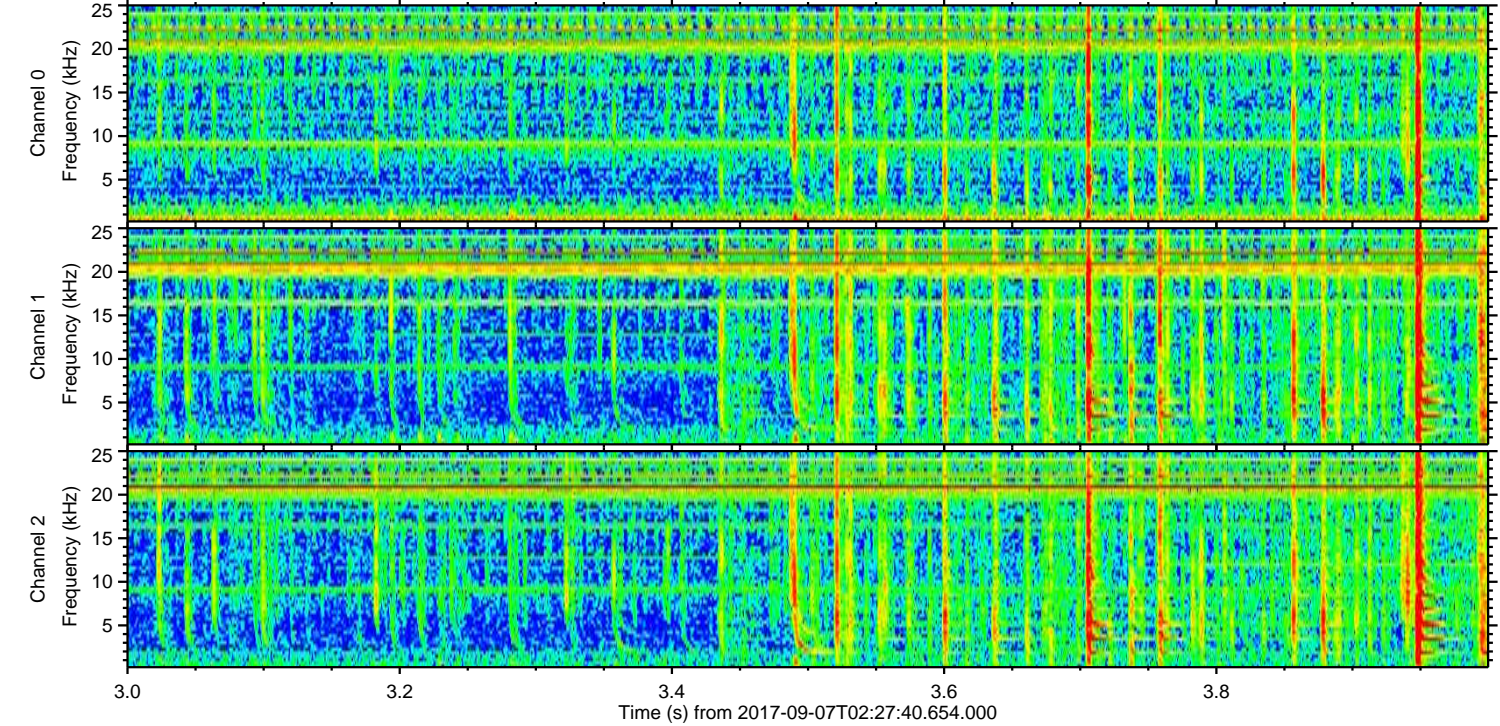
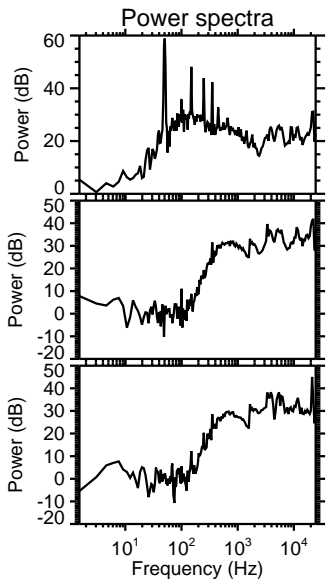
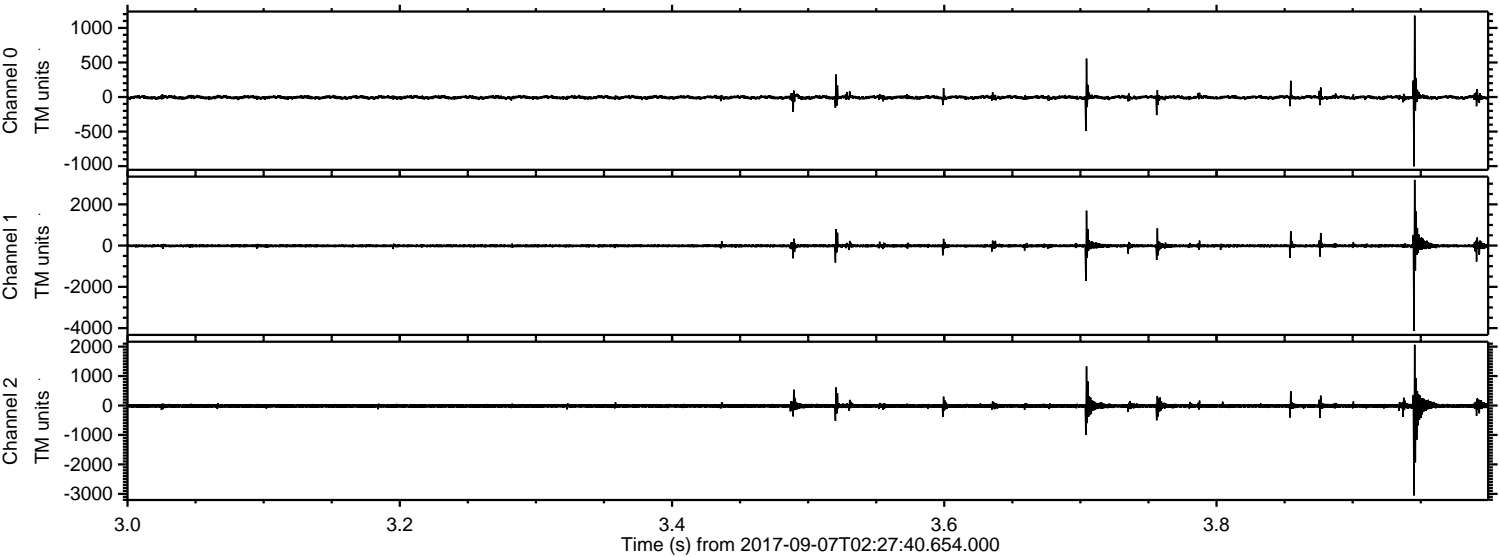


Processed Thu Sep 7 04:35:43 2017 by ELM ver.2012-10-06 from 001\_\_elm20170907\_022739\_\_dat00.bin





Processed Thu Sep 7 04:35:44 2017 by ELM ver.2012-10-06 from 001\_\_elm20170907\_022739\_\_dat00.bin



Channel 0  
mn: -1003  
mx: 1178  
 $\mu$ : -5.5  
 $\sigma$ : 19.1

Channel 1  
mn: -4124  
mx: 3185  
 $\mu$ : -12.2  
 $\sigma$ : 61.7

Channel 2  
mn: -3056  
mx: 2063  
 $\mu$ : -15.1  
 $\sigma$ : 52.4



Processed Thu Sep 7 04:35:45 2017 by ELM ver.2012-10-06 from 001\_\_elm20170907\_022739\_\_dat00.bin

