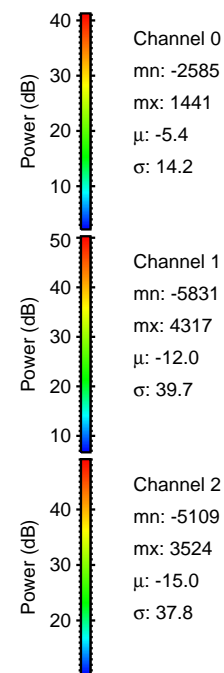
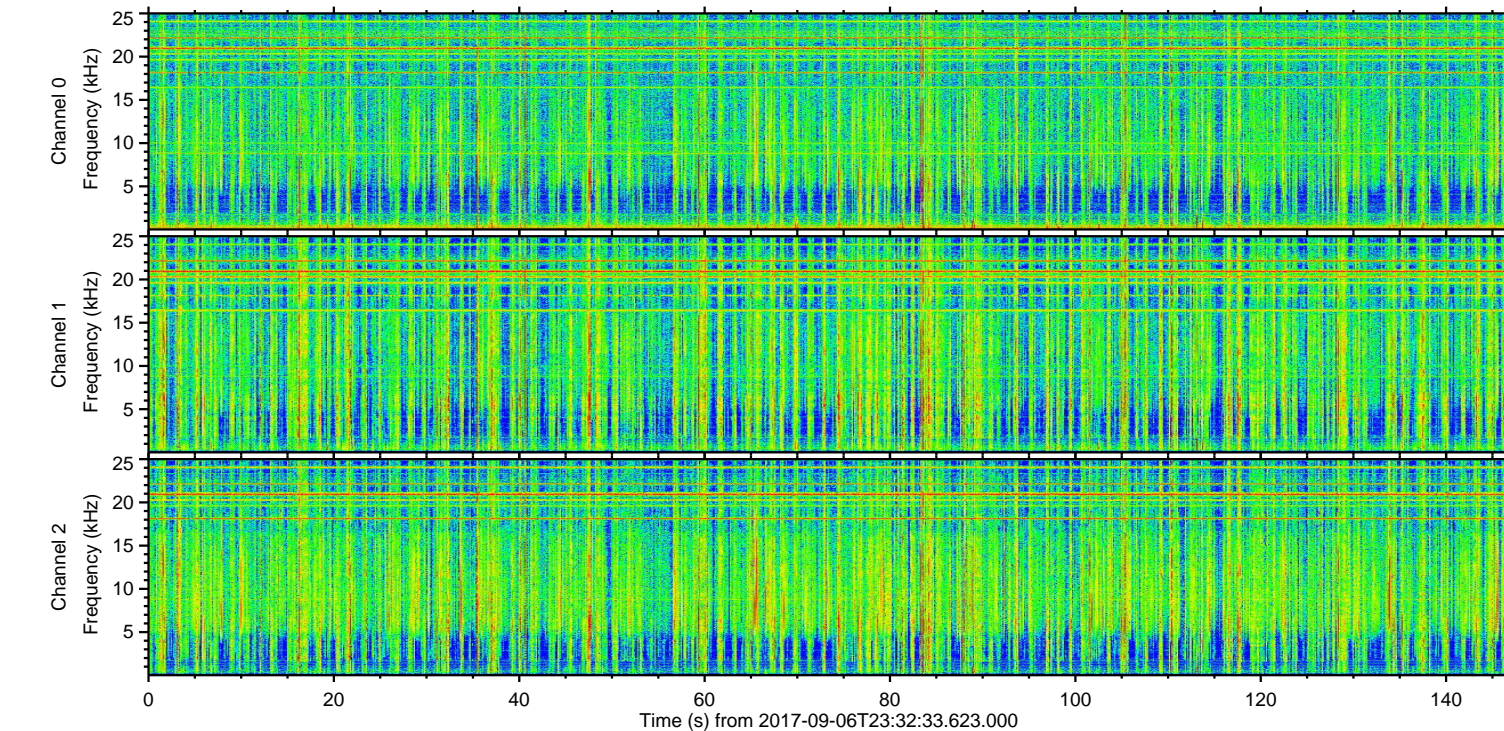
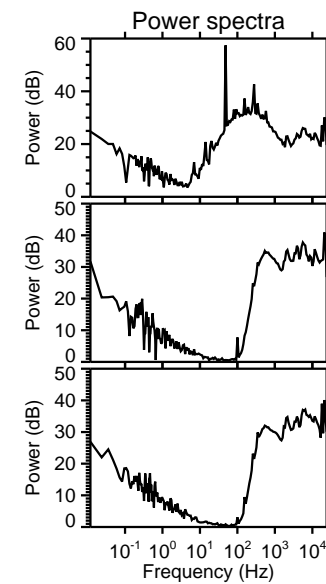
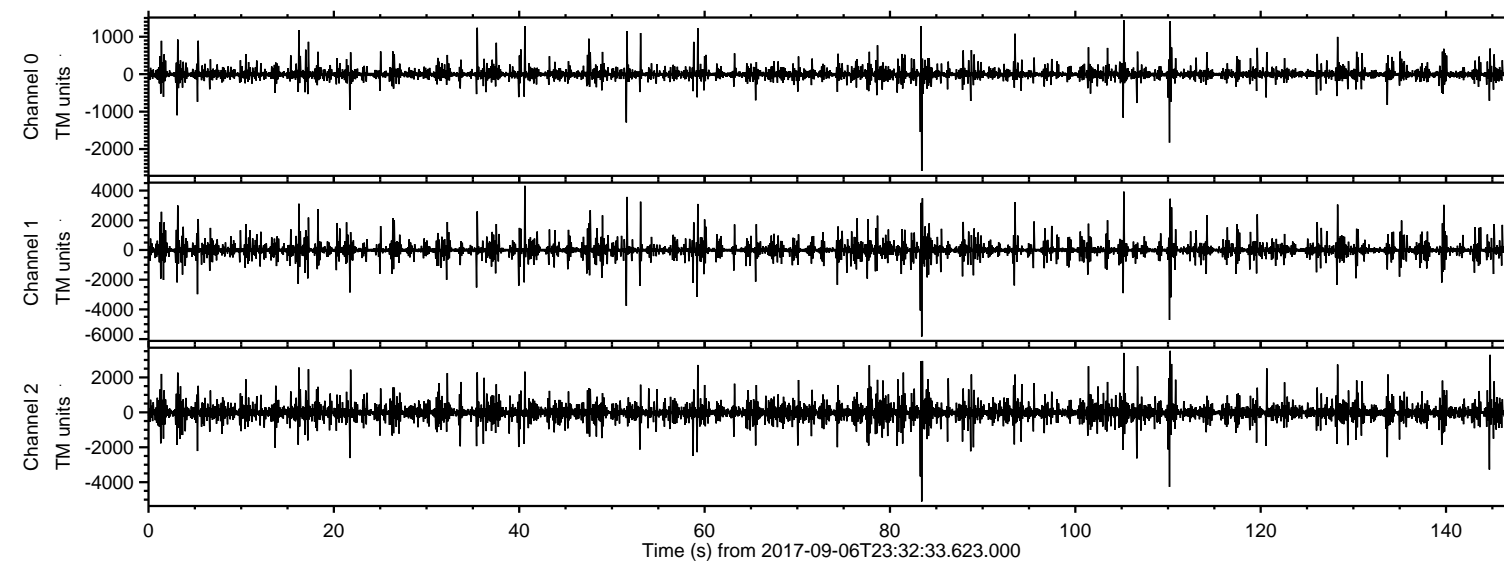
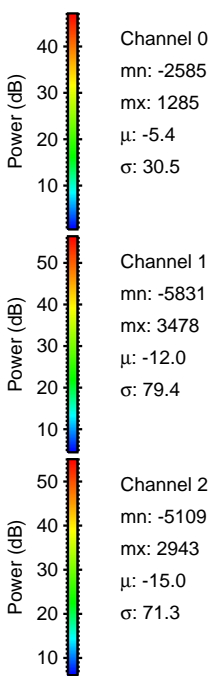
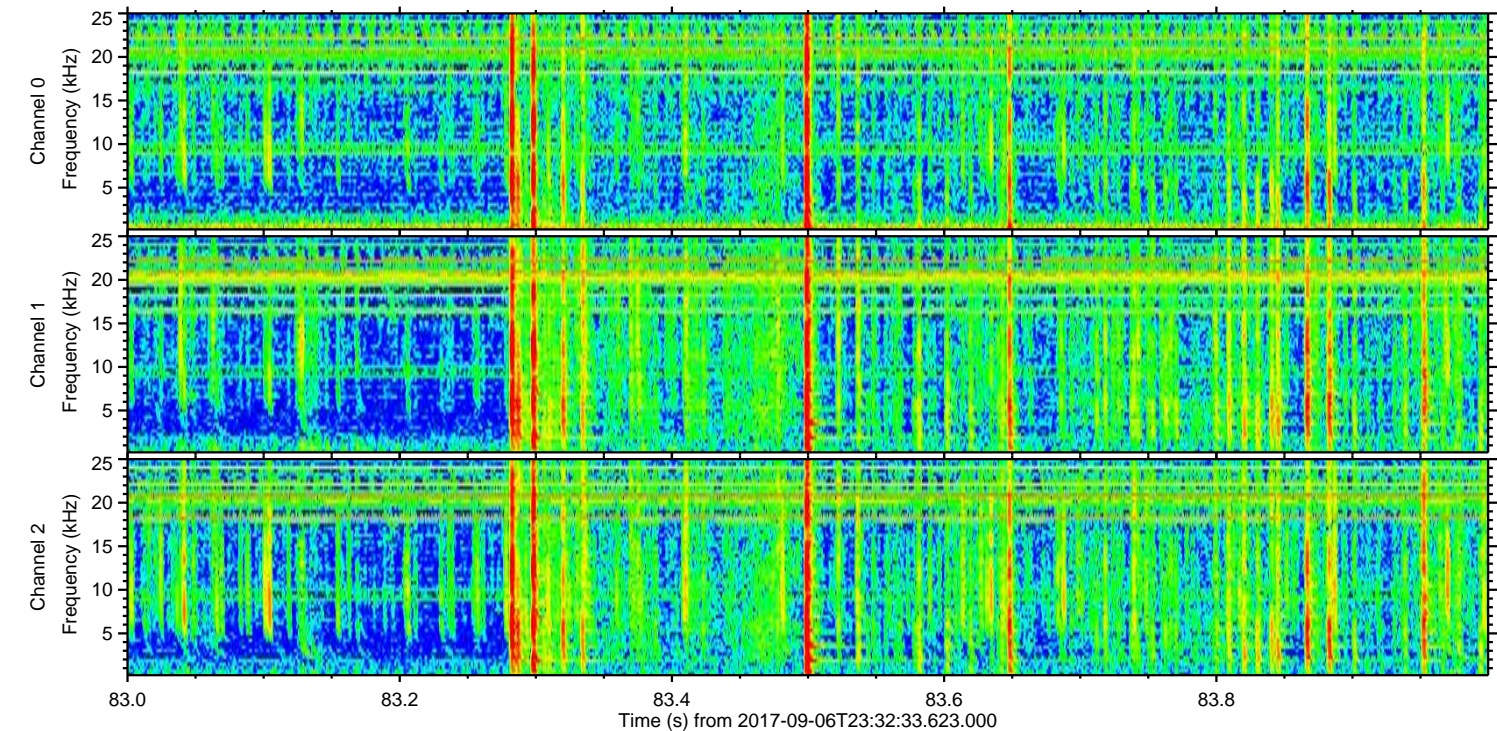
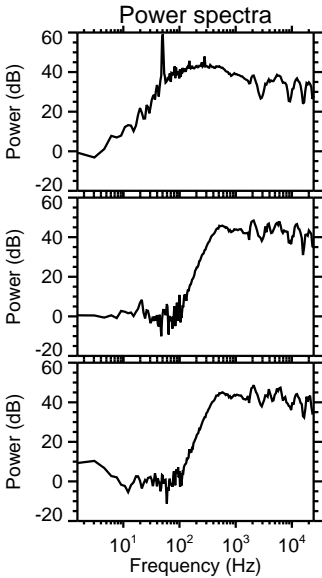
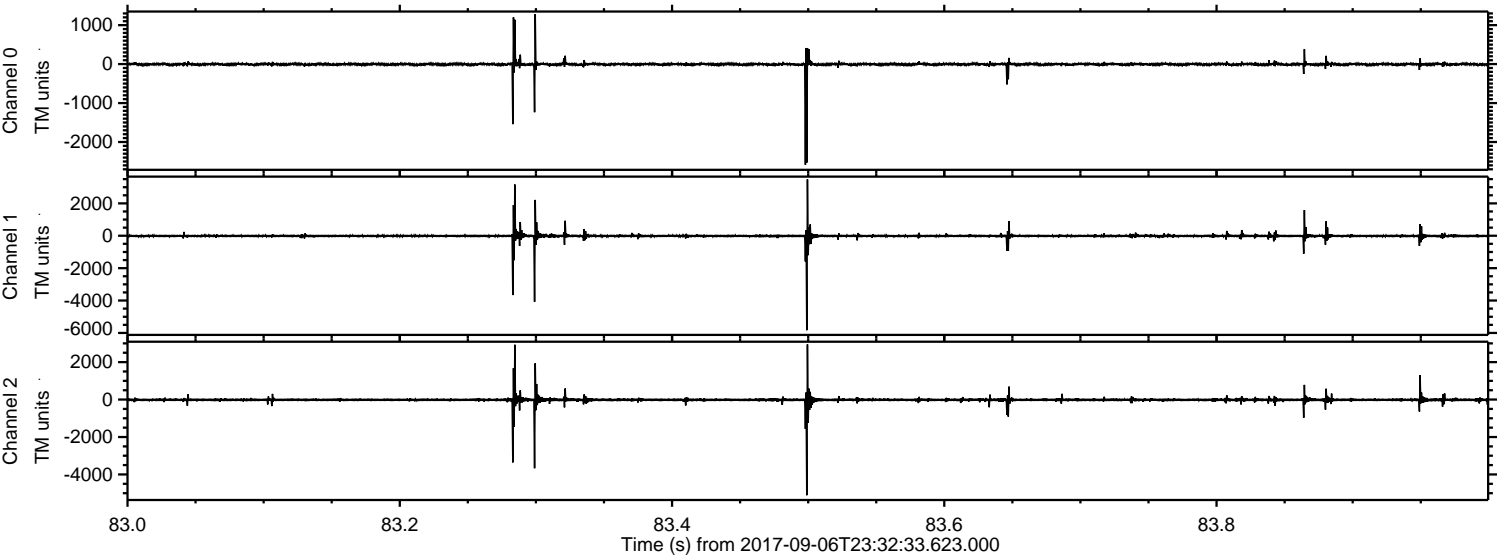


ELMAVAN 3D WAVEFORMS (Measured data sampled at 50 kHz) 51000 packets of 144 samples from 2017-09-06T23:32:33.623.000.

Processed Thu Sep 7 01:40:19 2017 by ELM ver.2012-10-06 from 001__elm20170906_233232__dat00.bin

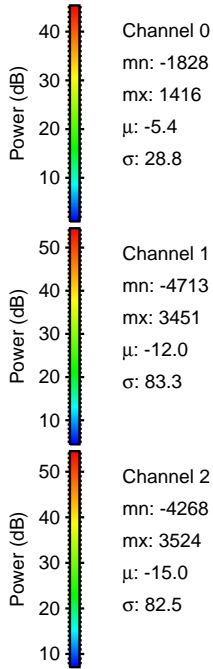
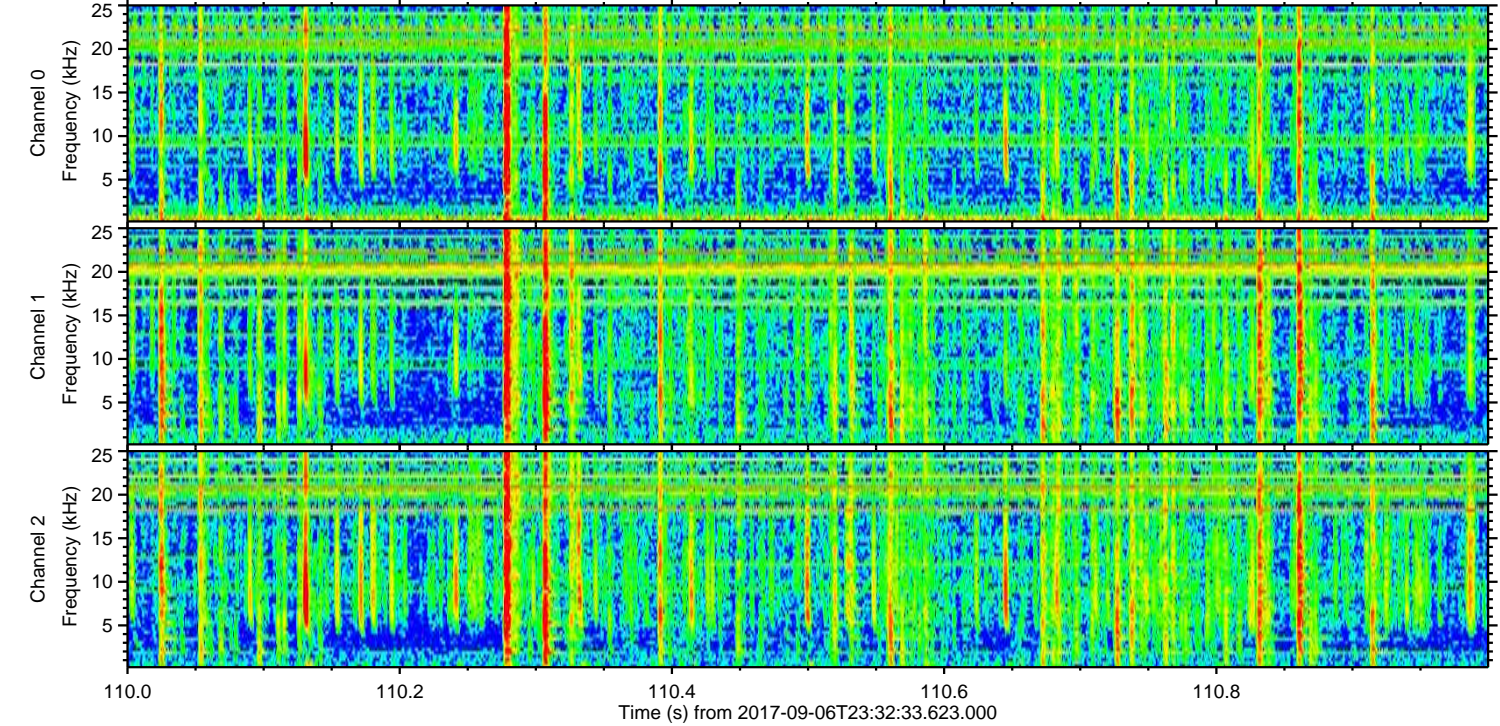
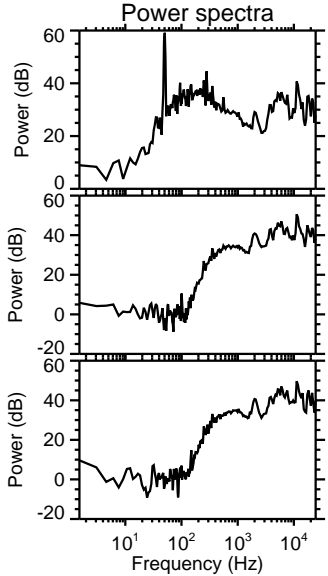
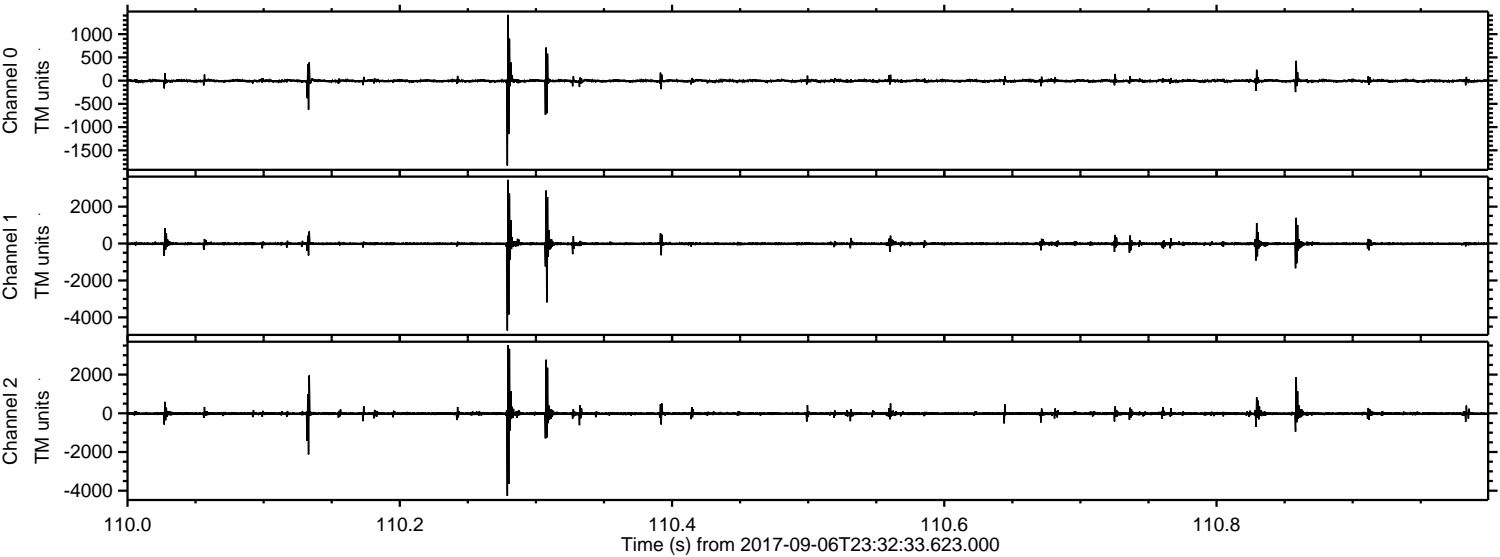


Processed Thu Sep 7 01:40:25 2017 by ELM ver.2012-10-06 from 001__elm20170906_233232__dat00.bin

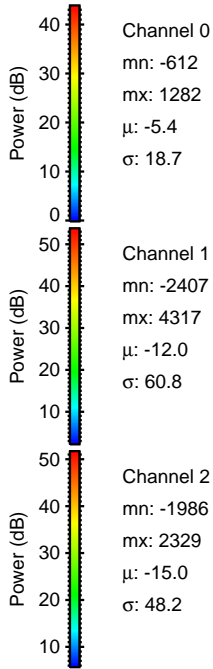
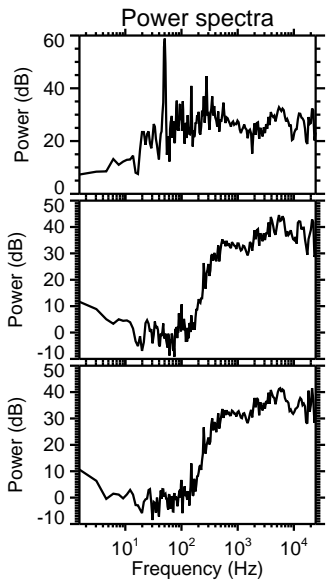
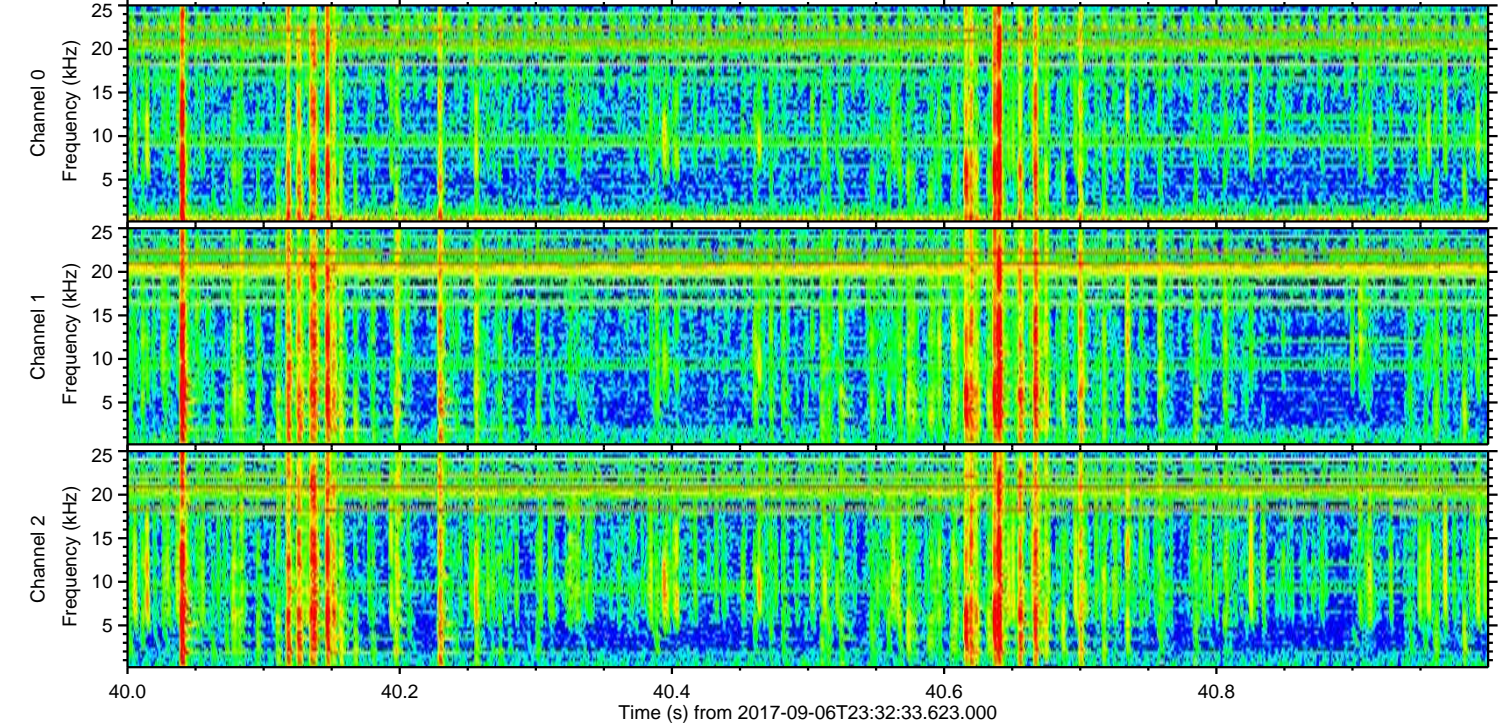
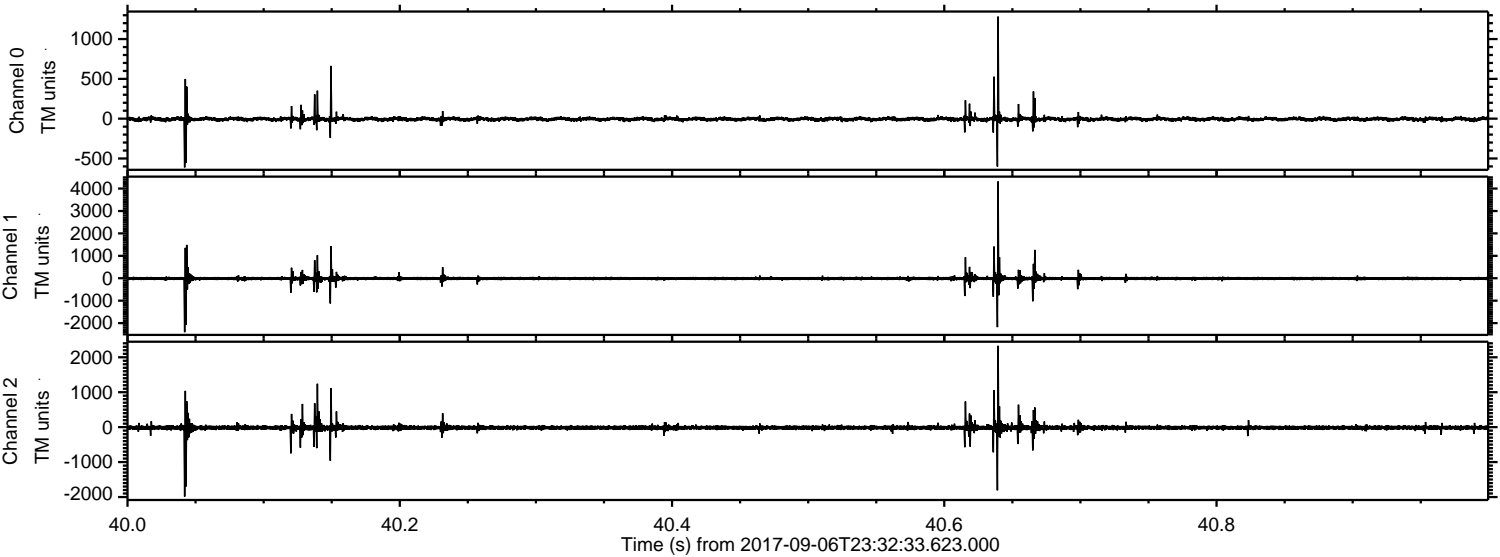


ELMAVAN 3D WAVEFORMS (Measured data sampled at 50 kHz) 51000 packets of 144 samples from 2017-09-06T23:32:33.623.000. Part 111/147

Processed Thu Sep 7 01:40:26 2017 by ELM ver.2012-10-06 from 001__elm20170906_233232__dat00.bin

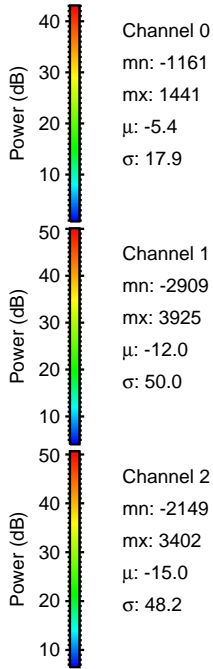
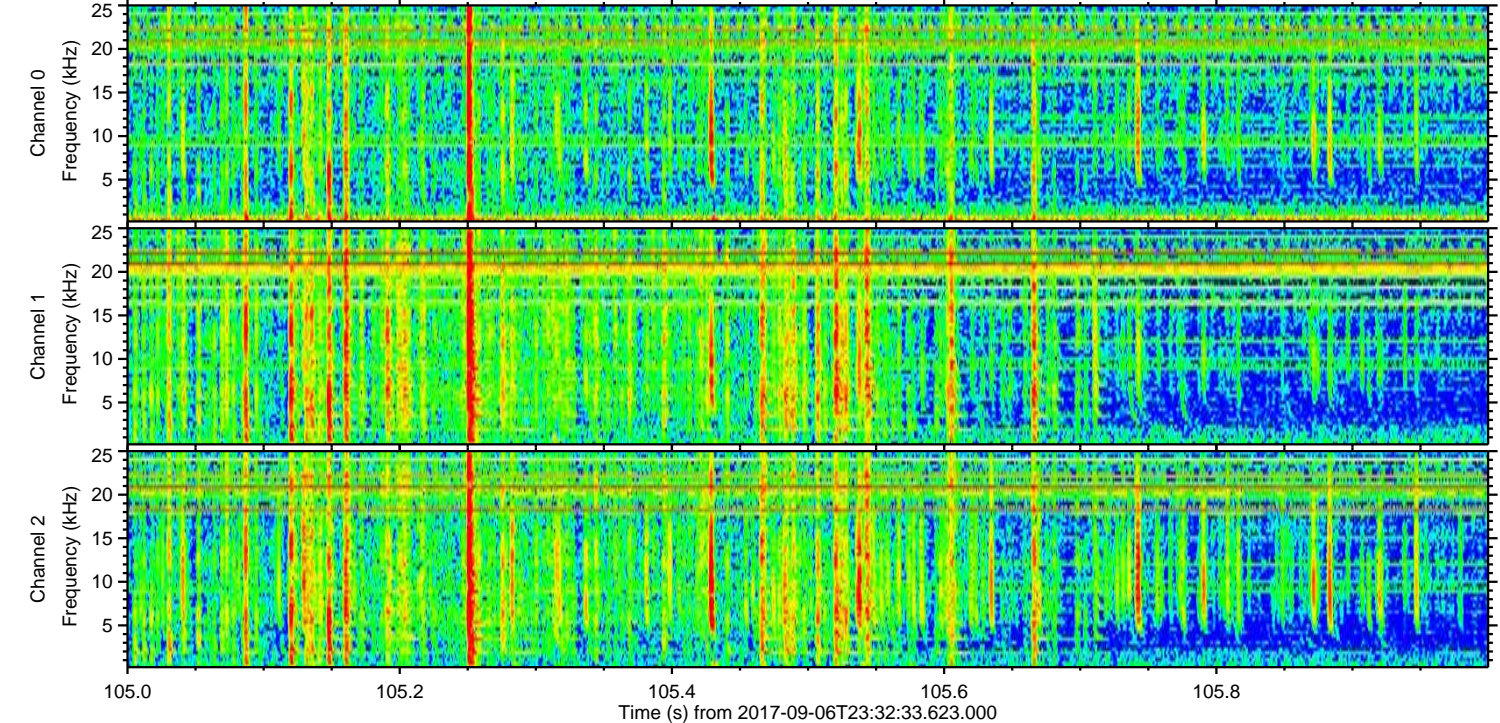
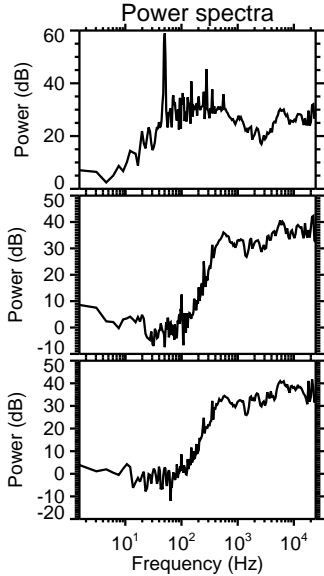
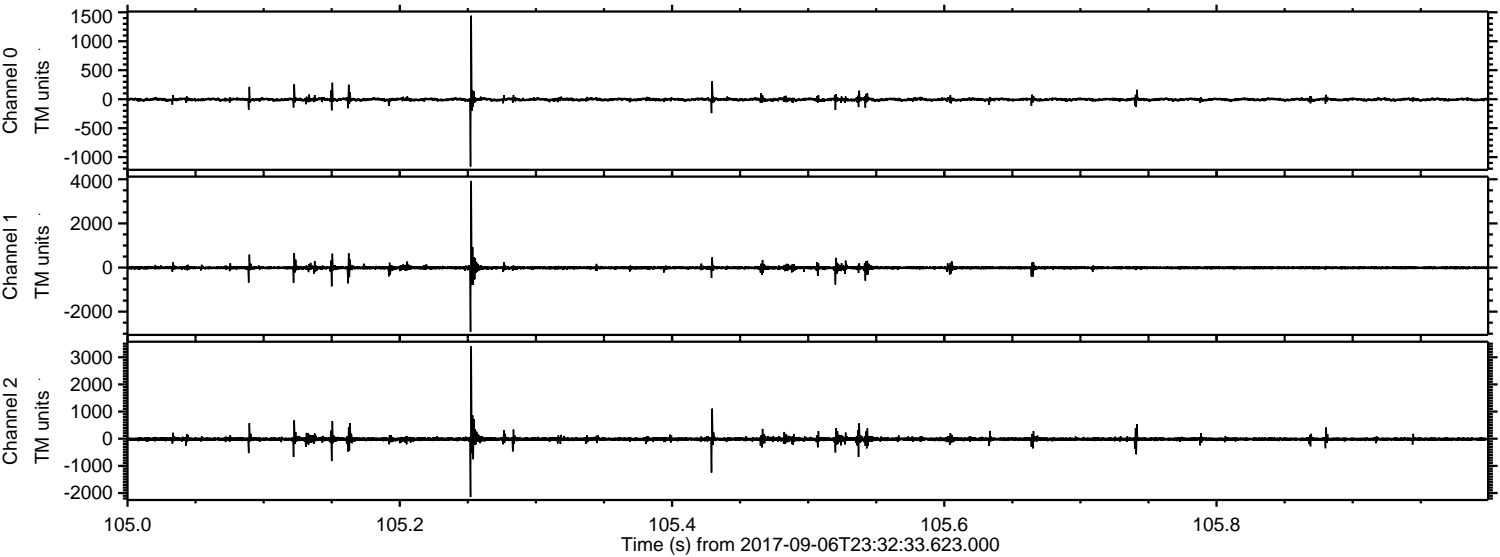


Processed Thu Sep 7 01:40:26 2017 by ELM ver.2012-10-06 from 001__elm20170906_233232__dat00.bin

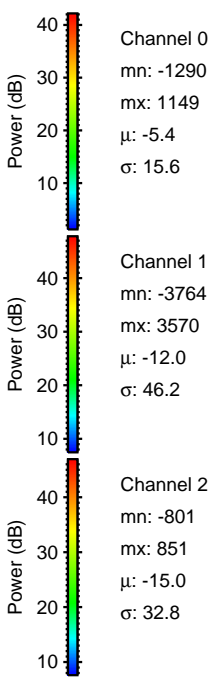
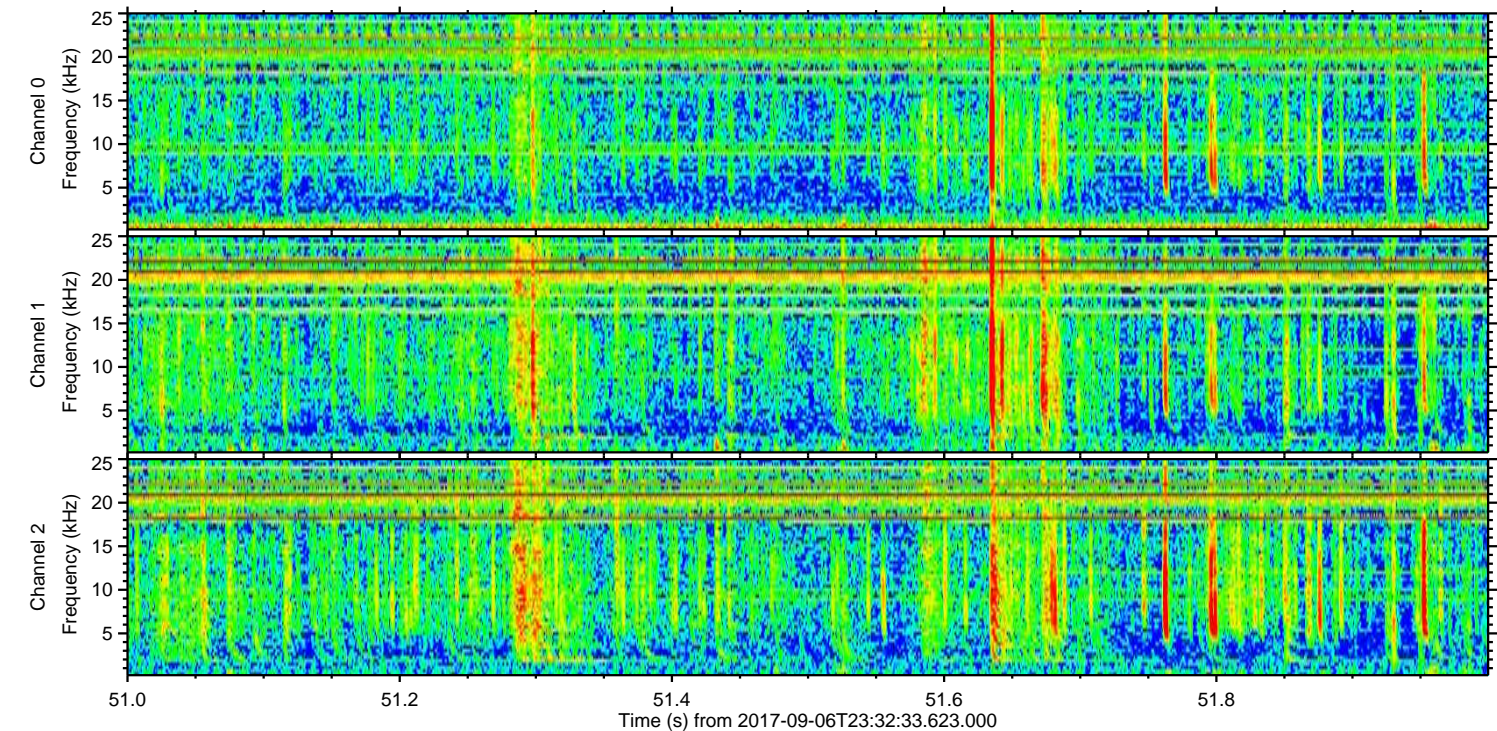
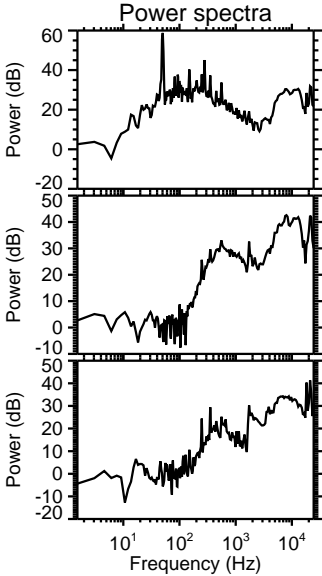
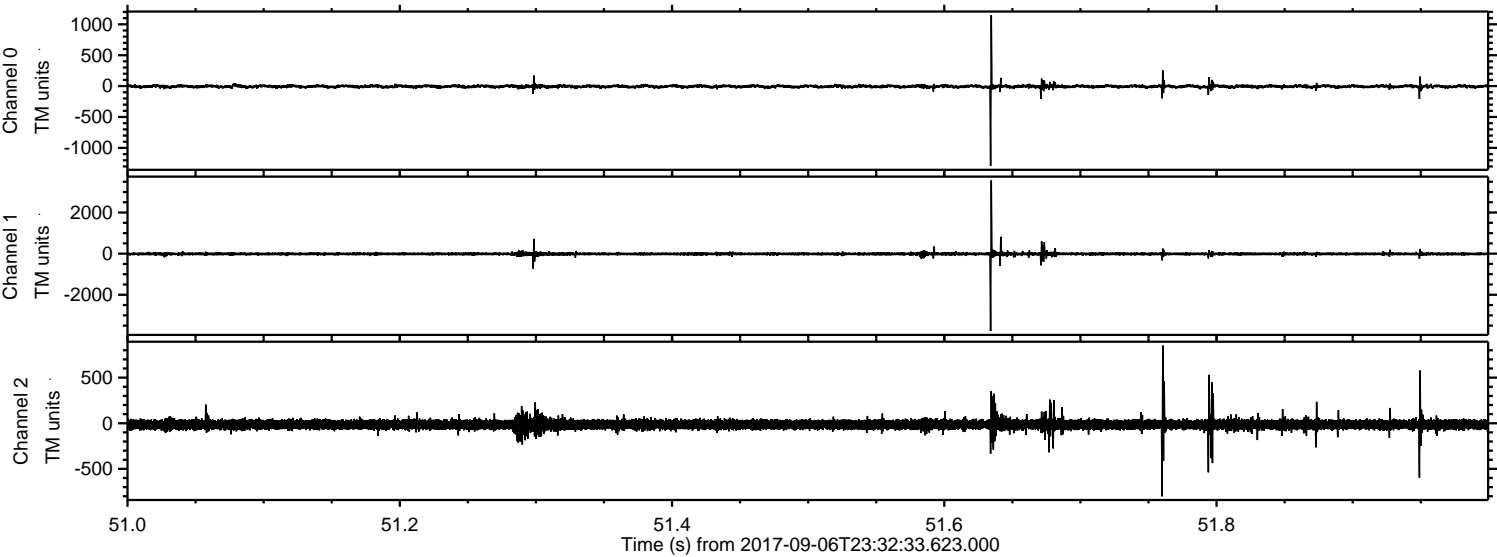


ELMAVAN 3D WAVEFORMS (Measured data sampled at 50 kHz) 51000 packets of 144 samples from 2017-09-06T23:32:33.623.000. Part 106/147

Processed Thu Sep 7 01:40:27 2017 by ELM ver.2012-10-06 from 001__elm20170906_233232__dat00.bin

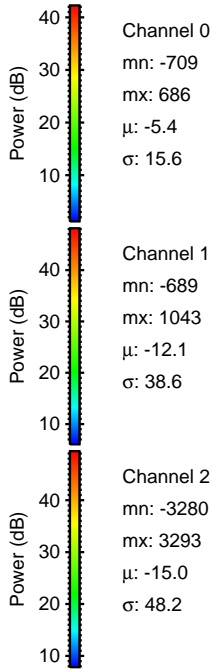
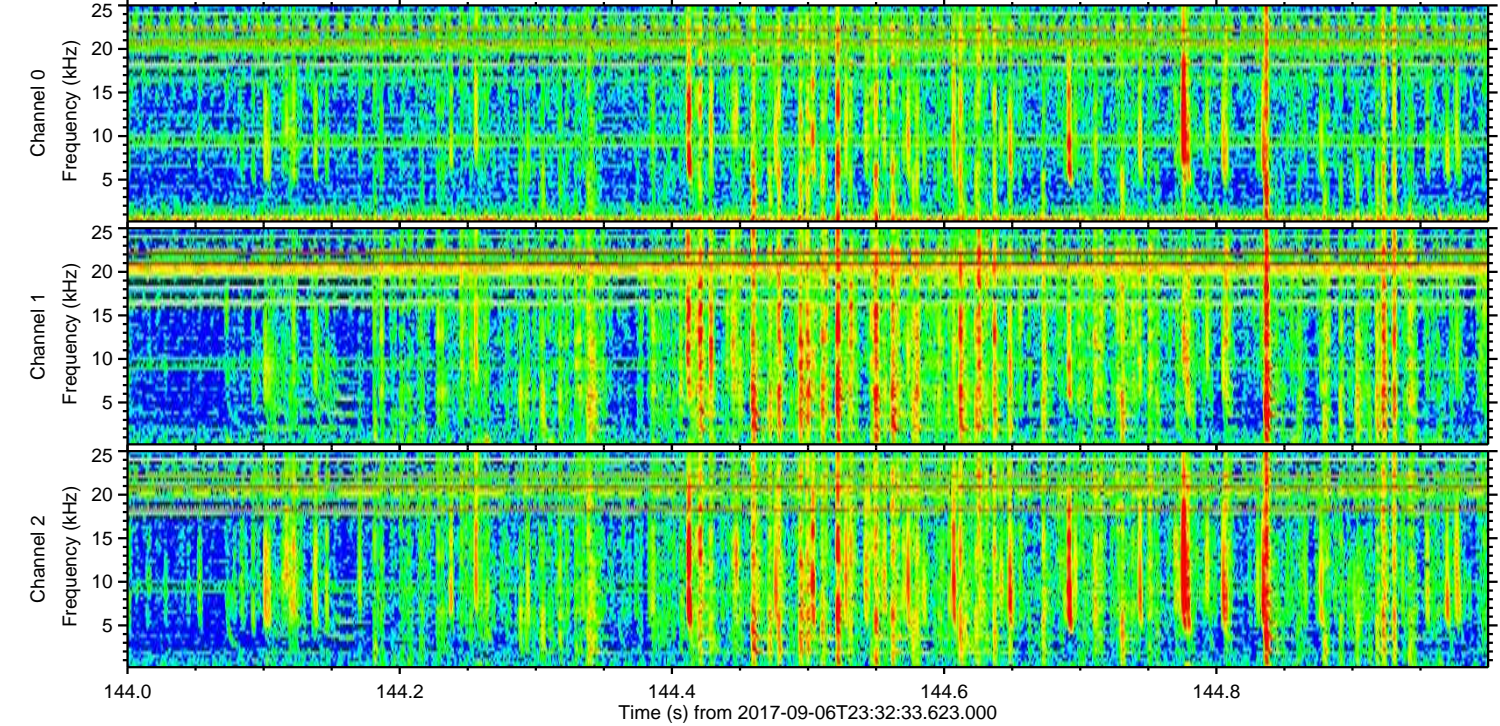
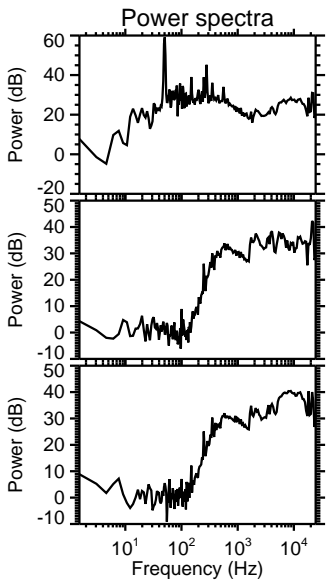
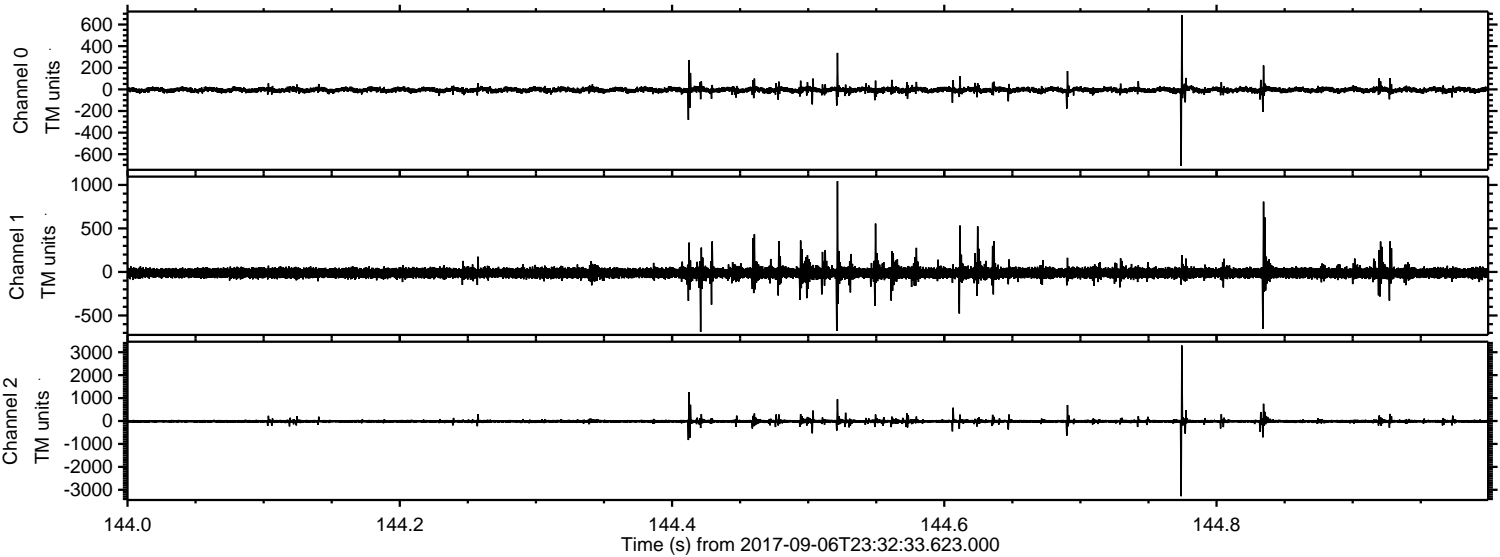


Processed Thu Sep 7 01:40:27 2017 by ELM ver.2012-10-06 from 001__elm20170906_233232__dat00.bin

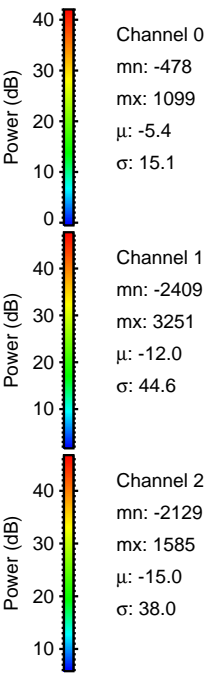
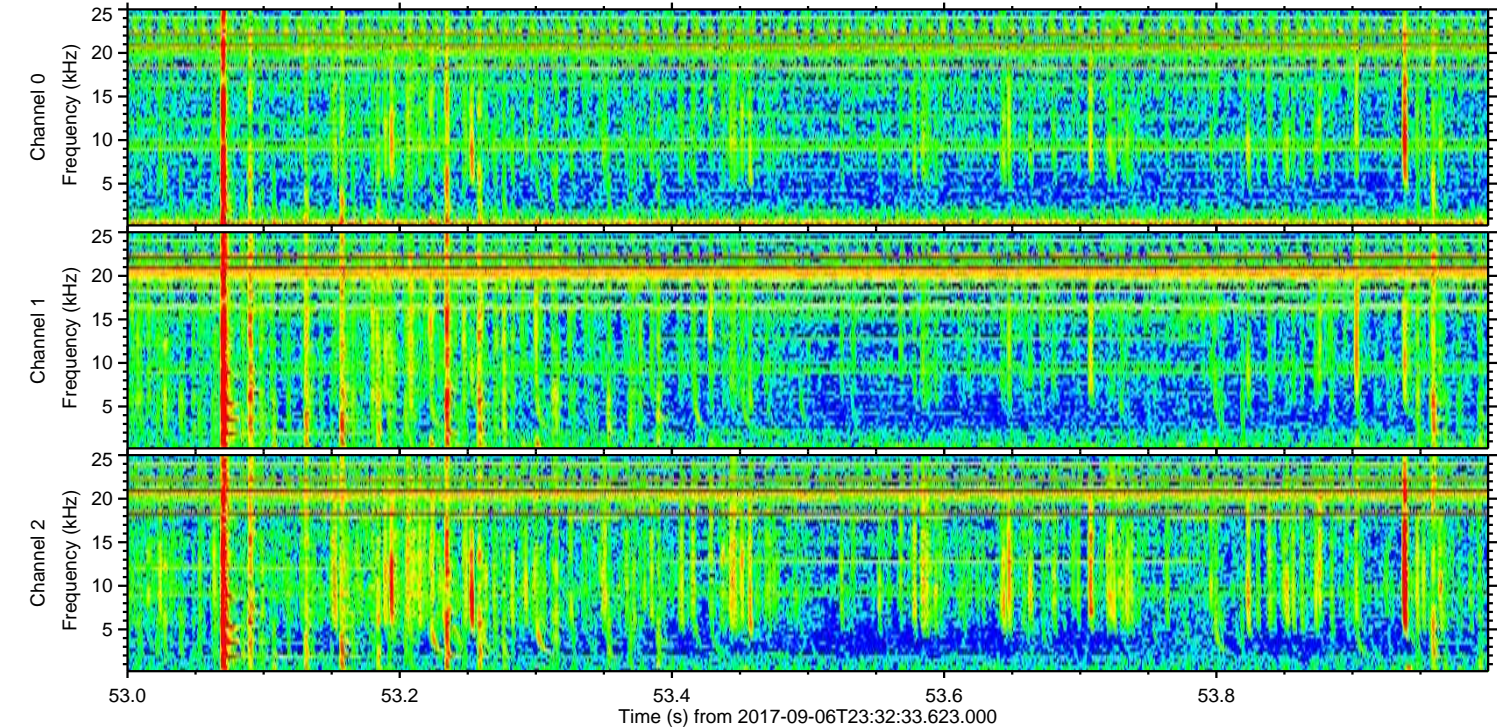
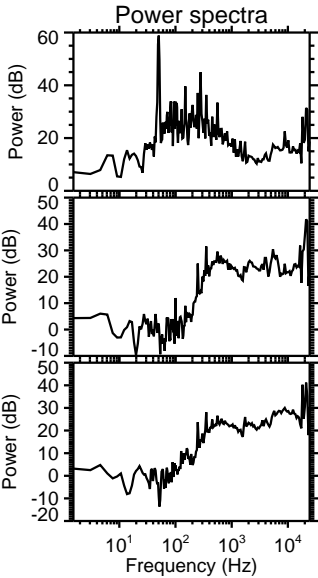
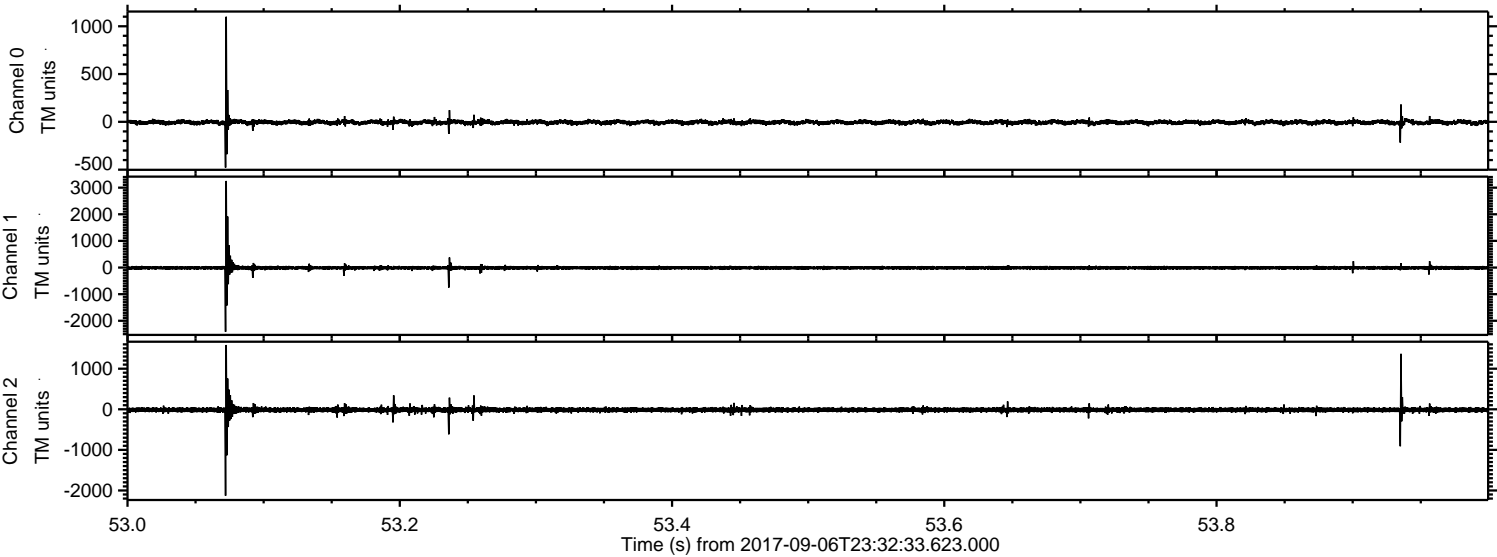


ELMAVAN 3D WAVEFORMS (Measured data sampled at 50 kHz) 51000 packets of 144 samples from 2017-09-06T23:32:33.623.000. Part 145/147

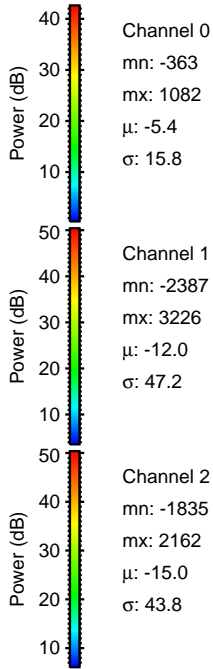
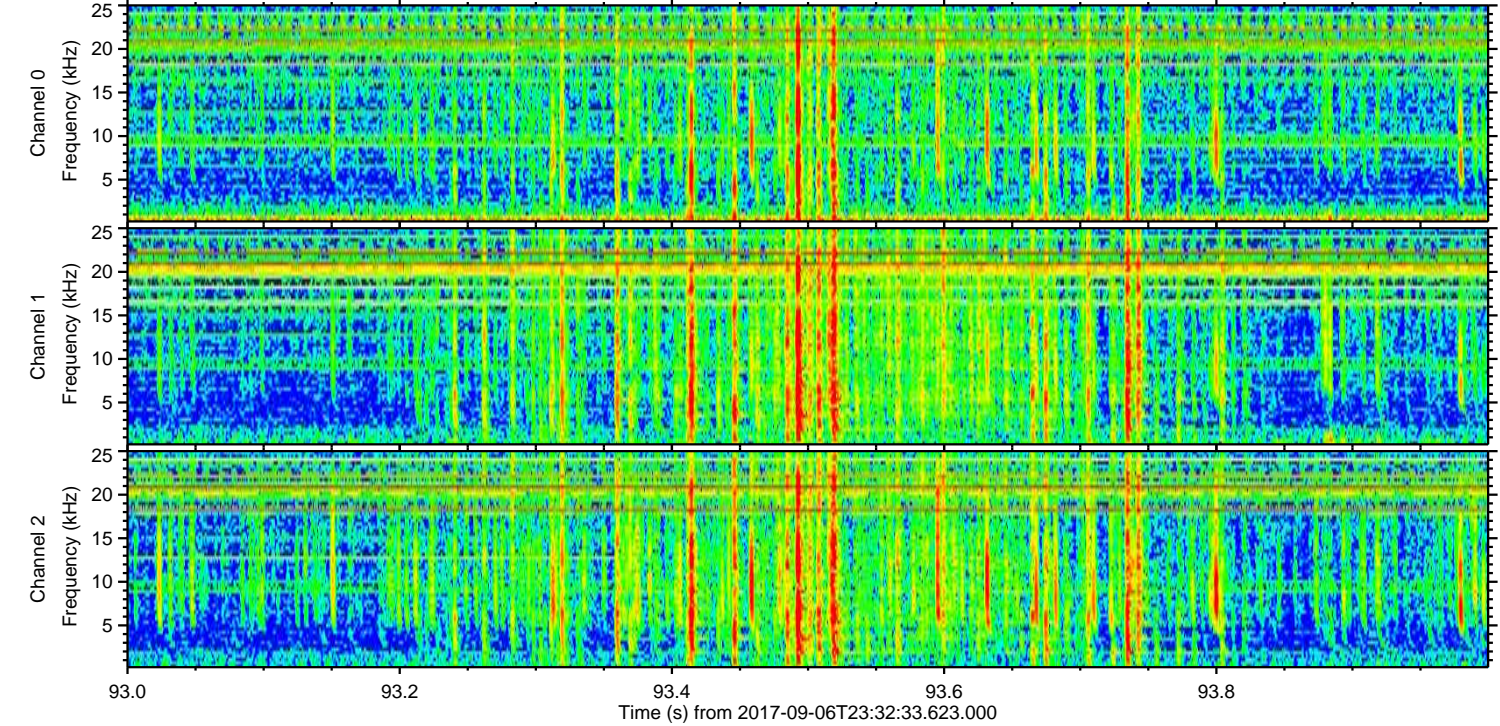
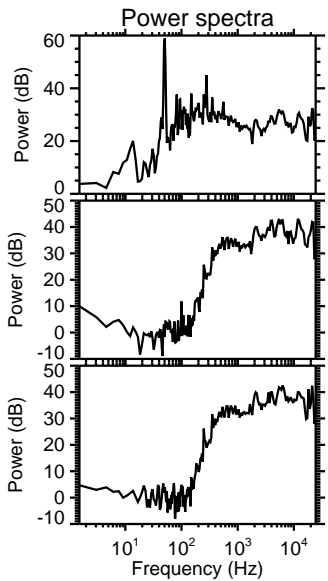
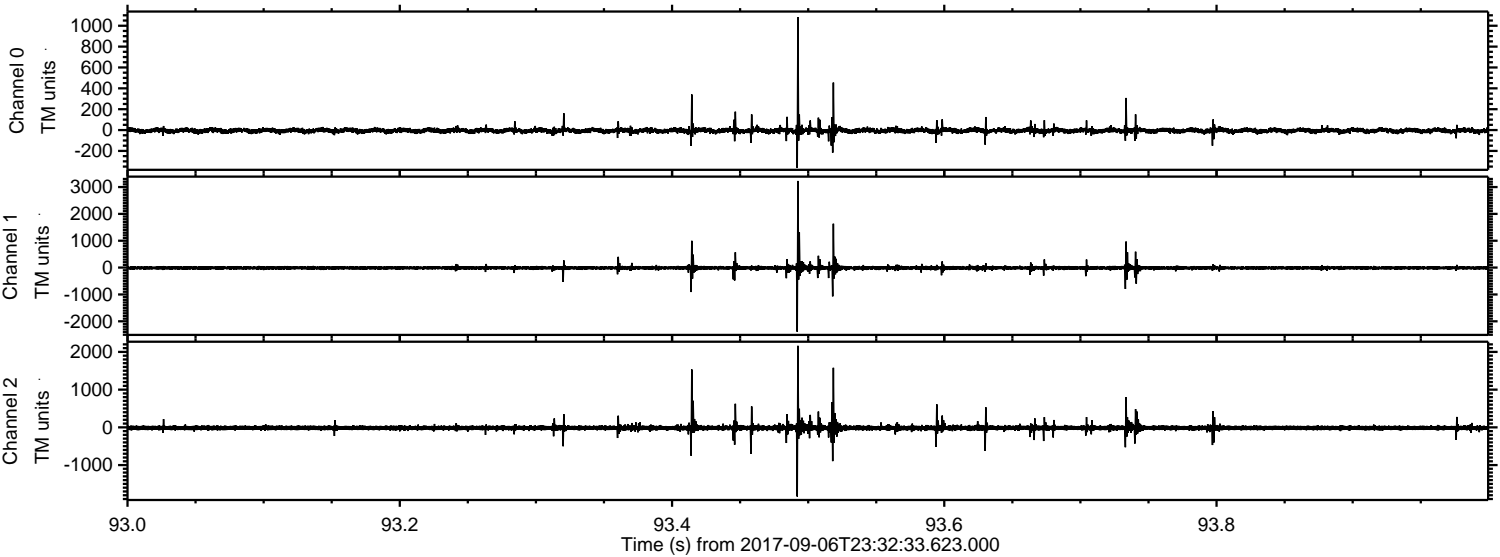
Processed Thu Sep 7 01:40:28 2017 by ELM ver.2012-10-06 from 001__elm20170906_233232__dat00.bin



Processed Thu Sep 7 01:40:29 2017 by ELM ver.2012-10-06 from 001__elm20170906_233232__dat00.bin



Processed Thu Sep 7 01:40:29 2017 by ELM ver.2012-10-06 from 001__elm20170906_233232__dat00.bin

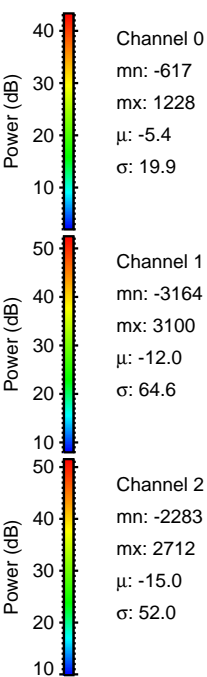
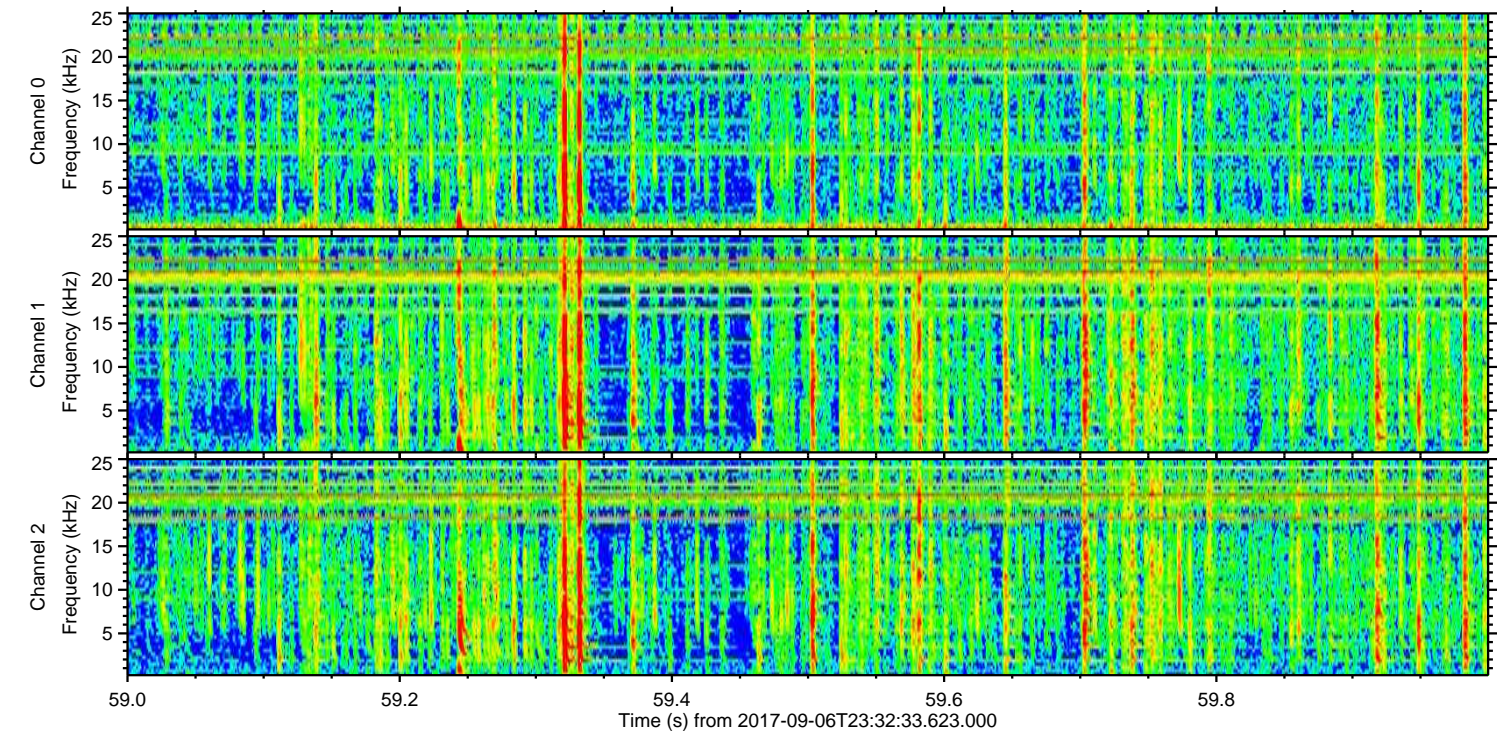
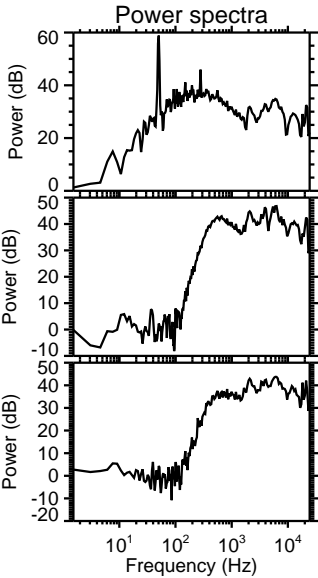
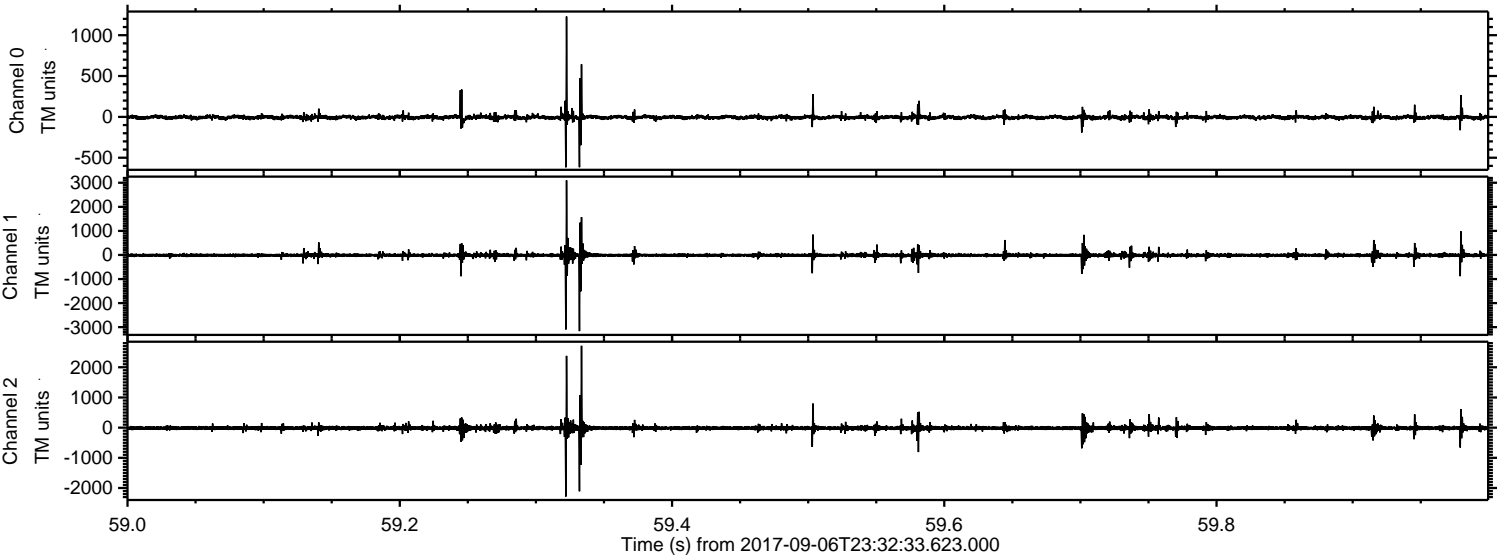


Channel 0
mn: -363
mx: 1082
 μ : -5.4
 σ : 15.8

Channel 1
mn: -2387
mx: 3226
 μ : -12.0
 σ : 47.2

Channel 2
mn: -1835
mx: 2162
 μ : -15.0
 σ : 43.8

Processed Thu Sep 7 01:40:30 2017 by ELM ver.2012-10-06 from 001__elm20170906_233232__dat00.bin



Processed Thu Sep 7 01:40:30 2017 by ELM ver.2012-10-06 from 001__elm20170906_233232__dat00.bin

