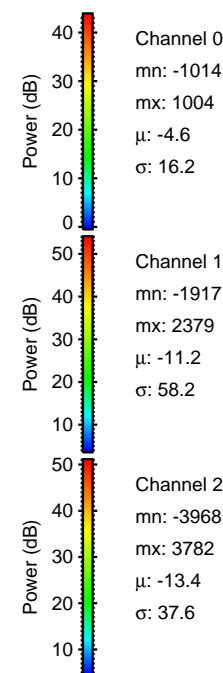
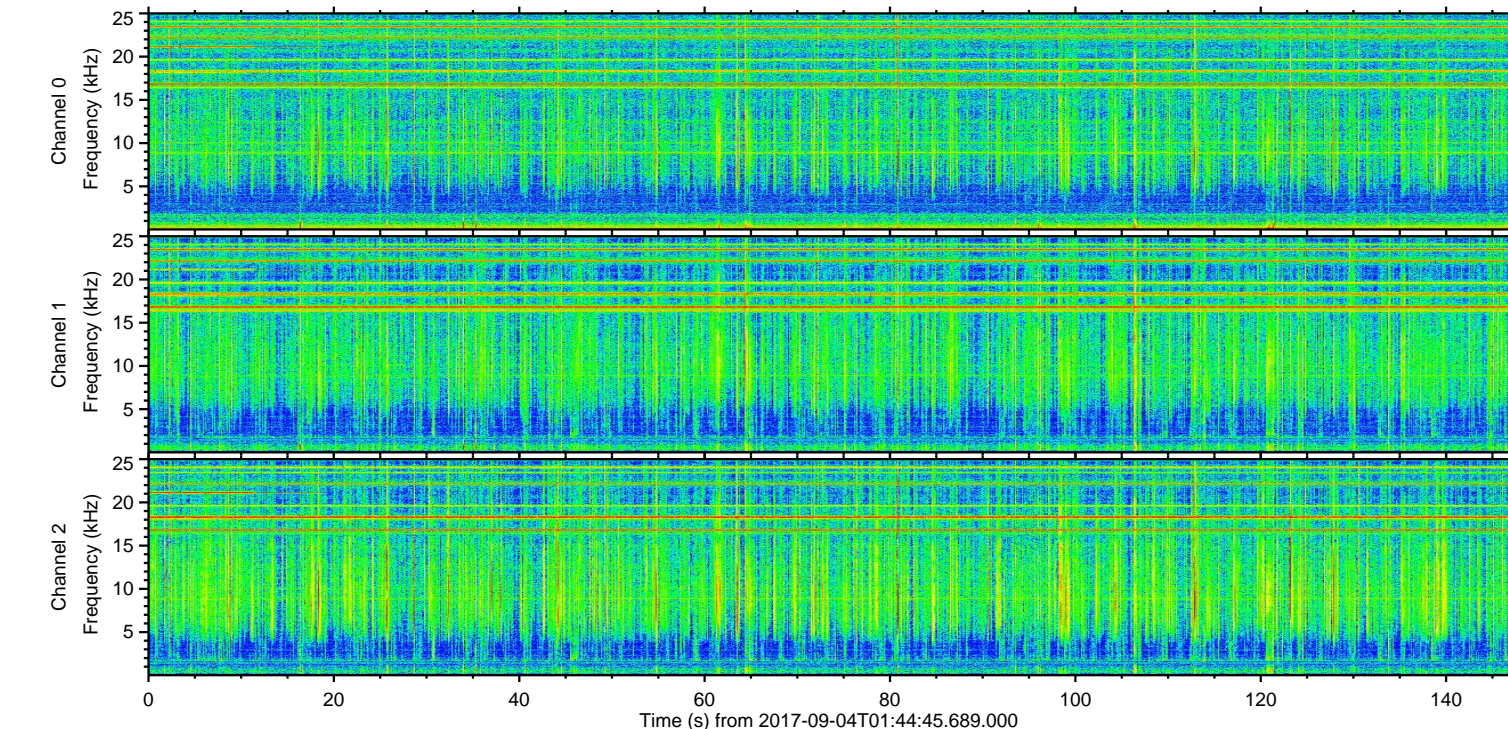
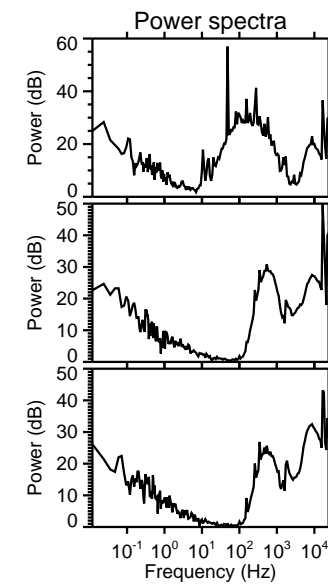
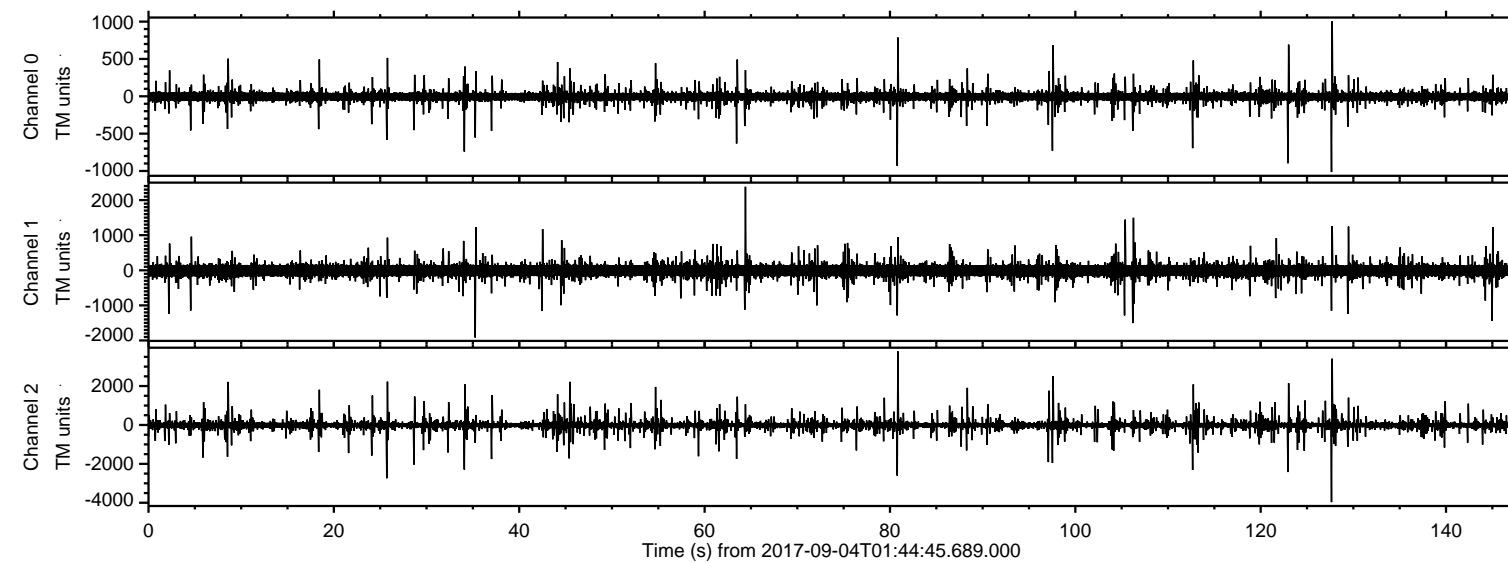


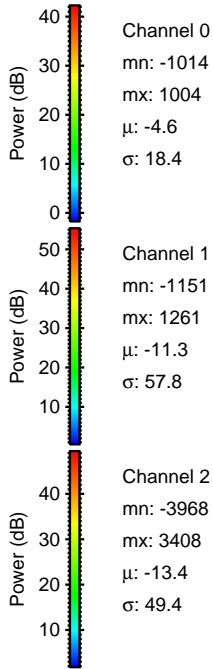
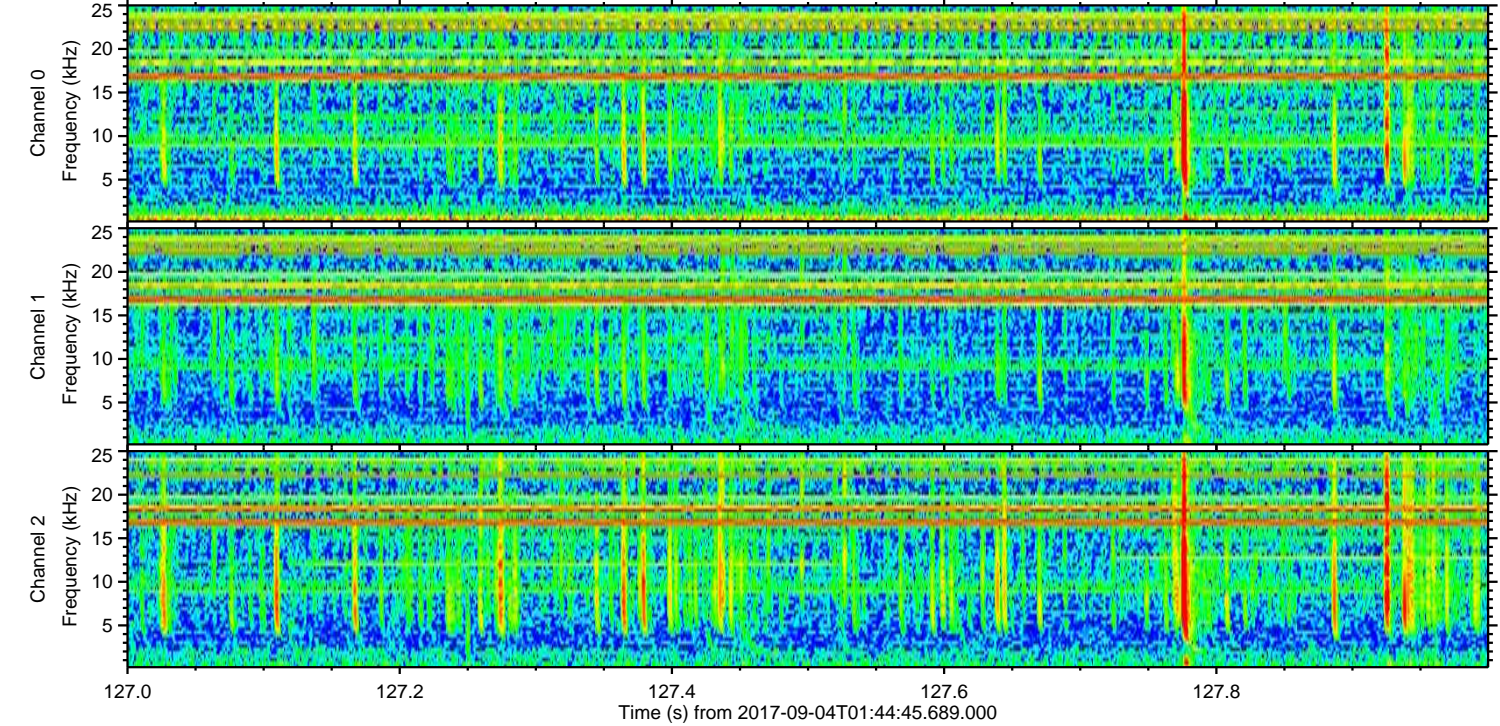
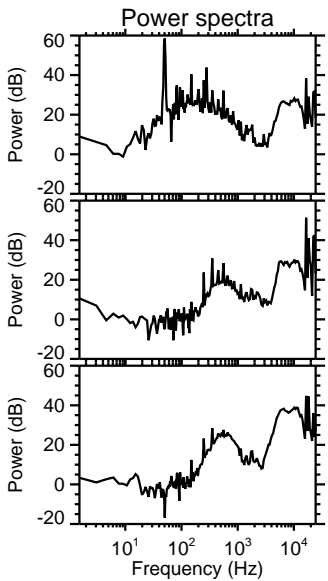
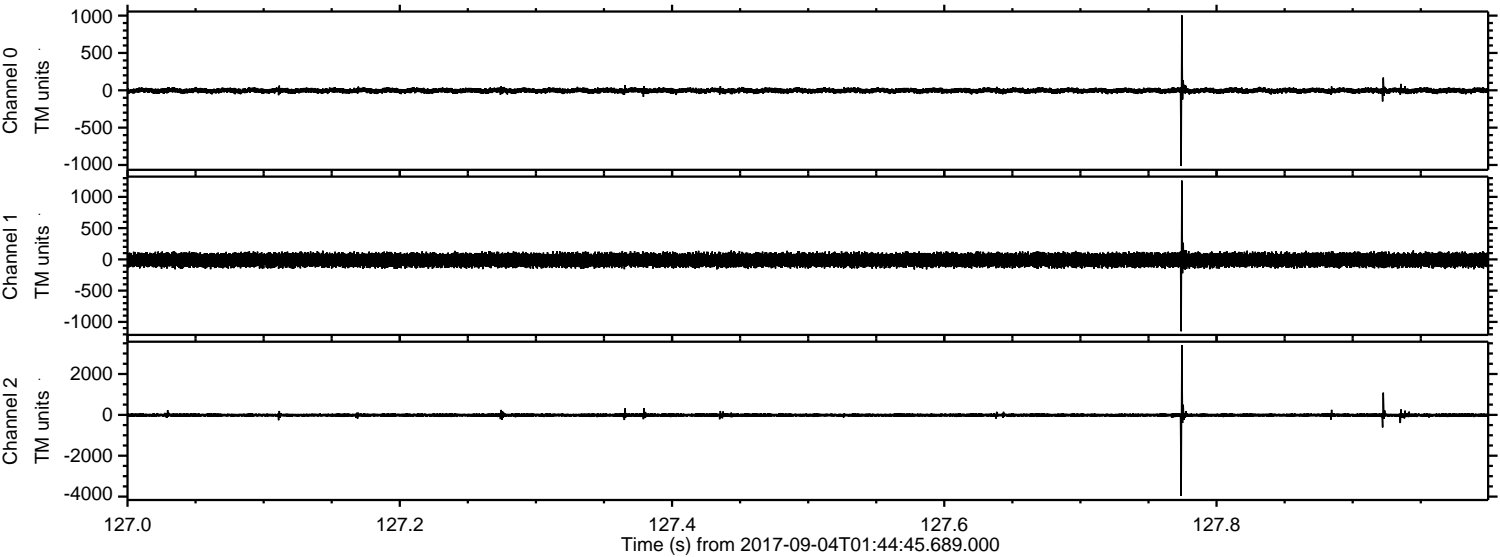
ELMAVAN 3D WAVEFORMS (Measured data sampled at 50 kHz) 51000 packets of 144 samples from 2017-09-04T01:44:45.689.000.

Processed Mon Sep 4 03:52:42 2017 by ELM ver.2012-10-06 from 001__elm20170904_014444__dat00.bin

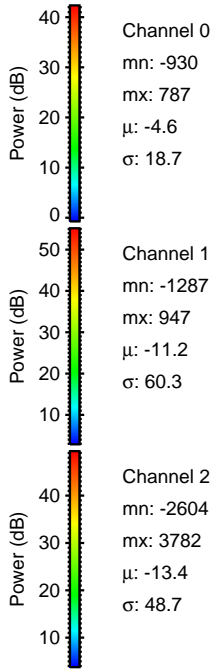
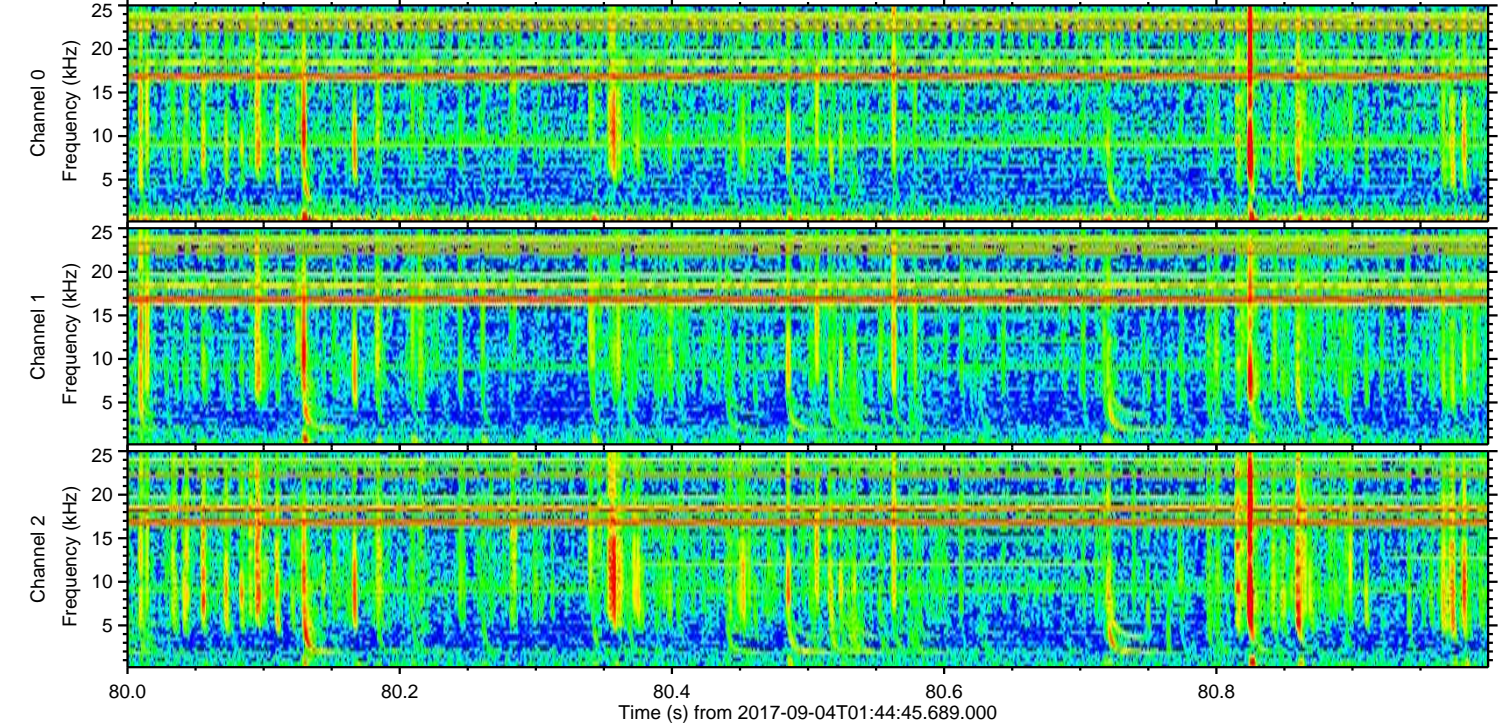
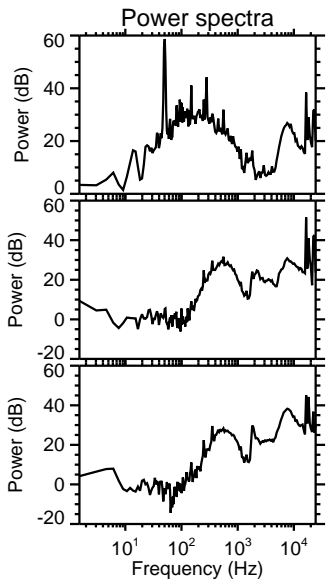
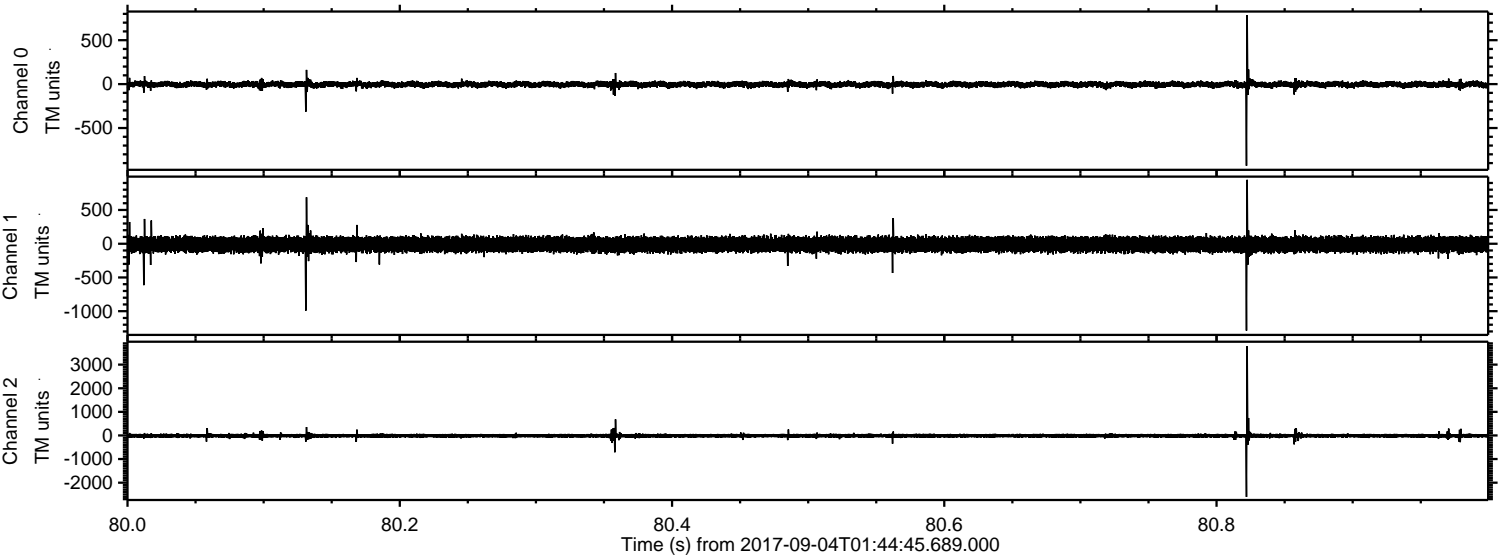


ELMAVAN 3D WAVEFORMS (Measured data sampled at 50 kHz) 51000 packets of 144 samples from 2017-09-04T01:44:45.689.000. Part 128/147

Processed Mon Sep 4 03:52:48 2017 by ELM ver.2012-10-06 from 001__elm20170904_014444__dat00.bin

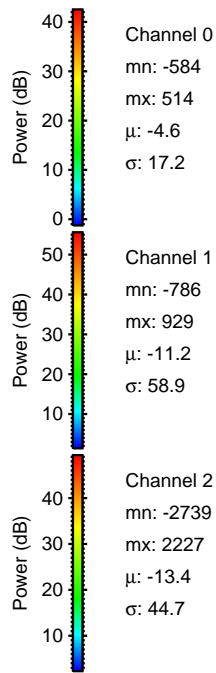
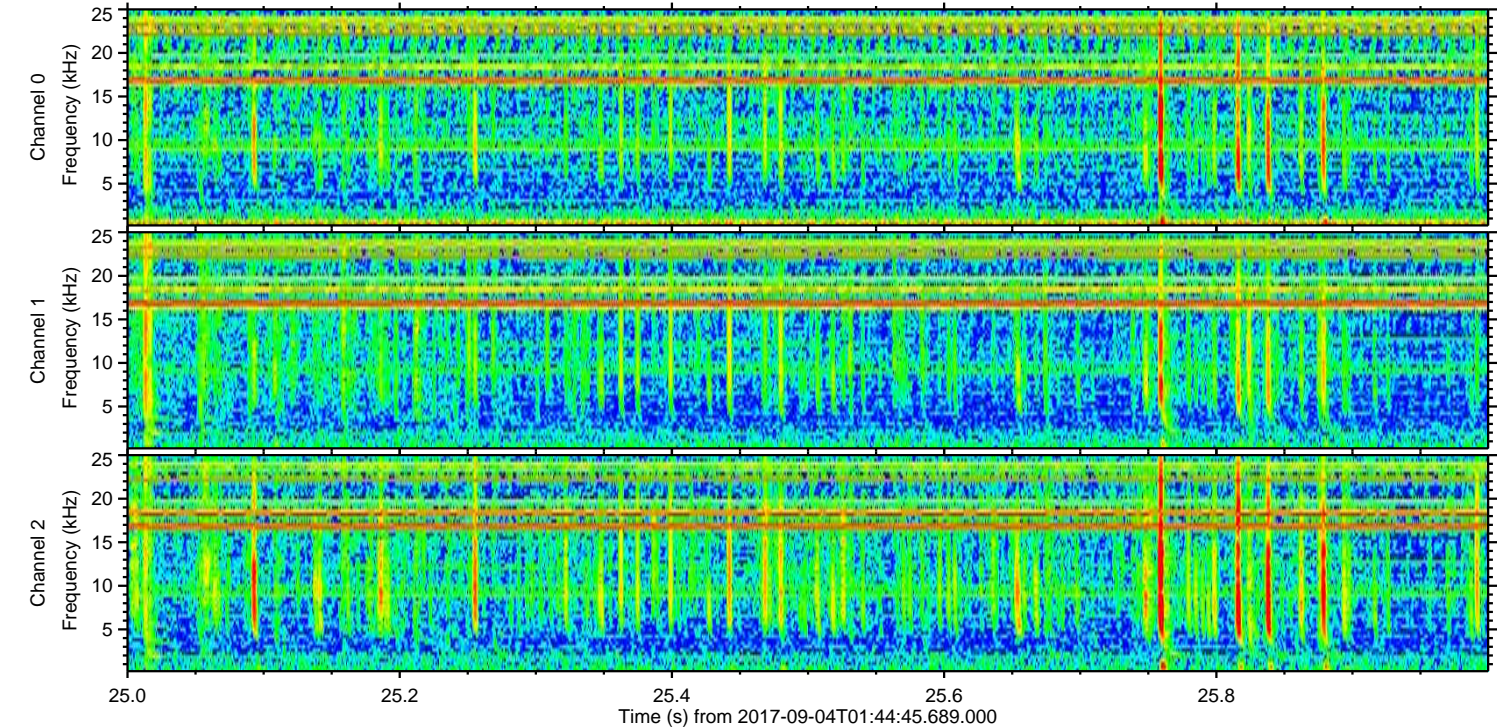
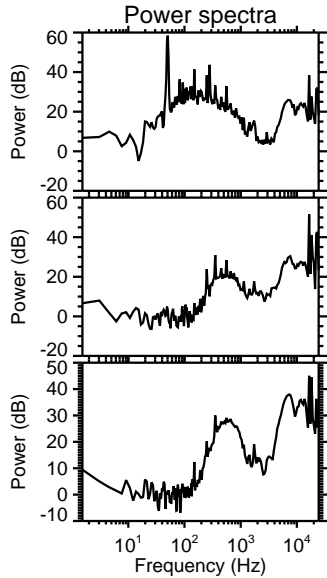
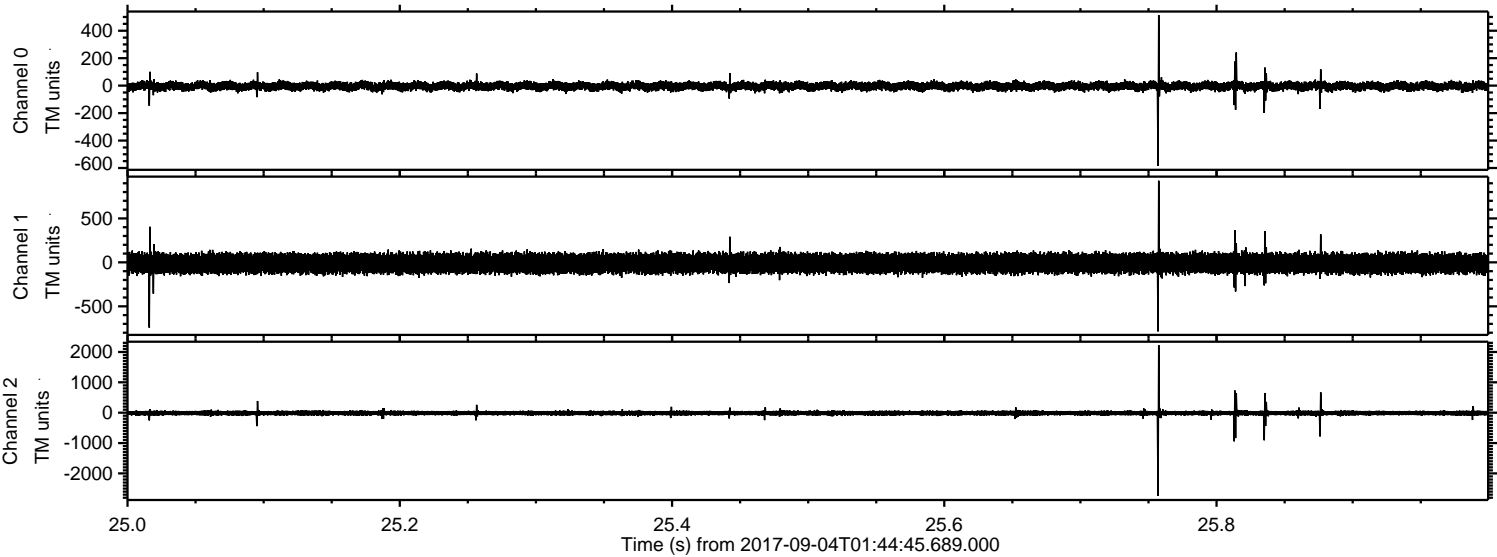


Processed Mon Sep 4 03:52:49 2017 by ELM ver.2012-10-06 from 001__elm20170904_014444__dat00.bin

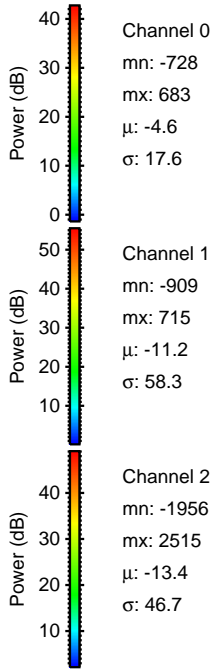
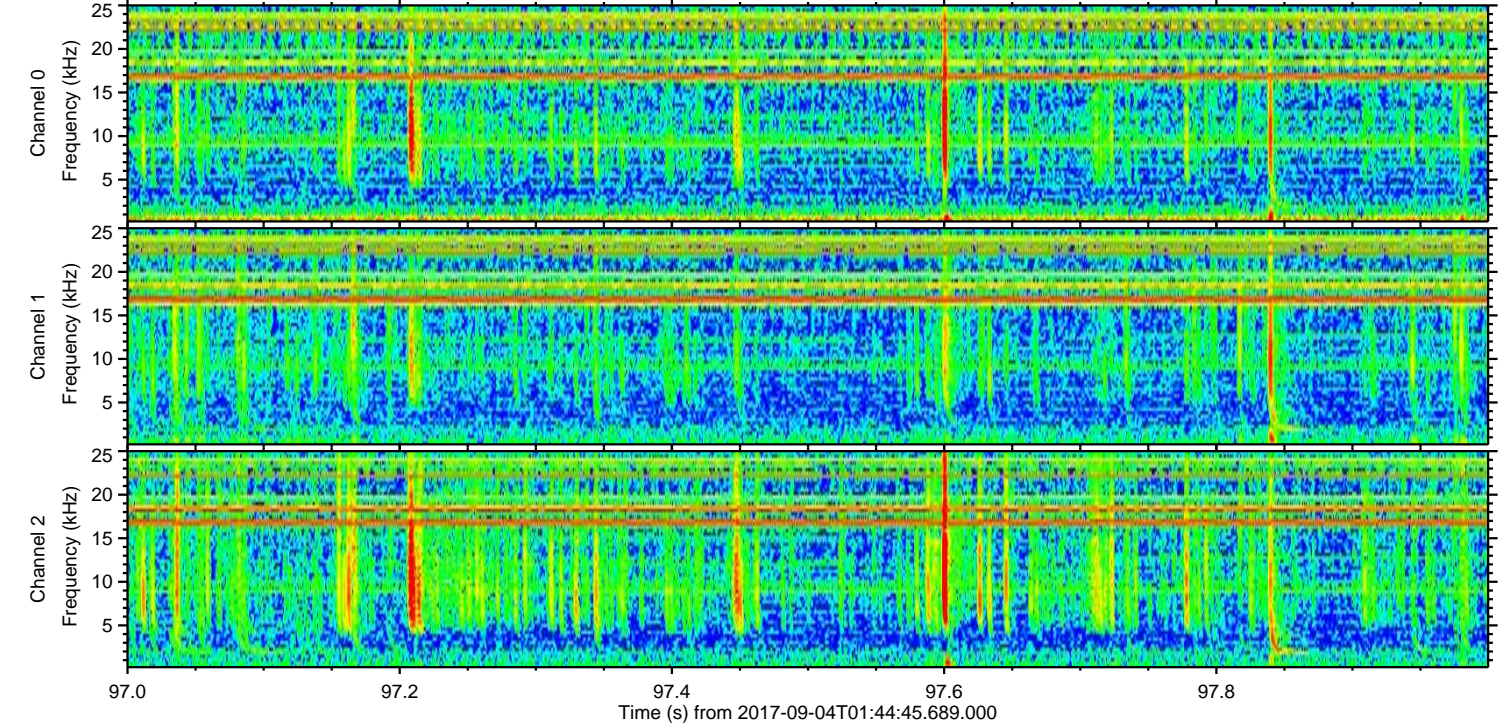
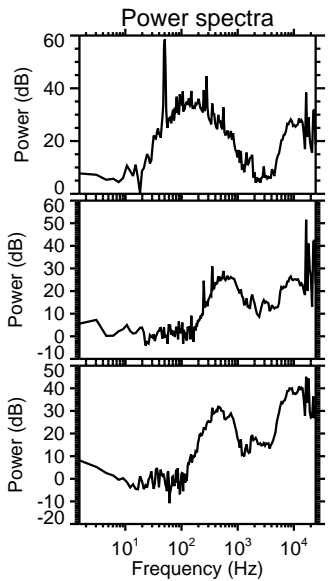
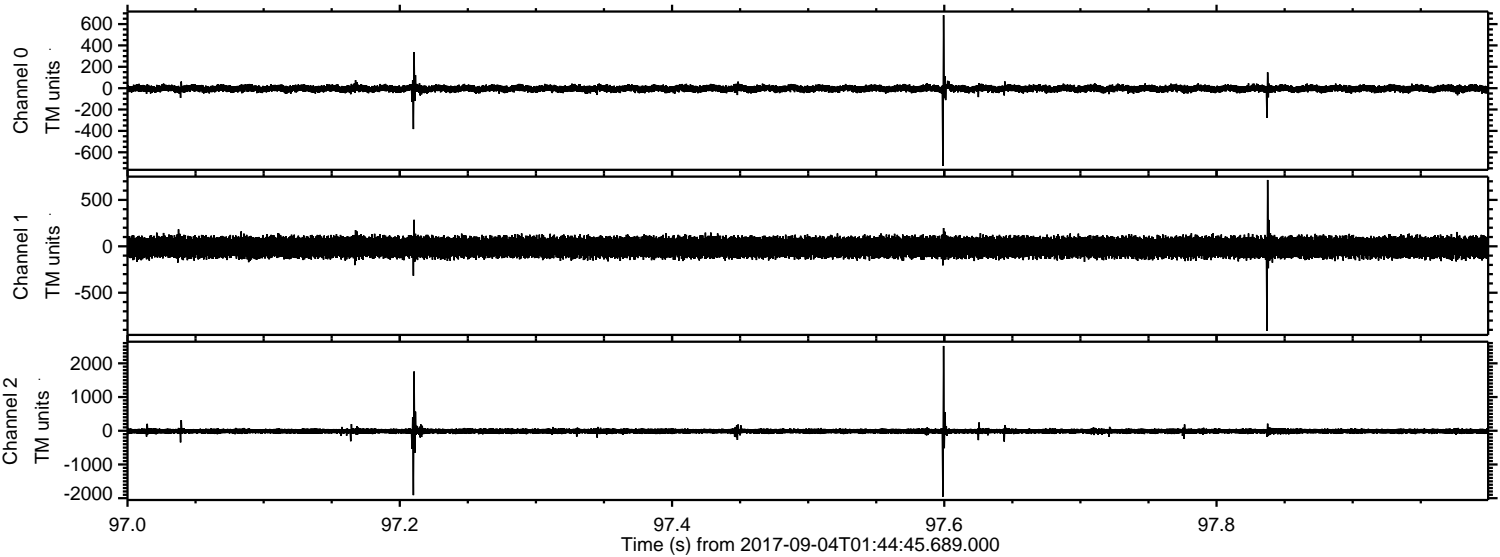


ELMAVAN 3D WAVEFORMS (Measured data sampled at 50 kHz) 51000 packets of 144 samples from 2017-09-04T01:44:45.689.000. Part 26/147

Processed Mon Sep 4 03:52:50 2017 by ELM ver.2012-10-06 from 001__elm20170904_014444__dat00.bin

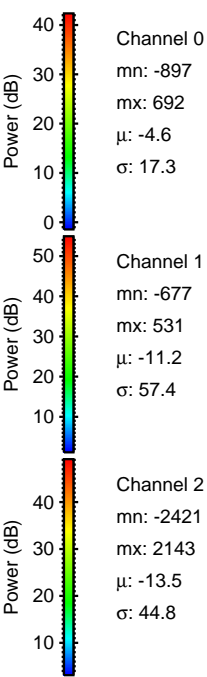
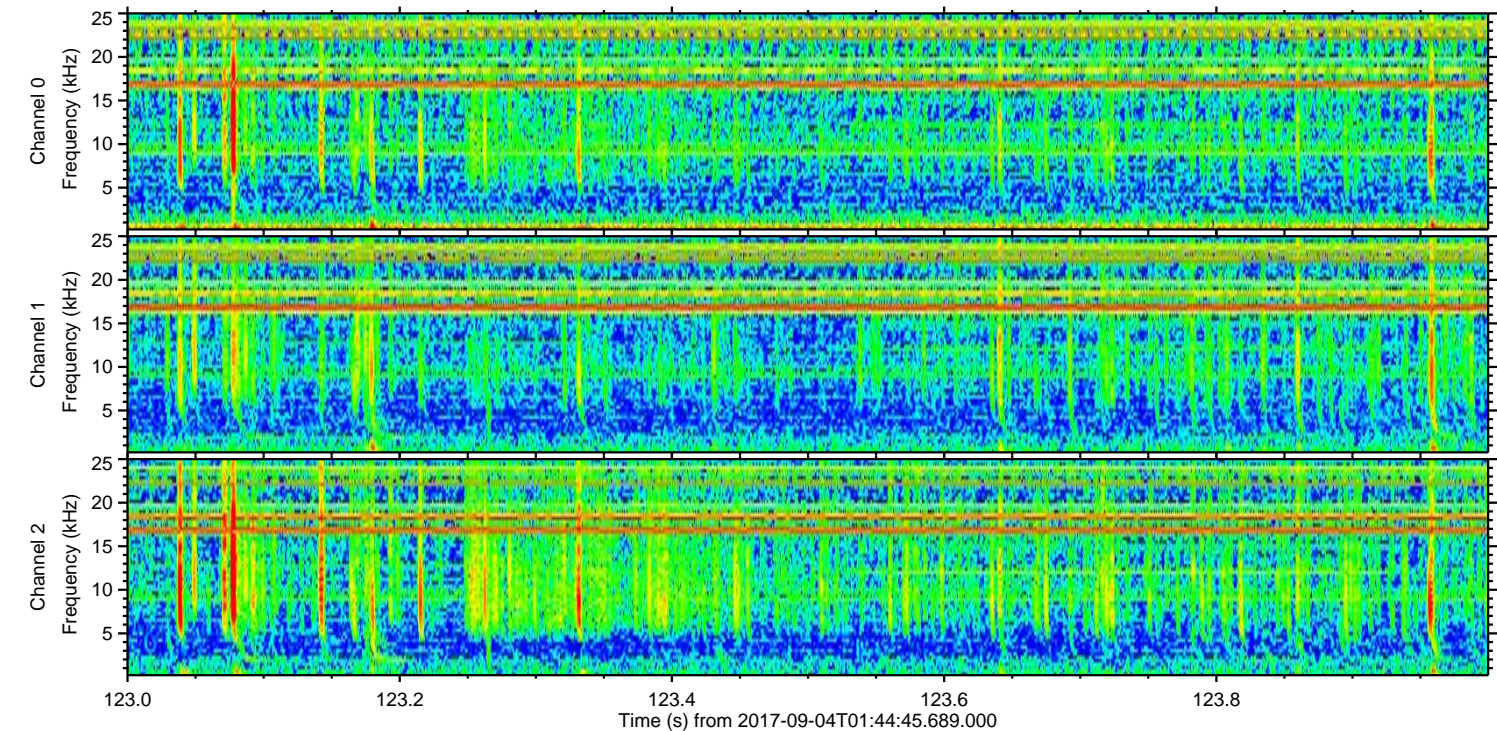
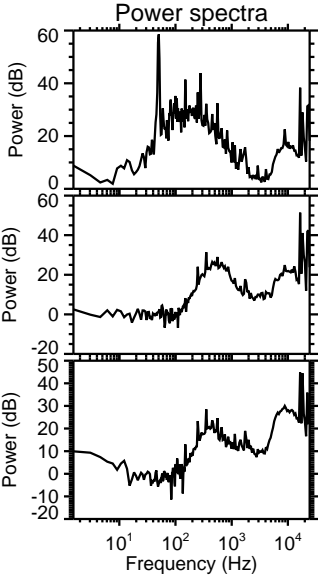
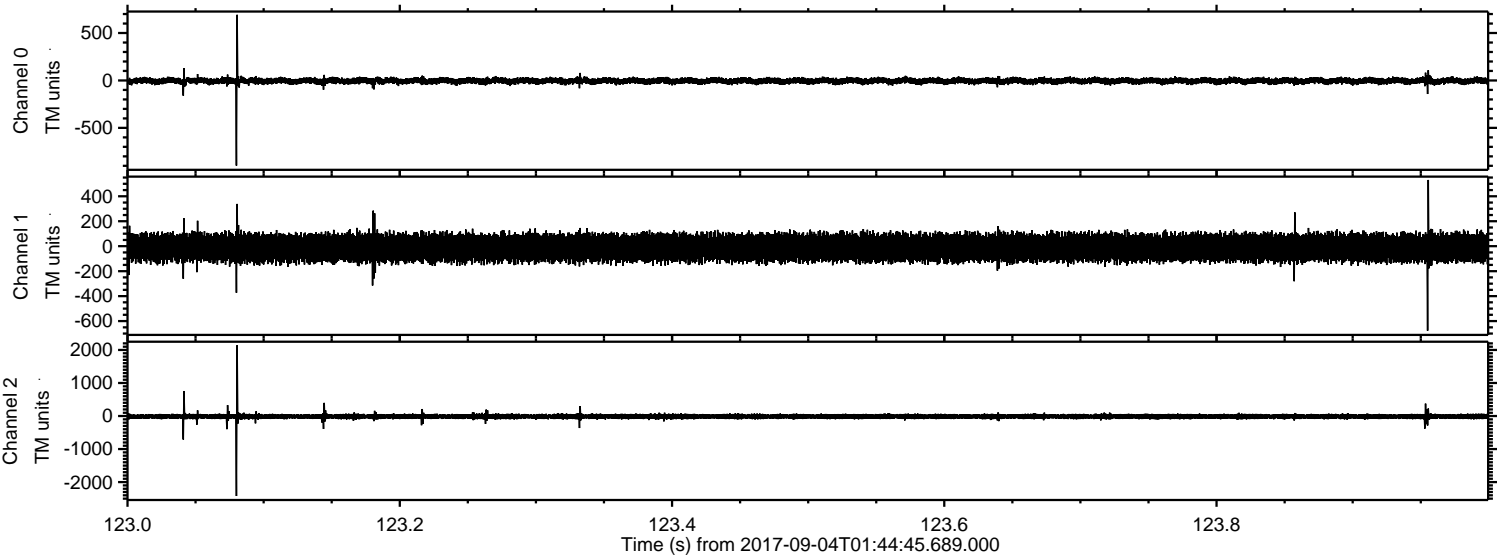


Processed Mon Sep 4 03:52:50 2017 by ELM ver.2012-10-06 from 001__elm20170904_014444__dat00.bin

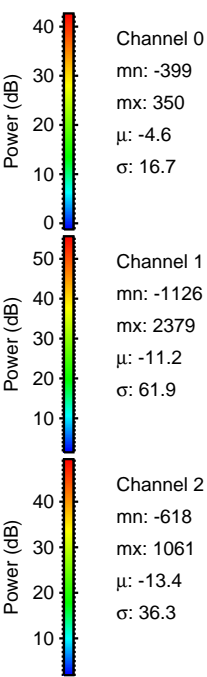
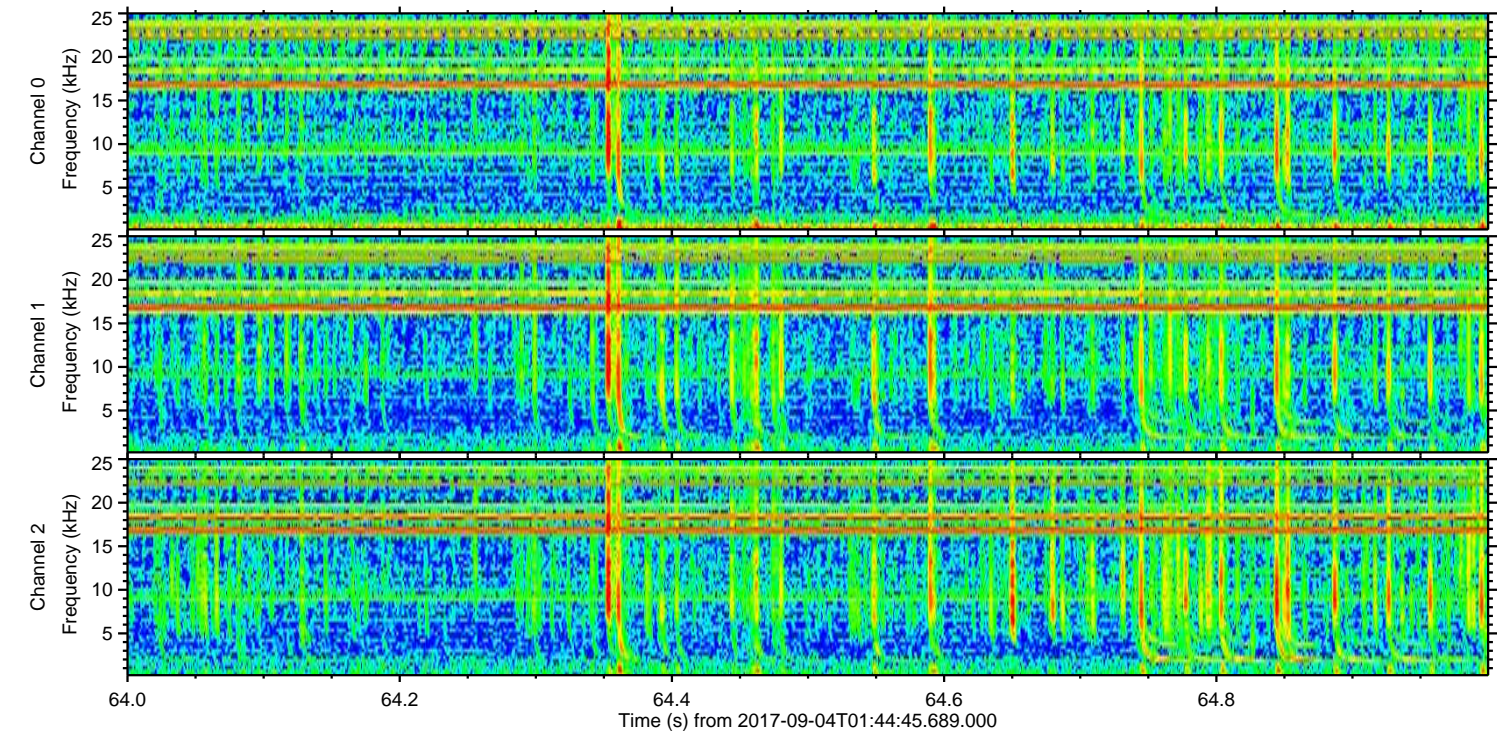
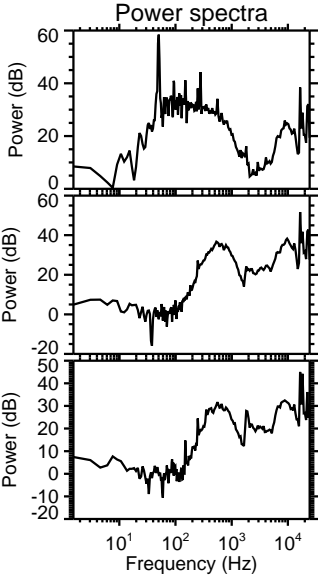
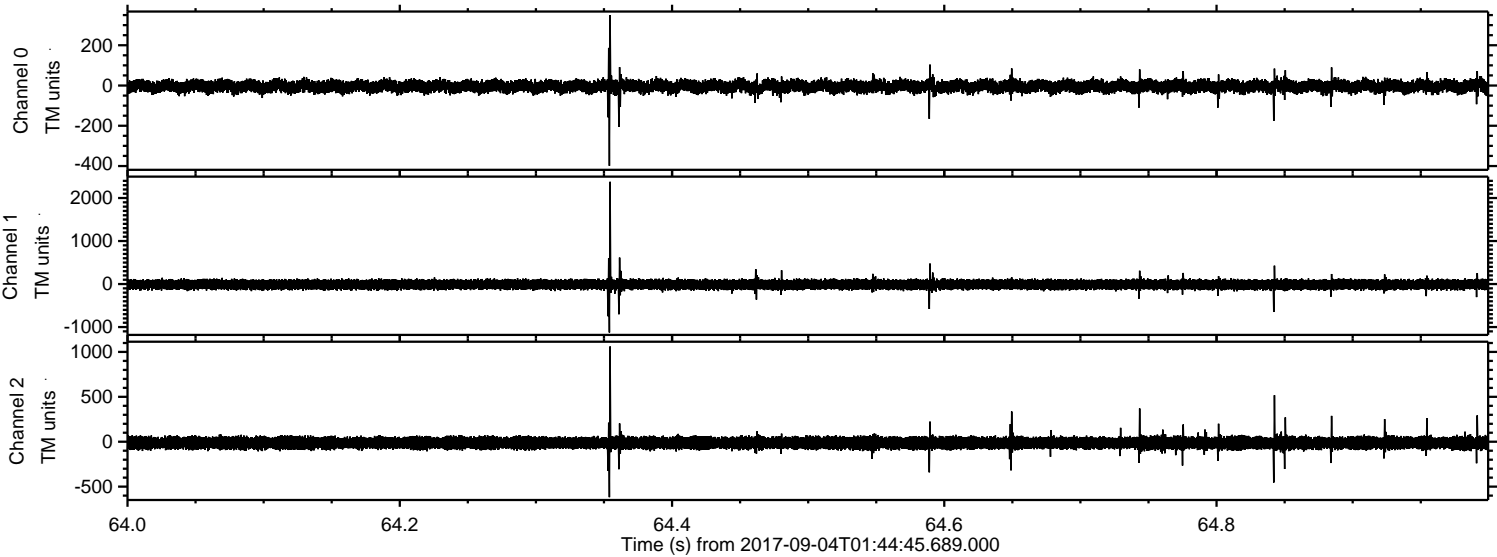


ELMAVAN 3D WAVEFORMS (Measured data sampled at 50 kHz) 51000 packets of 144 samples from 2017-09-04T01:44:45.689.000. Part 124/147

Processed Mon Sep 4 03:52:51 2017 by ELM ver.2012-10-06 from 001__elm20170904_014444__dat00.bin

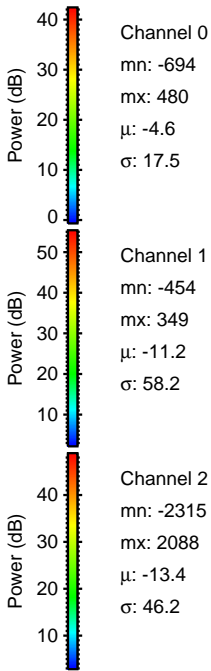
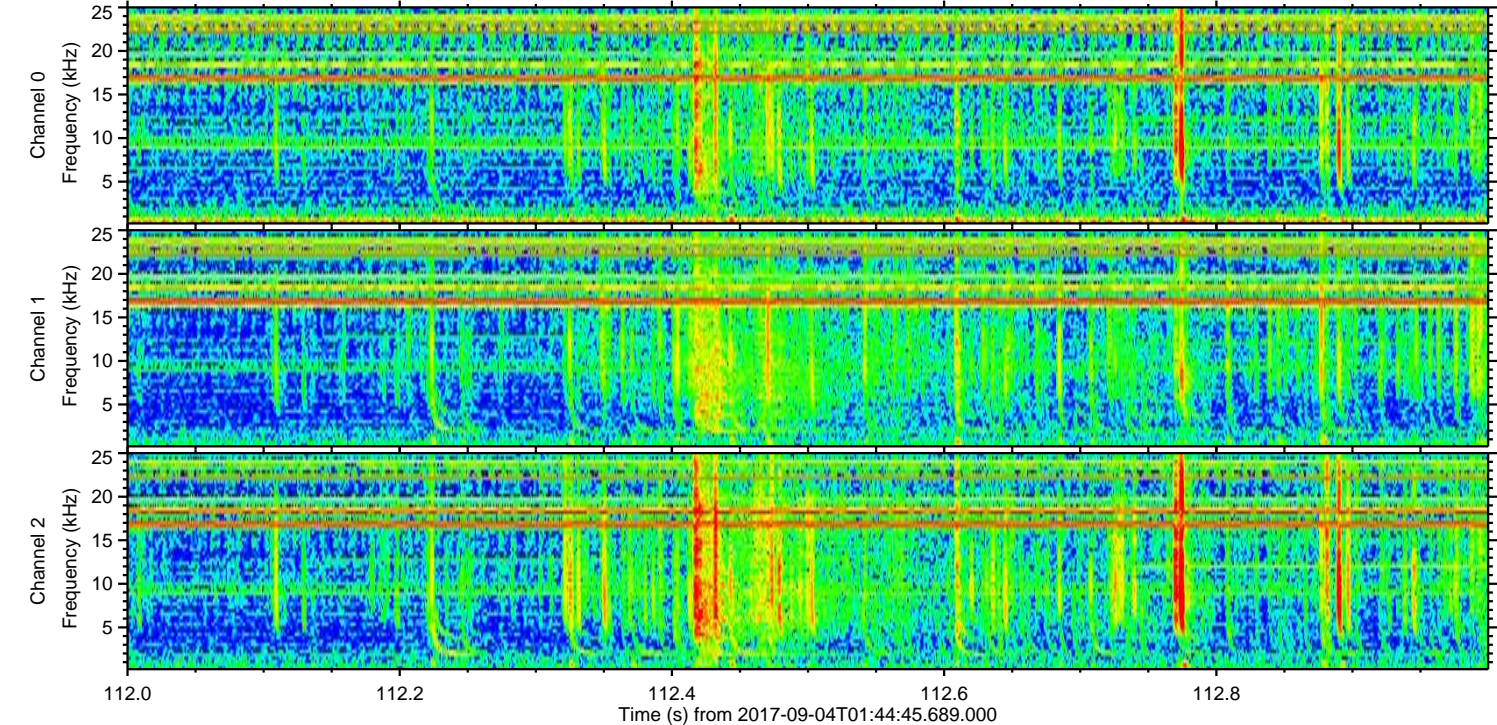
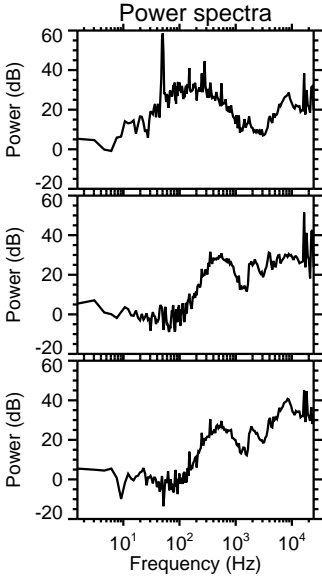
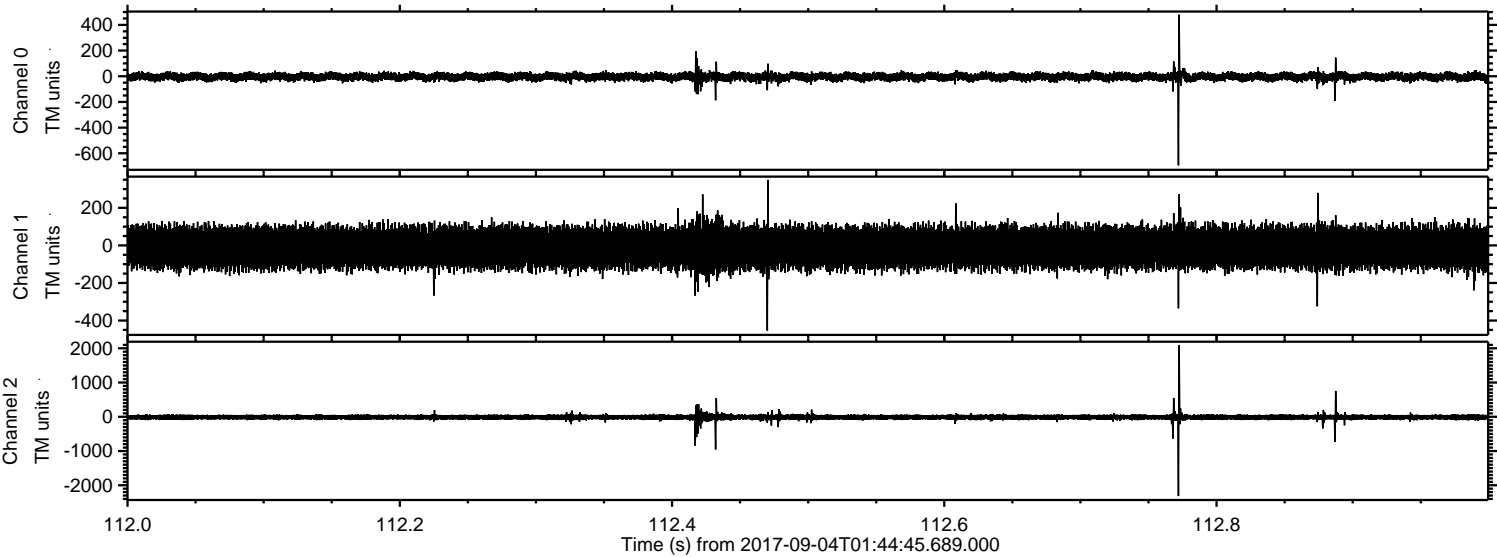


Processed Mon Sep 4 03:52:52 2017 by ELM ver.2012-10-06 from 001__elm20170904_014444__dat00.bin



ELMAVAN 3D WAVEFORMS (Measured data sampled at 50 kHz) 51000 packets of 144 samples from 2017-09-04T01:44:45.689.000. Part 113/147

Processed Mon Sep 4 03:52:52 2017 by ELM ver.2012-10-06 from 001__elm20170904_014444__dat00.bin

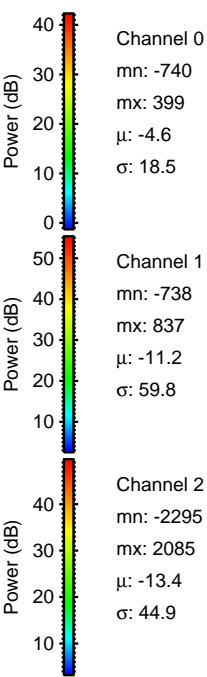
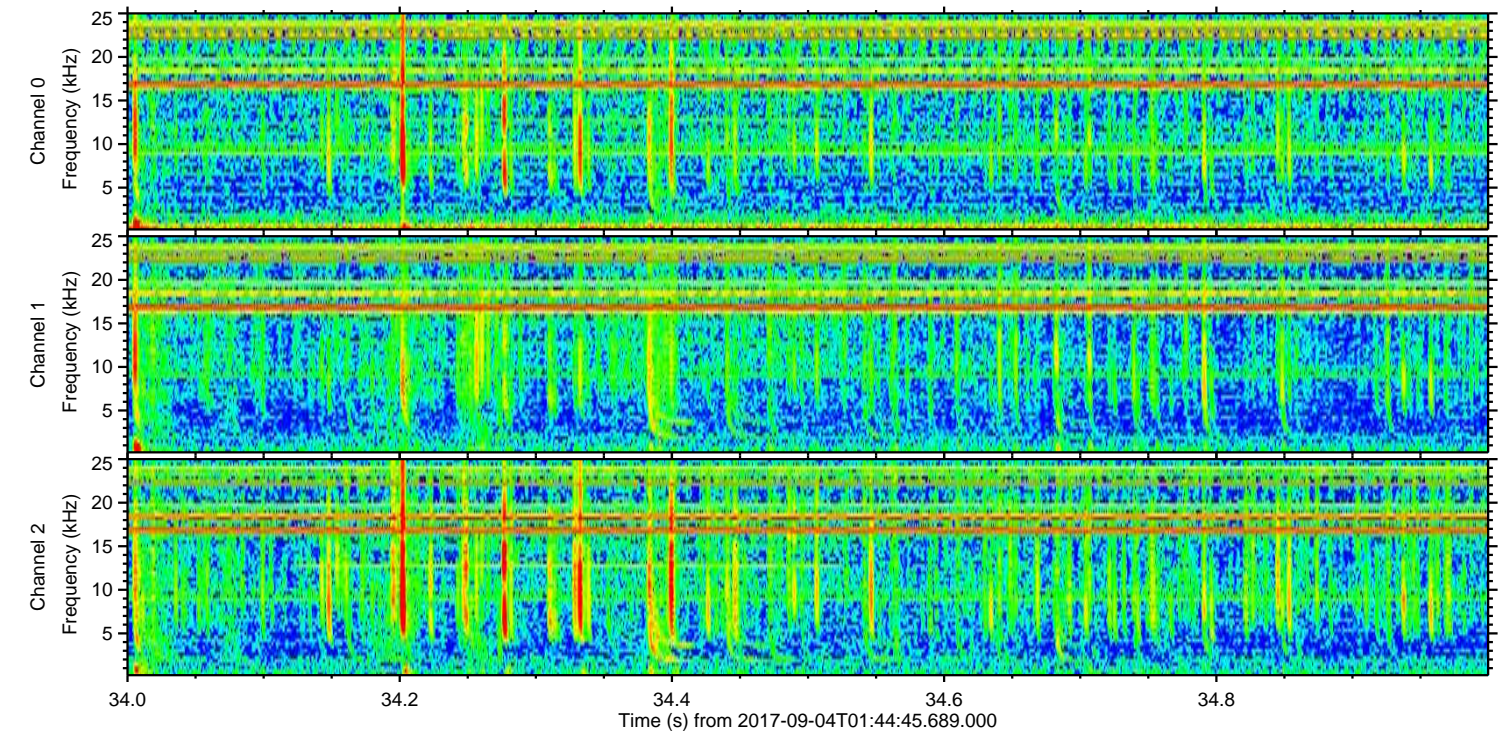
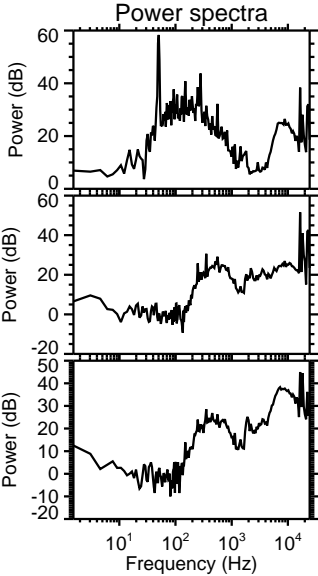
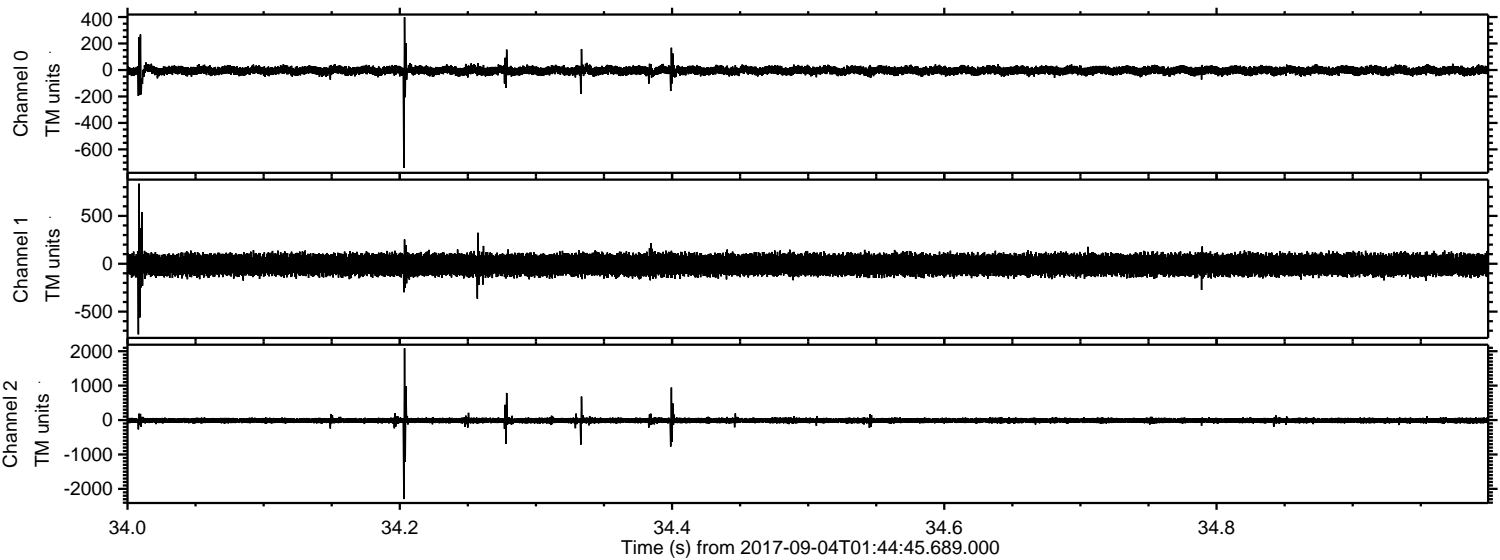


Channel 0
mn: -694
mx: 480
 μ : -4.6
 σ : 17.5

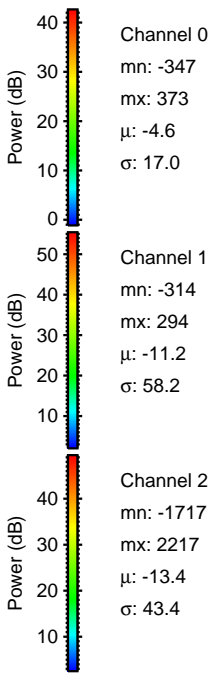
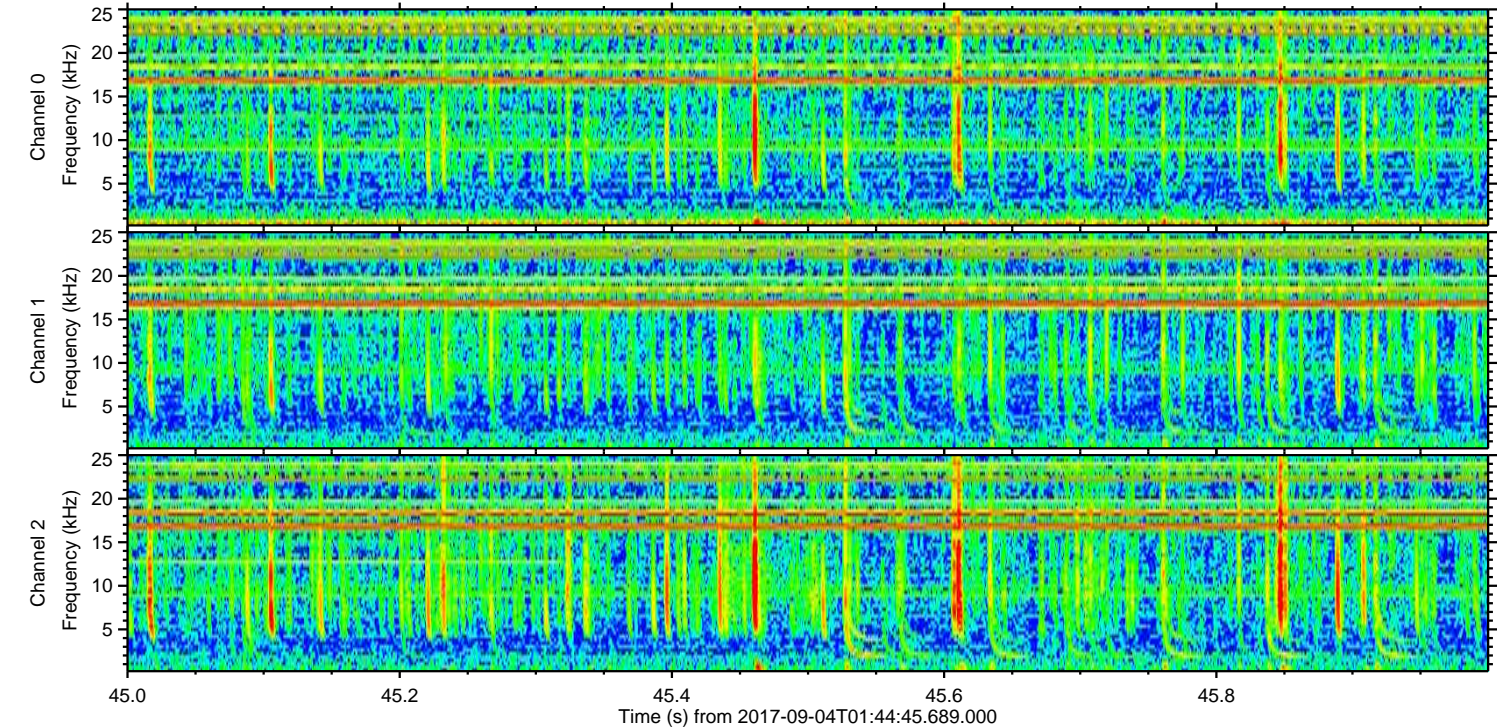
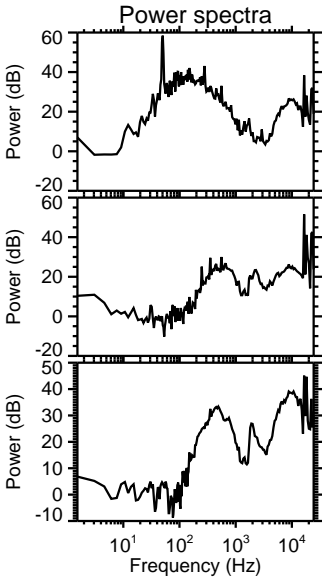
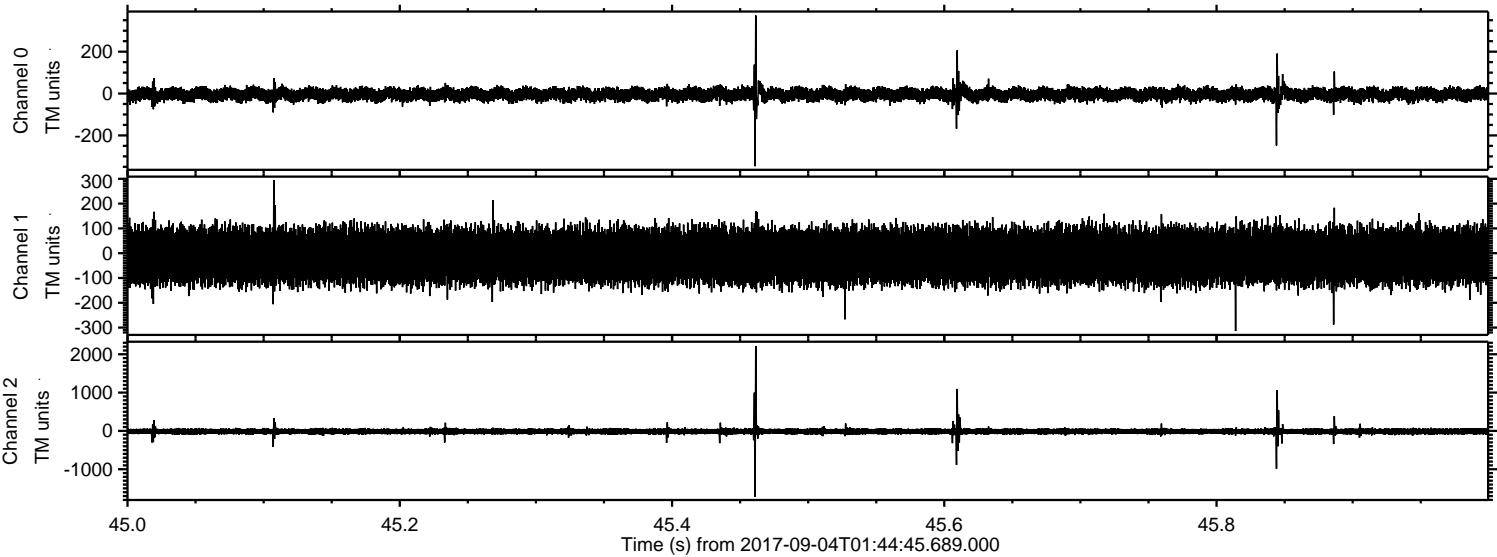
Channel 1
mn: -454
mx: 349
 μ : -11.2
 σ : 58.2

Channel 2
mn: -2315
mx: 2088
 μ : -13.4
 σ : 46.2

Processed Mon Sep 4 03:52:53 2017 by ELM ver.2012-10-06 from 001__elm20170904_014444__dat00.bin



Processed Mon Sep 4 03:52:54 2017 by ELM ver.2012-10-06 from 001__elm20170904_014444__dat00.bin



Processed Mon Sep 4 03:52:54 2017 by ELM ver.2012-10-06 from 001__elm20170904_014444__dat00.bin

