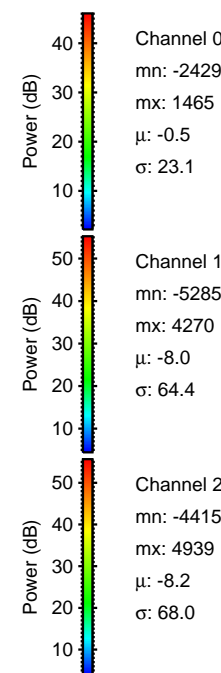
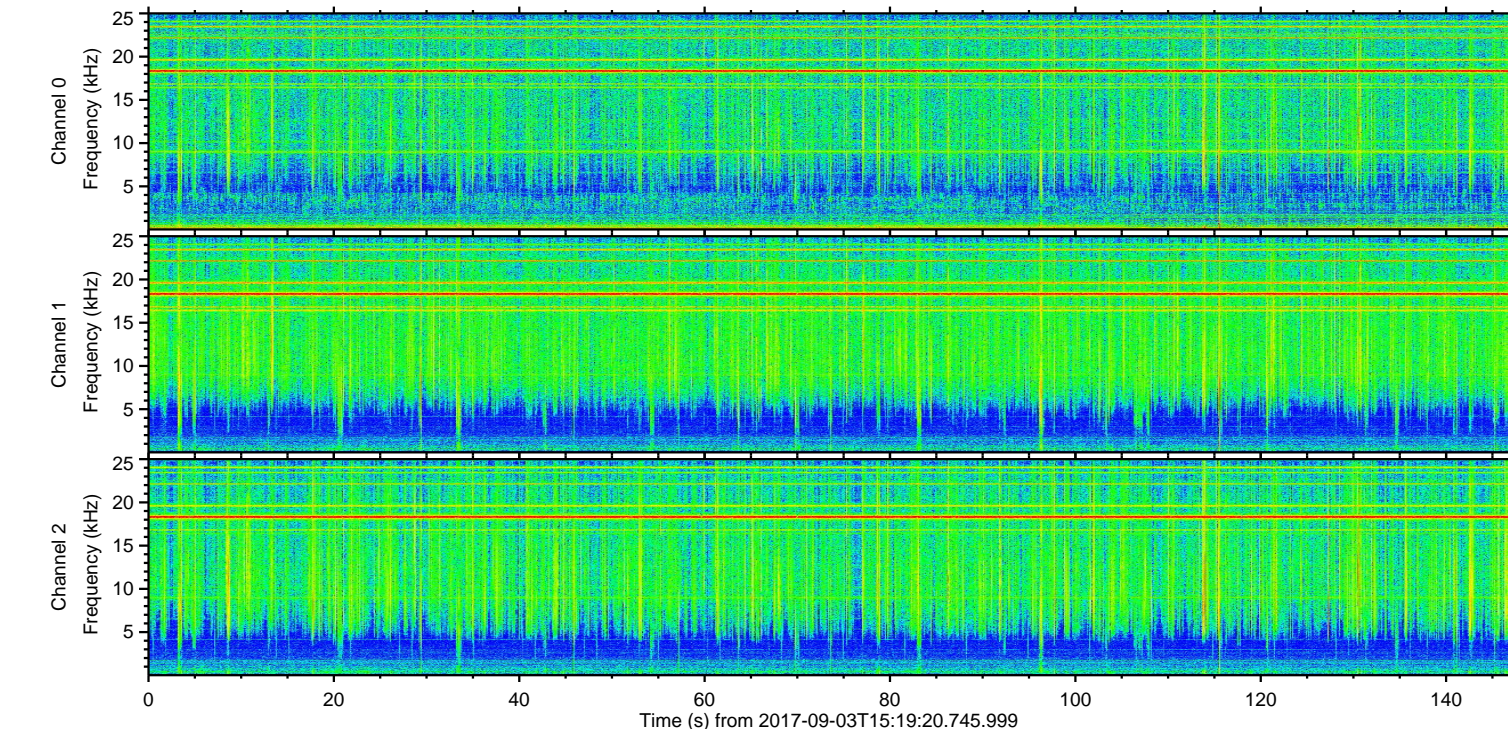
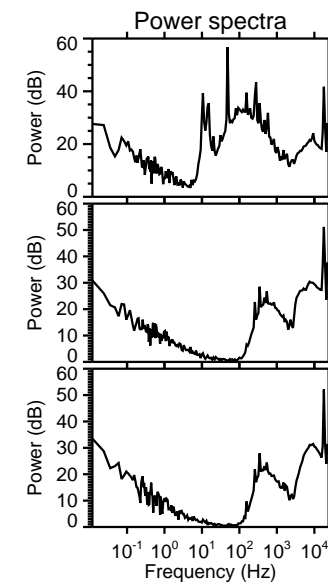
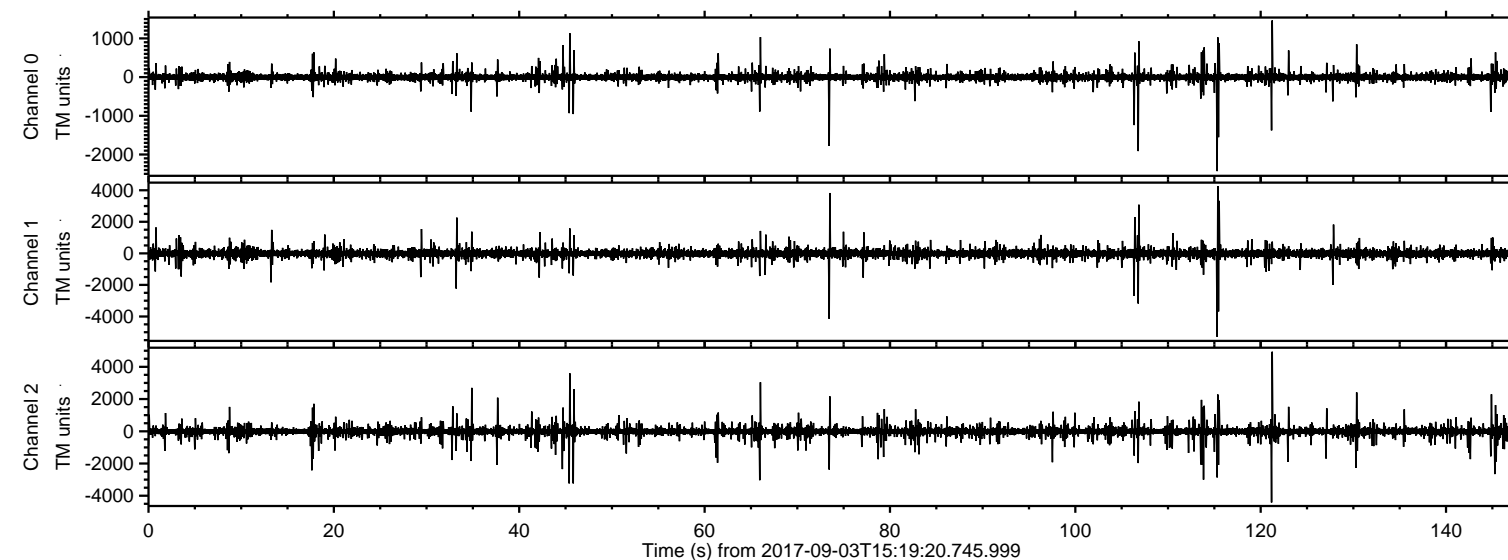


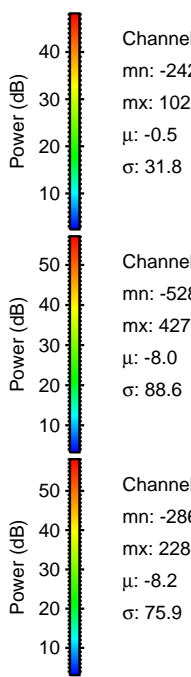
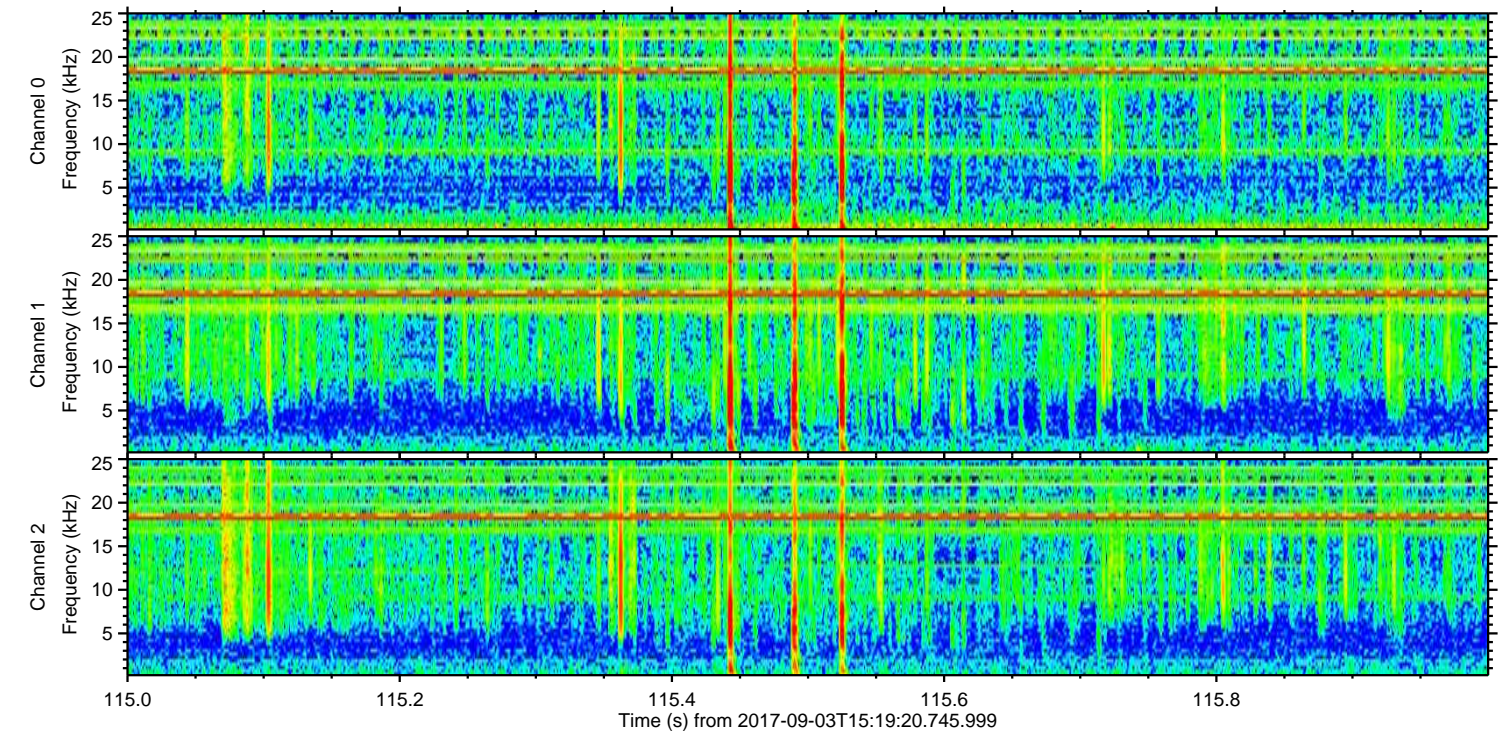
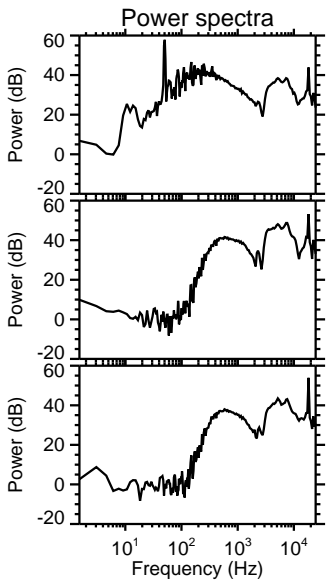
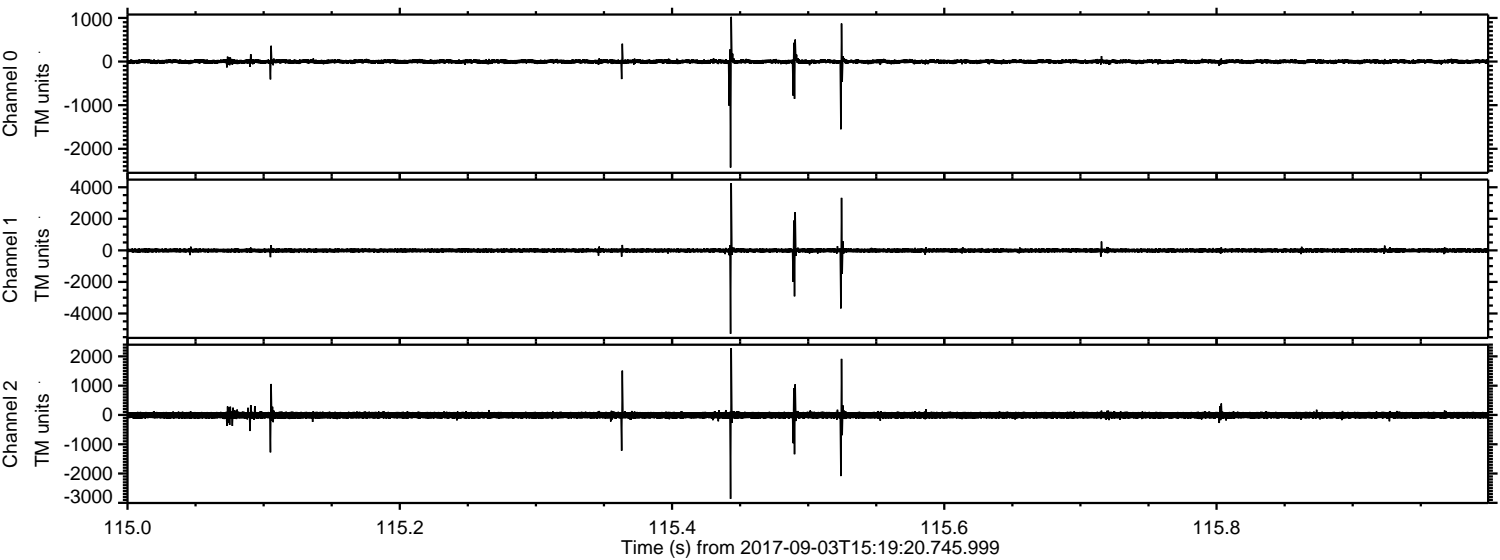
ELMAVAN 3D WAVEFORMS (Measured data sampled at 50 kHz) 51000 packets of 144 samples from 2017-09-03T15:19:20.745.999.

Processed Sun Sep 3 17:27:10 2017 by ELM ver.2012-10-06 from 001__elm20170903_151919__dat00.bin



ELMAVAN 3D WAVEFORMS (Measured data sampled at 50 kHz) 51000 packets of 144 samples from 2017-09-03T15:19:20.745.999. Part 116/147

Processed Sun Sep 3 17:27:16 2017 by ELM ver.2012-10-06 from 001__elm20170903_151919__dat00.bin



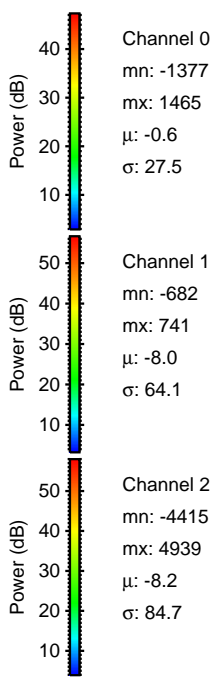
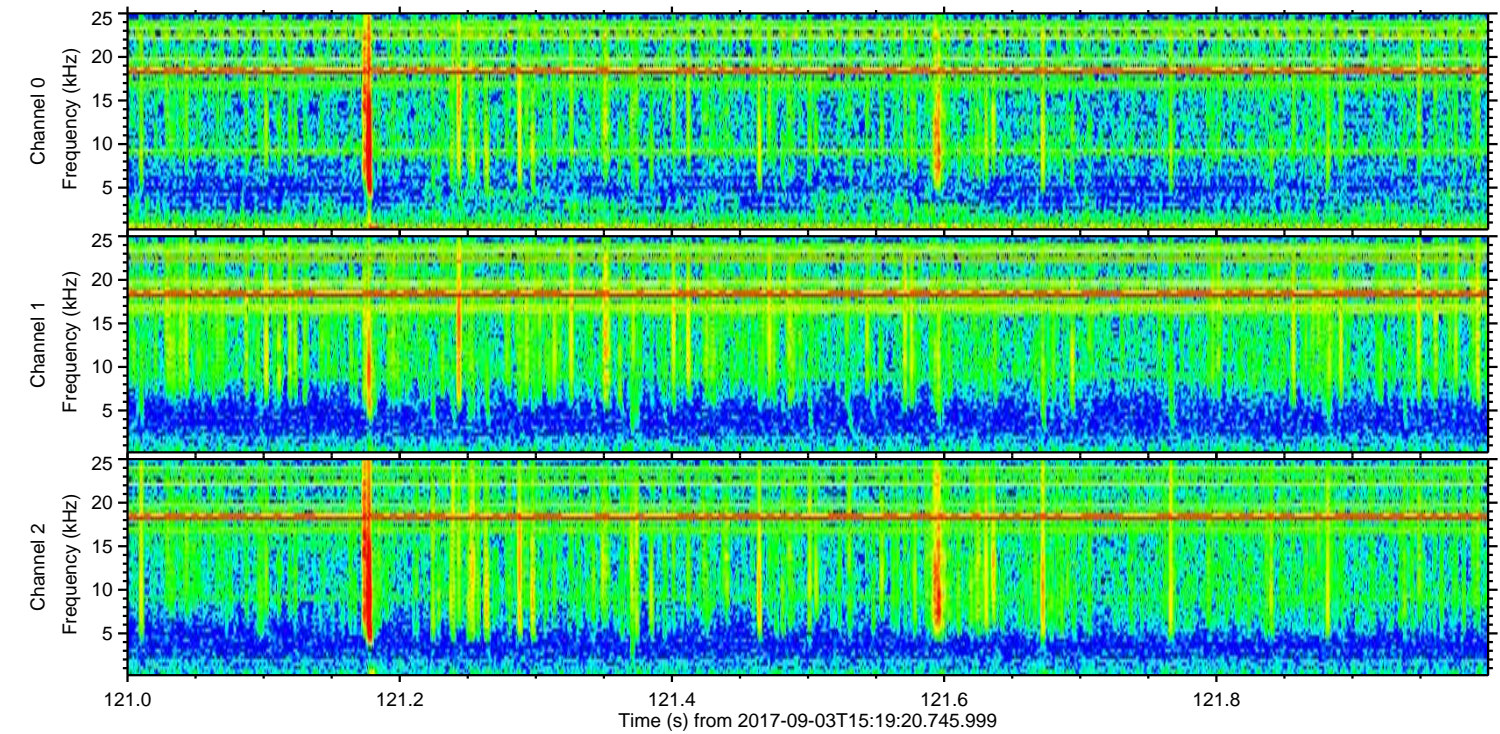
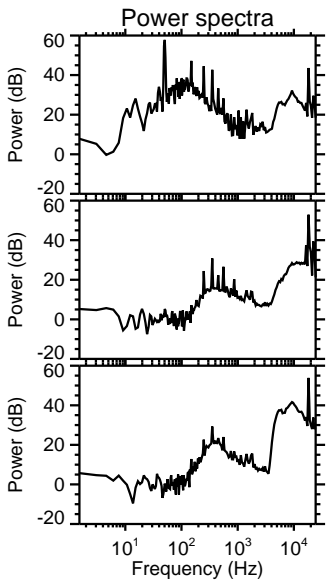
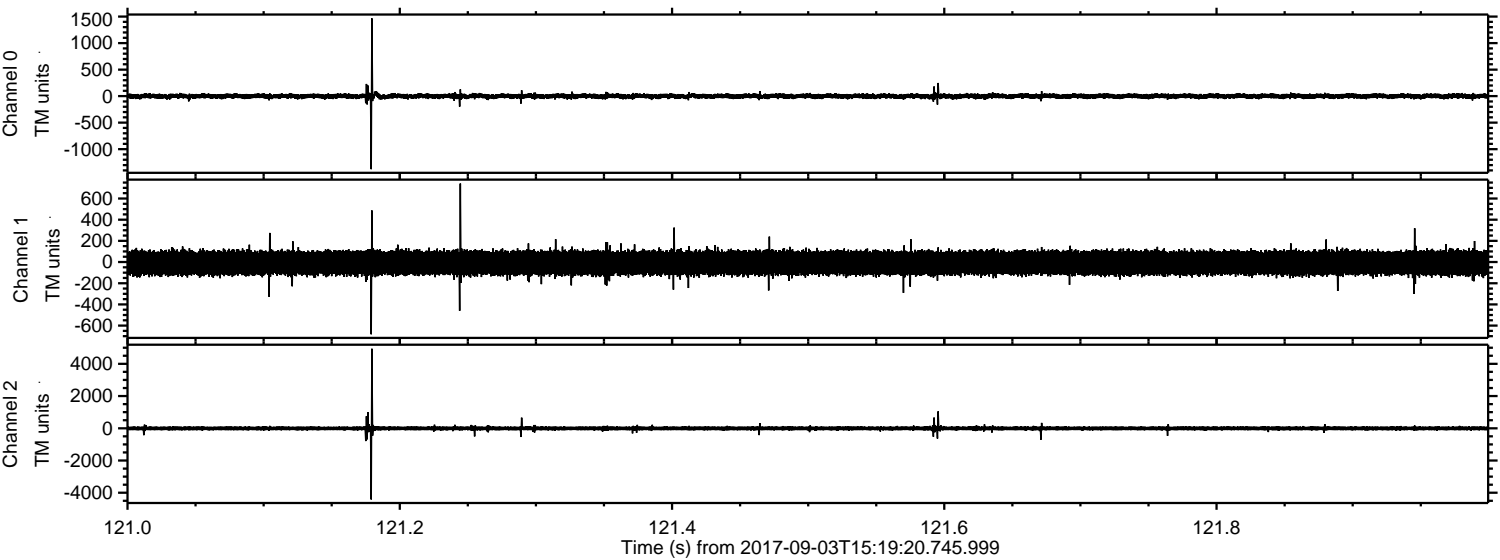
Channel 0
mn: -2429
mx: 1026
 μ : -0.5
 σ : 31.8

Channel 1
mn: -5285
mx: 4270
 μ : -8.0
 σ : 88.6

Channel 2
mn: -2862
mx: 2284
 μ : -8.2
 σ : 75.9

ELMAVAN 3D WAVEFORMS (Measured data sampled at 50 kHz) 51000 packets of 144 samples from 2017-09-03T15:19:20.745.999. Part 122/147

Processed Sun Sep 3 17:27:16 2017 by ELM ver.2012-10-06 from 001__elm20170903_151919__dat00.bin

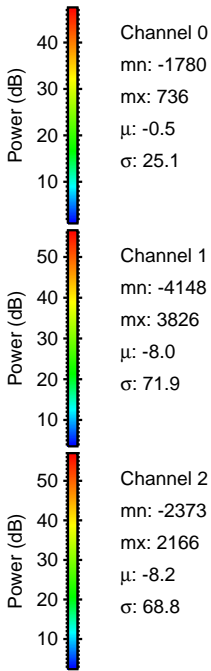
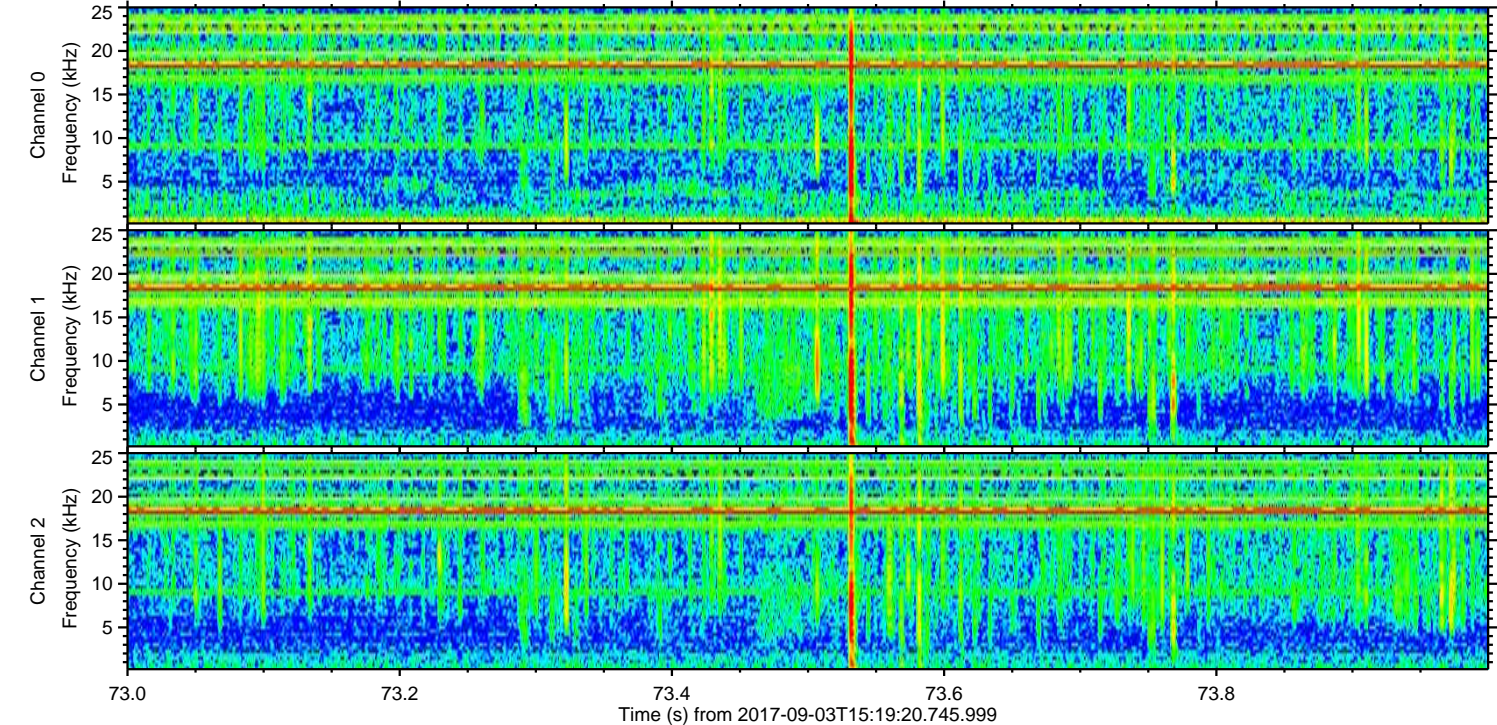
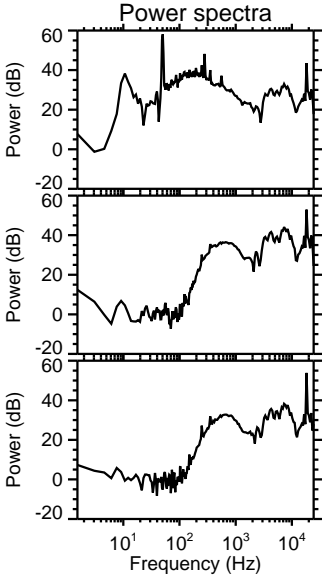
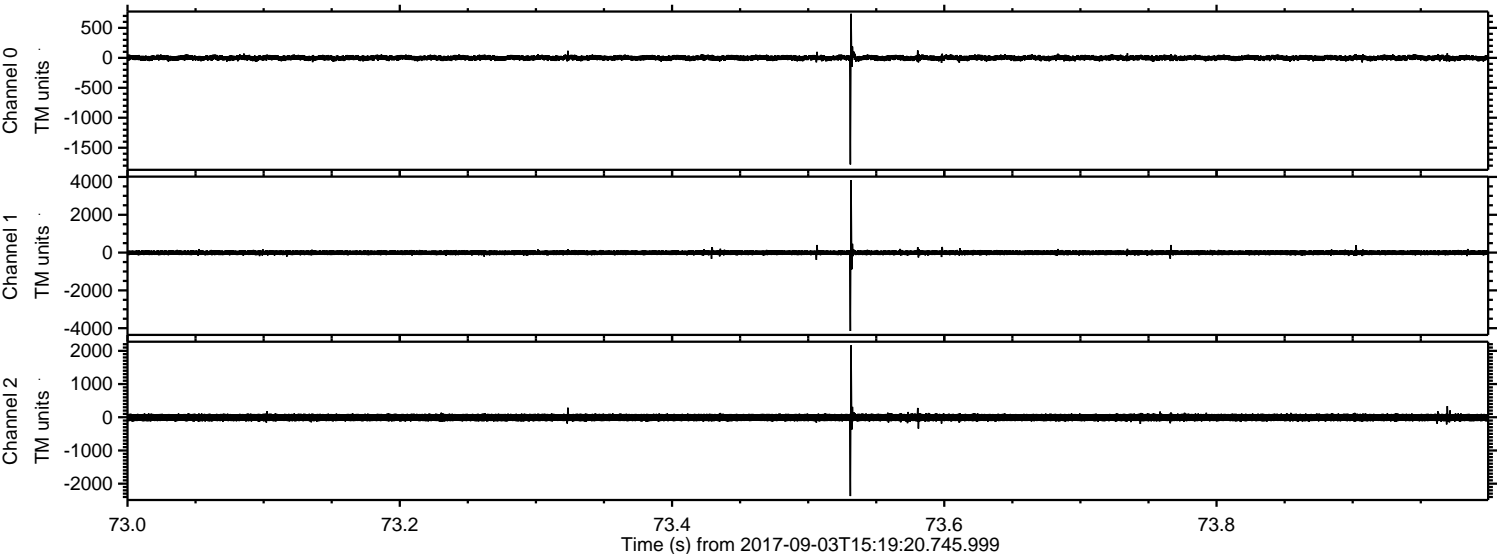


Channel 0
mn: -1377
mx: 1465
 μ : -0.6
 σ : 27.5

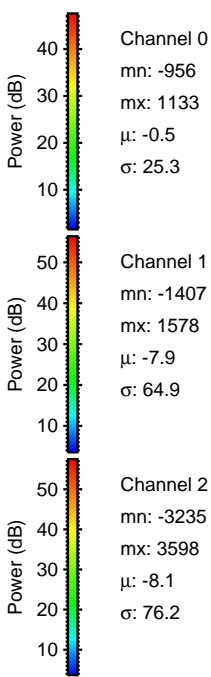
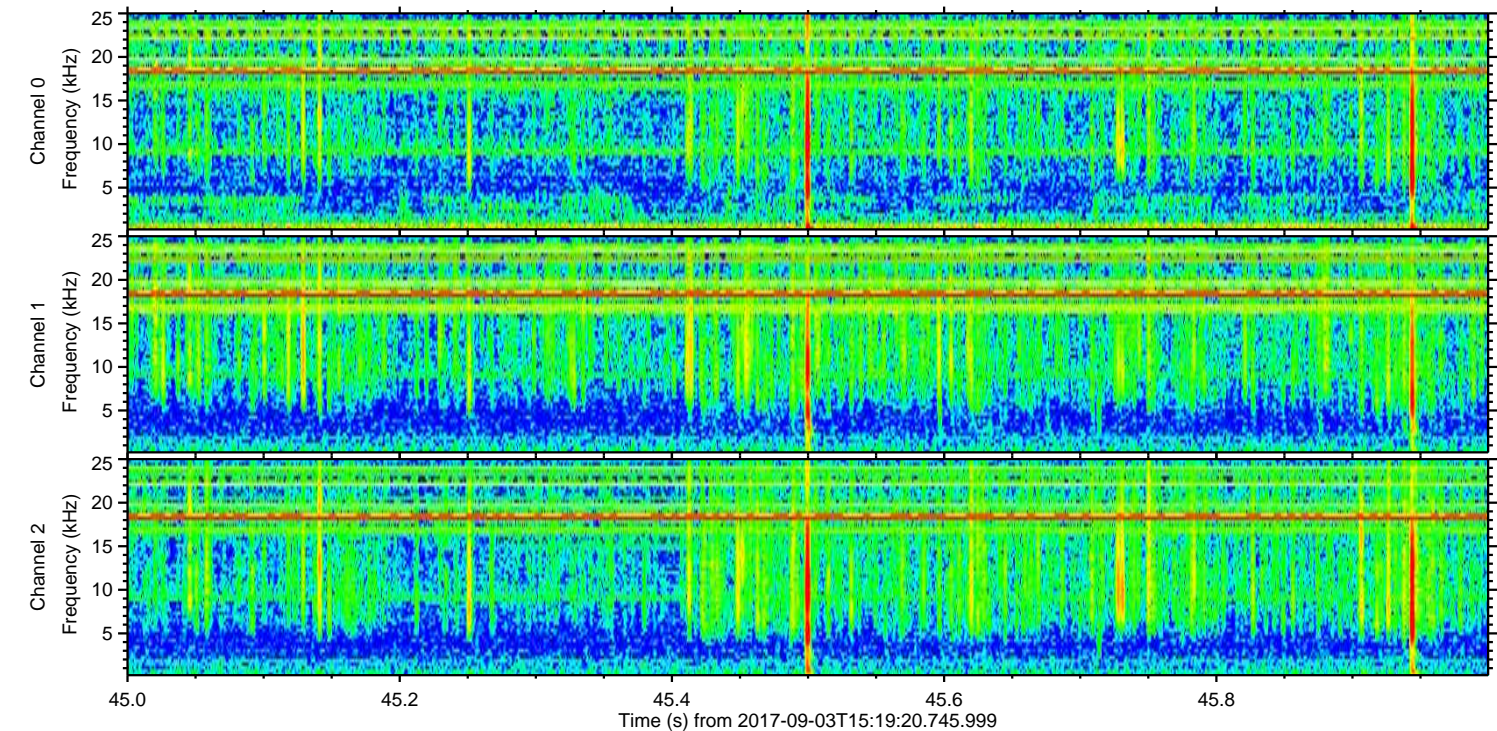
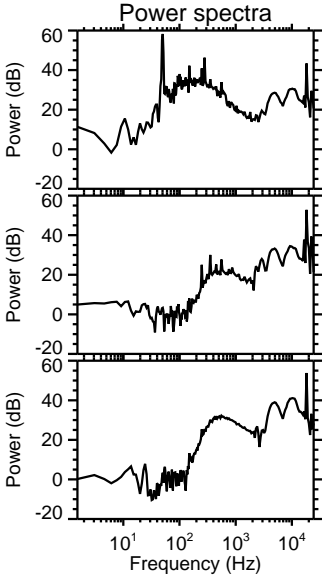
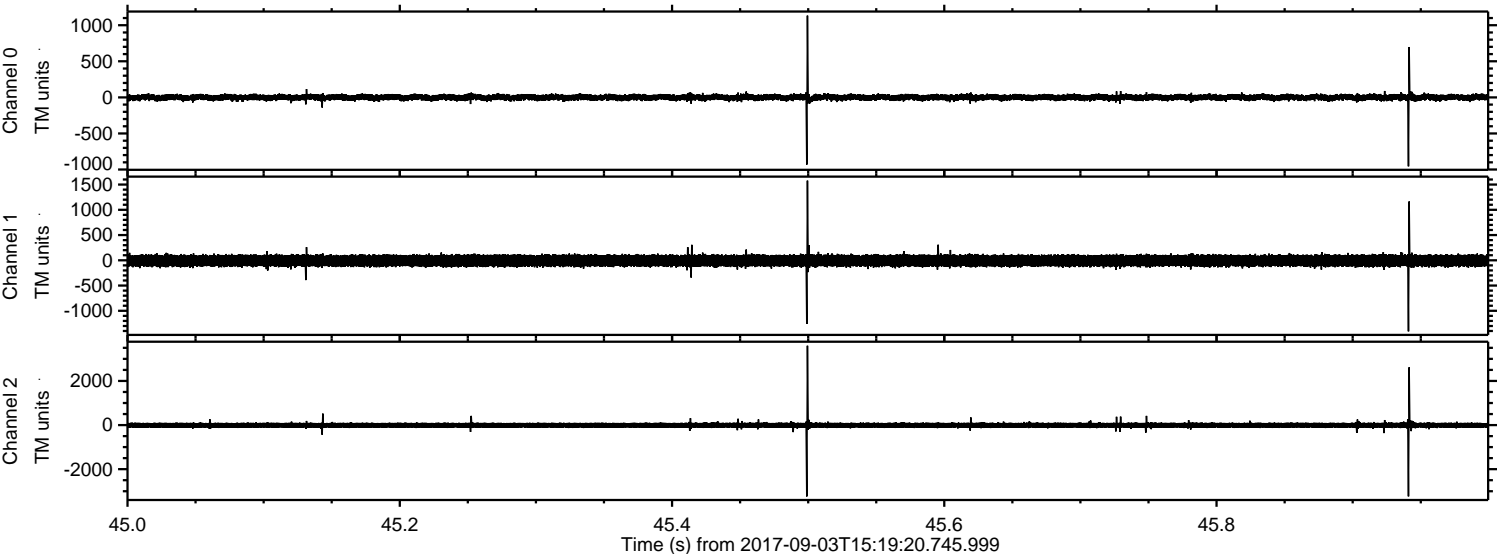
Channel 1
mn: -682
mx: 741
 μ : -8.0
 σ : 64.1

Channel 2
mn: -4415
mx: 4939
 μ : -8.2
 σ : 84.7

Processed Sun Sep 3 17:27:17 2017 by ELM ver.2012-10-06 from 001__elm20170903_151919__dat00.bin

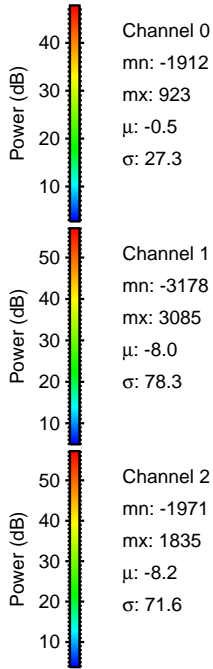
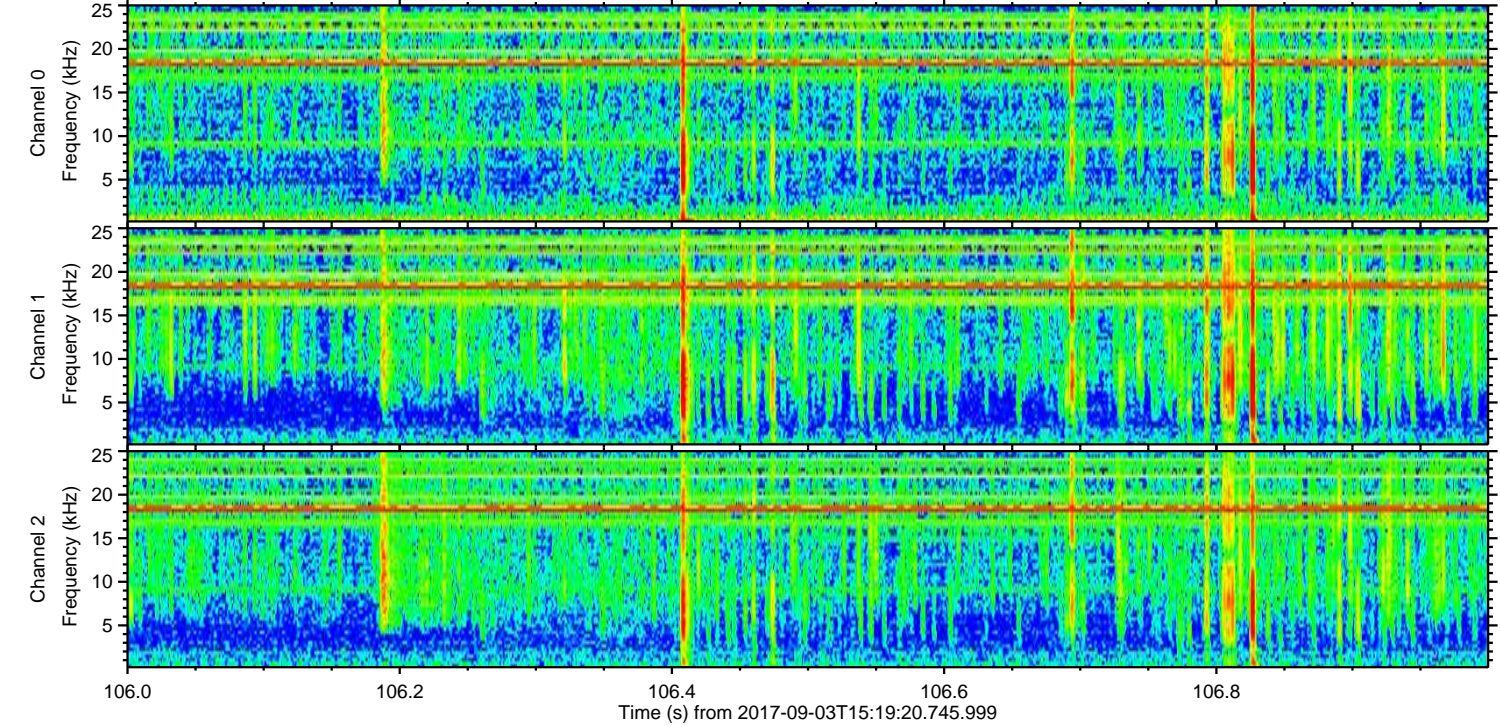
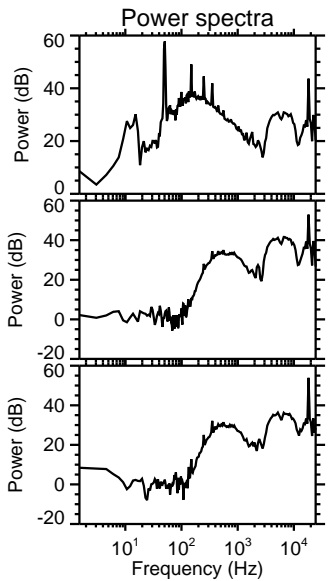
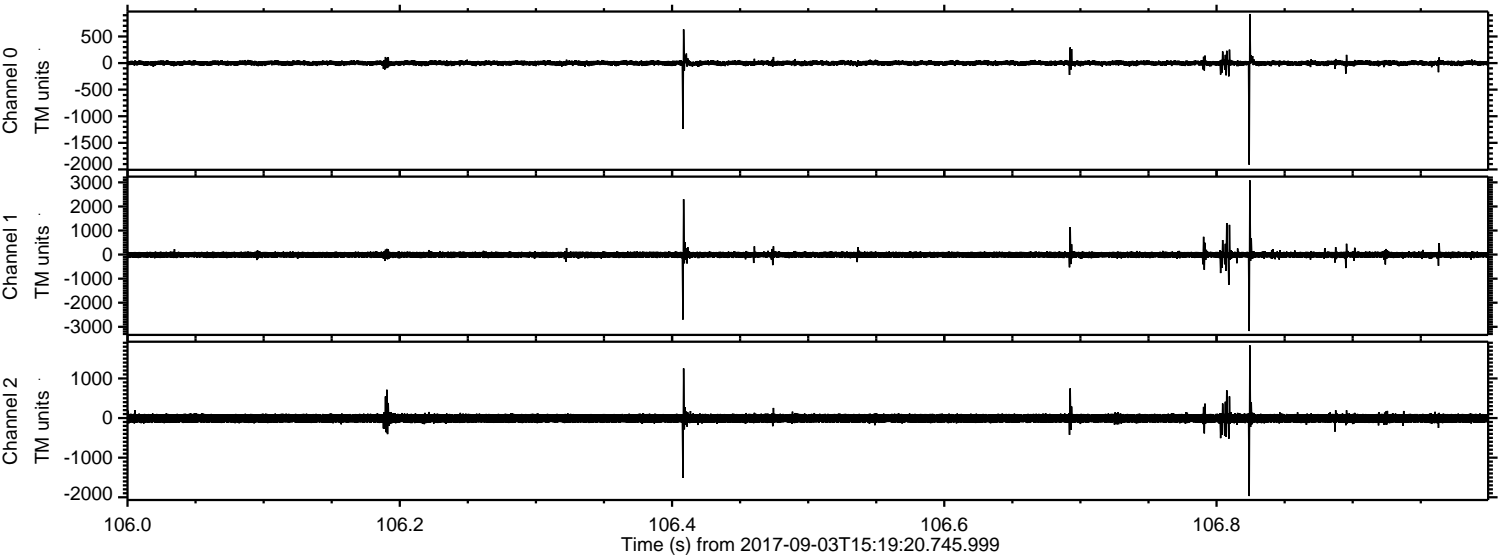


Processed Sun Sep 3 17:27:18 2017 by ELM ver.2012-10-06 from 001__elm20170903_151919__dat00.bin



ELMAVAN 3D WAVEFORMS (Measured data sampled at 50 kHz) 51000 packets of 144 samples from 2017-09-03T15:19:20.745.999. Part 107/147

Processed Sun Sep 3 17:27:18 2017 by ELM ver.2012-10-06 from 001__elm20170903_151919__dat00.bin

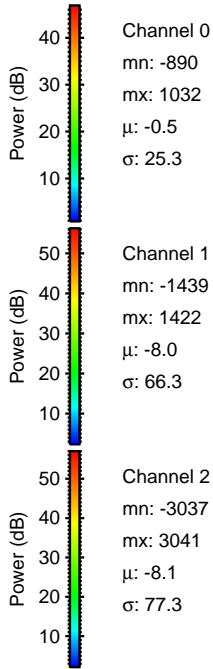
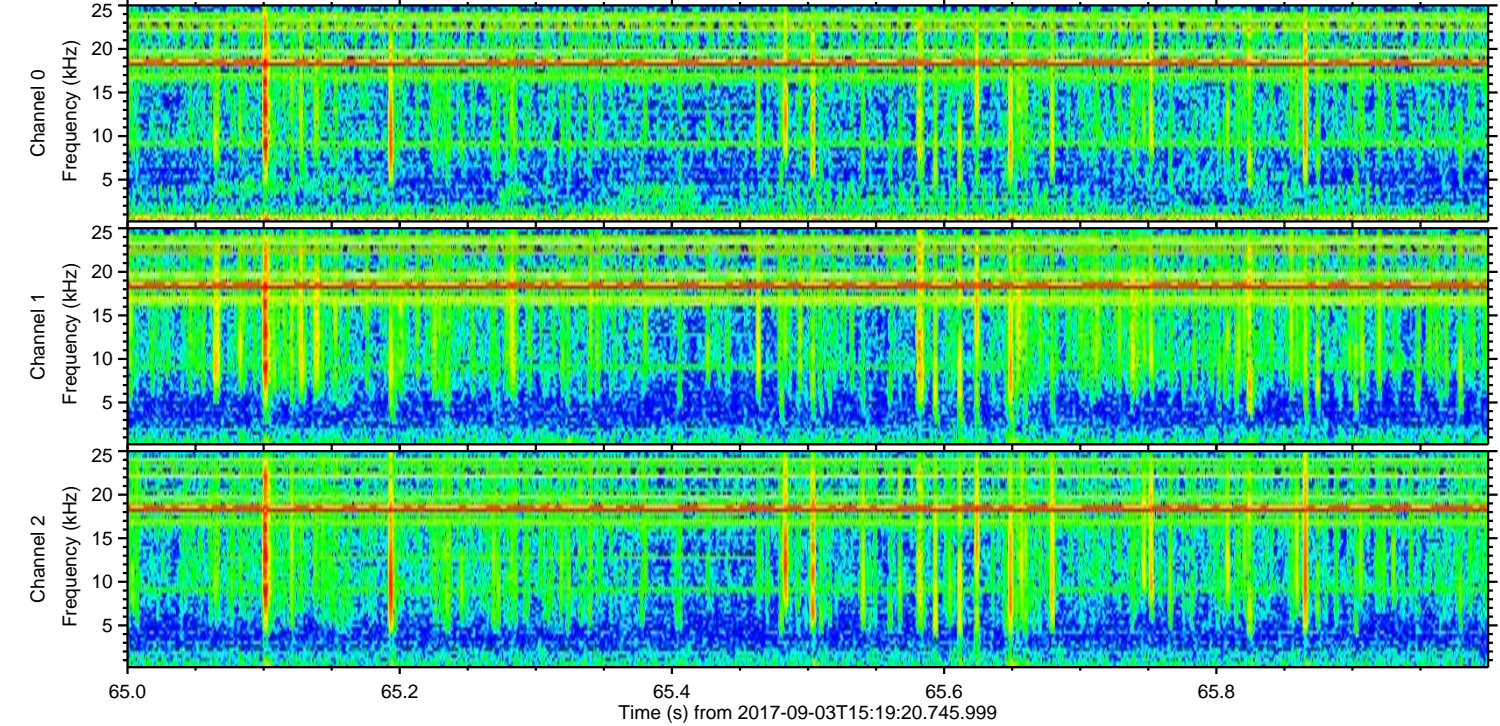
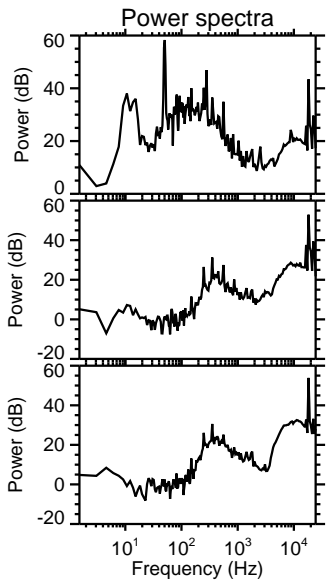
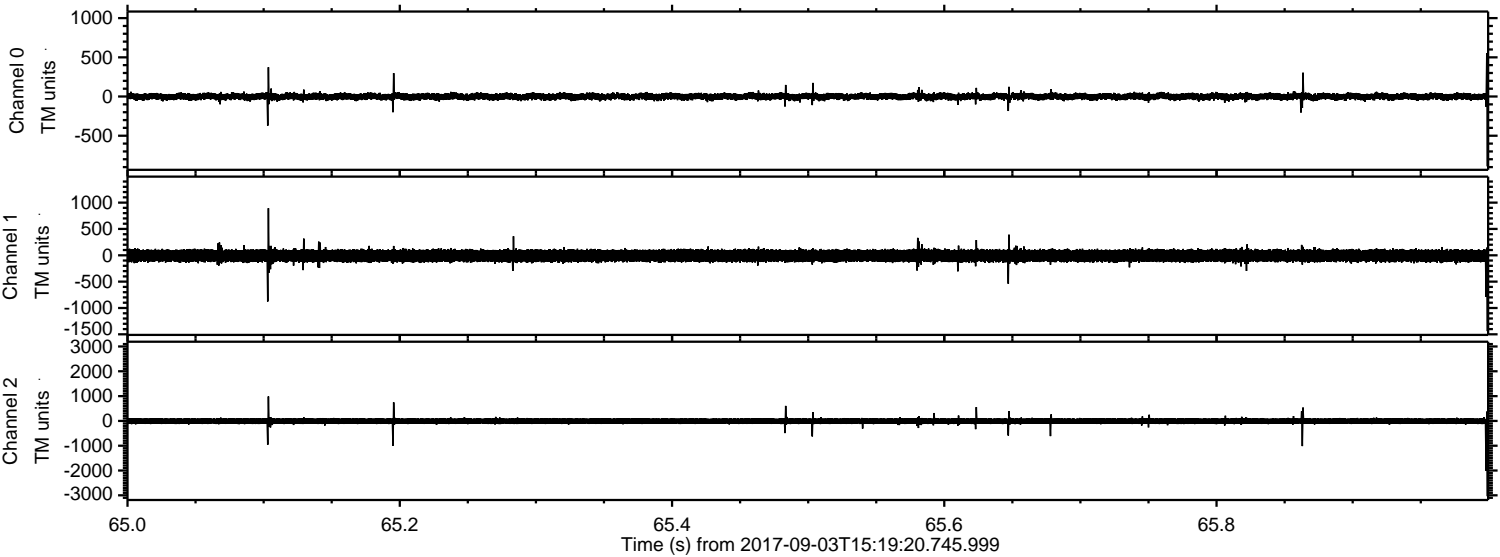


Channel 0
mn: -1912
mx: 923
 μ : -0.5
 σ : 27.3

Channel 1
mn: -3178
mx: 3085
 μ : -8.0
 σ : 78.3

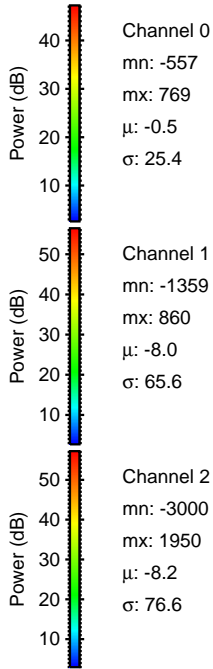
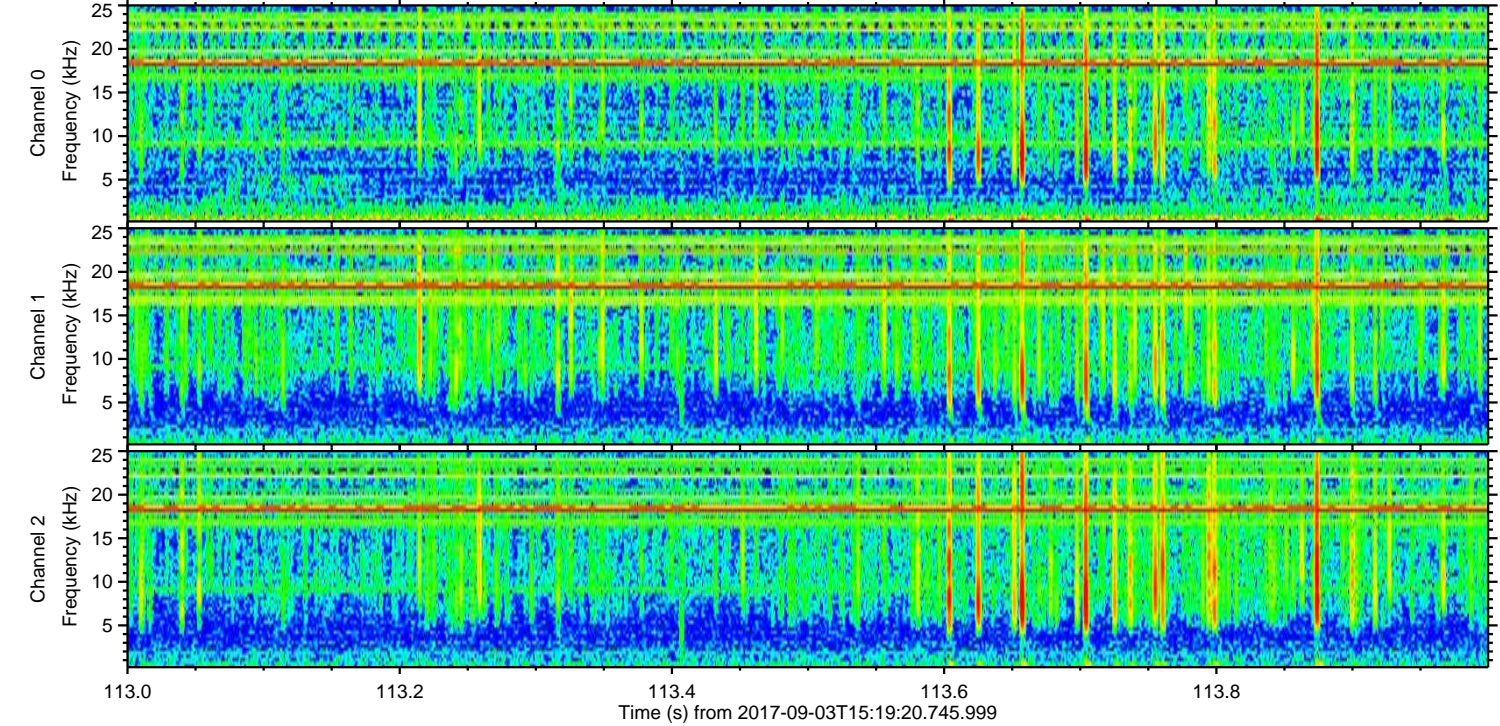
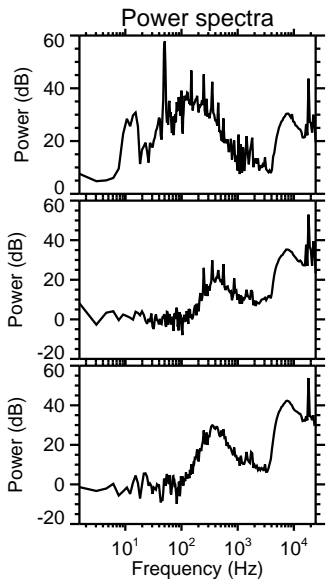
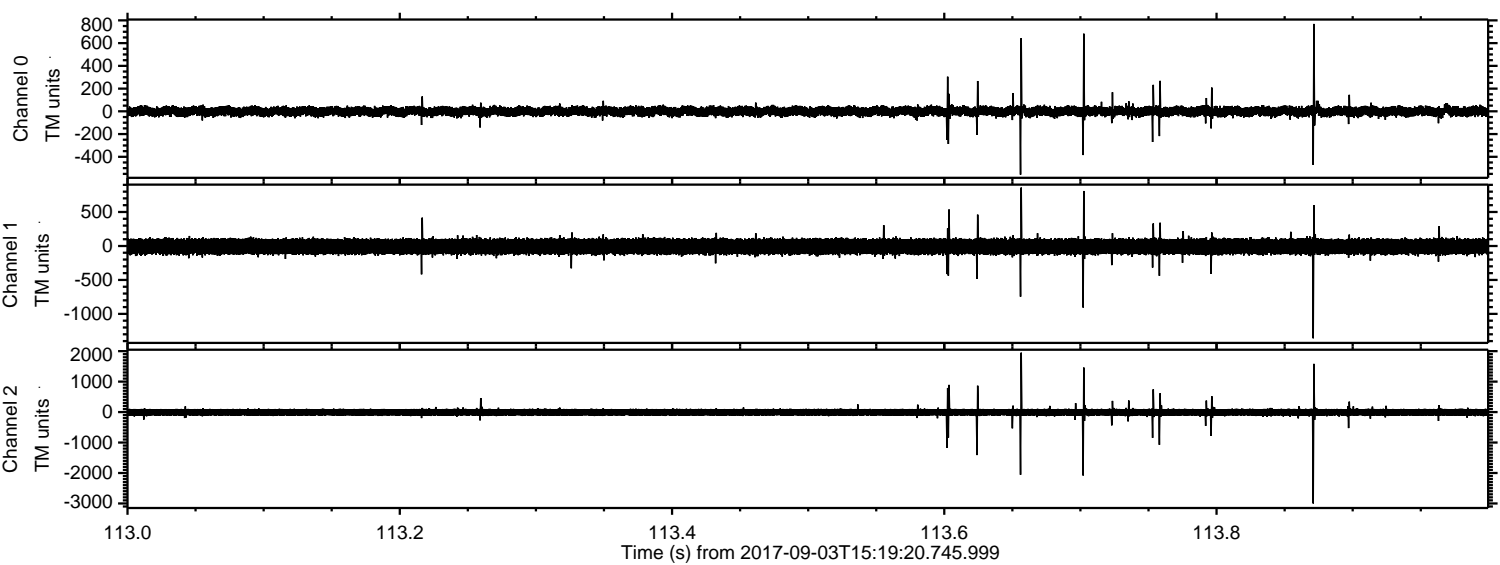
Channel 2
mn: -1971
mx: 1835
 μ : -8.2
 σ : 71.6

Processed Sun Sep 3 17:27:19 2017 by ELM ver.2012-10-06 from 001__elm20170903_151919__dat00.bin



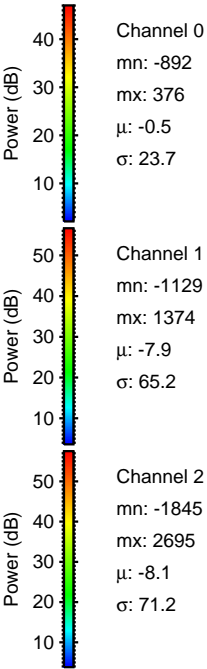
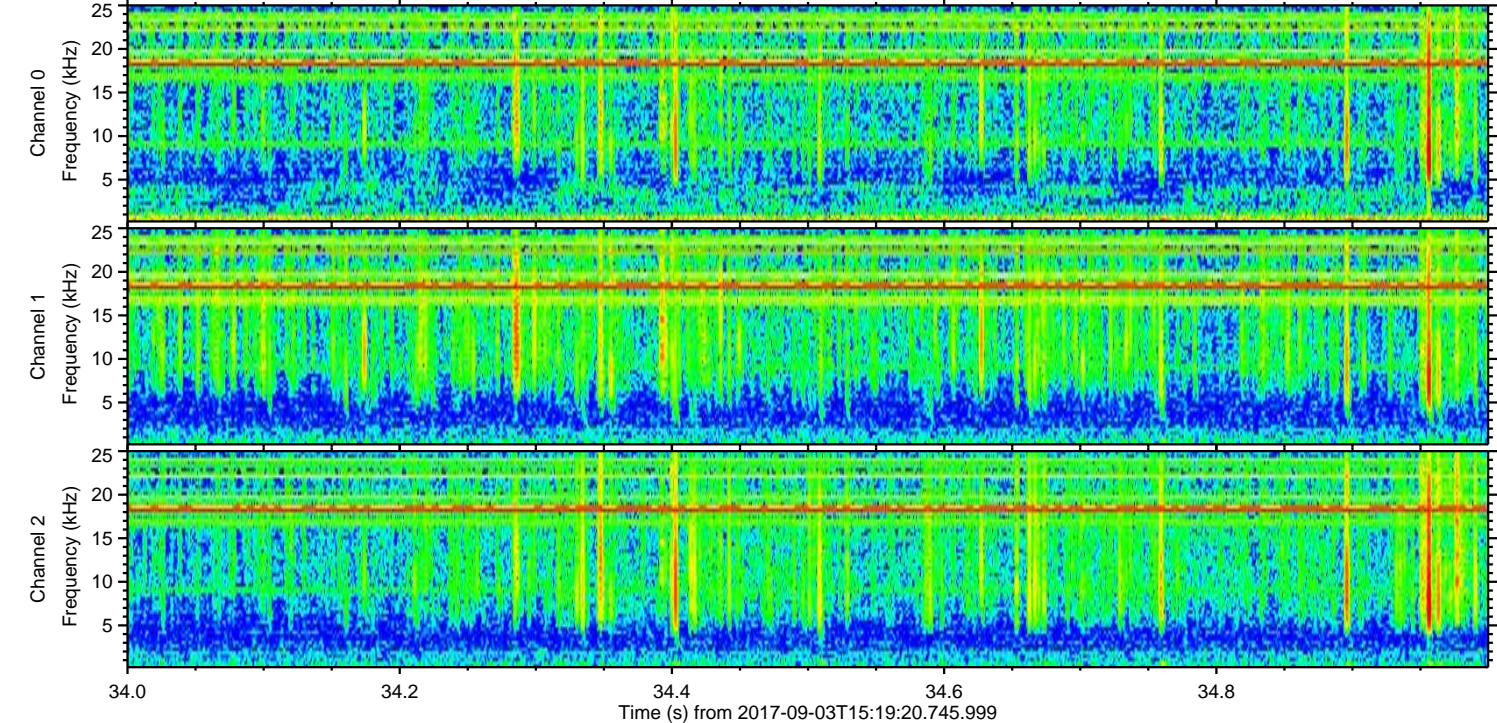
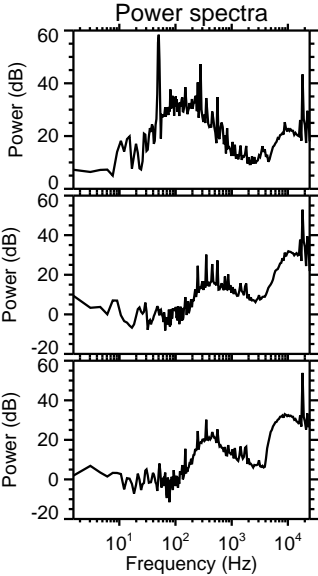
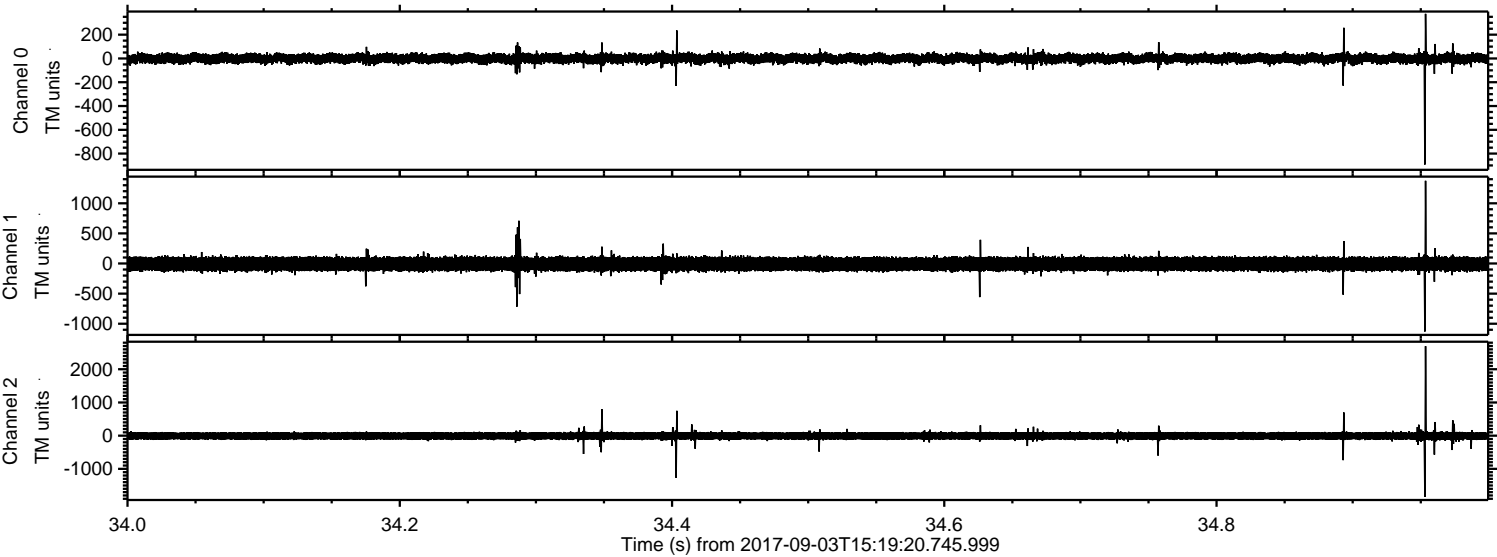
ELMAVAN 3D WAVEFORMS (Measured data sampled at 50 kHz) 51000 packets of 144 samples from 2017-09-03T15:19:20.745.999. Part 114/147

Processed Sun Sep 3 17:27:20 2017 by ELM ver.2012-10-06 from 001__elm20170903_151919__dat00.bin



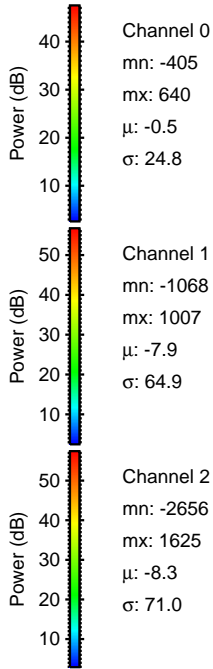
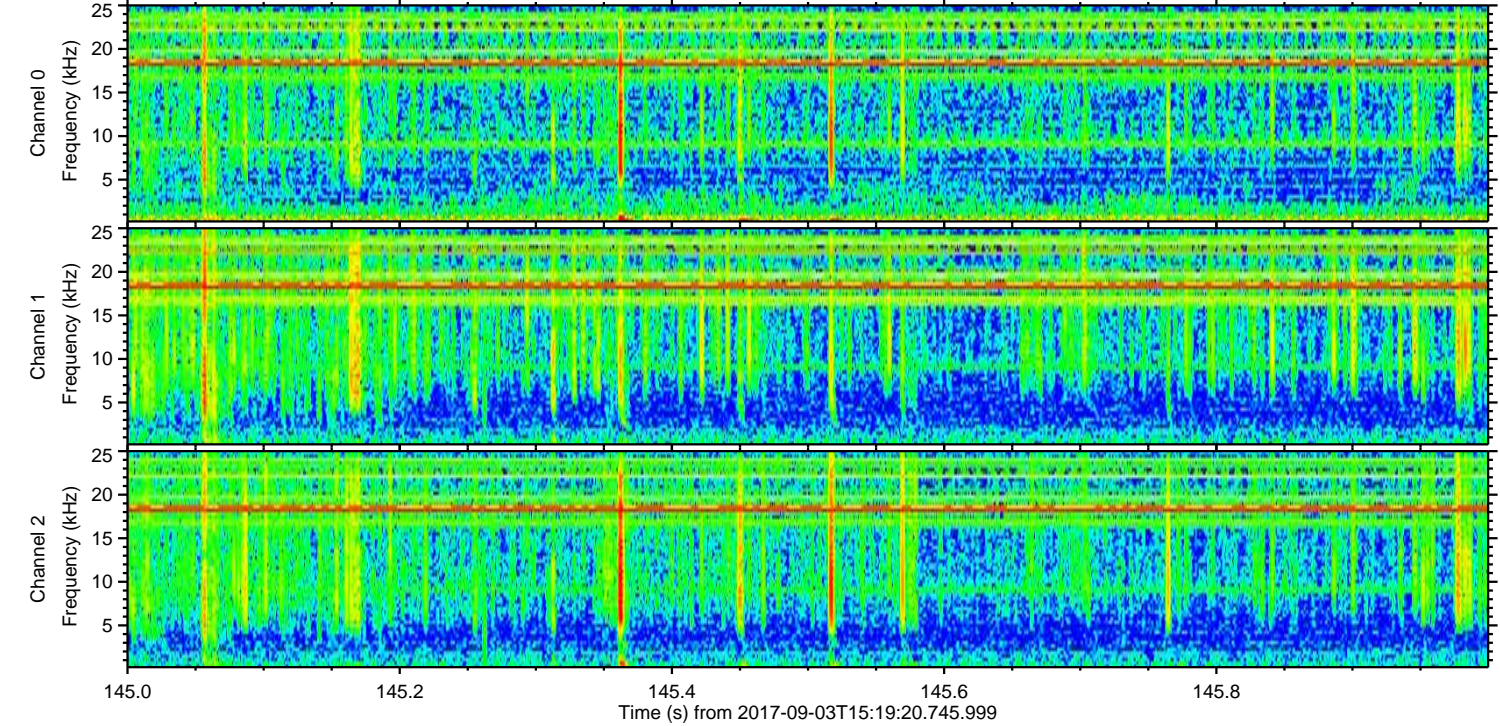
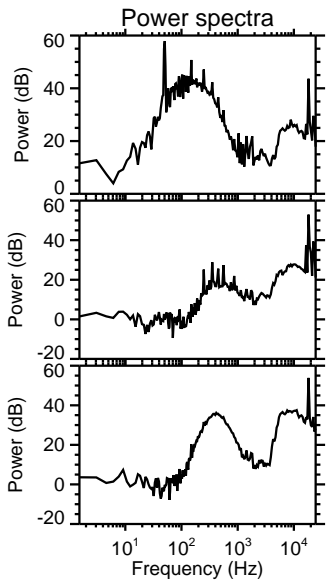
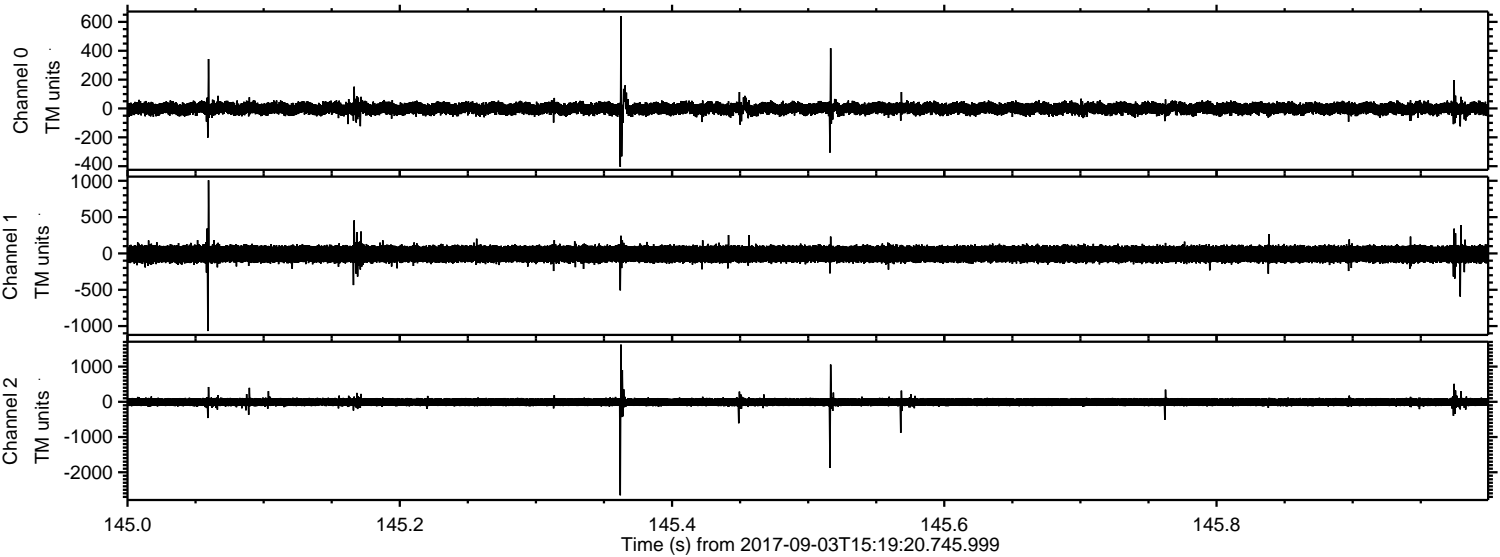
ELMAVAN 3D WAVEFORMS (Measured data sampled at 50 kHz) 51000 packets of 144 samples from 2017-09-03T15:19:20.745.999. Part 35/147

Processed Sun Sep 3 17:27:21 2017 by ELM ver.2012-10-06 from 001__elm20170903_151919__dat00.bin



ELMAVAN 3D WAVEFORMS (Measured data sampled at 50 kHz) 51000 packets of 144 samples from 2017-09-03T15:19:20.745.999. Part 146/147

Processed Sun Sep 3 17:27:21 2017 by ELM ver.2012-10-06 from 001__elm20170903_151919__dat00.bin



Processed Sun Sep 3 17:27:22 2017 by ELM ver.2012-10-06 from 001__elm20170903_151919__dat00.bin

