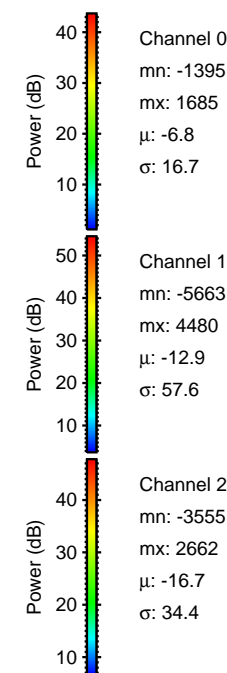
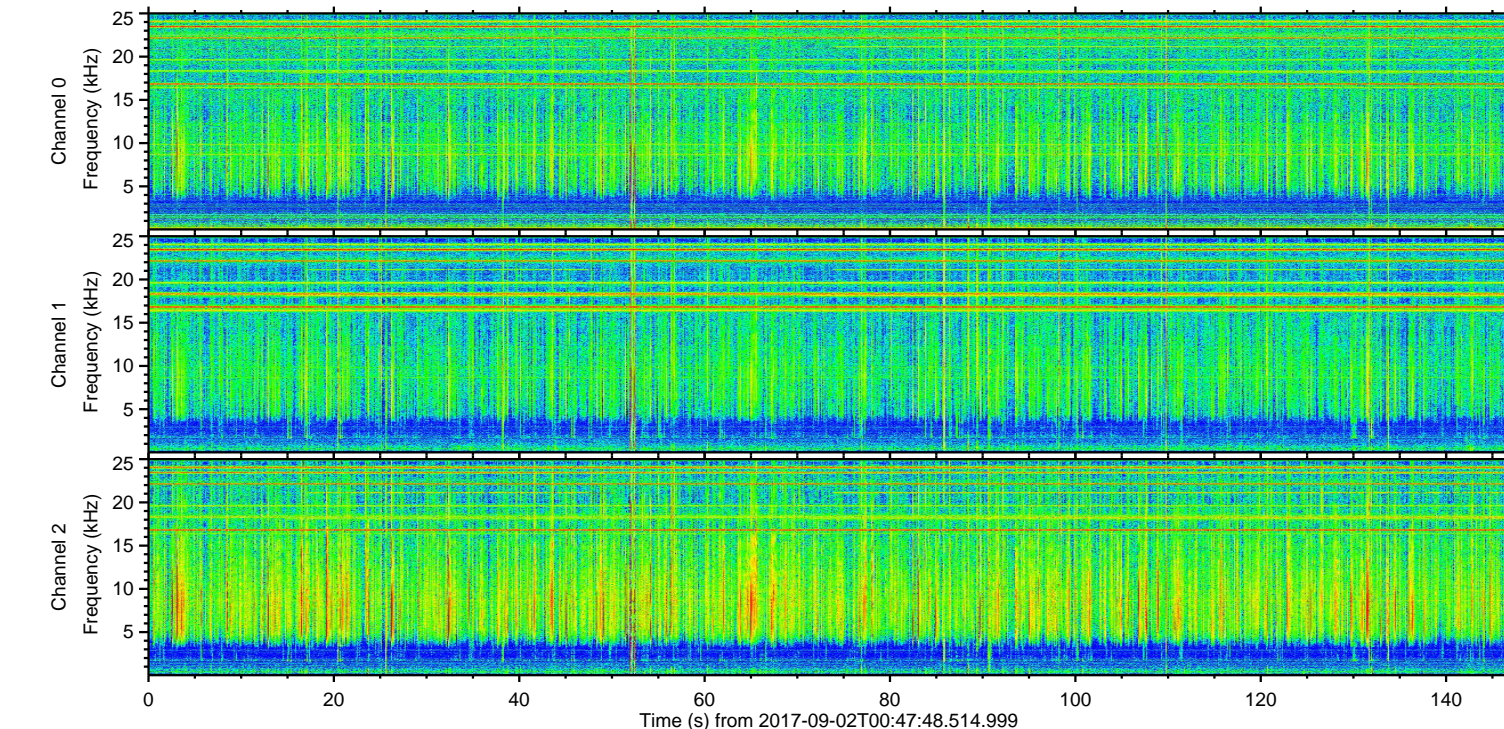
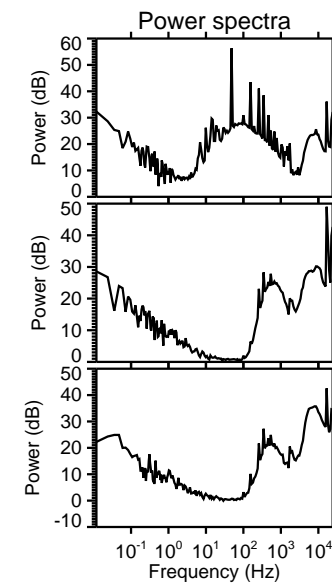
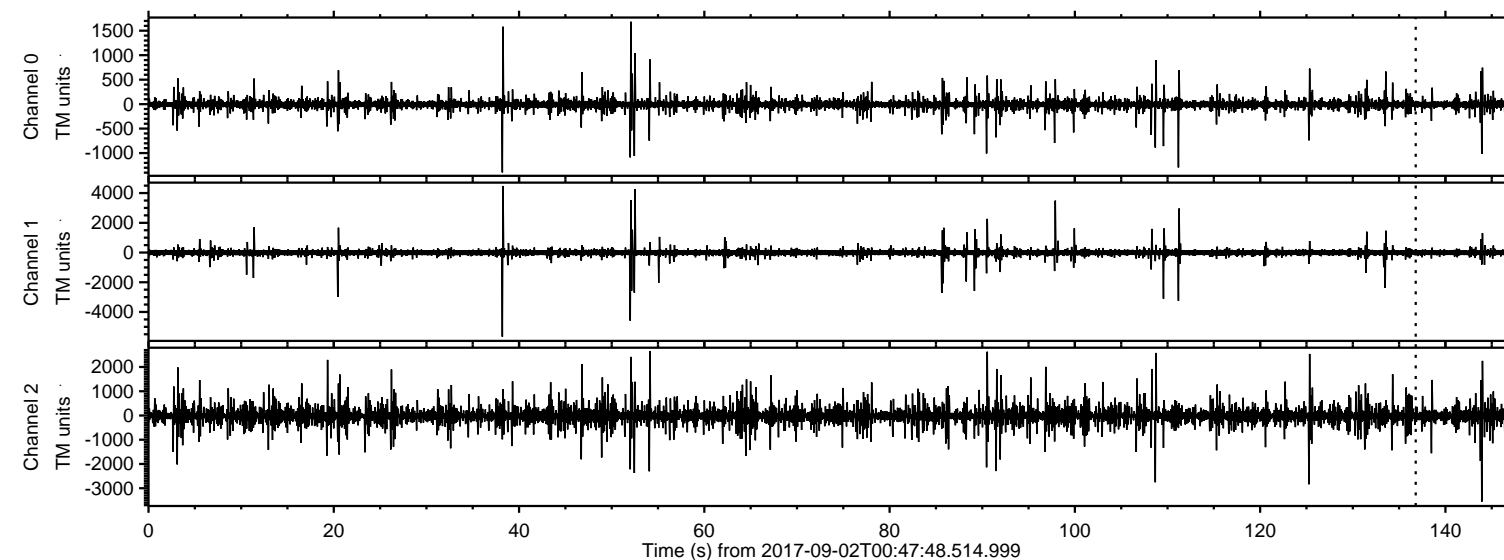
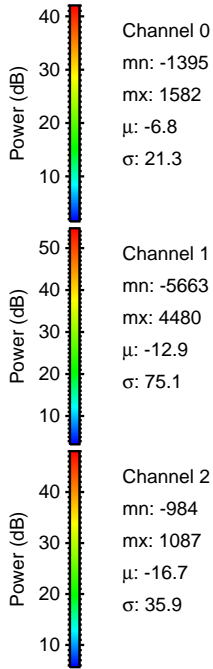
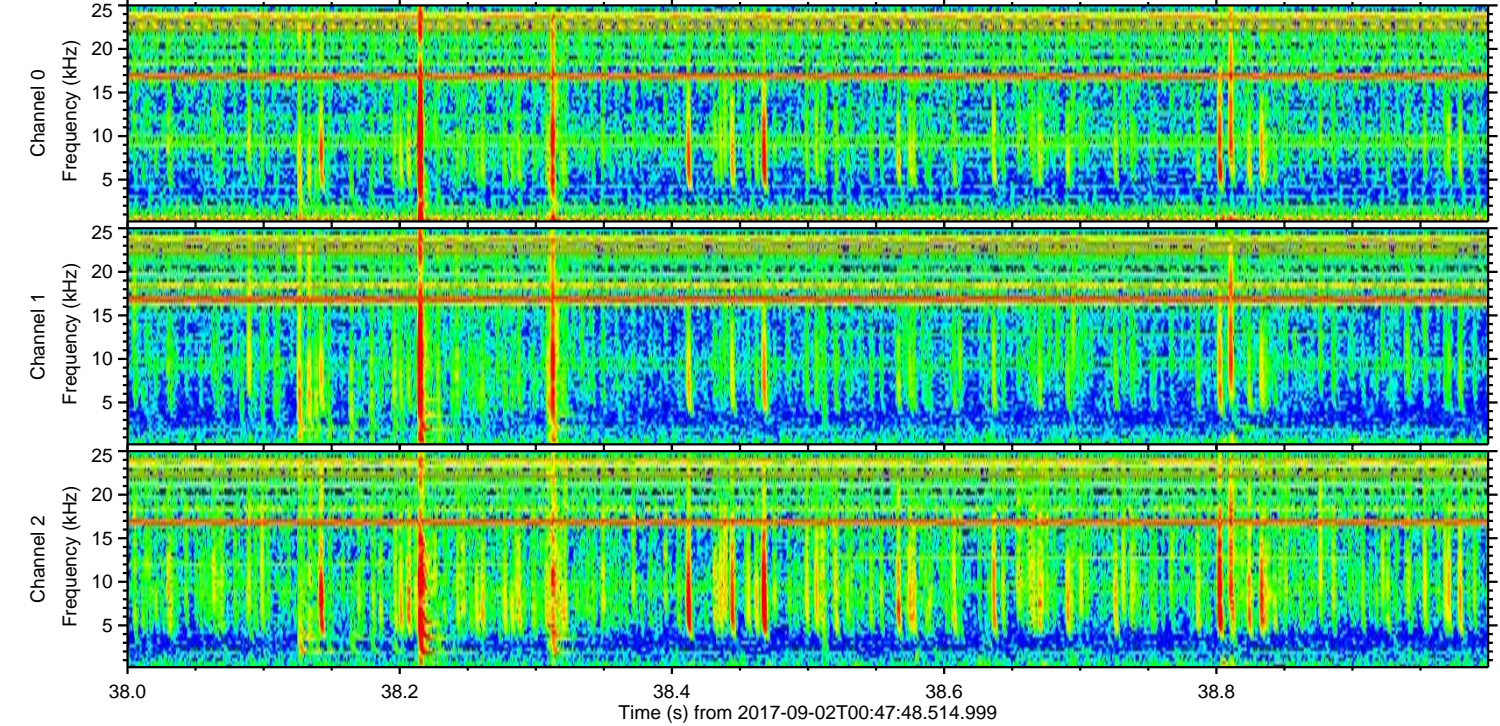
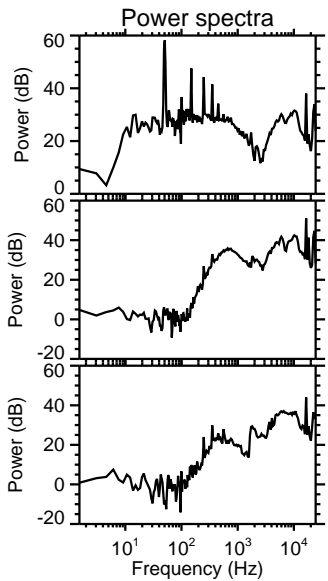
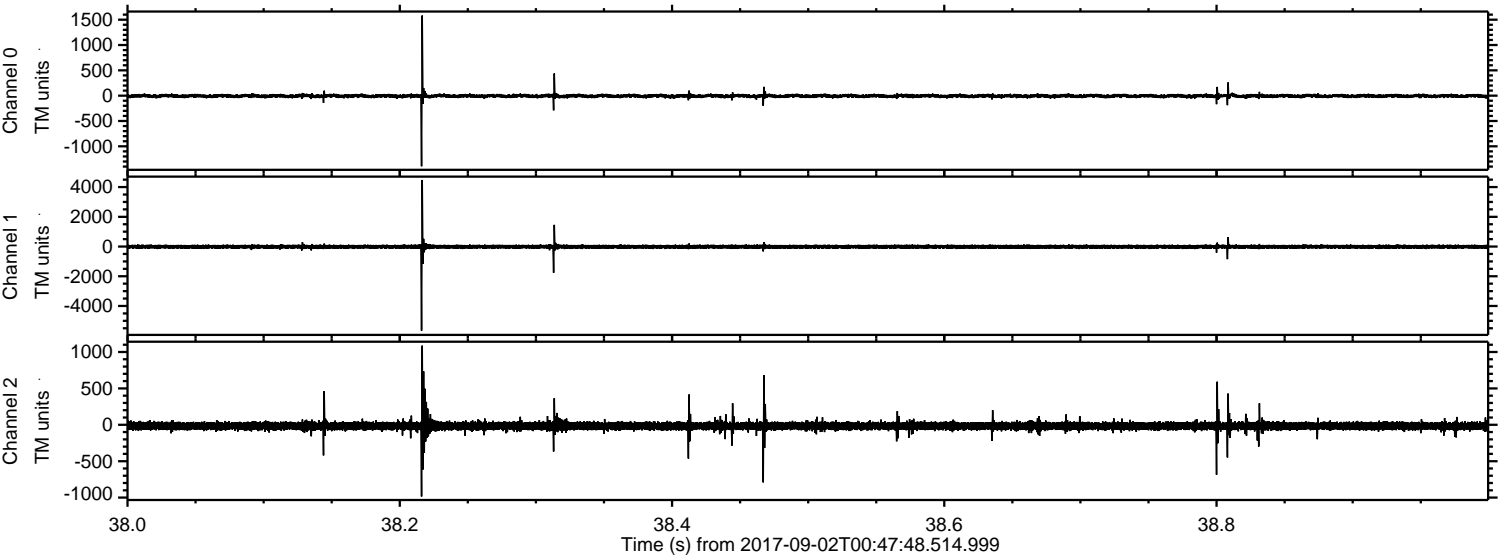


ELMAVAN 3D WAVEFORMS (Measured data sampled at 50 kHz) 50999 packets of 144 samples from 2017-09-02T00:47:48.514.999.

Processed Sat Sep 2 02:55:03 2017 by ELM ver.2012-10-06 from 001__elm20170902_004747__dat00.bin



Processed Sat Sep 2 02:55:09 2017 by ELM ver.2012-10-06 from 001__elm20170902_004747__dat00.bin

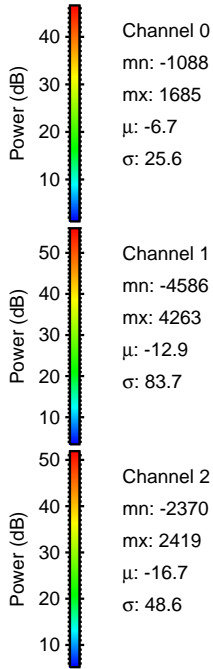
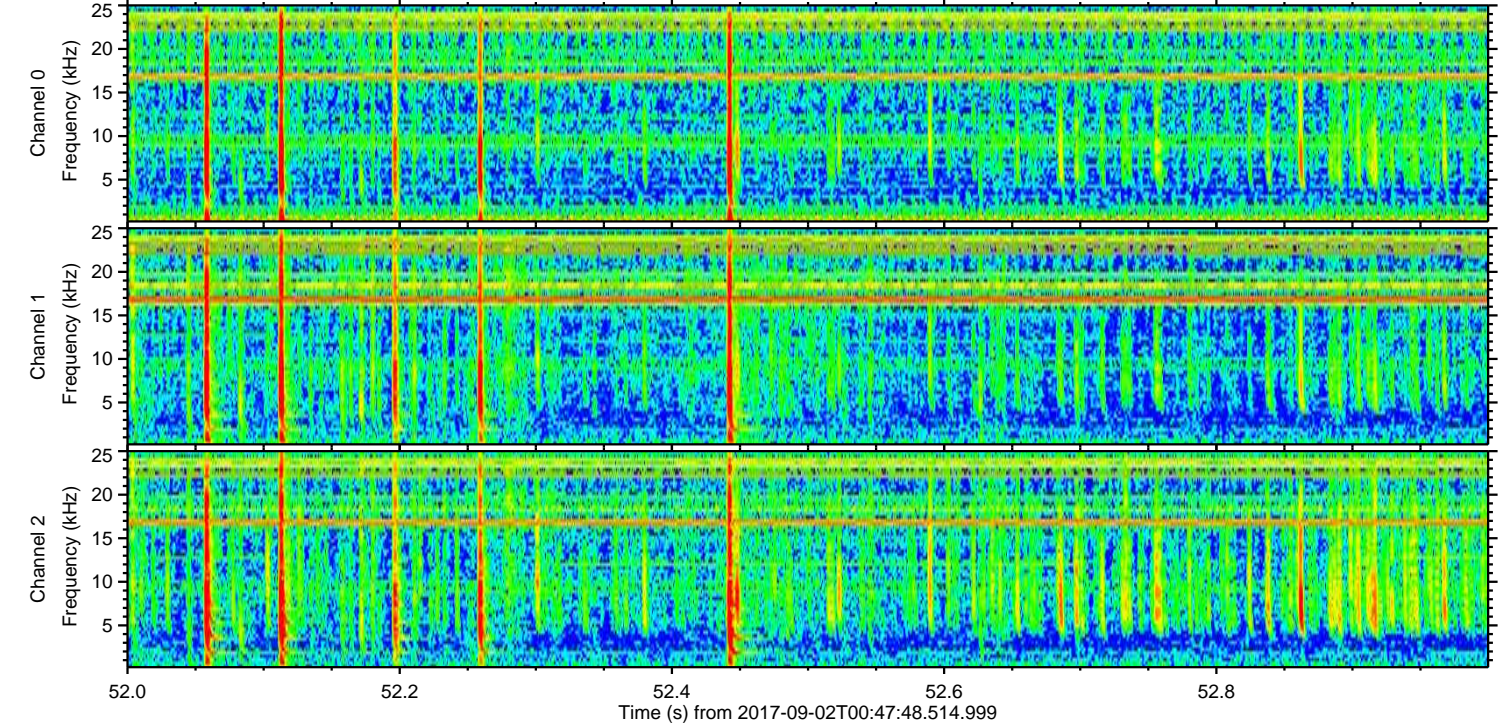
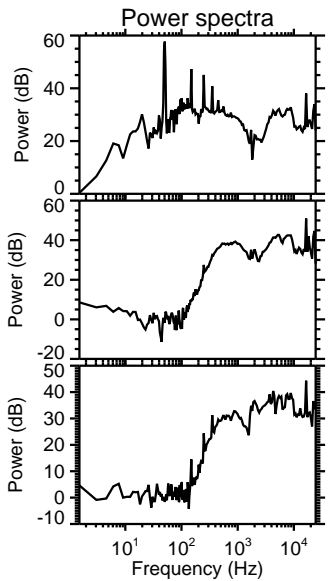
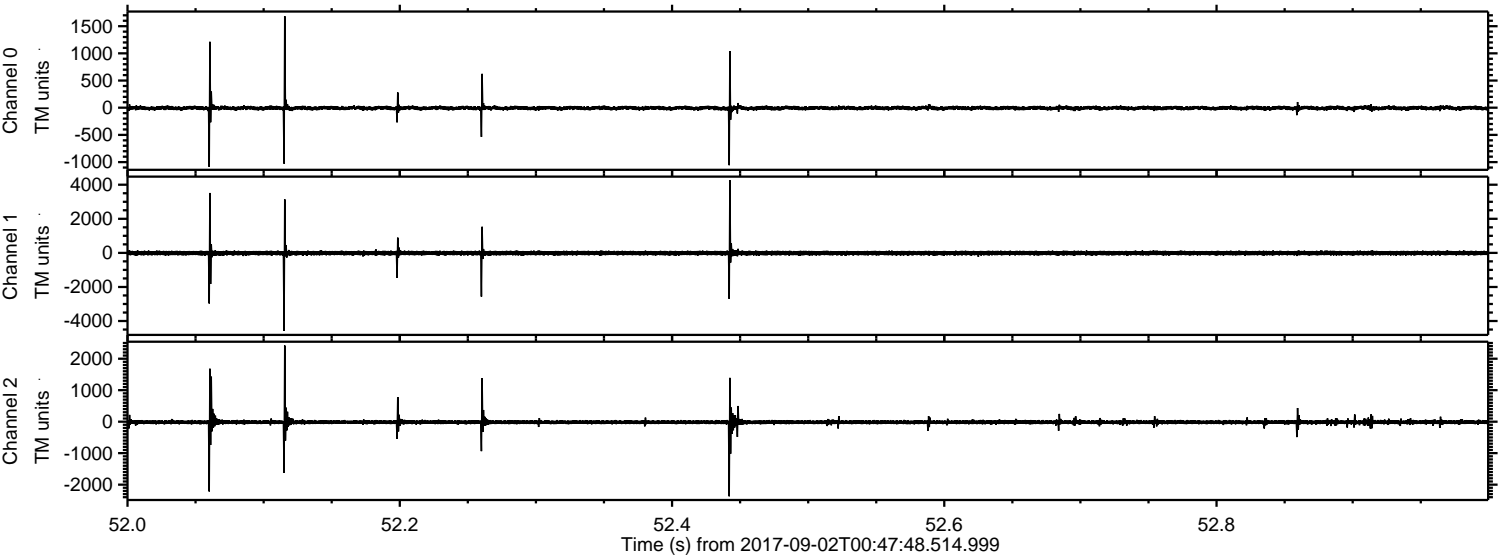


Channel 0
mn: -1395
mx: 1582
 μ : -6.8
 σ : 21.3

Channel 1
mn: -5663
mx: 4480
 μ : -12.9
 σ : 75.1

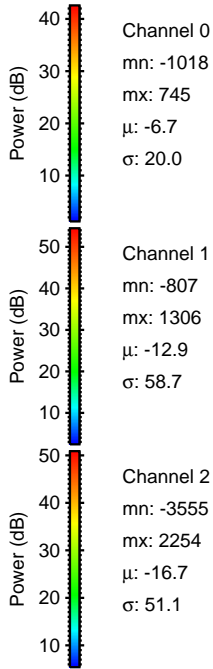
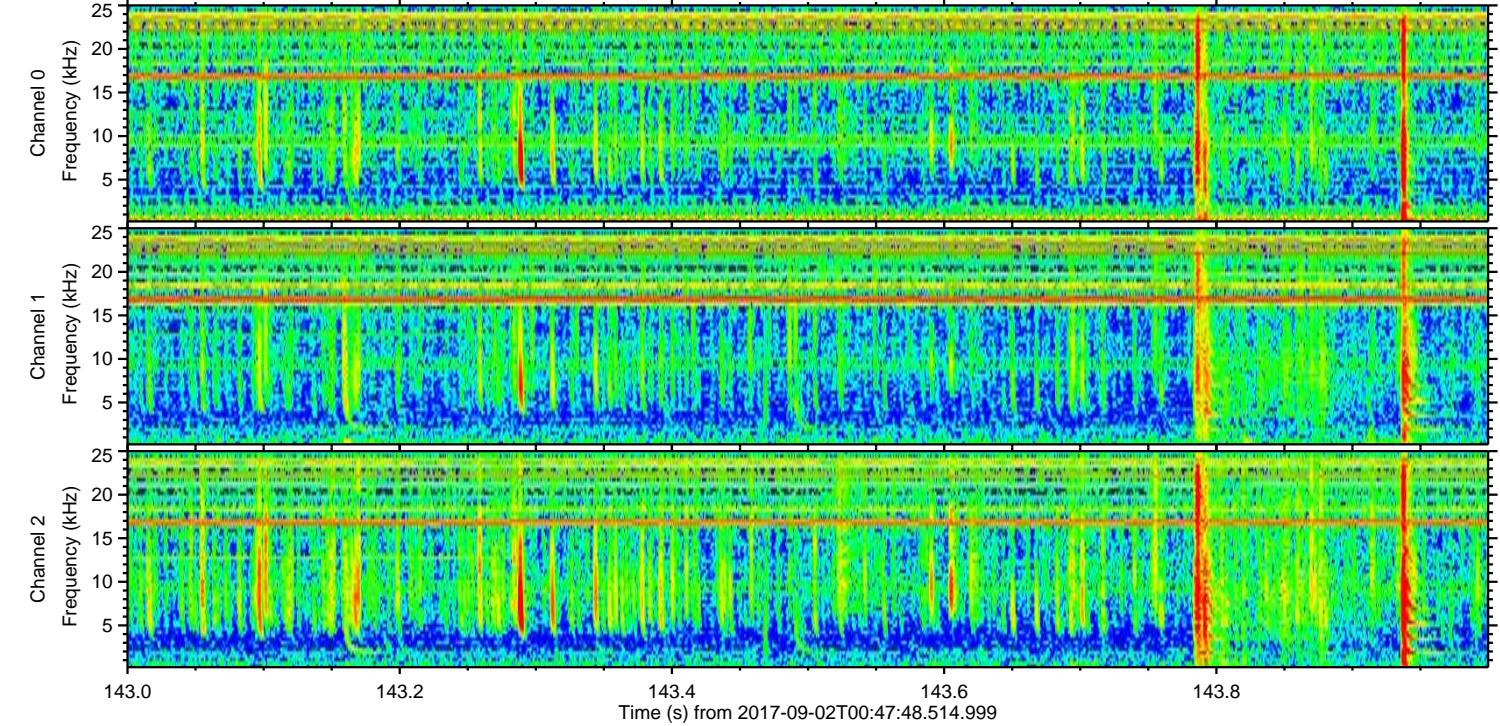
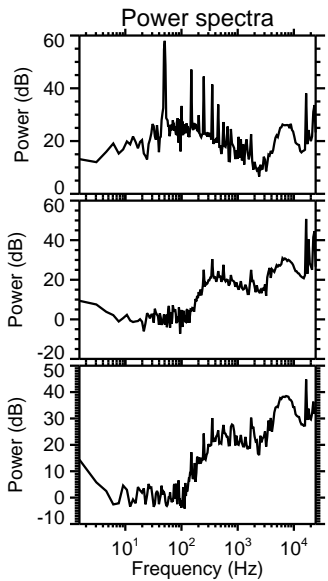
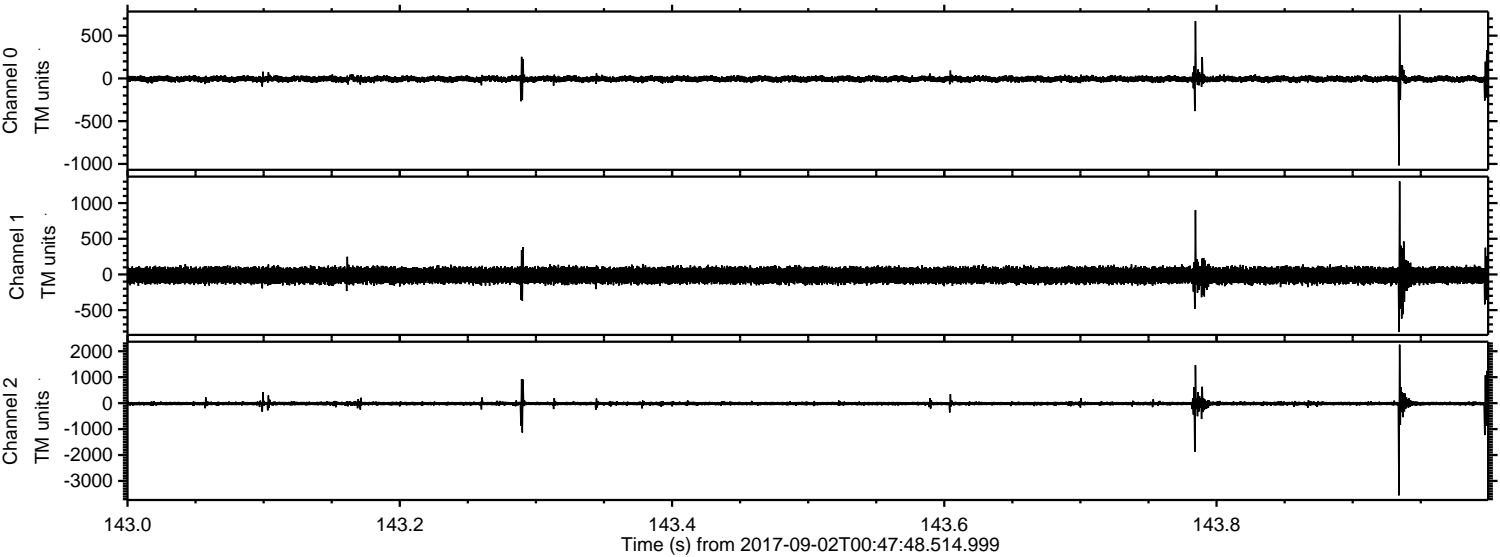
Channel 2
mn: -984
mx: 1087
 μ : -16.7
 σ : 35.9

Processed Sat Sep 2 02:55:10 2017 by ELM ver.2012-10-06 from 001__elm20170902_004747__dat00.bin

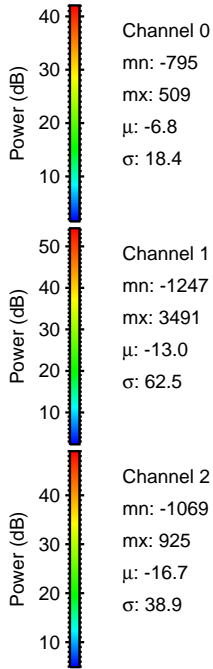
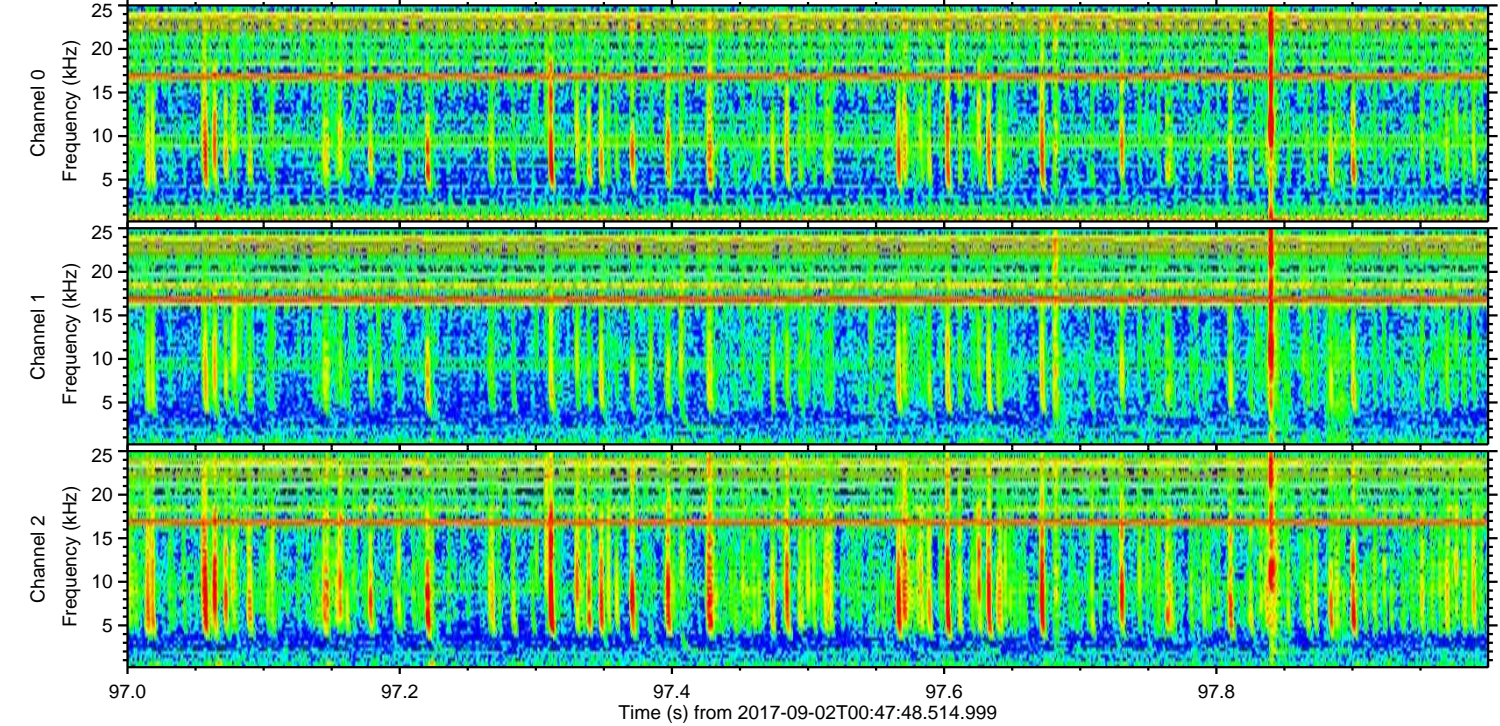
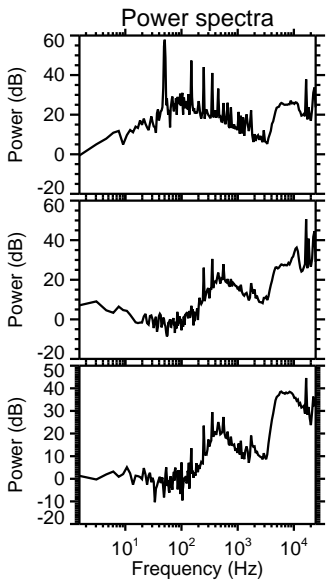
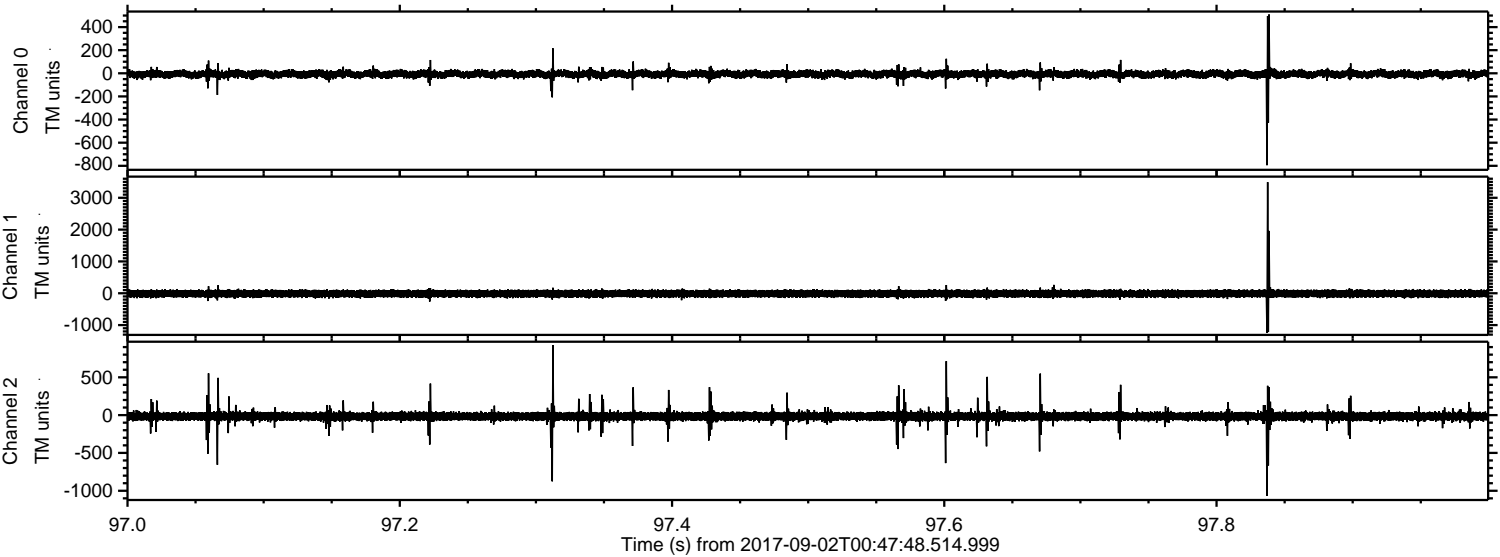


ELMAVAN 3D WAVEFORMS (Measured data sampled at 50 kHz) 50999 packets of 144 samples from 2017-09-02T00:47:48.514.999. Part 144/147

Processed Sat Sep 2 02:55:10 2017 by ELM ver.2012-10-06 from 001__elm20170902_004747__dat00.bin



Processed Sat Sep 2 02:55:11 2017 by ELM ver.2012-10-06 from 001__elm20170902_004747__dat00.bin



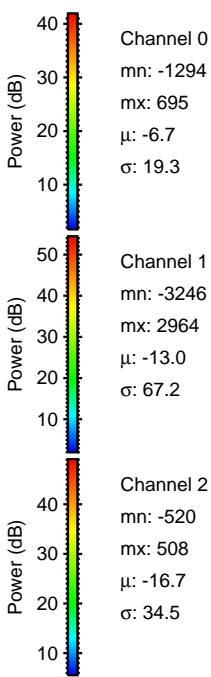
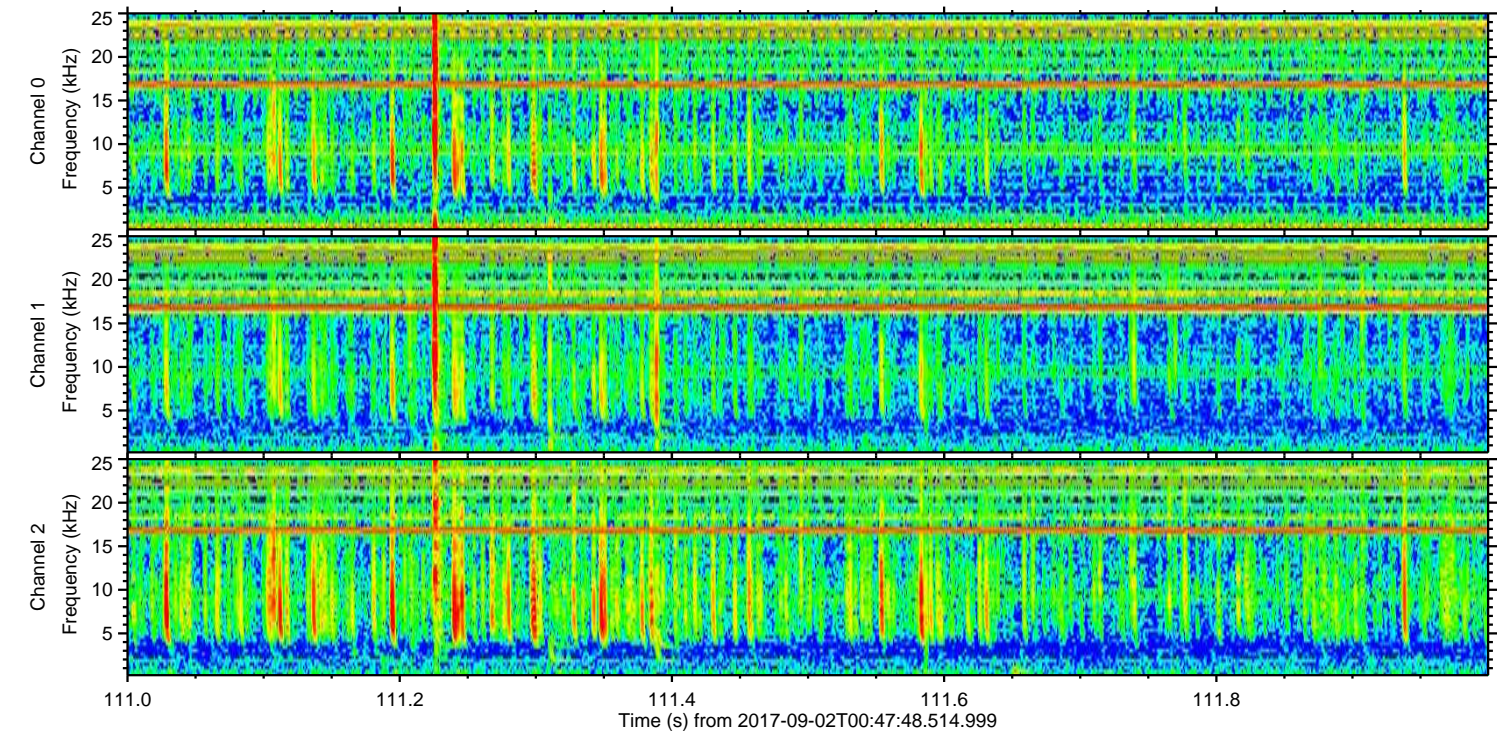
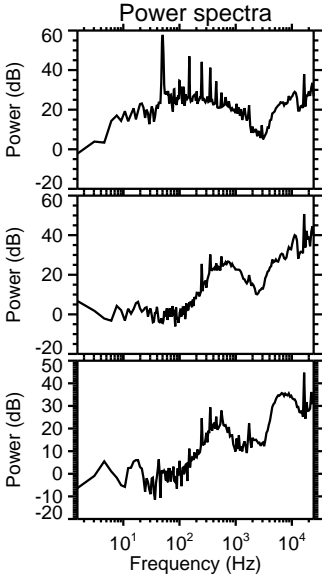
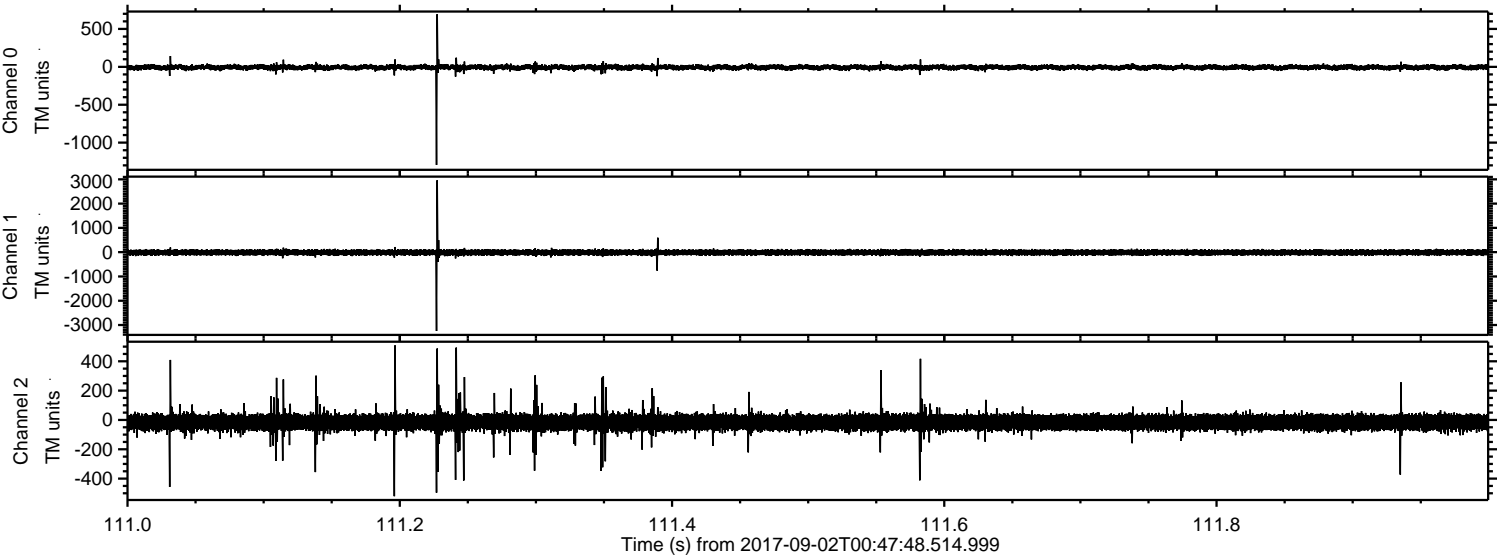
Channel 0
mn: -795
mx: 509
 μ : -6.8
 σ : 18.4

Channel 1
mn: -1247
mx: 3491
 μ : -13.0
 σ : 62.5

Channel 2
mn: -1069
mx: 925
 μ : -16.7
 σ : 38.9

ELMAVAN 3D WAVEFORMS (Measured data sampled at 50 kHz) 50999 packets of 144 samples from 2017-09-02T00:47:48.514.999. Part 112/147

Processed Sat Sep 2 02:55:12 2017 by ELM ver.2012-10-06 from 001__elm20170902_004747__dat00.bin



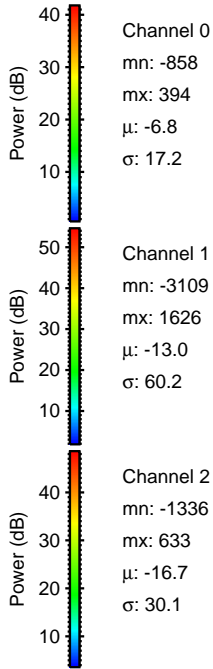
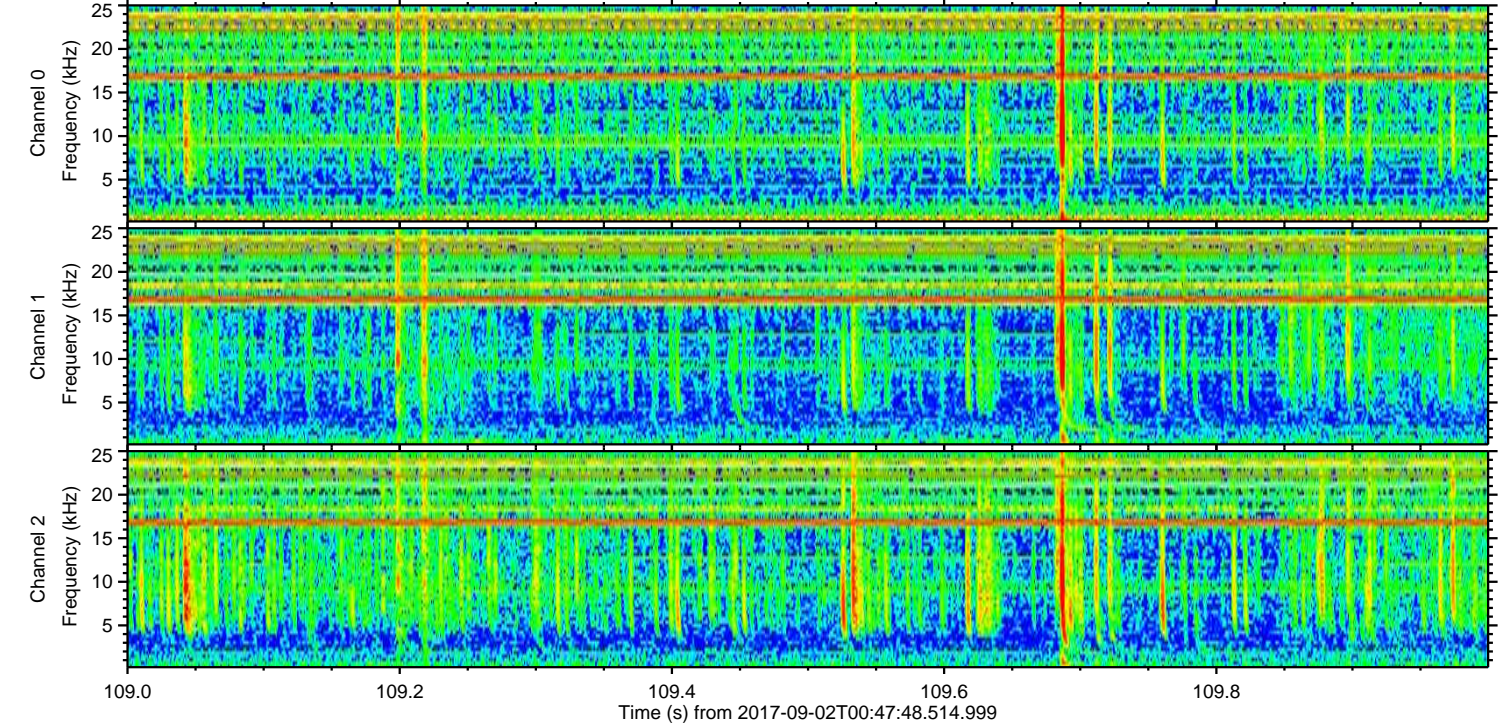
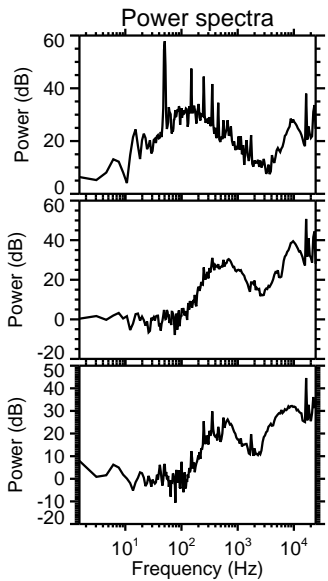
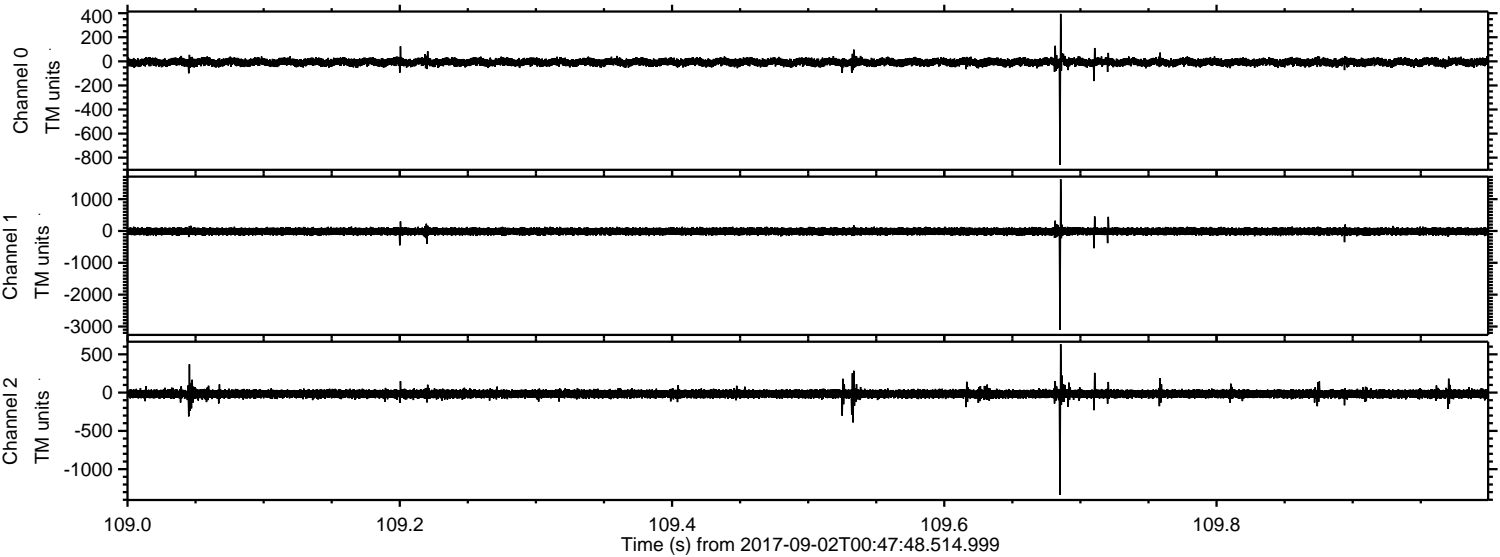
Channel 0
mn: -1294
mx: 695
 μ : -6.7
 σ : 19.3

Channel 1
mn: -3246
mx: 2964
 μ : -13.0
 σ : 67.2

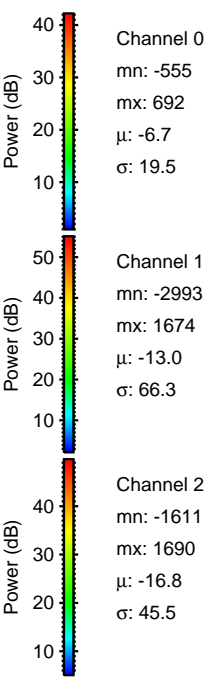
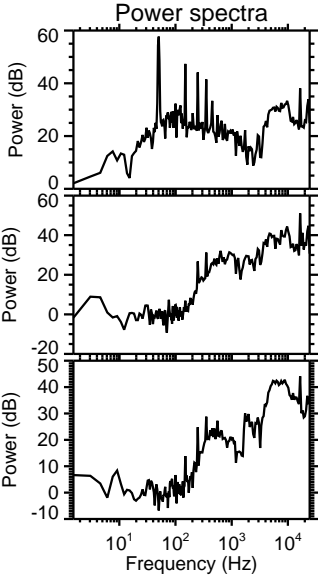
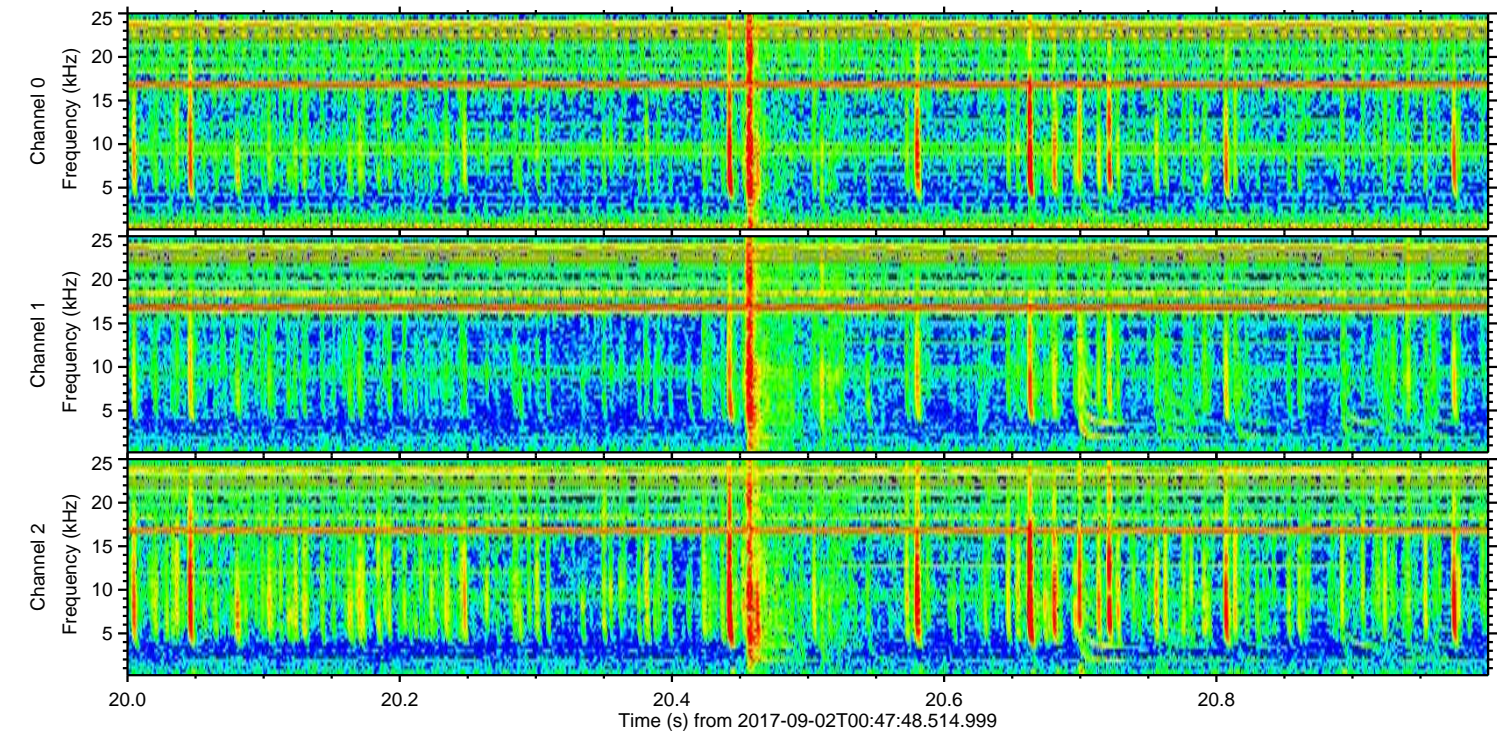
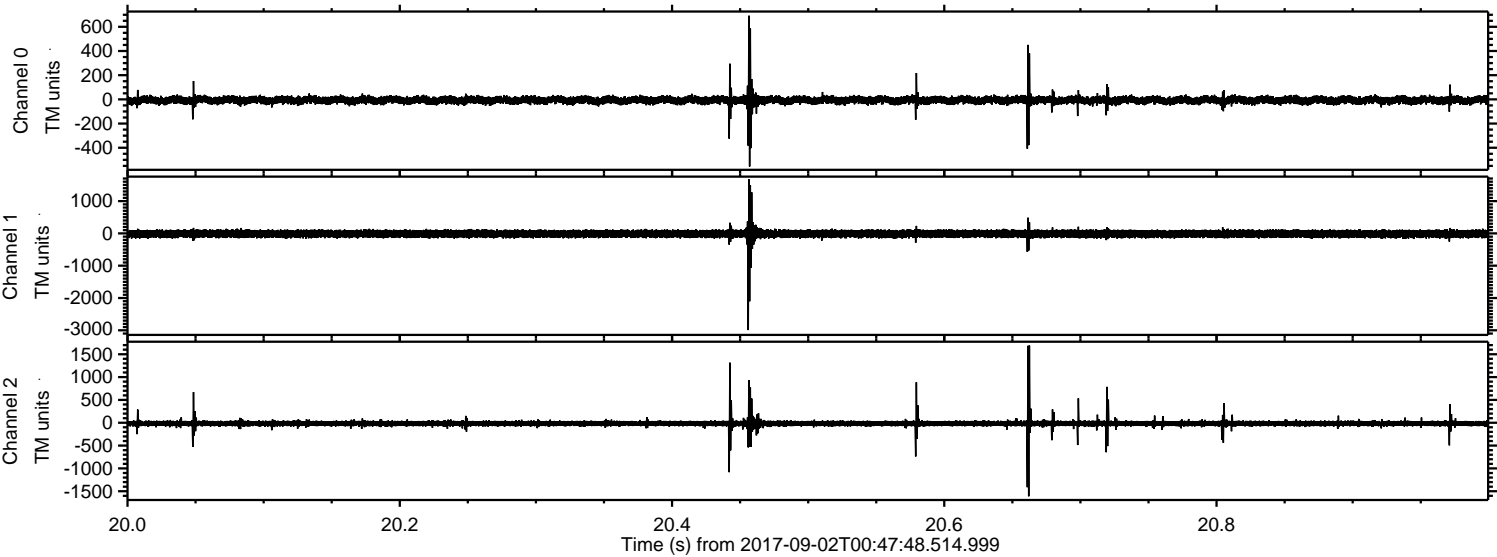
Channel 2
mn: -520
mx: 508
 μ : -16.7
 σ : 34.5

ELMAVAN 3D WAVEFORMS (Measured data sampled at 50 kHz) 50999 packets of 144 samples from 2017-09-02T00:47:48.514.999. Part 110/147

Processed Sat Sep 2 02:55:12 2017 by ELM ver.2012-10-06 from 001__elm20170902_004747__dat00.bin

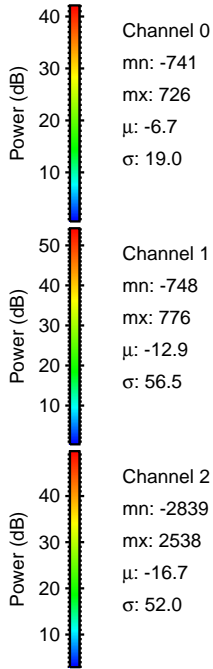
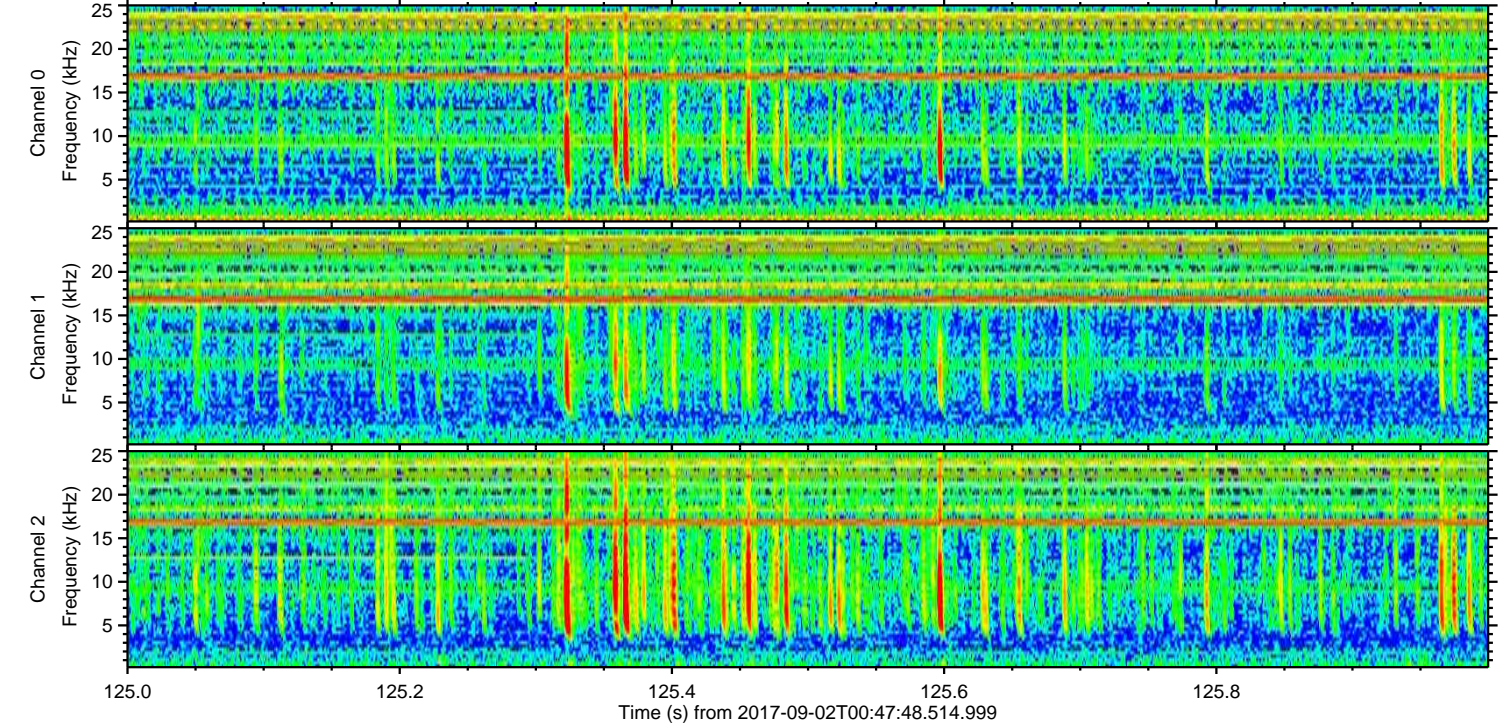
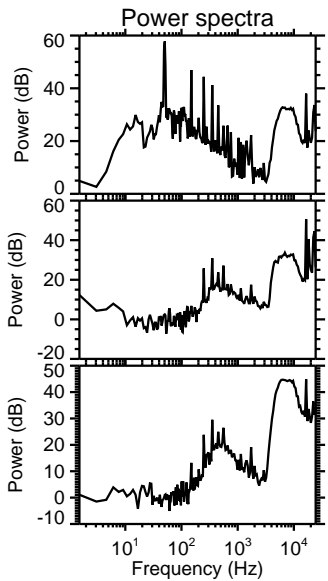
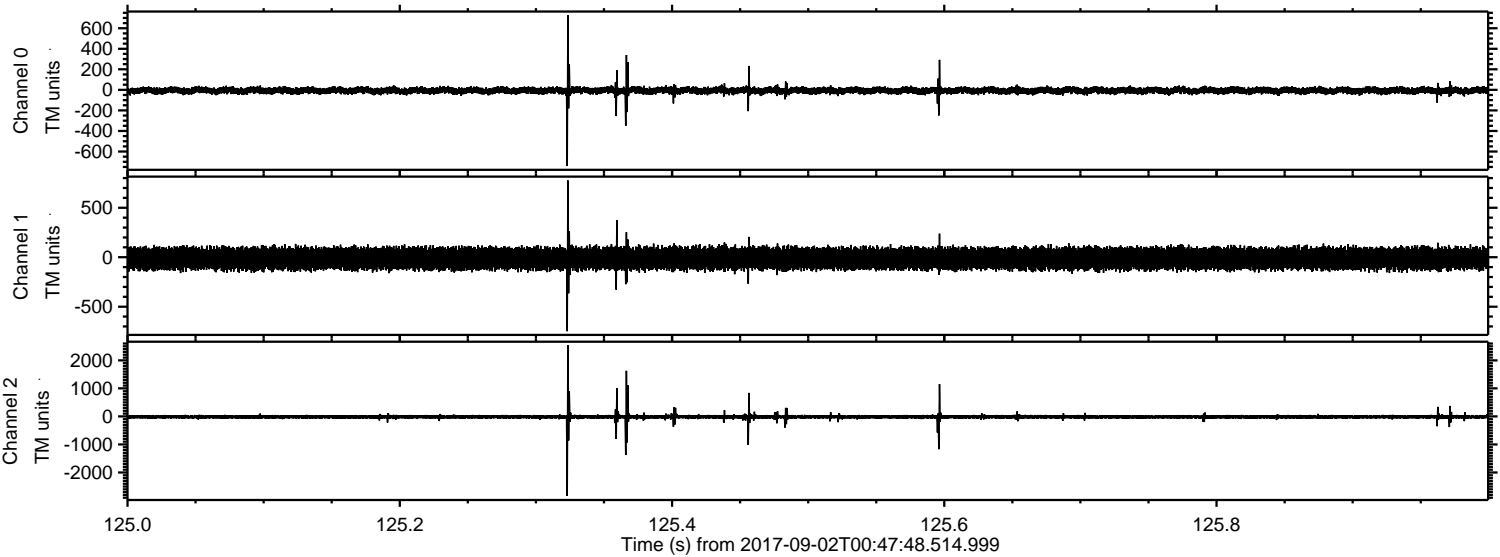


Processed Sat Sep 2 02:55:13 2017 by ELM ver.2012-10-06 from 001__elm20170902_004747__dat00.bin



ELMAVAN 3D WAVEFORMS (Measured data sampled at 50 kHz) 50999 packets of 144 samples from 2017-09-02T00:47:48.514.999. Part 126/147

Processed Sat Sep 2 02:55:13 2017 by ELM ver.2012-10-06 from 001__elm20170902_004747__dat00.bin



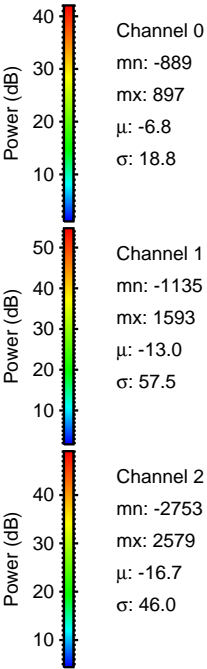
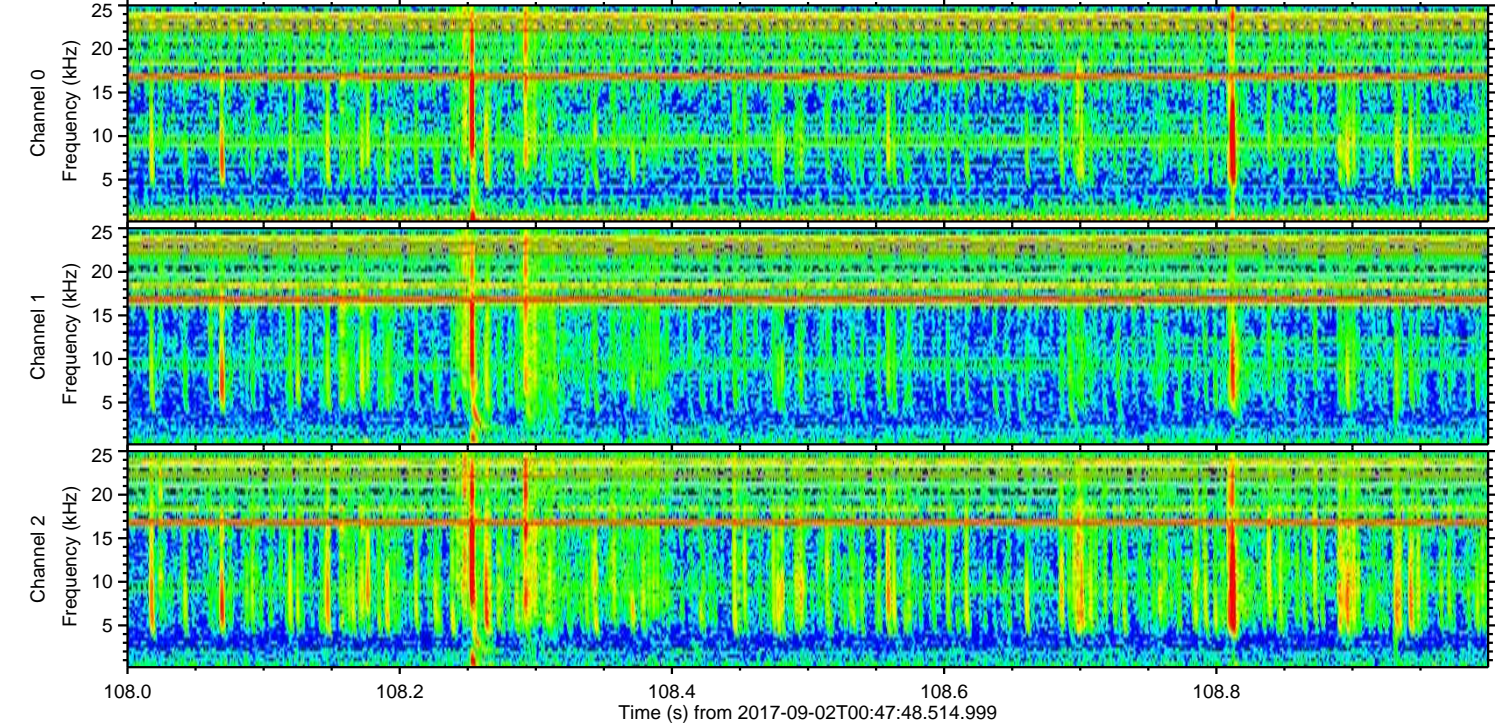
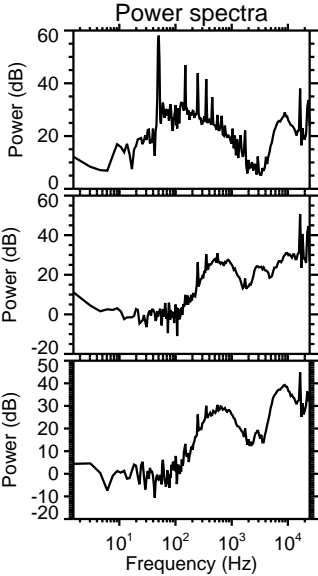
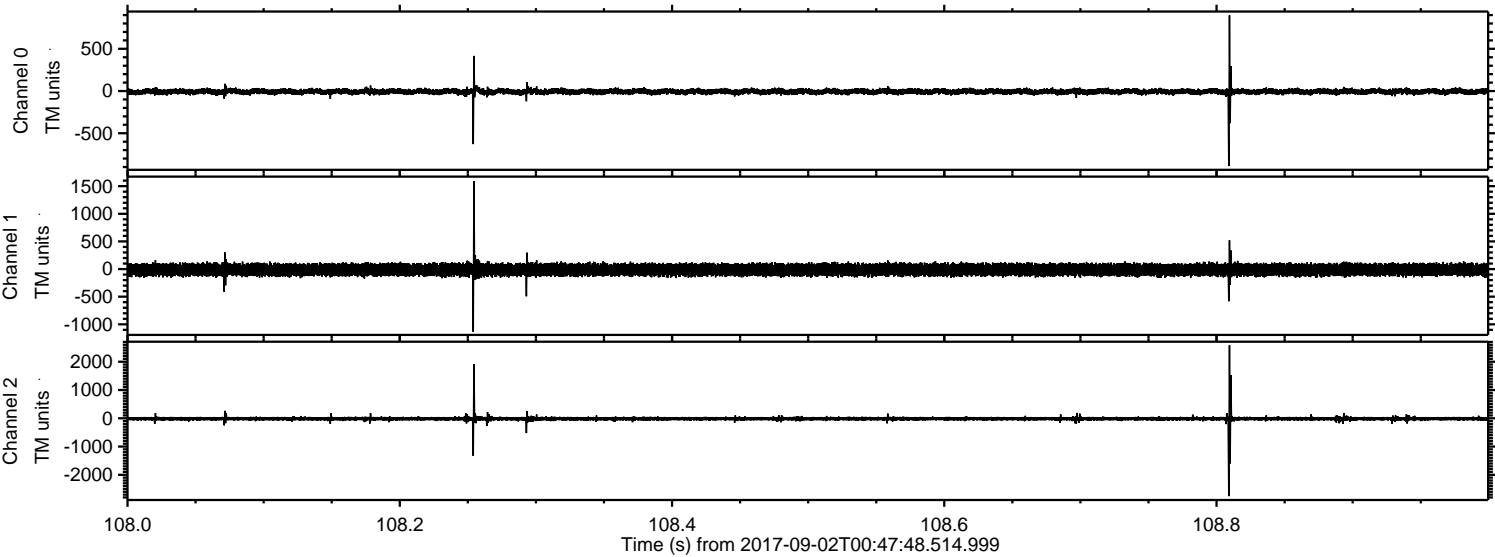
Channel 0
mn: -741
mx: 726
 μ : -6.7
 σ : 19.0

Channel 1
mn: -748
mx: 776
 μ : -12.9
 σ : 56.5

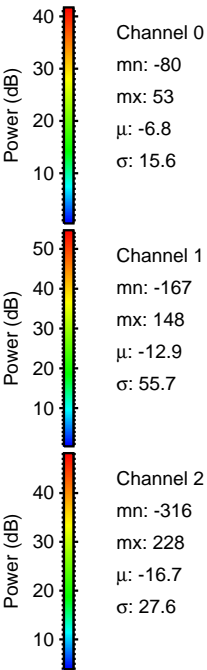
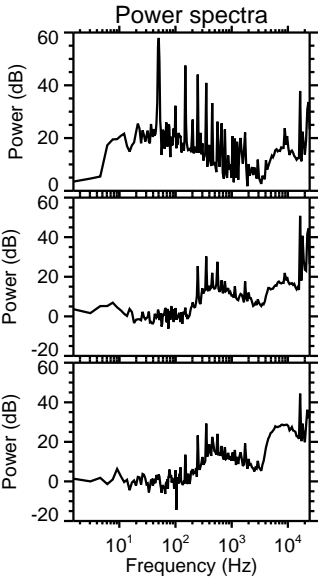
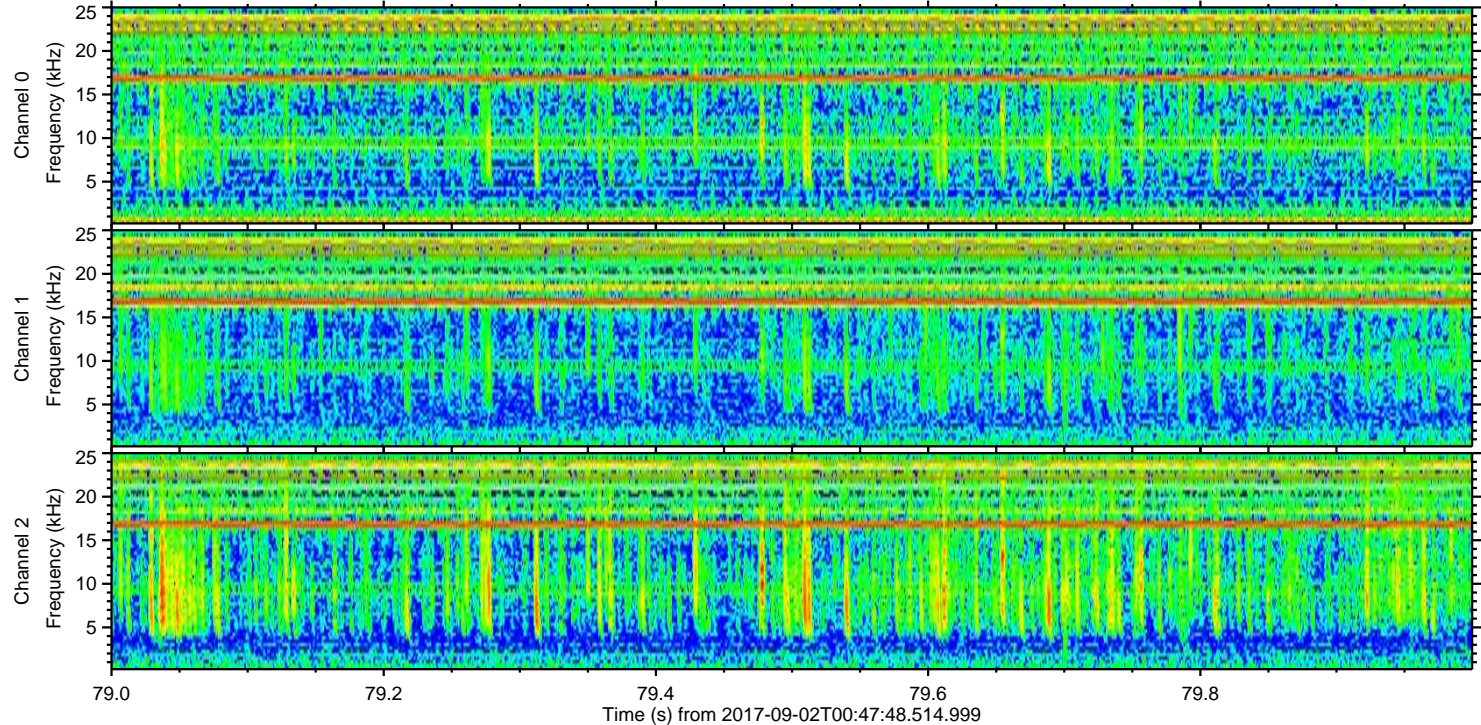
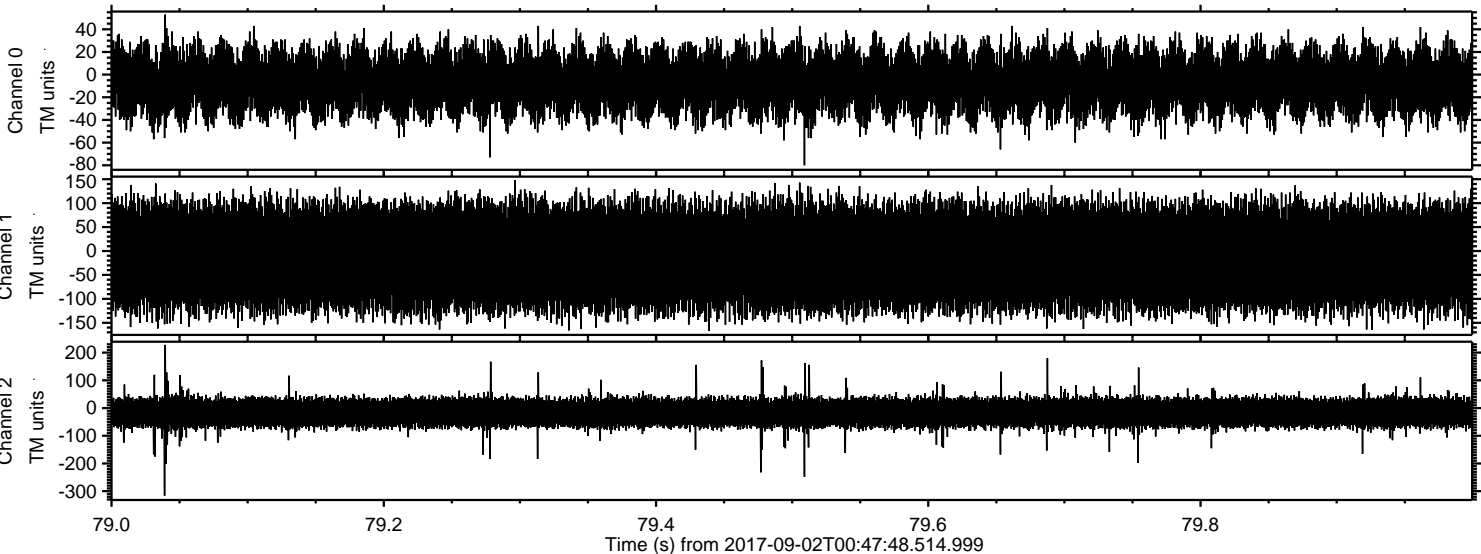
Channel 2
mn: -2839
mx: 2538
 μ : -16.7
 σ : 52.0

ELMAVAN 3D WAVEFORMS (Measured data sampled at 50 kHz) 50999 packets of 144 samples from 2017-09-02T00:47:48.514.999. Part 109/147

Processed Sat Sep 2 02:55:14 2017 by ELM ver.2012-10-06 from 001__elm20170902_004747__dat00.bin



Processed Sat Sep 2 02:55:15 2017 by ELM ver.2012-10-06 from 001__elm20170902_004747__dat00.bin



Channel 0
mn: -80
mx: 53
 μ : -6.8
 σ : 15.6

Channel 1
mn: -167
mx: 148
 μ : -12.9
 σ : 55.7

Channel 2
mn: -316
mx: 228
 μ : -16.7
 σ : 27.6