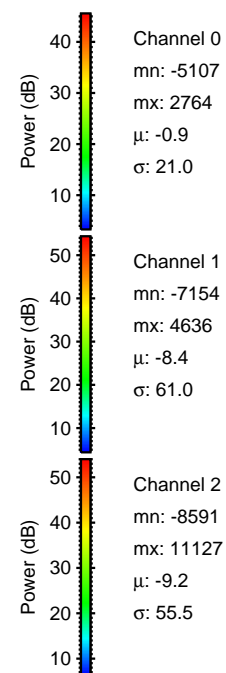
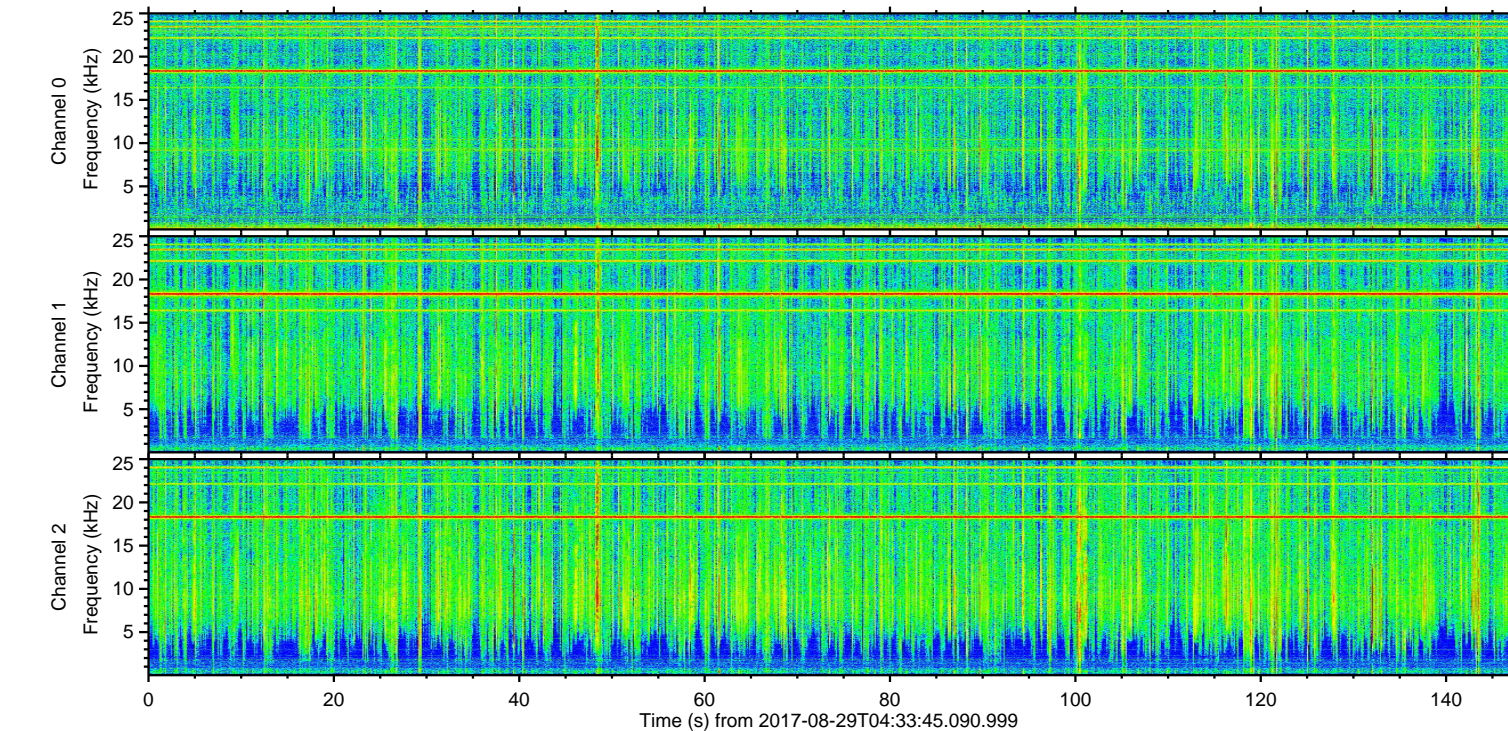
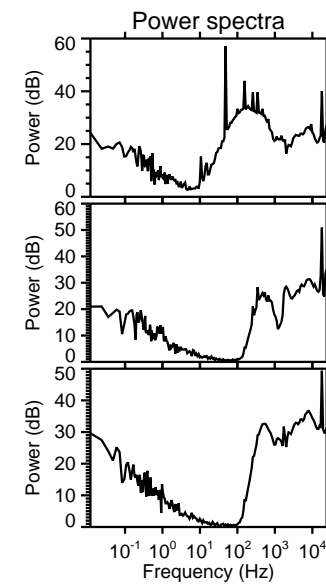
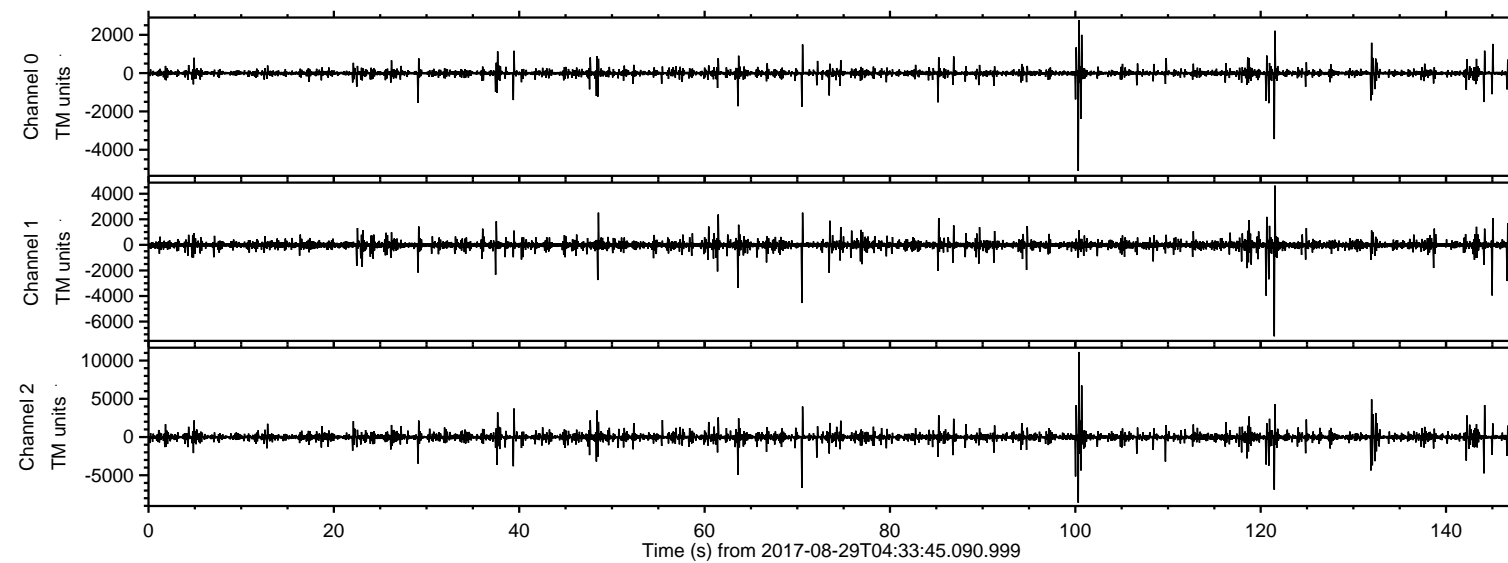


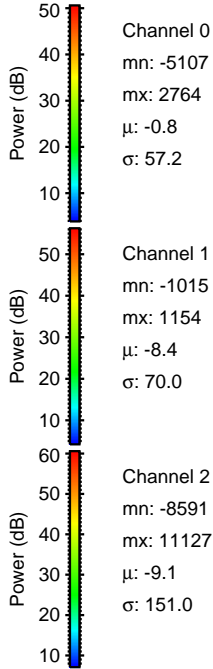
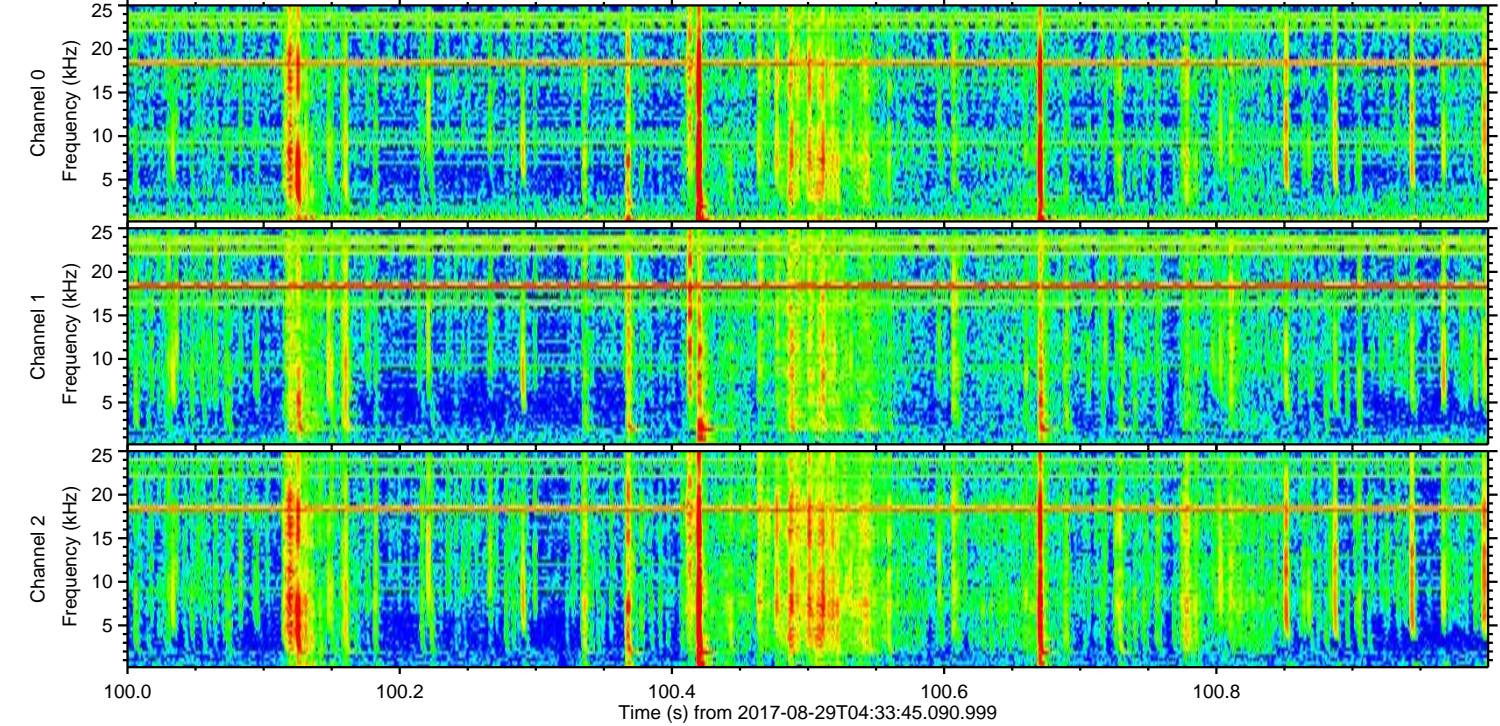
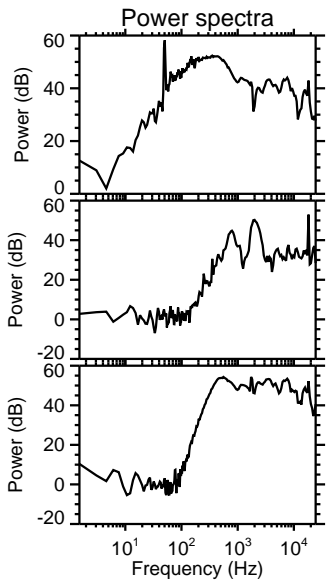
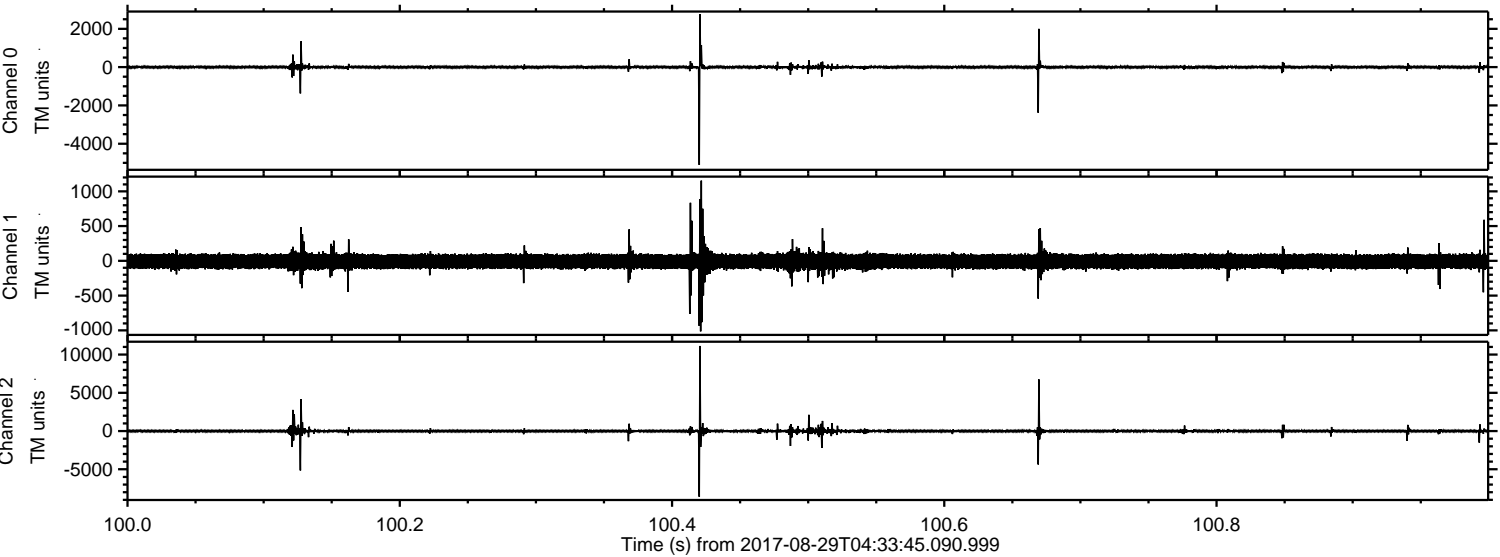
ELMAVAN 3D WAVEFORMS (Measured data sampled at 50 kHz) 51000 packets of 144 samples from 2017-08-29T04:33:45.090.999.

Processed Tue Aug 29 06:41:09 2017 by ELM ver.2012-10-06 from 001__elm20170829_043344__dat00.bin



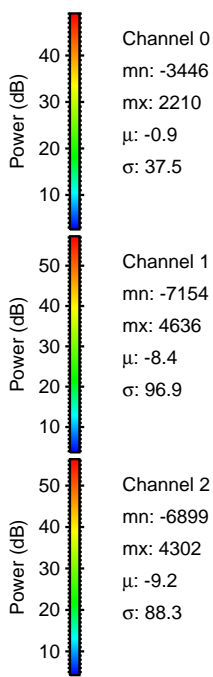
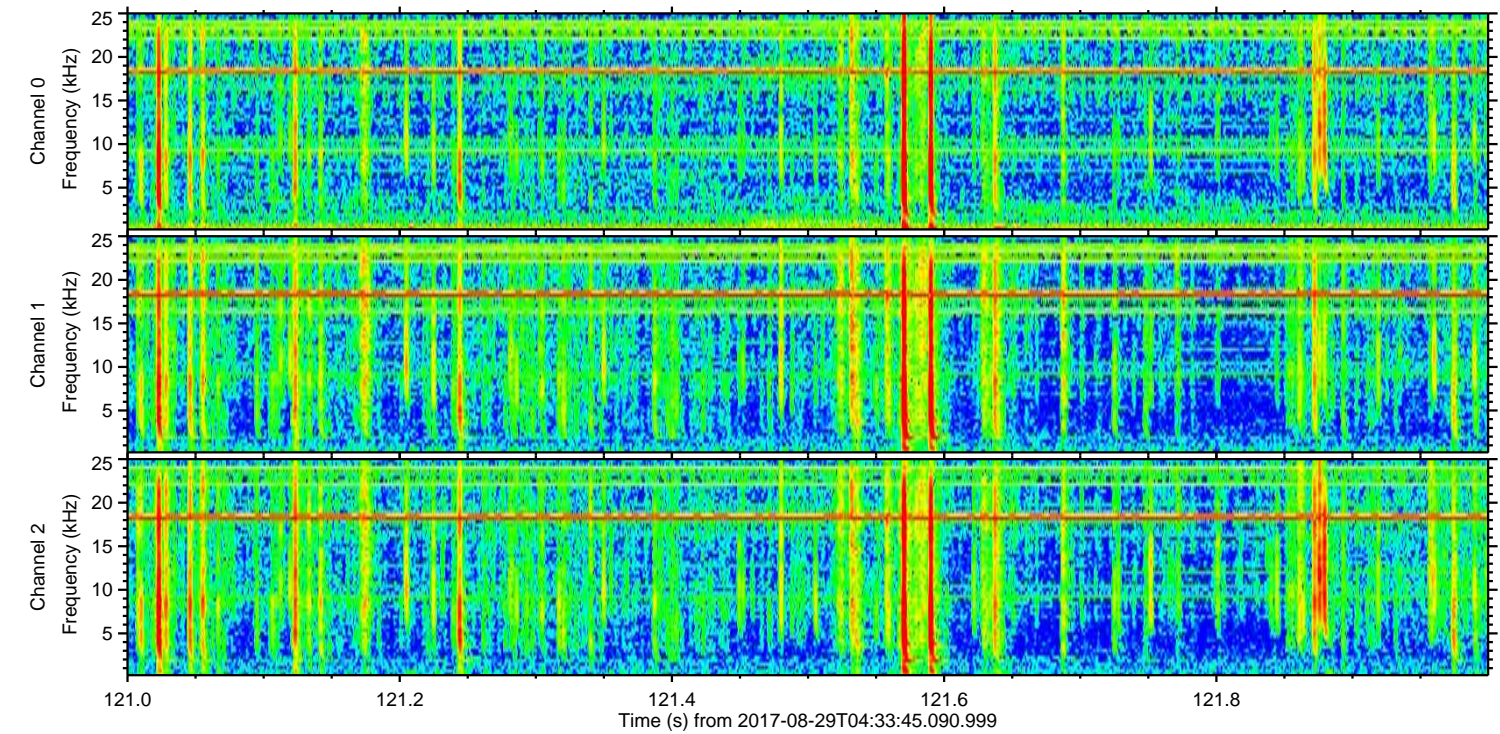
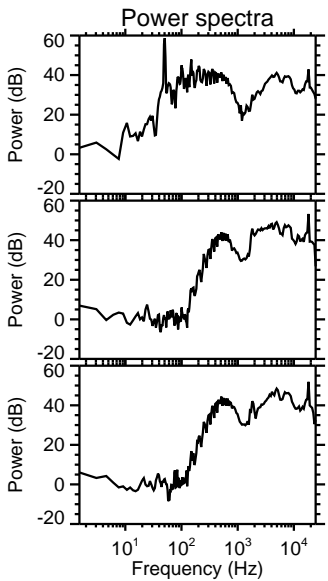
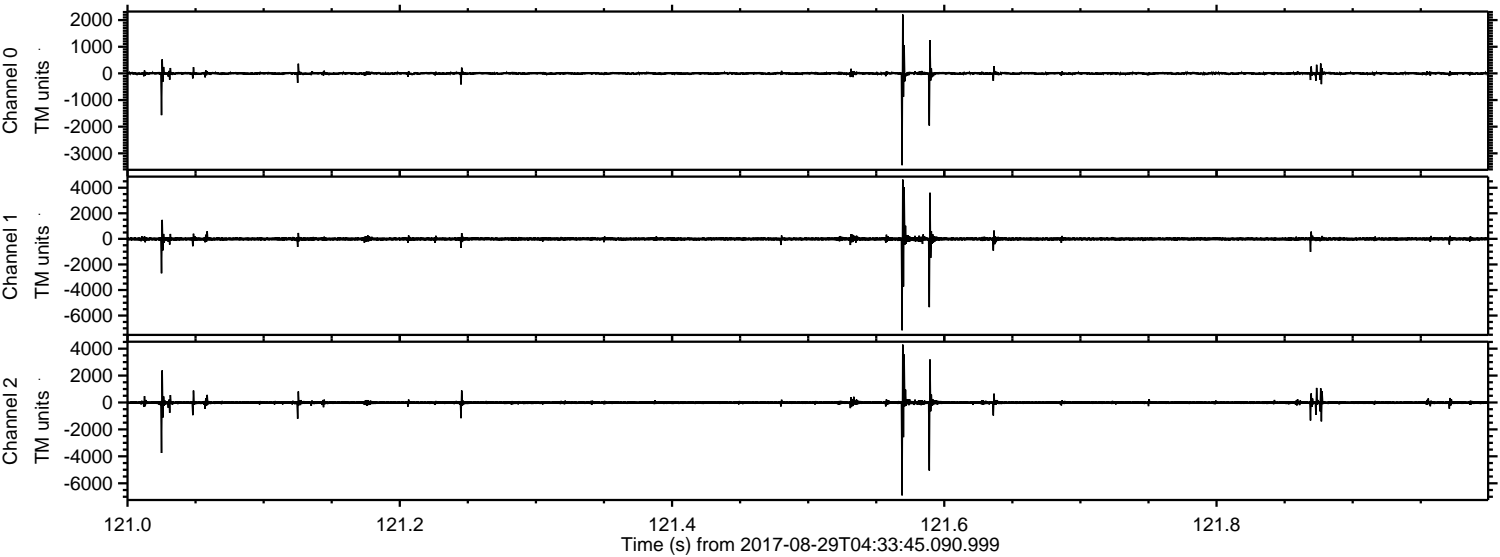
ELMAVAN 3D WAVEFORMS (Measured data sampled at 50 kHz) 51000 packets of 144 samples from 2017-08-29T04:33:45.090.999. Part 101/147

Processed Tue Aug 29 06:41:15 2017 by ELM ver.2012-10-06 from 001__elm20170829_043344__dat00.bin

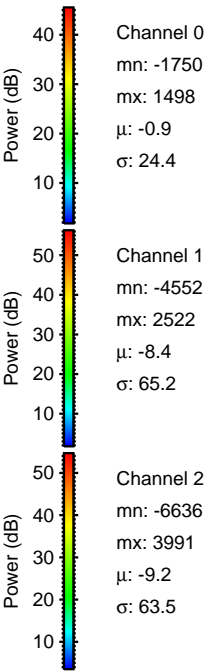
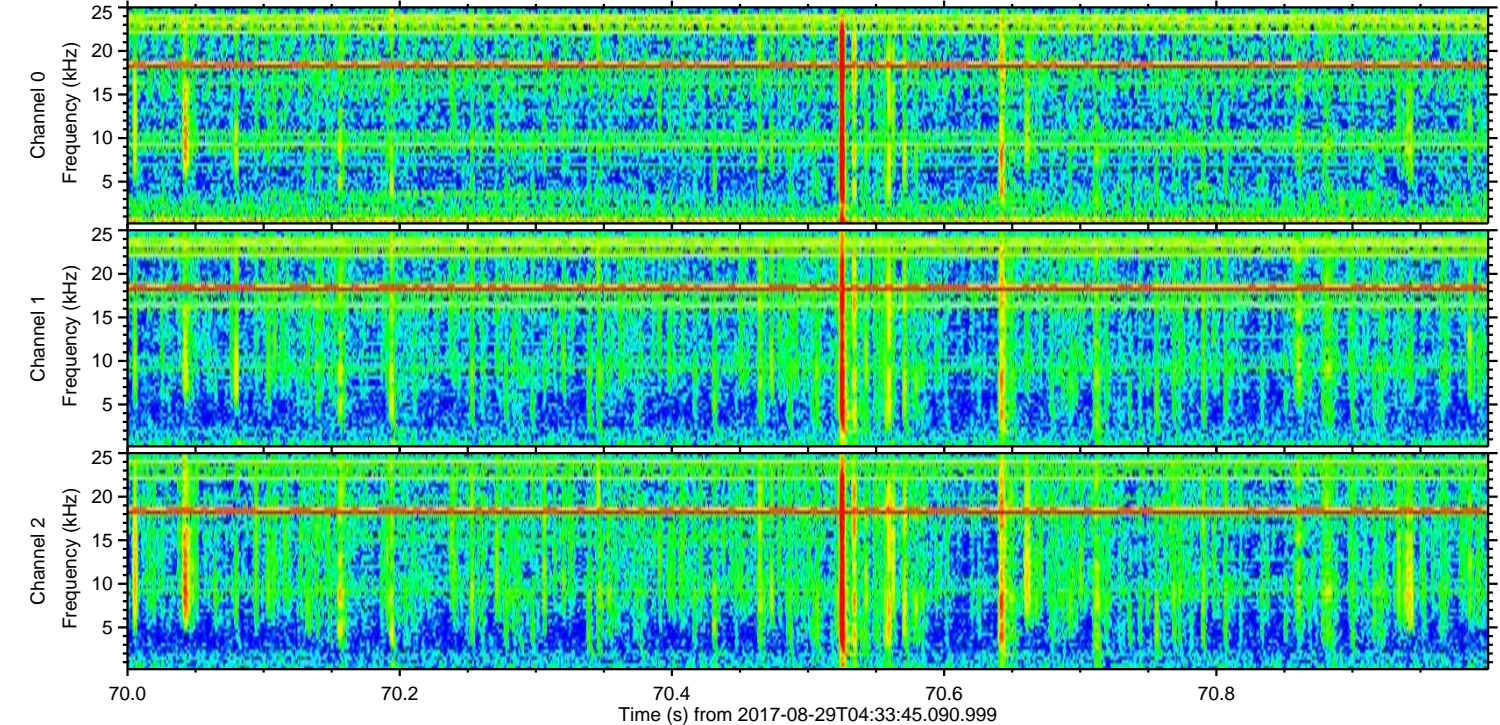
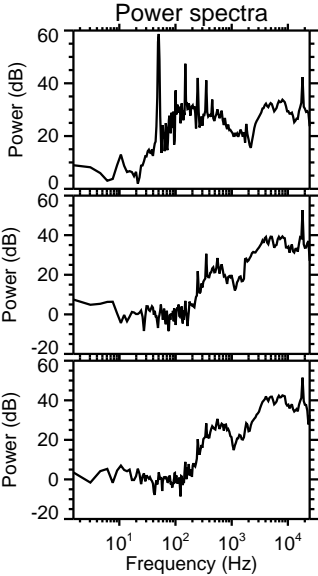
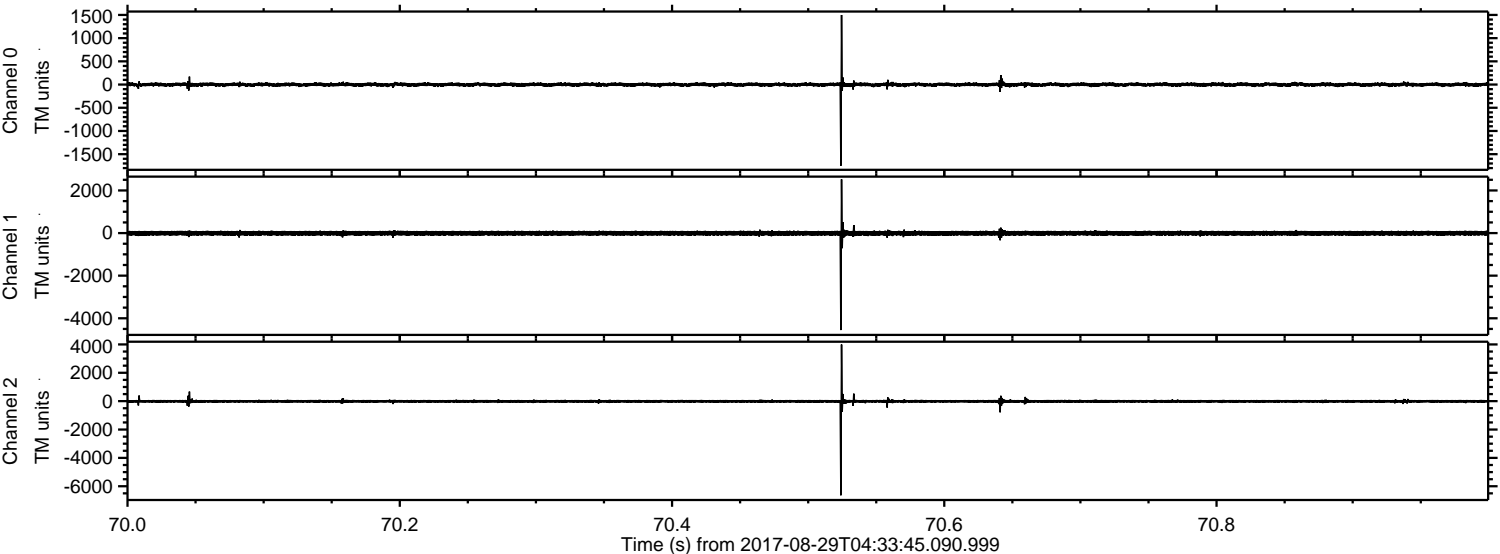


ELMAVAN 3D WAVEFORMS (Measured data sampled at 50 kHz) 51000 packets of 144 samples from 2017-08-29T04:33:45.090.999. Part 122/147

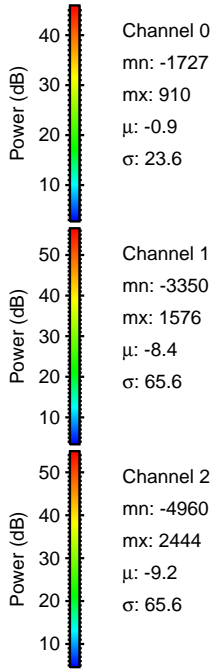
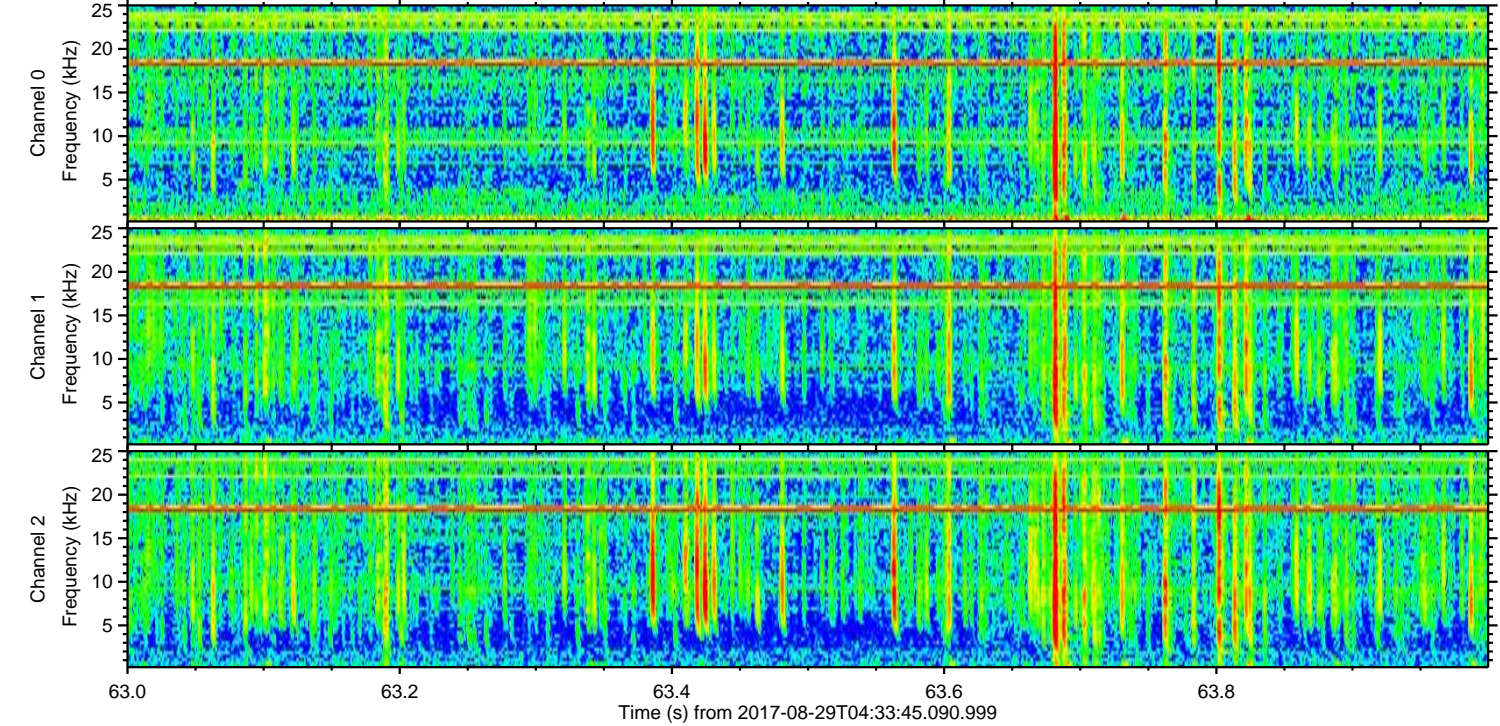
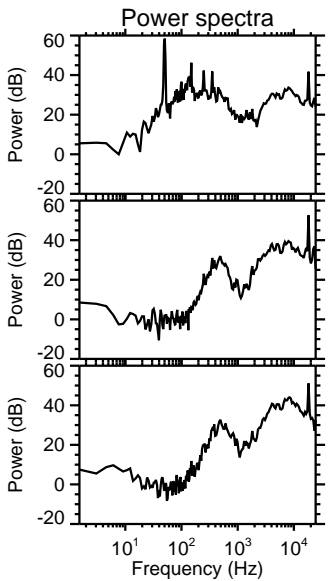
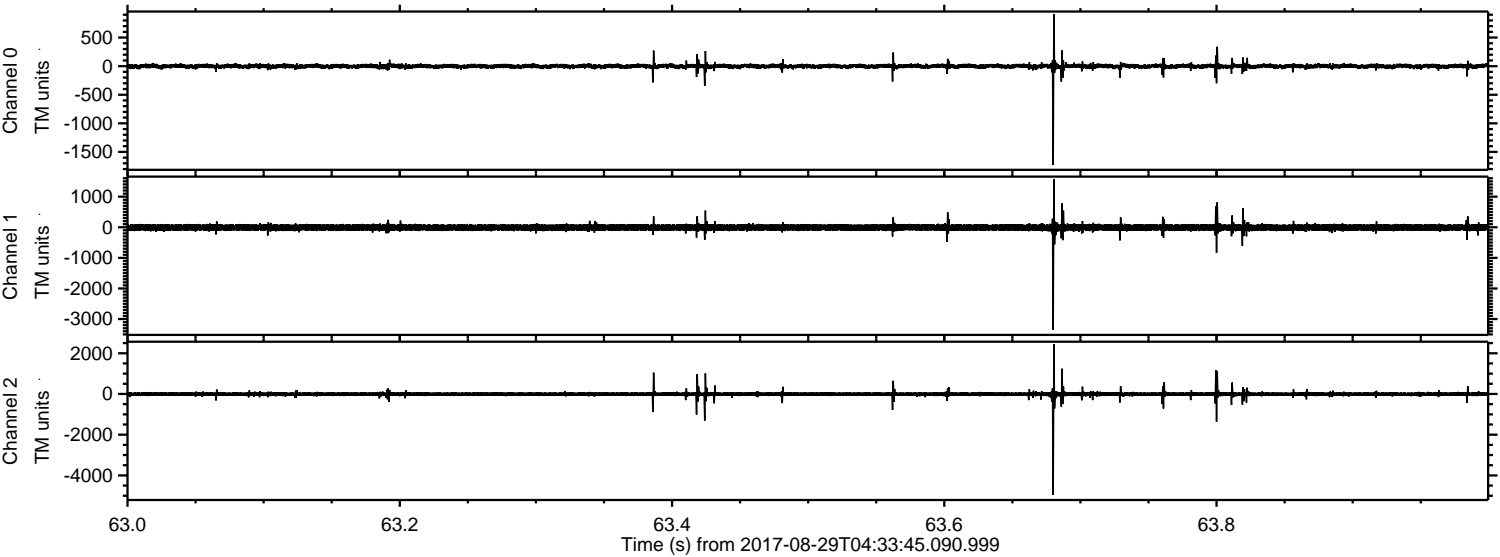
Processed Tue Aug 29 06:41:16 2017 by ELM ver.2012-10-06 from 001__elm20170829_043344__dat00.bin



Processed Tue Aug 29 06:41:16 2017 by ELM ver.2012-10-06 from 001__elm20170829_043344__dat00.bin

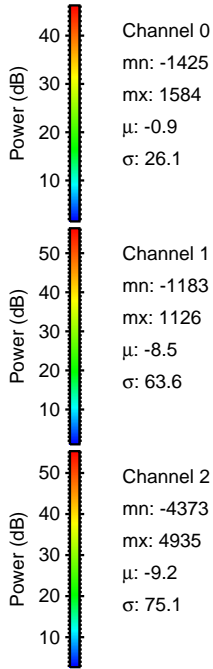
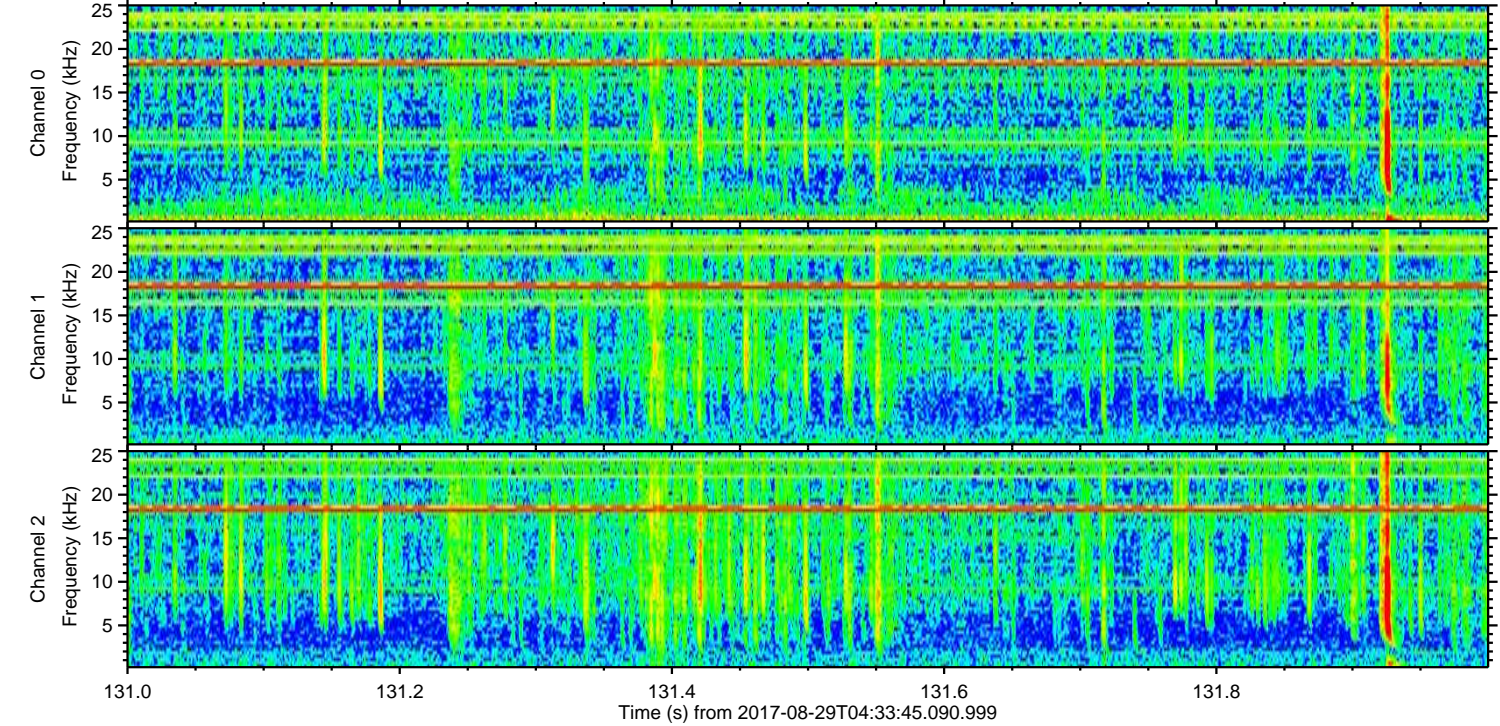
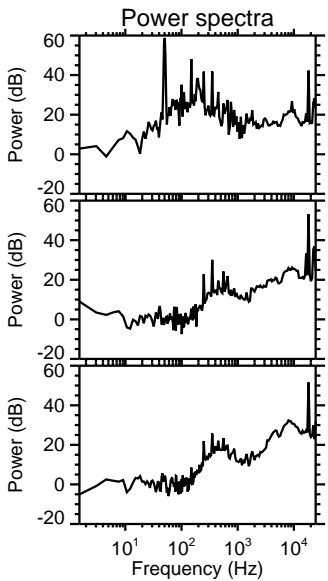
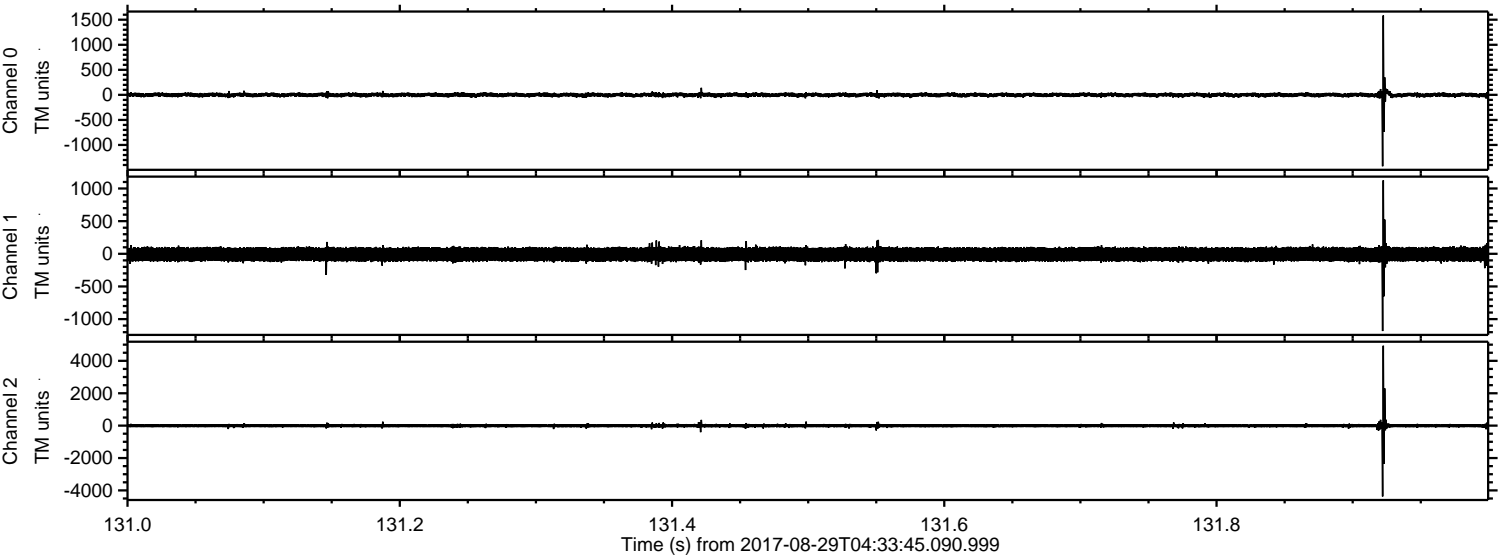


Processed Tue Aug 29 06:41:17 2017 by ELM ver.2012-10-06 from 001__elm20170829_043344__dat00.bin



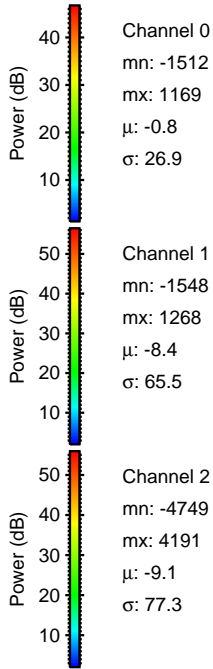
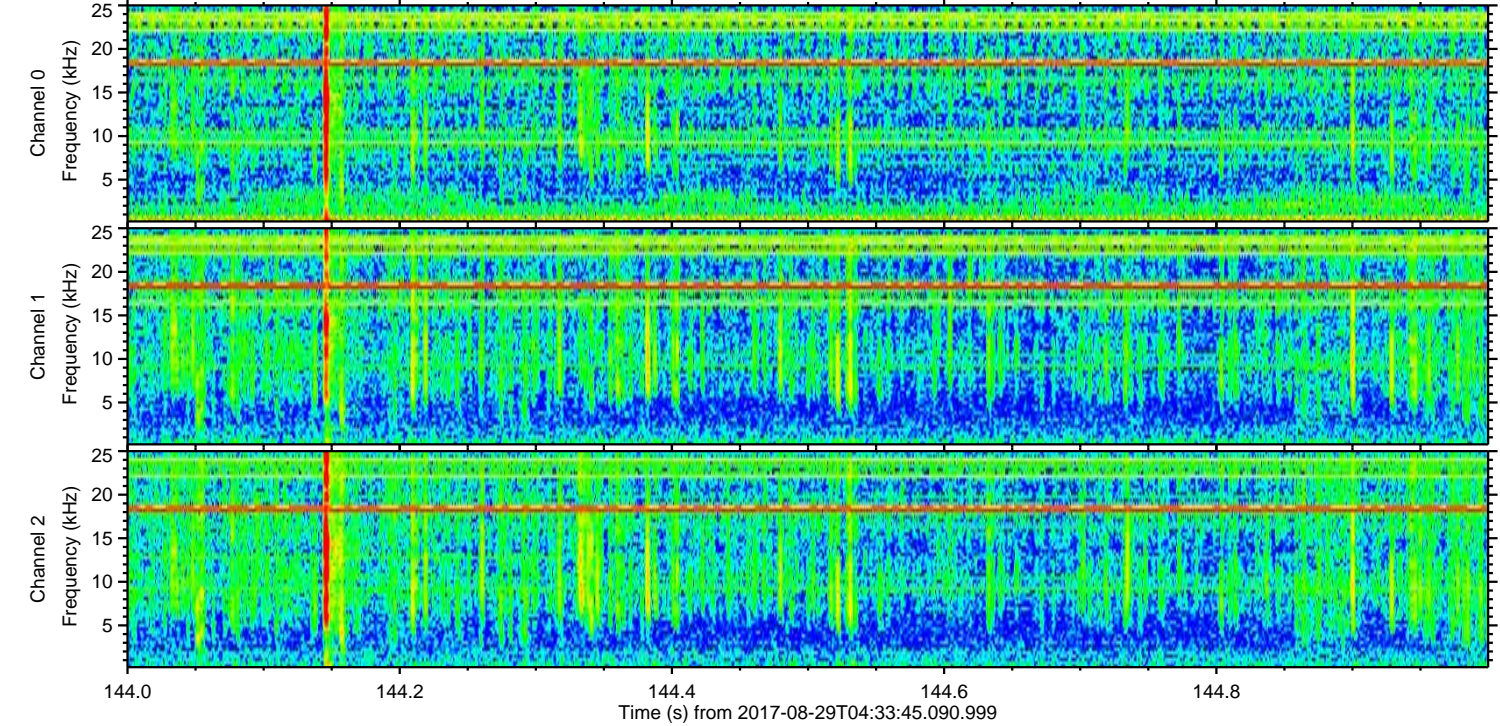
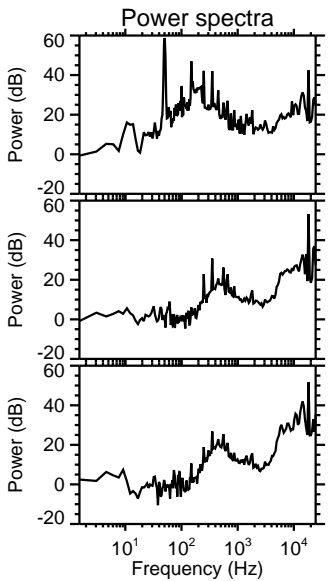
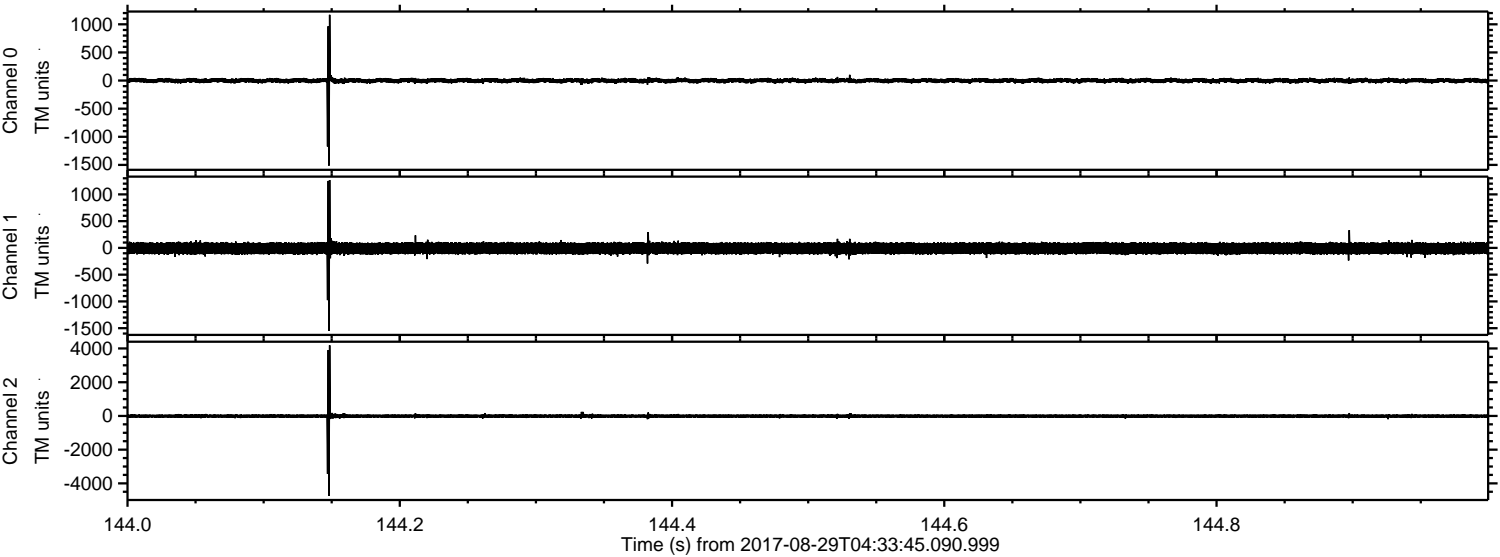
ELMAVAN 3D WAVEFORMS (Measured data sampled at 50 kHz) 51000 packets of 144 samples from 2017-08-29T04:33:45.090.999. Part 132/147

Processed Tue Aug 29 06:41:18 2017 by ELM ver.2012-10-06 from 001__elm20170829_043344__dat00.bin



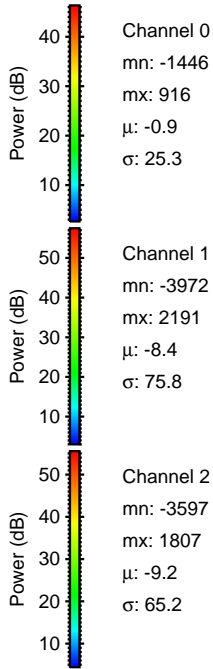
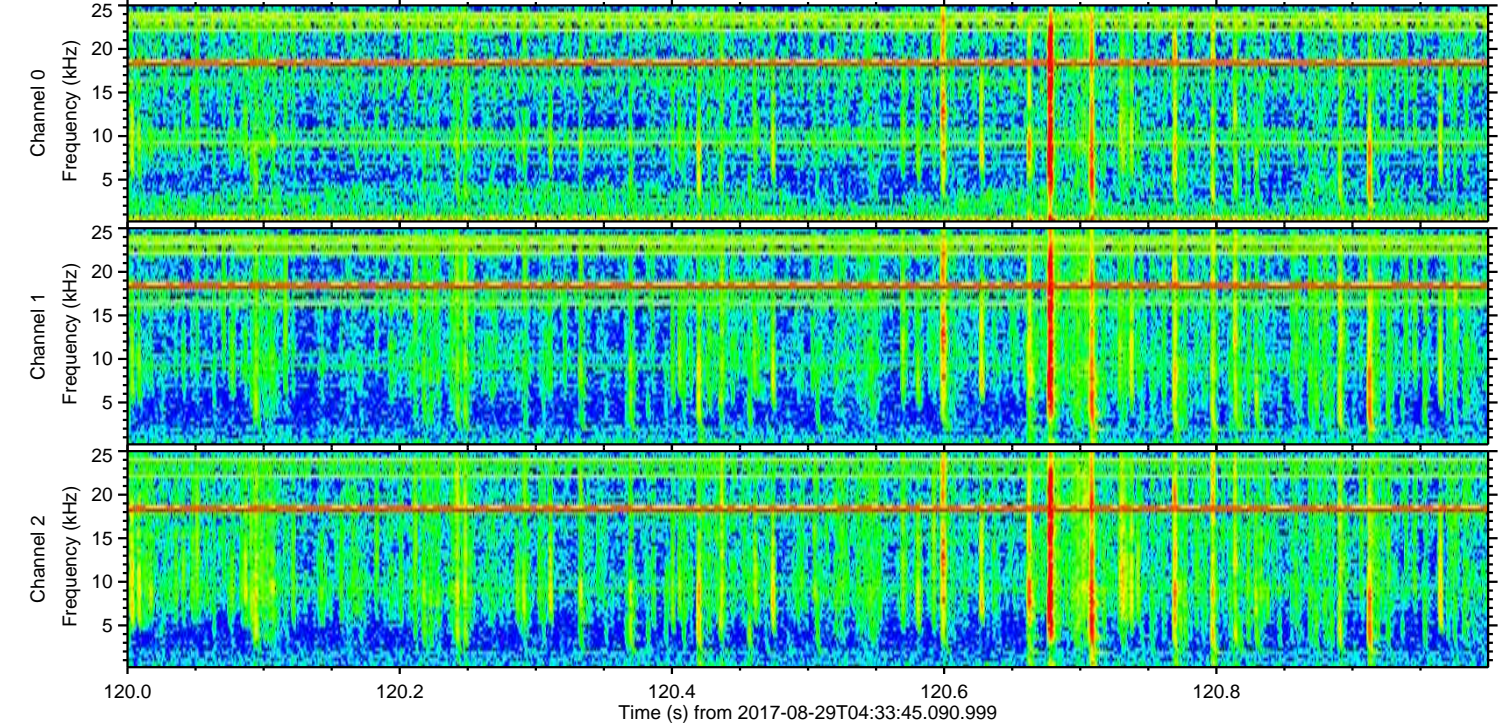
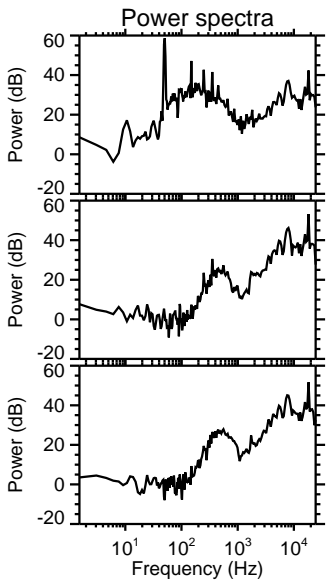
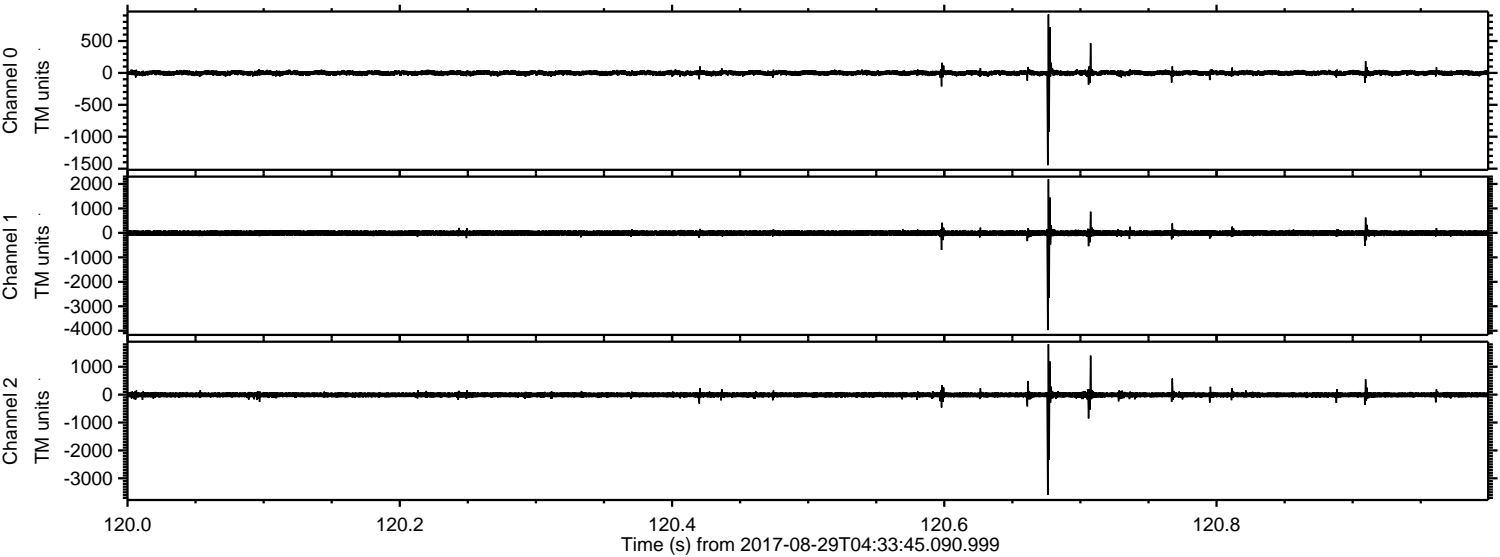
ELMAVAN 3D WAVEFORMS (Measured data sampled at 50 kHz) 51000 packets of 144 samples from 2017-08-29T04:33:45.090.999. Part 145/147

Processed Tue Aug 29 06:41:19 2017 by ELM ver.2012-10-06 from 001__elm20170829_043344__dat00.bin



ELMAVAN 3D WAVEFORMS (Measured data sampled at 50 kHz) 51000 packets of 144 samples from 2017-08-29T04:33:45.090.999. Part 121/147

Processed Tue Aug 29 06:41:19 2017 by ELM ver.2012-10-06 from 001__elm20170829_043344__dat00.bin



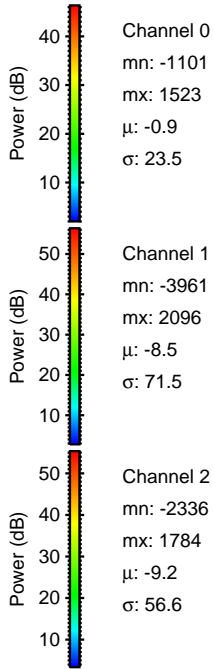
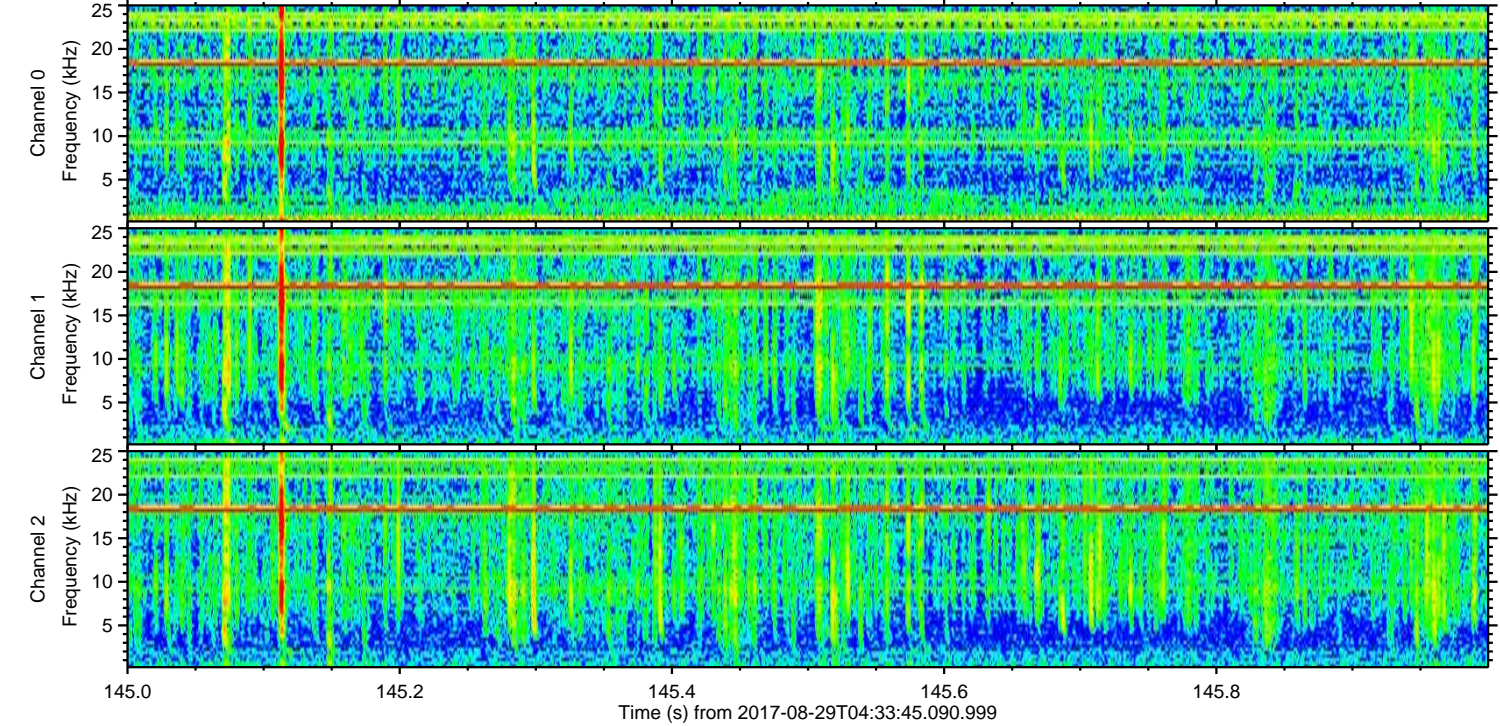
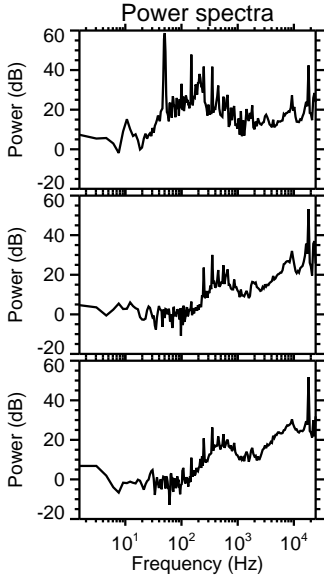
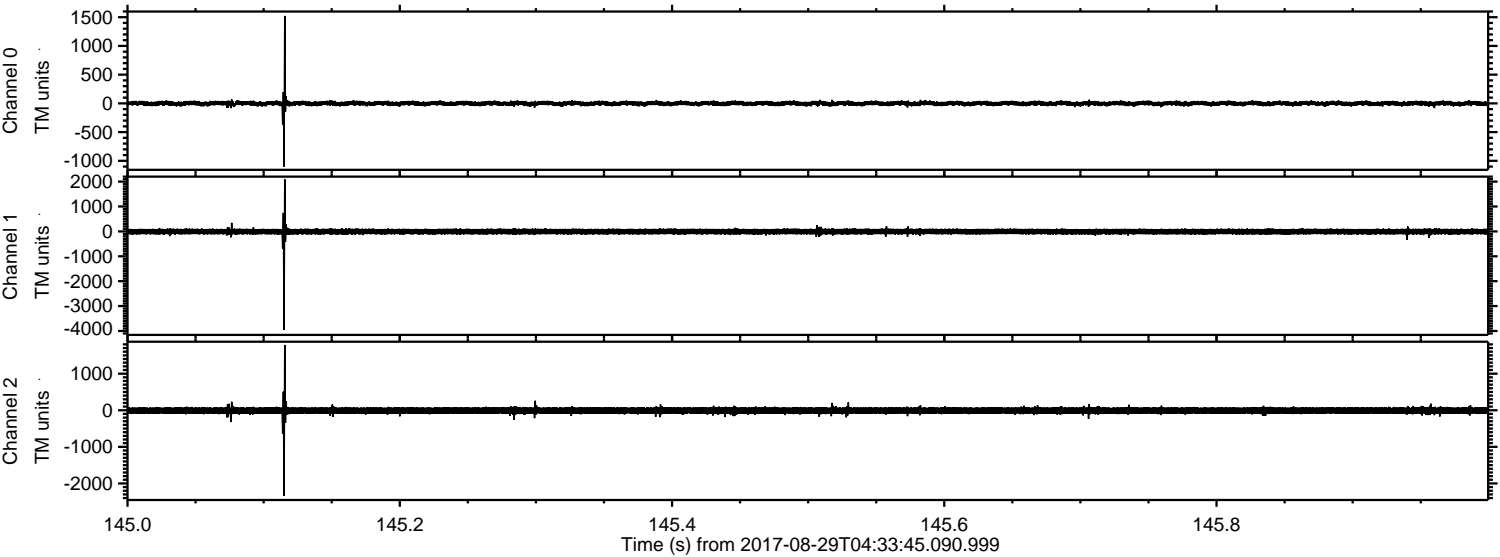
Channel 0
mn: -1446
mx: 916
 μ : -0.9
 σ : 25.3

Channel 1
mn: -3972
mx: 2191
 μ : -8.4
 σ : 75.8

Channel 2
mn: -3597
mx: 1807
 μ : -9.2
 σ : 65.2

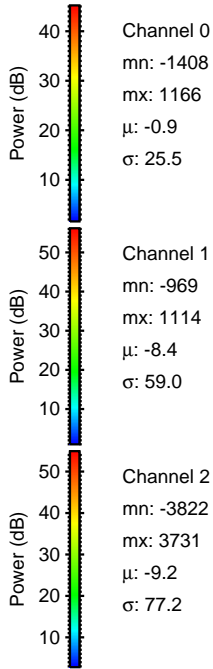
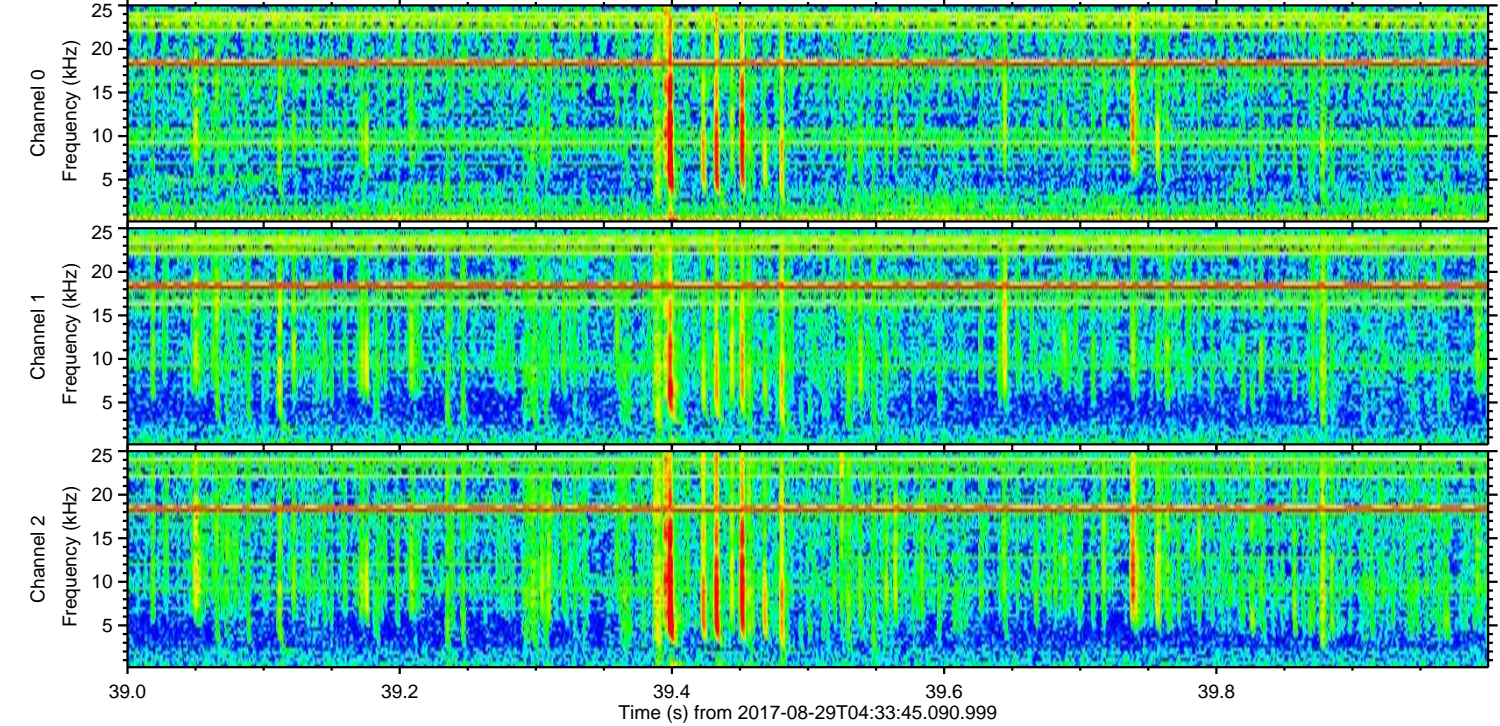
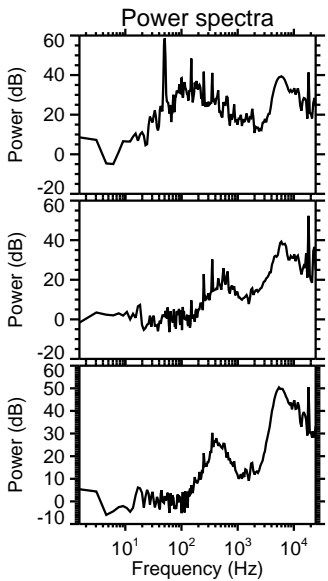
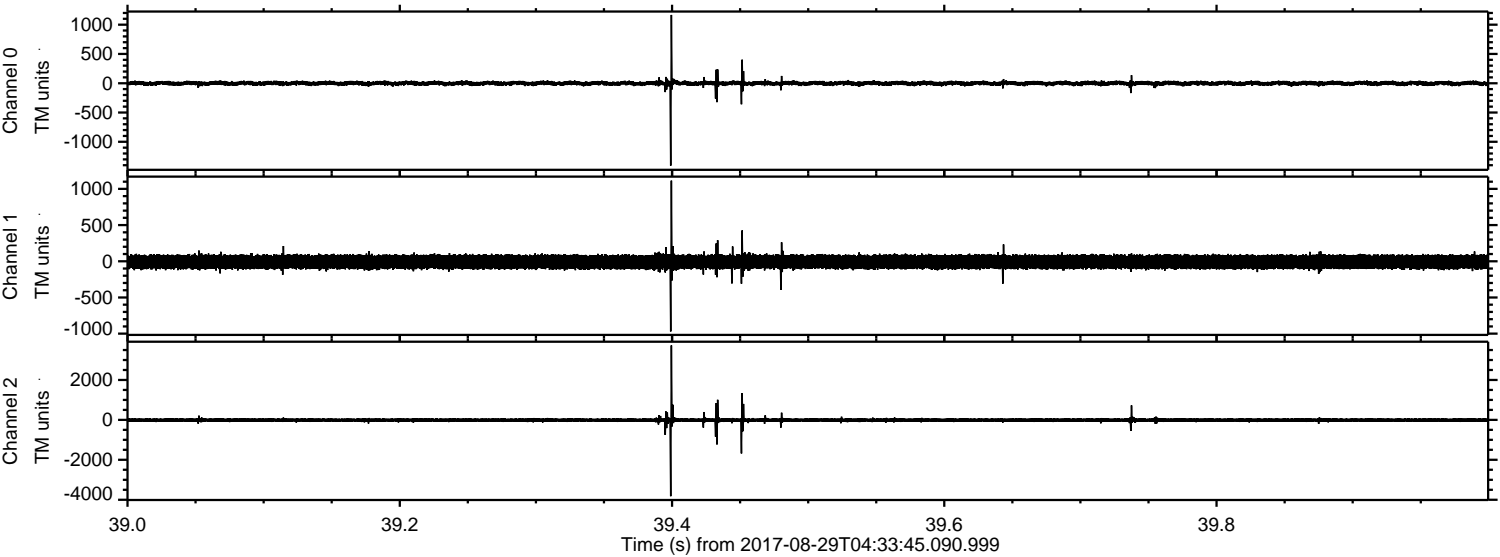
ELMAVAN 3D WAVEFORMS (Measured data sampled at 50 kHz) 51000 packets of 144 samples from 2017-08-29T04:33:45.090.999. Part 146/147

Processed Tue Aug 29 06:41:20 2017 by ELM ver.2012-10-06 from 001__elm20170829_043344__dat00.bin



ELMAVAN 3D WAVEFORMS (Measured data sampled at 50 kHz) 51000 packets of 144 samples from 2017-08-29T04:33:45.090.999. Part 40/147

Processed Tue Aug 29 06:41:21 2017 by ELM ver.2012-10-06 from 001__elm20170829_043344__dat00.bin

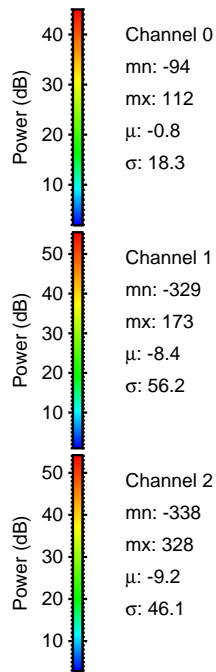
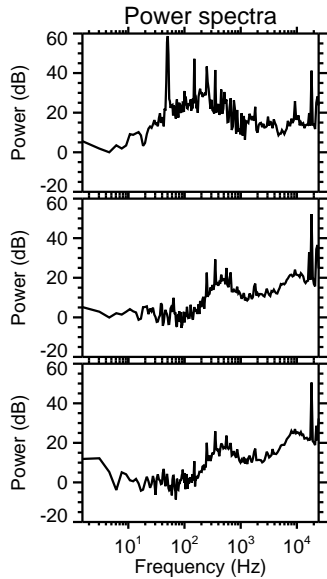
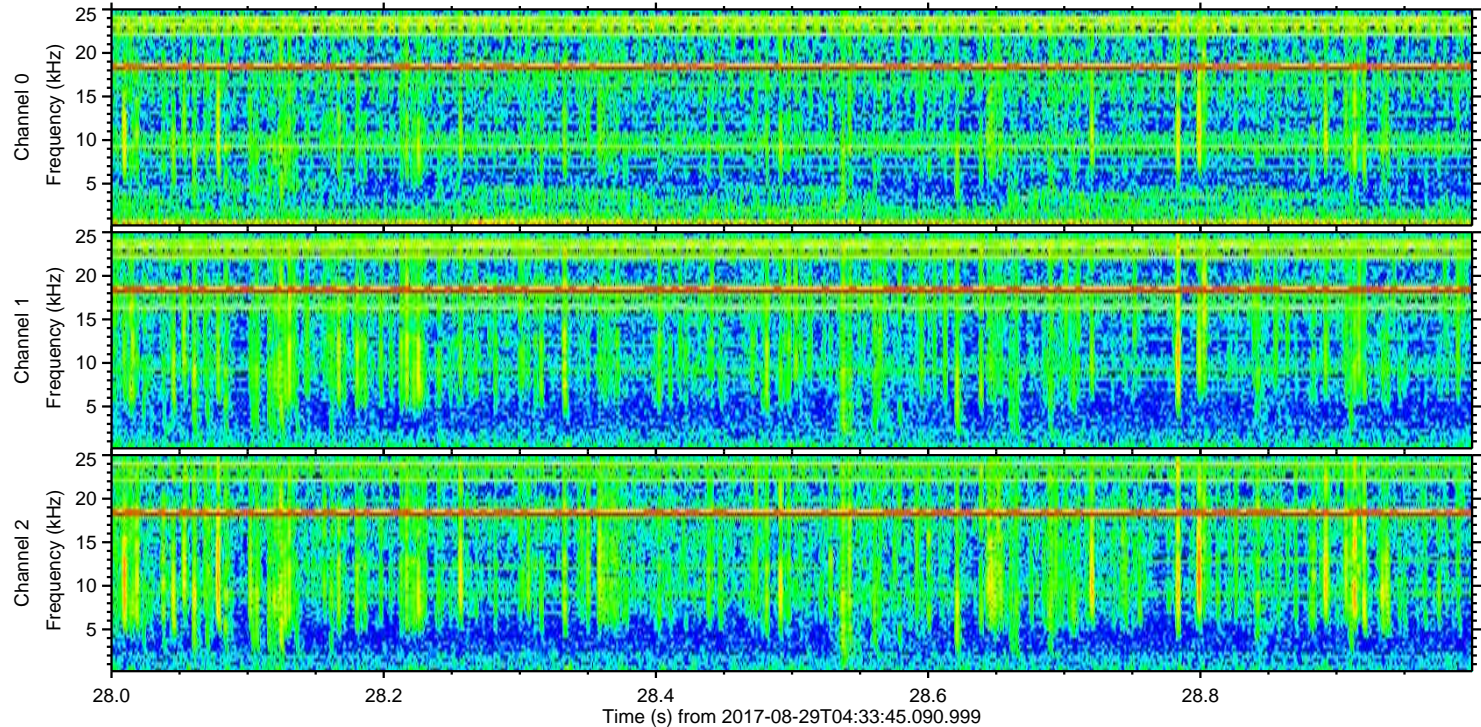
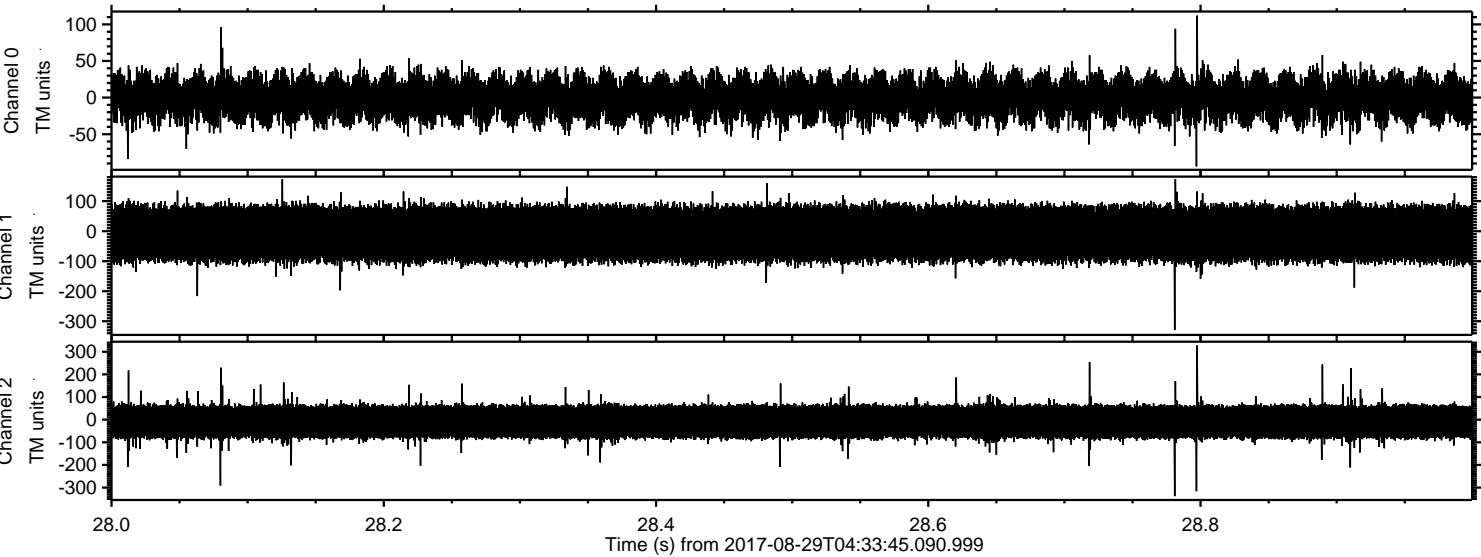


Channel 0
mn: -1408
mx: 1166
 μ : -0.9
 σ : 25.5

Channel 1
mn: -969
mx: 1114
 μ : -8.4
 σ : 59.0

Channel 2
mn: -3822
mx: 3731
 μ : -9.2
 σ : 77.2

Processed Tue Aug 29 06:41:21 2017 by ELM ver.2012-10-06 from 001__elm20170829_043344__dat00.bin



Power spectra

Channel 0
mn: -94
mx: 112
 μ : -0.8
 σ : 18.3

Channel 1
mn: -329
mx: 173
 μ : -8.4
 σ : 56.2

Channel 2
mn: -338
mx: 328
 μ : -9.2
 σ : 46.1