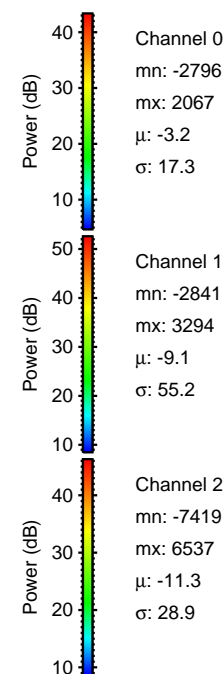
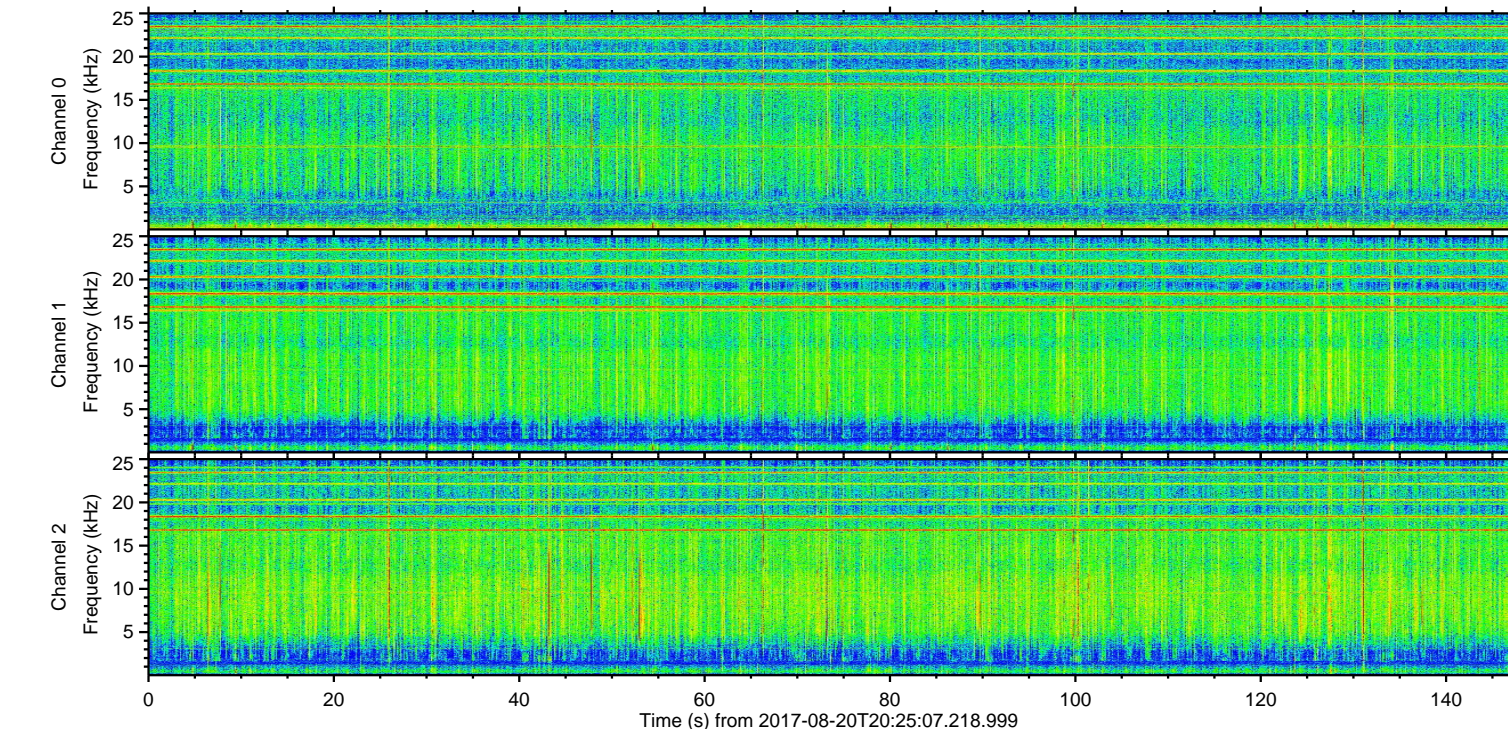
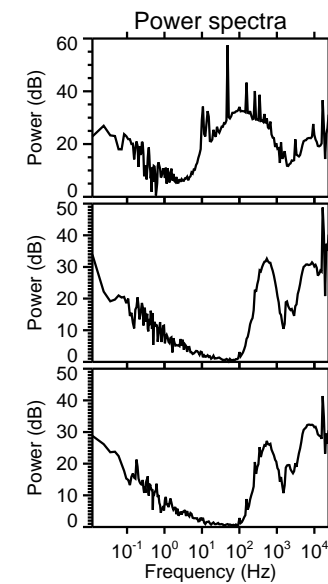
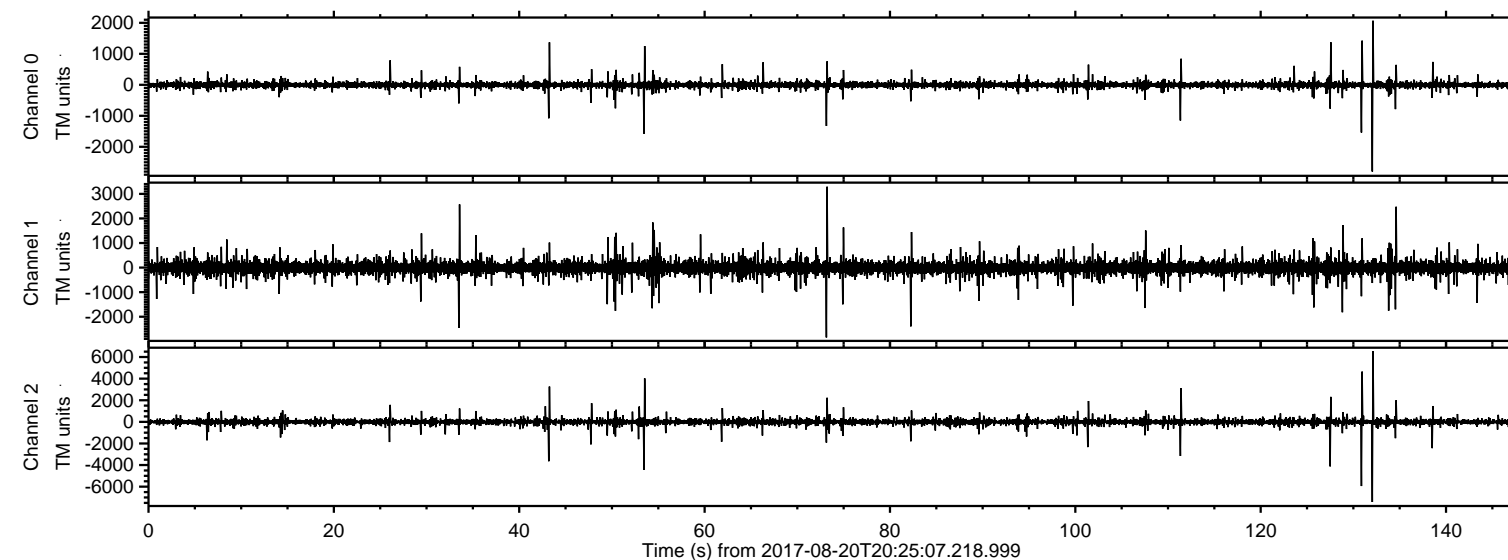


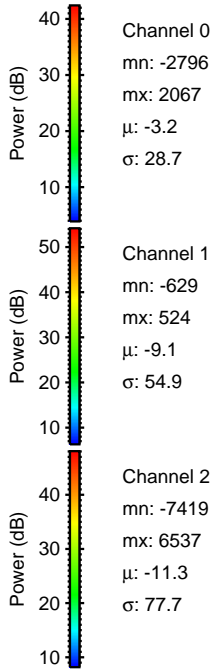
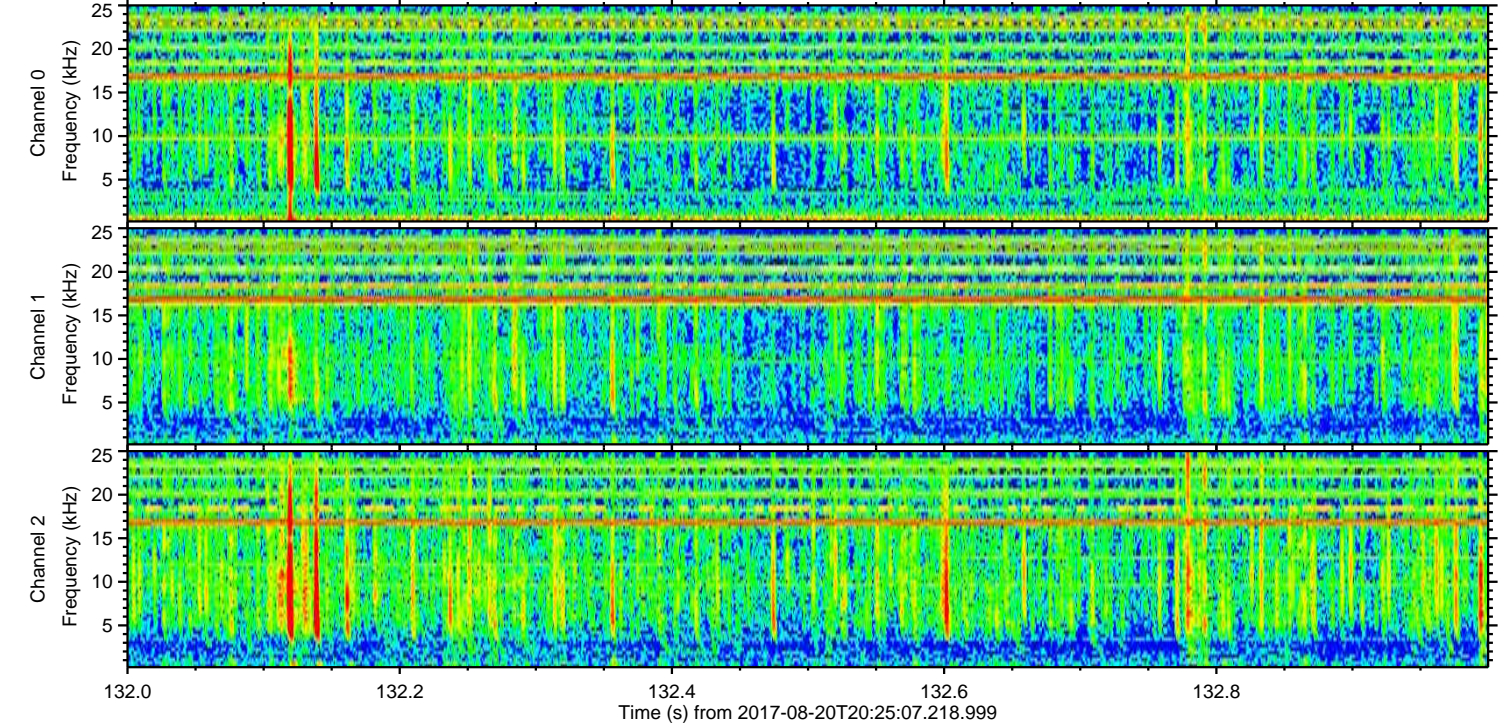
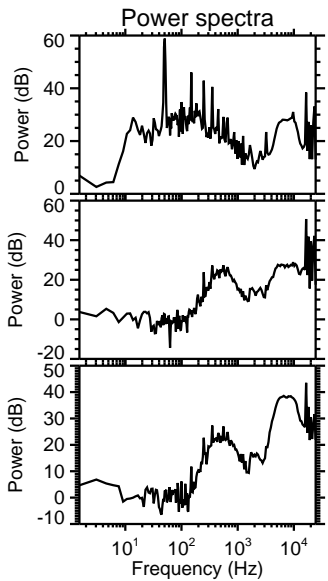
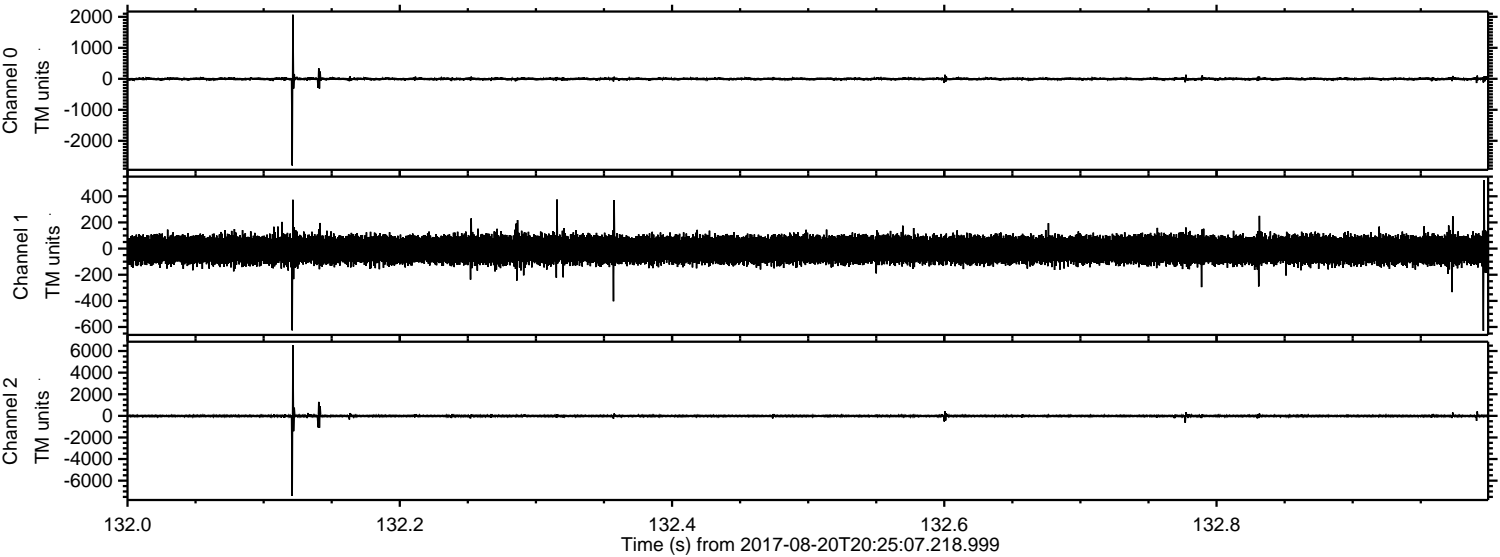
ELMAVAN 3D WAVEFORMS (Measured data sampled at 50 kHz) 51000 packets of 144 samples from 2017-08-20T20:25:07.218.999.

Processed Sun Aug 20 22:33:33 2017 by ELM ver.2012-10-06 from 001__elm20170820_202506__dat00.bin



ELMAVAN 3D WAVEFORMS (Measured data sampled at 50 kHz) 51000 packets of 144 samples from 2017-08-20T20:25:07.218.999. Part 133/147

Processed Sun Aug 20 22:33:40 2017 by ELM ver.2012-10-06 from 001__elm20170820_202506__dat00.bin



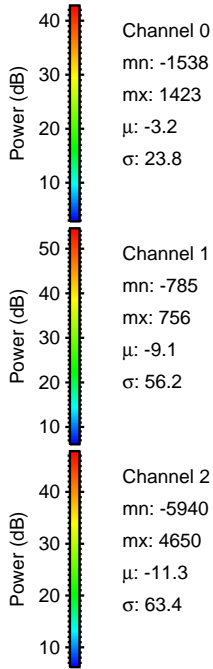
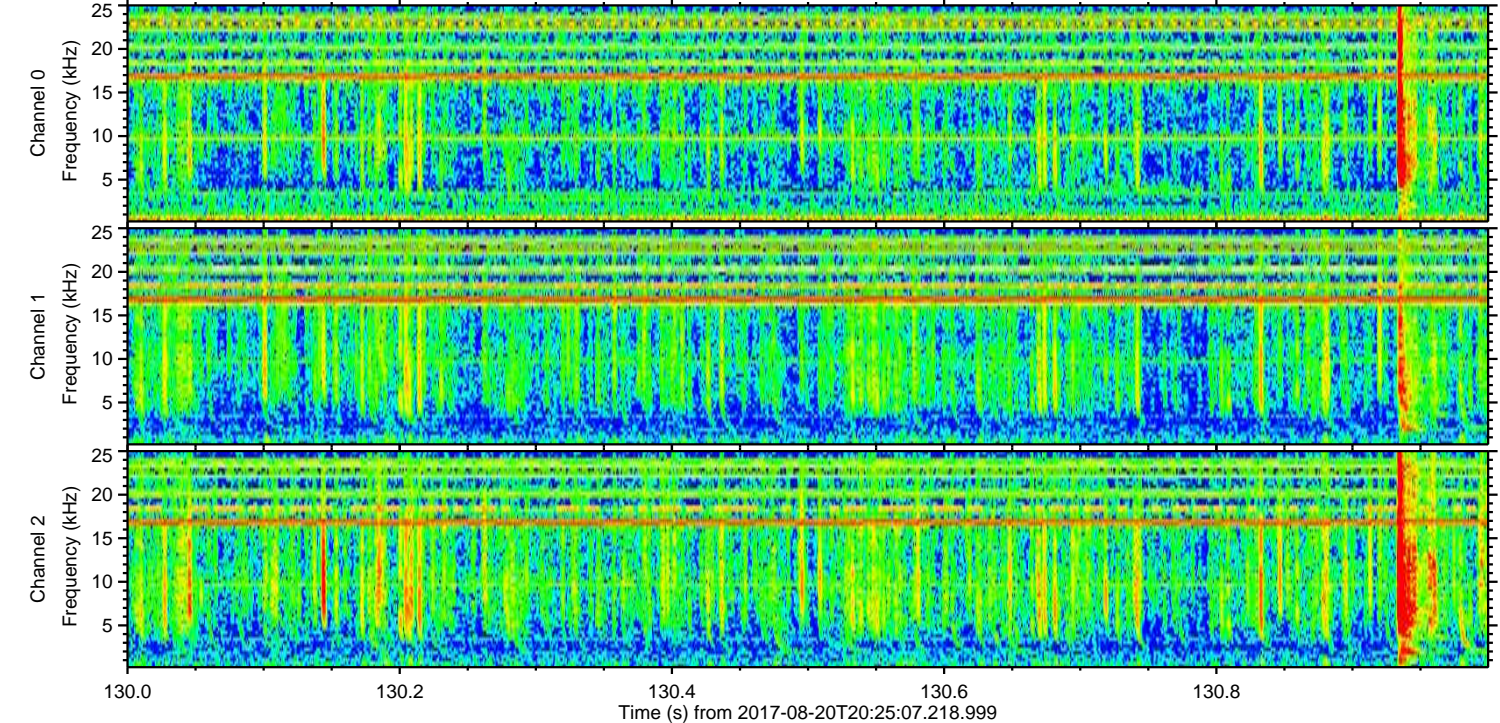
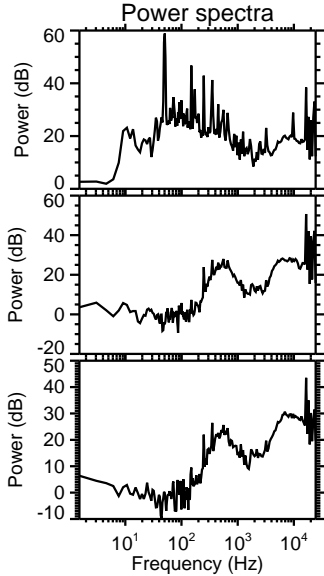
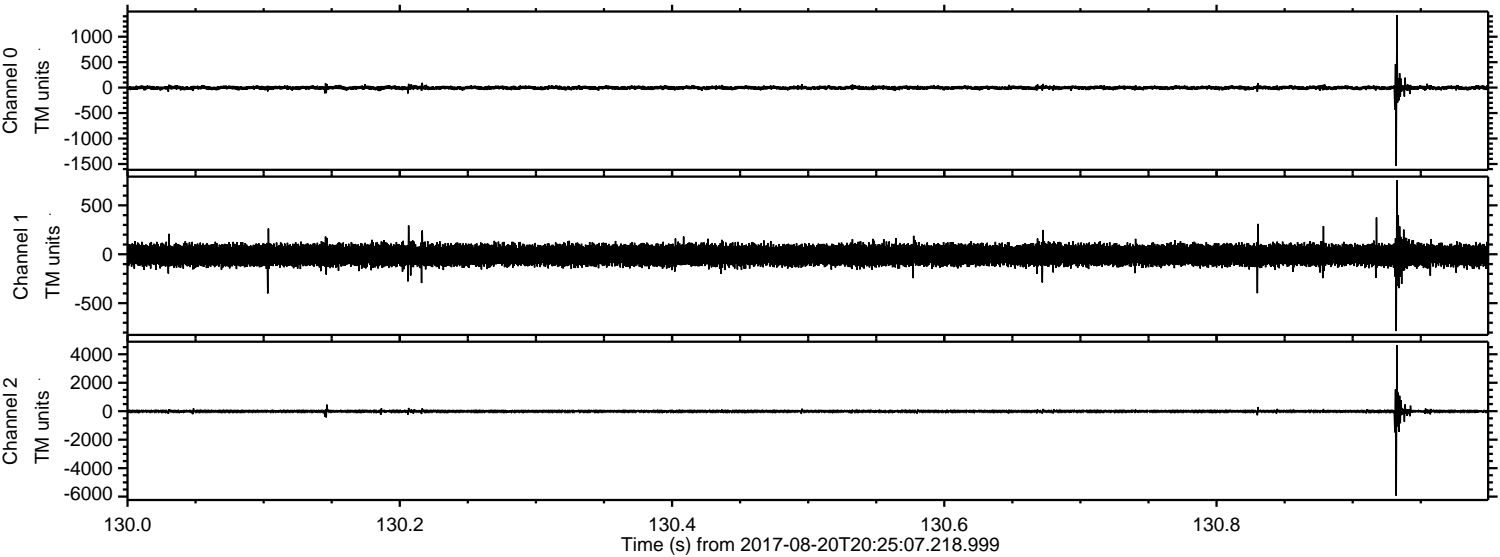
Channel 0
mn: -2796
mx: 2067
 μ : -3.2
 σ : 28.7

Channel 1
mn: -629
mx: 524
 μ : -9.1
 σ : 54.9

Channel 2
mn: -7419
mx: 6537
 μ : -11.3
 σ : 77.7

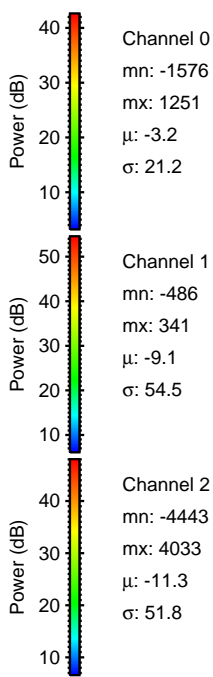
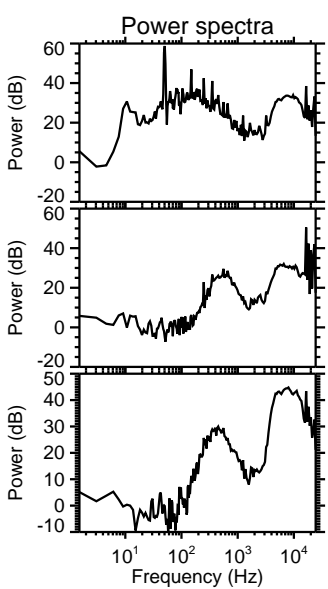
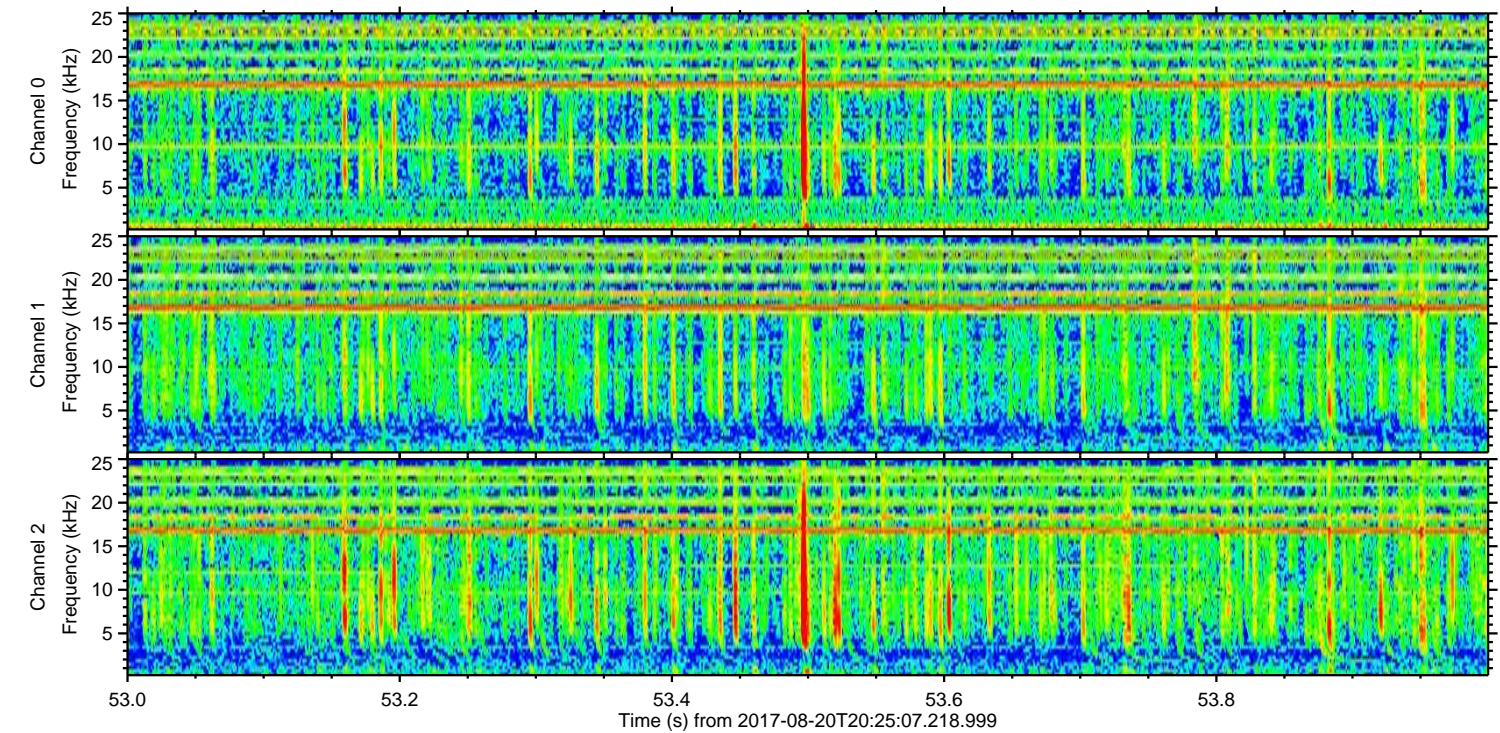
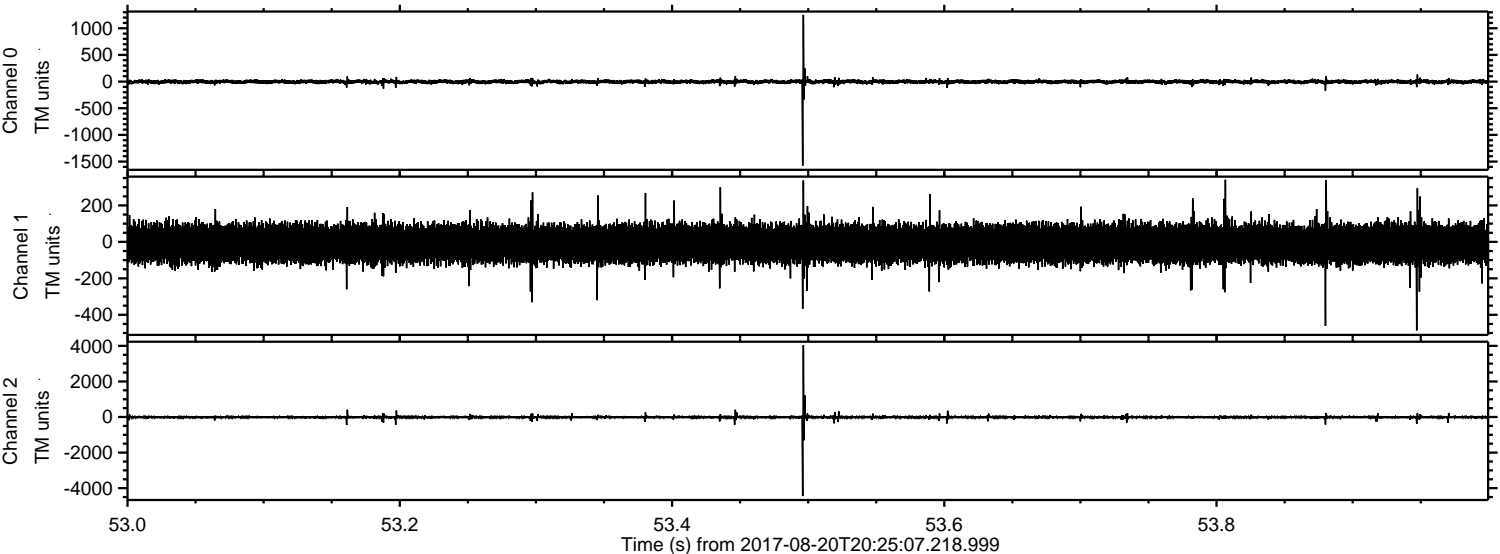
ELMAVAN 3D WAVEFORMS (Measured data sampled at 50 kHz) 51000 packets of 144 samples from 2017-08-20T20:25:07.218.999. Part 131/147

Processed Sun Aug 20 22:33:41 2017 by ELM ver.2012-10-06 from 001__elm20170820_202506__dat00.bin



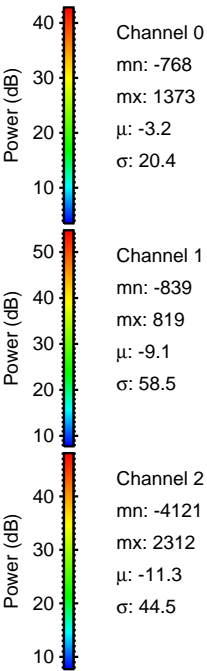
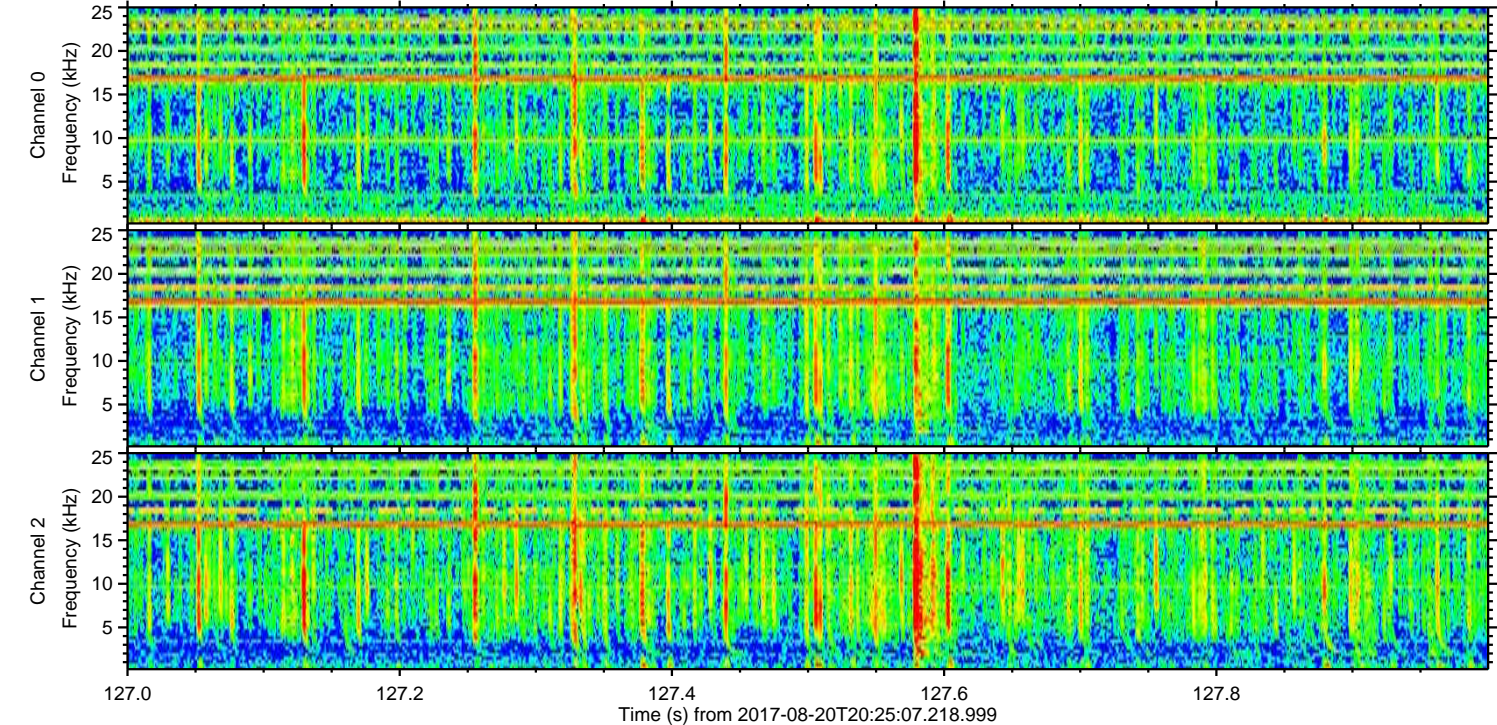
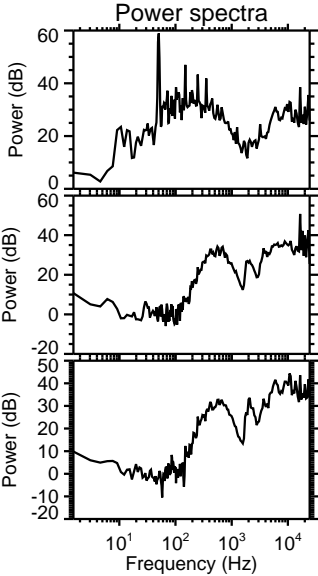
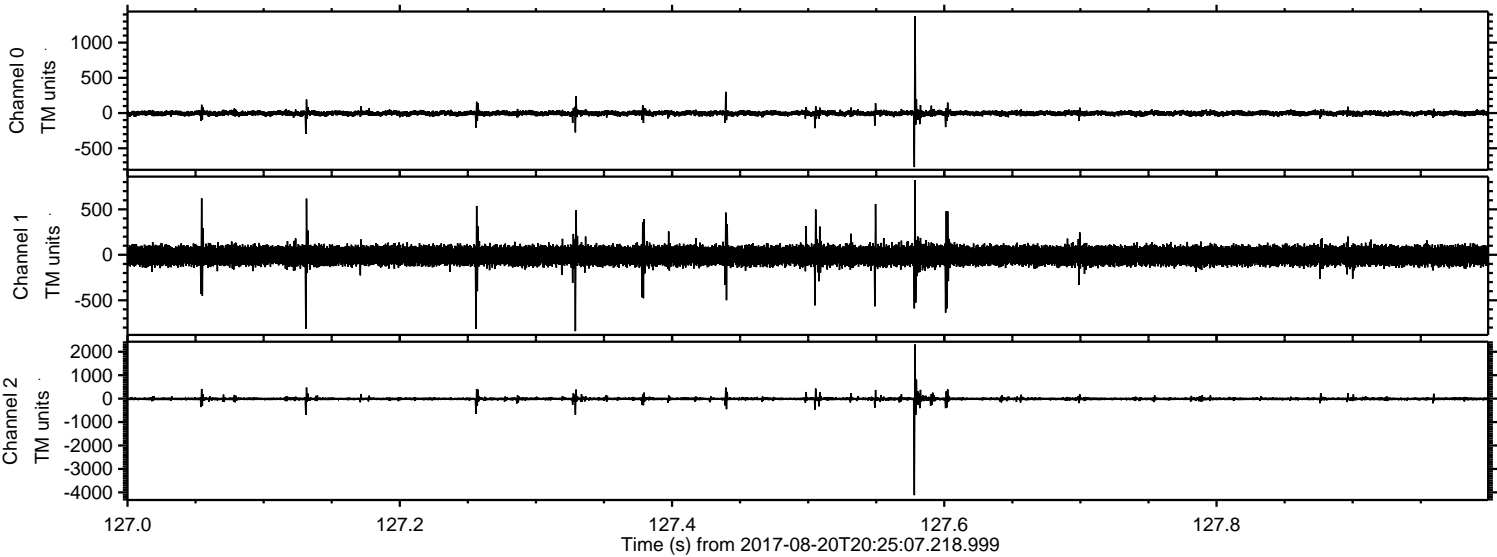
ELMAVAN 3D WAVEFORMS (Measured data sampled at 50 kHz) 51000 packets of 144 samples from 2017-08-20T20:25:07.218.999. Part 54/147

Processed Sun Aug 20 22:33:42 2017 by ELM ver.2012-10-06 from 001__elm20170820_202506__dat00.bin



ELMAVAN 3D WAVEFORMS (Measured data sampled at 50 kHz) 51000 packets of 144 samples from 2017-08-20T20:25:07.218.999. Part 128/147

Processed Sun Aug 20 22:33:42 2017 by ELM ver.2012-10-06 from 001__elm20170820_202506__dat00.bin

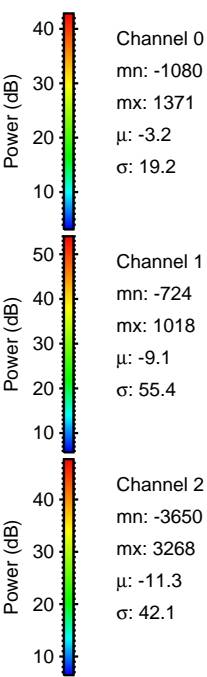
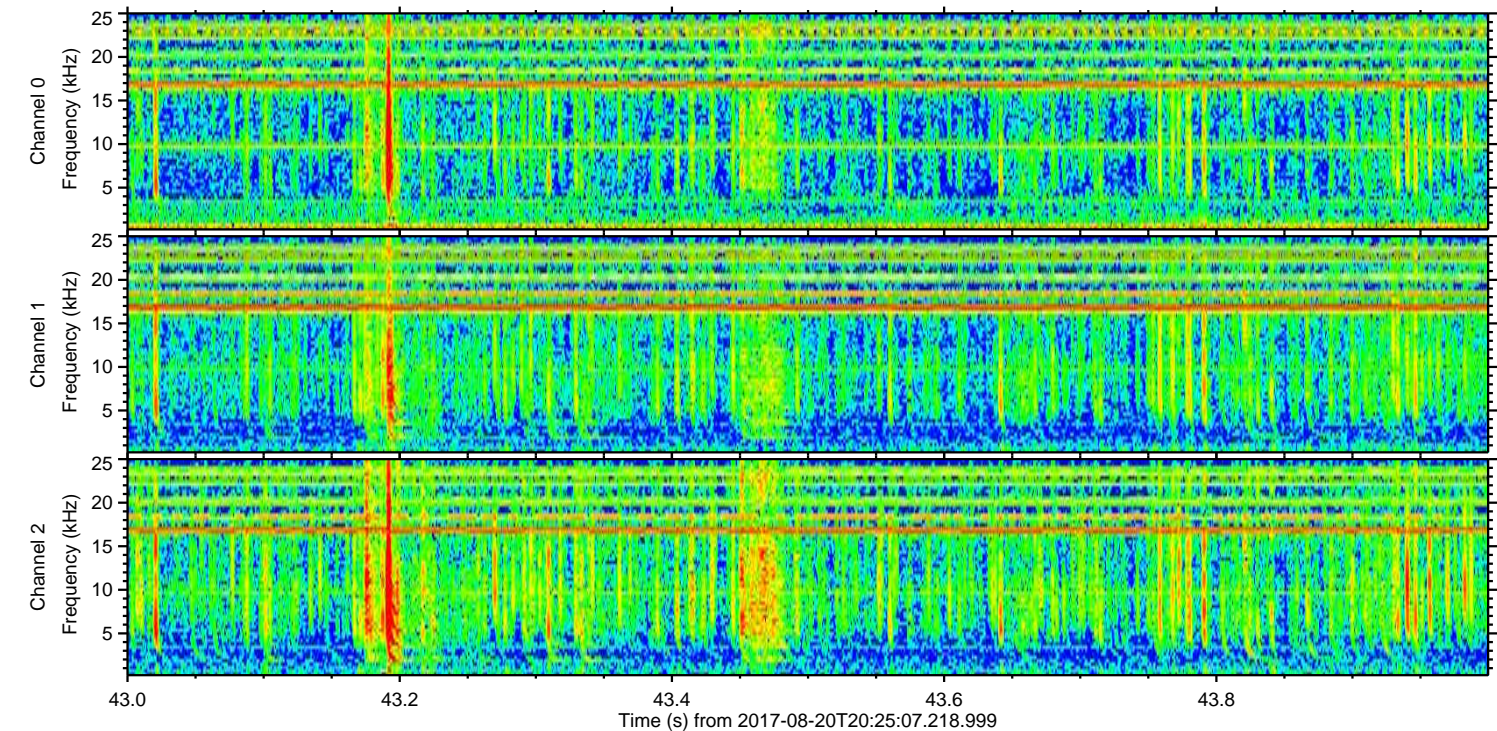
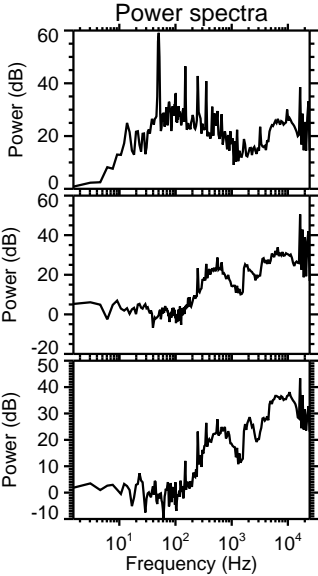
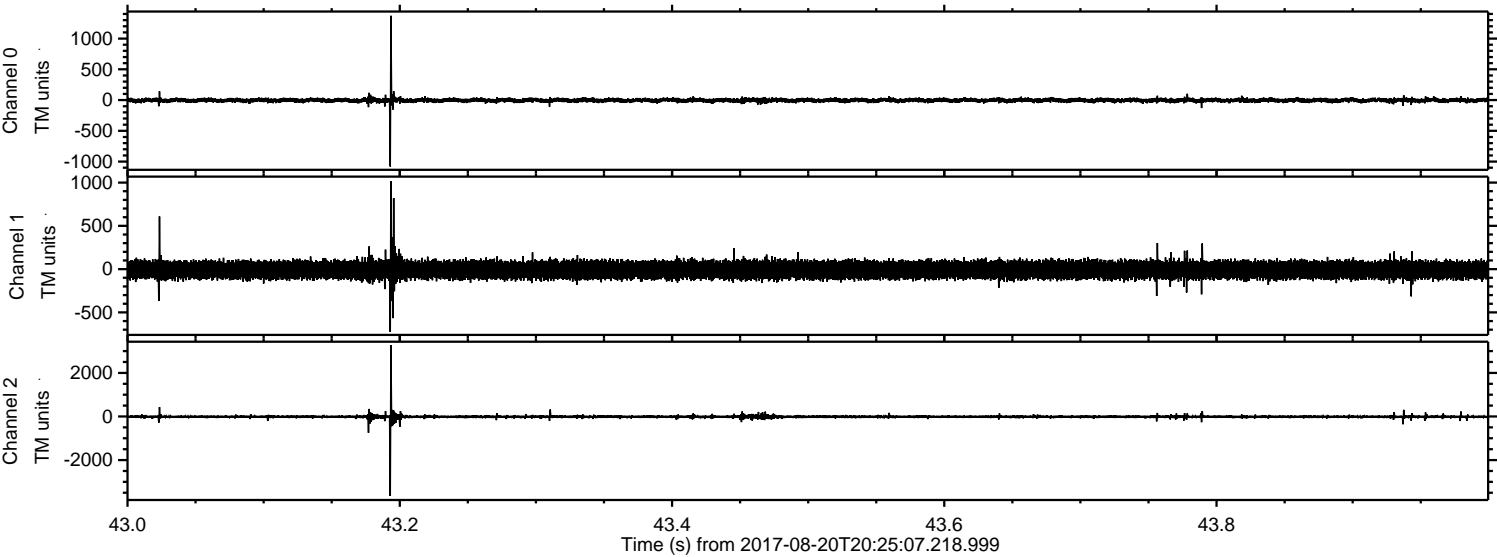


Channel 0
mn: -768
mx: 1373
 μ : -3.2
 σ : 20.4

Channel 1
mn: -839
mx: 819
 μ : -9.1
 σ : 58.5

Channel 2
mn: -4121
mx: 2312
 μ : -11.3
 σ : 44.5

Processed Sun Aug 20 22:33:43 2017 by ELM ver.2012-10-06 from 001__elm20170820_202506__dat00.bin

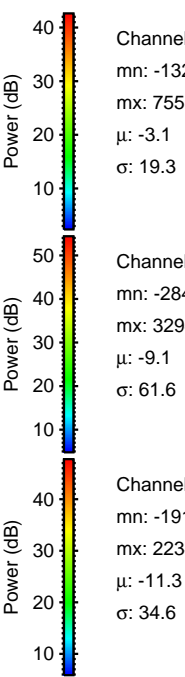
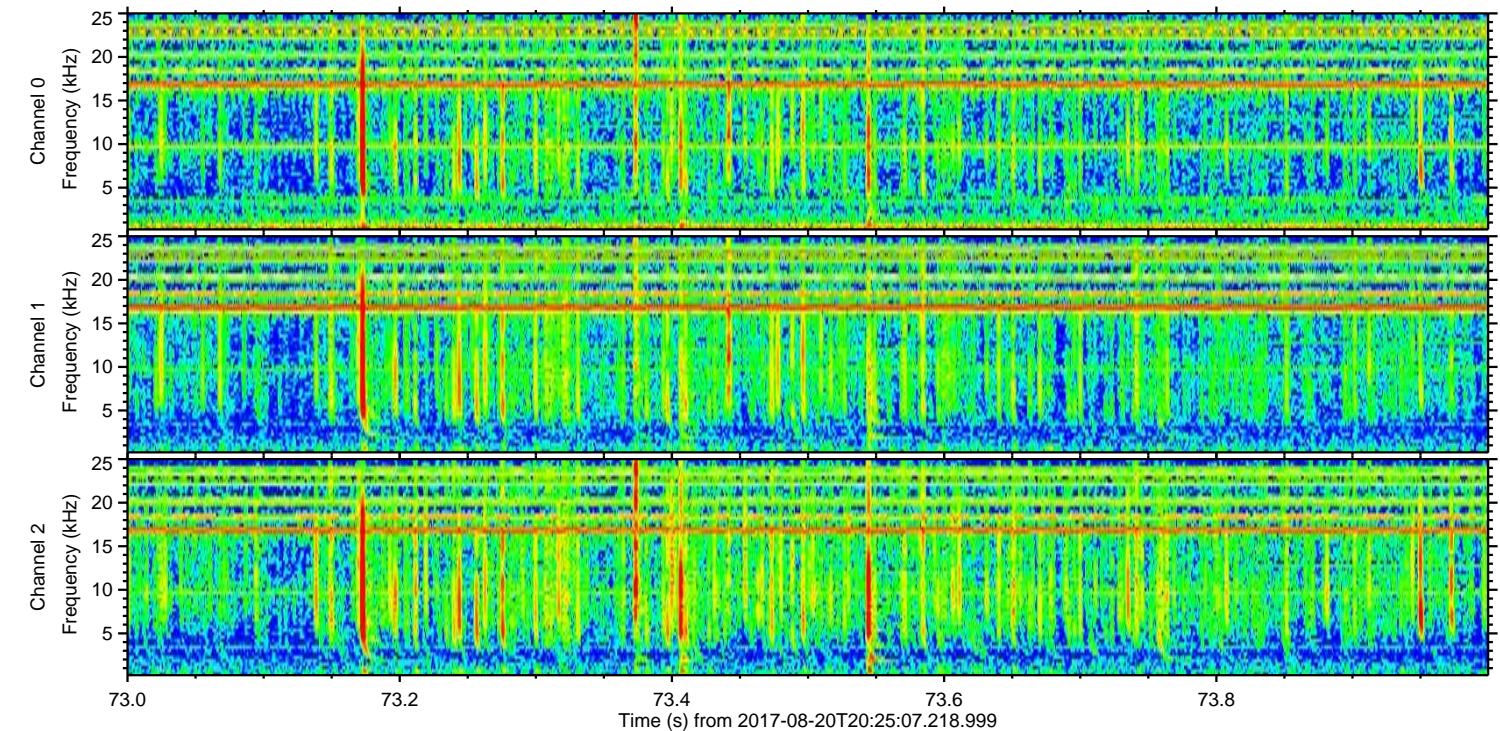
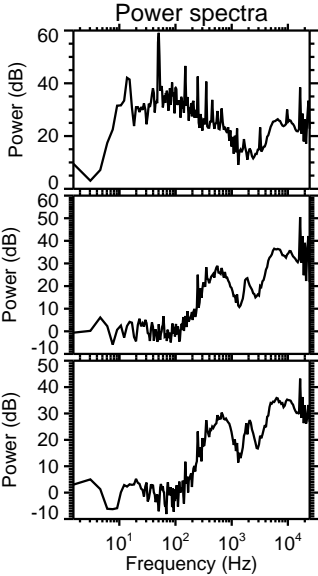
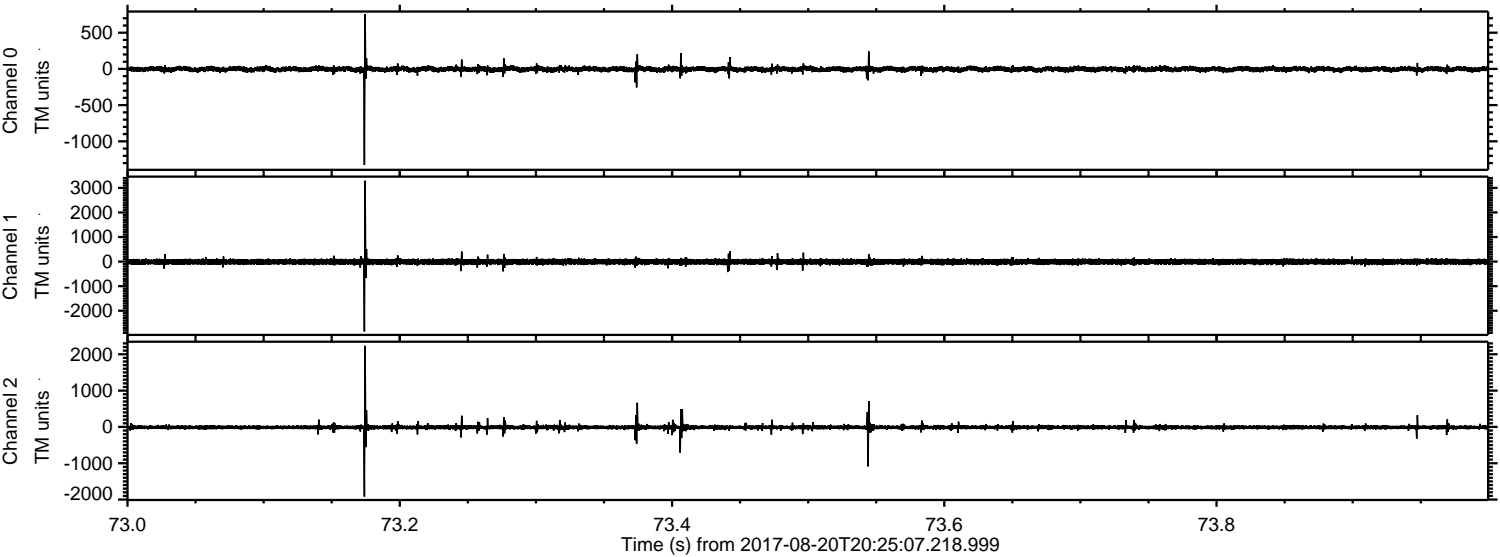


Channel 0
mn: -1080
mx: 1371
 μ : -3.2
 σ : 19.2

Channel 1
mn: -724
mx: 1018
 μ : -9.1
 σ : 55.4

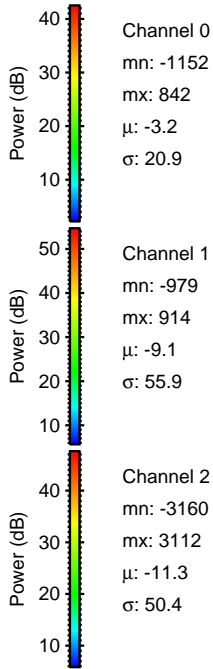
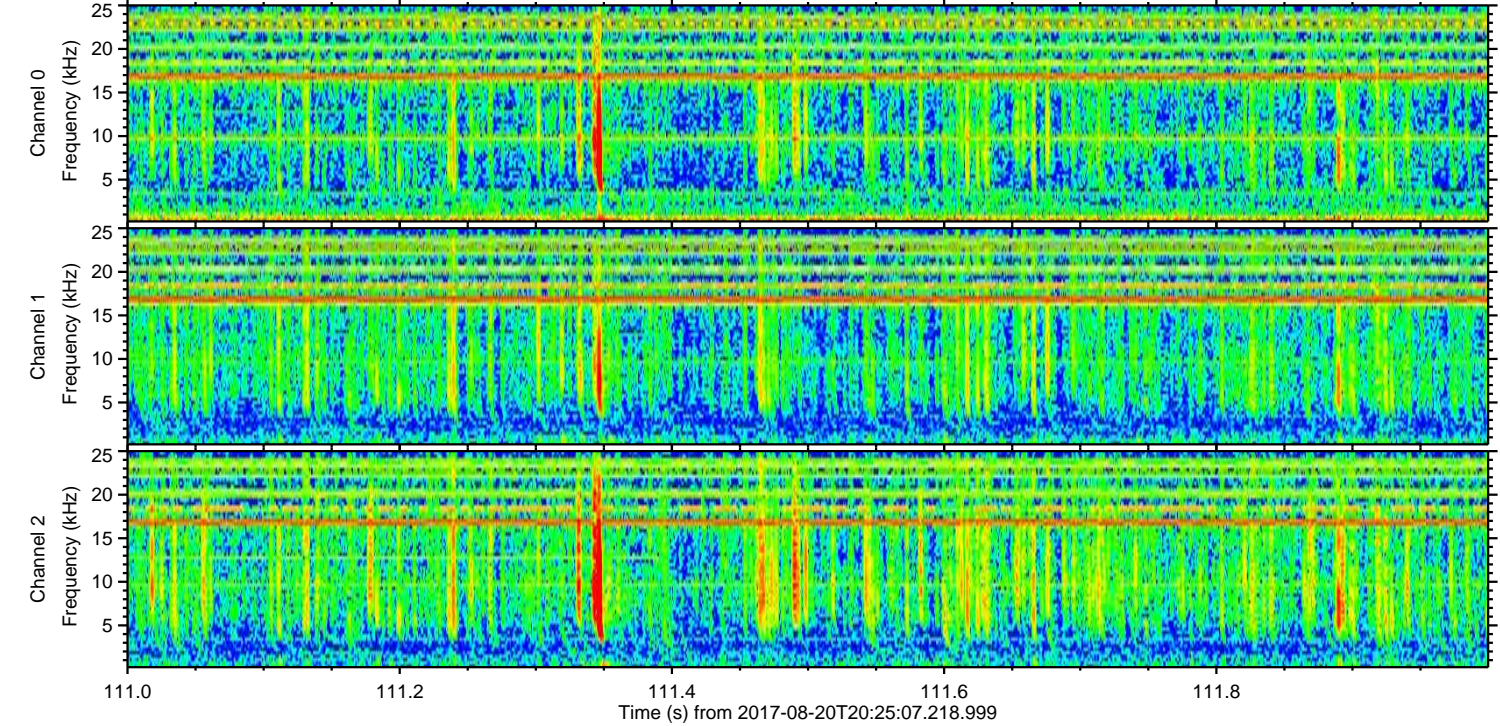
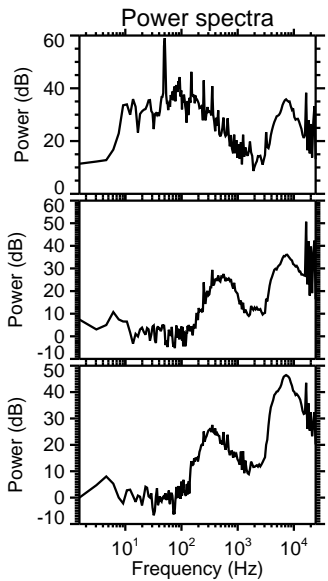
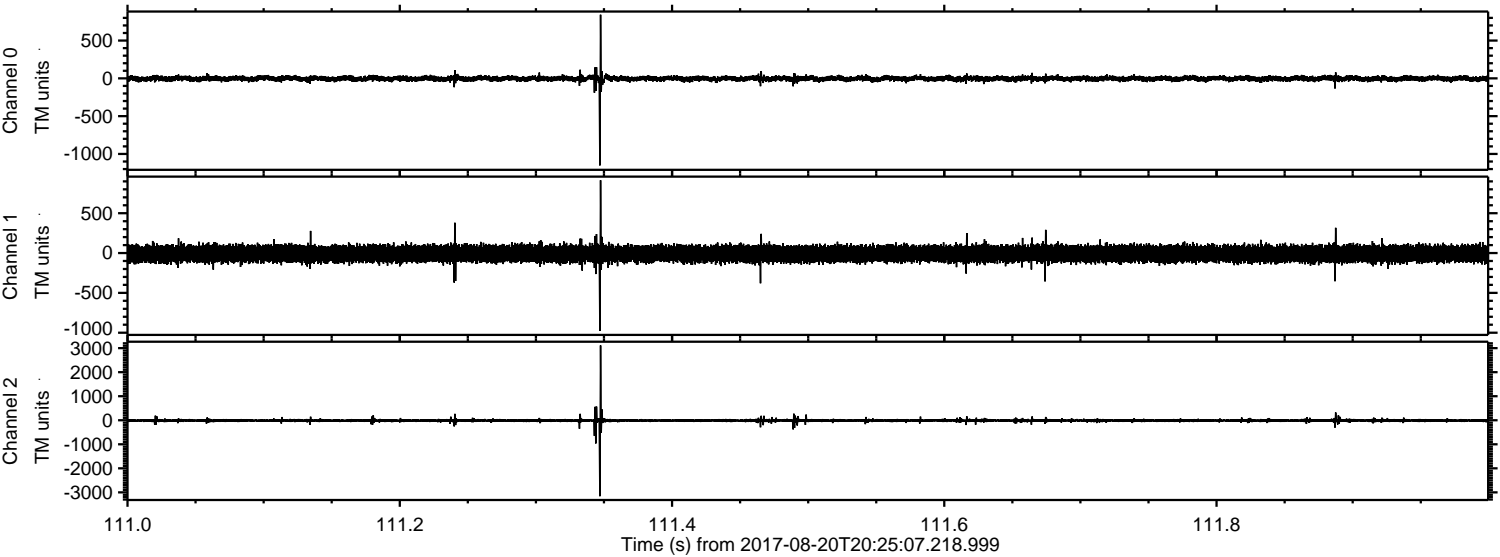
Channel 2
mn: -3650
mx: 3268
 μ : -11.3
 σ : 42.1

Processed Sun Aug 20 22:33:44 2017 by ELM ver.2012-10-06 from 001__elm20170820_202506__dat00.bin



ELMAVAN 3D WAVEFORMS (Measured data sampled at 50 kHz) 51000 packets of 144 samples from 2017-08-20T20:25:07.218.999. Part 112/147

Processed Sun Aug 20 22:33:45 2017 by ELM ver.2012-10-06 from 001__elm20170820_202506__dat00.bin

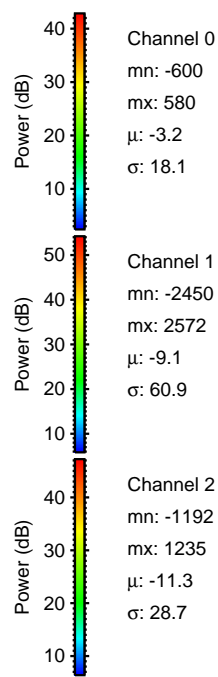
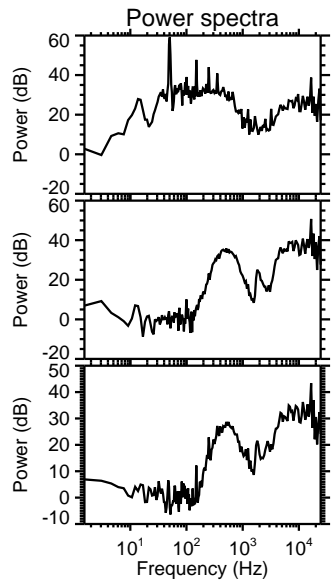
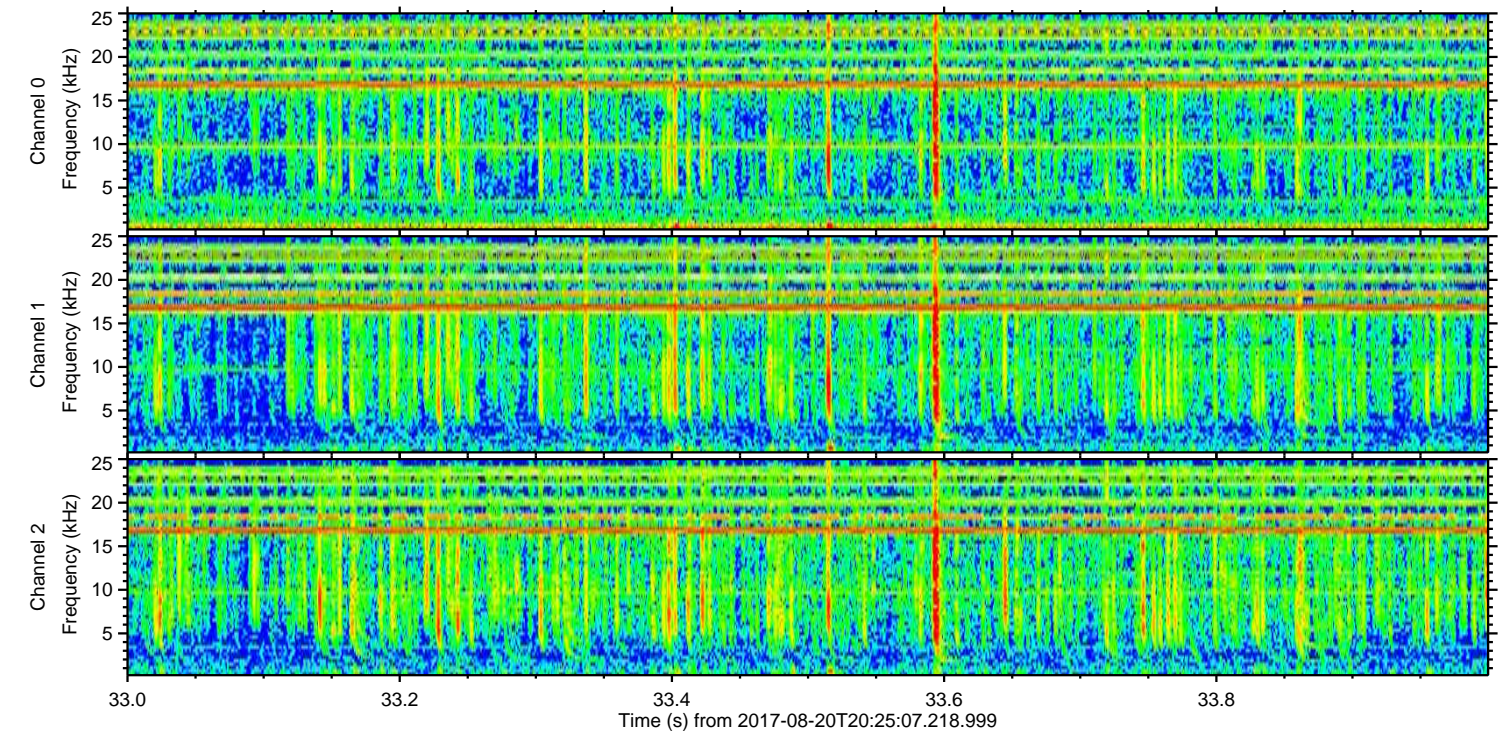
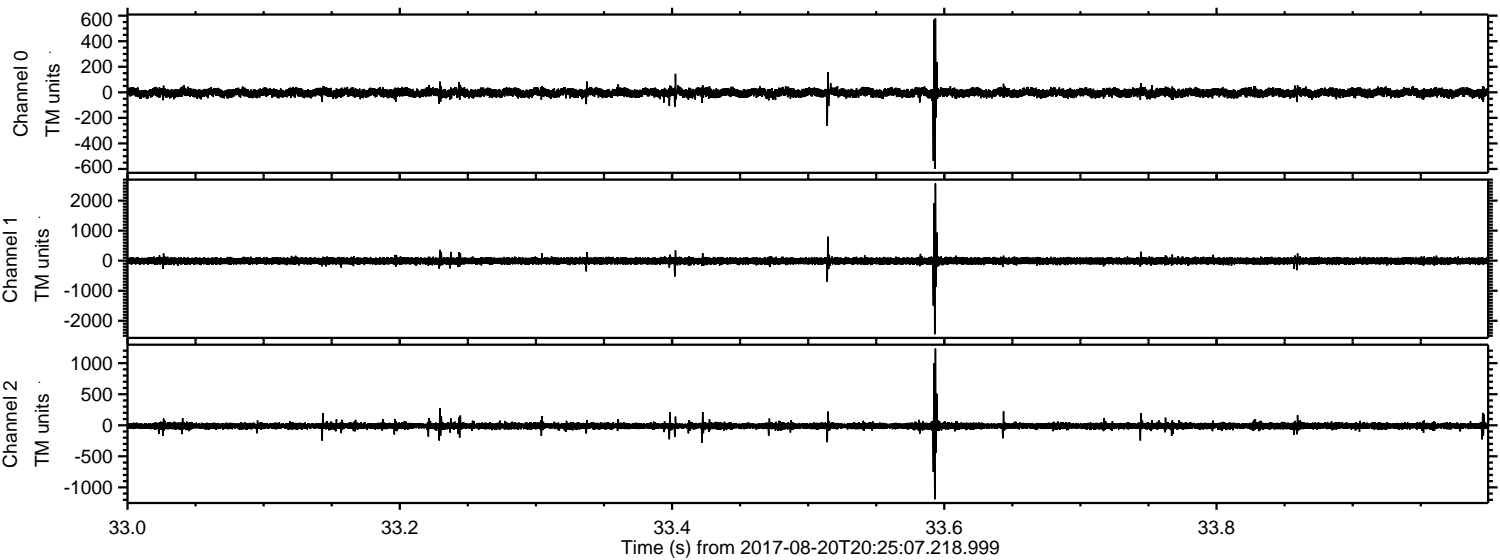


Channel 0
mn: -1152
mx: 842
 μ : -3.2
 σ : 20.9

Channel 1
mn: -979
mx: 914
 μ : -9.1
 σ : 55.9

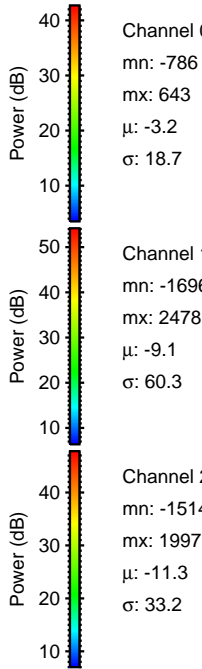
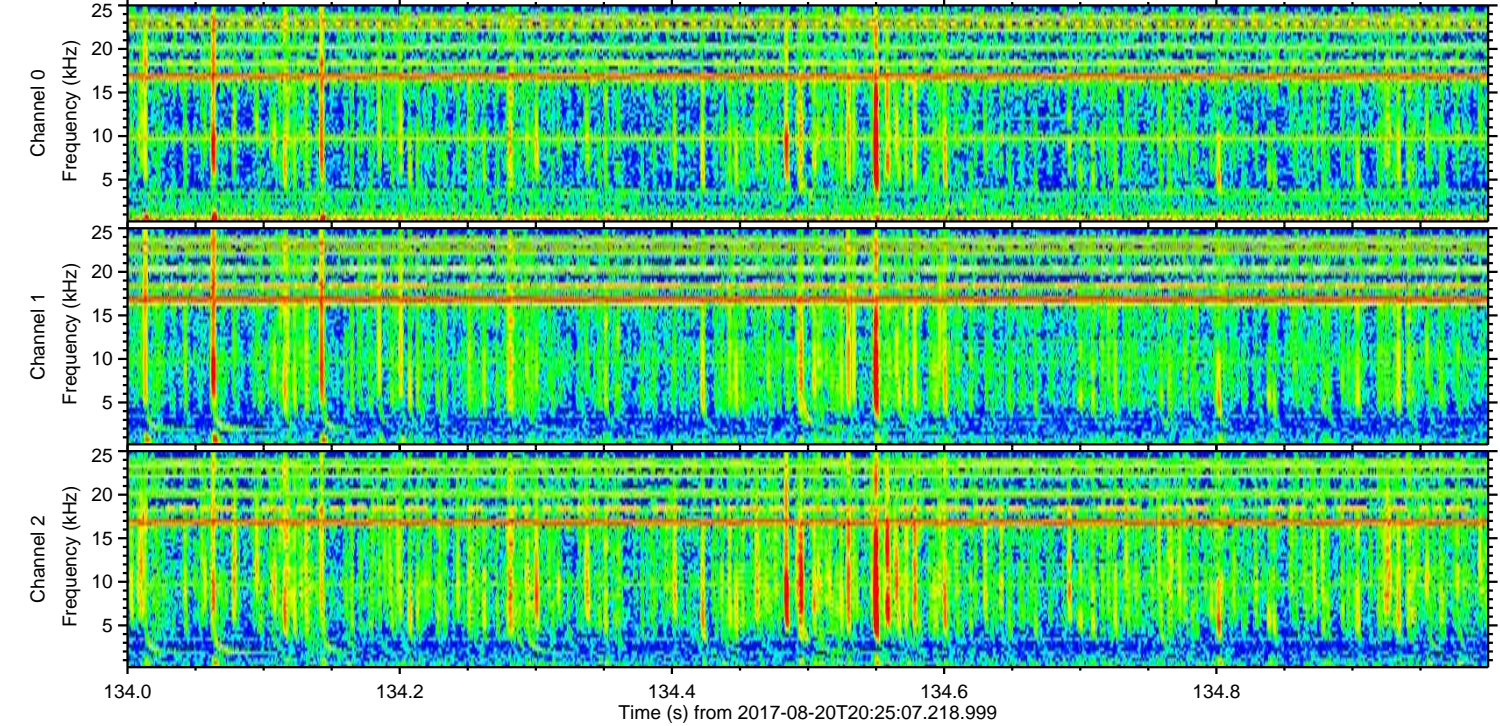
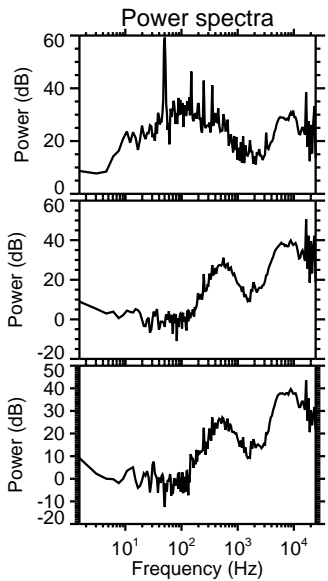
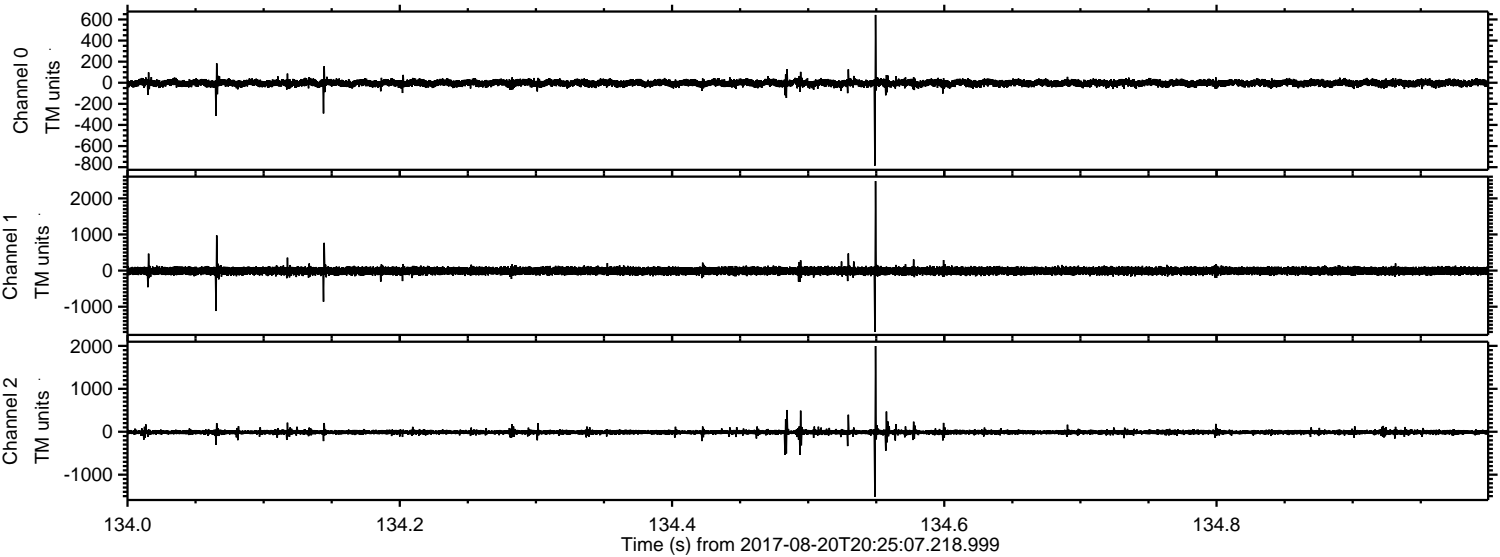
Channel 2
mn: -3160
mx: 3112
 μ : -11.3
 σ : 50.4

Processed Sun Aug 20 22:33:45 2017 by ELM ver.2012-10-06 from 001__elm20170820_202506__dat00.bin



ELMAVAN 3D WAVEFORMS (Measured data sampled at 50 kHz) 51000 packets of 144 samples from 2017-08-20T20:25:07.218.999. Part 135/147

Processed Sun Aug 20 22:33:46 2017 by ELM ver.2012-10-06 from 001__elm20170820_202506__dat00.bin



Processed Sun Aug 20 22:33:47 2017 by ELM ver.2012-10-06 from 001__elm20170820_202506__dat00.bin

