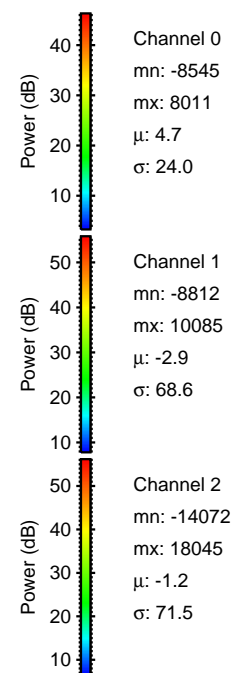
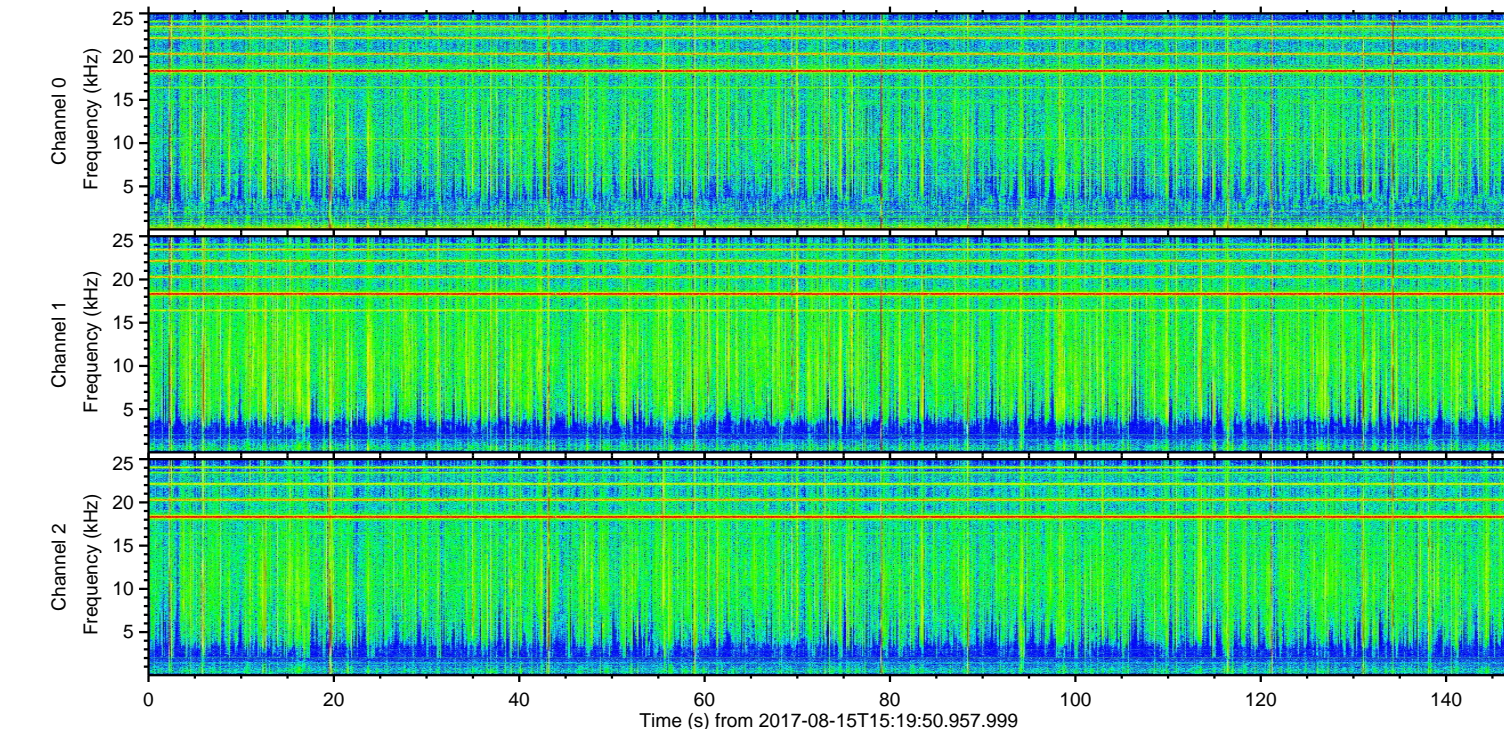
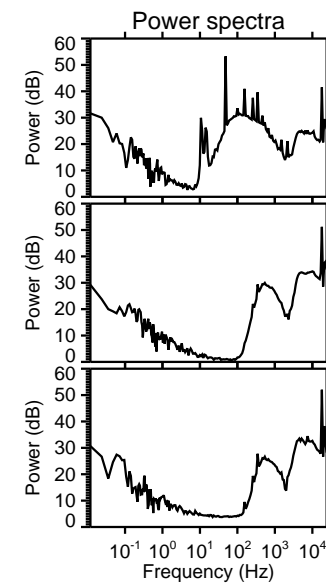
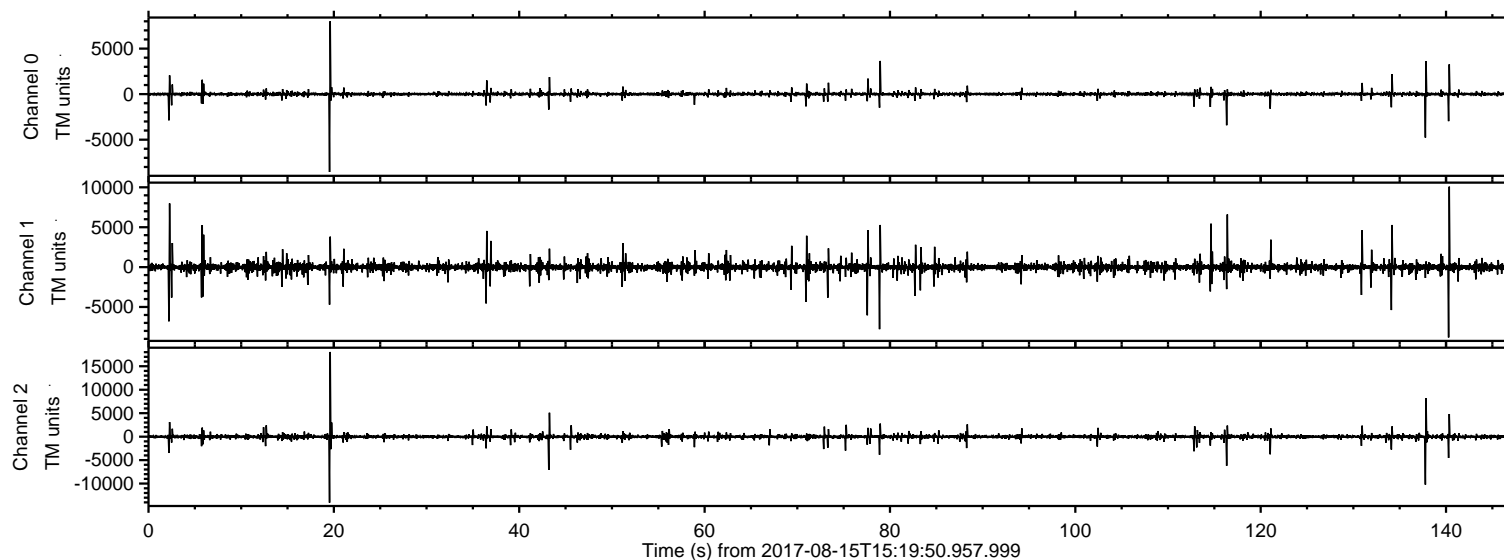
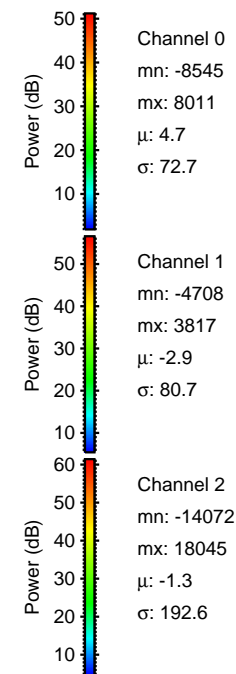
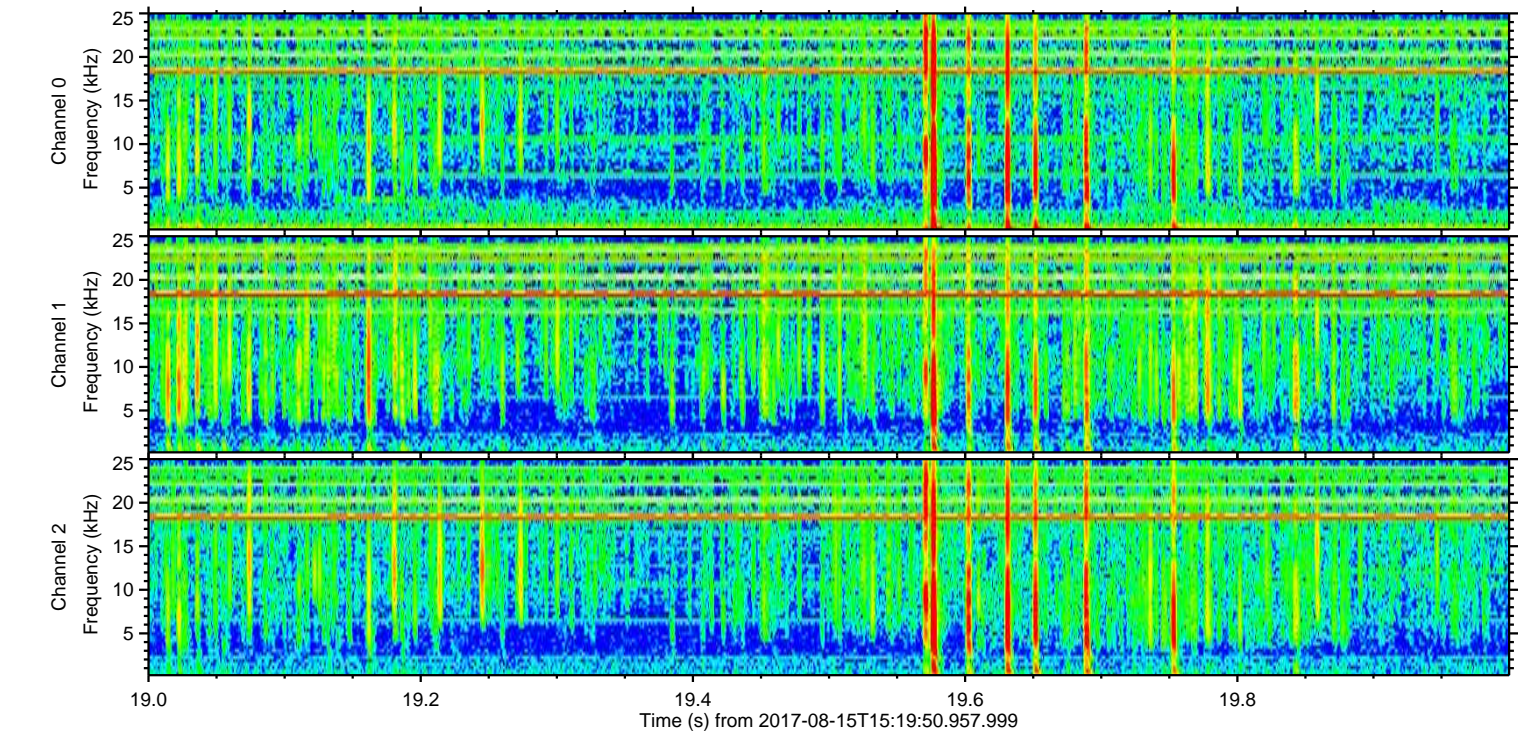
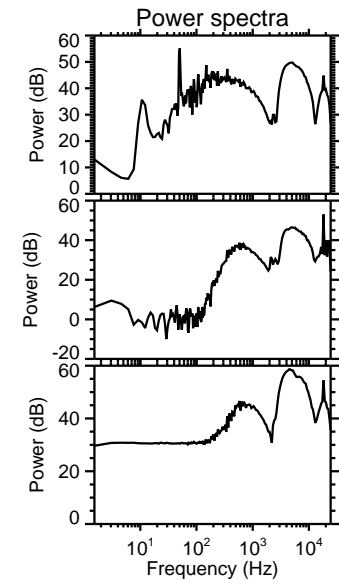
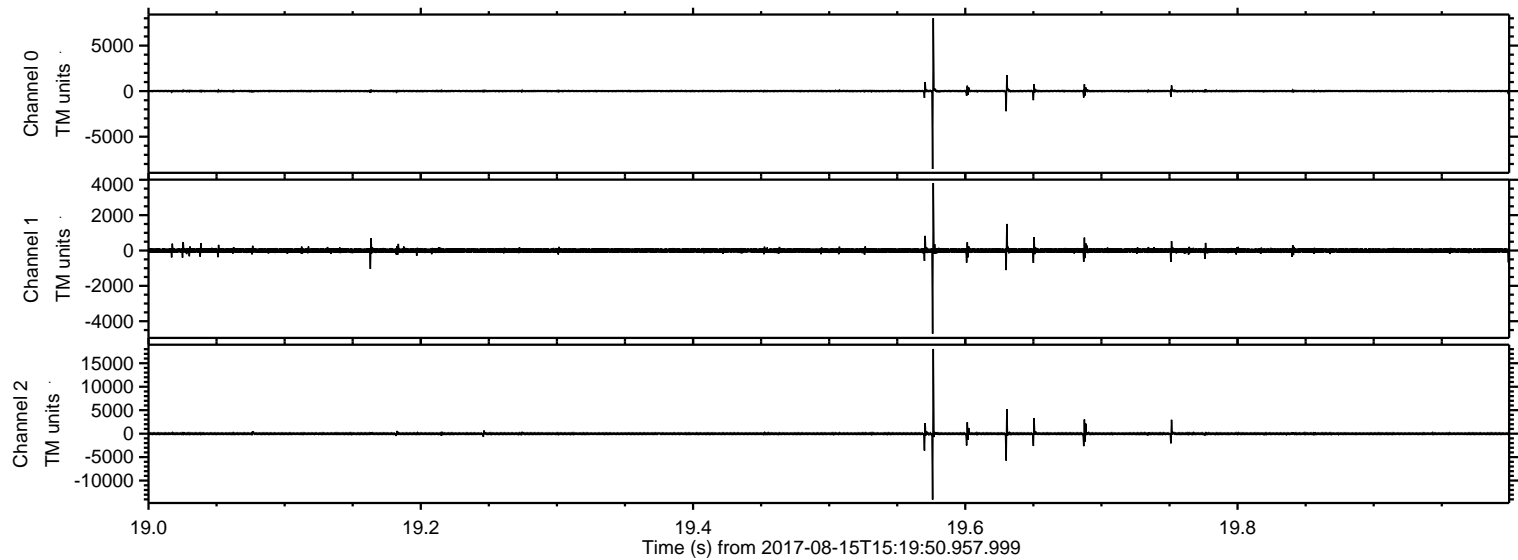


ELMAVAN 3D WAVEFORMS (Measured data sampled at 50 kHz) 51000 packets of 144 samples from 2017-08-15T15:19:50.957.999.

Processed Tue Aug 15 17:28:17 2017 by ELM ver.2012-10-06 from 001__elm20170815_151949__dat00.bin

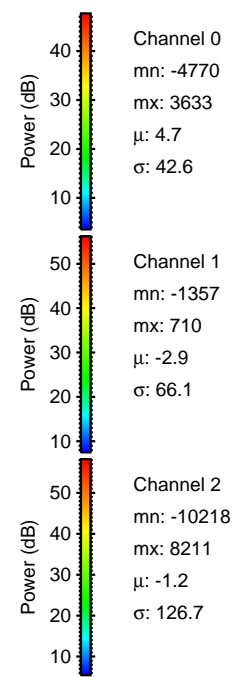
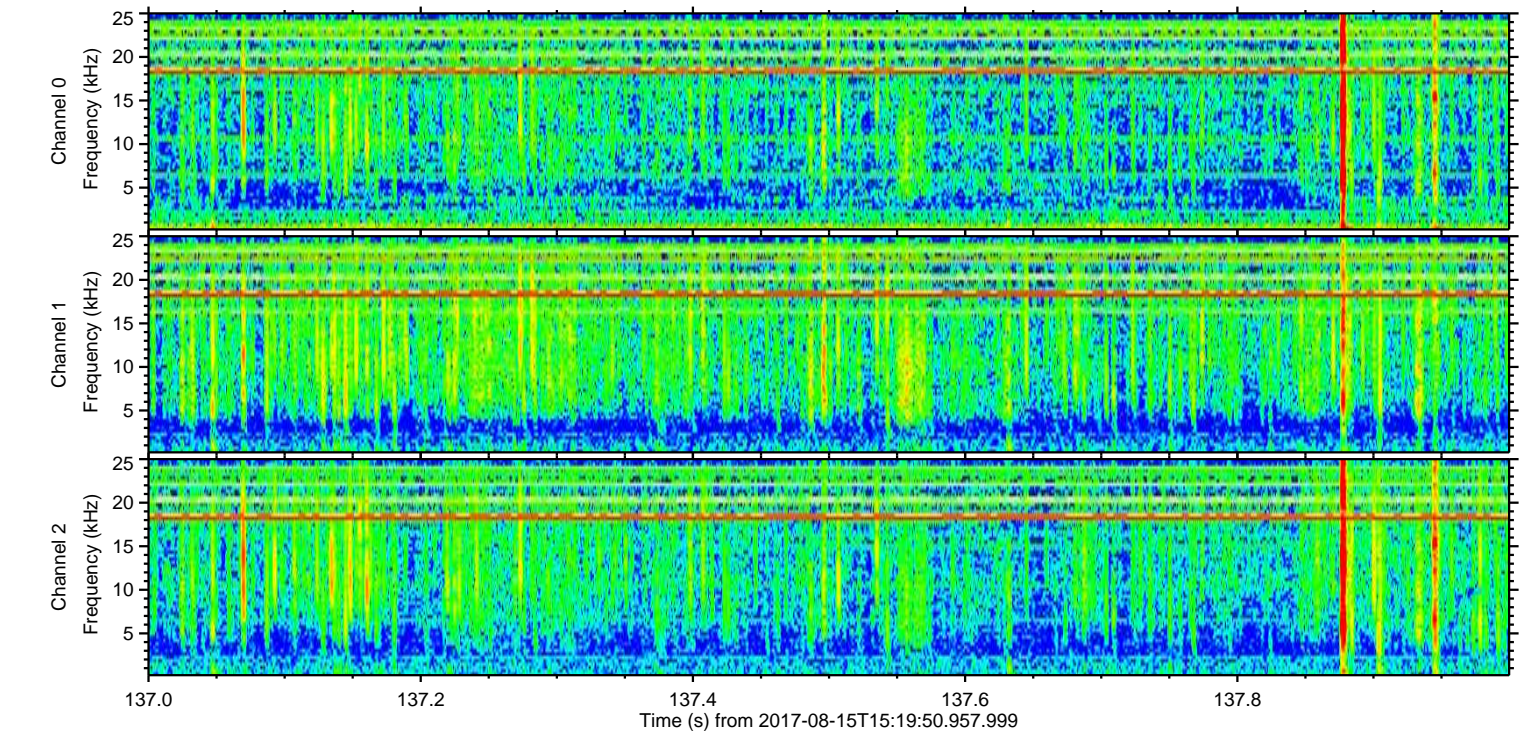
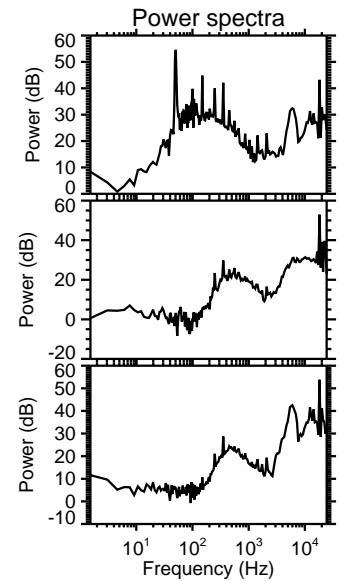
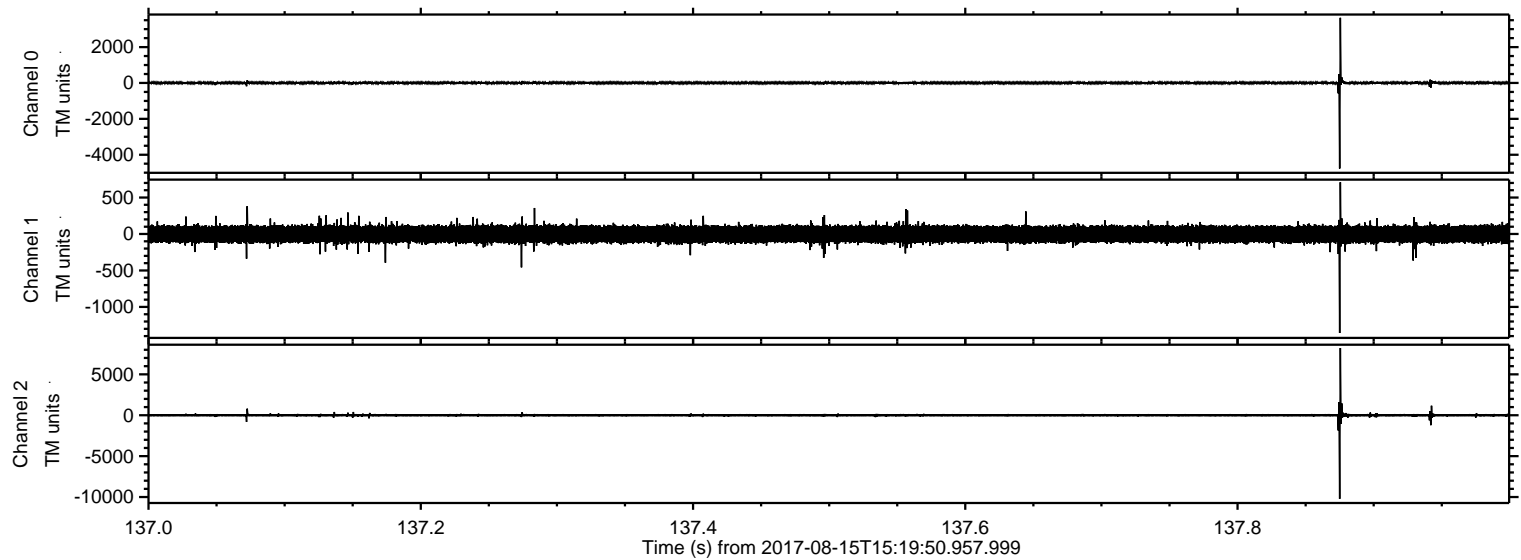


Processed Tue Aug 15 17:28:26 2017 by ELM ver.2012-10-06 from 001__elm20170815_151949__dat00.bin



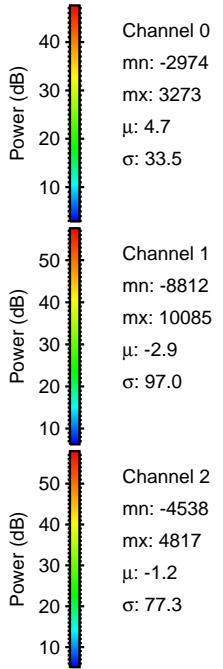
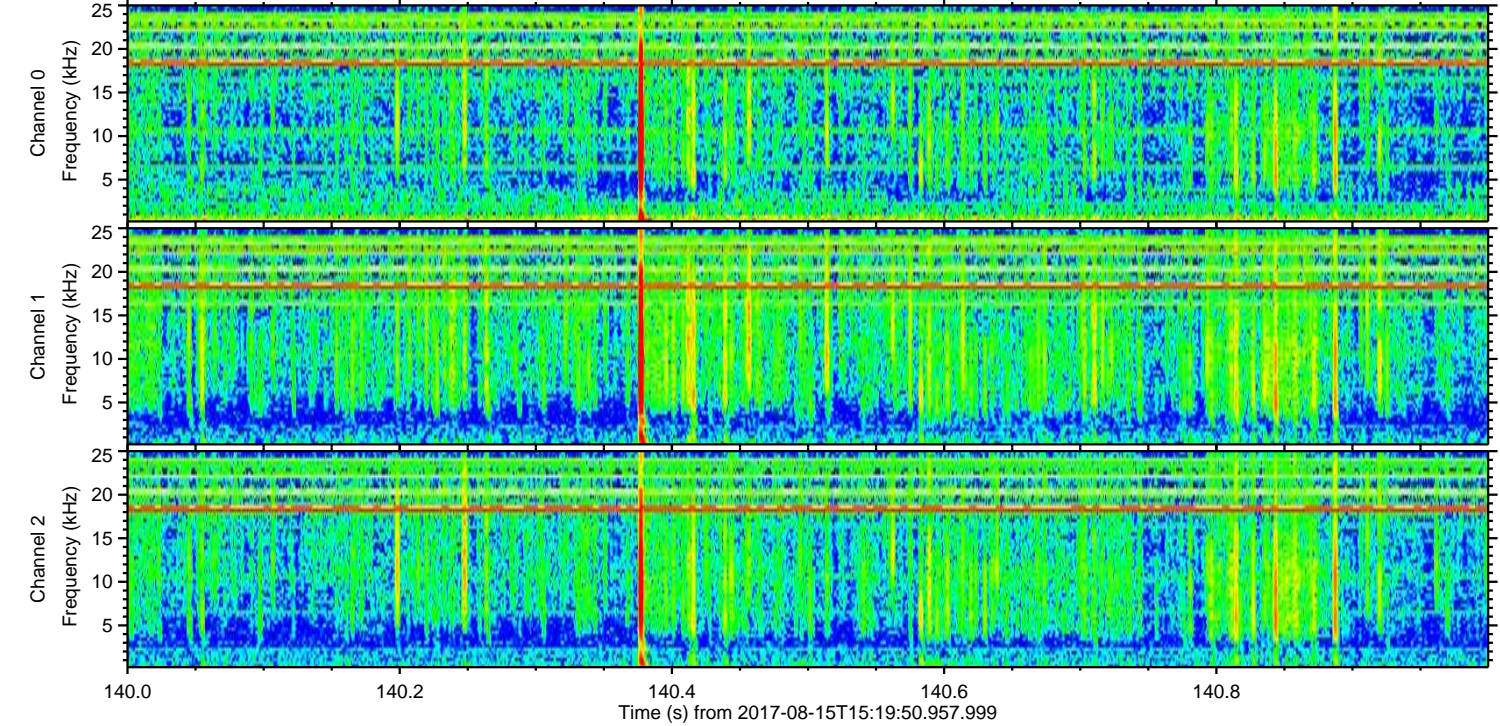
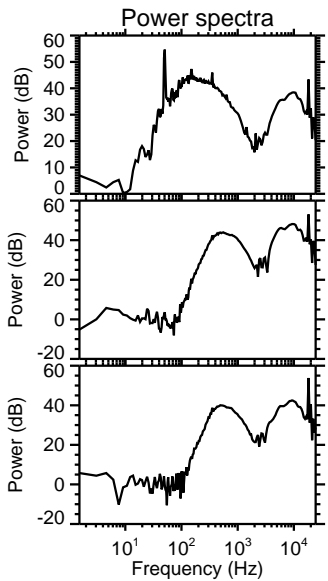
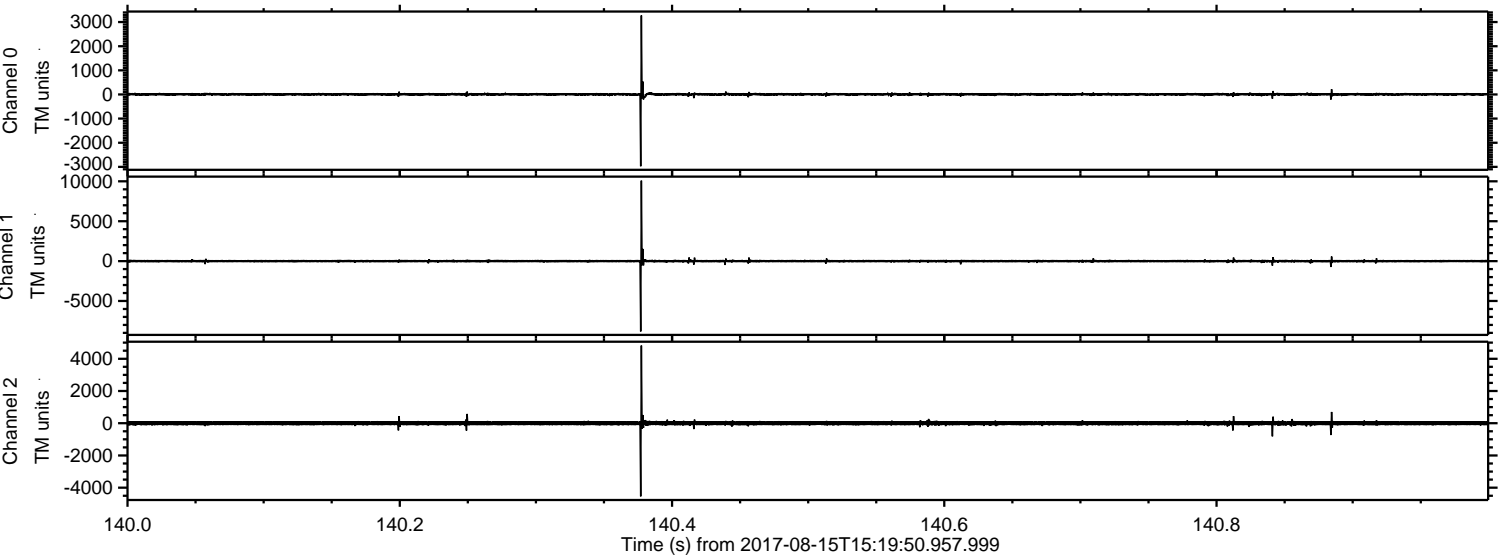
ELMAVAN 3D WAVEFORMS (Measured data sampled at 50 kHz) 51000 packets of 144 samples from 2017-08-15T15:19:50.957.999. Part 138/147

Processed Tue Aug 15 17:28:27 2017 by ELM ver.2012-10-06 from 001__elm20170815_151949__dat00.bin



ELMAVAN 3D WAVEFORMS (Measured data sampled at 50 kHz) 51000 packets of 144 samples from 2017-08-15T15:19:50.957.999. Part 141/147

Processed Tue Aug 15 17:28:28 2017 by ELM ver.2012-10-06 from 001__elm20170815_151949__dat00.bin



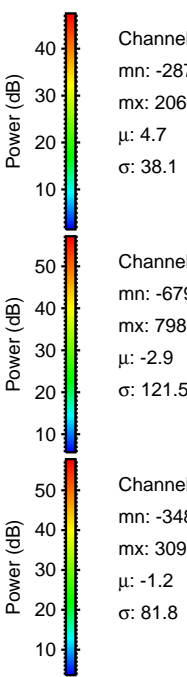
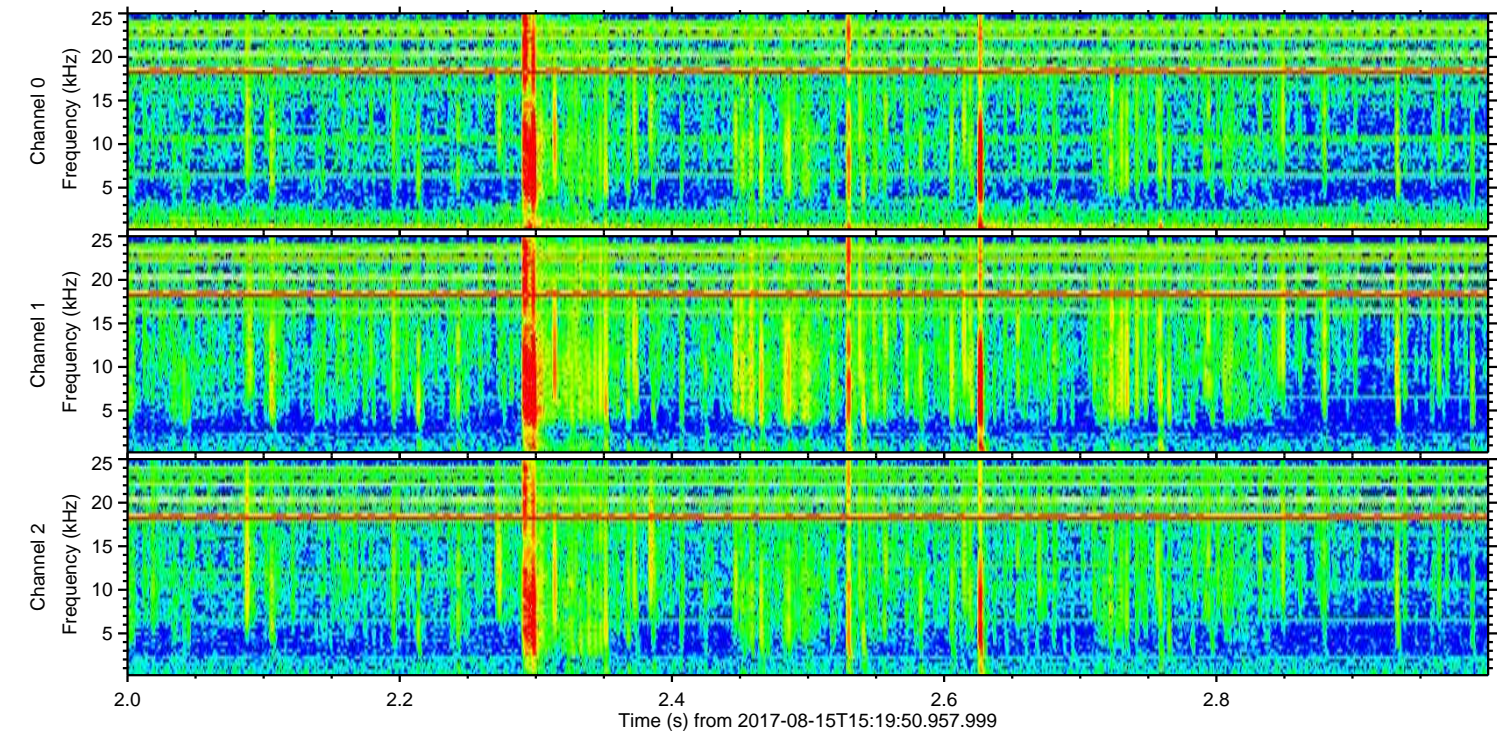
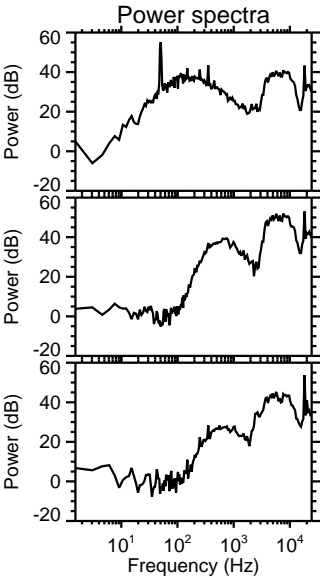
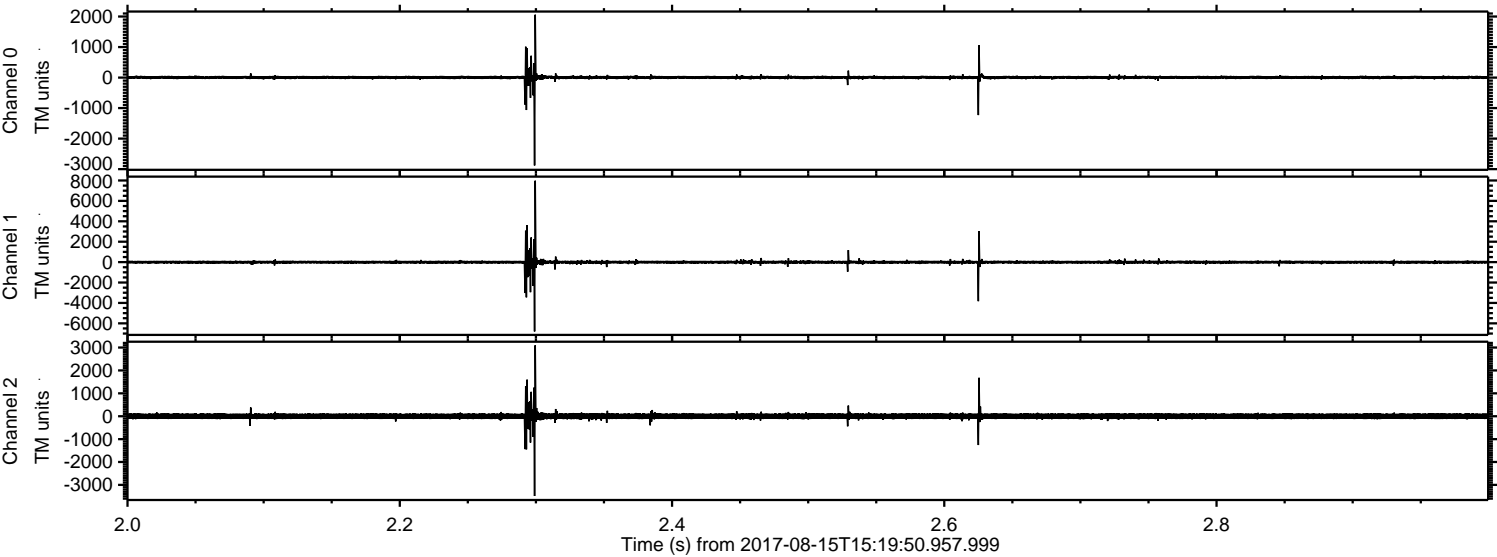
Channel 0
mn: -2974
mx: 3273
 μ : 4.7
 σ : 33.5

Channel 1
mn: -8812
mx: 10085
 μ : -2.9
 σ : 97.0

Channel 2
mn: -4538
mx: 4817
 μ : -1.2
 σ : 77.3

ELMAVAN 3D WAVEFORMS (Measured data sampled at 50 kHz) 51000 packets of 144 samples from 2017-08-15T15:19:50.957.999. Part 3/147

Processed Tue Aug 15 17:28:29 2017 by ELM ver.2012-10-06 from 001__elm20170815_151949__dat00.bin



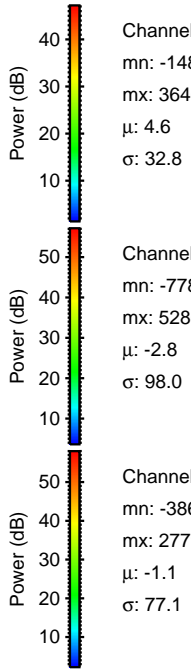
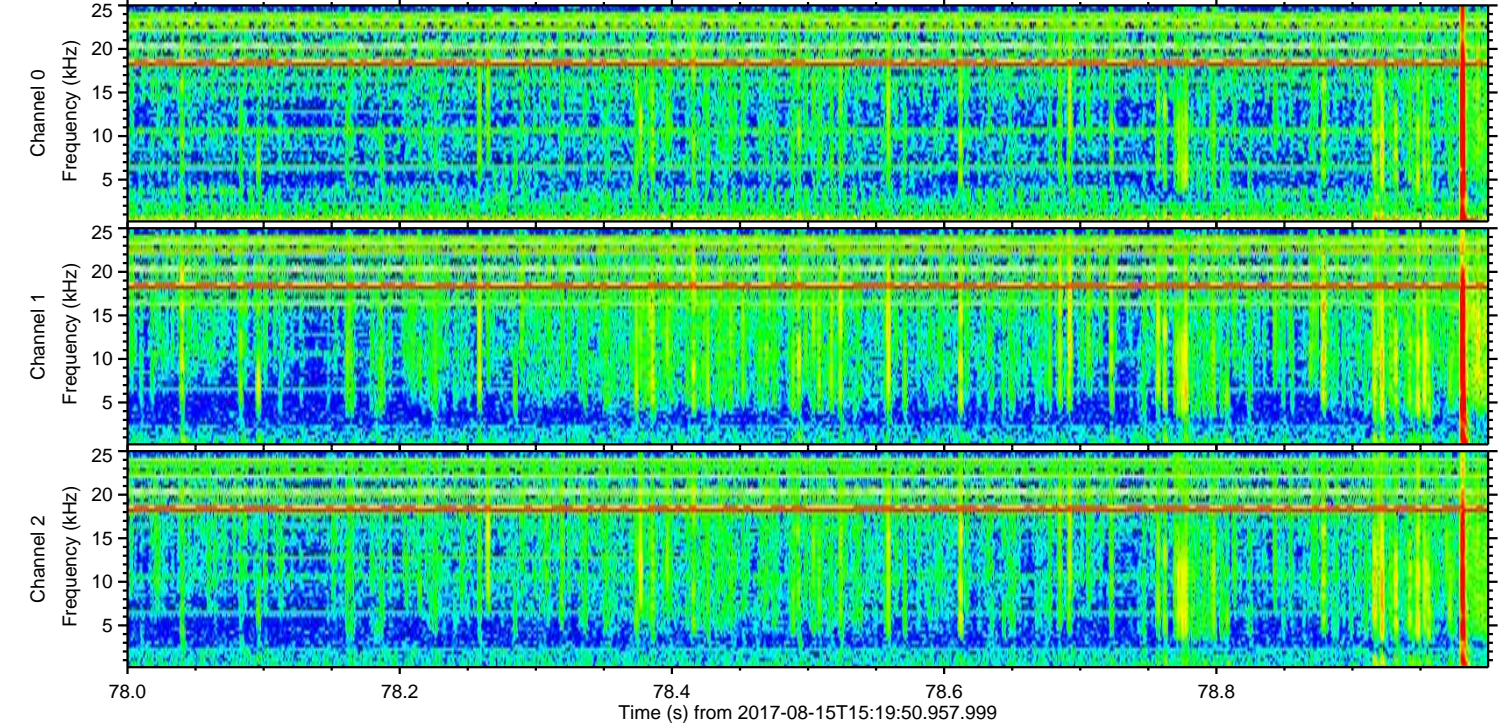
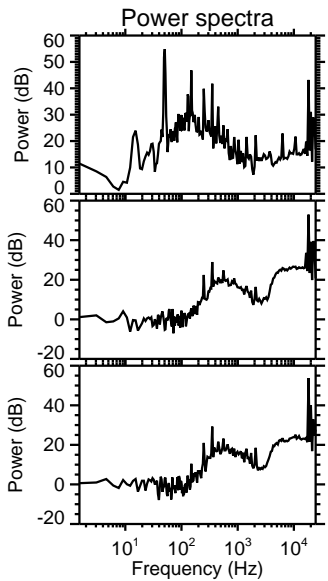
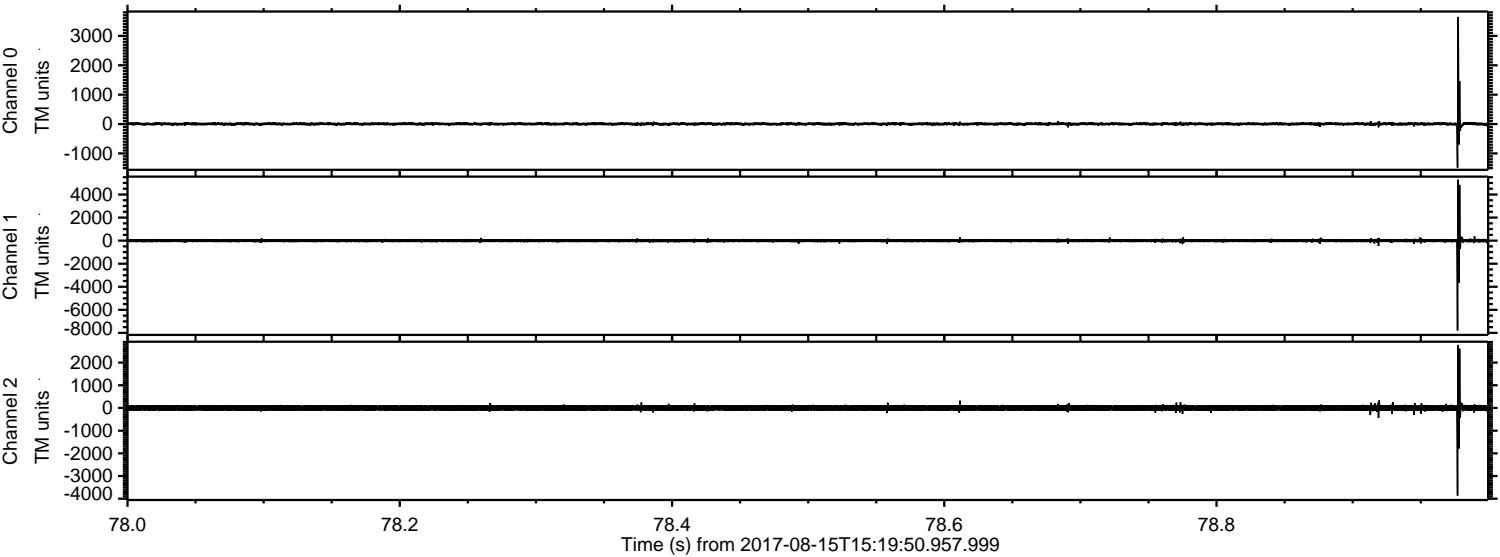
Channel 0
mn: -2879
mx: 2061
 μ : 4.7
 σ : 38.1

Channel 1
mn: -6794
mx: 7980
 μ : -2.9
 σ : 121.5

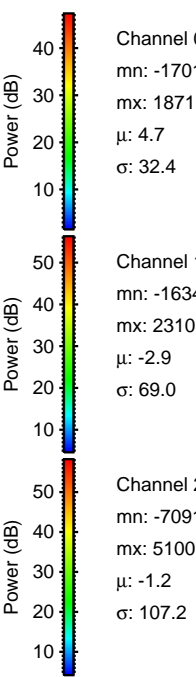
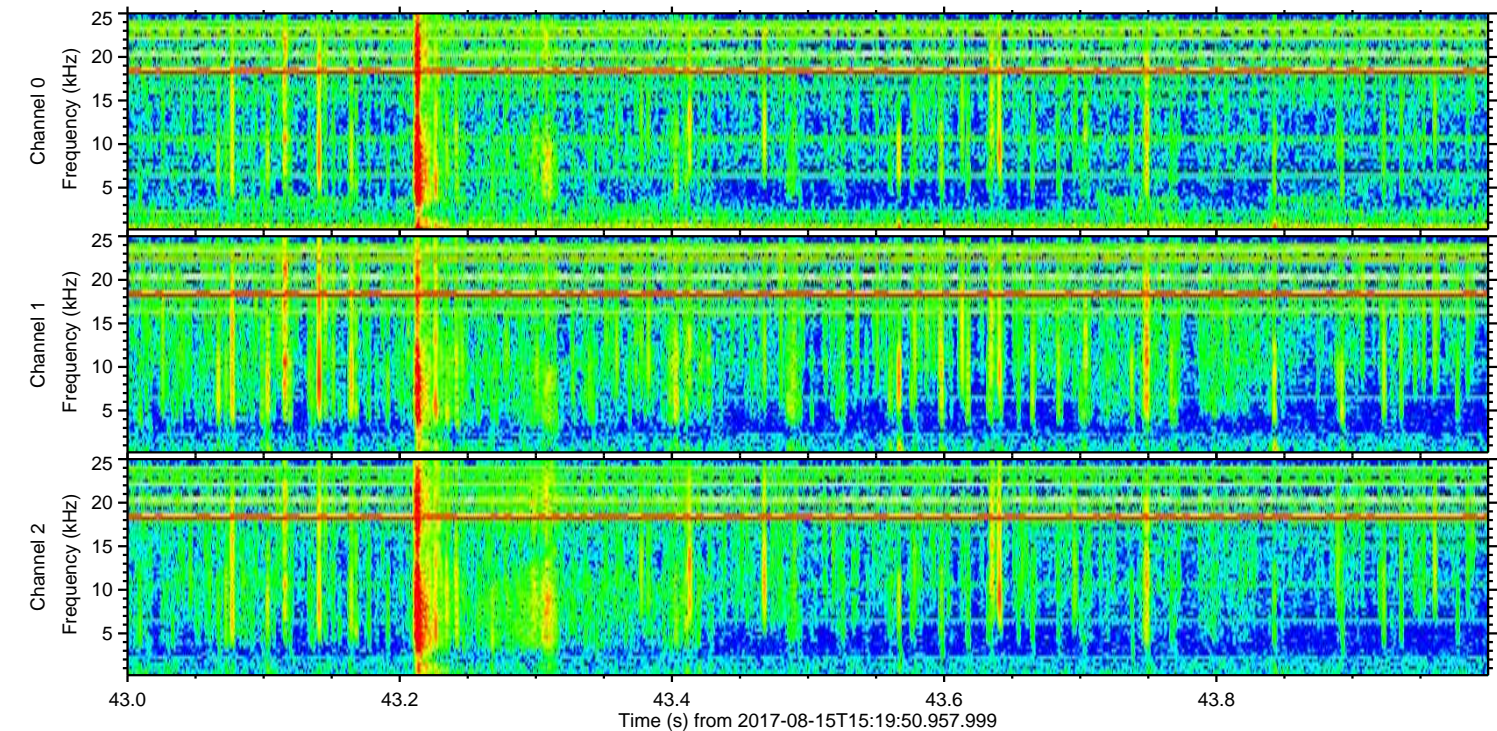
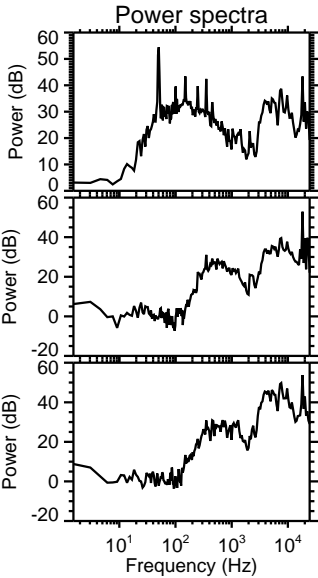
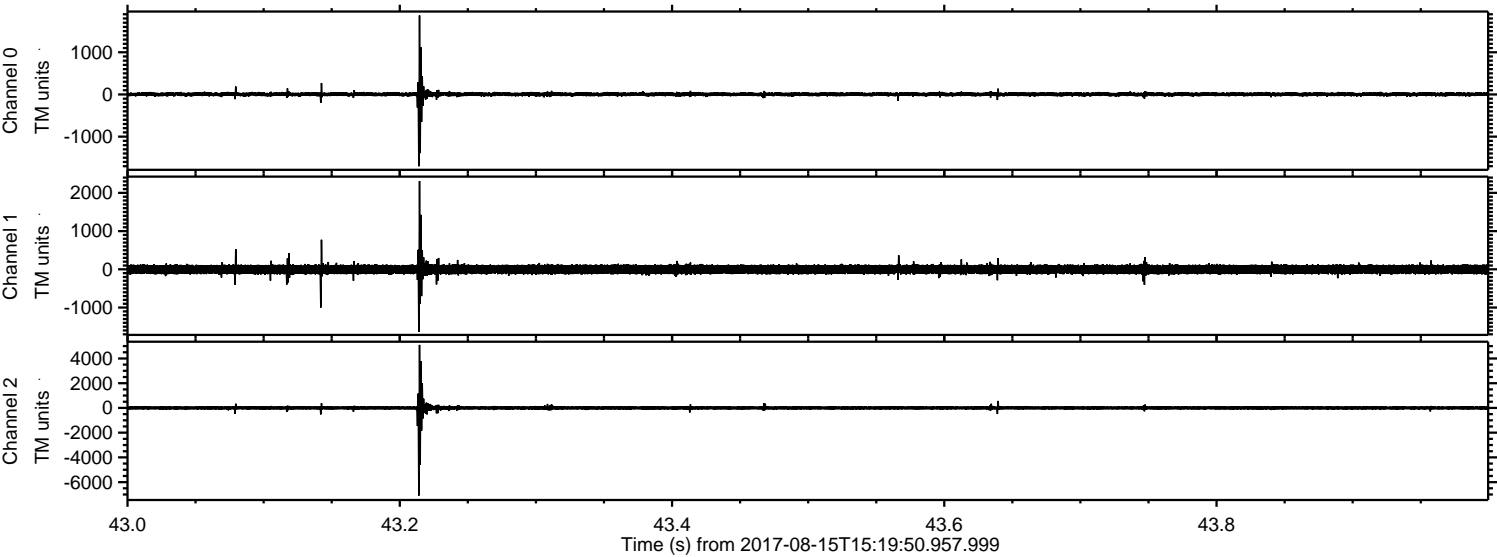
Channel 2
mn: -3485
mx: 3099
 μ : -1.2
 σ : 81.8

ELMAVAN 3D WAVEFORMS (Measured data sampled at 50 kHz) 51000 packets of 144 samples from 2017-08-15T15:19:50.957.999. Part 79/147

Processed Tue Aug 15 17:28:29 2017 by ELM ver.2012-10-06 from 001__elm20170815_151949__dat00.bin



Processed Tue Aug 15 17:28:30 2017 by ELM ver.2012-10-06 from 001__elm20170815_151949__dat00.bin



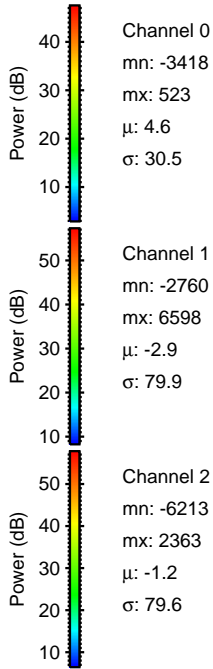
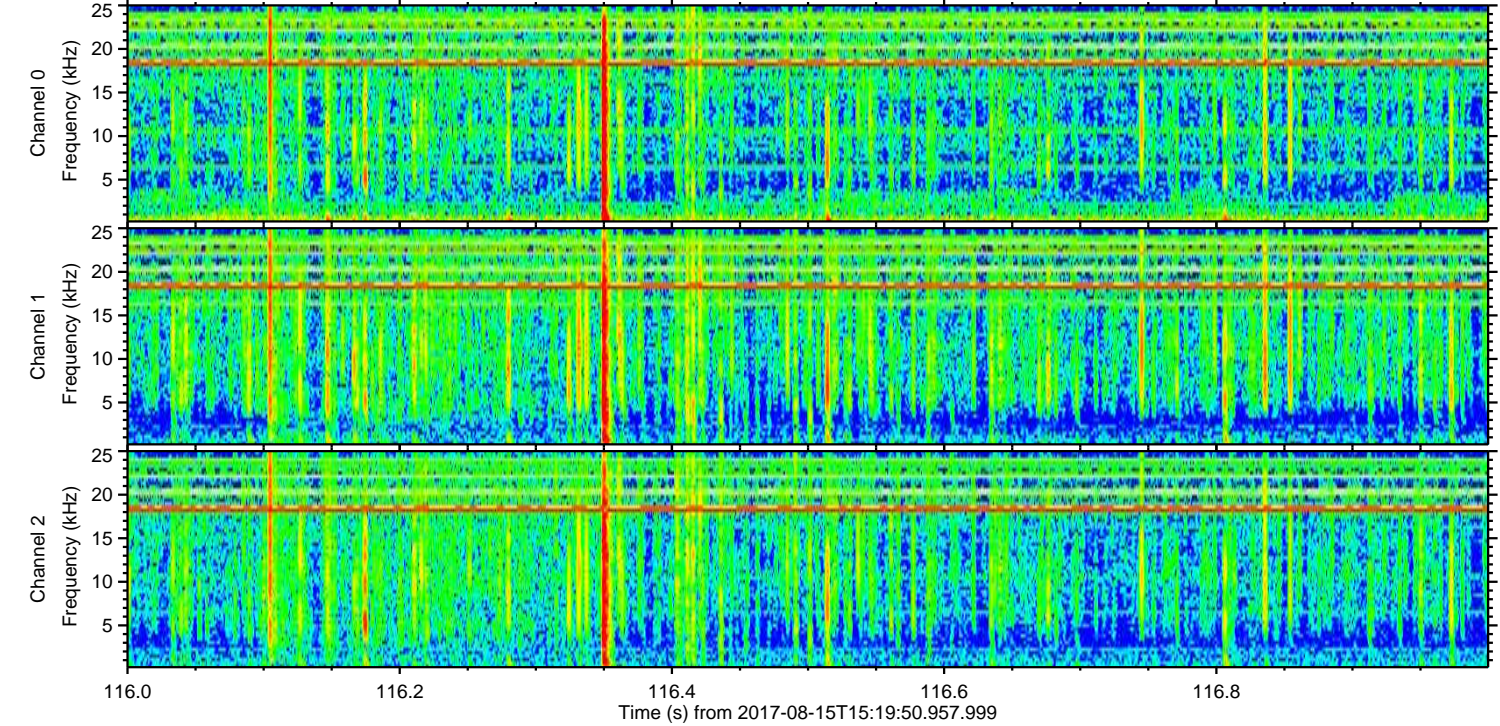
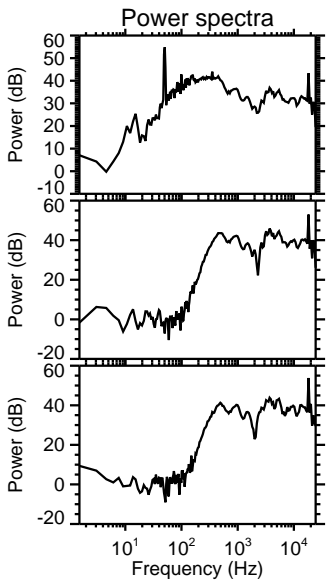
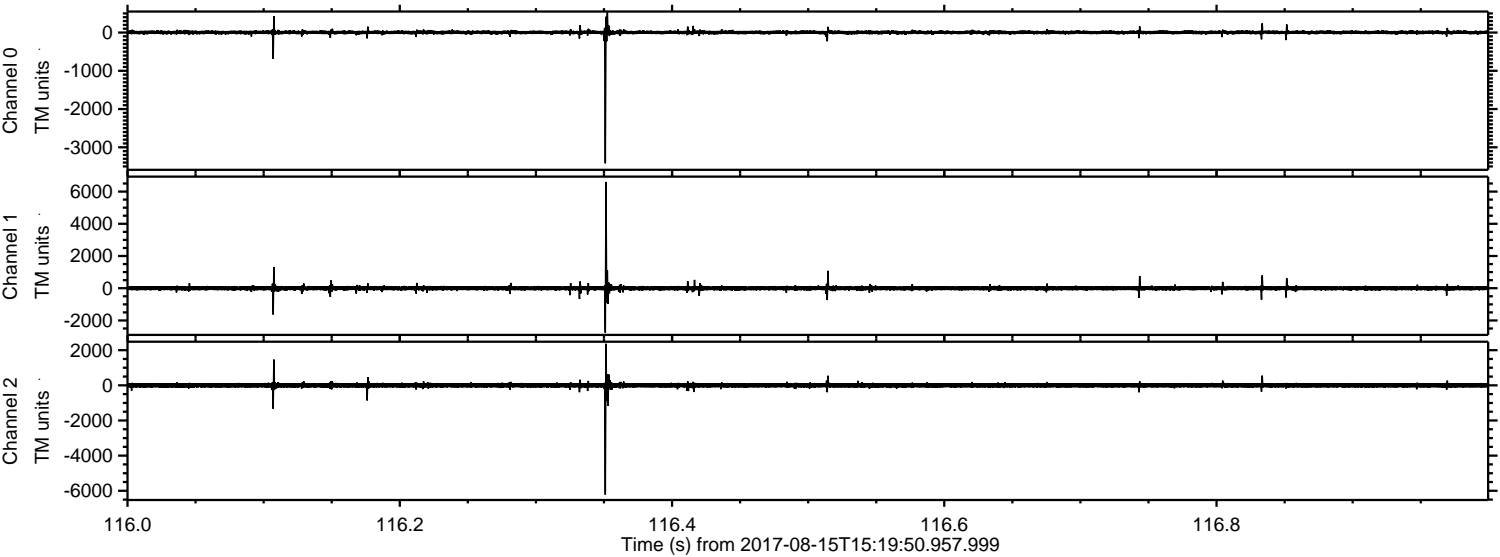
Channel 0
mn: -1701
mx: 1871
 μ : 4.7
 σ : 32.4

Channel 1
mn: -1634
mx: 2310
 μ : -2.9
 σ : 69.0

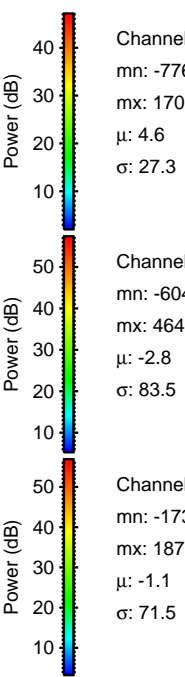
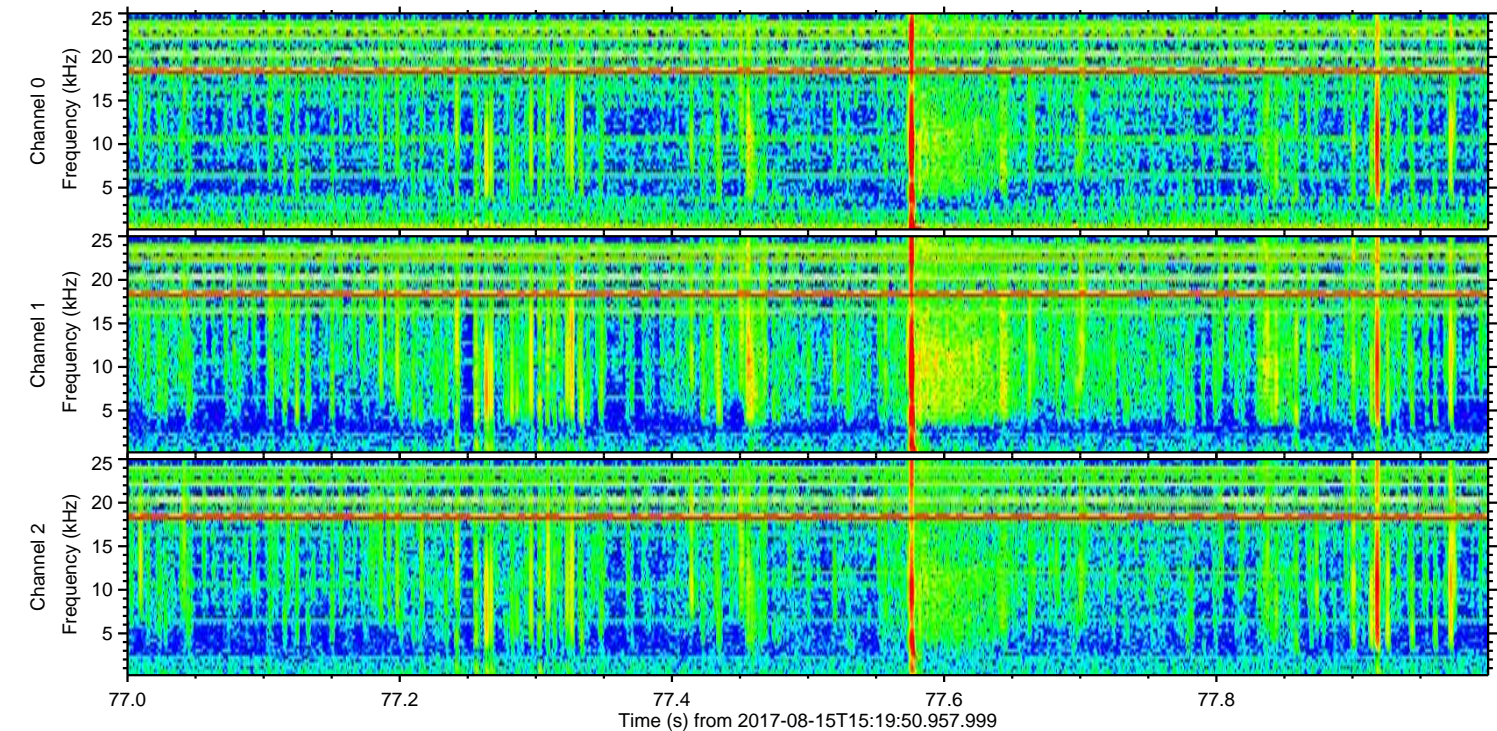
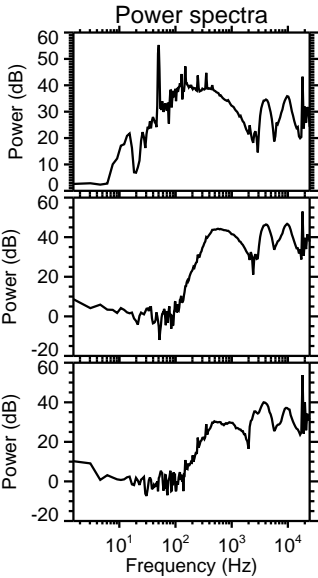
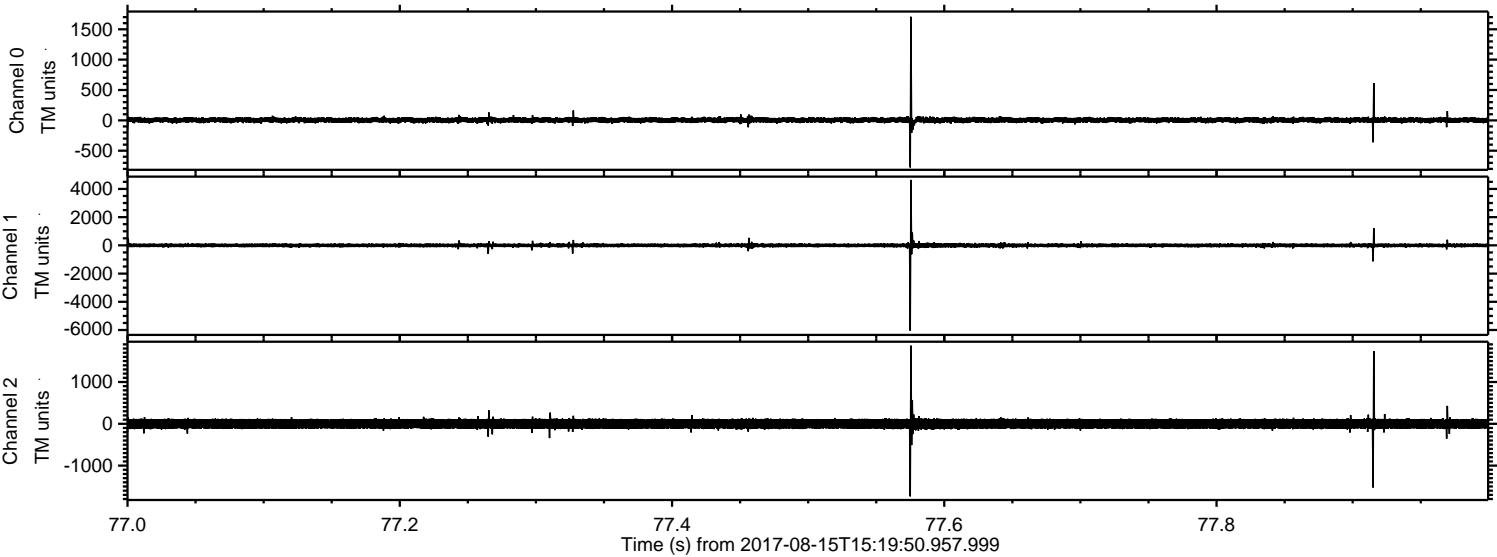
Channel 2
mn: -7091
mx: 5100
 μ : -1.2
 σ : 107.2

ELMAVAN 3D WAVEFORMS (Measured data sampled at 50 kHz) 51000 packets of 144 samples from 2017-08-15T15:19:50.957.999. Part 117/147

Processed Tue Aug 15 17:28:31 2017 by ELM ver.2012-10-06 from 001__elm20170815_151949__dat00.bin

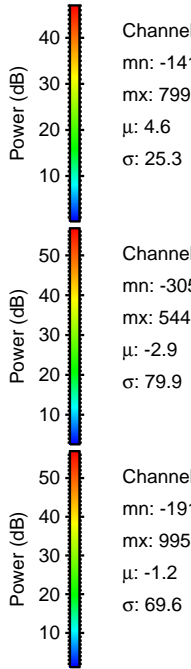
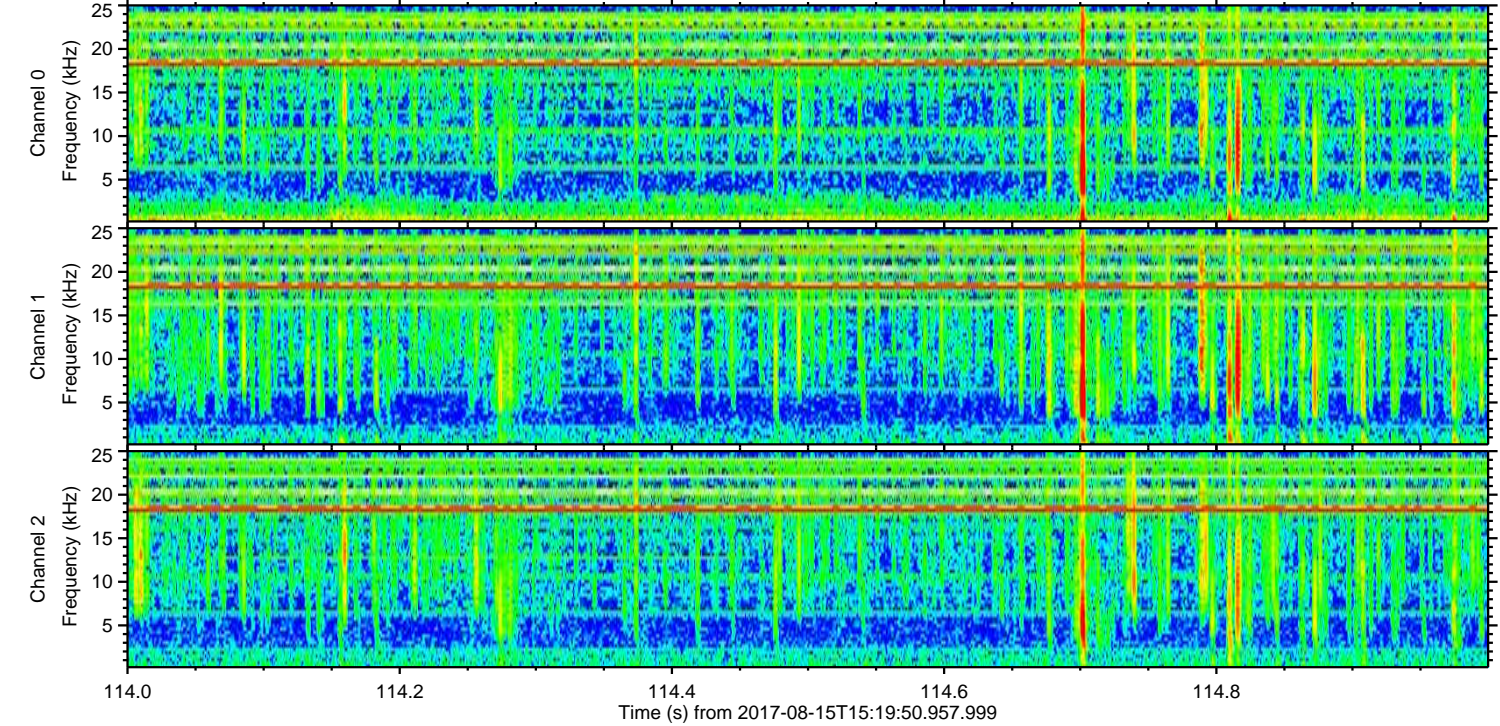
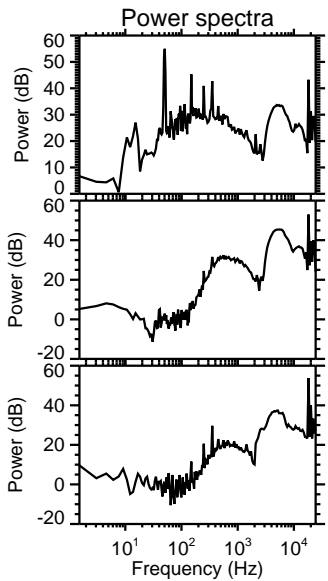
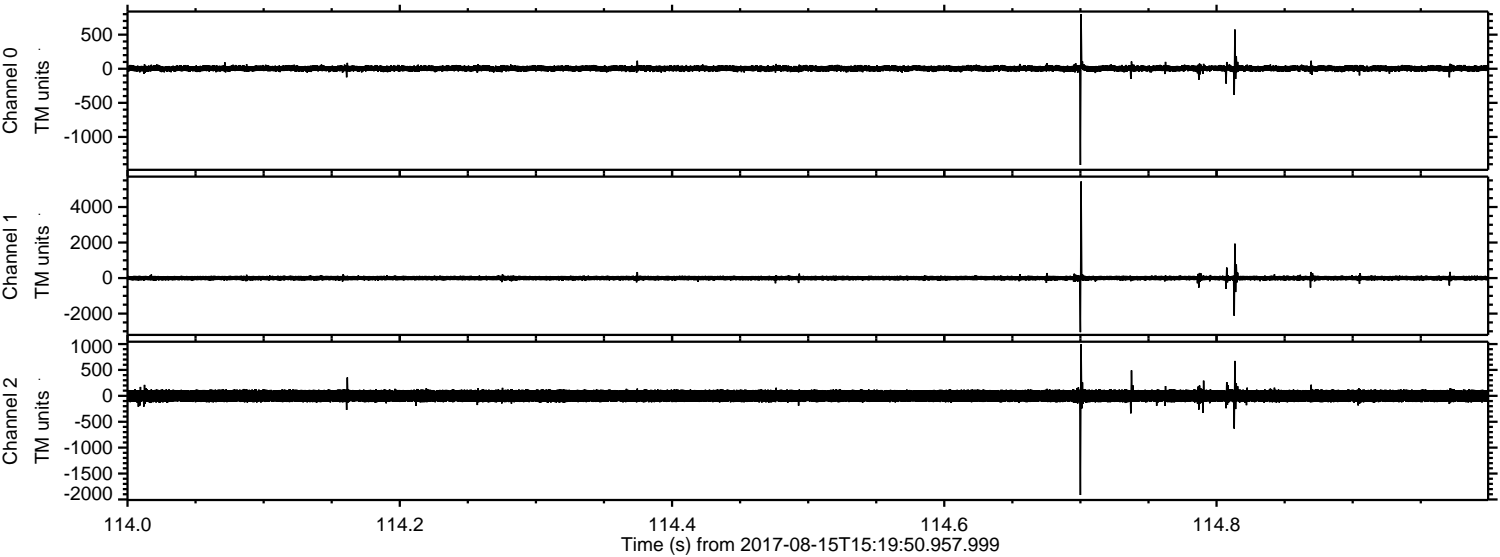


Processed Tue Aug 15 17:28:32 2017 by ELM ver.2012-10-06 from 001__elm20170815_151949__dat00.bin



ELMAVAN 3D WAVEFORMS (Measured data sampled at 50 kHz) 51000 packets of 144 samples from 2017-08-15T15:19:50.957.999. Part 115/147

Processed Tue Aug 15 17:28:32 2017 by ELM ver.2012-10-06 from 001__elm20170815_151949__dat00.bin



Channel 0
mn: -1411
mx: 799
 μ : 4.6
 σ : 25.3

Channel 1
mn: -3050
mx: 5440
 μ : -2.9
 σ : 79.9

Channel 2
mn: -1915
mx: 995
 μ : -1.2
 σ : 69.6

Processed Tue Aug 15 17:28:33 2017 by ELM ver.2012-10-06 from 001__elm20170815_151949__dat00.bin

