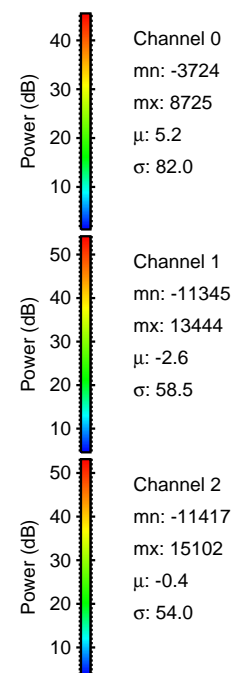
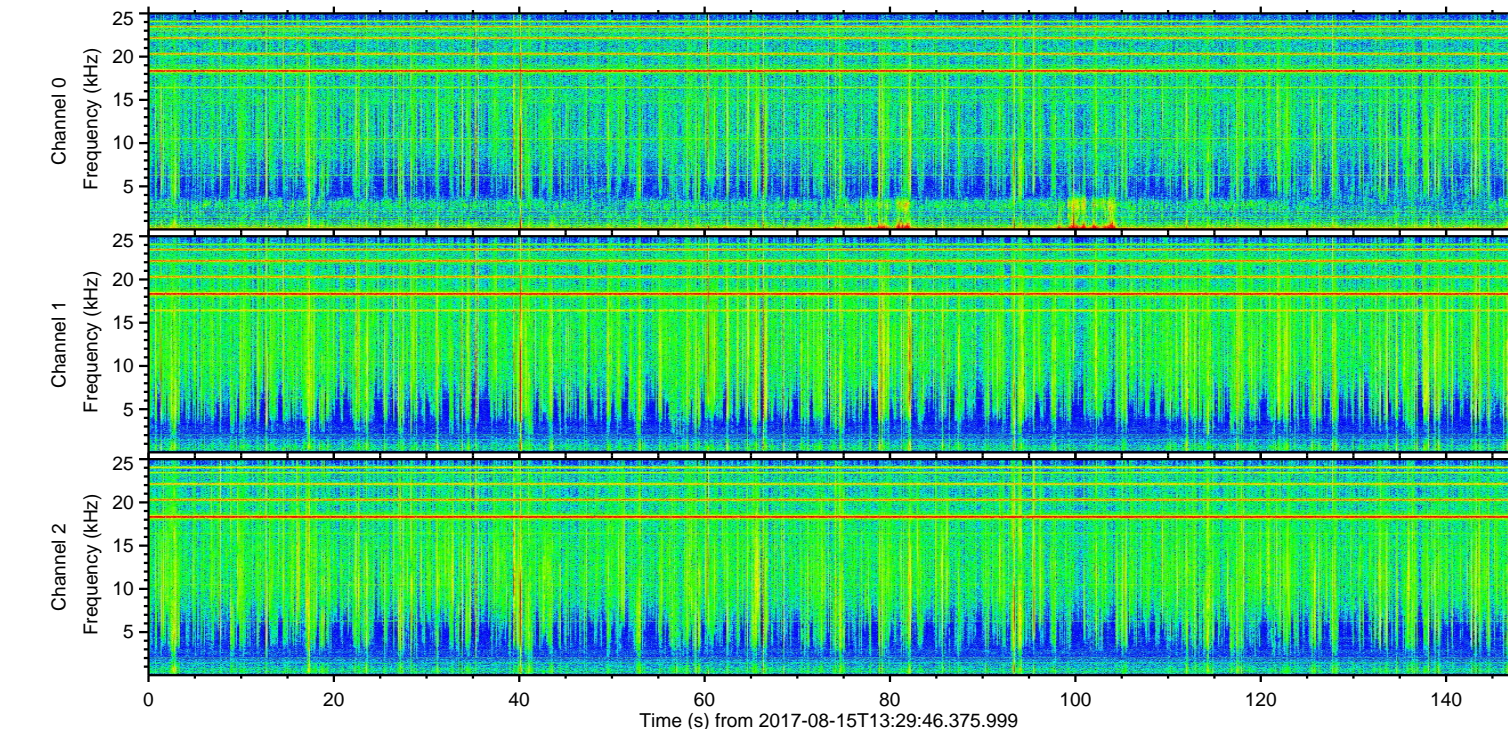
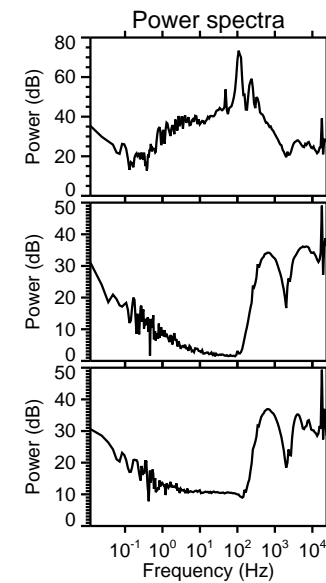
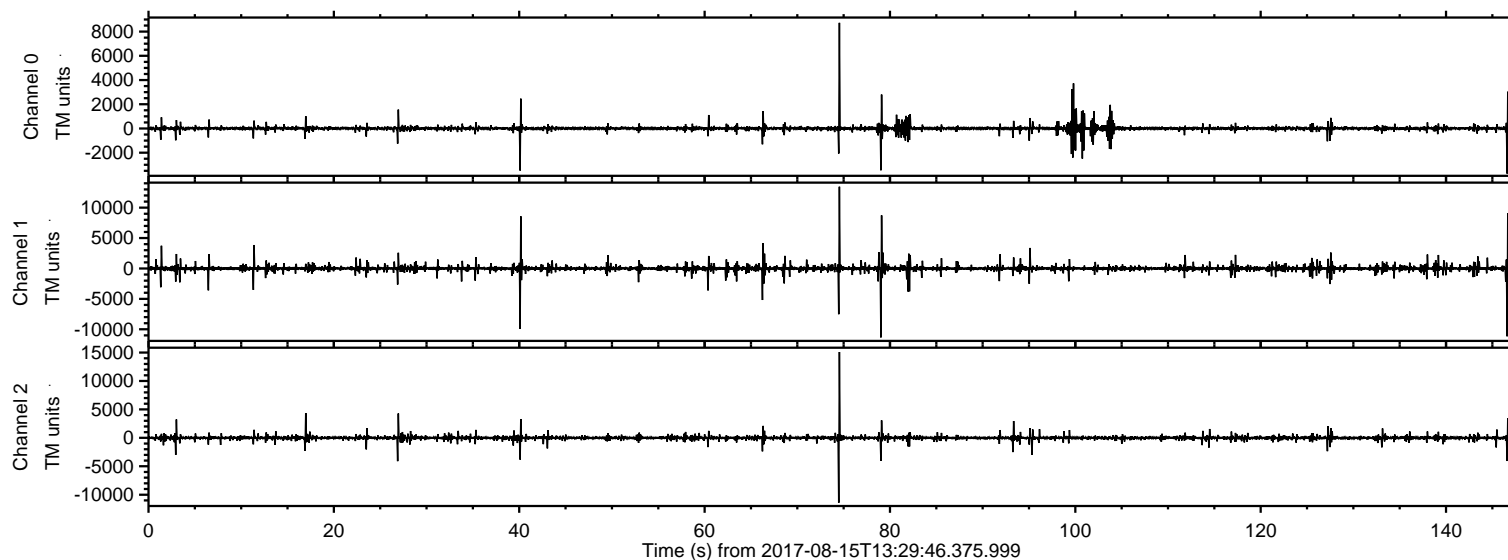
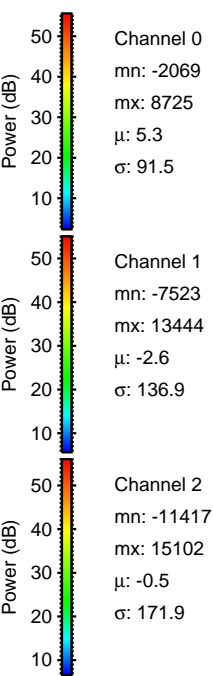
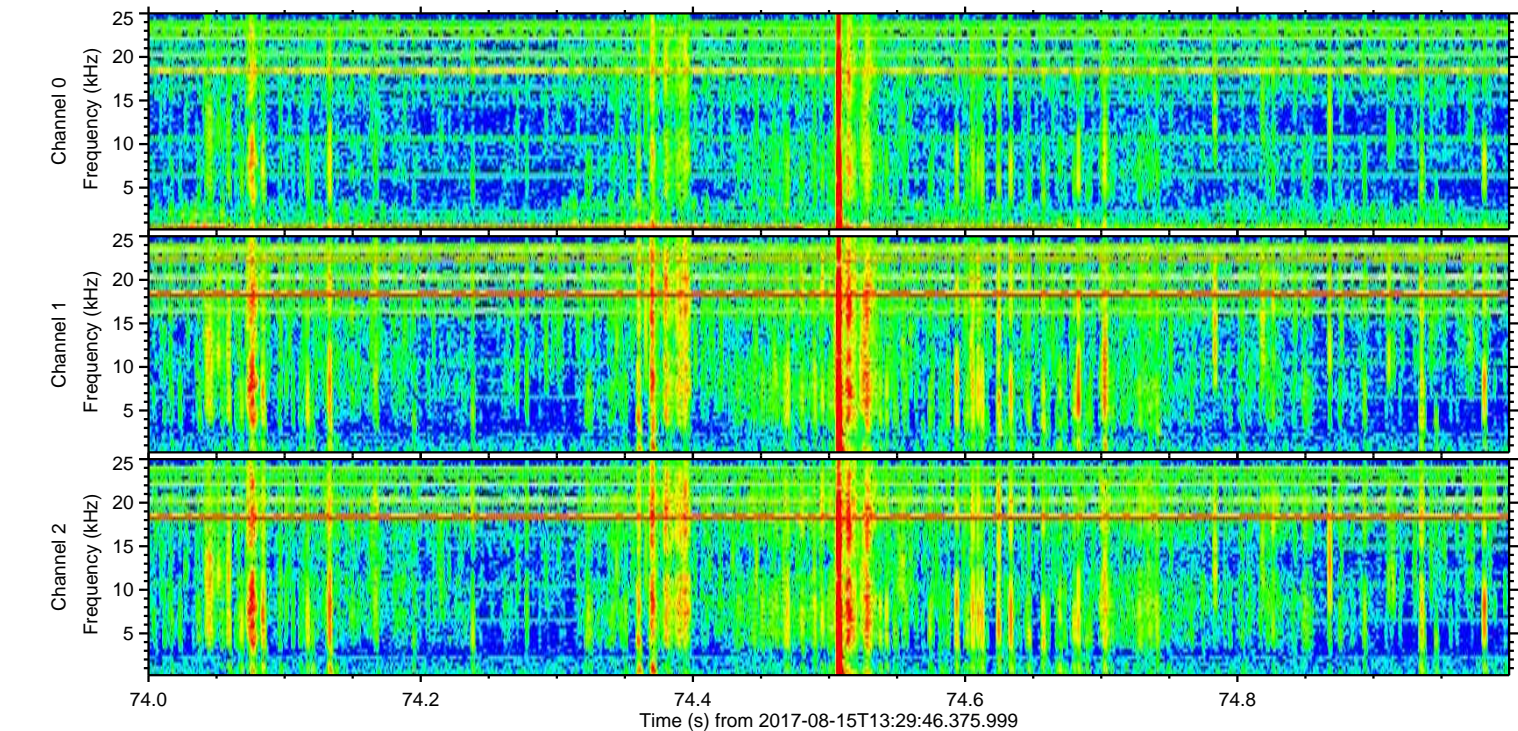
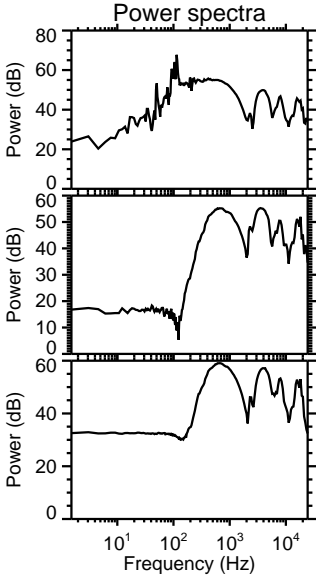
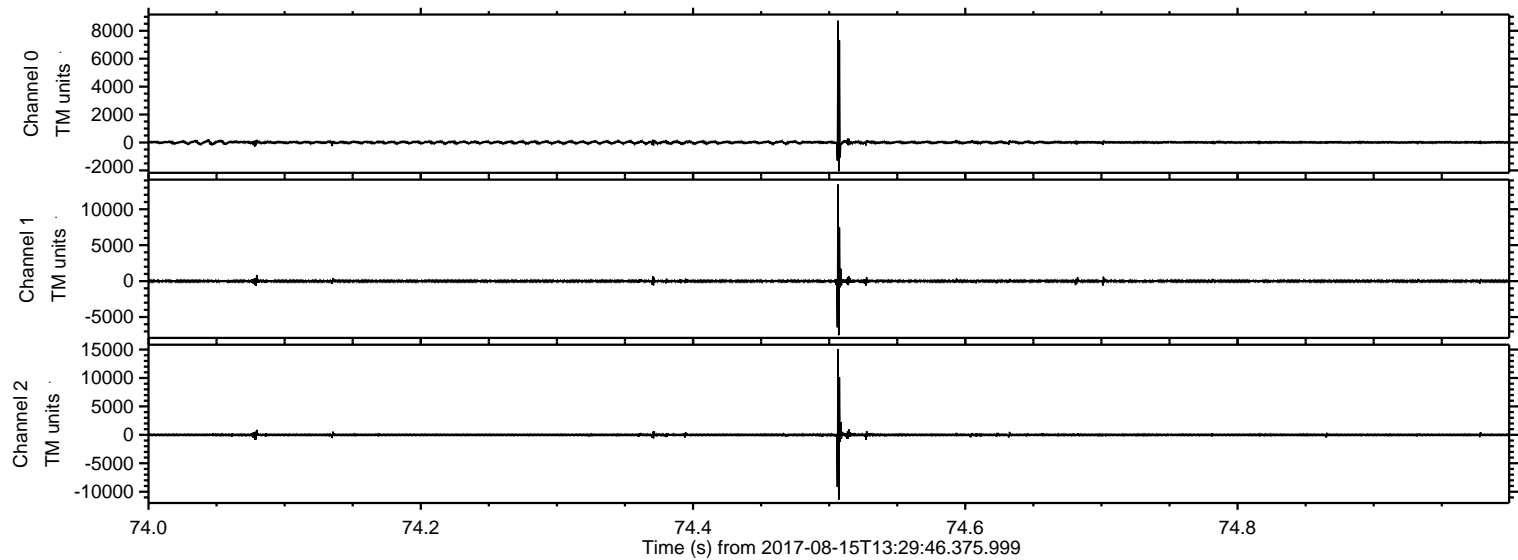


ELMAVAN 3D WAVEFORMS (Measured data sampled at 50 kHz) 51000 packets of 144 samples from 2017-08-15T13:29:46.375.999.

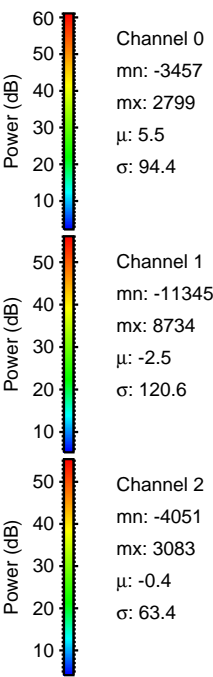
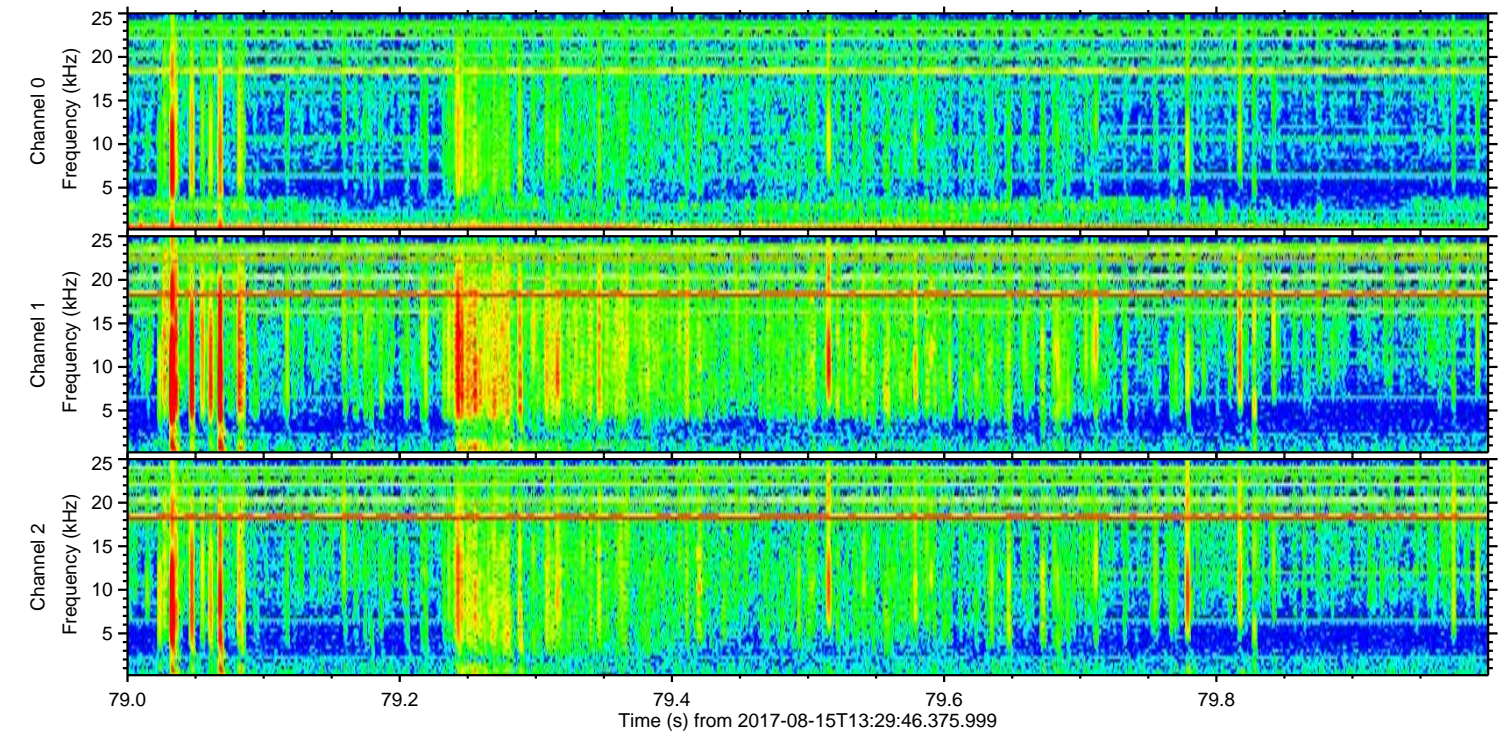
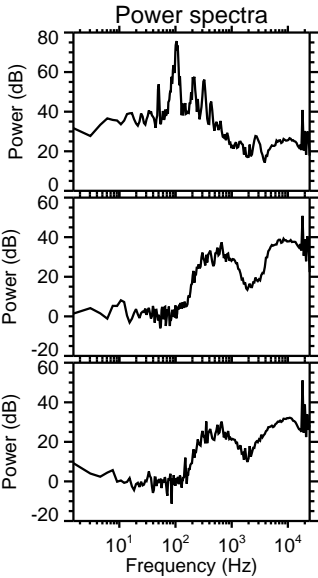
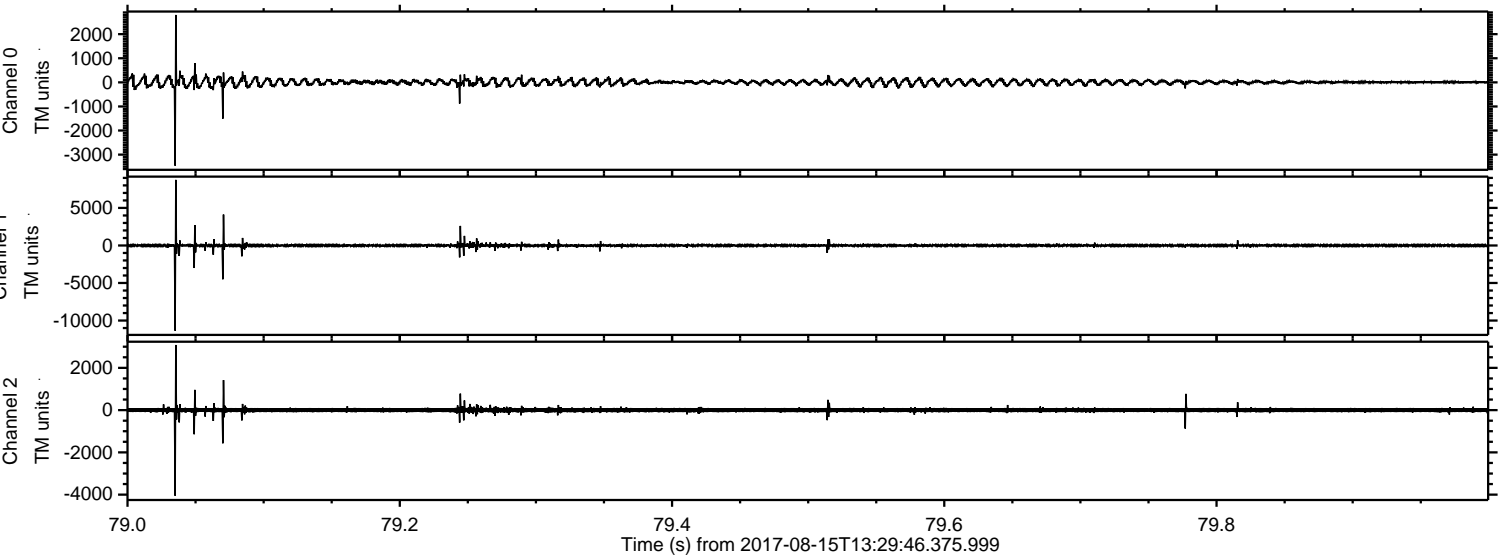
Processed Tue Aug 15 15:38:03 2017 by ELM ver.2012-10-06 from 001__elm20170815_132945__dat00.bin



Processed Tue Aug 15 15:38:10 2017 by ELM ver.2012-10-06 from 001__elm20170815_132945__dat00.bin

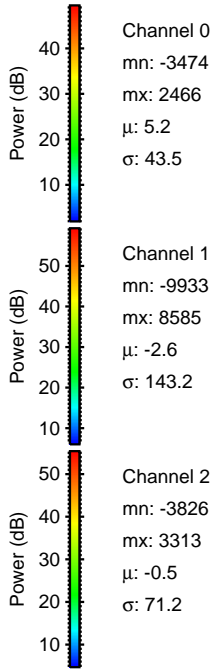
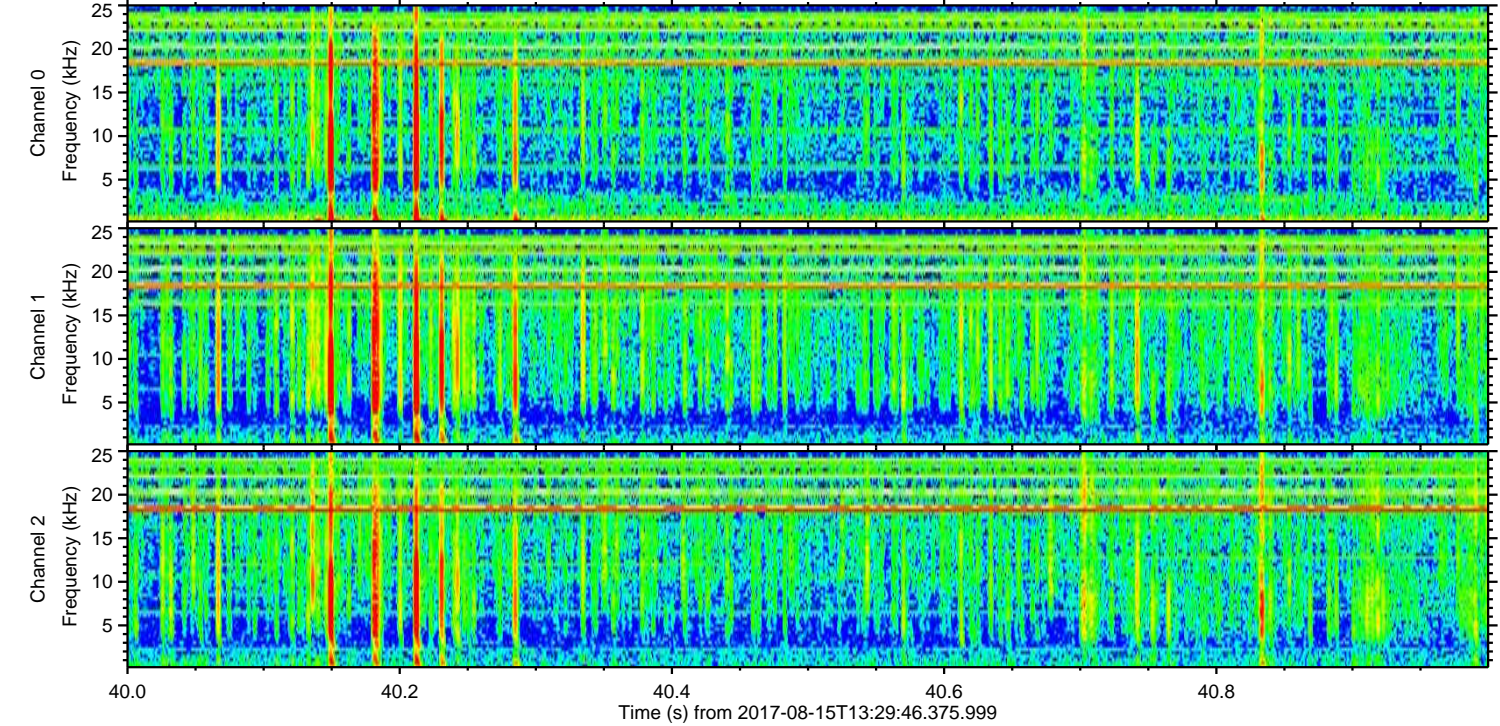
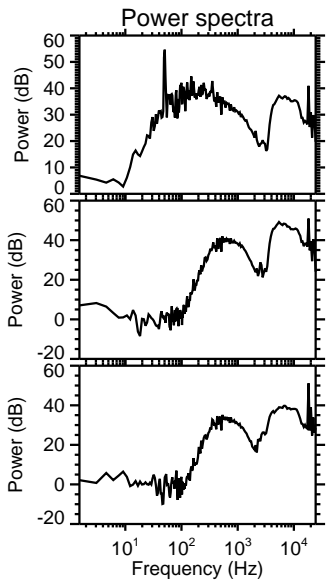
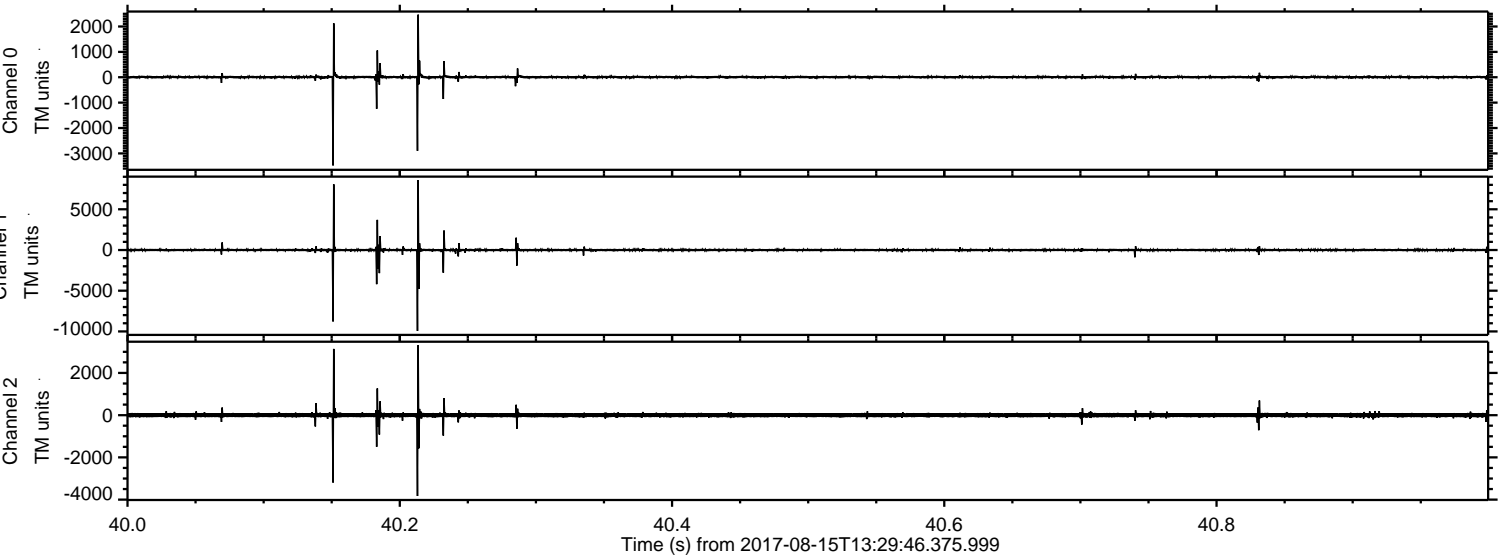


Processed Tue Aug 15 15:38:10 2017 by ELM ver.2012-10-06 from 001__elm20170815_132945__dat00.bin



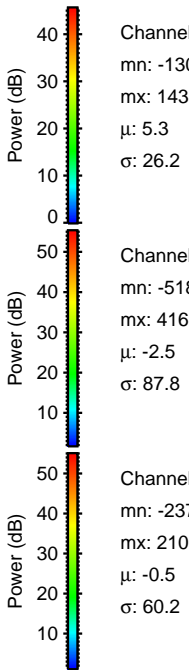
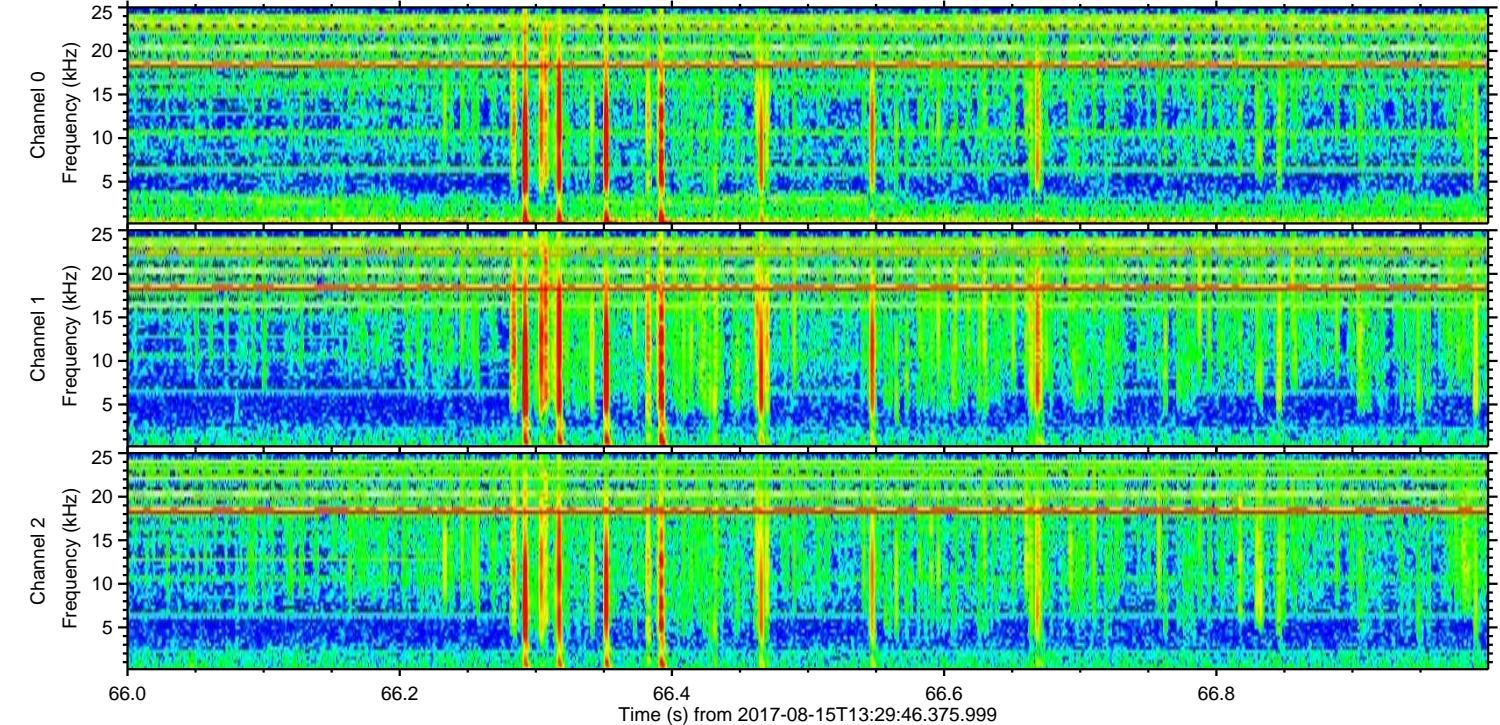
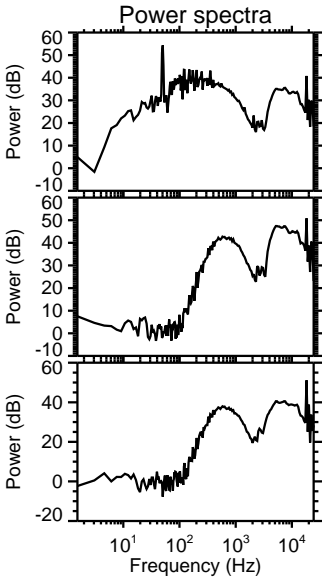
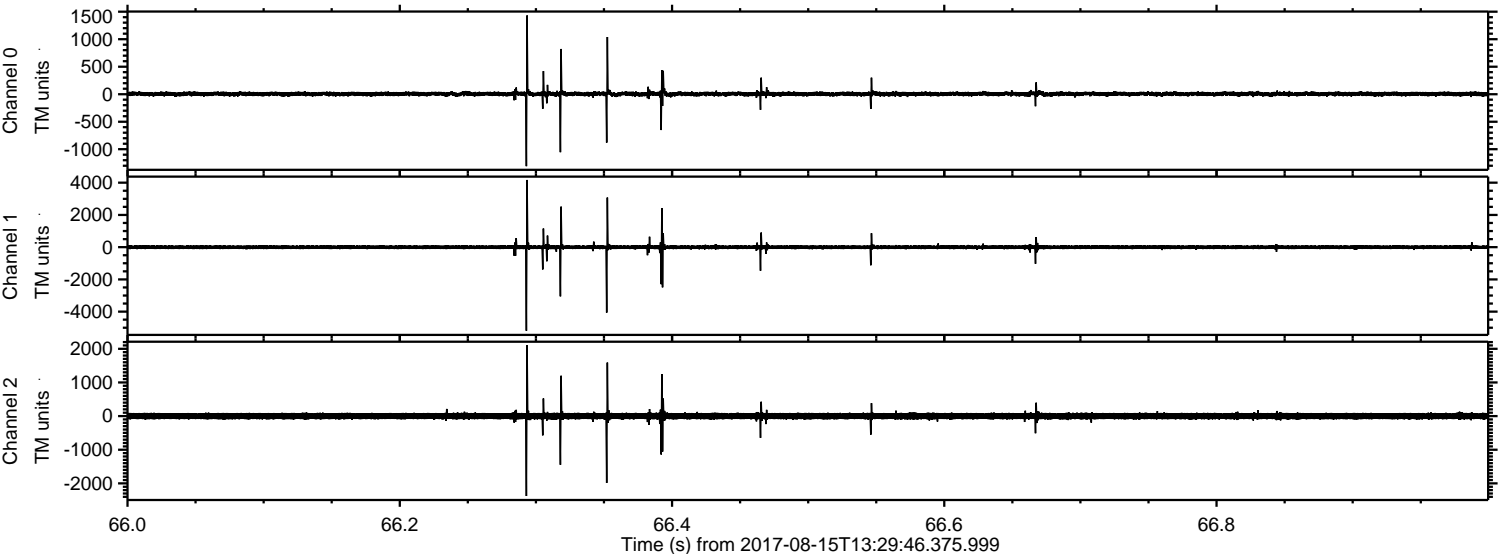
ELMAVAN 3D WAVEFORMS (Measured data sampled at 50 kHz) 51000 packets of 144 samples from 2017-08-15T13:29:46.375.999. Part 41/147

Processed Tue Aug 15 15:38:11 2017 by ELM ver.2012-10-06 from 001__elm20170815_132945__dat00.bin



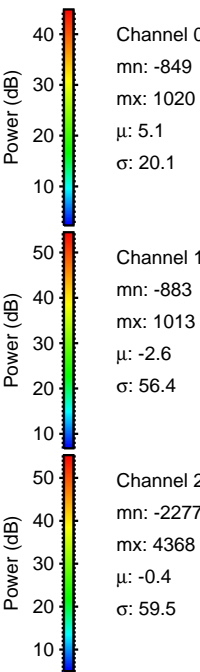
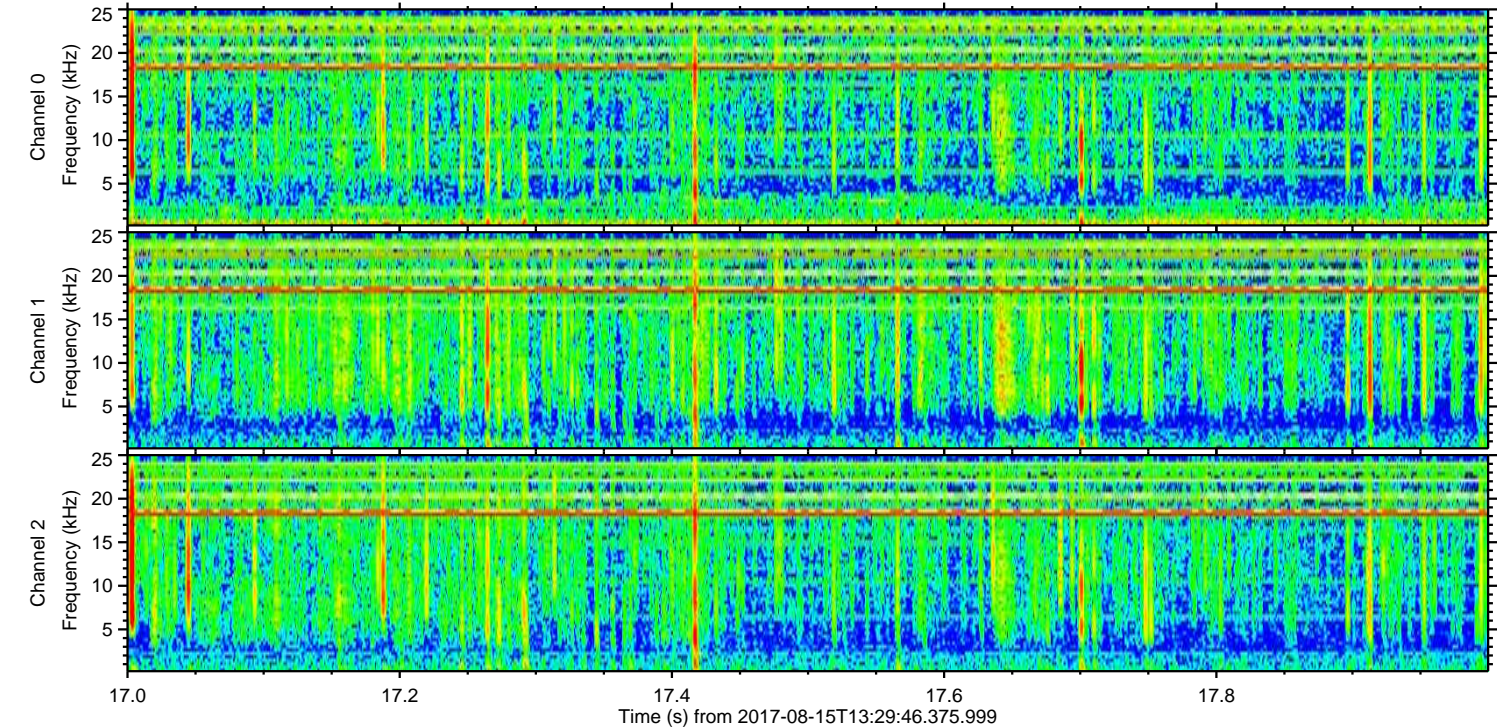
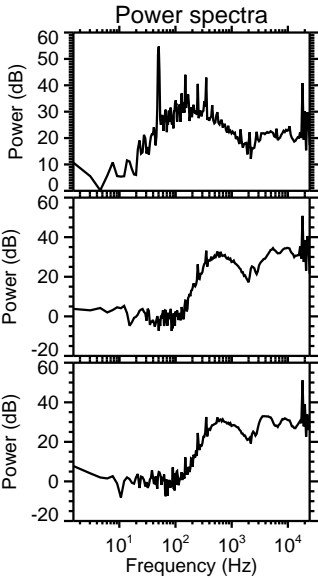
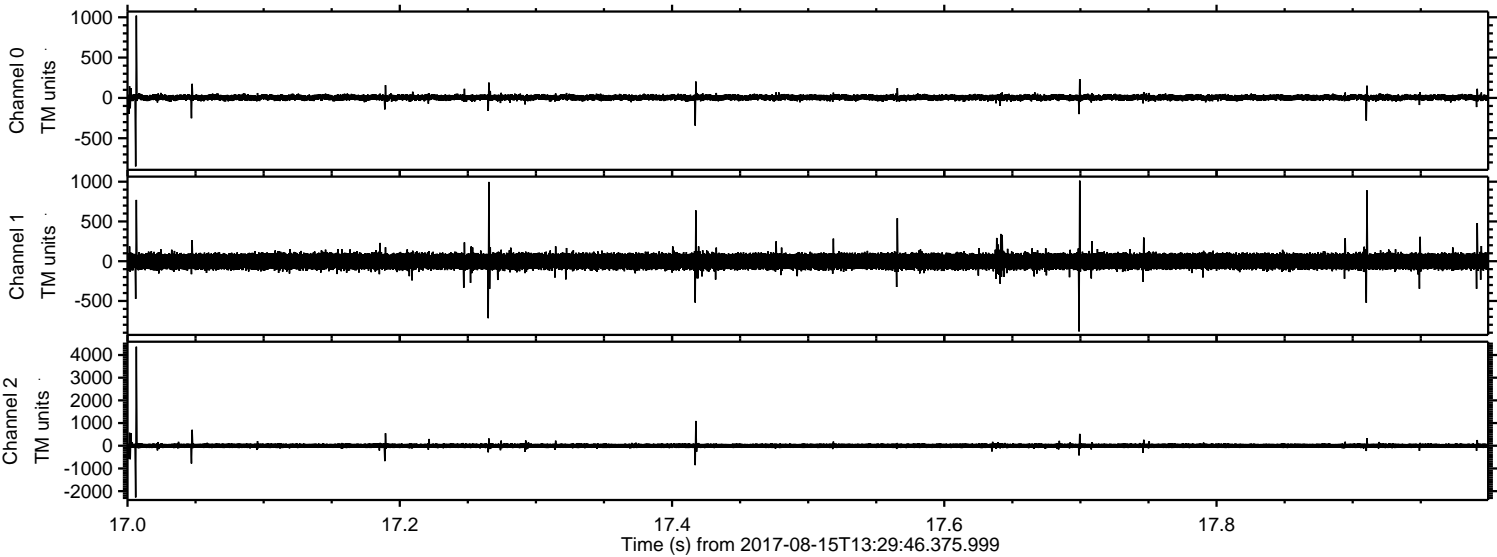
ELMAVAN 3D WAVEFORMS (Measured data sampled at 50 kHz) 51000 packets of 144 samples from 2017-08-15T13:29:46.375.999. Part 67/147

Processed Tue Aug 15 15:38:12 2017 by ELM ver.2012-10-06 from 001__elm20170815_132945__dat00.bin



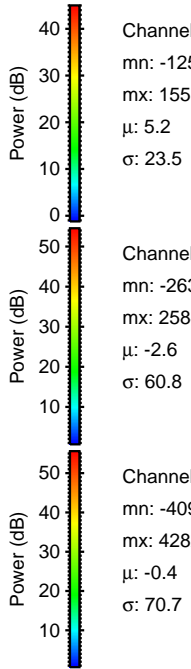
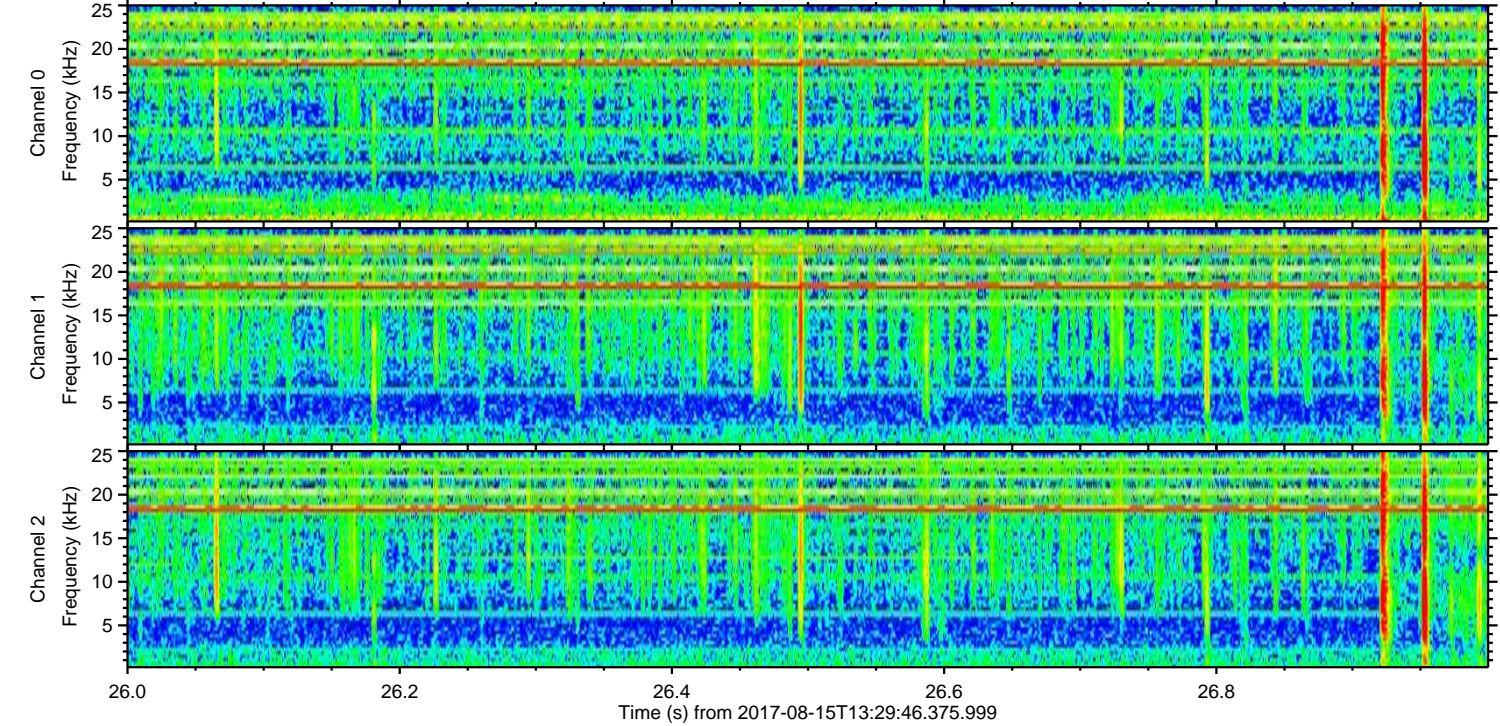
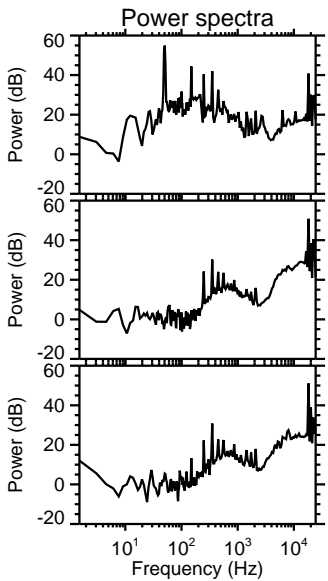
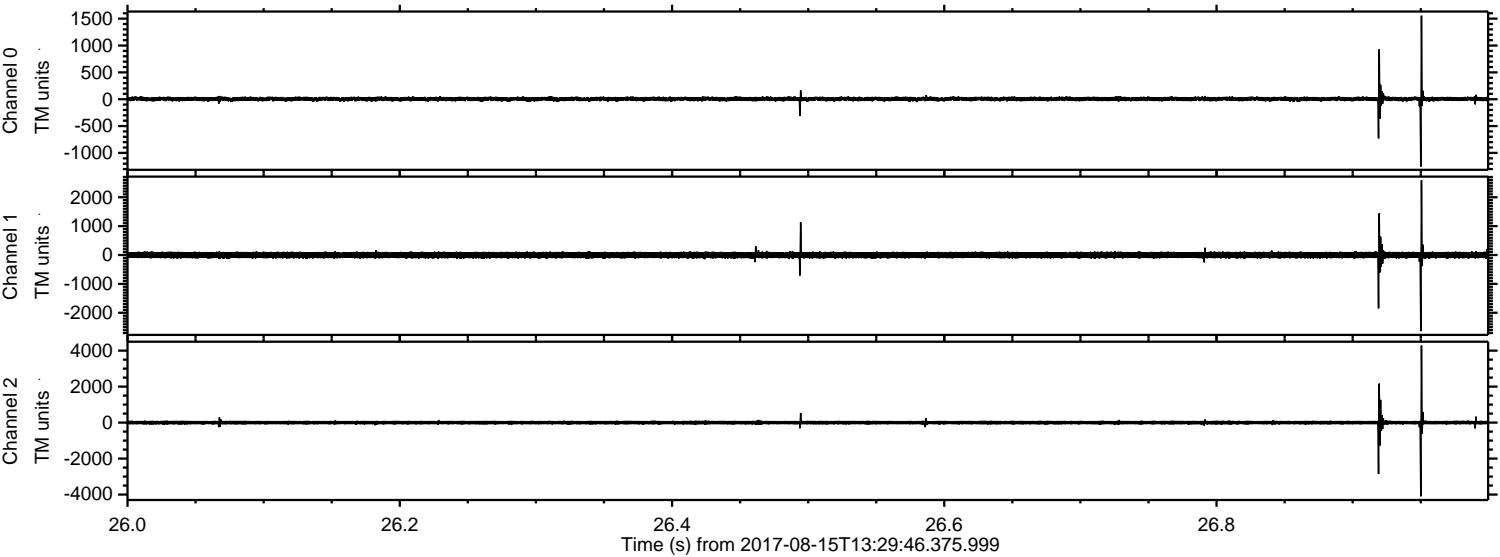
ELMAVAN 3D WAVEFORMS (Measured data sampled at 50 kHz) 51000 packets of 144 samples from 2017-08-15T13:29:46.375.999. Part 18/147

Processed Tue Aug 15 15:38:12 2017 by ELM ver.2012-10-06 from 001__elm20170815_132945__dat00.bin



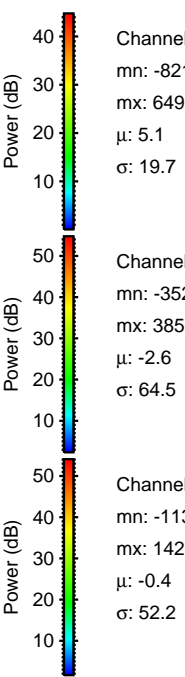
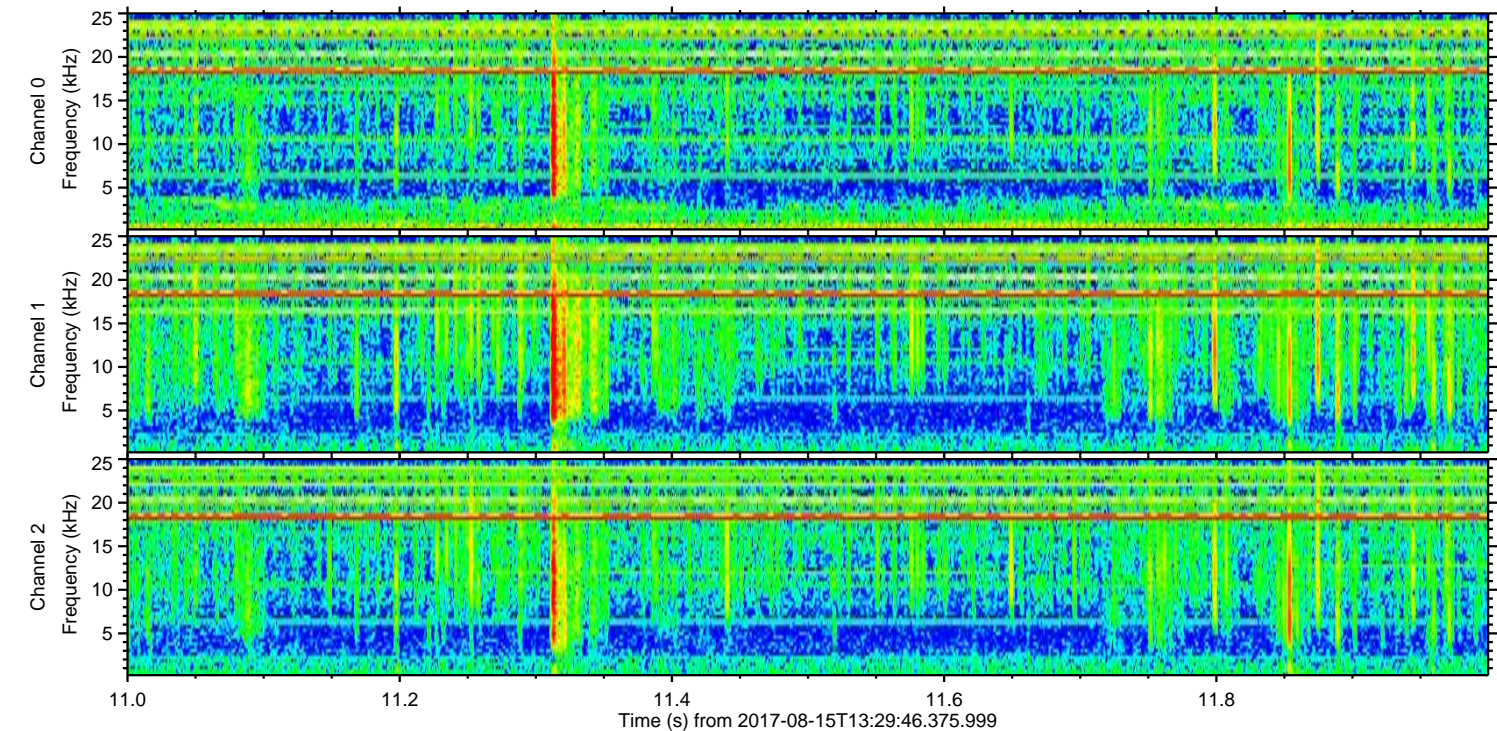
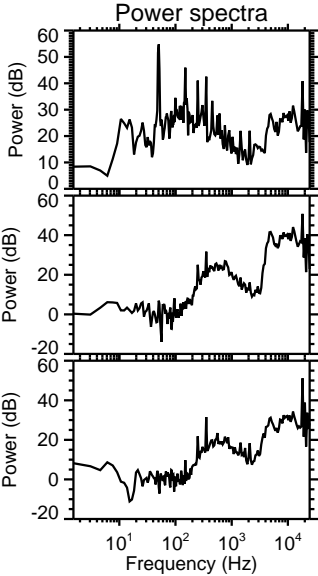
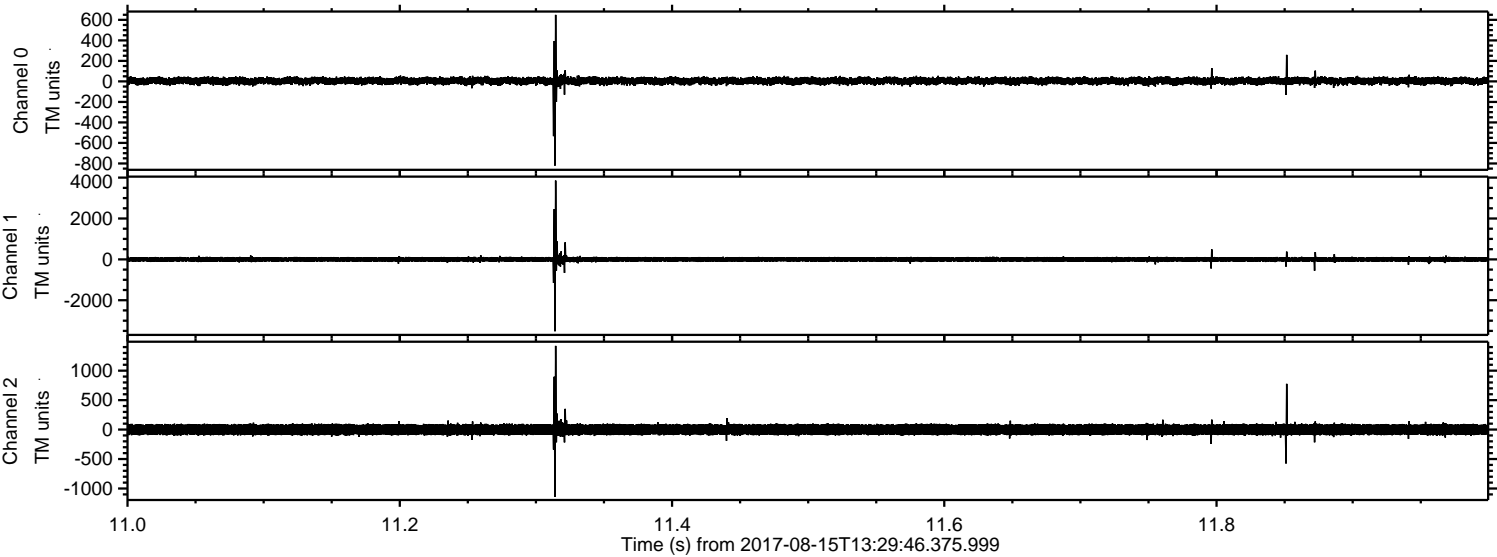
ELMAVAN 3D WAVEFORMS (Measured data sampled at 50 kHz) 51000 packets of 144 samples from 2017-08-15T13:29:46.375.999. Part 27/147

Processed Tue Aug 15 15:38:13 2017 by ELM ver.2012-10-06 from 001__elm20170815_132945__dat00.bin



ELMAVAN 3D WAVEFORMS (Measured data sampled at 50 kHz) 51000 packets of 144 samples from 2017-08-15T13:29:46.375.999. Part 12/147

Processed Tue Aug 15 15:38:14 2017 by ELM ver.2012-10-06 from 001__elm20170815_132945__dat00.bin

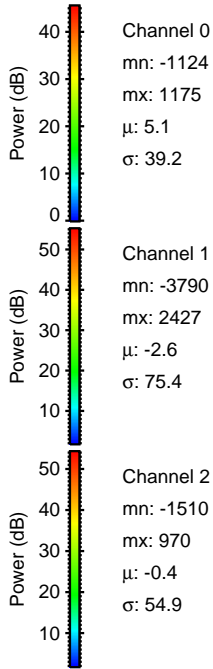
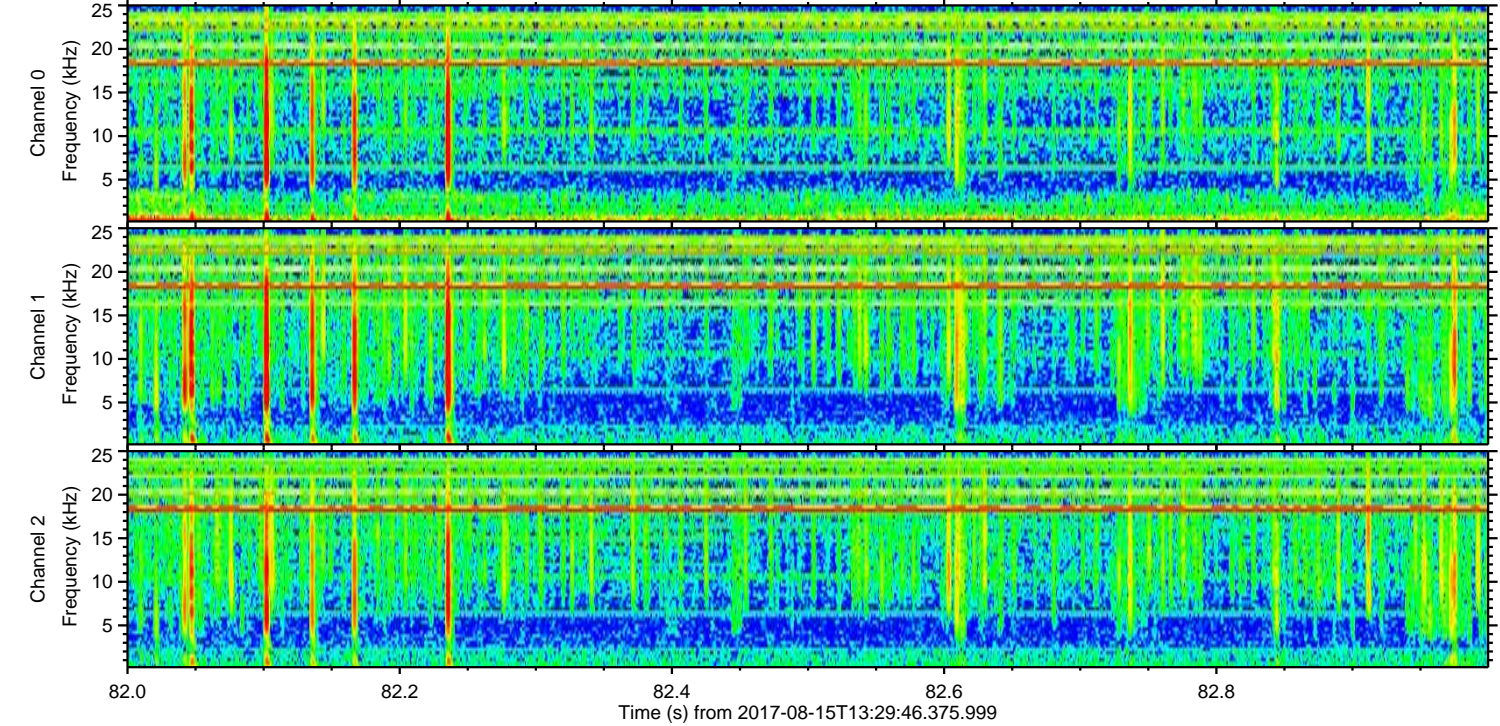
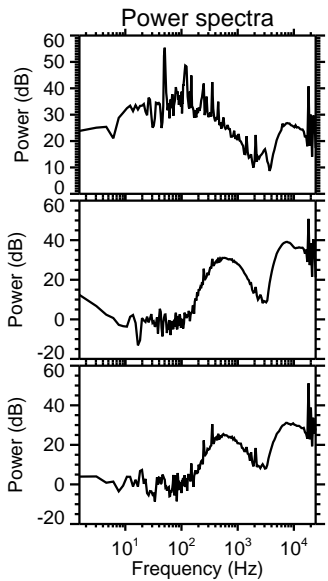
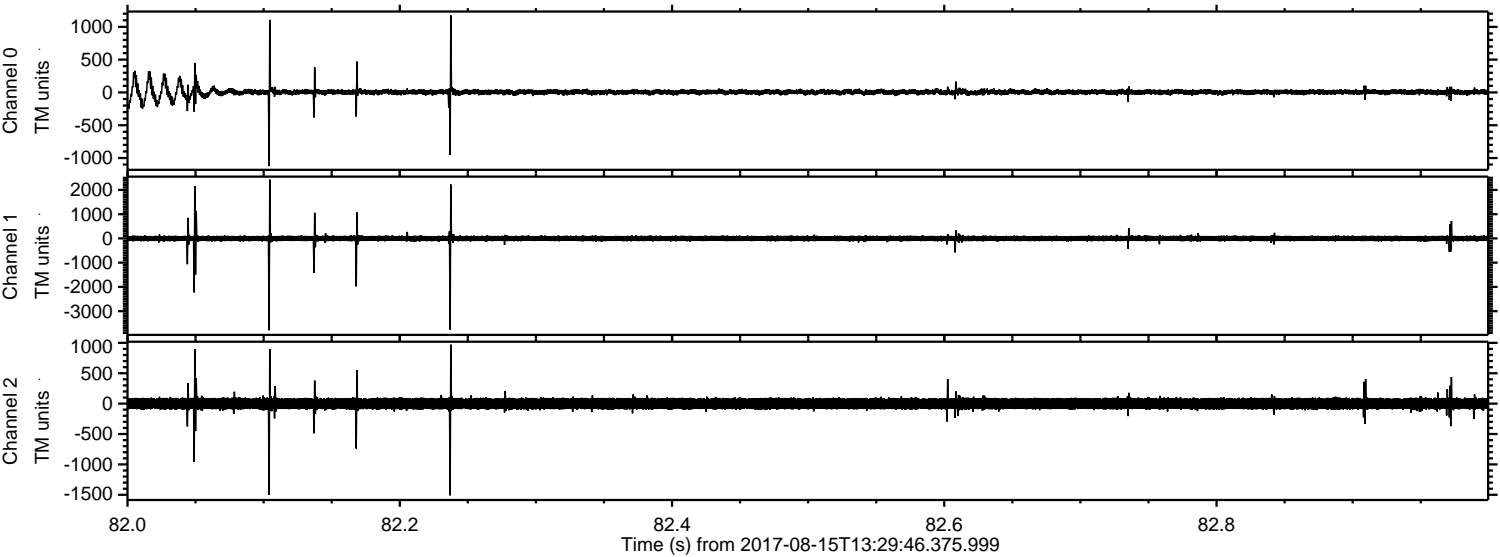


Channel 0
mn: -821
mx: 649
 μ : 5.1
 σ : 19.7

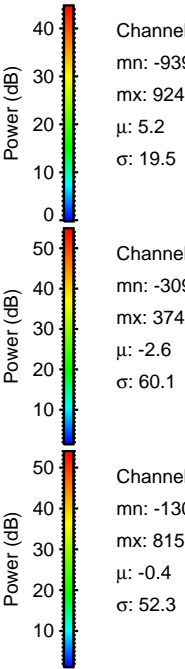
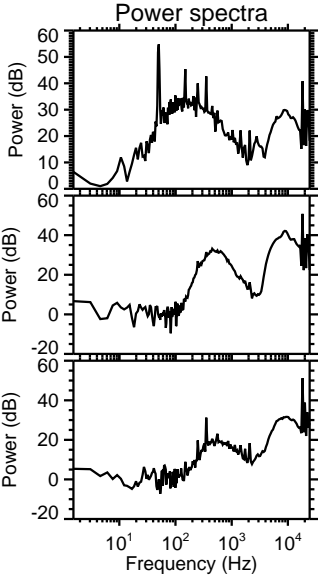
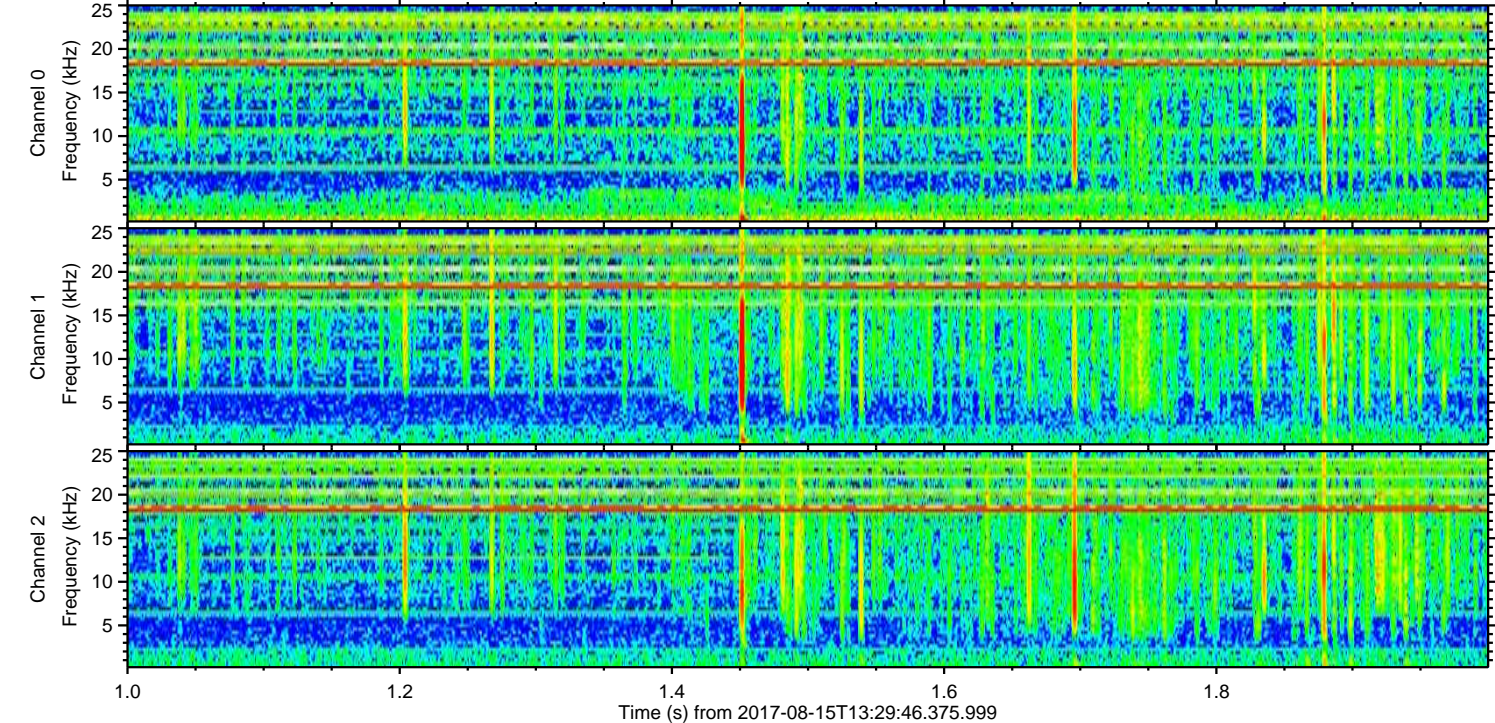
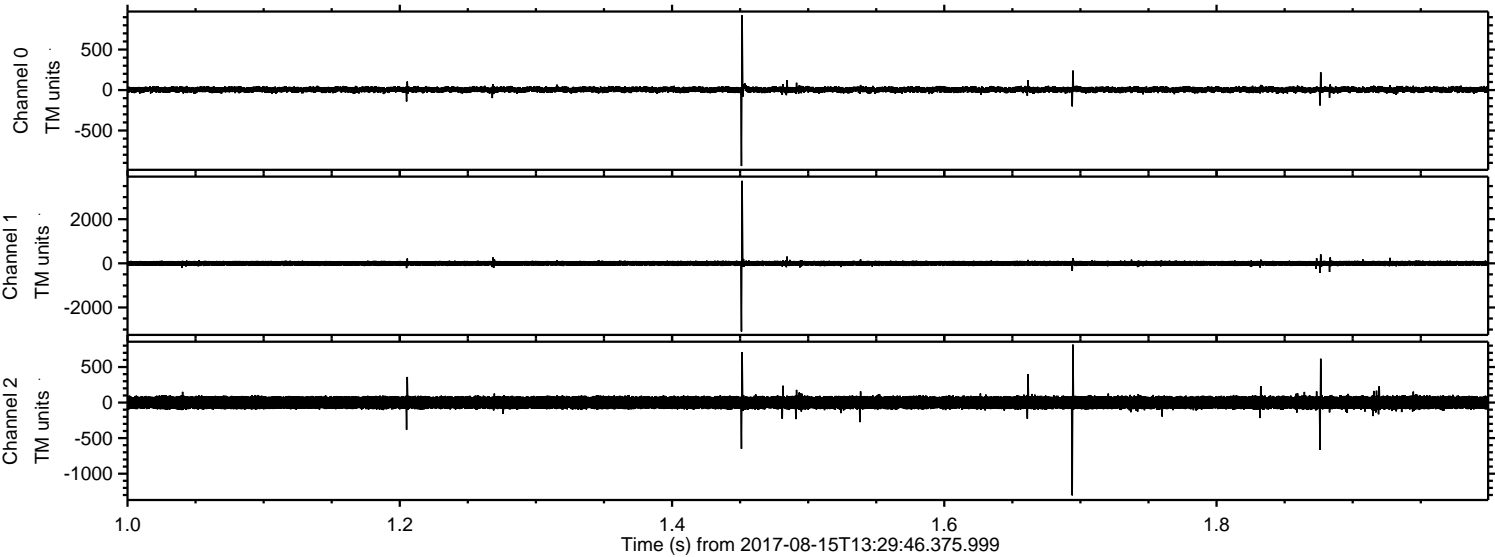
Channel 1
mn: -3521
mx: 3857
 μ : -2.6
 σ : 64.5

Channel 2
mn: -1138
mx: 1420
 μ : -0.4
 σ : 52.2

Processed Tue Aug 15 15:38:15 2017 by ELM ver.2012-10-06 from 001__elm20170815_132945__dat00.bin



Processed Tue Aug 15 15:38:15 2017 by ELM ver.2012-10-06 from 001__elm20170815_132945__dat00.bin



Channel 0
mn: -939
mx: 924
 μ : 5.2
 σ : 19.5

Channel 1
mn: -3090
mx: 3742
 μ : -2.6
 σ : 60.1

Channel 2
mn: -1305
mx: 815
 μ : -0.4
 σ : 52.3

