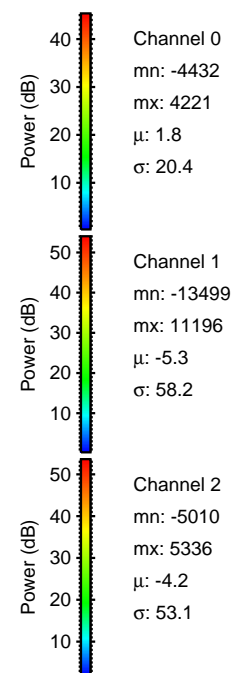
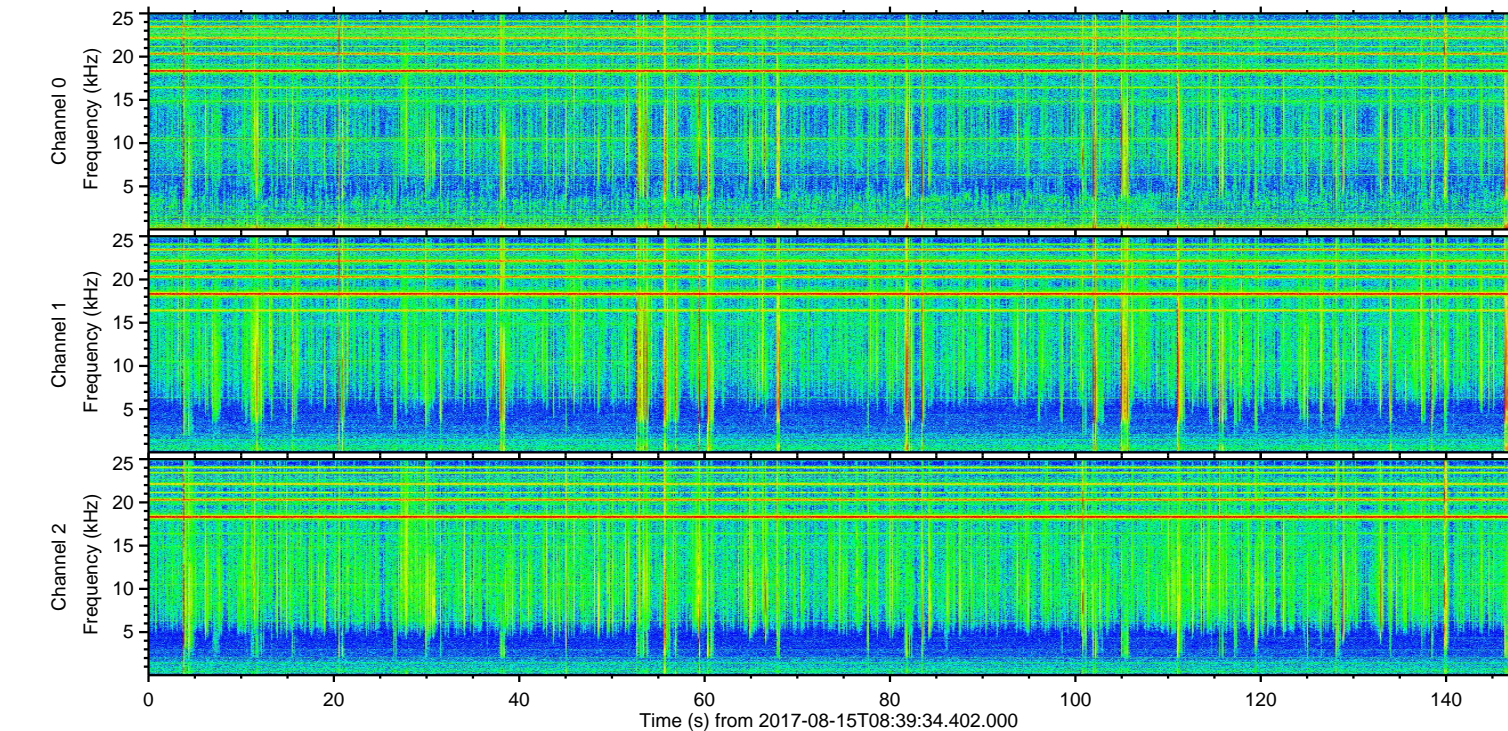
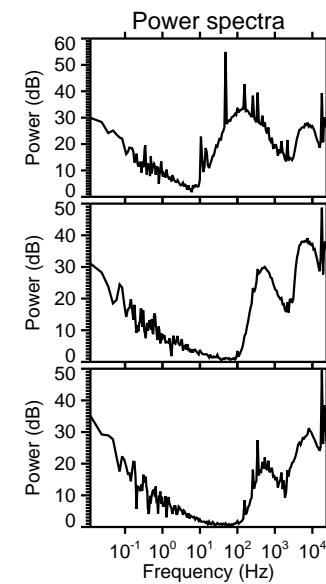
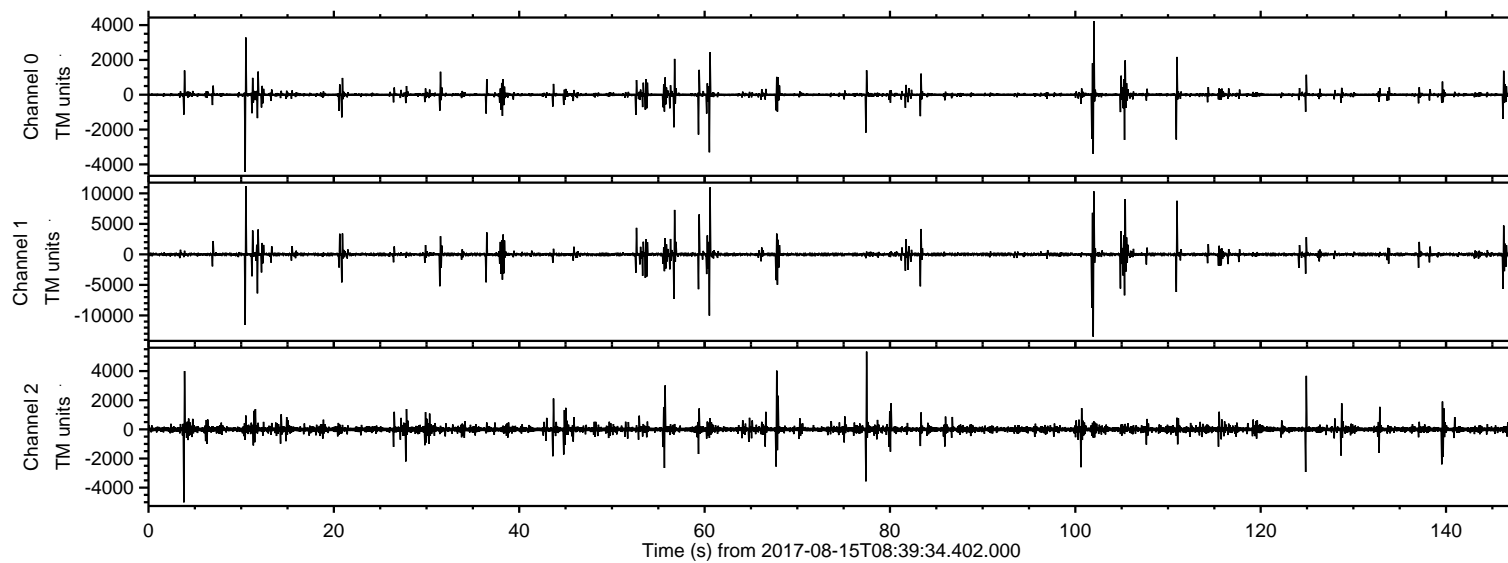


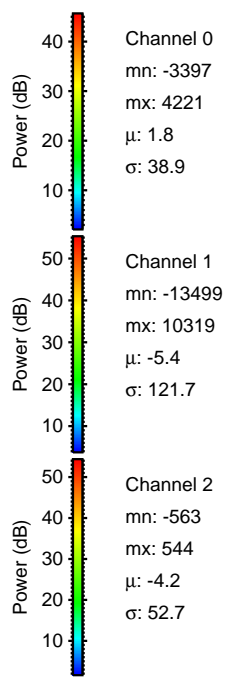
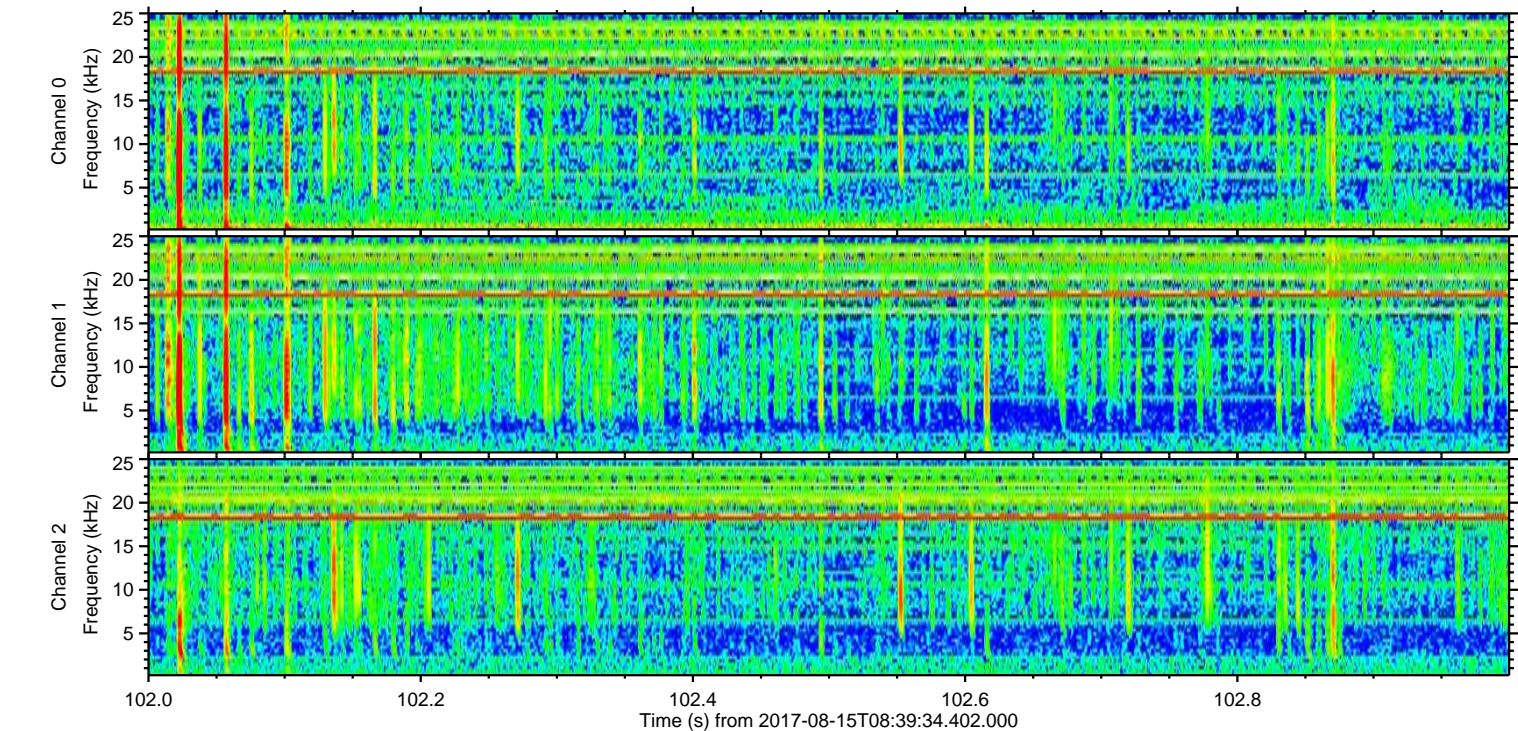
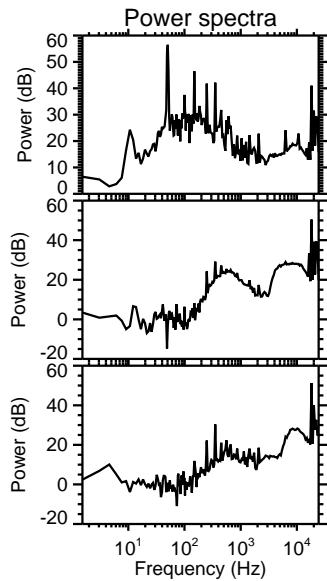
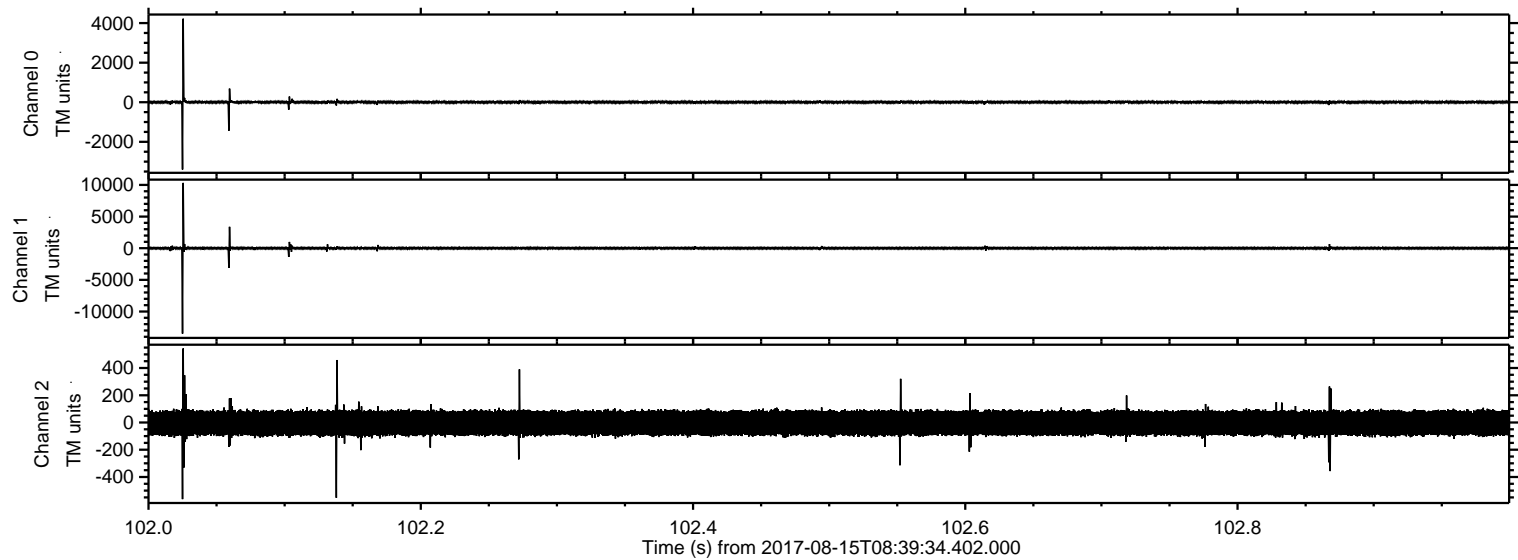
ELMAVAN 3D WAVEFORMS (Measured data sampled at 50 kHz) 51000 packets of 144 samples from 2017-08-15T08:39:34.402.000.

Processed Tue Aug 15 10:47:22 2017 by ELM ver.2012-10-06 from 001__elm20170815_083933__dat00.bin

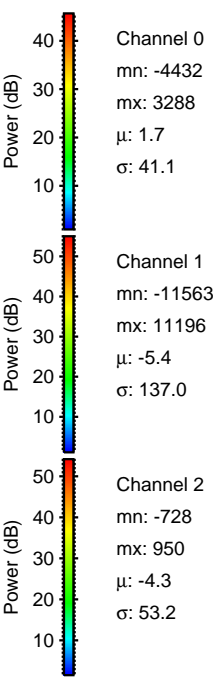
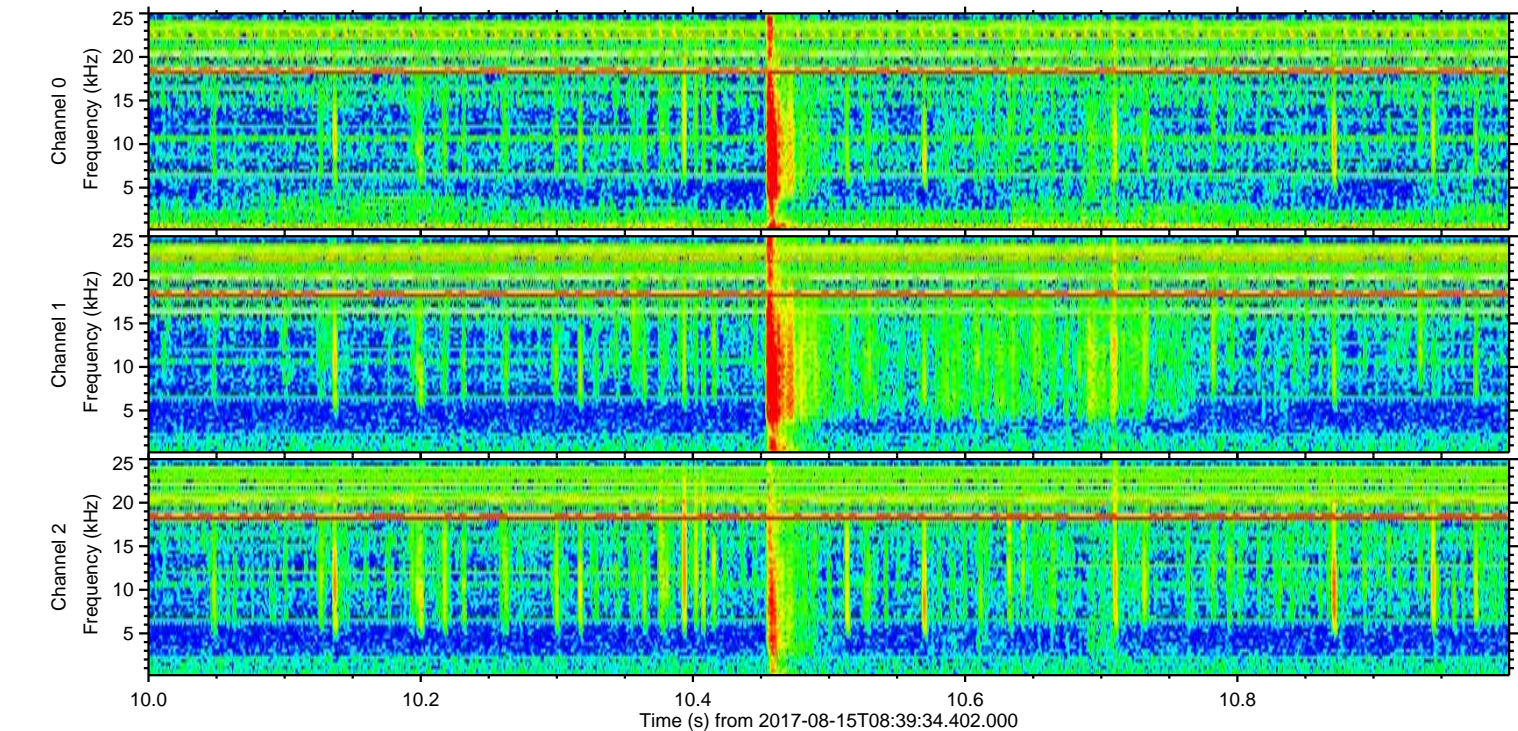
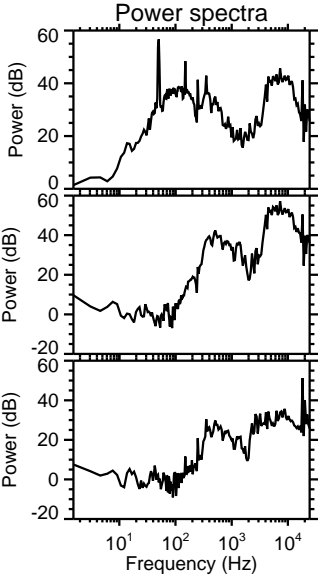
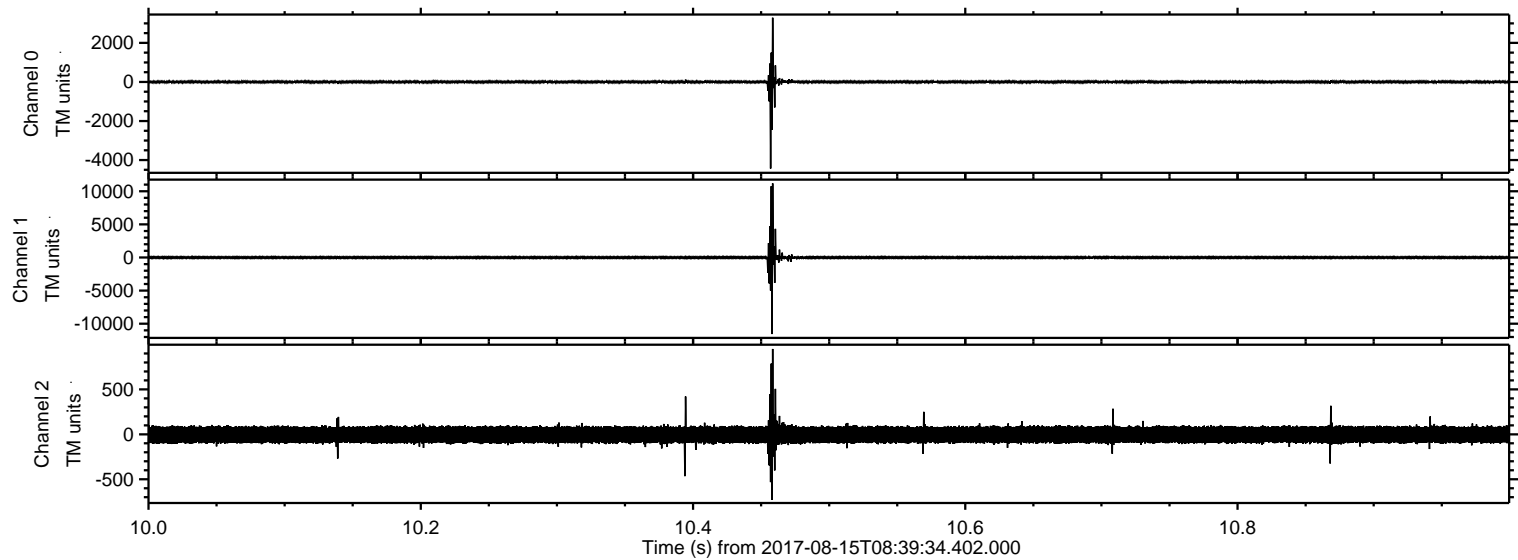


ELMAVAN 3D WAVEFORMS (Measured data sampled at 50 kHz) 51000 packets of 144 samples from 2017-08-15T08:39:34.402.000. Part 103/147

Processed Tue Aug 15 10:47:29 2017 by ELM ver.2012-10-06 from 001__elm20170815_083933__dat00.bin



Processed Tue Aug 15 10:47:29 2017 by ELM ver.2012-10-06 from 001__elm20170815_083933__dat00.bin

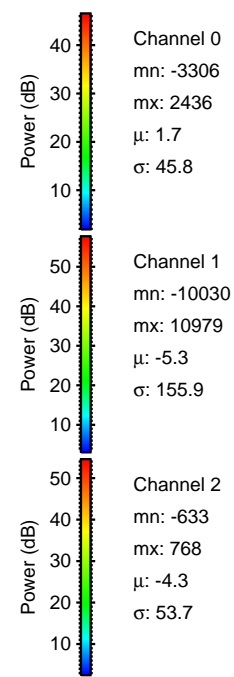
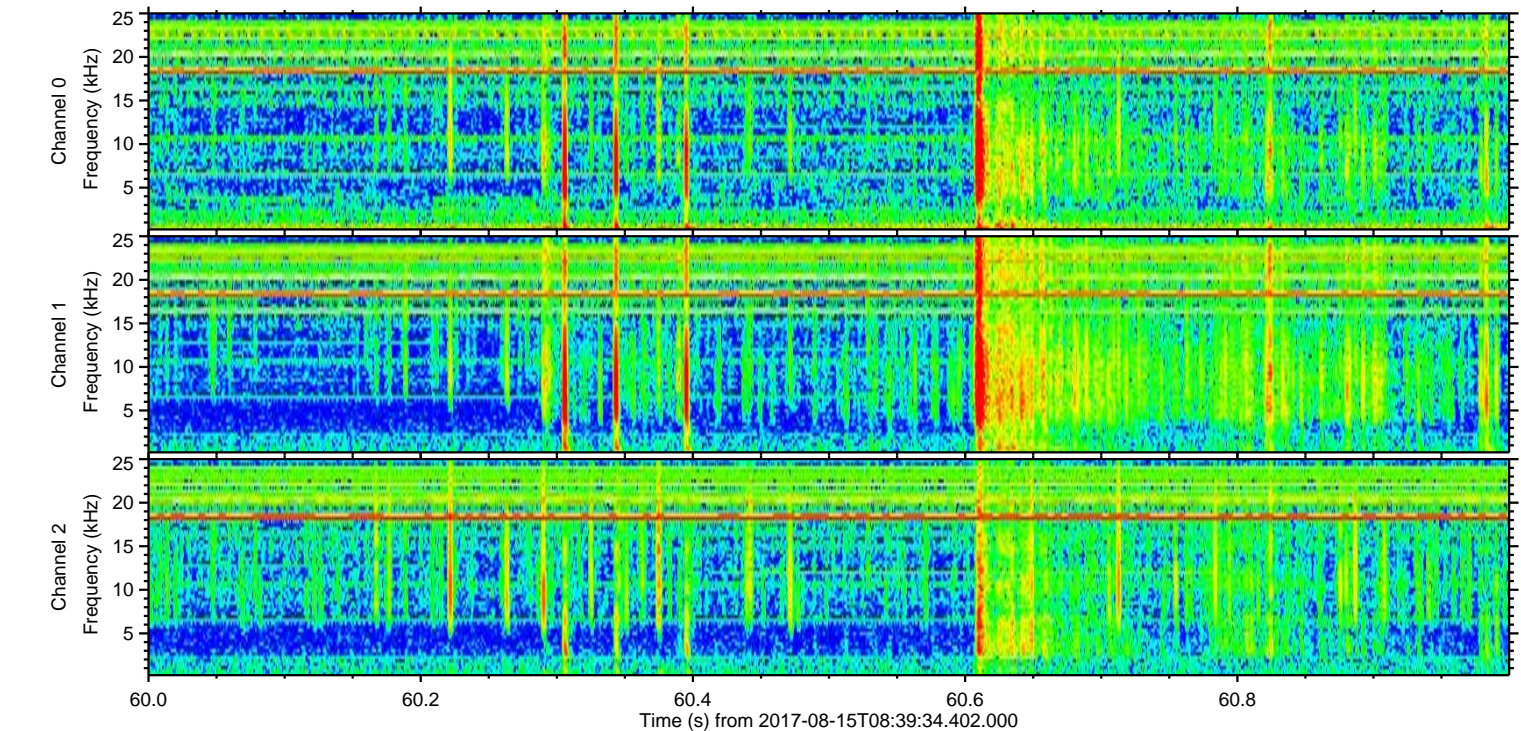
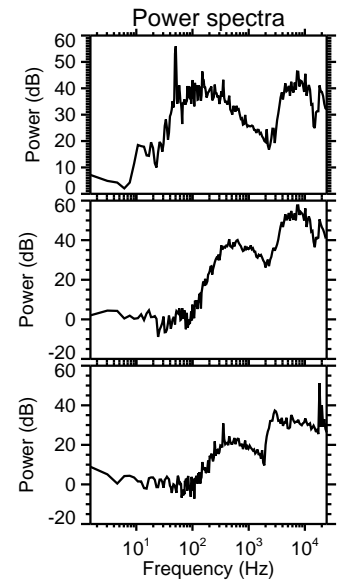
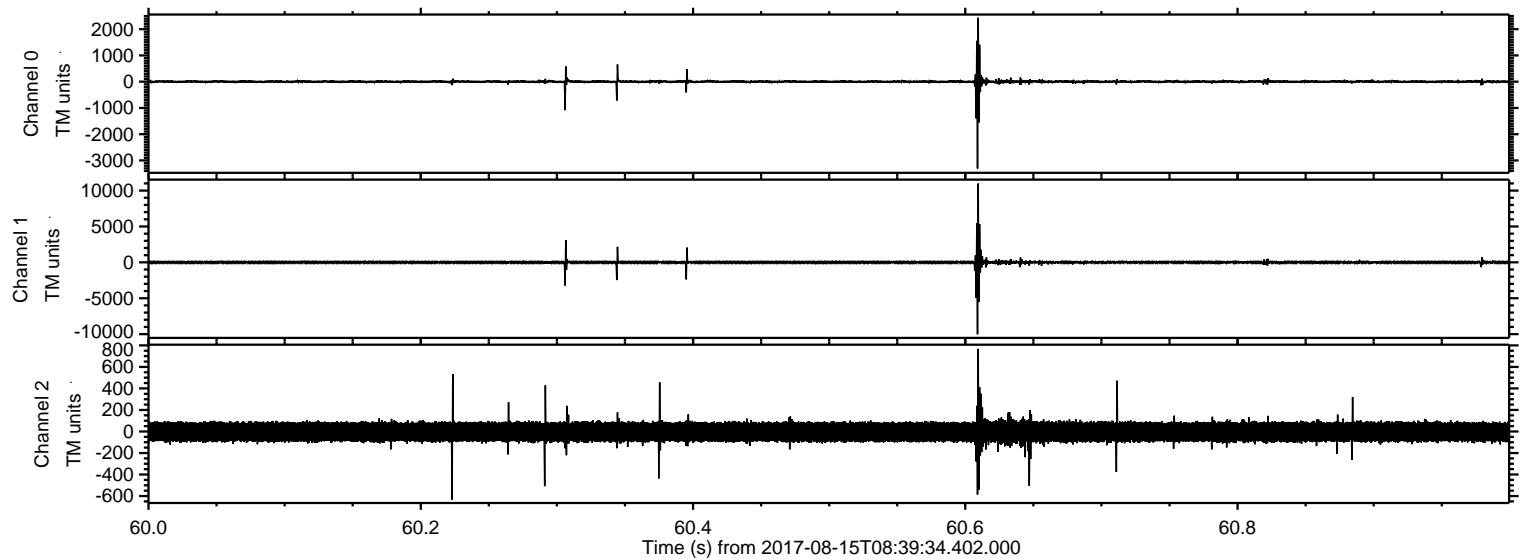


Channel 0
mn: -4432
mx: 3288
 μ : 1.7
 σ : 41.1

Channel 1
mn: -11563
mx: 11196
 μ : -5.4
 σ : 137.0

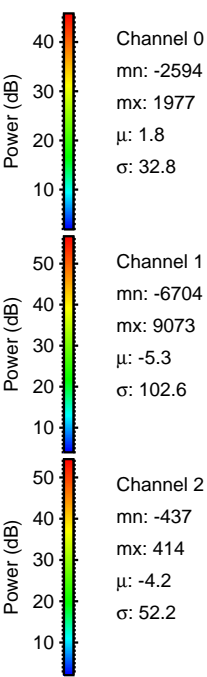
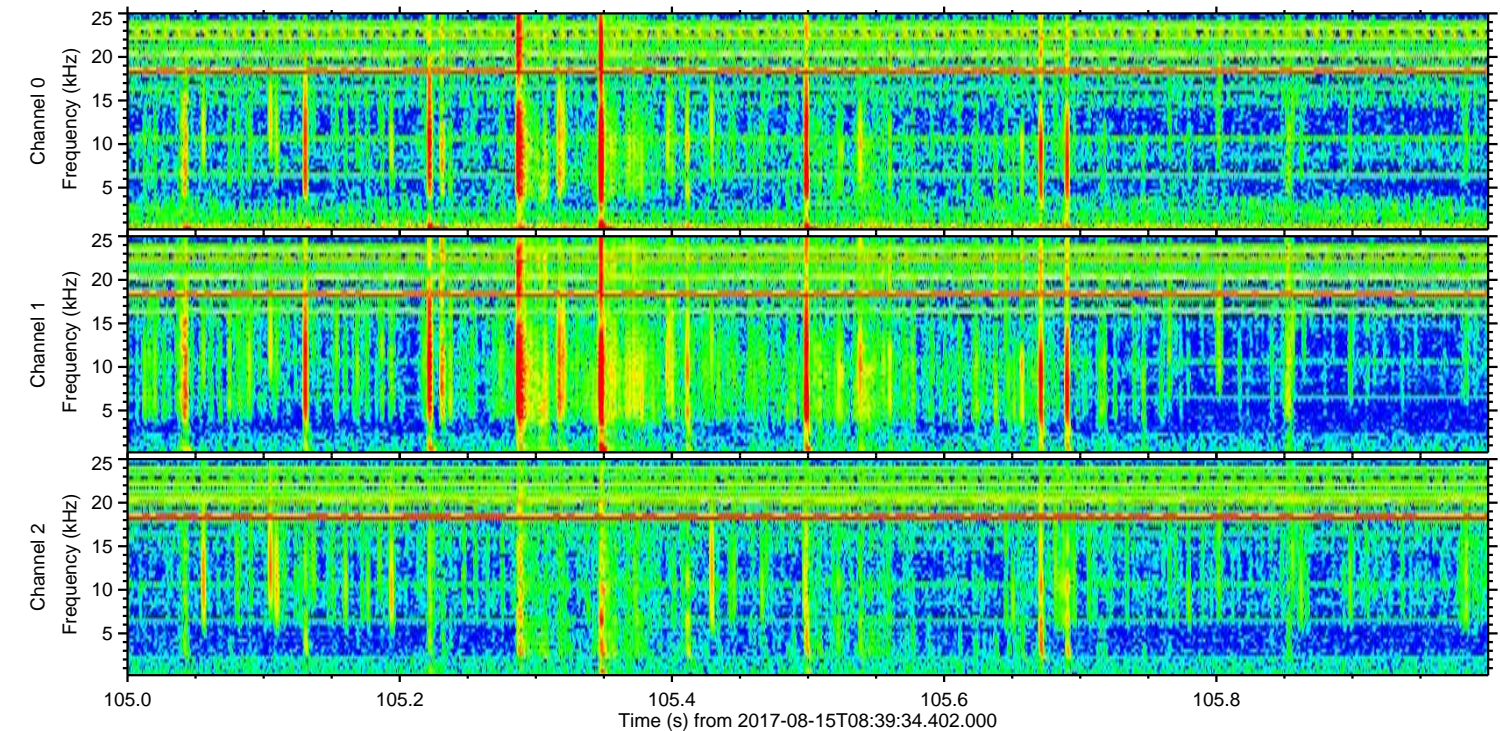
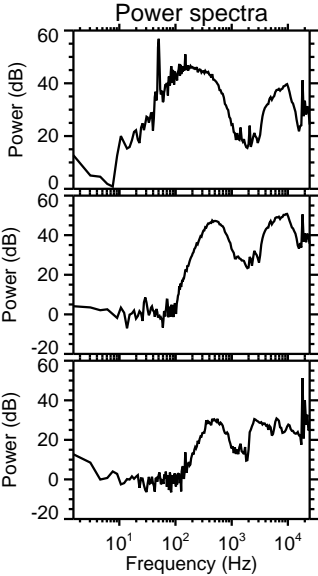
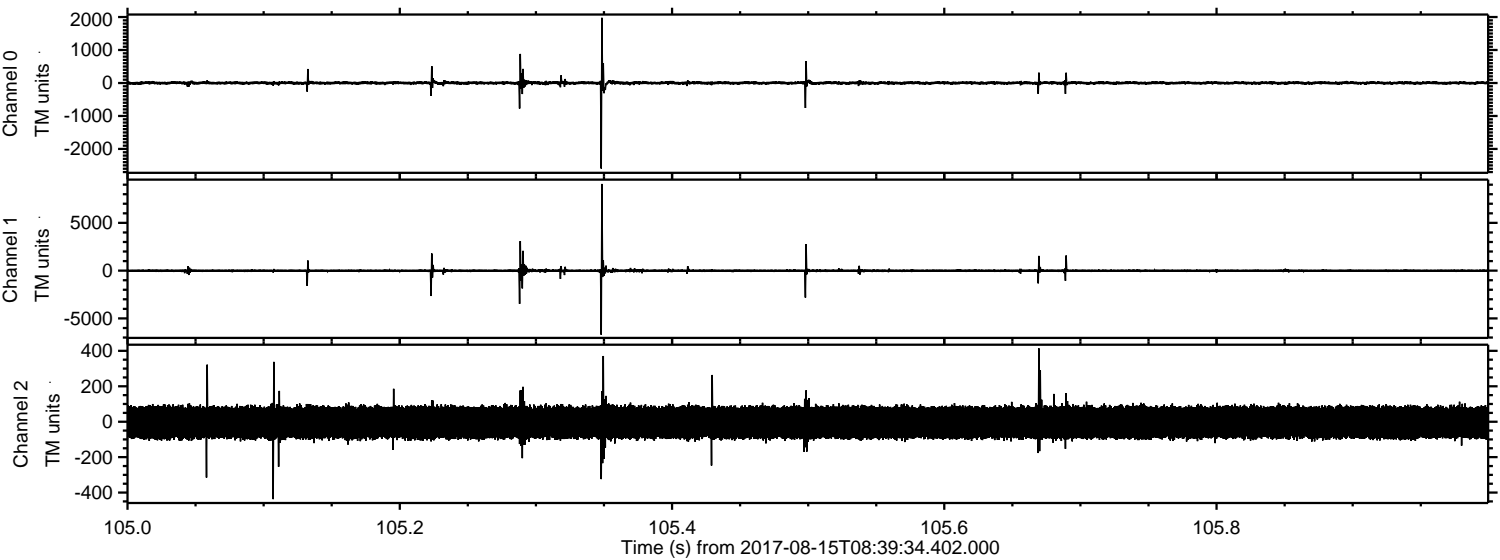
Channel 2
mn: -728
mx: 950
 μ : -4.3
 σ : 53.2

Processed Tue Aug 15 10:47:30 2017 by ELM ver.2012-10-06 from 001__elm20170815_083933__dat00.bin



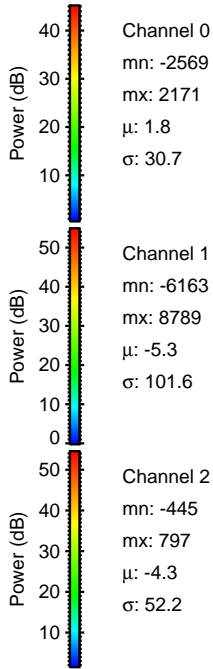
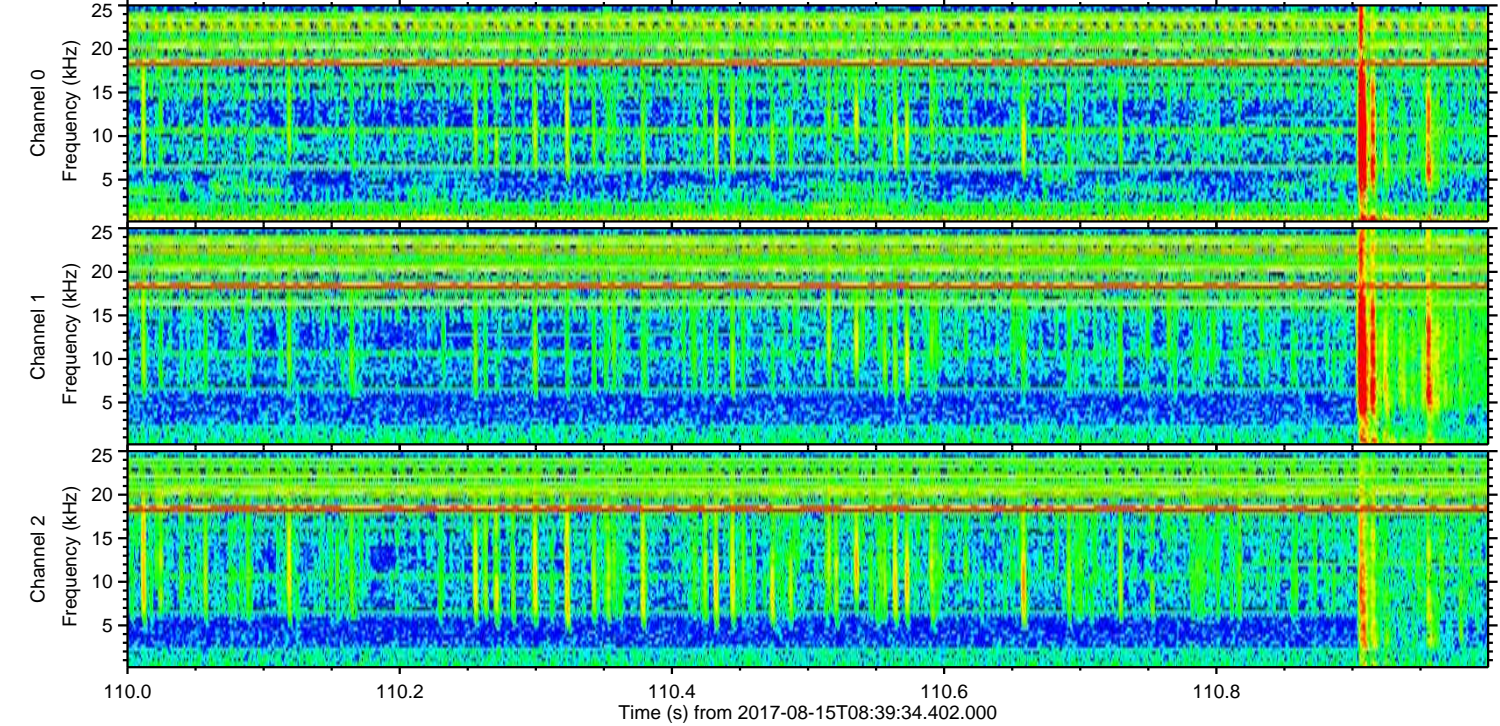
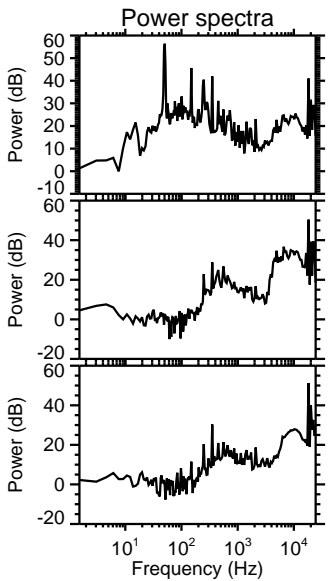
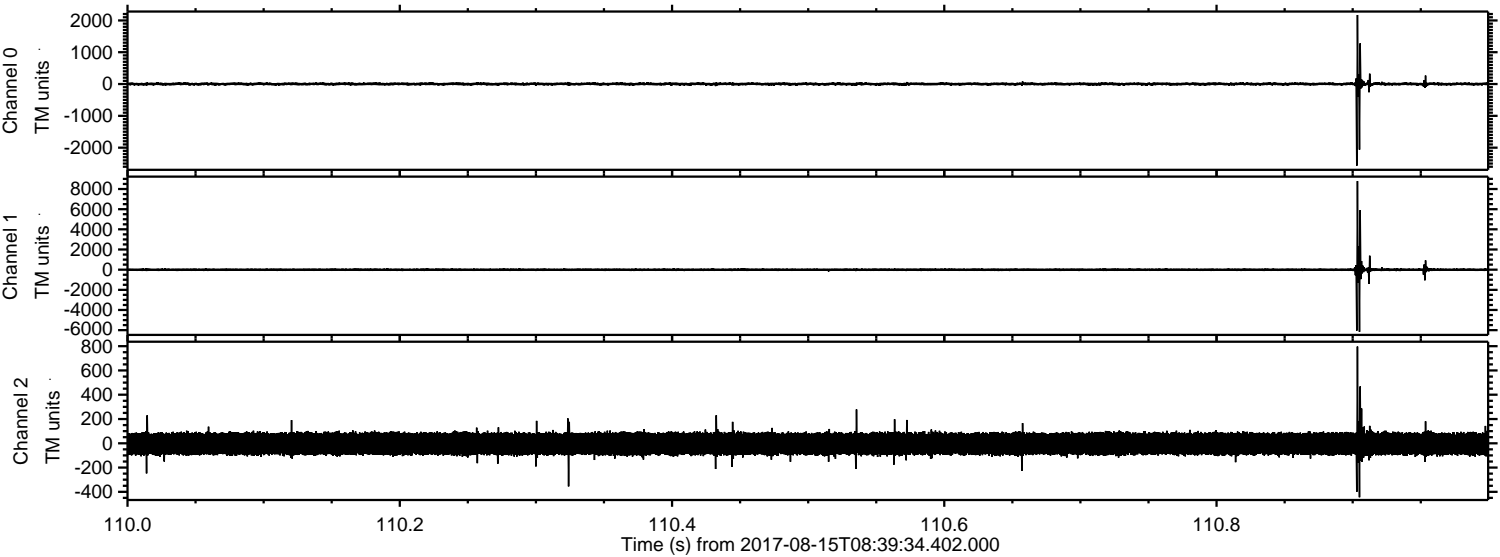
ELMAVAN 3D WAVEFORMS (Measured data sampled at 50 kHz) 51000 packets of 144 samples from 2017-08-15T08:39:34.402.000. Part 106/147

Processed Tue Aug 15 10:47:31 2017 by ELM ver.2012-10-06 from 001__elm20170815_083933__dat00.bin



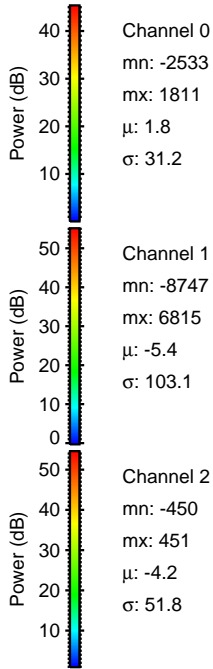
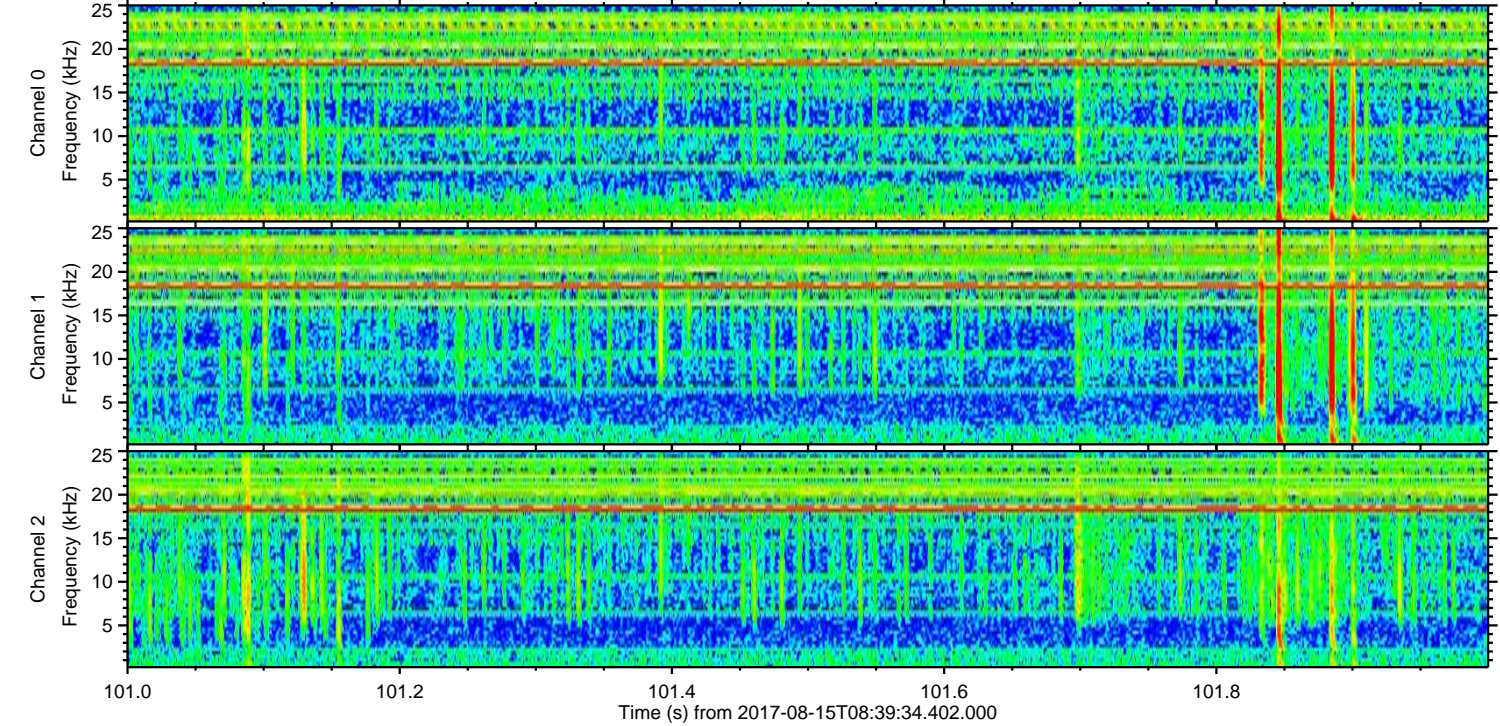
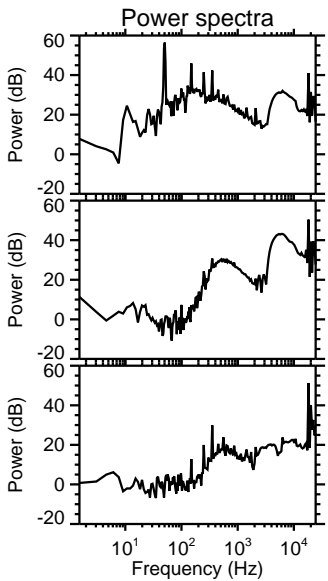
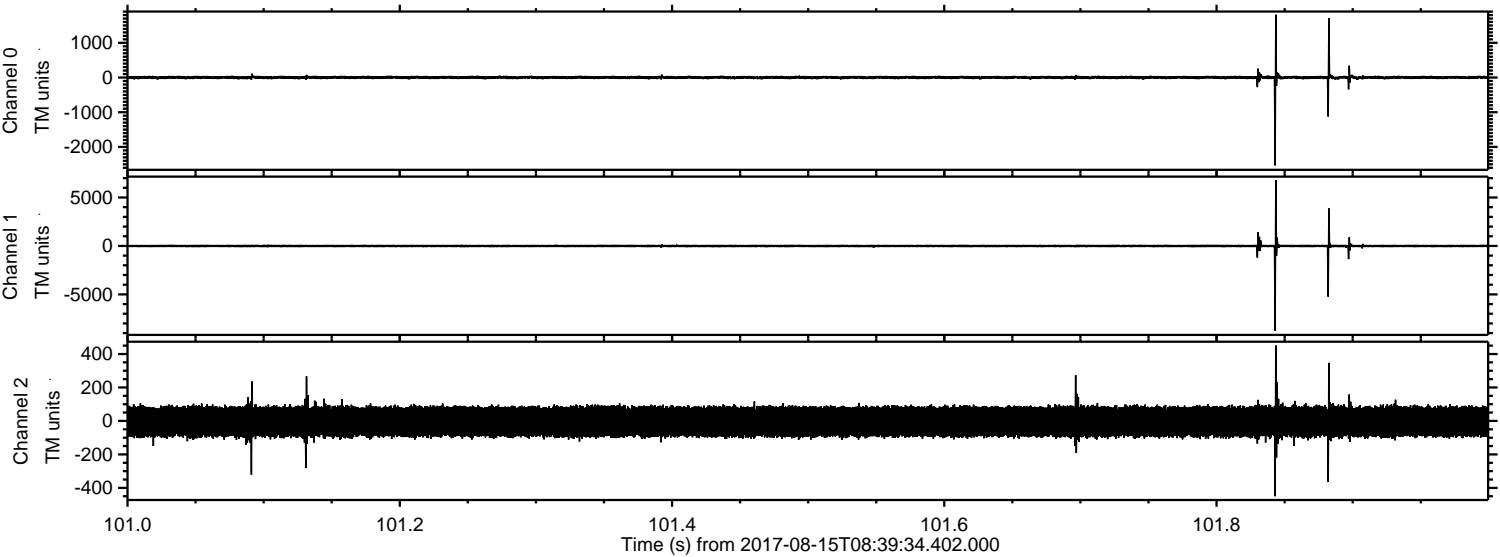
ELMAVAN 3D WAVEFORMS (Measured data sampled at 50 kHz) 51000 packets of 144 samples from 2017-08-15T08:39:34.402.000. Part 111/147

Processed Tue Aug 15 10:47:31 2017 by ELM ver.2012-10-06 from 001__elm20170815_083933__dat00.bin

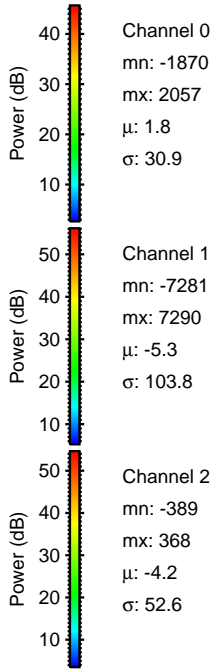
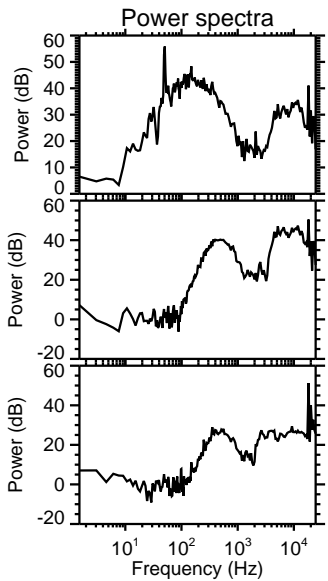
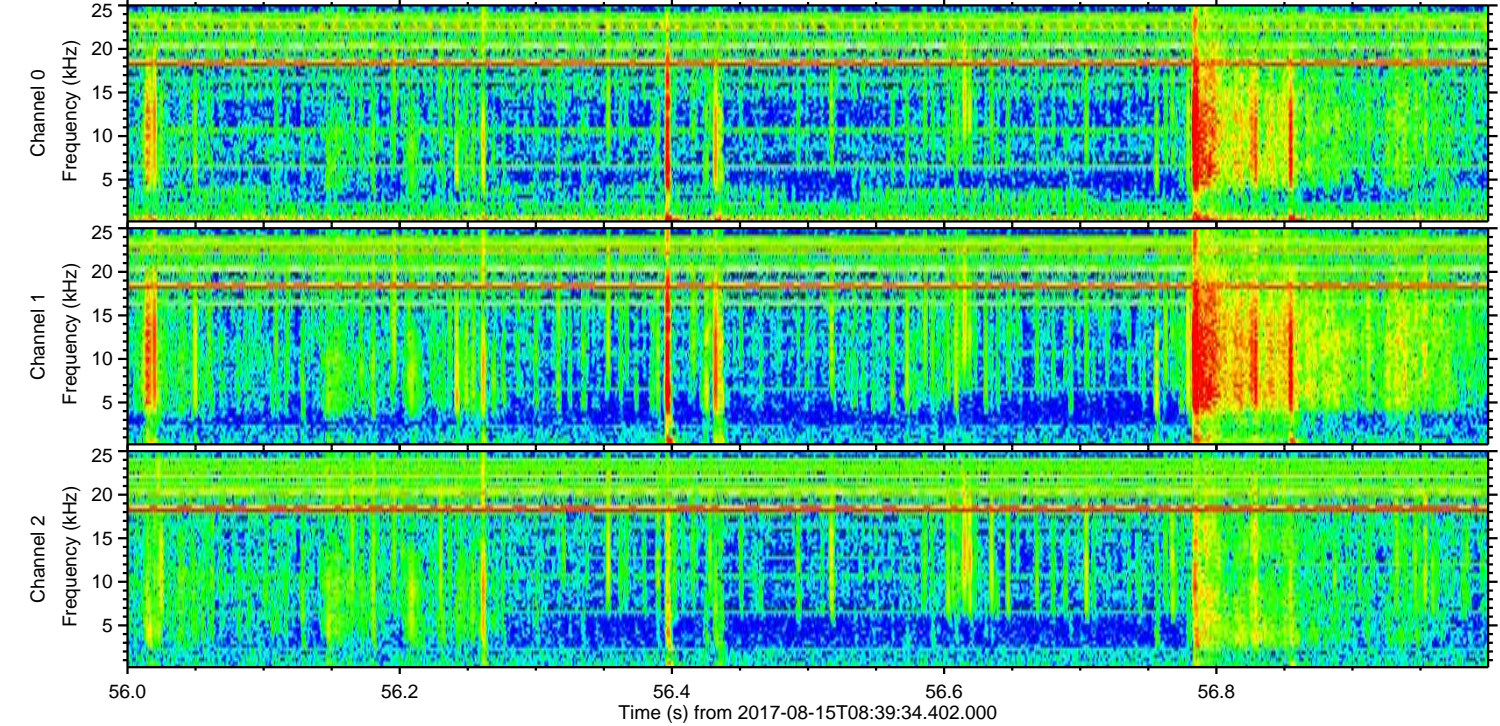
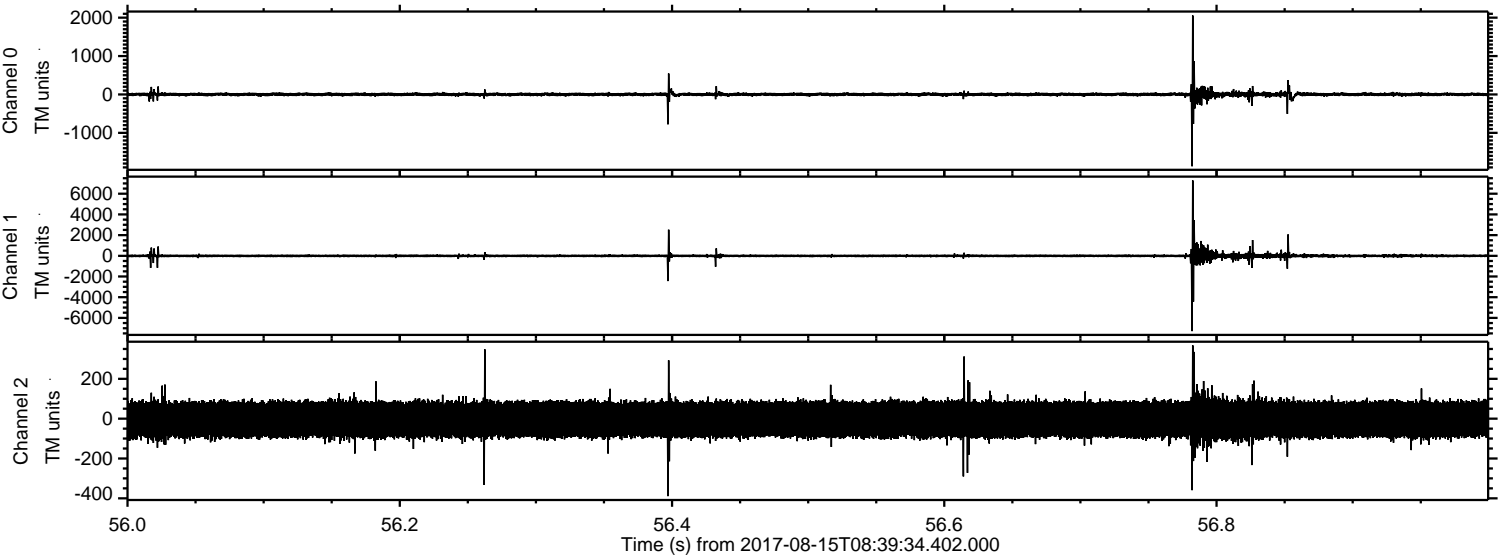


ELMAVAN 3D WAVEFORMS (Measured data sampled at 50 kHz) 51000 packets of 144 samples from 2017-08-15T08:39:34.402.000. Part 102/147

Processed Tue Aug 15 10:47:32 2017 by ELM ver.2012-10-06 from 001__elm20170815_083933__dat00.bin



Processed Tue Aug 15 10:47:33 2017 by ELM ver.2012-10-06 from 001__elm20170815_083933__dat00.bin

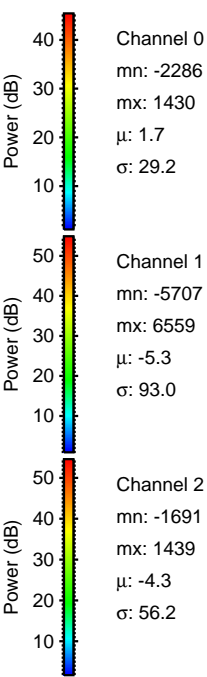
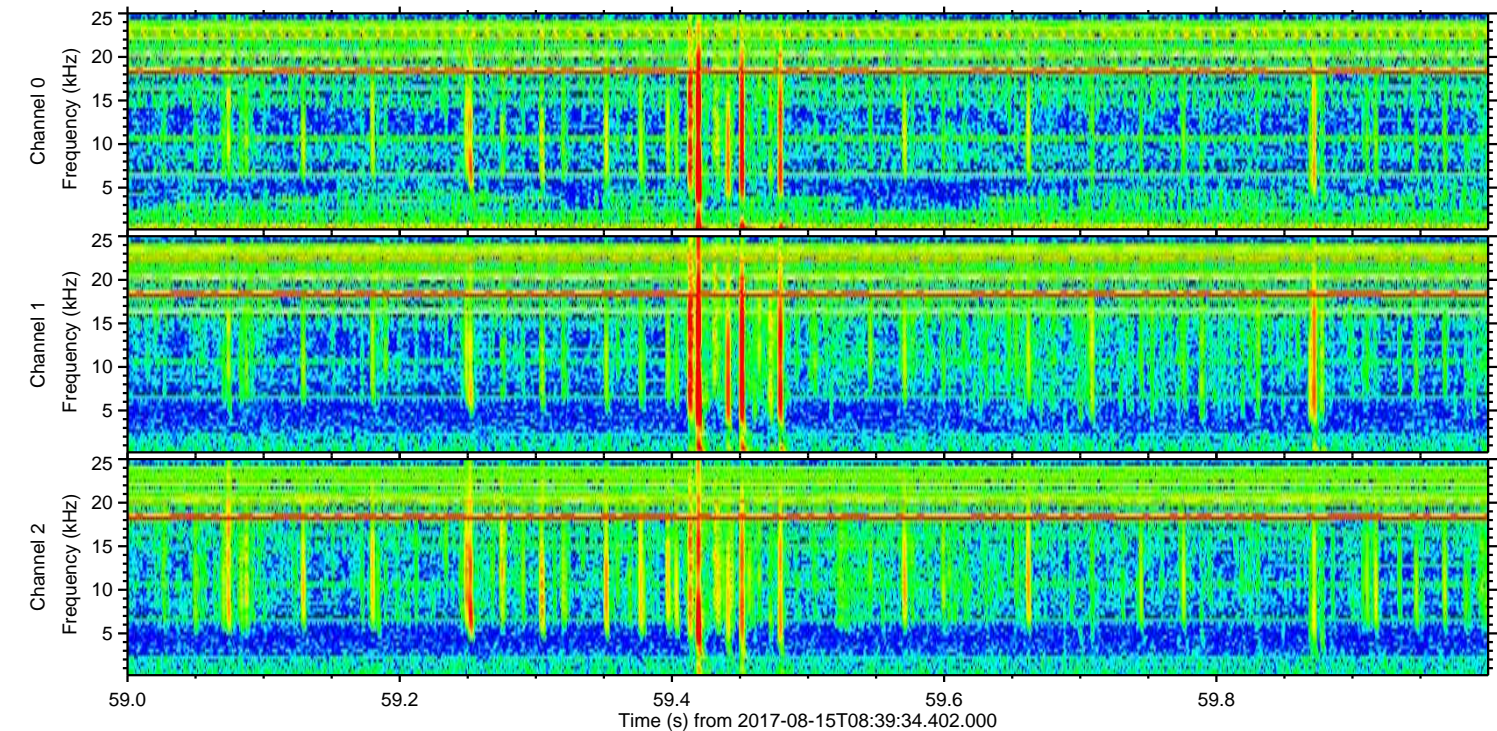
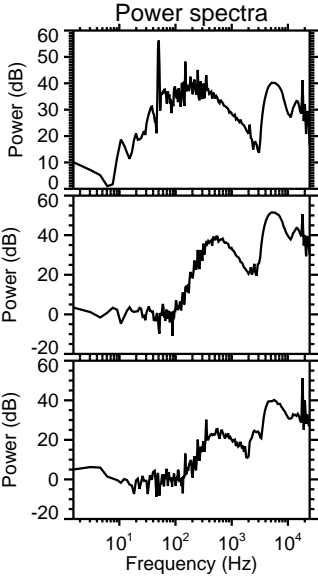
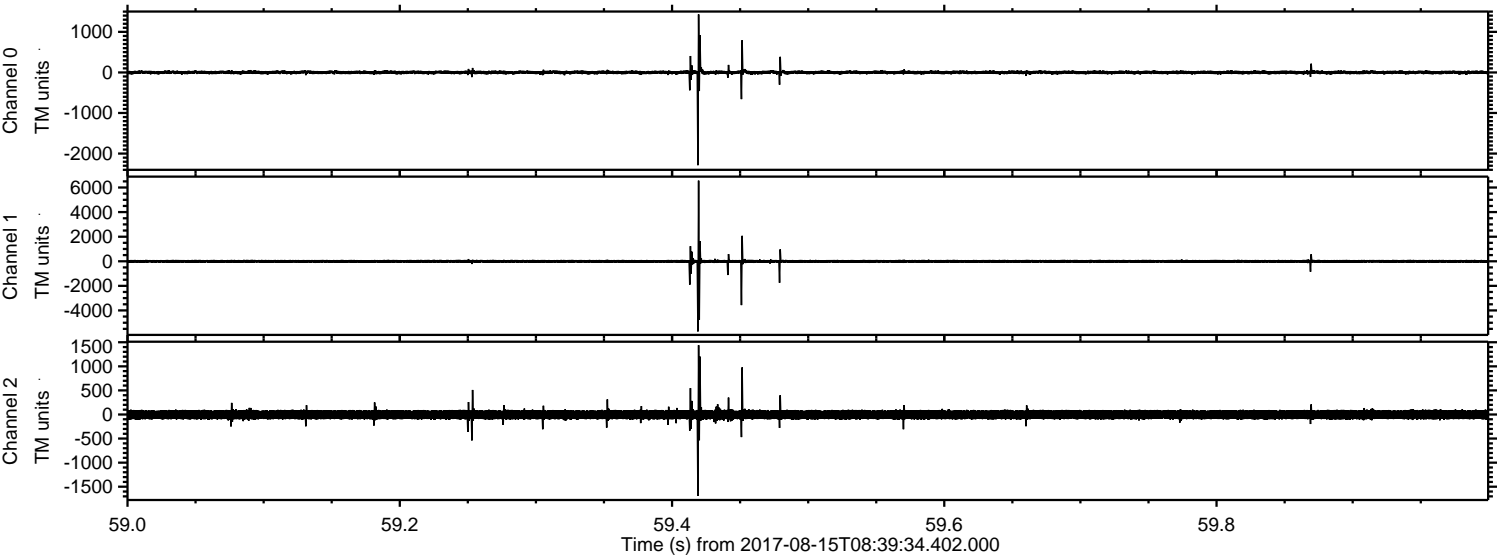


Channel 0
mn: -1870
mx: 2057
 μ : 1.8
 σ : 30.9

Channel 1
mn: -7281
mx: 7290
 μ : -5.3
 σ : 103.8

Channel 2
mn: -389
mx: 368
 μ : -4.2
 σ : 52.6

Processed Tue Aug 15 10:47:33 2017 by ELM ver.2012-10-06 from 001__elm20170815_083933__dat00.bin

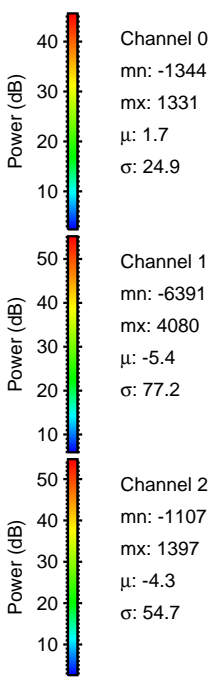
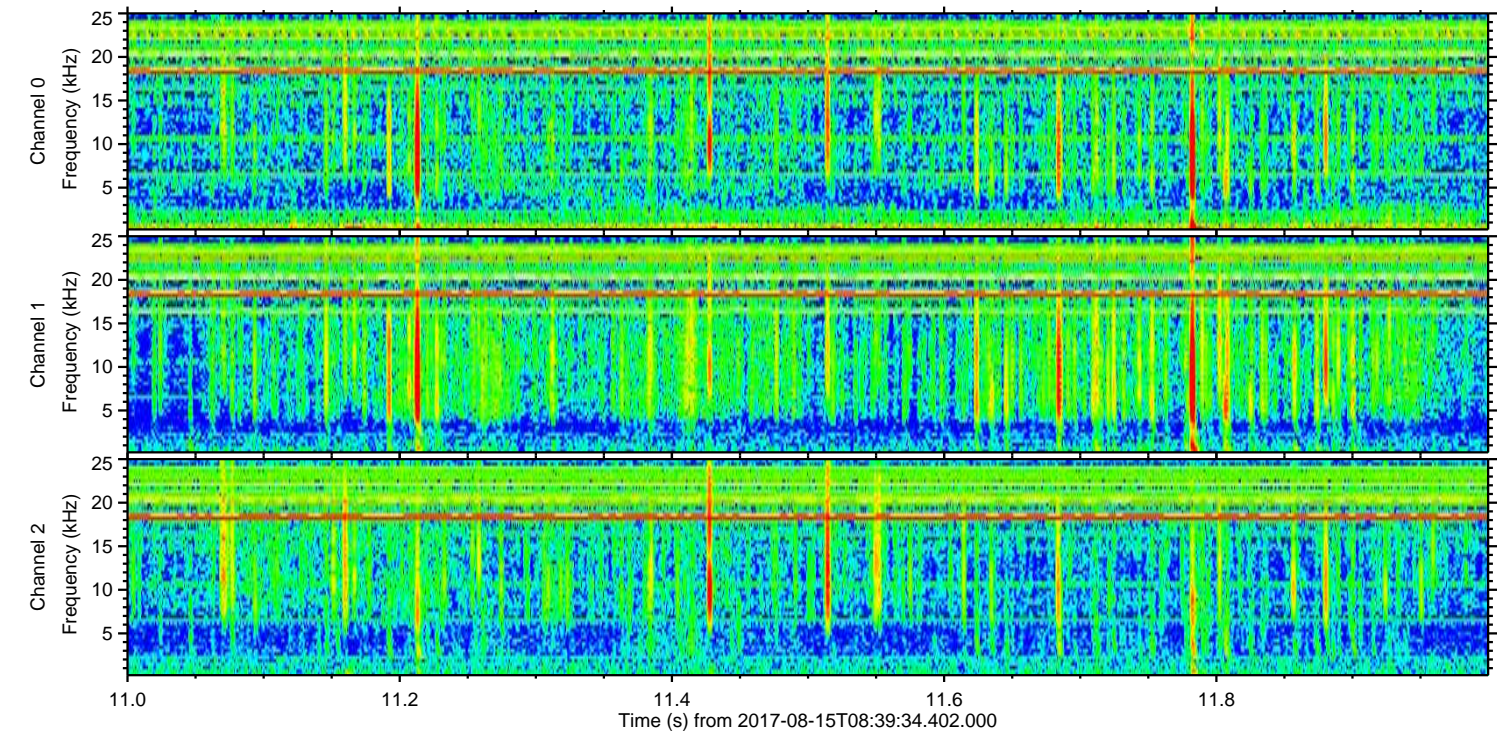
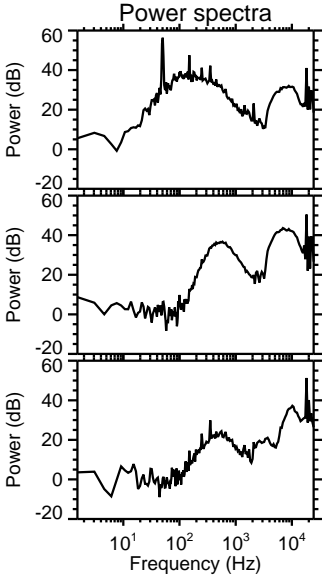
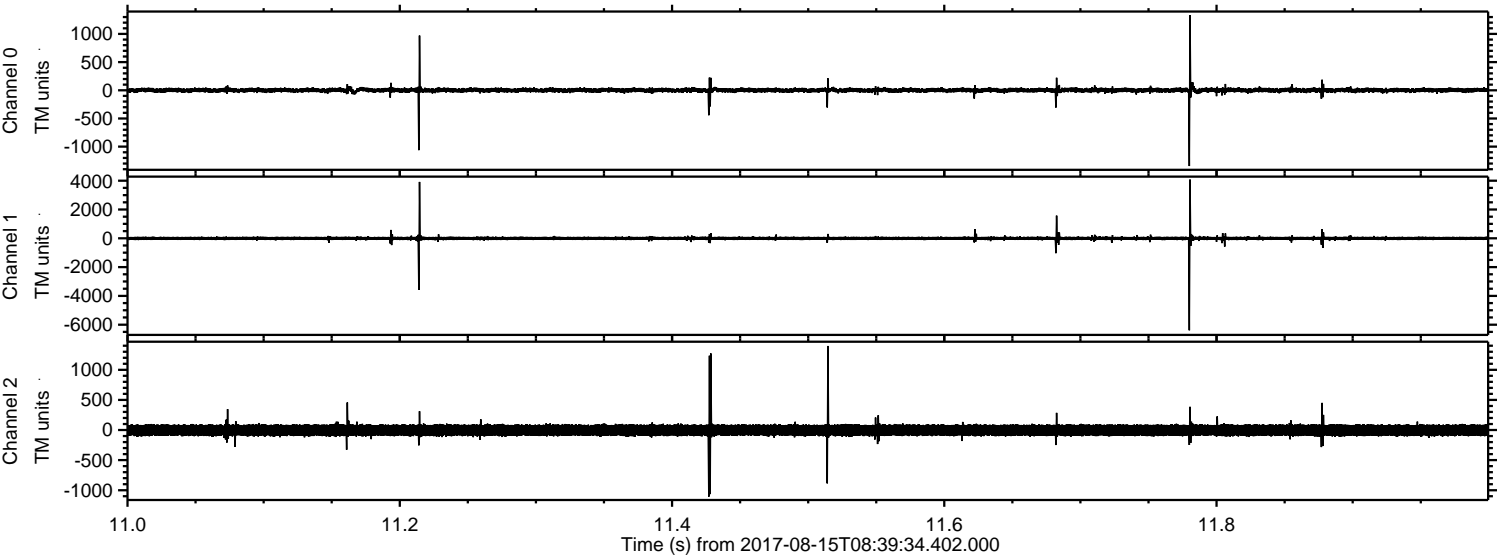


Channel 0
mn: -2286
mx: 1430
 μ : 1.7
 σ : 29.2

Channel 1
mn: -5707
mx: 6559
 μ : -5.3
 σ : 93.0

Channel 2
mn: -1691
mx: 1439
 μ : -4.3
 σ : 56.2

Processed Tue Aug 15 10:47:34 2017 by ELM ver.2012-10-06 from 001__elm20170815_083933__dat00.bin



ELMAVAN 3D WAVEFORMS (Measured data sampled at 50 kHz) 51000 packets of 144 samples from 2017-08-15T08:39:34.402.000. Part 132/147

