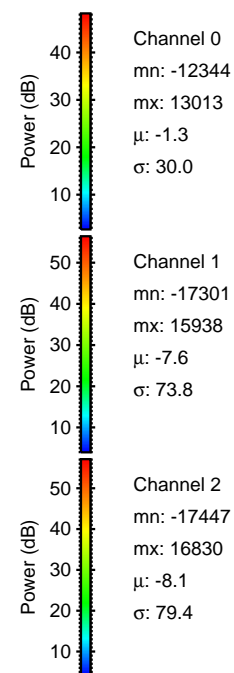
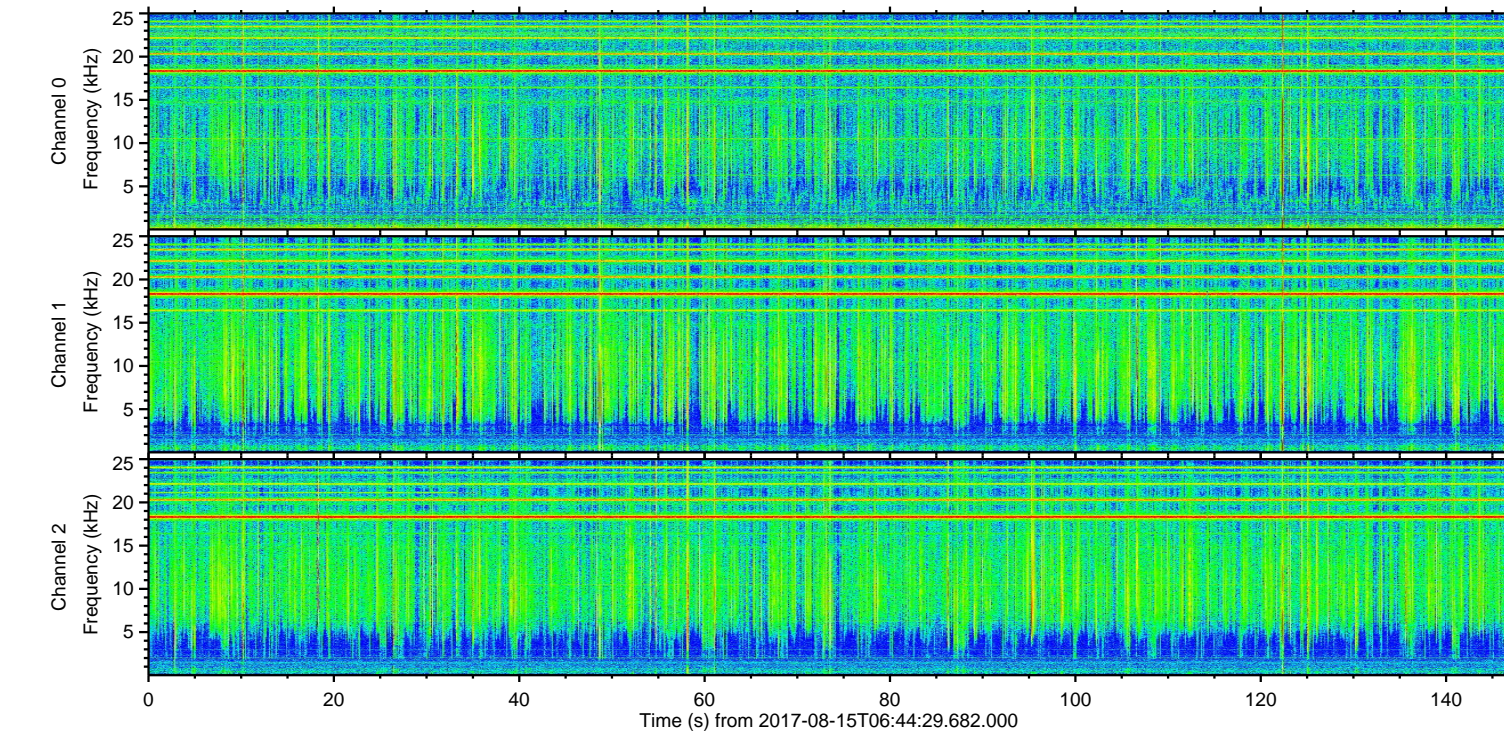
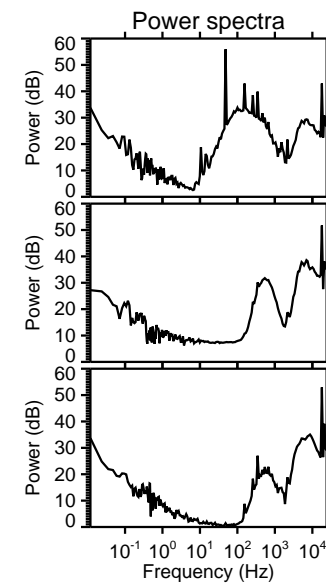
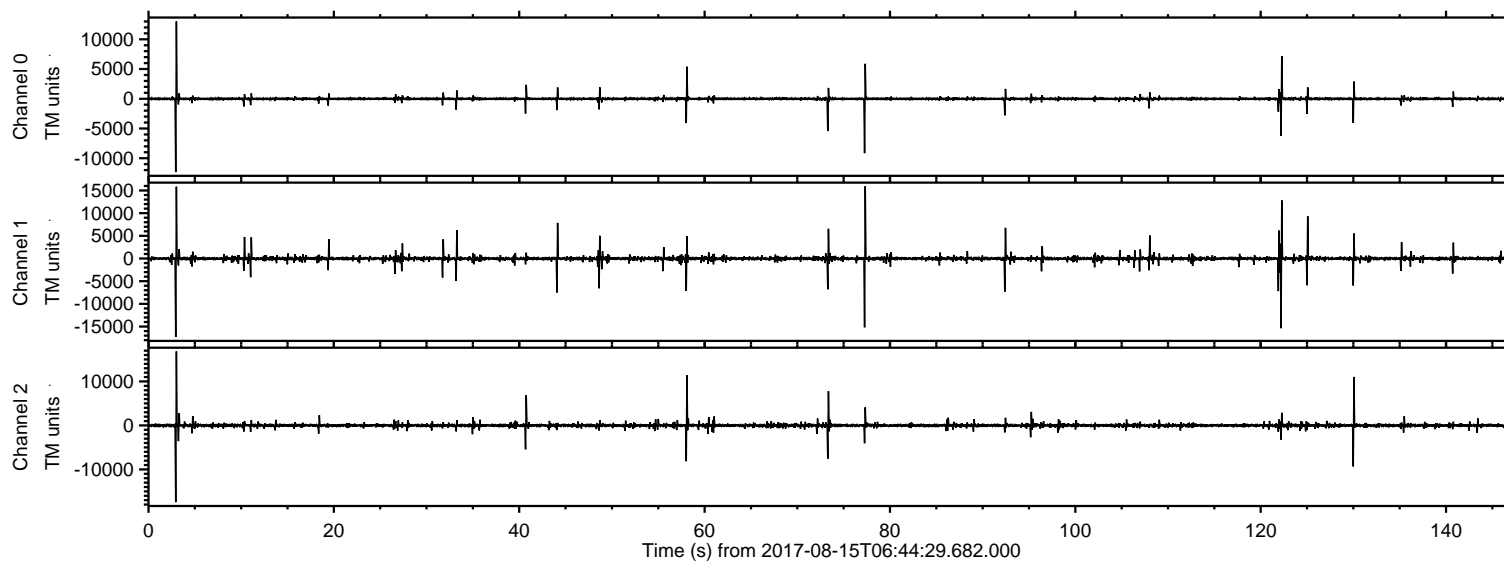


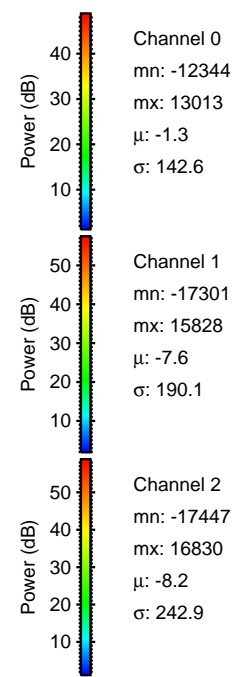
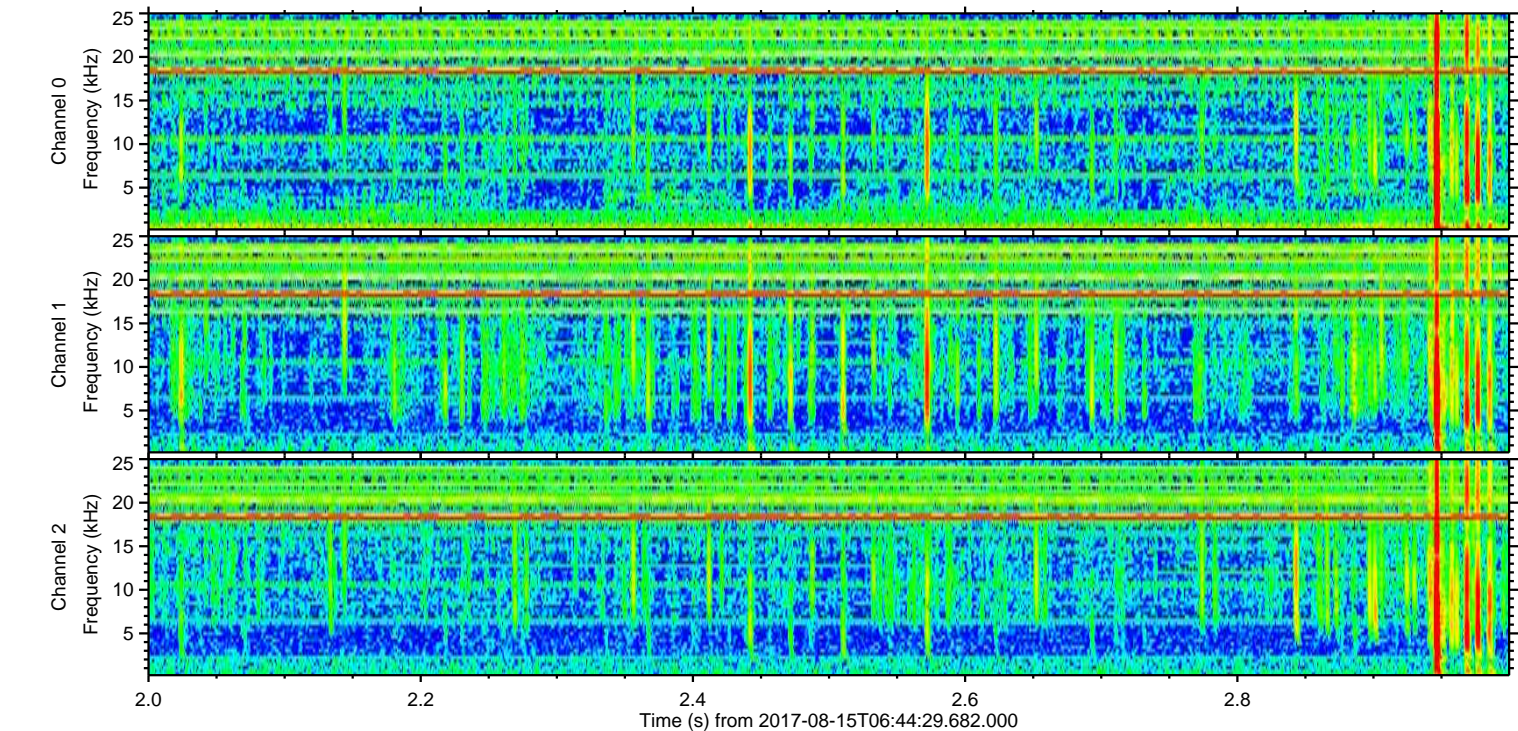
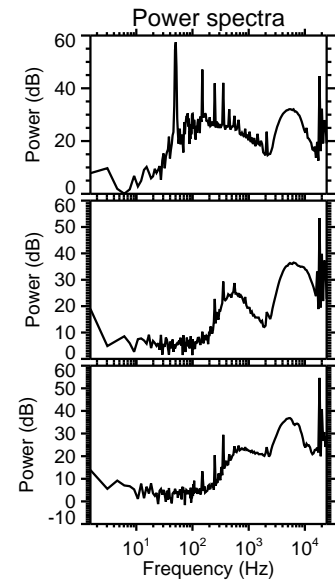
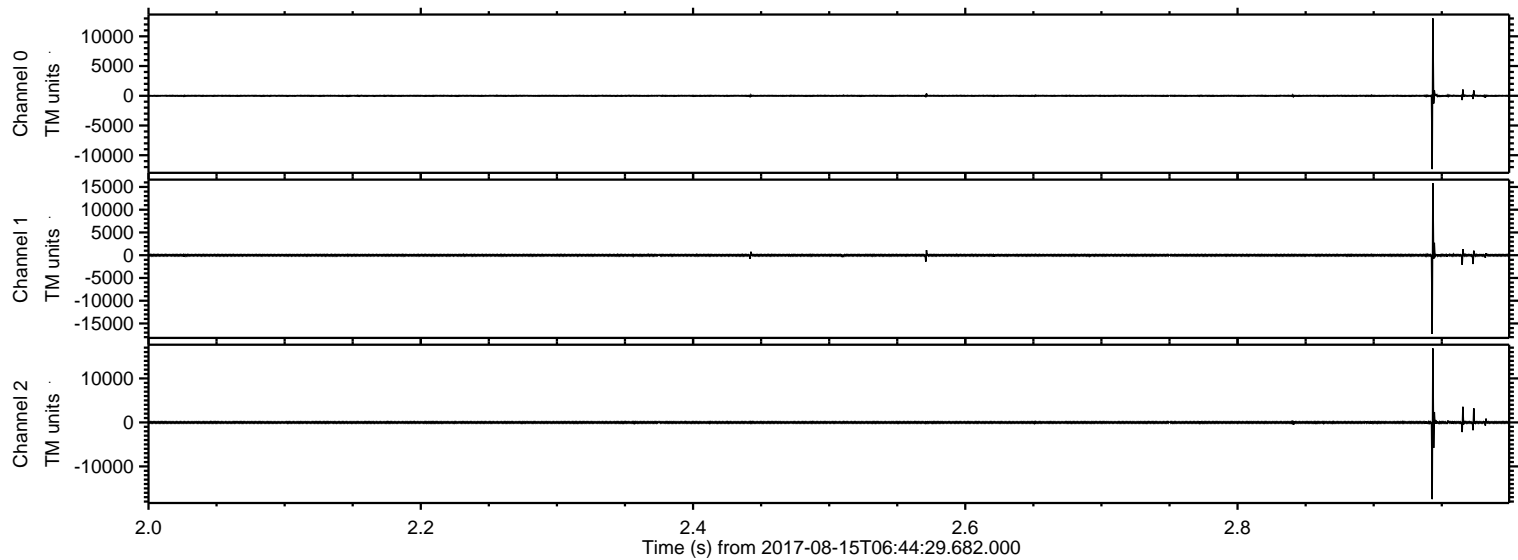
ELMAVAN 3D WAVEFORMS (Measured data sampled at 50 kHz) 51000 packets of 144 samples from 2017-08-15T06:44:29.682.000.

Processed Tue Aug 15 08:51:57 2017 by ELM ver.2012-10-06 from 001__elm20170815_064428__dat00.bin



ELMAVAN 3D WAVEFORMS (Measured data sampled at 50 kHz) 51000 packets of 144 samples from 2017-08-15T06:44:29.682.000. Part 3/147

Processed Tue Aug 15 08:52:03 2017 by ELM ver.2012-10-06 from 001__elm20170815_064428__dat00.bin



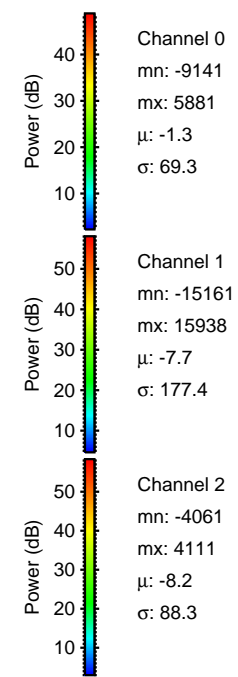
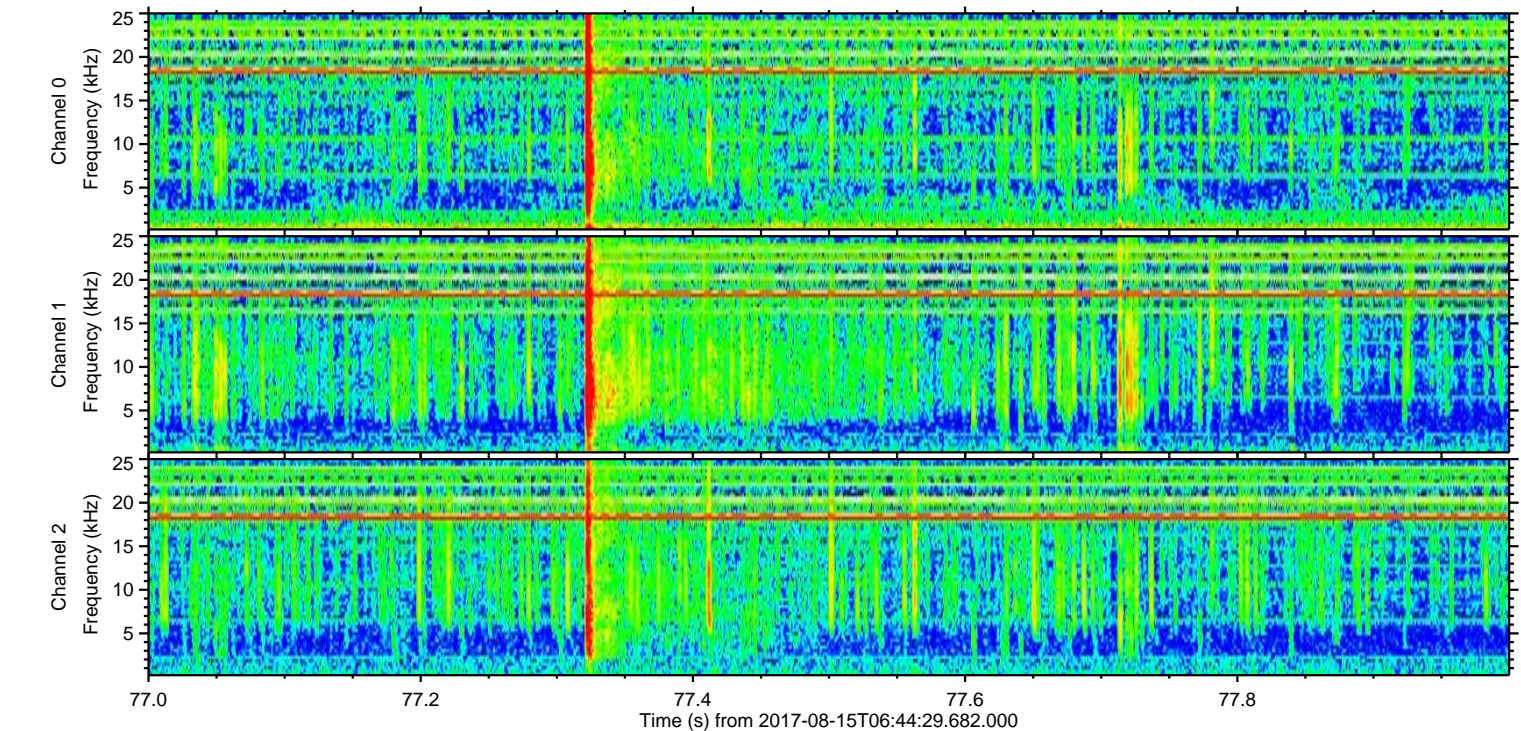
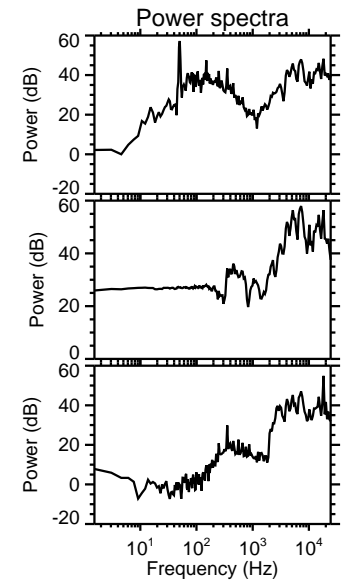
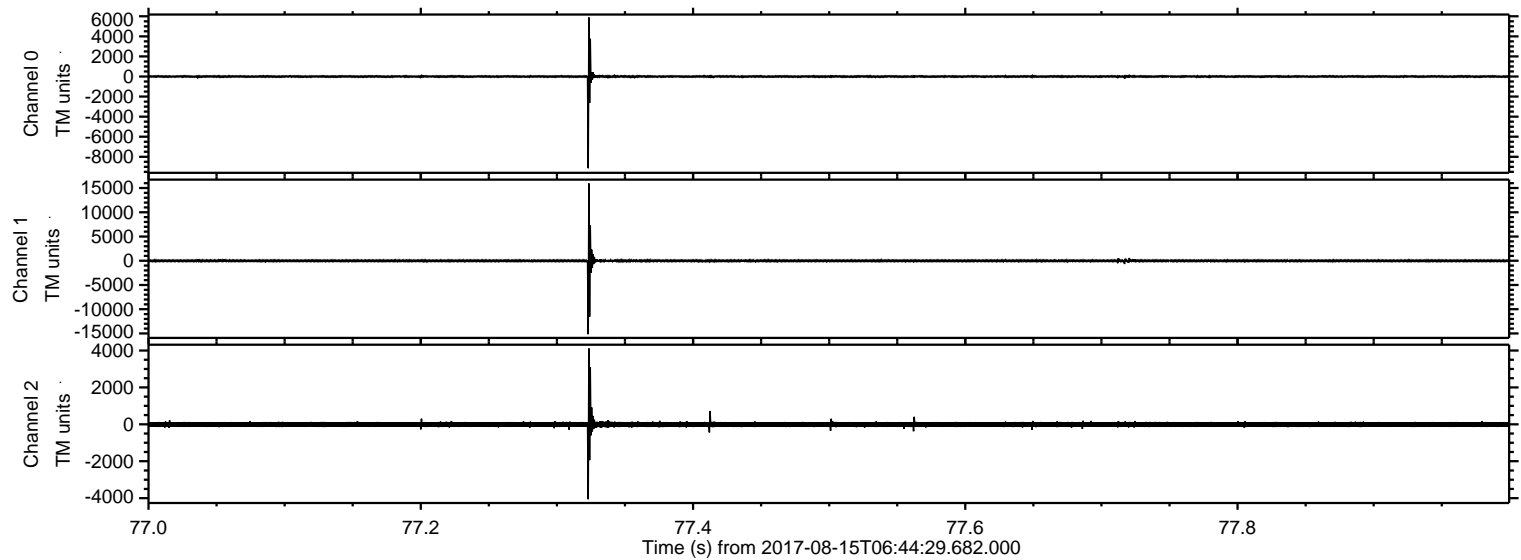
Channel 0
mn: -12344
mx: 13013
 μ : -1.3
 σ : 142.6

Channel 1
mn: -17301
mx: 15828
 μ : -7.6
 σ : 190.1

Channel 2
mn: -17447
mx: 16830
 μ : -8.2
 σ : 242.9

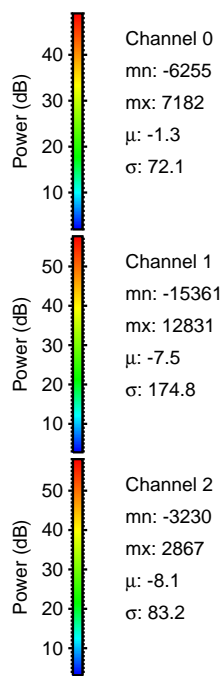
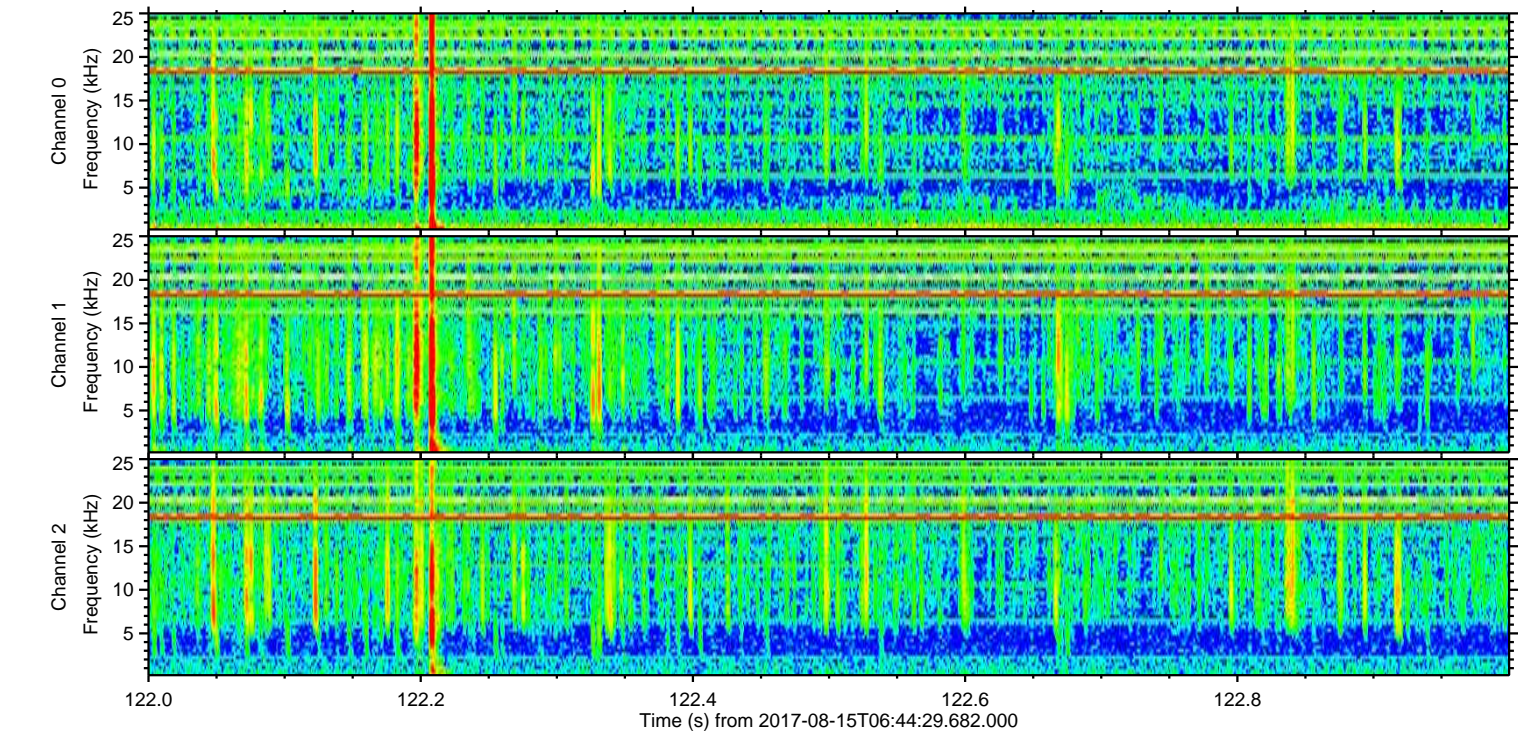
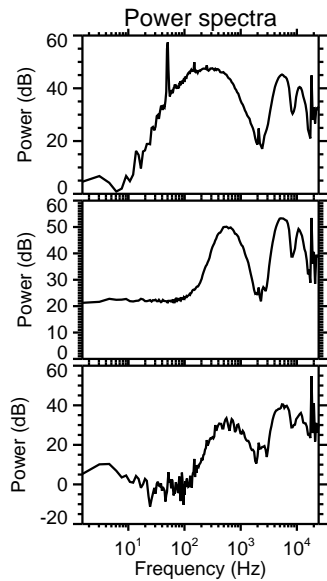
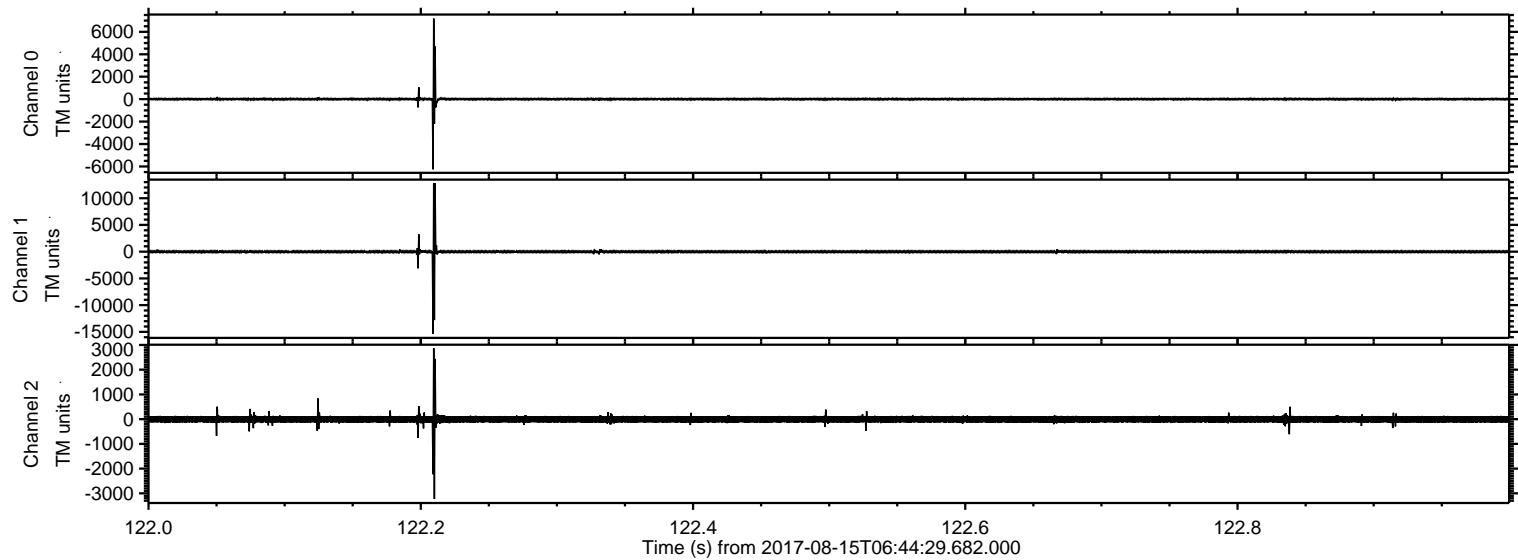
ELMAVAN 3D WAVEFORMS (Measured data sampled at 50 kHz) 51000 packets of 144 samples from 2017-08-15T06:44:29.682.000. Part 78/147

Processed Tue Aug 15 08:52:04 2017 by ELM ver.2012-10-06 from 001__elm20170815_064428__dat00.bin

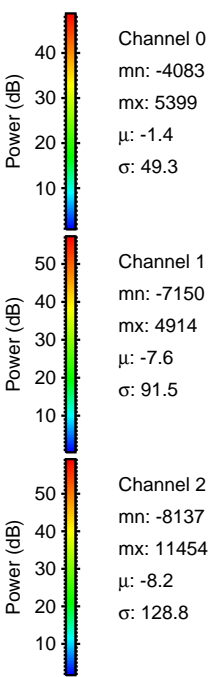
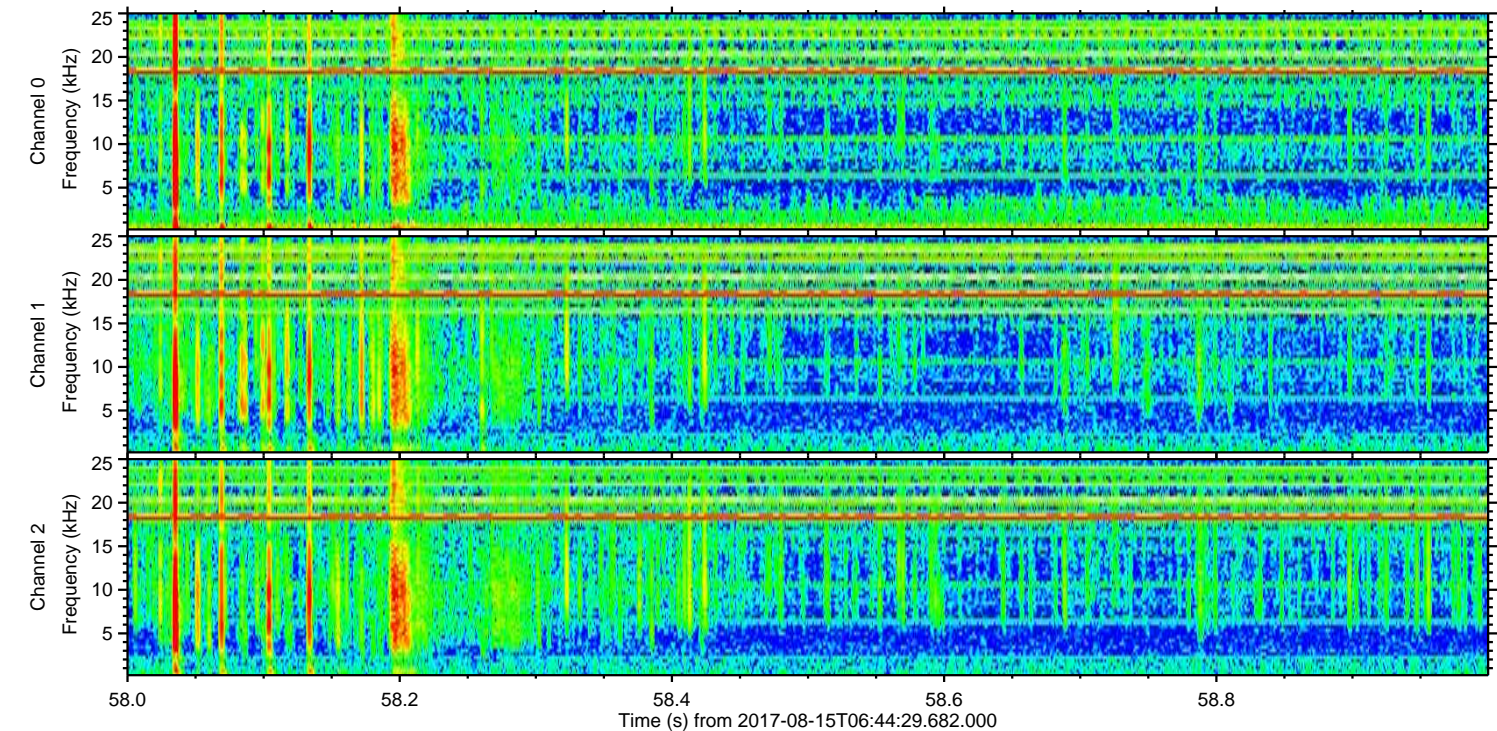
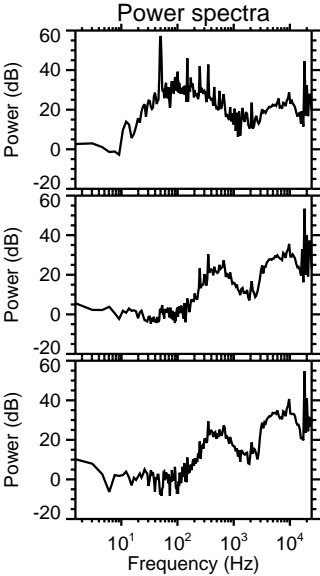
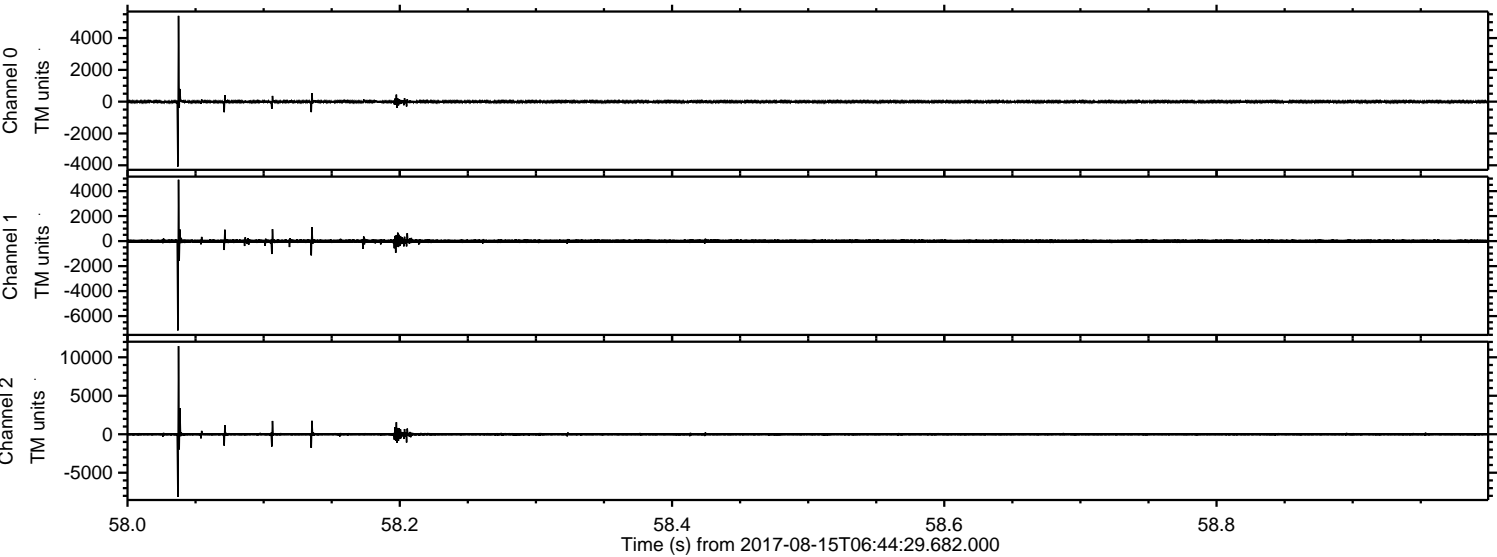


ELMAVAN 3D WAVEFORMS (Measured data sampled at 50 kHz) 51000 packets of 144 samples from 2017-08-15T06:44:29.682.000. Part 123/147

Processed Tue Aug 15 08:52:04 2017 by ELM ver.2012-10-06 from 001__elm20170815_064428__dat00.bin

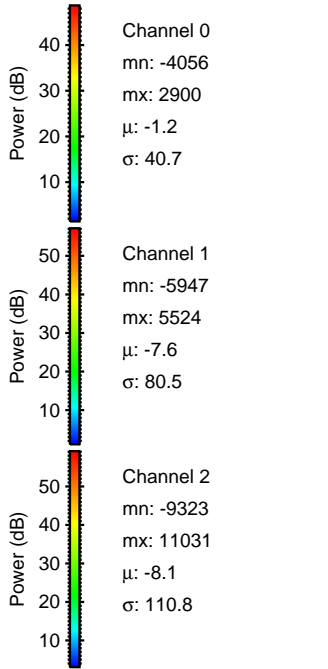
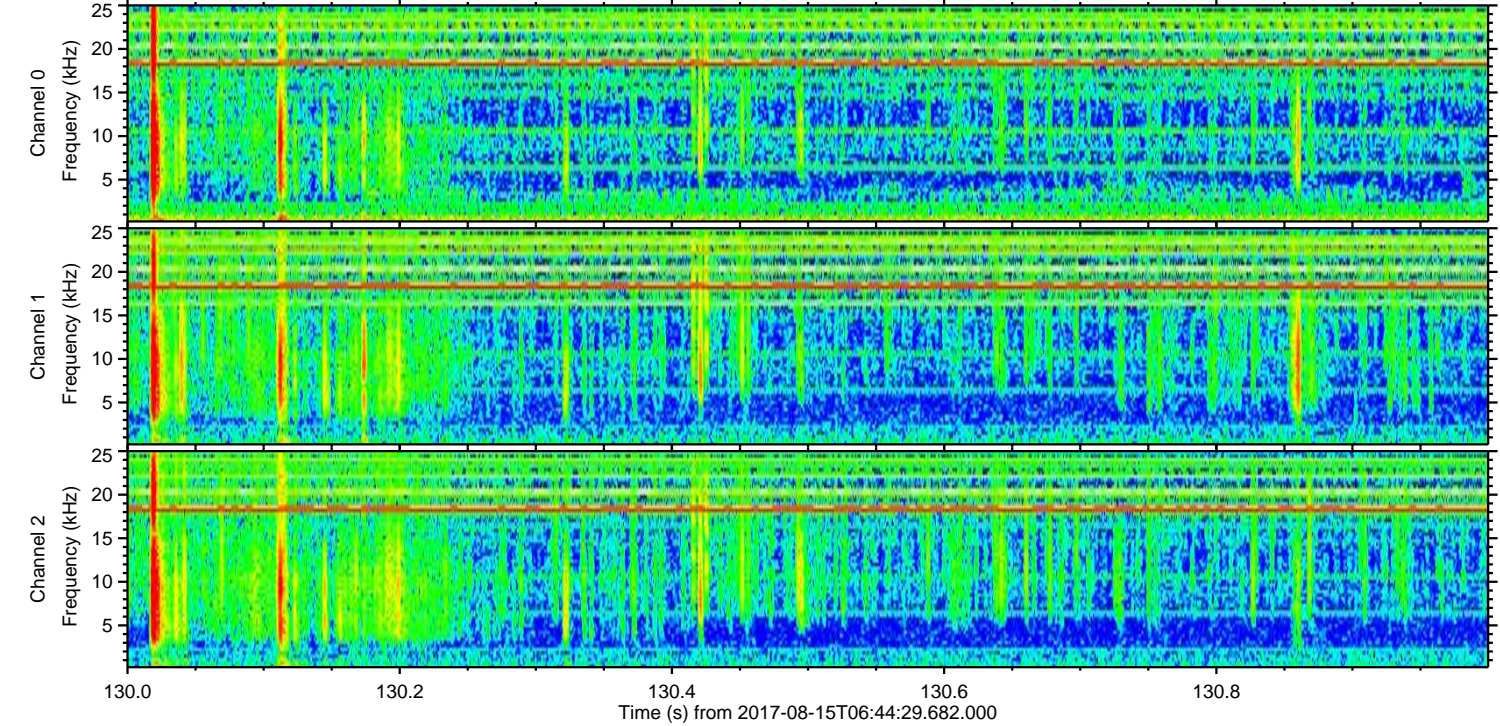
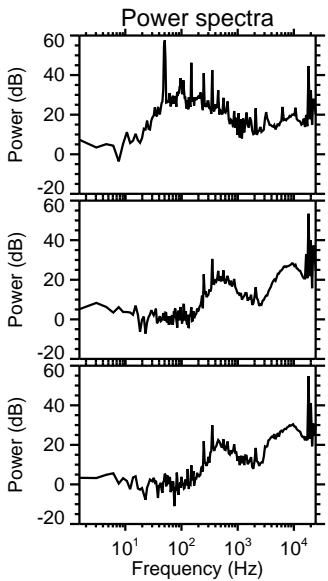
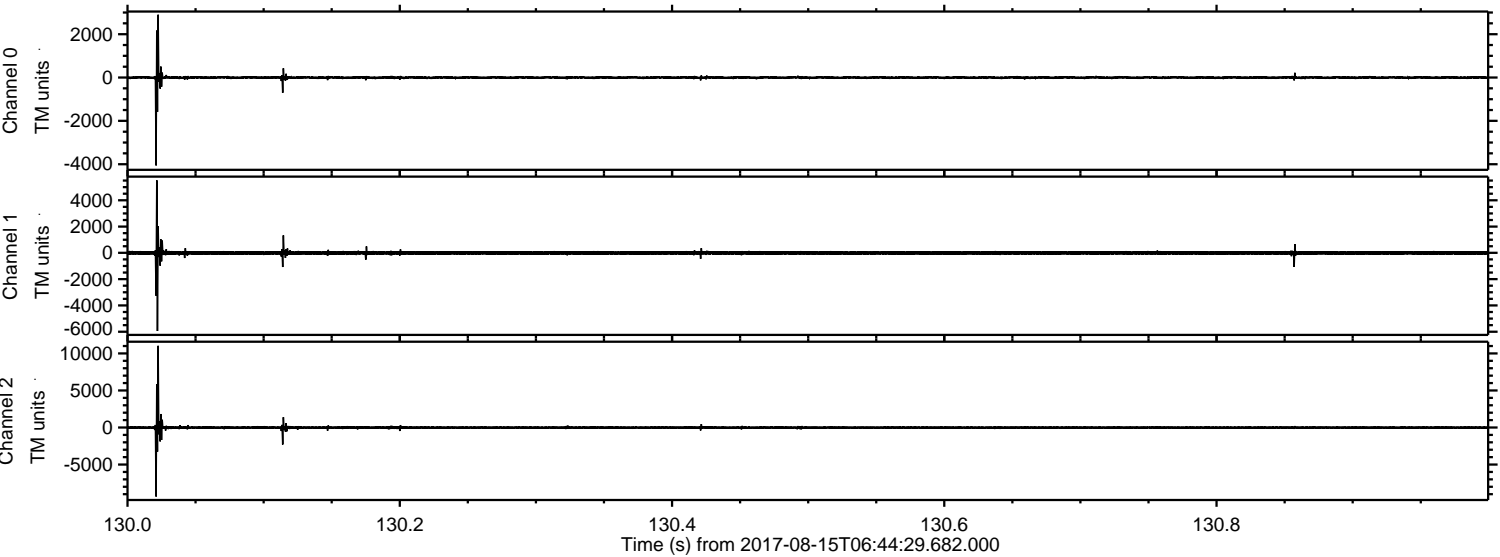


Processed Tue Aug 15 08:52:05 2017 by ELM ver.2012-10-06 from 001__elm20170815_064428__dat00.bin



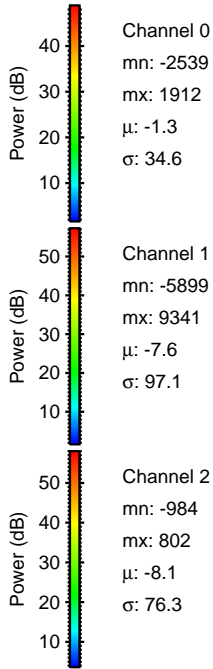
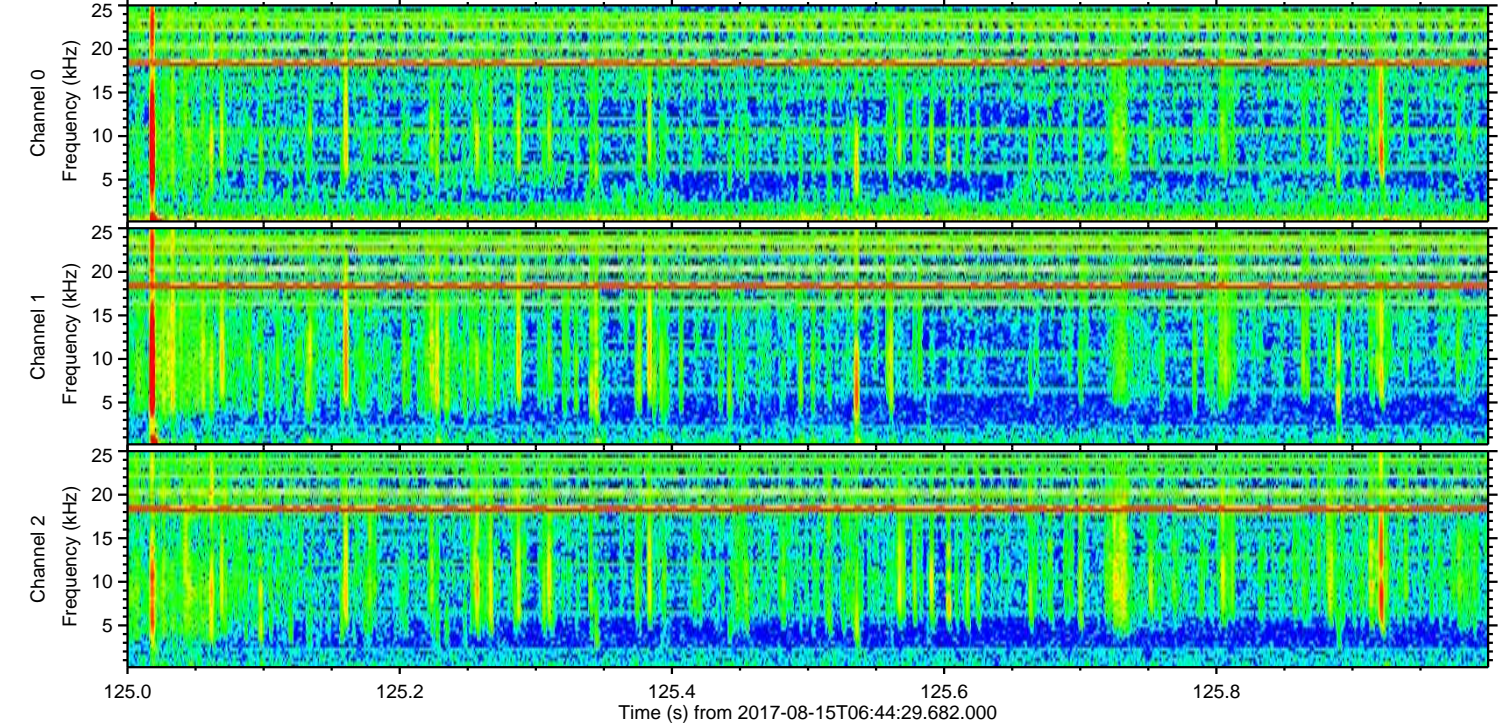
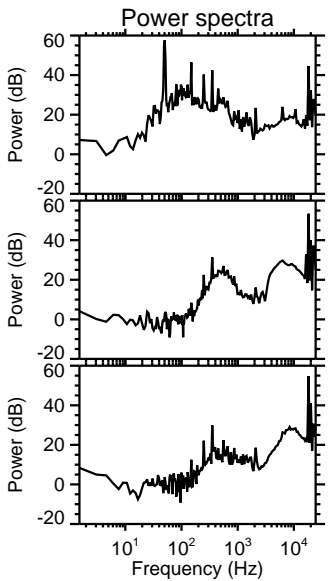
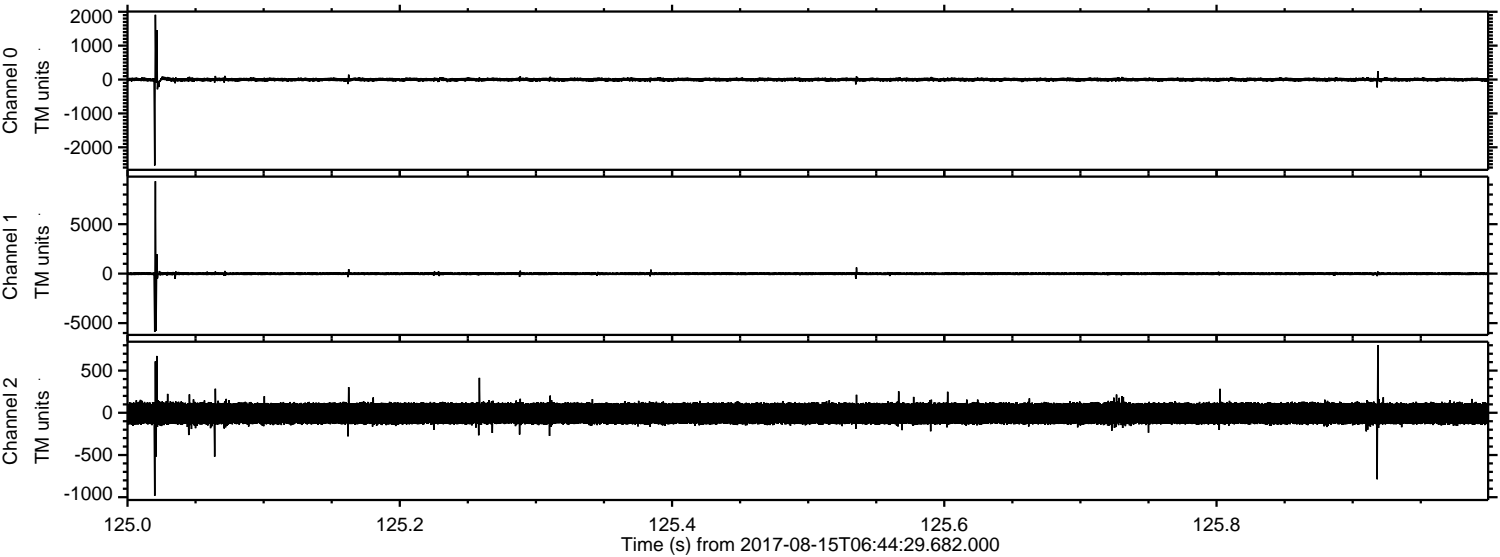
ELMAVAN 3D WAVEFORMS (Measured data sampled at 50 kHz) 51000 packets of 144 samples from 2017-08-15T06:44:29.682.000. Part 131/147

Processed Tue Aug 15 08:52:06 2017 by ELM ver.2012-10-06 from 001__elm20170815_064428__dat00.bin

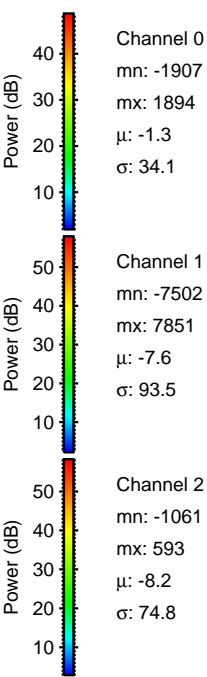
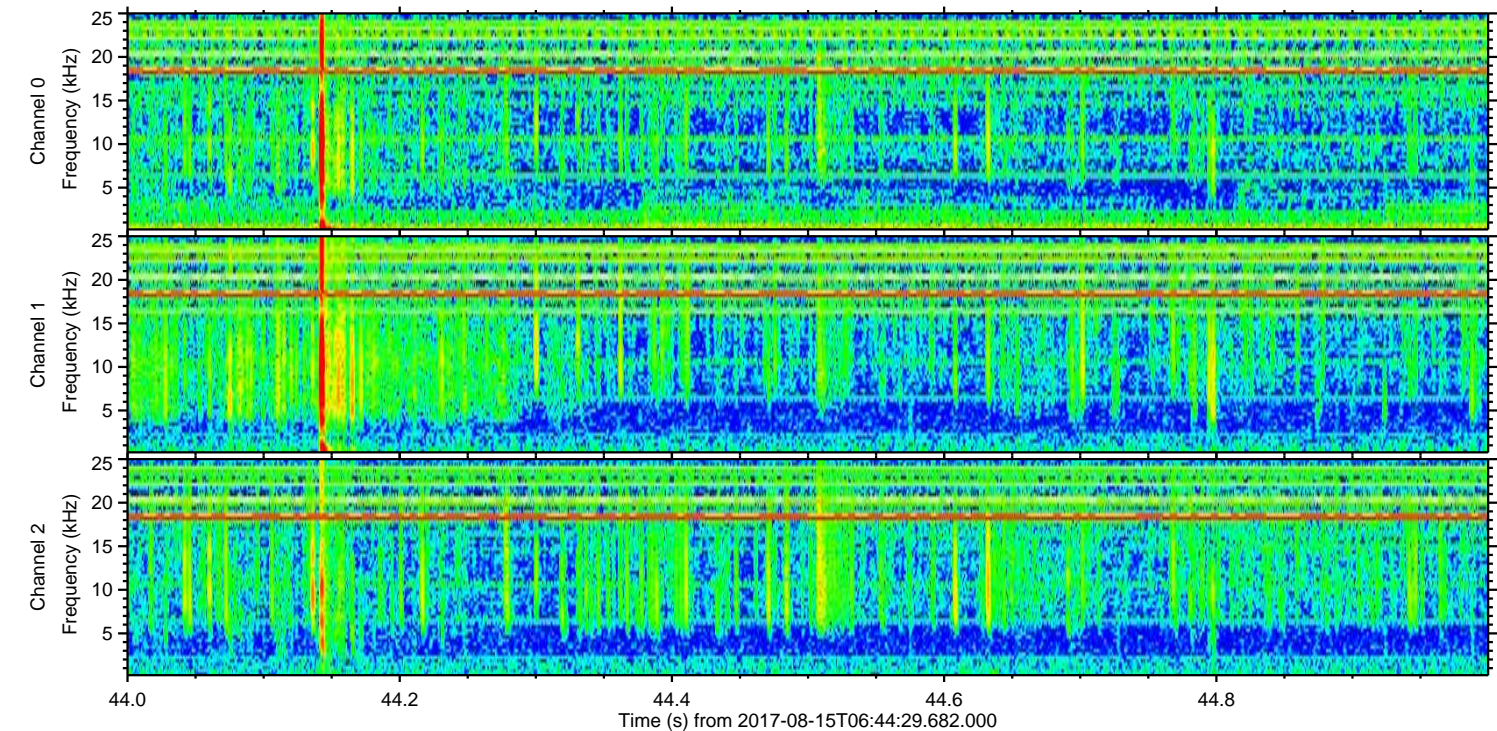
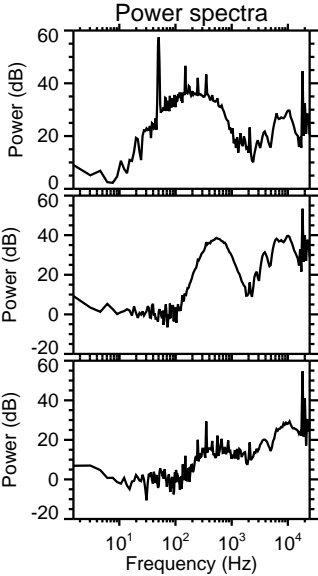
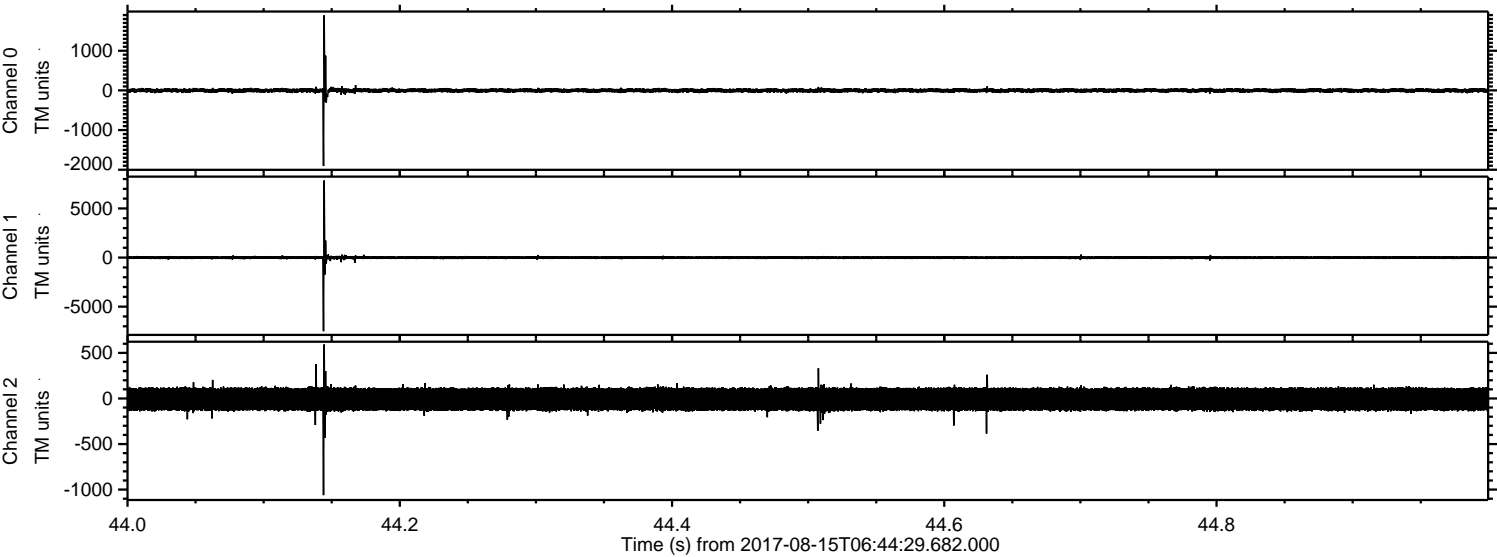


ELMAVAN 3D WAVEFORMS (Measured data sampled at 50 kHz) 51000 packets of 144 samples from 2017-08-15T06:44:29.682.000. Part 126/147

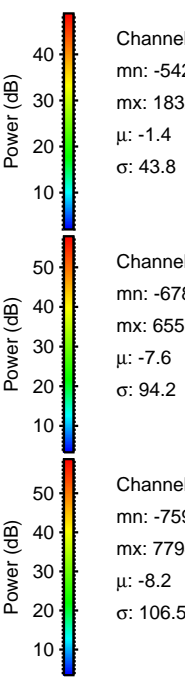
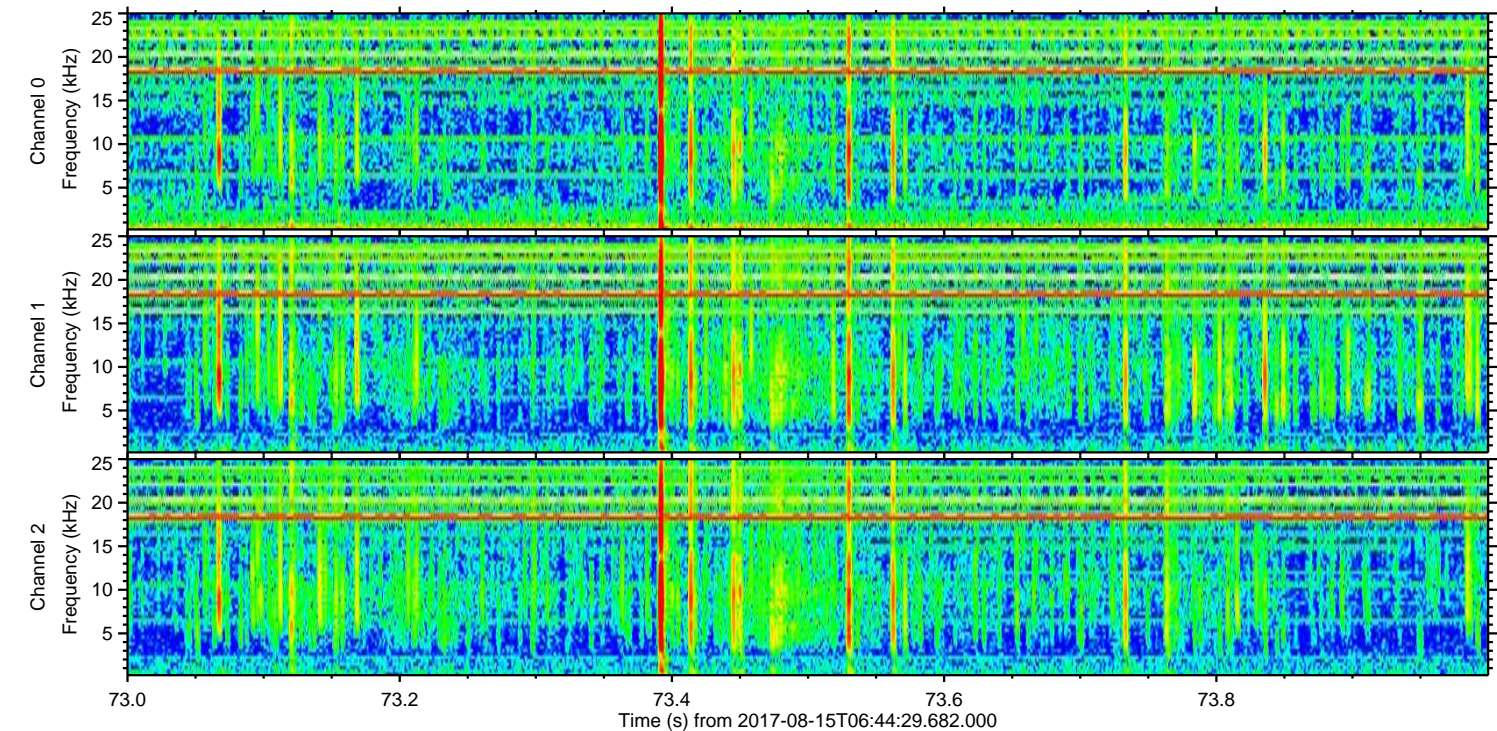
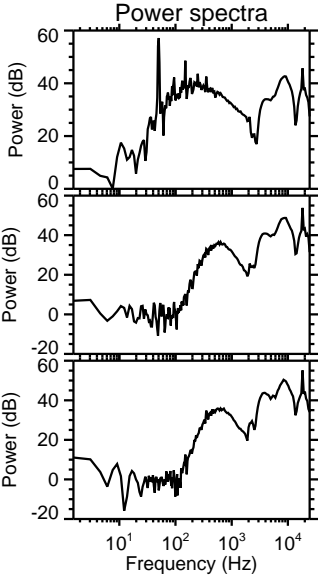
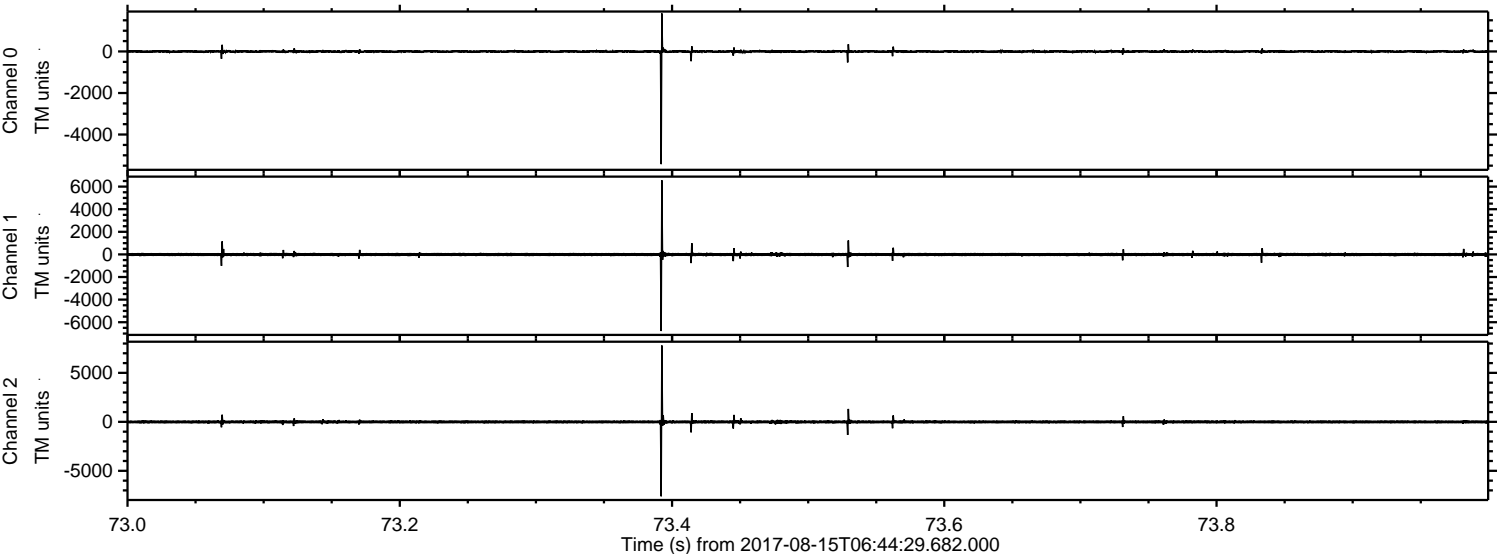
Processed Tue Aug 15 08:52:06 2017 by ELM ver.2012-10-06 from 001__elm20170815_064428__dat00.bin



Processed Tue Aug 15 08:52:07 2017 by ELM ver.2012-10-06 from 001__elm20170815_064428__dat00.bin



Processed Tue Aug 15 08:52:07 2017 by ELM ver.2012-10-06 from 001__elm20170815_064428__dat00.bin

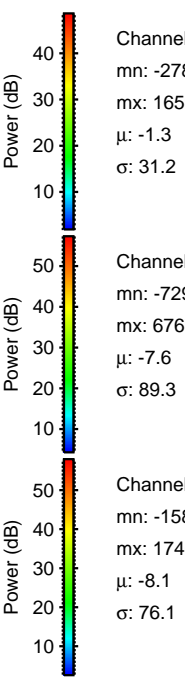
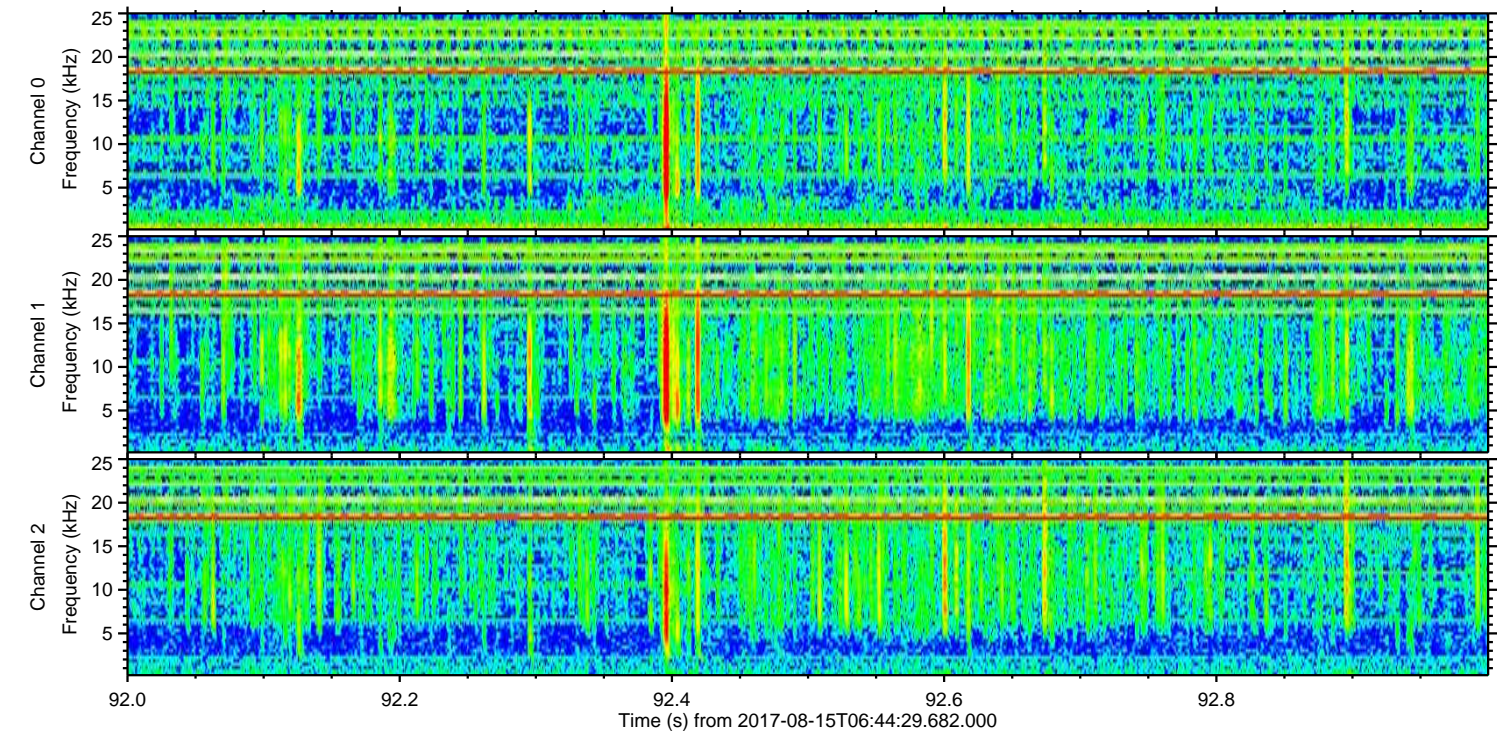
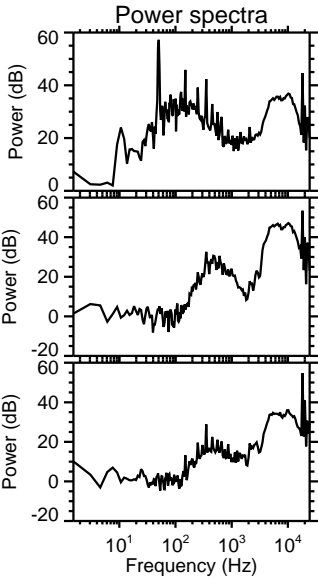
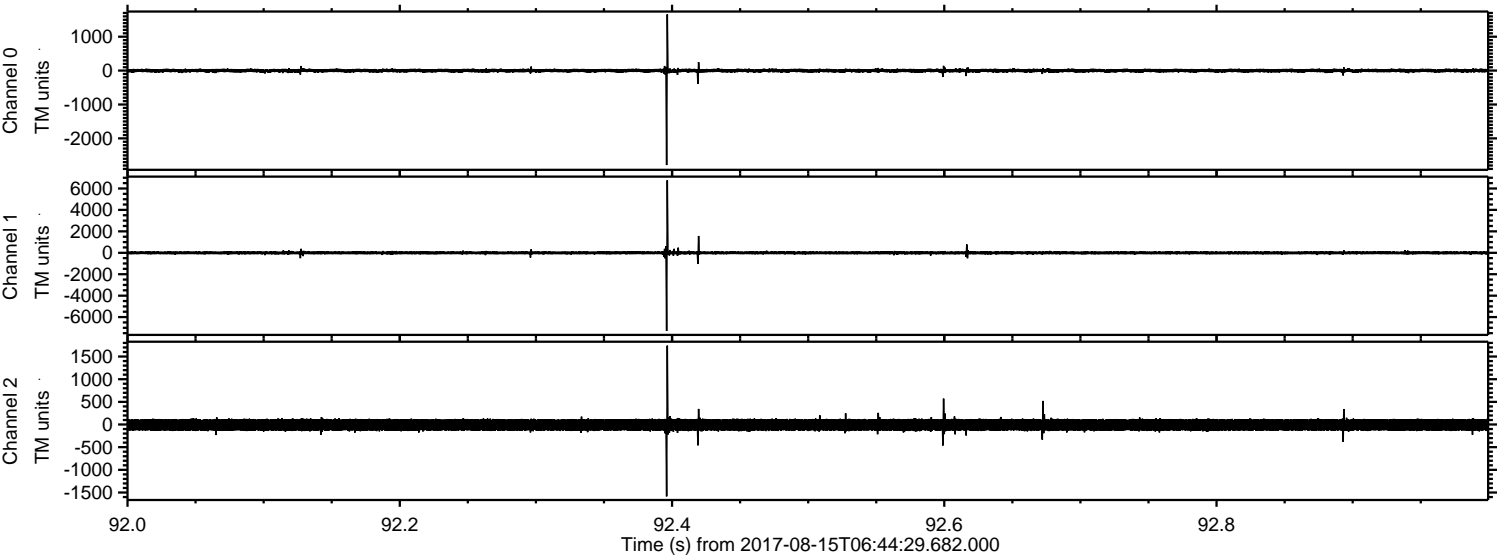


Channel 0
mn: -5428
mx: 1832
μ: -1.4
σ: 43.8

Channel 1
mn: -6782
mx: 6557
μ: -7.6
σ: 94.2

Channel 2
mn: -7599
mx: 7794
μ: -8.2
σ: 106.5

Processed Tue Aug 15 08:52:08 2017 by ELM ver.2012-10-06 from 001__elm20170815_064428__dat00.bin



Channel 0
mn: -2787
mx: 1659
 μ : -1.3
 σ : 31.2

Channel 1
mn: -7297
mx: 6767
 μ : -7.6
 σ : 89.3

Channel 2
mn: -1586
mx: 1740
 μ : -8.1
 σ : 76.1

Processed Tue Aug 15 08:52:09 2017 by ELM ver.2012-10-06 from 001__elm20170815_064428__dat00.bin

