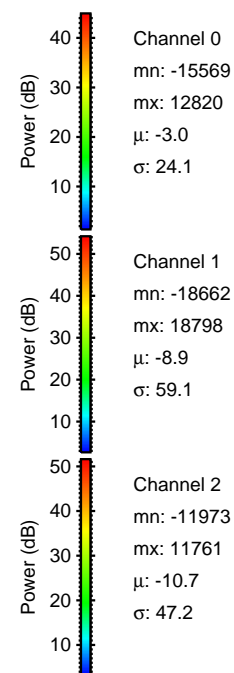
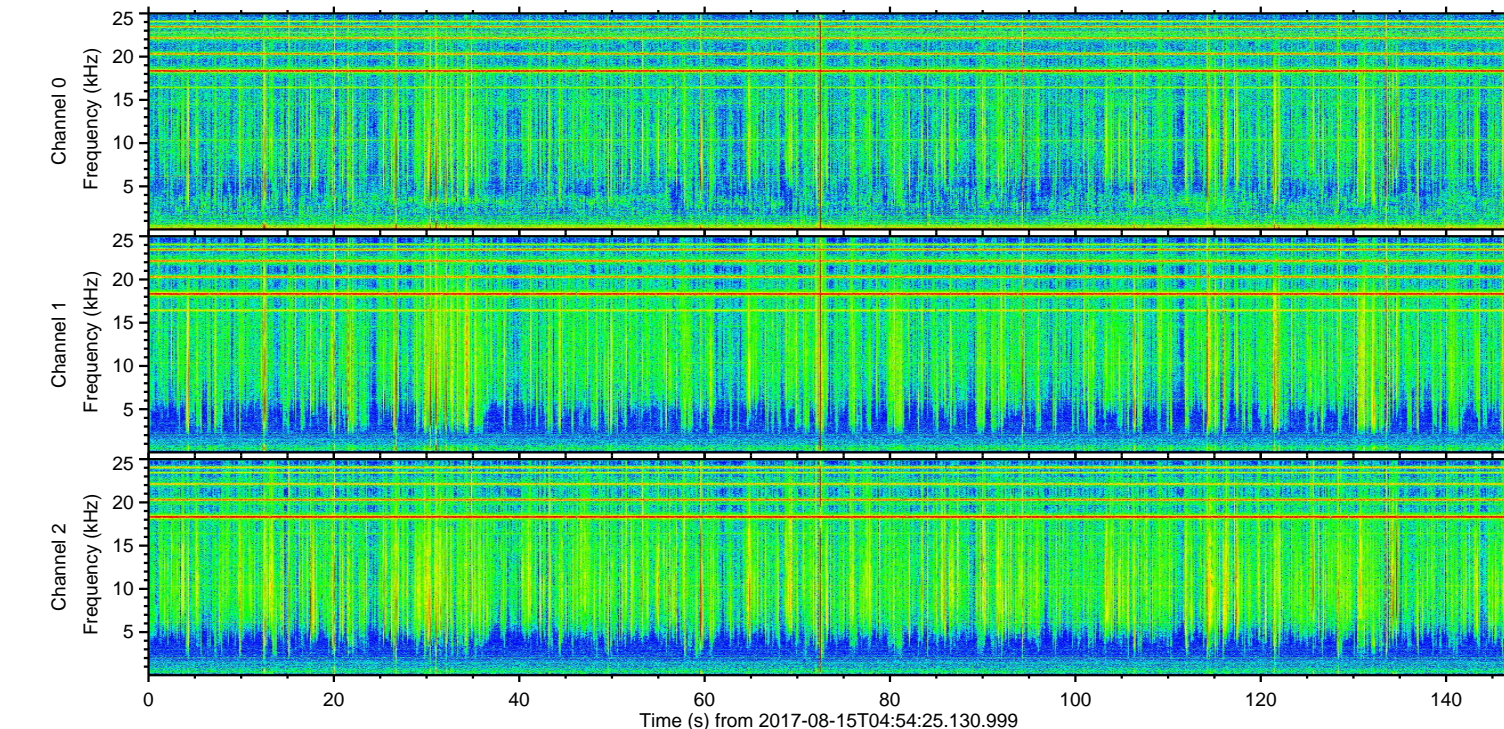
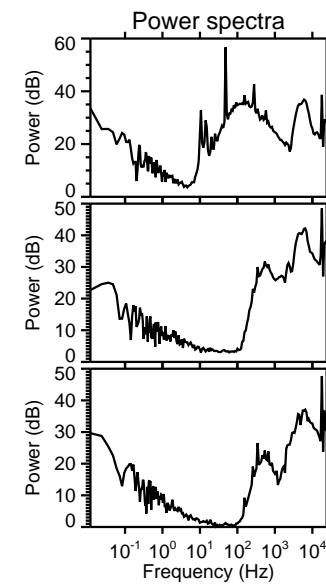
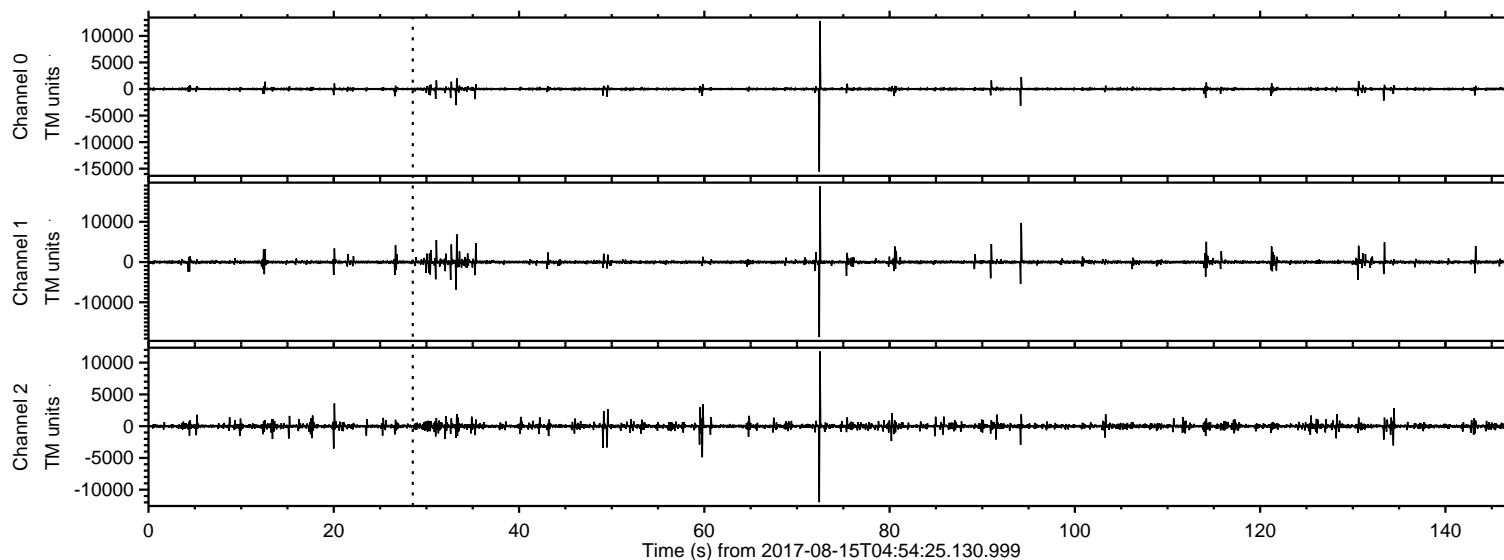


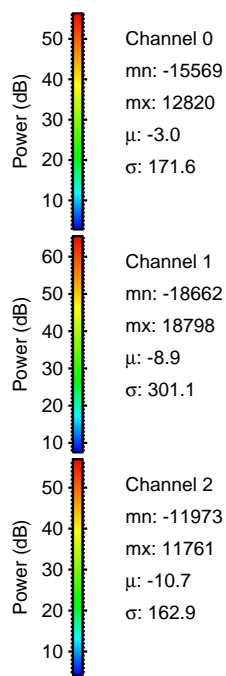
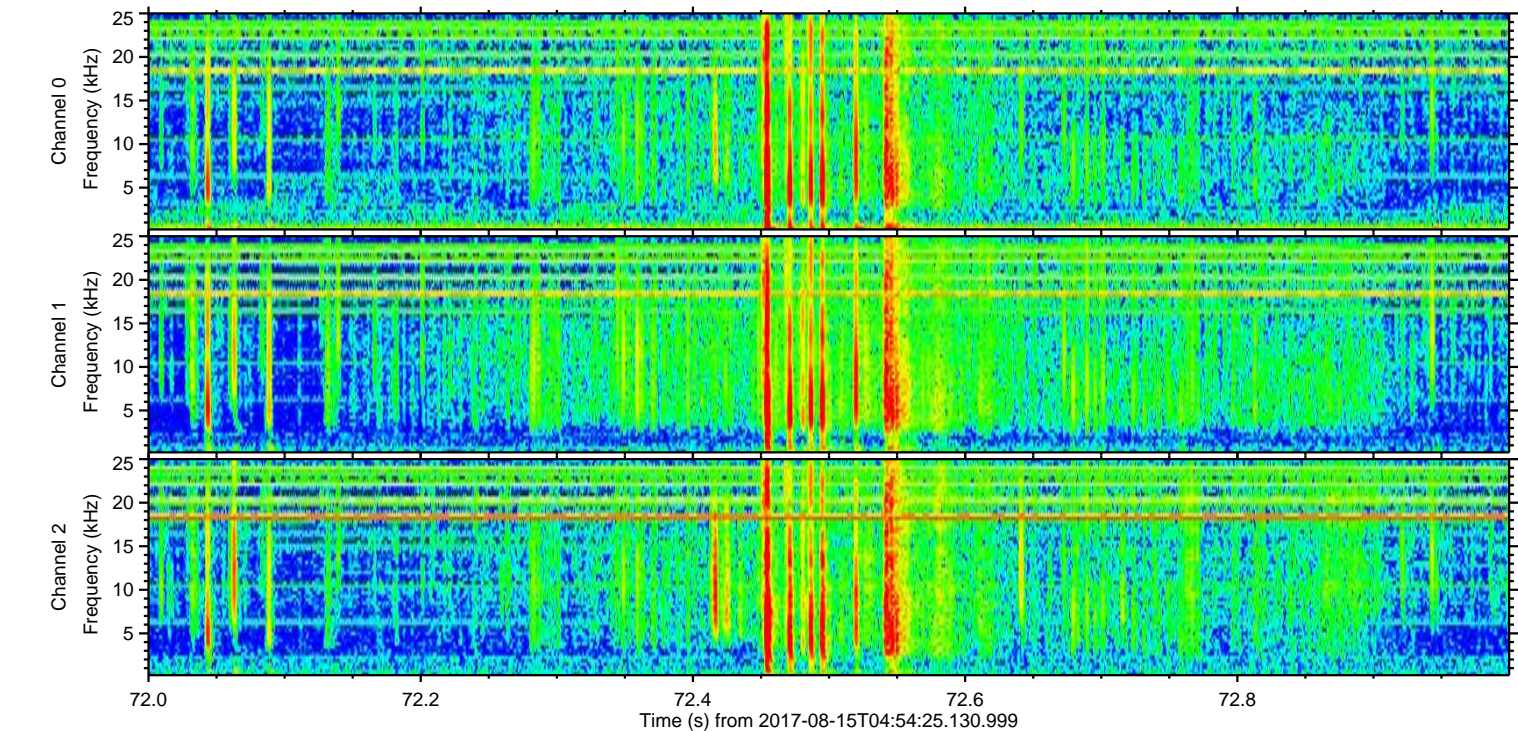
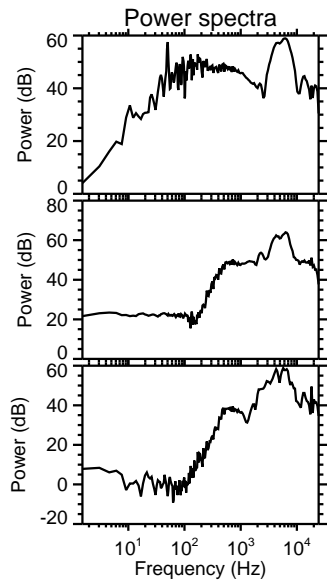
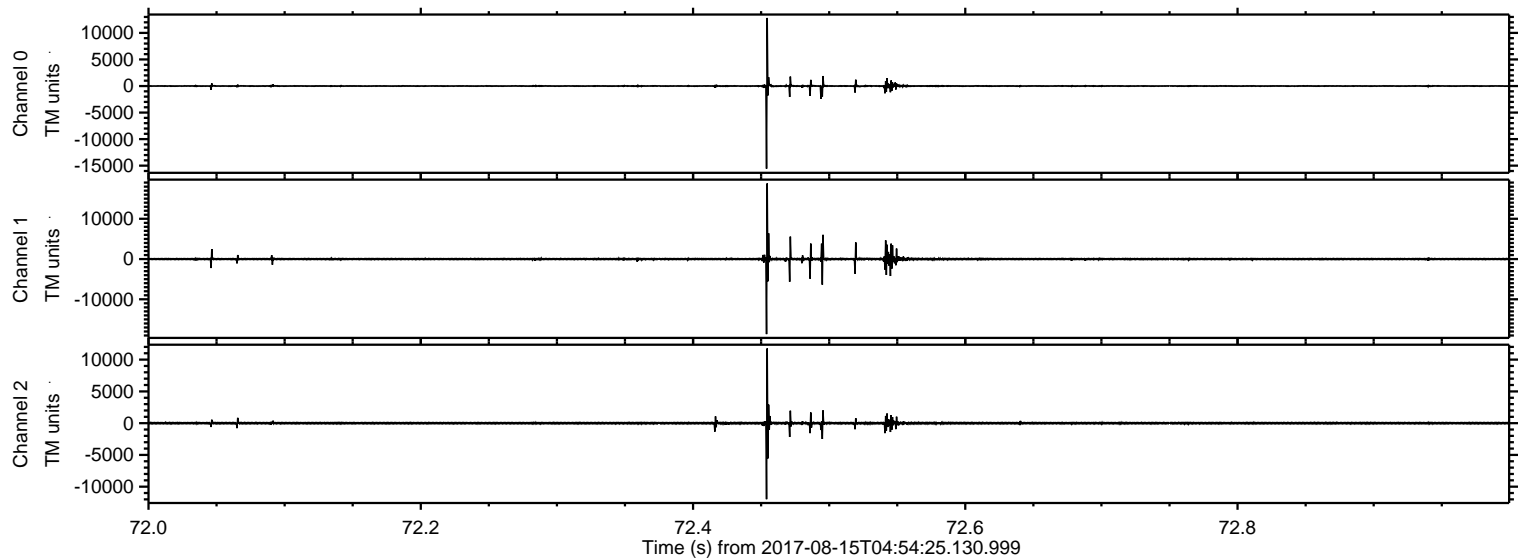
ELMAVAN 3D WAVEFORMS (Measured data sampled at 50 kHz) 50999 packets of 144 samples from 2017-08-15T04:54:25.130.999.

Processed Tue Aug 15 07:02:42 2017 by ELM ver.2012-10-06 from 001__elm20170815_045424__dat00.bin

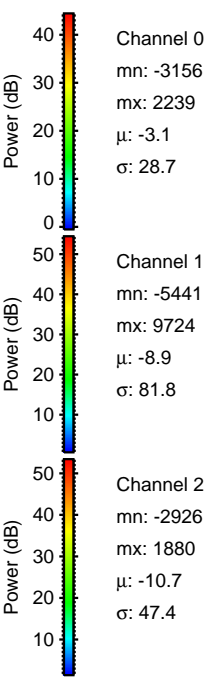
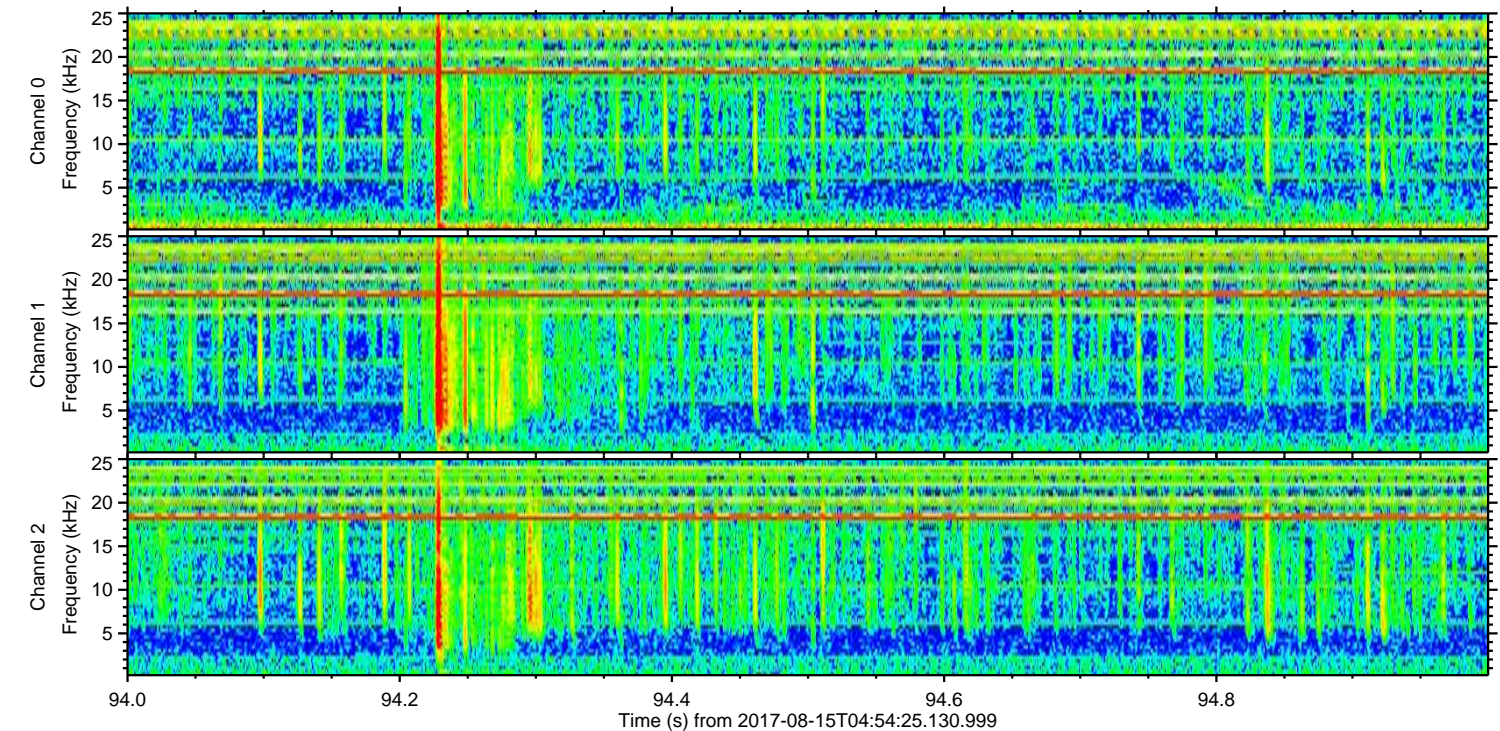
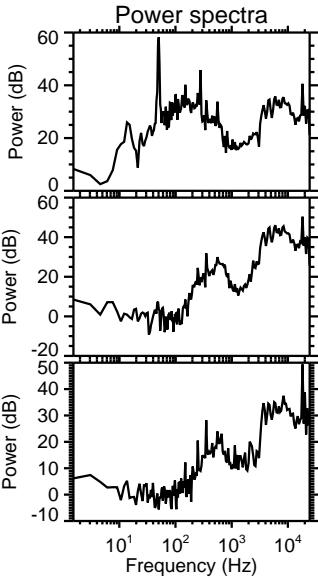
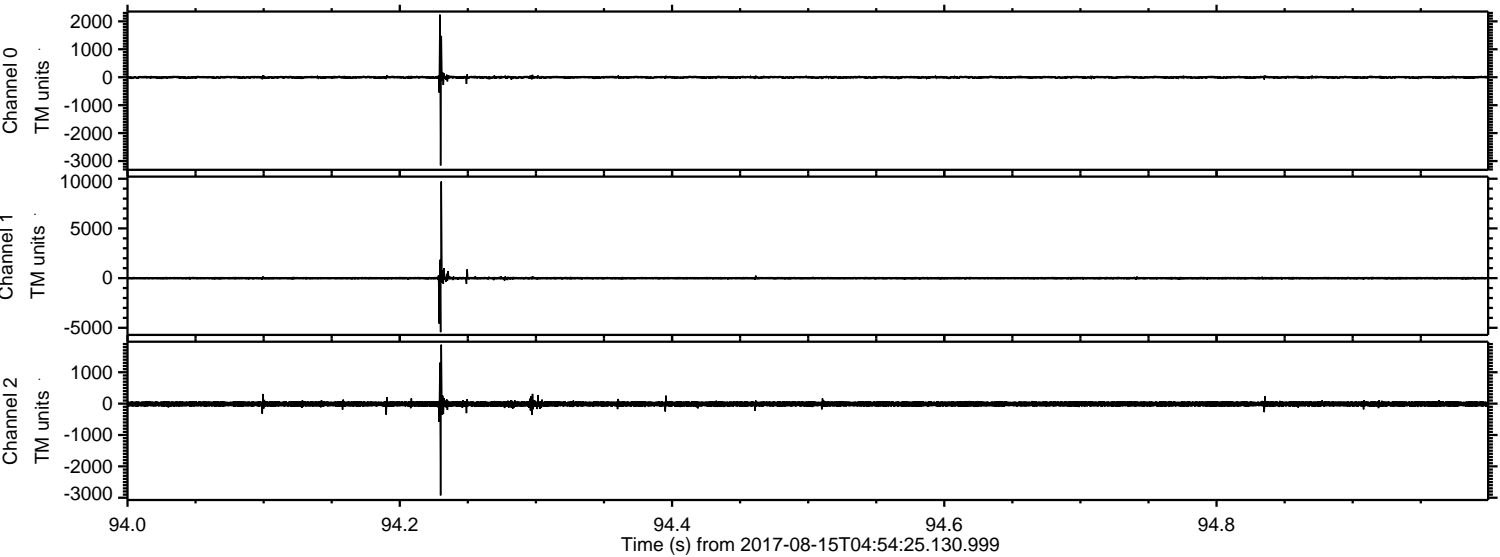


ELMAVAN 3D WAVEFORMS (Measured data sampled at 50 kHz) 50999 packets of 144 samples from 2017-08-15T04:54:25.130.999. Part 73/147

Processed Tue Aug 15 07:02:48 2017 by ELM ver.2012-10-06 from 001__elm20170815_045424__dat00.bin



Processed Tue Aug 15 07:02:48 2017 by ELM ver.2012-10-06 from 001__elm20170815_045424__dat00.bin



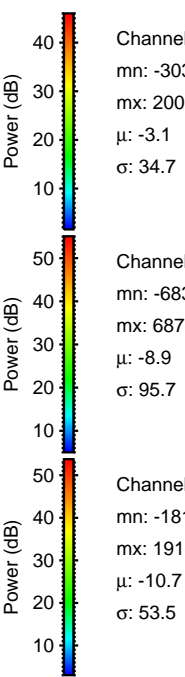
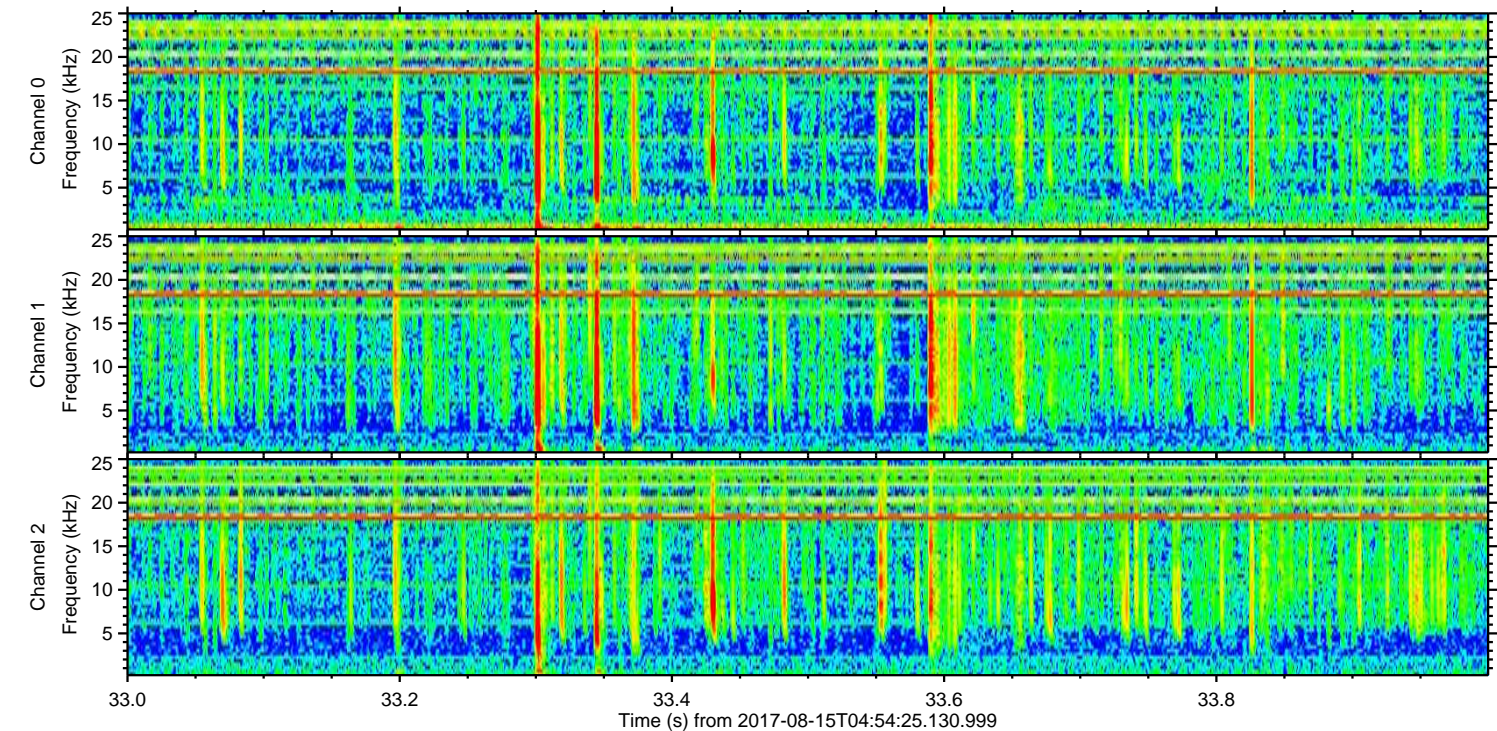
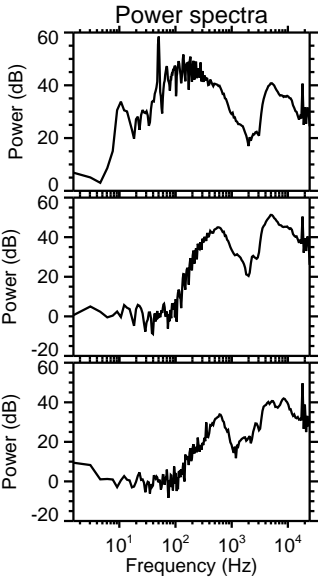
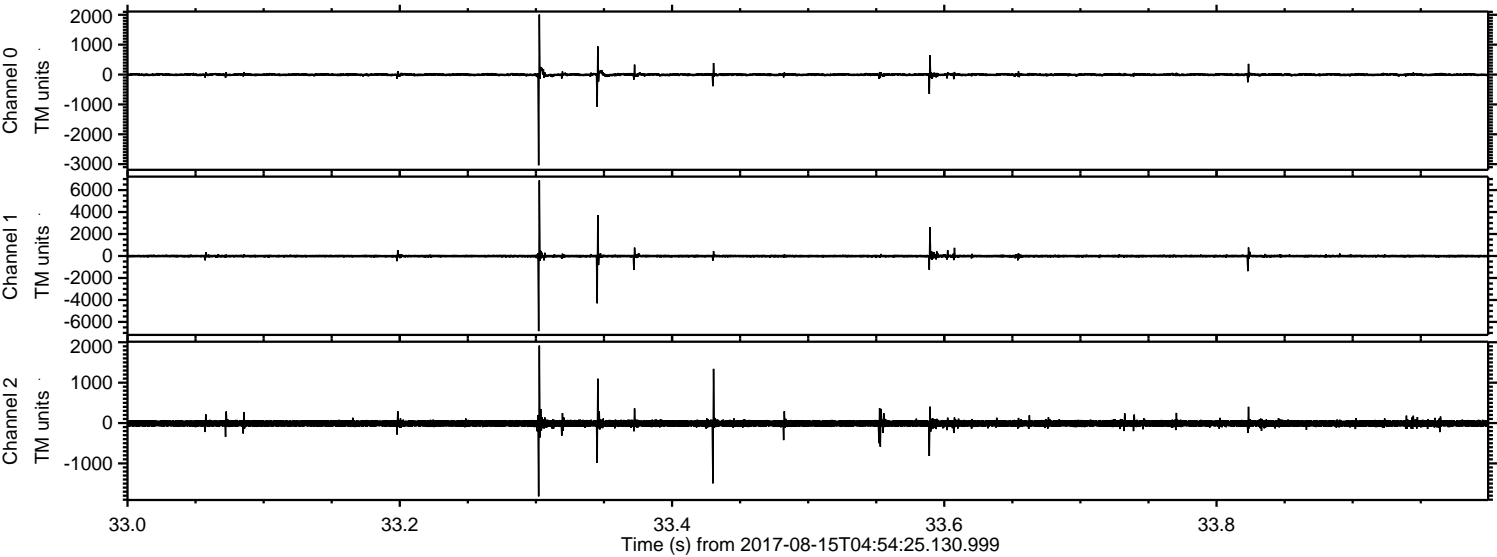
Channel 0
mn: -3156
mx: 2239
 μ : -3.1
 σ : 28.7

Channel 1
mn: -5441
mx: 9724
 μ : -8.9
 σ : 81.8

Channel 2
mn: -2926
mx: 1880
 μ : -10.7
 σ : 47.4

ELMAVAN 3D WAVEFORMS (Measured data sampled at 50 kHz) 50999 packets of 144 samples from 2017-08-15T04:54:25.130.999. Part 34/147

Processed Tue Aug 15 07:02:49 2017 by ELM ver.2012-10-06 from 001__elm20170815_045424__dat00.bin

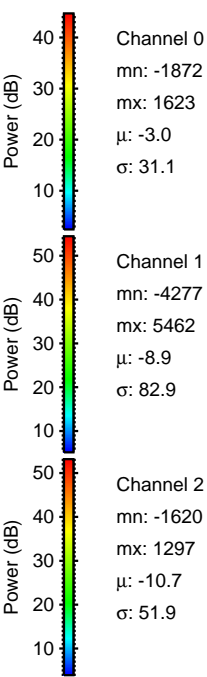
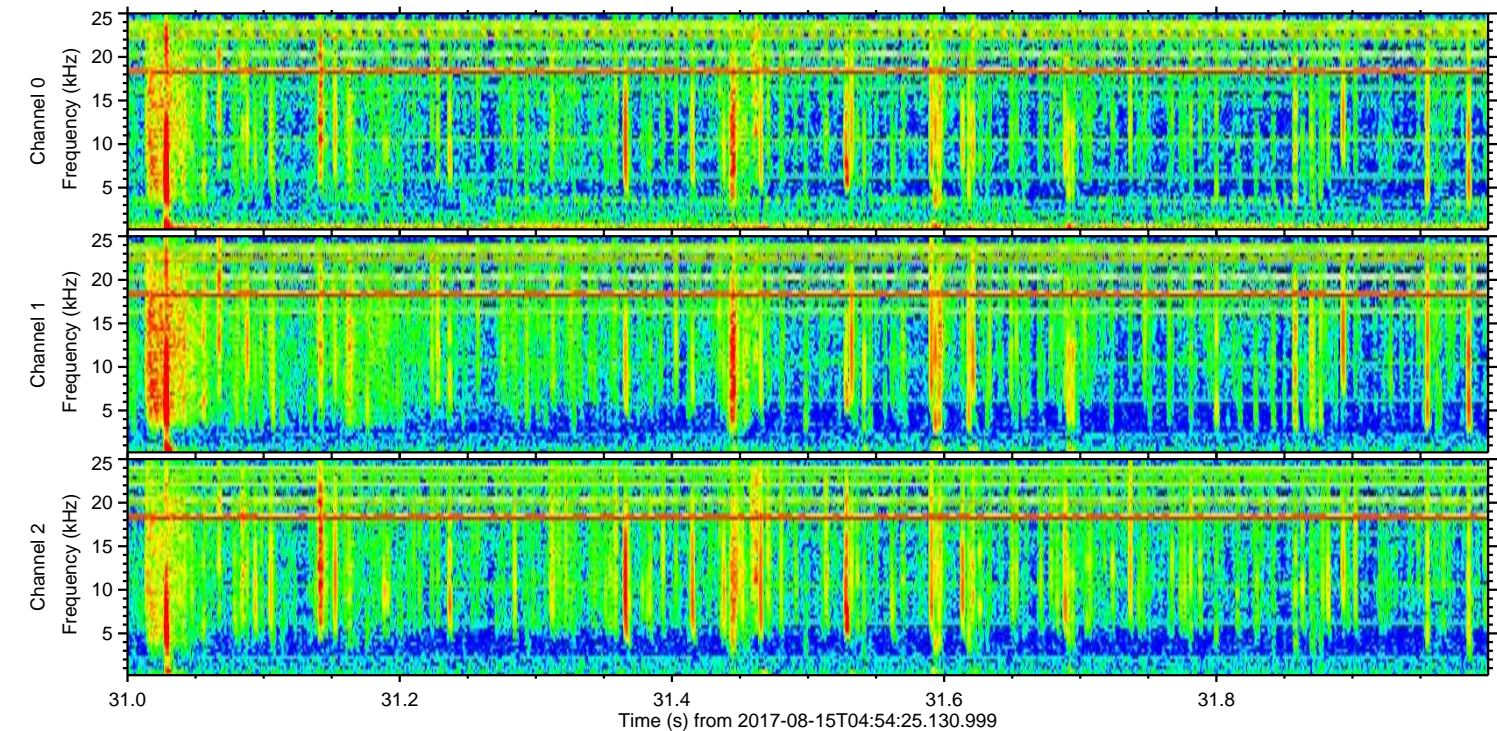
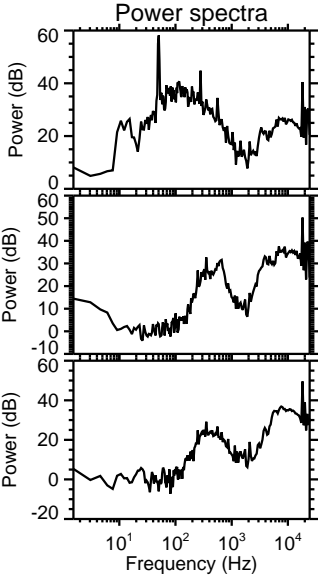
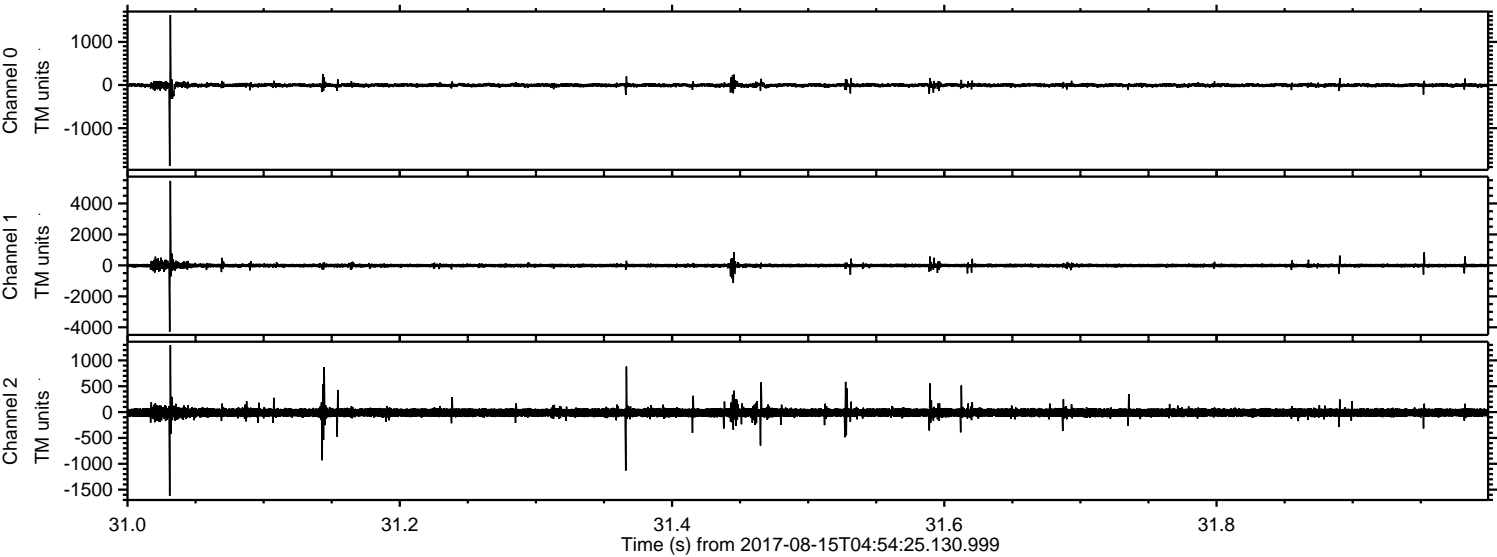


Channel 0
mn: -3037
mx: 2009
 μ : -3.1
 σ : 34.7

Channel 1
mn: -6838
mx: 6878
 μ : -8.9
 σ : 95.7

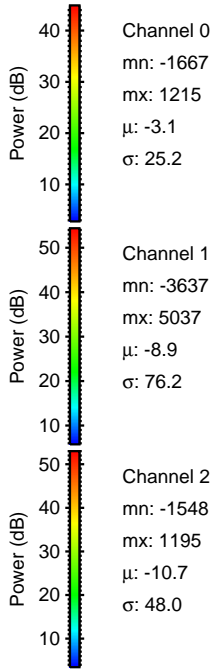
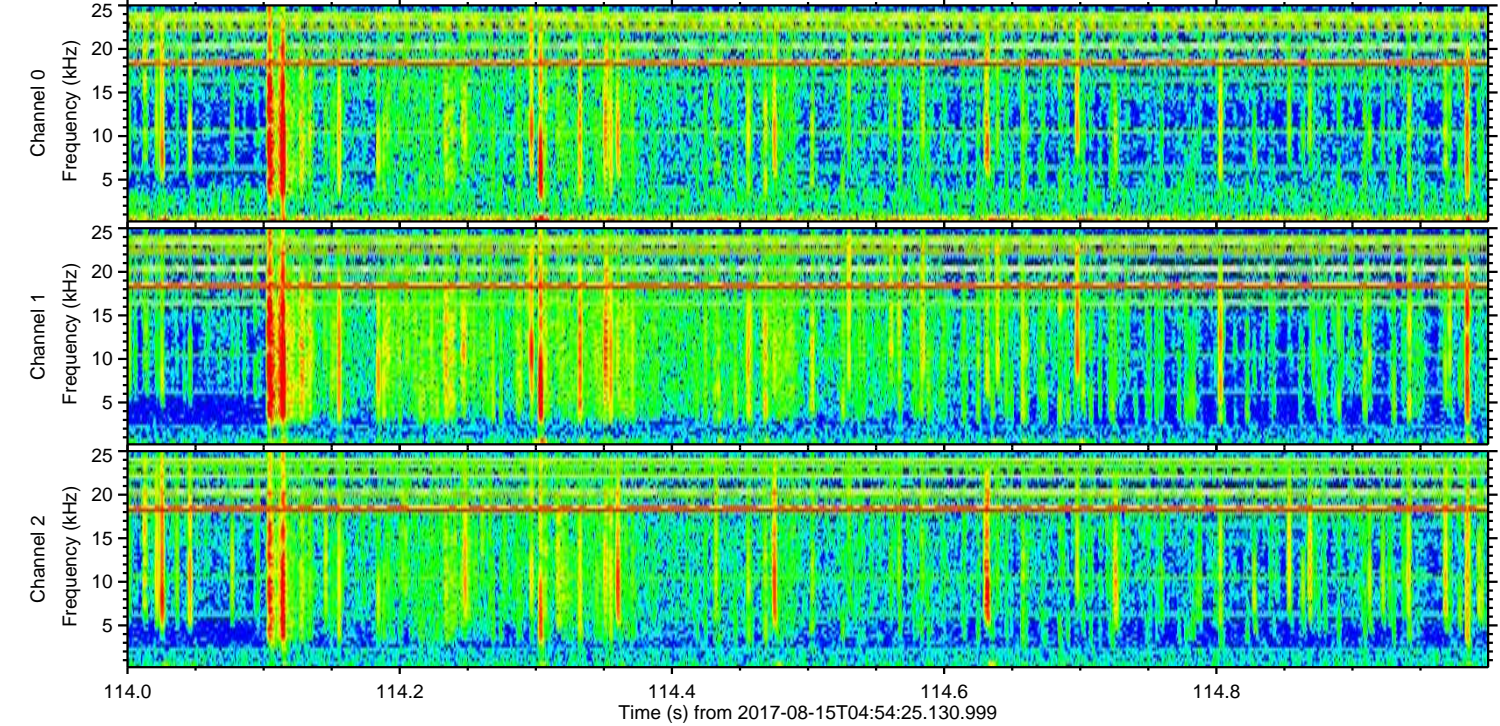
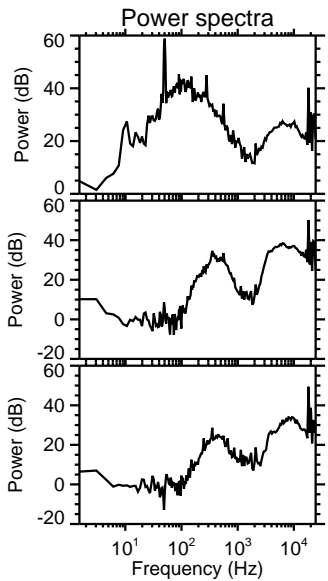
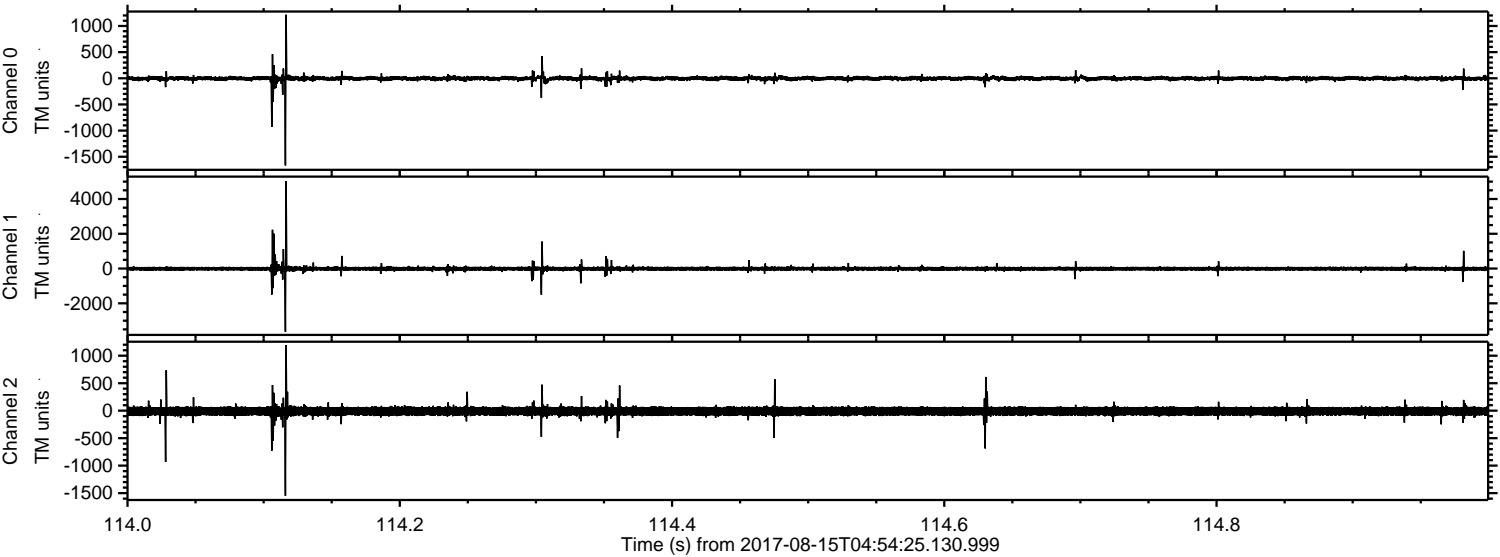
Channel 2
mn: -1816
mx: 1918
 μ : -10.7
 σ : 53.5

Processed Tue Aug 15 07:02:50 2017 by ELM ver.2012-10-06 from 001__elm20170815_045424__dat00.bin



ELMAVAN 3D WAVEFORMS (Measured data sampled at 50 kHz) 50999 packets of 144 samples from 2017-08-15T04:54:25.130.999. Part 115/147

Processed Tue Aug 15 07:02:50 2017 by ELM ver.2012-10-06 from 001__elm20170815_045424__dat00.bin

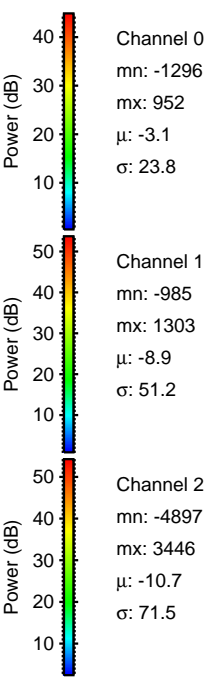
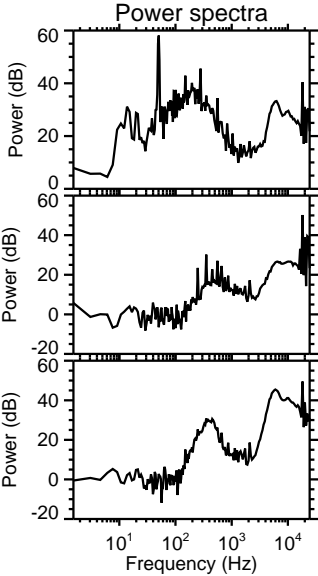
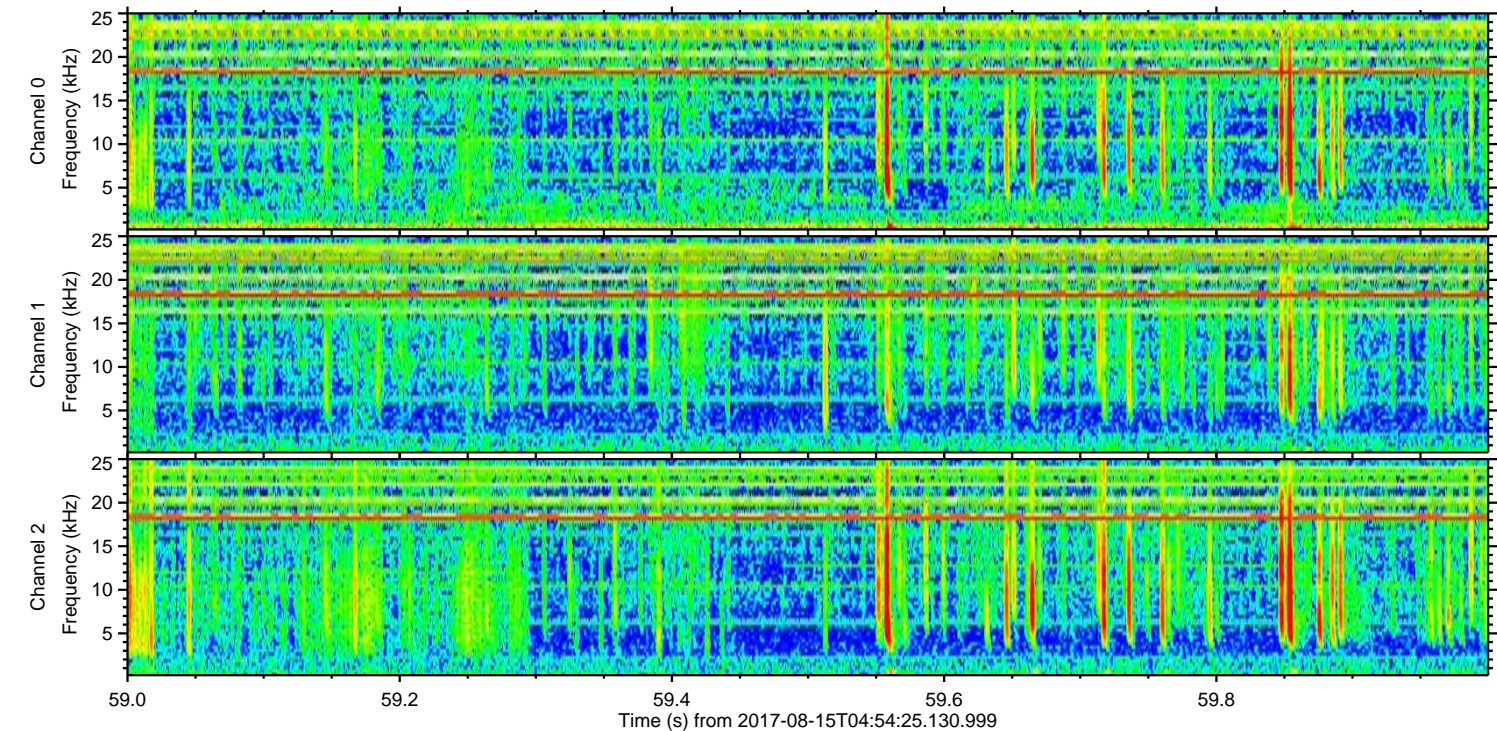
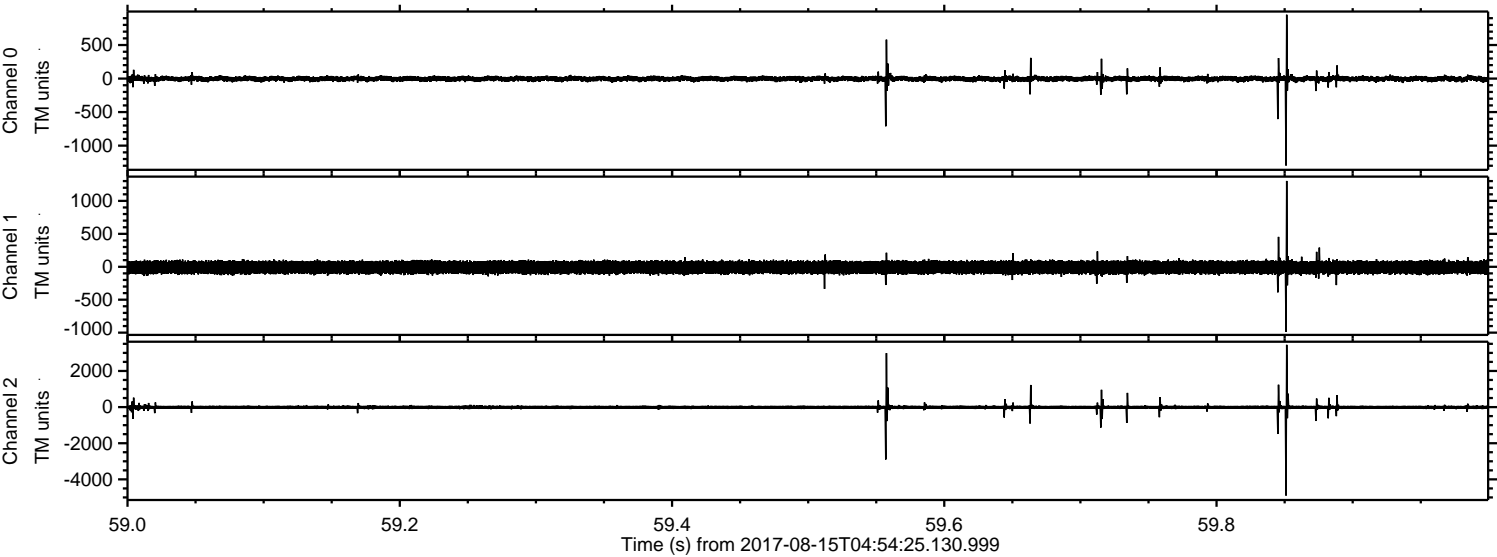


Channel 0
mn: -1667
mx: 1215
 μ : -3.1
 σ : 25.2

Channel 1
mn: -3637
mx: 5037
 μ : -8.9
 σ : 76.2

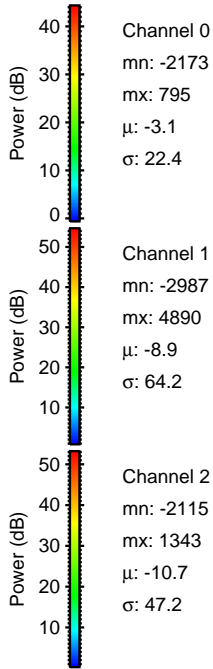
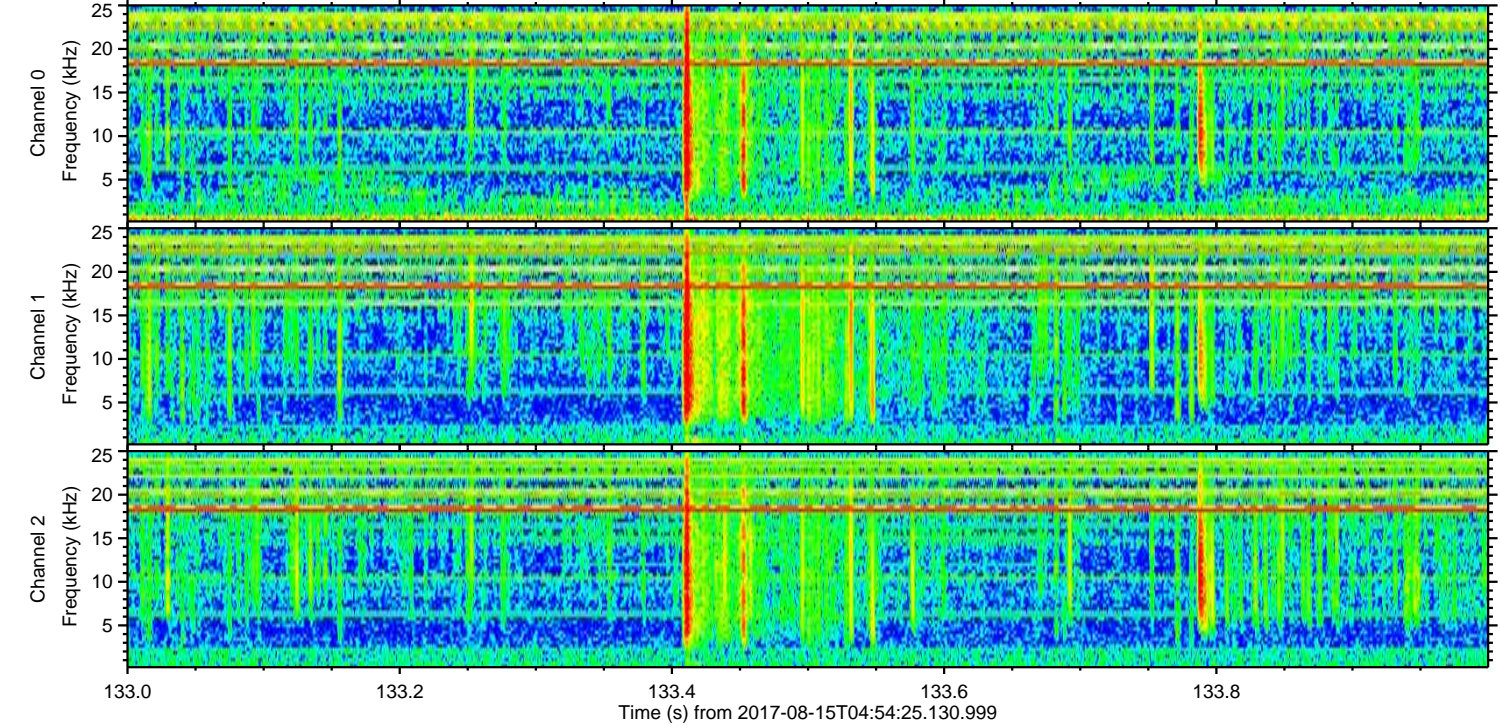
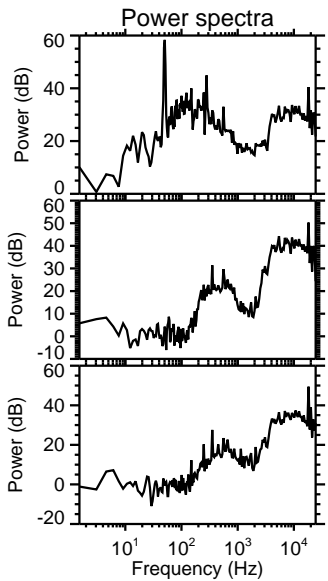
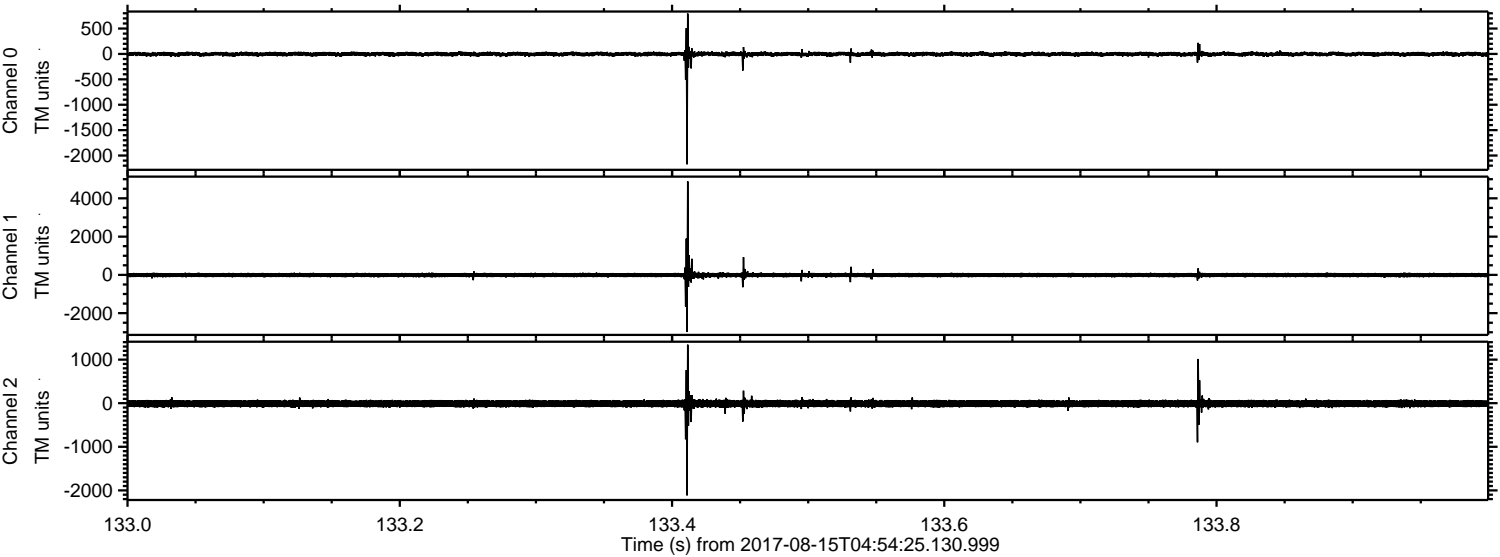
Channel 2
mn: -1548
mx: 1195
 μ : -10.7
 σ : 48.0

Processed Tue Aug 15 07:02:51 2017 by ELM ver.2012-10-06 from 001__elm20170815_045424__dat00.bin

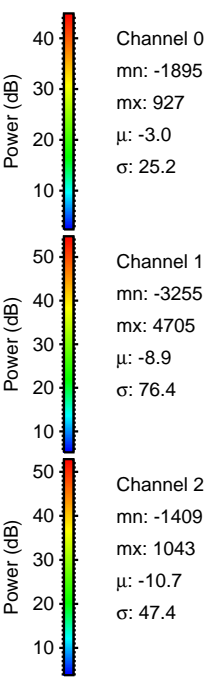
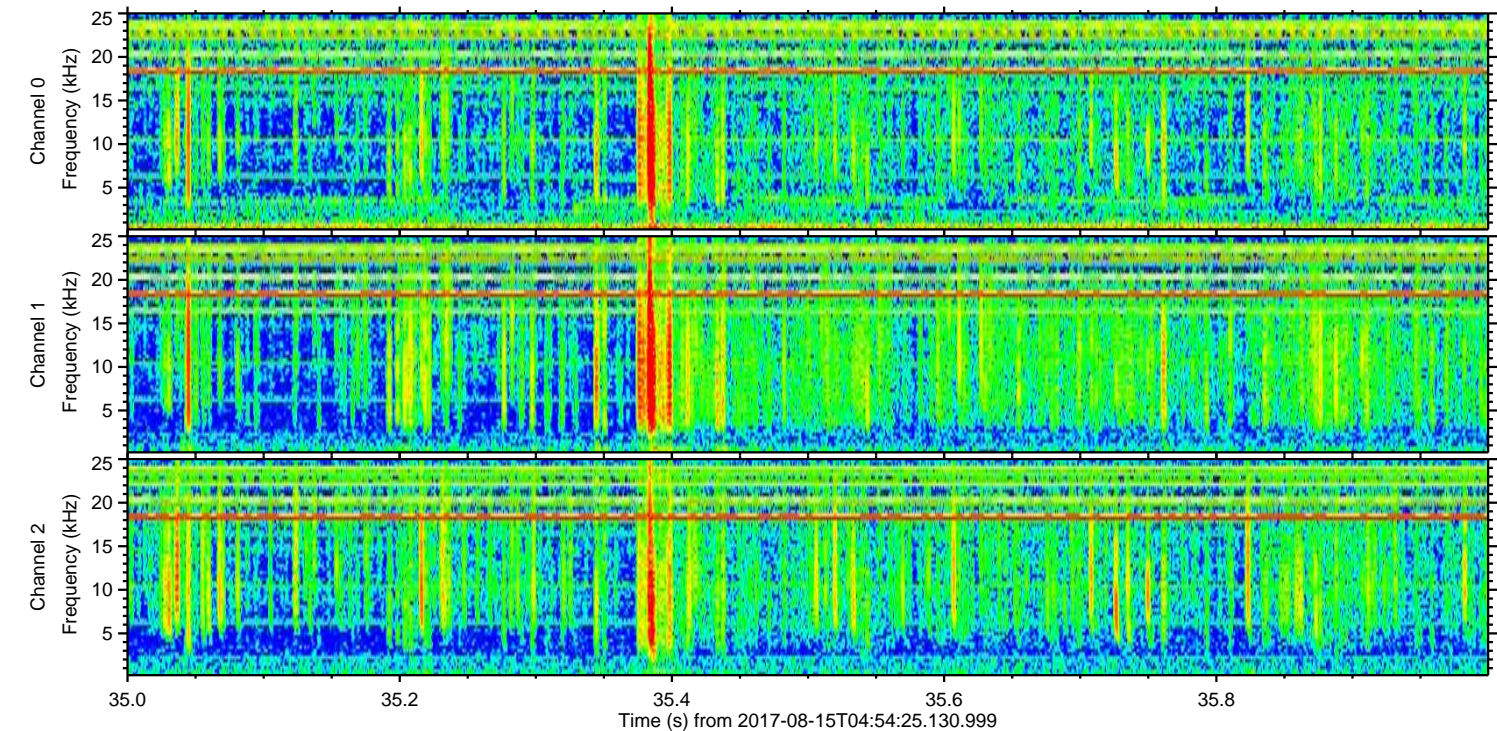
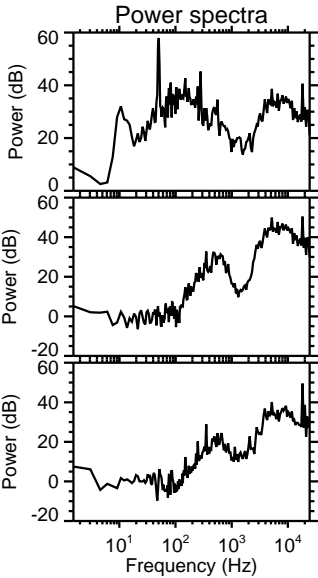
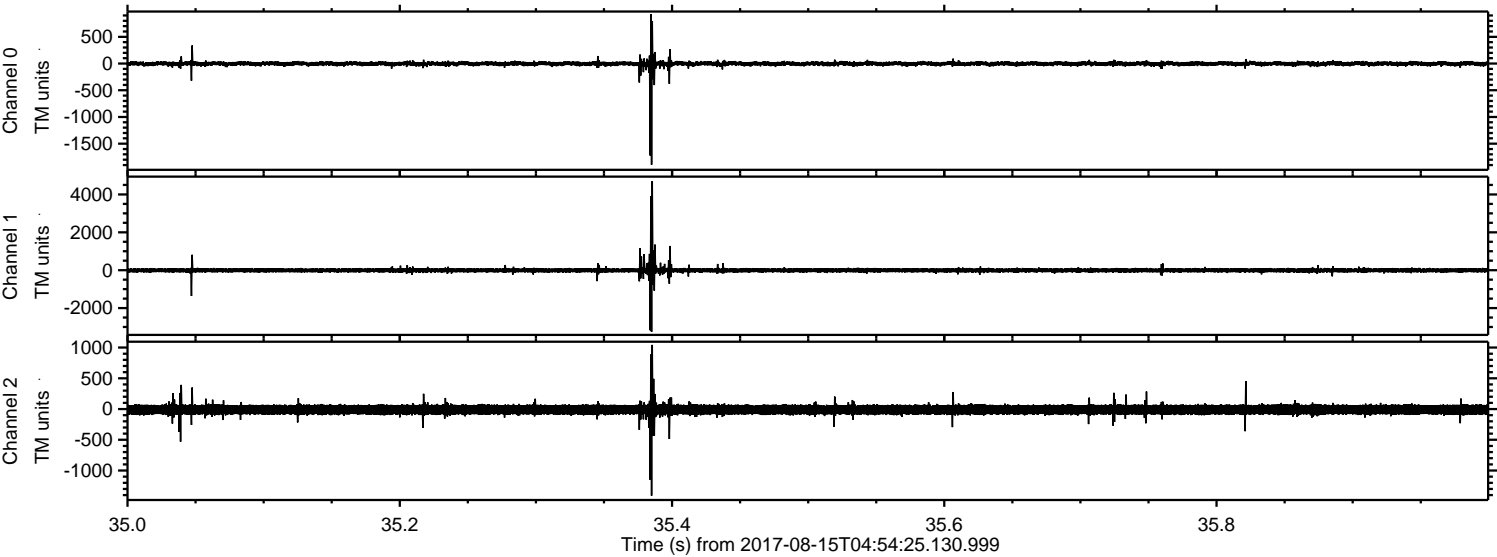


ELMAVAN 3D WAVEFORMS (Measured data sampled at 50 kHz) 50999 packets of 144 samples from 2017-08-15T04:54:25.130.999. Part 134/147

Processed Tue Aug 15 07:02:52 2017 by ELM ver.2012-10-06 from 001__elm20170815_045424__dat00.bin

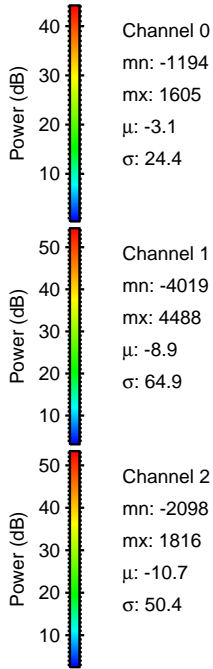
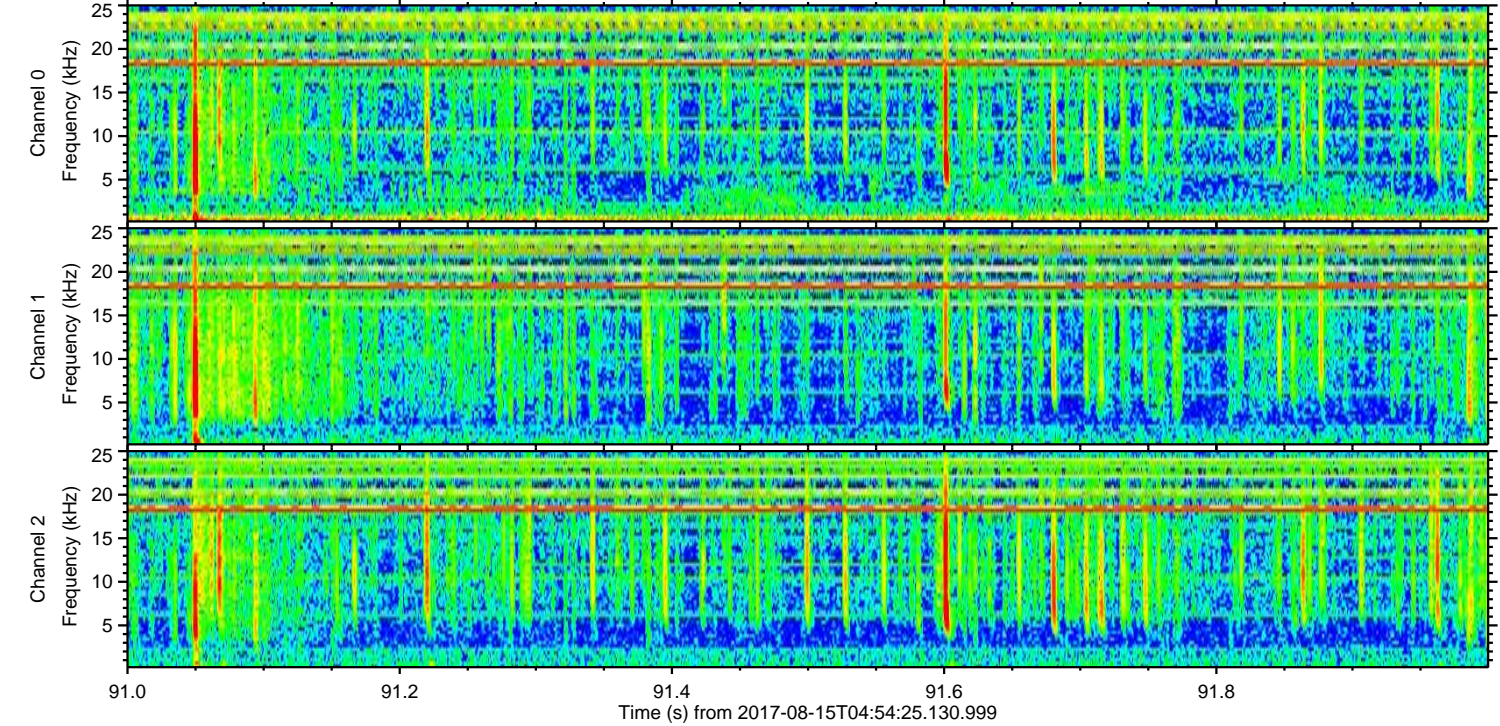
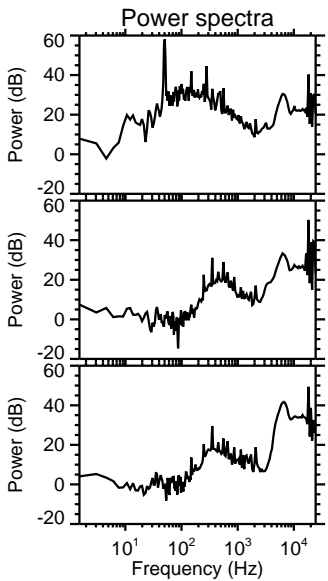
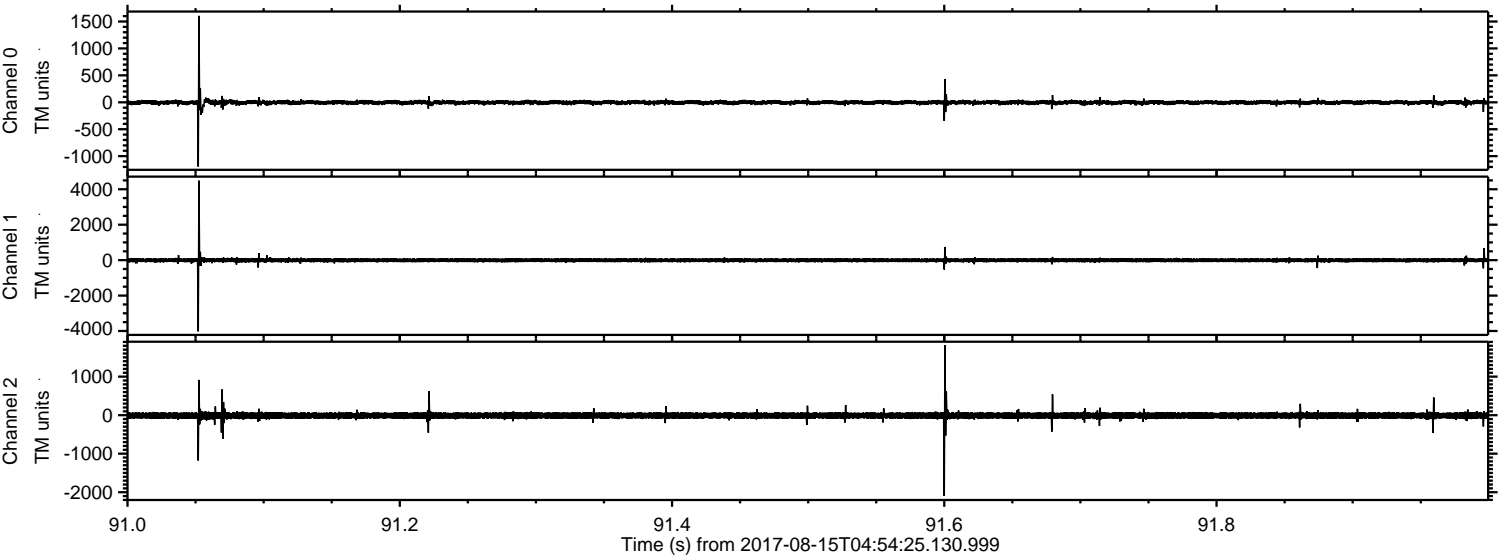


Processed Tue Aug 15 07:02:52 2017 by ELM ver.2012-10-06 from 001__elm20170815_045424__dat00.bin



ELMAVAN 3D WAVEFORMS (Measured data sampled at 50 kHz) 50999 packets of 144 samples from 2017-08-15T04:54:25.130.999. Part 92/147

Processed Tue Aug 15 07:02:53 2017 by ELM ver.2012-10-06 from 001__elm20170815_045424__dat00.bin



Channel 0
mn: -1194
mx: 1605
 μ : -3.1
 σ : 24.4

Channel 1
mn: -4019
mx: 4488
 μ : -8.9
 σ : 64.9

Channel 2
mn: -2098
mx: 1816
 μ : -10.7
 σ : 50.4

Processed Tue Aug 15 07:02:54 2017 by ELM ver.2012-10-06 from 001__elm20170815_045424__dat00.bin

